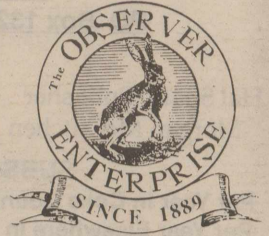


THE OBSERVER/ ENTERPRISE

Single Copy 35c



Serving Coke County

(USPS 467-480)
(ISSN 8750-197X)

Vol. 113, No. 31

Friday, March 2, 2001

WCCCD slates fish fry, dance to kick off big striper contest

The West Coke County Community Development is hoping the number thirteen is their lucky number. The chamber of commerce group which represents West Coke County is planning a fish fry and dance for Saturday, April 21, 2001. These festivities will kick off the big striper contest on Lake Spence. And the thrust of the contest is to best R. L. Flanagan's record striper. The ironic part of this is that the fish fry and dance, set for April 21, will be exactly thirteen years to the day since R. L. set the current striper record on Lake Spence.

The West Coke group has also planned a membership drive and other activities during the fish fry on April 21. More information on the fish fry and dance will be forthcoming in later issues.

As to the striper contest, the West Coke County Community Development is offering a \$2,000 reward to the striper fisherman who bests R. L.'s record. And there aren't a lot of strings attached -- no entry fees or other gimmicks. The only requirements are a driver's license and a valid fishing li-

cense plus a Lake Spence fishing permit. Of course, all Texas Parks & Wildlife Fishing regs apply, including those which state that your big fish must be caught on a rod and reel -- no trotlines. Potential winners will be required to sign a statement concerning how and where the big fish was caught. DNA and polygraph evidence may also be utilized to certify the winner.

Fish anytime during the year. There are no restrictions on when you land your record striper. Your big fish will be weighed on certified scales by CRMWD officials and game warden Gary Mitchell at Wildcat Marina on Lake Spence. First one to break the record will receive a check

(cont'd. next page)

Membership drive for BVFD

The Bronte Volunteer Fire Department will be having a membership drive this month.

They will work with new members to train them in safety and the proper ways to operate the trucks and equipment.

Your volunteer fire department keeps your home insur-



The Robert Lee Lady Steers capped a successful season by capturing the Bi-District Championship. They include (bottom row, from left) Jennifer Alexander, Kizre Matthews, Managers Amber Perez and Jennifer Fluhmann, Rachelle Mills, Bobbie Sparks (top row, from left) Whitney Millican, Jodee Helwig, DeShira Dickey, Coach Wayne Alexander, Amber Freeman, Dixie Simpson and Shanna Wojtek.

ance affordable and often saves lives on the highway. Each person has an obligation to serve at sometime on volunteer boards. You cannot go through life leaving all responsibility to someone else. You can only ride so far then you must help pull.

Please step up and join the

fire department for your share of the service as well as some fun and good times. A member's schedule can be worked around. Business owners, you have so much at risk, please allow an employee to attend the drills and help when the siren blows.

Call the City Hall, a fireman or a city council member for details on how to join.

Pageant Association to meet

The Coke County Pageant Association will meet on Thursday, March 1st at 7 pm at Robert Lee City Hall. All interested area residents are encouraged to attend.

Stenholm aide to visit Coke County

Charlie Stenholm's aide will be in the conference room in the Coke County Courthouse in Robert Lee, March 12th, 2001 from 10:00 am to 11:00 am to answer any questions that the citizens of Coke County might have. Please be sure to stop by.

Singing at Bronte Nursing Home

J D Taylor & singers will be at the Bronte Nursing Home Monday, March 5, 2001, from 2:00 - 4:00 pm. The public is invited to attend.

Gibbs named MVP

Longhorn senior Brandon Gibbs was named the Most

Valuable Player on the all district squad in District 6-A. Four Longhorns made the all district team, along with two from Robert Lee.

Brandon is joined by teammate seniors Ryan McCorkle, Henry White, and Zeb Speary.

Honorable mention for the all district squad is senior Josh Schoenfield and junior Steve Eldred.

Robert Lee Steers named to the all district team were senior James Gallegos and sophomore Cooper Riley.

Helwig named MVP

Junior Jodee Helwig has been named the Most Valuable Player on the all district basketball squad in District 6-A. Five Lady Steers made the all district team, along with one from Bronte.

This is Helwig's third year to be named MVP on the all district squad.

Jodee is joined on this year's team by senior Deshira Dickey, and juniors Shanna Wojtek, Kizre Matthews and Whitney Millican.

Honorable mention on the all district squad is senior Dixie Simpson and junior Jennifer Alexander.

Joining the Robert Lee Lady Steers on the all district squad is senior Kala Arrott of Bronte.

Honorable mention on the all district squad from Bronte is senior Tessie McMullen and junior Cody Monsey.



The Bronte Longhorns finished a great season with a win in the first round of the Sectional Tournament. They include (bottom row, from left) Anthony Gibbs, Josh Schoenfield, Zeb Speary, Tim Green, (top row, from left) Manager Brandon Poehls, Charlie Bettis, Clayton Acker, Ryan McCorkle, Brandon Gibbs, Dalton Graves, Jeremy Silva, Henry White and Steve Eldred. The Horns are coached by Rocky Rawls.

THE OBSERVER/ENTERPRISE
 Published Weekly Except Christmas
 707 Austin (915) 453-2433

(USPS 467-480) (ISSN 8750-197X)
 Periodical Rate Postage paid at Robert Lee, TX.

**POSTMASTER: Please send address changes to
 Observer/Enterprise
 PO Box 1329, Robert Lee, TX 76945.**

STAFF
 Hal Spain, Publisher Melinda McCutchen, Editor
 Morgan McCutchen Pat Taft

SUBSCRIPTION RATES
 Per Year in Coke County.....\$20.00
 Per Year Elsewhere in Texas.....\$22.00
 Per Year Outside of Texas.....\$25.00

Obituaries

Magness
 Amanda Beulah Magness, 98, of Bronte, died Sunday, February 25, 2001, at a San Angelo hospital.

Funeral services were held at 1:30 pm, Tuesday, February 27, 2001, at First Baptist Church, Blackwell, Texas, with Brother John Curry officiating. Burial followed at Hylton Cemetery under the direction of Shaffer Funeral Home of Bronte.

Mrs. Magness was born November 29, 1902, in Cedar Nob, Texas to James Elbert Childers and Clercy Lee Pillion. She was a member of the Methodist Church. She married James Newton "Jim" Magness, April 28, 1929 in Drasco. After their marriage, they made their home in the Hylton area as farmers and ranchers. She was a homemaker, an avid cook, a member of the Hylton Home Demonstration Club and the Hylton Quilting Club for many years, and also enjoyed gardening and preserving the fruits of her labor. In later years, she enjoyed watching birds and her soap operas. After her husband's death in 1963, she moved to Bronte and resided there until her death.

Her daddy was a school teacher, carpenter, fisherman and blacksmith. They moved many times in her growing up years. She loved to talk about the many places she had lived such as Cedar Nob, Blackwell, Maryneal, Champion, Shep, Mulberry Canyon, Fort Chadbourne and Grassburr, and recalled helping her mother care for her younger brothers and sisters.

Survivors include two sons, Jessie Magness and wife, Hulene, of Blackwell; Bill Magness and wife, Hazel, of Hylton; one sister, Myrtie Ware of Abilene; 8 grandchildren, Joe V. Hicks and wife of Burleson; Gay Kloster of Austin; Lee Magness and wife, Shirley, of Granbury; Sandra Bushore and husband, Michael, of San Antonio; Jan Magness of Bronte; Billy Magness and wife, Janet, of Blackwell; Marie Wooten and husband Jim, of Ocean-side, CA, and Dean Johnson and wife of Fort Worth; 6 step-grandchildren; numerous great-grandchildren; several great-great-grandchildren and many nieces, and nephews.

She was preceded in death by her husband, Jim Mag-

ness, her parents, James and Lee Childers; 2 sisters, Vera Buchanan and Wilma McDorman, and 6 brothers, Clifton Crockett, Eldon, Raymond "Slim", Morris, Kenneth and Grady Childers; 1 son, Valton Hicks and 1 step-daughter, Ruby Johnson.

Pallbearers were Joe V. Hicks, Lee Magness, Billy Magness, Danny Magness, Michael Bushore and Jerome Hanna. Honorary pallbearers are Caleb Magness and Mason Magness.

31a-11c

Death Notices

McCleskey
 Dee McCleskey, 89, of Robert Lee, passed away on Saturday February 24, 2001, at a local hospital.

He is survived by a daughter, Dee Anna Bogusch of Cleburne, Tx; one sister, Louise Allen of Abilene; two grandsons; one great granddaughter; one nephew; and two nieces.

Services were held at 11:00 am Monday, February 26, 2001, at the First United Methodist Church with the Reverend Jim Reeves officiating. Burial followed in the Robert Lee Cemetery. Services were under the direction of Shaffer Funeral Home.

Eubanks
 Tad Eubanks of Strawn, Texas passed away February 14, 2001. Services were held at the First Methodist Church in Strawn on February 17.

She is survived by a brother, Bill Copeland of Strawn, and a sister-in-law, Earl Gillis of Del Rio. She is also survived by 1 niece, 2 nephews, 2 granddaughters, 1 great granddaughter, and several Coke County cousins.

WIC to serve surrounding areas

The Ballinger WIC office serves Robert Lee and surrounding areas. Classes, screenings, and immunizations are offered every 1st and 4th Wednesday. The WIC staff is at the Southside Church of Christ in Robert Lee, between 10 am and 4 pm. If you have any questions, please contact the office in Ballinger, 365-5925, Tuesdays or Fridays.

...Contest (cont'd. from page 1)

from the West Coke County Community Development in the amount of \$2,000.00. Possibly the best part of the promotion is that if we don't break R. L.'s record this year, then each year the pot will increase another \$2,000, until the maximum of \$10,000.00 is yours for the taking.

Lake Spence fishing guide Terry Brown has been after R. L.'s record for most of those thirteen years the big bass has been on the books. In fact, Terry has developed a poem, or chant, or prayer, that his fishermen recite in unison every time they go out on Lake Spence.

The WCCCD has adopted this "prayer" for the contest, and it goes like this:

Paying the Fish Gods
 Take a penny and throw it over your left shoulder into the water after you recite the following:
"For all the times we've tried and failed; Give us a fish that'll beat R. L.'s."

The chant has worked wonders for catching big fish, but so far none of Terry's fishermen have broken R. L.'s record.

Terry has also done some recent research on Lake Spence. It turns out that over forty of the top 100 stripers in the state of Texas have come from Lake Spence. That should also be some incentive to striper fishermen; to not only break R. L.'s record, but to also be listed in the state records for big stripers.

Local businesses and individuals who are sponsoring the promotion include: Super H Grocery, Ben Bessent

Chevrolet, Robert Lee State Bank, Ivey Motor Co., Key Feed Store, City of Robert Lee, Flanagan Boat Storage, Terry's Wildcat Marina, The Best Connection, Cracker Barrel Restaurant, Terry Brown Guide Service, Mountain Creek Lodge, West Coke County Community Development, Molly B's, Jimmy's Automotive & Tire Shop, Bell Auto Body Shop, Texas Cellular/Rock Solid Communications, C & H Auto & Hardware, Askins Propane/RV Refrigeration, and the Observer/Enterprise.

Local sponsors still have time to get in on this year's contest. If you are interested in promoting Lake Spence and West Coke County, please contact R. L. Flanagan at 453-4359 or Dave Hughes at 453-4639.

The striper contest will begin March 9, 2001. The big kickoff for the contest will be the Lake Spence Striper Tournament, set for March 24. The tournament is sponsored by the Texas Striper Association. For more information on the tournament, contact Terry Brown at 1 (800) 375-8191.

The deadline for this year's sponsorship is March 5. Don't miss out on this opportunity to promote Lake Spence and West Coke County.

Euterpean Club holds meeting

by Collene Fletcher
Reporter

The Euterpean Club held their annual business meeting February 15th at the Blackwell Methodist Church. President Gypsy McMullin called the meeting to order. The Club Collect was read, roll called,

Secretary and Treasurer reports were given.

The Selection Committee was recognized and their slate of officers were read. After a discussion, the officers were elected by acclamation. Officers for the coming year will be President - Collene Fletcher; Vice-President - Heather Sanderson; Secretary - Karen McBride; Treasurer - Sue Dean; Librarian - Sharon Taylor; Parliamentarian - Dona Sanderson; Pianist - Jeraldine Hickman; Reporter - Lillie Burwick.

The hostesses Sue Sweet, Sue Dean and Linda Watts used a Valentine Theme to serve a vegetable tray, cheese ball and crackers, cookies, cheese cake and punch to Margaret Battle, Mary Burnett, Lillie Burwick, Betty Cole, Collene Fletcher, Hulene Magness, Karen McBride, Gypsy McMullin, Heather Sanderson, Sharon Taylor, Rosemary Ten Eyck, Bobbie Varnadore and Linda Watts.

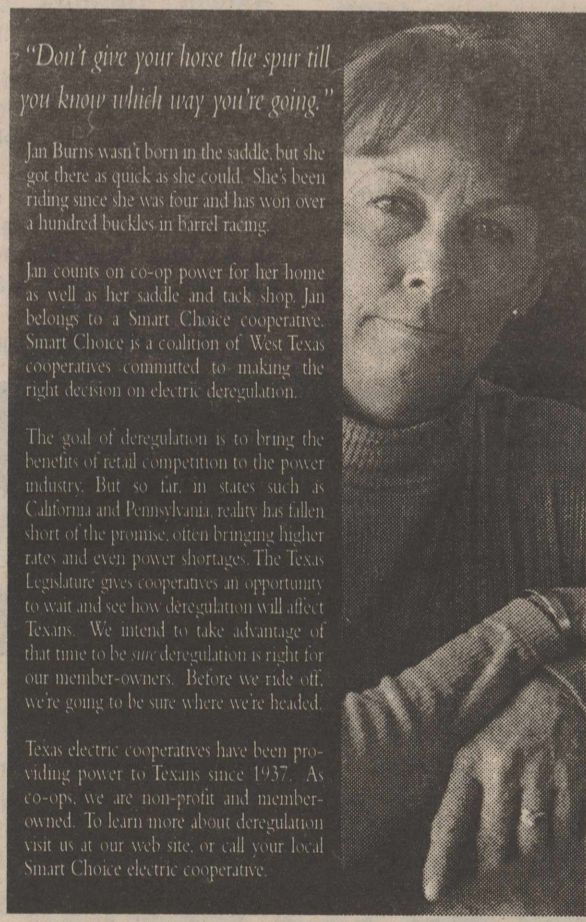
The January meeting was canceled due to the bad weather.

Farm Service office taking applications

The FSA office is currently taking applications for the Livestock Assistance Program (LAP) for 2000 crop year and the Crop Disaster Program (CDP) for 2000 crops. Producers will need to call and make appointments due to the various sign-ups going on at once and the length of time for each. Producers may call (915) 453-2751 for an appointment. Appointments will NOT be made for Thursday afternoons and Friday afternoons.

Churches of Robert Lee

- Invite You to Worship*
- Emmanuel Pentecostal**
 PO Box 683 • 1019 Colorado City Hwy
 (915) 453-2360
 Rev. Ray Aldridge, Pastor
 Sun. 10 am & 6 pm, Wed. 7 pm
- Northside Church of Christ**
 PO Box 388 • 9th & Chadbourne
 (915) 453-2619 or 453-2270
 Tommy Williams, Minister
 Services: Sun. 10 am & 6 pm;
 Wed. 7 pm
- Pecan Baptist**
 PO Box 542 • 12 W. Sterling City Hwy
 (915) 453-4645
 Rev. Dale Patterson, Pastor
 Sun. 10 am, Sunday School
 11 am & 7 pm, Worship
- Southside Church of Christ**
 PO Box 698 • 8th & Houston
 (915) 453-2176
 Frank J. Daniels, Preacher
 Sun. 10 am, Sunday School
 11 am & 6 pm, Worship
 Wed. 7 pm, Worship
- Robert Lee Baptist Church**
 PO Box 493 • 22 W. 11th
 (915) 453-2724
 Bro. Waide Messer, Pastor
 Sun. 9:45 am, Sunday School
 11 am & 7 pm, Worship
 Wed. 7 pm, Prayer Meeting
- Our Lady of Guadalupe Catholic Church**
 601 W. 10th
 (915) 365-2687
 Rev. Hubert Wade, Jr., Pastor
 Sat. 6 pm
- Victory Assembly of God**
 PO Box 638 • Robert Lee
 (915) 453-2208
 Rev. Erma Johnson, Pastor
 Sun. 9:45 am, Sunday School
 10:45 am & 6 pm, Worship
 Wed. 7 pm, Prayer Meeting



the smart choice.

Your Smart Choice Electric Cooperatives.

Big Country Electric Cooperative, Inc.
 Coleman County Electric Cooperative, Inc.
 Comanche Electric Cooperative, Inc.
 Concho Valley Electric Cooperative, Inc.
 Rio Grande Electric Cooperative, Inc.
 Southwest Texas Electric Cooperative, Inc.
 Swisher Electric Cooperative, Inc.

www.smartchoicecoops.com

Check out
✓ Coke Co.
Library

Westerns added to county library

The Coke County Library has added the following westerns to the collection: Final Ride, Mike Flanagan; Blood Red River, Walter Lucas; Aces and Eights, Loren Estleman; West of the River, Jack Ballas; The Second Gun, James Clifton Cobb; Tumbleweeds, Will Henry.

Also added this month are Painted House, John Grisham; Birds of Prey, J. A. Jance; From the Corner of His Eye, Koontz; Night Heat, Higgins; and The Redemption of Sarah Cain, Beverly Lewis.

The book Too Old for This, Too Young for That! Your Survival Guide to the Middle School Years is in the library. Seven survival chapters are offered in this book for students ages 10-13. Some of the chapters are "Like the Skin You're In," "Understand Your Feelings," "Find, Make, and Keep Friends," and "Take Charge of Your Life."

Anyone interested in reading what is going on at the Capitol in Austin can read all about it in the House Journal which includes the proceedings on a day-to-day basis of the seventy-seventh legislature. The daily invocations, while brief, make inspirational reading. Many of the resolutions are of a congratulatory or honoring nature, but there is some insight into the bills and joint resolutions being passed to committees.

Library hours are Tuesdays, 8-12; Wednesdays, 8-4; Thursdays, 1-5; Fridays, 8-12.

Coke County approved for LAP

Agriculture Commissioner Susan Combs reminds livestock producers that 239 Texas counties have been approved by the U.S. Department of Agriculture Farm Service Agency for the Livestock Assistance Program (LAP).

LAP, administrated by FSA, provides direct payments to eligible livestock producers in approved counties who suffered grazing losses due to natural disasters during 2000. Nationwide, \$430 million have been allocated for livestock producers for weather-related losses as part of the farm assistance package passed last October.

For drought-related losses, LAP benefits are available in approved counties where precipitation was 40 percent or more below normal for at least four months and where there was at least a 40 percent loss of available grazing during a 90-day period due to drought during the 2000-crop year.

Coke County has been approved for LAP benefits.

Eligible producers must have suffered a 40 percent or greater loss of grazing for three or more consecutive months during 2000 due to a natural disaster. Eligible livestock include beef and dairy cattle, buffalo or beefalo when



Mrs. Odella Wrinkle Coalson was honored on her 92nd birthday at the Senior Citizens Nursing Home in Winters where she has lived for six years. The family members attending were her daughters Loretha Knight of Abilene and Joyce Riley of Hubbard, her son Loy Wrinkle of Bronte, and a granddaughter Linda Connell of Abilene. Also attending were Dorthey Pruitt of Bronte, Janette Bradshaw of Abilene, Freddie Bredemeyer and Billie Bishop of Winters and several residents of the home. Loretha, Janette and Freddie are the Tuesday Volunteers who do the gospel singing hour every week. Everyone enjoyed refreshments, visiting and singing.

maintained on the same basis as beef cattle, sheep, goats, swine and equine animals used commercially for human food or kept for the production of food or fiber on the owner's farm or ranch.

For more information on LAP, visit the USDA-Farm Service Agency website at www.fsa.usda.gov/pas/publications/facts/html/lap1.htm or contact the local USDA Service Center.

Severe weather awareness week

Governor Rick Perry has proclaimed the week of March 4-10 as Severe Weather Awareness Week in Texas. The National Weather Service, in coordination with the Texas Division of Emergency Management, urges the citizens of Texas to

prepare for the upcoming severe weather season. The goal during the week is to educate all Texans about severe weather safety rules. Emergency preparedness should come before the emergency, not during one.

SA Genealogical Society meets

The San Angelo Genealogical and Historical Society will meet at 7:30 pm on Tuesday, March 6, 2001 at the Church of Christ in San Angelo, 901 Main St., in the fellowship hall. The meeting is free and they would like to invite anyone interested in Genealogy to come and join them.

There will be no beginners classes in March because of spring break. Times for these classes will be announced at a later date. For more information call 655-6494.

Are You Prepared for Long-term Care Costs?

Long-term care insurance is one of the best ways to protect your financial security if you or a loved one requires extended care. A number of different plans and options are available to meet your needs, and I can help determine the best plan for you.



Call or stop by today.
Jim Woodruff
719 Strong Avenue
Ballinger, Texas 76821
(915) 365-2505
www.edwardjones.com

Member SIPC

Edward Jones
Serving Individual Investors Since 1871

LONE STAR
CARDS
WELCOME

Super H
IGA

LIMIT
RIGHTS
RESERVED

501 Commerce - Robert Lee, TX

Store Hrs: Mon.-Sat. 8-8 Sun. 8-6

SPECIALS GOOD 2/28 Thru 3/6

Boneless
Skinless
**Fryer
Breasts**
Lb. \$1.49

Regular or Hot
**Owens
Roll Sausage**
2 Lb.
Pkg. \$2.99

Red Ripe
Strawberries
1 Lb.
Pkg. \$1.99

Hot House
Tomatoes
LB. .99

Chunk Light in Water or Oil
**Chicken of
the Sea Tuna**

3 6 oz.
cans / \$1

Selected Varieties
**Blue Bell
Ice Cream**
2 1/2 Gal.
Rounds / \$7



Selected Varieties
**Coca-Cola
Products**
12 Pk.
12 Oz. Cans \$2.89

Bronte School News

Bronte Longhorn basketball

Bronte Longhorns took the court against Wink in the Sectional Tournament semi-finals. Bronte won the semi-final game by a score of 64-57. Bronte stats as follows: Brandon Gibbs 6 points, 9 rebounds; Henry White 19 points, 11 rebounds; Zeb Speary 10 points, 5 assists; Ryan McCorkle 12 points, 7 rebounds, 5 assists; Josh Schoenfield 4 points; Tim Green 3 points; Steve Eldred 6 points; and Charlie Bettis 4 points.

In the Sectional finals, the Bronte Longhorns fell to Lorenzo 90-67. Bronte scoring is as follows: Brandon Gibbs 19 points; Henry White 15 points; Zeb Speary 10 points; Ryan McCorkle 7 points; Josh Schoenfield 4 points; Tim Green 4 points; Steve Eldred 4 points; Anthony Gibbs 2 points; Charlie Bettis 2 points.

The Bronte Longhorns finished their season with a record of 24-5.

Bronte attends practice UIL

There was a practice UIL math/science meet at Lake View High School Saturday, February 17, 2001. Students and their events were: Clayton Acker - Number Sense, Math, Science; Jade Richards - Number Sense, Math, Science; Joe'l Sefcik - Calculator, Science; and Anthony Flores - Science, Calculator.

Jade Richards placed 4th and was the Top Biology



Breakfast

- Monday, March 5**
Cereal, apple juice, pop tart, milk
- Tuesday, March 6**
Sausage, grape juice, pancake, milk
- Wednesday, March 7**
Sliced ham, scrambled eggs, apple juice, biscuit, milk
- Thursday, March 8**
French toast sticks, sliced peaches, teddy grahams, milk
- Friday, March 9**
Student holiday, Teacher inservice

Lunch

- Monday, March 5**
Pizza, tossed salad, sweet corn, milk, peanut butter cookies
- Tuesday, March 6**
Steak fingers with gravy, creamed potatoes, green beans, rolls, milk, brownies
- Wednesday, March 7**
Burritos with cheese sauce, tossed salad, Spanish rice, sliced peaches, milk, jello
- Thursday, March 8**
Sub sandwiches, ham & cheese, lettuce, tomato, pickle, pork & beans, bun, chips, milk, rice krispie bars
- Friday, March 9**
Student holiday, Teacher inservice

Award winner in the 12 grade Science contest. She also placed 5th in Mathematics.

Anthony Flores placed 3rd and was the Top Biology Award winner in the 11th grade Science contest.

Joe'l Sefcik placed 7th in 10th grade Calculator.

The Math team of Clayton Acker and Jade Richards placed 7th. The Science Team of Clayton Acker, Jade Richards, and Anthony Flores placed 7th also.

Lady Longhorns All-District stats

Kala Arrott (Sr) 2001 All District; All-Tournament @ Miles Tournament; 2000 All District; 2001 District Stats: 8.7 points/game; 8 rebound/game.

Honorable Mention All-District Tessie McMullen (Sr); Codi Monsey (Jr); Lauren Williams (Jr); and Natasha Reed (Jr).

Diabetes

Oh, if you have it, doesn't that mean you just can't have sweets? Not too much of a problem, true?

No, not true.

Look at the possible results of having uncontrolled diabetes - blindness, irreversible kidney failure, amputations, heart disease, stroke, complications in pregnancy. And diabetes mellitus was the sixth leading cause of death in Texas in 1998, increasing from 4,753 deaths in 1997 to 4,888 in 1998.

Diabetes is a serious disease. With it, the body either does not produce insulin (Type 1 diabetes) or does not effectively use or produce adequate amounts of insulin (Type 2 diabetes). The hormone insulin allows sugar or glucose to enter cells and be used for energy. Insulin also is needed to make protein and store fats. In Uncontrolled diabetes, sugar and fats remain in the bloodstream and, with time, damage vital organs.

The Diabetes Program at the Texas Department of Health (TDH estimates that more than 1 million Texans 18 years and older have diabetes. About 890,000 of these - 6 percent of the state's population - have been diagnosed, and the remainder are not aware they have the disease.

In Texas, African Americans, Hispanics, Asian Americans and people who are overweight are more likely to develop diabetes. In 1999 in Texas, 7.8 percent of African Americans, 7.1 percent of Hispanics and 5.6 percent of whites and other ethnic groups had diagnosed diabetes. A family history of diabetes, high or low blood sugar, limited physical exercise and being age 45 or older also point to those who may develop diabetes.

"Early detection, good care and education on self-management are essential for people with diabetes," said Dr. Philip Huang, chief of the TDH Bureau of Disease, Injury and Tobacco Prevention. "These steps are especially vital to take since the incidence of this type of diabetes linked to obesity, Type 2, has jumped significantly in children and adolescents as the percentage of overweight youngsters has increased."

Once diagnosed, careful management of diabetes is vital to prevent or delay serious complications and premature deaths.

"There is no known cure," Huang said. "Diabetes is certainly treatable, but it is a chronic condition that people must learn to deal with daily."

Among the keys to keeping diabetes in check are to:

- *Eat healthy meals and snacks that can include veggies such as carrots, celery or cucumbers; small fruits such as apples or oranges; popcorn; or a small bagel.

- *Take the proper medicine.

- *Monitor blood sugar and keep a daily log.

- *Exercise at least three times a week for 20 minutes.

- *Live a healthy lifestyle including no smoking, less stress, adequate sleep and avoiding excessive alcohol.

- *Lose weight if overweight and then maintain recommended weight.

- *Reduce and control high blood pressure.

- *Adjust meal plans and exercise to keep blood sugar in the desired range.

- *Check and take special care of feet and skin every day.

- *Make and keep follow-up appointments with health care providers.

Symptoms of diabetes may

include blurred vision; fatigue and a lack of energy, extreme thirst or hunger, frequent urination, sudden weight change, numbness or tingling in hands or feet, slow healing sores or cuts, frequent infections or depression.

Many of these symptoms go unnoticed, so people most likely to develop diabetes should be tested. Current guidelines also recommend that everyone consider being tested every three years. In addition, people with diabetes should get pneumococcal and annual influenza vaccinations because they are more likely to die with complications of pneumonia and flu.

For more information contact Donna Jones, TDA Diabetes Program, at 512-458-7490; or Emily Palmer, TDH Office of Communications, at 512-458-7400.

National Weather Service message

Each spring, Texas experiences numerous outbreaks of severe weather. Many of these outbreaks are deadly. Over the past few years, the National Weather Service's capability to warn people of impending hazardous weather has improved dramatically through the use of state of the art Doppler weather radar. But early warnings are useless unless people know how to react to impending severe weather.

As part of Texas Severe Weather Awareness Week this year, I urge you to participate in the West Central Texas tornado drill. The weekly test of NOAA Weather Radio on Wednesday, March 7th will occur between 9:00 am and 9:30 am. When that test of NOAA Weather Radio occurs, your National Weather Service in San Angelo will ask all those participating in the tornado drill to begin their drills.

I strongly recommend that schools and day care centers participate in this tornado drill. Additionally, families, businesses, and any other places that are entrusted with public safety may also want to participate. Thursday, March 8th is an alternate day for the drill should bad weather occur Wednesday.

Should you have any questions about tornado safety or severe weather, please contact the National Weather Service in San Angelo.

Your San Angelo National Weather Service office urges

you to prepare for severe weather now. Don't wait until it is too late!

Tornado safety tips for home

Before the storm

- *Develop a plan for you and your family for home, work, school, and when outdoors.

- *Have frequent drills.

- *Have a NOAA weather radio with a warning alarm to receive warnings.

- *Listen to radio and television for information

If a warning is issued or threatening weather approaches

- *In a home or building, move to a pre-designated shelter, such as a basement.

- *If no basement, move to an interior room or hallway on the lowest floor.

- *Stay away from windows.

- *Get out of automobiles.

- *If caught outside or in a vehicle, lie flat in a nearby ditch.

- *Abandon mobile homes.

Tornado safety tips for school

- *Develop a severe weather action plan and have frequent drills.

- *Each school should be inspected and shelter areas designated by a registered engineer or architect. Basements offer the best protection. Schools without basements should use interior rooms and hallways on the lowest floor and away from windows.

- *Monitor weather information from NOAA weather radio and local radio/television.

- *Make special provisions for those in portable class rooms.

- *Lunches or assemblies in large rooms should be delayed if severe weather is anticipated. Gymnasiums, cafeterias, and auditoriums offer no protection from tornado-strength winds.

- *Move students quickly into interior rooms or hallways on the lowest floor. Have them assume the tornado protection position - kneeling on the floor with arms and hands protecting the head.

Look Who's New Tanner Blane Braswell

Tanner Blane Braswell was born to Blake & Valerie Braswell on February 17, 2001. He weighed 8 lbs. 3 oz. and was 20 inches long.

Big sisters are Kaitlyn & Marley Braswell. Grandparents are Dennie & Sharon Braswell and great-grandmother is Oleta Braswell of Bronte.

RUNNELS CO. AG MART & PEST CONTROL

is offering a new service!

We are now fertilizing trees with liquid fertilizer injected into the soil around trees. No waste - No watering in. All nutrients get down to the feeder roots. Call us for details and put your name on our list. Now is also the time to spray dormant oil for scale. We are licensed with the state & would like to be your exterminator for all pests. We are a full line yard and garden store as well as a feed dealer. We carry Surefed & Caraway Feeds and MLS Tubbs for sheep and cattle.

Call (915) 365-2618 or come by
105 N. 10th St. in Ballinger.

GLENN-BIVINS INSURANCE
See us for your auto insurance.
123 W. Main Bronte 473-6791

TIRED OF YOUR WATER?
Complimentary Testing & Free Estimates
RainSoft
CALL 1-866-653-7628 ANYTIME

Nursing homes reveal crisis looming

Results of a survey released recently in Austin by the Texas Association of Homes and Services for the Aging (TAHSA) revealed that over half of its mostly faith-based nursing home members believe that they may have to close their doors within the next five years if the Texas legislature does not adequately address several pressing issues in its January session. Another 38% of TAHSA members believe their continued operation is at least somewhat threatened by the crisis they are facing.

According to TAHSA's President David Latimer, the survey shows that several interrelated issues lie at the heart of this crisis, including inadequate Medicaid reimbursement, escalating insurance liability costs, and difficulty in funding competitive wage rates for staff.

"Many TAHSA not-for-profit homes have been serving their communities for more than 50 years. We have been hearing from our members that the current operating environment is the toughest they have ever seen, and this survey certainly confirms this," said Latimer.

"For many faith-based not-for-profits, the upcoming legislative session is their last hope. Unless we can find a legislative solution to adequate reimbursement to cover the actual costs of care, staffing, and escalating insurance costs, many of our members may not be able to continue to provide their much-needed community services. One of our members closed their doors in September, and our survey indicates that many others may face the same fate if they do not get some relief," Latimer said.

The current level of Medicaid reimbursement is inadequate to provide care for low-income seniors. Medicaid reimbursement rates are set by individual states and Texas is near the bottom in level of funding.

"Medicaid pays for the care of 70% of nursing home residents in Texas at a rate set by the legislature. Texas is 45th in the country in the amount it reimburses nursing homes to care for elderly low-income Texans," Latimer said.

"The average rate of reimbursement in Texas is \$82.50 per resident per day, and that is just not adequate to pay for the proper level of staffing needed to give good care. It also gives no consideration to the exploding costs of liability insurance. By contrast, the state pays nursing home inspectors \$95 per day when traveling to cover the costs of a room and meals, and the inspectors are not receiving 24-hour nursing care, laundry, personal assistance with meals and bathing, social services, and the other activities that a nursing home must try to provide for \$82.50," Latimer said.

Other advocacy groups have recognized the need for adequate reimbursement for improving staffing and quality of care. The Texas Silver-Haired Legislature urged the legislature to add \$161 million each year of the biennium for

staffing. AARP has also joined with advocates, health care professionals, and providers to urge an increase in funding for staffing and other direct care costs.

Another equally threatening situation for Texas not-for-profit nursing facilities is skyrocketing liability insurance premiums. "We believe that the serious liability insurance problem for nursing homes has really been flying below the radar and has not been brought to the public's attention in a meaningful way. If you recall, several years ago, obstetricians quit delivering babies because they could not pay for liability insurance. That kind of crisis is occurring within the nursing home community now," Latimer said.

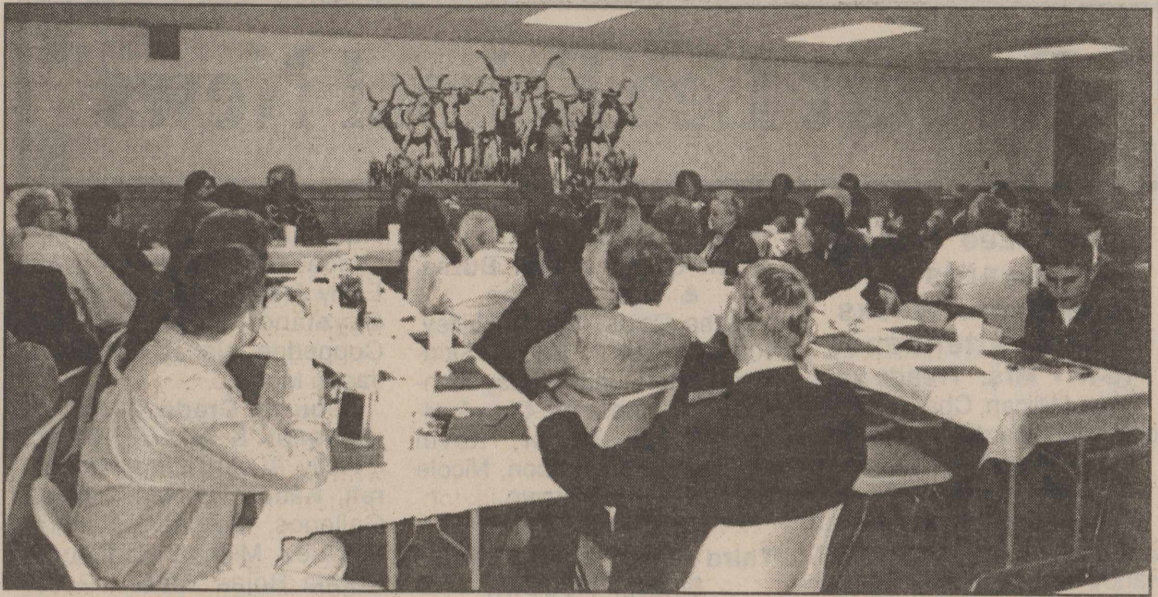
"Many of TAHSA's members do not yet know exactly how hard they will be hit with skyrocketing insurance rates because they are renewing their coverage on a calendar year basis and have not yet gotten their renewal quotes. Those facilities who have renewed since June 2000 are finding premiums have risen over 600% for less coverage than they had last year even though they had no history of claims whatsoever," Latimer said.

"Residents of nursing homes who have suffered harm deserve compensation, but what we are seeing in suits against homes is beyond all reason. Nursing homes have become easy targets and insurance companies have been quick to settle because the current rules of evidence are stacked against even a legitimate defense in an unwarranted lawsuit," he said.

The result, Latimer stated, has been the withdrawal from Texas of many insurance carriers and an explosion of rates charged by those who remain, even for facilities that have a good claims history.

"Even a well-run facility may face an insurance premium that is ten times what it was two years ago. One member, a not-for-profit organization with a 58-bed facility providing a critical service to a rural community, has seen their insurance rates rise from \$17,000 in 1998 to \$111,000 for this year's premium. The only way they can afford to pay it is to cut staff and quality of care for their residents, and they refuse to do that," Latimer said.

"They have decided that they have to continue to provide care for their residents, but will have to do it without having insurance. This is a terrible situation for this facil-



San Angelo's award winning western author, Elmer Kelton, was the guest speaker for the Bronte Chamber of Commerce banquet Monday night, February 19. Mr. Kelton entertained the large crowd with stories from his childhood and long career in agri-journalism.

ity," he said.

The Texas Association of Homes and Services for the Aging represents 182 not-for-profit providers of health care services, housing, and community support programs.

Building Social Security protection

Fredi Franki
Social Security Manager
San Angelo

This is the time of year when we think about taxes--federal (and state) income taxes, specifically. Many of us will be spending a great deal of time assuring the accuracy and timeliness of our income tax returns. However, far fewer people will be checking the accuracy and timeliness of their Social Security taxes. That tax may be even more important to your future financial security because the earnings on which they are paid determine the level of your Social Security retirement, disability or survivor benefits.

More than 6.2 million employers will be reporting the earnings of the nation's 154 million workers to Social Security. They will provide you with a copy of the report - a W-2 form - by the end of February. (Earnings from self-employment are reported on your federal income tax return.)

When you receive your W-2 form, check to make sure your name and Social Security number are correct. Compare the number and name shown on the W-2 with the information on your Social Security card. Report any discrepancies to your employer and Social Security office right away. Uncredited earnings could adversely affect your future eligibility for benefits, as well as your benefit amount.

You should also take this opportunity to be sure your Social Security earnings record is up-to-date. Now that all workers receive an annual Social Security Statement, checking your earnings is easy. If there is an error in your earnings, you should contact Social Security as soon as possible.

Remember, Social Security is likely to be a major source of income for you in your old age, to your family if you should die and if you become disabled today. More than one out of every six Americans are currently receiving Social Security benefits. It's important that you take the time to protect your investment.

Is automatic withholding for you?

Fredi Franki
Social Security Manager
San Angelo

Are you one of the eight million people who pay taxes on their Social Security benefits? If so, you can now have your taxes withheld from your payments automatically. Over 62,000 people have signed up for this convenient service

offered jointly by Social Security and the Internal Revenue Service (IRS).

To take advantage of automatic withholding, complete IRS Form W-4V, Voluntary Withholding Request. Select the percentage of your monthly benefit you want withheld--7, 15, 28 or 31 percent. After you've make your selection, sign and return the form to your local Social Security office either by mail or in person.

Each time you want to change or stop a withholding, complete a new W-4V and send it directly to Social Security.

To get a Voluntary Withholding Request, Form W4V, call IRS toll free at 1-800-829-3676. Your local Social Security office does not have these forms. However, the forms are available on the Internet at www.ssa.gov.

Keep in mind, automatic withholdings are totally voluntary. If you prefer, you can continue paying taxes quarterly, without making any changes.

JIMMY'S
AUTOMOTIVE
& TIRE SHOP
121 W. 10th
Robert Lee, Texas
(Across from Bell's Auto Body Shop)

New & Used Tires • Flats • Interstate Batteries
Oil & Filter Change & Lube • Wash & Wax
For Appointment, Call: **453-9933 • 473-8650**
Jimmy & Staci Womack

IVEY MOTOR COMPANY, INC.

1999 Ford F-150 Supercab XLT \$17,495
28,000 Miles

2000 Windstar LX \$17,995

1997 Mercury Gr. Marquis LS \$12,995
One Owner • White with Blue Leather Interior

1994 F-250 Regular Cab 4x4 \$ 9,995
48,000 Miles

2000 F-350 Crewcab XLT \$26,995

2000 Lincoln Town Car \$26,995

2000 Taurus \$13,995

Ask For: **453-2715**
Randy Flanagan • Buck Duncan • Billy Wayne Roe

Robert Lee School News

Robert Lee School Awards

Fourth Six Weeks Perfect Attendance

Pre-K - Mrs. Treadaway
Ciera Millican, Charissa Caston, Will Howard

Kindergarten Mrs. Gibbs

Justin Gartman, Jordan Gartman, Makenna Netting, Randy Barnett, Grady Barnett, Dusty Howard, Zach Skinner, Kevin Saucedo

First Grade - Mrs. Pay

Linsey Arellano, Raquel Rojas, Chad Martin, Samantha Fernandez

Second Grade - Mrs. Duncan & Mrs. Horn

Foster Allen, Anita Saucedo, Jake Cotter, Heidi Austin, Joe Estrada, Robbie Gonzales, Logan Philley, Haden Dillard, Amanda Mendoza, Garrett Rogers, Tanner Brickey, Diego Saucedo, Travis Sailer, Cody Taylor, Kacey Roberts, Sarah Walker, Paul Pineda

Third Grade - Mrs. Devoll & Mrs. McCown

Tanner Hanigan, Catie Anyon, Miguel Perez, Colton Reed, Emily Arellano, Emilee Yanez, Cayetano Carrera, Sarah Jones, Olivia Trejo, Molli Hinderliter

Fourth Grade - Mrs. Bessent & Mrs. Roberts

Norma Rojas, Garrett Blair, Cory Fields, Jennifer Barrett, Caleb Millican, Kaden Duncan, Amy Barnett, Cody Williamson, Morgan Hill

Fifth Grade - Mrs. Byrne

Kasie Skinner, Chase Roe, Jesse Braswell, Ray Rector, Allison Millican, Melissa Martinez, Brody Dillard, Cameron

Hodge

Sixth Grade - Mrs. Burns & Mrs. McCabe

Rosa Rojas, Sarah Philley, Katie Bessent, Becca Skinner, Tony Munoz, Kelsy Duncan, Cody McCabe, Clay Antilley, Robin Taylor, Kevin Honse, Dixie Johnson, Nicole Barnett, Jordan Brown

Honor Roll

Third Grade - Mrs. Devoll & Mrs. McCown

Emily Arellano, Stetson Nesbit, Sarah Jones

Fourth Grade - Mrs. Bessent & Mrs. Roberts

Holly Austin, Garrett Blair, Kaden Duncan, Morgan Hill, Caleb Millican, Mason Ross, Jimmy Womack

Fifth Grade - Mrs. Byrne

Molly Burns, Cody Denton, Brody Dillard, Briana Longoria, Allison Millican, Taylor Percifull, Chase Roe, Kasie Skinner

Sixth Grade - Mrs. Burns & Mrs. McCabe

Nicole Barnett, Katie Bessent, Jordan Brown, Kelsy Duncan, Brian Eubanks, Nicole Fields, Kevin Honse, Dixie Johnson, Jessica Long, Cody McCabe, Casey Nesbit, Sarah Philley, Brettanie Reed, Ashleigh Rogers, Rosa Rojas, Becca Skinner, Eleasar Vera

Accelerated Reader Honor Roll

(Students who reached their Reading Goal for the Six Weeks)

First Grade - Mrs. Payne

Linsey Arellano, Chad Martin

Second Grade - Mrs. Duncan & Mrs. Horn

Foster Allen, Heidi Austin, Ginny Caston, Jake Cotter, Haden Dillard, Logan Philley, Paul Pineda, Kacey Roberts, Garrett Rogers, Tiffany Rogers, Josh Rowoldt, Anita Saucedo, Tanner Brickey, Robbie Gonzales, J.P. Conner, Joe Estrada, Jared Long, Amanda Mendoza, Skyler Rainwater, Meagan Ross, Travis Sailer, Diego Saucedo, Cody Taylor, Sarah Walker

Third Grade - Mrs. Devoll & Mrs. McCown

Cody Brosh, Sara Jones, Ivan Landeros, Emilee Yanez, Angelica Andrade, Tanner

Hanigan, Terry McDonald, Miguel Perez, Catie Anyon, Emily Arellano, Briana Brisbin, Cayetano Carrera, Sarah Coppedge, Nancy Landeros, Jacob Moreno

Fourth Grade - Mrs. Bessent & Mrs. Roberts

Holly Austin, Jennifer Barrett, Kaden Duncan, Joshua Gallegos, Morgan Hill, Arrin Minjarez, Michael Rodriguez, Norma Rojas, Mason Ross, Cody Williamson, Jimmy Womack, Kimberly Cardenas, Amy Barnett, Garrett Blair, Jasmine Gloria, Caleb Millican, Olga Perez, Cori Torres

Fifth Grade - Mrs. Byrne

Jesse Braswell, Molly Burns, Cody Denton, Brody Dillard, Ashley Hopson, Anna Rojas, Briana Longoria, Allison Millican, Taylor Percifull, Ray Rector, Chase Roe, Kasie Skinner

Sixth Grade - Mrs. Burns & Mrs. McCabe

Nicole Barnett, Katie Bessent, Jordan Brown, Cara Cavness, Dixie Johnson, Jerry Martinez, Casey Nesbit, Becca Skinner, Robin Taylor, Eleasar Vera, Kelsy Duncan, Nicole Fields, Jessica Long, Tony Munoz, Sarah Philley, Brettanie Reed, Sergio Rocha, Ashleigh Rogers, Rosa Rojas

Steer track team travels to Water Valley

On February 23, 2001 the Robert Lee Steers traveled to Water Valley for the Water Valley track meet. The Steer varsity were the champions with 180 points.

The varsity results are as follows:

3200 Meter Relay - 3rd - Pitcock, Minjarez, Reyes, Taylor - time 10:00.44
High Jump - 2nd - Colby Eubanks - 5'6"
Shot Put - 2nd - Cooper Riley - 40'11"
Discus - 5th - Cooper Riley - 111'3"; 6th - Sean Edging - 107'
Pole Vault - 1st - Stewart Millican - 11'; 2nd & 3rd (tie) - Curtis Bell & Taylor Clendennen - 9'
Triple Jump - 3rd - Colby Eubanks - 37'9"
Distance Medley Relay - 3rd -

Flanagan, Millican, Reyes, Taylor - 4:11.28

Shuttle Hurdle Relay - 1st - Eubanks, Abalos, Pitcock, Minjarez - 1:18.36

400 Meter Relay - 5th - Brown, Ballew, Clendennen, Lott - 46.64

110 Meter Hurdles - 3rd - Anson Lott - 19.35; 4th - Brian Abalos - 20.33

100 Meter Dash - 3rd - Bret Ballew - 11.95; 4th - Taylor Clendennen - 12.13

800 Meter Relay - 3rd - Flanagan, Millican, Reyes, Bell - 1:42.03

300 Meter Hurdles - 1st - Colby Eubanks - 45.12; Brian Abalos - 48.45

Sprint Medley Relay - 4th - Brown, Clendennen, Lott, Ballew - 1:51.44

1600 Meter Run - 6th - Travis Taylor - 5:52.13

Weight Man Relay - 1st - Cates, Edging, McCabe, Riley - 53.44

1600 Meter Relay - 5th - Pitcock, Minjarez, Brown, Eubanks

JV boys track results
Discus - 1st - Chris Eubanks - 97'6"

Shot Put - 2nd - Chris Eubanks - 36'2"; 6th - Robert Sailor - 30'1"

Triple Jump - 3rd - Evan Braswell - 28'

100 Meter Dash - 6th - Adam Caston - 13.7

Lady Steers All-District stats

Jodee Helwig (Jr) - 2001 District MVP; All Tournament @ Irion County, Stanton, MVP @ Sterling City; 2000 District MVP, Class A All West Texas; 1999 District Co-MVP, Super All West Texas; 2001 District Stats: 12.9 points/game; 4.9 rebounds/game; 51.3% field goals; 65.2% free throws; 2.1 steals/game; 2.8 assists/game.

Deshira Dickey (Sr) 2001 All District; 2000 All District; All

Tournament @ Sterling City; MVP @ Stanton & Irion County Tournaments; 2001 District Stats: 16.9 points/game; 9.5 rebounds/game; 50.45% field goals; 85% free throws.

Shanna Wojtek (Jr) 2001 All District; 2001 District Stats: 9.1 points/game; 3.8 assists/game; 3.9 rebounds/game; 44.7% 3 point; 66.7% free throws; 2.9 assists/game.

Kizre Matthews (Jr) All District, All Tournament @ Stanton & Sterling City Tournaments; 2001 District Stats: 5.4 points/game; 3.8 assists/game; 3.1 steals/game; 2.3 rebounds/game; 66% free throws; 44.1% field goals.

Whitney Millican (Jr) 2001 All District; 2001 District Stats: 7.0 points/game; 4.1 rebounds/game; 54.3% field goals; 2.8 assists/game.

Honorable Mention All-District Jennifer Alexander (Jr) and Dixie Simpson (Sr).

Thunderstorm safety tips

Before the storm...
*Watch for signs of approaching storms.

*If a storm is approaching, keep a NOAA weather radio or AM/FM radio with you.

*Postpone outdoor activities if thunderstorms are imminent.

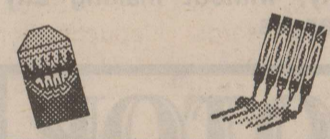
When thunderstorms approach...

*If you can hear thunder, you are close enough to the storm to be stuck by lightning. Go to safe shelter immediately!

*Move to a sturdy building or car.

*If lightning is occurring and a sturdy shelter is not available, get inside a hard-top automobile and keep the windows up.

SCHOOL MENU



Breakfast

Monday, March 5
Orange juice, donut, cereal, milk

Tuesday, March 6
Orange juice, breakfast pizza, cereal, milk

Wednesday, March 7
Orange juice, blueberry pancakes with sausage on a stick, cereal, milk

Thursday, March 8
Orange juice, muffin, cereal, milk

Friday, March 9
Orange juice, cinnamon roll, cereal, milk

Lunch

Monday, March 5
Pizza, corn, fruit cocktail, ginger bread, milk

Tuesday, March 6
Chicken O's, macaroni & cheese, English peas, rolls, pineapple tidbits, milk

Wednesday, March 7
Baked potato, chili/crackers, pears, milk

Thursday, March 8
Rib-b-ques, carrots, apple-sauce, sliced bread, cowboy cookies, milk

Friday, March 9
Hamburgers, lettuce/tomatoes, pickles, tator tots, chocolate pudding, milk

WINK INSURANCE AGENCY



Home • Auto
Life • Commercial

715 Austin • 453-4551

We'll Be There...

...To make your family more secure, to protect your property, to insure your life.

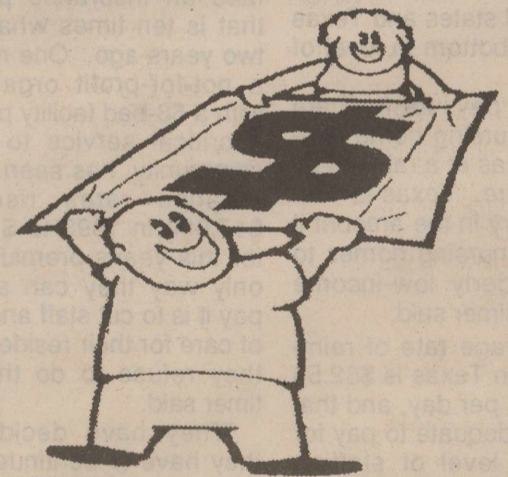
We'll be there. Whenever you need us, we're only a phone call away.

You're part of our family—we'll be there, for you.



GERMANIA INSURANCE COMPANIES
CARWILE INSURANCE
453-2522

Want your money at your fingertips?



Get a Pulse ATM card from Robert Lee State Bank

Use our Pulse ATM card at thousands of ATM locations including one in both Robert Lee and Bronte, plus Point-of-Sale terminals at many retail stores.

Call us at 453-2545 for more details.



621 Austin Street
Robert Lee, Texas

Robert Lee State Bank

Member FDIC

Phone 453-2545
Tele-Bank 453-2585



Robert Lee Elementary students visited Robert Lee Care Center in February and assisted the residents with arts and crafts. The children and the residents had a great time making hearts for Valentines.

NOW!
IS A GREAT TIME TO INCREASE YOUR PHYSICAL ACTIVITY.

American Heart Association
Fighting Heart Disease and Stroke

OUT-TALK OUT-DO OUT-RUN

HOW TO BE A SURVIVOR

IN THE TEXAS BACKBUSH

G'Day m'cellphone mates!
Oy, did you ever get stuck in the Texas backbush? With Texas Cellular alongside, you'll never be alone! Homeowned Texas Cellular gives you all the same rates all the time and local billing. So sign up for our service folks and keep your wits about ya! No worries mates.



1st 2 INCOMING MINUTES FREE

For More Information, Call Us at 800-424-7182 or Contact Your Local Texas Cellular Agent.

IN ROBERT LEE:
Rock Solid Communications
803 Austin
915-453-2380

IN SNYDER:
Permian Communications
2403 West 25th Street
915-573-2424

IN SWEETWATER:
Sierra Communications
1901 Bristol
915-235-4377

We Take Care Of Our Neighbors.



TEXAS CELLULAR®

A service of Taylor Telecommunications, Inc.

9796 N. I-20 • MERKEL, TX • 79536
915-928-3200

Driving toward auto deductions

The fast lane can be expensive, especially if your business requires you to put a lot of mileage on your car. For this reason, the Texas Society of CPAs (TSCPA) recommends that business owners make a concerted effort to keep track of business-related transportation. Qualified transportation expenses are deducted from your business's bottom line and reduce your overall tax bill. The key is to understand the rules and keep good records.

Business or Personal Mileage?

When the odometer on your car reflects not only mileage for business-related transportation, but trips to the mall, the gym, and your vacation home, only the business-related miles you drive produce a tax reduction. According to James Sanderson, CPA, President of the San Angelo TSCPA Chapter, you must track the use of a dual-purpose vehicle and allocate your expenses based on your business and personal use.

Business-related transportation includes traveling from one job to another; traveling from one customer or client to another; and running business-related errands such as picking up supplies, going to the post office, or making a bank deposit. If you are an employee with a regular place of business and you are asked to work at a "temporary" business location, the cost of transportation between your home and the temporary location is deductible as well. On the other hand, mileage associated with commuting between your residence and your regular business location is nondeductible, unless your home is your principal place of business. In this case, you generally can deduct the cost of traveling from your home to any business destination.

Actual Expenses or Standard Mileage Deduction?

The tax code gives you a choice of two ways to calculate and deduct business vehicle expenses: the standard mileage or the actual expense method. With the actual expense method, you can deduct business-related automobile expenses associated with operating your car for business including oil, gas, tolls, parking, towing, repairs, insurance, auto club memberships, plus an allowance for depreciation. To qualify, you must keep detailed records to substantiate each and every expense.

Instead of keeping a record of all your business-related mileage expenses, you can use the IRS standard mileage allowance to determine your deduction for the business use of your car. To claim the standard mileage deduction, which covers all the expenses outlined above, you would total the number of business miles driven over the year and multiply that figure by 32.55 cents, the rate allowed for 2000. (The rate for 2001 is 34.5 cents.)

Even if you use the standard mileage method, you still can deduct the business portion of tolls and parking fees. But if you overstay your wel-

come at a parking meter, don't look for Uncle Sam to pay the fee. Fines for traffic violations, including parking violations, are not deductible under either method.

There is no easy way to determine which method will produce the greater tax benefit for you. Many factors can impact your decision, including the number of miles you drive each year, the type of vehicle you drive, and your willingness to keep detailed records.

Recordkeeping is Key

As with other business expenses, CPAs say good recordkeeping is the key to maximizing your tax savings. In fact, regardless of the method you choose, the amount of your deduction depends, to a large extent, on how good you are at saving receipts, keeping mileage records, and jotting down your costs throughout the year.

The way you report business use of your car depends on whether you are self-employed or an employee. Self-employed taxpayers report transportation expenses on Schedule C, where they are fully deductible. Employees, on the other hand, must complete Form 2106, Employee Business Expenses, to deduct automobile expenses. Employees may claim unreimbursed transportation expenses as miscellaneous itemized deductions, which are deductible to the extent that they exceed two percent of adjusted gross income.

Although the fine print concerning the auto expense deduction can be tricky and the recordkeeping cumbersome, you can save valuable tax dollars by claiming qualified expenses. Ideally, each year, you or your CPA should compute your deduction under both methods and compare the results to determine which alternative gives you the largest deduction for that particular year.

About the TSCPA

The Texas Society of CPAs is a nonprofit, voluntary professional organization representing Texas CPAs. With a membership of 28,000 and a history of over 85 years, the Society has one of the largest in-state memberships of any CPA organization in the nation. The Society promotes professionalism, ethics, and integrity among CPAs, and is committed to protecting the interests of the public and its members.

Look Who's New Jeffrey Vance Gunter

Julian Renee proudly announces the arrival of her baby brother, Jeffrey Vance, born February 20, 2001 at 7:16 am at Livingston Memorial Hospital in Livingston, Texas. Jeffrey weighed 10 pounds and 5 1/2 ounces and is 22 inches long.

Jeffrey's parents are Brandy and William Gunter of Point Blank, Texas. Grandparents are Judy and Harvey Snowden of Odessa, and great-grandmother is Bessie Brice of Robert Lee.

The state bird of Utah is the sea gull.

Many Texans uninsured by choice

With one in four Texans lacking health insurance, the state leads the nation in percentage of residents who are uninsured. Yet, according to John C. Goodman, president of the National Center for Policy Analysis (NCPA) in Dallas, many Texans are uninsured by choice.

"Many Texas families cannot afford insurance," said Goodman. "But a lot of families can afford it and choose not to buy it. Slightly less than one in three uninsured Texans is poor, and well over a million of them are solidly middle class."

The problem, said Goodman, is the availability of free health care. According to a report by the Texas State Comptroller, public and private organizations spend about \$1,000 per uninsured individual per year on charity care, on the average. That equals \$4,000 for a family of four - an amount that would buy adequate private insurance in most Texas cities.

Goodman, who was appointed last year to the Blue Ribbon Task Force by then Governor George W. Bush, said, "Health policy in the state of Texas encourages Texans not to have insurance."

Texas has more than 40 federal health care programs that fund health services for uninsured residents. The largest program - the "disproportionate share hospital" payment program - spends more than \$1.5 billion to compensate hospitals that serve an above average number of indigent patients. And in 1985 federal law made it illegal to turn away hospital emergency patients.

There are also health care grants for residents of public housing, seasonal farm workers, legal immigrants, and even undocumented immigrants. Texas law also requires counties to have pro-

grams to serve the medically indigent. Texas requires non-profit hospitals to provide indigent care equal to five percent of revenues. State and local government, charities and non-profit providers also run numerous other health care programs.

"The alternative to free care is to purchase private insurance," said Goodman. "But most of the uninsured get virtually no government subsidy if they choose that option." Although federal tax subsidies for employer-provided insurance total about \$125 billion per year, most of the uninsured get no tax relief when they purchase insurance on their own. As a result, they must purchase insurance with after-tax dollars.

In a report issued last week, the Blue Ribbon Tax Force recommended expanding enrollment in the state's Medicaid program. Goodman filed a minority report in which he disagreed. He pointed to several national studies showing that the expansion of public programs tend to come at the expense of private insurance. "When Medicaid expands, private insurance contracts," he said. "The number of people who are uninsured remains largely unaffected."

Goodman also said there is not much difference between being uninsured and being on Medicaid. "In most major cities, Medicaid patients and the uninsured enter the same emergency rooms, see the same doctors and are admitted to the same hospital rooms," he said. "Those who have signed up for Medicaid do not get more, faster or better care. That's why large numbers of potentially eligible Texans have decided enrolling in Medicaid is not worth the bureaucratic hassle."

According to state estimates, 1.6 million Texans qualify but are not enrolled in Medicaid, and hundreds of

thousands of children are eligible but not enrolled in CHIP (children's health insurance program).

The answer? According to Goodman, state and federal policies could reduce the number of uninsureds if they subsidize private insurance as generously as they subsidize free care to the uninsured.

Plans will expand sales tax holiday

Carole Keeton Rylander Texas Comptroller
Texas Comptroller Carole Keeton Rylander announced recently her proposal to expand the Sales Tax Holiday from three days to five days and add to the list of tax-exempt items safety equipment, school supplies and materials used to make kiddos' clothing. Comptroller Rylander's proposal would save Texas taxpayers an additional \$46 million from 2001 to 2003.

"The Sales Tax Holiday is a tremendous help to hard-working Texas families," Rylander said. "By expanding the holiday from three days to five and adding these items, the sales tax holiday will be less of a traffic jam and save Texans more of their hard-earned dollars for their families."

The items added to the tax-exempt list are buttons, zippers and fabric for mammas who make the clothes: school supplies, including backpacks; and safety equipment, including bicycle helmets, elbow and knee pads, and baby and children's car seats.

"I want to make the Sales Tax Holiday as beneficial to Texas families as possible," Rylander said. "The tax burden on working families is too high and the sales tax holiday provides Texans with much-needed relief."

In 1999, the legislature approved an annual sales tax holiday to fall on the first weekend in August each year, which coincides with

back-to-school shopping. No state or local sales taxes are collected on tax-exempt items under \$100.

During the first two Sales Tax Holidays, taxpayers saved \$32.6 million in 1999 and \$37 million in 2000. Beginning next year, local taxing entities were able to opt out of the Sales Tax Holiday if they notified the Comptroller's office by March 31. Only Sunset Valley, a small community southwest of Austin, chose not to waive its local sales tax.

For more information on the Sales Tax Holiday and a list of exempt and non-exempt items, see the Comptroller's Web site at www.window.state.tx.us, or call the tax assistance hotline at (800) 252-5555.

Mobile visits for disabled veterans

Detailed explanations of the full range of benefits available to disabled veterans and their families will be presented at an upcoming Disabled American Veterans (DAV) Mobile Service Office visit.

Like all services provided by the nonprofit DAV, there will be no charge for this on-site counseling and claim filing assistance, which will be hosted by Taylor County Chapter No. 36. It will be presented at the Chapter Home, 2555 N. Grape Street, Abilene, Texas from 10:00 am to 6:00 pm on March 12, 2001. There will also be one hosted by O'Neal-Kunkle Chapter No. 47. It will be presented at the Midland Vet. Center, 3404 W. Illinois Avenue, Midland, Texas from 10:00 am to 6:00 pm on March 13, 2001.

A highly trained National Service Officer from the DAV's Waco office will meet with you personally. "This veterans' benefits expert offers you the best counseling and claim filing assistance you and your family can get," DAV National Adjutant Arthur H. Wilson said in a letter inviting local veterans and their families to visit the Mobile Service

Office.

That's important, he said, because, "So many disabled veterans feel confused about benefits and services they've earned. There's so much to know...and so many changes from one year to the next."

Veterans and members of their families need not be DAV or DAV Auxiliary members to take advantage of this free DAV service. They should bring their Department of Veterans Affairs (VA) claim number and Social Security number and any other pertinent documentation to either on-site location.

Predator take for Coke County

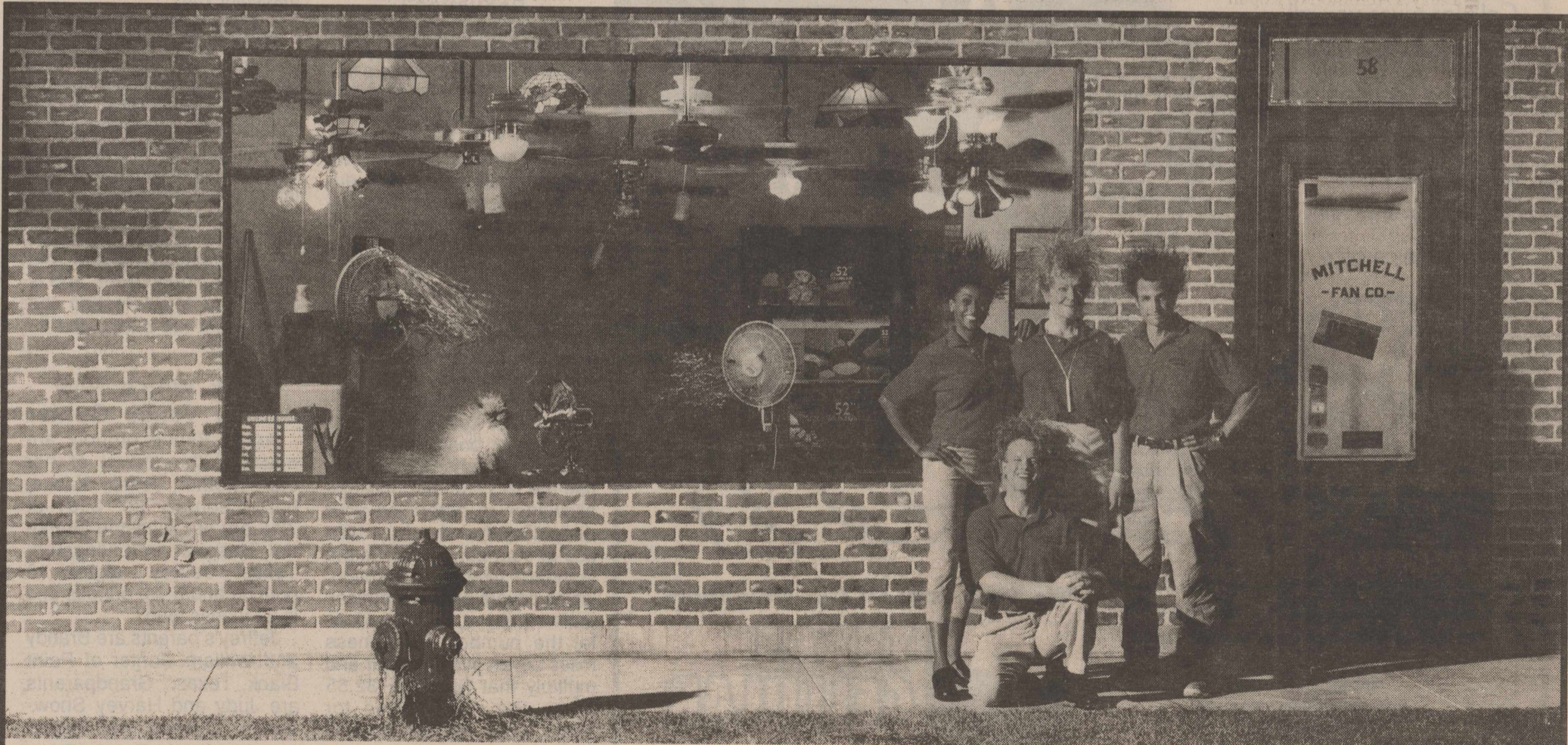
For the year 2000, 36 ranches were worked in Coke County for predators. Predator take as follows: 76 coyotes; 83 bobcats; 32 red fox; 65 gray fox; 125 raccoons.

Jennifer Grace makes Dean's List

McMurry University released their 2000 Fall Semester Dean's List and Honor Roll. To be eligible for the honor, a student must maintain a 3.5 out of 4.0 grade point average during the semester. Jennifer Grace, of Robert Lee, received the honor of making the Dean's List that requires 12 or more hours.

Pharmacists talk beef nutrition

All 225 Texas-division Albertson's in-store pharmacies began providing beef nutrition information to their clients Jan. 11 in a partnership with the beef checkoff program. The Albertson's pharmacists will give their customers checkoff-funded beef nutrition and consumer education materials when they undergo counseling. Many pharmacists also will attend a continuing education program conducted by the Texas Beef Council's staff dietitian to update their knowledge about nutrition.



We provide electricity. But it's not so much what we do, it's what you do with it.

Go, world. Go.



TXU Electric & Gas

The Coke County Livestock Show Association Directors would like to thank the following businesses and individuals for their contributions to the 2001 Coke County Livestock Show.

BRONTE

All Sports Booster Club
 Arrott Farms - LeDrew Arrott
 Mr. & Mrs. J. B. Arrott
 Mike & Andra Arrott
 Nick Arrott Ranch
 Mr. & Mrs. Tim Arrott
 B & B Enterprises
 Mr. and Mrs. C. B. Barbee
 Martin & Angie Basquez
 Marilyn Bivins
 Floyd & Charlotte Blackburn
 Blane & Kim Braswell
 Dennie & Sharon Braswell
 Bronte Band Boosters
 Bronte Chamber of Commerce
 Bronte Coaching Staff
 Bronte Evening Lions Club
 Bronte HS Faculty & Staff
 Bronte ISD Administration
 Bronte Pharmacy - Randy
 & Julie Springer
 Butler's Tire Service
 C & C Cattle Company
 Michael & Angie Cervenka
 Wayne & Shaye Coalson
 Donald Cooper
 Ron Cooper
 Country Inn
 Cradle S Ranch -
 David & Donna Scott
 Joe & Glenda Draper
 Mark & Quinda Duncan
 Royce Fancher
 First National Bank in Bronte
 Kendall & Lisa Gibbs
 Randy & Shalon Gibbs
 Glenn-Bivins Insurance
 Earl & Mary Glenn
 Craig & Kara Grant
 Hall's Super Save
 Calvin & Billie Helm
 Jay & Jolene Henderson
 Highway Garage
 Hometown Hardware
 Mr. & Mrs. Jimmy Hoyt
 Mr. & Mrs. Elmer Hurley
 David & Nancy Jackson
 Bud & Lilia Johnson
 Mr. & Mrs. Corby Kelso
 Steve & Sharon Kelton
 Wayne King
 Larry's Automotive Repair
 Bob Lasswell
 Mr. & Mrs. Martin Lee
 Mr. & Mrs. Billy Joe Luckett
 Joe A. Luckett
 Harold & Gina McCutchen
 Mrs. Joe McCutchen
 Mitchell Gas Services
 Jack & Earlene Moore
 Moore's Construction
 Charles Oliphant
 Parker Plumbing
 Jerry T. Parker
 Randy & Laura Pieper
 Mr. & Mrs. Bob Ragsdale
 David & Kary Rawlings
 Karen Richey -
 Mary Kay Cosmetics
 Riley's Lawn Service
 Alonzo & Kay Robbins
 S & S Printing
 Karen & Joe Sefcik
 Shaffer Funeral Home
 Shalon's Floral Boutique
 Ron & Beverly Sims
 Charles & Dorris Sonnenberg
 Wade Stautzenberger
 Rick & Kay Styles
 Texas Best - Bob Frazee
 Donnie & Dee Anna
 Thompson
 Town & Country
 Triangle P Development
 James & Janel Vaughn
 Venteaire Awning - Billy,
 Charlotte, Doug & Connie
 Tounget

Wackenhut Corporation
 Jr. & Jane Webb
 Webb Ranch -
 Shane & Alisa Webb
 West Texas Utilities - Bronte
 Paul Williams
 Chester Wilson
 Wilbern Wrinkle
ROBERT LEE
 Christine & Manuel Abalos
 Clay Allen
 Tommy & Kei Antilley
 Arledge Ranches
 Joe & Donna Ash
 Askins Propane
 Bob Bagwell
 Mike & Christie Bagwell
 Bell Auto Body Shop
 Ben Bessent Chevrolet
 Best Connection
 Mr. & Mrs. Jimmy Bickley
 Mr. & Mrs. Bill Blair
 Marcela Blaylock
 Mr. & Mrs. Bobby Bolding
 Paul Bosworth
 Mr. & Mrs. Joe Brasher
 Mr. & Mrs. Jeff Brisbin
 Mr. & Mrs. Edwin Brosh
 Mr. & Mrs. Ray Brown
 Bill & Linda Burns
 Paul Burns -
 Paint Creek Ranch
 Jim & Patty Byrne
 C & H Auto Parts
 C & W One Stop
 John & Shelia Carver
 Carwile Insurance Inc.
 Mr. & Mrs. Bill Casey
 The Caston Company
 Cathy's Flowers & Gifts
 David & Mary Chesshir
 Ernest Clendennen, Inc.
 Coke County Officials
 Coke County Pharmacy
 Coke County Soil & Water
 Conservation District
 Coke County Treasurer
 Coke-Sterling Farm Bureau
 John & Maudie Conley
 Mr. & Mrs. Vic Conner, Jr.
 Mr. & Mrs. J. Q. Counts
 Cracker Barrel Restaurant
 Mr. & Mrs. Add Davis
 Russell Davis - Farm Bureau
 Lynn Denton
 Donnie & Audrey Devoll
 Yvonne Devoll
 Diane's Chuck Wagon
 Keith & Cynthia Dillard
 Double E Ranch
 Wayland & Mary Beth
 Drennan
 Mr. & Mrs. Bob Duncan
 Buck & Kellye Duncan
 Terry & Linda Eaton
 Jeff & D'Ann Eubanks
 F. R. Oilfield Services
 Weldon & Virginia Fikes
 Randy & Camille Flanagan
 Thomas H. Freeman
 Mr. & Mrs. Douglas Gartman
 Kerry & Frankie Gartman
 Jimmy & Brenda Gray
 George Grim
 Mr. & Mrs. Floyd Harmon
 Joe & Dee Anna Harmon
 Mrs. LaRue Harmon
 Hayes Oilfield Construction -
 David & Karen Hayes
 Hill Top Pet Shop -
 Noel Tinkler
 Bill & Cynthia Hill
 Don Hodge
 Mr. & Mrs. William Hood
 Fred & Linda Homeyer
 Ivey Motor Company, Inc.
 Shane & Stacy Kelton
 Weldon & Carolyn Koepf
 Key Feed Store

Mr. & Mrs. Kenneth Lackey
 Tom & Elaine Lee
 Mrs. Sterling Lindsey
 Mike & Fran Lomas
 Kyle & Rosa Long
 Sid & Carolyn Long
 Brandon Luce - Farm Bureau
 Mary Kay Cosmetics -
 Sharon Pitcock
 Wayne McCabe
 Mr. & Mrs. Sid McCown
 Dub & Cynthia Metcalf
 Mr. & Mrs. Finis Millican
 Marshall Millican -
 Concho Realty
 Teddy & Kay Millican
 Mr. & Mrs. Tim Millican
 Mr. & Mrs. Waldon Millican
 Mr. & Mrs. Wibby Millican
 Mr. & Mrs. Wilbern Millican
 Molly B's
 Mountain Creek Golf Club
 Jimmy & Janie Munoz
 Stephen & Sterling Myers
 Mr. & Mrs. Jim Naico
 The Observer/Enterprise
 Payne Boer Goats -
 Paul & Lynn Payne
 Dale & Martha Patterson
 PCR Feed Yard
 Frances Percifull
 Joel & Patty Percifull
 Pat Percifull
 Tim & Kim Phillely
 Darrel & Sharon Pitcock
 Mr. & Mrs. Gaylon Pitcock
 Winnie Pitcock
 Mr. & Mrs. Kenneth Rasco
 Red Canyon Archery Club
 Tod & Karla Reed
 Mr. Hadley Richards
 Mark & Cindy Riley
 Mark & Cindy Riley Ranch
 Robert Lee Eastern Star
 Robert Lee FFA
 Robert Lee-Silver Lions Club
 Robert Lee State Bank
 Bobby & Jeffie Roberts
 Douglas & Denise Roberts
 Donny & Ruth Robertson
 Rock Solid Communications
 Mr. & Mrs. Billy Jack Roe
 Ranch
 Billy Wayne & Dolores Roe
 Mrs. Faye Roe
 Kevin & Tammy Roe
 Runnion Ranch
 Salt Creek Beefmasters - Don
 Fields & Troy Wimberley
 Ricky & Elena Sanchez
 Sanco Materials Co.
 Mike & Donna Schultz
 Mr. & Mrs. Horace Scott
 Butch & Glenda Service
 Simpson Ranch
 Skinner's Grocery & Station
 Don & Robin Sparks
 Super H, Inc.
 Roy & Jennie Tinkler
 Johnny & Kay Torres
 Dwayne Vincent
 W.E.B. Construction
 Waggoner's Auto & Truck
 Repair
 Riley & Donna Waldrop
 Curtis & Annice Walker
 D. J. & Nelia Walker
 Jackie Walker
 Mr. & Mrs. J. C. Wallace
 Lindsey & Janet Wallace
 West Texas Utilities -
 Robert Lee
 Mr. & Mrs. Gary Sam
 Williams
 Wink Insurance Agency
 Milburn Wink
 Robert & Marsha Wink
 Dale & Sue Wojtek
 Harvey & Carla Wojtek

Jimmy & Staci Womack
 Jack & Jan Yanez
 Ernest & Vicky Ybarra
SAN ANGELO
 All American Chevrolet
 Angelo Auto Glass
 Angelo Pellets, Inc.
 Arden Road Animal Clinic
 Bahlman Cleaners
 Don Batko
 Bearing Service & Supply
 Co.
 Bill's Man Shop
 Blair's Western Wear
 Kenny Blane Catering
 Bruton Trailer Sales
 Bryan Builders
 Caddo St. Wheel Alignment
 Coca-Cola Bottling Co.
 Concho Butane Co.
 Concho Concrete
 Concho Livestock Co.
 Concho Realty -
 Becky Clendennen
 Concho Valley Implement
 Co.
 Corley Freightliners Inc.
 Crockett National Bank
 Federal Land Bank Assn.
 First American Bank
 Kitty Floyd
 Gerald & Dolores Fohn
 Frito Lay, Inc.
 Gandy's Dairies
 Todd & Kelly Harrell
 H.E.B. Food Stores
 Holland Jewelry, Inc.
 Hughes Company
 Thomas Jeter, DDS MD
 Jim Bass Ford
 Harrell & Micki Johnston
 Robert Junell
 Keating Paint & Body, Inc.
 Lee, Lee & Puckitt
 Leggett Aerial Spraying
 Logan's Road House
 Dr. Gene P. Lusk
 M. C. Supply - Mills
 Caraway
 Dr. Dale McDonald
 Mr. & Mrs. Jim McDougall
 Mr. Boots
 North Concho Veterinary
 Clinic
 Nunn Electric Supply Corp.
 Palmer Feed & Supply, Inc.
 Probandt Feed & Supply
 Producers Livestock Auction
 Randall Motors
 Ratliff, Edwards & DeHoyos
 Reece Albert, Inc.
 Morgan & Barbara Riley
 Steve Salmon
 San Angelo Ford Tractor, Inc.
 Sherwin Williams
 TXU
 Texas Production Credit
 Twin Mountain Fence Co.
 The Turner Collection
 Weathersbee Electric Co.
 Lana Webb
 West Texas Steel Supply
 Western Wool & Mohair Co.
 Zentners Steak House
OTHER
 Acco Feeds
 Alderman-Cave Feeds
 Frank & Marianne Antilley
 Mr. & Mrs. Ray Atkinson
 R. A. Bagwell Oil, Inc.
 Ballinger Wool & Mohair
 Bandera Drilling Co., Inc.
 Clayton & Pansy Bloodworth
 Raymond Bloodworth
 Mr. & Mrs. W. A.
 Bloodworth
 Bryan Jewelers
 C.C. Certified Quality Meats
 CADCO

Cervenka Coke Co. Cattle
 Company
 Coleman Co. Electric Co-op
 Colorado City Livestock
 Market
 Colorado Pump & Supply
 Compressor Elements Service
 Compressor Systems, Inc.
 Cooper Energy Services
 Country Cobbler
 Bonnie Denton dba Lone
 Wolf Furniture
 Kerwin & Rosie Denton
 E. C. & M.
 Mr. & Mrs. Dale Ellis
 Enertech Equipment, Inc.
 Engine Service & Supply Co.
 Ezell-Key Grain Company
 Funderburg & Co., Inc.
 Garco Contracting Co., Inc.
 Grimmett Brothers, Inc.
 H & S Valve, Inc.
 HLS Feeds - Mr. and Mrs.
 Larry Jameson
 Mike & Debbie Harris
 Heidenheimer's Inc.
 Tommy Hendry
 Hi-Pro Inc.
 W. A. & Jeraldine Hickman
 Higginbotham-Bartlett
 Mr. & Mrs. C. W. Howell
 Mike & Rhea Irish
 Bill & Kathy Jackson
 Kasberg Grain Co. LLC
 Katty Industries, Inc.
 Bob Loyd L.P. Gas Company
 Lowake Steak House
 Mark III Incorporated
 Matlock Farm Supply
 Theresa Mauldin
 Maverick Controls -
 John Cervenka
 Maverick Liquor & Beer
 Mike & Diana McCabe
 Leon & Corin McCarty
 Miles Co-op Gin Co.
 Millsap Construction Services
 Mitchell County Vet Clinic
 Mueller, Inc.
 Myers Auto Parts
 Patterson Drilling Company
 Pioneer Vet Clinic
 Mrs. Thomas Rawlings
 Redman Pipe & Supply Co.
 Javier Regino
 Rowena Milling Company
 Kenneth & Linda Scott
 James T. Self
 Sklenarik Smoked Meats, Inc.
 TJ's Package Store
 T & R Oilfield Construction
 Toliver Brothers, Inc.
 Vancil & Clayton
 John & Charlotte Waddil
 Wall Co-op Feed Mill
 Wal-Mart - Ballinger
 Ann McCabe Way
 West Texas Cablevision
 Mr. & Mrs. Billy Whisenant, III
 Wilkes Brothers, Inc.
 Doug & Debbie Wilkes
 Jerry Wilkes
 Western Wool & Mohair Co.
 Terry Wojtek
 Wood's Boots
SPECIAL THANKS
A special thanks to those who helped with the Barbecue: Wayland Drennan, Gaylon Pitcock, Roy Tinkler, Clark Tinkler, Rick Drennan, Curtis Walker, Jeffie Roberts, Debbie Wilkes, Sue Wojtek, and the Directors' Wives. Also, thanks to the 4-H & FFA mothers who worked in the concession stand & Randy Flanagan & Ron Cooper for announcing during the show and sale.



**BUY IT.
SELL IT.
FIND IT.**

CLASSIFIED.

**CLASSIFIED
ADVERTISING RATES**

Classified Advertising must be paid in advance.

1st. Insertion...
20¢ Per Word
(\$3.00 Minimum)

2nd and Subsequent Insertions...
16¢ Per Word
(\$2.50 Minimum)

Additional 50¢ charged for Blind Ads

Legal Notices...
25¢ Per Word

ADVERTISING DEADLINE
Tuesdays at 5 pm

FOR SALE

153 ACRES
with 3 BR/1BA home. Horse pens/6 stalls.

275 +/- ACRES
on Yellow Wolf Creek.
COKE COUNTY
2350 +/- acres. Will divide.
NORTH OF ROBERT LEE
1242 +/- acres. Will Divide.

Other Listings Available.

**ASH & MILLICAN
REAL ESTATE**

453-5144 OFFICE

JOE ASH MARSHALL MILLICAN
473-0164 MOBILE 473-0437 MOBILE
453-2554 HOME 453-9002 HOME

LATE MODEL GMC
and Chevrolet pickup alternators \$65. Installed while you wait. Warren Tomlinson 655-0362.

29a-12tp

FOR SALE

1998 Dodge Caravan; city lots corner 16th & Chadbourne, Robert Lee. Call Ricky Ross 453-4671.

30a-6tc

FOR SALE

160 acres (would divide). Less than four miles from Bronte. Live Oaks, 46 acres in grass fields (fenced separately), natural water. Deer, turkey, quail. (915) 473-3201.

24a-tnc

OUTSKIRTS OF TOWN

4 bdrm, 2 1/2 bath, 2 story home w/acreage.

BRICK HOME

Excellent condition, close to school. Call for prices and for appointment.



Lee Associates

453-2995

EQUAL HOUSING OPPORTUNITY

**BUY IT.
SELL IT.
FIND IT.**

CLASSIFIED.

**FOR SALE
BRONTE**

124 Randal (behind Town & Country) 3 Bd/2 bath, garage/fenced yard. Cottonwood Real Estate, Mary Slimp, Broker. (915) 754-4081,

28b-tnc

**COMMERCIAL
PROPERTY**

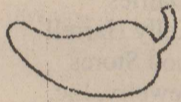
in Robert Lee. Previously operated as a convenience/grocery store. Good location near school with highway frontage. Call 915-453-2545.

46a-tnc

**HOMEMADE
HOT ROLLS**

& casseroles made fresh daily, Monday through Friday. Cathy's Flowers & Gifts. 453-2036

31a-1tc



MARIA'S HOT TAMALES
\$6/dozen. Delivered daily each morning. Call 453-2075.

13a-tnc

NEWER BRICK HOME

on 1.7 Acres! Approx. 2000 sq. ft. of Living Space with 2 car garage! Watch the deer from porch extending the length of the home!

2 BEDROOM

1 Bath with Central Heating & Cooling on Washington St. in Bronte. Price Reduced! \$15,800!!!

3 BEDROOM

Home in Bronte! Fireplaces & 11' ceilings! Room with French Doors! Huge Storage Bldg/Shop! Chainlink fence yard! \$30's!!!

OVER AN ACRE

of land with this 3 Bedroom Home! Backs up to park with picnic tables along River! \$20's!!!

160 ACRES

with Scattered Live Oaks, Rolling Hills & Excellent Hunting!

450 ACRES

Water Valley Divide! Mountainous, Rugged, Remote & Scenic!

640 ACRES

Pastureland with some improved grasses! Mountain views with Excellent Hunting!

CONCHO REALTY

Becky Clendennen

Office - 653-4535

Mobile - 650-9729

Nights - 453-4748

FOR RENT

TAKING APPLICATIONS
for one, two, & three bedroom apartments. Contact Housing Authority of Robert Lee, 710 N. Bishop, 453-2912. Equal Housing Opportunity.

29a-EOW

BRONTE MINI STORAGE
has storage buildings for rent. Call 473-2221.

14b-tnc

FOR RENT

2 BR mobile home w/add on. CH/CA. Total electric. Very Clean. Flanagan. 453-4359.

27a-tnc

MISC

SPRING PUPPIES

Mom is (Spuds McKenzie) bull terrier, Dad is your guess. Puppies are 5 black and 2 brown. Available for FREE adoption NOW! For a look or more info, call 473-4400, Bud and Laila Johnson.

31b-1tc

LOST

Registered Black Angus Bull in Silver area. Freeze brand L/Hip A (Angelo State Brand). C. Wilson - 915-453-2898, Nights

30a-2tp

WANTED

1984 volume of Coke County Family Heritage Book. Will pay your price. Richard L. McCutchen, P.O. Box 15165 Oklahoma City, OK. 73155. Ph. 405-390-3199.

30a-2tp

PARKER PLUMBING

Residential & Commercial. All types plumbing repair - new construction, remodeling, fixtures, and sewer service. Licensed Master Plumber. 473-2131, Bronte.

34b-tnc

**FOR RENT:
THE RUG DOCTOR**

Carpet & Upholstery
Cleaning Machine

Hometown Hardware
Bronte, Texas

WANT TO BUY

old pant stretchers. 473-2020 daytime or 473-4441 after 5 pm.

31b-tnc

**SUNSHINE
CONSTRUCTION**

New Construction, Additions, Renovations, and Home Repairs. Contact Don Parks @ 453-2860 or 450-2767 mobile.

34a-tnc

Bob Frazer's 944-0010
473-6603

**Texas Best
Deflooding &
Carpet Cleaning**

24 hr. Emergency
Water Damage Service

TREES TRIMMED

topped or removed. Call 453-9902 after 6 pm.

37a-tnc

COMPUTERS

Complete systems, repairs, upgrades, internet. Call Ed @ EMCO Computers. 473-3004.

32b-tnc

**D & L DOZER SERVICE
& CUSTOM FARMING**

Larry Spivey, owner-operator. PO Box 160, Bronte, Texas. Phone (915) 282-3038.

45b-tnc

THE "BARBER" SHOP

Debora England, 223 N. Lombard, Bronte. 473-4026. Monday, Tuesday, Wednesday, 9 am-6 pm.

17b-tnc

HELP WANTED

HELP WANTED

Front and back lawn needs to be mowed in Robert Lee. \$35.00. 453-2726.

31a-1tp

**NURSES UNLIMITED,
INC.**

needs attendants to assist with personal care, meal preparations and light house keeping. Part time basis. Please call toll free 1-888-859-0642 Mon. - Fri. 8A-5P. E.O.E.

31b-2tc

Hiring CNA's

All shifts, full time, part time and PRN. \$7.30/hour.

Contact Rhonda or Larry

**Runnels County
Rehabilitation and
Nursing Center**

1800 N. Broadway

Ballinger, Texas

915-365-2538

NOW HIRING!

Production Workers, Bookkeepers, Dental Assistant, Computer Tech, Desktop Administrator, Nanny, Receptionists, Welders, Machine Operators, Mill Workers. For more info. (915) 365-9133, or apply @ Demand Staff, 804 Hutchings, Ballinger, TX 76821.

28a-4tc

CNA'S NEEDED

for full-time & part time hours. Friendly, caring environment. Sr. Citizens Nursing Home, Winters, Tx. Contact Sarah Lee RN at 754-4566.

28b-tnc

**PERSONAL CARE
ATTENDANT**

needed in Robert Lee to assist aged and disabled individuals in their homes. Tasks include assistance with personal care, light housekeeping, heavy lifting, and other tasks as assigned. Hours vary according to client served. Applicants must be 18 years of age or older and free of any criminal history charges. Contact Rolling Plains Memorial Hospital Home Health at (915) 235-1701 (ext. 413) or fax resume to (915) 235-1783.

31a-1tc

**SR. CITIZENS
NURSING HOME**

now hiring for week-end RN. Every other week-end coverage and some prn. Competitive pay. Flexible hrs. Contact Sarah Lee RN. 506 Van Ness in Winters or call 754-4566.

28b-tnc

**SR. CITIZENS
NURSING HOME**

in Winters now hiring for part-time & prn LVN. Nursing Home & Medicare experience preferred. Competitive Salary. Contact Sarah Lee RN at 754-4566.

28b-tnc

GARAGE SALES

YARD SALE

Friday, 8-5, Saturday 8-12. 407 West 8th, Robert Lee. Lots of baby items.

31a-1tp

DON'T FORGET

Bronte City wide garage sale...May 5th.

31b-1tc

YARD SALE

Something for everyone. 219 W. Oliver, Bronte (across from Post Office) Saturday, March 3rd, 7:30 am till noon.

31b-1tp

Garage Sale

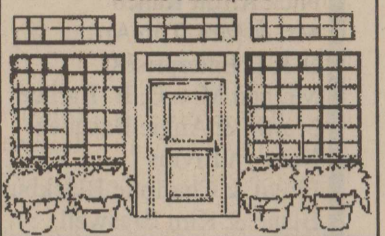
Downtown Robert Lee

Friday & Saturday

March 2nd & 3rd

9 am to 4 pm

Some Antiques



CARD OF THANKS

I WANT TO SAY THANK you for the many nice things my friends & neighbors did for me while I was in the hospital. Thanks for the food, flowers & prayer card. May God Bless every one of you.

Estelle Askins

31a-1tc

**THANK YOU FROM
BRONTE SENIOR
CENTER & QUILTERS**

To each of you that had a part in the auction of our quilt, donated by Christene Corley, and quilted by the ladies at the Senior Center, you have our heart felt thanks. To the Chamber of Commerce, who do a great job for the community of Bronte, thank you again. To Ed Cumbie, who is the greatest, thank you. May the Lord Bless you all.

31b-1tp

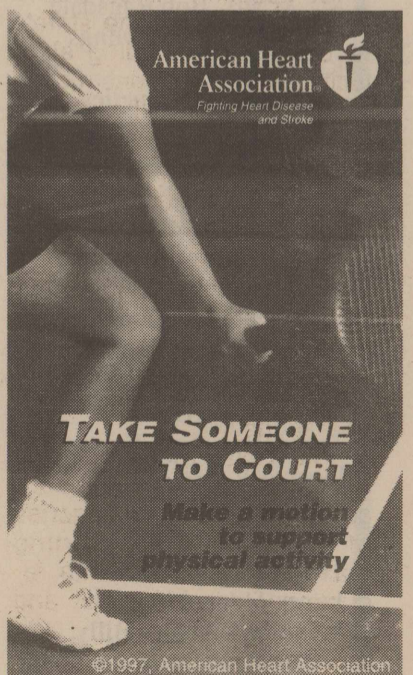
NOTICES

**NOTICE OF PUBLIC
MEETING**

Take Notice That A Meeting of The Housing Authority of the City of Robert Lee, Texas

will be held at the Housing Authority' Office at 710 Bishop Street, commencing at 4:00 o'clock pm, on the 18th Day of April 2001 to consider and act upon the following: Commissioners will be receiving comments on the Annual Plan for the Robert Lee Housing Authority. All documents are on display at the Office of the Housing Authority at 710 Bishop Street, from (8-4) Mon., Wed. - Fri. and (10-3) Tues. - Thurs.

31a-1tc



American Heart Association
Fighting Heart Disease and Stroke

**TAKE SOMEONE
TO COURT**

Make a motion
to support
physical activity

©1997, American Heart Association

Texas ripe for competition in electric industry

Texas is ripe for competition and the Legislature has set an effective course to transition to a competitive market that should be maintained, according to a new analysis prepared by The Perryman Group.

The study, commissioned by the Association of Electric Companies of Texas (AECT), analyzes the landmark 1999 Texas Electric Choice Act in light of recent developments in the electric industry - including other states' experience with competition and the dramatic rise in natural gas prices. The measure opens the retail market for electric power to the forces of competition for most Texans in January, 2002.

"The results of the review are unambiguous," said Dr. Ray Perryman, author of the analysis. "Competition will result in competitive prices that will be lower than consumers could expect in the highly regulated structure that exists today. In addition, Texans can expect greater choice, enhanced efficiency, more effective innovation, and improved environmental quality. An open market for retail power, with appropriate safeguards, will bring many positive outcomes to the state."

"This study provides an effective analysis of the course Texas has followed on the road to competition versus how it was done in California," said John Fainter, President of AECT. "It provides compelling evidence that Texas is on track to achieve significant benefits from competition. Clearly, we should stay the course."

The Benefits of the Texas Electric Choice Act (S.B. 7)

*The anticipation of retail competition in the electricity market has already stimulated extensive investments in new capacity within the state. Accounting only for projects currently under way, the economic impact from construction includes \$5.3 billion in Gross State Product and 87,600 person-years of employment.

*An effective competitive mechanism yields greater consumer choices as electric providers compete on price, services, and product differentiation (such as renewable energy or "green" power). This pattern is already occurring in Pennsylvania.

*Competition will contribute to efficient use of the state's resources in providing electricity. New plant construction is dominated by the use of combined-cycle gas turbines (CCGTs), which are highly cost effective. Smaller, distributed generation facilities may also aid in delivering power more efficiently. Competition similarly brings incentives for suppliers to innovate and rapidly deploy new innovations in all aspects of their operations.

*The Texas Electric Choice Act is designed to ensure cost savings for all categories of customers, including mandatory minimum rate reductions for residential and small commercial users.

*Depending on the degree of success achieved, the benefits to the Texas econ-

omy of a competitive market after the transition are projected to include \$300 million - \$1.4 billion in annual Gross State Product and 7,700 to 31,000 permanent jobs.

*The Texas competitive structure maintains the long-standing role of the power industry in local economic development by assigning this function to the transmission and distribution (T&D) system.

*The movement to a well-conceived competitive retail electric market will allow Texas to offer an environment for site selections and expansions similar to that of several large industrial states, such as Ohio and Pennsylvania, and superior to others. Power-intensive manufacturers view the ability to negotiate for electric service as a key factor in location decisions.

*Senate Bill 7 offer numerous advantages in improving the environment in Texas. The measure mandates emission reductions for older facilities that were grandfathered from prior Clean Air Act standards. It also ensures that a substantial segment of new capacity will be clean and fuel-efficient and establishes goals and incentives for renewable energy. Major "green" power projects are already under way.

Problems in California

Beginning with power shortages last summer, California has received national attention during the past few months. The reasons for these problems include:

*California has a deficiency in power supply and imports approximately 25% of its electricity from outside the state.

*California has a cumbersome process for developing new capacity, with a new plant taking about seven years to bring into operation.

*California has built virtually no new capacity in the past five years, despite substantial economic growth and corresponding increases in power needs.

*California set up a highly restrictive power exchange system, which limited the ability to stabilize prices through hedging in forward markets.

*California did not establish an effective transition mechanism, with the movement to market pricing being tied to stranded costs recovery rather than the emergence of significant competition. The result is inadequate incentives for market entry.

*California's power grid is not well-suited to transmitting electricity to areas with insufficient local generating capacity.

*California's transitional pricing structure for incumbent utilities, not yet subject to competition, did not initially provide for adequate recovery of energy cost increases, thus threatening the financial integrity of the state's power supply system.

In short, the situation in California does not stem from any weakness in the concept of competition; it is more the result of basic flaws in the structure and implementation of the specific programs. Meanwhile, according to the study, Texas is not in a position to be plagued by the problems which have beset California in its transition to competition.

The Texas Framework



January birthdays celebrated at Robert Lee Care Center included (from left) Ester Howell, Frances Bloodworth, Oma Lewis and Hazel Cornelius.

*Texas has significant excess generation capacity.

*New generation facilities typically come on line in Texas in three years or less.

*Texas had added about 5,000 megawatts (MW) of new capacity during the past year and has several times that amount now under development.

*Texas allows forward buys of power to hedge against price fluctuations.

*Texas established a Price to Beat system to encourage retail market entry during the transition period. This mechanism, which is working effectively in Pennsylvania and elsewhere, allows competitors to offer prices to consumers below those permitted for the retail affiliates of incumbent utilities.

*Although some upgrades are needed (and are now under way), Texas generally has a well integrated power grid. In particular, the Electric Reliability Council of Texas (ERCOT) covers approximately 85% of the state's power systems. Moreover, Texas instituted wholesale power competition in 1995 and has already provided for an Independent System Operator (ISO) well in advance of an open retail market.

*Texas allows for adjustments for fuel costs and purchased energy price increases for the retail providers affiliates of incumbent utilities during the transition period.

In summary, "The bill passed last session is comprehensive and well-conceived," according to Dr. Perryman. "It avoids the difficulties experienced in a few other states. With careful management, all consumers will benefit."

"There will be challenges for us here in Texas," said Fainter. "As the study points out, construction of new transmission lines will likely encounter some opposition. In addition, the consumer education program is key for us here in Texas. These issues, among others, must be managed and monitored effectively for the transition to competition to be as seamless as possible for consumers, and to reap the full benefits of a competitive market. By sticking to the roadmap provided by state legislators in S. B. 7, we are on track to do just that."

The Perryman Group is an economic research and consulting firm based in Waco with more than 20 years of experience in analyzing the Texas economy.

The Association of Electric Companies of Texas, Inc. (AECT) is a trade organization representing all investor-owned utilities in Texas. Organized in 1978, AECT provides a forum for electric-utility representatives to exchange information on their industry, and to communicate with state and federal government officials.

Preparing tax return for mailing

Your tax return is complete and ready to be mailed. Before sealing that envelope, take a few minutes to make certain that all information is complete and accurate. Avoid mistakes that may delay your refund or result in correspondence with the IRS.

Here are just a few items to complete prior to mailing your tax return:

*Sign your return. Your federal tax return is not considered a valid return unless it is signed. If you are filing a joint return, your spouse must also sign.

*Provide a daytime phone number. This may help speed the processing of your return if the IRS has questions about items on your return. If you are filing a joint return, you may provide daytime phone numbers for either you or your spouse.

*Assemble any schedules and forms behind Your 1040/1040A in the order of the "Attachment Sequence No." shown in the upper right hand corner of the schedule or form. For supporting statements, arrange them in the same order as the schedules or forms they support and attach them last.

*Attach a copy of Forms W-2, W-2G and 2439 to the front of Form 1040. Also attach Forms 1099-R if tax was withheld.

*Use the coded envelope included with you tax package to mail your return. If you did not receive an envelope, check the section called "Where Do You File?" inside the back cover of your tax instruction booklet. You may be mailing your return to a different service center this year because the IRS has changed the filing location for several areas to provide better customer service.

*If you owe tax, make your check or money order payable to the "United States Treasury." Write your name, address, Social Security number, daytime telephone number and "2000 Form 1040" (or appropriate form number) on your payment. Then complete Form 1040-V following the instructions on that form and enclose it in the envelope with your payment. Do not attach the payment to your return.

For more information, refer to your tax instruction booklet or visit the IRS Web site at www.irs.gov.

WCC/Coke County Juvenile Justice Center

WCC, a world leader in the Privatized Corrections Industry, is currently accepting applications for the following Employment opportunities:

LICENSED VOCATIONAL NURSES Full Time/PRN

Competitive salary plus an attractive benefits package. Correctional Nursing in a team oriented environment.

Please call or submit resumes to:

Coke County Juvenile Justice Center

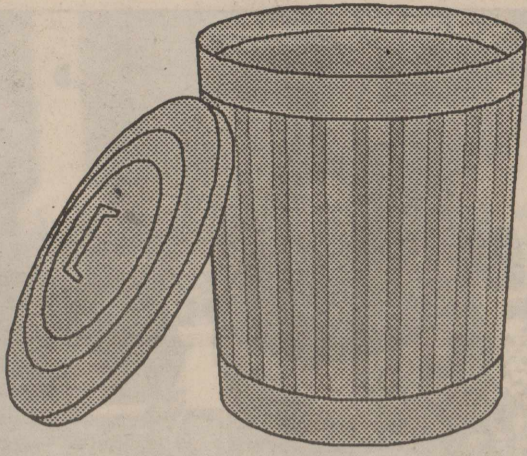
4 East Hwy 277 South • Bronte, Texas 76933

915-473-5700 • Fax 915-473-5029

ATTN: Barbara Smith RN

Health Services Administrator

EOE M/F/V/D

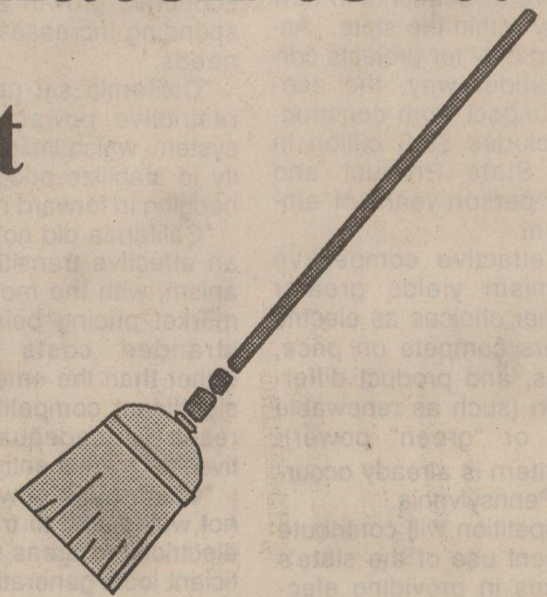


*One man's trash is
another man's treasure.*



**Don't just stick
a match to it!**

**A garage sale is the perfect
way to get rid of all your
junk after your spring
cleaning!**



*Make sure your's is a success by placing
a Garage Sale ad in the Classifieds!*

**THE OBSERVER/
ENTERPRISE**
Serving Coke County

P.O. Box 1329 Robert Lee, TX 76945

453-2433 or 473-2001