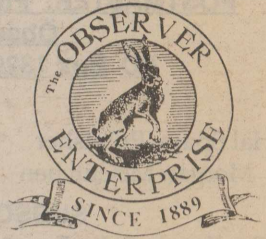


# THE OBSERVER/ ENTERPRISE

Serving Coke County

Single Copy 35c



(USPS 467-480)  
(ISSN 8750-197X)

Vol. 113, No. 20

Friday, December 8, 2000

## "Ceremonial hosing" set for Tuesday at RL

The City of Robert Lee has been notified that the new fire truck will be arriving in Robert Lee for presentation to the Robert Lee Volunteer Department on Tuesday, December 12th at 2:00 pm at the Robert Lee City Hall.

Weather permitting, the Robert Lee Volunteer Fire Department will be conducting a "Ceremonial Hosing" of the new truck to honor the "retirement" of the 1963 Pumper truck which no longer

meets the requirements of the state's fire insurance standards.

The new truck has been purchased through efforts of the City of Robert Lee and a grant from the San Angelo Health Foundation.

It is a state of the arts truck constructed by the Ferrara Fire Apparatus Corporation and will meet all fire protection standards for the City.

The public is invited to

### Angel tree

Bronte Health and Rehab Center is once again sponsoring an "Angel" tree for the residents. "Angels" may be picked up in the lobby of the facility. On the back of each Angel, a list of "wants" are listed for that person. As last year, the names of the residents are left off and only a number appears which corresponds with a master list. When you select an Angel, please let Mary Beth in the activities department, someone in the office or a charge nurse know which number you selected. Let's make this a wonderful time for our senior citizens. Please leave all gifts at BHRC by December 18th.

come to the Robert Lee City Hall for the 2:00 o'clock program which will be concluded with a drawing for a hand-made quilt donated to the Volunteer Fire Department as a "Fund Raiser".

### Holiday happening

Join the holiday fun on Monday, December 11, 2000 at 5 pm at the County Courthouse. Holiday food and craft ideas will be presented by the Texas Agricultural Extension Service. Family and Consumer Science Agents Jan Yanez, Coke County and Kelly Aherns Tom Green County will be presenting this holiday happening program.

### Fish stocking program

Early planning for a spring fish stocking program is underway! Your local Soil and Water Conservation District is offering channel cat, bass, bluegill, bluecat and minnows for your private ponds. Place your orders NOW for delivery in early May, 2001. Contact the Coke County Soil and Water Conservation District at 915-453-2623, ext. 3 or go by 214 East 7th Street in Robert Lee for more information.

### Water well plugging meeting

The Coke County Extension office and the Coke County Underground Water District will sponsor an educational meeting concerning the laws, regulations and procedures for capping or plugging abandoned water wells. This meeting will be held on Tuesday, December 12, beginning at 8:30 am with registration and the program from 9-noon. Allan Lange with the Lipan-Kickapoo Water District will conduct the meeting along with Tommy Antilley, Coke County Extension Agent. CEU's will be given for one hour of laws and regulations and two hours for general.



4-H members Whitney Millican (bottom) and Erin Millican were recently honored at the District 7 4-H Gold Star Banquet in Abilene. Pictured with Whitney and Erin is Jamie Rainey, West Texas Utilities representative, sponsors of the banquet. The Gold Star Award is the highest 4-H award given to a senior 4-H member for their leadership and participation in 4-H.

### Christmas Greetings set for Dec. 22

It is time once again for Christmas Greetings! The Observer/Enterprise would like to remind businesses and individuals wishing to place a Christmas greeting in the newspaper to call or stop by and choose your greeting for the Dec. 22nd paper.

Deadline for this year's greetings is Tuesday, December 19. For more information or to place an ad, contact the Bronte office at 473-2001 or 453-2433 in Robert Lee.

### Food Closet to make up baskets

The Coke County Food Closet will be making up a number of Christmas baskets to give to those who may be experiencing difficulty in the Christmas season. In order to make up as many baskets as

may be needed, the Food Closet is asking for help from the community. Following our giving of Thanksgiving baskets, the food closet is low in some critical areas, including: flour, sugar, cooking oil, canned meats, dry cereal, peanut butter, crackers, pasta products, cornbread mix, jellies, canned fruit products, dry beans, canned milk, macaroni and cheese, and other non-perishable food items. If you would like to donate any of these items to the food closet, you may bring them by the First United Methodist Church. In addition, cash donations may be made to: The Coke County Food Closet Fund at the Robert Lee State Bank.

The ancient Druids believed that mistletoe could cure sickness, and could shield people from witches and ghosts.



Bronte children gathered to sing Christmas carols at the Bronte Christmas celebration last Friday evening at the Mini-Park.



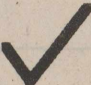
**THE OBSERVER/ENTERPRISE**  
 Published Weekly Except Christmas  
 707 Austin (915) 453-2433

(USPS 467-480) (ISSN 8750-197X)  
 Periodical Rate Postage paid at Robert Lee, TX.

**POSTMASTER: Please send address changes to  
 Observer/Enterprise  
 PO Box 1329, Robert Lee, TX 76945.**

**STAFF**  
 Hal Spain, Publisher Melinda McCutchen, Editor  
 Morgan McCutchen Pat Taft

**SUBSCRIPTION RATES**  
 Per Year in Coke County.....\$20.00  
 Per Year Elsewhere in Texas.....\$22.00  
 Per Year Outside of Texas.....\$25.00

Check out  
 Coke Co.  
 Library

**New audio tapes for CC library**

Open House day in Robert Lee brought several regular patrons and a few new patrons by the Coke County Library. As always, visits are appreciated.

The library has received a new issue of audio tapes. Among them are Small Vices, Robert Parker; Secrecy, Belva Plain; Don't Know Much About the Bible, MacDonald; Rip Van Winkle; A Mule for Santa Fe, L'Amour; and Get Shorty, Elmore Leonard.

Several web sites have been recommended by the Texas State Library Association. They are as follows: [www.santas.net/howmerrychristmasissaid](http://www.santas.net/howmerrychristmasissaid); [christmas.com](http://christmas.com); [www.historychannel.com/exhibits/holidays](http://www.historychannel.com/exhibits/holidays); [www.holidays.net/Christmas/Santa.htm](http://www.holidays.net/Christmas/Santa.htm); [www.buddyproject.org/teach/explore/xmas](http://www.buddyproject.org/teach/explore/xmas); also [www.buddyproject.org/parent/capers/dec00.asp](http://www.buddyproject.org/parent/capers/dec00.asp).

Library patrons checked out almost 200 more books this year in November than they did November, 1999. Coke County reads - a lot.

Library hours are Tuesdays, 8-12; Wednesday 8-4; Thursdays, 1-5; Fridays, 8-12. Story Hour continues for three-to-five year olds on Tuesdays at 10:00. Books may be returned to the Main Street Mkt. in Bronte. The food-for-fines program continues to add to the Food Closet sponsored by the Methodist Church.



Jesus Landeros, son of Martin and Maria Landeros, appears to be counting his Christmas wishes on his fingers during his visit with Santa Claus (Rev. Waide Messer) at the Robert Lee Christmas celebration last Friday.

Actual classes will begin in January. Classes will be three hours long on Monday and Thursday. If you are interested or know someone who is interested please have them to contact Mary Bessent at 453-2492.

The Service will have their annual Christmas Party December 18th at 6:30. Meeting adjourned and Continuing Education Hours were held.

**ECC Ambulance Serv. contributions November 2000**

**Donation**  
 R. W. Blackmon  
**Memorials**  
 Mildred Lee  
 Cotton, Joyce & Sam Morgan

*Churches of Robert Lee*

*Invite You to Worship*

- Emmanuel Pentecostal**  
 PO Box 683 • 1019 Colorado City Hwy  
 (915) 453-2360  
 Rev. Ray Aldridge, Pastor  
 Sun. 10 am & 6 pm, Wed. 7 pm  
**First United Methodist Church**  
 PO Box 144 • 9th & Chadbourne  
 (915) 453-2417  
 Rev. Jim Reeves, Pastor  
 Sun. 10 am Sunday School  
 11 am Worship  
 Wed. 7 pm Choir  
**Northside Church of Christ**  
 PO Box 388 • 9th & Chadbourne  
 (915) 453-2619 or 453-2270  
 Tommy Williams, Minister  
 Services: Sun. 10 am & 6 pm;  
 Wed. 7 pm  
**Pecan Baptist**  
 PO Box 542 • 12 W. Sterling City Hwy  
 (915) 453-4645  
 Rev. Dale Patterson, Pastor  
 Sun. 10 am, Sunday School  
 11 am & 7 pm, Worship  
**Southside Church of Christ**  
 PO Box 698 • 8th & Houston  
 (915) 453-2176  
 Frank J. Daniels, Preacher  
 Sun. 10 am, Sunday School  
 11 am & 6 pm, Worship  
 Wed. 7 pm, Worship  
**Robert Lee Baptist Church**  
 PO Box 493 • 22 W. 11th  
 (915) 453-2724  
 Bro. Waide Messer, Pastor  
 Sun. 9:45 am, Sunday School  
 11 am & 7 pm, Worship  
 Wed. 7 pm, Prayer Meeting  
**Our Lady of Guadalupe Catholic Church**  
 601 W. 10th  
 (915) 365-2687  
 Rev. Hubert Wade, Jr., Pastor  
 Sat. 6 pm  
**Victory Assembly of God**  
 PO Box 638 • Robert Lee  
 (915) 453-2208  
 Rev. Erma Johnson, Pastor  
 Sun. 9:45 am, Sunday School  
 10:45 am & 6 pm, Worship  
 Wed. 7 pm, Prayer Meeting

**Obituaries**



Pauline Sims

**Sims**

Pauline Sims, 88, died Tuesday, November 28, 2000, at a nursing home in Abilene, Texas. Funeral services were held at 2:00 pm Friday, December 1, 2000, at the First Baptist Church in Bronte with Rev. Morris Johnson officiating. Burial followed in the Fairview Cemetery in Bronte under the direction of Girdner-Brown Funeral Home, 111 Elm, Abilene, Texas.

Mrs. Sims was born in Bronte, Tx, and attended the Tennyson and Bronte schools. She married T. E. (Tuffy) Sims in Bronte on Dec. 14, 1935. He preceded her in death in 1991. Mrs. Sims was employed by Nathan's Jewelers in San Angelo during WWII while her husband served in the Air Corp. After the war, Mrs. Sims and her husband operated the Sims Red and White Grocery Store in Bronte for many years. In 1987, Mrs. Sims moved to San Angelo where she resided in the Rio Concho Manor until 1998 when she moved to Abilene.

Mrs. Sims was a member of the First Baptist Church in Bronte where she taught Sunday school class for many years, attended the J.O.Y. Sunday School class, and was a member of the Committee of Deacons Wives and the Diversity Womens Club.

Survivors include a son Glenn Sims of Abilene; four brothers Clark Glenn and E.F. (Tuny) Glenn of Bronte, James Vernon Glenn of Amarillo, and Dale Glenn of San Angelo; 2 grandsons, Dr. Shaughn Sims of Abilene, and Lance Sims of San Angelo, and, numerous nieces and nephews.

20a-1tc

**McDonald**

Maxine Kathryn McDonald, 84 of Bronte, Texas went to be with the Lord on December 3, 2000.

Graveside services were held at 2:00 pm on Wednesday, December 6, 2000 at Ft. Chadbourne Cemetery with Reverend John Curry of Blackwell officiating. Arrangements were under the direction of Shaffer Funeral Home in Bronte.

Maxine was born on November 24, 1916 in Bronte to William C and Mary Etta Collette.

She was married to Walter D. (Pete) McDonald on May 18, 1940. Pete preceded her in death on January 4, 1994. She was preceded in death by 5 sisters and 4 brothers. She is survived by one son J. D. McDonald and his wife Robbin of Bronte; one grandson J. D. (Bear) McDonald II of Bronte; and several nieces and nephews.

20a-1tc

**Death Notices**  
**Sinclair**

Mary Eudora Sinclair, 82, passed from this life November 28, 2000 in Hope, Arkansas. Services were held Friday, December 1, 2000 at 2:00 pm in the Herndon Funeral Home Chapel with Rev. Charles Bell and Rev. Clay Collins officiating. Burial followed at Anderson Cemetery under the direction of Herndon Funeral Home.

Survivors include two sons, Jimmy Sinclair of Robert Lee, Tx. and Thomas Sinclair of Hope; two daughters, Naomi Simmons of Magnolia and Melba Whatley of Hope; a brother, Claude Collins of Hope; twelve grandchildren, eighteen great grandchildren and nine great great grandchildren.

**Collett**

Vicktor "Pete" Collett, 66, of San Angelo died Sunday, Dec. 3, 2000, in a San Angelo hospital.

Graveside service was at 10:30 am Tuesday, Dec. 5, in Robert Lee Cemetery. Arrangements were by Johnson's Funeral Home.

Survivors include his wife, Patricia A. Collett, a son, Ernest Collett, two daughters, Joyce Anderson and Ruth Robison, and six grandchildren, all of San Angelo.

**West Coke County EMS elects officers**

West Coke County EMS met Monday, November 27th at the EMS building. Officers were elected for the coming year as follows: Mary Bessent - President, Shell Williams - Vice President, Secretary - Jeanette Jacobs, Board Representatives - Joan Burns and Kathy Underwood, and Board Liaison - Johnny Elam.

ECA and EMT class registration is to be held December 4th. The required CPR class will be held on the 16th of De-

**GLENN-BIVINS INSURANCE**

 See us for your auto insurance.

123 W. Main Bronte 473-6791

**Thoughts on the Scripture**  
*By Rev. Jim Reeves*

*Proverbs 25:11 "A word aptly spoken is like apples of gold in settings of silver."*

Remember, think before you speak. Harsh words are hard to eat.

May God bless each one of you.  
 Brother Jim





Attending the 67th Annual Texas Farm Bureau Convention in Arlington recently were (from left) William Joe and Julie Ann Harmon, Bobby and Jeffie Roberts and Joe and Dee Anna Harmon.

**Locals attend TFB State convention**

Two voting delegates from Coke-Sterling County Farm Bureau recently participated in the 67th Annual Texas Farm Bureau Convention held November 26 through November 29 in Arlington.

Attending the convention were Bobby and Jeffie Roberts of Robert Lee.

Policies directing the state's largest farm organization were adopted by more than 1200 delegates from 208 organized Farm Bureaus. Approved recommendations on national policies will advance to the American Farm Bureau Federation Annual Meeting to be held in January in Orlando, Florida. Bobbie and Jeffie Roberts were selected as delegates to attend the national meeting.

Addressing the delegates were Donald Patman of Waxahachie, TFB president; Dale Jeskie of Alamo, secretary-treasurer; and Vernie Glasson, TFB executive director.

The business session covered the final two days of the meeting. The last order of business was the election of the president, Donald Patman of Waxahachie.

This year's youth winners were: Jade Lusk of Nocona, Miss Texas Farm Bureau; Abigail Wilks of Hereford, Talent Find winner; and Kerri Schneider of Marion, Free Enterprise Speech winner.

Kevin Huffman of McGregor was named "Outstanding Young Farmer/Rancher of 2000".

William Joe and Julie Ann Harmon of Keller attended the convention to accept a plaque honoring his late father, Finis Harmon of Robert Lee, as the Pioneer Award winner for District 6. The Harmon's also attended a luncheon in honor of the Pioneer Award winners.

Also attending the convention were Joe and Dee Anna Harmon of Robert Lee. Joe was honored during the convention as the District 6 finalist of the 2000 Outstanding Young Farmer and Rancher

contest. He received a plaque, belt buckle, and a \$100 gift certificate. Joe and Dee Anna attended a luncheon honoring the recipients.

**CC retired teachers meet**

The Coke County Retired Teachers Association met Monday, Nov. 20, 2000. The noon luncheon meeting was held at the First Baptist Church in Bronte.

Janet Wommack, president, presided at the business meeting. Alan Richey, Bronte ISD superintendent, spoke to the unit members on health care. President Janet told of TRTA by-laws that are being amended. Vote on the by-laws will be at the state meeting in April 2001. Nina Brewer, Community Service chairman, reminded members that volunteer service hours totals are due at the January meeting.

The next meeting will be Monday, January 15, 2001, at the First Baptist Church in Bronte.

Attending the meeting were: C. B. Barbee, Wanda Barbee, Emma Lee Bickley, Jimmy Bickley, R. W. Blackmon, Celia Bowden, Oleta Braswell, Jack Brewer, Nina Brewer, Wanda Brewer, Harrell Foshee, Janice Foshee, Mary Frances Glenn, Kay Gothard, Paul Gothard, J. T. Henry, Sybil Henry, William

Hood, Mary Lawhon, Bette McCutchen, Jerry McCutchen, Beth Prather, Gerald Sandusky, Janet Wommack, Lee Wommack, and guests: Rick Howell, Terry Marrs, Alan Richey, Eddy Spiller and Sue Spiller.

**Personal**

Visiting with Christine Corley over the holidays were Mr. & Mrs. Larry Corley & Scott of Tucson, Arizona; Shannon & Kenneth Corley of Ft. Worth; Davis & Kurt Corley of Midland; Brenda & James Tidwell, Mary & Jim Morrow, Jack & Glenda Corley, Becky Morrow, and Kenneth Cockran all of Bronte. Also visiting were Shilene Black & Caleb Usey of Mertzon; Kacy & Kacelyn Follis of Wall; Jason, Faith, & Bubba Corley of San Angelo; Tom Sullivan of Gallatin, Missouri, and Dee Boyd of Blackwell.

**Letter to the Editor**

Classes are starting for EMT training. There are prospective students who cannot afford the cost of the class, books & certification. Your assistance in providing a scholarship, 1/2 scholarship or any amount would help not only the two services in Coke County but just may help you.

Remember, many school athletic events cannot be held without trained personnel in attendance.

A Citizen  
(name withheld by request)



**Holiday Happening**

*Holiday Crafts & Food Ideas & much more ...*

December 11 • 5 pm

Coke County Courthouse Courtroom

Sponsored by the Family & Consumer Science Committee & the Texas Agricultural Extension Service

For More Information: 453-2461



LONE STAR CARDS WELCOME



LIMIT RIGHTS RESERVED

501 Commerce - Robert Lee, TX

Store Hrs: Mon.-Sat. 8-8 Sun. 8-6

SPECIALS GOOD 12/6 Thru 12/12



Farmland Boston Butt

Pork Roast

Lb. .79

Family Pack • Farmland Asst'd

Pork Chops

Lb. \$1.49



Russet Potatoes

20 Lb. Bag .99

Grade A Extra Large

IGA Eggs

12 Ct. Ctn. .79



IGA

Vegetable Oil

48 oz. bottle .99



Washington Large

Red Delicious

Apples

Lb. .49



Selected Varieties

Bounty Paper Towels or Charmin Bath Tissue

4-24 Roll Pkg.

\$5.99



# Robert Lee School News

## Lady Steers win Irion Tournament

The Lady Steers traveled to Mertz on last weekend and successfully defended their Super Hoops Tournament championship by defeating Iraan, Miles, & the host team Irion County in the championship finals.

In their opening game, the Lady Steers faced undefeated Iraan. The Lady Steers trailed at half time 20-26, but came back with a big 3rd quarter, outscoring Iraan 24-6, to put the game away and coast to a 63-49 victory. Deshira Dickey had a season high 26 points for the Lady Steers. Jodee Helwig had a solid 16 points followed by Whitney Millican with 9, Amber Freeman 5, Dixie Simpson 4, Jennifer Alexander 2, and Kizre Matthews 1.

The semifinal game pitted the Lady Steers against an old district opponent, Miles. The Lady Steers got off to a slow start, but were able to maintain a 22-16 lead at half time and finished with a 56-34 win. Dickey once again led in the scoring department with 14. Alexander and Freeman came off the bench to add 11 and 9 points respectively. Wojtek also scored in double figures with 11. Others scoring included, Matthews 2, Millican 5, Helwig 2 and Simpson 2.

The championship final saw the Lady Steers vs. Irion County, in a rematch from last year's final. Once again the Lady Steers prevailed in a 43-38 victory. The Lady Steers jumped out to a 32-15 lead at the half and were able to main-

tain their lead throughout. Helwig had 14 points, Matthews 3, Wojtek 9, Freeman 2, Millican 7, Simpson 3, and Dickey 6.

Deshira Dickey was chosen as the tournament's MVP, as she averaged 15.3 points and 7.7 rebounds per game. Jodee Helwig was also selected to the All-Tournament team as she averaged 10.7 points and 7 rebounds. With the three wins, the Lady Steers ran their record to 6-1. They will play in the Stanton Tournament this week, beginning with their opening round game against Greenwood, Thursday at 3:00. The Tournament has been moved from Stanton to Midland Christian High School due to the fact that Stanton is still in the football playoffs. Other schedule changes could be forthcoming.

## Grape Creek JV tournament

The JV girls went 1-1 in their first tournament action of the year. They won their opening game against Christoval 26-20. Scoring for the JV Lady Steers were: Kindra Matthews 2; Misti Brothers 6; Amie Kendall 2; Tyler Lott 1; Krystal Soliz 6; Christina Middleton 8; and Debra Barron 1.

In their second game, the JV Lady Steers played the host team Grape Creek. The JV's lost in a close one 35-36. Matthews had 2; Brothers 10; Kendall 10; Lott 1; Middleton 1; and Soliz 10. It was the first loss of the year for the JV ladies as they now post a record of 5-1.

## RL Lady Steers take two from Forsan

On 11-27, the Robert Lee JV girls took a win from Forsan JV by a score of 21-17. Scoring for the JV girls were: April Cowart 2; Kindra Matthews 2; Misti Brothers 2; Krystal Soliz 5; and Christina Middleton 7.

On the same night, the RL Varsity also took a win from Forsan by a score of 62-25. Scoring for the varsity were: Kizre Matthews 2; Shanna Wojtek 5; Amber Freeman 3; Whitney Millican 9; Jodee Helwig 15; Rachelle Mills 4; Dixie Simpson 4; Bobbie Sparks 2; and Deshira Dickey 18.

## Jr. High Girls win two over Eden

On December 4, the Robert Lee Junior High Girls traveled to Eden and took a couple of

wins from Eden. The Robert Lee Junior High "A" team took a win over Eden by a score of 36-16. Lindsey Roe led the team by scoring 12, followed by Cara Eaton with 10, Cassidy Wink 6, Brittany Soliz 5 and Michelle Sanchez with 3.

The Robert Lee "B" team won a close game by a score of 22-21. Leading scorer was Kyla Millican with 10, Kayla Medrano 6, Tiffany Bagwell 4, and Andra Braswell 4.

## Jr. High Boys win over Water Valley

On November 27, the Robert Lee 7th grade boys took a win over Water Valley by a score of 17-10. Lewis Hearn was top in scoring with 7 followed by Josh Conner and Brandon Soliz with 4 each. Lance Millican added 2 for the victory.

The 8th grade boys took their win by a score of 29-7 over Water Valley. Omar Saucedo scored 12 followed by Andy Mulkey with 6, Ruben Torres 4, Jake McCabe, Mark Colon, and Wade Arledge 2 each and Robert Raney 1.

## JV Steers basketball

On November 21, the JV Steers lost to Winters by a score of 39 to 20. Travis Taylor led the scoring with 12, Taylor Clendennen 4, and Cole Flanagan and Brian Abalos with 2 each.

On November 28, the JV Steers lost to Forsan by a score of 48-23. J J Reyes led the scoring with 13, Travis Taylor 4, Brian Abalos 3, Taylor Clendennen 2 and Cole Flanagan 1.

In the Grape Creek Tournament, the JV Steers played the Lee Blue team and lost by a score of 43-24. Travis Taylor scored 12, J J Reyes 6, Cole Flanagan 4, and Brian Abalos 2.

## GED program

Classes for the GED program will begin on January 2, 2001. Be sure to call 453-4555 to register. The class will be held at the Robert Lee school in room 4 beginning at 6:30 pm. For more information please call Gayle Bolding at 453-2508. These classes are free and everyone is welcome.

The custom of kissing under the mistletoe may have derived from the Scandinavians. They associated the plant with their goddess of love, Frigga.



Santa and his elves came to town last Friday on the Head Start float in the Robert Lee Christmas Parade. They included (clockwise, starting from front left) Brianna Longoria, Molly Burns, Rebecca Saucedo, James Torres and his son, Brandon, and Linsey Arellano.

## Conservation trees booklet

The National Arbor Day Foundation has published a Conservation Trees booklet which is available to the public free of charge.

The booklet uses colorful photos and illustrations and easy-to-understand descriptions to help people plant and care for trees.

The contents of the guide include:

- \*How to use shade trees and windbreaks to save energy in your home.
- \*How to attract songbirds to your yard.
- \*How to save trees during construction.
- \*How to plant the right tree in the right place.
- \*How to plant conservation buffers for streams.
- \*How to create living snow fences.
- \*The right way to plant trees.
- \*The right way to prune trees.

\*How to get conservation trees for planting.

\*Where to get help caring for trees.

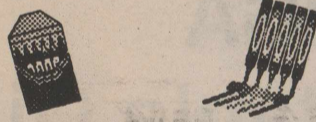
"The Arbor Day Foundation's Conservation Trees program encourages Americans to plant and manage trees to conserve energy, soil, water, wildlife, and the atmosphere," John Rosenow, the Foundation's president, said.

"The Conservation Trees booklet is a central part of this educational project. It serves as a useful guide for people in all areas, whether they live in America's largest cities or in the country."

For your free booklet, send your name and address to: Conservation Trees, The National Arbor Day Foundation, Nebraska City, NE 68410.

Ancient Romans used to exchange evergreen branches as symbols of good luck.

## SCHOOL MENU



### Breakfast

- Monday, Dec. 11**  
Orange juice, donut, cereal, milk
- Tuesday, Dec. 12**  
Orange juice, breakfast burrito, cereal, milk
- Wednesday, Dec. 13**  
Orange juice, breakfast pizza, cereal, milk
- Thursday, Dec. 14**  
Orange juice, muffins, sausage, cereal, milk
- Friday, Dec. 15**  
Orange juice, French toast w/syrup, cereal, milk
- Lunch**
- Monday, Dec. 11**  
Barbecue wieners, corn, broccoli w/cheese, rolls, applesauce, milk
- Tuesday, Dec. 12**  
Salisbury steak, macaroni & cheese, green beans, rolls, fruit cocktail, milk
- Wednesday, Dec. 13**  
Grilled cheese sandwich, pickles, potato patty, pineapple, brownie, milk
- Thursday, Dec. 14**  
Turkey w/gravy, creamed potatoes, green beans, rolls, fruit salad, milk
- Friday, Dec. 15**  
Barbecue beef, pickles, French fries, fruit, milk

## SANJAY MITTAL, M.D.

Board Certified in Internal Medicine

## Robert Lee Primary Health Care Center

308 E. 3rd Street \* Robert Lee, Texas

(Open every weekday afternoon, except Tuesday)

Call for appointment 915-453-9744

# Compare Our CD Rates

Bank-issued, FDIC-insured to \$100,000

1-year	6.55% APY*	Minimum deposit \$5,000
3-year	6.50% APY*	Minimum deposit \$5,000
5-year	6.60% APY*	Minimum deposit \$5,000

\*Annual Percentage Yield (APY) - interest cannot remain on deposit; periodic payout of interest is required. Effective 12/5/00.



Call or stop by today.  
Jim Woodruff  
719 Strong Avenue  
Ballinger, Texas 76821  
(915) 365-2505  
www.edwardjones.com

**Edward Jones**  
Serving Individual Investors Since 1871





**COUNTRY AGENTS NEWS**

by Tommy Antilley  
Coke County Agent

**CEU's for pesticide license renewal**

Producers that will have their Certified Private Applicators Pesticide License expire in the next couple of months have an opportunity to gain several hours of CEU's in the next couple of weeks. As producers know, you must have a total of fifteen hours of Continuing Education Units within the five years you have had your license renewed. Failure to get these CEU's will cause you to lose your license and suffer some delays and penalties before gaining another license.

There will be three different CEU trainings conducted in this area the next two weeks. On December 12, 3 hours will be given in Robert Lee from a meeting sponsored by the Extension office and the Underground Water District on plugging of abandoned water wells. On December 11, there will be 3 hours given at the Irion County courthouse annex beginning at 5:00 pm. You can contact Kerry Shropshire, Irion County Extension Agent at 915-835-2711. On December 18, there will be another 3 hours given at Eldorado beginning at 5:30 pm and you can contact Scott Edmundston, Schleicher County Extension Agent at 915-853-2132.

**What kind of livestock supplement do we need?**

As cattle producers, we all know to use protein supplements to improve performance of cattle grazing drought dormant or frost-killed pastures. Protein supplements, by improving digestibility and forage intake, are efficient in maintaining cattle performance on lower quality pasture.

When pastures become short or the quality is very poor, energy supplementation can complement protein supplementation but the efficiency of response is much lower. Grain and molasses (starch supplements) are most efficient when consumed at less than 0.25% of the animal's weight, while the fiber supplements, hulls, wheat midds, etc. appear to be utilized more efficiently than the grains where moderate to large amounts are needed (0.25-0.75 percent of body weight).

Now comes the question of energy supplementation relative to calving. Is it better to feed a thin cow before calving or following calving? Extensive studies have shown that cows need to be in good body condition (scores of 5.5 to 7) to be able to breed back quickly and maintain a good calving record. Cows in poor body condition (3 and 4) are always slow to breed back if at all, will not milk well and have weaker calves with increased health problems. These body condition scores are a visual appraisal of the cows condition and can be easily determined with a little practice. If

you would like assistance in determining your cattle body condition score, I would be glad to assist you.

In dry, low quality conditions like we are in now, it is extremely important to maintain your livestock's condition before they begin to lose weight. Besides hurting your weaning weights on the present calf with lower milking rates, body condition of cattle now can have a tremendous effect on how soon they will breed back if at all and how large a calf they will wean next year. Your decisions on supplemental feeding this winter can have either positive or devastating effects on your operation for the next 14-18 months. Trying to play catch up after calving or cows begin to lose weight, is next to impossible economically if not biologically. It's like the old commercial, "You can either pay a little now or pay a lot later".

In supplementing your livestock, it is important to remember that protein can be stored by animals, therefore protein supplements can be fed only two or three times a week. On the other hand, if energy is the limiting factor, livestock cannot store energy, therefore it must be supplemented every day. Also, if available forage is of poor quality like this year, there is a misconception that cattle will just eat more, but in reality, if quality of grass is poor and low in digestibility, it takes longer for the rumen to digest the forage forcing the animal to actually eat less per day, compounding the problem of low nutrient intake.

When buying supplemental feed, determine the cost by actual pounds of protein and nutrients found in the feed. Sometimes the so called "bargain cubes" if figured on pounds actual protein are not really a bargain at all. Feeds containing some source of non-nitrogen protein (usually urea) are not totally utilized by the animal. If you are buying feed containing this unnatural protein source and they only utilize about 75-80% of the

protein, your 20% feed is only furnishing about 15-16%. To get the needed amounts of protein in the animal you must actually feed more of this type of feed, increasing the cost.

One other item to be considered is the amount of money spent on maintaining your herds. If conditions are bad enough that you are having to supplement nearly the entire supply of nutrients for cattle, don't get caught in the trap of going through the winter and owing the bank for livestock and feed store for feed. There are always some animals that could be culled for some reason, sell these animals and use that money to buy feed for the rest.

**Arrests/Charges filed November 2000**

Merrion Glenn Lemley Jr., Theft by check, 11-07-00

Samuel Bruce Schiwart of Alpine, Texas, Minor in possession of alcoholic beverage, 11-11-00

Bobby Joe Longoria of Robert Lee, Texas, Making alcohol available to a minor, 11-11-00

Cruz R. Tijerina of Robert Lee, Texas, Driving while license suspended, 11-18-00

Pamela Hope Kresta of Bronte, Texas, Possession of drug paraphernalia, 11-21-00

Cynthia Marie Rhodes of Bronte, Texas, Possession of drug paraphernalia, 11-21-00

Francisco Ontiveros Jr. of Monahans, Texas, Harassment, 11-27-00

James Lee Hazelton of Abilene, Texas, Driving while license suspended, 11-30-00

**51st District Court Disposition November 6, 2000**

State of Texas vs: James William Rock

Charge: Driving while intoxicated 3rd or more

Plea: 6 years I.D. - TDCJ probated for 6 years, \$1,000 fine, 10 days in county jail, drivers license suspension 2 years

**Coke County Court Dispositions November 21, 2000**

The State of Texas vs: Robert Sierra

Charge: Criminal mischief

Plea: Restitution \$500, court cost \$209.25, 5 days jail, probated 12 months, 5 day (40 hours) community service

The State of Texas vs: Johnny Lee Wilson



Will Howard, son of Valerie Howard, was all smiles during his visit with Santa Claus (Rev. Waide Messer) at the Robert Lee Christmas celebration last Friday.

Charge: Furnishing alcohol to a minor

Plea: Fine \$300, court cost \$210.25, 20 hours community service

The State of Texas vs: Manuel Eugino Gonzales

Charge: Cruelty to animals

Plea: Deferred adjudication 6 months, fine \$500, court cost \$200.25, attorney \$250.00

The State of Texas vs: Tommy Wayne Bryant

Charge: Gambling promotion

Plea: Fine \$400, court cost \$235.25, 10 days jail, probated 24 months, 40 hours community service, attorney fee \$250.00

The State of Texas vs: Tommy Wayne Bryant

Charge: Cruelty to animals

Plea: Fine \$350.00, court cost \$235.25, 10 days jail, probated 24 months, 40

hours community service, attorney fees \$250.00

The State of Texas vs: James William Rock

Charge: Driving while license suspended

Plea: 5 days jail, court cost \$235.25

The State of Texas vs: Melody Ewing

Charge: Theft by check

Fine \$400, court cost \$280.25, restitution \$580.74, 80 days jail, probated 12 months

**Juveniles Handled Through Sheriff's Department**

1 male - Criminal mischief, unauthorized use of a motor vehicle

1 female - Criminal mischief, unauthorized use of a motor vehicle

**IVEY MOTOR COMPANY, INC.**

Ask For:

Randy Flanagan • Buck Duncan • Billy Wayne Roe

1999 Mazda B2500	\$ 8,995
1998 Taurus SE	\$10,995
21,600 Miles	
1998 Expedition XLT	\$20,995
White • Great Condition	
1999 Chevrolet Tahoe LS	\$17,995
2-2000 F-350 Crewcab XLT Powerstrokes	\$24,995
1997 F-250 Supercab XL Powerstroke	\$11,995
1983 F-250 Diesel Supercab Flatbed, Welder, Air Compressor ready to work	\$4,995

**453-2715**

**WINK INSURANCE AGENCY**



Home • Auto  
Life • Commercial

715 Austin • 453-4551

Wishing Everyone

**HAPPY & HEALTHY HOLIDAYS**

Jimmy, Staci, Jimmy Lynn & Ashley Womack



# Bronte School News

## Horns participate in Ballinger tournament

The Bronte Longhorns took on the Winters Blizzards in the first game of the Ballinger tournament, winning by a score of 55-37. Sharing high point honors for the Horns were Brandon Gibbs and Steve Eldred, with 13 each. Brandon also had 8 rebounds and 4 assists, while Steve had 7 rebounds. Also scoring were Henry White with 9 points and 7 rebounds; Zeb Speary, 3 points, 5 assists; Ryan McCorkle, 5 points, 6 assists, 5 steals; Josh Schoenfield, 6 points; Tim Green, 2 points; and Charlie Bettis, 4 points.

In the second game Bronte was on the short side of the score with Ballinger, 65-41. High point for the Horns was Steve Eldred with 12; followed by Ryan McCorkle - 11; Brandon Gibbs, 10 points, 8 rebounds; Zeb Speary, 3 points, 4 assists; Henry White and Clayton Acker, 2 each; and Tim Green, 1.

In the third game the Horns defeated Ballinger JV 46-40. Brandon Gibbs was high point with 16, followed by Henry White - 10; Zeb Speary - 9; Josh Schoenfield and Steve Eldred - 4 each; Tim Green - 2; and Charlie Bettis - 1.

San Angelo Lake View handed the Horns a loss in the fourth game, 50-45. Brandon Gibbs was the high point man with 18 points, 8 rebounds, and 4 assists; fol-

lowed by Henry White, 13 points, 6 rebounds; Steve Eldred - 10 points; Zeb Speary, 6 assists; Ryan McCorkle, 3 points, 4 assists; and Josh Schoenfield with 2 points.

The Horns won the final contest with Sterling City, 84-56. Ryan McCorkle led the scoring with 19 points, 5 assists, and 5 steals; followed by Brandon Gibbs, 16 points, 6 rebounds, and 5 assists; Steve Eldred, 16 points, 6 rebounds; Henry White, 9 points, 4 steals; Josh Schoenfield, 8 points; Zeb Speary, 6 points, 4 assists, 3 steals, Jeremy Silva, 4 points; and Charlie Bettis, 4 points, 5 rebounds, and 4 assists.

## JV Lady Horns play well at Wall tourney

The JV Lady Horns participated in the Wall Tournament on November 30, and received several compliments on their play from the larger schools participating.

In the first game, Wall A team defeated the Ladies, 42-21. Heather Richey was high point with 8; followed by Kanah Coalson-6; Ashley Denton-4; Mindy Boyd-2; and Kailey Howell-1. The team as a whole played a strong defensive game in this contest.

In the second game, the Ladies defeated the Wall B girls. Leading the scoring was Lindsay Springer with 10; followed by Britney McCutchen-7; Heather Richey-3; Mindy Boyd, Kayla Hilliard, and Ashley Torres, 2 each; and Kanah Coalson, 1.

The JV Ladies lost the consolation game to Ozona, 35-22. Sharing high point honors for the Ladies were Mindy Boyd and Kanah Coalson, 6 each; Heather Richey, 5; Kayla Hilliard and Lindsay Springer, 2 each; and Kyla McGinnis, 1.

## Bronte JH Boys basketball results

The Bronte Junior High Boys basketball team has played four games recently, with the following results.

Both the A and B teams lost a couple to Garden City. The B boys lost a close one, 8-10. Scoring for the Shorthorns were Sherman Griffin, 6; and Jaylon Saunders, 2.

The A team were defeated 13-26. Kinlee Hoyt put up 10 points, and Cody Moore, 3.

Christoval was next on the schedule. In the B game, the Shorthorns were defeated 12-15. Scoring were Jaylon Saunders, 7; Riley Coalson, 3; and Curtis Moore, 2.

In the A game, Bronte lost 21-26. Garrett Jackson led the scoring with 6; followed by Justin Frazee, 5; Cody Moore and Cory Cooper with 4 each; and Blaine Dyess, 2.

The Shorthorns lost a couple to Sterling City. In the B game, the final score was 27-3. Jaylon Saunders put in 2, and B. J. Bilbrey 1.

The Shorthorns lost a close one in the A game, 16-18. Justin Frazee led the scoring with 8; followed by Cody Moore, 5; Blaine Dyess, 2;

and Jesse Herold, 1.

The Shorthorns split a couple of games with Water Valley, with the A boys taking the win by a score of 19-13. Scoring were Garrett Jackson, 5; Blaine Dyess and Justin Frazee, 4 each; and Jesse Herold, Kinlee Hoyt, and Cory Cooper, 2 each.

The B boys were defeated 12-32. Scoring were Riley Coalson, 4; Curtis Moore, 3; Zach White and Sherman Griffin, 2 each; and Jaylon Saunders, 1.

## Lady Shorthorns split a couple with Water Valley

The Lady Shorthorns basketball teams split a couple of games with Water Valley on December 4.

The 7th grade girls defeated WV 16-4. Scoring were Lilly McMullan, 4 points, 4 rebounds, 1 steal, and 1 assist; Cheyanne Webb, 2

points, 3 rebounds, and 2 steals; Chris Kelly, 2 rebounds, 1 steal, and 3 assists; Rebecca Rawlings, 4 points and 6 rebounds; Megan Gibbs, 4 points and 3 rebounds; Lindsey Butler, 1 rebound; and Bailey Saunders, 2 points. Their record is now 2-1.

The 8th grade girls were defeated 9-17. Scoring were Jasmine Kresta, 1 point, 2 rebounds, and 1 steal; Calli Johnson, 2 points, 2 rebounds, 3 steals, and 1 assist; Desi Mireles, 2 points; Ashleigh Kelly, 2 points, 9 rebounds; Monica DeLaGarza, 2 points, 8 rebounds, 5 steals, and 1 assist; Angeles Gutierrez, 2 rebounds; Salena Soto, 1 rebound; and Vanessa Lange, 2 rebounds.

## Varsity and JV Lady Horns lose

On November 28, the Lady Longhorns fell to Sterling City by a score of 29-22. Scoring for Bronte as follows: Natasha Reed 1 rebound, 2 assists, 1 block; Kara Thompson 2 steals, 1 assist; C. J. Monsey 4 points, 3 rebounds, 1 assist; Tessie McMullan 7 points, 4 rebounds, 2 steals, 1 assist;

Stormy White 5 points, 4 rebounds; Kala Arrott 4 points, 8 rebounds, 1 assist; Lauren Williams 9 points, 8 rebounds, 1 assist; Rosa Rodriguez 1 rebound, Jade Richards 1 rebound; and Chrissie Counts 1 rebound, 1 assist.

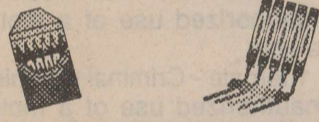
The Lady Horns JV lost a close one to Sterling City by a score of 26-28. Scoring for Bronte is as follows: Heather Richey 7 points, 10 rebounds, 1 steal, 1 assist; Lindsay Springer 9 points, 5 rebounds, 3 steals, 1 assist; Kayla Hilliard 3 rebounds, 3 steals; Britney McCutchen 4 points, 1 rebound, 3 steals, 4 assists; Kanah Coalson 2 points, 4 rebounds, 1 steal, 1 assist; Ashley Denton 2 rebounds; Natalee Reed 1 steal, Jenna Herold 1 rebound; Ashley Torres 1 steal; Brittany Eldred 2 points, 2 rebounds; Lindsey Williams 1 assist; and Kyla McGinnis 2 points.

\*\*\*

If you don't learn to laugh at trouble, you won't have anything to laugh at when you're old.

Ed Howe

## SCHOOL MENU



### Breakfast

**Monday, Dec. 11**  
French toast stix, grape juice, biscuit, milk

**Tuesday, Dec. 12**  
Sausage, apple juice, pancake, milk

**Wednesday, Dec. 13**  
Scrambled eggs, hash browns, biscuit, milk

**Thursday, Dec. 14**  
Breakfast burrito, apricots, cinnamon toast, milk

**Friday, Dec. 15**  
Cereal or oatmeal, apple sauce, teddy grams, milk

### Lunch

**Monday, Dec. 11**  
Burrito with cheese, ranch style beans, crackers, tossed salad, apple sauce, milk, rice krispie bars

**Tuesday, Dec. 12**  
Spaghetti with meat sauce, tossed salad, sweet corn, bread sticks, milk, apricot cobbler

**Wednesday, Dec. 13**  
Cheese burgers, lettuce, tomato, pickle, French fries, bun, milk, strawberry short cake

**Thursday, Dec. 14**  
Sliced turkey with gravy, creamed potatoes, green beans, rolls, milk, spice cake

**Friday, Dec. 15**  
Chic-fil-lay sandwich, tator tots, lettuce, tomato, pickles, bun, milk, sugar cookies

# Join a Cellular Wonderland!



"Cell phones ring. Are you listening? Our phones are FREE so's activation. Texas Cellular's FREE, 'til February so you can talk FREE in a winter wonderland."



Some restrictions apply. See agent for details.

We Take Care Of Our Neighbors.



## TEXAS CELLULAR

A service of Taylor Telecommunications, Inc.

9796 N. I-20 • MERKEL, TX • 79536  
915-928-3200

For More Information, Call Us at 800-424-7182 or Contact Your Local Texas Cellular Agent.

**IN ROBERT LEE:**  
Rock Solid Communications  
803 Austin  
915-453-2380

**IN SNYDER:**  
Permian Communications  
2403 West 25th Street  
915-573-2424

**IN SWEETWATER:**  
Sierra Communications  
1901 Bristol  
915-235-4377



## Homemade Breads Make Quick Gifts



(NAPS)—'Tis the season for entertaining and searching out perfect gifts. Try fruit-studded *Berry-Cherry Breads* for both. These festive breads make an attractive centerpiece on a holiday brunch table, and each recipe makes six mini loaves to give friends and loved ones.

So simple, these breads are prepared with on-hand ingredients. The whole grain oats used in place of some of the flour boost the fiber and add a delicious, nutty flavor. Since quick and old fashioned oats are interchangeable in baking, you can use whichever happens to be on your shelf.

### Berry-Cherry Breads 6 mini loaves

- |  |  |
|--|--|
| 2-½ cups all-purpose flour                           | ¾ cup dried cranberries                              |
| 1 cup Quaker oats (quick or old fashioned, uncooked) | ¾ cup dried cherries                                 |
| 1 teaspoon baking powder                             | ¾ cup honey  |
| 1 teaspoon baking soda                               | ¾ cup milk   |
| 1 teaspoon ground cinnamon                           | 12 tablespoons (1½ sticks) butter, melted and cooled |
| ½ teaspoon salt                                      | 2 eggs, lightly beaten                               |

Heat oven to 350°F. Lightly spray six mini Bundt® pan cups with cooking spray. In large bowl, combine first six ingredients; mix well. Add dried fruit; mix well. Add combined honey, milk, butter and eggs all at once; stir just until dry ingredients are moistened. (*Do not overmix.*) Divide batter evenly between cups. Bake 23 to 27 minutes or until tops of breads feel firm when touched and wooden pick inserted into breads has a few moist crumbs clinging to it. (*Do not overbake.*) Remove breads from cups; cool on wire rack. Drizzle with favorite glaze. Decorate as desired. Store wrapped in aluminum foil up to 2 days. For longer storage, label and freeze.

**Variation:** Spoon batter into four 6 x 3¾-inch disposable foil mini loaf pans sprayed with cooking spray. Bake 22 to 28 minutes.

### Personal

Bobby and Jeffie Roberts of Robert Lee were pleased to have visiting in their home many of their family for Thanksgiving Day and during the holiday. Those present were Floyd and Jessie Harmon, Marshall, Sheri and Stewart Millican, Douglas, Denise, Kacee, and James Roberts all of Robert Lee; Sheila Farrar, Crystal and Lauren Hammerton of Houston; Rena Mashburn Johnson and Jason Harmon of San Angelo; Jerry and Janie Harmon of Weatherford; Troy, Susan, and Cayla Millican of Sterling City; Tammy Mason and Lee Hortenstine of Bronte; and Kannan Millican of Stephenville. The group enjoyed playing table games, pool, visiting, and a traditional Thanksgiving Dinner and Evening Meal. Lawana and Howard Perry were in Ruidoso, New Mexico, visiting his daughter. Dorene and Wayne Mashburn were in Oklahoma for his school reunion.

### Boy Scouts go to camp

Boy Scouts Pack 461 went to camp Sol Meyer for the Dad and Me campout back in September.

They all participated in archery, canoeing, swimming and there was a mud pit which was the main attraction for all the scouts.

They spent one night and built a campfire and set up tents.

Everyone had a great time, the moms are getting geared up for the mom and me campout next year.

There are 10 currently enrolled, anyone wanting information on joining can contact: Lorrie Martin @ 453-4500 or Terry McDonald @ 453-2801.



by Jan Yanez  
Coke County  
Ext. Agent

### How to care for Poinsettias at home

**Location and temperature.** The poinsettia thrives on indirect, natural daylight, and exposure to at least six hours daily is recommended. If direct sun cannot be avoided, diffuse with a light shade or sheer curtain. To prolong the bright color of the poinsettia bracts, daytime temperatures should not exceed 70 degrees F. Avoid placing the plants near drafts, excess heat, or the dry air from appliances, fireplaces, or ventilating ducts.

**Water and fertilizer.** Poinsettias require moderately moist soil. Water the plants thoroughly when the soil surface feels dry to the touch. Remove the plant from decorative pots or covers, and water enough to completely saturate the soil. Do not allow the poinsettia to sit in any standing water; root rot could result which could kill the plant. It is not necessary to fertilize the poinsettia when it is in bloom.

**Outside placement.** Since poinsettias are sensitive to cold weather, frost, and rain, outside placement during the winter months should be avoided. However, in mild climates, an enclosed patio or entry way may be suitable, provided the night temperatures do not drop below 55 degrees F. Make certain the delicate bracts are well protected from wind and cold rain.

**After the holidays.** Keep the plants in indirect sun and water regularly. Place your plants outdoors, where they can bask in the warmth of spring and summer, after outside night temperatures average 55 degrees F or above. When the bracts age and lose their aesthetic appeal, usually by late March or early April, cut the poinsettia back to about 8 inches in height. By the end of May you should see vigorous new growth. Continue regular watering during the growth period. Fertilize every 2 to 3 weeks throughout the spring, summer, and fall months with a well-balanced,

complete fertilizer. Around June 1, you may transplant your poinsettias into larger pots. Select pots no more than 4 inches larger than the original inner pot. A soil mix with a considerable amount of organic matter, such as peat moss or leaf mold, is highly recommended. If you wish, you may transplant the poinsettias into a well-prepared garden bed. Be sure the planting bed is rich in organic matter and has good drainage. Pruning may be required during the summer to keep plants bushy and compact. Do not prune after September 1.

**Re-flowering.** The poinsettia is a photoperiodic plant, meaning that it sets bud and produces flowers as the autumn nights lengthen. The plants will naturally come into full bloom during November or December, depending upon the flowering response-time of the individual cultivar. Timing the bloom to coincide closely with the Christmas holiday can be difficult without the controlled environment of a greenhouse. Stray light of any kind, such as from outside street lights or household lamps, could delay or entirely halt the re-flowering process.

Starting October 1, the plants must be kept in complete darkness for 14 continuous hours each night. Accomplish this by moving the plants to a totally dark room, or by covering them with a large box overnight. During October, November, and early December, the plants require 6 to 8 hours of bright sunlight daily, with nighttime temperatures between 60 and 70 degrees F. Temperatures outside this range may delay flowering. Continue the normal watering and fertilizer program.

Following this regime for 8 to 10 weeks should result in a colorful display of blooms for the holiday season.

### Surviving holiday stress

Although the holidays are known for bringing people together in the spirit of joy, cheer and goodwill, they are also recognized as the most

hectic time of the year. People are rushing to get somewhere and then are stuck in long lines to buy presents, food for the holiday meal or just to get to their final destination. It's no wonder that frustration and tension are becoming synonyms for year-end celebrations.

It happens to the best of us. Nonetheless, it is important to practice safety when you're behind the wheel. Stressed drivers with sore feet and spent pockets can lead to a holiday tragedy, when not concentrating on the task at hand. Progressive Insurance provides these tips to all commuters out on the roadways this season.

### Going to grandma's house

\*It's best to leave early, allowing more time to reach your destination.

\*Make sure everyone has had something to eat and drink before a long drive. Hungry or thirsty passengers can elevate stress levels when you're stuck in traffic.

\*Do not speed, it causes stress for you and other drivers, more so when roads are congested.

### Mall traffic

\*Wear your walking shoes. Wherever you go, you will probably have a long hike from your parking spot.

\*Expect crowds. You can try to dodge some of this by shopping during non-peak hours, such as weekdays.

\*Don't weigh yourself down with packages. Make trips to the car to store your purchases safely in your trunk.

### Parties should be approached responsibly

\*Appoint a designated driver and keep an eye on him or her.

\*Inquire about office policies providing car or cab service for employees attending a company affair. Taking a cab can be the best investment you can make for yourself and others.

\*Attend gatherings that offer a safe ride home.

\*Never drink and drive.

## MADISON'S AVENUE

216 S. STATE • Hwy 277 • BRONTE • 473-6053

### Before Christmas Sale

25% off ALL Women & Childrens Apparel

Large Selection of TOYS have just arrived.  
Sign up for the Christmas Giveaway.

BRING THIS AD & RECEIVE 10% OFF ON TOYS.

New Hours! 10 am - 5:30 pm  
Tuesday - Saturday

We accept all Major Credit Cards.  
Layaway & Gift Certificates Available.

Always the very best in  
Fashion • Gifts & Antiques

After careful consideration, much thought and prayer, I have decided I can better serve the citizens of Coke County through the Sheriff's Department.

I wish to thank all the citizens of Precinct 2 who supported me during the election and the last two years.

Sincerely,  
Wayne McCutchen

"...Thank you for caring so much and not treating us like paperwork, but like people."

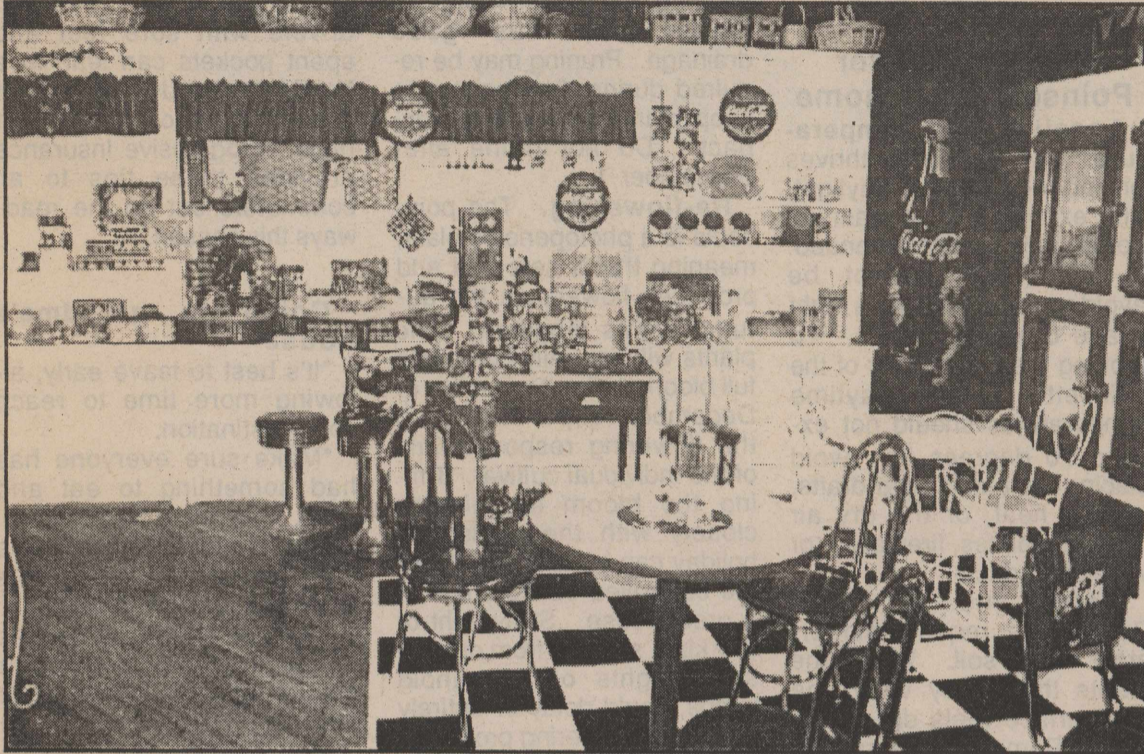


GERMANIA INSURANCE COMPANIES

CARWILE INSURANCE  
453-2522



# Coke County Christmas Business Profiles



Coca Cola memorabilia enhances the back corner of Shalon's Floral Boutique at 113 W. Main Street in Bronte.

## Shalon's Floral Boutique

Shalon's Floral Boutique at 113 West Main Street in Bronte is in an historic one hundred year old building. The building housed the Central Drug and Soda Fountain in the fifties and had a beauty shop upstairs, a pharmacy and a barber shop as well. The soda fountain is no longer there, but the wood floors and walls reflect its history.

The store's history is also noticeable in the black and white checked floors with Coca Cola memorabilia and red and chrome tables that welcome visitors to come shop or sit awhile.

Shalon and Randy Gibbs own the shop and invite shoppers to come see their live and silk flower arrangements, Possible Dreams Santas, Boyd's Bears, Alda Gourmet foods, Dreamsicles, Candles, toys and many other gift items.

Another idea for Christmas giving is a fruit/snack basket available at Shalon's. The Christmas tree at the front of the store inspires ideas for gifts and the Coca Cola corner inspires memories. Shopping here during the holidays is not a chore, but a pleasure.

## Cathy's

Cathy Hendry oversees an all-purpose shop at 824 Austin Street in Robert Lee. She has been at this location since 1996 as co-owner of Molly B's and now as owner of Cathy's.

Cathy has her own line of appliqued shirts which make unique gifts. She also carries a line of specialty clothing and purses from Grigsby's of Abilene. Arranged with a decorator's flair are also Carmen candles, Primal Elements soaps and candles, Twista-vants candles and fresh silk flower arrangements. One area of the store has stocking

stuffers all under \$10.00. Jon Hart luggage which can be monogrammed is also available.

For the Christmas season, Cathy has wreaths which inspire the holiday spirit, and are some of the most reasonably priced anywhere. During the holidays, Cathy is doing custom wrapping for all holiday gifts--not just those purchased at her store.

As always, live floral arrangements are available and flowers may be sent by Teleflora anywhere in the country.

A new side-line of Cathy's is her food-service. She prepares casseroles in two serving, or family-size servings. Also she is doing specialty cooking - rolls, bread and desserts. Call to order at 453-2036.

Cathy will have spiced cider everyday during the holidays for customers and shoppers.

## Molly B's

Molly B's, a local embroidery shop, is home-owned and operated by Cookie and Sid Burns and has been in business since 1996. The shop is located at 711 Austin in Robert Lee. Debbie Wilkes has just recently joined in all the fun at Molly B's and is available to assist you with all your embroidery needs. They offer a wide variety of gift items including gift certificates for everyone on your list.

Molly B's has become well-known nation-wide for their "Original Grandmother Shirt". Cookie, Sid and Molly have traveled across the USA to showcase and sell these shirts for the past two years. One of the most frequent questions they are asked is "Where in the heck is Robert Lee?" Quite surprisingly, there is the occasional person that not only knows where Robert Lee is but knows someone who lives in Robert Lee or Bronte!

See Molly B's for all your embroidery needs. They can personalize bookbags, shirts, jackets, towels - even Christmas Stockings so Santa can find yours.

## Elegant turkey easy to make

Turkey is the traditional centerpiece of many holiday dinners. With the simple addition of a glaze or marinade, turkey shines as the star of your dinner, said Dr. Sarah Birkhold, assistant professor and poultry specialist with the Texas Agricultural Extension Service.

The mild flavor of turkey meat readily accepts flavors from marinades, she said.

For whole birds, bone-in or boneless breast portions, inject 10 percent of the bird's weight with marinade to add flavor and juiciness.

"For example, a 10-pound turkey should be injected with about 1 pound of marinade," she explained.

Inject 60 percent of the marinade into the breast muscles, 30 percent into the legs and thighs and 10 percent into the wings, Birkhold said.

Meat injectors are available in cooking stores, and many grocery stores sell ready-to-use marinades packages with injectors.

Soak smaller cuts in the marinade for up to several hours, depending on the size of cut.

"If you are using the marinade as a base for sauces, use a separate portion of marinade for the sauce," she said. "Do not use marinade that has come into contact with raw meat or juices for the sauce."

Marinades also are a great way to carry flavors from the main dish to side dishes. Citrus-based or apple cider-based turkey marinades

match well with rice or stuffings flavored with similar juices, fruits or nuts, she said.

"Simply replace a portion of the rice or stuffing liquid with juice or cider and cook according to directions," Birkhold explained.

Glazes are another way to add grace to turkey. Glazes are typically made from sugar containing ingredients such as syrups, preserves or jellies.

They are applied to the outside of the meat as it cooks. A basting brush can be used to gently paint the glaze onto the skin. Spoon the glaze over the turkey if you do not have a basting brush. Baste the glaze onto the bird during the last 30-45 minutes of cooking, she said.

"The sugar in the glaze will darken to a rich brown color that contrasts beautifully with the light turkey meat," Birkhold said.

Glazes are easy to make. Simply combine syrup, jelly or preserves with a small amount of liquid such as juice, bourbon, cider or white wine, heat gently to dissolve and pour over turkey.

Occasionally baste the bird

with the glaze as it cooks and watch the color develop. A glaze turns grilled or smoked turkey into an elegant entre. This way you can divide cooking duties by making part of the meal on the grill. For easy to use recipes, search the recipe database for the National Turkey Federation, <http://www.turkeyfed.org/consumer/main.html>.

Click and search the recipe data base using the sauces, glazes and marinades category.

## Easy Apricot Glaze

3/4 cup apricot preserves, 3-4 tablespoons orange juice

Combine all ingredients in a small sauce pan. Stir over medium heat until the preserves just melt. Brush or spoon glaze on turkey during the last 30-45 minutes of roasting. Apply glaze to the turkey 3 or 4 times; allow the glaze to turn brown before the next application.

\*\*\*

The supreme happiness of life is the conviction that we are loved; loved for ourselves.

Victor Hugo

# Holiday Entertaining

## Bark Up The Right Tree For Delightful Dessert

(NAPS)—Whether you're preparing for an office party, or just want to create something for the little elves who've been good this year, this recipe for a tantalizing tree—from Creative Cook's Kitchen—can be a wonderful part of any holiday celebration.

### Christmas Tree Cake Serves 10

For the cake:

- 1 package (18 1/4 ounces) white cake mix

For the frosting:

- 6 ounces cream cheese, softened
- 1/4 cup (1/2 stick) butter or margarine, softened
- 2 cups confectioners' sugar
- 1 teaspoon lemon juice
- green food coloring

For the decoration:

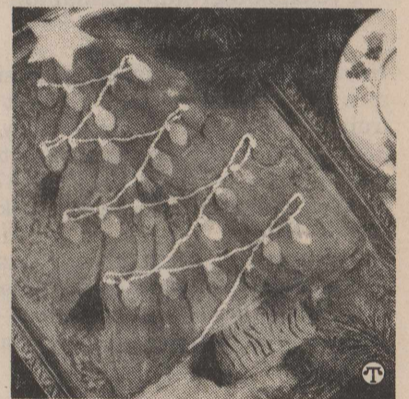
- 1/4 cup prepared chocolate frosting
- assorted large gumdrops
- green colored sugar

Special aids:

- oval aspic cutter or sharp knife
- small resealable plastic bag
- star-shaped cookie cutter

Making the cake and frosting:

1. Prepare cake batter and bake in a 13- x 9-inch pan according to package directions. Cool completely.
2. In a medium bowl, using an electric mixer set on medium speed, beat cream cheese and butter until creamy, about 2 minutes. Add confectioners' sugar and lemon juice; beat until creamy, about 3 minutes longer. Transfer 1/4 cup frosting to a small bowl; set aside. Add green food coloring to remaining frosting until desired color is reached.



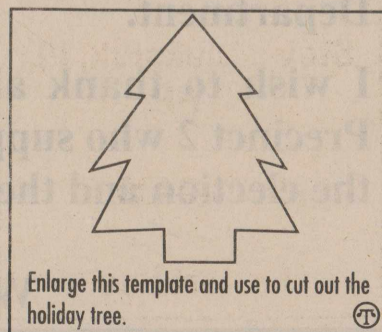
Taste the season. This tempting tree from Creative Cook's Kitchen is an easy addition to the holiday preparations. Visit [www.creativecooks.com](http://www.creativecooks.com) for more ideas, including free sample cards.

Decorating the cake:

1. Transfer cake to a serving platter. Place template (see below) on cake; using a sharp knife, cut around the tree template.
2. Spread green frosting over top and sides of tree, leaving trunk unfrosted. Using a flat spatula, pull frosting toward top of tree to create pine boughs.
3. Frost trunk with chocolate frosting; drag a fork over frosting for a bark effect.
4. Using a rolling pin, roll gumdrops to a 1/4-inch thickness; using an aspic cutter or a sharp knife, cut out ovals for Christmas tree lights. Place reserved white frosting in a small resealable plastic bag; snip off one corner. Pipe garland on tree. Arrange lights on garland; pipe a dot of white frosting at the top of each.
5. Using a star-shaped cookie cutter, cut out a star from 1 gumdrop; place star on top of tree. Sprinkle cake with green colored sugar; serve.

Creative Cook's Kitchen, a division of International Masters Publishers, is the country's most popular recipe collection. The recipe cards are written by experts, providing the easiest preparation methods.

To obtain a free 10-day trial, call 1-800-566-4554. Or, visit [www.creativecooks.com](http://www.creativecooks.com) for free sample cards.



Enlarge this template and use to cut out the holiday tree.



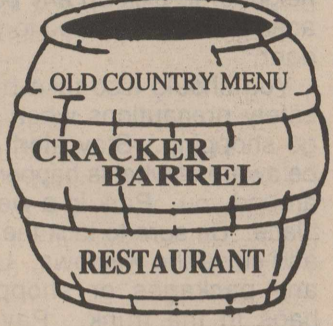
**HOMETOWN HARDWARE**  
 112 W. Main • Bronte  
 (915) 473-3811  
 Wendell & Jeanna Lee  
 Owners  
 General Hardware • Tack Supplies • Vet Supplies • Acco Feed • Alderman Cave Feed • Automotive • Housewares • Lawn & Garden • Wrangler Jeans/Shirts


**Cathy's Flowers & Gifts**  
 824 Austin St. • Robert Lee  
 453.2036 - 888.750.1123  
 Holiday Floral Arrangements -  
 Silk & Fresh • Holiday Wreaths • Gift Items •  
 Appliqued Christmas Shirts •  
 Clothing

**MERLE NORMAN COSMETICS**  
 Check Weekly Specials!  
 7 East 6th St. • Robert Lee  
 (915) 453-4642  
 Full line of Cosmetics & Accessories • Jewelry  
 Suzann Johnson • Owner  
 Debbie McCabe • Beauty Advisor

**Robert Lee Care Center Gift Shop**  
 Select from inexpensive gift items.  
 Jewelry • Wallets • Scarves • Decorative Items • Watches & Much More!  
 Open 2-4 pm  
 Monday - Friday  
 Come Visit Us ... Merry Christmas!

**MAIN STREET MARKET**  
 105 W. Main  
 PO Box 301  
 Bronte, Texas 76933  
 (915) 473-MAIN  
 K. Gothard

  
 OLD COUNTRY MENU  
**CRACKER BARREL RESTAURANT**  
 Hwy 208 • Robert Lee  
 453-2375  
 Mon. - Sat. • 6 am - 9 pm  
 Friday "All You Can Eat" Catfish  
 5 pm to 9 pm



*Make This A*


*Coke*

*County*

*Christmas*

*By Shopping*

*At Home!*



**MOLLY B'S**  
 The Original Grandmother Shirt  
 PO Box 529 • 711 Austin  
 Robert Lee, TX 76945  
 (915) 453-2427  
 800-840-8753  
 Cookie & Sid Burns

**MADISON'S AVENUE**  
 216 S. State • Hwy 277  
 Bronte • 473-6053  
 OPEN HOUSE  
 December 2nd  
 New Hours 10-5:30  
 Tuesday - Saturday  
 We accept all major credit cards.  
 We have Layaway & gift certificates available.  
 Fashion • Gifts & Antiques

**CELIA'S ANTIQUES & MORE**  
 202 South State • Hwy 277  
 Bronte, Texas  
 (915) 473-2194  
 Thursday, Friday, Saturday  
 10:30 - 5:00

**SKINNERS GROCERY & SERVICE STATION**  
 (Since 1976)  
 435 Highland  
 Hwy 158 East  
 Robert Lee  
 Open 7 Days A Week  
 6 am to 7 pm

**SUPER H**  
 501 Commerce Robert Lee  
  
 Register for a \$50 Shopping Spree to be given away weekly for the next 5 weeks! (must register weekly)  
 Name \_\_\_\_\_  
 Address \_\_\_\_\_  
 Phone \_\_\_\_\_  
 City \_\_\_\_\_

**Waggonner's Hardware Auto & Truck Repair**  
 416 Commerce  
 Robert Lee, Texas  
 Phone 453-2414  
 Mobile 473-0268  
 Fax 453-4730  
 Ron & Joyce Waggonner  
 Owners

**C & H Auto & Hardware**  
 801 Austin • Robert Lee  
 453-2911  
 For all your auto parts needs as well as plumbing, hardware, fencing, houseware, paint, tools & ammunition.

**HALL'S SUPER SAVE FOODS**  
 120 Main • Bronte  
 473-2065  
 Mon. - Sat. 7:30 am to 8 pm  
 Sunday 8 am to 7 pm

**COKE COUNTY PHARMACY**  
 Steve Oleksiuk, III,  
 R. PH.  
 453-2400  
 Robert Lee

**Shirley's Place**  
 121 N. State St.  
 Bronte, Texas  
 Consignment Alterations Dry Cleaning Drop Station  
 New Clothing • Candles Sun Belt Tee Shirts

**KEY FEED STORE**  
 808 Austin • Robert Lee  
 453-2611  
 Livestock Feed • Lawn & Garden • Pet Food & Supplies • Deer Feeders • All Farm & Ranch Supplies

**Shalon's Floral Boutique**  
 Flowers & Gifts  
 Randy & Shalon Gibbs  
 113 W. Main  
 Bronte, Texas  
 473-5101  
 888-800-7808





**BUY IT.  
SELL IT.  
FIND IT.**

**CLASSIFIED.**

**CLASSIFIED ADVERTISING RATES**

Classified Advertising must be paid in advance.

1st. Insertion...  
20¢ Per Word (\$3.00 Minimum)  
2nd and Subsequent Insertions...  
16¢ Per Word (\$2.50 Minimum)

Additional 50¢ charged for Blind Ads

Legal Notices...  
25¢ Per Word

**ADVERTISING DEADLINE**  
Tuesdays at 5 pm

**FOR SALE**

**BRONTE ACROSS FROM CHURCH**

2 Bedroom home \$18,500!!!  
**OWNER MAY FINANCE**  
Low Down pmt! 3 bedroom \$20's!

**HILLCREST LOCATION**  
Large Brick Home on 2 Lots!  
**BRONTE AREA**  
**40+ ACRES**

3 Bedroom Home \$80's!!!  
**TOWN VIEW ESTATES**  
Brick Home on Acreage! 80's!!!

**HUNTERS!!!!!!!**  
**ROBERT LEE/WATER VALLEY**

160 Acres with 2 Houses & Rural Water!

**BRONTE AREA 180+ ACRES WITH**

Huge Rock Home. Barns & Pens!

**200 ACRES NEAR BRONTE!**

**320 ACRES NEAR BRONTE**

**600+ ACRES NEAR ROBERT LEE**

**1200+ ACRES MITCHELL COUNTY**

Other Listings Available

**Concho Realty**

5 E. 6th St.

Robert Lee, TX 76945

Contact

Joe Ash 453-2554

Marshall Millican

453-9002

453-5005 Robert Lee

653-4535 San Angelo

**OUTSKIRTS OF TOWN**

4 bdrm, 2 1/2 bath, 2 story home w/acreage.

**BRICK HOME**

Excellent condition, close to school. Call for prices and for appointment.



**Lee Associates**  
EQUAL HOUSING OPPORTUNITY  
453-2995

**Wrangler**  
Shirts & Jeans  
**Hometown Hardware**  
Bronte, Texas  
A hometown store with old fashioned service.

**COMMERCIAL PROPERTY**

in Robert Lee. Previously operated as a convenience/grocery store. Good location near school with highway frontage. Call 915-453-2545.  
46a-tnc

**HOUSE FOR SALE**

717 E. 6th, Robert Lee. On 3 lots, metal roof, carport. \$5,000. (915) 677-0989, after 5:00.  
19a-2tp

**FOR SALE**

1999 VW Beetle, 9,000 miles. Standard, power locks, radio, tape deck, CD player (6 CD), \$16,500. Call 473-2015.  
20b-2tp

**FOR SALE**

Excellent Hereford bulls breeding age. Allen Bloodworth 453-2838.  
20a-2tc

**NOEL'S CREATIONS IN GLASS**

Glass mosaic art and stained glass effect items. Unique one of a kind gift items, affordably priced for Christmas. Available exclusively at Waggonner's Hardware in Robert Lee.  
19a-4tp

**MARIA'S HOT TAMALES**  
\$6/dozen. Delivered daily each morning. Call 453-2075.  
13a-tnc

**FOR RENT**

**BRONTE MINI STORAGE**  
has storage buildings for rent. Call 473-2221.  
14b-tnc

**MISC**

**KENNETHS CONSTRUCTION**

Local professional roofing done at reasonable rates. Repair, replace, composition or metal. Free estimates, work guaranteed! 453-2339 & 453-4788.  
20a-4tc

**WANT TO BUY**

Heavy duty metal looking working iron. 473-2030, Angie.  
20b-2tc

**GREAT CHRISTMAS GIFTS**

West Coke County Community Development cookbooks available at the Courthouse or Waggonner's Hardware, \$10.95.  
20a-3tc

**CNJ CLEANING SERVICE**

Commercial & Residential. Locally owned. Personal service. Reasonable rates. 453-9222.  
05a-tnc

**Quality Film Processing by Keaton Kolor**

at **Hometown Hardware**  
Bronte, Texas

**COMPUTERS**

Complete systems, repairs, upgrades, internet. Call Ed @ EMCO Computers. 473-3004.  
32b-tnc

**D & L DOZER SERVICE & CUSTOM FARMING**

Larry Spivey, owner-operator. PO Box 160, Bronte, Texas. Phone (915) 282-3038.  
45b-tnc

**PARKER PLUMBING**

Residential & Commercial. All types plumbing repair - new construction, remodeling, fixtures, and sewer service. Licensed Master Plumber. 473-2131, Bronte.  
34b-tnc

Bob Frazer's 944-0010  
473-6603



**Texas Best**  
Deflooding & Carpet Cleaning

24 hr. Emergency  
Water Damage Service

**SUNSHINE CONSTRUCTION**

New Construction, Additions, Renovations, and Home Repairs. Contact Don Parks @ 453-2860 or 450-2767 mobile.  
34a-tnc

**Dec. 4 - Dec. 8 MERLE NORMAN COSMETICS**

Robert Lee, Texas  
10% off Sterling Silver Jewelry

**THE "BARBER" SHOP**  
Debora England, 223 N. Lombard, Bronte. 473-4026. Monday, Tuesday, Wednesday, 9 am-6 pm.  
17b-tnc

**TREES TRIMMED**  
topped or removed. Call 453-9902 after 6 pm.  
37a-tnc

**HELP WANTED**

**APPLICATIONS TO BE** considered for the position of Pct. 2 Commissioner will continue until the first of the year. The position should be filled by the 5th of January, 2001. Please bring resume to the Judges Office.  
20a-2tc

**PCT. 3** will be taking applications for the position of road hand. Applications are available in the County Judges' office. Position will be filled the first week of January 2001. Coke County is an equal opportunity employer.  
20a-3tc

**GIRLING HEALTH CARE, INC**

Home Care Attendants needed in Robert Lee and surrounding areas to help with housekeeping and personal care. For more information call 800-665-4471 or 915-643-5604.  
20a-2tc

**LITTLE FISH CHILD CARE**

Center currently has a position open for you, if you are...a Christian, who loves children, has had basic child care experience, and are willing to work with a Christian based pre-school curriculum. Call 473-3044 for more information and interview times.  
20b-2tc

**HELP WANTED**

CNAs needed for all shifts. Full time and part time. Competitive pay. Contact Sarah Lee, DON, Senior Citizens Nursing Home, Winters. Phone 754-4566.  
36b-tnc

**GARAGE SALES**

**GARAGE SALE**

Dec. 8th and 9th. 301 South State, Bronte. In barn behind day care. 8 am - till everything is gone. Lot of good stuff.  
20b-1tc

**MOVING SALE**

Across from Bell Auto. 121 W. 10th & Colorado City Hwy in Robert Lee. Tools, office items, furniture, 4 horse trailer, clothes, too many things to list. Friday, & Saturday. 9:00 - ?.  
20a-1tp

**Garage Sale**

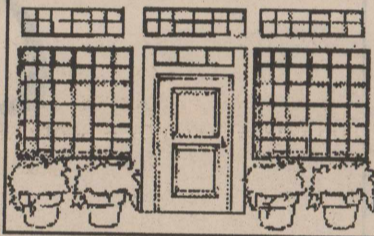
Downtown Robert Lee

Friday

December 8th

9 am to 4 pm

Some Antiques



**CARD OF THANKS**

**WE WANT TO LET**

everyone know how much we appreciate the help we've been given with our twins. Small towns are known for their kindness and Robert Lee is no exception.

Thank you  
Bonnie, Shawn & the kids  
20a-1tp

**Staying safe during the holidays**

by John Cornyn  
Attorney General of Texas

Q: I plan to spend a lot of time during the holidays out shopping for gifts, visiting my grandchildren, and traveling to see old friends. What can I do to protect my safety while I am out and about?

A: The holidays are a time of good spirits, of gifts given and received, of sharing happy times with family and friends. Unfortunately, a thief can quickly ruin the holiday spirit. Here are some tips for staying safe during the holidays.

If you are going out for the evening, turn on several lights. Turn on a radio or television as well. Don't display gifts where they can be seen through the window from the outside. Turn off or unplug the lights on any indoor holiday decorations. Double-check door and window locks when you leave, even if you will only be gone for a few minutes. If you find signs that someone has entered your

home while you were away, go to a neighbor's house immediately and call the police.

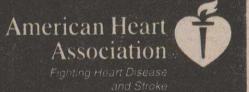
If you are going out of town, do what you can to make it look as though someone is home. Put two or more interior lights on automatic timers. Set each one on a different schedule, so that no pattern is obvious to outsiders. Ask a friend to stay at your house for one or two nights while you are away. Also, ask the neighbors to watch your home and to park a car in your driveway from time to time. Have the mail and newspaper delivery stopped, and ask a neighbor to pick up any packages that are delivered to your door.

You should also take basic safety precautions when you go shopping. Stay alert and be aware of what is happening around you. Park in a well-lit place. Be sure to lock the car and close the windows. Lock any packages or shopping bags in the trunk. Pay by check or credit card when possible, and avoid carrying large amounts of cash with you. If you are shopping with children, make sure they know to go to a store clerk or security guard in the event you become separated. Finally, deter pickpockets and thieves by taking care with wallets and purses.

Q: This year, I plan to do a lot of my holiday shopping online, and will have the packages delivered to my house. How can I be sure the person at the door is really making a delivery and not just looking for a way to break in?

A: Sometimes, criminals pose as couriers delivering packages or flowers. If a delivery person comes to your door, do not open the door right away. Ask them to show you proof of identification through a window or peephole. If the person's identification, dress or demeanor make you suspicious, tell them that you will pick up the item up at their store or delivery warehouse, or ask to have the package left at a neighbor's house. If there is a charge for delivery and you are reluctant to open the door, get an address where you can send payment and arrange for delivery at a later date.

During the holidays, some people do try to take advantage of our generosity by asking for contributions to a bogus charity. If someone comes to your door seeking a donation, ask to see identification before opening the door. Also, ask for information about the charity, including how the funds will be spent. If you are uncertain about making a donation, ask for an address where you can send money at a later date. Legitimate charities will not hesitate to give you this information. If you suspect the solicitation is a fraud, decline to make a contribution and report the incident to your local police.



**JOIN THE FIRM.**

EXERCISE.



**RLVFD news**

by Marian Thompson  
Secretary

The fire department held its first meeting of December on the 4th at the fire station with President Larry Martin presiding. 13 members were present.

The minutes and monthly Treasurer's report were approved as read.

Dispatcher Bud Thompson gave his report of the month's activities. There were 2 fire calls. The first call on December 14th was a roadside fire which was out before the call was made; however, the men took a truck and wet down the area to prevent a rekindle. The second call was on the 25th. Highway 208 at the divide was covered with smoke and flames could be seen from the highway. It turned out to be a controlled burn. A total of 4 man hours was taken on these 2 calls.

On the 10th, they assisted with a Landing Zone. The group put in a total of 76 man hours on other fire department related activities. They had 2 meetings and 1 training class.

The 1963 Red City Pumper made its last parade on December 1st at the annual Christmas parade. Firemen Lewis Millegan and Matthew Millegan led the parade in the white number 3 superduty truck. The city pumper took the tail end of the parade. Bud Thompson, Dispatcher/City Fire Marshal was driving while Catie Anyon was in the truck, and Santa Claus was on the back waving to all the children.

Rick Drennan reported the new city pumper will arrive the first of next week. The presentation ceremony is planned for December 12th at 2 pm in the downtown area. The planned hosing may have to be postponed if it is below freezing as the forecasters predict.

The department will also hold the raffle drawing for the hand-made quilt after the presentation of the truck.

Another topic of discussion was the need for some type of heat in the new building. The

trucks do not want to start when the temperature is very cold. Time is important when there is a fire. If November is any indication of what to expect this winter, it will be a cold one.

There was a discussion on possible ways of fixing the pump on the tank truck and the need to service the trucks. The meeting was adjourned and the next hour was spent working on the trucks.

Training class will be next Monday, on the 11th, and the next meeting will be on the 18th.

**West Coke Co. Ambulance runs for November**

- 11-03-00, 7:15 pm, stand by football game
- 11-04-00, 6:47 pm, medical transport
- 11-10-00, 10:30 am, medical transport
- 11-10-00, 7:10 pm, medic vac
- 11-14-00, 3:15 pm, medical transport
- 11-14-00, 3:39 pm, medical transport
- 11-17-00, 6:00 pm, medical transport
- 11-20-00, 10:38 pm, medical transport
- 11-23-00, 12:15 am, medical transport
- 11-23-00, 8:38 am, medical transport
- 11-25-00, 5:53 am, medical transport
- 11-29-00, 2:13 pm, no transport
- 11-29-00, 5:58 pm, medical transport

**Bronte JV boys win**

On Tuesday, November 28, the Longhorns played Sterling City winning by a score of 40-28. Scoring for Bronte is as follows: B. J. Hall 5; Cody Lee 7; Joel Webb 12; Garrett Fiveash 10; Scott Snyder 2, and Casey McKee 4.

\*\*\*  
Tooth enamel is the only part of the human body that remains unchanged throughout life.



Robert Lee City Council members wished everyone a happy holiday from their float in the Robert Lee Christmas Parade last Friday afternoon.

**Healthy after school snacks**

You're 8 years old and starving after a long day at school. As soon as you get home, you head straight for the kitchen to see what's around to snack on.

What do you find? Rice cakes with peanut butter! Celery stalks with cheese! Do you eat them? No Way! Instead, you do what many other kids would do in the same situation - hunt for potato chips, ice cream or chocolate chip cookies, and if you can't find them, whine.

Getting children to eat healthy snacks is an on-going battle with many parents, especially since so many of these children so obviously prefer less-healthy foods, such as burgers and fries, hot dogs, sweet desserts and snack chips.

But it doesn't have to be that way. According to Dr. Sharon F. Robinson, nutrition specialist with the Texas Agriculture Extension Service, tips on healthy snacking are just a mouse-click away.

The Web site <http://www.fns.usda.gov/cnd/CyclesMenu/CycleMenus.htm> is a good resource for parents and care providers who want to feed children better,

she said. Recipes and healthy eating tips on this site are part of the U.S. Department of Agriculture's National School Lunch and Child and Adult Care Food Programs. Although designed for after-school programs, the recipes would work just as well in a home kitchen.

Can't get the kids interested in carrot sticks or stuffed celery? Try sliced canned peaches in light syrup or pineapple chunks or orange wedges. They won't touch broccoli or cauliflower, even with ranch dressing for dipping (although the ranch dressing itself is a hit)? How about soft pretzels with honey mustard?

For heartier after-school snacking, give them chicken roll-ups, each made with 0.9-ounce flour tortilla, 0.5 ounce low-fat diced cooked chicken, 0.5 ounce low-fat cheddar cheese and a tablespoon or so of salsa. Or maybe a ham sandwich made with 0.9 ounce of pita bread, 0.5 ounce each of ham and Swiss cheese and a tablespoon of mustard.

Want to give them something soothing to drink after a long, hot, sweaty day at school? Maybe a peach smoothie would hit the spot.

For each smoothie, combine three-fourths cup of sliced peaches with four ounces of low-fat milk and one cup of ice, and blend until smooth.

For quicker, grab-and-go snacks, try graham crackers, fresh fruits such as apples or bananas, whole wheat crackers or small bagels.

Low-fat milk and, of course, water, are also vital ingredients in healthy diets.

Healthy after-school snacking is possible - even likely - with these recipes, even for the most dedicated young junk-food aficionado.

**Fort Worth stock show**

The 105th annual Southwestern Exposition and Livestock Show has planned a full schedule of top flight entertainment for the 30 performances of the World's Original Indoor Rodeo as well as a variety of family-oriented events.

The rodeo is scheduled to run January 19 through February 4 at Will Rogers Memorial Center in Fort Worth.

Entry information and other data are available on the Stock Show website at [www.fwssr.com](http://www.fwssr.com). Ticket purchases may be made by calling the Stock Show ticket office at 817-877-2420.

**AFTER 95 YEARS, SPILL BROTHERS FURNITURE IS...**

**GOING OUT OF BUSINESS**

EVERYTHING MUST GO! Choose from famous names like Lexington, Action Lane, La-Z-Boy, Vaughn Bassett, Jasper Cabinet, Bassett, Crawford, Howard Miller, Ridgeway, Virginia House, Athens, Pulaski, Broyhill, Stiffel & Many More!

**GLIDER ROCKERS**  
starting at...  
**\$166**



**CHERRY CURIOS**  
Regularly \$549...  
**NOW \$288**



**3PC. OAK DROP-LEAF DINETTE SET**  
Regularly \$399...  
**NOW \$188**



**TWIN SIZE MATTRESS SETS**  
starting at...  
**\$88**



**GRAND-FATHER CLOCKS**  
Regularly \$899...  
**NOW \$388**



**LEATHER SOFA & LOVE SEAT**  
Regularly \$3,599...  
**NOW \$1,788**



**HURRY IN NOW WHILE THE SELECTION IS STILL ITS BEST!**

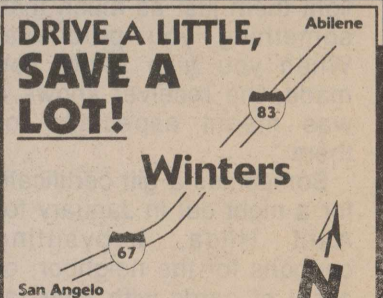
SINCE 1905

**SPILL BROTHERS FURNITURE**

131 South Main • Winters, Texas • (915) 754-4511 • DAILY 9 - 6 AND SUN. 1 - 5

Cash, Approved Checks, MasterCard & Visa Accepted. Financing Available. GOB Permit #2. Photos are for representation only, actual merchandise may not be exactly as pictured.

**DRIVE A LITTLE, SAVE A LOT!**



Abilene  
83  
Winters  
67  
San Angelo  
N



**Savings tips for Christmas shopping**

Christmas is less than a month away and holiday shopping will once again draw hundreds of consumers to retail outlets. Before heading out the door and making sure a gift is purchased for everyone, financial experts say, make a Christmas budget ahead of time to prevent piling up unwanted debt.

"Just because the world around us focuses on the material side of the holidays doesn't mean we have to go along with them," said Sue Lynn Sasser, a family economics specialist with the Texas Agricultural Extension Service. "First and foremost, holidays are for our families. And, most of us would rather spend time with those we love than worry about spending money on the perfect gift. There's more to the holidays than spending money."

Deciding how much one can spend is the first step, according to Sasser. Examine last year's expenses, review credit card bills and check register receipts to get an estimate of how well Christmas spending went last year.

"When you look at last year's bills and realize that it took you several months to pay them off, then it should motivate you to make some changes," she said. "It also signals whether this year's budget is too high or too low."

Once you have your budget in mind and have an estimate of last year's expenses, list every expense you expect to have around the holidays. These expenses include decorations, parties, cards, gift wrapping, etc.

Each of these items needs to be included in your holiday budget.

"Otherwise, they will quickly sabotage your plans to limit your holiday spending," Sasser said. "Keep in mind that you are not limited by what you did last year; it's a new holiday season, and you have the right to control your expenses."

Now you are ready to make a list of everyone that you plan to buy gifts for. Be sure to include anyone at the office, at school, or other social obligations. Decide how much you want to spend on each person and total the dollar amount.

Add together the amount for gifts and other holiday expenditures. See how the total of your expenses compares to what you budgeted and how it compares to last year. If your amount of estimated expenses is too high, then it's time to make some tough decisions - where can you cut costs?

"This is the point where we should be creative," Sasser said. "Rather than eliminating people from our list, we can start to think about simple, handmade gifts that will delight them just as much than something you purchase. When you give a gift you made, the receiver knows it was meant especially for them."

Sometimes a gift certificate for a night out in January for Aunt Hilda, babysitting coupons for the neighbor, or a set of cards with your fa-

vorite recipes for your co-worker are really more appreciated than a store-bought gift.

Spending less on some people will allow you to spend what you originally budgeted for others.

"If there's something we really want to give our children or our spouse, substituting inexpensive gifts for others helps us meet our spending plan. And, everyone has received something more distinctive."

Finally, quit shopping when you've bought the last gift on your list.

"Just a little something extra for Susie will wreck your efforts to limit spending," Sasser said.

\*\*\*

**If you tell the truth you don't have to remember anything.**

**Mark Twain**

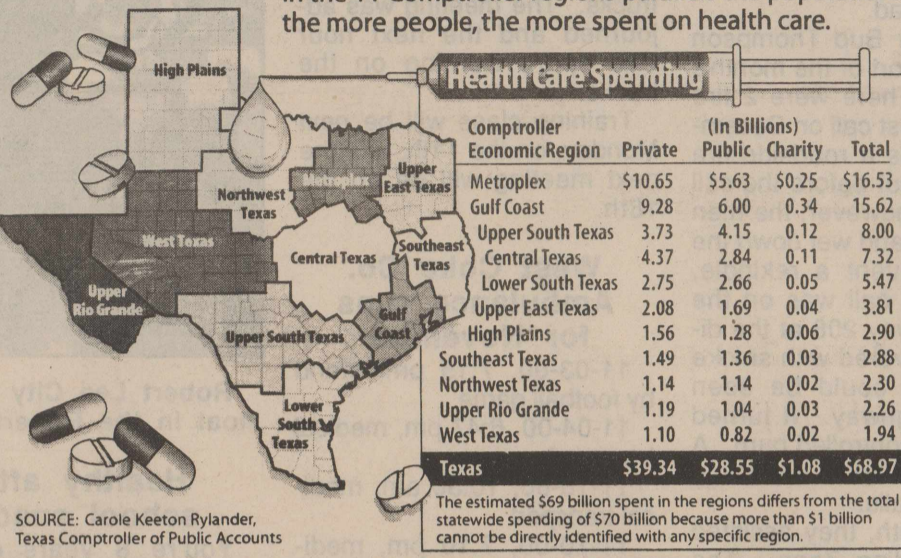
\*\*\*



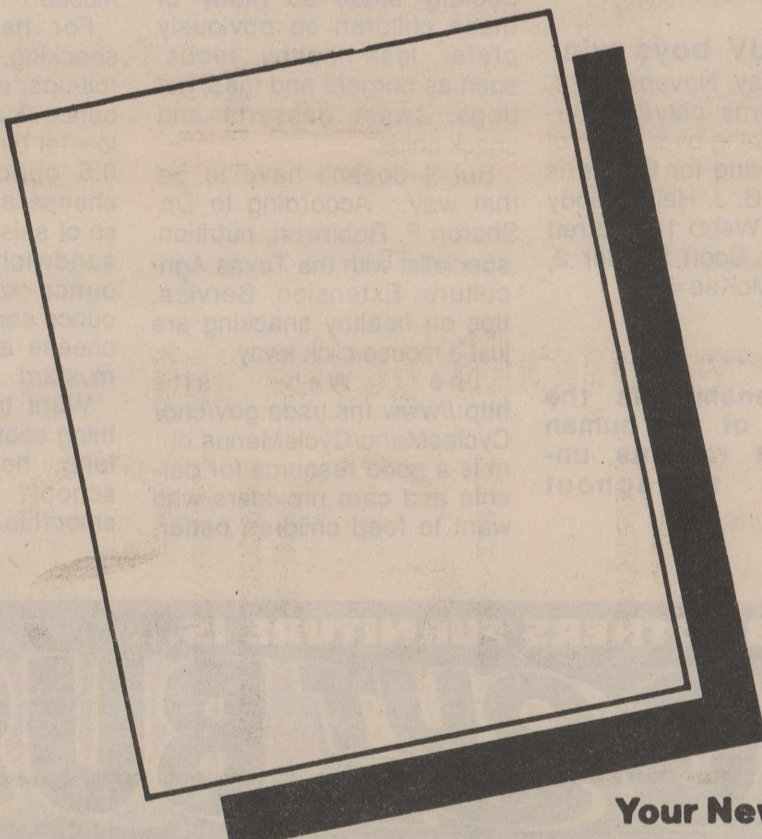
*Keeping an Eye on Texas*

**Health Care Spending in Texas**

Health care injects a lot of money into local economies. Statewide, Texas spent more than \$70 billion on health care in 1998 and the estimated spending in the 11 Comptroller regions parallels the populations: the more people, the more spent on health care.



**silence  
is not golden...**



**Your Newspaper Ad**

You're right! The space is empty. There isn't any ad. If you operate a business and don't advertise, the silence is **anything but golden.**

**if you need more business,  
call our business**

**Observer/Enterprise**

**Robert Lee  
453-2433**

**Bronte  
473-2001**