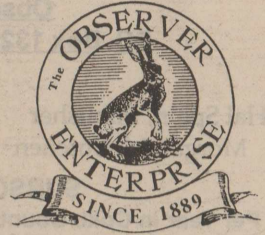


THE OBSERVER/ ENTERPRISE

Single Copy 35c



Serving Coke County

(USPS 467-480)
(ISSN 8750-197X)

Vol. 113, No. 15

Friday, November 3, 2000

Voting in general election set for Tuesday, Nov. 7th

Coke County voters, along with their counterparts throughout the state and nation, will go to the polls on Tuesday, November 7, to elect a new president, members of Congress, and state and local elected officials. Polls will be open from 7:00 am until 7:00 pm at the following locations, depending on the precinct of the voter's residence. Precinct #1 residents will be voting in the Old Recreation Hall at the park in Robert Lee; Pct. #2 - City Hall, Bronte; Pct. #3 - Courthouse, Robert Lee; Pct. #4 - Tennyson Community Building; Pct. #5 - Old Depot, Bronte; Pct. #9 - Pecan Baptist Church - Edith; Pct. 10 - Southside Church of Christ - Robert Lee.

An alternate method of voting which is gaining support with voters throughout the country is early voting. Early voting used to be called absentee voting and required an excuse for not being available on general election day. Nowadays the absentee voting terminology has been changed to early voting, and this method of casting ballots whether by mail or in person is catching on in popularity.

The political race getting the most attention is the apparent dead heat in the presidential election between Texas governor George W. Bush and incumbent Vice President Al Gore. Races of interest a little closer to home include in-

County receives more rain

Coke County was again the recipient of more moisture this past Saturday evening, October 28. A quick total reveals amounts up to 2 inches for the Robert Lee area, and 1.2 inches on the east side of the county. Total moisture for the county since this spell began on Sunday, October 15, ranges from five to seven inches generally throughout the county.

Whatever the exact amounts you received in your area, the bottom line is that this spell has been a lifesaver. Another plus with the rains is the beautiful fall weather we have been experiencing. The wonderful weather has done as much for the souls of Coke Countians as the moisture has done for the land.

cumbent United States Senator Kay Bailey Hutchison, who is opposed by Democrat Gene Kelly; US 17th District Representative Charles Stenholm, who is opposed by Republican Darrell Clements; State Senator Troy Fraser, who is unopposed; 72nd District State Representative Rob Junell, who is opposed by Betsy Johnson; and 51st District Judge and District Attorney Barbara Walther and Stephen Lupton, respectively, who are unopposed.

County positions, which are all unopposed, are as follows: County Attorney - Nancy Firebaugh Arthur; Sheriff - Rick Styles; Tax Assessor-Collector - D. Kristeen Roe; Commissioner, Pct. #1 - Paul Burns; Commissioner, Pct. #2 - Gaylon Pitcock; and Constables for Pcts. #1 & #2, respectively, include Kenneth Rasco and Russell Johnson.

According to County/District Clerk Mary Grim, 331 county voters have cast their votes by voting early or by mail in this general election, as of Tuesday, October 31. The deadline for voting early ends today, November 3, and the October 31st date was the deadline for mail-in ballots. So if it's not too late when you read this, you may still want to cast an early ballot at the courthouse. If you miss the early voting period, please take the time to cast your ballot on Tuesday, November 7, in the upcoming general election.

Coke County Courthouse to close

The Coke County Courthouse at Robert Lee will be closed two days next week. Tuesday, Nov. 7 will be General Election Day which prevents business being conducted near a polling site. Veterans Day is on Saturday, Nov. 11 and the facility will observe that national holiday on Friday, Nov. 10.

Gospel Singing Sunday

The regular monthly community gospel singing will be held Sunday, November 5 from 2:00 to 4:00 pm at the Central Baptist Church in Bronte. Everyone in the area is invited to come and enjoy this fellowship time together.



Robert Lee pre-school children gathered at the Coke County Library Halloween morning before heading out to "Trick or Treat" at local businesses.

Bronte City Hall to be closed

Bronte City Hall will be closed Tuesday, November 7, for the election. They will also be closed Friday, November 10 for Veteran's Day.

Dedication service set for Tennyson

The dedication service for the new Maggie Sayner Fellowship Hall at the Tennyson Baptist Church will be held Sunday, November 5, 2:30 pm.

After the service there will be a tour of the building and refreshments.

Fall Festival

The Blackwell United Methodist Church will be hosting a Fall Festival, Saturday, November 11, 2000.

Crafts and baked goods will be available for purchase during the day. A barbecue lunch will be served from 11:00 until 1:00. The festival is at the Blackwell United Methodist Church in Blackwell. For more information call Heather Sanderson at 282-2214.

SA Genealogy and Historical Society

The San Angelo Genealog-

ical and Historical Society will meet at 7:30 pm on Tuesday, Nov 7, 2000 in the Fellowship Hall of the Church of Christ at 901 Main Street, San Angelo, Texas.

There will be no beginners class until a later date. All visitors are welcome. For more information call 655-6494.

Cactus Jazz Series

The Cactus Jazz Series will be held Friday, November 10 at the historic Cactus Hotel Lobby at 8 pm. It is to be presented by the San Angelo Cultural Affairs Council.

For information and tickets call 915-653-6793.

THE OBSERVER/ENTERPRISE
 Published Weekly Except Christmas
 707 Austin (915) 453-2433

(USPS 467-480) (ISSN 8750-197X)
 Periodical Rate Postage paid at Robert Lee, TX.

**POSTMASTER: Please send address changes to
 Observer/Enterprise
 PO Box 1329, Robert Lee, TX 76945.**

STAFF
 Hal Spain, Publisher Melinda McCutchen, Editor
 Morgan McCutchen Pat Taft

SUBSCRIPTION RATES
 Per Year in Coke County.....\$20.00
 Per Year Elsewhere in Texas.....\$22.00
 Per Year Outside of Texas.....\$25.00

Fall Season Opener set for Sat., Nov. 4

by Joan Davis

Texans take their fun and games seriously. We love the World Series, our Friday night football, bashing politicians -- but what we really, really love is hunting the outdoors.

What a dry, hot, miserable summer we have suffered through, but all will be forgotten when the fall gun season opens on Nov. 4. Although conditions don't bode well for a banner year, hunters are forever optimistic and looking forward to getting out.

Deer regs haven't changed -- 4 deer allowed with no more than two bucks. Despite wildlife hardships this year, deer have remained in pretty good shape. Body fat has remained on the bucks; some does with fawns do look a little thin, but not stressed too bad. Not all of them produced twins, and that was fortunate. Most landowners reduced or cleared out herds; so deer were able to get to what forage that was left. Hunters on some leases never quit feeding, some even fed hay, and that kept filler available. With underbrush and tall grass and weeds gone, the deer will be more visible in the pastures and near feeders.

Turkey season will open on Nov. 4 also, with a bag limit of 4 per license year. The general season harvest will be an either sex bag, but a little planning may be needed if you plan to hunt in the spring season (April 7 - May 13, gobblers only) since the 4 per calendar year limit will be for both seasons.

The spring hatch initially was fair, but heat and lack of water and feed may have reduced survival for the young. Mature birds have been noted, however, in smaller flocks than usually seen. These birds may have also benefited from year-round feeding. Statewide quail season also

opens on Nov. 4 and will run through Feb. 25, 2001. Quail hunting in the area has all the earmarks of being a dismal time. Numbers have been down consistently in the 90's, capped by the extended drought this year. Biologists are unable to point to any one factor but drought, destruction of habitat, and fire ants top the list. Will the classic sport one day be relegated to pen-raised birds?

Javelina hunting is now underway -- Oct. 1 thru Feb. 25 -- with a 2 per season bag limit.

Both deer and turkey season end on Jan. 7, 2001. For more info on hunting our area or another county, check the rules and regs in the Outdoor Annual, free for the asking wherever licenses and sporting good are sold.

Death Notices

Tinkler

Clarence H. Tinkler, 79, of San Angelo died Tuesday, Oct. 24, 2000, at his residence.

Service was held at 10 am Friday, Oct. 27, at Johnson's Funeral Home. Burial followed in Lawnhaven Memorial Gardens.

He is survived by his wife, Billie Ola Tinkler of San Angelo; two daughters, Nancy West and husband, McAllan, of San Antonio and Janice Loyd and husband, Charlie, of Austin; two grandchildren, Damon West and Shelly Loyd; two stepchildren, Sandra Horton and husband, Larry, and Gary Etheredge and wife, Karen; four stepgrandchildren, Jenifer and Kendra Horton and Taylor and Brehn Etheredge; two brothers, Harvey and Roy Tinkler; three sisters, Ella Mae Dumas, Marguerite Sonnenberg and Pauline Large; and numerous nephews and nieces.

Coke County slates free hunter barbecues

WCCCD Hunter Appreciation BBQ

West Coke County Community Development will sponsor its 12th annual Hunters Appreciation Barbecue on Saturday evening, November 4. It will again take place in the rec hall in the county park at Robert Lee. The supper will include plenty of barbecued brisket and sausage, beans, potato salad, iced tea, and fixings. Serving will begin at 6 pm and will continue until 9 pm.

The feed is at no cost to hunters, but tickets are necessary. They are available either from the party from whom they lease or from participating individuals or businesses

Commissioners Court meets

The Commissioners Court met in regular session on October 9th in the courtroom in Robert Lee. All members and Mary, Grim County Clerk were present.

The following business was conducted: the minutes were approved and bills were paid; on-site sanitation regulations for Coke County were approved; the court agreed to allow Metlife to present Texas Products to each employee; holidays for 2000-2001; tax roll totals for 2000; communication grant matching funds for Sheriff's department; contract with Tom Green County for detention services; and budget amendments were approved and conditions and furnishings of rec hall were discussed.

Judge Walker reported on several items of business: all newly elected Justices of Peace will now be required to have 80 hours education their first year; a check was issued to the County for refund of state supplement benefits; priorities on redistricting were discussed and a report on payment of the asphalt truck; and correspondence and reports were given.

Notice of single pole power line was received from Concho Valley Electric Cooperative. A workshop date will be set to study sub-division regulations and public nuisance abatement procedures.

Next regular meeting will be November 14, 2000 at 9:00 am. The public is invited.

who have supported the barbecue by donations.

Hunting has become increasingly important to Coke County during a sagging economy. The Hunters Appreciation Barbecue is a way of welcoming them back to the area and has grown to gigantic proportions over the years. When the idea was first born, about 300 were fed that first year; now the WCCCD plays host to as many as 1,050.

Great volunteers and WCCCD members do the work -- preparations, cooking, serving, clean-up -- whatever it takes to make the event happen. More help is always needed. If you can help in any way or you need to donate and acquire tickets, please call Waggonner's Hardware, 453-2414, or barbecue chairman Gaylon Pitcock, 453-2942. Be a part of this community undertaking.

Free Hunter BBQ Lunchset for Bronte

As in years past, the free Hunter Barbecue Lunch is once again slated for Bronte. The main change for this year is that the free feed has been changed to Saturday only, and not Saturday and Sunday. The reason for the change to Saturday only is to give the folks at B&K Processing a little

Tennyson church history information requested

Church officials are issuing an appeal for any information concerning the history of the Tennyson Baptist Church. The original structure was first located at Mule Creek and was named Mount Margaret Missionary Baptist Church, some time before 1909.

The first deacons' names were W.A. Brooks, J.D. Hale, and C. Brooks. Maybe someone related to any of these men might have some family history related to the church.

The church was later named Tennyson Tabernacle Baptist Church, moved, and renamed to Tennyson Baptist Church. Any information would be greatly appreciated. Please contact Lora Belle Brown at 473-7206, or write to P.O. Box 1047, Tennyson 76953.

more time to tend to their business, which is processing deer, instead of spending the whole weekend feeding hunters.

Sponsored by Hall's Super Save Grocery and B&K Processing, Saturday's excellent barbecue lunch menu will consist of deer and elk barbecue sandwiches, smoked sausage, beans, soft drinks, and dessert. Serving will begin at 11:00 am and go until 2:00 pm. The location is B&K Processing (behind Hall's Grocery) in Bronte.

If you haven't eaten the variety of wild game sandwiches and sausages prepared at Bronte, don't miss this opportunity to sample some of these excellent vittles. And, while you're there, take a tour through their state of the art processing facility.

Singles ministry event planned

Church leaders of all denominations can explore ministries with single adults Nov. 4 in San Antonio.

A Single Ministry Celebration is scheduled at Windcrest United Methodist Church, 8101 Midcrown Road at Walzem Road in San Antonio. To register, call toll free (888) 349-4191 and for reservations call Linda Gwathmey at (210) 654-0404.

Churches of Robert Lee

Invite You to Worship

- Emmanuel Pentecostal**
 PO Box 609 • 1019 Colorado City Hwy
 (915) 453-2360
 Rev. Ray Aldridge, Pastor
 Sun. 10 am & 6 pm, Wed. 7 pm
- First United Methodist Church**
 PO Box 144 • 9th & Chadbourne
 (915) 453-2417
 Rev. Jim Reeves, Pastor
 Sun. 10 am Sunday School
 11 am Worship
 Wed. 7 pm Choir
- Northside Church of Christ**
 PO Box 388 • 9th & Chadbourne
 (915) 453-2619 or 453-2270
 Tommy Williams, Minister
 Services: Sun. 10 am & 6 pm;
 Wed. 7 pm
- Pecan Baptist**
 PO Box 542 • 12 W. Sterling City Hwy
 (915) 453-4645
 Rev. Dale Patterson, Pastor
 Sun. 10 am, Sunday School
 11 am & 7 pm, Worship
- Southside Church of Christ**
 PO Box 698 • 8th & Houston
 (915) 453-2176
 Frank J. Daniels, Preacher
 Sun. 10 am, Sunday School
 11 am & 6 pm, Worship
 Wed. 7 pm, Worship
- Robert Lee Baptist Church**
 PO Box 493 • 22 W. 11th
 (915) 453-2724
 Bro. Waide Messer, Pastor
 Sun. 9:45 am, Sunday School
 11 am & 7 pm, Worship
 Wed. 7 pm, Prayer Meeting
- Our Lady of Guadalupe Catholic Church**
 601 W. 10th
 (915) 365-2687
 Rev. Hubert Wade, Jr., Pastor
 Sat. 6 pm
- Victory Assembly of God**
 6th & Houston
 (915) 453-2208
 Rev. Erma Johnson, Pastor
 Sun. 9:45 am, Sunday School
 10:45 am & 6 pm, Worship
 Wed. 7 pm, Prayer Meeting

WINK INSURANCE AGENCY



Home • Auto
 Life • Commercial

715 Austin • 453-4551

Thoughts on the Scripture

By Rev. Jim Reeves

Job 4:8 "As I have observed, those who plow evil and those who sow trouble reap it."

When we spend all our time trying to stir up trouble for others, we usually find that the ones who are most troubled are ourselves.

May God bless each one of you.

Brother Jim

I have enjoyed serving you as Coke County Sheriff and would appreciate your vote of support next Tuesday.

**Thank you,
 Rick Styles**

Pd. Pol. Adv. by Rick Styles



The Coke County 4-H Food Show was held October 28 at the county courthouse. Taking Best of Show was Sarah Philley with Cranberry Chicken.



The Coke County 4-H Food Show was held October 28 at the county courthouse. Placing first - Junior Snack & Desserts - Emilee Yanez; first - Breads & Cereals - Allison Millican; first - Main Dish - Sarah Philley; and second - Main Dish - Brettnie Reed and Mason Ross. Those advancing to the District Food Show in Abilene are Sarah Philley, Emilee Yanez, Allison Millican and Brettnie Reed.

Check out
Coke Co.
Library

Book Sale

The Coke County Library will have a book sale Friday afternoon and Saturday morning, November 3 and 4. Several months ago the Big Country Library System office deleted books from their collection and dispersed them among the libraries in the system. The books are hard back copies. Mysteries, romances, science fiction, fantasy fiction and some non-fiction books are among the books to be sold. The books will be a tremendous bargain at twenty-five cents each. Anyone who wishes to make a donation above the asking price is welcomed to do so.

The trick-or-treat goodies provided by the downtown offices and merchants were very much appreciated by the children. The adults who see that the treats are available seem to have a good time, too. Our appreciation to the moms, dads and the volunteers who came along to make things go smoothly.

The library has acquired several new patrons this week. To get a Coke County Library card takes about three minutes; just long enough to write name, address and phone number on a card. Membership is free and begins immediately after filling out the card. The Coke County Library has a good selection of westerns, romance fiction, mysteries, and popular author collections. There are also reference books to answer inquiries on

almost any subject.

Library hours are Tuesday, 8-12; Wednesday 8-4; Thursday, 1-5; Friday, 8-12. Books may be returned in Bronte to the Main Street Market. Story Hour is Tuesday at 10:00 for three-five year old children.

UBS needs help

United Blood Services will be at The Depot in Sterling City Thursday, November 9 from 2:00 pm until 6:00 pm. Please call Nell Castro at 378-4400 for an appointment.

"United Blood Services is asking for the donors of Sterling City to come and help us," said Johnna Pevey, Community Relations Representative. "If you have never donated blood before, please give us a chance. Your donation can save up to three lives."

Donors must be at least 17 years old, weigh more than 110 pounds and be in good health. We also ask that you have proof of identification and know the names of any medication you may have taken in the past 30 days.

United Blood Services is the area's not-for-profit provider. In order to supply the 12 area hospitals, United

Blood Services must collect more than 300 units each week. Blood products have a shelf life of 5 to 42 days. We need your help. Please try to make an appointment. It will help you get in and out in a timely manner.

CC residents sworn in as volunteers

In a ceremony Monday night at 6:00 pm in the District Court of Judge Tom Gosett, three Coke County residents were sworn in as Guardians Ad Litem in the CASA program. Linda Farrington of Bronte and Joan Burns and the Rev. Jim Reeves of Robert Lee completed two weeks of training for the CASA (Court Appointed Special Advocate) program, which involves working with child abuse cases in Coke County and surrounding areas.

During his entire 47 years in office, Herbert Hoover turned over each of his Federal salary checks to charity. He had become independently wealthy before entering politics.

*We will be KICKING off the
Christmas Season at
Shalon's Floral Boutique
on
Saturday, November 4*

*Pictures with Santa • 11 am - 12 noon
Refreshments
Register for prizes and fill out VIP cards.*

*Lay Away Available Open each Saturday through
Christmas 9 am to 5 pm.*

LONE STAR
CARDS
WELCOME



LIMIT
RIGHTS
RESERVED

501 Commerce - Robert Lee, TX
Store Hrs: Mon.-Sat. 8-8 Sun. 8-6
SPECIALS GOOD 11/1 Thru 11/7

Cut & Wrapped Free!

Boneless Whole In The Bag
Top Sirloin
\$1.79

Regular or Hot
Owens Roll
Sausage
2 Lb. Pkg. \$3.29

Asst'd Michigan Apples
3 Lb. Bag .99

IGA
Vegetable Oil
48 oz bottle .99

Extra Large
IGA Eggs
12 Ct. Ctn. .79

Selected Varieties
Maxwell House
Coffee
34.5-39 oz. can \$4.99

Selected Varieties
Best Yet
Sodas
3 Ltr. Btl. .79

AUTO-HOME-LIFE
HELPING YOU is what we do best.
RUSSELL DAVIS, AGENT
Coke-Sterling Farm Bureau 453-4505

FARM BUREAU INSURANCE
Texas Farm Bureau Mutual Insurance Co.
Texas Farm Bureau Underwriters
Southern Farm Bureau Casualty Insurance Co.
Southern Farm Bureau Life Insurance Co.

Bronte School News

Bronte Longhorn football

The Longhorns stayed alive for a play-off berth Friday night with a 21-0 shutout of the Menard Yellowjackets.

Bronte scored the only touchdown of the first half on a Brandon Gibbs 6 yard run and Gibbs kicked the PAT to give the Horns a 7-0 halftime lead.

The third quarter was scoreless. The Longhorns found two more touchdowns in the fourth quarter on a Gibbs 1 yard run and a Gibbs to Tim Green 30 yard pass. Gibbs kicked both PAT's to give the Longhorns a final 21-0 win.

The Longhorn offense racked up 268 yards as Jesse McClure carried the ball 31 times for 123 yards and Brandon Gibbs threw for 152 yards. The Longhorn defense continued to

improve, holding Menard to 8 first downs and 135 yards of total offense, and also forced them into four turnovers. The offensive and defensive line and linebackers pretty much dominated the game for the Longhorns.

Bronte next travel to Christoval to battle the Cougars. A Bronte win will send the Longhorns into the play-offs. Make sure to plan on going to Christoval and root for the Longhorns as they continue their run for the play-offs.

Bronte JV volleyball

The Bronte JV white won over Miles on Oct. 24th with scores of 10-15, 16-14 and 15-8. Stats are as follows: Heather Richey 7 kills, 3 blocks 1 ace; Kanah Coalson 6 kills 2 aces; Lindsay Springer 3 kills; Jenna Herold 1 assist; Kayla Hilliard 3 kills; Joel Sefcik 5 assists; and Britany Eldred 1 kill, 7 assists, 1 ace.

The JV maroon lost against Miles with scores of 9-15, 15-9 and 8-15. Stats are as follows: Kyla McGinnis 5 kills, 2 assists, 1 ace; C.J. Macon 1 kill, 3 assists; Ashley Torres 1 block; Logan Acker 1 kill; and Kendra Graves 1 kill.

On the 28th, the JV maroon and white teamed together against Veribest with a win of 15-1 and 15-10. Stats are as follows: Heather Richey 4 kills 1 ace; Kanah Coalson 1 kill; Kayla Hilliard had 1 kill; Joel Sefcik 2 assists; Britany Eldred 2 assists; Kyla McGinnis 1 ace; Kailey Howell 3 kills; Natalie Reed 1 ace and Kendra Grave 1 kill.

The JV team ended a very successful season with a 16-7 record and went undefeated in district with a record of 9-0.

Bronte Lady Longhorn varsity

On Oct. 24, Bronte varsity won over Miles with a duplicate score of 15-13 and 15-13. Stats are as follows: Britni Adams 5 kills, 4 digs; Kala Arrott 8 kills, 2 blocks, 15 digs, 1 save; Chrissie Counts 6 digs; Britney McCutchen 1 kill; Brooke McCutchen 3 kills, 1 block, 6 digs, 1 save; Tessie McMullan 1 dig; Tasha Reed 5 kills, 1 block, 14 digs; Jade Richards 14 assists, 4 digs, 1 ace, 1 save; Cara Sefcik 4 digs; Lacy Schoenfield 1 kill, 15 assists, 4 digs, 2 saves; Stormy White 2 kills, 4 digs, 1 save; Lauren 5 kills, 1 block

and 7 digs.

Bronte's varsity record stands at 24-7 with district 7-1. On Thursday, Nov. 2nd, they will play a Bi-District game at Greenwood at 6:00 pm. The game will be broadcast on KDRQ 96.1.

BISD fundraiser

Bronte elementary is having a fundraiser. The money raised will be for safer playground equipment. The program is called General Mills Box Tops for Education. They will raise money for each box top collected including Betty Crocker box tops, which will be available on over 330 products.

Check with your friends and neighbors and help support the children of your community. For more information call Bronte ISD elementary office at 473-2251.

Videotape addresses children's concerns about stuttering

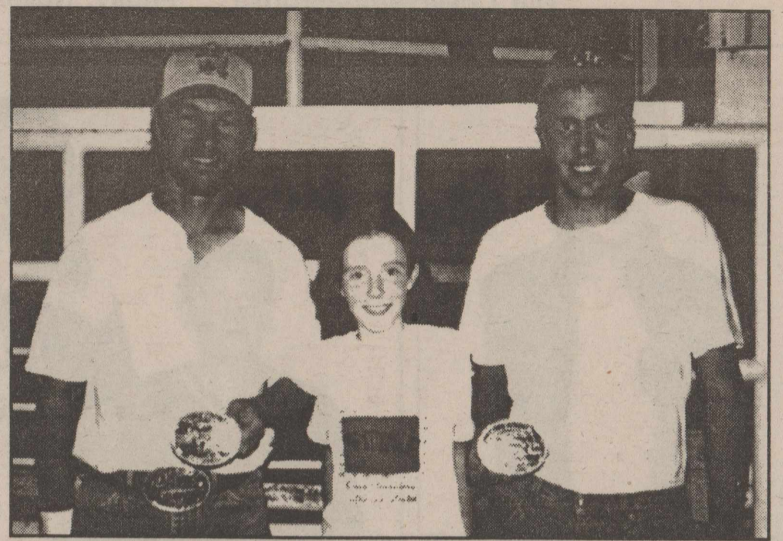
Stuttering is a frustrating and embarrassing problem for millions of people, but it can be especially tough on elementary school-age children.

Now some new help is available for parents, teachers, and speech-language pathologists at the Coke County Library in Robert Lee, Texas, in the form of a new videotape designed specifically to help school-age children who stutter.

"It's meant to give speech-language pathologists the tools they need to deal with stuttering in this age group, but it also offers good ideas for parents and teachers," said Professor Peter Ramig of the University of Colorado at Boulder. Ramig is one of five nationally recognized experts appearing in the video produced by the nonprofit Stuttering Foundation of America.

The video features students from first through sixth grade, some of whom talk about their experiences with stuttering. They talk openly about the teasing they face from classmates and how their stuttering sometimes makes them feel about themselves.

"We focus on demonstrat-



The Coke County Roping Club had their final buckle roping of the season recently. Roping secretary Bailey Saunders presents Terry Austin, heeler, (left) and Brady Bolding, header, with their trophy buckles.

ing a variety of therapy strategies that are appropriate in working with children who stutter," adds Ramig. He appears in the video along with speech-language pathologists Barry Guitar, Ph.D., of the University of Vermont, Hugo H. Gregory, Ph.D., and June Campbell, M.A., of Northwestern University, and Patricia Zebrowski, P.D., of the University of Iowa.

These five experts answer questions about stuttering, refute myths and misconceptions, and present examples of therapy sessions showing how stuttering can be reduced.

More than three million Americans stutter, yet stuttering remains misunderstood by most people," said Jane Fraser, president of the Stuttering Foundation. "Myths such as believing people who stutter are less intelligent or suffer from psychological problems still persist despite research refuting these erroneous beliefs."

This 38-minute video, entitled Therapy in Action: The School-age Child Who Stutters, is being distributed free of charge to public libraries nationwide. For more information about obtaining your own copy, contact the Stuttering Foundation of America, P.O. Box 11749, Memphis, TN 38111-0749 or call us toll free at 1-800-992-9392.

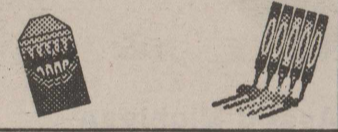
Join the adventure

Hosting a high school exchange student in August 2000 is like bringing the world to your doorstep. Cultural Academic Student Exchange (CASE), A U.S. Government sanctioned, CSJET listed non-profit educational organization is seeking families of all types; retired couples, couples with children, single parent families and childless couples.

We have students arriving from various countries--Brazil, Germany, Spain, Russia and many others, ALL of whom speak English. You can choose a male or female between the ages of 15 and 18, all with various interests and hobbies matched to your family. You will have the support of a LOCAL Area Representative with you throughout the exchange.

Students arrive sometime in August (depending on when your school starts). They bring their own spending money for personal expenses. Your new son or daughter will attend your local high school for either 5 or 10 months (first semester or academic year). All students have their own medical insurance. As a host family, you agree to provide room and board and to include your student as a member of your family.

SCHOOL MENU



Breakfast

Monday, Nov. 6
Breakfast burrito, apricots, biscuit, milk

Tuesday, Nov. 7
Sausage, grape juice, pancakes, milk

Wednesday, Nov. 8
Scrambled eggs, apple juice, toast, milk

Thursday, Nov. 9
French toast stix, grape juice, biscuit, milk

Friday, Nov. 10
Cereal, apple sauce, teddy grams, milk

Lunch

Monday, Nov. 6
Pizza, tossed salad, sweet corn, milk, brownies

Tuesday, Nov. 7
Chicken nugget with gravy, creamed potatoes, green beans, rolls, milk, chocolate cake

Wednesday, Nov. 8
Soft taco with cheese, refried beans, Spanish rice, lettuce & tomato, flour tortilla, milk, jello

Thursday, Nov. 9
Sloppy Joe, French fries, pickle spears, macaroni & cheese, bun, milk, apple crisp

Friday, Nov. 10
Spud day, chili & cheese, potato (baked), steamed broccoli, crackers, milk, peanut butter cookies

BRONTE PROJECT GRADUATION

will have a

Benefit

Hamburger Lunch

Sunday, November 5th

11 am - 1:30 pm

at B & K Deer Processing.

GLENN-BIVINS INSURANCE



See us for your auto insurance.

123 W. Main

Bronte

473-6791

CITY OF BRONTE TRASH COLLECTION SCHEDULE CHANGE

Beginning December 4th, customers North of West Main and East Main will be picked up on MONDAYS.

Beginning December 7th, customers South of West Main and East Main will be picked up on THURSDAYS.

BRONTE LONGHORNS FOOTBALL

Friday, November 3
7:30 pm
THERE

				BHS
September 1	Robert Lee	There	8:00	28 7
September 8	Santa Anna	Here	8:00	20 14
September 15	Rankin	There	8:00	7 42
** September 22	Roby	Here	8:00	40 41
* September 29	Irion County	Here	7:30	33 24
* October 6	Miles	There	7:30	7 26
* October 13	Water Valley	Here	7:30	53 7
* October 20	Eden	There	7:30	34 6
* October 27	Menard	Here	7:30	21 0
* November 3	Christoval	There	7:30	
November 10	Open			

* District Games ** Homecoming

BRONTE LONGHORNS

vs.

Christoval Cougars

First National Bank in Bronte

Member FDIC

B&K Deer Processing
& Taxidermy

Hall's Super Save Foods

Nancy Arthur
Attorney-At-Law

Wayne McCutchen
Coke Co. Commissioner Pct. 2

Bronte Health
& Rehab Center
Town & Country

"Backing The Horns All The Way"
All American Security
James Chambers - Tennyson

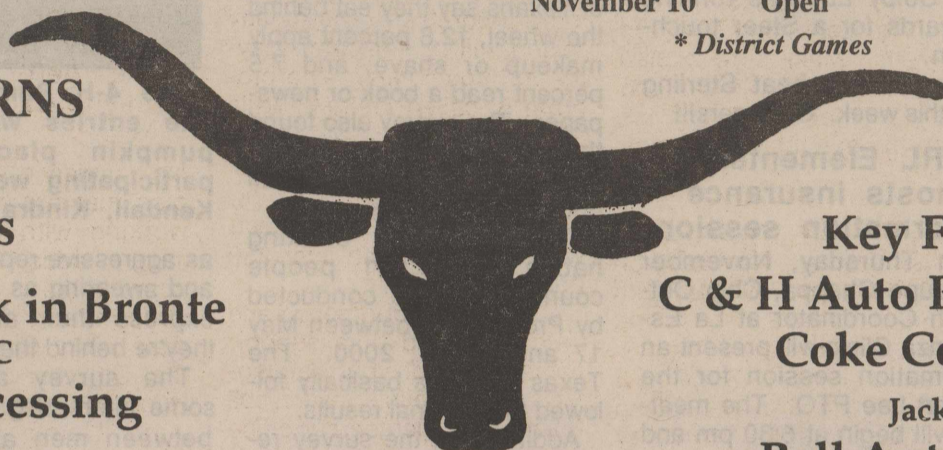
Jesse & Doris Sims

Shirley's Place
Shirley Denton & Mary Jane Cooper

Ivey Motor Company, Inc.

Don Pablo's
BBQ & Country Cooking

Larry's Automotive Repair



Key Feed Store

C & H Auto Parts & Hardware
Coke County Judge

Jackie Walker

Bell Auto Body Shop

Doug, Daryl, & Jason

David Rawlings

Coke Co. Commissioner Pct. 4

Wackenhut Corrections

We Support the Longhorns

Texas Best De-Flooding
& Carpet Cleaning

Bob & Patti Frazee

S&S Printing & Supply

Bruce & Fran Sonnenberg

Shalon's Floral Boutique

Shalon & Randy Gibbs

Bronte Pharmacy

Hope you have a winning season!

Glenn-Bivins Insurance Co.

Marilyn, Mary, Lucretia, & Deanna

Hometown Hardware

Feed & Supply

ACCO & Alderman Cave Feeds

Shaffer Monument Company

Handwritten signatures and names of players and coaches, including: Joseph Israel #71, Acceptable #55, Smith #7, Dalton Graves #33, Brandon #15, Josh #2, Schofield, James #14, James #19, Coach McClutchen, Tyler #60, Brandon Boehls mgr., Lyndon #10, Minnie #63, James Graves, #32, Kinch #30, James #28, Class #65, Coach Paul, Kevin Huddleston #22, Josh Eubanks #70, Cody #12, Coach James, Guy Rhodes #79, Coach Paul, and many others.

Robert Lee School News

Steer effort can't turn losing tide

The Steers hosted the Garden City Bearkats last Friday night. It was a game in which the Steers put together a lot of effort but the results did not match the effort. It has been an unusual year for the Steers as the injuries keep adding up. The replacements are playing hard and doing a good job.

1st Quarter

The Steers made 4 first downs with effort from running backs Bret Ballew, Stewart Millican, and Anson Lott. Colby Eubanks did a good job at quarterback, running the ball and throwing the ball as Travis Pitcock and Stewart Millican came up with good catches.

Linemen Curtis Bell, Cooper Riley, Michael Brickey, Charles Abalos, Clifton Bohannon, Trent McCabe, Adam Cates, and Sean Edging all continue to do a good job in the trenches as they have all year.

2nd Quarter

There was a defensive battle this quarter as both teams managed 2 first downs apiece.

Stewart Millican came up with 2 interceptions for the Steers.

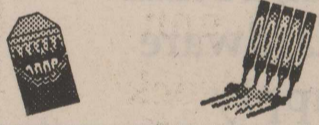
3rd Quarter

The Steer offense couldn't get much going but Pitcock caught a pass for 14 yards and Lott caught one for 22 yards.

The Steer defense faltered a little, which is unlike them, and then the Bearkats scored 2 times.

4th Quarter

SCHOOL MENU



Menu

Breakfast

Monday, Nov. 6

Orange juice, burrito, cereal, milk

Tuesday, Nov. 7

Orange juice, biscuit, sausage, cereal, milk

Wednesday, Nov. 8

Orange juice, breakfast pizza, cereal, milk

Thursday, Nov. 9

Orange juice, cinnamon roll, cereal, milk

Friday, Nov. 10

Orange juice, muffins, sausage, cereal, milk

Lunch

Monday, Nov. 6

Nacho, ranch style beans, corn, strawberry delight, milk

Tuesday, Nov. 7

Bar-b-Que, meatballs, creamed potatoes, peas & carrots, rolls, pears, milk

Wednesday, Nov. 8

Chicken a la king over rice, green beans, pineapple, rolls, milk

Thursday, Nov. 9

Lasagna, tossed salad, carrots, bread, peaches, milk

Friday, Nov. 10

Chick-fil-A, French fries, pickles, peaches, chocolate pudding, milk

The Steer defense came back strong and stopped the Bearkats at 36 total yards. Beau Blair had some outstanding plays from the defensive halfback position. The Steers faked a punt late in the quarter with Beau Boxell playing out the fake and Colby Eubanks running 53 yards for a Steer touchdown.

Steers, let's beat Sterling City this week. Go Steers!!!

RL Elementary hosts insurance information session

On Thursday, November 16, Lupe Chappa, Chip Outreach Coordinator at La Esperanza Clinic will present an information session for the Robert Lee PTO. The meeting will begin at 6:30 pm and will be held in the Robert Lee School Cafeteria.

Ms. Chappa will explain how to apply for the TexCare Partnership Insurance. She will also answer questions regarding health insurance for children.

If you need childcare or additional information about this PTO meeting, please call Janet Wallace at 453-4555 by Monday, November 13.

RLISD to observe Veteran's Day

On Friday, November 10, the Robert Lee students will observe Veteran's Day with a flag raising ceremony at 8:30 am. Community members and all veterans are invited to attend this ceremony.

RL students plant a tree in memory of beloved educator

On Friday, November 10, following the Veteran's Day ceremony, students, teachers and guests will dedicate a tree that has recently been planted on the Robert Lee Elementary School playground. The tree will be dedicated to the memory of beloved teacher and friend, Suzie Wilson.

Community members are invited to attend this dedication time. Donations from the student body and faculty members made the purchase of the tree possible. Additional donations may be made to Robert Lee ISD in memory of Mrs. Wilson. Please contact Gayle Bolding or Janet Wallace at 453-4555 for additional information.

Dangerous driving habits

Whether you own a compact car, a sports car or an SUV, many Americans are using their cars more like mobile homes. According to a new survey by Progressive Auto Insurance, 69.4 percent of Texans say they eat behind the wheel, 12.8 percent apply makeup or shave, and 7.5 percent read a book or newspaper. The survey also found that 49.8 percent of respondents say they use a cell phone while driving.

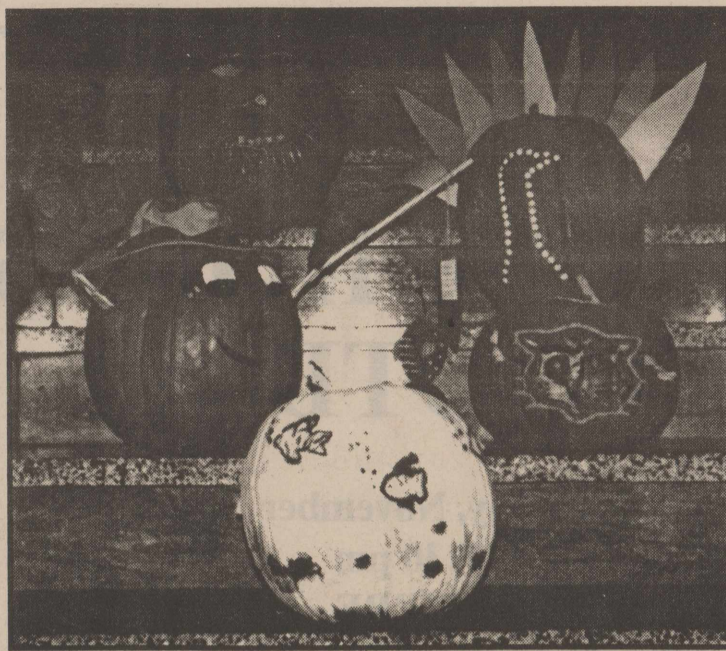
The survey of drinking habits of 29,981 people countrywide was conducted by Progressive between May 17 and July 1, 2000. The Texas numbers basically followed the national results.

Additionally, the survey revealed that besides being distracted while driving, we are also angry while behind the wheel. According to the survey, 45.6 percent of respondents in Texas report expressing their anger at other drivers (by shouting or swearing, using hand gestures, cutting off other drivers or speeding) and more than 56.7 percent of those talk on their cell phones.

"It's a reflection of our society that we try to do more than just drive when we're on the road, but it's important that your full attention be spent on driving when you are behind the wheel," said Willy Graves, President of Progressive County Mutual of Texas. "Perhaps our busy lifestyles, combined with more traffic and congested roadways, is why nearly half of the drivers express anger. Becoming too emotional and too preoccupied with other drivers is just another way to get distracted and can potentially lead to accidents."

The survey found that 76.6 percent of SUV drivers and minivan drivers report eating behind the wheel, more than other type of vehicle, with SUV drivers being the most likely to use a cell phone behind the wheel.

When asked if they would describe their car as "classy" "sexy" "sporty" "reliable" or "aggressive," the number one group to classify their vehicle as aggressive are truck owners followed by SUV drivers. Interestingly, 32.3 percent of people who classify their car



The 4-H Pumpkin Contest was held October 30. The entries were very creative. Sam Rawlings' pumpkin placed first. Other 4-H members participating were Dixie Johnson, Mason Ross, Amie Kendall, Kindra Johnson and Ashley Royall.

as aggressive report shouting and swearing as a means to express their anger when they're behind the wheel.

The survey also found some interesting differences between men and women. According to the survey, when it comes to letting off steam behind the wheel, women are more likely than men to shout or swear at other drivers to express anger, while men are nearly as likely as women to use hand gestures. Men are also three times more likely than women to classify their car as "aggressive," whereas women are more likely to classify their car as "sexy."

RL schools observe parent involvement month

The Board of Directors and the members of the Texas Association of Partners in Education want to remind everyone that November is Parent Involvement month. It will be celebrated in schools across Texas. This is an opportunity for parents, guardians, and other community members to celebrate with schools for the value of parent involvement in ensuring academic success for all students. Robert Lee schools will offer a variety of opportunities for parent involvement.

November 10 will be a Veteran's Day Observance at 8:30 am. This will be followed by a tree dedication on the elementary playground. On November 14, the board of trustees will meet at 6:30 pm. Community members and parents are always invited to attend the school board meetings. On November 16, the Robert Lee PTO will meet in the school cafeteria at 6:30 pm. Lupe Chappa will present a program on insurance for children at this meeting. Parents and community members are also invited and encouraged to attend the sports activities.

If you are interested in doing volunteer work at the school or serving on PTO committees, please contact Janet Wallace at 453-4555.

Continuing education seminar

Shannon Health and the University of Texas Southwestern Medical Center at Dallas, the accrediting sponsor, will host a continuing education trauma symposium Saturday, Nov. 18, from 8 am until 6 pm at the Holiday Convention Center in San Angelo.

Pre-registration is required; for more information contact Lance Keilers at 915-365-2531.

BAKE SALE

All Proceeds Go To

PROJECT GRADUATION RLHS SENIOR CLASS 2001

Where: ROBERT LEE STATE BANK LOBBY

When: WEDNESDAY, NOVEMBER 22, 9 AM - ?

To order pumpkin or pecan pies or bread, contact Jo Nell Blair at 453-4505 or 453-2825 or 453-2135.

Many goodies including cakes, pies, cookies!

Just in time for your holiday needs!

JIMMY'S AUTOMOTIVE & TIRE SHOP

121 W. 10th

Robert Lee, Texas

(Across from Bell's Auto Body Shop)

We now have hunting & fishing licenses.

Deer Corn • Hunting Supplies

For Appointment, Call: 453-9933 • 473-8650

Jimmy & Staci Womack



I would like to encourage each and every voter in Coke County to exercise your right to vote on November 7.

I would appreciate your support in my bid for Commissioner of Precinct 3.

Gaylon Pitcock
Democratic Candidate

for County Commissioner, Pct. 3

Pd. Pol. Adv. by Gaylon Pitcock

ROBERT LEE STEERS FOOTBALL

Friday, November 3
7:30 pm HERE

ROBERT LEE STEERS

vs.

Sterling City Eagles

Shaffer Monument Company
Robert Lee-Silver Lions Club
Nancy Arthur

Attorney-At-Law

Waldon & Judy Millican
& Family

Coke County Judge

Jackie Walker

West Coke County
Community Development
Skinner's Gro. & Station

Jim & Geanette Skinner

W.E.B. Construction

Edwin, Wyndell & Family

Bell Auto Body Shop

Doug, Daryl & Jason

Waggoner's Hardware
Auto & Truck Repair

Ivey Motor Company, Inc.

Robert Lee State Bank

Member FDIC

S&S Printing & Supply

Bruce & Fran Sonnenberg

Robert Lee Care Center

Concho Realty

C & W One Stop #14

453-2047 • Backing the Steers

Jimmy's Automotive
& Tire Shop



				RL	
September 1	Bronte	Here	8:00	7	28
September 8	Water Valley	There	8:00	48	0
** September 15	Miles	Here	8:00	0	27
September 22	Eden	There	8:00	40	0
September 29	May	There	7:30	33	0
October 6	Open				
* October 13	Roscoe	Here	7:30	6	34
* October 20	Rotan	There	7:30	12	20
* October 27	Garden City	Here	7:30	7	21
* November 3	Sterling City	Here	7:30		
* November 10	Roby	There	7:30		

* District 9A Games

** Homecoming

Wackenhut Corporation

Supports the Steers

Joan Davis

Key Feed Store

Cracker Barrel Restaurant

Paul Burns

Coke Co. Commissioner Prec. #1

The Best Connection

The Wayland Drennan Family

Ernest Clendennen, Inc.

Storage Rental & Sales & Vacuum Truck Services

Robert Lee

Therapy Clinic

Super "H" IGA

Dave & Betty Hughes

Coke County Pharmacy

Steve & Wanda Oleksiuk

Merle Norman Studios

Especially For You

Suzann Johnson & Debbie McCabe

Glenn-Bivins Insurance Co.

Marilyn, Mary, Lucretia, & Deanna

CJ&C Heating & Cooling

C & H Auto Parts

& Hardware

Diane's Chuckwagon

Gaylon & Kaye Pitcock

Coke Co. Commissioner Prec. #3

Trout
McCall
#64

Byrt Ballew #12
#21
Colby Eubanks

Capen
Riley #53

April Ballinger #5

Justin Johnson #55

Curtis Bell #52

Charles
alabs #6

Faron
Wingard #85

John Elgert

Adam
Carver #65

Brian
alabs #40

Shelley
Randall #72

John
#22

Chase
Rainwater #44

Beau
Boxell #10

Janett
Brown #3

Janis
Steak #73

Brian
#80

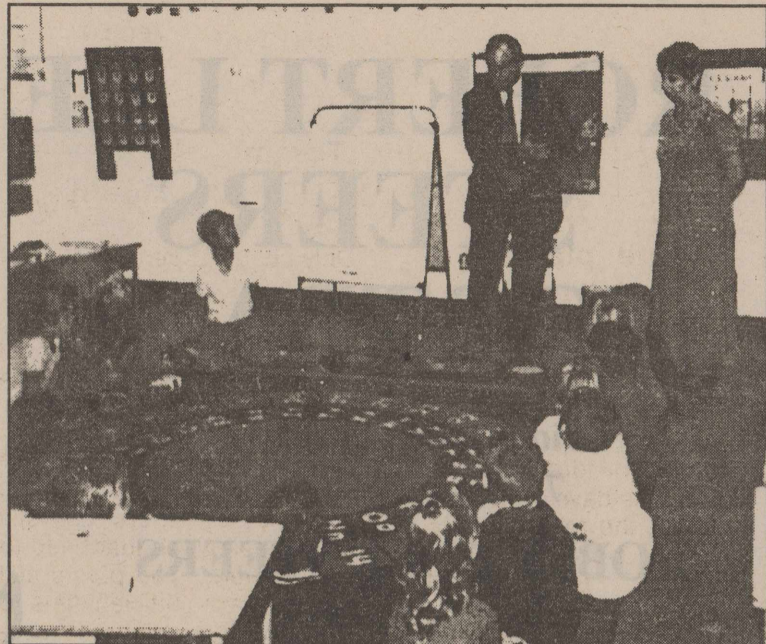
Tim
#60

Steve
#33

Maddy
Lewis #79

Representative Rob Junell visits RL Elementary School

On Tuesday, October 24, Rob Junell visited Robert Lee Elementary School. Mr. Junell visited the Kindergarten class of Mrs. Judy Gibbs. He explained to the students that his very favorite story was about a little train engine that believed he could do anything, *The Little Engine that Could*. Mrs. Gibbs and her students were anxious for Mr. Junell to see the purchases made during the 1999-2000 school year for improving reading instruction in kindergarten. The students are especially proud of the literacy bags, learning carpet, and reading loft.



State Representative Rob Junell visits with the Robert Lee Elementary School Kindergarten class.

As our representative, Mr. Junell was very instrumental in securing this funding for each school district in the state. He hopes that in the next legislative session additional funding for improving reading in grades 2-5 will be appropriated.

Tobacco hurts your heart

Cigarette smoking accounts for 430,700 of the more than 2 million annual deaths in America and is usually associated with lung disease. People may not know that smoking is also a major cause of coronary heart disease, which leads to heart attacks.

The physicians of Texas Medical Association want people to know tobacco can hurt your heart. A smoker's risk of having a heart attack is more than twice that of a non-smoker. They have two to four times the risk of non-smokers for sudden cardiac deaths and are more likely to die within an hour from a heart attack than are nonsmokers.

There is no safe level of smoking. If you smoke one to four cigarettes a day, the increased risk for coronary artery disease is significant.

Austin cardiologist Dr. Roger Gammon explains that smoking "causes inflammation on the inside of the artery and some local spasm within the artery. Those processes set up the background for cholesterol to deposit, which is how plaque forms within the artery. And once there's plaque, that lays the groundwork for a heart attack."

Estimates for the United States are that 26.3 million men (27.6 percent) and 22.7 million women (22.1 percent) are smokers, putting them at increased risk of heart disease.

The health benefits of eliminating smoking include a major reduction in the occurrence of coronary heart disease and other forms of cardiovascular disease. Quitting smoking reduces the risk of repeat heart attacks and death from heart disease by 50 percent or more.

If smoking has already caused so much damage, will quitting really help? Yes. Within one year of quitting the risk of developing coronary artery disease will drop by 50 percent. Three or four years after quitting, a former smoker's risk will approach that of people who have never smoked.

Male smokers who quit be-

State Representative Rob Junell tells Robert Lee Elementary School Kindergarten students his favorite story.

tween ages 35 to 39 add an average of five years to their lives. Female quitters in this age group add three years to their lives. Men and women who quit between the ages of 65 to 69 increase their life expectancy by one year.

A smoker will reap the benefits of quitting, no matter what their age.

Recommendations for quitting:

There is no magical approach to quitting. Smokers should talk to their physician if they are thinking about quitting. Their doctor can provide information about options to try including nicotine gum, nicotine patches, and medication options. They also can provide them with advice to ease the tension of quitting.

The National Cancer Institute offers the following suggestions to help people quit smoking:

- *Set a target date for quitting - Call it quit day.
- *Throw away your cigarettes and matches.
- *Hide your lighters and ashtrays.
- *Quit smoking during a vacation.
- *Involve your friends and family for support.
- *Change to a brand you find distasteful.

*Drink milk (some find it incompatible with smoking).

*Get plenty of rest.

*Use positive thinking.

*Learn relaxation techniques.

*Keep your hands busy.

Texas Medical Association is a professional organization of more than 36,000 physician and medical student members. It is located in Austin and has 118 component county medical societies around the state. The Association represents 85 percent of the doctors of medicine licensed and residing in Texas. TMA's key objective is to improve the health of all Texans.

Look Who's New Hunter Dane Smith

Proud new parents Noal and Kristi Smith of San Angelo would like to announce the birth of their first child, Hunter Dane Smith. Hunter was born on Monday, August 14, 2000 at 3:41 pm at Shannon Hospital's Women and Children's Center in San Angelo. He weighed 7 pounds, 12 ounces and was 21 inches long. Noal was a 1987 graduate of Merkel High School. Hunter's paternal grandparents are Royce and Lynn Doris Smith of Robert Lee. His maternal grandparents are Howard and Joy Smith of Abilene.



State Representative Rob Junell and Mrs. Gibbs listen to the Robert Lee Elementary School Kindergarten class.

AMERICAN LUNG ASSOCIATION
of Texas

YOUR Gift IS A WAY TO CONQUER LUNG DISEASE

Find out how you can help ...

www.texaslung.org

When you lose someone dear to you — or when a special person has a birthday, quits smoking, or has some other occasion to celebrate — memorial gifts or tribute gifts made for them to your local American Lung Association help prevent lung disease and improve the care of those who suffer from it.

1-800-LUNG-USA

I would appreciate your vote and support in the upcoming general election. If I can be of assistance, please contact me at 277-1642, or pager #278-2577.

"I encourage all citizens to become informed and vote during the general election."

**Russell Johnson
Constable, Precincts 2 and 4**

Pd. Pol. Adv. by Russell Johnson

Jewel Auto Refinishing AND Collision Repair

Complete Paint Jobs

E-MAIL Jewel@wcc.net

SAN ANGELO

8558 Hwy 208 M-S 9-6 (915) 655-9747

We'll Be There...

... To make your family more secure, to protect your property, to insure your life.

We'll be there. Whenever you need us, we're only a phone call away.

You're part of our family—we'll be there, for you.

GERMANIA
SINCE 1896

**GERMANIA INSURANCE COMPANIES
CARWILE INSURANCE**
453-2522



COUNTRY AGENTS
NEWS

by Tommy Antilley
Coke County Agent

Late planting of wheat

Tommy Antilley
With the recent moisture we have received, late planting of small grains should produce a good stand and the possibility of sufficient forage for grazing. As the days of November pass by, the requirements of wheat being planted changes. Every passing week will mean an increase in planting rate, a decrease in the depth that the seed are planted, and a reduction in overall plant performance and development. November planted wheat will have less nutrient requirements than those planted in September.

Receive year-end tax break

Looking to get rid of an old car or truck, help a good cause, and possibly get a tax break - all in one easy step? Through the American Lung Association of Texas' Vehicle Donation Program, Texans can simply call 1-800-ALA-LUNG to donate their car, truck, or other vehicle, and the association will tow it at no cost to the donor.

With the help of local towing companies throughout the state, the American Lung Association of Texas will tow donated vehicles from the location of the donor's choice, sell the donated vehicle for the best possible price, and use the net proceeds to help fight lung disease, the third leading cause of death in Texas. Donors may be able to deduct the fair market value of their vehicle as a charitable contribution on their federal tax returns, which in some cases may be worth more than selling or trading a vehicle.

"We believe our Vehicle Donation Program is a hassle-free way for people to dispose of vehicles they no longer need, and at the same time, help the American Lung Association of Texas fight lung disease," said Edward Carter, Chief Executive Officer at the American Lung Association of Texas.

In past years, proceeds from the Vehicle Donation Program have helped the Lung Association reach out to the 2.2 million Texans with lung disease, including over 400,000 children who suffer from asthma. "The American Lung Association of Texas' most important goals right now are to help children and their families with asthma management, advocate for clean indoor and outdoor air, and prevent teens from smoking," said Carter. "Funds raised from our Vehicle Donation Program have greatly helped our efforts in all three areas."

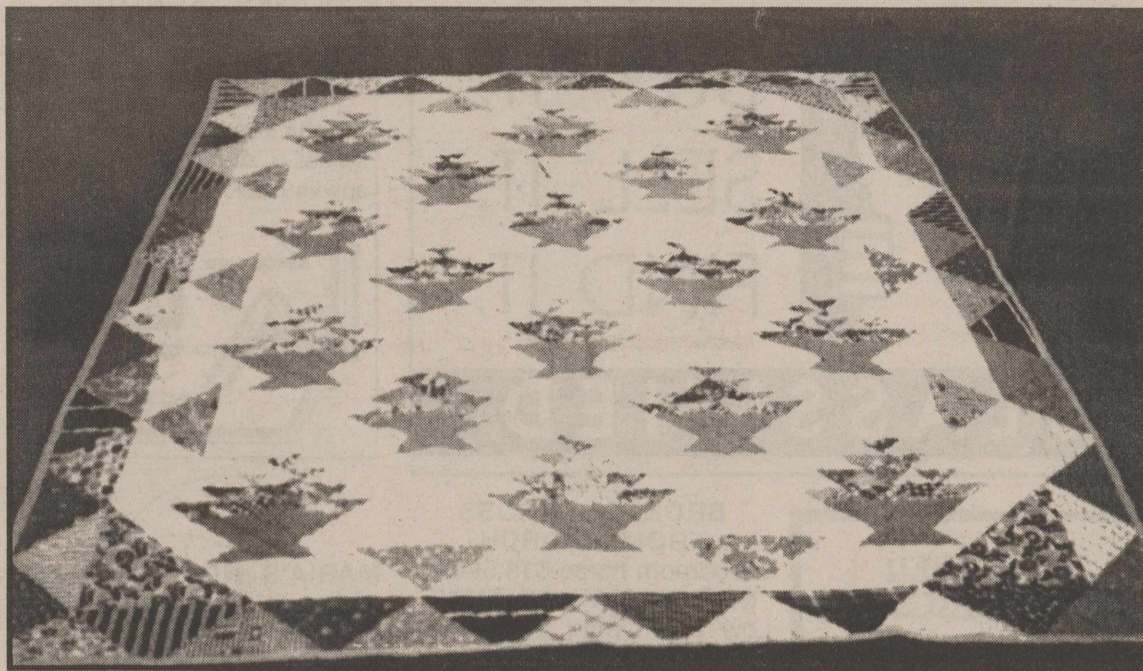
The American Lung Association of Texas accepts a variety of vehicles including cars, trucks, vans, RVs, motorcycles, and boats with trailers. For more information about the Vehicle Donation Program, Texans may call the American Lung Association of Texas at 1-800-252-5864 or visit them on the web at www.texaslung.org.

Only about 30 percent of what is needed for projected production needs to be applied. The remainder can be applied in the February, March time period.

Due to the lack of forage, producers may want to graze their small grains as soon as possible, but there are still some basic rules that need to be followed. The plants still need to have sufficient time to develop a secondary root system so that is anchored and can handle being grazed. If producers start the grazing process too early the livestock will pull up the entire plant, reducing the plant population and eventually the amount of forage available for later production. You need to examine the wheat planted and see if the secondary root system has adequately developed before livestock is allowed to graze. This can be easily checked by simply trying to pull up the wheat plants. Give them a good tug and if they don't pull completely up, it can be grazed. If the wheat hasn't tillered and is not stable, it can easily be yanked out of the ground.

Management factors affecting calf prices

A recent study at several livestock markets documents things you can do to increase calf prices. For one, castrate; steers brought \$3.56/cwt more than bulls. For another, dehorn or use polled breeding stock; calves without horns brought \$2.48/cwt more. Fleshy calves were discounted \$2.43/cwt and fat calves lost \$8.69/cwt, while thin calves sold for \$3.27/cwt less and very thin calves lost a whopping \$13.24/cwt. Full calves brought \$3.69/cwt less than those that of average fill, and shrunk calves received \$1.85/cwt less. Visibly healthy calves brought \$7.83/cwt more than those that appeared to be stale. Compared to singles, premiums for multiple-head lots



This beautiful handmade quilt has been anonymously donated to the Robert Lee Volunteer Fire Department to be given away in a raffle prior to Christmas. The quilt can be seen at Robert Lee City Hall.

were: 2-5 head, \$3.59 more, 6-10 head \$5.01; over 10 head \$5.92 more. So, to get the best price, market calves that are castrated, dehorned, in average flesh, visibly fresh, and in multiple-head lots if possible.

Recent rains not total salvation yet

With the very good rains we have received the past couple of weeks, our prospects for a decent fall and winter are looking a lot better, but we are not totally out of the woods yet. Remember, we did not get in this bad a shape overnight, and we will not greatly improve our forage production overnight either. Our pastures have little or no available forage for livestock to graze even though we are beginning to see some winter forbs and grass emerging. Most of the summer grasses will not have enough time to produce any significant amount of forage before frost, so therefore, we are looking at basically how much forage we have to last until spring. Now would not be the time to restock, if you have greatly reduced your livestock numbers. Our pastures will need time and grazing management to completely recover from the severe drought we have been in. Money would be better spent on other man-

agement practices such as new fencing, brush management, etc. than buying more livestock and having to still feed them basically their entire diet through the winter.

Pet talk

If you're feeling bad and think you're sick as a dog, you might have put your finger on the cause.

There are more than 200 diseases that can be transferred from animals to humans, and even man's best friend can be unfriendly when it comes to staying healthy.

From Peetie the parakeet to Roger the rabbit, almost every animal is capable of passing some type of disease or sickness to humans. Dr. Leon Russell, a veterinarian in Texas A&M University's College of Veterinary Medicine who teaches a course on the subject, says ailments range from near harmless to downright deadly.

The technical term for such a transfer is zoonosis, which means any disease that is communicable from animals to humans.

"Most of those 200 or so diseases that can be passed to humans are fairly rare and don't occur much in the United States," Russell says. "But there are a few dozen that are very common and can even be killers."

One of the worst: salmonella. It's a bacterial disease found in poultry and eggs and uncooked meat. Worldwide, it kills thousands of people every year but can be one of the most preventable, Russell says. Its bacterial cousin - campylobacter - can also be acquired from poultry, but young puppies have been known to pass the disease, Russell confirms.

"If you cut up chicken and then use the same knife to cut the bread or salad, you're asking for trouble," Russell believes. "And it's best to clean off a cutting board you're using, too. Just one drop can make a person very sick."

"Also," he adds, "you must wash your hands after handling raw meat or poultry to prevent transfer of these bacteria to other food items."

I would like to take this opportunity to thank you for the trust you have placed in me by electing me as Tax Assessor/Collector for the past twelve years. It is a privilege and an honor to serve in elected office. I look forward to the opportunity to continue serving you in this position, and promise to look for the most efficient, convenient and cost effective ways to assist the people of Coke County. As Voter Registrar of Coke County, let me encourage you to participate in the upcoming election. The right and freedom to voice your opinion in government is one of the unique and wonderful things about living in this country. Remember, every vote counts!

Please take the time to
Vote
Tuesday, November 7!

Sincerely,
Kristeen Roe, RTA
Coke County Tax Assessor/Collector

Pd. Pol. Adv. by Kristeen Roe

IVEY MOTOR COMPANY, INC.

Ask For:
Randy Flanagan • Buck Duncan • Billy Wayne Roe

1997 F-250 Crewcab Powerstroke	\$18,995
1998 Taurus SE <i>21,600 Miles</i>	\$10,995
1998 Expedition XLT <i>White • Great Condition</i>	\$22,495
1999 Chevrolet Suburban LT	\$21,595
1997 Mercury Grand Marquis LS <i>23,000 miles</i>	\$13,995
1997 Mercury Mountaineer	\$15,495
1996 Lincoln Town Car Signature	\$13,995
1999 Chevrolet Tahoe LS	\$17,995

453-2715



**BUY IT.
SELL IT.
FIND IT.**

CLASSIFIED.

OUTSKIRTS OF TOWN
4 bdrm, 2 1/2 bath, 2 story home w/acreage.

BRICK HOME
Excellent condition, close to school. Call for prices and for appointment.



453-2995

Quality Film Processing
by Keaton Kolor
at
Hometown Hardware
Bronte, Texas

PARKER PLUMBING
Residential & Commercial. All types plumbing repair - new construction, remodeling, fixtures, and sewer service. Licensed Master Plumber. 473-2131, Bronte.
34b-tnc

TREES TRIMMED
topped or removed. Call 453-9902 after 6 pm.
37a-tnc

GARAGE SALE
At the Wheat's house. 509 W. 12th St., Robert Lee (across from football field on corner). Sat. Nov. 4, 8 am to ???. Babyswing, infant seat, tons of baby clothes and baby items. Kids clothes, misc. Come by and check it out!
15a-1tp

GARAGE SALE
Nov. 3 & 4. 8 to 5. 713 SE Railroad, Bronte. Follow signs on 277. Too much to list.
15b-1tp

GARAGE SALE
Sat. Nov. 4th (If not raining). 8-3. 324 Briarwood, Bronte.
15b-1tp

MOVING SALE
Nov. 3rd & 4th. Can't take it with me! 6 1/2 miles east of Bronte on Hwy. 158. Watch for gate sign. Mildred Thomason.
15b-1tp

YARD SALE
Lots of miscellaneous items. Come and see! Friday & Saturday. 715 E. Main, Bronte.
15b-1tp

YARD SALE
Sat. 8-2. In the barn behind Little Fish Child Care, 302 S. State, Bronte.
15b-1tp

NOTICES

NOTICE OF PUBLIC SALE
To the public and Cathy Huntley, Pursuant to Section 59.44 of the Texas Property Code, notice is hereby given of the sale of the contents of Unit 44-AC of the storage facility located at the southeast corner of Chadbourne Street and West 8th Street in Robert Lee, TX. The storage unit is held in the name of Cathy Huntley and the contents will be sold to satisfy a contractual landlord's lien. The contents will be sold no sooner than 9 Nov 00.
E. A. Clendennen
14a-2tc

At 65, Social Security Still Growing
"Social Security turns 65 on August 14 and is still growing," states Fredi Franki, Social Security manager in San Angelo. "The nation's largest benefit program in 1999 paid almost \$358 billion in Social Security benefits to approximately 45 million Americans. That's one out of six Americans."
The program, which originally was set up as only a retirement program, now pays benefits to retirees' spouses, children and survivors as well as disabled workers and their dependents. In 1999, benefits were paid to: 27.8 million retired workers-\$22.3 billion; their 3.2 million dependents-\$1.3 billion; 4.9 million disabled workers-\$3.7 billion; their 1.6 million dependents-\$4 billion; and 7 million survivors-\$4.9 billion.
"As the needs of the nation have changed, so has the Social Security program," stated Franki. "The program will have to evolve in the future since the percentage of older Americans will about double between now and 2030. And we, at Social Security, look forward to the challenge of continuing to provide Americans with the best social insurance program in the world."

CLASSIFIED ADVERTISING RATES

Classified Advertising must be paid in advance.

1st. Insertion...
20¢ Per Word (\$3.00 Minimum)

2nd and Subsequent Insertions...
16¢ Per Word (\$2.50 Minimum)

Additional 50¢ charged for Blind Ads

Legal Notices...
25¢ Per Word

ADVERTISING DEADLINE
Tuesdays at 5 pm

BRONTE ACROSS FROM CHURCH
2 Bedroom home \$18,500!!!
OWNER MAY FINANCE
Low Down pmt! 3 bedroom \$20's!

HILLCREST LOCATION
Large Brick Home on 2 Lots!
BRONTE AREA 40+ ACRES
3 Bedroom Home \$80's!!!

TOWN VIEW ESTATES
Brick Home on Acreage! 80's!!!

HUNTERS!!!!!!!
ROBERT LEE/WATER VALLEY
160 Acres with 2 Houses & Rural Water!
BRONTE AREA 180+ ACRES WITH
Huge Rock Home. Barns & Pens!
200 ACRES NEAR BRONTE!
320 ACRES NEAR BRONTE
600+ ACRES NEAR ROBERT LEE
1200+ ACRES MITCHELL COUNTY

MARIA'S HOT TAMALES
\$6/dozen. Delivered daily each morning. Call 453-2075.
13a-tnc

FOR SALE
'94 Ford Explorer XLT 4 dr, 2wd, Loaded w/sunroof, AM/FM Cassette stereo, excellent condition. Call Donna @ 453-2545 or 450-4050 after 5:30 pm.
15a-3tc

FOR SALE
'97 Mercury Mountaineer, 4dr, 2wd, Loaded, White w/gray leather interior, AM/FM Cassette w/CD changer. Excellent Condition, Call Leslie @ 650-0051.
15a-3tc

FOR SALE
A sleeper sofa and matching love seat. \$75. Call daytime 453-2036, evening 453-2071.
15a-1tc

FOR RENT
3 BRM home for 6 mo. lease. Near RLHS. \$295/mo + \$200 dep. 655-9141.
10a-tnc

TAKING APPLICATIONS
for one, two, & three bedroom apartments. Contact Housing Authority of Robert Lee, 710 N. Bishop, 453-2912. Equal Housing Opportunity.
29a-EOW

BRONTE MINI STORAGE
has storage buildings for rent. Call 473-2221.
14b-tnc

MISC

COMPUTERS
Complete systems, repairs, upgrades, internet. Call Ed @ EMCO Computers. 473-3004.
32b-tnc

D & L DOZER SERVICE & CUSTOM FARMING
Larry Spivey, owner-operator. PO Box 160, Bronte, Texas. Phone (915) 282-3038.
45b-tnc

KENNETHS CONSTRUCTION
Local professional roofing done at reasonable rates. Repair, replace, composition or metal. Free estimates, work guaranteed! 453-2339 & 453-4788.
15a-4tc

SUNSHINE CONSTRUCTION
New Construction, Additions, Renovations, and Home Repairs. Contact Don Parks @ 453-2860 or 450-2767 mobile.
34a-tnc

MESQUITE FIREWOOD
\$85 a cord, delivered and stacked. Call 282-3030.
13a-4tp

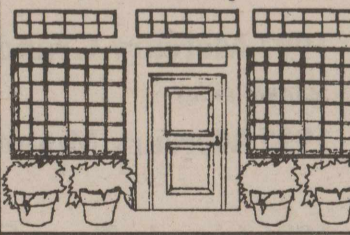
Other Listings Available
Concho Realty
5 E. 6th St.
Robert Lee, TX 76945
Contact
Joe Ash 453-2554
Marshall Millican 453-9002
453-5005 Robert Lee
653-4535 San Angelo

COMMERCIAL PROPERTY
in Robert Lee. Previously operated as a convenience/grocery store. Good location near school with highway frontage. Call 915-453-2545.
46a-tnc

MINI RANCH
3 Bedroom with acreage and trees. Minutes from Town. FMI Call 655-3827.
12b-4tc

DROUGHT RELIEF
COST + 10%
Limited Time Offer.
Call for an appointment.
653-7800/1-800-698-8003.
12b-4tc

Garage Sale
Downtown Robert Lee
Friday & Saturday
November 3rd & 4th
9 am to 4 pm
Some Antiques



DOUBLE WIDE PALM HARBOR
\$250 per mo.
10% dn; 360 mo; 8.75% fixed apr; 8 pts; WAC 915-653-7800/1-800-698-8003.
12b-4tc

FOR SALE

KEVIN PARKS TRAILERS & WELDING SERVICE
Single Axles
4 x 8 Utility \$475
5 x 8 Utility \$485
5 x 10 Utility \$535
6 x 10 Utility \$555
6 x 12 Utility \$580

Tandem Axle Trailers Available
Can see at Jessandi Enterprises Fish Farm • 3490 W. FM 2105, San Angelo, Texas
For Info, call Kevin • 659-2587
leave message

FOR SALE BY OWNER:
3 bedroom, 1 bath, central heat and air on large corner lot. Has 1 bedroom guest house in back. 201 West 16th, Robert Lee. **ONLY SERIOUS INQUIRIES** call 453-2088 and leave message.
12a-4tp

Wrangler
Shirts & Jeans
Hometown Hardware
Bronte, Texas
A hometown store with old fashioned service.

WARNING
Do not buy a manufactured home without seeing this video tape. 915-655-6531.
15b-4tc

PUBLIC NOTICE
Taking application on all 2001 model homes. No application refused. 1-800-698-8003.
15b-4tc

4 BEDROOM ON 3 WOODED
acres. \$500 a month. Ready to move in. 1-800-698-8003. 10% DOWN 360 MON 8.5% APR FIXED.
15b-4tc

USED HOMES
From \$5,000 to \$25,000. 1-800-698-8003.
12b-4tc



Keeping an Eye on Texas

Flying mammals fight bad bat rap

Far from the frightening tales of vampire lore, Texas' bat population, more than 100 million strong, is a valuable animal resource. One bat may eat up to 3,000 insects, including crop pests and mosquitoes, each night. Some of the winged mammals also pollinate or disperse seeds for many plants.



Bat viewing areas

1. Congress Avenue Bridge, Austin
2. Old Tunnel Wildlife Management Area, between Fredericksburg and Comfort
3. Colorado Bend State Park, near Bend
4. Eckert James River Bat Cave Preserve, near Mason
5. Kickapoo Cavern State Natural Area, between Brackettville and Rocksprings
6. Devil's Sinkhole State Natural Area, near Rocksprings
7. Big Bend National Park, south of Fort Stockton
8. Beneficial Animal Teaching Station, Mineral Wells

SOURCES: Carole Keeton Rylander, Texas Comptroller of Public Accounts (www.window.state.tx.us), Bat Conservation International, and Texas Highways.

Holidays present opportunities for seasonal work

From October through the new year, seasonal work can be abundant. Work opportunities can range from production to sales at year-round businesses or temporary holiday shops, such as pumpkin patches and Christmas tree lots.

Employers and job seekers, alike, should know their legal obligations and rights. For anyone choosing seasonal staff or jobs, the Texas Workforce Commission (TWC) offers these highlights:

*Temporary employees are subject to the same laws as regular full-time or part-time employees. Despite the fact that they know that their job will end at a specific time, temporary staff members are not contract labor. They are entitled to the same protections under the law as regular employees.

*For students seeking jobs during the holidays, child labor laws apply to teenagers under age 18. While less stringent guidelines apply to 16- and 17-year-olds, the minimum employment age for most jobs is 14. According to federal law, during the school year, 14- and 15-year-olds cannot be scheduled to work more than three hours a day or more than 18 hours a week. When school is not in session, 14- and 15-year-olds cannot work more than eight hours a day, nor can they work more than 40 hours in one week. Additionally, the work must not start before 7 am and must end by 7 pm. The only exception is from June 1 through Labor Day, when work can be scheduled up to 9 pm. In instances, where an employer is not covered by

federal child labor laws, Texas child labor laws will apply. Furthermore, because teenagers are barred from performing hazardous work, office machines such as computers and copiers are the only power-driven pieces of equipment they are allowed to operate. Under both federal and Texas law, parents may employ their own children in nonhazardous work for and during unlimited hours.

*Employers must pay Unemployment Insurance taxes even on their temporary employees. The wages earned must be reported and are subject to taxes. This law applies even though a temporary employee knows from the outset that the job will end at a set time and the employee has no plans to seek another job after that particular assignment has ended.

*The Texas Pay Day Law requires that both temporary and regular employees receive their wages in full and in a timely manner. For any employee, employers cannot withhold any amount of a paycheck without prior written authorization from the employee, or unless authorized by state or federal law, or by court order. Additionally, current minimum wage laws apply to wages earned.

Annually, the labor force realizes employment growth in the last three months of the year as employers hire staff for various needs. In 1999, the actual employment annual average in Texas was 9,734,413. In the last three months of that year, the number of people employed was well above the annual average: The October average was 9,849,210; November tallied 9,869,318; and December topped out at

9,895,156.

"Seasonal work pays off for both employers and workers," said TWC Executive Director Cassie Carlson Reed. "While businesses benefit from the services of temporary staffing, the workers boost workplace skills and earn extra money."

Early detection is key to survival

The statistics are staggering. One out of nine American women will develop breast cancer in her lifetime. A new breast cancer case is diagnosed every three minutes and one woman dies from this disease every 13 minutes.

While Anglo American women have the greatest risk of developing breast cancer, African Americans are twice as likely to die from the disease. The physicians of Texas want all women to know they are at risk of breast cancer regardless of ethnic background. For all women, prevention and early detection are important. For those ethnic groups that are at particularly high risk, careful monitoring is much more essential.

Prevention

Breast cancer cannot yet be prevented but there are risk factors to be aware of. Having one or several risk factors, does not necessarily mean that a person will get the disease but that their chances of having the disease are greater. Risk factors may include:

***Gender:** Simply being a woman is the main risk factor for developing breast cancer. Breast cancer can also affect men, but to a lesser degree.

***Aging:** A woman's risk of developing breast cancer increases with age. About 77 percent of women with breast cancer are over age 50 at the time of diagnosis.

***Family history of breast cancer:** Breast cancer is highest among women whose close blood relatives have the disease.

***Personal history of breast cancer:** A woman with cancer in one breast is three to four times more likely to develop cancer in the other breast.

***Race:** Breast cancer is slightly more common among Anglo American women.

***Menstrual periods:** Women who started menstruating before age 12 or who went through menopause after age 50 have a higher risk.

***Alcohol:** Women who have two to five drinks daily, have about 1.5 times the risk of women who drink no alcohol.

Although most of the asso-

ciated risk factors cannot be controlled, early detection, and early treatment, may be promoted through routine breast self exam beginning around age 20 and screening mammography after age 40.

For early breast cancer detection, the American Cancer Society recommends the following:

*Women age 40 and older should have a screening mammogram every year.

*Between the ages of 20 and 39, women should have a clinical breast examination by a health professional every 3 years. After age 40, women should have a breast exam by a health professional every year.

*Women age 20 or older should perform a breast self exam (BSE) every month. By performing the exam regularly, women get to know how their breasts normally feel and can more readily detect any signs or symptoms.

*If a change occurs, such as development of a lump or swelling, skin irritation, or dimpling, nipple pain or turning inward, redness or scaliness of the nipple or breast skin, or discharge other than breast milk, women should see their physician as soon as possible for evaluation.

During a breast cancer screening, the two primary methods used are mammography and a clinical breast exam. Mammography is used to diagnose breast disease in women who have symptoms, and also those who appear to have no breast problems. A clinical breast exam is an examination by a physician or nurse.

If detected early, breast cancer can be treated effectively with surgery followed by radiation therapy. With early detection, the five year survival rate after treatment is 96 percent.

Texas Medical Association is a professional organization of more than 36,000 physician and medical student members. It is located in Austin and has 118 component county medical societies around the state. The Association represents 85 percent

of the doctors of medicine licensed and residing in Texas. TMA's key objective is to improve the health of all Texans.

Texas Highway Patrol Museum

The Texas Highway Patrol Museum, located at 812 S. Alamo St. in San Antonio, Texas, unveils its newest permanent exhibit, the "Hall of Fame" on November 18, 2000 with an induction ceremony beginning at 10 am.

Three individuals who have a combined service to the Department of Public Safety of over 70 years will be honored for their dedication. Former Chief of the Highway Patrol, L.G. Phares, and former DPS Director, Homer Garrison, will be inducted posthumously. Former DPS Director Wilson E. Speir, who currently lives in Austin, will also be inducted.

"This exhibit recognizes the achievements of this select group whose contributions to the Texas Highway Patrol have made it one of the most revered branches of law enforcement," said Senior Trooper and Museum Board Chairman Mark Lockridge.

The new exhibit will join the other permanent exhibits such as the "Hall of Honor", a tribute to the 75 troopers killed in the line of duty, the History of the Highway Patrol, and the Medal of Valor display. The "Hall of Fame" induction ceremony comes just over two years after the Museum's grand opening on June 6, 1998.

"Texas Highway Patrol officers put their lives on the line every time they leave for a day at work. Seventy-five officers have died in the line of duty since 1932. The Museum honors all troopers for their service and dedication to the citizens of Texas," said Lockridge.

Along with educating the public of the service and dedication of these officers, the Texas Highway Patrol Museum reaches out to the community with educational programs geared toward both teens and school-aged children.

PROPANE

MEETING ALL YOUR ENERGY NEEDS

WEST TEXAS GAS, INC.

Coleman • 625-2925
Ballinger • 365-2625
San Angelo • 651-4945

SANJAY MITTAL, M.D.

Board Certified in Internal Medicine

Flu Shots Now Available
Free Glucose, Blood Pressure & Cholesterol Screenings
Also Available.

**Robert Lee Primary Health
Care Center**

308 E. 3rd Street * Robert Lee, Texas

(Open every weekday afternoon, except Tuesday)

Call for appointment 915-453-9744

**RATLIFF DOZER
SERVICE**

Robert Lee, Texas
(915) 453-2407
877-383-8682

We specialize in
Oil Field Dirt Work • Roads
Built • Grubbing & Raking
Large or Small Acreage •
Stock Tanks Built & Cleaned

**2D-8DOZERS With ROOT
PLOW & RAKES**

BLACKWELL AUTO SERVICE

104 N. Highway 70
Blackwell, Texas
282-4024

Gasoline - Oil New Tire Sales Used Tires - Starting at \$15 Tire Repair Batteries Oil Changes	NO APPOINTMENT NECESSARY Credit Cards Accepted Hours • 7 am to 7 pm
--	---

* SNACKS *

Chips • Candy • Cold Drinks • Ice • Ice Cream
LOWEST CIGARETTE PRICES IN TOWN!

(Condado de) SAMPLE COUNTY, TEXAS
 NOVEMBER 7, 2000 (7 de noviembre de 2000)
 SAMPLE BALLOT (BOLETA DE MUESTRA)

INSTRUCTION NOTE: Vote for the candidate of your choice in each race by placing an "X" in the square beside the candidate's name. You may cast a straight-party vote (that is, cast a vote for all the nominees of one party) by placing an "X" in the square beside the name of the party of your choice. If you cast a straight-party vote for all the nominees of one party and also cast a vote for an opponent of one of that party's nominees, your vote for the opponent will be counted as well as your vote for all the other nominees of the party for which the straight-party vote was cast.

(NOTA DE INSTRUCCION: Vote por el candidato de su preferencia para cada candidatura marcando una "X" en el espacio cuadrado a la izquierda del nombre del candidato. Usted podrá votar por todos los candidatos de un solo partido político ("straight ticket") marcando una "X" en el espacio cuadrado a la izquierda del nombre de ese partido político. Si usted vota por uno de los partidos políticos y también vota por el contrincante de uno de los candidatos de dicho partido político, se contará su voto por el contrincante tanto como su voto por todos los demás candidatos del partido político de su preferencia.)

Candidates for: (Candidatos para:)	<input type="checkbox"/> REPUBLICAN PARTY (Partido Republicano)	<input type="checkbox"/> DEMOCRATIC PARTY (Partido Democrático)	<input type="checkbox"/> LIBERTARIAN PARTY (Partido Libertariano)	<input type="checkbox"/> GREEN PARTY (Partido Verde)	INDEPENDENT (Independiente)	WRITE-IN (Voto Escrito)
President and Vice President (Presidente y Vice Presidente)	<input type="checkbox"/> George W. Bush/ Dick Cheney	<input type="checkbox"/> Al Gore/ Joe Lieberman	<input type="checkbox"/> Harry Browne/ Art Olivier	<input type="checkbox"/> Ralph Nader/ Winona LaDuke	<input type="checkbox"/> Pat Buchanan/ Ezola Foster	<input type="checkbox"/>
United States Senator (Senador de los Estados Unidos)	<input type="checkbox"/> Kay Bailey Hutchison	<input type="checkbox"/> Gene Kelly	<input type="checkbox"/> Mary J. Ruwart	<input type="checkbox"/> Douglas S. Sandage		
United States Representative, District <u>17</u> (Representante de los Estados Unidos, Distrito Núm. <u>17</u>)	Darrell Clements	Charlie Stenholm	Debra M. Monde			<input type="checkbox"/>
Railroad Commissioner (Comisionado de Ferrocarriles)	<input type="checkbox"/> Charles R. Matthews		<input type="checkbox"/> Carolyn Fields	<input type="checkbox"/> Gary Dugger		
Railroad Commissioner, Unexpired Term (Comisionado de Ferrocarriles, Duración Restante del Cargo)	<input type="checkbox"/> Michael L. Williams		<input type="checkbox"/> Anthony Garcia	<input type="checkbox"/> Charles L. Mauch		
Justice, Supreme Court, Place 1 (Juez, Corte Suprema, Núm. 1)	<input type="checkbox"/> Nathan Hecht		<input type="checkbox"/> Mike Jacobellis	<input type="checkbox"/> Ben G. Levy		
Justice, Supreme Court, Place 2 (Juez, Corte Suprema, Núm. 2)	<input type="checkbox"/> Priscilla Owen		<input type="checkbox"/> Joe Alfred Izen, Jr.			
Justice, Supreme Court, Place 3 (Juez, Corte Suprema, Núm. 3)	<input type="checkbox"/> Al Gonzales		<input type="checkbox"/> Lance Smith			
Presiding Judge, Court of Criminal Appeals (Juez Presidente, Corte de Apelaciones Criminales)	<input type="checkbox"/> Sharon Keller	<input type="checkbox"/> Bill Vance				
Judge, Court of Criminal Appeals, Place 1 (Juez, Corte de Apelaciones Criminales, Lugar Núm. 1)	<input type="checkbox"/> Charles Holcomb		<input type="checkbox"/> Rife Scott Kimler			
Judge, Court of Criminal Appeals, Place 2 (Juez, Corte de Apelaciones Criminales, Lugar Núm. 2)	<input type="checkbox"/> Barbara Parker Hervey	<input type="checkbox"/> William R. Barr				
State Senator, District <u>24</u> (Senador Estatal, Distrito Núm. <u>24</u>)	Troy Fraser					
State Representative, District <u>72</u> (Representante Estatal, Distrito Núm. <u>72</u>)	Betsy Johnson	Robert A. Junell				
Justice, <u>3rd</u> Court of Appeals District, Place <u>1</u> (Juez, Corte de Apelaciones, Distrito Núm. <u>3rd</u> Lugar Núm. <u>1</u>)	David Puryear	Woodie Jones				
Justice, <u>3rd</u> Court of Appeals District, Place <u>2</u> (Juez, Corte de Apelaciones, Distrito Núm. <u>3rd</u> Lugar Núm. <u>2</u>)		Mack Kidd				
Justice, <u>3rd</u> Court of Appeals District, Place <u>3</u> (Juez, Corte de Apelaciones, Distrito Núm. <u>3rd</u> Lugar Núm. <u>3</u>)		Bea Ann Smith				
Justice, <u>3rd</u> Court of Appeals District, Place <u>4</u> (Juez, Corte de Apelaciones, Distrito Núm. <u>3rd</u> Lugar Núm. <u>4</u>)	Lee Yeakel					
District Judge, <u>51st</u> Judicial District (Juez del Distrito, Distrito Judicial Núm. <u>51st</u>)	Barbara Walther					
District Attorney, <u>51st</u> Judicial District (Procurador del Distrito, Distrito Judicial Núm. <u>51st</u>)		Stephen R. Lupton				
County Attorney (Procurado del Condado)		Nancy Firebaugh Arthur				
Sheriff (Sherife)		Rick Styles				
County Tax Assessor-Collector (Asesor-Collector del Impuestos del Condado)		D. Kristeen Roe				
County Commissioner, Precinct No. 1 (Comisionado del Condado Precinto Num 1)		Paul Burns				
County Commissioner, Precinct No. 2 (Comisionado del Condado Precinto Num 2)		Gaylon Pitcock				
Constable, Precinct No. 1 (Condestable, Precinto Num 1)		Kenneth Rasco				
Constable, Precinct No. 2 (Condestable, Precinto Num 2)		Russell Johnson				