

# THE OBSERVER/ ENTERPRISE

Serving Coke County

(USPS 467-480)  
(ISSN 8750-197X)

Vol. 108, No. 15

Friday, November 10, 1995

## County arrests listed

October arrests/charges filed in Coke County appear below.

Efren James Gloria, After hours consumption of alcohol, 10-1-95; Christopher Marquez, After hours consumption of alcohol, 10-1-95; Cecil Callaway, Theft: property by check, 10-5-95; Antonio Hinojosa, Jr., Driving while license suspended, 10-5-95; Mario Paul Montez, Public intoxication, 10-7-95; Clint Scott, Burglary of a vehicle, 10-12-95; Raynaldo Maldonado, DWI (1st), Driving while license suspended, 10-13-95; William Stallworth, Public intoxication, 10-13-95; Reymondo Gutierrez Montez, Public intoxication, Criminal trespass, 10-13-95; Charles Gregorio Charles, After hours consumption of alcohol, 10-14-95; Joe Flores, After hours consumption of alcohol, 10-14-95; Shawn Lewis Coppedge, After hours consumption of alcohol, 10-14-95; Mellisa Ellen Lozano, Minor in possession of alcohol, 10-15-95; Johnny Mack Cohlma, Minor in possession of alcohol, 10-15-95; Chuck Alan Fields, Making alcohol available to a minor, 10-15-95; Raymond Lane Smith, Driving while intoxicated, Violating terms & conditions of probation, Driving while intoxicated - Capias pro fine, Assault - Motion to revoke probation, Assault - Capias pro fine, Assault, family violence - Capias pro fine, Assault - motion to revoke probation, 10-21-95;

Joe Chad Wagley, Minor in possession of alcohol, 10-27-95; Blake Orland Payne, Minor in possession of alcohol, 10-27-95; Brenda M. Martin, No proof of liability - Capias pro fine, Failed to stop & leave information at scene of accident - Capias pro fine, 10-30-95;

### Out of County Warrants:

Yolanda Pam Smith, (Tom Green County Warrant) Driving while intoxicated - Capias pro fine, 10-22-95; Yolanda Pam Smith, (Tom Green County Warrant) Driving while intoxicated - violation of probation, 10-22-95; Teresa Lee Clawson (Taylor Co. Warrant) Theft by check, 10-29-95; Brenda Mae Martin (Runnels Co. Warrant) Theft of merchandise by check, 10-30-95; Brenda Mae Martin (Tom Green Co. Warrant) Theft Class B Checks, 10-30-95.

### Bronte Hunter's Barbecue

B&K Deer Processing and Bronte Chamber of Commerce hosted a barbecue for deer hunters this past Saturday and Sunday with good results. According to Kerry Hall, owner of B&K, approximately 400 hungry deer hunters were served barbecue sandwiches, smoked sausage and beans.

Hall stated that hunters brought in about 200 deer to be processed, indicating that this should be a good season for local hunters.



Shayne and Monte Briley of Winters enjoy barbecue at the Hunters Barbecue held last weekend at B&K in Bronte.



West Coke County Nursing Home residents cake walk at their Halloween Party last week, with the help of auxiliary members.

### RL Angel Tree Program

The Robert Lee community churches have joined forces to bring a little Christmas miracle into the lives of some special children this season. They are asking individuals who would like to give a gift to a child in need to pick out an "Angel". The "Angel" cards will be posted at Ace Hardware, The Carousel and Robert Lee State Bank beginning November 22. They will include gift suggestions, sizes, and the child's age. The names of the children and the person giving the gift will not be given. You then make your purchase, wrap it and return it to one of the trees by December 15. The committee will make the deliveries.

It is our hope that the spirit of Christmas will move us all to see that every child in Robert Lee has a gift to open Christmas morning.

### Coke County Bass Club

The Coke County Bass Club will hold its regular meeting on Tuesday, November 14, at 7:00 pm at Sunshine Gardens on Hwy. 158 West in Robert Lee. The Club is beginning its new fiscal year and is encouraging interested fishermen to join as members.

### WCCCD Hunters Barbecue successful

The 7th Annual Hunters Appreciation BBQ has come and gone with its usual success. Sponsored by the West Coke County Community Development in Robert Lee, the organization, its members, and volunteers fed 850 last Saturday night, according to BBQ chairman Bob Winkle.

The food was plentiful and no bottlenecks occurred during serving. Everything went smoothly, he said.

The Robert Lee-Silver Lions Club was raffling off a rifle during the BBQ. The drawing was held at 9 pm. David Miller of Abilene was the lucky winner.

### RL Elementary Drug Education

Clayton Haynes, of the U.S. Border Patrol will be conducting drug education classes to the fourth and fifth grade classes at Robert Lee Elementary. The program, called WADE (War Against Drugs Education) will be taught one day per week for five weeks.

Robert Lee ISD is proud to be in conjunction with Officer Haynes and the U.S. Border Patrol to combat drug use and abuse within the educational systems across the state.

### Third Thursday Dance

The Coke County Cavaliers will provide C&W music for the Third Thursday Dance at 7:30 pm on November 16 in Robert Lee. The event is open to dancers of all ages, and tickets are available at the door.

### RL Thanksgiving musical

A Thanksgiving musical, *Exalt His Name*, will be presented at Robert Lee Baptist Church on Sunday morning, November 12, at the regular 11:00 am service. Everybody is invited to attend.

### Runnels Baptist Assoc. to meet

The Runnels Baptist Association will meet for a world mission banquet, November 20 at First Baptist Church, Bronte. The executive board and WMU will meet at 6:00 pm. At 6:30 pm everyone will meet in the fellowship hall for the banquet.

The Associational WMU director, Mrs. Bobbie Elliott, is in charge of the program. Don Bass, missionary to Yemen, will be the guest speaker.

Church member families and youth mission groups are invited and welcome to attend.

**THE OBSERVER/ENTERPRISE**  
 Published Weekly Except Christmas  
 707 Austin (915) 453-2433  
 (USPS 467-480) (ISSN 8750-197X)  
 Second Class Postage paid at Robert Lee, TX.  
**POSTMASTER: Please send address changes to Observer/Enterprise**  
**PO Box 1329, Robert Lee, TX 76945.**

**STAFF**  
 Hal Spain, Publisher Jo Nell Blair  
 Joan Davis Angie Cox

**SUBSCRIPTION RATES**  
 Per Year in Coke County.....\$15.00  
 Per Year Elsewhere in Texas.....\$17.00  
 Per Year Outside of Texas.....\$20.00

**Death Notices**

**Norwood**

Cleta Joyce Norwood, 58, of Palestine, Texas died October 19, 1995, in Cartmell Home after a brief illness.

Services were held October 22 at 2:00 pm at Herrington Memory Chapel with Rev. Robert Rachuig officiating. Burial was in Land of Memory.

She is survived by her son, Richard Norwood, Jr. of Elkhart; daughter Jana Ramirez of Beaumont; brothers, O.C. Wojtek and Marlow Wojtek of San Angelo, Robert Wojtek of San Antonio, Frankie Wojtek of Eden and Victor Wojtek of Oklahoma City; sisters, Beatrice Cobb of San Angelo, Norma Montgomery of Robert Lee and Goldie Campbell of Ft. Worth; and seven grandchildren.

Pallbearers were Mark Meador, James Bruce, Harold Roper, Harold Petty, Brad Socia, and William Trimuar.

**Flowers**

Grady Clyde Flowers, 74, of Robert Lee died Saturday, November 4, 1995, in a San Angelo hospital.

Service was at 2:00 pm Tuesday, November 7 at the Southside Church of Christ with burial in Robert Lee Cemetery. Mike Talley, minister of the church, officiated the services. Arrangements were by Shaffer Funeral Home.

Survivors include his wife, Faye Flowers of Robert Lee; four sons, James Flowers of Midland, Ronnie Flowers of Kermit, Johnny Flowers of Hobbs, New Mexico, and Steve Flowers of Coahoma; a daughter, Ann Wiit of Tahoka; a brother, Ray Flowers of Longview; a sister, Joyce Lambrich of Tulsa, Oklahoma; 11 grandchildren; and 21 great-grandchildren.

**Meyers**

Kenith Meyers, 90, died Saturday, November 4, 1995

**Germania Insurance**

Covering Texas since 1896. Property, liability and life insurance

**Bill Carwile**  
453-2522

**Food Show**

**winner announced**

The Coke County Food Show was held on Saturday, November 4 at the courthouse. Five contestants participated in this year's event.

Cayla Jeffrey took top honors winning first place in the Intermediate division and "Best of Show" with her dish "Chicken Sopa". Other winners included: Jr. Main Dish: Blue ribbon - Nicole Sanchez; Jr. Snacks & Desserts: Blue - Stewart Millican, Red - Michele Sanchez; Intermediate Main Dish - Red - Whitney Millican.

Those representing Coke County at the District Food Show will be: Cayla Jeffrey, Nicole Sanchez, and Stewart Millican.

Contestants were provided gifts by West Texas Utilities and Adams Extract Company.



Five Coke County Food Show entrants participated in Saturday's show.

**Note signs of Alzheimer's**

Ethel's family knew something was wrong when she began asking the same question over and over at a family reunion.

Repetitiveness is just one of the early signs of Alzheimer's disease, says Dr. Rachelle Doody, clinical director of the Alzheimer's Disease Research Center at Baylor College of Medicine in Houston. Knowing these signs may help family members recognize the disease in a loved one.

Alzheimer's disease, a progressive loss of memory and other thinking abilities, is a degenerative disease of the brain's nerve cells. It generally affects persons over the age of 60 but may begin in the 40s or 50s.

Other early signs of Alzheimer's include difficulty remember recent information, losing track of time and frequent forgetfulness and disorientation.

"While everyone forgets things now and then, the person with Alzheimer's disease begins to lose the ability to retain new information," Doody said. "Memories of high school may be very clear, but present events are forgotten."

Family members may also notice confusion over the time of day or the day of the week. The affected person may have difficulty keeping on a schedule, such as taking pills or eating regularly.

in Baker-Brame Nursing Center in San Angelo. Graveside services were held in McLean, Texas Wednesday, November 8, in Hillcrest Cemetery. The Rev. Craig Meyers, pastor of St. Paul's Presbyterian Church, was the officiant.

His survivors include his wife, Helen, of San Angelo; one son, Rev. Craig Meyers; eight grandchildren, including John and Terri Organ of Robert Lee; sixteen grandchildren; and two great-great-grandchildren.

**Wrapping up for the holidays**

If you're looking for ways to save time this holiday season, why not pay someone to wrap those presents for you? If you have the presents wrapped in the store where you bought them, you will pay sales tax on gift wrapping. Consider taking the gifts to a wrapping shop because sales tax isn't collected for wrapping services. If you wrap the presents yourself, you'll have to pay sales tax on the wrapping paper, bows and tape.

When it's time to decorate for Christmas, you'll pay a sales tax on Christmas trees and decorations. The good news is that if you pay someone to set up decorations or string your lights, the service is not taxable. If the stringer has to trim limbs from trees, that service is taxable.

Looking to really surprise the family? Why not pay Santa to run around the house or sit and listen to the kids' secrets?

**Rice Farm Chinese Restaurant**  
**SUPER BUFFET**  
 ALL YOU CAN EAT  
 22 Different Entrees and 2 Soups  
 Plus Dessert and Salad Bar

7 DAYS BUFFET WEEKDAYS  
 Lunch - \$5.95 Dinner - \$6.95

WEEKEND  
 Dinner - \$7.95

**BEST CHINESE BUFFET IN TOWN**  
 YOUR GOOD HEALTH IS OUR MAJOR CONCERN  
 OPEN 7 DAYS A WEEK  
 (915) 949-9931

1801 Knickerbocker - San Angelo, TX 76904

Present this coupon at Rice Farm and receive a FREE drink with your meal.

"Forgetfulness and disorientation that starts to occur more frequently is not just a normal part of aging," Doody said.

Doody urges family members who recognize these early indicators to seek help.

"There is no simple test to diagnose Alzheimer's disease," Doody said. "However, there is a standardized evaluation process that has an accuracy rate of up to 95 percent."

The standard evaluation for Alzheimer's disease includes:  
 - A complete medical history including all conditions and medications.

- A complete neurological examination to assess thinking ability, as well as eye and ear function, coordination, balance, sensation and motor strength.

- Memory and thinking tests.

- Blood tests.

- Magnetic resonance imaging (MRI) or other brain imaging.

- A chest x-ray and electrocardiogram.

Sometimes additional tests, such as a lumbar puncture, electroencephalogram or SPECT (Single Photon Emis-

sion Computed Tomography) study, are needed.

"This combination of tests helps to rule out other possibilities and looks for reversible causes of the dementia," Doody said. "This evaluation is becoming the standard internationally. In experienced hands, it is very accurate."

Doody recommends that family members seek out one of the 28 Alzheimer's centers sponsored by the National Institutes of Health. These facilities provide clinical care and research.

"At present there is no treatment to stop or reverse the disease," she said, "but large-scale drug studies at these centers are evaluating drugs to improve symptoms and slow progression."

**Fight Lung Disease With Christmas Seals®**

When You Can't Breathe, Nothing Else Matters®

AMERICAN LUNG ASSOCIATION. 1-800-LUNG-USA

**NEW 1996's Ready To Roll**

**1996 Neon \$10,995**

5 Spd., Air, P. Steering, Dual Air Bags

**1996 Grand SE \$23,750**

7 Pass., Dual Sliding Drs., Dual Air, P. Win./Locks

- 2 1996 Club Cabs
- 1 HD 3/4 T., CTD
- 1 HD 3/4 T., CTD, 4x4
- 2 1996 Mini Vans
- 2 1996 Dodge Avengers
- 2 1996 Neons
- 1 1996 Dodge Stratus

All 1995 Year Models Discount Priced to Save \$\$\$

Open 9-5 on Saturday

**SNYDER**

CHRYSLER\*PLYMOUTH\*DODGE\*JEEP\*EAGLE, INC.  
 Snyder Traffic Circle 574-6886

**ECC Ambulance donations**

The following donations and memorials were reported by East Coke County Ambulance Service for the month of October.

**Donation** - Otis and Flora Smith

**Memorials**

**Bill Feil**

Joe and Glenda Draper, Benny and Jackie Corley, Virginia Boatright, Billy and Charlotte Tounget, Directors, Officers, and Employees of First National Bank in Bronte

**Inez Ellis**

Keith and Lanette Fletcher, Bruce and Fran Sonnenberg, Benny and Jackie Corley, Virginia Boatright

**Sharon Brunson**

Alonzo and Kay Robbins

**Lorena Hubbert**

J.B. and Martha Arrott

**C.G. Parsons**

Larry and Merle Kelso

**D.K. Bowman**

Virginia Boatright

**Ruby Blackmon**

Richard and Peggy Hem-bree, Alonzo and Kay Robbins, Helen Murtishaw, Larry and Merle Kelso

**Pearl Bradshaw**

Virginia Boatright

**Walter Jones**

Bruce and Fran Sonnenberg, Mack and Gwen Baker, Billy and Charlotte Tounget, Ray and Brenda Barnett, Donnie and Dee Anna Thompson, Wendell and Jeanna Lee

**Bill Westbrook**

Mack and Gwen Baker

**Hazel Percifull**

Helen Murtishaw, Kim Jan-cha

**Fred McCabe, Jr.**

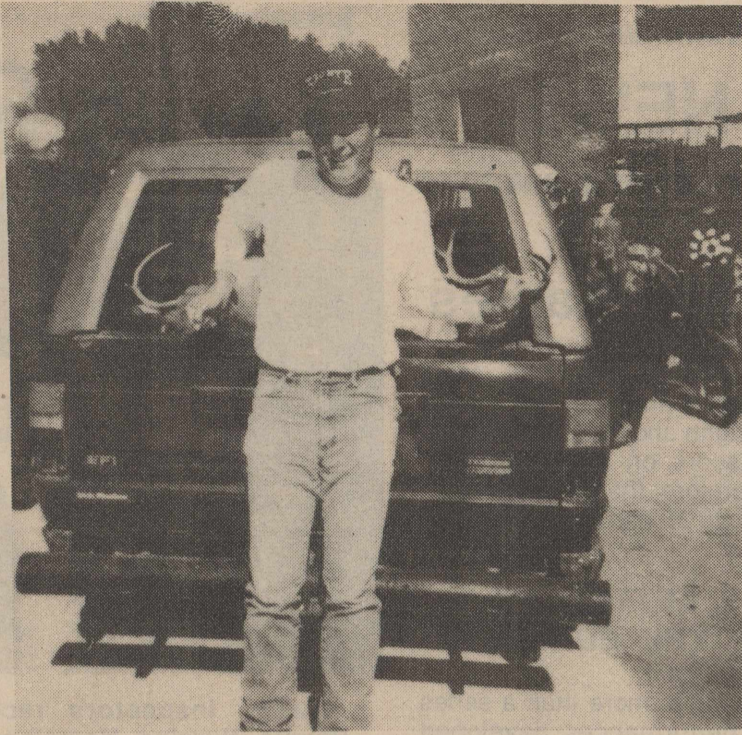
Larry and Merle Kelso

**Ruth Villaret**

Christine Corley, J.B. and Martha Arrott

**Tereso Charles**

Directors, Officers and Em-



Terry Myers of Bronte shows off racks on a couple of nice bucks he took during the first weekend of deer season.

ployees of First National Bank in Bronte

**Ben Wilcox**

Bruce and Fran Sonnenberg, Keith and Lanette Fletcher, Friendship Sunday School Class of First Baptist Church, Bronte, Billy and Charlotte Tounget, Ray and Brenda Barnett, Mack and Gwen Baker

**Virginia Snead**

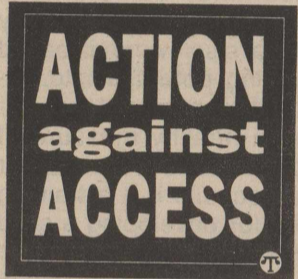
Billy and Charlotte Tounget, Royce and Jean Fancher, Lois Wallace, Joe and Glenda Draper, Geneva Minnick, Norma Gentry, Jo Ann Hutchinson, Elmer and Janet Hurley, Virginia Boatright, Jerry and Sug Lawhon, Mrs. Conn Johnson

**Lila King**

Pat and Ken Martindale, Joe and Glenda Draper, Geneva Minnick, Directors, Officers and Employees of First National Bank in Bronte, Billy and Charlotte Tounget, Jerry and Sug Lawhon

**Did You Know?**

(NAPS)—Laws have been passed in all 50 states making it illegal to sell cigarettes to minors.



This law was supported by a cigarette company that is now doing even more. Philip Morris USA has launched a ten-step program called Action Against Access to make it as difficult as possible for minors to purchase cigarettes.

FOOD STAMPS WELCOME



LIMIT RIGHTS RESERVED

501 Commerce - Robert Lee, TX

Store Hrs: Mon.-Sat. 8-8 Sun. 8-6

SPECIALS GOOD 11/8 Thru 11/14

IGA Tablerite Fresh

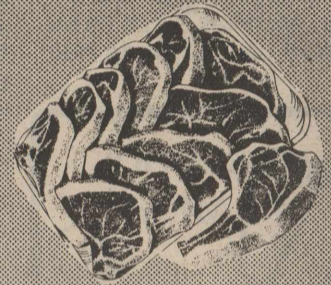
Picnic Roast

Lb. .79

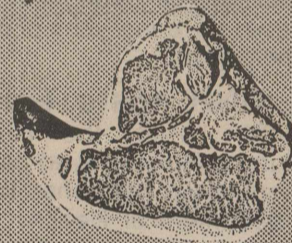


Family Pak Assorted

Pork Chops Lb. 1.59



IGA Tablerite Center Cut Pork Chops Lb. 1.99



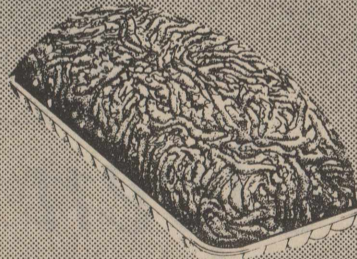
Wright's Sliced Slab Bacon

Lb. 1.29



Fresh Family Pak Ground Chuck

Lb. 1.39 3 Lbs. or More



IGA Tablerite Country Style

Pork Ribs Lb. 1.19



**BOB WRINKLE'S ACE HARDWARE**

416 Commerce Robert Lee, TX 915-453-2414

**S&S PRINTING & SUPPLY**

117 W. Main Bronte, TX 915-473-2001 & 473-2020

**THE TOWER IS UP!!!**

CELLULAR ONE NOW HAS COVERAGE IN COKE COUNTY!

We will have

CELLULAR ONE REPRESENTATIVES out of the San Angelo Office at each of these locations on FRIDAY, NOVEMBER 10th, from 8:00 am until 5:30 pm.

- 1) Phones as Low as \$19.00!
  - 2) If You have your Own Phone:
    - >Receive 2 FREE Months of Service!\*
    - >No Activation Fee!
  - 3) NO ROAMING in CONCHO VALLEY, BIG COUNTRY, PERMIAN BASIN, SOUTH PLAINS, TRANS-PECOS, AND SOUTHEASTERN NEW MEXICO!
- Come by and see us today for information on our service.  
\*Restrictions Apply

# BRONTE SCHOOL NEWS

## Longhorns defeat Sterling City Eagles

The Longhorns have gone 2-2 in district play after defeating Sterling City. In the first quarter Nicholas Arrott completed a pass to Keith Treadaway in the end zone for Bronte's first touchdown.

Arrott also passed to Kale Beck for the 2 point conversion. Cody Holland made an outstanding catch at the end of the first quarter after it was deflected by Sterling City.

In the second quarter, the Longhorns were very strong defensively. Russel Vaughn intercepted a Sterling City pass while Darrel Sharp and Kale Beck were among the strong defensive line preventing Sterling City from scoring.

At the beginning of the 3rd quarter, Nicholas Arrott threw a 25 yard pass to Cody Hol-

land and scored another Longhorn touchdown. On a handoff from Arrott to Michael

Sallee, Sallee was able to run 20 yards for another touchdown. Sterling City scored 2 points this quarter with a safety.

### BISD plans "Red Ribbon Days"

November 6 and 7 Bronte High School's Student Council met and planned 3 days of drug free activities entitled "Red Ribbon Days". These days include November 16th, 17th, and 20th.

November 16th is decoration day. Every class will make a sign and decorate the halls. This will be a competition and award certificates will be given to the classes with the best sign. The categories will be: K-2, 3-5, 6-8, 9-12. Also certificates will be given to all businesses who decorate.

November 17th will be "Wear Red Day". Each class will have a winner; the one who wears the most red.

On November 20th there will be a parade from the school down to the mini-park. The council will have a drug awareness speaker at the park. The signs from each class will be judged at the parade, so bring your signs to the parade.

### BNH hosts TDH

Last week the Bronte Nursing Home played host to inspectors from the Texas Department of Health. The inspectors were visiting the 24 bed addition. TDH tentatively approved the building with some adjustments needed. It will be approximately two more weeks before patients will be allowed to move in. Open house will be Sunday, December 10, 1995 from 2:00 to 5:00 pm. The public is invited to attend.

In the fourth quarter, Arrott pitched the ball to Russel Vaughn and Vaughn was able to score on a 15 yard run. Therefore, the final score was Bronte 26 and Sterling City 2.

### LETTER TO THE EDITOR

Dear Editor,

Band is more than a series of performances developed through an ongoing rehearsal schedule. It may appear we are simply completing one event and immediately starting to prepare for the next. Although we do maintain a busy schedule, there is a higher learning taking place that will benefit your son/daughter in all of life, which is discipline. We all know young people possess unlimited potential for learning, achievement, and personal success. Every individual's self-worth is based on turning potential into accomplishment, and that requires a healthy measure of discipline. Band is a metaphor of life because it is a training ground for developing a solid pattern of personal discipline habits. Band is a collection of artistic values clearly defined and ultimately achieved. This process unlocks the power of commitment, puts human will in action, develops a positive attitude, controls negative thinking, encourages success, and deters failure. The study of music is a link between inspiration and value achievement; it is a bridge between thought and accomplishment, between ideas and results. This explains the impressive correlation between music study and academic achievement. Our band members are clearly experiencing the value of discipline driven by inspiration, enticed by desire, tempered by reason, and guided by intelli-



T.D.H. inspectors recently paid a visit to Bronte Nursing Home's new addition. Touring the facility were (l-r), Pete Barbee, I.N.C.A. Fire Alarms, Mark Burk, construction manager, Paul Rheinlander, architect, Louis Cornoyer, engineer, and George Eubanks, Maintenance Supervisor.

gence. Band is grooming them for successful living. Your child's participation in band is so much more than performance preparation; it reinforces the importance of self-discipline as the fundamental of healthy self-esteem, group pride, personal satisfaction, and aesthetic joy. Being in the band is teaching him/her how to master the circumstances of life by putting ambition and skill into action.

We will all enjoy seeing you at our next band parent meeting, Nov. 21st (Tuesday) at 8 pm in the band room.

On behalf of our students,  
George Tomes  
Director of Bands  
*"The art of music is so deep and profound that to ap-*

*proach it very seriously only is not enough. One must approach music with serious rigor and, at the same time, with a great affectionate joy."*

Nadia Boulanger

### Poetry Society holds competition

Modern Poetry Society is seeking new poetry for publication. Awards will be made, including \$500 for best overall, \$100 each for best in any category (12 categories), \$25 merit awards (minimum of ten \$25 awards, more added as merited). Poems must be 25 lines or less, any form; one poem per author; original works only, not previously published. Send poems to: Modern Poetry Society, PO Box 2029, Dunnellon, FL 34430.



#### Breakfast

**Monday, Nov. 13**  
Cereal, Diced Peaches, Biscuit, Milk.

**Tuesday, Nov. 14**  
French Toast, Mixed Fruit, Milk.

**Wednesday, Nov. 15**  
Sausage, Orange Juice, Pancakes, Milk.

**Thursday, Nov. 16**  
Breakfast Pizza, Grape Juice, Milk.

**Friday, Nov. 17**  
Cereal or Oatmeal, Apple-sauce, Cinnamon Toast, Milk.

#### Lunch

**Monday, Nov. 13**  
Pizza, Tossed Salad, Applesauce, Ranch Style Beans, Chocolate Pudding, Milk.

**Tuesday, Nov. 14**  
Burrito, Chili & Cheese, Buttered Corn, Tossed Salad, Green Grapes, Jello, Milk.

**Wednesday, Nov. 15**  
Spaghetti w/meat sauce, Tossed Salad, Mixed Fruit, Bread Sticks, Oatmeal Cookies, Milk.

**Thursday, Nov. 16**  
Baked Turkey & Ham w/gravy, Mashed Potatoes, Green Beans, Cranberry Sauce, Rolls, Pumpkin Pie, Milk.

**Friday, Nov. 17**  
Submarine Sandwiches w/ham & cheese, Lettuce, Tomato, Pickles, Pork & Beans, Orange, Bun, Chips, Ice Cream Cups, Milk.

**PARKER PLUMBING**  
Residential-Commercial  
All Types Plumbing Repair

- \*New Construction
- \*Remodeling
- \*Fixtures
- \*Sewer Service

Licensed Master Plumber  
473-2131 Bronte

**Open House**  
*Wayne & Shaye Coalson*

\*\*\*Friends & Neighbors Welcome\*\*\*

Sunday, November 12th  
2:00 - 4:00 pm  
Come & Go

**GLENN-BIVINS INSURANCE**  
Home, Auto, Life, and Health

123 W. Main Bronte 473-6791

**All-Star Teamwork**

For a limited time only, you can also get a Texas Travelin' Tote Phone for only

- ★ Great Rates
- ★ Safety
- ★ Convenience
- ★ Peace of Mind

**\$49<sup>95</sup>**

Great cellular communication and service from your local cellular provider!

**TEXAS CELLULAR.**  
A service of Taylor Telecommunications, Inc.

Call Anytime.

Snyder  
2403 W. 25th St.  
(915) 573-2424

Roy Blair, Agent  
Robert Lee  
824 Austin  
(915) 453-2380

Sweetwater  
1901 Bristol  
(915) 235-4377

★ Certain Restrictions Apply

# BRONTE LONGHORNS FOOTBALL

Friday, November 3  
7:30 pm THERE

**BRONTE  
LONGHORNS**  
vs.  
**Water Valley Wildcats**

## Bronte Longhorn Football Schedule

DATE	OPPONENT	SITE	TIME	SCORE
Sept. 8	Cross Plains	Here	8:00	35   13
Sept. 15	Miles	There	8:00	31   6
Sept. 22	Roby	Here	8:00	14   25
Sept. 29	Santa Anna	There	8:00	27   6
**Oct. 6	Menard	Here	8:00	7   0
*Oct. 13	Robert Lee	There	7:30	12   21
*Oct. 20	Roscoe	Here	7:30	8   38
*Oct. 27	Garden City	There	7:30	30   8
*Nov. 3	Sterling City	Here	7:30	26   2
*Nov. 10	Water Valley	There	7:30	

\*\*Homecoming  
\*District



**Texas Best De-flooding &  
Carpet Cleaning**

Bob & Patti Frazee

**D's Total E. Clipse**

Donna Hall - Donna Scott

**Jim & Jessie Lammers**

**S&S Printing & Supply**

Bruce & Fran Sonnenberg

**Bronte Chamber of  
Commerce**

James & Brenda Tidwell

Billy Joe & Diane Lockett

**Shaffer Monument Company**

Margaret's Flowers & Gifts

Eddie & Earlene Alexander

**Hurley Pharmacy**

Hope you have a winning season!

**Glenn-Bivins Insurance Co.**

Marilyn, Garry, Shalon & Mary

**Wackenhut Corrections**

We Support The Longhorns

**All American Security**

James & Katy Chambers - Tennyson

**Joni Lyn Sportswear**

Cheering The Longhorns

**Hometown Hardware**

Feed & Supply - ACCO & Alderman Cave Feeds

**Arrott Ranches**

Nick & Linda LeDrew & Bobbie Mike & Andra

**Lone Star Maintenance**

Danny & Roenna

**Key Feed Store**

**Ranchland Restaurant**

**Bell Auto Parts**

**& Body Shop**

Jim & Beverly Bell

**Butane Sales Company**

Doug & Grace Ditmore

**Bob Wrinkle's**

**Ace Hardware**

416 Commerce - Robert Lee

**Coke County Judge**

Jackie Walker & Rosa Long

**Askins Propane Co. &**

**Coke Co. Feed & Supply**

Charlie, Raynelle, Foy, Estelle & Rhonda Askins

**Hall's Super Save Foods**

**Red Barn Barbecue**

**First National Bank**

in Bronte

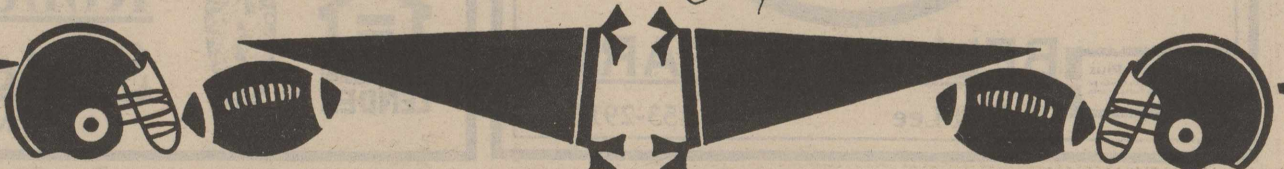
Member FDIC

**Kenneth's Kuts**

We do it right.



*Jimmy Graves Blake Hoyt Cory Kolbrinson Ann Cooper David Wilson Russell Vanhook  
 Daniel Sharp Dustin Johnson Billy Arthur Cody Holland Nick Anott Skealitt  
 Benjamin Hobbes KALE BECK Drew Pitt Rod Harrell Michael Blair Michael Sallee  
 Brent Sanders Cody Harris Dustin Scoll Dustin Holland Corey Galt  
 Courtney Beam DUSTY WHITE Chris Keller  
 Coach McLatchey Gary Walker Coach Bawls*



# ROBERT LEE SCHOOL NEWS

## Steers lose tough contest to Plowboys

by Bill Burns

The Steers lost their first regular season game in 34 games last Friday night against the Plowboys of Roscoe. The Steers were out-sized by Roscoe, but they certainly were not out-classed. They fought a battle against great odds and proved they could stay on the field with any team.

### 1st Quarter

Roscoe received the opening kick and started a good drive but that came to an end when the Steers knocked the ball loose and Marc Owen recovered the fumble. Roscoe managed two T.D.s in this quarter but that would be the only T.D.s for Roscoe on the night.

### 2nd Quarter

This quarter belonged to the Steers as Jason Key intercepted a Roscoe pass that started a T.D. drive for the Steers. Eli Boxell completed

a 20 yard pass to Daniel Hayes to get the penetration and Jerrod Copeland ran the final four yards for the Steer T.D. Gilbert Torres kicked the extra point for the Steers. Daniel Hayes intercepted a pass that ended the half. RL -7, Roscoe -14.

### RL Cross Country

The Robert Lee boys cross country team, consisting of Rocky Coates, Fred Wojtek, Starsky Oleksiuk, Kelly Prine, Polo Arellano, Chad Helwig, and Matthew Millican, competed at Lubbock last Saturday morning at 8:00 am. These boys gave up many Saturday mornings this year to run and have represented Robert Lee High School well.

Heather Millican also qualified to run at the Regional I Cross Country meet at Lubbock. Heather finished seventh to qualify to run again at the State Cross Country meet this Saturday in Georgetown. The Class A division girls will start at 12:30 pm. Heather has had a very successful year this year including setting the school record of 12:26 for a 2 mile course at district. Best wishes go to Heather as she leaves Friday for Georgetown.

### Dogies fall to Roscoe

by B.J. Bessent

The Dogies traveled to Roscoe last week. They experienced a tough loss. The Dogies scored on their first possession. It was on a run by Andrew McCabe. McCabe also got the two point conversion. The Roscoe Plowboys scored three times before the final buzzer. The final score was Dogies - 8, Plowboys - 20. This puts this year's record at 4-3.

The Dogies host the Sterling City Eagles. They will play Thursday. Come out and support the Dogies. Go Dogies!

### 2nd Half

The Steer defense stopped Roscoe on several key situations, but they did give up one field goal that was the final score of the game. RL - 7, Roscoe - 17

**Steers, this might have been the best game so far this year. Hang Tough!!!**

### RL Seniors hold Spirit Rally

Twenty-one Seniors and their parents enjoyed a cold "Smash the Plowboys" activity in the County Livestock Show Barn on Thursday night before the big game on Friday. Hot chocolate was served to everyone while the mighty Steer Seniors showed their other talents besides their heroic football talent. Even some of the fathers showed their TALENTS. Bill Hood got involved in the action with his always-surprising speeches. A good time and a lot of laughter was enjoyed by all who attended.

### RL Accelerated Readers listed

Winners in Robert Lee Elementary's accelerated reading program for the month of October were named recently. Each winner received an award from Robert Lee State Bank. Winners for the month are:

- 2nd Grade (Horn) - Cassidy Wink, Shawna Seals, and Eric Ortega.
- 2nd Grade (Randolph) - Kyla Millican and Manuel Alcantar.
- 3rd Grade (McCown) - Julie Riley and Abraham Flores.
- 3rd Grade (Devoll) - Ruben Torres.
- 4th Grade (Davis) - Jessica Fluhmann and Preston Francis.
- 5th Grade (Bessent) - Matthew Boone.
- 5th Grade (Wilson) - Cooper Riley.
- 6th Grade (Burns) - Rachelle Mills.



RL Elementary Accelerated Reader winners for the month of October show off the prizes they received from Robert Lee State Bank.

### Holiday meals can be taxing

The holidays are fast approaching. Time to start pulling out the Thanksgiving and Christmas decorations and planning those holiday meals.

You can buy canned or whole pumpkins and you won't pay sales tax on this oversized fruit. Whole pumpkin pies will not be taxable unless they are sold with plates or forks. If you buy a piece of pumpkin pie in a restaurant you'll have to pay sales tax.

Consider using a fruitbowl centerpiece; you won't have to pay sales tax on the fruit. If your holiday decorations include gourds you'll have to pay sales tax on them.

The ingredients for holiday are not taxable unless dinner

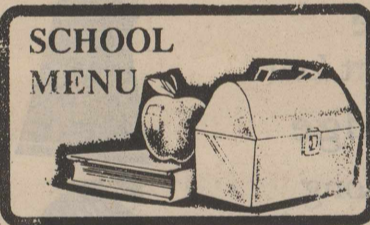
happens to be a Coke and a candy bar, both of which are taxable. If you decide not to cook and buy a pre-packaged dinner to take home, you will not have to pay sales tax, unless it comes with eating utensils or is sold hot and ready to eat.

You'll also have to pay sales tax on salads and entrees that are sold with eating utensils.

Thinking of having a turkey or ham smoked for that holiday dinner? You don't have to pay sales tax for having the meat smoked, unless the meat is kept hot or served with eating utensils. For dessert, go ahead and order or buy that fruit cake; you won't have to pay sales tax on it.

### Steer fans parking at SC

Robert Lee Steer fans need to park on the east side of Eagle Stadium Friday night. The parking lot on the hill next to the swimming pool will be for Robert Lee Steer fans. Let's all go to Sterling City Friday night and support the Steers!



- Breakfast**
- Monday, Nov. 13  
Breakfast Burrito, Orange Juice, Milk.
  - Tuesday, Nov. 14  
Donuts, Cold Cereal, Orange Juice, Milk.
  - Wednesday, Nov. 15  
Cinnamon Toast, Cold Cereal, Orange Juice, Milk.
  - Thursday, Nov. 16  
Breakfast Bagel, Orange Juice, Milk.
  - Friday, Nov. 17  
Breakfast Pizza, Orange Juice, Milk.

- Lunch**
- Monday, Nov. 13  
Frito Pie, Chili Beans, Buttered Corn, Crackers, Applesauce, Milk.
  - Tuesday, Nov. 14  
Salisbury Steak, Sliced Potatoes, Buttered Carrots, Buttered Rolls, Fruit Cocktail, Milk.
  - Wednesday, Nov. 15  
Grilled Cheese Sandwich w/pickles, French Fries, Peaches, Milk.
  - Thursday, Nov. 16  
Turkey and Giblet Gravy, Creamed Potatoes, Buttered Green Beans, Rainbow Jello, Buttered Rolls, Cranberry Sauce, Milk.
  - Friday, Nov. 17  
Hot Dogs w/chili & cheese, Tator Tots, Pork & Beans, Fruit, Milk.

**WINK INSURANCE AGENCY**  
Home\*Auto  
Life\*Commercial  
715 Austin - 453-4551

**TEXAS RECYCLES DAY**  
NOV. 15

**BELL AUTO PARTS**  
Robert Lee 453-2911

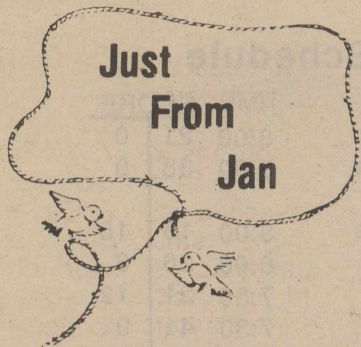
?

Have you ever thought about how many dollars stay at home when you buy a new vehicle locally, register it at our courthouse, insure with a local representative, and finance your vehicle with your home-town bank?

We're your home-town bank with low financing rates and courteous, home-town service.

**Robert Lee State Bank**  
Member FDIC





by Jan Yanez  
Coke County  
Ext. Agent

**Cooking big game**

Game meat differs in flavor from domestic meat, with each species of game having its own distinctive flavor and aroma. Flavor is more strongly marked in older and more active animals, in the more exercised muscles and in the fat of the animal.

The success of cooked game depends to a great extent on the treatment the animal received when killed. If the hunter properly cares for the game after it is killed, the homemaker can prepare delicious and palatable game.

Game meat adds variety to meals and is high in nutritive value. It is an excellent source of high-quality proteins, fats, minerals, iron, copper and

phosphorus and the B vitamins thiamin, niacin, and riboflavin.

Fresh and properly handled game meat can be tender and palatable when cooked by dry or moist heat. The method of cooking is determined by the quality and tenderness of the carcass.

Young and tender game is best cooked by dry heat such as roasting, broiling, pan-broiling, and frying. Dry heat preserves flavor and insures tenderness. Basting with additional fat may be necessary if the meat is lean.

Old and less tender game is best when cooked by moist heat such as braising, stewing and simmering. Swiss steaks and pot roasts are cooked by

braising. Add a small amount of liquid to the meat which is cooked in a covered container. Stews, fricassees and boiled game are prepared by simmering (not at boiling point) in hot liquid which partially or completely covers the meat. With moisture, the high temperature necessary to soften the connective tissues can be obtained.

Parboil only strong game to reduce flavor if a strong game flavor is objectionable. Parboiling well-conditioned carcasses will remove some of the soluble nutrients and produce a mild game flavor.

The strong, gamey flavor some people find objectionable is concentrated in the animal fat. To reduce this flavor, remove fat in more mature, highly fattened carcasses.

Many people prefer to marinate meat from more mature animals to reduce gamey flavor and make the meat more tender. A marinade is made by combining one-fourth part vinegar, three-fourths part water, sugar and seasoning. Place meat in the solution and refrigerate for 72 hours or

longer.

The nutrient content of lean domestic and game meats are as follows: Whitetail Deer - 23.6g protein, 1.4g fat, 116g cholesterol; Mule Deer - 23.7g protein, 1.3g fat, 107g cholesterol; Elk - 22.8g protein, 0.9g fat, 67g cholesterol; Wild Turkey - 25.7g protein, 1.1g fat, 55g cholesterol; Wild Pheasant - 25.7g protein, 0.6g fat, 52g cholesterol; Dove - 22.9g protein, 1.8g fat, 94g cholesterol.

With some of your "big kill" this deer season, try the following delicious recipe for **Deer Summer Sausage:**

- 2 lbs. meat, ground
- 3 Tbs. Morton's Tender-Quick salt
- 1/2 tsp. Allspice
- 1 1/2 tsp. Liquid Smoke
- 1 tsp. red pepper
- Coarse Black Pepper to taste
- Garlic to taste
- 1/2 tsp. Mustard Seed
- 1 cup water

Mix ingredients in large bowl. Add 2 pounds ground deer meat and mix well. Grind meat and spices 2 times. Add the 1 cup water after second grinding. Mix together with hands. Roll into a 1 pound roll. Wrap in foil, shiny side in-

side. Place in refrigerator 24 hours.

To cook, punch holes in foil; place on baking sheet for 3 hours at 250 degrees. Unwrap or open foil and cook 30 minutes at 350 degrees. Let cool and unwrap.

**LOOK WHO'S NEW  
Cody Anderson  
Halfmann**

Ricky and Becky (Clendennen) Halfmann are the proud parents of a new baby boy, Cody Anderson. Cody arrived at 11:42 am Wednesday, October 25. He weighed 6 lbs. 14 1/2 oz. and was 19 1/4 inches long.

Grandparents are Allen and Carole Clendennen of Robert Lee and Delbert and Betty Jean Halfmann of St. Lawrence. Great-grandparents are Mr. and Mrs. Ernest Clendennen of Robert Lee, Mr. and Mrs. Bill Farmer of Granite Shoals, Mrs. Lawrence Hoelscher of St. Lawrence, and Mr. and Mrs. Leo Halfmann of Rowena. Cody is also blessed with several aunts, uncles, and cousins.

# Wherever You Are In West Texas, Shannon Is Nearby.

From Coleman to Menard, Big Spring to Brady, Shannon Health System is close by and convenient. That's because our regional clinics bring quality healthcare to where it's needed, to towns and communities across West Texas.

**Call The Clinic Nearest You For More Information.**

- Ballinger** Ballinger Memorial Hospital Clinic, 604 Avenue B, 915-365-5761  
Ballinger Rural Health Clinic, 302 N. 3rd., 915-365-5737
- Big Spring** Family Medical Center, 2301 S. Gregg Street, 915-267-5531
- Brady** Brady Regional Health Center, 2006 Old Nine Road, 915-597-3471
- Coleman** Coleman Doctor's Clinic, 2310 S. Concho, 915-625-3516
- Menard** Shamrock Clinic of Menard, 110 E. San Saba, 915-396-4612
- Robert Lee** Shamrock Clinic of Robert Lee, 722 S. Washington, 915-453-4516
- San Angelo** MedPlus™ Occupational Health Center, 3280 Sherwood Way, 915-947-8500  
Shamrock Clinic North, 2239 N. Bryant Blvd., 915-658-7561  
Shamrock Clinic South, 4208 S. College Hills Blvd., 915-942-8611
- Sterling City** Shamrock Clinic of Sterling City, 305 5th Street, 915-378-2112

**Part Of The Shannon Health System.**



In the event of more serious injury or illness, a Shannon Regional Clinic can call on the full resources of Shannon Health System. For example, Shannon's Medivac I air ambulance is available to airlift patients in an emergency directly to Shannon Medical Center or other medical facilities.

Wherever you live in West Texas, don't settle for anything less than Shannon Health System. We're pioneering a new health system in West Texas, with Shannon Clinic, Shannon Health Plan, Shannon Regional Clinics and Shannon Medical Center, forming the area's first integrated network of high quality, affordable healthcare services.

Shannon's network of regional clinics covers a 19-county area of West Texas.

Big Spring Family Medical Center ★  
Shamrock Clinic of Robert Lee ★  
Shamrock Clinic of Sterling City ★  
San Angelo ★  
MedPlus™ Occupational Health Center  
Shamrock Clinic North  
Shamrock Clinic South  
Coleman Doctor's Clinic ★  
Ballinger Memorial Hospital Clinic  
Ballinger Rural Health Clinic ★  
Brady Regional Health Clinic ★  
Shamrock Clinic of Menard ★

**SHANNON HEALTH SYSTEM** *Healthcare Pioneers of West Texas*

120 East Harris Avenue, San Angelo, Texas 76903  
657-6222 • 800-640-6222 (outside of San Angelo)



### Preparing pumpkin dishes

Pumpkins usually get a lot of fanfare this time of year by either wearing a funny smile, loafing around or settling down into a pie plate. But some of its best dishes are rarely prepared.

A member of the gourd family and cousin to the squash, pumpkin is versatile. It can be baked, boiled, canned, and frozen. Pumpkin can be sieved, stewed, mashed, fried in egg and crumbs or baked au gratin. Even the seeds can be cooked to make a delicious snack. Better yet, it's good for you.

"One-half cup of cooked pumpkin supplies enough vitamin A for one day's needs and small amounts of iron, thiamin and riboflavin," said Dr. Dymple Cooksey, nutrition specialist with the Texas Agricultural Extension Service. "It's also low in calories. A half cup of unseasoned pumpkin contains only 38 calories."

However, pumpkin is highly perishable and must be cooked the same day it is cut open, Cooksey said. Otherwise, count it as food waste

since the insides quickly mold to a feathery black.

Cooked pumpkin should be chilled immediately, she said. The pulp puree should be used within 36 hours.

"If you plan to use the cooked pumpkin later, freeze it or can it in a pressure canner," she said. "The family and consumer sciences county Extension agent in your area can provide information on safe and proper canning procedures."

Fresh pumpkin is ideal as a substitute for winter squash or sweet potatoes in meals, Cooksey said. It also makes a variety of delicious treats that are easy to make:

\* Vegetable dish - Cut pumpkin in chunks and steam. Then add butter, salt and pepper and other seasoning. A touch of nutmeg will add a great flavor.

\* Pot pie - Add pumpkin to hashed meat with apples, pears, rhubarb or other fruits.

\* Casserole - Combine pumpkin with rice and minced green pepper in a thick white cheese sauce.

\* Soup - Add pureed carrots, sliced onions and leeks, chopped celery and parsley to pumpkin.

\* Souffle - Mix pumpkin with white sauce, eggs and cheese.

\* Stuffed - Pumpkins may be stuffed with meat, vegetables or seafood.

Those who like the taste of summer squash can either bake or broil pumpkin, Cooksey said. If baking, during the last 15 minutes in the oven, turn flesh side up and brush with butter, honey and your favorite spices. Add nuts, raisins, sunflower seeds or other ingredients.

Instead of throwing away the seeds, try them as a snack. Wash the seeds well. Spread them in a single layer on cookie sheet to dry. Then, roast them at 375 degrees F. for 20 to 30 minutes or until they are dry. Dot with butter and brown for 5 to 10 minutes at 400 degrees. Stir often until toasted. Sprinkle with salt, cool and serve.

To prepare curried pumpkin seeds, in a saucepan, mix one-fourth cup of curry powder, one-fourth cup warm water, 1 clove garlic (finely minced), 1 teaspoon salt and the juice of 1 lime. Blend until smooth. Add 1 cup water and heat, stirring constantly until

liquid simmers. Add 2 cups plain, hulled pumpkin seeds and simmer (do not boil) for 5 minutes. Drain. Spread pumpkin seeds on a cookie sheet, dot with butter, sprinkle with salt and bake in preheated (250 degrees) oven until crisp.

According to Cooksey, cooked pumpkin seeds can be stored safely in a jar with a lid for an enjoyable snack later.

### Surgery may help with tremors

Parkinson's disease patient Pablo Quiroga can again do simple tasks like drinking from a glass, thanks to surgery at Baylor College of Medicine in Houston.

The surgery, known as pallidotomy, doesn't cure Parkinson's or stop progression of the neurological disease, whose cause is unknown. But the procedure can help control tremors, stiffness, and slowness of movement in some patients.

For a pallidotomy, neurosurgeons create a small lesion in the part of the brain where they suspect the movement problems originate. An anesthetic applied to the scalp prevents pain, but the patient remains conscious during the procedure, which allows surgeons to observe immediate changes in body movement and make modifications in the lesion.

Although the pallidotomy was invented in the 1940's, the modern refinement of surgical and scanning techniques have made the results more promising. Baylor recently acquired the equipment needed for pallidotomies, including micro-electrodes that record changes in the brain and help neurosurgeons target the problem area.

"How long the benefits of a pallidotomy last is still being determined," said Dr. Robert Grossman, chairman of neurosurgery at Baylor. "In stud-

ies, a number of patients in the United States have maintained good results for three or four years."

For most of the 1 million Americans who have Parkinson's disease, medication like levodopa is the best treatment, said Dr. Joseph Jankovic, director of the Parkinson's Disease Center at Baylor. But in patients like Quiroga, who had lost control of his arms due to side effects of his medication, the pallidotomy might help regain control of involuntary muscle movement. The surgery is more effective in patients who develop Parkinson's in their 40s or 50s rather than later in life.

Quiroga experienced "dramatic improvement," Grossman said, as indicated by extensive testing at Baylor's Parkinson's Disease Center before and after surgery.

### Ballinger plans Christmas celebration

Christmas comes to "Olde Ballinger" on Saturday, November 25th beginning at 9:00 am. The Christmas lights will be on, downtown will be decorated, and there will be arts & crafts booths on the Courthouse lawn. The Christmas Parade will begin at 2:30 pm, immediately following will be the crowning of Miss Merry Christmas at the stage on the courthouse lawn.

The festivities of "Christmas in Olde Ballinger" will continue into the evening. "Downtown Merchants" will hold their annual "Moonlight Madness" by staying open until 9:00 pm. Plans are being made for a variety of entertaining and fun things to get you in the Spirit of Christmas! Be sure to join family and friends downtown for the beginning of an "Olde Fashioned Christmas".

Holiday store hours after November 25 until Christmas are Thursday nights until 7:00 pm, and Sundays 1-4 pm.

# CUT CRIME IN YOUR NEIGHBORHOOD.

Yes!

Tell me more about easy, low-cost WTU Security Lighting! Have one of your specially trained representatives give me a call.



Name \_\_\_\_\_  
 Address \_\_\_\_\_  
 City \_\_\_\_\_ State \_\_\_\_\_ ZIP \_\_\_\_\_  
 Daytime Phone \_\_\_\_\_ Best Time To Call \_\_\_\_\_

Mail to: Security Lighting Program  
 West Texas Utilities Company  
 Marketing Department - P.O. Box 841  
 Abilene, TX 79604

## START HERE.

Experts agree: outdoor lighting is one of the most cost-effective ways to increase the safety and security of your home or business. Now, it's easier and more cost-effective than ever, thanks to the WTU Security Lighting Program.

Lease your security lights from us, and we'll install and maintain them for you. Then, we'll simply add the low lease

charge to your regular monthly bill. It's added safety and security — for just pennies a night!

No matter what your needs, we can help you make sure your home or business stays in the right light.

Find out more. Simply fill out the coupon above and send it in to WTU. Better yet, simply give us a call.

**WTU**

West Texas Utilities Company  
 A Central and South West Company

Abilene: (915) 674-7466 San Angelo: (915) 657-2731 Marfa: (915) 729-4329 Childress: (817) 937-8221.



Complete FRATERNAL LIFE INSURANCE for the entire family including

Omni-Plus II Universal Life Annuities and IRAs - Highly Competitive Interest Rates Term-Plus

**Ryan J. Thoma**

Field Representative  
 3005 Timber Ridge  
 San Angelo, TX 76904  
 915-944-9946

**Royal Neighbors**  
 OF AMERICA

100 Years

Fraternal Life Insurance

"For a hole in your roof or a whole new roof"

\*Free Estimates \* Manufacturer's and Labor Warranty with every job \* We work with all major insurance companies \* Insurance claims assistance

**PIONEER ROOFING**  
 Locally Owned & Operated  
 San Angelo

658-3327 or 1-800-613-6255

Ask for Robert Porter or Marion Sparks



**BUY IT.  
SELL IT.  
FIND IT.**

**CLASSIFIED.**

**CLASSIFIED ADVERTISING RATES**

1st. Insertion...  
20c Per Word  
(\$3.00 Minimum)

2nd. and Subsequent  
Insertions...  
16c Per Word  
(\$2.50 Minimum)

Additional 50c  
for Blind Ads

Cards/Thanks...  
20c Per Word

Legal Notices...  
25c Per Word

**COPY DEADLINE**

Class Ads..5 pm Tues.  
Display Ads..5 pm Tues.  
Classified Ads & Cards of  
Thanks are payable in  
ADVANCE unless customer  
carries regular account.

**FOR SALE**

**CLEARANCE CENTER**  
Factory mistakes are sent to  
US! Huge savings on special  
ordered homes that came in  
wrong. Nationwide Clearance  
Center of Abilene. 800-976-  
5341

15a-1tc

**HOUSE FOR SALE**  
at Spence Lake. Private, se-  
cluded property Lake Spence  
Addition. 2 bedroom, 2 bath,  
2-car carport. Call Larry Jolly  
915-944-0021.

11-8tc

**DISPLAY MODEL  
HOMES**  
must go so we can make room  
for our 1996 homes. Call  
Carrol Mendoza at Nationwide  
Midland 800-456-8944 or  
915-520-5850.

15a-1tc

**FOR SALE**  
1994 Ford Supercab half-ton  
pickup; 305 engine - only  
\$17,000. Call 473-6121 after  
5 pm.

14B-tnc

**FOR SALE**

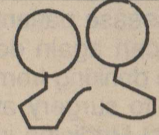
**Robert Lee**

**SUPER NICE CABIN**, fur-  
nished. Lots of room. Call to-  
day.  
**ARROWHEAD POINT** a  
stone's throw from water's  
edge. 3 bdrm., 2 bath home  
on approx. 2 acres. Get de-  
tails and let's look.

**Elaine Lee  
453-2995**



**453-2226**



**BALLOONS!  
BALLOONS!  
BALLOONS!**

**BALLOONS!**  
Celebrate your next special  
occasion with helium  
balloons from Ace Floral &  
Gifts. Our selection  
includes birthday, holiday,  
get well, and thinking of  
you arrangements.  
**453-2414**  
Ace Floral & Gifts



**JUST IN TIME FOR  
HUNTING SEASON!**

160 acres, remote southwest  
Robert Lee.

**BEAUTIFUL LOCATION**  
3 bedroom, 2 bath, 40's.  
Let's look.

**2 BEDROOM,  
1 BATH HOME**  
CH/CA on 12 lots. Priced in  
the 30's.

**OWNER WILL FINANCE**  
this 3 BR, 2 BA mobile home  
near Lake Spence on approx.  
1 acre.

**CONCHO REALTY**  
1886 PECOS #4  
SAN ANGELO, TX 76901  
800-530-4242  
915-453-4748  
Becky Clendennen  
15a-2tc

**THINKING ABOUT  
BUYING**

a conventional site built  
home? Come see our  
Burlison Homestar. Put  
money in your pocket. Call  
Mary Hohn-Ply at Nationwide  
Midland. 800-456-8944 or  
915-520-5850.

15a-1tc

**HUNTERS SPECIAL**  
16' camper trailer with icebox,  
sink, stove/oven. \$1500.00.  
Phone 453-2398.

15-tnc

**DOUBLEWIDE REPO**  
1995 Patriot, 3 bdrm., 2 bath.  
\$1595 down, \$312 mo., 240  
mos., 10.99% APR. Call Na-  
tionwide Clearance Center of  
Abilene. 800-976-5341

15a-1tc

**INDOOR SALE**  
West Coke County Nursing  
Home Auxiliary Gift Shop. Fri-  
day, Nov. 10 - 1 to 4 pm, Sat-  
urday, Nov. 11 - 9 am until  
noon. Good selection of gift  
items, Sunbelt clothes, dolls,  
toys, etc.

**THRIFT SHOP**  
Open Thursday, 2 to 4 pm.  
Books, clothes, miscella-  
neous items.

15-1tc

**QUALITY HOMES**  
to fit your budget. Call Carol  
Cook at Nationwide Midland  
800-456-8944 or 915-520-  
5850.

15a-1tc

**SECTIONAL SOFA**  
for sale. Bonita Copeland,  
453-2698.

15-tnc

**\$372.00 MO.**  
4 bdr/2 bth mobile home. 8%  
APR 10% down, 360 months.  
Call Byron at Nationwide Mid-  
land 800-456-8944, 915-520-  
5850.

15a-1tc

**GARRINGER'S THIS &  
THAT WOODCRAFTS**

Order your woodcrafts for  
Christmas now. Have some  
crafts made. May be seen at  
801 Houston, Robert Lee.  
Also have like-new Nordic  
Track for sale.

15-2tc

**FACTORY CLOSE-OUTS**

Many homes to choose from.  
Doublewide and singlewide.  
Hurry - they won't last long.  
Nationwide Clearance Center  
of Abilene. 800-976-5341

15a-1tc

**3 BEDROOM,  
2 BATH HOUSE**

for sale by owner. Lennox  
heating & cooling, ceiling  
fans, year old carpet in 2 bed-  
rooms, pecan trees, large lot,  
excellent neighbor. 473-  
4031. 724 S. State, Bronte.

15B-tnc

**FOR RENT**

**FOR RENT**  
2 BR, 1 BA at 2413  
Washington, Robert Lee. Call  
453-2169 or 453-2765.

14-2tp

**BRONTE MINI  
STORAGE UNITS**  
for rent. Call 473-2140 or  
473-2221.

14B-tnc

**ONE OR TWO  
BEDROOM  
APARTMENTS  
FOR RENT**

Taking applications Mon.,  
Wed., and Fri., 9 am - 3 pm.  
Housing Authority of Robert  
Lee, 170 N. Bishop, 453-  
2912. Equal Housing Oppor-  
tunity.

16a-EOW

**Classifieds**

**Johnson's  
Water Well  
Service**

Farm  
Ranch Home  
Windmills & Pumps  
24 HR. SERVICE  
658-6039 or 655-0379  
1-800-797-6039

**TEXTRONICS**

TV, VCR, Microwave  
Oven Repairs & Fence  
Charger Repair  
1705 Hutchings - Ballinger  
365-5934 or 1-800-310-8398  
We make service calls to the  
following towns &  
surrounding areas within 50  
miles of Ballinger: Blackwell,  
Bronte, Miles, Paint Rock,  
Robert Lee, Rowena

**GARAGE SALES**

**GARAGE SALE**  
606 W. 9th, Robert Lee. Fri-  
day and Saturday.

15-1tc

**SALE**  
323 N. State St., Bronte.  
Bedspreads, curtains, vac-  
uum cleaner, dishes, heater,  
much more. Saturday, 8:00  
am and Sunday till noon.

15B-1tc

**MISC**

**JOB FAIR:**

Where: San Angelo, TX, 200  
South Magdalen, 9:00 am  
until 7:00 pm on Wednesday  
November 15th. 85 positions  
open, better than average  
wages plus benefits. **Come  
prepared for a same day  
interview.** For more infor-  
mation call Glenn or Larry at  
(915) 944-9666. EOE

15-1tc

**"TEXAS BEST" CARPET  
CLEANING AND FLOOD  
RESTORATION**

Serving all Coke County for  
carpet cleaning, fire and water  
damage. Call toll free 1-800-  
473-2807 or 473-6603,  
Bronte. Free estimates.

01B-tnc

**KENNETH'S CUTS**  
will be closed November 23,  
24, & 25 for Thanksgiving.

14B-3tc

**WOULD YOU LIKE TO  
EARN \$50K+**

per year selling top of the line  
manufactured homes? Biling-  
ual a plus. Experience a  
plus. Must be honest, and  
have the sincere desire to  
help people. Contact Byron  
Cook at Nationwide Homes  
Midland.

15a-1tc

**Toni Rainwater**

Is Now At  
**Hair With Patience**  
Hair - Nails  
453-4734 - Robert Lee  
Tues.-Fri.  
9:00 am-5:00 pm  
Saturday  
9:00 am-1:00 pm

**PERSON NEEDED**

to assist with housekeeping  
two days a week. Please call  
Caprock Home Health, 1-800-  
638-1513.

14-2tc

**POSITION AVAILABLE**

Church custodian, Robert  
Lee Baptist Church. Job will  
include all aspects of building  
and grounds upkeep. Does  
entail heavy lifting. Applica-  
tions may be picked up from  
or filled out at the church of-  
fice, 22 West 11th, weekdays.  
Applications will be taken  
through Tuesday, November  
21st. Interviews will be held  
the week of November 27th.

15a-2tc

**C.N.A. POSITIONS  
OPEN**

Competitive pay; differentials;  
double pay for holidays;  
perfect attendance pay; raise  
after 90 days based on  
evaluation; Nurse Aide  
School available; work in a  
clean and friendly facility.  
Apply at:

Bronte Nursing Home  
South US Hwy 277  
Bronte, Tx. EOE

14B-2tc

**D & L DOZER SERVICE**  
Larry Spivey, Owner-Opera-  
tor. PO Box 160, Bronte, TX.  
Phone (Oak Creek Lake) 915-  
743-2577.

21b-tnc

**CARD OF THANKS**

**A THANK YOU**  
is so small compared to the  
love and concern shown to  
me during my illness and  
hospital stay. Your prayers,  
phone calls, visits, cards and  
flowers all are appreciated.  
May God Bless You.

Gaylon Pitcock  
15-1tp

**NOTICES**

**NOTICE TO CREDITORS**

Notice is hereby given that  
original Letters Testamentary  
for the Estate of Ethel Conner  
Green, Deceased, were is-  
sued September 11, 1995, in

Cause No. 1477, pending in  
the Probate Court of Coke  
County, Texas, to: BILLY C.  
GREEN

Claims may be presented in  
care of the attorney for the Es-  
tate addressed as follows:

Billy C. Green, Independent  
Executor  
Estate of Ethel Conner  
Green, Deceased  
c/o Saegert, Angenend &  
Augustine, P.C.  
PO Box 410  
Austin, TX 78767

All persons having claims  
against this Estate which is  
currently being administered  
are required by law to present  
them within the time and  
manner prescribed by law.

DATED this 6th day of  
November, 1995.  
SAEGERT, ANGENEND &  
AUGUSTINE

a Professional Corporation  
By: JOHN C. AUGUSTINE  
Attorney for Estate

15a-1tc

**NOTICE OF  
APPLICATION**

NOTICE IS HEREBY GIVEN  
that the Applicant, Exxon  
Corp., PO Box 1600, Midland,  
TX 79702, has made applica-  
tion for a spacing exception  
permit under the provisions of  
Railroad Commission  
Statewide Rule 37 (16 Tex.  
Admin. Code Section 3.37).  
Applicant seeks exception to  
the distance between wells  
requirement to amended Well  
No. 118, if completed in the  
Bronte field, Bronte Palo  
Pinto Unit, 2411.3 Acres; if  
completed in the Bronte  
(Gardner) and Wildcat fields,  
R.E. Hickman "C" Lease,  
309.6 Acres; if completed in  
the Bronte (Cambrian) field,  
Bronte Cambrian Unit, 486.7  
Acres, C&M RR Co. 15 Sur-  
vey, A-62, Coke County, be-  
ing 1.5 miles in a southwest  
direction from Bronte, Texas.

IF COMPLETED IN THE  
BRONTE FIELD, BRONTE  
PALO PINTO UNIT, 2411.3  
Acres, WELL NO. 118 LO-  
CATION IS AS FOLLOWS:  
3594' from the northeast line  
and 3268' from the southeast  
line of lease. 3594' from the  
southerly northeast line and  
474' from the southerly  
southeast line of survey.

IF COMPLETED IN THE  
BRONTE (GARDNER) AND  
WILDCAT FIELDS, R.E.  
HICKMAN "C" LEASE, 309.6

## NOTICES

ACRES, WELL NO. 118 LOCATION IS AS FOLLOWS:

3594' from the northeast line and 474' from the southeast line of lease. 3594' from the southerly northeast line and 474' from the southerly southeast line of survey.

IF COMPLETED IN THE BRONTE (CAMBRIAN) FIELD, BRONTE CAMBRIAN UNIT. 486.7 ACRES, WELL NO. 118 LOCATION IS AS FOLLOWS:

2944' from the south line and 1010' from the east line of lease.

3594' from the southerly north line and 474' from the southerly southeast line or survey.

Field Rules for the Bronte and Bronte (Cambrian) fields are 330/933, 40 acres.

Field Rules for the Bronte (Gardner) and Wildcat fields are 467/1200, 40 acres.

This well is to be drilled to an approximate depth of 5364 feet.

PURSUANT TO THE TERMS of Rule 37 (h) (2) (A), this application may be granted administratively if no protest to the application is received. An affected person is entitled to protest this application. Affected persons include owners of record and the operator or lessees of record of adjacent tracts and tracts nearer to the proposed well than the minimum lease line spacing distance. If a hearing is called the applicant has the burden to prove the need for an exception. A protestant should be prepared to establish standing as

an affected person, and to appear at the hearing either in person or by qualified representative and protest the application with cross-examination or presentation of a direct case. The rules of evidence are applicable in the hearing. If you have questions regarding this application, please contact the Applicant's representative, Alex M. Correa, Sr. Regulatory Specialist, at (915) 688-6782. If you have any questions regarding the hearing procedure, please contact the Commission at (512) 463-6718.

IF YOU WISH TO REQUEST A HEARING ON THIS APPLICATION, YOU MUST FILL OUT, SIGN AND MAIL OR DELIVER TO THE AUSTIN OFFICE OF THE RAILROAD COMMISSION OF TEXAS THE ENCLOSED NOTICE OF INTENT TO APPEAR IN PROTEST. A COPY OF THE INTENT TO APPEAR IN PROTEST MUST ALSO BE MAILED OR DELIVERED ON THE SAME DATE TO APPLICANT AT THE ADDRESS SHOWN ABOVE. THIS INTENT TO APPEAR IN PROTEST MUST BE RECEIVED IN THE RAILROAD COMMISSION'S AUSTIN OFFICE BY DECEMBER 5, 1995. IF NO PROTEST IS RECEIVED WITHIN SUCH TIME, THE REQUESTED PERMIT WILL BE GRANTED ADMINISTRATIVELY, TO BE EFFECTIVE THE DAY FOLLOWING THE TERMINATION OF SUCH THREE-WEEK PERIOD.

THIS NOTICE OF APPLICATION REQUIRES PUBLICATION.

15a-4tc

### Where's the juice?

The variety of fruit-flavored drinks available at the grocery store leave many parents asking -- where's the juice?

With clever advertising and packaging, parents can be easily misled into buying "juices" for their children that have no real nutritional value, said Janice Stuff, a nutritionist at the USDA's Children's Nutrition Research Center and a research instructor at Baylor College of Medicine in Houston.

Stuff encourages parents to purchase 100 percent pure fruit juice. Fruit punches or 10 percent juice products may be fortified with vitamin C, but are low in potassium and high in sugar.

"As a general rule, any juice containing more than 22 grams of sugar probably means sugar has been added," she said.

Stuff offers more "juicy" tips:

\* Despite the appeal of exotic blends like mango, guava or peach, orange juice still sets the "gold standard" by providing the greatest amount of vitamin C and potassium per 6-ounce serving. Grapefruit juice is second, followed by apple juice.

\* Pure fruit juice is an excellent source of vitamin C and potassium. Vitamin C keeps gums, skin, tissue and bones healthy. Potassium is a mineral important for maintaining normal bodily functions.

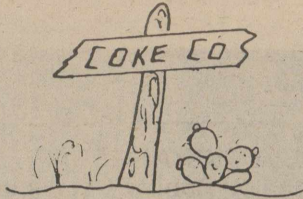
\* Though some juices products are calcium-fortified, don't serve them in place of milk, since there is no strong evidence on how well the body retains and uses this supplemental form of calcium.

\* Serve juice in moderation, so that children do not fill up on juice before mealtimes.

\* Parents should not serve juice combinations to infants unless they have been introduced to each individual juice previously to avoid allergic reaction.

Stuff also encourages parents to set a good example for their children by drinking juice or water instead of soda or other non-nutritional drinks.

"Children tend to imitate what their parents do," she said. "Make 100 percent juice a sensible addition to your diet."



## COUNTRY AGENTS NEWS

by Tommy Antilley  
Coke County Agent

### Pesticide recertification and licensing

The deadline for recertifying your Private Applicators Pesticide license is quickly approaching. All producers who have the certified applicators license must have obtained 15 hours of Continuing Education Units (CEU's) by January 1, 1996. If you do not obtain these CEU's, your license will be revoked. Many producers think that they can just wait until January and take the Pesticide test over, but if you have had your old license revoked, you must still take the fifteen hours CEU's prior to being able to retake to obtain a license.

There will be a 12 hours of CEU's available at the Coyotes of the Southwest meeting to be held at the San Angelo Convention Center December 13-14. Cost of this meeting is \$40 prior to December 1 and \$50 after that time. Registration forms can be obtained at the Coke County Extension office.

For those producers that want to upgrade your license to the Licensed Private Applicator, which allows you to supervise pesticide application, you will have some opportunities to obtain this in the next few weeks. Also, if you obtain this license prior to January 1, 1996, you will have 5 more years to obtain your 15 hours CEU's. Cost of this training is \$50.00. There will be one of these presented on Tuesday, November 14, beginning at 6:00 pm at the Tom Green County Extension Office in the Ed Keyes Building in San Angelo. We will also have one of these on Saturday, December 2, beginning at 9:00 am in the District Courtroom of the Coke County Courthouse.

If you have not met your CEU requirements, the 12 hour CEU training at San Angelo plus a 5 hour training during December on two separate nights will qualify you to maintain your old license. Your other option would be to take the newer upgraded license test.

For more information on Pesticide Recertification, contact the Coke County Extension office.

Also, you can find out how many hours you have obtained by calling 1-800-Tell TDA.



### Lake Spence fishing report

On Lake E.V. Spence the water temperature was recorded at 69 degrees Fahrenheit during the first part of the week of Oct. 30 - Nov. 3.

Sunday, October 29, the Midland Bassin' Bunch held a one day tournament. Twenty-four anglers entered the competition, with a total of eight fish being reeled in. Cliff Shipman landed the largest bass; it weighed 2.75 pounds.

Rankings were as follows: First place went to Cal Wolfenberger and Wes Smith for their stringer of two fish which totaled 4.76 pounds. Second place was awarded to Roy Daughetry and Cliff Shipman whose two fish added up to 4.47 pounds. Ronnie Branch and Sue Workman took third place for their bass duo that came to 2.65 pounds. All the bass caught were in good shape, and they were released.

At the Wildcat Marina, there were several reports of stripers being landed. Terry and Tommy Brown, from Odessa, Texas, were fishing with live shad and pulled in nine stripers whose weight totaled 95 pounds. R. L. Flanagan, from Robert Lee, Texas, hooked a 14 1/2 pound striper on cut shad. There were a couple of other reports of stripers being caught in this area, they averaged around 10 pounds each.

### Supplements increase infant survival

Amino acid supplements may increase the survival rates of premature infants who rely on intravenous feedings.

Results from a study at the USDA's Children's Nutrition Research Center indicate that premature infants may not be able to produce cysteine and proline, amino acids important for growth, the prevention of infections, and healing.

"It appears that cysteine and proline must be supplied through the diet," said Dr. Tom Jaksic, a CNRC scientist and an assistant professor of surgery at Baylor College of Medicine.

"This is especially important because many premature infants are born with a number of complications that require surgery," Jaksic said. "One in five of very-low-birth-weight infants die."

Little is actually known about the amino acid needs of premature infants. The scientists examined seven infants and assessed the amino acids that, in adults, are naturally produced by the body. The CNRC team used a safe stable isotope tracer technique to identify the two deficiencies.

Jaksic believes the findings may be important in the design of nutritional formulas. Premature infants cannot suck or swallow and depend on intravenous feedings of specially blended formulas.

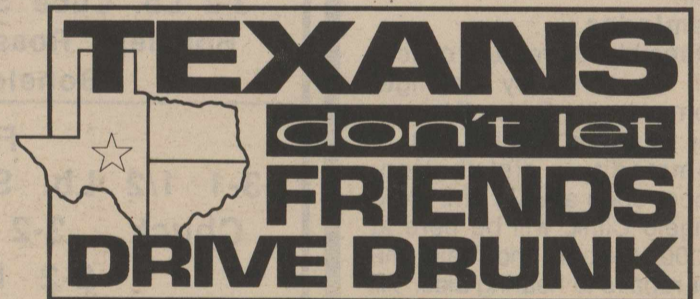
"Current formulas contain varying amounts of amino acids and some are already supplemented with cysteine, but no one knows the precise amounts premature infants require," Jaksic said.

"Our goal is to fine-tune the formulas which, hopefully, will enable premature infants to tolerate stress, overcome infection and grow," he said.

Study results, reported by Dr. Ronna G. Miller, Dr. Farook Jahoor and Jaksic, were published in a recent issue of the Journal of Pediatric Surgery.

**You never know what is enough until you know what is more than enough.**

-William Blake



Happy 35th Anniversary!

Love,  
Sam



You are cordially invited to an  
Open House  
at Olean's Frame Shop  
on Saturday, November 18, 1995  
10 o'clock to 4 o'clock  
in honor of  
Olean Poor's 19 years of service  
to the community of West Texas  
Come by and meet  
Margarite & Jarrod Stokes,  
the new owners of Olean's Frames  
1717 N. Chadbourne - San Angelo, TX

**Counselor's Comments**  
by Vicky McCutchen

After several weeks of testing, I have finally had time to catch my breath. I will continue with the ADD child. As a brief review, Attention Deficit Disorders are a primary weakness of selective attention and children may have one, some or all of those characteristics previously mentioned. Inattention or distractibility is the most academically devastating aspect of ADD. This includes the mind shifting from one focus to another, usually without reaching any conclusions. Another is the increased activity level (hyperactivity) which parents and teachers notice immediately because of the distractibility of the mind and the overactive body that moves disruptively from one activity to another.

Inconsistency is the cardinal feature of ADD. The child will turn in a perfect paper and the teacher assumes the child can succeed every time he tries. For reasons which are not understood, this child can be out of focus and out of control the next day and have little success. We all vary in performance levels from day to day but the ADD child varies more widely. Interest and motivation is extremely important with all children but especially with the ADD child.

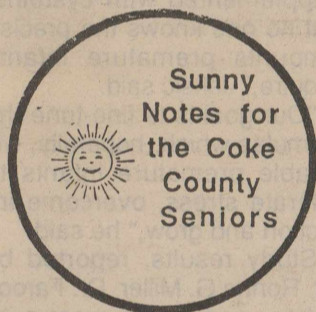
The impulsive child is another characteristic of the ADD child. He is recognized because he acts first and

thinks later. He is usually unable to plan his own behavior. Academic work suffers because the child acts on the first idea rather than making plans to perform the task properly. Insatiability is another aspect of the ADD child. Parents are particularly frustrated by this child who is never satisfied. This child constantly desires new objects, experiences or friends and it often causes the child to be friendless and unhappy.

The child with ADD usually has problems in school just because his mind works differently from the majority of children. Parents need to stay in close contact with the school and a doctor who is experienced with ADD child to establish or rules out the diagnosis of ADD. The goal is to enable the child to experience success in school and life so that the child can feel good about himself and be a productive citizen.



Floy Sawyer "treats" Enrique Sanchez, son of Ricky and Elena Sanchez, at the Halloween Party at the West Coke County Nursing Home. AON Service Club served punch and cookies to a large group of residents and visitors.



**Quilters**

The ladies will be starting a new quilt, Wednesday, Nov. 15, at 1:00 pm. They will also be quilting on Thursday, Nov. 16 beginning at 8:00 am. You have a cordial invitation to join us, or come by the center for a visit.

**Reminder**

Free blood pressure checks will be given by Ballinger Home Health, Friday, November 10 during the first hour of commodity distribution. Doors open at 8:00 am. Also Angelo Clinic will be here at 12:00 to clean and make minor repairs to hearing aids. All events will take place at the Bronte Senior Center.

**Menu for the Week**  
**Monday, Nov. 13**

Swiss Steak, Peas & Carrots, Tossed Salad, Orange Sections, Corn Muffin.

**Wednesday, Nov. 15**

Baked Chicken, Lima Beans, Zucchini Squash, Applesauce, Wheat Bread.

**Friday, Nov. 17**

Baked Ham, Green Beans, New Potatoes, Hot Roll, Sugar Cookies.

**Blessed is he who expects nothing, for he shall never be disappointed.**

-Alexander Pope

## HALL'S SUPER SAVE FOODS

120 W. MAIN BRONTE 473-2065      FOOD STAMPS WELCOME      OPEN 7 DAYS A WEEK  
MON.-SAT. 7:30 AM-9 PM      SUN.-8 AM-8 PM

BONELESS PREFERRED TRIM TOP

**Sirloin Steak**

LB. **1.99**



GOLDEN DELICIOUS OR WASHINGTON EXTRA FANCY RED DELICIOUS

**Apples**

LB. **.58**



PREFERRED TRIM ASSORTED

**Pork Chops**

LB. **1.79**



CELLO WRAPPED PREMIUM ICEBERG

**Lettuce**

HEAD **.58**



**Hires Root Beer, RC Cola or Asst. Flavors Crush**

6 pk. 12 oz. cans **1.39**



**FREEZER PACK - \$59**

*All Freezer Packs are Cut, Wrapped & Frozen Fresh*

3-2 Lb. Cube Steak, 3-2 Lb. Pork Chops, 2-3 Lb. Boneless Roast, 4-2 Lb. Ground Chuck, 2-2 Lb. Boneless Skinless Fryer Breast

**FREEZER PACK - \$39**

3-1 1/2 Lb. Sirloin Steaks, 4-2 Lb. Ground Chuck, 3-2 Lb. Country Style Pork Ribs, 2-2 Lb. Split Fryer Breast

**FREEZER PACK**

**A WEEK OF MEAT FOR ONLY \$25.00**

2 Lbs. Split Fryer Breast - 2 Lbs. Extra Lean Cube Steak - 3 Lbs. Boneless Roast - 2 Lbs. Lean Ground Chuck - 2 Lbs. Sirloin Steak - 2 Lbs. Pork Chops

GRANULATED SHURSAVING

**Sugar**

4 Lb. Bag **1.29**



POST FROSTED 15 oz. Box

**Wheat Bites**

CALIFORNIA, FLORIDA OR LITE CITRUS PUNCH

**Sunny Delight** 64 oz. btl. **.99**



**BUY ONE GET ONE FREE!**

PRICES EFFECTIVE 11-8 THRU 11-14-95 We reserve the right to limit quantities.