

THE OBSERVER/ ENTERPRISE



Serving Coke County

(USPS 467-480)
(ISSN 8750-197X)

Vol. 107, No. 29

Friday, February 24, 1995

Tax Office posts new hours

Beginning March 1, the Coke County Tax Office will have new hours of operation. The office hours will be 8:00 am to 4:30 pm.

This change is due to the requirements of the new Registration and Title Computer System installed by the State in January. The balancing and maintenance procedures at the end of each business day cannot be done until the last customer is handled.

Since October of 1988, the County Tax Office has been open through lunch, providing 9 hours of service each business day. The office will still be open through the lunch hour for those finding it difficult to fit a visit in during

regular business hours.

It is hoped that the reduction to 8 1/2 hours of service will not place a burden on the citizens of Coke County. Mail in procedures are in place for all services provided by the County Tax Office. The tax office encourages you to call with any questions. The number is 453-2614.

Lady Steers Regional site announced

The Robert Lee Lady Steers will continue their hunt for a state title when they face off against Water Valley in the regional playoffs Friday, February 24 at 3:00 pm. The tournament will be held in McMurry University's Indian gym at Abilene. All Robert Lee fans are urged to support the girls in Abilene.

Steers playoff site

The Robert Lee Steers will take on the Trent Gorillas in a Bi-District Basketball playoff Friday night February 24, 1995 at 7:00 pm in Abilene High School gymnasium in Abilene. Robert Lee will be representing the home team in this contest. The Steers would like to invite all their fans out to support them in Abilene on Friday night.

Lady Horns playoff site

The Bronte Lady Horns will begin play in the Regional tournament against Zephyr. The Regional Tournament will be held at McMurry University's Indian gym in Abilene. The Ladies will play Friday, February 24 at 8:30 pm.

PLAYOFF BOUND!

Three Coke County Basketball Teams will continue the quest for trophies today. See this issue for playoff sites and times.

RL DARE graduation

Robert Lee Elementary's sixth grade class held D.A.R.E. graduation Monday, February 20th in the school auditorium. D.A.R.E. is a nationally recognized drug resistance program aimed at educating youngsters about the dangers of drug use and, in recent years, against the hazards of joining gangs and avoiding gang violence.

Officer Robert Garza of the Runnels County Sheriff's Department is the D.A.R.E. officer for this area. Officer Garza is a graduate of Winters High School and has been in law enforcement for 8 years. This is his first year as a D.A.R.E. officer.

Guest speaker for the graduation was Officer Lowell Neinast of the Houston Police Department. He has received a number of awards, including the 1994 Officer of the Year, Medal of Valor, *Parade Magazine* 1993 National Officer of the Year, and has been recognized by President Clinton.

Students of the class presented skits depicting lessons learned in the class to the parents and teachers. The skits were entertaining and informative. Each of the students did an excellent job, not only in acting out the skits, but in coming up with original ideas to present.

The 1995 D.A.R.E. graduates were: Mary Arellano, Stephanie Balderas, Shawn Barnes, Robert Barrett, Curtis Bell, Beau Blair, Clifton Bohannon, Beau Boxell, John Burdett, Kristy Calhoun, Athena Clawson, Tiffany Copeland, Louis Cornejo, Jessica Cowart, DeShira Dickey, Jeannie Eaker, Lane Fenton, Justin Fluhmann, Amber

Freeman, James Gallegos, Jennifer Hamilton, Cayla Jeffrey, Freddy Landeros, Erin Millican, Favian Minjarez, Zeke Montgomery, Leticia Olguin, Chase Rainwater, Lewis Samaniego, Dixie Simpson, Matthew Tinkler, Dee VanHuss, and Joleen Yates.

These young ladies and gentlemen completed 17 weeks of instruction and were commended by Officer Garza for the enthusiasm and effort they put into the class.

Tuesday Dance

The Coke County Cavaliers will provide C/W music for the Tuesday Special Dance on February 28 at 7:30 pm. The dance is held the fourth Tuesday of each month at the Rec Hall in Robert Lee. Tickets are available at the door.

City of Br. to hold election

The City of Bronte will hold its General Election on May 6, 1995. The terms of Aldermen Pete Percifull and Gerald Sandusky will expire. Application for a place on the ballot will be received from February 20 through March 22, 1995, at the City Hall, 114 South Washington.

Benefit Dance

A benefit dance in support of the Rudy Gloria family will be held in the Robert Lee rec hall Saturday, March 4 beginning at 8:00 pm. Featured bands will be High Noon and La Promesa. Local resident Lupe Torres is a member of La Promesa, and former Robert Lee residents Matt and Michael Wilson are members of the band High Noon.



Lynn Freeman and Edith Hipp were crowned Mr. and Mrs. Valentine at the Bronte Nursing Home on February 14th. They received a trophy and a red carnation. Red punch and cookies were enjoyed by the residents, several family members and staff.



Officer Lowell Neinast (l) was guest speaker at Robert Lee D.A.R.E. graduation Monday night. Officer Robert Garza taught the D.A.R.E. program to the sixth graders.

THE OBSERVER/ENTERPRISE

Published Weekly Except Christmas
707 Austin (915) 453-2433

(USPS 467-480) (ISSN 8750-197X)

Second Class Postage paid at Robert Lee, TX.

POSTMASTER: Please send address changes to Observer/Enterprise

PO Box 1329, Robert Lee, TX 76945.

STAFF

Hal Spain, Publisher
Jo Nell Blair

Sharon Brunson
Joan Davis

SUBSCRIPTION RATES

Per Year in Coke County.....\$15.00
Per Year Elsewhere in Texas.....\$17.00
Per Year Outside of Texas.....\$20.00

Letter to the Editor

Dear Editor;

Following is a letter addressed to all Band Students and their Parents in Robert Lee and Bronte schools.

BAND: A PREPARATION FOR LIFE

School curriculum, use of academic time, and the applicable value of knowledge brought to the classroom are all being discussed in today's society. With an emphasis on "back to basics", it becomes increasingly more significant to bring the importance of band to the forefront of this on going discussion.

WHY SHOULD A YOUNG PERSON CONSIDER JOINING THE BAND?

HOW LONG SHOULD THEY STAY IN BAND?

WHAT WILL IT MEAN IN THEIR LIFE?

CREATIVITY: Creativity is the source of all possibilities. We are constantly challenged to explore this area of the mind. Music appeals to the part of the mind which opens new horizons. The study of music supports wonderment, imagination, appreciation, and sensitivity. Music allows us to experience creativity as an inventive thinking style.

COMMUNICATION: Music is a language unto itself. Music can only be explained by music. If we do not expose the human to music, we are depriving the individual of an array of personal understandings that cannot be found in any other part of life.

CRITICAL ASSESSMENT: Intelligence is the ability to process facts and respond according to the given situation. Emotional stability stems from the capacity to deal with life's many inconsistencies. To accomplish both, the individual must be able to access the cognitive (factual) and affective (emotional) sides of the mind. Music is one of the few academic disciplines which demands this ability and reinforces learning patterns to allow for greater critical assessment.

COMMITMENT: Success is not measured by what we start, but rather by what we complete. In music, every student will be required to play the entire composition from beginning to end. Although there may be errors in the performance, it is most unusual to see an individual simply stop and put the instrument away. The important qualities of tenacity and persistence establish habits for positive, productive living.

These attributes can be found in many subject areas; however, MUSIC does not make these optional, but a fundamental necessity from the first note ever played.

Participation at the level of excellence is not a personal preference; it is a requirement. Success breeds success in every avenue of life. Therefore, a successful and well-trained musician does tackle life with a knowledge of "What it takes to get there," and the wisdom of "what it brings to life."

LET THE MUSIC BEGIN!

George Tomes
Band Director
Bronte ISD

Death Notices

Hightower

Leroy Hightower, 75, of Midland, died Friday, February 17, 1995, in a local hospital.

Service was at 1 pm Monday, February 20, in the Ellis Funeral Home chapel with burial in Resthaven Memorial Park.

He was born June 1, 1919, in Frost and had lived in Midland for 35 years. An Army veteran of World War II, he was the co-owner of Hightower's Barber Shop and was a member of Bellview Baptist Church.

Survivors include his wife, Louese Foster Hightower of Midland; two sons, Dr. Roy Hightower of Abilene and Dr. Mike Hightower of Fort Worth; a daughter, Cindy Blue of Midland; a brother, Freddie "Buck" Hightower of Robert Lee; a sister, Carmen Morris of Midland; seven grandchildren; and numerous nieces and nephews.

Gardner

Mr. Jerome Wilfred (Will) Gardner, age 80 of Wharton and former long-time resident of Midland, Texas died Sunday, February 19, 1995, in a Missouri City, Texas nursing home following an extended illness. He was born on April 27, 1914 in Robert Lee, Texas, the son of John Samuel and Jessie Stickney Gardner.

Following cremation, graveside services were held at 11:00 am Thursday, February 23rd, at the Evergreen Memorial Park Cemetery in Wharton with Reverend Bill Jenkins officiating. Local funeral arrangements were under the direction of the Wharton Funeral Home.

Survivors include his wife, Jeanette Gardner of Wharton; son and daughter-in-law, John Charles and Karen Gardner of Houston; a brother, Winston Gardner of Kilgore, Texas. He was preceded in death by one brother and one sister.

Pierce

Viola Pierce, 86, of Robert Lee died Saturday, February 18, 1995, in a San Angelo hospital.

Service was held at 2 pm Monday, February 20, in Robert Massie Riverside Chapel with burial in Robert Lee Cemetery.

She was born February 14, 1909, in Hamilton. She was a nurse and a Baptist.

Survivors include three sisters, Louise Paul and Billie Dye, both of San Angelo, and Sylvia Tinkler of Robert Lee.

Letter to the Editor

Hello Hal,

I noticed in the paper you wanted some poems. I wrote one, but I don't think it's the kind people wanted. But here it is anyway:

The rabies epidemic is in the news

Does the government think the public was on rabies vaccine abuse?

Used to go to the feed store and get my animals a shot

Do the lawmakers think the vaccine is the same as pot?

While the epidemic worsens and it makes the news

Do you think the veterinarians are singing the blues?

Loy Wrinkle

District 28-A Picks

The following Blackwell high school girls were recently named to the 28-A All District team: sophomore Jessica Shafer, senior Carrie Parsons and freshman Jennifer O'Malley.

Honorable mentions included Connie Sawyer, senior, and Amber Mulanax, sophomore, both of Blackwell.

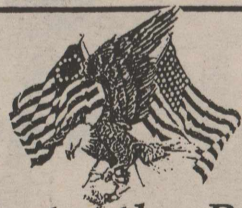
WCCCD meets

The West Coke County Community Development met Monday, February 20, in general session in the conference room of the courthouse. Since the group did not meet in January, a re-cap of December, 1994 was discussed. The last two Adopt-A-Highway trash pick-ups for the year were accomplished, which fulfilled the organization's two-mile responsibility on SH 158 West. Manuel Abalos, standing in for Santa Claus, visited Robert Lee businesses on Saturday, December 3. He was driven around town by Fire Chief Ron Waggoner on the fire truck. The pair then visited the local nursing home. The Food for the Needy project was successful; boxes were made up from donations and purchased items and the Robert Lee-Silver Lions Club made the deliveries.

In current business matters, President Billy Kelly asked for help in taking down the lights purchased by WCCCD which outlined downtown Robert Lee businesses. Purchase of other lights to extend the lighting in December was discussed. Other items on the agenda were a community development banquet, the annual lighting contest and fundraisers to support further projects.

Stanley Adams was a visitor at the meeting and offered his help with various needs, such as the Texas Tourism Guide.

Drawing for the monthly door prize was held and Nell Kennedy's name was drawn for the second time. Members must be present to win. Door prize for the next meeting on March 20 will be \$60.00.



Special Thanks

to the Robert Lee-Silver Lions Club for their efforts in displaying the American flags throughout Robert Lee during the recent holiday.

ACE HARDWARE RANCLAND RESTAURANT

What Cancer Can't Do

*Cancer is so limited...
It cannot cripple love
It cannot shatter hope,
It cannot corrode faith,
It cannot eat away peace,
It cannot destroy confidence,
It cannot kill friendship,
It cannot shut out memories,
It cannot silence courage,
It cannot invade the soul,
It cannot reduce eternal life,
It cannot quench the Spirit
It cannot lessen
The power of resurrection.*

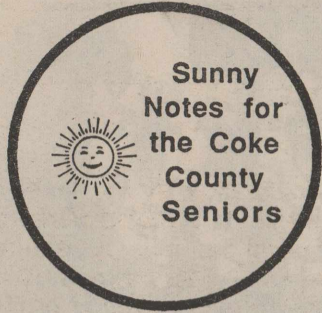
*In Memory of
Aubrey Denman*

Germania Insurance

Covering Texas since 1896. Property, liability and life insurance



**Bill Carwile
453-2522**



Sunny Notes for the Coke County Seniors

"88" Tournament coming up

The Bronte Senior Center is hosting an "88" Tournament on Thursday, March 2nd. Come at 9:30 for coffee and registration. Players will draw for partners at 10:00 am with play beginning as soon as the drawing is concluded. The Robert Lee Senior Center has been issued an invitation and anyone else who would like to play may come also. Rules will be available for those who have not played during a Coke County "88" Tournament. Lunch will be furnished by the Bronte Senior citizens at 12:00 and play will continue after lunch until 6 games have been played.

Card Tables needed

Do you have a card table around your house that you no longer need? We could use an extra one or two down at the Bronte Senior Center. We have plenty of chairs, we just need tables.

Shopping in Bronte

Wednesday morning is the day set aside to shop or to do any business you might need to do in Bronte. Call Donna Noland at 473-5341 and make reservations. This is for all ages, you do not need to be a senior citizen to take advantage of this service. A fare is charged for those under 60 years of age and donations are accepted from those over 60.

American Heart Month

Did you know that February is American Heart Month? As you know heart attacks are the single largest killer of American men and women. The Bronte Senior Center has material available that they have received from Lifetime Learning Systems and it is yours for the asking. "Be Smart About Your Heart" has been developed by LLS and BAYER aspirin.

Menu for the Week

- Monday, Feb. 27
Franks with Chili, Corn, Spinach, Bun, Fruit Jello with Topping
- Wednesday, March 1
Chicken a la King, Hot Rice, Green Beans, Hot Roll, Orange, Chocolate Chip Cookie
- Friday, March 3
Country Fried Steak, White Sauce, Corn, Brussel Sprouts, Bread, Pineapple

CHICKEN SPAGHETTI DINNER!!

FIRST BAPTIST FELLOWSHIP HALL
FEB. 26th, 1995

12:00 Noon or After Church (whichever comes first)

Donations will be taken at the door. All proceeds will go toward the First Baptist Church Youth.



COUNTRY AGENTS NEWS

by Tommy Antilley
Coke County Agent

Weeds and Range Management

The relatively mild winter has resulted in the germination of many broadleaf plants. Annual broomweed seedlings are abundant in many areas of the state. Broadleaf plants may be desirable or undesirable depending on management objectives. Grass production can be reduced significantly if these broadleaf plants develop to a mature stand. To improve grass production, the broadleaf plants are easily controlled with herbicides if the infestation is recognized when the plants are in a seedling stage of growth. Ranchers should be encouraged to survey their rangeland now to determine if a weed infestation is present. Grazon P+D, Weedmaster, 2, 4-D, Grazon PC, Banvel or Ally (Escort) provide excellent control of most broadleaf weeds when applied at the proper time. Ally does not control western ragweed.

Following are a few "rules of thumb" that are used in the art and science of range management.

*Weed control will increase grass production one pound for every pound of weeds removed.

*Weeds can economically be controlled if they exceed a density of 8 plants per square yard.

*Pastures should be reseeded if desirable plants make up less than 10% of the total vegetation.

*With proper grazing only 25% of each year's annual forage production is consumed by livestock.

*Insects, rabbits, trampling, etc. consume 25% of each year's forage production.

*Proper grazing equates to take half, leave half.

*Rangeland can be stocked at 1 to 1.5 animal units per section for every inch of annual rainfall received.

With these rules of thumb in mind producers should evaluate their range or pastures each spring and determine if you have a weed problem, what and how much forage can you expect and make some sound management decisions for utilization of forage produced. Remember, you are actually selling grass or forage produced rather than pounds of lamb, calves or wool. No grass, no pounds, pure and simple.

Steers advance to Bi-District

The Robert Lee Steers advanced to Bi-District play when they defeated district opponents Roby Tuesday, February 14 in a playoff game for the district title. The victory was a hard fought one as Robert Lee was behind at the half 33-47. By the end of the third the Steers had a 3 point lead, they held off the Lions and won the game 75-69.

Aaron Hood was high point man with 20; Lee McCown was close behind with 18. Eric Hood tipped in 15, Jeremy Vincent 14, Jerrid Vincent 4, Jason Key and Charles Hayes each added 2.

The boys traveled to Waxahachie Saturday to compete in a practice tourney held there. Robert Lee was faced off against a team of giants from Anderson-Shiro. The Steers held their own in the first half taking a half time lead of 29-28, but Anderson-Shiro came back in the second half to win the game 67-63. Lee McCown was high pointer with 26 points. Eric Hood scored 17, Jeremy Vincent 13, Charles Hayes 4, and Aaron Hood 3.

The Steers will be in Abilene Friday night to try to win the Bi-District title. They will play against Trent in the Abilene High School gym at 7:00 pm.

Sunshine Gardens & Big Boys Toys

2 miles west of Robert Lee on Highway 158
Phone (915) 453-4625

- Spring Bulbs: Dahlias - Elephant Ears - Gladiolus - Dwarf Cannas - Garden Amaryllis - Bearded Iris - Caladiums - Asiatic Lily - Daylily - Clematis - Ferns - Hosta - Phlox

ONION SETS & SEED POTATOES
LARGE SELECTION OF TREES & SHRUBS
ARRIVING FEBRUARY 24TH

AMMUNITION-DEER CORN
LIVE & FROZEN BAIT
RODS & REELS
LARGE SELECTION OF TACKLE

ICE-SNACKS-COLD DRINKS
SEASONAL BEDDING PLANTS
HOUSEPLANTS

OPEN 7 DAYS A WEEK

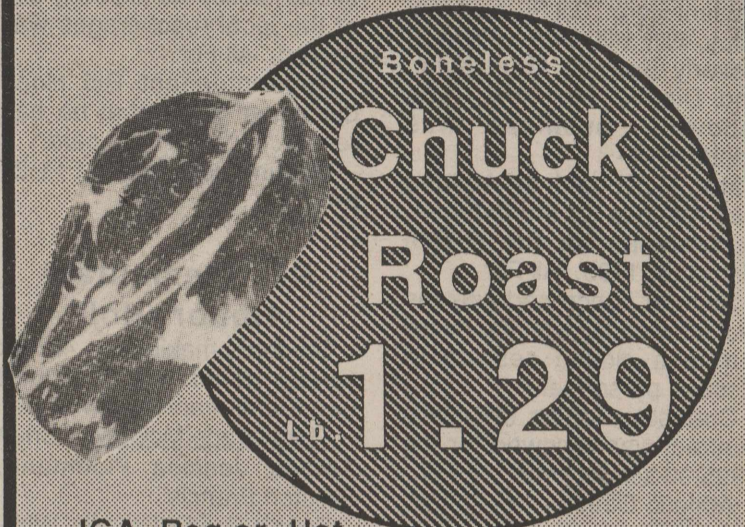
We Accept MasterCard, Visa, & Discover

FOOD Super H LIMIT
STAMPS IGA RIGHTS
WELCOME RESERVED

501 Commerce - Robert Lee, TX

Store Hrs: Mon-Sat 8-8 Sun. 8-6

SPECIALS GOOD 2/22 THRU 2/28



IGA Reg. or Hot

Pork Sausage

Buy one - Get one FREE

16 oz. pkg.



Asst. Sunny Delight

Punch

64 oz. Bottle **99**

Washington Delicious Red

Apples

or Sunkist Navel

Oranges

10 Lb. Bag **2.99**



Corina

Tomato Sauce

8 oz. **6 / \$ 1**



IGA All Purpose

Flour

5 Lb. Bag **.69**



Coke, 7-Up, Mr. Pibb, Sunkist Orange, Fresca or Barqs Rootbeer

6 pk. 12 oz. cans **1.69**



ROBERT LEE SCHOOL NEWS

RL School Board Minutes

The Robert Lee ISD school board met in regular session February 20, 1995. Members present were: Bill Burns, Mark Riley, Billy Hill, Darrel Pitcock, Beverly Burdett, Mary Grim, and Dianne Simpson. The following business was conducted:

Carol McDonald of Abilene was retained as the independent auditor for the school district for 1995. All For.

Several concerned citizens met individually with the board during a closed session to discuss personnel.

Counselor Melba Mauldin's contract was renewed for the 1995-96 school year. All For.

Athletic Director Ed Poehls' contract was renewed through the 1996-97 school year. For: Burns, Hill, Pitcock, Burdett, Simpson and Grim. Against: Riley.

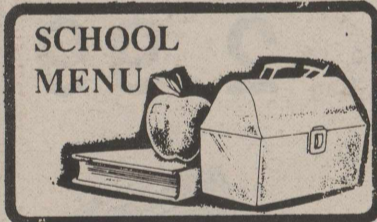
No action was taken on High School Principal Jackie Tennison's contract.

Elementary Principal Lane Jackson's contract was extended through the 1996-97 school year. For: Simpson, Burns, Grim, Burdett. Against: Pitcock, Riley, Hill.

Athletic Director Ed Poehls, High School Principal Jackie Tennison and Elementary Principal Lane Jackson recommended their respective staff to board.

Sealed bids on three buses were opened. Dan Hanson of Austin, Texas was awarded the bid. All For.

Sealed bids on a 1995 Chevrolet Suburban were opened. Ben Bessent Chevrolet was awarded the



SCHOOL MENU

Breakfast

- Monday, Feb. 27**
Breakfast Pizza, Apple Juice, Milk
- Tuesday, Feb. 28**
Breakfast Bagel, Orange Juice, Milk
- Wednesday, Mar. 1**
Buttered Toast, Oatmeal, Orange Juice, Milk
- Thursday, Mar. 2**
Donuts, Cold Cereal, Apple Juice, Milk
- Friday, Mar. 3**
HOLIDAY

Lunch

- Monday, Feb. 27**
Chili with Crackers, Buttered Corn, Ranch Beans, Apple-sauce, Milk
- Tuesday, Feb. 28**
Steakfingers with Gravy, Creamed Potatoes, Green Beans, Buttered Rolls, Fruit Cocktail, Milk
- Wednesday, Mar. 1**
Fish Sticks, French Fries, Buttered Carrots, Hush Puppies, Apple Crisp, Milk
- Thursday, Mar. 2**
Corndog with Mustard, Tator Tots, Pork and Beans, and Peaches and Cream, Milk
- Friday, Mar. 3**
HOLIDAY

bid. All For.

Wink Insurance of Robert Lee was awarded the bid on school insurance. All For.

A request for a waiver of the school policy concerning use of the local teacherages was denied. All For.

Superintendent Bill Hood discussed items that he had researched with the board.

Meeting adjourned at 11:27 pm.

RL Elementary Honor Roll

Students making the 4th six weeks honor roll at Robert Lee Elementary School were:

Third Grade/McCown - Brian Abalos, Jessica Fluhmann, Preston Francis

Fourth Grade/Devoll - Whitney Fleming, Cooper Riley, Travis Pitcock

Fourth Grade/Davis - Mirta Alcantor, Kim Keating, Ashlee Millican, Stewart Millican, Shelby Roe

Fifth Grade/Wilson - Jamie Chesshir, Jodee Helwig, Shanna Hendrix, Rachelle Mills, Bobbie Sparks

Sixth Grade/Randolph - Mary Arellano, Tiffany Copeland, Lane Fenton, Justin Fluhmann, Amber Freeman, Erin Millican

Sixth Grade/Burns - Curtis Bell, Clifton Bohannon, Cayla Jeffery, Chase Rainwater, Dixie Simpson

RL Honor Roll

The following Robert Lee students made the honor roll for the 4th six weeks:

12th Grade - Christy Hendry, Anthony Wink

11th Grade - Tiffany Bruning, Jeremy Burns, Carrie Emert, Aaron Hood, Jason Key, Heather Millican, Jaclyn Waldrop

10th Grade - Daryl Calder, Meagan Hill

9th Grade - NONE

8th Grade - Holly Copeland, Jeremy Edging, Justin Francis, Chad Helwig, Mariusz Skibicki

7th Grade - B. J. Bessent, Daniel Cates, Joel Gallegos, Coke Hendry, Macy Hill, Dan McCown

RLHS Academic team competes

Robert Lee High School Academic Team competed in Christoval on Saturday, February 18. The team scored 146 points total. Results were:

Number Sense - Jaclyn Waldrop, 6th; 2nd team with David Sevier and Jeremy Burns

Literary Criticism - Tiffany Bruning, 1st; Michael Lamar, 4th; 1st team with Brandy Cunningham

Current Events - Chris Woods, 3rd; Michael Lamar, 4th; 1st team with T. J. Roe

Mathematics - Jaclyn Waldrop, 5th

Spelling - Trish Minjarez, 1st; Cameron Cook, 3rd

Computer Science - Carrie Emert, 5th; 3rd team with Chris Woods and Chad

Goodman

News Writing - Becca Emert, 5th

Informative Speaking - Jennifer Parks, 3rd

Persuasive Speaking - Rob Smith, 5th; Korey Pitcock

Poetry - Tiffany Bruning, 4th

Others competing were: Kannan Millican, Christy Hendry, Tara Bruning, Jerrod Copeland, Jeremy Fluhmann, Cynthia Abalos and Shalon Waldrop.

Lady Steers roll over opponents

The Lady Steers continue to mow down opponents in their quest for a state title. The girls have defeated Blackwell and Garden City to advance to the regional tournament to be held in Abilene this weekend.

Robert Lee traveled to Sweetwater Friday to face off against Blackwell's Lady Hornets for the Bi-District title. The Ladies rolled over Blackwell 64-24. Shalon Waldrop hit for 16 points to take high point honor. Jennifer Scott tipped in 12 points, Jaclyn Waldrop 11, Tiffany Bruning 5, Cynthia Abalos, Maranda Wojtek, Heather Millican, and Kannan Millican each scored 4, Patricia Minjarez and Kizzie Howell 2 each.

The Ladies had a tougher time of it Tuesday when they hit the road to Big Spring and played against a determined Garden City team. Robert Lee pulled out front for the first time at the end of the fourth quarter to take the Area title. Sophomore Jennifer Scott was high pointer, pouring in 24 points to lead the Ladies to a 56-47 victory. Shalon Waldrop added 11 to the board, Jaclyn Waldrop 10, Heather Millican 7, and Tiffany Bruning 2.

Robert Lee will play Water Valley Friday afternoon at 3:00 pm at McMurry University in Abilene in the Regional Tournament.

Experience is a wonderful thing. It enables you to recognize a mistake when you make it again.



Robert Lee JV Girls - Front row (l to r) : Bianca Lara, Donna Bell, Stacy Hendry, Amanda Sanders, Patricia Minjarez and Tracy Millican. Back row (l to r) : Rachel Shook, manager, Jessica Key, Melissa Smith, Brandi Brosh, Maria Gallegos, Bree Bolding, Tara Bruning, Meagan Hill, Carrie Green and Coach Jimmy Randolph. Photo by Winnie McPeek.



Robert Lee Junior High "A" Boys - Back row (l to r) : Jeremy Edging, Will Simpson, Mariusz Skibicki, Chad Helwig and Andrew McCabe. Front row (l to r) : Tony Bell, B. J. Bessent, Michael Munoz, Justin Francis and Jaimie Olguin. Photo by Winnie McPeek.



Robert Lee Junior High "A" Girls - (l to r) Coach Bob Bolding, Kyla Long, Holly Copeland, Whitney Montgomery, Angela Abalos, Kim Gloria, Flor Barrera, Melissa Sanders, Lori Eubanks, Samantha Padgett and Marie Eads. Photo by Winnie McPeek.

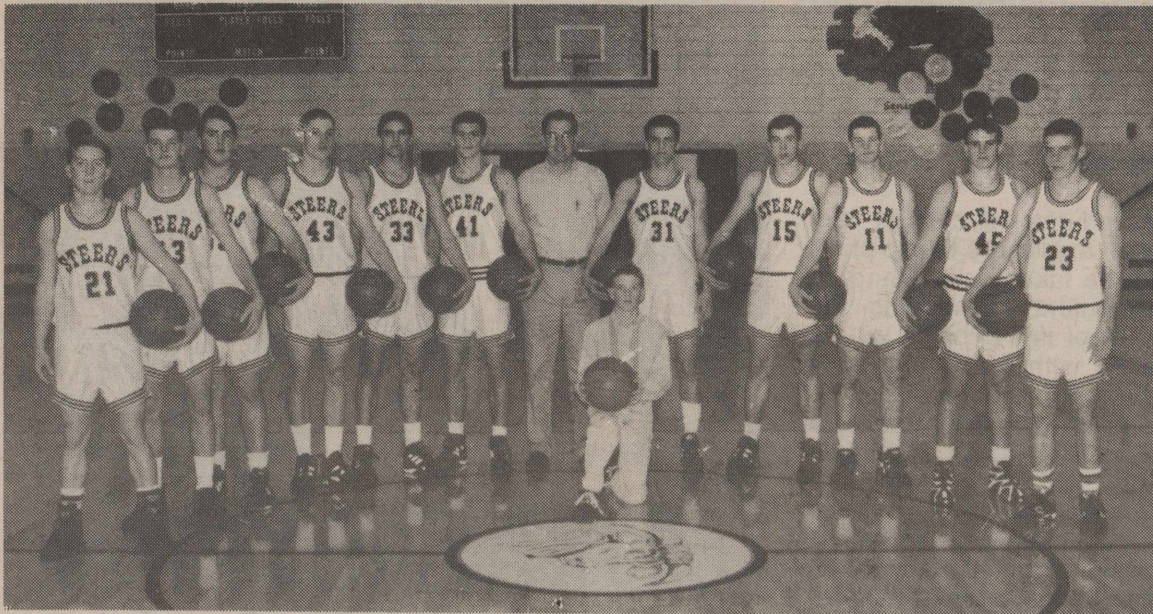
WINK INSURANCE AGENCY
Home*Auto
Life*Commercial
715 Austin - 453-4551

CONGRATULATIONS!
ROBERT LEE STEERS
LADY STEERS
BRONTE
LADY HORNS!
BELL AUTO PARTS
Robert Lee 453-2911

YOU CAN TRUST
H&R BLOCK

*We are reasonably priced.
*We are conveniently located.
*We offer complete electronic filing services.

1926 Hutchings Ave.
Ballinger, TX 76821
(915) 365-2474
1-800-217-2474



Robert Lee Varsity Boys - Koby Howell, Jerrid Vincent, Anthony Wink, Bart Goodman, Aaron Hood, Lee McCown, Coach Kurt White, Eric Hood, Jason Key, Jeremy Vincent, Jason Wyatt, Charles Hayes and Casey Antilley, manager.

Photo by Winnie McPeek.



Robert Lee Junior High "B" Girls - Front row (l to r) : Gina Torres, Cecelia Ortega, Macy Hill and Jamie Luna. Back row (l to r) : Sondra VanDeventer, Cassandra Munoz, Shyla Cole, Melanie Johnson and Ashley Townsend.

Photo by Winnie McPeek.



Robert Lee Varsity Girls - (l to r) Lynlee Owen, manager, Heather Millican, Tiffany Bruning, Shalon Waldrop, Maranda Wojtek, Jaclyn Waldrop, Coach Jimmy Randolph, Kannan Millican, Jennifer Scott, Cynthia Abalos, Kizzie Howell and Rachel Shook, manager.

Photo by Winnie McPeek.



Robert Lee Junior High "B" Boys - (l to r) Matthew Pitcock, Jeremy Eaton, Coke Hendry, Kent Freeman, Daniel Cates, Shane Hendrix, Nick Pinson, Joel Gallegos, Jeremy Ortego, Dan McCown and Brandon Van Huss.

Photo by Winnie McPeek.



Robert Lee JV Boys - Starsky Oleksiuk, David Sevier, Scotty Wyatt, Dustin Clendennen, Eli Boxell, Jerrod Pitcock, Matthew Millican, Coach Kurt White, Kory Pitcock, Kirk Bagwell, Michael Pentecost, Freddy Wojtek, Jason Tavarez, Polo Arellano and Jerrod Copeland.

Photo by Winnie McPeek.

Students attend lecture

Junior High Gifted and Talented students from Robert Lee ISD traveled to Angelo State University on Monday, February 20, 1995, to hear America's best-known historian of the Civil War, Shelby Foote, present a lecture on "The Novelist as a Historian."

Students attended a reception which followed Mr. Foote's lecture and examined a Civil War display in the ASU library. Those attending the lecture were B. J. Bessent, Daniel Cates, Justin Francis, Joel Gallegos, Chad Helwig, Dan McCown, Mariusz Skibicki and Mrs. Melba Mauldin.

TO ALL INTERESTED PERSONS AND PARTIES:

SANCO MATERIALS COMPANY has made application with the Texas Natural Resource Conservation Commission for Air Quality Permit No. 27790 to construct a Rock Crushing Facility in Robert Lee, Coke County, Texas. The location of the proposed facility is approximately 5 miles southeast of Robert Lee, along the Colorado River about 2.5 miles east of SH 208. Additional information concerning this application is contained in the public notice section of this newspaper. This notice is to be published on February 17 and February 24, 1995.



I R A

You may still qualify for this tax-sheltered retirement plan. Come in and talk to us to get complete information about IRAs.



Robert Lee State Bank

Member FDIC

BRONTE SCHOOL NEWS

Lady Horns continue to win

The Lady Horns defeated Highland Friday night in Abilene and continued winning Tuesday night when they trounced Rankin 70-50 in Mertz. That win will send the Ladies to the Regional Tournament in Abilene Friday night for the first time in seven years.

Bronte came out shooting Tuesday and never looked back as they took a 42-22 lead into halftime. The momentum continued into the second half and Bronte finished off the Red Devils 70-50. Scoring for the Ladies in the win were Jill Johnson with 20, Kim Hall 19, Wendy Johnson 17, Joy Ehl 5, Julia Gentry 3, Joni Barrett 3, Courtney Arrott 2, and Jodie Hilliard 1.

The Lady Horns will face off against Zephyr Friday night in Abilene at McMurry University's gymnasium. Tip off is scheduled for 8:30 pm. Fans are urged to support the Ladies in their efforts for a victory.

BHS Student Council

On Monday, February 20, the Bronte High School Student Council consisting of Brent Taylor - president; Nicholas Arrott - vice-president; Jill Johnson - treasurer; Joni Barrett - secretary; Micah Hoyt - reporter; and Cory Robinson - parliamentarian; met to discuss all upcoming



Breakfast

Monday, Feb. 27
Cereal, Orange Juice, Toast, Milk

Tuesday, Feb. 28
Breakfast Pizza, Grape Juice, Milk

Wednesday, March 1
Sausage, Apple Juice, Waffles, Milk

Thursday, March 2
Scrambled Eggs, Orange Juice, Toast, Milk

Friday, March 3
Oatmeal, Diced Pears, Cinnamon Toast, Milk

Lunch

Monday, Feb. 27
Chicken Strips with Gravy, Creamed Potatoes, Green Beans, Rolls, Milk, Chocolate Pudding

Tuesday, Feb. 28
Hot Dogs with Chili and Cheese, Tator Tots, Pork and Beans, Bun, Milk, Fruit Cup

Wednesday, March 1
Spaghetti with Meat Sauce, Tossed Salad, Diced Pears, Bread Sticks, Milk

Thursday, March 2
Chicken Fajitas, Refried Beans, Spanish Rice, Tossed Salad, Flour Tortilla, Milk, Jello with Whip Topping

Friday, March 3
Hamburger, Lettuce, Tomato, Pickles, French Fries, Ranch Style Beans, Bun, Milk, Juice Bars

issues.

The student council first discussed what they should do for Teacher Appreciation Week. Many ideas were considered before decisions were made. Plans were also made for a teacher's breakfast set for May. The student council then decided to dedicate a book to the Christoval High School library in memory of the Christoval boy recently killed in a car accident. Suggestions were then made on how Bronte High could be made better: toothpicks for the cafeteria, uncarbonated drinks added to the coke machine, and being able to drink cokes between classes were all proposed. Lastly, the student council set the next meeting for the third Monday in March.

Micah Hoyt
Student Council Reporter

New look for Driver licenses

Texas driver licenses will have a new look beginning early in 1995.

The new licenses will be more convenient for Texas' 15.6 million license and identification card holders and will provide more security features, according to the Texas Department of Public Safety.

"We're always looking for new ways to prevent criminals from using driver licenses for illegal purposes," said DPS Director Col. James R. Wilson. "The new licenses and identification cards will be much harder to forge or alter. A real bonus is that the same technology that makes the new licenses more secure will greatly reduce the time it takes to get the card into the hands of the owner."

The DPS began phasing in the new technology in January. New licenses will be available in all 243 towns and cities with driver license offices later in the year.

Current licenses need not be replaced. They will continue to be valid until their expiration date. Fees will remain the same.

The new licenses will have a look similar to a credit card, but will be easy to distinguish because of colorful images of the Texas flag and Texas seal against a beige background. New digital imaging technology also will enhance the licenses' photographs.

"The new format will include a magnetic stripe, a bar code and a special laminate to maximize security," said Judy Sibert, DPS project manager for the digital image driver license system. "Licenses issued for Texans under the age of 21 will look different from regular licenses, making it easier for merchants to determine a customer's age."

The application and renewal

procedures will change very little. Applicant's thumb prints will be taken using imaging equipment, eliminating the mess of ink. Photos will be taken with video cameras linked to computers, allowing technicians to better assure a good likeness of the applicant.

"A real benefit to licensees is that the new system will allow us to get the license in their hands in fewer than 10 days, instead of the current four to six weeks," Sibert said. "And as merchants adopt equipment capable of reading the magnetic stripe, these new cards will speed up check acceptance."

Sibert said another security feature will be a laminate embossed with the word "TEXAS" in lines on the front. The "TEXAS" will glow under ultraviolet light.

Drivers with good records will continue to be able to renew for a second four-year period without returning to a license office.

The last major change in licenses was made in 1968, when pictures were added and the use of paper licenses was discontinued except for temporary licenses, learners' permits and certain special needs licenses.

FBC Pastor

First Baptist Church of Bronte is very excited to announce that we will have a new pastor beginning Sunday, February 26. Brother Morris Johnson and his family will be moving to Bronte from Monahans, Texas. Brother Morris and his wife, Judy, have three sons - Dustin, a sophomore, Kevin, an eighth grader, and Eric, a sixth grader.

Morris said that he's very anxious to get moved in and meet all the people. Please let the Johnsons know what a great community we have by going out of your way to make them feel welcome. Following the morning church service the youth will be serving a chicken spaghetti dinner with all the trimmings in the Fellowship Hall. Use this opportunity to come by and get acquainted with the Johnsons.

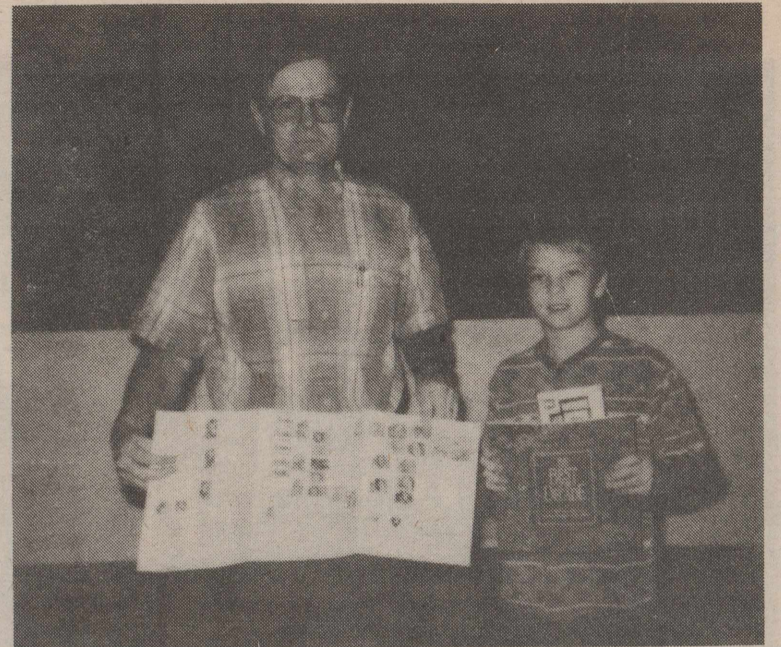
Never explain - your friends do not need it, and your enemies will not believe it anyway.

PARKER PLUMBING
Residential-Commercial
All Types Plumbing Repair

- *New Construction
- *Remodeling
- *Fixtures
- *Sewer Service

Licensed Master Plumber
473-2131 Bronte

El Rancho Restaurant
Mexican-American Food
Open Tues.-Sat. 11 am - 2 pm & 5-9 pm
Open Sunday 11 am - 2 pm
224 W. Main Bronte 473-2140



Joey Rhodes receives "The Best of the Decade" Commemorative Album from Postmaster Ray Barnett. Joey is a member of the Ben Franklin Stamp Club, made up of the 4th, 5th, and 6th grade classes. Joey was the only one to complete the 1994 "Treasury of Stamps Album".



Spence Fishing Lake E. V. Spence Water temperature 53 degrees

Silver Bullet Bass Club from Midland held a two day tournament at Lake Spence. It was headquartered at Paint Creek Marina.

There was a total of 24 Black Bass caught, and 22 anglers fishing the tournament.

Andy Thames reeled in the big fish for the second day with a Rapala Tennessee Shad. It weighed in at 6.04 pounds. First place went to Mike Griffin with 4 fish weighing 9.86 pounds. Andy Thomas took second place with 2 fish weighing in at 7.73 pounds and third place went to Glenn Cobos having 3 fish at 7.57 pounds.

Permian Bass Club from Odessa also held a two day

tournament at Lake Spence headquartered at Paint Creek Marina.

There was a total of 85 Black Bass caught by 80 anglers, including youth.

Don Poston weighed in 16.43 pounds on a 5 fish stringer. Ronnie Mooring reeled in the first day's big fish at 6.78 pounds. On the second day, Robert Absher reeled in a 7.15 pound Black on a Carolina rig. Dane Widner came in with the big fish of the day, weighing 7.20 pounds, reeled in with a pig and jig lure. First place went to Robert Absher with a total of 13.04 pounds, total of fish unknown.

Paint Creek Marina
Darrell Sorey - Midland, reeled in a 27 1/2 lb. Striper on live shad.

Bob Green - Midland, caught a 5 lb. Black Bass.

Rocky Wickliffe - Robert Lee, hooked a 2 lb. Black Bass on a bass minnow.

Terry Brown - Midland, reeled in 2 Stripers on Cut Shad weighing 12 lbs. and 12 1/2 lbs.

TEXAS CELLULAR
EMERGENCY

Texas Safe!
Roadside Assistance from Auto Helpline of America

Traveling with Texas Cellular is Texas Safe! Listed below are just some of the emergency services you'll have access to for only \$1.95 a month!

- Mechanical First Aid
- Battery Recharging
- Flat Tire Repair
- Locksmith Services
- Emergency Towing Services

Texas friendly, Texas sized local calling, Texas service, Texas Safe!

TEXAS CELLULAR
A service of Taylor Telecommunications, Inc.

RoadRoamer
CELLULAR NETWORK

Call Anytime.
Roy Blair, Agent
Robert Lee
824 Austin
(915) 453-2380

Snyder
2403 W. 25th St.
(915) 573-2424

Sweetwater
1901 Bristol
(915) 235-4377



Gladys Baker

Baker honored

Gladys Baker was the February Birthday Honoree at the Bronte Nursing Home recently. The party was sponsored by the Sorosis Club on February 17. Don Edmiaston and Margaret Martin provided entertainment. Everyone enjoyed birthday cake and punch.

Br. 6th grade band to perform

The Bronte ISD 6th grade band will be performing for the 1st annual Robert Lee elementary Band Festival Monday February 27th, 1995. The Festival will begin at 4:00 pm in the Robert Lee Auditorium. The band will perform for a rating and personal comments from the judge to help them prepare for the Cisco Jr. College Music Festival March 30th. Their performance time is 5:00 pm.

Texas tourism increasing

Nationwide interest in Texas travel information continued to grow steadily and break records in 1994. For a second year in a row, more than one million people requested travel publications from the Texas Department of Transportation's Travel and Information Division.

"We were excited last year because for the first time we received an historic one million inquiries for travel information. But this year we filled 1,111,386 requests for travel literature. That's an 8% increase over last year's record-breaking benchmark," says J. Don Clark, director of TxDOT's Travel and Information Division. "With this kind of resounding interest in travel literature, it's no wonder that tourism ranks as the third greatest money-producing industry in Texas."

Texas Comptroller John Sharp agrees: "Tourism has become a vital ingredient in the state's overall economic development recipe. In the years ahead, visitors to the Lone Star State, as well as Texans who choose to explore the expanse of the state they call home, will help the Texas tourism industry outpace the state's overall economic growth. That's how important it is."

"TxDOT plays an important role by promoting the "Texas mystique" in their travel literature," Sharp added.

People who call TxDOT's toll-free phone number receive a standard packet of information that includes the Texas State Travel Guide, the Texas Official Highway Travel Map, and the Texas

Accommodations Guide. The packets are sent within 24 hours through a fulfillment contract with the Texas Department of Criminal Justice.

"The information packet is designed to promote tourism and make travelling easier," explains Clark. "The information packet is so complete, you can plan your entire vacation-including travel routes-before setting a foot out the door."

TxDOT also distributes Texas travel literature through their 12 Travel Information Centers located along the state's borders and in Austin. Overall, the department annually distributes more than 14.6 million pieces of travel literature through their mail fulfillment operation and the Travel Information Centers-which hosted more than 3.7 million visitors in 1994.

Callers in all 50 states and Canada can request information by phoning TxDOT's toll-free number: 1-800-452-9292.

Citrus crop comeback

The biggest crop of Texas grapefruit and oranges since the 1989 freeze brought the citrus industry to a standstill awaits consumers in supermarkets all over Texas, Agriculture Commissioner Rick Perry said recently.

Perry spoke at a news conference at TexaSweat Citrus Marketing Inc. in Mission. He was joined by TexaSweat officials, who introduced a school food service program to encourage Texas grapefruit and oranges in school cafeterias. The materials include a poster of Houston Oilers all-pro defensive end Ray Childress and linebacker Michael Barrow and Oilers' strength coach Steve Watterson.

Perry said this season's crop of Rio Star and Ruby-Sweet red grapefruit is expected to be 20 to 30 percent higher than last year. In December, grapefruit production was nearly 415,000 cartons ahead of December 1993. Orange production is expected to be 1 million boxes, double from last season.

"Exports are soaring," Perry added. "European shipments to date have more than tripled last year's total sales to Europe."

Noting that January is the peak citrus month, Perry said the Texas Department of

Agriculture and the citrus industry are cooperating on a series of marketing promotions to increase sales. Promotions will carry into February, which is National Grapefruit Month.

On January 23, Texas citrus will be included in the menu at the Capitol Dining Room of the State Capitol in Austin and citrus tasting stations will be placed around the room. TDA is working to have the same day officially proclaimed "State Grapefruit Day." In 1993, the Texas Legislature declared Texas red grapefruit the state fruit.

TDA and TexaSweat are cooperating on school cafeteria tastings planned in Austin, San Antonio, Houston and Dallas Independent School Districts. Tastings already were held in the Mission and McAllen ISDs.

Citrus will be promoted as a menu item during Texas School Lunch Week March 6-10. Slaton ISD, near Lubbock, wants to feature red grapefruit on March 2, Texas Independence Day.

During January and February, TDA's Nutrition Coordinator Belinda Boshell will appear on radio and television shows in Dallas, Houston, San Antonio and Austin to promote Texas citrus.

Nothing so needs reforming as other people's habits.

Mark Twain

Br. ISD recognized

Michael Hartman, Superintendent of the Bronte Independent School District was recently honored for outstanding employee safety by the North Texas Educational Insurance Association at its annual meeting conducted in Austin, Texas. The Association consists of 121 participating school districts located throughout northern central Texas. The district is a member of a uniquely designed partially self-funded workers' compensation program developed by Hibbs-Hallmark and Company and administered by Claims Administrative Services, Inc., both located in Tyler. Hibbs-Hallmark and Company currently provides workers' compensation programs to over 25 percent of all schools in Texas. The purpose of the meeting was to recognize those districts



Barry Jones, Michael Hartman and Billy Hibbs

that have held both the number and severity of employee accidents to a very low level. The combined savings during the 1993-94 school year, for all participating districts, was over 2.4 million dollars when compared to the costs of fully insured programs. The total savings for all districts since inception of the programs in 1991 exceed \$13 million dollars.

The Bronte Independent School District was a Diamond award recipient with the actual losses from employee accidents equaling less than 10 percent of the fund set aside by the district for claims expenses. The actual savings to the school district was \$18,863. "Our self insurance program was designed to provide the highest level of safety and offer the greatest potential for premium savings to the districts," said Billy Hibbs,

President of Hibbs-Hallmark and Company. "We have a team of safety professionals who help the districts to implement a strict set of safety policies and procedures."

Claims Administrative Services, Inc. President, Barry Jones, stated "Safety in the workplace is such an important issue and the administrators who have achieved such a high level of success in the area of employee safety deserve this special recognition. The taxpayers should also be pleased to know that the Board of Trustees and the administrative staff of the Bronte Independent School District is doing everything possible to insure a safe working environment for its employees while reducing the cost of the workers' compensation insurance," continued Jones.

GLENN-BIVINS INSURANCE
 Home, Auto, Life, and Health
 123 W. Main Bronte 473-6791

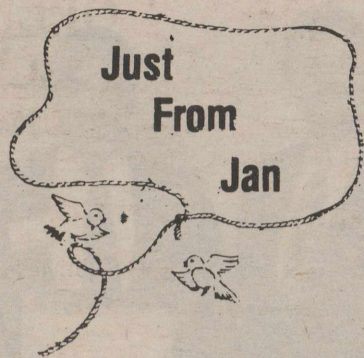
If you use an insurance card for your prescriptions, or are getting treatment under Workman's Compensation, you are free to have your prescriptions filled where you desire.
WE ARE NOW SET UP TO DO THIS FOR YOU.
 Why not let us be your pharmacist and save that trip out of town? We GUARANTEE it will cost you no more than what you are now paying, if anything. Just bring your bottles by and we will do the rest.
HURLEY PHARMACY
 503 S. State St. - Bronte - 473-2351

FREE CHECKING!

- *No Monthly Service Charge
- *No Per Check Charge
- *Free Initial Check Order
- *\$200 To Open Account
- *Automated Check Safekeeping

24 Hour Banking - ATM
 IRAs
 Student Loans
 *12 Month CDs 5.25 APY
 *(Subject to change without notice)

FIRST NATIONAL BANK
IN BRONTE
 102 West Main Street
 Bronte, Texas 76933
 915/473-2911
 MEMBER FDIC



by Jan Yanez
Coke County
Ext. Agent

Sugar: The Basic Facts

What is Sugar? To most people "sugar" means white table sugar. In the Dietary Guidelines "sugar" means all forms of caloric sweeteners, including white sugar, brown sugar, raw sugar, corn syrup, honey and molasses.

Table sugar, or sucrose, is the most commonly used sugar. Corn based sweeteners are also used in large amounts in food processing. Sugars are simply carbohydrates.

Where is Sugar found? Sugar found in food is either naturally, or it has been added during the processing stage. Most fruits and vegetables contain sugars such as glucose, fructose and sucrose. Another sugar, lactose, is found in milk and milk products. Legumes and cereals contain small amounts of maltose. Sugar is most commonly added to food that are prepared at home. Sweeteners such as corn syrups and sucrose are used

Medicare needs new info

If you are a new Medicare enrollee, you'll be receiving a special package from the Health Care Financing Administration (HCFA). It contains a letter, questionnaire, and pamphlet. The questionnaire asks about other health care coverage you have. You are asked to complete it and return it in the self-addressed envelope included in the package. Mailings will begin in mid-January 1995.

The responses to this initial enrollment questionnaire will determine whether Medicare or another health insurance provider is the primary payer on a claim. Your other coverage could be based on your current employment or the current job of your spouse or certain other family members. If this information is not furnished, HCFA may not be able to pay your Medicare claims and you may be billed directly for health care services.

Although a private firm has been hired to collect the information for HCFA, all responses will be kept confidential. If you have questions or need more information, call the toll-free 800 telephone number included in the package. Neither Social Security nor your local Medicare carrier will be able to supply information about the questionnaire.

The initial enrollment questionnaire package is available in Spanish.

If it is bright and sunny after two cold and rainy days, it is probably Monday.

to preserve and flavor foods. Soft drinks and sweetened beverages, sugars and sweets, and bakery products provide most of the sugar found in our diet. What about Artificial Sweeteners? Saccharin and aspartame are artificial sweeteners commonly used in diet beverages, tabletop sweeteners, and other products to provide sweetness without unwanted calories. Aspartame (marketed commercially as "NutraSweet") is also used in gelatins, puddings, desserts, toppings, and even cereals. Since saccharin does not have the same baking characteristics as sugar, special recipes must be used for preparing baked products using this sweetener. Aspartame decomposes with heat and is not appropriate for baking purposes.

How does Sugar affect our diet? Sugar supplies energy (calories) but few nutrients. If eating sugar keeps you from eating nutritious food, you may not get enough vitamins and minerals. Amounts of sugar should be limited by everyone, but especially by individuals with low calorie needs.

The major problem that results from eating too much sugar is tooth decay. Sugar has been blamed for obesity, diabetes mellitus, heart dis-

ease and hyperactive behavior in young children. However, scientific studies have not shown a direct link between sugar and any of these conditions, except tooth decay. Cutting back on added sugars is a good way to reduce calories without reducing nutrients.

How much Sugar is in the food we eat? The amount of hidden sugar found in the food we eat and like is amazing. Following is a list of hidden sugar found in the things you enjoy: Cola drink 12 ounce - 9 teaspoons; Blueberry pie 1 slice - 10 teaspoons; One frosted cupcake - 6 teaspoons; Chocolate pudding 1/2 cup - 4 teaspoons; One ice cream cone - 6 teaspoons; One glazed doughnut - 6 teaspoons; 1 ounce of a chocolate bar - 5 teaspoons; Eight ounces lowfat fruit yogurt - 7 teaspoons; Jello 1/2 cup - 5 teaspoons.

Some suggestions to avoid too much sugar are as follows:

- *Read the labels. Identify the sugar content found in food you buy.

- *Reduce the sugar in foods prepared at home.

- *Cut back on the number of soft drinks, punches, and ades you drink.

Remember sugar supplies energy but few nutrients that the body needs.

-- The Hornets' Nest --

Lunch Menu

Monday, Feb. 27

Fish, French Fries, Green Beans, Salad, Hot Rolls, Apple Crisp, Milk

Tuesday, Feb. 28

Tacos, Corn, Rice, Cake or Fruit, Milk

Wednesday, Mar. 1

Meat Loaf, Cream Potatoes, Blackeye Peas, Corn, Salad, Hot Rolls, Fruit, Milk

Thursday, Mar. 2

Corn Dogs, French Fries, Okra, Carrots, Salad, Apple-sauce Cake, Milk

Friday, Mar. 3

Sandwiches, Soup, Chips, Salad, Fruit or Cookies, Milk

School Beat

by Connie Sawyer

Saturday, February 25, Mr. Herman Seale will conduct a Defensive Driving Course at First Baptist Church in Blackwell. There will be a fee. The course starts at 8:00 am. For more information, you can contact Herman Seale at 282-3374.

On Tuesday, February 28, the Juniors will take the ASVAB test in Room 3, beginning at 8:00.

The Houston Stock Show begins on Tuesday, February 28. We wish all those who are going Good Luck.

Community News

by Trinity Tankersley

The children's choir will be featured this Sunday in the morning worship service at the Blackwell First Baptist Church. Cyree Hyde is the Children's choir director.

The First Baptist Church has also started a new study at 5:00 on Sunday evenings. The Mind of Christ is being taught by Brother Bryan Adair.

Euterpean Club

by Bea Murray

Geneva Holcomb of San Angelo gave an interesting program on "dolls and antiques" when the Euterpean Club met in the fellowship hall of the United Methodist Church of Blackwell. Bobbie Varnadore, president, presided over the business session.

The hall was decorated in the Valentine motif and refreshments were served by Laura Seale and Bobbie Varnadore. Members present were: Margaret Stout, Mary Lee, Juanita McRorey, Esther Smith, Myrle Thompson, Rosemary Ten Eyck, Linda Watts, Lillie Burwick, Hulene Conradt, Sue Sweet, Bea Murray and special guest: Geneva Holcomb.

Next meeting will be March 16th in the home of Tommie Lucas.

New study for MS

The Multiple Sclerosis Association of America has announced plans to become the first organization in the country to fund a clinical study on the effects of Bee Venom Therapy and MS.

Earlier this year, the MS Association funded noted immunologist Dr. John Santilli with a \$25,000 grant to manufacture bee venom extract. The venom extract is currently in production and awaits review by the Food and Drug Administration. Upon FDA clearance, MSAA will fund an additional \$40,000 to principal investigators Dr. Santilli, Dr. John Richert of Georgetown University and Dr. Jay Rosenberg of Kaiser Hospital in San Diego for a six month Phase I study. The Phase I study will test the venom extract for safety on chronic progressive MS patients and determine the appropriate dose for future clinical trials.

Multiple sclerosis is a crippling disorder of the central nervous system, affecting over 300,000 Americans. During an MS attack, inflammation occurs in various areas of the nervous system causing the loss of the myelin (insulation) coating. When myelin is damaged, nerve signal transmission may be slowed or blocked, leading to symptoms such as blindness, fatigue or paralysis.

Over the past few years, reports in the national media have suggested that bee venom may be an effective treatment for those with multiple sclerosis. It is now estimated that between 5,000 to 10,000 MS patients are stinging themselves with honey bees in order to test claims of symptom relief.

"It's an unbelievable movement throughout the MS community with little to no scientific evidence," said

MSAA President John Hodson. "Rather than risk a let's wait and see approach, we realized that this is a dangerous situation which needs to be carefully and scientifically studied. We're proud to be the first organization in the country to work with the FDA in developing a method of studying this unusual treatment option for those with MS."

In addition to Bee Venom Therapy, MSAA's patient care programs include counseling, support groups, the free loan of therapeutic equipment, barrier-free housing, microclimate cooling from NASA technology, newsletter and referral assistance. The MS Association of America is an independent organization and is not affiliated with the National Multiple Sclerosis Society. To learn more on Bee Venom Therapy or other MSAA service call 1-800-833-4672.

FCE Club meets

The Bronte Family Community Education Club met on Friday, February 17th in the home of Marie Arrott serving as hostess. Opening exercise "Pass It On" was read by Marie. Six members answered roll call by naming a President of the United States. Those present included Virginia Boatright, Juanita Bradley, Annie Laura McShan, Alene Jameson, Charlie Bell Bagwell and agent Jan Yanez.

Business for the club included electing a delegate to attend the District FCE meeting in Menard on March 13th. Also, the Bronte Nursing Home birthday party was planned. Next meeting will be March 17th.

The obvious is always the least understood.
-Metternich

SHANNON

HEALTH NOTES

Silent Heart Attacks

Millions of Americans have an increased risk of heart attack and death from coronary artery disease, especially if periods of reduced blood flow occur during their daily lives. If there is no pain associated with the reduced blood flow, the episode is called silent ischemia. If there is pain associated with ischemia, that is called angina.

Lead author Dr. Carl Pepine, of the University of Florida, says nobody knows why the heart muscle often causes no pain when it is starved for blood. Nonetheless people whose arteries are narrowed by plaque have an increased risk of a heart attack, even without the classic symptoms of chest pains.

A scientific journal of the American Heart Association reports that an anti-ischemic drug called atenolol, cut in half the risk of heart attack, hospitalization and sudden death in people with documented episodes of silent ischemia. This is a relatively short study, but if additional studies confirm the benefit of anti-ischemic drugs, several million of us could benefit.

©1994, Lyle Dean, Inc.

Shannon Health Notes is a public service of



SHANNON MEDICAL CENTER

120 East Harris • San Angelo, Texas • (915) 653-6741

473-2065

473-2065

473-2065

Hall's Super Save

OPEN
7 Days a Week

STORE HOURS
Mon.-Sat. --7:30 am to 8 pm
Sunday -- 8 am to 7 pm

OF BRONTE

FOOD STAMPS WELCOME

Extra Lean

Cube Steak

Lb. **2.39**

Boneless Arm Roast

Lb. **1.69**

Oscar Mayer Wieners

1 Lb. pkg.

1.49

Shurfresh Sliced **Bacon**

12 oz. pkg. **.79**

Boneless Arm Steak

Lb. **1.89**

Armour Market Sliced Bologna or Salami

Lb. **1.59**

Boneless Short Ribs

Lb. **1.79**

Dell Ham

Lb. **1.69**

Shurfine or Parade **Tomato Sauce**

8 oz. can **6 / \$1**

Dishwashing Detergent **Dove**

22 oz. Bottle **.99**

Lipton **Tea Bags**

100 ct. Box **2.99**

Starkist **Tuna**

6 oz. can **.69**

Zesta **Saltines**

1 Lb. Box **1.29**

Shurfine **Chili**

15 oz. can **.89**

Lean **Ground Chuck** 10-1 Lb. Pkg. **14.90**

Veribest **Spiced Luncheon**

Lb. **.99**

Market Made **Pork Sausage**

Lb. **.99**

Rice or Corn **Chex**

12 oz. Box **2.99**

Dr. Pepper or Pepsi Cola

6 pk. 12 oz. cans **1.79**



Shurfine **Bath Tissue**



4 roll pkg. **.69**

Shurfine **Bleach**



Gal. Jug **.79**

Shurfine **Paper Towels**

2 / .89

Saver's Choice **Hot Cocoa Mix**

12-1 oz. pouch **.99**

Heinz **Ketchup**

28 oz. Squeeze Bottle **1.59**

Shurfine **Vegetables**

Cut & French Style Green Beans, Whole or Cream Style Corn, Sweet Peas, Mixed Vegetables, Whole New Potatoes, Sliced Carrots

15 / \$5

Shurfresh **Cream Cheese** **.49**

Kraft **Velveeta Cheese** 2 Lb. Box **3.99**

Kraft 12 oz. **American Singles** **1.99**

Shurfresh **Sour Cream** 8 oz. **.49**

Russet

Potatoes

10 Lb. Bag **.79**



FRESH PRODUCE

New Crop Roasted or Salted In Shell

Peanuts 1 Lb. Bag **.99**

Washington Fancy Red **Apples** Lb. **.39**

California Navel **Oranges** Lb. **.49**

Texas **Grapefruit** **3 / \$1**

FROZEN FOOD

Saver's Choice Chicken, Beef, Turkey, Mac & Cheese

Pot Pies 7 oz. **3 / \$1**

Shurfine **Fried Chicken** 25 oz. **2.99**

Shurfine **Orange Juice** 12 oz. can **.89**

Prices Good 2/23 Thru 3/1

FOOD STAMPS WELCOME



**BUY IT.
SELL IT.
FIND IT.**

CLASSIFIED.





Jewell
REALTOR
Nell Kennedy

Bus. 1-800-221-7464
Res. 915/453-4355

Large Corner Lot
2BR/1Bath/Pecan trees
Edith Estates
View of Lake from balcony. 2
BR/2Bath/rural water

Custom Shop
w/Hwy frontage, too many ex-
tras to list-call for details

Priced Reduced
Owner Says Sell! 25 acres at
Lake Spence Estates

New Listing
Comfortable 2 or 3 BR 2 Bath
w/ carport and storage

Owner Will Carry
Downtown Lots

Superb Location
Overland Trail. 3BR 2B Brick
Fireplace-Built Ins-Privacy
Fence

27a-4tc

FOR SALE
On corner lot in Bronte, 3
bedroom, 1 bath, frame
house. Central heat and air.
Well insulated. Dishwasher,
washer and dryer
connections. Appointment
Please. Call 915-473-2007.

29B-4tp

**WHEN YOU GET
TIRED OF BEING**
a renter call and make an
appointment to look at our
new and pre-owned
singlewide and doublewide
mobile homes. Low down
payment and low monthly
payments WAC. E-Z credit.
Call 915-550-4463 or 1-800-
215-4665.

29a-1tc

FOR SALE
One lot, N. Wood St., Bronte
with all trailer hook-ups.
\$2000. 282-4901 or 473-
5741.

27B-4tc

**GOOD, BAD, OR
NO CREDIT.**
Guaranteed financing at
NATIONWIDE homes.
Owner financing. Call for
details. 1-915-550-4663 or 1-
800-215-4665.

29a-1tc

HOME FOR SALE
near Juvenile Justice Center
in Bronte. 2 or 3 BR/1 BA,
shaded, carport, central heat
and air, fireplace, 653-7019.

08-tnc

\$185.00 MONTHLY
buys totally remodeled 3 brd-
2 bth mobile home. All kitchen
appliances, skirting, a/c
included. 10% down 180
months WAC, 12.25% APR.
Call 1-800-456-8944.

29a-1tc

**REPO 1985
FLEETWOOD**
Doublewide. Bank repo,
lender willing to take loss.
Come in and make an offer at
Nationwide Mobile Homes,
6910 West Highway 80,
Midland, Texas or call 1-800-
456-8944 for more
information.

29a-1tc

**YOUR JOB IS YOUR
CREDIT AT NATIONWIDE
MOBILE HOMES. OWNER
FINANCING. CALL 1-915-
550-4663 or 1-800-215-
4665.**

29a-1tc

FOR SALE
Two registered hereford bulls,
breeding age and 2 younger
bulls. W. A. Bloodworth, Sil-
ver, 915-453-2838.

27-3tp

**!!! REPOS !!!
!!!!REPOS!!!!REPOS!!!!**
SEVERAL IN STOCK,
SINGLEWIDES AND
DOUBLEWIDES. MORE
COMING IN DAILY LOW
DOWN PAYMENT AND LOW
MONTHLY PAYMENTS.
CALL 1-915-550-4663 OR 1-
800-215-4665.

29a-1tc

**SMOKE FREE -
PET FREE**
in Bronte. Brick home, 2
Bedroom, den or 3 Bedroom,
2 bath on 4 1/2 lots, storm
windows, 2 separate central
heat and air units, all or part of
house can be heated and
cooled. Utility room, formal
living and dining rooms,
breakfast room, built in china
cabinet, 10 closets. Extras
include large bearing pecan
trees, sprinkler system,
cistern, cement cellar has
cross ventilation, double
garage, metal storage
building, over 2400 square
feet in house. Appointment
Please. Call 915-473-2007.

29B-4tp

SPECIAL GIFT IDEAS
Handcrafted brooms, wreaths,
hats, personalized baby gifts.
The Beauty Den, 601 N.
Jefferson, Bronte. Open
Tuesday through Friday.

29b-1tp

FOR RENT

**ONE OR TWO
BEDROOM
APARTMENTS
FOR RENT**
Taking applications Mon.,
Wed., and Fri., 9 am - 3 pm.
Housing Authority of Robert
Lee, 170 N. Bishop, 453-
2912. Equal Housing Oppor-
tunity.

16a-EOW

HOUSE FOR RENT
2 bedroom house in Robert
Lee. Call Bill Casey at 453-
4382 or Hank Baker at 453-
2765.

29-tnc

CARD OF THANKS

CARD OF THANKS
Your cards, calls and
memorials to Pauline will
never be forgotten. Thanks
to each of you.

Snookye, Marvin
and Jerry

29-1tc

MISC

SALES REP NEEDED
for Prime Star, the new mini-
dish satellite TV programming
service that brings direct
broadcast digital cable TV to
its customers with no
equipment to purchase and
no credit check. 1-800-328-
8003.

28a-2tc

*Responsible Child
Care in My Home.*

**Monday-Friday.
Non-Smoker.
Call Tammy for
more information,
leave message at
453-4344.**

22a-tnc
453-2711 before 5:30 p.m.
453-2775, if no answer call
rotary sewer line cleaning,
repairs and service, power
Repair Service - Mobile home
LES GRAY'S AA-1

**EXTENDED
LOCAL
CALLING**

to San Angelo would
greatly reduce the
West Coke County
Nursing Home's
telephone bill as well
as other businesses
& individuals in
Robert Lee.
The West Coke
County Hospital
District Board of
Directors urge you to
vote YES for ELC.

DEER LEASE WANTED:
Prefer 5 year lease with
option. Camp house desired.
5 experienced adult hunters
will maintain and respect your
ranch and treat as their own.
References available. Call
903-567-2669.

29B-2tp

WANT TO BUY
one to twenty acres in or near
Bronte with access to city
water, suitable for home
building. Call 214-727-4254.

28-3tp

**"TEXAS BEST"
CARPET CLEANING**
professional service, truck
mounted cleaning system.
Serving all Coke County. Call
toll free 1-800-473-2807 or
473-2807, Bronte. Free esti-
mates.

49-tnc

DEER LEASE WANTED
for responsible Christian
adult. Small to medium lease,
3 to 4 people. Call Buddy
(713) 492-6776.

29-4tc

**Johnson's
Water Well
Service**

Farm
Ranch Home
Windmills & Pumps
24 HR. SERVICE
658-6039
or
655-0379

D & L DOZER SERVICE
Larry Spivey, Owner-Opera-
tor. PO Box 160, Bronte, TX.
Phone (Oak Creek Lake) 915-
743-2577.

21b-tnc

**ATTENTION SINGING
WIND GOLFERS!!**
The 1995 handicap cards
need to be updated. Please
contact the pro shop and let
us know if you want to
continue to participate.

29B-1tc

**CLASSIFIED
ADVERTISING RATES**

1st. Insertion...
20c Per Word
(\$3.00 Minimum)
2nd. and Subsequent
Insertions...
16c Per Word
(\$2.50 Minimum)
Additional 50c
for Blind Ads
Cards/Thanks...
20c Per Word
Legal Notices...
25c Per Word

COPY DEADLINE

Class Ads..5 pm Tues.
Display Ads..5 pm Tues.
Classified Ads & Cards of
Thanks are payable in
ADVANCE unless customer
carries regular account.

FOR SALE

3 BR HOUSE, 2 BA, central
heat & air, numerous extras,
well-kept, large corner lot,
trees, sprinkler system,
garage, patio, and storage
buildings. Price reduced.

MOBILE HOME on 4 lots in
Robert Lee.

3 LOTS on east side Hwy.
158

BRICK 3 BR/2 BATH, lo-
cated on large lot, double car-
port and storage building.
Make offer.



**ADAMS LAND &
REALTY CO.**

Phone 453-2723
Elsie Adams 453-2757
Randy Mueller
453-2386

BIG SCREEN TV

For Sale - Responsible party
to take on small monthly
payments. GOOD CREDIT A
MUST. CALL 1-800-398-
3970.

28-4tp

NO CREDIT CHECK

\$6,000.00 equity buys a 3
bdrm-2 bath Cameo d/w
mobile home. Only 52 pay-
ments left. 1-800-456-8944.

28a-2tc

HOUSE FOR SALE

Two bedroom, study, one
bath, near Bronte school.
323 West Oliver. Phone
(915) 692-2242.

26B-4tc

LAST OF THE 94'S

Quality home 28 x 80 Walden
Redman 4 bdrm with parents
retreat. Includes 5 ton A/C,
skirting set and delivered to
your location within 100 miles.
Save \$\$\$\$\$. 1-800-456-8944.

28a-2tc

HOUSE FOR SALE

By owner. 302 W. 15th,
Robert Lee. 3 bedroom, 1 1/2
bath, close to school. Call
453-4307 after 4 pm.

23-tnc

OWN YOUR OWN

apparel or shoe store,
choose: Jean/Sportswear,
Bridal, Lingerie, Westernwear,
Ladies, Men's, Large Sizes,
Infant/Preteen, Petite,
Dancewear/Aerobic,
Maternity, or accessories
store. Over 2000 name
brands. \$25,900 to \$37,900;
inventory, training, fixtures,
grand opening, etc. Can open
15 days. Mr. Loughlin (612)
888-6555.

29-1tp

FOR SALE

**SHAFFER
FUNERAL HOME**

BRONTE ROBERT LEE
473-3131 453-2424

MONUMENTS

Duplications
Custom Designs

HOUSE FOR SALE

by owner, 4 bedroom, 2 bath,
total electric. 1121 Eucl,
Robert Lee, call 453-2580.

13-tnc

DRESSES REDUCED

to \$35.00 and up! Children's
clothes reduced to \$4.00 and
up! **Hurry** - the best items will
go first!! Cumbie Mercantile,
downtown Bronte.

29B-1tc

**CONSOLE/SPINET
PIANO FOR SALE.**

Take on small payments. See
locally. 1-800-343-6494.

29-1tp

FOR SALE

Robert Lee

ALL THE EXTRAS,
3 bedroom, 2 bath, corner lot.
Call today.

**LAKE PROPERTY
HOME:** 2 years old, 3 bed-
room, 2 bath.

Large home plus more!
New to market, call for details.




453-2226

Elaine Lee
453-2995

Get Results!

WANT ADS

MISC

TEN EXPERIENCED, reliable hunters looking for long-term deer/turkey lease. Please call Glen Cummings at 1-800-658-2660, 9:00 am - 4:00 pm.

29-3tc

NEED 100 OVER-WEIGHT PEOPLE serious about losing weight. Satisfaction guaranteed or your money back. Call 915-942-8029.

26a-4tc

FULL TIME HELP WANTED at Paint Creek and Wildcat Marinas. Apply in person only.

28a-2tc

NOTICES

PUBLIC NOTICE

You are hereby notified that **SANCO MATERIALS COMPANY** has applied for Texas Natural Resource Conservation Commission (TNRCC) Air Quality Permit No. 27790. This permit, if approved, will authorize construction of a **Rock Crushing Facility** in **Robert Lee, Coke County, Texas**. The location of the proposed facility is approximately 5 miles southeast of Robert Lee, along the Colorado River about 2.5 miles east of SH 208. This facility will emit the following air contaminant: **particulate matter (rock and road dust)**.

A copy of all materials in the public file is available for inspection and reproduction at the TNRCC San Angelo Regional Office, Air Program, at 301 W. Beauregard Avenue, Suite 202, San Angelo, Texas 76903, telephone (915) 655-9479, and at the TNRCC Central Office, 12124 Park 35 Circle, Austin, Texas 78753, telephone (512) 239-1000. The facility's compliance file, if any exists, is available for public review in the regional office of the TNRCC. Inquiries about the permit application and any information concerning any technical aspect of this application can be obtained by writing **Mr. Wesley Smith**, TNRCC Office of Air Quality New Source Review Program, P. O. Box 13087, Austin, Texas 78711-3087 or the TNRCC San Angelo Regional Office.

You may submit written comments concerning the permit application to the Office of Air Quality, New Source Review Program in Austin. All written comments received within 30 days after the second publication of this notice shall be considered by the Executive Director in determining whether to issue or not issue the permit. All written comments will be made available for public inspection at the TNRCC Central Office in Austin. This notice is to be published on February 17, 1995 and February 24, 1995.

Any person who may be affected by emissions of air

contaminants from the proposed facility may request the Commission to hold an informal public meeting and/or contested case hearing on the permit application pursuant to Section 382.056(d) of the Texas Health and Safety Code. The Commission is not required to hold a contested case hearing if the basis of a request is determined to be unreasonable. All requests for a contested case hearing must be received in writing within the 30-day comment period regardless of whether an informal public meeting has been held or scheduled on this matter. If you wish to request a public hearing, you must submit your request in writing. You must state (1) your name, mailing address and daytime phone number; (2) the permit number or other recognizable reference to this application; (3) the statement "I/we request a public hearing"; (4) a brief description of how you, or the persons you represent, would be adversely affected by the granting of the application; (5) a description of the location of your property relative to the applicant's operations; (6) your proposed adjustment to the application/permit which would satisfy your concerns and cause you to withdraw your request for hearing. Requests for a public hearing on this application should be submitted in writing to Office of the Chief Clerk, Texas Natural Resource Conservation Commission, P. O. Box 13087, Austin, Texas 78711-3087, Telephone (512) 239-3300.

Before a permit can be issued for this facility, the applicant must demonstrate that all emission sources are in compliance with all TNRCC air quality Rules and Regulations and all applicable Federal Regulations. This includes the application of "best available control technology" to each new or modified emission source and compliance with all ambient air quality standards.

28a-2tc

PUBLIC NOTICE CITY OF BRONTE

The City of Bronte will hold a public hearing at 6:45 pm on March 9, 1995 at the Bronte City Hall. The purpose of the hearing is to allow for final public comments regarding the completion of the 1992 Texas Community Development Program - Sewer System Improvements (Contract No. 702061). The general public is invited to attend and participate. Should any non-English speaking citizen(s) desire to address the City during the public hearing and needs the assistance of an interpreter, the City will attempt to provide one if sufficient notice is provided. Also, should any citizen(s) desire technical assistance or handicap accessibility to the hearing site, please call the City Secretary.

Martin Lee
Mayor
City of Bronte
29B-1tc

NOTICE OF PUBLIC MEETING TO DISCUSS POSSIBLE FREEWAY ROUTE CONNECTING LUBBOCK AND INTERSTATE 10 (BETWEEN FORT STOCKTON AND JUNCTION)

The Texas Department of Transportation (TxDOT) is initiating studies to identify possible freeway routes between Lubbock, beginning at the terminus point of Interstate Highway 27, and terminating at points along Interstate Highway 10 between Fort Stockton and Junction. The study will also identify possible freeway routes located north of Interstate Highway 40 to the Texas state line commencing at Interstate Highway 27 in Amarillo. TxDOT will conduct a public meeting on Wednesday, March 22, 1995 starting at 7:00 pm with public input beginning at 7:30 pm, at the Holiday Inn Convention Center located at 441 Rio Concho Drive in San Angelo for the purpose of discussing the route study and soliciting input from citizens and other concerned groups. TxDOT will also conduct an open house at the same location from 4:00 pm to 7:00 pm to answer questions and provide assistance.

All interested citizens are invited to attend and participate in this meeting and/or open house.

Written comments will be accepted through April 1, 1995 and should be addressed to:

Walter G. McCullough
District Engineer
Texas Department of Transportation
4502 Knickerbocker Road
San Angelo, TX 76904

Persons interested in attending the meeting who have special communication or accommodation needs are encouraged to contact the District Public Information Officer at (915) 947-9205 or 944-1501. Requests should be made no later than two days prior to the meeting. TxDOT will make every reasonable effort to accommodate these needs.

29a-2tc

PART-TIME RECEPTIONIST

needed for busy office. Must be flexible, professional, possess good telephone skills, good driving record and have own car. Light typing and filing. Friendly mature adult. Apply in person, 900 South State Street, Bronte, Texas. EOE.

29B-1tc

NOTICE INVITING BIDS

To: All Sub-Contractors
Notice is hereby given that East Coke County Hospital District will accept sealed bids for the renovation of the Bronte Nursing Home in Bronte, Texas (the "Project"), in strict conformity with bidding and contract documents, including the plans and specifications. All bids must be received by East Coke County Hospital District, at their offices located at 900 South State Street, Bronte, Texas, on or before 2:00 p.m. of March 3, 1995. East Coke

County Hospital District reserves the right to receive and consider any late bid. Separate sub-contractor bids will be considered and accepted for each division of the construction of the Project as set forth in the bid documents. Copies of the bid documents, plans and specifications, may be obtained from the construction manager for a refundable deposit of \$150.00 per set, at the following address:

Mark Burk Construction Co.
3141 Chatterton Dr.
San Angelo, TX 76904
(915) 942-9045

All shipping or postage expense of the delivery of the bid documents shall be the bidders expense. Bidding document may be examined at area Plan Rooms. A pre-bid conference will be held on February 22, 1995 at 11:00 a.m. at the locations of the Project.

All sealed bids which are received will be opened and read aloud at 2:00 p.m., March 3, 1995, at the offices of East Coke County Hospital District, in the Bronte Nursing Home, located at 900 South State Street, Bronte, Texas.

With respect to any contract awarded a successful bidder in excess of \$25,000.00 bidder will be required to furnish a performance bond in the amount of each respective contract, conditioned upon the faithful performance of the work in accordance with the plans, specifications, and contract documents; and shall also be required to furnish a payment bond in the amount of the contract solely for the protection of all claimants supplying labor and material in the prosecution of the work provided for in the contract, for the use of each such claimant.

Notice of award of each contract will be given by regular U.S. Mail if any contract is awarded to a bidder. East Coke County Hospital District reserves the right to reject any and all bids and to waive any informality in bidding.

28B-2tc

NURSES AIDES NEEDED

for evening and night shift: competitive salary, shift differential, pleasant atmosphere, training available, sick pay, vacation pay and perfect attendance pay. Insurance available and employees credit union. Non-smokers preferred. Apply in person: 900 South State Street, Bronte, Texas. EOE.

29B-1tc

FULL TIME LVN

Weekends, unusual schedule with lot of time off.
Susie Spitzer, RN/DON
West Coke County Nursing Home, Robert Lee, TX
915-453-2511, EOE.

29a-2tc

RN NEEDED FOR WEEKEND DAYS

Relief of DON.
Susie Spitzer, RN/DON
West Coke County Nursing Home, Robert Lee, Texas
915-453-2511, EOE.

29a-2tc

NOTICE INVITING BID

To: All Sub-Contractors
Notice is hereby given that East Coke County Hospital District will accept sealed bids for the construction of a 24 bed nursing care addition, of approximately 5600 square feet, to the Bronte Nursing Home in Bronte, Texas (the "Project") in strict conformity the bidding and contract documents, including the plans and specifications. All bids must be received by East Coke County Hospital District, at their offices located at 900 South State Street, Bronte, Texas, on or before 2:00 p.m. of March 3, 1995. East Coke County Hospital District reserves the right to receive and consider any late bid. Separate sub-contractor bids will be considered and accepted for each division of the construction of the Project, as set forth in the bid documents. Copies of the bid documents, plans, and specifications, may be obtained from the construction manager, for a refundable deposit of \$150.00 per set, at the following address:

Mark Burk Construction Co.
3141 Chatterton Dr.
San Angelo, TX 76904
(915) 942-9045

All shipping or postage expense of the delivery of the bid documents shall be the bidders expense. Bidding documents may be examined at area Plan Rooms. A pre-bid conference will be held on February 22, 1995, at 11:00 am at the location of the Project.

All sealed bids which are received will be opened and read aloud at 2:00 p.m., March 3, 1995 at the offices of East Coke County Hospital District, in the Bronte Nursing Home located at 900 South State Street, Bronte, Texas.

With respect to any contract awarded a successful bidder in excess of \$25,000.00, the successful bidder will be required to furnish a performance bond in the amount of each respective contract, conditioned upon the faithful performance of the work in accordance with the plans, specifications, and contract documents; and shall also be required to furnish a payment bond in the amount of the contract solely for the protection of all claimants supplying labor and material in the prosecution of the work provided for in the contract, for the use of each such claimant.

Notice of award of each contract will be given by regular U. S. Mail if any contract is awarded to bidder. East Coke County Hospital District reserves the right to reject any and all bids and to waive any informality in bidding.

28B-2tc

BRONTE ISD IS ACCEPTING BIDS on an all weather long jump runway and high jump apron. For specifications call Keith McCutchen, Bronte ISD, 915-473-2511.

29B-2tc

CLASSIFIEDS

(cont'd. on page 12)

Classifieds

NOTICES

BRONTE ISD IS ACCEPTING BIDS for a metal computer building. For specifications call Michael Hartman, Superintendent, 915-473-2511.

29B-2tc

**1 CNA DAYS
2 CNA EVENINGS**
Susie Spitzer, RN/DON
West Coke County Nursing Home, Robert Lee, TX
915-453-2511,EOE.

29a-2tc

PART-TIME VAN DRIVER.
Prefer mature adult with good driving record. In good physical condition and capable of handling patients and operating wheelchair lift. Must be neat and clean. Non-smoker preferred. Apply in person at : 900 South State Street, Bronte, Texas. EOE.

29B-1tc

Retirement and Soc. Sec.

How much money is needed to assure a comfortable retirement? Many financial analysts recommend that middle-income Americans need a replacement rate of about 80% of pre-retirement earnings. Too often, people never think about where that money will come from until it's too late to do much about it.

Social Security retirement benefits replace about 42% of an average earner's pre-retirement earnings. Social Security is a financial base on which most retirees can build.

Some critics of the program say they could do a lot better than Social Security in providing for their retirements. I would encourage them to make the effort, because a partnership with each worker is what was originally intended. When the original Social Security Act was passed almost 60 years ago, Social Security retirement benefits were thought of as part of a "three-legged stool". The other two financial "legs" were (1) personal savings and investments and (2) employer pension.

What if an individual is either wise enough or lucky enough, through investments and pensions, to duplicate Social Security's replacement rate of 42% of earnings for an average individual? He or she would then reach an 84% figure and assure themselves a comfortable retirement.

If you do a little less well, the effort is still all to the good because you will have more than just Social Security to rely on.

A good starting point for any analysis of what you will want or need for your retirement years in a Personal Earnings and Benefit Estimate Statement that is available free from Social Security by calling 1-800-772-1213.



Here's a handy sign for your garage sale!

Call The Observer/Enterprise with your Garage Sale Ad. Deadline is 5 pm each Tuesday.

Robert Lee
453-2433

Bronte
473-2001



EXERCISE
Does Your Heart Good. American Heart Association