

WEATHER

April 12 88 36  
April 13 77 34  
April 14 74 34

# BAILEY COUNTY JOURNAL

'The Community of Opportunity-Where Water Makes the Difference'

Vol. 22, No. 16

10 Pages

Published Every Sunday at Muleshoe, Bailey County, Texas 79447

Sunday, April 15, 1984

## Around Muleshoe

Muleshoe High School's one-act play, "Othello" was the regional winner in competition at Odessa on Thursday.

The play will now advance to state competition to be held in Austin on April 26.

It was also reported that several of the MHS drama students won honors in the regional competition, but no names were known at press-time.

Absentee voting begins in Bailey County at the Bailey County Clerks office on Monday, April 16th, according to County Clerk Barbara McCamish.

The Muleshoe High School Athletic Banquet will be held on May 8 at 7 p.m. in the High School Cafeteria. All boosters and parents are needed to help make this banquet a success. Call one of the booster officers for further information.

Edwin Cox of Fry and Cox, Inc. was recently elected at President Elect of the Southwest Hardware and Implement Association during the 95th Annual Association Convention held on March 11-14 in Fort Worth. Cal Jordan of Cal Jordan Implement in Clovis was elected 1984 President of the organization.

The Lazbuddie Young Homemakers will have a blood pressure clinic at the Lazbuddie School's Open House on Tuesday, April 17. The event will be from 6:30 to 8 p.m. in the cafeteria, and two registered nurses will be on hand to conduct the tests. There will be no charge for the service.



LIBRARY FAMILY OF THE YEAR...The Benny Bruns family was named as "Library Family of the Year" late Thursday afternoon as a part of the library week celebration. The award, a dictionary, was presented to the family by members of the Muleshoe Study Club. From left: Mrs. Blanche Johnson, Joylene Costen, Gail and Benny Bruns and in front, their two children Leah and Luke.

## Awards Presented At FFA Annual Chapter Banquet

The Muleshoe FFA Chapter Parent/Member and awards banquet was held in the Muleshoe High School Cafeteria on Tuesday, April 10, with about 35 members and 125 guests present.

A welcome was given to those present by Micheal Barrett, Reporter of the Chapter and answered by a response from School Board Member Dewey Moore, who encouraged all parents and other citizens to support their FFA and ag students. Moore stated that he felt, as others did, that the support given these young people had helped and would continue to help them become more productive people.

Special guests were recognized, including members of the School Board and their wives, faculty and school officials, as well as Chapter officers.

Following a meal catered by Big Boy's Barbeque, Adult Chapter Farmer degrees were presented to parents of all senior FFA members. Those who received the awards included: Mrs. Helen Bickel, Rick Barrett, Bill Hunt, Dirk Kerly, Donnie Stewart and Mr. and Mrs. Wayne Tunnell.

Presentation of Chapter awards in proficiency were then presented. Those receiving the awards, and the

designation of their field of proficiency were: Martin Pacheco, Ag Production; Chris Hopkins, Agri-Business; Brian Houston, Swine; Lee Copley, Ag Mechanics; Steven Ethridge, Beef Production; Lupe Rejino, Jr., Crops; Brent Black, Sheep; Dondee Stewart, Diversified Livestock and Kristi Spies, Horse Proficiency.

Awards were also presented for record keeping in each of the four ag divisions: for Vo Ag I, Lisa Black; Vo Ag II, Lupe Rejino, Jr.; Vo Ag III, Kristi Spies; and Vo Ag Coop, Ray Vinson.

Awards were presented to the outstanding Freshman or "Greenhand" student and Star Greenhand, which went to Brent Black. Outstanding Chapter Farmer was awarded to Mike Holt and overall outstanding chapter member award, designated by the Kenny Henderson Memorial Scholarship was awarded to Martin Pacheco. The Hen-

## Williams To Head March Of Dimes

In the 26th year of the March of Dimes effort to prevent birth defects, Coach Windy Williams of Muleshoe has been appointed director for the South Plains Chapter's '1984 Walk America Campaign.'

Williams is head coach and athletic director for Muleshoe High School and a leader in community affairs. "Even in an age of great technological advances, too many infants born in this country have birth defects," he said. "The March of Dimes Birth Defects Foundation has made great strides in trying to change that. Over 26 years of successful work has saved many babies thanks to the generous support from the public," Williams added.

"It is encouraging to know that there are some birth defects that are preventable with proper prenatal care," Williams said. "But the March of Dimes needs help to be able to reach every community in this country. I hope everybody in Muleshoe and the surrounding communities will support Walk America on April 28."

For more information, please contact Coach Williams, and watch for posters and registration cards all around town.

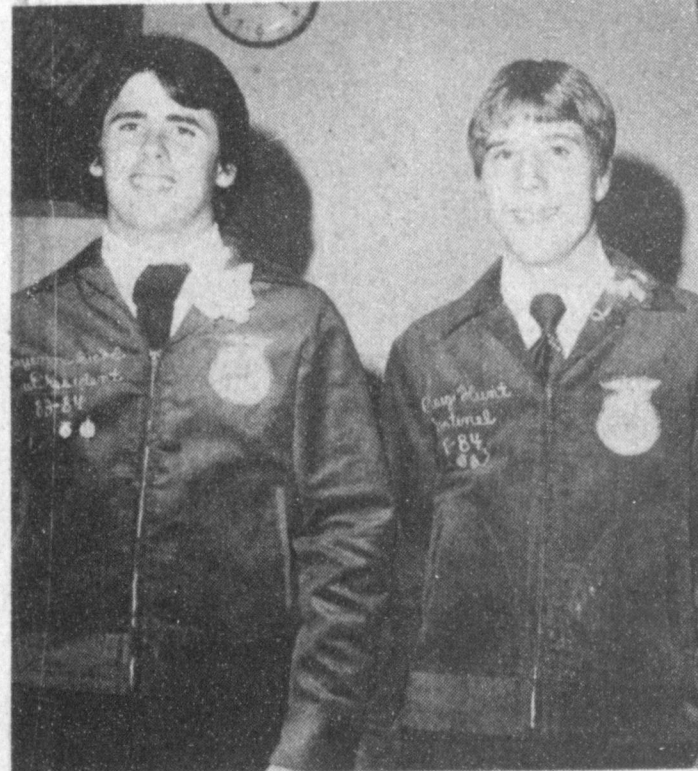
## Varsity Boys Golf Wins District Title

Muleshoe High School's boy's golf team won the District Championship in Tulia on April 11 against all comers.

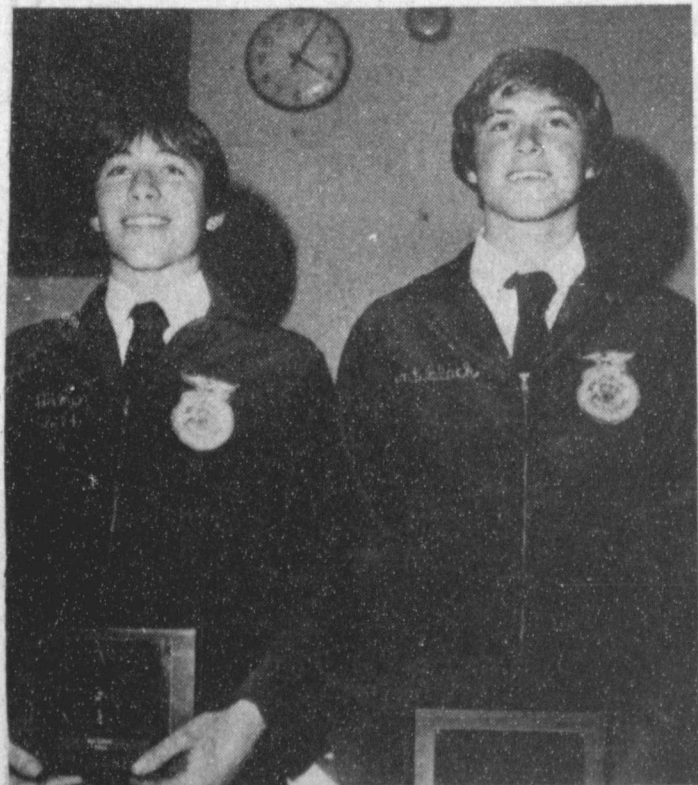
Loy Triana won second place medalist while Hector Flores won third place medalist.

Muleshoe's "B" team won sixth place in the District.

The varsity team will go on to regional competition and from there, hopefully, Cont. Page 6, Col. 3



SCHOLARSHIP WINNERS...Cheyenne Bickel and Craig Hunt were the recipients of the Muleshoe FFA Boosters' annual scholarships at the FFA Parent-Member Banquet recently. They were chosen as outstanding applicants for these awards.



OUTSTANDING...Three young men were named as outstanding in their respective classes at the annual Muleshoe FFA Banquet recently. Mike Holt was named as Outstanding Chapter Farmer, Brent Black was named as Star Greenhand, and Martin Pacheco (not shown) was named as winner of the Kenny Henderson Memorial Scholarship.

## Sales Tax Rebate Shows Almost 5 Percent Increase

\*\*\*

### New School Board Members Sworn In

In a regular school board meeting on Monday, April 9, election results of the April 7 Trustee Election were canvassed, with incumbents Ben Roming and Dewey Moore, along with new member Howard Watson being declared as official winners of the election. The oath of office was administered to these trustees prior to the re-organization of the Muleshoe ISD for the coming year.

Ben Roming was re-elected as President of the Board, Julie Cage was named as Vice-President and Dewey Moore as secretary. Other board members include Ronnie Holt, Gordon Wilson, Royce Harris and Howard Watson.

An update on the MISD testing and counseling program was presented by counselors, in which a summary of the program now in effect was given. A recommendation has been made by the Select Committee that every grade be tested each year, which is already an active part of the Muleshoe Schools systems. A comparison and list of tests was also given.

An update on House Bill 246 was given which indicated that the bill had now become law. A meeting will be held on Tuesday, April 17 at Estacado School in Lubbock by the Texas Education Committee from 9 a.m. until 4 p.m. in order to explain the implementation and requirements of the newly ordered bill.

Select Committee recommendations updates were to be mailed to all Board Members on Tuesday. Also, members were reminded of the South Plains School Board Association meeting

on Thursday, April 26. Julie Cage, local school board member has been nominated as director of the Board.

In other items, a report was given on winners in UIL literary events, as well as the success of various teams in the Muleshoe Schools in UIL events.

Regarding the Volunteer Program, no action was taken at the time of this meeting, but a special meeting will be set up prior to any decision on whether the Board will participate.

Tom Jinks gave financial reports, reviewing all bank balances in each school fund and reviewing expenditures in the school budget. Approval of payment of current bills was given.

Under business items, the School Board rejected all bids on items listed as "for Cont't Page 7, Col. 1

State Comptroller Bob Bullock last week sent checks totaling \$46.3 million in local sales tax payments to the 985 cities that levy the one-percent city sales tax.

"These receipts are up more than 16 percent over last year," Bullock said. "This is just exactly where I estimated they would be when I gave the Legislature its estimate of revenues last year. Texas is in the thick of the national economic recovery. Let's just hope we stay there."

In Bailey County and the city of Muleshoe, sales tax rebates for the period ending on March 27, 1984 were up by 4.82 percent over the same period of time in 1983, according to information released by Bob Bullock's office last week. Net payment for this period for Muleshoe amounted to \$10,095.55, up considerably from the \$7,725.39 at the same time last year. Total 1984 payments to date for Muleshoe amount to \$65,481.54, up from the \$62,467.88 of 1983, reflecting the 4.82 percent change for the period.

In Castro County, net payment for that county this period amounted to \$10,180.19, up almost double

from the \$5,852.13 at the same time last year. Sales tax rebates to date in Castro County total \$16,528.65, up from the \$14,056.42 of 1983, reflecting a 16.45 percent change for the period. All cities in Castro County reflected an upward trend in sales tax rebates for the period ending March 27, 1984.

To the south of Muleshoe, Cochran County reflected a net payment of sales tax rebates this period of \$3,219.79, up from the \$2,390.88 of 1983. Total rebates for Cochran for 1984 to date amount to \$16,528.65, up from the \$14,056.42 of 1983 for the same time period. This shows a 17.59 percent change for the period.

Deaf Smith County, with Hereford being the only city therein, showed a total rebate for this period of \$28,238.61, up from the \$18,530.08 at the same time last year. Total sales tax rebates received there for the period to date equal \$170,939.99, up from the \$147,723.10 of 1983 - a change to date of 15.72 percent.

Hockley County received a net sales tax rebate for the period just ended in the amount of \$49,213.47, up considerably from the \$28,819.91 at the same time last year. Total 1984 payments to date for Hockley amount to \$267,458.01, up from the \$231,267.68 of 1983, a change reflected of 15.65 percent for the year to date. All cities in Hockley County reflected an upward trend in sales tax rebates for this period.

Sales tax rebates in Lamb County for the period ending March 27 amounted to \$20,227.16, up almost double from the \$10,180.19 of 1983. Cont. Page 6, Col. 4

## Emergency Funds Available In County

Texas' allocation of funds for direct loans in the economic emergency farm loan program has been increased from \$5,890,140 to \$18,415,000, State Director J. Lynn Futch of the Farmers Home Administration (FmHA) announced today.

The increase will be distributed through State Offices of the FmHA, the U.S. Department of Agriculture's farm credit agency. Nationally, the direct loan portion of the \$600 million economic emergency program was raised to a \$310 million share.

Interest rates for direct loans obtained from FmHA county offices are 10.25 percent on loans made for operating purposes and 10.75 percent on loans made for real estate purposes.

Economic emergency loans are authorized for bona fide farmers and ranchers who are directly and primarily engaged in, and expect to continue in, agricultural production, are unable to get sufficient credit from their regular lenders, and need credit to maintain viable farming operations. FmHA can loan up to \$400,000 to any one borrower under the economic emergency program.

Paul Wilbanks, incumbent, and running unopposed garnered 348 votes for Councilman of Place 3. There were eight write-in candidates for this seat, with Rich Magby receiving 14 and the other seven one each.

For Councilman, Place 4, incumbent Ronnie Shafer had a total of 252 votes and was re-elected. His opponent, Gerald K. Reid had a total of 148 votes and there was one write-in vote. Council declared Wilbanks and

Shafer as the winners of the election and they were sworn in duly by Mayor Charles Bratcher. All councilmen with the exception of A.V. Wood were present at the meeting.

Also on hand was Bruce Chapman local GTE representative and Layton Covington, Division Superintendent at Brownfield's GTE office. Chapman told council that a rate increase request had been filed in February for \$84.8 million by GTE. If this rate increase is granted, Chapman indicated "net rates for Muleshoe which are now \$8.55 for local dial and \$1.35 for EAS would change to \$14.10 for local service and \$7.75 for EAS. Business rates which are now \$22.50 for local and \$3.55 EAS would be increased."

Cont. Page 6, Col. 4

## Councilmen Sworn In, GTE Discusses Hike

In a Muleshoe City Council meeting held on Tuesday, April 10, votes were canvassed from the Saturday, April 7 election. A resolution was adopted by council declaring the results of the election, in which it was determined that a total of 408 votes were cast.

Paul Wilbanks, incumbent, and running unopposed garnered 348 votes for Councilman of Place 3. There were eight write-in candidates for this seat, with Rich Magby receiving 14 and the other seven one each.

For Councilman, Place 4, incumbent Ronnie Shafer had a total of 252 votes and was re-elected. His opponent, Gerald K. Reid had a total of 148 votes and there was one write-in vote. Council declared Wilbanks and

Shafer as the winners of the election and they were sworn in duly by Mayor Charles Bratcher. All councilmen with the exception of A.V. Wood were present at the meeting.

Also on hand was Bruce Chapman local GTE representative and Layton Covington, Division Superintendent at Brownfield's GTE office. Chapman told council that a rate increase request had been filed in February for \$84.8 million by GTE. If this rate increase is granted, Chapman indicated "net rates for Muleshoe which are now \$8.55 for local dial and \$1.35 for EAS would change to \$14.10 for local service and \$7.75 for EAS. Business rates which are now \$22.50 for local and \$3.55 EAS would be increased."

Cont. Page 6, Col. 4

## Residents To Honor Famed Native Son

Lubbock boasts of famed citizens such as Buddy Holly and Mac Davis. Odessa gladly recognizes their contribution to stardom in the country western team of The Gatlin Brothers. Littlefield steps forward with their favorite son, Waylon Jennings, and now Muleshoe is taking giant strides to honor their own, Lee Horsley, according to Jackie Johnson, chairman of the Project.

Lee Horsley, better known as "Matt Houston", has always made an effort to acknowledge Muleshoe wherever he travels. In April 1983, Horsley was quoted by the Los Angeles Herald Examiner, in their TV weekly, "I'm not there yet and I'm not going to sit around and worry about things that haven't happened, I will know the time has come when approximately 5,500 fan letters arrive from MULESHOE, TEXAS."

Muleshoe will now honor their own, as he desires. A giant fan letter is now being prepared for presentation to Lee. The fan letter in the form of a scroll will be circulated around town. The letter will begin circulation in the lobby of the Muleshoe State Bank. Horsley will arrive in Lubbock on April 27th, where he will be the host of the Celebrity Tennis Tournament, sponsored by the Tech Foundation. Upon his arrival he will be greeted by a delegation from Muleshoe, who will present him

## Local Field Day Scheduled Thursday

The Blackwater Valley Soil and Water Conservation District and the Soil Conservation Service office in Muleshoe will host a field day on Thursday, April 19, according to Obie Kelley, Soil Conservationist in Muleshoe. The meeting is scheduled to begin at 8 a.m. at the Muleshoe State Bank meeting room.

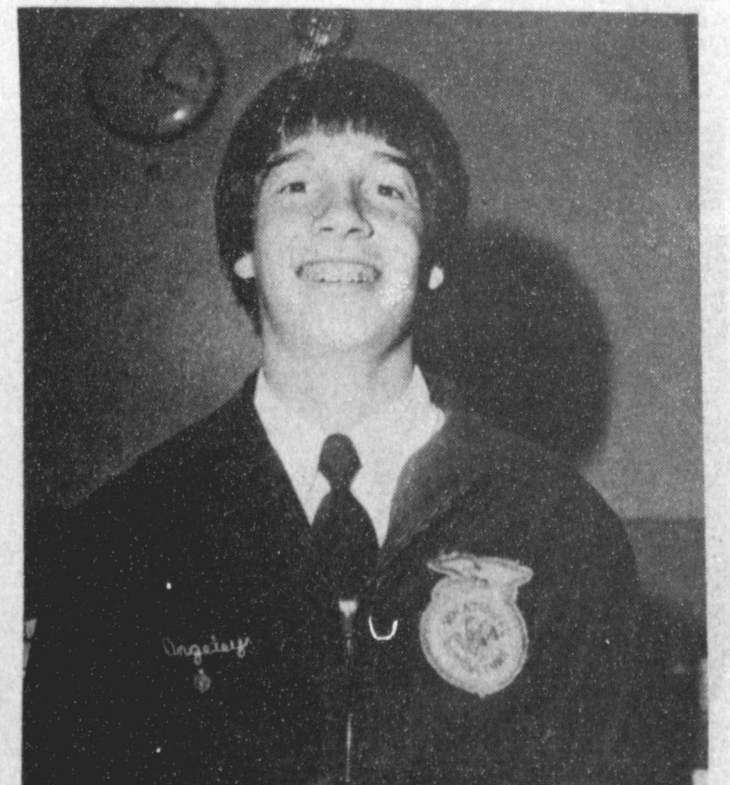
Speakers who are scheduled to attend and the subjects which they will cover are: Dr. Bill Dahl, Texas Tech University, Department of Range Management; Nick Bamert, Bamert Seed Company, Seed Varieties; Harold Martin, Grass Seeding; Dr. Bill Lipe, Horticulturist with the Texas Experiment Station, Vineyards; David Webster Soil Conservationist, Littlefield, grape production; Dennis Neffendorf Conservation Agrono-

mist, SCS, Lubbock on Pasture Planting and Greg Sokora, Ag Engineer, Lubbock on Drip Irrigation Systems.

A short question and answer session will be held after each subject discussion, with speakers available for information.

The meeting is scheduled to adjourn at approximately 12 noon for lunch. All interested persons should meet back at the Muleshoe State Bank parking lot at about 1 p.m. From that point, the group will then visit the M.K. Dean farm where grass seeding equipment will be available to view. The wind erosion problems that exist on this farm will also be discussed and some alternatives to existing problems will be reviewed.

For further information regarding the field day, contact the Soil Conservation Service at 272-5124.



HE'S A HUSTLER...Michael Angeley was awarded with the annual "Hustler" award at the FFA Banquet recently. The award is for a first year ag student who has put his best foot forward in everything he has done.

## Creative Woman

By Sheryl Borden

Topics to be presented on "The Creative Women" show on April 17 and 21 include main dish salads and body language. One guest, Mae Martha Johnson, Food-Nutrition Specialist with the Cooperative Extension Service at NMSU in Las Cruces will show how to create a main dish salad. As she'll explain, a main dish salad can be a creation or it can be a last minute dish that saves the day.

Frankie Clemons, assistant Dean in the College of Business Administration and Economics at NMSU will discuss body language. Do you always know what feelings or emotions you convey through your body language? Ms. Clemons will share her insight concerning this topic.

Color analysis and cooking for one or two persons will be the topics to be presented on April 19 and 22. Lynne Griffith is a color and wardrobe consultant with Color One Associates in Lubbock, Texas and she will discuss color analysis, tell how a personal color chart and pocket size shopping guide are formed, and tell how these charts can be used for the selection of clothing, accessories, furs, jewelry, all make-up, hair coloring and interior decor.

Another guest will be Christy Kirk, home economist with Reynolds Metals Co. in Los Angeles, California and she will discuss cooking for one or two. Statistics show that half of our population is made up of one or two member households. Ms. Kirk will share shopping tips, quantity cooking ideas, "double-batching" and will demonstrate how oven cooking bags can be utilized to advantage for cooking for smaller member households.

"The Creative Women" is produced and hosted by Sheryl Borden. The show is seen on Tuesday and Thursday at 12 noon, on Saturday at 2:00 p.m. and on Sunday at 7:00 p.m. on KENW-TV Channel 3, Portales. (All times are Mountain Standard). The show is also carried by KRWG-TV in Las Cruces and by KNME-TV in Albuquerque, as well as on PBS stations throughout the country via satellite.

Viewers can request copies of printed materials offered on the show by calling on KENW-TV's toll-free telephone lines. The numbers are: New Mexico: 1-800-432-2361, out-of-state: 1-800-545-2359 and Portales and Roosevelt County: 562-2112.

### Check Insurance On Computer Coverage

If you're the proud owner of a new home computer, you may need to check your current homeowner's insurance coverage, says home economist Nancy L. Granovsky.

Under a typical homeowner's policy, a computer is insured against the same perils as any other appliance in the home, says Granovsky, a specialist with the Texas A&M University Agricultural Extension Service. That means general protection against fire, theft and lightning, with any loss subject to the deductible included in the policy.

But if your computer is used for business purposes, such as farm or ranch management, running a home business or just doing work you bring home from your place of employment, the homeowner's policy may not cover the machine at all, she says.

Also, the typical policy will not cover computer equipment damaged by an electrical surge, extremes in temperature or other perils that can damage sensitive data processing equipment, cautions the specialist.

Power surges can damage the system's hardware and even destroy the programs stored on the tapes or disks. Although you can buy a device for your electrical outlet which offers some protection against minor electrical surges, it cannot avert a major electrical problem.

Insurance companies have developed policies to provide consumers with comprehensive coverage against most computer perils and even offer protection if you use your machine for business, says Granovsky.

According to industry reports, some companies now provide all-risk coverage for all of the system's hardware and software, including compensation to a policyholder for the time and energy needed to re-enter lost data.

"As home computers become more common, consumers can look forward to more insurance products to meet this specialized need," says Granovsky.

There are thousands of hidden taxes these days, but, alas, no place where the tax payer can hide.

-Times, St. Louis.



MRS. PAMELA ATWOOD

## Local Woman Nominated For TPD Service Award

Ruby Smith Green of Muleshoe is one of 91 nominees for the Texas Panhandle Distinguished Service Awards which will be presented on Saturday, April 14, at West Texas State University.

Nominees from 24 Panhandle and South Plains communities have been selected by individuals and members of organizations. Ten recipients will be presented during the ninth annual luncheon at 11 a.m. at the WTSU East Dining Hall.

Dr. Marjorie Bell Chambers of Los Alamos, N.M., will address the theme, "One World - Where Women are Concerned," at the luncheon. Tickets are \$10 each and may be purchased through Thursday, April 12, by calling the Returning Student Program which annually hosts the luncheon.

Chambers, co-founder of Bell-Chambers Associates, Inc., a consulting firm, is a former college president and has served as a presidential appointee to a number of national and international groups.

Honorary chairpersons for the 1984 luncheon are Mrs. Lydia Wright and Pauline Guinn.

Members present at the meeting included: Pat Cummins, Lydia Wright, Nora Flanary, Ada Thomason, Faye Wellborn, Mildred Williams, Millie Mitchell, June Dunnam, Adelia Jones and grandson, Jason, Marie Hendrix, Kay Madry, Pauline Guinn, Lois Martinec and LaJune Duren.

Hostesses for the April 19 luncheon will be all the WOTS ladies for the fourth annual birthday celebration.

For more information concerning WOTS, you may call either LaJune Duren at 272-4048 or Mildred Mitchell at 272-5474.

Gail Shannon of Canyon and Bobby Henson of Happy Planning the luncheon as co-chairpersons are Dr. Charlotte Rappsilber, dean of the WTSU School of Nursing and president of the Canyon branch of the American Association of University Women, and Lois Lowe, president of the Amarillo AAUW branch.

Green has been nominated by Muleshoe Rebekah Lodge no. 114.

A resident of the Muleshoe area since 1949, Green has farmed, operated a filling station at Lariat and operated the Spudnut Shop.

She is an active participant in community activities at First Baptist Church, a member of the Order of Eastern Star for 20 years and a charter member of the Rebekah Lodge since 1945.

She and her husband, Lusk, are parents of five children.

## Baby Shower Honors Mrs Atwood, Kyle

Mrs. Pamela Young Atwood and Kyle James were honored with a baby shower Sunday, April 8 in the home of Mrs. James Elder.

Lisa Whalin served banana slush punch, sand tarts and thumbprint cookies from crystal appointments. The serving table was

### Rebekah Lodge Meeting Held

### Tuesday

Muleshoe Rebekah Lodge No. 114 met Tuesday evening with Noble Grand, Sandi Robinson presiding. Seventeen members and three visitors were present. The American flag was presented by Juanita Busby, flag-bearer, escorted by Ona Berry, warden, and Joyelene Costen, conductor.

Joyelene Costen presented the District Lodge Deputy of District 5, Levita Fitzgerald to the Lodge. The minutes of the previous meeting and roll call were read by Fern Davis, secretary. Other visitors present were C.D. Fitzgerald and Roberta Combs of Hereford Rebekah Lodge.

Those attending the South Plains Association meeting at Brownfield were Ruby Green, Lela Hawkins, Raneta Dawson, Dimple Sims and Fern Davis.

It was reported that there will be a pot luck supper next Tuesday evening for members and guests.

Refreshments were served by Juanita Busby, Nita Girffiths and Joyelene Costen.

accented with a silk floral arrangement.

Special guest included: Mrs. Jack Young, mother of the honoree; and Mrs. Lee Atwood, mother in law of the honoree.

The hostesses gift was a high chair. Hostesses for the occasion included: Lisa Whalin, Kanetha Foster, Elenor Yerby, Monica Henry, Glenda Dale, Alma Burton, Ginger Bales, Tammy Elder, and Linda Elder.



### Nichole Janan Chandler

Mr. and Mrs. Charlie Chandler of Galveston, formerly of Muleshoe, are the proud parents of a daughter born March 11.

The young lady weighed six pounds and was 20 inches long. She has been named Nichole (Nicki) Janan. The couple have no other child.

Grandparents are Mr. and Mrs. Homer Redwine of Port Arthur and Mr. and Mrs. Orbie Chandler of Lubbock, all formerly of Muleshoe.

Great grandparents are Mrs. Opal Pugh of Port Arthur and Mrs. Minnie Redwine and Mr. and Mrs. Charlie Watson, all of Muleshoe.

### Jason Roberts Sexton

Mr. and Mrs. Larry Sexton are the proud parents of a son born at 12:20 April 3 in West Plains Medical Center.

The young man weighed seven pounds and one ounce. He has been named Jason Roberts. The couple have one other child, Stephanie, two years of age.

Grandparents are Mr. Mrs. L.W. Jones and Mr. and Mrs. Tommy Sexton, all of Muleshoe.

Great grandparent is Nattie Mae.

### Thomas Gilbert Ortiz

Mr. and Mrs. David Ortiz of Texico are the proud parents of a son born at 6:40 p.m. Friday, April 6 in West Plains Medical Center.

The young man weighed six pounds and has been named Thomas Gilbert. The couple have two other children, Troy, nine; and Jonathan, seven years of age.

Grandparents are Gilbert and Nora Ortiz of Texico, N.M. and Tomas and Rosa Ortiz of Mexico.



DONNA HORN

### Sherry Fisher Named

### To Dean's List

Sherry Fisher, a native of Sudan, has been named to the Dean's List of Lubbock Christian College. This announcement came as 1983, fall semester grades were posted.

The Dean's List is an academic honor with specific requirements. In order to qualify, each student must be enrolled on a full-time basis and have taken at least 12 hours for a letter grade. Any classes taken on a pass/fail basis must be passed and a grade point average of 3.5 or better must be obtained for the semester.

Sherry, a 1982, graduate of Sudan High School is the daughter of Mr. and Mrs. Jan Fisher of Sudan.

## Donna Horn Named AAUW Girl Of Month

Donna Horn, daughter of Mrs. Wanda Hutton, has been selected as the American Association of University Women (AAUW) Girl Of The Month.

Ms. Horn is active in band, FHA, Pep Club, National Honor Society and FTA. In band Donna was freshman representative, merit point officer and librarian. She is currently president of the Pep Club. In FHA she has served as secretary and president. She is also second vice president of Encounter and vice president of NHS.

Donna is a member of the 16th and Ave D Church of Christ and is active in all youth activities. She plans to attend Texas Tech and major in home economics.

"Donna is an exemplary teenager and she is a credit to her school, community and church," said an AAUW representative.

Despite the short routes and quick cures, there's no easy way to anything that is worth very much.

**Bridal Selections**  
For  
**Stacy Barnhill**  
Bride-Elect  
of  
**Glen Killough**  
**Antiques & Junk**  
109 S 1st 272-5275

WE WANT TO HELP SHAPE UP MULESHOE

**THE FITNESS CENTER**  
FEATURING  
**Nautilus**  
And Raquetball  
(Now Under Construction)  
**We Are Now Adding Raquetball!**  
Hurry In! Charter Memberships Going Fast!  
Stop By Our Temporary Office  
At 1420 N. Prince  
For More Information  
Stop By And Register  
For Trip To Mazatlan  
Mexico!  
You Might Win!  
Buy 1 Membership  
Get Second 1/2 Price  
During Preopening Sale!!  
(No Purchased Required)  
Call 762-3775

**BEDDING PLANT**  
Thousands Of Plants On Hand

Flowers Over 200 Varieties	Vegetables Over 50 Varieties	Ground Covers Over 30 Varieties
-------------------------------	---------------------------------	------------------------------------

**OURS ARE BETTER**  
Watered Daily / Never Drought Stressed  
Screened Daily For Insects & Disease / We Don't Send Problems Home With You  
Fertilized/Guaranteed Healthy Roots & Plants  
All At Prices You Can Afford  
**ROSES**  
Bushes/Climbers  
2 Gallon Plantable Peat Pots  
Excellent Selection - In Bud & Bloom - \$7.95  
Soil Conditioners, Fertilizers Chemicals  
**Texas Certified Nurseryman On Duty**  
**DECORATORS**  
Nursery & Floral  
Telephone 272-3660 616 South First

**Nancy And Her Staff Welcome Josie Gonzales**

Now Accepting Appointment's  
Walk-ins Welcome  
Tuesday - Saturday

**The Honeycomb**  
120 Ave. C 272-5108

**Art Loft - Bridal Registry -**  
Linda Bell  
Bride-Elect of  
Mark Washington  
Delia Jean Shaw  
Gail Bryant  
Bride-Elect  
of  
David McVicker  
Kay Lynn Prather  
Diane Dot  
Bride-Elect of  
Gary Wrinkle  
1529 American Blvd 272-3485



**NURSING HOME PROJECT...**O.Z. Franks, a resident of the Muleshoe Nursing Home, seems to be trying to get the attention of a pet rabbit, loaned to the residents of the nursing home by Shirley Hicks. Although an agreement has not been reached for a name for this black and white rabbit, all the residents enjoy feeding and tending to his needs.

### Cooking Eggs For Easter

Concern over cost, nutrition or even how to cook the perfect hard-cooked egg shouldn't keep you from enjoying Easter eggs this year. Egg prices have varied quite a bit over the past six months, says Dr. David Mellor, Texas A&M University Agricultural Extension Service poultry specialist. Due to a reduced egg supply and a higher than usual demand for eggs during the holiday season, retail egg prices almost doubled by January, he explains.

But retail prices have decreased from their January peak and should stay in the \$1.10 to \$1.20 range through Easter. Supplies are now adequate, so consumers shouldn't have any trouble stocking up for Easter, adds Mellor.

Some people won't be eating Easter eggs this year due to their concern over cholesterol. The average egg contains 250 milligrams of cholesterol, while the typical therapeutic diet for reducing blood cholesterol level only allows 300 milligrams per day, says Extension nutritionist Dr. Dymple Cooksey.

Since there are many risk factors for heart disease in addition to cholesterol, however, most normal, healthy people can simply moderate rather than eliminate eggs from their diet, she says.

Eggs are a low-cost and low-calorie source of high-quality protein. They also provide unsaturated fats, iron, phosphorus and most vitamins and minerals. And a hard-cooked egg will provide a far more healthful snack for children than the candy that comes in the Easter basket, notes the specialist.

If you chop your Easter eggs up for egg salad and other dishes, you may not care about the appearance of the cooked egg. But if you're aiming for the "picture-perfect" egg for deviled eggs or garnishes, you'll have to prepare them carefully, says Cooksey. Hard-cooked eggs are more difficult to peel cleanly these days, partly because the eggs we buy at the store are fresher than ever. Also, some eggs are now shell-treated with a light mineral oil spray to preserve freshness. As an untreated egg "ages" it becomes easier to peel when hard-cooked, but the yolk is more likely to be off-center.

If you want to avoid that

dark line between the yolk and the white that can develop in a hard cooked egg, don't cook it too long. Overcooking intensifies the union of sulfur from the egg white with iron from the yolk to form a dark iron sulfide ring.

For best results with hard-cooked eggs, Cooksey recommends the following:

- \* Store eggs small-end-up at least overnight at room temperature. This will age them a little and center the yolk.

- \* Cook small-end-up using a heat resistant plastic egg flat or a metal plate with holes.

- \* Cook by placing eggs in room temperature water, bring to simmer, remove from heat, cover and leave 20 minutes; or bring water to simmer, carefully add eggs which have been tempered by placing them in warm tap water while waiting for the water to simmer, just below simmering for 15 minutes, but do not boil.

- \* Cook eggs immediately by removing from hot water and placing in cold water.

When it comes time to eat your Easter eggs, they should peel easily and the yolk should be centered with no dark ring between yolk and white.

#### Not Very

Mrs. Flanagan: "Was your husband in comfortable circumstances when he died?"

Mrs. Murphy: "No; he was half way under a train."

#### Long Minutes

Auntie (coming for a call)-Where is your mother, Lucile, dear?

Lucile-Mama left for a five minute visit with Mrs. Wells about two hours ago.



**YOUTH LEADERSHIP WORKSHOP...**Twenty two Bailey County 4-H'ers participated in a 4-H Youth Leadership Workshop Saturday, March 31. The day long workshop was presented by Dr. Martha Couch, Kirby Rankin and Linda Mullin.

## Get-Acquainted Shower Honors Mrs Walser, Son

A get-acquainted shower was held Tuesday night in the community room of the First National Bank in Sudan in honor of Mrs. Dorman (Lisa) Walser and her new son, Kent.

The honoree was presented a corsage of blue baby socks and ribbons.

Cookies and yellow punch were served from crystal appointments. The serving table was covered with a floor length white linen cloth

with a white lace overlay, accented with a floral arrangement in multi pastels surrounding candles.

Special guests were her mother, Mrs. Carolyn Monkres and her sister, Lauri of Crowell. Other special guests included: Mrs. Mary Smith, Donna Hulett, Penny Franks, Mrs. Ransom Galloway, Mrs.

Robert Pierce and Emily Beth all of Lubbock.

The hostesses gift was a car seat and her sister, Lauri, recorded the gifts. Hostesses for the occasion included: Jane Netherland, Mary Ann Gordon, Verna Ingle, Barbara May, Julie Rigsby and Mechele Edwards.

### 4-H Youth Leadership Workshop Held

Twenty two Bailey County 4-H'ers participated in the Bailey County 4-H Youth Leadership Workshop held March 31 at the Bailey County Coliseum.

Dr. Martha Couch, 4-H Specialist for the Texas Agriculture Extension Service, along with Kirby Rankin and Linda Mullin, Bailey County Extension Agents, presented the day long workshop.

4-H'ers learned all phases of the leadership process. Dr. Couch conducted officer training, as well as teaching recreation leadership. 4-H'ers also participated in communications exercises and public speaking.

As a special activity, the workshop participants were divided into three groups and conducted mock 4-H club meetings. Gerald Reid of KMUL radio served as judge for the activity and selected one group to receive prizes for having the most outstanding presentation.

Each 4-H'er prepared his or her own lunch by having an omelet rodeo. Adult leaders were Rose Sain and Linda Tanksley. Participants included: Zanna Huckaby, Donae Parker, Courtney Tanksley, Brenda Muford, Leah Irvin, Brandi Estep, Robert Whisenhunt, David

Ramirez, Britta O'Tay, Chad Griswold, Colin Tanksley, Mason Conklin, Stacey Cisneros, David Orozco, Jenna Glover, Carol Copley,

Kevin Duncan, Troy Watson, Keetha Glover, Jesse Singleterry and Shelley Sain.

### Sudan News

By Evelyn Ritchie

Mr. and Mrs. Butch Blind of Gnadenhutton, Ohio arrived this week to visit her brother, Mr. and Mrs. B.A. Beauchamp and Derwin and her sister in Farwell, Mr. and Mrs. Cotton Robertson.

Mrs. Earlene Kropp has returned from a visit with her friends and relatives in Oklahoma and Arkansas.

Mr. and Mrs. Sam Serratt of Artesia, N.M. visited some this week with Louzelle Serratt.

Mr. and Mrs. Harvey Grigsby of Optima, Oklahoma visited last week with her children, Mr. and Mrs. Damon Provence and family and Mr. and Mrs. Darren Provence and boys and her sister, Mr. and Mrs. Bob Carson and Angie. She also visited in Lubbock with her daughter, Mr. and Mrs. Jeff Lynsky and Bradley.

Mr. and Mrs. Mike Fisher, Tanya and Shannon visited in Brownfield during the spring break with his

sister, Mr. and Mrs. Ralph Granger as did Mrs. Josephine Fisher and Missy.

Lucy Kent was in Arlington during the spring break to visit her mother, Mrs. Maurine Barnett and also to visit her sister, Mr. and Mrs. Jim Sorerells.

Mr. and Mrs. Halbert Harvey have returned home from visiting in Lufkin and her mother, Mrs. Luella Kendricks returned home with them after an extended visit there.

Coach and Mrs. Dewayne Sexton, Kelly and Katy visited during the spring break with his dad, Mr. and Mrs. Wayne Sexton and in Wildorado with her parents, Mr. and Mrs. Dee McDade.

Mr. and Mrs. Elray Rasco and Gayla vacationed during the spring break in Ruidoso, N.M. and were also with the young people from the FBC while they were there for a skiing trip.

### Party Honors

#### D. J. Provence

D.J. Provence, son of Mr. and Mrs. Darren Provence was recently honored on his first birthday with a party in his home.

A Care Bear Theme was carried out with a birthday bear cake and punch being served.

Honored guests were his two great grandmothers, Mrs. Jack Hill and Mrs. Herman Welkener, both of Sudan; his grandparents, Mr. and Mrs. Theron Hill, Papa Bud Provence; and uncle Rick Hill.

Others attending were Angie and Ann Carson, Mary Kay Baker, Kelli and Bo, Mary Baker and Kristen, Marie Allen, Mechele Burns, Justin Harrison, Nancy Legg and Amber, Mitsi and Kyle Glascock, Karen and Kendra Whitten and Dustin Provence, brother of the honoree, and his parents.

### SAME DAY SERVICE AT H & R BLOCK

Stop by your Block office today and mail your 1040A or 1040EZ to the IRS TONIGHT!

Block's new Same Day Service saves time and money for today's busy customers. Fast accurate tax returns prepared by skilled personnel is your assurance of getting every deduction possible. H & R Block makes the new tax laws work for you.

You will receive a complete, personal interview to be sure

### BIBLE VERSE



"Thou therefore endure hardness, as a good soldier of Jesus Christ."

1. To whom were these words addressed?
2. By whom were they spoken?
3. Who were Timothy's mother and grandmother?
4. Where may this verse be found?

#### Answers to Bible Verse

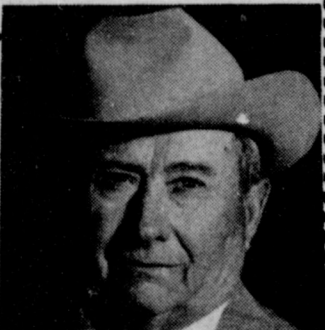
1. To Timothy, a young preacher of the gospel.
2. By Paul, the Apostle.
3. Jewish women, named Eunice and Lois, respectively.
4. II Timothy 2:3.

### SMILES

Ready Dorothy--"How long is it to my birthday?" Mother--"Not very long dear." Dorothy--"Well is it time for me to begin to be a good girl?"

### ELECT AN EXPERIENCED BUSINESSMAN

R.O. Gregory Your 'Best' Choice



Precinct I  
May 5  
Responsible, Conservative & Would Appreciate Your Support  
Pd. Pol. Adv.

### Important

## Local Tax Information Deadline!!

All Applications - Exemptions - Renditions Due Before May 1, 1984

#### Home Owners

##### General homestead exemption

School homestead exemption: If you qualify for a residence homestead, you will be entitled to a \$5,000 exemption off the market value of the homestead for school tax purposes.

County homestead exemption: If you qualify for a residence homestead, you may also be entitled to a \$3,000 exemption from the assessed value of your home from county taxes.

##### Are you 65 or older?

If you are 65 years of age or older on January 1 of the tax year, you are entitled to an additional \$10,000 exemption off the market value of your residence homestead. This exemption applies to school taxes only and your initial application should be filed before the end of the rendition period, May 1, 1984.

Once a homestead exemption has been granted to a resident homeowner by the appraisal district, a renewal application is not necessary unless the property changes ownership or the person's eligibility for the exemption changes.

##### Are you disabled?

If you are disabled and qualify for the residence homestead exemption, you are entitled to receive an additional exemption of \$10,000 off the market value of your residence homestead. This exemption applies to school taxes only.

##### Are you a disabled veteran or qualifying survivor?

Texas law also provides for a disabled veterans' or survivors' exemption. Certain disabled veterans or their survivors may be entitled to a partial exemption from property taxes. This exemption can be applied to any one property - not just a homestead - that is owned on January 1.

#### Business

Texas law requires that owners of tangible personal property used to produce income file a rendition (list) of such property owned on January 1. Additionally, the chief appraiser may require renditions by owners of real property.

Such renditions must be filed beginning January 1 and before May 1 on rendition forms meeting State Property Tax Board requirements. Contact your appraisal district office for additional information or for copies of approved forms.

#### Farm And Ranch

Under the Texas Property Tax Code, farmers and ranchers who qualify may have their agricultural land taxed on the basis of productivity rather than market value. Productivity valuation may lower the 1984 taxes on your agricultural or open-space land.

If you have never received open-space (1-d-1) valuation on your land, you must make application to the appraisal district office before May 1, 1984, to be entitled to tax relief this year.

If your land received open-space (1-d-1) valuation in 1983, there will be no requirement for you to reapply for 1984 in this appraisal district.

If your property happens to be situated in two or more appraisal districts. You must apply for your homestead exemption or productivity valuation in each district. Failure to do so may result in one or more taxing units taxing your property on its full market value.

This could occur if a taxing unit, such as a school district in two or more counties, participates in an appraisal district other than the district for the county where your property is situated.

For additional information, contact the appraisal district office at the address shown below.



BAILEY COUNTY APPRAISAL DISTRICT

104 E. Ave. C - MULESHOE, TEXAS 79347 - 806/272-5501

## INTRODUCING

Elizabeth Niedrich  
Formerly From  
Cannon Air Force  
Base Beauty Salon



Monday - Friday  
9 a.m. - 5 p.m.,  
Perms, Colors, Cuts  
Men's Hairstyles  
Walk-ins

## Ana's House Of Beauty

109 Ave B

272-4152

**Bailey County Journal**  
Established March 10, 1983. Published by Muleshoe Publishing Co., Inc. Every Sunday at 104 W. Second, Box 489, Muleshoe, Texas 79347. Second Class Postage paid at Muleshoe, Texas 79347.

**MEMBER 1984**  
**TEXAS PRESS ASSOCIATION**

F.R. Hall, President  
James Wash, Vice President  
Clara Williams, Secretary  
Evelyn Harris, Treasurer  
Bobbie McHugh, Advertising  
Lillian Nixon, Circulation & Classified  
Suzanne Hall, Bookkeeper

Subscription Rates:  
Muleshoe Journal and Bailey County Journal: \$11.00 per year in advance.  
Muleshoe Journal and Bailey County Journal: \$12.00 per year in advance.  
Muleshoe Journal and Bailey County Journal: \$13.00 per year in advance.  
Muleshoe Journal and Bailey County Journal: \$14.00 per year in advance.  
Muleshoe Journal and Bailey County Journal: \$15.00 per year in advance.

**KRAFT**  
THE GREATEST **FOOD SHOW** IN THE LAND

KRAFT PURE  
**GRAPE JELLY**  
18 OZ. JAR

**79¢**

HALFMOON LONGHORN CHEDDAR/COLBY  
**KRAFT CHEESE**  
10 OZ. PKG.

**\$1.59**

REG. OR REDUCED CALORIE POURABLE  
**KRAFT DRESSINGS**  
8 OZ. BTL.

**79¢**

LIGHT SPREAD  
**KRAFT PARKAY**  
3 LB. BOWL

**\$1.59**

KRAFT AMERICAN STACK PAK  
**CHEESE SINGLES**  
1 LB. PKG.

**\$1.99**

KRAFT PHILADELPHIA  
**CREAM CHEESE**  
8 OZ. PKG.

**89¢**

KRAFT ASSORTED  
**BARBECUE SAUCE**  
18 OZ. BTL.

**89¢**

ASSORTED VARIETIES  
**HUNGRY JACK BISCUITS**  
10 OZ. CANS

**49¢**

KEEBLER ZESTA SALTINE  
**CRACKERS**  
2 LB. BOX

**\$1.39**

KEEBLER DELUXE CHIP  
**COOKIES**  
12 OZ. PKG.

**\$1.29**

**GROCERY DEPARTMENT**  
RANCH STYLE BEANS 15 OZ. CAN **37¢**  
SCHILLING ASSORTED COLORS 4 1/2 OZ. BTL. **99¢**  
FOLGER'S COFFEE CRYSTALS 12 OZ. JAR **\$5.19**  
FOLGER'S ALL GRINDS COFFEE 1 LB. CAN **\$2.35**  
50% OFF LABEL JIF PEANUT BUTTER 40 OZ. JAR **\$2.98**  
TREE TOP APPLE JUICE 32 OZ. BTL. **89¢**

8% OFF LABEL  
**AJAX CLEANSER**  
21 OZ. CANS

**2\$1**

ALL PURPOSE FLOUR  
**GOLD MEDAL**  
5 LB. BAG

**89¢**

GRADE "A" SHURFRESH  
**LARGE EGGS**  
DOZ.

**79¢**

BETTY CROCKER ASSTD.  
**CAKE MIXES**  
18 OZ. BOX **83¢**  
BETTY CROCKER ASSTD. RTS FROSTING 16 OZ. CAN **\$1.29**

SHURFINE  
**CHARCOAL**  
20 LB. BAG **\$2.99**

NABISCO ASSTD.  
**SNACK CRACKERS**  
BOX **\$1.09**

NEW! CITRUS HILL FROZEN  
**ORANGE JUICE**  
3 PAK 16 OZ. CANS **\$2.99**  
BUY 2 GET 1 FREE

FRESH  
**SHORT CAKES**  
6 CT. PKG. **49¢**

ANGEL FOOD  
**CAKE BARS**  
8 OZ. PKG. **69¢**

SKINNER  
**LONG SPAGHETTI**  
12 OZ. PKG. **49¢**

WELCH'S REGULAR OR WHITE  
**GRAPE JUICE**  
24 OZ. BTL. **89¢**

D OR C SIZE 2 CT. PKG.  
**RAY-O-VAC BATTERIES** **59¢**

BORDEN'S  
**SOUR CREAM**  
8 OZ. CTNS. **2 \$1**

ASSORTED FLAVORS  
**BORDEN'S DIPS**  
8 OZ. CTNS. **2 \$1**

BANQUET ASSTD.  
**POT PIES**  
8 OZ. PKGS. **3 \$1**

BORDEN WHIPPING  
**CREAM**  
8 OZ. CTN. **39¢**

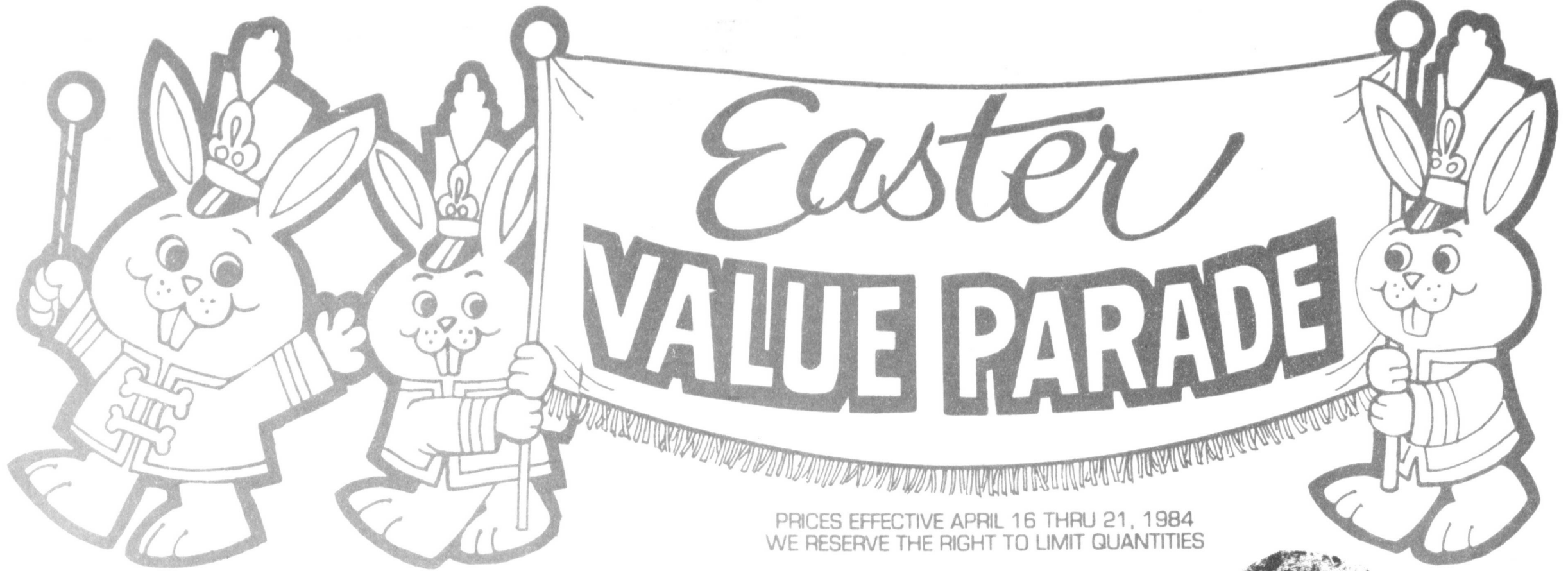
VAN DE KAMP FISH LITE &  
**STICKS CRISPY**  
13 OZ. PKG. **\$1.59**

VAN DE KAMP FISH L & C  
**FILLETS**  
14 OZ. PKG. **\$1.59**

MRS. GOODCOOKIE ASSTD.  
**COOKIES**  
1 LB. PKG. **\$1.09**

BORDEN'S ASSORTED ICE  
**CREAM**  
1/2 GAL. RND. CTN. **\$1.65**

W...  
of...  
Juan...  
Be...  
Not...  
Our...  
Sp...  
stor...  
Mon...  
Sun...



PRICES EFFECTIVE APRIL 16 THRU 21, 1984  
WE RESERVE THE RIGHT TO LIMIT QUANTITIES

USDA GRADE A 10-14 LB. FINEST QUALITY SELF-BASTING  
**SHURFRESH TURKEYS** LB. **79¢**  
SHURFRESH CANNED BONELESS FULLY COOKED 3 LB. CAN **\$6.49**  
HEAVY GRAIN FED BEEF SHOULDER BONELESS LB. **\$1.79**  
HEAVY GRAIN FED BEEF SHOULDER BONELESS LB. **\$2.19**  
HORMEL SUPER SELECT LEAN TRIM FRESH PORK BUTT LB. **\$1.39**  
EXTRA LEAN FRESH GROUND CHUCK QUAL. 81% LEAN LB. **\$1.69**  
HORMEL LITTLE SIZZLERS 12 OZ. PKG. **\$1.19**

WRIGHT'S HICKORY SMOKED FULLY COOKED 14-20 LB. AVERAGE

**WHOLE HAMS**  
**\$1.29**  
LB.



Winner of The Stamps  
Juanita Busby

Be Sure To Not Overlook Our In-Store Specials

TV SPECIAL DECORATOR  
**ZEE TOWELS**  
**49¢**  
JUMBO ROLL



TV SPECIAL NICE & SOFT  
**BATH TISSUE**  
**89¢**  
4 ROLL PKG.

RED RIPE

**CALIFORNIA STRAWBERRIES**  
**39¢**  
PINT BASKET

WASHINGTON EXTRA FANCY RED DELICIOUS  
**APPLES** LB. **59¢**  
CALIFORNIA GREEN PASCAL **39¢** CALIFORNIA TENDER SPEARS **\$1.24**  
CELERY STALK **39¢** ASPARAGUS LB.  
DELICIOUS BAKED **49¢** US NO. 1 BAKING **39¢**  
YAMS LB. POTATOES LB.



STORE ADDRESS:  
Mon - Sat 8:00 a.m. - 9:00 p.m.  
Sun Only 9:00 a.m. - 7:00 p.m.

STORE HOURS:  
515 Amer. Blvd.

TENDERCRUST BROWN & SERVE  
**ROLLS**  
**2 79¢**  
REGULAR 12 CT. PKGS.

ORANGE CRUSH SPRITE/TAB./DIET, REG. CAFF. FREE  
**COKES**  
**\$1.85**  
16 Oz. Btl. 6-Pack

HEALTH AND BEAUTY AIDS

PROTEIN 29  
**LIQUID SHAMPOO** 4 OZ. BTL. **\$1.49**

EXTRA STRENGTH  
**BUFFERIN TABLETS** 30 CT. BTL. **\$1.89**

PROTEIN 29  
**HAIR CREAM** 3 OZ. TUBE **\$1.49**

ANTI-PERSPIRANT  
**SURE DEODORANT** 4 OZ. BTL. **\$1.89**

EXTRA STRENGTH  
**BUFFERIN CAPSULES** 24 CT. BTL. **\$1.89**

REG. OR UNSCENTED  
**SECRET SOLID** 2 OZ. BTL. **\$1.89**

KRAFT REAL  
**MAYONNAISE** 32 OZ. JAR **\$1.79**

CHICKEN OF THE SEA  
**CHUNK TUNA** WATER OR OIL 6 1/2 OZ. CAN **69¢**

TV SPECIAL AUTO. DISHWASHER  
**LEMONY SUNLIGHT**  
**99¢**  
35 OZ. BOX

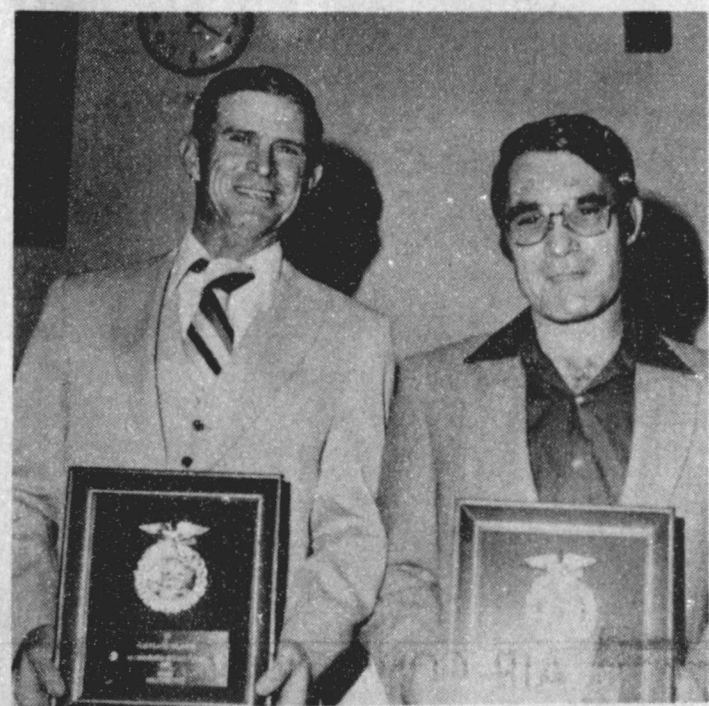
\$1.00 OFF LABEL  
**FAMILY TIDE**  
**\$5.99**  
171 OZ. BOX



**BEST RECORD KEEPERS...**The best record keeper in each year of vocational agriculture was awarded at the Muleshoe FFA Annual Banquet Tuesday. Winners included: Ray Vinson, ag coop; Lisa Black, Ag I, Lupe Rejino, Ag II and Kristi Spies, Ag III.



**PROFICIENCY AWARD WINNERS...**Several Muleshoe FFA members were honored with proficiency awards in their specific fields of endeavor at the annual MHS FFA Banquet. Those who received awards included: Brent Black, Steven Ethridge, Dondee Stewart, Kristi Spies, Lee Copley, Lupe Rejino, Brian Houston and Chris Hopkins. Also awarded, but not shown was Martin Pacheco.



**DISTINGUISHED SERVICE AWARDS...**Galen Black and Dewey Moore were presented with DSA awards by the Muleshoe FFA Chapter at their banquet on Tuesday evening. These are given to adults who have been of help to the FFA Chapter in almost any case.



**INSTRUCTORS HONORED...**Carl Wheeler and G.T. Dickerson were presented with gifts of appreciation from all vocational agriculture students at Muleshoe High at the annual awards banquet. Both men are Vo-Ag instructors.

**Exams Scheduled For Rural Carrier**  
F.A. Sutton, Sectional Center Manager/Postmaster, Lubbock, Texas has announced that the Rural Carrier Examination for the Littlefield Area will be open from April 12 through April 26, 1984 in the following Post Offices: Abernathy, Amherst, Anton, Farwell, Levelland, Littlefield, Morton, Muleshoe, Shallowater and Sudan, Texas. Persons who are interested may fill out application blanks at any of the Post Offices listed in this announcement only. Salaries range from \$19,025 to \$22,317 per year depending on the length and character of the route. Further details may be obtained from the Post Offices listed.

**RANDGEAR** Now Available  
Randolph Gearhead  
20 Hp. to 750 Hp.  
**WE CAN SAVE YOU MONEY — COME IN AND CHECK WITH BUTCH OR R. O. BEFORE YOU BUY**  
Leo's Blacksmith & Machine  
310 W. American Blvd. 272-4418

## Tax Rebate

Cont. From Page 1

ble from the \$10,784.45 at the same time in 1983. Total rebate payments to date for Lamb amount to \$128,218.93, as compared to \$102,111.99 in 1983, showing a 25.57 percent change to date for that county. All cities in Lamb County reflected upward sales tax rebates.

In Parmer County, net payment for this period amounted to \$8,591.54 up from the \$6,495.75 in 1983. Total 1984 rebate payments to date for Parmer County equal \$44,703.74, up from \$38,731.55 reported at the same time in 1983, reflecting a 15.42 percent change to date. All cities in Parmer had upward percentage changes for this period.

Houston received the biggest check—for \$8.6 million—which brings the city's 1984 total to \$45.8 million, up 9 percent over what Houston had received by this time last year.

Dallas received \$5.6

million, boosting 1984 payments to more than 19 percent over 1983.

San Antonio got \$2.7 million, bringing that city's 1984 total payments to \$14.9 million.

Austin's \$2.2 million check boosted the city's year-to-date total more than 28 percent ahead of last year. Fort Worth received \$1.7 million, compared with \$1.2 million for the same period last year. El Paso got \$1 million, with 1984's year-to-date total now better than 22 percent ahead of 1983.

Bullock also sent checks to the state's three Metropolitan Transit Authorities. DART, the Dallas MTA, received \$6.7 million. Via, the San Antonio MTA, got \$1.6 million and Metro, the Houston MTA, got \$9.6 million.

April checks reflect sales made in February and reported to the Comptroller in late March.

## City Council

Cont. From Page 1

ed to \$36.55 local and \$1.95 EAS. Chapman also intimated that these rates or increase requests could change prior to the regional hearings.

City Manager, Dave Marr stated that the Muleshoe City Council has no authority over regulations of telephone rates. "That is done specifically by the Public Utilities Commission, (PUC) he stated. The City of Muleshoe will join with other cities in the Texas Municipal League in actions on these rates, according to Marr.

Chapman also stated that people in the Muleshoe area should take more advantage of the local GTE service office, by bringing their phones in for service. The service is done there with no charge to the customer.

## Houston...

Cont. From Page 1

scholarships to Texas Tech. The money from Muleshoe will not be lumped into a general fund, but will be set aside for the Eddie Flowers Scholarship Fund. Tickets for the weekend of tennis are 7.50 and 5.00. The tournament is attracting such stars as Donna Mills, Lloyd Bridges, Trini Lopez, Morgan Brittany of "Dallas," and many others.

On Saturday evening there will be a dinner and show featuring the stars. Tickets are available for the dinner and the show.

In Horsley's beginning statement in the Los Angeles Herald Examiner, he said, "Muleshoe, Texas is bigger than you think." Let's show Lee, that he is bigger than he thinks!" says Jackie Johnson.

For more information contact Sandy Turner, Antiques & Junk or Jackie Johnson, Muleshoe State Bank, and the Chamber Office.

## Banquet...

Cont. From Page 1  
erson award was presented by Jimmy Henderson.

Michael Angeley was awarded the "Hustler" award by the Chapter, which is given to a student who has distinguished himself by giving his best through the year.

The Muleshoe FFA Boosters presented two scholarship awards in the amount of \$250 each to Craig Hunt and Cheyenne Bickel, for their accomplishments in agriculture.

Two Distinguished Service Awards were presented to two local individuals who were described as having helped almost every ag member at some time. These awards are presented in appreciation to those individuals by the Muleshoe FFA Chapter. The two recognized were Galen Black and Dewey Moore.

Ray Vinson, President of the Muleshoe FFA in final words, recognized all special friends, parents, boosters and honorary Chapter Farmers.

A special presentation was made at the end of the ceremonies by the FFA Chapter to Carl Wheeler and G.T. Dickerson, vo ag instructors for all the help and guidance they have provided through the year.

## Golf...

Cont. From Page 1  
State competition. Coach Jerry Robinson is their coach.

## Adult Probation Fees \$67,753 In County

Adult probationers in the 287th Judicial District, including Bailey and Parmer Counties, paid in a total of \$101,322.78 to compensate for crimes committed in this district in 1983, according to Bud Street, adult probation officer.

The total paid by Bailey County probationers amount to \$67,753.69, while that paid by Parmer County probationers totaled \$33,569.09, Street said.

Statewide, adult probationers paid a total of \$52.1 million in 1983 to compensate for crimes committed, according to the Texas Adult Probation Commission. The total amount has increased over one fourth the amount of similar payments in 1982.

Under the adult probation system, an offender may be required to pay restitution to victims, court costs, fines, court-appointed attorney's fees and supervision fees.

Monthly, probationers "Sheer volume and growth in the number of probationers account for the increase in collections," said Information Officer, Dick

Lewis. "The probation system is making the offender responsible for his actions by repaying the victim and the community as a result of his offense," said Lewis.

Court ordered restitution rose almost \$2 million in 1983. "I think they're ordering restitution to be paid to victims because of increased awareness and sensitivity by the courts," Lewis said. "The program benefits both society and the victims," he added.

The collection figures are the results of cumulative data reported by 115 local adult probation departments in Texas.

## Multi-Factors Determine Soil Irrigation Frequency

Are some producers over-watering? Warren Givens, Soil Conservation Service technician states that "the soil capabilities, root depths, and water use of plants are what determines the amounts and frequency of irrigation." The less a producer knows about these relationships, the greater the probability of over-watering or of water being wasted, Givens stated.

According to studies by the SCS, a plants' water intake rate is uniform when the soil moisture content is between field capacity and above the wilting point.

and maximum quality and yield is the end result, surveys show.

Givens says "Field capacity is the amount of water held in the soil against the pull of gravity for plant use." After pre-watering, the most important time to water is in the flowering and fruiting stages. Plants are at their peak water use at this time, and use the following average amounts: Vegetables: 2 inches per day; corn, cotton, sorghum, alfalfa and wheat use point three inches per day. The water use totals three inches every nine days for sandy soils and four inches every twelve days for loamy soils, studies show.

Feeder root depths are. When the water content of the soil is in this range, uniform growth is gained on the average, two and one half feet for corn, small grains and sorghum. Alfalfa and cotton average around

3 1/2 plus, while vegetables range within the two foot area.

A producers knowledge of plant, soil and water relationships is important today to insure minimum water use and maximum production.

These figures and information was arrived at by studies of the local Soil Conservation Service in Muleshoe, and have been proven by tests in local areas. The SCS in Muleshoe at 111 East Avenue D is available to assist producers in all conservation areas. Producers are urged to call the SCS at 272-5124 if they are in need of assistance or advise on production or conservation matters.

\*\*\*\*

Why is it that those who look young want to look old, while those who look old want to look young?

## Muleshoe Survey Now In Progress

Census takers working for Johnson Publishing Company are contacting local residents to obtain current information to update the next Muleshoe City Directory.

The survey workers are all local residents and will be contacting people by telephone or by sending Direct Mail questionnaires. Residents will be asked to provide both the husband and wife's first names and occupations, whether or not they own their home, address, telephone number and number in family. Persons 18 or older will be given a separate listing.

Business firms will be asked to provide the correct business name, address, telephone number, names of owners and officers, number of local employees and business description. There is no charge to be listed in the directory.

Information gathered in



The Journal has been authorized to announce the following candidates for public office:

- SHERIFF**  
Tom Watson  
Bob Henderson
- TAX ASSESSOR /COLLECTOR**  
Kathleen Hayes
- STATE SENATOR**  
Bill Sarpalius
- U.S. CONGRESS**  
Don R. Richards  
Tom M. Richards  
Gary D. Condra  
Dr. John Selby  
Delwin Jones
- COMMISSIONER Precinct 1**  
R.L. Scott  
G.L. 'Hoss' Gibson  
R.O. Gregory  
Marshall  
'Catfish' Williams
- COMMISSIONER Precinct 3**  
James Warren  
Joey Kindle
- COUNTY ATTORNEY**  
Linda Guelker

**Re-elect James Warren**  
Commissioner Precinct III  
Bailey County  
**The Taxpayers Candidate**  
Experienced & Conservative  
Pd. Pol. Ad.

**Introducing the John Deere Credit Card**

Use it to buy a new John Deere lawn mower, rider or lawn tractor ...get 90 days same as cash

Use your John Deere Credit Card to buy a lawn mower, rider, lawn tractor, high-pressure washer, chain saw, tiller, tools or hundreds of other John Deere consumer products, and there will be no monthly payment and no finance charges for 90 days. A 10 percent downpayment is required on purchases of \$1,000 or more; no downpayment on purchases less than \$1,000. A minimum initial purchase of \$250 is required, with no minimum on subsequent purchases. Maximum charge is \$5,000 per item purchased.

So come in now and apply for your John Deere Credit Card. Use it between April 1 and June 30, 1984 and get 90 days same as cash.

Leon "Tuffy" Dent  
Ronnie Dent  
**Dent-Rempe, Inc**  
1516 W. Amer. Blvd. 272-4296

**The Dude**

**\$1.29 sale**

For Texas Taste, DQ's the place for a Golden Chicken Fried, 100% Pure Beef Sandwich Served on a toasted bun with crisp lettuce and red, ripe tomatoes. So come on by...

**Dairy Queen** Monday thru Sunday, April 16-22, 1984  
...a Texas tradition that keeps on Getting Better.



**NEW SCHOOL BOARD MEMBERS SWORN IN...** New school board members elected last Saturday were sworn into office on Monday evening at a regular school board meeting. The 1984-85 school board members are: (L to R) Howard Watson, Gordon Wilson, Ben Roming, Julie Cage, Ronnie Holt and Dewey Moore. Watson is the only new member, others who ran were incumbents Roming and Moore. Member Royce Harris was not present.

### School Board

Cont. From Page 1

sale" by the school district, with the exception of miscellaneous items such as air conditioners and motors. The Board's decision was that the bids were not high enough, and that the items would be worth more as salvage.

Campus budgets for the 1984-85 school year were approved by the Board, as well as 1984-85 budgets for the office of Assistant Superintendent for Curriculum, Director of Special Education and Director of Special Programs.

The board also appointed Suddeth and Field as school auditors for the 1983-84 school year. The offering of

incentives to teachers taking masters level courses was tabled at the recommendation of Superintendent Fuller until such time as further information could be obtained on the matter.

A tax collection report was given, indicating that 87 percent of the current roll has been collected as of March, as compared to 85 percent at the same time last year. Also it was pointed out that 101 percent of the total budget had now been collected.

In personnel considerations, the resignations of Keith and Treva Taylor were accepted, due to a move to the Abilene area; also re-

signations were accepted from Mary Scoggin and Aileen Stewart who are both retiring, and from Kevin Wiseman, who will be taking a coaching job at Snyder. Also resignations from Jamie Thrasher and Donna Krey were accepted due to personal reasons. The board also had a request from parents that certain students be allowed to act as cheerleaders who had had excessive absences from school. This decision was left up to the administration to deal with on a regular rule basis, with the only exception being due to illness.

The board meeting adjourned at 1:30 a.m.

### Veteran Outreach Rep In Muleshoe Monday

Lorenzo M. Sedeno, Veterans Outreach Representative for the Veterans Land Board, will be available in Muleshoe, Tx. in Bailey County on Monday, April 16 to provide information to the Texas Veterans Land Program and the Veterans Housing Assistance Program. Sedeno will appear at the County Commissioners Court room between 11 a.m. and 12 noon to answer questions and pass out literature on the two programs.

Texas Land Commissioner Garry Mauro, who administers both programs, said, "I intend for these to be the finest veterans' programs in the country and to be the models for other states to follow. I want to urge each of the 850 veterans in Bailey County to participate in these excellent programs. We don't need to do our veterans a favor, just repay one."

The Veterans Land Program offers long-term, low-interest loans to eligible veterans to purchase a minimum of ten acres of land. Veterans can receive an application form at the pre-

sentation by submitting a nonrefundable \$25.00 fee.

The newly-created housing program offers low-interest loans up to \$20,000 to apply toward the purchase of a home. The program is available to veterans who wish to purchase an existing home or to build a new home. The program can also be used in conjunction with a no down payment home loan from the U.S. Veterans Administration and there is no limit on the amount of acreage bought with a home.

### News brief

The Spanish explorer Cortez reached Mexico City in 1519.

The Louvre Palace in Paris was opened as a public museum in 1793.

**"The Fingertip World of Classifieds"**  
Call 272-4536

### Enochs News By Mrs. J.D. Bayless

Clifford Snitker took his wife Dicie to Morton to eat a fish dinner at the E.L. Monterey Steak House for her 73rd birthday.

Mr. and Mrs. Jarrol Layton visited her parents, Mr. and Mrs. Leon Dupler at Andrews Sunday.

Guests in the home of Mr. and Mrs. E.N. McCall Friday were her brother, Mr. and Mrs. Lee Kelly of Plainview and her sisters, Mr. and Mrs. Fred Locker of Plainview and Mr. and Mrs. R.T. Lytle of Conroe, Texas.

Mrs. Winnie Byars and Mrs. E.N. McCall visited Mrs. Bonnie Long at Morton the past week after she came home from the hospital in Lubbock.

Mrs. Ida Henderson, Mrs. Juanita Parsons and Mrs. Lucy Parsons of Azle, Texas, Mrs. Eldred Coffman of Bangs, Texas, Mr. and Mrs. Carl Coffman of Lamesa, Texas, Rev. and Mrs. Ray Cunningham of Lubbock all stopped in for a short visit in the home of Mr. and Mrs. J.D. Bayless last Monday afternoon. Carl and wife Rena spent the night with them.

Harold and Loretta Layton of Dell City, Texas spent Thursday night with his mother, Mrs. Etta Layton and moved Loretta's mother and husband, Mr. and Mrs. Johnie Cox to Hico, Texas, Friday. They will be missed very much.

Mr. and Mrs. Chester Petree drove to Clovis, N.M. Sunday afternoon to visit their son Kenneth Petree and family.

Bill Key is at home from Methodist Hospital, all of our sick folks are at home but Willie Welch.

Mr. and Mrs. Elwood Autry attended the funeral services for her step-mother Mrs. Alice Robertson at Porterville, California, March 31, they also visited friends and relatives there and visited Mr. and Mrs. Bradley Robertson at Phoenix, Arizona, got into a big rainstorm as they were leaving for home Friday at Phoenix.

Dinner guests in the home of Mr. and Mrs. J.E. Layton Sunday were their son, Mr. and Mrs. Keith Layton and the Harold Laytons visited them in the afternoon.

### Council Calls For "21" Drinking Age

T.C. "Chuck" Gilchrest, president of the National Safety Council, Monday (March 19) called for Texas to raise its drinking age to 21.

Speaking before the 1984 Texas/Southwestern Safety Conference and Exposition being held at the Hyatt Regency Hotel, Gilchrest said that total accidental deaths last year on the national level were 90,000, a four percent decline from the previous year. He said that, nationally, motor vehicle fatalities dropped to 44,300, a decrease of four percent.

For Texas, he said, the 1983 traffic deaths were nine percent below the total for 1982, more than twice the national average. There were 3,791 motor vehicle deaths in Texas in 1983, which was an 18 percent reduction over the last two years.

Nevertheless, he said, Texas should raise the legal minimum age at which alcoholic beverages can be bought and consumed to 21; it should also pass a law mandating that young children be protected in approved child passenger restraints when in motor vehicles. He said that Texas recorded a mileage death rate of 3.8 deaths per 100 million vehicle miles last year, well above the national average of 2.73.

Gilchrest said the National Safety Council will conduct its second national teleconference, covering

participants in 50 locations, on the subject of cumulative trauma disorders and ergonomics. It will be sponsored May 16 in Texas by the Texas Safety Association, he said, in Dallas, Houston, Corpus Christi and El Paso. It will be sponsored in San Antonio by the Greater San Antonio Safety Council.

He paid tribute to Dean Ward, president of the Texas Safety Association and a vice president of Alexander & Alexander, Dallas, and to Russell Perry, chairman of the conference, and to George Gustafson, executive president of the Texas Safety Association.

"Somehow we must crash through all of the stimuli surrounding the individual and get our safety message across in terms the individual can accept," he said.

The Journal has been authorized to announce the following candidacies:

**Lamb County Assessor/Collector**  
**Mary B. Willey**

You can never tell when a little careful driving will save your life on the highways.

Composure is that state of being wherein you don't bother to answer the telephone.

**Re-Elect R.L. Scott Commissioner Precinct 1 May 5, 1984**

Your Vote & Support Greatly Appreciated

P.d. Pol. Adv.

**When Atari Talks It Pay\$ To Listen**

- Stock Quotes
- Education
- Record Keeping
- Loan Analysis
- News Wires
- Home Entertainment

Computer Supplies Available  
322 MAIN

Complete Line Of Computer Furniture  
272-3113

**True Value HARDWARE STORES**

Your local independently owned True Value® Hardware Store has national chain-buying power.

## Spring & Summer Specials

Stop in and pick up your FREE copy of our Spring & Summer catalog

<p><b>LAWN CHIEF 20-in. 3.5-HP Deluxe Mower</b> 1-pc. steel deck, easy-rolling steel wheels, height adjusters. 5-in. saddle-type blade stabilizer gives smooth cut. 60B</p> <p><b>189<sup>98</sup></b></p>	<p><b>5<sup>99</sup> 50 Ft. GREEN THUMB Sprinkler/Soaker</b> Vinyl tube with solid-brass couplings. 3 watering tubes for even spray. 146301</p>	<p>Your Complete Air Conditioner Supply And Parts Store</p> <p><b>AIR CONDITIONER PADS</b> 24X36 28X31 30X36</p> <p><b>\$1<sup>99</sup></b></p>
<p><b>LAWN CHIEF 21-in. 3.5-HP Rear Bagger</b> Rear bag convenience at an affordable price! 2-sided trimming, sturdy 8-in. wheels, height adjusters. 81B</p> <p><b>199<sup>88</sup></b></p>	<p><b>True Value Alkaline Batteries</b> Provide long life for toys, electronic games. Get 2-pk. C or D, 4-pk. AA or one 9V. TV1400B2/1300B2/1500B4/1604B</p> <p><b>Your Choice 149</b></p>	<p><b>Sunbeam Grillmaster</b> Dual burners provide 361-sq. in. cooking surface. Has redwood side tables, shell, front table. 20-lb. LP cylinder. 3174T</p> <p><b>169<sup>99</sup></b></p>
<p><b>8<sup>98</sup> Gal. TRU-TEST SELECT Latex Flat Wall Finish</b> Provides a soft, flat finish on walls. Dries fast with no odor. 16 colors &amp; white. A</p>	<p><b>9<sup>98</sup> GAL. TRU-TEST SOLID COLOR LATEX STAIN</b> Hides like paint; acts like stain. Won't hide texture of rough cut wood. For wood siding, shingles, shakes. LS</p>	<p><b>Black &amp; Decker 16-in. Double-Edge Shrub/Hedge Trimmer</b> Incl. reciprocating blades, safety switch, wraparound handle, more. 2.4 amps, 5 1/2 lbs. 8124</p> <p><b>38<sup>99</sup></b></p>
<p><b>True Value 4-Sq. Ft. Chamois</b> Polishes without scratching. Genuine sheepskin. 070</p> <p><b>6<sup>88</sup></b></p>	<p><b>True Value Patio Thermometer</b> Easy-to-read F° and C° scales. Rustproof plastic case. 5371</p> <p><b>4<sup>99</sup> TAYLOR</b></p>	<p><b>True Value 3-Cu. Ft. Wheelbarrow</b> Seamless steel tray with reinforced undercarriage. 30WB</p> <p><b>18<sup>88</sup></b></p>
		<p><b>Sunbeam Rotisserie Kit For Gas Grills</b> Includes chrome-plated spit and tines with wood spit handles. Batt. operated. 0281</p> <p><b>17<sup>99</sup></b></p>
		<p><b>GREEN THUMB Lawn &amp; Leaf Rake</b> Features steel head, pull type, painted spring with 22-inch head width. 4-ft. handle. 279216</p> <p><b>6<sup>49</sup></b></p>
		<p><b>Melnor Aqua-Gun</b> Water-saver dial, 3-way head, instant on/off. 440C</p> <p><b>2<sup>99</sup></b></p>

**Fry & Cox, Inc.**

Phone Center  
401 S. First

272-4511

**Hire the Right Man for the Job!**

**CONDRA FOR CONGRESS**

**GARY D. CONDRA**  
Agricultural Economist  
Democrat

Pd. Pol. Adv. by Condra for Congress Comm.  
P.O. Box 64309, Lubbock, Tx 79464 Tommy Swann.

**Notice!**

Due to an oversight, the following errors are in our April Sale Days tabloid inserted in today's paper.

Page 4: MTD Mower 114-050 is a 20" cut - not a 22" cut.

Page 5: Weed 'N Feed Plus is a 20 lb. bag and covers 5,000 sq. ft.

Page 8: Harris Torch Kit will not be available by ad date, however rainchecks will be issued.

Page 13: Full Leather Gloves, No. 6872 will not be available and no rainchecks will be issued.

**A&M**  
Portales, 1601 S. Ave. D  
Clovis, 2600 E. Mabry Dr.  
Muleshoe, 1302 W. American Blvd.



REGIONAL QUALIFIERS...Johnny Bevers and Terry Graves both qualified to enter regional tennis competition representing Muleshoe High. The pair placed second in Boys Doubles competition in Abernathy and will go to regional on April 30 and May 1.

### Boys Qualify For Regional Meet

Muleshoe's Boy's Tennis Teams and individuals traveled to the District tennis tournament held Tuesday, April 10 in Abernathy, with the team finishing second overall in team totals and qualifying some players for regional play on April 30 - May 1 in Odessa, Texas.

### West Plains Medical Center Report

PATIENTS IN THE WEST PLAINS MEDICAL CENTER  
April 10 - Charles Brommer, Susie Medley, Felix Bryant, Betty Lancaster, Sherry Hadley, Bernice Amerson, Alice O'Brien, Jimmy Johnson, Ethel Walden, Opal Talley, Tonya Pool, Polly Birdsong, Jannette St. Clair, R.D. Dale, Sandra Gray, Jesse Castorena, Alma Fivash, Johnnie Ivy, Rosie Martin and Lupe Vidaurri.  
April 11 - Charles Brommer, Susie Medley, Felix Bryant, Betty Lancaster, Sherry Hadley, Bernice Amerson, Rosie Martin, Alice O'Brien, Jimmy Johnson, Lupe Vidaurri, Ethel Walden, C.L. Mahaney, Tonya Pool, Polly Birdsong, Johnnie Ivy, R.D. Dale, Corrine Ortiz, Alma Fivash and Rosie Holland.  
April 12 - Charles Brommer, Susie Medley, Betty Lancaster, Sherry Hadley, Bernice Amerson, Rosie Martin, Alice O'Brien, Jimmy Johnson, Lupe Vidaurri, Vergie Harding, C.L. Mahaney, Ernest Kerr, David Claybrook, Polly Birdson, Johnny Ivy, R.D. Dale, Sandra Gray, Corrine Ortiz - Baby Boy Ortiz, Alma Fivash and Rosie Holland.

### Courthouse News

MARRIAGE LICENSE  
Burse E. Goke and Loretta C. Flores, Las Vegas, N.M.  
Gregory Wayne Stewart and Melanie Gay Pruitt, Morton.  
COUNTY COURT ORDER DISCHARGING DEFENDANT FROM PROBATION  
Cuarhiemec Valdez, Jessie David Sotelo, Sylvester Torres, Jimmy Espinoza, John Robert Young, Andres Sigola and James Henry Kelley.  
DISTRICT COURT  
Gloria Hilda Guerrero and Mario Guerrero, DV  
Rhonda Sue Madrid and Dennis Joseph Madrid DV  
Bailey County Appraisal District et al VS Henry L. Barbour Motion For Dismissal  
Bailey County Appraisal District VS Daniel Lopez Motion of Dismissal  
Three Way Independent School District Et Al VS Goldman E. Stroud Motion of Dismissal  
NEW VEHICLES  
Sandy Noble, 1984 Ford PU, Muleshoe Mtr. Co., Inc.; Ray Castorena, 1984 Pont. 2 dr, Robert D. Green, Inc.; Jim Brinkly, 1984 Dodge PU, Muleshoe Mtr. Co., Inc.

### Nursing Home News

By Joyce Stancell  
Betty McCormick visited Ethel Askew and Effie Smith Wed. morning.  
Gail Wilcox visited her father-in-law, William Wilcox Tues. morning.  
Jewel Glenn was visited by her daughter and husband Tuesday.  
Alva Shofner was visited by her daughter Tuesday, Mr. and Mrs. Bellar.  
Alma Henley went shopping with Cleo and Stanley Wed.  
Josephine Wenner's son Ralph from Del Rio is here visiting.  
Betta Lancaster remains in the hospital at this time.  
Mrs. Jack Schuster and Joanna are among those visiting Sallie Schuster this week. She was also visited by Lindy Schuster and girls.

Among those visiting the nursing home this week were J.E. Embry, Maud Kersey and Mr. Scarbrough.  
Daniel Gage was visited by C.W. Wilhite and Lena Hawkins this week.  
Ernest Kerr's visitors this week were Ruby Lee and Lindy, Carolyn and Melinda.  
Marie Engram was visited

### Local Woman's Sister Dies At Lubbock

Funeral services for Rosine Loven, 72, of Lubbock were held at 2 p.m. Thursday, April 12 in the W.W. Rix Chapel in Lubbock with Elder Richard Jones, Reorganized Church of Jesus Christ of Latter Day Saints, officiating.  
Interment was in Resthaven Memorial Park under the direction of Rix Funeral Directors of Lubbock. Mrs. Loven died at 9:40 a.m. Tuesday in Methodist Hospital in Lubbock following a lengthy illness.  
Mrs. Loven was born in Bowie County and married Clyde D. Loven in Bowie County July 2, 1932. She moved to Lubbock in 1945, from Bowie County and was a member of the reorganized Church of Jesus Christ of Latter Day Saints.  
Survivors include her husband, Clyde; one daughter, Betty Garrett of Lubbock; one son, Lyndell of Abilene; one brother, R.L. Carpenter of Lubbock; three sisters, Ruby Hurt of Lubbock, Jo Baker of Texarkana, and Joyce Wolf of Muleshoe; two grandchildren; and one great grandson.

by her cousin Mrs. Edward Engram of Farwell Wednesday.  
The nursing home has a feeling of spring time with the Easter decorations about. We wish you our friends a happy springtime, from the nursing home.

Annie Brown was visited by Ruth Hall Tues.

Tues. morning the three and 4 year old gymnastics class of Muleshoe came to perform for the residents. This was a big treat for us and we would like to thank Cindy Purdy, Bob and Ricki for making it possible.

Wanda Lewis and Mr. and Mrs. J.C. Shanks came Friday to have a Devotional in song with the residents.

Thursday afternoon Maud Kersey, Rita Shipp, Laverne James, and Floyd Ruthardt came to play Skip Bo, 42 and dominoes with the residents. Lena Ruthardt made popcorn and served it to those attending.

Barbara Lust and Jackie Johnson came Wed. afternoon to have a Sing-A-Long with the residents.

Sunday morning the Muleshoe Church of Christ brought communion. E.B. Wilson came for Bible Study and The Calvary Baptist came to sing to the residents in the afternoon.

Cordelia Cochran was visited by Jewel Strong.

The Spudnut Shop brought spudnuts for the residents Monday.

Tuesday afternoon the Hospital and Nursing Home Auxiliary came to shampoo and set the ladies hair and give manicures. They stayed afterwards and played Skip Bo with the residents.

Lindy Schuster, Carolyn and Melinda came Tuesday and Friday to have exercise class with the residents.

We are so excited to see Margaret Beard up walking with just a little bit of help.

Blanton Street was visited by his son and daughter in law Wednesday. His granddaughter also visited him Tuesday. Mr. Street lead in a song at our Sing a Long Wednesday.

Bro. Huggins of the Trinity Baptist Church gave a Devotional for the residents Thursday morning.

Janice Bradshaw and children visited the nursing home Wednesday afternoon. Among residents they visited were Josephine Wenner and Delfer Wenner.

Piki Lanham and her beautiful baby girl, Ashley Marie, visited the nursing home Thursday.

Our thanks to our dear Hospital and Nursing Home Auxiliary for our T-Pumps. They are a very helpful to reduce swelling and infection. The generate warm water through a pad for warm moist heat, holding a continuous degree of temp.

We are trying to start a Jr. Volunteer Program. If you are between the age of 14-17 and are interested in volunteer work, call 272-3861 and ask for Helen or Joy.

Edith Goucher was visited by her relatives from Okla. Friday.  
Harry Freeman's grand-



CHECK PRESENTED...Marjorie Merritt, past president of the Jennyslippers presented a check in the amount of \$250 to President of the Muleshoe Youth Baseball, Lynn Box on Thursday. The funds are to help support activities of the MYB this year.

Spring is here and everyone at the nursing home welcomes it. Spring brings with it many extra activities for our residents that we are unable to do in the cold weather. Some of these include sight seeing trips in the Senior Citizens Van, taking walks, sitting on the patio, cook outs and picnics.

Our regular weekly religious service this week was Muleshoe Singers Sunday afternoon, E.B. Wilson Sunday Bible Study. Thursday Sharon Williams gave a Devotional, Sunday morning the Muleshoe Church of Christ brought communion and Friday Lazbuddie Church of Christ came.

Weekly activities, Tuesday afternoon, beauty shop time by the hospital and nursing home aux., Also Skip Bo, Wed. morning, Reading in the Day Room. Wed. afternoon, Sing a long with Glenda Jennings and Jackie Johnson. Thurs. afternoon 42 and Skip Bo Party with hot buttered popcorn for refreshments. Exercise class Tues through Fri. Lindy Schuster leads the class Tues and Fri.

Tues afternoon a beautiful group of ladies from the Lazbuddie Church of Christ came and served homemade pies to all residents.

Sat. morning the Lazbuddie Home Ec. Dept. taught by Cassandra Cargile came to decorate the nursing home for Easter. They put pink bunnies on the residents door and hung bright and colorful decorations through out the nursing home.

We can't believe it, but we do not have a single resident with a birthday in April. But our dear faithful Needmore Community Club are coming to give us a party anyway. Thursday, April 26 at 2:30 p.m. We invite you to come join us.

A very special thanks to Shirley Hicks for letting us borrow their Bunny Rabbit unit after Easter. We are enjoying "bunny" so much. I think he is getting a little spoiled. Thanks too, to Bill Crawford for building Bunny a nice pen, and thanks to John's Custom Mill for furnishing our Bunny plenty of food. Thank you Josie for your good help....

Edith Goucher was visited by her relatives from Okla. Friday.  
Harry Freeman's grand-

Slowed Up  
John: I used to chase girls.  
Joe: You used to chase girls, but you don't now?  
John: No, you can hardly find any that will run anymore.

No Wonder!  
Husband: "Damn! This razor won't cut!"  
Wife: "Nonsense, darling! If I could cut carpeting with it this morning you certainly can cut your beard with it now."

### 3. HELP WANTED

Fast growing progressive company will hire a person experienced in retail sales to work and train as assistant manager. Good starting salary and excellent agricultural background helpful but not essential. Send resume stating qualifications to A&H Enterprises c/o General Delivery, Muleshoe, Texas. Only qualified personnel need apply. 3-16s-3tp

### 8. REAL ESTATE FOR SALE

Nice 2 bedroom brick house in Earth. Sale or Rent. Garden spot, cellar, large garage, corner lot. Call 965-2391. 11-16s-1tc

DAVIS COMMERCIAL PUMPING SERVICE  
Cess Pools Grease Pits Dipping Vats Mud Pits Septic Tanks  
"If it's part liquid & not over 20 ft. deep we'll try to drain it."  
806-272-4673  
806-272-3467  
Muleshoe, Texas  
15-38s-stfc

BALLOONS EXPRESS  
Send some bunnys special a bouquet of balloons also have the Easter Bunny visit your children  
Call: 965-2857  
g15-16s-2tc

Atlas - Hotpoint - Magic Chef  
Rick's Repair Service  
Open For Business: January 2, 1984  
To Repair All Small Appliances & Lawnmowers  
Rick T. Galt, Owner  
Maple (806) 927-5595

ROBERT D. GREEN, INC.  
2400 W. AMERICAN BLVD. - MULESHOE, TEXAS 79347  
HOME OF THE GREEN MACHINES  
Terry Yell  
Sales Representative

Stop Crabgrass and feed your Lawn  
Easy to apply!  
Prevent Sandburrs  
ferti-lome  
FOR A GREENER LAWN  
ferti-lome  
LAWN FOOD + IRON  
BAKER FARM SUPPLY  
1532 W. American 272-4613

Ellis Funeral Home  
Pre-Need Funeral Plans  
Guaranteed By Texas Department of Banking  
Price Frozen at Time of Purchase

Re-Elect Bob Henderson Sheriff Bailey County  
Your Vote & Support Greatly Appreciated  
Pd. Pol. Adv.

A&M  
FivePoint  
\$10.50  
HI PROTEIN DOG FOOD  
• A 26% crude protein dog food  
• Formulated for hard working dogs  
• For peak condition and performance.

BEST IN THE FIELD SPRING BREAK PARTS SPECIALS BUY CASE LUBRICANTS AND GET:  
• \$25.00 off Case Ag filters • \$10 Savings Certificate  
• FREE Systemgard Kit PLUS  
Save up to \$20.00 on Case Batteries.  
Now is the time to get your equipment ready for the field with quality Case Ag parts. Save on Spring maintenance parts!  
Now Through 00/00/00!  
Reynolds & Young  
803 W. Amer. Blvd 272-4236

True Value HARDWARE STORES  
BARGAIN OF THE MONTH  
GREEN TRUCK Plus Iron & Sulfur 939  
Lawn Food With Weed Control  
9.77 Our Price -2.00 Mr.'s Rebate 7.77 Final Cost  
Home & Auto Twin-Pack Fire Extinguishers  
289  
Heavy-Duty Steel Hacksaw Frame  
Fry & Cox, Inc.  
401 S. First 272-4511



# CLASSIFIED ADS

**BUY  
SELL  
AND  
TRADE  
WITH...**

**DEADLINE FOR  
CLASSIFIED ADS IS  
TUESDAYS AND FRIDAYS  
11:00 A.M.**

**CLASSIFIED RATES**  
1st Insertion  
Per Word...\$15  
Minimum Charge...\$2.30  
2nd Insertion  
Per Word...\$13  
Minimum Charge...\$2.00  
**CARD OF THANKS**  
Per Word...\$20  
**CLASSIFIED DISPLAY**  
\$1.70...per column inch  
**BLIND AD RATES**  
50% more  
**DEADLINES**  
11 a.m. Tues for Thurs.  
11 a.m. Fri. for Sun.  
WE RESERVE THE RIGHT  
TO CLASSIFY REVISE OR  
REJECT ANY AD.  
NOT RESPONSIBLE FOR  
ANY ERROR AFTER AD  
HAS RUN ONCE.

**3. HELP WANTED**

Need fast, accurate typist. Typing speed required on application. Come by Muleshoe Journal and fill in application. No Phone Calls!

Wanted-experience field cuber mechanic. Good pay. Must be willing to relocate in Kansas. For more information call AC 316-624-6124. 3-15s-3tp

Applications now being taken for Sales People, Cashiers and stockers, Ben Franklin Store, 2104 W. American Blvd. 3-16s-2tp

**1. PERSONALS**

Custom farming work done. Call 272-5317 after 6 p.m.

Wanted 3 Bedroom house to be moved. Phone 272-4581 days, 272-5651 after 6 p.m. h1-8t-tfc

Licensed Daycare. Reserve a place now for your child aged 18 months up. Openings for the summer and fall also. Dianne Allison, 272-3304. a1-10s-tfc

I will not be responsible for any other debts than my own. 4-5-84 Scotty Farley 1-15t-2tc

**5. APTS. FOR RENT**

FOR RENT: 1 bedroom apartment, unfurnished. Some bills paid. Call 965-2188 or 272-4754. s5-8t-tfc

**8. REAL ESTATE FOR SALE**

FOR SALE BY OWNER: 3 bedroom, 1 bath house. Call 272-4583 before 5:00. After 5:00, 272-3985. e8-12s-tfc

**LAND FOR SALE**  
19 1/2 Acres - Just right for Texas Veteran's Loan. Good Cultivated Land. 2 miles NW of Muleshoe on County Road. Call 272-5183

**UNIQUE!!!** Beautiful 3 bedroom, 2 bath custom-built home. Fireplace, central air, basement, 2 enclosed courtyards, lots of storage, much more! By owner. 1807 W. Ave. 1. 806 / 796-1133. a8-14s-8tc

Nice 2 bedroom, 1 bath & garage in Lenau Addition. Central Heat, Large Kitchen, Patio. Mid 20's. 272-3123. b8-7s-1tp-stfc

**TOWN and COUNTRY**

**Real Estate**

John W. Smith  
Broker  
806-272-4307  
903 W. 7th  
Muleshoe, Tx. 79347

186 acres of dryland farm. 272-3496.  
18-16s-tfc

**SMALLWOOD REAL ESTATE**  
232 Main  
272-4838

Nice 3 Bedroom, brick, 2 bath, 2 car garage, 2 storage bldg. Fireplace all electric, lots of insulation. Storm Windows.

For Rent -- 2 Bedroom, 2 Bath Apartment with Stove & Refrigerator.

2 Bedroom, 1 bath, 318 W. 11th, \$500.00 down payment, \$158.00 month.

3 Bedroom, 1 bath, carpet, fenced back yard, 213 E. Birch. \$1,000.00 down payment, monthly payment \$215.00 month.  
s8-16s-tfc

**1. PERSONALS**

Your votes and support were sincerely appreciated.  
Sam Harlan

**J.B. SUDDERTH REALTY, INC**  
Drawer 887  
Farwell, Tx. 79325  
Ph. 806-481-3288

160 Acre on Hwy. N.W. of Muleshoe, 2 wells, Excellent Financing. Priced for Immediate Sale.

320 Acre, 3-8 inch wells, 1 Circle. Lays Excellent. Oklahoma Lane Area.

80 acres, 2 wells, 1 electric motor, wheat crop grows. West of Muleshoe on highway, Owner says sell

480 Acres-irrigated with Circle Sprinklers, lays good, on highway-West of Muleshoe. Owner says sell!

50 acres in edge of Muleshoe 6 inch electric well. Barn, Corral, side roll sprinkler, City Water. Owner says Sell. 8-6s-tfc

**FOR SALE BY OWNER**  
Large Brick Home on 10 acres. Plus 32' x 50' insulated shop building, small barn, fruit orchard, excellent well with sprinkler system. Locate 2 1/2 miles from city limits. \$93,500. Call 272-4957. m8-4s-tfc

**BINGHAM & NIEMAN REALTY**  
116 E. Ave. C  
272-5285---272-5286

**WE CAN HELP OUR BUYERS WITH 9 7/8% A.R.M. INTEREST RATES ON 30 YEAR LOANS!!!!!!**

3-1 3/4-2 carport Brick, Cent. A&H, built-ins, gas log fireplace, fenced yard. PRICED TO SELL. . . . .  
3-1 3/4 Brick, Cent. heat, Evap. air, fireplace. Let's Look Today!!!!!!

3-2+2 carport, Brick, Cent. A&H, built-ins, fireplaces, nice den & lv. area, & freshly painted interior. . . . .  
**COUNTRY CLUB**

3-1 3/4-2 Brick, Cent. A&H, built-ins, fenced yard, much more, & a nice area!!!!  
2-1 home on corner lot, storm windows & doors, plus nice storage bldg. . . . .

**LENAU ADDITION**

3-1 1/2-1 home, Cent. heat, Evap. Air, built-ins, nice carpet, screened porch. Let's Look Today!!!!

2-1-1 home, wall furnace, window evap. air, fenced yard. . . . .  
**PRICE REDUCED-3-1-1 carport home, corner lot, earth-tone carpets, fenced yard, large rooms, very nice!!!!!!**

3-1 3/4-1 carport home, Cent. heat, nice carpet, fenced yard, & more. 30's. . . . .

2-1-1 home, Cent. heat, lots of storage, fenced yard, fruit trees, \$23,500!!!!

3-1-1 home on corner lot, Cent. heat, Evap. Air, fenced yard. Let's Look Today. . . . .

3-1 3/4-1+1 carport, Brick, built-ins, new wallpaper, paint, & carpet less than 2 years old, utility, & large storage. Mid 40's. . . . .

**JUST LISTED-EDGE OF TOWN-3-1 3/4-2 home on 1/2 acre, wall furnace heat, nice carpet, ceiling fans, & more. \$37,500!!!!!!**

3-2 3/4 home on corner lot, Cent. A&H, built-ins, 2 fireplaces, approx. 3,000 sq. ft. of lv. area, new carpet, large gameroom, auto. sprinkler sys. Mid. 50's. . . . .

**ENJOY COUNTRY LIVING** in this 3-1 3/4-2 home on 1 acre, Cent. A&H, built-ins, nice large patio, fenced yard, storm shelter, & fruit trees. . . . .

3-1 3/4-1 carport Brick, Cent. A&H, built-ins, storage area, fenced yard on corner lot!!!!!!

2-1 home on 1 acre, built-ins, nice carpet, on pavement close to town. . . . .

2-1-1 home on corner lot, freshly painted interior, includes furniture & other items. One Block to School . . . . .

Nice 3-2 home on 1 acre, isolated master bdrm., Cent. A&H, built-ins, fireplace, wet bar, fenced yard, & insulated storage!!!!!!

2-1-1 home, new roof, freshly painted inside & out. Very nice. \$19,500

3-1 3/4 - 2 home on corner lot, Cent. A&H, built-ins, covered patio, fenced yard, gas grill. Very nice & only \$39,500!!!!!!

3-2-1+1 carport home, built-ins, Cent. heat, fireplace, fenced yard. Mid 40's. . . . .

3-1 1/2-1 Brick near schools, fenced yard, nice large workshop. \$39,500. . . . .

**EXTRA NICE 2-1+1 carport home, new paint, fenced yard, & storage bldg.!!!!!!**

**CLOVIS HWY.**-3-1 home and 2-1 home (rented) on approx. 4.4 acres, fenced, & has sprinkler sys. \$42,500. . . . .

2-1 3/4 Mobile home + 2 carport, built-ins, cable TV, large barn & corrals on approx. 2 acres on pavement close to town!!!!!!

**CHURCH BLDG.** on 2 lots, approx. 2350 sq. ft., paved parking. . . . .

**EARTH-** 3-1 3/4-2 Brick, isolated master, Cent. A&H, built-ins, fireplace, finished basement, fenced yard, storage bldg., & only 4 yrs. old. . . . .

**FARMS**

2-1 home on 32 acres, 6" well, close to town on pavement, fully allotted. . . . .

1062 acres, 3 wells, 2 circles, large metal barn, 9% Owner financing . . . . .

80 acres, 6" well, undergrd. tile, close to town . . . . .

40 acres, 8" well, undergrd. line, & sideroll sprinkler. . . . .

**"WE APPRECIATE YOUR BUSINESS"**  
GEORGE NIEMAN\* BROKER  
DIANNE NIEMAN\* BROKER

8-14s-stfc

*Henry Realty*  
111 W. Ave. B  
Muleshoe  
272-4581

3 Bedroom - 1 Bath - 1 car garage in Lenau Addition.

800 Acres West of Muleshoe on HWY Excellent Improvements. Priced Right to Sell. Owner Financing.

38 Acres West of Muleshoe, 6 Inch Well, Sideroll, All Wheat.

One Acre Sites for Home Construction. 3 Miles of Muleshoe on HWY, 3 lots remain.

h8-8t-tfc

Krebbs Real Estate  
201 W. Ave. C.  
Telephone 272-3191  
Appraisals

See our lots on Hwy 84E. We specialize in farms.

k8-15s-tfc

**9. AUTOMOBILES FOR SALE**

For sale-1977 Mercury Marquis PHONE 272-3227 or 272-3113

**AMERICAN VALLEY INVESTMENTS REALTORS**

**NEW LISTING IN COUNTRY**--3 Bedroom, 1 3/4 Bath, Double car garage located on one acre, Cellar, Fruit trees and grapevines.

**NEAT CLEAN**--2 Bedroom, 1 Bath, 1 Car Garage in Lenau Addition. Extra room built on behind garage. Storm windows and doors. Nearly new roof. In good condition.

**NEW LISTING**--2 Bedroom, 1 Bath, 1 Car Garage in Lenau Addition. Extra room built on behind garage. Storm windows and doors. Nearly new roof. In good condition.

**SPACIOUS FAMILY HOME**--Nice 3 Bedroom, 1 3/4 bath, double car garage, brick home. Lots of storage. Well-kept, Mid 40's.

**AFFORDABLE LUXURY-IMMACULATE** 3 Bedroom, 2 Bath Home in Country Club Addition, Fireplace, Slanted Beamed Ceiling, Skylight, stained Glass. Lots of Storage, Gameroom, Matching Storage Building, Much, Much more...Assumable loan.

**PRICE REDUCED TO SELL**--Nice, Well-Built, 2 Bedroom, 1 Bath, Single-Car Garage. Storage Building.

**COUNTRY HOME**--Beautiful 3 Bedroom, 1 3/4 Bath, 2 car Garage. Located on 15 Acres West of City planted in Alfalfa. Barns, Correls, Lots of Extras.

**PRICED REDUCED**--Large 3 Bedroom, 1 3/4 Bath, 2 Car Garage Brick Home Located on 1 Acre Close to Town. Approximately 1.5 Sq. Ft. Lots of Storage. Cable. Large Fenced 1/2 Acre. \$57,500.00.

**BUILDER SAYS SELL NOW**--- 3 Bedroom 1 3/4 bath, 2 car Garage, Fireplace, Cathedral Beamed Den.

**NEW LISTING**---1 Bedroom home for only \$7,500.00. New carpet and wall heater.

**PRICE REDUCED--READY TO SELL!** Nice 2 Bedroom, 1 Bath, Single-car Garage. Well-Insulated. New Roof. Storm Doors & Windows.

**NEW ON THE MARKET**---160 Acres in Lazbuddie Area. 2-8" Irrigation Wells. Good Land in Good Area.

280 Acres in Lazbuddie Area---Electric Valley Sprinkler -- 2 Siderolls 1-8" Well, 1-6" Well, 3/4 Mile Underground PVC, 1/4 Minerals, 25 hp. Lake Pump, 32 Acres of Improved Grasses. PRICED TO SELL!!

**LOVELY CORNER LOT**---Extra Nice 3 Bedroom, 1 3/4 Bath, Carport, Isolated Master Bedroom. Carp. . . . . new. Lots of Storage. Good Location.

**3 BEDROOM-2 Bath, Fenced Yard, Storage Building, Fruit Trees, Garden Area.** Assumable loan for Qualified Buyer.

**REDUCED AGAIN!!!!**---3 Bedroom, 1 Bath, Single Car Garage. Separate Dining Room.

**GOOD RENT PROPERTY**---2 Bedroom and 1 Bedroom Homes. In Good Condition. \$22,500.00.

80 Acres in YL Community, 1-6" Well--- 30 Hp. Elec. Motor, 1/2 Mile Underground Pipe Domestic Well. Some Minerals.

3 Bedroom, 1 Bath, Carport.

160 Acres in Lazbuddie Area. Good Water. Priced to Sell.

**LARGE BUILDING** in Back for Workshop, Storage, or Hobbie. 3 Bedroom, 1 Bath Home in Lenau Addition.

**4 BEDROOM-2 Bath, Large Living Room, Dining Room.** Fireplace.

**GOOD STARTER HOME** -- 1 Bedroom Home. Priced at only \$9,500.00.

**MOBILE HOME**--2 Bedroom, 1 Bath. Partially Furnished. 12 x 64. \$9,500.00.

2 BEDROOM--Home at only \$15,000.00.

272-4266

Roy Whitt---272-3058  
Thursie Reid---272-3142  
Derrell Matthews---965-2127  
Karen Harris---272-5183  
Lucille Harp---272-4693  
Rex Harris - Broker John Craig - Builder

8-14s-stfc

**JIMMIE CRAWFORD REAL ESTATE & INS.**  
1725 W Ave E  
Muleshoe, Texas  
Phone 272-3666

2-1-1 in Lenau Addition. Outside trim just painted.

2-1 with utility on 6th st. Will sell Lease-Pur.

3-1 1/2-2 with carport in Lenau Addition. Price reduced to sell.

3-2 with carport in Richland Hills. Very nice.

Lots of farm listings. Call for information. 8-10s-stfc

**9. AUTOMOBILES FOR SALE**

For Sale - 1973 Pontiac, Runs good, Work car. \$350. Call 272-5317 after 6 p.m. Also: Collectors Item: 1960 Chevrolet El Camino Pickup. Call 272-5317 after 6 p.m.

Automobile: The best of new used cars and the lowest of prices is us at Birdwells Auto. Auto Sales and Service 220 West Bedford, Dimmitt 647-4726. 9-15t-1mc

**10. FARM EQUIP. FOR SALE**

FOR SALE: Avenger 3 Wheel Hoe Hands with spray tanks attached. Call First National Bank. 272-4515. 10-21t-tfc

**11. FOR SALE OR TRADE**

**IF YOU WANT IT SOLD**

**AMERICAN VALLEY INVESTMENTS REAL ESTATE**

272-4266

**ROY WHITT HOME PHONE 806/272-3058**

**WEST HWAY 84 MULESHOE, TEXAS 79347**

**SEE ROY WHITT FOR YOUR REAL ESTATE NEEDS**

**62 And Older! LOW RENT OR NO RENT**

Government Subsidized  
Your Rent Will Be 30% Of  
Adjusted Monthly Income.  
Full Maintenance, Central  
Heat, Refrigerated Air.

**NEW! Mid-TULE VILLAGE**

7th & Dallas Tulia, Tx. 995-2442  
m5-14s-18tc

EOH

**HONEY FOR SALE**  
Nick Landers  
334 W. Ave. J.  
272-3096

15-5t-tfc

Does Your Trim Need  
Painting?  
If So Paint  
**NO MORE**  
By having steel siding  
and accessories installed to  
put an end to the painting.

50 year guarantee:  
on material  
Free Estimates  
Free Stormdoor With  
Every Job.  
**LITTLEFIELD  
SPECIALTY CO.  
DARRELL SIEMS**  
385-3262  
385-3787

115-12s-tfc

**BOX CARS FOR SALE**

55 ft. refrigerated all steel. Box Cars, excellent storage, mouse proof. Also 40 ft. Box Cars good storage facility for your house and heavy hauling.

Call Bennett Housemovers, Clovis, N.M.

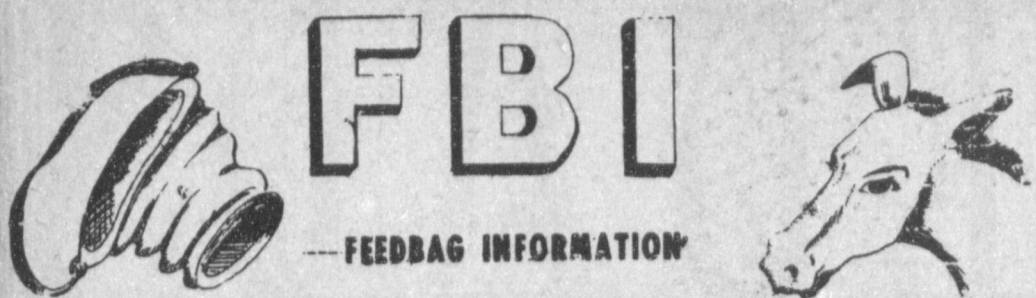
(505) 763-5501. 9:A.M. -4:P.M.

Mon thru Friday.

Nights- (505) 389-5411

11-16s-2tp

## At Muleshoe Junior High



**EIGHTH GRADE DISTRICT CHAMPS...**Winners of the 8th Grade District Championship were all Muleshoe Tracksters. They are: (Bottom to top) L to R) Stacey Haley, Shannon Springfield, Renee Snell, Connie Perez, Elena Perez, Elizabeth Posadas. (Middle) Melissa Burnett, Tanya Nowell, Caroline Liles, Toy Pena, Michelle Stevenson, Karen Kennemer, Jennifer Green. (Top) Amy Bean, Ali Cage, Katy Crittenden, Mary Jane Sanchez, Nancy Jaramillo. (not pictured: Quay Gregory and Misti Tredway.)

## Eighth Boys Place At Morton

Eighth grade boys from Watson Jr. High recently participated in a track meet at Morton, emerging with a second place win, 169½ pts. Boys placing in individual events were:

440 Relay, Russell Brown, Pat Vega, Ramon Garcia, and Bobby Mora, 1st, 50.39.  
800, Carlos Reyes, 1st, 2:24.62; Jesus Agundis, 2nd, 2:24.66; Miguel Sanchez, 4th, 2:28.40; Bobby Mora, 7th.  
High Hurdles, Jerry Mendoza, 1st, 18.28; Sergio Gonzalez, 5th, 20.75; Joe Mendoza, 6th, 20.97.  
100, Miguel Sanchez,

2nd, 13.10.  
400 Shannon Simnacher, 1st, 58.55.  
300 Hurdles, Ronnie Perez, 1st, 46.6; Miguel Sanchez, 3rd, 50.23; Ramon Garcia, 6th, 52.  
200 Joel Leyva, 2nd, 27.80.  
1 Mile, Alex Bachicha, 5th, 5:50.9; Greg Garcia, 2nd, 5:35.85; Carlos Reyes, 1st, 5:35.5.  
1 Mile Relay, Brown, Vega, R. Garcia, and Mora, 2nd, 4:00.  
Shot Put, Eddie Hernandez, 4th, 37' 7½".  
Discus, Richie Tillema, 1st, 141' 1" (set a new

school record); James Ziegenguss, 2nd, 112' 11"; Jesus Agundis, 6th, 99' 1".  
High Jump, Joel Leyva, 5th, 4' 10".  
Long Jump, Joel Leyva, 4th, 16' 4"; Joe Mendoza, 5th, 15' 9".  
Pole Vault, Kasey Whatley, 4th, 8'.  
Eighth grade boys will be entered in the district track meet Tuesday, April 17, at Abernathy. They are coached by Roy Donaldson.

Courtesy may take a little of your time but, in the long run, it may save you more time.

## Eighth Grade Girls First At District

Eighth grade girls from Watson Jr. High participated in the district track meet at Abernathy April 6 and returned to Muleshoe with a first place win. Coach Roxie Johnson directs the activities of this team of girls, and reports a team total of 150 accumulated points. Individual records included:

Shot Put, Renee Snell, 4th, 26' 7".  
Discus, Nancy Jaramillo, 2nd, 69'; Emilie Martinez, 4th, 67' 5".  
High Jump, Amy Bean, 3rd, 4' 6"; Karen Kennemer, 4th, 4' 4"; Michelle Stevenson, 5th, 4' 2".  
Long Jump, Karen Kennemer, 2nd, 13' 6".  
Triple Jump, Amy Bean, 1st, 29' 11"; Karen Kennemer, 5th, 27' 11½".  
400 m. relay, Amy Bean, Esmerado Bara, Karen

Kennemer, Michelle Stevenson, 2nd, 57.88.  
100 m. hurdles, Elena Perez, 6th, 19.7.  
800 m. Quay Gregory, 3rd, 2:41; Caroline Liles, 4th, 2:54.75; Misti Brewer, 5th, 2:56.  
100m., Kim Glover, 2nd, 13.81; Karen Kennemer, 4th, 13.73.  
800 m. relay, Kim Glover, Tanya Nowell, Jennifer Green, Michelle Stevenson, 1st, 2:00.9.  
400 m. Stacey Haley, 4th, 72.0.  
200 m. Michelle Stevenson, 2nd, 29.23; Jennifer Green, 4th, 29.99.  
1 Mile Run, Quay Gregory, 1st; Caroline Liles, 5th; Toy Pena, 6th.  
1 Mile Relay, Lisa Laredo, Stacey Haley, Jennifer Green, Quay Gregory, 3rd, 4.49.



**SEVENTH GRADE DISTRICT CHAMPS...**Muleshoe Junior High School's 7th grade track team recently won the distinction of District Champs in their district. From Bottom to top, L to R) Lisa Noble, Julie Crittenden, Laurel Dillard, Becky Vela, Coach DeAnn Halford, Jo Ann Gutierrez, DeAnn Crozier, Connie Garza, Thelma Ford, (Middle) Michelle Cox, Krystal Angeley, Debbie Brown, Mary Lou Bastardo, Esther Acosta, Rosemary Bryan, Mychelle Stout. (Top) Lydia Alfaro, Bonnie Perez, Shelly Berry, Leticia Davila, Susan McCarty.

## 7th Girls Place First In District

Watson Jr. High seventh grade girls traveled to Abernathy Friday, April 6 to participate in the district track meet. Muleshoe's girls returned with a first place win, tallying a total of 168 points. Individual records included the following:

Shot Put, Krystal Angeley, 6th, 22' 6½".  
Discus, Krystal Angeley, 4th, 64' 1¼".  
High Jump, Mary Lou Bastardo, 3rd, 4' 2".  
Long Jump, Mary Lou Bastardo, 2nd, 13' 1½"; Thelma Ford, 4th, 11' 11½"; Michelle Cox, 6th, 11' 9½".  
Triple Jump, Thelma Ford, 1st, 28' 4¼"; JoAnn Gutierrez, 3rd, 27' 1 3/4"; Mary Lou Bastardo, 4th, 26' 11 3/8".  
400 m. relay, JoAnn Gutierrez, Krystal Angeley, Becky Vela, and Lisa Noble, 2nd, 57.02.  
100 m. Hurdles, Michelle Cox, 2nd, 18.91; Mary Lou Bastardo, 3rd, 19.13; Krystal Angeley, 4th, 19.78.

800 m. DeAnn Crozier, 3rd, 2:52.0.  
100 m. dash, Lisa Noble, 2nd, 13.52; Lydia Alfaro, 5th, 14.24; Mary Lou Bastrado, 4th, 14.13.  
800 m. relay, Lisa Noble, Lydia Alfaro, Bonnie Perez, and Thelma Ford, 2nd, 2:01.72.  
400 m. JoAnn Gutierrez, 1st, 69.31; Becky Vela, 2nd, 70.06; Michelle Cox, 3rd, 70.77.  
200 m., Bonnie Perez, 4th, 30.56.  
1600 m., Esther Acosta, 3rd, 6:27.66.  
1600 m. relay, Michelle Cox, Krystal Angeley, JoAnn Gutierrez and Becky Vela, 1st, 4:37.34.  
Seventh grade girl tracksters are coached by DeAnn Halford.

**SMILES**

**Really Good**  
Willie was destined to be a great violinist—at least so thought his mother. But one evening, while Willie was practicing on his fiddle, she got a bit of a shock. Her husband stamped in from the garden and flared at her son. "Why didn't you tell me that Willie was going to practice on his violin tonight?", he demanded. "I've spent half an hour oiling the gate!"

**Big Job**  
Boss--Can't you find something to do?  
Office Boy--Gee whiz; am I expected to do the work and find it too?

**Career Man**  
First Prisoner--"What are you in for?"  
Second Prisoner-- "Want to be a warden, so I thought I'd start from the bottom."

## SHOP AND SAVE... THE THRIFTY WAY

BE SURE TO SEE OUR COLORFUL INSERT IN THIS PAPER.

**COCA COLA**  
99¢  
2 LITER

**KAHN'S HICKORY GROVE BONELESS FULLY COOKED 12-14 LBS. AVERAGE**  
WHOLE HAMS \$1.79  
HAM SLICES \$2.39  
GROUND BEEF \$1.69  
TURKEYS \$89¢  
BREAD \$2.19  
HOT DOGS \$89¢  
SAUSAGE \$1.99

**LIPTON 3 OZ. JAR INSTANT TEA**  
20% OFF LABEL \$2.29

**CALIFORNIA RED RIPE STRAWBERRIES**  
ANGEL FOOD CAKE BARS 79¢  
PINT BASKET \$3.99

**FROZEN SHURFINE STRAWBERRIES**  
10 OZ. 59¢

**SHURFINE CHARCOAL**  
10 LB. \$1.59

**BORDEN 8-PACK SANDWICH, HEATH BAR, DRUMSTICK, ESKIMO PIE SPECIALTIES**  
99¢

**FOLGER'S ALL GRINDS COFFEE**  
1 LB. CAN \$2.29

**MOUNTAIN DEW, DIET PEPSI, PEPSI LIGHT, PEPSI FREE**  
16 OZ. 6-PACK \$1.45

**KITCHEN TESTED FLOUR GOLD MEDAL**  
5 LB. BAG 79¢

**SHURFRESH GRADE A LARGE EGGS**  
ONE DOZEN 79¢

**CHICKEN OF THE SEA-OIL OR WATER PACK CHUNK TUNA**  
6 1/2 OZ. CAN 69¢

**FAMILY SIZE TIDE**  
79¢

**BORDEN FRUIT DRINK**  
1 GAL. 99¢

**BORDEN 1 GALLON HI PROTEIN MILK**  
\$1.99

**KLEENEX DINNER NAPKINS**  
50 CT. PKG. 79¢

**BORDEN ICE CREAM**  
5 QT. BUCKET \$3.99

**10 LB. BAG ICE**  
69¢

**8 3/4" LUNCHEON PLATES CHINET**  
40 CT. PKG. \$1.99

**SOLO 16 OZ. PARTY CUPS**  
20 CT. PKG. 99¢

**BATHROOM TISSUE NICE'N SOFT**  
4 ROLL PKG. 89¢

**ZEE DECORATOR PAPER TOWELS**  
JUMBO ROLL 49¢

**We Rent Videodisc And VHS Players. Come By And See Our Selection.**

401 West American

**SERV-ALL**

**THRIFTWAY**

We're proud to give you more!

272-4739

**THRIFTWAY AFFILIATED FOODS INC.**

MEMBER STORE

PRICES EFFECTIVE APRIL 1-14, 1984  
WE RESERVE THE RIGHT TO LIMIT QUANTITIES  
WE ACCEPT FOOD STAMPS