

THE OBSERVER/ ENTERPRISE

Single Copy 35

(USPS 467-480)
(ISSN 8750-197X)

Serving Coke County

Robert Lee, Coke County, Texas (76945)

Vol. 4, No. 23

Friday, January 22, 1988

Coke County Stock Show termed "excellent"

Excellent was the key word to describe the 1988 edition of the Coke County Stock Show. A record number of over 300 livestock projects were exhibited; the sale of livestock projects was as strong as in the past; and attendance was unusually heavy for the judging, as well as the barbecue lunch held on Saturday. Part of the reason for these high numbers was the very much appreciated warm weather, which locals do not expect this time of year.

Champions were everywhere, as Michael Lee started the weekend off right when his Champion Mediumwool Lamb was named Grand

Champion of the show. Melissa Bivins' Mediumwool Champion was selected as Reserve Grand Champion of the show.

The Champion Finewool Lamb was exhibited by Brande Burrows. Brande proved that luck runs in threes as she also had the Champion and Reserve Champion Finewool Cross Lamb. Reserve Champion honors in the Finewool Lamb division went to Scott Antilley.

The sister duo of Julie and Kim Blair posted the best placings in the Swine Division, as Julie exhibited her Champion Cross to Grand Champion of Show status, and sister Kim drove her Reserve

Champion Cross to Reserve Grand Champion honors.

Julie and Kim had identical placings in the Other Pure Breeds division of the show, with Julie driving the Champion, and Kim the Reserve.

Champion Duroc trophy went to Blake Pitcock, with Audra Pitcock driving the Reserve Champion.

Brent Jameson topped the Hampshire class when his pig was named Champion, with Jason Key taking Reserve honors in this class.

Saturday's steer judging culminated in Grand Champion honors for Scott Antilley, with his Champion European Crossbred Steer. Reserve Grand Champion honors went to Waylon Ensor, with his Reserve European Cross Steer.

Dane Smith exhibited the Champion English Crossbred Steer of the show, with Russel Vaughn showing the Reserve English Crossbred.

Showmanship awards are some of the most important at any show, as they are awarded to those exhibitors who have made the best presentation of their project to the judge. In the Sheep Division, Melissa Bivins took top Showmanship honors; with Randy Gartman being named top showman in the Swine Division; and Teresa Vaughn winning in the Steer Division. The Frank Percifull Memorial Overall Showmanship Award was presented to Shane Kellton. Michael Lee was awarded the Ralph Walker Memorial Top Hand Award.

Breeder awards were handed out to Raymond Bloodworth in the Beef Division; Wayne Arrott in the Sheep Division; and Blair Hog Farm in the Swine Division.

Complete results of the show are detailed below:

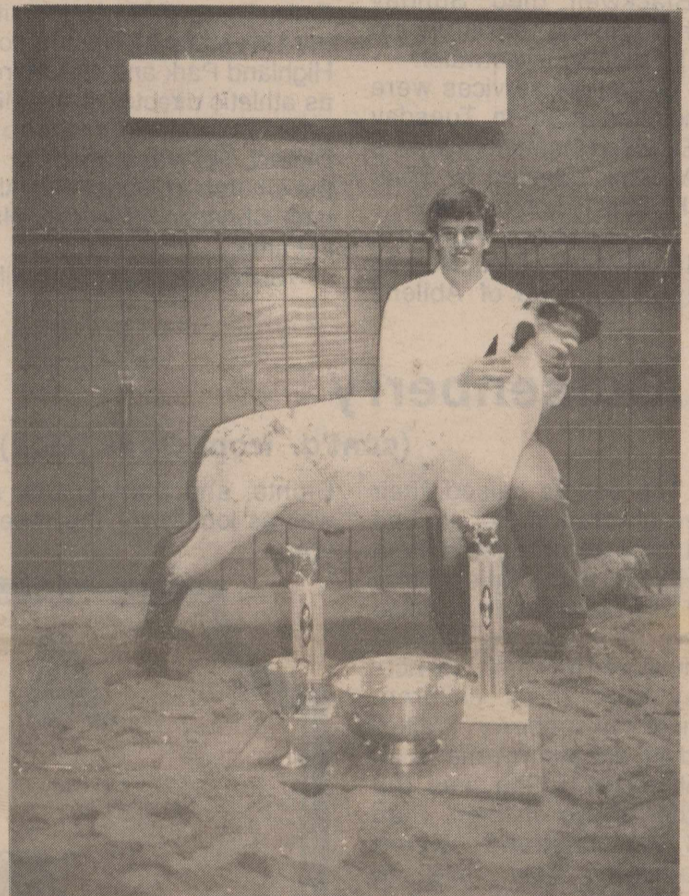
Grand Champion Lamb: Michael Lee, Heavyweight Medium Wool.

Reserve Grand Champion: Melissa Bivins, Mediumweight Mediumwool.

Breeding Rambouillet - Ewes:

1. Shalon Waldrop; 2. Jaclyn Waldrop; 3. Jaclyn Waldrop; 4. Shalon Waldrop; 5. Christi Payne; 6. Christi Payne; 7. Blake Payne; 8. Blake Payne.

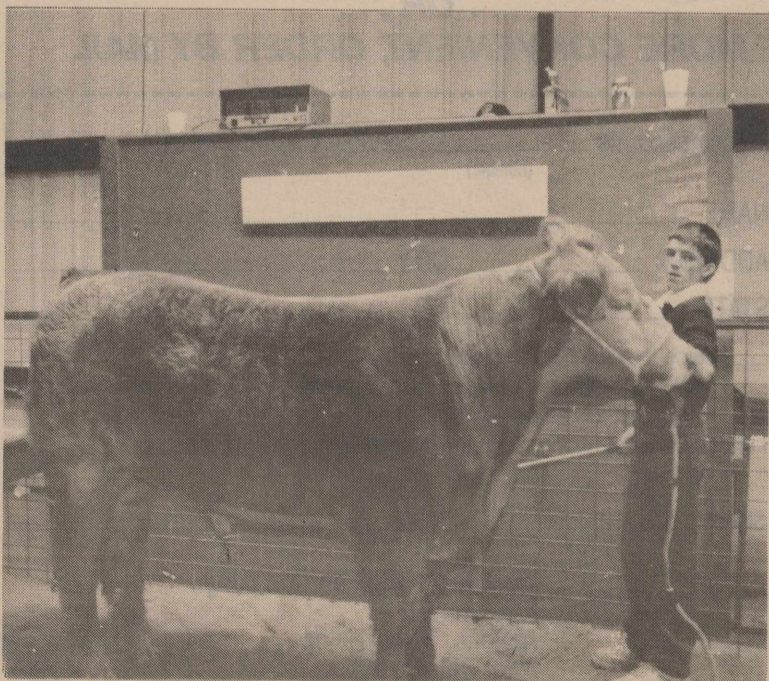
Breeding Rambouillet
(cont'd. on page 6)



MICHAEL LEE DISPLAYS the Grand Champion Lamb of the 1988 Coke County Stock Show. Michael was also awarded the Ralph Walker Memorial Top Hand Award.



GRAND CHAMPION SWINE honors went to Julie Blair.



GRAND CHAMPION STEER honors went to Scott Antilley, with this European Cross Steer.

J. E. Quisenberry retires

Coke-Sterling County ASCS has announced the retirement of J.E. Quisenberry, Jr. from that office after 36 1/2 years of service, effective Jan. 2, 1988. He came to Robert Lee to assume the County Executive Director's position in July of 1951. Prior to that time he had worked for the ASCS in Hardeman County at Quanah.

Raised in Quanah, Quisenberry joined the Army Air Force where he served in World War II. He was a POW and discharged as a Staff Sgt.

Mr. and Mrs. Quisenberry are members of the Robert Lee Baptist Church. He is a



J.E. Quisenberry, Jr.

retired member of the Volunteer Fire Department and a past member of the Robert Lee-Silver Lions Club and the BCD.

(cont'd. on page 2)

...Additional Stock Show pictures start on page 6

THE OBSERVER/ENTERPRISE

**PUBLISHED WEEKLY
EXCEPT CHRISTMAS**
Phone 453-2433 P.O. Box 1329
(USPS 467-480 (ISSN 8750-197X))
Entered at the Post Office at
Robert Lee, Texas 76945
as second class matter.

Publisher Hal Spain

STAFF

Joan Davis
Jane Webb

Lisa Spain
Mike White

SUBSCRIPTION RATES

Per Year in Coke County \$10.00
Per Year Elsewhere in Texas \$11.00
Per Year Outside Of Texas \$12.00

Obituaries

Jones

T.L. "Tugboat" Jones, 69, of Blackwell died Sunday night at Rolling Plains Memorial Hospital in Sweetwater.

Graveside services were conducted at 3 p.m. Tuesday at Elmwood Memorial Gardens in Abilene, directed by Shaffer Funeral Home of Bronte.

He was born April 16, 1918, in Wilson, Okla. He was a 1942 graduate of Abilene

Christian College and played professional football for the Brooklyn Dodgers. He coached at Electra, Wichita Falls, Texas A&M University, the University of Washington, Highland Park and was retired as athletic director of the Midland Independent School District. He was a member of the Church of Christ and Abilene Christian University Hall of Fame.

Survivors include his wife,

Obituaries cont'd.

Ruth Jones of Blackwell; two sons, Bill Jones of Blackwell and J.L. Jones of San Antonio; one daughter, Marca Bramlett of Midland; two brothers, Balard Jones of Hayward, Calif., and Stanley Jones of Ardmore, Okla.; one sister, Mrs. Garvin Beauchamp of Abilene; and three grandchildren.

Gibson

Joseph Floyd "Gip" Gibson, 92, went to dwell in the house of our Lord on Jan. 17, 1988 at 12 o'clock midnight.

He was born March 5, 1895 in Comanche County, coming to Coke County in 1913. He was retired from the railroad and a member of the Masonic Lodge of Bronte.

He was preceded in death by his wife, Lola Maude; his father, Anderson Morgan; his mother, Mattie Warner; and his sister, Zadie Gibson.

Mr. Gibson, who died in West Coke County Nursing Home, was buried in Fairview Cemetery at Bronte, directed by Shaffer Funeral Home, on Tuesday, Jan. 19. Funeral services were held at the Central Baptist Church in Bronte, officiated by the Rev. R.W. Blackmon.

Survivors include two daughters and one son-in-law, Mattie Wisley of Bronte, and Della and Joel Webb of Roswell, N.M.; three granddaughters and husbands, Ruth and Dean Huddleston of San Angelo, Collette and Clint Jones of Granbury, and Bren-

da and John Bachman of Roswell, N.M.; four great-grandchildren, Deborah Kay and Johnny Powell, Gary Huddleston, all of San Angelo; Kimberly and Kyle Bachman of Roswell, N.M.; three great-great-grandchildren, J.W. and Quintin Dean Powell and Kevin Huddleston, all of San Angelo; two sisters, Lola Allison and Mae McQueen, both of Bronte; and a number of nieces and nephews.

Pallbearers for the services included Gary Huddleston, John Powell, Jack Corley, John Bachman, Shane Webb and Pete Thomas.

Beaver

Frances E. "Fannie" Beaver, 75, died Friday in her home in Bronte.

Services were held at 3 p.m. Sunday in Central Baptist Church with burial in Fairview Cemetery directed by Shaffer Funeral Home.

She was born Nov. 23, 1912 to Monroe and Mattie Moore McCutchen in Hayrick. She married T.B. Beaver in Ballinger in October 1931. The couple made their home in Bronte since their marriage. She was a member of Central Baptist Church.

Survivors include her husband, T.B. "Dink" Beaver; two daughters, Ouida Scott and Pauline Blair, both of Bronte; four brothers, Randal McCutchen of Mertzon, Calvin McCutchen and Luther F. McCutchen, both of Bronte, and Olie Lee McCutchen of Del Rio; five sisters, Vera Mae Sanders and Annie Forbes, both of Grand Prairie, Thresa

Butner of Bronte, Janie Kyle of Seattle, Wash., and Georgia Rhue Gibbs of Cruz; three grandchildren and eight great-grandchildren.

Nephews served as pallbearers.

Gray

Mrs. Sam (Lucy) Gray, 93, died Friday, Jan. 15, at her residence in Bronte.

Services were conducted at 2 p.m. Monday at the First Baptist Church with the Rev. R.W. Blackmon officiating. Burial followed in Fairview Cemetery, directed by Shaffer Funeral Home.

Mrs. Gray was born June 6, 1894, in Limestone County. She was reared in Ballinger. She was married to Sam Gray Aug. 13, 1913, in Ballinger, and they moved to Bronte in the 1920s. They had engaged in farming and ranching near Bronte since then. Mrs. Gray preceded her in death Aug. 29, 1972. Mrs. Gray had been a member of First Baptist Church since 1934.

Survivors include one daughter and son-in-law, Goldie and Dawson Coleman; and one grandson, Randal Gray Coleman, all of San Angelo.

Pallbearers were Billy Joe Lockett, Robert Gallaway, Bobby Edmiaston, Ed Cumbie and Noah Pruitt Jr.

Baker

Clyde Stephen Baker, 82, of 401 Spaulding St., San Angelo, died at 4:50 p.m.

(cont'd. on page 3)

...Quisenberry

(cont'd. from front page)

The couple raised their three children in Robert Lee and they all graduated from RLHS. Dr. Jerry Quisenberry and wife Diane reside in Idalou where he is with the national Agriculture Research Service. They have three children. Bonnie Quisenberry Walker died in an automobile accident in 1971. She was the mother of two children. Pam and her husband, Byron Bauerlein now live in Ballinger, along with their two children. Bauerlein is the County Executive Director for Runnels County.

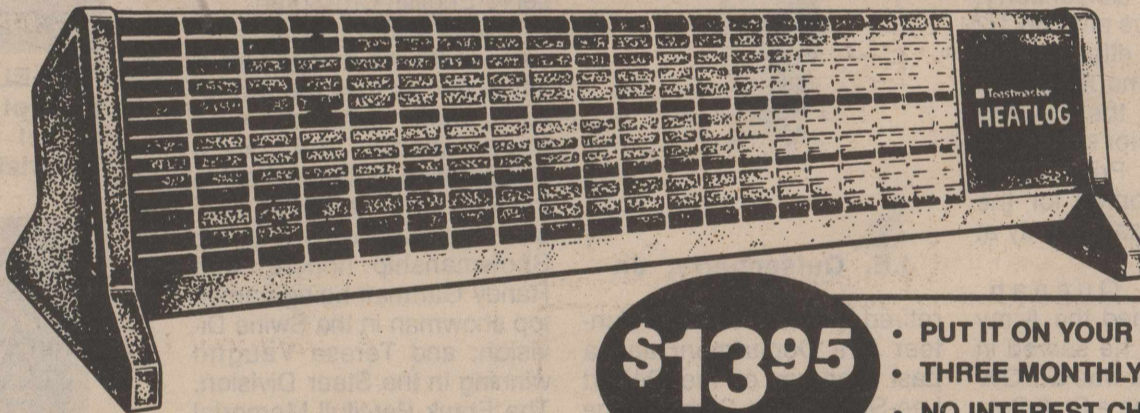
Quisenberry will now turn his full attention to his ranching operation and his retail business, Quisenberry's Greenhouse, at his home on 7th Street. Mrs. Quisenberry is employed by West Coke County Nursing Home as a nurse.

Bronte, and Sterling City as well as locally for the reception.

The County Office Staff and the Coke and Sterling County Committees hosted a reception on Tuesday, Jan. 19, honoring Quisenberry's many years of service to the farmers and ranchers of both counties. Over 75 guests registered and were served from a heavily laden refreshment table which included a money tree for the honoree. Friends and associates came from Colorado City, Ballinger,

Ronald C. Lee, C.P.A. will be in the Observer Enterprise building on the following dates:
Feb. 4th & 5th
March 7th & 8th
March 28th
To make an appointment call (817) 772-5515

A GREAT DEAL ON A SAFE BUY!



\$13.95
PLUS TAX

- PUT IT ON YOUR ELECTRIC BILL
- THREE MONTHLY PAYMENTS
- NO INTEREST CHARGES

PORTABLE ELECTRIC HEATERS

You won't find a better bargain than this. This attractive 25-inch Heatlog™ by Toastmaster® is the safe, convenient way to warm up cold spots. Weighing only four pounds, it fits into out-of-the-way places and plugs into any 110-volt outlet. This durable heater has a simulated pecan woodgrain case and grill.

Unlike kerosene heaters, this electric heater eliminates the danger of flammable liquids, odors and fumes. It meets the high safety standards set by Underwriters Laboratories (UL). And, should the heater be accidentally knocked over, it will automatically turn itself off.

PICK IT UP AT ANY WTU OFFICE

... OR ...

IF MORE CONVENIENT, ORDER BY MAIL

Please send me _____ portable electric heater(s).
(number)

NAME _____

ADDRESS _____ CITY _____

STATE _____ ZIP _____

- I agree to pay \$13.95 plus tax.
 - I want to put this on my electric bill and pay for it in three monthly installments.
 - I want to put this on my electric bill and pay for it in one installment.
- I understand I am *not* paying any interest or carrying charges.

Signed _____

WEST TEXAS UTILITIES COMPANY



A Member of The Central and South West System

MAIL TO: West Texas Utilities Company
P.O. Box 841
Abilene, Texas 79604
Attn: Bill Baxter

...Obituaries cont'd.

Saturday, Jan. 16, in Shannon Medical Center.

Services were held at 1 p.m. Monday at Robert Massie Riverside Chapel with the Rev. Durward Rutland officiating. Burial was in Fairmount Cemetery.

He was born Nov. 26, 1905, in Killeen. He had lived in San Angelo for 50 years and was a former meat cutter.

Survivors include his wife, Theresa Baker of San Angelo; three daughters, Mrs. Buddy Carnes of San Angelo, Mrs. Jo Ann Barlett of Vernon and Mrs. Billie Tefteller of Farmington, N.M.; one son, Gerald Baker of Houston; two brothers, Johnnie Baker of Ballinger and Fred Baker of Abilene; 24 grandchildren and 13 great-grandchildren.

Mr. Baker was a brother of late businessman Gene Baker of Robert Lee.

Nursing Home News

The Christmas party for the residents of the Bronte Nursing Home was December 18, 1987. Everyone enjoyed a covered-dish supper with turkey, dressing and all the trimmings. After supper Santa handed out candy and the gifts.

Michael and Melissa (Lee) Hoach of Garden City made a VHS movie of the party. Everyone has enjoyed watching it.

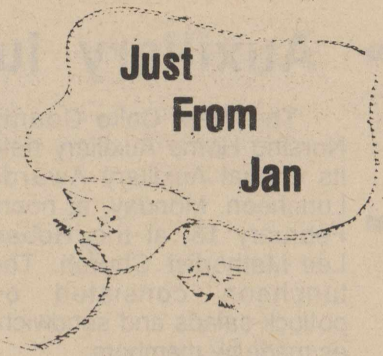
OES meeting held

Joy Ehl, worthy matron and Ed Ehl, worthy patron presided at the January meeting of Bronte Chapter 1048 Order of the Eastern Star held at Bronte Masonic Hall.

An announcement was made of the Order of the Eastern Star School of Instruction to be held in San Angelo Feb. 3 and 4.

Preparation for the school will be at a meeting of the local chapter on Thursday, Jan. 28 at 6 p.m. at the hall.

Following the meeting, refreshments were served by Mildred Thomason, Diane Coulter and Willie B. Edmiston.



**Jan Hohensee
County Extension
Agent-HE Coke Co.**

**SAFE USE OF
KEROSENE HEATERS**

If not used correctly, kerosene heaters can be fire hazards. Many Texans use kerosene heaters as supplemental sources of heat, especially in areas of the house not well served by central heating or in unheated workshops, garages or barns.

Follow these suggestions to lessen the risk of fires or other hazards.

* Use only 1-K grade kerosene. Do not use lower grades because they may contain high levels of sulfur which increases sulfur dioxide emissions from heaters and pose a possible health risk. Different grades of kerosene can look the same, so ask the dealer for 1-K.

* Never use gasoline. Even small amounts of gasoline mixed with kerosene can increase fire risk.

* Store kerosene in a separate container intended for and clearly marked "kerosene". This helps avoid using contaminated fuel or getting the wrong fuel by mistake. Kerosene containers are

blue; gasoline containers are red.

* Do not refuel the heater when it is hot or in operation.

* Do not fill the fuel tank above the full mark. The space above the full mark allows the fuel to expand without causing leakage when the heater is operating.

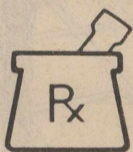
* In case of a flare-up or uncontrolled flaming, do not move or carry the heater, since this can make the fire worse. Use the manual shut-off switch to turn off the heater. If this doesn't extinguish the fire, leave the area and call the fire department.

As an added precaution, install at least one smoke detector near each sleeping area and on each level of the house.



The average adult has 3,500 square inches of skin.

**IT'S YOUR HEALTH
THAT COUNTS!**



**Hurley
Pharmacy**

Generic drugs used for savings with physician's permission. We redeem manufacturers coupons.

503 S. State Bronte

...Upcoming

Runnels Baptists

The regular meeting of the Runnels Baptist Association will be held January 27 at First Baptist Church, Winters.

The meeting begins with the W.M.U. and Executive Board at 5:30 p.m. The evening meal will be served at 6:30 p.m.

The program begins at 7:00 p.m. The program is to be on Evangelism Emphasis.

Jerry Howe, Association Evangelism Director, is in charge of the program. Gene Hawkins, Director of Missions with Lubbock Baptist Association, will be the speaker.

The public is invited to attend.

Super Seniors

Bronte Super Seniors will host a pot-luck luncheon on Thursday, Jan. 28 at the Senior Center.

Beginning at 11 a.m. a program on "Supplemental Insurance for the Elderly" will be presented by R.T. Caperton.

Everyone is urged to come and enjoy the informative programs.

Lunch will follow at 12 noon. Every family is asked to bring a covered dish.

Games will be played in the afternoon.

Movie Night

The Bronte FHA will sponsor the FHA "Movie Night" this Saturday from 7:00 - 10:00. All FHA members and dates may attend. Cost is \$1.00 per person. Popcorn will be provided and drinks will be sold for 50c.



The apple originated in Afghanistan.

Now Open

**RIVER
CREST**

A Chemical Dependency and Psychiatric Care Facility

River Crest Hospital has been established to provide West Texas with quality care for persons in need of psychiatric or chemical dependency treatment in a hospital environment. Private, individualized treatment programs are provided by a team of health care professionals and attending psychiatrists, working within a variety of carefully structured programs for adolescents, adults and their families. All inquiries are strictly confidential.

River Crest offers a Speakers Information Bureau, Employee Assistance Program for employers and a 24-Hour Help Line. River Crest will be accredited by Medicare, Champus, JCAH and is eligible to accept all third-party reimbursement.

River Crest is a 56,000-square-foot facility located on 13 acres in The Bluffs subdivision. Each patient room in the 80-bed hospital is equipped to handle two patients.

"Start Living Again"

River Crest Hospital

1636 Hunters Glen Road / San Angelo, Texas 76901
915-949-5722 / 1-800-777-5722

VARNADORE PLUMBING

For all your plumbing needs
Residential - Commercial
New - Repair- Remodeling

Call Jim Varnadore - Licensed Plumber

453-2156

**OPEN
MUELLER BEER
STORE**

(East Door of Mueller Liquor Store)

Hours: Thurs. & Fri. 9:00pm-12:00pm
Sat. 9:00pm-1:00am
Sun. 12:00am-12:00pm

Liquor Store Hours: Mon.-Sat. 10:00am-9:00pm

7 Miles East of Bronte on Hwy 158
In The Orchard

BRONTE SCHOOL NEWS

Jr. High basketball action continues

Bronte Jr. Hi basketball action continues. Monday, Garden City traveled to Bronte and split wins in the girls' games. The B team lost 2-12.

Jennifer McCorkle scored the only two points. Their record falls to 2-3.

Raising their record to 10-2 the A team took a close 24-

22 win over the Bearkats. Teresa Vaughn scored 10 pts.; Amie Parker and Kristie Cooper, each had 5; and Jami Morrow scored 4.

The B team will participate in the Robert Lee Tournament Saturday at 9:00 a.m.

Monday, Jan. 25 Robert Lee will travel to Bronte for 4 games beginning at 5:00.

rebounds and 3 steals; Matt Mecke had 4 pts., 3 rebounds and 2 steals; Luke Robbins, 3 pts., 7 rebounds; and Joe O'Malley had 2 points and 2 steals.

The boys play Robert Lee at Bronte on Monday, Jan. 25, be sure to come support them against their cross-county rivals.

Shorthorn results told

Monday night the Bronte "A" boys entertained the talented Bear Kittens losing 39 to 25. The Shorthorns are improving weekly and managed to keep the game fairly close until the fourth quarter. Darrell Lucas and Ray Seals tied for high point honors with 8 pts. apiece. Lucas also contributed 7 rebounds; Seals had 2

GS Cookie Sale slated

The Girl Scout Cookie Sale begins on January 18th and extends through January 31. The West Texas Girl Scout Council will offer seven different varieties of cookies which will be delivered from March 4-19. Each box sells for \$2.

The sales first started in 1920 with Girl Scouts walking through their neighborhoods carrying paper bags full of homemade cookies for sale.

Presently, over 130 million cookies are sold each year.

Placed end-on-end the cookies would stretch from New York to Los Angeles!

The Council's goal is to sell 15 thousand boxes of cookies. All proceeds from the West Texas Council's Cookie Sale remain in the area within the Council's jurisdiction and benefit Girl Scouts in the community.

The cookies are baked with vegetable shortening, have nutritional labeling, and contain no artificial preservatives.

Singing Winds elects new club officers

Singing Winds Golf Association met Jan. 13, 1988. New officers were elected: president, Mack Baker; vice president, Corky Collins; secretary and reporter, Sue Caudle; treasurer, Maxine Percifull; tournament directors, Joey Luckett, Gwen Baker, Mack Baker, Richard Hembree.

Directors elected are Wayne Coalson, Noel Percifull, Benny Corley and Winston Modgling.

Golf course improvements and ABC tournament prizes were discussed.



SCHOOL MENU

Monday, Jan. 25: Breakfast - Rice, pear bits, biscuits, butter, jelly. Lunch - Chicken patties with gravy, cream potatoes, fried okra.

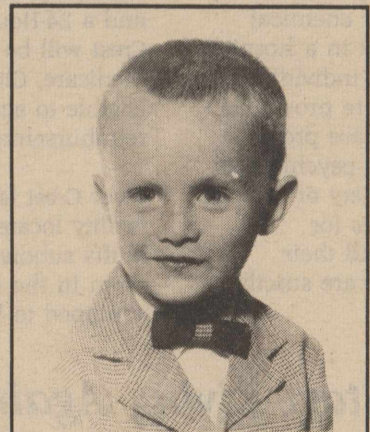
Tuesday, Jan. 26: Breakfast - Ham slices, grapefruit juice, biscuits, butter and jelly. Lunch - Lasagna, English peas, tossed salad.

Wednesday, Jan. 27: Breakfast - Cranberry juice, donuts. Lunch - Turkey slices with gravy, sweet potatoes, green beans, cherry cobbler.

Thursday, Jan. 28: Oatmeal, fruit cup, cinnamon toast. Lunch - Burritos, pinto beans, buttered corn, strawberry jello.

Friday, Jan. 29: Cereal, pineapple juice, biscuits, butter, jelly. Lunch - Hamburger, French fries, lettuce, tomato, and pickle slices, fruit bars.

Hot rolls served with lunch and milk served at all meals.



STILL NO WEIGHT AT 28!

Happy Birthday Rocky!

Your Wife

Auxiliary luncheon held

The West Coke County Nursing Home Auxiliary held its annual Auxiliary Awards Luncheon, Monday, at noon, February 18, at the Robert Lee Methodist Church. The luncheon consisted of potluck salads and sandwiches made by members.

The Auxiliary was well represented with 23 members and special guest, Jeanene Baucum, Nursing Home Administrator attending.

The following members were recognized by Barbara Jameson, outgoing president, for their hours of service in the year 1987, to-wit: receiving their 100 hour bar

was, Alene Key, Nina Brewer, Dean Percifull, Kaye Pitcock, and Virginia Whybrew; 300 hour bar, Pauline Vaughan; and 500 hour bar, Pauline Barron.

A special thank you was given to all outgoing officers and committee chairpersons for their service in 1987.

The luncheon was certainly a success and enjoyed by each one that attended.

Sec.-Report.

Linda Boone



A tornado at sea is known as a "waterspout."



Extend Your Winter Days With a Guard-Lite From WTU.

During the shorter, winter days, a Guard-Lite provides you with the extra light you need for outdoor activities and chores. In addition, a Guard-Lite helps secure your property from accidents, theft and vandalism.

Guard-Lites automatically come on at dusk and turn off at dawn. WTU will provide normal installation, maintenance, bulb replacement and electricity for your Guard-Lite — all you pay is a low monthly rental fee.

Call your local WTU office for more information on how you can rent a Guard-Lite.

PARKER PLUMBING CO.
Residential & Commercial
All Types Plumbing Repairs

- *New Construction
- *Remodeling
- *Fixtures
- *Sewer Service

Licensed Master Plumber
DIAL 473-2131
BRONTE

WEST TEXAS UTILITIES COMPANY
An Equal Opportunity Employer

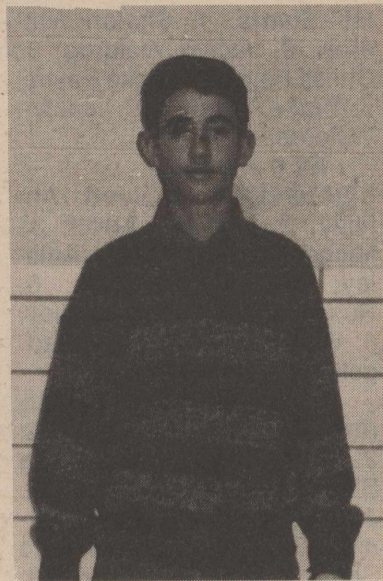
A Member of The Central and South West System

Serving you with dependable electrical energy from the Red River to the Rio Grande.

ROBERT LEE SCHOOL NEWS

Wilkes attends rifle camp

Jeff Wilkes of Robert Lee was among 15 of the top junior shooters in the state to spend four days of their Christmas vacation at the Texas State Junior Olympic Rifle Camp. The camp for advanced shooters age 13 to 19 was sponsored by the Texas State Rifle Association and held at the National Guard Armory in Coleman, Texas.



Jeff Wilkes
awards presentation.
Jeff is the son of Mr. and Mrs. Doug Wilkes of Silver.

Steers hosts Irion County at home

Only basketball matches played by Robert Lee last week were a 4-game series at home against Irion County.

out-pointed the Lady Hornets 54-51 with Rachel Metcalf as the top scorer. She came away with 24, Kim Hood had 10, Brooke Boone got 9, Shannon Skipworth had 4,

Lisa Bower 3, and Jodi Waggonner and Becky Padgett, 2 each.

The JV Lady Steers were defeated by Irion County 25-23 with Sheree Burns leading the scoring at 9. Stephanie Poehls had 6 and Lisa Sanchez and Rachel Lopez, 4 apiece.

The Hornets stung the Steers 48-39. Scoring for the home team were Randy Gartman 10, Stevie Ebenstein 9, Robert Runnion 5, Jason Herring 4, Cody Anthony, Curt Gardner, and Kelly Tomlinson, 3 each and Wes Hood 2.

The JV Steers were also defeated by Irion County 39-21 with scoring by Clint Smith 5, Jason Wink, Jon Rogers, and Wes Horn, 4 each, and Brent McPeck and Ronnie Waggonner, 2 apiece.

7th grade announces:

The Robert Lee 7th graders are proud to announce that they have a new student, Kristina Cherry. She came from Lincoln Jr. High in San Angelo, and we are happy to have her as a member of our class.

tending this tournament. The Robert Lee "B" team boys will be playing there too. Please come and support your team! The tournament will be at the Robert Lee High School gym.

Many of the seventh graders placed well in the Stock Show. These students are Blake Pitcock, Thad Metcalf, Shelley Burrows, and Debra Drennan, and the seventh graders just wanted to tell them congratulations!!!!
Reporter,
Carla Bewick

The "B" team (basketball players) are having a tournament on Jan. 23. The games will start at 9 a.m. The Robert Lee girls "B" team will be starting the games. Bronte, Sterling City, Miles, and Water Valley are the other teams at-

Letter to the Editor

Dear Editor,
Enclosed is my check for renewal and thanks - without the Observer we couldn't keep up with happenings in Coke County and people who

mean so much to us.
Thanks,
Mona & Mike Casey
Rt. 6, Box 398A
Abilene, TX.
79601



Monday, Jan. 25

Barbecue Wieners
Cream Potatoes
Green Beans
Hot Rolls-Butter
Sliced Peaches
Milk

Ranch Style Beans
Lettuce-Tomato Salad
Cherry Cobbler
Milk

Thursday, Jan. 28

Hot Dogs with
Chili & Cheese
Tator Tots with
Catsup
Banana
Milk

Tuesday, Jan. 26

Spaghetti with
Meat Sauce and
Cheese
Carrots
Peas
Cornbread-Butter
Applesauce Cake
Milk

Friday, Jan. 29

Salisbury Steak
Cream Potatoes
Mixed Vegetables
Hot Rolls-Butter
Applesauce Cake
Milk

Wednesday, Jan. 27

Cheese Nachos

Mashburns return home

Tony and Paul Mashburn left Robert Lee over the weekend to return to their parents, Rick and Sherry Mashburn, who had been in the process of changing businesses and locations for several months. The boys have been with their grandparents, Bobby and Janet

Baker, since school began in the fall. The family will be living near Salado.

Tony and Paul enjoyed living in the country, attending school in Robert Lee, and last weekend Tony participated in the livestock show for the first time.

"There is hardly anything in the world that some man cannot make a little worse and sell a little cheaper."
John Ruskin

WORSHIP WITH US AT SOUTHSIDE CHURCH OF CHRIST

BIBLE STUDY 10:00 AM
WORSHIP 11:00 AM
PH: 453-2176

EVENING WORSHIP 6 PM
WED. BIBLE STUDY 6 PM
ROBERT LEE, TX.

New Tax Laws for '88

Start Early and Be Prepared

Contact
Jackie Walker

Walkers Income Tax Service

Mt. Creek Lodge-806 Commerce

Robert Lee, Texas

Office Hours 8:00 am to 3:00 pm or by appointment

915-453-2516

LEGAL TITLE OF BANK				STATE BANK NO			
Robert Lee State Bank				1684			
P. O. Box 549				FEDERAL RESERVE DISTRICT NO			
Robert Lee, Texas 76945				11			
CITY	COUNTY	STATE	ZIP CODE	CLOSE OF BUSINESS DATE			
Robert Lee	Coke	Texas	76945	December 31, 1987			
				Dollar Amounts in Thousands			
				Bil	Mil	Thou	
ASSETS							
1. Cash and balances due from depository institutions:							
a. Noninterest-bearing balances and currency and coin				2	064	1 a	
b. Interest-bearing balances				2	380	1 b	
2. Securities				12	143	2	
3. Federal funds sold and securities purchased under agreements to resell in domestic offices of the bank and of its Edge and Agreement subsidiaries, and in IBFs					945	3.	
4. Loans and lease financing receivables:							
a. Loans and leases, net of unearned income				5	765	4 a	
b. LESS: Allowance for loan and lease losses					87	4 b	
c. LESS: Allocated transfer risk reserve					N	4 c	
d. Loans and leases, net of unearned income, allowance, and reserve (item 4 a minus 4 b and 4 c)					5	678	4 d
5. Assets held in trading accounts					N	5	
6. Premises and fixed assets (including capitalized leases)					136	6.	
7. Other real estate owned					N	7	
8. Investments in unconsolidated subsidiaries and associated companies					N	8	
9. Customers' liability to this bank on acceptances outstanding					N	9.	
10. Intangible assets					N	10	
11. Other assets					400	11	
12. Total assets (sum of items 1 through 11)					23	746	12.
LIABILITIES							
13. Deposits:							
a. In domestic offices							
(1) Noninterest-bearing				3	115	13 a (1)	
(2) Interest-bearing				18	269	13 a (2)	
b. In foreign offices, Edge and Agreement subsidiaries, and IBFs							
(1) Noninterest-bearing					N	13 b (1)	
(2) Interest-bearing					N	13 b (2)	
14. Federal funds purchased and securities sold under agreement to repurchase in domestic offices of the bank and of its Edge and Agreement subsidiaries, and in IBFs					N	14	
15. Demand notes issued to the U.S. Treasury					N	15	
16. Other borrowed money					N	16	
17. Mortgage indebtedness and obligations under capitalized leases					N	17	
18. Bank's liability on acceptances executed and outstanding					N	18	
19. Notes and debentures subordinated to deposits					N	19	
20. Other liabilities					124	20	
21. Total liabilities (sum of items 13 through 20)					21	508	21
22. Limited-life preferred stock					N	22	
EQUITY CAPITAL							
23. Perpetual preferred stock (No. of shares outstanding)				None		23	
24. Common stock (No. of shares a. Authorized				20,000			
b. Outstanding				20,000			
25. Surplus					500	25	
26. Undivided profits and capital reserves					1	538	26
27. Cumulative foreign currency translation adjustments							
28. Total equity capital (sum of items 23 through 27)					2	238	28
29. Total liabilities, limited-life preferred stock, and equity capital (sum of items 21, 22, and 28)					23	746	29
MEMORANDA: Amounts outstanding as of Report Date							
1 a Standby letters of credit, Total					N	1 a	
1 b Amount of Standby letters of credit in memo 1 a conveyed to others through participations					N	1 b	
NOTE: This report must be signed by an authorized officer(s) and attested by not less than three directors other than the officer(s) signing the report. We, the undersigned officer(s), do hereby declare that this Report of Condition has been prepared in conformance with official instructions and is true to the best of my (our) knowledge and belief.							
SIGNATURE OF OFFICER(S) AUTHORIZED TO SIGN REPORT				DATE SIGNED			
<i>Willis W. Smith</i>				January 19, 1988			
NAME AND TITLE OF OFFICER(S) AUTHORIZED TO SIGN REPORT				AREA CODE PHONE NO.			
Willis W. Smith, Vice President & Cashier				915-453-2545			
We, the undersigned directors, attest the correctness of this Report of Condition and declare that it has been examined by us and to the best of our knowledge and belief has been prepared in conformance with official instructions and is true and correct.							
SIGNATURE OF DIRECTOR		SIGNATURE OF DIRECTOR		SIGNATURE OF DIRECTOR			
<i>Willis W. Smith</i>		<i>Willis W. Smith</i>		<i>Willis W. Smith</i>			
State of		Texas		County of Coke			
(MAKE MARK FOR NOTARY'S SEAL)		Sworn to and subscribed before me this 19th day of January 19 88					
		and I hereby certify that I am not an officer or director of this bank					
		My commission expires Aug. 26, 19 89		<i>Carly J. McHenry</i> Signature Notary Public			

...Stock Show results (cont'd. from front page)

let - Rams: 1. Sharon Waldrop; 2. Jaclyn Waldrop; 3. Christi Payne; 4. Blake Payne; 5. Blake Payne; 6. Jaclyn Waldrop.

Finewool - Lightweight: 1. Scott Antilley; 2. Melissa Arrott; 3. Michael Lee; 4. Casey Antilley; 5. Stevie Oleksiuk; 6. Russ Horn; 7. Casey Antilley; 8. Wes Horn; 9. Becky Padgett; 10. Thad Metcalf.

Finewool - Mediumweight: 1. Melissa Arrott; 2. Rachel Metcalf; 3. Melissa Bivins; 4. Brande Burrows; 5. Jason Wink; 6. Robert Runnion; 7. Gail Wagley; 8. Tim Sims; 9. Waylon Ensor; 10. Lori Wink.

Finewool - Heavyweight: 1. Brande Burrows; 2. Michael Lee; 3. Shelley

Burrows; 4. Jason Wink; 5. Michael Lee; 6. DeAnn Parker; 7. Melissa Arrott; 8. Lori Wink; 9. Chad Wagley; 10. Lori Wink.

Champion Finewool: Brande Burrows, Heavyweight Finewool.

Reserve Champion Finewool: Scott Antilley, Lightweight Finewool.

Finewool Cross - Lightweight: 1. Brande Burrows; 2. Scott Antilley; 3. Robert Runnion; 4. Brande Burrows; 5. Kim Carver; 6. Stevie Oleksiuk; 7. DeAnn Parker; 8. Shea Kelton; 9. Warren Brasher; 10. Casey Antilley.

Finewool Cross - Mediumweight: 1. Brande Burrows; 2. Melissa Bivins; 3. Brande Burrows; 4. Michael

Lee; 5. Brande Burrows; 6. Robert Runnion; 7. Dane Smith; 8. Jason Wink; 9. Robert Runnion; 10. Jason Wink.

Finewool Cross Heavyweight: 1. Brande Burrows; 2. Michael Lee; 3. Michael Lee; 4. Cody Anthony; 5. Tim Sims; 6. Shelley Burrows; 7. Tony Mashburn; 8. Melissa Arrott; 9. Stephen Lee; 10. Rachel Metcalf.

Champion Finewool Cross: Brande Burrows, Heavyweight Cross.

Reserve Champion Finewool Cross: Brande Burrows, Lightweight Cross.

Mediumwool - Lightweight: 1. Brande Burrows; 2. Shelly Sims; 3. Michael Lee; 4. DeAnn Parker; 5. Warren Brasher; 6. Robert Runnion; 7. Shelly Sims; 8. Kim Carver; 9. Krystal Carver; 10. Randy Gartman.

Mediumwool - Mediumweight: Melissa Bivins; 2. Melissa Arrott; 3. Melissa Arrott; 4. Brian Arrott; 5. Shane Kelton; 6. Randy Gartman; 7. Tim Sims; 8. Randy Gartman; 9. DeAnn Parker; 10. Chad Wagley.

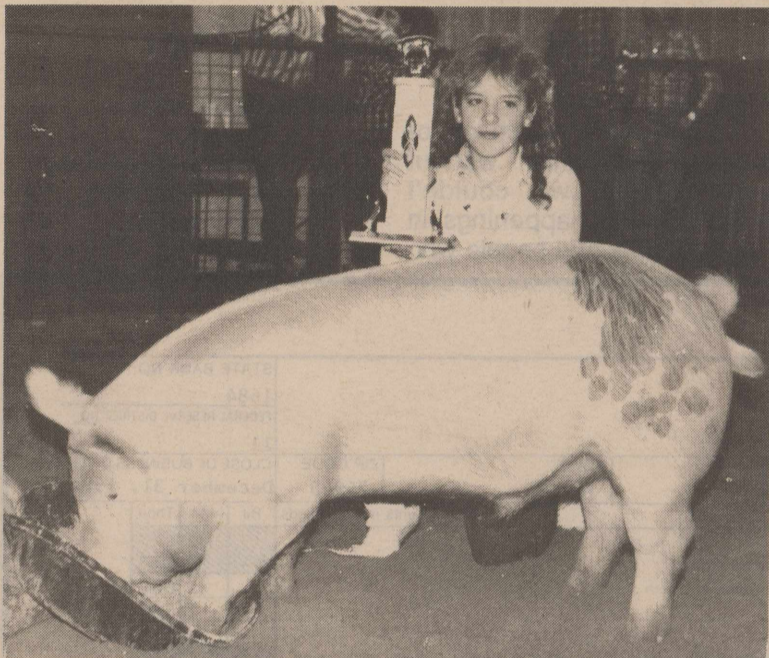
Mediumwool - Heavyweight: 1. Michael Lee; 2. Michael Lee; 3. Stephen Lee; 4. Waylon Ensor; 5. Brande Burrows; 6. Shelley Burrows; 7. Waylon Ensor; 8. DeAnn Parker; 9. Dorinda Scott; 10. Christy Bivins.

Champion Mediumwool: Michael Lee, Heavyweight.

Reserve Champion (cont'd. next page)



WAYLON ENSOR EXHIBITED the Reserve Grand Champion Steer at this year's county livestock show.



KIM BLAIR IS shown here with her Reserve Grand Champion of the Swine Show.



RESERVE GRAND CHAMPION in the Lamb Division was this entry, shown by Melissa Bivins.

Your patronage of the following stock show boosters is greatly appreciated

SKINNER'S GROC. & STATION	IVEY MOTOR COMPANY	MARGARET'S FLOWERS & GIFTS Eddie & Earlene Alexander
THE FLOWER SAK Rhonda Hood & Judy Blair	BRONTE LIONS CLUB	TOM & ELAINE LEE
QUAIL PARK HOME SPACES Tom & Irene Price	J & B BARBECUE	HEART O' TEXAS SAVINGS
ADAMS LAND & REALTY	CRACKER BARREL RESTAURANT Chris & Katy	CUMBIE & ARROTT MERCANTILE Nick & Susan Arrott
BILLY JOE & DIANE LUCKETT	HURLEY PHARMACY Elmer & Janet	KEY FEED STORE
WATER OUTLET STORE James & Nola Miller	KELLY'S CABBAGE PATCH	MARSHALL & SHERI MILLICAN
BOB & DALE FIELDS	J & B LUMBER & HARDWARE	BOBBY & JEFFIE ROBERTS



SHALON WALDROP DOUBLED up in the 1988 Coke County Livestock Show with wins in both the Rambouillet Breeding Ewes and Breeding Rams classes.

...Show

(cont'd. from previous page)

Mediumwool: Melissa Bivins, Mediumweight.

Grand Champion Swine: Julie Blair, Heavyweight Cross.

Reserve Grand Champion Swine: Kim Blair, 2nd Heavyweight Cross.

Market Swine - Light Durocs: 1. Audra Pitcock; 2. Donya Cooper; 3. Jerrod Pitcock; 4. Jerrod Pitcock; 5. Jeff Wilkes; 6. Jeff Wilkes; 7. Judd Pitcock; 8. John Rogers.

Market Swine - Heavy Durocs: 1. Blake Pitcock; 2. Randy Gartman; 3. DeAnn Parker; 4. Danielle Parker; 5. Randy Gartman; 6. Judd Pitcock; 7. Lenny Jackson; 8. Audra Pitcock; 9. Jeff Wilkes; 10. Jody Tavarez.

Champion Duroc: Blake Pitcock, Heavyweight.

Reserve Champion Duroc: Audra Pitcock, Lightweight.

Hampshire - Light: 1. Jason Key; 2. Randy Gartman; 3. Blake Pitcock; 4. Randy Gartman; 5. Judd Pitcock; 6. Jerrod Pitcock.

Hampshire - Heavyweight: 1. Brent Jameson; 2. Judd Pitcock; 3. Randy Gartman; 4. Audra Pitcock; 5. Judd Pitcock; 6. Randy Gartman; 7. Kim Blair.

Champion Hampshire: Brent Jameson, Heavyweight.

Reserve Champion Hampshire: Jason Key, Lightweight.

Market Swine - Light Cross: 1. Julie Blair; 2. Lee Sonnenberg; 3. Michelle

(cont'd. next page)



RESERVE CHAMPION FINEWOOL Lamb was shown by Scott Antilley.



AUDRA PITCOCK IS shown with her Reserve Champion Duroc entry.



RESERVE CHAMPION HAMPSHIRE exhibitor was Jason Key.

Your patronage of the following stock show boosters is greatly appreciated

ROCK OIL COMPANY Roy & Judy Blair	GEORGE & MAVIS NEWBY	GLENN-BIVINS INSURANCE Tuny, Mary, Garry, Marilyn, Shalon
BELL AUTO PARTS	ASKINS PROPANE CO.	THE HITCHIN' POST
PARKER PLUMBING Jerry & Pam Parker	HUGHES RADIO & TV Fred & Ona Hughes	BILL HELWIG Attorney at Law
J. D. HARMON, Inc.	ROY & JENNIE TINKLER	HOMETOWN HARDWARE Wendell & Jeanna Lee
BEN BESSENT CHEVROLET	COKE COUNTY TREASURER Phelan Wrinkle	COKE COUNTY JUDGE'S OFFICE Aubrey, Zada, Janet
RED BARN BARBECUE Phone 473-4891	FINIS & SUE MILLICAN	WILBERN & CHARLOTTE MILLICAN
WINK INSURANCE AGENCY	ADD & JOAN DAVIS	HAROLD & PATSY DUNN

...Show

(cont'd. from previous page)

Parker; 4. Jason Tavarez; 5. Audra Pitcock; 6. Audra Pitcock; 7. Jody Tavarez; 8. Danielle Parker; 9. Judd Pitcock; 10. Jerrod Pitcock.

Market Swine - Heavyweight Cross: 1. Julie Blair; 2. Kim Blair; 3. DeAnn Parker; 4. Michael Blair; 5. Brent Jameson; 6. Korey Pitcock; 7. Jerrod Pitcock; 8. Judd Pitcock; 9. Casey Thorn; 10. Randy Gartman.

Champion Cross: Julie Blair, Heavyweight.

Reserve Champion Cross: Kim Blair, Lightweight.

Other Pure Breeds - Light: 1. Julie Blair; 2. DeAnn Parker; 3. Casey Thorn; 4. DeAnn Parker; 5. Audra Pitcock; 6. Michelle Parker; 7. Brandy Brosh; 8. Joel Herring.

OPB - Heavy: 1. Kim Blair; 2. Randy Gartman; 3. Michael Blair; 4. Casey Thorn; 5. Stephen Epperson; 6. Korey Pitcock; 7. Roger Robinson.

Champion OPB - Julie Blair, Heavyweight.

Reserve Champion - Kim Blair, Lightweight.

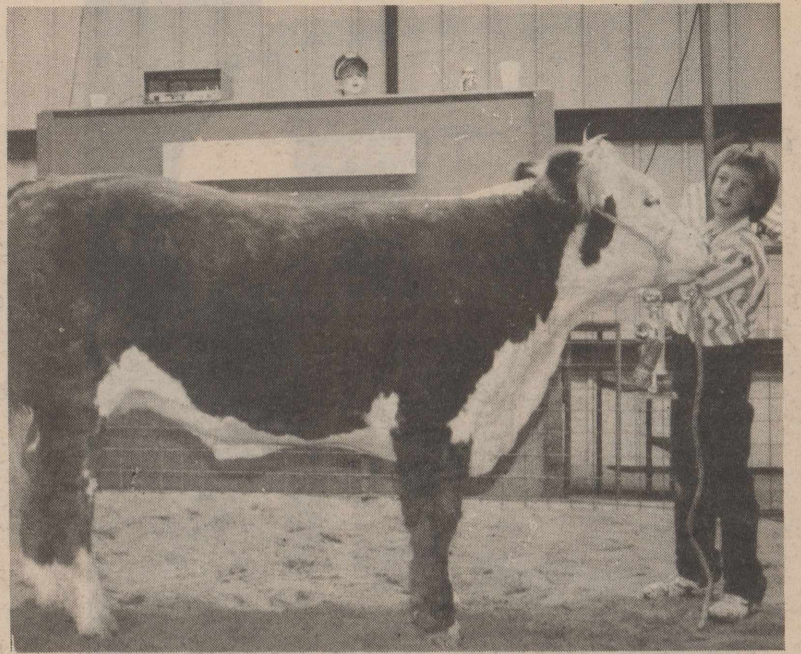
Prospect: 1. Jerrod Pitcock; 2. Judd Pitcock; 3. Jason Key; 4. Jeff Wilkes; 5. Rob Smith; 6. Donya Cooper; 7. Ray Wallace; 8. Brandy Brosh; 9. Brian Arrott; 10. Jeff Wilkes.

Grand Champion Steer: Scott Antilley, Heavyweight European Cross.

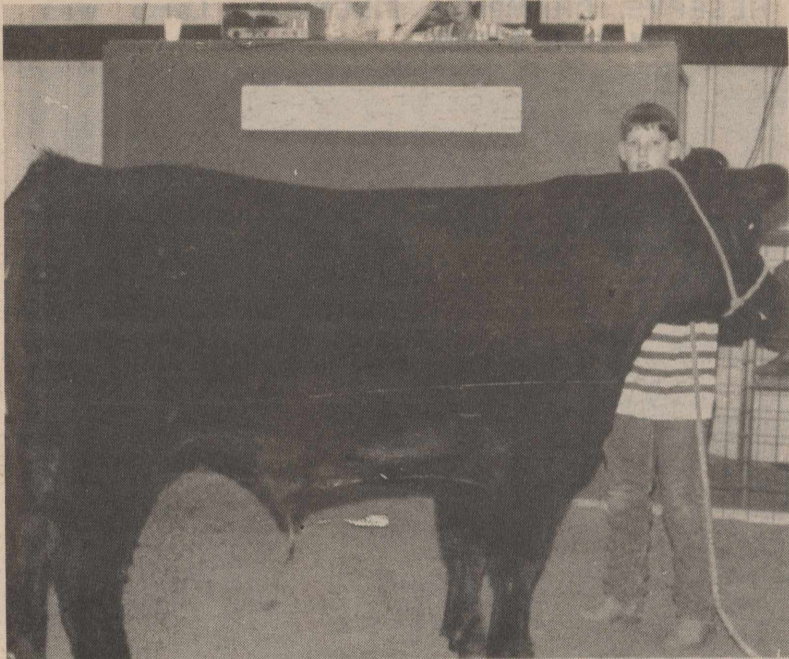
Reserve Grand (cont'd. on page 11)



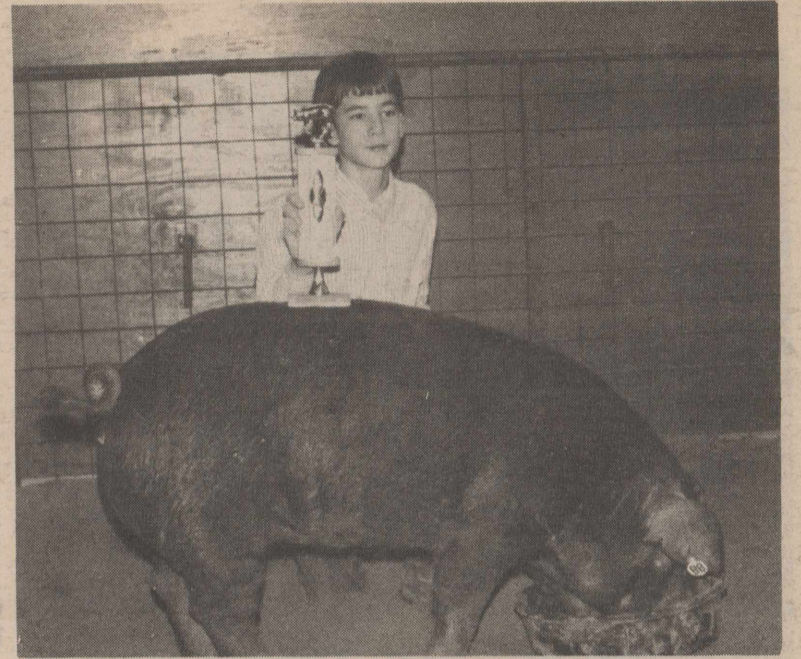
BRENT JAMESON DISPLAYS the Champion Duroc Pig of the 1988 Coke County Stock Show.



RUSSEL VAUGHN DISPLAYED the Reserve Champion English Crossbred Steer of the show.



NEARLY OBSCURED BY this black steer is Dane Smith. This entry was named Champion English Crossbred Steer.



CHAMPION DUROC PIG was shown by Blake Pitcock.

Your patronage of the following stock show boosters is greatly appreciated

FIRST NATIONAL BANK IN BRONTE Member FDIC	LAZY G RESTAURANT Joe & Cindy Grigg	TIM & PAM MILLICAN
ADAMS ABSTRACT CO. Mike Varnadore & Roy Martin, Jr.	JAMES & BRENDA TIDWELL	MILLER LIQUID FEED James & Nola Miller
HIGHWAY GARAGE & Auto Parts	PAUL & JOAN BURNS	DANIELLE'S Doug & Peg Robertson
THE CAROUSEL Flowers & Gifts	BAKER'S GROCERY & MKT.	MARTIN LEE ASSOCIATES
COUNTRY HAIR DESIGNS Donna Scott & Brenda Hines 473-5151	WINK SHOW LAMBS	ROBERT LEE STATE BANK Member FDIC
BUTANE SALES COMPANY Doug & Grace Ditmore	COKE COUNTY PHARMACY	BILLY JACK & KRISTY ROE
JONI-LYN BLOUSE FACTORY C. A. Dry & Shirley Denton	ERNEST CLENDENNEN, Inc Silver, Tx.	BOB WRINKLE'S ACE HARDWARE



Dr. Carol Cassell

League slates seminar

The Cactus League of Bronte, in conjunction with the Junior League of San Angelo, issues an invitation to anyone in the community to attend "Straight from the Heart", a seminar conducted by author Carol Cassell.

The session will be held Tuesday evening, Jan. 26 at the San Angelo Convention Center from 7:00-10:00 p.m. This informal evening session is aimed at helping anyone broach seven tough topics with their children: love, kissing, dating, sex, broken hearts, avoiding pregnancy, and being a couple (not necessarily in that order!).

Some issues to be dealt with include dealing with PG rated values in an X rated world.

Also on the panel are Dr. Milton Squiers, Jean Richey, Ruth Ross, and Beverly Nevins.

There is no charge for the session, and parents of children from 3 years of age and up are encouraged to take advantage of this opportunity.

If you would like to carpool to San Angelo, or if you need any other information, phone Susan Arrott at 473-2701 or 473-5841.

Brownlee, Gray wed

Sheila Brownlee of San Angelo and Airman Steve Gray, formerly of Robert Lee, exchanged wedding vows in San Angelo on Friday, January 15. Parents of the couple are Mr. and Mrs. W.E. Harding of San Angelo and Mr. and Mrs. Les Gray of Robert Lee. Airman and Mrs. Gray left the United States on Tuesday for

Croughton Village, England where he will be stationed with the Air Force.



The average lifespan of a pigeon is about ten years. A record exception is a pigeon who lived for thirty nine years.

Menopause is generally misunderstood

Jerry L. Cochran, MD

One of the most frightening as well as physically and emotionally destructive physical processes that can occur to women is menopause. Climacteric is the period following menopause when marked involution or deterioration (aging) occur. Whereas its cause is understood by the medical community, it is generally poorly understood by its victims.

Sometime during the 4th or 5th decade of a lady's life, the ovaries reduce and then discontinue the production of the female hormones (estrogen and progesterone) necessary for reproduction. It is this process, which is normal, that leads to menopause and climacteric.

Whereas it is true that diminished ovarian function causes physical symptoms, cessation of menstruation does not itself impair physical capacity. Fewer than 15% of women require therapy during menopause, but many will eventually seek medical treatment for disorders pertaining to the climacteric.

Estrogen depletion is the most significant factor in the production of the symptoms of menopause. Symptoms are more severe when the decline of production of estrogen occurs rapidly. These symptoms include cessation of menses, hot flashes, emotional instability, headaches, and dryness of mucous membranes (the lining of the mouth and vagina).

During the climacteric, the patient may experience increased incidence of heart disease, osteoporosis (fragility of bones) and the aging of skin and hair. That's the bad news. The good news is that many of these disturbances may be diminished or eliminated.

Estrogen replacement therapy at the beginning of menopause will significantly decrease the incidence and severity of hot flashes, dryness of membranes, and emotional fragility. The estrogens may be taken in the form of pills, by injection, or even through the skin by special patches. I strongly feel that estrogen replacement therapy should be administered only by a gynecologist or endocrinologist. There are a number of side effects with the replacement estrogens which are best understood and treated by the type of physicians who use these medications routinely.

The climacteric or post-menopausal problem of osteoporosis may be particularly disabling. It has been estimated that more than 50% of people over 65 have some degree of osteoporosis. This produces fragility of bones and is evidenced by the increased incidence of fractured hips, fractured wrists, and compression fractures of the spine.

For many years physicians have been trying to find ways to treat patients with post-menopausal osteoporosis. Currently, it appears that a combination of estrogen, vitamin D, and calcium provides the best treatment. The key is to prevent the loss of bone which causes the fragility and subsequent fractures. Again, I believe that an endocrinologist is needed to provide the level of care necessary to assure the best results.

Another adjunct to treatment is appropriate exercise. Wolff's Law states that "connective tissue develop strength according to the stress applied to them". A good example of this basic law is what happens to a muscle when it is exercised. It of

course gets bigger and stronger.

Another example would be the increased blood count that is seen in people that live at high altitudes versus those that live at sea level. Total blood volume increases because of the physiological stress of decreased oxygen at the higher altitude.

Appropriately then, a person who performs exercise then may expect strengthening of their musculoskeletal and cardiopulmonary systems. Studies have demonstrated this physiological principle to be true whether a person be pre or post-menopausal. Regular exercise also tends to prevent the loss of range of motion and stiffness that occur with increasing age. Exercise then, is a method of treating the effects of osteoporosis.

Appropriate exercise also has the side effect of increasing the sense of well-being. I cannot think of anything more comforting than going from a state of insecurity and doubt of self worth to a state of emotional and mental stability with improved physical appearance. Just because a lady is no longer biologically capable of having children, it bares no relationship to her worth as a person, how she should feel about herself, or even how she should look. Using exercise to enhance health is true sports medicine.

GLENN-BIVINS INSURANCE
 Come See Us For
AUTO HOUSE LIFE HEALTH
 123 W. Main, Bronte 473-6791

CONGRATULATIONS!!!

County Stock Show
Winners
BELL AUTO PARTS
 121 WEST 10TH 453-2911

We'll make your money grow... right here at home

When you make a deposit we make your money grow by passing it around the community. Your deposits may help finance a new tractor, buy cattle or put up a house. Some of your money may finance a vacation, buy a car or provide for a college education.

We loan money back into our community making it a better place for all of us.

FIRST NATIONAL BANK
 BRONTE, TX.
 MEMBER FDIC

30 COLOR PHOTOS

1-10x13 (Wall Photo)
 1- 8x10
 2- 5x7
 2- 3x5

16-King Size Wallets
 8-Regular Size Wallets

\$10⁹⁹

99¢ Deposit
 \$10⁰⁰ Due At Pick up Plus Tax

WE USE KODAK PAPER

AT
Cumbie Arrott Mercantile
 119 W. Main Bronte, Tx.

Tues. Jan. 26th NO LIMIT ON THIS OFFER

GROUP CHARGE 99¢ per person **Shugart's inc.**

COLOR PHOTOS

Kodak paper For a Good Look at the Times of Your Life

WANT ADS Work Wonders!

CLASSIFIED ADVERTISING RATES

1st Insertion... Per Word 15c (\$3.00 Minimum)
 2nd and Subsequent Insertions... Per Word 12c (\$2.50 Minimum)
 Additional 50c for Blind Ads Cards/Thanks Per Word 15c
 Legal Notices.. Per Word 15c

COPY DEADLINE

Class. Ads... 5 p.m. Tuesday
 Display Ads.. 5 p.m. Tuesday

Classified Ads and Cards of Thanks are payable in Advance unless customer carries regular account.

FOR SALE

FRIGIDAIRE DRYER - Heavy Duty; Coastal and Grazer Hay. Hayrick Valley Ranch, 473-6052.

23b-1tc

'85 BUICK PARK AVENUE - 4 door, 40,000 miles, excellent condition. Has all extras, see to appreciate. \$10,950. See at First National Bank, Bronte. Call after 4:30, 473-3861. Jolene Barrett.

23b-2tc

REBUILT TVS for sale. Hughes TV, Bronte, 473-4601.

8b-tnc

MUST SELL - 16 foot single axle Windjammer Travel Trailer, self-contained. Hunters' or Campers' Bargain. \$2000.00. 473-3811 or 473-3901.

23b-1tc

FORMERLY KC HOUSE Restaurant in Bronte on Hwy. 277. Sell or Lease. Seating capacity over 100 people. Would make nice Restaurant or Feed & Supply Store or etc. Call 915/944-0321.

21b-tnc

SMALL PIANO for sale. \$150, call 453-2302, Robert Lee.

23-1tc

MILLER LIQUID FEED SERVICE

Now selling my own special blend of liquid feed supplement - 32% protein, \$165.00 per ton, delivered. James Miller, 473-7271 or 453-2063.

14b-tnc

LARGE PECAN TREES grown at Ballinger and guaranteed best prices. Also fruit and shade trees. 915-365-5043.

21b-8tc

1978 FORD 1 Ton Dual Wheel Flat Bed, Gooseneck ready. 4 Speed, 400 engine \$2700. 453-2995 nights, 453-2049 weekdays.

23-tnc

BUYING or SELLING

FOR SALE

2 Bedroom, 1 bath house, Edith Estates, on Salt Creek.

Two-story apartment, 6 units, central heating, cooling, carpeted, on 2 1/2 lots. Approximately 3 years old.

Located on lg. corner lot - 3 BR, 1 1/2 bath, two storage buildings, and fruit trees.

Located on lg. lots - older 2 BR, 1 bath house, carport w/storage bldg., lg. trees. See to appreciate.

Furniture and appliances go with this double-wide mobile home. Beautiful yard with riding mower, pump, and sprinkler system. Screened porch with fireplace. Walk down to water for swimming, fishing or boating.

Two acres with mobile home. Owner would consider trade.

Country living on approx. 262.46 acres, 2 BR/2BA house, CH/CA, large barn, corrals, guest house. Deer, turkey, quail, Colorado River fishing rights.

3 BR - 1 1/2 BA, fireplace, carport, located on 3 acres 8 mi. west of Robert Lee near Paint Creek Marina.

Contact
 Becky Clendennen
 453-4748

Adams Land & Realty Co. Phone 453-2723 or 453-2757 or 655-9429

38-tnc

LAKEHOUSE FOR SALE

by owner - Bayview Estates, Lake Spence - 2 Bedroom, 1 bath - Newly Built, Slab Construction - 915-453-2433 or 453-4643

FOR SALE

Country atmosphere, beautiful yard, fenced and much more. 3 BR, 2 bath mobile on 1/2 acre. Call now.

2 BR home, washer/dryer connections, large yard, trees on 1 1/2 lots. Don't wait to call.

Quite comfortable 3 BR, 1 1/2 bath home with fenced yard, trees, shrubs, utility room on 1 1/2 lots. Available for immediate possession. Call for details.

Owner moved and must sell this brick, 3 BR, 2 bath home on 2.9 acres. Call immediately.

We have other homes, lots and acreages available.

Please call for further details. You can depend on us for your real estate needs.

FOR RENT: 2 BR home close to school. 453-2049/453-2995

FOR RENT: Mobile home lot close to school. 453-2049/453-2995

LOTS FOR SALE...

Martin Lee Associates, Inc.

 Elaine Lee

453-2049
 453-2995 nights

1983 OLDS CUTLASS

Brougham - All Power, Tilt, Cruise, 51,000 miles. Sable Brown. 453-4729 after 5:30.

5-tnc

1982 TOYOTA SUPRA

- 48,000 miles, new paint, new tires, \$5,500. Bob Duncan, 453-2485 after 5. 1010 W. 11th, Robert Lee.

23-2tp

PURE BREED AMERICAN

Eskimo puppies for sale to good home. Born 12-2-87. 453-2202.

23-3tp

CLASSIFIED ADS... for results

FOR RENT

TRAILER SPACES for rent - south side of Hwy. 158, 5 miles west of Robert Lee near Lake Spence. 453-2914.

45-tnc

FOR RENT: Several 2 Bedroom low income units available. For more information, contact Robert Lee Housing Authority or call 453-2912 or 453-2909.

20-tnc

GIDEON APARTMENTS - available - 2 bedroom & 1 bedroom, 453-2318 (days), 453-2196 (nights).

33-tnc

RENT OR LEASE purchase 1987 16x80 3 BR or 16x80 2 Br Mobile Home. Small deposit and small payment. Will relocate, call 915-333-8811 for appointment.

22b-5tp

MOBILE HOME for rent. Central heat/air, refrigerator, stove, washer/dryer. Call 453-4727, Robert Lee, 12 noon.

22-2tp

MISC

FOUND - YOUNG female Spanish goat. Call 453-2272, Robert Lee. Identify and pay for ad.

23-1tp

WE SPECIALIZE in valve jobs, brakes, motor overhauls, tune-ups, transmission work, and carburetor overhauls - Also, in-board and out-board boat motor parts and service. **R&D Automotive & Marine** (formerly Starling's Garage) Robert Lee - 453-2041.

6b-tnc

BRYAN'S BACKHOE SERVICE - Caliche and gravel driveways, level lots, clear brush, dirt work, and septic tanks. Call 453-4635, 453-4300.

23-tnc

THE BROWNIE SCOUTS of Robert Lee are in need of Arts & Crafts supplies. If you have buttons, beads, lace, yarn, thread or scraps you are willing to donate, please call Quincie Gregston, 453-2237 or 453-2934.

23b-1tc

WE BUY ALUMINUM Cans 30c per lb. Also scrap copper & brass. We will be in Robert Lee every Thursday from 12:00 to 2:00 southwest corner of courthouse square. Larada Metals Co.

22b-4tp

ALL TYPES HOME & mobile home service and repair, including air conditioning, heating and plumbing. Also will do carpentry and painting. Loyd or Johnny Sevier, 453-2377.

22-tnc

PART TIME - HOME MAILING PROGRAM! Excellent income! Details, send self-addressed, stamped, envelope. WEST, Box 5877, Hillside, NJ 07205.

12b-tnc

VETERINARY SERVICES

Robert Lee - 9-12, Thursday mornings; other times arranged. Jack C. Newkirk, DVM, 453-2085, or 728-3461 (days), 942-8033 (nights).

16b-tnc

GET PAID for reading books! \$100.00 per title. Write: ACE- B132, 161 S. Lincolnway, N. Aurora, IL 60542.

20-4tp

I NEED JOB so I can move out on my own. I can do farm work or yard work. Call Bronte Training Residence 473-6561, ask for Clinton Swoford or Jan Hartley.

11b-tnc

RELIEF HELP NEEDED Bronte Training Residence, GED/High School Diploma required. Contact Jan Hartley, 473-6561, Mon.-Fri. 8-5.

11b-tnc

NOW IS THE best time to prepare for Spring - **Replace** lumber in stock trailer beds; **Repair** that plow you will need for spring planting; **Make** a trailer out of that old pickup bed. We have a few live traps for sale. **Gregston's Welding**, Hwy. 208, Robert Lee, 453-2237.

22b-2tc

GERMANIA FARM MUTUAL Insurance Association - reasonable, sound insurance protection for your home and other property. If you want to save, contact J.A. Dunklin, 805 Vicki St., 915-453-2397, Robert Lee, TX.

18b-1tc

OPEN YOUR OWN beautiful discount high quality shoe store. Satisfaction Guaranteed. **LADIES-CHILDREN-MENS.** Over 300 nationally known brands-Over 1500 styles- 40-50% below wholesale prices. Your "\$" cash investment of \$12,900.00 to \$39,900.00 includes beginning inventory, training, fixtures and grand opening promotions. Ladies Apparel stores also available. Call Today. Prestige Fashions 1-800-247-9127.

23b-1tp

FULL-TIME L.V.N. needed for 11-7 shift. Good benefits. Apply in person at the Bronte Nursing Home, 900 S. State, Bronte, TX. An Equal Employment Oppr.

22b-2tc

POLITICAL CALENDAR

The **Observer/Enterprise** has been authorized to make the following announcements for the political offices in Coke County, subject to the action of the Democratic Primaries in 1988.

Unless otherwise specified, each candidate has paid for his or her announcement, and will serve as their own campaign treasurer. All political advertising, announcements, and printing is cash in advance.

UNITED STATES REPRESENTATIVE 17th Congressional District

Charles Stenholm

COKE COUNTY COMMISSIONER PRECINCT 1

Paul Burns
 George Newby

COKE COUNTY COMMISSIONER PRECINCT 3

Roy Tinkler
 Tim Millican

COKE COUNTY TAX ASSESSOR/-COLLECTOR

Kristeen (Kristy) Roe
 Patsy N. Dunn

COKE COUNTY ATTORNEY

Bill J. Helwig

DONNIE PATTON AUTO REPAIR

512 W. Main
 (Robert Lee Hwy)

Bronte

K & S CONSTRUCTION

Carpentry Carports
 Roofing Glass Cutter
 Room Additions Patios
 Remodeling Wood Fencing

Free Estimates & References

Ph. 915-473-2046
 Bronte, Texas

SHAFFER FUNERAL HOME

Bronte Robert Lee
 473-3131 453-2424

MONUMENTS

Duplications -
 Custom designs

WATER OUTLET STORE

403 W. 10TH ROBERT LEE
 Drinking Water
 Low Sodium
 35c per gallon
 Sacked Ice

5 lb. 40c 10 lb. 75c

DMC Embroidery Thread
 Red Heart Yarn
 Pretty Punch

8:30-5:30 Mon-Fri
 9:00-2:00 Sat
 453-2063

WANT ADS Work Wonders!

NEED HELP with W-2's, 1099, 1098, 1096, Sales Tax, Federal Tax Return, etc.? **CONTACT** Walker's Income Tax Service, 806 Commerce, Mt. Creek Lodge, Robert Lee, Ph. 453-2516.

22b-3tc

EARN EXCELLENT MONEY in Home Assembly work. Jewelry, Toys & Others. FT & PT Avail. **CALL TODAY!** 1-518-459-3535 (Toll-Refundable) Ext. B-6699C 24 Hrs.

21-4tp

FEDERAL, STATE & CIVIL SERVICE Jobs \$14,877 to \$63,148/Year, Now Hiring! Call **JOB LINE** 1-518-459-3611 Ext. F-6607A for info. 24 Hr.

21b-3tp

OWN YOUR OWN Apparel or Shoe Store, choose from: Jean/Sportswear, Ladies, Mens, Children/Maternity, Large Sizes, Petite, Dancewear/Aerobic, Bridal, Lingerie or Accessories Store. Add Color Analysis. Brand Names: Liz Claiborne, Healthtex, Chaus, Lee, St Michelle, Forenza, Bugle Boy, Levi, Camp Beverly Hills, Organically Grown, Lucia, over 2000 others. Or \$13.99 One Price Designer, multi tier pricing discount or family shoe store. Retail prices unbelievable for top quality shoes normally priced from \$19. to \$60. Over 250 brands 2600 styles. \$17,900 to \$29,900: inventory, training, fixtures, airfare, grand opening, etc. Can open 15 days. Mr. Keenan (305) 366 8606.

23-1tp

FREE COLOR ANALYSIS anytime. Color-coordinate your makeup and wardrobe to enhance your personal coloring. BeautiControl cosmetics in stock. Contact Nadine Davis, 453-2150 after 4 p.m.

23-6tp

GARAGE SALES

INSIDE SALE: 9-5 Friday and Saturday, 2 miles south of Bronte on San Angelo Highway, turn left at the bridge.

23b-1tc

CARD OF THANKS

THANK YOU FOR all the kindnesses that have been shown to us in our bereavement, in the loss of our dear sister, Jessie Newton Yarbrough.

Mr. & Mrs. Houston Hill
Mr. & Mrs. Virgle Barrett

23-1tp

IN APPRECIATION

We would like to express a special thanks to everyone involved with the care given to me during my illness, especially Ivan Conner, Lou Wright, Quincie Gregston, the Shannon Emergency room personnel, Pam Bradford, and members of First United Methodist Church in Robert Lee, and Judy Gibbs. May each of you be blessed.

Ruth Wilkes & Family

23-1tc

TO EACH OF you who made a personal visit, brought or sent food, made a telephone call, sent flowers or a memorial, said a prayer for us, babysat for the younger members of our family and made many helpful gestures, we thank you for your expression of love to "Ole Man" and our family. To all the Shaffers, Bro. Blackmon, Bro. Hutchinson, and Mrs. Pat Lee, thank you for the lovely memorial service. We also want to say a special thank you to the ladies of the First Methodist Church for serving us lunch and to our wonderfully kind neighbors, the Champions and Sonnenbergs and the East Coke County Emergency Medical Service volunteers who have been on 24 hour call for so many months.

Thanks to all of you. We have beautiful memories of wonderful friends.

The Family of
O.R. McQueen

23-1tc

CARL D. MARTIN

In loving memory of our loved one who left us Jan. 17th, 1981.

Loving memories keep him always near.

He's loved today as much as yesterday.

Sadly missed by wife Polly, Stepchildren, Brothers, Sisters.

23b-1tp

NOTICES

Notice To All Persons Having Claims Against The Estate Of Jessie N. Yarbrough Deceased

Notice is hereby given that original Letters Testamentary for the Estate of JESSIE N. YARBROUGH, Deceased, were issued on the 14th day of January, 1988, in Cause No. 1291 now pending in the County Court of Coke County, Texas, to VAN N. BAUCUM, a resident of Sweetwater, Nolan County, Texas, whose post office address is 909 East Third Street, Sweetwater, Texas 79556.

All persons having claims against said Estate, which is currently being administered, are required to present them within the time and in the manner prescribed by law.

Dated this the 19th day of January, 1988.

Van N. Baucum
Independent Executor of
The Estate of
Jessie N. Yarbrough, Deceased.

State Bar No. 21235400
P.O. Box 488
Sweetwater, TX.
79556

23-1tc



The first recorded fire engine was built for the city of Augsburg, Germany, in 1518. It consisted of a large lever-operated squirt mounted on a wheeled carriage.

...Show

(cont'd. from page 8)

Champion: Waylon Ensor, 2nd Heavyweight European Cross.

English Cross - Lightweight: 1. Jeff Wilkes; 2. Korey Pitcock; 3. Blake Pitcock; 4. Anthony Wink.

English Cross - Mediumweight: 1. Russel Vaughn; 2. Thad Metcalf; 3. Jason Blaylock; 4. Jason Blaylock.

English Cross - Heavyweight: 1. Dane Smith; 2. Casey Antilley; 3. Debra Drennan; 4. Krystal Carver.

Champion English Cross: Dane Smith, English Heavyweight.

Reserve Champion English Cross: Russel Vaughn, English Mediumweight.

European Cross - Lightweight: 1. Teresa Vaughn; 2. Kim Carver; 3. Debra Drennan; 4. Debra Drennan.

European Cross - Heavyweight: 1. Scott Antilley; 2. Waylon Ensor; 3. Shane Kelton; 4. Shane Kelton; 5. Scott Antilley.

Champion European Cross: Scott Antilley, Heavyweight.

Reserve Champion European Cross: Waylon Ensor, 2nd Heavyweight.

Showmanship Awards

Sheep Division: Melissa Bivins.

Swine Division: Randy Gartman.

Stær Division: Teresa Vaughn.

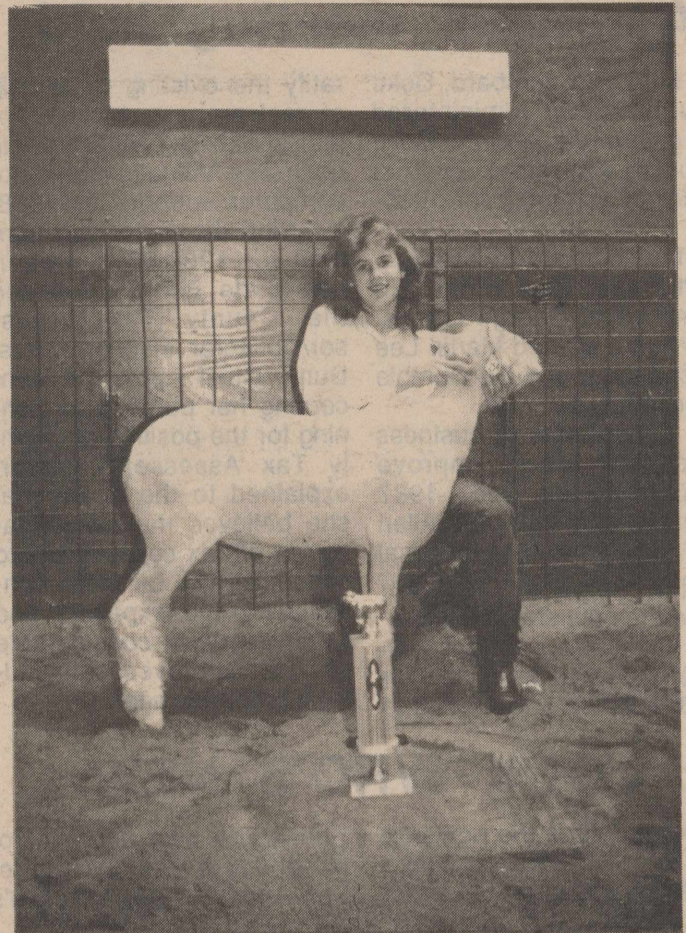
Ralph Walker Memorial Top Hand Award: Michael Lee.

Frank Percifull Memorial Overall Showmanship Award: Shane Kelton.

Breeders Awards
Beef: Raymond Bloodworth.

Sheep: Wayne Arrott.

Swine: Blair Hog Farm.



BRANDE BURROWS WAS a triple winner in this year's lamb show. Shown here with her **Champion Finewool Lamb**, she also exhibited the **Champion and Reserve Champion Finewool Cross lambs**.

CRP signup announced

The next signup for the 1988 Conservation Reserve Program will take place Feb. 1-19 at the Agricultural Stabilization and Conservation Service county office in the Coke County Courthouse at Robert Lee.

Farmers may offer bids to place highly erodible cropland into the reserve for the 6th time.

Annual payments for 10 years will compensate farmers

for retiring highly erodible land from crop production. The amount of the payment is determined by the accepted bid per acre and the number of accepted acres.

Participants will also receive cost-share assistance for establishing grass, trees, or wildlife plants on the acreage placed in the reserve. Hunting is allowed on the land but no crops can be harvested while it is in the reserve.

WE INVITE YOU

TO BE WITH US FOR WORSHIP AND STUDY AT ALL THESE SERVICES

SUNDAYS: 10 AM & 6 PM - Wednesdays: 7:30 PM

NORTHSIDE CHURCH OF CHRIST

TOMMY WILLIAMS, MINISTER

453-2270

OR CALL 453-2619

CHADBOURNE & W. 9TH ROBERT LEE, TX.

QUISENBERRY'S GREENHOUSE

7th St. & Hwy 208 453-2428 Robert Lee

Fresh Shipment of Rose Bushes

150 to Choose From

Pecan Trees Still In Stock

Pecans For Sale — 50c lb.

UNTIL THERE IS
NO LONELINESS,
NO DESTITUTION,
NO SICKNESS,
NO WAR...

Please join.



The primary function of the Tax Assessor-Collector is to serve you the people of Coke County-to be available to you to help you understand the laws, rules and regulations that affect you and to help solve any problems as quickly as possible.

I would sincerely appreciate the opportunity to serve you as your County Tax Assessor-Collector and I earnestly solicit your vote on March 8.

Kristeen (Kristy) Roe

(Political Advertising Paid For By Kristeen Roe)

Appraisal meeting held

Mrs. Ettie Hubbard, Coke County Clerk administered the oath of office to the Coke County Appraisal District Board of Directors for 1988-89.

Members are Don Bowen, Martin Lee, Paul Burns, Ed Cumbie and George Lomas. The board elected Martin Lee as chairman and Ed Cumbie as secretary for 1988.

Other items of business conducted were: approve minutes of the Dec., 1987 meeting; appointed Bill Allen and Joe Ash to the Appraisal Review Board for 1988-89; ratified the mineral and industrial valuations contract with Thos. Y. Pickett & Co., Inc. for 1988; adopted a resolution to

ratify the existing ownership of real property by the Appraisal District; contracted with Lone Star Valuations, Inc. for computer support for 1988; awarded the depository contract for 1988-89 to Robert Lee State Bank; discussed the County Tax Assessor/Collector election-- Mrs. Dunn, Chief Appraiser, concerning her purpose for running for the position of County Tax Assessor/Collector, explained to the board that she believes the consolidation of all tax collections into one office will be more convenient to the taxpayers, and would result in considerable savings; approved outstanding bills for payment.

LOOK WHO'S NEW

Riley Ray is the new son born to proud parents, Shaye and Wayne Coalson. He was born January 14 at 12:18 p.m. He weighed 9 lbs. 7 ozs. and was 21 inches long.

Riley has one sister, Kanah.

Grandparents are Dennie Ray and Sharon Braswell of Bronte and Charlotte Blackburn and the late Delbert Ray Coalson.

Great-grandparents include George and Oleta Braswell and Ray Coalson, all of Bronte, and Maxine McCauley of Mount Pleasant.

Kamron Kaye Gray arrived at Angelo Community Hospital in San Angelo at 2:51 p.m. Tuesday, Jan. 19. Her birthweight was 7 lb. 1 oz. and she measured 19 inches long.

She is the new daughter of Mr. and Mrs. Les Gray, Jr. of San Angelo and the couple's first child.

Her grandparents are Mr. and Mrs. Dudley Boldin of Lamesa and Les and Geneva Gray of Robert Lee.

Mr. and Mrs. Edwin Clell Smith are proud to announce the birth of their first child, a daughter, Jennifer Mae Smith. She was born Jan. 19 weighing 7 lb. 14 oz. and measured 21 inches long.

Her grandparents are Mr. and Mrs. Jim Mitchell of San Angelo and Mr. and Mrs. James Royce Smith of Robert Lee.

Mrs. Tol Terrell of San Angelo and Mr. and Mrs. Bill Mitchell of Lansing, Michigan are Jennifer Mae's great-grandparents.

EL VAQUERO
RESTAURANTE



MEXICAN FOOD AT ITS BEST
In Western Atmosphere

Daily Specials - Take Out Orders
Open 11 a.m.-2 p.m. 5 p.m.-9 p.m.
Tues, Wed, Thurs, Fri, Sat

473-2027 Downtown Bronte

We wish to thank all the sponsors for the 1987 year. Their contributions are greatly appreciated.

SINGING WINDS GOLF ASSOCIATION

- RICHARD HEMBREE CUSTOM GOLF SHOP
- HOMETOWN HARDWARE
- CUMBIE & ARROTT MERCANTILE
- HOLT CLEANERS
- BAHLMAN'S JEWELERS
- FIRST NATIONAL BANK IN BRONTE
- FASHION SHOP
- F & A CONSTRUCTION
- T & R CONSTRUCTION
- ROBERT LEE STATE BANK
- HEIDENHEIMERS DRY GOODS
- GARY'S BACKHOE SERVICE
- AGAPE WELDING
- SHAKEY'S PIZZA PARLOR
- J & B LUMBER
- SHAFFER FUNERAL HOME

BUDGET PLEASERS

FOR THE HOMEMAKER

Boneless Chuck
ROAST LB. **\$1.49**

Gooch Franks 12 oz. pkg. 89c

Gooch German Sausage Ring \$1.29

Ground
CHUCK LB. **\$1.59**

Chicken of the Sea
TUNA 6 oz. can **79c**

Generic Apple Sauce - Large 50 oz. Jar 79c

Armour's Vienna Sausage 5 oz. can 49c

Baker's Coconut 7 oz. pkg. 79c

Parade Dinner 7 oz. pkg.

MACARONI & CHEESE 3/\$1.00

Gatorade 32 oz. jar 98c

Blackburn White Syrup 32 oz. bottle \$1.19

Parade Chocolate Chips 12 oz. pkg. \$1.29

Zesta

CRACKERS 1 # box **95c**

Parade

BLEACH gal. bottle **77c**

Snuggle Fabric Softener Sheets 20 ct. box 95c

Hi Dri

TOWELS Big Roll **59c**

Hungry Jack Biscuits 10 ct. can 65c

Soft Parkay Twin Tubs 1# pkg. 89c

Jeno's Pizza 10 oz. size \$1.29

Country Cousin 59c

FRENCH FRIES 2 # bag **59c**

Washington Red Delicious

APPLES LB. **49c**

Green Cabbage LB. 19c

Yellow Onions LB. 29c

Potatoes 10 # bag 95c

Prices Good Jan. 22nd thru Jan. 28th

BAKER'S GROC. & MKT.