

COMING  
SUNDAY

Bread or Bullets

Is bread better than bullets in dealing with the crises in Iran and Afghanistan? Staff writer David Campbell examines President Carter's actions regarding the present situation in the Middle East in Sunday's Reporter-Telegram.

Dumping it in New Mexico

The future of the Waste Isolation Pilot Plant for storing nuclear waste at Carlsbad, N.M., is anything but certain. Staff writer Kay Hord examines WIPP's current status and possible future in Sunday's Reporter-Telegram.

Adolescent Pregnancy

Twenty-one percent of the 1,008 births in Midland County in 1978 were to mothers under 20 years of age. Sunday's Lifestyle section will report on the annual March of Dimes Mothers' March, which will focus on the problem of adolescent pregnancy in Midland this month.

# The Midland Reporter-Telegram

METRO EDITION

DIAL 682-5311, P.O. Box 1650, MIDLAND, TEXAS

Vol. 56, No. 362, Daily 15¢, Sunday 35¢

FRIDAY, JANUARY 11, 1980  
32 PAGES, 4 SECTIONS



George Meany, a gruff-talking plumber who rose to become the single most powerful force in the American labor movement, died Thursday at age

85, two months after his retirement as the only president the AFL-CIO ever had. (AP Laserphoto)

## Longtime labor boss George Meany dead

WASHINGTON (AP) — Cigar-chomping George Meany, the indomitable leader and sharp-tongued symbol of the American labor movement since the 1950s, is dead at 85.

Death came late Thursday at George Washington University Hospital, barely two months after deteriorating health forced his retirement as the only president in the AFL-CIO's 24-year existence.

The former Bronx plumber, who became one of the nation's most influential private citizens during his 57-year labor career, had been hospitalized on Sunday for treatment of a painful buildup of fluid in his legs.

His condition worsened Thursday afternoon and he was transferred to the hospital's intensive care unit, according to Meany's spokesman, Albert Zack.

Meany's three daughters were with him when he died at 9:55 p.m. EST. Death was attributed to cardiac arrest, said Zack.

President Carter called Meany "an American institution" and "a patriot."

"He changed the shape of our nation for the better in hundreds of ways, great and small, through the force of his character and the integrity of his beliefs," said Carter, who had clashed often with Meany over economic policies.

"A giant has fallen," Labor Secretary Ray Marshall said. "He leaves a legacy to all of us of a better, more decent and equitable society."

Massachusetts Sen. Edward Kennedy, a long-time political ally of the labor leader and candidate for the 1980 Democratic presidential nomination, said Meany "was a great American and all of us will miss him."

Mr. Labor, as Meany was known for three decades, had been confined to a wheelchair with arthritis since last spring, when he injured his knee in a golfing accident. The injury frequently left him in severe pain and his health deteriorated rapidly after that.

Having outlived most of his contemporaries, he grew despondent last March following the death of his wife of 59 years, Eugenia, and lost the drive to regain his strength, said close friends and aides.

The son of a 19th century Irish-American union leader, Meany never finished high school. But he used his keen mind, uncanny political instinct and dominating personality to unite a fractious labor movement and hold most of it together for a quarter century.

Using the 14 million-member American Federation of Labor and Congress of Industrial Organizations as his base, Meany became one of the most effective lobbyists in Congress, the self-appointed adviser to eight presidents and a key broker in Democratic Party politics.

With the merger of the AFL and CIO in December 1955, he ruled as the unchallenged spokesman for the American labor movement.

He presided over the labor movement during a period of relative labor peace and unprecedented prosperity for organized labor. Healthy wage gains pushed union members into the mainstream of the American middle class; the unions, their violent organizing struggles behind them, had joined the establishment.

Critics within the labor, however, complained that the movement under Meany had grown too complacent and conservative because of its success. Union membership failed to grow during the Meany era because of a lack of AFL-CIO interest in organizing the unorganized, particularly minorities and women, the critics charged.

Although Meany's authority over the AFL-CIO did not diminish as he advanced in age, some labor leaders grumbled in recent years that he was losing influence with the White House, Congress and the public.

For a decade, he spurned suggestions that he retire. It was only when his health failed that he decided to step down last November as AFL-CIO president to be succeeded by his protégé and personally selected heir, federation Secretary-Treasurer Lane Kirkland.

## Some attack Soviets in U.N., but not Afghans

UNITED NATIONS (AP) — Japan, China and Colombia attacked the Soviet intervention in Afghanistan in the U.N. General Assembly emergency debate, while the new Afghan government installed by the Russians defended them.

The United States and the Soviet Union were scheduled to speak today.

Speaking in the first session of the debate Thursday, Japanese Ambassador Masahiro Nisibori called on the Soviet Union to withdraw its troops immediately from its Central Asian neighbor and let the people of Afghanistan "solve their internal problems by themselves."

The present crisis bears tremendous political implications, jeopardizing international peace and security and threatening the stability of the region," said Nisibori. "The Soviet actions in Afghanistan contravene international law and justice, and we find the use of force in these actions particularly deplorable."

Chief among the "internal problems" to which he referred is a rebellion by Moslem tribesmen which broke out after the Afghan communists seized control of the government in Kabul in April 1978. Despite a change of government last September, the rebels were reported to control at least half the country, and last month the Soviet government sent thousands of its troops into Afghanistan, engineered another change of government and deployed its forces around the country to help the new government put down the rebellion.

Chinese Ambassador Chen Chu accused the Soviet Union of "flagrant and massive military aggression and intervention against Afghanistan" and charged that "Soviet social-imperialism is the most dangerous source of a new world war."

Colombian delegate Indalecio Livano charged the Russians with an "arrogant abuse of power" that threatens other small nations with "a return to the law of the jungle in this era of nuclear weapons."

The Afghan delegate, Shah Mohammad Dost, asserted that "the so-called situation in Afghanistan is entirely an internal matter and poses no threat to peace in the world." He charged that the assembly special session was a throwback to "the dark days of the cold war" since it was convened under a 1950 resolution providing for recourse to the assembly when a veto blocked Security Council action.

Dost said his government requested Soviet military aid to help defend it against attacks by "imperialists," the position taken ever since the coup Dec. 27 by the Russians and the new government.

Third-World countries are expected to introduce a resolution in the next day or two calling for withdrawal of the Soviet forces from Afghanistan, and the United States and its allies are reported confident that the 152-nation assembly will approve it.

The Soviet Union on Monday vetoed a similar Security Council resolution which was supported by 13 of the other 14 council members. The Russians could not block a council resolution asking for the emergency assembly debate because it was a procedural vote in which the permanent members' veto did not apply. But the assembly can vote no punitive action if the Russians ignore its call to get out of Afghanistan.

Members of the Midland County Tax Appraisal Board were sworn into office Thursday afternoon, although their duties are limited at the current time.

## Tax appraisal board is officially organized

By BILL MODISETT  
Staff Writer

Members of the Midland County Tax Appraisal Board were sworn into office Thursday afternoon, although their duties are limited at the current time.

142nd District Judge Perry Pickett administered the oath of office to Gil Thompson, representing the Midland Independent School District; Fred Wright Jr., Midland College; Walter B. Holton, Midland Hospital District; Donald Lea, Greenwood school; Charlie Welch, Midland County; and Joe Nuessle, the city of Midland.

Following the swearing-in ceremony, Thompson was elected chairman and Nuessle was elected the board's secretary.

Thursday's meeting, the board's initial gathering, was called by County Attorney Leslie Acker who explained that the law creating the appraisal

board, passed during last year's Legislature, didn't specify how the board was to begin operation.

So, Acker said, he took it upon himself to call the meeting, since the law specified he was to serve as legal counsel for the board.

During the half-hour meeting Thursday, the board also voted to hold future meetings when called by chairman Thompson or a majority of the board. The board plans to meet in the Commissioners' Courtroom on the second floor of Midland County Courthouse.

The next meeting has been scheduled for sometime in March. By law the board is required to meet Oct. 1 of each year.

One of the reasons for the scarcity of meetings during this initial year, Acker told the group, is a lack of operating funds and a lack of business

(See MEMBERS, Page 2A)

## Arrest reported of Iranian rebel

TEHRAN, Iran (AP) — Radio Tehran reported the capture of the leader of Iran's most effective anti-Khomeini terrorist group and 15 of his men, but the roundup did nothing to ease the revolutionary regime's troubles with rebellious ethnic minorities.

The broadcast said the gang chief, identified only by his family name, Goudarzi, and the other members of the organization called Forghan were captured after a gun battle with revolutionary guardsmen early Tuesday. It was not explained why the announcement was delayed two days.

A revolutionary guard spokesman said documents found in the group's headquarters on Jamalzadeh Street in central Tehran showed that more than 20 assassinations had been planned.

The spokesman said more than 20 hideouts of Forghan members had been identified, but at least 20 members of the gang were still at large. The terrorists, firing submachine

guns from motorcycles, have assassinated five of Ayatollah Ruhollah Khomeini's associates and his first army chief of staff since the Shiite Moslem leader's revolution ended Shah Mohammad Reza Pahlavi's reign last February and replaced it with an Islamic theocracy.

The most recent victim was the dean of Tehran University's theology department, Hojatoleslam Mohammad Mofateh, who was killed with two bodyguards Dec. 18.

Mofateh had said government without-out clergymen was unacceptable, a direct challenge to Forghan, an extremist Moslem movement whose main tenet is Islam without clergy.

Forghan members believe the Prophet Mohammed and the imams who followed him were not clergymen, that Islam is a religion to live by, not to govern by, and that a clerical ruling class is a betrayal of the religion and should not exist.

Forghan is a Persian word that refers both to the scales of justice and the Koran, the Moslem holy book.

## Afghans riot in protest of Soviet intervention

PUL-I-CHARKHI, Afghanistan (AP) — More than 800 Afghans, shouting slogans against the Soviet Union and Afghanistan's Marxist regime, stormed through the main gate of a prison here today and freed at least 12 inmates from two cell blocks. Two persons were killed when authorities quelled the riot.

It was not immediately clear whether Russian or Afghan troops fired what sounded like short bursts of automatic weapons to end the uprising about 15 miles east of the capital city.

Later, an Afghan officer stood over the two bodies just outside the main gate of the prison and shook a fist in the direction of a Russian tank crew. Western reporters were led away at gunpoint.

The incident apparently stemmed from the crowd's disappointment about the number of political prisoners set free.

About 3,000 Afghans gathered outside the high-walled prison compound to receive relatives they thought were being released. But only about 125 prisoners were freed, causing an uproar in the crowd.

A teenaged boy grabbed the jacket of an Afghan officer and with tears streaming down his face, shouted: "Where's my father, my brother?"

## Gloomy picture painted

### Congressman comments on world crisis

By LANA CUNNINGHAM  
Staff Writer

Hostages held in Iran will be released, but not for several months, U.S. Rep. Kent Hance predicted Thursday while on a visit to Midland.

Hance, a Democrat elected two years ago to represent the 19th Congressional District, painted a picture of the U.S. and the world today in shades of gray with black thunderclouds building in the distance.

Considering the Iranian situation, U.S. dependence on Middle East oil and Soviet invasion of Afghanistan, this country is closer to war than it has been for several years, he said.

Getting the American hostages in Iran released may take as long as eight or nine months, Hance said, drawing a parallel between this situation and the incident in 1968 in which North Korea seized the U.S. intelligence ship Pueblo.

"THE NO. 1 PRIORITY is to get the hostages out with their safety intact and not do anything to cause any harm to them," the congressman said.

Ayatollah Ruhollah Khomeini's government is tottering on the edge in Hance's opinion. "He's only a temporary ruler and has a temporary government. Someone will come to the front and take over."

Those "students" holding the hos-

tages actually are PLO (Palestine Liberation Organization)-trained terrorists, he added.

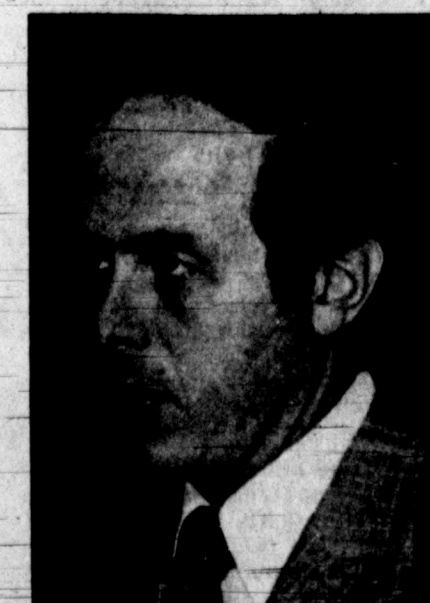
The congressman outlined a plan he suggested to President Carter, but which wasn't followed.

"I suggested a naval blockade of Iran," he said. "We wouldn't let any ships in or out of Iran. It would have brought them to their knees in 30 days."

"You deal from strength," he said. "We could have shown more strength in the Middle East with such a maneuver, and it would not have gotten us into war."

The Soviet Union's takeover of the country and government in Afghanistan

(See HANCE SAYS, Page 2A)



"I suggested a naval blockade of Iran. We wouldn't let any ships in or out of Iran. It would have brought them to their knees in 30 days." — Rep. Kent Hance.

**INSIDE TODAY**

- IN THE NEWS: Gunshots are fired outside struck oil refinery in Houston.....2A
- ENERGY: Another round of gasoline and heating oil price increases in store.....1C
- SPORTS: LSU's new grid coach, Bo Rein, apparent plane crash victim.....4D
- PEOPLE: Jimmy Durante hospitalized with a form of pneumonia.....3A

Around Town.....1B	Dear Abby.....2B	Markets.....5A
Classified.....2C	Editorial.....4A	Obituaries.....6A
Comics.....3A	Entertainment.....5B	Oil & gas.....1C
Crossword.....3A	Lifestyle.....1B	Sports.....1D

**Outside Service**

A little cooler tonight, becoming fair and warmer Saturday. Details on Page 2A.

Delivery.....682-5311  
Want Ads.....682-6222  
Other Calls.....682-5311







DEATHS

O.D. Thomas

O.D. Thomas, 3300 Roosevelt Ave., died Tuesday in a Midland hospital. Services were to be at 10 a.m. today in the Bethel Baptist Church here with the Rev. Roy S. Day, pastor, officiating. Graveside services were to be at 4 p.m. today in Highland Cemetery in Stamford with Bob Elliott, associate minister of Bethel Baptist church, officiating, directed by Newbie W. Ellis Funeral Home. Mrs. Thomas was born in Hamilton and reared in Stamford. She was married to Marion E. Thomas Nov. 26, 1946, in Albany. They moved to Midland from Abilene 27 years ago. She was a member of the Bethel Baptist Church. Survivors include her husband; her mother, Minnie Lee Simpson of Stamford; and three sisters, Dolly Tabor of Stamford, Mrs. D. Goodyear of Midland and Mrs. Ben (Ethel) Short of Bakersfield, Calif.

Dick Rushton

Graveside services for Dick Rushton, 63, of Midland were Wednesday in Christy Chapel Cemetery near Magnolia, Ark., directed by Bailey Funeral Home of El Dorado, Ark. Rushton was found dead Friday. Preliminary ruling indicated he had died several days before of natural causes. Formerly of Union County, Ark., he was born in Columbia County, Ark. Survivors include his wife, Charlotte of Louann, Ark.; two daughters, Vickie Bass of New Orleans, La., and Ann Smith of Louann, Ark.; three brothers, Don Rushton of Xavier Springs, Mo., Doyle Rushton of Raytown, Mo., and Otis Rushton of Smackover, Ark.; four sisters, Myrtle Paster of Delaware, La., Annie Cain of Lafayette, La., Opal Sales of Smackover, Ark., and Mamie Lee Ware of Magnolia, Ark.

Gene Purdy

TAHLEQUAH, Okla. — Services for Gene Purdy, 84, of Tahlequah, Okla., father of E.W. "Bill" Purdy of Midland, were to be at 2:30 p.m. today in Hart Funeral Home chapel here with burial in Tahlequah Cemetery. He died Wednesday in Tahlequah. Other survivors include his wife, two sons and five grandchildren.

Zollie Boykin

BIG SPRING — Services for Zollie Boykin, 66, of Big Spring will be at 2 p.m. Saturday in the Nalley-Pickle Rosewood Chapel with Dr. Edwin Chapel, pastor of the First United Methodist Church, and Dr. Kenneth Patrick, pastor of the First Baptist Church, officiating. Burial will be in Trinity Memorial Park. He died Wednesday in a Lubbock hospital after a lengthy illness. Boykin was born April 10, 1913, in Sierra Blanca. He moved to Big Spring from Fort Worth in 1929. He was married to Lucille True in 1938. He had been in the oil business since 1929. He and his brother, Ross, were rig building contractors from 1934 to 1953 and had been in oil production since 1953. He was a member of the First United Methodist Church. He was a past master of the Staked Plains Masonic Lodge No. 598; past high priest of the Big Spring Chapter 178, R.A.M.; past illustrious master of the Big Spring Council 117, R.A.M.; past commander of the Big Spring Commandry 31; and a member of the Suez Shrine. Survivors include his wife; a daughter, Mrs. Jerry (Sue) Graves of Odessa; a stepson, Fred Harrington of Wichita Falls; two brothers, Ross Boykin of Big Spring and Henry Boykin of Mansfield; and two grandchildren.

Opa Bowman

BROWNWOOD — Services for Opa Bowman, 82, mother of Preston Bowman of Midland, were to be at 2 p.m. here today at the Davis-Morris Funeral Home Chapel with the Rev. Vern Whittington and the Rev. Ray Elliott of the Central Methodist Church officiating. Burial was to be in Indian Creek Cemetery of Comanche County Texas. Mrs. Bowman died Wednesday in a local nursing home. She was born Sept. 24, 1897, in Franklin, Ark. Mrs. Bowman was a member of the Central Methodist Church here. She was also a member of the Order of the Eastern Star. Other survivors include four sons, two daughters, two sisters, 15 grandchildren and 12 great-grandchildren.

Vidal Garza Jr.

BIG SPRING — Vidal Garza Jr., 33, of Big Spring died at his residence Thursday after a short illness. Services are pending with Nalley-Pickle Funeral Home. Survivors include his mother, Inez Garza of Big Spring; two brothers, Ben Garza of Ackerly and John Garza of Big Spring; five sisters, Mrs. James (Mary) Johnson, Mrs. Lupe (Yolanda) Vantura, Jeneice Garza, all of Big Spring, Mrs. Jimmie (Dolores) Cantu of Ackerly and Mrs. Raul (Alice) Rivas of Lenorah; and his maternal grandmother, Armanda Gonzales.

Clifford Draper

BIG SPRING — Clifford L. Draper, 67, of Big Spring, died Thursday in a local hospital. Services are pending at Nalley-Pickle Funeral Home.

Laura A. Burdine

LUBBOCK — Services for Laura A. Burdine, 70, of Lubbock, formerly of Midland, were to be at 2 p.m. today in W.W. Rix Chapel with Ray F. Johnson, First Church of Christian Science reader, officiating. Burial was to be in City of Lubbock Cemetery. She died Thursday in a Lubbock hospital following a lengthy illness. A native of Lefors, Mrs. Burdine lived in Plainview and Midland prior to moving to Lubbock in 1941. She was married to Leonard L. Burdine Sept. 24, 1934, in Clovis, N.M. The couple was responsible for organizing Arnett-Benson Baptist Church. Her husband died in 1963. Mrs. Burdine was a member of Broadview Baptist Church and the Order of Eastern Star. Survivors include two daughters, Virginia A. Burdine of Big Spring and Mrs. E.E. Rawls of Houston; a son, A.M. Burdine of Lubbock; and three sisters, Mrs. Willie F. Welch of Lubbock, Mrs. A.G. Tunnell of Muleshoe and Mrs. C.T. Dotson of Athens.

Maria Franco

LUBBOCK — Services for Maria Franco, 58, of Lubbock, sister of Martin Cantu of Hobbs, N.M., will be at 2 p.m. Saturday in the Arnett-Benson Baptist Church with the Rev. A.A. Marquez, pastor, officiating. Burial will be in Peaceful Gardens Memorial Park directed by Henderson-Singleton Funeral Home. Mrs. Franco died Wednesday in a Lubbock hospital after a lengthy illness. The Yorktown native moved to Lubbock two and a half years ago from Ackerly. She was a member of the Arnett-Benson Baptist Church. Other survivors include her husband, four sons, five daughters, her father, five brothers and 23 grandchildren.

Former Alabama governor to undergo minor surgery

MONTGOMERY, Ala. (AP) — Former Alabama Gov. George C. Wallace is planning to undergo minor surgery Jan. 15 at a Montgomery hospital, Wallace spokesman Elvin Stanton says. Stanton said Thursday that the surgery is designed to clear up a skin irritation problem on Wallace's hip that was caused by prolonged pressure. Wallace has been confined to a wheelchair since a 1972 assassination attempt while he was campaigning in Maryland for the Democratic nomination for president.

Retired Justice William O. Douglas remains in very serious condition

WASHINGTON (AP) — Retired Supreme Court Justice William O. Douglas, suffering from progressive lung and kidney failure, remained in very serious condition today at Walter Reed Army Medical Center, hospital officials said. Douglas, 81, was admitted to the hospital on Christmas Eve with pneumonia.

Advertisement for 'The Great Frame Sale!' featuring 'ALL FRAMES ONE PRICE \$14.90'. Includes images of various eyeglasses and contact lenses. Text: 'Your choice of any frame in our large inventory... Fashion Designer Frames... Glamorous Imported Frames... Colorful Plastic Frames... Bold Wire Frames... Stylish Combination Frames for women, men, and children of all ages.' Location: 2211 WEST TEXAS STREET. Hours: OPEN ALL DAY MONDAY THRU SATURDAY.

Philadelphia cheerleader killed in auto-truck crash

PAOLI, Pa. (AP) — The Philadelphia Eagles fans' favorite Liberty Belle cheerleader, Cheryl R. Frey, has died in a car-tractor trailer collision in Chester County, state police said. Authorities said her southbound compact car collided with the truck in the northbound lane of Route 202 in East Whiteland Township early Thursday. Mrs. Frey, 25, of Kenilworth, was one of two new Liberty Belles cheerleaders for the National Football League team selected at a pre-season audition in April 1979. In two Philadelphia newspaper polls, Mrs. Frey, dubbed "Cheerful Cheryl," was voted the fans' favorite. "It's a great loss to all of us," said Caroline Cullum, the founder of the Liberty Belles. "All of my girls and all of those in the Eagles organization are very, very sad. It's so tragic when someone so young, so spirited, so vibrant and in love with life is taken," she said. "It's a great tragedy for such a lovely young lady to have her life wiped out," said Eagles' Public Relations Director Jim Gallagher. "We are just very saddened." Mrs. Frey's car was struck in the left lane of the four-lane divided highway and was pushed about 30 feet by the truck, coming to rest against a guard rail, investigating troopers said. She was pronounced dead at Paoli Memorial Hospital at 2:28 a.m. Police said the driver of the truck, Leon Butler Jr. of Sadsburyville, Chester County, suffered only minor injuries. At the time of her death, Mrs. Frey was employed by a law firm in Kenilworth. She also had been a successful saleswoman for the United Biscuit Co. in Reading, Miss Cullum said.

'50s rock'n'roll composer Williams found dead from apparent suicide

LOS ANGELES (AP) — Singer Little Richard sang "Precious Lord" at Williams' funeral, which was held Thursday with burial later at Inglewood Park Cemetery. Williams' body, with a gunshot wound in the head, was found Jan. 2 by his mother, who was worried that she hadn't heard from him and asked a locksmith to let her into his Laurel Canyon home. Williams, 44, zoomed to the top of the record charts in 1957 with his two best known compositions, then faded into obscurity after his last successful record, "Dizzy Miss Lizzie" in 1958, and his arrest on narcotics possession charges in 1959.

FUN GIFTS GALORE. Box Gags • Novelties • Party Supplies. Puzzles • Jokes • Magic Tricks and Supplies. Dodson's Fun 'n Party Shop. 1 1/2 Mi. North of Andrews Hwy. on Midland Drive. 4100 N. Midland Dr. Phone 694-2851

QUITTING BUSINESS SALE. EVERY ITEM REDUCED NOTHING HELD BACK. DON'T MISS THIS OPPORTUNITY TO SAVE 25% TO 75% ON YEAR ROUND SUITS, SPORTCOATS. ALL DRESS SHIRTS, SPORT SHIRTS. ARROW, VAN HEUSEN, ALL OTHERS. 1/2 PRICE. CALL KOHL'S 682-3093. 11 META DRIVE.

ALL HAGGAR PANTS REDUCED 25% TO 60% OPEN 10 AM SAT.

January Clearance SALE. NOW IN PROGRESS. OPEN 9 TO 6 MON.-SAT. Knorr Charge Card. VISA, master charge. ALL ITEMS SUBJECT TO PRIOR SALE. CHAIR SPECIALS during our STOREWIDE SALE. List of chairs and prices: Victorian child's rocker, solid maple with medium brown finish. Reg. 69.50. Now 49.95. Contemporary pull up chair on casters, white Haitian cotton cover, loose pillow back. Regular 299.50. Now 219.50. Country French wing chair, exposed wood trim with pickled finished, T-cushion, brown and beige crevel fabric. Reg. 499.00. Now 299.50. Classic Bentwood Rocker completely assembled, walnut finish. Regular 149.00. Now 79.50. Armless occasional chair, loose pillow back transitional styling, beige wide wale Herculon cover. Reg. 300.00. Now 149.50. Chaise Lounge, loose back pillow, skirted, brick color velvet cover. Reg. 429.00. Now 249.00. Rattan & cane occasional chair, beige cotton cover, loose pillow back and seat, brown finish. Regular 320.00. Now 259.50. Swivel rocker by Woodmark, button tufted back, T-cushion, skirted, wine velvet cover. Reg. 329.00. Now 269.50. Traditional styled wing chair, Queen Ann leg, T-Cushion, brown and beige flame stitch cover. Reg. 300.00. Now 199.50. Contemporary occasional chair by Heritage, slate blue nubby cover, upholstered legs, loose back pillow. Reg. 540.00. Now 299.50. Fully upholstered occasional chair by Heritage, traditional styling, T-cushion, skirted, button tufted back, aqua LaFrance velvet cover. Reg. 479.00. Now 199.00. Swivel Rocker, skirted, button back, T-Cushion, brown velvet cover. Reg. 339.50. Now 199.50. Rolled arm chair by Woodmark, traditional, skirted, rounded button back, extra arm covers, T-Cushion, LaFrance velvet fabric in your choice of gold, rust, green, brown or white. Regular 339.50. Now 289.50. Heritage occasional chair, button back, skirted, aqua velvet cover. Reg. 479.00. Now 299.00. Country French pull up chair, exposed wood, loose cushion, detailed carving, upholstered back, brown and beige crevel fabric. Regular 479.00. Now 229.50. Heritage armless chair, champagne velvet with brown welt cord, loose back pillows, upholstered legs. Reg. 761.00. Now 329.00. Lounge chair & ottoman by Flexsteel, large and comfortable, wide wale Herculon cover for wearability, your choice of beige or brown. Reg. 569.00 set. Now 399.50 set. Wall-a-way reclining chair by Flexsteel, wide wale Herculon cover, rust, brown or beige. Regular 550.00. Now 399.50. Antique reproduction arm chair, ball and claw, very detailed carving, nail head trim, genuine leather cover. Reg. 1,046.00. Now 399.50. Rattan 3-way recliner by Barcolounger. Natural or dark finish, white on white flame stitch cover. Reg. 649.00. Now 499.50. Genuine glove soft leather chair and ottoman by Leather Shop, Transitional styling, rolled arm, button seat and back, ottoman has casters, your choice of light or dark brown. Regular 1,596.00 set. Now 999.50 set. Curio Cabinet. Curio cabinet by Drexel, transitional styling, pecan solids and veneers finished in a medium brown, brass pulls and corner accents, 6 beveled glass doors, 3 grooved and adjustable glass shelves and interior lights. 36" wide, 15" deep, 78" high. Reg. 1,179.00. Now 699.50. Triple Dresser & Mirror. Triple dresser and mirror by Heritage, Country French styling, rich brown finish, beautifully carved mirror, velvet pin tray. Reg. 1,624.00. Now 839.50. 2200 W. TEXAS...AT THE VILLAGE. Serving the Petroplex.







# 'Rockford' fan angry over 'filing' of show

By PETER J. BOYER

LOS ANGELES (AP) — Lucius couldn't believe his eyes. He threw down the newspaper in disgust and whined, "Did you read that? Did you?"

The offending story began: "TV Private Eye Jim Rockford solves his latest case as NBC's 'The Rockford Files' ends its six-year run..."

My pal Lucius, television connoisseur, "Rockford" fan and loafer of the first degree, fairly trembled at the news. "This is too much," he said, turning away, mumbling.

For a fellow whose steadiest job has been parking cars at the Rose Bowl, Lucius takes life very seriously. He was shaken by the ayatollah's outrages and frightened by the Russian intervention in Afghanistan. But "Rockford" leaving the air, this was a frontal assault on the Lucius soul.

I can sympathize with Lucius on this one. "Rockford's" last night, tonight, is one to be grieved. Television loses a lot in Jim Rockford.

ROCKFORD WAS one of TV's last adults, a man possessed of self-assurance and an abiding instinct for survival. He lived by his wits. He could take care of himself. He was a grown-up in an era when most TV characters serve as doltish straight men for adolescent stand-up comics.


Rockford heroics were of the best sort — reluctantly drawn forth. He didn't carry a gun, but he was forever being shot at. He loathed fisticuffs, but, if pressed, would rearrange a wronghead's facial features — and then clutch his fist in pain.

Rockford had character. If his heart was gumshoe, his mind was strictly Baker Street.

**Robert's Gopper Hot deli**  
Saturday Special  
Chicken Kiev, Macaroni & Cheese  
30 Imported Beers & Wine  
Eat, drink here or take home  
2211 W. Wadley 694-2422

**BRAKES**  
WHILE YOU WAIT  
Replace front disc Pads or Rear Brake Shoes  
Includes parts & labor. **29<sup>95</sup>**  
Midland Dayton Tires  
1.5. 20 at Garden City Hwy. 682-5248

**A Special Top Sirloin Dinner for 2 plus all the salad you can eat!**



**Only \$6.99 at Bonanza!**  
A TOP SIRLOIN DINNER FOR 2 for only \$6.99  
And that includes (at no extra charge) a baked potato — a thick slice of Texas toast — and all the salad and fixings you can help yourself to at our famous Discovery Salad Bar.  
And there's never any tipping.  
At Bonanza, you know what it costs before you come in.  
And you'll love what you get!  
Offer Good at Participating Bonanza Restaurants.

**Bonanza's Special TOP SIRLOIN 2 for \$6<sup>99</sup>**  
We honor Master Charge® and Visa®  
Dinner includes steak, potato, toast & all the salad you can eat.  
Offer good with coupon only.  
Coupon expires 1/16/80.

SAN ANGELO 1650 Sherwood Way  
MIDLAND 903 Andrews Hwy.  
ODESSA 1810 E. 1st

# Will 'Bear' maul 'Peacock's' plans?

LOS ANGELES (AP) — The Peacock meets The Bear. It is possible, I suppose, that the Kremlin did not consider NBC's 1980-81 prime time schedule when drawing plans for the Afghanistan intervention. In any event, the march of Red army onto Afghan turf could well ruin Fred Silverman & Co.'s neat plans for a happy future.

The linchpin of NBC's recovery plan was a successful 1980 Moscow Olympics. The design, like television itself, was simple, with a beginning, middle and end.

NBC would spend lots of money to buy the Olympics, use the event as a promotional tool for its 1980 fall schedule, and parlay its investment to the No. 1 position in the ratings race. It worked for ABC in 1976 and, given Fred Silverman's record, figured to work for NBC in 1980.

Unfortunately for NBC, Russia's historical imperatives were not figured into the scenario. Russia gets this occasional urge to visit the sea. Iran, Afghanistan and Pakistan sit between the Soviet Union and the Arabian Sea. Russia went into Afghanistan.

This complicates things for NBC. President Carter has threatened to boycott the Moscow Olympics and has urged other nations to follow suit. Saudi Arabia, which likely isn't happy over the prospect of Russians in the Persian Gulf (also easier to get to from Afghanistan than from Russia), has already announced its intention to boycott the Games and is asking its friends to join in.

The British Commonwealth may boycott, and other nations, as well. This bodes ill for the Moscow Olympics, and, thus, for NBC. If President Carter calls for a boycott it's quite likely that the U.S. Olympic Committee would oblige. And without U.S. participation, NBC is left with damaged goods.

If the U.S. drops out, NBC might drop its plans to cover the Games. The network has insurance that would cover most of its financial loss (the Moscow Olympics cost is estimated at somewhere over \$150 million right now), and the 152 hours of planned Olympic coverage from July 18 to Aug. 5 could be filled with regular programming.

But the value of the Moscow Olympics as a promotional tool is incalculable. Under Silverman, the network has learned to appreciate the value of on-air promotion. The hope was that viewers glued to Summer Games would become familiar with the NBC prime time lineup after a barrage of promotion spots.

# Texas judge says no filming

SAN ANTONIO, Texas (AP) — A state judge has indicated he will not allow CBS' "60 Minutes" to film the testimony of a Dallas psychiatrist during the upcoming capital murder trial here of a 20-year-old man.

Officials of the television show had asked State District Judge Mike Machado for permission to film the testimony of Dr. James P. Griggon as part of a segment on the importance of expert witnesses in criminal trials.

CBS News Producer Stephen A. Glauber told Machado in a letter that the segment would focus on Griggon.

Assistant District Attorney Larry Souza contended Wednesday that the filming would be a distraction to the jury and possibly prejudice the case against Alan Johnson, who is charged with fatally stabbing 14-year-old Joni Foster in her home last February.

Machado said he agreed, but asked the prosecutor to put his objection in the form of a written motion before ruling.

Johnson's attorney, Allan Manka, said he

would not object to filming of Griggon's testimony about his examination of Johnson. Griggon has testified in numerous capital murder cases about whether defendants are inclined to further violence.

Register first night of Class or now for  
**Belly Dance Classes**  
BEGINNER CLASS JAN. 14  
INTERMEDIATE CLASS JAN. 15  
8:00 P.M. \$20 for 12 lessons  
for further information call 694-8863  
MAGIC MIRROR FIGURE SALON

WESTWOOD cinema  
NOW SHOWING!  
MATINEES SATURDAY - SUNDAY & HOLIDAYS AT 2:00  
NIGHTLY AT 7:15 & 9:30  
ADMISSION \$3.50  
UNDER 12 YEARS \$1.50

**REDFORD FONDA ELECTRIC**  
COLUMBIA PICTURES and UNIVERSAL PICTURES  
RAY STARR, WILLOWICK PRODUCTION  
ROBERT REDFORD JANE FONDA  
A STEVEN POLLACK FILM  
VALERIE PERRINE and WILLIE NELSON  
Music by DAVE GARDIN. Screenplay by ROBERT GARLAND. Screenplay by PAUL CAHILL and R. STEVE CARLSON. Produced by RAY STARR. Directed by STEVEN POLLACK.

# Ringo to be 'Starr' of UA's 'Cave Man'

HOLLYWOOD (AP) — Ringo Starr will star in the prehistoric comedy "Cave Man" for United Artists.

Carl Gottlieb will direct from a screenplay he co-wrote with Rudy DeLuca. The movie will be filmed on location in Mexico.

Starr has appeared in "The Magic Christian" and "Candy," and with the Beatles he starred in "A Hard Day's Night," "Help," and "Let It Be."

**Isabel's Yoga Class is Back!**  
Ladies 10-11 am Mon., Wed. and Fri.  
Phone 682-7164 for details  
STARTS MONDAY

HOWARD  
HOLLYWOOD  
CINEMA  
Phone 682-1531  
NOW SHOWING!  
MATINEES SAT. - SUN. & HOLIDAYS  
ADMISSION \$3.50  
UNDER 12 YEARS \$1.50  
TODAY 7:15 & 9:15  
SATURDAY & SUNDAY AT 1:45-3:35-5:25-7:15-9:15

# ENTERTAINMENT

## 'Manoeuvre' focuses on NATO

NEW YORK (AP) — Frederick Wiseman's new documentary, "Manoeuvre," about the NATO exercises in West Germany, will air on public television on March 20.

It follows an infantry tank company from Fort Polk, La., through various stages of the exercise.

Wiseman has made such award-winning documentaries as "Tropic of Cancer," "Juvenile Court," "Law and Order," "High School" and "Hospital."

## R. Cox, A.I. McMillan to co-star

HOLLYWOOD (AP) — Ronny Cox and Andrew Ian McMillan star in "The Courage of Kavik, The Wolf Dog," airing on NBC on Sunday, Jan. 20.

The movie, based on the book by Walt Morey, was filmed partly on location in Alaska.

## 'Beulah Land' adds stars to cast

HOLLYWOOD (AP) — "Beulah Land," a Civil War saga now filming in Mississippi, has added a number of new stars to its large cast.

Starring in the NBC miniseries are Lesley Ann Warren, Meredith Baxter Birney, Tony Beckley, James McEachin, Clarice Taylor, Jean Renee Foster, Madeline Stowe, Eddie Albert, Hope Lange, Dorian Harewood, Paul Rudd, Jenny Agutter, Allyn Ann McLerie, Martha Scott, Robert Walker Jr., and Don Johnson.

## Chayefsky, Warners Bros. argue

HOLLYWOOD (AP) — Paddy Chayefsky and Warner Bros. have disagreed on the film version of his novel "Altered States" and his screenplay credit will read, "Based on the novel by Paddy Chayefsky..." Linda Carter, the former "Wonder Woman," will star in her first TV special on CBS on Saturday, Jan. 12.

## Kaufman controls own screenplay


HOLLYWOOD (AP) — Jonathan Kaufman will write and direct his original screenplay, "War Babies," a romantic comedy set against the background of the anti-war movement of the late 1960s.

Kaufman, 24, will make his directorial debut in March with "All Conquers Love" for Warner Bros. The studio has also purchased another screenplay, "The Shapiro Report."

**CINEMA 1**  
Downtown 207 N. Main  
Phone 684-7687

**NOW SHOWING!**  
NIGHTLY AT 7:15-9:15  
MATINEE SAT.-SUN. HOLIDAYS AT 2:00  
ADMISSION \$3.50 UNDER 12 YEARS \$1.50

Starring **PETER GRAVES CURT JURGENS MICHAEL DANTE**



**ALL HELL'S ABOUT TO BREAK LOOSE...! TORTURE! TERROR! SUSPENSE! EXCITEMENT!**

**THE TEHRAN INCIDENT**  
Also Starring **JOHN CARRADINE** with **TITTA BAKER** and **PUR BANAI**  
A Noble Production Inc. Presentation  
Directed by Leslie H. Martinson - Music by A. Balidan - Written by Clark Reynolds & E. Romano  
Produced by Ika Panajotovic - A Transvue Pictures Corp. Release  
Color by Deluxe®

**HARLEM GLOBETROTTERS**  
in person!  
WEDNESDAY JANUARY 16 7:30 PM  
CHAPARRAL CENTER - MIDLAND  
admission: \$4.00, \$5.00, \$6.00  
all seats reserved  
on sale: Center Ticket Office  
Sears (Midland & Odessa)  
S & Q Clothiers (Downtown & Suburban Midland)

**GEORGE BURNS IS REMARKABLE**  
AN OUTSTANDING PERFORMANCE.  
—RONA BARRETT, ABC-TV  
"FIRST RATE PERFORMANCES...  
'GOING IN STYLE' is tough and tender, touching and very funny."  
—JUDITH CRIST



**GEORGE ART LEE - BURN'S CARNEY STRASBERG**  
"GOING IN STYLE"  
A comedy to steal your heart  
GEORGE BURNS - ART CARNEY - LEE STRASBERG  
A TONY BILL PRODUCTION - PRODUCED BY TONY BILL AND FRED T. CALLO  
Executive Producer EDWARD GAMES - DIRECTED BY MARY ELBERT  
Screenplay by MARTIN BRETT - BASED ON A STORY BY EDWARD LAMMON  
Music Composed and Conducted by MICHAEL SMALL  
Distributed by UNITED ARTISTS - A Warner Communications Company  
PG PARENTAL GUIDANCE SUGGESTED - (Some Material May Be Inappropriate for Children Under 10)

TODAY AT 7:30 & 9:30  
SATURDAY & SUNDAY AT 1:30-3:30-5:30-7:30-9:30

**Kramer vs. Kramer**



There are three sides to this love story.  
COLUMBIA PICTURES PRESENTS A STANLEY JAFFE PRODUCTION  
DUSTIN HOFFMAN  
"KRAMER VS. KRAMER"  
MERYL STREEP JANE ALEXANDER  
Director of Photography NESTOR ALMENDROS  
Based Upon the Novel by AVERY CORMAN  
Produced by STANLEY R. JAFFE  
Written for the Screen and Directed by ROBERT BENTON  
Now A Best Selling Signet Paperback  
PG PARENTAL GUIDANCE SUGGESTED - (Some Material May Be Inappropriate for Children Under 10)

**The right signal to call is 682-6222**

**CHIEF**  
NOW SHOWING!  
BOX OFFICE OPENS 7:30 PM  
FIRST FEATURE AT 8:00  
ONE COMPLETE SHOW ONLY  
ADMISSION \$2.50  
UNDER 12 YEARS \$1.00  
Phone 694-5811

**SKATETOWN USA**  
NOW SHOWING!  
BOX OFFICE OPENS 7:30 PM  
FIRST FEATURE AT 8:00  
ONE COMPLETE SHOW ONLY  
ADMISSION \$2.50  
UNDER 12 YEARS \$1.00

**DRIVE-IN**

**TEXAN**  
NOW SHOWING!  
BOX OFFICE OPENS 7:30 PM  
FIRST FEATURE AT 8:00  
ONE COMPLETE SHOW ONLY  
ADMISSION \$2.50  
UNDER 12 YEARS \$1.00  
Phone 694-1411

**JACKSON COUNTY JAIL**  
YVETTE MIMIEUX  
What they do to her in Jackson County Jail is a crime!  
The cops are there to protect her. But who will protect her from the cops?

**"MASSACRE AT REDNECK COUNTY"**  
LESLIE UGGAMS SHELLEY WINTERS MICHAEL CHRISTIAN TOTTED CASSIDY OSLIM PICKENS

**WANT ADS & ACTION**  
Dial 682-6222



TEXAS NEWS

### 'Copter just misses crash with jetliner

DALLAS (AP) — A helicopter passed dangerously close to an American Airlines jetliner carrying 44 persons as the plane made its descent into San Diego's airport Tuesday, an airline spokesman said.

Art Jackson, director of operations public relations, said Thursday he did not know how close the Boeing 707 and the helicopter came to colliding in flight or if the pilot, Capt. Kenneth Allmond, was forced to take evasive action.

He said no injuries were reported aboard Flight 309 from Phoenix to San Diego.

"The airplane was within a few minutes of the San Diego airport. It was at 6,000 feet and cleared to descend to 5,000 when the pilot reported a helicopter passed off to his right," Jackson said.

Jackson said he thought it was a military helicopter and said the Federal Aviation Administration would investigate the incident.

San Diego has been the site of several in-flight near misses recently, making it the focus of an escalating dispute over air traffic regulations.

Two near collisions occurred in November near San Diego, where the September 1978 midair crash of a small private plane and an airliner resulted in 144 deaths.

### 'Midland Magazine' available

The premier issue of Midland Magazine, a quarterly publication of the Midland Chamber of Commerce, is now available.

The magazine focuses on Midland's lifestyle with feature articles and photos by local talent.

In addition, the magazine has a listing of area restaurants and clubs, including a guide to activities in the Tall City.

The first issue features a story on well-known golfer Judy Rankin of Midland, a look back at early ranching days in the High Sky area and a review of activities at Midland Community Theatre.

Midland Magazine has been made available in local hotels and has been mailed to chamber members. Starting today, it is available at local newsstands.

The magazine is a project of the chamber's public relations committee chaired by Harry Clark. Editor of the magazine is Roger Thomas.

### TUGC staffs new nuclear plant

GLEN ROSE — Texas Utilities Generating Company personnel began staffing the control room for the first unit of the Comanche Peak nuclear plant Jan. 2, according to a news release from Texas Electric Service Company.

The control room must be staffed at all times as the plant systems are completed and turned over to operations for testing and eventual start-up, the release noted. No nuclear fuel material is on the site.

The first unit of the nuclear plant is scheduled to go into operation in 1981. The second unit is expected to start operations in 1983.

# NTSU former president Nolen says he will testify voluntarily at hearing

AUSTIN, Texas (AP) — Former president C.C. Nolen of North Texas State University has said he will testify voluntarily at a public hearing Monday of the House General Investigating Committee, the panel's lawyer says.

"His lawyer indicated to me he would be there," said Jim Vollers, special counsel of the investigating committee.

Vollers also said Thursday "it is fair to assume the committee" will look into allegations that funds belonging to NTSU were channeled into a foundation seeking a public television station for Denton.

Three of the five committee members met less than an hour behind closed doors Thursday and presumably issue.

Chas for certain witnesses to appear at Monday's hearing.

Chairman Richard Slack, D-Pecos, said the reason for the executive session was "to decide on subpoenas — how many and who will be the recipients of the glad tidings."

The Dallas Morning News reported in Thursday editions the committee has received NTSU records on the school's relations with Denton Channel 2 Foundation, Inc.

The News said investigators are interested in an alleged proposal to transfer a \$60,844 piece of property from NTSU to the television foundation.

NTSU has been under investigation since April, when reports were published that the school had made unconstitutional transfers of state funds into the private North Texas State University Educational Foundation.

Nolen resigned just before the committee's first meeting in April.

Asked if the committee had discovered any prosecutable offenses, Slack told reporters:

"I would hesitate to say. I'd say they are serious enough for us to have a meeting about. There were clear violations of the law, although how far the prosecution would go, I cannot say. ... We want anyone who is guilty of misappropriation or misuse of public — we want something done about it."

The Texas Prosecutors Coordinating Council, which assembled a task force from several urban district attorneys' offices to look into the NTSU situation for Slack, gave Vollers the documentary evidence and written statements it had collected.

"After consultation with Mr. Vollers, it is clear that testimony must be taken from several additional witnesses. Therefore, no report is being made to protect the innocent as well as to ensure the successful prosecution of any guilty party," council director Andy Shuval wrote Slack.

## Official suggests shifting funds

WASHINGTON (AP) — Surplus Social Security disability funds should be shifted to cover anticipated shortages in the account used to pay old age and survivors benefits, the National Commission on Social Security said today.

The government-appointed commission, midway through a two-year study, also said Congress should allow borrowing of general revenues if inflation and the recession create problems with paying benefits to the 35 million Social Security recipients.

The commission said in an interim report that seven of its nine members feel Congress should not roll back the steep payroll tax increases schedule for 1981.

The other two members favor a rollback, possibly by paying for Medicare out of general revenues instead of the payroll tax.

That was the method proposed last month by another blue-ribbon panel, the Advisory Council on Social Security, which said the payroll tax could be cut to 5.6 percent if Medicare were

paid for out of income and corporate taxes.

The payroll tax is 6.15 percent now and jumps to 6.65 percent next year.

Currently, the 6.13 percent tax is allocated this way: 4.33 percent to pay old age and survivors benefits, 0.75 for disability and 1.05 for Medicare.

The commission recommended shifting 0.125 percent of the disability tax to the old age funds in 1981 to 1984, 0.2 percent in 1985 to 1989, and 0.1 percent from 1990 on.

Social Security benefits increase automatically when the Consumer Price Index exceeds 6 percent a year. It is rising at more than double that rate now.

At the same time, if the recession puts more people out of work and fewer taxes are paid in, the system may have cash flow problems in a few years. Congress already knows about this problem.

There might not be enough money in the trust funds at the start of a month to pay a full month's benefits,

although the funds would be replenished later in the month as taxes came in.

After 1985, the higher taxes already scheduled will start building up the trust funds so the cash-flow problems disappear, the report said.

It said the disability trust fund's financing is more than adequate for the short-term, so it could stand to lose some of its taxes.

## Carriers fail, knock out N. Dallas phone service


DALLAS (AP) — Thousands of telephones in northern sections of Dallas and in three adjoining communities were out of service early today because of a carrier failure, a Southwestern Bell Telephone Co. spokesman said.

The telephones were in northern sections of Dallas and in Addison, Richardson and Plano, the spokesman said.

The spokesman said she had "no idea" as to when full service would be restored. She also was unable to estimate how many telephones were out, but said it would be "thousands."

The carrier failure was reported at about 11:30 p.m. Thursday, according to the spokesman.

Telephone service in downtown Dallas was not interrupted by the problems.



**Thornton's**  
OPERATED BY P.N. HIRSCH & CO.  
an INTERCO company

**PRE-  
INVENTORY**

# CLEARANCE

**Dellwood Mall  
7 hours**

**We Will Close at 4:00 P.M. To Begin Inventory Shop and Save  
9:00 A.M.-4:00 P.M. Saturday January 12th**

<p><b>LADIES SPORTSWEAR</b> REG. 18.00 to 60.00 VALUE <b>1/3 &amp; 1/2 OFF</b></p> <p><b>LADIES SPLIT SKIRTS</b> BY Uribloch Prive \$26.00 Values <b>SALE 7.99</b></p> <p><b>LADIES SPORTSWEAR</b> by Center Stage Tan &amp; Rose <b>LADIES DRESSES</b> REG. 28.00 to 80.00 <b>NOW 1/3 OFF</b></p> <p><b>JUNIORS MISSY JEANS</b> To \$26.00 Value <b>SALE 1/3 OFF</b></p> <p><b>LADIES SKIRTS</b> by Donnkenny <b>LADIES PANT SUITS</b> Selected Group Ladies <b>SALE 13.99</b></p> <p><b>LADIES SPORTSWEAR</b> by Donnkenny <b>ROCHELLE</b> <b>CARDIGAN SWEATERS</b> REG. 18.00 <b>SALE 11.99</b></p> <p><b>WOMENS SWEATERS</b> <b>LADIES SPORTSWEAR</b> by Booth Bay Grey and Rose <b>ODDS AND ENDS RACK</b> <b>10.00 and less</b></p> <p><b>JUNIOR DRESSES</b> assorted colors <b>1/3 OFF</b></p> <p><b>BLOUSES</b> by Koret City Blues VALUES to 32.00 <b>SALE 1/3 OFF</b></p> <p><b>LADIES TUNIC TOPS</b> by Ms. Fits <b>11.99</b></p> <p><b>DUMAS PANTS COATS</b> \$68.00 VALUE <b>NOW 1/3 OFF</b></p> <p><b>WOMENS BLOUSES</b> Limited Quantity <b>11.99</b></p> <p><b>WOMENS BLOUSES</b> Limited Quantity <b>13.99</b></p> <p><b>LADIES SPORTSWEAR</b> by Boothbay Purple &amp; Blue \$30.00 VALUE <b>SALE 13.99</b></p> <p><b>LADIES SPORTSWEAR</b> by Donnkenny Green and Peach <b>SELECTED GROUP PANTS</b> by Bobbie Brooks <b>11.99 AND 12.99</b></p> <p><b>LADIES SPORTSWEAR</b> by Jantzen Green &amp; Rose <b>1/3 OFF</b></p> <p><b>LADIES SPORTSWEAR</b> by Koret Black, Grey Burgundy <b>1/3 OFF</b></p> <p><b>LADIES SPORTSWEAR</b> by Center Stage Brown &amp; Burgundy <b>1/3 OFF</b></p>	<p><b>LADIES SPORTSWEAR</b> by Donnkenny Plaids and solids <b>1/3 OFF</b></p> <p><b>MEN'S KNIT SLACKS</b> Selected Group Values to \$20.00 <b>SALE 13.99</b></p> <p><b>"SACHEL"</b> Designer Jeans by HIS \$30.00 VALUE only <b>15.99</b></p> <p><b>MEN'S WAIST LENGTH LEISURE JACKETS</b> by Farrah <b>28.00</b></p> <p><b>SELECTED GROUP Men's Suits</b> \$120.00 VALUE <b>95.00</b></p> <p><b>MEN'S LONG SLEEVE SPORT SHIRTS</b> by Carriage House Reg. 9.00 <b>SALE 6.50</b></p> <p><b>MEN'S SHORT SLEEVE SHIRTS</b> by Mr. California <b>SALE 12.99</b></p> <p><b>MEN'S SHORT SLEEVE PULLOVERS</b> by Scene III <b>SALE 9.99</b></p> <p><b>MEN'S LONG SLEEVE KNIT SHIRTS</b> by Da Vinci <b>SALE 12.99</b></p> <p><b>MEN'S LONG SLEEVE DRESS SHIRTS</b> <b>SALE 9.99</b></p> <p><b>MEN'S LONG SLEEVE SPORT SHIRTS</b> by Da Vinci ENTIRE STOCK <b>1/2 PRICE</b></p> <p><b>MEN'S SWEATERS</b> <b>MEN'S SWEATER VEST</b> by Robert Bruce <b>SALE 7.50</b></p> <p><b>MEN'S LEVI JEANS</b> Limited Quantity <b>ONLY 9.99</b></p> <p><b>MEN'S GLOVES</b> Now <b>1/2 PRICE</b></p> <p><b>MEN'S SWEAT SHIRTS</b> WERE 5.95 <b>NOW 3.95</b></p> <p><b>MEN'S HOODED SWEAT SHIRTS</b> WERE 9.95 <b>NOW 7.95</b></p> <p><b>MEN'S PLAIN VINYL JACKETS</b> <b>ONLY 9.99</b></p> <p><b>BOYS SWEATERS</b> \$10.00 VALUE <b>ONLY 4.99</b></p> <p><b>BOYS USA T-SHIRTS</b> 8.50 VALUE <b>only 5.99</b></p> <p><b>LUCKY BOY DISCO SHIRTS</b> 7.95 VALUE <b>only 5.95</b></p> <p><b>ENTIRE STOCK BOYS COATS</b> <b>NOW 1/3</b></p> <p><b>BOYS TOBBAGANS</b> <b>NOW 1/2</b></p> <p><b>BOYS TUBE SOCKS</b> <b>only 3/1.99</b></p> <p><b>MEN'S ARMY SOCKS</b> <b>only 99c</b></p> <p><b>50% COTTON 50% WOOL</b> <b>only 99c</b></p> <p><b>SAMSONITE SONORA SOFT-SIDED LUGGAGE</b> <b>25%</b></p>	<p><b>SOFT-SIDED LUGGAGE</b> only 4 Sets left 4 piece Set <b>79.00</b></p> <p><b>MEN'S OVERNITE BAGS</b> Limited Quantity <b>only 5.49</b></p> <p><b>NECKLACE AND RING SET</b> in various styles <b>4.00 a set</b></p> <p><b>HAIR BARRETTES</b> by Rivera <b>2.50 and less</b></p> <p><b>EARRINGS</b> by Marquise in various styles <b>4.00 a pair</b></p> <p><b>SELECTED GROUP Women's Bracelets</b> <b>1/2 OFF</b></p> <p><b>WOMEN'S NECKLACES</b> by Marquise <b>only 4.00</b></p> <p><b>DUETS EARRINGS</b> by Marquise <b>2 pair for 4.00</b></p> <p><b>LADIES AND MEN'S WATCHES</b> Limited Quantity <b>38.88</b></p> <p><b>HUSH HUSH PANTI HOSE</b> Sheer to Waist Style F6802SW <b>only 77c</b></p> <p><b>HUSH HUSH PANTI HOSE</b> Super Stretch Style F6802 <b>only 77c</b></p> <p><b>WOMEN'S HOSIERY SOCKS</b> REG. to 3.50 <b>SALE 1.99</b></p> <p><b>LADIES BROWN SUEDE SHOES</b> by Capezio REG. 35.00 style Runner-Chocolate <b>SALE 14.99</b></p> <p><b>LADIES SLIP ONS</b> by Nickles REG. 34.00 style Saucy <b>SAL 14.99</b></p> <p><b>LADIES WEDGE HEEL SLIP ONS</b> by Miramonte REG. 30.00 style Romero Copper <b>SALE 9.99</b></p> <p><b>LADIES SHOES</b> by Nickles REG. 32.00 style Thunder <b>SALE 14.99</b></p> <p><b>LADIES HIGH HEEL DRESS SHOES</b> by Vitality REG. 34.00 style La Manchia <b>SALE 19.99</b></p> <p><b>LADIES CASUAL WEDGE</b> by Danelle REG. 29.00 style # 709-55 <b>SALE 14.99</b></p> <p><b>LADIES OPEN WEDGE</b> by Danelle REG. 29.00 style # 539-55 <b>SALE 14.99</b></p> <p><b>LADIES WEDGE HEEL SLIP ONS</b> by Miramonte REG. 30.00 style Romero Black <b>SALE 9.99</b></p>	<p><b>LADIES DRESS SHOE</b> by Frolics REG. 22.00 style Hunter Black <b>SALE 17.99</b></p> <p><b>LADIES BEIGE SUEDE SHOES</b> by Capezio REG. 35.00 style Runner Clay <b>SALE 20.00</b></p> <p><b>LADIES OSAGA TENNIS SHOES</b> REG. 14.00 Pattern Candy <b>SALE 9.00</b></p> <p><b>CHILDRENS SKI BOOTS</b> REG. 16.00 <b>SALE 8.00</b></p> <p><b>MEN'S AND WOMENS APRES SKI BOOTS</b> <b>6.99</b></p> <p><b>WOMENS CASUAL BOOTS</b> REG. 20.00 Rust Stock # 07810119 <b>SALE 12.99</b></p> <p><b>WOMENS BOOTS</b> by Blossom Inc. REG. 22.99 Wine Color Stock # 077269 <b>SALE 15.99</b></p> <p><b>WOMENS BOOTS</b> by Blossom Inc. REG. 22.99 Black Stock # 077259 <b>SALE 15.99</b></p> <p><b>CHILDRENS LEATHER UPPERS</b> <b>only 9.99</b></p> <p><b>SELECTED GROUP WOMENS SHOES</b> <b>only 9.99</b></p> <p><b>SELECTED GROUP WOMENS ROBES AND GOWNS</b> <b>1/2 OFF</b></p> <p><b>CHILDRENS SKI JACKETS</b> <b>NOW 1/3 OFF</b></p> <p><b>INFANT RED ROBES</b> <b>NOW 1/3 OFF</b></p> <p><b>ENTIRE STOCK CHILDRENS COATS</b> <b>1/3 OFF</b></p> <p><b>TRIANGLE T.V. PILLOWS</b> <b>only 10.99</b></p> <p><b>APPLIQUE CLOTH CALENDARS</b> <b>only 1.59</b></p> <p><b>ZODIAC PILLOW CASES</b> <b>only 1.98</b></p> <p><b>DINING CHAIR CUSHIONS</b> <b>only 6.99</b></p> <p><b>WALL TO WALL BATHROOM CARPET</b> Ready to Place 5'x6' only <b>19.98</b></p> <p><b>TERRIMONDA WASH CLOTHS</b> <b>1.39</b></p> <p><b>TERRIMONDA HAND TOWELS</b> <b>1.59</b></p> <p><b>TERRIMONDA BATH TOWELS</b> <b>5.99</b></p> <p><b>SOAP BASKET HOLDERS FOR YOUR SHOWER</b> <b>only 5.99</b></p> <p><b>ROOM FRESHENERS</b> <b>only 4.00</b></p> <p><b>TOOTHBRUSH CADDY IN ASSORTED COLORS</b> <b>only 5.29</b></p> <p><b>GLYCERINE AND COCONUT OIL SOAP</b> REG. 1.29 Size <b>LARGE 1.79</b></p> <p><b>KLEENEX HOLDERS</b> in various colors <b>only 5.00</b></p> <p><b>PARTYTRAYS</b> <b>now 1/3 OFF</b></p>
---	---	---	--

SECT

M

John L. ...  
the No. 1 D...  
cat, one m...  
15 miles east...  
Drillsite...  
east lines...  
Hondo I...  
contract

CHAVES I...  
Enserch...  
8,000-foot...  
shut-in g...  
Chaves Co...  
Operato...  
west of F...  
field of R...  
Wellste...  
12-48-28c.

Fred Po...  
No. 1-24 C...  
west of pr...  
12 miles...  
(Cisco gas...  
Location...  
of section

EDDY PE...  
Mesa P...  
the No. 1...  
row) test...  
tion, 16 m...  
Operato...  
and 990 f...  
Ground

FISHER...  
John R...  
drill the...  
one and f...  
field, sep...  
The M...  
ducting a...  
Locatio...  
49, block...  
ley.

TOM GR...  
SUNEX...  
for the 1

Offs

By

HOUSTO...  
threatened...  
do so as lon...  
hope" Tex...  
crude oil t...  
tankers.

The proj...  
the Texas...  
is too impo...  
omy for the...  
facility to b...

Casey's...  
bate Thurs...  
authority q...  
to continue...  
though ind...  
port has l...  
tions.

The stat...  
the possibi...  
nal 26 mi...  
stages but...  
mate daily

After he...  
dations, Sh...  
he was no...  
towel.

Mole

Mole Ope...  
staked loca...  
test in an...  
creek (Cis...  
3/8 mile s...  
ducer in th...  
field, eigh...  
sa.

The No...  
1,650 feet...  
from west...  
T-4-N, T&E

ANDREW...  
Amoco F...  
tential tes...  
Farms Dec...  
reopen th...  
(Devonian...  
13 miles so...  
Operator...  
ing potent...  
ity oil and...  
perforatio...  
after an a...  
lons. Gas-...  
Old tota...  
5.5-inch c...  
Plugged b...  
Location...  
from est l...  
T-2-N, G&E

WINKLE...  
Ike Lov...  
completed...  
5/8 mile...  
Paladin...  
Winkler C...  
Kermit.

Operato...  
gauge of...  
and three...  
20/64-incl...  
from 8,474...  
The pro...  
with 30.50...  
6,122-1...  
"Original...  
casing is...  
depth is 9...  
Location...  
from west...  
G&MBA

Amoco...  
ed the No...  
tion, one...  
in the M...  
Winkler C



Midlander stakes wildcat in Lea

John L. Cox of Midland has filed application to drill the No. 1 Dickson as a 10,700-foot Pennsylvanian wildcat, one mile southeast of a 10,190-foot failure, 2.5 miles east of Tres Papatotes, West field of Lea County, 15 miles northwest of Lovington.

CHAVES EXPLORERS STAKED

Enserch Exploration Inc. of Dallas will drill an 8,000-foot wildcat, eight miles northeast of a 6,310-foot shut-in gas well in the Newmill, South field of Chaves County.

Fred Pool Drilling Co. of Roswell, N.M., will drill the No. 1-24 Corn as a 5,200-foot wildcat, four miles northwest of production in the Linda (San Andres) field and 12 miles northwest of production in the Haystack (Cisco gas) field of Chaves County.

EDDY PROJECT

Mesa Petroleum Co. of Midland spotted location for the No. 1 Siegest-State as an undesignated (Morrow) test, 5/8 mile southwest of Morrow gas production, 16 miles west of Lakewood.

FISHER WILDCAT

John R. Thompson Operating Inc. of Abilene will drill the No. 1-C J.J. Maberry as a 5,500-foot wildcat, one and five-eighths mile southwest of the McCaulley field, separated by depleted wells.

TOM GREEN PROJECT

SUNEX Energy Corp. of San Angelo staked location for the No. 2-B Herbert Utermeyer as a 4,300-foot

Canyon test in the six-well Canyon area of the Susan Peak field of Tom Green County, four miles southeast of Wall.

STONEWALL PRODUCER

Bettis, Boyle & Stovall of Graham filed potential test on the No. 4 Wienke as the third conglomerate producer and a location northwest extension to the Gunby (Conglomerate) field of Stonewall County, one mile northwest of Old Glory.

Operator reported a 24-hour pumping potential of 75 barrels of 39.5-gravity oil and 10 barrels of water, through perforations between 6,078 and 6,087 feet, which had been acidized with 250 gallons.

IRION EXTENDER FINALS

Meadco Properties of Midland has completed the No. 3-13 E. Sugg as the third Canyon producer and 1/2-mile south extension to the Taos (Canyon) field of Irion County, 25 miles north of Barnhart.

Operator reported a final potential of nine barrels of 32-gravity oil and 12 barrels of water, through perforations from 1,488 to 1,516 feet, after an acid treatment of 2,000 gallons and fractured with 10,000 gallons.

CROCKETT FINALS WELL

Southland Royalty Co. of Midland has completed the No. 1-53 Todd, 3/4 mile northeast of a two and three-quarters-mile southeast extension to the Wyatt oil field of Crockett County, 14 miles northwest of Ozona.

Operator reported a 24-hour pumping potential of 32-gravity oil and 12 barrels of water, through perforations from 1,488 to 1,516 feet, after an acid treatment of 2,000 gallons and fractured with 10,000 gallons.

Another round of gas price boosts heads for consumers

By WILLIAM GLASGALL

NEW YORK (AP) — Consumers were just getting used to the last round of gasoline and heating oil price increases are being hit with another series of boosts.

Reacting to decisions by members of the Organization of Petroleum Exporting Countries to raise crude prices, most major oil companies in recent days have posted wholesale price boosts of as much as 6 cents a gallon on top of last month's increases of 1 to 6 cents a gallon. The increases are likely to be passed along by retailers to consumers.

According to the industry publica-

tion Lundberg Letter, the average U.S. retail price of a gallon of gasoline was \$1.0463 in December, the latest month for which figures are available. That compares with \$1.0167 a month earlier and 67.11 cents in December 1978.

December's gasoline consumption was about 8 percent lower than that for December 1978, the newsletter said.

Retail heating oil prices, meanwhile, have risen to about 82 to 94 cents a gallon this month from a national average of 53.7 cents a year ago.

The estimate is derived by adding what sources say is a typical 15 cents-a-gallon retailer's markup to current wholesale prices on the East Coast, a major heating oil market.

One oil industry source believes some heating oil prices could fall by as much as a nickel a gallon later this winter.

The source, who asked not to be identified, said the drop may result as high stockpiles of heating oil here and abroad are sold quickly to make room in refiners' storage tanks for summer gasoline supplies.

Heating oil use is running 5 to 10 percent behind last year's levels as rising prices have spurred conservation efforts and boosted conversions to natural gas and other fuels.

Warmer-than-normal weather here and abroad also has kept heating oil stocks high. In the latest round of increases, Exxon USA, the nation's largest gasoline marketer, raised wholesale gasoline prices 3 cents a gallon to an average of 76.6 cents for regular. Home heating oil rose 3 cents to an average of 68 cents.

Exxon's prices are lower than average because of the company's access to Saudi Arabian crude oil, which at \$24 a barrel is nearly \$3 below the average OPEC price.

Third-ranked Shell Oil on Wednesday raised gasoline prices by 5 cents a gallon nationwide, and heating oil prices by 6 cents in the East and South and 5 cents in the Midwest and West.

Others to announce price increase in recent days include: Standard Oil Co. of Indiana, Gulf Oil Co., Texaco, Mobile, Standard Oil Co. of California, Cities Service and Sun Oil Co.

Price increases imposed before and during last month's OPEC meeting in Venezuela, and boosts by non-OPEC exporters, have raised the average price of a barrel of oil imported to the United States to about \$31, nearly double the level of a year ago.

The United States imports about half its crude oil. But about 60 percent of domestic crude oil production is not under price controls and thus rises along with OPEC's actions.

Field work announced

Energy Reserve Group, Inc. of Midland will re-enter and clean out to total depth of 8,450 feet, the No. 1 W.A. Waddell, former dual Ellenburger and Strawn opener and now depleted.

Operator will attempt to test the Strawn pay of the Dunigan multipay, 1/2 mile southwest of Strawn production, 12 miles north of Gail.

Location is 2,640 from south and 1,980 from east lines of section 20, block 30, T-6-N, T&P survey. Old records show location to be 1,980 from south and east lines of section 20, block 30, T-6-N, T&P survey.

EDWARDS EXTENDER FINALS

Arapaho Petroleum Inc. has finalized a two-mile northeast extension to the Campanero (Canyon) field of Edwards County, with the completion of the No. 8 Denman Moody, 5.5 miles northwest of Rockspings.

Operator reported a calculated absolute open flow of 5,200,000 cubic feet of gas per day, through perforations from 2,309 to 3,347 feet.

The producing zone was acidized with 31,000 gallons and fractured with 31,000 gallons. Total depth was reached at 4,100 feet, with 4.5-inch casing set 3,939 feet. Plugged back depth is 3,931 feet.

Location is 1,034 from north and 1,021 from east lines of section 60, block 12, GC&SF survey.

UPTON PRODUCER

Joy Petroleum Corp. of Midland has completed the No. 1-28 University, 1/2 mile northeast of production in the Flat Rock (Spraberry) field of Upton County, seven miles east of Rankin.

Operator reported a 24-hour pumping potential of 31 barrels of 38.9-gravity oil and 15 barrels of water, through perforations from 7,380 to 7,390 feet.

Perforations were acidized with 2,000 gallons and fractured with 30,000 gallons. Gas-liquid ratio is 806-1. Drilled to 7,423 feet, 4.5-inch casing is set on bottom.

Location is 2,198 from north and 1,763 from east lines of section 28, block 3, University Land survey.

Discovery reported

Adobe Oil & Gas Corp. of Midland announced a significant gas discovery from the Miogyp Sands in the Lake Arthur area of Vermilion Parish, La.

The Adobe No. 1 Macdonell Estate was perforated from 17,455 to 17,460 feet and flowed at a daily rate of 10 million cubic feet of gas through a 10/64-inch choke with flowing tubing pressure of 12,000 psi.

Adobe owns 38.75 percent working interest in the well with other interests owned by Traverse Corp. et al, Traverse City, Mich., with 45 percent and Quest Exploration & Development Co. et al, Houston, with 10 percent, along with Jones-O'Brien Inc. of Shreveport, La., who owns an after payout interest.

Adobe has an average payout working interest of 23.25 percent in the 6,000 acre block surrounding the discovery.

Cotton well completes

HOUSTON — Cotton Petroleum Corp., a subsidiary of United Energy Resources, Inc., Houston, and Dawson Exploration Inc. tested gas and condensate in a recently completed 9,978-foot wildcat in Jefferson County.

The Dawson Exploration, Inc., No. 1 Burrell well was completed through perforations ranging from 9,640 to 9,646 feet. Results of the completion test indicate calculated absolute open flow to be 52,000,000 cubic feet per day. The well flowed at a rate of 3,232,000 cubic feet per day and 201 barrels of 45.2-gravity condensate per day with a flowing tubing pressure of 6,321 psi on a 10/64-inch choke. Shut-in tubing pressure was 6,547 pounds. Cotton Petroleum owns a 1/2 interest in this well while Dawson Exploration is the operator and has the remaining working interest.

Offshore port may be built in stages

By MAX B. SKELTON

HOUSTON (AP) — Bob Casey had threatened to quit but says he will not do so as long as there is a "glimmer of hope" Texas can build an offshore crude oil terminal for use by super-tankers.

The project, said the chairman of the Texas Deepwater Port Authority, is too important to the state's economy for the 2.5 million barrels a day facility to be abandoned.

Casey's remarks prompted no debate Thursday and directors of the authority quickly voted unanimously to continue its feasibility studies even though indicated oil company support has been far below expectations.

The state agency now will explore the possibility of building the terminal 26 miles south of Freeport in stages but without changing the ultimate daily capacity goal.

After hearing Casey's recommendations, Sherman Fricks, Austin, said he was not ready to throw in the towel.

"And I'm not sure we even have the authority to quit," Fricks said. "Oil companies and their wisdom move in strange ways and somebody is going to build this thing."

When the Department of Transportation authorized a license last August, the authority hoped to have on hand by Jan. 1 company use agreements covering 1.4 million barrels a day, the level needed for underwriting an overall \$1.125 billion in tax free revenue bonds.

"We have non-binding agreements for seven companies for only 550,000 barrels a day," Casey said Thursday.

"Do we quit cold or explore other methods? I say we've spent too much time to quit."

Casey said the efforts should continue "as long as there is a little light."

"I suggest we bring the seven companies back and check with the Department of Transportation on the feasibility of building the terminal in increments with the final goal still 2.5 million barrels a day," he said.

Casey said the current overall construction cost estimate is \$843 million. He told newsmen, however, that starting with two mooring buoys instead of four as had been planned would boost overall costs.

Both Casey and Gerald A. Jackson, general manager, had said in October they would resign if the necessary use agreements had not been received by Dec. 31.

Casey said Thursday he had changed his mind. Jackson did submit his resignation but it was rejected.

"I'll stay as long as there is a glimmer," Jackson said. Seadock Inc., a consortium of private companies, had planned to build the port but bowed out after such major backers as Exxon, Gulf, and Mobil withdrew while terming some provisions of the DOT license as onerous. Seadock had spent about \$25 million but later agreed to sell its engineering plans and other data to the state agency for \$11 million.

Mole schedules Dawson reopening try

Mole Operating Co. of Midland has staked location for a 9,200-foot Cisco test in an attempt to reopen the Goldcreek (Cisco) field of Dawson County, 3/8 mile southwest of the only producer in the Goldcreek (Canyon reef) field, eight miles southeast of Lamesa.

The No. 1 O.P. Vogler is located 1,650 feet from south and 1,800 feet from west lines of section 6, block 34, T-4-N, T&P survey.

ANDREWS FIELD REOPENED

Amoco Production Co. has filed potential test on the No. 18 Midland Farms Deep Unit, a plug back test, to reopen the Midland Farms, West (Devonian) field of Andrews County, 13 miles southeast of Andrews.

Operator reported a 24-hour pumping potential of 88 barrels of 41.5-gravity oil and 33 barrels of water, through perforations from 11,020 to 11,060 feet, after an acid treatment of 9,000 gallons. Gas-oil ratio is 1,568-1.

Old total depth is 12,583 feet, with 5.5-inch casing set at 12,563 feet. Plugged back depth is 12,370 feet.

Location is 660 from south and 1,883 from east lines of section 16, block 42, T-2-N, G&MMB&A survey.

WINKLER ACTIVITY

Ike Lovelady, Inc. of Midland has completed the No. 1-31 Sealy Smith, 5/8 mile west of production in the Paladin (Pennsylvanian) field of Winkler County, 12 miles southeast of Kermit.

Operator reported a 24-hour flowing gauge of 49 barrels of 40.2-gravity oil and three barrels of water, through a 20/64-inch choke and perforations from 8,474 to 8,896 feet.

The producing zone was fractured with 30,500 gallons. Gas-liquid ratio is 6,122-1.

Originally drill to 9,170 feet, 4.5-inch casing is set on bottom. Plugged back depth is 9,126 feet.

Location is 467 from south and 660 from west lines of section 31, block A, G&MMB&A survey.

Kermit. Operator reported a 24-hour pumping potential of 18 barrels of 36.0-gravity oil and 65 barrels of water, through perforations from 6,056 to 6,234 feet.

The producing zone was acidized with 750 gallons. Gas-liquid ratio is 4,667-1.

Total depth is 10,235 feet, with 5.5-inch casing set at 8,619 feet. Plugged back depth is 7,983 feet.

Location is 660 from south and east lines of section 52, block A, G&MMB&A survey.

LOVING EXPLORER SET

Getty Oil Co. will drill the No. 1-25-76 Tom Lineberry as a 22,500-foot gas wildcat, one mile north of a depleted producer in the Grice, East (Atoka) field, one and three-eighths mile southeast of the same firm's No. 1-12-26 Glenn Brunson, recently staked 22,500-foot wildcat, now drilling below 8,735 feet.

Location is 1,980 from south and east lines of section 25, block 76, PSL survey, 25 miles northeast Mentone.

WINKLER PROJECT

ARCO Oil & Gas Co. will drill the No. 7-X Sealy & Smith Unit as a 9,900-foot gas test in attempt to reopen Halley (Pennsylvanian-gas) production in Winkler County and also test the Devonian pay, eight miles southeast of Wink.

Operator will drill the test as a replacement for the No. 7 Sealy & Smith, 1/2 mile northeast of Devonian production.

Location is 800 from north and east lines of section 90, block A, G&MMB&A survey.

MARTIN DEEPENING

Southland Royalty Co. of Midland will deepen the No. 1-G University to 10,000 feet, for test in the Lacaff (Wolfcamp) field of Martin County, 5/8 mile northwest of production, 17 miles southwest of Patricia.

Originally drill to 9,850 feet, the well is a former Dean producer. Location is 1,320 from north and east lines of section 3, block 7, University Land survey.

potential test on the No. 3 W.C. Tyrell Unit No. 1, 1/2 mile northwest of production in the Gomez, Northwest (Wolfcamp) field of Pecos County, nine miles northwest of Fort Stockton.

Operator reported a calculated absolute open flow potential of 1,930,000 cubic feet of gas per day, through perforations from 11,919 to 11,436 feet, which was acidized with 4,000 gallons.

Drilled to 11,800 feet, 4.5-inch casing is hung from 10,459 to 11,798 feet. Plugged back depth is 11,655 feet.

Location is 1,400 from south and east lines of section 2, block 115, GC&SF survey.

CROSBY TEST STAKED

Threshold Development Co. of Midland will drill the No. 8 Rex Wheeler, 3/8 mile northeast of production in the Hoople (Clear Fork) field of Crosby County, two miles southwest of Robertson.

Operator staked the 4,500-foot test 534 from north and 1,980 from west lines of section 1043, block 1, H&O B survey.

Threshold Development has completed the No. 3 T.C. James Jr., 1/2 mile northwest of production in the Hoople (Clear Fork) field of Crosby County, three miles southwest of Robertson.

On 24-hour pumping test it made 15 barrels of 24.2-gravity oil and 100 barrels of water, through perforations ranging from 4,350 to 4,424 feet.

The producing zone was acidized with 1,500 gallons and fractured with 30,000 gallons.

Location is 1,980 from north and west lines of section 1044, block 1, H&O B survey.

GAINES SITE STAKED

Glenn Cope of Midland filed application to drill the No. 1 Christine as a 12,800-foot test in the Champion (Devonian) field of Gaines County, one location southeast of Strawn production and one mile northeast of Devonian production.

Location spots 467 from north and east lines of labor 2, league 302, Terry County School Land survey, 13 miles southeast of Seminole.

RRC okays Shell unit

AUSTIN — The Railroad Commission authorized the Shell Oil Co. to operate the Bryans Mill (Rodessa Upper) Field in Cass County as a unit and to initiate a water injection program there to enhance additional oil production.

Through unit operation and the proposed waterflood, the Northeast Texas field is expected to yield an

additional 400,000 barrels of oil. The field, discovered in 1974, has produced more than 644,000 barrels of oil and presently has six producing wells that average 11 barrels of oil per day.

The newly authorized unit consists of 286 surface acres of which 261 are considered productive. Production is from the 6,200-foot interval.

Conoco asks for permit

AUSTIN — Conoco Inc. has submitted an application to the Railroad Commission for authorization to surface mine uranium in Atascosa County.

The proposed permit area is situated on the property of Otto Retzlaff and

John Lytle Tom Sr., approximately four miles southwest of Fashing. The area to be mined covers 54 acres of the proposed 847-acre permit area. Conoco anticipates mining by open pit method some 25,000 tons of uranium ore in the first and last years of a three-year program.

DRILLING REPORT

ANDREWS COUNTY: No. 18 Midland Farms Deep Unit, drilling 7902 feet.

BORDEN COUNTY: Laguna Petroleum Co. No. 1 W.D. Everett, drilling 2752 feet, set 12 1/2-inch casing at 317 feet.

CHAVES COUNTY: No. 1 Brangan, id 8173 feet, circulated and conditioned mud, took drill stem test from 5886 to 6036 feet, recovered 15 feet of drilling fluid.

CRANE COUNTY: Bass Enterprises No. 20 Moss, id 5562 feet, setting anchors, preparing to drill out hole.

DAWSON COUNTY: Blanks Energy Corp. No. 1 Semple-Moore, "TIGHT", id 4100 feet in lime and red shale.

EDDY COUNTY: Bass Enterprises No. 48 Paker Lake Unit, id 4100 feet, plugged and abandoned.

GAINES COUNTY: ARCO No. 1 SRC, drilling 2280 feet. Adobe Oil & Gas No. 1 Duffield, State, drilling 8294 feet.

HOWARD COUNTY: Turner & Baumgardner No. 3 Black Bass, drilling 3,851 feet.

HOCKLEY COUNTY: South Ranch Oil Co. No. 1 Williams, id 10,115 feet, swabbed 107 barrels of water and 2 barrels of oil in 9 hours through perforations from 6,800 to 6,885 feet.

IRION COUNTY: Meadco Properties No. 3-13 E. Sugg, id 4566 feet, repairing pump shaft in the formation of lime.

LEA COUNTY: John L. Cox No. 1 Dickson, id 10,700 feet, set 10 1/2-inch casing at 10,190 feet.

LEA COUNTY: Union Oil & Gas No. 1-35 Gray, building location.

LEA COUNTY: Union Oil & Gas No. 2 Laguna Deep, id 13,000 feet, moving off rotary tools.

LEA COUNTY: Exxon Corp. No. 8 P.W. Harrison, id 10,800 feet, set 8 1/2-inch casing at 10,797 feet, moving off rotary tools.

LEA COUNTY: V.F. Petroleum No. 1 Cox, id 12,148 feet, swabbed 20 barrels of clean oil in 3 hours, swabbed down, through perforations from 12,126 to 12,134 feet.

CAMPANA COUNTY: Campana Petro. No. 4-A Reed, id 8,584 feet, set 4 1/2-inch casing at total depth, waiting on completion unit.

CAMPANA COUNTY: Campana Petro. No. 9 Reed, drilling 8,824 feet in lime.

LEA COUNTY: Union Oil & Gas No. 1-35 Gray, building location.

LEA COUNTY: Union Oil & Gas No. 2 Laguna Deep, id 13,000 feet, moving off rotary tools.

LEA COUNTY: Exxon Corp. No. 8 P.W. Harrison, id 10,800 feet, set 8 1/2-inch casing at 10,797 feet, moving off rotary tools.

LEA COUNTY: V.F. Petroleum No. 1 Cox, id 12,148 feet, swabbed 20 barrels of clean oil in 3 hours, swabbed down, through perforations from 12,126 to 12,134 feet.

LEA COUNTY: Energy Reserves Group No. 3 Gulf State, drilling 5,728 feet in lime.

LEA COUNTY: Bass Enterprises No. 1 Hest, id 14,307 feet, preparing to drill out cement.

LEA COUNTY: ARCO No. 1 Langley Griffin Comm., drilling 1,321 feet.

LEA COUNTY: Belmont Petro. No. 2 Warren-American State, drilling 2,906 feet.

LEA COUNTY: Blanks Energy Corp. No. 1 Semple-Moore, "TIGHT", id 4100 feet in lime and red shale.

LEA COUNTY: ARCO No. 1 Langley Griffin Comm., drilling 1,321 feet.

LEA COUNTY: Belmont Petro. No. 2 Warren-American State, drilling 2,906 feet.

LEA COUNTY: Blanks Energy Corp. No. 1 Semple-Moore, "TIGHT", id 4100 feet in lime and red shale.

LEA COUNTY: ARCO No. 1 Langley Griffin Comm., drilling 1,321 feet.

7.99 0.00 9.00 8.00 6.99 2.99 5.99 5.99 9.99 9.99 2 OFF 3 OFF 3 OFF 3 OFF 0.99 1.59 1.98 6.99 19.98 1.39 1.59 5.99 5.99 4.00 5.29 1.79 5.00 3 OFF

CABLE TOOL DRILLING Top-To-Bottom Deepening Lease Holding Todd Aaron 312 N. Big Spring 915/684-8643 Midland, Texas

For PROMPT SERVICE CALL 682-5311 (Before 6:45 p.m. weekdays. Before 10:45 a.m. Saturday and Sunday) We want you to have YOUR NEWSPAPER ON TIME EVERY TIME The Midland Reporter-Telegram

NOPI DRILLING COMPANY Operating cable tool rigs in southeast New Mexico and West Texas 915-682-6441 505-885-9976

MISS YOUR PAPER ???



# CRMWD boosts fixed rate for member cities

**BIG SPRING** — Monthly fixed charges of the Colorado River Municipal Water District to the member cities were set at \$307,768 Thursday by directors, an increase of \$19,234 over the 1979 rates.

The distribution of increase ranged from 8.26 percent for Odessa to virtually an unchanged rate for Snyder, according to water district officials.

Most other rates are geared to those of member cities. Midland and Stanton, for example, will pay a rate of 45.36 cents per thousand gallons in 1980 — the rate Odessa paid in 1979 — plus a differential of 3.227 cents per thousand gallons.

Directors applied \$600,000 of oil company revenues to modify rates to the cities. This helped hold the line although electric power costs will go up by \$467,274 if the same amount of water is pumped in 1980 as was the case last year, water district officials indicated.

Monthly fixed charges are apportioned to member cities in the ratio that their deliveries bear to the total estimated expense of the district, plus a factor for distance from Lake J.B. Thomas. Actual rates per thousand gallons cannot be computed until the end of the year because they are based on fixed charges plus six cents per thousand gallons delivered.

The CRMWD supplies all of the water needs of Odessa, Snyder, Stanton and Big Spring, most of Midland's water requirements, and also contracts to supply specified quantities to San Angelo and Robert Lee.

# O'Connor interns at MC

Edwin Anthony "Tony" O'Connor has begun a one-semester administrative internship at Midland College, according to college president Dr. Al G. Langford.

"We are pleased to have Mr. O'Connor come to Midland College to study the school's administrative processes and the way in which our board, administrators, staff and faculty operate on a daily basis," Langford said.

O'Connor currently is enrolled in The University of Texas at Austin graduate school, specializing in community college educational administration. He received his bachelor's degree from Holy Cross in Worcester, Mass., in 1956, was commissioned as a Naval officer and became a Navy pilot the following year.

After several years as a pilot and instructor, he was assigned to Notre Dame University as a Naval ROTC instructor. He did graduate work at Notre Dame, including study of the Russian language.

During his 23 years of military service, he handled a variety of administrative and operational assignments. His last two duty assignments were as Air Operations Department Head at the Naval Air Station in Agaña, Guam, and in Corpus Christi. He retired as a commander.

During his assignment at Corpus Christi, he completed his graduate work and received the master of science degree from Corpus Christi State University.

# Plush Shades



7093 by Alice Brooks

Add elegance to any room with dramatic Austrian shades! They cost a fortune to buy, yet they're simple to make. Sew Austrian shades and valance of print or solid color cottons, shantung, poplin, gauze. Pattern 7093 easy-to-follow directions. \$1.75 for each pattern. Add 50¢ each pattern for first class airmail and handling. Send to Alice Brooks Dept. 288 Midland Reporter-Telegram Box 163, Old Chelsea Sta., New York, NY 10011. Print Name, Address, Zip, Pattern Number. EXCITING! New 1980 NEEDLE-CRAFT CATALOG with over 170 designs in great variety of crafts. 3 free patterns inside. Send \$1.00 132-Quilt Originals...\$1.50 131-Add a Block Quilts...\$1.50 130-Sweaters Sizes 38-56...\$1.50 129-Quick 'n' Easy Transfers...\$1.50 128-Patchwork Quilts...\$1.50 127-Alphans 'n' Dollies...\$1.50 126-Crafty Flowers...\$1.50 125-Petal Quilts...\$1.50 124-Gifts 'n' Ornaments...\$1.50 123-Stitch 'n' Patch Quilts...\$1.50 122-Stuff 'n' Puff Quilts...\$1.50 121-Pillow Show-Offs...\$1.50 119-Flower Crochet...\$1.50 118-Crochet with Squares...\$1.50 116-Nifty Fifty Quilts...\$1.50 115-Ripple Crochet...\$1.50 114-Complete Alphans...\$1.50 112-Prize Alphans...\$1.50 107-Instant Sewing...\$1.50 105-Instant Crochet...\$1.50 101-Quilt Collection...\$1.50

# LEGAL NOTICES

**Green Tree Country Club, Inc., John W. Wood, Jr., President, Jerry Mobley, Vice-President-Samuel W. Conner, Jr., Secretary-W. C. Osborne, Treasurer, is making application to the Texas Alcoholic Beverage Commission for a Mixed Beverage Permit on the address of 4900 Green Tree Blvd., Midland, Midland County, Texas. (January 11, 12, 1980)**

**NOTICE OF INTENTION TO INCORPORATE GOING BUSINESS** Pursuant to the provisions of Article 13.02-2.02 of the Texas Miscellaneous Corporation Laws Act, Sections 6.103171 of the Texas Business and Commerce Code, of the Texas Revised Civil Statutes, notice is hereby given that Miracle Building Services, Inc., a corporation organized under the laws of the State of Texas, will be dissolved and the business of the corporation will be transferred to the business of firm name by Miracle Building Services, Inc., a Texas corporation, at Midland, Texas. (December 21, 28, January 4, 11, 1980)

# Lodge Notices

**Midland Commandery #84, Knights Templar.** Stated convocation and installation officer: January 15, at 7:30 P.M. All Knights are invited and urged to attend. J. A. Bobbitt, Commander; George Medley, Recorder.

**Acacia Lodge No. 1414, A.F. & A.M. 1000** Up-land Lodge dark work. 7th Stated Communications 2nd & 4th Tuesdays 7:30 P.M. School of instruction every Monday night. Glenn Filippin, W.M.; Al Talbot, Secretary.

**Keystone Chapter No. 172 & Council No. 112.** 1600 W. Wall, stated meetings first Tuesday at 7:30 P.M. Floor school each Wed. 7:30 P.M. J. Morrison Brown, H.P. & T.I.M.; Geo. Medley, Sec./Rec.

**Midland Lodge #623 A.F. & A.M., 1600 W. Wall.** 682-3292. Stated meetings 2nd & 4th Thursdays. Most Worshipful Grand Master, Sam E. Hilburn will be honored at dinner, Saturday, January 5th, 7:00 P.M. New Holiday Inn Hotel, West Hwy. 80, Midland, 9¢ per person. E.A. Degee, Thursday, January 3rd, 7:00 P.M. J. Morrison Brown, W.M.; George Medley, Secretary.

**Midland Shrine Club.** No stated meetings in Dec. & Jan. 1980 Election of Officers on 2nd Friday, January 11th. Refreshments after 5:00. Dinner at 7:00. Meal \$2.50.

**Knights of the Ku Klux Klan, No. 1001.** 683-8181. W.E. Moler, President; Robert O'Donnell, Vice President; Gus Hicks, Secretary; Bobby T. Ellis, Treasurer.

# Lost and Found

**LOST PET**  
Must be found in the neighborhood where they live and/or work. We care and would like to help you find your pet. Call us and we will deliver & give you free 15111 service. This ad is placed on a basis in your neighborhood. Space to describe your pet is provided.

**LOST:** 10 year old male white Miniature Poodle. Wearing black jewel collar. \$20 reward. Call 697-2827 or 694-1425.

**LARGE reward for information leading to or return of a male sable colored Shetland Collie. Must be found immediately. 682-7324. Ext. 252 between 7 am and 4 pm. 697-4874 after 4.**

**Money Loans Wanted**  
TOP dollarers for diamonds, old gold, estate pieces, strictly confidential. Call 683-3822.

**PAWN LOANS, PERSONAL LOANS.** Furniture sales and rentals, rent to buy. Call John Bradford C/O Finance, Furniture and Pawn, 905 South Main, 685-3074.

**BUYING SILVER COINS PAYING HIGHEST PRICES CASH**  
For 1964 & earlier. Dimes, quarters, halves & silver dollars. Call Monday-Friday after 5 pm, all day weekends. Midland, 694-7393.

**FINANCING AVAILABLE**  
long term, farm, ranch and commercial loans, construction funds and standby. TAKE OUT LOANS. Also re-financing.

**LUBBOCK MORTGAGE CO. INC.**  
METRO TOWER, 1220 Broadway, Suite 202, Lubbock, Texas 762-6523

# Help Wanted

**TRI-CITY BEVERAGE (DR. PEPPER)**  
Has Opening For... **ADVANCED SALESPERSON** (Male or Female)  
Apply In Person **2101 MARKET STREET**  
**ACCOUNTS PAYABLE/ INVENTORY CONTROL**  
Minimum 2 years experience and some college accounting. Ordering, processing payment, and reconciling purchases of petroleum products. Benefits include savings plan, medical and life insurance, paid vacation and holidays, year end bonus, free parking.  
**EDDINS-WALCHER COMPANY**  
2406 W. Wall  
684-5539

**LINEN SUPPLY & UNIFORM ROUTEMAN**  
Excellent Working Conditions, Good Starting Salary  
Paid Vacation After 1 Year Employment  
Uniforms Furnished  
Apply In Person  
**SNOWHITE LAUNDRY & CLEANERS**  
315 S. Marienfeld  
equal opportunity employer

**WANTED**  
Neat, dependable experienced waitress. Good salary and tips. Uniforms and meals furnished.

**HIGH SKY RESTAURANT MIDLAND AIR TERMINAL**  
563-0860

**PART TIME— TO \$100 PER WEEK**  
Ladies work from your own home on new telephone program. Earn \$4 to \$6 per hour and more.  
CALL 697-6081

**SALES MANAGER**  
Must be experienced in direct sales and capable of training others. Earnings should exceed \$30,000 per year. Product with unlimited potential. Both home and commercial.  
CALL 683-3043  
**FOR APPOINTMENT**  
TELEPHONE solicitor needed, up to \$4 per hour. Will train. 684-6013.

**NEED someone for stocking and in town delivery.** Call 684-6397.

**WATRESS** needed for 6 am to 2 pm shift. Call 697-2201 for appointment.

**NEED wanted 2 days a week. \$4 hour.** Please call after 5. 682-9252.

**NEED lady to work in Day Care Center.** 682-0076.

**NEED gas station attendant.** Apply in person, 3110 Garden City Highway.

**FULL TIME Secretary** wanted. 8 to 5. Y.M.C.A. 800 North Big Spring.

**WANTED:** electrical helpers for oil field electrical work. 683-7569.

**HAVE immediate opening for accounts receivable clerk.** Call 682-9451.

**APARTMENT assistant manager.** Free apartment. Call 684-8182.

**SOBER, reliable, semi-retired person** to run a home. 682-4029.

**ANS, LVN's, aides and nurses** needed. Call 684-6881 or 563-1142.

**LIGHT delivery person** needed, easy work. Must have own transportation. Know the area. 684-6013.

**RECEPTIONIST** for small oil company. Light typing, learning experience. Call 682-5336.

**NEED someone to pick up child** at William Travis and keep until 5 or 5:30. 683-8752 or 682-2752.

**WANTED:** experienced housekeeper 3 days a week. References required. 682-5418.

**NEED kitchen help.** Will train. Apply in person. Parkview Hospital, 3201 Sage, Midland.

**NEED Service agent to wash and clean cars.** Apply Midland Air Terminal. Avis Rent-A-Car.

**DAYTIME warehouse help** wanted. Apply in person to Webb Davis Fruit Company, Midland Air Terminal.

**COUNTER help** needed, 4 hour shifts or 8 hour shifts. Price Crawley Retail Drug, 315 Dodson.

**HAVE immediate opening for sales person** with musical background. Call 682-9451.

**FULL TIME apartment maintenance person.** Free apartment plus salary. Must be fully qualified. 694-8182.

**OIL Field Supply Trainee:** neat, some college preferred, relocate. Send resume to Box 34, Midland, Texas 79701.

**NEEDED:** Receptionist/Secretary. 17-40 work, 8:00 month. Contact Mike Moran, 563-4414 or 563-4415.

**EXPERIENCED** drivers, motor men, derrick men, operators, floor hands, roustabouts. Come by 702 S. Main. ROOFERS needed, experience preferred but not necessary. Must have own transportation. Call 685-8607.

**DELIVERY person** with commercial license to deliver furniture. Call Carter Furniture at 682-2843 or come by 301 E. Illinois.

**Midland Suzuki**  
Needs **MOTORCYCLE MECHANIC**  
Experienced preferred.  
Apply in person  
**2601 N. Big Spring**

**BURGER KING**  
Needs quality people for lunch shift and weekends.  
Full or Part-Time  
**UP TO \$3.50 PER HOUR PLUS BENEFITS**  
Apply in person after 2:00 p.m. daily  
**710 Andrews Hwy.**

**DELIVERY MEN**  
Good driving record. Commercial license required. \$450 per hour to start. Call Charlie, 694-8896.

**BENNETT**  
Personnel Consultants  
**3211 W. Wall, Suite 3B**

**NURSES AIDES**  
needed for 7 to 3 and 3 to 11 shifts. Contact:  
**K. LOMANDO, R.N.**  
697-3108  
**TERRACE WEST**  
2800 MIDLAND DR.  
Midland, Texas

**WAITRESSES & WAITERS**  
**COOKS - BUS PERSONS**  
**KITCHEN HELP**  
Full or Part-Time  
Apply in person 2 to 5 pm  
Monday thru Friday

**EL CHICO**  
45 Plaza Center  
(Wadley & Garfield)

# The Midland Reporter-Telegram

# WANT AD ORDER FORM

PHONE 682-6222

PHONE 682-6222

# WRITE YOUR WANT AD HERE TO DETERMINE COST OF YOUR AD, PUT EACH WORD IN SPACE PROVIDED

(1)	(2)	(3)	(4)	(5)
(6)	(7)	(8)	(9)	(10)
(11)	(12)	(13)	(14)	(15)
(16)	(17)	(18)	(19)	(20)
(21)	(22)	(23)	(24)	(25)

# CHECK THE COST OF YOUR AD HERE

RATES SHOWN ARE BASED ON MULTIPLE INSERTIONS (MINIMUM CHARGE 15 WORDS)

NO. OF WORDS	1 DAY	2 DAYS	3 DAYS	4 DAYS	5 DAYS	6 DAYS	7 DAYS	8 DAYS	9 DAYS	10 DAYS	14 DAYS	15 DAYS	30 DAYS
15	3.00	5.10	6.75	FREE	9.60	FREE	12.30	FREE	17.10	FREE	32.55		
16	3.20	5.44	7.20	FREE	10.34	FREE	13.12	FREE	18.34	FREE	34.72		
17	3.40	5.78	7.65	FREE	11.08	FREE	13.94	FREE	19.38	FREE	36.89		
18	3.60	6.12	8.10	FREE	11.82	FREE	14.76	FREE	20.52	FREE	39.06		
19	3.80	6.46	8.55	FREE	12.56	FREE	15.52	FREE	21.66	FREE	41.23		
20	4.00	6.80	9.00	FREE	13.30	FREE	16.40	FREE	22.80	FREE	43.40		
21	4.20	7.14	9.45	FREE	14.04	FREE	17.22	FREE	23.94	FREE	45.57		
22	4.40	7.48	9.90	FREE	14.78	FREE	18.04	FREE	25.08	FREE	47.74		
23	4.60	7.82	10.35	FREE	15.52	FREE	18.84	FREE	26.22	FREE	49.91		
24	4.80	8.16	10.80	FREE	16.26	FREE	19.64	FREE	27.36	FREE	52.08		
25	5.00	8.50	11.25	FREE	17.00	FREE	20.40	FREE	28.50	FREE	54.25		

# CLIP AND MAIL--PLEASE ENCLOSE CHECK OR MONEY ORDER

Publish for \_\_\_\_\_ Days, Beginning \_\_\_\_\_

NAME \_\_\_\_\_ PHONE \_\_\_\_\_

ADDRESS \_\_\_\_\_

CITY \_\_\_\_\_ STATE \_\_\_\_\_ ZIP \_\_\_\_\_

FOR YOUR CONVENIENCE CLIP OUT LABEL AT RIGHT AND ATTACH TO YOUR ENVELOPE

THE MIDLAND REPORTER-TELEGRAM  
**CLASSIFIED DEPT.**  
P. O. BOX 1650  
MIDLAND, TEXAS 79702

# DEAR ABBY

**ANOTHER TOP-RANK FEATURE APPEARING REGULARLY**

SAVE 40% on HOME DELIVERY  
**682-5311**

# Classified Advertising Dial

682-6222  
OFFICE HOURS:  
Week Days...8 a.m. to 5 p.m.

Closed Saturdays  
Corrections and cancellations may be made Saturday morning between 8 am and 10 am only.

AFTER AD HAS BEEN PLACED, IT MUST RUN ONE DAY.

COPY CHANGES  
3 p.m. day prior to publication except 3 p.m. Friday for Sunday editions; 10 a.m. Saturday for Monday editions.

**WORD AD DEADLINES:**  
5:00 p.m. Friday for Sunday  
5:00 p.m. Friday for Monday  
4:00 p.m. Monday for Tuesday  
4:00 p.m. Tuesday for Wednesday  
4:00 p.m. Wednesday for Thursday  
4:00 p.m. Thursday for Friday  
4:00 p.m. Friday for Saturday

**SPACE AD DEADLINES:**  
5:00 p.m. Friday for Sunday  
5:00 p.m. Friday for Monday  
3:00 p.m. Monday for Tuesday  
3:00 p.m. Tuesday for Wednesday  
3:00 p.m. Wednesday for Thursday  
3:00 p.m. Thursday for Friday  
4:00 p.m. Friday for Saturday

**DISPLAY DEADLINES:**  
12:00 a.m. Thursday for Sunday  
12:00 a.m. Thursday for Monday  
4:00 p.m. Friday for Tuesday  
12:00 a.m. Monday for Wednesday  
12:00 a.m. Wednesday for Friday  
3:00 p.m. Friday for Saturday

**SAME DEADLINES APPLY FOR CANCELLATIONS**

1 LODGE NOTICES  
2 PUBLIC NOTICE  
3 PERSONALS  
4 CARD OF THANKS  
5 LOST AND FOUND  
6 MISCELLANEOUS  
7 SCHOOLS-INSTRUCTION  
8 WHO'S WHO  
9 REAL ESTATE  
10 SALES-AGENTS  
11 SITUATIONS WANTED  
12 CHILD CARRIAGES  
13 BUSINESS OPPORTUNITIES  
14 AUTOMOBILES  
15 TRUCKS & TRACTORS  
16 WHEEL DR. VEHICLES  
17 MOTORCYCLES  
18 AIRPLANES  
19 BOATS AND MOTORS  
20 RECREATIONAL VEHICLES  
21 HOUSEHOLD GOODS  
22 ARTICLES AND ART  
23 SPORTING GOODS  
24 FURNITURE  
25 CAMERAS AND SUPPLIES  
26 GOOD THINGS TO EAT  
27 FROZEN FOOD LOCKERS  
28 FIREWOOD  
29 OFFICE SUPPLIES  
30 STORE, SHOP, CAFE EQUIPMENT  
31 AIR CONDITIONING & HEATING  
32 BUILDING MATERIALS  
33 PORTABLE BUILDINGS  
34 MACHINERY & TOOLS  
35 OILFIELD SUPPLIES  
36 WHEEL DR. VEHICLES  
37 MOTORCYCLES  
38 AIRPLANES  
39 BOATS AND MOTORS  
40 RECREATIONAL VEHICLES  
41 HOUSEHOLD GOODS  
42 ARTICLES AND ART  
43 SPORTING GOODS  
44 FURNITURE  
45 CAMERAS AND SUPPLIES  
46 GOOD THINGS TO EAT  
47 FROZEN FOOD LOCKERS  
48 FIREWOOD  
49 OFFICE SUPPLIES  
50 STORE, SHOP, CAFE EQUIPMENT  
51 AIR CONDITIONING & HEATING  
52 BUILDING MATERIALS  
53 PORTABLE BUILDINGS  
54 MACHINERY & TOOLS  
55 OILFIELD SUPPLIES  
56 WHEEL DR. VEHICLES  
57 MOTORCYCLES  
58 AIRPLANES  
59 BOATS AND MOTORS  
60 RECREATIONAL VEHICLES  
61 HOUSEHOLD GOODS  
62 ARTICLES AND ART  
63 SPORTING GOODS  
64 FURNITURE  
65 CAMERAS AND SUPPLIES  
66 GOOD THINGS TO EAT  
67 FROZEN FOOD LOCKERS  
68 FIREWOOD  
69 OFFICE SUPPLIES  
70 STORE, SHOP, CAFE EQUIPMENT  
71 AIR CONDITIONING & HEATING  
72 BUILDING MATERIALS  
73 PORTABLE BUILDINGS  
74 MACHINERY & TOOLS  
75 OILFIELD SUPPLIES  
76 WHEEL DR. VEHICLES  
77 MOTORCYCLES  
78 AIRPLANES  
79 BOATS AND MOTORS  
80 RECREATIONAL VEHICLES  
81 HOUSEHOLD GOODS  
82 ARTICLES AND ART  
83 SPORTING GOODS  
84 FURNITURE  
85 CAMERAS AND SUPPLIES  
86 GOOD THINGS TO EAT  
87 FROZEN FOOD LOCKERS  
88 FIREWOOD  
89 OFFICE SUPPLIES  
90 STORE, SHOP, CAFE EQUIPMENT  
91 AIR CONDITIONING & HEATING  
92 BUILDING MATERIALS  
93 PORTABLE BUILDINGS  
94 MACHINERY & TOOLS  
95 OILFIELD SUPPLIES  
96 WHEEL DR. VEHICLES  
97 MOTORCYCLES  
98 AIRPLANES  
99 BOATS AND MOTORS  
100 RECREATIONAL VEHICLES  
101 HOUSEHOLD GOODS  
102 ARTICLES AND ART  
103 SPORTING GOODS  
104 FURNITURE  
105 CAMERAS AND SUPPLIES  
106 GOOD THINGS TO EAT  
107 FROZEN FOOD LOCKERS  
108 FIREWOOD  
109 OFFICE SUPPLIES  
110 STORE, SHOP, CAFE EQUIPMENT  
111 AIR CONDITIONING & HEATING  
112 BUILDING MATERIALS  
113 PORTABLE BUILDINGS  
114 MACHINERY & TOOLS  
115 OILFIELD SUPPLIES  
116 WHEEL DR. VEHICLES  
117 MOTORCYCLES  
118 AIRPLANES  
119 BOATS AND MOTORS  
120 RECREATIONAL VEHICLES  
121 HOUSEHOLD GOODS  
122 ARTICLES AND ART  
123 SPORTING GOODS  
124 FURNITURE  
125 CAMERAS AND SUPPLIES  
126 GOOD THINGS TO EAT  
127 FROZEN FOOD LOCKERS  
128 FIREWOOD  
129 OFFICE SUPPLIES  
130 STORE, SHOP, CAFE EQUIPMENT  
131 AIR CONDITIONING & HEATING  
132 BUILDING MATERIALS  
133 PORTABLE BUILDINGS  
134 MACHINERY & TOOLS  
135 OILFIELD SUPPLIES  
136 WHEEL DR. VEHICLES  
137 MOTORCYCLES  
138 AIRPLANES  
139 BOATS AND MOTORS  
140 RECREATIONAL VEHICLES  
141 HOUSEHOLD GOODS  
142 ARTICLES AND ART  
143 SPORTING GOODS  
144 FURNITURE  
145 CAMERAS AND SUPPLIES  
146 GOOD THINGS TO EAT  
147 FROZEN FOOD LOCKERS  
148 FIREWOOD  
149 OFFICE SUPPLIES  
150 STORE, SHOP, CAFE EQUIPMENT  
151 AIR CONDITIONING & HEATING  
152 BUILDING MATERIALS  
153 PORTABLE BUILDINGS  
154 MACHINERY & TOOLS  
155 OILFIELD SUPPLIES  
156 WHEEL DR. VEHICLES  
157 MOTORCYCLES  
158 AIRPLANES  
159 BOATS AND MOTORS  
160 RECREATIONAL VEHICLES  
161 HOUSEHOLD GOODS  
162 ARTICLES AND ART  
163 SPORTING GOODS  
164 FURNITURE  
165 CAMERAS AND SUPPLIES  
166 GOOD THINGS TO EAT  
167 FROZEN FOOD LOCKERS  
168 FIREWOOD  
169 OFFICE SUPPLIES  
170 STORE, SHOP, CAFE EQUIPMENT  
171 AIR CONDITIONING & HEATING  
172 BUILDING MATERIALS  
173 PORTABLE BUILDINGS  
174 MACHINERY & TOOLS  
175 OILFIELD SUPPLIES  
176 WHEEL DR. VEHICLES  
177 MOTORCYCLES  
178 AIRPLANES  
179 BOATS AND MOTORS  
180 RECREATIONAL VEHICLES  
181 HOUSEHOLD GOODS  
182 ARTICLES AND ART  
183 SPORTING GOODS  
184 FURNITURE  
185 CAMERAS AND SUPPLIES  
186 GOOD THINGS TO EAT  
187 FROZEN FOOD LOCKERS  
188 FIREWOOD  
189 OFFICE SUPPLIES  
190 STORE, SHOP, CAFE EQUIPMENT  
191 AIR CONDITIONING & HEATING  
192 BUILDING MATERIALS  
193 PORTABLE BUILDINGS  
194 MACHINERY & TOOLS  
195 OILFIELD SUPPLIES  
196 WHEEL DR. VEHICLES  
197 MOTORCYCLES  
198 AIRPLANES  
199 BOATS AND MOTORS  
200 RECREATIONAL VEHICLES  
201 HOUSEHOLD GOODS  
202 ARTICLES AND ART  
203 SPORTING GOODS  
204 FURNITURE  
205 CAMERAS AND SUPPLIES  
206 GOOD THINGS TO EAT  
207 FROZEN FOOD LOCKERS  
208 FIREWOOD  
209 OFFICE SUPPLIES  
210 STORE, SHOP, CAFE EQUIPMENT  
211 AIR CONDITIONING & HEATING  
212 BUILDING MATERIALS  
213 PORTABLE BUILDINGS  
214 MACHINERY & TOOLS  
215 OILFIELD SUPPLIES  
216 WHEEL DR. VEHICLES  
217 MOTORCYCLES  
218 AIRPLANES  
219 BOATS AND MOTORS  
220 RECREATIONAL VEHICLES  
221 HOUSEHOLD GOODS  
222 ARTICLES AND ART  
223 SPORTING GOODS  
224 FURNITURE  
225 CAMERAS AND SUPPLIES  
226 GOOD THINGS TO EAT  
227 FROZEN FOOD LOCKERS  
228 FIREWOOD  
229 OFFICE SUPPLIES  
230 STORE, SHOP, CAFE EQUIPMENT  
231 AIR CONDITIONING & HEATING  
232 BUILDING MATERIALS  
233 PORTABLE BUILDINGS  
234 MACHINERY & TOOLS  
235 OILFIELD SUPPLIES  
236 WHEEL DR. VEHICLES  
237 MOTORCYCLES  
238 AIRPLANES  
239 BOATS AND MOTORS  
240 RECREATIONAL VEHICLES  
241 HOUSEHOLD GOODS  
242 ARTICLES AND ART  
243 SPORTING GOODS  
244 FURNITURE  
245 CAMERAS AND SUPPLIES  
246 GOOD THINGS TO EAT  
247 FROZEN FOOD LOCKERS  
248 FIREWOOD  
249 OFFICE SUPPLIES  
250 STORE, SHOP, CAFE EQUIPMENT  
251 AIR CONDITIONING & HEATING  
252 BUILDING MATERIALS  
253 PORTABLE BUILDINGS  
254 MACHINERY & TOOLS  
255 OILFIELD SUPPLIES  
256 WHEEL DR. VEHICLES  
257 MOTORCYCLES  
258 AIRPLANES  
259 BOATS AND MOTORS  
260 RECREATIONAL VEHICLES  
261 HOUSEHOLD GOODS  
262 ARTICLES AND ART  
263 SPORTING GOODS  
264 FURNITURE  
265 CAMERAS AND SUPPLIES  
266 GOOD THINGS TO EAT  
267 FROZEN FOOD LOCKERS  
268 FIREWOOD  
269 OFFICE SUPPLIES  
270 STORE, SHOP, CAFE EQUIPMENT  
271 AIR CONDITIONING & HEATING  
272 BUILDING MATERIALS  
273 PORTABLE BUILDINGS  
274 MACHINERY & TOOLS  
275 OILFIELD SUPPLIES  
276 WHEEL DR. VEHICLES  
277 MOTORCYCLES  
278 AIRPLANES  
279 BOATS AND MOTORS  
280 RECREATIONAL VEHICLES  
281 HOUSEHOLD GOODS  
282 ARTICLES AND ART  
283 SPORTING GOODS  
284 FURNITURE  
285 CAMERAS AND SUPPLIES  
286 GOOD THINGS TO EAT  
287 FROZEN FOOD LOCKERS  
288 FIREWOOD  
289 OFFICE SUPPLIES  
290 STORE, SHOP, CAFE EQUIPMENT  
291 AIR CONDITIONING & HEATING  
292 BUILDING MATERIALS  
293 PORTABLE BUILDINGS  
294 MACHINERY & TOOLS  
295 OILFIELD SUPPLIES  
296 WHEEL DR. VEHICLES  
297 MOTORCYCLES  
298 AIRPLANES  
299 BOATS AND MOTORS  
300 RECREATIONAL VEHICLES  
301 HOUSEHOLD GOODS  
302 ARTICLES AND ART  
303 SPORTING GOODS  
304 FURNITURE  
305 CAMERAS AND SUPPLIES  
306 GOOD THINGS TO EAT  
307 FROZEN FOOD LOCKERS  
308 FIREWOOD  
309 OFFICE SUPPLIES  
310 STORE, SHOP, CAFE EQUIPMENT  
311 AIR CONDITIONING & HEATING  
312 BUILDING MATERIALS  
313 PORTABLE BUILDINGS  
314 MACHINERY & TOOLS  
315 OILFIELD SUPPLIES  
316 WHEEL DR. VEHICLES  
317 MOTORCYCLES  
318 AIRPLANES  
319 BOATS AND MOTORS  
320 RECREATIONAL VEHICLES  
321 HOUSEHOLD GOODS  
322 ARTICLES AND ART  
323 SPORTING GOODS  
324 FURNITURE  
325 CAMERAS AND SUPPLIES  
326 GOOD THINGS TO EAT  
327 FROZEN FOOD LOCKERS  
328 FIREWOOD  
329 OFFICE SUPPLIES  
330 STORE, SHOP, CAFE EQUIPMENT  
331 AIR CONDITIONING & HEATING  
332 BUILDING MATERIALS  
333 PORTABLE BUILDINGS  
334 MACHINERY & TOOLS  
335 OILFIELD SUPPLIES  
336 WHEEL DR. VEHICLES  
337 MOTORCYCLES  
338 AIRPLANES  
339 BOATS AND MOTORS  
340 RECREATIONAL VEHICLES  
341 HOUSEHOLD GOODS  
342 ARTICLES AND ART  
343 SPORTING GOODS  
344 FURNITURE  
345 CAMERAS AND SUPPLIES  
346 GOOD THINGS TO EAT  
347 FROZEN FOOD LOCKERS  
348 FIREWOOD  
349 OFFICE SUPPLIES  
350 STORE, SHOP, CAFE EQUIPMENT  
351 AIR CONDITIONING & HEATING  
352 BUILDING MATERIALS  
353 PORTABLE BUILDINGS  
354 MACHINERY & TOOLS  
355 OILFIELD SUPPLIES  
356 WHEEL DR. VEHICLES  
357 MOTORCYCLES  
358 AIRPLANES  
359 BOATS AND MOTORS  
360 RECREATIONAL VEHICLES  
361 HOUSEHOLD GOODS  
362 ARTICLES AND ART  
363 SPORTING GOODS  
364 FURNITURE  
365 CAMERAS AND SUPPLIES  
366 GOOD THINGS TO EAT  
367 FROZEN FOOD LOCKERS  
368 FIREWOOD  
369 OFFICE SUPPLIES  
370 STORE, SHOP, CAFE EQUIPMENT  
371 AIR CONDITIONING & HEATING  
372 BUILDING MATERIALS  
373 PORTABLE BUILDINGS  
374 MACHINERY & TOOLS  
375 OILFIELD SUPPLIES  
376 WHEEL DR. VEHICLES  
377 MOTORCYCLES  
378 AIRPLANES  
379 BOATS AND MOTORS  
380 RECREATIONAL VEHICLES  
381 HOUSEHOLD GOODS  
382 ARTICLES AND ART  
383 SPORTING GOODS  
384 FURNITURE  
385 CAMERAS AND SUPPLIES  
386 GOOD THINGS TO EAT  
387 FROZEN FOOD LOCKERS  
388 FIREWOOD  
3



### CRMWD boosts fixed rate for member cities

**BIG SPRING** — Monthly fixed charges of the Colorado River Municipal Water District to the member cities were set at \$307,768 Thursday by directors, an increase of \$19,234 over the 1979 rates. The distribution of increase ranged from 8.26 percent for Odessa to virtually an unchanged rate for Snyder, according to water district officials.

Most other rates are geared to those of member cities. Midland and Stanton, for example, will pay a rate of 45.36 cents per thousand gallons in 1980 — the rate Odessa paid in 1979 — plus a differential of 3.227 cents per thousand gallons.

Directors applied \$600,000 of oil company revenues to modify rates to the cities. This helped hold the line although electric power costs will go up by \$467,274 if the same amount of water is pumped in 1980 as was the case last year, water district officials indicated.

Monthly fixed charges are apportioned to member cities in the ratio that their deliveries bear to the total estimated expense of the district, plus a factor for distance from Lake J.B. Thomas. Actual rates per thousand gallons cannot be computed until the end of the year because they are based on fixed charges plus six cents per thousand gallons delivered.

The CRMWD supplies all of the water needs of Odessa, Snyder, Stanton and Big Spring, most of Midland's water requirements, and also contracts to supply specified quantities to San Angelo and Robert Lee.

### O'Connor interns at MC

Edwin Anthony "Tony" O'Connor has begun a one-semester administrative internship at Midland College, according to college president Dr. Al G. Langford.

"We are pleased to have Mr. O'Connor come to Midland College to study the school's administrative processes and the way in which our board, administrators, staff and faculty operate on a daily basis," Langford said.

O'Connor currently is enrolled in The University of Texas at Austin graduate school, specializing in community college educational administration. He received his bachelor's degree from Holy Cross in Worcester, Mass., in 1956, was commissioned as a Naval officer and became a Navy pilot the following year.

After several years as a pilot and instructor, he was assigned to Notre Dame University as a Naval ROTC instructor. He did graduate work at Notre Dame, including study of the Russian language.

During his 23 years of military service, he handled a variety of administrative and operational assignments. His last two duty assignments were as Air Operations Department Head at the Naval Air Station in Agana, Guam, and in Corpus Christi.

During his assignment at Corpus Christi, he completed his graduate work and received the master of science degree from Corpus Christi State University.



**Plush Shades**  
Add elegance to any room with dramatic Austrian shades! They cost a fortune to buy yet they're simple to make. Sew Austrian shades and valances of print or solid color cottons, shantung, poplin, gauze. Pattern 7093 easy to follow directions. \$1.75 for each pattern. Add 50¢ each pattern for first-class airmail and handling. Send to: Alice Brooks Dept. 208 Midland Reporter-Telegram Box 163, Old Chelsea Sta., New York, NY 10011. Print Name, Address, Zip, Pattern Number, EAGLE: New 1980 NEEDLE CRAFT CATALOG with over 170 designs in great variety of crafts. 3 free patterns inside. Send \$1.00 132 Quilt Originals \$1.50 131 Add a Block Quilt \$1.50 130 Sweaters Sizes 38-56 \$1.50 129 Quick/Easy Transfers \$1.50 128 Patchwork Quilt \$1.50 127 Alphans 'n' Dories \$1.50 126 Crafty Flowers \$1.50 125 Patch Quilt \$1.50 124 Gifts 'n' Ornaments \$1.50 123 Stitch 'n' Patch Quilt \$1.50 122 Stuff 'n' Puff Quilt \$1.50 121 Pillow Show-Offs \$1.50 120 Crochet a Wardrobe \$1.50 119 Flower Crochet \$1.50 118 Crochet with Squares \$1.50 115 Witty Fifty Quilt \$1.50 114 Complete Alphans \$1.50 112 Prize Alphans \$1.50 107 Instant Sewing \$1.50 105 Instant Crochet \$1.50 101 Quilt Collection \$1.50

**LEGAL NOTICES**  
**Green Tree Country Club, Inc., John W. Wood, Jr., President, Jerry Mobley, Vice-President, Samuel W. Conner, Jr., Secretary, W. C. Osborne, Treasurer, is making application to the Texas Alcoholic Beverage Commission for a Mixed Beverage Permit on the address of 4900 Green Tree Blvd., Midland, Midland County, Texas. (January 11, 12, 1980)**

**NOTICE OF INTENTION TO INCORPORATE GOING BUSINESS**  
PURSUANT TO THE PROVISIONS OF ARTICLE 102.2 OF THE TEXAS BUSINESS AND COMMERCE CODE OF THE TEXAS REVISED CIVIL STATUTES, notice is hereby given that Mirale Building Services, a sole proprietorship operated by Eddy T. Mirale, existing business at Midland County, Texas, will be dissolved and that after December 31, 1979, the business will be conducted without change of firm name by Mirale Building Services, Inc., a corporation organized under the laws of the State of Texas, effective December 31, 1979. (December 21, 28, January 4, 11, 1980)

**11 Lodge Notices**  
Midland Commandery 684, Knights Templar, stated convolve and installation officers, January 11, 12, 1980. All Knights are invited and urged to attend. J.A. Bobbitt, Commander; George Medley, Recorder.

Acacia Lodge No. 1414, A.F. & M. 1000 Upland Lodge dark until January 7th. Stated Communications 2nd & 4th Tuesdays, 7:30 P.M. School of instruction every Monday night, Glenn Flippin, W.M.; Al Talbot, Secretary.

Keystone Chapter No. 172 & Council No. 112, 1600 W. Wall, stated meetings first Tuesday at 7:30 P.M. Floor school each Wed., 7:30 P.M. J. Morrison Brown, H.P. & T.I.M.; Geo. Medley, Sec./Rec.

Midland Lodge #423 A.F. & M., 1400 W. Wall, 8:30 P.M. Stated meetings 2nd & 4th Thursdays. Worshipful Grand Master, Sam E. Hilburn will be honored at dinner, Saturday, January 19th, 7:00 P.M. New Holiday Inn Holiday, West Hwy. 80, Midland, 99 per person, A.E. Degree, Thursday, January 3rd, 7:00 P.M. J. Morrison Brown, W.M.; George Medley, Secretary.

Midland Shrine Club, No. 1127, stated meetings, Monday, Jan. 13, 1980. Officers on 2nd Friday, January 11th. Refreshments after 5:00. Dinner at 7:00. Meal \$2.50. Eagles Lodge, Hwy. 80 information, (682-8181). W.E. Moler, President; Robert O'Donnell, Vice President; Gus Hicks, Secretary; Bobby T. Ellis, Treasurer.

**65 Lost and Found**  
**LOST PET**  
Have you found in the neighborhood where they live and/or work? We care and would like to help you find your pet. Call us and we will deliver it to you. Free 11x11 posters like this and to place on posts in your neighborhood. Space to describe your pet is provided.

**66 Money Loans Wanted**  
TOP dollars for diamonds, old gold, estate pieces, strictly confidential. Call 682-7281, ext. 232 between 7 am and 4 pm, 697-8774 after 4.

**67 BUYING SILVER COINS PAYING HIGHEST PRICES**  
**CASH**  
For 1964 & earlier. Dimes, quarters, halves & silver dollars. Call Monday-Friday after 5 pm, all day weekends. Midland, 694-7593.

**FINANCING AVAILABLE**  
long term farm, ranch and commercial loans, construction funds and standby. TAKE OUT LOANS. Also re-financing.

**LUBBOCK MORTGAGE CO. INC.**  
METRO TOWER, 1220 Broadway, Suite 202, Lubbock, Texas 79602-6523

**03 Personals**  
NEED prayer? There are people willing to pray. 682-7281.

**04 Enroll Now For Day & Night Classes**  
We can teach you OFFICE MACHINES in 3 months (IBM Key Punch included) STEENOGRAPHY in 4 months BOOKKEEPING in 5 months SECRETARIAL in 6 months ACCOUNTING in 6 months DRAFTING in 12 months PLACEMENT ASSISTANCE COURSES APPROVED FOR VETERANS

**COMMERCIAL COLLEGE**  
Certified by Texas Education Dept. 3306 Andrews Highway

**05 HAVE MOVED TO**  
1600 RANKIN HIGHWAY Permian Tire Service Moved from 3202 W. Front

**BUYING SILVER COINS PAYING HIGHEST PRICES CASH**  
For 1964 & earlier. Dimes, quarters, halves & silver dollars. Call Monday-Friday after 5 pm, all day weekends. Midland, 694-7593.

**CASH FOR COINS**  
Pay \$15.00 per dollar for dimes, quarters & halves—1964 & before. Pay \$15.50 each for silver dollars—1955 & before. Also buy 40¢ halves & rare coins. Phone 683-7638

**SHAKLEE PRODUCTS**  
Yes! We have all the vitamins, cleaning products and Lovox Cosmetics. We also give free facials for cosmetics. Monday through Saturday. Please call before you come. 694-4312 or 694-3521. Roy & Eunice at 1012 Denton.

**TIDY CAR**  
Preserve the beauty of your automobile investment with a protective shield that seals out the harmful effects of weather, sun, pollution & oxidation. With Tidy Car's Preserve-A-Shine, never wash your car again! One Preserve-A-Shine treatment, plus an annual re-treatment & your car's showroom shine is always protected. It's guaranteed in writing. Come by 3207 Andrews Hwy. (Big D Station) or call 694-7641 or 683-7729.

**04 Card of Thanks**  
We the family of Elmer Lamb would like to express our gratitude to our friends who have done so much for us during our recent sorrow. May we thank you for your friendship, affection, flowers, food and loving thoughts. God bless you; Muriel Lamb, children, grandchildren.

**05 Lost and Found**  
REWARD for lost 7 month old male Golden retriever. Lost in vicinity of 906 W. Michigan. Call 682-7225. FOUND: one pet rabbit. Call 694-7459.

LOST: small brown and white puppy with curled tail. Wearing green collar. Call 682-7800.  
LOST: small male Siamese cat, black face and one white hind foot. 1400 Block Community Lane, 682-6316.  
LOST in Delwood area, 2 puppies, part Chihuahua. If found please call, 697-3527 after 5.

LOST: December 24: Embroidered linen in plastic bag along State 158 near Gardendale. Reward: 684-5094.  
FOUND: Siamese kitten, in vicinity Missouri and Wall. Call 682-4220 between 8 a.m. and noon.  
FOUND: Boston Terrier in vicinity of Wadley and North Big Spring. Call 682-4220 between 8 a.m. and noon.

MINIATURE Schnauzers, Only 2 left. Both female. AKC registered. \$150. (985) 392-7727.  
SOMEONE forgot to return my metal detector. I need it. Paul Davis, 683-4485.  
REWARD for lost 9 month old male Doberman, black with rust markings. Lost near Delwood. Reward: 684-5094. Call 682-9481, ext. 397. After 5:30, 683-4328.

LOST in vicinity of 2000-2200 block of Denver, one male part-Keeshond puppy, 3 months old, light-brown. 685-1174.  
LOST: reddish brown male Doberman, black with rust markings. Lost at slightly below the Hill above the name "Schultz". Has collar and tag. Reward: Call 682-4479.

**TRI-CITY BEVERAGE (DR. PEPPER)**  
Has Opening For... **ADVANCED SALESPERSON** (Male or Female)  
Apply In Person 2101 MARKET STREET

**ACCOUNTS PAYABLE/ INVENTORY CONTROL**  
Minimum 2 years experience and some college accounting. Ordering, processing payment, and reconciling purchases of petroleum products. Benefits include savings plan, medical and life insurance, paid vacation and holidays, year end bonus, free parking.  
**EDDINS-WALCHER COMPANY** 2406 W. Wall 684-5539

**LINEN SUPPLY & UNIFORM ROUTEMAN**  
Excellent Working Conditions, Good Starting Salary  
Paid Vacation After 1 Year Employment  
Uniforms Furnished  
Apply In Person  
**SNOWHITE LAUNDRY & CLEANERS** 315 S. Mariefield equal opportunity employer

**WANTED**  
Neat, dependable experienced waitress. Good salary and tips. Uniforms and meals furnished.  
**HIGH SKY RESTAURANT** MIDLAND AIR TERMINAL 563-0860  
**PART TIME— TO \$100 PER WEEK**  
Ladies work from your own home on new telephone program. Earn \$4 to \$6 per hour and more. Call 697-6081

**SALES MANAGER**  
Must be experienced in direct sales and capable of training others. Earnings should exceed \$30,000 per year. New product with unlimited potential. Both home and commercial market.  
CALL 683-3043  
**TELEPHONE solicitor** needed, up to \$4 per hour. Will train. 684-6013.  
NEED someone for stocking and in town delivery. Call 684-4977.

**WANTED**  
WATRESSES needed for 6 am to 2 pm shift. Call 697-2201 for appointment.  
MAID wanted 2 days a week. \$4 hour. Please call 682-9522.  
NEED lady to work in Day Care Center. Call 684-0076.  
NEED gas station attendant. Apply in person. 3110 Garden City Highway.

**EXPERIENCED BACKHOE OPERATOR**  
Apply Midland Industrial Service 2300 Garden City Hwy.  
Needed Full Time & Part Time  
**BELLMEN** Apply In Person New Holiday Inn 4300 W. Wall

**DRILLERS & ROUGHNECKS**  
Experienced hands who want to work are needed by expanding drilling contractor. Top wages, hospitalization and vacation.  
**BBL DRILLING CORP.** 915-683-5653

**EXPLOITATION GEOLOGIST**  
Location, Oklahoma City. Must have 3-5 years experience in Rocky Mountain area. Excellent opportunity for right individual. Send resume to:  
**J.B. Noble** SOHIO PETROLEUM CO. 50 Penn Plaza, Suite 1100 Oklahoma City, Ok. 73118 Equal Opportunity Employer

**WANTED**  
EXPERIENCED DIESEL MECHANIC  
Requires familiarity with 2 and 4 cylinder diesels. 40 hour week, commission bases, insurance program available.  
**Permian Pontiac** 684-7101

**RECEPTIONIST CHOOSE YOUR HOURS WORK EITHER**  
8:30 - 3:00 OR 8:30 - 5:00  
Light Typing & Filing Company benefits. You Will Be Attractive & Well Groomed. You Will Be Dealing With Exclusive Clientele. Salary DOE. Send Replies to: Box A-17 c/o Reporter-Telegram Box 1650 Midland, Tx. 79702

**Midland Suzuki Needs MOTORCYCLE MECHANIC**  
Experienced preferred. Apply in person 2601 N. Big Spring  
**BURGER KING** Needs quality people for lunch shift and weekends. Full or Part-Time UP TO \$3.50 PER HOUR PLUS BENEFITS. Apply in person after 2:00 p.m. daily 710 Andrews Hwy.

**DELIVERY MEN**  
Good-driving record. Commercial license required. \$450 per hour to start. Call Charlie, 694-8894.  
**BENNETT Personnel Consultants** 3217 W. Wadley, Suite 3B  
**NURSES AIDES** needed for 7 to 3 and 3 to 11 shifts. Contact: K. LOMANDO, R.N. 697-3108 TERRACE WEST 2800 MIDLAND DR. Midland, Texas

**WATRESSES & WAITERS**  
**COOKS - BUS PERSONS**  
**KITCHEN HELP**  
Full or Part-Time. Apply in person 2 to 5 pm Monday thru Friday  
**EL CHICO** 45 Plaza Center (Wadley & Garfield)

**Partly day. High Details of Delivery.. Want Ads. Other Ads.**

**The Midland Reporter-Telegram**  
**WANT AD ORDER FORM**  
PHONE 682-6222  
**WRITE YOUR WANT AD HERE**  
TO DETERMINE COST OF YOUR AD, PUT EACH WORD IN SPACE PROVIDED  
(1) \_\_\_\_\_ (2) \_\_\_\_\_ (3) \_\_\_\_\_ (4) \_\_\_\_\_ (5) \_\_\_\_\_  
(6) \_\_\_\_\_ (7) \_\_\_\_\_ (8) \_\_\_\_\_ (9) \_\_\_\_\_ (10) \_\_\_\_\_  
(11) \_\_\_\_\_ (12) \_\_\_\_\_ (13) \_\_\_\_\_ (14) \_\_\_\_\_ (15) \_\_\_\_\_  
(16) \_\_\_\_\_ (17) \_\_\_\_\_ (18) \_\_\_\_\_ (19) \_\_\_\_\_ (20) \_\_\_\_\_  
(21) \_\_\_\_\_ (22) \_\_\_\_\_ (23) \_\_\_\_\_ (24) \_\_\_\_\_ (25) \_\_\_\_\_  
**CHECK THE COST OF YOUR AD HERE**  
RATES SHOWN ARE BASED ON MULTIPLE INSERTIONS. MINIMUM CHARGE IS 5 WORDS.  
NO. OF WORDS DAY 2 DAYS 3 DAYS 4 DAYS 5 DAYS 6 DAYS 7 DAYS 8 DAYS 9 DAYS 10 DAYS 11 DAYS 12 DAYS 13 DAYS 14 DAYS 15 DAYS 16 DAYS 17 DAYS 18 DAYS 19 DAYS 20 DAYS 21 DAYS 22 DAYS 23 DAYS 24 DAYS 25 DAYS  
15 3.00 5.10 6.75 7.50 8.25 9.00 9.75 10.50 11.25 12.00 12.75 13.50 14.25 15.00 15.75 16.50 17.25 18.00 18.75 19.50 20.25 21.00 21.75 22.50  
16 3.20 5.44 7.20 8.00 8.80 9.60 10.40 11.20 12.00 12.80 13.60 14.40 15.20 16.00 16.80 17.60 18.40 19.20 20.00 20.80 21.60 22.40 23.20 24.00  
17 3.40 5.78 7.65 8.50 9.35 10.20 11.05 11.90 12.75 13.60 14.45 15.30 16.15 17.00 17.85 18.70 19.55 20.40 21.25 22.10 22.95 23.80 24.65 25.50  
18 3.60 6.12 8.10 9.00 9.90 10.80 11.70 12.60 13.50 14.40 15.30 16.20 17.10 18.00 18.90 19.80 20.70 21.60 22.50 23.40 24.30 25.20 26.10 27.00  
19 3.80 6.44 8.55 9.50 10.45 11.40 12.35 13.30 14.25 15.20 16.15 17.10 18.05 19.00 19.95 20.90 21.85 22.80 23.75 24.70 25.65 26.60 27.55 28.50  
20 4.00 6.80 9.00 10.00 11.00 12.00 13.00 14.00 15.00 16.00 17.00 18.00 19.00 20.00 21.00 22.00 23.00 24.00 25.00 26.00 27.00 28.00 29.00 30.00  
21 4.20 7.14 9.45 10.50 11.55 12.60 13.65 14.70 15.75 16.80 17.85 18.90 19.95 21.00 22.05 23.10 24.15 25.20 26.25 27.30 28.35 29.40 30.45 31.50  
22 4.40 7.48 9.90 11.00 12.10 13.20 14.30 15.40 16.50 17.60 18.70 19.80 20.90 22.00 23.10 24.20 25.30 26.40 27.50 28.60 29.70 30.80 31.90 33.00  
23 4.60 7.82 10.35 11.50 12.65 13.80 14.95 16.10 17.25 18.40 19.55 20.70 21.85 23.00 24.15 25.30 26.45 27.60 28.75 29.90 31.05 32.20 33.35 34.50  
24 4.80 8.16 10.80 12.00 13.20 14.40 15.60 16.80 18.00 19.20 20.40 21.60 22.80 24.00 25.20 26.40 27.60 28.80 30.00 31.20 32.40 33.60 34.80 36.00  
25 5.00 8.50 11.25 12.50 13.75 15.00 16.25 17.50 18.75 20.00 21.25 22.50 23.75 25.00 26.25 27.50 28.75 30.00 31.25 32.50 33.75 35.00 36.25 37.50

**DEAR ABBY**  
ANOTHER TOP-RANK FEATURE APPEARING REGULARLY  
SAVE 40% on HOME DELIVERY 682-5311

**Classified Advertising Dial 682-6222**  
OFFICE HOURS: Week Days... 8 a.m. to 5 p.m.  
Closed Saturdays  
Corrections and cancellations may be made Saturday morning between 8 am and 10 am only.  
AFTER AD HAS BEEN PLACED IT MUST RUN ONE DAY.  
Please check your ad the first day it appears. The Reporter-Telegram is responsible only for the first day of error that nullifies the value of the ad.  
COPY CHANGES 3 p.m. day prior to publication except 3 p.m. Friday for Sunday editions. 4 p.m. Saturday for Monday editions.  
WORD AD DEADLINES: 12:00 p.m. Monday for Monday 1:00 p.m. Friday for Monday 4:00 p.m. Monday for Tuesday 4:00 p.m. Tuesday for Wednesday 4:00 p.m. Wednesday for Thursday 4:00 p.m. Thursday for Friday 4:00 p.m. Friday for Saturday  
SPACE AD DEADLINES: 5:00 p.m. Friday for Sunday 3:00 p.m. Monday for Monday 3:00 p.m. Tuesday for Tuesday 3:00 p.m. Wednesday for Wednesday 3:00 p.m. Thursday for Thursday 4:00 p.m. Friday for Saturday  
DISPLAY DEADLINES: 12:00 a.m. Thursday for Sunday 12:00 a.m. Thursday for Monday 12:00 a.m. Friday for Tuesday 12:00 a.m. Monday for Wednesday 12:00 a.m. Tuesday for Thursday 12:00 a.m. Wednesday for Friday 3:00 p.m. Wednesday for Saturday  
SAME DEADLINES APPLY FOR CANCELLATIONS  
1 LODGE NOTICES  
2 PUBLIC NOTICE  
3 PERSONALS  
4 CARD OF THANKS  
5 LOST AND FOUND  
6 MONEY LOANS WANTED  
7 SCHOOLS-INSTRUCTION  
8 WHO'S WHO  
9 HELP WANTED  
10 APARTMENTS UNFURNISHED  
11 SALES-AGENTS  
12 BUSINESS OPPORTUNITIES  
13 AUTOMOBILES  
14 TRUCKS AND TRACTORS  
15 WHEEL DR. VEHICLES  
16 AIRPLANES  
17 FARM EQUIPMENT  
18 LIVESTOCK-POULTRY  
19 FEES  
20 APARTMENT FURNISHED  
21 APARTMENTS UNFURNISHED  
22 APTS. FURN. UNFURN.  
23 FURNITURE FURNISHED  
24 HOUSES UNFURNISHED  
25 HOUSES FURN. UNFURN.  
26 BEDROOMS  
27 MOBILE HOMES FOR RENT  
28 MOBILE HOMES SPACE FOR RENT  
29 BUSINESS PROPERTY OFFICE  
30 BUSINESS PROPERTY OFFICE FOR RENT  
31 RECREATION & TOURS  
32 RENTALS  
33 LEASES  
34 LAND AND LEASES  
35 MOBILE HOMES FOR SALE  
36 HOUSES FOR SALE  
37 SUBURBAN HOMES  
38 OUT OF TOWN REALTY  
39 TRUCKS AND TRACTORS  
40 FARMS & RANCHES  
41 RESORT PROPERTY SALES  
42 INVESTMENT PROPERTIES

**COMING SOON!**  
**Honor Roll Report**  
In February, 1985 the City of Midland was founded. Midland is now 95 years old and its present population is over 84,000. How long has your business been in Midland?  
Coming January 20 in the Midland Reporter-Telegram Classified Section will be the Honor Roll Report. This interesting feature will list Midland firms in chronological order by the number of years they have been in business. The features will be published on January 20, 27, February 3 and 10, 1980.  
**YOUR FIRM MAY BE REPRESENTED IN ALL FOUR OF THE SUNDAY ISSUES IN WHICH IT WILL BE PUBLISHED FOR AS LITTLE AS \$22.50**  
To be sure your firm is listed in the HONOR ROLL REPORT, USE THIS CONVENIENT ORDER COUPON  
NAME OF FIRM \_\_\_\_\_ ADDRESS \_\_\_\_\_ PHONE \_\_\_\_\_  
NUMBER OF YEARS IN BUSINESS IN MIDLAND \_\_\_\_\_ AUTHORIZED BY \_\_\_\_\_  
COUPON-CLIP OUT AND MAIL  
**CLASSIFIED WANT AD ADVERTISING DEPT.**  
P.O. BOX 1650  
MIDLAND, TEXAS 79702  
Listings in the Honor Roll Report may also be placed by phone. Dial 682-6222.  
**THE MIDLAND REPORTER-TELEGRAM**