

2822-27
Lubbock Tex

The Muleshoe Journal



DEDICATED TO THE PROGRESS AND DEVELOPMENT OF BAILEY COUNTY AND THE GREAT MULESHOE COUNTRY

Volume 26, Number 42

MULESHOE — County Seat of Bailey County — TEXAS

Thursday, October 14, 1948

SCHOOL OFF TO BEST START IN YEARS

Three Way School Plant Is Becoming One Of Best On Plains

Mr. Muleshoe -

This week in Lubbock a conference was held that seemed to presage the early demise that has been well known to most of us, the cotton sack. Mechanization seems to be right upon us, and already it is said that this year West Texas cotton will be harvested without nearly so many Mexican laborers as have been used in the past. Fewer still are predicted to be necessary by 1950.

So far as Muleshoe is concerned, few migrant laborers for the cotton fields have shown up; local ginners say they will be along soon, being late in arriving here because our cotton has been slow to open.

One shudders to think what some who have depended upon this means of a livelihood will do once mechanization attains 100 per cent in the harvest. Cotton has always scattered money more than any of our crops, among the land owners, ginners, buyers, pickers, haulers, etc. If some of this labor is eliminated, where will our usual extra business in fall time be coming from?

Even more serious is the sentimental aspect of mechanization. It won't seem right if the cotton is harvested in a day or so by a machine, with no hands in the field, no wagons or trailers here and there, no water to tote to the hands, no kids chunking green balls at each other. Let's kind of slow down a little. Let's make progress in some other direction, and let our old established customs and traditions alone.

Coke Stevenson's endorsement of the candidacy of the Republican nominee for U. S. Senator after he was defeated for the Democratic nomination in a close race by Lyndon Johnson reminds one of the boy who couldn't run the ball game, therefore picked up his ball and bat and went home.

Of all the men in Texas who should feel an ever-lasting obligation to the Democratic party, Coke Stevenson is first. He has been honored by his party countless times and his service to his party was rewarded by his being made Governor of this great state. Now, at the end of his political career, he ridicules and shames his party by espousing the cause of the Republican opposition.

Not that the GOP candidate has any more chance of being elected to the Senate than the editor, who isn't running. But we feel that Coke's act is disloyal and we feel that it is unworthy of his great political career and of the men and women who supported him in his last campaign.

New Machine Received
This newspaper ordered a new typesetting machine Sept. 15, 1945, upon the first visit of the salesman after the war. The machine was delivered three years later. But thank goodness it was delivered, and is now operating in the most satisfactory manner in our shop. Old Billy Hill, of the well known newspaper family of Hills, our machine operator, likes the way the machine runs so well he is considering requesting that his wages be reduced a little.

The most casual glance at the paper will reveal that something new has happened. The type faces are entirely different and are of the latest style in use by the largest, most modern papers. Type produced by the machine is entirely suitable to most job work, and the Journal will be able to produce better looking work in that line. The machine ought to speed up the work of the Journal shop quite a bit. The old machine has been leased to a nearby newspaper, with the thought that Muleshoe will be large enough soon to warrant use of two machines by the Journal.

We hope that this is just the beginning of a process of modernization to be carried out in the coming months.

Three Way High School has gotten off to the best start this year that it has ever had since it opened school in September 1945. Compliments of the parents coupled with the moans and groans of the students indicate that the teachers are getting the job done this year.

Three Way boasts a modern brick elementary and high school building that has 14 class rooms, two offices and two book rooms. Adjacent to this ultra-modern building is the gymnasium-auditorium, constructed of the same type brick. It is 82x88 feet over all, has asphalt tile floors throughout, complete with showers, dressing rooms, and a spacious stage. In addition to these two buildings, Three Way has an exceptionally large lunchroom building. Some 300 children are fed a nice lunch here daily.

Near the lunchroom will be found the Vocational Ag. building. This building has a lecture room and a work shop. A separate Home Making building will soon be renovated and placed into use.

Three Way has two dwellings, each housing six apartments for a total of 12 apartments. In addition to the apartments, there are five tearaches strictly modern.

An order for a heating system has been let for the auditorium. In addition to this 500 folding chairs will be purchased immediately for use in the auditorium. An all-electric time clock and score board has just been received for the gym.

Three Way now boasts 14 teachers and some 375 students actually enrolled.

The district and community can well be proud of the progress the school is making through the combined efforts of the Board of Trustees, the patrons, the patrons and the faculty.

U. S. Navy Band Visiting Plains
DALLAS (Spl. to The Journal)—David Boren of Muleshoe, Texas, received a check today for the amount of \$12,000 for second place honors won by the barrow he had entered in the Junior Pig Show at the State Fair.

Employment Man Is Placed Here

A representative of the Texas Employment Commission will be stationed at Muleshoe from October 15, as long as the cotton harvest is in progress, to take orders from farmers for cotton pickers and to assist crews in locating work with farmers.

He will have his office with the County Agent in the courthouse, and will be working with the cotton gins, and on the Santa Fe parking lot, according to information received from Mr. Jordan, office manager of the Littlefield office. This is a free service offered by the State of Texas, and it is hoped that the service will prove of benefit to Bailey County farmers.

Community Meet Called At Three Way

There will be a community meeting in conjunction with a pie and box supper at the Three Way School auditorium Friday night, October 22, at 8:00 p. m. Every patron of the district is urged to come out and lend a hand.

The proceeds received will be spent exclusively for a stage curtain.

HUNTING IN COLORADO

Randy Johnson, Golden Benton, and Elvin Crow are on a hunt for deer near Glenwood Springs, Colo.

Cheated Wife



MERCEDES REY
Mercedes Rey, of Brunk's Comedians who will play one of the 'wives' in 'Cheating Husbands' Thursday and Friday nights of this week. The play will be presented just as it recently was in K. C. with the questionable night club scene played intact. Brunk's are appearing here under the auspices of the Fire Department and will close their engagement Saturday night with a western play 'King of the Cattle Ring.'

VENISON SUPPER
The Jack Julian family entertained the Kenneth Ericson and Merriman Vise families in their home Tuesday night with a venison steak supper and bridge afterwards.

Survivors include his father, mother, and one brother, Raymond; his grandparents, Mrs. J. E. Vaughan, Muleshoe, Mr. and Mrs. D. M. Shuping, Kress, and a host of uncles, aunts, cousins, and friends who loved him.

Funeral services will be at the Church of God, Dumas, Texas, Rev. T. J. Lightfoot, minister at Point, Texas, will officiate, assisted by Rev. H. L. Stevens, minister of the Assembly of God Church, Dumas. Services will be held October 20.

U. S. Navy Band Visiting Plains

PLAINVIEW, Oct. 13. (Spl.)—The United States Navy Band, frequently termed the world's finest, will play a concert in Plainview Friday, October 15, at 3 p. m. at the high school football stadium, directed by Lt. Commander Charles Brendler, USN.

MULESHOE BAND TO BE AT CANYON CONCERT
Band Director H. A. Owens, of Muleshoe High School, has announced that the Muleshoe High School Band will attend the Canyon concert, scheduled at the college tonight, Thursday, by the Navy Band.

U. S. Election Three Weeks Away

The big election is only three weeks away. On November 2 the people of the U. S. will select a man to be President during the next four years.

In many states voters will decide on Senators and Congressmen; in Texas, the Democratic nominees are conceded elected since this is a Democratic state.

Shuping's Body To Be Reburied At Lazbuddy

SUNRAY, Oct. 5. (Spl.)—The body of another Texas plainsman who gave his life in World War II is coming home to rest under the sod of the wide open spaces he loved so well.

Mr. and Mrs. J. L. Shuping have been notified that the body of their son, Cpl. Russell L. Shuping, 20 years old, is enroute from Europe aboard the U. S. Army Transport, Lawrence Victory.

He was born in Frederick, Oklahoma, on July 10, 1924. When he was seven months old the family moved to Texas, first near Muleshoe, later to Pampa, then to Borger, and for the past twelve years have lived near Sunray and Dumas.

Cpl. Shuping attended school at Borger and Dumas and was employed by the Columbian Carbon Plant at Sunray until he entered the Armored Force Replacement Training Center at Fort Knox, Kentucky, and went overseas in November, 1943.

He was with the 66th Armored Regiment, 2nd Armored Division and saw action in France, Belgium, Holland, and Germany. He was killed in action on October 20, 1944, in Germany when his tank was knocked out. He was given an American military funeral in Holland by an Army Chaplain of his religious faith, and buried in the U. S. Military Cemetery at Margraten, Holland. Cpl. Shuping's parents received his Purple Heart, which was awarded posthumously.

Survivors include his father, mother, and one brother, Raymond; his grandparents, Mrs. J. E. Vaughan, Muleshoe, Mr. and Mrs. D. M. Shuping, Kress, and a host of uncles, aunts, cousins, and friends who loved him.

U. S. Election Three Weeks Away

The big election is only three weeks away. On November 2 the people of the U. S. will select a man to be President during the next four years.

In many states voters will decide on Senators and Congressmen; in Texas, the Democratic nominees are conceded elected since this is a Democratic state.

KILLED IN PHILIPPINES IN 1942

Pfc. Billie M. Black Re-burial Services Were Held Here Today

Fire Damages Lambert Cleaners

Fire early this morning did considerable damage to the building, equipment, fixtures and contents of the Lambert Cleaners, located in one of the Moeller buildings on north Main Street.

Muleshoe fire department members extinguished the flames. The alarm sounded around five o'clock. Origin of the fire was not immediately determined.

Jones Farm Store Is Purina Dealer

Jones Farm Store has been named dealer in Muleshoe for the Ralston Purina Company, manufacturer of Purina Chows, Farm Supplies and Sanitation Products—the famous "Checkerboard" line.

The Ralston Purina Company is now in its 55th year and its merchandise is the result of an exhaustive research program in laboratories and on farms, including Ralston Purina's 738-acre Research Farm at Gray Summit, Mo. A leader in the feed industry, Ralston Purina has pioneered the way in animal nutrition which is responsible for the tremendous increase in milk, meat and egg production now achieved on farms through a program of good breeding, sound management, careful sanitation and good feeding.

BOX SUPPER TO BE HELD

Everybody is invited to attend the Box and Sock Supper at the Needmore Lodge Hall October 19, 1948. There will be special music and entertainment for everyone. Don't miss it!

GAME TO BE PLAYED AT LITTLEFIELD

Yellowjackets To Be At Full Strength Against Wildcats Friday

Muleshoe's Yellow Jackets will be at full strength for their biggest game of the current season, against the powerful Littlefield Wildcats at Littlefield Friday night.

Bobby Goss, fullback, who was out of the play in the game against Seagraves because of a wrench ankle, will be ready to go his best at Littlefield.

While Bobby was out of the lineup, his play mates carried on in fine fashion, to down the rather weak Seagraves eleven 26 to 6. Weldon McCarty, Teddy Joe Lawler, Ed Nickels, and others were on the beam. McCarty showed some of his finest changes of pace and side-stepping, and never failed to make a gain when called upon, often tearing off sensational runs to give the fans their money's worth. Gene Harvey, the left end, again got in on the scoring with a neat run.

The body of Pfc. Billie M. Black, who lost his life while serving in the U. S. Army in defense of the Philippine Islands, was laid to rest in Muleshoe cemetery today, Thursday.

Members of Ben Richardson Post, American Legion, conducted military rites as a final tribute to the Plains hero.

The soldier was a member of the Second Battalion, 200th C. A. (AA). He entered the Army on January 6, 1941, and took his training at Fort Bliss, El Paso. Along with the famous 200th, New Mexico outfit, he went overseas Sept. 8, 1941, to the Philippine Islands. There he served until war was declared.

Pfc. Black was wounded in a bombing raid Jan. 1, 1942, near the town of Orani, Luzon Island, as he was about to cross a bridge which the Japanese bombed. He died Jan. 6, 1942, in Military Hospital at Limay, and was buried there. Later his body was moved to Military cemetery No. 2, in Manila.

His parents, Mr. and Mrs. C. M. Black, of Muleshoe, received the Purple Heart, awarded to him posthumously.

Pfc. Black was born April 19, 1920, in Perryton. The family moved here in 1933. After graduating from Muleshoe high school in 1939, the young man attended a business college in Clovis, where he was a member of the National Guard.

Besides his parents, he is survived by the following brothers and sister: B. H. A. W., L. R. C. R. J. D. and Eugene Black, all of Muleshoe; Mrs. Alton Epting, Muleshoe; Mrs. Lawrence Perry, Ripley, Calif.; and Mrs. Edgar Raymond, Corona, Calif.

The body arrived at Farwell about 2 a. m. Thursday and was received by Muleshoe Funeral Home where the body remained until the hour of the funeral.

Muleshoe business houses closed their doors during the funeral hour. School was dismissed at 3 o'clock so that all might attend the services.

CALLING ALL GIRL SCOUTS

The Girl Scouts will have their first meeting since school started on Monday the 25th, of this month. We will meet at the Scout House located at the South end of Main Street.

The house has been moved in, and still needs quite a bit of work done on it. There is a lot of work the boys and girls can do themselves. We can clean it up and be using it now.

Jesse Murrah, Long Time Resident Died Here Today

Jesse Murrah, widely known farmer of the Muleshoe community, and a resident here for about a quarter century, died today, apparently of a heart attack suffered while he drove a tractor on the farm of his son, Gordon Murrah, 1 mile west of Progress.

Mr. Murrah's body was found by a neighbor, a son of Manuel Self, shortly after noon. It was lying in a ditch, while the tractor he was driving was still circling nearby. It was not thought that he was struck by the tractor after falling from it. He was rushed to the Green Hospital & Clinic here but was dead upon arrival, physicians there said.

Funeral arrangements had not been made this afternoon.

Mr. Murrah is survived by his wife; seven children, Dalton of Alamosa, Colo., Gordon, Claudis, Jerene, and Dorothy of Muleshoe; A. L. of Jal, N. M.; and Jesse, of Lubbock.

U. S. Election Three Weeks Away

The big election is only three weeks away. On November 2 the people of the U. S. will select a man to be President during the next four years.

In many states voters will decide on Senators and Congressmen; in Texas, the Democratic nominees are conceded elected since this is a Democratic state.

COMPLETE CHART ON CANCER IS PREPARED FOR FIRST TIME

For the first time a complete chart on cancer has been prepared for publication with the approval of the American Medical Association and the American Cancer Society.

Prepared by Maxine Davis, noted medical reporter, the complete chart appears in the October issue of Good Housekeeping magazine.

Categories into which the chart is divided include 1—the site or location of the cancer; 2—the frequency with which such cancers occur in each sex; 3—the common age at which they occur; 4—details of the doctor's examination; 5—technical laboratory studies; 6—treatment; 7—chances for cure; 8—preventive measures.

No such comprehensive and succinct investigation of cancer ever has been made available to the public, the magazine declares. "In an illness in which early diagnosis continues to be the most important factor, and fear of examination a contributor to delay, this hysterical presentation of facts renders a unique public service."

"For the first time in the history of medical science, there is reason to hope for some solutions to the tragic riddle of cancer," Miss Davis writes in an article which accompanies the chart; "In the past, although no one denied cancer's gravity, few scientists studied it. . . . So profound is the subject that few had the courage to in-

vestigate it, and the funds available to them were minuscule. Today money for research on a grand scale is being provided, and many investigators are at work.

NEW CALDWELL BOOK ON LIBRARY SHELVES

"Milissa" a new book by Taylor Caldwell has been added to the shelves of the Muleshoe Public Library, Mrs. E. R. Taylor, librarian reports. Another new book is "The Plague and I," by Betty McDonald, author of "The Egg and I".

Local Markets

Cream, lb.	.60
Light Hens, lb.	.18
Heavy Hens, lb.	.22
Eggs, doz.	.45
Hogs, cwt.	\$24.50
Wheat, bu.	\$2.00
Maize, cwt.	\$1.95
Hogari, cwt.	\$1.95
Kafir, cwt.	\$1.95

WEEKEND IN LUBBOCK
Mr. and Mrs. Dan Bray spent the weekend in Lubbock, in the home of her mother.

TO AMARILLO MONDAY
Mr. and Mrs. L. F. McCormick were in Amarillo Monday on business.

RETURNS HOME
Mrs. Bob Herrington returned

home Friday from a visit in Los Angeles with her father and other friends.

FROM GARDEN CITY, KANS.
Mr. and Mrs. L. L. Herrington of Garden City, Kansas, parents of Bob Herrington spent the weekend here with Mr. and Mrs. Herrington and sons. They were en route to Hot Springs, N. M.

GUESTS IN GRAVES HOME
C. E. Graves' aunts, Sally Graves of Tompkinville, Ky., and Mrs. T. G. Pitecock of Altus, Okla., his uncle, T. J. Kidwell of Vernon, and his cousins, Opal and Marvin Graves of Indianapolis, Ind., have been visiting in the Graves home the past week.

MOVE TO MORTON
Mr. and Mrs. Bob Knight moved to Morton last week where he will be with the Flash-O-Gas Co.

TO LUBBOCK
Mrs. C. D. Julian and Mrs. L. V. Julian spent Tuesday in Lubbock shopping.

VISIT IN OKLAHOMA
Mr. and Mrs. Troy Atkinson and Mrs. J. E. Wilhite spent a few days in Mangum and Altus, Oklahoma last week.

VISIT IN YOUNG HOME
Tye Young's sister-in-law, Mrs. P. G. Young and his mother, Mrs. J. H. Young of Arlington have been visiting Mr. and Mrs. Young here.

HERE FROM LEVELLAND
Biff Warren and E. C. Seifert of Levelland spent Saturday with Horace Blackburn and family.

SHOPPING IN LUBBOCK
Mrs. Pat Bobo and Mildred Davis were in Lubbock Tuesday shopping.

HOME FROM COLLEGE
David Weyer, student at John Tarleton, Stephenville, spent the weekend here with his parents, Mr. and Mrs. Jay Weyer.

RESUMES TEACHING
Mrs. J. Wilson Witherspoon is back on her teaching job in grade school after an illness of a week.

At the Churches



Schedule of Services

FIRST BAPTIST CHURCH
Rev. A. W. Blaine, Pastor
Sunday School 9:45 a.m.
Morning Worship 11 a.m.
Training Union 6:30 p.m.
Evening Worship 7:30 p.m.
Officers and Teachers, 7 p.m.
Wednesday 7 p.m.
WMU, Wednesday 2 p.m.
Choir Rehearsal, Thursday 7 p.m.

CHURCH OF CHRIST
Ebb Randol, Minister
Bible Study, 10 a.m.
Church Services, 10:50 a.m.
Evening Services 7:30 p.m.
Ladies Bible class Wednesday at 3 p.m.
Mid-week Service, Wednesday, at 7:30 o'clock.

FIRST METHODIST CHURCH
T. G. Craft, Pastor
Sunday Services 10 a.m.
Bible Study 9:45 a.m.
Church School 9:45 a.m.
Preaching 11 a.m.
Young People 6 p.m.
Evening Worship 7:30 p.m.
Midweek Service, Wednesday 7:30 p.m.
W.S.C.S., Monday 2:30 p.m.
Choir Rehearsal, Wednesday 7:30 p.m.

LONGVIEW BAPTIST CHURCH
Rev. J. E. Moore, Pastor
Sunday School 10 a.m.
Church Services 11 a.m.
B. T. U. 8 p.m.
Preaching Service 8:30 p.m.
W. M. S., Monday, 2:30 p.m.
All Church Night, Wed., 7:30 p.m.

LAZBUDDY METHODIST CHURCH
Rev. M. Maness, Pastor
Lazbuddy, Texas
Sunday school 10 a.m.
Church Service 11 a.m.
Evening Service 8:30 p.m.
Mid-week Prayer and Song Service 8:40 p.m.
Everyone invited to our services.

MAIN STREET MISSIONARY
Rev. M. E. Robinson, Pastor
Sunday School 10 a.m.
Church Services 8 a.m.
B. T. U. 7:30 p.m.
Church Services 8:15 p.m.

LAZBUDDY FIRST BAPTIST CHURCH
Lazbuddy, Texas
Sunday School 10:00 a.m.
Morning Worship 11:00 a.m.
Training Union 7:45 p.m.
Evangelistic Service 8:45 p.m.
Mid-Week Prayer Service 8:30 p.m.
"Not forsaking the assembling of yourselves together." Heb. 10:25.

ASSEMBLY OF GOD CHURCH
Rev. L. H. Hubbard, Pastor
Morning Worship 11 a.m.
Sunday School 10 a.m.
Morning Worship 11 a.m.
Evening Service 8 p.m.
Young People's Service, Tuesday 8 p.m.

MULESHOE PRIMITIVE BAPTIST CHURCH
Elder L. M. Handley, Preacher
Sunday at the school house.
Song Service 1:30 a.m.
Preaching 11 a.m.

Make Your Vote Mean Something

Vote for a man who will be seated—Who is sincere and sensible—Who will represent YOU, and not special interests or groups—Who will save the Tideland for the school children of Texas—Who will rid our government of the Communists in our midst—Who will oppose any and every Civil Rights program devised to disenfranchise the South.

Vote For The All-Texas Candidate
Jack Porter
FOR U. S. SENATE

CHURCH OF CHRIST
Legion Hall West of Courthouse.
Worship, 10:30 Each Lords Day.
Extending to all a cordial invitation.

GUESTS IN BRAY HOME SUNDAY
Mr. and Mrs. Luther Taylor and two sons of Durant, Oklahoma, Mr. and Mrs. Hardy Ryhne and daughters of Morton, Mr. and Mrs. Davis Robinson of Ranchville, N. M., Mr. and Mrs. Andy Thompson and daughters of Dimmitt, sister of Mrs. Bray's, Mr. and Mrs. Geo. Carpenter of Earth, father of Mrs. Bray's, Bill Carpenter of Enochs, were guests Sunday in the home of Mr. and Mrs. Clyde Bray Sr. Other guests over the weekend were Mrs. B. W. Bray of Tomkaw, Okla., mother of Mr. Bray, Mr. and Mrs. Charlie Wagner and sons of Pampa, Mrs. Bill Albright of Pochita, Okla., sister of Mr. Bray, Mr. and Mrs. Herbert Phillips of Levelland and Miss Hazell Phillips of Durant, Okla.

VISITS EZELLS
Mr. and Mrs. Buford Butts and family visited with the Marty Ezell family in Portales, N. M. Sunday.

ATTENDED FAIR
Weldon McCarty attended the State Fair in Dallas Saturday. He met his brother, Fuston McCarty there. Fuston had come up for the day from College Station.

More than 8,000,000 workers, or one in seven, in the United States are in the automotive field.

Visit our large stock of Monuments and Markers here in Plainview. For lowest prices—

South Plains Monument Co.
401 W. 6th St. Plainview
Our 32nd Year

Water Well Drilling
California Irrigation Pumps
Estimates on
TURN KEY JOBS

Any Size Hole up to 20 Inch
50 Yr. Experience
3 Machines In Operation
ALL WORK GUARANTEED

K. & L. Drilling Co.
E. H. Kennedy - L. D. Lancaster
Muleshoe, Box 612 Pho. 268-W

A picture of quality



This quality motor oil cleans as it lubricates. Its Twin-Action lubricating qualities stand up to boiling and above, yet flow freely below zero.

A PRODUCT OF THE CHAMPLIN REFINING COMPANY... ENID, OKLA.
Producers, Refiners, Distributors of Quality Petroleum Products Since 1916

Evans Oil Company
DISTRIBUTORS Muleshoe, Texas

HURRY...HURRY... THE BIG SHOW IS ON Everybody's Going! Oct. 9-24 Don't Miss It...

- NEVER BEFORE HAS SUCH AN ARRAY OF OUTSTANDING EXHIBITS AND ENTERTAINMENT BEEN SEEN AT A MAJOR STATE FAIR**
- Jimmy Durante Culinary
 - Ice Cycles Textiles
 - Livestock Antiques
 - Agriculture Farm Machinery
 - Midway Food Show
 - Band Festival Free Acts

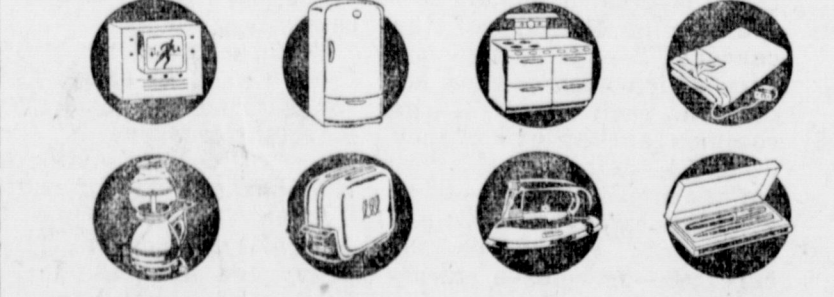
State Fair of Texas
DALLAS
The Show Window of the Southwest

Win a new HUDSON SEDAN!



...A WINTER CRUISE TO HAWAII!

... 563 OTHER PRIZES!



Come in today and enter our \$65,000 BENDIX WASHER CONTEST!

Nothing to buy... easy to enter. See a demonstration of the Bendix Automatic Soap Injector and get your Official Entry Blank, full details and easy contest rules at...

E. R. HART COMPANY
Phone 23 Muleshoe

But Hurry! Contest ends November 20!

Auction Sale!

This Rich, Irrigated West Texas FARM LAND At Your Own Price!

Oct. 21, 22, 23
SALE WILL BE HELD ON THE SITE OF THE LAND IN SWISHER AND CASTRO COUNTIES IN THE TEXAS PANHANDLE

4,000 Acres in Two Tracts
I. C. LITTLE FARMS
Land Divided into 160-Acre Units

TRACT NO. 1
3200 acres located 15 miles west of Kaffir, Texas. Kaffir is on Highway 87 midway between Happy and Tulia. The tract includes 1690 acres of excellent wheat; 1107 acres cultivated land ready to plant; 50 acres of alfalfa; 323 acres of good pasture; 4 irrigation wells and a large reservoir; 8-room modern house with 3 barns, sheds, tool-house, bunk house, silos, windmills, etc., and a 6-room modern house with barn, granary, cellar, orchard, windmill, etc.

TRACT NO. 2
800 acres located 5 1/2 miles east of Highway 87 from a point approximately midway between Tulia and Happy, Texas. This tract includes 130 acres alfalfa which yields a ton per acre per cutting; 400 acres of good wheat; 70 acres of pasture with natural lake; 200 acres cultivated land; modern, newly-remodeled 6-room house with nice trees; 5-room semi-modern house; windmill and 3 irrigation wells.

This is level land, ideal for irrigation. It is rich and easily farmed. Last season it produced 40-bushel wheat, and 80 to 90-bushel grain, on the average. The irrigation wells average 180 ft. in depth and produce 1200 gallons of water per minute indefinitely without falling off. This season much of the crops have not needed irrigation.

ALL FARM MACHINERY AND EQUIPMENT TO BE SOLD AT AUCTION
8 Tractors, combine, ditcher, floats, feed chopper, plows, 4 trucks, binder, drills, engines, hay baler, mower, rake and various other items of farm machinery and equipment.

ORDER OF SELLING
Sale will begin at 2 PM on October 21 and continue daily at 2 PM through October 23, or until everything is sold. All sales will be held at headquarters on Tract No. 1. Come early October 21, inspect the land and machinery—be ready to bid when the sale starts.

HOW TO GET THERE:
Tract No. 1: Drive from Happy south 8 miles, or Tulia north 7 miles, to Kaffir elevator. Turn west on Farm Road No. 214 and drive 10 miles, then north 1 mile and then west 4 miles.
Tract No. 2: Drive from Happy south 7 miles, or Tulia north 8 miles, and turn east 5 miles then south 1/2 mile.
FOR THOSE WHO WANT TO FLY: There is a level turf landing field with a wind sock adjacent to headquarters on tract No. 1.

FREE! To All Visitors
Famous John Snider Barbecue at noon each day—Western Music by Rip Ramsey and his Western Ramblers.

Write Today For Descriptive Folder and Motel Reservation, If Desired, To John L. McCarty, Room 203, Moys, Bldg., Amarillo, Texas.

The most valuable asset in your business is the human asset—the personal skill, judgment and driving force of your key personnel. The human asset is the factor that makes it possible for your business to show a profit—or a loss.

GIVE YOUR BUSINESS a Stronger Foundation

Your business is based on three foundation pegs—Capital, Labor and Management. You probably have your property insured against the hazard of fire. Your labor is protected by compensation insurance. But what about you, and the key men who administer your business?

If you haven't protected your business against the risk you face every day of the possible loss by death of the brains that guide the destiny of your business—you need Southwestern Life Insurance.

You can establish a sound emergency fund with Southwestern Life Insurance at an investment surprisingly low. It will be an asset to your business, strengthening the financial structure that undergirds it. And the day the need arises, forcing you into the competitive market seeking an executive with the know-how, you will be prepared. A full discussion of this Southwestern Life Insurance plan, without obligation, is yours upon request. Let's discuss it now.

MULESHOE REPRESENTATIVE
MARION F. HARRIS
Southwestern Life Insurance Company
JAMES RALPH WOOD, PRESIDENT HOME OFFICE • DALLAS

The Muleshoe Journal

Published Every Thursday at MULESHOE, TEXAS

J. M. FORBES Publisher

Entered as second-class matter at Act of Congress, March 3, 1897. The Muleshoe Postoffice under the



SUBSCRIPTION RATES
In immediate territory, yr. . . . \$2.00
Out of Territory \$2.50

BAKE SALE

The three 5th grade rooms will have a bake sale Saturday, Oct. 23, at the Public Service Office. Help select the grade school carnival queen by buying at this sale.

FROM TUCUMCARI

Mr. and Mrs. Leroy Nelson and son of Tucumcari, N. M. were visitors here Tuesday with Mr.

and Mrs. L. F. McCormick and family.

ODDFELLOWS AND REBEKAHS DAY IS OCTOBER 17 AT FAIR

Some 6,000 members from 885 Oddfellow, Rebekah, Encampment and Candon Lodges are expected to be on hand for Oddfellows and Rebekahs Day at the Texas State Fair in Dallas Sunday, October 17. Special exhibition drills will be put on by branches of the order in front of the Hall of State.

TWO MULESHOE STUDENTS ENROLLED AT A. C. C.

ABILENE, Oct. 12.—With 1680 resident college students registered for the fall semester, Abilene Christian college's enrollment has reached a new record high.

There also are 336 enrolled in the School of Correspondence Service, and 263 in the Demonstration school, making a grand total enrollment of 2279.

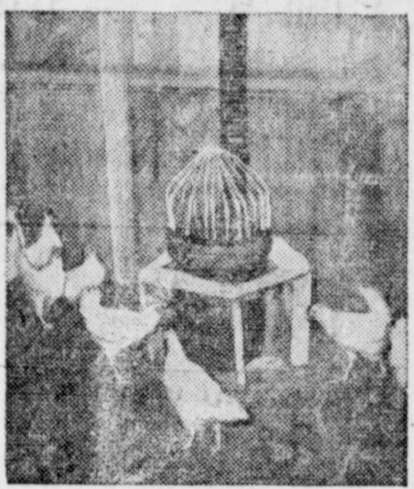
Among the resident college students are two students from Muleshoe. They are Daniel Baker, son of Mr. and Mrs. C. M. Baker, a sophomore student majoring in agriculture; and Donald C. Barnett, son of Mr. and Mrs. C. A. Barnett, a freshman student majoring in chemistry.



Poultry Will Require Water for Winter
Steady Flow Obtained With Pressure System

Farmers have tried various ways of preventing water from freezing in their poultry houses in cold weather. Some simply drain the poultry line and go back to carrying water during the winter. Others, who dislike carrying water even more in the winter than they do in the summer, appear to have devised satisfactory ways of keeping their pressure water systems working no matter what the thermometer reads.

The result of one farmer's idea is shown in the accompanying illustration. It presents one of 16 waterers fashioned from drain tiles, 2 1/2 feet high and 12 inches in diameter. Pie plates, suspended a few inches below the top of the tiles, are used for drinking purposes and water flows into them on a continuous,



Ideal water heater for winter use can be installed at little cost.

year-round basis. Ordinary sink drains, located below the plates, direct the overflow into a central waste system which serves the three-story poultry house.

Waste water spills over a hill a short distance from the building. The steady flow of water through the supply pipes, plus the fact that all such pipes are doubly protected by being located within conventional soil tiles, keeps them open all winter. To date, ice and snow have not retarded the waste outlet. The system's 500-gallon supply tank is served by a two-horsepower electric motor.

Pays to Mechanize

The mechanical age is paying dividends on the farm as well as in industry, says the Farmers and Manufacturers Beet Sugar association. A century ago 64 man-hours of labor were required to produce an acre of wheat, now less than



10 hours are needed. One hundred fifty years ago the labor of 19 farm workers was necessary to produce the food consumed by one person living in the city, now one worker can produce for four people living in the cities.

Herds and Flocks

Milk slump usually is caused by fly trouble, poor pasture or both. To control flies, keep buildings sprayed with DDT and use a repellent type of spray at milking time. To bolster short pastures, feed grain or silage.

Mudholes for hogs, aside from harboring parasites and disease, are likely to cause animals to overheat. An animal plastered with mud, baked on by the sun, is likely to heat up in a hurry.

Mangy hogs usually bring 50 cents to \$1 less per 100 pounds when sent to market. It's easy to clean up mange with benzene hexachloride.

Farm Population Drops 10 Per Cent Since 1940

Farm population of the United States declined about three million persons, or 10 per cent, between the census of 1940 and the special estimate as of January 1, 1948. The latest farm population figure of 27,439,000, however, is more than two million larger than the total for January, 1945, when many farm residents were in the armed forces or working in war plants, census reports show.

IN LUBBOCK
Mrs. A. P. Lambert and daughter Helen were in Lubbock Tuesday of this week.

SPENT WEEKEND HERE
Mr. and Mrs. Forest Walker, of Amarillo, visited over the weekend in the home of Mr. and Mrs. Morris Childers.

FORMER RESIDENT HERE
S. E. Morris, of Jal, N. M., a former Muleshoe resident, visited here this week with the family of his brother, Arnold Morris, and with friends.

HAS BEEN ILL
Mrs. S. C. Stephens returned to her home from the hospital here Friday after recovering from an attack of pneumonia.

IN LUBBOCK
Mrs. Howard Elliott and Mrs. Jimmie Green, and little son were visitors in Lubbock, Monday.

Maple News

The Three Way Eagles lost by a score of 6 to 0 to the Pettit team last Friday.

Mr. and Mrs. Bill Warton and son from South Dakota and Mrs. Carol Allen from Minn., are visiting in the home of their parents, Mr. and Mrs. Fred Warton.

GREEN

Hospital & Clinic
Muleshoe, Texas

L. T. Green, Jr., M. D.
M. F. Green, M. D.

Mr. Lula Gorrell, R. N.
Alice Hicks, R. N.
Winona Blair, R. N.
Geraldine Green, R. N.
(Offices At Hospital)

NOTICE

Before You Buy A Radio See The New

ZENITH'S
At
Spence Radio Shop

ALSO APPLIANCES FOR YOUR NEEDS

HEADQUARTERS For All Kinds of RADIO BATTERIES And

DEPENDABLE SERVICE On ANY MAKE RADIO

Phone 270-W

It seems that everybody in the community are out looking for hands to gather their crop.

The gins and the elevator are kept busy most of the time these days.

Rev. C. A. Norcross was able to fill his appointment at the Methodist Church. We are very glad he has recovered from his recent illness.

Mr. and Mrs. Andy Davis and son visited in Andy's parents home Saturday.

Chester Castlebury was in Lubbock Tuesday having dental work done.

UNITED PENTECOSTAL CHURCH

Maggie Kent, Pastor
Sunday School 10:00
Preaching Service 11:00
Evangelistic Service 7:30 p. m.
Tuesday Service 7:30 p. m.
Friday Service 7:30 p. m.

FORT WORTH STAR-TELEGRAM BARGAIN DAYS

Bargain Days on subscriptions to the popular West Texas paper are now in effect.

The paper is accepting a few new subscriptions this year also.

THE MULESHOE JOURNAL Will handle your new or renewal subscription for you.

IN THE MATTER OF THE ESTATE OF HELEN INA MUSSON, DECEASED, No. 212

In The County Court of Bailey County, Texas.

The State Of Texas, To the Sheriff or any Constable of Bailey County,—GREETING:

Harry Edward Musson, Executor of the estate of Helen Ina Musson, deceased, having filed in our County Court his final account of the condition of the estate of said Helen Ina Musson, deceased, together with an application to be discharged from said administration.

YOU ARE HEREBY COMMANDED that by publication of this writ once in a newspaper regularly published in the County of Bailey, and said publication shall be not less than ten days before the return day hereof.

YOU GIVE DUE NOTICE TO ALL PERSONS INTERESTED IN THE ACCOUNT FOR FINAL SETTLEMENT OF SAID ESTATE, to file their objections, thereto, if any they have, in said court on or before Monday, the 25th day of October, A. D. 1948, when said account and application will be considered by said court.

WITNESS M. G. Bass, Clerk of the County Court of Bailey County, Texas.

GIVEN UNDER MY HAND AND SEAL OF SAID COURT, at my office in the City of Muleshoe, Texas, this 13th day of October, A. D. 1948.

M. G. Bass, Clerk County Court, Bailey County, Texas. 42-1tc.

Bryant's Service Station

Friendly Service Our Motto

—We Fix Flats—

Phone 213 - Muleshoe

WE WANT YOU TO SEE THE

John Deere No. 15 2-Row

Cotton Harvester

Strips all bolls from cotton plants in a once-over operation. Simple to operate—built for years of low-cost service.

DAVIS - LENDERSON

Phone 56

Muleshoe

THE MULESHOE JOURNAL, Thursday, October 14, 1948

COUNTY TREASURER'S FINANCIAL REPORT, SEPT. 30, 1948
Report of Helen Jones, County Treasurer of Bailey County, Texas of Receipts and Expenditures from July 1, to Sept. 30, 1948 inclusive

GENERAL FUND—1st Class
Balance last report 16,090.67
To Amount received since last report 67.11
By amount paid out since last report, Ex. "A" 6,072.37
Amount to balance 16,761.13 16,761.13

Balance 6,072.37

ROAD AND BRIDGE FUND
Balance last report 25,740.35
To Amount received since last report 11,056.72
By amount paid out since last report, Ex. "B" 14,683.63
Amount to balance 25,740.35 25,740.35

Balance 14,683.63

JURY FUND
Balance last report 3.67
To Amount paid out since last report, Ex. "C" 119.00
Amount to balance 3,674.83 3,674.83

Balance 3,553.83

ROAD AND BRIDGE PRECINCT NO. 1 FUND
Balance last report 1,906.15
To Amount received since last report 2,366.25
By amount paid out since last report, Ex. "D" 4,185.90
Amount to balance 86.50

Balance 4,272.40 4,272.40

Balance 86.50

ROAD AND BRIDGE PRECINCT NO. 2 FUND
Balance last report 2,433.11
To Amount received since last report 1,491.99
By amount paid out since last report, Ex. "E" 1,491.99
Amount to balance 2,433.11

Balance 1,491.99

ROAD AND BRIDGE PRECINCT NO. 3 FUND
Balance last report 2,018.59
To Amount received since last report 2,001.80
By amount paid out since last report, Ex. "F" 3,128.79
Amount to balance 891.60

Balance 4,020.39 4,020.39

Balance 891.60

ROAD AND BRIDGE PRECINCT NO. 4 FUND
Balance last report 44.00
To Amount received since last report 3,030.00
By amount paid out since last report, Ex. "G" 2,506.68
Amount to balance 970.87

Balance 3,477.55 3,477.55

Balance 970.87

COURT HOUSE AND JAIL FUND
Balance last report 1,352.11
To Amount received since last report 3.64
By amount paid out since last report, Ex. "H" 593.27
Amount to balance 762.48

Balance 1,355.75 1,355.75

Balance 762.48

ROAD DISTRICT NO. 1-A
Balance last report 46,068.49
By amount paid out since last report, Ex. "I" 2,802.60
Amount to balance 43,265.89

Balance 46,068.49 46,068.49

Balance 43,265.89

GENERAL "SINKING" FUND
Balance last report 2,975.47
To Amount received since last report 3.64
By amount paid out since last report, Ex. "J" 220.00
Amount to balance 2,759.11

Balance 2,979.11 2,979.11

Balance 2,759.11

ROAD AND BRIDGE "SINKING" FUND
Balance last report 8,002.43
To Amount received since last report 3.64
Amount to balance 8,006.07

Balance 8,006.07

Balance 8,006.07

IMPROVEMENT "SINKING" FUND
Balance last report 3,498.83
To Amount received since last report 3.64
By amount paid out since last report, Ex. "K" 220.00
Amount to balance 3,282.47

Balance 3,502.47 3,502.47

Balance 3,282.47

COURT HOUSE AND JAIL "SINKING" FUND
Balance last report 3,754.94
To Amount received since last report 8.97
Amount to balance 3,763.91

Balance 3,763.91

Balance 3,763.91

ROAD DISTRICT NO. 1-A "SINKING" FUND
Balance last report 19,932.73
To Amount received since last report 130.10
By amount paid out since last report, Ex. "L" 7,990.00
Amount to balance 12,072.83

Balance 20,062.83 20,062.83

Balance 12,072.83

RECAPITULATION
Jury Fund Balance 3,553.83
Road and Bridge Fund Balance 14,683.63
General County Fund Balance 6,072.37
Precinct No. 1 Fund Balance 86.50
Precinct No. 2 Fund Balance 1,491.99
Precinct No. 3 Fund Balance 891.60
Precinct No. 4 Fund Balance 2,433.11
Court House and Jail Fund Balance 762.48
Road District No. 1-A Fund Balance 43,265.89
General Sinking Fund Balance 2,759.11
Road and Bridge Sinking Fund Balance 8,006.07
Improvement Sinking Fund Balance 3,282.47
Court House and Jail Sinking Fund Balance 3,763.91
Road District No. 1-A Sinking Fund Balance 12,072.83

THE STATE OF TEXAS, County of Bailey. Before me, the undersigned authority, on this day personally appeared Helen Jones, County Treasurer of Bailey County, who being by me duly sworn, upon oath, says that the within and foregoing report is true and correct.

Sworn to and subscribed before me, this 8th day of October, 1948.
M. G. Bass, Clerk, County Court, Bailey County, Texas.

UNKLE HANK SEZ

THERE IS ONLY A HAIR-LINE MARGIN BETWEEN SUCCESS AND FAILURE.



There's a difference in car service. Try JOHNSON & NIX where you save time and money, and are fully guaranteed of excellent auto repairs. Let our reputation serve as a guarantee of satisfactory workmanship.

FOR SALE---

'H' TRACTORS
I fully equipped with tool bar, lister, and cultivator. 1-'45 model with dual wheels, new 2-row cultivator and No. 19 lister.
-122 12-ft. Combine.
iler Wagons

JOHNSON & NIX
IHC AND OLDSMOBILE
SALES AND SERVICE
NE 166.. MULESHOE & CLOVIS HIGHWAY

ANKING'S ANTI-INFLATION PROGRAM . . .

America's banks are doing their part. Our bank and the banks all over the country have these objectives:

- 1. To see that bank credit is made available to all borrowers who can increase the supply of needed goods and services.
- 2. To continue to discourage speculative borrowing or borrowing that will contribute to inflationary demand for goods and services.
- 3. To encourage thrift, regular bank deposits, and the use of United States Savings Bonds.



Muleshoe State Bank

JAMES RA

NO LOST TIME!...

for PIGGLY WIGGLY SHOPPERS


SPEND AS LITTLE OR AS MUCH TIME WITH US AS YOU LIKE — OUR QUICK CHECKOUTS SPEED YOU ON YOUR WAY!



Deer SPINACH No. 2 Can 14c
Pard DOG FOOD No. 1 Can 15c
Laundry Soap P. & G. Bar 9c
Hunt's TOMATO JUICE 46 oz. 23c
Deer SAUERKRAUT No. 2 Can 10c
Nancy Jo GREEN BEANS No. 2 Can 15c
Flavorful TURNIP GREENS No. 2 1/2 Can 10c
Hunt's CATSUP 12 oz. 19c

Lard Swift's Pure 4 Pounds—	97c
Dreft Large Box	28c

HUNT'S FRUIT COCKTAIL, No. 1 Can	20c
MARSHALL HOMINY, Marshall - No. 2 Can	10c
HEINZ BABY FOOD, 3 Cans For	25c



FRESH SLICED BOLOGNA, lb.	35c
SWIFT'S ALL MEAT FRANKS, lb.	45c
GOOD LEAN PORK CHOPS, lb.	63c

Plenty Fresh Dressed
Hens & Fryers

Armour's 10-12 lb. Half or Whole CURED HAM, lb.	59c
KRAFT'S LONGHORN CHEESE, lb.	49c
BEEF SHORT RIBS, lb.	39c

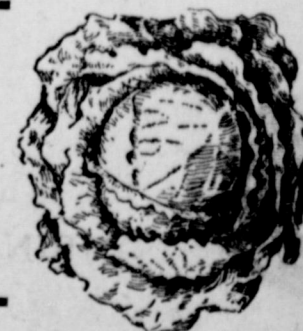
NO. 1 GOOD SLICED BACON	65c
--------------------------------------	------------

HEINZ APPLE JELLY, 12 oz.	23c
TOWELS, Scott, Roll	19c
BLUE BONNETT — 1/2 PINT SALAD DRESSING	18c
PI-DO, Box	17c
HARVEST INN CORN, No. 2 Can	19c
ADAMS — 46 oz. CAN ORANGE JUICE	29c
DORMAN — No. 2 CAN PINTO BEANS	12 1/2c
LIBBY'S SLICED — No. 1 FLAT PINEAPPLE	17c



CELERY, Green Firm - Ea.	15c
CABBAGE, Firm Sliced - lb.	5c
GRAPES, Red - lb.	12 1/2c

FIRM HEADS LETTUCE, lb	10c
----------------------------------	------------



JELLO Pkg.	6c
MARSHALL PORK & BEANS, No. 1 Can	12c
ROYAL - IN SYRUP APRICOTS, No. 2 1/2 Can	25c
BETTY - SOUR or DILL PICKLES Qt. Jar	25c
LIBBY'S PINEAPPLE JUICE, 46 oz. Can	43c
LIBBY'S POTTED MEAT 1/4 Can	9c
PUREX Qt. Bottle	15c
CRYSTAL WEDDING OATS 3 lb. Box	39c
LOG CABIN SYRUP 26 oz. Can	58c
Campbell's - No. 1 Can Tomato Soup 12 1/2c	Snack Time VIENNA Sausage, can
BABO, box 12c	JELLO PUDDING, box 8c
Dorman - No. 2 Can New Potatoes 14c	CLABBER GIRL - 10 oz. Baking Powder 10c

Washington Delicious APPLES, lb	15c
RED SPUDS, lb.	4c
IDAHO - No. 1 SPUDS, lb.	5c
Radishes, bu.	7 1/2c

PALMOLIVE 2 FOR 19c

PALMOLIVE 2 FOR 29c

Cashmere Bouquet 2 FOR 23c

SUPER SUDS 35c

VEL 37c

FAB 35c

AJAX 12c

FRIDAY & SATURDAY SPECIALS

SUPER STOPPERS FOR THRIFTY SHOPPERS
PIGGLY WIGGLY

WE BUY FRESH COUNTRY EGGS

COX RADIO & ELECTRIC

ELECTRIC SERVICE

Anywhere — Anytime
Irrigation Motor Hook-ups & Repairs
REA House Wiring A Specialty
FOR ANY ELECTRICAL NEEDS
Contact

MULESHOE ELECTRIC

D. H. MORRIS NITF PHONE 344W SPUD THOMAS
First Door East of Magnolia Wholesale

SURVEYING & MAPPING

Surveying of all kinds, Contour Maps.
Terracing lines run and have party who
builds them.

John J. Mock COUNTY SURVEYOR

Muleshoe Phone 356-J



Cooperation Wins on the Telephone Party Line, Too

Real teamwork is needed to win football games and for a smooth telephone party line.

Today, continued shortages of vital materials make it possible for us to continue our expansion program only by party line telephone installations.

So won't you please be a good party line neighbor. It means better telephone service for everyone—including you.

SOUTHWESTERN ASSOCIATED TELEPHONE CO.
Muleshoe, Texas

DAMRON Rexall Drug STORE

THE DRUG STORE IN MULESHOE IN BUSINESS FOR YOUR HEALTH

\$1.00
WINE OF CARDUI
69c

\$2.00
VITAMINS
A - B1 - B2 & Iron Tonic
\$1.29

25c
BLACK DRAUGHT
16c

\$1.25
HOOD SARSAPRILLA
98c

\$1.25
CREOMULSION
\$1.08

50c Phillips
MILK OF MAGNESIA
39c

89c
NOXZEME CREAM
59c

75c
BAYER ASPIRIN
59c

\$1.00 Lustré Cream
SHAMPOO
89c

16 oz.
MILK OF MAGNESIA
39c

\$2.00 Jergens
FACE POWDER
79c

60c
ALKA SELTZER
49c

50c Lyons
TOOTH PASTE
43c

\$2.00
CARA NOME
COLD & CLEANSING
CREAM
\$1.00

70% W/V
Absolute
ALCOHOL
49c

60c
MURINE
For The Eyes
49c

288 Rexall Puretest
PLEMAMINS
Vitamin Complex with
Liver and Iron
\$8.25

REX
ALARM CLOCKS
\$2.95

75c
LISTERINE
59c

25c
All Purpose
RIT
16c

ALL KINDS
OF
Hallowe'en
Cards

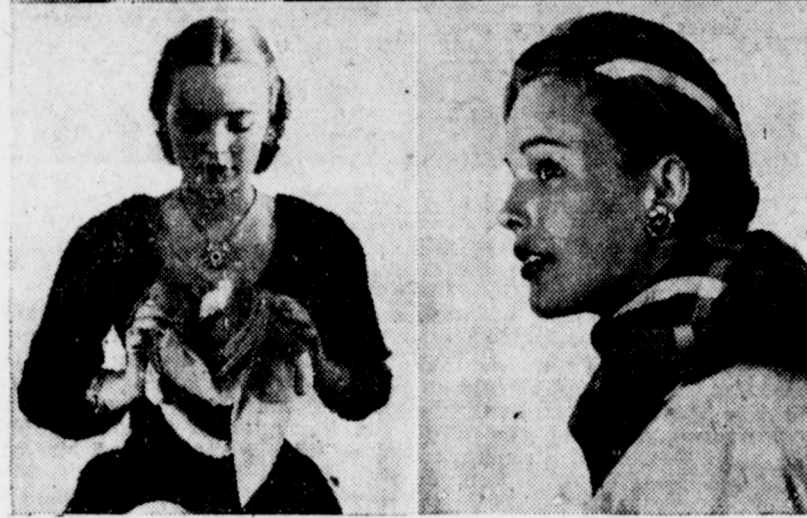
WATCH FOR THE
1c REXALL 1c
1c SALE 1c

REPUTATION
THE COMBINATION TO HEALTH

The combination that opens the door to health is the combination of your PHARMACIST working in close cooperation with your PHYSICIAN. It's this scientific combination of Professionals that is so important in the EFFECTIVE COMPOUNDING of your Prescription.

The only Drug Store in Muleshoe that has TWO Registered PHARMACIST IN CHARGE
SAM DAMRON B.S. PHG. 11483
JOE DAMRON PHG. 9576

Miracle Hat



For only two dollars any woman can have as many hats as she has scarves, thanks to the "Bobbin" shown above as presented exclusively in the October issue of Cosmopolitan magazine.

A patented invention, the "Bobbin" is a rolling frame, double at front, single at back.

With the "Bobbin" in her wardrobe, any woman can have as many hats as she has scarves. She doesn't have to be ingenious. She just winds a scarf around the "Bobbin" as shown at lower left. Top shows the "Bobbin" with a sequined scarf, which makes it the perfect hat for dancing. Lower right shows the "Bobbin" adorned with a bold plaid scarf, which makes an ideal out-door hat. Designed by Jamie Ballard, it is expected to make hat history all over America this fall.

Soil Conservation District News

Topographic surveys have been completed on 358 acres owned by J. D. Tipton and on 160 acres owned by O. L. Whitley of Shawnee, Oklahoma.

Soil Conservation Service technicians assisted G. T. Maltby in laying out borders and ditches for watering alfalfa and improved pasture.

Complete plans of conservation operations have been worked out on farms owned by Allison Cassidy, B. H. Porter, J. A. Love, and E. C. McWilliams.

Conservation surveys have been completed on farms owned by Wilce Embry, B. H. Porter, Allison Cassidy, D. O. Knoop, John Johnson, and O. L. Whitley.

To prepare a special Hard Sauce for a steamed pudding add a quarter cup of cream, whipped stiff to the sauce; fold in well and serve immediately.

Mrs. Ezell Is Supper Honoree

Mrs. Marty Ezell, a former member of the Wesleyan Service Guild, was honored with a supper at the El Monterey in Clovis Monday evening, October 11, by members.

Those attending from Muleshoe were: Rev. and Mrs. T. G. Craft, Mesdames David Anderson, Jim

NOW PLAYING

MULESHOE

TENT THEATRE

BRUNK'S COMEDIANS

Thursday & Friday

Racy, Saucy, Smart,
Daring, Risqué

"Cheating
Husbands"

NAUGHTY BUT NICE

Presented exactly as it
recently was in K. C.

The questionable scene in
the private dining room will
be shown intact, nothing will
be omitted.

Saturday Night 8 P. M.
WESTERN COMEDY

"KING OF THE
CATTLE RING"

With Red Head 'Toby'

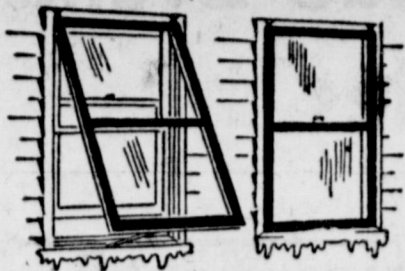
10:15 P. M.

SPECIAL WHOOPEE
JAMBOREE SHOW

Blackouts
Hits and Bits
Vaudeville
Music
Exotic Dances

Your Home

By Frances Alsworth



Did you know that from 15% to 35% of all the heat from your furnace escapes out the windows? Well, when I recently learned that fact I was amazed—and resolved right then and there to find a solution to that heat leak before winter set in.

I found the answer in Winter Windows! My friend Madge had purchased Winter Windows last year for her home, and told me that the added comfort and warmth from this proper insulation was really surprising. She explained that Winter Windows are actually second windows which fit over the regular ones with a dead air space between. And . . . because this dead air space has been proved one of the best heat insulators there is, these windows form a complete insulation.

One thing Madge cautioned me about—making sure that my Winter Windows were glazed with good glass. She advised "Pennvernon" because it is extremely clear and free from distortion. And . . . of course, clear vision and good looks are important as well as the proper insulation.

Well, I've ordered Winter Windows for every window at our house, too—and we're looking forward to a big saving in fuel costs this year. We feel sure, too, that the children will have fewer colds this winter, with those dangerous draughts eliminated. And they will certainly make our rooms more comfortable on those cold, zero winter days. On warmer days—or for sleeping at night—these windows may be easily adjusted to let in the amount of fresh air you want.

My husband and I are looking forward to a big saving on our fuel bill this year . . . which is good news in these days of high prices, isn't it?

The Texas Forest Service says that 90 percent of our forest fires are caused by man, and are therefore preventable.

Alsop, Jim Burkhead, Jim Cox, James Case, Francis Gilbreath, Noel Woodley, Fred Johnson, Glen Jennings, G. O. Jennings, N. H. Greer, Curtis Spivey, Homer Sanders Jr., H. D. King, and Miss Elizabeth Hardert.

DEALER WANTED

For

ABC WASHERS

ABC DELUXE IRONERS

Write or See

South Plains Appliance Co.

Distributors

806 W. 8th - Plainview

THE MULESHOE JOURNAL, Thursday, October 14, 1948

You will get a higher food value and improved flavor by cooking cereals in milk instead of water. But remember that milk scorches more easily than water, so when you cook cereal in milk, use a double boiler.

More and more farmers are finding that selective cutting of woodland means better quality timber and more income from the farm.

First coil bedspring was made by James Liddy, Watertown, N. Y., in the middle 18th century with coils from the seat of a buggy.

COTTON BUYING

● Top Prices for both—
OLD & NEW CROP COTTON
Prompt CCC Cotton Loan Service

A. S. STOVALL

COTTON BUYER

At Crossroads - Muleshoe - Office Ph. 286

Krueger, Hutchinson and Overton Clinic LUBBOCK, TEXAS

GENERAL SURGERY

J. T. Krueger, M. D.
J. H. Stiles, M. D. (Ortho)
H. E. Mast, M. D. (Urology)
A. W. Bronwell, M. D.

EYE, EAR, NOSE & THROAT

J. T. Hutchinson, M. D.
Ben B. Hutchinson, M. D.
(Limited to Eye)
E. M. Blake, M. D.

OBSTETRICS

O. R. Hand, M. D.
Frank W. Hudgins, M. D. (Gyn)
J. H. Felton, Business Manager

INFANTS AND CHILDREN

M. C. Overton, M. D.
Arthur Jenkins, M. D.
J. B. Rountree, Jr., M. D.

INTERNAL MEDICINE

W. H. Gordon, M. D.
(Limited to Cardiology)
R. H. McCarty, M. D.
Brandon Hull, M. D.

GENERAL MEDICINE

G. S. Smith, M. D. (Allergy)
R. K. O'Laughlin, M. D.
X-RAY AND LABORATORY
A. G. Barsh, M. D.

WOODY The Builders Friend

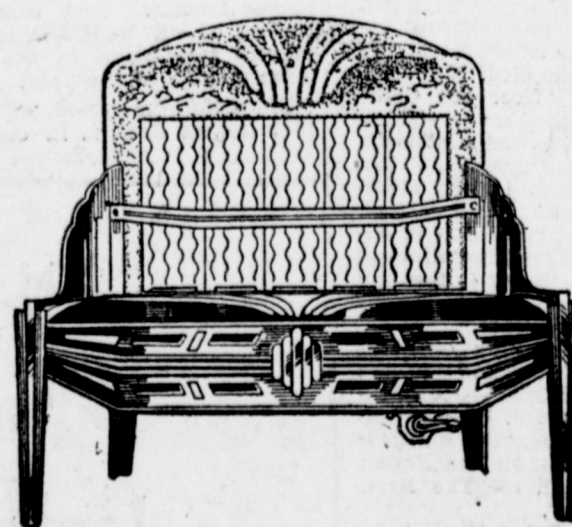
WEAKENING? HOW ABOUT ORDER-
ING THAT SASH AND DOOR FROM
WILLSON & SANDERS LUMBER

NOW!



WILLSON & SANDERS LUMBER
PHONE 93 . . . MULESHOE, TEXAS

L P GAS RADIANT HEATERS



- Utmost in value
- Distinctive Models
- 5 Double Radiant Size
- 6 Double Radiant Size
- Beautifully Finished

A high-grade heater for bath rooms
and other small rooms.

3—Double radiant size, finished in
white enamel.

\$16.90 to \$29.90



MULESHOE LIQUEFIED GAS CO.

NORTHWEST CORNER SQUARE

Women's News - Club Events Social Activities

Sunshine Club Met In Odom Home

Mrs. C. H. Odom was hostess to the Sunshine Club Thursday, October 7, with fifteen members present and one visitor, Mrs. Ed Harp.

The meeting was called to order by the vice president, Mrs. J. W. Crawford in the absence of Mrs. L. D. Lipton. Each one answered the roll call by reading a verse from the 31 psalm. After the meeting was over, we set a couple of quilts together. Plan on quilting them at a future date.

Everyone is urged to bring clothes to the next meeting.

Delicious refreshments of candy cookies and grape juice were served to the following: Mesdames O. H. Eberhart, M. M. Simmons, G. C. Hart, George Chambers, Cecil Harvey, C. G. Graham, L. E. Ware, Merle Banou, Foy Dawkins, Dave Coulter, Ike Stinson, Ed Harp, Miss Dorothy Dawkins and the hostess, Mrs. C. H. Odom.

The next meeting will be with Mrs. C. G. Johnson, October 21.

New President Heads Auxiliary

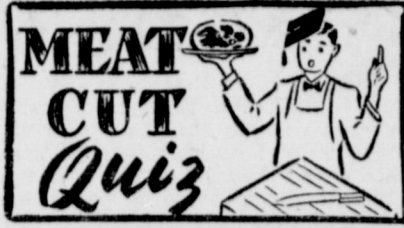
The ladies of the American Legion Auxiliary met Wednesday night, October 6, in the home of Mrs. Houston Hart.

Mrs. Walker resigned as president and Mrs. Woody Lambert was elected to fill the office for the coming year.

Dues are again due for the coming year and if you are a member of the Auxiliary please send your dues to Mrs. Homer Sanders Jr., secretary.

Plans will be made at the next meeting for the Armistice Day program and all members are urged to come.

The next meeting will be with Mrs. Hertha Walker in her home Wednesday, October 20, at 8 o'clock p. m.



MEAT CUT QUIZ

Q. What is the name of this cut of meat?
A. This is a beef arm pot-roast.

Q. Where does the cut come from, and how is it identified?
A. The arm pot-roast is cut from the chuck section of beef. It is identified by the small round arm bone which is located in the center of one end of the roast. The arm bone pot-roast also contains two or three rib ends. Another identifying mark is a small round muscle near the arm bone.

Q. How should this cut be prepared?
A. The arm pot-roast is cooked by braising, in other words by the use of a small amount of moisture and slow heat. When cooked by this method it is tender and flavorful, and comparable to the finest roast. Brown the pot-roast first in a small amount of fat in a heavy utensil such as a Dutch oven or a large frying-pan with a cover. When browned, add liquid—water, tomato juice or other vegetable liquid; cover tightly and cook over low heat until tender, usually about 3 to 4 hours. If desired, vegetables may be cooked with the pot-roast, adding them during the last few minutes of the cooking time just long enough for them to become tender by the time the meat is done!

Mrs. Malone Is Shower Honoree

Mrs. Vance Wagon, Mrs. Julian Lanau, Mrs. Buck Wood, and Mrs. Howard Elliott entertained Thursday morning with a coffee, and pink and blue shower for Mrs. Dudley Malone at the home of Mr. and Mrs. Vance Wagon.

Mrs. Elliott greeted the guests and directed them to the array of gifts on display.

Mrs. Lenau presided at the coffee service, and Mrs. Wagon and Mrs. Wood assisted with the serving.

Guests calling during the morning were: Mesdames Sam Fox, Bob King, T. W. White, Charles Lenau, J. M. Forbes, Woodie Lambert, Houston Hart, L. S. Barron, Clyde Holt, Harold King, Bill Collins, W. B. LeVeque, Henry Williamson, Marion Harris, Harold Weyer, Noel Woodley, Morris Douglas and Miss Mildred Davis. Guests sending gifts who were unable to attend were: Mesdames Cecil Tate, Gilbert Wollard, Morris Childers, O. D. Ray, Buck Ragsdale, Olin Jennings, F. H. Davis, Horace Holt, M. F. Green, A. J. Gardner and Pat Bobo.

Girl Scout School To Be Held Tuesday

The adult workers in Girl Scouting will have an all day training session Tuesday, October 19, at the Fellowship Hall. Meet at 10 o'clock and we will close at 3 o'clock.

New officers have been elected for the new year. They are as follows: Mrs. Noel Woodley, President; Mrs. E. W. Johnson, Public Relations Chairman; Mrs. Howard Cox, Treasurer; Mrs. Wylie Bowers, Training Chairman.

The leaders and co-workers are: Mrs. Clifford Green, Mrs. Clyde Brown, Mrs. Raymond Gaedie, Mrs. Morris Douglas, Mrs. Henry Scarborough, Mrs. Earl Dorsey, Mrs. Elizabeth Barnett.

If there is anyone else interested in Girl Scout work, we invite you to attend the all day training school for Tuesday. The Littlefield adult workers are coming over to Muleshoe to attend the school. Miss Rosemary Head from Clovis will be here to conduct the school.

W. D. NICEWARNER HONORED ON BIRTHDAY

A birthday party was given for W. D. Nicewarner on his birthday, October 8, at his home.

The guests were: Mr. and Mrs.

Jimmy Brown, Mr. and Mrs. Clarence Wilhite, Mona Ellen Wilhite, Mrs. Roe Stroud, Mrs. E. C. Stroud, Jaunice and Doralice Stroud, Mr. and Mrs. Thurman White, Clifford White, Don Nicewarner, Billie Stroud.

W. D. received many nice gifts, and a birthday cake with all the candles. Cake and coffee were served.

Observe Golden Wedding Anniversary



Approximately two hundred relatives and friends of Mr. and Mrs. B. E. Chaney called at their home Tuesday in observance of their 50th Wedding Anniversary.

Visitors included their four daughters, seven grandchildren, and four great-grandchildren. Two persons who attended the wedding, C. E. Dotson, of Tuscon, Arizona, and Mrs. L. A. Tipton, of Muleshoe, were present.

Children of the immediate family present were Mrs. W. H. Lindsey of Dallas, and Mr. Lindsay; Mrs. Jeff D. Welch, and Rev. Welch of Lubbock; Mrs. L. L. Burdine, and Mr. Burdine, of Lubbock, and Mrs. A. G. Tunnell, and Mr. Tunnell, of Muleshoe.

Grandchildren and great-grandchildren included Mr. and Mrs. Russell E. Benack, Betty Lee and Albert Howard, of St. Louis, Mo.; Mr. and Mrs. Sam Lindsey of Dal-

Winsome Class Installation Dinner Held

The Winsome Sunday School class of the First Baptist church met Monday night at the Cross Roads Cafe for their installation dinner.

Mrs. Wilma Gilbreath, outgoing president took charge with Mrs. Ruby Phipps leading the prayer. The tables were decorated with beautiful fall cut flowers.

The program was in form of a broadcast with Mrs. Jean Griffiths acting as master of ceremonies.

Mrs. Dorothy Barron gave an interesting talk on "Stewardship" followed by Mrs. Jean Cox playing a few piano selections.

The following officers were installed for the coming year and interviewed: Group captains: Mesdames Jean Griffiths, Hattie Jones, Billie Joan Smith, Wilma Gilbreath, L. Levallyn, Reporter, Phyllis Beavers, Secretary and Treasurer, Beth White; Assistant secretary and treasurer, Ronald Hedges; Stewardship, Mildred Redwine; Class Minister, Faye Lambert; Fellowship, Eunice Evans; Membership, Doris English.

Mrs. Mary Obenhaus was crowned president for the coming year and Mrs. Barron was crowned teacher for the coming year and each presented a gift from the class. Mrs. Wilma Gilbreath, retiring president was also presented with a gift.

Besides the officers present, the following guests were present: Mesdames Edie Lane, E. E. Dyer, Horace McAdams, Hoyt Morgan, W. C. Cunningham, H. A. Owens, Ruby Phipps, L. E. Bracher, Noah Kinser and Marie White.

VETERANS' BENEFITS

Every Veteran of World Wars I and II are entitled to the following benefits when facts warrant: Service connected compensation, disability pay, hospitalization, burial expense, veterans homes, free flag. World War II Veterans are entitled to loans on farms, homes or business, on the job training, farm and crop training, vocational training, widows pensions both wars, dependent parents pensions, according to United War Veterans of America, of Dallas.

Uncle Sam Says



The first observance of Labor Day in the United States was held in New York City in 1882 by the American Federation of Labor. In 1948, some 60 millions of you wage earners will join in the 66th annual celebration of that day. Congratulations are in order. Millions of you workers are now guarding against any future emergencies by allotting a portion of your weekly wages to the purchase of U.S. Savings Bonds through the Payroll Savings Plan. You like it because it is automatic, it is sure, if not enrolled you can sign up today where you work for the Payroll Savings Plan, or, if self-employed, see your banker and ask to be enrolled for the Bond-a-Month Plan to purchase U.S. Savings Bonds. An allotment of \$3.75 a week will bring you \$2163.45 in just ten years. U.S. Treasury Department

FACULTY PARTY

The faculty members of the Muleshoe School system were entertained with a steak fry Tuesday night at the sandhills. After a delicious meal the evening was spent visiting and becoming better acquainted. The hosts were the men of the faculty.

Mr. and Mrs. Chaney are well known residents of this locality, having moved here from Pampa in 1910. They were married in Greer County, Okla., on Oct. 12, 1898.

Birthday Party Given Oct. 7

A birthday party honoring Shirley Ann Carpenter was given at her home Thursday afternoon, Oct. 7.

A number of games were enjoyed after which the gifts that were presented to Shirley Ann by her friends, were opened and displayed for all to see and enjoy.

Refreshments of sandwiches, cake, punch and hot chocolate were served to the following guests:

Carolyn Beavers, Joann Nowell, Mary Blackburn, Joan Kincaannon, Nealy Mace Steinbock, Joy Smith, Johnnie Nowell, Barbara Hinkston, Juanita Scott, Susie Carpenter, Janice Lahavn, Sherry Jo Steinbock, Carolyn Scott, Carolyn Hinkston, Jerry Gleason, Jimmy Carroll Wadell, Carall Ray Preure, and "Chunky" Ivey, and the host and hostess, Shirley Ann and James Henry Carpenter.

A good time was enjoyed by all the children attending the celebration.

NOW OPEN

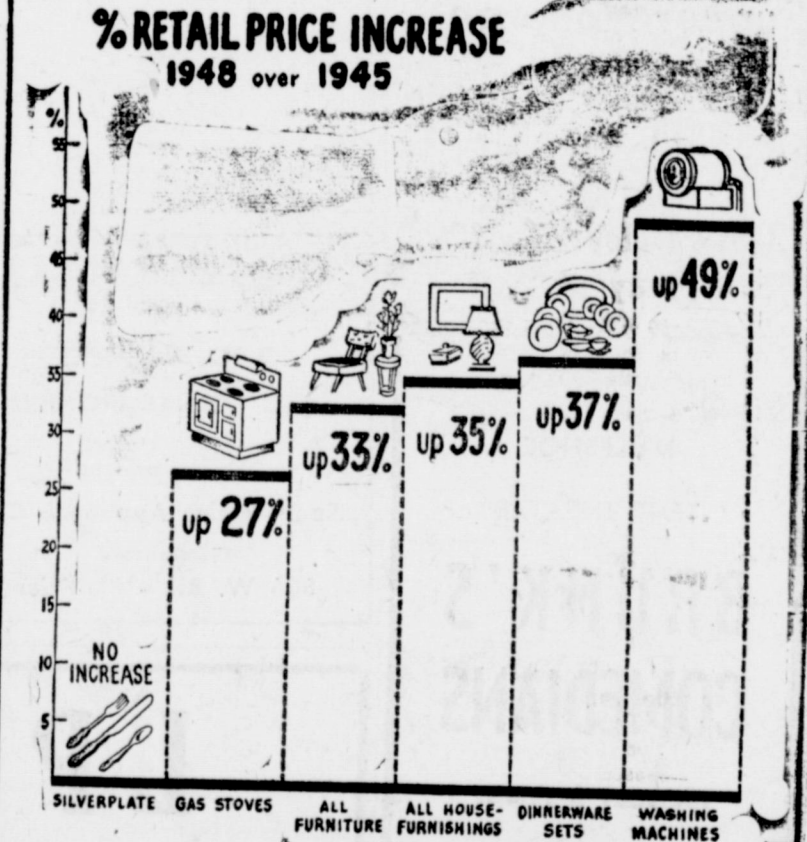
Dan's Studio

DAN BRAY, Prop.

AT MULESHOE REAL ESTATE OFFICE

PHOTOGRAPHS

PHONE 282 — MULESHOE



America's brides — there'll be approximately a dozen to each 1000 population for the entire year — today have a silver lining for their picture of rising costs.

One prized possession of brides — 1847 Rogers Bros. silverware — will continue to be priced at 1945 levels!

Just how welcome this will be to brides and their friends can be judged from the fact that 22.8 percent of all weddings in this country take place in the final three months of the year.

The hold-the-price policy of 1847 Rogers Bros. is in contrast to that of most household items. In fact, flatware prices of other silverware lines recently were increased for the first time since the war.

Today's bride finds the job of planning household furnishings extremely complicated by the seemingly ever-increasing costs. Washing machines, for example, have increased in price 49 percent since 1945. A 52-piece dinnerware set has gone up 37 percent in the same period.

All household furnishings have increased 35 percent while all furniture shows a 33 percent increase since 1945.

N-O-T-I-C-E

CUSTOMERS OF

Lambert Cleaners

Having garments in our shop at the time of the fire Thursday morning are notified to file with us a "Customers Statement" by November 15, 1948.

LAMBERT CLEANERS

WOODIE LAMBERT

IS YOUR

SOUTHWIND HEATER

READY FOR COLD WEATHER??

WE ARE THE APPROVED SOUTHWIND HEATER SERVICE STATION IN MULESHOE AND HAVE JUST RECEIVED A LARGE SHIPMENT OF REPAIR PARTS AND SERVICE EQUIPMENT.

COVIN MOTOR Co.

South East Corner of Square
Phone 327 • MULESHOE TEX.

Star-Lites

MOVIES, MIKES and MISCELLANEOUS
By LYN WILSON

MOVIE FANS have a treat in store for them with RKO's plan to star lovely Ann Sheridan in "Carriage Entrance", a novel by Polan Banks, laid in the South just before the turn of the century. Banks is a favorite with movie studios. He has sold nine out of his ten novels for motion pictures.

"Carriage Entrance" will get under way just as soon as Ann returns from Europe where she is co-starring with Cary Grant in "I Was A Male War Bride". She is currently being seen (with Gary Cooper) on the screen in "Good Sam" a big box office attraction at Radio City Music Hall.

NEW LOOK NOTE: When Terry Moore's classmates at Glendale High, voted Glenn Ford its "boy friend" nobody — of course — had any idea she would be his leading man in Columbia's forthcoming technicolor production "The Return of October". Enroute to fame, 19 year old, Terry, as Helen Koford, appeared on 29 odd national magazine covers and had minor roles in a couple of films. Now she's way up there in lights, a leading lady with a new name!

ADELE MARA at last is "in the swim" for Republic's new picture "Wake of the Red Witch". Adele has spent three years as a "pin up" girl in a bathing suit without going near the water. Her role in the new picture requires her to take swimming lessons.

STAR STUDDED SHOW — "Cavalade of America", top-flight radio dramatic show which began its 14th year this fall, has some of the most famous names of stage, screen and radio signed for feature roles in forthcoming broadcasts. Burt Lancaster stars in "The Darkest Hour" a story of Jack Jouett, a Revolutionary War hero. Walter Pidgeon and Fay Bainter will be cast as Andrew and Rachel Jackson in "Home To The Hermitage", originating from Chattanooga, Tenn. New screen find John Dall and NBC commentator Robert Trout will co-star in a thrilling story of the Spanish-American War, "Action at Santiago". A special Thanksgiving treat will be the rebroadcast of "Us Pilgrims" which received much favorable comment last year with George Tobias, as the immigrant giving his version of the first Thanksgiving. The show is on NBC Monday aites.

GRANDMA may not have been a hep-cat but she was still sharp — so found Irene Beasley, singing star and mistress of ceremonies of "Grand Slam", popular five-a-week musical quiz show. Grandma was the little woman who put Irene up to the piano and said "practice". Irene did and as a result her radio show is going into a very successful third year this fall on CBS.

"Bease", as her friends call her, is a product of Tennessee, attended Sweet Briar in Virginia, taught school in Mississippi and Tennessee, sold records in a phonograph shop, sang in a five-and-ten and has had top billing in vaudeville houses throughout the country. Grandma holds somewhat of a record herself. She continued at the keyboard for 67 years — from childhood to the age of 85 when she died.

HOLLYWOOD'S "Over 300 Club", consisting of members weighing over 300 pounds has had a let-down. (Total membership about 30,000 lbs. or 100 persons limit 4 to an elevator). Charter member and president, Andy Devine now being cast in Republic's "The Far Frontier" dropped from 310 to 270. Result is that the club has been changed to "Over 250 Club" (closer frontier)!

FRED ASTAIRE points out that four of his former dancing partners have each won an Oscar—Joan Fontaine, Joan Crawford, Ginger Rogers — and, says he, "the fourth is Bing Crosby"! Astaire and Rogers are together again in "The Barkleys of Broadway".

THE LINE-UP OF TALENT for "The Family Hour Of Stars", new CBS dramatic series which replaces "The Family Hour" this fall, sounds like a Who's Who of Stardom. Gregory Peck, guest star of the premiere broadcast will be well remembered in "Duel in the Sun", "Yearling", "Without Honor" and a long line of box office "beats". The complete parade of top-talent screen personalities include Humphry Bogart, Bette Davis, Gregory Peck, Ginger Rogers, Barbara Stanwyck and Robert Taylor. Each Sunday one of the stars will be heard in a drama adapted especially for radio. Peck gave up medicine to major in English and drama. He began his career as a barker at the New York World's Fair in 1937. Since then his rise to film fame has been rapid and colorful.

Want Ads

RATES: — Minimum charge, 35c; 2 1-2c per word one time; 1 1-2c per word each additional insertion. Cash in advance.

FOR SALE—All makes of used typewriters. The Muleshoe Journal.

LOANS of all kinds, on farms or city property. Low rate interest. Littlefield, Texas. Phc. 389M. 32-20tp.

FOR RENT—Bedroom, out side entrance, 3 blocks east of bank. Della Seales. 39-4tp.

ATTENTION FARMERS—If you have a farm for sale, list it with us. We have calls daily for irrigated and unirrigated farms. No obligation to you. List the information, location and etc. on a post card and mail to THE PEMBERTON AGENCY 262 Cotton Exchange Bldg., Lubbock, Texas. Phone 9366 and 7595. 40-4tc.

FOR SALE—Lumber delivered to Muleshoe from N. M. \$7.00 per hundred rough, \$8.00 per hundred planed. J. L. Landrum, Mora, N. M. 40-3tp.

FOR SALE—Small Drilling machine suitable for water wells, irrigation pump setting, etc. Practically new motor, tools from 4" to 10" good cables, ready to go. K. & L. Drilling Co., Box 612, Muleshoe. 40-4tc.

FOR SALE—All steel two wheel Bantam trailer. A real bargain. Bed and springs. See A. W. Blaine at Baptist Parsonage. 41-2tp.

FOR SALE—John Deere No. 15 cotton harvester, pulled 15 bales, \$700. Tommy Haley, 5 1-2 miles north 41-3tp.

FOR SALE—M-D Farmall, '47 model, run very little. L. M. Hardage, 11 miles north Muleshoe. 41-4tp.

WANTED — Public stenographic work at my home. Mrs. Frances GHBreath. 41-3tp.

FOR SALE—1947 model 30 Oliver 12-ft. combine. Can see at 4 miles south and 1 west of Morton. Ross Badgett. 41-2tp.

SAVE—Get your Christmas pictures made on our Special. See display ad in this paper. PIERCE'S STUDIO. 41-4tc.

FOR SALE—140 acre farm, Needmore community, 30 acres of he-gari bundles. Jerry Kirk. 41-2tp.

FOR ODD JOBS in carpenter work see I. H. Robinson inside or out. \$1.00 per hour. 41-4tp.

FOR SALE — 4-room bungalow house, 26x24 to move, wired. West Camp partonage. Lloyd Garrison. 41-2tp.

SAVE—Get your Christmas pictures made on our Special. See display ad in this paper. PIERCE'S STUDIO. 41-4tc.

WANTED—Old Batteries. We will pay \$2.50 for limited time. Millst & Robertson. 35-4tc.

HOUSE FOR SALE—6 rooms, modern, well located, corner lot. Terms can be arranged. Lee R. Pool. 30-4tc.

FARM LOANS—Will make some choice farm loans, 15 years with 4 1-2 per cent interest. No handling charges except recording of your papers. S. E. Goucher, 1 blk. west of hospital. 15-4tc.

SUBSCRIBE To The Journal Today.

CEDAR POSTS delivered to your farm, any amount and any size. Give us your order. Clyde, Jr. and Dan Bray. 35-4tc.

NEW OLIVER TWO-ROW Cotton Harvesters

Power take-off drive, 32-inch to 42-inch rows, trailer type, power lift, cotton elevated to trailer. Can be quickly attached or detached to any make of tractor.

Moore Oliver Co.
822 W. 7th St.
CLOVIS, N. M. 4tc

WANTED—Will take orders for custom made Venetian Blinds. Howard Cox, Cor. Radio Shop. 4tc.

SIGNS — J. E. McWhorter. Phone 211. 33-4tc.

\$1950

Delivers this Walnut Garden Cottage No. 936, a 2-bedroom, living room, dinette, kitchen and bathroom home. Pre-fabricated in precision built sections for ready erection. The above price includes the complete building structure above the foundation, including insulation, less the plumbing, wiring and heating. See what modern production engineering can do for you and your home.

\$1400

Delivers the smaller one-bedroom Walnut Master Cabin. Built in the same precision sections for ready erection. These units are readily adaptable to a number of floor plans. They can be used for a variety of building needs. By ordering only what you want, these units are adaptable for small business buildings of all kinds. Call or write

The Henderson-Getz COMPANY
of FARWELL, TEXAS
Phones 3701-3501
P. O. Box 234 38-4tc.

WANTED TO BUY
Top prices for Fat Hogs and Feder Pigs
CLOVIS HOG CO., Phc. 234

ORDER EARLY for your inexpensive Christmas Cards, wrappings and all occasion cards. See Mrs. C. E. Farrell, 1 blk. west, 1 south of Courthouse. 42-2tp.

SEE MRS. FARRELL for imprinted with name or business and stationery with monograms and address which make lovely Christmas gifts. 42-2tp.

FOUND—Chev. truck wheel N.W. of Muleshoe. See Arthur Bolton, 14 miles east of Farwell. 42-1tp.

FOR SALE—6 good milk cows, Cooler, Separator and Milker. Also Ford tractor. Kirk Stembock, 4 miles east Lazbuddy. 42-2tp.

FOR SALE—2 bedroom home, \$5800; Also 3 bedroom home, \$6300; each have a \$3500 loan, all modern. Howard Griffin, Lakeside addition. 42-1tc.

FOR SALE—2 practically new Le Roi engines equipped with butane carburetion Allison Cassidy, 3 mi. east on Plainview highway and 4 north. 42-3tp.

FIRESTONE Super Anti-Freeze \$1.50 gal.—207 boiling point. Will not rust or corrode cooling system.—BASS FIRESTONE 42-1tc.

10 CU. FT. 350 lb. capacity upright Home Locker—BASS FIRESTONE. 42-1tc.

RANKIN round cord plastic Seal Covers at BASS FIRESTONE 42-1tc
FIRESTONE Washing Machines at BASS FIRESTONE. 42-1tc

FOR RENT—2 room house. Mrs. McCarty, just north Woods Laundry; also trailer space. 42-2tp.

THE ARMY STORE has a nice supply of Army goods on sale now. Men and children's rebuilt Oxfords. Mrs. Carothers. 42-2tc.

FOR SALE—Brand new Western Holley double oven cook stove. Double broiler, 4 burners and grill on top. Bargain. See Gerald Pribboth, Muleshoe, Texas. 42-1tc.

FOR SALE—Apartment size Gas stove, \$25. Lazbuddy Baptist Parsonage. 42-1tp.

REG. 65c Firestone Spark Plugs—A set for your car for \$1.29—BASS FIRESTONE. 42-1tc.

FOR SALE—New A-C Combine. Also 1947 A-C Combine. Ross Badgett, 4 mi. S., 1 mi. W. Morton, Texas. 42-1tp.

IRRIGATED LAND FOR SALE—Good shallow wells. Two 80's one 160, one 320. Modern improvements. See these before you buy. See C. W. HUNT, Rt. 1, 7 miles Northeast of Muleshoe. 42-4tp
COTTON SACKS 7 1/2 - 9 - 12 feet at BASS FIRESTONE 42-1tc.

FOR SALE—1 M-M Feed Mill, one Amarillo gear head, one Chev. motor. These are in good condition. See C. W. HUNT, Rt. 1, 7 mi. NE of Muleshoe. 42-4tp.

ALL METAL and wool top ironing boards nationally adv. at BASS FIRESTONE. 42-1tc.

FOR SALE—1940 Model Mercury in good condition. See Lynn Smith, Benton Food Market. 42-1tp.

USE our convenient Christmas Lay-A-Way Plan—Bass Firestone. 42-1tc.

SEWING ROOM OPENS

Dressmaking — will make button holes—alteration and mending of men's & women's clothes.

Mrs. L. V. & C. D. Julian

PAIR OF GLASSES left in Holland Barber Shop. Owner claim them and pay for ad. 42-1tc.

FOR SALE—Good used living room suit. Reasonable. See E. R. Hart company. 42-2tp.

FOR SALE—Montgomery Ward Washing Machine. In good condition: Raymond Preure. 42-2tp.

FOR RENT—Nicely furnished bedroom to either boys or girls. Inquire at 1st house N. hospital. 1tc.

THE LONE STAR TRADING POST IN MULESHOE

—Wants to sell 160 acres good red land, located NE of Muleshoe with good irrigation well, possession Jan. 1, 1949. Priced to sell, \$13,500.00 will handle. Balance 20 years at 4 1/2%.

—Plenty of houses to sell. See us for FHA loans to buy or build houses in Muleshoe. Also conventional loans of 60%.

—Farm loans 20 years at 4 1/2% to buy or re-finance.

—160 acres land, located 1/2-mile from pavement, in irrigation belt, has 3 phase electricity and is good red land. Priced at \$80.00 per acre. A bargain.

—Well improved quarter section, with plenty irrigation facilities, nice 5-rooms and bath, plenty out-buildings, good clean farm well located with minerals, intact. Priced at \$200.00.

—We have some of everything to sell. Come and tell us your needs and if we don't have it, we will get it for you.

—160 acres, good improvements in irrig. dist. well worth the money at only \$75.00 acre.

SEE

DAVE AYLESWORTH

AT THE

LONE STAR TRADING POST

Across the street from the Piggly Wiggly in Muleshoe, Texas. Phone 356-J

Real Estate For Sale

—4 room & bath, new. \$2,000. loan, \$4,750.

—3 bedroom house, new, \$6,000.

—4 room house 70x140 lot, \$4,750.

—3 bedroom & 2 bath, this is a real buy.

—Some good lots well located.

—20 acres, good 4 room house, new well priced to sell.

—2 acres; A good buy.

—40 acres close in with a good well.

—160 acres priced to sell, good well and house.

—80 acres priced to sell, good well and house.

—80 acres close in.

—320 acres, two wells.

—177 acres dry land well located.

—140 acres can be watered.

All of these listings will carry a good loan and are priced right.

See EDDIE LANE

at

Lane & Hale

BARBER SHOP

TRUCK FOR SALE—GMC '39 model with 22-ft. trailer. Muleshoe Canning Co. 42-2tp.

ALL KINDS of jackets and coats for men. Cloaks and jackets for women and girls. Mrs. Carothers. 42-2tc.

TOYS—Trains, electric and windup—Dolls, magic skin & others—Bicycles, Tricycles & Wagons—BASS FIRESTONE. 42-1tc.

Selective Service Answers

Q—Will a man with a wife, or wife and children, be deferred?
A—If a man maintains a bona fide relationship with them in his home, the President orders his deferment.

Q—Is a man who has persons dependent upon him for support exempt from training and service?
A—The President has ruled under the law that he will be deferred. Dependents are defined as a wife, child, parent, grandparent, brother or sister, a person 18 years of age (or older, if the person is physically or mentally handicapped, in short, anyone who depends on the draft-age

Higher Yields Outweigh Cattle Spraying Costs

An increase of \$3.75 per head more than covers the cost of spraying beef cattle with DDT, it was revealed in a test of the value of fly control conducted at the University of Illinois college of agriculture.

Protected cattle gained about 15 pounds more per head during the pasture season than a group that had not been sprayed. At 25 cents a pound, an increase of 15 pounds a head amounts to \$3.75 a head, a return that far outweighs the cost of spraying.

Beef cattle should be sprayed often enough to control flies, whether it requires two or three sprayings during the season or once a month.

Herds and Flocks

Use of 2, 4-D sprays for weed control in pastures is not dangerous to grazing animals.

A home-mixed spray of crude benzene hexachloride powder and water is more likely to taint eggs in poultry houses than a good commercial roost paint containing the effective portion of the same chemical.

Poultry houses with light colored roofs are cooler in summer than those with roofs painted black.

To get water to hogs in distant pasture where there is no water supply, pipes can be laid on top of the ground. To prevent freezing in winter, disconnect and drain the pipes.

Benzene Hexachloride Will Check Hog Mange

If hogs stand around and rub instead of eating, they may have a touch of mange. Benzene hexachloride has been found to be more effective than lime sulphur. Benzene hexachloride should be applied when temperatures are up around 75 degrees, using one pound of 50 per cent powder to four gallons of water. It is important to see that the animal is completely covered, including the inside of the ears.

James Goss

Now With

Holland
BARBER SHOP

And will appreciate a visit from all his old friends.

THE MULESHOE JOURNAL, Thursday, October 14, 1948

New Ideas

for YOUR home

How to take the ruts out of your breakfast routine... ways to make your kitchen "homey"... what color to choose for your living room... These are just a few of the intriguing new ideas furnished daily on the Women's Page of THE CHRISTIAN SCIENCE MONITOR.

These helpful ideas are "plus value" in this daily newspaper for the home that gives you world news interpreted to show its impact on you and your family.

Use this coupon for your SPECIAL introductory subscription—five weeks—30 issues—only (U. S. funds)

The Christian Science Publishing Society
One, Norway Street, Boston 15, Massachusetts

Please enter a special introductory subscription to The Christian Science Monitor—5 weeks (30 issues) for \$1

Name _____
Street _____
City _____ State _____
PS-4

It's Brand New!

it's the
GREATEST Magic Chef YET!



Wiedebush & Childers

Phone 16 Muleshoe

BUY YOUR XMAS CARDS NOW

And avoid the possibility that they may be late in arriving. Plants producing Christmas Cards become congested in late November and it is wise to order early, so that they can be produced for you before the rush period begins.

We will not accept orders for Christmas cards after December 1, unless they are to be printed in our shop.

We have a nice selection of boxed cards to be printed here if desired.

THE MULESHOE JOURNAL

PHONE 54

MULESHOE REAL ESTATE

Clyde Bray Sr.

PHONE 282 — BOX 793
MULESHOE, TEXAS

160 ACRES—No. 16 in. pump, 5 room house, 14x30 Quonset hut, pressure pump. All this land is in cultivation. For sale \$165 acre.

20 ACRES—Good level land, 12 A. hay, 6 A. hog fenced; 14" western pump, new Buick motor, 5-room modern house, electricity, pressure water system, butane. \$12,500.

32 ACRES—No improvements, located northwest of town. \$100.

160 ACRES—Summer tiled land now in wheat, one windmill setting on 240' setting in 90' water. \$80.00 acre.

160 ACRES—6-room house with bath, barn, chicken house, 12" pump setting on 90'3 stage. \$300.00.

160 ACRES—Nice 7-room house newly finished double garage, Granery, chicken house, barn, new irrigation No. 14" pump.

160 ACRES—Good level land, 80 acres newly planted, 2 irrigation pumps, One 14" Peerless pump, Buick motor setting on 90'; One 12" pump, Chrysler motor on natural gas. 4-room modern house.

160 ACRES—Four room house, two barns. No. 12 pump 8" discharge. \$35,000.

SEE US FOR MANY MORE GOOD LISTINGS. WE WILL HELP YOU WITH WHAT YOU WANT.

MULESHOE REAL ESTATE

Everybody in favor say— "Lubri-tection"!



That's the word that brings you
one of America's greatest motor oils—
Phillips 66 Premium Motor Oil

What does "Lubri-tection" mean? Brother, it means
just exactly what it says! It means lubrication plus
protection.

Yes, with Phillips 66 Premium Motor Oil in your
crankcase your engine gets both lubrication and
protection. Here's how. Phillips 66 Premium Motor Oil
is expertly refined from high quality crude to give you
fine basic lubrication. But that's not all it does! Cer-
tain additives and inhibitors in this oil go to work in
your engine to help fight against sludge, varnish, and
other harmful deposits. Next time you need oil, ask
for "Lubri-tection"... at the sign of the famous
orange and black Phillips 66 shield!



* "Lubri-tection"—the protection rendered by
an oil of fine base stock containing special
detergent and oxidation inhibiting ingredients.

Half Century Club Met Oct. 7

Mrs. Willie Witherspoon enter-
tained the Half Century Club at
her home Thursday afternoon, Oct.
7.

Proposed club projects were dis-
cussed during the business session
conducted by the president. At the
last meeting of the club, Sept. 23,
the members present voted to do-
nate \$10.00 each month to the
City Park improvement program.
Dainty refreshments were serv-
ing during the social hour to Mes-

ladies C. C. Mardis, Beulah Carles,
C. D. Julian, Walter Witte, J. C.
Gilbreath, W. G. Wyer, J. J. Wil-
liams, Maude Jones, Birdie Paul,
Bill Kistler, J. B. Burkhead, R. G.
Spence, Etta Welch, Jennie Pan-
ter, three new members, Mrs. Mary
McCormick, Mrs. Carrie Wilhite,
Mrs. Anna Templar and the hos-
tess, Mrs. Witherspoon.

The next meeting will be held
Thursday afternoon Oct. 21 at the
home of Mrs. J. B. Burkhead, with
Mrs. C. D. Julian as co-hostess.
Each member is requested to
bring needle, thimble, and scissors.

DR. B. R. PUTMAN OPTOMETRIST

Office: Muleshoe Bank Bldg.
Hours: 9 to 5

CAR UPHOLSTERY

SPRADLEY'S Upholstering Shop

Complete upholstery on automobiles—
Or any kind of Furniture.

See us for materials: Velours, Friezos,
Brocatelle, Mohair and Tapestry.

All Colors Leather

Just West of Shady Rest on Clovis Hi-way

H. A. SPRADLEY

CAR UPHOLSTERY

Hair beauty secrets... by Toni



If You're
Tall



If You're
Heavy

If you're tall and stately, a flat
top page boy rather than the longish
side will lend you glamour, mini-
mize your height. The basis of this
coiffure is a soft natural looking
home permanent just on the ends
of the hair. And for the heavier
woman, an upsweep with winged
rolls on the side, gives a clear,
sophisticated look which slend-
erizes the neck and figure.

Carefully planned kitchen light-
ing and handy outlets save time
and money and help do away with
much of the fatigue that comes
from working long hours in the
kitchen.

Cookies are good nearly any-
where you find them—the school
lunch box, for desserts, picnics, in-
between-meal snacks or on re-
freshment plates. And while we're
talking about cookies, some folks
collect cookie cutters of various
sizes, shapes and kinds.

<p>Crosley RANGES GAS and BUTANE</p> <p>NEW RADIOS CABINET AND TABLE MODELS</p>	<p>GAS HEATERS</p> <p>BATHROOM UP TO 50,000 B. T. U.</p> <p>CHROMIUM Breakfast Sets BLACK TRIM</p>	<p>USED Sewing Machine CROSLEY Frost Master SEE OUR NEW Upholstery SAMPLES</p>
---	---	---

**NEW McCORMICKS USED
FURNITURE**

Muleshoe Defeats Seagraves 26-6

The Seagraves eleven proved to
be the Yellowjackets weakest op-
ponent so far this season with the
Jackets winning by an easy mar-
gin of 26 to 6.

Lawler kicked off for Muleshoe
to Seagraves to open the ball
game. Both teams moved the ball
up and down the field during the
first quarter with neither side
scoring.

Early in the second quarter,
Gene Harvey, Jacket left end
took the ball on a sneak play and
scampered across the goal line for
Muleshoe's first score. Lawler
went over a few minutes later to
add the extra point.

When the half ended the score
still remained 7 to 0.

Bands Perform
During the half-time period both
the Muleshoe and Seagraves
bands put on a fine performance
which was enjoyed by all the
fans attending the ball game.

Spectacular Play
Early in the third period of the
game quarterback Ed Nickels
carried the ball over for Mule-
shoe's second score on a quar-
terback sneak over center. The try
for extra point failed and the
score remained 13 to 0.

Muleshoe kicked off to Sea-

Local Wildcats Drilling Ahead

The lone Parmer County wild-
cat, Sunray Oil Corporation and
Skelly Oil Company No. 1 Kim-
brough, was going in to core from
total depth 9,416 feet in granite
wash shale. It is slated to con-
tinue to solid granite.

Location is 330 feet from north
and 990 feet from east lines of
section 12, Doud & Keeler Sub-
division, in the southeast portion
of the county. The town of Mule-

shoe lies about 15 miles south.
Drilling in Hard Lime
Sun Oil Company No. 1 A. L.
Haberer, Castro County's only
wildcat, 660 feet from north and
east lines of section 8, block 2, W.
E. Halsell subdivision, was mak-
ing hole beyond 7,900 feet through
hard lime.

**Guaranty Abstract
Company**
— Office in Court House —
PAT R. BOBO, Owner
Phone 97 — Muleshoe

**CHENILLE
Spreads - Rugs
Bath Sets**
MADE IN MULESHOE BY
Mrs. R. E. Luttrell

121 W. 4th St. Clovis, N. Mex.
ACROSS FROM POST OFFICE

DR. J. R. DENHOF
DR. ABNER ROBERTS
Optometrists
PHONE 61-W OR WRITE FOR APPOINTMENT

PRE - CHRISTMAS
SPECIAL

12—3x4's
1—8x10
Gold Toned

\$11.95

A Regular
\$16.95
Value

GET YOUR XMAS PICTURES
MADE EARLY AND SAVE

Open Mon. thru Fri., 1 to 6 p. m.—Sat. 9 to 6.
Appointments at other hours by request

**PIERCE'S
STUDIO**

Phone 185 Muleshoe

Words to the wise!

GAS HAS GOT IT for modern
automatic
cooking!

NO OTHER RANGES give so many people—so much—
for so little! This automatic
Gas range is one example of
the many fine makes built to
"CP" standards. See your
dealer now and choose the
one that fits your family's
needs.

FASTEST COOKING: Of
all modern ranges, only Gas
gives you high heat, low heat,
any heat, instantly!

FINEST FLAVOR: Only
smokeless Gas broilers give
you char-type broiling from
juicy-rare to "done through."

SO COOL, SO CLEAN: Ex-
tra heavy insulated for cool-
ness...super-streamlined for
new ease of cleaning.

**AUTOMATIC ALL THE
WAY:** New Gas ranges light
without matches, cook by
clock control, set and keep
exact heats!

PERFECT BAKING: Only
air-circulated Gas ovens can
bake six cake-layers at once
with the same even texture!

**MORE FOR YOUR
MONEY:** New Gas ranges
cost less to buy and operate
than any other modern auto-
matic ranges!

SEE YOUR DEALER NOW!
AUTOMATIC GAS RANGES ARE
BECOMING PLENTIFUL



"I SUPPOSE YOUR CAR BROKE DOWN
AGAIN, HUH?"

Poor excuse... call the ARNOLD MORRIS AUTO CO.

ARNOLD MORRIS AUTO CO.
Phone 111 Muleshoe

West Texas Gas Company

SURPRISE DINNER

Mack Ragsdale had his 17th birthday Wednesday October 7. He certainly got the surprise of his life when he came home Wednesday night to find his home loaded with kids.

The dinner was given by Mrs. Buck Ragsdale and his mother. Two beautifully decorated tables were laden with chicken, dressing and all the trimmings.

After dinner Mack opened his gifts, then the evening was spent dancing.

The following were present: Waneen Beller, Weldon and Marion, Ted and Jo Ann, Bobby and Joyce, Joe and Margaret, Don and Melba, Joe Bob, R. E. Ray, and the honoree, Mack.

Joe Frank: What can we do? Margaret: We'll flip a coin. If it's heads we'll go to the movies. If it's tails we'll go to the dance and if it stands on edge we'll study.

Call at The Muleshoe Journal for all your office supplies.

VISIT IN LEVELLAND

Mrs. J. T. Lambert, Mr. and Mrs. Jim Lane were visitors in Levelland Sunday with Mrs. Lambert's daughters, Mrs. Victor Fozz and Mrs. G. V. Joffcoat and families.

VISITED IN OKLAHOMA

Mr. and Mrs. Joe Damron visited their daughter, Miss Jayne Damron in Waco, and in Oklahoma last week.

VISITED HERE

Mr. and Mrs. Charles Julian of Plainview and Mr. and Mrs. Ralph Wilt of Tulsa spent the weekend with Mr. and Mrs. C. D. Julian.

NEW CHEVRONS FOR RECER

TOKYO, (5th Army)—"There's something about a soldier,"—so goes the familiar old refrain that glorifies Uncle Sam's men in uniform and this time that "something" is the new style chevrons to be worn by the Army's present-day non-commissioned officers.

But with the new chevrons has come a change in titles too, and that's why T-5 Carl J. Recer, son of Mr. Carl E. Recer of Muleshoe will now be known as "Private First Class." But only the title is changed. His relative rank remains the same, and so does his pay.

Cooking eggs at an even, moderate temperature will keep them from becoming tough.

COLLEGIAN—1948!



Corduroy is the co-ed's choice for this season for coke date, class, or football game. All sorts of mix and match 'em corduroy costumes have been designed as wardrobe stretchers for the college girl. This popular cotton corduroy by Stephanie Koret of California teams a cutaway weskit with a matching skirt, the National Cotton Council reports.

Carnival Queen To Be Chosen

Election of class queens will be held this next week. Each class in high school will select one queen. The grade school will select one queen from each class on Wednesday, Oct. 27, the queen leading in the grades will be automatically elected to represent the grade school.

Each class in the grade school will place their funds with the leading candidate in the grades.

The race will start for all the school Thursday, Oct. 21, at 12:00 noon and will close at noon Thursday, Oct. 28.

There will be no campaigning during school hours.

The Carnival will be held Thursday, Oct. 28, at the football field.

CARNIVAL BOOTHS

6-B: Miss Armstrong, Hot Dog Stand; 2-B: Mrs. McAnally, Grab Box; 7-B: Mrs. Beddingfield, Grab Box; 1-A: Mrs. DeShazo, Guess What; 1-B: Miss Childress, Fish Pond; 3-A: Miss Stolls, Country Store; 2-C: Mrs. Boone, Country Store; 1-C: Mrs. Cunningham, Wheel of Fortune; 2-A: Mrs. Witherspoon, Wheel of Fortune; 5-B: Miss Zeffie Childress, Doll Rack; 4-B: Mrs. Oberhaus, Cold Drinks, Coffee, Ice Cream; 7-A: Mrs. Page, Basketball Throw; 5-A: Mrs. Thompson, Sandwich, Pie, Coffee; 4-C: Miss Tally, Fortune Telling; 6-A: Miss Cassidy, Penny Pitching; 3-C: Mrs. Peugh, Peanuts and Pop Corn; 3-B: Miss Pierce, Spinning Wheel; 6-C: Miss Hill, Pop Corn, Cold Drinks; 5-C: Miss Stew-

fin, Spook House; Sophomore: Mrs. Newsom, Guess What; Juniors: Miss Moore, Cake Walk; Seniors: Brown, Owens, Bingo; Eighth Grade: Mrs. Stovall, Weight Guessing.

AT CONVENTION

A. J. Gardner, Muleshoe postmaster, this week attended the annual convention of the Texas Postmasters Association, held in Houston. He and Mrs. Gardner had visited relatives at Hollis, Okla., before he went on to the meeting, which runs through the week.

INSPECTED MACHINERY

County Judge Cecil H. Tate and L. T. McKillip, Prec. 1 Commissioner, were in Amarillo Friday to inspect road machinery on display there.

NEW HOMES GOING UP
New homes for the Buford Butts and Morris Childers families are going up in the west part of town on adjoining lots. Both are to be three bedroom homes and construction is being supervised by Sylvan Robinson.

HAD PNEUMONIA
Sylvan Robinson, the builder, is up and about after a siege of pneumonia that had him confined to the hospital for a time.

To protect young eyes, light for studying should be free from glare harsh shadows and contrasts between darkness and bright light. A table study lamp should be tall enough and have a shade broad enough to spread a wide circle of light so that a child can sit up comfortably when reading.

SKATE FOR HEALTH
Hillcrest Roller Rink, Clovis, N. M.
Open 7:00 'til 10:30 p. m.
Sunday Afternoon 1:00 to 4:30
Open for Private Parties.
School or Civic Organizations Parties can be Arranged
Wednesday & Thursday — Day or night,
Old or Young Always Welcome

STOP!

HERE'S FINER SERVICE

- Expert Mechanics
- Modern tools, equipment
- Genuine Chevrolet Parts and Accessories

WASHING & LUBRICATION

Your Chevrolet Dealer

C. & H. Chevrolet Co.

Muleshoe Texas Phone 12

NO BRAKES

OUR CARS ARE CAREFULLY SERVICED - CONTACT

C.W. GOSS & SON'S OIL GULF GAS

USED CARS you can depend on
Come in Please - Go out Pleased

Muleshoe Phone 53

Fall Time Fire Warning Time

AUSTIN, Oct. 12—Fall time is fire warning time, cautions Marvin Hall.

The State Fire Insurance Commissioner says when red leaves begin falling they really should be regarded as signals of fire danger because the greatest fire loss each year is suffered during cold, winter months.

Reminding housewives that one-half of the fires in Texas and the U. S. are home fires, Hall said the fall of the year was a good time to launch a personal fire prevention program with a thorough check-up and clean-up.

"Winter brings additional fire hazards as this season marks the time for heating equipment to be installed and put into use, for dead leaves to be gathered and burned, for lighting equipment to be in more frequent use as the days shorten, for the wearing of clothes that have to be dry cleaned rather than laundered and for greater use of matches," Hall explained.

Urging housewives to prepare now for the fire dangerous months, Commissioner Hall named a few special fire safety tips for Texas housewives to keep in mind:

1. Have all gas stoves connected with solid piping and if leaking gas is noticed, call the gas company. Protect woodwork around or under gas heaters. Be sure heaters are a safe distance from curtains or towel racks.
2. By all means rake up all the dead leaves on your premises but bury them—don't burn them—in your flower beds. Buried leaves enrich the soil and create no fire hazard.
3. Never use gasoline, benzene, naphtha or similar volatile flammable liquids for cleaning purposes. Use an approved solvent for removing spots from clothes. Send to the dry cleaners any clothes needs extensive cleaning.
4. If the wiring system of the house is to be extended, call a professional electrician and have the job done right. Cords to portable electrical appliances should be as short as possible. Replace those that have become the least worn or frayed. Using pennies instead of fuses invites fire.
5. Keep matches in metal containers and out of reach of small children. Be sure matches and cigarettes are out before discarding them. Don't smoke in bed.

4-A: Mrs. Johnson, Ringing the Duck; 1-D: Fitzgerald, Cake and Coffee; Mr. Browder, Ag. Boys, Shooting Gallery; Mr. White, Ag. Boys, Hairless Dog and souvenirs; Mrs. Jones, Miss Paul, Beauty Shop; Mr. Bowman, Ring Toss and Washers; Coach J. Beam, Football Throw; Freshmen, Miss Grif-

SUBSCRIPTIONS WANTED

MARSHALL DEATON—A shut-in-solicits your "new" and "renewal" Magazine and Newspaper Subscriptions... Write title of Publications wanted on a postal card and mail to: Marshall Deaton, Black, Texas. Marshall will gladly furnish Publishers' Prices and any other information desired. Thanks.

Bobo Insurance Agency
Pat R. Bobo, Owner
Office in Court House
Phone 97 Muleshoe

DRS. WOODS & ARMISTEAD
Optometrists
406 LFD Drive Littlefield
Phone 328

FARM LOANS
DRY LAND FARM LOANS
NEW IRRIGATED LAND LOANS
NOW AVAILABLE
No Appraisal or Examination Fee
L. S. BARRON
Representative
Kansas City Life Ins. Co.
AT
BAILEY CO. ABSTRACT

FOR
Refrigeration Sales & Service
Call 272-W
PERKINS' Refrigeration Service
BOX 1025

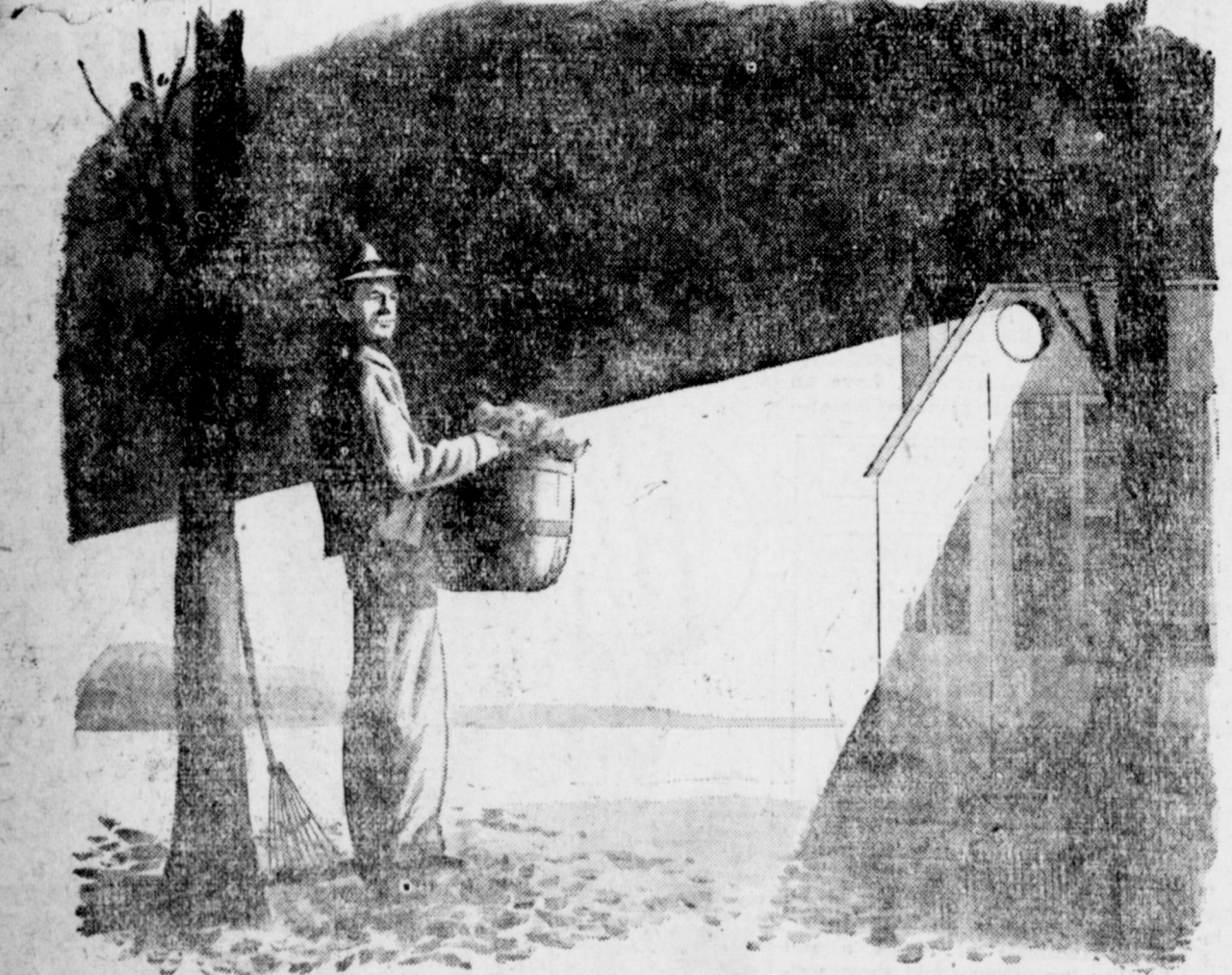
Entertainment at Your Local

THEATERS

MULESHOE, TEXAS

Box Office Opens 7:45 p. m. Show starts 8 p. m. Saturday and Sunday continuous showing beginning at 2 p. m.

--- VALLEY ---	--- PALACE ---
THURSDAY & FRIDAY	THURSDAY & FRIDAY
'Sutter's Gold' Starring EDWARD ARNOLD	ROY ROGERS & TRIGGER In "Eyes Of Texas"
SATURDAY	SATURDAY
JIMMY WAKELY In 'Oklahoma Blues'	LAUREL and HARDY In "Pardon Us"
SUNDAY & MONDAY	SUNDAY & MONDAY
JEAN ARTHUR MARLENE DIETRICH In "A Foreign Affair"	IRVING BERLIN'S "Easter Parade" With JUDY GARLAND FRED ASTAIRE
TUESDAY & WEDNESDAY	TUES. & WED.
"The Cobra Strikes" With SHEILA RYAN	"The Spoilers" Marlene Dietrich - John Wayne Randolph Scott



SHORTER DAYS

Whether it's yard work around the house or important work that has to be done on the farm... more and more must be done after sunset these fall days.

Plenty of low-cost, dependable electric service is available to turn that dusk and darkness into many additional hours of profitable work time. Use it to your best advantage.

Call in an electrician or electrical contractor now to discuss your outside lighting. You'll find it economical... and time saving.

SOUTHWESTERN PUBLIC SERVICE COMPANY
24 YEARS OF GOOD CITIZENSHIP AND PUBLIC SERVICE

YES, all comparisons prove CHEVROLET GIVES MORE VALUE

It's first in all these basic motoring advantages...

FIRST IN BIG-CAR QUALITY at LOWEST PRICES

... just as it's first in nationwide registrations!

CHEVROLET - and Only CHEVROLET - IS FIRST!

C. & H. CHEVROLET
Muleshoe, Texas
Phone 12

More Value in Riding Comfort
You'll find that Chevrolet gives more riding-smoothness, more riding-steadiness, on all kinds of roads because it has the original Unitized Knee-Action Ride, proved and perfected by 14 years of experience in building Knee-Action units. Available only in Chevrolet and higher-priced cars!

More Value in All-round Safety
Chevrolet brings you the four-fold safety-protection of Fisher Unisteel Body-Construction, safety plate glass in all windows, the Unitized Knee-Action Ride and Positive-Action Hydraulic Brakes; and this is another combination of features found elsewhere only in higher-priced cars!

More Value in Performance with Economy
There's nothing like Chevrolet's world's champion Valve-in-Head engine... with its record of having delivered more miles of satisfaction, to more owners, over a longer period, than any other engine built today... and Valve-in-Head design is exclusive to Chevrolet and higher-priced cars!

More Value in Beauty and Luxury
You know that there's only one leader in fine coachcraft—Body by Fisher! It's world-famous for quality, beauty and luxury, not only in exterior design, but in interior appointments like hard-ware and upholstery, as well. And Body by Fisher, too, is exclusive to Chevrolet and higher-priced cars!

Compare Values!... Compare Prices!...

Muleshoe Real Estate Bargains

—4-Labors, 4 room mod. house, REA. Small irrig. well, 5 acres alfalfa, 450 in cult., SW of Goodland Texas, \$50.00 A., 3/4 minerals to go, or 2 North Labors, \$60.00.

—656 A. water well and mill, 576 in cult., level tight land, 18 miles SW Muleshoe, new land, \$50 per Acre.

—320 acres in cult, best red cat-claw land, no imp., shallow water, level, all will irrig, at \$125.00 A.

—320 A. good 6 room and bath house, well and pressure system; lots sheds and out buildings, one end on pavement, about 300 in cult., shallow water belt, all will water, no Senator grass, and I mean NONE. A dandy home \$125. Acre.

—160 acres, well imp., shallow water, level, all will irrig, \$150 A.

—80 A. on pavement, shallow water, no imp., all in cult. PERFECTLY CLEAN, \$110. A.

—160 A. nice modern home, two irrig. wells, lots sheds and corrals, 35 A. alfalfa, 40 A. per pasture fenced in sep. pastures, bal in row crop, 7 miles out, one mile off pavement, dirt cheap at \$200 per acre. P. S. All minerals go.

—356 A., dandy big four room and bath, stuccoed house, chicken houses, young orchard, all for \$18,000. Will be on F-To-M road, everything else there now.

—160 acres close to Muleshoe, has dandy 7 room & bath home on it, new irrig. well, level as a floor, all in cult., lots of granary room and out houses of all kinds. You had better look at this. \$260.00 A.

—40 Acres, all in alfalfa, near town, \$15,000.00.

—80 Acres on Plainview highway, all cult., \$125.00 A.

—45 acres, irrig well, 2 rm. house, 28 A. alfalfa, \$200.00 A.

—30 A., five rm. mod. house, 7 A. alfalfa, joins town, \$8,800. Several nice residences, also lots of lots from \$400.00 up, see us.

Wish I had more room, 'cause we got lots more. You come in and ast us 'bout 'em . . .

BEAVERS - HANOVER & DAY
Bank Building

HOW'S YOUR HOME HARMONY?

COLLEGE STATION, Oct. 14.—Peace and harmony—like charity—begin at home. Family harmony is the foundation of world harmony and peace.

Mrs. Eloise Johnson, extension family life education specialist of Texas A. & M. College, says that living together is like singing together, and family members are like members of a choir. A good choir achieves harmony through continued cooperation and practice. Each member of the choir has his own part and each blends with the others to make real harmony.

The family voices differ in pitch and volume, she points out. Each one must learn how to make the most pleasing tones possible and to sing with the rest of the family.

"You can measure your own signs of happy home living," she says. "Take stock of your family and home harmony occasionally. You may be surprised at the results."

"Through practice in cooperative planning, working, playing and praying together, the family can achieve harmony in home living, which is the strongest hope for individual and world peace," Mrs. Johnson concludes.

Uncle Sam Says



Can you keep on the "up" side of life's see-saw? The bumps come when you are on the "down" side and they aren't funny. For most of these bumps are financial ones and they hurt, unless you cushion the shock. Millions of Americans have discovered the safe, automatic pillow against financial bumps. That pillow is U.S. Savings Bonds. By allotting only \$2.50 a week, you will accumulate \$1440.84 in ten years. There are two convenient methods for the purchase of U.S. Savings Bonds—the Payroll Savings Plan, where you work or, if self-employed, the Bond-Month Plan where you bank.

U.S. Treasury Department

Hospital News

Janice Gulley, daughter of Mr. and Mrs. W. E. Gulley underwent a tonsillectomy. She has gone home.

Mr. Tom Watson was in for medical care. He has been discharged.

Mr. Mart Gilmore was in for observation due to being thrown from a horse. He has gone home.

Mrs. W. F. Beck was in for medical care. She will soon go home.

Congratulations

Mr. and Mrs. C. E. Blauscet on the birth of a son, Lawrence Calvin, Oct. 9.

Mr. and Mrs. John Bruton on the birth of a son, Jimmy Muriel, Oct. 10.

Mr. and Mrs. C. W. Davis on the birth of a daughter, Kathy Dean, Oct. 12.

Mr. and Mrs. Matias Sandoval on the birth of twins, a daughter Juanita and a son, Juan, Oct. 12.

Mr. and Mrs. D. L. Redwine on the birth of a son, Oct. 14.

COTTON TEAMMATES



A "gal in calico" adds a fashionable corduroy weskit and presto, she has a completely new outfit to mix and match for all-occasion wear, the National Cotton Council reports. This cotton duo was designed by Nardis of Dallas for the versatile co-ed's campus activities.



Wheat Yield Boosted Through Fertilization

Gains in Indiana Tests Exceed Seven Bushels

Fertilizing wheat paid dividends in crop increases averaging seven to nine and one-half bushels per acre, Purdue university research men revealed in announcing results of 1947 studies conducted in 15 Indiana counties.

Wheat yields increased seven bushels per acre when fertilizer applications averaged from 150 to 200 pounds per acre. When the plant food treatment was boosted to 300 to 400 pounds per acre, average production gains of nine and one-half bushels were obtained.

Demonstrations with wheat started on various soil types last fall showed somewhat similar results, according to the Purdue agronomy department.

When 165 pounds of 0-12-12 was applied on six southern Indiana upland soils, increases of five bushels per acre resulted. When the application was doubled, yield increases averaged seven bushels per acre.

"Applications of 300 to 350 pounds of 3-12-12 are being recommended for wheat on practically all upland silt or clay loam soils and for sandy loams," says a statement by the Purdue agronomy department. "If the 3-12-12 cannot be obtained, then 2-12-8 is a good substitute for the wheat crop itself. The additional potash in the 3-12-12, however, is especially important for the clover and corn crops following the small grain."

Machinery Is Revamping Farming in Cotton Belt

Nearly a million tractors today are in action on farms in the 18 cotton-producing states, saving time and labor in nearly every phase of cotton production. The invasion of machinery into the South's white cotton fields is eliminating the back-breaking task of producing the cotton crop.

Man's mechanical helpers achieve in a few hours what formerly took days of costly human labor. For example, the flame cultivator, attached to a tractor, removes grass and weeds from the field at one-tenth the former cost.

An experiment in the coastal plains area of North Carolina showed that while 118 man hours are required to produce an acre of cotton by the old man-mule methods, use of two-row tractor equipment, mechanical choppers, flame cultivators and machine pickers cuts the man-hour requirements to 19.7 per acre.

Machines capable of harvesting a bale of cotton in slightly more than an hour are now a reality instead of a remote possibility. While the average hand-picker gathers about 15 pounds of seed cotton an hour, a single mechanical picker in the same field harvests about 1,500 pounds in 2 hours, 20 minutes. Thus, the mechanical harvester accomplishes the work of 40 to 50 human pickers.

Internal Parasites Loot Farmers of Huge Toll

Few criminals ever dream of committing a 125 million dollar robbery. But that's the amount in internal parasites steal from the U. S. livestock industry every year. Because the parasites are hidden, the farmer never will see the thieves at work. However, they keep right on causing losses day and night.

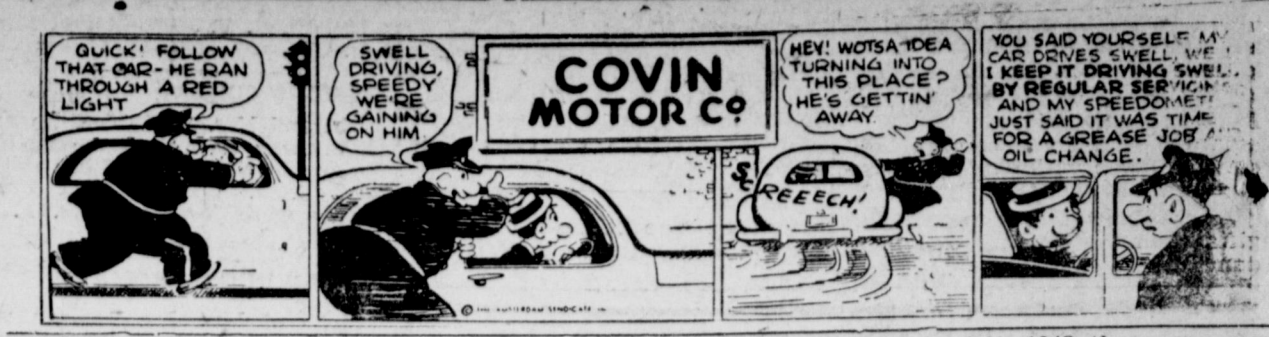
Parasites cause diseased animals and poultry to eat more grain and other feeds than healthy stock eat. They stunt the growth of young animals and sometimes kill them. Affected animals generally bring lower prices when shipped to market.

Internal parasites can be controlled. Phenothiazine, carbon tetrachloride, hexachlorethane, sodium fluoride and carbon disulfide are used to fight certain types of parasites. The advice of a local veterinarian should be secured to determine the proper method of treatment.

Spoilage of Stored Grain Hinges on Bin's Condition

Grain can be stored almost indefinitely with little deterioration in farm-type bins—those that hold 1,000 to 3,000 bushels—if the bins are kept dry, cool, clean and free of insects, according to the USDA. For control of insect infestation, chief reliance must be placed on fumigation. Shelled corn has been stored for several years with a loss of less than 1 per cent, according to official reports.

"SPEEDY" COVIN MOTOR CO.



PARASITES COST MONEY, TOO

College Station.—Most of the stockmen know there hasn't been much grass in the pastures and on the range this year. There hasn't been enough to feed the cattle so there ain't enough to feed the cattle parasites, too. But lots of farmers and ranchmen are now feeding them, and it's costing an awful lot of money to do so, says C. A. King, associate extension entomologist of Texas A. & M. College.

Cattle that are free of parasites have a better appearance, are healthier, more productive cattle, than those that have to keep switching flies off, or rubbing against the fence post to scratch the ticks. Cattle lice and four kinds of ticks are the parasites that bother cattle most in winter time.

Cattle are bothered by lice more in the winter and early spring when the hair is long, so the best time to treat cattle for lice is the fall of the year. Both rotenone and DDT are good for the control of lousy cattle. If you use rotenone, two treatments two weeks apart will give good lice control. Here's the recipe: one pound of 5 per cent rotenone and 10 pounds of wettable sulphur for each 100 gallons of water. Or you can use 50 per cent DDT wettable powder to each 100 gallons of water.

Four ticks common to Texas cattle are the Lone Star tick, the spinose ear tick, the Gulf Coast ear tick, and the winter tick. All are blood suckers and cause the cattle to lose weight if there are enough ticks.

The Lone Star tick can be controlled by dipping every two weeks, beginning when the first ticks are found and stopping when they are gone. Eight pounds of 50 percent wettable DDT in 100 gallons of water used as a spray or dip is recommended for tick control. The spinose ear tick is a common cattle parasite throughout most of Texas, and can be controlled by treating the ears of livestock with Stock 1029, using a small paint brush. Also it's important to treat all salt, mineral and feed troughs with equal parts of kerosene and lubricating oil.

The Gulf Coast ear ticks are found in a 100 mile area from the coastline along the Gulf of Mexico. A good treatment inside the ear and out with Stock 1037 kills any ticks present and holds them off from three to six weeks. The winter tick is found down around San Antonio. A spray or wash

with eight-tenths percent DDT will get rid of these winter ticks. Farmers and stockmen will notice better and bigger gains on their livestock if they keep the lice, ticks and mites away, especially during the winter months, says King.

You can keep peaches or other light colored fruits from turning dark when preparing them for canning by dropping the peeled fruit into a salt and vinegar water solution. The proportions are two tablespoons of vinegar and two tablespoons of salt to each gallon of water used.

As of July, 1948, there were more than 10,000 freezer-locker plants in operation in the United States.

An important detail in making dress collars with a professional look is to trim the seam to a quarter-inch and clip off the corners after stitching around the edge.

If you have trouble with the fruit product rising to the top when you're canning, there's a reason for it. Fruit may float because the pack is too loose or the syrup is too heavy. Another reason may be that all the air in the fruit tissues may not have been cooked out.

Suit Time

Immaculately Tailored
Distinctively Styled
KRAVIN PARK SUITS
Single and Double Breasted
In
Worsted - Gabardines - Tweeds
1 pr. pants \$40.00 to \$48.00
2 pr. pants \$62.50
Or A
TAILORED TO MEASURE SUIT



Tailored to your individual measure
Choose your suit from a wide selection of fabrics... that we now have in stock to show you... from \$41.50 to \$92.50.
USE OUR LAY-A-WAY PLAN FOR YOUR CONVENIENCE

Elliotts Mens Wear

Phone 246 Muleshoe

SAVE!

BARGAIN SALE by Westinghouse

Westinghouse
ADJUST-O-MATIC IRON
\$11.95 VALUE



WIL-STAN HOT-IRON HOLDER
\$1.98 VALUE
\$13.93 TOTAL VALUE



This is a bargain. The Westinghouse Iron you've been waiting for and a safe, modern way to store your iron. Both for the price of the iron alone.
Holder is securely fastened to wall or cupboard. Iron safely cools to room temperature in just a few minutes.

BOTH ONLY \$11.95 LIMITED TIME ONLY!

Enjoy These Easy-Ironing Features • Streamlined Design • Finger-Tip Control • Beveled Edge, Tapered Point • Cool Plastic Handle.

ACT TODAY! BUY AT Fry & Cox Bros.

PHONE 35 MULESHOE, TEXAS

YOU CAN BE SURE ..IF IT'S **Westinghouse**



BAD WEATHER AHEAD—BETTER SWITCH TO **Super-Cushion TIRES BY GOOD YEAR**
"STOP-NOTCHED" for Super-Safety on Slippery Roads!

SUPER-CUSHIONS are tailored to your need for traction—give you a choice of two safe non-skid treads made super-safe with "Stop-Notches." These molded-in zigzag slots in both the saw-toothed Rib tread and the All-Weather tread grip the road with hundreds of sharp edges on stops and starts. Too, Super-Cushions give you the softest ride you've ever had—on 24 lbs. of air.—Come in today.

MULESHOE IMPLEMENT AND SUPPLY COMPANY
Allis-Chalmers Parts Service
Phone 137 Muleshoe, Texas