



THE MULESHOE JOURNAL



Dedicated to the Progress and Development of Bailey County and the South Plains of Texas

MULESHOE ELEVATION, 3,789 FEET, 6 INCHES

MULESHOE, County Seat of Bailey County, Texas

THURSDAY, JANUARY 10, 1946

TWENTY-FOURTH YEAR, NO. 2

New Officers CC Take Over

The Muleshoe Chamber of Commerce is off on another year of work with new officers and directors. The new officers and directors for the office of commissioner for precinct 1.

Horace Taylor is the new president; Finley Pearson is vice-president and Arthur Crow is secretary. The board of directors is composed of the three named above and R. L. Brown, Jesse Osborne, Neil Rookey and Sam Fox.

A committee to continue the campaign for funds with which to purchase new band suits was named by the new president. \$1,400 is required to re-suit the band, and some \$600 already has been raised. The new committee will make personal calls to obtain additional funds.

Many already have agreed to pay cost of curb and gutter along the two main highways through Muleshoe. Other property owners are being contacted. It is believed the highway department will finish paving the strips of streets left unpaved after highway paving was completed, if property owners will pay the cost of curb and gutter.

1945 Was Driest In Bailey County

Last year was the driest year in the history of Bailey County, at least since records were begun in 1921.

The county had only 11.21 inches of precipitation in 1945, according to R. J. Klump, weather recorder. Normal average for the year is about 16 inches.

By months precipitation was recorded last year at Muleshoe as follows:

January, .57; February, .13; Mar. 17; April, .35; May, .64; June, .0; July, 1.68; August, 2.50; September, 3.79; October, 1.17; November, .0; December, .21.

Local Farm Loan Ass'n Leads In New Business

Western National Farm Loan Association, with office in Muleshoe has been the leading farm loan two years in respect to new loans during the year ending the last closed, according to information received here.

David Bates, who has served as secretary and treasurer of the association during those years, has been awarded an expense free trip to farm loan association headquarters in Houston because of this excellent showing.

Leading secretaries of Texas associations will gather there, probably about February 15.

Cpl. Douglass Is Given Discharge

Cpl. H. A. Douglass, Jr., has been given his honorable discharge from the U. S. Army after serving three years, two of which were spent overseas. Upon his arrival in the European theatre he was stationed in England. Later he participated in five major campaigns including those of Normandy, Northern France, Ardennes, Rhineland, and Central Europe. Cpl. Douglass is the son of Mr. and Mrs. H. A. Douglass.

Valley Theater

Theatre opens 6:45, show begins at 7:00 p. m. Saturdays, open 6:15, show begins 6:30.

Thurs., Fri., Jan. 10, 11 Preston Foster - Gail Patrick "TWICE BLESSED"

Saturday, Jan. 12 Johnny Mack Brown in "GHOST GUNS"

Sun., Mon., Jan. 13, 14 Gene Tierney - John Hodiak "A BELL FOR ADANO"

Tues., Wed., Jan. 15, 16 Humphrey Bogart, Ann Sheridan "IT ALL CAME TRUE"

Limited Amounts Johnson Grass Killer Available

A representative of the makers of Atlacide weed killer was in Muleshoe Thursday of last week and consulted J. K. Adams, county agent, about the need of Atlacide in this territory.

At the present time only one carload of Atlacide has been promised for delivery this spring for distribution on the entire South Plains. This farm territory alone can use at least one car load, it is estimated. The only possibility of our getting this shipment is for everyone to sign up for the amount needed, and these orders will be submitted to the manufacturers of Atlacide with the hope that such orders will have the result needed to get them to ship the carload.

Western Drug Company has been appointed distributor for Atlacide and has agreed to split their profit on this preparation so that the cost of Atlacide will cost the landowners only \$12.50 per 100 pounds.

If this carload is worked up, it must be done within the next two or three weeks.

NEW CHIEF OPERATOR

Mrs. Vivian Lee entered upon the duties as chief operator at the Muleshoe telephone office January 1. She was employed in the office recently. Mrs. Lee said that at present the office has its full complement of operators.

Cpl. Oran Dorsey and Cpl. Jimmy Casberry were here for the holidays visiting with Cpl. Dorsey's parents, Mr. and Mrs. Tony Dorsey of Muleshoe.

County Doubles Its Bond Quota

Bailey County people went over the top again in the Victory Loan Drive, concluding December 31, Jesse Osborn and E. R. Hart, co-chairmen of the drive have announced. Citizens subscribed \$332,000 to more than double the assigned overall quota.

However, the county failed to meet its E bond quota, they said. The quota was \$70,000 and the county subscribed for \$49,000.

The government will continue its efforts to sell bonds to the people, but in the future these bonds will be known as Savings Bonds. An advertising campaign will be started at once by the Treasury.

Baileyboro Club

The Baileyboro Home Demonstration Club met Jan. 8, 1946, at the club room. Mrs. Myers, the new president, and Miss Evelyn Vanderdown, the secretary. Other officers taking charge for the year 1946. After the business was attended to, Mrs. Wilson took charge and discussed "Hotbeds for Home Gardens" which was very interesting, also the program event for 1946.

We had one new member and several more will attend next meeting. All old members are urged to come and get started on the "beam."

The next meeting will be at the club room January 22. Sandwiches, lemonade and cookies were served to Mesdames Myers, McClain, Kitykendall, Wilson, the home demonstration agent, and the hostess, Miss Evelyn Vanderdown, and Mrs. Rodgers.

ARMY RECRUITERS WILL BE HERE JANUARY 14

Corporal Short from the U. S. Army Recruiting Station, Lubbock, will visit Muleshoe from 11:30 a. m. to 3:00 p. m. on January 14. Cpl. Short is bringing with him all the latest information pertaining to enlistment and enlistments in the regular army.

Men with previous service are warned that they have until 31 January, 1946, to enlist in the regular Army and obtain the highest rank at the time of their discharge and to secure a reinstatement furlough, provided they do so within 20 days from date of discharge.

Mahon Returns To Washington

Congressman George Mahon is returning to Washington the latter part of this week to be present when Congress reconvenes after the holiday recess.

In a telephone conversation with the editor of The Journal, Mr. Mahon said he regretted that his short stay in Texas did not give him time to visit in the county. "Bailey County people have been mighty nice to me," the Congressman said, "and I am sorry for my lack of time to visit them but I look forward to a later trip to the county to renew my acquaintance with the people."

During his stay in the district this time, the Congressman has been busy conferring with farmers in regard to crop insurance payments where land has been too dry to permit seeding. This question has been discussed with him by delegates from several counties as well as by individual farmers. An attempt has been made to secure an interpretation of the Crop Insurance authorities on this point.

Ewell Jennings Is Visiting Here

Ewell Jennings, Bugler 1c, son of Mrs. Pearl Jennings of Muleshoe is here visiting his mother and friends. He has a 15 day leave from the Navy.

He has served with the Navy for almost a year. After his leave he will report to Pensacola, Florida, for duty.

Judge Cecil Tate Has Announced For Re-Election

Cecil H. Tate has authorized The Journal to announce his candidacy for re-election to the office of County Judge and Ex-Officio County School Superintendent of Bailey County, subject to the action of the Democratic primary to be held in July.

Judge Tate said that he deeply appreciates the cooperation he has received from the people in the conduct of the offices, and that it is his ambition to so carry on the county's business as to continue to merit their approval.

If he is elected, it will be his purpose to cooperate with officials, citizens and all concerned throughout Bailey County, to the end that this county shall continue to progress and prosper in the years that lie ahead.

Judge Tate invites the influence and active support of every citizen of the county in his campaign for re-election.

Only 833 bales of cotton had been ginned in Bailey County up to December 13, compared with 17,856 bales ginned in the county in '34 to this date.

Miss Effie Jean Powers has gone to Tulsa, Oklahoma to make her home there. She is a graduate of Muleshoe High School. She was formerly employed at St. Clair Variety Store.

— BUY SAVINGS BONDS —

Bates Family Will Move To Levelland

David Bates will become secretary-treasurer of two farm loan associations, located at Brownfield and Levelland, on February 1, he announced this week. Mr. Bates served as secretary-treasurer of the Western National Farm Loan Association with office in Muleshoe since May, 1943, during the time Noel Woodley has been in the service.

Mr. Woodley returned to his old position January 1.

Mr. Bates said he will sell his farm home three miles west of Muleshoe and he and the family will move to Levelland, he said.

He will handle the work of the two farm loan associations in the four counties of Cochran, Terry, Hockley, and Yoakum. Brownfield and Levelland are the two largest towns in the territory.

AAA Performance Reporting Date Is January 15

The closing date for reporting practices performed between August 1 and December 31 is January 15, 1946. This closing date is final and no extension of time will be granted. Producers who have not submitted their final performance report and signed their application for payment must do so by January 15, 1946 in order to be eligible for payment on practices carried out under the 1945 Agriculture Conservation Program, according to Travis A. Whiter, County Administrative Officer.

M. D. King In Commissioner Race, Prec. 1

M. D. King, Well known Bailey County farmer, authorizes The Journal to announce his candidacy for the office of commissioner for precinct 1.

In connection with his candidacy, Mr. King issued the following statement:

To the voters of Precinct 1: I wish to take this opportunity of announcing my candidacy for the office of commissioner of precinct 1 of Bailey County.

I feel I can render a distinct service to Bailey County as county commissioner. I am a firm believer in the future of this county as many of you know. I see no reason why there should not be a great development here in the next few years.

There will be available both Federal and State funds for road development, and I believe we should obtain our part and concentrate on improving and building our farm to market roads. I believe in progress and looking to the future. I agree that we should begin a united fight against Johnson Grass, the commissioners court should and must cooperate with and assist in this work.

If elected I will do all that is possible for the betterment and building of a progressive Bailey County.

I may not be able to see each and every Bailey County precinct, but I will assure you that your vote and influence will be greatly appreciated.

M. D. KING

Maple Section Seeks Farm To Market Roads

County Doubles Its Bond Quota

Bailey County people went over the top again in the Victory Loan Drive, concluding December 31, Jesse Osborn and E. R. Hart, co-chairmen of the drive have announced. Citizens subscribed \$332,000 to more than double the assigned overall quota.

Baileyboro Club

The Baileyboro Home Demonstration Club met Jan. 8, 1946, at the club room. Mrs. Myers, the new president, and Miss Evelyn Vanderdown, the secretary. Other officers taking charge for the year 1946. After the business was attended to, Mrs. Wilson took charge and discussed "Hotbeds for Home Gardens" which was very interesting, also the program event for 1946.

ARMY RECRUITERS WILL BE HERE JANUARY 14

Corporal Short from the U. S. Army Recruiting Station, Lubbock, will visit Muleshoe from 11:30 a. m. to 3:00 p. m. on January 14. Cpl. Short is bringing with him all the latest information pertaining to enlistment and enlistments in the regular army.

FAIRVIEW CLUB

The Fairview Home Demonstration Club met in the home of Mrs. Luther Ogletree, January 8. The hostess gift was discussed and decided on. Each time that the club meets in your home, you are to have a gift. Chances at this gift are a nickel each.

The club plans to assume another name soon, which we think will be more appropriate. Plans were also discussed on having the Pickern family to entertain at the school house auditorium in the near future.

Behind Your Bonds



Ranking second to agriculture in Iowa's resources, coal has been mined for 95 years. Twenty-two counties produce it. From 3 1/2 million tons in 1880, it increased to 3 1/2 million in the peak year of 1917. In 1910, 297 mines employed 18,000 men. Recently the output has dropped to 3 million tons but with peace there is a good indication that this quantity will increase. The state's industries need this fuel and its mining operations will contribute to the Nation's wealth behind War Bonds.

Mr. and Mrs. J. C. Hart are back on their farm near Muleshoe after living for a time in Borger.

B. H. Morgan, manager of Cobb's Department Store, attended the annual Men's Apparel Show held in Dallas Sunday.

Pool Won Trip To Cotton Bowl

Lee R. Pool of the Pool Insurance Agency, Muleshoe, won an expense free trip to Dallas and the annual Cotton Bowl football game New Year's day as the result of his high production of life insurance last year for Rural Life Insurance Company.

He witnessed the game between Texas University and Missouri University and visited the Texas headquarters of the company.

The Pool Agency was high producer in the State of Texas last year for Rural Life.

Winn Family In Reunion Sunday

A family reunion Sunday at the home here of Mr. and Mrs. D. W. Winn found all three sons at home and all the family together again for the first time in four years.

Here with the guests for the occasion were D. W. Winn, Jr., his wife and their two babies, of Winslow, Arizona; Welton Brooks Winn, recently returned from Europe and discharged by the Army; and Jesse Winn of the home.

Postal Receipts Gained Over 1944

Postal receipts at Muleshoe continue to increase and receipts at the local postoffice for 1945 showed a gain over the total for the previous year, according to a summary made public by A. J. Gardner, Muleshoe postmaster.

Gains were registered in the first three quarters of 1945, however. The fourth quarter of 1945 had less receipts than those of the office for the last quarter of 1944.

Total for 1945 was \$18,259.32, and for 1944 were \$18,181.63.

Receipts for 1944 by quarters were: First, \$4,990.81; second \$3,601.98; third, \$4,223.98; fourth, \$5,044.69. Last year's quarterly figures are: First, \$4,388.33; second, \$4,444.69; third, \$4,315.03; fourth, \$5,112.27.

Receipts for 1944 by quarters were: First, \$4,990.81; second \$3,601.98; third, \$4,223.98; fourth, \$5,044.69.

Receipts for 1944 by quarters were: First, \$4,990.81; second \$3,601.98; third, \$4,223.98; fourth, \$5,044.69.

Receipts for 1944 by quarters were: First, \$4,990.81; second \$3,601.98; third, \$4,223.98; fourth, \$5,044.69.

Receipts for 1944 by quarters were: First, \$4,990.81; second \$3,601.98; third, \$4,223.98; fourth, \$5,044.69.

Receipts for 1944 by quarters were: First, \$4,990.81; second \$3,601.98; third, \$4,223.98; fourth, \$5,044.69.

By VERNON H. BAKER

Supt. Three Way School

The Maple Chamber of Commerce met Monday evening, January 7, 1946. County Commissioner Glen Williams and Jesse Osborn of the Muleshoe State Bank were special speakers for the evening.

Mr. Williams spoke of farm to market roads for this area. Then he enumerated farm to market roads already designated for Bailey County. One of the things brought out in this connection by Mr. Williams was the growing trend of farmers wanting to secure modern conveniences. He contended that good, hard surfaced roads along with rural telephones, and electricity for rural homes, would cause farmers to be more satisfied on farms and cause the rural area to build up instead of the county to town movement.

Glen Williams has done everything in his power to bring before the County Court and all other groups that may have anything to do with the highways the condition of this precinct of Bailey County. It is the only section of Bailey County that is without pavement. Mr. Williams found a strong ally in Judge Cecil H. Tate. Together they got the county court to see the unbalanced road program of this section.

Glen Williams, Judge Tate and the entire county court have been at work on the district highway engineer, and the whole state highway department. They have managed to actually convince the state highway department that this forgotten area really exists. What is more, the highway department admits that something should be done about pavement in this area, and have promised the county court that it will be done in further grants of farm to market roads. The highway department has specified a paved road "from Enuche to new school east of Three Way and an extension of the pavement running north to Cochran county line from pavement now running west out of Morton. The extension to run north from Cochran county line to town of Maple.

These roads may not be constructed at once, but they surely will be a boon to this county. The county court sent to state highway department statistics prepared by Mr. Williams and Judge Tate that really opened the department's eyes about this section of the county.

The Maple Chamber of Commerce really feels that it has a real friend in Mr. Glen Williams, and they do feel that Judge Cecil H. Tate has expended untiring efforts in behalf of this precinct. And this Chamber of Commerce wishes to express its thanks and appreciation for the efforts put forth by Commissioner Williams, Judge Tate

and the entire county court in behalf of this region.

The feeling of all those present was that this region is due to advance with such efforts.

The second speaker was Jesse Osborn of the Muleshoe State Bank. He spoke to the group on the development of good serviceable telephone system for Bailey County. He told the group of what Muleshoe is doing towards the formation of a private telephone company for Muleshoe and vicinity. He extended an invitation for the Maple group to make the organization county-wide.

Mr. Osborn showed the group the vast need for telephones in this area. He made suggestions of how we could tie in on already established lines.

Through Mr. Osborn's talk he stressed the fact that by personally would do anything he could to further the development of this area, and that all Muleshoe was ready and anxious to do whatever was within its power to help develop this area.

The Chamber of Commerce is deeply appreciative of this wholesome, helpful attitude. We feel that we are bound to progress with such splendid help if we but stay organized and push.

Committees were appointed to meet with the Muleshoe telephone committee and another to meet with the Morton telephone committee.

We feel that by united efforts something can really be accomplished and that is county-wide telephone system need not be merely a pipe dream. It was decided that this group would go to work at once to see what it could do and just what could be done.

The Maple Chamber of Commerce has seen the light. The members see that there is something to be done by working together, that they may be able to working together to really develop this great area as should be developed.

The Maple Chamber of Commerce was organized not for the promotion of Maple alone but for this whole south and southwest area of Bailey County.

Members of all the communities are invited to meet with this group and to join it. If we would but all get together there is no limit to what the organization could do.

BAPTIST W. M. S. WILL MEET NEXT WEDNESDAY

The Women's Missionary Society of the First Baptist Church will meet Wednesday, January 16, for a mission program, taken from the Royal Service Magazine. Mrs. Eddie Lane will have charge of this very interesting program. We are inviting every lady to come and be with us for this program.

MONTHLY SINGING AT THE CHURCH OF CHRIST

Sunday afternoon a large tuneful crowd of singers gathered for an hour and a half of sacred singing. Numbers of singers were in attendance from almost every city and village within a radius of 30 miles. This is a regular feature of the churches within our section. Next meeting for such will be with the Larlat church in next first Sunday afternoon.

The ministers of the various churches take great interest in such gatherings. Among those present were the following ministers and their groups of singers:

Messrs O. A. Huff and Otis W. of Metrose, N. M.; Prof. Reynolds of Clovis, Louis C. Cox and Ab Randall of Farwell, Texas. J. A. Bristow and a group of singers from Sudan.

Prof. J. M. Baker and a group from Lazbuddie, and others of various surrounding districts whose name we did not learn. Come again, folks. The singers of the Church of Christ at Muleshoe appreciate greatly your happy tuneful presence in our midst.

W. O. Burford of Lazbuddie was in town this week with the third of his sons, Parker Burford, to be released from the Army. Parker makes his home with Lubbock people. Walter says his mother, Mrs. L. O. Burford, is very fortunate in

having all of her grandsons pass through the nearly four years service in various parts of the Pacific, Europe and America, and no one in anyway wounded or injured. We rejoice with all such fortunate mothers. God bless and help those not so fortunate.

Minister S. A. Ribble, Leo Baker, and Eld Jarman attended a gathering of Church of Christ ministers at Clovis the evening of January 9. This voluntary gathering was for mutual encouragement and assistance of the ministers and others attending. Each minister introduced a guest from his community or place of labor. An address by Silas Howell of the Clovis church was listened to and then an hour or more was spent in round table discussions. This is to be a regular monthly feature of the work of the contributing ministers. An enjoyable meal was eaten at the Clovis Hotel as a feature of the gathering. A very enjoyable and profitable time was had by all.

TEXAS OVER THE TOP IN THE VICTORY LOAN

Texas met and passed all quotas in the Victory Loan Drive which ended December 31. A last minute spurt put the State over on its E Bond purchases, with a percentage of 102.7 of its quota. On the overall quota, Texas had a percentage of 221.7, more than double the amount assigned in this last loan for financing World War

Cpl. Arle Owen Home From Europe

Another veteran of the Owen family reached home Sunday. Cpl.

Arle Owen, who took part in Gen. Patton's whirlwind campaign across France and into Germany, is at home with his parents, Mr. and Mrs. A. H. Owen. The family is

looking forward to having all the twelve children here with their 24 grandchildren the coming Sunday. Cpl. Owen's twin brother, Carle Owen, arrived last week from England. Cpl. Owen had not seen his

family since entering the service three and one-half years ago. He said that in all the fighting not one man was lost in battle out of the unit which he served.

DITCHING MADE Easy

Adjustable Wings, Wheels and Beam

Actual performance proves that Double Wing Chattin Ditchers take the hard work out of ditching and save time and expense.

Thousands of farmers agree Chattin Ditchers are by far the best for building new ditches and cleaning old ones. All Chattins have the famous Curved Mold-Board Wings which build a rounded, strong, lasting bank and handle any type of soil with a minimum of draught.

The Chattin Ditcher builds a firm, flat bottomed ditch; is quickly and easily adjustable to any cut.

One Man Operation
★ Detachable Front Share
★ Single or Double Wing
★ A Size for Every Need
★ Low Cost

Double Wing, 11 sizes; Single Wing, 5 sizes. See us for the ditcher that will make ditching easy for YOU.

E. R. HART COMPANY
Muleshoe — — — Texas

New Cars BUT Few Cars

IT WILL BE SOME TIME BEFORE PRODUCTION CAN EQUAL THE DEMAND FOR NEW CARS MEANWHILE CONTINUE TO CONSERVE YOUR OLD CAR BY DRIVING CAREFULLY AND BY PAYING REGULAR VISITS TO OUR SERVICE DEPARTMENT. OUR CONSERVATION PROGRAM IS YOUR SAFEGUARD FOR DEPENDABLE AND ECONOMIC MOTORING.

- Skilled Mechanics
- Chevrolet-Engineered Parts
- The Finest Tools and Equipment

SEE US TODAY FOR PERSONALIZED SERVICE

C. & H. CHEVROLET CO.
Muleshoe, Texas

Muleshoe Lodge
No. 1237 A.F. & A.M.
Regular Meeting Second Tuesday Night of Each Month
Vance Wagon, W. M. - R. J. Klump, Secretary
—Visitors Welcome—

Guaranty Abstract Company
PAT E. BOBO, Owner
— Office in Court House —
Phone 97 — Muleshoe

Covered Buttons And Buckles
Custom Made Belts — Machine Buttonholes
GOLD and SILVER SPOT TRIM
Mrs. M. G. Bass
3rd House North of Hospital

APPETIZING Plate Lunches
We Serve Lunches Until 10 p. m.
Open 4 a. m. — Close 12 midnight

BILL'S CAFE
Muleshoe, Texas

BUBBLES SEZ

Now that those lovely nyons are on the way back, the trick is finding soap to wash 'em in! Best way to fix that is to keep turning in the USBD PATS needed to help make soap. Remember, where there's a fat, there's a soap. Keep saving yours!

Sue's Beauty Shop

SUE IS BACK TO SERVE THE PEOPLE OF MULESHOE AND IS LOCATED IN THE SAME PLACE SHE HAS BEEN FOR THE PAST SIX YEARS.

CALL FOR APPOINTMENT OR COME IN TO SEE US.

Sue Bradley
PHONE 149-V

A "Look at the Books" OR "A Finger in the Pie"?

Which is the UAW-CIO really after? Is it seeking facts—or new economic power? Does it want to know things—or run things?

These questions concern you as well as General Motors.

For years the facts about General Motors have been made public.

In spite of this, the UAW-CIO demands a chance to look at our books, with the hint that we could meet Union demands "if the truth were really known."

We have firmly declined to recognize this as a basis for bargaining:

- 1. The Full Facts are Published**
How much General Motors takes in each year—how much it pays employees—how much it pays to stockholders—how much it pays in taxes—how much net profit we make—and many other facts are plainly stated in annual reports and quarterly reports.
These are broadcast to 425,000 stockholders from coast to coast to newspapers and libraries. Additional copies are free for the asking.
- 2. All Figures are Thoroughly Checked**
Every General Motors annual statement is audited by outside auditors. Similar figures are filed with the Securities & Exchange Commission.
Does the UAW-CIO or could deceive or Contingencies leral Tax 20,000.00 Profits 3,215.49 Bonds—Safekeeping. 9,500.00 a Deposit 291,482.79 The Wagner Act 2,749,904.31 These cover suc conditions. LIABILITIES \$3,149,102.59 No mention is n the like. These spect—Ines P Bobo, Cashier. CORPORATION
- 3. Basis of Co is Defined**
The Wagner Act is defined as active bargaining of work, working volume, taxes and of management.

4. Something New has been Added

The obvious fact is that the UAW-CIO has gone beyond its rights under the law—and is reaching not for information but for new power—not for a look at past figures, but for the power to sit in on forecasting and planning the future.

A "look at the books" is a clever catch phrase intended as an opening wedge whereby Unions hope to pry their way into the whole field of management.

It leads surely to the day when Union bosses, under threat of strike, will demand the right to tell what we can make, when we can make it, where we can make it, and how much we must charge you—all with an eye on what labor can take out of the business, rather than on the value that goes into the product.

5. This Threatens All Business

If the Union can do this in the case of General Motors, it can do it to every business in this land of ours.

Is this just imagination? Union spokesmen have said, "The Union has stated time after time that this issue is bigger than just an ordinary wage argument, that it is bigger than the Corporation and bigger than the Union."

For Labor Unions to use the monopolistic power of their vast membership to extend the scope of wage negotiations to include more than wages, hours and working conditions is the first step toward handing the management of business over to the Union bosses.

We therefore reject the idea of a "look at the books" not because we have anything to hide but because the idea itself hides a threat to GM, to all business, and to you, the public.

GENERAL MOTORS
"MORE AND BETTER THINGS FOR MORE PEOPLE"

PROGRESS CLUB

"Plant your tomato seed early in hot beds," said Mrs. Laurette A. Wilson, county home demonstration agent, when the Progress Club met January 3 for the first meeting of the year, at the home of Mrs. C. T. Mathey.

Directions for a hot garden by which a few tomato plants, peppers and egg plants could be raised were given by Mrs. Wilson in her presentation. These and subjects of tomato raising and hot beds are handed out to the members.

Preceding the demonstration a short business session was in charge of the president, Miss Elmer McManis.

The committees for the coming year were appointed as follows:

1. Finance: Mrs. Raymond Boyer, Mrs. Harold Mathey and Mrs. C. M. Orr.
2. Year Book: Mrs. Joe Stinham, Mrs. J. J. Cross and Mrs. W. Clark.
3. Educational: Mrs. Mrs. Elmer McManis, Mrs. J. J. Cross, Mrs. Thomas and Mrs. Chas. Baker.
4. Exhibit: Mrs. Lewis Stover, Mrs. D. C. Smith and Mrs. Chas. Shaw.
5. Marketing: Mrs. Marjorie Sol.

Mrs. George Wray and Mrs. Cecil Sigman.

The personal service committee will be appointed later.

Mrs. Albert Davis was elected parliamentary to replace Mrs. Dave St. Clair who has moved from our community.

A quilt of 1946 results was enjoyed by the club to recreation.

Cookies and hot chocolate were served to these new members—Mrs. Lewis Stover, Mrs. D. C. Smith, Mrs. Shaw, Lorraine and AMHXNE and Mrs. Chas. Shaw, the demonstration agent and former club members.

The next meeting will be on January 13, 1:30 p. m., at Mrs. George Wray's home.

Renovating Fur Methods Told By County HD Agent

These helpful notes of fur-out muffs, collars from coats of 1945 of remaining new styled, may in times and those in many homes could be used to add to the appearance and warmth of being clothes this winter when new fur is expensive. Mrs. Laurette Wilson, county home demonstration agent at Bailey County, said:



THE HOME INSURANCE AGENCY is known for its dependable insurance coverage. Protect property, business and home against fire damage. There are so many risks in which we can help you, you'll want to call us about them.

The Pool Insurance Agency
Lee & Myron
Muleshoe — Gilbreath Bldg.

MULESHOE INSURANCE AGENCY
Office in Court House
Paul K. Sudo, Owner
Phone # — Muleshoe

DR. A. E. LEWIS
DENTIST
Office at rear of Western Drug

WATER WELL DRILLING
NEW INSTANT RIG
PROMPT SERVICE
GUARANTEED JOB
See
Willis & Owens
at R. L. Beverly office in Muleshoe

Dr. G. A. PITTMAN
Chiropractor
Office Located First Door North of New Theatre
Chiropractor Adjusting
Color Therapy — Physio-Therapy — Hungarian Bath
Mrs. Pittman — Technician

Col Dick Doshier
AUCTIONEER
Dallas — Texas
New booking sales at 3 per cent commission. I pay all advertising and check expenses.
PHONE ME AT
Lariat Elevator

ROLL DOWN THE ROAD LIKE A—
Whizz!

Your engine will purr like a kitten full of cream when that new Phillips 66 goes to work in it!*

Want new power, new pep and pick-up—then let a tankful of the new Phillips 66 open your eyes!

It's a high volatility gasoline made with many of the elements that formerly went into combat aviation fuels—it ought to be good!

Just pull in where you see the orange and black "66" sign and say "O.K., I want to be *smooth*!" In city traffic or on the broad highway, you'll say there never was a gasoline like this one!

Phillips 66

* PHILLIPS CONTROLLED VOLATILITY MEANS THE MOST EFFICIENT GASOLINE IN YOUR MOTOR, NO MATTER HOW HOT OR COLD IT GETS.

PHILLIPS 66 GASOLINE

Holt Oil Co. Phillips 66 Dealers
Muleshoe Texas

Byron Jackson Pumps
CASING and ENGINES
ROTARY DRILLING
Now available for this territory from Lubbock
FOR EARLY DELIVERIES AND SERVICE, WRITE OR PHONE
WATER DEVELOPMENT CO.
1000 AVENUE H LUBBOCK TEXAS PHONE 4200

We're Still Buying HOGS
At Muleshoe -
—We are in the market for your hogs at all times and we are paying —
TOP MARKET PRICES
Just bring them to the old location.
We are also supplying Muleshoe merchants with meat and are thus keeping in touch with our old friends here.
Starkey Packing Company
Muleshoe — Texas

vents out that home renovating and remodeling fur is not difficult. Yes it is an unknown skill to many a housewife otherwise skilled at makeovers.

Cleaning. The first step in making over fur is to clean it. Moisten the fur to a board, skin side up, and sawdust or corn meal with dry cleaning fluid and rub thoroughly a thick soap suds into which a little

oil has been whipped. (Nails look all the better.)

Restoring fur. The next step is to brush the fur in the direction it grows with a sponge moisten in water. When dry, shake and comb the fur. Then sweep a hog bristle rapidly over the surface of the fur to glass it.

Changing cut (or with scissors— and on the skin side. Otherwise the hair will be cut leaving the fur with a bobbed appearance.

Sewing. Lay cut edges together and then sew by overhanding, using waxed medium-weight cotton thread never silk, which cuts the skin.

New Furniture Here
—Baby Beds and Mattresses
—Studio Couches
—Sofa Beds
—Breakfast room Suits
—Utility Cabinets

PHILCO APPLIANCES
"10 Years Ahead of 4 Years Ago"
PHILCO FREEZERS—STORAGE FOR FROZEN FOODS FOR THE HOME
PHILCO AIR CONDITIONERS
NOW ON DISPLAY
PHILCO REFRIGERATORS AND PHILCO RADIOS

DYER
HARDWARE and FURNITURE
Muleshoe Phone 151 Texas

Closet Combinations
Lavatories
Chromium Plated Fixtures
9x12 Linoleum Rugs
Linoleum By the Yard
12 Gauge Shot Gun Shells

H. S. Sanders
LUMBER
Muleshoe — Texas

Prop Wash

(This column is dedicated to those who fly and are interested in the proceedings at the Muleshoe Airport).

Conrad Williams of Goodland took his first cross country last week, after flying off and on for the last five years. Conrad combined both business and pleasure. His bus-

ness was in Memphis, Texas. After leaving Memphis, he returned to Muleshoe via Clarendon. His total time for the round trip was 3 hours and 40 minutes. Less than half the time he could have driven.

The first 1946 airplane to be in Muleshoe was an Aeronca Tandem Trainer. It cruises at around 90 mph and sells at a good price, \$2995.00.

The Muleshoe Flying club is a

good example to others who would like to fly with a minimum of cost. The Club is composed of five members: Earl Ladd, Bill Holt, Buddy Jones, Ray Griffiths, and C. E. Briscoe. A club cuts operating expense, yet gives you opportunity to fly as much as you like, at one fifth the cost.

Muleshoe has an iron in the fire, labeled "Air Show." It will be announced when the date and other particulars have been decided upon.

Did you know? Today's light planes' gas consumption is around 24 miles to the gallon (better than your car will do on a down hill grade), and that figure is without any wind?

INFORMATION FOR VETERANS

Q. Are there conditions under which the widow of a World War I veteran who served less than 90 days may receive a pension?

A. Such widow may receive pension if death was due to a service-connected disability or if the veteran was discharged by reason of a disability incurred in service in line of duty or the veteran at the time of his death was receiving or entitled to receive compensation for a service-connected disability.

Q. How long must the relationship of loco parentis have existed in order that the one so acting may receive a pension?

A. In order to receive a pension as widow that the claimant, a dependent parent is must be provided that the claimant has stood in the place of a parent for at least one year prior to the veteran's service.

Q. When going to school under the provisions of the G. I. Bill of Rights does a veteran receive any payment for subsistence in addition to the \$75.00 per month paid the veteran and wife?

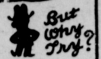
A. When going to school under the provisions of the G. I. Bill, a veteran will receive \$50. per month without dependents or \$75.00 per month with dependents regardless of how many there may be. No other payment of subsistence is received.

Q. Is the \$500.00 per month that pays for tuition, fees, books and supplies the total that will be paid for a full year?

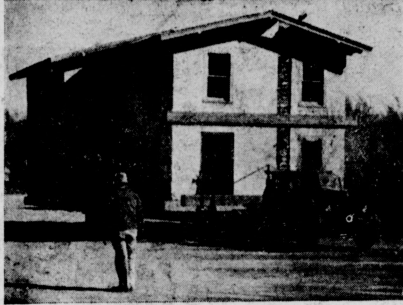
fees, books, and supplies for each ordinary school year of nine months, if the school is operating the full calendar year and the veteran wishes to attend, the

A. The Veteran's Administration will pay up to \$500. for tuition, amount paid will be increased accordingly.

MAYBE You Can Make Money Without ADVERTISING-



House Moving



Winch Work - Irrigation Well Work

E. K. ANGELEY

10 Miles east on Plainview highway and 3 Miles North

COLD WAVE AHEAD!

CHANGE TO THIS NEW FIGHTING AVIATION OIL WITH... *Twin Action**

Flows Freely AT ZERO OR BELOW **STANDS UP AT BOILING OR ABOVE**

● Champlin HI-V-I... the new fighting aviation oil... provides the two things you want most in your winter motor oil... easy starts and sure lubrication.

Because it is thoroughly de-watered by an amazing new solvent... N-Hexane... it flows freely even at zero or below.

Refined by an entirely new and different dual solvent process, it has a high viscosity index that resists terrific speeds, pressures, and temperatures. Motor heat, boiling or above, won't even break-down its tough oil film.

So try Champlin HI-V-I... the really better winter motor oil. Available in refinery sealed cans from friendly Champlin service stations and dealers. And fill up with Presto... Champlin's quick-starting, power-packing gasoline.

CHAMPLIN REFINING CO.
Enid, Oklahoma

Producers, Refiners, and Distributors of Petroleum Products Since 1916

CHAMPLIN HI-V-I Motor Oil
"ON THE GROUND... OR IN THE SKY"

HOLT OIL CO.
Muleshoe, Texas

SEE YOUR DODGE DEALER NOW... for a NEW DODGE Job-Rated TRUCK

Enjoy the **ECONOMY** and **LONG LIFE** of a truck that Fits Your Job

1/2 to 2-Ton CAPACITIES AVAILABLE NOW

DON'T WAIT! Get your Order in... NOW

ARNOLD MORRIS AUTO CO.
PHONE 111 MULESHOE

See us, too, for **DEPENDABLE TRUCK SERVICE** and **Factory Engineered TRUCK PARTS**

ANNOUNCING OUR APPOINTMENT

Exclusive Dealers In Bailey County

FOR THE



KIRBY POSTHOLE DIGGER

"Something to Crow About!"

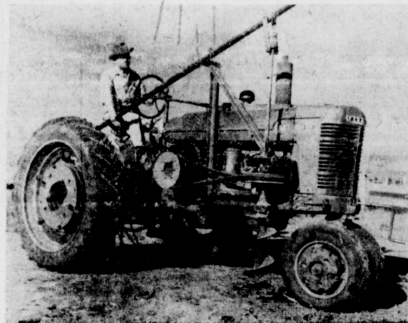
For Minneapolis-Moline Model U T U ALLES-CHALMERS W-C

For International Models M and H J hu Deere H and G

Now You Can Dig Your Postholes

• Quickly • Easily • Economically

WITH THE BEST POWER POSTHOLE DIGGER ON THE MARKET



KIRBY DIGGER on International Model M

• **Simplicity in Design!**

Operating on a new and different principle from any other digger on the market, the Kirby Digger has the simplest possible design and several exclusive features. It is the only digger with no cogs or gears to slip or wear out—operates by V-belt drive... Right front side mounting gives best possible visibility for stepping auger directly on mark for hole. No crank to turn—no complicated mechanism to learn to operate.

• **Easy To Operate**

No aching necks from operating the Kirby Digger—it's right up where you can see it without turning around! One man can operate it without getting down from the driver's seat. Designed so that a helper may be used for protracted digging operations for greater speed. It's easy to clean loose dirt out of holes with this digger, to dig holes of uniform desired depth.

• **Inexpensive**

Low in initial cost and inexpensive to operate, the Kirby Digger is designed and built to last for many years. So simple in design that it is built of only a few rugged parts, any one of these can be replaced should it be needed: Owners report: Digging for two days or more on a task of gas, digging up to 700 holes per day in actual fencing operations. You can pay for your Kirby Digger in four days doing custom digging for your neighbors—and have money left.

EXTRA EQUIPMENT—9-inch auger is standard equipment; 6 and 12-inch augers available. We can also furnish bumper attachments for pushing wires aside in fence line for digging holes to replace old posts or for installing new posts between old ones.

JOHNSON & NIX

INTERNATIONAL TRACTORS and IMPLEMENTS

Phone 232

Muleshoe, Texas

Back of E. R. Hart Hardware

News Briefs

Mr. and Mrs. Jim Speer have moved from Belton to make their home in Muleshoe. He is owner of the Speer Drug store here. His brother and wife, Mr. and Mrs. Geo. Speer have been operating the store and will continue to be associated with its management.

Miss Frances Williams has become one of the regular staff at the city office, assisting R. J. Klump, city secretary. Until the new year rush developed, she had been assisting in the office on a part time basis.

"Be sure you send me each week my copy of The Muleshoe Journal," said John Benson, the building contractor, to his family as he left for Big Square to build a new residence for the E. F. Brown family. It appears that John is a judge not only of good building but of good reading material as well.

Mr. and Mrs. L. J. May Wayne, Okla., were here over the weekend

visiting in the home of Mr. and Mrs. Glenn Jennings. Mrs. May and Mrs. Jennings are sisters. The Mays plan to make their home in Muleshoe.

Miss Latrice Ward has been visiting friends at Roswell, N. M.

Miss Ruth Taylor, teacher in the Carlsbad, New Mexico schools, has been visiting here. She taught in the Muleshoe school last year and was girls' basketball coach.

Welton Brooks Winn, son of Mr. and Mrs. D. W. Winn of Muleshoe has recently received an honorable discharge from the Army, where he served for 31 1-2 months, part of the time overseas.

Warrant Officer Noel Garrett, of the USS Idaho, is spending a thirty day leave here with his parents, Mr. and Mrs. W. H. Garrett. He has been in the service about five years.

Mr. and Mrs. J. W. Miller are the parents of a daughter born January 8 at Littlefield. She was named Kandis Babbitt. She weighed 5 lbs. 11 oz. Mr. Miller is with the Muleshoe Airport.

Mr. and Mrs. Horace McAdams are the parents of a baby daughter born December 26 at Clovis. She was named Julia Ann.

Arnold Morris left Wednesday of this week to attend the Dodge and Plymouth dealers meeting in Oklahoma City.

Mrs. L. N. Childress of Dallas visited her parents, Mr. and Mrs. H. A. Douglass this week end.

Mrs. Alva Sparks returned Thursday to her work with the War Department in Washington, D. C., after spending the holidays with her parents, Mr. and Mrs. H. A. Douglass.

Mr. and Mrs. Glenn McKinny and children of San Jose, California visited here with Mr. and Mrs. Alton Cherry Friday.

Mrs. Fern Gallegas resigned her position as apprentice operator at Santa Fe, January 1. The position was filled by Wallace Jones of Lubbock.

J. B. Burkhead, who has been ill, is able to spend a time each day at his real estate office now and seems to be improving nicely.

Mr. and Mrs. George Speer have been visiting at Rogers, Texas, with her parents, Mr. and Mrs. W. M. McCormick.

J. V. Davis and Mrs. E. R. Wittner, of Brownfield, were in Muleshoe Thursday, on business.

Mr. and Mrs. Irvin St. Clair returned from Dallas Friday. They attended the Rose Bowl football game while there.

Mr. and Mrs. T. C. Goss and Mike of Artesia, New Mexico, visited over the week end here in the home of Mr. and Mrs. C. W. Goss.

Miss Joyce Shengog visited in Ar-

tesia, New Mexico, over the week end

Lions Working On Airplane Purchase

Muleshoe Lions are continuing their efforts to obtain a surplus warplane for instruction purposes in connection with the aviautual ground school here. Lion Pat Bobo told the club at their luncheon Tuesday.

Financial arrangements have all been made, and one of these planes may soon be brought here.

Secretary Lee R. Pool reminded Lions that this is new membership month. Several new member will be received by the club during January.

Fidelis Matrons Class Met Thursday

The Fidelis Matrons Class of the First Baptist Church met Thursday for their monthly business meeting in the home of Mrs. Clinton Brister.

The living and dining rooms were decorated with sweet peas and carnations.

Mrs. Floyd Davis brought the devotional taken from the book of Ruth. Mrs. Bert Mathis, the president, presided over the business session. After the meeting, New Year's games were played.

Guests were seated at tables and the hostess served delicious Mexican food. Those attending were: Mesdames: Eddie Lane, A. W.

Helps build up resistance against MONTHLY FEMALE PAIN

When taken regularly! Lydia E. Pinkham's Vegetable Compound does more than relieve monthly pain when due to functional, periodic disturbances. It also relieves accompanying weak, tired, nervous, bitter feelings—of such nature. Taken regularly—Pinkham's Compound helps build up resistance against distressing conditions. Pinkham's Compound is worth trying!

Speer Drug Muleshoe, Texas

What's Back of My Gas Burners?

This is the third of a series of four advertisements being published in the belief that you would like to know more about the natural gas business, which so vitally affects your daily lives.

CHAPTER III The Gas Is Conditioned for Transporting

In the previous chapter we saw how natural gas travels from a well through a meter house, through a field gathering line, and through a compressor station where it was squeezed into smaller space. Now what happens to it next?

Before starting on its long journey, the gas passes through a Gasoline and Dehydration Plant adjacent to the field compressor station. This plant removes gasoline and moisture from the gas to increase the efficiency of the pipe line system. If the gasoline were not removed, it would condense out in low spots in the pipe line and decrease the line's capacity. If the moisture, which is produced in vapor form with the gas, were not removed, it would, under certain pressure and temperature conditions, form "hydrates" which are similar to slushy ice. When formed, these hydrates accumulate in the pipe line, regulators and other facilities and restrict or stop the flow of gas.

The most important piece of equipment at the Gasoline and Dehydration Plant is the high-pressure absorption tower, 75 feet tall and weighing 125,000 pounds, which is used in our sketch to represent the plant. Actually, the plant consists of several buildings, steam boilers, heat exchangers, stabilizers, dehydrators, generating plant, compressors, many pumps, and other auxiliary equipment, all quite complicated and scientific. The gas itself passes through only the absorption tower where the gasoline is removed by the use of absorption oil and the moisture is removed by the use of diethylene glycol, a liquid chemical which has a strong affinity for water. The absorption oil and the diethylene glycol are purified and used again, in continuous cycles.

Another advantage gained by drying or "dehydrating" the gas is that internal corrosion of the pipe line is held to a minimum, thereby reducing the roughening of pipe walls and the formation of scale and dust.

After passing through the Gasoline and Dehydration Plant, the gas flows into the high-pressure pipe line. This is the main transmission line which brings the gas across the country to your city and other cities, passing through one or more additional compressor stations on its way.

West Texas Gas Company owns and operates five compressor stations; one at the gas field, called the Turkey Creek Station, the McSpadden Station near Canyon, and the Plainview, Tahoka and Littlefield Stations. McSpadden Station is now being enlarged, and when this work is completed we will have in service 20 compressor units with a total rating of 4540 Brake Horse Power.

WEST TEXAS GAS COMPANY

WE HAVE SOY BEAN CAKE AND MEAL
Gilbroath Feed and Seed Co.
MULESHOE, TEXAS

REPORT OF CONDITION OF MULESHOE STATE BANK

of Muleshoe, Bailey County, Texas, at the close of business December 31, 1945, a State banking institution organized and operating under the banking laws of this State and a member of the Federal Reserve System. Published in accordance with a call made by the State Banking Authorities and by the Federal Reserve Bank of this District.

ASSETS	
Loans and discounts (including \$24.36 overdrafts)	257,709.19
United States Government obligations, direct and guaranteed	1,979,840.43
Obligations of States and political subdivisions	8,000.00
Corporate stocks (including \$2,500.00 stock of Federal Reserve Bank)	2,250.00
Cash, balances with other banks, including reserve balance, and cash items in process of collection	883,202.97
Bank premises owned \$8,400.00, furniture and fixtures	8,900.00
TOTAL ASSETS	\$3,139,602.59
LIABILITIES	
Demand deposits of individuals, partnerships, and corporations	\$2,591,299.54
Time deposits of individuals, partnerships and corporations	153.00
Deposits of United States Government (including postal savings)	291,978.71
Deposits of states and political subdivisions	156,938.22
Other deposits (certified and officers' checks, etc.)	206.20
TOTAL DEPOSITS	\$3,040,575.67
Other Liabilities	811.43
TOTAL LIABILITIES (not including subordinated obligations shown below)	3,041,387.10
CAPITAL ACCOUNTS	
Capital*	25,000.00
Surplus	50,000.00
Undivided Profits	2,215.49
Reserves (and retirement account for preferred capital)	20,030.00
TOTAL CAPITAL ACCOUNTS	98,215.49
TOTAL LIABILITIES AND CAPITAL ACCOUNTS	\$3,139,602.59
*This bank's capital consists of common stock with total par value of \$25,000.00.	

MEMORANDA

Pledged assets (and securities loaned) (book value):

(a) U. S. Government obligations, direct and guaranteed, pledged to secure deposits and other liabilities	356,500.00
(b) Other assets pledged to secure deposits and other liabilities (including notes and bills rediscounted and securities sold under repurchase agreement)	8,000.00
TOTAL	364,500.00

Secured and preferred liabilities:

(a) Deposits secured by pledged assets pursuant to requirements of law	330,982.79
(d) Deposits preferred under provisions of law but not secured by pledge of assets	1,307.35
TOTAL	332,290.14

I, Inez F. Bobo, Cashier of the above-named bank, hereby certify that the above statement is true to the best of my knowledge and belief.

INEZ F. BOBO
CORRECT-ATTEST:
HATTIE GRIFFITHS,
MARY E. HART,
E. R. HART, Directors
State of Texas, County of Bailey ss: sworn to and subscribed before me this 4th day of January, 1946.
MILDRED DAVIS, Notary Public.

Blaine, A. W. Crow, Edward White, Wiley Bowers, Gid Howell, Floyd Davis, Bert Mathis, Rufus Gilbreath, Cecil Tate, Arthur Holt, C. A. Barnett, Robert Precure, Ray Griffiths, one visitor, Mrs. Jim Burkhead, and the hostess, Mrs. Brister.

FOR SALE OR LEASE—Irrigated farm, 160 acres, 7 miles west of Muleshoe. Call 134-M, Brownfield, Texas. 2-27p

NOTICE OF ANNUAL MEETING BAILEY CO. ELECTRIC CO-OP.

The Annual Meeting of the members of the Bailey County Electric Cooperative will be held in the District Court Room at 2:30 o'clock, p. m., on Friday, January 18, 1946. Reports of the officers, directors and manager of the Cooperative will be made. The election of seven directors to serve the Cooperative for the year 1946 will be made. In connection with the election of seven directors scheduled for this meeting, the following members have been nominated by the Committee of Nomination appointed by the Board of Directors of the Cooperative pursuant to the By-laws:

W. R. DAMRON
H. E. SCHUSTER
MRS. M. A. SNIDER
V. C. WEAVER
O. M. JENNINGS
W. W. BRANSCUM
H. B. ABBE

Each member of the Cooperative should feel his responsibility to be present at this meeting.

Winfield Evans, of Shamrock, came in Thursday to visit with his sister, Mrs. Morris Douglass.

Firestone
JANUARY
Clearance Sale!
One-of-a-Kind... Limited Quantities SHOP EARLY

EVERY ONE REDUCED!

DUMBO COOKIE JAR	Reg. \$2.49	Now! \$1.98
ELSIE THE COW COOKIE JAR	Reg. \$3.00	Now! \$2.49
CROCKERY COOKIE JAR	Reg. 89c	Now! 79c
DRIPOLATER	Reg. \$2.95	Now! \$2.19
WHISTLING TEAKETTLE	Reg. \$1.39	Now! \$1.09
OVEN GLASS ROUND ROASTER	Reg. \$1.58	Now! \$1.79
PYREX DOUBLE BOILER	Reg. \$3.69	Now! \$2.19
PYREX SAUCE PAN	Reg. \$1.75	Now! \$1.29
1 1/2 QT. FIRE KING CASEROLE	Reg. 50c	Now! 39c
LARGE SERVING TRAYS	Reg. \$2.49	Now! \$2.19
SMALL SERVING TRAYS	Reg. \$1.69	Now! \$1.29

Everyone A Big Saving

1¢ SALE
Firestone SPARK PLUGS
For every plug you buy, you get another for just one penny! Guaranteed to give you quicker, easier starts or your money back! A sensational opportunity!

LIMITED QUANTITY!
Reg. 1.49
Heavy Duty HOUSE BROOM 1.33
Firmly bound with extra strong stitching. Best quality broom corn.

SAVE! SAVE!
RUBBER DOOR MAT 1.69
Firmly bound with extra strong stitching. Best quality broom corn.

BARGAIN!
Reg. 3.39
TRAVEL KIT
Made of fine, soft, pliable leather with water-repellent lining. Closes with a zipper. *Plus 20% Tax. 2.59

PRICE SLASH!
Reg. 2.19
LAUNDRY CASE
Pack it up, address, and send it off! 1.59

Firestone STORE
Pror 62 Muleshoe

THE MULESHOE JOURNAL

Entered as second-class matter at the Muleshoe Postoffice under the Act of Congress, March 3, 1877

J. M. FORBES Publisher

Advertising that does not show in its text or typography that it is paid for must be marked as an advertisement. All local advertisements remain in this paper for the time specified or until ordered out. All notices, it matters not by whom nor for what purpose, if the object is to raise money by admission fee or otherwise, is an advertisement and when sent in for publication must be paid for at the regular advertising rate per line for each issue printed.

Obituaries, cards of thanks and resolutions of respect will also be charged for at the same rate.

SUBSCRIPTION RATES

In Bailey County, one year, \$1.50; Outside of County, one year, \$2.00

Any erroneous reflection upon the character, standing or reputation of any person, firm or corporation which may appear in the columns of the Muleshoe Journal will be gladly corrected upon being brought to the attention of the Publisher.

In case of errors or omissions in local or other advertisements, the publisher does not hold himself liable for damage further than the amount received by him for such advertisement.

AN EXPERIMENT STATION FOR OUR TERRITORY

Several Muleshoe and Bailey County people last week joined with the people of other parts of this section in helping to get an A. & M. College experiment station located at Hereford, on land now used by the Hereford Prisoner of War Camp.

Such a station would without doubt be of great benefit to the people of Bailey County. Results of experiments conducted at Hereford would be applicable to our own county since soil and climate are much the same.

Texas experiment stations have helped to spread knowledge of agriculture and livestock growing methods among our people and have paid for everything spent on them many times over. The exper-

iment station at Hereford would be of untold value to our section and we ought to do everything in our power to help influence those in authority to grant the land to A. and M. College for this purpose.

PAPER SHORTAGE LOOMS

Some readers of the Journal may be surprised to learn that newspaper print stocks are getting dangerously low and some who know the situation are predicting that before 1946 has run its course some weekly papers may have to shut down for a time. Dailies will have to ration their advertising space, it is claimed, in a more than ever drastic manner in order to keep up publication.

The shortage which just naturally developed because of war condi-

tions has been aggravated by shortage of labor and by the fact that some magazines have bought up the output of the mills for their own type of paper.

Paper wholesalers are doing out their short stocks to their customers (The Journal got 8 reams last week), but they say that every week they get less to dole out. It is said the shortage may ease by June 1—and this editor hopes it will. We can't imagine how a Bailey County citizen could get along without The Journal, or how the editor would pay rent without printing a paper.

Party Dress Aid To Victory Loan



Dress-up school dances call for gay frocks. This one is black and white plaid rayon accented with a pointed ruff of black crepe. Making it from a pattern which can be found at local stores, a thrifty schoolgirl can amass savings for Victory Bonds, U. S. Treasury Department

POLL TAX NOTICE

Bailey county citizens are reminded that they must secure poll taxes for exemptions certificates by January 31, 1946 to be qualified to vote in this year's election.

Your early attention to this matter will help avoid congestion at the office during the last few days.

J. C. BUCHANAN
Tax Assessor and Collector
Bailey County

FERTILIZER

is going to be very scarce. Farmers interested in fertilizer for alfalfa, potatoes, etc., should place orders at once. Ask us about this matter now.

RAY GRIFFITHS ELEVATOR

Muleshoe ——— Texas

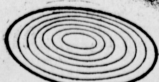


JIM-ARE YOU KIDDING?

"YES-IT'S EASY AS THAT!"

I thought the old boy was fooling when he told me how easy and simple it was to cook electrically, but I found out! My new electric range is a wonder. It cooks automatically—while I'm away from home—and everything is done a turn because of the slow, even heat.

It won't be long now until you will be able to buy a new electric range for your home. Ask your dealer how long it will be. Place your order now.



SOUTHWESTERN PUBLIC SERVICE COMPANY

20 YEARS OF GOOD CITIZENSHIP AND PUBLIC SERVICE

Producers Must Get Approval Of 1946 Practices

According to Travis A. Winter, County Administrative Officer, producers must secure prior written approval from the local AAA Office on all practices to be carried out under the 1946 AAA program in order to be eligible to receive payment for carrying out the approved practices. Producers should make their plans for their 1946 farming operations as soon as possible and secure prior written approval for all the practices that they plan to carry out during 1946. Under no

condition will payments be made which are carried out before prior written approval is granted. This procedure is necessary and required by the State AAA Committee in as much as Bailey County has been allotted \$129,940.17 for the purpose of making payments to producers for carrying out approved practices and a control must be kept on this mon-

ey at all times. As soon as the above amount of money has all been obligated by prior written approvals no further approvals will be granted.

Pvt. James C. Broyles has returned to Houston after spending a six day furlough at home. He hopes to get a 30 day furlough sometime this month.

Steed Funeral Home
Arrangements Carefully Handled
Ambulance Service Anywhere Very Reasonable
PHONE 97
Muleshoe, Texas

GREEN Hospital & Clinic
Muleshoe, Texas
L. T. Green, Jr.
M. D.
Mrs. Lulu Gorrell, R. N.
(Office at Hospital)

CROSS THE STREET NORTH OF COURT HOUSE.
ALL KINDS OF PLUMBING SUPPLIES.
Lambert Plumbing Shop
PHONE 96
Muleshoe, Texas

SITTING-NOT SO PRETTY
Next time he will wear his rubbers!
When fire finds a householder without enough insurance there is no next time in so far as that property is concerned—it's gone. That's why the best time to take out insurance is before the fire.

BRAY'S Insurance Agency
Phone 147 Office over Bank
MULESHOE, TEXAS

HOLT OIL CO.
PHILLIPS 66 JOBBERS
Office At Precure Service Station At the Cross Roads
Phone 44W
Muleshoe - Texas

New and Used Kerosene Heaters
Studio Couches
Platform Rockers
Nice Dining Room Suite
COME IN AND SEE US ABOUT EARLY DELIVERIES ON Premier Vacuum Cleaners
New FURNITURE Used
McCormick's
Phone 170 Muleshoe, Texas

Berry Electric Co.
AUTHORIZED DEALER
ADMIRAL
DUAL - TEMP REFRIGERATOR
Lighting Fixtures — Wiring Supplies
Wiring and Repairs
Phone 98 Muleshoe, Texas

NOW OPEN...
For Your Convenience
BULK PLANTS
With complete stocks of TEXACO Gasoline, Kerosene, Oil and Grease located at...
EARTH, TEXAS
ENOCHS, TEXAS
MULESHOE, TEXAS
SAME. FOX
DISTRIBUTOR OF TEXACO PETROLEUM PRODUCTS
Phone 77

SERVING THIS GROWING CITY OF
Muleshoe
With Monthly Payment
Home Loans
TO BUILD - BUY - REPAIR REMODEL
Make Application With **David Bates** Muleshoe
FEDERAL SAVINGS AND LOAN ASSOCIATION OF CLOVIS
Clavis, New Mexico

RIBBLE'S RIPPLES

What is your life? Do you consider this life to be the end of itself? Or do you recognize this life as only the means to the end? Do you live merely to satisfy the sensual desires of the flesh? Or do you live to prepare your soul for heaven? Think over these questions, they may mean life or death to you.

"Whereas ye know not what shall be on the morrow. For what is your life? It is even a vapor that appeareth for a little time, and then vanisheth away." Jas. 4:14. "For all flesh is as grass, and all the glory of man as the flower of the grass

The grass withereth and the flower thereof falleth away." 1 Pet. 1:24.

Further, "It is appointed unto man once to die, but after this the judgment." Heb. 9:27. That your fleshly body shall "return unto the ground; for out of it wast thou taken; for dust thou art and unto dust thou shalt return." is a solemn truth the fulfillment of which is constantly within our observation.

Not only is your earthly life short and death certain, "but after this the judgment." Heb. 9:27. "Marvel not at this for the hour is coming, in which all that are in the grave shall hear his voice and shall come forth; they that have done good unto the resurrection of life; and

Pretty Waist Aid To Bond Sales



Checkerboard waist with short sleeves, simple V-neck, and slim skirt with side pockets make this an alluring combination. Made at home from pattern secured from local store. It saves dollars for Victory Bonds. U. S. Treasury Department

they that have done evil unto the resurrection of damnation." Jn. 5:28,29.

Jesus in describing the judgment scene in greater detail in Matthew 25, said "When the Son of Man shall come in His glory of and all

the holy angels with him, then shall he sit upon the throne of His glory; and before Him shall be gathered all nations; and he shall separate them one from another, as a shepherd divideth his sheep from the goats; and he shall set the sheep on his right hand, but the goats on the left. Then shall the king say to them on his right hand, Come ye blessed of my Father, inherit the kingdom prepared for you from the foundation of the world." (Verses 31-34).

"Then shall he say also to them on the left hand, depart from me, ye cursed, into everlasting fire, prepared for the devil and his angels, and these shall go away into everlasting punishment; but the righteous into life eternal." (verse 46).

Thus we see from the words of Jesus that, though we shall be assigned to our eternal habitation on the same occasion, we are NOT all going to the same place.

Further, though some teach to pray for the dead as if it would benefit them, the gospel of Christ teaches that when we die in the flesh our eternal destiny is sealed. For we must all appear before the judgment seat of Christ; THAT EVERYONE MUST RECEIVE THE THINGS DONE IN THE BODY, according to that he hath done, whether it be good or bad." 2 Cor. 5:10.

So, then, life is short, death is certain, the resurrection of all is assured, the judgment is inevitable, one of two eternal destinies—heaven or hell—awaits us and that destiny is determined in his life.

Since it is a matter of "whoever will, let him take of the water of life freely." Rev. 22:17. It is up to you whether you appropriate the gospel of Christ, God's power to save you (Rom. 1:16) into your life or not. Shall your life be the means of eternal happiness or shall it be squandered as the end is itself? Think, neighbor, think. May God help you to think clearly.

FIRST BAPTIST CHURCH
A. W. Blaine, Pastor
H. B. Morgan, S. S. Supt.
9:45 a. m.—Sunday School
11:00 a. m.—Morning Worship.
6:30 p. m.—Baptist Training Union.
7:30 p. m.—Evening Worship.
Prayer Meeting, Wed. 7:00 p. m.
"The church where all are welcomed."

LADIES BIBLE CLASS
For the future the women of the Church of Christ will have a Ladies Bible Class at 3 p. m. each Tuesday afternoon. Everyone will be welcome to these classes. Studies will be about women of the Bible. Minister S. A. Ribble will be their teacher.

Mrs. J. H. Slakon, of Plainview, visited Saturday here with her brother, Gene Dyer and Mrs. Dyer.

DANCE
EVERY TUESDAY AND FRIDAY NIGHTS
PRIBOTH ROLLER RINK
Muleshoe Texas

ATTENTION FARMERS
LISTEN TO THE
KICA FARM PROGRAM
Each Morning 7:00 Until 8:00 and 12:45 Until 1:00

DAILY MARKET AND WEATHER REPORTS AND FARM NEWS BY
C. J. TODD
Radio Farm Editor

KICA CLOVIS

Watch Repairing
RENSE AND WATERPROOF WATCHES
DIAMOND RINGS
SILVER AND GOLD NOVELTY ITEMS
The Jeweler
At Robinson's Shoe Shop

LANE'S BARBER SHOP
YOUR PATRONAGE APPRECIATED
Muleshoe, Texas

THE Beauty Box WELCOMES YOU
PERMANENTS—HAIRDRESSING—MANICURES
We carry a full line of Norman cosmetics, and will give free demonstrations every Tuesday.
OPERATORS
MRS. Bernice Amerson Mrs. Ed Myers
2 blocks south of locker plant.

NURSE LOSES FAT SAFELY AYDS WAY
Get slimmer without exercise
Fat starvation, potatoes, gravy just cut down. AYDS plan is safe, sensible, easier. No restriction. No drugs. No laxatives.
Nurse was one of more than 100 persons losing 10 to 15 lbs. average in 100 days while in clinical tests with Ayds plan conducted by medical doctors.
Delicious AYDS before each meal dills the appetite. Yet you get vitamins, minerals, essential nutrients in Ayds. Start the Ayds way to lose weight now. 30 day supply of AYDS MONEY BACK on the very line how if you don't get results. Phone

Speer Drug
Muleshoe Beauty Shop
We Specialize in All Types Of PERMANENT WAVES
FACIALS
MANICURES
SCALP TREATMENTS
We Take Late Appointments
OPERATORS
Lucille Cherry and Lorraine Daugherty
PHONE 114-W

SPENCE RADIO SHOP
Authorized ZENITH Dealer
Headquarters for Radio Batteries. First Class Service On Any Make Radios.

Now Hatching
PLACE YOUR ORDERS NOW FOR
Baby Chicks
FROM BLOOD TESTED, AAA GRADE FLOCKS
FIRST HATCHING OFF JANUARY 21
Muleshoe Hatchery
TYE YOUNG, OWNER

FREE FARM WELDING CLINIC

This is a real down-to-earth Farm Welding Clinic. Actual broken gears and pieces of farm machinery will be welded to show you how to quickly and economically make dependable welds with a Marquette Farm Welder.

The Marquette Farm Welder has a wide welding range (20 to 180 Amps) to take all Farm Welding jobs in stride. It is built for R. F. A. requirements and is listed by Underwriters Laboratories.

See the handy Marquette Farm Electrode Kit at the clinic. It enables you to "Do the job Right" by using the right welding rod for Every Farm Welding Job.

MARQUETTE Farm welders
FULLY EQUIPPED NO EXTRAS TO BUY

Mon. & Tues., Jan. 14 & 15
1 p. m. to 10 p. m.

RAY GRIFFITHS ELEVATOR
Muleshoe Texas

1/2 PRICE

One Lot of Winter
**Coats - Suits
Dresses - Blouses
Sweaters**

These are real values—neatly styled garments.
Come In and Choose Yours

All Sales Final

Nylon Hose
We are receiving a few Nylon Hose and in order to give every customer a fair chance, we will take your name and then they will draw from the box and you will be mailed a card. The first drawing will be Saturday, Jan. 17th. So come in and register now.
The drawings will continue until we have a full supply of hose for everyone.

Cobb's Dept. Store
B. H. Morgan, Mgr.
Muleshoe Texas

