

The Midland Reporter-Telegram

METRO EDITION

DIAL 682-5311, P.O. Box 1650, MIDLAND, TEXAS
Vol. 50, No. 267, Daily 15c, Sunday 35c

THURSDAY, DECEMBER 6, 1979
56 PAGES, 4 SECTIONS

Iran's Khomeini says U.N. settlement call was 'a step forward'

TEHRAN, Iran (AP) — Ayatollah Ruhollah Khomeini said today the U.N. Security Council's call for a negotiated settlement of the U.S.-Iranian crisis was "a step forward," the official Pars news agency reported.

In other developments, members of Iran's Turkish minority seized facilities of the state-run broadcasting company in Tabriz, capital of the largely Turkish Azerbaijan Province. But tension between the two groups eased in the holy city of Qom, 100 miles south of here.

The apparent softening of Khomeini's stance on the resolution was disclosed after a meeting in Qom with Foreign Minister Sadegh Ghotbzadeh, Pars said. Ghotbzadeh was quoted as saying they "noticed that this is not a resolution condemning us."

Observers said the remarks by Khomeini and Ghotbzadeh were the most moderate yet by revolutionary leaders during the month-long crisis. Last week Khomeini rejected in advance any steps taken by the Security Council, alleging that it was controlled by the United States.

Ghotbzadeh's statement made no mention of the resolution's call for the immediate release of 50 American hostages held in the U.S. Embassy and did not outline possible negotiations for their release.

The Security Council resolution, adopted unanimously Tuesday, asks the two nations to show restraint and negotiate a settlement to the crisis, which began with the Nov. 4 occupation of the embassy by militants demanding President Carter send ousted Shah Mohammad Reza Pahlavi back to Iran to stand trial for alleged crimes against the people.

Carter has refused to extradite the shah and on Sunday the ousted monarch was flown to Lackland Air Force Base in Texas from a New York hospital he entered Oct. 22 for cancer and gallbladder treatment.

Ghotbzadeh tempered his reaction to the U.N. resolution, saying "We are not very satisfied with it because they have not condemned the shah. Altogether this is a step forward and a better decision than the previous one."

He was apparently referring to a Nov. 9 statement issued with the unanimous consent of the Security Council calling for release of the hostages.

The embassy militants rejected the appeal Wednesday as "worthless," but Tehran Radio said the U.N. resolution still left the door open for negotiations.

Today was the second straight day of clashes in Tabriz, 300 miles northwest of Tehran, and Qom between Khomeini's backers and followers of the religious leader of Iran's Turks

over the Islamic constitution that made Khomeini supreme ruler for life.

On Wednesday night a Khomeini revolutionary guard and one of minority leader Ayatollah Mohammed Kazem Shariat-Madari's personal guards were shot and killed and eight other persons were wounded in the clashes in Qom, informed sources said. Before the revolutionary turmoil, Shariat-Madari was considered Iran's most influential religious leader.

No casualties were reported today, and tension eased in Qom after Khomeini paid an afternoon visit on Shariat-Madari and said "plotters" were responsible for the trouble.

"Do not quarrel between yourselves and focus on the one and only enemy... It is your religious duty and national responsibility to concentrate on the confrontation with the United States," Khomeini said in a state radio broadcast to the nation.

The demonstrators in Tabriz said they were angered by broadcast statements attributed to Shariat-Madari appealing for calm, saying they would only believe the remarks were authentic if they heard them from Shariat-Madari himself.

The protesters also were angry over official referendum returns, still coming in, which claim endorsement of the constitution in the province. The constitution fails to meet the minority's demand for more autonomy.

Pars quoted Khomeini's son Ahmad as saying his father and Shariat-Madari discussed relations with the United States and "CIA agents and SAVAK, who at this critical juncture are sowing discord among Moslems." SAVAK was the secret police of the deposed shah.

Meanwhile, The Associated Press obtained photographs of hostages in the embassy made by Iranians for Britain's Thames Television. No information was available on the circumstances under which the photographs were taken.

Iran crisis at-a-glance
By The Associated Press
President Carter applied new pressure and domestic trouble broke out in Iran as 50 American hostages at the U.S. Embassy spent a 33rd day in the hands of militant Iranian students. Here are the highlights:

In Washington
President Carter was said to be hoping a policy of economic denial — "turning the screws a little tighter" every few days — will induce Iran to free the hostages.
Carter reportedly told about 100 House members Wednesday night at the White House, of a series of economic measures he is prepared to take to end the crisis.

The administration apparently hopes to enlist the support of several U.S. allies in Europe, all major consumers of Iranian oil. Secretary of State Cyrus R. Vance may travel to Europe next week to try to line up support for new American initiatives. A high-level State and Treasury Department mission was sent to Europe on Wednesday.

Trouble in Iran
Supporters of Iranian ruler Ayatollah Ruhollah Khomeini, the man behind the anti-U.S. feelings in Iran, and the religious leader of the country's Turkish minority clashed in the holy city of Qom for the second straight day.
Wednesday night one man was shot dead in clashes between Khomeini and Shariat Madari supporters in Qom, 100 miles south of Tehran, where the hostages are being held.

Shariat-Madari's followers were protesting that the state radio and television distorted his criticism of the constitution, approved in a national referendum this week, giving sweeping powers for life to Khomeini.

The ailing shah
Shah Mohammad Reza Pahlavi, resting and playing chess in the unseasonably warm San Antonio, Texas, sun, ruled out four nations often mentioned as possible havens — Egypt, South Africa, Panama and The Bahamas.
And a spokesman said the shah, recovering from cancer treatment and gallstone surgery, is withholding comment on the taking of hostages at the embassy and on allegations against him until after the Americans are freed.

His admission to the United States triggered the embassy takeover on Nov. 4.

American protests
New York City cab drivers promised to shine their headlights and Rhode Island gasoline station owners started handing out white flags as the American hostages in Iran spent their 32nd day in captivity.
Meanwhile, Alger Hiss, one of the most celebrated targets of the 1950s "Red Scare" said the treatment of Iranians in the United States reflected the kind of feeling he hoped had vanished with the era of Sen. Joseph McCarthy.

Roof raising circus style

It's the biggest big top in the country, and it takes 30 men and two elephants a full eight hours to put together. Reporter-Telegram photographer Mike Kardos takes a look at the organized pandemonium of raising the roof for the Circus Vargas on Page 11A.

WASHINGTON (AP) — There is a "growing consensus" among President Carter's advisers that he should recommend a big increase in the federal gasoline tax or gasoline rationing to reduce oil consumption, says a high administration official.

"It boils down to choices between rationing or taxes," the official said in an interview Wednesday. He did not want to be identified.

He indicated an increase in the gasoline tax is considered the more likely choice because a rationing program would require a larger government bureaucracy to administer and because a tax would fit what the official described as the "free economy concept" of reducing consumption.

He said the amount of a proposed tax could range as high as 50 cents per gallon, although it could be substantially less. The gasoline tax is now 4 cents per gallon.

The official said a decision has not been made among Carter's advisers on whether even to recommend the tax to the president. He said some advisers remain skeptical that either a gasoline tax or gasoline rationing would work to reduce consumption.

He said other options are also still under consideration, including establishment of oil import quotas. But he stressed there is "a growing consensus" in favor of either taxes or rationing.

Congress earlier this year approved legislation that would allow rationing when there was a 20 percent reduction in supplies. The administration would have to go back to Congress to change that legislation if it wanted to impose rationing to encourage conservation.

CBS News reported Wednesday night that the Energy Department has come up with a standby rationing plan to handle a 20 percent gasoline shortage. That plan would reportedly give ordinary motorists about three-

quarters of their normal usage. For the alternative rationing plan to force conservation, CBS said, the department is studying two options. Under one, each car would carry a sticker saying which day of the week it would have to stand idle. The other would permit a particular car to be filled up only on a certain day each week.

The administration official said one appealing feature of an increase in the gasoline tax is that tax receipts could be used to offset a possible reduction in Social Security payroll taxes, which are scheduled to rise sharply in 1981. He said they also could be used to provide new investment incentives for business through an accelerated depreciation allowance.



These two photos of U.S. hostages exercising inside the grounds of the U.S. Embassy in Tehran were among several released by the Iranians. None of the hostages were identified. President Carter continued to apply pressure on Iran through economic denial, domestic trouble erupted in Iran, and the Ayatollah Khomeini called the U.N. resolution 'a step forward' as the hostages spent the 33rd day in captivity. (AP Laserphotos)



Rationing or higher tax? Carter's advisers want one or the other

WASHINGTON (AP) — There is a "growing consensus" among President Carter's advisers that he should recommend a big increase in the federal gasoline tax or gasoline rationing to reduce oil consumption, says a high administration official.

"It boils down to choices between rationing or taxes," the official said in an interview Wednesday. He did not want to be identified.

He indicated an increase in the gasoline tax is considered the more likely choice because a rationing program would require a larger government bureaucracy to administer and because a tax would fit what the official described as the "free economy concept" of reducing consumption.

He said the amount of a proposed tax could range as high as 50 cents per gallon, although it could be substantially less. The gasoline tax is now 4 cents per gallon.

The official said a decision has not been made among Carter's advisers on whether even to recommend the tax to the president. He said some advisers remain skeptical that either a gasoline tax or gasoline rationing would work to reduce consumption.

He said other options are also still under consideration, including establishment of oil import quotas. But he stressed there is "a growing consensus" in favor of either taxes or rationing.

Congress earlier this year approved legislation that would allow rationing when there was a 20 percent reduction in supplies. The administration would have to go back to Congress to change that legislation if it wanted to impose rationing to encourage conservation.

CBS News reported Wednesday night that the Energy Department has come up with a standby rationing plan to handle a 20 percent gasoline shortage. That plan would reportedly give ordinary motorists about three-

quarters of their normal usage. For the alternative rationing plan to force conservation, CBS said, the department is studying two options. Under one, each car would carry a sticker saying which day of the week it would have to stand idle. The other would permit a particular car to be filled up only on a certain day each week.



Nellie stumps for John

By LANA CUNNINGHAM
Staff Writer

The Republican nomination for President will come down to a race between Texas John Connally and former California governor Ronald Reagan, predicted Nellie Connally, wife of the presidential candidate.

Speaking Wednesday at a news conference before attending a reception in Midland, Mrs. Connally discounted former Midlander George H.W. Bush as a serious candidate in the race.

The Midland stop is one of 11 cities on a fund-raising tour in Texas for Mrs. Connally. The Midland reception was hosted by Mr. and Mrs. Roger Allen. Tickets were \$125 each.

Concerning Bush, Mrs. Connally said "he's a fine fellow and has a certain amount of support. It's the liberal Republican support which is about one-fourth of the party."

Until his comment earlier this week on the Iranian situation with the 50 American hostages, Mrs. Connally said her husband had purposely refrained from making any statement.

"John feels the United Nations should boycott Iran financially and politically and in every kind of way," she said.

18 SHOPPING DAYS LEFT 'TIL CHRISTMAS, MEN!

The milk scandal in the early 1970s in which Connally was accused — and found innocent — of taking bribe money from milk companies isn't being mentioned in the campaign except by the media, according to Mrs. Connally.

If her husband wins the GOP nomination and subsequently the general election, Mrs. Connally said she feels it would be an honor to be first lady. However, she pointed out she wouldn't be an adviser on matters as Rosalynn Carter is doing.

The fact that Connally, as governor of Texas in 1963, was injured when President John F. Kennedy was assassinated, doesn't deter Connally from running for the country's highest elected office, said his wife.

Unlike some of the other presidential candidates who already are in office as senators, Connally has had no "podium from which to speak. He's had to make his own news," Mrs. Connally said.

And the fact that Connally once was a registered Democrat but changed to the GOP won't hurt his chances in the race, she contended.

Former lieutenant governor Ben Barnes, who is traveling with Mrs. Connally, pointed out at the conclusion of the news conference that a poll released Sunday by a Columbus, Ohio, newspaper shows Connally to be leading the Republicans in that state.

Connally received 38 percent of the Republicans' voice vote; Reagan, 34 percent; and Bush, 12 percent.

"John feels the United Nations should boycott Iran financially and politically and in every kind of way." — Mrs. Nellie Connally

ROUSTIN ABOUT
Goes to Gardendale
See Page 12A

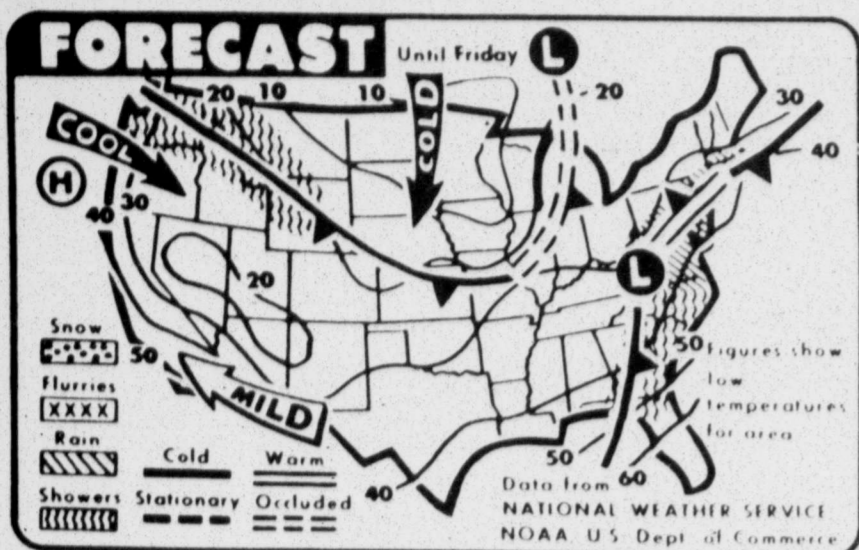
INSIDE TODAY

IN THE NEWS: November's food price increase the highest in five years.....5A	SPORTS: Darryl Dawkins shatters another NBA backboard.....3C	
RELIGION: Expelled from the Mormon Church, she vows to keep fighting for ERA.....13A	PEOPLE: Wisconsin overspender helps others with the same problem.....16A	
Around Town.....1B	Crossword.....6C	Markets.....6B
Answer Line.....4A	Dear Abby.....1B	Obituaries.....7A
Bridge.....15C	Editorial.....6A	Oil & gas.....1D
Classified.....4D	Entertainment.....10C	Sports.....1C
Comics.....6C	Lifestyle.....1B	TV Schedule.....7C

Outside
Fair through Friday. Low tonight, mid-30s. High Friday, upper 60s.

Service
Delivery.....682-5311
Want Ads.....682-6222
Other Calls.....682-5311

WEATHER SUMMARY



Showers and rain are expected today until Friday morning for most of the Atlantic coast states. Showers are forecast from Washington state into the northern Plains.

Midland statistics

Table with weather forecast and statistics for Midland, including high/low temperatures and precipitation.

The weather elsewhere

Table listing weather conditions for various cities across the country, including Albany, Albuquerque, and Los Angeles.

Texas area forecasts

West Texas: Generally fair through Friday. 2 or more south today. Highs 30s and 40s. Lows upper 20s to upper 30s.

Texas temperatures

Table showing current and forecast temperatures for various Texas cities like Abilene, Amarillo, and Austin.

Swearing-in ceremonies set for Odessa Lucius Bunton

Swearing-in ceremonies for Lucius Bunton of Odessa as the first 'resident' judge of Midland's U.S. District Court are scheduled for 2 p.m. Friday in the district courtroom on the third floor of the George Mahon Federal Building.

Former MHS student given probated sentence in robbery of student

A 17-year-old former Midland High School student has been handed a five-year probated prison sentence after pleading guilty Wednesday to the Oct. 26, 1979, robbery of a fellow student at the high school.



Towering above Dennis the Menace Park, the city's Christmas tree awaits the flick of the finger to turn on a light switch, giving it the sparkle which makes it stand out from all other trees.

Christmas tree to be 'light' of the party Friday night

The towering Christmas tree in Dennis the Menace Park, Garfield and Indiana streets, will be the center of attention Friday when the lights are officially turned on at 7 p.m.

Senator wants tuition for state colleges upped

AUSTIN, Texas (AP) — Sen. Bill Moore, D-Bryan, has suggested a tuition increase as a source of building money for state colleges outside the University of Texas and Texas A&M systems.

County still searching for Culver house parents

land City Jail or Midland County Jail. Asked if such an arrangement presents a problem for the county, Green replied, "It's just a matter of not wanting to keep them in jail if we can possibly help it."

Temperatures to swing up as cold front effects diminish

Temperatures should begin to take a swing upward Friday as the effects of a cold front that passed through the Permian Basin on Wednesday begin to diminish.

118-pounder lifts 4,500 to save child

SAN DIEGO (AP) — "I don't know how I did it. My body hurts all over now," said 44-year-old Martha Weiss.

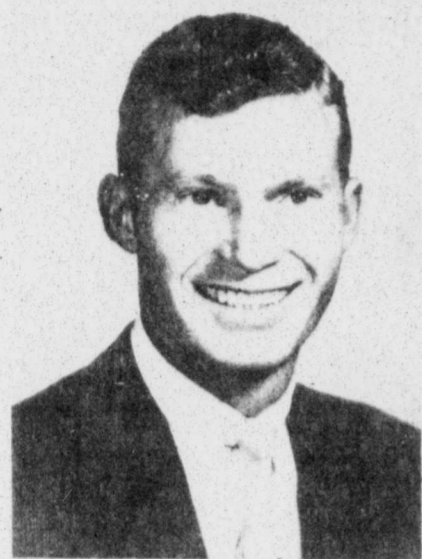
his gift! Aramis...

the total grooming system designed to compliment the contemporary man. A collection of quality grooming aids to keep your man in top form from head to toe.

Advertisement for S & Q Clothiers featuring a perfume bottle and a Santa Claus illustration. Includes text about gift sets and store information.

Vertical text on the far right edge of the page, including 'Want work? Not DEATH', 'Luther R.', 'Peking government is abolishing...', and 'Mrs. Ma'.

DEATHS



Luther R. "Rusty" Rainwater

Luther Rainwater

Luther R. "Rusty" Rainwater, 54, of Seminole and formerly of Midland, died Tuesday in a Dallas hospital after a lengthy illness.

Services will be at 10 a.m. Friday in Grace Lutheran Church with the Rev. Donald V. Hafemann officiating. Burial will be in Resthaven Memorial Park directed by Ellis Funeral Home.

Rainwater was born Dec. 30, 1924, in Ira. He was graduated from Texas Tech University in 1949 with a bachelor's degree in geology. He entered the U.S. Air Force in World War II serving from 1943 to 1946 and again from 1951 to 1953, retiring as a captain in the U.S.A.F. Reserve. He was a long-time resident of Midland and recently had been a petroleum geologist with Amerada Hess Corp. in Seminole. He was married to Mary Ann

Krause April 23, 1950, in Pecos. He was a member of Grace Lutheran Church and the Midland Elks Lodge No. 1826.

Survivors include his wife; a son, Arthur Ray Rainwater of Midland; two daughters, LuAnn Rainwater of Midland and Penny D'Ann Rainwater of Seminole; two brothers, R.C. Rainwater of Robert Lee and W.H. Rainwater of Snyder; two sisters, Mildred Browne of Colorado City and Thula Whatley of Snyder; and one grandchild.

The family requests memorials be made to Texas Elks Crippled Children's Hospital in Luling or to the American Cancer Society.

Pallbearers will be John Fuzzek, Phillip Jones, Ross Moore, Eugene Penn, Derwood Ratliff and Horace Underwood.

Honorary pallbearers will be members of the Elks Lodge No. 1826, Marshall Frazier, James Hamilton, Julian Stroud, C.H. Brockett and Don Dodson.

John Cate

BIG SPRING — Services for John Cate, 81, of San Antonio, formerly of Big Spring, are pending at Nalley-Pickle Funeral Home here.

He died Wednesday at a San Antonio hospital following an apparent heart attack.

Cate had been a resident of San Antonio since September. Prior to that, he had been a longtime resident of Big Spring. He was a member of the East Fourth Street Baptist Church, Big Spring Independent Order of Odd Fellow Lodge No. 117 and the John A. Kee Rebekah Lodge No. 153.

Survivors include his wife, Vela; two sons, a daughter, a stepson, two stepdaughters and two sisters.

Mrs. Stephenson

MCCAMEY — Services for Jewel Stephenson, 67, of McCamey will be at 1 p.m. Friday in Sanders Memorial Chapel in Lubbock with the Rev. David Stokes, pastor of Victory Baptist Church, officiating.

Burial will be in Crosbyton Cemetery.

She died Wednesday in an Odessa hospital after a short illness.

Mrs. Stephenson lived in Dickens County for 49 years before moving to Lubbock in 1963. She lived in Lubbock until 1977 when she moved to McCamey. She was a Baptist.

Survivors include three sons, Jack Phillips of McCamey, Jerry Stephenson of Ropesville and Joe Stephenson of Murfreesboro, Tenn.; a sister, Foya Henley of Lubbock; 12 grandchildren and a great-grandchild.

Henry Lawson

ODESSA — Services for Henry L. Lawson, 70, of Odessa will be at 2 p.m. Friday in Sherwood Baptist Church here. Burial will be in Sunset Memorial Gardens directed by Hubbard-Kelly Funeral Home.

Lawson died Tuesday in an Odessa hospital after a lengthy illness.

He was born Aug. 8, 1909, in Newcastle. He was a retired oil field plumber and carpenter for Teneco. He was married Nov. 7, 1933, to Lois Walters in Wichita Falls. Lawson was a member of the Sherwood Baptist Church, the Scottish Rite and Order of the Eastern Star.

Survivors include his wife; two sons, Henry Lawson of El Paso and

Calvin Lawson of Odessa; a daughter, Rosetta Faye Pool of McCamey; four brothers, L.H. Lawson of Odessa, Ray Lawson of Stanton; two sisters, Reba McDougle of Wichita Falls and Bonnie Hambright of Iowa Park; seven grandchildren and three great-grandchildren.

Lou E. Speegle

CISCO — Services for Lou E. Speegle, 65, of Cisco, mother of Mrs. Gilbert (Lynda) Casbeer of Midland and Wayne Speegle of Big Spring, were at 2 p.m. Wednesday in Cisco Funeral Home chapel with the Rev. Joe Philpott officiating. Burial was in Scranton Cemetery.

She died Monday in a Cisco hospital after a lengthy illness.

Born Dec. 22, 1913, in Texas, she was married to Johnny Speegle Feb. 18, 1934, in the Van Horn community near here. She had lived here most of her life and was a seamstress for Boss Manufacturing until her retirement. She was a member of Mitchell Baptist Church.

Other survivors include her husband, three sons, a brother, a sister, nine grandchildren and a great-grandchild.

Ethel Kisinger

SEYMOUR — Services for Ethel Beatrice Ewing Kisinger, 79, of Red Springs, mother of Shirley Harmon of Midland, were at 2 p.m. Wednesday in the First Baptist Church in Red Springs with the Rev. Randal Parks, pastor, officiating. Burial was to be in Henson Cemetery in Red Springs, directed by Seymour Memorial Fu-

neral Home.

She died Monday in a Seymour hospital after a short illness.

Born Oct. 23, 1900, in Limestone County, she had been a resident of Baylor County for 46 years. She was married to Carl Edward Kisinger Feb. 8, 1920, in Baylor County. She was a member of the First Baptist Church in Red Springs. She was a member of the American Legion Women's Auxiliary of World War I and the Red Springs Community Club. Her husband died Nov. 13, 1965.

Other survivors include three sons, three daughters, two sisters, 24 grandchildren and 17 great-grandchildren.

Cora S. Turner

STAMFORD — Services for Cora Sample Turner, 78, of Avoca, mother of Clyde Turner of Midland, were Tuesday in the Avoca United Methodist Church. The Rev. R.H. Mexner, pastor of Hawley United Methodist Church, officiated, assisted by the Rev. Mike Shaffer, pastor, and the Rev. Charles Gafford, pastor of the Avoca Baptist Church. Burial was in Spring Creek Cemetery directed by Stamford Funeral Home.

Mrs. Turner died Saturday in an Abilene hospital after a long illness.

She was born Oct. 22, 1901, in Jones County. She was married to R.S. Turner Nov. 20, 1950, in Avoca. She was a school teacher in Jayton and Borger for 20 years. She was a member of the United Methodist Women and Avoca United Methodist Church.

Other survivors include her husband, three sons, two daughters, a brother, 14 grandchildren and three great-grandchildren.

E.M. Handley

TEAGUE — Graveside services for Edward M. Handley, 62, of Horseshoe Bay, brother of D.H. Handley of Midland, were Monday in Greenwood Cemetery directed by Lawrence Funeral Home in Teague.

Handley died Sunday in a Houston hospital.

He was a retired geophysical contractor. Born Jan. 16, 1917, in Cleveland, Handley was a Methodist.

Other survivors include his wife, a daughter, a stepdaughter, two grandchildren and a great-granddaughter.

Scott Donaldson

Scott Donaldson, 25, of Rankin and formerly of Midland died Tuesday at his home in Rankin.

Services were to be at 2 p.m. today in the First Baptist Church chapel with Dr. Daniel Vestal, pastor, officiating. Burial was to be in Resthaven Memorial Park directed by Ellis Funeral Home.

Donaldson was born Jan. 15, 1954, in Biloxi, Miss. He was reared in Belton and was graduated from Lee High School here in 1972. He received a bachelor's degree in education from Sul Ross University in 1976. He taught in Odessa one year before moving to Rankin in August 1979.

Survivors include his parents, Mr. and Mrs. J.W. Donaldson of Midland; a brother, Jay Donaldson of Midland; a sister, Joyce Ann Donaldson of Midland; and his grandparents, Mr. and Mrs. M.C. Donaldson of Gaitesville and Mr. and Mrs. R.D. Dunn of Plano.

Peking city government bans Democracy Wall

PEKING (AP) — The Peking city government announced today that it is abolishing Democracy Wall, effectively ending 12 months of nearly uninhibited free speech in the capital and presumably elsewhere in China.

In place of Democracy Wall, the government will allow carefully screened posters to be hung in Moon Altar Park, a mile to the west. There, a registration center will be set up for those wishing to put up posters. Their names, pseudonyms, addresses and units to which they belong will be recorded.

The Peking Municipal Revolutionary Committee said the content of the posters will not be examined at the park, but "writers of big-character posters will be held responsible for the political and legal implications of the content. It is forbidden to reveal state secrets, to fabricate information and make false charges, to libel and conduct other activities that violate the law."

The notice, distributed by the official Xinhua news agency, added: "Creating disturbances or riots at the selected site will be duly punished according to law." It said the stipulations were "for the time being," but did not elaborate.

The notice said the rules had been set to protect people's rights and social order and to "prevent the use of posters under pseudonyms for the conducting of law-breaking activities."

It said citizens will continue to have the right to put up posters within the work or study unit to which they belong.

Some one hundred civil rights sympathizers made the wall the focus of their activities over the past year. Because of their accusations against Chinese leaders and the Chinese political system, the wall became world-

famous, one of the prime tourist sights in the city.

The new site has the advantage, for the city government, of being off the beaten track, in a corner of the city. Democracy wall is on Changan, the main avenue, which runs by the square, the party and government headquarters and the Great Hall of the People. Its activities were highly visible to visiting state guests as well as ordinary tourists.

Xinhua quoted an unidentified spokesman of the municipal government as saying: "China's socialist democracy is not displayed on the Xidan wall, about which some foreign journalists make a big hubbub. All our government offices, schools and factories have sites or notice boards on their own grounds for wall posters or big character posters. Anyone can present opinions and demands to organizations or to the leadership at higher levels."

"No country in the world allows a person to make false charges and libel others," the unidentified spokesman added.

The city government's action follows complaints from the Communist Party leadership and bitter discussions last month at a meeting of the standing committee of the national Parliament. The decision was preceded by several days of criticism of the wall and those who "used it for ulterior motives" in the municipal organ, the Peking Daily.

Wall posters and newspapers for centuries have been a traditional and widely respected vehicle for criticizing the Chinese administration. The right to post them is enshrined in the Chinese Communist constitution, largely because posters were a potent and valuable weapon used by young Communist revolutionaries not so long ago.

Warsaw Pact members end two-day conference

BERLIN (AP) — Foreign ministers of the seven Warsaw Pact member nations ended their two-day conference today with a new warning to the NATO alliance to forsake plans for stationing new U.S.-built missiles in Western Europe.

In a communique, the Soviet Bloc foreign ministers condemned NATO's "dangerous plans" to station 572 Pershing II and Cruise missiles in Western Europe and urged the West to "consider once again" the weapons' effect on the military balance.

They also repeated their call, issued last spring in Budapest, Hungary, for convening of another disarmament conference bringing together nations of Europe, Canada and the United States.

The ministers said the communist alliance would be interested in negotiating a series of "confidence-building" measures designed to reduce tensions in Europe.

The East Berlin meeting took place one week before a conference of

NATO defense ministers in Brussels, during which the missile deployment plan is expected to be approved.

Chances for approval of the missiles received a boost Wednesday night when delegates to the Social Democratic Party convention in West Berlin endorsed Chancellor Helmut Schmidt's stand on the issue.

Schmidt has urged the alliance to approve deployment of the missiles in conjunction with an offer to the Soviets to negotiate a mutual reduction in medium-range nuclear delivery systems.

At the close of the East Berlin meeting, the foreign ministers, including Russia's Andrei A. Gromyko, met with East German leader Erich Honecker.

The East German news agency ADN said Honecker praised the ministers for their "important contribution to the implementation of the coordinated peace policy of the Socialist community."

Neiman-Marcus founder's widow dies at 97, burial to be Friday

DALLAS (AP) — Mrs. Herbert Marcus, widow of the co-founder of Neiman-Marcus department stores, died Wednesday night. She was 97.

Mrs. Marcus was born here on Oct. 4, 1882. She and Marcus lived briefly in Atlanta after their marriage, before he returned here to help establish the stores.

She became vice president of Neiman-Marcus in charge of horticulture

in 1951. She was a member of the board of directors of Temple Emanu-El in Dallas, and was made honorary life president of the Dallas Garden Center.

She was a member of the Dallas Symphony League, the Dallas Museum of Fine Arts and was co-chairman of the Greater Dallas Planning Council for several years.

No. 4 in a series.

Exxon's profits should be judged by the need to generate capital for large investments.

Exxon's profits are large but so are its investments in energy. When Exxon's profits are put on a comparable basis with the profits of other U.S. manufacturing companies, we do only a little better than average.

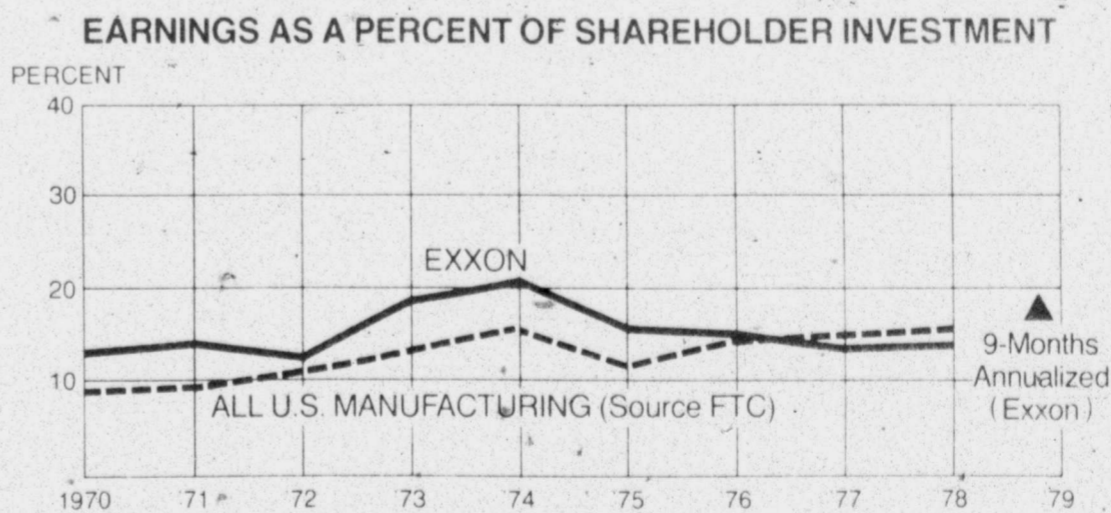
In 1978, for example, only two companies reported higher profits than Exxon. But 545 companies were more profitable than Exxon according to the Fortune magazine list of the largest 1,000 U.S. manufacturing companies.

The difference between "profit" and "profitability" is important. "Profit" is like a worker's take-home pay. It tells you little about how many hours were worked to get it. Take-home pay might be large simply because of a lot of overtime. So, "profit" could be large, even though "profitability" (dollars earned per hour) is not.

Shareholders invest dollars instead of time, so to have real meaning, profits must be related to the amount of money which is invested. A common measure of earning performance is "return on shareholder investment."

During the past decade, Exxon's return on shareholder investment has ranged from a low of 12.4% in 1970 to a high of 20.6% in 1974. So far in 1979, our return has been at an annualized rate of 18.5%.

We don't know how long this current rate of return will last, but we do know that finding and developing energy is getting increasingly more expensive. Oil companies need to be at least as profitable as other companies if they are to continue to be able to attract the funds necessary for the high risk, big investments vital to the delivery of energy in the future.



Exxon's return on shareholder investment has generally been somewhat above that of all U.S. manufacturing companies. In 1977 and 1978, however, it was below the average.



Recipes

MUSHROOM PIE

By CLAUDINE SEALE

10 inch unbaked pie shell
Grated Tillamook cheese
Cooked crumbled bacon
Chopped green onion
1 pound slice sauteed mushrooms
3 eggs beaten
1/2 cup cream
Salt and pepper
Fill bottom of pie shell with layer of cheese. Top with layer of bacon, green onions, followed by mushrooms and the butter they were cooked in. Blend eggs, cream, salt and pepper. Pour over filling.
Bake 15 to 20 minutes at 425 degrees and reduce heat to 350 degrees and continue baking 25 minutes.
Note: Serve with white wine and green salad.

WHOLE WHEAT BROWN BREAD

By BARBARA COVINGTON

2 cup whole wheat flour
1/2 cup unbleached flour
1 tsp. baking powder
1 tsp. baking soda
1 tsp. salt
1 1/2 cup buttermilk
1/4 cup cooking oil
1/3 cup honey
1/4 cup molasses
1/4 unprocessed wheat bran or wheat germ
In large bowl, combine all ingredients. Stir 70-80 strokes. Preheat oven to 350 degrees. Grease a 9x5 loaf pan. Pour batter into greased pan. Bake 40-50 minutes or until toothpick inserted into center comes out clean. Immediately remove from pan onto wire rack to cool slightly. Serve warm with butter or cream cheese.

BULGUR HONEY BREAD

By MARLENE BELLAMY

1 cup dry bulgur wheat
3 cups boiling water
1/2 cup honey
2 tbsps. cooking oil
1 tsp. salt
2 pkgs. active dry yeast
1/4 cup warm water
6 1/2 to 7 cups flour

Combine bulgur wheat, boiling water, honey, salad oil and salt in large mixing bowl. Cool to lukewarm. Add yeast to warm water. Let stand a few minutes; stir to dissolve. Add to cooled bulgur-honey mixture. Blend in flour in three parts, beating after each addition until dough leaves sides of bowl. Dough will be soft. Turn onto lightly floured surface. Knead until smooth, elastic and does not stick when pinched with fingers, about five minutes. Place in greased bowl, turning to grease all sides. Cover with plastic wrap; then a towel. Let rise in warm place until doubled in bulk, about two hours. Punch down and divide dough in half. Shape into loaves. Place

in greased 9"x5"x3" loaf pans. Cover and let rise until doubled in bulk, about 1 hour. Bake in 350 oven 45 to 50 minutes or until done. Place on wire racks. Brush with butter.

LEMON BREAD

By MRS. M.W. MESSER

1/2 cup Crisco
1/2 cup sugar
2 eggs (slightly beaten)
1 1/2 cups flour
1 tsp. baking powder
1/2 cup sweet milk
1/2 cup pecans (optional)
1 tsp. lemon peel (grated)
1 tsp. lemon flavoring

Cream Crisco and sugar until sugar dissolves. Add beaten eggs, beat until fluffy. Add flour, salt and baking powder alternately with milk and beat until smooth. Add lemon peel and 1 tsp. lemon flavoring. Bake in greased and floured loaf pan at 350 degrees for 50 minutes. While still warm glaze with 1/2 cup sugar and juice of one lemon, dissolved together and punch holes in bread to penetrate.

SPUD DUNKERS

By MRS. FRED MONTIS

2 pkg. dry yeast
1/2 cup warm water
1/4 cup sugar
1/2 cup shortening
1 1/2 tps. salt
Instant mashed potatoes for 4
2 cups scalded milk
2 eggs beaten
5 1/2 to 6 cups flour

Place the yeast in the warm water. Add the sugar, shortening and salt. Mix.

Then add the instant mashed potatoes, milk and eggs. Stir in the flour.

Roll out on floured board about 1/2 inch thick. Cut with doughnut cutter. Fry in deep fryer. Turn once.

These will cook quickly. Place about six at one time in small bag and add 1/2 cup sugar and shake. Place on paper towel or for plain doughnuts, drain on towel without the sugar.

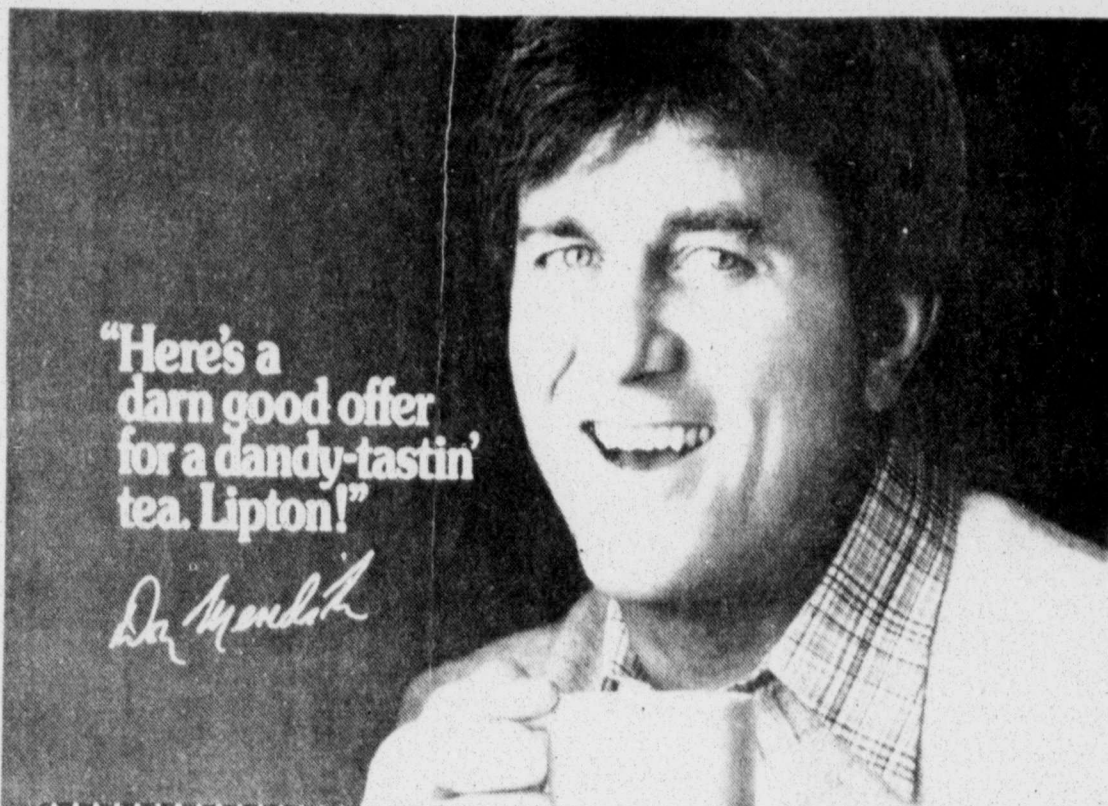
CASSEROLE BREAD

By GWEN GELTEMEYER

1 pkg. dry yeast

1/4 cup warm water
1 cup creamed cottage cheese, heated to lukewarm
2 tbsps. sugar
1 tsp. minced onion
1 tsp. butter or margarine
2 tps. dill seed
1 tsp. salt
1/4 tsp. baking soda
1 unbeaten egg
2 1/4 cups flour

Soften yeast in water. Combine cheese, sugar, onion, butter, dill seed, salt, soda, egg and yeast. Add flour a little at a time, beating well after each addition. Add enough to form a stiff dough. Let rise until double in bulk—about an hour. Stir down. Turn out into a well greased 8 inch round casserole. Let it rise about 30-40 minutes. Bake at 350 degrees for 40-50 minutes. Brush with butter and sprinkle with salt after taking loaf out of oven. Good hot or cold.



"Here's a darn good offer for a dandy-tastin' tea. Lipton!"

Da Munch

30¢

Save 30¢ when you purchase one box of 100 Lipton® Flo thru Tea Bags

30¢

SAVE 40% ON R-T HOME DELIVERY 682-5311

Santa Fe Square invites you to our International Open House Friday, December 7 From 3-6. Refreshments will be served and our Christmas-Around-The-World-Holiday Book will be given to all our shoppers.

Santa Fe Square E. 42nd St. Odessa

SAVE up to \$1.10

ORDER FORM / NOT A STORE COUPON

SAVE \$1.00 ON VIVA TOWELS BE SURE TO INCLUDE THIS FORM

GET 5 VIVA TOWELS COUPONS EACH WORTH 20¢ ON THE PURCHASE OF 2 PACKAGES. JUST SEND 2 SEALS OF QUALITY FROM VIVA-TOWELS WRAPPERS TO:

VIVA TOWELS REFUND OFFER
P.O. BOX 4297
CHESTER, PA 19016
HURRY! OFFER EXPIRES FEBRUARY 29, 1980

IMPORTANT: WE CANNOT GUARANTEE DELIVERY WITHOUT ZIP CODE. PLEASE ALLOW 6-8 WEEKS FOR DELIVERY. THIS ORDER FORM PLUS 2 VIVA SEALS OF QUALITY MUST ACCOMPANY YOUR ORDER. FACSIMILES OF THIS ORDER FORM OR SEALS OF QUALITY WILL NOT BE ACCEPTED. VOID WHERE TAXED, RESTRICTED OR PROHIBITED BY LAW.

USE ORDER FORM AT RIGHT TO GET \$1.00 WORTH OF VIVA COUPONS

HERE'S 10¢ TO GET YOU STARTED

THIS COUPON WORTH 10¢ WHEN YOU BUY ONE PKG. OF VIVA TOWELS

RETAILER: [Small text about retailer requirements]

THE USE, REDEMPTION OR HANDLING OF COUPON NOT ACCORDING TO ITS TERMS CONSTITUTES FRAUD. ONLY ONE COUPON PER PACKAGE PURCHASED. MECHANICAL REPRODUCTION OF COUPON PROHIBITED. 07033

Kellogg's It's gonna be a great day.

Save 15¢ on Kellogg's CORN FLAKES

Now there's even more reason to wake up to the heart-of-the-corn cereal, Kellogg's Corn Flakes. With this coupon, you'll save 15¢ on any size package. And what better way of starting your day than with a bowl of those crunchy, delicious flakes of toasted corn. So get going on a great day with 15¢ off on Kellogg's Corn Flakes cereal. Kellogg Company is an official sponsor of the 1980 Olympic Winter Games.

15¢

Save 15¢ on your next purchase of any size Kellogg's CORN FLAKES cereal.

15¢

15¢

15¢

Judge to rule on Alaska sale

WASHINGTON (AP) — The immediate fate of an oil lease sale that could bring drilling rigs to the icy waters off Alaska's northern coast is in the hands of a federal judge.

eventually permit drilling in the Beaufort Sea. The environmentalists also plan to fight for a permanent ban that would keep the drilling platforms away from the dwindling population of bowhead whales.

But Justice Department attorney Margaret Strand called the suit "one more in a series of challenges" to government efforts to reduce dependence on foreign oil.

Wildcat projects reported; discovery takes potential

Texas Oil & Crude Co. of Odessa spotted an 8,900-foot wildcat in Pecos County, one location north of the Yucca Butte, West (Ellenburger) discovery well.

of section 29, block MM, T&SL survey. The No. 6-55-B Bill Clegg is 5/8 mile southwest of the Ozona (Canyon) field and one location northwest of a 7,000-foot failure, 914 from north and 581 from west lines of Runnels County School Land survey No. 55.

REEVES PRODUCER Gulf also announced completion of No. 10 S.E. Ligon-State, seventh producer one location southwest of the Worsham, East (Cherry Canyon) field of Reeves County, 17 miles southeast of Pecos.

Operators report Basin field work

Gulf Oil Corp. will drill two 5,550-foot tests in the Janelle, Southeast (Tubb) field of Ward County, six miles southeast of Monahan.

Mesa Petroleum Corp. of Midland will drill No. 1 Fourmile-Federal Communitized as a one and one-eighth mile northwest outpost to the Penasco Draw (Morrow gas) field, 12 miles southeast of Hope.

TERRELL STEP-OUT Union Oil Co. of California will drill a five-eighths mile southeast stepout to the only well in the McKay Creek (Caballo) field, 22 miles northeast of Sanderson.

IRION EXPLORER

Simpson-Mann Oil Producers of San Angelo will drill a 1,600-foot wildcat 1/2 mile northwest of a 1,600-foot failure and one mile northwest of the MIM (San Angelo) field of Irion County.

WARD EXTENSION

Gulf Oil Corp. finalized No. 1040 Hutchings Stock Association as a 2-3/10-foot southeast extension to the Wagon Wheel (Pennsylvanian) field of Ward County, 3.5 miles southeast of Wickett.

MARTIN TEST

Saxon Oil Co. of Midland will drill the No. 2 Gay Wade, 1/2 mile south of production in the Breedlove, East (Spraberry oil) field of Martin County, five miles south of Patricia.

LOVING TEST

C&K Petroleum Inc. of Midland will drill No. 1-40 Johnson, 1.5 miles southwest of the Slash Ranch (Ellenburger) field of Loving County, eight miles northeast of Mentone.

MCCULLOCH OILER

C&R Co. of Midland completed No. 4 Bratton Ranch Co. as the second or one location southeast of the Bratton (Strawn) field, nine miles northeast of Brady.

COKE EXTENDER

The Higgins Ranch (Canyon) field of Coke County has been extended one location west with completion of Texaco Inc. No. 10 March Ranch, nine miles northeast of Carlsbad.

RUNNELS SITES

Simpson-Mann will drill two 4,700-foot wildcat operations in Runnels County. The No. 1-87 H.J. Kasberg is five-eighths mile southwest of Miles oil production in the Urban field and one and seven-eighths miles northwest of Miles gas production and one mile north of Miles.

DRILLING REPORT

ANDREWS COUNTY Amoco No. 1-HI State, drilling 13,200 feet, 10,200 feet, 10,200 feet, 10,200 feet, 10,200 feet, 10,200 feet, 10,200 feet, 10,200 feet, 10,200 feet, 10,200 feet.

WARD COUNTY

Adobe No. 12 Barstow, id 6,471 feet, pumped 2 barrels of oil and 40 barrels of water, time not reported, through perforations at 5,836 to 45 feet.

Field work announced

Amoco Production Co., operating from Levelland, announced plans to drill the No. 145-A Ellwood, one location northwest of the dual Canyon and Strawn discovery well of the Smyer, North field, four miles northwest of Smyer.

The new location is 3,105 feet from north and 1,900 feet from east lines of section 1216, TCRR survey, 16 miles northwest of Eldorado.

SCHLEICHER PRODUCER Tuckey Drilling Co. Inc. finalized No. 1-A Glass as the second well in the R.E.G. (5900 lime) field of Schleicher County, one location south of other production.

STONEMAN WILDCAT

Stringer Oil & Gas Co. of San Antonio will drill No. 1 Emma H. Randolph and others as a 6,200-foot wildcat, 2,310 feet southeast of the lone producer in the Mariann (5050 sand) field, 2.5 miles northeast of Old Glory.

DAWSON COUNTY

Crown Central Petroleum No. 1 Carson Ebbels, drilling 11,498 feet, 11,498 feet, 11,498 feet, 11,498 feet, 11,498 feet, 11,498 feet, 11,498 feet, 11,498 feet, 11,498 feet, 11,498 feet.

REEVES COUNTY

Union Texas No. 18 Westbrook, id 4,050 feet, ran logs, perforated from 3,000 to 3,162 feet, spotted acid across perforations.

REAGAN SITES

Cola Petroleum Inc. of Midland spotted location for two tests in the Reagan County portion of the Calvin (Dean) field, 12 miles northeast of Stiles.

NOLAN SITE

Yates Exploration Co. of Laredo will drill the No. 2 Ash, one location west of Canyon oil production, one-quarter mile northwest of dual Canyon oil and upper Canyon oil production in the JMM field of Nolan County.

PECOS EXTENSION

The USM (Queen) field of Pecos County has been extended 1/2 mile southeast with completion of Tahoe Oil & Cattle Co. of Midland, No. 1 Papoose, four miles north of Fort Stockton.

GARZA OPENER

Aikman Petroleum Inc. of Midland completed No. 1 Post-Montgomery as an Ellenburger oil discovery 2.5 miles west of the Arlene (Glorieta and San Andres) field and 2.75 miles southwest of Glorieta production in the H&L field.

REEVES COUNTY

Quinn Oil Corp. No. 1 Langford, id 4,224 feet, set 85/8 inch casing at 2,147 feet, plugged back to 9,365 feet, 4,285 to 4,324 feet.

REEVES COUNTY

Quinn Oil Corp. No. 1 Langford, id 4,224 feet, set 85/8 inch casing at 2,147 feet, plugged back to 9,365 feet, 4,285 to 4,324 feet.

REAGAN SITES

The No. 1 Wooten is five-eighths mile south of production, 1,980 feet from south and 660 feet from west lines of section 139, block 2, T&P survey.

REAGAN SITES

The No. 2 Wooten is seven-eighths mile southeast of production, located 1,880 feet from south and 1,980 feet from east lines of section 139, block 2, T&P survey.

REAGAN SITES

The No. 1 Wooten is five-eighths mile south of production, 1,980 feet from south and 660 feet from west lines of section 139, block 2, T&P survey.

REAGAN SITES

The No. 1 Wooten is five-eighths mile south of production, 1,980 feet from south and 660 feet from west lines of section 139, block 2, T&P survey.

REAGAN SITES

The No. 1 Wooten is five-eighths mile south of production, 1,980 feet from south and 660 feet from west lines of section 139, block 2, T&P survey.

REAGAN SITES

The No. 1 Wooten is five-eighths mile south of production, 1,980 feet from south and 660 feet from west lines of section 139, block 2, T&P survey.

REAGAN SITES

The No. 1 Wooten is five-eighths mile south of production, 1,980 feet from south and 660 feet from west lines of section 139, block 2, T&P survey.

REAGAN SITES

The No. 1 Wooten is five-eighths mile south of production, 1,980 feet from south and 660 feet from west lines of section 139, block 2, T&P survey.

REAGAN SITES

The No. 1 Wooten is five-eighths mile south of production, 1,980 feet from south and 660 feet from west lines of section 139, block 2, T&P survey.

REAGAN SITES

The No. 1 Wooten is five-eighths mile south of production, 1,980 feet from south and 660 feet from west lines of section 139, block 2, T&P survey.

REAGAN SITES

The No. 1 Wooten is five-eighths mile south of production, 1,980 feet from south and 660 feet from west lines of section 139, block 2, T&P survey.

REAGAN SITES

The No. 1 Wooten is five-eighths mile south of production, 1,980 feet from south and 660 feet from west lines of section 139, block 2, T&P survey.

REAGAN SITES

The No. 1 Wooten is five-eighths mile south of production, 1,980 feet from south and 660 feet from west lines of section 139, block 2, T&P survey.

REAGAN SITES

The No. 1 Wooten is five-eighths mile south of production, 1,980 feet from south and 660 feet from west lines of section 139, block 2, T&P survey.

REAGAN SITES

The No. 1 Wooten is five-eighths mile south of production, 1,980 feet from south and 660 feet from west lines of section 139, block 2, T&P survey.

REAGAN SITES

The No. 1 Wooten is five-eighths mile south of production, 1,980 feet from south and 660 feet from west lines of section 139, block 2, T&P survey.

REAGAN SITES

The No. 1 Wooten is five-eighths mile south of production, 1,980 feet from south and 660 feet from west lines of section 139, block 2, T&P survey.

REAGAN SITES

The No. 1 Wooten is five-eighths mile south of production, 1,980 feet from south and 660 feet from west lines of section 139, block 2, T&P survey.

REAGAN SITES

The No. 1 Wooten is five-eighths mile south of production, 1,980 feet from south and 660 feet from west lines of section 139, block 2, T&P survey.

REAGAN SITES

The No. 1 Wooten is five-eighths mile south of production, 1,980 feet from south and 660 feet from west lines of section 139, block 2, T&P survey.

REAGAN SITES

The No. 1 Wooten is five-eighths mile south of production, 1,980 feet from south and 660 feet from west lines of section 139, block 2, T&P survey.

REAGAN SITES

The No. 1 Wooten is five-eighths mile south of production, 1,980 feet from south and 660 feet from west lines of section 139, block 2, T&P survey.

REAGAN SITES

The No. 1 Wooten is five-eighths mile south of production, 1,980 feet from south and 660 feet from west lines of section 139, block 2, T&P survey.

REAGAN SITES

The No. 1 Wooten is five-eighths mile south of production, 1,980 feet from south and 660 feet from west lines of section 139, block 2, T&P survey.

REAGAN SITES

The No. 1 Wooten is five-eighths mile south of production, 1,980 feet from south and 660 feet from west lines of section 139, block 2, T&P survey.

REAGAN SITES

The No. 1 Wooten is five-eighths mile south of production, 1,980 feet from south and 660 feet from west lines of section 139, block 2, T&P survey.

REAGAN SITES

The No. 1 Wooten is five-eighths mile south of production, 1,980 feet from south and 660 feet from west lines of section 139, block 2, T&P survey.

REAGAN SITES

The No. 1 Wooten is five-eighths mile south of production, 1,980 feet from south and 660 feet from west lines of section 139, block 2, T&P survey.

REAGAN SITES

The No. 1 Wooten is five-eighths mile south of production, 1,980 feet from south and 660 feet from west lines of section 139, block 2, T&P survey.

REAGAN SITES

The No. 1 Wooten is five-eighths mile south of production, 1,980 feet from south and 660 feet from west lines of section 139, block 2, T&P survey.

REAGAN SITES

The No. 1 Wooten is five-eighths mile south of production, 1,980 feet from south and 660 feet from west lines of section 139, block 2, T&P survey.

REAGAN SITES

The No. 1 Wooten is five-eighths mile south of production, 1,980 feet from south and 660 feet from west lines of section 139, block 2, T&P survey.

REAGAN SITES

The No. 1 Wooten is five-eighths mile south of production, 1,980 feet from south and 660 feet from west lines of section 139, block 2, T&P survey.

REAGAN SITES

The No. 1 Wooten is five-eighths mile south of production, 1,980 feet from south and 660 feet from west lines of section 139, block 2, T&P survey.

REAGAN SITES

The No. 1 Wooten is five-eighths mile south of production, 1,980 feet from south and 660 feet from west lines of section 139, block 2, T&P survey.

REAGAN SITES

The No. 1 Wooten is five-eighths mile south of production, 1,980 feet from south and 660 feet from west lines of section 139, block 2, T&P survey.

REAGAN SITES

The No. 1 Wooten is five-eighths mile south of production, 1,980 feet from south and 660 feet from west lines of section 139, block 2, T&P survey.

REAGAN SITES

The No. 1 Wooten is five-eighths mile south of production, 1,980 feet from south and 660 feet from west lines of section 139, block 2, T&P survey.

REAGAN SITES

The No. 1 Wooten is five-eighths mile south of production, 1,980 feet from south and 660 feet from west lines of section 139, block 2, T&P survey.

REAGAN SITES

The No. 1 Wooten is five-eighths mile south of production, 1,980 feet from south and 660 feet from west lines of section 139, block 2, T&P survey.

REAGAN SITES

The No. 1 Wooten is five-eighths mile south of production, 1,980 feet from south and 660 feet from west lines of section 139, block 2, T&P survey.

REAGAN SITES

The No. 1 Wooten is five-eighths mile south of production, 1,980 feet from south and 660 feet from west lines of section 139, block 2, T&P survey.

REAGAN SITES

The No. 1 Wooten is five-eighths mile south of production, 1,980 feet from south and 660 feet from west lines of section 139, block 2, T&P survey.

REAGAN SITES

The No. 1 Wooten is five-eighths mile south of production, 1,980 feet from south and 660 feet from west lines of section 139, block 2, T&P survey.

REAGAN SITES

The No. 1 Wooten is five-eighths mile south of production, 1,980 feet from south and 660 feet from west lines of section 139, block 2, T&P survey.

REAGAN SITES

The No. 1 Wooten is five-eighths mile south of production, 1,980 feet from south and 660 feet from west lines of section 139, block 2, T&P survey.

REAGAN SITES

The No. 1 Wooten is five-eighths mile south of production, 1,980 feet from south and 660 feet from west lines of section 139, block 2, T&P survey.

REAGAN SITES

The No. 1 Wooten is five-eighths mile south of production, 1,980 feet from south and 660 feet from west lines of section 139, block 2, T&P survey.

REAGAN SITES

The No. 1 Wooten is five-eighths mile south of production, 1,980 feet from south and 660 feet from west lines of section 139, block 2, T&P survey.

REAGAN SITES

The No. 1 Wooten is five-eighths mile south of production, 1,980 feet from south and 660 feet from west lines of section 139, block 2, T&P survey.

REAGAN SITES

The No. 1 Wooten is five-eighths mile south of production, 1,980 feet from south and 660 feet from west lines of section 139, block 2, T&P survey.

REAGAN SITES

The No. 1 Wooten is five-eighths mile south of production, 1,980 feet from south and 660 feet from west lines of section 139, block 2, T&P survey.

REAGAN SITES

The No. 1 Wooten is five-eighths mile south of production, 1,980 feet from south and 660 feet from west lines of section 139, block 2, T&P survey.

REAGAN SITES

The No. 1 Wooten is five-eighths mile south of production, 1,980 feet from south and 660 feet from west lines of section 139, block 2, T&P survey.

REAGAN SITES

The No. 1 Wooten is five-eighths mile south of production, 1,980 feet from south and 660 feet from west lines of section 139, block 2, T&P survey.

REAGAN SITES

The No. 1 Wooten is five-eighths mile south of production, 1,980 feet from south and 660 feet from west lines of section 139, block 2, T&P survey.

REAGAN SITES

The No. 1 Wooten is five-eighths mile south of production, 1,980 feet from south and 660 feet from west lines of section 139, block 2, T&P survey.

REAGAN SITES

The No. 1 Wooten is five-eighths mile south of production, 1,980 feet from south and 660 feet from west lines of section 139, block 2, T&P survey.

REAGAN SITES

The No. 1 Wooten is five-eighths mile south of production, 1,980 feet from south and 660 feet from west lines of section 139, block 2, T&P survey.

REAGAN SITES

The No. 1 Wooten is five-eighths mile south of production, 1,980 feet from south and 660 feet from west lines of section 139, block 2, T&P survey.

REAGAN SITES

The No. 1 Wooten is five-eighths mile south of production, 1,980 feet from south and 660 feet from west lines of section 139, block 2, T&P survey.

REAGAN SITES

The No. 1 Wooten is five-eighths mile south of production, 1,980 feet from south and 660 feet from west lines of section 139, block 2, T&P survey.

REAGAN SITES

The No. 1 Wooten is five-eighths mile south of production, 1,980 feet from south and 660 feet from west lines of section 139, block 2, T&P survey.

REAGAN SITES

The No. 1 Wooten is five-eighths mile south of production, 1,980 feet from south and 660 feet from west lines of section 139, block 2, T&P survey.

REAGAN SITES

The No. 1 Wooten is five-eighths mile south of production, 1,980 feet from south and 660 feet from west lines of section 139, block 2, T&P survey.

REAGAN SITES

The No. 1 Wooten is five-eighths mile south of production, 1,980 feet from south and 660 feet from west lines of section 139, block 2, T&P survey.

REAGAN SITES

The No. 1 Wooten is five-eighths mile south of production, 1,980 feet from south and 660 feet from west lines of section 139, block 2, T&P survey.

REAGAN SITES

The

District 8 leads Permian Basin in new oil, gas operations

District 8 of the Railroad Commission of Texas lead all other Permian Basin areas last week in new oil and gas locations with 70. Operators announced 194 operations in the West Texas, southeast New Mexico area.

The District 8 headquarters in Midland processed nine wildcat operations and 61 field tests.

Pecos County gained five of the wildcats, and two were spotted in Andrews County. The others were staked in Glasscock and Sterling.

District 7-C, headquartered in San Angelo, reported 42 new operations, 13 of them in wildcat country.

Runnels gained six of the wildcats and three were spotted in Coke, Crockett, Irion, Schleicher and Upton counties each gained one.

County	Wildcat	Field
District 8		
Andrews	2	8
Crane	0	13
Ector	0	6
Glasscock	1	1
Howard	0	6
Loving	0	1
Martin	0	6
Midland	0	3
Mitchell	0	2
Pecos	5	8
Sterling	1	4
Ward	0	2
Winkler	0	1
Total	9	61
District 8-A		
Borden	3	3
Cochran	0	3
Cottle	1	0
Dawson	1	1
Gaines	2	6
Garza	0	3
Hockley	1	2
Kent	2	0
King	0	1
Lamb	0	1
Lubbock	0	1
Shelby	1	3
Terry	1	0
Yoakum	0	2
Total	12	26
District 7B		
Fisher	3	2
Nolan	4	0
Stonewall	1	2
Total	8	4
District 7C		
Coke	3	0
Crockett	1	10
Irion	1	3
Reagan	0	6
Runnels	6	1
Schleicher	1	3
Sutton	0	4
Tom Green	0	1
Upton	1	1
Total	7	24
Total	50	144
Grand Total		194

DISTRICT 8

ANDREWS COUNTY
Emma (Strawn) & Clabberhill—OWPB—Getty Oil No. 2 K University, 1,980 from north, 660 from west section 28, block 9, ULS, 11 south Andrews, 9,500, OTD 12, 568.

Emma—ARCO No. 70 Emma Cowden, 1,100 from north, 1,350 from east section 11, block 44, T-2-N, T&P, 15 south Andrews, 4,400.

Emma—ARCO No. 71 Emma Cowden, 2,200 from north, 2,250 from east section 11, block 44, T-2-N, T&P, 15 south Andrews, 4,400.

Emma—ARCO No. 72 Emma Cowden, 1,980 from south, 1,150 from east section 11, block 44, T-2-N, T&P, 15 south Andrews, 4,400.

Emma—ARCO No. 73 Emma Cowden, 1,980 from south, 2,250 from east section 11, block 44, T-2-N, T&P, 15 south Andrews, 4,400.

Dollarhide, Northeast (Devonian) & Eilenburger—Amend—Tipperary Oil & Gas No. 1 Evans, 660 from south, 990 from east section 10, block 4-A, PSL, 25 west Andrews, 12,900 (Amend operator)

Wildcat—OWPB—Tex-

aco Inc. No. 1-AB State of Texas, 1,980 from south, 660 from west section 22, block 5, ULS, 15 north east Andrews, 11,900, OTS 12,667.

Wildcat—Britton Management No. 2-5 Fasken, 660 from north, 1,980 from east section 5, block 41, T-2-N, G&MMB&A, 13 southeast Andrews, 5, 200.

Fullerton—Rule 37—Exxon Corp. No. 1633 Fullerton Clear Fork Unit, 90 from south, 1,050 from west section 13, block A-32, PSL, 17 northwest Andrews, 7, 300.

CRANE COUNTY
Sand Hills, West (Wolf camp)—Amend—Gulf Oil No. 1140 W.N. Waddell et al., 1,980 from south, 2,075 from east section 7, block B-27, PSL, 19.5 northwest Crane, 6,070. (Amend field)

Waddell—Gulf No. 118 W.N. Waddell, 2,310 from north, 1,650 from west section 9, block B-23, PSL, 11 northwest Crane, 3,650.

Sand Hills (McKnight & Tubb)—Exxon No. 212 J. B. Tubb, 1,300 from south and east section 29, block B-27, PSL, 15 west Crane, 4,800.

Sand Hills (McKnight & Tubb)—Exxon No. 21 C. Tubb, 1,200 from south, 1,470 from west section 6, block 32, PSL, 17 north west Crane, 1,800.

Lea (San Andres)—Petro. Tech. Services No. 1 P.J. Lea, 3,107 from north, 467 from west section 18, block 32, PSL, 10 west Crane, 3,400.

Sand Hills (Wolf camp)—Amend—Gulf Oil No. 580 Waddell et al., 660 from south and east section 7, block B-21, PSL, 19 northwest Crane, 6,260. (Amend field)

Abell (3200)—OWPB—Sabine Prod. No. 8 Ren aud, 6,018 from north, 1,430 from south-east section 19, block 1, H&TC, 7 north-Imperial, 3,200, OTD 5,118.

Block 31 (Devonian)—ARCO Oil & Gas No. 5 W Block 31 Unit, 2,290 from north, 2,440 from east section 11, block 31, ULS, 7 northwest Crane, 9, 100.

Sand Hills (Judkins)—Rule 37—Gulf Oil No. 1142 W.N. Waddell et al., 1,980 from north, 560 from east section 20, block B-26, PSL, 15 northwest Crane, 3,300.

Sand Hills (Judkins)—Rule 37—Gulf Oil No. 1143 Waddell et al., 1,370 from south, 100 from west section 21, block B-26, PSL, 16 northwest Crane, 3, 300.

Sand Hills (Judkins)—Rule 37—Gulf Oil No. 1144 Waddell et al., 950 from north, 1,000 from west section 30, block B-26, PSL, 14 northwest Crane, 3,300.

Sand Hills (Judkins)—Rule 37—Gulf Oil No. 1145 Waddell et al., 710 from south, 230 from east section 21, block B-21, PSL, 15 northwest Crane, 3, 300.

ECTOR COUNTY
Foster—Wayman W. Buchanan No. 1 Cowden-Oliver, 1,980 from north, 2,160 from east section 5, block 43, T-2-S, T&P, 8 north Odessa, 4,400.

Foster—Buchanan No. 1-A Cowden-Oliver, 1,800 from north, 990 from west section 5, block 43, T-2-S, T&P, 8 north Odessa, 4,400.

Fasken (Pennsylvanian)—Amoco Prod. No. 5-A Midland Farms, 467 from north, 1,320 from west section 36, block 42, T-1-N, G&MMB&A, 20 north Odessa, 11,500.

Cowden, North—Rial Oil No. 2-6 TXL, 1,326 from south, 2,206 from east section 33, block 43, T-1-N, T&P, 10 northwest Odessa, 4,200.

Cowden, North—Rial No. 1-6 TXL, 2,206 from south, 2,203 from east section 33, block 43, T-1-N, T&P, 10 northwest Odessa, 4,200.

Cowden, North—Conoco No. 1-A-19 Wight, 1,980 from north, 660 from

west section 19, block 43, T-1-S, T&P, 4 east Goldsmith, 4,450.

GLASSCOCK COUNTY
Spraberry Trend Area—Parker & Parsley No. 1 Walton, 660 from north, 1,320 from east section 43, block 36, T-3-S, T&P, 20 south Stanton, 9,200.

Wildcat—Hanover Management No. 1 Winnie P. Cooper, 1,980 from north and west section 35, block 35, T-2-S, T&P, 9 west Garden City, 8,400.

HOWARD COUNTY
Coahoma, North (Fusselman)—McCann Corp. No. 5 A Read, 1,965 from south, 1,937 from east section 40, block 30, T-1-N, T&P, 3 northeast Coahoma, 9,100.

Moore—P-R-O Management No. 1 Weaver, 2,310 from north, 990 from west of south half of northwest quarter section 5, block 33, T&P, 3 west Big Spring, 3,350.

Coahoma (Mississippian)—Amend—McCann Corp. No. 4 A Read, 660 from north, 1,879 from west section 40, block 30, T-1-N, T&P, 3 east Coahoma, 8,840. (Amend field)

Snyder—D.L. Dorland No. 1 F.M.M. Edwards, 2,316 from north, 1,659 from west section 44, block 30, T-1-N, T&P, 11 southeast Coahoma, 3, 250.

Snyder—Dorland No. 2 F.M.M. Edwards, 1,653 from north, 330 from west section 44, block 30, T-1-S, T&P, 11 southeast Coahoma, 3,250.

Coahoma, North (Fusselman)—Amoco No. 1 A Emma F. Davis, 2,173 from south, 467 from east section 44, block 30, T-1-N, T&P, 3 east Coahoma, 9,200.

Coahoma, North (Fusselman)—Amoco No. 2 A Emma F. Davis, 990 from south, 2,173 from east section 44, block 30, T-1-N, T&P, 3 east Coahoma, 9,200.

LOVING COUNTY
Slash Ranch (Ellenburger)—Mobil Oil Corp. No. 1 Lacy et al. Unit, 1,320 from south, 1,520 from west section 14, block 53, T-2, T&P, 6 northeast Mentone, 22, 000.

MARTIN COUNTY
Spraberry Trend Area—MGF Oil Corp. No. 2 Mays, 660 from north and west section 23, block 37, T-2-N, T&P, 3.5 southwest Tarzan, 9, 500.

Spraberry Trend Area—MGF Oil No. 1 Nail, 660 from north, 4,980 from west section 42, block 37, T-1-N, T&P, 11.4 west Stanton, 9,500.

Spraberry Trend Area—MGF No. 2 Nail, 1,980 from south and west section 42, block 37, T-1-N, T&P, 11.4 west Stanton, 9,500.

Spraberry Trend Area—MGF Oil No. 1 Blocker, 660 from north and east section 5, block 35, T-1-S, T&P, 4.9 north-east Stanton, 9,500.

Spraberry Trend Area—MGF Oil No. 1 Langford, 1,980 from northeast, 990 from northwest section 9, block 4, H&GN, 8 north-northwest Pecos, 4,500. (Amend location)

STERLING COUNTY
Conger (Pennsylvanian)—Dorchester Explorer No. 2-15 Terry, 1,980 from north, 1,320 from west section 15, block RT, T&P, 4.9 southwest Sterling City, 7,550.

Conger, Southwest (Pennsylvanian)—Amend—Champlin Petro. No. 2 I.W. Terry, 660 from south and west section 1, GC&SF, 20 southwest Sterling City, 9,400. (Amend field)

Conger, Southwest (Pennsylvanian)—Amend—Champlin No. 1 J.E. Watson, 660 from south and west section 3, EL&RR, 18 southeast Garden City, 9,400. (Amend field)

Conger (Pennsylvanian)—Wagner & Brown No. 3-36 Conger, 660 from north and west section 36, block 22, H&TC, 9 southwest Sterling City, 8,600.

Conger (Pennsylvanian)—Wagner & Brown No. 39-10 Hildebrand, 1,940 from north, 1,592 from west section 10, block 31, T-5-S, T&P, 11 southwest Sterling City, 8,600.

Wildcat—Petro. Explorer & Develop. No. 1 Reed, 660 from south and east section 13, block 30, W&N, 15 northwest Sterling City, 7,800.

Conger (Pennsylvanian)—Amend—Wagner

Howard-Glasscock—A.K. Guthrie No. 1 Francis, 330 from north, 2,310 from west section 45, block 17, SPRR, 18 south Westbrook, 1,500.

PECOS COUNTY
Yates (Smith sand)—McCurdy, Easter & McCurdy No. 7-A M.A. Smith, 330 from south and west section 28, block 194, GC&SF, 7 southwest Iraan, 1,005.

Yates (Smith sand)—McCurdy, Easter & McCurdy No. 18-A Smith, 660 from south, 330 from east section 27, block 194, GC&SF, 7 southwest Iraan, 1,000.

Yates (Smith sand)—McCurdy, Easter & McCurdy No. 5-B Smith, 330 from north, 1,090 from east section 24, block 194, GC&SF, 7 southwest Iraan, 1,025.

Pecos Valley (Low Gravity)—Don W. Dittman No. 15 Jackson Oil Unit, 1,650 from north, 330 from west section 28, block 3, H&TC, 24 north-east Fort Stockton, 1, 650.

USM (Queen)—Gulf Oil No. 1-C Nora Boatman et al., 767 from south, 2,173 from west section 1, block 1, Ft. Stockton Irrig. Lands, 4.5 north-east Ft. Stockton, 3,800.

USM (Queen)—Gulf Oil No. 1 Hillin-Winfield, 2, 173 from north, 767 from west section 1, block 1, Ft. Stockton Irrig. Lands, 4.5 northeast Fort Stockton, 3,900.

USM (Queen)—Gulf Oil No. 1-Dema Smith et al., 1,787 from south, 1,863 from east section 4, block 1, Ft. Stockton Irrig. Land, 4.5 northeast Fort Stockton, 3,900.

Wildcat—Amend—Rule 37—Wilson Bros. No. 1-20 Wilson Ranch, 217 from south, 1,235 from west section 20, block Z, TCR, 12 west Iraan, 1,700. (Amend field)

Wildcat—William B. Wilson No. 3-29 Wilson Ranch, 660 from east, 467 from east section 29, block Z, TCR, 11 west Iraan, 2,500.

Wildcat—ATAPCO No. 3 Max D. Shaffrath et al., 710 from south, 1,980 from west section 26, block C-2, PSL, 4 south-west Coynosa, 7,000.

Wildcat—ATAPCO No. 4 Max D. Shaffrath et al., 1,910 from south, 1,980 from west section 26, block C-2, PSL, 4 south-west Coynosa, 7,000.

Wildcat—ATAPCO No. 5 Max D. Shaffrath et al., 1,910 from south, 660 from west section 26, block C-2, PSL, 4 south-west Coynosa, 7,000.

Payton—The Three-B Oil Co. No. 4 Brander, 6,845 from south, 330 from east section 100, block 8, H&GN, 3 south-east Grandfalls, 2,100.

Wildcat—Re-entry—OWPB—Gas Lift Sales No. 1 D.Priest, 1,980 from north and west section 98, block 194, GC&SF, 2 southwest Bakersfield, 7, 400, OTD 9,920.

REEVES COUNTY
Wildcat—Amend—Coquina Oil No. 1 Langford, 1,980 from northeast, 990 from northwest section 9, block 4, H&GN, 8 north-northwest Pecos, 4,500. (Amend location)

COTLE COUNTY
Wildcat—Jack F. Grimm No. 1 D.L. Smith, 467 from south, 1,680 from west section 2, MEP&P, 7 northwest Dunlap, 7,000.

DAWSON COUNTY
Gin, North (8000)—Petro. Explorer & Develop. Funds No. 1 Hatch, 1,980 from south, 660 from west section 4, block 36, T-5-N, T&P, 3 west Lamesa, 8,400.

Wildcat—Tomlinson Oil No. 1 Jenkins, 1,980 from south and east section 12, block M, EL&RR, 10 northwest Lamesa, 5, 400.

Sharon Ridge (1700)—Ellipen, Inc. No. 1 Coleman, 1,650 from north and east section 97, block 97, H&TC, 3.5 south Ira, 1,900.

TERRY COUNTY
Wildcat—RK Petro. No. 1 Carter-State, 467 from north and east section 122, block D-11, D&E, 3 southwest Gomez, 12,900.

YOAKUM COUNTY
Wasson—ARCO Oil & Gas No. 330-A Willard Unit, 925 from south, 1,300 from east section 635, block D, J.H. Gibson, 8 north Denver City, 5,400.

Wasson—ARCO No. 331-A Willard Unit, 1,097 from south, 127 from east section 635, block D, J.H.

14-BA Exxon Fee-Eubanks, 2,150 from south, 2,800 from west section 6, block AX, PSL, 9 south-west Seminole, 7,300.

Robertson, North (7100 Clear Fork)—Exxon No. 17-BA Exxon Fee-Eubanks, 1,180 from south, 2,760 from east section 6, block AX, PSL, 9 south-west Seminole, 7,300.

Robertson, North (7100 Clear Fork)—Exxon No. 18-BA Exxon Fee-Eubanks, 780 from south, 2,340 from west section 6, block AX, PSL, 9 south-west Seminole, 7,300.

Wildcat—Tri-Service Drilg. No. 1 Birge, 500 from south, 1,800 from west section 27, block C-30, PSL, 11 east Seminole, 13,000.

Wildcat—OWWO—W&W Oil Co. No. 1-A Colgan State, 2,310 from north, 467 from east section 19, block A-22, PSL, 12 south Seminole, 4,816.

GARZA COUNTY
Coulter (Spraberry)—Wil-Mc Oil No. 7-A J.F. Lott, 3,375 from north, 660 from east section 13, block 1, Jasper Hays, 12 southwest Post, 5,500.

Hackberry (Glorieta)—W. Ridley Wheeler No. 3 W.A. Hamilton, 2,310 from south, 330 from east section 1249, AB&M, 4 south Southland, 4,200.

Three Way (San Andres & Glorieta)—Petro. Explor. & Develop. No. 1 Puel, 2,173 from north, 467 from east section 1307, B&F, 5 west Post, 4,000.

HOCKLEY COUNTY
Wildcat—Amoco Prod. No. 1-B Montgomery-Davies, 620 from south, 349 from west labor 18, league 28, Hood CSL, southwest Levelland townsite, 10,300.

Yellowhouse—Rogers & Bryant No. 1 Ray Denney, 660 from south, 760 from west labor 20, league 705, State CSL, 21 north Levelland, 4,900.

Yellowhouse—Rogers & Bryant No. 1 Watkins, 660 from south and west labor 19, league 705, State CSL, 20 north Levelland, 4,900.

KENT COUNTY
Wildcat—Convest Energy No. 1 E.A. Wallace et al., 600 from south and east section 13, block 5, H&GN, 6 northeast Polar, 7,750.

Wildcat—Hanover Management No. 1-39 LeRoy Spires, 2,000 from south and east section 39, block 4, H&GN, 7 south-west Clairmont, 7,200.

KING COUNTY
Prudence (Atoka)—BTA Oil Prod. No. 17907 J.W. King, 660 from north and west section 12, D-N; Robinson, 12 northeast Guthrie, 6,200.

LAMB COUNTY
Anton Irish—Amoco Prod. No. 496 Anton Irish Clear Fork Unit, 970 from north, 1,320 from east section 118, Block A, R.M. Thompson, 5 north-east Anton, 6,300.

LUBBOCK COUNTY
Lee Harrison—Gulf Oil No. 2 Mary L. Crawford, 660 from north and east labor 8, league 2, San Augustine CSL, 16 east Lubbock, 4,900.

SCURRY COUNTY
Diamond M (Clear Fork)—Calley & Fowler No. 2-B J.N. Bynum, 990 from north, 2,310 from west section 178, block 97, H&TC, 11 southwest Snyder, 3,350.

Diamond M (Clear Fork)—Calley & Fowler No. 6-B Bynum, 2,310 from north, 990 from west section 178, block 97, H&TC, 11 southwest Snyder, 3,300.

Wildcat—Terra Resources No. 4 Dan E. Whitley, 660 from north, 1,980 from west section 428, block 97, H&TC, 2 southeast Fluvanna, 8, 400.

Sharon Ridge (1700)—Ellipen, Inc. No. 1 Coleman, 1,650 from north and east section 97, block 97, H&TC, 3.5 south Ira, 1,900.

TERRY COUNTY
Wildcat—RK Petro. No. 1 Carter-State, 467 from north and east section 122, block D-11, D&E, 3 southwest Gomez, 12,900.

YOAKUM COUNTY
Wasson—ARCO Oil & Gas No. 330-A Willard Unit, 925 from south, 1,300 from east section 635, block D, J.H. Gibson, 8 north Denver City, 5,400.

Wasson—ARCO No. 331-A Willard Unit, 1,097 from south, 127 from east section 635, block D, J.H.

Gibson, 8 north Denver City, 5,400.

DISTRICT 7-B

FISHER COUNTY
Wildcat—Bridwell Oil Co. No. 2 H.C. McClesky, 330 from north, 1,300 from east section 182, block 2, H&TC, 6 north-east Rotan, 3,800.

Wildcat—John R. Thompson No. 1-A J.J. Mabery, 467 from north, 2,080 from west section 56, block 1, HT&B, 5 southeast McCauley, 3, 400.

Keeler-Winberly (Canyon sand)—A.L. Sauder Jr. No. 1 Holman & Boyd, 2,290 from south, 330 from east section 187, block 1, BB&C, 3 northeast Hamlin, 4,528.

Sweetwater (Canyon)—Synergy Oil & Gas No. 49 Sweetwater (Canyon sand) Unit, on north line, 1,320 from west section 24, block 22, T&P, 7 southeast Claytonville, 5, 300.

Wildcat—Earl M. Craig No. 1 Floyd, 467 from north, 1,787 from west section 2, block 23, T&P, 5 south Claytonville, 7,000.

NOLAN COUNTY
Wildcat—Enrich Oil Corp. No. 1-83 Double M Ranch, 660 from south and west section 83, block 1-A, H&TC, 13 southwest Maryneal, 7, 200.

Wildcat—Enrich No. 1-82 Double M Ranch, 660 from south, 990 from west section 82, block 1-A, H&TC, 8 southwest Maryneal, 7,200.

Wildcat—Wes-Tex Drilg. No. 1 Compton, 2,300 from south, 660 from west section 49, block 1-A, H&TC, 16 southwest Maryneal, 7,200.

Wildcat—Wes-Tex No. 1 Stewman, 660 from north, 467 from west section 121, block 1-A, H&TC, 6 southwest Maryneal, 7,200.

STONEWALL COUNTY
Wildcat—Jack C. Staley No. 1-A Long, 2,173 from north, 467 from east section 1, BBB&C, 24 northeast Aspermont, 6, 000.

Bissett, East (Strawn sand)—Luke Grace No. 3-A Brown, 853 from south, 467 from west section 37, block F, H&TC, 19 northeast Aspermont, 5,430.

Bissett, East (Strawn sand)—Luke Grace No. 1-B Brown, 2,167 from south, 3,175 from east section 37, block F, H&TC; 20 northeast Aspermont, 5,450.

DISTRICT 7-C

COKE COUNTY
Wildcat—Enrich Oil No. 1 Geraldine A. Arledge et al., 2,140 from south, 2,070 from west section 258, block 1-A, H&TC, 6 northeast Silver, 7,200.

Wildcat—Enrich No. 1 Flora Winberly et al., 1,980 from south, 660 from west section 463, block 1-A, H&TC, 4 southeast Silver, 7,200.

Wildcat—OWWO—Baja Energy No. 1 Chapman, 1,980 from north, 1,985 from west section 302, block 2, H&TC, 15 southwest Robert Lee, 7, 000, OTD 6,950.

CROCKETT COUNTY
Simpson—Amend—WSW Operating No. 110 Big State, 1,010 from north, 1,662 from east section 10, block 1, GC&SF, 11 northeast Ft. Lancaster, 2,500. (Amend operator, lease)

Tripoli (Pennsylvanian Detrital)—OWWO—Texas Oil & Gas No. 1-C Mann State, 2,925 from south, 467 from north-west section 4, block B, GC&SF, 17 northwest Iraan, 6,600, OTD 8,105.

Ozona (Canyon)—OJB, Inc. No. 2-7 Dorothy Pierce, 1,774 from south, 1,980 from east section 7, TCR, 19 southwest Ozona, 7,000.

Ozona (Canyon)—OJB, Inc. No. 1-18 J.W. Henderson, 1,744 from north, 1,683 from west section 18, block M, GC&SF, 17 southwest Ozona, 9,500.

Ozona (Canyon)—OJB, Inc. No. 1-7 Dorothy Pierce, 1,774 from north, 1,144 from east section 7, TCR, 18 southwest Ozona, 7,000.

Ozona (Canyon)—Anderson Petro. No. 3-12-B Austin Mills, 1,801 from south, 1,101 from west section 12, block MM, J.H. Gibson, 25 southwest Ozona, 7,500.

Ozona (Canyon)—OBJ No. 1-100 Dorothy Pierce,

6,061 from most northerly north, 666 from most northerly west lines section 100, Louis Ice, 20 southwest Ozona, 7,000.

American (Canyon)—Dameron Petro. No. 1-63A W.P. Hoovwer, 2,482 from north, 699 from west section 63, block MM, T&SL, 32 south-west Ozona, 7,500.

Noelke (1400)—C.F. Lawrence No. 3-67 Half, 660 from north, 2,300 from east section 67, block 1, I&GN, 11 south Iraan, 1,600.

Wildcat—Amend—Sioux Natural Gas No. 1-16-33 University, 1,131 from north, 1,980 from east section 16, block 33, ULS, 19 west Ozona, 8, 900. (Amend operator)

Wildcat—Ocean Minerals No. 3-24-29 University, 540 from south, 2,000 from east section 24, block 29, ULS, 22 west Ozona, 1,700.

Farmer (San Andres)—Leede Oil & Gas No. 7-50-A University, 1,650 from north, 2,310 from west section 3, block 50, ULS, 10 south-east Big Lake, 2,600.

Shannon—OWWO—Big State Ranch No. 3-C Hoover, 330 from south, 2,310 from west section 4, block FF, B&B, 10 east Iraan, 2,410.

IRION COUNTY
Spraberry Trend Area—Energy Reserves Group No. 3-71 Ela C. Sugg, 660 from south and east section 71, block 14, H&TC, 9 north Barnhart, 6,700.

Ela Sugg (Wolf camp)—Amoco No. 2-P Ela C. Sugg, 1,980 from north, 660 from west section 83, block 14, H&TC, 14 north Barnhart, 8,500.

Wildcat—Union Oil Co. No. 1-109 T.S.R.H., 1,980 from north and west section 109, block 1, T&P, 13 northwest Barnhart, 9, 500.

Lucky Mag—William B. Wilson No. 3 Ida Nutt, 2,174 from south, 930 from west C.A. Chadwick No. 1030, 2 north Mertzon, 6,700.

REAGAN COUNTY
Spraberry Trend Area—John L. Cox No. 14-X-P Rocker B, 1,980 from north and west section 157, block 1, T&P, 9 northeast Big Lake, 7, 500.

Calvin (Dean)—Amend—Getty Oil No. 1-E J.F. Nunn, 1,650 from south, 1,980 from west section 8, block B, L&SV, 13 north Stiles, 8,300. (Amend location)

Spraberry Trend Area—Moran Explor. No. 85 Rocker B, 660 from north, 2,440 from east section 34, block 1, T&P, 15 northeast Big Lake, 6,820.

Spraberry Trend Area—Frank Cass No. 1-19 Hughes, 1,320 from north, 660 from west section 19, block F, C&M, 5 northeast Stiles, 7,500.

Wildcat—Enrich No. 1 Flora Winberly et al., 1,980 from south, 660 from west section 463, block 1-A, H&TC, 4 southeast Silver, 7,200.

Wildcat—OWWO—Baja Energy No. 1 Chapman, 1,980 from north, 1,985 from west section 302, block 2, H&TC, 15 southwest Robert Lee, 7, 000, OTD 6,950.

CROCKETT COUNTY
Simpson—Amend—WSW Operating No. 110 Big State, 1,010 from north, 1,662 from east section 10, block 1, GC&SF, 11 northeast Ft. Lancaster, 2,500. (Amend operator, lease)

Tripoli (Pennsylvanian Detrital)—OWWO—Texas Oil & Gas No. 1-C Mann State, 2,925 from south, 467 from north-west section 4, block B, GC&SF, 17 northwest Iraan, 6,600, OTD 8,105.

Ozona (Canyon)—OJB, Inc. No. 2-7 Dorothy Pierce, 1,774 from south, 1,980 from east section 7, TCR, 19 southwest Ozona, 7,000.

Ozona (Canyon)—OJB, Inc. No. 1-18 J.W. Henderson, 1,744 from north, 1,683 from west section 18, block M, GC&SF, 17 southwest Ozona, 9,500.

Ozona (Canyon)—OJB, Inc. No. 1-7 Dorothy Pierce, 1,774 from north, 1,144 from east section 7, TCR, 18 southwest Ozona, 7,000.

Ozona (Canyon)—Anderson Petro. No. 3-12-B Austin Mills, 1,801 from south, 1,101 from west section 12, block MM, J.H. Gibson, 25 southwest Ozona, 7,500.

Ozona (Canyon)—OBJ No. 1-100 Dorothy Pierce,

Henson—JLH Corp. No. 1 Fuller, 660 from north and west lines of section 124, ETRR, 8 east Crews, 4,000.

SCHLEICHER COUNTY
Eldorado (Canyon)—Discovery Operating No. 1 Jackson, 1,320 from south, 467 from east section 43, block LL, GC&SF, 2 northwest Eldorado, 7,000.

Sawyer (Canyon)—HNG Oil No. 1-68 Bacon, 933 from north and east section 68, block D, GC&SF, 14 southwest Eldorado, 7,500.

Eldorado (Canyon)—HNG Oil No. 1-107 McCaughey, 1,980 from south, 1,320 from west section 107, block A, HE&WT, 2 west Eldorado, 7,300.

Wildcat—J. Cleo Thompson No. 2-A Rousset, 1,320 from south and west section 10, block 5, F.L. Burns, 20 southwest Eldorado, 9, 000.

SUTTON COUNTY
Saw