



# Kennedy, Carter endorsements begun

By The Associated Press

Chicago Mayor Jane Byrne, saying the public has lost confidence in the Carter administration, has formally endorsed Sen. Edward Kennedy for president, but the governor of Kennedy's home state says he is in President Carter's corner.

Gov. Edward King also said Tuesday that Kennedy hasn't asked for his support for the Democratic nomination for president, and Carter has. "I'm supporting President Carter," King said in an interview a day after a presidential campaign committee for his own state's senior senator was announced in Washington.

The Democratic governor has expressed his support for Carter several times in the past, noting also that a Kennedy candidacy is simply speculation until it is formally announced.

Mrs. Byrne, who originally said she would back Carter, is the first big-city mayor to endorse Kennedy's candidacy. Her formal endorsement Tuesday came three days after she first said she would back Kennedy and 15 days after Carter spoke at a dinner to raise funds for her.

Stephen E. Smith, Kennedy's brother-in-law, said at a Washington news conference Monday that the senator will make his formal statement in Boston Nov. 7. Smith also stressed that the committee announced at the news conference "is a campaign committee, not an exploratory committee."

King said Tuesday that, "President Carter, I say it once more, has been very responsive to the needs of the people of Massachusetts."

He referred to "home heating oil, the availability of monies, his help in permitting us to burn coal as we should to help ourselves and the nation, his support of offshore (oil) exploration."

King and Kennedy have never been political allies, and they were bitter opponents over expansion of Boston's Logan International Airport when King headed the Massachusetts Port Authority.

Mrs. Byrne has been close to the Kennedy family since working in the 1960 presidential campaign of John F. Kennedy, the senator's brother.

Mrs. Byrne, ticking off problems such as inflation and soaring interest rates, contended Tuesday that the public "has lost confidence with the job done by the Carter administration."

She said she had hoped she could help Carter's popularity in Illinois by having him to her fund-raising dinner Oct. 15. But polls taken afterward showed no improvement, she said.

During a visit to Chicago by first lady Rosalynn Carter on Oct. 8, Mrs. Byrne said she supported the president. At the fund-raising dinner a week later, she said she would support Carter if the Democratic nominating convention were held that night.

# Carter aide calls for political loyalty

WASHINGTON (AP) — President Carter's campaign manager says he hopes the administration will fire any political appointee found to be flirting with the campaign of Sen. Edward M. Kennedy.

After watching two Carter administration officials defect to the Kennedy camp, Tim Kraft said he thinks loyalty should count in politics.

A White House official who asked not to be named said it would be no surprise if some others now on the administration roster switched to the camp of the president's challenger. But he said, "We have had and will have our share of support and endorsements."

Asked whether he thinks the administration should dismiss likely defectors before they publicly break with the president in favor of Kennedy, Kraft replied:

"As campaign manager, I'm not an official member of the administration. But as a political person who respects loyalty, I hope to hell they do."

Kraft commented in an interview Tuesday after former Iowa Sen. Dick Clark said he is leaving the Carter administration to work for Kennedy and J. William Heckman Jr., resigned as deputy assistant attorney

blitzkrieg, we don't have any sharp adjustments to make," Kraft said. "We've got more work to do, we've got more money to raise, but basically we're on schedule. We've always felt like we'd have an opponent."

Public opinion polls show Kennedy ahead of Carter and Kraft said he accepts suggestions that Carter is the underdog.

"I would say we're probably starting out that way," he said. "We're supposed to be behind 3-1 in New Hampshire and other parts of New England, maybe 2-1 in Iowa and other parts of the country."

But Kraft, who ran Carter's highly regarded field operations in 1976, says the long campaign will change that.

*"As odd as it may appear in the face of what seems to be a Kennedy blitzkrieg, we don't have any sharp adjustments to make. We've got more work to do, we've got more money to raise, but basically we're on schedule. We've always felt like we'd have an opponent."*

general for legislation to join the Kennedy committee.

In related developments Tuesday, the 70,000-member National Treasury Employees Union announced its support of Kennedy and Chicago Mayor Jane Byrne made a formal announcement reaffirming her weekend endorsement of Kennedy.

There was a particular sting to the defections by Clark, who was given a \$7,500-a-year job as U.S. coordinator for refugee affairs after being defeated for re-election last year, and by Heckman, a personal friend of Carter campaign lawyer Tim Smith.

In accepting Clark's resignation, Carter noted that he had understood Clark would remain neutral in the 1980 campaign and devote his attention to refugee problems.

However, Clark said in an interview the refugee programs have been overhauled and "it seems as appropriate as any time to make the change."

A Clark spokesman, Bob Miller, said Clark had pledged to remain politically neutral while in the administration, but that he had not promised to remain out of the race indefinitely.

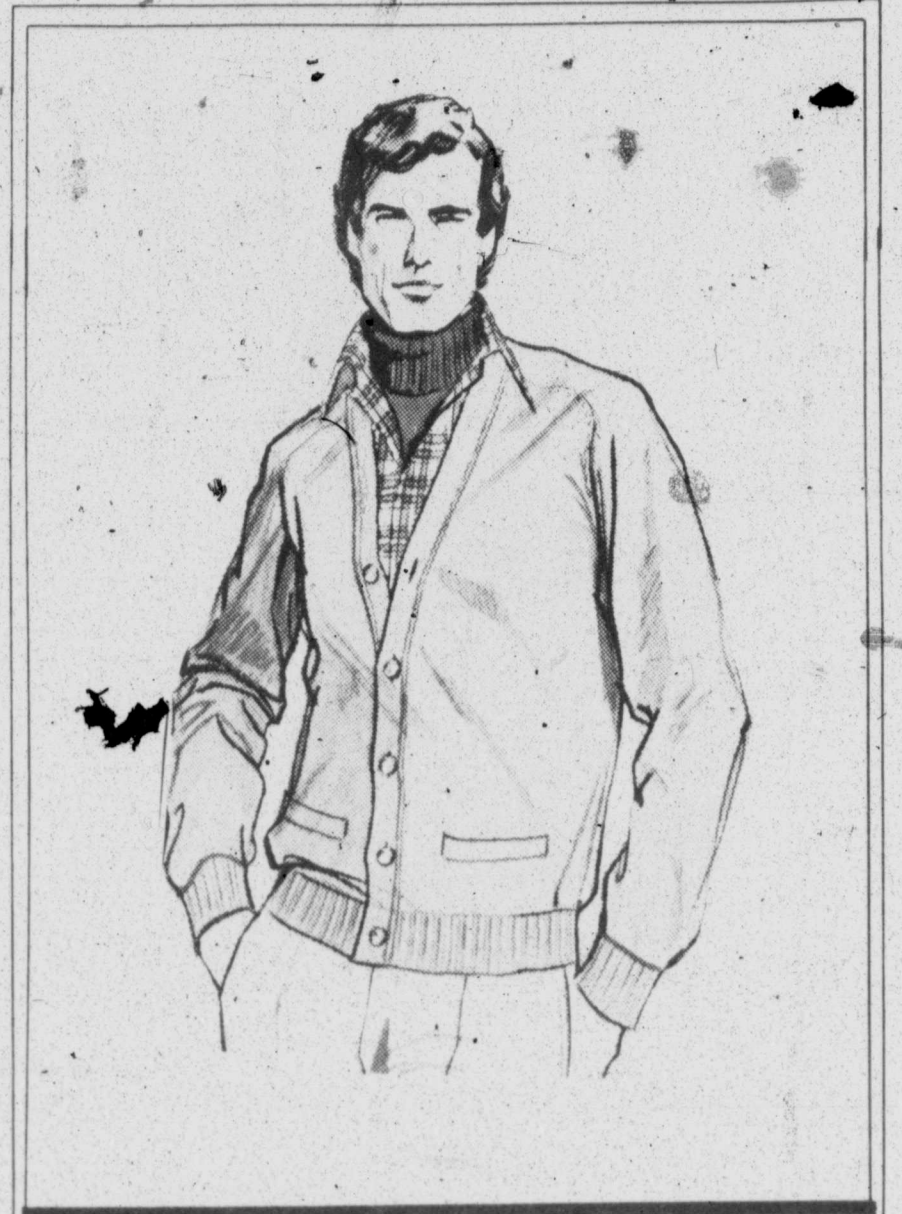
Clark's bolt to Kennedy came one day after formation of a Kennedy campaign committee and announcement that Kennedy would formally announce his candidacy Nov. 7 in Boston.

Mayor Byrne's stand ran counter to a long string of endorsements Carter has been garnering from state and local officials, but the White House and the campaign committee insist it is an isolated case and not a turning tide.

Kraft pointed out that Carter picked up backing from strong majorities of the Democratic mayors and governors at their conventions last summer and that many of them were at a Carter dinner-rally here last week.

Other than clamping down on defectors, Kraft sees no major adjustments to the Kennedy threat.

"As odd as it may appear in the face of what seems to be a Kennedy



sweater country...

Good looking classic cardigans. Great selection of fabrics and colors. Navy, Brown, Camel, Black, Ecru, White, Burgundy, Grey, and Yellow. S, M, L, XL, XXL.

- Shirts 27.50
- Alpaca & Wool 42.50
- 100% Camel Hair 60.00
- 100% Cashmere (V-Neck) 75.00



use our convenient OPTION CHARGE PLAN

## Allocations panel member aware of United Way budget

As a member of the United Way allocations committee, Sal Montez is well aware of the careful scrutiny given budget requests and allocations for the 19 United Way member agencies.

"I think lots of people who give money to the United Way don't really know that the money is budgeted out and accounted for. The process is thorough," he said.

Every year, the allocations committee reviews budget requests from the agencies before recommending a goal for final review and approval by the advisory committee and board of directors, Montez explained.

Montez is a heavy equipment operator lead man with Texas Electric Service Co.



Sal Montez

## UTPB to host seminar providing information for tax practitioners

ODESSA — A new tax practitioner's seminar to provide updated information to accountants is slated Dec. 5 at The University of Texas of the Permian Basin.

Co-sponsored by UTPB and the Internal Revenue Service, the seminar is scheduled from 9 a.m. to 5 p.m. in the UTPB Founder's Building.

The seminar will cover recent changes in payments of estimated tax,

targeted jobs tax credit, advanced earned income credit, capital gains and losses and supplemental schedule of gains and losses.

The course has been approved for eight hours of continuing education credit by the accredited Council for Accountancy, UTPB officials said.

Instructors from the Dallas office of IRS will be among featured speakers.

All materials for the seminar will be provided.

Interested persons should send their name, address, phone number and a check for \$25 to Dr. Eugene Nini, The University of Texas of the Permian Basin, Odessa, Texas, 79762. For further information, call 267-2150.

### midland chamber of commerce:

# Our Progress Is Your Future!

...and we have only to look at the past to know how true this is. For example... ten years ago the citizens of Midland set some priorities that they felt would help Midland become a better place in which to live and work.

### LOOK WHAT'S HAPPENED

In order to keep up with the needs of a growing community, the Chamber of Commerce consistently pursued the renovation and expansion of medical facilities for Midland. Now, Midland is seeing the results of these efforts with a newly renovated hospital (soon to be complete) - new doctors and technicians who have located here because of these expanded facilities - and some of the most modern equipment available for the treatment of disease.

## SUPPORT YOUR CHAMBER... THEY HELP SUPPORT MIDLAND



a special sale... our famous label trio suit

149<sup>90</sup>

regularly \$185 a savings of 35.10

This suit comes with a contrasting solid slack. In colors of blue, brown or grey. 100% Textured Dacron Polyester. Label it wears you'll quickly recognize as one of America's favorites.



Use our convenient OPTION CHARGE PLAN

DEATHS



Mrs. Arvol Brown

Mrs. Arvol Brown

Mrs. Arvol (Wynn) Brown, 48-of Gardendale, died early Tuesday in a Lubbock medical facility following an illness.

Services will be at 11 a.m. Thursday in Newnie W. Ellis Funeral Home chapel with Dr. Daniel Vestal, pastor of the First Baptist Church, officiating. Burial will follow in Resthaven Memorial Park here.

Mrs. Brown was born Jan. 20, 1931, at Eden. She was reared there and was educated in the Eden schools. She moved to San Angelo in 1957, residing there until moving to Midland in 1971. She was married May 18, 1977, to Arvol R. Brown, and the couple had lived at Gardendale since that time.

Survivors include her husband; two sons, Arvol R. Brown Jr., of Las Vegas, Nev., and Steve Flippin of Gardendale; three daughters, Lynn Barbican of Midland, Mrs. David Hargroves of Marble Falls and Sue Flippin of Austin; two sisters, Mrs. Jim Gallon of Cleburne and Mrs. Robert Stout of Odessa, and six grandchildren.

Henry C. Biggs

SAN ANGELO — Services for Henry Clyde Biggs, 71, of San Angelo, brother of Chester Biggs of Hobbs, N.M., were to be at 11 a.m. today in Park Heights Baptist Church here with the Rev. Fred Wiesen, pastor, officiating. Burial was to be in Lawnhaven Memorial Gardens directed by Robert Massie Funeral Home.

Biggs died Monday in a San Angelo hospital.

He was born Nov. 5, 1907, in Miles. He was married Sept. 25, 1942, to Othadean Horton in San Angelo. A resident of San Angelo the past 60 years, Biggs had operated an automobile dealership since 1936. He was

a deacon at Park Heights Baptist Church.

Other survivors include his wife, a daughter, a sister, three grandchildren and a great-grandchild.

Tommy Hudson

Services for Tommy Wayne Hudson, 42, of Clear Lake City and formerly of Rankin, were to be at 2 p.m. today in Newnie W. Ellis Funeral Home chapel. Burial was to be in Resthaven Memorial Park.

Hudson died Friday in a Houston hospital from injuries received in an automobile accident.

Pallbearers will be Gene McCain, Gene Shifflett, Mike Gibson, Ken Huestis, Tommy Martin, Fritz Smith and Ralph Cherry.

E.T. Patterson

SNYDER — Services for E.T. "Pat" Patterson, 63, of Snyder, brother of Virginia Bates of Big Spring, will be at 2 p.m. Thursday in Bell-Seale Funeral Home chapel. Burial will be in Hillside Memorial Gardens.

Patterson died Tuesday from an apparent heart attack.

He was born Aug. 14, 1916, in Lott. He had lived since 1967 in Snyder where he was manager of Hillside Memorial Gardens. Patterson was a member of the Noon Kiwanis Club, the Texas Cemetery Association, National Cemetery Association and the First United Methodist Church. He was married Dec. 2, 1955, to Ethel Hightower in Tahoka.

Other survivors include his wife, a daughter, a son, five sisters, a brother, four grandchildren and a great-grandchild.

Mattie Tompkins

BIG SPRING — Services for Mrs. Charles (Mattie) Bell Tompkins, 65, will be at 3 p.m. Thursday in the Nalley-Pickle Funeral Home Rosewood Chapel. Burial will be in Trinity Memorial Park.

She died Tuesday in a Big Spring hospital following a lengthy illness.

Mrs. Tompkins was born Nov. 19, 1913, in Valley Mills and was reared in Sweetwater. She attended Hardin-Simmons University in Abilene. She came to Big Spring in 1935. She was married June 10, 1937, to Charles Tompkins in Sweetwater.

She was a member of the First Baptist Church, the Pastor's Sunday School Class and the 1948 Hyperion Club. She was a charter member of the Volunteer Services at Malone-Hogan Hospital.

Survivors include her husband; a son, Tommy John Tompkins of Big Spring; a sister, Mrs. Wendell McKisicki of San Antonio; a brother, Blanton McCord of Abilene; and three grandchildren.

Federal judge sentences officers in Torres case to year and a day

HOUSTON (AP) — A federal judge who sentenced three former policemen to one year and one day for their convictions in the death of Joe Campos Torres, has brought "contempt upon himself," says the head of the state's most powerful Hispanic organization.

Terry Denson 27, Stephen Orlando, 22, and Joseph Janish, 22, faced a possible maximum term of life in prison for a violation of the young Mexican-American's civil rights that resulted in his death.

U.S. District Judge Ross Sterling, who was ordered by the 5th Circuit Court of Appeals to sentence the officers, Tuesday gave them the lightest prison term possible.

Judge Ross Sterling is a man who has neither respect of nor appreciation for the discrimination suffered by Hispanics for generations in Texas, said Ruben Bonilla, president of the League of United Latin American Citizens. "We are calling for immediate and meaningful disciplinary sanctions. He has brought contempt upon himself, upon law enforcement and upon Hispanic-Americans."

In May 1977, the body of Torres, 23, was found floating in Buffalo Bayou, which flows through downtown Houston near police headquarters.

He had been arrested a few days earlier during a disturbance at a bar.

He was in police custody when he was either pushed, jumped or fell into the bayou.

Carlless E. Elliott, a rookie officer at the time, reported to his superiors that Torres had been taken to the banks of the bayou, slapped around and verbally abused by the other officers.

The three defendants had said Torres was troublesome, had screamed and kicked when arrested and warned them he had served in an Army unit specializing in martial arts. They said Torres either jumped or fell off a 17-foot embankment into the bayou.

The three former officers were sentenced to one year in jail on a misdemeanor conviction and 10-year suspended sentences with five years probation on the felony conviction.

The appellate court ruled the suspension was illegal and ordered Sterling to resentence them.

One dead, four missing after Soviet ships collide in strait

COPENHAGEN, Denmark (AP) — Two Soviet ships strengthened for icebreaking collided in a Danish strait today. One of them, carrying scientists to an Antarctic expedition, was in the wrong sea lane and caught fire after the collision, leaving one dead, four missing and 94 rescued, officials said.

They said two of the rescued were seriously burned and four had less serious burns. None was immediately identified.

The Danish naval command said the 9,243-ton Antarctic expedition ship Olenek and the 22,632-ton tanker General Shkodunovich collided in rough seas in the Great Belt, between Zealand and Fyn, Denmark's two biggest islands.

The strait connects the Baltic and North Seas.

The Olenek, which was bound for the Antarctic, caught fire, and the captain at first reported 16 of his crew missing but police later said 11 of them were rescued.

Danish maritime officials said the Olenek was sailing north on the wrong side of the channel at the time of the collision. They said the ship should have been on the east side of the channel, but was traveling on the west.

Oil was flowing from the Olenek, which carried 99 sailors and scientists.

The General Shkodunovich, carrying molasses, continued with all its crew members to a Danish port.

The naval command said a Danish dredger picked up 46 crewmen from the water and took them to the port of Korsor.

The Swedish ferry Stena Olympic and four Danish helicopters also helped in the rescue.

The Olenek was the first of the 25th Soviet Antarctic expedition, transporting personnel and equipment to the Druzhnaya Base on the Weddell Sea. The ship had many experienced crew members aboard, including Antarctic veteran I. Ivanov.

Mussolini's widow dies

PREDAPPPIO, Italy (AP) — Rachele Mussolini, widow of World War II dictator Benito Mussolini, is dead of a heart attack at the age of 89.

She died at her home here Tuesday. Relatives said she was spry and healthy until a few months ago but never recovered fully after losing a lot of blood during a three-week hospitalization in March.

Mussolini had five children by her, three out of wedlock, two by an Italian woman and one by a French woman. But Donna Rachele never appeared jealous and defended his memory staunchly.

Mussolini and his mistress, Claretta Petacci, were shot by a partisan executioner in 1945.

THE CONTINENTAL SHORTCUT.

FOUR WAYS CONTINENTAL CUTS THE TIME TO NEW YORK.

1. Continental has found the fastest way into New York. With service to Newark Airport, Newark's fifteen minutes less flying time than if you head into JFK. It's also in a different traffic pattern. You'll avoid those stackups that happen so often over JFK.

2. You save time on the ground, too. Newark serves about 15,000,000 fewer passengers a year than JFK. So you still have a good chance of getting your baggage in a reasonable amount of time, without the frustrating delays.

3. Because Newark is modern and well laid out, people are able to come and go without the huge jams you get at most International airports. You can get through the terminal without the shoving, crowding and delays that cut into your time.

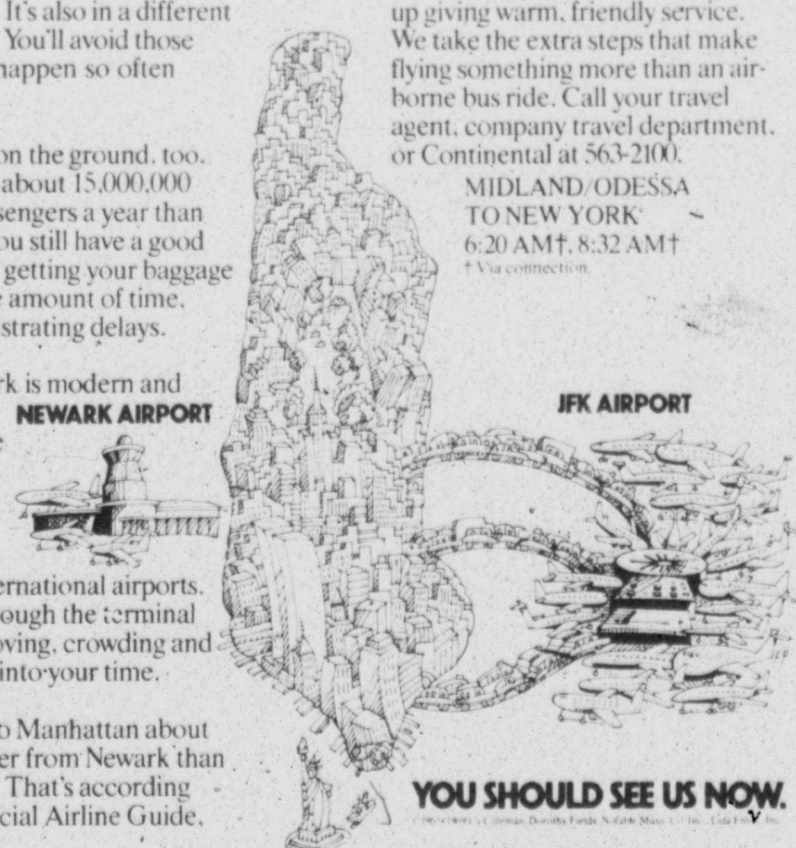
4. You can get into Manhattan about 45 minutes faster from Newark than from JFK. That's according to the Official Airline Guide.

not us. So you spend far less time caught in time-consuming traffic.

Finally, Continental saves wear and tear on your soul. We've grown up giving warm, friendly service. We take the extra steps that make flying something more than an airborne bus ride. Call your travel agent, company travel department, or Continental at 563-2100.

MIDLAND/ODESSA TO NEW YORK 6:20 AM†, 8:32 AM†

†Via connection

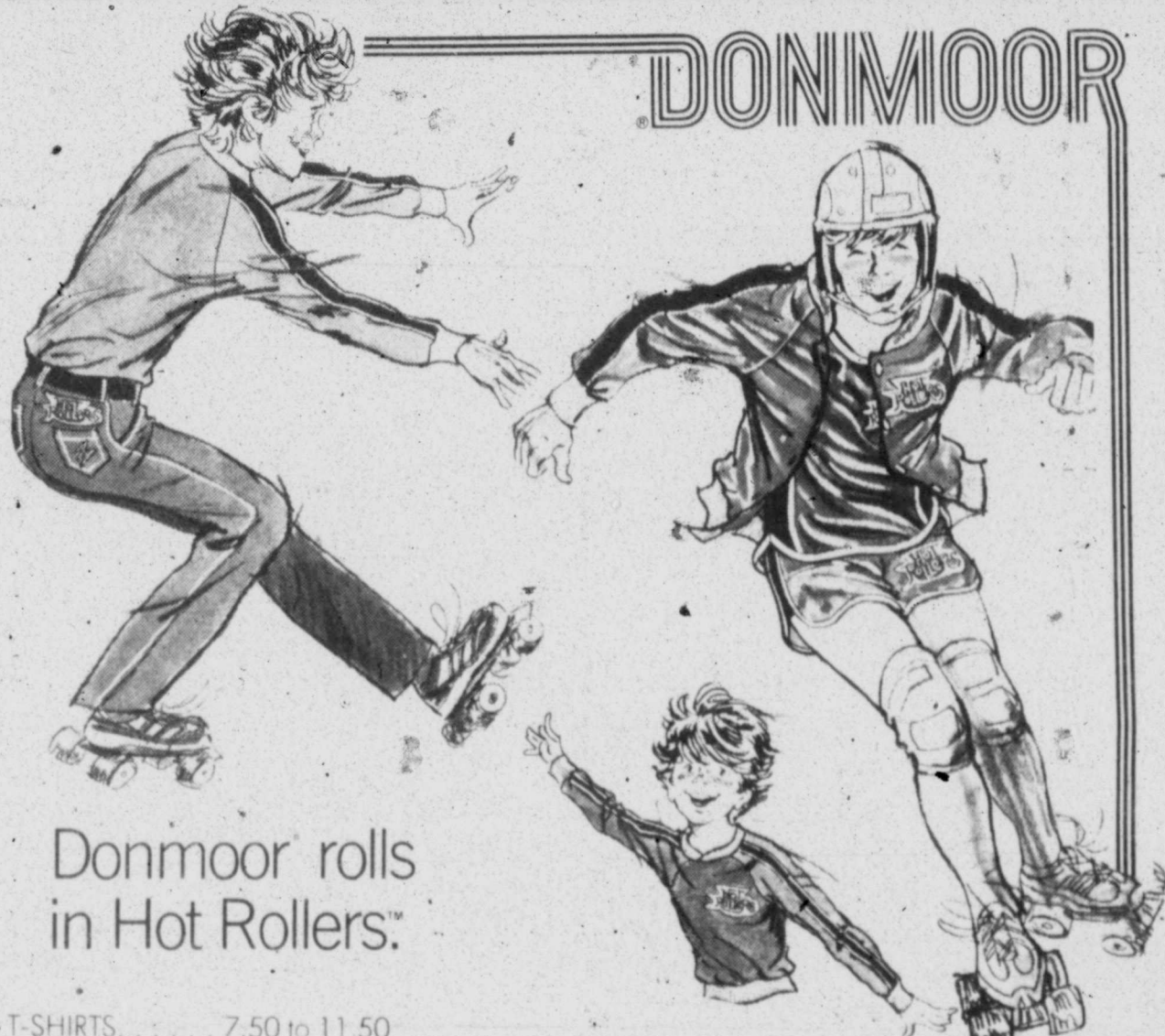


YOU SHOULD SEE US NOW.



CONTINENTAL AIRLINES

U.S.A. Canada Mexico Hawaii Micronesia Australia New Zealand Fiji Samoa and the Orient



Donmoor rolls in Hot Rollers™

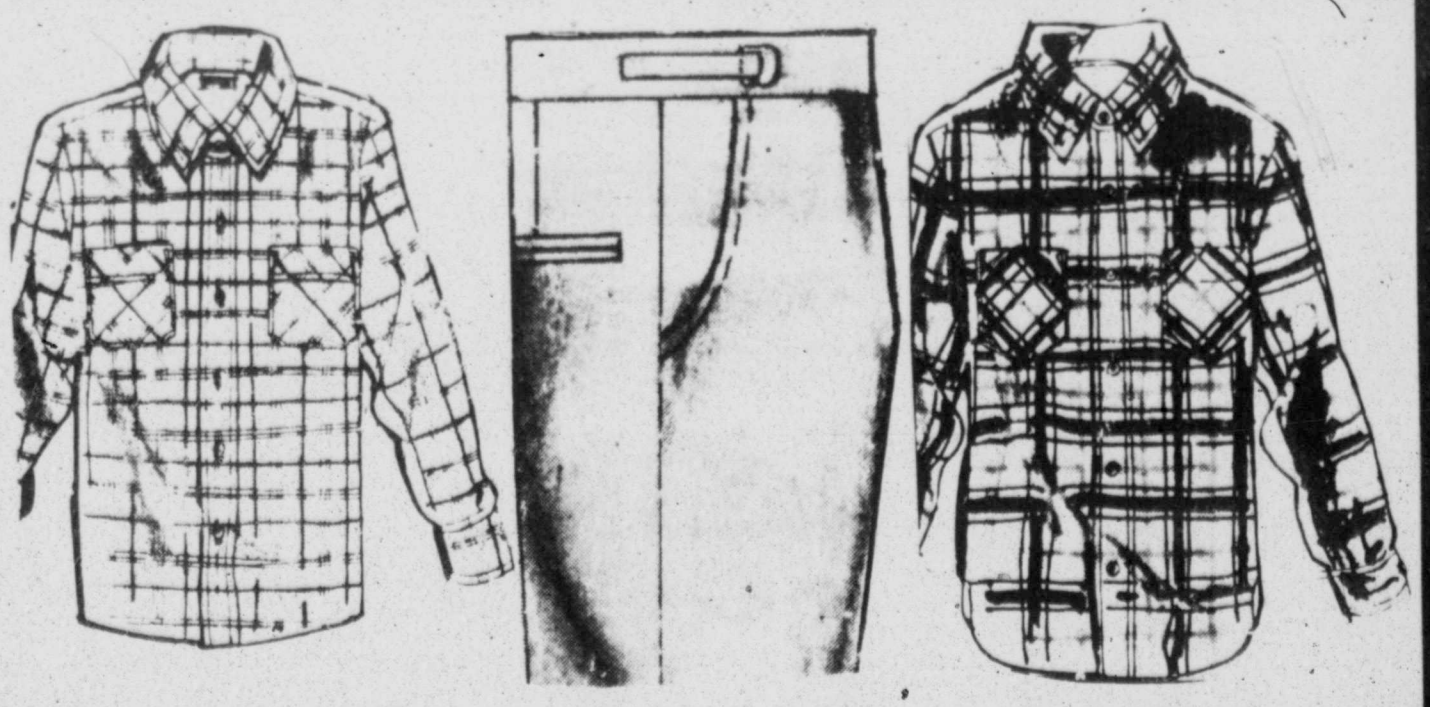
T-SHIRTS 7.50 to 11.50 JACKETS 16.00

Boys' great new "Hot Rollers" in red, yellow and blue... good looking with skates, or any other game he plays. V-neck or crew neck T-shirts in short or long sleeves. 100% acrylic or cotton/polyester blend. Snap front satin-lock jacket in acetate/nylon blend; ribbed sleeves, neck and waist. Sizes 10-16.

Mens Jogging Suits

Reg. to 35.00, a great selection of two-piece acrylic or cotton/polyester jog suits with handsome striped treatments. S,M,L,XL

19.99



WOVENS 9.99

DRESS PANTS 15.90

FLANNEL 9.99

Reg. 15.00, men's sporty shirts in solid brown, navy, khaki, blue and cream. Action plaids in a wide variety of multi colors.

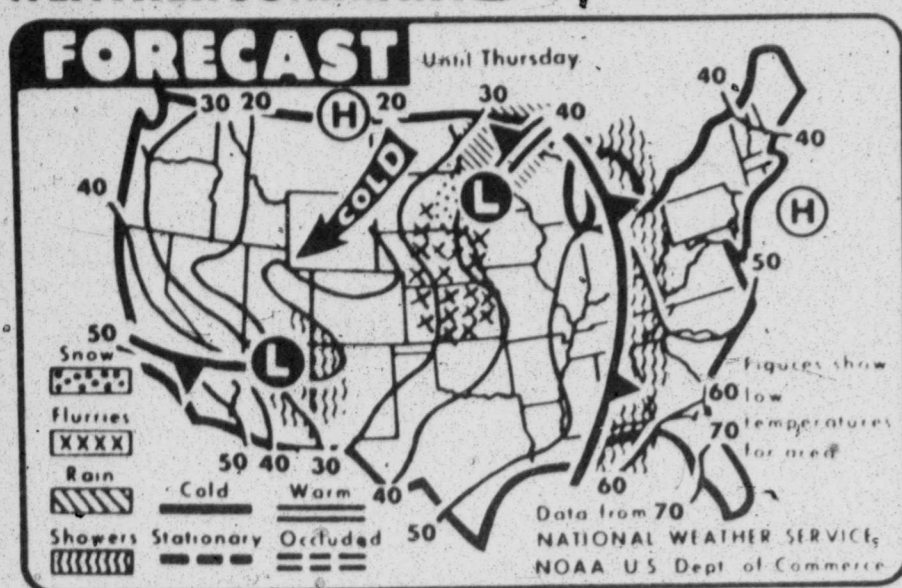
Reg. to 35.00, finest men's polyester slacks, comfortable and easy-care, in a variety of popular styles and colors. Sizes 28 thru 52

Reg. 15.00, men's rugged sports plaids in colorful deep toned fall combinations.

DUNLAPS

SHOP THURSDAY 10 A.M. TO 9 P.M.

WEATHER SUMMARY



Showers are expected today through Thursday from the central Gulf to the Great Lakes. Snow flurries are forecast from Kansas to the Dakotas, changing to rain over Minnesota. Showers over the Southwest and colder weather from the northern Plains to the Texas panhandle also are predicted.

Midland statistics

Table with columns for weather forecast, national weather service readings, local temperatures, and southwest temperatures.

The weather elsewhere

Table listing weather conditions for various cities including Albany, Albuquerque, Amarillo, Anchorage, Ashville, Atlanta, Aulcity, Baltimore, Birmingham, Bloomington, Boston, Brownsville, Buffalo, Butte, Christm, Christm, Cheyenne, Chicago, Cincinnati, Cleveland, Columbia, Denver, Des Moines, Detroit, Duluth, Fairbanks, Hartford, Helena, Honolulu, Houston, Indianapolis, Jacks, Juneau, Kansas, Las Vegas, Little Rock, Louisville, Memphis, Miami, Milwaukee, Minneapolis, Nashville, New Orleans, Norfolk, Omaha, Orlando, Philadelphia, Phoenix, Pittsburgh, Portland, Raleigh, Reno, Sacramento, St. Louis, St. Paul, St. Petersburg, San Diego, San Francisco, Seattle, Spokane, Tulsa, and Washington.

Texas thermometer

Table showing high and low temperatures for various Texas cities like Abilene, Alice, Alpine, Amarillo, Austin, Beaumont, Brownsville, Childress, College Station, Corpus Christi, Cotulla, Dalhart, Dallas, Del Rio, El Paso, Fort Worth, Galveston, Houston, Junction, Longview, Lubbock, Lufkin, Marfa, McAllen, Midland, Mineral Wells, Pecos, Palacios, Prentiss, San Angelo, San Antonio, Stephenville, Stephenville, Texarkana, Tyler, Victoria, Waco, Wichita Falls, and Wink.

Extended forecasts

Friday Through Sunday
West Texas: Fair. Cold Friday with a warming trend Saturday and Sunday. High Friday 50 north to 60 south...

McCamey's boosters 'hoot it up'

(Continued from Page 1A)

years, was named the year's outstanding citizen. "He has served the people of McCamey faithfully and unselfishly," said Chamber Secretary Roylene Chandler...

Miss Howard College crowned

BIG SPRING.—A freshman was crowned Tuesday night as Miss Howard College during a pageant held in the college auditorium before a capacity crowd of 500.

Authorities probe elevator accident

SAN DIEGO (AP) — Authorities are investigating whether a cable may have snapped, sending an elevator plunging seven floors at the historic U.S. Grant Hotel. Seven persons were injured.

Chrysler expects Carter's support

WASHINGTON (AP) — Supporters of federal loan guarantees for the dollar-short Chrysler Corp. say they expect the Carter administration to shortly announce support for the plan.



Jack Tompkins, left, a McCamey product who found success in Houston, gathers with Dean Bolen, center, out-going president of the McCamey Chamber of Commerce, and Carlton Smith, incoming chamber president...

Witnesses say Roseberry's death followed argument in city bar

during the afternoon. Jackson said he saw Roseberry come out of the business, saying "he wasn't going to take that shit" and he saw Freeman fire a shot.

Kucinich making 'costly promises'

CLEVELAND (AP) — Mayor Dennis J. Kucinich, governing a city struggling to recover from two defaults, has been making costly promises in the final weeks of his uphill campaign to stay in office.

Weather turns toward winter with nights in mid-30s likely

Frost on car windshields this morning reminded Midlanders to dig out the window scrapers and pour in the anti-freeze as weather made a definite turn towards winter.

Prosecution shakes Davis' defense with introduction of rebuttal witnesses

FORT WORTH, Texas (AP) — Prosecutors have shaken the foundation of the Cullum Davis defense strategy with rebuttal witnesses who fired salvos aimed at tearing holes in two major defense points in the murder-solicitation retrial.

The Midland Reporter-Telegram (USPS 461 900)
Published by Reporter-Telegram Publishing Company evenings (except Saturday and Sunday) and Saturday and Sunday morning, 201 E. Illinois Street, P.O. Box 1650, Midland, Texas 79702.







# SCRAM-LETS

That Intriguing Word Game with a Chuckle

Edited by CLAY R. POLLAN

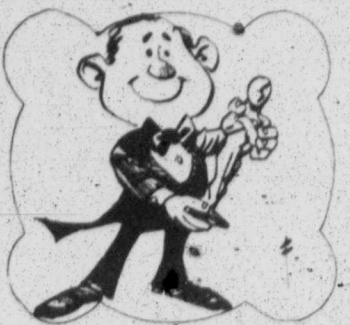
1 Rearrange letters of the four scrambled words below to form four simple words

ROTMER

SUPEA

VOEGE

LUTMUT



I love to watch the Academy Awards on TV. It's so dramatic. The winners holding their Oscars. The losers holding their -----

2 Complete the chuckle quoted by filling in the missing word you develop from step No. 1 below

PRINT NUMBERED LETTERS IN THESE SQUARES

UNSCRAMBLE LETTERS TO GET ANSWER

TEMPERS I love to watch the Academy Awards on TV. It's so dramatic. The winners holding their Oscars. The losers holding their -----

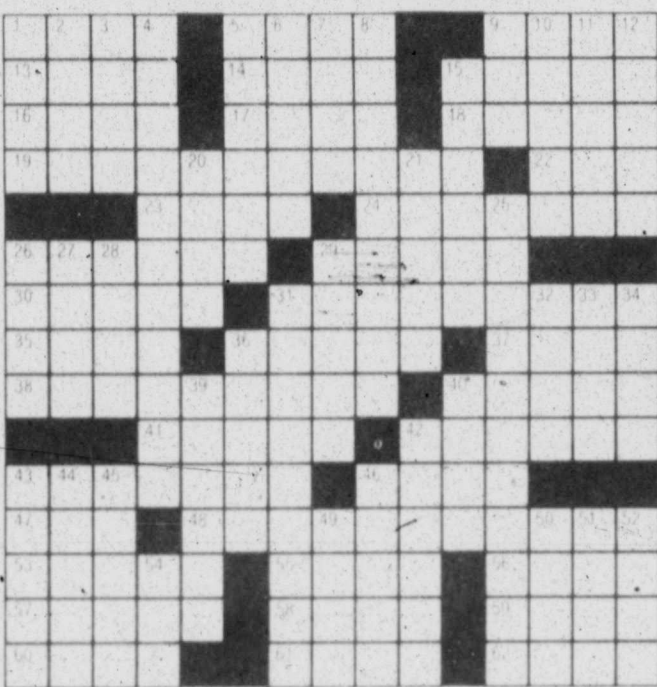
TEMPERS - f-use - Glove - Turnill - TEMPERs

# DAILY CROSSWORD PUZZLE

Edited by Margaret Farrar and Trude Jaffe

1979 Los Angeles Times Syndicate

- ACROSS**
- 1 Metal beam of a certain shape
  - 5 Shoe buyer's concern
  - 9 In ----- because
  - 13 Half-Prelix
  - 14 Quechuan Indian
  - 15 Punkin
  - 16 Sloop-like
  - 17 Corner
  - 18 Matarka
  - 19 Practical traveler's attire
  - 22 Honshu bay
  - 23 Tupelo
  - 24 Fearful
  - 26 Reprise
  - 29 Chophouse
  - 30 Soothing
  - 31 Practical over Colop
  - 33 One of triplets
  - 36 TV heroine
  - 37 But Sp
  - 38 Restrains
  - 39 House in Washington
  - 41 Overact
  - 42 Elegant Colop
  - 43 Novel of 1759
  - 46 Irish man's name
  - 47 Brew
  - 48 Certain pitches
  - 53 D.D. Bennett's song
  - 55 Allie languages
  - 56 Departs
  - 57 Trunkets
  - 58 Vein of ore
  - 59 Decid. animal of Asia
  - 60 In ----- existing
  - 61 Of silver Abbr.
  - 62 Federal agts.
- DOWN**
- 1 Melt
  - 2 Early ----- of Hungary
  - 3 Hebrew prophet
  - 4 Purposing well
  - 5 smallfish
  - 6 Positive
  - 7 terminal
  - 8 Harbor night
  - 9 ----- real nature in favor of another Colop phrase
  - 9 Deer
  - 10 Modern agts.
  - 11 Diver!
  - 12 Checked
  - 13 Contracted
  - 20 Seed covering
  - 21 Let ----- not to mention
  - 25 Lustrous
  - 26 Footway
  - 27 Historic river of Spain
  - 28 Vex
  - 29 Moment
  - 31 Generous servings of food
  - 32 Cream
  - 33 British treats
  - 34 Greek goddess
  - 34 Hero of old ballad
  - 36 House
  - 37 Looks cheerful
  - 38 Malin favorite
  - 42 Buyer and seller
  - 43 Best Colop
  - 44 Ward on a Post office poster
  - 45 Link
  - 46 A comparative
  - 47 Shrewd
  - 49 Juggint paper
  - 50 School event
  - 51 Mature
  - 52 Daze
  - 54 Suffix for chemical compound



10/31/79

# FUNKY WINKERBEAN

DEFINE THE FOLLOWING:

(1) BUMPKIN

A pumpkin with warts!



# BLONDIE



# MARY WORTH



# JUDGE PARKER



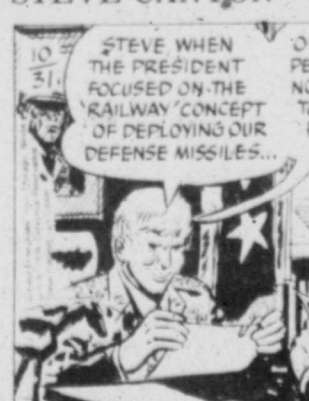
# STEVE ROPER



# NANCY



# STEVE CANYON



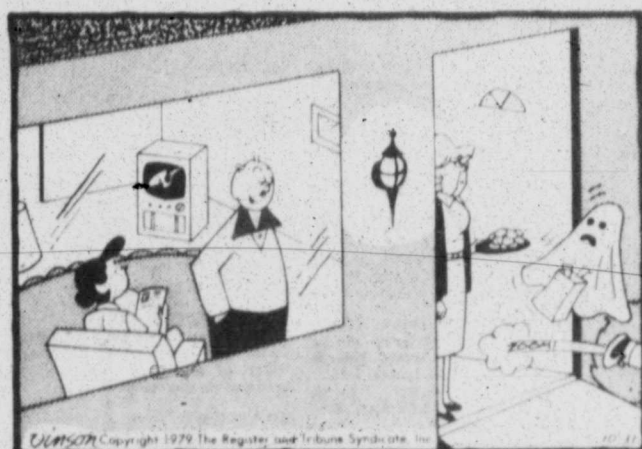
# MARMADUKE



# DENNIS THE MENACE



# THE BETTER HALF



# ANDY CAPP



# SHOE



# DICK TRACY



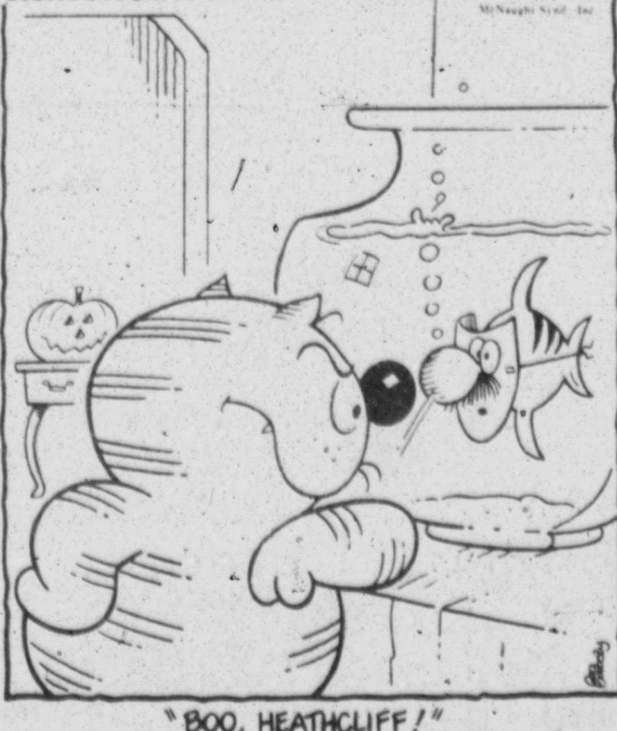
# REX MORGAN, M.D.



# PEANUTS



# HEATHCLIFF



BOO, HEATHCLIFF!