

# The Midland Reporter-Telegram

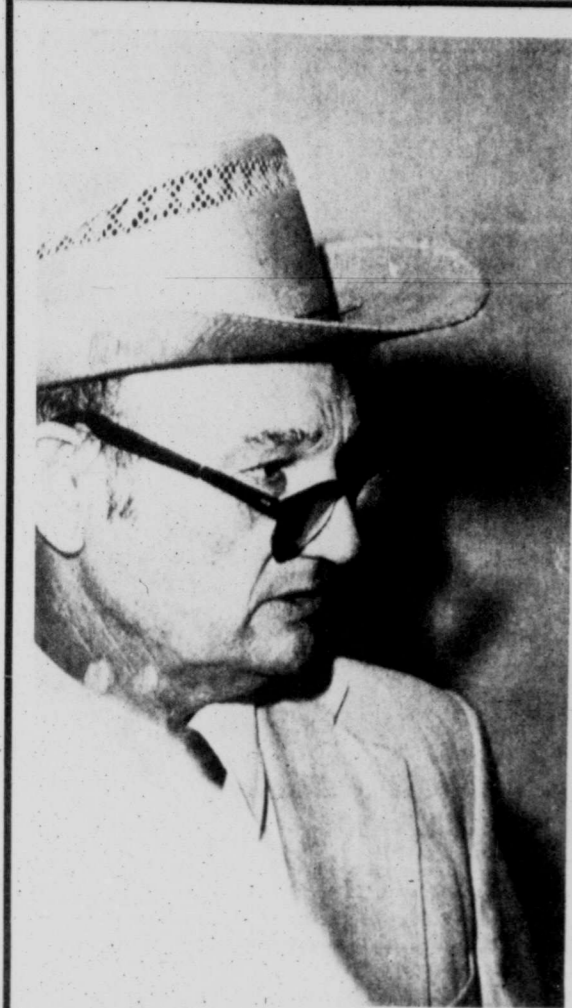
METRO EDITION

DIAL 682-5311, P.O. Box 1650, MIDLAND, TEXAS

WEDNESDAY, SEPTEMBER 26, 1979

Vol. 50, No. 196, Daily 15¢, Sunday 35¢

44 PAGES, 5 SECTIONS



Atascosa County officials say they'll heave the county's entire Department of Public Safety operation out of their county-owned command post, right, unless two controversial troopers are transferred by Monday. The two troopers have spearheaded a crackdown on drunk drivers which has led to charges against the son of a nearby mayor and the son of County Commissioner Smith Tausch, left. It was Tausch who introduced the eviction resolution at a meeting of the county's commissioners. (AP Laserphotos)

## Local officials want them out, but DPS troopers won't go

JOURDANTON, Texas (AP) — Atascosa County officials say they want Earl Rodriguez and Albert Rodriguez out of their county by Monday or there will be dire consequences.

That presents somewhat of a problem. Conaway and Rodriguez, you see, are top-notch state troopers credited by their superiors with a crackdown on drunk drivers that has trimmed the county's traffic accident rate in half.

But Monday, if the two young troopers are still on duty, county officials vow in an official resolution that they'll heave the entire six-man Department of Public Safety operation out of its county-owned command post.

The county judge and commissioners also want Sheriff Tommy Williams to refuse any prisoners brought in by the two patrolmen if they continue to work. Williams has said he intends to comply.

DPS officials said Tuesday they do not plan to transfer the two officers, but will simply work from the six troopers' homes if the threat is carried out. "We'll just take our equipment, clean up the building, lock the door and take the keys over to the judge," said Capt. Randol Gilmore, district commander.

The crackdown by the two troopers has led to drunk driving charges this summer against Plez William Hall, the son of Pleasanton Mayor Travis Hall, and Thomas James Tausch, the son of County Commissioner Smith Tausch, who introduced the resolution last week.

DPS officials feel the arrests probably prompted the eviction threat. "We can't prove it, but the circumstantial evidence is obviously there," said a top DPS official who requested anonymity.

Conaway, who arrested both men, is black, leading some to say the episode in the rural South Texas county has racial overtones. "His being black has a lot to do with it. But you can't go out and prove it," said Patrolman Johnny Abrego, Conaway's partner.

But County Judge O.B. Gates and Tausch deny those two arrests or racism prompted the ultimatum. They said numerous residents have complained to them about "harassment and abuse" from the two officers, but refused to offer specifics.

"It's just these two particular patrolmen, no others," said Tausch. "They have harassed and abused people." He then refused further comment and shoved past reporters.

"It's harassment and the methods that they apply when they arrest a person," said Gates, who unsuccessfully met Tuesday with the DPS region commander. The resolution did not specify any allegations.

Hall alleged Tuesday that Conaway had repeatedly followed his son the night of his son's arrest July 19, but Gilmore said an investigation disproved that charge.

"I agree with this resolution because of the harassment. I don't want a drunk driver on the highway, not my son or anybody else," said Hall. "But I've gotten complaints from other people. It seems to me that the DPS should respect the wishes of the county judge and commissioners on a mere transfer."

Conaway had the day off Tuesday and could not be reached for comment, but Rodriguez denied he and Conaway harassed anyone.

"We've done what we can call non-selective law enforcement. Anybody we stop, if they are driving while intoxicated, they'll come in. We don't make any exceptions whatsoever," he said.

Gilmore said Conaway, 32, and Rodriguez, 26, often work more than 12 hours per day, each arresting an average of 14 drunk drivers per month. The district average, he said, is about five.

"The two troopers they want moved are two of my best men. They arrest more DWIs (drunk drivers) than the other four troopers combined," said Gilmore. "We encourage the detection and arrests of drunk drivers. We feel a drunk driver is a potential murderer."

# Report to the nation due on Soviet troops

WASHINGTON (AP) — President Carter says he will report to the nation — probably within a week — on American attempts to get the Soviet Union to "eliminate the combat capability" of its brigade in Cuba, a nation he says has become a "puppet" of Moscow.

Of negotiations with the Russians, Carter said: "I don't know whether we will be successful. If we do not succeed, we will take appropriate action to change the status quo."

Carter, addressing a "town meeting" in New York City on Tuesday, disputed Soviet Foreign Minister Andrei Gromyko's curt dismissal of American statements that the Russian troops in Cuba represent combat forces.

"It is a combat unit," the president said.

He said intelligence reports indicate the brigade numbers about 2,500 troops with about 40 tanks and "some field pieces." But there are no indications, the president emphasized, that the troops possess any weapons that could threaten the United States.

Gromyko, while not specifically mentioning the troops, told the U.N. General Assembly earlier in the day that "all sorts of falsehoods are being piled up concerning the policies of Cuba and the Soviet Union. It is high time that you honestly admit that this whole matter is artificial and proclaim it to be closed."

The Soviet Union, he said, "shall not allow anybody to meddle in our internal affairs." Neither his nation nor the Cubans, he said, has ever "threatened anybody."

Carter's view of the Cubans differed. He said Cuba is dependent on Russian aid and "acts, in effect, as a Soviet surrogate in areas around the world." The Cubans "act completely in accordance" with Moscow's policies, he added.

On Capitol Hill, several influential senators blasted Gromyko's speech.

—Sen. Henry M. Jackson, D-Wash., labeled as a "baldfaced lie" Gromyko's dismissal of the U.S. charges. Jackson said "hard evidence" of a Soviet combat brigade has placed the proposed strategic arms limitation treaty "on ice for an indefinite period."

—Sen. Frank Church, D-Idaho, chairman of the Senate Foreign Relations Committee, called Gromyko's denials "unacceptable" and recommended the panel delay voting on the SALT II treaty until the troops controversy is resolved.

Both Church and Sen. Jacob Javits, R-N.Y., the committee's ranking Republican, said the treaty cannot receive the 67 votes needed for ratification while the Cuban situation remains deadlocked.

"As far as I am concerned," Church said, "the matter can be closed" only when President Carter is able to certify to the Senate his conclusion based on our independent intelligence assessment, that these Soviet combat forces are no longer present in Cuba.

—Senate Republican Leader Howard H. Baker Jr. of Tennessee said he was "astonished" at Gromyko's statement that the United States, in complaining about a Soviet combat presence in Cuba, was waging a propaganda campaign "based on falsehoods."

Baker called on the president to quickly make public the reconnaissance and satellite evidence which he said has convinced all who have seen it that there is in fact a brigade of

tions Committee, called Gromyko's denials "unacceptable" and recommended the panel delay voting on the SALT II treaty until the troops controversy is resolved.

Both Church and Sen. Jacob Javits, R-N.Y., the committee's ranking Republican, said the treaty cannot receive the 67 votes needed for ratification while the Cuban situation remains deadlocked.

"As far as I am concerned," Church said, "the matter can be closed" only when President Carter is able to certify to the Senate his conclusion based on our independent intelligence assessment, that these Soviet combat forces are no longer present in Cuba.

—Senate Republican Leader Howard H. Baker Jr. of Tennessee said he was "astonished" at Gromyko's statement that the United States, in complaining about a Soviet combat presence in Cuba, was waging a propaganda campaign "based on falsehoods."

Baker called on the president to quickly make public the reconnaissance and satellite evidence which he said has convinced all who have seen it that there is in fact a brigade of

Russian fighting men in Cuba.

U.S. officials said privately they found no merit in Baker's proposal. One official, who requested anonymity, said such an action "could blow our entire intelligence operation."

But Baker, who has made it clear he will seek the 1980 GOP presidential nomination, said Carter "simply can't remain silent... Before long it will look like the United States doesn't have the will to do anything."

Several senators recalled that it was Gromyko who in 1962 told President John F. Kennedy there were no Soviet missiles in Cuba.

"I think Gromyko has a credibility problem," remarked Sen. John Warner, R-Va.

Gromyko and Secretary of State Cyrus R. Vance are to meet in New York Thursday, continuing negotiations Vance began three weeks ago with Russian ambassador Anatoly Dobrynin.

Gromyko is scheduled to fly to Moscow over the weekend, but U.S. officials did not rule out a meeting with THE PRESIDENT IN Washington. "We will see what happens on Thursday," said State Department spokesman Hodding Carter.

# School accepts appraisal district

By SUSAN TOTH Staff Writer

Midland School trustees, faced with no apparent alternative, Tuesday decided to accept the wishes of their fellow officials in the county's other five taxing districts.

School trustees, who are required to join a county appraisal district mandated by the Legislature last session, took no action after a fairly lengthy discussion of the new district.

City Councilman Tom Sloan, trying to "smooth any ruffled feathers" on the school board, explained the city's position in agreeing to change the method of voting on the new district's board.

Under the provisions of the law, votes on a five-member board would be awarded to cities and school districts based on the percentage of taxes raised by each district.

Under that rule, MISD, which collects 75 percent of the taxes in the county, would get four of the five votes, with the city getting one.

Greenwood ISD, Midland County Hospital District and Midland County Junior College District would not get a vote on the board administering the district.

Midland County officials, who had an option to enter the district, voted to join only if the method of voting was changed. Changes in the voting methods are allowed if three-fourths of the voting districts agree.

The city and Greenwood agreed with the county's request, leaving MISD no choice but to accept the decision giving each of the six districts one representative with one vote each.

Trustee Johnny Warren voiced a concern that, while MISD raised 75 percent of the taxes, it would have only a one-sixth voice on the board.

He envisioned a case, far in the future, when "if the rural taxpayers don't like the tax system, the county, Greenwood, the college and the hospital district can vote to change the tax assessor, and the city and the school district, who raise 75 percent of the money, have no say."

"I would like to see it structured so we (the city and schools) control at least half the votes on the board," Warren said.

Sloan, on the other hand, said he favored fairness to the other groups, and added he couldn't imagine such a problem "with the intelligent, rational people we have now (on the various boards)."

"I think there is a possibility for conflict," Warren answered, "but I don't think it's imminent. I worry about later when all of us are retired from the boards."

Faced with no real alternatives in the matter, the board took no action after the discussion.

In other business on Tuesday's relatively short agenda, trustees heard a report on the bilingual program in the Midland schools, awarded bids for \$52,207.85 in band instruments and \$25,750 for electric typewriters and approved an appeal procedure for complaints about federally funded programs in the schools.

Board members also accepted two gifts from school groups that fell outside their normal policy.

The Henderson Elementary School PTA gift of \$6,814.40 for folding tables in the cafeteria was accepted with the proviso that the PTA's total donations over a three-year period not exceed \$7,500.

Board policy limits donations from PTAs and similar groups to \$2,500 per year, but the Henderson group had not made any donation last year, trustees were told.

Trustees also accepted a \$3,350 donation of a video tape recording camera and color television from the Lee High School Bandoliers because the equipment could not be purchased for \$2,500 or less.

The limits were set several years ago, trustees said, to prevent pressure on PTA groups with less financial clout than others, and to avoid obligating the school district in matching gifts to equalize the other schools.

"Before the last bond election, we had some PTA offer to air-condition their schools," Trustee Joe Doinney noted.

"We don't want to dampen their enthusiasm," he said, "but the purpose of the policy was to keep a fair balance between and among all the schools."

# World oil ministers open meeting with quota debate

PARIS (AP) — A one-day meeting of energy ministers of the seven leading Western nations today opened with tough bargaining between the United States and Europe over oil import quotas, conference sources said.

The U.S. delegation, led by Energy Secretary Charles Duncan, demanded specific oil import ceilings for each European Common Market country, while the Europeans held out for more flexible targets.

Duncan and the ministers from Canada, Japan, West Germany, France, Britain and Italy agreed to the creation of a central record of international oil transactions, Common Market Energy Commissioner Guido Brunner announced.

They also were to discuss a proposal that oil tankers carry documents showing the original purchase price of their cargoes, and the establishment of an international energy technology group.

But the central topic at the follow-up to the June Tokyo summit of the leaders of the seven nations was a country-by-country breakdown of the 472 million-ton annual oil import limit pledged by the nine member states of the European Common Market.

Brunner told reporters the Common Market nations would stick to an oil import ceiling of 472 million tons annually from 1980 to 1985. He announced agreement on goals for individual nations' imports for 1985, but left open the specific targets for the intervening years.

He said the 1985 target figures were: West Germany, 141 million tons; Italy, 124 million; France, 111 million; the Netherlands, 49 million; Belgium, 31 million; Denmark, 11 million; Ireland, 8 million, and Luxembourg, 2 million.

Britain, which is a major oil producer with its North Sea fields, would be pledged to export 5 million tons in 1985, Brunner said.

There are 6.99 barrels in a metric ton of crude oil.

French Industry Minister Andre Giraud said the results of the morning discussions were "very comforting." He added that Japan had announced it would try to achieve "the bottom of the range" of the 6.3-6.9 million barrels a day import ceiling it had promised for 1985 at the Tokyo summit.

# Stanton youth killed, brother hurt in one-vehicle accident

STANTON — Thirteen-year-old Kendall Newman of Stanton was killed and his 15-year-old brother was hospitalized as the result of a one-vehicle accident about 6:20 p.m. Tuesday northeast of Stanton on FM 3113, a Texas Department of Public Safety official said today.

Newman, the son of Mr. and Mrs. Tommy Newman, Star Route 1, was pronounced dead at the scene of the accident by Howard County Peace Justice Wes Morgan, according to DPS reports.

Kevin Newman, driver of the pickup involved, was listed in stable con-

dition today with head and internal injuries at Malone-Hogan Hospital in Big Spring, hospital officials said.

The older Newman boy previously was listed as being in critical condition. He was to be moved out of the hospital's intensive unit care this morning, a hospital spokesman said.

Both boys were thrown from the pickup when it apparently left the right side of the road and struck a dirt embankment, DPS reports indicated.

The pickup apparently rolled over a number of times, the DPS official said.

# Some workers due larger pay boosts?

WASHINGTON (AP) — The government's inflation-monitoring agency has ruled that most workers who complied with President Carter's voluntary 7 percent wage guideline last year could receive an 8 percent boost this year.

The Council on Wage and Price Stability acted on its own during the past week to loosen the pay ceiling while the administration sought to agree on a formal set of new voluntary anti-inflation guidelines that were due to be released at the end of the month.

The administration has been under pressure from organized labor and other groups to relax the 7 percent standard because of sharply higher consumer prices, which have been rising at a 13 percent annual rate this year.

Under pay-standard changes being granted by the wage-price council, a company may give a group of employees up to an 8 percent raise during the next year so long as that group was held to an average 7 percent wage hike during the previous year and received no automatic cost-of-living pay increases.

Council spokesman Ed Dooley said today the change is designed to narrow the advantage workers with cost-of-living clauses have enjoyed under the guideline program.

The initial guideline did not count all of a worker's cost-of-living raises toward the 7 percent ceiling, and thus allowed the worker to receive wage increases of more than 7 percent while still being considered in compliance with the program.

The council estimates that about 10 million workers — mostly those covered by union contracts — now receive some type of cost-of-living increase.

The council's action is in line with prior administration statements that it plans to loosen the wage guideline during the program's second year, which begins in October, to compensate for the higher inflation rate.

However, the administration's schedule for proposing a new set of guidelines has been delayed by intensive negotiations with the AFL-CIO on a new program that labor leaders could support.

# INSIDE TODAY

- ✓ IN THE NEWS: Reversing three earlier votes, House gives itself pay raise..... 2C
- ✓ SPORTS: Astros win as Richard goes over the 300-strike-out mark again..... 2D
- ✓ ECONOMY: The maximum interest rates on FHA mortgages are going up..... 2C
- ✓ PEOPLE: Tom Landry, the Dallas coach, is only 500 on Monday nights..... 1D

Around Town.....	1B	Editorial.....	6A	Oil & gas.....	1C
Bridge.....	7B	Entertainment.....	7B	Solomon.....	8D
Classified.....	3C	Lifestyle.....	1B	Sports.....	1D
Comics.....	6B	Markets.....	5D	TV Schedule.....	3A

## Weather

Continued fair with warm afternoons. Details on Page 4A.

## Service

Delivery..... 682-5311  
Want Ads..... 682-6222  
Other Calls..... 682-5311



Lending a hand Tuesday to get materials moved over to her new Head Start classroom at Bunche Elementary School is teacher Lexie Kauffman. Ms. Kauffman and others are moving the program from South Elementary to Bunche for purposes of obtaining more space for the program. (Staff Photo)

### Carter issues Houston's third disaster declaration this year

WASHINGTON (AP)—Federal officials are getting ready to open disaster assistance centers in the Houston area for the third time this year. President Carter issued a major disaster declaration Tuesday for Texas as a result of September floods and tornadoes along the Gulf Coast. The Federal Emergency Management Agency then designated individuals and businesses in Aransas, Brazoria, Galveston, Harris, Matagorda and San Patricio counties eligible to apply for assistance. The locations of disaster assistance centers were scheduled to be announced within several days. "I have a feeling it's going to be a

pretty smooth operation," agency spokesman Dave Stringer said. "I'm not sure we've closed from the last one yet." The latest declaration follows floods and tornadoes that started Sept. 17. Earlier declarations were made after July and April floods. Residents of the six counties will be eligible for Small Business Administration loans at 3 percent interest for personal property and 5 percent for businesses. Applicants for business loans must pass a credit test. Temporary housing assistance and disaster unemployment compensation also will be available.

### 'Long-shot candidate' thinks his age an asset

WASHINGTON (AP) — Freshman Sen. Larry Pressler admits he's a "long-shot candidate" for the 1980 Republican presidential nomination. But the youngest formally declared contender says he believes his sincerity will attract voters. Pressler, 37, announced his candidacy Tuesday at a news conference jammed with shouting supporters from South Dakota, his home state. He said he plans to enter every presidential primary and will focus on issues so far ignored by others in the GOP race. The youthful Pressler said the presidency is so wearing that "we should consider electing persons in the prime of their lives rather than electing someone in the twilight of his or her career." He said he would not accept the GOP vice presidential nomination if it were offered. Pressler, armed with a "few thousand dollars" in the bank and little organization, said he will concentrate

on voters in their 20s and 30s who are disillusioned by better known Republican candidates. Among the issues Pressler said he would raise are production of alternative sources of energy, increased spending on NATO by America's European allies, housing for the elderly, improved health benefits for Vietnam veterans and tax credits as a means of creating new jobs. He said he opposes the strategic arms limitation treaty in its present form, particularly portions he said would limit development of the cruise missile. A native of Humboldt, S.D., Pressler was first elected to the House in 1974. After serving one term, he ran successfully last year for the Senate seat vacated by Democrat James Abourezk. He is the Senate's only Vietnam veteran and has earned degrees from the University of South Dakota, Oxford University in England, the Kennedy School of Government in Boston and Harvard Law School.

### Ford feels treaty necessitates increased defense spending

WASHINGTON (AP) — Former President Gerald R. Ford says his study of America's defense policy and the proposed SALT II treaty has left him convinced he cannot support the treaty without a guaranteed increase in defense spending. "I am deeply troubled," Ford said in remarks prepared for delivery today before the Army War College in Carlisle, Pa. "To use SALT as an answer to our defense needs is the most dangerous kind of wishful thinking." Ford called for increased military spending as a prerequisite for Senate ratification of the treaty. He suggested a 5 percent increase — after inflation — in military spending in the next fiscal year, compared to the 3 percent proposed by the Carter administration. "Can America be certain of her strength today and during the next decade?" asked Ford. "My answer, frankly, is no. It is an ominous picture. The essential first step is to recognize that our military policy is increasingly out of touch with reality." Ford said he is "opposed to the ratification of the treaty until and unless we can once again be certain of our strength."

"Some suggest they are for the treaty on the assumption that the necessary defense spending decisions will be made," Ford continued. "That is not my position. My position is that I am against the treaty unless the necessary defense spending decisions have been made and have been written into law."

**At this price, our handsome leather slip-on never looked better.**

See for yourself. Step into the beauty of genuine leather, trimmed with a classic, saddle-link ornament. Admire the good looks that take you anywhere in style. Then notice the price...so appealing you won't be able to resist. In black, brown or white. **\$42.00**

**FREEMAN LIGHTLINES**  
**S & Q**  
Clothing

**You don't have to work for a big company to have a great Retirement Plan...**

A First Savings Individual Retirement Account (IRA) will give you that, plus a tax break...

If you're currently working for a company that doesn't have a retirement plan, or if it is no longer providing one, then an IRA at First Savings is the thing for you. With an Individual Retirement Account at First Savings you can save for the future at the impressive current interest rate of 8% (effective annual yield 8.33%). You can deposit up to \$1500 or 15% of your yearly income, whichever is less, and deduct every penny from your taxes. You do not have to pay the taxes on your IRA funds until you start with drawing from it, normally after you retire. (THE LAW REQUIRES SUBSTANTIAL PENALTIES FOR WITHDRAWALS BEFORE THE AGE OF 59½.) When you retire, you'll probably have less income and more than likely be in a lower tax bracket, that way the tax bite will be less.

And now for greater protection, your IRA funds are insured up to \$100,000 by an agency of the Federal Government.

So, stop by either First Savings office... downtown at 500 West Wall... or San Miguel Square... today, and tell them you want a great retirement plan, and they'll tell you all about the benefits of an Individual Retirement Account.

*\*Remember, the deadline for starting or adding to an IRA is the date your taxes are due.*

**1 FIRST SAVINGS AND LOAN ASSOCIATION OF MIDLAND**  
500 WEST WALL • MIDKIFF AND WADLEY • MEMBER FSLIC

**RCA Clean Sweep SALE**

Last Chance to Save on these Models before the New Higher Priced Ones Arrive

**RCA SelectaVision**  
4 HOUR VIDEO CASSETTE RECORDER

**ALL 1979 RECORDERS ARE ON SPECIAL CLOSEOUT!**

**9 DIAGONAL RCA SPORTABLE AC/DC \$98**

**ASK ABOUT OUR EXCLUSIVE OPTIONAL 5 YEARS WARRANTY**

**BUY YOUR RCA FROM Bolin Appliance MART**  
RCA HEADQUARTERS FOR THE PERMIAN BASIN

**LOOK ELECTRONIC TUNING! THIS SET NEVER NEEDS TO HAVE ITS TUNER CLEANED**

**RCA XL-100 17" \$338 w/t**  
SAVE \$61.95 NOW ONLY

**RCA XL-100 25" COLOR TV \$498 w/t**  
For Only

**ExtendedLife Chassis XL-100 COLOR TV**

**RCA XL-100 25" \$548 w/t**  
SAVE \$101.95

**IMPORTANT! FOR YOUR OWN PROTECTION AND SATISFACTION BUY FROM A SERVICING AND AUTHORIZED DEALER! BOLIN'S IS YOUR ANSWER**

**No. 1 in SALES and SERVICES**

**WE RENT RCA CONTACT RIC BUTLER MR. B'S TV - 694-7571**

**LITTON Microwave**  
We Service Everything We Sell... We Aim to Satisfy!

**Bolin Appliance MART**  
3108 Cuthbert  
Across from Gibson's



Leading this year's Alamo Junior High School eighth grade athletic teams are, front center, mascot, April Bryson; and, from left clockwise, Lori Neatherlin, Denise Callen, Lisa Harris, Jackie Yakshaw and Melody Garcia. Not shown is Lisa Bernal. (Staff Photo)

## Evening TV Schedule



### Drug Fix

Kelly (series star Jaclyn Smith) is kidnapped and plied with heroin until she is addicted by a drug addict (guest star Cameron Mitchell) she once helped to convict and send to prison in "Avenging Angels," on ABC's hit detective series, "Charlie's Angels," airing Wednesday, Sept. 26.

This is the hit series' fourth season of action, adventure and suspense. Stars Jaclyn Smith and Cheryl Ladd were joined by newest Angel, Shelley Hack.

(Stations reserve the right to make last minute changes.)

WEDNESDAY SEPTEMBER 26, 1979 Programs subject to change without notice

	KMID 2 Midland CABLE 3	KOSA 7 Odessa CABLE 8	KMOM 9 Monahans CABLE 9	S.I.N. 10 Spanish CABLE 10	KTVT 11 Fort Worth CABLE 11	KERA 13 Dallas CABLE 13	KXTX 39 Dallas CABLE 4
6:00	News NBC News	News Carol Burnett	News Joker's Wild	Domenica Montero	Bewitched Jeannie	Studio See MacNeil	Star Trek
7:00	Real People	Last Resort Lightning	Eight Is Enough	Viviana La Muneca	Gunsmoke	News Day The Arts	Jim Rockford
8:00	NBC Special: "The Last	CBS Movie: "The	Charlie's Angels	Rota Pecado	M.T. Moore Bob Newhart	Great Performances	700 Club
9:00	"Convertible" Part 3	"Betsy"	Vega\$	24 Horas	Special: "Evening In	"Figaro" Part 1	Faith
10:00	News Tonight	News	News Love	Lucha Libre	Byzantium" Part 1	Great Performances	America Truth
11:00	"	Switch	Boat Baretta	"	Late Movie: "Colossus"	"Figaro" Part 2	Hi Dougl' Life Of Riley
12:00	Tomorrow	Hawaii Five-O	"	"	The Forbin Project	Earth, Sea And Sky	"

### Century III Scholarship information now available

Information about the Century III scholarship program is now available to seniors at both high schools. Two alternates from each state will receive \$500 scholarships.

The program, which offers \$218,500 in scholarships, is administered by the National Association of Secondary School Principals and funded by Shell Oil Co.

One high school senior in the nation will win an \$11,500 scholarship as the top national prize in the Century III Leaders Scholarship Program. Two students from each state will win \$1,500 and an opportunity to talk with national leaders in a conference at Williamsburg, Va.

The Century III Leaders is a national scholarship program open to high school seniors which emphasizes the future concerns of America, program officials said. Students are initially judged on their leadership abilities, community involvement and current events awareness.

Students interested in the program should contact Bill Wells at Midland High School or Dorothy Sanders at Lee High School before the Oct. 10 application deadline.

## The Brittany Dresser & Mirror At Special Savings This Week



Dresser 70 3/4" wide 21" deep 31 1/2" high Mirror 18 1/4" wide 52" High

Each piece is an authentic treasure as shown by this elegant dresser and mirror. Inspired by generations of fine European furniture design, the collection is a visual feast of rich carvings and mellow brass and hand carvings. A lovely interplay of veneers delights the eye...leafy heart cherry and pecan glowing beneath the warm Brittany finish. All our Brittany bedroom pieces will capture your imagination! Allows us to introduce them to you today! AT BIG SAVINGS! No approvals or phone orders, please. All items subject to prior sale.

Reg. 1,624.00

This Week Only

**\$979<sup>95</sup>** set

**Knorr**  
FURNITURE

2200 W. TEXAS...AT THE VILLAGE

Save 25%  
Sale 3.75

Reg. 4.99 Padded Knee crawler of polyester/cotton corduroy. Embroidery trim, lined bib, Snap crotch. 1/2 to 2.

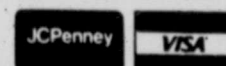


FREE PARKING NEXT TO ALLEY BEHIND PENNEY'S

Save 25%  
Sale 2.65

Reg. 3.53 Infant's cotton corduroy cowlabout has bib front, adjustable straps, elastic back waist, snap crotch. Sizes 1/2 to 2.

Now, two great ways to charge!



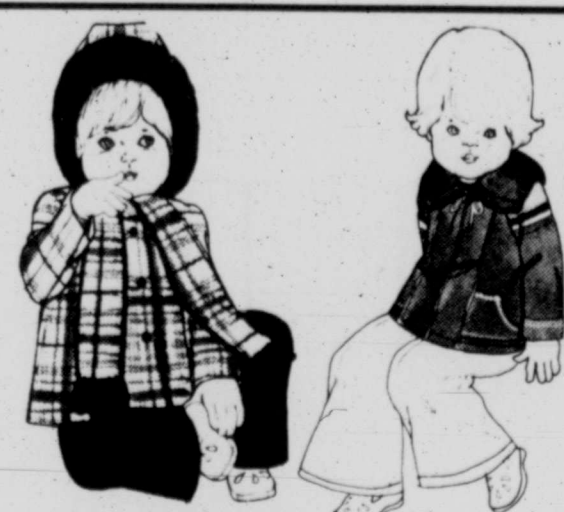
25% off  
Infant's play wear.

Sale 284

Reg. 3.79 Tot's plaid shirt is cotton flannel with long sleeves, button front. Sizes 2 to 4.

Sale 1.90

Reg. 2.53 Infant's and tot's boxer waist pants are 100% cotton corduroy in lots of solid colors. Sizes 1/2 to 4.



25% off  
Coats and jackets for tot's.  
Sale 9.00 to 18.00

Reg. 12.00 to 24.00  
Sizes 2 to 4.



25% off  
Tot's pantsets  
Sale 5.25 to 9.75

Reg. 7.00 to 13.00  
Boy's and girl's sizes 2 to 4



25% off  
Tot's dresses  
Sale 5.25 to 11.25

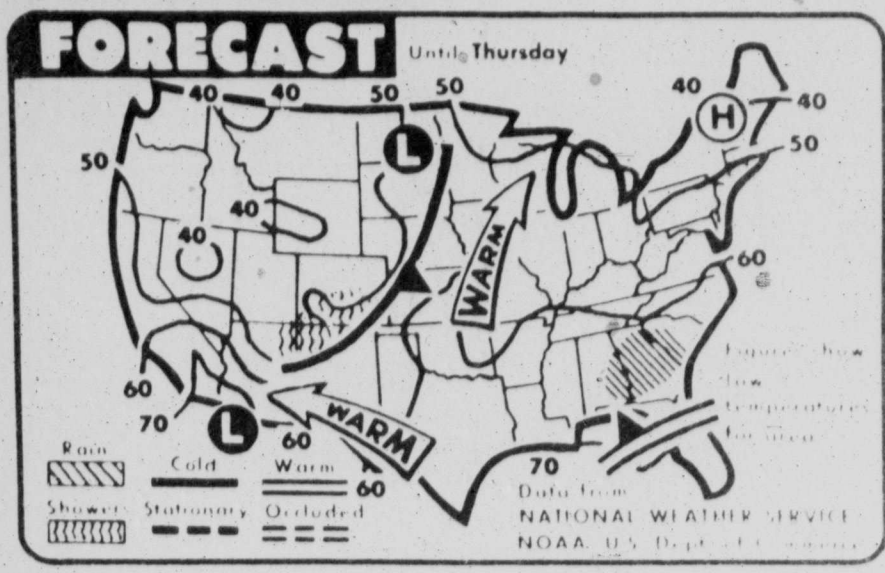
Reg. 7.00 to 15.00  
Sizes 2 to 4.

212 N. MAIN

This is JCPenney

Shop Catalog 682-9471

WEATHER SUMMARY



Warm weather is forecast across the nation today through Thursday. Small areas of showers and rain are forecast for the Southwest and Southeast.

Midland statistics

Table containing Midland statistics and the weather elsewhere, including a national weather service forecast for Wednesday.

Texas thermometer

Table listing temperatures for various Texas cities including Abilene, Amarillo, Austin, Brownsville, Dallas, Fort Worth, Houston, and San Antonio.

Texas area forecasts

West Texas: Fair through Thursday with warm afternoons. Highs mostly 80s, except 90s mountains. Lows 50s to 60s west to middle 80s east and north.

Abolition of death penalty urged

LONDON (AP) — At least 5,000 persons were executed worldwide in the last 10 years and more than 500,000 assassinated, the human-rights organization Amnesty International reported today in urging the abolishment of capital punishment around the globe.

More of same weather expected

The weatherman is taking it easy these days. Instead of changing the forecast, he just puts in a different day. Skies should be fair with continued warm afternoons through Thursday.

Resumption of Davis trial ordered

FORT WORTH, Texas (AP) — After a two-day delay, State District Judge Gordon Gray has ordered testimony to resume today before only 11 jurors in the murder solicitation trial of Cullen Davis.

Unions will grow, Hubbard says

By RICHARD MASON Staff Writer

Union strength in Texas will grow over the next several years in spite of a conservative Texas governor, a state AFL-CIO official said Tuesday in Midland.

Hubbard, along with Jackie St. Clair, executive secretary of the Texas Building Trades Council, met with the local union to discuss affiliation with the state organizations.

Hubbard said results of the last election and anti-union activity in the last legislative session was enough to prompt union organizations across the state to organize into a coalition.

This is being done, he said, to defend labor interests in the Legislature during the next legislative session.

In fact, union officials feel they took such a beating in the last election that they are beginning now to prepare for the 1980 political season, Hubbard said.

The union official said the Texas AFL-CIO will concentrate its political activities on races for 50 house seats and an additional eight seats in the Senate for the 1980 election.

Union officials also have taken a tip from Clement's successful campaign for governor and are incorporating the same sophisticated demographic techniques — including use of computerized voting records — to target supporters across the state for the next election, Hubbard said.

Governor roughed up by picketers

EL PASO, Texas (AP) — Gov. Bill Clements, who was shoved and taunted by Chicano demonstrators here, has called for an improved good neighbor policy with Mexico.

Clements was pushed back by picketers when he tried to shake hands with some of the 23 persons demonstrating outside a reception hosted by the League of United Latin American Citizens.

The protesters, members of the Chicano Coalition for Economic Justice and the Campaign for the Preservation of the Barrios, carried signs calling Clements a "racist" and contended some LULAC officials had "prostituted" Chicano interests.

Coalition member Carmen Felix said the group was protesting Clements' ties with the Southwest Border Commission. She said the commission looks out for industries that exploit poor Chicanos.

Clements, in his first speech since his return from his Eastern European tour, spoke at a Chamber of Commerce banquet later Tuesday, commenting on Arizona Gov. Bruce Babbitt's recent remarks on the Alamo.

"It's time we started talking about things like undocumented workers, the drug traffic, exchanges of agricultural products and industrial development — instead of bad mouthing Texans and the Alamo as the governor of Arizona seems so intent on doing," said Clements.

Clements also commented on Texas Attorney General Mark White's threat of a lawsuit. White has said he will sue PEMEX, Mexico's state-controlled oil monopoly, and SEDCO, an oil well drilling firm founded by Clements, for damages connected with the oil spill from an offshore well in the Bay of Campeche.

Border states forecasts

Oklahoma: Fair to partly cloudy with warm afternoons. Highs upper 80s, south to middle 90s. Fanfare die and southwest. Lows 50s to 60s Thursday-90s.

New Mexico: Partly cloudy north central mountain region and northwest with a slight chance of thunder showers. Mostly sunny and continued very warm elsewhere.

Extended forecasts

West Texas: Generally fair through Sunday with warm afternoons. Highs in the 80s except mid 90s lower elevations of the Big Bend. Lows lower 50s north to the low 60s south except mid 40s mountains.

North Texas: Clear to partly cloudy with little change in temperatures through Sunday. High temperatures in the 80s. Lows in the 40s.

South Texas: Partly cloudy and warm through Sunday. Highest temperatures in the 80s and low 90s. Lowest in the 60s and low 70s.



Texas Gov. Bill Clements, left, tries to shake hands with demonstrators protesting his involvement in the Southwestern Border Commission. About 23 picketers, who claim the commission looks after industries which exploit poor Mexican-Americans, Tuesday gathered outside an El Paso reception hosted by the League of United Latin American Citizens.

Carter's Queens talk 'toughest'

By RICHARD T. PIENCIAC NEW YORK (AP) — The borough of Queens is Archie Bunker's territory and when Jimmy Carter visited, most people gave the president the kind of support the patriotic TV character could appreciate.

But a few gave him the kind of welcome Meathead, Bunker's liberal son-in-law in the CBS television series, would better understand.

In his toughest "town meeting" to date, Carter took on a crowd of about 1,500 persons Tuesday night at the Queens College auditorium, not far from where the fictional Bunker family lives.

Carter practically urged the audience to give it to him hard. "If you will not be timid with your questions, I will not be timid with my answers," he said before canceling a planned opening speech to begin taking questions.

Although the White House advance team went to great pains to select questioners at random, those allowed to ask questions were a relatively mild bunch compared to others in the audience.

Among the questioners was Elizabeth Hoye, who said she was a member of the welcoming committee for the 1976 Democratic convention here, and Anthony Cerami, who worked as a volunteer for Carter in 1976.

The first questioner was Nicholas Gray, who made a plug for his hot dog restaurant, before asking Carter about his jogging. "I stay in good shape, ready for running in the future," quipped Carter, who has not yet announced his candidacy for reelection.

Next up was Stewart Weinberg, a self-described 1976 Carter campaign worker, who started off by listing a host of Carter administration controversies and unsolved problems.

"What makes you think your first term deserves re-election?" he asked.

Carter, who addressed each part of the question, said "there's only so much you can do in 2 1/2 years."

It was during a question about the tight money supply that the boisterous protesters tried to take over.

Just outside a side entrance to the hall, about 30 representatives of the "Student Struggle for Soviet Jewry" began chanting "Hell no, PLO" — a reference to the Palestine Liberation Organization.

When the door opened, the shouting was heard in the hall. Instantly, a short man carrying a Revolutionary Communist Party sign started shouting at Carter. He had earlier demonstrated outside the hall, alongside a small group of anti-nuclear protesters.

While the Communist supporter was being escorted out by the Secret Service, a woman in the rear stood up and delivered a minute-long speech, during which she asserted that "You can't stop the Revolutionary Communist Party."

Analyst says inflation would boost Bell needs

AUSTIN, Texas (AP) — New York financial analyst Brad Peery says inflation has compelled him to forecast higher revenue needs for Southwestern Bell Telephone than he did earlier this month.

Peery, vice-president of Paine, Webber, Mitchell, Hutchins, returned to the witness stand Tuesday in the Texas Public Utility Commission's hearing on Bell's request for \$145.2 million in higher telephone rates.

The financial analyst's comments came on the final day of the hearings. The proceedings ended Tuesday after 16 days of testimony. Hearing Examiner Phillip Ricketts set Oct. 5 as the deadline for filing briefs.

Ricketts will then forward his examiner's report to the PUC. Commission members have said they expect to make a decision by early November.

Peery earlier had testified that purchasers of stock in Bell's parent company, American Telephone & Telegraph, would require a 14.1 percent annual return on their investment.

He said Tuesday he projected long-term inflation rate was 7.5 percent when he prepared that testimony in April. Since then, he said, the rise in OPEC oil prices has kicked the long-term inflation rate to 8.5 percent.

"If the long-term inflation rate has increased by 1 percent since April 1979, then AT&T's cost of capital is 15.1 percent today, not the 14.1 percent I used in my testimony. This higher long-term inflation rate and higher required market return for AT&T is undoubtedly a significant factor in AT&T's recent price decline from \$58 per share to the recent \$5 1/4 price," Peery said.

Peery repeated his earlier testimony that he counsels investors to sell their AT&T stock because the return isn't high enough.

He said AT&T stock has dropped 11.4 percent since April 10 while Standard & Poor's industrial index rose 7 percent.

Peery criticized two witnesses who used Bell's historical performance in recommending a lower return to stockholders than Peery. He said testimony of Pat Loconto, a Texas Municipal League witness, and Mark Langsam, presented by the U.S. General Services Administration, was out of touch with the real world of investors.

Peery said the Loconto and Langsam testimony was "useless to this commission as a basis on which to draw risk or rate of return conclusions."

He also said the PUC "enjoys a very good reputation within the investment community as a fair and forward-looking regulatory body."

Odessa man charged with aggravated assault

An Odessa man arrested Monday night after he allegedly pulled a knife on a Midland police officer was free Tuesday on \$10,000 bond, according to officials.

Robert Arnold MacMurchy, 47, charged Tuesday with aggravated assault with a deadly weapon, was arrested about 10:53 p.m. Monday in the 800 block of Texas Avenue, officials said.

MacMurchy was arrested by officer John Roundtree when he allegedly pulled a hunting knife on the officer, officials said.

The Odessa man was stopped because he appeared to be staggering, the officer reported.

Advertisement for The Midland Reporter-Telegram, including publication details and subscription rates for home delivery.

**DEATHS**

**Mrs. Campbell**

BIG SPRING — Services for Mrs. C.E. (Lizzie Jane) Campbell, 94, of Big Spring will be at 3:30 p.m. Thursday in Nalley-Pickle Rosewood Chapel here. Burial will be in Mount Olive Memorial Park.

Mrs. Campbell died Tuesday in a Big Spring hospital after a lengthy illness.

She was born Lizzie Jane Little on March 10, 1885. She was married to Charles Edward Campbell July 7, 1901, in Groesbeck. The couple moved to Big Spring in October 1921 from Ovalo. He died April 15, 1950.

Mrs. Campbell then moved to Lake Jackson on Dec. 30, 1977, to live with her son, returning to Big Spring Aug. 11, 1979. She was a charter member of the Primitive Baptist Church of Big Spring.

Survivors include three sons, Howard Campbell of Hobbs N.M., Elton Campbell of Gardendale and Doyle Campbell of Lake Jackson; two daughters, Myrtle Varnell of Big Spring and Ethel Smith of Denver; a sister, Mrs. L.H. Lanford of Brenham; a brother, B.F. Little of Hemphill; and a number of grandchildren, great-grandchildren and great-great-grandchildren.

She was preceded in death by three children.

Grandsons will be pallbearers.

**Mrs. C.F. Roberts**

Services for Mrs. C.F. (Samantha) Roberts, 91, of Stanton were to be at 2 p.m. today in Newnie W. Ellis Funeral Home chapel with Elvis Barlington, an elder at the Primitive Baptist Church in Midland, officiating. Burial was to be in Fairview Cemetery.

Mrs. Roberts died Monday in a Stanton nursing home after an extended illness.

She was born July 22, 1888, in Arkansas. She spent her early life in Red River County at Clarksville.

She was married to the late Charles Frederick Roberts in 1903. The couple moved to Mitchell County in the late 1920s, then to Midland in 1936. He died in 1959. She was a member of the Primitive Baptist Church.

Survivors include four daughters, Mrs. Weldon Moore of Sulphur Springs, Mrs. B.W. Brown of Stanton, Mrs. Kenneth Hoeflin of Deming, N.M., and Mrs. Bill Caldwell of Camp Verde, Ariz.; two sons, Aubrey Roberts of Phoenix, Ariz., and Tony Roberts of Houston; 23 grandchildren, 26 great-grandchildren and one great-great-grandchild.

Pallbearers were to be Ronald Moore of Grand Prairie, Larry Roberts, Jay Vergil, Glen Allen Brown of Caddo Mills, Jerry Brown and David Brown of Stanton.

**G.F. Hulsey**

LAMESA — Services for G.F. "Slim" Hulsey, 72, of Lamesa were to be at 3 p.m. today in Branon Funeral Home chapel here with burial in Lamesa Memorial Park.

Hulsey died Monday in a Lamesa hospital following a lengthy illness.

A native of Young County, he moved to Dawson County in 1929. He was a farmer and a Baptist.

Survivors include a daughter, Sarah Frances Carlile of San Angelo; a sister, Erma Lee Bradshaw of Bovina; a brother, J.W. Hulsey of Downey, Calif., and three grandchildren.

**Mamie Eisenhower undergoing stroke treatment in Army hospital**

WASHINGTON (AP) — Mamie Eisenhower, bedridden at home for the last several months, was in an Army hospital today undergoing treatment for a stroke that affected the right side of her body.

The 82-year-old widow of President Dwight D. Eisenhower was rushed by a volunteer fire department ambulance from her farm near the historic Civil War battlefield of Gettysburg, Pa., to the Walter Reed Army Medical Center.

A medical bulletin Tuesday said Mrs. Eisenhower was taking medication. "The stroke has affected some of the functions on the right side of her body," the report said. "The permanency of these effects is not known at this time."

The report said it was not known how long Mrs. Eisenhower would remain at the hospital. A spokesman said early today that her condition "continues to be stable."

Hospital officials said Mrs. Eisenhower's son John, a former Army officer-turned-writer, arrived to see her Tuesday. Her only other child, Doud Dwight Eisenhower, died at age 3. President Eisenhower died in Walter Reed hospital in 1969.

Mrs. Eisenhower was described by the Secret Service officials who guard her as fully conscious when she was placed in the ambulance for the trip from Gettysburg to Washington, 80 miles away.

After arriving at the hospital, Mrs. Eisenhower was taken immediately to the hospital's Eisenhower Nursing Suite, a VIP facility named after the late president.

Julie Nixon Eisenhower, who is married to Mrs. Eisenhower's grandson, David, said the former first lady has been in delicate health for several years and bedridden for several months.

"She has an enlarged heart and hasn't been able to keep up her regular activities," Julie Eisenhower said in a telephone interview. "She's been in frail health for awhile."

In the last year, the elder Mrs. Eisenhower has stopped greeting such civic groups as Boy Scouts and 4-H clubs that visit Gettysburg. Julie Eisenhower said: "They gave her a lift. But she hasn't been able to do that

for awhile." Julie, younger daughter of former President Richard M. Nixon, said Mrs. Eisenhower has spent most of her time lately reading. "Now her bed is always filled with books. She reads everything. It's really the thing that has kept her going."

Julie Eisenhower said she and her husband talk with Mrs. Eisenhower by telephone about three times a

week. "Mamie lives for her family. She wants to know everything about us."

In March 1975, Mrs. Eisenhower was admitted to the U.S. Army Medical Center at Fort Gordon in Augusta, Ga., for internal bleeding. Doctors reported the bleeding was caused by diverticulosis of the intestine.

She has been hospitalized several times since for various ailments.

**Rose Kennedy undergoes surgery**

BOSTON (AP) — Rose Kennedy, the 89-year-old matriarch of the Kennedy family, underwent surgery for an intestinal hernia today at New England Baptist Hospital, her personal physician said.

Dr. Russell Boles Jr. of Wellesley said the operation, which he said would last about 45 minutes, was intended to correct an inguinal hernia.

"Whenever you have this sort of operation in a person in her age group, it certainly has serious overtones," Boles said before the operation. "She's strong, and we don't look on it that critically in her case."

He added, "She's a tough old gal. She was swimming just two days ago."

The operation was intended to bypass a knot of blocked intestine in Mrs. Kennedy's groin area.

The condition was discovered during an examination by Boles about 4 a.m. Without correction, he said, the hernia could cause gangrene.

Boles said he failed to correct the problem by manipulating with his hands. So a decision was made to perform the operation, which was

conducted by Dr. Kenneth Warren. The hernia had given Mrs. Kennedy nausea. She was admitted to the hospital Tuesday. At the time, Thomas Southwick, a spokesman for her son, Sen. Edward Kennedy, D-Mass., said she entered the hospital for "a routine check-up."

Boles said he expected Mrs. Kennedy to be in the hospital for about

five days, but he added: "Knowing her, she'll want to be released tomorrow."

Mrs. Kennedy, who resides at the family's compound in Hyannis, is the widow of former ambassador to Great Britain Joseph P. Kennedy, and the mother of the late president John F. Kennedy and the late Sen. Robert F. Kennedy.

**Former Midland DPS commander recommended**

AUSTIN, Texas (AP) — The Texas Public Safety Commission is accepting applications for a replacement for Department of Public Safety Director Col. Wilson Speir.

Speir, whose resignation is effective at the end of the year, recommended Tuesday that the commission hire his top aide for the post, Assistant Director Lt. Col. Leo Gossett who has been with the DPS since 1949.

The commission accepted Speir's resignation at its Tuesday meeting and announced applications will be received until Oct. 10, with interviews beginning shortly afterwards.

Gossett, 54, who started as a student patrolman, replaced Speir as regional commander at Midland in 1972.

**Vema Allen**

Services for Vema Lloyd Sammons Allen, 77, 1306 N. A St., were to be at 4 p.m. today in Newnie W. Ellis Funeral Home chapel with Paul Walker of the Big Spring Church of Christ officiating. Burial was to be in Resthaven Memorial Park.

Mrs. Allen died Monday in a Midland hospital after a lengthy illness.

She was born Jan. 26, 1902, in San Antonio.

Pallbearers were to be Art Oestmann, Herb Bloomer, Ricky Taylor, Harold Taylor, Tommy Lewis and Bill McCarley.

Honorary pallbearers were to be Claude Nichols, Sam Logan, Willis Baze and John Nichols.

**RICK ALLEN INC. INVITES YOU TO A PRECIOUS JEWELRY AUCTION**

**THURSDAY, SEPTEMBER 27, 6:30 P.M. CHAMPAGNE RECEPTION, 7:30 P.M. AUCTION HILTON INN, MIDLAND**

(The entire collection may be previewed at the Hilton Inn Wednesday, September 26, 10 a.m. — 8 p.m. & Thursday, September 27, 10 a.m. — 6 p.m.)

**A Partial Listing of Items to be offered \***

- 18 kt white and yellow gold ring with one 1.80 ct emerald-cut emerald surrounded by ten tapered baguette and eight round diamonds totaling 2.05 ct.
- Platinum ring with one 1.98 ct oval-cut ruby surrounded by 24 tapered baguette and 12 round diamonds totaling 3.64 ct, ballerina style, convertible to pendant.
- Simple 18 kt gold ring with 4.25 ct marquise-cut diamond.
- 18 kt yellow gold flexible bracelet weighing 3.45 Troy ounces.
- Simple 18 kt gold ring with 3.36 ct oval-cut diamond.
- Platinum ring with one emerald-cut 12.50 ct tanzanite surrounded by 14 round diamonds totaling 2.50 ct.
- 18 kt yellow and white gold bracelet with 30 round emeralds totaling 3.02 ct and 60 round diamonds totaling 5.81 ct.
- Simple 14 kt gold ring with 3.45 ct round-cut diamond.
- 14 kt yellow gold collar-style necklace with one large pear-shaped turquoise cabochon, 106 round diamonds totaling 1.60 ct and 201 oval sapphires totaling 25.20 ct.
- One loose 6.21 ct round diamond certified by the Gemological Institute of America, Inc.
- White gold and diamond heart-shaped pin with 21 round diamonds totaling 1.00 ct.
- One loose 7.55 ct round diamond.
- 18 kt yellow gold drop earrings with 24 rubies totaling 21.49 ct and 120 diamonds totaling 6.13 ct.
- One loose 4.25 ct pear-shape diamond.
- Platinum brooch with 45 sapphires totaling 19.18 ct and 57 diamonds totaling 14.46 ct.
- One loose 1.25 ct oval-cut diamond.
- Pair of platinum earclips with 30 round diamonds totaling 3.60 ct and 18 baguettes totaling 2.00 ct.
- One loose 1.65 ct heart-shape diamond.
- Hand-made miniature replica of Irish State Carriage 24 oz of 18 kt gold and 34 diamonds totaling over 2.00 ct.
- Gentleman's 14 kt white gold ring with 12.00 ct oval black star sapphire.
- Platinum bracelet, flexible mount set with 18 marquise-shaped diamonds, 90 baguette and 72 round diamonds totaling 15.00 ct.

All weights listed are approximate. Over 130 items will be offered including estate and contemporary jewelry, solitaire diamond rings and loose diamonds. Values from \$200.


Attention Prospective Sellers: We are accepting precious jewelry for future auctions. For detailed consignment information, call or write: (214) 361-8013, 4803 W. Lovers Lane, Dallas, TX 75209

Terms: Cash, cashier's check, traveller's check, money order, Master Charge, VISA. Personal or company checks must be accompanied by a letter or guarantee from drawee bank.

*Rick Allen Inc.*  
SPECIALISTS IN PRECIOUS JEWELS

(214) 361-8013, 4803 W. Lovers Lane, Dallas, TX 75209  
AUCTION CONDUCTED BY DON WILCOX  
State License No.: TXE-109-0895

Local Bank Reference: Midland National \* Items listed subject to prior sale.



**We're Braniff. We're non-stop to Dallas-Fort Worth**

also service to

**Albany • Austin • Boston • Brownsville • Chicago  
Colorado Springs • Corpus Christi  
Detroit • Fort Lauderdale • Hartford - Springfield  
Houston • Jacksonville • Kansas City • Las Vegas  
Little Rock • Memphis • Miami • Minneapolis - St. Paul  
Nashville • New Orleans • New York/Newark  
Oklahoma City • Omaha • Orlando • Philadelphia  
Reno-Tahoe • San Antonio • Tampa-St. Petersburg  
Tulsa • Washington, D.C. • Wichita**

For details and reservations, call your Travel Agent or Braniff in Midland or Odessa at 563-3885.

**Ask about our Fall Super Savers. Up to 50% Savings.**



A donation of \$200 by the Midland Jaycees to the Midland Boys Club will be used to purchase athletic equipment. From left, Roy Camarillo, Jaycee project chairman, and Steve Davidson, Jaycees president, present the check to Boy's Club director Donny Thompson. The money was raised by painting addresses on street curbs. (Staff Photo)

## Rev. Jesse Jackson says blacks support Israel

JERUSALEM (AP) — The Rev. Jesse Jackson condemned terrorism today and said the American black community supports Israel even as public feuding broke out between him and two Jewish members of his delegation.

"We challenge all acts of terrorism," Jackson said in a ringing sermon before 150 worshippers at the Lutheran Church of the Redeemer in the Old City of Jerusalem.

Jackson repeated his familiar theme of urging both sides to rise above the "cycle of pain" and promised that when he visits Lebanon for talks with Yasser Arafat, chief of the Palestine Liberation Organization, he will urge him to recognize Israel.

"I shall appeal to the PLO to stop their tactics of terrorism, to recognize Israel's right and need to exist, to articulate its own goal for self-determination and a homeland and to fight for peaceful coexistence."

Jackson and his delegation traveled to Nablus, the largest Arab city in the occupied West Bank of the Jordan River, before leaving Israel later today.

Earlier, two American Jews traveling with Jackson attacked his motives for the trip after the black leader canceled a meeting with the leader of the World Organization of Jews from Arab Countries.

Raymond Maglal, an executive member of the world Sephardi Federation, and Phillip Blazer, publisher of the Los Angeles magazine "Israel Today," both accused Jackson of using the trip to the Mideast to ad-

vance his own political career in the United States.

Blazer claimed to be a good friend of Jackson since the two organized opposition to the pro-Nazi march in Skokie, Ill., in April 1978, but Jackson has said that he "hardly knows" Blazer.

In Israeli press reports published today, Jackson retorted that Blazer was using Jackson's tour in order to get press coverage of Blazer's publishing and public relations activities.

The Israeli government has turned a cold shoulder to the visiting delegation and Prime Minister Menachem Begin refused to meet them because he considered the group's pro-PLO leanings antagonistic.

On Tuesday, Jackson toured a Palestinian refugee camp and said the living conditions there reminded him of his childhood in Chicago.

Afterward, Jackson said he would appeal to the United States to boost its financial aid to Palestinian refugees to correct what he called unbalanced assistance to Israel.

In a meeting with opposition Labor Party leaders Tuesday, Jackson called the government's refusal to meet his delegation part of a "trend of rejection of black people in America."

Jackson, who has billed his tour as a "mediating mission" between Israel and the PLO, caused Israeli hackles to rise by comparing Israel's bombing raids of south Lebanon with Palestinian terrorist bombings against civilians.

## Bodies of two lost divers will remain in Jacob's Well

WIMBERLEY, Texas (AP) — The bodies of two divers who became the latest drowning victims in a water-filled Texas Hill Country cavern will not be brought out of the deep hole.

Divers who tried for a week to reach the trapped bodies of Kent Maupin, 20, and Mark Alan Brashier, 21, have decided the mission was too risky.

"They said it was too dangerous for anyone to go in," Mary Maupin of Pasadena, the mother of one of the victims, said Tuesday.

"We couldn't live with that if anyone got hurt," she said.

The two Pasadena men died in Jacob's Well during the early morning hours of Sept. 9. They ventured through a narrow underwater opening to explore beyond the cavern's dangerous third chamber. They died after apparently failing to bring their breathing apparatus through the opening, officials speculate.

Commercial divers worked in the well for a week before deciding the recovery effort was too dangerous. They had planned to use powerful pumps to clear the way of loose silt.

One rescue diver was briefly trapped in the well. Two others were injured during the aborted recovery attempt.

The well has long been a popular spot for divers. Several have drowned in the cavern in recent years.

A spokeswoman for Hays County Sheriff Alton Smithey said stainless steel bars will be installed to prevent divers from going into the hazardous area. A Pasadena diver who was with the two men when they went into the well said a memorial plaque will be placed at the site — perhaps underwater near the third chamber.

"I don't know what went through Kent's head," said Mary Jane Jones of Neptune's Locker Dive Shop.

## Suit against Claudine Longet settled

ASPEN, Colo. (AP) — A settlement has been reached in a civil suit filed two years ago against singer Claudine Longet by the parents of slain professional skier Vladimir "Spider" Sabich.

Attorneys refused to discuss the terms of the settlement.

The suit, filed in May 1977, asked \$1.3 million in damages, including \$1 million in punitive damages, which have since been excluded in wrongful death actions under Colorado law.

Ms. Longet was convicted of criminally negligent homicide in Sa-

bich's death in Pitkin County District Court on Jan. 14, 1977.

The shooting occurred in March 1976 in the \$250,000 Aspen home Sabich had shared for two years with Ms. Longet and her three children. Ms. Longet maintained that a pistol accidentally discharged and killed Sabich while he was showing her how to use it.

During the trial the Sabiches' attorneys tried to obtain the confidential files of Glenwood Springs District Attorney Frank Tucker.



Save! Save! Save!  
all fanfares including YO YO'S

10% OFF

Thursday, Friday, Saturday  
September 27, 28, 29, 1979

GRAMMER-MURPHEY

# Fall '79

raincoats by Jerold

full double yokes, raglan sleeves and softly gathered back waist fashion this perennial trench just right. Water repellent poplin washes ready to go. British tan, stone. Sizes 5-7-9-11-13. \$64.

GRAMMER-MURPHEY



SEC  
Co  
SW  
WASH  
must re  
even if d  
cess all  
The Ho  
block for  
ity of "J  
Japan or  
Similar  
earlier b  
The leg  
ition on  
duced o  
the ban  
Alaska  
June 22  
was cont  
Admin  
the expo  
We  
ga  
Midlan  
discover  
counties  
in Nolan  
other We  
new well  
PECOS  
C. F.  
Midland  
pleted a  
Pecos Co  
kersfield  
The op  
absolute  
cubic fe  
perforat  
Total  
pipe is  
plugged  
Wellsit  
990 feet  
block 17  
and one  
West (Q  
SCHL  
An uni  
complete  
Discover  
land.  
The  
calculat  
tial of 2,  
day, thro  
to 6,788  
Total  
pipe is s  
plugged  
The Ca  
on Kelly  
feet.  
Wellsit  
Eldorado  
517 feet  
block A,  
seven-eig  
P-W (Ca  
west of t  
pay oil a  
NOLAN  
Texfel  
and Hack  
each ann  
in Nolan  
Texfel  
H. Gibs  
northeast  
tion sout  
erston (S  
and one-  
Tramme  
area.  
Locatio  
east lines  
survey  
Hack I  
ias a 5,  
northeast  
It is 2,  
feet from  
block 64,  
tion east  
is one an  
east of t  
and Jenn  
RUNNE  
E. B. I  
Wayne P  
4,900-foot  
seven mi  
Drillsit  
1,453 feet  
block 63,  
tion south  
field and  
4,612-foot  
The pr  
east of F  
berts, a  
ANDREW  
Exxon  
strong, p  
Andrews  
been com  
(Wolfcan  
On 24-h  
313 barre  
water thr  
to 9,437  
with 6,100  
The gr  
not repor  
Total d  
pipe was  
Locatio  
660 feet  
block A-4  
five other  
MIDLAN  
Mobil  
Parks ha







# Stock market loses

## Texans say 'no' to salary boost

WASHINGTON — Here's how area members of Congress were recorded on major roll call votes Sept. 13-19.

### HOUSE

**PAY RAISE:** The House defeated, 191 for and 219 against, an appropriations measure (HJR 399) one provision of which gave congressmen and some 20,000 other top federal officials their first raise since 1977. Salaries of House members and senators would have gone from \$57,500 to \$61,525, a seven percent hike.

The Democratic leadership had maneuvered to prevent a record vote directly on the proposed pay raise. The vote on final passage of HJR 399 presented the only opportunity opponents had to go an

Declining issues led advancing ones by a 5-2 margin on the new York Stock Exchange.

The NYSE's composite index of its more than 1,500 listed common stocks was down .33 to 62.04.

Volume on the exchange, with two hours left in the trading session, was 21.87 million shares.

Issues that had led the run-up — such as oils and glamor stocks — were in the forefront of today's drop.

IBM led the most active list, falling 3/4 to 67 1/2. The firm said it will sell \$1 billion in short and long-term securities in what is believed to be the largest single public debt offering ever by an industrial corporation.

Among other active issues, Mobil was down 5 1/2 to 34 1/2. Charter Co. fell 2 1/2 to 43 1/2. National Semiconductor dropped 3/4 to 30 3/4. Gulf Oil slipped 3/4 to 33 1/4. Dow Chemical gave up 1/4 to 32 1/2.

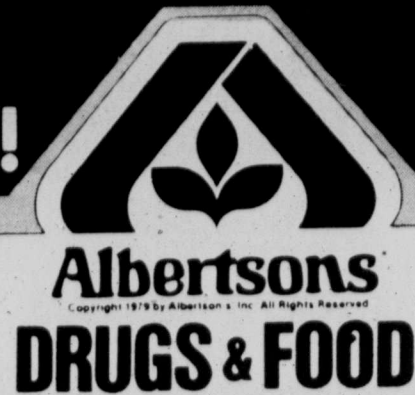
At the American Stock Exchange, the market value index stood at 224.22 at 2 p.m., off 1.14.

### Livestock

AMARILLO, Texas (AP) — Confirmed 3000

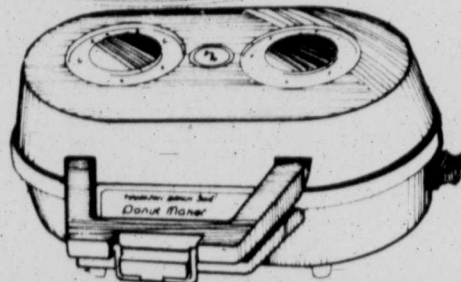
Trade moderate in the Panhandle area Tuesday. Slaughter steers, 50 to 100 lbs., 90 to 100 lbs., 100 to 110 lbs., 110 to 120 lbs., 120 to 130 lbs., 130 to 140 lbs., 140 to 150 lbs., 150 to 160 lbs., 160 to 170 lbs., 170 to 180 lbs., 180 to 190 lbs., 190 to 200 lbs., 200 to 210 lbs., 210 to 220 lbs., 220 to 230 lbs., 230 to 240 lbs., 240 to 250 lbs., 250 to 260 lbs., 260 to 270 lbs., 270 to 280 lbs., 280 to 290 lbs., 290 to 300 lbs., 300 to 310 lbs., 310 to 320 lbs., 320 to 330 lbs., 330 to 340 lbs., 340 to 350 lbs., 350 to 360 lbs., 360 to 370 lbs., 370 to 380 lbs., 380 to 390 lbs., 390 to 400 lbs., 400 to 410 lbs., 410 to 420 lbs., 420 to 430 lbs., 430 to 440 lbs., 440 to 450 lbs., 450 to 460 lbs., 460 to 470 lbs., 470 to 480 lbs., 480 to 490 lbs., 490 to 500 lbs., 500 to 510 lbs., 510 to 520 lbs., 520 to 530 lbs., 530 to 540 lbs., 540 to 550 lbs., 550 to 560 lbs., 560 to 570 lbs., 570 to 580 lbs., 580 to 590 lbs., 590 to 600 lbs., 600 to 610 lbs., 610 to 620 lbs., 620 to 630 lbs., 630 to 640 lbs., 640 to 650 lbs., 650 to 660 lbs., 660 to 670 lbs., 670 to 680 lbs., 680 to 690 lbs., 690 to 700 lbs., 700 to 710 lbs., 710 to 720 lbs., 720 to 730 lbs., 730 to 740 lbs., 740 to 750 lbs., 750 to 760 lbs., 760 to 770 lbs., 770 to 780 lbs., 780 to 790 lbs., 790 to 800 lbs., 800 to 810 lbs., 810 to 820 lbs., 820 to 830 lbs., 830 to 840 lbs., 840 to 850 lbs., 850 to 860 lbs., 860 to 870 lbs., 870 to 880 lbs., 880 to 890 lbs., 890 to 900 lbs., 900 to 910 lbs., 910 to 920 lbs., 920 to 930 lbs., 930 to 940 lbs., 940 to 950 lbs., 950 to 960 lbs., 960 to 970 lbs., 970 to 980 lbs., 980 to 990 lbs., 990 to 1000 lbs., 1000 to 1010 lbs., 1010 to 1020 lbs., 1020 to 1030 lbs., 1030 to 1040 lbs., 1040 to 1050 lbs., 1050 to 1060 lbs., 1060 to 1070 lbs., 1070 to 1080 lbs., 1080 to 1090 lbs., 1090 to 1100 lbs., 1100 to 1110 lbs., 1110 to 1120 lbs., 1120 to 1130 lbs., 1130 to 1140 lbs., 1140 to 1150 lbs., 1150 to 1160 lbs., 1160 to 1170 lbs., 1170 to 1180 lbs., 1180 to 1190 lbs., 1190 to 1200 lbs., 1200 to 1210 lbs., 1210 to 1220 lbs., 1220 to 1230 lbs., 1230 to 1240 lbs., 1240 to 1250 lbs., 1250 to 1260 lbs., 1260 to 1270 lbs., 1270 to 1280 lbs., 1280 to 1290 lbs., 1290 to 1300 lbs., 1300 to 1310 lbs., 1310 to 1320 lbs., 1320 to 1330 lbs., 1330 to 1340 lbs., 1340 to 1350 lbs., 1350 to 1360 lbs., 1360 to 1370 lbs., 1370 to 1380 lbs., 1380 to 1390 lbs., 1390 to 1400 lbs., 1400 to 1410 lbs., 1410 to 1420 lbs., 1420 to 1430 lbs., 1430 to 1440 lbs., 1440 to 1450 lbs., 1450 to 1460 lbs., 1460 to 1470 lbs., 1470 to 1480 lbs., 1480 to 1490 lbs., 1490 to 1500 lbs., 1500 to 1510 lbs., 1510 to 1520 lbs., 1520 to 1530 lbs., 1530 to 1540 lbs., 1540 to 1550 lbs., 1550 to 1560 lbs., 1560 to 1570 lbs., 1570 to 1580 lbs., 1580 to 1590 lbs., 1590 to 1600 lbs., 1600 to 1610 lbs., 1610 to 1620 lbs., 1620 to 1630 lbs., 1630 to 1640 lbs., 1640 to 1650 lbs., 1650 to 1660 lbs., 1660 to 1670 lbs., 1670 to 1680 lbs., 1680 to 1690 lbs., 1690 to 1700 lbs., 1700 to 1710 lbs., 1710 to 1720 lbs., 1720 to 1730 lbs., 1730 to 1740 lbs., 1740 to 1750 lbs., 1750 to 1760 lbs., 1760 to 1770 lbs., 1770 to 1780 lbs., 1780 to 1790 lbs., 1790 to 1800 lbs., 1800 to 1810 lbs., 1810 to 1820 lbs., 1820 to 1830 lbs., 1830 to 1840 lbs., 1840 to 1850 lbs., 1850 to 1860 lbs., 1860 to 1870 lbs., 1870 to 1880 lbs., 1880 to 1890 lbs., 1890 to 1900 lbs., 1900 to 1910 lbs., 1910 to 1920 lbs., 1920 to 1930 lbs., 1930 to 1940 lbs., 1940 to 1950 lbs., 1950 to 1960 lbs., 1960 to 1970 lbs., 1970 to 1980 lbs., 1980 to 1990 lbs., 1990 to 2000 lbs., 2000 to 2010 lbs., 2010 to 2020 lbs., 2020 to 2030 lbs., 2030 to 2040 lbs., 2040 to 2050 lbs., 2050 to 2060 lbs., 2060 to 2070 lbs., 2070 to 2080 lbs., 2080 to 2090 lbs., 2090 to 2100 lbs., 2100 to 2110 lbs., 2110 to 2120 lbs., 2120 to 2130 lbs., 2130 to 2140 lbs., 2140 to 2150 lbs., 2150 to 2160 lbs., 2160 to 2170 lbs., 2170 to 2180 lbs., 2180 to 2190 lbs., 2190 to 2200 lbs., 2200 to 2210 lbs., 2210 to 2220 lbs., 2220 to 2230 lbs., 2230 to 2240 lbs., 2240 to 2250 lbs., 2250 to 2260 lbs., 2260 to 2270 lbs., 2270 to 2280 lbs., 2280 to 2290 lbs., 2290 to 2300 lbs., 2300 to 2310 lbs., 2310 to 2320 lbs., 2320 to 2330 lbs., 2330 to 2340 lbs., 2340 to 2350 lbs., 2350 to 2360 lbs., 2360 to 2370 lbs., 2370 to 2380 lbs., 2380 to 2390 lbs., 2390 to 2400 lbs., 2400 to 2410 lbs., 2410 to 2420 lbs., 2420 to 2430 lbs., 2430 to 2440 lbs., 2440 to 2450 lbs., 2450 to 2460 lbs., 2460 to 2470 lbs., 2470 to 2480 lbs., 2480 to 2490 lbs., 2490 to 2500 lbs., 2500 to 2510 lbs., 2510 to 2520 lbs., 2520 to 2530 lbs., 2530 to 2540 lbs., 2540 to 2550 lbs., 2550 to 2560 lbs., 2560 to 2570 lbs., 2570 to 2580 lbs., 2580 to 2590 lbs., 2590 to 2600 lbs., 2600 to 2610 lbs., 2610 to 2620 lbs., 2620 to 2630 lbs., 2630 to 2640 lbs., 2640 to 2650 lbs., 2650 to 2660 lbs., 2660 to 2670 lbs., 2670 to 2680 lbs., 2680 to 2690 lbs., 2690 to 2700 lbs., 2700 to 2710 lbs., 2710 to 2720 lbs., 2720 to 2730 lbs., 2730 to 2740 lbs., 2740 to 2750 lbs., 2750 to 2760 lbs., 2760 to 2770 lbs., 2770 to 2780 lbs., 2780 to 2790 lbs., 2790 to 2800 lbs., 2800 to 2810 lbs., 2810 to 2820 lbs., 2820 to 2830 lbs., 2830 to 2840 lbs., 2840 to 2850 lbs., 2850 to 2860 lbs., 2860 to 2870 lbs., 2870 to 2880 lbs., 2880 to 2890 lbs., 2890 to 2900 lbs., 2900 to 2910 lbs., 2910 to 2920 lbs., 2920 to 2930 lbs., 2930 to 2940 lbs., 2940 to 2950 lbs., 2950 to 2960 lbs., 2960 to 2970 lbs., 2970 to 2980 lbs., 2980 to 2990 lbs., 2990 to 3000 lbs., 3000 to 3010 lbs., 3010 to 3020 lbs., 3020 to 3030 lbs., 3030 to 3040 lbs., 3040 to 3050 lbs., 3050 to 3060 lbs., 3060 to 3070 lbs., 3070 to 3080 lbs., 3080 to 3090 lbs., 3090 to 3100 lbs., 3100 to 3110 lbs., 3110 to 3120 lbs., 3120 to 3130 lbs., 3130 to 3140 lbs., 3140 to 3150 lbs., 3150 to 3160 lbs., 3160 to 3170 lbs., 3170 to 3180 lbs., 3180 to 3190 lbs., 3190 to 3200 lbs., 3200 to 3210 lbs., 3210 to 3220 lbs., 3220 to 3230 lbs., 3230 to 3240 lbs., 3240 to 3250 lbs., 3250 to 3260 lbs., 3260 to 3270 lbs., 3270 to 3280 lbs., 3280 to 3290 lbs., 3290 to 3300 lbs., 3300 to 3310 lbs., 3310 to 3320 lbs., 3320 to 3330 lbs., 3330 to 3340 lbs., 3340 to 3350 lbs., 3350 to 3360 lbs., 3360 to 3370 lbs., 3370 to 3380 lbs., 3380 to 3390 lbs., 3390 to 3400 lbs., 3400 to 3410 lbs., 3410 to 3420 lbs., 3420 to 3430 lbs., 3430 to 3440 lbs., 3440 to 3450 lbs., 3450 to 3460 lbs., 3460 to 3470 lbs., 3470 to 3480 lbs., 3480 to 3490 lbs., 3490 to 3500 lbs., 3500 to 3510 lbs., 3510 to 3520 lbs., 3520 to 3530 lbs., 3530 to 3540 lbs., 3540 to 3550 lbs., 3550 to 3560 lbs., 3560 to 3570 lbs., 3570 to 3580 lbs., 3580 to 3590 lbs., 3590 to 3600 lbs., 3600 to 3610 lbs., 3610 to 3620 lbs., 3620 to 3630 lbs., 3630 to 3640 lbs., 3640 to 3650 lbs., 3650 to 3660 lbs., 3660 to 3670 lbs., 3670 to 3680 lbs., 3680 to 3690 lbs., 3690 to 3700 lbs., 3700 to 3710 lbs., 3710 to 3720 lbs., 3720 to 3730 lbs., 3730 to 3740 lbs., 3740 to 3750 lbs., 3750 to 3760 lbs., 3760 to 3770 lbs., 3770 to 3780 lbs., 3780 to 3790 lbs., 3790 to 3800 lbs., 3800 to 3810 lbs., 3810 to 3820 lbs., 3820 to 3830 lbs., 3830 to 3840 lbs., 3840 to 3850 lbs., 3850 to 3860 lbs., 3860 to 3870 lbs., 3870 to 3880 lbs., 3880 to 3890 lbs., 3890 to 3900 lbs., 3900 to 3910 lbs., 3910 to 3920 lbs., 3920 to 3930 lbs., 3930 to 3940 lbs., 3940 to 3950 lbs., 3950 to 3960 lbs., 3960 to 3970 lbs., 3970 to 3980 lbs., 3980 to 3990 lbs., 3990 to 4000 lbs., 4000 to 4010 lbs., 4010 to 4020 lbs., 4020 to 4030 lbs., 4030 to 4040 lbs., 4040 to 4050 lbs., 4050 to 4060 lbs., 4060 to 4070 lbs., 4070 to 4080 lbs., 4080 to 4090 lbs., 4090 to 4100 lbs., 4100 to 4110 lbs., 4110 to 4120 lbs., 4120 to 4130 lbs., 4130 to 4140 lbs., 4140 to 4150 lbs., 4150 to 4160 lbs., 4160 to 4170 lbs., 4170 to 4180 lbs., 4180 to 4190 lbs., 4190 to 4200 lbs., 4200 to 4210 lbs., 4210 to 4220 lbs., 4220 to 4230 lbs., 4230 to 4240 lbs., 4240 to 4250 lbs., 4250 to 4260 lbs., 4260 to 4270 lbs., 4270 to 4280 lbs., 4280 to 4290 lbs., 4290 to 4300 lbs., 4300 to 4310 lbs., 4310 to 4320 lbs., 4320 to 4330 lbs., 4330 to 4340 lbs., 4340 to 4350 lbs., 4350 to 4360 lbs., 4360 to 4370 lbs., 4370 to 4380 lbs., 4380 to 4390 lbs., 4390 to 4400 lbs., 4400 to 4410 lbs., 4410 to 4420 lbs., 4420 to 4430 lbs., 4430 to 4440 lbs., 4440 to 4450 lbs., 4450 to 4460 lbs., 4460 to 4470 lbs., 4470 to 4480 lbs., 4480 to 4490 lbs., 4490 to 4500 lbs., 4500 to 4510 lbs., 4510 to 4520 lbs., 4520 to 4530 lbs., 4530 to 4540 lbs., 4540 to 4550 lbs., 4550 to 4560 lbs., 4560 to 4570 lbs., 4570 to 4580 lbs., 4580 to 4590 lbs., 4590 to 4600 lbs., 4600 to 4610 lbs., 4610 to 4620 lbs., 4620 to 4630 lbs., 4630 to 4640 lbs., 4640 to 4650 lbs., 4650 to 4660 lbs., 4660 to 4670 lbs., 4670 to 4680 lbs., 4680 to 4690 lbs., 4690 to 4700 lbs., 4700 to 4710 lbs., 4710 to 4720 lbs., 4720 to 4730 lbs., 4730 to 4740 lbs., 4740 to 4750 lbs., 4750 to 4760 lbs., 4760 to 4770 lbs., 4770 to 4780 lbs., 4780 to 4790 lbs., 4790 to 4800 lbs., 4800 to 4810 lbs., 4810 to 4820 lbs., 4820 to 4830 lbs., 4830 to 4840 lbs., 4840 to 4850 lbs., 4850 to 4860 lbs., 4860 to 4870 lbs., 4870 to 4880 lbs., 4880 to 4890 lbs., 4890 to 4900 lbs., 4900 to 4910 lbs., 4910 to 4920 lbs., 4920 to 4930 lbs., 4930 to 4940 lbs., 4940 to 4950 lbs., 4950 to 4960 lbs., 4960 to 4970 lbs., 4970 to 4980 lbs., 4980 to 4990 lbs., 4990 to 5000 lbs., 5000 to 5010 lbs., 5010 to 5020 lbs., 5020 to 5030 lbs., 5030 to 5040 lbs., 5040 to 5050 lbs., 5050 to 5060 lbs., 5060 to 5070 lbs., 5070 to 5080 lbs., 5080 to 5090 lbs., 5090 to 5100 lbs., 5100 to 5110 lbs., 5110 to 5120 lbs., 5120 to 5130 lbs., 5130 to 5140 lbs., 5140 to 5150 lbs., 5150 to 5160 lbs., 5160 to 5170 lbs., 5170 to 5180 lbs., 5180 to 5190 lbs., 5190 to 5200 lbs., 5200 to 5210 lbs., 5210 to 5220 lbs., 5220 to 5230 lbs., 5230 to 5240 lbs., 5240 to 5250 lbs., 5250 to 5260 lbs., 5260 to 5270 lbs., 5270 to 5280 lbs., 5280 to 5290 lbs., 5290 to 5300 lbs., 5300 to 5310 lbs., 5310 to 5320 lbs., 5320 to 5330 lbs., 5330 to 5340 lbs., 5340 to 5350 lbs., 5350 to 5360 lbs., 5360 to 5370 lbs., 5370 to 5380 lbs., 5380 to 5390 lbs., 5390 to 5400 lbs., 5400 to 5410 lbs., 5410 to 5420 lbs., 5420 to 5430 lbs., 5430 to 5440 lbs., 5440 to 5450 lbs., 5450 to 5460 lbs., 5460 to 5470 lbs., 5470 to 5480 lbs., 5480 to 5490 lbs., 5490 to 5500 lbs., 5500 to 5510 lbs., 5510 to 5520 lbs., 5520 to 5530 lbs., 5530 to 5540 lbs., 5540 to 5550 lbs., 5550 to 5560 lbs., 5560 to 5570 lbs., 5570 to 5580 lbs., 5580 to 5590 lbs., 5590 to 5600 lbs., 5600 to 5610 lbs., 5610 to 5620 lbs., 5620 to 5630 lbs., 5630 to 5640 lbs., 5640 to 5650 lbs., 5650 to 5660 lbs., 5660 to 5670 lbs., 5670 to 5680 lbs., 5680 to 5690 lbs., 5690 to 5700 lbs., 5700 to 5710 lbs., 5710 to 5720 lbs., 5720 to 5730 lbs., 5730 to 5740 lbs., 5740 to 5750 lbs., 5750 to 5760 lbs., 5760 to 5770 lbs., 5770 to 5780 lbs., 5780 to 5790 lbs., 5790 to 5800 lbs., 5800 to 5810 lbs., 5810 to 5820 lbs., 5820 to 5830 lbs., 5830 to 5840 lbs., 5840 to 5850 lbs., 5850 to 5860 lbs., 5860 to 5870 lbs., 5870 to 5880 lbs., 5880 to 5890 lbs., 5890 to 5900 lbs., 5900 to 5910 lbs., 5910 to 5920 lbs., 5920 to 5930 lbs., 5930 to 5940 lbs., 5940 to 5950 lbs., 5950 to 5960 lbs., 5960 to 5970 lbs., 5970 to 5980 lbs., 5980 to 5990 lbs., 5990 to 6000 lbs., 6000 to 6010 lbs., 6010 to 6020 lbs., 6020 to 6030 lbs., 6030 to 6040 lbs., 6040 to 6050 lbs., 6050 to 6060 lbs., 6060 to 6070 lbs., 6070 to 6080 lbs., 6080 to 6090 lbs., 6090 to 6100 lbs., 6100 to 6110 lbs., 6110 to 6120 lbs., 6120 to 6130 lbs., 6130 to 6140 lbs., 6140 to 6150 lbs., 6150 to 6160 lbs., 6160 to 6170 lbs., 6170 to 6180 lbs., 6180 to 6190 lbs., 6190 to 6200 lbs., 6200 to 6210 lbs., 6210 to 6220 lbs., 6220 to 6230 lbs., 6230 to 6240 lbs., 6240 to 6250 lbs., 6250 to 6260 lbs., 6260 to 6270 lbs., 6270 to 6280 lbs., 6280 to 6290 lbs., 6290 to 6300 lbs., 6300 to 6310 lbs., 6310 to 6320 lbs., 6320 to 6330 lbs., 6330 to 6340 lbs., 6340 to 6350 lbs., 6350 to 6360 lbs., 6360 to 6370 lbs., 6370 to 6380 lbs., 6380 to 6390 lbs., 6390 to 6400 lbs., 6400 to 6410 lbs., 6410 to 6420 lbs., 6420 to 6430 lbs., 6430 to 6440 lbs., 6440 to 6450 lbs., 6450 to 6460 lbs., 6460 to 6470 lbs., 6470 to 6480 lbs., 6480 to 6490 lbs., 6490 to 6500 lbs., 6500 to 6510 lbs., 6510 to 6520 lbs., 6520 to 6530 lbs., 6530 to 6540 lbs., 6540 to 6550 lbs., 6550 to 6560 lbs., 6560 to 6570 lbs., 6570 to 6580 lbs., 6580 to 6590 lbs., 6590 to 6600 lbs., 6600 to 6610 lbs., 6610 to 6620 lbs., 6620 to 6630 lbs., 6630 to 6640 lbs., 6640 to 6650 lbs., 6650 to 6660 lbs., 6660 to 6670 lbs., 6670 to 6680 lbs., 6680 to 6690 lbs., 6690 to 6700 lbs., 6700 to 6710 lbs., 6710 to 6720 lbs., 6720 to 6730 lbs., 6730 to 6740 lbs., 6740 to 6750 lbs., 6750 to 6760 lbs., 6760 to 6770 lbs., 6770 to 6780 lbs., 6780 to 6790 lbs., 6790 to 6800 lbs., 6800 to 6810 lbs., 6810 to 6820 lbs., 6820 to 6830 lbs., 6830 to 6840 lbs., 6840 to 6850 lbs., 6850 to 6860 lbs., 6860 to 6870 lbs., 6870 to 6880 lbs., 6880 to 6890 lbs., 6890 to 6900 lbs., 6900 to 6910 lbs., 6910 to 6920 lbs., 6920 to 6930 lbs., 6930 to 6940 lbs., 6940 to 6950 lbs., 6950 to 6960 lbs., 6960 to 6970 lbs., 6970 to 6980 lbs., 6980 to 6990 lbs., 6990 to 7000 lbs., 7000 to 7010 lbs., 7010 to 7020 lbs., 7020 to 7030 lbs., 7030 to 7040 lbs., 7040 to 7050 lbs., 7050 to 7060 lbs., 7060 to 7070 lbs., 7070 to 7080 lbs., 7080 to 7090 lbs., 7090 to 7100 lbs., 7100 to 7110 lbs., 7110 to 7120 lbs., 7120 to 7130 lbs., 7130 to 7140 lbs., 7140 to 7150 lbs., 7150 to 7160 lbs., 7160 to 7170 lbs., 7170 to 7180 lbs., 7180 to 7190 lbs., 7190 to 7200 lbs., 7200 to 7210 lbs., 7210 to 7220 lbs., 7220 to 7230 lbs., 7230 to 7240 lbs., 7240 to 7250 lbs., 7250 to 7260 lbs., 7260 to 7270 lbs., 7270 to 7280 lbs., 7280 to 7290 lbs., 7290 to 7300 lbs., 7300 to 7310 lbs., 7310 to 7320 lbs., 7320 to 7330 lbs., 7330 to 7340 lbs., 7340 to 7350 lbs., 7350 to 7360 lbs., 7360 to 7370 lbs., 7370 to 7380 lbs., 7380 to 7390 lbs., 7390 to 7400 lbs., 7400 to 7410 lbs., 7410 to 7420 lbs., 7420 to 7430 lbs., 7430 to 7440 lbs., 7440 to 7450 lbs., 7450 to 7460 lbs., 7460 to 7470 lbs., 7470 to 7480 lbs., 7480 to 7490 lbs., 7490 to 7500 lbs., 7500 to 7510 lbs., 7510 to 7520 lbs., 7520 to 7530 lbs., 7530 to 7540 lbs., 7540 to 7550 lbs., 7550 to 7560 lbs., 7560 to 7570 lbs., 7570 to 7580 lbs., 7580 to 7590 lbs., 7590 to 7600 lbs., 7600 to 7610 lbs., 7610 to 7620 lbs., 7620 to 7630 lbs., 7630 to 7640 lbs., 7640 to 7650 lbs., 7650 to 7660 lbs., 7660 to 7670 lbs., 7670 to 7680 lbs., 7680 to 7690 lbs., 7690 to 7700 lbs., 7700 to 7710 lbs., 7710 to 7720 lbs., 7720 to 7730 lbs., 7730 to 7740 lbs., 7740 to 7750 lbs., 7750 to 7760 lbs., 7760 to 7770 lbs., 7770 to 7780 lbs., 7780 to 7790 lbs., 7790 to 7800 lbs., 7800 to 7810 lbs., 7810 to 7820 lbs., 7820 to 7830 lbs., 7830 to 7840 lbs., 7840 to 7850 lbs., 7850 to 7860 lbs., 7860 to 7870 lbs., 7870 to 7880 lbs., 7880 to 7890 lbs., 7890 to 7900 lbs., 7900 to 7910 lbs., 7910 to 7920 lbs., 7920 to 7930 lbs., 7930 to 7940 lbs., 7940 to 7950 lbs., 7950 to 7960 lbs., 7960 to 7970 lbs., 7970 to 7980 lbs., 7980 to 7990 lbs., 7990 to 8000 lbs., 8000 to 8010 lbs., 8010 to 8020 lbs., 8020 to 8030 lbs., 8030 to 8040 lbs., 8040 to 8050 lbs., 8050 to 8060 lbs., 8060 to 8070 lbs., 8070 to 8080 lbs., 8080 to 8090 lbs., 8090 to 8100 lbs., 8100 to 8110 lbs., 8110 to 8120 lbs., 8120 to 8130 lbs., 8130 to 8140 lbs., 8140 to 8150 lbs., 8150 to 8160 lbs., 8160 to 8170 lbs., 8170 to 8180 lbs., 8180 to 8190 lbs., 8190 to 8200 lbs., 8200 to 8210 lbs., 8210 to 8220 lbs., 8220 to 8230 lbs., 8230 to 8240 lbs., 8240 to 8250 lbs., 8250 to 8260 lbs., 8260 to 8270 lbs., 8270 to 8280 lbs., 8280 to 8290 lbs., 8290 to 8300 lbs., 8300 to 8310 lbs., 8310 to 8320 lbs., 8320 to 8330 lbs., 8330 to 8340 lbs., 8340 to 8350 lbs., 8350 to 8360 lbs., 8360 to 8370 lbs., 8370 to 8380 lbs., 8380 to 8390 lbs., 8390 to 8400 lbs., 8400 to 8410 lbs., 8410 to 8420 lbs., 8420 to 8430 lbs., 8430 to 8440 lbs., 8440 to 8450 lbs., 8450 to 8460 lbs., 8460 to 8470 lbs., 8470 to 8480 lbs., 8480 to 8490 lbs., 8490 to 8500 lbs., 8500 to 8510 lbs., 8510 to 8520 lbs., 8520 to 8530 lbs., 8530 to 8540 lbs., 8540 to 8550 lbs., 8550 to 8560 lbs., 8560 to 8570 lbs., 8570 to 8580 lbs., 8580 to 8590 lbs., 8590 to 8600 lbs., 8600 to 8610 lbs., 8610 to 8620 lbs., 8620 to 8630 lbs., 8630 to 8640 lbs., 8640 to 8650 lbs., 8650 to 8660 lbs., 8660 to 8670 lbs., 8670 to 8680 lbs., 8680 to 8690 lbs., 8690 to 8700 lbs., 8700 to 8710 lbs., 8710 to 8720 lbs., 8720 to 8730 lbs., 8730 to 8740 lbs., 8740 to 8750 lbs., 8750 to 8760 lbs., 8760 to 8770 lbs., 8770 to 8780 lbs., 8780 to 8790 lbs., 8790 to 8800 lbs., 8800 to 8810 lbs., 8810 to 8820 lbs., 8820 to 8830 lbs., 8830 to 8840 lbs., 8840 to 8850 lbs., 8850 to 8860 lbs., 8860 to 8870 lbs., 8870 to 8880 lbs., 8880 to 8890 lbs., 8890 to 8900 lbs., 8900 to 8910 lbs., 8910 to 8920 lbs., 8920 to 8930 lbs., 8930 to 8940 lbs., 8940 to 8950 lbs., 8950 to 89

# Albertsons ONE STOP... FOOD AND DRUG WITH ONE CENTRAL CHECKOUT!



## HAMILTON BEACH DONUT MAKER

MAKES MAN-SIZED, PIPING HOT DONUTS IN MINUTES ALSO MAKES DELICIOUS BAGELS, MUFFINS, & BISQUITS. MODEL 200



**4<sup>99</sup>**  
OUR REG. 5.99

## September SALE

1002 ANDREWS HIGHWAY

OPEN 24 HOURS

PRICES EFFECTIVE WED. THURS. FRI. SAT. SEPT. 26, 27, 28, 29, 1979.



## ROTARY RAZOR

THE NORELCO TRIPLE-HEADER CONTOURED FOR MORE CLOSENESS THAN EVER.

**41<sup>88</sup>**  
OUR REG. 49.99

## ELECTRONIC FLASH

**14<sup>99</sup>**  
OUR REG. 19.95

VERTICAL STYLING HELPS ELIMINATE "RED EYE" FITS ALL 110 CAMERAS USING FLIPFLASH. STOP WASTING MONEY ON FLASH CUBES. MODEL 128



### PARING KNIFE

BY CHICAGO CUTLERY WALNUT HANDLE AND SPECIAL STEEL BLADE THAT RESISTS STAINS & RUST NO. 100'S WILL HOLD IT'S SHARP EDGE FOR YEARS

**2<sup>99</sup>**  
OUR REG. 4.49

### ULTRA RICH SHAMPOO

16-OUNCE BEAUTY FORMULA. GENTLE, NORMAL OR OILY.

**99¢**  
REG. 1.39

### NAIL ACCENTS

L'OREAL CREME OR PERLE IN THE NEWEST SHADES.

**99¢**  
REG. 1.39

### COUGH FORMULA ROBITUSSIN

4-OUNCE NON-NARCOTIC EXPECTORANT FOR ADULTS AND CHILDREN.

**89¢**  
REG. 1.25

### NORELCO COFFEE MAKER

10 CUP AUTOMATIC DRIP FILTER COFFEE MAKER WITH DIAL-A-BREW PERFECT COFFEE. CONSISTENT RESULTS.

**24<sup>88</sup>**  
OUR REG. 29.88

\$5.00 REBATE FROM NORELCO

### EXTRA STRENGTH EFFERDENT

20% FREE! WITH THIS PURCHASE 12 EXTRA TABLETS AT NO CHARGE

72 TABLETS. FAST ACTING DENTURE CLEANSER

**1<sup>39</sup>**  
OUR REG. 1.99

### EYE CRAYONS

NEW FROM L'OREAL IN 9 SUBTLE SHADES.

**2<sup>49</sup>**  
OUR REG. 2.99

### CONTAC JR.

4-OZ. THE COMPLETE CHILDREN'S COLD MEDICINE.

**89¢**  
REG. 1.49

### FIREPLACE MATCHES

11" MATCHES 90 CT. PER BOX GREAT FOR STARTING BAR-B-QUE GRILLS ALSO.

**69¢**  
OUR REG. 99¢

### SUPER DRY SURE

4-OUNCE SPRAY ANTI-PERSPIRANT AND DEODORANT. REGULAR OR UNSCENTED.

**1<sup>29</sup>**  
OUR REG. 1.59

### ACCENT SHADOWS

L'OREAL'S CREME-ON OR MOISTURE-FINISH PRESSED SHADOWS.

**2<sup>49</sup>**  
OUR REG. 2.99

### FRENCH GLOSS

NEW FROM L'OREAL PUT A LITTLE ON AND FEEL A LITTLE FRENCH!

**1<sup>75</sup>**  
OUR REG. 2.25

### WHITE ENVELOPES

CHOOSE BOX OF 100 STANDARD SIZE OR 50 LEGAL SIZE.

**2<sup>88</sup>**  
FOR ONLY

### TEAL CALCULATOR

SUPER-THIN WITH LIQUID CRYSTAL DISPLAY MODEL LC-822

**11<sup>99</sup>**  
OUR REG. 14.99

### CAMPHO-PHENIQUE

2.3 OUNCE GEL CONCENTRATES PAIN-KILLING POWER RIGHT ON THE HURT

**99¢**  
OUR REG. 1.29

### PROTEIN 21 HAIR SPRAY

9-OUNCE AEROSOL REGULAR OR EXTRA HOLD. SCENTED. UNSCENTED.

**1<sup>29</sup>**  
OUR REG. 1.59

### EDGE SHAVE GEL

7-OUNCE PROTECTIVE SHAVE GEL. FOR A SHAVE CLOSER THAN FOAM.

**1<sup>19</sup>**  
OUR REG. 1.39

### JERGENS LOTION

10-OUNCE SIZE REGULAR OR EXTRA DRY FORMULA.

**99¢**  
OUR REG. 1.39

### ELECTRONIC QUARTERBACK

PLAY ALONE OR AGAINST AN OPPONENT. GREAT FUN! BATTERY OPERATED.

**24<sup>99</sup>**  
OUR REG. 33.99

COUPON

COUPON GOOD SEPT. 26-29 LIMIT 1 PER COUPON

### CHOCOLATE BROWNIES

CHOCOLATE FUDGE

**121<sup>39</sup>**

FOR ONLY WITH PECANS THROUGHOUT REG. PRICE 12 for 1.89

CLIP & SAVE

COUPON

COUPON GOOD SEPT. 26-29 LIMIT 1 PER COUPON

### CHEDDAR CHEESE

"SMOKEY SHARP"

**1<sup>99</sup>**

"FROM OUR IN STORE DELI" LB.

CLIP & SAVE

COUPON

COUPON GOOD SEPT. 26-29 LIMIT 1 PER COUPON

### KLEENEX ELASTIC DIAPERS

SUPER DRY DISPOSABLE • 18 CT.

**1<sup>99</sup>**

CLIP & SAVE

COUPON

COUPON GOOD SEPT. 26-29 LIMIT 1 PER COUPON

### LISTERINE MOUTHWASH

18 OUNCE SIZE

**1<sup>19</sup>**

KILL GERMS BY MILLIONS ON CONTACT

CLIP & SAVE