

COMING  
SUNDAY

### The Farrier and his Craft

They put shoes on horses, don't they? You bet they do. In Midland County, there are 7,500 horses and four farriers. Staff Writer Richard Mason profiles one of the horseshoers and his craft Sunday in West Texas Life.

### Special Football Section

The Reporter-Telegram sports staff kicks off the 1979 football season Sunday with a special section featuring the outlook for local and area teams as well as a preview of the Southwest Conference and the Dallas Cowboys.

### Smokey the 'Drug Dog'

In February 1978, a "drug dog" named Smokey was purchased by the Midland Police Department to help curb the drug problem in Midland schools. Sunday's Reporter-Telegram examines Smokey's performance and future.

# The Midland Reporter-Telegram

HOME EDITION

DIAL 682-5311, P.O. Box 1650, MIDLAND, TEXAS  
Vol. 50, No. 176, Daily 15¢, Sunday 35¢

FRIDAY, AUGUST 31, 1979  
36 PAGES, 4 SECTIONS

## Soviet troops in Cuba, U.S. sources confirm

BOISE, Idaho (AP) — U.S. intelligence sources have confirmed the existence in Cuba of Soviet combat troops — possibly some 2,300 to 3,000 men, says Senate Foreign Relations Chairman Sen. Frank Church.

Church Thursday called on President Carter to insist on immediate withdrawal of the brigade of ground-combat troops.

"The United States cannot permit the island to become a Russian military base, 90 miles from our shores, nor can we allow Cuba to be used as a springboard for Russian military intervention in the Western hemisphere," Church said.

Church, an Idaho Democrat, said he and other members of the committee heard reports several weeks ago of a Soviet troop buildup in Cuba. He said members of the committee agreed to say nothing until the reports were confirmed.

Church said Secretary of State Cyrus Vance called him Thursday to confirm the buildup. He said "American intelligence units" confirmed existence of the Soviets, but he said he could not disclose the type of operation involved.

Church said he was advised by Vance that the Soviet Embassy in Washington has been asked for a full explanation. Asked why the Russians were placing troops in Cuba, Church said: "That's one of the questions we have asked the Soviet Embassy."

Russia has had military advisers in Cuba under agreements reached shortly after the Cuban missile crisis of 1962. But Church said they are there for training and communications.

This is the first time Russia has placed combat-type troops in Cuba, he said, adding, "... our concern for deployment of Russian combat troops in this hemisphere should be apparent."

"It is one thing for Russians to engage in such activities in places like Angola and Ethiopia. It is quite another thing to move into what always has been regarded as our own front yard."

Church said the type of troops involved, ground combat units, also concerned him.

On Aug. 7, the Defense Department said "there might have been a very modest increase" in the Soviet military presence in Cuba. U.S. intelligence sources said then that estimates indicated 2,000 military advisers and between 4,000 and 6,000 civilian technicians and advisory personnel were in Cuba.

The Defense Department had no comment on Church's report. But in response to previous such reports, Pentagon spokesmen said the Soviet military in Cuba were advisers and technicians and were not combat troops.

Church said the presence of Russian ground troops did not pose the threat of the 1962 missile buildup. But, he said, "The president must make it clear, we draw the line on Russian penetration of this hemisphere."

## Clements minimized spill to lease rigs, Demo says

AUSTIN (AP) — Gov. Bill Clements minimized the Mexican oil slick because he wants to lease drilling rigs to Mexico, says State Democratic Party Chairman Billy Goldberg.

Goldberg said he supports Attorney General Mark White's exploration of a possible lawsuit against Mexico, the oil drilling contractor or SEDCO, the owner of the drilling rig.

"Let's put them under oath and see who is really to blame for the \$100 million disaster. Then I suspect we will learn why Clements tried for over a month to downplay the whole affair and argue against the lawsuit," Goldberg said.

Clements founded SEDCO but put his interest in a blind trust upon becoming governor. His son now runs the company.

Goldberg was a leading campaigner for former Attorney General John Hill, whom Clements defeated in the 1978 governor's race. He was elected state Democratic chairman on Hill's recommendation.

Goldberg asserted Clements had downplayed the oil slick because "he wanted to maintain good relations with Pemex (Mexico's nationalized oil industry) so that he could lease them more drilling rigs in the future."

"He's afraid to offend the Mexicans for fear they won't let SEDCO have any more of their business," Goldberg said.

## Midland child hurt by auto

A 4-year-old Midland boy remained in critical condition in Midland Memorial Hospital early today following a hit-and-run incident Thursday night, officials said.

Ernest Franklin Jr., 1506 W. Francis Ave., suffered head injuries when he was struck by a car in the intersection of Francis Avenue and Pratt Street about 8 p.m. Thursday, police said.

According to a witness, the Franklin boy was thrown into the air by the car and landed about 23 feet from the point of impact, police said.

The car which struck the boy left about 66 feet of skid marks, police said.

The witness provided police with a description of the car and some physical evidence was collected at the scene, police said.

## Mayor says city's growth may be tied to bond issue

By ED TODD  
Staff Writer

Midland's continued growth and the city's providing of adequate services may be tied to the \$16.83 million bond issue confronting Midland voters Tuesday, Mayor Ernest Angelo Jr. told the Downtown Midland Rotary Club in The Midland Hilton at noon Thursday.

"We're not in an emergency," Angelo said. "There's no crisis. But to prepare the city for a growth of up to 120,000 population toward end of the century, certain propositions on the bond issue must be implemented, he said.

The nine-part issue includes water and sewer improvements, drainage and street upgrading, new city-county health department building apart from Midland Memorial Hospital, a Municipal Courts Building, renovat-

ing the Public Safety Building, adding two stories to the three-story City Hall, remodeling the city's service operations building and adding on to the city garage.

Each of the nine propositions will be voted on separately.

Angelo said the City Council was not acting frivolously in submitting this "fairly complicated, expensive bond issue" to the voters.

"We've had a greater growth than any of us could imagine 4½ years ago," he said.

"We've tried to be prudent in growth planning."

Angelo side-stepped placing priorities on the proposals. However, he did suggest that the first three — sewer, water and street improvements — on the ballot "have a lot more obvious and immediate needs than the others do."

The water-system proposal calls

for drilling additional water wells in the Paul Davis Field to supplement lake water from the Colorado River Municipal Water District (CRMWD), extending the gathering lines, build-

stand still. We have to have an adequate, secured supply of water."

Angelo said the sewer system is approaching capacity — six million gallons of sewage handled daily. The

*"In a city, you either grow or you die. A community doesn't stand still... We've had a greater growth than any of us could imagine 4½ years ago." — Mayor Ernest Angelo Jr.*

ing new water mains and upping the pumping capacity.

"The (water) demands here are almost entirely from growth," the mayor said. "In a city, you either grow or you die. A community doesn't

current level is 5½ million gallons.

"Now, the sewage matter is a different proposition (from the others). If it doesn't pass and if we have an overflow, you've really got problems."

Angelo said the City Council could have voted in revenue bonds for the \$7.8 million for water- and sewer-system improvements without submitting those propositions to the citizenry.

"The water and sewer systems generate their own revenue via fees and do not rely on tax money; by law, they are to be self-sustaining, he said.

"The others would require a tax increase, likely," said the mayor. He said the increase, for example, would be \$26 on a house assessed at \$40,000.

Additional office space is needed at City Hall, Angelo said, because of cramped office space.

"Their (the workers') efficiency levels are going to be down.... We have reached a situation that is not conducive to good work." The three-story downtown City Hall was built in 1965-66.

The Municipal Court, now in the Public Safety Building, is "now very, very crowded as far as clerical help is concerned."

The Public Safety Building currently houses the central fire department, police offices, the City Jail and Municipal Court.

Midlanders entering the Public Safety Building to pay traffic fines "feel that it all is stacking up against them if the people (police officers) giving the tickets are running the show," the mayor said. "It is not that way, really."

Angelo said the "mundane" operations building, where city vehicles are maintained, was built over a landfill about 15 years ago, and the soil and refuse apparently were not compacted sufficiently.

"The building has sunk — part of it sank sooner than the other."

## City Hall addition in bond issue

EDITOR'S NOTE: Midlanders will go to the polls Tuesday to decide the fate of a \$16.83 million bond issue containing nine proposals. This is the sixth in a seven-part series examining the proposals.

By LANA CUNNINGHAM  
Staff Writer

After 13 years of use in both boom and bust periods, the seams of Midland's City Hall now threaten to burst under the pressures of increased workloads and personnel, said City Manager James Brown recently.

Because of that, the City Council has included a proposal for a \$750,000 two-story addition to City Hall in

the \$16.83 million bond issue going to the voters Tuesday.

The present City Hall building was finished in 1966, said Brown. Even then, the building had been scaled down from the original plans because of "building costs exceeding the amount of money available for the construction of the project.

"It meant every office was filled to capacity insofar as a good working situation was concerned," he said.

Plans had called for two more floors, but these were deleted because it would have cost an additional \$160,000 then, according to the city manager. But in looking ahead, the City Council instructed the contractor to build the roof so two more floors could

be added later.

A second elevator shaft also was built into the structure, and these are now being used as closets in most offices, according to Brown.

When city personnel moved into the new building in 1966, there were 69.5 employees, Brown said. With the 1979-80 budget, that number will have increased 52 percent to 105.5 employees.

Also, Brown said there is an increasing shortage of storage space as files keep growing with material that can't be thrown away.

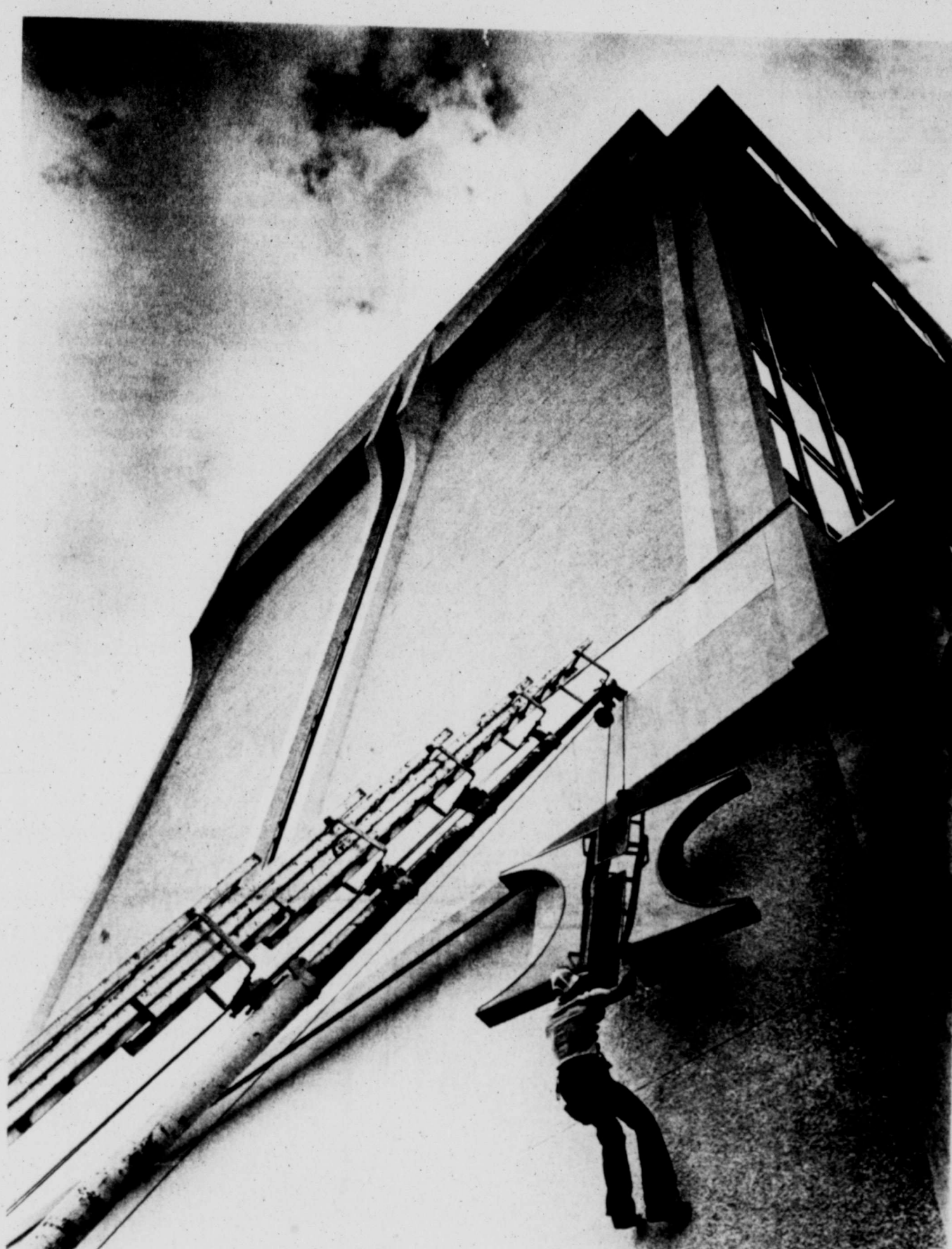
Offices which are not crowded include those for the city secretary, data processing and water account-

"The rest of the departments range from moderate crowding to very crowded," Brown said, citing the engineering drafting room and the Planning and Zoning Department as examples of extreme overcrowding.

In 1966, the Planning Department had three people in the offices. Today there are nine, Brown said.

Situation in the Finance Department is complicated by the copying machine for the entire City Hall being located in a back room, Brown said. This means everyone needing to copy materials must walk all the way through the Finance Department, and

(See \$750,000, Page 2A)



If the ABCs throw you, wait until you grapple with the big "H." Sign hanger George Hammond of Odessa took about 15 minutes Thursday to bolt the electric monogram back on The Midland Hilton.

The giant letter had been removed during construction of the hotel's new south tower. (Staff Photo by Bruce Partain)

### INSIDE TODAY

✓ IN THE NEWS: Defense in Dorr trial trying to discredit witness..... 2A

✓ SPORTS: As high school football nears opening day, teams set scrimmages..... 1C

✓ ENERGY: Media members tour TESCO lignite coal and nuclear plants..... 6A

✓ PEOPLE: Part Three of Hearst Newspapers' series on life in Egypt..... 8B

Around Town..... 1B  
Bridge..... 6B  
Classified..... 1D  
Comics..... 5C  
Crossword..... 5C

Dear Abby..... 2B  
Editorial..... 4A  
Entertainment..... 6B  
Lifestyle..... 1B  
Markets..... 6C

Obituaries..... 5A  
Oil & gas..... 7C  
Solomon..... 3B  
Sports..... 1C  
TV schedule..... 8B

### Weather

Partly cloudy with a chance of thunderstorms through Saturday. Details on Page 2A.

### Service

Delivery..... 682-5311  
Want Ads..... 682-6222  
Other Calls..... 682-5311





Midlanders with umbrellas were the only ones taking the "Don't Walk" advice of traffic lights Thursday afternoon. "Unscheduled" showers had much of the populace running to get out of the rain. While only .02 inch of rain was recorded by the National Weather Service at Air Terminal, parts of Midland received considerably more moisture than that. (Staff Photo by Bruce Partain)

### Registration for fall semester going on at Odessa's UTPB

ODESSA — Students may register for the fall semester Tuesday and Wednesday at The University of Texas of the Permian Basin. Late registration will continue through Sept. 21.

Registration is set from 9 a.m. to noon and from 2 to 7 p.m. in the student lounge.

Classes are scheduled to begin Thursday with the fall session ending Dec. 21.

UTPB Director of Admissions Robert Warmann noted registration materials currently are available in the registrar's office.

Enrollment at the upper-level university is open to students who have completed 60 credit hours of coursework at any accredited community college, senior college or university.

"Prospective students should notify the registrar at their previous colleges to send official transcripts directly to the admissions office at UTPB, and an application should be on file to avoid a long wait at the time of registration," Warmann explained.

## Grand jury indicts Preece on murder charge

A 22-year-old man was indicted by the Midland County Grand Jury Wednesday on charges of murder and attempted murder in connection with the Aug. 21 shooting death of a Junction man and the alleged attempted murder of a Midland woman.

Coy Preece Jr. was indicted on the charges by the Midland County Grand Jury. The grand jury also returned nine other indictments against seven other individuals.

Daniel Nixon, 22, of Junction died the evening of Aug. 22 in Midland Memorial Hospital after he was shot more than once with a shotgun and small caliber weapon nearly in front of the Midland Police Department offices, according to police reports and accounts at that time.

Witnesses said Nixon and a passen-

ger in his vehicle, Betty Sue Preece, 304 1/2 W. California Ave., were fired at by an individual following their vehicle in a pickup. Ms. Preece was not injured in the incident, but Nixon later died of his wounds.

Later, Preece was charged in connection with the incident and was arrested in San Angelo and returned to Midland.

Preece remained in Midland County Jail Thursday in lieu of posting a \$100,000 bond on the murder charge and a \$50,000 bond on the attempted murder charge.

One of the others indicted by the grand jury was Paul Dee Nobles, 23, who was named in three charges of robbery.

Nobles was arrested in Fort Worth Aug. 22 and charged in connection

with three robberies in Midland. He reportedly gave officers a statement in connection with robberies in Midland, Odessa, Abilene, San Angelo, Austin and Fort Worth.

The grand jury indicted Nobles in connection with robberies from Barbara Gardner, Thelma Barker and Norma Jean Jimenez.

He was in Midland City Jail Thursday in lieu of posting a \$10,000 bond on each of the charges.

Julius Watson was indicted on a charge of burglary of a building with intent to commit theft. He currently is free on \$5,000 bond.

Raul Raygoza Lopez was indicted on a charge of possession of heroin. He was in Midland County Jail Thursday in lieu of posting a \$10,000 bond.

Raymond Bowers, 33, 407 S. Web-

ster St., was indicted on a charge of theft over \$200, but less than \$10,000. He is in jail in lieu of posting a \$5,000 bond.

Maurice Tillis Jr. was indicted on a charge of burglary of a building with intent to commit theft. He is in jail in lieu of posting a \$10,000 bond.

Blademar Berrera was indicted on a charge of unlawful carrying of a weapon on a licensed premises. He is free on \$3,500 bond.

An indictment on a charge of burglary of a building with intent to commit theft was returned against 26-year-old Royce Lee Harvey, 1119 Chestnut Ave. He was in jail Thursday in lieu of posting a \$10,000 bond.

Names of two others indicted by the grand jury were not immediately available.

SHOP SATURDAY 10 A.M. — TOP 6 P.M.

# DUNLAPS

dellwood mall

## Weekend Winners

Sale!  
Men's Polyester  
Pants

Orig. to 21.00

14.90

Just received 100 Pair Handsomely styled bell loop pants in 100% polyester, solids and neat patterns, from famous Texas makers.

Sizes 32 to 30 to 40.



Sale  
Men's  
Shirts

9.99

Take your choice of long sleeve knits, woven plaids or western style shirts that were regularly 15.00. Carefree blends, most wanted colorings for fall. A good time to stock up from these choice selections and build a fall wardrobe of traditional or western looks.

Sale!  
Men's  
Sweater-  
Shirts

Reg. 18.00

12.99

Long sleeve 12 gauge acrylic knit shirt with placket and V-neck collar styles. Bold stripes with solid collar. A versatile fall casual.



Sweater Shirts  
for Boys  
9.99

Orig. 16.00, acrylic sweater-shirts come in 4 styles, long sleeve, S,M,L, and 8-20.

Footworks

V.F.P.\*  
Sandals

Reg. 31.00  
19.90



\*VERY FORTUNATE PURCHASE of this city sandal gets down to fashion business with a great price and plenty of feminine flair. Sleek, chic and pretty with all your fall fashions. In black or brown leather. Sizes 5 1/2 to 10, narrow and medium widths.

Sale!  
Ladies  
Sweaters  
and Shirts

Reg. 15.00 to 18.00

11.99

Most in demand for skirts, trousers and jeans, the chick cowl and V-neck sweaters come in great colors. Shirts to wear with everything in tiny checks, wind-downpane and colorful plaid.



Rabbit Wrap  
jacket  
Regularly 100.00  
69.90

Fantastic buy on popular wrap jacket with leather-lock tie. Warm casual or dressy, as you choose. S,M,L

Special!  
Fieldcrest  
"Pussy Willow"

Printed Sheets

Fall is a perfect time to renew a bedroom decor with specially priced print sheets, scatterings of delicate blossoms on a champagne ground.

Twin, flat or fitted	4.99
Full, flat or fitted	6.99
Queen, flat or fitted	9.99
King, flat or fitted	13.99
King cases, pr	6.99

**Fostoria**  
**Save**

**20% to 31%**  
Savings Sept. 1st-15th

Whether you're adding to your own collection, or buying gifts for others, now is the time to take advantage of a special two-week sale on fine Fostoria crystal. Many pieces, including these show, cake stand, shaker with chrome top, cheese/sugar shaker, napkin rings, footed cup, footed cup and saucer, candlestick, luncheon goblet or ice tea, footed cake plate, drip cut syrup, celery dish, Bon Bon dish, Nappy, dinner Plate and Torte plate.

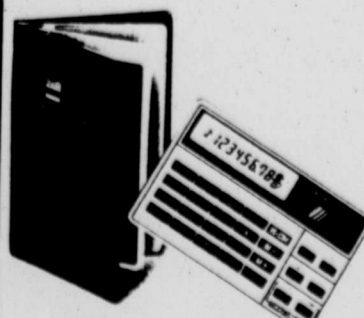
**DUNLAPS**  
dellwood mall  
shopping center

Girls  
Knit  
Pants

4 to 6x ..... 8.00

7 to 14 ..... 9.00

Girls school or dress pants of 100% Acrylic knit in deep fall colors of berry, hunter green or navy. Fashion waistband on pull-on pant style. Mock front pocket. 100% machine washable.



Model EL-8145

No larger than a credit card and just a little thicker—but it has independent memory, a storage computer and safe guard circuitry.

EL 8145	34.95
EL 850	29.95
EL 1168	94.95
EL 8039	34.95
EL 8149	17.95
EL 8153	19.95
EL 5813	39.95

and Luz Gon-  
ns, but now  
(Staff Photo  
me  
icularly, was  
currents since  
straw poll on  
s in Novem-  
nation's first  
e of an effort  
Kennedy of  
Democratic  
D-Fla., pre-  
cious" at the  
mber unless  
quivalently.  
por audience  
tt King, wife  
ader Martin  
sident called  
t aside their  
t of national  
and Jewish  
side by side  
aid. "Both  
much pain,  
oo much big-  
suffering in  
an  
fight  
drews man  
ound early  
en allegedly  
Big Spring,  
lice.  
as wounded  
y abducted  
om in Big  
forced him  
him down a  
they want-  
and credit  
lked, one of  
d made him  
ary report-  
h the knife,  
toe, receiv-  
away and  
telegram  
blishing Com-  
pany and Sat-  
urday and  
H. P.O. Box 1650,  
d, Texas  
RY  
6-Mos. 1 Mo.  
50 \$19.00 \$3.25  
50 \$13.80 \$2.30  
50 \$11.10 \$1.85  
6-Mos. 1 Mo.  
50 \$26.50 \$4.75  
50 \$21.00 \$3.50  
50 \$19.50 \$3.25  
6-Mos. 1 Mo.  
50 \$30.00 \$5.00  
50 \$22.50 \$3.75  
50 \$21.00 \$3.50  
on request. All  
scription rates





# TESCO's fuel conversion program well under way

**EDITOR'S NOTE:** Staff writer-photographer Richard Mason recently spent two days touring Texas Electric Service Co. facilities in the state. This is the first of two reports.

Story and photos by **RICHARD MASON**  
News Staff

**FAIRFIELD** — It's a simple concept.

Heated water produces steam which powers turbines. Those turbines produce electricity.

That, basically, is how Texas Electric Service Co. produces its customers' electricity.

But like other energy-related industries, TESCO and its sister companies, Texas Power and Light Co. and Dallas Power and Light Co., are experiencing a cost crunch thanks primarily to rising fuel prices, company officials contend.

The bottom line for the customer, who underwrites the utilities' operation, is higher electric rates.

TESCO officials quietly affirm these days that electric rates will never go down again.

Like 25-cent gasoline, low electric rates are destined to become a memory of the past.

And company officials say that the public does not understand the fuel situation which utilities face.

As a result, utility officials, who have drawn fire because of the rise in rates, are going public with their case.

Last week, in one of several TESCO-sponsored trips, 27 members of the media from the Permian Basin were flown to Dallas for a two-day tour of a lignite coal plant near Fairfield and the Comanche Peak nuclear power plant about 40 miles southwest of Fort Worth.

"We are interested in the general public being made aware of all the

facts concerning utilities," Winston Barclay, western division manager for TESCO, told media representatives in Dallas.

**TOO, THE COMPANY** has a message.

Company officials contend the size of increases in electrical rates should stabilize in the future after the company completes its fuel conversion program, a massive industry-wide attempt to end itself of dependence on natural gas with its spiralling costs while switching instead to lignite coal, a more stably-priced fuel.

To understand the company's rea-

soning, it helps to review the company's history.

That history is tied to fuel, another aspect of electricity.

In the United States today, natural gas, coal, and nuclear power generate the steam which is used to manufacture electricity in electric power plants.

For more than 30 years, TESCO and its sister utilities, Texas Power and Light Company and Dallas Power and Light Company, have operated gas-fired electrical generating plants to produce their customer's electricity.

Gas and oil-fired plants are located

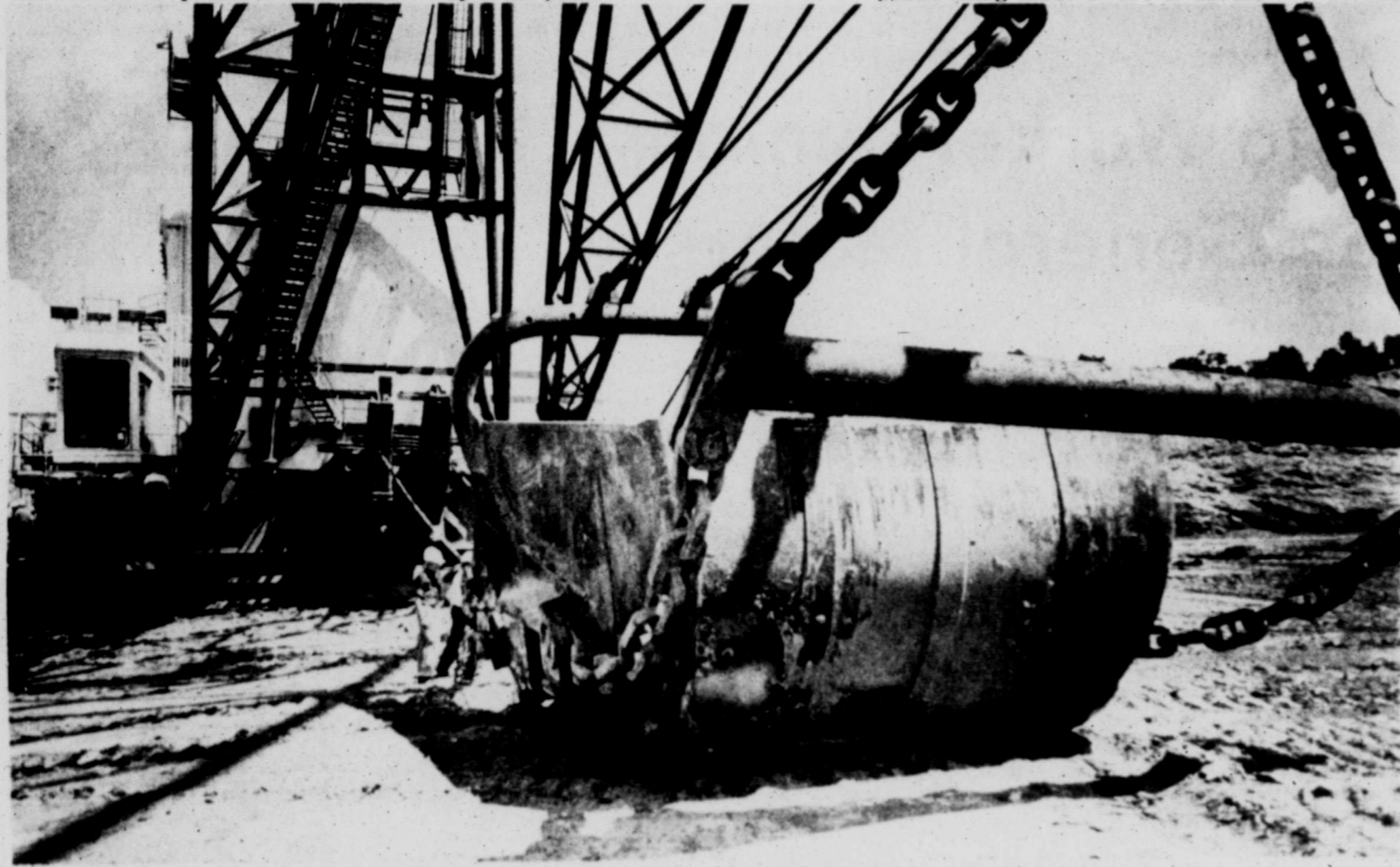
in Monahans, Colorado City, Graham, Wichita Falls and around Fort Worth.

And company officials maintain they provided for stable electric rates by signing long-term gas supply contracts which kept prices low for most of the last 20 years.

Many of those contracts, which supply about 60 percent of all the gas used by the company, are due to expire in 1980-81, according to a company financial report.

**SINCE THE 1920s**, meanwhile, the

(See TESCO, Page 7A)



A dragline bucket dwarfs workers at a lignite coal site near Fairfield. The bucket removes about 100 tons of dirt per scoop, unveiling seams of lignite coal, which is

strip-mined and transported to the Texas Utilities Company power plant at Big Brown to generate electricity.

## TESCO part of vast Texas Utilities network

Texas Electric Service Company is part of an energy conglomerate that supplies electricity to North and West Texas.

Along with its sister companies, Texas Power and Light Company and Dallas Power and Light Company, the utility is interconnected with a vast electrical network that runs from Henderson, near the Texas-Louisiana border, out beyond Wink in West Texas.

Included in that master network, which services four million customers, are the cities of Dallas, Fort Worth, Wichita Falls, Midland, Big Spring, Odessa, Lamesa and Grandfalls.

TESCO supplies electricity from Fort Worth west in the system.

All three sister utilities are owned by Texas Utilities Company System. Texas Utilities provides common stock capital and short-term financing to the three sister utilities as needed.

In addition to the three sister utilities, Texas Utilities also operates:

—Texas Utilities Services Inc., which provides engineering and other services to all subsidiaries in the company.

—Texas Utilities Fuel Company, which operates the company's natural gas pipeline system and acquires and delivers fuel gas and oil for all three utilities.

—Texas Utilities Generating Company, which operates power plants owned jointly by all three sister utilities. Those power plants include some of the lignite-coal operated facilities in East Texas and will include Comanche Peak, the nuclear power plant, when it begins operation in 1981.

—Chaco Energy Company, which is chartered by the state of New Mexico. Chaco currently is seeking leases on coal in western New Mexico and uranium for plants in the Texas area. Under current plans, coal from New Mexico would be transported to new coal-fired electrical generating plants in Texas.

One of those plants tentatively is scheduled for construction within the next 15 years on Stacy Reservoir in Central Texas.

—Basic Resources Inc., which is engaged in the development of energy resources and technology. Among projects under study are coal gasification experiments in East Texas. Ironically, technology on coal gasification has been obtained from the Soviet Union. The subsidiary also is attempting to reclaim uranium from mine tailings in Karnes County.

Electricity from the Comanche Peak nuclear power plant will be split equally between all three sister utilities. All three utilities also will split costs for the power plant.

Also under study for the future is a solar energy plant near the Monahans area.

## Mayors threaten to quit in nuclear plant protest

**BADAJOS, Spain (AP)** — Nearly 100 mayors from cities and towns in the Extremadura region of southwestern Spain are threatening to quit unless the government reverses a decision to build a nuclear power plant in their water-starved district.

The mayors claim the U.S.-made nuclear reactors will take away water badly needed irrigation water from the arid Extremadura plain, a region encompassing the provinces of Badajoz and Caceres.

About 25 mayors began a sit-in three-days-ago at the town hall in Villa de la Serena to draw attention to their demand that the government move the proposed plant. By Wednesday night, their ranks had grown to 96 mayors.

In addition to the threatened mass resignation, which could paralyze municipal services in the district, the mayors say they will join with unions in a mass weekend strike and demonstration against the proposed plant.

The government, showing no sign of giving in, has sent two companies of national police to the village.

**Back to School!**  
Regulation Gymwear Available  
**Don't Be a Benchwarmer!**  
Get your gymwear at J.C. Penney.

White polo T-Shirts  
50% cotton 50% polyester.  
Sizes 8-20

**3/3.99**

Boy's regulation  
boxer short for sport  
and swim. All-  
rounds elastic waistband  
secured with four rows of  
stitching. No fly. Color:  
white waist sizes: 24-38

**2.49**



**Shell 4.00 & 5.00**

Shell: Contrasting self fabric V-neck, hemmed arms, bust darts, straight hemmed bottom. 100% stretch nylon double knit fabric. Sizes: 30- 44. White with Blue trim.

All purpose sport short with self exposed elastic boxer waists, side leg slits. Dk. Blue. Waist sizes: 21-36

**Shorts 5.00**

For other sporting good needs, Shop the J.C. Penney Catalog. Phone: 682-9471.

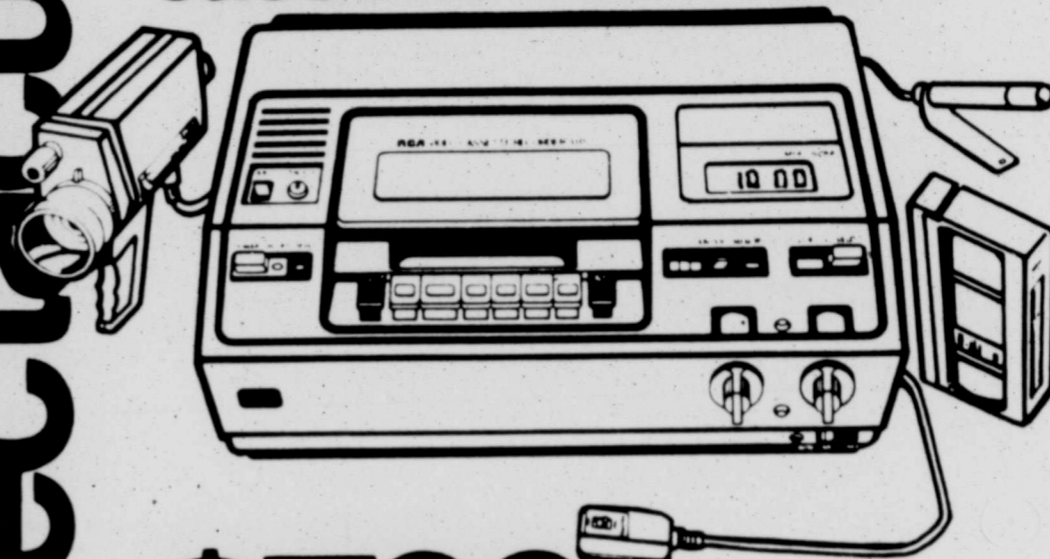
**FREE PAKING  
NEXT TO ALLEY  
BEHIND PENNEYS**

**OPEN LABOR DAY.**

This is **JCPenney**  
212 N. MAIN

## Whites Home & Auto

**Spectacular**  
Save over \$100 now on this RCA video cassette recorder!



**\$798**

**2 Days Only**

Reg 899.95  
Features four hour capability and built-in timer. Records the program being watched, records one program while you watch another and records while you're away. Camera and microphone available at additional charge. 122-9200

**16.88** RCA video cassette 2 hour recording tape. 122-9225  
Reg 19.95

**24.88** RCA video cassette 4 hour recording tape. 122-9250  
Reg 28.95



**\$398** Save over \$40

Reg 439.95  
Brilliant color performance! Features 100% solid state XtendedLife chassis and new LOW POWER CONSUMPTION—less than 75 watts! New Super Acculine picture tube. 122-9243



**\$248**

**Soundesign AM/FM stereo receiver**

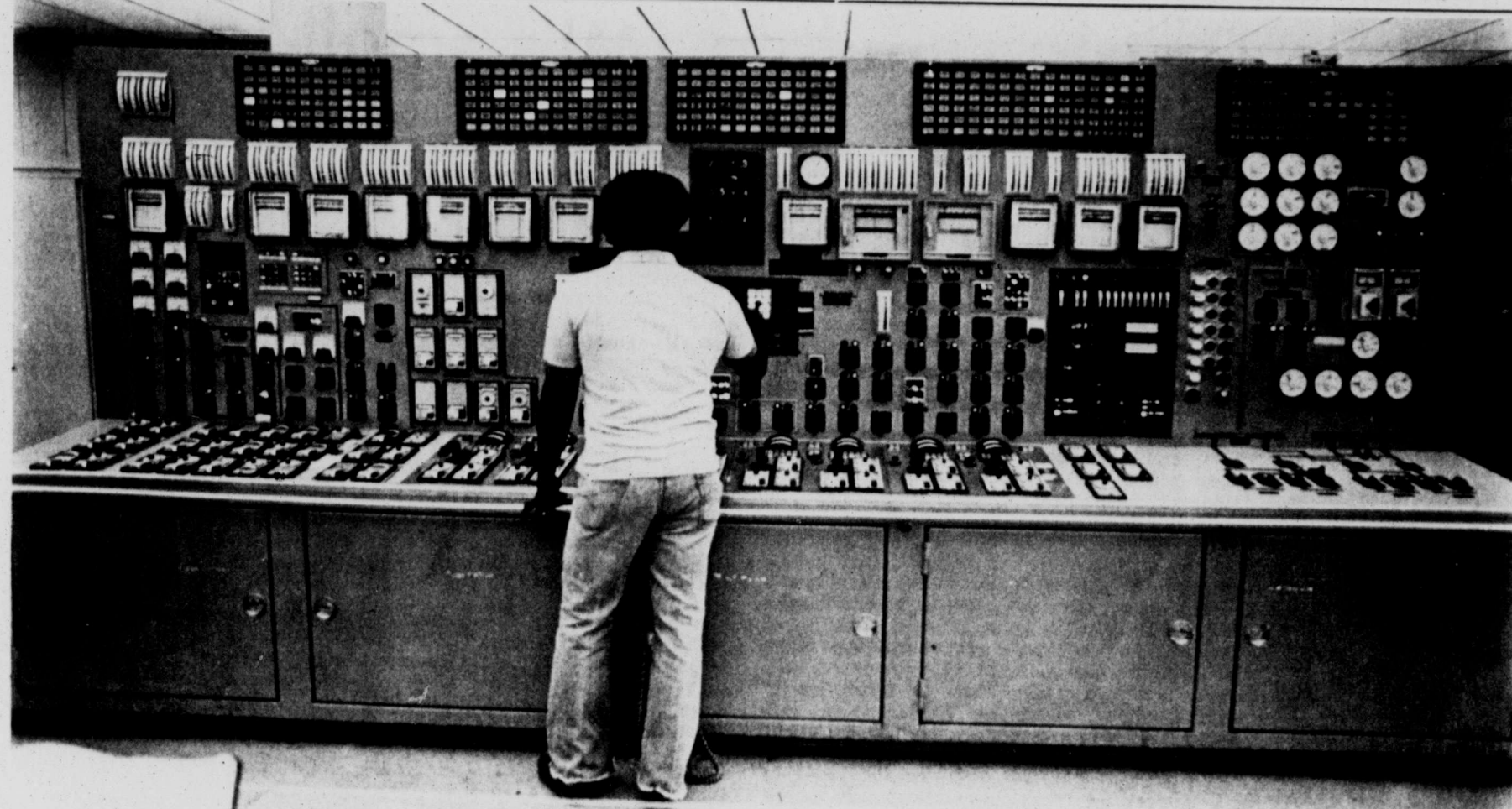
Reg 3268  
Features built-in 8 track or cassette tape recorder/player and BSR record changer. Includes speaker system, dust cover, mikes and 45RPM adapter. 123-888

Records 8 Track and Cassette

Prices effective thru September 1, 1979

**Village Shopping Center**  
3 Meta Drive  
Open 9-6 Mon.-Sat.





A Texas Utilities Generating Company employee monitors one of the control panels governing coal-generated electricity at the Dallas Big Brown plant about 90 miles south of

## Federal judge kills attempt for Philippine nuke license

The Washington Post

WASHINGTON — A federal judge Thursday threw out an attempt by the Westinghouse Electric Corp. to pry a Philippine nuclear power plant license from the Nuclear Regulatory Commission.

The decision appeared to affirm the government's right to consider health and safety questions in export license decisions, a shift in policy that could have wide repercussions in the future.

U.S. District Court Judge June Green said in a brief oral ruling that she had been unable to find the NRC "arbitrary and capricious" in delaying the license, and so had decided in the agency's favor. She declined jurisdiction in a second suit, involving a permit held up by the State Department, and deferred to the U.S. Court of Appeals.

Westinghouse had argued that the NRC and the State Department were guilty of "arbitrary and capricious conduct in excess of their authority under the Atomic Energy Act" when they decided to check health and safety aspects of the proposed reactor. The company applied for licenses beginning in 1976.

"Such considerations relate to the domestic policies of a foreign nation," Westinghouse argued. Traditional U.S. policy and the Atomic Energy Act ordered that sovereign nations must be expected to police their own health, and that U.S. government considerations must be limited to whether a proposed export is "indivisible to the common defense and security or the health and safety of the (U.S.) public," it argued.

The Philippine reactor, however, is to be built on the slope of Mount Natib, a sleeping volcano, in a known earthquake zone 65 miles west of Manila. And 12 miles away, at Subic Bay, is a major U.S. military installation where 8,000 Americans live.

It is conceivable that a safety or health risk could so threaten U.S. relations with a recipient country — or a U.S. military facility in that country — that it would jeopardize important U.S. security of defense interests such as relations with an ally or base rights," the government argued.

Since the Philippines is "a longstanding U.S. ally" and Americans live close to the reactor site on a permanent basis, health and safety considerations are justified, the government continued. Its attorneys also cited possible effects from any accident on "the global commons," or the high seas, as giving "a clear interest in insuring that the world's nations carefully evaluate activities taken under their authority."

Westinghouse applied in 1976 for a permit to export the main reactor and its steam-producing equipment, and the State Department has been pondering the national security aspects ever since. As part of this case, the department agreed to make up its mind by Sept. 28, an action Judge Green said meant the case should be reviewed after that by the U.S. Court of Appeals.

A second Westinghouse application went to the NRC in 1978, asking that the firm be allowed to export certain reactor parts and related equipment of a non-nuclear nature so that construction could proceed while the State Department deliberated.

The NRC has never authorized the export of components before the main reactor was permitted to be sent, and sees no point in starting now, the government stated.

Westinghouse sets pact

PITTSBURGH (AP) — Westinghouse Electric Corp. and two unions representing 23,900 striking blue collar workers say they've tentatively agreed on a new contract.

Details of Thursday's pact were not immediately available, but a union spokesman said Westinghouse, No. 2 behind General Electric in the U.S. electrical equipment industry, sweetened a previous contract offer.

Coming Soon!.....

SUNDAY Woman

Watch for date!

TUDOR J. GROSEV, M.D., F.R.C.S.(c), F.A.C.S.  
Diplomate American Board of Ophthalmology  
Eye Surgery and Diseases  
announces the relocation of his office at  
EYE MEDICAL CLINIC  
2701 W. Cuthbert Midland Phone 697-4166

## TESCO switching from gas to lignite coal

(Continued from Page 6A)

company has been acquiring leases to lignite coal deposits which run in a northeasterly direction across East Texas.

The three utilities, facing higher gas prices today and legal challenges to the long-term fuel contracts, are quickly switching to lignite coal and the more controversial use of nuclear energy to produce the electricity they say their customers will need in the future.

The utilities are also asking customers to equalize the lower energy costs of the past while underwriting the stable prices the company expects during the next 35 years, company officials said.

"You are refinancing the debt you had over 30 years ago," Barclay said.

According to TESCO officials, the company originally signed contracts which provided gas for electrical generation at the rate of 75 cents per million BTUs. (BTU stands for British Thermal Unit, an industry standard for measuring heat.)

Natural gas now costs more than \$2 per million BTUs, those officials maintain, while lignite, a low-grade coal plentiful in East Texas, costs about 50 cents per million BTUs.

That economic fact has encouraged

the utilities to undertake the massive construction program on lignite-fired plants to wean themselves away from natural gas-fired plants, company officials maintain.

As a result, construction costs jumped from \$50 million in 1969 to more than \$210 million in 1978, due in part to work on the new lignite plants and Comanche Peak, the company's

completion of the additional plants, each utility enjoys a surplus in reserve peak capacity of at least 30 percent, Barclay said.

What that means is that the utility could shut down one third of its power generating system and still meet the heaviest demand loads.

Barclay said the reserve capacity is only temporary and will be phased

*Company officials contend the size of increases in electrical rates should stabilize in the future after the company completes its fuel conversion program, a massive industry-wide attempt to rend itself of dependence on natural gas with its spiralling costs while switching instead to lignite coal, a more stably-priced fuel.*

nuclear power plant near Glen Rose.

BY 1983, TESCO hopes to generate equal amounts of electricity from lignite and gas.

Those fuels will contribute more than 42 percent each of all generated electricity. Nuclear power will produce the remaining 15 percent.

"We're well on our way to meeting national objectives (for converting away from natural gas)," Barclay said.

TESCO, TP & L and DP & L have drawn criticism because, with the

out in the future when some of the gas-fired plants are decommissioned.

"We have no intentions of selling any of the (gas) plants before they are decommissioned," Barclay said.

NONETHELESS, THE CURRENT construction program which the company is undergoing is one of many the utility will face in the future.

At the end of the next 35 years, the company will be lower on lignite reserves.

The Big Brown Plant near Fair-

field, for instance, consumes 20,000 tons of coal each day.

"We have enough coal to last the life of the plant," Kirby Sewell, an executive assistant for TESCO, told media members on the tour.

Then, too, technological advances eventually render the plants obsolete.

"The decommissioning of a power plant is not because it's 35 or 40 years of age," Barclay said. "The efficiency of that plant becomes less than the efficiency of newer power plants to the extent that we cannot justify them economically."

As far as generating plants are concerned, the company plans 10-15 years in the future.

Those plans are revised as power demands shift.

Conservation by customers has already postponed by five years the construction of two additional lignite-fired plants, a company financial statement said.

While company officials agree the construction is planned obsolescence, they intend the building program is necessary to maintain the electric supply at the same level.

"It's a big system," Barclay concluded. "And it's all in one pot. It's all for the future benefit of all our customers. You theoretically never finish paying for an electric company."

Coming Saturday: Nuclear power.

# SATURDAY IN THE SQUARE

## San Miguel Square, That is!

### JANIE'S INTIMATE APPAREL

#### NEW MANAGEMENT CLEARANCE SALE

Open 10-6 Mon.-Sat. til 9 p.m. Thurs.

VISA MASTER CHARGE

Upstairs in the Mall

694-7361

### FIRST SAVINGS & LOAN ASSOCIATION

IRA and KEOGH Retirement Plans at First Savings are the sure way to build for a secure retirement, and get a tax break at the same time.

500 West Wall 3303 N. Midkiff

Member FSLIC

694-2567

### JIMMY SMITH SHOES

A NEW SHOE EXPERIENCE.. by CHARM STEP shoes

Camel Navy Burgundy Black

694-4991

### COMMAND PERFORMANCE

For that precision haircut, that lets you keep on looking like you looked when you left!

Mon.-Fri. 10 a.m.-9 p.m. Sat. 10 a.m.-6 p.m.

697-3113

### #1 SPORTS PLACE

#### YMCA Football Equipment

Helmets by Riddell.....\$32.95  
Wilson.....\$21.95  
Bill Kelley.....\$21.95

Bike Shoulder Pads \$15.95 to \$21.95

Adidas - Pony & Puma football shoes

MISD PE clothes & shirts & jackets for school organizations

Shoes by Nike - Adidas - Puma - Pony

694-0551



San Miguel Square  
Wadley at Midkiff - Midland

# This Is Midland:



The city of Midland's Department of Animal Control has been located at its 1601 E. Orchard Lane address for more than 25 years, officials say, and about 8,000 animals come through the center yearly. Of that

number, about 7.5 percent are adopted, department figures show. The department employs 10 persons, four of them as animal control officers. (Staff Photo by Mike Kardos)

# Test to simulate TMI's small leak

IDAHO FALLS, Idaho (AP) — In about three months, an experimental nuclear reactor in Idaho will spring a small leak, in a test patterned on what happened at the Three Mile Island plant last spring.

It's another in a series of experiments in the Loss of Fluid Test facility at the Idaho National Engineering Laboratory in eastern Idaho. The LOFT series is designed to cope with the dangers posed when nuclear reactors lose their cooling fluids.

About the first of December, officials will launch the "small break" test.

A small leak will be simulated in the test reactor's cooling system. Within an hour, water pressure will drop from about 2,200 pounds per square inch to 1,000 psi. If uncorrected, that could lead to disastrous overheating of the nuclear reactor's core.

"Because it will take so long, there's time for

operators to do things," said Jim Solecki, LOFT director. "They can do things which will help cool the reactor. If they do the wrong things, it will hinder the cool down."

The test is a direct response to what happened March 28 at Three Mile Island in Pennsylvania. Human error at that plant turned a minor accident at the nuclear reactor into a major incident.

Part of the test will be to determine if commercial nuclear reactors need better instruments to tell operators what's going on inside the nuclear core.

The reactor used in the LOFT experiment will have far better instrumentation than was available to operators at Three Mile Island.

"We're not trying to simulate what happened there, except we're testing a small break in the cooling system," said Solecki.

The Department of En-

ergy has been running tests at LOFT for years. Last winter, experimenters caused a major loss of cooling fluid, to see how the reactor's emergency cooling system worked.

That was over in a matter of seconds. Scientists simulated a major break in the cooling system, quickly pumping out most of the water. The emergency system worked perfectly. But there was no operator judgment involved. The cooling system was trig-

gered automatically. That's one of the reasons why LOFT is moving into "small breaks" one year ahead of schedule.

"The large breaks came out so well, they answered quite a few questions. They showed that for that type of leak, at least, the plants seemed to be safe," says Solecki.

He said DOE officials asked the LOFT project to begin testing "small breaks" earlier than scheduled, particularly

in response to the Three Mile Island incident.

Actually, Solecki said a "small break" is more likely to happen to an operating nuclear reactor than the simulated "disaster" in the last test, a complete loss of coolant.

It can be something as simple as a gasket leaking, pipe splitting or a loose joint. "There's a whole different types of things that can cause a small leak in the pressurized system" Solecki said.

# Inflation affects the cost of crime

AUSTIN, Texas (AP) — A fund to repay victims of crimes in Texas will begin collecting a \$10 and \$15 fee from every person convicted of a criminal charge, Comptroller Bob Bullock said Thursday.

"The cost of crime just like everything else in today's world is going up," Bullock said in a statement.

Under a new law passed by the 1979 Legislature and effective Saturday a \$15 fee will be assessed against persons convicted of felonies and a \$10

fee charged to persons convicted of misdemeanors punishable by a jail term or fines of more than \$200. The fee, collected by the comptroller's department, will be added to other fines or costs that may be ordered by a court.

The money will be used to create a fund to compensate victims of crime.

"The fees are expected to raise more than \$205 million the next five years, including \$37 million the first year," Bullock said.

# Fan dancer Sally Rand dies of heart failure

GLENDORA, Calif. (AP) — Sally Rand, whose peekaboo fan dancing scandalized and delighted audiences for more than 45 years, died today of heart failure. She was 75.

Miss Rand died at Foothill Presbyterian Hospital in Glendora, where she had been kept alive since suffering cardiac arrest late Wednesday, said hospital spokeswoman Jane Tessitor.

The cause of death was congestive heart failure, the spokeswoman said.

The petite, blonde-haired dancer and her ostrich plumes were the hit of the 1933 Chicago World's Fair — and just about everywhere else. Until last year, when ill health forced her to curtail her appearances, she was still waving the fluffy white fans up to 40 weeks a year.

"People ask me, 'What the hell are you doing it for?'" she told The Associated Press. "Well, it's a lot better than doing needlepoint in the patio."

Born Helen Gould Beck on April 3, 1904, she started performing at age 14 and worked her way from Missouri to Hollywood in the 1920s. There, director Cecil B. De Mille cast her in "The King of Kings" as Sally Rand, a name he lifted from a Rand-McNally atlas.

While Miss Rand settled in this Los Angeles suburb, she never made it big in the movies. So she came up with the ideal of dancing in the nude with ostrich plumes to set her apart from other striptease acts.

She first performed her dance in a Chicago speakeasy in 1932, when she coined the phrase "the Rand is quicker than the eye." But it was at the Midway in the World's Fair that she really made a splash.

She took her fan dance all over the country, sometimes varying things a bit with an almost-as-famous routine using a bubble five feet in diameter.

The act periodically got her hauled into court for indecent exposure. The last time that happened was in Omaha, Neb., in 1964, when she was old enough to have been most strippers' grandmother.

# Standoff called 'fiasco'

MOSCOW (AP) — The Communist Party newspaper Pravda declared today that the U.S.-Soviet standoff at New York's Kennedy Airport over ballerina Ludmilla Vlasova "ended in a disgraceful fiasco."

"One thing is clear," the paper said in its first direct commentary on the grounding of an Aeroflot plane. "The masterminds of the anti-Soviet provocation did not manage to gain political prestige. They landed in an unenviable situation."

"Indeed, one can hardly expect anything else when one's actions cause universal condemnation."

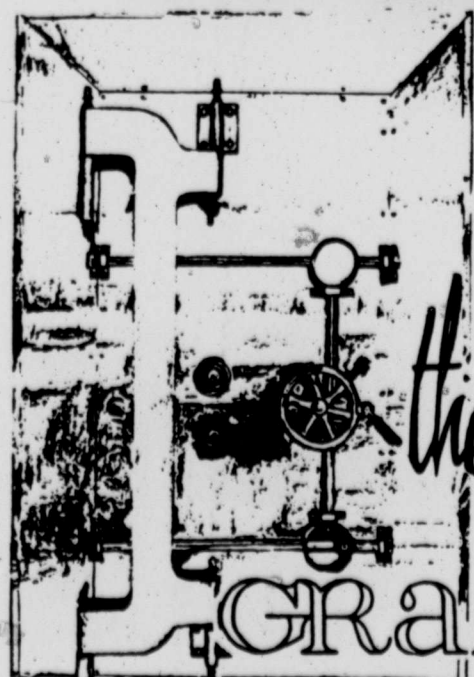
Pravda said the 73½-hour affair last weekend "needlessly burdened relations between the states" but also warned that "the incident cannot be regarded as exhausted for, as facts show, the anti-Soviet provocation was prepared by the special services of the USA and was sanctioned by the higher quarters."

# Feel the difference the one and only Sansabelt makes.



Stand apart in comfort and style in Sansabelt slacks by Jaymar. Our fall collection is awaiting your selections in; all wools, \$50-\$52.50 polyester blends, \$43.50 to \$46.50 -100% woven polyesters, \$35. In fall's most wanted solid colors.

Look What We've Got For You  
**FAMOLARE** **lovers!**  
Great new styles for fall to take you back to school, back to work, or just hangin' around.



the vault at  
**GRAMMER-MURPHEY**

SEC  
...Pre  
Mr. and  
are their  
husband  
York Ci  
Dr. D  
Luke's  
chiatry  
Medical  
Mrs. I  
the Joff  
York...  
...THE  
as rece  
and Mrs  
Rachel  
Mrs.  
master'  
the Univ  
ed sprin  
there. S  
Ross, c  
Ross...  
...MA  
ceived a  
ate of  
Texas A  
Attene  
ies from  
Len Nev  
Harvey  
ate, and  
B. Chan  
Terri C  
and Sus  
Tyler w  
Chandle  
reside in  
...FIR  
Garden  
be Thurs  
lar first  
Franc  
brian  
Library,  
wildflow  
the Wom  
Hostes  
Mrs. R. T  
and Mr  
McCart  
Hynd is  
...PAR  
NERS, T  
conduct  
rage, wh  
market,  
St.  
Procee  
Christm  
ing deleg  
and will  
dren's ac  
Min  
offe  
prot  
DES M  
(AP) —  
expanding  
taken the  
pulpit" an  
they need  
case they  
a accordi  
Moines-b  
company  
Preferr  
of Des M  
fering m  
tection to  
July 1 an  
president  
says the  
has been  
"A lot o  
been com  
announc  
Plunk. "c  
coming in  
the count  
be the typ  
ministers  
about."  
In the  
ministers  
ly involve  
services a  
tices. No  
ters overs  
recreatio  
programs  
parishone  
and famil  
nance, m  
ties, vocat  
and alco  
use.  
"A mini  
spend 25  
the day  
sessions."  
Such co  
sions can  
practice la  
to those b  
psycholog  
ors.  
"The su  
involve  
members,



to the Three incident. Solecki said "leak" is more appen to an nuclear reac-e simulated in the last plete loss of

something as gasket leak-splitting or a. "There's ent types of can cause a ank in the d system"

ne

convicted of le by a jail en \$200. The omproller's led to other e ordered by

to create a victims of ed to raise he next five ion the first



By PATSY GORDON Lifestyle Writer

...Present visitors in the home of Mr. and Mrs. D.A. Ross, 2601 Sentinel, are their daughter, Donna, and her husband, Dr. Paolo Decina of New York City, N.Y.

Dr. Decina is a psychiatrist at St. Luke's Hospital and professor of psychiatry at Columbia-Presbyterian Medical Center in New York.

Mrs. Decina is a former member of the Joffrey Ballet Company in New York...

...THE ROSS FAMILY has also had as recent guests in their home Mr. and Mrs. Carlos Ryerson and children Rachel and Alex of Houston.

Mrs. Ryerson recently earned a master's degree in education from the University of Houston and attended spring commencement exercises there. She is the former Mary Ann Ross, daughter to Mr. and Mrs. Ross...

...MARY SUZANNE CARR has received a degree, cum laude, a doctorate of veterinary medicine from Texas A&M University.

Attending the graduation ceremonies from Midland were Mr. and Mrs. Len Newsom, sister of the graduate; Harvey Carr Jr., father of the graduate, and Mrs. Carr; Mr. and Mrs. W. B. Chandler, Mrs. William R. Larsen, Terri Carr, sister of the graduate; and Susan Baker. Attending from Tyler was Mrs. Harvey Carr. Dr. Chandler and her husband, Mark, will reside in Midland...

...FIRST MEETING of the Midland Garden Club of the new club year will be Thursday, Sept. 13, instead of regular first Thursday of the month.

Frances Williams, retiring head librarian of the Midland County Public Library, will present a program on wildflowers beginning at 9:30 a.m. at the Woman's Club Sept. 13.

Hostess for the social period will be Mrs. R.T. German, Mrs. John Kelsey and Mrs. C.E. Bissell. Mrs. J.W. McCart is president and Mrs. Ike Hynd is program chairman...

...PARENTS WITHOUT PARTNERS, Tall City Chapter No. 32, will conduct Saturday and Sunday a garage, white elephant sale and flea market, all in one, at 2100 Tarleton St.

Proceeds will go for the chapter's Christmas dance, will assist in sending delegates to regional conferences and will finance the group's children's activities.

Ministers offered protection

DES MOINES, Iowa (AP) — Ministers whose expanding roles have taken them outside the pulpit are finding that they need protection in case they end up in court, according to a Des Moines-based insurance company.

Preferred Risk Mutual of Des Moines began offering malpractice protection to ministers on July 1 and company vice president Robert Plunk says the initial response has been good.

"A lot of inquiries have been coming in since the announcement," said Plunk. "They've been coming in from all over the country. It seems to be the type of thing many ministers are concerned about."

In the past, he said, ministers were primarily involved with Sunday services and choir practices. Now most ministers oversee community, recreational and social programs, and counsel parishoners on personal and family problems, finance, marital difficulties, vocational guidance and alcohol and drug use.

"A minister can easily spend 25 to 60 percent of the day in counseling sessions," said Plunk. Such counseling sessions can lead to malpractice lawsuits similar to those brought against psychologists or counselors.

"The suits frequently involve other family members," said Plunk.

Inquiry into asbestos hazards launched

WASHINGTON (AP) — A federal agency, caught off guard this year by disclosures that many hair dryers emitted dangerous asbestos, is launching a major investigation into any asbestos hazards in nearly 150 other types of products.

The Consumer Product Safety Commission is working on the wording of a request for information from scientists, manufacturers and the general public on the products. Many of the product types are known to contain asbestos in at least some brands.

However, asbestos is not considered dangerous unless its fibers are released in a way that consumers can inhale them. Thus there is not necessarily a problem with all products containing asbestos.

Breathable asbestos fibers have been associated with cancer and other diseases in numerous scientific studies. Once inhaled, the fibers can become lodged in the lungs for life.

The list of product types that the commission will publish in the Federal Register includes some very common products, including toasters, ranges, automobile mufflers, flower pots and paint. Whether any asbestos

is released in a way that people can breathe it is expected to be a subject of intense scrutiny by commission experts.

The commissioners approved in principle Thursday placing the list in the Federal Register. However, its publication is being delayed until the Environmental Protection Agency is ready to announce its own inquiry into the impact of asbestos on the environment, expected in October.

The Federal Register publication will be an "advanced notice of proposed rulemaking," which is a statement of an agency's intentions that invites interested people to respond. The comments can then be considered as the agency makes final plans.

In addition to the Federal Register request for information, the commission said it plans to compel manufacturers and importers to provide information on some products, which have not yet been designated, "for priority attention in this investigation."

The draft of the commission's Federal Register notice said, "The high tensile strength, flexibility and heat and chemical resistance of asbestos makes it adaptable to a large number of uses. Precise figures on the number of asbestos-containing products are

not available....

"Many consumer products, for example, contain asbestos paper as a thermal or electrical insulating barrier. Asbestos is also commonly used in household building products to resist rotting and to provide strength and stability," the draft said.

A Washington television station revealed this spring that various brands of hair dryers emitted respirable asbestos fibers, something the commission did not know up to then. The nationwide consumer reaction, as reflected in telephone calls to the agency, was the greatest in the six-year history of the commission.

Over the next few months, the commission put enough pressure on manufacturers and sellers that asbestos-containing models were taken off the market. Replacements, modifications or refunds were offered to millions of customers.

The draft mentions three particular problems with asbestos in household products:

—Exposure of young children is of special concern because exposure to a cancer-causing agent at an early age "presents the greatest opportunity for development of the disease."

—Fibers in the home are not readily dispersed by air currents.  
—Unlike asbestos workers, family members do not have protective clothing and engineering systems to minimize their exposure.

Advertisement for Pryor Shoes featuring a coupon for \$5 off on any pair of men's or women's shoes. The coupon is valid for Saturday, Sept. 1, 1979. Images of a men's loafer and a women's high-heeled shoe are shown.

Unique surgery scheduled for today

BALTIMORE (AP) — A 33-year-old woman who has lain motionless for five weeks since removal of a football-size tumor and a portion of her spine today is undergoing unique surgery doctors hope will offer her a chance to walk again.

Doctors performing the operation, a medical first, are replacing missing vertebrae in Jesse Thomas' lower spine with a metal prosthesis to protect her spinal cord until a bone transplant can be performed.

Mrs. Thomas, paralyzed since May, has been immobilized in a special stretcher since June, when in another medical first surgeons at University Hospital here removed a rare bone tumor the size of a football and four vertebrae from her lower spine, said Dr. Charles C. Edwards, chief of orthopedic surgery.

Surgeons planned to begin the five-hour operation, Edwards said, by placing two steel rods on the back of Mrs. Thomas' spine to keep the spinal column from twisting. They are then implanting the prosthesis designed to protect the spinal cord, part of the body's vital nerve center, and to serve as a temporary spine, he said.

The final procedure, he said, involves removal of a section of the pelvic bone and grafting it to the front of the spinal column.

"Man-made materials don't last forever as any of you who own a car well know," he said, adding that the graft would grow to connect the remaining vertebrae and serve as the permanent spinal replacement.

"There is a remote possibility she will be able to walk" as a result of the replacement, Edwards said.

"None of us can know how many of

the nerves (in the spinal cord) will survive," he said. "What we are trying to do is create the best possible environment in which the spinal cord can survive and heal."

Edwards, who engineered the prosthesis and the tools to implant the device, said the procedure "was developed to enhance and speed recovery to a good quality of life."

The alternative, he said, would be for Mrs. Thomas to remain immobilized for the rest of her life. The prognosis on such cases is not good, he said, because of skin, pulmonary and psychological problems.

Dr. Mukund Dibolkar, who assisted on the July operation and was to assist today, said that once Mrs. Thomas healed, she would be given chemotherapy to make sure the malignant tumor did not return. He said there was only a slim chance of recurrence.

Edwards said if the operation was a success Mrs. Thomas would remain

on a rotating stretcher for several weeks and could be discharged from the hospital after a few months.

A hospital spokeswoman said Mrs. Thomas was in good spirits and was excited when she learned the operation had received television coverage.

Edwards' team has performed 10 other operations involving major skeletal reconstruction, he said. All were successful.

Edwards' team has performed 10 other operations involving major skeletal reconstruction, he said. All were successful.

Advertisement for Dial Direct classified ads, featuring the phone number 682-6222.

Advertisement for Alexander's IMPERIAL PRODUCE, listing various fresh produce items like strawberries, watermelons, and squash, along with their prices and store hours.

Large advertisement for Serta Perfect Sleeper mattresses, featuring a woman in a white dress and a large mattress. Includes a 25% off discount and contact information for Littivake Furniture.

## Focus Fall '79

Lisa Welton  
University of Nebraska

Beth Welton  
Southwest Texas State University

Are ready for a fun-filled College year in Pants, Sweaters and Jackets to mix & match for that traditional look so important for fashion '79.



NO. 20 IMPERIAL SHOPPING CENTER MIDKIFF AT WADLEY



We Will Be Closed Labor Day

## DEAR ABBY

### Live-In 'bride' gift-miffed

By ABIGAIL VAN BUREN

DEAR ABBY: How about equal time to respond to that narrow-minded prude in Alaska who wrote, "Couples who have been living together neither need nor deserve wedding gifts"? She further stated that the purpose of wedding gifts is to set the couple up in housekeeping, and couples who are already keeping house already have a toaster, dishes, pots and pans, etc.

Well, I have been living with my boyfriend for two years, and we still have no definite plans to marry. One day, if I marry, I would like to have all new appliances, a complete set of dishes, matched silverware and glasses, etc. In the meantime, we're using my mother's old pots and pans, secondhand dishes, and whatever else we could scrape together. We did not go out and buy new things to set ourselves up in housekeeping.

And as for not "deserving" wedding gifts because we've been living together, that's a laugh. If relatives and friends gave wedding gifts only to bona fide virgins, the jewelry and housewares merchants would starve to death during the month of June! -- MAD IN MANHATTAN

DEAR MAD: Other live-ins wrote to protest the cold letter from Alaska. But a reader in Shaker Heights took ME to task for my lukewarm reply.

Read on: DEAR ABBY: So YOU think the parents of the kids who live together are so "thrilled" when the live-in lovers finally "make it legal," that they gladly kick in with wedding gifts.

No way, Abigail! When our daughter, who is living on a very generous trust fund from her grandparents, finally married her freeloading, live-in lover, all we gave them was our best wishes.

Had she married a

more decent man, we would have gladly given her a beautiful gift. -- NO GIFTS IN OHIO

DEAR ABBY: This is for the 34-year-old married woman who quit college after her freshman year, regretted dropping out, but thought she was too old to go back to earn a degree:

You're never too old! I started college at 37 and graduated the same year my oldest daughter graduated from high school. Three years later I took up skiing. Two years after that I started taking piano lessons. I've been teaching physical education in high school for the last six years and love it!

There are still many other things I would like to do before I settle down in a rocking chair with a pair of knitting needles. -- J. IN GRAND RAPIDS, MICH.

DEAR J.: Congratulations. In no way do I mean to minimize your accomplishments, but

I'll wager there are many readers out there who have returned to college, taken up a sport and begun music lessons much later than you, Readers?

CONFIDENTIAL TO "FLAT AS A BOARD IN NINTH GRADE": Save your money, Honey. No creams, lotions or special exercises will increase the size of your chest. At your age the only options are padding and prayer, but there's a lot of bed said for accepting yourself as you are.

Wedding bells in your future? Whether your lifestyle is bridal gown or blue jeans, Abby lays it all out for you in her booklet, "How to Have a Lovely Wedding." Send \$1 and a long, stamped (28 cents) self-addressed envelope to Abby in care of this newspaper.

## COUPON

### THE GLASS SHACK

2400 W. Front

683-0811

#### -OFFERS-

Window Glass-Glass For Furniture Tops - Shower Doors-Storm Doors & Mirrors.

This And More Available For Your Convenience on Saturdays From 9:00 to 1:00

BRING THIS COUPON FOR A

## FREE

Can of Glass Cleaner Limit one Per Customer Offer good on Saturdays Only

**Career Girl**  
"WE CARE" 682-1678  
Serving Midland for 25 years!  
329 Dodson In the Village

### Fun Tops

Embroidered Sweaters In beautiful fall shades. S,M,L,XL. \$25.

### Couple married

AUSTIN—Brenda Kay Grosse was married to Paul Rieker Goth at 7:30 p.m. Aug. 25 in Zilker Park Clubhouse. The Rev. Robert Girling officiated.

Parents of the couple are Mr. and Mrs. Will A. Grosse of 3223 Apperson, Midland, and Mr. and Mrs. Robert C. Goth of Lake Travis.

Cynthia S. Gross of Tulsa, Okla., sister of the bride, was the matron of honor.

The best man was David Cooksey of Georgetown.

After the ceremony, the couple left on a trip to New Mexico and Colorado.

### Strawberry named Scott is conceived

WASHINGTON, D.C. (AP)—The U.S. Department of Agriculture has released a new strawberry named Scott, described as suited to home gardens, pick-your-own operations, and fresh fruit shipment. It ripens in late midseason and has a mild, sweet flavor.

Scott is reported to be very productive, resistant to five races of red stele root rot and partially resistant to verticillium wilt, a serious fungus disease. The foliage is resistant to leaf scorch and powdery mildew.

Scott's large, smooth, firm berries are red through to the core, hold up well on the plants, and resist bruising. The sturdy plants are vigorous, easy to grow and produce many runners. It stems from a cross between eastern and western U.S. varieties, and should be available to home growers next spring.

### For Fall Color! GARDEN MUMS

5 1/2" pots.....2<sup>00</sup>  
Good Selection Red Clay Pots

### FERTILIZERS

Scott ● Carl Pool ● Fertilome  
16-20-0-Beauty Turf-Milorganite  
Spreaders loaned with purchase of fertilizers

### Good Selection Live Oak & Red Oak

Good Selection SHRUBS  
Many Hard-To-Get Shrubs Arriving Soon.

Fall is the ideal time for planting trees & Shrubs!

### DAVIS GARDEN CENTER AND LANDSCAPING

2820 Golf Course Rd.  
682-8046

### 9-West

Step in this wood sole with suede uppers  
Black  
Brown  
Camel  
\$30

In the Mall SAN MIGUEL SQUARE Leg By Debbie

### jimmy smith shoes

Open til 9:00 Thursday  
694-4991

OPEN LABOR DAY, MONDAY SEPT. 3

**LABOR DAY SPECIALS**

Selected specials from our transition merchandise.

T-SHIRTS.....\$8.99  
SKIRTS.....\$14.99  
VELOURS.....\$14.99  
DRESSY BLOUSES...1/2 off

Other items reduced... sportswear/blouses/skirts

321 Dodson...shop 10 to 6

WANT ADS & ACTION DIAL 682-6222

### THE TOTAL LOOK OF "COSMETINT"®

When shopping for eyewear, who cares what color your eyes are, what shade your skin is, what shape your cheekbones are?

WE DO!

At our OIC office we can find you the one lens in a thousand that's absolutely right for your skin tone, your haircoloring, your eye color even the clothes you're most likely to wear.

Come by our office today and let our LENS COSMETINT EXPERT prescribe your very own, very personal tinted lenses COSMETINT. Not just for seeing, but to be seen.

**west texas optical**  
#40 Plaza Center  
563-4242

## DINING ROOMS

TRADITIONS X by Hibriten

Tradition is timeless...tradition is classic...tradition is beauty...TRADITIONS X from Hibriten captures all the formal elegance of Old World artisans. Reflecting Italian design origins, this lovely grouping is crafted in selected hardwood solids, pecan and olive ash burl veneers of exceptional quality and other wood products...all finished in a warm, golden brown and to a satin finish. Magnificent custom details are offered such as beveled glass in china decks, gracefully canted fronts and olive ash overlays on china bases and server, open carving on chair backs and uniquely patterned pecan and olive ash burl table tops. Masterful, modern craftsmanship, beautifully grained woods, the Hibriten trademark...all combine to make TRADITIONS X the perfect look for the tasteful home.

**Littiwake FURNITURE**

3209 N. MIDKIFF (915) 694-9588 MIDLAND, TX 79702  
Open Tues.-Sat 10-6

**Patterson wins White award**

LAWRENCE, Kan. (AP) — Eugene Patterson, who won the 1966 Pulitzer Prize for editorial writing, will receive the 1980 William Allen White Foundation award for journalistic merit at ceremonies Feb. 8.

Patterson, editor and executive officer of the St. Petersburg (Fla.) Times and its Washington publication, Congressional Quarterly, is the 31st winner of the citation, named after the Emporia (Kan.) Gazette editor.

Ceremonies will be held at a luncheon on the University of Kansas campus. The citation is given annually to a journalist who "exemplifies William Allen White in service to his profession and his country."

The selection was announced Thursday by W. David Meritt, executive editor of the Wichita (Kan.) Eagle and Beacon, and chairman of the foundation's national citation committee.



Misty Fincher shows her enthusiasm after being encouraged by comedian Jerry Lewis at a recent workshop for his upcoming Labor Day Muscular Distrophy Telethon. For the 10th year Misty, a Midland radio personality, will be serving as local mistress of ceremonies for the telethon which runs from 8 p.m. Sunday through 5:30 p.m. Monday on KMOM television.

**Sears reports slight drop in sales for August**

NEW YORK (AP) — Sears, Roebuck & Co., the nation's largest retailer, reported on Thursday a 0.5 percent drop in August sales, while several other major retailers' reports indicated sales gains were slim or were just about keeping pace with inflation.

Among the biggest gainers was K Mart Corp., which recorded a 13.2 percent jump in sales over the August 1978 level. But consumer prices are running more than 11 percent ahead of a year ago, eroding much of the increase.

Sears, whose receipts have been running consistently behind those of a year ago — in part because of changes in merchandising strategies — had sales of \$1.516 billion in the four weeks ended Aug. 25. A year ago, August sales totaled \$1.524 billion.

K Mart, the second-largest general retail chain, tallied sales of \$917 million, up from \$810 million, while third-ranked J.C. Penney logged a 3.1 percent sales gain. Penney's sales came to \$874 million, against \$848 million last August.

Penney said "catalog sales were very strong," but overall, "August results reflected continued consumer caution."

The Friends of the Library invite the public to a reception honoring **FRANCES WILLIAMS** Retiring Librarian and to introduce **JOHN DEATS** New Librarian

FRIDAY Aug. 31 3:30-5:00  
301 W. Missouri MIDLAND COUNTY LIBRARY

**Furr's Family Kitchen wants to help you with your Party**

**Choice of 2 hot entrees and two cold salad selections**  
(selections vary in each locale)

Serve 10 for only	19.95
Serve 20 for only	36.95
Serve 30 for only	51.95
Serve 40 for only	63.95
Serve 50 for only	71.95

The bigger the bunch The better the bargain  
**Advance arrangements and deposit are necessary.**

Offer at the following Furr's SM Locations

Located at:  
2208 N. Big Spring in Midland

**DR. NEIL SOLOMON**

**Lump on breast not always cancer**

Dear Dr. Solomon: For the past few weeks, my nine-year-old daughter has had a lump on one breast. My doctor tells me it's normal, and that we should just wait and see. I can't be as calm as he is, and I feel something should be done. What would you suggest? — Mrs. D.S.

Dear Mrs. S.: I would suggest you follow your doctor's advice. There are many things that can be done, but they may lead to a lifetime of regret.

With the onset of puberty, breast development in girls often begins on one side only, and may continue in that fashion for a year or more. The lump or nodule you noticed is most likely the beginning of such breast development, and should disappear as development continues. If in these circumstances a biopsy is done, the result may be a cosmetically abnormal breast. Breast cancer is rarely found in premenstrual girls and generally can be ignored as a cause for breast lumps.

On the other hand, tumors of the soft tissue, although rare, may occur at any age. If there is still some uncertainty about this after a few months, you may wish to ask for consultation with a pediatric endocrinologist. It might be worthwhile, if only to relieve your anxiety.

Dear Dr. Solomon: Why is it important to have protein in our diets? And how can I be sure that our meals include enough protein? — Mrs. R.L.C.

Dear Mrs. C.: Protein is required throughout life for the maintenance and repair of body tissue. It is essential for normal growth in children. Protein also helps make hemoglobin, which carries oxygen to — and carbon dioxide away from — the cells; forms antibodies to fight infection; and supplies energy. Important sources of protein include meat, poultry, fish, milk, cheese, eggs, dry beans, dry peas, and nuts.

Cereals, bread, and fruits and vegetables provide relatively smaller amounts of protein. However, in combination with animal protein (taken at the same meal), their protein value is enhanced.

Dear Dr. Solomon: Why is alcohol considered to be a depressant? It seems to me that it acts as a stimulant. — Don.

Dear Don: Alcohol may appear to be a stimulant since it reduces inhibitions and enables a person to behave more aggressively than he or she ordinarily would. Physiologically, however, alcohol decreases the speed of bodily functions, including muscle contractions, digestion, thought processes, and reaction time, and thus is very much a depressant.

**Fall Expressions**

**LYNDA'S LABOR DAY SPECIAL**

EARLY FALL CO-ORDINATES  
By L & K (Lucky Tops)

**25% off**

- Mauve
- Blue
- Navvy
- Red
- Pants
- Blouses
- Skirts
- Jackets

Always in Fashion At

**Lynda's**  
House of Sportswear  
118 NORTHLAND SHOPPING CENTER  
NORTH "A" & W. SCHARBAUER  
684-4631

**FAMOLARE lovers!**

BRICK **\$35**

TAN **\$47**

**EARL MATNEY Shoes**

Store Hours: 2509 W. OHIO 9:30 a.m.-6 p.m. 682-9691

Continuing our **20% OFF THE REGULAR PRICE**

**Sale**  
extended through Sat; Sept. 1

**OPTIC boutique**

Prescription and non-prescription glasses  
**"Everybody's putting us on!"**

Fashion Eyewear Consultants will be on hand to assist you in your selection.

No. 3 Plaza Center 683-7282 Corner of Midland, Texas 683-7284 Wadley & Garfield

**Registration for YMCA swimming classes today**

Registration for fall swimming classes at the Alamo YMCA will be from 5 p.m. to 7 p.m. today and 10 a.m. to 1 p.m. Saturday. Classes will begin Sept. 10.

Swimming lessons for pre-school age children are offered in the mornings or afternoons on a Monday and Wednesday or a Tuesday and Thursday weekly schedule.

For school-age children, all classes will be in the afternoon.

Classes for intermediate and advanced intermediate swimmers start at 5:10 p.m.

Advance swimmers will conduct their class at 6 p.m.

Fees for swimming classes are \$4 for Y members and \$14 for non-Y members.

Further information concerning these classes may be obtained by calling 694-2528.

**Farm Bureau to move site of '82 convention**

PARK RIDGE, Ill. (AP) — The board of directors of the American Farm Bureau Federation has voted to move its 1982 convention from San Francisco because that city's board of supervisors supports boycotts of certain farm products.

The federation said Wednesday its decision was prompted by a vote of the board of supervisors in June supporting boycotts called by the United Farm Workers, led by Cesar Chavez. The UFW has asked consumers to stop buying iceberg lettuce and Chiquita bananas.

The boycotts are part of a strike against California lettuce growers, now in its seventh month. One lettuce firm, Sun Harvest, is owned by a company which also owns Chiquita.

Farm Bureau President Allan Grant said the board of supervisors' position "has simply undercut the base of a San Francisco convention."

"Thousands of California farm families who have for very good reasons developed the strongest antipathy towards the UFW boycott won't be coming to San Francisco," Grant said. "And across this land there are thousands more who will stay home."

**FURR'S FAMILY KITCHEN**

**FAMILY STYLE MEALS**

PRICES EFFECTIVE THRU MONDAY, SEPT. 3 1979

**FRIED FISH SPECIAL**

**TACKLE BOX**  
8 PIECES OF ENGLISH BATTERED WHITE FISH DEEP FRIED TO A GOLDEN BROWN. FEEDS TWO OR THREE PERSONS **\$2.69**

**TREASURE CHEST**  
12 PIECES OF ENGLISH BATTERED WHITE FISH DEEP FRIED TO A GOLDEN BROWN. ENOUGH TO FEED A FAMILY OF FIVE. **\$4.69**

**Labor Day Special!**

A selection taken from our stock of beautiful

**LAMPS**

**1/2 Price**

**Decorating Center**

1608 N. BIG SPRING 684-7525  
OPEN 10 TO 5 OPEN LABOR DAY

**"GREEN TREE REPORT"**

GRAND OPENING-GREAT SUCCESS over 500 in Attendance

Remaining Lots Available For Individual Purchase-Approximately 170 (out of 403)

Sales Office open-11:30-1:30 4:30-6:30

**GREEN TREE IS WHERE YOU WANT TO BE!**

Offered by Word-Sherrill Realtors  
683-7002 694-3391

**LABOR DAY SPECIALS!**

**CRISPY GOLDEN BUCKET OF CHICKEN**

9 PIECE BUCKET . . . \$3.39  
15 PIECE BUCKET . . . \$5.39  
21 PIECE BUCKET . . . \$7.49

Located at 2208 N. Big Spring in Midland

**Furr's SUPER MARKETS**

**BARBECUE RIBS**  
Tender, succulent . . . smothered in our own special sauce **\$2.89 LB.**

# Drug abuse program will open doors Saturday

## Goal reached — and more

By PATSY GORDON  
News Staff

Its goal has more than been reached and the Midland Palmer Drug Abuse Program will open its doors Saturday in the Tall City.

According to Giffert Alstrin, chairman, total contributions amounted to \$645 more than the goal of \$50,000 set for the first year.

Counselors will resume their duties at 10 a.m. Saturday at offices located in two Midland churches, the First United Methodist Church, 300 N. Baird St., and Episcopal Church of the Holy Trinity, 1412 W. Illinois Ave.

Bob and Michele Savage of Houston will serve as directors of West Texas Central, which encompasses Midland PDAP, and will include Odessa when that city's program gets under way, said Alstrin.

Sarah Cross of Dallas will be a junior counselor at the Episcopal Church, which will handle the treating of the 13-17 age group. Another junior counselor is in the process of being secured, Alstrin explained.

Savage will be head counselor at First United Methodist Church, which will treat drug-alcohol abusers ages 17 and up, said Alstrin.

The \$50,645 will pay expenses for the family-based program for the first year, including sa-

laries for the four trained counselors, office help and the cost of treating each young person.

Treatment includes counseling for both the abuser and his parents. Local organizers hope once families get involved in the program, they will want to help support it. According to Alstrin, "the 1977 budget of PDAP in Dallas was \$177,000, and approximately 70 percent of that amount was raised by parents and youths in the program, with philanthropic organizations picking up the remaining 30 percent."

The services of PDAP are absolutely free, however.

In commenting about the goal being reached on time, Alstrin said, "Less than three months ago, a group of Midlanders invited Bob Meehan, the founder of the Palmer Drug Abuse Program, to the Tall City to tell us about PDAP and how it could benefit our children."

Consequently, the people of Midland became aware of the severe drug problem here and the need for an alternative way of life for our youth.

Their response to this need by helping us reach our goal in bringing

PDAP to Midland goes to show how much people of Midland really care."

Alstrin stressed the fact that this money collected "only got them here. The work is yet to come."

Alstrin said Meehan expects "to have 12-19 people on the staff a year from now. That means the budget probably will be over \$100,000 for next year."

Meehan was in Midland Thursday night to hear the good news that the program will be a reality here.

The program is patterned after the 12-steps of Alcoholics Anonymous and involves five basic actions on the part of the participant.

They are: staying sober or undrugged for 30 days, admission and definition of the problem, confession of wrongs, making amends and helping others.

Anyone interested in donating to the program may send a check or money order payable to "PDAP Midland" in care of Western State Bank, Giffert Alstrin, trustee, P.O. Box 4157, Midland, 79701.



Palmer Drug Abuse Program founder Bob Meehan, left, accepts a \$2,500 donation from Western State Bank Chairman John B. Billingsley. At the time of this contribution's receipt, \$48,800 of the program's \$50,000 goal in Midland has been collected. (Staff Photo)

# Two area residents named to council

Austin Bureau

AUSTIN — House Speaker Bill Clayton announced today the appointment of two Midland area representatives to the Texas Energy and Natural Resources Advisory Council.

Clayton also appointed former State Rep. Gene Hendryx of Alpine to the Texas Conservation Foundation.

State Reps. Joe Hanna of Breckenridge and Tom Craddock of Midland were appointed to serve on the newly-created advisory council.

Hanna is chairman of the House Natural Energy Committee and Craddock is chairman of the House Natural Resources Committee.

The 21-member advisory council is charged with assessing energy and natural resource policies of the state and recommending legislation implementing those policies, development of alternative energy technologies and determining the impact of federal actions on the energy and natural resources policies of the state.

Hendryx, an Alpine businessman, was reappointed to a six-year term on the conservation foundation.

The foundation was established to encourage gifts to the state, to survey and collect data concerning natural resources and areas of Texas, to make proper use of grants and funds and to make acquisition of property to benefit the state.

# New orders decline for second month

WASHINGTON (AP) — For the second month in a row, new orders for manufactured goods declined in July, the Commerce Department says.

Factory orders dropped 2 percent to \$139.7 billion in July, giving fresh evidence of the economy's sluggishness, the Commerce Department reported Thursday.

The July decline in orders for manufactured goods was attributed primarily to declines in the transportation equipment and electrical machinery industries, the Commerce Department said.

Auto sales were particularly sluggish, an indication of consumer wariness of new purchases because

of the earlier gasoline crunch. Aircraft orders also were off.

Overall, orders for durable goods dropped 4.6 percent to \$72.5 billion in July, with orders for non-durable goods climbing 1 percent to \$67.1 billion, the department said.

The July decline was the biggest drop in the seasonally adjusted total since orders fell 6.2 percent in April, when independent truckers were on strike.

Meanwhile, factory inventories grew 1.3 percent in July to \$217.1 billion, which was about equal to the average increase in each month of this year. Shipments were \$140.4 billion in July, up 1.1 percent from June.

Spray now for chinch bugs and cutworms in lawn & spray the oak trees and pecan trees for black tree aphids and bag worms.

TEXAS SPRAYING LICENSE NO. 1351

**RICHARDSON NURSERY**

2307 N. BIG SPRING 682-3031

**FINAL CUT**  
75% OFF  
ALL SUMMER  
Dresses-Skirts  
Pants  
Long Dresses  
Etc.  
66%  
Cotton Blend Lingerie  
Blouses

Thru Sept. 8  
Panty Hose  
Sheer to Waist



Reg. \$1.09 Now 87¢  
Knee Highs  
Reg. 2 pr. \$1.09  
Now 2 pr. for 87¢  
by  
The Famous  
Todays Girl  
The No. 1 \$1.09 Brand

Arriving Daily  
For Fall  
For Hot 78° Temperatures  
T-Shirt Dresses  
\$37 up  
(cotton Blend)  
Umbrella Skirts  
\$29 & up  
Blending T-Shirts  
Cotton Blends  
ALSO  
Dresses \$43-150  
Separates \$14-90  
Famous Brands  
Sizes 3-13, 6-20

Janette  
Blatherwick's  
Since 1951  
Formerly Gibbs-Blatherwick  
Across From Commercial Bank  
In The Village

**WEEK-END TELEVISION SPECIAL**  
**BE READY FOR THE FOOTBALL SEASON**

**Thornton's**  
OPERATED BY P.H. HIRSCH & CO.  
an INTERCO company

**NFL MAGNAVOX**

**TRADE-IN FOR TOUCH-TUNE**

**COMPUTER COLOR 330™**

**25 INCH DIAGONAL COLOR CONSOLE**

Regular \$809.95  
YOUR CHOICE  
**768<sup>00</sup>** WITH TRADE

**FREE** WHILE THEY LAST LIMITED QUANTITY

**NFL**

432 Page OFFICIAL NFL RECORD MANUAL yours, just for coming in and touching Magnavox Touch-Tune Color Television

Official 1979 NFL National Football League Record Manual

- Convenient Touch-Tune™ System
- High Resolution Filter
- Videomatic® System
- 100° In-Line Tube
- Advanced Solid-State Chassis
- Improved Sound System
- 20-Channel Cable Capability

**Model 4816** — beautifully crafted Mediterranean styled 25" diagonal TV. On concealed casters.

**Model 4814** — 25" diagonal console in distinctive Early American styling. On concealed casters.

WANT A  
22

play  
Pers  
at 16  
Mon  
Phot

Cu  
car

HAVA  
influe  
America  
Cuba i  
the West  
tion.  
The ap  
the fore  
prepara  
The U  
The Org  
finding  
Venezue  
President  
Argen  
the Rio  
countri  
In a w  
Minister  
peoples,  
peoples,  
and their  
economy  
Malmi  
the non-a  
"Those  
known e  
Malmi  
"colonia  
dominat

Ca

VICTO  
seized T  
Columbi  
Patrol  
eight shi  
Fisherie

5

JOHA  
Mozamb  
as milit  
The C  
the first  
with gue  
home in

7

PRINC  
plane wi  
its term  
The ot  
them cri  
the Prin  
Vancouv  
Rupert h  
The m  
located o  
passeng  
He sai  
seaplane  
The pla  
Alice Arr  
Futher

Te

SKOP  
complet  
Christia  
The c  
Stobi. T  
Macedon

S

BALB  
Panama  
obstruct  
The ac  
and the s  
Gaillard

S

SAN S  
policem  
One of  
terrorist  
The ot  
than 60





# Author not surprised by death of lord; Used theme in book

CHICAGO (AP) — Author Bill Granger says he wasn't surprised by the assassination of Lord

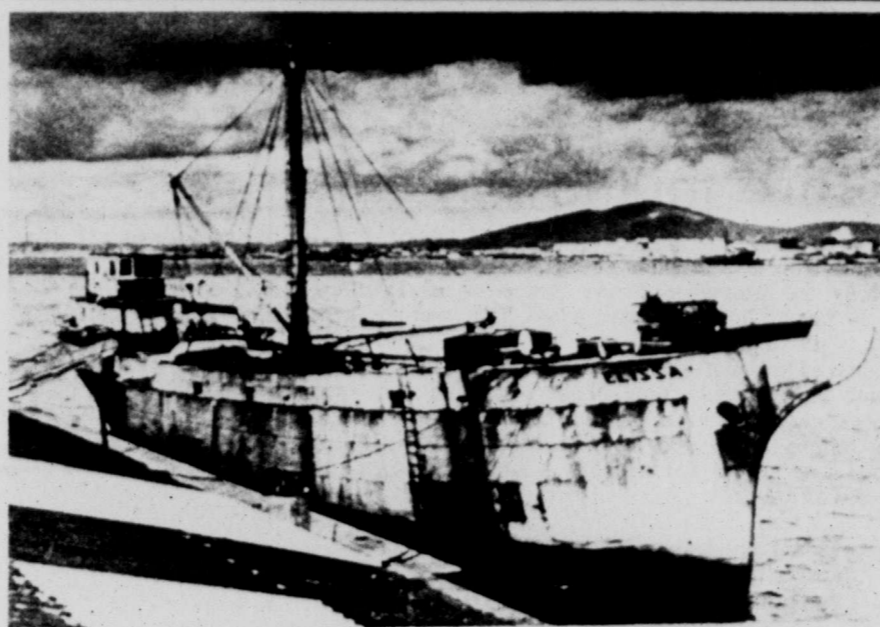
Lord Mountbatten. Granger's just-released novel "The November Man" turns on the attempted assassination by the Irish Republican Army of a prominent English lord aboard a Dublin-bound boat.

Lord Mountbatten, 79, a British war hero and cousin of Queen Elizabeth, was killed Monday in an explosion that demolished his sailboat off the coast of Ireland. IRA terrorists claimed responsibility.

"Lord Mountbatten's death didn't surprise me. But understand that I'm talking about this dispassionately — as a newspaper reporter," said Granger, a journalist-turned-novelist who undertook the story in his first fictional effort.

"Everybody says it, but fact is stranger than fiction. After covering the Irish civil war for some time, you begin to realize that terrorism logically has to escalate," the 38-year-old author said Wednesday.

"The thought that they'd strike at a member of the Royal family did not seem outlandish when I conceived it," he said.



The three-masted merchant ship Elissa, at top in present condition, will be restored to its 19th century condition, bottom, as a sailing vessel by the Galveston Historical Society. The ship, originally built in 1877, will cost a million dollars to restore over two or three years. (AP Laserphoto)

# Will asks orchestra to disband

LOS ANGELES (AP) — In his will filed in Superior Court, Stan Kenton asked that his Stan Kenton Orchestra be disbanded forever. Kenton, part of the "Big Band" era of the 1940s, died Aug. 25 of a stroke at age 67.

He left his estate, valued at \$525,000, to his three children.

One third of the money will go to his daughter Leslie Brooke Smith, 38, and the remainder will be put into a trust. The income from the trust will be divided equally between his son, Lance Kenton, 21 and his other daughter, Dana Lynn Kenton Padilla, 22.

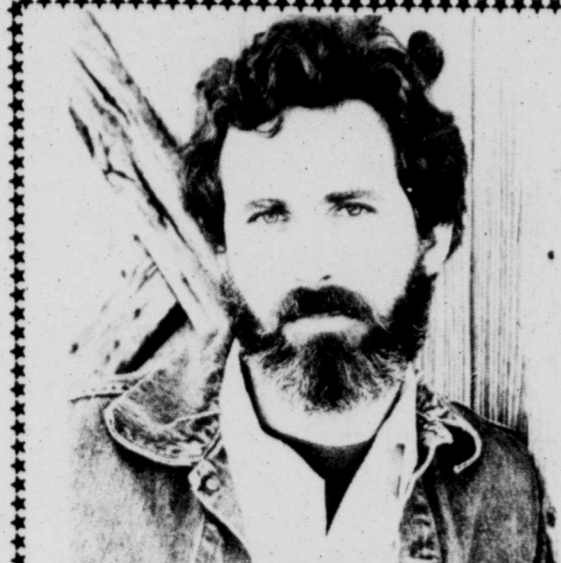
## Record & Tape Special At The Grapevine

MFG. LIST	OUR REGULAR LOW PRICE	Fri. Sat. Sun. Special Price
6 <sup>98</sup>	5 <sup>99</sup>	3 <sup>98</sup>
7 <sup>98</sup>	6 <sup>77</sup>	4 <sup>98</sup>
8 <sup>98</sup>	7 <sup>47</sup>	5 <sup>98</sup>

Higher priced Albums & Tapes \$3.00 off Mfg. List

Every Record and Tape in Stock is included. None will be held back.

#8 Plaza Center (Next to Skillerns)  
Mon.-Sat. 1-9  
Sun. 1-6 684-4211



**Joseph Brunelle**  
Vocalist-Guitarist  
Appearing  
WED. THUR. FRI.  
Evenings from 8:30-12:30

Spuds  
Studio 2215 Club  
2215 N. Big Spring St.

# Newspaper may be kin to marijuana

YUMA, Ariz. (AP) — The day may not be far off when the newspaper on your doorstep will be made from a plant that looks like marijuana, grows faster than wood and is cheaper than both.

Newspaper publishers who have been plagued by newsprint shortages are awaiting the harvest of kenaf — a little-known crop touted as a major pulp source of the future.

The plant is described as "a 14-foot buggy whip with hibiscus blossoms" and it could grab a healthy share of the newsprint market from shortage-prone wood pulp, according to the publisher behind the Yuma experiment.

Depending on the results of an upcoming commercial test of the soon-to-be-harvested crop, widespread use of kenaf is likely "within perhaps five years," said Donald Soldwedel, publisher of the Yuma Daily Sun.

Soldwedel also is president of Western Newspapers Inc., a member of the American Newspaper Publishers Association Board of Directors and chairman of the association's newsprint committee.

Like many publishers, he has been forced to reduce the number of pages in his editions periodically because of newsprint shortages.

His longtime interest in the paper-producing potential of kenaf was shared by Yuma farmer Walt Kammann, who last year agreed to plant 30-acres of the non-wood, annual fiber plant.

In a speech at a recent ANPA conference, Soldwedel listed the advantages of supplementing wood-pulp with kenaf.

—The increasing demand for wood in new as well as traditional uses will continue to drive supply down and price up;

—The future will bring continued ecological demands for paper recycling and kenaf fiber may make a singularly superb pulp;

—Kenaf can be grown anywhere in the continental United States, which would promote construction of regional

The Audrey Walker School of Dance  
Is proud to announce enrollment for fall classes in  
**CLASSICAL BALLET AND JAZZ**  
Classes Start Sept. 4  
Also for the First Time offering TAP and a FIFTH GRADE JAZZ class.  
ADULT CLASSES in BALLET, EXERCISE, JAZZ and TAP.  
Call now to insure placement.  
682-9761 or 694-2458  
3320 N. BIG SPRING  
4 Years and Up - Beginners to Advanced

**Best Western**

## SPECIAL SUNDAY BUFFET

11:30 a.m. to 2:00 p.m.

- Baked Ham
- Barbecued Ribs
- Baked Chicken w/ dressing
- Candied Yams
- Green Beans
- Mashed Potatoes
- Peach Cobbler

**3<sup>95</sup>** all you can eat **1<sup>75</sup>** under 12

# Furr's BAKERY

"FRESH FROM FURR'S OWN OVENS"  
PRICES EFFECTIVE THRU SEPTEMBER 2, 1979

## ASSORTED COOKIES

**\$1.59**

BOX OF 30

Two Locations To Serve You:  
2208 N. Big Spring  
Midkiff & Cuthbert

HAPPY HOUR DAILY TIL 2:30 ALL SEATS \$1.50 DOORS OPEN AT 1:30

**UA CINE 4** PHONE • 697-3204  
3207 W. Cuthbert

HAPPY HOUR DAILY TIL 2:30 ALL SEATS \$1.50 DOORS OPEN AT 1:30

1:50-3:40-5:40-7:45 9:45

# OUR BROTHERS

SPECIAL LIMITED ENGAGEMENT

—Charles Chaplin, L.A. Times

MEL BROOKS' **BLAZING SADDLES**

SPECIAL LIMITED ENGAGEMENT OF THE FUNNIEST MOVIE EVER MADE

2:00-4:20-7:10-9:30

# THE LINE BETWEEN LOVE AND DEATH IS THE BLOODLINE.

SIDNEY SHELDON'S BLOODLINE

Paramount Pictures Presents  
A DAVID V. PICKER SIDNEY BECKERMAN Production  
Starring AUDREY HEPBURN BEN GAZZARA JAMES MASON CLAUDIA MORI IRENE PAPAS MICHELLE PHILLIPS MAURICE RONET ROMY SCHNEIDER OMAR SHARIF BEATRICE STRAIGHT and GERT FRÖBE as Inspector Max Horning  
"SIDNEY SHELDON'S BLOODLINE"  
Produced by DAVID V. PICKER and SIDNEY BECKERMAN  
Directed by TERENCE YOUNG Screenplay by LAIRD KOENIG  
Based on the Novel by SIDNEY SHELDON  
Music Composed and Conducted by ENNIO MORRICONE  
A PARAMOUNT PICTURE

1:40-3:30-5:25-7:40-9:45 HELD OVER!

You can't turn this mob over to the cops.  
They are the cops.

**HOT STUFF**

5TH BIG WEEK! 1:45-4:20-7:15-9:50

NICK NOLTE  
MAC DAVIS

"Wait till you see the weird part."

**NORTH DALLAS FORTY**

LET THE SUNSHINE IN... BUT NOT THE HEAT, GLARE OR FABRIC FADE!

## Scotchint

Sun Control Films by 3M Applied to the inside of windows, this unique product stops up to 75% of the sun's heat...82% of its glare...81% of its fabric fading ultraviolet rays! Let us show you the comfort and savings possible with this unusual development from 3M company. No obligation.

**3M** ENERGY CONTROL CENTER  
W. HWY. 80 Midland  
563-1642 or 697-2266  
©1971 3M CO., ST. PAUL, MN 55101

# BUTTERCRUST BREAD

SLICED 1 LB. LOAVES

## 2 89¢

FOR

**Furr's SUPER MARKETS**







# Talk is cheaper than you think.

## How to save up to 60% on Long Distance.

If you're one of those who thinks a Long Distance call is a luxury, read on.

The trick to saving money while keeping in touch with family or friends is knowing when to call, and calling One-Plus.

## Call between 11pm and 8am.



Before you groan about how you can't stay up late or see straight in the morning, think about it.

You'll be saving up to 60%! If you're a night person, you probably don't start counting sheep until after 11 pm anyway. And if you've got friends and family to call out west, it'll be a perfectly civilized 9 or 10 pm

when their phone rings.

If you like to see the sun rise, and you know folks back east, it'll be an hour later on their end.

Call out of state anytime before 8 am and you can talk all day if you want and still save 60%. In-state calls are also greatly reduced. Just remember to dial One-Plus.



## Reach out on the weekend and save up to 60%.

Now this is a stroke of good luck: a really cheap Long Distance phone call just when you may want it most. Call any time between 11 pm Friday and 5 pm Sunday and really save. For instance, dial One-Plus and you can make a ten-minute call to Atlanta for only

\$1.55. That's almost worth making a new friend in Atlanta for.



## Even on weeknights, save up to 35%.

Sometimes you can't wait for the weekend. Or you don't want to. But you can still save plenty Sunday through Friday from 5 pm to 11 pm. Think about what a bargain it is to call someone 1900 miles away, talk it up for ten minutes, and only run a tab of about \$2.00. There's just no other way to get close to a faraway friend or relative so quickly, so cheaply.



## On weekdays it's still a bargain.

Here's a surprise. From 8 am to 5 pm, a Long Distance chat still doesn't cost very much. A five minute call out of state, to anywhere in the continental U.S. is only about \$2.50 when you dial One-Plus. Think of how good the sound of your voice would be to a friend (not to mention your mother!) right in the middle of the day.




## Dial One-Plus and watch the savings add up.

Even if you're not a regular do-it-yourselfer, do-it-yourself when you call Long Distance. The savings are significant when you dial "one" plus the area code plus the phone number, instead of having the Operator do it. It's also faster. If you don't know the area code you need, just look in the front of your Telephone Directory. (Also check your telephone directory for exact discounts and conditions on out-of-state and in-state calls.)

## Take advantage of the Holiday discount and celebrate.

Along with the flag-waving, fetes and parades, pick up the phone and call Long Distance. Our regular evening discount rates apply all day on Christmas, New Year's Day, Labor Day, July 4th and Thanksgiving. If the holiday falls on a weekend, you get the lower rate. Isn't this the perfect time to ring up friends and family?

# Reach out. Reach out and touch someone.

 Southwestern Bell

SEC

Toronto safely h

N

NEW on cent madnes tional s tournam The pl Nastase ends of Umpire penalize ing play 10,549 th Thursda decision

THEY They cl feet. "It ma thing I'v the top t Finally resumed

Se 13

SAN A chalked here Thu as he pit 4-3 Texas Antonio The vi game lea two gam son. The Cu a best-of overall ti the Texa night he broadcas Cub Gene by-play o will be 7: San An race by t Midland second h game of playoff st of the M set will Shrevepo pions in a determin champion Mike T

Se

By They fir tical 9-7 behind t champion Seattle S Chargers their own each othe Football underway Actually season sta Detroit L Bucs. In Sund visits New Louis, Gr the New Y phia, San sota, Hou Los Ange









# SCRAM-LETS

That Intriguing Word Game with a Chuckle

Edited by CLAY R. POLLAN

1 Rearrange letters of the four scrambled words below to form four simple words.

TOPGIS

NIKTS

TOHOB

IRESUC



Overheard: "He was the first one to cross a chicken with a silkworm, and get eggs with \_\_\_\_\_ in them."

2 Complete the chuckle quoted by filling in the missing word you develop from step No. 3 below.

2 PRINT NUMBERED LETTERS

3 UNSCRAMBLE FOR ANSWER

Overheard: "He was the first one to cross a chicken with a silkworm and get eggs with STOCKINGS in them."

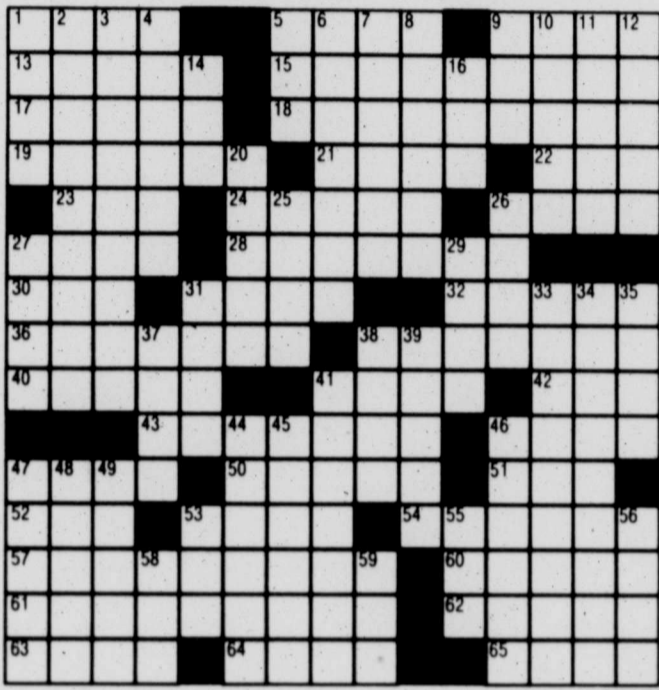
SCRAM-LETS ANSWERS

# DAILY CROSSWORD PUZZLE

Edited by Margaret Farrar and Trude Jaffe

© 1979 Los Angeles Times Syndicate

- ACROSS
  - 1 Salt-water fish
  - 5 Spotted rodent
  - 9 Give forth
  - 13 Ran swiftly
  - 15 Foreshadow
  - 17 Fluffed
  - 18 Woodworker
  - 19 Franklin
  - 21 Variegated
  - 22 Bad — German spa
  - 23 Period
  - 24 Thespian
  - 26 Sit for a portrait
  - 27 Laboratory item
  - 28 Gift
  - 30 Darling
  - 31 Unreliable one
  - 32 Caravan stops
  - 36 Storming
  - 38 Sweet
  - 40 Auriculate
  - 41 Ill humor
  - 42 Golf term
  - 43 Sought ambitiously (with "to")
  - 46 Satellite sound
  - 47 Time of day
  - 50 Pointless
  - 51 Charge — Abbr.
  - 52 Actress Hagen
- DOWN
  - 1 The ladies
  - 2 Columbia seaport
  - 3 Presumptuous one
  - 4 Kipling character
  - 5 Moccasin
  - 6 Adjuster
  - 7 Bibelots
  - 8 Power unit
  - 9 Water bird
  - 10 San — California
  - 11 Agenda entries
  - 12 Succinct
  - 14 Famous monogram
  - 16 Garden plot
  - 20 Balsam fir
  - 25 Mountain locale
  - 26 School gps.
  - 27 Architectural structure
  - 29 Roman —
  - 31 Movable covers
  - 33 Choosy
  - 34 De Witt Clinton's achievement
  - 35 Pace
  - 37 Alienate (from)
  - 38 Ich — (The Prince of Wales' motto)
  - 39 Presbyter
  - 41 Trimmed with narrow bands
  - 44 Milne character
  - 45 Intrinsic
  - 46 Philippine peninsula
  - 47 19th cent. French novelist
  - 48 Start of Dickens title
  - 49 River into the Oder
  - 53 What "sum" means
  - 55 Spring mo.
  - 56 Promontory
  - 58 With: Ger.
  - 59 Noun suffixes



8/31/79

## THE BETTER HALF



"This fried chicken is great. The stove should break down more often."

## ANDY CAPP



## SHOE



## DICK TRACY



## REX MORGAN, M.D.



## HEATHCLIFF



## PEANUTS



## FUNKY WINKERBEAN



## BLONDIE



## MARY WORTH



## JUDGE PARKER



## STEVE ROPER



## NANCY



## STEVE CANYON



## DENNIS THE MENACE



## MARMADUKE



"Well, you know how upset he becomes when I serve you first!"

"I UNDERSTAND THIS IS YOUR FIRST SQUARE MEAL SINCE YOU GOT MARRIED."







# Albertsons



**Albertsons**  
Copyright 1979 by Albertsons, Inc. All Rights Reserved  
**DRUGS & FOOD**

## WHERE ONE STOP DOES IT ALL!!

**OPEN 24 HOURS**

**1002 ANDREWS HIGHWAY**



USDA CHOICE

## BRICKET

CRY-O-VAC

# 108

LB. USDA CHOICE BEEF

## BONELESS HAMS

JANET LEE

# 168

LB. HALVES OR WHOLE

"FULLY COOKED"

LOW FAT OR HOMO MILK

ALBERTSONS

# 149

1 GAL. PLASTIC BTL.

100-COUNT

## BAYER ASPIRIN

# 99¢

FAST PAIN RELIEF

SCOPE MOUTHWASH & GARGLE

# \$1.49

24 OZ. PLASTIC BOTTLE

CHUNK TUNA

CHICKEN OF THE SEA

# 68¢

6 1/2 OZ. TIN IN OIL

Coca Cola

Pibb, Tab, Sprite Welches Flavors

# 699¢

12 Oz. Cans

EDGE SHAVE CREAM

PROTECTIVE GEL

# 99¢

7 OZ. CAN

SCOPE

# \$5.49

130 CT. BY PARKE DAVIS

POTATO CHIPS

RUFFLES

# 79¢

7 OZ. PKG.

INSTORE BAKERY

## CINNAMON ROLLS

"OLD FASHIONED"

# 15 149

CT. FOR ONLY "FAMILY PAK WITH OR WITHOUT RAISINS"

Deli Shoppe

## KAHN'S PICKLE LOAF

"SLICED YOUR WAY!"

# 199

LB.

FRESH PRODUCE

## SEEDLESS GRAPES

THOMPSON

# 68¢

LB. "COOL & REFRESHING"

RELY TAMPONS

EVEN ABSORBS THE WORRY!

# 169

30 CT. BOX

COMPLETE PHARMACY!

LET US TRANSFER YOUR NEXT PRESCRIPTION

Quality & Service

OPEN 24 HOURS

OPEN 24 HOURS

QUALITY PHOTO FINISHING!

MONEY BACK GUARANTEE ON ALL PROCESSING!

10 LB. BAG

TIDY CAT KITTILITTER

# 79¢

10 LB. BAG

Act Lone well-v to cor

LOS accom Court mask. Moor to 1957, Vernon refused "I ha fight." Poste Televis to the He ru upheld price a The i or any Moor treasur "The don't th Wrath a new l Wrath masked silver h his trin black n "It's reason Boxer ances w Lone R he may It wa of fans Moor who pl wheelcl Mean announc Butle strike, Moor Moore

Arr

WASHI — From recruits v endure "s cuts and v "with the and dignit all soldier That's a the Army's Doctrine C recruit r tions and centers. Although didn't say policy und tended to a off" poten the Army because it meet its

L Ger Clo 300

Replace f or Rear B Includes Midlan I.S. 20















NOTICE DOVE HUNTERS IMPROVE YOUR SHOOTING! Midland Shooter's Association will be OPEN EACH DAY FROM 4 PM to 8:30 PM MONDAY thru SATURDAY Range location on HOLIDAY HILL ROAD, NORTH Non Members Welcome

44 Houses Unfurnished BRICK 3 bedroom, 2 bath, garage, covered patio. Refrigerator, stove, furniture, other furniture possible. \$450 plus \$350 deposit. Call 682-3581.

FOR LEASE DUPLEX ON WADLEY 2 1/2 + garage. Small yard, refrigerated air, fireplace, built-in kitchen, utility room. Children welcome. \$400 per month.

65 Houses Furn, Unfurn FOR rent, one bedroom furnished duplex. 682-9722, after 3 call 684-7996.

67 Mobile Homes For Rent 12x60, \$290 per month. All bills paid, except utilities. No pets. Deposit \$100 deposit. Call 684-4088, 682-9931, after 5.

69 Business Property, Office Warehouse Space For Rent BUILDINGS for lease. West Highway 80. 2400 square feet shop area, 600 square feet office space, carpet, and snack bar. First class at economic rates. 562-2639 or 362-5179.

INDUSTRIAL DISTRICT Large office building, 10,000 sq. ft. of recently remodeled office space. Refrigerated air, new carpet and paneling. All this with small fenced yard and lots of parking space. Best rental deal in town. For only \$1.50 per square foot. Located off South Midland Street. Call 682-6071 or 694-6193 for details.

MOBILE WORLD Factory Direct Dealer New 1980 28 Wide NEW 1980 14x80 3 Bedroom, 2 bath, Roman tub, dishwasher, deluxe range & oven, double door refrigerator, deluxe carpet & drapes, furniture, tie downs. \$22,995 Full Price \$1142 down \$276.02 mo.

14 WIDE 720 Sq. Ft. VETS \$9900 DOWN \$13962 PER MO. \$8995 Full Price

NEW 1980 14x70 3 Bedroom, house type siding, carpet & drapes to match. FREE Furniture FREE Credit Check \$10,995 FULL PRICE

WHY PAY MORE? PHONE 563-4220 1 block East of Odessa Country Club On Highway 80 Se Habla Espanol! CLOSED MONDAY, LABOR DAY

69 Business Property, Office Warehouse Space For Rent Space in new 62,000 square foot, atrium-style office building. Available within 2 months. Let us design and complete your offices to suit your needs. No charge for parking. Western State Bank Building, 1030 Andrews Hwy. Call 697-3135 for brochure.

OFFICE SPACE AVAILABLE 9-1-79. For sub-lease until 1-1-80, 9th floor, Western United Life Building, 1-4 room suite (\$933.44 per month) 1467 sq. ft., or can be split into 1-2 room suite (\$252.00 per month) and/or 1-4 room suite (\$681.40 per month). Carpeted and fully draped.

INDUSTRIAL DISTRICT Large office building, 10,000 sq. ft. of recently remodeled office space. Refrigerated air, new carpet and paneling. All this with small fenced yard and lots of parking space. Best rental deal in town. For only \$1.50 per square foot. Located off South Midland Street. Call 682-6071 or 694-6193 for details.

RED CARPET PETROPLEX REAL ESTATE RESIDENTIAL FOR SALE: 3 bedroom, one bath, fully carpeted & paneled. Well cared for yard. \$20,000

Residential-Commercial-Investments ONE YEAR WALL TO WALL PROTECTION PLAN™ Don Tidwell Betty Doss Larry Tidwell 683-9792 694-1894 700 Andrews Hwy. Suite B

COUNTRY REALTY 684-9020 Rural Property Special: Small Tracts, Farms & Ranches 1.94 acres, 3 BR, 2 bath, 2 car garage, barn. \$58,500.00

DORIS PINARD REALTOR MAPLE-You be the judge-2 bedroom, den, PLUS 3 room apartment OR large 3 room, 1 3/4 bath. \$29,900.00

SUNSET REALTY Faye McAdams 683-1786 PALO PINTO-80 acres, 1/4 mile to lake, 600 pecan trees & drip system. Will subdivide (10 ac. plots). 1/2 minerals.

A-1 INC. Pre-Owned Homes 14x80 WAYSIDE 1975, 3 bedroom, 2 bath, total electric, unfurnished, extra clean.

NEW HOMES On cul-de-sac in new North-West subdivision. All are 3 bedroom, 1 3/4 bath and near completion. VA or Conventional financing. TALK TO LINDA RECTOR, Associate, DON HARVEY, REALTORS, 683-5333. Evenings, 682-8155.

BUNNIE KENT REALTORS 1906 Illinois MLS 684-6361 684-6363 SADDLE CLUB—a magnificent home in super location on an acre of land-beautifully landscaped swimming pool-3 bedroom home-

WE HAVE JUST LISTED A THRIVING RETAIL BUSINESS—OWNERS WILL GLADLY SHOW YOU THE RECORDS—IT WILL PAY ITSELF OUT IN TWO AND ONE HALF YEARS AT PRESENT RATE-PRIME LOCATION. ESTABLISHED CLIENTEL—CALL FOR MORE INFORMATION

WE'RE NATIONAL BUT WE'RE NEIGHBORLY OVER 4,000 OFFICES NATIONWIDE World's largest Relocation Brokers. Moving? Call us. "No Obligation."

Sutton Place Townhomes 1 & 2 Bedroom Condominiums •Swimming Pool •Clubhouse •From \$40,900 Furnished Model Open for Viewing This Weekend 600 Liddon No. 77 683-0948 or 682-4961

BASIN REAL ESTATE Ed LeMarquand, Owner Office 682-6332 Alvah Mckee 683-3896 Ed LeMarquand 697-5632 APARTMENT HOUSE SITE—Already zoned. CALL ED OFFICE SPACE FOR RENT

\*LOW EQUITY House on Shandford for \$5,000.00 equity. 5 BR, 2 living areas, lovely and clean. Great location. Near schools. Will sell fast! For appointment, TALK TO NORMA BECKETT, Associate, DON HARVEY, REALTORS, 683-5333. Evenings, 682-2879.

\*EASY LIVING Nice Contemporary 3 BR, 3 1/4 bath, one living area with atrium, bar and fireplace. Patio off master bedroom. Lots of extras in this home in Skyline Addition. TALK TO J. FRANK NALL, Associate, DON HARVEY, REALTORS, 683-5333. Evenings, 694-4497.

Century 21 LA CASA REALTORS Phone 683-6336 MLS 1711 W. Wall BROOKS: new 2 story, 4 bedroom, 2 baths, total built-ins in kitchen, ref. air and more. \$41,000

NEED TO SELL? Call Century 21 for a FREE Market Analysis and cost sheet showing your net cost. We're here for you! Billie Roberts, GRI 694-5192 Jean Farris 694-5911

NEW ADDITION 10 NEW HOMES Priced From \$49,190 to \$53,275 VA & FHA FINANCING SALES OFFICE 5102 Storey 684-8448

CAREFREE CONDOS 3-BR, 2 1/2 BATH, FP, Large patio, heated pool, you choose colors \$54,900

LOOKING FOR A RE-DO? WE have several possibilities. If you are a handy man or just want a bargain to fix and sell-OR KEEP, call and let us guide you. Patsy Bohannon Realtors 685-0881

EXCELLENT HOME AT \$35,500 West side, brick, 3 bedroom, 1 3/4 bath, new paint. Call Johnneen, 683-4888 or 685-3568. Investor's Real Estate.





Deed Real Estate Co. 3102 W. CUTHBERT 694-9666. Houses for Sale. NEW LISTING on Keith, 2 bdrms, 1 full bath, one living area, new floor covering in kitchen & bath, home in good condition with hardwood floors. \$25,500.

REALTORS, INC. 694-9548. 114 San Miguel Square. Multiple Listing Service. IT SPEAKS FOR ITSELF AT ADDBE REALTORS, INC. APPELSON—Just listed! 4 bdr, photographers dark room, water well. CALL

Word Sherrill REALTORS. 683-7002. 1811 W. WALL. RESIDENTIAL. RACQUET CLUB AREA—Spanish executive home, 4 BR, 3 1/2 bath, 3 car garage, wet bar, intercom, sprinkler system.

Word Sherrill REALTORS. 683-7002. 1811 W. WALL. RESIDENTIAL. RACQUET CLUB AREA—Spanish executive home, 4 BR, 3 1/2 bath, 3 car garage, wet bar, intercom, sprinkler system.

Langston 1908 W. WALL. REALTORS - BUILDERS. 24 HOUR SERVICE. 682-9495. LATEST LANGSTON LISTINGS. MURRAY Terrific home with large, inviting living room, spacious MBR, beautifully done sunporch, lovely landscaping. \$59,250.

Tall City Realtors. 1115 ANDREWS HWY. 697-3236. MILDRED ETHRIDGE 694-7368 JUDY EVERETT 682-3564 MILDRED UNRUH 682-6019.

Heritage REALTORS. 306 N. Highways Square. 683-3948 Ron Estridge 684-6486. THE MOORE REALTORS. Kentucky, brick duplex, \$40,000. Trailer 14.23 acres. \$32,000.

BETTY TAYLOR 683-1504. PRE OWNED HOMES. MOSS 3 BR TOWNHOUSE, 2 Bath, Atrium & Delightfully Decorated. \$90,000.

Word Sherrill REALTORS. 683-7002. 1811 W. WALL. RESIDENTIAL. SHADY LANE—Incomplete quadplex, will complete at cost plus 10%.

RELO WORLD LEADER IN RELOCATION. MEMBER MLS. CLYDE C. WHITE CONST. 682-3861. Glenda Maury, Realtor 694-0654.

Kniffen Real Estate. Office 682-4878. FOR SALE OR LEASE: Commercial & Industrial lots, good location. FOR SALE: Good 2 1/2 acre Ranchettes, good land, good water, close in.

CANTON'S Carpeting, Flooring, Wall Coverings, Cabinet Tops. 4600 Sinclair 695-4114. LaVerne Foster Realtors. 682-1103. G.R.I./C.R.S. 682-1103.

LABOR DAY SPECIAL. Large tract on Highway 80, just outside city limits. Will build to suit tenant on lease or sale, 5 acres or more. Utilities available.

RELOCATION SERVICE. Moving to another City—Let us help you relocate through our nationwide relocation service: Affiliated Independent Brokers (AIB).

DEL NORTE ESTATES. CUSTOM HOMES. Pick your lot. Pick your house plans. For your custom home.

PROPERTY CONSULTANTS. FOR SALE BY OWNER. 10 acres 4 miles N.E. of Midland on pavement, 6000 water well with new pump and motor, underground electricity.

JIM MONTGOMERY REAL ESTATE. 3012 W. Kentucky 697-3173. NICE 3 bdr, 2 bath home on Sprayberry with over 1500 sq. ft. and ready to move into.

4500 Square Feet. Warehouse/Shop, with office on South Big Spring near Florida. Available for lease. Total price, \$87,500.

Business Property Sales. INVESTORS CHOICE LOCATIONS BY OWNER. Have 3 Clubs for sale in Midland. These include property, building, and fixtures.

Investment Property. DUPLEX, good location. Brick veneer construction, well maintained. One bedroom, one 1/2 bathroom, \$49,500.

Farms & Ranches. 2300 acres one hour South of Midland, \$300,000. \$30,000 down, \$10,000 year plus 9%, deer, turkey, quail, misc. gals, house pens. 512-367-2254.

Resort Property Sales. WATERFRONT LOTS, beautiful building sites on wooded lots at Lake Brownwood. Owner financing with easy terms.

LABOR DAY SPECIAL. Lake Coleman mobile home, 2 lots, trees, many extras. See to appreciate, \$13,500. Weekend 915-382-4222. Other 694-3683.

Business Property Sales. 4500 Square Feet. Warehouse/Shop, with office on South Big Spring near Florida. Available for lease.

Investment Property. DUPLEX, good location. Brick veneer construction, well maintained. One bedroom, one 1/2 bathroom, \$49,500.