

# THE CISCO PRESS

Home of  
Cisco Junior  
College

Home of  
Hilton's First  
Hotel

The News Of A Proud City Reported By Your Hometown Paper

Volume 81  
Number 62

Weekend Edition

25¢

USPS No. 113780

Sunday, August 5, 1990

Cisco, Texas 76437  
©1990 Eastland County Newspaper

## J's Jottin's

By J.E.

Wanda Hallmark of Breckenridge is receiving treatments for M.S. in Lubbock. She will be there until August 12, 1990.

Wanda is the former editor of The Cisco Press. Anyone wishing to send her a card may write her in care of Allen Morris, 4918 37th, Lubbock, Tx 79414.

The Powder Puff Football organization had their annual meeting Thursday, August 2nd. They have scheduled the Powder puff football game for Saturday, August 25, 1990.

In the Abilene Reporter-News front page Thursday, August 2, 1990, appeared an article on the volunteers for the ombudsman with the West Central Texas Council of Governments. Roy Cartee of Cisco is one of those people. He has been an ombudsman with the council since 1981,

and he works with 10 nursing homes in Eastland and Calahan counties.

HELLO DOLLY the CJC Summer Theatres' last production opened Friday, August 3rd.

According to Carol Brown, theatre director, "It's been another fabulous season for CJC's summer theatre season, and there couldn't be a more exciting finale than the ever-popular production, HELLO DOLLY!"

For reservations call the CJC box office at 442-2589. Tickets are \$15 for dinner performances and \$7.50 for dessert shows.

'Meet the Coaches Night' will be held Tuesday, August 7, 1990, at the Cisco High School library. The meeting will begin at 7 p.m. with Coach Evatt introducing the new coaches and their plans for this season.

## VBS At Cisco Church Of Nazarene To Begin Monday

The Cisco Church of the Nazarene will hold their annual Vacation Bible School Aug. 6-10 for all children who are going to be in kindergarten through sixth grades. VBS will be held from 9 until 11:30 a.m. Monday through Friday with a special program for parents on Sunday morning.

The church is located at the corner of West 10th and Avenue N. The van will be available for those children without transportation. Call 442-1667 for rides.

There will be puppets, special stories and refreshments each day.

## Lobo Football Tickets Go On Sale August 13

Season tickets will go on sale August 13th, 1990. Last years season ticket holders will be able to purchase their seats until August 31, 1990. After that date all seats will be sold to the general public on a first come-first serve

basis. The price for a season ticket for the 1990 Lobo football games will be \$15.00. The tickets may be purchased at the High School office. For further information call 442-3051.

## Junior High Registration Is Set August 23

Seventh and Eighth grade students will register August 23, 1990 from 9 a.m. to 12 noon and 1 p.m. to 4 p.m. in the new Junior High School.

School personnel will assist all students as they finalize their class schedules for the 1990-91 school year.

## VFW Ladies Auxiliary To Hold Meeting August 13

The Ladies Auxiliary of the VFW #10782, Cisco will have a special open meeting Monday, August 13, at 7:30 p.m.

They extend all eligible ladies, widows, children, sisters, grandchildren, and wives of VFW Veterans a warm welcome to attend, and become members.

The VFW Ladies Auxiliary #10782 will be sponsors for the annual, M.D.A. Tele-

## There's Still Time To See 'Hello Dolly'



HELLO DOLLY opened Friday, August 3, 1990, at the Hilton Community Center. The show is being produced by the CJC Summer Theatre it is the last production for the summer season. In the above picture is Donna and Robert DeLuca, they are portraying the parts of Dolly and Horace. (Photo by Evelyn Valek)

By Jackie Kincheloe  
HELLO DOLLY is the talk of Eastland County. Those who have seen it are still discussing the discover-

ies they have made as to hidden talents of friends and neighbors. Now, there's no intention of giving away all the show's delightful secrets, but a few tidbits might wet

your appetite for what is in store for theatre-goers.

MINDY STEPHENSON is not only a delight at which to look, but she will treat the audience to a one-handed cartwheel. Silverware will fly in one musical number. The costumes are stunning and accented by actual period accessories such as hats and gloves. You'll be transported to turn-of-the-century New York through a colorful array of fashions. Many hours of meticulous hand work went into pliques and other finishing touches to perfect the wardrobe down to the most minute detail. Mr. Vandergelder's feed store has its own antique cash register the generosity of

James Wright of Eastland.

Many of you have had dealings with RHETT MILLER at the hardware store in Eastland, now is your opportunity to see him whizzing around stage while he sings and dances his way to stardom.

From the minute the curtain rises to the rousing Grande Finale, HELLO DOLLY is a captivating production that will leave you wanting to see it again. Everyone is invited to come and see why theatre-goers are singing the praises of Cisco Junior College's final summer musical HELLO DOLLY. For reservations and information call 442-2589.

## Ag Dept To Meet Tuesday

An important meeting is scheduled for August 7 at 7:30 p.m. in the Ag department at the high school. If you have a

child in 4-H or F.F.A. please attend. We need all the help we can get.



HULL CITGO located at 8th and Avenue G is now open for business. Chamber of Commerce Manager Don Shepard is shown presenting Owner Fred Hull with his chamber membership card. Shown in the picture are (L to R): Ronnie Ledbetter, Fred Hull, Don Shepard, and Ray Saunders. (Staff Photo)

## School Substitutes To Hold Meeting August 17

There will be a meeting of all persons interested in substituting in the Cisco School system for the 1990-91 school term. The meeting will be held on August 17, 1990 in the High School Library at 10 a.m. The Principal's from each campus will be there to answer questions about the role of the substitute. A person must have a High School Diploma in order to substitute in a Texas Public school. All interested persons are

## V.F.W. Activities

By Charles Preston  
The Cisco V.F.W. Post 10782 will hold their regular monthly meeting Tuesday, August 7, at 7 p.m. at the Post House.

All members are urged to attend and participate in business activities.

## Cisco Bike Rides Benefit Brazil Mission Projects

Thirty-one cyclists and one horseback rider, all members of the First United Methodist Church of Cisco, traveled approximately 1,500 miles on May 26 and raised \$1,900 for foreign and local mission.

The event was directed by pastor Ken Diehm and Pat Wallace, the Outreach Chairman. Three grandparents, nine youth and young adults, eleven teenagers, three adults and 5 pre-schoolers participated. Senior Citizen Ray Hounshell rode his horse for 25 miles while Jane Ray and Helen Hounshell rode stationary bikes for 30 miles each. The group began at 7 a.m. at Brownwood, 50 miles south of Cisco, and ended at South Bend, 50 miles north of Cisco, at 4 p.m. the same day.

Nine of the young adults completed the ride from Cisco to 20 miles north of Breckenridge where they were picked up by the church bus and returned to Cisco. Their aggregate total mileage was 900.

Ken Diehm, Kirk Wallace, Kody Wallace, Leigh Callaman, Amy Hounshell, Dickey Seider, Carl Bray, Sean

Continued

## High School Registration To Be Held On August 24

Registration for all high school students will be held August 24, 1990. High school students in grades 11 and 12 will register from 9 a.m. to 12 noon in the Cisco High School Library. High school students in grades 9 and 10 will also register on the 24th between 1 p.m. and 4 p.m. in the school library.

School personnel will assist all students as they finalize their class schedules for the 1990-91 school year.

## CofC Coffee Wednesday

There will be a Chamber of Commerce Coffee at 10 a.m. Wednesday, August 8, 1990. It will be held at the Double Vision Restaurant.

## 'Meet The Coaches' To Be Held Tuesday

The Cisco High School Athletic Booster Club will meet Tuesday, August 7th, at 7 p.m. in the high school library. Coach Evatt will introduce the new coaches and their plans for this season.

If you have a son or daughter in the athletic program or if you are simply an interested fan, this would be an

excellent opportunity for you to show your support for the program. Booster club membership is open to anyone in the community. It's main function has been to provide needed athletic equipment for our students, and to support our athletic program.

Come on out and get acquainted!

## Junior Class Of '92 To Hold Meeting Sunday

There will be an important meeting of Junior Class parents and students on Sunday, August 5th, at 3:00 p.m., in the Community room of the 1st National Bank. Upcoming junior class activities for the school year and the possibility of a Senior Trip or activity for the class will be discussed. In order to be able to plan a large group activity, it is essential to the participation of every student and their parents who desire such an activity. It will be determined at this meeting if there is enough parent and student support to work toward a

Senior trip for the class. All juniors and parents of juniors need to attend this meeting if they want a Senior trip. If a student or parent will not be able to attend this meeting, they need to indicate their interest by sending their name, phone #, and type of fund-raising activities that they can participate in with another class member.

## Kindergarten Registration To Be August 6

The 1990-91 School Year is upon us. Mr. Lindsey Principle of the Cisco Elementary School would like to announce that on August 6, 1990 from 8 a.m. - 12 noon, students whom fall under the categories below need to come in and register.

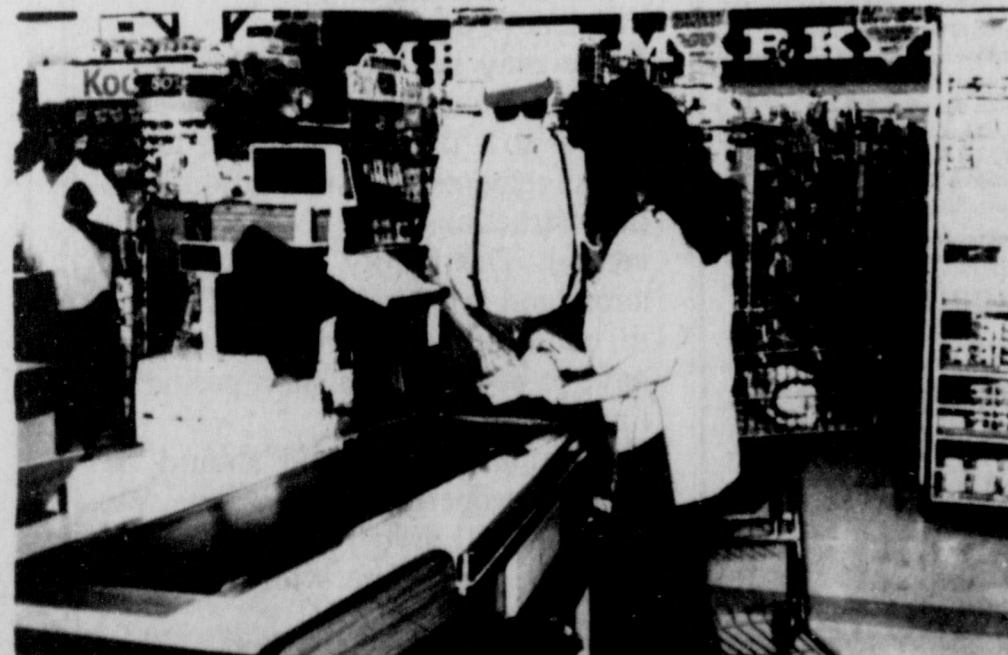
They are all Kindergarten students who have not registered, all new students to the district or students who did not finish school, also kindergarten students who are already registered but since then have already received their immunization need to come by with their records prior to the beginning of the school year.

## Physicals For Athletes To Be Wednesday

There will be physical taken for girls and boys in the athletic program Wednesday, August 8, 1990, at the High School Gym from 1:30 p.m. to 5:30 p.m.

Physical's will be \$10.00 for that day, the regular price is usually \$25.00. All students participating in sports are required to have an annual physical.

The physical is sponsored by the Booster Club.



MODERN TECHNOLOGY arrives in Cisco, Thrift Mart grocery store has added a new modern convenience for shoppers. They now have the new scantron registers, shown in the above picture is Patricia Pavon, a checker for the grocery store. (Staff Photo)



NEW BUSINESS OPENS-- Eastco Homes Inc., located at 6th and Conrad Hilton Ave., is now open for business. Chamber of Commerce Manager Don Shepard was presenting Owner Gary Rabel with his chamber membership card when the above photo was taken. Shown in the picture are (L to R): Ronnie Ledbetter, Don Shepard, Gary Rabel, and Ray Saunders. (Staff Photo)

# Legal Notices

## Notice of Effective Tax Rate 1990 Property Tax Rates in City of Cisco

This notice concerns 1990 property tax rates for Cisco City. It presents information about three tax rates. Last year's tax rate is the actual rate the taxing unit used to determine property taxes last year. This year's effective tax rate would impose the same total taxes as last year if you compare properties taxed in both years. This year's rollback tax rate is the highest tax rate the taxing unit can set before taxpayers can start tax rollback procedures. In each case these rates are found by dividing the total amount of taxes by the tax base (the total value of taxable property) with adjustments as required by state law. The rates are given per \$100 of property value.

**Last Year's Tax Rate:**  
Last year's operating taxes-\$319,400.

(Plus) last year's debt taxes-\$0.

(Equal) last year's total taxes-\$319,400.

(Divide) last year's tax base-\$54,338,277.

(Equal) last year's total tax rate-\$5878 per \$100.

**This Year's Effective Tax Rate:**

Last year's adjusted taxes (after subtracting taxes on lost property)-\$319,356.

(Divide) this year's adjusted tax base (after subtracting value on new property)-\$53,096,520.

(Equal) this year's effective tax rate-\$60146 per \$100.

(Times) 1.03 equals maximum rate unless unit publishes notices and holds hearing-\$61950 per \$100.

**This Year's Rollback Tax Rate:**

Last year's adjusted operating taxes (after subtracting taxes on lost property)-\$319,356.

(Divide) this year's adjusted tax base (after subtracting value on new property)-\$53,096,520.

(Equal) this year's effective operating rate-\$60146 per \$100.

(Times) 1.08 equal this year's maximum operating rate-\$64957 per \$100.

(Plus) this year's debt rate-\$0.

(Equal) this year's rollback

## rate-\$64957 per \$100. SCHEDULE A: UNENCUMBERED FUND BALANCES

The following balances will probably be left in the unit's property tax accounts at the end of the fiscal year. These balances are not encumbered by a corresponding debt obligation.

Type of Property Tax Fund: Maintenance & Operation.

Balance: -0-

SCHEDULE B: 1990 DEBT SERVICE

The unit plans to pay the following amounts for long-term debts that are secured by property taxes. These amounts will be paid from property tax revenues (or additional sales tax revenue, if applicable.)

NONE (-0-)

This notice contains a summary of actual effective and rollback tax rate calculations. You can inspect a copy of the full calculation at:

City of Cisco

City Hall

500 Conrad Hilton

Cisco, Texas

Name of person preparing this notice: Steve Thomas, RPA, RTA.

Title: Chief Appraiser, Eastland CAD

Date Prepared: August 1, 1990

(8-5)

## NOTICE OF EFFECTIVE TAX RATE

1990 Property Tax Rates in Cisco Junior College

This notice concerns 1990 property tax rates for Cisco Junior College. It presents information about three tax rates. Last year's tax rate is the actual rate the taxing unit used to determine property taxes last year. This year's effective tax rate would impose the same total taxes as last year if you compare properties taxed in both years. This year's rollback tax rate is the highest tax rate the taxing unit can set before taxpayers can start tax rollback procedures. In each case these rates are found by dividing the total amount of taxes by the tax base (the total value of taxable property) with adjustments as required by state law. The rates are given per \$100

of property value.

**LAST YEAR'S TAX RATE:**

Last year's operating taxes-\$210,676.

(Plus) last year's debt taxes-\$0.

(Equals) last year's total taxes-\$210,676.

(Divided by) last year's tax base-\$105,338,027.

(Equals) last year's total tax rate-\$20/100.

**THIS YEAR'S EFFECTIVE TAX RATE:**

Last year's adjusted taxes (after subtracting taxes on lost property)-\$210,128.

(Divided by) this year's adjusted tax base (after subtracting value on new property)-\$106,991,390.

(Equals) this year's effective operating rate-\$19639/100.

(Times) 1.08 equals this year's maximum operating rate-\$21210/100.

(Plus) this year's debt rate-\$0.

(Equals) this year's rollback rate-\$21210/100.

**SCHEDULE A: UNENCUMBERED FUND BALANCES**

The following balances will probably be left in the unit's property tax accounts at the end of the fiscal year. These balances are not encumbered by a corresponding debt obligation.

Type of Property Tax Fund: Maintenance & Operation

Balance: \$704,191.

**SCHEDULE B: 1990 DEBT SERVICE**

The unit plans to pay the following amounts for long-term debts that are secured by property taxes. These amounts will be paid from property tax revenues (or additional sales tax revenue, if applicable.)

NONE

This notice contains a summary of actual effective and rollback tax rate calculations. You can inspect a copy of the full calculations at:

City of Cisco

City Hall

500 Conrad Hilton

Cisco, Texas

Name of person preparing this notice: Steve Thomas, RPA, RTA.

Title: Chief Appraiser, Eastland CAD

Date Prepared: August 1, 1990

(8-5)

## NOTICE OF EFFECTIVE TAX RATE

1990 Property Tax Rates in Cisco Junior College

This notice concerns 1990 property tax rates for Cisco Junior College. It presents information about three tax rates. Last year's tax rate is the actual rate the taxing unit used to determine property taxes last year. This year's effective tax rate would impose the same total taxes as last year if you compare properties taxed in both years. This year's rollback tax rate is the highest tax rate the taxing unit can set before taxpayers can start tax rollback procedures. In each case these rates are found by dividing the total amount of taxes by the tax base (the total value of taxable property) with adjustments as required by state law. The rates are given per \$100

of property value.

**LAST YEAR'S TAX RATE:**

Last year's operating taxes-\$210,676.

(Plus) last year's debt taxes-\$0.

(Equals) last year's total taxes-\$210,676.

(Divided by) last year's tax base-\$105,338,027.

(Equals) last year's total tax rate-\$20/100.

**THIS YEAR'S EFFECTIVE TAX RATE:**

Last year's adjusted taxes (after subtracting taxes on lost property)-\$210,128.

(Divided by) this year's adjusted tax base (after subtracting value on new property)-\$106,991,390.

(Equals) this year's effective operating rate-\$19639/100.

(Times) 1.08 equals this year's maximum operating rate-\$21210/100.

(Plus) this year's debt rate-\$0.

(Equals) this year's rollback rate-\$21210/100.

**SCHEDULE A: UNENCUMBERED FUND BALANCES**

The following balances will probably be left in the unit's property tax accounts at the end of the fiscal year. These balances are not encumbered by a corresponding debt obligation.

Type of Property Tax Fund: Maintenance & Operation

Balance: \$704,191.

**SCHEDULE B: 1990 DEBT SERVICE**

The unit plans to pay the following amounts for long-term debts that are secured by property taxes. These amounts will be paid from property tax revenues (or additional sales tax revenue, if applicable.)

NONE

This notice contains a summary of actual effective and rollback tax rate calculations. You can inspect a copy of the full calculations at:

City of Cisco

City Hall

500 Conrad Hilton

Cisco, Texas

Name of person preparing this notice: Steve Thomas, RPA, RTA.

Title: Chief Appraiser, Eastland CAD

Date Prepared: August 1, 1990

(8-5)

of property value.

**LAST YEAR'S TAX RATE:**

Last year's operating taxes-\$210,676.

(Plus) last year's debt taxes-\$0.

(Equals) last year's total taxes-\$210,676.

(Divided by) last year's tax base-\$105,338,027.

(Equals) last year's total tax rate-\$20/100.

**THIS YEAR'S EFFECTIVE TAX RATE:**

Last year's adjusted taxes (after subtracting taxes on lost property)-\$210,128.

(Divided by) this year's adjusted tax base (after subtracting value on new property)-\$106,991,390.

(Equals) this year's effective operating rate-\$19639/100.

(Times) 1.03 equals maximum rate unless unit publishes notices and holds hearing-\$20228/100.

**THIS YEAR'S ROLLBACK TAX RATE:**

Last year's adjusted operating taxes (after subtracting taxes on lost property)-\$210,128.

(Divided by) this year's adjusted tax base (after subtracting value on new property)-\$106,991,390.

(Equals) this year's effective operating rate-\$19639/100.

(Times) 1.08 equals this year's maximum operating rate-\$21210/100.

(Plus) this year's debt rate-\$0.

(Equals) this year's rollback rate-\$21210/100.

**SCHEDULE A: UNENCUMBERED FUND BALANCES**

The following balances will probably be left in the unit's property tax accounts at the end of the fiscal year. These balances are not encumbered by a corresponding debt obligation.

Type of Property Tax Fund: Maintenance & Operation

Balance: \$704,191.

**SCHEDULE B: 1990 DEBT SERVICE**

The unit plans to pay the following amounts for long-term debts that are secured by property taxes. These amounts will be paid from property tax revenues (or additional sales tax revenue, if applicable.)

NONE

This notice contains a summary of actual effective and rollback tax rate calculations. You can inspect a copy of the full calculations at:

City of Cisco

City Hall

500 Conrad Hilton

Cisco, Texas

Name of person preparing this notice: Steve Thomas, RPA, RTA.

Title: Chief Appraiser, Eastland CAD

Date Prepared: August 1, 1990

(8-5)

Cisco Junior College Business Office  
Cisco, Texas  
Name of Person preparing this notice: Steve Thomas, RPA, RTA.  
Title: Chief Appraiser- Eastland County Appraisal District.  
Date Prepared: August 1, 1990

## CITY OF CISCO PUBLIC NOTICE

The proposed budget for the City of Cisco for fiscal year 1990-91 is on file with the City Secretary effective Monday, August 6, 1990.

(8-5-90)



## Sis. Peralez Is Honored With Celebration

Sis. Diane Robledo Peralez, the daughter of Maria Peralez and the late Porferio Peralez of Moses Lake, Wa., was honored with a mass and celebration in which she proclaimed her perpetual vows. The mass was held on June 28, 1990, in Mexico City, where she studied for the last ten years.

A second mass was held in her hometown of Moses Lake, Wa., on July 15, 1990.

Sis. Diane is the niece of Manuel and Chonita Robledo of Cisco, whom traveled with their daughters, Anita and Isabelle of Cisco, Lynda Gutierrez and her daughter Kristen of El Paso; son Acey and his wife Lisa Robledo of Edinburg, to Washington to join in the celebration.

## THE CISCO PRESS Sunday, August 5, 1990

Kimbrough Funeral Home  
Brad Kimbrough - Director  
442-1211  
Monuments 300 W. 9th Street  
Pre-Paid Funeral Contracts  
Burial Insurance  
Cisco, TX 76437 P.O. Box 1191

Painting Storm Doors Cisco, TX 76437  
Concrete Storm Windows 817/442-2346

Benton Lacy  
TOTAL HOME BUILDING AND REMODELING  
TILE VINYL SIDING  
CABINETS C104 ADDITIONS

HARGRAVE INSURANCE AGENCY  
1106 CONRAD HILTON  
CISCO, Tex.

Personal Sales & Service For  
Home Insurance  
Car Insurance  
Commercial Business Insurance  
Mobile Home Insurance  
& Travel Trailers  
Boat Insurance  
Life Insurance  
Bonds of All Kinds

Shirley A. Hargrave  
442-2337

## New Foundry Under Construction

# Expansion At EBAA Iron

Expansion is the word that describes EBAA Iron Inc. these days. At the headquarters of the Eastland Foundry President Earl Bradley glances at a large world map on one wall, realizing this now symbolizes company territory. The Megalug joint restraint system, the Flex-Tend and other EBAA pipefitting products are used in a number of countries.

Outside his office several new buildings dot this complex, once a location of a Texas Electric Power Plant. A storage warehouse was added to EBAA in 1989, and a 24,000 sq. ft. airset foundry is currently under construction. This facility will be able to make 24 in. through 48 in. castings.

The new Foundry is expected to open in September, and at that time the Company plans to add 20 employees to the 170 already working at the Eastland plant.

This will increase the local payroll considerably above the present figure of \$45,000 weekly, or around \$2,340,000 annually.

"This is base pay-before bonuses," adds Bradley. "Our people are working hard these days-we're having a hard time keeping up with orders."

One of the products most in demand is the Megalug, Bradley says. This thrust-resistant joint restraint for pipelines is approved by over 200 cities, towns and engineering firms in the United States.

The Flex-Tend is another big seller. In 1984 EBAA Iron made an agreement with a Japanese firm to produce and market this product in the United States. This flexible joint system is particularly useful in earthquake-prone areas, or in places with unstable soils.

Other EBAA products include joint gaskets of various types, and castings distributed by jobbers.

## Garl Gorrs To Celebrate 50th Anniversary

Mr. and Mrs. Jack Speegle of Abilene, Mr. and Mrs. Bob Holden of Andrews, Tx, and Danny J. Speegle II of Abilene invite the friends and relatives of Garl and Burnice Gorrs to a reception in honor of their 50th Wedding Anniversary, Sunday, August 5, 1990 at the First United Methodist

Church Fellowship Hall from 2 p.m. - 4 p.m. Your presence there will mean much to them and will add to the many memories they share in their life together.

**READ THE CLASSIFIEDS**

## Dental Dialogue

by Cone C. Rice, D.D.S.

### Sinus Toothache

Q. Is it possible to have a toothache from a cold?

A. Yes. The sinuses are bony openings in the upper jaw. There are several sinus cavities located right above your upper back teeth. If you have a cold, sometimes congestion occurs in these cavities, and that can cause a toothache. One way you can judge if you have a sinus toothache is if your back teeth are sensitive to hot or cold liquids, or if they feel loose when you bite down. If you think you have such a toothache, a visit to your dentist is in order. After an examination, he or she will probably prescribe a decongestant to relieve the pressure, and perhaps an antibiotic as well.

CERS 104

This column is presented in the interest of better dental health. If you have any dental questions you would like answered, please contact the office of Dr. Cone C. Rice 963 East Main St. Eastland, Texas Phone: 817-629-3843

T-L Irrigation Co.

Center-Pivot, Hydrostatic Drive Can Be Moved In Minutes

Sales and Service At

## Buddy's Plumbing & Appliance

112 N. Main Rising Star

817-643-7312

RS53-C1104

EBAA built its own pattern shop. In 1985 the company purchased a Cordele, Georgia location for a Foundry.

In Feb. 1988 U.S. Senator Phil Gramm paid a visit to EBAA Iron, recognizing the company as one of the outstanding small businesses of the southwest.

A large crowd attended the reception for the Senator, and heard him speak on the value to America of private enterprise. He paid special tribute to Earl Bradley and his wife, Billye, who is Executive Vice President of EBAA.

In October 1988 the Bradleys began a new Company-EBAA Iron Sales Inc. Jim Keffer is President of this company, and Jennifer Bradley and Jeff Bradley Vice Presidents.

Daughter Leslie Keffer is also involved in EBAA ownership, as is son Earl T. Bradley. He oversees the Cordele, Georgia Foundry.

Sometimes long trips are necessary for the Bradleys or top personnel of the company. Last April Earl Bradley and Harold Kennedy, Vice President in charge of Research and Development, were in Rio Janerio. In October 1991 Earl and Billye Bradley plan to be at an International Standards meeting (on Ductile Iron Pipe Fittings) which will be held in Australia. Trips to Canada-where sales are especially high now-or to distant parts of the US are all part of the job for these people.

Earl Bradley says that Eastland has generally been a good place to live and operate a business. "With a few expectations, Eastland has a lot of good people," he remarks. "They are generally friendly, and we have been able to keep a good labor force here."

"The only big problem we have (at the Foundry) is that we don't have enough water," Bradley adds. "We've been hauling drinking water here for seventeen years-ever since we got here."

He points out that a lake behind the old foundry furnishes enough water for industrial needs, stating that "this kind of manufacturing doesn't use a great deal of water."

He says that to solve the problem the Company will either put in a water treatment plant of its own to use the small lake or lay a water line from Olden to the plant, tying into a main transmission line.

"As the company grows, we'll need more water to take care of the personal needs of employees."

On the future of EBAA Bradley says: "I still believe in freedom and new ideas. I don't set any limits on what we can do."

## A Thought For The Day....

"I don't have to a thing, unless I want to. I don't owe anybody anything."... You hear it often, but don't believe it. There is no such thing as individual isolation. All of us must depend on others everyday of our lives. If we did not rely on others, we would have no clothes, no shelter, or food, or protection against the elements. Every person has a point of responsibility to others. This holds true from the moment of birth to the moment of death.

If we may be permitted, here is a personal example. Many times we are called at a time of death to make "arrangements" and suddenly realize no instructions were left by the deceased. The family, already under stress and grief-stricken, find it hard to handle the many decisions that have to be made in a short period of time.

These matters can and should be handled properly...ahead of time. We can and will give you counsel and guidance at any time, with no obligation and at no cost.

## Cisco Funeral Home

Family Owned And Operated

203 West 7th 442-1503 C104

## Business Services

Fort Worth Star Telegram delivery is Gary Fink. Call 442-3349 for a subscription. C105

MINI WAREHOUSE STORAGE As low as \$25 month. Call 442-3640. Cisco. C102

HOLLIS WILLIAMS CONSTRUCTION Blown cellulose insulation, metal construction, new homes, concrete, electrical work and other remodeling needs. 442-1933 or 442-1880

PIANO, KEYBOARD, VOICE LESSONS Beginner thru advanced Susan Wester 442-4099 C51

DOZER SERVICE Tanking, brush pushing and all types of dirt work. \$35.00 per hour. Minimum 4 hours. Call Bob Hallmark, 442-2127. C105

NOTICE: For home delivery of the Abilene Reporter News! If you live north of 8th Street or West of Avenue N, call Morgan Fleming, 442-3031. C105

TIM BARTON CONSTRUCTION & INSULATION New homes, add-ons, cabinets, metal const., concrete, electrical work & blown cellulose insulation. Call 442-3

# Wedding Bells



## Pierce - Ledbetter

Miss Tammy Lynn Pierce of Eastland and Chris Sean Ledbetter of Cisco were married in a beautiful double ring ceremony at six o'clock on the evening of Friday, August 3, 1990, at the Daugherty Street Church of Christ in Eastland. Milton Underwood of Eastland, Grandfather of the bride, officiated.

The bride is the daughter of Mr. and Mrs. Terry Mizell of Eastland and Mr. Joe Pierce of Eastland. Parents of the groom are Mr. and Mrs. Ronnie Ledbetter of Cisco.

Given in marriage by her father, the bride wore a tea length white lace dress with a fitted bodice, melon sleeves and basque waistline, scooped low in the back. The V neckline was accented with ruffle and the bodice was covered with lace applique and simulated pearls. She wore a lace bridal hat with satin roses, simulated pearls, nylon pouf and finger tip veil. She carried a traditional white bridal bouquet of silk cascading roses, stephanotis and English ivy. The bouquet was accented with peach ribbon strands. The bride carried out the tradition of something old, something new, something borrowed, and something blue.

Miss Tracy Pierce of Eastland served as her sister's maid of honor. The maid of honor wore a tea length peach satin and lace dress featuring

scooped neckline, fitted bodice, poet sleeves and dropped basque waistline accented with a satin rose. The maid of honor carried a long stemmed peach rose.

The groom wore a traditional charcoal gray business suit with a peach shirt. Ronnie Ledbetter was his son's best man and was dressed in a traditional business suit and peach shirt.

The bride's cousins, Doug Underwood and Brad Underwood of Eastland, served as candlelighters and guests were seated by the brides brother, Gary Mizell of Eastland and the groom's cousin, Dusty Walton of Cisco.

The bride is a graduate of Eastland High School and attended Cisco Junior College and Tarleton State University. She is presently employed by Kenneth B. Parker, C.P.A. firm in Eastland. The bridegroom is a graduate of Cisco High School and attended Cisco Junior College and will continue his education at Tarleton State University in the fall. He is presently a part-time employee of E. L. Graham Memorial Hospital EMS Service, Eastland Memorial Hospital EMS Service and Finaservice, Inc.

After a brief wedding trip to San Antonio, the couple will make their home in Eastland.

Eastland Telegram - Ranger Times - Cisco Press  
Sunday, August 5, 1990

**DRUNK DRIVERS PAY!**  
sometimes with their lives!

## ESTATE AUCTION SAT., AUG. 11 - 10:00 A.M.

Mayben Street (between Ross and Pollock streets) Rising Star, Texas (From Highway 183 turn East on Pollock, go one block to Mayben and turn right) Partial listing of items belonging to Maggie Smith Estate consigned to this sale follows:

Amana Refrigerator-Almond-nice	Old Dough Board
Frigidaire Freezer-upright-frost proof	Card Table, Small Hamper
Washer-Signature	Small Metal Cabinet
Evaporative Cooler	Kitchen Clock
Small Oak Buffet	Crock Churn (Cracked)
Couch, Small Rocker	Iron, Food Chopper
3 pc Bedroom Suite-all wood	Large Aluminum Pot, Canner
4 pc Bedroom suite-has large wardrobe with vanity and bench	Kitchen Stool, Small Metal Stool
Coffee table and end table	Lots of Fruit Jars
Ottoman	Electric Skillet
Table Lamps, Floor Lamps, Hanging Lamp	Presto Cooker, Electric Can Opener
Black & White TV	Lots of Pots & Pans
Radio	Kitchen Tools, Flatware
Straight Back Chairs	Pyrex & Corning Ware
Large Dearborn Heater	Bauer Pottery Dishes, assorted colors
Small Dearborn Heater	Lots of Miscellaneous Dishes
Gas Range	1 Set of Melmac
Vacuum Cleaner	Whatnots & Vases
Nice Wooden Cabinet	1 Large Blue Fruit Bowl
Large Old Rocker	2 Cake Plates
Small Child's Rocker	Coffee Pot
TV Tray Set, Pictures	Chrome Dining Room Chairs
Centerpieces	Small 2 Drawer Cabinet
Some Old Costume Jewelry	Kerosene Lamp
Luggage	Metal Table, Card Table
Linens, lots of sheets, towels, 2 electric blankets, scarves, table cloths, etc.	Sewing Kit
Small oak Antique Bureau	Bag of Quilt Scraps
	Few Yard Tools

Cisco Auction Company  
Alfred E. Green, Auctioneer  
Rt 4, I-20 West, Cisco  
817-442-2304  
License 6699

Jackie Gentry, Auctioneer  
Rt 3, Ranger, Texas  
817-647-1308  
License 6442

## 4-H News

By Scott Hodges, Extension Agent

**4-H PRIME TIME '90:**  
Seven Eastland County 4-Hers are experiencing the State 4-H Center to its fullest by attending 4-H PRIME TIME, August 1-4.

Prime Time '90 is geared toward the younger 4-H members where project learning is emphasized. 4-Hers develop life skills and gain a better understanding of themselves and others!

Eastland County is proud to have the following 4-Hers having this prime opportunity: Holly Butler, Kristie Collins, Amy Collins, Courtney Ezzell, Judy Ware, Robin Griffin, all of Rising Star 4-H Club; and Niki Cozart, of Ranger 4-H Club.

**4-H SPECTRA '90:**  
SpecTra means "special training in spectacular tradition" for the older 4-H youth at the State 4-H Center.

SpecTra is designed to be a complete 4-H experience...project enhancement, leadership development, self-image enrichment, and career exploration. 4-Hers 13-19 years of age cultivate new visions of themselves, their goals and aspirations, and commit themselves to grow personally and professionally.

4-Hers experience 25 hours of concentrated project training during the week in their chosen sessions.

Attending SpecTra at the State 4-H Center on August 5-10, are: Cathy Thomas, Photography session; Brian Bailey, Public Speaking; Amy Logan, Image & Attire; Joanna Wallace, Advanced Computers; Natalie Stevens, Public Speaking; Robbi Daskevich, Photography; Ricky Agnew, Agricultural Enterprises; and Jeremy Keith, Meat Identification.

Congratulations 4-Hers on accepting the challenge to learn and "Make the Best Better."

### 4-H RECORD BOOK RESULTS:

34 Eastland County 4-Hers completed 4-H Record Books this year. 26 of these record books advanced to District 8 4-H Record Book competition. Results of the district contest are:

**SENIOR DIVISION: First Place Winners** were Cathy Thomas-Santa Fe; Brian Bailey Beef; Natalie Stevens-Leadership; Jennifer Jarrell-Home Economics Achievement; Toby Long-Achievement.

**Third Place Winner:** Tommy Squiers-Recreation.

**Other Participants:** Ricky Agnew-Sheep; Dena Rogers-Horse; Shelly Agnew-Rabbit.

**JUNIOR DIVISION: First Place Winners** were Stephen Reich-Dairy Goat; Holly Greenwood-Horse; Joanna Wallace-Entomology.

**Third Place Winner:** Amy Collins-Fashion Revue.

**Other Participants:** Jeremy

Keith-Santa Fe; Kirby Bush-Sheep; Timothy Thompson-Agriculture.

**SUB-JUNIOR DIVISION: First Place Winners:** Larry Burcham-Photography; Jeremy Orsagh-Agriculture; Clayton Carmack-Petroleum Power; Kimberly Reich-Dairy Goat.

**Second Place Winners:** Niki Cozart-Food & Nutrition; Tommy Seay-Santa Fe.

**Other Participants:** Jeremy Schaefer-Rabbit; Holly Butler-Swine; Dedria Emert-Clothing & Textiles; Robin Griffin-Sheep.

Congratulations to first place senior record book winners Brian, Natalie, Cathy, Jennifer, and Toby. Their records will be judged at Texas A & M University on August 13-15, for state honors. 4-Hers who are state winners experience an education and recognition event to National 4-H Congress in Chicago on December 1-5, 1990.

Best of luck to each of you!

### 4-H RALLY DAY:

All 4-Hers and youth 3rd grade to 19 years of age who wish to join 4-H Clubs for the 1990-91 year are reminded that 4-H Rally Day will be Tuesday, August 14, at Camp Inspiration, Eastland.

Registration will begin at 12:30 p.m. We have three sessions that will be featured this year. The first session will be **4-H Dog Project Opportunities**, which will be given by the Palo Pinto Dog Project Club; second session will be **Trust and Team Work...The 4-H Way**, which will be directed by the 4-H Council; third session will be **4-H Ambassador and Recreation Workshops**, given by the 4-H Council. There will be officer training sessions for everyone. The evening will include some fun activities such as, swimming, volleyball, viewing 4-H exhibits, etc. The Hot Dog Cookout will begin at 6:15 p.m. Beginning at 7:00 p.m. there will be an Adult Session with Mike McKinney, 4-H Specialist from the State 4-H Center in Brownwood, as the speaker. Also, the Youth Session will be headed up by the Eastland County Rec Team. The grand finale will be a 4-H Promotion Slide Show.

Everyone is invited to come and join in on the fun. If you want to know more about 4-H this is the perfect opportunity for you to learn and experience 4-H activities. Educational programs conducted by the Texas Agricultural Extension Service serve people of all ages, regardless of socioeconomic level, race, color, sex, religion, handicap or national origin.

FUN, FRIENDSHIP, AND LEADERSHIP FOUND AT 4-H COUNTY CAMP

By Tommy Squiers  
As over 150 4-H members gathered at the State 4-H Center in Brownwood, Texas, on Friday the 13th, wild superstitions wasn't about to spoil Texas 4-H Fun.

You could feel an atmosphere beginning to build as the members from Stephens and Eastland County filled the auditorium for an orientation. After the orientation, everyone began their first session.

The sessions provided were: Initiatives (Teamwork Games), Swimming, Canoeing, Archery, and Riflery. Only two sessions took place on Friday.

Friday night, the State 4-H Leaders organized a party for everyone. The theme for "Sock It To Me" party, and everyone dressed in wild creations of socks. A dance took its place after fun games with "socks".

The next day, Saturday, July 14th, everyone began their third, fourth, and last sessions after breakfast. After the last session, everyone huddled up in the auditorium and sang songs. Then, everyone ate lunch. Finally, the fun had ended and all good things had come to an end for now. Everyone packed up their

belongings and headed for home.  
It was a great 4-H Camp!

Use the Classifieds

TEXAS  
It's Like A Whole Other Country

# Try

Before you buy.

Choose your new look from Merle Norman's exclusive range of over 35 eye shadows, 65 lip colors, 50 foundation shades. Beautiful.

MERLE NORMAN STUDIO

Hwy. 80 East - Eastland - 817-629-3521

Now AmWest  
can give you something  
few banks can...



## A good night's sleep.

Now AmWest has "DreamSaver"—a savings program designed to bring peace of mind to all those who worry about saving money.

Here's how it works: You tell AmWest how much you want to save every month, (as little as \$25 if you like) and they'll deduct it automatically from a free checking account (that's right, free checking) and put it into a CD account. Keep your money there for a full 12 months and it will earn a high-interest CD rate. Take it out early, and you'll get a penalty — three months interest or \$50.

So "DreamSaver" not only helps you save money on a regular monthly basis — it helps you keep your hands off it too. And with a little money in savings — a good night's sleep will come a whole lot easier.

Put Your Money on Texas.



Substantial penalty for early withdrawal. Interest paid quarterly. Rates subject to change without notice.

CISCO: 701 Conrad Hilton, 817-442-1605 - EASTLAND: 200 South Seaman, 817-629-1723  
RANGER: 121 Main Street, 817-647-3277



Insured by FDIC.

## MAJESTIC THEATRE

629-1322



Fri. • Sat. • Sun. • Mon.

All Shows: 7:30 p.m. - \$3.00

We Now Offer 5-Admission Gift Passes - \$10

Majestic Classic Film Series

# OKLAHOMA!

The music. The magic.  
The memories. The movie.

Sunday, Aug. 19 - 2:00 p.m. \$4.00  
Tuesday, Aug. 21 7:30 p.m. \$4.00

© 1990 AmWest Savings Association

# Obituaries

## Russell Clyde Turner

EASTLAND - Russell Clyde Turner, 73, died Monday at a local hospital.

Services were held at 2 p.m. Wednesday, August 1, at Bakker Funeral Home Chapel with Dr. Robert Jeffress officiating. Burial was in Eastland Cemetery.

Mr. Turner was born in New Castle, Pa., where he grew up. He lived in Eastland since 1946. He was a self-

employed carpenter and also worked for the Eastland Independent School District as a bus driver in the 1970s.

He was a U.S. Army veteran of World War II and the Korean conflict. He was a Presbyterian and a member of Masonic Lodge No. 467.

Survivors include his wife, Bessie Turner of Eastland; and a sister, Arlene Lehmkuhl of Pittsburg, Kan.

## Frank Joseph Kostih

MINGUS - Frank Joseph Kostih, 74, died Monday, July 30 at his residence.

Wake service was held at 7:30 p.m. Wednesday, August 1 at Edwards Funeral Home Chapel in Strawn with Sister Renie Turcotte officiating. Mass was at 10 a.m. Thursday, August 2 at St. John's Catholic Church in Strawn with the Rev. Tom Teczar officiating. Burial was in Old Gordon Cemetery.

Mr. Kostih was born in Thurber and attended school there. He was a U.S. Army veteran of World War II and served in the 330th U.S. Army Engineers. He was over a group of Engineers that helped build the Burma Road and he had an airport named after him in Burma.

He was a member of St. John's Catholic church and

Catholic Men's Club. He was also a member of Mingus American Legion, Member of the Executive Committee of the Thurber Historical Society, Former member of the city council for many years. He was past president of Mingus Historical Society.

Survivors include his wife, Imogene Kostih of Mingus; a son, Jimmy Kostih of Gordon; three daughters, Karla Chamberlain of Mingus, Paula Campbell of Gordon and Jan Hinkson of Strawn; three brothers, Joe Kostih of Seaside Heights, N.J., Walter Kostih of Strawn and Steve Kostih of Carlsbad, N.M.; four sisters, Josephine Repal, Mary Kristynik, Rose Pustejovsky and Angie Yordanoff, all of Houston, and 10 grandchildren.

## Bill Mullenweg

RICHARDSON - Bill Mullenweg, a lifelong resident of Richardson, passed away Monday, July 23 at Richardson Medical Center from pneumonia, after a long battle with lung cancer. He was 46. A Mechanical Engineer for Mobil Pipeline for 23 years, he had worked in Alaska, Saudi Arabia, and Indonesia.

He was a 1961 honor graduate of Richardson High School. He attended SMU on an athletic scholarship and later transferred to Texas Tech University where he graduated in 1967 with a Mechanical Engineering Degree. He is survived by his wife of 27 years, Darlene, one son, Mike, a student at Stephen F. Austin

University; one daughter, Lynn Davenport of Friendwood; parents Will and Betty Mullenweg of Tyler; and one sister, Betty Lynn Mullenweg of Memphis, Tenn. The Rev. Tom Matthews officiated the service at Restland Memorial Chapel on Wednesday July 25th, at 4:00 p.m. Interment in Restland Memorial Park.

Darlene attended South Ward Elementary School in Eastland, and is the daughter of the late James Ford Byrd and Dorothy Dobbs Byrd, former residents of Eastland. She is the niece of Mrs. Luce Pittman of Eastland, and granddaughter of Mrs. Iva Lee Dobbs of Odessa, formerly of Eastland.

## Eastland Memorial Hospital To Sponsor Breast Cancer Unit

According to the American Cancer Society, one out of every ten women in the United States will develop breast cancer sometime during her lifetime. Every year over 37,000 women die as a result of breast cancer.

According to a spokesman from the Regional Breast Care Center at Women's & Children's Hospital in Odessa, Texas "The death rate from breast cancer could be drastically reduced if women would have mammograms done before a problem exists." By using modern state

of the art x-ray equipment breast cancers can be found when they are about the size of a grain of rice and well before the cancer can be felt. A woman who is diagnosed with breast cancer at this early stage has a 90%-97% survival rate. However, a woman who is not diagnosed until a lump can be felt has approximately a 50% survival rate in five years.

In an effort to find cancers at the earliest possible stage and prevent unnecessary deaths, a Mobile Breast Cancer Detection Unit will be

## Hospital Report

EASTLAND MEMORIAL HOSPITAL  
July 31, 1990  
Admissions  
Kendrick, Pierre L.  
Dismissals  
Odom, Carolyn R.  
August 1, 1990  
Admissions  
Carr, Donny W.

Jobe, Dan  
Dismissals  
Craddock, Alma I  
Little, Lily M.  
Wilkison, Mary G  
August 2, 1990  
Admissions  
Chesnut, Clona A.  
Dismissals  
Kendrick, Pierre L.  
Martin, H D  
Perkins, Cecil A  
Reynolds, Meagan

made available to local women on Monday, August 6.

The Mobile Unit will be parked at Eastland Memorial Hospital, 304 South Daugherty, Eastland. Appointments may be made by calling 629-2601.

For more information you may call the Regional Breast Care Center at Women's & Children's Hospital at (915) 334-8888/561-9999.

**HELP US HELP YOU!**  
In order for us to provide our readers with more efficient and better publication, our deadlines are:  
**THURSDAY EDITION**  
5 P.M. MONDAY  
**SUNDAY EDITION**  
5 P.M. THURSDAY  
If Proofs Are Needed, the Deadline is 12 Noon

## Richard Lee Turpin

Richard Lee Turpin, 71, of Weatherford, Texas passed away July 31, 1990 in a Ft. Worth hospital. He was a retired construction worker.

He is survived by his wife Margaret, of Weatherford; two sons, Richard Lee Turpin, Jr. of Weatherford and Roy Edward Turpin of Pensacola, Fla.; a daughter

Tricia Dunn of Weatherford and nine grandchildren; three brothers, Roland Turpin of Amarillo, Burwin Turpin of Paradise, and Roy Turpin of Ft. Collins, Colo.; one sister Lula Tollerson of Ranger.

Graveside services will be held at the Azle Cemetery at 2 p.m. on Sunday, August 5th

## KING INSURANCE AGENCY REAL ESTATE

207 Main Ranger  
647-1171

PAMPERED AND PETTED, inside and out, newly decorated inside, built-in GE microwave, abundant storage and built-ins, large back yard, with pecan and fruit trees, BR 3 BR, 2 bath, CHA, fireplace, brick dwelling.

3 BR, 1 Bath, dining rm, living rm, 2 lots, frame dwelling, new roof, \$20,000.00

REDUCED PRICE, on the 3 BR, 1 bath, frame dwelling new cabinets, carpet, paneled, on 2 lots. Make an Offer.

2 BR, 1 BATH, living RM, kitchen-dining RM, fenced back yard, 1 car car-port, storage building.

2 BR, 1 BATH, living RM, dining RM, kitchen with built-ins, fire place, large storage, workshop, 1 car garage, 1 car car-port, fenced back yard, CHA

3 BR, 1 BATH, living RM, den, Kitchen, 5 lots. Reduced to \$12,000.00

3 BR, 1 1/2 BATH, living RM, kitchen, utility, ceiling fans in all bedrooms, CHA, 2-car car-port, small storage building.

BEAUTIFUL COUNTRY LIVING on 60 wooded acres, 2 stock tanks, Very nice BV dwelling, 2 BRs, 2 baths, large living-dining area with fire place, large den (or extra BR, plenty of closet space, CHA, 1.2 miles from city limits, GOOD HUNTING.

OPAL KING-BROKER  
647-1171

LEE RUSSELL  
647-1383

NEED LISINTGS TRY US

Cisco Press - Eastland Telegram  
Ranger Times  
Sunday, August 5, 1990

**Rescue Line**  
Battered, abused, alcoholism, suicidal, divorced, troubled marriage, etc.  
There is free help for Eastland County Women  
Listen to KVMX 97 F.M. 442-4479  
6:00-7:00 Monday night CER104

**OVERWEIGHT?**  
Take off excess weight with program medically supervised by M.D.  
Free Initial Consultation  
THE WEIGHT AWAY CLINIC  
278 S. Pioneer Dr.  
Abilene, Texas 79605  
Suite #107 915-692-6210 5-66

**Pharmacy Topics**  
By Bob Mueller

Prompt drug treatment after spinal cord injuries can reduce paralysis and other disability, the National Institutes of Health reported. In research, patients were given high doses of a steroid hormone, methylprednisolone, within eight hours of injury.

Rheumatologists at the University of Michigan Medical Center and the Presbyterian Medical Center in Philadelphia now emphasize the benefits of exercise against the stiffness of arthritis -- even if it hurts. Gradual, custom-tailored workouts are recommended.

Antidepressant clomipramine can curb the compulsion of some people to pull out their hair. Drug therapy was reported in the New England Journal of Medicine.

What causes diabetes? Researchers in Sweden and the United States say that overproduction of islet-amyloid polypeptide, a newly identified natural hormone, may trigger the disease by interfering with insulin effectiveness so that the body can't use glucose properly.

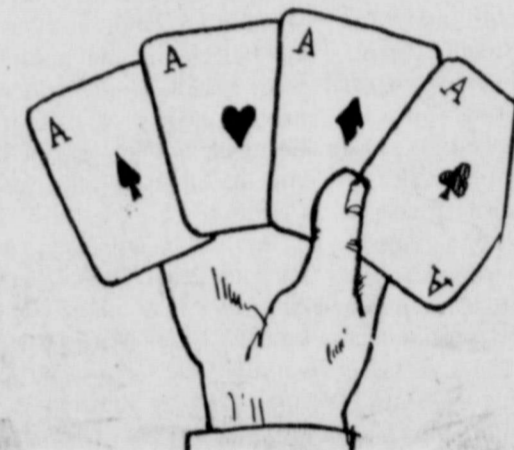
What helps diabetics? The wide selection of test products, syringes, insulin and medications always available at Wal-Mart Pharmacy, Hwy. 80 East, Eastland, 629-3347. cer104

**CLASSIFIEDS** INEXPENSIVE PROFITABLE

CHILD ABUSE  
24 HOUR HOTLINE  
1-800-252-5400

"FREE ESTIMATES"  
**Crawford's Lawn Sprinkler Co.**  
Complete Installation And Repair  
Manual and Automatic  
Landscaping And Yard Care  
Residential - Commercial  
Gordon D. Crawford, Owner Phone Local  
License No. 3109 915-529-3025  
5-72

WE CAN GIVE YOU THE  
**BEST DEALS**  
IN TOWN



Like These  
All 1990 Delta 88 Royales Reduced up to \$3,000\*. Excellent Selection  
All New 1990 Buicks Just \$100 over invoice and you get up to \$1250. Rebate  
Make your Best Deal on a 1990 Suburban & then receive \$1000 Rebate or 7.9% APR  
Grand Prix's & Grand Am's Discounted \$3,000\*. Both 2 dr & 4 dr. models available  
Cadillac Demonstrator \$1500 Below dealers cost beautiful car with a beautiful price.  
Top Dollar for your trade in, too.  
\*Rebates assigned to Dealer

**JIM CALDWELL**  
**MOTOR CO.**  
Cadillac-Olds-Buick-Pontiac-GMC  
Hwy. 80 E. Eastland  
629-2636

**EASTCO REALTY**  
107-A Main St.  
Ranger, Texas 76470  
647-1302 Opportunity

**RANGER**  
529 Pine - Frame house in great shape - located in one of the best neighborhoods - Priced to move. CH/A  
700 Foch - 3BR 2B 2 Car Gar., Fireplace CH/A - Newer Home - Completely renovated.  
309 Elm - Remodeled - 3 apts. - Possible owner finance - Good income property.  
454 Pine - Older home, but priced for anyone's budget - Some furnishings included. Needs some TLC.  
414 Mesquite - Remodeled - Good location - Ceiling Fans - fenced yard.  
403 Blundell - 3BR - Ceiling Fans - Beautiful Yard - Fantastic location - large storage building - Fenced - Owner Finance.  
1213 Lamar - 3 BR 1 1/2 Bath - Brick - CH/A - Great neighborhood.  
Hodges Oak Park Add. - Nice Frame - BR - 1 bath - CP Fenced - Priced Right.  
Approx. 1 Acre - with very comfortable 3 BR Home - Just out of the city limits.  
Highland Heights - Oakhill Sub. - 10 Residential lots for sale.

**EASTLAND**  
S. Seaman - Nice Frame 3 BR - 2B - CH - Fireplace - Built-ins - Corner lot.  
N. Oaklawn - Brand new home on a beautiful, wooded lot. Terms available.  
**LAKE LEON**  
Lee Road waterfront - 2BR - 1B - staff water - deeded lot - Boat dock.  
5.3 Acres - 3 garden spots - fruit trees - extra nice doublewide - staff water - fireplace - 2 bath - CH/A includes tillers, riding mower, satellite dish, they'll even throw in a pick-up. Too many extras to list - Come see it.  
**ACREAGE**  
223.79 acs. - 2160 sq. ft. - gorgeous home - 3 BR, 2 3/4 Bath - Native Stone fireplace - Big Porch - only 4 yrs. old. Land is Partial Coastal - Great hunting - 8 tanks - near Carbon.  
39 acs. - Near Ranger - wooded & some cultivation  
80 acs. - 5 Irrigation wells, pit, irrigation equipment - 2 gas wells - good fences.  
Call us about the great values available on HUD owned homes in Eastland County. Some with low down payments & HUD insured financing available.

Shirley Griffith 647-1635 Bobby L. Little 639-2288  
Ellen Bollinger 647-3160  
D.B. Cozart Jr. Broker

## Your Special Invitation...



If you like to hear about...

**Jesus**

The pastor, and international speaker, John C. Jones presents the "Living Christ" through the message of "faith" weekly. The congregation is a **inter-denomination worship center** where people from all walks of life and religious experience come to study God's Word.

A Church Of "Signs & Miracles"

### Service Times

Sunday 10:30 a.m. 6:00 p.m.  
Wednesday 7:30 p.m.

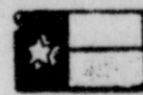
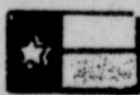
"Where going to church is fun"

This week, join those who drive from a 100 mile radius each week to attend a church that is "Delightfully Charismatic."

Ph. 442-2673 608 E. 8th Ph. 442-4479  
Cisco, Texas

## TEXAS BARBER SHOP

106 S. Connellee Eastland, Texas



Barbers Lisa Phillips & Harrel Burch


Harrel has instructed for Sebring & Omega in North Texas and Oklahoma. Sebring & Omega is a layer cut designed for long or short hair.

Regular Haircuts \$6.00  
Layer Cuts & Dried \$8.00

\$1.00 Off Regular Haircuts & Layer Cuts Thru August 31

CER65

**Rescue Line**  
For Women



Ruth Stewart, M.Ed.

Q. What are other inexhaustible wells for communication with word pictures?  
A. The other three wells are as follows:  
The Well of Everyday Objects - using an object lesson to illustrate a point in understanding a relationship can be helpful to adults and children.  
The Well of Imaginary Stories - these can help to create emotions if they relate to the interest of the individual hearing the story.  
The Well of "Remember When" has an advantage over the others in that it draws from a well that is already in the other person's memory.  
A marriage partner, parent or leader can refer to a past event that was shared to evoke emotional response and a springboard for ruther discussions.  
The Language of Love by Gary Smalley and John Trent, Ph.D.)  
Questions should be addressed to:  
Rescue Line  
P.O. Box 269  
Cisco, Texas 76437 CER104

# CALENDAR OF EVENTS

A Public Service Of The Majestic Theatre And Eastland County Newspapers

For Additions, Changes, Deletions, Please Call Faye Spurlen At The Majestic 629-2102 1 to 5 p.m.

SUNDAY, AUG. 5  
SPECTRA, Aug. 5-10, State 4-H Center.  
7:30 BIRD ON A WIRE RATED PG 13 MAJESTIC THEATRE.

MONDAY, AUG. 6  
8:00-4:00 Senior Citizens, 11:30 Noon Meal.  
12:00 Rotary, Eastland.  
2:30 United Methodist Women, Ranger.  
6:00 Rescue Line, KVMX  
7:00 ASCII Computer Club, Eastland.  
7:30 BIRD ON A WIRE RATED PG 13 MAJESTIC THEATRE.  
8:00 Narcotics Anonymous Open Meeting, Eastland.

TUESDAY, AUG. 7  
9:00 Chamber of Commerce Retail Meeting, Eastland.  
9:30 Social Security, Eastland.  
12:00 Lions, Eastland.  
5:15 Weight Watchers, Eastland.  
5:30 TOPS, EMH.  
7:00 Volunteer Fire Dept., Eastland.  
7:00 Special Needs, Camp Inspiration, Eastland.  
7:30 Order of the Eastern Star, Eastland.  
8:00 Alcoholics Anonymous Closed Meeting, Eastland.  
8:00 Al Anon Step Study, Eastland.

WEDNESDAY, AUG. 8  
7:00 Kiwanas, Eastland.  
Prime Time '90 (ages 9-14), Aug. 1-4, Texas 4-H Center.  
8:00-4:00 Senior Citizens, 11:30 Noon Meal.  
12:00 Kiwanas, Ranger.  
5:00 Overeaters Anonymous, EMH.  
6:00 Jackpot Fishing, Lake Leon.

THURSDAY, AUG. 9  
12:00 Lions, Ranger.  
6:00 AARP, Cisco.  
7:30 Masonic Lodge, Eastland.  
7:30 MAJESTIC THEATRE OF THE AIR, KEAS THE SHADOW: NIGHT WITHOUT END.  
8:00 Narcotics Anonymous Closed Meeting, Eastland.

FRIDAY, AUG. 10  
8:00-4:00 Senior Citizens, 11:30 Noon Meal.  
7:30 ANOTHER 48 HRS. RATED R MAJESTIC THEATRE.

SATURDAY, AUG. 11  
Eastland Sales Tax Election.  
6:30 County-Western Musical, Cisco.  
7:30 ANOTHER 48 HRS. RATED R MAJESTIC THEATRE.

## PILGRIMS TO PIONEERS

Jeanne Pruett  
P.O. Box 99  
Ranger, Tx.  
76470



Volume 1990-Thirty One: Sunday 5 August, 1990  
...A book entitled PERRY PIONEERS is in the making. Need help in contacting all of the descendants of this family. Michael/Michael PERRY was born in VA (county unknown) He married Jane/Janie -? Their children were: Elzey (1819, KY); James

(1819, KY); John T. (1825, KY); Nelley; Elizabeth. According to tradition, James (1819, KY) fought in the Battle of San Jacinto [TX] and is pictured to the left holding his hat in the air in William H. Huddle's painting in which Sam Houston is receiving the surrender of Santa Anna. Sam Houston is

wounded and is under a large tree on a blanket. Need to contact descendants of this JAMES PERRY.

JOHN T. PERRY fought in the Mexican War with his brother James. John T. married Louisa TENHET in Mississippi moved to Hamilton Co., TX where the family is listed in the 1860 census. John T. joined Cotton's Home Guard but deserted to move his family to Kaufman Co., TX to be safe from the Indians, then probably returned to battle. John T. and Louisa PERRY's children were: Mary Alice McDANIEL (1853); Sarah Annice VICK (1856); Elzie Napoleon PERRY (1859); Delilah

BORDERS (1866); Texana WATSON (1867); Matilda STRAIT (1872)

Need to contact any descendants of these families immediately for inclusion in the book to be published this year. Respond to: Mrs. O.J. Whitten, 720 Giles Drive, N.E. Huntville, AL 35801.

...MRS. EARL BURTON, P.O. Box 357, Mineral Wells, TX 76067 needs information on Sarah Ann ROBERSON (poss. ROBERTSON) ca 1842 MS (both parents b. GA per census), married Issac W. BRADBURY, 1865 in OKTIBBEHA Co., MS, died sometime between 1882 and 1888 (poss Whitfield or Stur-

gis, MS) Children of Issac and Sarah BRADBURY were: Nancy Ann Virginia; William H.; Newton C.; Issac Rufus; George B.; John H.; Thomas perry; Emma daisy. Would like to confirm date and place of death of Sarah Ann, her parents name, brothers, sisters and any other information available about her family.

...FROM HERITAGE BOOKS, a new book entitled RECORDS OF THE TOWN OF NEWARK, NEW JERSEY from its settlement in 1666 to its incorporation as a city in 1836, by the New Jersey Historical Society.

What is now Newark was first settled in 1666 by people from Milford, Guilford and Brandford in Connecticut. This volume contains a trans-

scription of interest to the genealogist and local historian. The volume consists primarily of minutes of the town meeting and of land grants, both of which are very important in that they name great numbers of residents. In the early years, in particular, there are numerous lists of residents made in conjunction with divisions of the common lands. "A MAP of

the Town of NEW-ARK in the State of NEW JERSEY Published in 1806," is included and has some interesting added references and notes which were not on the original map.

(1864) reprint, 294 pp., index, paper, \$20.00, #N337, Shipping \$3.00 per order from Heritage Books, Inc., 1540-East Pointer Ridge Place, Suite 300, Bowie, Maryland 20716.

...NEWS RELEASE: Ancestry's 1990 Catalog is Free! With over a dozen new titles, products, and services, this latest catalog is available, free of charge upon request. This year's catalog has an expanded European collection, with books that aid in English, Irish and German descent. Ancestry Inc, P.O. Box 308, Dept. RV, Salt Lake City, UT 84110-0308, or call 1-800-531-1790.

...Send queries and notices; books and other material for review to Pilgrims To Pioneers, P.O. Box 99, Ranger, TX 76470.

## Outreach Open House Wed.

Outreach Health Services invites you to attend Open House from 1 until 4 p.m. Wednesday, August 8, in their new branch office at 601 West Main in Eastland. It is next door to Express Photo.

The invitation is extended by Nancy Clark, R.N., who supervises an area staff of local Licensed Vocational Nurses and qualified Home Health Aides who are on Call 24 hours a day, seven days a week.

Outreach has been delivering health care in Eastland and the surrounding area for several years from the Abilene office, but to better follow Administrator Georgia Tarant's expressed commitment to provide this area with in-home care under the physician's orders, a local office has been opened and local health care professionals are being used.

The agency's objective is to assist in the delivery of health care for this community including enabling an improved transition from facility to home for patients. Better communication between physician, patient and caregiver is a result.

Refreshments will be served at the Open House, and staff personnel will be available to explain the services offered and to perform blood pressure checks.

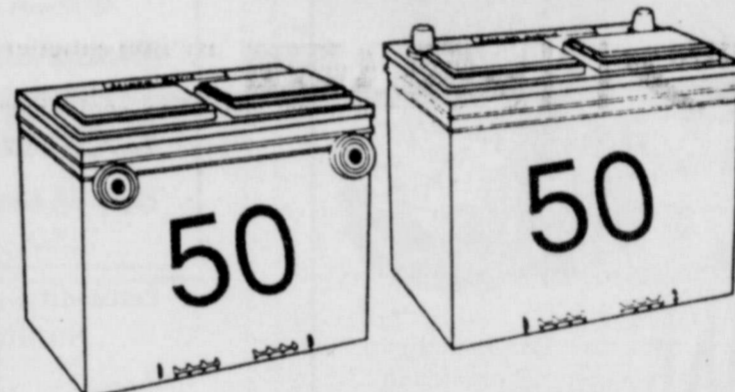
Eastland County is OPEN For Business

Eastland Telegram - Ranger Times - Cisco Press Sunday,

August 5, 1990

## DOUGLAS BATTERY SALE

50 month Automotive Battery



Groups 24, 24F, 74 ONLY

Installed \$34.95 each

NATIONWIDE WARRANTY

JOE HUDSPETH'S Tire & Appliance  
315 E. Main Eastland 629-2622

## The Dance Studio

227 S. Rusk Ranger  
Now Open For Its 9th Annual FALL ENROLLMENT

New Student Enrollment  
9:00 - 12:00 Wed. August 12 1:00 - 5:00  
Call 647-3391 or come by the Studio

Old Student Enrollment  
9:00 - 12:00 Wed. August 22 1:00 - 5:00  
Call 647-3391 or come by the Studio

Classes offered in:

Ballet  
Tap  
Jazz  
Baton  
Gymnastics  
Dramatics

Dance Instructor: Jammie Gentry  
Gymnastic Instructor: Betsy Herrington  
If these days are inconvenient please call anytime  
647-1308, 647-3247 or 647-3391  
Jammie

CER70

# ANNIVERSARY SALE!

We're celebrating our 92nd anniversary with some of the best tire prices of the year! Come in and check your size.

GOODYEAR TIEMPO \$28.95

WHITEWALL SIZE	SALE PRICE No Trade Needed
P165/80R13	\$38.24
P185/80R13	\$42.33
P185/75R14	\$45.91
P195/75R14	\$48.37
P205/75R14	\$50.87
P205/75R15	\$53.58
P215/75R15	\$56.42
P225/75R15	\$59.38
P235/75R15	\$62.51

GOODYEAR ARRIVA IMPORT \$34.95

BLACKWALL SIZE	SALE PRICE No Trade Needed
P145/80R13	\$35.74
P155/80R13	\$37.53
P165/80R13	\$39.49
P175/80R13	\$41.49
P165/80R15	\$43.87
P165/70R13	\$41.99
P175/70R13	\$44.16
P185/70R13	\$46.45
P185/70R14	\$48.79

Based On Availability.

GOODYEAR EAGLE ST \$56.95

RAISED WHITE LETTER SIZE	SALE PRICE No Trade Needed
P185/70R13	\$60.38
P195/70R13	\$63.63
P195/70R14	\$66.97
P205/70R14	\$70.51
P215/70R14	\$72.68
P225/70R14	\$74.98
P225/70R15	\$77.27
P235/70R15	\$79.65
P215/65R15	\$75.64
P205/60R13	\$67.64
P215/60R14	\$73.43
P195/60R14	\$67.64
P235/60R14	\$77.94
P245/60R14	\$80.40
P245/60R15	\$82.90
P255/60R15	\$85.49
P275/60R15	\$90.86

## LIGHT TRUCKS

GOODYEAR WRANGLER LT



SIZE & SIDEWALL	LOAD RANGE	SALE PRICE No Trade Needed	FET
LT235-75R15 BSL	C	\$ 82.29	—
LT235-75R15 OWL	C	\$ 91.50	—
LT225-75R16 BSL	C	\$104.18	\$ 15
LT225-75R16 OWL	C	\$ 97.96	—
LT225-75R16 DVL	C	\$101.97	—
LT235-65R16 BSL	E	\$112.23	\$ 75
LT245-75R16 BSL	E	\$112.23	\$ 73
875R16 S BSL	D	\$100.51	—

## AUTO SERVICE WITH NO EXCUSES

Disc Brake Service \$79

New front disc pads, repack wheel bearings, resurface front rotors. Conventional rear wheel drive vehicles. Prices vary for front wheel drive. Caliper overhaul \$22.50 each if needed. Hydraulic service will be recommended if needed for safe operation.  
Limited Warranty for 6 months or 6,000 miles, whichever comes first.

Hunter Computer WHEEL ALIGNMENT \$25.

2 Wheel Alignment Most U.S. Cars

THAT'S WHY WE SAY...THE BEST TIRES IN THE WORLD HAVE GOODYEAR WRITTEN ALL OVER THEM.

GOODYEAR

Just Say Charge It!

You may use Goodyear's own credit card or American Express • Carte Blanche • Diners Club • Discover • Card-Master Card • VISA  
RAIN CHECK: If we sell out of your size we will issue you a rain check, assuring future delivery at the advertised price.

NO PAYMENTS TILL JANUARY 1991\* on purchases made with the Goodyear Credit Card  
\* For purchases made on an eligible account, finance charges will accrue in accordance with the credit card agreement. See your participating Goodyear retailer for complete details about terms and eligibility.

JOE HUDSPETH'S TIRE & APPLIANCE

YOUR HOMETOWN HUDSPETH STORE

315 E. Main

629-2262

# Marketed Gas Production Decreased In April

Railroad Commission Chairman Kent Hance announced that Texas marketed gas production in April totaled 356,020,779 Mcf (thousand cubic feet) of gas, compared to the March production total of 383,732,759 Mcf. The April marketed gas production reflected a decrease of 2.01 percent compared to the April 1989 production of 363,333,446 Mcf.

Total gas production in Texas in April was 433,881,253 Mcf.

Marketed gas production is the gas left after liquid hydrocarbons have been separated on the lease from the "wet" gas that is usually produced at the wellhead. It also does not include gas that is used to fuel production-related equipment on the lease site, or gas

that is otherwise not marketed.

Exports of Texas-produced gas in April totaled 147,517,453 Mcf compared to 176,241,934 Mcf in March. The April exports of Texas-produced gas reflected a 7.27 percent decrease when compared to the April 1989 exports total of 159,083,645 Mcf.

According to Hance the state's top ten exporters of Texas produced gas in April were: Tennessee Gas Pipeline Company, 30,600,314 Mcf; Natural Gas Pipeline Company of America, 25,792,505 Mcf; Transcontinental Gas Pipeline Corp., 25,681,403 Mcf; Texas Eastern Trans. Corp. 19,494,451 Mcf; United Gas Pipeline Company, 17,259,999 Mcf;

Trunkline Gas Company; 8,621,666 Mcf; Florida Gas Transmission Company, 7,964,193 Mcf; Texas Gas Trans. Corp., 2,603,941 Mcf; El Paso Natural Gas Company, 2,546,040 Mcf; and Panhandle Eastern Pipeline Company, 2,366,726 Mcf.

Operators reported a total of 313,949,865 Mcf of gas in Texas storage facilities in April, compared to the March total of 333,250,182 Mcf. April's total of stored gas reflected a 4.6 percent increase compared to April 1989's volume.

Hance said the state's top ten storage operations in April were: Natural Gas Pipeline Company of America, Harris County, 116,731,023 Mcf; Exxon Company, U.S.A., Harris County,

28,867,905 Mcf; Lone Star Gas Company, Henderson County, 28,119,248 Mcf; Delhi Gas Pipeline Corp. Hopkins and Franklin counties, 11,317,085 Mcf; Texas Utilities Fuel Company, Jack County, 9,882,513 Mcf; Lone Star Gas Company, Eastland County, 9,005,141 Mcf; Texas Utilities Fuel Company, Jack County, 6,889,885 Mcf; Lone Star Gas Company, Clay County, 6,143,812 Mcf; and America Gas Storage Corp., Gaines County, 4,869,453 Mcf.

## Union Pacific Railroad Security To Go Undercover

Union Pacific Railroad's security force is going "undercover" to catch wire thieves and scrap dealers who purchase stolen wire.

"We want everyone to know across our 23,300-mile system that we are going to stop this," said Roger Young, assistant vice-president security and special service.

"Our security agents have arrested several persons responsible for stealing the communication and electrical wires as well as several scrap metal dealers who knowingly purchase stolen wire," Young said.

Arrests have been made in Kansas, Missouri and Nebraska.

Those who steal the wire are committing federal and state offenses by obstructing railroad operations.

Also, when a person attempts to take wires down from the poles, they take the chance of being electrocuted. Some of the lines are charged with 550 volts. Two persons died last year while attempting to take wire from the poles along the railroad right-of-way.

The wires provide power for railroad signals and switches as well as communication and computer data transmissions.



A boy, running away from home, took time out to see a game.

His mother, watching the same game at home on TV, saw him sitting in the front row. She called the police and they picked him up.

There was another run-away who couldn't escape - Jonah. God wanted him to go to Nineveh, but he went to Tarshish.

Nineveh was east and Tarshish was west. He crossed half a world to get away from God - but found God waiting for him.

You, too, have tried to run from God, haven't you? But there's no escape. Instead of running from Him, run to Him and receive His pardon and peace, won't you?

T 188

## Research Underway To Reduce Heart Attack Damage

A treatment to reduce heart attack damage is the ultimate goal of a new research project at The DeBakey Heart Center of Baylor College of Medicine and The Methodist Hospital in Houston.

Researchers, funded by a five-year, \$6.5 million federal grant awarded earlier this month, are studying inflammation that occurs in heart cells following a heart attack.

They seek the cause of the inflammation and a way to control it that will not interfere with the healing of the damaged heart, according to Dr. Mark L. Entman, Baylor's chief of cardiovascular sciences and principle investigator for the Heart Center's new Program Project Grant in ischemia.

When blood flow to a heart cell is interrupted, damage called ischemia results. Investigators think the damaged cells release molecules that trigger the inflammation mechanism of surrounding cells, extending the ischemia and increasing the area of damage in the heart.

"If we determine how this trigger works and then develop a way to stop it, we can

control the inflammatory reaction to ischemia and prevent additional heart damage from occurring when a heart attack occurs," Entman said.

Reduced damage from a heart attack could mean a shorter recovery time and should improve a patient's long-term outlook for a normal life, Entman said.

Working with a live animal model developed through The DeBakey Heart Center's animal research core, scientists will study cell-to-cell interaction, how inflammation may be initiated, how it may be perpetuated, how it effects the mechanism of the heart and, ultimately, how it can be controlled, Entman said.

Research will be conducted by investigators from the departments of medicine, pediatrics, microbiology and pathology of Baylor, The Methodist Hospital and Texas Children's Hospital.

The new grant from the National Heart, Lung and Blood Institute of the National Institutes of Health succeeds a 16-year

research-oriented grant on ischemia at Baylor, Entman said.

## Adopted Children Can Get Social Security Benefits

A change in the Social Security law effective January 1990 makes it easier for a child adopted by a Social Security beneficiary to receive benefits based on the beneficiary's record.

Under previous law, these children generally could not receive benefits unless the adopting parent had lived with and supported the child for a full year before the parent became entitled to disability or retirement benefits. The legislative change eliminated

this requirement for most children.

Any beneficiary who had adopted a child who might be eligible for benefits should contact Social Security to file a child's benefits application. Any beneficiary whose adopted child was previously denied benefits should also contact Social Security to find out if the child now qualifies.

The child's birth certificate, Social Security number, and proof of the adoption will be needed, but claimants should

file applications right away to avoid loss of benefits, even if these documents are not readily available.

For more information, visit any Social Security office or call toll-free 1-800-234-5772.

**Eastland County is OPEN For Business**

## Eastland County 4-Her's Compete At State Horse Show

By Scott Hodges

Two Eastland County 4-Hers participated in the State 4-H Horse show this past week in Abilene and represented us well. David Williams, son of Mr. and Mrs. Hollis Williams of Cisco, participated in the Calf Roping and placed 7th out of a large field of 61 ropers. This was a very impressive win considering the level of competition present at this type

of prestigious show.

Holly Greenwood, daughter of Mr. and Mrs. Waymon Greenwood also participated at the state horse show in the barrel racing and the pole bending events but luck was not on Holly's side but she is already making plans for next year. We are very proud of our Eastland County 4-Hers that competed at the state horse show and hope they keep up the good work.

## Now Available At Eastland Drug

"Original Oriental Formula" Pearl Creme

As Seen On T.V.

"People might accuse you of actually having had a face lift" - Dr. C.A. Byrne

"Original Oriental Formula" Pearl Creme contains choice natural pearls which are crushed and ground to a fine powder. The pearl powder is then blended into one of the world's most luxurious cremes. Pearl cremes made from this exact formula have been used by the more affluent women in China since the Ming Dynasty.

**\$12.95 / 2 oz. jar**  
(Nationally advertised at \$19.95)

**Eastland Drug Co.**  
201 W. Main - Eastland - 629-1791  
7:30 - 6 M-T-W-T-F 8-4 Sat 62

Eastland Telegram - Ranger Times - Cisco Press  
Sunday, August 5, 1990

## Re-opening Hair Shapes by Janet

full family service perms & color electrolysis Matrix products

Monday - Friday 629-2463

1/4 mile, north on gravel road from Hwy 2214 and 2416 Y by Church south of Lake Leon

CER68/TF

917/629-3631



**EXPRESS PHOTO**  
SAME DAY PHOTO PROCESSING  
COLOR, BLACK & WHITE, PHOTO REPRODUCTION

BILL CULVERHOUSE, OWNER

801 W. Main EASTLAND, TX 76448

## Safe Driving Tips from Rhonda

Effects of drugs on driving: Alcohol is classified as a "Legal" Drug, but it is illegal to drink and drive. Even one or two drinks affect a person's ability to drive. Alcohol affects coordination. It is difficult to coordinate what your eyes are seeing with what your hands should be doing. Judgement is impaired. It is difficult to choose the proper alternatives that are so often presented while driving. (To be continued in next week's article)



Rhonda Pipkin  
Defensive Driving Instructor

## Defensive Driving Classes Now Forming

Week Nights or Saturday (Day) Classes

Traffic Tickets Dismissed  
Reduce Your Auto Insurance by 10%  
State Certified Instructors / State Certified Program  
Call 442-2673 or 442-4479

## These Magic Ornaments light up!



Hallmark

**KEEPSAKE**  
ORNAMENTS

**HEATHER'S** Hallmark

Located Along With...

MERLE NORMAN COSMETICS

629-3533 Hwy. 80 East - Eastland 629-3521

We have them. Come in and select yours while they last!

## had a busy day? call us for your dinner

one quick phone call and you'll have juicy, golden **BROASTED CHICKEN**

ready for you table... in just minutes

You don't have to lift a finger (except to dial 647-5265)... Quick as a wink, all the luscious BROASTED CHICKEN your family can eat will be ready for you... Juicy and tender... A taste delight... flavored the way everyone loves it best!

Let your telephone do the cooking tonight...

**The Store**  
520 W. Main  
Ranger, Texas  
647-5265

cer105

# AREA FRONT PAGE

## Ranger General Hospital To Host Talent Show August 25

Dr. Gordon, his wife Debbie and three children are making plans to re-locate in Ranger in the early parts of September.

Ranger general Hospital has scheduled a Fund Raising Talent Show. Proceeds will go toward renovation of Dr. Watkins old clinic which will be used by Dr. Gordon.

The Talent Show is scheduled for August 25 and will be held in the old gym. Booths will open at 10:00 a.m. and the Talent Show will begin at 2:00 p.m.

### CALENDAR OF EVENTS

**BOOTHS:** Food and Craft booths will be charged a \$20.00 fee per space and will be set up outside (weather permitting) to avoid disruption of the Talent Show. Game booths will be charged a \$10.00 fee. Spaces will be approximately 10x10 depending on the number of entries. (may be larger)

**TALENT:** All categories will be open= dance, singing, instrumental, comedy, gospel singing, etc. will be \$10.00 for individuals and \$15.00 for

groups. Age categories are as follows:

**INDIVIDUAL:** 3 to 7; 8 to 13; 14 to 19 and 20 and over.

**GROUPS:** All ages accepted, categories will be dependent on number of entries.

**AWARDS:** 1st, 2nd, 3rd place trophies will be awarded to an individual in each age group. 1st, 2nd, 3rd place trophies will be awarded to each winning group. Participation trophies will be given to each entry and over-all trophy will be awarded.

**JUDGES:** In order to avoid any question of partiality we invite citizens from surrounding areas to participate as judges.

**EXTRA:** We have contacted the Teenage Mutant Ninja Turtles and invited them to come. They think that only one may be able to come. If he does, we will be taking pictures of him with the kiddos! Cost will be \$5.00. We will let you know in a later issue if this can be arranged.

11:00 a.m. - Watermelon Eating Contest with trophy

## Octoberfest To Be Held At Lake Brownwood

The "Center" of attention! That's what mature adults 55 and over will be at the Texas 4-H Center on Lake Brownwood when hundreds will enthusiastically participate in the tenth annual Octoberfest during October and November say's, Janet Thomas, Eastland County Extension Agent-H.E.

Sponsored by the Texas Agricultural Extension Service, five weeks are offered from which men and women alike may choose:

awarded to 1st place. Fee is \$2.00.

1:00 p.m. - Wheelchair Race. Fee is \$2.00 1st place trophy.

If you are interested in entering our talent show or obtaining space for a booth, please contact any of the following at the hospital or at home:

Janie Hornbeck - 647-5145

Wilma Sybesma - 647-3036

Esther Robinson at hospital - 647-1156

Deadline for talent entries is August 15, 1990. Booths is August 20, 1990.

a variety of areas such as oil painting, wind chime making, needlecrafts, furniture refinishing, country crafts, collectibles and more.

Boat rides and fishing on Lake Brownwood add popularity to your stay. Lighted tennis courts, horseshoes, billiards, volleyball, shuffleboard, dominoes, and card and table games round out the event.

A special theme of "Bring In the Clowns" will provide a festive atmosphere to the facilities. Thursday night's theme party will be held "Under the Big Top"!

Octoberfest! 55 or older? It's for you! Each weekly event is limited to the first 165 participants at a nominal fee. Get away and learn to make the most of the best years of your life. Call your county Extension office today at 817/629-2222.

Learning Centers will offer "hands-on" experience in

Quit smoking.

American Heart Association

Eastland Telegram - Ranger Times - Cisco Press  
Sunday, August 5, 1990

## Golden Olden Kids 4-H News

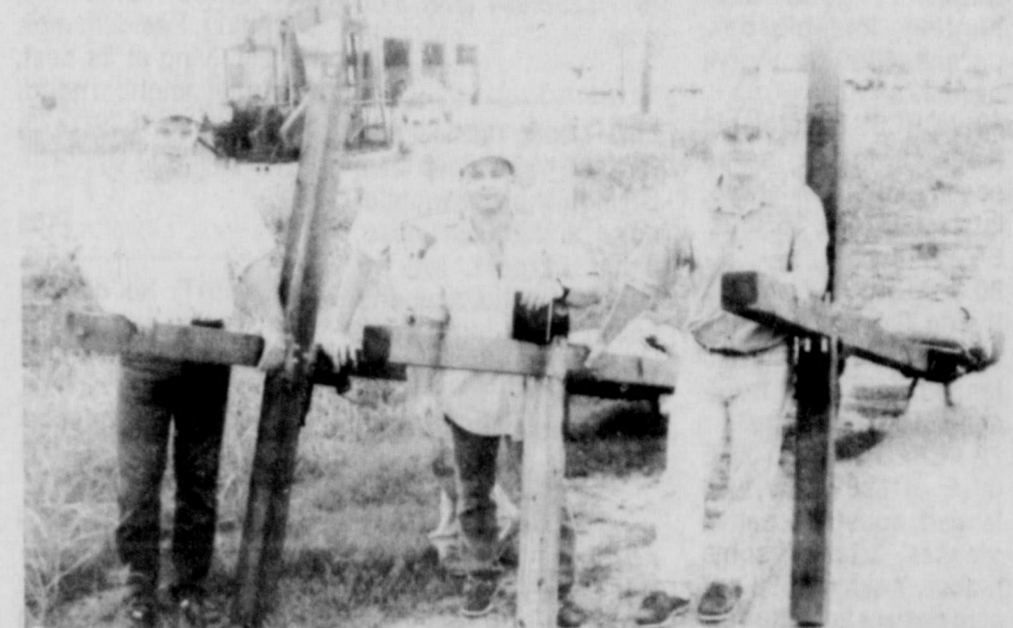
The Olden 4-H was established in November of '89. No one was sure if the club would have great success. So far, the club has had members to qualify for method demonstrations, public speaking, stock show participants, food shows, clothing shows, ect.

Now 6 qualify in record books.

The six members of the Olden 4-H who submitted record books are: Clayton Carmack-Petroleum Power, 1st in County, 1st in District; Jeremy Keith-Santa Fe, 1st in

County & in District; Jessica Keith-Santa Fe, 2nd in County; Jeremy Orsaugh-1st in Agriculture, 1st in County, 1st in District; Tommy Squiers-Recreation-1st

County 3rd District State Qualifiers are Clayton Carmack in Petroleum Power and Jeremy Orsaugh in Agriculture. Good luck guys and congratulations to all of the Olden 4-Hers who came home with county and district ribbons!



The three men carrying the crosses are evangelists from Cross Ministries in Greenville, Texas, and the fourth man became a Christian after hearing about Jesus. When not preaching, they carry crosses seeking people to witness to on "Jesus die for the human race tours." Pictured in Eastland, they also planned to visit Cisco.

## EVENING COLLEGE TARLETON STATE UNIVERSITY

FALL '90 EVENING COLLEGE CLASSES  
START MONDAY, SEPTEMBER 3RD

### UNDERGRADUATE DEGREE COURSES

PRINCIPLES OF ACCOUNTING I  
COST ACCOUNTING  
PERSONAL FINANCE  
PRINCIPLES OF FINANCIAL MANAGEMENT  
REAL ESTATE FINANCE  
AGRICULTURAL FINANCE  
WILDLIFE HABITAT & RANGE MANAGEMENT  
ELEM. COMPUTER CONCEPTS & APPL.  
PROGRAM LOGIC & DEVELOPMENT  
INTRO. COBOL PROGRAMMING  
PRINCIPLES OF MANAGEMENT  
PERSONNEL/HUMAN RESOURCES MGMT.  
EMPLOYEE LABOR RELATIONS  
MANAGEMENT POLICY & PROBLEMS  
THE AMERICAN SCHOOL SYSTEM  
EDUCATIONAL PSYCHOLOGY  
THE ELEMENTARY CURRICULUM  
SOCIAL STUDIES IN THE ELEM. SCH.  
SECONDARY CURR. PLANNING & EVAL.  
CONTENT AREA READING  
SOCIAL PSYCHOLOGY  
RHETORIC & COMPOSITION  
INTRODUCTION TO LITERATURE  
INTRODUCTION TO TECH. WRITING  
BASIC SPANISH FOR VOCATIONS  
PAINTING STUDIO  
APPLIED FUNDAMENTALS OF MUSIC  
BUSINESS & PROFESSIONAL SPEAKING  
INTRODUCTION TO BUSINESS  
BUSINESS STATISTICS

BUSINESS CORRESPONDENCE  
REAL ESTATE PRINCIPLES  
BUSINESS LAW I  
PROMOTIONAL STRATEGY  
WORD PROCESSING  
RACQUETBALL  
WEIGHT TRAINING  
WEIGHT CONTROL  
ESS. ELEM. HEALTH & PE IN ELEM. SCH.  
HUMAN INTIMACY  
PARENTING  
SAFETY ENGINEERING  
NUMERICAL CONTROL SYSTEMS  
CAD-CAM  
CRAFTS-CERAMICS, PLASTICS & FABRICS  
NUMERICAL CONTROL PROGRAMMING  
COLLEGE ALGEBRA  
COLLEGE CHEMISTRY  
POLYMERS  
INTRO. TO ASTRONOMY  
PRINC. OF ECONOMICS: MACRO  
AMERICAN NATIONAL GOVERNMENT  
GOVT. POLITICS & THE MEDIA  
HISTORY OF THE UNITED STATES  
INTRODUCTION TO SOCIOLOGY  
SPECIAL TOPICS IN CRIMINAL JUSTICE  
CJ ROLE OF THE PROSECUTOR  
METHODS OF SOCIAL RESEARCH  
SOCIAL WORK PRACTICAL SKILLS II  
FIELD PLACEMENT I

### GRADUATE DEGREE COURSES

FINANCIAL MANAGEMENT I  
ADM. & SUPERV. OF CAREERS & VO TECH ED  
AGRI. EDUC. ANIMAL RELATED  
ADV. FARM & RANCH MANAGEMENT  
PHILOSOPHY, INTERP. & APPL. OF RESEARCH  
DEV. MODERN BIOLOGICAL CONCEPTS  
BIOLOGICAL RESEARCH DESIGN & ANALYSIS  
COMPUTER BASED INFO. SYSTEMS  
ORGANIZATIONAL BEHAVIOR  
ANALYTICAL METHODS MGMT. DECISIONS  
MANAGEMENT LEADERSHIP SEMINAR  
HUMAN DEVELOPMENT  
PGMS. & PROCED. IN SUPERVISION  
ADMN. OF ELEM. & SEC. SCHOOLS  
PUBLIC SCHOOL LAWS  
ORG. & ADMN. OF READING PGMS.

FOUNDATIONS OF READING  
ADMN. & SUPERV. OF SPECIAL SERVICES  
STANDARDIZED TESTS & MEASUREMENTS  
TRENDS & ISSUES ELEM. CURR. & INST.  
PROCESSES IN EDUC. LEADERSHIP  
SCHOOL-COMMUNITY RELATIONSHIPS  
TRENDS & ISSUES SEC. CURR. & INST.  
INTRODUCTION TO GUIDANCE  
TECHNIQUES OF RESEARCH  
PRINCIPLES OF RHETORIC  
STUDIES IN MODERN FICTION  
ENGLISH SEMINAR  
BUSINESS RESEARCH METHODS  
MARKETING THEORY & PRACTICE  
ADAPTIVE PHYSICAL EDUCATION  
TOPICS IN MODERN ALGEBRA  
HISTORIOGRAPHY & HISTORICAL METHOD

EVENING COLLEGE REGISTRATION  
THURSDAY AUGUST 30TH 6 PM-9 PM  
CLYDE H. WELLS FINE ARTS CENTER

ADMISSIONS INFORMATION: 817-968-9125  
OR WRITE: BOX T-2003, STEPHENVILLE, TX 76402

## EVENING COLLEGE TARLETON STATE UNIVERSITY

ACCREDITED BY THE AMERICAN COLLEGE OF RADIOLOGY

## BREAST CANCER DETECTION UNIT

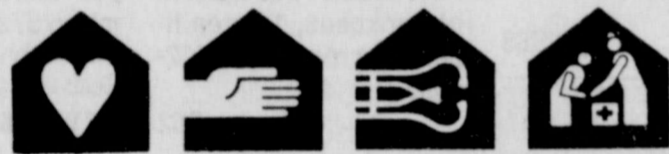
available to area women!

MONDAY, AUGUST 6TH  
EASTLAND MEMORIAL HOSPITAL  
304 SOUTH DAUGHERTY  
EASTLAND, TEXAS

Call 629-2601 for appointment

According to the American Cancer Society, one out of ten women will develop breast cancer sometime in her lifetime. It is, currently estimated

that over 37,000 women die each year as a result of breast cancer. Ninety percent of breast cancers are diagnosed by women or their physicians finding a lump in the breast. Women who are diagnosed with a lump large enough to feel have a 50 percent five year survival rate. A woman who is diagnosed as having breast cancer by mammography, before a lump can be felt, has a 97% five year survival rate and a 90% 10 year survival rate. The cost is only \$60.00. A mammogram can detect a cancer this small, even before it can be felt.



### Outreach Home Health Services - Eastland

You are cordially invited to attend our Open House: 1:00 pm to 4:00 pm, August 8, 1990. Staff will be present to explain our services to your community. We look forward to meeting and serving you and your community.

Refreshments will be served.

Outreach Health Services - Eastland  
601 W. Main 629-3365  
Eastland, Texas 76448

CEKRSB62/31

## Fullen Motor Co.

305 East Main Eastland 629-2676

THE  
Heartbeat  
OF AMERICA

### TRUCKS

1984 3/4 Ton Ford  
4X4 - Diesel  
\$3450.00

1985 1/2 Ton 48,000  
V6 4 speed  
\$3250.00

1977 1/2 Ton Chevrolet  
4X4 V8 - Automatic  
\$2250.00

1980 1/2 Ton Ford  
Good Work Truck  
\$1500.00

1981 Conversion Van  
V8 - automatic  
Good Vehicle  
\$2500.00

TODAY'S  
CHEVROLET

### CARS

1984 Mercury Marquis  
4dr Sedan  
\$1250.00

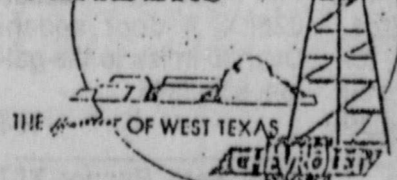
1980 Ford LTD Coupe  
74,000 Miles  
Local One Owner  
\$2500.00

1981 Pontiac Lemans  
Station Wagon  
Good Work Car  
\$1750.00

1979 Malibu 4 Dr.  
Dependable Transportation  
\$1250.00

1978 Buick LeSabre  
Excellent Work Car  
\$1150.00

BIG  
COUNTRY  
CHEVROLET  
DEALERS



Call Collect 817-629-2676. Open Mondy - Friday 8 a.m. till 6 p.m.  
Closed Saturday and Sunday

## SPECIALS

## KEN'S CHICKEN-N-FISH

Hwy. 80 East "As Fast As Fresh Can Be" Eastland

Reg. \$2.49	Steak Finger Basket With Fries, Gravy, Toast or Puffs	Large \$2.95
----------------	---	-----------------

Mess-O-Fish	\$15.90
Includes Bucket of Fish, Pint of Slaw, Tartar Sauce, Hot Puffs, honey	
FREE LARGE OKRA	

Specials good Saturday thru Friday August 4 - August 10  
Open 7 days a week 11 a.m. - 9 p.m.

For Faster Service At Our Drive thru Window

# Call 629-8981

Read The  
Classifieds

CHILD ABUSE  
24 HOUR HOTLINE  
1-800-252-5400

M. H. Perry  
Insurance

104 N. Lamar  
Eastland, TX

Phone 629-1566

- Life Insurance
- Hospitalization
- Group
- Cancer
- Supplement
- Medicare

CEK 104

# County Classified Section

Sunday, August 5, 1990

**HOMES**

57 ACRES, 7 mile Cisco, most timber, deer/turkey/birds, road front, \$400. ac.

300 ACRES Sipe Springs area, partially timbered, good deer, turkey, sandy loam soil, good fences, \$400 per acre.

161 ACRES Lots bottom land, pecans, 60 tillable, well fenced, 1/2 mile Sabanna, good deer hunting, lots big oak, pecans. \$550 ac. Agent owned.

58 ACRES, Several big trees, 2 tanks, some coastal, most new fences, lots road front. \$550 ac. E-ZZ terms.

80.5 ACRES, 7 mi NE Rising Star, 30 Coastal, app. 1/2 cultivation, well fenced, lots road frontage \$560.00 per acre.

72 ACRES on Hwy. 36, 6 mi. E. of Rising Star, well fenced, coastal & native grasses, 2 tanks, some timber. Asking \$550 per acre cash or assume Tex. Vet loans.

1000 + ACRES S of Carbon. Native, coastal pasture, 13 pastures, 13 tanks, co-op water, lots road frontage, deer lease brings over \$10,000 per yr. \$495.00 per acre.

70.3 ACRES 7 mi E of Rising Star Hwy 36. Some coastal, well fenced, 3 co-op water taps applied for, fair barn, 2 tanks. \$500 per acre, cash or assume \$21,600 GI loans.

95.43 ACRES, 20 cultivated. 3/1 frame home, 4 mi of Carbon, good barn, native grasses. House partially furnished; several cows included. \$70,000, \$14,000 down, 10% interest.

We WANT your listings 35 Yrs. in Business COGBURN REALTY DE LEON 893-6666 893-5898 893-2642 RS105

FOR SALE BY OWNER: 3 bedroom brick, 1 1/2 bath, large fenced yard in Cisco. 442-2237 or 442-1553, anytime.

PRICE REDUCED - Nice 2 or 3 BR, 1 1/2 bath, central heat and air, new storm windows and doors, good location, 502 W. 7; Cisco. Was \$24,500, now \$13,900 or best offer. Some financing available. Call 915-646-0289 (Brownwood).

FOR SALE OR RENT - 2 BR home, CH/CA, privacy fence, good neighborhood. Call 817-725-7140 or 442-1580.

FOR SALE OR RENT: 2 BR house on 1/2 acre located edge of Cisco city limits. Deposit required. Call 442-4043 or 442-4413.

TO SETTLE ESTATE: 3 BR, 1 3/4 bath, brick large living area, roomy closets, central H/A, fully carpeted, on two corner lots, large storage bldg., near schools. Immediate possession. 817-629-1509.

**HOMES**

HOME FOR SALE BY OWNER

Perfect for young family or retired couple! 3 BR, 1 1/2 bath, central air, ceiling fans, carpet, garage w/door opener, kitchen w/appliances, privacy fence, large oak trees. Separate garage in back may be used as storage/shop building. Call (817)629-8634 after 5:00 p.m.

Lake Leon, 100 feet waterfront, 400 ft. deep lot. 2 BR Mobile home w/metal cover, small guest house, 3 car carport, lots of concrete patio, fruit and pecan trees, big garden plot, lots of shade trees. 30,000.00 terms to suit responsible buyer. Call 769-2303.

FOR SALE: 3 BR, 1 Bath, House and nice lot with stove, refrig, window a/c, \$5700.00 will take dependable car or truck as partial trade. Call 442-1806 after 6:00 p.m.

FOR SALE OR LEASE: 3 BR, 1 3/4 Bath, Brick with fireplace, corner lot, large playroom, \$475.00, \$300.00 deposit. (817) 629-3480.

FOR SALE BY OWNER: 139.75 Acres. Near Nimrod. Fronts paved road. Lg. stock tank never dry. Elec and phone lines. New fences. With or without producing mineral rights, 14'X74' mobile home. (915) 393-5765.

**ACREAGE**

FOR RENT: We have a wide range of apartments and houses. One to fit every need. Furnished or unfurnished by the week or month. Call and ask for Darlene or DeeAnn first for clean modern living and low, low prices. 629-2805 or 629-2851.

1 AND 2 bedroom; like new; carpet and drapes; frig, dishwasher, range and disposal; water, trash pickup and tv cable paid. Furnished apt. available weekly or longer. Choice neighborhood. See and compare Royal Oaks Apartments, 1304 Royal Lane, Cisco, 442-3232.

FOR RENT: 2 bdrm deluxe apts., appliances, fenced back yard, extra storage, \$210 per month. Call Ron Butler Sr. at 647-3234 or 647-3511 after 5:00 p.m.

MAVERICK APTS. Under New Management. 1-2 & 3 bedroom available with W/D hookups. Close to all Eastland Schools call Diana Underwood at 629-1913 for details.

**FOR RENT**

COLONY II APARTMENTS One and two bedroom. Furnished and unfurnished. Move in now!! \$30 off your monthly rent. For a limited time only! Designer decorated, energy efficient with modern appliances, central H/A, Laundry, large play area. Conveniently located near schools, churches, shopping. Resident mgr. Family living at its best in a quiet neighborhood! 500 Sadosa, 629-1473. Equal Housing Opportunity.

FOR RENT: No deposit with utilities paid. 3 or 2 bedroom mobile home. Refrigerator, stove, washer, dryer furnished. Sunshine Valley. Leona Morton, 442-1365.

ATTENTION: If you are looking for a clean and attractive newly remodeled apartment at a reasonable rate try Flamingo Apartments in Cisco. Fully furnished kitchenettes. All bills paid. Starting at \$45 per week. Must see to appreciate. Call 442-9902 or 629-2805.

House For Rent in Olden: Small 3 BR house \$200.00 per month plus deposit. Call 629-1202 after 5 p.m.

FOR RENT: 2 BR, 2 bath, trailer, CH/A, ceiling fans, kitchen equipped, quiet countryside. Nice! Responsible party only. \$375. 442-1495. 915-695-2740.

FOR RENT: 3 BR, C/HA, nice carpet, excellent condition. \$300./\$150. deposit. 442-3130 or (915) 675-6225.

FOR RENT: 2 BR house all kitchen appliances furnished, carpet, curtains, total electric, no pets. 1316 S. Seaman. Call Mrs. Basham after 9 a.m. 629-3445.

FOR RENT: Downtown 2 bay buildings office space, and area for welding. Call 629-2083.

FOR RENT: Close in building on Commerce St. suitable for store or various business with or without fenced in lot and small office. Call 629-2083.

FOR RENT OR LEASE: 2 BR home on 3 acres, near Ranger school. Call 647-1822 in Ranger.

FOR RENT: 1 BR house, large yard with carport and washroom, \$175. unfurnished, \$200 furnished. 307 E. Patterson, Eastland. 629-2660, office or 442-3777.

**FOR RENT**

FOR RENT: 2 BR Mobile, \$150 monthly, 609 W. 12th, newly remodeled. Also 4 BR, 2 Bath, largest workshop in Cisco, 442-1269. Will sell with 10% down and \$250 monthly.

HOUSE FOR RENT: 2 BR, 1 Bath, large fenced back yard, 1 car garage. Deposit and references required. Call (214) 563-0250 or (214) 563-6873.

For Rent: Partially furnished apartment 647-3507, nights and weekends.

NEEDED: Competent, caring LVN's who are interested in furthering their career in nursing. Available to you are an established program for RN School, competitive wages, vacation and holiday pay, health and dental insurance, retirement plan, stock plan three day weekend every third week and much more. If you are interested in a steady career in long term care and desire to work in a clean, established facility please come by 1405 W. Commerce for all the details.

NEEDED: Full time LVN, paid holidays, insurance, vacation, 3 day weekend off every third weeks. Apply at 700 S. Ostrom, Eastland.

NEEDED: Full time LVN, paid holidays, insurance, vacation, 3 day weekend off every third weeks. Apply at 700 S. Ostrom, Eastland.

NEEDED: Full time LVN, paid holidays, insurance, vacation, 3 day weekend off every third weeks. Apply at 700 S. Ostrom, Eastland.

NEEDED: Full time LVN, paid holidays, insurance, vacation, 3 day weekend off every third weeks. Apply at 700 S. Ostrom, Eastland.

NEEDED: Full time LVN, paid holidays, insurance, vacation, 3 day weekend off every third weeks. Apply at 700 S. Ostrom, Eastland.

NEEDED: Full time LVN, paid holidays, insurance, vacation, 3 day weekend off every third weeks. Apply at 700 S. Ostrom, Eastland.

NEEDED: Full time LVN, paid holidays, insurance, vacation, 3 day weekend off every third weeks. Apply at 700 S. Ostrom, Eastland.

NEEDED: Full time LVN, paid holidays, insurance, vacation, 3 day weekend off every third weeks. Apply at 700 S. Ostrom, Eastland.

NEEDED: Full time LVN, paid holidays, insurance, vacation, 3 day weekend off every third weeks. Apply at 700 S. Ostrom, Eastland.

NEEDED: Full time LVN, paid holidays, insurance, vacation, 3 day weekend off every third weeks. Apply at 700 S. Ostrom, Eastland.

NEEDED: Full time LVN, paid holidays, insurance, vacation, 3 day weekend off every third weeks. Apply at 700 S. Ostrom, Eastland.

NEEDED: Full time LVN, paid holidays, insurance, vacation, 3 day weekend off every third weeks. Apply at 700 S. Ostrom, Eastland.

NEEDED: Full time LVN, paid holidays, insurance, vacation, 3 day weekend off every third weeks. Apply at 700 S. Ostrom, Eastland.

NEEDED: Full time LVN, paid holidays, insurance, vacation, 3 day weekend off every third weeks. Apply at 700 S. Ostrom, Eastland.

NEEDED: Full time LVN, paid holidays, insurance, vacation, 3 day weekend off every third weeks. Apply at 700 S. Ostrom, Eastland.

NEEDED: Full time LVN, paid holidays, insurance, vacation, 3 day weekend off every third weeks. Apply at 700 S. Ostrom, Eastland.

NEEDED: Full time LVN, paid holidays, insurance, vacation, 3 day weekend off every third weeks. Apply at 700 S. Ostrom, Eastland.

NEEDED: Full time LVN, paid holidays, insurance, vacation, 3 day weekend off every third weeks. Apply at 700 S. Ostrom, Eastland.

NEEDED: Full time LVN, paid holidays, insurance, vacation, 3 day weekend off every third weeks. Apply at 700 S. Ostrom, Eastland.

NEEDED: Full time LVN, paid holidays, insurance, vacation, 3 day weekend off every third weeks. Apply at 700 S. Ostrom, Eastland.

NEEDED: Full time LVN, paid holidays, insurance, vacation, 3 day weekend off every third weeks. Apply at 700 S. Ostrom, Eastland.

NEEDED: Full time LVN, paid holidays, insurance, vacation, 3 day weekend off every third weeks. Apply at 700 S. Ostrom, Eastland.

NEEDED: Full time LVN, paid holidays, insurance, vacation, 3 day weekend off every third weeks. Apply at 700 S. Ostrom, Eastland.

NEEDED: Full time LVN, paid holidays, insurance, vacation, 3 day weekend off every third weeks. Apply at 700 S. Ostrom, Eastland.

NEEDED: Full time LVN, paid holidays, insurance, vacation, 3 day weekend off every third weeks. Apply at 700 S. Ostrom, Eastland.

NEEDED: Full time LVN, paid holidays, insurance, vacation, 3 day weekend off every third weeks. Apply at 700 S. Ostrom, Eastland.

**HELP WANTED**

HELP WANTED: Retired couple to live on. House and utilities furnished. Good health and references required. Send replies to P O Box 606, Brady, TX 76825.

Positions open for LVNs, 12 hour or 8 hour shifts. Competitive salaries and benefits. Apply in person at Eastland Memorial Hospital, 304 S. Daugherty St., Eastland, TX 76448. AN EQUAL OPPORTUNITY EMPLOYER.

WANTED: Salesperson for retail store. Apply in person at House of Webster Ceramics, 1208 So. Bassett St., Eastland. No phone calls please.

HELP WANTED: Growing to appliance and furniture rental company taking applications for manager trainee at Eastland Store. Position requires manager experience, hard work, good paperwork skills, ability to deal with customers, etc. Must present neat appearance, honest and willing to work we offer a good starting salary, bonus plan, group medical insurance, paid vacation, paid holidays, sick pay and a chance for advancement. Please apply at Color Vision.

HELP WANTED: Growing to appliance and furniture rental company taking applications for manager trainee at Eastland Store. Position requires manager experience, hard work, good paperwork skills, ability to deal with customers, etc. Must present neat appearance, honest and willing to work we offer a good starting salary, bonus plan, group medical insurance, paid vacation, paid holidays, sick pay and a chance for advancement. Please apply at Color Vision.

HELP WANTED: Growing to appliance and furniture rental company taking applications for manager trainee at Eastland Store. Position requires manager experience, hard work, good paperwork skills, ability to deal with customers, etc. Must present neat appearance, honest and willing to work we offer a good starting salary, bonus plan, group medical insurance, paid vacation, paid holidays, sick pay and a chance for advancement. Please apply at Color Vision.

HELP WANTED: Growing to appliance and furniture rental company taking applications for manager trainee at Eastland Store. Position requires manager experience, hard work, good paperwork skills, ability to deal with customers, etc. Must present neat appearance, honest and willing to work we offer a good starting salary, bonus plan, group medical insurance, paid vacation, paid holidays, sick pay and a chance for advancement. Please apply at Color Vision.

HELP WANTED: Growing to appliance and furniture rental company taking applications for manager trainee at Eastland Store. Position requires manager experience, hard work, good paperwork skills, ability to deal with customers, etc. Must present neat appearance, honest and willing to work we offer a good starting salary, bonus plan, group medical insurance, paid vacation, paid holidays, sick pay and a chance for advancement. Please apply at Color Vision.

HELP WANTED: Growing to appliance and furniture rental company taking applications for manager trainee at Eastland Store. Position requires manager experience, hard work, good paperwork skills, ability to deal with customers, etc. Must present neat appearance, honest and willing to work we offer a good starting salary, bonus plan, group medical insurance, paid vacation, paid holidays, sick pay and a chance for advancement. Please apply at Color Vision.

HELP WANTED: Growing to appliance and furniture rental company taking applications for manager trainee at Eastland Store. Position requires manager experience, hard work, good paperwork skills, ability to deal with customers, etc. Must present neat appearance, honest and willing to work we offer a good starting salary, bonus plan, group medical insurance, paid vacation, paid holidays, sick pay and a chance for advancement. Please apply at Color Vision.

HELP WANTED: Growing to appliance and furniture rental company taking applications for manager trainee at Eastland Store. Position requires manager experience, hard work, good paperwork skills, ability to deal with customers, etc. Must present neat appearance, honest and willing to work we offer a good starting salary, bonus plan, group medical insurance, paid vacation, paid holidays, sick pay and a chance for advancement. Please apply at Color Vision.

HELP WANTED: Growing to appliance and furniture rental company taking applications for manager trainee at Eastland Store. Position requires manager experience, hard work, good paperwork skills, ability to deal with customers, etc. Must present neat appearance, honest and willing to work we offer a good starting salary, bonus plan, group medical insurance, paid vacation, paid holidays, sick pay and a chance for advancement. Please apply at Color Vision.

HELP WANTED: Growing to appliance and furniture rental company taking applications for manager trainee at Eastland Store. Position requires manager experience, hard work, good paperwork skills, ability to deal with customers, etc. Must present neat appearance, honest and willing to work we offer a good starting salary, bonus plan, group medical insurance, paid vacation, paid holidays, sick pay and a chance for advancement. Please apply at Color Vision.

HELP WANTED: Growing to appliance and furniture rental company taking applications for manager trainee at Eastland Store. Position requires manager experience, hard work, good paperwork skills, ability to deal with customers, etc. Must present neat appearance, honest and willing to work we offer a good starting salary, bonus plan, group medical insurance, paid vacation, paid holidays, sick pay and a chance for advancement. Please apply at Color Vision.

HELP WANTED: Growing to appliance and furniture rental company taking applications for manager trainee at Eastland Store. Position requires manager experience, hard work, good paperwork skills, ability to deal with customers, etc. Must present neat appearance, honest and willing to work we offer a good starting salary, bonus plan, group medical insurance, paid vacation, paid holidays, sick pay and a chance for advancement. Please apply at Color Vision.

HELP WANTED: Growing to appliance and furniture rental company taking applications for manager trainee at Eastland Store. Position requires manager experience, hard work, good paperwork skills, ability to deal with customers, etc. Must present neat appearance, honest and willing to work we offer a good starting salary, bonus plan, group medical insurance, paid vacation, paid holidays, sick pay and a chance for advancement. Please apply at Color Vision.

HELP WANTED: Growing to appliance and furniture rental company taking applications for manager trainee at Eastland Store. Position requires manager experience, hard work, good paperwork skills, ability to deal with customers, etc. Must present neat appearance, honest and willing to work we offer a good starting salary, bonus plan, group medical insurance, paid vacation, paid holidays, sick pay and a chance for advancement. Please apply at Color Vision.

HELP WANTED: Growing to appliance and furniture rental company taking applications for manager trainee at Eastland Store. Position requires manager experience, hard work, good paperwork skills, ability to deal with customers, etc. Must present neat appearance, honest and willing to work we offer a good starting salary, bonus plan, group medical insurance, paid vacation, paid holidays, sick pay and a chance for advancement. Please apply at Color Vision.

HELP WANTED: Growing to appliance and furniture rental company taking applications for manager trainee at Eastland Store. Position requires manager experience, hard work, good paperwork skills, ability to deal with customers, etc. Must present neat appearance, honest and willing to work we offer a good starting salary, bonus plan, group medical insurance, paid vacation, paid holidays, sick pay and a chance for advancement. Please apply at Color Vision.

HELP WANTED: Growing to appliance and furniture rental company taking applications for manager trainee at Eastland Store. Position requires manager experience, hard work, good paperwork skills, ability to deal with customers, etc. Must present neat appearance, honest and willing to work we offer a good starting salary, bonus plan, group medical insurance, paid vacation, paid holidays, sick pay and a chance for advancement. Please apply at Color Vision.

HELP WANTED: Growing to appliance and furniture rental company taking applications for manager trainee at Eastland Store. Position requires manager experience, hard work, good paperwork skills, ability to deal with customers, etc. Must present neat appearance, honest and willing to work we offer a good starting salary, bonus plan, group medical insurance, paid vacation, paid holidays, sick pay and a chance for advancement. Please apply at Color Vision.

HELP WANTED: Growing to appliance and furniture rental company taking applications for manager trainee at Eastland Store. Position requires manager experience, hard work, good paperwork skills, ability to deal with customers, etc. Must present neat appearance, honest and willing to work we offer a good starting salary, bonus plan, group medical insurance, paid vacation, paid holidays, sick pay and a chance for advancement. Please apply at Color Vision.

HELP WANTED: Growing to appliance and furniture rental company taking applications for manager trainee at Eastland Store. Position requires manager experience, hard work, good paperwork skills, ability to deal with customers, etc. Must present neat appearance, honest and willing to work we offer a good starting salary, bonus plan, group medical insurance, paid vacation, paid holidays, sick pay and a chance for advancement. Please apply at Color Vision.

HELP WANTED: Growing to appliance and furniture rental company taking applications for manager trainee at Eastland Store. Position requires manager experience, hard work, good paperwork skills, ability to deal with customers, etc. Must present neat appearance, honest and willing to work we offer a good starting salary, bonus plan, group medical insurance, paid vacation, paid holidays, sick pay and a chance for advancement. Please apply at Color Vision.

HELP WANTED: Growing to appliance and furniture rental company taking applications for manager trainee at Eastland Store. Position requires manager experience, hard work, good paperwork skills, ability to deal with customers, etc. Must present neat appearance, honest and willing to work we offer a good starting salary, bonus plan, group medical insurance, paid vacation, paid holidays, sick pay and a chance for advancement. Please apply at Color Vision.

HELP WANTED: Growing to appliance and furniture rental company taking applications for manager trainee at Eastland Store. Position requires manager experience, hard work, good paperwork skills, ability to deal with customers, etc. Must present neat appearance, honest and willing to work we offer a good starting salary, bonus plan, group medical insurance, paid vacation, paid holidays, sick pay and a chance for advancement. Please apply at Color Vision.

HELP WANTED: Growing to appliance and furniture rental company taking applications for manager trainee at Eastland Store. Position requires manager experience, hard work, good paperwork skills, ability to deal with customers, etc. Must present neat appearance, honest and willing to work we offer a good starting salary, bonus plan, group medical insurance, paid vacation, paid holidays, sick pay and a chance for advancement. Please apply at Color Vision.

HELP WANTED: Growing to appliance and furniture rental company taking applications for manager trainee at Eastland Store. Position requires manager experience, hard work, good paperwork skills, ability to deal with customers, etc. Must present neat appearance, honest and willing to work we offer a good starting salary, bonus plan, group medical insurance, paid vacation, paid holidays, sick pay and a chance for advancement. Please apply at Color Vision.

HELP WANTED: Growing to appliance and furniture rental company taking applications for manager trainee at Eastland Store. Position requires manager experience, hard work, good paperwork skills, ability to deal with customers, etc. Must present neat appearance, honest and willing to work we offer a good starting salary, bonus plan, group medical insurance, paid vacation, paid holidays, sick pay and a chance for advancement. Please apply at Color Vision.

HELP WANTED: Growing to appliance and furniture rental company taking applications for manager trainee at Eastland Store. Position requires manager experience, hard work, good paperwork skills, ability to deal with customers, etc. Must present neat appearance, honest and willing to work we offer a good starting salary, bonus plan, group medical insurance, paid vacation, paid holidays, sick pay and a chance for advancement. Please apply at Color Vision.

**SERVICES**

CENTER POINT ENTERPRISES INC: Free Estimates. Builders & Developers, Metal Buildings, & Remodeling. Joe Maynard, 629-8568, or 629-1013.

Tractor Mowing - Shredding - Rototilling - Acreage - Lots - Gardens. Free estimates 817-629-1033, Bill Batts.

VISA/ MASTERCARD Easy, fast! No deposit. No credit check. Also \$5000 Gold Card Guaranteed! Cash advances! Free info! 1(800)234-6741, anytime.

GOLD CREDIT CARD visa/ mastercard guaranteed \$2,500.00 unsecured credit line \*cash advance\* 1-900-446-0028 19.95 fee

I want a sitting job with the elderly; daytime hours. Ranger or Eastland. Come by 912 B Diaz-Ranger or call 653-2231.

FOR SALE: Farm Fresh Tomatoes - 1st quality of canning tomatoes reduced to \$7.50 for a 25 pound box. Bo Caraway, 639-2545 - call before driving out.

FOR SALE: Practical office supply items; books, and much, more more. At this newspaper office.

FOR SALE: Quality business and/or personal cards. Order at this newspaper office.

THE ALMOST NEW SHOPPE 811 East Walker 817-559-9677 Breckenridge, Texas Open 10-5 Monday-Friday, 10-12 Saturday. Appliances, 30 day guarantee, stoves, washers, dryers beginning at \$50, refrigerators \$75, also furniture, tools, etc.

BOOKS FOR SALE at Eastland Telegram. 1/2 price, different varieties.

Barracks 5 - Time to order your deer rifle. Rem. 700 ADL/\$350; Win. 70/\$385; Win. Ranger 30-30/\$210; Mini Mauser .223/\$285; 817-442-3475.

FOR SALE: 1983, 35 foot Shasta 5th Wheel trailer with awning, \$7,500. Also 1985 Ford 3/4 ton dooley, diesel, air, power, tilt, cruise, running boards, \$7,500. Firm. Sell together as unit or sell trailer separately. Call 442-2858 or see at 202 Ave. I, Cisco.

Remodeling - Repair - New Homes - Ceramic Tile - Carpet - Painting. Alton Frazier Construction, 442-3130.

Hay Hauled: call Carl Bray, 442-1447.

**FOR SALE**

FOR SALE: 1975 Ford 1 Ton with welding bed, recently rebuilt 390 engine, electric 9000 lb winch w/poles. Call 647-5120.

FOR SALE: 1981 Sun Villa mobile home, 14 x 70, 2 BR, 2 B, CH/A, kitchen appliances. 1 owner, excellent condition. Assumable loan to qualified buyer. Call 647-5120.

Sudan Hay for Sale: (Round or Square). Call 817-647-3177 or 817-647-3951.

DISPLAY OUR FLAG: 20 ft. galvanized flag poles with hardware and rope. \$80.00 ready to set or \$100.00 set with concrete in your yard-25 mile area. Raymond Hounshell, 1322 Park Dr. Cisco. Phone (817) 442-1590.

FOR SALE: Floral couch \$65, 2 chairs \$30 each. In very good condition. Call for appointment. 442-3294 or 442-1613.

FOR SALE: 4 beds, 2 sets of bunkbeds, 1 green fiberglass roof panel, 442-4750.

Large Round Bails, Sudan Hay, \$25 a bail. Call Bobby Carlton 639-2291.

'85 Plymouth, 2 door-\$2500.00. Clarinet used 1 school term. \$150.00. Call 629-1117.

Used Appliances for Sale. Refrigerators, stoves, washers & dryers. Call 629-2252.

Piano For Sale: Wanted responsible party to take on small monthly payments. See locally. Trade-in accepted. Credit manager 1-800-233-8663.

Auto For Sale: 1988 Ford Pickup, F-150, 5 speed, low mileage, excellent condition. Call 647-1155 or 647-1182.

FOR SALE: 1974 Dodge Dart 4 door, 6 cyl., auto, PS, air cond., runs good. Call 653-2260 or 629-3514.

FOR SALE: 1977 Pontiac Bonneville, well kept. Electric doors, locks, windows and seats. Original paint. Upholstery in excellent shape. Good tires. 306 N. Daugherty, Eastland.

For Sale: 1984 Mazda 626LX, 4 door sedan. Over 30 miles to the gallon. 639-2545.

1989 Ford Ranger XLT Supercab, 2.9L, V6 engine. Call 629-8737.

**AUTOS**

1988 Chevy PU, AC, V-6 (EFI), 4 spd. w/OD, AM/FM, cruise, tilt, 21K miles. \$7500. 442-2154.

**BOATS**

SANDY CREEK MARINA We can save you \$\$\$! 1-800-292-3004. Mon-Sat. New and used boats. Stratos - VIP - Malibu - Evinrude



**GARAGE SALES**

Garage Estate sale: everything must move: dishes, furniture, lingerie, dresses, coats, afghans, and blankets, and much more. Friday and Saturday, 8 a.m. - 6 p.m. 1208 Park Drive, Cisco. C62

Garage Sale: Used-small jeans, \$1.00 pr. 20 pr ladies riders-NEW-\$5.00. Power tools, table saw, skill, jig, Beltsanders, lots of misc. household items. Corner of 11th Ave. J, Cisco. Saturday & Sunday. C62

Four Family Garage Sale: at 608 E. 22nd, Cisco. Starts at 8 a.m Saturday. C62

Garage Sale: Sat., Aug. 4, 1300 Spring Rd Ranger. School clothes, childrens, Jr., adult, glass shower doors, household items, misc. R62

Garage Sale: 410 Hillcrest, Sat. Aug. 4th 8:00 am. Children and adult clothing, shoes, furniture, nick-nacks, collectibles, and lots of misc. Bargains for everyone. T62

Garage Sale: Sat. 8 a.m.-4 p.m. at 1410 Park Drive, Cisco. Childrens Clothes and lots of misc. C62

Garage Sale: 704 E. 13th, Cisco. Begins at 9 a.m. until ? All kinds of baskets, blankets, card table and much more. C62

Garage Sale: 1210 W. 8th, Cisco. 8 a.m. - ? Refreshments, clothes, dishes, and misc. C62

Carport Sale: 3 Family, mens & womens clothes, household goods, quilting frame and misc. Aug. 3 & 4. 9:00 to 6:00. 602 West Main, Ranger. R62

Garage Sale: The garage list Thursday for 102 N. Oaklawn Eastland has been canceled due to illness. T62

**GARAGE SALES**

Garage Sale: Baby & children clothes, adult clothes, shoes of all sizes. A big 5-10-25c sale come see. 417 S. Marston St. Ranger. Sat. 4th Sun. Monday. R62

4 Family Yard Sale: School clothes, boys & girls size 7-12, guns, plants, toys, atari game, adult clothes, antiques, lots of misc. Saturday, 8-? at Morton Valley Old Store. T62

Garage Sale: 401 W. Moss Tuesday, Aug. 7th, 8 a.m. to 5 p.m. Clothing, lights, linens, shoe's, dishes, Christmas items, arts and crafts, misc. items. T62

Garage Sale: 409 Colony-Off Conner St. Lots of furniture and a little bit of everything. Sat. & Sun. 9 a.m.-6 p.m. T62

**ANTIQUES**

**FORSALE:** Antique glass and furniture and other collectibles. "We Buy Estates." The House of Antiques, 908 S. Bassett, Eastland, Texas. Open every day. T104

**WANTED**

**WANTED HOUSEWORK** or sitting with elderly. Days-Evenings-Nights. 3:35 an hour. Mary Addie Harris. 629-2450. T64

**NOTICES**

**NOTICE: FUND RAISING** for your church, club or organization can be easy and profitable, selling a local product at a good commission rate. If interested, describe your organization in a letter to **LOCAL SALES**, Box 29, Eastland, TX 76448, with name of person to contact. T104

**CHILD ABUSE 24 HOUR HOTLINE 1-800-252-5400**

**NOTICES**

**NOTICE:** Now's the time to check for winter damage; hedges, shrubs and ornamentals. Call Jackie Hallmark for a free evaluation. Hallmark Garden Center, 600 W. Main St. Eastland, 629-8616. T103

**NOTICE OF SALE**

Eastland County Precinct 3, Rising Star wishes to sell the old Precinct Barn and property located at West College Street in Rising Star, TX. Property consists of 1.27 Acres land, a building 40' wide x 30' long with attached shed 18' long. Additional shed on property 33 1/2' wide x 41' long. Mail bids to Eastland County Judge, P. O. Box 327, Eastland, TX 76448, clearly marking outside of envelope as such. Bids to be opened at regular meeting on August 27, 1990 at 10:00 o'clock a.m. Eastland County reserves the right to reject any or all bids not in the County's best interest. T63

I Leonard Brown am no longer responsible for the debts of Deborah (Thrasher) Brown. C62

**LIVESTOCK**

**CISCO AUCTION:** Cisco Horse Sale: Sunday, Aug. 5, 12:00 noon, Call 817-442-2304. T62

**PETS**

**FREE:** young, mostly black and white pups; medium sized dogs. Richard at Telegram, 629-707. R64

**LOST & FOUND**

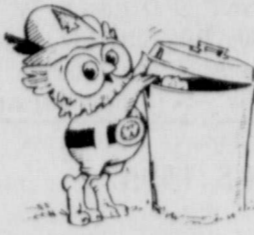
**LOST DOG:** Black lab, male, 3 years old, 85 lbs., answers to the name of "Jigger." Last seen wearing a gold collar. Call Stan Weekes 647-1040. R64

**LOST DOG:** Female Sheltie (miniature Collie) answers to name Sheena. Black, brown & white has had rabies shots but was not wearing tags. If seen or found please call Bill Green at 629-2934. 510 W. Plummer. R64

**Jr. Rodeo To Be Held August 17 and 18**

There will be a Jr. Rodeo sponsored by Eastland Co. 4-H Ruff Riders Horse Club, August 17 and 18 at 8 p.m. at the Cisco Arena. Books open at 6 p.m. and close at 7:30 p.m. Enter upon arrival. CASH ONLY. 60 percent jackpot paid each night. Age groups: 10 and

under, 11-14, and 15-19. Montanan Silversmith Trophy Belt buckles to all-around cowboy and cowgirl in each division. Also stick horse race for 5 and under. More information call 817-629-1063, 817-442-4043, or 817-629-1093.



Woody Owl says Stash Your Trash Give a hoot. Don't pollute.

**PERSONAL**

Seeking descendants or information on Vel Edward (Boomer) Gregory who lived near Cisco in 1900. Had brother W.P. and wives name Rachel possibly Davie Gregory's son who is shown to be here in 1860's census. Write to Harold Gregory, P O Box 255, Wynnewood, Ok 73098. T63

Loving Couple looking to adopt. Call collect 817-579-1239 or 817-326-2181. R67

**REDUCE, Burn off fat while you sleep, take OPAL available at City Drug. C64**

**FOR LEASE**

FOR LEASE: 2 trailer lot spaces. Call 653-2407. T104

**MOBILE HOME TRANSPORTING Complete Moves & Setups Moving Throughout Texas**

•Tie Downs •Blocking & Leveling •Licensed •Bonded •Insured 18 Years Experience 817-893-6753 S104

**Keys Made Locks Changed or Repaired**

**ELROD'S MOBILE LOCK SHOP** 423 W. Main Ranger, Texas 76470 Phone 647-3444 Bonded Locksmith Auto — Residential — Commercial R62

**Changes In Circumstances May Affect SSI Eligibility**

For example, like the widow the other day, they had too much money in the bank and have since spent the money. Following is a list of what I suspect are the most common changes that could affect someone's eligibility for SSI: \* a decrease in income or resources \* the death of a spouse \* a spouse enters a nursing home \* a disabled child reaches age 18 \* moving to another State \* the medical condition of someone who was previously denied disability benefits worsens. Additionally, the SSI income and resource limits have increased over the years. This means people who were found ineligible in the past because they had too much income or resources may now be eligible.

I heard a rather sad story the other day that prompted me to write this column. An elderly widow came into the office to sign up for direct deposit. When I realized her Social Security check was only \$375, I asked her about applying for Supplemental Security Income (SSI). She told me she had applied about three years ago and was turned down because she had too many resources, specifically money in the bank. Come to find out, those extra resources had been spent a long time ago and she was now eligible for SSI. Unfortunately, she hadn't reapplied. That leads me to believe there are many people who were once turned down or thought themselves ineligible for SSI who have had a change in their circumstances that would make them eligible.

Too often, people who have these types of changes fail to reapply for SSI. They're losing out on important benefits because being eligible for SSI means more than simply getting monthly checks. In most States, including Texas, they would also be eligible for Medicaid which helps pay health care expenses. And SSI recipients often qualify for food stamps and other social services. If you or someone you know was previously denied SSI benefits, look at the situation again. If there's been some kind of change, check with Social Security to see if the change affects SSI eligibility. If you have a question or need an appointment, you can call toll free by dialing 1-800-234-5772.

**Linda Bonner To Host Seminar**

On Monday, August 6, Linda Bonner, staff therapist, will present an hour-long seminar entitled 'Marital Intimacy.' The program will begin at 7:00 p.m. in the conference room at Pastoral Care and Counseling Center in Abilene and is free to the public. For more information call 672-5683.

**Use the Classifieds**

**Oil and Gas Well Production Down**

Railroad Commission Chairman Kent Hance announced that Texas oil and gas wells produced 433,881,253 Mcf (thousand cubic feet) of gas in April, compared to the March gas production total of 461,051,521 Mcf. April production was down 6.12 percent compared to April 1989's production of 462,168,029 Mcf. The state's top producing counties, rank ordered by preliminary April production were: Pecos, 25,331,645 Mcf;

Webb, 22,265,564 Mcf; Zapata, 21,801,828 Mcf; Panola, 16,241,726 Mcf; Hidalgo, 14,180,739 Mcf; Ector, 9,391,482 Mcf; Crockett, 8,921,082 Mcf; Hemphill, 8,898,781 Mcf; Yoakum, 8,037,215 Mcf; and Ward, 6,956,840 Mcf. Texas gas production in April came from 182,887 oil wells and 46,417 gas wells. Gas production for Eastland County in April was reported to be 956,643 Mcf, dropping from 1,030,502 in March.

**Benefits Can Be Paid To Mentally Impaired People**

People who are developmentally disabled may qualify for monthly benefits under either the Social Security or the Supplemental Security Income (SSI) programs. The medical requirements for eligibility so far as disability is concerned are the same for both programs. Other eligibility requirements differ. A mentally impaired person can get Social Security payments when a parent starts getting Social Security retirement or disability payments, or when an insured parent dies. It doesn't matter how old the person is, but he or she must have become disabled before age 22. A mentally disabled person who has worked long enough and recently enough under Social Security can also get benefits on his or her own Social Security work record. SSI payments are paid to disabled people of any age, as well as to the blind and people 65 and over. SSI payments, however, are made to people whose income and resources are below certain levels. In deciding if an unmarried child under 18 and living at

home can get SSI payments, part of the parents' income and resources may be considered to be the child's. If the parents' countable resources exceed the SSI limit, the excess is included with the child's resources. After deducting allowances for the parents' work and living expenses and for other children living in the home, the remaining amount of the parents' income is included with the child's to decide if the child is within the income limit. Although people living in public institutions are generally not eligible for SSI payments, an application may be submitted when it appears that a person will be able to leave an institution soon. And sometimes it is the SSI payment that makes it possible for the person to leave the care facility. Call Social Security's toll-free telephone number for more information about Social Security or SSI benefits for disabled people. The number is 1-800-234-5772.

**Portrait of the Great American Investor**  
It's his job to know good advertising—and he also knows a good investment. Terry Wilson puts his money in U.S. Savings Bonds. Bonds now pay competitive rates, like money market accounts. Find out more, call 1-800-US-BONDS. U.S. SAVINGS BONDS THE GREAT AMERICAN INVESTMENT

**R & R CARPET CLEANERS**  
• Carpet •  
• Car Upholstery •  
• Furniture •  
• Re-do Headliners •  
• Offering Scotch Guard •  
• Water Extractions or Water Damage •  
**For Free Estimates Call Collect 647-1211 CER 104**

**Holland Electrical**  
• Residential and Commercial •  
• Ballasts Replaced •  
• Meter Loops •  
• Ceiling Fans •  
629-2409 CER104

**Read the Want Ads! Your Neighbors Do!**  
Eastland Telegram - Ranger Times - Cisco Press Sunday, August 5, 1990

**Jimenez Welding Service**  
Structural Fabrication Pump Jack & Engine Repair  
Custom Shop Welding Pumping Unit Repair Heavy & Light  
1103 Sinclair P.O. Box 397 817-647-3736 Ranger, TX 76470

**Squires Roofing Contractors**  
43 Years in Eastland  
Carbon - Eastland  
639-2233 CER 104 653-2354

**Remodeling - Siding Windows and Doors Jobbers for All Side Reynolds, Mastic and B.M.D. Siding, Windows, and Doors Also Remodeling & Add-Ons. Cover Facers and Overhang on Brick Homes. All Work Guaranteed. Call For Free Estimate. Butler & Fox Phone 629-2149 or 629-2814 CER 104**

**Vic's Welding**  
323 N. Commerce Ranger, Tx 76470  
• Heliarc & Wire Feed Aluminum Welding - Heavy or Light  
• Portable & Shop Arc Welding  
• Custom Fabrication  
Call 817-647-5120  
Phone answered 24 hours, 7 days  
Owner: Vic Huerta

**Paul Williams Roofing Co.**  
• FREE Estimates •  
• All Work Guaranteed •  
• Hot Tar & Gravel Composition •  
• Shingles • T-Locks • Wood Shingles •  
25 Years Experience In Eastland Area  
Paul Williams Carbon, Texas  
817-639-2330  
If No Answer call 817-629-1020 CER104

**FULL-SERVICE PLUMBING**  
58 Years And Three Generations of Service:  
**SMITH PLUMBING**  
Roy Lee, James and Mike  
Master Plumbing Supervision  
200 N. Walnut--629-2995  
Eastland CER104

**DON'T OVERLOOK YOUR INSURANCE NEEDS**  
Serving Eastland County Since 1919  
**CONTACT D.L. KINNAIRD GENERAL INSURANCE**  
629-2544 629-8606  
Sallie Kinnaird 104 N. Lamar Mike Perry

# Volunteers Needed

Volunteers are needed at Baylor College of Medicine in Houston for drug tests which may help with the devastating memory problems that accompany Alzheimer's disease.

"There is as yet no cure for Alzheimer's disease," said

Dr. Rachelle Doody, an assistant professor of neurology at Baylor, "but we are hopeful that these drug trails now underway here and elsewhere around the country will provide us with new tools to alleviate some of the misery Alzheimer's patients and their families must endure."

The drugs are physostigmine and SQ29852, which is similar to the blood-pressure medicine Captropil. If these drugs help in stem-

ming memory loss associated with Alzheimer's, it could be good news for victims of the disease, Doody said.

Volunteers must be 50 or older, in the early stages of Alzheimer's disease and free of any other major health problems. In addition, there are restrictions concerning other drugs patients may already be taking. People wishing to volunteer may call (713) 798-6660 for additional information.

# Donations Needed For Cemeteries

Center Point and Brown Cemeteries-We need help in the way of donations from friends and relatives of the following list. Please send your donations to Cricket Walker, Sec. Treasurer at P. O. Box 606, Carbon, Texas 76435. The money collected will be used for fencing, mowing and other needs in Eastland County south of Carbon, Texas.

The following in Center Eastland Telegram - Ranger Times - Cisco Press Sunday, August 5, 1990

# Point Cemetery:

- WJ & CL Lovell, A W and L A Maness, Sybbie Maness, Arleen Maness, G S and Z M Maness, M R White, David White, J W White, J F White, A M Caldwell, Frank Caldwell, J L Collard, W S Carter, P D Low, M A Greer, W N Greer, G H Greer, L L Greer, D F Tyrone, J E Greer, Walton Walker, J T Craig, R N Key, James Craghead, M G Craghead, Wiley Williams, J M Arms, J N Maynard, D J Lovell, Alva Lovell, Rhonda Lovell, U D Lovell, W W Kelly, Bill Kelly, Ida Jordan, George Kelly, Martha M Kelly, A A Hurst, P S Hardy,

T C Hardy and R T Hardy. The following in Brown Cemetery: JB and Tiny Johnson Children, John and Mary Hord, Luler J. O'Brien, Reed Fam-

# BIG COUNTRY REAL ESTATE

1101 1/2 W. 12TH  
Cisco, Tx 76437

Phny 442-1707  
Dana (Bkr.) 442-3958



- 3 bd Brk, fire-pl, patio, fenced, on Simms \$40,000
- 3 bd Brk, lng corner lot, shop, nice pool area \$75,000
- 3 bd frame, corner lot, gar. & carport, garden, patio
- Frame Homes, Reasonably priced, low down, owner carry
- Small acres, out of Cisco, nice home sites
- Frame home on 2 acs, fenced, out buildings \$28,000
- 165 acs, 2 homes, bottom land, game, o-carry \$175K
- 500+ acres, home, mins, game, water, will divide
- Rising Star - 3 bd, really great place, must sell \$45K
- Lake Cisco - 2 bd, good water, quiet, nice \$12,000
- 1-20 access, next to Sonic, owner carry
- Lake Cisco - lovely home, good water, central h/a, \$37,500

We Have More Listings - We Handle Rentals

# Notice

The Eastland County Juvenile Board will meet in regular session on Monday, August 6, 1990, at 9:00 a.m. in the 91st District Courtroom, Eastland, Texas.

1. Meeting called.
2. Approve minutes of previous meeting.
3. Discuss 1990 Monitoring Report.
4. Discuss 1991 Budget.
5. Other business.
6. Adjournment.

## James W. Ratliff

REALTOR-BROKER

111 E. Main St. Ranger, Texas

Office 647-1260 Home Phone 647-1667

REALTOR

Brick, three bedrooms, 1 1/2 baths, very large living room, dining room, combination kitchen with plenty of cabinets, dishwasher, two storage buildings in back yard. Drapes, curtains, fans, and many other nice things about this home. 1230 Lamar Street. This house should FHA to Qualified Buyer.

On the corner two lots, two bedrooms, one bath well kept home, dining room or den as it is used now. Very attractive home. 616 Young Street. Let us show you this place.

Older home on 1 1/2 lots in Young Addition. You can repair home to rent or clear just for the lots. Make us an offer.

Very attractive Spanish style Home on 32.55 acres of land on access road to I-20 West of Ranger. Three bedrooms, three baths, kitchen, den, dining room, living room. New carpet in bedrooms, a lot of welded pipe fences, city water, gas, electricity, small house just back of big house. Colony Creek on south and west sides.

Brick four bedrooms, 1 1/2 baths, living room, separate dining room, kitchen, sun room or office. Double garage, two lots, in very good neighborhood. Space heaters and several window refrigerated units.

Large older home on land 130x170, three bedrooms, one bath, separate dining room, living room, double garage, storage room. On good quiet street.

Stucco 2 bedrooms, 1 bath, living room, dining room, utility room, garden spot, carport. 710 Cherry St.

328 acres of land west of Ranger

1984 Morgan Building 14X40 Heat & Air units, must be moved. In good condition, let us show you this building.

355 acres north of Ranger.

## Town & Country REAL ESTATE

Barbara Love, Inc. Highway 80 East  
Broker Eastland, Texas 76448

629-1725 629-8391

EASTLAND

FOUR Residential Lots. Only \$10,000.00. E11 ONLY \$10,000.00 for this 3 BR, 1 bath frame on S. Seaman. Con. h/a. Needs some work. E7 PERFECT for newbies/weds - small 2 BR, 1 B home in nice neighborhood. Only \$12,000.00 E1 YOU won't believe this price! This 2BR, 1 bath frame has new carpet, inside & out. Drastically reduced to \$15,000.00 E26 PERFECT for newbies/weds - 1 B home in nice neighborhood. Only \$12,000.00 E1 THIS Large 3 BR, 2 bath frame has a lot to offer! Con. h/a, large of stg., game room & beautifully landscaped. Only \$45,000.00 E3 BEAUTIFUL Custom 3BR, 1 1/2 bath brick home on tree covered lot in Crestwood Addn. all the Extras! E8 OWNER Financing on this 3 BR, 2 bath mobile home on slab foundation. 21X24 den addition w/bay. Lots of storage! E29 VACANT Lot-Commercial Area, near downtown Frontage on N. Lamar, access from Patterson St. Owner will finance. E30 SHADDED Corner Lot-2BR, 1B frame. Central heat, metal stg. bldg. E6 NEWLY WEDS! 2BR, 1 bath frame home in neat neighborhood. Reasonably priced. E15 CAN'T beat this bargain! 2BR, 1B garage w/brick front, fenced, beautiful pecan & fruit trees. E19 PRICE! 1 owned on 3BR, 1 1/2 bath frame w/brick front. H/A freshly painted. Only \$19,500.00 E22 THIS Charming 2 BR, 1B frame (could be 3 BR) hardwood floors & lots of cabinet space. Single Gar. & C/P E24 NEED room for a large family? Reasonably priced 4 BR, 3 bath remodeled older home. E27 PRICE reduction in Fox Hollow! Two story 3BR's, 2 1/2 B. A beautiful family home. E14 PRICE! Newer home for growing family. 3BR, 2 B brick. F/P, drapes & built-ins. Gameroom/Sunroom. A well kept home. E17 OAK Hollow Addition! 3 BR, 2 B brick. Patio doors from kitchen & LR to cov. patio, built-ins. Proceed in the \$60's. E16 CRESTWOOD Addn. 3BR, 2 bath home with wet bar, F/P, cov. patio. Good family home. E18 ONLY 4 yrs. Old! 3BR's, 2 baths. Lots of kit. cabinets & large closets. A real family home! E23 FAIRY Tale Setting! 2 BR, 1 bath frame, convenient to all downtown. A real neat home. E25 Victorian Beauty! In perfect location. Recently updated; 3 chandeliers, stained glass in parlor. Decorator touches. E28

HERE'S a Bargain! Just over 2 acres with 3 BR, 2 B mobile home, north of Eastland. HA 16 FAMILY wants to move small, almost new 3BR frame on 1.1683 acres in Olden. Reduced to \$15,000.00HA1 EXECUTIVE Home on 5.5 acres. Beautifully decorated, bay in DR, patio doors to cov. patio, show place HA5 RANGER 3 BR, 2B modular home on 2 1/2 acres. 18X30 metal barn HA19 CARBON 3.6 acres with frontage to Hwy. 6. a 14X64 mobile home. ONLY \$12,500.00HA20 3 BR Frame ON 11.85 acres, near Lake Leon. Frontage on 3 sides. Some Klein grass. HA22 LONE Cedar .28K69 double wide on 5 acres. Cov. wood deck, & front porch. Nice 40X48 horse barn with attached shed. HA23 CARBON - 3 BR frame home on 36.576 acres. Cultivation with quota; minerals. HA24 CUSTOM 3BR, 3 1/2 B beautiful lake view. Satellite dish, split bed side, jacuzzi. Many extras! HA4 100 acre Pecan Orchard. Highly productive - Burkett & Indian varieties. 2 homes, farm equip.; 23 AC w/irrigation. Good Income! HA9 PERFECT Set-Up. 3BR mobile home on approx. 4 acres, edge of Carbon. Beautiful yard, scattered oak trees, coastal. Affordable! HA10

20 Acres SW of Eastland Good pasture, large, stocked tank. Fenced. A32 29 ACRES within city limits of Cisco. Hwy. frontage, oak trees. A10 LAKE Leon Excellent Recreational or Building Site! Approx. 4 acres highway frontage & lake frontage. Trees! A1

GORMAN - 82.9 ac. 45ac. coastal w/balance pasture. Stock tank, 2 wells. Minerals! A4 TWO Building Site. Approx. 3 acres each with water meters. Highway frontage. A5A&6 EDGE of Eastland, 3/4 acres homesite - oak trees, city utilities available. A2 5.2922 AC. Country Club. Nice building site. Owner Finance! A1 CARBON Area 118.5 AC. Fenced & cross-fenced, 3 tanks, & equip. shed. Some minerals. A19 224 AC So. of Carbon. Part brush, approx. 30 ac. coastal. 2 tanks, fenced & cross-fenced. Some minerals. A20 320 AC. Carbon. Improved grasses & cult. Fenced & cross-fenced. 5 tanks. Some minerals. A21 HERE it is! 16 AC. on pavement near Eastland. Fenced, beautiful oak trees. Be Quick! A11 296 AC North of Cisco. Native pasture with Hwy. & City Road frontage. 3 tanks, good hunting! A26 GOOD Location-2 AC. tract in Pogue Industrial Park. A28

SOUTH of Carbon, 160 AC. Approx. 40 ac. in field w/balance in pasture. Good four & deer hunting! A29 LAKE Front Lots, Lake Leon Four lots to choose from! A30 9 ACRES in the City Limits! Nice building site. A31 5.5 ACRES, Approx. 1m N. of Olden. Mostly cleared, few trees. Partially fenced. A3 E. of Carbon. 65 Ac. with approx. 21 acres in cult. on paved road. Sandy land & some minerals. A7 160 ACRES NW of Eastland. Approx. 92 acres of improved grasses, remainder native pasture with scattered trees. 2 tanks. A9 327 Acres W of Carbon. Approx. 75 ac. in cult. Some improved grasses & wooded pasture. Peanut trees. On corner lot. C12 82 Acres NW of Gorman. approx. 1/2 in cult. Small tank had dug wells. Minerals. A14 245 ACRES - So. of Carbon. Approx. 67 acres in cult. balance improved grasses. Underground irrigation, large barn w/shed. 12X70 mobile home on property. Minerals & Quota! A8

VERSATILE commercial Building! Central h/a carport. \$20,000.00 C2 EXCELLENT Location - Store with 1680 sq. ft. kitchen, Gen. H/A. 5 ft. spaces located in back on separate meters w/ utilities C3 NICE Rental Property. Brick duplex unit. 2BR's & 1 1/2 baths to each unit. Gen. h/a. good location C3 FANTASTIC Location Next to Skippy's. 24x14 off bldg. sitting on 60X 160 paved & fenced lot C1 ON the Square! Two story bldg. in good location. Some equip. & booths. Needs some repairs C4 CISCO Excellent office bldg. 5 rooms, 2 restrooms. Concrete parking area. In good location. C5 CISCO 1.20.30 wooded acres, over 500ft. frontage on North Access Rd., east of city limits C6 RANGER - Two story bldg., in need of some repairs. 1st floor has lrg., open area w/restroom & kitchen. C8 1-20 - 25 Acres, 1 mile from E. Eastland exit. Beautiful homesite permanent & overnight trailer spaces. Some minerals and production. C9 CISCO - Beauty shop 4 stations, 8 hairdryers, nice interior. Asphalt parking. C10 CISCO - Frame office bldg. 3 offices, reception area. On corner lot. C12 CISCO - Vacant corner lot at E 8th & Ave. C13 CISCO - Mini-mall. Over 4,000 sq. ft. in this metal bldg. located on main thoroughfare. C14 CISCO - Large, metal bldg. on main thoroughfare. Concrete floor, office in front. 30'x60' stg. bldg. C15 1-20, Baird. Approx. 2,400 sq. ft. mesquite B-B-O chipping factory, on 30 acres. Equip. can be purchased also. C11

LAND FOR SALE

328 acres of land west of Ranger

355 acres north of Ranger.

ACREAGE

20 Acres SW of Eastland Good pasture, large, stocked tank. Fenced. A32 29 ACRES within city limits of Cisco. Hwy. frontage, oak trees. A10 LAKE Leon Excellent Recreational or Building Site! Approx. 4 acres highway frontage & lake frontage. Trees! A1

GORMAN - 82.9 ac. 45ac. coastal w/balance pasture. Stock tank, 2 wells. Minerals! A4 TWO Building Site. Approx. 3 acres each with water meters. Highway frontage. A5A&6 EDGE of Eastland, 3/4 acres homesite - oak trees, city utilities available. A2 5.2922 AC. Country Club. Nice building site. Owner Finance! A1 CARBON Area 118.5 AC. Fenced & cross-fenced, 3 tanks, & equip. shed. Some minerals. A19 224 AC So. of Carbon. Part brush, approx. 30 ac. coastal. 2 tanks, fenced & cross-fenced. Some minerals. A20 320 AC. Carbon. Improved grasses & cult. Fenced & cross-fenced. 5 tanks. Some minerals. A21 HERE it is! 16 AC. on pavement near Eastland. Fenced, beautiful oak trees. Be Quick! A11 296 AC North of Cisco. Native pasture with Hwy. & City Road frontage. 3 tanks, good hunting! A26 GOOD Location-2 AC. tract in Pogue Industrial Park. A28

SOUTH of Carbon, 160 AC. Approx. 40 ac. in field w/balance in pasture. Good four & deer hunting! A29 LAKE Front Lots, Lake Leon Four lots to choose from! A30 9 ACRES in the City Limits! Nice building site. A31 5.5 ACRES, Approx. 1m N. of Olden. Mostly cleared, few trees. Partially fenced. A3 E. of Carbon. 65 Ac. with approx. 21 acres in cult. on paved road. Sandy land & some minerals. A7 160 ACRES NW of Eastland. Approx. 92 acres of improved grasses, remainder native pasture with scattered trees. 2 tanks. A9 327 Acres W of Carbon. Approx. 75 ac. in cult. Some improved grasses & wooded pasture. Peanut trees. On corner lot. C12 82 Acres NW of Gorman. approx. 1/2 in cult. Small tank had dug wells. Minerals. A14 245 ACRES - So. of Carbon. Approx. 67 acres in cult. balance improved grasses. Underground irrigation, large barn w/shed. 12X70 mobile home on property. Minerals & Quota! A8

VERSATILE commercial Building! Central h/a carport. \$20,000.00 C2 EXCELLENT Location - Store with 1680 sq. ft. kitchen, Gen. H/A. 5 ft. spaces located in back on separate meters w/ utilities C3 NICE Rental Property. Brick duplex unit. 2BR's & 1 1/2 baths to each unit. Gen. h/a. good location C3 FANTASTIC Location Next to Skippy's. 24x14 off bldg. sitting on 60X 160 paved & fenced lot C1 ON the Square! Two story bldg. in good location. Some equip. & booths. Needs some repairs C4 CISCO Excellent office bldg. 5 rooms, 2 restrooms. Concrete parking area. In good location. C5 CISCO 1.20.30 wooded acres, over 500ft. frontage on North Access Rd., east of city limits C6 RANGER - Two story bldg., in need of some repairs. 1st floor has lrg., open area w/restroom & kitchen. C8 1-20 - 25 Acres, 1 mile from E. Eastland exit. Beautiful homesite permanent & overnight trailer spaces. Some minerals and production. C9 CISCO - Beauty shop 4 stations, 8 hairdryers, nice interior. Asphalt parking. C10 CISCO - Frame office bldg. 3 offices, reception area. On corner lot. C12 CISCO - Vacant corner lot at E 8th & Ave. C13 CISCO - Mini-mall. Over 4,000 sq. ft. in this metal bldg. located on main thoroughfare. C14 CISCO - Large, metal bldg. on main thoroughfare. Concrete floor, office in front. 30'x60' stg. bldg. C15 1-20, Baird. Approx. 2,400 sq. ft. mesquite B-B-O chipping factory, on 30 acres. Equip. can be purchased also. C11

COMMERCIAL

VERSATILE commercial Building! Central h/a carport. \$20,000.00 C2 EXCELLENT Location - Store with 1680 sq. ft. kitchen, Gen. H/A. 5 ft. spaces located in back on separate meters w/ utilities C3 NICE Rental Property. Brick duplex unit. 2BR's & 1 1/2 baths to each unit. Gen. h/a. good location C3 FANTASTIC Location Next to Skippy's. 24x14 off bldg. sitting on 60X 160 paved & fenced lot C1 ON the Square! Two story bldg. in good location. Some equip. & booths. Needs some repairs C4 CISCO Excellent office bldg. 5 rooms, 2 restrooms. Concrete parking area. In good location. C5 CISCO 1.20.30 wooded acres, over 500ft. frontage on North Access Rd., east of city limits C6 RANGER - Two story bldg., in need of some repairs. 1st floor has lrg., open area w/restroom & kitchen. C8 1-20 - 25 Acres, 1 mile from E. Eastland exit. Beautiful homesite permanent & overnight trailer spaces. Some minerals and production. C9 CISCO - Beauty shop 4 stations, 8 hairdryers, nice interior. Asphalt parking. C10 CISCO - Frame office bldg. 3 offices, reception area. On corner lot. C12 CISCO - Vacant corner lot at E 8th & Ave. C13 CISCO - Mini-mall. Over 4,000 sq. ft. in this metal bldg. located on main thoroughfare. C14 CISCO - Large, metal bldg. on main thoroughfare. Concrete floor, office in front. 30'x60' stg. bldg. C15 1-20, Baird. Approx. 2,400 sq. ft. mesquite B-B-O chipping factory, on 30 acres. Equip. can be purchased also. C11

HOUSE & ACREAGE

OLDEN - 3BR, 1 3/4 B brick on 1.8 acres. Fruit & pecan trees, garden area & 2 wells. HA2 GOLDEN 1.3 Ac. & 2 BR, 2 B brick. F/P, storm windows, covered patio & More! HA15 PRICE Reduced on this large 2BR, 2 B home situated on 1.4 Ac. HA14 198 ACRES with early 1900's home - joins Eastland City Limits. Excellent to Subdivide Hwy. frontage, rustic trees. HA8

BARBARA LOVE 647-1397

CINDY FOSTER 629-8227

SIHELLY RICHIE 629-3614

ROSEMARY FERGUSON 65-75

## PREGNANT? WORRIED?

Talk With Someone Who Cares

In Eastland Calling Area - Call 629-8994

Others Call - 1-800-588-8994

CERRS104

READY FOR SUMMER FUN-Lake Cisco Cabin-modified a-frame furnished, loft, could sleep 8, garage, one lot. CALL TO SEE. \$12,000.00 HOME ON 5 ACRES 3 bedroom, 2 bath, fireplace, large game room. Westbound water. Off Old Abilene Highway, 10 miles W of Cisco. \$27,000.00 Owner/Agent Approx 167 acres west of Cisco on FM 2945, 2 stock tanks, 112 acres cultivation, Owner finance with 1/3 down, 12% interest for 10 years \$530.00 per acre. 1907 Avenue "C" - 1 bdrm, house, 1 mobil home 2 bdrm, 1 bath all for only \$3100.00 Owner/Agent 3 Bedroom 1 bath on East side, needs work 504 E. 10th St. \$9,500.00 Old Canyon Road 1 mil out on 1.3/4 bath, 1 garage brick home, 5 yrs old has fruit trees. \$35,000.00 SOLD 2 Bedroom home with large backyard, 1 bath washer & dryer hook-up, carport 1004 W. 11th St. \$20,000.00 Beautiful 2 story house on corner lot, 4 Bedroom 1 1/2 Bath, formal living & formal dining, breakfast room w/bay window, close to downtown and 300 W. 5th St. \$95,000.00

McMillian Real Estate  
Yvonne McMillian-Broker  
8th & C. Hilton Ave.-Cisco, Texas 442-3846  
Nancy Bacon, Associate 442-2679 CER104

## ANN WILLIAMS REAL ESTATE

610 Conrad Hilton Ave., Cisco  
442-1880

Business & Home Phone

CISCO HOMES  
\$700. Down Payment and possible owner finance bal. of \$4,300. on this 3 BR frame home.  
Terrific Value! 1 3/4 baths, total electric, 2 carports, corner lot, extra storage, only \$15,000.  
Another Tempting Buy! Spacious 2BR, CH, storm windows, garage, possible 90% owner financing, reduced to \$15,000.

Own For Less Than Rent, Numerous other 2 and 3BR homes under \$19,500., some with owner financing.  
Garden Lovers! 2BR remodeled home, well insulated, CH/CA, water well, city water, large oak trees, 4 lots.  
Well Kept 2 BR stucco home near Elementary school, fenced yard carport, 2 storage buildings, \$22,000.  
Corner Lot, 4 BR, 1 1/2 bath brick home, CH/CA, garage, fenced yard, \$34,500.

Feeling Confined? Spacious 3 BR, CH/CA, storm windows, vinyl siding, covered deck, 2 car garage, large priv. fenced yard.  
Assumable FHA Loan! Approx. 2700 sq. ft. 4 BR, 2 1/2 bath home, great floor plan, CH/CA, 2 lots.  
Perfect For The Family - Nice 3 BR, 2 bath brick, LR, DR, den, gameroom, CH/CA, FP & woodheater, owner fin. available.  
Elegant 3 BR, 1 3/4 bath brick home, formal DR-LR, den, CH/CA, FP, large tree shaded yard, many extras.  
A Rare Find! 10 room, 2 bath Victorian Style Home, 2 story, 2 fireplaces, surrounded by large oak trees.  
Grand Ole 3 BR, 2 bath home, large rooms, formal DR, LR, Den, 3 fireplaces, great workshop, approx. 5 lots.  
All The Room You Will Need! 6 BR, 2 story, remodeled kitchen, acre of land, possible 90% financing, \$28,000.  
Historical 2 Story Home with basement, large privacy fenced yard, great shop, 2nd story needs restoration.  
Country Club Area, Beautiful 3 BR, 1 3/4 bath, CH/CA, hot tub, sat. antenna, large carport, extra storage.

LAKE CISCO AREA  
Relax and Enjoy Lake Life! Several cabins under \$19,600.  
Ideal Retirement Business and Pleasure! 5 A-Frame cabins, bath house, screened pavillion, \$22,000., 90% financing.  
Neat 2 BR furnished cabin surrounded by trees, boat dock, deck all across water side.  
Inspiring View! Lovely 2 BR, 1 3/4 bath home, CH/CA, oversized double garage, covered deck and boat dock.  
Don't Cramp Your Style! Have it all! 4 BR, 2 bath, swimming pool, racquetball court, boat dock, poss. 90% financing.

RESIDENTIAL LOTS: Several to choose from.  
COMMERCIAL PROPERTIES  
Reduced to \$9,500. - Metal building on 4 lots.  
Start Your Own Business - 2 commercial bldgs. to choose from on Conrad Hilton Ave., \$14,500 or \$17,900.  
Tremendous Business Opportunity! Outstanding Restaurant on 2 acres, Int. 20 frontage, with or without equipment and furniture, price and terms are very negotiable.

ACREAGE  
Nestled In Trees! Spacious 3 BR, 1 3/4 bath home on approx. 3 acres, \$29,500., poss. owner financing.  
Want Privacy? Roomy 2 BR, 2 bath mobile home, CH/CA, fireplace, garage, horse barn, tank, rural water, approx 5 acres.  
Get Ready For Hunting! 160 acres, mostly wooded, small field, tank, creek, assumable 8% int. loan, \$350. per acre.  
Roomy 4 BR, 2 1/2 bath brick home, CH/CA, FP, 160 acres, mostly cleared, some coastal, 3 tanks, 3 wells.  
Improvements Galore! 200 acres of coastal, low grass & cultivation, good fencing, pens, working chute, several outbuildings, 7 tanks, well, nice 3 BR, 2 Bath home.

Ann Williams Cathy Wallen  
Broker Associate  
442-1880 442-2120  
CERRS104

# PAT MAYNARD REAL ESTATE

WE APPRECIATE YOUR BUSINESS!  
629-8568 MAYNARD BUILDING HWY. 80 EAST EASTLAND, TEXAS

EASTLAND HOMES AND LOTS  
\$15,500 - 3 Bedroom, 1 Bath, carpet, refrigerated air, tall chainlink fence, storage shed, good location, price reduced for QUICK SALE before we rent! \$16,000 - 2 Bedroom, 1 Bath, Frame, on 1 Acre just outside of City, 14 high pecan trees, fruit trees, Detached Car Shed, Storm Cellar, fence. \$16,000 - 2 Bedroom, Frame w/Siding, carpet, bright freshly painted interior, pull-down attic stairs, appliances, detached garage & storage. \$16,000 - 3 Bedroom, separate dining room, all rooms good-sized, roof needs work, but priced accordingly, handy location, good rental property. \$19,500 - 2 Bedroom Mobile Home on approx. 3/4 acre, central heat & air, appliances, carpet, pretty yard w/lots of flowers, horse barn, stor. bldg., pipe-rail fence. \$19,800 - 3 Bedroom, 1 1/2 Bath, Brick Home on large lot, Central Heat & Air, Builtins, Close Into town, small equity & assume FHA Non-Qualifying Loan, Hurry! \$20,000 - 2 Bedroom, 1 1/2 Bath, Frame, w/siding, garage, pecan & pear trees, fence, plus large 25'X40' metal building. \$21,500 - 2 Bedroom, 1 1/2 Bath, Frame, Separate Living Areas, or part of big den could be 3rd bedroom, CH/CA, 2-car carport, high Oak trees, detached Garage Apt. \$23,000 - 3 Bedroom, 2 Bath, Doublewide, CH/CA, carpet, & Oven, carpet, fresh paint, 2-car carport, new roof, nice lot w/big trees. \$27,000 - 3 Bedroom, 1 Bath, woodburning heater, separate dining, utility rm., pretty patio, just a hop, skip, & jump from tennis courts & track field. \$27,000 - 3 Bedroom, 1 3/4 Bath, Frame, Corner Lot, Surrounded by Oak & Pecan Trees, Chainlink Fence, Detached 2-car garage, Storage Building. \$28,000 - Assume Loan Balance on this 2 Bedroom, 1 Bath, Frame Home, Close In, Nice Backyard, \$780 total move-in cost! \$29,500 - 3 Bedroom, 2 Bath, Frame w/Composition Siding, central heat & air, formal dining rm., detached garage, fence, corner lot, Possible Loan Assumption. \$30,000 - 2 Bedroom, Brick Home, Central Heat & Air, Carpet, drapes, ceiling fans, Fireplace w/Heat-O-Lanter, Double Carport w/Storage, Extra Storage Bldg. \$30,000 - 2 Bedroom, 1 3/4 Bath, Frame w/Siding, Formal Living Rm., Spacious Den, Formal Dining, 2-car carport, Workshop, Pecan Trees, Fenced backyard. \$32,000 - 3 Bedroom, 2 Bath, Modular Home on 2 acres, Central Heat & Air, carport, storage room, fenced backyard, utility rm., storm windows, carpet, appliances. \$33,000 - 3 Bedroom, 1 3/4 Bath, Frame, two different 2-car carports, covered porch across front, patio, large airy rooms, w/lots of windows, 1.5 ac., shed & pens, Neat Place! \$37,500 - 4 Bedroom, Frame, Light & Bright & decorated to perfection, formal dining, breakfast area in kitchen, corner lot, Assumable FHA, 2 lots, large airy rooms, w/lots of windows, 1.5 ac., shed & pens, Neat Place! \$45,000 - 3 Bedroom, 1 1/2 Bath, Brick, New Carpet, Central Heat & Air, Drapes, Privacy Fence, Barn & Pens, near schools. \$49,500 - Lovely Rock Home, Completely Refurbished, Everything New, Six Rooms, Central Heat & Air, Carpet, Drapes, Pretty Wallpaper, even wiring, plumbing, & roof are new! \$49,900 - Extra Nice 3 Bedroom, 2 Bath, Home on large 1/2 ac. lot, Central Heat & Air, Formal Dining Area, Eating Bar in Kit., Isolated Master BR w/Paid-in tub & sep. shower, Covered Breezeway w/Wardrobe, large storage rm. \$50,000 - Large 2 Bedroom, 2 Bath, Mobilehome w/big den & office built on, carpet, builtins, central heat & air, situated on beautiful 20 ac. near Eastland. \$58,000 - Two-Story, 4 Bedroom, 2 1/2 Bath, Cedar & Brick, Approx. 2,400 sq. ft., Outstanding Custom Cabinets in Kitchen, Formal Dining, Master Suite Downstairs. \$64,900 - 3 Bedroom, 2 Bath, on 12.9 ac. coastal, fenced & cross-fenced, central heat & air, woodburning heater, nice shop bldg., City Water plus water well. \$65,000 - Magnificent Two-Story on 3 Lots, Approx. 3,000 sq. ft., 4 Bedrooms, Completely Up-dated, Pretty Wallpaper, Formal Living & Dining, Comfortable Family Room, and Charming Sun Room. \$65,000 - 3 Bedroom, 2 Bath, Brick Home on 9.7 ac. fenced, Central Heat & Air, Carpet, Formal Dining Area, Fireplace, large utility rm., 1 tank, Staff Meter. \$69,000 - Nice 3 Bedroom, 2 Bath, Brick, Custom Shades, Fireplace, Builtins including Jenn-Air & Microwave, Isolated Master BR w/Whirlpool Bath, Outstanding Patio, Privacy Fence, Electric Garage Door, Exclusive Oak Hollow, Must See! \$78,500 - 3 Bedroom, 1 3/4 Bath, Brick Home on 2.67 ac., carpet, drapes, CH/CA, Builtins, Fireplace, Ceiling Fans, Fabulous Patio/Deck, Large Storage Bldg., Gazebo. \$86,500 - Mission Brick, Classy 3 Bedroom, 2 Bath, Approx. 2,471 sq. ft., Rock Fireplace, Beamed ceiling, Wet Bar, Garden Tub & Sep. Shower in Master, Oak Hollow. \$91,000 - Large 3 Bedroom, 2 Bath, Brick, Ideal Location, formal living/dining, big den w/fireplace, super gameroom/sunroom, approx. 2,300 sq. ft., 2-car garage beautiful yard w/courtyard flower beds, privacy fence, storage shed, See To Believe! \$125,000 - Two Year Old Gorgeous Country Home on 8.6572 ac., approx. 2,825 sq. ft., Bright & Cheerful, Beautiful Wallpaper, huge Master Suite, Spacious Den w/Spiral Staircase to Loft, Wonderful Deck & Breezeway to oversized garage. \$130,000 - Log Home on 5 ac., 4 Bedroom, Approx. 2,500 sq. ft., Fireplace, Deck, Detached Gameroom w/wet bar, Great location near City limits, Super Nice! \$160,000 - Executive Home, Approx. 3,000 sq. ft., 3 Bedroom, 3 Bath, Log/Stone/Glass Home, Huge Den/Dining/Kitchen w/open concept, Office, All The Amenities, 3.77 wooded ac. Oak Hollow Addition, Nice Residential Lot in Preferred Area, \$8,500. Hillcrest Addition, Lovely Residential Lot on South Virginia St., \$10,000. West Plummer, 8 Residential Lots, \$2,500 to \$5,500. Residential or Commercial Lot on North Lamar, \$3,000. Good Metal Building w/concrete floor, gas & electricity, on 70' X 110' lot, \$11,000. Mobile Home Lot, 48' X 110', City Utilities, 1307 S. Lamar, \$3,500. Two Residential Lots, each 50' X 140', some trees, owner will finance, \$2,500. To Be Moved, 3 Bedroom, 2 Bath, Doublewide, CH/CA, Appliances, \$29,900. HUD ACQUIRED PROPERTIES in Eastland Ranger & Cisco, Equal Housing Opportunity. \$38,500 - Just Listed, Pretty 3 Bedroom, 1 3/4 Bath, Gray Frame, carpet, drapes, central heat & air, Privacy Fence, Really Nice, and in excellent neighborhood.

Honeymoon Cottage or weekend retreat, Cute 1 Bedroom Yellow Frame, Carpet, Mexican Tile, wallpaper, fireplace, enclosed porch, 1 1/2 deep waterfront lots, \$25,000. Providence Road, Nice 2 Bedroom, 1 1/2 Bath, Mobile Home, Central Heat & Air, deck, New Storm Cellar, Carpet, Staff Meter, 5 scenic Acres, good hunting, \$19,500. Lee Lane, 2 Bedroom, 2 Bath, Mobile Home (14' X 80') w/beautiful sunroom added on, 2 Deeded Lots, Deep Waterfront, CH & Refrigerated Air, Satellite Dish, Chainlink, \$55,000. Nice Lake Cabin, First Time On Market, Deeded Lot, Deep Water, Staff Meter, Completely Fenced, Concrete Boat Ramp, Boat Dock, CH & Refrigerated Air, Knotty Pine Screened Porch across lakefront, \$35,000. Near Country Club, 2 Deeded Lots, Good

## Nutrition Program

Did you read it in the newspaper? Did you read where the Medical University in Illinois has made a study in regard to cholesterol and came to the conclusion that rather than being disturbed about a single item causing a high bad cholesterol you should think of wellness of the whole body. When you stop to think about the subject it makes sense that we should take complete charge of our body and give attention to all aspects of it and not be so singular.

At the Senior Centers we think of the 'whole person'. Your attitude toward your fellow man is just as important as the food you eat. So why don't you come to the Senior Center nearest you and share the fellowship.

For reservations for the luncheon call Cisco 442-1557 and Eastland 629-1382.

Programs for the week were: dinner music by Lois Holder, Richard Parker, Senior Center Band and choir. Members having birthdays and anniversaries, during the month, were honored. Blood pressure was taken by Mable Thetford, for those requesting it.

Eastland programs were: birthdays and anniversaries were honored for the month of July; nutrition program by Kerstin Gerhardt, her presentation was 'Eating Lean Limousin Beef', it was a very interesting and educational program. Ann Carpenter and Flo Remmer sang accompanied on the piano by Larue Broussard, Senior Center choir sang accompanied by Ruth Kendrick.

Menus for the week are:  
**MONDAY, AUGUST 6**—Oven fried chicken, corn, green beans with stewed tomatoes, creamy apple slaw, sliced peaches, bread, butter and milk.

## Defensive Driving Course

Eastland County Defensive Driving Class will offer a class on Defensive Driving on Saturday, August 11, from 8 a.m. to 4:30 p.m. The fee for the class is \$20.00. The class will meet in the Family Center of the Mountain Top Church located at 600 East Eighth Street, Cisco.

For enrollment call 442-2673 or 442-4479.

## Cisco-Eastland Ranger Sunday, August 5, 1990

**WEDNESDAY, AUGUST 8**—Baked breaded fish, tartar sauce, creamy cole slaw, green peas and carrots, white cake, strawberries with topping, cornbread, butter and milk.

**FRIDAY, AUGUST 10**—Liver and onion with brown gravy, rice, beets, orange juice, raw vegetable salad, cornbread, butter and milk.

## Texas State Aquarium Hosts 100,000th Visitor After Only Three Weeks

After only three weeks of operation, the Texas State Aquarium hosted their 100,000th visitor. Al and Hope Combest and their daughter Tiffany from Fort Worth walked through the Aquarium's waterfall entryway Thursday, July 26, at approximately 3 p.m.

The Combest family was greeted by Dr. Quenton Dokken, executive director of the Aquarium, who congratulated the guests and led them on a behind-the-scenes, VIP tour of the facility.

"We were so excited just to visit the facility, but to get a behind-the-scenes tour by Dr. Dokken was icing on the cake," commented Hope Combest.

Following the tour, the Combest family was given commemorative gifts including two sterling silver lapel pins designed by James Avery and funded by H.E.B. Gro-

USE THE CLASSIFIEDS

cery Company.

"Our attendance projections are above our original calculations," stated Denise London, marketing director. "Our goal was to have 107,277 visitors for the month of July, so we are doing quite well," she continued.

"We are averaging approximately 4,500 visitors per weekday, with the number increasing to 6,500 per day on the weekend," London said.

Because of high public demand to visit the facility, the Aquarium has new extended summer hours that will be in effect through Labor Day. The facility will be open from 9:30 a.m. to 6 p.m. Sunday through Thursday and 9:30 a.m. to 8 p.m. Friday, Saturday and Labor Day.

The \$31.5 million Gulf of Mexico Exhibit Building opened its doors July 6 to the general public. It is phase I of the four-phase master plan.

CHILD ABUSE  
 24 HOUR HOTLINE  
 1-800-252-5400

## Social Security Travel Schedule

AUGUST 1990

A Social Security representative will be at the following places on the dates listed:

CISCO: Senior Citizen Ctr., Wednesday, 1 p.m., Aug. 15.

EASTLAND: Courthouse Basement, Wednesday, 9:30 a.m., Aug. 7, 21.

RANGER: Joseph Bld. (Main St.), Wednesday, 9:30 a.m., Aug. 15.

You can call Social Security toll-free 7 days a week, 24 hours a day by dialing: 1-800-234-5772. The 800 number allows you to conduct your Social Security business without waiting for a scheduled trip.

Sign up for Medicare now - before your 65th birthday!



Old Rip Fest  
 Saturday  
 October 6

## Happy Birthday Jericho & Cory



Love, Mom & Dad

## Men In Service

Pvt. 1st Class Raymond L. Andrews Jr. has completed an Army motor transport operator course at Fort Dix, N.J.

During the course, students were trained in the operation and maintenance of military vehicles of less than four and one-half tons rated capacity. Instruction was also given in the transportation of personnel, equipment and supplies.

Andrews is the son of Raymond L. Andrews of 9941 White Hurst, Dallas, and grandson of Vennie O. Webb

of 712 West 5th St., Cisco. The private is a 1986 graduate of Cisco High School.

## Eastland County is OPEN

For Business

## NEWSPAPER DEADLINES:

Monday, 5:00 p.m. (For Thursday Paper)  
 And  
 Thursday, 5:00 p.m. (For Sunday Paper)

## 7.00%\* Tax-Free Bonds

A great way to protect yourself from higher taxes.

President Bush has announced that he may be forced to raise taxes. If that increase includes income taxes, one of the best ways to protect against a bigger tax bite will be tax-free investments like municipal bonds. Don't wait until it's too late. Call today to find out more about the tax-free solution.

Robert Steed  
 107 W. Main Eastland, Tx  
 (817) 629-3851  
 1-800-441-5282

## Edward D. Jones & Co.

\*Rate expressed as yield to maturity. Effective 8-2-90. State and local taxes may apply. Subject to availability. Market risk is a consideration on investments sold prior to maturity.

**TRUMAN GREGORY INSURANCE**  
 112 S. Seaman Suite 315  
 Eastland, Texas 76448  
 (817) 629-1078

KINDS OF INSURANCE SOLD  
 Universal - Whole - Term - Life  
 Accident - Health - Major Medical  
 Disability Income - Annuities  
 IRA's - Cancer - Dreaded Diseases  
 Medicare Supplement  
 Individual or Group Rates  
 Long Term Convalescent Care  
 Crop Insurance - Farmers  
 Home Owners - Fire  
 "All Companies 'A' Rated" (CR 5/84)

## Mike's Cabinet Shop

100% Financing Available on new Kitchen, Bathroom Cabinets and remodeling.

No down payment with approved credit.

Call for details. Free Estimates

Mike Kelly, Owner

629-1000 - Day 629-8485 - Night

CER68

## QUALITY HEALTH CARE CLOSE TO HOME

Eastland Memorial Hospital is pleased to announce the addition of Dr. Avi Deshmukh to our Courtesy Staff as a specialist in adult and pediatric urology.

Eastland Clinic Day Every Other Monday

Appointment and referrals may be made by calling Eastland Memorial Hospital at 817-629-2601 or Dr. Deshmukh's office at 1-800-527-9355.

CER56/32

## Eastland Office Supply/Radio Shack Dealer

111 W. Main

Eastland, Tx 76448 817/629-8942

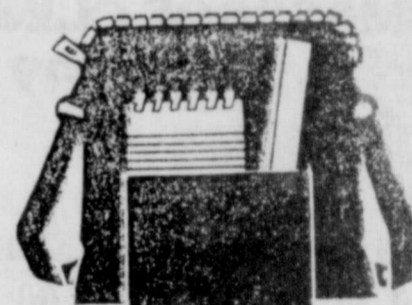


Every Tablet Required By Your Child's Teacher:

- Aladdin- 2112
- 2114
- 3115
- 2216
- 4002
- 12054
- 12931
- Hytone- 48154
- McDougal, Littell - Brown Level
- Big Chief



Data Memory Calculator  
 Regular \$14.95 Now \$10.95



10 - 12 - & 15 Inch Woofers  
 \$31.95 and UP



Construction Paper  
 9 X 12 and 12 X 18  
 White Construction Paper  
 9 X 12  
 Manilla Paper  
 9 X 12 and 12 X 18  
 Art Tablets  
 Water Colors  
 Crayloa Brand Crayon & Markers



Copy Paper & Computer Paper  
 White  
 Colored  
 Fluorescent

Franklin Spellers - \$39.95  
 While Supply Last!!

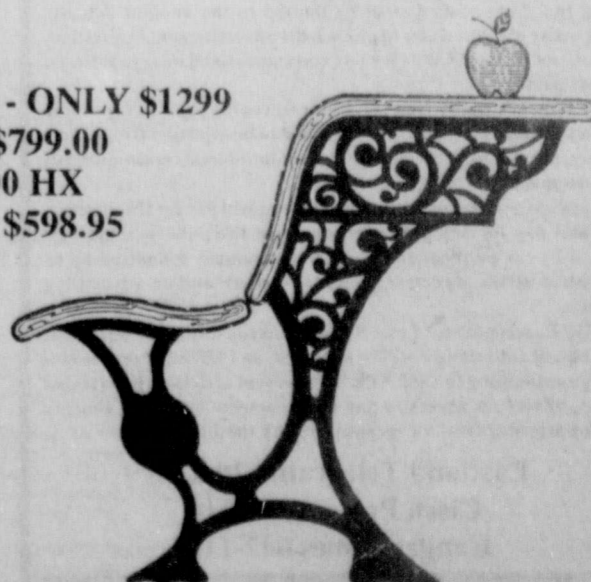


Ribbons For Most Makes  
 of Typewriters & Printers



## TANDY COMPUTERS:

1000 TL/2 Color Monitor, Mouse & Software - ONLY \$1299  
 Tandy 110 FD Notebook PC - ONLY \$799.00  
 Great for HOME or SCHOOL - 1000 HX  
 Computer and Color Monitor - ONLY \$598.95  
 While Supply Last!!



MON. - FRI. 8:00 A.M. to 5:30 P.M.

SAT 9:00 A.M. TO 4:00 P.M.

ONE STOP DOES IT ALL

Don't believe "THEY" sell for less until you check "OUR" prices!



### Letter to the Editor

Dear Editor,

The people of Cisco are so fortunate to have the hospital and the staff that you have.

I came to Cisco last Saturday to attend the funeral of my father-in-law E. L. Jackson. Shortly after the service I developed a violent allergy reaction and went to the Emergency Room of your local hospital.

They were busy with other patients, but I was taken care of as they ushered me right into an examining room and began to attend my needs. Shortly, Dr. Griffin (who I understand is from Fort Worth and contracts with the hospital on the weekends) began his examination of me. I was soon admitted, x-rayed by a very competent technician, given an EKG by the same young man and taken to a room where nurses attended my needs in a very professional, but warm and caring manner.

Throughout my stay in the hospital there was never any lack of attention. The entire staff is competent, courteous, caring and all are to be commended for their concern.

Yes, you are very fortunate to have this wonderful hospital and staff in Cisco. At home my nearest hospital is 26 miles away, yours is right here at home.

Sincerely,  
F. H. (Pat) Ryan, Jr.  
Marfa, Texas

## Fishing Outdoors

By Terry L. Wilson

### Lights Required For Boating at Night

Twenty five anglers were on hand for a nice storm out at Lake Leon Wednesday. Also these anglers were entered in the weekly open jackpot. Taking first place with 2 fish Tom Maynard, and second place with 3 fish H D Houghton from Stephenville. Anglers who are attending these events are reminded that starting time is 6:00 p.m. and should not begin casting until then. Also sportsmanship and common courtesy should be practiced at all times don't cut another angler off from the area he is fishing, who knows he might just return the favor next time when it could cast you the most.

The weekend of August 18 and 19, 1990 will be a red letter day for Lake Leon, Eastland County business, and anglers from across the northwest region of Texas. The final event of the Anglers Choice Northwest Team Circuit will be headquartered out of the La Mancha Marina. This circuit has drawn 65 teams on a 7 lake schedule.

With Leon being the final event some heavy hitters will be taking a cut at qualifying for the October Classic at Lake Falcon. Qualifying for the Classic is based on a points

plus pounds format. The top 15 teams often the last event will qualify plus 5 other teams who have fished six tournaments. After the top 15 have been established the next 5 teams will be determined by how they finish in the last event. There will be 20 teams from each region that will be in the Championship.

Anyone may enter this event at Leon by joining Anglers Choice for a \$20.00 membership fee, and an entry fee of \$100.00 per team with an optional \$10.00 big bass pot. For more information you may contact myself at 629-

3255 or John Smith, Northwest Regional Director at (915)643-3310, or (915)643-2334.

The 1991 Team Circuit promise to be even better for this region, with the like, of Proctor, Leon, Graham, Brownwood, Possum Kingdom, Stamford and a host of other lakes in our area to be opened up for selection. So why not join up and fish this one at Leon to test the water and warm up for 1991.

In addition to being a safety measure, lights are required for water enthusiasts who want to boat at night.

A vessel under 26 feet long and underway by power alone or by sail and power must display a combined red/green light on the bow and a 360 degree white light on the stern.

Sailboats under 26 feet long without power shall carry the combined red/green light on the bow and a 135 degree white light on the stern.

Vessels 26 feet long and longer underway by power alone must display four lights. These lights include a green light on the starboard bow of 112.5 degrees; a bright white light in the fore part of the vessel as near the stem as practical, so constructed as to show a light 225 degrees; and a bright white light aft to show all around the horizon and higher than the white light forward.

All vessels that are paddled, pulled, oared or windblown must have and exhibit at least one bright light, lantern or flashlight from sunset to sunrise in all weather.

Every white light prescribed must be visible for at least two miles. Every colored light must be visible for at least one mile.

For more information consult the pamphlet, "A Digest of the Texas Water Safety Act."

New dues for the Eastland County Bass Club will become due September 1, 1990. Everyone is invited to come join this organization.

For more information you may contact Tom Maynard at 629-3550.

Terry L. Wilson

## Low-Income Texans Eligible For Medicare Premiums

Low-income Texans may be eligible for payment of Medicare premiums (both Parts A and B), and the co-insurance and deductibles for Medicare covered services. Individuals who qualify for the special benefits must meet the following criteria:

- Persons must be enrolled in Medicare part A.
- Persons must be at least age 65 or declared disabled by the Social Security Administration.
- Countable resources, such

as bank accounts, real property other than a homestead, etc., valued at no more than \$4,000 for an individual and \$6,000 for a couple.

Gross monthly income cannot exceed \$491 for a single person or \$652 for a couple.

Texas residents who meet these criteria should contact their local Texas Department of Human Services office to explore eligibility as a Qualified Medicare Beneficiary.

## Eastland County Is OPEN For Business

### PERSONALIZED CHRISTMAS CARDS



Now is the time to order! See our complete selection of beautiful personalized Christmas Cards.

EASTLAND TELEGRAM  
215 S. Seaman-Eastland-629-1707

## HER FUTURE LOOKS GOOD or does it?

# She



has potential for success.

is like your daughter-tempted and pressured by drugs and immoral values in school.

is TOO SPECIAL to be left in the care of a school full of problems.

THAT'S WHY Christian Life Academy is accepting enrollment for next fall to provide the alternative your child deserves!

FOR MORE INFORMATION CONTACT:

UNITED PENTECOSTAL CHURCH  
206 N. DIXIE PHONE 629-2410  
EASTLAND, TEXAS 76448  
Registration: Thurs., Aug. 2

OFFERING

- \*College preparatory courses
- \*Algebra I on video
- \*Computer-enhanced learning
- \*Word Processing
- \*Optimistic atmosphere
- \*Moral values
- \*Enrichment studies
- \*Grades K-12

REC-62

## Ranger Jaycees Ranch Rodeo & Jackpot Bull Riding

6:30 p.m.  
Jaycee Rodeo Arena  
August 18-19

Top Bull Riders & Ranches From All Over Texas Will Be Represented

Ranch Rodeo Contestants Call  
817-629-1194 or 639-2236

Bull Rider Contestants Call

Terry Rhodes  
817-798-3165

Ronnie Smith  
817-796-4932

Must Be Entered By August 10th Entry Fee: \$60.00

Events: Team Penning, Double Mugging, Team Roping, Branding, & Milking

Four Man Team....Entry Fee Is \$240.00

Concession Stand On Grounds

## NOW IS THE TIME

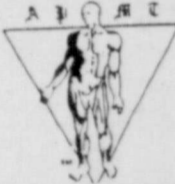


ORDER YOUR PERSONALIZED CHRISTMAS CARDS NOW AND MAKE LIFE A LITTLE EASIER IN THE HEFTIC HOLIDAY SEASON

EASTLAND TELEGRAM  
215 S. Seaman-Eastland-629-1707

## MYO-MASSAGE CLINIC

442-4149



Full Body Relaxation - \$30.00  
Spot Massage - \$18.00  
Ask About the New Mini-Message - \$18.00

Dr.'s across the country now say 80% of all illness and injuries are stress related. Take a little time for yourself.

You're worth it!

Jerry Bacon, RMT - By Appt. Only

CER68

### IMPORTANT--PLEASE READ

We ask that you please check your ad the first day of publication and report to the Eastland County Newspapers any errors or corrections at that time. Hours are 8:00-5:00 Mon.-Fri. The corrections will be made in the next issue. The Eastland County Newspapers will be responsible for only one incorrect insertion with liability limited to that portion of the advertisement affected by the error. Requests for adjustments or corrections on charges must be made within 30 days of the ad's expiration.

Publishers liability or damages resulting from errors in any advertising that is published shall be limited to the amount actually received by the Publisher to publish the advertisement in question. It shall not be responsible for any consequential damages suffered by any part.

The Eastland County Newspapers reserves the right to reject any and all ads considered by the Publisher to be objectional in subject matter, phraseology, or opposed to the public interests or the policy of the newspaper.

The advertiser and/or advertising agency will pay for the attorney fees and pay for any judgments against the publisher that are caused by the publication of any advertisement submitted by or published at the direction of the advertiser and/or advertising agency.

NOTICE: acceptance of this schedule also constitutes an agreement that all unpaid balances will be subject to an 1 1/2% per month late charge amounting to 18% APR. In the event of default in payment terms, advertiser agrees to pay all reasonable collection charges and/or attorney fees. All accounts due by the 10th.

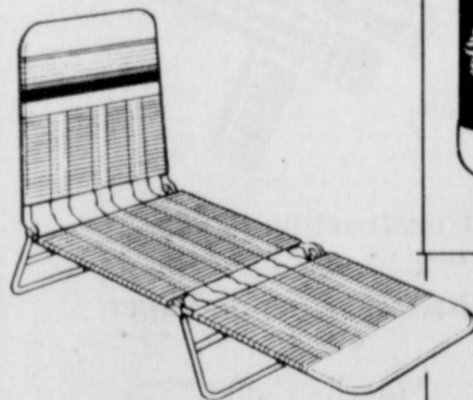
Eastland Telegram 629-1707  
Cisco Press 442-2244  
Ranger Times 647-1101

## WAL-MART® ALWAYS THE LOW PRICE ON THE BRANDS YOU TRUST. ALWAYS.™

reg. \$9.86  
**\$6.00**

### Multi-Position Chaise Lounge

- assorted colors
- zinc plated steel frame
- PVC strapping



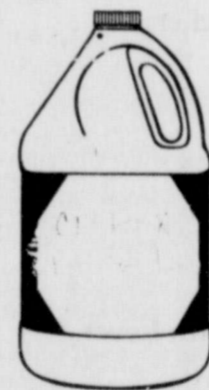
reg. \$8.96  
**\$5.00**

### Lawn Chair



**\$1.00**

### Tortilla Warmer



reg. \$1.04  
**78¢**  
Clorox Bleach  
1 gallon  
Lemon Fresh  
Clorox Bleach  
reg. \$1.28

**78¢**

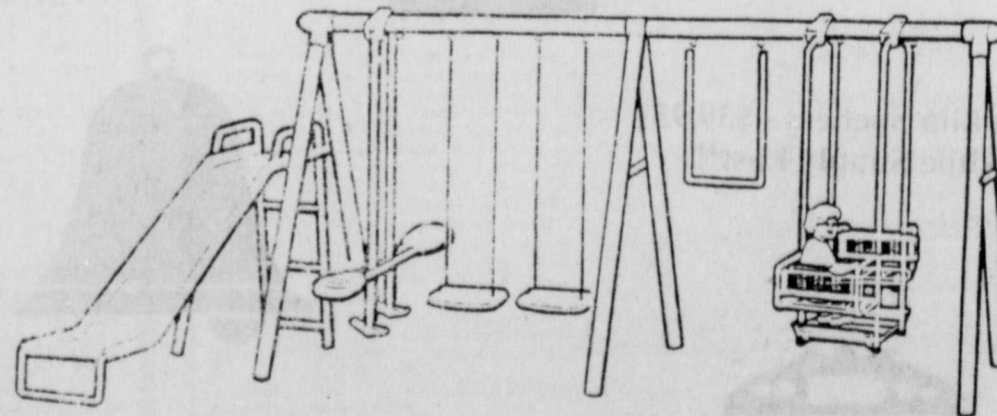
Limit 4



reg. \$5.88  
**\$5.00**  
Twin Pack  
Kitchen Bags  
90 Count  
Lawn Bags  
30 count  
Trash Bags  
50 count

## \$99.00 Play Gym

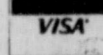
reg. \$129.97



Sunday-Wednesday  
Aug. 5 - Aug. 8  
Mon-Sat 9 a.m.-9p.m.  
Sun 12:30 p.m.-5:30 p.m.  
Hwy 80E. Eastland, TX



WAL MART  
Now Accepts  
the Discover Card



WAL-MART'S ADVERTISED MERCHANDISE POLICY - It is our intention to have every advertised item in stock. However, if due to any unforeseen reason, an advertised item is not available for purchase, Wal Mart will issue a Rain Check on request, for the merchandise to be purchased at the sale price whenever available or will sell you a similar item at a comparable reduction price. We reserve the right to limit quantities. Limitations void in New Mexico.

# Kokomo News

By Zelda Jordan

Summertime temperatures in the 90's have returned to our area, but as I write this on Monday night, a cool front has come in from the north and has lowered the temperature to the upper eighties with a promise of cooler weather for tomorrow. No rain showers as yet at our place, but perhaps we could receive some before morning. Everything is sure looking better since the good rains that came a week or so ago.

Mary Jo (Mrs. Mike) Leonard of Canadian was a visitor at the Kokomo Baptist Church on Sunday morning. The special music was rendered by the Choir. Members of the Kokomo Baptist Church went to the 5th Sunday night singing at the New Hope Baptist Church. Members of the First Baptist Church of Gorman were also there and there was a happy time of singing praises to the Lord and fellowship with one another. We didn't get there this time, but I heard good reports.

Mr. and Mrs. Lyndon Gathright of Abilene were recent visitors with Mr. and Mrs. J. L. Morrow.

Eastland Telegram - Ranger Times - Cisco Press  
Sunday, August 5, 1990

Mary Jo Leonard of Canadian is spending a few days with her mother, Mrs. J. C. Clearman. Other recent visitors with Mrs. Clearman were Ken, Linda and Kendi Clearman of Missouri City, Nanetta and Cathy Thompson of Plainview, Jamie and Ann Clearman of Ovalo, Krystal and Klay Clearman of Lawn and Kelvin, Kristi and Kaylee Whitehurst of Buffalo Gap.

Woodrow, Helen and Gary Browning were recent visitors with Donna and Gary Gatlin in Panhandle and they all enjoyed a visit to the Palo Duro Canyon and the show "Texas."

Lavell and Jerry Hallmark, Amy and LeeVi of San Angelo visited three days last week with Mrs. Dora Garrett. Other visitors in the Garrett home were Verna Lee and Jimmy Little, Cody and Jarad Fails of Arlington, Glenn Jordan, James and Jill Little, George and Glenn Lasater of Eastland, Mrs. J. B. Blacnet, Ruth Bryant, Lois Collins.

The Jerry Hallmarks and Mrs. Dora Garrett also visited in Eastland with Mrs. Connie Hallmark.

Mrs. J. C. Clearman, Norma Webb, Doris Bradshaw of Gorman and Ruth Bryant were visitors with Mrs. Nancy Hendricks during the past week.

Zelda Jordan visited in Coleman on Saturday with her aunts and uncles, Mrs. Gladys Garner and Mr. and Mrs. Edwin Webb of Coleman and Rev. Neil Webb of South Lake Tahoe, California.

Mrs. Lois Stice of Dallas visited during the weekend with her brother and sister-in-law, Vernon and Deon Fields and Lindell and they attended the graveside rites for a nephew's wife, Billie Winn, in Big Spring on Saturday.

Nancy Hendricks and Ruth Bryant visited with Daisy Wood at the Valley View Nursing Home in Eastland on Thursday.

Mr. and Mrs. Glen Jordan visited with Mr. and Mrs. Roddy Miles on Sunday and attended the birthday party for B.J. Miles on Sunday afternoon. B. J. was also visiting with his grandparents, the Roddy Mileses on Sunday.

**Birthday Party Honors B. J. Miles**

Robert and Diane Miles of Abilene honored their son B.J. with a birthday party in their home on Sunday, July 29th in celebration of his second birthday, which was July 31. A racing car theme was

used in the table covering, napkins, plates, cups and bowls. The birthday cake was in the form of a red racing car with the number "M 1/2" on it and held two candles. Racing car cookies had the inscription "Happy Birthday B.J." The cake and cookies were baked by his grandmother, Glenda Miles. Cake, ice cream and punch was served to those present to help B.J. celebrate which were his grandparents, Roddy and Glenda Miles of Abilene, his great-grandparents, Mrs. Mary Miles of Abilene and Glenn and Zelda Jordan of Kokomo, and friends, Joyce Carter of Hodges and Wayland, Stacy and Kayce Hulan of Abilene, the honoree, B.J. and his parents, Robert and Diane Miles. An aunt, Sheri Miles, called to wish him a Happy Birthday from Alamosa, Colo.

After B.J. opened his gifts, he was then taken to his bedroom where his room had been transformed into a little boy's dream room with a new "car" waterbed, a gift from his parents. B.J.'s daddy, Robert, drives the car No. M 1 in the economy late model class at the Abilene Speedway, and B.J. loves to go to the races. Robert placed 5th in his heat race and 7th in the Feature race on Saturday night after a lot of accidents and frustration on the track.

## Curtis Descendants Meet At Eastland Motor Inn

Curtis descendants of the Western States met for the twelfth time at the Eastland Motor Inn on Sunday, July 22, 1990.

Relatives and friends enjoyed visiting, taking pictures for albums and the Curtis family tree book and having an auction sale.

Those attending the reunion were Sherman and Frankie Taylor and son Bobby, Lubbock; Lucille Simpson, Lubbock; Bob and Lorena Simpson, Round Rock; Homer and Beulah Smith, Eastland; Garland Ramsey, Jal, New Mexico; Wallace Johnson, Tulsa, OK; Carl and Mina Simpson, Graham; Felton Herring, Fort Worth; Eddie F. and Trushell,

Axtell; Cecil Cooper, Cisco; Zola Thomas, Cisco; Ola Frost, Abilene; Dorothy Woodard, Becky Woodard, Cisco; Francil Williams, Cisco; J D and Bea Brawley and grandsons Gregory Cole and Flynt Black, Cisco; Maggie Lee, Cisco; Cecil and Madelyn Simpson and Children, Sherri, Crystal and Gale, Lubbock; Daniel Brawley, Cisco; Richard and Jennifer Simpson, Eastland; Lillie Simpson Logan, daughter Gina Granddaughter Lori, Fort Worth; Larry Simpson, Shannon Valley, Crowley; Pearl Baker, Eastland; Rex and Lori Simpson and children Courtney, Christopher and Rachel, Cedar Park, Round Rock; Margaret Lane, Cisco; Evelyn Kirk, Cisco.

## Monica Weber Named All-American Scholar

The United States Achievement Academy announced today that Monica Weber has been named an All-American Scholar.

Monica is the daughter of Roger and Carla Weber. The grandparents are Mr. and Mrs. Gene Boney of Fort Worth, Texas, and Mr. and Mrs. Charlie Weber of Greenwood, Texas.

The USAA has established the All-American Scholar Award Program in order to offer deserved recognition to superior students who excel in the Academic disciplines. The All-American Scholars must earn a 3.3 or better grade point average. Only Scholars selected by a school instructor, counselor, or other qualified sponsor are accepted. These scholars are also eligible for other awards given by the USAA.

Monica who attends Slide

School, was nominated for this National Award by Gene Franklin, Principal.

She will appear in the All-American Scholar Directory, which is published nationally.

"Recognizing and supporting our youth is more important than ever before in American History. Certainly, winners of the All-American Scholar Awards should be congratulated and appreciated for their dedication to excellence and achievement," said Dr. George Stevens, Executive Director of the United States Achievement Academy.

The Academy selects All-American Scholars upon the exclusive recommendations of teachers, coaches, counselors, and other qualified sponsors. Once awarded, the students may be recognized by the USAA for other honors.

## ASCII Computer Club Meeting

The ASCII Computer Club will meet at 7:00 p.m. Monday, August 6 at the Computer Patch, 300 E. 20th St. in Cisco. The topic of this meeting will be PC File and will be discussed at length by Bill Mears and others that use it every day. Every one will

have the opportunity to ask questions and get the right answers.

Be sure to attend this meeting and bring a friend that is interested in using PC File. This is going to be one of the best meetings we've had.



**108 W. 6th Cisco**  
**ONE STOP SERVICE CENTER**  
Electrical - A/C Heating - Appliances  
All Work & Materials Guaranteed 90 Days  
Call Now 442-2060  
Free Estimates or Bids

# CHURCH DIRECTORY

CISCO CHURCHES	EASTLAND CHURCHES	RANGER	CARBON
<p><b>FIRST EVANGELICAL METHODIST CHURCH</b> 1000 Ave. A and East 10th - Cisco 442-1227 Kenneth Whitstone Minister Sunday 2:30 p.m.; Tuesday Evening 7:30 p.m.; Thursday Evening 7:30 p.m.</p> <p><b>EAST CISCO BAPTIST CHURCH</b> Rev. Larry Linam 506 E. 11th - Cisco Sunday School 9:45 a.m.; Morning Worship 10:50 a.m.; Training Union 5:30 p.m.; Evening Worship 6:30 p.m.; Wednesday Evening 7:00 p.m.</p> <p><b>CALVARY BAPTIST CHURCH</b> Rev. Ronnie Shackelford Pastor 18th and Conrad Hillton, Cisco Sunday School 9:30 a.m.; Morning Worship 10:45 a.m.; Training Union 5:30 p.m.; Evening Worship 6:30 p.m.; Wednesday Prayer Meeting 7:00 p.m.</p> <p><b>NIMROD BAPTIST CHURCH</b> 10 Miles SW of Cisco Rev. T.D. Whitehorn Sunday School 10:00 a.m.; Sunday Services 11:00 a.m.; Training Union 6:00 p.m.; Evening Services 7:00 p.m.; Wednesday Services 7:00 p.m.</p> <p><b>NEW LIFE TABERNACLE</b> 307 W. 17th St. - Cisco Rev. W.M. (Bill) Bailey Sunday School 10 a.m.; Worship 11 a.m. (Hour of Power); Old Fashion Prayer time 6 p.m.; Evangelistic Service 6:30 p.m. Bible Study 7:15 p.m. Wednesday.</p> <p><b>GREATER ST. MARK BAPTIST CHURCH</b> Rev. Lorenzo Christman, Pastor Sunday School 9:45 a.m.; Morning Worship 11:00 a.m.; Evening Worship 6:00 p.m. Wednesday Prayer Service 7:00 p.m.</p> <p><b>MITCHELL BAPTIST CHURCH</b> S. of Cisco off Hwy. 206 Rev. Jessie Bigbee Pastor Sunday School 10:00 a.m.; Preaching 11 a.m.; Sunday Night 7:00 p.m.; Prayer Service Wednesday 7:00 p.m.</p> <p><b>CHURCH OF THE NAZARENE</b> Rev. Al Gary Pettigrew Sunday School 9:45 a.m.; Morning Worship 10:45 a.m.; Evening Worship 6 p.m.; Wednesday Prayer Meeting 7 p.m.</p> <p><b>CHURCH OF CHRIST</b> Jim Yates, Minister Ave. N. - Cisco Sunday Bible Classes 9:30 a.m.; Worship Service 10:30 a.m.; Evening Service 6:30 p.m.; Wednesday Service 7:30 p.m. Ladies 10:00 a.m. Tuesday.</p> <p><b>FAITH BAPTIST CHURCH</b> Fundamental Ross Dickson, Pastor Sunday School 10:00 a.m.; Worship Service 11:00 a.m.; Evening Worship 5:00 p.m. Wednesday Evening Worship 7:30 p.m.</p> <p><b>FOURTH STREET CHURCH OF CHRIST</b> 701 W. 4th St. Sunday 10:30 a.m.; Evening 5:00 p.m.</p> <p><b>ASSEMBLY OF YAHWEH</b> Welcome Worship 11:00 a.m. Saturday. Only 10 miles South of Cisco on U.S. Highway 183.</p> <p><b>MOUNTAIN TOP CHURCH</b> Where Spirit Filled Believers Worship 606 E. 8th St. (Old Hwy. 80) - Cisco Pastor John C. Jones Phone 442-4479 Praise In Word 10:30 a.m. Sunday; Evangelist Service 6 p.m. Sunday; Bible Study 7:30 p.m. Wednesday.</p> <p><b>PRIMITIVE BAPTIST CHURCH</b> James E. Robertson, Jr., Minister Services 1st Sunday each month; Singing 10:30 a.m.; Preaching 11:00.</p>	<p><b>GOSPEL ASSEMBLY CHURCH</b> 442-1227 Kenneth Whitstone Minister Sunday 2:30 p.m.; Tuesday Evening 7:30 p.m.; Thursday Evening 7:30 p.m.</p> <p><b>FIRST BAPTIST CHURCH</b> 710 North Seaman Rev. Danny Brown 915-356-2997 Sunday School 9:30 a.m.; Morning Worship 11:00 a.m.; Baptist Training Union 6:00 p.m.; Evening Worship 7:00 p.m. Wednesday Night Service 7:00 p.m.</p> <p><b>THE CHURCH OF JESUS CHRIST OF LATTER DAY SAINTS</b> Chapel Phone: 817-429-1383 Opening Exercise 9 a.m.; Relief Society 9-9:50; Priesthood 9-9:50; Primary 9-10:40; Sunday School 10:10-10:40; Sacrament Mgt. 10:50-12:00. Branch President Floyd A. Aldredge Route 1 Box 166 Ranger, Texas 76470 647-3827</p> <p><b>EASTLAND UNITED PENTECOSTAL CHURCH</b> 206 N. Dixie Rev. Bobby Hart, Pastor Let us be your friend Sunday School 10:00 a.m.; Morning Worship 11:00 a.m.; Evening Worship 7:00 p.m.; Wednesday Service 7:30 p.m.</p> <p><b>FIRST BAPTIST CHURCH</b> Dr. Robert Jeffers Sunday School 9:45 a.m.; Morning Worship 11:00 a.m.; Evening Worship 7:00 p.m.</p> <p><b>FIRST UNITED METHODIST CHURCH</b> Rev. Luther Helm Sunday School 9:30 a.m.; Morning Worship 10:30 a.m.</p> <p><b>BETHEL BAPTIST CHURCH</b> Rev. Dewey V. Lamb Sunday School 9:45 a.m.; Morning Worship 11:00 a.m.; Wednesday Evening 6:30; Evening Worship 6:00 p.m. Wed. Mission Groups 6:30.</p> <p><b>FIRST UNITED METHODIST CHURCH</b> Dr. Vaughn Baker, Pastor Sunday School 9:45 a.m.; Choir Practice 10:30 a.m.; Morning Worship 11:00 a.m.; Evening Worship 6:00 p.m.</p> <p><b>CALVARY BAPTIST CHURCH</b> David Henley Sunday School 10:00 a.m.; Morning Worship 11:00 a.m.; Prayer Class 6:30 p.m.; Evening Worship 7:00 p.m.; Wednesday Night Prayer Service 7:30 p.m.</p> <p><b>CHURCH OF GOD</b> 613 W. Main - Eastland 629-3129 Rev. Jim Oglesby Sunday School 10:00 a.m.; Evening Service 7:00 p.m.; Wednesday Service 7:30 p.m.</p> <p><b>NORTH OSTMOR CHURCH OF CHRIST</b> H.S. Lewis Phone 629-2219 Church Phone 629-2110 Services Sunday 10:30 a.m. and 5:00 p.m.; Wednesday 6:00 p.m.</p> <p><b>PLEASANT HILL BAPTIST CHURCH</b> Pleasant Hill Community Joe Philpot, Pastor Sunday School 10:00 a.m.; Morning Worship 11:00 a.m.; Evening Service 5:30 p.m.</p> <p><b>SOUTHSIDE PENTECOSTAL</b> 107 New Street - Eastland Sunday School 9:45 a.m.; Sunday Evening 7:00 p.m.; Midweek Service 7:00 p.m. Thursday.</p> <p><b>LAKE LEON BAPTIST</b> John C. Taylor - 629-2350 Sunday School 9:45 a.m.; Sunday Morning Service 11:00 a.m.; Sunday Night Service 5:30-6:30 p.m.; Wednesday Night Service 7:00-8:00 p.m.</p>	<p><b>CHURCH OF CHRIST</b> Gary Montgomery Minister Sunday School 9:30 a.m.; Morning Worship 10:20 a.m.; Evening Worship 6:00 p.m.; Wednesday Worship 7:30 p.m.</p> <p><b>ASSEMBLY OF GOD</b> Frank Saylor 1608 W. Commerce - Eastland Sunday School 9:45 a.m.; Morning Worship 11:00 a.m.; Evening Service 6:00 p.m.; Wednesday Night 7:00 p.m.</p> <p><b>FIRST PRESBYTERIAN</b> Dr. Bill Radtiff Sunday School 10:00 a.m.; Morning Worship 11:00 a.m.</p> <p><b>FIRST CHRISTIAN CHURCH</b> (Disciples of Christ) S. Lamar &amp; Olive - Eastland Rev. Randy Cook Sunday School 9:45 a.m.; Worship Service 10:50 a.m.</p> <p><b>WORD OF LIFE</b> 581 S. Lamar Robbie Moore Pastor Sunday Morning 10:45 a.m.</p> <p><b>INSPIRATION CHURCH OF GOD</b> Rev. Douglas R. Moore Camp Inspiration Box 167 Sunday School 9:45 a.m.; Morning Worship 10:45 a.m.; Evening Worship 6:00 p.m.; Wednesday Service 7:00 p.m.</p> <p><b>CATHOLIC CHURCH</b> Pastor Fr. Thomas H. Tezcar St. Francis, Eastland, 7:00 p.m. Saturday; St. Rita, Ranger, 10:30 a.m. Sunday; St. John Strawn, 8:30 a.m., Sunday; Holy Rosary, Cisco 5:00 p.m. Saturday.</p> <p><b>EASTLAND CHRISTIAN SCIENCE SOCIETY</b> Sunday Morning Worship 11:00 a.m.; Service on First Wednesday of the Month 7:30 p.m.</p> <p><b>PRIMERA IGLESIA BAUTISTA</b> EASTLAND, TEXAS (First Mexican Baptist Church) Pastor Eddie Gonzales Located at Ringling Lake Road Sunday School 10:00 a.m.; Sunday Morning Worship 11:00 a.m.; Evening Service 7:00 p.m.; Wednesday 7:00 p.m.</p> <p><b>FAITH BAPTIST CHURCH</b> 105 W. Plummer, Eastland Pastor R.L. O'Quinn Sunday School 10:00 a.m.; Sunday Morning Service 11:00 a.m.; Sunday Evening Service 6:30 p.m.</p> <p><b>CALVARY ASSEMBLY</b> Boyd Porter Sunday School 10:00 a.m.; Morning Worship 11:00 a.m.; Sunday Evening 7:30 p.m.</p> <p><b>MARANATHA BAPTIST</b> Independent - Fundamental Pastor M.H. Jones Hwy. 80 West of Eastland Sunday School 10:00 a.m.; Worship Hour 11:00 a.m.; Prayer Classes 6:00 p.m.; Worship Hour 6:30 p.m.; Wednesday Services 7:30 p.m.</p> <p><b>SOUTHSIDE BAPTIST MISSION</b> (S.B.C. Mangum Sponsors) 1509 South Seaman Larry Briley, Pastor Sunday School 10:00 a.m.; Sunday Worship 11:00 a.m.; 7:00 p.m.; Wednesday 7 p.m.</p> <p><b>CHURCH ON THE WAY</b> Pastor Ron Allman Meets For Every Service At The Women's Club Sunday Morning 10:30 a.m.; Sunday Night 6:30 p.m.; Wednesday Night 7:14 p.m.</p> <p><b>FIRST PENTECOSTAL CHURCH</b> 311 S. Lamar Dr. D.P. Sadowski Sunday Morning 10 a.m.; Sunday Evening 6 p.m.; Wednesday evening 7 p.m.</p>	<p><b>FULL GOSPEL</b> Pastor Jimmy Maples P.O. Box 423 Hwy. 6 at Caution Light, Carbon</p> <p><b>CARBON CHURCH OF CHRIST</b> Randy Moody Bible Study 10:00 a.m.; Morning Worship 11:00 a.m.; Evening Worship 6:00 p.m.; Wednesday Night Service 7:30 p.m.</p> <p><b>FIRST BAPTIST CHURCH CARBON</b> Rev. George W. Weeks Sunday School 10:00 a.m.; Morning Worship 11:00 a.m.; Training Union 6:00 p.m.; Evening Worship 7:00 p.m.; Wednesday Night Prayer Meeting 7:00 p.m.</p> <p><b>LIGHT OF GOD</b> FULL GOSPEL CHURCH 4 Bks. S. on Okra Hwy., Carbon Pastor Bill Griffin 639-2579 Sunday School 10:00 a.m.; Morning Worship 11:00 a.m.; Evening Worship 7:00 p.m.; Wednesday 7:00 p.m.</p> <p><b>OLDEN</b> OLDEN BAPTIST CHURCH David Edwards, Pastor 653-2201 Olden, Texas 76466 Sunday School 9:45 a.m.; Morning Worship 10:50 a.m.; Evening Worship 7:00 p.m.; Wednesday Worship 7:00 p.m.</p> <p><b>LIGHTHOUSE CHURCH</b> Stephen Allen, Pastor 629-3601 Corner of East &amp; North Streets in Olden Sunday School 10:00 a.m.; Morning Worship 11:00 a.m.; Sunday Night 6:00 p.m.; Wednesday Night 7:00 p.m.</p> <p><b>OLDEN CHURCH OF CHRIST</b> Minister Roy Haley Bible Class 10:00 a.m.; Morning Worship 10:30 a.m.; Evening Worship 5:00 p.m.</p>
<p><b>Higginbotham-Bartlett Lumber Co.</b> 629-1311</p> <p><b>Perkins Implement Co.</b> 629-2665</p> <p><b>Vicki's Beauty Shop</b> 629-2032</p> <p><b>Dr. J.O. Jolly, Dentist</b> 629-2033 or 629-2432</p> <p><b>R.M. Sneed Contractor</b> 629-1756</p> <p><b>White Elephant Restaurant</b> 442-9957</p> <p><b>Eastland County Newspapers</b> 629-1707</p> <p><b>Cisco Funeral Home</b> 442-1503</p> <p><b>U-Save Pharmacy</b> 629-1166</p> <p><b>Thornton Feed Mill</b> 442-1122</p> <p><b>J &amp; J Air Conditioning</b> 629-2251 TACLBO02300C</p> <p><b>Kimbrough Funeral Home</b> 442-1211</p> <p><b>Maxwell Appliance Service &amp; Parts</b> 442-1439</p>	<h1>SERVICES</h1>		

## Cisco Cemetery Association

The Cisco Cemetery Association received the below listed donations during the month of July:

In memory of E.F. "Chief" Bender by A.A.R.P., Cisco Chapter #2447.

In memory of Wanda Strother by Charles and Sandy Bellaire and Girls.

In memory of Z.E. Lee by Walter G. Pettijohn.

In memory of C.W. Henry by Kitty Z. McCracken.

In memory of Charles U. Davis by Vernetta Pierce.

In memory of E.L. Jackson by Lela Latch Lloyd, Louise Cooper, Helen Crawford, Mr. and Mrs. Luke Pippen, Trixie Whatley and Mrs. L.O. Thompson.

In memory of Mrs. C.W. (Bess) Henry by Lela Latch Lloyd and Kitty McCracken. Mrs. L.D. Barton made a contribution to the Endowment Fund.

Donations to the Cisco Cemetery Association may be mailed to P.O. Box 308, Cisco, Texas 76437.

## Friends And Fellowship Ministry Meet

The Friends and Fellowship Ministry of East Cisco Baptist Church met July 26, 1990 at 11:30 a.m. in the Fellowship Hall of the church for their regular monthly meeting, and covered dish luncheon.

Ruth Moore voiced the prayer before the meal. Then those present enjoyed a great covered dish luncheon.

After they finished eating, Marshall Ivie, President, opened the business meeting.

The minutes were read by Laverne Ivie and approved as read.

In the unavailable absence of the Treasurer, Marshall gave the Treasurer's report; approved as read.

Marshall reminded the group of the bake sale scheduled for Friday the 27th at the bank. He also reminded them that the Friends and Fellowship Ministry is still helping the Child Care Center with food.

The next item of business was discussion of the next out of town trip. The pastor (on Travel Committee) gave the

report of information he had obtained about Eureka Springs. It was reported to Bro. Linam that the nearest booking for rooms to the Passion Play this time of year, was hours away from it. After discussion another vote was taken and only about three were still interested, two were going anyway, and the rest couldn't go (or were not interested in going).

So the President asked for suggestions for another place to go. Some names were turned in to him and the travel committee will (hopefully) have more information next month.

The Devotional was the next item; it was given by Lucy Hagen. The title was "Give Thanks" from Psalms 118:1. She said each person should not only thank God for His blessings, but thank others for things they do to help. She expressed her appreciation to Laverne and Marshall Ivie, Bro. Larry and Sherrel Linam and others, who go above and beyond the call (so to speak) of deacons,

## Teen Drama To Perform At First Methodist Church

What is **Teen Drama**?

**Teen Drama** is a group of high school age students dramatizing real life issues through improvisational skits. Sponsored by the Boys and Girls Clubs of Greater Fort Worth and the Fort Worth Adolescent Pregnancy Board, these young people volunteer at least 40 hours of their free time to be educated on such issues as: teen pregnancy, drug and alcohol abuse, communication with parents, as well as many other issues

that confront our youth. The acceptance of the presented information has been great, as young people tend to be much more receptive to information presented to them by their peers.

This group is directed by Mary McGrew-Smith, formerly of Cisco. They will perform at the First United Methodist Church in Cisco Saturday, Aug. 11, at 3 p.m. For more information call Betty McGrew at 442-2155 or Rev. David Leech, pastor of the First United Methodist Church at 442-1334, or Carol Brown at Cisco Junior College, 442-2567.

## Rodgers Hold Family Reunion

The family of Thelma and the late Troy P. Rodgers gathered for a family reunion the weekend of June 30 at the home of Robert E. Rodgers in Kerrville.

The reunion was a co-operative effort of the Rodgers children, whom were all born in Cisco they are, Vonnice Bolton, Uvah Falk, Troy W. Rodgers, and Robert Rodgers. Thirty-six people feasted on barbecue with all the trimmings.

Special guest were Mr. Rodgers' nephews, Lesley Rodgers, Don Rodgers, and Howard Lawson and Mrs. Rodgers' sister, Lucile Cozby of Cisco.

Family members came from California, Arkansas, New Mexico and all parts of Texas.

## Bike Rally To Benefit M.D. Is Planned

The Big Country Cycling Association will hold a Tour de Buffalo Gap bike rally to benefit Muscular Dystrophy on Saturday, August 11. The rally will start at the Abilene State Park at 8 a.m. There are two courses, a ten mile fun ride for beginners and one or two laps around a 27 mile moderately hilly course for more advanced riders. This is a perfect training ride for those

## Bike Rides

(From Page One)

Schaefer and Roman Maddox all made the long ride.

A 20 mile safari down the highway from Cisco netted Daniel Bray the next longest ride. Eleven teen-agers and three adults pounded the pavement of I-20 for varying distances of 8-16 miles and five pre-seniors made loops around the Cisco Junior College parking lot to bring the total miles traveled by church members to near 1,500 on that day.

Teen-age and adult riders included Annie Wright, Becca Wright, Anna Odom, Dietrich Odom, Robert Smith, Jane Hounshell, Kate Hounshell, Ann Hounshell, Amy Anderson, Ginger Rhyne, Lori Whatley, Susan Watts, Joe Cooper and Kori Cooper. The five preschoolers were Aaron Mellette, Amber Mellette, Jason Bray, Travis Bray and Bekah Fields.

Sponsors of the various riders paid by the mile, the minute or a designated gift. The 1,900.00 raised will be divided between foreign and home mission projects with the larger portion going to the Wesley Byas family of missionaries in Brazil, according to Pat Wallace.

"The event was so successful and so much fun that we already have it on our calendar for next year," said Pat Wallace.

planning to ride in the Hotter'n Hell Hundred in Wichita Falls August 25.

The registration fee is \$10.00, which includes a tee shirt for the first 80 riders to register. There will be two manned rest stops with fruit and water along the way with sag wagons to help those needing mechanical assistance or unable to finish the ride.

Registration blanks are available at Mike's Bikes, 426 Butternut and ProMotion Bike Shop, 3370 Rebecca Lane. For more information call Paul Moore, 629-7907 or Mike Thomsen, 672-4835.

Come out and enjoy a fun ride and help Jerry's Kids at the same time.



CHS Class Of 1940

## CHS Class Of 1940 Holds 50th Anniversary Reunion In June

The CHS Class of 1940 held their 50th Anniversary Reunion in the Corral Room of the LaGuna Hotel on Friday night June 8, 1990.

Seventy-five classmates and friends attended the reunion.

Those attending were as follows: Eugenia Jackson, Flippin, Ar.; Jeane Alexan-

der, Grapevine; Madeleine Ruppert Meals, Dallas; Marvin Fonville, Housaton; Mr. and Mrs. Jack Waters, Granbury; Lola Mae Heath, Albuquerque, N.M.; Carroll and Jean Barnhill, Fort Worth; Leo Callarman, Fort Worth; Jane Moore Parks, Pearl, Ill.; Dorothy Lamb Rose, Tyler;

Marc Rose, Tyler; Cissy McDaniel Parker, Tulsa, Okl.; Gayle Bailey, San Antonio; Mr. and Mrs. John D. Ward, Cleburne; Rex and Polly Pollard, Grand Prairie; Jeanne Jamison, Fort Worth; Venita Drury, Tyler; Angeline McDonnell, Tuscon, Az.; Charles McDonnell, Tuscon, Az.; Clifford Thomas, Jackson, Ms.; J.S. "Red" Cleveland, Sanford, Fl; Robert Christi, San Antonio; Waldine and Dan Hoover, Coleman; Oran and LaVerne Clark, Amarillo; Bob and Henry Ott, Hobbs, N.M.; Glen and Mary Ann Tableman, Houston; June Cessna, Midway City, Ca.; Robert Grantham, Jr., Houston; Charles and Dottie Yates, Fort Worth; Jolly (w/ks) Shefler, Stephenville; Henry Hageman, Bedford; Lurleen Blackburn Kempner, Long Beach, Ca.; Ralph and Kathryn McCanlies, Hurst; Don Vick, Lampasas; those attending from Cisco, Louise Pryor, R.B. and Annette Boyd, Dorothy Short Wink and her sister Mrs. Blackwell, Emma nad Derivard Morris, Frances Brown Strother, Bill and Mary Anderson and Robert H. "Jib" and Emma Lee Donovan.

## REPORT OF CONDITION

Consolidating domestic subsidiaries of the First National Bank in Cisco of Cisco, Texas, at the close of business on June 30, 1990, published in response to call made by Comptroller of the Currency, under title 12, United States Code, Section 161. Charter Number 12795 Comptroller of the Currency Southwestern District

## Statement of Resources and Liabilities

	Thousands of dollars
Cash and balances due from depository institutions	1,807
Noninterest-bearing balances and currency and coin	100
Interest-bearing balances	18,190
Securities	1,850
Federal funds sold	0
Securities purchased under agreements to resell	0
Loans and lease financing receivables:	
Loans and leases, net of unearned income	12,623
LESS: Allowance for loan and lease losses	379
LESS: Allocated transfer risk reserve	0
Loans and leases, net of unearned income, allowance, and reserve	12,244
Assets held in trading accounts	0
Premises and fixed assets (including capitalized leases)	997
Other real estate owned	68
Investments in unconsolidated subsidiaries and associated companies	0
Customers' liability to this bank on acceptances outstanding	0
Intangible assets	840
Other assets	36,096
Total assets	36,096
Losses deferred pursuant to 12 U.S.C. 1823(j)	N/A
Total assets and losses deferred pursuant to 12 U.S.C. 1823(j)	36,096
Deposits:	
In domestic offices:	
Noninterest-bearing	4,530
Interest-bearing	24,365
Federal funds purchased	0
Securities sold under agreements to repurchase	0
Demand notes issued to the U.S. Treasury	0
Other borrowed money	0
Mortgage indebtedness and obligations under capitalized leases	0
Bank's liability on acceptances executed and outstanding	0
Subordinated notes and debentures	0
Other liabilities	140
Total liabilities	29,035
Limited-life preferred stock and related surplus	0
Perpetual preferred stock and related surplus	0
Common stock	500
Surplus	500
Undivided profits and capital reserves	6,062
LESS: Net unrealized loss on marketable equity securities	1
Total equity capital	7,061
Losses deferred pursuant to 12 U.S.C. 1823(j)	N/A
Total equity capital and losses deferred pursuant to 12 U.S.C. 1823(j)	7,061
Total liabilities, limited-life preferred stock, equity capital, and losses deferred pursuant to 12 U.S.C. 1823(j)	36,096

We, the undersigned directors, attest to the correctness of this statement of resources and liabilities. We declare that it has been examined by us, and to the best of our knowledge and belief has been prepared in conformity with the instructions and is true and correct.

Lee D. Woolley  
Joe J. Cooper  
Jerry L. Morgan

Allen R. Masters  
Vice President & Comptroller

of the above-named bank do hereby declare that this Report of Condition is true and correct to the best of my knowledge and belief.

Allen R. Masters  
July 25, 1990



BATTER UP, in the above picture is shown a teammate from the A's baseball team receiving a pitch from the Rebels. The teams were participating in the District II State Qualifying Tournament of Texas Teenage Baseball, held earlier in the week. (Staff Photo)

## FREE PROSTATE SCREENINGS

Friday, Aug. 24 2-5 p.m.

Harris Methodist Erath County Hospital Community Room.

Sponsored by Harris Methodist Erath County Hospital, Stephenville.

Call for appointment 817-965-1534.

Dr. A.T. Deshmukh M.D., Board Certified Urologist, will be conducting the screens. A member of the Harris Methodist Health System.

CE59

## Garl D. Gorr

Real Estate Brokerage

807 Conrad Hilton, Ave., Cisco  
442-3642 or Night 442-1642

Three bedroom, two bath, in very good condition, good location, priced right and anxious to sell.

640 acres good ranch land, good location, 1/4 minerals and price is right.

Another three bedroom, two bath frame dwelling, plenty ground with it and you will like it and the price.

90 acres good grass and timber, close to paved road and not far from town.

Attractive two bedroom cottage, paved street and good location.

Two bedroom frame, very good, central air and heat. If price has anything to do with it you'll buy this one.

We have a three bedroom place with acreage.

Nice two bedroom dwelling with yard full of beautiful oak trees.

Two bedroom, living room, dining room, kitchen on paved street close to store.

Two bedroom, livable dwelling on paved street, make an offer and we might just let you have it.

Near new brick dwelling with land. If you want a fine place this is it.

Another fine brick dwelling with lots of extras, some land to 295 acres of good grass land, consider offer.

Good commercial building, situated good for most business's.

400 acres good hunting and good grass.

A nice unique type of commercial building, located good for many business's.

Large rock dwelling with plenty of room inside, would like an offer.

Look, three bedroom two bath on paved street would consider just taking over the payments, you can't beat that.

745 Acres, house and outbuildings, possibly some minerals.

Good commercial building on 120, Good for lots of uses.

435 acres good grass land.

One of the finest frame dwellings in Cisco, inside and out. You cannot help but like it.

We have nearly 50 houses and tracts of land in and around Cisco. Naturally we want to sell them and we are!!

Come On In!!!

8:30 - 5:30

## MOTT'S

Sports Bottles

Neon

32 oz.

99¢

Plastic Kiddy Chairs

Asst. Colors

\$1.99

Cornet 8 Roll Bath Tissue

\$2.24

Neon Poly Tumblers

16 oz.

3/\$100

Closet Saver Organizers

Save Space

4/\$1.00

Playmates Dick Tracy Figures

\$4.99

Neon Sun Visors

Poly

2/\$1.00

Slouch Socks

Sgt. Irregulars

99¢

Delta Paper Towels

57¢