

UNKLE HANK SEZ

THIS OLD WORLD IS A MIGHTY FINE PLACE TO LIVE--- THAT IS IF YOU MAKE IT THAT WAY.



We are ready and willing to help you make your life easier and more enjoyable. International Harvester farm implements add to the convenience of your farm at surprisingly low cost. Select the tractor, combine, harvester or other equipment you need from JOHNSON & NIX. One of the finest items you can put in a home is a freezer. We invite you one and all to come in and see the International Deep Freezer units now on display.

JOHNSON & NIX
IH CAN OLD SMOBILE
SALES AND SERVICE
PHONE 166.. MULESHOE & CLOVIS HIGHWAY

DR. J. R. DENHOF
DR. ABNER ROBERTS
Optometrists

PHONE 61-W OR WRITE FOR APPOINTMENT
121 W. 4th St. Clovis N. Mex.
ACROSS FROM POST OFFICE

Read The Journal Want Ads

HAWAIIAN STEEL GUITAR LESSONS

The Aloha Studio of Hawaiian Music is now enrolling students in Muleshoe. Your guitar will be furnished. Pupils of any age can learn to play. Classes on Saturday.

Call at Studio on Saturday
Or Write to Studio, in Clovis

ALOHA STUDIOS

Clovis — Portales — Muleshoe

HEADQUARTERS for

BABY CHICKS



We Handle All The
Equipment
Feeds
and
Remedies
You'll Need In
Growing Your
CHICKS



Place Your Order For
Baby Chicks NOW!

Muleshoe Hatchery
TYE YOUNG, Owner

Social Security Man Here Feb. 26

Elliott W. Adams, Social Security Administration Representative, will be in Muleshoe at the U. S. Post Office at 9 a.m. on Thursday, February 26, 1948, for the purpose of answering any questions you may have on Social Security; discussing possible benefits and taking claims from persons who seem entitled to benefits; and taking applications for Social Security account number cards.

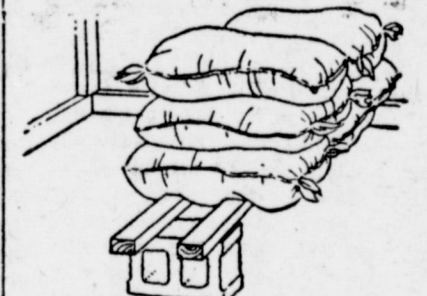
Every day last year an average of 700 people qualified for retirement benefits under the Federal old age and survivors insurance program, but the record shows that one out of every six could have qualified sooner and saved some monthly payments that were lost because of the delay. If you are one of the two and one half million people over 65 who have social security cards, it's a good idea to check with the nearest social security office about benefits, even if you expect to keep on working. The nearest social security office is at 1311 Texas Avenue, Lubbock, Texas.

MID-TERM GRADUATE
William Gordon Kennedy, Jr., of



Exterminating Rats
WITH grain and food conservation a pressing need today, one of the prime considerations of nearly every farmer should be extermination of rats. The annual damage to feed and flocks inflicted by rats amounts to millions of dollars. Not only do rats consume and spoil feed, but they kill chicks, spread diseases and damage buildings.

Number 1 on your program of rat extermination should be cleaning up trash piles and refuse of all kinds, especially in and near farm buildings. Then prepare for the kill by placing unpoisoned bait at locations frequented by rats. Repeat this operation for several nights to coax the rat population out in force. Meat or fish is good bait, being a change of pace from the rats' usual grain diet. After lulling the rats into a false sense of security, place poison on the bait. About a week later repeat extermination, using different bait.



Don't overlook the importance of rat-proofing, however. The illustration above shows how grain can be stored on skids and blocks which leave plenty of room underneath for cats or dogs to catch prowling rats.

Another effective control measure is to line the walls and floors of your farm buildings with asbestos cement board, a mineral product which is impervious to rats. This material, which additionally is weatherproof and fireproof, also comes in the forms of siding and roofing.

"Fuel Thief Detector" Used In Oil Conservation Drive



Recent tests in Champaign and Urbana, Ill., homes showed that much fuel oil and heat are being wasted. This situation is believed to exist country-wide. Poorly adjusted and worn-out oil burners and furnaces, plus lack of insulation and storm sash, and bad heating practices are chiefly responsible.

Scientific instruments, like the one above, were employed in the test surveys by 70 experts of the Oil-O-Matic Division of Eureka

Muleshoe, is among the mid-term graduates of the Department of Agricultural Administration, Texas A. & M. College.

Methodists Will Gather Here 24th

Dr. E. D. Landreth, superintendent of Amarillo district, Methodist church, is calling a meeting for Tuesday evening, February 24, at 8 o'clock. Dr. Landreth has requested that the Y.L. Methodist church, Lazbuddy, Progress and Muleshoe churches meet at Fellowship hall, Muleshoe. Every family in all churches are expected to be present, and each family will bring a good meal. The meal will be served in Fellowship hall.

The purpose of this meeting is to hear Dr. Harold Cook, president of McMurry college, speak in the interests of our own McMurry college at Abilene. Dr. Cook is speaking in the next few weeks to all Methodist members in the Northwest Texas conference. He will not be able to go into every church, but will speak at centers where all members can attend.

Make your plans to be present and hear Dr. Cook. Dinner will be served at 8 p.m., February 24. Dr. Cook speaks immediately after dinner.

Signed:
Rev. T. G. Craft, local pastor
E. D. Landreth, District Supt.
Rev. Annias, Pastor, Y. L. Charge.

Your Arteries Are Index To Your Age

Austin, Feb. 15—Some folks are old at sixty; others are mentally and physically alert at eighty. The number of years one has lived may not be a true index to one's physical condition. Actually, the length of a person's life span is influenced by the condition of his arteries. Premature hardening of the ar-

teries, often due to avoidable infections, improper diet, and possibly worry and strain is to a certain extent, preventable, said Dr. Geo. W. Cox, State Health Officer.

Many of the problems connected with the hygiene of old age are due to lowered mental power. So, a cheerful and optimistic attitude toward the aged, especially during sickness, is essential to their well-being. Old people regard their condition as far less serious when they can be fully dressed and out of bed. When they can be up, the excretory organs function more sat-

isfactorily, too. However, when an elderly person complains of being overtired, or otherwise not physically fit, a day of rest in bed is advisable. By providing light and easily digested food and applying warmth to the body of an aged patient, he is often tided over a mild or threatened illness.

Special attention should be paid also to proper clothing, diet, and exercise of the elderly. With reasonable attention to certain well-defined and easily followed principles of personal hygiene, it is possible to grow old gracefully. Furthermore it is also possible, in many instances, to retain one's faculties to such an extent as to make old age a pleasure rather than a burden.

TO HOUSTON MEETING

Mr. and Mrs. Noel Woodley and daughter, Anne, were in Houston

Bobo Insurance Agency

Pat R. Bobo, Owner
Office in Court House
Phone 97 — Muleshoe

The Journal wants your news — Just Phone 54.

FOR
Refrigeration Service
and
Refrigerators

Call 272-W

PERKINS' Refrigeration Service

Krueger, Hutchinson and Overton Clinic LUBBOCK, TEXAS

GENERAL SURGERY

J. T. Krueger, M.D., F.A.C.S.
J. H. Stiles, M.D., F.A.C.S. (Ortho)
H. E. Mast, M.D., F.A.C.S. (Urology)

EYE, EAR, NOSE & THROAT

J. T. Hutchinson, M.D.
Ben B. Hutchinson, M.D.
E. M. Blake, M.D.

INFANTS AND CHILDREN

M. C. Overton, M.D.
Arthur Jenkins, M.D.
J. B. Rountree, Jr., M.D.

OBSTETRICS

O. R. Hand, M.D.
Frank W. Hudgins, M.D. (Gynecology)

INTERNAL MEDICINE

W. H. Gordon, M.D. (F.A.C.P.)
R. H. McCarty, M.D.

GENERAL MEDICINE

G. S. Smith, M.D. (Allergy)
R. K. O'Loughlin, M.D.

X-RAY and LABORATORY

A. G. Bersh, M.D.

J. H. Felton, Business Manager

IS YOUR TRACTOR

READY ?



It's Time to Start Making a Crop

and
YOUR TRACTOR
Needs To Be In Top Shape

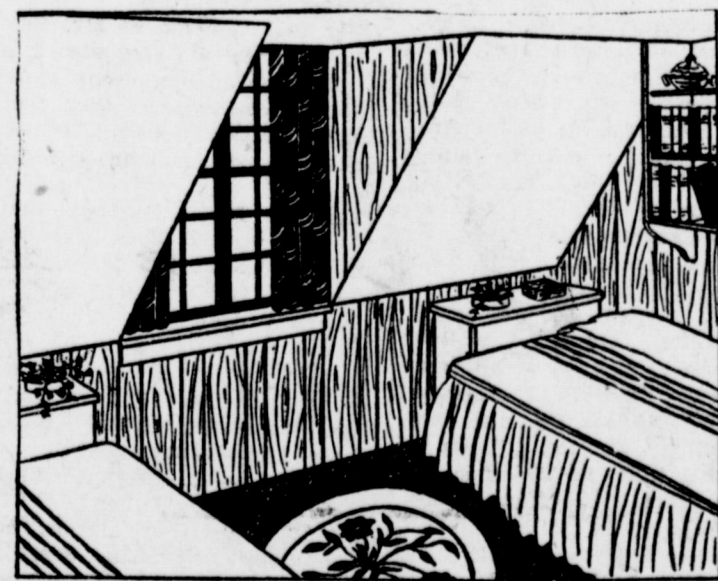
SHORTY HOLMES

Is In Charge Of Our
SERVICE DEPARTMENT

and is ready to do repair work on any make tractor or car.



Davis & Lenderson



We Can Give You a Cozy Bedroom In Exchange for Your Attic

Have you ever thought of turning that useless attic into a spare bedroom for one of the kids or an overnight guest? We're prepared to do the job with superior materials.

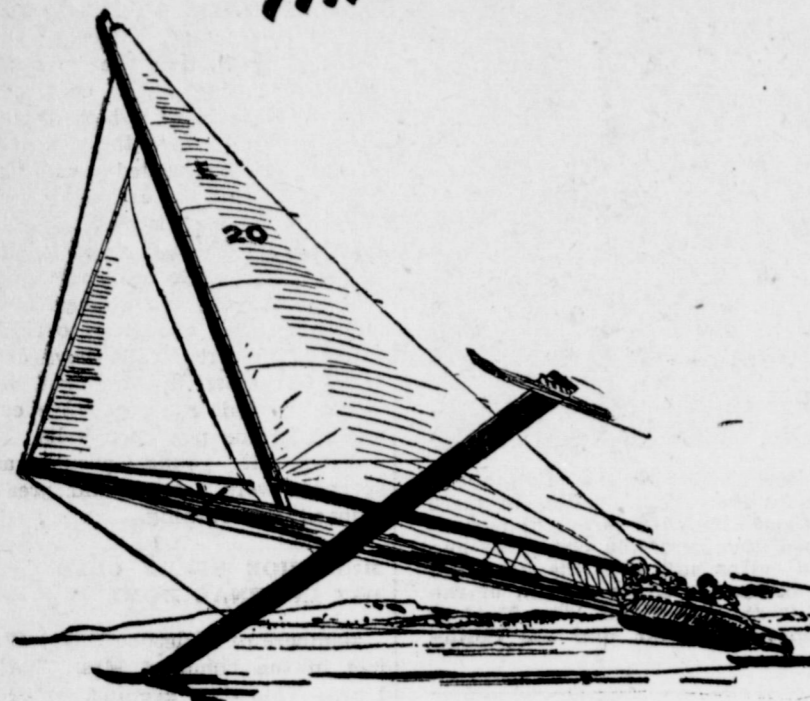
Complete Line of Building Materials
Closet Combinations

H. S. SANDERS LUMBER

Phone 93

Muleshoe

In ICE-BOATING or GASOLINE
IT'S
CONTROL
 THAT COUNTS!



PHILLIPS 66 IS CONTROLLED* TO GIVE YOU QUICK STARTING AND EASY WARM-UP!

It takes a sure touch to control one of those whizzing ice boats, and it takes real control to build a great cold-weather gasoline, too!

We do it by selective blending of high-quality blending components—season by season—to fit your driving needs all year 'round!



See for yourself the kind of action a tank full of Phillips 66 Gasoline gives you these cold mornings!

* "VOLATILITY CONTROLLED" TO GIVE YOU FAST STARTS!



Evans Oil Company
 DISTRIBUTORS Muleshoe, Texas

ENJOY—

AMERICA'S FINEST
 AUTOMOBILE ACCESSORIES

Here is your opportunity to increase your motoring enjoyment with one or more of these finest accessories—

Our Stock Includes:

- Cigarette Lighters
 - Batteries
 - Seat Covers
 - Vanity Mirrors
 - Back-up Lamps
 - Radios
 - Safetylights
- AND MANY MORE

C. & H. Chevrolet Co.

BLOCK ASSEMBLIES and
 MOTOR ASSEMBLIES

Muleshoe Texas

Phone 12

At the Churches



Schedule of Services

CHURCH OF CHRIST
 Ebb Randol, Minister
 Bible Study 10 a.m.
 Preaching Service 11 a.m.
 Communion Service 11:45 a.m.
 Preaching 8 p.m.
 Ladies Bible Class, Tues- day 3 p.m.
 Mid-Week Services 8 p.m.

FIRST BAPTIST CHURCH
 Rev. A. W. Blaine, Pastor
 Sunday School 9:45 a.m.
 Morning Worship 11 a.m.
 Training Union 6:30 p.m.
 Evening Worship 7:30 p.m.
 Officers and Teachers, Wednesday 7 p.m.
 Choir Rehearsal, Thursday 7 p.m.
 WMU, Wednesday 2 p.m.

FIRST METHODIST CHURCH
 T. G. Craft, Pastor
 Sunday Services 9:45 a.m.
 Church School 11 a.m.
 Preaching 6 p.m.
 Young People 7:30 p.m.
 Evening Worship 7:30 p.m.
 Midweek Service, Wednes- day 7:30 p.m.
 W.S.C.S., Monday 2:30 p.m.
 Choir Rehearsal, Wednes- day 7:30 p.m.

LONGVIEW BAPTIST CHURCH
 Elwin R. Ingram, Pastor
 Sunday School 10 a.m.
 Morning Worship 11 a.m.
 Training Union 7:30 p.m.
 Evening Worship 8:30 p.m.
 Everyone welcome.

MAIN STREET MISSIONARY
 Rev. M. E. Robinson, Pastor
 Sunday School 10 a.m.
 Church Services 11 a.m.
 B. T. U. 7:30 p.m.
 Church Services 8:15 p.m.

LAZBUDDY FIRST BAPTIST CHURCH
 Lazbuddy, Texas
 Sunday School 10 a.m.
 Morning Worship 11 a.m.
 Training Union 7 p.m.
 Evangelistic Service 8 p.m.
 Midweek Prayer Service 7 p.m.
 Meeting 8 p.m.
 Wednesday Night Prayer "Not forsaking the assembling of ourselves together."—Hebrews 10-25

MULESHOE PRIMITIVE BAPTIST CHURCH
 Elder L. M. Handley, Preacher
 Services every second and fourth Sunday at the school house.
 Song Service 10:30 a.m.
 Preaching 11 a.m.

ASSEMBLY OF GOD CHURCH
 Rev. L. H. Hubbard, Pastor
 Sunday School 10 a.m.
 Morning Worship 11 a.m.
 Evening Service 8 p.m.
 Young People's Service, Tuesday 8 p.m.

**ALL FORMAL,
 ALL WASHABLE**



Miss America of 1947 (center), Barbara Jo Walker of Memphis, and other models show a completely washable wardrobe of formal attire at a recent convention of laundry-owners. Miss America's evening gown is of white chintz. The model at her right wears an evening gown of striped cotton. Other gowns, left to right, are a jacket-and-dress set of cotton, a bridal gown of cotton-pique, an evening suit of cotton-voilet and an evening gown of cotton-voilet. The style show at which this photo was taken was part of a demonstration of how manufacturers are working with the laundry industry to produce new washable fabric marvels.

FURNITURE FASHIONS by Frances Ainsworth



GRAND RAPIDS, MICHIGAN—An outstanding example of unusual handling and fine furniture craftsmanship is illustrated in the chairs of the Rendez Vous Room of the Hotel Plaza, New York. Custom designed and made by the Brower Furniture Company, Grand Rapids, the chairs are finished in ebony black—a third of them are upholstered in violet felt and two-thirds in cardinal red—carrying out the room theme of an 18th century French pavilion. Brower Furniture Company also furnished chairs for the Plaza's new Persian and Terrace Rooms.

WEST PLAINS BAPTISTS TO MEET AT FIELDTON
 West Plains Baptist association is to be held at the Fieldton Baptist Church Friday, February 20. A Workers' Conference of the



From where I sit... by Joe Marsh

**Free Ride For You—
 on the Freedom Train!**

We had a real thrill in Our Town just the other day—when the Freedom Train stopped by!

You've heard about it, of course—an actual train that's touring the country to remind us again what true Democracy means. It carries such Americana as the Declaration of Independence, the Bill of Rights, and other immortal documents that guarantee every citizen his liberty.

A great idea! And from where I sit, we're all riding along with that Freedom Train—right now—by liv-

ing in a country that protects our individual liberties—whether they apply to our right to vote, to choose our church, to speak our minds, or enjoy a glass of beer with friends.

Only thing is—we've got to prove ourselves worthy of the ride... by guarding zealously against whatever forces of intolerance encroach upon our American concepts of live-and-let-live, in a free and strong Democracy!

Joe Marsh

The meeting will begin at 10 a.m. and will extend over into the afternoon.

Program of events is as follows:
 10:00—Song, Devotional and Prayer, Fieldton Baptist Church; 10:15—Part the Sunday School Plays in the Great Commission, F. M. Wiley; 10:40—Part Training Union Plays in the Great Commission, Lloyd Garrison; 11:05—Some of Christ's Teachings Concerning Brotherhood Work, W. A. Reed; 11:30—The Mission of New Testament Churches in the World Today, W. G. Self.
 12:00—Lunch; 1:30—Board and WMU Meeting; 2:00—Song; 2:05—The Marks of New Testament Churches, Franklin E. Swanner.

WANT ADS PAY
 WANT ADS PAY

GREEN
Hospital & Clinic
 Muleshoe, Texas
L. T. Green, Jr.,
M. D.
M. F. Green, M. D.
 Mrs. Lula Gorrell, R. N.
 Joyce McCarty, R. N.
 Betty Jo Campbell, R. N.
 Winona Blair, R. N.
 Geraldine Green, R. N.
 (Offices At Hospital)

LOANS
TO BUILD OR
REMODEL
IN MULESHOE



Find out at once how practical and how sound Savings and Loan is as the way to realize home ownership plans. You can and should have a home!

WE WELCOME SAVINGS ACCOUNTS

For information

See
Miss Mildred Davis
 Muleshoe State Bank Bldg.

First Federal

SAVINGS & LOAN ASS'N. OF CLOVIS
 CLOVIS NEW MEXICO

Ford
parts
fit!



**YOU GET GENUINE FORD PARTS
 WITH OUR FORD SERVICE**

We've got the parts that are made right to fit right and last longer in your Ford. They're exactly like the ones which came in your Ford when it was new. Naturally they work smoothly, give you better wear, and save you money. Come "home" to us for Ford service and save with our

1. GENUINE FORD PARTS
2. FORD-TRAINED MECHANICS
3. FACTORY-APPROVED METHODS
4. SPECIAL FORD EQUIPMENT

There's no place like HOME for Ford Service
 — your Ford dealer knows your Ford best!

Your Ford Dealer invites you to listen to the Ford After Show, Sunday Evenings—NBC network. Listen to the Ford Theater, Sunday Afternoons—NBC network. See your newspaper for time and station.



Motor Co.

Phone 33

Your Ford Dealer

Muleshoe

Women's News. Club Events Social Activities

Progress HD Club Met Tuesday, Feb. 17

The Progress Home Demonstration Club met in the home of Mrs. John Thomson Tuesday, February 17. The president was in charge of the meeting. The council report was given by Mrs. Ada Murrah.

Two gardens were reported plowed by the food preparation committee. Six garments, one suit and two sets of curtains were reported made by the clothing committee.

The finance committee reported \$18.65 from the sale of food at Mr.

Radney's farm sale. We wish to thank each person who donated sandwiches.

A very interesting and instructive demonstration on "Screen Plantings" was given by Mrs. O. C. Thomson.

We have found that our Holland relief family consists of five members, both parents, a boy of fourteen, an eight year old girl, and a small girl of one year. Mrs. Murrah read the instructions on how to prepare the relief box for mailing. The first box is ready for mailing.

Progress Club also donated \$10.00 to help get some clothes for a needy

family in our community. We welcome three new members, Mrs. Ray Maeberry, Mrs. L. B. Myers and Mrs. J. P. Wedel. A delicious plate lunch and coffee were served to two visitors, fourteen members and the hostess.

The next meeting will be held in the home of Mrs. Tom Sinnacher March 2.

Hokit And Garth Vows Are Read

A single ring marriage ceremony for Miss Billie Jean Hokit of Amherst and Mr. Claude Garth of Needmore was read by Rev. J. E. Moore February 13, at 8:30 p.m. in the J. E. Moore home.

The bride wore a medium blue suit with grey accessories.

Mr. George Coleman served as best man while his wife, Mrs. Coleman, served as bridesmaid. Other attendants were Misses Fern Hawkins, Wanda Johnson, Nell Mote, Polly Thompson and Mr. Ben Green. Mrs. Garth is a former nurse of the Amherst Co-op hospital.

Mr. and Mrs. Garth plan to make their home near Needmore.

Mrs. Halford Is Hostess To Club

The Enoch's Home Demonstration Club met Thursday afternoon with Mrs. A. D. Halford as hostess. A large number was present, including one visitor, Mrs. Zed Robertson, was presented as a new member.

A lovely Valentine box was enjoyed by everyone present. The next meeting will be in the home of Mrs. Lewis McCall February 26. Mrs. Laurette Williamson will meet with them. Everyone is invited to attend.

Mrs. Clyde Brown Honored At Shower

Mrs. Clyde Brown was honored with a bridal shower Tuesday afternoon, February 10, at 3 o'clock in the home of Mrs. M. E. Finley, with Mrs. S. E. Guicher, Mrs. T. R. White and Mrs. Finley as hostesses.

The bride was seated in the living room, and as music played softly, Jimmy Kinser and Goldilou Goucher entered dressed as bride and groom, pulling a beautifully decorated wagon loaded with gifts.

The bride's assistants in opening the gifts were her mother, Mrs. C. J. McKnight, and mother-in-law, Mrs. C. M. Brown. The bride received many beautiful and useful gifts. The bride's table was covered with a lace cloth, with a miniature bride in the center.

Mrs. T. R. White presided at the bride's book. Refreshments of coffee, cake and salted nuts were served to the following: Mesdames O. H. Morris, Doris Kinser, Euna McLaury J. E. Wilhite, A. O. Terrell, Edith Lee, A. W. Crow, R. L. Harrison, L. T. Green, Jr., H. G. Harvey, R. G. Spence, G. E. Hicks, C.

LOVELY TEXAN TELLS COTTON'S FASHION STORY



Blonde and beautiful Matilda Nail of Ft. Worth, Texas, the cotton industry's 1948 Maid of Cotton, has begun a 35,000-mile cotton goodwill tour which will carry her to more than 40 key cities in three countries. She's pictured here in three of the 1948 cotton creations which are included in her glamorous all-cotton wardrobe. On the left, Matilda wears a romantic evening gown done in cotton chambray and organdy by Dorris Varnum. In the center, she poses in a sophisticated cotton suit with the new slim skirt done by Herbert Sondheim. And on the right the Maid of Cotton shows a modern version of the white cotton batiste and black poplin from Alice Stuart. The Maid of Cotton tour is sponsored by the National Cotton Council, Memphis Cotton Carnival, and the Cotton Exchanges of New York, Memphis, and New Orleans.

J. McKnight, C. M. Brown. Also attending were Jimmy Kinser, Lyndal Kinser, Lawanna Kay Lee, Goldilou Goucher and Janice Harrison, and the hostesses and honoree.

Many sent gifts that were unable to attend.

HD Club Met With Mrs. D. R. Aylesworth

The Muleshoe Home Demonstration Club met Thursday, January 12, in the home of Mrs. D. R. Aylesworth. Mrs. Aylesworth acted as president in the absence of the president, Mrs. S. C. Caldwell.

As the agent, Mrs. Laurette Williamson, could not be present for the meeting, there was a round table discussion of "Ready Mixes" on the market.

Mrs. A. W. Copley gave Lincoln's Gettysburg address. Mrs. J. T. Shofner, our clothing demonstrator, gave a report. A report was given by Mrs. Aylesworth, the landscape demonstrator. Mrs. O. C. Kirk, food demonstrator, also gave a report. Bill Aylesworth gave the ladies a formula for preparing fertilizer for plants.

We are very sorry to lose Mrs. Ila Mae Lawler as a member. She is moving to Lubbock. Refreshments were served to 1 visitor, Ray Marberry, and 4 members Mesdames A. W. Copley, O. C. Kirk, J. T. Shofner, and D. R. Aylesworth, the hostess.

The next meeting will be held on February 26 in the home of Mrs. O. C. Kirk.

VALENTINE DAY PRESENT
Mr. and Mrs. Russell W. Bryant

received a very wonderful Valentine this year, a big 8 pounds, 6 ounces boy, Michael Wayne, at Clovis Memorial Hospital, February 14.

Valentine Party Is Held For Sophomores

The sophomore class of Muleshoe high school held a Valentine party and dinner in the Home Economics Department room, Friday night, February 13. The table was decorated with white crepe paper and American Beauty roses as centerpieces. Table favors consisted of nut cups filled with candy Valentine hearts.

The dinner consisted of chicken and dressing and all the trimmings. There were forty-four present including the sponsors of the class, Miss Margie Moore and James A. Beam, and several room mothers and fathers. They were Mrs. David Stovall, Mr. and Mrs. Leon Julian, Mr. and Mrs. Roy Bryant, Mr. and Mrs. L. J. Sanders, Mrs. O. C. Kirk and Mrs. M. F. Green.

After the dinner they played games that referred to Valentine's Day. The evening was enjoyed by everyone.

Goodland Ladies Bible Class Gives Valentine Dinner

The Goodland Ladies Bible Study Club entertained their husbands Saturday night, Feb. 14, with a banquet at Patton's Cafe in Maple. The lovely three course dinner as well as the decoration and program carried out the Valentine motif. Each lady was presented with a carnation corsage wristlet on being seated.

The following program was given: Introduction of each member by the president, Mrs. Jewel Brackman; Toast to our husbands, Mrs. Herbert Wall; Reading, and encore, Mrs. Earl Humphrey; Reading and pantomime, "The Three Bears," by

SPRING'S IN THE AIR



It doesn't take a weatherman to predict that spring's just around the corner, for violets are in bloom again and spring's in the air, says the romantic formal gown created by Emma Deuch. Though the air may be a bit chilly and Jack Frost still at work, there's no denying of violets on this charming young lady's confounding dress and flowing coat of Pinguet's "New Ladyship" cloquay organdy.

Mrs. Dorsey read a very interesting letter from Mrs. Harris on the THDA. The THDA fund of each club is to be turned in to the council in March.

Each club is to elect one delegate to be sent to the council in March. Three delegates and three alternates will be elected from those to go to the District meeting.

Each club president turned in reports of their club work for the month. There were present twenty three officers, delegates and visitors at the council.

Leap Year Party Held Saturday

A large group of young people attended a Leap Year Party in the home of Mr. and Mrs. Clyde Henry, Saturday night, February 14.

The girls invited the boys and gave each of them a corsage of carrots and celery which seemed to taste very good to them as nothing was left but wilted carrot tops.

Several lively games were enjoyed by everyone especially when some couples had their wrists tied together and had to get them apart without untying the strings. Much merriment was exclaimed over the game of "Heads." The boys drew slips of paper to find out who would be waitresses, pop the corn and make the pop corn balls.

About fifty young people and sponsors were present and greatly enjoyed the evening.

MULESHOE STUDY CLUB MET IN LENAUE HOME

Members of Muleshoe Study Club met in the home of Mrs. Charles Lenaue Thursday evening, Feb. 12, for an evening of study and entertainment.

Mrs. A. J. Gardner brought a very interesting paper on the life of Abraham Lincoln and Miss Elizabeth Bailey spoke on "Lincoln, the President." Many interesting facts on both the youth and older life of Lincoln were brought out.

After a short business session, Mrs. Lenaue served delicious refreshments to Miss Elizabeth Bailey and Mesdames Jane Beavers, Elizabeth Gardner, Geraldine Green, Mary Hart, Ida Ruth Holt, Mary Frances Holt, Grace Ivy, Velma Jennings, Hope King, Lois Lenaue, Mickey Lewis, Jewel Pool, Maxine Ragsdale.

Valentine Party For Girl Scouts

Muleshoe Girl Scouts, Troop 1, had a formal Valentine party Feb. 13. After exchanging Valentines the group went to the Palace Theatre. These present were: Mrs. Marie Edmiston, leader, and Mrs. Juanita Scarbrough, assistant; Joan Hale, Jeanel Twilliger, Lillie Ruth Lee, Etta Dyck, Patience Templar, Joyce Collins, Frances Totten, Norman Graves, Betty Lynn Shook, Sydney Adair and the hostess Barbara Bowers.

The troop met Feb. 16 in the home of Joadine Wagoner. Delicious refreshments were served by her mother. Present were: Mrs. Edmiston, leader, and Mrs. Scarbrough, assistant; Joyce Scarbrough, Joyce Collins, Patience Templar, Joan Hale, Lillie Ruth Lee, Frances Totten, Sydney Adair, Betty Lynn Shook, Bobbie Collins, Barbara Bowers, Etta Dyck, and the hostess, Joadine Wagoner.

McGREGOR
Sportswear

The Imperial Shelley Sport Shirt
Washable Rayon
Broadcloth — With
Soft Rich Color —
Cool New Comfort
— And America's
Top Sport Shirt Stylings!

Luxurious rayon—cool, colorfast, washable—and in soft new muted tones. Brilliantly fashioned by McGregor—America's top creators of quality sportswear!

LONG SLEEVES \$5.00
SHORT SLEEVES \$3.75

COBB'S

**APPLIANCES
NOW AVAILABLE
ON DISPLAY**

RANGES—

Maytag Dutch Oven
Gas & Butane
Monarch
Electric—Butane—Gas
Western-Holly
Gas & Butane

MAYTAG Home Freezer

PHILCO

HOME FREEZERS—REFRIGERATORS
RADIO

Dyer Hardware & Furniture
Genuine Maytag Parts and Service
Bus. Phone 151 Res. Phone 253-J

WIND

While the Plains farmer cannot predict when or how much rain will fall, he can be reasonably sure that the wind will blow with enough severity each spring through February, March and April, to move unprotected soil. There may be severe blow periods at other times in the season, but the highest average wind velocities occur during the late winter and spring months. During these periods of high wind velocity, soil may be moved which otherwise might have remained in place under average wind pressure.

As spring approaches, it is time to take every possible precaution to prevent soil losses from wind erosion.

In traveling over the county, one cannot fail to see large unprotected areas which will suffer soil and fertility losses unless immediate steps are taken to prevent blowing.

These areas are usually found where a crop of cotton has been grown and harvested by sledging or harvested with a mechanical harvester which tends to powder and pulverize the soil. Cotton provides little or no protection against wind erosion. It is therefore necessary to apply timely and emergency tillage to keep the soil from blowing. Chiseling as deeply as possible is a very good method to prevent soil blowing. This practice will largely prevent soil blowing for several weeks. The next preventative measure will be listing and seedbed preparation.

* This information was furnished by the Blackwater Valley Soil Conservation District.

This Bank Will Be Closed Monday, Feb. 23

Muleshoe State Bank

Member Federal Deposit Ins. Corp.

EASTER IS COMING

Be Prepared With A
New Suit

I Am Representing
KAHN
Tailoring Co.

Spring Samples
Suits
Slacks
Shirts

Now on Display

CALL ME — PHONE 160

HOWARD ELLIOTT

MULESHOE LODGE
NO. 1237 A. F. & A. M.
regular Meeting Second Tuesday
Night of Each Month
Jack Lenderson, W. M., R. J. Klump
Secretary
—Visitors Welcome—

Income Tax Returns
C. C. GRIFFITHS
Ray Griffiths Elevator
Phone 32 — Muleshoe

Highway 70 Meet To Be In Durant

Plans were made at a recent meeting of the Oklahoma Division of U. S. Highway 70 Association, held in Hugo, Okla., by representative citizens from cities and towns on U. S. Highway 70, for a general meeting of the Association in Durant, Okla., on Sunday, March 7, at 3 p. m., at which time a dedication and program of appreciation will be held in connection with the extensive improvements of this highway thru Oklahoma. A monument and plaque will be

Th wimmen-folks sure go for this here pancake make-up; but I've saw eggactly th same effect on cowboys after a dusty day durin' round-up.

FOR FREE REMOVAL OF DEAD STOCK CALL
Phone 115 Muleshoe
RENDERING PLAINVIEW COMPANY
FAST SANITARY SERVICE

AUTO TESTS

The modern car will cross the country nearly as fast as Washington crossed the Delaware!



But not as fast as the auto repair service done by the
ARNOLD MORRIS AUTO CO.

Phone 111 — Muleshoe
Job-Rated Dodge Trucks

SCHOOL DAYS

By DWIG



erected on U. S. Highway 70 at the approach to the Roosevelt Bridge west of Durant in testimony of appreciation to the State of Oklahoma and the officials responsible for the

construction of the highway through Oklahoma. Invitations will be sent to all cities and towns along the route and it is expected that delegations will be present to assist in the promotion of this transcontinental highway as a tourist route from the Atlantic to the Pacific Ocean.

February 29, Fred Gurley, Santa Fe president, has announced. Present running time of 39 hours 45 minutes between the two cities will remain in effect. Doubling the service on this famous train was made possible by delivery to Santa

EATS New Kind of CANDY Loses 65 Lbs. Wears Size 12 Again
New all you have to do to lose ugly fat is to eat this delicious new kind of candy called AYDS. Once 180 lbs., Dorothy J. Miller, 2033 W. 70th St., Chicago, lost 5 lbs. weekly for 13 weeks, with the remarkable NEW AYDS Candy Reducing Plan and she now wears size 12 again.
PROOF POSITIVE! Eminent physicians supervised clinical tests and report quick and safe losses of 14 to 15 pounds, with over 100 users.
WHY EXPERIMENT? No exercise. No laxatives. No drugs. Eat all you want. Absolutely Harmless!
You simply take AYDS before meals which automatically curbs the appetite. The result is you eat less and lose weight. Only \$2.89 for a full 30-day supply—possibly more than you will need. Your money refunded on the very first box if you fail to lose weight. Come in or phone.

U. S. Highway 70 is one of the few national highways carrying the same number entirely across the United States and is a well recognized trans-continental highway, receiving much attention from highway officials in each state. Bisecting the Southern United States and beginning at the towns of Beaufort and Atlantic, North Carolina, on the Atlantic Coast, it traverses North Carolina, Tennessee, Arkansas, Oklahoma, Texas, New Mexico, Arizona and California, terminating on the Pacific Coast at Los Angeles.

Super Chief Now To Operate Daily

Santa Fe Railway's deluxe Diesel powered streamliner, the Super Chief, now operating on alternate days between Los Angeles and Chicago, will go into daily service on



SPENCE RADIO SHOP
Sales & Service
Combinations
Portables
Consoles
ZENITH
Table Models
Batteries
Service on Any Make Radio
Your Dependable Service Shop
PHONE 210-W

Fe of latest type lightweight equipment long on order, Curley said. Pullman Standard Car Mfg. Co. built the new equipment.
The new daily Super Chief will be an all-room train offering roomettes for individuals, bedroom compartment suites, drawing room compartment suites and drawing room-bedroom suites providing more spacious accommodations for fam-

ly and other groups.
Dr. B. Z. Beaty
Dr. A. E. Lewis
Dentists
Rear Western Drug

GASOLINE GAGS
POPS! HOPS!
STOPS! TOPS!
We'll be glad to give your car a drink--no charge of course--with the same polite and prompt service you'll always find here.
OIL GULF GAS
C. W. GOSS AUTO CO.
Phone 53 Muleshoe, Texas

Only One is No. 1—

Only Chevrolet Is First!

Men and women everywhere agree: Only one is No. 1—only Chevrolet is first—in all-round value as in popularity. Consequently, more people drive Chevrolets than any other make, according to official nationwide registrations; and more people want Chevrolets than any other make, according to seven independent nationwide surveys. Here, in the new 1948 Chevrolet, is record value. For new and even more luxurious styling, colors and appointments have been added to all of Chevrolet's other advantages of **BIG-CAR QUALITY AT LOWEST COST!**

Meet the new standard of Big-Car beauty! It's here, in Chevrolet's Bodies by Fisher—finest bodies made—available only on Chevrolet and higher-priced cars.

You'll enjoy Big-Car performance, too, when you own a Chevrolet; for it brings you Valve-in-Head engine performance, found elsewhere only in more expensive cars.

You'll find Chevrolet rides more smoothly on all types of roads due to the famous Knee-Action Ride; and, of course, Knee-Action is found only on Chevrolet and costlier cars.

Keep your present car in good running condition by bringing it to us for skilled service, now and at regular intervals, pending delivery of your new Chevrolet.

CHEVROLET and ONLY CHEVROLET IS FIRST!
C. & H. CHEVROLET CO.
Phone 12 Chevrolet Sales & Service Muleshoe, Texas

BRIGHT SCHOLARS

NEED Right LIGHT
No child should be asked to do school work at home with insufficient or too powerful lighting. To make studying easier, to protect the precious eyes of your children, make sure that they have proper light.
It costs absolutely nothing to have a Southwestern Public Service lighting specialist check the lighting in your home, and it may insure not only better school grades, but the future vision of your children. Call or write for a lighting check TODAY.
I'LL COME TO YOUR HOME OR PLACE OF BUSINESS
A Public Service Company lighting specialist will come to your home, office, or place of business to give you recommendations as to how to obtain the best in lighting. There's no obligation. Just call or write your nearest Public Service office.
We have nothing to sell but good electric service.
SOUTHWESTERN PUBLIC SERVICE COMPANY
20 YEARS OF GOOD CITIZENSHIP AND PUBLIC SERVICE

Hospital News

A. E. Ward was in for medical care. He has gone home.

Mrs. Lawrence Smith of Portales was a surgical patient and has been discharged.

Melvin Collins was in for medical care. He has gone home.

Robert Owen, son of Mr. and Mrs. E. W. Owen was a medical patient. He has been discharged.

Mrs. J. H. Moore was in for medical care. She has been discharged.

The small child of Mr. and Mrs. Floyd Andreas is a medical patient. It is doing well.

The Hospital wishes to thank the

McWhorter Floral for the beautiful bouquet of glads presented them this weekend.

Congratulations
To Mr. and Mrs. Frank Swint on the birth of a son, Feb. 14.
To Mr. and Mrs. Adolph Wittner on the birth of a daughter, Sharyn Ruth, Feb. 15.

MULESHOE LIBRARY NEWS

The Muleshoe Public Library has on its shelves a book that would be of interest to many readers. "When the Mountain Fell" by C. F. Ramus is the story of the epic struggle of man against Nature. A mighty mountain tries to engulf a tiny human being under a mass of

one hundred and fifty million cubic feet of stone, and yet it does not succeed in breaking his body nor in destroying his mind, though it comes very close to it.

The author, being a Swiss, lived all his life among the mountains and felt their menace as well as their beauty. He makes you feel as if you were really in the stricken village in which the story takes place. It will keep you interested to the end.

BLACKWATER VALLEY SOIL CONSERVATION DISTRICT NEWS

Applications for soil conservation assistance were received last week on 160 acres of land owned by Willie Ramm, and 354 acres owned by R. H. Harland, and on 800 acres owned by E. P. Farmer.

Soil Conservation Service technicians located wells on land owned by McCasland and Williams of Clovis, New Mexico, Willie Ramm, John Johnson, and the T. B. Hunter Estate; technicians assisted Joe Simmacher and Virgil Nowell in laying out irrigation ditches for watering improved pasture; and they assisted A. J. Jones in laying out terrace lines.

ENLIST FOR UNITS IN THE STATES

Veterans who have had overseas service can enlist directly in one of eight U. S. Army units now stationed in the United States and be guaranteed three years of service with that unit.

COTTONLAND'S CHOICE FOR 1948 MAID



Cream of the 1948 crop of cottonland beauties are the three gorgeous girls who came out on top in the Maid of Cotton contest held in Memphis recently. In the center is the 1948 Maid, vivacious Matilda Nail, of Fort Worth, whose blonde loveliness and gracious manner captivated judges and spectators. On either side are the beauties who ran a close race for the coveted title: left, second alternate, Elizabeth Ann Stoltenwerk of Waxahatchie, Texas; right, first alternate, Catherine Hamrick of Gaffney, S. C. Matilda, the first Texan to make the International tour as cotton's fashion and good-will ambassador, is 19 years old, 5 feet 3 1/2 inches tall, and was a sophomore at the University of Texas when she was selected Maid of Cotton.

Bill is an accomplished Scouter and his ability is being fully utilized. Fred Johnson also was useful in Scout instruction Monday night, giving instruction in knot tying.

MOVE TO MARBLE FALLS

R. H. Brown and family have moved to Marble Falls, Burnett county, where Mr. Brown will en-

gage in ranching. They have been farming northwest of Muleshoe and Mr. Brown recently held a farm sale.

Mr. and Mrs. James Phipps and son spent the week end in Amarillo, visiting in the home of Mrs. Phipps' sister, Mrs. M. A. Springs-tube and family.

Electronics Now Helps You Keep "On Time"



ELECTRONICS ENTERS A NEW FIELD and reveals, in just a few seconds, exactly how a watch will run over a 24-hour period. By means of the WatchMaster, shown above, the jeweler can tell not only the rate of gain or loss down to a fraction of a second, but also what is wrong if the watch is "sick". The instrument records on a chart, which is attached to a revolving drum, each "tick-tock" of the watch; the slope of the resulting row of dots tells how the watch is keeping time, while unusual or varying slopes tell the jeweler its condition. Top photo shows jeweler pointing to smooth row of dots made by a new watch in perfect condition; inset picture shows how watch is placed in special "microphone" of the WatchMaster, with a smooth row of dots on the chart (near center of machine) revealing excellent condition of watch.

MULESHOE JEWELRY

Phone 114-J Muleshoe, Texas

LUMBER
2 x 4 and 2 x 6 Fir
1 in. Pine Sheeting
No. 105 Pattern Drop Siding
210 Lb. Composition Shingles
Sheetrock
Doors and Windows
Oak Flooring

Heathington Cash Lumber Co.
On Clovis Hiway Across from Hiway Dept.

SAVE on Furniture NOW

Our Sale Begins Feb. 20—Ends Feb. 28

Come in early and select the items you want before they are picked over. We have new furniture coming in daily. In order to make room for this new merchandise we are offering you the following items at reduced prices, which range down below cost:

- 1—Lot Floor Lamps, Value, \$36.50 to \$16.95
Reduced to \$21.50 to \$9.95
- 1—Studio Divan, Lime color, Value \$109.75, Reduced to \$ 82.50
- 1—2 pc. L. R. Suite Value \$185.00, Reduced to \$149.95
- 1—2 pc. L. R. Suite Value \$217.45, Reduced to \$174.95
- 1—2 pc. Studio Suite Value \$185.00, Reduced to \$149.95
- 1—Lot of End Tables Value \$ 5.95, Reduced to \$ 4.95
- 1—Occasional Table Value \$ 14.00, Reduced to \$ 8.95
- 1—Lot Platform Rockers Value \$ 34.95, Reduced to \$ 25.95
- 1—Lot Platform Rockers Value \$ 54.95, Reduced to \$ 44.95
- 1—Lot Platform Rockers Value \$ 44.95, Reduced to \$ 34.95
- 1—Platform Rocker Value \$ 24.95, Reduced to \$ 17.50
- 1—Chair with Ottoman Value \$ 46.85, Reduced to \$ 32.50
- 1—Lot Coffee Tables Value \$ 17.95, Reduced to \$ 12.50
- 2—4 pc. Bedroom Suites with Plate glass mirrors Value \$219.50, Reduced to \$159.50
- 1—Lot Odd Rockers Value \$ 12.95, Reduced to \$ 6.50
- 1—Lot Red & Green Leatherette Chairs Value \$ 6.10, Reduced to \$ 4.25
- 1—Lot Child's Rockers, while They Last \$ 1.50
- 1—Lot Book Cases Value \$ 7.50, Reduced to \$ 5.00
- 1—Lot Odd Chests, Walnut Value \$41.00 to \$31.25, Reduced to \$ 24.50
- 1—5 pc. Chrome Dinette Suite Value \$ 79.95, Reduced to \$ 59.95
- 1—5 pc. Chrome Dinette Suite Value \$ 69.95, Reduced to \$ 49.95
- 1—Chrome metal top Dinette Table Value \$ 44.95, Reduced to \$ 32.50
- 1—Metal top Kitchen Table, Value \$ 18.57, Reduced to \$ 11.50
- 1—Lot 4-6 Wood Beds Value \$ 31.50, Reduced to \$ 18.50

Come in and check these values over. We have many other items of good value which we are unable to list.

E. R. HART CO.

Phone 23

Muleshoe, Texas

These units and their present locations are: 2nd Infantry, Ft. Lewis, Wash.; 2nd Armored, Camp Hood, Tex.; 2nd Engineer Special Brigade, Fort Worden, Wash.; 82nd Airborne, Fort Bragg, N. C.; 3rd Armored, Ft. Knox, Ky.; 4th Infantry, Fort Ord, Calif.; 5th Infantry, Fort Jackson, S. C.; 9th Infantry, Fort Dix, N. J.

"The duties of the men enlisting directly in these units," T-Sgt. Leon A. Reynolds explained, "will be to help build up the defensive strength of the Army within the zone of interior (United States), and to assist in the training of new recruits."

T-Sgt. Reynolds of the Clovis Army and Air Force office will be in Muleshoe on February 25. He will be around town and at the post-office.

SCOUTS IN SPLENDID MEETING MONDAY NIGHT

Eddie Lane, Scoutmaster, reports a very fine meeting of Muleshoe Boy Scouts Monday night, the regular meeting time. A good attendance of the boys was noted. Mr. Lane has an assistant Scoutmaster now, in the person of Bill Covin, of Covin Motor Company. Young

Wagnon's "Market Boy" Says:



- Comstock Sliced No. 2 Can
PIE APPLES 23c
- Red & White Fancy 2 12 Oz. Cans
GOLDEN CORN 35c
- Big M 2 No. 1 Cans | Brimfull 2 No. 2s
Tomatoes 19c | **Spinach** 27c
- WHEATIES, 2 Pkgs.** 27c

Market Specials

- BEEF ROAST, Lb.** 45c
- First Grade Lb.
SLICED BACON 68c
- Borden's
CHEESE, 2 Lb. Box \$1.10

SPECIALS

Friday and Saturday

- Lge. Box
DREFT 38c
- Lge. Box
OXYDOL 38c
- Packard's Best 25 Lb. Sack
FLOUR \$1.75
- Hearts Delight No. 2 1-2 Can
PEACHES, Freestone 34c
- Starr 1 Lb. Jar
Plum Preserves 25c
- Camay Soap, 2 Bars** 21c
- Ivory Soap, Lge. Bar** 19c
- SPIC & SPAN, Box** 22c
- Marco 2 No. 2 Cans
Grapefruit Juice 15c
- Curtis 46 Oz. Can
Tomato Juice 25c
- Worth 1-2 Gal.
HONEY \$1.05

WAGNON GROCERY & MARKET

Your Red & White Store
PHONE 4 ... WE DELIVER ... MULESHOE

OUR HONOR ROLL

Among the new and renewal subscriptions received by The Journal in the last few days are those from the following:

- Noel Woodley, City.
- Claude Faubus, City.
- Mrs. Lois West, City.
- Mrs. O. J. Thornley, City.
- Mrs. Lois Shook, City.
- G. H. Davenport, City.

- F. H. Davis, City.
- W. E. Warren, Route 1.
- R. O. Gregory, Route 1.
- H. M. Gable, Route 1.
- I. T. Actkinson, Route 1.
- R. A. Shanks, Route 2.
- L. R. Sims, Star Route 1.
- G. J. Garth, Star Route 2.
- Wayne Garth, Star Route 2.
- L. D. Sanderson, Baileyboro.
- Robert Bridges, Littlefield.
- E. M. Sowder, Baileyboro.

Men Hate "New Look"



At last the men mustered enough courage to come right out and say they don't like the "new look" in women's fashions. Ted Malone, well known radio personality revealed, while serving as a member of Cosmopolitan magazine's male-tested fashion show at the Stork Club in New York that when he mentioned the "new look" on two of his radio programs he received 97,432 letters assailing the new fashions. The jury which also included Arthur Hale, Richard Kollmar, Peter Roberts and Peter Donald agreed that the new fashions were too extreme. They selected the cocktail suit in Juilliard's worsted crepe, shown above, as the suit most likely to succeed with men.

ther than the 760 miles from Laredo to Mexico City.

Included also is a small scale map of the United States showing all state capitals and major federal highways.

The Texas map is published under the direction of R. M. Stene, who performed all the cartography, made the color photographs, and attended to technical details of production. At 76, Mr. Stene's boundless energy and versatile talent uphold his contention that "life begins at 70."

A registered professional engineer, he came with the Highway Department in 1927. He had previously built dams in Arizona and worked for railroads in Texas.

Copies of the new Spring Edition are available to the traveling public at the Highway Department's main office in Austin, its twenty-five district offices throughout the state, and at its nine information bureaus operated at ports of entry into Texas.

Pioneer Extends Airlines To Clovis

Direct airline service from Amarillo to El Paso, and air service for eight cities in Eastern New Mexico, will be inaugurated by Pioneer Airlines as soon as equipment is available.

This announcement was made following word from Washington that the Civil Aeronautics Board had granted Pioneer an extension of

its lines into the Sunshine State.

The new service involves the establishment of two additional routes, totaling 700 miles. One line will operate from Amarillo to El Paso via Clovis, Roswell, Alamogordo and Las Cruces. The other will operate from Lubbock to Albuquerque via Clovis, Tucumcari, Las Vegas and Santa Fe.

Clovis will be the cross-roads for the two lines, and it is expected that

direct connections can be made there. Thus Amarillo passengers will be able to proceed with little delay to Albuquerque and other cities on the northern leg of the Lubbock route, and Lubbock passengers will be able to make immediate connections for El Paso.

Miss Joyce Edwards of Amherst spent last week end visiting Miss Jeri Nicholson.

Valley & Palace THEATRES

MULESHOE, TEXAS

Schedule of Coming Attractions

Beginning Feb. 24, box office opens 7 p.m.

Show starts 7:15. Sat. & Sun. continuous showing from 2 p.m.

VALLEY

Thurs., Fri., Feb. 19, 20
Errol Flynn, Barbara Stanwyck
in
"Cry Wolf"

Sat., Feb. 21
Johnny Mack Brown
in
"The Law Comes To Gunsight"

Sun., Mon., Feb. 22, 23
Lizabeth Scott, Burt Lancaster
in
"I Walk Alone"

Tues., Wed., Feb. 24, 25
Adele Jergens, Stephen Dunne
in
"The Woman From Tangier"

PALACE

Thurs., Fri., Feb. 19, 20
Phillip Reed
in
"I Cover Big Town"

Sat., Feb. 21
"The Woman Who Came Back"
With Nancy Kelly

Sun., Mon., Feb. 22, 23
Katherine Hepburn, Robt. Walker
in
"Song of Love"

Tues., Wed., Feb. 24, 25
"Girls of the Big House"

Frequent Change of Programs Gives You A Variety of Fine Entertainment

- G. W. Newman, Sudan.
- L. Quisenberry, Sudan.
- Mrs. Julia Rocky, Scipio, Okla.
- O. V. Cooper, Rising Star.
- F. W. Jones, Seagraves.

Texas Highway Maps Are Ready

Austin, Feb. 18—The Spring Edition of the Texas Highway Department's official travel maps is being released for public distribution State Highway Engineer D. C. Greer has announced.

The new four color map incorporates all changes in the state road system through December occasionally by the Department's vast postwar road building program.

There is a generous display of color pictures representing a cross section of the State's industrial and recreational assets.

ford H. Jester is printed in the cover. Addressing "motorists everywhere," the Governor invites all to "see and travel in Texas, revel in its sunshine, its modern cities, and scenic beauty."

Except for revisions in the road system and the new pictures, the edition is similar to others issued since the war which have been acclaimed among the best of the state road maps published throughout the nation.

Standard highway warning and directional signs are reproduced on the map to familiarize drivers with road markers.

Size of the Lone Star State is again graphically told by a table of comparative distances. The 868 miles from El Paso to Orange is greater than the 815 miles from El Paso to Los Angeles. It is also fur-

Farmers Agree-

DITCHING IS EASIER

WITH THE

Double Wing



Build and Clean

- ★ Faster
- ★ Easier
- ★ Cheaper

Thousands of farmers are ahead because Double Wing Chatten Ditchers build wider bottomed, stronger, cleaner ditches in less time, with less work, less manpower, less motive power and less cost.

The strong, rounded front dips deeply without clogging. The exclusive and famous curved mold board wings handle a maximum of dirt easily, shape it evenly, build cleaner and stronger ditches.

Quickly adjustable wings, wheels and boom make it easy to build any size of ditch up to the full capacity of the ditcher, and Chattens are built in 12 useful sizes. Electrically welded, all-steel construction assures long life.

See us for the Double Wing Chatten that will eliminate YOUR ditching troubles.

E. R. Hart Co.

Phone 23 Muleshoe, Texas

JOHNSON - POOL

TIRE & APPLIANCE

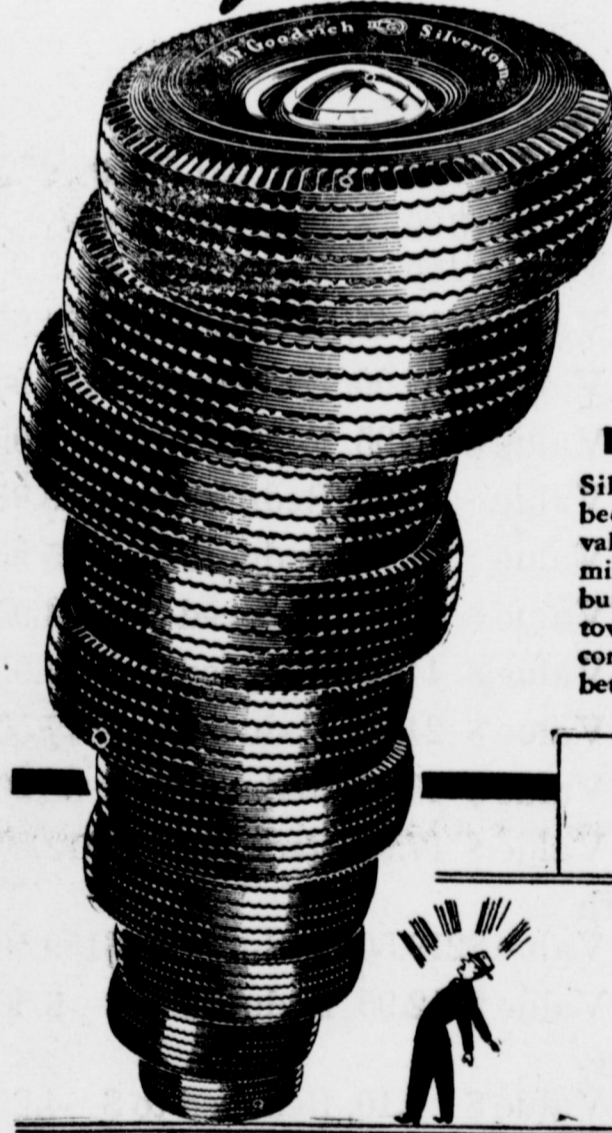
B.F. Goodrich
Gives you

MORE

MORE TRACTOR TIRES IMPLEMENT TIRES

USED TIRES AT A REAL BARGAIN

MORE
IN YOUR NEW TIRES
Silvertowns are "best in the long run" because dollar for dollar they are THE value in tires today. Silvertowns give more mileage than ever before because they are built with the broader-faced tread. Silvertowns give more safety because the stronger cord body resists road shocks and blowouts better than ever before.



EVERY B.F. GOODRICH TIRE CARRIES A
Lifetime Guarantee

You'll get **MORE** mileage and safety for your money.

THOR WASHING MACHINES

THOR IRONERS

COMPLETE STOCK OF

Baseball Shoes & Sporting Goods

B.F. Goodrich
FIRST IN RUBBER

THE GREATEST IMPROVEMENT IN TIRES IN 20 YEARS—

GOOD YEAR

Super Cushion Tires

Now Standard Equipment on 1948 Plymouth Cars

ANOTHER BIG CAR

FEATURE OF THE PLYMOUTH

SEE THE NEW CHRYSLER AND PLYMOUTH CARS AT

Corvin Motor Co.

Chrysler-Plymouth Sales & Service

Southwest Corner Courthouse Square

Phone 252-J

650,000 Farms Paid All Debts From '40 To '45

Further evidence of how prudently American farmers handled their

boom income of recent years is contained in Government figures on mortgaged and unmortgaged farms. A joint study made public recently by the Bureau of the Census and the Bureau of Agricultural Economics of the U. S. Department of Agriculture indicates that seven of every ten of the nation's farms are now owned free and clear, a sub-

stantially better showing than in prewar years.

This information on mortgaged and unmortgaged farms is derived from data gathered in the 1945 Census of Agriculture. Authorities regard the 1945 figure as a close approximation of the current situation in view of the trend of overall farm mortgage debt since that year. As a matter of fact, equities in many of the mortgaged properties have very likely increased since then as a result of the further rise in farm land prices in the last two years.

In 1945 there were 1,711,665 mortgaged farms in the country, representing 29.2 per cent of the total number of farms. This ratio contrasts with 1940 when 38.8 per cent of all farms were mortgaged, while the proportions of mortgaged farms for 1935, 1930 and 1925 were 34.5 per cent, 40.1 per cent and 39.2 per cent, respectively.

Young Designer



New York and Hollywood designers are keeping a weather-eye on a group of mid-western girl students at Stephens College. Miss Barbara Gantley, above, of Verona, New Jersey and New York City, is president of the Fashion Group which is staging its second Fall Show next month. The girls, who design and frequently model the creations displayed at the show are receiving tempting offers from fashion houses and large department stores all over the country. Miss Gantley was one of five prize winners in the Spring Fashion Preview which featured 12 of her original designs.

AT FUNERAL SERVICES

Mr. and Mrs. J. M. Forbes attended funeral services held Monday in Amarillo for his cousin, Rev. William H. Forbes, retired Baptist minister, who died of a heart attack Saturday. He was stricken after receipt of a message finally confirming the airplane death of

a son in China during the war. Rev. Forbes earlier in life preached at various Panhandle churches and took part in many revival meetings as a singer. He was 66.

Mr. and Mrs. Homer Sanders, Sr. and Mr. and Mrs. Irvin St. Clair Sr., returned home Friday from a trip to New Orleans, La.

POOL INSURANCE AGENCY



Authorized Mortgage Loan Solicitor for THE PRUDENTIAL INSURANCE COMPANY OF AMERICA

Home Office, Newark, N. J.

THE NATION'S LEADING INSURANCE COMPANY FARM LENDER

5 TO 40 YEARS LOW COST

FARM LOANS

PROMPT CLOSING NO FEES

OFFICE

reath Bldg. — Muleshoe, Texas
Phone 113

WORD TO THE WISE



osit large quantities of food ether raised at home or purchased) in your frozen food locker for many a delightful meal. e on your food bill—save time, e effort.

Muleshoe Locker Co.

3 Muleshoe



HERE'S A FACT THERE'S NO DENYING... HERE'S A SERVICE SATISFYING! SERVICE

LAMBERT Plumbing Company PHONE: 96 • MULESHOE

DAIRY TALES

WHOOIE - WHAT DICKY HASN'T GOT ON THE BALL TO-DAY. MALONE MILK CO. AND YOU'LL ALWAYS HAVE PLENTY ON THE BALL, MISTER.

Homogenized Milk scores on every count. Try this milk and see why it is ever increasing in popularity.

Malone MILK CO. Phone 206 Milk and Ice Cream

Political Announcements

The Journal is authorized to make the following announcements for public office, subject to the action of the Democratic Primaries in July.

For Commissioner, Prec. 2: TOM L. SMITH (Re-election)

For Commissioner, Prec. 4: W. E. "Woody" GOFORTH

For Senator, 30th Texas Senatorial District: KILMER B. CORBIN Dawson County

For District Attorney, 64th Judicial District: JOE SHARP Hale County

For County Judge: CECIL H. TATE (Re-election)

For Sheriff, Tax Assessor and Collector: J. C. BUCHANAN (Re-election)

For County and District Clerk: M. G. BASS (Re-election)

For County Treasurer: HELEN JONES (Re-election)

For Commissioner, Prec. 1: L. T. MCKILLIP (Re-election) H. K. FREEMAN

Your Home



It's surprising how important the apparently "little things" in a home are, isn't it? Not long ago my niece built a new home—and I advised her to engage an architect to help her with her building plans. Well, since moving into her home, she tells me she is thankful every day that she followed my advice! I stopped in to see her home the other day—and she showed me all through it, pointing with pride to the various special things which were used. One feature she mentioned was the use of solid Brass for all the hardware in her home—doorknobs, knockers, and so on. I had noticed the beautifully carved knocker on her front door and she said that it, too, was Brass. The architect had explained to her that these materials do not rust and that they are the most durable and practical of all hardware types. My niece—Kay—called my attention to her lighting fixtures, too. She told me that for these, too, she had insisted on brass... and that she had been very surprised to see the variety of styles and designs in brass which were available—a design to blend with any period or decoration or style of architecture, ranging from the ornate to the extremely simple. She had selected severely plain pieces which blended perfectly with her modern furnishings. Well, I certainly approved her selection; for these brass fixtures are lovely—and they will actually outlive her house. Corrosion resistant, requiring no maintenance, brass lighting fixtures once more supply the answer to the "low cost upkeep and high quality service" problem—and that's something that interests every home-maker, isn't it?

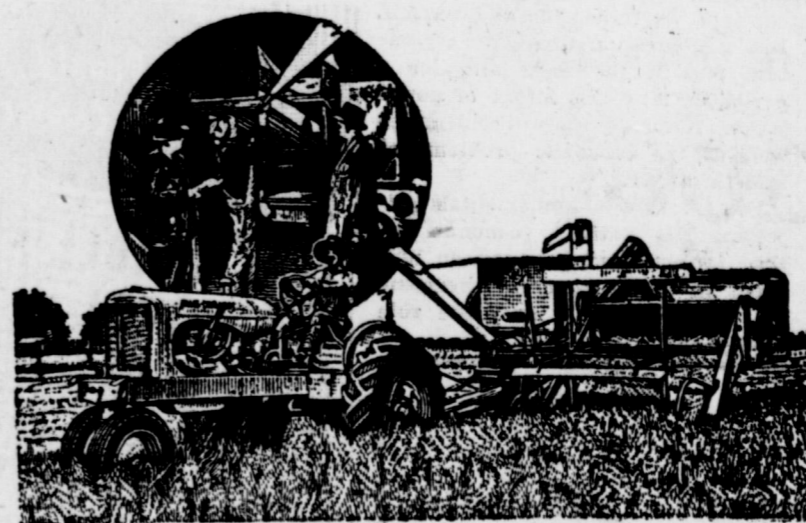
Those Large Beautiful MONUMENTS You Have Been Waiting For Have Arrived. Please Come To See Them. South Plains Monument Co. Plainview 401 W. 6th St. OUR 32ND YEAR

BRING US YOUR SWEET SUDAN COMMON SUDAN Seed Types HEGARI and Other WELL MATURED GRAINS for TOP MARKET PRICES Gilbreath Feed & Seed Co.

Water Well Drilling AND REPAIR California Irrigation Pumps Estimates on TURN KEY JOBS Any Size Hole up to 20 Inch 50 Yr. Experience ALL WORK GUARANTEED E. H. Kennedy Muleshoe, Box 612 Pho. 268-W

ELECTRIC SERVICE Anywhere — Anytime Motor Hook-ups and Repairs REA House Wiring A Specialty FOR ANY ELECTRICAL NEEDS Contact O. H. MORRIS at C. L. Lenau Lumber Co.

BE ASSURED



That You Will Make

A GOOD CROP

When you're entirely dependent on rain, you don't know whether you'll make a crop or not. Let us install some crop insurance for you—AN IRRIGATION WELL. Drop in today and figure with us.

IF YOU ALREADY HAVE A WELL

Perhaps it's been several years since it was checked over. We're headquarters in Muleshoe for Irrigation Well Repair.

Irrigation Supply Co.

Your Furniture Made New in Our Upholstery Department

ave a large variety of beautiful materials on hand. Select yours now.



Gas & Butane RANGES

Steel Bed Springs Full & 3-4 Size

HOT WATER HEATERS Gas and Butane 20 & 40 Gal. Capacity

NEW RANGES Gas and Butane

INNERSPRING MATTRESSES

Used WHEEL CHAIR Jr. Washing Machine

Crosley and Detroit Jewel Wardwick Apt. Ranges

Consult With Us On Your Household Needs

NEW MCCORMICKS USED FURNITURE

LOOK THESE OVER

—360 acres of the very best red catclaw land, new No. 14 pump with Mercury motor, all in cultivation, clean, no improvements, 5 miles out, \$115 per acre.

—2 ten acre blocks, 1 mile north, no improvements, level, \$1500 each.

—70 acres, 4 room and bath, 1-2 mile city limits, \$175 acre (Not bad, Not Bad-) better look at this.

—160 acres, 5 room modern home, double garage, 4 good corrals, lots of fence, 40 acres permanent pasture, 35 acres alfalfa, 15 oats, 3 stage No. 10 new Winthroath Pump on 78 ft. setting, 7 miles northwest town, \$200 per acre.

—265 1-2 acres, 1 mile off State Highway, good sandy loam land, clean, good, 4 room house, \$65 acre.

—80 acres, 3 bedroom modern house, large swimming pool, REA all over the place, about 4 miles out, large barn, chicken house, all in cultivation. Irrigation well, 7 acres alfalfa, some permanent pasture, fairly clean, \$16,800.

—160 acres of choice land with 2x32 modern house, REA, 12x40 granary with shed 14x28. Hen house 12x14, garage 16x18, pressure pump, irrigation well, No. 12 pump, 6 cyl. M-M motor on butane, 600 gal. tank, 200 gal. at house; 12 acres pasture, 2 acre hog pasture, bal. in cultivation. Clean, close to pavement and small town. \$225 per acre with \$20,000 loan, bal. 15 years at 5 per cent. (Less me and you look at it.)

—216 acres with dandy four room and basement, on concrete foundation, 12x20 helper house, all stuccoed, cow barn, 2 granaries, garage, REA posts up, 140 in cultivation, 4 wire fence, 1-2 minerals, \$100 acre. \$4,700 loan, 1-2 mile off pavement being built. This is good, no kidding. Ide by it myself if I had the money.

—640 acres, 80 acres in cultivation, bal. grass, \$25 acre.

—656 acres, improved, about 350 acres in cultivation, some wheat, at \$65 an acre with possession.

—320 acres, no improvements, good well and mill, 225 acres in cultivation, 80 acres sowed in wheat, \$45 acre. Possession.

—6 room stucco modern house, 50 ft. lot, southwest part of town, 3 bedrooms, \$5,000.

—One of the nicest new houses being built, all material is of the best, has floor furnace, large plate window, 80 foot lot, beautiful view, hardwood floors throughout, 2 bedrooms, could be changed to a three very cheap if done now. Come on, let's look at it, \$8,000.

—3 rooms with bath, on pavement, \$3,500.

Clay Beavers Henry Hanover

Marie Antoinette, Queen of France, when told that the poor had no bread, said "Let them eat cake."

Andrew Johnson is the only American president against whom impeachment charges have been brought.

Country And City Business Men Are "Getting Better Acquainted"

College Station, Feb. 15—The businessmen of the country—the farmers and ranchmen of the cities and towns are getting better acquainted, and as a result, each group is obtaining a clearer understanding and a more appreciation of the other's business behavior, problems and potentialities.

At the extension economist Cyrus R. Timm's College summer session, the current picture upon his return from Washington where he attended a meeting of the national agricultural committee of the United States Chamber of Commerce. Timm is one of two land-grant college representatives serving as members of and consultants to the committee.

Timm's belief that closer town and country cooperation is underway is based on the work done by the national committee as well as his observations of farmer-businessmen matters in local chambers of commerce, service clubs, county units of farm organizations and other groups. The time has passed, he says, when a speaker needs to explain why he is talking about agriculture to a business group or any group of non-farmers. It is an accepted fact that their interests are, in the end, closely related.

Timm points out that there are four main reasons why the need for better understanding and appreciation between businessmen and farmers is more urgent today. First, of course, is the food crisis which turns the eyes of the world to American agriculture.

Second, the increasing specialization and commercialization of farms, and the end of this trend is not in sight. This development, which means that cash expenditures by the farmer are greatly increased, is responsible for the greater efficiency in the farm business as well as the higher standard of living in the farm home, and means a growing dependence of agriculture upon the goods and services bought from businessmen in town. On the other hand, it means the welfare of the businessmen is more closely allied with the degree of farm prosperity.

The fact that rural people, including those living in small towns, make up the highest potential source of buying power in this country is the third reason. Obviously, the extent of their buying corresponds to the level of their net income.

And fourth, adjustments for the extent and kind of population migration that goes on between farm and city requires understanding between agriculture and business. Over the long haul, the migration is to the city and apparently will continue in that general direction. But a depression turns the migration toward the farm and for a period of time this influx of population intensifies farm problems as well as the economic problems of non-farm life.

Some of the fundamentals affecting the nation's economic life that farmers and businessmen now seem in more general agreement, the economist says, are: the role

mers when major adjustments are necessary or disturbing conditions threaten; farmers' cooperatives' place in the farm economy; the advantages of mechanization; the importance of a foreign outlet for substantial amounts of agricultural production and the necessity of solving surplus farm population problems largely off the farm.

Additional problems which affect farmers and businessmen alike and on which there is better understanding are soil conservation programs, which are basic to continuing business and farm prosperity; rural electrification, farm-to-market roads and other standards of living improvements which influence non-farm business; the influence of prosperity or depression upon the amount of farm production; the impact upon the farmer in dangerous inflationary and deflationary periods with corresponding impact on businessmen, and finally, a realization that research in agriculture largely must be of a public nature rather than a private venture of farmers.

"There are many different points of view in regard to the practices and procedures to follow in obtaining these ends," Timm says, "But the important thing is that we are making progress in our understanding of mutual problems and that is good for all of us."

CARD OF THANKS

To our friends in Muleshoe and surrounding territory, we want to express our gratitude and thankfulness for every remembrance of us and the loss of our dear husband and daddy. For the lovely floral offerings, the cards and letters and your prayers, may God richly bless you and may we all be used of the Lord to lighten the grief and sorrows of others as you have ours.

Mrs. C. C. Griffiths and Gary Don.

MARCH OF DIMES

FIGHT INFANTILE PARALYSIS

JANUARY 15-30

Modern Beauty and Controlled Comfort

FLEXIBLE STEEL SLATS

Vacation Blinds by **Breneman**

Flexible steel slats with rust-proofed baked enamel finish make these blinds a low cost investment in comfort and beauty that will last as long as your house. For information and service, Phone—

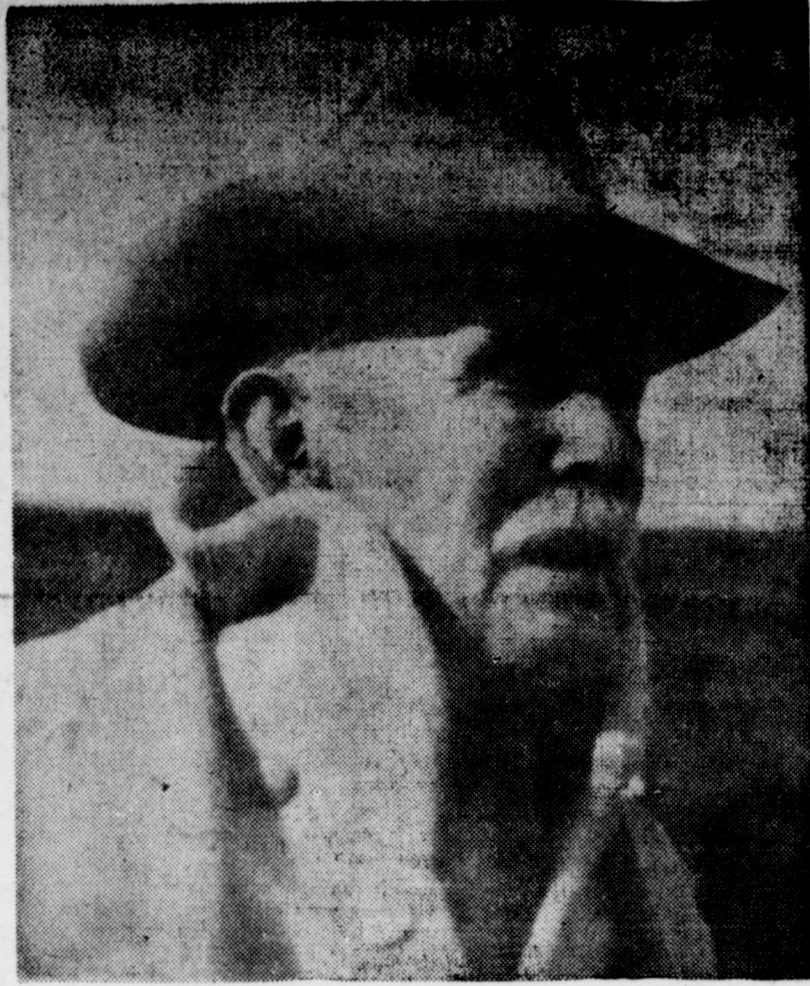
Cox Radio And Electric

Your Neighborly Service Shop MULESHOE, TEXAS

For

Fin Printing

Call 54 The Journal



J. FRANK NORFLEET

The Sherlock Holmes Of The Plains Celebrates His 84th Birthday

By VIC LAMB

Hale Center—J. Frank Norfleet, colorful Hale Center rancher-detective, about whom hundreds of magazine articles, a book, numerous radio programs, a motion picture and even comic strips have told millions of people in North America of his epic man hunts, observed his eighty-fourth birthday Feb. 23.

Even though his hearing is failing, his steel blue eyes still contain the sharpness of the prairie sky. He bushes himself about the ranch home, located five miles southwest of Hale Center, helping amiable Minnie Fluke, handyman, hired hand and "foreman" with the tasks of feeding several head of horses, some of which is valuable race stock; feeding a few head of cattle; some hogs and a few remaining game cocks; the descendants of a once large flock well-known throughout the Southwest.

Rancher by profession detective of necessity and author of a book about his experiences to better tell the world of the ruthlessness of confidence men, Norfleet was born in San Saba county Feb. 23, 1864. After a brief schooling in a one-teacher school, he came to the Texas plains when a lad of 13. This country then was known as the buffalo range. He first worked at odd jobs on the few scattered ranches, principally around Post. He recalled his first steady cowboy job in 1886 when he worked three and a half years for D. H. and J. W. Snyder at old White Lakes in Halley county. During that time he said he never saw a woman, but kept busy riding the range, trail driving and punching cattle.

He worked several years for I. L. Elwood on the Spade ranch, southwest of Hale Center, starting about

Mostly Static

By Berry

Howdy Folks: One of our customers remarked that the time will come when more and more city folks will have to go back to the farm.

The hardest thing to learn about farming is getting up at 5 a.m.

We learned how the farmer gets lean and fat streaks in the bacon, though. He feeds the hogs one day and starves them the next.

Hog raising comes natural to us, though. Father raised a big hog, once. What are we saying?

Father got a job in a flower show as judge, once, but he didn't do so well. Folks said he didn't smell so good.

We raised rabbits, too. One of our rabbits had six bunnies. She beat the Canadian record by a hare.

We're beating some records, ourselves, with our DEEPFREEZE Home Freezer. You'll be enthralled, too, if you will give them a try.

Berry Electric

Exquisite

IN TEXTURE

Famous among fastidious women, this medium weight face powder possesses a gently clinging quality for a dry skin... will not cake on an oily skin.

Du Barry FACE POWDER

Try this soft, fragrant powder for the warm, suede-like flattery it gives your skin. Large economy box 2.00; get acquainted size 1.00... plus tax.

Western Drug Co.

The Leading Drug Store in Muleshoe

told of his sleuthing. The story has been reshaped and reprinted in almost every detective story magazine in this country, and Readers' Digest carried a brief report of his bulldog chase. He was pictured in a comic strip "True Comics" only a few weeks ago.

He gets a large "fan mail" daily, many of the letters from victims of confidence rackets who ask his aid in tracking down the swindlers. He has given up attempting any sleuthing now but recently said that after he first gained national prominence, he was called in on many cases and declares he has tracked down, in a 15-year period, 100 swindlers.

He has appeared as guest star on two national radio programs. He still turns up at the large pioneer reunions and western fetes in Southwest towns. Hardly a month goes by without a roving freelance magazine or newspaper writer doesn't stop at the ranch home for an interview and to take pictures.

Up until a few years ago they found much to photograph there, for he provided a haven for wild geese and ducks and had dozens of odd pets, including a pair of havanillas, deer, a peacock, swans, pheasant, antelope and other animal and

feathered friends were had free run of the place.

In 1936 a move was made by Hale county to erect a memorial auditorium in the form of a school, 14 miles southwest of Drought and poor bus-tions at the time the announced slowed do-tions and the projected in 1938.

It was proposed a memorial auditorium which would be a moments. Norfleet home is almost a with the walls li-graphs, testimonial of early days or artifacts of the p

The Norfleets children and thr A daughter, Mrs. Haar lives in Ja son named Fred P is with the Immig has a son and da children of the fi-neers died in inf and Robert Lee,

THIN PAPERS Journal.

IT'S Economical.. To Buy JENNINGS

No. 2 1-2 Size	GREEN BEANS, Gal.
Apricot Nectar 19c	CATSUP, Gal.
Grapefruit Juice 9c	DREFT
HOMINY, Gal. 49c	Scott's No
MARKET SPECIALS	
Bacon Squares, Lb. . 44c	Tomato Soup
1 Lb. Roll	Everlite
SAUSAGE 45c	10 Lbs. 89c
BUTTER, Lb. . 83c	Prepared No. 2 1-2 PRUNES,
Gold Coin Lb.	Porters
BACON 59c	HONEY

JENNINGS Food Store

WE DELIVER HOME OWNED & OPERATED

SPRING CALLS FOR A NEW SUIT

Tailored to Measure SUITS

Be assured of the best in fabrics and fit.

See Our Samples NOW!

CITY CLEANERS

QUALITY SERVICE

Phone 145 Muleshoe, Texas