

Q 7 02/01/85
CISCO JR COLLEGE LIBRARY
RT 3 BOX 3
CISCO, TEX 78437

'Your Hometown Paper'

Volume 76 No. 40

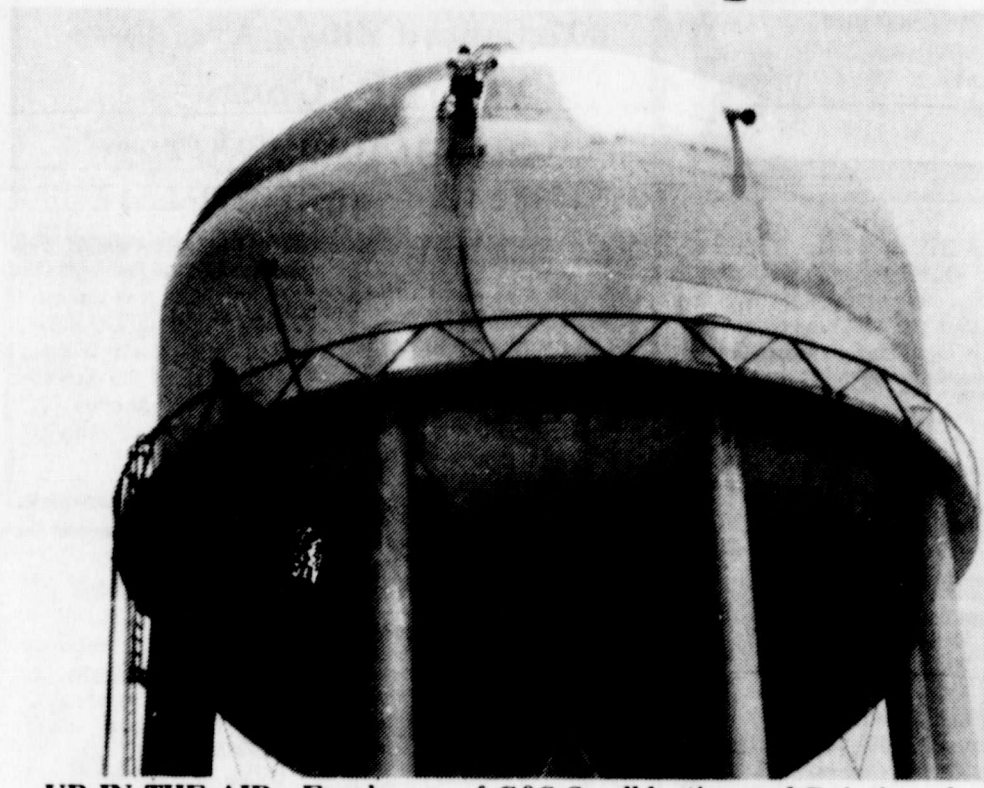
Copyright 1985 Eastland County Newspaper Co.

Cisco, Texas 78437

Sunday, May 19, 1985

USPS No. 113780

Water Tower Repairs



UP IN THE AIR—Employees of G&S Sandblasting and Painting of Abilene have been working on the water tower located near I-20 in Cisco for two weeks now. They are sandblasting both the exterior and the interior of the tank in preparation for re-coating and re-painting. Despite the approximately 135 feet from the ground to the top of the tank, the two workmen visible in the above photo do not seem to mind working up in the air. One worker can be seen to the left of the tank, standing on the walkway, while another can be seen on a ladder near the top of the tank. (staff photo)

Hilton Board Of Trustees Reject Bids

The Board of Trustees of the Conrad N. Hilton Memorial Park and Community Center of Cisco on Thursday voted to reject all bids which had been received for the rehabilitation of the Moblely property in Cisco. The bids had been opened on Tuesday afternoon.

Mayor Eris Ritchie, president of the Hilton Board, said in a prepared statement, "The board of trustees has regrettably been compelled to make the decision to reject all bids received, due to the fact that all were significantly higher than we or our architects and engineers had anticipated. The amount of funds we have available for the project are simply not adequate to allow us to award a contract and proceed with construction on the basis of the competitive bids received Tuesday."

Mayor Ritchie pointed out, however, that the board would meet again on Monday, May 20 and arrive at a decision as to the method of proceeding with the project. He said, "We want the citizens of Cisco to know that we intend to proceed with the project within the next thirty days one way or another, so our rejection of the bids received in no way indicates that construction work will not begin in the very near future. We will simply have to approach the work by another method or methods other than with a 'turn-key' general contract with a construction firm."

In May of 1983 the people of Cisco were awarded a grant of \$1.2 million from the Conrad N. Hilton Foundation of Los Angeles for the purposes of "establishing an appropriate memorial to Conrad Hilton on the site of his

first hotel in Cisco." Since that time a steering committee, and later an officially-chosen board of trustees, has been working out the mechanics and details for the project.

"We have known all along that we had very ambitious goals for the amount of money available," Mayor Ritchie said, "so we were not entirely surprised that the bids were higher than our architects' estimates. Nonetheless, we still have a significant amount of funds with which to work and we have no doubt that we will accomplish a rehabilitation for the Moblely of which all Cisco will be justifiably proud, and that it will be framed in a beautifully-appointed park. And we do not intend to delay the beginning of construction very much longer. In fact, we feel reasonably confident that work will begin before the end of the month of June."

HALL OF REMARKS

BY HERREL HALLMARK

SCHOOL IS OUT. Cisco public schools finished their 1984-85 season here on Friday and the 1985 Seniors of Cisco High School received their diplomas Friday night.

Since school is out for the summer, drivers are being advised to be especially careful when driving along streets in the residential parts of the city. Local children will probably be outside a lot this summer and may not look before darting out into the streets.

So, please be careful and watch out for the "little ones."

LOCAL CITIZENS should be aware that the tornado warning siren for the City of Cisco is the same signal you can hear at 1 p.m. on the first day of each month, when the warning sirens are checked. Firemen say the 12-cycle

CISCO KID CAR WASH
3rd St. and Ave. E
Where Most People Wash. Wash your venetian blinds, throw rugs, motor. c-52

blasts is the weather warning. Fire alarms will only be one cycle, since Cisco also has a pager system for the volunteers.

SORRY TO HEAR that the mother of Robert Dudley is seriously ill in a Denver, Colorado hospital. Robert is the former manager of the J.C. Penney store which used to be located in Cisco.

I understand his mother had to be transferred from Fort Morgan to Denver by ambulance this week.

HATS OFF to all Cisco businessmen and citizens who improve the looks of their property. Two businesses I noticed on Friday which have done work on improving the looks of their businesses were: Ted's and Rex's One Stop and Cisco Paint and Body Shop.

Ted's and Rex's have enclosed some of the open areas of their tire shop and painted the same, while Cisco Paint and Body is having their building painted.

Let these people know how you feel about their improvements.

Homecoming Set Sunday

Nimrod Homecoming will be held Sunday, May 19. Bro. O.L. Roger, pastor of Nimrod Baptist Church, will be the speaker.

After church, there will be a covered dish luncheon at the club house. A spokesperson for the event said, "Make plans now to come spend the day with us and enjoy the fellowship and singing."

Rev. Pogue To Be In Pulpit

The Rev. Russell Pogue, former minister of the First Baptist Church here, will occupy the pulpit for services Sunday in the absence of the pastor, according to an announcement.

Mr. Pogue recently returned from Uganda where he spent a year in missionary work.

LL Board Will Meet Monday

Cisco Little League Board of Directors will meet Monday at 7:00 p.m. at Olney Savings. All directors and interested people are invited to attend.

CHS Seniors Receive Diplomas Friday Night In Ceremony Here

Diplomas were presented to the 58 members of the 1985 graduating class of Cisco High School in a commencement program that concluded the 1984-85 school year Friday night at Harrell Fine Arts Building on the Cisco

Junior College campus. Scholarships to attend Cisco Junior College next school year were presented to eight members of the graduating class by Dr. Henry E. McCullough, president of the college.

Carp Tourney Set

Registration for the annual Cisco Pump Carp Tournament will continue through May 31, 1985. Registration can be made at Cisco Pump located on East Hwy. 80, in Cisco. The tournament will start at 3:00 p.m. Saturday, June 1, and go through 12:00 noon, Sunday, June 2. All ages are invited to participate.

Entry fee is \$5.00. Calcutta is \$1.00. The Calcutta goes to the largest fish caught. Fishing and boating license is required.

Weight in will be at the Point at 12:00 noon Sunday. Winning money will be from the entry fees. First place winnings are 50 percent, 2nd place is 30 percent and 3rd place is 20 percent.

Group Of Students Will Tour Europe

A group of 15 students, including two from Littlefield, plan to leave June 12th for a 23-day tour of nine European countries. They will be accompanied by Don and Janice Shepard.

The trip has been organized under the direction of Mrs. Shepard, who teaches English, accounting and business at Cisco High School, and the Shepards will be in charge. Plans call for leaving from Dallas-Fort Worth airport to join the student groups from New Orleans and St. Louis.

Flying first to London, the group will tour England, France, Belgium, Netherlands, Germany,

Switzerland, Austria, Italy and Spain. Travel in Europe will be mostly by air-conditioned bus with bilingual guides.

The student tour was arranged through the Cultural Heritage Alliance of Philadelphia as an educational program. They will stay in tourist or better hotels with private baths and all meals will be provided in the tour package, which cost each student \$1,629.

Women In Prison Focus Of Film Sunday

The film "Honey, Your Mama's In Prison" will be shown at the First Evangelical Methodist Church on Sunday, May 19, 1985 at 7:00 p.m.

The film is unique look at the importance of the family and the tragedy of family break-up as seen through the eyes of mothers who have been imprisoned for murder, assault, trafficking in drugs, forgery, and embezzlement. Each of the women shares how she became a Christian after going to prison.

Cisco Gun Club Will Hold Jackpot Shoot

The Cisco Gun Club will hold a Jackpot Shoot beginning at 1:00 p.m., May 18, at the Cisco Gun Club. The shoot will include small bore rifle, big bore rifle, pistol and shotgun matches.

Meeting Set For Hospital Auxiliary Mon.

There will be a general meeting of the E.L. Graham Memorial Hospital Auxiliary on Monday, May 20, at 2:00 p.m.

LL Board Will Meet Monday

Cisco Little League Board of Directors will meet Monday at 7:00 p.m. at Olney Savings. All directors and interested people are invited to attend.

Receiving the CJC scholarships were:

Band-- Cheryl Casey, Janet Glenn, Laura Hutchens, and Keith Reich.
Agriculture-- Teddie Hull and Wade Shackelford.
Wrangler Belles-- Kim Williams and Melissa Wylie.

Mike Turner, high school principal, presented a special plaque to Miss Annette Jorgenson, exchange

Extra Copies Of Yearbook Are Available

The 1984-85 High School year books have arrived. There are still 50 copies for the public to purchase at \$20.00 each. Contact the high school for more information.

City Sponsoring Swim Lessons For Youth

This summer the City of Cisco will again sponsor swimming lessons for our youth. This year the course will be the American Red Cross "Learn To Swim" Program. The program will be conducted and supervised by Mrs. Jerry Choate, and all instructors will be Red Cross certified.

Again, the lessons will be conducted at the swimming pool at City park on Royal Lane. Dates of the lessons will be on May 29, 30, 31 and June 3, 4, 5, 6, and 7 from 11:00 a.m. to 12 noon. There will be a Beginners Class and an Advanced Beginners Class. There will also be an Advanced Lifesaving Course on the same dates starting at 9:30 a.m. Cost of the 8 lessons will be \$20.00 per student. The number of students per class will be limited. Upon successful completion of the course each student will receive a certificate and patch.

Registration for the swimming lessons will be held at the park pool on Tuesday, May 28th, between 11:00 a.m. and 1:00 p.m. For any additional information, please contact Mrs. Jerry Choate at 442-3145.

Additional swimming classes will be conducted later in the summer.

student from Denmark, certifying her graduation from Cisco High School. Miss Vickie Stephenson, another member of the class, was presented the Sue Witzsche Scholarship given each year by the Cisco Service Club.

The commencement program included the salutatory address by John Bailey, valedictorian, and the salutatory address by Miss Shelly Schaefer, salutatorian. Mr. Turner formally presented the graduating class that was certified by Superintendent James Couch. Diplomas were awarded by Dr. Allen McGinness, president of the school board.

A large crowd turned out for the final program. Members of the graduating class were as follows:

Christi Lee Adams, Susan Alvarado, Donald Davis Baggett, John Melvin Bailey, Angela Renee Bradford, Louis Charlie Bradley, Bennie James Brown, Stanley Jackson Callahan, Dana Michelle Carlile, Cheryl Darlene Casey.

Kenneth Allen Deitiker, Cynthia Ann Dill, Stacy Trey Douglas, Frederick Todd Dunnam, Wendy Lynn End-

sley, Gracie Escovedo, Laura Frances Gage, Janet Marie Glenn, John Gonzales, Buford Don Hageman, James Coy Hogan, Teddy Brian Hull, Laura Susanne Hutchens.

Mike Bobby Ingram, Willard Lee Johnson II, Kenneth Jay Jones, Annette Heller Jorgensen, Sabrenia Kay Justice, Daniel Gene Kearney, Daniel Scott Keating, Leah Jean Lambeth, Cameron Dewey Light, Tammy Ellen McCulloch, Robert Neal McDonald.

Carol Lynn Pittman, Joshua Paul Potter, David Patrick Qualls, Johnny Martin Ramirez, Sylvia Lee Ramirez, Jeanine Joyce Reich, Keith Allan Reich, Erick Scott Roberts, Shelly Anne Schaefer, David Ray Seabourn, Johnny Dale Seabourn, Michael Wade Shackelford, George Leslie Shaw, Toffie Charee Shirley, Melissa Dianne Sitton, Vickie Lynn Stephenson.

Deborah Lynn Tipton, Sheri Lynn Underwood, Robert Earl Vann, Michael Scott Wester, Kimberley Dawn Williams, Melissa Gale Wylie, Stephen Eric Zarate, and Teresa Lynn Cross.

Sixth Graders Get Certificates Friday

Certificates of graduation from Intermediate School were presented to 66 members of the sixth grade at a program Friday at the high school auditorium. Principal Bob Lindsey of Intermediate School awarded the certificates to the group.

Members of the class will enter junior high school next school year.

Receiving certificates were the following:

Russell Abbott, Shelly Agnew, Glenn Andrews, Heidi Arnold, William Boles, Joshua Brewster, Derwin Brown, Cynthia Burton, Brian Callarman, Media Campbell, Eric Carr, Floyd Cotton, Jr.

Tracey Croley, John Davis, Brack Dempsey, Ruben Dominguez, Ryan Duncan, JoAnn Escovedo, Eddie Garza, Michael Gosnell, Melissa Grumbles, Cheryl Harrison, Crystal

Hatcher, Deitra Hearne, Justin Heyser, Leroy Hill, Robert Hines, Kari Hull.

Tonya Humphries, David Jarrett, Kammie Jessup, Kerrie Jessup, Jolene Johnston, Betsy Laird, Ronald Letney, James Lewis, Clay Lorraine, Misty McCulloch, Amanda McGinness.

Angela McGowen, Barbara Malloy, Timothy Markham, Jeffery Martin, Robin Mayle, Lloyd Moore, Bill Nunn, Patrick Oxford, Heather Parker, Jimmy Parker, Brian Peacock, Sandra Price, Kelly Rhodes.

Shelly Rhyne, John David Rios, Kenneth Roark, Kessa Roberson, Christy Smith, Joseph Smithson, Sammie Solis, Curtis Stanley, Melanie Stewart, Kelly Tollett, Chester Vara, Celia Weeks, Robert Wilburn, and Roy Worley.

Rotary Club Citizenship Awards



AWARD RECIPIENTS— Angela Bradford and John Bailey, Cisco High School seniors, were honored here Thursday, May 9, by the Cisco Rotary Club when they were presented the club's Citizenship Awards. Shown with the recipients in the above photo are: (left to right)

Dr. Barry Thompson, president of Tarleton State University and guest speaker for the event; Angela Bradford; John Bailey; Mike Turner, Cisco High School principal and Rotary President; and Mayor Eris Ritchie, chairman of the event.

The Fine Points of Industrialization

First, decide what needs to be done. This can be accomplished in any number of ways, such as community meetings at the neighborhood level to determine what each neighborhood and the people who reside there want for their community; questionnaires sent out by the city or through the chamber of commerce; sample interviews conducted by a local college or university or a civics group in a high school; community-wide mass meetings; newspaper surveys; or a combination of one or several of those mentioned.

Upon the final collection and review of what needs to be done, the second step should be to determine in what order they should be done. Rank the projects to be undertaken by priorities. Those things that are most crucial should have a high priority. Those that need to be done but are not quite as important should be put further down on the list to be tackled once other projects with the higher priority are accomplished.

Thirdly, a decision must be made as to who will undertake the projects. Once you have the projects listed and you have the priorities set, it is usually pretty easy to see which projects of necessity must be undertaken by the city, by the county, or by the school system. The leaders of the local political subdivision should have been included as part of the goals-making process so that they clearly understand that the goals that have been established are those goals of the taxpayer or the constituents of their respective political subdivision. The remaining projects will have to be analyzed more closely simply because in many communities it is difficult to determine who has the responsibility, or in some cases, who will agree to take on a new responsibility in a particular area. Your chamber of commerce will want to take on its fair share

but should not agree to take on all of the remaining responsibility. Your chamber can be the coordinating group for the community development program. There are other civic clubs and organizations in town which need to participate. You may find it necessary to sit down with the planning committees or with the presidents of these civic organizations and ask them to accept responsibility for some of these projects. You may also find that once responsibilities for each of the projects have been assumed, certain projects with lower priorities can readily be implemented and set into motion to be accomplished. If this is the case, don't wait for the first priority project to be finished before you begin to implement some of the other projects. It will be necessary for you to have some success stories so that the "doubting Thomases" realize that you are serious about getting these goals accomplished. Even though you may take on projects with lower priorities, don't forget the major priorities. Make sure that each group or organization understands the priorities and supports and works on them as well.

One of the keys of success in the organization of a goals-setting program and the implementation of priorities is that you try your best to set a time limit and decide when a project will be completed. You may wish to set up a community-wide meeting for interim reports on how projects are coming, where the stumbling blocks are, and what might be done to overcome them. Be careful with these reporting meetings; they sometimes serve only to embarrass a particular group which has been sincerely and honestly trying to complete a project but for a legitimate reason has not been able to get the project accomplished. Not all of the projects will be as easy to accomplish as others. These projects may need an extended time limit or should have more people

working on them. Just be careful you do not stifle the enthusiasm built up in a group to contribute their share to a total community improvement program.

If you find that are certain projects that just do not seem to be going anywhere, it is time to take a look to see what their problems may be. First of all, make sure you have given the right group or organization the responsibility to get the job done. If they are not as well equipped to handle the job as another group or organization, then they have taken on the wrong responsibility. Rather than take the project away from the group who is having trouble, maybe you need to enlist another group who has the time to work on it to help that group out. A problem often encountered is that the project is too big or too broad in its original scope to be easily attacked and accomplished. Analyze the problem and break it into several parts. Then set up some steps to attack the problem one part at a time until all the parts have been overcome and your large project has been accomplished.

There is another question you have to ask yourself when a project does not seem to be accomplishing what you had hoped it would. It is a question you must ask yourselves throughout the goals-setting program. That question is, "Are we attacking the actual problem, or are we trying to work on the symptoms of the problem?"

The development and work toward a total community development program builds a sense of community spirit and pride. It develops the right attitude. It creates an environment where economic develop-

ment can take place.

B. Research & Analysis

This step of an economic development program may sound like a very difficult step, but it is not. It involves no more than getting to know your community better. It is putting what you know, plus what other people know about your community, into one central resource. Usually this means that you set all of these items down in writing, put them all together and then look at exactly what your community has to offer. You have heard the old term, "You can't sell from an empty wagon."

When you conduct research on your community, you are simply loading the wagon, so that you know what you have to sell about your community. You learn what the good things are that make your community a nice place in which to live. Essentially you're gathering facts to put into a fact booklet or profile. Among the subjects that must be covered to have all of the facts about your community are the following: education, local government structure and capabilities, local taxes, religious and civic organizations, health services, recreational and cultural activities, transportation, utilities, local industries, industrial sites, industrial financing capabilities, population, and labor supply.

Many communities organize industrial teams made up of volunteer members of the business community who are willing to meet with industrial prospects, discuss their community, and help sell it. Normally one or two of the above-listed areas of the community are assigned to each team member who agrees to do the research in that particular subject. He serves as the resource person for that topic when meeting with an industrial

prospect. Each team member that assumes responsibility for gathering information gives a date by which he can have all his data collected and is prepared to report to the rest of the team members. This is an easy way to spread the work around, get the job done, and get it all back in one central place so that a fact book can be put together. It also allows each team member to learn things about his community that he probably never knew. The establishment of an industrial team is discussed later.

Once the research has been conducted and you know what your community has and does not have, begin to analyze those items which might be attractive to industries or new businesses wishing to locate in your area. These are the items to point out and sell to an industrial prospect. On the other hand, you are likely to find facts about your community that put you at a competitive disadvantage with other communities. These are the items to put into your community development program so that they can be assumed by various organizations and worked on to be improved. When your prospect finally comes to town, he will be able to see and spot some of these weaknesses immediately. You will want to be ready with the answers on what you're doing to overcome them.

One of the most effective tools developed in the research and analysis for economic development in recent years is the Industrial Commission's Instasite program. Through a joint effort between your community and the staff of the Industrial Commission, more than

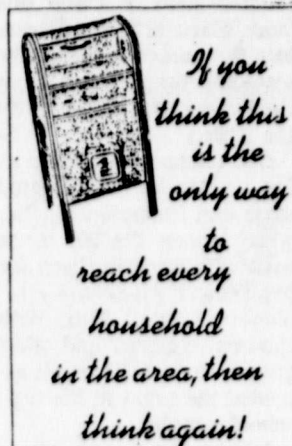
2,000 facts are collected on each community in Texas participating in the program. Of these 2,000 facts, the local community is asked to collect about 20%. Thus, once you agree to enter the Instasite program, the Industrial Commission staff does 80% of your work to be added to the 20% that you provide. There is no cost to you and your organization. Your community receives a free, updated printout annually. You're also qualified to buy additional printouts at a reduced cost. Instasite allows your community to obtain, in one single publication, most of the facts necessary for an economic development program published in other standard

statistical sources published by the Bureau of Census, the various state agencies, and from retail publications.

Instasite will not provide all of the information you need. TIC's Community Brochure Outline contains a more complete listing, as well as a suggested format.

Once these facts are collected and your community's information has been incorporated into the computer bank of the Industrial Commission, you're eligible to have conducted for you a computer analysis of your city. The analysis compares your city with other communities in Texas of the same size. You may select the factors to be compared. This may prove an in-

valuable tool to you in organizing and conducting your own local goals-setting programs because you have a third source to point out some of the problems existing in the community.



If you think this is the only way to reach every household in the area, then think again!

Prices Good May 18-24

SPECIALS

AT

Ken's Chicken-n-Fish

Hwy. 80-E. (Across from Wal-Mart) - Eastland
Air Conditioned Dining - Drive-Thru Window
Open 7 Days A Week - 11 a.m. to 9 p.m.

No. 14
Shrimpies & Fries \$3²⁹

No. 15
Jumbo Shrimp \$5⁴⁹
5 Shrimp-French Fries
2 Hot Puffs & Honey w/Red Sauce

No. 16
Deep Fried Clams \$2⁷⁵
French Fries-Red Sauce
1 Hot Puff & Honey

For Faster Service at Our Drive-Thru Window
Call 629-8981

GREATER LIFE BIBLE BOOKSTORE
Hwy. 80 E. 915-629-2052 Eastland
Shady Oaks Shopping Center
-NOW OPEN-
9 A.M. - 5:30 P.M. - Monday - Saturday
We Invite You To Come By!
Your Business Is Appreciated!
BIBLES; MUSIC; RECORDS; CARDS; BOOKS TTP104

EASTLAND ELECTRIC
Now At New Location In The Carroll Electric Building Hwy. 69 1 Mile North.
Compare Our Satellite Antennas For Quality At Affordable Prices.
Call For Demonstration
629-3315 629-3316
Ask For Tony or James T104

D. L. KINNAIRD GENERAL INSURANCE
Says Thank You Eastland County for 65 years!
104 S. Seaman
629-2544 629-1116

Insurance for Your
Dwelling
Auto
Business

Business Is Booming
Morgan Building Corp. must start a swing shift to meet demand for portable and modular buildings in the North Texas Area.
Hours - 4:00 p.m. till 12:30 a.m.
Openings
Assembly Line Workers
Saw Operators
Fork Lift Operators
Steel Cutters
Starting Date - May 24, 1985
All company benefits will apply PLUS a .15¢ hourly bonus for night work.
Apply in person from 8:00 a.m. till 4:30 p.m. Monday thru Friday
Morgan Building Corp. Hwy 69 No. Eastland, Texas

Fishing Outdoors

Terry L. Wilson



Members of the Eastland County Bass Club joined in the sad but needed clean-up around Check-O-Block. Members helped lake patrolman Bob Simons trim and pile trees destroyed by the Mother's Day twisters. All time and equipment was donated, and some members even postponed repairs on their own places to assist Bob in this massive cleanup.

The Texas Parks and Wildlife Commission approved a number of fishing regulation changes for 1985-86 in a public hearing May 2 in Austin.

Some of the more significant changes involved special bag limits for largemouth bass and crappie on selected reservoirs, minimum size limits on red snapper and a new statewide limit on hybrid striped bass.

All adopted changes to the freshwater fishing regulations will be effective Sept. 1, 1985, but changes in the saltwater fishing regulations will be effective June 1, 1985.

The commission approved the staff recommendation to establish a "slot" limit for largemouth bass at Nacogdoches City Lake at Nacogdoches, Houston County Lake near Crockett and Fayette Power Project Reservoir near LaGrange. After Aug. 31, anglers will be

prohibited from retaining large-mouth bass between 15 and 21 inches long. All other sizes may be retained, and a three largemouth bass per day bag limit will be in effect.

Tradinghouse Creek Reservoir in McLennan County and Aquilla Creek Reservoir in Hill County will have a three largemouth bass per day bag limit with a 16-inch minimum length limit. The same limit already is in effect at Squaw Creek and Coletto Creek Reservoirs.

Lake Worth in Tarrant County and Lake Fork in Wood, Rains and Hopkins Counties will have a slot limit of 14-18 inches, with a daily bag limit of five largemouth bass, possession limit 10.

A five largemouth bass per day bag limit and minimum length limit of 14 inches was adopted for Lake Brownwood in Brown County, Coleman Lake in Coleman County, Falcon Reservoir in Zapata and Starr Counties, Lake Jacksonville in Cherokee County and Lake Whitney in Hill and Bosque Counties.

The standard bass limit on lakes and streams not affected by special lake regulations is 10 bass in the aggregate (largemouth,

smallmouth or spotted) per day, 20 in possession, with 10-inch minimum length limit.

For the first time ever, bag and length limits were established for crappie in several Texas reservoirs. In Brandy Branch Reservoir in Harrison County, Lakes Braunig and Calaveras near San Antonio, Lake Fairfield in Freestone County and Lake Jacksonville in Cherokee County, the daily bag limit will be 15 crappie (black or white), possession limit 30, and minimum size limit 10 inches.

The commission authorized a 25 crappie per day bag limit, possession limit of 50 and 10-inch minimum length limit for Lake Fork in Wood, Rains and Hopkins Counties; Lake Palestine in Anderson, Cherokee, Henderson and Smith Counties; Lake Meredith in Hutchinson, Moore and Potter Counties; Lake Whitney in Hill and Bosque Counties; and the Brazos River above Lake Whitney in Hill, Bosque and Johnson Counties.

Fisheries staff members told the commission that most of the reservoirs recommended for the limits are power plant cooling ponds which traditionally have very poor crappie reproduction, making restocking essentially a put-grow-and-take concept. Coldwater lakes such as Palestine were selected to assess the effects of the limits on that type of habitat.

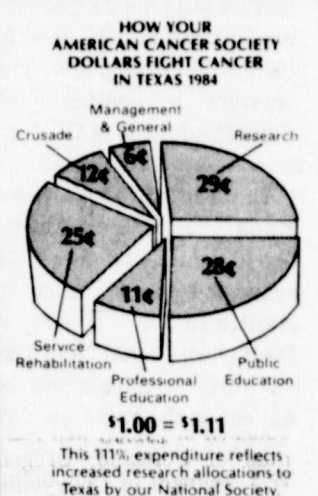
The commission adopted a statewide limit of five per day, 10 in possession, for hybrid striped bass. The only exceptions will be Lakes Arlington and Graham, which will have no bag limits for evaluation purposes. The five per day bag limit for hybrid strippers already is in effect at Calaveras and Squaw Creek Reservoir in Hood and Somervell Counties.

The commission also set a daily bag limit of five.

possession limit of 10, catfish in lakes of less than 500 acres lying totally within the boundaries of state parks, and reopened the trailrace area below Lakke Granbury Dam to fishing.

Also adopted was a "final destination" regulation covering fish and other wildlife resources. For fish, "final destination" is defined as "a place either on the mainland, a peninsula or barrier island where a fish by boat." Final destination does not include jetties or piers. Final destination for all other wildlife resources means the permanent residence of the person possessing or receiving the wildlife resource, or a commercial processing plant after the carcass of the wildlife resource has been finally processed.

The commission adopted a 13-inch minimum length limit for red snapper in coastal waters under state jurisdiction. Anglers will be allowed to retain five snappers under the minimum length per day. Headboats taking seven or more persons fishing for a fee, and persons legally operating trawls are exempted from the regulation. The snapper regulations are identical to those already adopted by the Gulf of Mexico Fishery Management Council for federal waters beyond nine nautical miles offshore.



H. Vance O'Brien Graduate - Magna Cum Laude

H. Vance O'Brien of Eastland graduated Magna Cum Laude from Hardin-Simmons University Saturday morning, May 11th. O'Brien was one of nine seniors who graduated in the upper 3 to 4% of the class of over 250.

Mrs. H.V. O'Brien, was named the recipient of the Brewer Science Award and Medal earlier in the spring. This medal was given each year to the outstanding graduating senior majoring in a natural science. O'Brien has a major in both biology and chemistry.

GOLDEN DESTINY
Tropical Fish, Birds & Pet Supplies
Expert Dog Grooming
Shady Oaks Shopping Center
629-8492

Check Our Specials On Tropical Fish Thursday - Saturday
Owned & Operated by Lorraine Lesfer
Monday-Saturday 9-5:30
Master Charge & Visa 90 Day Lay-A-Way

James W. Ratliff Realtor - Broker
111 E. Main St. Ranger, Texas
Office 647-1260
Home Phone 647-1667

RANGER

- 1978 Celtic Mobil Home on 3.48 acres of land located at 431 Wayland Road. Large barn and tank, garden spot.
- 1101 West 48 acres of land with 3 bedrooms, 1 bath, living room, dining room. \$17,500.
- 108 Cherry St. Large older home with 3 bedrooms, 1 bath, \$11,500.
- 121 South Oak St. 2 bedrooms, 1 bath, large kitchen, living room. Clean and ready to move in. \$20,000.
- 1013 Deidreanna Blvd. Rock home with 3 bedrooms, 1 bath, central heat and air, insulated, total electric, den, attached garage. Shop building, rear in the fenced back yard. This nice home is on three corner lots.
- 1014 Hill Addition Brick, 3 bedrooms, two baths, central heat and air, just like new. Good financing.
- 1014 Hill Addition Brick 3 bedrooms, two baths, storm windows, excellent condition.
- 1982 Cameo Mobil home 14 x 78 three bedrooms, two baths, nearly all furniture and appliances. To be moved. Make an offer.
- 1101 West 3 bedrooms, 1 bath, large living and dining room combination. Unlimited storage, some appliances, air conditioners, heaters.
- Two bedrooms, 1 bath, living room kitchen on 3/4 acre corner of Wayland Road and Homer St. Priced to sell \$20,000.
- 1978 Celtic Mobil Home on 3.48 acres of land located at 431 Wayland Road. Large barn and tank, garden spot.
- 1013 Deidreanna Blvd. Rock home with 3 bedrooms, 1 bath, central heat and air, insulated, total electric, den, attached garage. Shop building, rear in the fenced back yard. This nice home is on three corner lots.
- 1014 Hill Addition Brick, 3 bedrooms, two baths, central heat and air, just like new. Good financing.
- 1014 Hill Addition Brick 3 bedrooms, two baths, storm windows, excellent condition.
- 1982 Cameo Mobil home 14 x 78 three bedrooms, two baths, nearly all furniture and appliances. To be moved. Make an offer.
- 1101 West 3 bedrooms, 1 bath, large living and dining room combination. Unlimited storage, some appliances, air conditioners, heaters.
- Two bedrooms, 1 bath, living room kitchen on 3/4 acre corner of Wayland Road and Homer St. Priced to sell \$20,000.
- 121 South Oak St. 2 bedrooms, 1 bath, large kitchen, living room. Clean and ready to move in. \$20,000.
- 1013 Deidreanna Blvd. Rock home with 3 bedrooms, 1 bath, central heat and air, insulated, total electric, den, attached garage. Shop building, rear in the fenced back yard. This nice home is on three corner lots.
- 7 1/2 acres out of city limits with three bedrooms, one bath, living room paneled, carpeted, shop building, one tank. Some appliances, priced to sell.
- COMMERCIAL PROPERTY RANGER
- Two brick buildings in downtown Ranger, one corner of S. Austin and Pine Streets. The other on the corner of Rank & Pine. Will separately, priced to sell.
- 12 lots on Old Strawn Road in Ranger.
- 48 1/2 acres of land west of Ranger, good building site.

He plans to attend the University of Texas Medical School at Houston in the fall. Reaching a decision was not easy, he says, because of several research stipend offers by U.T. at Austin, Texas A&M and several U.T. and other Research Science Centers.

A Magna Cum Laude graduate must have a grade point average of 3.70 or higher.

Vance has been a member of the Concert and Cowboy Bands, Alpha Chi National Scholarship Society and Beta, Beta, Beta National Biology Honor Society.

He has been named outstanding Biology, Physics and Chemistry student during his year at H-SU.

HEIDENHEIMER'S
Sheds water feels great defies wear.

Popular Pecos boot with Red Wing's exclusive long-wearing SuperSole

Style No. 1104 \$59.99

Red Wings
HEIDENHEIMER'S
Your Family Western Store In Cisco

The Dance Studio
Offering Private Lessons in:
Ballet
Tap
Jazz
Baton
For ages 3 to Adult

Also offering for the ladies:
Aerobics and Jazz

ENROLL NOW!
Classes begin June 3

Located in Downtown Ranger Next to Video World.
For additional information call 647-1308
Jammie Gentry - Instructor

PEBBLE STONE
By: Ed Craig & Son
Clyde, Texas
THE ULTIMATE SURFACE
For Walks, Patios, Drives, Pool Decks!
INSTALLED BY TRAINED PROFESSIONALS
Perfect Cover For Old Or New Concrete
SPECIAL OFFER THIS WEEK
(915)893-5805
Clyde (Call Collect)
Beautiful Natural River Rock Guaranteed

SAS Presents this cool, comfortable sandal for Summer fun!

\$32.98 "Tickle"

SAS Lace-up Shoes \$39.98
Other Styles Sandals \$36.98

Greer's Department Store
"On the Square"
Eastland, Texas

REWARD \$5,000.00

For information leading to the arrest and conviction of person or persons responsible for criminal mischief shooting of an oil lease south of Ranger.

Person reporting may remain anonymous.

Report all information to Sheriff Don Underwood.

Call 629-1774

Entire Stock of Spring & Summer Dress Shoes

1/4 Off

Spring & Summer Bags

1/4 Off

My Shoe Shoppe
 Hwy. 30 629-2172

Free Estimates **J&D Carpets** All Work Guaranteed
Eastland-Pogue Ind. Park-629-1672

Free Area Rugs While Supply Lasts
With Carpet Purchase 60 yd Minimum 2x3 Area Rug
90 yd Min 3x4 Area Rug 120 yd Minimum 4x6 Area Rug
Formica In Stock-Ceramic Tile For Baths, Counter Tops & Floors (101)

MEDICARE.
They pay. You pay.

Medical and hospital bills. They can be overwhelming if you're not prepared. Medicare will pay a part of the bill and generally you are left with the rest. That's where WE come in.

Southland Life. We have a Medicare Supplement Insurance Plan to help cover those bills. We supplement your Medicare coverage. In other words:

They pay. You pay. We pay.

With our Medicare Supplement policy, we help reduce the "you pay" portion. Call or write for details. There's no obligation.

Southland Life INSURANCE COMPANY
Serving the people since 1908.
M.H. Perry
104 N. Lamar
Eastland Texas 76448
(817)629-1566

Spring & Summer Shoes

1/3 Off

SHOES TOO
I-20 Next to Best Western
629-8030

Large Group of Spring and Summer Coordinates

40% off

David & Quetta's
Interstate 20 629-8030

Drilling Bits

Flowing 145 barrels of oil per day, the No. 3 McDonnell was completed successfully in the Katlaco-Cook Field by Kelly-Barnett Petroleum.

Drillsite is two miles southwest of Cisco.

It was drilled to 4,130 feet total depth and will produce from an interval in the Mississippian Formation, 3,869 to 3,909 feet into the wellbore. Production tests were run on a 16/64 choke.

The location is in Eastland County's H&TC Survey, A-177.

H.E. Austin has filed first production figures on four new oil wells in the Hawk Eye Field. The Nos. 19A thru 22A Cox showed combined potential to make 84 barrels of oil per day.

Drillsites are about one mile west of Romney in Eastland County's H&TC Survey, A-1328.

The wells will produce from perforations in the Adams Branch Formation, ranging from 1,128 to 1,164 feet into the wellbore. Total drilling depths range from 1,191 to 1,203 feet.

A 3,900-ft. wildcat well is planned by Pendragon Oil of Dallas at a drillsite five miles east of Eastland. The location is in a 74-acre lease in the McLennan CSL Survey, A-367. Well's designation is the No. 1 Scott.

A Borger-based operator has staked location for the No. 6 Schaefer "A", a wildcat well to be located four miles south-southwest of Nimrod. With projected total depth of 3,000 feet, the well is in a 409-acre lease in Eastland County's Moses Allen Survey, A-1. The operator is Logan Energy.

The No. 1 E.H. Winge, a 1,500-ft. wildcat well, is scheduled to be drilled in Eastland County. Bill C. Burns of Midland is the operator. The well will be spudded in a 320-acre lease two miles west of Romney in the H&TC Survey, A-1416.

The same operator has filed for permit to drill the No. 1 J.R. Morris, a 1,600-ft. developmental well two miles west of Romney. Location is in an 80-acre lease in Eastland County's H&TC Survey, A-1950. The well is in the East Nimrod Field.

Snow Oil has filed first production figures on two new gas wells in Eastland County's H&TC Survey, A-298 & A-766.

The No. 1 Germany "B" indicated ability to flow 650,000 CF gas per day on a 13/64 choke. The absolute open flow rating came in at 1,200,000 CFD.

Bottomed at 3,869 feet, it will produce from Duffer Formation perforations, 3,722 to 3,731 feet into the

hole. Location is six miles north of Eastland in the Snow Field.

The No. 1 Imes-Dorn will flow 547,000 CF gas daily on a 14/64 choke. It was rated at 1,300,000 CFD on absolute open flow.

It was taken to a 4,025-ft. bottom and will produce from perforations in the Conglomerate Formation, 3,655 to 3,661 feet into the hole. Location is two miles east of Cisco in the Cisco Field.

Eastland County's Tucko Field gained a new producer when Tucko Petroleum completed the No. 7 Travis Bond five miles south of Ranger.

The well indicated ability to pump at the rate of 70 barrels of oil per day. It was taken to a 3,463-ft. bottom and will produce from a set of perforations in the Conglomerate Formation, 3,193 to 3,211 feet into the hole.

The operation is in the William Van Norman Survey, A-565.

At a location three miles southwest of Ranger, Pendragon Oil has finished a new oil producer in Eastland County's REB Field.

The well is designated as the No. 2 McClesky, pumping at the rate of 56 barrels of oil daily.

Location is in the William Todd Survey, A-537. Bottomed at 3,721 feet, the well will produce from perforations in the Marble Falls Formation, 3,205 to 3,226 feet into the hole.

Two 1,400-ft. developmental wells are planned by H.E. Austin of Cisco at drillsites one and two miles west of Romney, Eastland County. The locations are in 134-acre lease in the H&TC Survey, A-1328. Wells' designations are the Nos. 24-A & 25-A Cox. They are in the Hawk-Eye Field.

Drillsite has been staked for the No. 1-A Williams, a 1,390-ft. developmental well in the Eastland Regular Field. The operation will be located eight miles west-southwest of Eastland in a 109-acre lease in the McLennan CSL Survey, A-368. The operator is Circle Exploration of Odessa.

A new producer has been brought on line in Eastland County's Hanvey Field, with Don H. Hanvey Oil Interest as the operator.

Located two miles north of Cisco, the well is in the SPRR Survey, A-928. It is designated as the No. 3 McDonnell. It will make 47 barrels of oil daily.

The well bottomed at 4,100 feet and will produce from a perforated interval in the Lake Sand Formation, 3,465 to 3,477 feet into the hole.

Snow Oil of Ft. Worth has revealed plans to drill two

4,000-ft. developmental wells in Eastland County's H&TC Survey, A-298 and A-304. Drillsites are six miles north of Eastland.

The No. 2 Germany "4" will be located in an 80-acre lease in the Eastland Regular Field.

The No. 4 Texfel-Harrell will be located in a 160-acre lease in the Snow Field.

Two 3,000-ft. developmental wells are planned by Wayne Turney Oil of Eastland at drillsites one mile northeast of Cisco. The locations are in a 120-acre lease in the H&TC Survey, A-172. Wells' designations are the Nos. 6 & 7 Schaefer. They are in the Eastland Regular Field.

The No. 3A Jackson has been finished by Carla Petroleum.

It is a developmental well in the Eastland Regular Field, two miles south of Carbon. Drillsite is in Eastland County's I&GN Survey, A-680.

Daily potential of 14 barrels was posted with the Railroad Commission. The well went to a 3,412-ft. bottom. Production will be from perforations in the Bend Conglomerate Formation, 3,144 to 3,214 feet into the wellbore.

A gas producer has been brought on line in Eastland County's Lake Leon Field, with Grover Chenoweth as the operator.

Located five miles south of Ranger, the well is in the William Van Norman Survey, A-545. It is designated as the No. 4 J. Williamson.

On a 3/8 choke, it flowed 403,000 feet and will produce from a perforated interval in the Duffer Formation, 3,393 to 3,398 feet into the hole.

Plug-and-abandon orders have been issued for the No. 1-A Scott, a developmental venture of Field Production in the Eastland Regular Field. Spudded April 14, the well had reached 675 feet total depth. Drillsite was five miles north-northeast of Rising Star.

Glen's Backhoe Service has given up in its efforts to make a producer out of the No. 1 Opal Edwards "A". It was a developmental try in the Eastland Regular Field. The location was one mile northeast of Scranton. Spudded March 29, the well had

reached 600 feet total depth.

The No. 1 Goode, a 3,700-ft. developmental well, is scheduled to be drilled in the Eastland Regular Field. Firerock of Cross Plains is the operator. The well will be spudded in a 40-acre lease three miles west of Pioneer in the ETRR Survey, A-973.

Drillsite has been staked for the No. 2 Freyschlag, a 3,800-ft. developmental well in the Eastland Regular Field. The operation will be located two miles south of Eastland in a 320-acre lease in the Thomas R. Foster Survey. The operator is Herod Investments of Ranger.

Eastland County's Reb Field gained a new producer when Snow Oil completed the No. 2 Fokken five miles north northeast of Eastland. or perforations in the Marble Falls Formation, 3,456 to 3,460 feet into the hole.

The operation is in the H&TC Survey, A-297.

At a location two miles northwest of Eastland, Northridge Corp. has finished a new oil producer in Eastland County's Reb Field.

The well is designated as the no. 1 Matthews, pumping at the rate of 36 barrels of oil per day.

Location is in the H&TC Survey, A-1574. Bottomed at 3,764 feet, the well will produce from perforations in the Marble Falls Formation, 3,222 to 3,368 feet into the hole.

Two undrilled wildcat locations have been abandoned by Raw Energy at drillsites six miles south of Ranger. The ventures had been designated as the Nos. 1 & 4 Blackwell "B".

Morrison Energy has abandoned an undrilled location in the Moreno Field, Eastland County, four miles south of Carbon. The well had been designated as the No. 2 Higgins.

A gas producer has been brought on line in Eastland County's Sipe Springs Field, with Southeastern Resources as the operator.

Located three miles east of Rising Star, the well is in the ETRR Survey, A-92. It is designated as the No. 1 Harris Weaver Unit.

On a 5/16 choke, it flowed 299,000 CF gas per day. It was rated at 406,000 CFD on absolute open flow.

The well bottomed at 3,410 feet and will produce from a perforated interval in the Marble Falls Formation, 2,772 to 2,804 feet into the hole.

A Cimarron-based operator has staked location for the No. 5 Sutton, a developmental well to be located five miles north-northwest of Rising Star. With projected total depth of 1,500 feet, the well is in a 364-acre lease in the Eastland Regular Field, W.Ahrenbeck & Brothers Survey, A-3. The operator is Jem-B Co.

Northridge Corp. of Duncanville has filed for permit to drill the No. 3 Walker Hall, a 4,000-ft. developmental well five miles west-northwest of Ranger. Location is in a 225-acre lease in the Eastland Regular Field, T&NO Survey, A-533.

Richey & Co. of Ft. Worth have revealed plans to drill two developmental wells in Eastland County.

The No. 1 J.C. Carr will be located three miles northwest of Cisco in an 80-acre lease in the SPRR Survey, A-463. Proposed total depth is 4,200 feet.

With projected total depth of 4,100 feet the No. 1 M. Harrell "C" will be located in a 40-acre lease in the H&TC Survey, A-304. Drillsite will be six miles north-northwest of Eastland.

Drillsite has been staked for the no. 1 John J. Cooper, a 2,000-ft. developmental well in the Eastland Regular Field. The operation will be located one mile west of Rising Star in a 71-acre lease in the ETRR Survey, A-93. The operator is Southern Oil Field Production of Gilmer.

The No. 2 Framers State Bank "B", a 4,999-ft. developmental well, is scheduled to be drilled in Eastland County's Desdemona Field. Sun Exploration & Production of Abilene is the operator. The well will be spudded in a 175-acre lease two miles southwest of Desdemona in the William DeMoss Survey, A-73.

At a location two miles northwest of Lee Ray, Auburn Oil has finished a

wildcat oil producer in Stephens County.

The well is designated as the no. 1 Spurlen, pumping at the rate of 60 barrels of oil per day, along with 100 barrels of waste water.

Location is in the T&P Survey. Bottomed at 4,200 feet, the well will produce from perforations in the Caddo Formation, 3,310 to 3,325 feet into the hole.

A new producer has been brought on line in Stephens County's East Ixex Field, with Investek Inc. as the operator.

Located four miles west of Eolian, the well is in the BAL Survey. It is designated as the No. Crompton.

On a 11/64 choke, it flowed 29 barrels of oil.

The well bottomed at 4,269 feet and will produce from a perforated interval in the Ellenburger Formation, 4,246 to 4,250 feet into the hole.

A 4,500-ft. wildcat well is planned by Hilco Petroleum of Breckenridge at a drillsite three miles east of Caddo, Stephens County. The location is in a 20-acre lease in the T&P Survey. Well's designation is the No. 1A Thompson.

Rogers Oil Co. has filed first production figures on a new gas well in the South Frankel Field. The No. 1 Cook Heirs indicated ability to flow 116,000 CF gas per day on a 3/16 choke. It was rated at 445,000 CFD on absolute open flow.

Location is three miles east-northeast of Frankell in Stephens County's T&P Survey.

The well will produce from an interval in the Strawn Formation, 1,429 to 1,430 feet into the wellbore. Total drilling depth was 1,430 feet.

Two new producers have been brought on line in the Stephens Regular Field, with Sun Exploration & Production as the operator.

Located four miles northwest of Ivan, the wells are in the Watkins Noble Survey. They are designated as the

Nos. 160 & 161 Eliasville Unit. They showed combined potential to make 50 barrels of oil per day along with 2,005 barrels of waste water.

The wells will produce from perforations in the Caddo Formation, ranging from 3,238 to 3,306 feet into the hole. Total depths were 3,400 and 3,435 feet, respectively.

At a location six miles east of Picwick, M.O. Rife, Jr. has finished a new gas producer in Palo Pinto County's O'Laughlin Field.

The well is designated as the No. 22 Florence Green, flowing gas at the rate of 1,367,000 CF gas per day on a 20/64-in. choke. The absolute open flow rating was 1,995,000 CFD.

Location is in the T&P

Survey. Bottomed at 4,165 feet, the well will produce from perforations in the Conglomerate Formation, 4,056 to 4,066 feet into the wellbore.

Williams Petroleum has filed first production figures on a new oil well in the Weldon Field, Palo Pinto County. The No. 7 Tesco showed potential to flow 276 barrels of oil per day on a 20/64-in. choke.

The operator has a lease block in the CEPI&M Survey, two miles south of Pickwick. The well will produce from a set of perforations in the Conglomerate Formation, 4,028 to 4,048 feet into the hole. Total drilling depth was 4,305 feet.

EX-LAX; "The Family Friend;" helps your body help itself.

Ex-Lax helps get your body's own natural rhythm going again. Gently. Dependably. Overnight. That's why more families use Ex-Lax - Choclated or Pills - than any other brand. Make it your Family Friend.



Read label and follow directions © Ex-Lax, Inc. 1983

HAIL DAMAGE SALE
Large Selection Of New Chevrolet Cars And Trucks Slightly Hail Damaged Great Savings On Over 100 Fullen Motor Co. Eastland CALL COLLECT 817-629-2676

MICRO-PLEX roofing
629-1038 For Quality At A Price You Can Afford. SUMMER SPECIAL - 20 Year Warranty Fiberglass Shingles, Labor & Material \$47.00 Per Square Ft. 144

The Hair Affair
(Walk-ins Welcome) 629-2019
HOURS: 8:30 til Late Tuesday thru Saturday
Professionally Trained Operators for Complete Personalized Hair Care for the Entire Family
Specializing Also in:
Manicures Pedicures Sculpture and Nail Tips Electrolysis Perms Color
Owned & Operated by Barbara Holland and Janet Messenger Hwy. 80 East & I-20 By the El Morroco Motel
New Operator: Penny Coplen
19 Years Experience T104

4-WD Enthusiasts!!
If interested in joining a four-wheel drive club for Eastland County, please send your name and phone number to:
4-WD
P.O. Box 722
Cisco, Texas 76437 P45

Lone Star Title & Abstract Co.
Joe B. Koonce, Mgr.
101 W. Main
Eastland, Texas 76448
(817) 629-2683

SNOW PIPE & SUPPLY
P.O. BOX 881 HWY. 80 East EASTLAND, TX 76448 817-629-8521
RODNEY REYNOLDS Assistant Manager Res 817-629-2250
LINDA NELSON Manager Res 817-629-8123

EASTLAND DRILLING INC.
817-629-8512 24 Hour Number
3 Rotary Rigs
Drilling depth from 1500' to 6000'
All Rigs Radio Equipped with 24 hr. answering service plus phone patch.
Gary Snapp, Vice President & Operations Mgr.
Res. Phone 817-647-3416 23 yrs. Offfield Experience

One Thing After Another -
....can and may happen to land titles in the passing of moments. During the time it takes you to read this ad, something could happen to your title that would change your whole financial structure, or indeed it could alter your plans and aspirations for generations to come. The abstractor, in a sense, is your land title guardian, for he keeps the records day by day as you or others make them. Advise with him often about your title.
Eastland County Abstract Company
112 W. Commerce, Eastland, Texas
R. Pat Miller TC Annelle B. Miller

EASTLAND SATELLITE SYSTEMS 629-3683
TUNE IN TO HOME SATELLITE TV
Questions: How would you like to take your pick from more than 650 live movies each and every month? Have you ever settled down in front of your TV for an afternoon of baseball - and then discovered the best games weren't even broadcast to your region?
SPECIAL
10 1/2 Ft. Wire Mesh Antenna, Uniden 3000 Receiver, 65° LNA, Sentari Power Arm...
\$2,400⁰⁰ Installed & Tax

church services ...

REDEEMER LUTHERAN CHURCH
Our worship service begins at 8:30 a.m. Pastor Schueler's message is entitled, "His Assignment For Us" based on John 17:11b-19.

What do you think about God? Is He a kind, white-haired, old man who is forgetful and beyond His prime? Or is He a vital part

births

REBECCA DAWN SINCLAIR
Ricky and Jeanene (Pharr) Sinclair of Glen Rose, Texas are proud to announce the birth of their daughter, Rebecca Dawn, born Tuesday, May 14, 1985 at 7:15 a.m. at Cleburn Hospital. She weighed 10 lbs. and 6 oz. She has a sister, Amanda LeAnn, age 4.
Grandparents are Mildred Pharr of Cisco and Garland Pharr of Dallas. Great grandmother is Erma Greenwidge of Cisco and she has several aunts and uncles in this area.

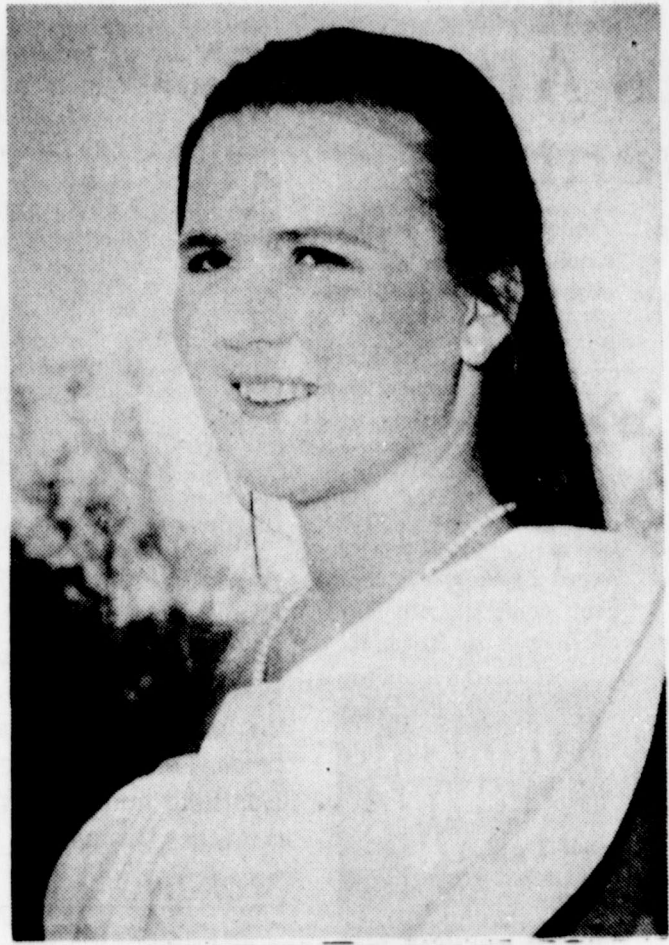
ROBERT CHASE HOLDEN
Dana and Bob Holden of Dublin, Texas are proud to announce the birth of their first child, Robert Chase, born May 12, 1985, at Brownwood Regional Hospital. He arrived weighing 8 lbs. 3 oz. and measured 20 inches long.
Maternal grandparents are Rochelle and Jack Speegle of Abilene, Tex., formerly of Cisco.
Paternal great-grandparents are Burnice and Carl Gorr of Cisco.
Paternal grandparents are Mr. and Mrs. Alex Schaffer of Andrews, Tx.
Paternal great-grandparents are Mr. and Mrs. B.C. Holden of Comanche, Tx.

people in the news ...

We salute the following Ciscoans who will celebrate birthdays this week:

- May 19- Roy Hathaway, Gerald Harris, Danny Gosnell and Diana Marie Thompson.
- May 20- Revis Gregg.
- May 21- Mrs. W.E. Dean and Nathan Harrel.
- May 22- Bobbi Jo Boyd, Ike Watts and Kristopher Wheat.
- May 23- Velma Fleming.
- May 24- No listing.
- May 25- Buster Tynes, Rocky Ingram, A.L. Anderson, Marilyn Hathaway Wragg and Bobby Bisbee.
- Couples celebrating anniversaries this week are Sherry and David Ray, May 19; and Gaston and Wanda Boyd, May 23.

SHAWN ALLEN WHITEHEAD
Natasha and Brandee Whitehead are proud to announce the birth of their brother, Shawn Allen Whitehead, who was born Tuesday, April 30, 1985 at 5:51 p.m. at Hendrick Medical Center in Abilene. He weighed 6 lbs., 11 oz. and was 20 3/4" long.
His parents are James and Michael Ann (Mike) Whitehead of Cisco.
Maternal grandparents are Mr. and Mrs. J.D. (Toby) Smith of Littlefield, Tx.
Paternal grandparents are Mr. and Mrs. Joe Whitehead of Putnam and Jim Whitehead of Dallas.



MRS. CHRISTOPHER WIEGAND

Bonnie Sudderth and Christopher Wiegand Are Married May 18th

Bonnie Sudderth became the bride of Christopher Wiegand in a Civil ceremony at 10:30 a.m., May 18, 1985, in the Abbey Mansion, in Austin, Texas. C.L. Ray, Texas State Supreme Court Justice performed the ceremony.
Parents of the bride are Ben D. Sudderth, of Blanket, Texas, and Carole Pyburn, of Comanche, Texas. Grandparents are Mr. and Mrs. Clarence Graves of Brownwood, Texas and Mr. and Mrs. J.L. Phippen, of Cisco, Texas. Great-grandparents are Mrs. John Hardy, of May, Texas.
Parents of the groom are Mr. and Mrs. E.L. Wiegand, of Amarillo, Texas.
Matron of honor was Sandi Sudderth Lolley, of Houston, sister of the bride. Maid of Honor was Lisa Wong of Los Angeles, Calif., friend of the bride. The Junior Bridesmaid was Taffy Watts of Odessa, friend of the bride. The flower girl was Tami Watts of Odessa, friend of the bride.
The best man was Gordon Wiegand of Amarillo, brother of the groom. Ushers were Johathan Wiegand of Amarillo, brother of the groom and Michael Wiegand of Burnet, brother of the groom.
Given in marriage by her father, the bride wore a gown featured with a single strap shoulder, accented by a large bow. The bodice was of ripple gathers descending into a floor length skirt of crisp, white taffeta. Something old was her grandmother's garter, the gown was new, she borrowed a strand of cultured pearls and wore sapphire stud earrings. The penny in the bride's white satin shoe was a British half-pence. The bride carried a bouquet of white "butterfly" rose, with

natural stems nestled in fern, gathered and tied with wide satin streamers.
The groom wore a traditional grey stroller with traditional stripe pants, a white wing shirt with ascot and a pearl grey vest. On his lapel was a single white rose boutonniere.
The fateh of the bride and groomsmen wore traditional grey strollers with traditional stripe pants, white Mozart shirts with traditional four-in-hand and pearl grey vests. They wore on their lapels single yellow rose boutineers.
The bridesmaids wore lovely dresses of crisp royal blue taffeta, featuring a candy-box bow on one shoulder. A fitted skirt flowed to an intermission-length. They carried a single, long-stem "golden wave" rose simply tied with wide satin ribbon. The junior bridesmaid and flower girl wore bright yellow dresses with short puffed sleeves. The full-skirted dresses, gathered at the waistline and tied with blue satin ring pillow and Tami carried a white wicker basket filled with yellow and white flower petals.
The pews in the chapel were decorated with bows of bright yellow and blue satin ribbons. Centered on the mantle was a floral design featuring yellow and white gladioli. A garland of springer fern, English ivy, galax and other foliage gracefully draped the length of the mantle and trailed its sides. Two pedestal arrangements of yellow and white gladioli flanked the mantle and completed the setting.
The processional was "Spring" from Vivaldi's The Four Seasons; and the recessional was "Autumn" from Vivaldi's The Four Seasons.
The reception following the ceremony was at The Abbey with approximately 100 guests. It was given by Mr. and Mrs. Ben D. Sudderth. Guest were served an assortment of fruit, cheese and crackers on large silver trays and champagne, punch and coffee beverages. The wedding cake was a three-tiered round traditional white cake. A German chocolate groom's cake was also served. Music provided at the reception was a selection of popular music from the 1930's and 1940's.
The bride, a graduate of Comanche High School and the University of Southern California, Los Angeles, is attending the University of Texas Law School, Austin, and will graduate in December, 1985.
The groom, a graduate from Palo Duro High School, Amarillo, graduated from the University of Texas, in Austin and is employed by General Dynamics in San Diego, California as a mechanical engineer.
For the wedding trip to New Orleans the bride wore a white-on-white satin print dress of a 1920's style with a dropped waist accented by a large white satin bow. They will be at home in San Diego, California on May 27.

Mary Martha SS Class Holds Meeting May 14

Mary Martha Sunday School Class of East Cisco Baptist Church met for their regular social and business meeting, Tuesday night May 14th in the home of class President Veneta Mitchell. Marie Ivie gave the prayer of Thanks before the group ate a delicious chicken and spaghetti supper with tossed salad, English peas, relishes, hot buttered bread, walnut & raisin pie, chocolate pie, tea and coffee, served from a very pretty set table with a beautiful center arrangement of Spring flowers.
The president opened the meeting with all present repeating the class watch word, "God is our refuge and strength, a very present help in trouble!", followed by prayer led by Ruth Carey.
Louise Pryor gave a devotional on observance of the past Mother's Day by reading scriptures in the Bible that contained the word mother and concluded with reading a prayer "In Memory of a Mother."
Secretary and treasurer Mildred Foster read the minutes from the last meeting and gave the treasurer report.
Activity director Florene Hagan led the group in some quiz test. An enjoyable time

legal notices ..

PUBLIC NOTICE
Dear Customer:
The presence of coliform organisms in water samples collected from the City of Cisco's water system at two of the collection points which are located on Railroad Avenue and Front Street on March 11, 1985, exceeded the limits set by the Texas Department of Health's "Drinking Water Act, Public Law 93-523 (US). Daily samples shall be collected from the identified sampling points showing positive results until the results from at least two consecutive samples show the water to be of satisfactory quality.
Additional samples have been taken and tested by Abilene-Taylor County Health Department Laboratories and were found to be satisfactory and in compliance with TDH's drinking water standards. The notification of the public is in compliance with Texas Drinking Water Standards and the Safe Drinking Water Act, as a means of keeping the public informed.
Michael D. Moore
City Manager
5-19-85
5-23-85
5-26-85

CITY OF CISCO, TEXAS SALE OF SURPLUS PROPERTY
The City of Cisco is accepting bids for the sale of the following surplus property:
1. 1971 Ford Pickup F-100 (Veh. #F10AKK30193).
2. Ford Tractor/front-end Loader, Model 735.
was had by all, those present were Christine Nance, Viola Abbott, Laverne Ivie, Marie Ivie, Florence Hagan, Ruth Carey, Lucy Hagan, Louise Pryor, a visitor Leota Hughes and the hostesses Mildred Foster and Veneta Mitchell.
May 9, 1985
May 12, 1985
May 19, 1985
May 26, 1985
June 2, 1985

The Cisco Press Sunday, May 19, 1985

Come to Church

<p>CALVARY BAPTIST CHURCH Rev. Ronnie Shackelford Pastor 18th and Ave. D Sunday School 9:45 a.m. Morning Worship 11:00 a.m. Training Union 6:00 p.m. Evening Worship 7:00 p.m. Wednesday Prayer Meeting 7:30 p.m.</p>	<p>CHURCH OF THE NAZARENE W. 10th and Ave. N. Rev. Phillip Smith Sunday School 9:45 a.m. Morning Worship 10:45 a.m. Evening Worship 6:30 p.m. Wednesday Prayer Meeting 7:30 p.m.</p>	<p>GREATER MOUNTAIN TOP UNITED PENTECOSTAL CHURCH Hwy. 183, 12 miles South of Cisco P.O. Box 269, Cisco, Texas Pastor John C. Jones Phone 643-3629 Sunday Sunday School 10:00 a.m. Morning Worship 11:00 a.m. Evangelistic Services 7:00 p.m. Wednesday Bible Study 7:30 p.m.</p>	<p>EAST CISCO BAPTIST CHURCH Rev. Cecil Deadman 506 E. 11th Sunday School 9:45 a.m. Morning Worship 10:50 a.m. Training Union 5:30 p.m. Evening Worship 6:30 p.m. Mid-Week Services: Wednesday 7:00 p.m.</p>	<p>CHURCH OF THE REDEEMER Pastor Larry Coats Phone 629-2831 Meeting at 104 W. Plummer Street in Eastland at 10:15 a.m. and 7:00 p.m. Sundays; Wednesday Evenings at 7:30 at 103 South Ammerman Street in Eastland.</p>	<p>FIRST PRESBYTERIAN CHURCH 500 W. 6th St. Rev. William C. Weeks Pastor Sunday School 9:45 a.m. Morning Service 11:00 a.m.</p>
<p>EASTLAND OUTREACH MINISTRIES Rev. Ralph Ablin American Lutheran Church HOLY TRINITY EPISCOPAL CHURCH 708 S. Seaman Eastland, Texas Worship 8:30 a.m. Bible Study and Sunday School 9:45 a.m.</p>	<p>FIRST EVANGELICAL METHODIST CHURCH John W. Clinton, Pastor Hwy. 80 West Across From Hospital Sunday School 10:00 a.m. Morning Worship 11:00 a.m. Evening Worship 7:00 p.m. Wednesday Youth and Adult Bible Classes 7:00 p.m.</p>	<p>REVIVAL TABERNACLE Attention Special Announcement Sunday at 1 p.m. on KERC Radio, Special preaching, anointed singing. Deliverance for both soul and body all in the name of Jesus! Special prayer for the sick!</p>	<p>INSPIRATION CHURCH OF GOD Rev. Larry Smith Camp Inspiration-Box 167 Eastland, Texas Sunday School 9:45 a.m. Morning Worship 10:45 a.m. Evening Worship 6:00 p.m. Wednesday Service 7:00 p.m.</p>	<p>CORINTH BAPTIST CHURCH Rev. Benny Hagan Cisco-Eastland Hwy. Sunday School 10:00 a.m. Morning Service 11:00 a.m. Sunday Training Union 6:00 p.m. Sunday Evening Service 7:00 p.m. Wednesday Night 7:00 p.m.</p>	<p>FIRST BAPTIST CHURCH Rev. Buddy Sipe Sunday School 9:30 a.m. Morning Worship 10:50 a.m. Church Training 6:00 p.m. Evening Worship 7:00 p.m. Wednesday: Mid-Week Prayer Meeting 7:00 p.m.</p>
<p>NEW LIFE TABERNACLE 307 W. 17th St. Rev. Timothy Gray Morning Worship 10:00 a.m. Evening Worship 7:00 p.m. Wednesday Bible Study 7:30 p.m. Family Night: Friday Night 7:30 p.m.</p>	<p>CISCO CHURCH OF CHRIST Jim Hatcher, Minister 1-20 North Access Road at Ave. N Sunday Bible Classes 9:30 a.m. Worship Service 10:30 a.m. Evening Services 6:30 p.m. Wednesday, Mid-Week Service 7:30 p.m. Ladies 10:00 a.m. Tuesday</p>	<p>GOSPEL ASSEMBLY 1000 Ave. A and East 10th Bible Teaching Subject To Question. Sunday 7:00 p.m. Worship Service Thursday & Saturday 7:30 p.m.</p>	<p>PRIMITIVE BAPTIST CHURCH James E. Robertson Jr., Minister Services 2nd Sunday each month Singing 10:30 a.m. Preaching 11:00 a.m.</p>	<p>CATHOLIC CHURCHES Rev. James Miller St. Francis, Eastland, 6:30 p.m. Saturday St. Rita, Ranger, 9:45 a.m. Sunday St. John, Strawn, 8:00 a.m., Sunday Holy Rosary, Cisco, 11:30 a.m. Sunday</p>	<p>CHURCH OF JESUS CHRIST OF LATTER DAY SAINTS Opening Exercises 9:30 a.m. Primary 9:30-11:10 a.m. Priesthood 9:30-10:20 a.m. Relief Society 9:30-10:20 a.m. 5 day School 10:30-11:10 a.m. Sacrament Service: 11:20-12:30</p>
<p>GREATER ST. MARK BAPTIST CHURCH Rev. J.C. Mills, Pastor Sunday School 9:45 a.m. Morning Worship 11:00 a.m. Evening Worship 6:00 p.m. Wednesday Prayer Service 7:00 p.m.</p>	<p>FAITH BAPTIST CHURCH 700 West 18th J. Doyle Roberts, Pastor Sunday School 10:00 a.m. Worship Service 11:00 a.m. Evening Worship 7:00 p.m. Wednesday Evening Worship 7:30 p.m.</p>	<p>WORD OF LIFE Pastor Randy Housh 501 S. Lamar Office 629-3413 Home 629-8037 Sunday Morning 10:15 a.m.; Morning Worship and Children's Church 11:00 a.m.; Sunday Evening 7:00 p.m.; Wednesday Evening 7:30 p.m.</p>	<p>FIRST CHRISTIAN CHURCH Dr. Kenneth Breeze- Minister Church School 9:40 a.m. Morning Worship 10:50 a.m. Bible Study 6:30 p.m.</p>	<p>MARANATHA BAPTIST CHURCH Independent-Fundamental Pastor M.H. Jones Hwy. 80 West of Eastland Sunday School 10:00 a.m. Worship Hour 11:00 a.m. Prayer Classes 6:00 p.m. Worship Hour 6:30 p.m. Wednesday Services 7:30 p.m. Rt. 2 Box 57 B, Cisco, Texas</p>	<p>FIRST ASSEMBLY OF GOD Rev. Jackie Stone 307 W. 7th St. Phone 442-1561 Sunday School 9:45 a.m. Morning Worship 10:45 a.m. Sunday Night 6:00 p.m. Wednesday Night 7:00 p.m.</p>
<p>MITCHELL BAPTIST CHURCH Joe Philpott, Pastor Sunday School 10:00 a.m. Preaching 10:45 a.m. Sunday Night 7:00 p.m. Prayer Service Wednesday 8:00 p.m.</p>	<p>FOURTH STREET CHURCH OF CHRIST Sunday 10:30 a.m. Evening 5:00 p.m.</p>	<p>CHURCH OF GOD Seventh Day Romney Community South of Cisco Worship: 11:00 a.m. Saturday Telephone 442-3962</p>	<p>FIRST UNITED METHODIST CHURCH Rev. Frank Williams, Pastor Sunday School 9:45 a.m. Worship Service 10:50 a.m. Evening Worship 6:00 p.m. U.M. Women Tuesday 9:30 a.m.</p>	<p>PLEASANT HILL BAPTIST CHURCH Pleasant Hill Community 8 miles South of Cisco Jim Andrews, Pastor Sunday School 10:00 a.m. Morning Worship 11:00 a.m. Evening Service 5:30 p.m.</p>	<p>BIBLE BAPTIST CHURCH Fundamental Ave. E at 17th St. Rev. Dale West Sunday School 10:00 a.m. Morning Service 11:00 a.m. Evening Service 7:00 p.m. Wednesday Worship Service 7:30 p.m.</p>

<p>Kimbrough Funeral Home 300 W. 9th 442-1211</p>	<p>Thornton Feed Mill 1200 Conrad Hilton Ave.</p>	<p>White Elephant Restaurant Eating Out Is Fun</p>	<p>Cisco Funeral Home 203 West 7th, Cisco</p>
--	--	---	--

Guest Slot By HVO

A Palo Duro "Texas"? No, not yet.
An Albany Fandango? No, not yet.

An Eastland County Historical Pageant? Definitely, a possibility.

A number of citizens are already thinking and mulling over the possibility of putting together a slick, all-inclusive hour-and-a-half presentation that could be staged on the south side of the square in connection with the All-New Eastland County Fair (which is detailed in this issue) for the weekend of Oct. 5.

It would take a lot of work and a lot of ideas, but it's something that should have been done long ago. Few other counties have as rich a history as does Eastland County, and it should be captured in an entertaining musical mini-extravaganza that all of us locals could take pride in and share with out visitors on a regular basis.

If the south steps and lawns of the courthouse were a giant stage, with audience seating in the street, there could be no end to the telling of our history, from the first settlements, Red Gap tornadoes, Indian raids, Oil Booms, Old Rippling, Santa Claus Bank Robbing, Hogtown booming, Gorman peanutting, Carbon development, Rising Star history - and generally the whole smear.

If it could be drafted this summer, and maybe chopped up into segments that the individual chambers of commerce could help produce, the public school students and adults could put it together, maybe for a one-shot Saturday night performance. (Oct. 4 would be a football night, so that's out.)

Some see a battery of spot lights mounted on the buildings on the south side of the square, with the lights pin-pointing portable sets down below on the

sidewalks, lawns and steps.

There could be the street gun-slinging, the boom town roudiness, the civil disorders, and a narrated telling of this country's exciting history.

The first one would be the hardest. But each successive one would become bigger and better. There's talent a plenty in this country to make it happen. There's hope that there could be some original words and music to help tell the tale.

All it would take would be the stepping forward of those who are truly ready to see something big and good happen for Eastland County to make it happen.

Music would have to be a part of it, as would bornin's and buryn's which all go to make up what we are today. This history and speech teachers of the county have and are being challenged to help put it on paper. There'd have to be a central force to help bring about all the logistics. Maybe not a committee, but a "doing force" that would teach the bases that would bring it all together.

Many of the elements would already be available from the morning parade: horses, wagons, old cars, etc.

It would be uniquely ours. We see an opportunity for stirring local, state and national patriotism. Combined voices for God Bless America and the Star Spangled Banner. Bugles in the distance. Drums on the right of us and on the left.

And a glorious finale which would see the multiple spotlights bathing the courthouse walls against which a giant American flag would unfurl.

Uniting us with patriotic sentiment, cementing us with entertaining laughter, fun and sending us our separate ways filled with pride.

Let's do it!

The Doug Whites Attend Hardware Convention

Doug and Carolyn White of White's Ace Hardware in Eastland helped set a new record for a spring Ace Hardware convention in Houston, TX.

The Whites were among about eight thousand Ace dealers, employees, manufacturers and Ace corporate staff at the show, April 19-21. The previous record was set last May at the Ace spring convention in St. Louis.

The convention featured new programs and services designed to help dealers stay competitive and provide their customers with the best possible services. One new service was the introduction of Ace's national charge card, offering customers a pre-approved line of credit at participating dealers. There is no annual fee for the

card and there is no finance charge of the balance is paid by the end of a 30-day billing period. Applications for the card are available at: White's Ace Hardware at 504 E. Main in Eastland.

Another show attraction was the unveiling of two Ace Stores of the Future, a new, total merchandising concept designed with today's consumer in mind.

The show featured many new products and special show-priced merchandise geared toward the 1985 Christmas season. Toys, trim-a-trim and gifts were featured, as well as a complete array of general merchandise. Ace's fall show in Kansas City, Oct. 18-21, will feature lawn and garden products, outdoor living items and sporting goods.

Other highlights of the con-

vention included breakfast meetings presenting merchandising trends in the marketplace and corporate news; workshops and seminars; a dinner show featuring entertainer Roy Clark, and a space theme party.

Ace Hardware Corporation is a cooperative wholly owned by its 4700 independent dealers, with headquarters in Oak Brook, IL.

**DRINKING
DRIVING
DEATH**

A Combination we CAN'T LIVE WITH!

A message from this newspaper and the Troopers of the Texas Department of Public Safety.

Heating Babyfood In Microwave Ovens

COLLEGE STATION - Warnings about the safety of heating baby food and infant formulas in a microwave oven have led to some confusion and unnecessary concern, says a Texas A&M University Agricultural Extension Service nutrition specialist.

"Parents see a precautionary statement on the labels of some baby food products and assume it applies to all baby food," says Dr. Alice Hunt. "Others have simply heard second or third hand that microwave cooking is bad for baby foods."

But parents can be assured that microwaves are safe to heat any food, including baby food, she says. "Microwaves simply supply the energy which causes the food molecules to vibrate and causes the food to become warm."

Hunt notes that the problem, if there is one, arises from the speed and unevenness with which microwaves heat food, causing splatting and hot spots.

Baby food products which cause the most concern are dense, high protein products like plain meats and poultry, high meat dinners, egg yolks and meat and poultry sticks,

says the specialist.

These foods have a tendency to form a dried layer on their surface that can prevent steam from escaping during heating. When the film is disturbed, by taking the food out of the oven or stirring with a spoon the trapped steam suddenly escapes and the food splatters, Hunt explains.

To avoid this problem, some baby food manufacturers put a precautionary statement on the label of their dense, high protein products, she remarks. But they don't put a warning label on plain mixed vegetables or vegetable and meat combinations, since these products have a higher water content and heat more evenly.

"Any baby food that is warmed in a microwave oven should be heated on a medium or low setting just to lukewarm. Also stir the food frequently during microwaving to promote even heating and the dispersion of any steam pockets that might be forming," recommends the specialist.

Infant formula can also be safely heated in a microwave oven if certain precautions are followed,

Hunt maintains.

First, heat the milk only to barely warm, not boiling. Remember that the container may remain cool, while the milk is too hot.

Microwave the bottle of milk without the top at a medium setting until warm, which is about one minute per six ounces from refrigerator temperature. Attach the nipple and cap and shake the bottle to redistribute the heat.

"Most importantly, let the bottle stand a few minutes before testing the temperature, and always sprinkle several drops on your inner wrist before giving the bottle to the baby," she cautions.

*The Bible.
It has a lot
to offer.*

GILMORE
RADIATOR AND
AUTOMOTIVE
WELDING
Hamby Rd. - Clyde
Rick Gilmore
893-4852



A WHOLE LOT OF THIS is going on in Eastland County right now as the result of recent wind and hail damage. Most of the damage was in certain portions of the Lake Leon area as well as in Olden where a tornado reportedly touched down although it apparently didn't hit any structures, but the accompanying winds certainly did damage to buildings, and uprooted large trees. There were unconfirmed reports from the north and northwest part of Eastland and insurance adjusters were busy most of this week checking damages throughout this area.

MISSING

LAURA BRADBURY
DATE MISSING: 10/18/84
FROM: Indian Cove Campground, Joshua Tree National Monument
AGE: 4
WHITE FEMALE
DATE OF BIRTH: 03/29/81
HEIGHT: 3'
EYES: Brown
HAIR: Sandy Blonde
WEIGHT: 25-30 LBS



Laura was last seen 10/18/84. Laura's family arrived at campground at approximately 4:00 p.m. Laura and brother went to restroom about 50 yards away from campsite. When her brother came out of restroom, he could not locate Laura. After the 3 day search, it became apparent that Laura had been kidnapped from the campground. She was wearing a kelly green sweatshirt w/hood, white, pink and purple knit short sleeve blouse w/horizontal stripes.

If you have any information about this child please call - 1-800-843-5678.

TAMMY L. BELANGER
SEX: Female
AGE: 9
DATE OF BIRTH: 02-24-76
EYES: Brown
HAIR: Long Brown
HEIGHT: 4'6"
WEIGHT: 65-70 LBS
IDENTIFYING MARKS: Slender build. Fair complexion.



Tammy was last seen 11-13-84, 8:00 a.m. on Court Street. She was wearing tan corduroys, tan suede boots, purple sweater, aqua jersey with thin black and white stripes, tan with blue sleeves short jacket, green and blue socks and carrying a red back pack with her name and address.

If you have any information about this child please call - 1-800-843-5678.

Hail Damage Sale
Large Selection Of New Chevrolet Cars And Trucks Slightly Hail Damaged
Great Savings On Over 100 Fullen Motor Co. Eastland
CALL COLLECT 817-629-2676

Pandora's Box
610 W. Main Eastland Tex.
Low Budget - High Fashion
Treat Yourself... Trade those gently worn spring & summer clothes into cash. Consign them to Pandora's 629-3641

8.8% APR
With Ford Motor Credit Company
On All New 1985 Bronco II's And 85 1/2 Escorts
Offer Good For Limited Time Only So Hurry On Down And Drive One Away Today.
Pierce Motor Company, Inc. Telephone 817/442-1566
FORD Cisco, Texas 76437

**BROWNING
SANDBLASTING**
Sandblasting - Painting - Fiberglassing
Plastic Coating
The Professionals (817)766-2671
Floyd Browning
Nite Phones 692-9625
8016 Seymour Hwy. Wichita Falls, Texas 76301

Redwood
2"x6"x8'
\$3.20 Each
Cisco Lumber
P-40-21

(Foreclosure) (Real Estate)
AUCTION
TUESDAY - JUNE 4th - 11 A.M.
SALE HELD AT EASTLAND COUNTY COURTHOUSE
EASTLAND, TEXAS
30+ Acres
32,000 Sq. Ft. Building
Located 1 Mile East of Cisco, Texas
On U.S. Hwy. 80
This property was formally a tile plant. Has many uses, such as auto salvage, etc.
SUBSTITUTE TRUSTEE'S DEED TO BE FURNISHED
SALE FOR BENEFIT OF SMALL BUSINESS ADMINISTRATION
TERMS: CASH. CASHIERS CHECKS OR OTHER CHECKS ACCEPTED WITH LEASER OF GUARANTEE FROM YOUR BANK.
REPRESENTATIVE OF AUCTION COMPANY WILL BE AT PROPERTY DAY BEFORE SALE FROM 1 P.M. 'til 5 P.M.
For further information, contact:
COL. RALPH SEGARS AND ASSOCIATES
5924 ROYAL LANE NO. 155
DALLAS, TEXAS 75230
(214) 388-8252
Permit No. TXS-016-0018 T-TP40

**OWN YOUR OWN
GREEN LIGHT
AUTOMOTIVE PARTS,
MERCHANDISING AND
BENEFIT SYSTEM
AUTO PARTS STORE**
Join A Leader In The Automotive Replacement Parts Distribution Business.
Receive delivery service, inventory control, fast turnover, advertising package, obsolescence protection and maximum return on investment, insurance package available, J-Con computerized inventory and account receivable program.
Not a Franchise-Be Independent-Own Your Own Business.
Requires A Capital Investment. However, there is a Finance Package available. For more information on how to get Green Light behind you call Martin Shaw at 214-638-8493 or Donnie Brake at 214-357-6822 concerning available trade areas. 743

**20 Year Warranty
Fiberglass Shingles**
Asphalt Reinforced
White, Tan, Brown
\$19.95 sq.
No Deliveries At This Price
Cisco Lumber & Supply
442-2320 P-40-21

**6 GOOD REASONS TO SHOP
EASTLAND COUNTY**

COATS FURNITURE "Better Values for Your Home" 629-2614 305 S. Seaman Eastland	JIM CALDWELL MOTORS NEW Body Shop 314 W. Main Eastland 629-2636	IDEAL GIFTS! Subscriptions To Your Local Newspaper Call Now!
FULLEN MOTOR CO. See Us for NEW 84's 305 E. Main Eastland 629-2676	KING MOTOR CO. Ford-Mercury Sales & Service Since 1939 100 E. Main Eastland 629-1786	QUICKWAY GROCERY Deli Bakery 1104 W. 8th Cisco 442-3508

Homemaking Hints

County Extension Agent

Janet Thomas

The Eastland County Extension Service is sponsoring a free home mailout series on "Preserving Food at Home."

"Preserving Food at Home" is a mail series (5 letters plus food preservation pamphlets) that is now available to interested homemakers. It contains information about:

*Canning - learn the basics of waterbath and pressure canning and the method that should be used for different foods.

*Freezing - learn to blanch vegetables to keep "freshed picked" flavor and how to freeze fruits to keep them firm and attractive.

*Pickles and Relishes - learn to pickle vegetables in

a brine or to prepare popular "quick" pickles and relishes.

*Preserves, Jellies, Jams and Marmalades - learn to select the test for proper jell, process to prevent mold growth and prepare sugar-free jellied fruits.

*Drying - learn to dry foods in your oven, in the sun or with a dehydrator and how to pretreat fruits and vegetables to retain nutrients, flavor and color.

How can you get this free mail series? Call Janet Thomas, County Extension Agent at 629-2222 or write Box 189, Eastland. You can request the entire mailout series or just the topics that you wish to learn more about.

For additional information

on food preservation, you may wish to call or come by the Extension Service office.

RECIPE FOR THE WEEK FREEZER STRAWBERRY JAM

2 cups crushed strawberries
4 cups sugar
¾ cup water
1 box powered pectin

Stir strawberries and sugar in bowl. Bring water and pectin to boil and boil 1 minute, stirring constantly. Add pectin mixture to fruit and stir 3 minutes. Pour into half-pint Kerr jars to within 1 inch of top. Put on cap, screw band tight. Let stand at room temperature for 24 hours or until set. Then freeze. Yield: 6 half pints.

4-H'ers are desperately working against the clock, trying to complete their garment for the 1985 4-H Fashion Show. The "Reflections of Fashion" will be an afternoon to remember. The girls and boys will begin preparing early Monday, May 27th. At 8:00 a.m. the judging will begin!

While one group is being judged, the others will be learning and practicing modeling. Each contestant is judged on construction, overall appearance, appropriate color, texture and style for their age. Also modeling skills and poise. The public viewing of the fashion show will be 3:00 p.m. The 4-H Fashion Review will be held at Cisco High School, auditorium, Monday, May 27th. Come and enjoy...reflect with us the periods of fashion. All entries are due by Wednesday, May 22nd, 8:30 a.m. The winner in each division and age group will receive a trophy provided by the 4-H Adult Leaders Association. Also one contestant will be selected as best model for

1985. Good Luck 4-H'ers!

County 4-H Camp is fast approaching. This year will celebrate "Holidays". Camp begins May 31 - June 1, 1985. The first opportunity the 4-H'ers will have is swimming after registration. Then on to orientations. Then off to two sessions of their choice out of: crafts, power guns, canoeing, leadership, ceremonies/citizenship or halloeen faces. Then off to a wonderful July 4th celebration. Following this the party with a theme of New Year's Eve! To close out the night we'll have a ceremonial. The morning will begin with a breakfast fit for royalty. Then out to salute the flags. Following flags will be the third and final session. It's swimming again! Then a Thanksgiving Feast, clean up and close out camp will be games. All registration forms are due by May 23rd at 5 p.m. This is for all youth and adults, so get signed up today.

Be sure to read next weeks and upcoming articles. 4-H has numerous activities forthcoming. This summer should be exciting and interesting for all Eastland Co. 4-H'ers and adults!

May 31 Is Deadline For Planting Insured Cotton In Eastland County

GEORGETOWN - May 31 is the final planting date for insured cotton in Eastland County, Texas, according to Ardell Kalmbach, District Representative for the Federal Crop Insurance Corporation (FCIC).

Insured cotton planted by May 31 must be reported by June 15 in order to receive full crop insurance coverage. The acreage report reflects the actual acreage planted and reported by the farmer.

In order to provide some flexibility on planting dates,

a late planting option may be extended by farmers who find themselves unable to plant their crops on time due to adverse weather. The late planting option provides insurance coverage for the late planted crop, but at a lower guarantee.

For insured farmers, "entering into the late planting option is not automatic," Kalmbach said. "Farmers wishing to use the late planting option must sign an agreement prior to the final planting date in order to have coverage

under the late planting option."

"Increasingly, our insured producers are discovering that with yield guarantees which reflect production capability, crop insurance establishes a farm income floor. Thus, cash flow and the ability to repay a loan can be more accurately projected," explained Kalmbach.

Farmers wishing to discuss local conditions that may affect planting should contact their local, authorized crop insurance agent.

How To Prevent Food Spoilage In Warm Weather

With the summer approaching, this means weekends out at the lake, picnics and outdoor cookery. This is also prime time for food to spoil! There are many ways to fight food spoilage:

1. When shopping for food, pick up meat, poultry and dairy items last; get them home and into the refrigerator or freezer promptly.
2. Never buy food in leaking, bulging or severely dented cans, cracked jars, or jars with loose or bulging lids.
3. Maintain refrigerator temperature at 35° to 40° F. and freeze at 0° or lower. Check frequently to be sure.
4. Thaw meat and poultry in refrigerator or for faster

results, in water tight package under cold water.

5. Wash hands before preparing food.
6. After handling raw meat or poultry, wash hands before touching other foods or food surfaces.
7. Wash utensils, containers, work surfaces before and after they come into contact with any raw meat or poultry.
8. Always keep hot foods hot and cold foods cold until served.
9. Refrigerate leftovers promptly.

For more information about Food Spoilers, call or come by the Texas Agricultural Extension Service. We are located in the County Courthouse Basement.

"Summertime Food Safety" To Be Presented

The monthly nutrition program at the Senior Citizen Centers will be on "Summertime Food Safety" announced Janet Thomas, County Extension Agent.

Senior Citizen Center; May 24 - Ranger Senior Citizen Center; May 29 - Cisco Senior Citizen Center.

Mrs. Thomas will present the program at noon on the following dates: May 20 - Eastland Senior Citizen Center; May 23 - Rising Star

Educational programs conducted by the Texas Agricultural Extension Service serve people of all ages regardless of socio-economic level, race, color, sex, religion, or national origin.

ACE IS THE PLACE FOR

Hardware Pipe Lawn & Garden
Automotive Plumbing Paint
Redi Mix Concrete Housewares Electrical
Tools Glass Lumber

WHILE SUPPLIES LAST

"Solid Comfort!"

588

All-Luminum

"Take-Along" Shortfold Chair (SF516/86039)

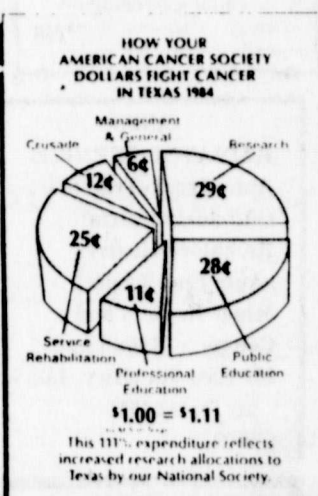
Epoxy coated steel frame folding chair with plastic arm rest and 1/2" padded sling. Bright blue or red grid pattern. Folds flat for portability.

ACE HARDWARE

304 EAST MAIN • EASTLAND
429-3373

WE BELIEVE IN AMERICA!

HOURS: 8:00 A.M. to 7:00 P.M. Monday-Friday
8:00 A.M. to 6:00 P.M. Saturday



VideoMovie

Let Us Invite You To Step With Confidence Into The World Of Live Video Recordings.....

shoot inside or outside-----
Weddings -- Receptions --
Proms -- Graduations --
Homecomings -- Class Parties.

And Consider this: For insurance and identification purposes, have a video made of the interior of your home, business or office. Keep the copy in your bank lock box or other safe place for future needs.
You may secure the original and have copies made too!
Write for confidential information and prices to

Herman Alsup's Live Recordings
P.O. Box 851
Eastland, Tx 76448
or Call 817 629-8231

The **HOMESTEAD**

Best Western

1-20 Eastland

Sunday Buffet

11:30 - 2:00 P.M.

YOUR CHOICE
Chop Sirloin
Catfish
Beef Tips
Chicken Fry

ONLY **\$4.25**

Served with Salad Bar, Tea or Coffee, Rolls, Dessert and Choice of 6 Vegetables.

Steak & Crab Legs & Salad Bar

5 to 10 Sat & Sun Only
We Still Have Specials Every Night

T-41

629-1633 **Discount Center** While Supplies Last!
108 W. Commerce

Sundown Sunblock no. 15 or 8 4.29

Atra Trial Razor 3/\$1

J&J Band-aids 30 ct. 1" or asstd. sizes 1.59

Ivory Shampoo or Conditioner 15 oz. 1.99

Crest Toothpaste 6.4 oz. All Flavors 1.69

Summer Sandals 1.99

STP Oil Treatment 4 Cyl. or Reg. 1.77 Limit 2

STP Carb Spray-Cleaner 1.57

Simoniz Body Gard Polish Liquid - Paste 3.99

Also
Generic Light Bulbs 2 ct. pk. - 4 pk/\$3
Roto Shear Bladeless Elect. Grass Trimmer 29.95

Eastland County Classifieds

Sunday, May 19, 1985



FOR SALE - Used General Electric built in automatic dishwasher \$60. Call 629-2413.



USED TIRES FOR SALE, \$10.00 and up. Call Darby 629-2663. T104

CALL THE AIRCONDITIONING specialist for new units. Call JoAnn 629-2663. T104

OIL CHANGE, FILTER and lube job for only \$15.00. Major brand oil. Call Everisto. 629-2663. T104

NOTICE - Booklet, MEDICINE SHOW, REVISITED-a little magic, a little nostalgia, a little hokum, a lot of fun reading...\$1. each at the Eastland Telegram, or \$2. each by mail. TF



BECAUSE BUSINESS IS BOOMING, McDonald's of Eastland is now taking applications for both part-time and full-time employment for day and night shifts. We offer an excellent wage advancement program, uniforms and a free meal. If interested apply in person at the McDonald's of Eastland anytime. T-40

NOW ACCEPTING APPLICATIONS for housekeeping and laundry. Prefer experienced help. Competitive salary and excellent benefits. Contact Judy Boffitt, administrator - Eastland Manor. 1405 W. Commerce. T-42

ACTIVITY DIRECTOR WANTED: For 102 bed ICF. Prefer certified but will train right applicant. Must be energetic, enthusiastic, and caring. Competitive salary and excellent benefits. Contact Judy Boffitt - Administrator. Eastland Manor. 1405 W. Commerce. 629-2686. T-42

HELP WANTED: Nurses aides on all 3 shifts. Come by Cisco Nursing Home, 1404 Front Street, Cisco. c-38-102



FOR RENT: Nice 1 or 2 bedroom apartments, furnished or unfurnished, now available. Water, cable and HBO paid. Nice yard and laundry. 501 S. Ostrom. 629-2805. T-42

FOR RENT - Reunion Hall with sleeping quarters. Four bath rooms, trailer hookups. Will accommodate large or small groups. Four miles from Lake Brownwood. 677-7329. T43



FOR SALE - 1984 Ford customized van. Loaded luxury interior, AM/FM cassette/stereo with equalizer. Front and rear air, B/W very T.V. Very Clean. \$13,800. 442-4753 or 442-1875. T41

FOR SALE - Short wide '82 Chevrolet Silverado, 4-wheel drive, 6.2 diesel, air, power steering, stereo cassette, custom wheels, sliding rear window. 629-2158 days, 442-1953 nights. T40



NEW AND USED Mobile Homes for sale. Single wides and double wides; mobile homes and RV parts; general mobile home repair. Homes moved, set up and anchored. West Texas Housing, West of Hubbard Creek Bridge, Breckenridge, 559-3121. T49

FOR SALE: 1972 Fleetwood mobile home to be moved. 14X70, 3 bedroom, located near Cisco. Call 817-725-7179, after 5 p.m. c-24-102

FOR SALE: 1970 Wayside Trailer house 12x58 to be moved. Can be seen a mile north of Staff Store. Call 629-1405 or 893-4925. T-40

SEE US TODAY: 1986 Models arriving daily, new floor plans, new decor, same low prices. Mid City Homes Inc., 1-20 Eastland, 629-8532. T-20



FOR SALE - 1978 19 ft. Pro-wler travel trailer, excellent condition. \$4,200. Day phone 629-8533; after 5 p.m. 629-8918. T41

DESKS, CHAIRS, files, sales, cash and carry. Save 20-50 percent. Large selection. 9-5:30 weekdays. Value City 1030 Butternut, Abilene. T-40

THREE MONTHS OLD registered Alpine Bucks and Does. sale. Call 647-3834 or 629-1365 after 6. T-40



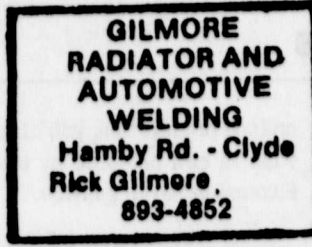
444 ACRES SOUTH of Cisco; 324 range and timber, 120 cultivation, barn, corral, well, some minerals, deer and turkey. Highway frontage. Call Town & Country Real Estate, 629-1725. T-42-21

FOR SALE - Select retreat on choice, wooded Lake Leon with good view. (One of the last remaining). Package includes 27-foot Terry Travel Trailer; completely self-contained; sleeps six; excellent condition; and deeded lake lot in ideal location; all-weather roads; water and electricity available; good neighborhood. Convenient to town and easy in and out with trailer. Call 629-2413 for details. TF

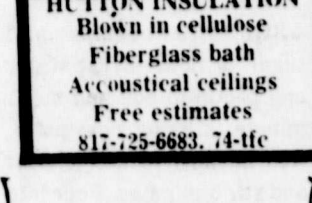


NOTICE: See us first for office furniture, fixtures, supplies. All kinds. Fast service, reasonably priced. Check your local newspaper in Eastland, Cisco, Ranger, Rising Star, or Baird. TF

FOR SALE: Last few copies of THE RAVING Foe, A Civil War Diary and List of Prisoners, by J.C. Poe. \$5. per copy at your local newspaper, or \$6. by mail from the Eastland Telegram, Eastland, TX. TF



GILMORE RADIATOR AND AUTOMOTIVE WELDING Hamby Rd. - Clyde Rick Gilmore 893-4852



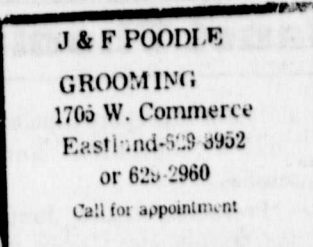
BUCKTON INSULATION Blown in cellulose Fiberglass bath Acoustical ceilings Free estimates 817-725-6883, 74-tfc



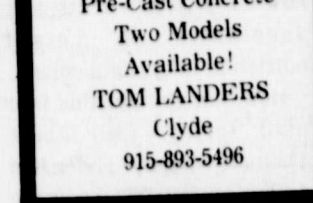
CISCO RADIATOR SERVICE Auto-Truck-Tractor Oilfield-Industrial Radiators-Heaters Auto Fuel Tanks Minor Repairs and Complete Rebuilding 207 East 6th (Hwy. 183) 442-1547 C26-102



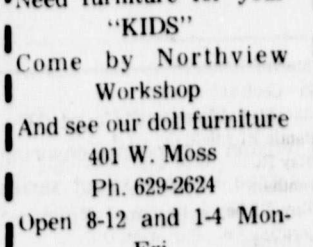
WATER WELL DRILLING test holes 915-672-8075



J & F POODLE GROOMING 1765 W. Commerce Eastland-629-3952 or 629-2960 Call for appointment



Pre-Cast Concrete Two Models Available! TOM LANDERS Clyde 915-893-5496



Need furniture for your 'KIDS' Come by Northview Workshop And see our doll furniture 401 W. Moss Ph. 629-2624 Open 8-12 and 1-4 Mon-Fri.



DAVIS UPHOLSTERY I do upholstery, furniture, refinish and sewing machine repair. 610 West 2nd 442-4712 P46



OUTSIDE DOOR SEAL Magnetic and easy to install - you will be impressed - For details call John Beil, Eastland, 817-629-1319. T104

FOR SALE: Building materials, both new and salvaged, metal roofing, and siding, framing lumber, paneling and much more. Morgan Building Corp., Hwy. 69 North, Eastland, 629-2668. T-43

MAIL DAMAGE, roof repairs, insurance adjustments, financing available. Call 653-2432. T-40

FACTORY SECOND BUILDING SALE - 8x6, \$345.; 8x8 \$380.; 8x10, \$450; more to choose from. Morgan Builders, Hwy 69 North, Eastland, 629-2668. T47



GIANT GARAGE SALE - 505 Crestwood Dr. Eastland. Thursday and Friday, May 23 and 24, 9 a.m. till 5 p.m. and Saturday, May 25, 9 a.m. till 1 p.m. Lots of goodies. Come see! T41

GARAGE SALE: Several families Garage Sale - Friday and Saturday 9:00 - 6:00. Maternity clothes, baby clothes, small appliances, books, pool table, nice clothes, and lots of misc. 113 E. Conner. T-40



HAY HAULING Call 442-1447 Carl Bray p-41

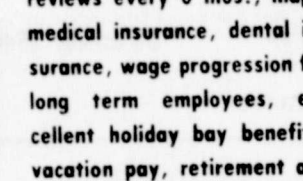
299A, ON SABANNA Creek. Approx. 3/4 mi. creek, trees, cross fenced, 7 pastures, water well, wind mill, several tanks, corrals, deer & turkey, some minerals. By owner 817-643-4654 rs 41



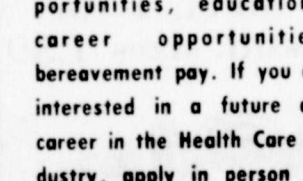
HAY FOR SALE: Taking orders now. Heavily fertilized hybrid sudan. Will cut June 1. \$2.25 per bale. Delivery available. Call Robby Robinson, 629-1320. T-42



HELP WANTED - Applications are being accepted for the positions listed below: 7-3 Nurse Aide, part time and full time; 3-11 Nurse Aide, part time and full time; 11-7 Nurse Aide, part time and full time; and 11-7 L.V.N. Relief, A.M. and P.M. cook, back-up cooks and dishwashers. We offer competitive wages with salary reviews every 6 mos., major medical insurance, dental insurance, wage progression for long term employees, excellent holiday pay benefits, vacation pay, retirement and savings program, stock option and stock enrollment program, numerous employee recognition programs, on-the-job training, continuous education, advancement opportunities, educational career opportunities, bereavement pay. If you are interested in a future and career in the Health Care Industry, apply in person to: Judy Chaney, 700 S. Ostrom, Eastland, Texas. T43

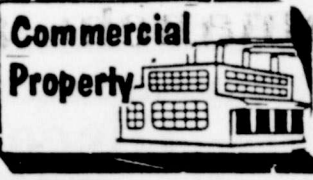


FOR SALE - Antique glass and furniture and other collectibles. 'We buy Estates'. The House of Antiques 908 S. Bassett, Eastland, Texas. Open every day. T104



HELP WANTED: Russell-Newman Manufacturing plant, 1-20 West in Cisco is now hiring employees. Apply between 8:00 a.m. and 4:30 p.m. Monday through Friday. p-42

MCDONALD'S is looking for a full time maintenance man. Responsibilities of the maintenance man will be primarily janitorial, with general maintenance and other specific duties necessary to maintain cleanliness in the store. Previous janitorial experience is preferred. All duties will be performed between closing and opening of the Restaurant each night. We offer a starting salary of \$4.00 per hour with merit increases every six months, paid vacations, job security, and other benefits. If interested apply in person at the McDonald's in Eastland, and interviews are Wednesday thru Friday, 2 p.m. - 4 p.m. T-40



COMMERCIAL BUILDING FOR SALE: Choice, centrally-located Eastland building ready for immediate occupancy: retail, office or commercial. Central air and heat. Floor and a half. Owner will finance. Serious inquiries only, call (817)629-1707 to inspect. TF

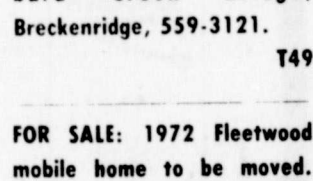


ANTIQUE SALE: Queen Anne China cabinet; rare china cabinet; desk side board; Victorian buffet side board; oak dresser. 30-50 percent below retail. Shown by appointment only. 1-945-2004, Moran. p-41



CATTLE FOR SALE: Choice young cows and calves for sale. \$500 a pair and up. 629-1320. T-40

THREE MONTHS OLD registered Alpine Bucks and Does. sale. Call 647-3834 or 629-1365 after 6. T-40



FOR SALE: 1972 Fleetwood mobile home to be moved. 14X70, 3 bedroom, located near Cisco. Call 817-725-7179, after 5 p.m. c-24-102

FOR SALE: 1970 Wayside Trailer house 12x58 to be moved. Can be seen a mile north of Staff Store. Call 629-1405 or 893-4925. T-40

SEE US TODAY: 1986 Models arriving daily, new floor plans, new decor, same low prices. Mid City Homes Inc., 1-20 Eastland, 629-8532. T-20



FOR SALE - 1978 19 ft. Pro-wler travel trailer, excellent condition. \$4,200. Day phone 629-8533; after 5 p.m. 629-8918. T41

DESKS, CHAIRS, files, sales, cash and carry. Save 20-50 percent. Large selection. 9-5:30 weekdays. Value City 1030 Butternut, Abilene. T-40

AVON 648-3934

Notice

NOTICE: This is to advise the public that effective immediately I will be responsible for any indebtedness incurred by myself. Everisto Jiminez. T-43

Please support the **AMERICAN CANCER SOCIETY**

We Can Supply ALL Your Invitation, Announcement and Greeting Needs of All Kinds.

Engraved or Printed.

Also Napkins and Other Printed Party Paper Needs.

Come Choose and They Will Be Ready QUICK.

EASTLAND COUNTY NEWSPAPERS

Cisco - Eastland - Ranger - Rising Star

CALLAHAN COUNTY STAR

Baird

NOTICE TO SUBSCRIBERS

We are no longer mailing notices of expired subscriptions. Check your mailing label for your expiration date. Please renew prior to that date so you won't miss any issues of your paper. TF

J&S Phone Service

Telephone Installation & Repair

Extension Phones or Cisco Complete New Home Wiring.

Key Systems for Home or Business.

Telephones & All Equipment Available

Warranty Work with Low Prices.

442-1539

AVON: 442-1185

Office - 1307 Ave. A, Cisco p39

R&R Carpet Cleaning

Randall Rogers, Owner

FOR FREE ESTIMATE

Call 629-1121

Over 8 years service in this area.

WE CARE ABOUT YOUR HEALTH

Specializing in physical ailments related to the spine and nervous system.

If you don't go you will never know.

Dr. Geo G. McPhaul

Chiropractor

Telephone 647-3821

454 Pine Street, Ranger

NARCOTICS ANONYMOUS

442-4306

500 Ave. E.

Cisco

8 P.M.

Monday & Wednesday

Fences

Steinman Fencing

(817) 647-1946

LEE ROY STEINMAN

P.O. BOX 86 EASTLAND TX 76448

Ask About CAR-PORTS & METAL BUILDINGS

- CHAINLINK FENCING
- RESIDENTIAL
- COMMERCIAL
- PRIVACY FENCE
- WHITE WOOD
- RED WOOD
- CEDAR
- FARM FENCING
- CUSTOM GATES
- WELDING

SCHOOL MASTER ANTIQUES

639-2228

Carbon USA

Buying anything from old magazines to old musical instruments Selling, sad irons

647-3197 or 653-2397

Doyle Squiers

Built up roofs and shingles new work guaranteed.

Roofing Contractor

COMPLETE AUTO SERVICE

...qualified mechanic on duty

...Transmission repair

...air conditioner service

...Lubrication-polish-Gulf tires

...Tire Distributor

ROAD SERVICE PICKUP & DELIVERY

Int. 20 at Carbon Hwy. 629-8894

RUBEN'S INTERSTATE GULF TC

Theme for Church of God Family Month is "These Three Remain Faith, Hope, Love"

Thurber Reunion To Be June 8-9 Plans For Thurber Centennial

Courthouse Report

Melvin Robinson to Bob Cochran dba - Contractor's Lien. James E. Russell Petri, Inc. To Atlantic Richfield Co. - Rel. OGL. Ray Richey & Co. Inc. To Vivon L. Grantham Est. - Par. Rel. OGL. Ray Richey & Co. Inc. To Katlaco Operating Co. - Par. Asgn OGL. Betsy Mize Rice and others To Tex. Elec. Serv. Co. - Esmat. Mary Sanger To Sun Explor. & Prod. Co. - Amend of OGL. Jacqueline L. Schwartz To Sun Explor. & Prod. Co. - Amend of OGL. Wortham H. Seale and wife To Sun Explor. & Prod. Co. - Amend of OGL. Lola Jo Spearling To Sun Explor. & Prod. Est. OGL. Mildred McClesky Strickland To Sun Explor. & Prod. Co. - Est. OGL. Gene M. Snow To James W. Littlejohn - Asgn OGL. Southern Sav. & L'n. Assn. To Olney Sav. Assn. - Asgn. Dorris L. Sneed To Inland Ld. & Min. Inc. - OGL. Benny Skinner and wife To Eastland Natl. Bk. - Deed of Trust. Alton W. Smith, dba To American Natl. Bk. Wichita Falls - D/T. Wikey Don Stacy and wife to Eastland Natl. Bk. - D/T. Patricia Huth Smoody, dec'd To S. Mark Smoody and others - Asgn. Edward A. Shibley Trust - To Tucko Petroleum Co. - OGL. Alfred A. Schaffner and wife To Federal Ld. Bk. of Texas. Zena Ethel Simpson To Jackie Don Simpson and wife - W/D. Sharon Kay Simpson and others To First Natl. Bk. Gorman - D/T. J. Tom Shelton and others To Comanche Investments - OGL. Donald T. Shepard and wife To Don Wallace - M/M. Essie Stephens To PHI Resources Ltd. - OGL. Hurnie Lucille Speer To PHI Resources Ltd. - OGL. Lee Silverstein Est To PHI Resources Ltd. - OGL. C.E. Sims, dec'd To The Public - Proof of Heirship. Hulan Sims, dec'd To Jerry Kiser - OGL. Annie Sims and others To Jerry Kiser - OGL. Jack Sims and wife to Jerry Kiser - OGL. Phillip Leonard Sims and wife To Jerry Kiser - OGL. Ted Sims and wife To Jerry Kiser - OGL. Floyd R. Sims and wife To Jerry Kiser - OGL. Ruth Sims To Jerry Kiser - OGL. Harry M. Sims To Jerry Kiser - OGL. Southwest Bk. - San Angelo To Investment Trust Co. - Transfer of Lien. J.M. Szabuniewicz, sub trust, To Investment Trust Co. - Sub. Trustee's Asgn. Robert Slampka To Ist. St. Bk. Ranger Transfer of Lien. Gene M. Snow To James W. Littlejohn - Asgn. Gene M. Snow To Dudley J. Nelson and others - Asgn. State of Texas To Alpha Omega Properties - State Tax Lien. C.M. Sneed Est. Dec'd To The Public - C-C Probate. David G. Stufman, trustee To Best Western Motel - Abstract of Judg. Lee Starr and others To Norma Jean Harlan and others - Contract and Agree. I.E. Schott and others to W.N. Miller - Warranty Deed. Lee Allen Searight and others To Tex. Elec. Serv. Co. - Esmat. Ruth Thorp, dec'd To The Public - Proof of Heirship. Calthe Thorp, dec'd To The Public - Proof of Heirship.

Carl Glen Turville and wife To Crain - Mortgage Serv. - D/T. DISTRICT COURT Gary Joe Hall - Driving While Intoxicated. Timothy Eugene Krias - Driving While Intoxicated. Sharon Lorette Howard Boaz - Theft over 20.00 and under 200.00. Roy Eugene Van Winkle - DWI. Clifford Lloyd Glasson - DWI. Kelly Elyse Smith - Possession of marijuana. Lisa Smith Smith - Possession of marijuana. Todd Edward Milnes - Possession of marijuana. Edward Coyte Sealy - Speeding. Garves Wayne Yates, Jr. - Speeding. Roy Lee Dunn - Speeding. Andy David Cleaver - Evading Arrest. Francisca F. Alvarado - DWI. Robert Lawrence Hudson - Furnishing alcohol to a minor. George Wayne Montgomery - Theft over 20.00 and under 200.00. Oleta Gwinn - Theft over 20.00 and under 200.00. Kenneth Don Kirtley - Possession of marijuana. HTH Trucking Inc. vs. Robert E. Storey and H. Bryant Barnes, DBA HSBH Petroleum Corp. - Verified Account. Sheryl Jean Wheeler vs. Mark Alan Wheeler - Divorce. Lannie Eugene Bennett vs. Jennifer Lea Bennett - Divorce. DBA Investments, Inc. vs. Mrs. Patty Jones and others - Receivship. State of Texas vs. Joseph W. Hopkins - Uniform Reciprocal Enforcement of Support. First State Bank - Rising Star vs. Thelma Spann - Judgement. Humancare Pharmacy Management Inc. vs. Blackwell Hospital - Judgement. Sharon Elaine Wells vs. Bentley Lowell Wells - Divorce. Enserch Exploration Inc. vs. Bobby Joe Alexander - Damages - Auto. Johnny Allen Tonn - Poss. of marijuana. John Daniel Reeves - Poss. of marijuana. Diana Lynn Nichols - Poss. of marijuana. Deborah L. Curocher Poss. of controlled substance - amphetamine. Deirda Kay Kesley - Poss. of a controlled substance - Amphetamine. Neil Wright McDaniel - Poss. of a controlled substance - amphetamine. Rebecca Ann McMillan - Poss. of a controlled sub. Carol Ramirez Valles - DWI. Mina Enterprises Inc. vs. Billy V. Stewart - Damages. Double River Oil & Gas Co. vs. B.B. Griffith and others - Receivship. Simon Esquivel vs. Tammy Esquivel - Divorce. Elida Iris Ashworth vs. Steven Wayne Ashworth - Divorce. PHI Resources Ltd vs. The Gulf Continental Corp. - Receivship. PHI Resources Ltd vs. Jack Stokes - Receivship. PHI Resources Ltd vs. Maury Anderson and others - Receivship. Debbie Fox Henson Williams vs. Joe Bob Oilfield Service - Deceptive Trade Practice and Consumer Protection Act.



The month of May has been designated as "family month" in the Church of God. Camp Inspiration is observing the "family month" theme in conjunction with their district camp meeting "family camp."

The camp meeting is to be held Friday, Saturday and Sunday, May 17, 18 and 19. The camp theme this year is "These Three Remain Faith, Hope, Love."

Speaker for this years camp meeting will be Dr. John Conley, President of Gulf Coast Bible College. He has served as president for approximately 10 years, prior to that he held pastorate in Kentucky, North Carolina and Virginia. The music director will be pastor Steve Seaton. Service schedules are: Friday and Saturday: 7:30 p.m. Sunday - Sunday School 9:00-10:00 a.m. Sunday worship 10:30-11:30 a.m. The public is cordially invited to come and worship each and every service.

PHI Resources Ltd vs. Maury Anderson and others - Receivship. Debbie Fox Henson Williams vs. Joe Bob Oilfield Service - Deceptive Trade Practice and Consumer Protection Act. The public is cordially invited to come and worship each and every service.

June 8-9. Registration will start at 9:00 a.m. on Saturday morning. A musical group, "Strawn Strings" will play on Saturday afternoon, while members drink free soda pop furnished by Strawn Security Bank. New board members will be elected. Awards will be given for greatest distance traveled for the oldest members present. Miss Verna Harris will tell of early schools. An effort will be made to locate all living former teachers of Thurber and they will be given special recognition at the 1986 Reunion. On Sunday Morning, a Memorial Service will be held to honor our departed members. People present will tell what they have done since living in Thurber. One member will review the life of his family in Thurber. Come and see who he will be! Lunch can be eaten at nearby cafes and overnight lodging can be found in towns near Thurber. A.L. "Chili" Sharp is in charge of arrangements.

Summer Classes To Register CJC-Cisco, Coleman June 3rd, May 29-30 Clyde and Abilene. Summer classes at Cisco Junior College will begin June 4 at all locations. Students may register from 9:00 a.m. to 4:00 p.m. and 6:00 to 8:00 on the following dates and locations: Cisco campus, Monday, June 3 in the Registrar's office; Clyde campus, Wednesday, May 29 and Thursday, May 30; Abilene campus, Wednesday, May 29 and Thursday, May 30. Coleman registration will be on June 3 at 6:00 p.m. at Coleman High School. The Cisco and Clyde campuses offer both day and night classes. The Abilene campus will offer night classes only. Night classes will only be offered at Coleman. For more information call the appropriate campus at one of the following numbers: Cisco- (817) 442-2567; Clyde - (915) 893-5976; Abilene - (915) 698-2212.

County Commissioners Put In Day With Various Business Items

Eastland County Commissioners put in a long day on various business items during the meeting in Commissioners Court Monday, May 13. Those present were Richard Robinson, Pct. 1, L.T. Owen, Pct. 3, and D.B. Dill, Pct. 4. Jack Blackwell, Pct. 2, was absent. County Judge Scott Bailey presided. A request was approved for North Ridge Corp. to cross County Road 215 in Pct. 3 with a pipeline. Raymond E. Beck made the request. Another request for a pipeline crossing was also approved - Gilbert Meredith of Enserch Corp. requested permission to cross County Rd. 165 in Pct. 1. Also granted was approval for the acceptance of roadways for Leon Valley Estates and approval of a Subdivision Plat. This is located off East Highway 80 adjoining the city limits of Eastland. The City of Rising Star requested a waiver of payment

in lieu of taxes on certain property. This was approved. A formal Resolution for Eastland County's participation in the Sesquicentennial Anniversary, 1986 was approved. Bids were opened for a backhoe purchase in Pct. 3, and it was found that the County had only one bid. This was from Case Implement Co., and the bid was accepted. A Pre-Budget Conference was held, and requests were received. The District Attorney was granted \$5,000 for a Computer and supplemental equipment. The Commissioners went into a discussion of structural and plumbing needs of the County Jail. It seems there is a drainage problem in one of the showers in a cell block. County Judge Bailey was authorized to contact Boone and Pope of Abilene, the firm which constructed the jail, about the matter. The firm is expected to send

a consulting engineer to deal with the problem. As the Commissioners considered the effect of the San Antonio Transit Case, they realized that this ruling could have a far-reaching effect for all County employees. After discussion the Commissioners passed a resolution stating that Eastland County intends to comply with Federal Wage and Hour Guidelines, after recognizing certain exemptions. Terms were set for the County Court (Civil, Criminal and Probate). Beginning in June, 1985 the County Court will begin the first Monday in June and end the first Monday in July. There will now be twelve terms per year. Bills, claims and accounts occupied more time as the session ended. A budget hearing will be held at the next meeting of the Commissioners Court, Tuesday, May 28, after the Memorial Day holiday.

Rubber Stamps at your Local Newspaper

Boyd Carpets Located in Comanche and Brownwood 915-356-5227, Comanche 915-643-5986, Brownwood Available for all your floor covering needs. Carpet and linoleums in stock for your every need. If it be new carpet, remodel or water damage. Call or come by for free estimates. Boyd Carpets In Comanche and Brownwood T40-Rs21

Majestic Theatre Eastland 629-1220 One Showing Only Each Evening OPEN 7:30 - STARTS 8:00 P.M. Sun. Mon. Tues. Bargain Nite All Seats \$1.75 Cat's Eye Follow the newest cat-and-creature game as played through the

Ranger Drive-In Theatre Ranger 647-3802 One Showing Only Each Evening OPEN 8:00 Starts At Dusk Sun. Last Day the COMPANY OF WOLVES

Closed Wed. & Thur. Starts Friday WATCH OUT FOR THE FORCE! POLICE ACADEMY 2 THEIR FIRST ASSIGNMENT

Next Friday Sat. & Sun. MISSING IN ACTION 2 THE BEGINNING CHUCK NORRIS AMERICAN WEST STORY CONTINUED

Baker Care Services 24 Hour Nursing LVNs - Aids - Sitters Home or Hospital 647-3976 Countywide - Experienced - References

CARPET REMNANT SALE New Room Size or Area Rugs. Good Used Carpet All Good Quality and Very Reasonable. Sat. & Sun. April 26 & 27. Bring Your Measurements to: 1413 Breckenridge Rd. in Eastland.

Century 21 EASTCO INC. 617-1302 647-1302 112 Railroad Ave. Ranger 619 Young Street, Ranger, FHA appraised home, frame, 3 Bdr., 1 bath, very good location. Ready to move in. 1504 Westland, Ranger, Cokhill Addition, energy efficient home, brick, 3 Bdr., 2 bath, CHA, fireplace, FHA appraised. 816 Cypress, large frame home, 3 Bdr., 2 bath, beautiful fireplace, 2 car garage with workshop plus carpet, FHA appraised. 471 Marston, 2 Bdr., 1 bath, close to downtown, easy terms. 1303 Young Street, frame 3 Bdr., 1 bath on 1/2 acre. This is a good business home. 606 Pine, Ranger, large frame, 3 Bdr., 2 bath, large den, good garden spot, needs some repair. 1223 Meadowbrook, Ranger, FHA appraised home, Meadowbrook Addn., brick, 3 Bdr., 1 1/2 baths. 1215 Lanier, large 5 Bdr., 3 bath, beautiful fireplace, basement CHA. 608 So. Marston, 3 Bdr., 1 bath, crilling fans, free standing fireplace on 2 1/2 acs, FHA appraised. 712 Paige, 3 Bdr., 1 bath, ceiling fans, free standing fireplace on 2 1/2 acs, FHA appraised. Hwy. 80 East, Ranger, frame 2 Bdr., 1 bath, 2 carport, pens, on 10 acres. German, frame home, 2 Bdr., 1 bath, storm cellar, 2 water wells on 1 1/2 acres, FHA appraised. Shirley Griffith 647-1635 Bobby L. Little 653-2379 Larry Armstrong 629-1683 Harvey Compton 647-3274 Donna McDonald 647-1291 Put Number 1 to work for you.

Nurse Aide Applications are now being accepted for Nurse Aide positions for all shifts. Join our health care team who provides good quality care for our VIP's (Very Important Patients). Good Benefits Such As: 1. Major Medical Insurance 2. Dental Insurance 3. Competitive Wages 4. Holiday Pay 5. Vacation Pay 6. Retirement & Savings Program 7. Stock Option & Stock Enrollment Program 8. Numerous Employee Recognition Programs 9. On the Job Training 10. Conti Education 11. Advancement Opportunities 12. Bereavement Pay 13. Educational Career Opportunities Apply in person, or contact Janie Stephenson, D.N.S. EASTLAND MANOR 1405 W. Commerce Eastland, Texas 76448

7:30 P.M. CISCO HIGH SCHOOL

"Snow White Due Monday



FANTASY LAND- The Ballet will be a delight for all ages. The public is invited. In the above photo are (L-to-R) Mirror- Holly Ritchie;

Queen- Shannon Anderson; Apple- Connie Chaney; and Mirror- Heather Duncan. (Staff Photo)



DAISEYS- Snow White and the Seven Dwarfs will be presented by the Ballet Studio on Monday, May 20, 1985, at 7:30 p.m. at the Cisco High School Auditorium. In the above photo are

(L-to-R) sitting- Ginny Cleveland, Lindy Duncan, DeAnn Rose and Shannon Roberts; standing- Julie Young and Danielle Corlee. (Staff Photo)



SEVEN DWARFS- The Narrator for the program will be Brad Hawari. In the above photo are (L-to-R), sitting- Amy Anderson and Annie Wright; Standing- Anna Odom, Mandi Senter-

fitt and Stacey Wheeler; sitting on a bench- Stacey Watson and Becky Elliott; Snow White- Jana Muller. (Staff Photo)



ENCHANTED FOREST- The summer program starts June 4. In the above photo are (L-to-R), kneeling- Jane Hounshell and Kelly

Mouser; standing- Carrie Conger, April Duncan, Treva Webb, Bridget McCulloch and Sarah Page. (Staff Photo)



AUTUMN WINDS- The film will consist of two Acts with a five minute intermission. In the above photo are (L-to-R), sitting- Christy Cozart and Nikki Vickers; kneeling- Leigh An-

na Walker and Stephani Heyser; Standing- Heather Lewis, Sunshine Duncan, Tessie Ingram, Kirsten Kent and Chanda Pittman; Fall Solo- Janet Glenn. (Staff Photo)



SPRING RAINBOW-- The ballet is choreographed by Becky Payne and Charis Johnson. In the above photo are (L-to-R), sitting- Nicky McCulloch, Sara Thomas and

Sarah Craik; standing- Kylie Midkiff, Ashlie Haines, Annie Parchman and April McCulloch; Mother Nature- Amanda McGinness. (Staff Photo)



**REMEMBER
the men
who can't
FORGET**

buy and wear a

VFW

Buddy Poppy

FROST CRYSTALS- In the first act there are four scenes and in the second act there are six scenes. In the above photo are (L-to-R), Becca Wright, Amy Abbott, Teresa Curry, Whitney Bishop, Gretchen Vickers, Lisha Luster, Jessica Keith, Jana Finley, Mandi Worthy, Cristal Rose. (Staff Photo)

**THESE 5 ITEMS ON SALE
SAT. - SUN. - ONLY!**

JIM CALDWELL MOTORS
314 W. Main
EASTLAND
629-2636
BRINGS YOU
THESE
IMPORTANT
TIPS...
YOU AUTO KNOW

Replace fuel filters periodically. This preventive maintenance can avert clogging of carburetor jets, and eventual carburetor failure.

Do-it-yourself headlight test: check reflection in a store window at night. You don't even have to get out of the car. See that lights are on, and aimed correctly.

Fancy video screens are being planned for auto dashboards. They're said to be simpler to understand than conventional instrument displays. In the future, satellite navigation that shows you on a video map where the car is, and the best way to get where you're going.

Are your seat belts working? They should self-adjust to let you move about, yet latch tight in case of a sudden stop.

Engine saver: manually shift into lower gears if your automatic transmission doesn't do it when climbing hills and long grades. Feed gas smoothly for best results.

New-Used Cars
Gasoline saver: the energy-efficient engines on your new (and late-model used) cars at Jim Caldwell Motors, 314 W. Main, Eastland, Texas 76448, 629-2636. Come see them soon.

Auto Repair
Gasoline saver: a car that's tuned just right by the knowhow service people at Jim Caldwell Motors, 314 W. Main, Eastland, Texas 76448, 629-2636.

Body Shops
Saving gasoline is one important job. WE'RE experts on body work. Let us repair and repaint dents and scratches to make your car look new again at Jim Caldwell Motors, 314 W. Main, Eastland, Texas 76448, 629-2636.

- ★ OLDSMOBILE
- ★ CADILLAC
- ★ PONTIAC
- ★ BUICK
- ★ GMC TRUCKS

SERVICE SECOND TO NONE
ASK JIM ABOUT HIS
'DEAL OF THE WEEK'

CHECK
OUR
BODY SHOP!

SUPER

DUPER

East Hwy. 80 Eastland
7AM - 10PM SEVENDAYS
Prices Effective Through
Tuesday, May 21, 1985

Hawaiian Days Sale!

MEAT

U.S.D.A. Boneless Chuck Roast \$1.09 lb.

T.V. Boneless Hams \$1.59 lb.

SUPER DUPER Large Eggs **49¢ doz.**
LIMIT 2

All Flavors Coke **88¢ 2 Liter**
LIMIT 3 With \$15.00 Purchase.
Next at 99¢ each.

California Medium Hass Avacodoes **3¢ each 84 ct.**
LIMIT 3 - Next at 10¢

California Large Strawberries **88¢ quart**

Generic Bread **39¢**
1½ Loaf

Fresh as the mornin' dew
PRODUCE

Bananas **3 lbs. For \$1**

Pineapple **59¢ lb.**

Del Monte Catsup

79¢

32 oz.

STORE COUPON
Cut and Redeem At Store
Expires May 19, 1985

50¢ OFF
Gooch German Sausage
12 oz. Pkg.
LIMIT 1 Per Customer

Hawaiian Punch

79¢

46 oz. Cans
or
3 pkg. cts.

Del Monte Pineapple

59¢

15¼ oz.

DAIRY DELIGHTS

Blue Bonnet Margarine **59¢**
1 lb. Cnt.

Five Alive **\$1.29**
64 oz. Cnt.

B.B.Q. Spare Ribs **\$2.99**
lb.

2 Piece Chicken **99¢**
with Extras

629-1201

Blooming Mums

\$8.99

H.B.A.

Close-Up

Toothpaste

\$1.29

Reg. or Mint
4.6 oz.

FROZEN FOOD

Totino's Pizza **99¢**

Morton Dinners **89¢**
11 oz.

The Flour Shop

Baked Fresh Daily

Fresh Strawberry Cake **\$4.99**

SATURDAY ONLY!
4 Ft. Strawberry Cake **\$2.99**
Piece

Lights From The Christian World

by Josephine Cleveland

"For by grace you are saved through faith; and that not of yourselves; it is the gift of God; not of works lest any man should boast." (Ephesians 2:8,9)

DREAM

David, the psalmist, was a successful musician, a general of an army, a noted writer, and a king of a great nation. Yet, none of these accomplishments were fulfillment of his greatest desire and dream. More than anything, he wanted to build a temple of the Lord in Jerusalem.

He had plans drawn, the site selected, and the materials purchased, but he never accomplished his dream. He thought that he

was a failure, and people who knew of his desire and plans thought of him as a failure.

His son, Solomon, later wrote in the Word, "And the Lord said to David, my father, Whereas it was in thine heart to build a house unto my name, thou didst well that it was in thine heart." (1 Kings 8:18).

God gave him the credit for his accomplishment even though it was never seen visibly by him. Take courage, friend, Trust Him who knows all. He knows what is in your heart, today. He will reward you according to your obedience and faithfulness.

Speak Up
Your voice comes from

Leadership Is Focal Point In 4-H Program

Leadership is a strong focus in the 4-H program in Eastland County. 4-H teaches numerous aspects of leadership, one such focus is currently on communication. A good leader must be able to communicate a message to the group.

Whether you are "saying a few words" at a committee meeting or making the main speech at a national convention, follow these important steps to insure success:

Stand Up
Don't slump, don't cling, don't drape yourself over the nearest piece of furniture. Don't make distracting motions or display distracting mannerisms.

Speak Up
Your voice comes from

your abdomen, not your throat. In speaking, use your lips. Project your words clearly by using your lips. Assume good, relaxed posture, use your diaphragm and your lungs to speak any words, poem or tongue twister using your lips to pronounce each letter - especially those on the ends of words. When speaking, speak over the heads of the first rows to the last third of your audience. Vary your emphasis, now powerful, now softer. Vary your speed, now faster, now slower. Try

to keep your voice low and well-modulated; and raise the voice occasionally for variety, especially if telling a human interest story, an anecdote or imitating someone, or to stimulate an audience to action.

Deepen your voice for sincerity, for conviction and especially when you swing into your last sentences. Pause occasionally, especially at the end of your last sentences or paragraphs or sections of your speech. If you tend to be nervous, be especially careful that you don't talk too fast and too shrilly.

Shut up — With A Snap
Quit when you are through. A long, drawn-out,

rambling and aimless conclusion is an anti-climax and destroys the good impression you have made previously. Deepen the voice as you say, "And now, in closing..." or "To summarize briefly..." or "Finally..." say a few, very few, sentences, and close with a ringing sentence or a deeply sincere one. Thank the audience (if you are giving a formal speech) and sit down.

The first week in June, 20 4-H'ers will be exercising communication skills at the State 4-H Roundup, held at Texas A&M University. Good Luck 4-H'ers and best wishes on your endeavor.

Summer Calendar Of Texas Festivities

AUSTIN — Sun time is fun time in Texas, and the variety of feasts, fairs, festivals, fetes and fiestas is as varied as are Texans themselves.

The Summer Calendar of Texas Events, just issued by the State Department of Highways and Public Transportation, lists more than 550 different events ranging from rodeos to rides on steam trains; from arts and crafts shows to aerobics. And there'll be plenty of fireworks, too, since this Calendar includes celebrations of the nation's Independence Day.

There's gospel singing and sandcastle building; tractor pulls and antique shows. There are roller-skating championships and the Miss Texas Pageant. In myriad ways, Texans love to celebrate everything from vegetables to vintage automobiles.

Free copies of the Calendar tell where and when it's all happening during the months of June, July and August. They are available at any Texas Highway Tourist Bureau, or by mail from Calendar of Texas Events, P.O. Box 5064, Austin, Texas 78763.

Kincaid Real Estate

100 S. Seaman Eastland, Texas 76448

629-1781

Residential

Located in Olden. Brick 3 bedroom, 2 bath 1800 sq. ft. home on 1 acre, \$46,500. Owner finance.

Frame 3 bedroom 2 bath, 1900 sq. ft. fenced yard and garage. Assumable V.A. Loan. Some owner financing, \$41,000. or "take offer."

2 Bedroom frame house. Big trees and fenced yard with owner financing.

5 acres and 1750 sq. ft. Frame home 3 bedroom, 2 bath, in Morton Valley. Owner's finance, \$59,500.

EXCELLENT BUY OR TRADE Brick 3 bedroom, 1 1/2 bath C/H & C/A approx. 1300 sq. ft. Owner will trade for house or acreage in or near Eastland.

Acreage

5 acre tracts located in Olden, water and gravel road to land. Owner finance. \$10,000.

40 acres cultivation, 50% minerals. South of Carbon. \$750.00/acre.

Eddie Kincaid (817)629-1505 **Aubrey Or (817)629-3149**
Bonnie (817)629-1804

PAT MAYNARD REAL ESTATE

629-8568 EASTLAND HIGHWAY 80 EAST 442-1880 CISCO

INVESTORS BARGAINS!

Lot on N. Lamar. \$2,150.
Only one left, perfect lot for mobile home. \$3,500.
For Mobile homes or new construction, 78'x125' lot. \$3,710.
To be moved, 3 BR, 2-story frame with porch and balcony. \$8,725.
2 BR, 1 1/2 bath in Cisco, large rms., only \$13,000.
Commercial lot on N. Seaman. \$8,000.
27' Avion travel trailer, good condition. \$6,000.

EASTLAND HOMES AND LOTS

3 BR, 1 1/4 bath brick, CH/CA, builtins, carpet, big fenced yard. \$75,000.
Elegant 3 BR, beautiful inside and out, corner lot, Ideal for home or business, price reduced.
3 BR frame, CH/CA, big closets, large rms., pretty yard, 2-car garage with super size workshop. \$56,900.
Just finished, pretty 3 BR, 2 bath brick with many extras in exclusive Oakhollow Addition. \$67,500.
Nice neighborhood, 2 BR with formal liv. rm., dining, den, fenced yard, storage bldg. \$42,500.
2 BR, 1 1/2 bath frame, large rms., fireplace, big yard, lots of trees, plus Apt. in back that stays rented. \$48,500.
Close in, large 2 BR frame, formal din. rm., breakfast nook, fenced yd., detached garage with storage. \$32,500.
Executive home, 10 rms., 2 baths in main house, plus huge playroom, utility and bath. Many extras including 2 fireplaces, sprinkler system and suana.
1 1/2 Story, 3 BR frame, Ben Franklin fireplace in den, sep. utility. \$25,500.
2 BR, large dining area, CH/CA, fenced yd., storage bldg., covered patio. \$43,000.
Comfortable 2 BR frame, CH/CA, fireplace, big fenced yard. \$34,000.
2 BR frame on large lot, fireplace, dishwasher, stove, refrig., 2-car garage. \$42,000.
3 BR frame with brick trim, CH/CA, carpet, fenced yard. \$40,000.
2 BR, 1 1/2 bath frame, could be 3 BR, carpet, drapes. \$27,000.
2 BR home on large corner lot, assumable loan, mobile home hookup. \$29,000.
Close in, 3 BR, 2 bath, carpet, fenced, nice. \$26,500.
2 BR frame, chainlink fence, garage, carport and storage. \$30,800.
3 BR, 1 1/2 bath, CH/CA, den, fireplace, large backyard, privacy fence. \$59,500.
Near Eastland, 1 and 2 ac. lots. \$8,000 and \$16,000.

LAKE PROPERTY

Lake Leon, newly remodeled 2 BR, 1 1/2 bath, could be 3 BR, den, fireplace, fully insulated, Staff meter, deep water. \$48,000.
Lake Leon, 14'x72' 2 BR, 2 bath Mobile home, CH/CA, dishwasher, storage bldg. \$28,500.
Lake Leon, 3 BR, 2 bath on 1.4 ac., CH/CA, builtins, carpet, beautiful yard. \$69,500.
Lake Leon, 3 BR, 1 1/2 bath on deeded lot with deep water frontage. \$64,000.
Lake Leon, 2 BR, 2 bath on 2 1/2 deeded lots, 22'x35' liv. rm., carpet, Staff water, fireplace. \$59,000.

HOMES: RANGER, OLDEN, CARBON AND GORMAN

3 BR and 5 lots in Carbon. \$8,500.
Choice Homesites near Olden, beautifully wooded, sizes vary from 3 to 18 ac. tracts. 28 lots in Ranger. \$8,500.
5 acres in Ranger. \$7,500.
Olden, 3 BR, 1 1/4 bath brick on 1 ac., CH/CA, carpet, builtins. \$49,500.
Ranger, 3 BR, 2 bath on 3.364 ac., 2 fireplaces, lots of cabinet space, some minerals. \$67,500.

FARMS AND RANCHES

220 ac. N. of Olden and W. of Ranger, Co. Rd. frontage on one side and Hwy. frontage on the other. 55 additional ac. available. \$550 per ac.
75 ac. near Rising Star, water well, windmill, 1 tank, some cultivation. \$32,250.
164 ac. close to Cisco on Hwy. 183, fenced, tank, shallow water well, \$625 per ac., will divide in half, nice homesite.
107 ac. N.E. of Rising Star, water well, 5 tanks, good coastal, possible owner finance. \$1,000 per ac.
320 ac. between Eastland and Cisco, 4 tanks, good fences, easy access, owner financing available. \$600 per ac.
166.5 ac. Dead Horse Creek area, pecan orchard, rest cleared, coastal, hay barn, pens, city water in front of prop., 1/4 min., \$1,250 per ac.
80 ac. near Union Center, part cleared, good fences, will sell all or part. \$800 per ac. for all.
50 ac. Nimrod area, mostly wooded, good hunting, spring fed tank, good fences. \$50,000.
71 ac. Pioneer area, new fences, all in brush and trees, mobile home hookup. \$550 per ac.
62 and 58 ac. between Union Center and Okra, good fences, coastal. \$650 and \$750 per ac.
160 ac. close to Eastland, Co. rd. frontage, water line in front of prop., good fences, owner finance. \$600 per ac.
48 ac., heavy brush on half, some pecan trees, sandy land, near Romney. \$850 per ac.
182 ac., 2 tanks, water line in front of prop., 1/2 min., income off prod. wells, good terms. \$155,000.
50 ac. N. of Eastland with woods and creek, some pecan trees. \$49,500.
40 ac. S. of Cisco near Romney, water well, 1 tank, native pecans, 1/2 of what Seller owns of min. will go. \$37,500.
28 ac. near Cisco on old Hwy. 80. \$28,500.
160 ac. off Hwy. 183, 8 mi. S. of Cisco, 100 ac. cultivation, remainder in trees. \$600 per ac.
40 ac. off FM 2526 out of Carbon, nearly all in love grass, some min., \$900 per ac.
245 ac. S. of Carbon, all in cultivation, 8 wells, irrig. pit, some min. \$850 per ac.

COMMERCIAL

Former Red Gap Western Wear Bldg., 120 East, Cisco, 1 1/2 wooded ac., Interstate frontage, prime location for store, restaurant, RV campground. \$75,000.
Hwy. 80 E., Cisco, 198' frontage, 1,344 sq. ft. bldg., plus 2 BR, 2 bath home in back. All for only \$65,000.
To be moved, custom designed 14'x52' portable office bldg., new condition, CH/CA, coffee bar, special insulation, phone system. \$21,500.
Eastland, approx. 4,500 sq. ft. brick bldg. on 2 large corner lots, fenced yard, area, paved parking, good location on busy street. \$85,000.
On Miracle Mile, Hwy. 80 E., Eastland, 4 ac. with additional ac. available.
Eastland, 1 1/2 story brick bldg., houses 2 businesses, stays rented. \$90,000.
Established business for sale in Eastland. Call for details.
Eastland, 2-story brick bldg., approx. 10,000 sq. ft., near Square, \$28,500.
1-20 frontage, Eastland, 1 to 5 ac., commercial use only.
Downtown Cisco, 3-story Mini Mall for sale, 8 remodeled business spaces and possibility of more. \$50,000.
Office space for lease, new Maynard Bldg., Hwy. 80 E., Eastland.
For Rent: Spaces in Cisco Mini-Mall, utilities paid.

WE BUILD NEW HOMES ON YOUR LOT OR OURS. WE HAVE OTHER HOME, LAND AND COMMERCIAL LISTINGS. WE APPRECIATE YOUR BUSINESS!

WAYNE CHANDLER ASSOCIATE 734-2782 **KAY BAILEY ASSOCIATE 629-2363** **ANN WILLIAMS ASSOCIATE 442-1880** **PAT MAYNARD BROKER 629-8063** **CINDY FOSTER ASSOCIATE 629-8193** **ROSEMARY FERGUSON ASSOCIATE 653-2373** **NOLAN BUTLER ASSOCIATE 629-8106**

Town & Country REAL ESTATE

Barbara Love, Inc. Highway 80 East Eastland, Texas 76448
629-1725 629-8391

EASTLAND

BEAUTIFUL OAK TREES AND LOTS OF SPACE surround this 2 BR frame home on 4 lots. See today! \$110 THIS IS A REALITY! About 2,000 sq. ft. of luxury living. Must see! E11
EXCLUSIVE AREA New 3 BR, 2 bath brick home, lot 1.2
HEY! FIX ME OVER! Into duplex, or 3 BR, 2 bath home E23
NICE BEGGINNER HOME, 3 BR, cent. H/A, remodeled F4
CLOSE IN 4 BR, 2 bath remodeled E36
EXTRA NICE small brick 3 BR, 1 1/2 bath home on 5 acres E18
COMPLETELY REDONE older 3 BR, 2 bath home, Cent. H/A, many extras E3
BEGINS OR BETTER HERE! Small, cozy 3 BR, 1 1/2 bath, Cent. air, fenced yard, immaculate E13
HOME FOR GROWING FAMILY! This frame home HOME FOR GROWING FAMILY! This frame home has 4 bedrooms, cent. H/A, alt. garage w/ site FHA VA or VA loan. Financing E19
ALL IN NETS IN your 1 mdy's 3 BR, 2 bath, brick, 2 living areas, 2 lots E12
DARLING COTTAGE! Ideal if yours is a small family. 2 BR, 1 1/2 bath brick, only 4 yrs. old E1
IT'S A GREAT DEAL! 3 BR, 2 bath, remodeled setting in City, in ground pool. Call for details! E17
CHAIRMAN OF AN OLDER HOME, convenience of a modern one 2 BR, 1 bath, Cent. H/A. Must see to appreciate E2
FHA VA FINANCING for qualified buyer. Near 2 BR, 1 bath, vinyl siding. Call today! E22
NICE, LARGE HOME, 2 1/2 bath, Assumption with 2nd on part of the down payment E21
NEED LOTS OF ROOM? VA appraised 3 BR, 1 bath older home, cent. H/A E19

OTHER

RANGER - Large 2 BR frame home on tree shaded corner lot near RJC Greenhouse, atg. bldg. 05
EX-30 PORTABLE BUILDING and lot, old house, financing to qualified buyer E13
RANGER - close in, good area, 3 BR frame, fenced yard 010
OLDEN - extra nice double wide on large lot with workshop 018
LAKE LEON - SURROUNDED BY TREES! Mobile home with a/c on lakeview lot, \$30,000 022
RANGER, FIVE SOLD BR on corner lot, fenced back yard, shop. \$42,000
GORMAN, BRICK HOME only 4 yrs. old! 4 Bedrooms, 2 baths, large lot, fenced. Assumption or new loan 07
RANGER - 3 BR, 1 1/2 bath, brick home, fenced back yd., kit. appl. 021
OLDEN-2 ACRES with small frame house, garden, fruit trees. 019
RANGER - 26 Lots, Lackland Addition, undeveloped. Excellent financing 02
CISCO - CLOSE-IN on paved street, 3 bed., 1 bath, frame home, single garage. 08

BARBARA LOVE HAZEL UNDERWOOD ELMER FOSTER ROGER BAILEY CHARLTON LEWIS
642-1197 629-1188 629-1972 442-3343 734-2508

**Canners Tested
June 10-24**

Home canning season is fast approaching. Now is the time to get your canning equipment out of storage.

The Texas Agricultural Extension Service recommends that all home pressure canners with a dial gauge should be tested for accuracy each year. The Eastland County Extension Service office will be testing canners in the near future at the following locations and dates: June 10 Rising Star Senior Citizen Center; June 14 - Ranger Senior Citizen Center; June 17 - Eastland Senior Citizen Center; June 19 - Gorman Senior Citizen Center; and June 24 - Cisco Senior Citizen Center. If you are interested in having your pressure canner dial gauge tested, bring your canner lid in between the hours of 10:30 - 11:30 a.m. at the centers.

There is no charge for testing your canner gauge. Along with this free service, Janet Thomas, Eastland County Extension Agent, states that she will have food preservation bulletins available. Mrs. Thomas states that persons wishing to have canner gauges tested other than these scheduled times are invited to call the Extension Service Office, 629-2222, and make an appointment to bring your lid into the Extension Service office, basement of courthouse.

As food prices increase, many homemakers see home canning and freezing as a way to reduce home food costs. Homemakers are encouraged to preserve their foods by the recommended methods at this time, the Eastland County Extension Service Office has an ample supply of free food preservation bulletins that are available upon request.

Qualified Bidders Invited

Qualified Bidders are invited to bid on the various bid packages to construct a 9,000 square foot Gymnasium-Classroom Building at the Elementary School Campus of Eastland Independent School District.

Bids will be received until 3:00 p.m. CDT Thursday, May 23, 1985 at the High School Cafeteria, 900 Plummer, Eastland, Texas 76448. Bids received after this time will not be accepted. All interested parties are invited to attend. Bids will be opened publicly and read aloud. Contract Documents may be examined at the Architects' Offices in Dallas and at the Eastland Independent School District Superintendent's Office.

Copies of the above documents may be obtained at the office of the Architect, 5301 South Westmoreland, Dallas, Texas, in accord with the Instructions to Bidders upon depositing the sum of \$50.00.

A bona-fide Bidder, upon returning the documents in good condition within ten (10) days after opening of said bids, shall be returned his deposit in full. NO REFUND on documents returned later than ten (10) days of bid opening will be obligatory.

Bid Security in the amount of five percent (5%) of the

Bid must accompany each Bid in accord with the Instructions to Bidders.

The Board of Trustees, Eastland Independent School District, reserves the right to waive irregularities and to reject all bids. (5-12, 5-16, 5-19)

HOUSE OVERFLOWING? CLEAN UP WITH CLASSIFIED ADS

SEEDS FROM THE SOWER
By Michael A. Guido, Metter, Georgia

Early one morning Richard Almo of Pittsburgh was walking home after working all night. Looking into a ravine, he saw a living man's head. The man had become helplessly entrapped in the bog. Descending into the ravine, Richard and his friends tied a rope beneath his shoulders and rescued him.

How aptly this illustrates our plight before the Saviour delivered us. Gratefully we say with David in the 40th Psalm. "He brought me up also out of an horrible pit, out of the miry clay."

Next, He sets us up - "He set my feet upon a rock." What an exchange - a boulder for a bog. Whom the Lord saves. He secures on a firm foundation.

Then, He holds us up. "He established my goings." I watched an engineer at work. Into his forge he put two pieces of iron and brought them to a white heat. Then he placed them under his hydraulic hammer and welded them together. They became one, never to be separated. Just so, the Christian is united to Christ. Finally, He tunes us up - "He hath put a new song in my mouth, even praise unto our God." Music was born in the heart of God. The one who has God in his heart has a song in his mouth. Are you in the mire or in the choir?

drive 55
the Texas

Public Auction
SATURDAY MAY 25th, 10:00 A.M.
"SALVAGE CENTER" 1590 N. GRAHAM
STEPHENVILLE, TEXAS.

.....
LOST OUR LEASE, EVERYTHING GOES
TOOLS, VEHICLES, SPORTS ITEMS,
HOUSEHOLD GOODS, SHOP TOOLS, WE
HAVE A LITTLE OF EVERYTHING AND
SOMETHING FOR EVERYBODY!
.....
DROP BY & LOOK.
.....
Keith Carey Auctioneers
TXS-016-0004
119 DIVIDEND CT., ARLINGTON, TEXAS.
(817) 265-1852

T 40-21

HERE'S THE BEEF!!

Newspapers Deliver Readers Of All Incomes

Every category of Texan reads the newspaper, regardless of their income. And as income increases - so does the readership of Texas newspapers.

Income	Percent Reading
\$50,000-plus	74.5%
\$30-50,000	77.2%
\$20-30,000	70.9%
\$10-20,000	72.3%
Under \$10,000	63.9%

Newspapers reach Texas audiences of every income bracket.

SOURCE: 1984 Consumer Data Service (CDS) Survey of Texas Consumers

(This newspaper is a member of the Texas Newspaper Advertising Bureau)

TEXAS NEWSPAPERS
Read By One-And-All

GREAT GOODYEAR GETAWAY SALE!

Get your car ready for some great driving days ahead with new tires you won't have to worry about. Some of our most popular tires are on sale now!

Sale Ends June 1

STEEL BELTED \$48 Custom Polysteel Radial*

- Gas-saving radial ply construction
- The strength and durability of steel cord belts
- Smooth-riding body plies of polyester cord

*Rib count and tread design vary with tire size

SPECIAL SUMMER VALUE!

Power Streak II \$2875

Whitewall Size	SALE PRICE No trade needed	Whitewall Size	SALE PRICE No trade needed
B78-13	\$29.90	H78-14	\$41.65
C78-14	\$32.00	E78-15	\$35.25
D78-14	\$33.10	F78-15	\$37.40
E78-14	\$33.85	G78-15	\$40.25
F78-14	\$36.00	H78-15	\$42.30
G78-14	\$39.15	L78-15	\$44.45

GOODYEAR BIAS BELTED

Cushion Belt Polyglas \$3485

Whitewall Size	Everyday Low Price With ad tire	Whitewall Size	Everyday Low Price With ad tire
D78-14	\$39.50	H78-14	\$49.95
E78-14	\$40.65	G78-15	\$48.35
F78-14	\$44.20	H78-15	\$50.65
G78-14	\$47.65	L78-15	\$52.95

LIGHT TRUCK FAVORITE!

Wrangler Radial RV \$8995

Outline White Letter Size	Load Range	SALE PRICE No trade needed	FET
9R15	B	\$100.95	\$ 18
10R15	B	\$114.25	\$ 62
31-1150R15	B	\$121.45	\$1.60
33-1250R15	B	\$134.05	\$2.84

One-Stop Service For U.S. Cars, Imports, And Most Light Trucks

LUBE, OIL CHANGE & FILTER \$15

- Includes up to five quarts oil
- Special diesel oil and filter type may result in extra charges

TRANSMISSION MAINTENANCE \$41

- Service not available for Honda or Mercedes Benz
- Replace fluid, pan gasket, and filter on vehicles so equipped

GOODYEAR "40" BATTERY \$3495

Dependable cranking power for small and mid-size cars. Maintenance-free construction - never needs water in normal service. 40-month limited warranty. Premium power, value price.

Installed, Group Sizes 22F, 24, 24F (Limited Quantities)

QUICK CREDIT!

Credit card convenience from Citibank for all your automotive needs. Pick up an application now at your nearby Goodyear retailer. Use The Silver Card nationwide at any participating Citibank.

Goodyear retail outlet. You may also use these other ways to buy: American Express, Carte Blanche, Diners Club, MasterCard, Visa.

PRICES, LIMITED WARRANTIES, AND CREDIT TERMS SHOWN ARE AVAILABLE AT GOODYEAR AUTO SERVICE CENTERS. SEE ANY OF THE BELOW LISTED INDEPENDENT DEALERS FOR THEIR COMPETITIVE PRICES, WARRANTIES, AND CREDIT TERMS. AUTO SERVICES NOT AVAILABLE AT STARRED LOCATIONS.

GOODYEAR

Everisto Jimenez
Manager

315 E. Main
629-2662

Hours: 7-6 Mon. - Fri.
7-5 Sat.

GILMORE RADIATOR and AUTOMOTIVE

General Auto Repair

Brakes, Engine Overhaul, Transmission Service

Complete Cooling System Service

Cleaning Repair, Recore of Auto, Truck and Industrial Radiators
Heater cores, waterpumps replaced and system flushed.

Complete Automotive and Farm Equipment Airconditioning Service

System diagnosis and charging condenser & evaporator repairs System overhaul and repair
Hamby Rd at FM18 Clyde 893-4852

U-Save Pharmacy

Enjoy Our Drive-In Window Service
Convenient Call Ahead
Good Parking



Open 8:00 - 5:30 Weekdays
8:00 - 1:00 Saturday
201 S. Daugherty
629-1166

RED HOT SPECIALS WHILE THEY LAST...

Melody Home



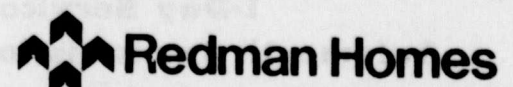
Hwy 377 6 mi. South Of Stephenville

(817)968-6228

Two Locations To Serve You Better
MidCity Homes Inc.

16 Wide Headquarters

FLEETWOOD



3 Bedroom 1 1/2 Bath
STARTING AT

\$13,900

I-20 Eastland,

(817)629-8532

Area News Briefs

RANGER

Pam Rose, R.N. has been named Ranger General Hospital Employee of the month. Mrs. Rose has been employed by RGH since September, 1982. She is the 7-3 R.N. Supervisor, O.R. Supervisor, and Infection Control Nurse. Her dedication and pleasant personality has made her an asset to the Hospital. The Department Supervisors of Ranger General Hospital choose an employee to be honored each month.

Ranger Dairy Queen has received the International Dairy Queen's Silver Cone Award, an honor given to Dairy Queen establishments with an increase of over 500 customers per year. Michael Cunningham and Hilary Vasquez are co-managers of the local Dairy Queen, and they take special pride in the training of their staff.

The Ranger High School Class of '85 will have a 20 year Class Reunion on Saturday, June 8. The Class will meet at the Little League Ball Park at 2 p.m. On Saturday night there will be a Little League Old Timers Softball Tournament. All Class members and friends are urged to attend.

Food commodities will be distributed in Ranger on Thursday, May 23 at the Senior Citizens Center in the Joseph Bldg. on Main Street. The hours will be 8 a.m. to 3 p.m.

RISING STAR

The Chamber of Commerce will sponsor a Playday each third Saturday during warm weather, beginning June 14. The rodeo arena will be used. Repair work is underway now on the bleachers, and donations are coming in. Some of the first donors were Gene Hicks, Murdoch Brangus and Quarterhorse Farms, and Mildred Childers. The Playdays will be open to all ages, and will include such classes as Western Pleasure, barrel racing and pole bending.

The Chamber of Commerce has received state and federal rules and regulations for operation Bingo - and some of the paperwork to be completed. Costs for setting up the game are being investigated.

The George Hill, Elm, Nickle Hill and Hallmark schools will have a Homecoming at the Union Center Clubhouse, five miles north of Rising Star, on Saturday, May 25. Everyone is invited to attend. There will be a basket lunch at noon.

Commodities will be distributed at the Senior Citizens Center Monday, May 20. The hours will be 1 p.m. to 3 p.m.

EASTLAND

Order of the Eastern Star No. 280 will have a rummage sale Thursday and Friday, May 16-17 at 509 East Pershing St. Hours will be 8 a.m. to 6 p.m.

Publishers of the Eastland County newspapers are considering a redesign of the papers to a new format which is labeled SAU, or Standard Advertising Unit. Under this plan, the papers would go from an eight-column wide pages to six-column wide papers. This would reduce the columns per page, but widen the individual columns. Almost all other papers have gone to this format. Opinions from readers from the Eastland County - and Baird - papers are welcome.

The Eastland Chamber of Commerce has been flooded with requests for deer and bird hunting leases for this fall. Manager James Wright reports. Land owners who would like to list their hunting site may do so by calling 629-2332.

Food commodities will be distributed in Eastland on Wednesday, May 22 at the Senior Center on Park Hill. The elderly and handicapped may come from 9 a.m. to 12:00, and all other from 1-2 p.m.

CISCO

Lana Hogan and Vickie Stephenson are the recipients of the Sue Witzsche Memorial Scholarship for the 1985 fall semester. Lana, a Sophomore at Cisco Junior College, plans to earn a degree in social work from Tarleton State University. Vickie is a 1985 graduate of Cisco High School, and plans to attend Cisco Junior college and work part time. The Memorial Scholarship was originated by Cisco Service Club members in honor and memory of club member Sue Witzsche.

Food commodities will be distributed in Cisco on Tuesday, May 21 from 8 a.m. until 1 p.m. The location will be in the Gas Light Apartments lobby, 802 Conrad Hilton Ave.

The Church of the Nazarene Ladies Fellowship will sponsor a spaghetti dinner at 6 p.m. Saturday, May 18. The Senior Citizens Rhythm Band will entertain.

George and Anna Brazell, well-known teachers at Cisco Junior College, have retired. Mr. Brazell has taught psychology and sociology, while Mrs. Brazell has taught journalism and photography. They have been at CJC for 18 years, and have been in the teaching profession for 35 years. They will continue to live on their stock farm near Desdemona.

CARBON

On Wednesday, May 22 the Commodities will be distributed from a van near Granny's Grocery. The time will be 3:30 p.m. to 4:30 p.m. All those eligible may apply.

HOSPITAL REPORT

Eastland Memorial Hospital

George P. Loukas
Judy Rae Garner
James Robert Gilkey
Mickey Wayne Kitchens
Glenn B. Liles
Patricia Gay Koonce
Victoria Annette Gonce
Neva Ann White
Bessie M. McCollum
Jean I. Fisher
Faye R. Tallent
Guadalupe Paramo
Carrie P. West
Vernon L. Frasier
Bill J. Johnson
Nova Ada Fehl
Ella A. Medford
Margie A. Jenkins
Baby Girl Gonce
Baby Girl Koonce
Manon Maybelle Cox

RANGER GENERAL HOSPITAL

Ellen Holsey
Maston Christmas
Fannie Donnell
Anna McEver
Willie Sutton
Jackie Ayson
Gussie Leverette
Vera Pearson

County Cancer Society To Meet

The Eastland County Unit of American Cancer Society will hold a business meeting Tuesday, May 21, at 6 p.m. in the Texas Electric Ready Room in Eastland.

The public is invited to come at 6:30 and bring a salad or casserole for a salad supper and to view the video "Cancer Research Update" by Dr. Frank Rauscher, vice-president of Cancer Research of the American Cancer Society.

Eastland Outreach Ministries Will Not Conduct Services Sunday, May 19

Eastland Outreach Ministries will not be conducting services this Sunday, May 19. Pastor Ablin will be speaking at a Spiritual Renewal Weekend in Abilene. The fellowship members will be traveling to Abilene on Sunday morning to join in the Renewal

Weekend at Grace Lutheran Church. The themes for the Renewal Weekend are "Abiding in Him through His Spirit", "Walking with Him in the Spirit", and "Standing Firm in the Spirit". Pastor Ablin will be speaking for the morning worship services at 8:30 a.m. and 10:45 a.m. on

Sunday and for two evening services at 7 p.m. on Sunday and Monday evenings. Grace Lutheran Church is located at 1202 South Pioneer Drive in Abilene.

Legal

PUBLIC NOTICE CONTRACTORS' NOTICE OF TEXAS HIGHWAY CONSTRUCTION

Sealed proposals for constructing 44,686 miles of Seal Coat on various limits in Eastland, Stephens, Brown, Coleman and McCulloch Counties, on US 80, US 180, US 84, US 67, US 377, US 183 & FM 3022, covered by CSB 7-4-68, CSB 11-8-16, CSB 11-9-44, CSB 54-6-49, CSB 78-3-23, CSB 128-3-26, CSB 128-4-19, CSB 257-1-24, CSB 3103-2-3 & CSB 404-2-19 will be received at the State Department of Highways and Public Transportation, Austin, until 9:00 a.m., June 6, 1985, and then publicly opened and read.

Plans and specifications including minimum wage rates as provided by Law are available for inspection at the office of B.R. Russell Resident Engineer, Brownwood, Texas, and at the State Department of Highways and Public Transportation, Austin, Texas. Bidding proposals are to be requested from the Construction Division, D.C. Greer State Highway Building, 11th and Brazos Streets, Austin, Texas 78701. Plans are available through commercial printers in Austin, Texas, at the expense of the bidder. Usual rights reserved. (5-19, 5-26)

Auction Market Report

The market at Eastland Auction was on a run of 875 head of cattle, 352 hogs, and 39 sheep and goats at its sale Monday and Tuesday according to David Coan reporter. Very active and strong with all cattle selling higher.

Butcher calves: choice, 55-60; good, 52-55.
Cows: fat, 31-39; cutters, 34-41; canners, 30-37; stockers, 42-50.
Bulls: bologna 45-48;

stockers, 48-68.
Stocker Steer Calves: choice, 70-94; good 65-77.
Stocker Heifer Calves: choice, 64-72; good, 57-55.
Feeder Steer Yearlings: choice, 64-74; good, 60-66.
Feeder Heifer Yearlings: choice, 62-66; good 54-64.
Cows & Calves: good, 500-600; plain, 400-500.
Top Hogs 39-42.75
Sows 35-38.00
Boars 28-33
Pigs 40-65

Nimrod Homecoming To Be Sunday

Nimrod Homecoming will be Sunday, May 19, at Nimrod Baptist Church and Community Center with O.L. Rodgers bringing the message.

There will be dinner on the grounds and everyone attending should bring a covered

dish. Plates, cups, eating utensils, ice and drinks will be furnished.

Following the noon meal, a singing service with testimonies is planned. Everyone is invited to attend.

EX-LAX; "The Family Friend;" helps your body help itself.

Ex-Lax helps get your body's own natural rhythm going again. Gently. Dependably. Overnight. That's why more families use Ex-Lax. Chocolated or Pills - than any other brand. Make it your Family Friend.



Read label and follow directions.
© Ex-Lax, Inc., 1983

Have Several Good Cars To Trade For Lots or House in Cisco. 112-4100 P33-40

Announcing The Opening
Tuesday May 7th 1985 of
Mansfield Chiropractic
Doctor W.K. Mansfield
Office Hours 207 E. 8th - Suite 2
Tues. - 2-6 p.m. Cisco Texas
Fri. - 2-6 p.m. 817-442-2030

BEIL Interiors
Draperies
"The Most Trusted Name in Interior Design"

BACK ROOM SALE!!
Bedspreads - Linens - Furniture
Selected Lamps 1/3 OFF
Large Selection Decorative Items 1/2 PRICE
1706 W. Commerce Eastland
817-629-1319

Steve's Garage
24 Hour Towing Service
6 Factory Wreckers
Complete Auto and Truck Repair
1-Day Service
Automatic Transmission Service
Complete Air Conditioning Service
Engine Re-Building
Computerized Ignition Service
Complete Wheel and Tire Service
Computerized Wheel Balancing
New TIRE's in Stock to Fit Most Car's and Truck's
Pic-Up "Trick-Up" Accessories Available
Auto Glass Installed "Free Estimate"
Shop 647-1651 Hwy. 80 East, Ranger Texas RT-43 Home 47-1545

HENSON'S RANCH SUPPLY & BUILDING MATERIAL
South Access Road - I-20 Between Eastland & Olden 629-3541

NO. 2 OR BETTER WHITEWOOD LUMBER <table border="1"> <tr> <td></td> <td>8'</td> <td>10'</td> <td>12'</td> <td>14'</td> <td>16'</td> <td>18'</td> <td>20'</td> </tr> <tr> <td>2x4</td> <td>1.76</td> <td>2.20</td> <td>2.64</td> <td>3.08</td> <td>3.52</td> <td>3.96</td> <td>4.40</td> </tr> <tr> <td>2x6</td> <td>2.56</td> <td>3.20</td> <td>3.84</td> <td>4.48</td> <td>5.12</td> <td>5.76</td> <td>6.40</td> </tr> </table>			8'	10'	12'	14'	16'	18'	20'	2x4	1.76	2.20	2.64	3.08	3.52	3.96	4.40	2x6	2.56	3.20	3.84	4.48	5.12	5.76	6.40	CHAIN LINK FENCE 4'x50' Economy.....\$18.95 4'x50' Heavy.....\$25.50 5' & 6' ALSO IN STOCK
	8'	10'	12'	14'	16'	18'	20'																			
2x4	1.76	2.20	2.64	3.08	3.52	3.96	4.40																			
2x6	2.56	3.20	3.84	4.48	5.12	5.76	6.40																			
YELLOW PINE PREMIUM STUD GRADE STUD Reg. 1.49 SALE \$1.29																										
HEAVY GAUGE AMERICAN NET WIRE 330' Rolls <table border="1"> <tr> <td></td> <td>12" Stays</td> <td>6" Stays</td> </tr> <tr> <td>32"</td> <td>\$46.95</td> <td>\$61.95</td> </tr> <tr> <td>35"</td> <td>\$42.95</td> <td></td> </tr> <tr> <td>39"</td> <td>\$56.95</td> <td>\$70.95</td> </tr> <tr> <td>47"</td> <td>\$61.95</td> <td>\$79.95</td> </tr> </table>			12" Stays	6" Stays	32"	\$46.95	\$61.95	35"	\$42.95		39"	\$56.95	\$70.95	47"	\$61.95	\$79.95	Stockade Fence Panel \$21.95 1x4 Pickets .64 each 8' Landscape Post \$3.79 Treated 2-Rail Wood Fence \$1.40 per foot. Includes Post & Rails.									
	12" Stays	6" Stays																								
32"	\$46.95	\$61.95																								
35"	\$42.95																									
39"	\$56.95	\$70.95																								
47"	\$61.95	\$79.95																								
AMERICAN MADE T-POST <table border="1"> <tr> <td>6'</td> <td>\$1.99</td> </tr> <tr> <td>6 1/2'</td> <td>\$2.19</td> </tr> <tr> <td>7'</td> <td>\$2.49</td> </tr> <tr> <td>8'</td> <td>\$2.89</td> </tr> </table>		6'	\$1.99	6 1/2'	\$2.19	7'	\$2.49	8'	\$2.89																	
6'	\$1.99																									
6 1/2'	\$2.19																									
7'	\$2.49																									
8'	\$2.89																									
AMERICAN MADE BARB WIRE Henson's "Hang Tough" 12 1/2 ga.\$31.50 Henson's "Reel Deal" 12 3/4 ga.\$28.50 Gaucho 15 1/2 ga.\$19.95 CLOSE OUT Bekaert 12 1/2 ga. Reg. 31.50 SALE \$29.50 Imported 12 1/2 ga.\$19.95		CONCRETE STEEL 3/8".....\$1.62 1,000 ft. or more...\$1.54 1/2".....\$2.66 1,000 ft. or more...\$2.53 5/8".....\$3.94 1,000 ft. or more...\$3.74 6-6-10 Mesh.....\$38.50																								
Galvanized American Iron <table border="1"> <tr> <td>8'</td> <td>\$3.64</td> </tr> <tr> <td>10'</td> <td>\$4.55</td> </tr> <tr> <td>12'</td> <td>\$5.44</td> </tr> <tr> <td>14'</td> <td>\$6.38</td> </tr> <tr> <td>16'</td> <td>\$7.28</td> </tr> </table>		8'	\$3.64	10'	\$4.55	12'	\$5.44	14'	\$6.38	16'	\$7.28	C-PURLIN 14 ga. PRIMED 4".....72 ft. 8".....\$1.15 ft.														
8'	\$3.64																									
10'	\$4.55																									
12'	\$5.44																									
14'	\$6.38																									
16'	\$7.28																									
White and Tan Metal 26 ga. 6" Rib \$48.00 per Square Call for Lengths		ANGLE IRON 1 1/4".....25ft. 1 1/2".....30ft. 2".....40ft. 3".....81ft.																								
SQUARE TUBING 1".....14 ga......32 per ft. 1 1/4".....14 ga......39 per ft. 1 1/2".....14 ga......49 per ft. 2".....14 ga......64 per ft.																										