

HONOR ROLL

The Journal continues to receive a large list of new and renewal subscriptions every week. Those who have paid a year's subscription in the last week are:

H. H. Kennedy, city.
J. A. Goss, city.
Raymond Green, city.

Jim Moore, city.
Barker's Cafe, city.
John Fried, city.
Mrs. Horace Edwards, city.
C. M. Barnes, city.
J. P. Wedel, route 2.
Cecil Young, city.
Tom L. Smith, city.
J. A. Johnson, Star route 1.
Mrs. W. R. Bowers, city.
J. W. Shafer, Star route 2.
I. M. Stinson, route 2.
Jimmy Seaton, route 1.
L. G. Davenport, Star route 2.
Raymond Houston, route 2.
Clyde Henry, route 2.
J. U. Dawson, star route 2.
L. T. McKillip, route 2.
J. W. Dyck, route 1.
Jim Clements, star route 2.

Bobo Insurance Agency

Pat E. Bobo, Owner
Office in Court House
Phone 97 — Muleshoe

USED FARM MACHINERY



- 1—1947 Used M Farmall.
- 1—1944 Used M Farmall.
- 1—1945 Used H Farmall on duals, complete with lister and cultivator.
- 1—1946 Used H Farmall, complete with lister and cultivator.

Johnson & Nix
International Harvester
Phone 166 Muleshoe

C. W. Hunt, route 1.
W. W. Smith, star route 1.
S. P. Phipps, Goodland.
R. L. Brooks, Lubbock.
C. M. Carr, Clovis.
T. A. Harris, Oklahoma City.

BLACKWATER VALLEY SOIL CONSERVATION DIST. NEWS

Soil Conservation Service technicians assisted G. P. Meisner with irrigation ditches for wheat. Well locations were made last week for Joe B. Tipton, Joe Miller, R. D. Precure, J. A. Love, and John

Your Home
By Frances Ainsworth



I recently had the interesting experience of "previewing" a Model Home! One of my good friends, Jim Blake—a contractor—invited me to see this home and to offer ideas on furnishings for it. Well, of course, I was thrilled to play a part in decorating this completely up-to-the-minute home, and, while going through it I learned some very helpful things about the new homes.

As we went from room to room, Jim told me about the very new features which made this particular home outstanding. We all know that good plumbing is essential to good health—and Jim told me that good plumbing calls for Red Brass pipe or Copper water tube—which were employed for both hot and cold water lines in this Model Home. He explained that Red Brass pipe and Copper water tube give long service and deliver a full flow of rust free water for many years. Rust in a pipe discolors the water and reduces the rate of flow—and, as Red Brass pipe and Copper water tube do not rust and do resist corrosion, they are the most satisfactory.

Another aspect of this Model Home which interested me was the Radiant Heating system. Copper tube with soldered fittings was built into the floors of the Home, and through these steam is circulated in order to heat the home. Jim told me that he always recommends the use of Copper for heating systems because its efficiency has been proved—and, being rust free, naturally made the system more practical.

Well, after learning about all these new features, I resolved to have Jim plan our new home for us—and when we build in the Spring, all these ideas will be incorporated. For we all want to make sure that our home and the equipment in it is the most practical and durable obtainable, don't we?



It's January! So what a mere male might ask, but to women all over the country this January, 1948, is special. Now the stores are again well stocked with bed and table linens and the good old January White Sales are in full swing. What a joy to be able to replace those sheets worn thin down the center with years of service. We had to make them do through the war and last January manufacturers hadn't even begun to catch up in production. Fun now to buy not only sheets but pillow cases, a "company" luncheon set and perhaps a good dinner cloth or two.

But wait a moment. Just because we can buy the new linens we badly need (and they'll still cost a pretty penny) doesn't mean that budget-minded homemakers should throw out the old stock without a careful look to what is still useable. The rag bag is the very last stop for fine linens, so put only literally ragged parts there. Whole sections—the sides of sheets, portions of tablecloths—are still serviceable, for one who is clever at a fast remake job.

This is the time to let go with

color. Probably several gay sets of table mats and napkins could be salvaged from those still good portions of worn linens. All it will take are a few packages of dependable all-purpose dye to outfit the house with those occasional sets one doesn't use every day but which simply make the party when we do need them.

Valentine's Day is coming and shell pink mats would be lovely with place cards in red, trimmed with edges of white paper lace cut from paper doilies. And Easter is early this year. Assorted mats in Spring colors—orchid, pink and pastel green—will suggest a centerpiece of shining green leaves and Easter eggs in hues to complement the table setting. Perhaps you'll be staging a bridal luncheon or shower before midyear. Be ready ahead of time with a turquoise blue cloth or runners as a background for your prettiest flowery china and clear crystal stemware.

These are just a few suggestions. Your own needs and imagination will take you on from here!

Johnson, W. R. Young received assistance in running terrace lines. Applications for soil conservation assistance were made by R. D. Precure on 150 acres; by Guy Sanders on 311 acres, by R. A. Vestal on 531 acres; and by H.O. Huff on 1280 acres owned by Cheeser and Hilburn

of Littlefield.

NOTICE TO BIDDERS

Notice is hereby given that the Commissioner's Court of Bailey County, Texas, will receive bids on the following described road machinery, to wit: One Motor Grader powered with diesel engine developing not less than 76 horsepower at 1400 RPM, enclosed cab, not less than 12' blade with 2' extension, 11 tooth scarifier, draw bar, complete machine to weigh not less than 23,000 pounds.

Contract to be made by the Commissioner's Court of Bailey County, Texas, for such machinery on the 31st day of January 1948. Bids on same may be delivered to the

County Judge of Bailey County, Texas, on or before 10:00 A. M. January 31st, 1948.

The Commissioner's Court reserves the right to reject any and all bids. Dated at Muleshoe, Texas, this the 12th day of January A. D. 1948.

Cecil H. Tate
County Judge, Bailey County, Texas.

3-316

Income Tax Returns

C. C. GRIFFITHS
Ray Griffiths Elevator
Phone 32 — Muleshoe

DR. J. R. DENHOF
DR. ABNER ROBERTS
Optometrists

PHONE 61-W OR WRITE FOR APPOINTMENT
121 W. 4th St. Clovis N. Mex.
ACROSS FROM POST OFFICE

Water Well Drilling and Repair

California Irrigation Pumps
Estimates On Turnkey Jobs
Any Size Hole Up to 20 Inch

FIFTY YEARS EXPERIENCE ALL WORK GUARANTEED

E. H. KENNEDY

Muleshoe Box 612 Pho. 268-W

Your FORD DEALER presents

FRED ALLEN

LISTEN NEXT SUNDAY

7:30 P.M. Your Nearest NBC Station

MOTOR CO.

GREEN Hospital & Clinic

Muleshoe, Texas
L. T. Green, Jr., M. D.
M. F. Green, M. D.
Mrs. Lula Gorrell, R. N.
Joyce McCarty, R. N.
Betty Jo Campbell, R. N.
Winona Blair, R. N.
Geraldine Green, R. N.
(Offices At Hospital)

SPENCE RADIO SHOP

Sales & Service

- Combinations
- Portables
- Consoles
- ZENITH
- Table Models
- Batteries

Service on Any Make Radio

Your Dependable Service Shop

PHONE 276-W

NOW-FOR THE FIRST TIME—

Laundrall
THE COMPLETELY AUTOMATIC HOME LAUNDRY

Washes Clothes Cleaner!
No other WASHER HAS ALL THESE FEATURES!

- ★ MORE THOROUGH WASHING—With Re-Verse-Rol washing action
- ★ NO BENDING OR STOOPING—Top-Fill-Door is waist high
- ★ GREATER SAFETY—Soft-Latch protects careless hands
- ★ DAMP-DRIES—DRIPLESS—Roto Drier damp-dries clothes ready for the line
- ★ SCIENTIFICALLY TIMED CYCLES—Hydro-Pal Drive takes guess-work out of washing
- ★ LARGER CAPACITY—10 full pounds—dry weight

BERRY ELECTRIC CO.
Authorized Dealer
Phone 98 Muleshoe

At The Churches



Schedule of Services

CHURCH OF CHRIST

Bible Study 10 a. m.
 Preaching Service 11 a. m.
 Communion Service 11:45 a. m.
 Preaching 8:00 p. m.
 Ladies' Bible Class, Tuesday, 3 p. m.
 Mid-Week Services 8:00 p. m.

FIRST BAPTIST CHURCH

Rev. A. W. Blaine, Pastor
 Sunday School 9:45 a. m.
 Morning Worship 11:00 a. m.
 Officers & Teachers - Wednesday 7:00 p. m.
 Choir Rehearsal, Thursday 7:00 p. m.
 Training Union 8:30 p. m.
 Evening Worship 7:30 p. m.
 WMU, Wednesday 2:00 p. m.

FIRST METHODIST

T. G. Craft, Pastor
 Sunday Services
 Church School 9:45 A. M.
 Preaching 11:00 A. M.

LONGVIEW BAPTIST CHURCH

Elwin R. Ingram, Pastor
 Sunday School 10:00 a. m.
 Morning Worship 11:00 a. m.
 Training Union 7:30 p. m.
 Evening Worship 8:30 p. m.
 Everyone welcome

1948 Chevrolet is Massive



The over-all simplicity and massiveness of the new, 1948 Chevrolet is well shown in this three-quarter view of the Fleetmaster Sport Sedan. Fenders, hood, body and door panels all blend; and the crease moulding, below the windows, is wider than that used in previous models. Note the new T-shaped chrome center bar on the radiator grille.

"Chevrolet was determined to without retarding production to any bring out a new line of motor cars great extent," said T. H. Keating, general sales manager. "The change over to the new models has been accomplished with this in mind, and there has been only a minimum of production delay to those who have placed orders with Chevrolet dealers."

The three series of the new models are the superlatively styled Fleetline in two body types featuring low sweeping contours; the de luxe Fleetmaster, with five body styles including a cabriolet and a station wagon; and the Stylemaster, offering unusual refinements in the economy price range. All models feature bodies by Fisher, exclusive in the low price class.

Social Security Man Coming Here Jan. 29

Elliott W. Adams, Social Security Administration Representative, will be in Muleshoe at the U. S. Postoffice at 9 a. m. on Thursday, January

29, 1948, for the purpose of answering any questions you may have on Social Security; discussing possible benefits; taking claims from persons who seem to be entitled to benefits; and taking applications for Social Security account number cards.

Records of the Social Security Administration show that most of the benefit checks under old-age and survivors insurance go to women and children. Yet many who are eligible fail to file a claim with-

in three months of becoming eligible, and as a result lose some of their monthly payments. You can get complete information about benefits at the social security office at 1311 Texas Avenue, Lubbock, Texas. There is no charge for assistance in filing claims.

WANT ADS PAY

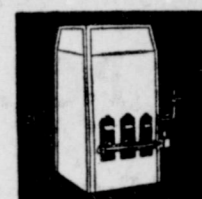
Your Gas Company recommends the use of FLUE-VENTED gas heating equipment

The proper flue-venting of any gas heating equipment is very important. It carries to the outside air all normal products of combustion including water vapor, thus eliminating the condensation of this moisture on windows or walls.

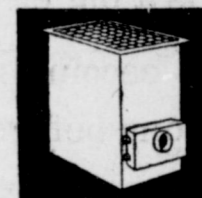
Flue-venting also carries to the outside air any carbon dioxide or carbon monoxide which may be produced by improperly adjusted burners.

Flue-venting thus provides greater safety, more healthful living conditions and greater cleanliness. Besides all this, flue-vented equipment may be thermostatically controlled, providing greater convenience and the steady maintenance of whatever temperature you desire.

These are always vented: central furnaces, floor furnaces, panel wall heaters. These should be flue-vented: circulators, gasteam radiators. These cannot be vented: open-face radiant heaters or open circulators.



Central Furnace



Floor Furnace

For gas equipment, see your Dealer

West Texas Gas Company

ORGANIZED TO SAVE SOIL

Ten Years ago, the first soil conservation district was organized in the U. S. Now there are nearly 2,000 farmer-voted and managed soil conservation districts in the 48 states and Puerto Rico. In early summer of 1947, Vermont became the sixth state in the country to be entirely covered by districts.

In the nation, districts include over one billion acres and three-fourths of the farms and ranches. The first district was organized in Anson county, North Carolina. Now, approximately 20 new districts are voted each month.

So much for the figures on districts. How about accomplishments? Impressive figures can be quoted there, too, but the fact remains—more land is being farmed by wasteful practices than by such conservation methods as will at least maintain the soil.



Muleshoe State Bank

MAIN STREET MISSIONARY BAPTIST CHURCH

Rev. M. E. Robinson, Pastor
 Sunday School 10 a. m.
 Church Services 11 a. m.
 B. T. U. 7:30 p. m.
 Church Services 8:15 p. m.

Young People 8:00 P. M.
 Evening Worship 7:30 P. M.
 Bible Study & Prayer - Wednesday
 Midweek Service—Wed. 7:30 P. M.
 W.S.C.S.—Mon. 2:30 P. M.
 Choir Rehearsal—Wed. 7:30 P. M.

LAZBUDDY FIRST BAPTIST CHURCH

Lazbuddy, Texas
 Sunday School—10:00 a. m.
 Morning Worship—11:0 a. m.
 Training Union—7:00 p. m.
 Evangelistic Service—8:00 p. m.
 Mid-Week Prayer Service—7:00 p. m.

"Not forsaking the assembling of ourselves together."—Hebrews 10-25
 Wednesday Night Prayer Meeting 8:0 p. m.

CHURCH OF CHRIST

Bible Study 10 a. m.
 Preaching Service 11 a. m.
 Communion Service 11:45 a. m.
 Preaching 8 p. m.

MULESHOE PRIMITIVE

Elder L. M. Mandley, Preacher
 Services every second and fourth Sunday at the school house.
 Song service 10:30
 Preaching 11:00

ASSEMBLY OF GOD CHURCH

Rev. L. H. Hubbard, Pastor.
 Sunday School 10:00 a. m.
 Morning Worship 11:00 a. m.
 Evening Service 8:00 p. m.
 Young People's Service, Tues., 8:00 p. m.

New Chevrolet Models Are Here

Detroit, Jan. 22—The new 1948 Chevrolet models, incorporating design changes dictated by a minimum change-over period in order to insure high production flow, were announced here today and will be on display at most Chevrolet dealers throughout the country on Saturday, Jan. 24.

The 11 models in three series all feature a re-designed radiator grille, pleasing new color harmonies in interior upholstery, and engine changes providing a more rigid crankshaft and more durable bearings.

A minimum of time was lost in conversion for the new models, thus enabling the largest builder of motor cars in the world to produce a maximum number of automobiles for the motoring public, which is so greatly in need of new vehicles.

DAIRY TALES



Bounce back to GOOD HEALTH and feel fit for what's ahead by drinking a constant and adequate supply of PURE, FRESH MALONE'S MILK.



CHEVROLET and ONLY Chevrolet IS FIRST!

FIRST in PRODUCTION, in SALES and in REGISTRATIONS of cars and of trucks . . .

FIRST in Passenger Car Production in 1947—according to published production figures.

FIRST in Truck Production in 1947—according to published production figures.

FIRST in Passenger Car Sales in 1947—according to incomplete but conclusive sales records.

FIRST in Truck Sales in 1947—according to incomplete but conclusive sales records.

FIRST to produce over a Million Cars and Trucks in a postwar year, 1947—according to published production figures.

FIRST in Total Passenger Car Production and Sales for the total 17-year period, January, 1931 to January, 1948—according to published nation-wide figures.

FIRST in Total Truck Production and Sales for the total 17-year period, January, 1931 to January, 1948—according to published nation-wide figures.

FIRST in Total Number of Cars and Trucks on the road today—according to official nation-wide registrations.

WE, YOUR LOCAL CHEVROLET DEALER—and every other Chevrolet dealer in America—are both proud and happy to make the following report to buyers and prospective buyers of Chevrolet products.

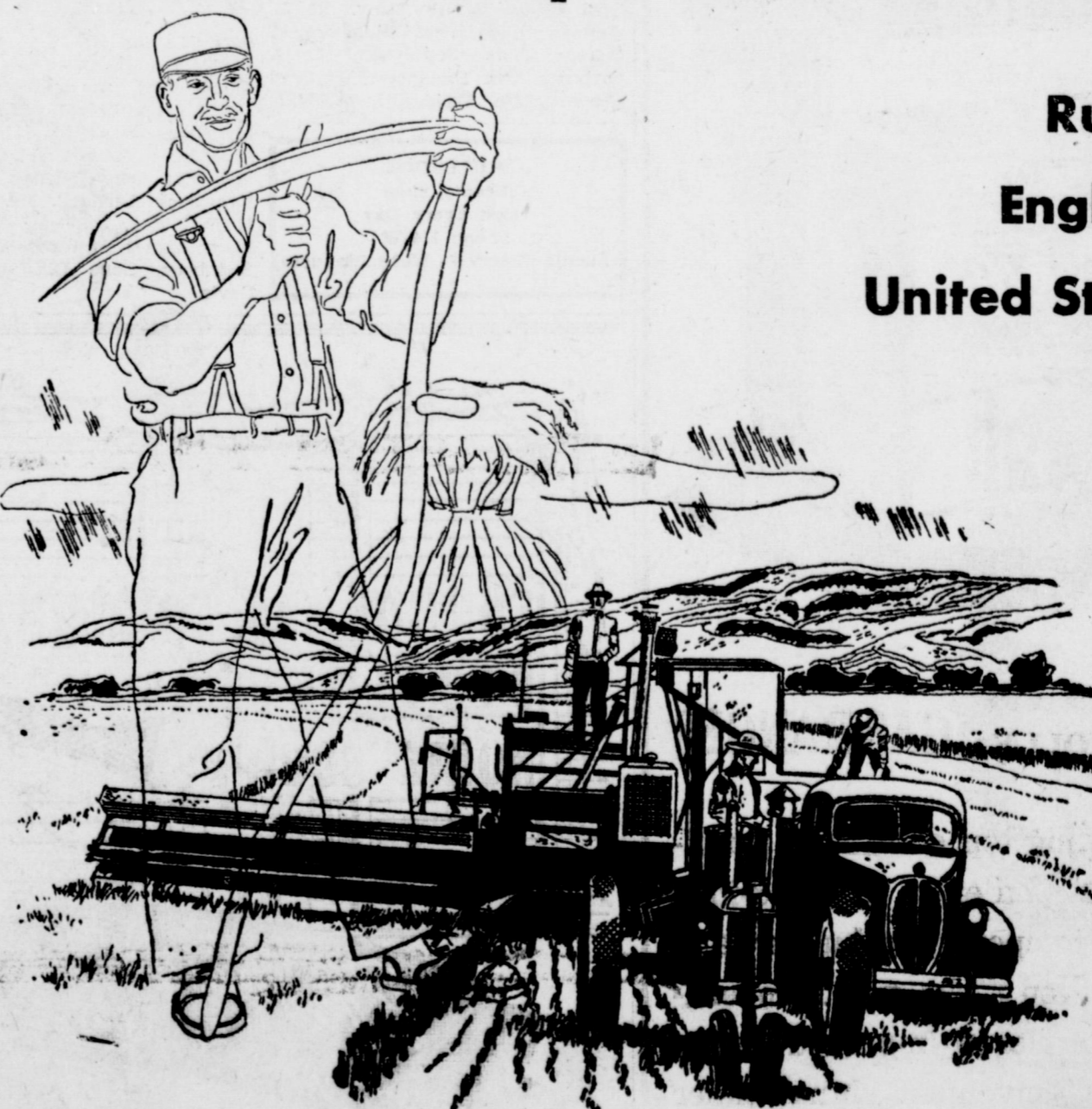
Again in 1947, Chevrolet built and sold more cars and more trucks than any other maker in the industry, just as Chevrolet has built and sold more cars and more trucks than any other maker for the total seventeen-year period, dating from January, 1931 to January, 1948—the modern period of motor car history.

Naturally, we as well as the Chevrolet Motor Division of General Motors are deeply grateful for America's outspoken preference for Chevrolet passenger cars and trucks; and we are determined to do everything in our power to continue to deserve this preference in the future as in the past.

We want to thank each and every person in this community for his friendship and goodwill for this organization. We will appreciate your patronage. We are doing our level best to prove that, by filling orders for new Chevrolets just as promptly as we can—even under today's trying conditions—and we are deeply and doubly appreciative of the patience and understanding of all our customers who are awaiting deliveries of new Chevrolets.

Needless to say, you buy wisely when you buy the product of the world's largest producers of cars and trucks, for that is the way to maximum dollar value! Be assured that we'll fill your order for a new Chevrolet just as soon as it is humanly possible to do so. Meanwhile, please let us help to keep your present car or truck in good running condition by bringing it to us for skilled service, now and at regular intervals.

Where Do People Live the Best?



Russia?
 England?
 United States?

The answer: The U. S.

We are better fed, better clothed, and have more automobiles, refrigerators, telephones, and radios per capita than any other country.

Why? One reason is the efficiency of the American farmer. In countries where farm production is low, the standard of living is low.

The American farmer represents only 2½ per cent of the world's farmers, yet he produces approximately 20 per cent of the world's food supply.

Steel production also is an accurate measure of living standards. America, with only 7 per cent of the world's population, produces 50 per cent of the world's steel.

AMERICAN IRON AND STEEL INSTITUTE

350 Fifth Avenue, New York 1, N. Y.

C. & H. CHEVROLET

PHONE 12

MULESHOE, TEXAS

Women's News. Club Events Social Activities

Ceremony Unites Miss Evelyn Nickels And Claude Riley

Miss Evelyn Nickels, daughter of Mr. and Mrs. Guy Nickels, and Claude Riley, son of Mrs. Blanche Riley, of Phoenix, Ariz., were united

in marriage Jan. 9 at 6 p.m. in Amarillo. Minister R. E. Roberts, of the Church of Christ, read the double ring service at the parsonage. Mr. and Mrs. T. L. Gilley of Amarillo and Mr. and Mrs. J. A. Nickels of Muleshoe were attendants. Mrs. Riley wore a pale rose gab-

ardine suit with brown accessories and a corsage of white gardenias. Mrs. Nickels wore a blue suit and a corsage of carnations.

After a weekend honeymoon, the couple returned to Muleshoe where they are employed and where they will make their home.

RAINBOW ASSEMBLY MET THURSDAY, JANUARY 15

The Muleshoe Rainbow Assembly held their regular meeting at Fellowship Hall Thursday night, January 15. Officers were elected and they will have announcement of the officers later.

The installation meeting will be held February 1 with Rainbow Chapters of Bovina, Earth and Oilton as visitors. The Muleshoe Chapter of the Rainbow Assembly will have a practice session at the Masonic Hall on Wednesday, January 28, immediately after school and again on Saturday, January 31. All members are urged to attend.

The Muleshoe Chapter has been invited to attend public installation services Sunday, January 25 at Bovina at 2:30. All girls wishing to attend should be at Fellowship Hall, at 1:15 p.m.

Mrs. J. A. Nickels Shower Honoree

Honoring Mrs. J. A. Nickels, the former Pat Jennings, Mrs. Charlie Gustin entertained at her home with a shower Friday afternoon, Jan. 16.

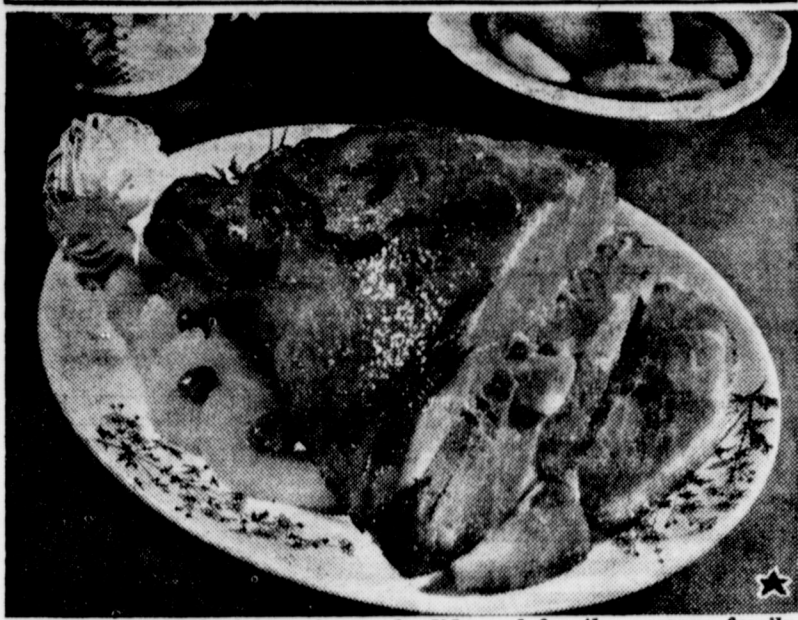
After visiting and a contest which prompted much thinking and merriment, a "gorgeous" prize was presented the winner of course, the honoree. Other gifts were presented by Masters "Lindy" and "Jeep" Jennings. Mrs. Joe Bates Jennings also assisted.

A refreshment plate was served by the hostess, assisted by Mesdames Raymond Green, H. D. Carpenter, Gordon Duncan and Eulen Parhans, to the following: Mrs. Guy Nickels and Mrs. Ophel Jennings, mother-in-law and mother of the bride, respectively, Willie Steinbock, Frank Huikson, Virgil Teague, Claude Farrell, Roy Bayless, John T. Seaton, Deboe Carpenter, S. C. Beavers, A. M. Seaton, Manuel Jennings, J. C. Dalton, O. M. Jennings, Eulan Parhans, H. C. Holt, I. W. Haney, R. B. Seaton, Ernest Nowell, W. S. Menefee, Claude Riley and Riley Goodnough.

Those sending gifts, but unable to attend were: Mesdames Finis and G. O. Jennings, R. L. Bledsoe, Glenn Dunn, Raymond Precure, Gene Seaton, Olen Jennings, Jimmie Seaton, W. B. McAdams, Martin Oliver, Opal Fields, Henny Iong, F. L. Wenner, Ollie Jones, Bill Moore, F. Pierson Shorty Steinbock, H. O. Barbour, Alex Steinbock, Winifred Reeves, Otto Treider, I. F. Wil-

son, Mr. and Mrs. T. J. Davis, Mr. and Mrs. J. D. Travis, Mr. and Mrs. Talma Teal, Mr. and Mrs. Dewey Dill, Mr. and Mrs. Roy Lee Nickels, Mr. Eldon Page, Mrs. Lila B. Nickels, Mr. and Mrs. T. L. Gilley, Mr. and Mrs. Bob Nickels, Mr. and Mrs. Jack Aduddell, Mr. and Mrs. H. C. Nickels, Mr. and Mrs. Joyce Davis, Misses Fern and Wanda Mae Steinbock, Gene Dill and Wanda Davis.

HALF HAM MEANS GOOD EATING



The shank half of ham is a splendid meal for the average family. Roast it as you would a whole ham, and you'll find there's meat a-plenty for all. The gay garnish outline on the top is made with strips of candied cherries, and the same cherries center the sauteed pineapple slices around the edge of the platter.

Guests in the home of Mr. and Mrs. Roy Shirey Sunday were her parents, Mr. and Mrs. J. W. Poff, of Lubbock.

Mr. and Mrs. J. H. Sain are rejoicing over the arrival of their first great grandchild, a daughter, Sandra Jeanne being born to their granddaughter, Mrs. R. H. Henshel, whose husband, Sergeant Henshel is stationed at Hamilton Field, Calif. The baby arrived just 4 days after Mr. and Mrs. Sain celebrated their 44th wedding anniversary.

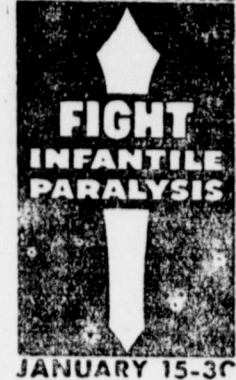
CARD OF THANKS

We wish to thank all of our friends in Muleshoe who have been so kind and considerate of us in the loss of our brother.

D. P. Brown
J. D. Brown
Mrs. B. H. Freeman
Dr. & Mrs. W. P. McGaughey.

The average cost of feed in a U. S. farm poultry ration at mid-November prices was \$4.71 per 100 pounds, in comparison with a 10-year average of \$2.14.

MARCH OF DIMES



JANUARY 15-31

JANUARY 31

LAST DAY TO PAY

POLL TAXES

Several hundred voters have failed to pay their poll taxes. You are reminded that 1948 is a big election year.

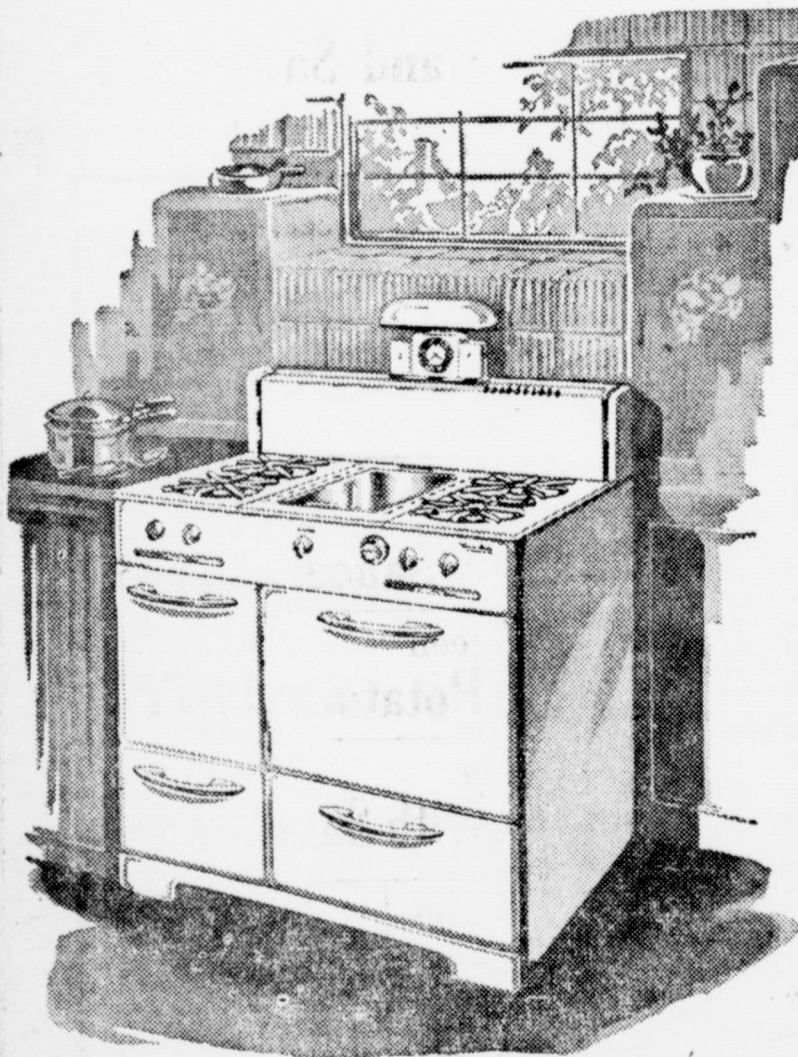
Those becoming 21 in 1947 must get exemptions before Jan. 31.

COME EARLY AVOID THE RUSH

J. C. BUCHANAN

Sheriff, Tax Assessor & Collector

FOR WESTERN LIVING



THE MARK OF EXCELLENCE ON WESTERN HOLLY GAS RANGES

- Divided cooking top • Built-in aluminum griddle • An extra large 18-inch oven with low temperature burner and safety non-tilt oven racks • A "Modern-Way" pull-out broiler • Improved-design top grates • Convenient signal timer clock and lamp • Fiberglass insulation • All-white cooking top • Large utility compartment • Flush-to-the-wall construction.

Dyer Hardware & Furniture

Bus. Phone 151

Res. Phone 253-J

Mrs. Slaton And Mr. Reese Wed In Ceremony Sunday

Mrs. Mary A. Slaton, Hale Center, and Mr. Worden A. Reese, of Muleshoe, exchanged marriage vows in a ceremony read at the Primitive Baptist church at Hale Center Sunday, Jan. 18, at 12 o'clock noon. About one hundred persons attended. The bride wore a dark purple crepe dress with white hat and black gloves. Her coat was dark and her corsage of white carnations.

Guests included Mr. and Mrs. Gordon Duncan, Muleshoe; Mr. and Mrs. Charlie Gustin and sons, Muleshoe; Mr. and Mrs. Thomas Thompson and sons, Portales, N. M.; E. R. Reese, brother of the groom, Carter, Lubbock; and Mr. and Mrs. Glen Wallace, Lubbock.

The couple will be at home on their farm northwest of Morton after February 1.

Muleshoe Rebekahs Met Tuesday Night

Muleshoe Rebekahs met Tuesday night and held installation of officers. Those installed are:

Noble Grand, Mae Provence; Vice Grand, Barbara Burion; Chaplain, Loma Gustin; Conductor, Ruth Anderson; Warden, Sylvia Wileman; Inside Guardian, Callie Smith; Outside Guardian, Lorena Thomsen; Right Supporter to N. G., Rota Johnson; Left Supporter to N. G., Iva Jewel Carpenter; Right Supporter, to V. G., Beulah Lawhon; Left Supporter to V. G., Lois Fay Goodnough.

A nice social hour followed installation, with refreshments of sandwiches, hot spiced punch and coffee being served.

mon, Mr. and Mrs. T. J. Davis, Mr. and Mrs. J. D. Travis, Mr. and Mrs. Talma Teal, Mr. and Mrs. Dewey Dill, Mr. and Mrs. Roy Lee Nickels, Mr. Eldon Page, Mrs. Lila B. Nickels, Mr. and Mrs. T. L. Gilley, Mr. and Mrs. Bob Nickels, Mr. and Mrs. Jack Aduddell, Mr. and Mrs. H. C. Nickels, Mr. and Mrs. Joyce Davis, Misses Fern and Wanda Mae Steinbock, Gene Dill and Wanda Davis.

MRS. C. H. ODOM HOSTESS TO SUNSHINE CLUB

The Sunshine club met with Mrs. C. H. Odom January 15 with 15 members present, one visitor and one new member. Mrs. George Chambless read several nice letters to the club. One was from Boys Ranch at Amarillo, one from Boys Ranch at Springlake and one from the tuberculosis hospital in Amarillo.

The following new officers were elected: Mrs. L. D. Tipton, president, Mrs. J. O. Crawford, vice president; Mrs. Merle Barnhouse, secretary-treasurer; Mrs. L. E. Ware, reporter; Mrs. Ike Stinson and Mrs. J. O. Crawford, sewing committee; Mrs. Dave Coulter and Mrs. U. L. Hart, program committee.

The club members showered Mrs. P. R. Johnson with birthday gifts. Refreshments of cake, fruit salad and coffee were served to the following:

Mesdames Ike Stinson, Frank Rowland, George Chambless, Foy Dawkins, John Stamford, J. W. Johnson, John Ladd, L. D. Tipton, J. O. Crawford, U. L. Hart, Ruby Crawford, L. E. Ware, Miss Dorothy Dawkins and the hostess, Mrs. C. H. Odom.

Next meeting will be with Mrs. Frank Rowland, February 5.

Mrs. Truma Griffiths Hosts Winsome Class

Members of the Winsome Sunday School class of the First Baptist Church held their regular meeting Monday night, November 12, in the home of Mrs. Truma Griffiths with Mrs. Dorothy Bowers as co-hostess.

Mrs. Wilma Gilbreath, president of the class, presided with a short business session, the group played several games and then gifts were exchanged. Mrs. Lela Barron, teacher of the class was presented with a basket of gifts for her birthday.

At the conclusion of the meeting, the hostess served hot chocolate with whipped cream, sandwiches and cookies to Mesdames Jean Griffiths, Gene Cox, E. E. Dyer, Mildred Radwine, Wilma Gilbreath, Billy Joan Smith, Eunice Evans, Dorothy Barron, Christine Morgan, Lela Barron, Francis Christie, Dorothy Bowers and Truma Griffiths.

Mrs. J. R. Moore returned Saturday from Dallas, where she has been with the Lathan Higginbotham family.



Breneman VENETIAN BLINDS

• Smallest cottage and largest mansion acquire new charm and comfort with the installation of Breneman Venetian Blinds. Strongly built and beautifully finished — a wide choice of lovely tape colors, including two-tone duplex tapes.

May we show you the convenience and remarkably low cost of these new blinds.

Phone 67-W

COX RADIO & ELECTRIC

Your Neighborly Service Shop

Here's How You Can Increase Your Home's Value And Save Money!



Ask Us How
Remodeling Can
Be Profitable
To You!

REPAIR AND REMODEL

YOUR HOME NOW—

WITH A TITLE 1—F.H.A. LOAN

Come in and let us give you the details on an F.H.A. Loan and show you how you can remodel or build a new home.

H. S. SANDERS LBR.

Phone 93

Muleshoe, Texas

Excellence need not be expensive

SEE • HEAR • COMPARE AT

E. R. HART COMPANY
Muleshoe, Texas

McMillan To Show African Films At Lubbock High

Lubbock, January 17.—In the summer and fall of 1947, weekly articles appeared in newspapers all over the U. S. covering experiences of W. G. McMillan in the jungles of darkest Africa. The expedition was made primarily for the purpose of filming wild animal life in its natural state as well as hunting big game.

McMillan, his wife and son, traveled some 5,000 miles by foot and motorized equipment through Kenya Colony, a British controlled province.

According to McMillan, the first sight of the jungle was like stepping into a page from the prehistoric past.

"Africa's teeming wildlife and formidable jungles were awe inspiring," said McMillan. "We were among wild animals for three months and living in temperatures from 37 to 110 degrees. If we did not see as many as 100,000 head of wild animals in a single day's journey, it was most unusual.

"We came across an amazing native life. They depend primarily on the blood and milk of their domestic stock for a livelihood. Periodically, they supplement their main diet with meat and Posho, a ground up corn meal. Armed only with spears, the native warriors fend off wild animals and raid nearby villages. Although we did not visit the cannibal country further west, we did go through the Tse Tse fly region. There is no cure for the sleeping sickness caused by the bite of this fly."

McMillan and his family brought

back 39 trophies for mounting purposes and over 10,000 feet of colored film. These films show closeups of the most dangerous animals in the jungle. In fact, his persistence in filming closeups brought on sinister charges from cape buffalo, rhinos, elephants, lion and leopards that resulted in several thrilling escapades.

The Lubbock Kiwanis Club is sponsoring the first showing of the films for the benefit of their youth projects. Mr. McMillan is especially anxious for as many school children to see these pictures as possible, and the Kiwanis Club has arranged for two matinee performances at 2:30 o'clock on Saturday and Sunday, January 24 and 25. The price of tickets for school children for these matinees will be 60 cents. Teachers will be admitted on a 60 cent ticket by signing same together with position held. Adult tickets for these matinees will be \$1.50. Night shows will be held January 26, 27, and 28. Seats for all night shows will cost \$1.50.

Only a certain number of tickets will be sold for each performance. Those interested in securing their tickets in advance may write to the Kiwanis Club, Box 3, Lubbock, Tex.

Highway Stripe Is Double Indemnity

Austin, Jan. 20.—Officials of the Texas Highway Department Thursday told the story about the bright yellow lines now being seen by motorists every day throughout the vast 27,000 mile system of paved roads.

"The new yellow no-passing line being put down on our highways is a double indemnity device," State

The Muleshoe Journal

Entered as second-class matter at the Muleshoe Postoffice under the Act of Congress, March 3, 1897.

Published Every Thursday at MULESHOE, TEXAS

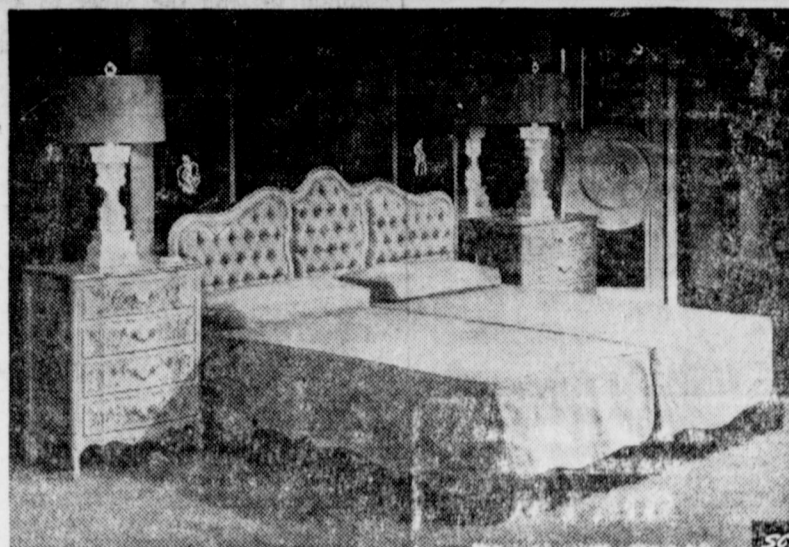
J. E. FORBES Publisher

SUBSCRIPTION RATES

In immediate territory, yr. . . . \$2.00
Out of Territory \$2.50

Short pieces of wire, nails and similar articles take the lives of many dairy cattle each year.

FURNITURE FASHIONS by Frances Ainsworth



GRAND RAPIDS, MICHIGAN — For today's home interior, whether strictly modern in feeling or traditional, French Provincial has an especially quaint suitability. We submit as proof this charming bedroom ensemble made by the John Widdicombe Furniture Company. The upholstered headboard with gracefully shaped framing joins the twin beds into one decorative unit. Accompanying commodes true to tradition are colorfully hand decorated.

Highway Engineer D. C. Greer declared,

"It gives a flashy and obvious warning of danger to the motorist who wants to protect his own life and the lives of others," he explained, "and it gives the police something definite on which to jail or punish the driver who apparently cares little for his life and thereby endangers the lives of innocent motorists in the other lane."

Last year, President Truman's Highway Safety Conference urged the States to concentrate on improvement of highway center stripe in a major effort to reduce the ghastly toll of accidents due to head on collisions and sideswiping.

In all States the color was changed to yellow, which tests have indicated is more visible in all kinds of weather than any other type of marking. This yellow color is used also to impress the motorist that where yellow is seen on the road it must not be crossed.

65,000 gallons of yellow paint are being used by the Texas Department painting crews to mark these no-passing zones. The painting operations have been under way since November and are now rapidly moving toward completion.

Highway Department officials pointed out the statewide yellow striping program for no-passing zones is considered the best method from the engineering point of view for temporarily combating the

traffic accident menace on the highway system.

The officials are hopeful that the traveling public will soon become "yellow line conscious", since crossing the yellow line is not only an invitation for loss of time or limb, but is a violation of Texas law under the new uniform traffic code making violators liable for a maximum fine of \$200.

"Do not cross the yellow line," is the new password for safe driving.

SHOWER FOR NEWLYWEDS SET FOR FRIDAY AFTERNOON

A shower for Mr. and Mrs. Ben Higginbotham is to be held Friday afternoon in the home of Mr. and

Mrs. Theron West, Mr. and Mrs. Higginbotham, well known young Muleshoe couple, were married at Christmas.

Farm Loans

DRY LAND — IRRIGATED LAND — RANCH

L. S. BARRON

Representative

Kansas City Life Ins. Co.

Steed Funeral Home

SERVING MULESHOE AND SURROUNDING TERRITORY OVER TWENTY YEARS

Muleshoe Phone 47

Clovis Phone 14

FOR
AMBULANCE SERVICE
Call Howard Cox Day Phone 67-W Night Phone 275-J

Steed Funeral Home

L. V. SPARKS, Co-Owner and Manager

• Ambulance Service • Funeral Service

HOGS WANTED

Highest Prices Paid For Killing Class Hogs

Peyton Packing Co.

Littlefield, Texas

Phones 173 or 231

ADD EXTRA HOURS



TO SHORTER DAYS

It's easy to have more working time on a farm today.

When the sun goes down and there are still chores to be done . . . just flick on the lights.

Dependable, low cost electric service goes on the job then, providing plenty of light in the yard, or in any building where it's needed.

Lighting adds extra hours to shorter days at a lower cost than ever before.



I'LL COME TO YOUR HOME OR PLACE OF BUSINESS

A Public Service Company lighting specialist will come to your home, office, or place of business to give you recommendations as to how to obtain the best in lighting. There's no obligation. Just call or write your nearest Public Service office.

We Have Nothing to Sell But Good Electric Service

SOUTHWESTERN PUBLIC SERVICE COMPANY

33 YEARS OF GOOD CITIZENSHIP AND PUBLIC SERVICE

FARM SALE

1 1-2 miles west of Stegall, or 30 miles Southwest of Muleshoe - 30 miles northwest of Morton, or 30 miles southeast of Portales, N. M.

Monday, Jan. 26, 1948

SALE TO BEGIN AT 11 A. M.

Lunch Will Be Served At Noon

Free Coffee, Bring Cups

FARM MACHINERY

- 1—U. T. U. Twin City tractor with lister and planter, cultivator and furrow guide.
- 1—M Farmall tractor with lister and planter.
- These tractors and implements in good condition.
- 1—4 row Twin City tool bar knifing and cultivating attachment. Almost new.
- 1—3 row tool bar knifing attachment for knifing beds.
- 1—Furrow Guide for M Farmall tractor.
- 1—'47 model Whirlwind Terracer. Has built about 10 miles of terraces.
- 1—'47 model Superior wheat drill. Almost new, 12-8 drill.
- 1—Old wood box Van Brunt 16-8 drill. A good wheat drill.
- 2—120 volt, 60 cycle, AC Power Plants.
- These power plants are very desirable for light and power in farm homes not served by REA. Same current as REA and commercial lines, efficient, dependable, practical.
- 1—Onan 1000 watt aircooled plant, remote starting and stopping. Large enough for lights, iron, gas pump, small air compressors.
- 1—Hobart 3000 watt water cooled plant - purchased new as Army surplus. Less than year ago. 4 cylinder. 11 HP, Hercules motor. For larger farm homes.

MISCELLANEOUS

- 1—Mankomb kerosene chicken brooder, 500 chick capacity.
- 1—Royal Blue Cream Separator.
- 1—used Dempster windmill, tower, overhead storage tank and tower.
- 1—Set of steel skids for moving houses.
- Approximately 40 rough yellow pine fence panels. 14 & 16 ft. lengths. Made of good lumber. Painted and in good shape.
- About 300 ft. of 1 in. galvanized pipe used, but in good condition.
- About 600 lbs. Texas State Certified Sweet Sudan Seed.
- 1—Unloading assembly for late model AC Combine. In good shape but full of honey dew.
- 1—Barrel pump and hose for gasoline or kerosene.
- A quantity of used fence posts, cross ties and barbed wire.
- Three or four lots of scrap lumber.

LIVESTOCK

- 1—Whitefaced Cow and Calf.
- 1—Brindle Cow and Calf.
- 1—Red Cow and Calf.
- 1—Whitefaced Cow - wt. about 800 lbs.
- 2—Whitefaced heifer calves, 300 each.
- 2—Whitefaced heifer yearlings, wt. about 450 each.
- 1—Whitefaced steer calf, wt. about 300
- 4—Red Shoats, wt. 80 lbs. ea.

Conrad Williams, Glen Williams and Cecil Cole, Owners

COL. W. D. WANZOR Auctioneer

HUGH FREEMAN Clerk

In SKATING or GASOLINE
it's **CONTROL**
THAT COUNTS!



PHILLIPS 66 IS **CONTROLLED** TO GIVE
YOU QUICK STARTING AND EASY WARM-UP!

Ever watch one of those marvelous, whirling figure-skaters? That takes control—you bet! And you can be sure it takes plenty of control to produce Phillips 66 Gasoline!

You see, we do it by selectively blending the high-quality components so that you get high-quality performance from Phillips 66 Gasoline—every season of the year!

That means—these chilly mornings—quick starts and easy warm up! Try Phillips 66 Gasoline and see, at the orange-and-black "66" sign!



* **"VOLATILITY CONTROLLED" TO GIVE YOU FAST STARTS!**



Evans Oil Company
DISTRIBUTORS Muleshoe, Texas

NIGHT VISION



Requires **EXPERT LIGHTING**



Auxiliary Driving Lights for better vision on fog covered roads.

Safety Lamp a powerful 1000 ft. beam that turns in all directions.

Sealed Beam Headlights and Tail Lights for safer car operation while driving at night.

C. & H. Chevrolet Co.
BLOCK ASSEMBLIES and MOTOR ASSEMBLIES
Muleshoe Texas Phone 12

NOTICE OF ELECTION FOR THE ISSUANCE OF BONDS THE STATE OF TEXAS COUNTY OF BAILEY

TO ALL QUALIFIED VOTERS OF THE CITY OF MULESHOE, TEXAS, WHO OWN TAXABLE PROPERTY IN SAID CITY, AND WHO HAVE DULY RENDERED THE SAME FOR TAXATION:

TAKE NOTICE that an election will be held in the City of Muleshoe, Texas, on the 10th day of February, 1948, to determine whether or not the Board of Commissioners of said City shall be authorized to issue bonds of said City, in the following amounts and for the following purposes, to-wit:

\$100,000.00 Bonds for the purpose of the reconstruction of street improvements in and for said City;

\$120,000.00 Bonds for the purpose of improving, enlarging and extending and repairing the City's Waterworks system;

\$80,000.00 Bonds for the purpose of improving, enlarging, extending and repairing the City's Sanitary Sewer System.

and which election was duly called and ordered by the order of the Board of Commissioners of said City, passed on the 15th day of January, 1948, and which election order is made a part of this Notice, and is in words and figures as follows, to-wit:

ELECTION ORDER THE STATE OF TEXAS, COUNTY OF BAILEY.

ON THIS the 15th day of January, 1948, the Board of Commissioners of the City of Muleshoe, Texas, convened in special session, at the regular meeting place thereof, in the City Hall, there being present and in attendance the following members, to-wit:

JULIAN E. LENAU, MAYOR,
W. M. DUDLEY, COMMISSIONER
R. N. EDWARDS, COMMISSIONER.

It was moved by Commissioner W. M. Dudley, and seconded by Commissioner R. N. Edwards, that there be submitted to the qualified voters of the City of Muleshoe, Texas, who are property taxpayers therein, and who have duly rendered their property for taxation, the proposition for the issuance of bonds of said City, in the following amounts and for the following purposes, to-wit:

\$100,000.00 Bonds for the purpose of the construction of street improvements in and for said City;

\$120,000.00 Bonds for the purpose of improving, enlarging, extending and repairing the City's Waterwork System;

\$80,000.00 Bonds for the purpose of improving, enlarging, extending and repairing the City's Sanitary Sewer System.

The above motion carried by the following vote: Mayor Lenau, Commissioners W. M. Dudley and R. N. Edwards voting "AYE"; and none voting "NO".

AND, THEREUPON, Commissioner W. M. Dudley introduced an order calling an election for the purpose of submitting the propositions to a vote of the qualified property taxpaying voters of said City, and moved the passage and adoption of such order. The motion was seconded by Commissioner R. N. Edwards.

THE MOTION, carrying with it the passage and adoption of the election order, prevailed by the following vote: Mayor Julian E. Lenau, Commissioners W. M. Dudley and R. N. Edwards voting "AYE"; and none voting "NO".

The election order is as follows: WHEREAS, the Board of Commissioners of the City of Muleshoe, Texas, deems it advisable and to the best interests of the City that the bonds of said City shall be issued for the purposes hereinafter stated, and that there is a necessity for the issuance of said bonds; therefore,

BE IT RESOLVED AND ORDERED BY THE BOARD OF COMMISSIONERS OF THE CITY OF MULESHOE, TEXAS:

I. That an election be held on the 10th day of February, 1948, and which is not less than fifteen (15) nor more than thirty (30) days from the date of the adoption of this order, at which election the following propositions shall be submitted to the resident qualified electors who own taxable property in said City and who have duly rendered the same for taxation, for their action thereupon:

PROPOSITION NUMBER 1 "SHALL the Board of Commissioners of the City of Muleshoe, Texas, be authorized to issue the bonds of said City in the total principal sum of ONE HUNDRED THOUSAND DOLLARS (\$100,000.00), maturing serially over a period of years not to exceed thirty (30) years from the date thereof, bearing interest at the maximum rate of FOUR PER CENTUM (4%) per annum, for the purpose of the construction of street improvements in and for said City; and to provide for the payment of principal of and interest on said bonds by levying a tax sufficient to pay the annual interest and to create a sinking fund sufficient to redeem said bonds as they become due?"

"SHALL the Board of Commissioners of the City of Muleshoe, Texas, be authorized to issue the bonds of said City in the total principal sum of ONE HUNDRED TWENTY THOUSAND DOLLARS (\$120,000.00), maturing serially over a period of years not to exceed thirty (30) years from the date thereof, bearing interest at the maximum rate of FOUR PER CENTUM (4%) per annum, for the purpose of improving, enlarging, extending and repairing the waterworks system of said City; and to provide for the payment of principal of and interest on said bonds by levying a tax sufficient to pay the annual interest and to create a sinking fund sufficient to redeem said bonds as they become due?"

PROPOSITION NUMBER 3 "SHALL the Board of Commissioners of the City of Muleshoe, Texas, be authorized to issue the bonds of said City in the total principal sum of EIGHTY THOUSAND DOLLARS (\$80,000.00), maturing serially over a period of years not to exceed thirty (30) years from the date thereof bearing interest, at the maximum rate of FOUR PER CENTUM (4%) per annum, for the purpose of improving, enlarging, extending and repairing the sanitary sewer system of said City; and to provide for the payment of principal of and interest on said bonds by levying a tax sufficient to pay the annual interest and to create a sinking fund sufficient to redeem said bonds as they become due?"

II. Said election shall be held at the City Hall in the City of Muleshoe, Texas, and the following named persons are hereby appointed officers of the election, to-wit: C. D. Gupton, Presiding Judge, C. L. Dyer, Jr., Judge, Mrs. Ruth Pierson, Clerk, and Mrs. Walter Wittke, Clerk.

III. That said election shall be held under the provisions of and in accordance with the laws governing the issuance of municipal bonds in cities, as provided in the General Laws of the State of Texas; and only qualified electors who own taxable property in the City, and who have duly rendered the same for taxation, shall be qualified to vote.

IV. That the ballots of said election shall have written or printed thereon the following:

"FOR THE ISSUANCE OF STREET IMPROVEMENT BONDS AND THE LEVY OF A TAX IN PAYMENT THEREOF."

"AGAINST THE ISSUANCE OF STREET IMPROVEMENT BONDS AND THE LEVY OF A TAX IN PAYMENT THEREOF."

"FOR THE ISSUANCE OF WATER SYSTEM IMPROVEMENT BONDS AND THE LEVY OF A TAX IN PAYMENT THEREOF."

"AGAINST THE ISSUANCE OF WATER SYSTEM IMPROVEMENT BONDS AND THE LEVY OF A TAX IN PAYMENT THEREOF."

"FOR THE ISSUANCE OF SEWER SYSTEM IMPROVEMENT BONDS AND THE LEVY OF A TAX IN PAYMENT THEREOF."

"AGAINST THE ISSUANCE OF SEWER SYSTEM IMPROVEMENT BONDS AND THE LEVY OF A TAX IN PAYMENT THEREOF."

As to each of the foregoing propositions, each voter shall mark out with black ink or black pencil one of the above expressions, thus leaving the other as indicating his or her vote on the three propositions respectively.

V. That all of the bonds of the two series hereinabove mentioned under Propositions Numbers 2 and 3, if approved by the qualified voters voting at the election herein and hereby ordered, are to be issued as one series to be known as Water and Sewer System Improvement Bonds, aggregating the principal sum of \$200,000.00; provided however, that said Water and Sewer System Improvement Bonds may be issued in installments as may be deemed advisable by the Board of Commissioners of said City of Muleshoe, Texas.

VI. That a copy of this order, signed by the Mayor of said City and attested by the City Secretary, shall serve as proper notice of said election.

VII. The entire City of Muleshoe shall constitute one election precinct, and said notice of said election shall be given by posting and publication of a copy of this order, at the top of which shall appear the words, "NOTICE OF ELECTION FOR THE ISSUANCE OF BONDS". Said notice shall be posted at the CITY HALL, and at two other public places in said City, not less than fourteen (14) days prior to the date on which said election is to be held and be published on the same day in each of two successive weeks in the Muleshoe Journal, a newspaper of general circulation published in the City of Muleshoe, Texas, the first of said publications to be made not less than fourteen (14) days prior to the date set for said election.

PASSED AND APPROVED, on

this, the 15th day of January, 1948,
Julian E. Lenau
Mayor, City of Muleshoe, Texas
R. N. Edwards
Commissioner.
W. M. Dudley
Commissioner.

ATTEST:
R. J. Klump
City Secretary.
(SEAL)
THIS NOTICE of election is issued and given by the undersigned pur-

suant to authority, conferred by virtue of the above and foregoing order of the Board of Commissioners of the City of Muleshoe, Texas, and under authority of law.

WITNESS MY HAND AND SEAL OF THE CITY OF MULESHOE, TEXAS, this, the 15th day of January, 1948.
Julian E. Lenau
Mayor, City of Muleshoe, Texas.
ATTEST:
R. J. Klump

City Secretary, City of Muleshoe, Texas.
(CITY SEAL) 4-3to

Guaranty Abstract Company
— Office in Court House —
PAT R. BOBO, Owner
Phone 97 — Muleshoe

FREE!
to all FARMERS
and their Families

another big
JOHN DEERE DAY PROGRAM

featuring
"DOCTOR JIM"

with
Stuart Erwin
Barbara Wooddell
William Wright

Hobart Cavanaugh



...You'll also enjoy
"WHAT'S NEW for '48"
and Several other new and interesting educational pictures

ADMISSION BY TICKET ONLY

If you don't have tickets or need more...ASK US FOR THEM—

Wednesday, January 28

at Valley Theatre, Muleshoe

John Deere Day Program

Will Start At Our Place at 10 A. M.

We Will Have Several New Implements
On Display.

FREE Lunch Will Be Served At Noon

Baked Beans, Chili, Weiners, Donuts and Coffee

Free Prizes

Will Be Given Away at the Theatre

EVERYBODY IS WELCOME

Davis - Lenderson

Phone 56

Muleshoe

**Johnson - Pool
TIRE & APPLIANCE**

**Save
ALL AROUND
with these
tractor tires**

ON REAR WHEELS

Use B. F. Goodrich Hi-Clear tractor tires... the only tires that have cleats in pairs—one long, one short. Double bars for double bite and extra grip. Open center, self-cleaning tread design. No mud-catching pockets to cause slippage. Extra high shoulders prevent sideslip. Tough, long-wearing rubber. Positive traction.



ON FRONT WHEELS

B. F. Goodrich front wheel tractor tires wear long, roll smoothly. Self-cleaning tread helps keep work moving speedily. Husky, high shoulders and tough rubber.



ON IMPLEMENTS

Long-wearing B. F. Goodrich Tires help you move faster from job to job, work in soil where steel wheels would bog down. And a B. F. Goodrich planned changeover from steel wheels to rubber tires means extra savings—often one set of tires and rims may be used on more than one implement.



Stop in and see us about all your farm tire needs.

**\$2 ALLOWANCE..
FOR YOUR OLD BATTERY**



on a new **B. F. Goodrich GLASSTEX BATTERY**

Don't miss this trade-in opportunity. Save \$2.00 now. Get more power for cold weather starts from six extra full-size plates. Get longer service from Glasstex mats. Get lower battery cost per month of use. Be ready for winter driving.

**we Are Your Dealer for
THOR**

Gladiron & Automatic Washing Machines
See Us For
Your Wrenches and Fram Cartridges

**B. F. Goodrich
FIRST IN RUBBER**

**JOHN DEERE DEALER to PLAY HOST
TO FARMERS and THEIR FAMILIES**



**"DOCTOR JIM" starring Stuart Erwin, is Feature
Picture in big John Deere Day Program**

Pictured above is a scene from the picture "Doctor Jim," which is being sponsored by Davis-Lenderson as a highlight of their annual John Deere Day Program. The movie will be held at the Valley Theatre, here in Muleshoe, beginning at 10 a. m. The program is scheduled for Wednesday, January 28, and will begin at the local implement house at 10 a. m. The movie will be held at the Valley Theatre, here in Muleshoe, beginning at 1 p. m.

**Progress H. D. Club
Met In Murrah Home**

Progress Home Demonstration Club met in the home of Mrs. Ada Murrah. The president, Mrs. Ada Thomson, presided over the meeting. Mrs. Marie Maltby gave an inspiring talk on "Friendship."

The minutes of the last meeting were read by Mrs. Fern Davis. The Council report was given by Mrs. Ada Murrah. The finance committee reported the amount of \$51.37 from the sale of food served at two public sales.

The club voted to send five dollars to the March of Dimes.

Roll call was answered by giving a club goal for 1944. Mrs. Elzada Gully gave an interesting talk on "My 1944 Plans for My Club." Mrs. Gully also demonstrated a sewing box.

The club voted to attain three main goals for 1944 as follows: 1. Build a club house. 2. Send a package of clothing each week to a Holland relief family. 3. Visit a new neighbor and invite them to club.

Delicious refreshments of sandwiches, cake and cocoa were served to ten members, two visitors and the hostess. The next meeting will be with Mrs. Clyde Henry, Feb. 3.

**Study Club Met
With Mrs. Lewis**

Muleshoe Study Club met Thursday evening, Jan. 8, with Mrs. A. E. Lewis.

We were very fortunate to have Dr. M. F. Green as our speaker for the evening. After a very interesting and informative talk on Cancer, Dr. Green was kind enough to an-

swer questions for various members.

During the business meeting it was decided to add Encyclopedia Britannica to our library shelves immediately. We are hopeful that these books will be used regularly by both adults and school children.

Following the business session delicious refreshments were served to Miss Elizabeth Bailey, Mesdames Jane Beavers, Inez Bobo, Elizabeth Gardner, Geraldine Green, Mary Hart, Ida Ruth Holt, Grace Ivy, Velma Jennings, Hope King, Marie Lennau, Blanche Lenderson, Maxine Ragsdale, Naomi St. Clair, Jo Wood, Miss Elizabeth Harden and the hostess, Mickey Lewis.

**King-Potter Nuptials
Were Read Friday**

Mrs. France N. King, of Farwell, became the bride of Mr. Herbert Potter, of Muleshoe, in a ceremony performed last Friday evening at 8:15 o'clock in the home of Rev. and Mrs. T. G. Craft. Rev. Craft officiated.

Mr. and Mrs. N. C. Blackshear were attendants of the couple. Mr. Potter is employed with the Muleshoe office of the Southwestern Public Service Company. The couple are at home in Muleshoe.

**Shower Given For
Mr. & Mrs. Alsop**

Mr. and Mrs. Charles Alsop were honored with a miscellaneous shower Thursday, January 15, at the Fellowship hall, given by Mrs. A. P. Lambert, Mrs. Richard Moore.

Mostly Static

By Berry

Howdy Folks: Over on the other side of the state, a pappy is reported to have put silencer on his gun because his daughter wanted a quiet wedding.

They say the old man wasn't emotional, but after the gal was safely married, he did shed a few cheers.

Dag-nab it, we gotta quit making funnies with puns. They say the pun is the lowest form of humor.

One party, who reads this column regularly, says humor is like history, it repeats itself.

Now whaddaya suppose he meant by that?

Well, whether a girl has a quiet wedding or one with bells, she'll sure love her old man if he'll set her up in a kitchen with one of our UNIVERSAL ELECTRIC RANGES.

There's a RANGE that's as useful as it is beautiful. So bring him to BERRY'S and we will tell him how easy they are to buy.

Berry Electric

DOROTHY GRAY

and

DU BARRY

Cosmetics

Everything In Your
Cosmetic Needs

Mrs. Hazel Dyer

Western Drug Co.

"The Leading Drug Store in Muleshoe"



From where I sit... by Joe Marshall

From Sheepskin to Sheep

There aren't too many college graduates in our town. Good honest thinking, yes...but most folks went from high school into farming.

No harm in that! But I admire veterans like Dick Newcomb... who's 23, but going to college under the G.I. Bill of Rights. Intends to be a sheep farmer—but a better-informed, more scientific farmer, with more know-how!

And veterans like Dick aren't letting anything interfere. What little relaxation they allow themselves is in the form of needed exercise, or

books, or conversation and an occasional glass of beer with friends.

Seems as if, just by having their education postponed, they've put a higher value on it...and on things like temperance (that glass of beer, for instance), understanding, and good citizenship. And from where I sit, when Dick gets his sheepskin—he won't have lost much time. He'll be an even better farmer than his Dad. (Exactly what Dad wanted!)

Joe Marshall

Tomorrow's Better Buys

FRIDAY & SATURDAY SPECIALS

Folger's COFFEE, _____	Lb. 49c	Apricots, Gal. _____	95c
		Heavy Syrup	

Hearts Delight No. 2 Spinach _____	12 1/2c	Fruits & Vegetables	
		ORANGES, Sack _____	29c

		Ruby Red GRAPEFRUIT, Ea. _____	5c
		CARROTS, Bunch _____	9c
		CABBAGE, Lb. _____	5c

MEAT SPECIALS

Ground Beef, Lb. _____	39c	Rinso Lge. Size Ea. _____	33c	Ap'le Butter Dutch Girl 24 Oz. _____	31c
------------------------	-----	---------------------------	-----	--------------------------------------	-----

OLEO, Lb. _____	39c	Pork & Beans, Armour's, can _____	9c
Bacon Squares Lb. _____	45c	Kraut, No. 2 1-2 Can _____	12 1-2c
Picnic Hams Lb. _____	49c	Gold Medal Flour, 10 Lbs., _____	99c
		Milk, Borden's, Sm. Can _____	5c
		Eagle Brand Milk, Ea. _____	29c

JENNINGS Food Store Phone 90
WE DELIVER HOME OWNED & OPERATED

**We Strongly Advise That You
Buy Seed Early**

When you consider the thousands of acres of wheat land which due to dry weather may this year become row crop land, you can see why planting seed may become very scarce and may advance in price.

Therefore we say: Wherever you buy seed or from whom you choose to buy—BUY EARLY. Get your seed now, have them on hand for planting time.

Of course we would like to supply your seed and we have in stock for you a

COMPLETE LINE OF CERTIFIED SEED

KING BROS.

GRAIN & SEED CO.
H. D. KING AND BOB KING

Phone 134

Muleshoe, Texas

Mrs. C. A. Barnett and Mrs. Roland Mathiesen left Sunday for Dallas to attend the spring market and buy spring merchandise.

Mr. and Mrs. Houston Hart were in Amarillo Monday, where Mr. Hart attended the Bendix school being held there.

TPA Mid-Winter Convention Speakers—January 31



HEADLINERS Feature speakers on the Texas Press Association's Mid-Winter Convention program, January 31, at the Baker Hotel in Dallas, will be the three newspaper executives pictured above. Mrs. Irene Simms Reid, center, advertising director of the Monroe (La.) News-Star-World, will address the Texas editors on the subject of "The Community Story on Public Relations." She is nationally known for her accomplishments in advertising and selling. O. H. Lachenmeyer (right), will present a publisher's viewpoint of an active state press association. He is owner of the Texas City (Tex.) Sun, the San Benito (Tex.) Cameron County News, the Cushing (Okla.) Daily Citizen, and is president of the Oklahoma Press Association. W. R. Rutherford (left), publisher of the Dumas (Tex.) Moore County News, will discuss "Needed Legislation." Rutherford is the immediate past-president of the Panhandle Press Association.

Gradd-sas, Glime Gordium—It Says

Know anything about "Gradd-sas," "glime" or "Gordium"? If you had a copy of the Santa Fe Almanac for 1948, you would. This handy little green booklet, now being distributed to the public free of charge by Santa Fe Railway agents at all points on the company system, contains explanations and statistics on "Gradd-sas," "glime," "Gordium," and hundreds of other interesting subjects. Recipes, weather facts, sunrise and sunset calendars for every month of the year and a wealth of other timely information is packed into its 32 pages.

To say nothing of hymns, poetry, proverbs and prayers. Oh, yes, "Gradd-sas" is a Swedish dessert, "glime" is a type of ice which forms on aircraft wings, and "Gordium" is the city in which Alexander the Great untied the Gordium knot. For more complete information, see the Santa Fe Almanac.

REA CREW HERE

Several members of a crew here to build lines and make other improvements for the Bailey County Electric Cooperative have found quarters for themselves and families. It was said they will be here about three months.

ANNOUNCEMENT—

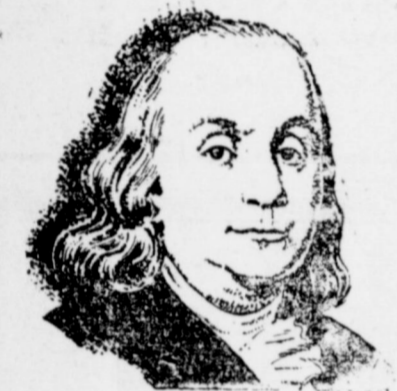
We Have Acquired the Services of WILLARD CURTIS

Who Will Do Repair Work On Any Make Car or Tractor

Mr. Curtis is well qualified in all lines of automotive repair.

—ALL WORK GUARANTEED—

Morris Douglass Implement Co.
Your J. I. Case Dealer



Take a Tip From "POOR RICHARD"

Benjamin Franklin's words—"Think of saving as well as getting"—are as applicable today as they were in his day. Open a savings account with us for every member of the family... save in advance for the things you'll need later.

For Information See Miss Mildred Davis
Muleshoe Bank Bldg.

First Federal

SAVINGS & LOAN ASS'N. OF CLOVIS
CLOVIS NEW MEXICO

SOPHOMORES ATTENDED SKATING PARTY FRIDAY

Muleshoe sophomores attended a skating party at Morton Friday night, January 16, with Miss Margie Moore and J. A. Beam as class sponsors. Refreshments of sandwiches and cookies were served. Also sponsoring the party were several class mothers, Mesdames O. C. Kirk, Leon Julian, David Stovall, and R. E. Bryant.

MULESHOE BEAUTY SHOP ADDS NEW EQUIPMENT

Mrs. Lucille Cherry has installed two new Helen Curtis Dryers in her shop, to give her customers a better service. Mrs. Cherry says that the Curtis Dryer will dry your hair in about half of the time as the old dryers.

Longview Club Met With Mrs. Hunt

The Longview HD club met January 13 in the home of Mrs. Ruth Hunt with eight members present. Plans for the new year were discussed and Mrs. Gladys Dorsey gave a talk on well equipped sewing boxes.

It was decided that, with each roll call, every member would be asked for handy hints or pay a forfeit.

After a business session refreshments of cookies, coffee and cocoa were served to the following: Mesdames Ranita Dawson, Katherine Buzzard, Oetha Buzzard, Gladys Dorsey, Naomi Black, and the hostess, Ruth Hunt.

The next meeting will be in the home of Mrs. Ranita Dawson January 27. Visitors and anyone who wishes to become a member is welcome to attend.

HAWAIIAN STEEL GUITAR LESSONS

The Aloha Studio of Hawaiian Music is now enrolling students in Muleshoe. Your guitar will be furnished. Pupils of any age can learn to play. Classes on Thursday and Friday.

Call at Studio on Thursday and Friday
Mrs. Douglass' Home, West of High School

ALOHA STUDIO

Clovis — Portales — Muleshoe

Lubbock Kiwanis Club presents AFRICAN ADVENTURES of the W. G. McMILLAN FAMILY



MOVING PICTURES IN FULL COLOR WITH W. G. McMILLAN, SR., COMMENTATING
WORLD PREMIERE: Friday, January 23rd at 8:00 P. M. o'clock. ALL SEATS RESERVED—\$2.40 tax included.
MATINEES: Saturday, Jan. 24 and Sunday, January 25th, 2:30 P. M. Children 60c, Adults \$1.50 tax included.
NIGHT: Monday, January 26th through Wednesday, January 28th, 8:00 P. M. —\$1.50. ALL SEATS RESERVED.
LUBBOCK HIGH SCHOOL AUDITORIUM
BENEFIT: LUBBOCK KIWANIS BOYS AND GIRLS FUND
TICKET OFFICE: Adair Music Company, 1012 Main Street
MAIL ORDERS: In care of Kiwanis, Box 3, Lubbock, Texas

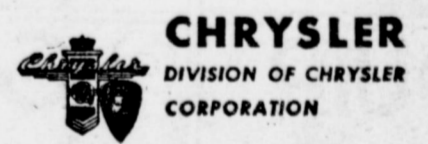
CHRYSLER PLYMOUTH

We are pleased to announce the appointment of
Govin Motor Company
Southeast Corner of Square — Morton Highway
Phone 252-J Muleshoe, Texas
as CHRYSLER - PLYMOUTH dealer

This new Chrysler agency is at your service—another member of the great Chrysler dealer organization of which we are justly proud. You are cordially invited to drop in and get acquainted. Let the staff show you around. Above all, examine the beautiful new Chrysler, the finest new car of all.

Until the time you get delivery on that new Chrysler or Plymouth, place your present car in the hands of this agency's modern service department. Factory-trained mechanics, using factory-designed tools and methods, will keep your car looking and acting young. On everything from a grease job to a major repair,

their know-how will increase your motoring pleasure... and mean money in your pocket on a trade-in.



ARE YOU HAVING TROUBLE

Balancing Your Budget?



A FOOD LOCKER

May be the answer to your problem. A Food Locker can save you money every day on your grocery bill. See us today about our services in helping you to have better foods at lower cost.



Muleshoe Locker Co.

Phone 33

Muleshoe

NEW BOOKS GIVEN TO THE MULESHOE LIBRARY

The Muleshoe Library received three good novels to add to their shelves. "To Have and Have Not" is by Ernest Hemingway, who has written many interesting books. "Three Came Home" is by Agnes Newton Keith and "Rooster Crows for Day," is by Ben Lucien Burman. The latter author has written many interesting books for boys.

MARRIAGE LICENSES

Claude V. Riley and Miss Guy Evelyn Nickels, Muleshoe.
Chester Henry Embry and Billy Jo Welch, Muleshoe.
John Hardy, Sudan, and Miss Grace Sneed, Muleshoe.
Charles Aldrich Green and Miss Ruth Corine Henson, Bula.
Herbert H. Potter and Mrs. Frances N. King, Farwell.
Worden E. Reese and Mrs. Mary A. Slaton, Muleshoe.

DAMRON TO GRADUATE
Bobby Sam Damron, of Muleshoe, is listed as a candidate for the Bachelor of Science Degree in Pharmacy at the University of Texas at graduating exercises Jan. 31, according to announcement of the dean. He is the son of Mr. and Mrs. Joe Damron of Muleshoe, owners of Damron Drug company.

IN MARITIME SERVICE
Herman R. Needham, 19, has enrolled in the U. S. Maritime Service in New Orleans, La., and has been transferred to the U. S. Maritime Service Training Station, St Petersburg, Fla.

Mrs. Olin Jennings and Mrs. Luther Fields are in Dallas this week attending the spring market and to buy merchandise for the Dixie Lee Shop.

Mrs. Lula Sadler has entered Dr. Sadler's Hospital at Merkel for treatment. Dr. Sadler is her son.

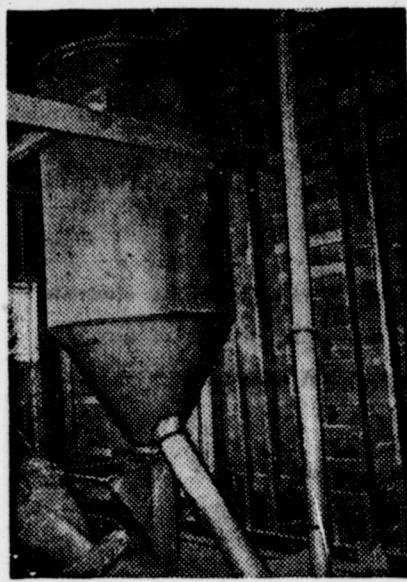


Automatic Mixers Available on Farm Electricity Cuts Down On Farm Labor Costs

By Bob Wilson

Feed mixing, like an increasing number of other farm chores, now is being placed on practically an automatic basis and coordinated with related activities. In this case, mixing is coordinated with cribbing and grinding operations.

Generally, mixers are located either adjacent to the grinder or in the barn now almost directly above the mill. The two-ton mixer, shown in the accompanying illustration, is in the mow of a Midwestern farm. When processing operations begin, shelled corn, which has been blown



Such a mixer will save labor.

into a bin to the right of the mixer, drops through a chute to the grinder on the floor below. The blower pipe is shown at the right of the mixer.

After grinding has been completed, the ground grain is blown into the mixer and necessary supplements added. The thoroughly mixed grain then flows out of the mixer and down a chute to be loaded into a feed cart on the first floor.

The only manual work required is dumping the sacked supplement into the mixer. A conventional type blower cribbs the whole grain automatically, while the blower attachment on the electrically powered grinder returns the ground grain to the mixer.

Setups of this type are becoming commonplace on scores of electrified farms. They can be constructed at relatively small cost and, in most cases, by unskilled farm labor.

TRAINING FOR HIGH SCHOOL GRADUATES

Here is an important message for mid-term high school graduates. Young men, no matter what your field of interest, if you want a good paying job and wish to continue your education and training, then it will pay you to obtain full details about the Army and Air Force educational program. You can pick your technical or specialist school before enlisting, and once in the service you can pick self-study college courses from hundreds of different subjects offered by the United States Armed Forces Institute. Ask your nearest Army and Air Force Recruiter—Sgt. Reynolds—for further information.

Clarence W. Niemings of Muleshoe was accepted for enlistment in the Air Force for a 3-year period. He had former service in the Navy. He will be stationed in Fort Worth. T-Sgt. Leon Reynolds will be in Muleshoe on Wednesday, January 21, at the postoffice to interview

anyone interested. Prior service men of any branch can enlist for specific units stationed in United States for a 3 year period in the States.

WAYNE CHERRY CELEBRATES 7TH BIRTHDAY

Mrs. Thurman White entertained at her home January 8, from 2:30 until 4:00 with a birthday party for Wayne Cherry on his seventh birthday. Mrs. White was assisted by Mrs. Roubinek, Mrs. J. Johnson and Mrs. Adair.

Games were played and refreshments of ice cream and cake were served to the following: Jack Roubinek, Goldilou Goucher, Reta Adair, Darla and Kay Johnson, Leon Anderson, Aiva Lee Shofner, Butch Wanzor, Sharon Kay West, Jimmy and Bobby Kinsler, Janice Prather, Sylvia Pool, Clifford White, Mary Jo Holt and the honoree.

Texas dairyman's minimum roughage goal for 1948.

A well-stocked and well-managed

ed farm pool can be expected to produce as much meat to the acre as if it were in good pasture, according to USDA.

ANNOUNCING A NEW ELECTRIC SERVICE

Anywhere — Anytime Motor Hook-ups and Repairs House Wiring, A Specialty FOR ANY ELECTRICAL NEEDS Contact

O. H. MORRIS at C. L. Lenau Lumber Co.

See Us For Your FERTILIZER NEEDS

Complete Stock of FIELD SEEDS

Full Line EL RANCHO FEEDS

RAY GRIFFITHS ELEVATOR

Phone 32 Muleshoe, Texas

BRING US YOUR SWEET SUDAN COMMON SUDAN

Seed Types HEGARI and Other WELL MATURED GRAINS for TOP MARKET PRICES

Gilbreath Feed & Seed Co.

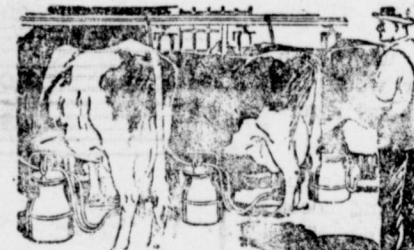
Now Hatching

First Hatch Off Feb 9

MULESHOE HATCHERY

TYE YOUNG, Owner

Dairy Cattle SALE



We have bought the Martin Herd of Holstein cows, of Farwell, and will sell our present herd of good Jersey and Durham milk cows. All cows offered in this sale are young cows, most of them in production now. If you want to know more about them, ask Dudley Malone of Malone Milk Company, who is well acquainted with their production qualities. Sale at Thomson place, 5 miles out from Muleshoe on Clovis highway, 6 miles west on new paved road, 1-4 mile south; or 4 miles south of Lariat, Texas. SALE TO BEGIN AT 11 A. M.

Thursday, Jan. 29, 1948

Lunch Will Be Served At Noon

Free Coffee, Bring Cups

- 1—Durham Cow, 5 yrs. old, fresh, giving 4 1-2 gal.
- 1—Durham-Jersey Cow, 6 yrs. old, fresh, giving 4 1-2 gal.
- 1—Durham-Jersey Cow, 5 yrs. old fresh, giving 4 1-2 gal.
- 1—Spotted Jersey Cow, 5 yrs. old, fresh, giving 4 1-2 gal.
- 1—Brown Jersey Cow, 7 yrs. old, fresh, giving 4 gal.
- 1—Brown Jersey Cow, 5 yrs. old, fresh, giving 4 gal.
- 1—Brown Jersey Cow, 5 yrs. old, fresh, giving 4 gal.
- 1—Brown Jersey Cow, 6 yrs. old, fresh, giving 4 1-2 gal.
- 1—Light Brown Jersey Cow, 6 yrs. old, fresh, giving 4 1-2 gal.
- 1—Fawn Jersey Cow, 6 yrs. old, fresh, giving 4 gal.
- 1—Brown Jersey Cow, 6 yrs. old, 5 gal. when fresh.
- 1—White Jersey cow, 5 yrs. old, 5 gals. when fresh.

- 1—White Jersey Cow, 5 yrs. old, giving 4 gals. now.
- 1—Black Jersey Cow, 4 yrs. old, fresh soon, 3 gal. cow.
- 1—Brown Jersey Cow, 5 yrs. old, fresh, 3 gals. now.
- 1—Brown Jersey Cow, 4 yrs. old, fresh, 3 1-2 gals. now.
- 1—Brown Jersey Cow, 6 yrs. old, giving 4 gals. now.
- 1—Black Jersey Cow, 5 yrs. old, giving 3 1-2 gals. now.
- 1—Light Jersey Cow, 6 yrs. old, giving 4 gals. now.
- 1—Light Jersey Cow, 6 yrs. old, giving 3 1-2 gals.
- 1—Light Jersey Cow, 4 yrs. old, giving 4 gals. now.
- 1—Light Jersey Cow, 4 yrs. old, giving 3 gals.

Gallonage given above is from actual weighing, not from estimate.

All cows listed have recently been Bangs tested and T. B. tested.

O. C. THOMSON and NOWELL BROS., Owners
COL. W. D. WANZOR Auctioneer HUGH FREEMAN Clerk

Checks Soil Losses

Good soil management pays dividends in making heavy crops per acre, building organic matter in the soil and at the same time checking

SOIL TREATED WITH LIME, PHOSPHATE, POTASH, GOOD CLOVER		SOIL NOT TREATED	
CORN	WHEAT	CORN	WHEAT
21 TONS 04. PER ACRE	185 TONS 04. PER ACRE	12 TONS 04. PER ACRE	12 TONS 04. PER ACRE
240 LBS. OF NITROGEN	150 LBS. OF NITROGEN	120 LBS. OF NITROGEN	120 LBS. OF NITROGEN
180 LBS. ANIM. POTASH	110 LBS. ANIM. POTASH	120 LBS. ANIM. POTASH	120 LBS. ANIM. POTASH
350 LBS. ANIM. CALCIUM	80 LBS. ANIM. CALCIUM	120 LBS. ANIM. CALCIUM	120 LBS. ANIM. CALCIUM

erosion. The results shown above summarize tests at the University of Illinois Elliz-abethtown experiment field since 1914.

Manure, lime and phosphate made the difference between the two plots. The soil was already rich in potash.

The heavy crops of alfalfa-clover and small grains protected the soil from beating rains. The soil of the treated plot with its 18 tons of organic matter per acre could soak up more water faster than the soil of the untreated plot with only five tons. Less water was left to run off and carry soil with it.

For erosion control on longer slopes a crop rotation that includes more years in soil protecting crops such as legume grass mixtures is advised. Full fields on a 12 per cent slope such as was in this field would need a rotation of corn, winter grain and two or three years of legume-grass mixtures for best results. Contour farming, strip cropping and terracing would help, too, to slow down the water so that more would have a chance to soak into the ground.

Three Major Problems Face Pork Producers

The pork producer faces three problems as he makes plans for 1948, say Michigan State college specialists. A short corn crop, a relatively narrow corn-hog ratio and a stressed feed conservation program are the problems to be met. The danger is that too few sows will be bred for spring pigs and there may not be enough hogs to consume the corn crop produced in 1948.

GASOLINE GAGS

SLIP **TRIP**

EQUIP **GRIP**

Unless you're being paid to be a movie stunt man you won't try a stunt like this guy. Let our expert mechanics reline and check your brakes for safer driving.

OIL **GULF** GAS
C. W. GOSS AUTO CO.
Phone 53 Muleshoe, Texas

Anti-Inflation Suggestions

Editor's note: Albert Perkins has offered for publication an article on current economic conditions, which appeared in a recent issue of "Air Conditioning & Refrigeration News," a trade publication he receives. While this editor does not see eye to eye with the writer, nor does Mr. Perkins wholly approve of the article, we reasoned that it still is informative and timely and undoubtedly would prove of interest.

This writer does not see how farm subsidies can be eliminated in the foreseeable future, nor how wages can be substantially reduced; the national income must be maintained at current high level, else how will we ever begin to pay off our

SNOODLES

By Cy Hungerford



national indebtedness of 267 bil-

ions or thereabouts?

ANTI-INFLATION SUGGESTIONS

The article follows:
"Every American owes it to himself in self defense to insist today that the representatives from his district in Congress, and the executive branch of our government rise above ordinary politics during this grave emergency and demonstrate true statesmanship. We need action now or it will be too late."
Thus speaks an important executive in our industry. He points out that food prices have soared to an all time record and are likely to soar higher. And he intimates that if government, business, labor and agriculture, working together as a

team against the common cost of living enemy, do not immediately act to halt the upward surge of prices and bring the necessities of life back within reach of "the really forgotten man," that this nation would soon face grave consequences. Emphasizing that neither price nor wage controls will solve the problem, he suggests a 9-point program which he thinks could bring the nation's economic structure back on an even keel if government, business, labor and agriculture unite in an unselfish effort to accomplish this purpose.

This 9-point program can be summarized as follows:
1. Turn food prices downward by suspending artificial government support of farm prices which is helping to keep them up.
2. Buy for export intelligently thru a central government agency that will operate in such a way as to prevent domestic prices from skyrocketing because of purchases needed for foreign aid.
3. Allocate by export licenses shipments overseas of scarce materials and thus minimize hardships at home as far as possible.
4. Let interest rates rise, so investors will buy long term securities, removing money from circulation that is now competing for our goods and bidding up prices.

5. When food prices start down, government should also ask organized labor to stop demands for wage increases for a year.
6. When assured of such cooperation from labor Government should ask industry to stop wholesale price increases for a year and ask distributors and retailers to reduce retail prices wherever possible.

7. Government should reduce its own expenditures, balance its budgets, use the savings to pay off the federal debt and still maintain a strong national defense while supporting the Marshall Plan.
8. Government should enact the community property tax early in January; put through other tax cuts; pass savings to the "really forgotten man."
9. Forget price and wage controls; keep free markets and stop bidding up prices by competing with one another for scarce items. Instead the government should switch to other items in better supply and costing less when implementing the Marshall Plan.

Sounds sensible, doesn't it?
COLD SPELL HITS
The mercury skidded to 9 degrees

below zero Monday night and highest temperature Monday was 29 degrees, R. J. Klump, weather recorder, said. Ice was thickest Tuesday

morning for this winter principally because for the last several days it had been below freezing most of the day.

LET

W. D. Wanzor, Auctioneer

**SELL YOUR SALE
FARM SALES A SPECIALTY**

WORK WITH YOU FROM THE TIME SALE IS BOOKED UNTIL IT IS SOLD

For Sale Date Call 15-J
Muleshoe, Texas

Clyde A. Bray, sr. **Muleshoe Real Estate Agency** Robert B. Precure
Box 793 Phone 282
Muleshoe, Texas

- 80 A. Level irrigated land, some hay and permanent pasture, 3 bedroom modern home, possession. This is a good buy \$16,800.00
 - 320 A. Level land near Muleshoe, irrigation, 120 a wheat, 15 a. alfalfa, 3 rm. house, pavement, 3 mi. out. \$157.50
 - 160 A. Red land 8 miles out, 3 rm. house, new. Large chix house. This has just been listed for sale \$85.00
 - 160 A. Good level irrigated land, 10" well on Mercury mtr. 5 rooms, modern, butane, elec. water system, pavement \$200.
 - 160 A. 5 room house, some out bldgs., good irrigation well, used two years, this is red land and some johnson grass not bad. \$125.00 per A.
 - 80 A. level land with a good irrigation well, 6 a. alfalfa, 7 A. permanent pasture, two r.m. house and out bldgs. \$15,000.
 - 80 A. 3 room house, big barn, double garage, chicken house, irrigation well and 20 A alfalfa. \$14,000.00
- We have several nice dwellings that are well located and priced to sell and can give immediate possission.
- 639 A. good level land, 6 room house, modern in every way 3 room tenant house, barns, and other out bldgs. No. 12 Irrigation pump, 3 stage setting on 130' New Chrysler Motor. This is one of the best sections of land in West Texas. All minerals intact \$125.00 per A.

WE NEED MORE LISTINGS

Located, Lubbock-Morton Highway

Woodmen Official



H. B. PORTER
Judge Advocate General, Uniform Rank, Woodmen of the World

Omaha, Neb.—Horton B. Porter, attorney, of Hillsboro, Texas, has been appointed a brigadier general and assigned as Judge Advocate General of the Uniform Rank, semi-military organization of the Woodmen of the World Life Insurance Society, W. C. Braden, its commanding general, announced here today.

Other appointments as brigadier general on the general staff are Dr. James C. Pepper, Easley, S. C., surgeon general, and David P. Kimball, Phoenix, Ariz., chaplain in chief.

High Milk Producers Required for Profit

The size of the milk wells is a true measure of the size of the milk veins. This diagram of the udder structure by Clemson Agricultural college shows the udder structure in detail. If the end of the vein is forked, two or three milk wells

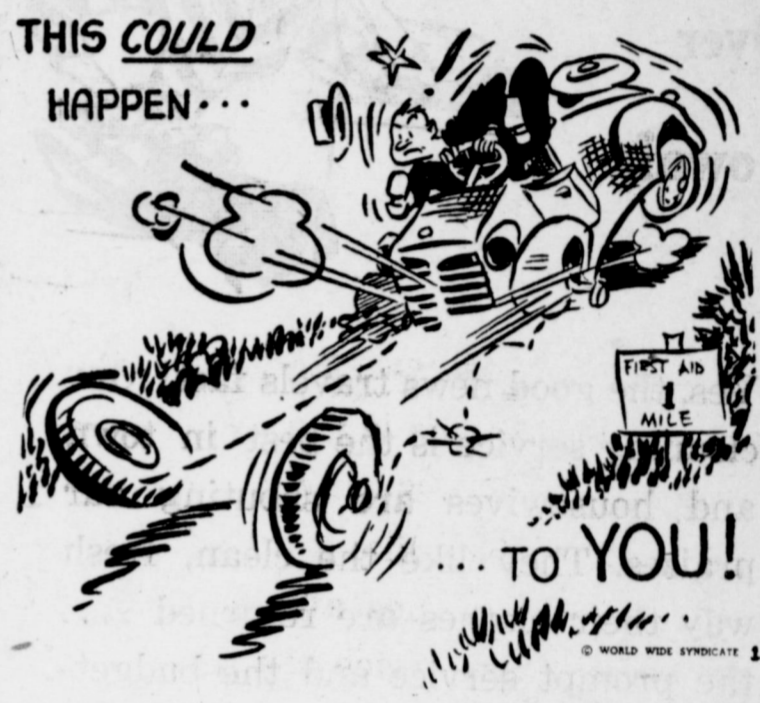


often may be found on either side. A good mammary system is indicated by a large udder, which gets its capacity in length and width rather than excessive depth, extending well up behind and forward.

New Seed Disinfectant Suggested for Cotton

Ceresan M seed disinfectant is being recommended for use against numerous seed-borne and soil-borne crop diseases, including seed-borne anthracnose, angular leafspot, seed decay and seedling damping-off of cotton. The active ingredient of this new material is ethyl mercury p-toluene sulfonamide, which has been successfully tested by colleges over a period of years under the designation of No. 1443-F.

THIS COULD HAPPEN...



... TO YOU!
**For Automobile & Truck Repair
Service Call 111 or Goto
ARNOLD MORRIS AUTO CO.**

Phone 111 — Muleshoe

FARMERS



"SELL A HEN — BUY THREE EARLY CHICKS"

Early Chicks Will Lay Fall Eggs Which May Be SCARCE and HIGH.

The Grain That One "Non-Productive" Hen Will Eat in Six Months Will Carry THREE Day Old Chicks to Laying Pullet Age.

Exchange Those NON-LAYING Hens for BABY CHICKS.

Hatching Each Week

Book Your Order Now

Taylor's Produce & Hatchery

Muleshoe, Texas

WAR BONDS AREN'T THE ONLY THINGS THAT ARE WORTH SAVING

Repair!

It's always good economy, good sense to keep your MM farm equipment in tip-top shape! As MM dealers we specialize in making repairs and re-conditioning! See us for estimates, on all farm equipment work! Be sure to see us if your MM equipment needs repair! Get your work done before the rush.



Read these 8 reasons for getting genuine MM repair parts!
1. Accurately manufactured! 2. Original MM quality built in during quantity production! 3. Correct weight and tolerance requirements! 4. MM parts meet same rigid MM inspection! 5. Treated to withstand the strains and tensions of their particular job! 6. Genuine MM parts are Number Identified to make sure you get the right one! 7. Genuine MM parts give long term, satisfactory service—economical, too! 8. Know the number of the part you need.

Save!

Save and conserve your farm machinery to help feed the starved peoples of the war torn countries and thus win total Peace. Keep the small things fixed—protect equipment from weather-wear! Conservation of farm equipment is one sure way to build farm profits—and to always have equipment in best working order! See us for repairs!

Fry & Cox Bros.

Minneapolis-Moline Farm Machinery
A One Stop Farm Service

Phone 35

Muleshoe

