



**At The Churches**

Communion Service 11:45 a. m.  
 Preaching 8:00 p. m.  
 Ladies' Bible Class, Tuesday, 3 p. m.  
 Mid-Week Services 6:00 p. m.

**FIRST BAPTIST CHURCH**  
 Rev. A. W. Blatne, Pastor  
 Sunday School 9:45 a. m.  
 Morning Worship 11:00 a. m.  
 Officers & Teachers - Wednesday 7:00 p. m.  
 Choir Rehearsal, Thursday 7:00 p. m.  
 Training Union 6:30 p. m.  
 Evening Worship 7:30 p. m.  
 WMU, Wednesday 2:00 p. m.

**MAIN STREET MISSIONARY BAPTIST CHURCH**  
 Rev. M. E. Robinson, Pastor  
 Sunday School 10 a. m.  
 Church Services 11 a. m.  
 B. T. U. 7:30 p. m.  
 Church Services 8:15 p. m.  
 Wednesday Night Prayer Meeting 8:0 p. m.



**Schedule of Services**

**CHURCH OF CHRIST**  
 Bible Study 10 a. m.  
 Preaching Service 11 a. m.

**LONGVIEW BAPTIST CHURCH**  
 Elwin E. Ingram, Pastor  
 Sunday School 10:00 a. m.  
 Morning Worship 11:00 a. m.

**BRING US YOUR SWEET SUDAN COMMON SUDAN**  
 Seed Types HEGARI and Other WELL MATURED GRAINS for TOP MARKET PRICES  
**Gilbreath Feed & Seed Co.**

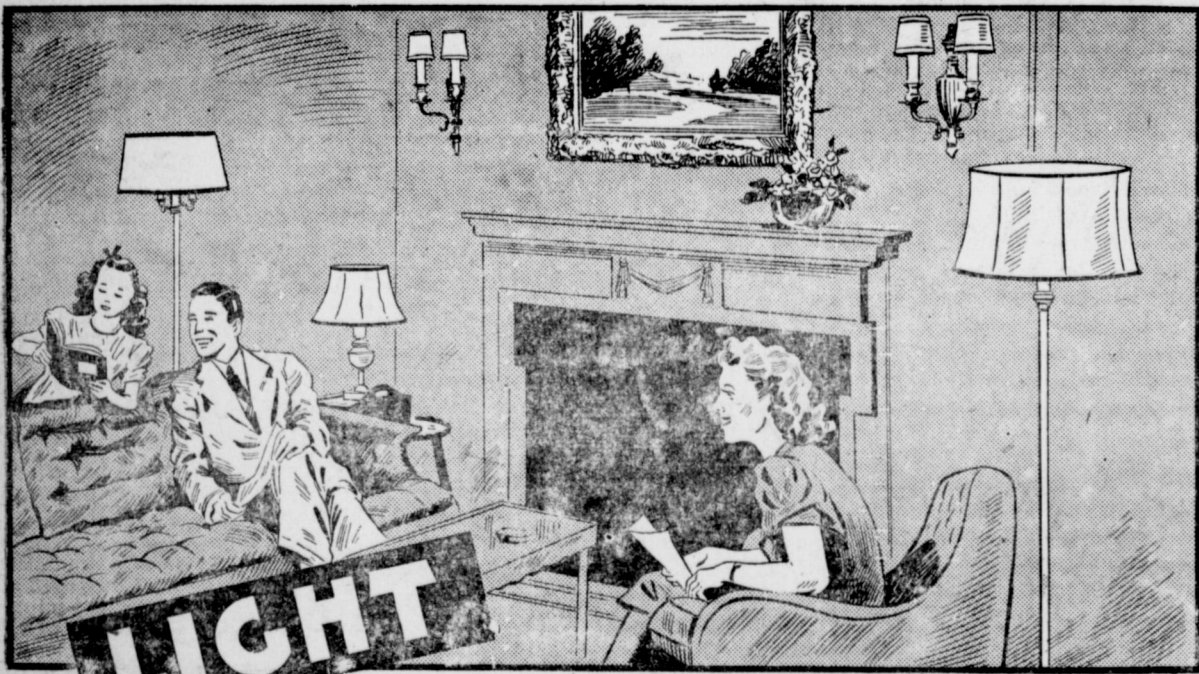
**Water Well Drilling and Repair**

California Irrigation Pumps  
 Estimates On Turnkey Jobs  
 Any Size Hole Up to 20 Inch

FIFTY YEARS EXPERIENCE ALL WORK GUARANTEED

**E. H. KENNEDY**

Muleshoe Box 612 Pho. 268-W



**Brings better living to your living room**

There's added charm and loveliness... better living in a well-lighted living room.

Use the room for reading, studying, sewing, relaxing—good lighting means added comfort, better eyesight.

For guests, there's an added welcome in cheery lighting; there's added pleasure in being entertained in a well-lighted home.

Now, you can have the lighting in every room of your home checked, absolutely free. Just call or write your nearest Public Service office for a visit from a lighting specialist. There is, of course, no obligation.

**I'LL COME TO YOUR HOME OR PLACE OF BUSINESS**



A Public Service Company lighting specialist will come to your home, office, or place of business to give you recommendations as to how to obtain the best in lighting. There's no obligation. Just call or write your nearest Public Service office.

We have nothing to sell but good electric service.

**SOUTHWESTERN PUBLIC SERVICE COMPANY**

23 YEARS OF GOOD CITIZENSHIP AND PUBLIC SERVICE

**JUST HUMANS**

By GENE CARR



The Most Unpopular Guy in the Neighborhood, His Father's the Trust Officer

A. R. Haley, Sudan.  
 C. W. Weeks, Route 1.  
 L. E. Ogletree, Star Rt. 2.  
 W. E. Goforth, Sudan.  
 Jack Epps, Route 1.  
 Alton Cherry, City.  
 W. F. Harrison, Star Rt. 1.  
 James L. Moore, City.  
 F. M. Fountain, route 1.

**OGLETREES ARE MOVING BACK TO GEORGIA**

Mr. and Mrs. J. C. Ogletree, of Springlake community, are moving back to Chatsworth, Georgia, their old home, after residing here for 21 years. They held a farm sale at their place last Thursday.

A son, Malcolm Ogletree, and his wife remain in the Springlake community while another son, L. E. Ogletree lives 11 miles south and west of Muleshoe. A third son of the couple is with the Army in Japan.

Col. W. D. Wanzor conducted the sale, which was clerked by Hugh Freeman. Mr. Ogletree reports it was a very satisfactory sale.

**ARMY RECRUITER TO BE IN MULESHOE**

T-Sgt. Leon Reynolds of the Clovis Army Recruiting office will be in town on December 3 between the hours of 9 a.m. and 4:30 p.m. He will be located at the postoffice to interview anyone interested in seeking information of the Army policies.

**BROUGHT BACK DEER**

Three Muleshoe hunters returned from a hunting trip last week

end with a deer each. The hunters were Jack Epps, Ray Griffiths, S. Sanders, Sr., and the Alamo Huteo Ranch, near N. M., a warren property.

**Income Tax Returns**

C. C. GRIFFITHS  
 Ray Griffiths Elevator  
 Phone 32 Muleshoe

**LAMBERT'S Little PLUMBER**

WE'LL MAKE THAT HEATER KEEP YOU WARM REGARDLESS OF THE WINTRY



**LAMBERT Plumbing Company**  
 PHONE: 96 • MULESHOE

**LAZBUDDY CHURCH OF CHRIST**  
 Bible Study 10 a. m.  
 Preaching Service 11 a. m.  
 Communion Service 11:45 a. m.  
 Preaching 8 p. m.

**FIRST BAPTIST CHURCH Lasbuddy, Texas**  
 Sunday School—10:0 a. m.  
 Morning Worship—11:0 a. m.  
 Training Union—7:00 p. m.  
 Evangelistic Service—8:00 p. m.  
 Mid-Week Prayer Service—7:00 p. m.  
 "Not forsaking the assembling of ourselves together."—Hebrews 10:25

**MULESHOE PRIMITIVE**  
 Elder L. M. Hamby, Preacher  
 Services every second and fourth Sunday at the school house.  
 Song service 10:30  
 Preaching 11:00

**ASSEMBLY OF GOD CHURCH**  
 Rev. L. H. Hubbard, Pastor.  
 Sunday School 10:00 a. m.  
 Morning Worship 11:00 a. m.  
 Evening Service 8:00 p. m.  
 Young People's Service, Tues., 8:00 p. m.  
 Mid-Week Service, Thurs., 8:00 p. m.  
 Women's Missionary Council, Thurs., 2:30 p. m.

**HONOR ROLL**

Many new and renewal subscriptions have been received the last few days, among which are:  
 V. M. Collins, city.  
 H. E. Musson, Lubbock.  
 George Johnson, city.

H. A. Angeley, Star rt. 1.  
 R. T. Tibbets, city.  
 John M. West, Star route 1.  
 Andrew Wittner, Dalleyboro.  
 A. J. Commons, Star rt. 1.

**LUZIE'S FINE COSMETICS**  
 Selected to suit your individual requirement.  
 Accepted by the American Medical Association  
**SALLIE M. SCHUSTER**

**Bobo Insurance Agency**  
 Pat R. Bobo, Owner  
 Office in Court House  
 Phone 97 Muleshoe

**GREEN Hospital & Clinic**  
 Muleshoe, Texas  
**L. T. Green, Jr., M. D.**  
**M. F. Green, M. D.**  
 Mrs. Lula Gorrell, R. N.  
 Joyce McCarty, R. N.  
 Betty Jo Campbell, R. N.  
 Winona Blair, R. N.  
 Geraldine Green, R. N.  
 (Offices At Hospital)

**Auto Parts**

We carry a complete line of parts for all makes of cars. Also plenty of accessories in stock.

Wholesale and Retail

**Bovell Motor Supply**

Phone 70

Muleshoe



**GET YOUR FORD SET for CAREFREE HOLIDAYS**

**SAVE MONEY 4 WAYS WITH REAL FORD SERVICE**

Adjust carburetor

Clean and adjust spark-plugs

Check distributor

Change to winter lubricants

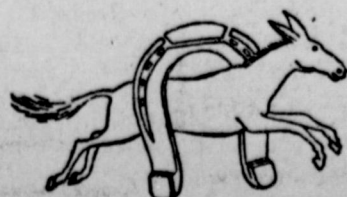
Flush and fill radiator with antifreeze

It pays to bring your Ford "back home" for service. If your Ford needs special repairs or just a general winter tune-up, your Ford Dealer can do the job better, quicker and at a greater saving with this 4 Way advantage of Ford Service:

1. Ford-trained Mechanics
2. Factory-approved Methods
3. Special Ford Equipment
4. Genuine Ford Parts

**There's no place like HOME for Ford Service**

*your Ford dealer knows your Ford best!*



**Motor Co.**

Phone 33

Muleshoe, Texas

**The Muleshoe Journal**

Entered as second-class matter at the Muleshoe Postoffice under the Act of Congress, March 3, 1897.

Published Every Thursday at MULESHOE, TEXAS

FORBES . . . . . Publisher

**SUBSCRIPTION RATES**

In immediate territory, yr. . . . \$2.00  
Out of Territory . . . . . \$2.50

**STAR-TELEGRAM RENEWALS**

Star-Telegram Bargain Days Are Here:  
Daily & Sunday . . . . . \$11.95  
Reader Saves . . . . . 3.05  
Daily Without Sunday . . . . . 10.60

Phone 54

**THE MULESHOE JOURNAL**

Reader Saves . . . . . 1.40

Sorry, no new subscriptions can be accepted due to paper shortage. We will be glad to handle your renewal subscription.

**Purchase Program To Speed Culling Of Poultry Flocks**

As a measure to save 30 million bushels of grain during the rest of the year the U. S. Department of Agriculture has announced a purchase program to help producers to speed up culling of hens, and at the same time conserve poultry meat-supplies for later use by consumers.

Processors offering fowl to the Government under this program will be required to pay at least the following prices to producers delivering poultry to the processing plants:

Hens, over 4 1-2 pounds live weight, 20 cents; Hens, 3 1-2 to 4 1-2 pounds live weight, 15 cents. Grade B quality will be accepted at 3 cents per pound under Grade A prices.

It is expected that this program will help reduce the number of hens by 136 million head by January 1, 1948. If this goal is accomplished the savings in grain will amount to approximately 30 million bushels.



© HOUSING PLAN SERVICE, Inc.

**THE VICTOR**

In the Victor, we present a house that offers what is practically the irreducible minimum in accommodations, four good, livable rooms and bath. But what rooms! And what a plan! And how beautifully the architect has developed the exterior! Its lines are as balanced, its whole appearance as attractive as you expect to find in homes costing twice as much.

The Victor is one of the two minimum houses pictured this month and it is certainly an outstanding one.

It has just a few luxuries: a living room a couple of feet larger each way than FHA standards call for. It also boasts an open fireplace. The kitchen has a built-in dinette, a great convenience in the house without a separate dining room. Each bedroom is 20 square feet larger than FHA requirements. There is a partial basement that would permit the installation of a "pipeless" furnace, the cheapest form of central heat. The Victor was designed according to all the exacting standards of Housing Plan Service. Like all our houses, it meets FHA standards and its wiring diagram carries the seal of National Adequate Wiring Bureau which insures economy, safety and efficiency of electrical use. Complete architect's working drawings and specifications from which the Victor may be built should be ordered from Housing Plan Service, 140 Nassau Street, New York 7, N. Y. They cost \$7.50 per set.

**Support Price On Turkeys Set**

The U. S. Department of Agriculture will buy dressed turkeys from producer-owners or their agents and from processors or vendors who certify that they have paid producers for all live or dressed birds which they process, sell, or resell, prices that reflect the announced live weight support prices. Only those birds purchased and dressed after August 31 will be purchased by the Department.

Processors who expect to sell turkeys to the Government under this program should pay the producers not less than the following prices: Young Turkeys, under 18 pounds live weight, 35 cents; Young Turkeys, 18 to 22 pounds live weight, 31 cents; Young Turkeys, 22 pounds and over live weight, 25 cents.

Prices for grade B turkeys will be 3 cents a pound less on all classes. These support prices will reflect the producers 90 per cent of parity as of August 15.

Persons interested in selling turkeys to the USDA should contact C. M. Evans, Poultry Branch, Production and Marketing Administration, Fidelity Building, Dallas, Texas.

Mr. and Mrs. Mack Hale and children, Joan, Jerre Lee and Mack, Jr., will spend Thanksgiving Day in Lubbock with Frank Bryant and family, their old friends.

Mr. and Mrs. J. M. Forbes will have Thanksgiving dinner in Plainview with her parents and other relatives.

I. C. Maddox, of Ralls, has been a visitor here in the home of his son, Bill Maddox.

**Saving Fats Adds To World Supply Of Food Grain**

Jesse B. Gilmer, Administrator of the Production and Marketing Administration of the U. S. Department of Agriculture, in an official statement points out the connection between world scarcities of wheat, corn and other grains used as feed for livestock and salvaged used kitchen fats in American homes.

"Salvaged fat," says Mr. Gilmer, "has taken the place of other fats and oils, many of which require feed grains in their production." Behind that short sentence is a whole agricultural economy. Hogs and other livestock produce a large portion of the fats and oils used for food and in industries.

Many fats and oils have specific uses such as linseed oil for paints and varnishes. But, many of the fat and oils are interchangeable for industrial use. Fats that are abundant supplies can be substituted in many instances for scarce fats and oils.

However, the entire world supply of fats and oils has dwindled ever since the beginning of the second world war due to excessive demands upon fats and oils supplies and curtailed oil-seed crops and livestock production.

Therefore, the salvaging of used kitchen grease in American homes is an important contribution to the world economy. Every pound of used kitchen fats turned in to meat dealers augments the overall supply of fats and oils. Used kitchen fats processed for industrial use make available vitally needed supplies of other fats and oils for other purposes.

Used kitchen fats processed for industrial use make available vitally needed supplies of other fats and oils for other purposes.

**Guaranty Abstract Company**

Office in Court House - PAT R. BOBO, Owner - Phone 97 - Muleshoe

**President Truman's 10 Key Points**

1. To restore consumer credit controls and to restrain the creation of inflationary bank credit.
2. To authorize the regulation of speculative trading on the commodity exchanges.
3. To extend and strengthen export controls.
4. To extend authority to allocate transportation facilities and equipment.
5. To authorize measures which will induce the marketing of livestock and poultry at weights and grades that represent the most efficient utilization of grain.

6. To enable the Department of Agriculture to expand its program of encouraging conservation practices in this country, and to authorize measures designed to increase the production of foods in foreign countries.
7. To authorize allocation and inventory control of scarce commodities which basically affect the cost of living or industrial production.
8. To extend and strengthen rent control.
9. To authorize consumer rationing on products in short supply which basically affect the cost of living.
10. To authorize price ceilings on products in short supply which basically affect the cost of living or industrial production, and to authorize such wage ceilings as are essential to maintain the necessary price ceilings.

er purposes, thereby easing the world-wide shortage. Used kitchen grease remains waste until it is sold to meat dealers and processed for industrial use.

**HOW YOU WILL BENEFIT BY READING**

the world's daily newspaper—**THE CHRISTIAN SCIENCE MONITOR.** You will find yourself one of the best-informed persons in your community on world affairs when you read this world-wide daily newspaper regularly. You will gain fresh, new viewpoints, a fuller, richer understanding of today's vital news—PLUS help from its exclusive features on homemaking, education, business, theater, music, radio, sports.

Subscribe now to this special "get-acquainted" offer—1 month for \$1 (U. S. funds)

The Christian Science Publishing Society One, Norway Street, Boston 15, Mass., U. S. A. Enclosed is \$1, for which please send me The Christian Science Monitor for one month.

Name \_\_\_\_\_ Street \_\_\_\_\_ City \_\_\_\_\_ Zone \_\_\_\_\_ State \_\_\_\_\_

**Bring Your Car or Truck to SERVICE HEADQUARTERS**

for the kind of work that

**SAVES**

and

**SATISFIES**

WE SERVICE ALL MAKES

**C. & H. Chevrolet Co.**

Muleshoe Texas

Phone 12



You don't need to wait any longer—our home loan plan will enable you to buy or build your home now. Payments include principal, interest, taxes, Xinsurance. Low interest—prompt courteous service.

IN MULESHOE MAKE APPLICATION WITH MILDRED DAVIS, MULESHOE STATE BANK BUILDING

Let Us Handle Your Savings Account

**First Federal SAVINGS & LOAN ASS'N. OF CLOVIS**

CLOVIS NEW MEXICO

**FOR TASTY MEALS**

Try Our PLATE LUNCHES STEAKS and SHORT ORDERS

**Muleshoe Cafe**

BILL & MARGARET COLLINS



**NOW—make a date to OIL-PLATE!**

Let's change that dirty, beat-up summer oil! Let's refill with brighter, lighter Conoco N<sup>th</sup> winter oil!

Free-flowing Conoco N<sup>th</sup> Motor Oil (patented) includes an added ingredient which fastens an extra film of lubricant so closely to metal surfaces that cylinder walls are OIL-PLATED!

This extra OIL-PLATING actually resists

gravity . . . won't all drain down even overnight! So, you're extra-protected from metal-eating, combustion acids . . . from "dry" starts . . . from sludge and carbon caused by wear!

And that means zingful power . . . pick-up . . . get-up-and-go! A change you'll be thankful for!



Your Conoco Mileage Merchant

# Women's News . Club Events Social Activities

## Wayland's Choir Begins Long Tour

The Wayland College choir, which has attracted state-wide attention, will go on tour November 26. This fine musical organization will play before civic and church audiences in Fort Worth, Dallas, Sulphur Springs, Little Rock, Arkansas, and a special performance at Ouchita College in Arkadelphia, Arkansas. Presenting special Thanksgiving music the choir which numbers over a hundred voices plans to tour these cities during the Thanksgiving holidays, returning to College in time for class resumption on December 1.

This organization is a new one. It is the largest choir to represent the college and great plans have been made for it. There is a possibility that the choir may tour South America next year.

The concert tour will be inaugurated in Plainview where the choir will present a concert at the city auditorium on November 24. Several presentations of the choir have been held in Amarillo, Hereford, and at Las Vegas, New Mexico, where the New Mexico Baptist Student Union convention met.

Dallas Alford, recent graduate of Southwestern Baptist Theological Seminary's School of Sacred Music, directs the choir.

Judge and Mrs. Cecil H. Tate and children left Wednesday noon for Taylor, Texas, to spend Thanksgiving with the family of his sisters. Other relatives were expected to gather there for the day.

## Fidelis Class Has Thanksgiving Dinner

The Fidelis Sunday school class of the First Baptist church entertained their husbands with a Thanksgiving dinner, November 26, at 7:30 in the annex of the church.

The guest speaker for the evening was L. T. Green, Sr., of Littlefield. He spoke on the origin of Thanksgiving and was introduced by Mrs. M. F. Green.

Myron Pool, Sr., gave the invocation. A quartet composed of Tye Young, Pat Bulloch, Chet Layne and George Hicks gave some selections. Mrs. C. C. Griffiths gave a reading and Mrs. E. H. Kennedy played several piano selections during the evening.

The banquet table was covered with a white table cloth, and yellow mums flanked by white candles with holders of red apples, miniature pumpkins, turkeys and the Pilgrims were placed the length of the table.

About sixty-five members and guests attended the party.

## 20 Year Club In Banquet Friday

A banquet of the "20 Year Club", honoring Southwestern Public Service Company employees of 20 years service or more, was held at La Vista in Clovis last Friday night. Attending from Muleshoe were the local manager, Roy Holland, and Mrs. Holland. Mr. Holland has been an employee of the company 22 years.

R. R. Leaird, of the Clovis personnel, who is retiring after many years of service, was presented a fine Hamilton pocket watch. The group gave Mrs. Leaird a beautiful cameo pin.

J. M. Collins, district manager, and several others of the Plainview office were in attendance. J. R. Jaquet, Clovis manager, was host.

Mr. and Mrs. W. B. LeVeque accompanied their son, Martel, a student at Texas Tech, back to Lubbock Sunday and spent the night there with friends. Martel had spent the week end here.

## SERVICE GUILD MET WITH MISS HARDEN

Miss Elizabeth Harden was hostess to the Wesleyan Service Guild of the First Methodist church at its regular meeting Monday night. Mrs. Marty Ezell gave three chapters of the study course book; Mrs. Jim Burkhead conducted the Thanksgiving devotional.

Mrs. Curtis Spivey, vice president, had charge of the meeting in the absence of the president, Mrs. G. O. Jennings, who was ill. Miss Harden served a delicious dinner to:

Mesdames Harold Weyer, W. B. LeVeque, Jim Burkhead, Curtis Spivey, Olen Jennings, and Marty Ezell.

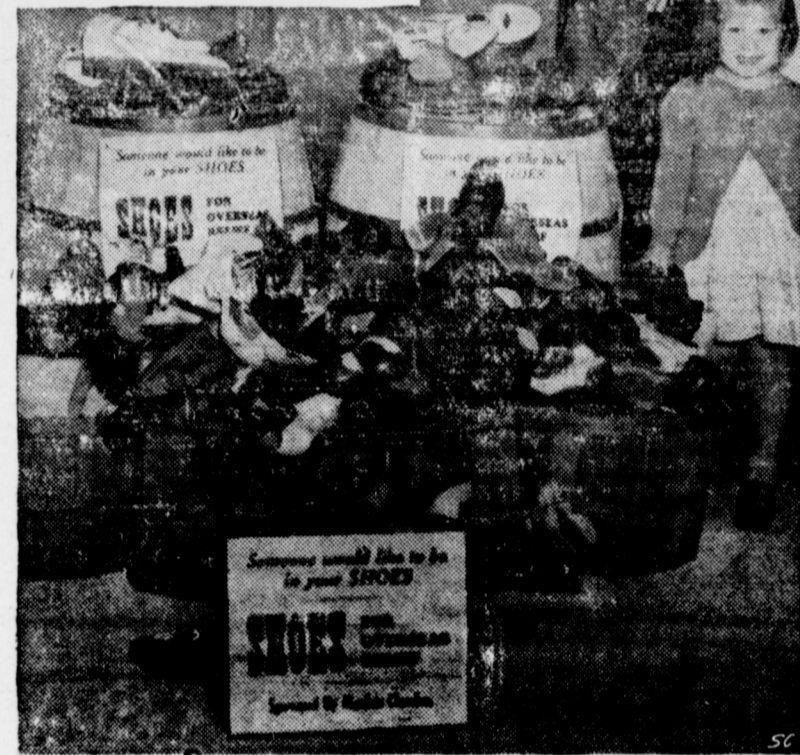
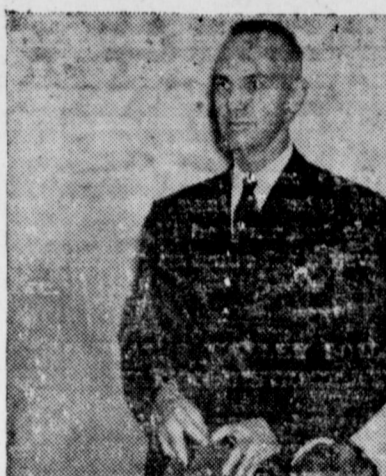
## GUESTS IN POOL HOME

It was almost a full house at the home of Mr. and Mrs. Lee Pool last Sunday as relatives gathered for the day and had dinner with the family. Guests included her mother, Mrs. Pearl Hammock, two brothers,

## Someone Would Like To Be In Your Shoes

MENDOTA, ILL.—"Someone would like to be in your shoes" is the slogan five churches here have used in their effort to collect 1,500 pairs of used but still wearable shoes for relief in Europe. This was one phase of a city-wide Church Loyalty Campaign. The Rev. Truman W. Potter, minister of the local Methodist church, and little Miss Kay Jump, a member of the Sunday School primary class, make their contribution to the pile of footwear.

In the current Christian education emphasis of their Crusade for Christ, Methodists are endeavoring to bring more people to the Church School where they are taught the attitudes and actions necessary for a Christian world order. This includes, of course, a greater sharing of material possessions with the needy of all lands.



John Ray and Ross, all of Sudan; another brother, Carl Hammock and his family, of Shamrock; Mrs. Pool's grandmother, Mrs. E. V.

Stephenson, of Tension, Texas; and Mr. and Mrs. R. C. Brandon and children, Muleshoe, relatives of the family.

## DINNER AT McCARTY HOME

There will be a gathering of family members at the home of Mr. and Mrs. A. D. McCarty Thanksgiving. Fus'on McCarty, their son, now a student at Texas A & M, will be home for a brief visit. Others expected to be here from out of town are: Mr. and Mrs. W. B. Mason, Jr., and Mr. and Mrs. W. H. Bethany, Amarillo, both women daughters of Mrs. I. W. Harden and sisters of Mrs. McCarty, Mrs. Buford Butts and Miss Harden.

## AT TECH-NEW MEXICO GAME

Several Muleshoe people saw the Texas Tech - New Mexico University football game played in Albuquerque Saturday, which Tech won 26 to 20. Attending from here were Mr. and Mrs. Clifton Griffith, Mr. and Mrs. E. T. Evans, Mr. and Mrs. Forrest Jones, Mr. and Mrs. E. C. McWilliams, Mr. and Mrs. Howard Elliott, Mr. and Mrs. Raymond Green and Mr. and Mrs. H. D. King.

## FEAST ON VENISON

Members of the two men's Sunday School classes of the First Baptist church and their ladies gathered at the home of Mr. and Mrs. Ray Griffiths Tuesday night for a venison supper. Mr. Griffiths, who recently returned from a hunt in New Mexico furnished the piece of resistance, and guests brought covered dishes to round out a delicious meal.

Lee Pool and family will have Thanksgiving dinner with relatives in Sudan and will attend the football game there in the afternoon between Sudan and Littlefield high school teams.

## Girl Scouts Met In Collins Home

Troops 1 and 2, Muleshoe Girl Scouts, met in the home of Bobbie and Bettie Collins Monday, November 24, from 3:45 to 5 o'clock.

Troop 1 was called to order by Pres. Barbara Bowers and Thanksgiving place cards were made for

every room in the hospital. Troop 2 was called to order by the president, Diane Barnett.

After the business and discussion were over, Mrs. Bill Collins served refreshments of sandwiches and cakes with candied letters "G. S." in green on top, orange slices and a bottle of pop to the following:

Troop 1 members: Barbara Collins, Joyce Collins, Frances Sneed, Jo Addine Wagoner, Totten, Norma Gay Graves, Scarbrough, Holly Ann Cox, Janna Twilligear, Sidney Adair and their sponsors, Mrs. Marie Edmiston, Mrs. Henry Scarbrough.

Troop 2 members: Ann Woodley, Ginger Gaede, Venette Wood, Barbara Douglass, Leta Allen, Waynell Bowen, Rosemary Pool, Virginia Wood, Marion Harris, Quineil Elliott, Paula Provence, Kay Ray, Jannell Green, Diana Barnett, Laura Whalin, Pearlene Coulter, Lenta Lewis, Gladys Whalin, the sponsor, Mrs. Marion Harris, three visitors, Irene Head, Patsy and Peggy Buchanan and the hostesses, Bobbie and Bettie Collins.



Don't let yourself in for a disappointment. Order cards now—have them in time for Christmas mailing.

MULESHOE JOURNAL

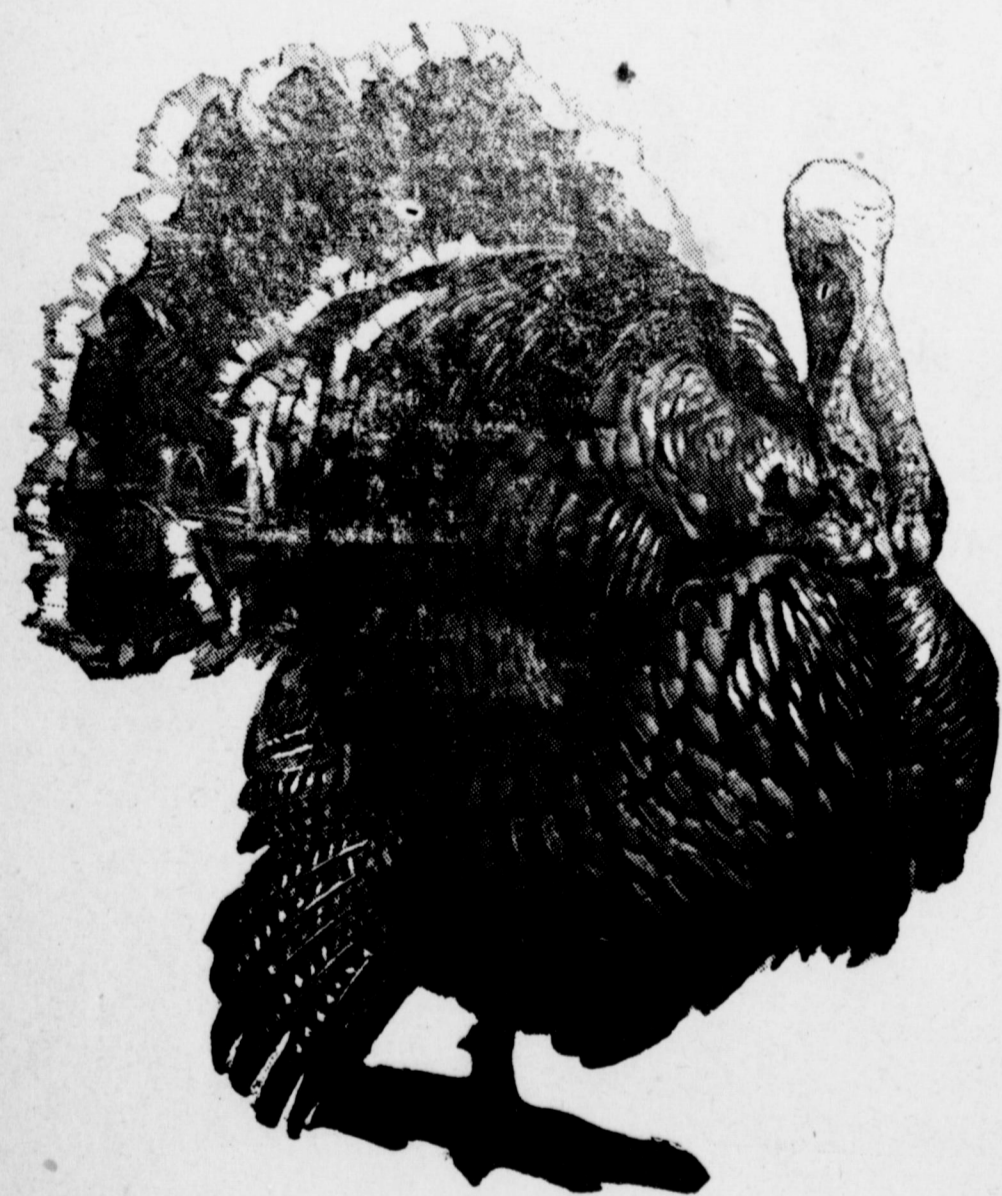
## LADIES!

Dryness of Your Skin Causes Wrinkles! What could be more important than taking care of your skin now? Nothing—I'd Say!

SEE Your Luzier's Distributor

SALLIE M. SCHUSTER

# Let Us Give Thanks..



Let us be thankful for the privilege we have of living in a land of freedom, opportunity and plenty. We have had a bountiful harvest in the Muleshoe area this year. We should all be deeply thankful for our blessings—we should realize that we are more fortunate than our neighbors in other countries of the world.

## Muleshoe Real Estate Agency

Clyde A. Bray, Sr.  
Phone 282

Robert B. Precure  
Muleshoe, Texas



## Friday and Saturday SPECIALS

Red & White COFFEE 3 Lb. Jar \$1.45

Swansdown	Lge. Box
CAKE FLOUR	38c
Monarch	
CATSUP, Bottle	22c
Powdered or Brown	
SUGAR, Per Box	10c
Gold Coast Spiced	
PEACHES, No. 2 1/2 Can	27c
Kellogg's	
RAISIN BRAN, 2 Boxes	29c
Crushed	
PINEAPPLE, No. 2 Can	29c
Red & White	
GRAPE JUICE, Pint	28c
Water Softener	
RAVO, 2 Boxes	19c

For Making Ice Cream	
Kraft's	Per Box
FRIZZ, With Sugar	22c
Big "M" Brand	
TOMATOES, No. 2 Can	14c
Nabisco Light & Dark	
FRUIT CAKES — 2 1/2 & 5 Lbs.	
<i>Fresh MEATS</i>	
PORK CHOPS, Lb.	59c
Sugar Cured	
JOWLS, Lb.	59c
Dry Salt	
BACON, Lb.	55c
Chuck	
BEEF ROAST, Lb.	45c

# WAGNON GROCERY & MARKET

Your Red & White Store

PHONE 4 ... WE DELIVER ... MULESHOE



## GOOD THINGS COME IN SMALL PACKAGES

... and it takes the small things to make a big CHRISTMAS. In our wonderful collection of robes, robes and gowns sets, gowns, slips and panties you'll find all those little treasures that charm and win feminine hearts.



Shop Early

Use Our Lay - A - Way Plan




# THE FASHION SHOP

Dorothy Matthiesen

Elizabeth Barnett

**TO PREACH HERE**  
Rev. Sam King, of Hamlin, will preach the coming Sunday at the Church of the Nazarene in Muleshoe.

shoe. Rev. King is here for a visit with his daughter, Mrs. Clinton Bristow and family.

Wilburn and Russell Davenport, of Cookeville, Putnam County, Tennessee, have been visiting here with their brother, W. D. Davenport.

## The HOUSE THAT BECAME a HOME



Those little but important touches of beauty and comfort lend much to the outside appearance and distinction of the home—and give charm, ease and comfort to the rooms within. Of such importance is the beauty of window treatment with Breneman Venetian Blinds. Your choice of featherweight aluminum or rustproofed steel slats—cost so little and add so much to your home.

**Breneman VENETIAN BLINDS for BEAUTY**

0000

### Cox Radio & Electric

"Your Neighborly Service Shop"

Phone 67-W Muleshoe, Texas

### McCollum Heads Continental Oil



**LEONARD F. McCOLLUM**  
Ponca City, Okla.—Leonard F. McCollum, 45, pictured above, has just been elected president of Continental Oil Company, effective December 1, succeeding Dan Moran, who has resigned because of ill health.

Born in Bradford, Tenn., in 1902, McCollum now becomes one of the youngest major executives of a fully integrated oil company in the United States. He launched his oil career following graduation from the University of Texas in 1925 by joining the Humble Oil and Refining Company, an affiliate of Standard Oil Company (New Jersey), as a geologist.

Eugene Broyles of Canyon visited here over the week end. Mitzi Ivy was an overnight guest of Trixie Steinbock recently.

### DAIRY TALES

SAVE YOUR JACK, DAISY THE MUSCLE BUILDING MILK FROM MALONE MILK CO. WILL ALWAYS GIVE YOU A LIFT.



Keep your body fit to enjoy the tingle of excitement by drinking ENERGY-PRODUCING, TISSUE-BUILDING MALONE'S MILK.

**MALONE MILK CO.**  
Milk and Ice Cream

#### NEEDMORE REBEKAHS NOMINATE NEW OFFICERS

The Needmore Rebekahs met on Tuesday night, November 18 at the I. O. O. F. hall, at which time nominations were opened for new officers.

Further plans were made for our Thanksgiving dinner to be held at the Cross Roads cafe banquet room Wednesday night, November 26, and tickets are now on sale for that occasion.

We would like to see everyone out to lodge next Tuesday night because it will be your last chance to nominate someone for a new office.

#### BLACKWATER VALLEY SOIL CONSERVATION DISTRICT NEWS

Topographic surveys have been completed on farms owned by J. W. Jarmon and J. C. Buchanan.

Applications for soil conservation assistance were received last week from M. L. Vinson, T. C. Moseley, L. H. Davenport and Lee Howard.

Complete plans of conservation operations were completed last week on farms owned by D. Warner, C. W. Grandy, Lonnie Arnold, Clyde and Loy Huff, J. C. Buchanan, Joe Simmacher, Walter Ramm and T. C. Moseley.

Mr. and Mrs. J. W. Hornbrook have gone to Neosho, Mo. to spend Thanksgiving with her parents. He is manager here of the F. M. Denton Well Drilling Company.

Mrs. Winnie Woods of Monterey, Calif., has been a guest here in the home of her daughter, Mrs. John R. Rogers. Mrs. Wood has gone on to Albuquerque to visit with the families of three sons.

Mr. and Mrs. A. W. Cimmers of Shawnee, Okla., are here to pass Thanksgiving with their daughter, Mrs. Mack Hale and family. The couple are on their way home later a visit in California with the family of a son.

#### GAS SERVICE SOON FOR NEW ADDITION

Several residents of the new Pool addition have told The Journal that they are looking forward to receiving gas service soon. Pipe and other supplies were said to be on hand.

These citizens have been using butane, but many were unable to heat water, hence they say the No. 2 wash tub has been a favorite item with them.

Mrs. Otto Treider and daughter, Clara, were in Amarillo Saturday.

Beardean Broyles returned recently from a visit at Big Spring.

### Protect Against VITAMIN DEFICIENCY With

# ONE A DAY

**MULTIPLE VITAMIN CAPSULES**

Each One-A-Day (brand) Multiple Vitamin Capsule furnishes the full basic daily quantity of five vitamins whose requirements in human nutrition have been established. You can't buy better vitamins no matter what you pay for them. One-A-Day (brand) Multiple Vitamin Capsules are guaranteed to be full potency, as shown on the label.

Make One-A-Day your Buy Word for vitamins. Get them at your drug store.

**MILES LABORATORIES, INC.**  
Elkhart, Indiana

# Firestone Thanksgiving VALUES

**BUY ON BUDGET**

Plenty of Time to Pay!

**SAVE ON HOME NEEDS**

EQUIP YOUR GARAGE

**Firestone**

FOR SAFE TROUBLE FREE WINTER DRIVING

LOW AS 1.25 A WEEK

Up to 60% more non-skid angles! Up to 55% stronger! Wider, flatter tread gives up to 32% more mileage!

**SALE FINEST QUALITY SATIN FINISH ALUMINUM WARE**

Set of 3 Sauce Pans **4.89**

Reg. 5.96 Value!

One, two and four-quart sizes, each with its own cover. Lifetime ware that "cooks right, stays bright."

Reg. 2.49 **ALUMINUM ROASTER**

**1.98**

Smart, modern design with new-type, self-basting cover. Holds 12-14 lb. fowl.

Cuts Hours Off Cooking Time

**12.95**

**Pressure Cooker and Server**

Safe, easy to use. Makes food look better, taste better and saves precious vitamins.

### IDEAS FOR CHRISTMAS GIFTS

**TABLE RADIO** 28.95

Rich, clear tone and plenty of power! Big set performance at small set price!

**8-Cup COFFEE MAKER** 12.50

Self-timing — can't go wrong! Ivory plastic and gleaming chrome.

**8-Cup COFFEE MAKER** 12.50

Self-timing — can't go wrong! Ivory plastic and gleaming chrome.

### TOYLAND OPEN!

**SPARKING FREIGHT** 4.29

A bell clangs and it shoots harmless sparks. Built-in governor. A beauty!

**MYSTERY RACER** 1.00

Self-powered, no winding. Sleek aluminum body.


**BUFFET TRAY** 2.98

Shiny chrome-plated tray with five glass dishes. A tray of a hundred uses!

# THANKSGIVING

IS AN AMERICAN HOLIDAY

It is as American as the turkey, the symbol of Thanksgiving. Established by our Pilgrim Fathers after their first year in the New World, Thanksgiving is our oldest National Holiday. Just as our forefathers of more than three centuries ago had much to be thankful for—so do we today. Let's all feel in our hearts the true spirit behind this great American institution—THANKSGIVING.



**DAVIS & LENDERSON**

Phone 56 Muleshoe, Texas

## Now In Stock FOR YOUR CHRISTMAS

- Westinghouse Vacuum Cleaner Tank Type, With Attachments
- Electric Radios
- Electric Clocks
- Electric Record Players
- Electric 2 Burner Hot Plate
- Electric Roaster
- Electric Irons
- Electric Comforters
- Electric Heating Pads
- Electric Razors
- Electric Churns
- Bubble Lights—for that Christmas Tree
- Ventilating Fans For the Kitchen Removes Odors and Grease

## Fry & Cox Bros.

Minneapolis-Moline Farm Machinery

# Muleshoe Motor Co.

FIRESTONE DIVISION

Phone 62 Muleshoe, Texas

We Are In The Market For Your Sweet and Common

# SUDAN SEED And All Field Seeds

Storage Again Available

We have been able to move some of the grain in our elevator and we are now in position to offer you storage on your sorghum grains and wheat. We operate a Federally Bonded Warehouse and Elevator.

## KING BROS.

GRAIN & SEED CO.  
H. D. KING AND BOB KING

Phone 134

Muleshoe, Texas

### Silver Haired, Fluent Pat Neff Is Resigning As Head Of Baylor Univ

Silver-haired, fluent tongued Pat Neff—the personification of Baylor University—resigned Saturday, November 8, 1947.

In a letter to George H. Belew, secretary of the Board of Trustees, the president wrote, "In keeping with my thoughts and plans, at all times, during the passing year, I hereby file with you as Secretary of the Board of Trustees my resignation as president of the institution effective midnight December 31, 1947."

To others he remarked simply, "I'm stepping out of the traces." Texas born, farm bred, the words came naturally.

President Pat Neff pulled Baylor University through the depression of the 1930's, retired

its big indebtedness, and was responsible for the vast expansion of the physical plant of the Waco unit. The net worth of Baylor University in 1932 was nearly 4 million dollars; its net worth upon President Neff's resignation was well over 9 million.

In addition to more than doubling the campus area, President Neff's administration witnessed the erection of Rena Marrs McClean gymnasium; Alexander Hall, the freshmen dormitory for girls; the Baylor Little Theater; near completion of the Union building; Kokerer hall, men's dormitory; Pat Neff Hall, administration building; and five new buildings on the Harrington Park site.

The enrollment during his administration jumped from 1125 to 4500.

Pat Neff is a graduate of Baylor. During his college days, the late Samuel Palmer Brooks was his roommate; Senator Tom Connally was a debate opponent. He and "Talking Tom" later went to the University of Texas Law School together. No one who has heard "Governor" Neff introduce Senator Connally will forget the lines, "We have walked down the trail of the friendly years together."

After law school, Neff went to the Texas Legislature where he served as the youngest Speaker of the House up to that time. Later as a fighting district attorney in McLennan county (422 cases in six years with 406 convictions), Neff built the formidable legal reputation which was the springboard into the Governor's Mansion in Austin.

His two terms as governor in the 1920's were notable for prison reform, advancement in educational standards, and the development of a state park system. Mother Neff Park was the first park in that system.

Neff won the governorship in his first race against Senator Joe Bailey in one of the most memorable races in Texas annals.

President Neff is a member of the First Baptist Church of Waco. He served as moderator of the Waco Association for many years. He has been president of the Texas Baptist Convention; was president of the Southern Baptist Convention, 1942-1946. He was president of the board of trustees of Baylor University for 29 years before he accepted the presidency of the institution in 1932.

Baylor, Howard-Payne College, Austin, College and Georgetown University have conferred upon him the honorary degree of doctor of laws, and Southern University of Florida the degree of doctor of literature.

Neff has reached the highest offices within the gift of two Texas fraternal orders. He recently serv-

ed as grand master of the Masonic Grand Lodge of Texas and was grand chancellor of the Knights of Pythias of Texas, 1918-19. He is a member of the Waco Rotary club. He is the author of three books, "Twenty-three Addresses," "Battles of Peace," and "Making Texans." The thought and theme of his articles and addresses is, "Let us make Texas the best place in all the world in which to live."

To one who recently witnessed him sprint to the "mike" to address a football pep rally, it seemed inconceivable that his years in public service were 50—half a century.

Sue Carr spent the day Sunday with Edith Henry.

Mr. and Mrs. Joe Smith and three children, Miss Margrett Davis, and Miss Joyce Gwynn.

Mr. and Mrs. Dalton Murrah and children, of Alamosa, Colo., are here for a two weeks visit with their parents, Mr. and Mrs. Tom L. Smith, and Mr. and Mrs. Jess Murrah.

Mr. and Mrs. Jess Murrah, Jerene and Dorothy had as their guests Sunday Mr. and Mrs. Dalton Murrah and two children, of Alamosa, Colo., Mr. and Mrs. Gordon Murrah and two children, Mr. and Mrs. Claudis Murrah and three children.

### IT WON'T HAPPEN TO ME!

Every automobile owner and operator is in constant danger of being involved in an automobile accident which might involve liability either for the property damage or bodily injury or both.

It is assumed by too many of us that "it won't happen to me," yet each day it does happen to some one.

For complete insurance protection with savings in cost, consult with . . .

**ELIZABETH WOODLEY**  
Insurance Agency

Muleshoe State Bank Building  
Phone 83 or 236

Two distinguished names . . .

**BULOVA**  
and

**Muleshoe Jewelry**

Use Our Convenient Lay-Away Plan

bring you  
**America's Greatest Watch Value!**

MARIE  
17 jewels  
\$37.50

FRANKLIN  
17 jewels  
\$42.50

HER EXCELLENCY I  
21 jewels  
\$59.50

# FARM SALE

Having sold my farm, I will sell property described below at public auction at my place, 4 miles north on Friona Highway, 1 mile east of Muleshoe, Texas, on

**Tuesday, Dec. 2, 1947**

Sale To Begin At 10 a. m. — Buyers Be On Hand Early - This Will Be A Big Sale  
Lunch Will Be Served At Noon — Free Coffee - Bring Cups

### FARM MACHINERY

- 1—1942 Ford Tractor, lister, planter cultivator, shop made planter, tool bar and knife attachments.
- 1—1946 Model B International Tractor.
- 1—1930 Model Farmall Tractor, lister and cultivator.
- 1—Papec Ensilage Cutter.
- 1—M-W Hammer Mill. 1—4 row sled.
- 2—Hog Feeders. 1—2 row sled.
- 1—McCormick 1946 2 row binder.
- 2—4 wheel trailers, cotton sideboards, good bed. 1—2 wheel trailer
- 1—1way ditcher, 16 in. nose.
- 1—1947 John Deere Mowing Machine.
- 1—Hitch for John Deere & Farmall.
- 1—6 ft. tandem disc. 1—Middle Buster.
- 1—14 in Hammer Mill, '46 model.
- 1—1942 Chev. truck, new tires, good bed, new motor. 1—1 row Planter.
- 1—2 bottom International breaking plow. 1—14 in breaking plow.
- 1—Fordson Blower. 2—Water troughs.
- 3—A type hog houses 300 Posts.
- 1—Wagon and Rack. 1—Stalk Cutter.
- 2—12 ft. feed troughs. 4—30 in. sweeps
- 1—Stock tank with hog fountains. 15 miles of barbed wire. 10—cow yokes.
- 1—Roll new poultry wire. 1, 2 row sled
- 2—Rolls new garden wire.
- 1—3 section harrow. 4—Ditcher stops. Several cream cans & oil barrels.
- 4—26 in sweeps. 25—Fence Panels.
- 100—Lbs. Alfalfa Seed. 1—Press Drill.
- 4—Windows. 1—Roll Bldg. Paper.
- 1—Chain hoist. 2—50 ft. water hose.
- 1—New Pump Cylinder.
- Several ft. gas pipe. Roll picket fence.

- 1—Stack of old feed, 1000 gal. gas tank.
- 1—Storage water tank, 6x7, cedar.
- 1—4 row stalk cutter. 1—2 wheel stock trailer. 1, 2 row cultivator for F-20.
- 1—6 ft. 1 way, Emerson, good shape.
- 1—4 wheel trailer, 8x16 bed, rack on it, bed under it.
- 1—2 row lister for F-20 Tractor.
- Brooder Stove, slush bucket, 2 chick sprays, 100 lbs. Johnson grass poison, 3 gals. white paint, 1 set dehorner, 1 Winchester deer gun, 1 gal. Acme lime of sulphur, 2, 15 gal. oil drums, 200 lbs. Ariz. hegari seed, several grease guns, shovels, braces, bits, wrenches, bolts, post hole diggers, pitchforks, levels, saws and many small items too numerous to mention.
- 1—Saddle, bridle, halter & blanket.
- 1—Set leather Harness.
- 1—Set tractor wheel weights.

### LIVESTOCK

- 1—Jersey cow, giving 5 gals.
- 1 Jersey cow, coming 3, heavy springer.
- 1—Jersey heifer, heavy springer.
- 1—Duroc Brood Sow, 220 lbs.
- 2—Red Shoats. 1—Kid pony, 2 yr. old.
- 100—White Leghorn Hens, 2—Ladders
- 50—Brown Leghorn Hens.

### HOUSEHOLD GOODS

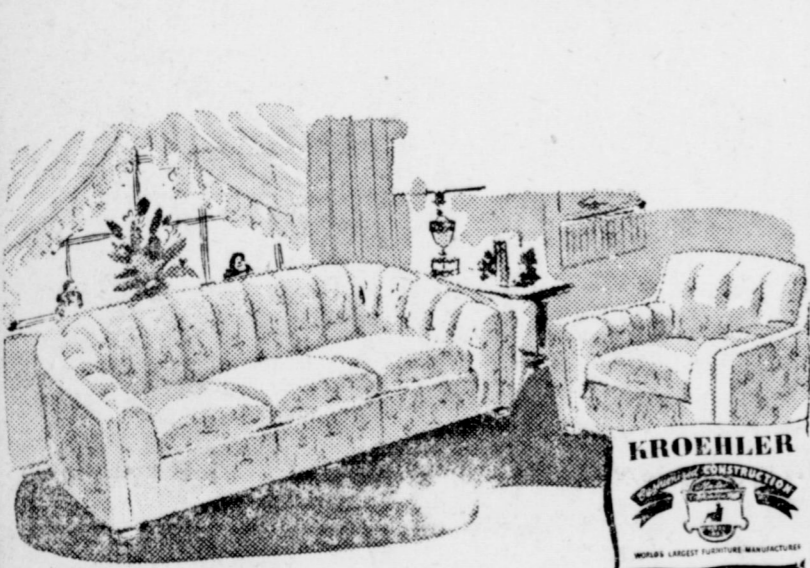
- 1—Living room suit. 1—Bassinet.
- 1—Platform Rocker. 1—Studio Couch.
- 1—Rocking Chair. 1 Chest of Drawers.
- 1—Dining Table, 5 Chairs. 1—Table.
- 1—Magazine Rack. 1 Ladies' Bicycle.
- 1—Baby bed, innerspring mattress.
- 3—Butane heating stoves.
- 1—Cream Separator. 1 20 gal Wash Pot

TERMS CASH: Nothing To BE REMOVED UNTIL SETTLED FOR  
**JOHNNY JOHNSON, Owner**

COL. W. D. WANZOR, Auctioneer  
Muleshoe, Texas

HUGH FREEMAN  
Clerk

### HOME FURNISHINGS for Christmas



The whole family can enjoy furniture, not just for today but for tomorrow and tomorrow.

- We Suggest These Gifts For Your Family
- FOR MOTHER . . . A living room suit in mohair, tapestry, or velvet.
- FOR DAD . . . A platform rocker or a fireside wing chair in tapestry or brocatel.
- FOR SISTER . . . A new modernistic or traditional bedroom suit.
- FOR BROTHER . . . A desk and chair.

**LAMPS! LAMPS! LAMPS!**  
Floor Lamps . . . Table Lamps . . . Torchier  
Boudoir Lamps . . . Reading Lamps . . .  
Bed Lamps

**Dyer Hardware and Furniture**

Business Phone 151 Residence Phone 253-J  
Gennine Maytag Parts and Service

IT'S THE  
*Morning Glory*  
DREAM TEAM

FOR THAT  
Wake Up  
and Sing  
FEELING

TAYLOR MADE  
PRODUCT

GUARANTEED 10 YEARS

There's no use sleep-shopping any further! The double-cushioned, cutless Morning Glory Dream Team, with specially designed, perfectly matched Equi-balanced spring units, brings you . . .  
THE KIND OF SLEEP YOU DREAM ABOUT!

Be Sure to Come in and See the  
Morning Glory Dream Team

**E. R. HART CO**  
Phone 23 Muleshoe



## Plains Water Well Discharge Rate Lower Than Estimates, Report Says

**From Lubbock Avalanche**  
Believed indicative of the performance of irrigation wells in this part of the state, discharge measurements of wells in operation are generally 200 to 300 gallons per minute lower than operators had estimated them to be, it is revealed in the second of a series of progress reports in a study of water use and other related management problems peculiar to the high plains of Texas.

The study is being made by specialists from the agricultural experiment station system and A. & M. college. The first report, released during the summer, covered organization on farms covered in the study. The latest report presents results of various measurements of wells during the 1947 pumping season.

**Irrigation Cost Studied**  
The report explains that the cost

of irrigation, a large item in the total cost of producing crops under irrigation, includes the cost of pumping and spreading water. This cost is largely determined by the distance the water must be lifted and the rate of pump discharge. The rate of discharge also materially influences the cost of spreading water, and greatly affects the acreage that can be served from a given well.

For determination of the lift and discharge rate, special equipment is required, and is usually not available or too expensive for use by the individual farmer.

**Seasonal Measurements Made**  
Pre-seasonal measurements to the undisturbed water levels were made in March of this year under supervision of the ground water division of the U. S. Geological Survey. This depth ranged from 25.4 feet to 193.9 feet in the 218 wells measured at that time of the 233 involved in the study. The more common depth of water was in the 60 to 90 foot range, the study finding 61 per cent of the wells measured were in that depth range, while only 12.8 per cent had water depths in excess of 90 feet.

Seasonal measurements were made on 158 of the 233 wells. More wells were visited, but some were not measured because of obstructions in casings or were closed down. The report sets out that each of the 233 wells were visited one or more times between August 4 and 23, but the study was started late in the season, and further measurements were not attempted. It is planned to measure each well during the pumping season in future years.

**Pumping Levels Determined**  
The range in pumping levels on the measured wells was 44.1 to 177.2 feet. Two wells, where pre-seasonal depth to water was more than 177.2 ft. maximum pumping level, could not be measured while in operation.

### OIL PAINTINGS ON VIEW AT McCORMICK'S STORE

A display of beautiful oil paintings is on view at McCormick's Furniture Store here the rest of this week. Painted by Mrs. J. A. McCormick, of Littlefield, the paintings, all landscapes, have been shown at Lubbock and Littlefield. At the Lubbock Fair one subject "Sunshine Valley" was placed second in the judging.

McCormick's invites the public to come in and see these paintings any time before Monday.

### SS CLASS ORGANIZED

A Sunday School class for boys has been organized with Mack Hale as teacher, to meet at the barber shop each Sunday morning at 9:30. Eight were present last Sunday. They elected a class secretary and adopted as a motto, "Come As You Are". The offering was \$3.20. Scripture reading for this week is the 13th chapter of I Cor. All boys who wish to attend are invited.

### CARD OF THANKS

We wish to take this method of expressing our sincere thanks to our many friends who were so helpful and sympathetic following the tragic death of our husband, father, son and brother, Jack Wright, and for the beautiful floral offerings. Your kindness shall never be forgotten.

Mrs. Jack Wright and children Mr. and Mrs. F. M. Wright and family.  
Mr. and Mrs. C. H. Long and family.



## Cube Turkey Steaks To Aid Consumption

### Process Boosts Market For Large Type Fowl

By W. J. DRYDEN

Turkey raisers want to produce the larger holiday bird—the public wants the smaller fowl. The cost for a large tom is too much for the average family. To produce a small turkey the cost per pound of gain is far greater than in the case of the larger fowl.

Desiring to create a year around consumer demand for turkeys, the National Turkey federation and the Poultry and Egg National board de-



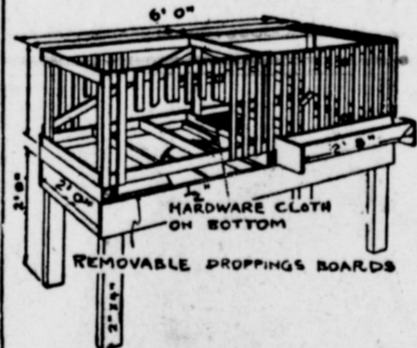
Making turkey steaks with cube machine.

ecided to utilize the machine which for years has been turning out the beef cubed steak.

The meat is removed from the turkey and sent through the machine and out comes a four or six ounce steak, ready for the stove and then the lunch box or the formal dinner.

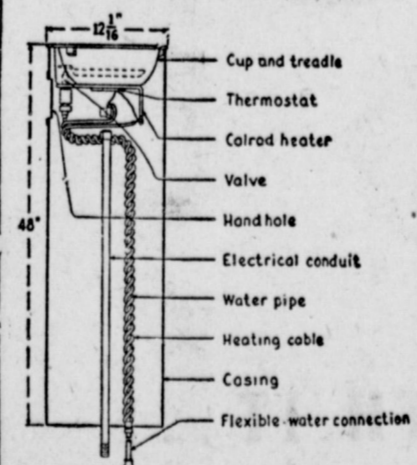
Consumption of turkeys has been less than five pounds per capita. With development of the turkey steak, the turkey industry is endeavoring to attain a per capita output 10 times higher. The cubed turkey steak can be quick frozen and packaged in the same manner as many other kinds of steaks. This new plan is expected to assure the turkey raiser that there will be no overproduction of turkeys.

### Fattening Crate



It may be advisable to confine poultry in small pens for market feeding. This fattening crate is easily made by the poultry raiser and also will make an ideal broody coop. Feeding and watering troughs should be placed so that the birds may secure food and water between the slats. Place a wire bottom so that droppings can fall through to a removable dropping board for cleaning.

### De-Icer for Livestock



A barnyard drinking cup in an open area where stock have access to it from all sides has been developed recently. The cup rests on a heavy steel cylinder installed in the earth to protect the water supply pipe, electric heating unit for the cup, heating cable for the pipe, and thermostatic switch. —Drawing by Geneva Agricultural Experiment station.

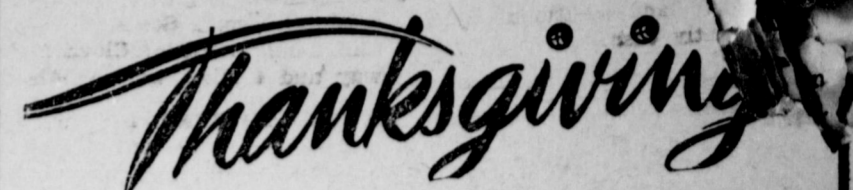
### Cannibalism Termed Frequent in Winter

Cannibalism may be started in the laying house during the winter months due to confinement of birds formerly adjusted to ranges, to lack of proper air, improper housing, floor laying, injured birds left in house, blow-outs and insufficient and improperly constructed nests as well as idleness, crowding and inadequate eating and drinking space. The remedy will lie in removal of the offenders.

Mr. and Mrs. Eddie Lane left Wednesday morning to spend Thanksgiving at Waco with relatives. Saturday they will attend the wedding of a relative there.

Rev. W. B. Walker, of Abilene, superintendent of this district of the Nazarene Church, has been here this week visiting the Muleshoe church.

## Try A Journal Want Ad



We can give thanks every moment for the fact that ours is such a bountiful land. There may not be as much of everything as some of us might like — but we may well remember that millions of folks in other lands have much less than we... We can be thankful, too, that ever since the early founders started Thanksgiving each generation has done its part to keep America as it was intended to be — a land of freedom and opportunity for all.



## Muleshoe State Bank

## SPENCE RADIO SHOP

Sales & Service

Combinations

Portables

Consoles

ZENITH

Table Models

Batteries

Service on Any Make Radio

Your Dependable Service Shop

PHONE 270-W

## TURKEY IS TRADITIONAL ON THANKSGIVING



For such things as turkey on Thanksgiving, which we all take for granted, we should be deeply thankful. America is, perhaps the only country in the world in which ordinary folks can enjoy such delicacies. Let's give thanks for our good fortune.

We Will Be Closed Thanksgiving Day

## New McCORMICKS Used Furniture

Clyde A. Bray, sr Muleshoe Real Estate Agency Robert B. Precure

Box 793

Phone 282

Muleshoe, Texas

320 A. Red Land clean of any noxious weeds or grasses, 7-room modern home, Butane, REA, School bus and Mail route, 2 extra large barns, number out bldgs., No. 12, 3-stage Pump, all mineral intact, \$125.00 per Acre.

80 A. Mixed Land on highway, 5-room modern home, 4 miles of Muleshoe, priced to sell. \$13,000.00.

160 A. well located, this is very productive land and priced to sell \$60.00 per acre.

160 A. mixed land, on highway, No. 14 Peerless Pump, 5-room modern home, out bldgs. Butane, REA, School buss and mail route, \$25,000.00.

32 A. 5 miles west on Clovis highway, 3-room house, large chicken house, No. 12 pump, 58 ft. setting, 10 A. Alfalfa, 5 acres permanent pasture, bal. in wheat, \$12,000.00.

160 A. all level land, 5 room home, plenty out bldgs., 35 acres Alfalfa, 3 acres permanent pasture, all minerals intact, \$165.00 per acre.

100 A. on hard surface Road, 6 miles of Muleshoe, 6 room modern house, pressure water system, 12x30 ft. garage, Government granary, other out bldgs. 10 A. alfalfa, No. 14 in. pump, Priced \$250.00 per acre.

160 A. Level land, 3 bedroom modern home, good outbuildings, 70 A. alfalfa, 20 A. permanent pasture. This is an excellent farm and a swell home for \$250.00 per acre.

## Place Your Order Now For Fruit Cakes

Made With Finest Ingredients

Any Size Desired

Packed in Airtight Boxes

JUST PHONE 27

## MULESHOE BAKERY

Mr. and Mrs. Jack Barbour

## CHOOSE CLEANERS

as carefully as you shop for clothes!



A well-fitted suit is meant to be worn more than once—Be sure your dry cleaner is dependable.

Quality Service

We Will Be Closed Thanksgiving Day

## City Cleaners

Phone 145

Muleshoe

## Ham What AM Ham

Raise your own choice porkers or buy them on the hoof. We're prepared to preserve the quality in ham and pork, by expert killing, curing, freezing and storing. Sit down to a real HAM STEAK any time and know you are getting THE BEST.



## Muleshoe Locker

VANCE WAGNON, Owner

Phone 133

Muleshoe



FABLES IN SLANG

By GEORGE ADE

FROM THE UNCONVENTIONAL HEROES OF CENTREVILLE

IN CENTREVILLE THERE LIVED 2 YOUNG HUSKIES WHO DIDN'T FIND ENOUGH EXCITEMENT THERE, SO THEY ENLISTED TO MAKE THE WORLD SAFE FOR DEMOCRATS.

THE GOVERNMENT GAVE 'EM EACH A TIN HAT AND A RAILROAD TICKET, AND THEY GAVE THE SIOUX YELL TO EVERYBODY ALONG THE TRACK FROM CENTREVILLE TO NEW YORK.

THEY GOT CLOSE ENOUGH TO FIRST LINE TRENCHES TO LEARN HOW TO PLAY "BLACK JACK" AND HOW TO CUSS THE RATIONS, WHEN THE ARMISTICE WAS SIGNED.

WHEN THEY GOT BACK TO CENTREVILLE THE FIRST THING THEY SAW WAS A BAND PLAYING "SEE THE CONQUERING HEROES COME" AND EIGHT LITTLE GIRLS WITH FLOWERS.

"THEY'RE TRYING TO MAKE US BELIEVE WE'RE HEROES," SAID ONE. "WHETHER I BELIEVE IT OR NOT I'M GOING TO LET THEM HAVE THEIR OWN WAY," SAID THE OTHER.

MORAL  
IF IT IS YOUR PLACE TO PLAY THE HERO, DON'T RENG!

ma types. All may be found in as-past 8,125 feet in lime, and was association with species of extinct bi-boring ahead Snday.

F. W. GREENE HONORED WITH BIRTHDAY PARTY

Mr. and Mrs. Ralph Paul entertained in their home Sunday with a birthday dinner in honor of Mrs. Paul's father, F. W. Greene, who was 72 years old. Those who enjoyed the delicious meal were: Mrs. Ella Jackson, Houston; Mrs. Laurena Kennedy, Mountair, N. M.; Mrs. Birdie Paul, Mr. and Mrs. L. F. Greene and Mary, Mr. and Mrs. Frank Greene, Joe Frank Paul, Dean and Mildred Paul and Homer Paul, who is attending West Texas State College.

MULESHOE LODGE  
NO. 1237 A. F. & A. M.  
Regular Meeting Second Tuesday Night of Each Month  
Jack Lenderson, W. M., R. J. Klump, Secretary  
—Visitors Welcome—

Look Into It!

Is your life insurance adequate to meet today's obligations? Look into it, today.

Southwestern Life Insurance Company

Marion F. Harris

Phone 242-J Box 222

NEARS CONTRACT DEPTH

Honolulu No. 1 Halsell Land & Cattle Company, scheduled 9,000 foot venture in the Sudan area of West Central Lamb conty, and 660 feet from south and west lines of labor 19, league 219, Castro County School Land, was making hole

DR. A. E. LEWIS DENTIST

Office at rear of Western Drug

Farm Notes

WHAT DID HIS GRANDPA DO?

College Station.—"Farmers in the dairy business have a pretty good future ahead of them, if . . ."

That's what extension dairymen of Texas A & M College are saying. And that "if" is mighty important. "If the herd replacements are the

result of a good bull; if the feeding program is built around good pastures, high quality hay and plenty of silage, and if the job of managing the herd is handled in such a way that the cows produce quality products for the market, then the dairy outlook is good.

Good dairy management goes back, in the end, to one thing: the right kind of sire for the herd. The feeding program won't help much if the cows are culls; there won't be plenty of quality products for the market if the cows aren't good producers and aren't handled right. The way to get the best results, all the way round, is to pick out a good bull.

three generations are especially important.

His physical condition feet and legs, disposition, general appearance and size should be considered. The health record of the herd from which he came should be examined. The needs of the herd for which he is being bought should always be kept in mind.

The future of the dairy business depends upon the breeding program, and the breeding program depends on the bull.

blaze, she warned, because water will serve to conduct the current and increase the danger.

Prehistoric Bones Given To Museum

Lubbock—A block of bison bones removed from an old road material pit near Plainview in 1945 has been presented to the West Texas museum at Texas Technological College by Dr. E. H. Sellards, director of the Texas Memorial museum at the University of Texas.

Flint artifacts located among the bones indicate that this prehistoric bison, *Bison taylori*, and ancient man lived at the same time in the south-central United States during the latter part of the Pleistocene Epoch, which began approximately one million years ago.

moved from Plainview. The total excavation, some 500 square feet in area, with an average thickness of less than a foot, yielded skeletons of approximately 100 bison. Bones of most of the skeletons were separated, and exhibited evidence of having been rapidly accumulated in a shallow water hole or pond. The presence of several fetal skeletons suggests that the accumulation occurred in the spring or early summer, according to Wann Langston, geology instructor at Texas Tech.

It is thought that the bison may have stamped over the low steep bluff bordering the south side of the water hole, and the projectile points may have been shot into those animals which were crippled but not killed by the fall.

The projectile points, which have been classified as the Plainview type, are perhaps historically intermediate between Folsom and Yule

The block received by the West Texas museum is one of eight re-

Farm Loans

DRY LAND — IRRIGATED LAND — RANCH

L. S. BARRON

Representative

Kansas City Life Ins. Co.

The extension dairymen say that a prospective buyer should thoroughly investigate the bull under consideration. Go back to the records of his sire and dam and his grand sire and grand dam. The production records and type classifications of tested daughters of all

OVERSIZE FUZES AND PENNIES RULED OUT

Lubbock—It's as unwise to install an oversize fuse in a fuse box as it is to slip in a penny, according to Miss Lola M. Drew, assistant professor of home management at Texas Technological College.

A 15-ampere fuse is proper for the average home circuit, Miss Drew stated, and to install a heavier fuse is dangerous since it will not blow in case the circuit becomes overloaded.

Fuses are designed to blow, thus breaking the current, at a point just below the maximum load the wires can carry, she explained. When the current continues on overloaded wires, the wires get hot and eventually set inflammable surroundings on fire. Because wires are installed in attics and walls, fires from this cause are often not discovered early, and are therefore extremely dangerous, she pointed out.

Insurance policies often include a clause rendering the policy void if fire is started from electrical wiring where pennies or oversize fuses are installed, she added.

In any case of fire caused by electricity, all circuits leading into the house should be broken before water is used to extinguish the

Nothing To Nothing

Folks, look here! Can sell irrigation pumps, give you a turnkey job with

NOTHING DOWN  
3 Years to Pay at 4% Interest

That Is, Complete  
SHORTY WARE

**FARM LOANS**

Home Office Newark, N. J.

5 TO 40 YEARS LOW RATE

NO FEES NO STOCK NO COMMISSION

POOL INSURANCE AGENCY

Gilbreath Bldg. Phone 113 Muleshoe

THE PRUDENTIAL INSURANCE COMPANY OF AMERICA

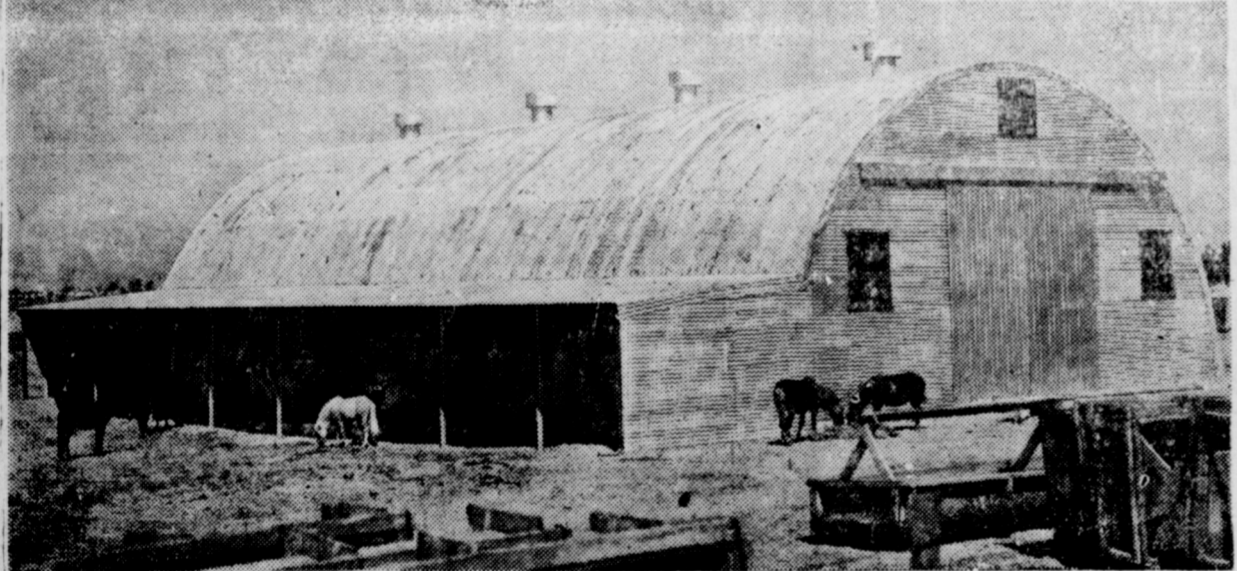
SHORTY'S SERVICE STATION

Drive In and Fill Up With

GAS Phillips OIL

Automobile Accessories  
Prompt and Courteous Service  
Shorty Holmes Phone 213

A NEW AGE IN FARM BUILDING BEGINS RIGHT HERE



UTILITY BARN AND LOAFING SHED LOCATED ON THE W. P. PRICE - TOM SIMMONS FARM

The big "Quonset 40" is the basis for this practical, usable barn, located two miles East, on the Nineteenth Street road, Lubbock, Texas. The 40x80 foot barn is now being used for the storage of alfalfa, but Mr. Simmons will put it to hundreds of uses during its long life. NAX steel makes this long life possible. It is the new steel alloy that has 50% higher tensile strength than ordinary steel. The 12x80 foot loafing shed, designed to protect livestock, is fabricated from St ran Steel framing and erected by Steelbilt Products Company according to Mr. Simmons' specifications. Write or drop in to Steelbilt Products and let us know what you need in modern farm building. A Quonset can always fill your need.

Steel Bilt Products Co.

P. O. Box 1261 2123 4th St., Lubbock, Texas Phone 2-5800

Represented by  
IRRIGATION SUPPLY CO.  
Muleshoe, Texas

Quality Brand in Texas!

Bette Smith  
Nationally Famous Rodeo Star  
from Abilene, Texas

Plenty of taste thrills every time you open an ice-cold bottle of Pepsi-Cola. Pepsi puts on one swell act—gives you 12 full ounces of the biggest drinking pleasure you've ever had. When you know your Texas brands, you'll always shout for "Pepsi-Cola." Buy one—buy six—buy plenty!

GET IT NOW!  
ICE IT UP!  
DRINK IT DOWN!

5¢  
12 OZ. BOTTLE

PEPSI-COLA

PEPSI-COLA COMPANY OF TEXAS  
BOTTLED BY: Pepsi Cola Bottling Co. of Lubbock

## Farm & Ranch Land For Sale

We have a few pieces left that we can offer you this week.

- 30 A, small house, some alfalfa, close to town, \$2800.00.
- 160 A, two good houses, irrigation, all in cultivation, right near town, \$150.00.
- 12 A, 4 miles out, 4 room modern house, hardwood floors, on pavement, \$6500.00.
- 175 A, 4 1-2 miles east Farwell, 151 A. in cultivation, irrigation belt, all level at \$75.00 per A.
- 160 A, half mile off pavement, new four room modern house, all in cultivation, clean, good irrigation well, \$160.00 A.
- 40 A, close to town, 20 A. in alfalfa, 3 room modern house, nice barn, lots hog fence and other improvements.
- 1420 A. two sets improvements, 500 A. in cultivation, balance, grass, \$17.50 A.
- 320 A, 245 in cultivation, 7 room modern home, plenty out buildings, just across line in New Mexico, for \$65.00 per A.
- 480 A, nice improvements, 230 in cultivation, balance in grass, in good all around farming belt and neighborhood, \$57.50.
- 240 A, good red land, 5 miles out, 1-2 mile off pavement, all in cultivation, good new irrigation well and pump, \$125.00 A.
- 320 A, 1 mile off pavement, new 5 room modern house, new No. 14 irrigation pump, alfalfa, permanent pasture, all level and in cultivation, \$125.00.
- 160 A, level red land, no improvements, 7 miles out, \$60.00 per A.
- 80 A, good irrigation outfit, good land, lays good, worth the money, let's talk about it.

-We need more listings, but don't give them to us unless you want it sold.

### Clay Beavers or Henry Hanover

## War Veterans To Warn Texans That Another Pearl Harbor Is Probable

Austin, Nov. 26—Sixth anniversary of one of the darkest days in the proud history of the world's most powerful nation—the sneak attack by the Japanese on Pearl Harbor—will be the occasion for a statewide broadcast that should serve as a warning that another "Pearl Harbor" not only is possible but that such a disaster is entirely probable.

Sponsored by the Veterans of Foreign Wars, Department of Texas, this momentous broadcast will be featured by addresses by Gov. Beauford H. Jester; by high ranking Army, Navy and Air Force officers; by Ray Brannaman, Denver, Colo., commander-in-chief of the Veterans of Foreign Wars, and by Roger Q. Evans, commander of the VFW in Texas. The broadcast will be from 2 to 2:30 p.m., Sunday, December 7.

Governor Jester will tell of the all important contributions of Texans in avenging the Jap attack that

plunged the United States into history's most tragic world conflict, hostilities of which ended with the unconditional surrender of the Tokyo war lords who dared challenge peace loving America to mortal combat.

Representatives of the armed forces will briefly outline the world's most brilliant war effort, one that saw the fighting units of the United States grow from almost nothing to the most devastating war machine in the history of mankind.

In addition to this, the spokesmen for today's armed forces will sound terse warnings that imminent danger lies ahead of a nation that once more has permitted its combat units to dwindle far below the minimum requirements of a sound national defense.

These speakers will join the Veterans of Foreign Wars in advocating the immediate adoption of universal military training as the only safeguard of world peace, and protection against the ever increasing threat of communism.

Although the American people might like to forget Pearl Harbor, they will never be able to do so, and the Veterans of Foreign Wars, according to Commander Evans, believes that the tragedy of that

**GIFTS BY LUZIER'S**  
What Could Be Nicer?  
See Your Local Distributor  
**SALLIE M. SCHUSTER**

## HAPPY THANKSGIVING and some Christmas Shopping Suggestions

Buy something for the car that all the family will enjoy. We have on hand:

- Southwind Gas Heaters
  - Hot Water Heaters
  - Seat Covers
  - Bumper Guards
  - Fog Lights
  - Bumper Jacks
  - Radios
  - Mirrors
  - Spotlights
  - Fulton Windshield Shades
- And many other items.

Any of these items will add to the comfort and pleasure of driving. We invite you to come in and look our stock over.

**ARNOLD MORRIS AUTO CO.**  
Phone 111 — Muleshoe

peaceful Sunday morning six years ago should serve as a constant reminder that a nation unprepared is susceptible to future assaults that might prove even more costly.

"We of the VFW would not forget Pearl Harbor nor the tragic years that followed, years that saw hundreds of thousands of our finest men and women fall at their battle stations the world over. We are intensely interested in preserving our hard earned peace and we who fought on foreign soil and on hostile seas can best do this through organized and concerted effort," Commander Evans said in announcing plans for the December 7 broadcast.

This statewide radio program will climax an intensive membership drive of the VFW in Texas, and will originate from an outstanding VFW post in the district of the Department of Texas showing the highest per cent of paid-up 1948 members based upon 1947 membership totals. This will be determined by reports to state headquarters in Austin as of November 30.

Commander-in-Chief Brannaman will give the VFW obligation to some 15,000 new members near the close of the broadcast, these members to be assembled in VFW halls throughout the state.

## Distiller's Processed Grain Has Feed Value

**By W. J. DRYDEN**  
Leading agricultural colleges have conducted experiments with distiller's dried grains and have found that for every bushel of grain milled in a distillery the high protein and vitamin by-products recovered are equal to one and one-seventh bushels of grain in feed value when fed with farm-raised grains.

From every bushel of grain processed for alcohol in the distillery, 17 to 18 pounds of highly nutritious animal and poultry feeds are recovered.



Weighing and checking periodically turkeys fed on stimufax at Walker poultry farm, Peoria, Ill. covered. The present demand for grain makes it advisable for farmers to substitute distiller's grain or similar product for part of the ration for their turkeys, chickens or livestock.

The economy of such a method has resulted in increased growth and production at a low cost. Poultry fed this by-product has shown a gain of one pound over chickens raised on a standard farm ration.

## Mostly Static --

**By BERRY**

Howdy Folks: Daisy Dope says that bridge used to be where you stood at midnight. Now, bridge is where you find out how you stand at midnight.

Bridge, that's a game where a good deal depends a lot on a good deal.

Did you hear about the ardent bridge player who said when he died he wanted to be buried with simple honors.

Then there was the husband who went home with a couple of bridge lamps. His wife gave them to him after he trumped her ace.

We still say that one of the neatest card tricks is learning how to get out of being a fourth at bridge.

There's no trick to selling Universal Electric Appliances. Just a good product backed by an honest service.

Come in and let us tell you more about this.

**Berry Electric**  
Phone 88 — Muleshoe

## MRS. LEWIS HOSTESS TO HALF CENTURY CLUB

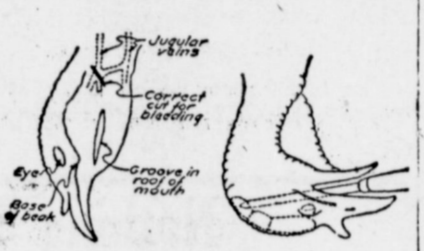
Mrs. Lewis was hostess for the Half Century Club at its meeting November 20. Eleven members were present. The evening was spent playing 42, and planning a Christmas party which will be held in the home of Mrs. Williams, over by the highway. All members bring a gift and be on time. Don't forget the time is 2:30.



## Process for Killing Turkeys Explained

**Proper Slaughtering And Bleeding Required**

Before killing turkeys, as well as other fowl, see that they have access to water but no feed during the 12 to 18 hours prior to slaughtering. When the turkey shows feed in the crop it will not be graded as quality.



Proper method of killing a turkey as well as other fowl. —Drawing, Cornell university.

and make one clean cut across the upper part of the throat just back of the junction of the head and neck, as shown in drawing.

Hold the turkey head down, with the beak open, until the blood is well started. With the left hand grasp the head in front of where the cut has been made to prevent the pressure of the fingers from checking the flow of blood. Poor bleeding is indicated by visible blood in the veins and by the dark red appearance of the carcass after picking.

When the blood is flowing freely, thrust the knife blade straight back on a line between the eyes and ears, through the cleft in the roof of the mouth and into the lower lobe of the brain. Give the knife a quarter turn. This kills the bird and loosens the feathers.

## Herds and Flocks on Successful Farms

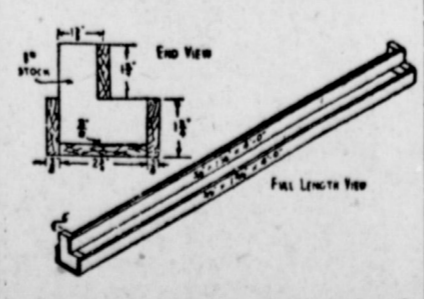
Feed bunks for cattle should be 30 inches high for mature stock and 24 inches for calves. Allow 30 inches of trough length for each grown animal, 20 for each calf. Make the grain and silage bunk three feet wide for feeding from both sides. Many ewes die every winter from a condition known as pregnancy diseases. The losses are not as common in flocks where the ewes are kept gaining slightly in weight during the gestation period.



Well-conditioned ewe that should cause no trouble.

Lousy cows, when freed from lice, give 10 per cent to 15 per cent more milk, according to Michigan State college. This means the equivalent of another cow in a herd for \$1, by controlling lice. In winter, which is a bad time for cattle lice, apply a powdered louse killer containing DDT and repeat the application in 10 to 14 days.

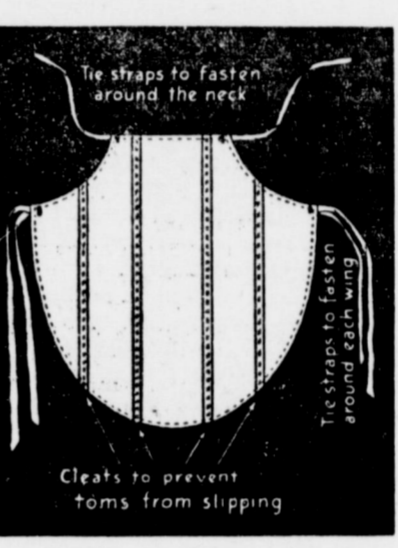
## Baby Chick Feeders



Preventing waste of feed is always important. Easily-built feeders of wood will help prevent waste of feed. This Washington State college design can be built at little cost. It will serve 100 chicks for their first 10 days.

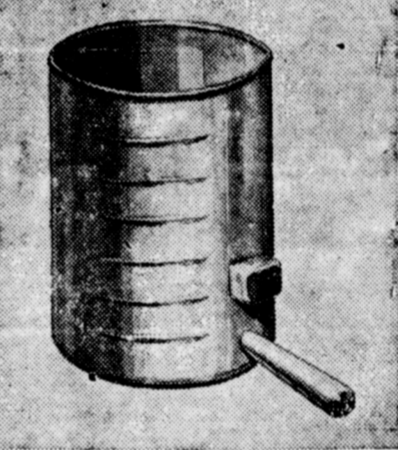


There's no question about the umpire's decision when you come home with a United States Savings Bond in your pocket on pay day. Each additional savings bond you acquire through your participation in the Payroll Savings Plan where you work or the Bond-A-Month Plan where you bank is another score for you and your family. Get safely to home plate as many times as you possibly can now while your hitting power in the automatic savings bond league is at its greatest strength.



Blankets for turkey hens may prevent serious losses from tears and bruises during the mating season. This one was designed by Cornell university.

## Metal Nipple Bucket



The metal nipple bucket was proven satisfactory for feeding young calves by Montana agricultural experiment station. The bucket is six inches in diameter, seven inches high, and is graduated in pints by indentations in the metal one inch apart which serve as a guide to the feeder in determining the amount of milk to feed. The nipple is 2 1/2 inches long, made of 1/2 inch copper tubing, soldered securely into the bucket as shown. It is rounded at the end with solder.

## Precautions Advised To Prevent Hog Flu

To keep flu from getting started, Iowa State college recommends that hogs be brought in at night from hogged-down cornfields to keep them from getting chilled. Overcrowding should be avoided. Quarters should be planned so that sufficient space and adequate equipment will be available during bad weather, but the buildings should not be shut tight, making hogs too warm.

## Thanksgiving

Upon the occasion of this, the most American of holidays, it is a pleasure to greet you and to express a wish for your well being.

Truly we in this country have so very much for which we should be deeply thankful—a measure of prosperity—peace—and the inestimable gift of "life, liberty, and the pursuit of happiness."

## Western Drug Co.

Muleshoe's Leading Drug Store

Mr. and Mrs. Roy Holland expect to spend Thanksgiving in Canyon and Amarillo with friends.

Mr. and Mrs. Troy Atkinson and two daughters are leaving Thursday morning for Oklahoma City to visit during Thanksgiving with friends.

Mr. and Mrs. Marion Harris and daughter, Marion Clark, are spending the holidays in Tulsa, Okla., with his mother and sister.

Mr. and Mrs. Charles Lenau are spending the Thanksgiving holidays in Siloam Springs, Ark., with her sister, Mrs. Storm Whaley. They will also visit other points in Arkansas.

Jess Reasoner of Blossom, Texas, was a visitor in the Journal Office Wednesday.



## PROTECT Your Home AGAINST ALL HAZARDS

It pays to have your property insured against fire, windstorm, hail, explosion, and every hazard. Let us explain our policies to you.

**WE OFFER YOU A COMPLETE INSURANCE & LOAN SERVICE**

## POOL INSURANCE AGENCY

W. M. Pool, Jr. — Lee R. Pool  
Phone 113 — Muleshoe

## FERTILIZER

IS NOW AVAILABLE

We would appreciate early notice on your fertilizer needs. Get your fertilizer now and avoid possible shortage in the Spring.

## Ray Griffiths Elevator

Phone 32 — Muleshoe