

# County News Briefs

Thursday, August 30, 1984

## RANGER

A number of exciting events are planned for the Third Annual Roaring Ranger Days celebration, which will be held Saturday, Oct. 13. A large Parade is planned, with floats, antique cars, riders and wagon trains. If you want to enter, call Ben Lancaster at 647-1107. Spanky McFarland of the original Our Gang and Little Rascals will again serve as the Grand Marshall of the Parade. Other entertainment will include a big Shootout, music from various bands, Swamp Surfing, Contests, and Our Gand Look Alike Contest, and a Dance. The Roaring Ranger Museum will be open without charge all during the festivities.

## GORMAN

The Gorman Class of 1944 is planning a 40th year reunion at the school on Sept. 28 and 29. A number of names from this long-ago class have been collected for the Homecoming, but there are some whose address is unknown. If you are a relative or know the whereabouts of anyone please call Lavoyce Wallace Hirst or Ethel Capers Sutton in Gorman. A large celebration is planned.

You can have a free blood pressure check in Gorman at anytime. Just come by the Nurses Station at Blackwell Hospital.

The next meeting of the Crimestoppers will be Thursday, Sept. 6, 7 p.m. at the Senior Center. Come for an informative meeting.

## EASTLAND

A Pat Walker's Salon will open soon in Shady Oaks Shopping Center, Highway 80 East in Eastland. It will be owned and directed by Mrs. Arlene Howell and her daughters, Mrs. Shelley Carter and Mrs. Holly Crisman of Breckenridge. The Salon will offer a reducing program and a mechanical unit designed to give passive exercise. Patrons will be taught how to maintain their weight once the program is completed.

Pandora's Box, an exclusive consignment store, will open soon at 604 S. Seamn St. in Eastland. Pat Alexander and Moonayne Stacy are the owners, and will hold a Grand Opening on Sept. 1. They will sell their own products, and consignments that range from name brand clothes for ladies and children to handcrafted items made locally. There will be quality art, flowers, and jewelry, as well as antiques and handmade quilts.

My Shoe Shoppe has moved from its location on I-10 to a new building on East Highway 80. Owner/Manager Kay Murry will be having a Grand Opening soon. The building is located next to Wards and Heather's Hallmark on the south side of the "Miracle Mile".

There will be a Musical held Friday, Sept. 14, 7 p.m. at Camp Inspiration. All musicians are invited to come join in the fun and activities. A collection will be taken to help pay the cost.

## CISCO

Work on details of the Mobley-Hilton Project is going on, reports Mayor Eris Ritchie. A Board of Trustees is being formed that will replace a Chamber of Commerce Steering Committee as a permanent management group. The Board of Trustees will include persons from the Chamber of Com-

merce, the Cisco Historical Society, and the City Council. The Hilton Foundation, which is providing 1.2 million dollars to finance the program, approved feasibility study and plans for the project at a recent meeting attended by Mayor Ritchie in Houston.

The Cisco Writer's Club will have their first meeting of the fall season on Thursday, Sept. 6, 7 p.m. at the Community Room in the Bank Building. Winners in the 1984 Writing Contest will be announced, and all interested persons are urged to attend. Contest Director, Viola Payne reports a large number of entries this year from all around Eastland County and as far away as Abilene. Judges were the Dallas/Ft. Worth Writer's Workshop.

The Cisco "Parents For Teens" will have a Bake Sale on Aug. 31, 1984 at the First National Bank in Cisco, beginning at 9 a.m. Proceeds will help defray the expenses for teen activities. Anyone wishing to donate baked goods may bring them to the Bank on the morning of the sale.

## County Keeps Same Tax Rate For 1984

County Judge Scott Bailey presented the 1984 tax rate to the county commissioners Monday.

They unanimously voted to adopt the rate of 19.5 cents per \$100 valuation - the same rate for 1983.

The rate is based on 14.5 cents per \$100 valuation for the general fund, and 0.5 cents per \$100 valuation for road and bridge tax. Bailey called the action "holding the line with a no-frills budget."

In other business, three men with Sun Pipeline Company offered to furnish materials for road base and to pay for paving 4/10ths mile of county road that has created severe dust problems at a packing plant southwest of Ranger.

The men said from 14-16 oil-field trucks use the road daily, causing unhealthy conditions at the plant, which is owned by Mose Natz.

Commissioners agreed to furnish heavy equipment to prepare the road bed for paving.

Dayton Hall, probation officer, also made a request for a new telephone system for his offices. Commissioners approved a max-

imum expenditure of \$2,500 for installing lines and securing needed equipment.

The 1985 operating budget was approved, which reflects a slight increase over the 1984 operating budget.

## Attends School

Ray L. Wright FIC, 206 W. Plummer, Eastland Field Rep. for Woodmen of the World Life Insurance Society, has been in Omaha, Nebr., attending Advanced II School at the Society's Home Office in the Woodmen Tower.

The School emphasizes the selling of insurance with its newest innovation, called Adjustable Life, along with Estate Planning, as well as Fraternalism.

The classes were conducted by Mel Evans, FIC, Educational Department Manager, Michael Trujillo, FIC, Instructor, Steve Haack, FIC, Instructor, Pamela Hernandez, Instructor and Irvin Holmes, Special Projects Manager.

## Good Management Is Vital In Ranching

SAN ANGELO--Good management is the effective use of resources to accomplish the most important objectives in your ranch business, an award-winning cattleman from Wauneta, Neb., told ranchers taking part in the 4th Annual International Ranchers Roundup here recently.

Jack Maddux, who was named "Beef Cattle Businessman of the Year" recently by the National Cattlemen's Association said he was optimistic about the future because "the cattle industry is meeting its problems head-on."

Some of the economic and management lessons that those ranchers surviving the boom-bust of the 1920s and 1930s developed and used quite successfully may be

coming back, Maddux said, and might be appropriate today.

"Many of the management techniques used today would be old-hat to good managers of the past. They used different terms than strategic planning, management by objective, cash flow budgeting and holistic ranch management, but today's concepts are essentially the same as those by successful ranchers for generations," Maddux said.

Planning can be a simple, straight-forward and ongoing process that fits any size of ranch operation, Maddux said, and those who fail to take advantage of it are missing a good thing.

"Good planning is disciplinarian that brings an operation face to face with

unpleasant facts that we sometimes ignore. Some of us fail to prioritize, and scatter our resources on a little of everything," Maddux told the ranchers.

He believes that the planning process provides a better way for ranch management or family members to reach agreement periodically on

six basic phases of the planning process.

These basics, he said, are where you are the present, where you want to go, how you want to get there, when you wish to arrive, who is going to "drive," and how much the trip will cost.

Maddux and his family own and operate an integrated cattle business

## Something Special

Everyday

at K-BOB'S,

Open Late for Eastland Home Football Games.



A good steak at an honest price.

1-20 East Eastland 629-3432

6:30 A.M. - 9 P.M. 7 Days A Week

# BEIL INTERIORS DRAPERIES

1706 W. Commerce

Eastland

629-1319

## CUSTOM ORDERS

Hand Sewn Draperies

Verticle Blinds

Mini Blinds

Shades

Complete Interiors

## GALLERY SHOWROOM

Just Arrived

Italian Imports

Inlaid Tea Cart

Tables-Glass

Ceramic Fruit

Metal Sculpture

## THE BACK ROOM OUTLET

NEW

STOCK

ARRIVING

DAILY

**JUST IN!**  
**NEW EXCITING FLOOR & TABLE LAMPS**  
**ON DISPLAY FLOOR NOW!!**

-We Deliver Quality-

"The Most Trusted Name In Interior Design"

## The Garden Editor

Ted Brice

Box 5766 Richardson, 75080

**THE 1985 AARS WINNER**  
This is the first time since 1970 that only one rose has won the AARS award. But there was only the one rose, Showbiz that rated high enough for this award. The history of this new floribunda, with its masses of brilliant crimson blooms, started in Utersen, Holstein, West Germany some ten years ago when the famous German hybridizer, Mathias Tantau, crossed two outstanding roses, Dream Waltz X Marlena, and planted the resulting seeds in his greenhouse.

The greenhouse bench was soon dotted with hundreds of tiny seedlings hybrid roses from the above cross and many others that the hybridizer had made. They grew rapidly and soon the seedlings began to bud and produce their first blooms. There was a tremendous diversity of color, shape and size as the blooms opened. Just a few here and there looked beautiful, even though they were but the first efforts of the young seedlings, however. For the most part the flowers appearing were not outstanding, which is the unusual expected by a professional hybridizer. The keen, experienced eyes of Mathias Tantau noted every particular of every bloom, and soon the very few outstanding plans were segregated from the hundreds of rejects and grown on for further testing.

Little SHOWBIZ, just a number at that time, looked good to the great hybridizer, and a large quantity of that hybrid was produced and planted. To describe

SHOWBIZ, the buds of this floribunda are a bright crimson, the semi-double, bully opened flowers are bright crimson, and the blooms end their appointed life cycle still bright crimson, and there are lots of them in large clusters. Probably the most valuable asset of SHOWBIZ is its prolific blooming habit and the brilliance of the flower display. The plants are a mass of gleaming crimson, with a slight tint of orange, from spring until the plants slow down for their winter rest. As is becoming usual with new floribundas, the clustered blooms are large,

averaging about two and one-half to three inches in diameter. They have 28 to 30 petals of thick, firm, and are blessed with a slight, very sweet fragrance. The big blossoms of SHOWBIZ are long-lasting on the plant and make excellent cut flowers. As also being a floribunda, the plants are vigorous and reported to be mildew resistant.

SHOWBIZ certainly deserves the AARS award as the 1985 winner.

GOOD GARDENING UNTIL NEXT WEEK FROM YOUR GARDEN EDITOR, TED BRICE!!!

KEYS MADE LOCKS CHANGED or REPAIRED

## ELROD'S MOBILBLOCK SHOP

423 W. MAIN - RANGER, TEXAS 76470

Phone 647-3444

BONDED LOCKSMITH

AUTO - RESIDENCE - COMMERCIAL

## ABILENE

New Available Ladies and Men's Matching Boots \$81.95 to \$112.95

B & N Trading Post

311 N. Seaman Eastland

629-2885

Also at DeLeon and Strawn

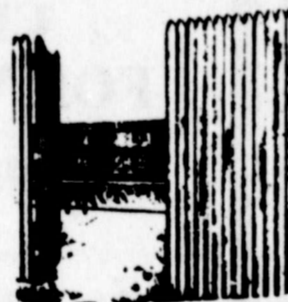
## HENSON'S

FARM & RANCH SUPPLY

South Access Road - I-20

Between Eastland & Olden

629-3541



8' Stockade Fence Panel

21<sup>95</sup>

6' 1x4 Fence Pickets

64<sup>c</sup> Each

8' Rails - \$ 1<sup>99</sup>

## Chain Link Fence

We have the Best Prices. Bring in Drawing of your Fence and we will figure it for you.

48"x50' Roll Heavy Duty \$22.50

60"x50' Roll Heavy Duty \$32.50

6' Also in Stock

## HEAVY GAUGE AMERICAN BARB WIRE

Nagle \$28.50  
Bekaert \$31.50  
CFI \$32.50  
Barbless \$26.50

## 1/4" ROD STOCK PANELS

	Reg.	SALE
16' Stock	16.99	\$15.49
16' Combo	17.95	\$16.95
16' Hog	16.95	\$14.95

## CORRAL PANELS

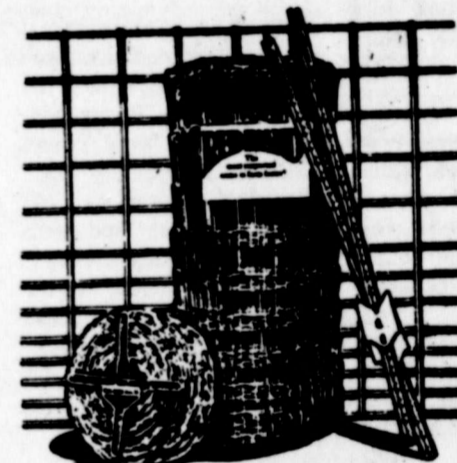
10' Heavy Pipe - \$29.95  
10' Extra Heavy - \$44.95  
4 Gauge 4"x4"x4"x20' - \$26.95  
4 Gauge 4"x4"x5"x20' - \$34.95  
1/4 Rod x 12' Horse Panel - \$34.95

## GATES

Passure	Corral
4' - \$19.95	4' - \$23.95
8' - \$29.95	8' - \$39.95
10' - \$37.95	10' - \$43.95
12' - \$44.95	12' - \$51.95
14' - \$49.95	14' - \$58.95
16' - \$54.95	16' - \$67.95

## CORRUGATED METALS

Light	Heavy
8 - \$3.64	4 - \$6.40
10 - \$4.55	10 - \$8.00
12 - \$5.46	12 - \$9.60



HEAVY GAUGE AMERICAN NET WIRE

330' Rolls

12" Stays

6" Stays

32"	\$46.95	\$61.95
35"	\$42.95	
39"	\$56.95	\$70.95
47"	\$61.95	\$79.95

## AMERICAN MADE T-POST

6'	\$1.99
6 1/2'	\$2.19
7'	\$2.49
8'	\$2.89

## SQUARE TUBING

1" 14 ga.	.30 cents ft.
1 1/2" 14 ga.	.40 cents ft.
2" 14 ga.	.55 cents ft.

WE ALSO STOCK A FULL LINE OF WOOD POST AND POLES

## CONCRETE STEEL

3/8"	\$1.67	20'
1/2"	\$2.55	20'
5/8"	\$3.44	20'

6-6-10 Mesh \$38.50

Other Items In Stock...

Call For Prices

# EASTLAND COUNTY CLASSIFIED

## Business Services

### Bread of Life

Upon the first of the week let every one of you lay by him in store, as God hath prospered him.

Praise the Savior, ye who know Him! Who can tell how much we owe Him! Gladly let us render to Him All we are and have.

I Cor. 16:2

Thursday, August 30, 1984

### For Sale

**FOR SALE:** Used General Electric Automatic Dishwasher. \$100. Call 629-2413. TF

**FOR SALE:** Good money available in stud fees, with two American Eskimo male pups. Year old. Registered with pedigree charts. Have all shots. Owner leaving for college. Prefer to sell as a pair. Beautiful, pure white. Call 629-2413 to inquire. TF

**FOR SALE:** Alfalfa hay pellets, bulk or bag. Gorman Milling Co., Gorman, Texas. 817-734-2252. T-70

**FOR SALE:** 1977 Chevrolet Custom Deluxe, 4-ton with camper. Excellent condition. One owner. Call 647-1182. TF

**FOR SALE:** Antique Glass and Furniture and other collectibles. 'We buy Estates'. The House of Antiques 908 S. Bassett, Eastland, Texas. Open every day. T105

**HAY FOR SALE:** Large round bales. Call 629-1646. T-70

**For Sale:** 1980 14 X 60 Melody Mobile Home. 2 br., 1 bath. Small equity, assume payments of \$146.95. Also, 1972 Glastron Tri-hull walkthru window recreational boat. call 442-4460 p-77

**FOR SALE:** 1979 Toyota Corolla. Excellent school ar. Runs like new. Mechanically sound and well maintained. New Goodyear tires. Reluctantly selling for larger car. \$2,995. firm. Call 629-2413. TF

**FOR SALE:** Deeded Water Front Lot on Lake Leon. Quiet Bay, Ideal for Underground or Solar Home. Call- 647-1145 or 647-3887. T-76

**FOR SALE:** 1979 Oldsmobile Tornado. All extras. Good condition. New tires. Call 629-1163 after 5 p.m. T-71

### Garage Sales

**GARAGE SALE:** Wed., Aug. 29th in Carbon turn right at flashing light, 2nd house on right. Desk, chest, chairs, bedroom furniture, edgar, clothes and misc. T-70

**4 FAMILY GARAGE SALE:** Sat., Aug. 1 and Mon., Aug. 3 includes 15 ft. boat-trailer and motor-across from Murray Cemetery Carbon-Gorman Highway 6. T-70

**GIGANTIC YARD SALE:** 500 S. Bassett, Thursday, Friday and Saturday, 8:30 - 6:30. Everything cheap. 10 families. Appliances, furniture, clothes of every size - new and used, motorcycles, video games, juke box. T-70

**NIGHT GARAGE SALE:** Friday, Aug. 31, 6 p.m. to midnight. 525 East Conner. Lots of treasures. T-70

**SALVAGE MATERIAL SALE:** 2x4s, 2x3s, 2x2s, tied in bundles; tarnished galvanized steel; damaged mobile home doors; and much more. Morgan Building Corp., Hwy. 69 North, Eastland, 629-2668. T-73

### For Rent

**FOR RENT:** Furnished or unfurnished apartments. Royal Oak Apartments, 1304 Royal Lane, Cisco. Call 442-3232 c-104

**FOR RENT:** Nice 1 bedroom apartment, furnished or unfurnished, water, cable and HBO paid. Also nice furnished efficiency with color TV. Both clean and neat. 501 S. Ostrom. 629-2805. T-75

**APTS FOR RENT:** 1 and 2 bedroom apts., furnished, water and T.V. cable paid. Fontaine Apartments, Cisco. Call 442-2320 or 442-4755. c-102

### Mobile Homes

**HOUSE FOR SALE:** By owner, lovely 2 BR., home in a nice location. May be seen at 509 S. Mulberry. For more information call 512-345-4673 or locally 629-2813 after 5. T-71

**STARTER HOME:** Mobile home immaculate condition pick-up payments on 14x80 ft. home with massonit siding, 3 bedroom, 2 bath with custom storage shed with large garden area with 6 giant oak trees, 1 block from P.O. and grocery, 3 blocks from school. Gorman location - price reduced. 629-3568 after 6 p.m. T-70

### Real Estate

**FOR SALE:** 2 bedroom, 1 bath, central air-heat, ceiling fans, new carpet, kitchen, built-ins. Low equity - 629-8547 or after 5, 629-2967. T72

**FOR SALE:** Select retreat on choice, wooded Lake Leon with a good view. (One of the last remaining). Package includes 27-foot Terry Travel Trailer; completely self-contained; sleeps six; excellent condition; and deeded lake lot in ideal location; all-weather roads; water available; good neighborhood. Convenient to town and easy in and out with trailer. Call 629-2413 for details.

**REAL ESTATE:** 2 acre tracts, with water, 1/2 mile from Eastland. 629-3488. T-73

**FOR SALE:** Choice building site; retail, industrial, commercial. Right in the heart of the action, just off East Main St., Eastland, Texas 76448. Contact site. Box 29, Eastland, Texas. T-76

**3,000 sq. ft. Building for sale or lease.** 629-8193. T72

### Employment

**HELP WANTED:** We are accepting applications for full time cook and part time dishwasher. Excellent benefits. Apply in person to 1405 W. Commerce, Eastland. T-73

**HELP WANTED:** We are now accepting applications for full-time and part-time afternoon dietary shift. Apply in person to 700 S. Ostrom, Eastland. T-73

**HELP NEEDED:** Family need help in caring for elderly gentleman. Room and board provided with a good salary. Must provide references and work history upon application. Please call 629-1781 for details or after 5 p.m. call 629-3149. T87

**HELP WANTED:** Recreation aides needed for ICF-MR5 facility, full time and part time position open. Apply at Northview Development Center, 401 W. Moss, Eastland. T-71

**NOW TAKING APPLICATIONS:** for nurse aids 7-3 and 3-11 shifts. Good benefits and working conditions. Every 3rd weekend off. Apply 700 S. Ostrom, Eastland. T73

**HELP WANTED:** Need General Supervisor for fabrication plant and personnel. Inquire in person with references to Stewart Tank Co., Strawn, Texas. T-70

**NOW ACCEPTING:** resumes for experience office help. Send resume to P.O. Box 62, Eastland, 76448. T-71

### Business Services

**WATER WELL DRILLING:** test holes 915-672-8075

**10 ± Discount.** NEETA'S FABRIC & CUSTOM SEWING. 712 Conrad Hilton - 442-4462 - Cisco. 10 ± Discount with this ad. c-69-104.



**Fire Paper Wet Rolled Air Dried LOGS**  
2 1/2 lb. Avg.  
**\$1.00 Each**  
Bundles of 3  
**\$2.50**  
2 Bundles \$4 of 3  
Rolled By MH/MR  
From Recycled Newsprint  
Available Only at EASTLAND TELEGRAM  
Beginning MONDAY

**AVAILABLE SOON**  
**Building On-The-Square**  
**In Downtown Eastland.**  
**Ideal for Retail, Offices, Etc.**  
**25 by 100 downstairs;**  
**24 by 30 upstairs.**  
**Centrally heated and cooled.**  
**Heavy wiring. Tile Floors.**  
**Carpeted stairs.**  
\*\*\*  
**For more information, write:**  
**Building, Box 29,**  
**Eastland, TX 76448** TF

**Jax Electric**  
**Residential - Commercial**  
**New Service Installations; Rewiring,**  
**Breaker Panels Moved or Replaced; New**  
**Range, Drier, Washer Hookups, etc.**  
**Call Jack Taylor 647-5390** TC

**J&S Phone Service**  
**Telephone Installation & Repair**  
**Extension Phones or Cisco**  
**Complete New Home Wiring.**  
**Key Systems for Home or Business.**  
**Telephones & All Equipment Available.**  
**Warranty Work with Low Prices.**  
**442-1539**

**R&R Carpet Cleaning**  
**Randall Rogers, Owner**  
**FOR FREE ESTIMATE**  
**Call 629-1121**  
**Over 8 years**  
**service in this**  
**area.**

**WE CARE ABOUT YOUR HEALTH**  
Specializing in physical ailments related to the spine and nervous system.  
Dr. Geo. G. McPhaul  
Chiropractor  
Telephone 647-3821  
454 Pine Street Ranger  
Please Clip & Save

**M.H. PERRY**  
Southland Life Ins. Co.  
offers protection  
•Life •Cancer  
•Hospitalization  
•Group Plans  
•Accident/Sickness  
104 N. Lamar - 629-1566  
Evenings: 629-1095 T78

**SCHOOLMASTER**  
**ANTIQUES**  
639-2228  
Carbon USA  
Buying anything from  
Horsedrawn machinery to  
Antifacts. Sell anything  
you will buy

**AUCTIONS**  
Call us first for all your  
Auction Needs:  
Estate, Farm, Liquidation,  
Antiques  
Contact: Alfred Green  
(817)442-2304; Jackie  
Gentry (817)647-1308  
Licensed & Bonded T71

**ADVERTISING NOTICE**  
Unless you have established credit with this newspaper, all advertisement must be paid for in advance. ALL classified ads must be PAID FOR IN ADVANCE at all times.  
Check you ad the FIRST DAY it appears. In the event of errors, please call immediately to have it corrected. No claims will be allowed for more than one incorrect insertion.  
The publishers liability shall be limited to only the amount of space consumed by these errors.

**U-Save Pharmacy**  
Enjoy Our  
Drive-In Window Service  
Convenient Call Ahead  
Good Parking  
Call for Fast Prescription Service

Open 8:00 - 5:30 Weekdays  
8:00 - 1:00 Saturday  
**201 S. Daugherty**  
**629-1166**

**Majestic Theatre**  
Eastland  
629-1220

One Showing Only Each Evening  
Open 7:30 Show Starts At 7:50 P.M.

**CLOSED FOR VACATION**  
August 29th  
thru  
September 13th.  
Starting Sept. 14...

*A cop on the edge.*

**CLINT EASTWOOD**  
**TIGHTROPE**

\*TIGHTROPE\* Starring CLINT EASTWOOD and GENEVIE BUJOLD  
Co-Starring DAN HEDAYA ALISON EASTWOOD JENNIFER BECK  
Produced by CLINT EASTWOOD and FRITZ MANES  
Music by LENNIE NEHALIS Written and Directed by RICHARD TUGGLE

**AVON**  
**648-3934**

647-3197  
or 653-2397  
Doyle Squiers  
Built up roofs and  
shingles new work  
guaranteed.  
Roofing Contractor

**MOBILE HOMES**  
Move, set up and tie  
down.  
We also service mobile  
homes. T105  
Call 817-893-6753

**Northview Workshop**  
Wood Craft Workshop  
Wooden Gifts and Toys  
For Sale 629-2624  
See at 401 W. Moss

**AVON**  
To become an Avon  
Representative Call:  
Wanda Hallmark  
442-2757

**CISCO RADIATOR SERVICE**  
207 E. 6th (Breckenridge Hwy.)  
Cisco, Texas 817-442-1547

- Cleaning-Rodding-Repairing
- Auto-Truck-Tractor Radiators
- New-Recorded-Rebuilt Radiators-Heaters
- Exchange Radiators
- Auto Gas Tanks Repaired

Open Monday-Friday 8:00a.m.-5:30p.m.  
Over 25 Years Experience Radiators Are Our Business

**Steinman Fencing**  
Commercial-Residential  
Chain Link-Wood-Farm-Ranch  
Welding  
Metal Buildings-Car Ports-Corrals-  
Cattle Guards  
No Job Too Small or Too Large. T78  
Leroy Steinman (817)647-1946

**Ranger Drive-In Theatre**  
Ranger 647-3802

One Showing Only Each Evening  
Open 8:00 P.M. Showtime 8:30P.M.

**CLOSED FOR VACATION**  
August 29th thru  
September 13th.  
Starting Sept. 14th...

Where dreams have a funny way of coming true.

**GRANDVIEW U.S.A.**

JAMIE LEE CURTIS  
C. THOMAS HOWELL  
PATRICK SWAYZE

**EXPERT GROOMING • BATHING**  
DOGS — ALL BREEDS  
Specializing in Poodles  
**Golden Destiny**  
West Highway 80  
Open Mon. - Fri. 9 - 5  
629-8492 629-8194  
Operated By:  
**Lorraine Lester** TC

# Guest Slot

## CHEW, CHEW, CHEW - IT'S WHAT AMERICANS DO!

It's as American as apple pie and baseball, yet it was used by the women of Greece. It aids digestion, reduces stress and it can actually assist in the cleaning of your teeth. It's favored by ball players, frowned on by etiquette books and loved by millions. Of course, we're talking about chewing gum.

Gum is as old as the Mayan culture and was found in the ancient ruins. In ancient Greece, the women used it to sweeten their breath and clean their teeth. Through the years the formula for chewing gum has included many diverse products such as paraffin, chicle, rubber, spruce sap and synthetic rubber. The shape of chewing gum has evolved, too. Early gums were little more than chunks of resin. Then came sticks, tabs and gum balls. The latest marriage in formula and shape is the Chew-On gum ball, a gum ball sweetened with NutraSweet.

The Indians of New England taught the settlers how to chew gum made from the hardened sap of the spruce tree. Maine Pure Spruce Gum was first manufactured commercially in 1848. Shortly after, spruce sap gums were joined by paraffin gums with such fascinating brand names as Licorice Lulu, White Mountain and Sugar Cream. The paraffin gums were not entirely satisfactory though.

## Intrest Pressure.

COLLEGE STATION - The recent rise in interest rates is putting further financial pressure on already hard-pressed Texas farmers and ranchers.

"Both producers and agricultural lenders are concerned about this added burden," says Dr. Carl Anderson, economist with the Texas Agricultural Extension Service, Texas A&M University System. "High real interest rates not only increase costs, but they also strengthen the dollar against foreign currencies," Anderson points out. "And, a strong dollar discourages exports, encourages imports and stimulates foreign production."

During the 1970s when interest rates adjusted for inflation ranged from 0 to 3 percent, farmers relied heavily on borrowed capital to expand operations. However, when interest rates skyrocketed in the late 70's, export markets began to disappear and stockpiles of surplus grain, cotton and dairy products started to appear, the economist notes.

"Last year intrest rates eased down slightly to average around 13 percent, but now they're back up to more than 14 percent," says Anderson, "and that spells bad news for Texas farmers and ranchers."

because they tended to crumble and stick to the teeth.

Gum made from South American chicle caught the attention of Thomas Adams in the 1860's. Mr. Adams had a house guest who chewed constantly on chicle - the former Antonio Lopez de Santa Ana, the Mexican general who led the assault on the Alamo. Santa Ana had hoped to sell chicle as a substitute for rubber and Adams was a potential customer. Adams found the chicle to be the wrong consistency for rubber substitution. He decided to boil it and discovered a new formula for chewing gum that quickly caught on with the public. Other manufacturers quickly followed Adams' lead.

The early days of chewing gum in this country were marked by the American spirit of Entrepreneurship. Fortunes were made and lost over the popularity of the new flavors and textures for gum. A small group of gum manufacturers actually formed a "chewing gum trust" which was as powerful as the railroad and banking trusts of the early 1900's. There are a total of 24 chewing gum manufacturers in the United States today; in Turkey there are 62.

No one seems to be able to pinpoint the first gum ball but tabs of gum coated with candy were popular in the early 1900's. Because of its cylindrical shape, the gum ball has always been considered an object of enjoyment as well as a convenient way to chew gum.

In the old days the brightly colored gum balls came in a regular rainbow of colors. Today's FDA regulations limit the colors to about 5 variations. While we consider the gum ball an object of enjoyment, it has had other unusual uses. A story is told about a Southern county where card playing was against the law. One manufacturer learned that a mountaintop grocery store was ordering large amounts of gum balls. Delighted, he checked into the source of the story and found that the local inhabitants used the gum balls in lieu of cards. Any entry by the local sheriff's office found a bunch of men sitting around a table with a pile of gum balls. When the door closed, the men returned to the pastime of the feeding the machine with pennies for a quick game of stud poker.

Bubble gum came into being in 1928 and won immediate popularity. During WWII, manufacturers were concerned that the market for bubble gum would die completely. War-time rationist included rubber, a key component of bubble gum, and the government simply could not release rubber supplies to gum makers.

The industry gave a collective sigh of relief when bubble gum reappeared and old, young and new bubble

blowers flocked to the market.

Gum as we know it today has changed in formula throughout the years, with more synthetics making up the base. The cost of importing ingredients has risen

dramatically as labor and shipping costs have risen so that in the earlier days of gum making. The formula which spawned the marketing of "soft" bubble gum greatly expanded that segment of the market. The addition of NutraSweet to gum balls is expected to bring many new customers into the marketplace. Last

year, G.D. Searle, the manufacturer of NutraSweet, found that telling the world about this new product, its flavor and its long-lasting sweetness could best be accomplished with a simple gum ball. It approached Leaf Confectionery, the world's largest manufacturer of gum balls, and asked them to manufac-

ture gum balls with NutraSweet for a massive consumer sampling program. Over 2½ million people responded to the gum ball offer and indicated by

card and letter that this new method of sweetening gum was a winner. Today, the biggest new trend in gum is NutraSweetened gum balls. Regardless of etiquette

books and teachers' looks, chewing gum reigns supreme in the hearts, on the lips and in the eyes of Americans. So chew on, folks, and on and on and on!

**OAK REPRODUCTIONS OF EASTLAND**

*Now Open*

**Oak Furniture**

**Direct From Store Owned Factory**

Grand Opening Sept. 10

Solid Oak Dining Table & Chairs

Rolltop Desks

Hutch & Buffets

Dry Sinks

Ice Box

Apothecary Wardrobes

BUY DIRECT AND SAVE ALL ITEMS PRICED

35 to 45% OFF RETAIL PRICE.

We Have 60 Pieces That We Make & Sell To The Public.

Look for GRAND OPENING.

Furniture Display

Curios

Library Tables

Bedroom Suits

Corner Hutches

Book Shelves

Gun Cabinets

Bar Stools

**OAK REPRODUCTIONS**

VISA MASTERCHARGE **214 W. Main** 90 DAY LAYAWAYS

**Old Montgomery Wards Building**

**Grand Opening Sale...**

Wed., August 29 - Sat., Sept. 1

Register for Drawings Held Every Day -

Wed., Thurs., Fri. & Sat.

For FREE Pair of Shoes & a \$50.00 Gift Certificate to be Given Saturday.

FREE Pair of JELLIES & Plastic Thongs or Barrell Back Given with each pair of New Fall Shoes Purchased.

Fall Dress Boots STILL... \$15.00 Off	Nike Athletic Shoes ¼ Off	Mary Mule House Shoes ½ Off
---------------------------------------	---------------------------	-----------------------------

**Hwy. 30 My Shoe Shoppe 629-2172 East**

# Bill's Labor Day Sale

Starts Today ... Ends Sept. 3

**2 LITERS SOFT DRINKS**

**79¢**

COLA  
ORANGE  
GRAPE  
STRAWBERRY

CLEARANCE CLEARANCE CLEARANCE

<b>Ladies Tops</b>	Reg 5.00	<b>YOUR CHOICE</b>
<b>Boys Shirts</b>	4.00	<b>\$2.00</b>
<b>Mens Shirts</b>	5.00	
<b>Mens Shorts</b>	4.00	
<b>Mens Tank Tops</b>	4.00	
<b>Ladies Sun Dresses</b>	6.00	
<b>Boys Pajamas</b>	6.00	<b>\$4.00</b>
<b>Mens Knit Shirts</b>	6.00	
<b>Boys Dress Slacks</b>	7.00	
<b>Girls Sun Dresses</b>	5.50	
<b>Gas Bar-B-Q Grill</b>	2 ONLY 109.00	<b>NOW \$59.00</b>
<b>Fans 2 Speed</b>	24.96	<b>\$19.99</b>
<b>6 pc. Patio Set</b>	1 ONLY 149.00	<b>\$79.00</b>
<b>Freezer Bags</b>	77¢	<b>NOW 4/\$1.00</b>
<b>Storage Containers</b>	1.97	<b>\$1.00</b>
<b>Canners</b>	13.97	<b>\$9.50</b>

CLEARANCE CLEARANCE CLEARANCE

**CLOROX BLEACH**

REGULAR PRICE 2.67  
Three 1/2 Gallons

SALE PRICE 2.00  
Three 1/2 Gallons

MFG. REBATE 1.00  
Three 1/2 Gallons

**YOUR COST FOR THREE 1/2 GALLONS AFTER MAIL-IN REBATE**

**\$1**

SUPER "B" PINE OIL

**75¢**

Reg. \$1.25

SUPER "B" BATH TISSUE

6 ROLL PACK

**\$1**

HURRY ... SOME QUANTITIES LIMITED!

**HEALTH FAIR**

Thursday, September 6, 1984

Cisco Senior Citizen Center

400 Conrad Hilton Avenue

10:00 A.M. - 8:00 P.M.

Cisco, Texas

<p><b>FREE SCREENING</b></p> <ul style="list-style-type: none"> <li>Genetics</li> <li>Anemia</li> <li>Blood Pressure</li> <li>Blood Sugar</li> <li>Glaucoma</li> <li>Hearing</li> <li>Height - Weight</li> <li>Oral Hygiene</li> <li>Vision</li> <li>Skin Cancer - Skin Disorders</li> <li>Pulmonary Function</li> <li>Colorectal Cancer</li> <li>Hand Strength</li> </ul>	<p><b>Exhibits, Films, Tour Computer Programs Demonstrations Free Door Prizes</b></p> <p><b>Counseling, Literature Featuring</b></p> <ul style="list-style-type: none"> <li>Alcohol &amp; Drug Abuse</li> <li>Blindness</li> <li>Poison Control</li> <li>Cancer</li> <li>Psychiatric Care</li> <li>Exercise</li> <li>Safety</li> <li>Heart</li> <li>Smoking</li> <li>Birth Defects</li> <li>Social Security</li> <li>Nutrition and Special Diets</li> <li>Life Line and More</li> </ul>
--	---

Sponsored By:  
Cisco and Eastland A.A.R.P. Chapters and Senior Services  
Family Living Committee  
Texas Agricultural Extension Service  
Education Program conducted by the Texas Agricultural Extension Service serves people of all ages regardless of socioeconomic level, race, color, sex, religion, handicap or national origin.

# Oil Belt News

## Drilling Bits

A wildcat well has been brought on line in Eastland County, with Proco Operating Co. of Grafrod as the operator.

Located six miles northeast of Rising Star, the well is in an 80-acre lease in the T&NORR Survey, A-1188. It is designated as the No. 1 R.E. Kizer.

On an 18/64 choke, it pumped at the rate of 44 barrels of oil and 75,000 CF gas per day.

The well bottomed at 3,464 feet and will produce from perforations 2,490 to 2,352 feet into the hole.

The Eastland Regular Field gained a new producer when Allstate Petroleum Operations Inc. of Brownwood completed the No. 3 K.D. Brooks, one mile northeast of Pioneer.

The well indicated ability to pump at the rate of 28 barrels of oil and 100,000 CF gas per day. It was taken to a 2,520-ft. bottom and will produce from perforations 2,390 to 2,400 feet into the wellbore.

The operation is in an 80-acre lease in the ETRR Survey, A-98.

A 3,500-ft. wildcat well is planned by Proco Operating Co. of Grafrod at a drillsite ten miles south of Carbon, Eastland County. The location is in a 157-acre lease in the T&NORR Survey, A-530. Well's designation is the No. 1 McCollom.

At a location five miles north of Pioneer, Hutch Petroleum Co. of Ranger has finalized a wildcat gas well in Eastland County.

The well is designated as the No. Upper 2 Sikes-Hutton, flowing at the rate of 320,000 CF per day on a 1 1/2 choke. The absolute open flow rating came at 275,000 CF.

Location is in a 330-acre lease in the W.H. Burgess Survey. Bottomed at 3,043 feet, the well will produce from perforations 2,600 to 2,610 feet into the hole.

Eastland County's Lee Ray Field gained a new producer when Rojo Operating Co. of Midland completed the No. 1 Joe High, three miles southwest of Lee Ray.

The well indicated ability to pump at the rate of 25 barrels per day. It was taken to a 4,000-ft. bottom and will produce from a set of perforations in the Duffer Lime Formation, 3,758 to 3,766 feet into the wellbore.

The operation is in a 240-acre lease in the H&TCRR Survey, Sec. 71, Blk. 4.

Katlaco Operating Co. of Lubbock has filed for permit to drill the No. 14 Fee "G", a 4,200-ft. developmental well five miles northeast of Cisco. Location is in a 40-acre lease in the H&TCRR Survey, Sec.

75, Blk. 4. The well is in the Katlaco Field.

A new producer has been brought on line in Eastland County's REB Field, with Richey & Co. of Ft. Worth as the operator.

Located four miles northeast of Eastland, the well is in a 40-acre lease in the S.J. Robinson Survey, A-423. It is designated as the No. 1 B.L. Hunter.

On an open choke, it pumped 35 barrels of oil and 90,000 CF gas per day.

The well bottomed at 3,765 feet and will produce from a perforated interval in the Marble Falls Formation, 3,218 to 3,234 feet into the hole.

The same operator has filed first production figures on a new oil well in the Hanvey Field. The No. 1 Ivie "A" showed potential to make 21 barrels of oil and 100,000 CF gas daily.

The operator has 40 acres leased, with drillsites in Eastland County's SPRR Survey, A-470, two miles northwest of Cisco.

The well will produce from a perforated interval in the Lake Sands Formation, 3,596 to 3,609 feet into the wellbore. Total drilling depth was 3,978 feet.

A Duncanville-based operator has staked location for the No. 2 Sallie Garrett, a developmental well to be located one mile north of Eastland. With projected total depth of 4,000 feet, the well is in a 160-acre lease in the Eastland Regular Field, H&TCRR Survey, A-1716. The operator is North Ridge Corp.

The No. 35 Tarver "A" has been finalized by Ridgeway Exco Inc. of Houston.

It is a developmental well in the Hawk-Eye Field, one mile west of Romney. Drillsite is in a 120-acre lease in Eastland County's H&TCRR Survey, Sec. 57, Blk. 3.

At a location 11 miles southeast of Eastland, D.C. Hagar of Eastland has finalized a new gas producer in Eastland County's Fair Field.

The well is designated as the No. 1 Hagar, flowing at the rate of 74,000 CF of gas per day on a one-in. choke. The absolute open flow rating came in at 96,000 CF.

Location is in a 160-acre lease in the McLennan CSL Survey, Lot 8, Lge. 3. Bottomed at 3,254 feet, the well will produce from perforations in the Marble Falls Formation, 3,112 to 3,118 feet into the hole.

Snow Oil Co. of Ft. Worth has revealed plans to drill a 4,000-ft. developmental well in the Snow Field. The operator has 80 acres leased.

with drillsite in Eastland County's H&TCRR Survey, A-300 and has designated the venture as the No. 2 Williamson. Drillsite is three miles north of Eastland.

Sun Exploration & Production Co. of Abilene has filed first production figures on two oil wells in the Ranger Field. The No. 534 North Central Ranger Unit and the No. 603 Northwest Ranger Unit showed combined potential to make eight barrels of oil per day.

The operator has 3,370 and 2,642 acres leased, with drillsites in Eastland County's John York Survey, A-557 and the J.W. White Survey, A-549. Drillsites were four and six miles west of Ranger.

The wells will produce from perforations ranging from 3,252 to 3,538 feet into the hole. Total drilling depths were 3,518 and 3,652 feet, respectively.

At a location three miles northeast of Cisco, Don Hanvey Oil Investes Inc. of Dallas has finalized a new gas producer in Eastland County's Fee Field.

The well is designated as the No. 10 Hanvey-Fee "D", flowing at the rate of 244,000 CF gas per day on a 3/8 choke.

Location is in a 40-acre lease in the H&TCRR Survey, A-1766. Bottomed at 4,096 feet, the well will produce from perforations in the Duffer Formation, 3,742 feet into the hole.

**AMERICAN CANCER SOCIETY NOTICE**

The Eastland County unit of the American Cancer Society will hold its first meeting after a summer vacation period on Tuesday, September 4, at 7 p.m. in the Eastland National Bank Community Room.

Pat Frosch, the new field representative, will be there and all officers and directors of the local unit are asked to please attend.

The Eastland County unit is actively working to help meet the needs of the county's cancer patients.

**Lights From The Christian World**  
by Josephine Cleveland

### A LAMP

A woman commented to a friend who often visited in her home, "It is such a cloudy day."

The friend replied, "Yes, it is, but remember that the sun is shining somewhere and it will shine again here."

Clouds of distress may hang heavy over you. You may think, "Is there hope for a better day? Or must I always endure the trouble that now confronts me?"

David, the great warrior and king of Israel was deeply concerned over attacks of the enemy. Yet he said, "He is my shield, and the horn of my salvation, my high tower, and my refuge. When waves of death compassed me, the floods of ungodly men made me afraid; the sorrows of hell compassed me about; the snares of death prevented me. In my distress I called upon the Lord, and cried to my God; and he did hear my voice out of his temple, and my cry did enter into his ears." II Samuel 22:5-7.

There were dark periods in David's life. He discovered that God was his refuge. He was convinced that the Lord was as a Lamp. The Lord would lighten his darkness. His words reveal his hope and trust. "For by thee I have leaped over a wall. As for my God, His way is perfect; the Word of the Lord is tried; He is a buckler to all them that trust Him." II Samuel 29:31.

The Lord is no respecter of persons. What he did for David He will do for you. The sun is shining somewhere. It will shine again for you. Even as David found that the Lord lightened his darkness, He will do the same for you as you wait upon Him.

Dear Lord, help me to somewhere now. You will send the light into my life as you. I know the sun is shining I trust and believe. Amen.

Thursday, August 30, 1984

## HELP WANTED

One Good Thing Deserves Another

IS THIS YOU?

Well groomed, dependable mature, personable, people oriented and career minded lady?

THIS IS US!

Expanding and needful of Full and Part-time management help for which we gladly provide:

Pay while training (Of course!), good base pay, bonuses, commissions, vacations, rapid advancement locally and nationally, pleasant inside work environment, and motivated, caring associates. We have the following openings:

### Assistant Manager

1:30 -7:30 p.m., Mon.-Fri.

### Morning Receptionist

7:30 a.m.-4:30 p.m., Mon.-Fri.

### Evening Receptionist

4:30 p.m.-7:30p.m.

9 a.m.-Noon, Sat.

### Counselor

4:30 p.m.-7:30 p.m., Mon.-Thurs.

### DO WE DESERVE EACH OTHER?

If you think so, pick up an application at the Eastland Chamber of Commerce, or call Breckenridge for your appointment BEFORE September 5, 1984.

### Shady Oaks

### Shopping

### Center

Hwy. 80 East

Eastland, Tx.



2911 W. Walker  
Breckenridge, Tx.  
817-559-6528

Over 37 years, the longest, most prestigious figure salon for men and women. T72

## One Thing After Another -

....can and may happen to land titles in the passing of moments. During the time it takes you to read this ad, something could happen to your title that would change your whole financial structure, or indeed it could alter your plans and aspirations for generations to come. The abstracter, in a sense, is your land title guardian, for he keeps the records day by day as you or others make them. Advise with him often about your title.

## Eastland County Abstract Company

112 W. Commerce,  
Eastland, Texas

R. Pat Miller

TC

Annelle B. Miller

## KING INSURANCE AGENCY REAL ESTATE

207 MAIN RANGER

Phone 647-1171

### RANGER

3 Bdrm., 1 Bath, Combined Dining Area and Kitchen, Carpet, Paneled, Chain Link Fenced Yard, All on Five lots, \$20,000. Cash Price Negotiable.

2 Bdrm., L.R., Dining Rm., Carpet, Paneled, Kitchen, 230X50 stone shop, 3/4 ac., Some Equity. Assumable loan.

Living Room, 2 Bdrm., Kitchen, 1 Bath, Storage Room, Cellar, on 3 Lots. \$10,000.

Very Nice Mobile Home on 3 1/2 Ac., 2 Bdrm., 2 Bath, Extra Kitchen Added, Large Shop Bldg., Front Porch, Cement Patio, Fruit Trees and Grapes, Irrigation System, Storm Cellar, Good Buy. \$50,000.

3 Bdrm., 2 Baths, Large L.R. and Den, Garage, Best Neighborhood. \$25,000.

3 Bdrm., 1 Bath, L.R., New Roof, Garage, on 3 Ac. Outside City Limits, \$20,000.

Very Nice Brick 3 Bdrm., 2 Bath, Carpeted, Beauty Shop Bldg. Large Slab for additional Bldg., Garage, Cellar, \$59,500.

Very nice 2 bdrm., L.R. and Dining room comb., Kitchen with built-ins, 1 bath, carpeted, garage, storage. Will sell. Furnished or unfurnished. Corner 2 lots. Best neighborhood.

Very Nice Brick Home, 3 Bdrm., 2 Bath, Built-ins, Dishwasher, Disposal, Stove, Drapes, Nice View, 1 Car Garage Attached, Assumable FHA Loan, Central Air and Heat, Ceiling Fan.

Nice Older Home, Close in Walking Distance, 3 Bdrm., 2 Bath, Walk-in Closets, Pantry, Large Kitchen, Steel Cabinets, Carpeted, Garage with Large Storage, Fenced Back Yard.

Mrs. Opal King  
647-1510

Ardythe Caldwell  
442-2134

Lee Russell  
647-1383

Pat Nowak  
629-2339

## EASTLAND SELF STORAGE

In Pogue Industrial Park

Available Spaces 7 1/2 X 7 1/2.....10X10

10X15.....10X20.....10X30

Start at \$26.50 and up.

Mrs. Dale Maston, Manager

629-2102

We Also Have Boat And Recreational Van Storage

Choosing the ideal and useful gift can take a

great amount of time and thought.

Gift subscriptions to your local newspapers make perfect gifts for birthdays, graduations, Christmas, anniversary, wedding, or any occasion.

Call your local paper office and let us start that gift subscription now. TF

**Town & Country REAL ESTATE**  
629-1725 629-8391  
Barbara Love, Inc. HIGHWAY 80 EAST EASTLAND TEXAS 76448

### EASTLAND

ASSUME SOLD RMs affordat. 2 BR, 1 bath PERFECT FOR YOU! Furnished, too! 14x70 new 2 BR, 2 bath mobile home, corner lot.E27

EXCLUSIVE AREA New 3 BR, 2 Bath brick home, fenced. E2

LOVELY HOME surrounded by stately oaks, lg. 2 BR, extras.E14

COUNTRY QUIET privacy fenced. 1 yr. old, 3 BR, 2 bath brick home.E21

CORNER 3 BR, garage, SOLD.13 BEAUTIFUL NEIGHBORHOOD, over 1800 sq. ft. of living area in this 3 BR, 2 bath brick with many extras.E10

NICE BEGINNER HOME, 3 BR, cent. H/A remodeled.E4

LITTLE CASH NEEDED to move in, 2 BR, cen. heat, fenced yard.E24

CLOSE IN - 4 BR, 2 bath, remodeled.E16

BRIGHT & SHINY! Large 3 BR, fireplace, ceiling fans, cen. H/A, storm windows, fenced.E11

BEAUTIFUL DEAL! Seller will finance this neat 2 BR, 1 bath.E1

NO QUALIFYING, assume and move in 3 BR, Cen. H/A.E5

BRING BACK THE SPARKLE! Older home, good area, easy terms. Call! E3

A PLACE WITH SPACE! 2 BR home on 4 lots, large oak trees.E9

ONE ACRE SPREAD IN TOWN with large 3 BR, 2 bath home, extras.E12

EXTRA NICE small brick 1 1/2 bath home on .5 ac. E-18

GREAT LITTLE HOUSE! Check this one CHOOSE YOUR FINANCING! FHA, VA, Conv. - 3 BR, Cen H/A, on 1/2 ac. lot, near downtown.E15

### OTHER

RANGER - COUNTRY ATMOSPHERE, lovely 3 BR, 1 1/2 bath brick home on large fenced lot.O17

CISCO - BRICK 3 BR, 1 1/2 bath, H/A, near school.O2

LAKE LEON NATURE LOVERS don't miss this! Woody setting on 1.4 ac. with lovely home, guest house, 22x36 bldg., more.O3

OLDEN-Garden, fruit, pecan & oak trees, barn, chain link fenced - all this and beautiful brick home on .8 ac.O12

RANGER, FLEXIBLE TERMS Boat, car, etc. for down pymt. Remodeled large 3 BR, 1 1/2 bath.O6

A COZY FIREPLACE add warmth to this neat 3 BR frame home. Many amenities.O8

GORMAN, 2 BR with carport and stg. garden spot, fruit trees.O5

RANGER - FHA APPRAISED 3 BR home on 2 corner lots.O10

GORMAN: TO EACH HIS OWN bedroom. 4 BR's, 2 baths in this 3 yr. old brick home, fenced. Assumption or new loan.O7

CISCO - START HERE, Nice mobile home on shaded lot.O13

CISCO - Oilfield opportunity! 1.6 ac. utilities in.015

PRIME COMMERCIAL/INDUSTRIAL SITE-64 Ac. 2 mi. East on pvt. near I-20, railroad spur.C4

Moving to Eastland County? or anywhere in U.S.A. Call Toll Free 1-800-525-8910 Ext. 4365 for information. (No Rentals Please)

BARBARA LOVE 647-1397

ELMER FOSTER 629-1972

CHRIS CRUM 629-8224

HAZEL UNDERWOOD 629-1188

B.J. PERRY 442-1446

ROGER AUTREY 442-3395



### Registration Continues At CJC

Cisco Junior College's registrar, Olin O. Odom, III, reminds area residents that registration is under way and will continue through September 10 at the Cisco campus and all off-campus centers. Though there will be no problem in registering as late as September 10, Mr. Odom urges those who wish to take college-credit

courses to register now in order to begin attending classes. Classes began on August 29 and a minimum amount of missed time is beneficial to the student.

Mr. Odom said, "Cisco Junior College offers a wide range of opportunities for expanding knowledge. We're anticipating a large enroll-

ment this year, and we invite anyone, college-age or older, to enroll in one of the many programs we offer."

Students may register at the main campus in Cisco, at

the Clyde Education Center, or at the Abilene center in Westgate Mall at anytime during regular office hours, 8:00 a.m. to 4:00 p.m., Monday through Friday.

### State Conducts Dove Survey

A Statewide mourning dove survey conducted by Texas Parks and Wildlife Department personnel on 225 roadside routes during the second week of August indicated mourning doves are most numerous this year within 100 miles either side of a line from Wichita Falls to McAllen, Texas.

According to Ron George,

dove program leader, good numbers of doves were observed in the Rolling Plains, Cross Timbers, South Texas Plains, and Gulf Prairies Ecological Regions. Hunters may find fewer doves in some areas due to drought, but hunters can expect to find mourning doves concentrated around available food and water.



## RED GAP - Cisco, Texas

# GOING OUT OF BUSINESS

- Tony Lama & Justin Bullhides** Reg. 129" **SALE \$89.95**
  - Adam's Antelope Boots** Reg. 120" **SALE \$89.95**
  - Tony Lama Cowhides** Reg. 129" **SALE \$89.95**
  - All Men's Wranglers** **\$12.95**
  - Ladies & Girls Wranglers & Lee Jeans** Values 24" - 32" **SALE \$12.00-\$16.00**
  - Straw Hats** Values 18"-36" **NOW \$9.00-\$18.00**
  - Felt Hats 5x - 10x Beavers** Values 60"-125" **NOW \$40.00-\$84.00**
  - Kid's Boots** Values 22"-43" **\$11.00-\$21.50**
- ALL SALES FINAL-NO EXCHANGES or REFUNDS**

### Episcopal Changes Services

Holy Trinity Episcopal Church, Eastland, announces a change in worship services.

Mass will be offered every other Sunday beginning August 26 at 7 p.m. by Rev. Earl Heberly of Comanche and Dublin.

Morning prayer will be offered on alternate Sundays beginning Sept. 2 at 11 a.m.

Rev. Heberly may be contacted through Harold's Funeral Home in Comanche at telephone number (915) 445-3311. His home telephone number is (915) 356-2997.

### NOTICE TO SUBSCRIBERS

We are no longer mailing notices of expired subscriptions. Check your mailing label for your expiration date. Please renew prior to that date so you won't miss any issues of your paper. TF



### Lights From The Christian World

by Josephine Cleveland

My husband parked the car by the huge fence. We gasped as we looked at the several storied rocket sitting on the launching pad. Then we watched a spectacular event, the blast off. The fuel tank of this rocket carried 500,000 gallons of fuel. This four and a half million pound

space ship was thrust into orbit in a few seconds. It shot up into the sky and began its travels at the speed of 17,000 miles an hour and traveled over one hundred miles above earth.

Amazing that this huge space craft was thrust into orbit and could said the earth without power of its own. And a power outside its own had put it there.

Later, still awed by what I had witnessed, I thought, "There is even a greater power than the rocket which sent this ship into space. What greater power is there than that which can change men into new creatures?"

God's power helps those who are bouyed by its power to subdue kingdoms, wrought righteousness, stop the mouth of lions, quench the violence of fire, escape the edge of the sword, bring men out of weakness to strength and turns to flight the armies of the aliens. (Hebrews 11)

I stand amazed in His presence.

Dear Lord, we reverently bow at your feet in thanksgiving for all your benefits. We thank you for the power granted to us which enables us to be more than a conqueror. Amen.



## Let's talk.

Information about your changing telephone service from Larry Vernon, Network Services Supervisor.

### Hello, may I introduce myself?

I'm Larry Vernon, network services supervisor for Southwestern Bell Telephone.

In the past months, this column was written by Bob Cox. He's still community relations manager and you'll be seeing him around, but I'll be taking over for him in this newspaper. Like Bob, I'll be keeping you up-to-date on telecommunications issues.

Meanwhile, if you should need to contact me, I've included my address at the end of this column. I would like to hear from you anytime you feel you have a special problem... or even when you would like to pass along a compliment, for that matter.

### Tele-Help has the answers

"My phone's not working... who should I call? What can I do to save money on my phone service? Why are there so many pages in my phone bill? How do I pick the long distance service company that's right for me?"

These are some of the questions I've been getting from many of you since Southwestern Bell Telephone became an independent company on Jan. 1.

Last year we anticipated many of these questions and began telling our customers about the changes in our business using advertising, bill inserts, news stories, brochures and public talks by our employees.

But we found that people aren't likely to listen until the message directly affects them. Our research shows that only about 17 percent of our customers fully understand the changes brought on by the Bell System split up.

We're concerned about this confusion. That's why we've started a new informative program to help you. It's in the public interest. You've been good customers too long. We split from AT&T, not you.

The new program is called "Tele-Help," and it will give you more information about your phone service, what to do, when and how. Perhaps you've already seen and heard some of the advertising. It's all designed to help clear up any confusion and make sure your phone service remains as useful as we can make it.

### You can still "call on us" for help

Tele-Help is our way of saying we hope you'll still "call on us." Just as you've turned to us in the past, we want you to continue to do so in the future.

In talking with you, we identified six major areas that most of you want to know more about. These topics comprise the first six Tele-Help booklets: phone service in general, phone bills, repair, telephone sets, long distance service and money-saving tips. Other booklets are in the works, and I'll tell you more about them in subsequent columns.

We feel the booklets are easy to understand and they're available at no charge. You can order the entire set if you like.

To get Tele-Help is easy! Just call toll-free 1-800-325-2686 (and ask for "extension 84") Monday-Friday, 8 a.m.-8 p.m. Or fill out the coupon below and mail it to us.

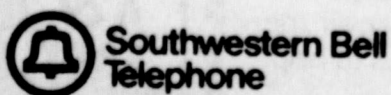
Yes, I want Tele-Help! Please send me the booklet(s) checked here:

- A Guide to Your Phone Service
- A Guide to Your Phone Bill
- A Guide to Home Phone Repair
- A Guide to Telephone Equipment
- A Guide to Long Distance Service
- A Guide to Saving Money on Phone Service
- The complete series
- Check here for Spanish version

To speed your order, please print clearly.

NAME \_\_\_\_\_  
 ADDRESS \_\_\_\_\_  
 CITY \_\_\_\_\_ STATE \_\_\_\_\_ ZIP \_\_\_\_\_  
 (AREA CODE) \_\_\_\_\_ PHONE \_\_\_\_\_

Please mail to:  
 Tele-Help  
 Southwestern Bell Telephone  
 Drawer 8, Dept. 84  
 Wheeler Station  
 St. Louis, MO 63188



Larry Vernon  
 SW Bell Telephone  
 608 Avenue E  
 Cisco, Texas 76437

## WAL-MART

# Country Western Jamboree

### FREE PRIZE!

Come see the Jana Jae Show in the Wal-Mart Parking Lot and register for a great free prize we will give away!

No purchase necessary and you need not be present to win.

Wal-Mart Associates and their immediate families not eligible for prizes!

## Jana Jae

& her band "Hotwire"!

Don't miss this great chance to hear the "First Lady of Country Fiddle" Jana Jae and her band "Hotwire" at Wal-Mart's big FREE Country Jamboree! Jana Jae has delighted country music fans around the world with her non-stop fiddlin' talent!



## WAL-MART

Location: Hwy. 80 E. Eastland  
 Store Hours: 9-9 SEPT. 4 9-10 P.M.  
 Event Date & Time  
 Tuesday, Sept. 4th 8-10 P.M.



## Heathcock-Wharton Vows Repeated July 27

Miss Janet Iva Heathcock and Kevin Flynn Wharton exchanged marriage vows Friday, July 27, in the First Central Presbyterian Church in Abilene with the Rev. Martin Thomas officiating.

Parents of the bride are Mr. and Mrs. S.J. Moreman of Abilene and the late Rev. J.E. Heathcock of Abilene. She was given in marriage by her step-father.

The bridegroom's parents are Dr. and Mrs. Charles Taylor II of Abilene and David Wharton of Garland.

Betty Jo Wharton was matron of honor. Bridesmaids were Mindy Moreman of Duarte, Calif., sister of the bride; Becky Elmonson of San Antonio; and Lora Lindsey. Kelly Sowell of Sweetwater was flower girl and Justin Wharton was ring bearer.

Randy Wharton was his brother's best man. Harold Heath of Abilene, Bob Mace of Merkel, uncle of the bridegroom; and Tab Norris of Lubbock, his cousin were groomsmen.

## Winners Of Contest To Be Announced

Winners in the Cisco Writer's Club 1984 Contest will be announced on Sept. 9, beginning at 7 p.m. at the Cisco National Bank Community Room.

Christene Reich, president, will lead out with the program, and Viola Payne and Lela Latch Lloyd and will announce winning entries in the contest. Prizes will be awarded.

Around 50 persons from

Parents of the bride hosted the reception at Fairyway Oaks. Dr. and Mrs. Taylor hosted the rehearsal dinner at Ramada Inn.

The bridegroom is the grandson of Arleta Mace and the late Jack Mace of Eastland and J.E. Wharton and Mrs. Bill Kelly of Ranger. He is the great-grandson of Mrs. J.F. Whitefield and Mrs. Golda Dodd of Ranger.

The couple is making their home in Abilene.

Miss Janet Iva Heathcock and Kevin Flynn Wharton exchanged marriage vows Friday, July 27, in the First Central Presbyterian Church in Abilene with the Rev. Martin Thomas officiating.

Parents of the bride are Mr. and Mrs. S.J. Moreman of Abilene and the late Rev. J.E. Heathcock of Abilene. She was given in marriage by her step-father.

The bridegroom's parents are Dr. and Mrs. Charles Taylor II of Abilene and David Wharton of Garland.

Betty Jo Wharton was matron of honor. Bridesmaids were Mindy Moreman of Duarte, Calif.,

over a wide area entered the contest this year, and interest is high concerning the winners. The judges are members of the Dallas/Ft. Worth Writer's Workshop, many of whom study in Universities or teach writing courses around the Metroplex.

All interested persons are encouraged to come out and enjoy the meeting and meet some of the winners.

sister of the bride; Becky Elmonson of San Antonio; and Lora Lindsey. Kelly Sowell of Sweetwater was flower girl and Justin Wharton was ring bearer.

Randy Wharton was his brother's best man. Harold Heath of Abilene, Bob Mace of Merkel, uncle of the bridegroom; and Tab Norris of Lubbock, his cousin were groomsmen.

Candlelighters and ushers were J.D. Heathcock of Greenville, brother of the bride; and Tim Norris of Grand Falls, cousin of the bridegroom.

Parents of the bride hosted the reception at Fairyway Oaks. Dr. and Mrs. Taylor hosted the rehearsal dinner at Ramada Inn.

The bridegroom is the grandson of Arleta Mace and the late Jack Mace of Eastland and J.E. Wharton and Mrs. Bill Kelly of Ranger. He is the great-grandson of Mrs. J.F. Whitefield and Mrs. Golda Dodd of Ranger.

The couple is making their home in Abilene.

Thursday, August 30, 1984

### SEEDS FROM THE SOWER

By Michael A. Guido, Metter, Georgia

The meeting was fully planned and highly advertised. But the memory expert failed to show up for the speaking engagement.

The reason? He forgot the date.

The offices of an insurance company were robbed. There was a great loss of money and equipment.

Guess what? The loss was not covered by insurance.

An agent for an oil company took me to see his new sign. It read: Check your gauge. Fill up now. No service for twenty-five miles.

I missed a plane that night. Why? He ran out of

gas. Many do not practice what they preach—especially in religion. They pray and talk cream, but they live skimmed milk. They talk Christianity by the yard, but they live it by the inch. But lofty doctrine and low practice do not go well together.

If you say you are a Christian, show it. If you profess Christianity, practice it. Either take the Lord into your life, or take Him off your lips.

The apostle John said, "He that saith he abideth in Him ought himself so to walk, even as He walked."

## GRAND OPENING SATURDAY, SEPTEMBER 1ST

9:30 A.M. to 5:30 P.M.

6 Days A Week

DOOR PRIZES — REFRESHMENTS



## Pandora's Box

EXCLUSIVE CONSIGNMENTS

604 South Seaman

Eastland, Texas 76448

817-629-9641

Accessories • Jewelry • Art • Fashions • Hand Crafts

# WAL-MART LABOR DAY Sale

**Kodak**  
COLOR PRINT FILM

**Kodak**  
DISC

Low Price Every Day

<p><b>2.48</b> CL110-24 24 Exposure</p> <p><b>2.94</b> CL135-24 24 Exposure</p> <p><b>4.47</b> CHR 15-2 2 Pack of 15 Exposures (disc camera)</p>	<p><b>2.48</b> CL110-24 24 Exposure</p> <p><b>2.94</b> CL135-24 24 Exposure</p> <p><b>4.47</b> CHR 15-2 2 Pack of 15 Exposures (disc camera)</p>
--	--

**SONY**

Low Price Every Day

**Sony Walkman Cassette Player**

- Compact size
- Lightweight
- Stereo headphones
- Shoulder belt
- Counter inertial flywheel
- No WMB

**36.93**

**WAL-MART**

## FAMILY NAPKINS

Wal-Mart Napkins

- 140 Count
- 1 Ply

**68¢**

**\$1**

**Bic Eraseable Pens**

- 4 Pack
- No. ESMP36J

**3.97**

Save 15%

**Cork Bulletin Board**

- 18x24 inch size
- Wood frame
- No. BCRC-60
- Reg. 4.68

**1.38**

Save 17%

**Charcoal**

- 10 Pound bag
- Easy starting
- Long burning
- Reg. 1.68

**1.18** Quart

**Gulf Lite Charcoal Starter**

- No odor
- No taste
- No soot

**2 FOR \$1**

**Styroweave Foam Cups**

- 6 4 Ounce • 51 Count
- Insulated to keep drinks hot or cold
- Limit 2

**1.53** Pack

**Coronet Bath Tissue**

- 8 Roll pack
- Assorted prints
- Limit 2 packs

**\$10**

**Your Choice**

**Shelf and Wastebasket Set or Wicker-Look Hamper**

- 2 Tier wicker shelf with matching wastebasket
- Shelf has hanging brackets
- Upright hamper with padded top
- 20x12x24 inches
- White, natural or wainut
- Hamper No. 820
- Shelf/Wastebasket No. 887-E

**2 Packs \$1**

Save 25%

**Children's Hangers**

- 4 inches
- Assorted colors
- Plastic
- Package of 5
- No. 5600/5A
- Reg. 67¢

**19.67**

**General Electric AM/FM Personal Portable Radio**

- Rugged AM/FM with two-way power
- High-impact polystyrene case with molded handle
- Plays on AC or batteries (not included)
- Hi-Lo tone control
- Vernier tuning
- Dark grey & metallic bronze
- No. 7-2825

Every Day Low Price

Anacin 100's

**3.12**

Anacin 200's

**5.38**

**78¢**

Save 19%

**Fix-a-Flat**

- 12 Ounce
- Seals and inflates up to 25 lbs.
- No. S-275
- Reg. 97¢

**19.67**

**General Electric AM/FM Personal Portable Radio**

- Rugged AM/FM with two-way power
- High-impact polystyrene case with molded handle
- Plays on AC or batteries (not included)
- Hi-Lo tone control
- Vernier tuning
- Dark grey & metallic bronze
- No. 7-2825

Aug. 29 - Sept. 3, 1984 9 a.m. - 9 p.m.  
Hwy. 80 E. EASTLAND MONDAY SEPT. 3rd - 9 a.m. - 6 p.m.



## Accuracy Is Most Important

We take special care in filling all prescriptions to the letter...for your own safety. Rely on our competent staff.

**Emergency Service**

**Central Drug**

Eastland 629-2681



# FOOTBALL

# 1984

## Ranger Bulldogs

Sept. 7 - Early - 8:00, Here  
 Sept. 14 - Cross Plains - 8:00, There  
 Sept. 21 - Gorman - 8:00 Here  
 Sept. 28 - Baird - 7:30, Here  
 Oct. 5 - Cisco - 7:30, Here  
 Oct. 12 - Winters - 7:30, There  
 Oct. 19 - Jim Ned - 7:30, Here  
 Oct. 26 - Coleman - 7:30, There  
 Nov. 2 - Albany - 7:30, Here  
 Nov. 9 - Eastland - 7:30, There

## Carbon Wolverines

Aug. 24 Novice (Scrimmage) Here  
 Aug. 31 Scrimmage Here  
 Sept. 7 Brooksmith Here  
 Sept. 14 Jonesboro Here  
 Sept. 21 Zephyr Here  
 \*Sept. 28 Strawn Here  
 \*Oct. 5 Sidney Here  
 \*Oct. 12 Woodson Here  
 \*Oct. 19 Moran Here  
 \*Oct. 26 Gordon Here  
 \*Nov. 2 May There  
 \*Nov. 9 Newcastle Here

## Cisco Lobos

September 7 - Here - 8:00  
 September 14 - There - 8:00  
 September 21 - Here - Mart  
 September 28 - There - Coleman\*  
 October 5 - Here - Ranger\*  
 October 12 - There - Albany\* - 7:30  
 October 26 - There - Eastland\* - 7:30  
 November 2 - Here - Jim Ned\* - 7:30

Here 6:30  
 Here 8:00  
 There 8:00  
 Here 8:00  
 There 8:00  
 Here 7:30  
 There 7:30  
 Here 7:30  
 There 7:30  
 There 7:00  
 Here 7:00

## Cisco JC Wranglers

November 9 - There - Baird\* - 7:30  
 \*District 11 AA Games  
 Sept. 6 - Panhandle State "JV" - 7:00 - Goodwell, Ok  
 Sept. 13 - Tarleton State "JV" - 8:00 - Stephenville  
 Sept. 22 - \*Ranger Junior College - 7:30 - Breckenridge  
 Sept. 27 - UTA "JV" - 7:30 - Cisco  
 Oct. 4 - West Texas State "JV" - 7:00 - Childress  
 Oct. 13 - Henderson County Jr. College - 2:30 - Athens  
 Oct. 20 - Kilgore Jr. College - 7:30 - Cisco  
 Oct. 25 - Texas Tech "JV" - 7:30 - Lubbock  
 Nov. 3 - \*Northeastern Oklahoma - 2:00 - Cisco  
 Nov. 10 - Navarro Jr. College - 7:30 - Corsicana  
 \*Lion's Benefit Bowl  
 \*Homecoming and Parent's Day

Here 6:30  
 Here 8:00  
 There 8:00  
 Here 8:00  
 There 8:00  
 Here 7:30  
 There 7:30  
 Here 7:30  
 There 7:30  
 There 7:00  
 Here 7:00

## Eastland Mavericks

Sept. 7 - Stamford - 8:00 - Here  
 Sept. 14 - Dublin - 8:00 - There  
 Sept. 21 - DeLeon - 8:00 - There  
 Sept. 28 - Winters - 7:30 - There  
 Oct. 5 - Jim Ned - 7:30 - Here  
 Oct. 12 - Coleman - 7:30 - There  
 Oct. 19 - Albany - 7:30 - Here  
 Oct. 26 - Cisco - 7:30 - Here  
 Nov. 2 - Baird - 7:30 - There  
 Nov. 9 - Ranger - 7:30 - Here

## Ranger JC Rangers

Sept. 1 Scrimmage Tarleton 6 p.m. Stephenville  
 Sept. 8 Henderson Co. JC. 7:30 Ranger  
 Sept. 15 Kilgore JC 7:30 Kilgore  
 Sept. 22 Cisco JC 7:30 Breckenridge  
 Sept. 29 Baylor Univ. JV 2 p.m. Weatherford  
 Oct. 4 North Texas State JV 7:30 Denton  
 Oct. 13 Northeastern Okla. JC 7:30 Miami, Ok.  
 Oct. 18 UTA JV 7:30 Arlington  
 Oct. 27 (Homecoming) Navarro JC 4 p.m. Ranger  
 Nov. 1 Texas Tech JV 7:30 Lubbock  
 Nov. 8 West Texas State JV 3:30 Canyon

## Open House

The Texas Department of Agriculture invites the public to join us for our Stephenville Open House, Thursday, August 30th from 4:00-6:30 p.m. Taste of Texas Refreshments will be served. The Dixie-Land Band and other musicians will provide music. Square-dancers will also entertain at the event. Jim Hightower, Commissioner of Agriculture, will be on hand for the informal, get-acquainted

Stephenville style get-together on August 30th, at 241 E. McNeill in Stephenville.

## Mangum To Hold Singing

The Mangum Baptist Church will hold a singing and potluck super Thursday, August 30th at the church. Everyone is invited to attend.

## Musical Friday

There will be a musical held Friday, September 14, at Camp Inspiration starting at 7:00. All musicians are invited to come and join in the fun and activities. A collection will be taken to help pay for cost.



October 4, 5 & 6

**Baker Care Services**  
 24 Hour Nursing  
 LVNs - Aids - Sitters  
 Home or Hospital  
 647-3970  
 Countywide - Experienced - References

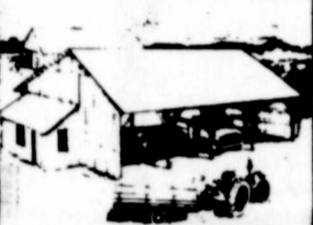
# Century 21

**EASTCO INC.**  
 RANGER MEADOWBROOK ADDITION, 5 bdr., 3 bath, fireplace and basement with CH/A.  
 MEADOWBROOK ADDITION, brick 3 bdr., 2 bath, fenced backyard, CH/A.  
 OAKHILL SUBDIVISION, Brick, 3 bdr., 2 bath, one car garage, energy efficient CH/A.  
 OAKHILL SUBDIVISION, Like new, brick 3 bdr., 2 bath, one car garage, energy efficient.  
 MEADOWBROOK ADDITION, beautiful Rock Home, 3 bdr., 2 Bath CH/A. Beautiful Yard.  
 MEADOWBROOK ADDITION, Nice Brick Home, 3 bdr., 1 1/2 bath, FHA Assumable Loan.  
 ENERGY EFFICIENT, 2 bdr., 2 bath, CH/A.  
 YOUNG ADDITION, Large frame 3 bdr., 1 bath, den, fenced backyard.  
 BRECKENRIDGE HIGHWAY, Brick, 3 bdr., 1 1/2 bath, 1 car carport, CH/A ASSUMABLE, FHA LOAN, Large 2 bdr., 1 bath, large den with fireplace, priced to sell.  
 NICE HOME, 3 bdr., 1 bath, on approximately 2 acres.  
 BRECKENRIDGE HIGHWAY, Beautiful brick home, 3 bdr., 2 bath, CH/A.  
 161 ACRES N.W. of Ranger, fenced into 5 pastures for rotation grazing, 3 ponds, steel corrals. Good hunting. Financing.  
 EASTLAND COMPLETELY REMODELED, 3 bdr., 1 bath, fenced backyard, FHA appraised.  
 IN EASTLAND, Good location, brick 3 bdr., 2 bath, large living area with fireplace, large lot, privacy fence.  
 REMODELED, Older brick home, 3 bdr. All new inside, insulated windows, much more.  
 VERY ATTRACTIVE, Brick, in better neighborhood, 3 bdr., 2 bath, nice kitchen with built-ins, privacy, CH/A, 2 car garage.  
 CORNER LOT, 3 bdr., large living area with fireplace, fenced yard.

**112 Railroad Ave. Ranger**  
 CISCO VERY NICE, Brick home, 3 bdr. 1 1/2 baths, FHA Assumable loan, call today for more information.  
 BRICK SPANISH, 4 bdr. 1 1/2 bath, new carpet, nice kitchen cabinets, only 5 yrs. old. In a hurry to sell.  
 RANGER LARGE COMMERCIAL Warehouse, accessible to railroad.  
 CLOSE TO GORMAN, 160 Acres, 1/2 minerals, mostly improved, tank, 8 wells, 7 with pumps.  
 BETWEEN CISCO AND EASTLAND, 166 acres, corrals, barn, city water, electricity, tan stone coastal, fenced, cross fenced.  
 92.26 Acres, Live Oak and Post Oak, 1 small tank, lots of game, owner finance, no minerals.  
 260 Acres, wooded, 3 tanks, has old shack on property.  
 HODGES OAK PARK ADDITION 3 bdr., 1 bath, free standing fireplace, 3 ceiling fans, on 2 corner lots.  
 FHA APPRAISED Oakhill Subdivision, brick, 3 bdr., 2 bath, study, fireplace, CH/A.  
 OLDEN, Mobile home, 2 bdr., 2 bath, screened back porch, 2 storage bldgs., fenced, on 0.511 acres.  
 COUNTRY LIVING, 2 bdr., 1 bath, on 2 acres.  
 COMMERCIAL, Eastland, ceramic business, priced to sell. Call for more information.  
 MORTON VALLEY, 8 Acres with nice 2 bdr., 1 bath, 2 tanks, city water, several out buildings. Priced to sell.  
 MORTON VALLEY, 12.5 Acres with Rock Home, 2 bdr., 1 bath, 3 car garage, steel corrals, barns, cellar.  
 OLDEN, Completely Remodeled Home, 4 bdr., 2 bath on 3/4 of an acre.  
 RANGER Mobile home, 2 bdr., 1 bath, to be moved Priced to sell.

**7 1/2% Loans**  
 BOBBY L. LITTLE 653-2379  
 SHIRLEY GRIFFITH 647-1635  
 LARRY ARMSTRONG 629-1683  
 DONNA McDONALD 647-1291  
 BILL GRIFFITH-BROKER-PRES. EASTCO, INC.  
**Put Number 1 to work for you.**  
 © 1984 Century 21 Real Estate Corporation as trustee for the NAF.  
 ® and ™—trademarks of Century 21 Real Estate Corporation. Equal Housing Opportunity ©  
 EACH OFFICE IS INDEPENDENTLY OWNED AND OPERATED.

**IF YOUR OLD ROOF IS RUSTING AWAY, PUT UP ONE THAT WON'T.**



- Corrugated Asphalt Roofing & Siding
- Can Go Right Over Your Existing Roof
- Doesn't Leak Like Metal (If Installed Correctly)
- Roofing & Siding That Won't Rust, Rot or Corrode
- Goes Up Fast & EASY. NO SPECIAL TOOLS
- Lightweight-Flexible Sheets (18 lbs. Sheet)
- Lifetime Limited Warranty
- Available in Several Colors

46" x 79" - 25 sq. Sheet \$10.95/sheet  
 \$43.80/Material per sq. (4.7 Sheets Cover sq.)  
 32 sqs. of Material Currently in Stock

**Onduline**  
 Cisco Lumber Co.  
 110 Sandler Sq.  
 Cisco, Tx. 76437

H&R Hardware & Lumber  
 715 W. Main  
 Eastland, TX 76448  
 8/30, 9/27, 10/25, 11/22

**Bookkeeping and Tax Service**  
 Ken Parreck  
 205 E. Main, Ranger, 647-3022  
 116 North Seaman, Eastland, 629-8641  
**INCOME TAX RETURNS MONTHLY AND QUARTERLY REPORTING FOR BUSINESS**  
 Individual, Partnership, and Corporation Tax Returns

**Lone Star Title & Abstract Co.**  
 Joe B. Koonce, Mgr.  
 101 W. Main  
 Eastland, Texas 76448  
 (817) 629-2683

**FORKLIFTS FOR SALE: All sizes from small to large commercial units. Call 442-9979 or 442-4569. Send specifications to P.O. Box 326, Cisco, Tx. 76437 p100**

**SHOW PIPE & SUPPLY**  
 P.O. BOX 881 HWY. 90 East EASTLAND, TX 76448 817-629-8521  
 RODNEY REYNOLDS Assistant Manager Res 817/629-2250  
 LINDA NELSON Manager Res 817/629-8123

**FOR SALE 95 Horse Power Allis-Chalmers Tractor. Runs on Butane. Good Condition. \$4,200. Caraway's Hwy. 80 Ranger 647-1280 or 1-800-772-5932**

**PATLOW Pipe and Supply, Inc.**  
 Casing - Tubing - Line Pipe  
 Dealer for L.B. Foster Pipe  
 Randy Lowrance (817)629-3311  
 T105 (817)629-3400

**PULLING UNIT FOR SALE: Mack Truck with double winch, derrick type, single-double. Foster tongs and hydraulics. Capable of 4,200 feet or more. Reasonably priced. Call 442-9979 or 442-4569. p-100**

**EASTLAND DRILLING INC.**  
 817/629-8512  
 24 Hour Number  
**3 Rotary Rigs**  
 Drilling depth from 1500' to 6000'  
 All Rigs Radio Equipped with 24 hr. answering service plus phone patch.  
 Gary Snapp, Vice President & Operations Mgr.  
 Res. Phone 817/647-3416  
 23 Yrs. Offfield Experience

FOR SALE  
 SPORTY 1982 Plymouth Turismo. Like new. BRIGHT red with gold stripes. Excellent mileage and good tires. Reason for selling: buying larger car. \$5,995. firm. Call 629-2413 to see.

**COMPLETE AUTO SERVICE**  
 ...qualified mechanic on duty  
 ...Transmission repair  
 ...air conditioner service  
 ...Lubrication-polish-G-ull tires  
 ...Tire Distributor  
**ROAD SERVICE PICKUP & DELIVERY Int. 20 at Carbon Hwy. 629-8984**  
**RUBEN'S INTERSTATE GULF TC**

**INTRO SERVICES, INC.**  
 P.O. Box 326, Cisco, Tx. 76437  
 "Let Us Help You Make A Better, Faster Deal."  
**DRILLING RIGS FOR SALE...**  
 1-5,500 ft. rig with N-4 Brewster Drawworks, 87 ft. Lee C. Moore derrick, 17' 6" x 32' x 7' high base sub. FXK model Gardner-Denver mud pump with new Cat engine. (Complete inventory description available upon request.)  
 1-6,500 ft. rig with unit Rig U-34 Drawworks, 92 ft. Lee C. Moore Cantilever Mast, 7' x 16' x 36' substructure with 3' extension wings. Gardner-Denver model FXK slush pump with Detroit diesel twin engine. (Complete inventory description available upon request.) OTHER DRILLING RIGS (Smaller or larger) are also available, along with some Pulling Units. Oil field equipment listings are welcomed.  
**FOR MORE INFORMATION -- CALL TODAY**  
 TEMPORARY PHONE NUMBER: 442-2669 (DAYS) OR 442-3647 (NIGHTS) c-100

**Kiva inn**  
 MOTOR HOTEL  
**Year Round Inn-Door Summer Fun**  
 2 Locations  
 Abilene & Wichita Falls  
 915-695-2150 817-766-6000  
**The Library Restaurant**  
**Sidewalk Cafe**  
 BRUNCH 11 AM-2 PM SUNDAY  
 LUNCH 11:30 AM-2 PM WEEKDAYS  
 DINNER 6 PM-11PM WEEKDAYS & Saturday  
 OPEN 6 AM-10 PM WEEKDAYS and SUNDAY TILL 11 PM SATURDAY





**FOR IT GO**

**BRIGHT  
IDEAS FOR  
SAVING  
TAXES**



**RE-NEW**

**YOUR SUBSCRIPTIONS**

**NOW!**

**CHECK YOUR LABEL**

**MOST SUBSCRIPTIONS EXPIRE JANUARY 1**

**BEGINNING OCTOBER 2ND 1984 THE NEW STATE SALES TAX WILL BE IN EFFECT. WITH STATE AND CITY TAX COMBINED IT WILL BE (5 1/8¢).**

**A ONE YEAR SUBSCRIPTION WILL BE \$15.77 IN COUNTY 6 MONTHS - \$7.88 (CISCO, EASTLAND & RANGER) AND 26¢ AT PAPER MACHINES**

**RISING STAR: \$6.31 PER YEAR WITH NEW 5 1/8¢ TAX.**

**SO BEAT THE TAX... GO FOR IT NOW!**

**(A SUBSCRIPTION INCREASE IS ALSO ANTICIPATED FOR JANUARY 1, 1985)**

**The  
Cisco Press**

700 Conrad Hilton  
Cisco, Texas  
442-2244

**Eastland  
Telegram**

110 W. Commerce  
Eastland, Texas  
629-1707

**Ranger  
Times**

211 Elm  
Ranger, Texas  
647-1101

**The  
Rising Star**

Main Street  
Rising Star, Texas  
643-4141

# Holistic Management -- A Key To Ranch Survival

Drought and tough economic times are having a high impact on the ranching industry of Texas. Some ways to remain on the cutting edge of new technology and keep an advantage despite the current situation were shared by speakers at the opening general session of the International Ranchers Roundup (IRR) here July 30.

Speakers keyed on the IRR Conference theme of "Holistic Ranching—Putting It All Together."

Speakers for current sessions during the remainder of the week also are relating their talks to that theme as the educational activity, arranged by the Texas Agricultural Extension Service, Texas A&M University System, progresses at San Angelo's Convention Center.

Dr. Richard Connor said holistic management requires a "systematic and comprehensive approach to planning, evaluating and executing management decisions and establishing realistic goals."

Connor, a researcher in range economics with the Texas Agricultural Experiment Station and a professor of agricultural economics at Texas A&M University, said, "Holistic management is an approach that emphasizes the organization and use of all ranch resources to achieve total ranch goals and objectives. A ranch must be managed like a business to survive in today's world of strong competition from pork and poultry on the produce side and high costs of fuel, feed, labor and borrowed money on the input side."

Getting and using information to make planning and operating decisions in a timely manner is critical for the success of holistic management, Connor added. "Each manager must develop a procedure for planning the production and financial activities a year in advance, then constantly monitor the actual performance and adjust operations so that actual production levels are as close as possible to those planned," he said.

Developing the ranch into grazing cells for holistic ranching.

Loftin manages some 250 sections of land and uses high quality Beefmaster bulls with a commercial herd and also maintains a purebred Beefmaster herd. He said that ranching in the 1980s forced the Anderson Ranches to become more efficient by changing from a straight commercial cow-calf operation to a mixture of livestock enterprises. Stocker steer and heifer operations were added.

"We have combined enterprises best suited to our area with the best profit potential," he said.

"Crisis management" should be avoided, according to another speaker, Bill Carey, president of the SMS-Throckmorton Ranch at

Throckmorton. Holistic planning of personnel and management alternatives should foresee many crises and consider all alternatives for solutions.

"Effective personnel management also should include employee pride in all accomplishments and benefits. Additionally, motivations to do the right things when and where they need to be done is another spinoff of good holistic planning. Management of labor—whether a one-man operation or a larger ranch with a number of employees—requires planning and allocation of time to all aspects of the business."

Carey said. Producers must recognize all market possibilities and consider them quite realistically, according to Dr. Kary Mathis, chairman of the Department of Agricultural Economics at Texas Tech University, Lubbock.

Ranchers must also understand how and why prices change and how market forces affect their marketing choices. Mathis said, "Marketing decisions are concerned with the intangibles—economic forces, psychology of the market and other factors which are the result of what people do, not what nature does."

## 'Getting High' Is Dangerous

HOUSTON--Youngsters who inhale spray paint and similar organic substances to "get high" run the risk of causing brain damage, according to a Baylor College of Medicine doctor.

Nancy Neff, M.D., assistant professor of community medicine at Baylor, recently completed a four-year study of 97 teenage inhalant abusers at the Casa de Amigos Drug Treatment Program in Houston. Nearly half of the teenagers had evidence of long-term brain damage, physical deterioration and personality problems.

"The primary physical effect of inhalant abuse is on the central nervous system," Neff said. "It can cause organic brain syndrome which is the diminished capacity to think, reason, remember, do calculations and do abstract thinking."

Many of the inhalant abusers in the study also suffered serious personality changes and previously stable youngsters became violent and aggressive. Anxiety, hostility, depression and suicidal thoughts were also common among the youth.

Some spray paints and leather care products contain the chemical toluene, which is rapidly absorbed into the bloodstream when inhaled through the nose or mouth. Neff says toluene dissolves the fatty protective layer around the nerves, which causes the nerve to wither away and die.

"Once the nerve is damaged, it's unable to regenerate and grow back," Neff said. "That's why I'm concerned that some of the neurologic problems that we see may be permanent in these teenage kids."

Simple neurologic tests like walking a straight line, touching the nose with a finger, or maintaining balance while standing with the eyes closed become difficult for many of the inhalant abusers. Neff says that is due to central nervous system damage.

Inhalant abusers may also suffer from nausea and vomiting, loss of appetite, ringing in the ears, a stuffy or runny nose, and abdominal pain or cramps. More severe problems can include kidney damage, muscle weakness and even paralysis. Female inhalant abusers who become pregnant have an increased risk of having a child with birth defects.

"Inhalant abuse, like many other forms of substance abuse, is probably a symptom rather than the problem itself," Neff said. "The kids get into it because they're unhappy, they're

alienated from their families and other traditional support systems, they're bored and they're very subject to peer pressure."

Treatment of the medical complication of inhalant

abuse, and individual and family counseling to attempt to remedy problems are the most common methods of preventing further damage and continued abuse of inhalants.

## Rural Crime Is Now Outpacing Urban Crime

COLLEGE STATION--There was a time when farmers and ranches didn't worry much about locking doors on their barns or homes. Unfortunately, times have changed—so much so that the rural crime—particularly theft—is now outpacing urban crime.

Despite the rapid increase in rural crime, farmers and ranchers still don't take many steps to prevent theft, says Dr. J. Fred Cross of Stephenville, a community development specialist with the Texas Agricultural Extension Service, Texas A&M University System. Tractors, in particular, are a major theft item due to their high price tag—\$45,000 and more.

"Farmers and ranchers can do a lot to prevent the theft of tractors and other equipment," notes Cross. "Every thief has to have three things: the motivation to steal, a victim and an opportunity. Farmers and ranchers can control the 'opportunity'."

The specialist list a number of things that can be done to remove the opportunity for tractor theft:

1. Remove the rotor. On gasoline or L.P. fuel tractors, this will disable the ignition system. Even though many professional thieves carry extra rotors, this step will discourage amateurs who like to "hot wire" the ignition.

2. Shut off the fuel line. On

3. Lock in gear. Many tractor thieves use tile bed trucks or trailers and a winch line to load a tractor. If the tractor's transmission cannot be put in neutral, then the wheels will not turn readily, making loading difficult. A hinged metal plate can be welded onto the tractor that can be folded across the transmission and then padlocked to keep the shift in gear or park position. A long shanked, heavy duty padlock, such as one used to lock motorcycle wheels, also can be used to lock the gear shift and steering wheel together to keep the tractor in gear and to prevent steering.

4. Chain the wheels. A heavy duty hardened chain and good padlock can be used to chain together the front and rear wheels or both rear wheels. This will keep the wheels from rolling and will make loading difficult. The wheels or frame also can be chained to immovable objects, such as a large tree.

5. Watch it. If a tractor or other equipment has to be left in the field, park it so that it can be watched by someone, possibly a neighbor.

6. Hide it. If a tractor or equipment must be left where it can't be watched, then park it out of sight behind a hill, trees or brush. Following these practices may not completely halt thieves, says Cross, but it will deter them in many instances by reducing the opportunity for theft.

**Cisco Dairy Queen**

**2101 Conrad Hilton Ave.**  
Hours: 10A.M. - 10P.M.

**BACK TO SCHOOL SPECIALS**  
**Your Choice \$1.99**

Country Basket    Hunger Buster & Fries  
Breast of Chicken Sandwich    or 3 Tacos

**Your Choice 99¢**

Banana Split    Peanut Buster Parfait  
or Banana Supreme

Prices Start August 29

**HEALTH FAIR**  
**Thursday, September 6, 1984**  
**Cisco Senior Citizen Center**  
**400 Conrad Hilton Avenue**  
**10:00 A.M. — 8:00 P.M.**  
**Cisco, Texas**

**FREE SCREENING**    Exhibits, Films, Tour

<ul style="list-style-type: none"> <li>Genetics</li> <li>Anemia</li> <li>Blood Pressure</li> <li>Blood Sugar</li> <li>Glaucoma</li> <li>Hearing</li> <li>Height - Weight</li> <li>Oral Hygiene</li> <li>Vision</li> <li>Skin Cancer - Skin Disorders</li> <li>Pulmonary Function</li> <li>Colorectal Cancer</li> <li>Hand Strength</li> </ul>	<ul style="list-style-type: none"> <li>Computer Programs</li> <li>Demonstrations</li> <li>Free Door Prizes</li> <li>Counseling, Literature</li> <li>Featuring</li> <li>Alcohol &amp; Drug Abuse</li> <li>Blindness</li> <li>Cancer</li> <li>Psychiatric Care</li> <li>Exercise</li> <li>Heart</li> <li>Birth Defects</li> <li>Social Security</li> <li>Nutrition and Special Diets</li> <li>Life Line and More</li> </ul>
---	---

Sponsored By:

**Cisco and Eastland A.A.R.P. Chapters and Senior Services**  
**Family Living Committee**  
**Texas Agricultural Extension Service**

Education Program conducted by the Texas Agricultural Extension Service serves people of all ages regardless of socioeconomic level, race, color, sex, religion, handicap or national origins.

**The Cisco Press**    Thursday, August 30, 1984

**SEPTIC TANK NEED CLEANING?**  
**Add Sandtraps**  
**Call LEWIS SEPTIC TANK SERVICE**  
442-2361 After 5 442-4392 Till 3 P.M. c102

**Ceramics and Crafts**  
**At The Post Oaks**

203 North Oak Street  
Eastland, TX 76448  
817-629-8605

Open  
Tuesday 9-9  
Saturday 9-2

Special Airbrush Classes  
On Monday Nights  
(Reservations Necessary)

**YOU NEED A TV CABLE CONNECTION**  
for complete television enjoyment

★ ★ ★

**Southern Television Systems Corps**  
Serving Cisco, Eastland, Ranger

Call us for complete information

**POODLES & PALS GROOMING SALON**  
Specializing in Grooming  
Poodles & other Small Breeds.

Call for Appointment  
**629-1489**  
613 S. Daugherty  
Nancy King, operator

**FOR RENT**

Furnished Mobile Homes with  
Washer & Dryer By the Week or 2  
Weeks with Utilities Paid. (No Deposit  
Required) Parking Spaces at \$2.00 a Day

Sunshine Valley Mobile Home Park  
442-1365    Leona Fay Morton

**Mary Kay Cosmetics**

Now available in Cisco. For a private,  
complimentary facial or reorder call

**Virgie Gregg**  
Professional Beauty Consultant  
442-3460    ttc

**HARGRAVE INSURANCE**  
**AGENCY**

1106 Ave. D  
Cisco, Tex

Personal Sales & Service For

- ✓ HOME Insurance
- ✓ Car Insurance
- ✓ Commercial Business Insurance
- ✓ Mobile Home Insurance & Travel Trailers
- ✓ Boat Insurance
- ✓ Life Insurance
- ✓ Bonds Of All Kinds

Shirley A. Hargrave  
442-1477 Or 442-1059

**DAVIES MONUMENT WORKS**  
Completed In Our Shop  
Also Last Dates, Vases & Crushed  
Marble.

**Harold Davies Owner**  
401 West 5th St.  
442-4082    Cisco, Texas    442-3523

**KK's**  
**KARPET KLEANING**

Carpets professionally steam cleaned: Commercial  
and Residential. Living room and Dining area or Hall,  
\$30.00

References upon request. FREE Estimates  
Karen Melson - Owner & Operator  
Call 817-725-7389 for Appointment or more  
information.    p-76

**THE BALLET**  
**STUDIO**  
Classes Will  
Start Sept. 4  
For information or  
Pre-Registration  
Call...  
**Becky Payne**  
**559-8443**

Announcing Registration  
For Ballet Classes  
**BALLET & TAP**  
Pre-School to Teens  
Mon.-Aug. 27-2:30-4:00 Thurs.-Aug. 30-4:00-6:00  
at the Studio 200 E. 6th Cisco    p-75

**TELECOMMUNICATIONS SERVICES**

501 HASSETT AVE.  
FT. WORTH, TEXAS 76114  
817-738-7981

Telephone Installation & Repair    p-72  
Residential & Business  
Local 639-2238    Local 442-3114

**Piano Lessons In Town**

Experienced Teacher  
Children or Adult

Beginners, Intermediate or Advanced  
Call Susan Wester now for fall  
enrollment    725-6731    p-71

**THE POTTING SHED**  
442-1249 1502 Park Dr. - Cisco

Flower Shop    Garden Center  
Silk Arrangements    Trees & Shrubs  
Pot Plants    Hanging Baskets

Open 8 a.m. - 6 p.m. Mon.-Sat.    p-74

**Steve Cozart**  
**CONSTRUCTION**  
442-1709

Remodeling, Add-ons, New Homes,  
Cabinets, Electrical, Etc. Free Estimates

### WORD of GOD

Jesus heals a withered hand:

And, behold, there was a man which had his hand withered. And they asked him, saying, Is it lawful to heal on the sabbath days? that they might accuse him.

And he said unto them, What man shall there be among you, that shall have one sheep, and if it fall into a pit on the sabbath day, will he not lay hold on it, and lift it out?

How much then is a man better than a sheep? Wherefore it is lawful to do well on the sabbath days.

Then saith he to the man, Stretch forth thine hand. And he stretched it forth; and it was restored whole, like as the other.



# Eleventh Court Of Appeals

The following proceedings were had in the Court of Appeals, Eleventh Supreme Judicial District of Texas: **AFFIRMED**

Ruth Wilhelm, Individual and as Independent Executrix of the Estate of Jack Wilhelm, Deceased v. J.A. Wilhelm et ux. (Opinion by McCloud) - Comanche.

Grady Brown, Individual and Severally, d/b/a Dallas Nurseries v. Money Oil Company. (Opinion by Judge Brown) - Dallas.

**REVERSED & RENDERED IN PART; AFFIRMED IN PART**

Leta Taylor and J.Y. Taylor Manufacturing Company v. David Johnson. (Opinion by Judge McCloud) - Dallas.

**FORMER OPINION WITHDRAWN; MODIFIED & AFFIRMED**

Texas Alcoholic Beverage Commission v. O.M. & S. Distributing Co. (Opinion by Judge Brown) - Brown.

**FORMER OPINION WITHDRAWN; APPEAL REINSTATED**

Richard Morales Castillo v. State of Texas. - El Paso. **APPEAL DISMISSED**

Calvin Wade v. Wilburn Drilling Corporation - Jones. **JUDGEMENT VACATED; CASE DISMISSED AS MOOT**

Judy Fulcher v. Carla Perry Parks et al. - Coleman.

**OTHER OPINION NOT DISPOSING OF CASE**

Richard Lee Uptain v. State of Texas. (Per Curiam Opinion) - Midland.

**MOTIONS SUBMITTED & GRANTED**

Albert Wayne Ware v. State of Texas. Appellant's motion for extension of time to file brief. - Nolan.

Richard Morales Castillo v. State of Texas. Appellant's motion for reinstatement appeal. - El Paso.

Amber Benavidez v. State of Texas. Appellant's motion for permission to file late brief. - Ector.

Paige B. Bayoud v. H.R. Nassour, Jr. et al. Appellant's motion for permission to file late supplemental transcript. - Dallas.

City of Dallas v. Charles et al. Appellees' motion for permission of time to file brief. - Dallas.

Elizabeth Doss Blanton et

al v. Martha Bruce et al. Appellant's (Hudson, Beggs & Baker) motion for permission to file late amended and supplemental brief. - Stephens.

Terry Gene Whitmire v. State of Texas. Appellant's motion for permission to file late brief - Palo Pinto.

Calvin Wade v. Wilburn Drilling Corporation. Appellee's motion to dismiss appeal. - Jones.

Comanche Land & Cattle Company, Inc. v. Samuel Frank Adams et al. - Appellant's motion to file supplemental transcript. - Comanche.

Judy Fulcher v. Carla Perry Parks et al. Appellant's motion to dismiss case. - Coleman.

Texas Alcoholic Beverage Commission v. O.M. & S. Distributing Co., Inc. Appellant's motion for extension of time to file brief. - Brown.

Terri Lynn Holden a/k/a Terri Lynn McClelland v. State of Texas. Appellant's motion for extension of time to file record and brief. - Taylor.

Paul Condit v. F.D.I.C., Receiver of First National Bank, Snyder, Texas. Appellant's motion for extension of time to file transcript. - Scurry.

Paul Haun et al v. Kathy Nowlin et al. Appellant's motion for extension of time to file transcript and statement of facts. - Taylor.

**MOTIONS SUBMITTED & GRANTED IN PART**

# HOSPITAL REPORT

## Eastland Memorial Hospital

Bessie L. Beaty  
Laura O. Bennie  
Eva D. Sanderson  
Iris G. Redden  
Frank Hightower  
Cladean C. Kisner  
Pamela Pruitt  
Marilou E. Summers  
William Aaron  
Dorothy E. Awalt  
Jacqueline R. Ayson  
Fannie E. Turner  
Mattie Cox  
Frankie Lou Altmire  
LaTrelle Stark  
Mary Evans  
Doris Lee Oliver  
Homer L. Hudson  
Emory G. Hallmark

Tina M. Bennett  
Sibyl P. Shafer

## Graham Memorial Hospital

Nora Pope  
Pearl Stone  
Lola Gleghorn  
James King  
Eleanor Green  
Vernell Jackson

## Ranger General

Audie Gibson  
Dorothy Abraham  
Clara Lyerla

**ATTENTION EVERYONE!**  
**"THE YELLOW ROSE"**  
will Be Opening Saturday  
here in Eastland. Be Sure and  
Read Your Paper Saturday  
For More Details.

**SunShine Carpet Cleaning**  
Full House Special **\$57<sup>95</sup>**  
(Living Room, 3 Bedrooms & Hall)  
**647-3191**  
Ronnie Gibbs T74 owner-operator

**SPECIALS**  
at **KID'S KOUNTRY**  
90 Day Lay-A-Way  
711 Conrad Hilton  
**30% OFF Summer Shorts & Tops**  
**20% OFF Fall & Winter LITTLE SHOES**  
711 Conrad Hilton  
**Buy 1 Pair at Regular Price - Buy 2nd Pair for ONLY \$7.00**  
Ballot & Tap Shoes Available

**SALE! Room Air Conditioners**  
COOL Your Home with Room Air Conditioners, Why Be Out the Cost of Installing Central Air.  
**629-3315**

Frigidaire Appliances Sharp  
Crosley Appliances Microwave Ovens  
Kitchen Aid Dishwashers

**EASTLAND ELECTRIC SUPPLY**

**Final Spring & Summer CLEARANCE...**  
**\$5 to \$15**  
Values to \$135<sup>00</sup>  
**SHOES TOO**  
Opening Soon  
**David & Quetta's**  
Interstate 20 629-8030

### Guest Slot

Every time you butter a slice of bread or pour dressing on your salad, you're adding visible fat to your diet.

Visible fats and oils are those added to foods, either directly or as ingredients in meals, bakery products and other processed foods, says Texas A&M University Agricultural Extension Service nutritionist Mary K. Sweeten.

U.S. Department of Agriculture figures show that we get the largest share of visible fats - about 30% - from foods prepared at home, notes Sweeten. Ingredients in prepared baked goods account for another 7.4 percent; canned goods 6.8 percent; and frozen foods 6.3 percent of the visible fats and oils we consume. Potato chips add another 6 percent to the total.

Fats are necessary and beneficial part of a balanced diet, says the nutritionist. But, making wise choices among the many margarines, oils, dressings shortenings on the market can help consumers reduce their visible fat consumption and increase the ratio of polyunsaturated to saturated fats in their diet, she adds.

The following information can help consumers select among different forms of fats and oils:

•Fats and oils that are solid at room temperature contain more saturated fat than those that are liquid. Liquid semi-soft fats and oils made from vegetable oils provide the lowest degree of saturated fats.

•If your physician has restricted your cholesterol intake, reduce your consumption of shortenings and margarine that contain animal fats, such as lard.

•Read the labels carefully to determine the oils used in production of margarine and shortening. Oils from a single source, labeled as 100 percent soybean, corn, safflower, or sunflower oils, have a higher ratio of polyunsaturated to saturated fatty acids. Products simply labeled "vegetable oil" or "vegetable margarine" can contain a combination of oils, including palm and coconut oils which are in the prime vegetable sources of saturated fats.

•Read the label on processed foods to determine the type of fats and oils used as ingredients. Many brands of cookies, crackers and baked goods contain lard, tallow or highly saturated vegetable fats.

•Diet or imitation margarine contains about 60 percent fat compared to 80 percent of regular margarine.

**EASTLAND COUNTY Fair**

**EASTLAND COUNTY FAIR LIVING PLANTS DIVISION DIRECTORS: RANGER GARDEN CLUB**

### MEMBERS

1. Participants should abide by the general rules of the Fair.

2. All plants should have been in the grower's possession for 3 months prior to the Fair.

3. Flowering plants must be in bloom.

4. Plant entries will be released between 5-7:00 p.m. Saturday, October 1.

### CLASSES

#### ADULT

1. Foliage plants
  2. African Violets
  3. Flowering Plants
  4. Cactus
  5. Succulents
  6. Ferns
- YOUTH 12 and younger**
1. Foliage Plants
  2. African Violets
  3. Flowering plants
  4. Cactus
  5. Succulents
  6. Ferns

**NO HANGING BASKETS**

Wal Mart Sells for Less • Wal Mart Sells for Less • Wal Mart Sells for Less • Wal Mart Sells for Less

**WAL-MART August 30 - Sept. 1, 1984**

**9 A.M. - 9 P.M. Hwy. 80 E. Eastland**

## KIMBERLY-CLARK SPECIALS

 <b>1.63</b> Kotex Lightdays *Regular or unscented *26 Count	 <b>2.36</b> Kotex Feminine Napkins *30 Count	 <b>2.93</b> Kotex Security Tampons *Regular or super *26 Count
---	---	---

**WAL-MART'S ADVERTISED MERCHANDISE POLICY** - It is our intention to have every advertised item in stock. However, if due to any unforeseen reason, an advertised item is not available for purchase, Wal-Mart will issue a Rain Check on request for the merchandise to be purchased at the same price whenever available, or will sell you a similar item at a comparable reduction in price. We reserve the right to limit quantities. Limitations void in New Mexico.

Wal Mart Sells for Less • Wal Mart Sells for Less • Wal Mart Sells for Less • Wal Mart Sells for Less

**If you're shopping for carpet**  
**J & D Carpets 629-1672**  
Located in Pogue Industrial Park. Eastland 629-8401

**Exclusive Local L.D. Brinkman Dealer.**  
**We've Been to Market! See Our New Carpet and Vinyl in Stock. Ceramic Tile. Remnants, All Sizes. "Come In and Look Around, Our Floor Covering Prices Will Floor You."**

**Free Estimates All Work Guaranteed**

**MAKE MONEY SAVE MONEY**

Enroll in the H&R Block Income Tax Course now. Make money during tax time. Comprehensive course taught by experienced H&R Block instructors begins soon in your area.

**Enroll Today!** **7.5 CEU's Awarded** **Classes Start Sept. 6**

**WHO COULD BE A BETTER INCOME TAX TEACHER?**

For More Information **CALL COLLECT 915-698-7573**

**CLASSES WILL BE HELD IN CISCO!!!**

**James W. Ratliff Realtor-Broker**  
111 E. Main St. Ranger, Texas  
Office 647-1260 Home Phone 647-1667

**HOMES RANGER**

Three bedrooms, living room, dining room, kitchen, one bath, all new wiring and breaker box, 8 ft. wooden fence around back yard. Assumable FHA loan \$26,500.

1981 Sun Villa Mobil home 14 x 70, central heat and air, store room 12 x 20 in back, two bedrooms and furniture, two baths, drapes, TV Antena, porch on front, underpinned. This mobil home is on a lease lot at Lake Leon, a very nice place.

Brick three bedroom, two baths, central heat and air, living room, dining room very nice kitchen with dishwasher, cooktop, wall oven. Will FHA \$47,500.

Very attractive three bedroom, two full baths, kitchen, with appliances, dining room, living room, very nice drapes, central heat and air. Washer dryer connections, storage building in fenced back yard, carport and storage room. All new plumbing, new roof, will FHA.

Small one bedroom home, one bath, some furniture, refrigerator. This place is in a private location, \$8,500.

Three bedrooms, one bath, dining room, living room, utility room. This house is one one half acre of land just out of Ranger.

Home on approx. five acres of land with three bedrooms, two baths, utility room, kitchen. Fruit trees, large garden spot. \$20,000.

Two story home with two bedrooms and a bath upstairs, two bedrooms and bath downstairs, large living room, dining room, utility room, kitchen. This is a very well kept home.

Rock house on three acres of land just out of Ranger. Three bedrooms, one bath, kitchen with range and refrigerator. Two car carport, city water, Lone Star gas.

Two bedrooms, one bath, large living room, den. This house is on a large lot with metal shop building, fenced yard. Priced to sell \$28,000.

Three bedrooms, one bath, nice kitchen and nice bath. Woodburning stove in living room. \$20,000.

Large three bedroom, one bath, living room, dining room, new carpet, utility room. This house is on one lot. Three refrigerated window air conditioners go with this place. \$38,000.

Two story home with two bedrooms and bath downstairs, living room, kitchen. One unfurnished bedroom and bath upstairs, fenced back yard.

Large three bedroom and bath, living room, kitchen, utility room. This house has a large area upstairs could be utilized either as bedrooms or den. This place will sell with furniture or without furniture. There is approx. 1/4 acre of land with this space.

1982 Cameo Mobil home 14 x 78, three bedrooms, two baths, drapes, three bedrooms, central heat and air, range, dishwasher. This mobil home is to be moved.

**INVESTMENT PROPERTY**

Four apartments, about four years old, good investment property. They are in good condition and stay rented.

**BUSINESS PROPERTY**

Two story brick building with apartment upstairs, place for business downstairs, on Main Street. \$21,000.

Seven acres of land on access road of I-20 \$1,200 per acre.

12 lots on old Strawn Road, Ranger. Make good pipe yard or building site. \$10,000.

**ACREAGE OUT OF RANGER**

363 acres north west of Ranger. Two water well one tank. Part of this place in cultivation, part in native pasture. Good hunting place. \$500.00 per acre.