

Feed The Land And Fatten The Crops Is Slogan Urging Legume Planting

College Station—"Feed the land and fatten the crops." That's a slogan that E. A. Miller, Extension agronomist of Texas A. and M. College, would like to see in operation on every farm in Texas. Miller brings the slogan to attention now because it's time to "feed the land" with winter legumes, which help furnish soil fertility that

fattens the crops. Winter legumes can be planted, says Miller, as soon as there is enough moisture in the soil to work it.

Legume seed that has been inoculated has produced the best crop of green manure. Miller says proper seed inoculation is a necessary phase of legume-growing, and the producer wants to get the most benefit from his winter cover crop. Fertilization is just as necessary, says the agronomist, in areas where soils and rainfall will make good use of the fertilizer. On the better types of Texas soils Miller recommends 200 to 400 pounds of 20 per cent superphosphate per acre, or its equivalent, while on light, sandy soils and old fields, it will take 300 to 400 pounds of 0-14-7 commercial fertilizer per acre to get the job done. In the timbered section of East Texas, the 0-14-7 application is especially important.

To give farmers an idea of what they can expect in the way of increased yields through planting winter legumes, Miller quotes some results chalked up by Texas A. and M. College Agricultural Experiment Stations. Fertilized and inoculated hairy vetch increased the yield of cotton more than 100 pounds per acre on sandy land at experiment substations at Nacogdoches and Tyler. At the Temple Experiment Substation, cotton following hubam sweet clover which was harvested for seed and then turned under, made a five-year average of 315 pounds of lint, compared with 165 pounds on land where cotton was grown continuously without clover. Losses from cotton root rot were also greatly reduced by the clover.

Miller labels winter legume growing one of the biggest steps in the

current Seven Step Cotton Program which thousands of farmers are carrying on in Texas. The Seven Step program, a balanced cotton farming plan, includes "soil improvement," and inoculated, fertilized legumes, turned under preceding cash crops, is a money-making soil improvement step.

The agronomist is urging Texas farmers to obtain their legume seed, fertilizer and inoculant and be ready for legume planting when soil moisture permits.

October is a month that can make or break a fruit orchard as far as the next growing season is concerned, depending on whether the orchardist gets his pruning work done, plants his winter cover crop and removes and replaces old and unhealthy trees.

Dairy cows don't need horns. De-horning them as calves makes dai-

rying safer for both the dairymen and the animals.

Poultry disease and parasite control can be simplified by cleaning the laying house before pullets are housed there.

Farm population of the U. S. is still 2½ million below the 30 million prewar figure.

Joe Mack Wagnon and Dick Taylor, students at John Tarleton College, Stephenville, spent the weekend here with their parents, Mr. and Mrs. W. B. Wagnon and Mr. and Mrs. J. Clyde Taylor.

Mr. and Mrs. Roy Shirey spent the weekend in Levelland visiting Mr. and Mrs. Olen McDonald. Mr. Shirey is employed by The Journal.

Read The Journal Want Ads.

New Method Devised For Treating Posts

A new method of treating fence posts and freshly sawed green lumber has been originated at the Lake States forest experiment station. This procedure, the "dry salting" method, consists of applying a mixture of copper sulphate and sodium dichromate in powder form to the surface of freshly peeled green posts and freshly sawed green lumber.

The mixture of these chemicals dissolves in a humid atmosphere and clings to the surface of moist posts and lumber when applied as a powder.

The method results in deep penetration of the preservative which appears to be firmly fixed in the wood so that it is not readily leached out. A definite advantage of this process over any other now available is that treatment can be concentrated at the ground line and top where more protection against decay is needed. The resulting posts have an attractive blue color which is not readily leached out, and tests indicate that the preservative is relatively noncorrosive to staples and wire.

Small Amount of Salt Needed by All Pigs

After several years of tests, the Missouri experiment station has found that hogs having free access to salt consume an average of only a fraction of an ounce per head daily. However, this small amount of salt caused these hogs to make much faster gains than hogs fed a similar ration without salt. The tests indicated that the best way to feed the salt is free choice in mineral mixture.

Uncle Sam Says



There's no question about the umpire's decision when you come home with a United States Savings Bond in your pocket on pay day. Each additional savings bond you acquire through your participation in the Payroll Savings Plan where you work or the Bond-A-Month Plan where you bank is another score for you and your family. Get safely to home plate as many times as you possibly can now while your hitting power in the automatic savings bond league is at its greatest strength. U.S. Treasury Department



Oct. 5-11

FIRES

in the United States accounted for losses of over \$11,000,000 during the first half of 1947. Let's all do our best to prevent such disastrous losses.

Incidentally, we offer you complete protection from fires through our Insurance Service. Come in to see us. We'll furnish you with a policy backed by the most reliable companies.

Elizabeth Woodley

Office in Bank Bldg.

HEALTHFUL

Frozen Foods

Retain Vitamins, Minerals and other substances that are invaluable in keeping your family on a healthful, balanced diet. Come in and let us show you the many advantages of a locker.

Muleshoe Locker Co.

Phone 133

Muleshoe

Perfection

Is what our chefs try to attain in every dish they prepare for you.



Our short orders, lunches, dinners and steaks are prepared from the finest foods available — and they're served to you with courtesy and promptness.

We Cater to Parties and Banquets—Phone 75 for Appointment

We Open at 5 A. M. and Close at 12 Midnight

Cross Roads Cafe

LOOKS "TOPS" TO TEXAS!



Pepsi looks tops because it is tops—tops for quality, tops for taste, tops for size. How that good good Pepsi flavor hits the spot! Plenty smooth—and plenty to enjoy in the big big 12-oz. bottle that makes Pepsi your best soft drink value, bar none. Take a look yourself—Pepsi's bigger! Take a taste—Pepsi's better! More top quality for your money. Buy one—buy six—buy plenty.

Get it now!
Ice it up!
Drink it down!



PEPSI-COLA COMPANY OF TEXAS

Under the Research and Marketing Act of 1946, the U. S. Department of Agriculture cooperating with state agricultural experiment stations, will conduct surveys to determine requirements and kinds of foods consumed by different groups with this country's population, the material to be used as a basis for estimating potential outlets for farm products.

Under the Research and Marketing Act of 1946, the U. S. Department of Agriculture cooperating with state agricultural experiment stations, will conduct surveys to determine requirements and kinds of foods consumed by different groups with this country's population, the material to be used as a basis for estimating potential outlets for farm products.

LUZEE'S FINE COSMETICS
Selected to suit your individual requirement.
Accepted by the American Medical Association
SALLIE M. SCHUSTER

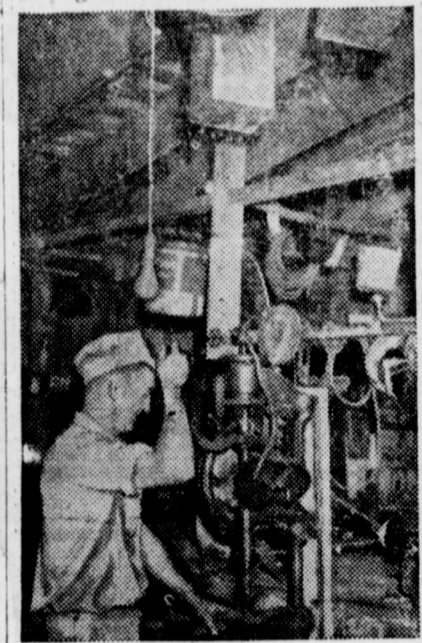
Bobo Insurance Agency
Pat R. Bobo, Owner
Office in Court House
Phone 97 — Muleshoe



Repair Shop Saves Money for Farmers Labor Saving Tools Aid In Better Farm Practice

Money saved by farmers who do their own repair and maintenance work may not show up in the price of hogs, but it will appear on the right side of the ledger when the year's account books are balanced. Buildings and equipment represent about one-half of the average farm's total investment, and it pays to keep them in satisfactory condition.

In order to do their best work, farmers, like other craftsmen, require adequate tools. Because much repair and maintenance work on equipment must be done during off-seasons and in unpleasant weather, it is wise economy to have a well-



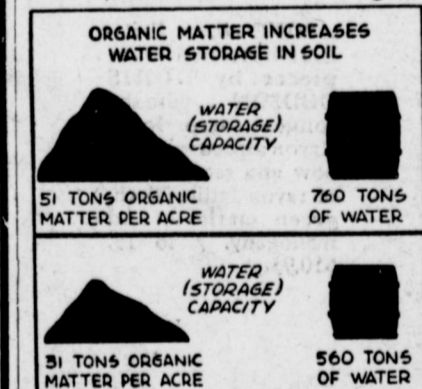
equipped farm shop. Such a shop should be large enough so that field machinery can be moved inside and also satisfactorily lighted so that emergency repairs can be made at night.

Farmers having electricity available will find that use of certain power equipment will speed up their work and save them time, money and energy. Since many cutting tools are used on the farm, probably one of the first pieces of power equipment purchased will be a tool grinder. Other electrical tools found in most farm shops include post and hand drills, wood lathes, rip and band saws, air compressors, battery chargers, paint sprayers and, more recently, transformer-type electric arc welders.

There's money in repairing your own equipment and there's something else also—most boys are interested in the development of farm shops, a factor which should not be overlooked as a means of stimulating their interest in farming.

Thirsty Crops Tests

Thirsty crops will have more water on soils with plenty of organic matter. Such soils will soak up more water faster than those low in organic matter. Less water will run off; more will be held for gradual release to the crops as they need it.



Two of the Morrow plots used for soil fertility research at University of Illinois were compared for organic matter content and their ability to soak up and hold water. Soil management and crop rotation made the difference between the two. Increasing the organic matter by 20 tons boosted the amount of water the soil would hold by 200 tons. In addition, tests showed that water needed only half the time to soak through a thin layer of the loose soil rich in organic matter than it needed for the same soil with only 31 tons of organic matter per acre. Using deep-rooted legumes in rotation with lime, phosphorus and potash, as needed for their production, will put organic matter deep into the soil.

Kill Poison Ivy by Spraying With Ammate
To kill poison ivy plants use ammate or 2,4-D. When ammate is used, dissolve a pound in a gallon of water and spray until the plants are dripping wet. Keep spray away from desirable plants. If one application is not sufficient and the plants reappear, a second spraying should kill the ivy. When using 2,4-D, follow the manufacturer's instructions on the package as to strength.

—Farm Notes—

POOR MILLING

College Station—A lot of Panhandle wheat farmers are finding that it costs money to sacrifice quality for quantity. Potter County Agent A. P. Bralley reports to Extension Service headquarters at Texas A. and M. College that terminal market mill buyers are penalizing incoming loads of wheat from Potter and other Panhandle counties. Reason: poor milling quality.

Twenty-one per cent of the total acreage in the Panhandle wheat belt was planted last year to two wheat varieties that have poor milling reputations, says the county agent. The overall figure of poor quality varieties is so high, he reports, that millers throughout the country are either refusing to purchase the grain or are discounting it in some manner.

Farmers plan low milling varieties because they get "good yields," says Bralley. Westar, Comanche and Wichita varieties, all good millers, have produced as good if not better yields in Potter county than the poor millers, and many farmers have turned to those three varieties for planting this year.

BLACKWATER VALLEY SOIL CONSERVATION DISTRICT NEWS

A well location was made last week on the G. P. Meissner farm which is located near Lariat.

Soil Conservation Service technicians assisted R. O. Gregory in laying out a border system for watering alfalfa.

Grady Childress was assisted last week in laying out irrigation ditches and a border system for watering improved pasture.

Virgil Nowell, cooper with the District, was assisted last week in laying out irrigation ditches for watering hairy vetch, a legume which is being used as a soil improving crop.

A complete plan of conservation operations has been worked out with Grady Childress on the Sadler and Childress Ranch. This plan has been worked out in accordance with the Rancher-District Program.

Twelve irrigation wells were checked last week for the purpose of making an evaluation study of the draw-down of the water. These wells are checked monthly for necessary information.

Tom Drinkard, tenant on the U. L. Childers farm, received assistance in laying out a border system for

watering wheat and irrigation ditches for watering alfalfa.

G. T. Maltby and Ralph Randolph received assistance in laying out borders for irrigating alfalfa.

A. J. Hicks was assisted by technicians in laying out borders for irrigating wheat.

A complete plan of conservation operations has been worked out under the Farmer-District Program with M. A. Jarvis who resides near the Stegall community.

A topographic survey has been completed on the C. C. West farm. This survey will furnish information for planning improved methods of irrigation water application.

W. Louis Shafer, cooper with the District, who lives about one mile west of Needmore, has a very good stand of improved pasture. Mr. Shafer's pasture is a mixture of brome, crested wheat, perennial rye and alfalfa.

J. M. Nelson, tenant on the C. C. West farm, received assistance in laying out a border system for watering alfalfa.

Patterns For Little Girls Frocks Available

College Station—Little girls of pre-school age need dresses that are not only attractive but comfortable, durable and simple enough to help them in dressing themselves, says the clothing specialist, Mary Ruth, from the Texas A. and M. Extension Service.

Two new dresses for little girls from two to six years of age have been designed by clothing specialists of the U. S. Department of Agriculture, and paper patterns for making them are now being produced commercially.

One is a flowered print dress with shoulder ruffles instead of sleeves, and a skirt gathered on a well-fitted yoke. This dress has just one button which makes it especially suited to the two or three year old, just learning to dress herself.

The other dress is more tailored in style and is made up of gay striped cotton, with the only trim in the facing around the square neck and full length front opening. The open cap sleeves come above the elbow for comfort.

Both dresses hang straight from well-fitted shoulders, unbelted and

loose for comfort and freedom of movement. The specialists point out that belts and sashes at the waistline are not a good choice at this age. Belts get lost and sashes come untied and young children don't have definite waistlines. Both dresses open in front and the openings are long enough so that the dress goes on easily; ample necklines so they don't come up high under the chin and cause discomfort and difficulty in dressing; and wide hems to let down for growth, since during pre-school years growth is almost entirely in height.

For the 1948 seed crop, the U. S. Department of Agriculture has announced that the support price for hairy vetch will be 12 cents per pound; for crimson clover, 11½ cents per pound; Austrian winter peas, four cents per pound.

Now Available

THAT GOOD LAUNDRY AND DRY CLEANING SERVICE FOUND AT THE CLOVIS STEAM LAUNDRY AND DRY CLEANERS

Quilts, Blankets, Curtains, Drapes, Oil Mops, Finished and Rough Dry Laundry. All Kinds of Dry Cleaning.

FREE DELIVERY IN MULESHOE ON MONDAYS and THURSDAYS

Just Drop Us A Card If You Wish Our Representative To Call.

Clovis Steam Laundry and Dry Cleaners

FIRE PREVENTION WEEK

Oct. 5 - 11



LIKE lots of things, in the matter of fires, an ounce of prevention is worth a pound of cure and we urge you to do everything possible to PREVENT FIRES. See us for your insurance coverage.

ALSUP

Insurance Agency

Phone 168-J

Muleshoe

Protect Against VITAMIN DEFICIENCY With

ONE A DAY

MULTIPLE VITAMIN CAPSULES
Each One-A-Day (brand) Multiple Vitamin Capsule furnishes the full basic daily quantity of five vitamins whose requirements in human nutrition have been established.

You can't buy better vitamins no matter what you pay for them. One-A-Day (brand) Multiple Vitamin Capsules are guaranteed to be full potency, as shown on the label.

Make One-A-Day your Buy Word for vitamins. Get them at your drug store.

MILES LABORATORIES, INC.
Elkhart, Indiana

Greater in '47!

- ★ AGRICULTURE
- ★ LIVESTOCK
- ★ EXHIBITS
- ★ ENTERTAINMENT
- ★ FOOTBALL
- ★ MIDWAY

It's a WHALE of a show!



MARY MARTIN IN "ANNIE GET YOUR GUN"
THE State Fair of Texas
THE SHOW WINDOW OF THE SOUTH
OCT. 4-19 DALLAS

Steed Funeral Home

SERVING MULESHOE AND SURROUNDING TERRITORY OVER TWENTY YEARS

Muleshoe Phone 47 Clovis Phone 14.

AMBULANCE SERVICE

Call Howard Cox Day Phone 67-W Night Phone 275-J

Steed Funeral Home

L. V. SPARKS, Co-Owner and Manager

● Ambulance Service ● Funeral Service

COMPLETE IRRIGATION WELL SERVICE

Brand New Heavy 16-Inch Casing
\$3.35 Per Foot
With Genuine

BYRON JACKSON PUMPS

F. M. DENTON
PUMP COMPANY

Just West of Angeley Yard Phone 163-J

FARM LOANS

Home Office Newark, N. J. 5 TO 40 YEARS LOW RATE
NO FEES NO STOCK NO COMMISSION

POOL INSURANCE AGENCY

Gilbreath Bldg. Phone 113 Muleshoe

Authorized Mortgage Loan Solicitor
THE PRUDENTIAL INSURANCE COMPANY OF AMERICA

Help Prevent FIRE LOSSES

Fire destroys without mercy! What must be rebuilt or replaced is preventable expenditure—and therefore goes hand in hand with inflation! Do your part to prevent fire losses. They're so costly! Be protected against fire losses; insurance is so inexpensive.

POOL INSURANCE AGENCY

Phone 113 Muleshoe

Fire is the Silent Partner of Inflation!



Women's News . Club Events Social Activities

Women's Dept. At Fair Overflowed Allotted Space—Got Much Attention

By MRS. DAVE AYLESWORTH

The Women's Department at the Fair had lots of interesting things exhibited and lots of compliments from the judges. We had so many pretty hand made pillow cases, as well as other things that it was hard for the judges to place the winners.

We had entries from 40 different women, and we do so thank you all and we hope you enjoyed entering them as much as we enjoyed having them, and next year we want you all to come back with more entries and ask your neighbors to bring items.

We had only one cake and one pan of muffins in our culinary department, and women, I know we have plenty of grand cooks in our county, so next time, let's more of us bring something for this department.

Mrs. W. F. Hays and Mrs. G. T. Maltby had more things entered in our department than anyone and Mrs. Hays won more ribbons than any of the others. She is a mighty fine home maker, I know. She won first place with her greens, green beans, preserves and corn, second on preserves, lima beans, tomato juice, pickles, greens and peas, and she had several third prizes in the canning. On her needlework she had two first places, one second, and three third places.

Mrs. Maltby had first place on peaches, blackeyed peas, English peas, second on pineapple, cherries, pears, corn, green beans, asparagus, and third with her tomato juice.

Mrs. C. D. Julian had first place on cherries and beans, second on blackeyed peas, peach preserves and beets.

Ruth Briscoe won first place with the cucumber pickles. Mrs. J. E. Day had second on her canned and pickled peaches. Mrs. Ernest Holland won first with her pears, pineapple, asparagus and beets. Mrs. J. W. Jarman had first with her pickled peaches and third place with her crocheted bedspread.

Mrs. C. E. Briscoe won first place with her cotton applique quilt and Ella Mae Lawler second with hers. Mrs. Briscoe had first on her rug, first on her pillow cases. Mrs. John Benson won first place with her crocheted bedspread and Mrs. Ault was second with hers. I hope you all saw Mrs. Opal Boothe's knitted dress, made for her daughter. It won a first place and had so many nice things said about it.

We didn't have a single entry on an afghan and I have seen so many pretty ones in the different homes. Next year, do take the time to bring

your knitted things. Everyone enjoys looking at them and it helps make our Fair.

We didn't have a single entry in our sewing, ladies and children's dresses. Next year let's do bring some of our dresses. We have such pretty ones in our style show each year.

Mrs. Claud Sanders won first with her peach preserves, first with her crocheted infant garments, first with her dresser set, first table cloth, as well as two second places on her tablecloth and a third with her crocheted dollies.

Mrs. J. T. Shofner won first with her chair set, second on her centerpiece. Mrs. A. W. Copley won first with her lima beans, third on her cucumber pickles. Mrs. Copley had her lima beans to go to the Lubbock Fair. Mrs. G. A. Maltby sent her pears.

Mrs. J. O. Aday won first and second prizes with her applique pillows. Mrs. C. E. Moore first with angel food cake, Amrina Aylesworth first with white bread muffins. Mrs. Base Abrams won first place with her strawberries.

In our flower department, Mrs. Zed Robinson won several blue and red ribbons on the dahlias. Mrs. Bill Moore, Mrs. I. F. Willman, Mrs. J. E. Day and Mrs. H. H. Snow all won ribbons with pot plants. Mrs. I. F. Willman won first on her zinnias.

Mrs. Tom Zimmer was first with her marigold. Mrs. Zed Robinson's gladiolas won first place. Mrs. J. O. Aday, first with cactus and fern, which the judges said was the most attractively displayed they had ever seen.

Her cactus had a lot of favorable comment, also Mrs. John Thomas had a ribbon for the best bouquet.

We are sorry not to have had prizes for the paintings. They were beautiful and we thank Mrs. Collins, Mrs. Aday, Mrs. McLaury. The pinning guard of Mrs. McLaury's and the painted rocks of Mrs. Aday proved very interesting for young as well as older people.

Mrs. Dave Aylesworth was superintendent of the women's department.

ment and Mrs. Earl Dorsey was assistant.

SLUMBER PARTY GIVEN

Joann Holman was hostess at a slumber party Thursday night of last week. Her guests were Mary Jo White, Wilma Jennings, Jeanette Kirk, Ellen Johnson and Almoia Goodman.

SOPH CLASS MEETING

Room mothers were chosen when the high school sophomore class met last week. They are Mrs. Grandy, Mrs. Sanders, Mrs. Bryant, Mrs. Kirk, Mrs. Green and Mrs. Stovall. The class also chose their favorites—Jeanette Kirk and Jimmy Winstead.

Muleshoe HD Club Met Sept. 25th

The Muleshoe home demonstration club met in the home of Mrs. Tom Zimmer, Thursday, Sept. 25. Mrs. Kenneth Burton told how to

prepare and launder rayon. Council report was given by Mrs. Zimmer and plans for the fair were made.

Delicious refreshments were served to the following members:

Mesdames C. E. Briscoe, W. H. Awirey, D. R. Aylesworth, W. F. Hays, Kenneth Burton, Kenneth Briscoe, J. E. Day, Ida Mae Lowler, J. T. Shofner, C. D. Julian, J. W. Jarman, O. C. Kirk, Lee Dillard, one visitor, the mother of Mrs. Tom Zimmer, and the co-hostess, Mrs. M. H. Otwell and hostess, Mrs. Zimmer.

Next meeting will be with Mrs. H. M. Shofner, Thursday, Oct. 9, at 2:30 p.m.

Winsome Class Has Officer Election

The Winsome Class of the First Baptist church met in the home of Mrs. Phyllis Beavers Monday afternoon, September 22, for the regular business and social meeting, with Mrs. Dorothy Bowers as co-hostess.

Truma Griffiths opened the meeting with a prayer. Vice-president Jean Griffiths was in charge of the business in the absence of the president, Gene Cox. New officers for the year, 1947-48, were elected and plans were made for the installation dinner.

Gifts were exchanged and water-

melon was served to: Mildred Redwine, Frances King, Emma Speers, Anna Lucy McAdams, Edith Blaine, Beth White, Marie Moore, Reta Johnson, Alice Angeley, Hattie Rae Jones, Jean Griffiths, Wilma Gilbreath, Hazel Dyer, Truma Griffiths, Dorothy Barron, Lela Barron, Christine Morgan, Doris English and the hostesses, Phyllis Beavers and Dorothy Beavers.

Rockey Invited To Maher Program

Neil Rockey of the Muleshoe Motor Company has been invited to an all-day program in Dallas on Monday, October 6, when Ed Maher, Dallas Ford dealer, will honor his two sons, who have recently become authorized Ford dealers.

Thomas H. Maher is president and Louis J. Maher is vice president of Maher Brothers, Thomas H. Maher is the first graduate of a recent Ford Motor Company school for dealers' sons to get a dealership of

his own. His classmates will come from all over the country to be present at the celebration in honor of him and his brother.

Coming Events

All Muleshoe Rebekahs are urged to attend Lodge next Tuesday night as we have four candidates for initiation on the second Tuesday and wish to practice.

Eastern Star meets next Tuesday night, October 7. The Journal last week erred in stating the meeting would be Tuesday, Sept. 30.

The Muleshoe P. T. A. will hold its regular meeting in the high school gym the coming Monday night, October 6. Everyone is invited to attend.

Read The Journal Want Ads.

BUY AVON COSMETICS
AND GET THE BEST

TRY AVON'S NEW AND IMPROVED LIQUIFYING AND FLUFFY TYPES CLEANSING CREAM. GOOD FOR ANY TYPE SKIN.

Mrs. Eddie Lane, Representative
Phone 24-W

Odd Fellow And Rebekah Lodges Here Observe Anniversaries Monday Night

Muleshoe Odd Fellows and Rebekah lodges celebrated their anniversaries Monday night at the I. O. O. F. hall here. A long table was spread across the lawn and filled with barbecued chicken, beef, and pork, also many salads, cakes, pies, iced tea and coffee. Approximately three hundred members and visitors enjoyed the happy occasion. After the feast everyone entered the lodge hall where the following program was given:

Song, "When We All Get Together."

Welcome, Neil Rockey.

Reading, "Dead Game," Barbara Burton.

Song, "If I Could Hear My Mother Pray Again," by Mrs. Murry D-

al and Mrs. Vernice Snyder. Reading, Church Revelry of a School Girl, Mrs. Ruby Green.

Song, "Feudin' and Fightin'," Valerie Dial, Joan Allison and Rosamond Booth.

Reading, "Everybody Knows It's There," Paula Provence.

Piano Solo, Mrs. Inez Kennedy.

Reading, "The Face on the Bar Room Floor," by Dave Aylesworth.

Introduction of visitors. There were visitors present from the following lodges; Lubbock 2, Morton 10, Littlefield 6, Needmore 13, Clovis 8, Hollis, Okla., 1, Oregon 1, and Bakersfield, Calif., 1.

Special music was furnished by Mesdames Sigman, Carr, Martin and Walden.

Luzier's
The Very Best in Cosmetics
Truly A Selected Beauty Service

See
Sallie M. Schuster
A Trained Cosmetician

Muleshoe, Texas

BULBS
Some as low as 3c Each
(Should Be Set Out Now)

Jonquils—Hyacinths—Crocus—Cranthris
Grape Hyacinth—Squills—Chionodoxa

McWHORTER FLORAL
Phone 211 West of Courthouse
Muleshoe, Texas

The Fashion Shop



All Eyes Follow Me

Give 'em the look! **JOAN MILLERS** leading new dress in rotation and outfit outfit... with a sexy trend popular build it comes in Ultraviolet with red or black body and white collar. **Under \$20.00**

\$18.95



Late again! Why don't you get your **WATCH** fixed at

Muleshoe Jewelry
Use Our Convenient Lay-A-Way Plan

DON'T MISS

MUSSON-KEELS

KSEL

New Radio Program

SUNDAY, 1:45 P. M.

COBB'S

it's a date!





Doris Dodson JUNIOR ORIGINALS

and I'll be wearing that darling **DORIS DODSON!**

Date time... dancing time

..time to dress up and look lady-like in new "D.D." dressy crepe!

They're graceful as you are... feminine as perfume... longer-skirted just like you've wanted!

ABOVE—Beau Bait— Side-buttoned two-piece by **DORIS DODSON**... with the longer torso look. Rayon alpaca with hip bow and set-in bands of rayon faille. Black, green mallard, and mahogany. 7 to 15. \$10.95.

LEFT—Sobriquette— Softly draped **DORIS DODSON** frock... buttoned-to-the-waist in back, wide waistline bow. In Mallinson's Whirlaway rayon crepe... Victorian lilac, China Gold, Tropic Aqua, Black. 9 to 15. \$14.95.

RIGHT—Linger Looks— Divine rayon ribbon faille suit by **DORIS DODSON**... sweet as a bonbon with satin-striped taffeta trim! Linger jacket rounds gently at the hips to flatter even the slimer girl! Black with black-and-pink. 9 to 15.

Building Code Will Safeguard Against Fire

Austin—If the welfare of every Texan is to be adequately safe-

guarded against the ravages of fire, a uniform building code will have to be enacted and enforced in each city in the State, said Marvin Hall, State Fire Insurance Commissioner. "The responsibility of safety to life and property from fire rests primarily with the owners of buildings," Hall pointed out, "and it is the duty of these owners to main-

tain the safe structures of their buildings, their operations and service and fire-protection equipment." In advocating building codes Hall stated that selfish freedom should not be tolerated when human life is in danger because of poor construction and inadequate protection against fire.

T. D. Stell and wife, of Lipan, Texas, have been visiting here in the home of his daughter, Mrs. I. L. St. Clair. Mr. Stell, who is 81, exhibited a lively interest in farming operations around Muleshoe, it being the first time he had been here when a good crop was being harvested. He operates a small farm, feeds out several beef animals every year.



World peace is the most urgent problem facing the United States in the opinion of Republican Senator Arthur H. Vandenberg of Michigan, above, who is quoted in the July issue of Cosmopolitan magazine as saying:

"Peace at home and abroad is the most urgent problem facing the American people today. We must find a way to stabilize labor-management relationships at home so high and uninterrupted production can sustain high wages and low prices. On the other hand, we must persistently hunt for collective peace and security in the world—not only to stop another war but also to remove the burden of armaments from national economies of all concerned. There are other problems. We must sustain Western Democracy against Eastern Communism, at home and abroad. But the firmest answer is my first one—PEACE."

The first Muleshoe swing over the trade territory was made on the same day of the visit here of the three caravans from out of town.

NEWS BRIEFS

MASTER PLUMBERS MEET
Mr. and Mrs. A. P. Lambert of the Lambert Plumbing Shop attended a meeting held in Lubbock Saturday of the Master Plumbers of the Panhandle. The meeting was held in Hilton Hotel, where, after a business session, a dinner was served to those in attendance.

Mr. and Mrs. R. T. Tibbets and son, Roy, and their daughter, Mr. and Mrs. Tommie Sullivan and baby, visited last week in Albuquerque with the Tibbets' daughters, Mrs. R. L. Jones and family and Mrs. A. J. Roberts and family, and their

son, Glen Tibbets, a student at the University of New Mexico, in Albuquerque, last week.

SCOUT EXECUTIVES HERE
W. R. Postma, Scout executive, and Pat Lewis, field Scout executive, South Plains Council, Boy Scouts of America, were here on business Thursday. Mr. and Mrs. Ben Oglesby and daughter, Margie, were Lubbock visitors Saturday. They have as their guest this week, Mr. Oglesby's mother, of Lubbock.

DR. A. E. LEWIS
DENTIST

Office at rear of Western Drug

Close Out Sale

On All 4-Wheel

STEEL WAGONS

While They Last — Special Price

\$125

Muleshoe Implement Company

"Over 50 per cent of the large-loss fires—involving property losses over \$250,000—in 1946 were directly traceable to inferior building construction," he said. "The frequencies of these fires has increased in an alarming number since 1940 when there were only 34 such property losses as compared to the 187 in 1946."

Hall suggests that Fire prevention week, Oct. 5 to 11, will afford a good opportunity for officials in each town and city to study possibilities of building codes and fire ordinances for their cities.

PETTIT 20, THREE WAY 7

Pettit (Lamb County) six man football team defeated Three Way School's six in a game played at Three Way Friday afternoon, 20 to 7. M. F. Harris of Muleshoe refereed.

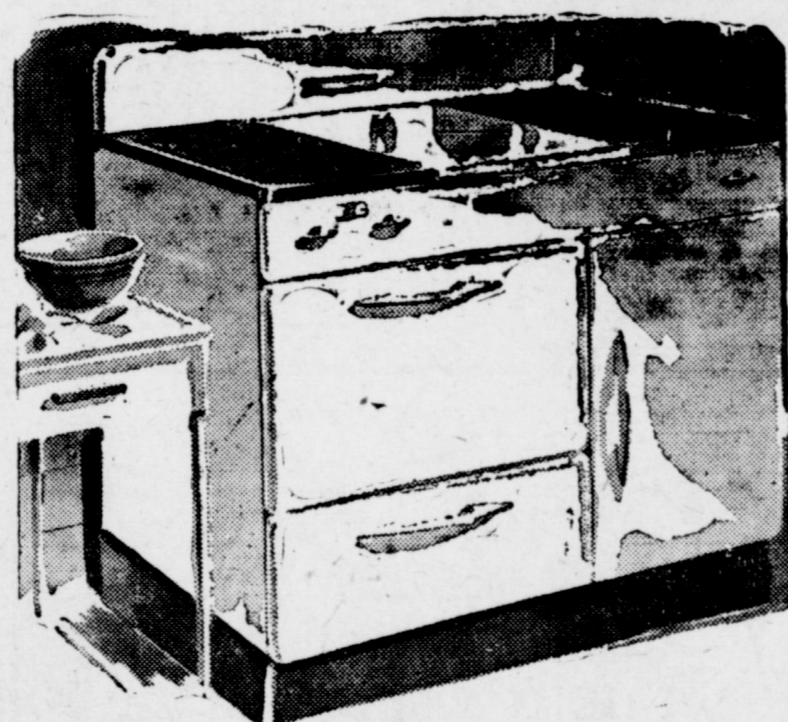
Vardemans Grow Fine Tomatoes

Wayne Vardeman, manager of the West Texas Gas company here, has brought to The Journal office several specimens of tomatoes he and Mrs. Vardeman have grown at their home this year.

Unusual were some large yellow tomatoes which possess the full tomato flavor and make a salad mighty attractive. They were earlier than the red varieties, and although fully ripe had shown no signs of cracking as red varieties do.

Then he had some vine tomatoes which grow in almost any shape

Shipment of New COOK STOVES



Gas and Butane
DETROIT JEWELL — ROYAL ROSE — DIXIE — NORGE and ODIN BEAUTY RANGE

NEW REFRIGERATORS

G. E. Electric—Crosley Shelvador Electric Servel Electrolux Gas Refrigerators Firestone Frozen Food Locker

See This New Equipment

NEW McCormicks USED

Muleshoe

Texas

Trellises were necessary to hold the vines, which grew to more than 6 feet high. They were not quite so red when ripe as our regular tomatoes.

Mr. Vardeman brought along two vine-ripened red tomatoes of the more common variety which looked mighty fine and all these tomatoes seem to refute the thought that tomatoes don't do well here. He used no fertilizer on the ground but put plenty of water to it.

Three Fair Groups Visited Muleshoe

Muleshoe was visited last Thursday by no less than three delegations boosting their respective fairs in this section. First of all there was the Lubbock caravan of boosters for the Panhandle South Plains Fair. In quick order came the Portales, N. M., people publicizing their event, the Roosevelt County Fair, and then the group from Dimmitt, advertising the Castro County Fair.

The Lubbock Fair begins Monday and continues through next week. Portales annual event started yesterday and will end Saturday. Castro's Fair was held Saturday.

The Muleshoe people enjoyed entertaining the visitors. However, most of our big shots were out of town—advertising our own Fair.

Best Real Estate BUYS IN COUNTRY

Dry land from \$31.50 an acre—

Irrigated land from \$105 an acre—

See Me At Once

Elizabeth Woodley

In Muleshoe State Bank Bldg.

WE HAVE JUST RECEIVED A LARGE SHIPMENT OF BEAUTIFUL

Monuments and Markers

and we will appreciate a visit from each of you who have unmarked graves in the cemetery.

SOUTH PLAINS MONUMENT CO.
401 West 6th St. Plainview

BRING IT BACK TO CHEVROLET!

FOR SERVICE • PARTS • ACCESSORIES

We Have On Hand
BLOCK ASSEMBLIES AND MOTOR ASSEMBLIES FOR MOST CHEVROLET MODELS



C. & H. Chevrolet Co.

Muleshoe Texas

Phone 12

20 % OFF

On All Cabinet Model

PHILCO

COMBINATION

RADIOS

We have a few of these beautiful sets left—Hurry if you want one of them.

DYER HARDWARE AND FURNITURE

Bus. Phone 151

Res. Phone 253-J

FARM EQUIPMENT FOR SALE

I have a good 1946 Allis-Chalmers Combine for sale. Possession on or about October 6.

2—200 lb. butane drums with regulator.

1—McCormick - Deering 2-row binder. New binder at considerable saving.

1—McCormick - Deering 2-row binder. Used. Has cut about 1,000 acres.

1—12x24 box house on skids.

1—2-wheel tractor Trailer. Built on truck rear axle with 20'x8' bed for both grain and cotton.

Conrad Williams

1 mile south, 1-2 mile east of Stegall

MULESHOE GIN

IN OPERATION SOON

During the summer the new management of this gin has given the machinery a thorough overhauling.

New Mitchell Burr Extractors have been installed as well as a new 45 ft. platform Fairbanks-Morse scale.

We will be operating in a few days and will appreciate the opportunity to serve you, assuring you that we will make every effort to give you an A-1 ginning job on every bale.

Muleshoe Gin

North of Railroad

Muleshoe

Texas

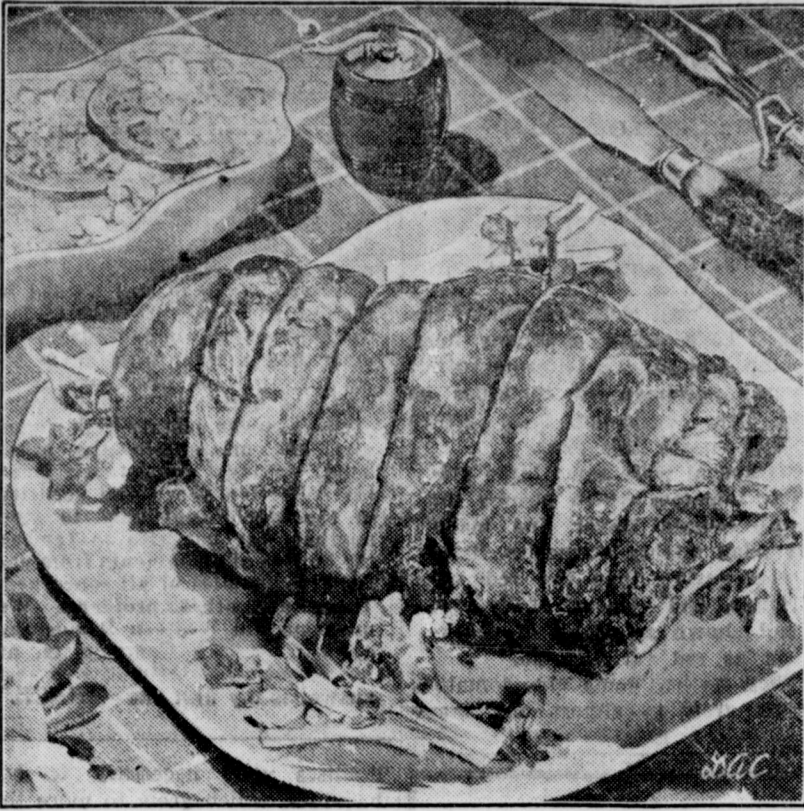
The Muleshoe Journal
 Entered as second-class matter at the Muleshoe Postoffice under the Act of Congress, March 3, 1897.
 Published Every Thursday at MULESHOE, TEXAS
 J. M. FORBES Publisher
 SUBSCRIPTION RATES
 In immediate territory, \$2.00 per year
 Out of Territory \$2.50

In Memory Of Leslie Barnes, Jr.
 On September 20, the death angel visited the happy home of Mr. and Mrs. Leslie Barnes and took from them their sweet little darling baby, Leslie D., Jr. He was seven months and fifteen days old and was the only child.
 He was sick only a few days, but God knew best and called him home where there will be no more suffering, no sorrows or pain.
 If we could only throw back the curtain and see him as he sits in the beautiful garden with Jesus and the angels, we would not want to

call him back to this world.
 How lonely home will be without little Junior. I cannot say that he is dead, but just away with a cherry smile and a wave of the hand, he wandered on into an unknown land and left us dreaming how fair it must be, since he lingers there.
 The golden gates were open wide, A gentle voice said come,
 An angel from the other side Welcomed our loved one home.
 One Who Loved Him.

Bobos Marvel At Leisurely Ways Of Dominion
 Mr. and Mrs. Pat Bobo have returned home after a two and one half weeks trip through the Pacific States and into British Columbia, Canada, and Mr. Bobo says the thing he most remembers, after the beautiful scenery, was the leisurely old world atmosphere of Victoria and other Canadian towns.
 They went by train to Los Angeles, where they were joined by Hal and Opal Neff (Mrs. Neff being the former Opal Smith, of Muleshoe). The four spent a night in San Fran-

Roast Veal Shoulder, Glamor-Stuffed Is Actually a Thrifty Cut of Veal!



POT ROAST in the pot! Savory sniffling for the family at dinner hour! Good, hearty eating at the table! A thrifty meat meal, pot roast brings the richness of beef slowly-cooked to coax out the last morsel of good meat texture, flavor and nutrition. Many cuts can be pot-roasted, each one of them thrifty, each tailored to your family's taste. Fine thrifty pot roast cuts include those called standing rump of beef, rolled rump, blade pot roast, arm pot roast and beef of round. Every cut of beef from fancy steak to homey hamburger, from prime ribs of beef to pot roast, contains the same important nutrition—the same high quality complete protein, the B vitamins and essential minerals found in all meat no matter what the cut or cost.

cisco and the next day motored north through the Redwood Forest, through Oregon and Washington and to Vancouver Island, on which is Victoria, capital of British Columbia. They landed at Nanaimo and motored down the island to Victoria.

Victoria is a beautiful city, they said, and is British enough, or Ca-

nadian enough, to remind the visitor that he is in a foreign land. Pat noted in the big hotel where they stayed, how perfect was the dining room service. There was not heard the sound of dishes crashing against each other, or of tableware striking dishes or tables. The women who served the tables performed their duties in such a dignified and efficient manner that one had to marvel.
 He noticed that lamp standards were surrounded by pots of the most attractive flowers, where neither a wilted leaf nor a faded bloom was apparent. The grounds of the provincial Parliament buildings and the buildings themselves are very pleasing to the senses.
 From Vancouver Island the party went by ship to Port Angeles, on the U. S. side. From Portland, Wash., they drove up the Columbia River to the famous Bonneville Dam, and from there to The Dalles, Oregon.

They remember a trip to the summit of Mount Hood, a 12,000 foot peak. At the halfway point they spent the night in the Timberline Lodge and went to the top the next morning.
 Orchards of apple trees and other fruits growing in profusion on the slopes of Mt. Hood helped to make the view indescribably beautiful and something long to be remembered, they said.

The next day they drove to Klamath Falls, Ore., where they spent the night. Monument National Forest was their next stop and there they viewed famed Crater Lake. Then, after a trip through Yosemite National Park, in California, they returned to Los Angeles and boarded a Santa Fe train for home.
 Please watch out for engineers' stakes along farm to market roads.

Will You Need Repairs ??

We are now in position to give you prompt service on all your repair needs with genuine repair parts and experienced mechanics.

Edwin Clark
 Francis Gilbreath
 Clyde Knight

Fry & Cox Bros.
 Minneapolis-Moline Farm Machinery
 One Stop Farm Service

COMPARE

Our Grain Prices with those anywhere in the South Plains Area and see why you should sell your grain to—

KARL GRIFFITH ELEVATOR

LEHMAN TEGAS
 We Are Still Buying Wheat.

MARATH Grain Loaders

For Sale or Lease

"Balanced So A Child Can Move It"

21 and 27 ft Sizes. Self levelling Engine Mount — Capacity 25 bushels per minute. Tows on rubber tired wheels behind your car.

We will lease you one of these loaders for as long as your job lasts.

MULESHOE IMPLEMENT AND SUPPLY CO.

Your Allis-Chalmers Dealer
 Sales — Repair — Service
 Phone 137 Muleshoe



Drink MALONE'S Pasteurized Milk, and you'll soon discover that its purity is your safest and surest route to good health.

Malone Milk Co.
 Phone 260

CITATION BY PUBLICATION

THE STATE OF TEXAS
 TO: R. A. Tipton, Mrs. R. A. Tipton, and the unknown heirs and legal representatives of the said R. A. Tipton and Mrs. R. A. Tipton, if they be deceased, either of them, Defendants, Greeting:

You are hereby commanded to appear before the Honorable 64th District Court of Bailey County at the Court House thereof, in Muleshoe, Texas at or before 10 o'clock A. M. of the first Monday next after the expiration of forty-two days from the date of the issuance of this citation, same being the 10th day of November, A. D. 1947, then and there to answer Plaintiff's Petition filed in said court on the 22nd day of September, A. D. 1947, in this cause numbered 1534 on the docket of said court and styled J. B. Nicewarner, plaintiff, vs. R. A. Tipton and Mrs. R. A. Tipton, and the unknown heirs and legal representatives of either, should either be deceased, Defendants.

A brief statement of the nature Plaintiff sues for title and possession of all of Section No. 10, Block "C", Melvin Blum & Blum survey (Blum Lands) situated in Bailey County, Texas, and for damage in the amount of \$5,000.00. The suit is brought as well to try title as for damages. Plaintiff also sues for cost and for general relief as is more fully shown by Plaintiff's Petition on file in this suit.

The officer executing this process shall promptly execute the same according to law, and make due return as the law directs. Issued and given under my hand and the Seal of Said Court, at office in Muleshoe, Texas, this 22nd day of September, A. D. 1947.
 Attest: M. G. BASS, Clerk,
 (SEAL) District Court Bailey County, Texas.
 394tc



Friday and Saturday SPECIALS
 Oxydol, Lge Box 29c
 Campbell's 3 Cans
 Tomato Soup 25c

Powdered or Brown Sugar, Lb. box	10c	Swift's Jewel SHORTENING, 4 Lb. Ctn.	\$1.04	Lge. Box Duz	29c
Brimfull Chili	Lge. Can 37c	Oscar Mayer Luncheon Meat	12 Oz. Can 35c	Marco Tamales	Lge. Can 23c
Karo White Syrup, 1 1/2 lb	Jar 19c	Spic and Span Cleaner	2 Boxes 35c	Brimfull Fancy Wax Beans, No. 2	22c

2 boxes BUTTER PEAS 18c
 For More Touchdowns 8 Oz. Box 13c
 2 boxes BUTTER PEAS 18c

Ektra Nice Tokay Grapes, Lb.	10c	All Meat Bologna, Lb.	39c
Home Grown OKRA, Lb.	13c	All Meat FRANKFURTERS	Lb. 45c
California Sunkist Lemons, Lb.	14c	Nice Pork Chops, Lb.	60c
California CARROTS, Bunch	7c	Long Horn CHEESE, Lb.	45c
Fresh Frozen Lima Beans, Box	39c	Fresh Oysters, Pint	98c

Save 1/4 ON WALLPAPER

EVERY ROLL REDUCED 25%!!

REGULARLY 10c TO 16c PER ROLL Sidewall and Border for average room as low as \$1.39.	REDUCED TO 7 1/2c TO 12c PER ROLL
REGULARLY 17c TO 20c PER ROLL Enough paper for average room (Sidewall and Border) as low as \$1.92.	REDUCED TO 12 3/4c TO 15c PER ROLL
REGULARLY 21c TO 24c PER ROLL Repaper the average room (Sidewall and Border) as low as \$2.38.	REDUCED TO 15 3/4c TO 18c PER ROLL
REGULARLY 24c TO 32c PER ROLL Sidewall and Border for average room will cost about \$2.68.	REDUCED TO 18 3/4c TO 24c PER ROLL

GIVEN! 2 LBS. WALLPAPER PASTE WITH EACH ROOM LOT PURCHASED

Sale Continues Thru Oct. 11
E. R. HART Co.
 Phone 23 Muleshoe

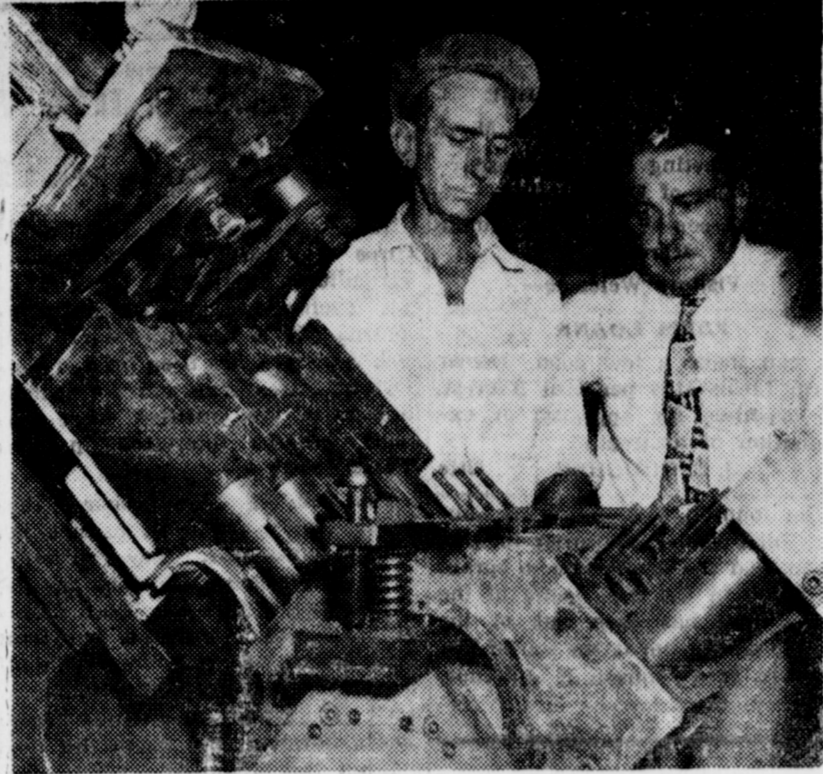
WAGNON GROCERY & MARKET
 Your Red & White Store
 PHONE 4 WE DELIVER MULESHOE

A Report From Europe

By GEORGE MAHON

This is being written from the city of Trieste, a town of about 300,000 on the shores of the Adriatic sea. I am here in Trieste with a Congressional sub-Committee charged with making a study of our foreign aid program. I had hardly heard of this city prior to the war and that is probably true of most Americans. It is now one of the danger spots of the world. The place belonged to Austria before World War I and to Italy after World War I. The city and a small bit of land surrounding

the city have now been set up as a free state which is to have a governor appointed by the United Nations. The city of Trieste is only five miles from Yugoslavia. At the conclusion of the war, Yugoslavia and Russia demanded that the city be made a part of Yugoslavia—America and Britain refused to agree as most of the people in the city are Italians, and the Free State was finally agreed upon. A force of 5,000 American troops and a similar number of British troops occupy the city of Trieste. The city is the dividing line which



EIGHT-AT-A-TIME—Believed to be the only one of its kind outside the large automobile factories, this powerful, specially-built machine re-bores eight cylinders at once in the complicated operation of Ed Maher's Motor Rebuilding Division at Dallas. Tony Brady (left) and R. A. Flume, manager of the Maher motor rebuilding plant, watch as the machine does its stuff. Ed Maher is the authorized Ford motor rebuilder for the North Texas district. Dealers from all over the district will inspect the plant on Oct. 6.

separates Russia and Yugoslavia from the western world. It may be our first line of defense against Russian aggression. In addition to maintaining our troops here, we are spending about \$800,000 per

month to help feed the people of the area. A ship load of American wheat arrived recently and there are no signs of starvation here. The Port was heavily bombed during the war. Our government is supporting a program to make the place self-sustaining.

During the stay of our Committee in Trieste, Treaty provisions have gone into effect setting up the new state, and Ratification Day has been celebrated. It has been a very precarious time for American and British military forces.

The Commanding General of the Yugoslav Army served notice upon our military headquarters that his army contrary to the provisions of the peace treaty was marching into the city of Trieste at 10 o'clock at night on Ratification Day. Our forces manned the roads to the city with instructions to prevent the entry of the Yugoslav army. The Yugoslavs engaged in some military maneuvers and threats, but when it became apparent that the Americans and British had called their bluff, they withdrew their forces.

There has been an air of uneasiness throughout the city during our stay here. There have been numerous riots and demonstrations by the Communists. Bombs have been exploded in the streets and a few people have been killed. The Yugoslav army outnumbers the Anglo-American forces in this area, but the presence of American warships in the harbor and the flight over the city of our four-engine bombers have had a stabilizing influence on the situation.

One of the most spectacular demonstrations was a Communist funeral procession through the streets of the city. The Communists claimed that the anti-Communists were responsible for the killing of a child who belonged to a Communist family. The child's casket was carried down the street on the shoulders of six young men, preceded

ed by four huge red flags. The bands played and hundreds of flowers were carried in the procession. The marching crowd extended for several blocks and was estimated at 15,000 people.

In Trieste we have conferred at length with American and British military officials, where we have found considerable pessimism as to the chances for peace and stability. Trieste is headed for trouble unless the United Nations is able to pursue a firm policy and establish a strong civilian government. We have conferred also with local citizens and officials. The majority of the people in the city of Trieste are Italian, but there are also many Yugoslavs in the area.

Among the 5,000 American troops in Trieste are 137 enlisted men from Texas. I had a pleasant visit with two of them from West Texas, Max Carpenter of Sundown, and Cecil Drake of Big Spring. All our troops

FRANCIS GILBREATH IS NOW WITH FRY & COX BROS.

Francis Gilbreath and family have returned to Muleshoe to make their home, following a sojourn of several years in California. Mr. Gilbreath has accepted a position with Fry & Cox Bros, local M-M dealers, as a mechanic.

Mr. Gilbreath is a widely known mechanic here, having followed the trade here before going into the Armed Service. After his separation from the Service he remained in California for a time. Mrs. Gilbreath is a daughter of Mr. and Mrs. George Nelson of Muleshoe.

Mr. and Mrs. Dixon Wagnon and little son, of Lubbock, spent the weekend here with his parents, Mr. and Mrs. W. B. Wagnon.

seemed to be in fine shape and morale appeared to be high.



PORTRAITS OF QUALITY

One 8x10 \$8.95
Six 3x5

Pierce's Studio

Seven Blocks West of Western Drug
Phone 185

SHORTY'S SERVICE STATION

Drive In and Fill Up
With

GAS  OIL

Automobile Accessories
Prompt and Courteous Service
Shorty Holmes Phone 213

DR. J. R. DENHOF

DR. ABNER ROBERTS

Optometrists

PHONE 61-W OR WRITE FOR APPOINTMENT
121 W. 4th St. Clovis, N. Mex.
ACROSS FROM POST OFFICE

FOR AN AMPLE AUTOMATIC WATER SUPPLY

Install This Simple
Jet Pumping System

Made By

Peerless Pumps

Advanced Peerless Jet Pumps

ECONOMICALLY PRODUCE THE WATER YOU REQUIRE FOR
LIGHT INDUSTRIAL NEEDS

Capacities: 120 to 7500 Gals. per hour from Well Depths to 120 Feet
The Peerless engineering achievement of designing and building more efficient pumps with fewer moving parts has again been most successfully applied in the advanced Peerless Jet Pumping System. The troublefree Peerless Jet Pump principle ingeniously applies the natural force of gravity, plus a minimum of mechanical power, to lift water upward by pressure from the Jet and force it to a pressure tank by means of an impeller. There is no simpler pump principle now being utilized where water lift requirements are comparable.

Peerless Jet Pumps are easy to understand, install, operate and maintain. Once the constant pressure Jet Pump is in operation adjustment or repair is rarely needed. Extremely compact in design. Double or single pipe systems available in sizes from 1/4 to 3 H.P. Quietly supplies the water you require whether installed over the well or offset at a distance from the water source. Ideally applied to wells 2' inside diameter and larger for water supply requirements of light industry including ice and refrigeration plants, creameries, dairies, milk plants, institutions, hotels, laundries, municipalities, motels, schools, etc.

SEE THE PEERLESS WATER KING

Unique in design and operation. For shallow well installation only. Capacities: 275 to 860 Gals. per hour. For trouble-free simplicity of operation, this unique pump utilizes the same "magic" pumping element of the Peerless Hi-Lift Pump. Hard chrome pumping element wholly positioned and protected within pump base is highly resistant to abrasive and corrosive action. Assures a clean, constant water supply. Requires a minimum of space and attention. 100% automatic. Easily installed over well or offset.

D. H. SNEED SUPPLY CO.

Phone 43, Muleshoe, Texas

Fire Prevention

WEEK



We are urging everyone to take part in Fire Prevention Week Oct. 5-11. We hope you will pledge yourselves to doing everything possible to prevent the appalling fire losses which sweep our country each year.

BOBO INSURANCE AGENCY

Office in Courthouse Pat R. Bobo, Owner
Phone 97 Muleshoe



WHOOPS!
No, this isn't a strip-tease, but just Hulda Cannon, 1947 International Cotton Queen, demonstrating a neat combination of strating a neat combination of cottons at the Cotton States Jubilee of the Lions international convention in San Francisco, where she won the title.

Rail travel made easier



Ask about these special features now available for Santa Fe travelers

Rail Traveloan—Travel Santa Fe now—pay later in easy monthly installments. Funds available for rail accommodations and other expenses for your trip. Simply make application for this service with your railroad ticket or travel agent.

Travel Credit Cards—Charge Santa Fe tickets as easily as you would department store purchases. Anyone with proper credit rating may have a rail credit card. Present it at any Santa Fe ticket window to charge rail, parlor-car, or sleeping-car tickets (amounting to \$5.00 or more) to any part of the country. Bills rendered monthly.

Rail Auto Service—Enjoy the comfort and economy of rail travel—and still have the convenience of a late-model automobile at your destination. Moderate cost. This plan now in operation in many U. S. cities.

Prepaid Tickets—Tickets can be delivered to any point in the U. S. by making a deposit with your Santa Fe ticket agent. Pullman accommodations, incidental cash included, if desired. A particularly attractive service for transportation arrangements of elderly people, invalids, students, etc.

Parmalee Transfer—Passengers holding tickets through Chicago may ride Parmalee coaches from the Dearborn station to any out-going depot, hotel, or downtown destination. Baggage included. This service available by presenting the Parmalee coupon which is a part of your through rail ticket.

For complete information
just call your Santa Fe Agent

Attention Cotton Farmers

We have completely overhauled our gin plant and have installed the latest cleaning, drying and burr extractor equipment.

We cordially invite you to give us a trial.

We Will Buy Your Cotton

We will offer the highest market price at all times.

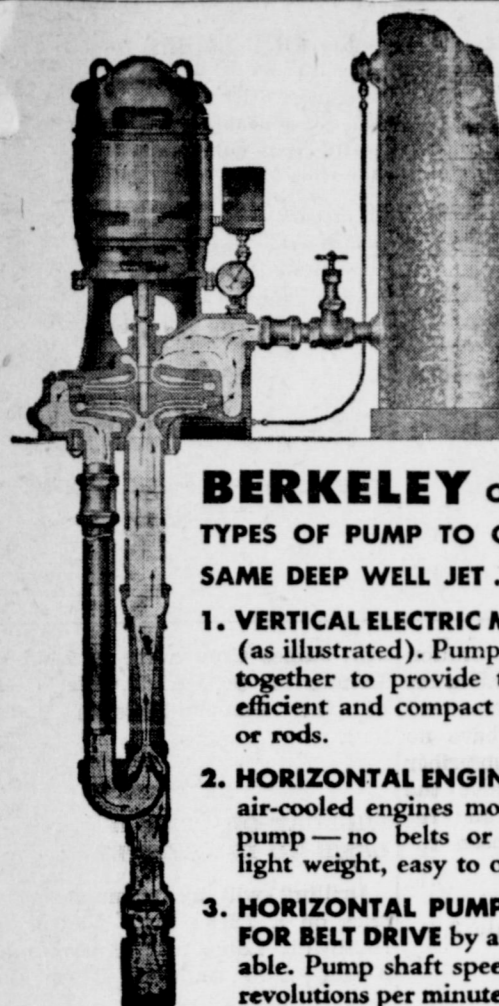
Lariat Gin Co.

Guy Nickels, Mgr.

Lariat, Texas

Mr. and Mrs. Foy Langford and Mr. and Mrs. James Jennings returned Sunday to Abilene after spending the weekend here. Both ladies are daughters of Rev. and

Mrs. T. G. Craft. Mrs. Langford had been with her parents several days, suffering from an attack of "strep throat."



BERKELEY
Jet Action... is automatic and positive. Stays primed even on low capacity wells.

300 to 4500 G.P.H. from water levels 20 to 200 feet vertical depth.

BERKELEY OFFERS THREE TYPES OF PUMP TO OPERATE WITH THE SAME DEEP WELL JET . . .

- 1. VERTICAL ELECTRIC MOTOR DRIVE UNITS** (as illustrated). Pumps and motors are built together to provide the most economical, efficient and compact unit. No belts, gears, or rods.
- 2. HORIZONTAL ENGINE DRIVE UNITS**, with air-cooled engines mounted directly on the pump—no belts or couplings. Compact, light weight, easy to operate.
- 3. HORIZONTAL PUMP UNITS ARRANGED FOR BELT DRIVE** by any prime mover available. Pump shaft speeds from 1800 to 2700 revolutions per minute.

E. R. HART COMPANY

Phone 23

Muleshoe

Water Well Drilling and Repair

California Irrigation Pumps
Estimates On Turnkey Jobs
Any Size Hole Up to 20 Inch

FIFTY YEARS EXPERIENCE ALL WORK GUARANTEED

E. H. KENNEDY

Muleshoe

Box 612

Pho. 268-W



October 5 - 11

Let's all cooperate in making Muleshoe safe from fires. Your efforts may save your home or your life—but whatever the gain—it will be well worth your while.

INSURANCE



Provides inexpensive protection against losses. See us today concerning your property.

BRAY INSURANCE AGENCY

Phone 147

Muleshoe



At The Churches

Schedule of Services

MAIN STREET MISSIONARY BAPTIST CHURCH
Rev. M. E. Robinson, Pastor

Sunday School 10 a. m.
Church Services 11 a. m.
B. T. U. 7:30 p. m.
Church Services 8:15 p. m.
Wednesday Night Prayer Meeting 8:0 p. m.

ASSEMBLY OF GOD CHURCH
Rev. L. H. Hubbard, Pastor.

Sunday School 10:00 a. m.
Morning Worship 11:00 a. m.
Evening Service 8:00 p. m.
Young People's Service, Tues., 8:00 p. m.

Mid-Week Service, Thurs., 8:00 p. m.
Women's Missionary Council, Thurs., 2:30 p.m.

FIRST METHODIST
T. G. Craft, Pastor

Sunday Services
Church School 9:45 A. M.
Preaching 11:00 A. M.
Young People 6:00 P. M.
Evening Worship 7:30 P. M.
Bible Study & Prayer - Wednesday

Midweek Service—Wed. 7:30 P. M.
W.S.C.S.—Mon. 2:30 P. M.
Choir Rehearsal—Wed. 7:30 P. M.

FIRST BAPTIST CHURCH
Lasbuddy, Texas

Sunday School—10:0 a. m.
Morning Worship—11:0 a. m.
Training Union—8:0 p. m.
Evangelistic Service—9:0 p. m.
Mid-Week Prayer Service—8:30 p. m.

"Not forsaking the assembling of ourselves together."—Hebrews 10-25
L. B. EDWARDS, Pastor

CHURCH OF CHRIST

Bible Study 10 a. m.
Preaching Service 11 a. m.
Communion Service 11:45 a. m.
Preaching 8:00 p. m.

Ladies' Bible Class, Tuesday, 3 p. m.
Mid-Week Services 8:00 p. m.

FIRST BAPTIST CHURCH
Rev. A. W. Blaine, Pastor

Sunday School 9:45 a. m.
Morning Worship 11:00 a. m.
Training Union 6:30 p. m.
Evening Worship 7:30 p. m.

W. M. U. - Wednesday 3:00 p. m.
Officers & Teachers - Wednesday 7:30 p. m.

Choir Rehearsal - Thursday 7:30 p. m.

MULESHOE PRIMITIVE BAPTIST CHURCH

Elder L. M. Handley, Preacher
Services every second and fourth Sunday at the school house.
Song service 10:30
Preaching 11:00

LAEBUDDY

CHURCH OF CHRIST

Bible Study 10 a. m.
Preaching Service 11 a. m.
Communion Service 11:45 a. m.
Preaching 8 p. m.

LONGVIEW BAPTIST CHURCH
Elwin E. Ingram, Pastor

Sunday School 10:00 a. m.
Morning Worship 11:00 a. m.
Training Union 7:30 p. m.
Evening Worship 8:30 p. m.
Everyone welcome.

IMPORTANT NOTICE

The public again is warned that the new state law requires those who trade for or buy new or used motor vehicle to apply at the office of the County Tax Assessor and Collector for transfer of title. A penalty of \$5 is mandatory upon my part on failure to do so. Failure to furnish all information on transfer form is a misdemeanor under the law and entails a fine of not less than \$50 nor more than \$200.
J. C. BUCHANAN,
Sheriff, Tax Assessor & Collector
Bailey County. 39-37c

Acme Mattress & Spring Co.
Box 837, Lubbock Tex

A CARD ADDRESSED TO US BRINGS OUR TRUCK TO YOUR DOOR - WE HAVE FELLING MACHINES .
Telephone 7347

Guaranty Abstract Company

— Office in Court House —
FAT E. BOBO, Owner
Phone 97 - Muleshoe

We Specialize In Good Meals

WELL COOKED AND SERVED COURTEOUSLY AND PROMPTLY.

BRING YOUR FRIENDS AND EAT IN COMFORT IN OUR NEW, CONVENIENT CAFE

Muleshoe CAFE

Margaret and Bill Collins

Mr. and Mrs. Jess Gentry of Los Angeles have been the recent guests here of Mr. and Mrs. Roy Dyer. The two couples visited the Carlsbad Caverns last week.

COTTON PICKER SACKS

IN STOCK NOW—

- 9 Foot Sacks
- 10½ Foot Sacks
- 12 Foot Sacks
- Knee Pads

E. R. HART COMPANY

SPENCE RADIO SERVICE

Phone 270-W

Zenith Radios

CONSOLES — TABLE COMBINATIONS
PORTABLES — FARM SETS

Batteries For All Models
Irons, Clocks, Toasters

Service On Any Make Radio

Our many years experience in the servicing business is your guarantee of the best service.

Phone 270-W

Beautiful Windows



begin with



VENETIAN BLINDS

- **Lighter** . . . 1/2 the weight of ordinary blinds because it's made of a special flexible aluminum alloy.
- **Lovelier** . . . Flexalum's satin-smooth plastic finish blends with every decorative setting.
- **Easier to Clean** . . . Its FLEXIBILITY makes cleaning so simple and quick.
- **Longer Lasting** . . . Flexalum is sun-proof, rust-proof, warp-proof, will not crack, chip or peel, resists weather stains and soil.
- **Custom made to fit windows exactly.** Bring your measurements in today. Flexalum's low cost will surprise you.

Cox Radio & Electric

Your Neighborly Shop
Phone 67-W Muleshoe, Texas

LOW COST



Home Loans

You don't need to wait any longer—our home loan plan will enable you to buy or build your home now. Payments include principal, interest, taxes, Xinsurance. Low interest—prompt courteous service.

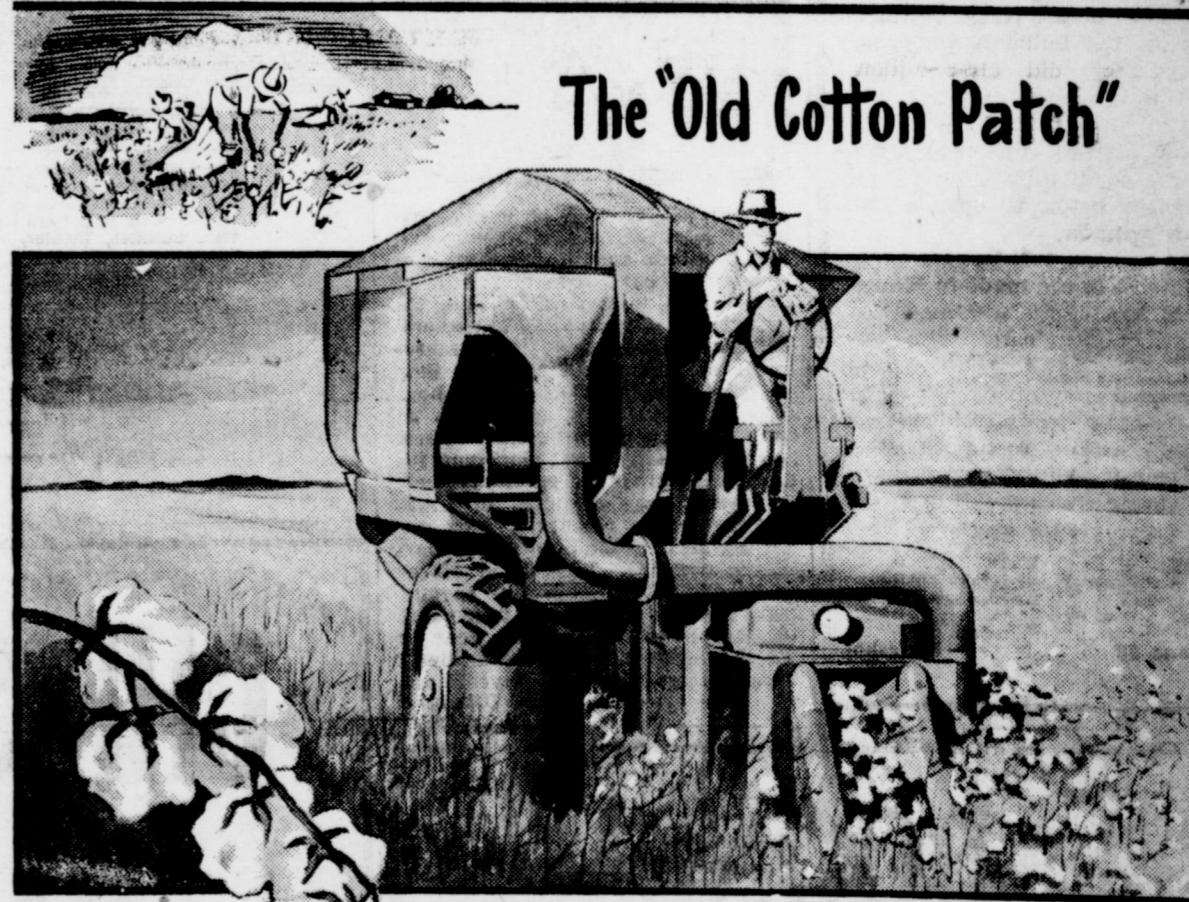
IN MULESHOE MAKE APPLICATION WITH MILDRED DAVIS, MULESHOE STATE BANK BUILDING

Let Us Handle Your Savings Account

First Federal

SAVINGS & LOAN ASS'N. OF CLOVIS
CLOVIS NEW MEXICO

The "Old Cotton Patch"



IS BIG TIME BUSINESS NOW

King Cotton has found the promised land! Here in the fertile Panhandle-Plains-Pecos Valley Area we market more than \$81,000,000 worth of cotton and cotton seed a year.

New uses are being found constantly for one of our number one crops. And today "the old cotton patch" is big time business for the folks in our area.

We have so much confidence in the cotton industry—and all other industries we serve—that we are investing 35 million dollars in a building program. This expansion program in our territory will bring more dependable electric service to industry and better living—electrically—to everyone!

SOUTHWESTERN

PUBLIC SERVICE COMPANY

23 YEARS OF GOOD CITIZENSHIP AND PUBLIC SERVICE

Be It Ever So Humble There Is No Place Like Home

Why not let us sell you one—we have several nice homes listed, at reasonable prices.

—Four rooms and bath, frame house on corner lot in Hospital Addition, \$4500.00.

—New four room Modern stucco, two blocks of Post Office, \$5500.00.

—Two 60 foot lots in Hospital Addition, \$1250.00.

—1300 Acre Ranch at \$12.50 per acre.

—276 Acre Farm good red land, subject to Irrigation with 32x32 frame house, at \$60.00 per acre. 200 acres of feed thrown in. Match that, will you?

—Small Farm, Arkansas land, close to town with twice as much land as half. All in cultivation, with good Irrigation well that will pump more water than you can drink to save your neck and a large patch of alfalfa. This particular farm is priced worth the berries, come in, let us tell you about it.

Bring us some listings, we sell 'em!

Clay Beavers or Henry Hanover

Across Street North of Bank

Real Estate—Nothing Else

M. O. Coleman and family who have been living in Baileyboro community are moving to Shallowater where he will be employed in a gin.

Please call in your news or send in. Phone 54—The Journal.

Mostly Static --

By BERRY

Howdy Folks: Do you suppose they gave the name "iron horse" to the locomotive in hopes that railroading would become a stable business?

And just as a silly thought the locomotive not only smokes a lot, but the durm thing also choos.

Even though you can see its tracks, it doesn't necessarily mean that a train just passed.

You have to give the railroad people credit; they couldn't open the Pullman windows, but they did air-condition them.

Frequently you can open a poker pot on anything, but it takes jacks or better to open a Pullman window.

Marriages are made in Heaven, but berths are made in the Pullman cars.

Customers are made with good merchandise and pleasing service. We do our best to supply both. Come in and look at our lighting fixtures.

Berry Electric

Phone 98

Muleshoe

Paving Contract Let To Davis

Floyd Davis, contractor who built the 25 mile stretch of farm to market roads in the north part of Bailey County, has been awarded the contract for construction of five miles of paving on highway 214 from Muleshoe north to the Par-

Uncle Sam Says



Many tributes will be paid newspaper boys on annual Newspaper Boy Day this month. Thousands of newspaper boys are members of thrift clubs, sponsored by the International Circulation Managers' Association. Perhaps no greater honor will come to these boys than to point them out as school boys who are demonstrating how to go into partnership with their Uncle Sam in building a growing fund for future education. By investing their newspaper boy earnings in U. S. Savings Bonds regularly, they are getting their Uncle Sam to pay part of the expense. Your bond officer or banker will explain how regular bond buyings can provide four years of college education, one year of which will be paid for by your Uncle Sam as interest on your investment.

U. S. Treasury Department

SCHOOL DAYS

By DWIG



mer county line. This has been announced from Austin, where bids were opened last week.

Davis also was given the contract at the same time on paving of Highway 214 from Friona south to four miles south of the Hub; and from a point two miles east of Farwell to Oklahoma Lane.

The firm is now winding up the job of paving the farm to market roads provided for by bonds approved by the voters last September.

Local officials said paving of the strips along the highways through Muleshoe will begin within the next few days. Highway department crews will do the work, and it was understood the Davis firm would provide caliche, curb and gutter work along these highways recently were laid by Panhandle Contracting Company, which is just completing

a 22-block city paving program in Muleshoe.

HALF CENTURY CLUB

The Half Century Club met in the home of Mrs. Kistler with 14 members and one visitor present. All spent the evening playing 42 and visiting. We discussed the clothing project for relief in foreign countries.

We are very proud to have Mrs. Gregory in town and we were very sorry she could not meet with the club. We meet next with Mrs. Anna Moeller, October 9.

Mrs. L. M. Cobb, of Mt. Pleasant, has been visiting here with her son, F. H. Davis and family, and in Sudan with her step-daughter, Mrs. Hazel Wiseman.

HONOR ROLL

New subscriptions continue to come in to The Journal. Old subscribers should look at the date on

their paper which shows expiration date. After a decent interval after expiration names will be removed from the list because we have no way of knowing whether subscriber wishes to continue to receive the paper. The following new and renewal subscriptions have been received in the last few days:

- Boy Scouts, Lubbock.
- H. C. Goodman, Star route 2.
- Nell DeShazo, Canyon.
- Bill Pierson, Abilene.
- J. F. Young, Afton.
- Ralph Burt, Maple.
- L. B. Edwards, Lazbuddy.
- J. E. Randol, City.
- Johnie Henderson, City.
- Elbert Goss, City.
- Russell Bryant, Route 1.
- E. T. Bryant, Route 1.
- Jack Obenhaus, Star Route 2.
- L. S. Tilger, Maple.
- T. P. Kittrell, Route 1.

Mr. and Mrs. A. W. Crow and

Mrs. James Crow were in Lubbock Monday for the parade which opened the Panhandle-South Plains Fair.

WILDCAT OIL TEST IN LAMB TO BE STARTED

Drilling will be commenced at once on a 7,500 foot wildcat in southwest Lamb county, two miles southwest of Amherst, it was announced Saturday.

The prospector is to be Forest Oil corporation, Jergins Oil company and H. R. Smith No. 1 Ida May Harris.

Location is 440 feet from the north and east lines of labor 15, league 61, State Capitol lands.

Cody and Terry of San Antonio have the contract to drill the exploration, using rotary equipment, which now is being moved in to the drillsite.

BETTER BUYS

At Jennings Friday and Saturday

SUGAR, 10 Lbs. 98c PEACHES, Gal \$1.14

Boysen Berries gal. 98c

White Swan 3 Lbs.
Hominy, No. 2 9c Spry \$1.05

Rinso 31c Coffee, Any Brand 49c

Snack Time
Vienna Sausage 15c Peach Preserves, 1 Lb. 25c

Eat Meat For HEALTH
Bell PEPPER, Lb. 15c

BEEF LIVER, Lb. 39c Fresh Tomatoes, Lb. 8c

Sugar Cured Lb.
JOWLS, Lb. 45c ONIONS 7c

Chevel
CHEESE, 2 Lb. Box 88c Honey Dew MELONS, Lb. 12c

CHRISTMAS CARDS

21 for \$1.00

—or—

21 for \$2.50

With Name Printed On Them

Get Your Orders In Early

THE JOURNAL OFFICE

Phone 54

BOONE

2 Row

COTTON PICKERS

Built For H and M Tractors

- DITCHERS
- LEVELLERS
- CREAM SEPARATORS

See Us Now About Overhauling Your FARMALLS

Johnson & Nix

Muleshoe — Texas
International Dealers

JENNINGS Food Store Phone 90
WE DELIVER HOME OWNED & OPERATED