

D 7 32/81/84  
LIBRARY CISCO JR COLLEGE  
RT 3 BOX 3  
CISCO, TEX 76437

# HALL OF REMARKS

BY HERREL HALLMARK

IF YOU HAVE not made reservations for the quarterly breakfast of Cisco's Chamber of Commerce, then you better see if you can possibly get a reservation before 7 a.m. Thursday, March 3.

The breakfast is scheduled for the Colony Restaurant and a good number is expected to turn out.

SPEAKING OF the Chamber of Commerce, they deserve a salute from the citizens of Cisco in regards to their membership drive which seems to be going very well. They have signed up several businesses and individuals and seem to continue finding more to join weekly.

The more people who belong to the Chamber, the more it can do for the people of Cisco.

If you have not joined, but would like to, please get in contact with the Chamber office and let them know. They will sell you either an individual membership or a business membership, whichever one you qualify for or desire.

I WAS SORRY to hear that Otis Engineering's Cisco plant had to make a cut-back in employees recently. I understand they laid off everyone except approximately seven foremen.

Hopefully, things will turn around and they will be rehiring before long.

AREN'T YOU enjoying the beautiful weather we have been having recently? The days have been warm with clear skies and lots of sunshine.

Naturally, weather forecasters are calling for a change sometime this week. Why can't they leave the

"weather dial" set where it is for awhile?

A PROUD WINNER at the Houston Livestock Show is Tommy Claborn, son of Mr. and Mrs. Danny Claborn of Cisco. Tommy returned from the Houston show early Sunday morning with a champion ram and champion ewe. He also had a reserve champion ram and a reserve champion ewe.

We will have photos and a write-up in Sunday's paper.

25¢

# THE CISCO PRESS

'Your Hometown Paper'

1983-Eastland County Newspaper Co.

Cisco, Texas 76437

Volume 75

Number 18

Thursday, March 3, 1983

USPS No. 113780



## Senior Play Will Be Thursday

The 1983 Senior Class of Cisco High School will present the annual senior play on Thursday night March 3, at 7:30 in the High School Auditorium.

The play is a three act comedy, called "Suitable for Hanging."

The Seniors in the play this year are Greg Sipe, Karen Crutchfield, Kenneth Preston, Tawni Angel, Bryan Lorance, Tricia Zellman, Randall Rattan, Connie Gosnel, Kendall Anderson, Vicki Wilcoxon, Terri Alfred, Larry Adams, and Jana Jeffcoat. Promoters for the play are Kim Chambers and Shawn Fisher.

## Open House Is Set At Schools Thurs.

Everyone is invited to Open House at the Cisco Schools.

The day is Thursday, March 3rd. The schools will be open on Thursday night at these times:

- Primary School, 6:00-7:00
- Intermediate School, 6:00-7:30
- Jr.-Sr. High School, 6:00-7:30
- Senior Play, 7:30

## Revival Services Set At East Cisco Baptist

Revival services will begin at East Cisco Baptist Church Sunday, March 6th. Bro. Fred Porter, pastor of First Baptist Church in Breckenridge, will be preaching.

Noon services will be held each week day at 12:00 o'clock. A covered dish lunch will be served each day. The evening services will begin at 7:00 p.m. Monday thru Saturday.

Everyone is invited to worship with them during these services. The nursery will be provided for all services.

## Local Men Will Be On TV Thursday

City Judge Jasper Cook and O.L. Stamey will be featured Thursday noon on the Mid-Day with Kay television program on KRBC (channel 5 on the cable). The program airs at 12:15.

Judge Cook and Mr. Stamey will be discussing the upcoming Variety Show of the local Lions Club and also the work they do in helping the Lions Club Camp for Crippled Children in Kerrville, Texas.

## Candidates File For All Local Elections April 2nd

As of Tuesday this week, Cisco had candidates for each of its three upcoming elections, April 2. The filing deadline for candidates was Wednesday afternoon, March 2, for the City election, School Board election and Hospital District Board election.

In the City election, four candidates had filed for three positions: two for Mayor and one each for Council places I and II. Incumbent Eris Ritchie had refilled for Mayor and W.E. (Edd) McGough had also filed for the position.

City Council incumbents Linton Bateas and Brad Kimbrough had both refilled for their positions as Council members Place I and II, respectively. No one else had filed as of Tuesday afternoon.

Hospital District Board incumbents Armo Chambers and Bruce Stovall had refilled petitions for their candidacy in the Hospital election. There were no other candidates at press time.

## John Parchman Signs As CHS Head Football Coach

John Parchman, 33, of Lubbock, signed a contract with Cisco Independent School District Saturday, February 26, as head football coach at Cisco High School, according to an announcement Monday by School Superintendent James Couch.

Mr. Parchman replaces Jim Puryear who recently submitted his resignation in that capacity.

Coach Parchman will be taking over the teams this fall. He and his family plan to move to Cisco after school is out this summer.

A graduate of Texas Tech in 1971, Coach Parchman has 11 years experience in the coaching field. He is presently the Defensive Coordinator at Lubbock Coronado High School where he has been employed since 1980.



JOHN PARCHMAN

## Gun Club Will Meet Monday

Cisco Gun Club will meet Monday March 7, at 7:00 p.m. at the Range Club House. All members are urged to attend.

## City Federation Plans 'Tea Day'

The City Federation of Women's Clubs will be hostess to their Annual Texas Day Program and Tea on Thursday, March 3, at 2:00 p.m. in the Fellowship Hall of the First Baptist Church. All member-clubs will be serving in some capacity to make this an outstanding occasion for the sixty-first anniversary year.

## Baseball Camp Planned For Baylor Campus

Little League Baseball takes pride in announcing the opening date for its eleventh Annual Summer Camp Program on the beautiful and historic Baylor University Campus.

The first of three two-week sessions begins on June 19. Applicants will be accepted for all three sessions on a first-come basis until they are full.

Each camp offers a variety of activities including swimming, boating, and other recreation; but with special emphasis on baseball. All of the latest equipment and techniques for training in the skills of baseball will be used, including daily use of batting cages, pitching machines and other items approved by the Research Department of Little League.

## Parent's Meet Set For Teen Ball Program

There will be a meeting for all interested parents who wish to help with the teenage summer baseball program at the First National Bank, 7 o'clock, Friday, March 4, 1983.

## Three Receive Degrees From Texas Tech

LUBBOCK--More than 1,000 students at Texas Tech University received degrees in commencement exercises at the conclusion of the 1982 fall semester.

Degree recipients included from Cisco: Betty Evatt, Route 2; Joe Heyser, Route 2 and Timothy Bint, Route 4.

several more times before the summer. He and his wife, Diane, have two daughters whose ages are two and three. The Parchmans are Methodists.

## CJC Is Accepting Applications

Cisco Junior College is now accepting applications for the August, 1983 Licensed Vocational Nursing program at Cisco.

In accord with certification requirements, applicants must make applications in advance and pass a pre-entrance physical and examination. Pre-testing for the August class will be held in March.

The twelve month program will hold classes on the campus with clinical work in the E.L. Graham Memorial Hospital in Cisco and the Eastland Memorial Hospital in Eastland on a rotating basis.

## Parent's Meet Set For Teen Ball Program

Satisfactory completion of the program entitles the student to a certificate from the college, and qualifies him/her to take the State Board of Vocational Nurse Examiner's examination.

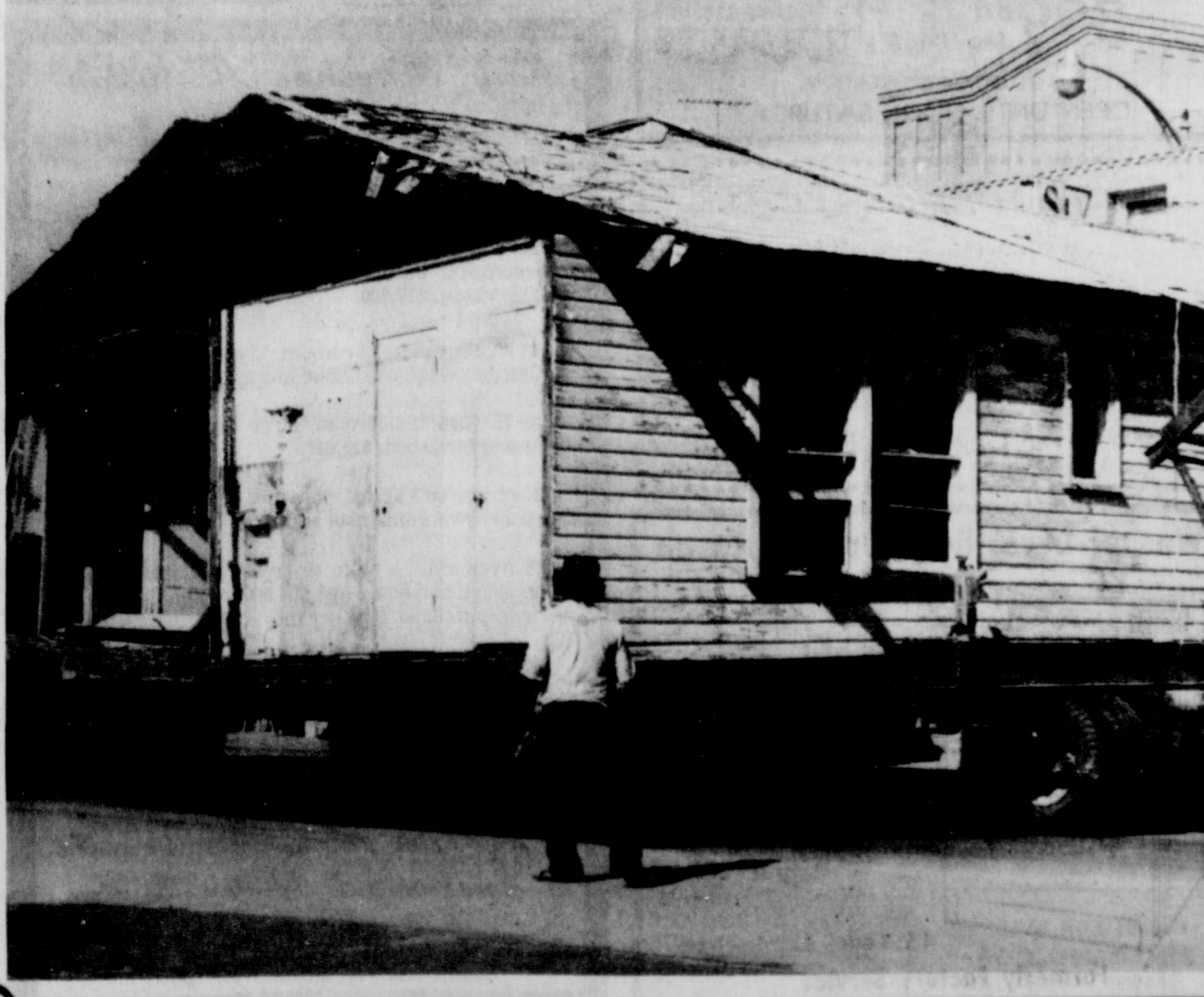
A prospective student must be at least 17 years of age and must be in good physical and mental health. Students must be high school graduates or have successfully taken the GED examination establishing high school equivalency. The GED examination is given on the CJC main campus in Cisco.

Employment opportunities for a Licensed Vocational Nurse are very good; the demand for LVN's far surpasses the supply. For full information, interested persons (male or female) may contact Vocational Dean, Gerald Bint or Program instructor, Mrs. Wanda Wheatley in the Vocational-Technical Building on the campus or by telephoning (817) 442-2567.

## House Causes Cisco Traffic Jam Monday



A BIG LOAD was moving through downtown Cisco Monday afternoon when the above photograph was taken around 3 p.m. The house shown was being moved across the intersection at Conrad Hilton Avenue and Eighth Street. It was almost as wide as the street and workers had to climb on top of the house to hold utility lines and signal lights above the structure. (staff photo)



### WORD OF GOD

Jesus answered and said unto them, Destroy this temple and in three days I will raise it up. John 2:19

And as Moses lifted up the serpent in the wilderness, even so must the Son of man be lifted up. That whosoever believeth in him should not perish, but have eternal life. John 3:14-15

CISCO KID CAR WASH  
3rd St. and Ave. E  
Where Most People Wash. Wash your venetian blinds, throw rugs, motor.









# Oil Belt

THURSDAY, MARCH 3, 1983

## Buck Wheat Resources Reveal Plans

Buck Wheat Resources Inc. of Eastland has revealed plans to drill four 1,200-foot developmental probes in the Hawk-Eye Field, 10 miles south of Cisco. The wells will be located in an 80-acre lease in Eastland County's H&TC RR Co. Survey, A-1310, and are to be designated as the No. 12, 13, 14, and 15 T.P. Simpson.

A wildcat for oil is scheduled for spudding five miles south-southeast of Cisco by New West Exploration Inc. of Abilene. The well will be known as the No. 2 Castle, with projected total depth of 1,300 feet. It will be situated in a 160-acre lease in Eastland County's H&TC RR Co. Survey, Sec. 49, Blk. 3.

Two 3,700-foot developmental wells in Eastland County's S.J. Robinson Survey, A-424 and J.W. White Survey, A-549, five miles northeast of Eastland. The wells are designated as the No. 2403 and 3801 Northwest Ranger Unit. Drillsites will be in a 2,642-acre unit in the Eastland Regular Field.

Two 4,000-foot oil wildcats are planned by Trinity Exploration Co. of Ft. Worth, at a drillsite eight miles northwest of Rising Star, Eastland County. The location is in a 190 and 110-acre lease in the Holcomb & Davis and Mary Ann Clark Surveys, A-51. Well's designations are the No. 3 James A. Cox and the No. 2 B.L. White.

recorded another successful developmental well in the D.R.S. SE Field. It is the No. 3 Roy Pippen, showing potential for 86 barrels of oil, along with 165,000 CF casinghead gas per day on a 20/64 choke.

Drillsite was in a 640-acre lease in the SP RR Co. Survey, nine miles northwest of Cisco, Eastland County.

The well was drilled to a total 3,960 foot bottom, after entering the pay structure at 3,816 feet. It was perforated to produce from an interval 3,816 to 3,838 feet.

Lubbock-based KATLACO Operating Inc. has filed for permit to drill the No. 3 Katlaco Fee, a wildcat for oil or gas to be located two miles northeast of Cisco. With projected total depth of 4,150 feet, the well is in a 40-acre lease in Eastland County's H&TC RR Co. Survey.

day on an 8/64 choke.

Tubing pressure was recorded at 50 PSI. The location is four miles northwest of Eastland, in a 280-acre lease in the H&TC RR Co. Survey, Eastland County.

Bottomed at 3,626 feet, the well will produce from an interval of perforations 3,340 to 3,365 feet into the hole. The pay formation was first encountered at 3,340 feet.

SO Operating Co. of Cisco has filed for permit to drill the No. 1 A Lynn Hagan, a 1,750-foot developmental well in the Hawk-Eye Field, 10 miles south of Cisco. The operation will be in a 40-acre lease in Eastland County's H&TC RR Co. Survey.

Dr. R.B. Wilchar of Ft. Worth has added two new natural gas producers in the Lake Leon Field. They are the No. 1 Casey Meazell "A" and the No. 1 Casey Meazell, located in a 40-acre lease in Eastland County's McLennan County School Land Survey, four miles east-southeast of Eastland.

The wells flowed at respective rates of 113,000 and 30,000 CF per day, both on an open choke. The absolute open flow came in at 122,000 CFD and 150,000 CFD respectively.

The "A" well went to 4,016 foot bottom, after the production zone was entered at 3,550 feet. The production interval will be perforations

3,521 to 3,558 feet.

The other Meazell well entered the production zone at 3,524 feet and went to total depth of 4,000 feet. It is producing from perforations 3,524 to 3,537 feet into the wellbore.

The No. 2 J.B. Brown, a developmental well in Eastland County's H&TC RR Co. Survey, is scheduled to be drilled four miles east of Scranton. Joe Hall of Ft. Worth is listed as the operator. Location is in a 40-acre lease in the Eastland Regular Field. Projected total depth is 500 feet.

Pumping at the rate of 18 barrels of crude oil per day on an open choke, the No. 1 J.C. Harrell was completed in the Ranger Field by North

Ridge Corp. of Grand Prairie.

Drillsite is in a 108-acre lease in Eastland County's Ben Willis Survey, A-1212, six miles northwest of Ranger.

After entering the pay zone at 3,390 feet, the well went to 3,905 foot bottom. It was perforated to produce from an interval 3,395 to 3,450 feet into the hole.

Location has been staked by Mike Becker of Louisburg, Kansas, for a 750-foot Eastland County wildcat. The explorer well will be known as the No. 2A Wesley Warren. It is in a 141-acre lease in the H&TC RR Co. Survey, Sec. 3, Blk. 1, two miles north of Gorman. It is aimed at either oil or gas production.

Petro-Mack Inc. of Dallas has staked location for the No. 23 G.P. Brawner "A" in Eastland County's Waldrop Field. It is scheduled for 1,150 feet of hole making. The location is in a 240-acre lease in the ET RR Co. Survey, Sec. 25, Blk. 2., about three miles northwest of Rising Star.

Location has been staked by Sun Exploration & Production Co. of Abilene for

The No. 1 Reid Unit and the No. 1 Carmack "1685" are slated to be drilled in the TE&L Survey, A-1685 by Ashtola Exploration Inc. of Amarillo. With projected total depths of 4,800 feet per well, they will be spudded in respective leases of 20-acres and 310-acres in Eastland County. The Reid Unit is about seven miles southwest of Proffitt and the Carmack "1685" is situated six miles southwest of Proffitt.

San Antonio-based EnRe Corp. has turned in first production figures for its No. 2 Roy Pippen, a successful developmental well in Eastland County's D.R.S. SE Field.

Flowing oil at the rate of 92 barrels per day plus 183,000 CFD casinghead gas, the well was tested on a 12/64 choke. Flowing tubing pressure was 410 PSI.

Drillsite was in a 640-acre lease in the SP RR Co. Survey, nine miles northwest of Cisco. The well was taken to a total depth of 3,988 feet, after entering the pay zone at 3,815 feet. Production interval will be 3,815 to 3,821 feet into the wellbore.

EnRe Corp. has also

A new oil producer in the P. Cameron Field has been finalized by Chase-Mann Petroleum Inc. of Ft. Worth. Designated as the No. 3B Charles G. Pence-P.C., the well indicated potential to produce 65 barrels of oil per

### Commission Kills Well

AUSTIN--A gas well blowout that had produced as much as 26 million cubic

**U.S. DEPT. Interior**  
Geological Survey  
Topographic  
Quadrangle  
MAPS  
of Eastland County  
now available  
\$3.00 ea. plus tax  
at the  
EASTLAND  
TELEGRAM  
110 W. Commerce  
Eastland

feet of gas per day from a gas field in the Texas Panhandle was killed Feb. 6, according to Railroad Commission field inspectors.

On Jan. 4, the Commission issued an interim order directing Apache Corp. to kill or control its Key No. 1 well in Wheeler County's (Morrow, Upper) field by Feb. 10 or show cause to the Commission why it has not been able to do so.

The well was killed as mud and cement were pumped into its wellbore through a relief well.

A second relief well, the Key No. 3, was necessary

when the first relief well, the Key No. 2, was not successful in reaching the Key No. 1 wellbore.

When the Key No. 1 blew out on Oct. 4, 1981, it had been completed and was awaiting a pipeline connection. Since then, the Commission has held periodic hearings to determine Apache's progress in attempts to plug the well.

Since last summer the well had been in a "controlled blowout" status, and the gas it produced was being taken by a pipeline company serving the area. To make that possible, Apache Corp. excavated tons of earth to reach well casing that had not been damaged when the well blew out.

As part of its statutory responsibility to prevent the waste of the state's hydrocarbon resources, the Railroad Commission had ordered the Palo Duro Pipeline Co. to take all of the Key No. 1 production rather than flare the gas.

### RRC Approves New Gas Contracts

AUSTIN--The Railroad Commission has approved new contracts sought by three natural gas companies in the state which will lower gas costs to several electric generating plants and two other commercial customers.

Commission approval of contracts offered by Lone Star Gas Company, Adobe Gas Company, and South Cen-Tex Gas Company will mean lower costs for electric generating facilities in Dallas, Tarrant, and Mitchell Counties; a gas pipeline; and a gas processing plant.

Citing market competition and a potential loss of gas sales, Lone Star asked the Commission to approve a reduction in the service rate it charges for providing gas to four plants affiliated with Texas Utilities Fuel Co. The service rate reduction, from 58 cents per Mcf (thousand cubic feet) to 39 cents per Mcf benefits Dallas Power and Light's Dallas Plants in Dallas County, Texas Electric Service Company's Handley and Eagle Mountain Plants in Tarrant County, and TESCO's Morgan Creek Plant in Mitchell County.

Adobe sought Commission approval of a contract reducing charges to Patoil Corporation for transporting gas for resale to Intratex Gas Company. The transporta-

tion rate will decrease from 47 cents per million Btu to 36 cents per million Btu for gas transported after February 17.

The Commission also approved a contract between South Cen-Tex and Liquid Energy Corporation decreasing rates from \$4.15 per MMBtu to \$3.66 MMBtu for gas sold after January 24. Liquid Energy uses the gas in its processing plant in Fayette County. South Cen-Tex told the Commission the new contract would decrease its annual revenues by some \$248,000.

**S & S DRILLING CO.**  
OIL & GAS  
Route 4  
CISCO, TEXAS 76437  
BILL GARY 442-3048  
LEE STARR 442-3226

**CREAGH ELECTRIC HOLE DIGGING SERVICE**  
216 WEST WILLIAMS  
BRECKENRIDGE, TEXAS 76024  
WELL SAFETY ANCHORING  
\$350.00 PER WELL PLUS TRAVEL TIME  
817/559-2220  
Holes For Gate Posts, Fence Posts, Pier Holes Or Any Installation

Many Good And Sincere Individuals  
...give little thought to the question of values when we should measure them in terms of personal worth in everything he buys, enjoys or does. For example, some folks will buy real estate without any kind of evidence of title disregarding the fact that the principal value of the purchase is in the title, not in the land itself or the improvements thereon. This kind of thinking costs property owners thousands of dollars annually which could be saved and a part of the savings wisely spent for an abstract of title or title insurance.  
**Eastland County Abstract Company**  
Pat and Annelle Miller 629-1077

**TANK BOTTOM CLEANING & HAULING OIL WELL CHEMICAL SQUEEZE AND STIMULATION SERVICES**  
Vacuum Truck Service  
WEST TEXAS DISPOSAL SYSTEM, INC.  
Day or Night, Call 817-442-4341 Cisco, Texas

**XERXES** FIBERGLASS OILFIELD TANKS AND GUNBARREL SEPARATORS  
1400 W. Overland Trail  
Abilene, Texas 79601  
1-800-592-4459  
915-673-8238  
WATS 1-800-592-4459  
Bus 915-673-8238  
Res. 915-695-4623

**FOR LEASE**  
80-plus acres  
in best location  
in Eastland County  
to firm ready to  
DRILL  
Section 51, Block 3,  
H&TC  
Call 817-629-1707  
Write Box 29  
Eastland, Tx. 76448

**Welding**  
Oilfield-Commercial-Residential  
**Gary Lindsey**  
629-2213  
If no answer call: 647-1485  
202 S. Hillcrest  
Eastland

**Complete Drilling Services**  
**OTIS DRILLING INC.**  
303 S. Madera 817/629-2040  
**Gene Clift**  
Vice-President & Drilling Superintendent  
24 Hour Service  
Drill From 2500 ft. to 6500 ft.  
Well Maintained Rigs Radio Controlled  
Reliable Experienced Crews  
817/629-8162 Unit 9862  
Many Satisfied Customers  
26 Years Experience

Hours: 9:00-2:00  
Drive-In: 4:00-6:00  
Fr. Night Deposit  
J.B. HICKS President  
**THE FIRST NATIONAL BANK**  
Gorman, Texas 76454  
Member FDIC  
● Full Service Banking  
● Money Market Certificates  
● Interest Bearing Checking Accounts  
Teller 24 Locations At:  
Cisco 202 W. 8th  
Eastland 601 W. Main  
Gorman 112 Railroad Ave.

**DRINKING DRIVING DEATH**  
A Combination we CAN'T LIVE WITH!

**ACE WELL SERVICE INC.**  
—Dale Jones—  
Completions - Swabbing  
Workovers - Roustabout Crews  
Rods & Tubing  
Fully Insured For Customers Protection  
Radio Equipped Call Day Or Night  
TC 200 S. Newton 559-5439

# House Of Representatives Ad Valorem Tax Reform

## Jim Parker-District 65

In what may or may not be a departure from an issue presentation, this week I would like to discuss a proposed tax reform. Representative Bob Barton is preparing for filing a most interesting item of legislation that would effectively eliminate residential property, both rural and urban, from ad valorem tax consequence, in so far as such taxes have and are being used to support the public schools. The proposed legislation would exempt any property used as a principle residence from school ad valorem taxation and, to make up lost revenue, would substitute an additional statewide one-cent sales tax. Since, with the ever-narrowing tax base, more and more of the burden of supporting public schools has fallen to the homeowner, the proposal has some very attractive aspects. Proponents say a one-cent additional tax would


generate approximately one billion dollars which would more than compensate for lost ad valorem revenue; that the State of Texas could more equitably distribute the funds, eliminating some of the disparities between "rich" and "poor" school districts; that a sales tax, exempting food and necessities, is not regressive, as is commonly thought, but is on the other hand, progressive; that the sales tax method of financing would more equitably spread the burden of supporting the schools to all citizens of the State of Texas; and that the average Texas taxpayer's property tax would be cut in half. Opponents feel that the ad valorem tax base tends to keep school control on the local level; that the sales tax is a regressive tax penalizing those most who are least financially able, that people in 42 states pay more sales tax than in Texas and, perhaps most important,

that we should not preempt this statewide tax avenue, for what many perceive to be a localized problem, at a time when the state of Texas may, because of budget necessity, desperately need statewide tax generating possibilities for general state revenue. I can readily agree, and do see, that the homeowner is one of an increasingly smaller group of people who must bear the ad valorem burden. With over 65 exemptions, open space exemptions, various agricultural exemptions and other statutory ad valorem tax exemptions, the entire ad valorem tax system may be headed down a "self-destruct" path. My greatest concern and most serious question is, assuming we all recognize that the ad valorem tax system is basically an inequitable system that must eventually go the way of the dinosaur, do we eliminate it, eventually, in one swell swoop, or do we eliminate it a piece at a time as past legislatures have done?

I do not think this Legislature is vested with the intestinal fortitude to attack the problem, in its entirety, head-on; but if we adopt this proposal of sales tax substitution for the limited purpose stated, what of the fate of the even smaller base of tax carrying the ad valorem burden? Surely you would have an opinion. My address is: Jim Parker, Texas House of Representatives, P.O. Box 2910, Austin, TX 78769

### Soil & Water District Sets Award Banquet

The Upper Leon Soil and Water Conservation District will be holding their Annual Awards Banquet at PAR Country Club on Wednesday, March 9, 1983 at 7:00 p.m. The banquet is held each year to honor farmers and ranchers who have done an outstanding job in soil and water conservation. Tickets will be \$5.00 and can be purchased from any District Director: Norman Moore in Sydney, J.W. Sadberry in DeLeon, Buster Jones in Dublin, George Steel in Rising Star and Bill Brown in Eastland. Tickets can also be purchased at the Soil Conservation Service office in Eastland. The banquet is sponsored by the ten banks within the conservation district.

**Celebrate Life!**  
Help the  
  
March of Dimes

## POGUE INDUSTRIAL PARK

HIGHWAY 80 EAST EASTLAND, TEXAS Phone 629-2102

**FOR SALE**  
NEW METAL BUILDING  
GOLD TRIMED IN WHITE  
1,950 sq. ft. of floor Space — Includes  
2 offices and one Restroom — Azrock Tiled Flg's  
Suspended Ceiling — Recessed Lighting  
Offices Heated + Cooled by Carrier Wall Units  
4 Bay Work Area with 10' x 10' Overhead Doors  
Flourescent Strip Lighting and SKylights in  
Work Area — ALL wiring in Conduet — 1-220 outlet  
8-110V Outlets in work area  
Located on 75' x 200' deep Lot — More adjoining Lots  
**PRICED BELOW MARKET VALUE**

We have many good Business Lots Available In Pogue Industrial Park

We can custom build to suit your needs plan ahead — buy your location now and build later —

Phone Anytime for Appointment 629-2102

### H & R BLOCK FEES UNDER \$50.00

H & R Block fights inflation. Again this year, short form 1040EZ prices are starting at only \$7.50, which includes the full Block guarantee. In addition the 1040A form will be instantly processed, so you will only have one visit to H & R Block. All you will need to do is sign and mail it to get your refund. Block has never charged on the basis of income or the size of the refund, but solely upon the return's complexity. THE AVERAGE CHARGE last year for all returns in this area was less than \$40.00. Skilled preparers conduct personal interviews to be certain that every legal deduction to which the customer is entitled will be uncovered. Often taxpayers are short changed when they simply file the

form they received in the mail from the government. All types of tax returns are done by H & R Block. This includes the Federal 1040A, 1040 state returns, complex corporations and foreign tax income and preparation. H & R Block has 2 conveniently located offices to serve you. Call today, appointment available.

1405 Conrad Hilton Ave.  
Cisco, Texas  
442-2794

104 w. Commerce  
Eastland, Texas  
629-8121

## TRADE CARS WHERE YOU ARE WELCOME — A-1 SALES TRADE WHERE YOUR CAR IS WORTH MORE!! — 629-2102

LOCATED IN POGUE INDUSTRIAL PARK — HIGHWAY 80 EAST — EASTLAND, TEXAS DIRECTLY BEHIND BROWDER SELF SERVICE STATION — IF YOU DO NOT TRADE WITH US WE BOTH LOOSE.....



### Pick Ups

We Have 6 — That really need a home!

- 1973 1/8 International 1100 series Positive Trac Diff. Dual gas tanks Ready to work with gooseneck hook up \$975.00
- 2 1979 Ford F150 Pickups We thought these were worth a lot more — Our mistake is your gain MAKE AN OFFER!!
- 1979 CHEVROLET 1/2 ton P.U. 6cyl. Pretty Tan — 45,000 Miles — Air Cond. Running Boards — New shocks and Battery — None Nicer \$4,100.00 YES WE WILL TRADE
- 1974 Chevrolet Custom, 350 1/8 White Blue Interior \$1,390.00 Will sell this one for loan value
- 1977 — 3/4 ton Ford P.U. A Real Workhorse \$2,450.00

1978 DODGE OMNI 4 CYL. — FRONT WHEEL DRIVE — AIR COND. — 4 DOORS + TOP LUGGAGE RACK — AM RADIO CLEAN AS A PIN — GREAT GAS MILEAGE \$2,950.00

You will LOVE this pretty green 1977 LTD Landau Ford beautiful green cloth interior Vinyl Roof — Cruise — AM-FM Stereo With Tape — Twin Rear View Mirrors — Divided elec. frt. seats with individual center arm rests elec. door locks — Air Cond. Power Strg. etc. \$2,850.00

We have had this one to long — 1976 Green and White Monte Carlo — Very nice and well taken care of WAS \$2,390 Now \$1,990.00

1977 Chevrolet Impala — 4 door 350 1/8 — pretty yellow with black stripes — clean inside and out — Auto Trans. Air Cond. Make any Family Happy \$2,950.00

1976 Buick Limited — That's the one with all the extras — runs and drives like a cool breeze on a hot summer day \$2,350.00

1974 Buick Limited — Ride in luxury at a very low price \$1,350.00

1978 Buick Riviera 75th anniversary special not many made like this — Black and Silver with red stripes — Wire chrome wheels — all air and power — divided elec. frt. seats be the envy of your friends — \$4,950.00 We will TRADE — !!!

Slide into this one cheap 1972 LTD FORD — White — lots of chrome Auto Trans. — Air Cond — Brougham interior red cloth with divided front seats This ones nice and drives \$975.00 out just right — dont delay

Also 1977 Cadillac Fleetwood with every thing and 1976 Olds Cut. Cruiser Sta. Wagon

Mow Them Down — with this Like New 8 Horse Power — Electric Start Riding Lawn Mower — Used very few times 2 years old — talk to previous owner — I took it in trade. \$650.00

Extra Heavy Duty Oxy. and Butane Bottle Holder — with large wheels — Check it out you will buy it

OUR VEHICLES ARE READY TO GO — YOU CAN HAVE YOUR MECHANIC CHECK THEM BEFORE YOU TRADE

COME — LOOK — Buy You will

# FOCUS

by D. J. HERDA  
America's Best Read  
Syndicated Photo  
Columnist



## For a Good Look



This 50X magnification of a woman's eye is a dramatic example of the fine grain and sharp resolution of Kodak's technical pan film 2415.

George Eastman was quite a creative genius. He was far from the "inventor" of photography, but he was certainly in the vanguard of its development. Like Henry Ford, Eastman had a dream. And, like Ford, he worked hard at making it a reality.

It's not surprising that Eastman Kodak continues to lead the industry in photographic development. Throughout this century, Kodak has shown its dedication to improving the art and science of photography. Now, on the heels of the company's new line of Disc cameras, come several additional announcements.

"For the home-darkroom enthusiast, Kodak's new book, "Quality Enlarging with Kodak B/W Papers," is a must. It's more than 150 pages of insights into how to make quality black-and-white enlargements. Basically an up-dated combination of two previous publications, "Kodak Black-and-White Photographics Papers" and "Professional Printing in Black-and-White," the new Kodak book offers instructions for print processing and processing for maximum image stability, as well as a completely revised section for toning. There are revised data sheets covering all current Kodak general-purpose black-and-white papers, plus much more. Over 200 illustrations are included, printed in two-black duotone, along with 60 line drawings. The book, coded G-1 in Kodak's catalog, is available at photo suppliers, dealers, and book stores or from Dept. 454, Eastman Kodak Co., 343 State St., Rochester, NY 14650. Suggested list is \$10.95 US (\$14.95 in Canada) plus \$2.95 for postage and handling.

"And, speaking of books, Kodak's new "1982 Index to Kodak Information" is now available from the company. It lists more than 800 photographic books, guides, and pamphlets currently available—everything from simple materials for beginners to sophisticated applications for advanced photo hobbyists, from lighting techniques for professional photographers to complex, state-of-the-art information for scientific, industrial, and laboratory applications. Radiography, microfilming, and other specialized areas of photography are also treated. The book makes interesting general reading, and the index is ideal for locating material in specific areas of interest. Publications about specific topics, for example, are included in simple alphabetical subject and product lists. New publications and major revisions are clearly

identified by bold-face type. One copy of the "1982 Index to Kodak Information" may be obtained free of charge by writing Dept. 412L-567, Eastman Kodak Co., 343 State St., Rochester, NY 14650.

"More for the home-darkroom enthusiast, as well as for commercial applications. It's Kodak's new Technidol LC developer for use with Kodak technical pan film 2415, providing the finest grain and highest resolving power of any black-and-white pictorial film ever offered by Kodak. Initially, photographers may buy the film and developer together in a convenient combination package called Kodak tech pack 2, containing two 36-exposure rolls of 35 mm technical pan film and a packet of Technidol LC developer—enough to process both rolls. The film and developer are also available separately.

The film and developer combination produces a full tonal range ideally suited to pictorial photography, exhibition prints, and similar premium-quality applications of black-and-white photography, according to the manufacturer. The film's extremely high sharpness and fine grain provide enlargements of excellent quality at magnifications of 25X to 50X—the equivalent of making a 4 x 6 foot enlargement from a frame of 35 mm film. The Kodak tech pack 2 has a list price of \$8.50 and is available at many Kodak dealers.

## Putnam News

By Mrs. R.B. Taylor

This has been a beautiful spring-like day. We do need rain, but everything seems to be growing and getting green. We did not have any rain last week and it is getting time for dust storms. Let's hope that the heavy snowfall in the Panhandle will provide enough moisture that we will not have any blowing dust.

Mr. George Weeks is still a patient in the Baird Hospital. He is slowly improving and we hope and pray that he will be able to come back home soon.

We hear that Mrs. Dorothy Tonia of near Scranton is in the Eastland Hospital after suffering a heart attack. Mrs. Tonia has been operating a beauty shop at Moran for a long time.

We were sorry to hear of the death of Marshall Manning at Baird this past week. Marshall and his wife, Lucy (nee Lucy Earp), were pupils of yours truly at the old Jackson School between Putnam and Baird in the early 20s.

Visiting Ollie Burnam this week have been Mr. and Mrs. Edwards and his mother from Moran. Hollis Dale Williams of Cisco, Keith Rhynes of Cisco and the James Isenhower family of Coleman. Ollie is feeling fine and able to get out after being ill since Christmas.

Mr. Don Weathermon of San Antonio recently visited his parents, the Sidney Weathermons.

The Ray Maxwells attended church at Eastland Sunday.

Mrs. R.B. Taylor visited friends at Baird Wednesday and Thursday.

Bill and Dorothy Taylor of

Weatherford spent Sunday with his mother, Mrs. R.B. Taylor.

Melton and Annie Mae Donaway had lunch at the old Donaway home near Dothan Sunday with his four sisters: Mrs. Edith Ivie and son, John of Putnam, Bonnie McClesky and Oleta Hale of Cisco, and Mr. and Mrs. R.C. Hazelwood of Midland.

Visiting the Calvin Kings this weekend were Darrel and Kathy Green of Clyde, Dennis Petty of Eastland and Mrs. Roddy Reynolds of Elmdale.

Mr. and Mrs. Bill Feeley recently visited their daughters, the Jack Thompsons and Cincy O'Connor and the grandbaby at Dallas.

Mr. and Mrs. Allen Kiesler of Abilene visited the Feeleys this week.

Workers have completed the new siding on the Baptist Church. It looks real nice. Come to church and see it.

Sunday, March 6, a covered dish luncheon will be held at the Putnam Community Center. The dinner is sponsored by the churches and everyone is invited to bring a dish and come. Serving time is at 12:30.



Latch On To Classified Ads THEY WORK

Sure-fitted results that's the Classified! They'll lend you a hand when you're looking to buy or sell just about anything under the sun. See what Classifieds can do for you. Speak to our ad-visor!

Cisco Press

## Two Minutes With The Bible

Cornelius R. Stam

### CHURCH GOING

There is an important passage on church going in Hebrews 10: 23-25:

"Let us hold fast the profession of our faith without wavering...And let us consider one another, to provoke unto love and to good works: not forsaking the assembling of ourselves together, as the manner of some is..."

We are often urged these days: "Go to the church of your choice." The implication is that one church is as good as another—just so you go to church. But this is not so.

The Scriptures teach that the true Church is composed of those who have placed their faith in the Lord Jesus Christ as the Saviour who died for their sins. Such are told to "hold fast" the faith which they have professed without wavering. This must come first, for it is only those who have first exercised such faith, who can meet together with unity of mind and purpose to encourage each other "to love and to good works."

It is a truly blessed experience for those who have been saved by the grace of God, to assemble to express their praise *together* in song, to lift their hearts *together* in prayer and to join *together* in the study of God's Word so as to "grow in grace and in the knowledge of our Lord Jesus Christ."

In these days of tension and confusion there is a tendency for even the most sincere Christians to be so occupied with temporal things that they deprive themselves of the encouragement and spiritual uplift that comes from getting together with other Christians. But these are just the times when true believers need the encouragement of each other's company and should particularly remember the admonition of Scripture not to forsake "the assembling of yourselves together...and so much the more as ye see the day approaching."



## Moran News

By Mrs. Luke Huskey

Mr. and Mrs. M.E. Offield visited with their children in Hurst, the first of the week.

SPRING BREAK  
The Moran School students are enjoying a "Spring Break" this week.

Dorothy Tonne is receiving treatment in the Eastland Hospital.

Mr. and Mrs. Jimmie Austin of Ft. Worth and Roger and Jack Scott of Odessa spent the week end with their mother, Mrs. Roe Scott.

J.R. King is receiving treatment in the Cisco Hospital.

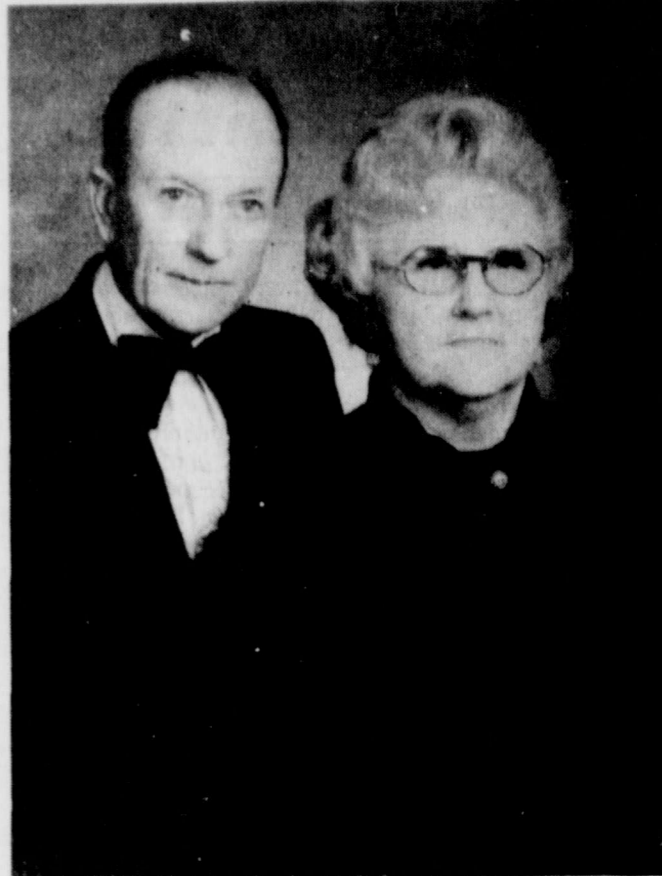
Don Loudder of Dallas spent the weekend with his mother and sister, Mrs. Carroll Loudder and Carrollyn.

Mrs. Bertrice Murphy has gone to Dallas to her sons, C.F. Oakley, for an extended visit and recuperate from a recent illness.

Mrs. C.H. Bridges spent Friday night and Saturday with her daughter, Mrs. Bill Sipe, and family in Graham.

Mrs. J.W. Booth is visiting her son, Bert Booth, and family in Temple.

Mrs. Eva Crayton visited with relatives in Graham, during the weekend.



## Mr. & Mrs. Robert L. Sugg Will Celebrate 50th Anniversary March 12

The children of Mr. and Mrs. Robert Lee Sugg will host a Golden Anniversary Reception for their parents on March 12, 1983 at the Community Room, First National Bank Evant Texas, from 2:00-4:00 p.m. All friends and relatives are invited to attend. No gifts please.

## The Cisco Press

Thursday, March 3, 1983

## THE RAINBOW CAFE A Quiet Family Place

Open Monday - Saturday, 10 am - 8 pm

- luncheon special
- two dining areas, one semi private
- total seating capacity- 50
- serving private groups
- FEATURING CHICKEN FRIED STEAKS, OCEAN WHITE HADDOCK AND CHICKEN BREAST FILLETS ANY TIME
- 100% pure beef 1/4 lb. burgers (we make our own patties)
- orders to go

After 5 Only:

- CHOPPED BEEF STEAK, BACON WRAPPED, U.S. CHOICE
- BAKED POTATOES - STUFFED OR PLAIN
- ONION RINGS

U.S. Hiway 183 North  
643-3000

Rising Star



### The Spot

## Restaurant & Patsy's Donuts

600 E. 8th Cisco Closed All Day  
Open 6 A.M. Monday

Breakfast & Lunch Specials  
**\$2.25 Daily \$3.50**

Wed: Mexican Food Specials  
**\$3.50**

Friday: Catfish Specials  
**\$4.00**

11 a.m. to Closing

All Meat Is 100% Pure Beef,  
No Soybean Additives.  
Chicken Fried Steaks, and  
Several Other Varieties of  
Steaks. Hamburgers And  
Other Varieties Of Sandwiches.  
Mexican Food, Chicken,  
Child's Plate, Homemade  
Chili & Pies

## First Evangelical Methodist Church

W. Hwy. 80. Cisco, Texas

**Believes:**  
In the transforming, forgiving, power of Jesus Christ  
That the Bible is the inspired, infallible Word Of God.  
That Jesus Christ is the same yesterday, today & forever.

**WE WOULD LIKE TO  
EXTEND AN INVITATION  
FOR ALL TO VISIT**

The First Evangelical Methodist Church  
Is Not A Member Of The  
National Council Of Churches.

### A safe and sane weight loss plan.

New The Shaklee Slim Plan. Safe. Proven to work for people like you. Clinically tested, nutritious and innovative.

**Sherry Ray**  
442-4278

**630 Calories Per Day**

The Shaklee Independent Distributor logo is a registered servicemark of Shaklee Corporation.

## JESUS IS LORD

# Word of Life-Faith Center

East 7th & Ave A Cisco, Texas

### Philippians 2:16

**We are nondemonational - preaching the uncompromised word of God**

Childrens Sunday School - 10:00  
Worship & Praise - 11:00  
Sunday Evening - 7:00  
Thursday Evening - 7:00

Prayer Line 442-1828

## Double Eagle

# Car & Truck Wash

## Opening Soon

On I-20 East of  
**Colony Restaurant**

4 Bay



Prices  
Effective  
March 3  
thru  
March 6

# Thrift Mart

Prices  
Effective  
March 3  
thru  
March 6

## DOUBLE MANUFACTURERS COUPONS

Sunday March 6 Only

 <p>Shurfresh <b>Boneless Ham</b> Water Added Whole 6-8 lbs. Average <b>Half Hams</b> \$1.98 lb.</p> <p><b>\$1.68</b> lb.</p>	 <p>U.S.D.A. CHOICE <b>T-Bone Steak</b></p> <p><b>2.68</b> LB.</p>	 <p><b>Sirloin Steak</b></p> <p><b>\$1.98</b> LB.</p> <p>U.S.D.A. CHOICE</p>
<p>FAMILY PACK <b>Ground Beef</b></p>  <p><b>87</b> LB.</p> <p>3 LBS. OR MORE</p>	<p><b>Dr. Pepper</b> Reg. or Sugar Free</p>  <p><b>\$1.00</b></p> <p>2 Liter</p>	<p>PURE VEGETABLE <b>Crisco</b> SHORTENING</p>  <p><b>1.88</b></p> <p>3 LB. CAN LIMIT 1 W/10.000PURCHASE</p>
 <p>Del Monte <b>Corn</b></p> <p><b>5 FOR \$2.00</b></p> <p>17 oz. Can Cream style or Whole Kernel LIMIT 10</p>	<p>GOLDEN <b>Bananas</b></p>  <p><b>4 \$1</b> FOR</p> <p>LB.</p>	<p><b>Soft n Pretty</b> Bathroom Tissue</p>  <p><b>\$1.00</b></p> <p>4 Roll Pack LIMIT 2</p>
<p>Del Monte Cut or French Style <b>Green Beans</b></p> <p><b>5 FOR \$2.00</b></p> <p>16 oz. Cans LIMIT 10</p> 	<p>Wolf Brand <b>Chili</b></p> <p>19 oz. Can Without Beans LIMIT 4</p> <p><b>\$1.00</b></p>	<p>Van Camps <b>Pork &amp; Beans</b></p>  <p><b>3 FOR \$1.00</b></p> <p>16 oz. Cans</p>
<p><b>Orange Juice</b></p> <p>Vita Gold Frozen 6 oz. Cans</p> <p><b>3 FOR \$1.00</b></p> <p>LIMIT 3</p> 	<p>U.S. NO. 1 RUSSET <b>Potatoes</b></p>  <p><b>89¢</b></p> <p>10-LB. BAG</p>	<p>BLUE BONNET Margarine</p>  <p><b>38¢</b></p> <p>Margarine Quarters 1 lb. Ctn.</p>

Quality.Variety.Service. Low Prices. and S&H Green Stamps too!  
Why settle for less?

**Thrift Mart**

200 East Main  
EASTLAND

1010 Avenue E  
CISCO

**SUPER-VALU**

1002 Conrad Hilton Ave.  
CISCO

WE HANDLE U.S. DA. CHOICE HEAVY BEEF ONLY!

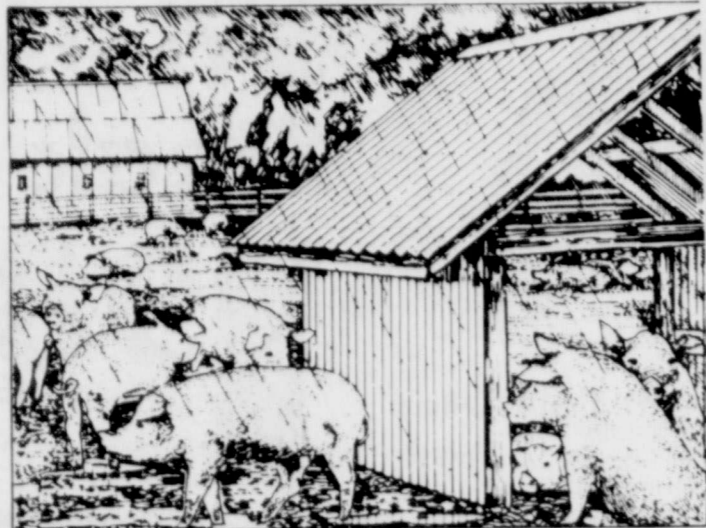
We Give S&H Green Stamps  
Plus Discount Prices  
Double S&H Green  
Stamps On Wednesday

This Ad Is In Addition To Our 4-Page  
Mail Out Circular

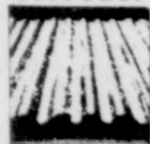
# Agriculture

THURSDAY, MARCH 3, 1983

## ROOFING THAT WON'T GIVE IN TO THE ELEMENTS THAT DESTROY METAL.



Even under the worst barnyard conditions, including acid rain and animal urine, Onduline roofing can't rust or corrode.



It's manufactured from organic fibers, corrugated for extra strength, and then totally impregnated with asphalt, one of nature's best preservatives.

So while destructive chemical reactions slowly gnaw away at even the most expensive metal roofing and siding, Onduline simply does its job. Protecting your animals, your buildings, your equipment, and your investment year after year.

LIMITED SPECIAL PRICE

\$44<sup>95</sup> Square

Cisco Lumber & Supply Co. Inc.

110 Sandler Sq. Phone 442-2320

## 4-H Celebrates 75th Anniversary

The Texas 4-H program is celebrating its 75th anniversary this year, and the initial celebration was kicked off at the State Capitol in Austin, February 16.

Between 300 and 400 4-H Club members and their volunteer adult leaders took part in special ceremonies in the Senate and House relating to the introduction of a resolution commemorating the 75th anniversary of 4-H.

Following the ceremonies, 4-H members and dignitaries of state government observed the planting of a ceremonial pecan tree on the Capitol grounds near the north entrance to the building. Besides being the state tree, the pecan also is a symbol of the vitality and longevity of the 4-H program.

Other special anniversary programs are planned in conjunction with the Texas 4-H Roundup at Texas A&M University, June 7-8; the Texas 4-H Congress in Austin, July 19-22; and at many district and county activities through the remainder of 1983.

The first pre-4-H youth club in Texas was organized in Jack County 75 years ago.

In 1908, the late Tom Marks, a part-time newspaperman in Jack County who also worked as agent of the federal government in a position which corresponded to that of today's County Extension agent-

agriculture, organized the first "Corn Club" for boys residing in his county. He enrolled 25 boys and demonstrated to them the best practices in corn production then known.

Each corn club youth also was required to exhibit the corn he produced, with judging to be done on the basis of yield, profit, a story about the youth's corn demonstration project, and the exhibit itself.

Marks earlier had attempted to involve a number of the Jack County farmers in producing the most recently-released varieties of hybrid corn and had scheduled a corn show to demonstrate the results, but was disappointed only a few adults took part in the educational effort.

As he reviewed what had happened, Marks decided that if he could not "teach old dogs new tricks, he would start with the pups" and thus began work with county youth through the Corn Clubs. He taught a number of farm boys corn production practices, and they followed up by exhibiting their results in Jack County.

The success of Marks' venture there triggered similar educational efforts in other counties and at the Texas State Fair in 1910 in Dallas. A feature of the first statewide rally for Corn Club boys at the Fair was a parade of 1,500 boys through the downtown section of

Dallas, with each youth carrying a stalk of corn.

The present 4-H Club program in Texas is an outgrowth of these early Corn Clubs for boys, and Tomato Clubs for girls, which were organized in 1912 in Milam County by Mrs. Edna W. Trigg, whose position corresponded to today's county Extension agent-home economics. Each Tomato Club member grew one-tenth acre of tomatoes.

Today's 4-H Club program encompasses a wide variety of educational programs and

activities, which were undreamed of before the present Texas Agricultural Extension Service was organized. On May 8, 1914, the U.S. Congress passed the Smith-Lever Act, which provided for establishment of a Cooperative Extension Service as part of the land-grant university system in each state.

The Texas Legislature accepted provisions of the Smith-Lever Act on January 29, 1915, and the Texas Agricultural Extension Service came into being. The

4-H program is the youth phase of Extension educational activities. Presently, some 187,000 young Texans are involved in 4-H work.

All educational programs conducted by the Texas Agricultural Extension Service serve people of all ages regardless of socio-economic level, race, color, sex, religion or national origin.

For more information about your local County 4-H clubs please contact the County Extension Office at 629-2222 or 629-1093.

## USSR Facing Agriculture Trouble

Most discussions regarding the United States and Russia usually center on military strength. But in the crucial area of agriculture and the capacity of each country to feed its own people, Russia is in deep trouble.

"While our exportable food surplus is climbing, the Soviet Union's dependence on imported foods is growing," says Dr. Bill Black.

"This year Russia will import more than 40 million tons of grain, or nearly one-fourth of all the grain fed to Soviet people and livestock. About one-half of their grain imports will come from the North American breadbasket, mostly from the U.S.," says Black, an economist with the Texas

Agricultural Extension Service, Texas A&M University System.

By comparison, the U.S. will export about three times more grain than Russia's total imports, notes the economist.

Black describes the Soviet Union as a centrally planned economy in which the country's leaders annually plan that their agriculture will produce sufficient food to feed their people and livestock. However, each year their production continues to fall short by a growing amount, with bad weather generally blamed for the deficit.

With 3.7 million people in U.S. agriculture—of which 2.4 million are family farm managers—this nation produced twice as much grain the past year as the Soviet Union with its 26 million farm workers.

"Individual productivity and individual decision-making in the U.S. make all

the difference in the world," emphasizes Black. "Our farmers respond daily to market signals and information; they are flexible, adaptive creatures."

In turn, the government makes all the decisions in Russia. Farm workers on collective farms customarily leave their tractors promptly at five o'clock regardless of the circumstances. "This clearly shows that the proprietary initiative of the U.S. farmer is missing," says Black.

As long as this situation exists, the Soviet Union will continue to depend heavily on other countries for its food and fiber supplies, notes the economist.

"The long line of ships that now connect American farms with Soviet dining tables constitutes a growing economic link between the two countries," says Black. "This eventually could affect their political relations as well."

**NOTICE**  
If your problems are driving you to drink, perhaps drinking is your problem. Call Alcoholics Anonymous. Call 817-442-1797.

**Auction's Best**  
by Fred Tucker

\*1981 Auction Marketing Network

**IT ALL ADDS UP**

The auction action is often quite exciting. Bids are made and items are sold at a rate that sometimes sees an average of 75 to 100 sales per hour.

We're interested in giving you a snappy auction so the bidders will stay interested until the last item is sold.

Properly handling the business transactions on auction day is a real big job. But, our auction clerks are professionals at handling the business end of an auction and you'll appreciate our fine auction accounting system.

Every transaction is recorded in detail by identifying the article, recording the price it brings and identifying the buyer. Receipts for each purchase are given to the buyers. And the seller gets a complete accounting for every transaction that balances with the total gross.

Our auction accounting system meets the approval of Courts of law, attorneys, bank trust departments and you will like it, too. It's another reason that people say "when it comes to buying or selling AUCTION'S BEST (SM)."

**TUCKER AUCTION COMPANY**  
ROUTE 1, BOX 90  
EASTLAND, TEXAS 76448  
License number TXS-083-1152  
Member NAA and TAA  
Phone 629-1956

**We Sell U.S.G.S. Maps!**

Residents, Campers, Hikers, Fishermen, Hunters, Tourists, Business firms...

...get yours now—priced from \$3

**Eastland Telegram**  
110 W. Commerce  
629-1707 Eastland

**Stallion Rocks and Shoals**

**TB \$500**

**50% off to all 4-H FFA and Sheriff's Pose Mares.**

**Call J.L. Murdock**  
**817-643-3282**

**JOHN DEERE**

**SUPER TRACTOR SAVINGS**

**PLUS**

**1 MAR. '83 WAIVER OFFER**

Finance your new tractor with Deere and get a second bonus—finance charge can be waived to March 1, 1983. This waiver plus the money bonus is yours, from John Deere, over and above our new tractor discount. And we're making specially good trades on your older models—3020's, 4020's and other tractors of that age. (Financing and leasing subject to approved credit.)

Get our best deal... get a John Deere money bonus... get a waiver of finance charge from Deere. Get moving... the whole deal can be withdrawn on short notice from Deere.

**BRAMLETT IMPLEMENT, INC.**  
RISING STAR, TEXAS  
817/643-4311

**MARK COOKEY**  
HOME 817-643-1882

**GARY HARBISON**  
HOME 915-356-5607

Classified Ads Get Results

**RADIAL TIRE SALE!**

A Wide Selection of Radial Sizes & Sidewalls Marked With Red Tags And Sales Prices. Hurry! This Sale Ends Saturday Night!

**Economy Radials VIVA**  
\$3295  
P155 80R13 Whitewall Plus \$1.44 FET No trade needed  
\$3850  
P175 75R13 Whitewall Plus \$1.53 FET No trade needed  
\$3995  
P185 80R13 Whitewall Plus \$1.75 FET No trade needed

**All Season Radials TIEMPO**  
\$3500  
P155 80R12 Blackwall Plus \$1.41 FET No trade needed  
\$4355  
P155 75R12 Blackwall Plus \$1.21 FET No trade needed  
\$4655  
P185 75R12 Blackwall Plus \$1.21 FET No trade needed  
\$5705  
P185 75R14 Whitewall Plus \$1.99 FET No trade needed

**Steel Belted Radials CUSTOM POLYSTEEL**  
\$3980  
\$5725  
P185 75R14 Blackwall Plus \$2.00 FET No trade needed  
\$6745  
P205 75R15 Blackwall Plus \$2.44 FET No trade needed

**High Performance Radials EAGLE ST**  
\$5700  
\$7140  
P185 70R13 White letter Plus \$1.95 FET No trade needed  
\$7980  
P225 70R15 White letter Plus \$2.88 FET No trade needed

Everisto Jimenez Manager

**GOODYEAR**

**AUTO SERVICE CENTER**

Hours: 7:30-6  
7:30-5 (Sat)

315 E. Main Eastland 629-2662 Open Till 9:00 P.M. Friday

# Greyhound Schedules Hearings In Affected Areas

AUSTIN--The Railroad Commission's Transportation Division has scheduled March hearings in Gonzales, Eagle Lake, Weimer, and Flatonia on the application by Greyhound Lines, Inc. to cancel bus service to 58 Texas cities.

Hearings in other affected areas of the state may be scheduled if interested parties request them.

The hearing in Gonzales will begin March 1 at the court house, at 3:00 p.m., to hear testimony from affected citizens in Gonzales, Harwood, Waelder, and Belmont. The hearing will continue the following day in the

same place at 10:00 a.m. and continue until all witnesses have been heard.

Next, the hearings move to the city hall in Eagle Lake on March 8, beginning at 10:00 a.m.

The following day, March 9, Commission examiner Renee McCright will be at the city hall in Weimer, opening the hearing there at 1:00 p.m.

The last of the initial hearings is set for March 10 at the city hall in Flatonia. The hearing will open at 10:00 a.m., recess at lunch time, and then resume from 1:00 to 4:00 p.m.

At the hearings, the Commission's Transportation Division has asked Greyhound to provide the following information on each schedule it proposes to end:

(1) Total ridership and nature of the trips for those riders for each point served on a schedule.

(2) Expenses incurred by Greyhound in providing service on the schedule, including documents which support the expense amounts listed.

(3) Total revenues received by Greyhound for service on the schedule, including an itemized breakdown of regular route passenger revenues, charter revenues, and express package revenues.

(4) An analysis of service available from other carriers at each of the involved cities, showing comparative transit times, routings, schedule times, and connections with major origin or destination points.

(5) Cost to Greyhound for arranging schedules so that every affected city would have at least one bus trip per day, excluding Saturdays and Sundays.

Cities which would lose existing service under the Greyhound proposal are: Melissa, Anna, Van Alstyne,

Howe, Glen Rio, Anthony, Canutillo, Kingsbury, Harwood, Belmont, Gonzales, Waelder, Flatonia, Engle, Weimer, Glidden, Alleyton, Eagle Lake, and East Bernard.

Also Karnes City, Sheldon, Crosby, Vidor, DeSoto Junction, Lancaster, Sterrett, Forrester, Italy, Milford, Abbott, Elm Mott, Lorena,

Bruceville-Eddy, Troy, Salado, Jarrell, Buda, Kyle, Bremond, Wylie, Copeville, Farmersville, Campbell, Cumby, Cumby Junction, Brashear, Saltillo, Gordon Junction, Putnam, Clyde, Merkel, Trent, Roscoe, Loraine, Westbrook, Coahoma, Pyote, and Toyah.

Under the provisions of the federal Bus Regulatory

Reform Act of 1982, interstate bus companies must apply to the Railroad Commission when cancelling bus service in the state. However, the act seriously limits Commission authority to block such moves. Railroad Commission decisions can be appealed to the Interstate Commerce Commission who has the power to overrule.

## Bass Club Report

March! Monster month. March is on us already folks. And great fishing is really going strong. Area lakes are all showing a definite sign of some real hawks to be taken. Some real nice females are being caught already. This marks a time of spawning for both the bass and the bass fisherman. And area lake Leon showed us this. 16

boats were counted at the chock-a-block Sunday. Reports were good with some 5 and 6 lbs fish being taken. Cisco is still giving up some solid 4 lb. fish. Brownwood is low with some fish coming of rocky points.

March also gives us the opportunity to take a child with us fishing. Kids and fishing are a natural combination going together as perfectly as spring and spawning.

Images of a barefoot boy with a cane pole and can of worms have made a belief that combination solid, almost a part of America's dreams.

A well planned, strong

teaching effort is required to convert an interested youngster into an avid Basser. So lets take this month as an opportunity to start those young's on a road of conservational and enjoyable days fishing.

And bring em to our meeting this Thursday the 3rd at the Cisco Bank Bldg. 7:30. This meeting is to the interest of everyone to attend as we plan our year to follow. Sunday the 13th will be our tournament day with our lake being drawn at 6:00 a.m. that morning. See you all there.

Terry L. Wilson

Sister Helen

Pawn and Card Reader  
Healer and Advisor

She guarantees to help with any problem in your life. She is located for the first time in this area. She advises you on business, love, marriage and health. No problems too big or small that she cannot solve.

She is located in Stephenville, Texas on Business Hwy. 377, 1150 West Washington. Open 7 days a week, 7 a.m. to 10 p.m. Look for palm sign in front of her home. No appointment necessary. t-20

\*\*\*\*\*

\*\*\*\*\*

### Legal Notice

#### PUBLIC NOTICE

There will be a pre-letting meeting at the District Headquarters in Brownwood, Texas at 10:00 A.M. on March 8, 1983 to discuss roadside contract mowing on various highways in District 23. Prospective bidders are cordially invited.

Sealed proposals for contract mowing on various tracts in Eastland County, covered by Tracts 1, 2, 3, 4, 5, 6, 7, 8, and 9 will be received at the District Headquarters of the State Department of Highways and Public Transportation, P.O. Box 1549, Brownwood, Texas, 76801, until 10:00 a.m. on March 17, 1983 and then publicly opened and read.

Plans, specifications and proposals are available at the office of Mr. Billy F. Claborn, Maint. Constr. Supr. II, Eastland, Texas. Usual rights reserved. (2-17, 2-20, 2-24, 2-27, 3-3)

**If You Had Your Prescriptions Filled At**

**GIBSON'S PHARMACY**

**Your Records & Files Are Now At**


**U-Save Pharmacy**

**Enjoy Our Drive In Window Service Convenient Call Ahead Good Parking**

**Open 8-6 Weekdays 8-1 Saturday**

**201 S. Daugherty**

**629-1166**



Prescriptions filled accurately

Eastland Business Services  
Complete Income Tax Service and Accounting  
Call 629-1061 or 629-1644



**Ken & Sue Grice Welcomes You Aboard**

**The Ancient Mariner**  
Seafood Restaurant & Steak House

Ranger, Texas

Hours Open Monday thru Friday 11 am to 9 pm  
Saturday 4 pm to 10 pm  
Sunday 11 am to 2 pm

<b>Monday Nite Special</b> Popcorn Shrimp \$4.95 All You Can Eat	<b>Sunday Buffet</b> Barbecue Spareribs & Chicken Fried Steak
<b>Thursday Nite</b> Prime Rib Roast	\$6.95 including Salad Bar

**The Pizza House**  
New Management

Featuring Sandwiches On

- ★Homemade Bread
- ★Homemade Bunwiches & Soup
- ★Homemade Cinnamon Rolls & Cake
- ★New York Cheesecake
- ★4 Sizes of Pizza ★Lasagne ★Spaghetti
- ★Large Salad Bar

Monday Thursday, 11 a.m. - 9 p.m.  
Friday & Saturday 11 a.m. - 10 p.m.

BREAKFAST Monday - Friday  
7:00 a.m. - 10:00 a.m.


115 S. Lamar  
Eastland 629-8838

**Majestic Theatre**  
Eastland 629-1220

One Showing Only Each Evening  
Open 7:30 Show Starts At 7:50 P.M.

Starts Friday

NICK NOLTE is a cop.  
EDDIE MURPHY is a convict.  
They couldn't have liked each other less...  
They couldn't have needed each other more...  
And the last place they ever expected to be is on the same side. Even for...



**48 HRS.**

PARAMOUNT PICTURES PRESENTS A LAWRENCE GORDON PRODUCTION  
A WALTER HILL FILM - NICK NOLTE - EDDIE MURPHY - "48 HRS"  
ANNETTE O TOOLE - EXECUTIVE PRODUCER D CONSTANTINE CONTE  
WRITTEN BY ROGER SPOTTISWOOD AND WALTER HILL & LARRY GROSS  
AND STEVEN E. DE SOUZA - PRODUCED BY LAWRENCE GORDON AND JOEL SILVER  
DIRECTED BY WALTER HILL

Coming Soon

Frank Galvin has one last chance to do something right.  
**PAUL NEWMAN**  
**THE VERDICT**

20th CENTURY-FOX FILMS

**Ranger Drive-In Theatre**  
Ranger 647-3802

One Showing Only Each Evening  
Open 7:30 Showtime 8:00 P.M.

Fri., Sat., Sun.,

They're the Hottest Things to Hit the Sand ... Since the Sun!



**THE BEACH GIRLS**

... Just Love to Get Physical!

CROWN INTERNATIONAL PICTURES presents "THE BEACH GIRLS"  
Starring DEBRA BLEE + VAL KLINE + JEANA TOMASINA + JAMES DAUGHTON  
And ADAM ROARKE Produced by MARILYN J. TENSER  
Co-Producer: MICHAEL D. CASTLE Directed by PAT TOWNSEND  
Screenplay by PATRICK DUNCAN Director of Photography: MICHAEL MURPHY  
Music Performed by J.NAL. Edited by GEORGE BOWERS  
A MARINER Production • COLOR BY DELUXE  
A CROWN INTERNATIONAL PICTURES RELEASE

**WE'RE IN HOT WATER**

**WE'RE OVERSTOCKED**

**SALE**

(CASH ONLY)

- 2 each - Large USED Executive Desk
- 2 each - 4 Drawer USED File Cabinets
- 2 each - NEW Cabinets With 3 File Drawers, Shelf Space & Combination Lock Drawer (Safe)
- 2 each - NEW Small Desk (With Locking Drawer Self) Student Type!
- 4 each Sharp Calculators - Model 1074 (NEW)  
Reg. Price \$139\* NOW - \$99.95 & Others

Miscellaneous Items Also

20% off All Cash Registers This Week (Cash Only) With Trade.

Need To Make Room For  
Radio Shack Merchandise

**Eastland Office Supply, Inc.**  
**Radio Shack Dealer**  
**No. 775**

112 N. Seaman  
Eastland, Texas 76448  
(817) 629-8942



# County Lifestyle

THURSDAY, MARCH 3, 1983

## The Family Remains Basic Economic Unit

In spite of concerns about the national debt, government spending and income taxes, for most of us "the economy" begins at home. According to Nancy

Granovsky, a family resource specialist, "the family remains the basic living unit, and the basic economic unit in this country."

"In fact, recent research indicates that economic status - including poverty status - is largely dependent on changes in family composition such as divorce, marriage, or remarriage, the birth of children, children leaving home and widowhood," states Granovsky.

Granovsky is one of several family resource management specialists with the Texas Agricultural Extension Service who are concerned with assessing and improving the economic well-being of Texas families. Assessing family economic status involves research on income and

poverty status, consumer spending, credit use, family savings patterns, economic decision-making and other factors related to the economic behavior of families. These economic behaviors affect the standard of living for Texas families.

Many Texas families lack the time, energy, or money to fulfill their expectations for a desirable standard of living, says Granovsky.

Other families have problems using resources when those resources are subject to changing influences from within or outside the family. The growth of children into teenagers for example, the sudden dependence of a relative, or a change in family composition can alter the family economy.

Outside factors such as the national economic climate, inflation, and unemployment also have a dramatic effect on an available resources, she adds.

Data about Texas families and their economic resources are used as a basis for program planning and to help individual families cope with changing economic resources.

"Improving the economic well-being of families through education for effective financial management

is the primary goal of our program," says Granovsky.

Programs conducted through county Extension centers include teaching families to utilize record keeping and manage financial resources, providing computer assistance to analyze family spending patterns, and offering educational programs on estate planning, credit use reduction and savings plans.



MR. AND MRS. C.W. NEWNHAM

## Newnhams To Celebrate 50th Anniversary Sun.

Mr. and Mrs. C.W. Newnham will celebrate their 50th wedding anniversary Sunday, March 13. The couple's children will honor them with a reception at the Texas Electric Reddy Room on March 13 from 1 to 4 p.m.

## Beta Upsilon Sets Theme For March 5th Meeting

Beta Upsilon Chapter of Delta Kappa Gamma will meet Saturday, March 5, at 9:30 in the Eastland National Bank Community Room, Eastland, Texas. The theme for this meeting

is "Exploring: Civil War Texas." Mr. Tom Wilson of Eastland will present the program on Texas and the Civil War.

Hostesses for the meeting will be Mildred Adair, Adeline Meredith, Beulah Beth Smith, Diane Hess, and Melba Aaron.

Beta Upsilon celebrated its forty-seventh birthday recently with a salad luncheon in Cross Plains.

Ella White gave a brief history of Delta Kappa Gamma and the chapter, emphasizing the importance of pride and professionalism in our educational endeavors.

Special memories of one of the founders, Annie Webb Blanton, were given by Allie Terrell and Sybil Sears. Thirty-three members and two guests attended this meeting.

### Graham Memorial Hospital

Odessa Murray  
Mary Sargent  
James King  
Myrtice Berg  
S.L. Boatman  
Althea Kizer  
Cleo Vell  
Joe Coats  
Ida Ballard  
Velma Coe  
Sylvil Kizer

### Eastland Memorial Hospital

Angelia Croley  
Charlotte Ann Clark  
Ruby Moore  
Ricky L. Campbell  
Nancy Manire  
Jack E. McCantles  
Vic L. Hendrix  
Judith Hill  
Leo Brooks  
Hattie Boggs  
Casey G. Meazell  
Paula K. Corley  
Nina Hudson  
Minnie Wigington  
Ethel Rowch  
Baby Girl Corley  
Baby Boy Hudson  
Jake Lee  
Ed Wende  
James Whiteside  
Joyce Berry  
Fannie James  
Merle Dry  
Amanda Dossey  
Walter Rice  
Edith Irue Long  
Nina Hart  
Susan Alexander  
Elva Freeman  
Marion Herridge  
Edith Hull  
Dorothy Tonne  
Jeannie Walker  
Orlena L. Preslar  
Elizabeth Gray  
Eva Mealar  
Tammy Baker  
Edna Joyce  
Gloria Ecoff  
Billie Jean Dendy  
Billie R. Wagner  
Tracy L. Thackerson  
Brawner Files  
Gleann Hamilton  
Floyd Fischer  
John Terry  
Myrtie Richardson

## Hoffman To Give Art Demonstration

Experience new concepts in enameling art. Gain self assurance and mastery of the medium. See enameling demonstrated where color and texture come alive. Learn the secret of exciting new techniques of composition are captured and design. Dorothy Hoffmann of Eastland will explain and demonstrate the Art of Enameling for the Eastland

County Art Association, 7:00 p.m. Thursday, March 3 at Texas Electric Reddy Room.

Dorothy received her BS degree from Texas Tech University and has studied art with Jean McGee, Helen Green, Jan Herring, Joan Salvant and Caryl Walker.

You'll come away from this art demonstration with an increased understanding of fine art.

### ATTENTION

The Health Spa at 309 W. Main in Ranger, now has day classes (ladies only) for Jazzercise beginners. Classes will be held from 9:30 a.m. to 12:30 p.m. Mon., Tues., Thurs. and Fri. Night classes will begin at 6:30 p.m. to 9:30 p.m. Mon., Tues., Thurs. and Fri. The Health Spa will be open each Wednesday night from 7:00 p.m. to 8:30 p.m. for men only. Also every Wednesday evening the Health Spa will have Mousercise (Exercise) classes for the kids. Hours: 2:30 p.m. - 3:30 p.m.; 1 yr.-4 yrs. 4:30 p.m. - 5:30 p.m.; 5 yrs.-10 yrs.

Classes are \$2.00 per person. For any additional information please call 647-1682 or 647-5172.

## Heart Judy's Country Corner

Opening Wednesday, March 3  
413 Conrad Hilton Ave.

Flowers for all occasions  
Craft supplies  
Handmade gifts  
Live plants  
Wood Accessories

Judy Cozart  
Mary Clifton  
442-4052

Thursday & Friday 1-6:00 Sat. 10-6:00  
Country At Heart



The York heat pump gives you a cool deal.

- Year-round heating and cooling
- Computer-controlled for maximum efficiency
- All coils have quality copper tubing

- Free estimates on installation
- Units qualify for electric company rebates

We're your York dealer—a specialist in design, installation and service.

J & J Air Conditioning  
629-2251

Make Sunday Special At The



Enjoy our Sunday Brunch in the Library Restaurant at the Kiva

from 11:00 am - 2:00 pm. Choose from a selection of breakfast or luncheon items, and have fresh squeezed orange juice with your meal. To compliment your meal there is baked bread and muffins, danish or sweet rolls and an exquisite dessert table. Complimentary champagne and wine served after twelve noon. Have brunch at the Kiva on Sunday and we will make you feel special.

ABILENE TEXAS HWY 80 WEST

915-695-2150  
For Reservations Call 1-800-592-4466  
5402 S. First Street

**Eastland Galleria & Gift Shoppe**  
1013 W. Main 817-629-2092  
Jamie Heffley, Owner  
"Custom Framing" (Fast Service); One Day Film Processing; Art Classes, Arts & Crafts, Gifts

**Gayels**  
The House of Ladies and Junior Fashions  
**Last Call Shoe Sale**  
Group of Ladies Dress Shoes from 69.00 to 95.00  
Your Choice \$30.44  
Group of Suede Ladies Dress Shoes Value up to 75.00  
Your Choice \$20.00  
705 Avenue I  
Eastland, Texas 76837  
Phone 817-642-2091

**My Shoe Shoppe**  
Fall And Winter Shoes \$12 to \$20  
Fall And Winter Bags and Boots 60% off  
j-20 (next to Best Western) 629-2172

Presenting ALL FALL & WINTER MERCHANDISE \$5 - \$25  
David & Quetta's  
Interstate 20 629-8030

**Golden Destiny**  
Miles West 80  
Open Mon.-Fri. 9 to 5  
629-8492 629-8194  
All Breeds Bathing, Clipping, Grooming.  
Specializing in Poodles  
Operated By Lorraine Lester

**Hallmark Garden Center**  
!  
410 S. Mulberry  
Eastland



