

HALL OF REMARKS

BY HERREL HALLMARK

WASN'T MONDAY a beautiful day in this area? Early in the morning, it was a little windy but later in the afternoon the wind died down and the day was perfect, except for the sand, which seemed to blow in just before sundown.

Temperatures were in the 80s and made for a very lazy day. The type of day where you wish you were out somewhere fishing or doing anything else which does not take much activity.

I WISH the weather would make up its mind whether it is going to stay warm or cool. One day it seems to be cold and requires the use of heaters and wearing of long sleeves and sweaters or coats; however, the next day is hot and you use an air conditioner and wear short sleeves.

I guess Texans should be used to the sporadic weather conditions since the old saying in Texas is, "If you don't like the weather, wait a while and it will change."

IF THE NICE weather holds up this week, it will give you a chance to take advantage of the city's annual cleanup campaign. Five city trucks were to tour all residential areas of Cisco on Monday, Tuesday and Wednesday of this week to pick up trash, debris and tree limbs to be hauled to the city landfill.

If you missed the trucks on those three days, they will be available on call Thursday and Friday. If you have trash to be hauled, you are asked to telephone city hall.

IN JUST a little over a

Bettye McGinness Will Be On 'Mid-Day' Program

Bettye McGinness, member of the Cisco Civic League and demonstrations chairman of the Cisco Folklife Festival, will appear on the Mid-Day with Kay program. She will be on Thursday, April 15, at 12:15 p.m. on KRBC-TV. Mrs. McGinness will show some of the folklife articles that will be demonstrated at the Folklife Festival: corn husk dolls, weaving and spinning, rug making and jerky making.

Chili Cook-Off Set At C.J.C.

Next Wednesday

During Ranch Week at Cisco Junior College, there will be the annual chili cook-off. It will be held in front of Wrangler Hall on Wednesday, April 21. There will be two divisions. Division I is open to the public and Division II is restricted to students. Cash prizes for both divisions will be: first, \$75; second \$50; third \$25. The public is invited to participate. Contestants should contact Dick Spencer, telephone number 442-2567, extension 164 by 3:00 p.m. April 19.

The Bitter
It has a lot to offer.

The Layman's National Base Committee, Inc.

month, local school students will be out for summer vacation here. I imagine some of those students are already getting a case of "spring fever."

I guess I could even be developing a bad (or good) case of spring fever.

MAKE PLANS now to attend the annual Folklife Festival which is scheduled for April 24 and 25.

Entrants are needed for the annual parade which is set for Saturday, April 24, at 10:00 a.m. For more information concerning the parade call Olin Odum III, at Cisco Junior College, (817)442-2567, extension 140.

Cisco Child Care Center Hunts Easter Eggs At Cisco Nursing Center Last Friday



Dr. John Stone To Read His Poems



Dr. John Stone, distinguished poet and pro-

fessor of medicine (cardiology) at Emory University School of Medicine will read from his poems at the Cisco Junior College campus Monday evening, April 19. The reading will be held in the Maner Memorial Library at 8:00 p.m. An informal reception will follow the reading. The public is invited, and there is no admission charge.

Dr. Stone's published poetry includes two books: "The Smell of Matches" and "In All This Rain." His poems have also appeared in such literary journals as "The American Scholar," "Southern Humanities Review," "The New York Quarterly," and "The

Southern Poetry Review." Among his awards and honors are the Literary Achievement Award presented by the Georgia Writer's Association, 1973, and the Writer of the Year Award in Poetry presented by the Dixie Council of Authors and Journalists, 1981.

Noted southern poet and novelist James Dickey writes, "Stone is not only a valuable physician, but a poet who is able to get his outstanding qualities of imagination and formal technique into a relationship that produces poems of great value." John Ciardi has called Stone's "In All This Rain" a "master work."

Stone has read from his

poetry at Johns Hopkins University, Kent State University and the University of Arkansas.

Read the classifieds

Official Memorandum
By
WILLIAM P. CLEMENTS, JR.
Governor of Texas

GREETINGS:

AUSTIN, TEXAS

"Get To Know A Lifelong Friend—Your Library."

With this as their theme, Texas Libraries are joining with libraries all over the United States to observe Library Week from April 18 through 24. Libraries are indeed lifelong friends. From the child just learning to turn the pages of picture books to the senior citizen trying to understand a world that has undergone dramatic change since his or her youth, libraries provide both information and recreation.

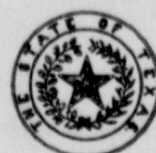
Public libraries as well as the libraries in schools and colleges and universities provide both the information that Texans need and the information that makes their lives fuller. Books and magazines and films can take us to an era of history long ago, to a spot on the globe we may never visit, or through the imagination of a writer to some future time. In our libraries we can find out how to repair our cars, prepare more nutritious meals, or communicate more effectively with our friends and families.

The future of our State depends upon a well-informed public. Libraries make it possible for all Texans to become well informed. Also, a wide range of library materials and services are available through interlibrary loan and from services available through the Texas State Library System.

WHEREFORE, I, as Governor of Texas, do hereby designate the week of April 18-24, 1982, as

LIBRARY WEEK

In Texas, and urge all Texans to visit their libraries and take advantage of the services available to them.



In official recognition whereof, I hereby affix my signature this 22nd day of March, 1982

W.P. Clements, Jr.
Governor of Texas

Cisco Bank Is Honored For Top Performance

The First National Bank of Cisco received a citation this week as one of the top banks of the nation in terms of financial performance based on an analysis conducted by the Bank Administration Institute (BAI).

The citation noted that the First National was one of the top 1,200 banks of the nation's some 14,000.

Lee D. Woolley, president of the Cisco bank, was commended by the BAI "as chief executive officer of one of the 1,200 high performance banks in the country — recognition of the leaders in the banking industry long overdue." He has been president of the bank since January, 1974.

A news release by the Bank Administration Institute, which deals extensively with educational activities for its members banks, quoted Joseph Ciaburri, chairman of BAI's High Performance Bank Assembly, in saying "we felt that the performance profiles of these 1,200 banks could be indicative of unique management practices worth examining and analyzing. They have managed to maintain a significant edge in an increasingly competitive market, and we think it's worth finding out why." The Institute's researchers used their 1980 Index of Bank Performance (based on information required by the FDIC) as a statistical base, weighing three factors: return on assets, return on equity and deposit growth. Using these criteria, the top 10% of banks in each state were selected.

As a result of the study, plans are underway for an exclusive High Performance Bank Assembly, June 1-4 in Denver, with enrollment limited to the chief executive officer of cited banks. "We



L.D. WOOLLEY

anticipate high involvement in the assembly, since it is a unique opportunity for 'thinkers' to meet and discuss the future of their business and management techniques that contributed to their success," said Johnette Beacham, program manager of Community Bank/Executive Leadership at the Institute.

A survey of CEO's eligible for participation in the assembly has indicated strong topics of interest, said Ms. Beacham. "Profit planning and finance, strategic planning, marketing, lending, operations and data

processing are areas which the group has identified as their priority issues."

The High Performance Bank study and assembly were developed by Bank Administration Institute, headquartered in Rolling Meadows, Ill., in keeping with its goal to provide timely education and research for the financial services industry.

Cisco bank employees have participated for many years in banking educational programs.

The BAI, commenting on Mr. Woolley's work, noted: "Your identity as a high performance bank is a positive statement of its skillful management, one we believe deserves recognition in your community."

Nimrod 4-Hers

Hold Meeting

The Nimrod 4-Hers met April 5. The following members were in attendance: Tommy Donham, Margaret Yeager, Tim McKinney, Terry Owings, Emory Kea, Rex Taylor, Scott Anderson, Cindy Foster, Tommy Claborn, Justin and Shannon Kendall. Adults attending were Mr. and Mrs. Anderson, Mrs. Yeager. County Extension Agents were Christy Gentry and John Blair.

The Nimrod 4-H had two new members join Laurina Gage and Robert Heath.

John Blair and Christy Gentry shared a program on "Crime Prevention." They explained about operation identification and how it protects our possessions.

The meeting ended with refreshments.

Reporter,
Cindy Foster

POLICEMAN RESIGNS

Jerry Carter, member of the Cisco Police Force since last January, has resigned to accept a position as Eastland County jailer, Chief Raymond Blevins reported Tuesday. The resignation will be effective April 16th. A replacement was being sought.

TOOL BOX STOLEN

A tool box and tools valued at some \$300 was stolen from a pickup truck owned by Hershell Goode, 205 West 11th Street, last Sunday, according to a city police report. Chief Raymond Blevins said the theft was being investigated.

BIRTHS

ANGELA JOY RIGGS
Mr. and Mrs. Richard Riggs, Jr., are proud to announce the birth of a daughter, Angela Joy. She was born on March 11 at Eastland Memorial Hospital. She weighed eight pounds and one ounce, and was 20 inches long. Angela was welcomed home by her sister, Melissa. Maternal grandparents are Mr. and Mrs. James R. Coats, Sr. of Cisco. Paternal grandparents are Mr. and Mrs. Richard Riggs, Sr. of Cisco and paternal great-grandmother is Mrs. Floyd Pack of Stephenville.

CROSS PENS
Ideal gift for every occasion.
COMMERCIAL
PRINTING CO.
Cisco p-36

LOBO & J.R.'s
Family Hair Care
Precision cuts, perms, sets-color. Full Service for the whole family.
442-9979 or 442-3551, 709 Ave. D, Cisco.
p-15

CISCO KID
CAR WASH
3rd St. and Ave. E
Where Most People Wash. Wash your venetian blinds, throw rugs, motor.

J.P. Doodles

WE DON'T SELL ROUND-TRIP TICKETS FOR THIS RUN—YOU CAN'T GET HERE FROM THERE

DRAFT EVADER
TAX EVADER
JUST AUDITED

BUS

BORDER
EVASION EXPRESS

EXIT USA

By Barry McWilliams

CLASSIFIED ADS

Thursday, April 15, 1982

OPPORTUNITY RINGS every time you use the Want Ads



JUST CALL 442-2244

Have something to buy or sell? One phone call to us is like dialing our entire circulation...

THE CISCO PRESS

Publication No. (USPS 113780) 442-2244 700 Ave. D., Cisco, Texas 78437

Second Class Postage paid at Cisco, Texas, under Act of Congress in March, 1970. Published semi-weekly Thursdays and Sundays. Publishers: Mr. & Mrs. H.V. O'Brien...

CISCO-EASTLAND-RANGER SUBSCRIPTIONS RATES: City and in county \$13.00. Out of county and out of state \$16.00, \$1.25 by the month.

NOTICE: Unless you have established credit with the Cisco Press all classified ads must be paid in advance.

MEMBER TEXAS PRESS ASSOCIATION

IMPORTANT Check your ad the First Day it appears. In event of errors, please call immediately to have it corrected.

NOTICE

REGULAR CONSIGNMENT AUCTION, Thurs., March 18, 6:30 p.m., in building between C.P. Discount and Western Auto in Cross Plains.

NOTICE

NEED MONEY? We can help! The Naron Agency has the perfect fund raising program.

NOTICE: For home delivery of the Abilene Reporter News! If you live north of 8th Street or west of Avenue N call Laura Hamilton.

HOME REPAIRS Anything done around the house. Painting, carpentry work, concrete work, small plumbing, etc.

CUSTOM FARMING Grass planting, garden plowing, breaking and sowing.

SAW SHARPENING SERVICE Scissors, hand saws, tin snips, circular saws, chain saws, lawn mower blades.

IN ONE FAMILY OUT OF 5, MOTHER GETS A JOB TO HELP PAY FOR A CHILD'S UNIVERSITY EDUCATION. LIFE INSURANCE CAN HELP AVOID THIS!

THE CLEAN SWEEP

Chimney Sweeping Wood heater service and installation 817-442-4568.

STEVE COZART CONSTRUCTION

Remodeling Add-ons New Homes Cabinet Concrete Electrical, etc. Free estimates

HOLLIS WILLIAMS CONSTRUCTION

Residential and commercial. Remodeling, additions, new homes, custom cabinets, concrete, electrical work.

HOUSE LEVELLING Interior and exterior painting. 893-5803, Clyde, p-45

Allen's Heating Air Conditioning Sales & Service 854-1795, Baird p-tfc

The Cisco Press

Political Calendar

The following candidates have authorized this newspaper and paid commercial rates to be listed as candidates:

County Commissioner, Precinct Two O.E. (Jack) Blackwell, Incumbent

County Judge: Scott Bailey, Incumbent

District Clerk Marciel G. Justice Mary Jane Rowch, Incumbent

State Representative 65th Dist. Democrat Lee Haney

Democrat Jim Parker

22nd State Senate Democrat Bob Glasgow

Commissioner Precinct 4 Eastland County C.B. (Runt) Dill

Congress, 17th District Charles Stenholm, Incumbent

Pol. Adv. - Paid for by each candidate listed

NOTICE

Freeman Draper Custom Drapes for one window or for the whole house. For more information call 725-6684.

44-ATP

HOME IMPROVEMENTS

Advertisement for Tim Barton and Greg Nichols, Building Contractors. Services include New Homes, Add-Ons, Cabinets, Electrical, Concrete, Blown Insulation, etc.

J.A.C.'s FIX IT SHOP 903 W. 5th Street 442-2274 Weekdays 5:30-9:30 p.m. Saturday 8-5

RAMBIS ELECTRIC 442-4212 WIRING & REPAIR SERVICE ELECTRICAL SUPPLIES APPLIANCE REPAIR & PARTS 110 W. 8th. St. Cisco, TX.

REST OF THE GOSPEL Many verses show that our body is a container to hold our spirit selves. John 2:19, 21; II Corinthians 5:1; I Peter 1:14; Matthew 26:61. This container is called a temple because it was created by our Heavenly Father to house our spirits.

YOU NEED A TV CABLE CONNECTION for complete television enjoyment Southern Television Systems Corps Serving Cisco, Eastland, Ranger Call us for complete information

NOTICE

WESTERN MATTRESS CO. San Angelo Mattress and complete bedding. New and exchange on delivery. Phone Cisco Motel, 442-9995. Leave name. p-27tfc

Starting work. Need babysitter immediately to keep child age 2 in your home. Evenings 2-11. Call between 8 a.m. and 1 p.m. References requested. Call 442-1837. p-30

NEED AMWAY PRODUCTS? Free delivery and money back guarantee on all products. Call Louann Ballinger, 442-4806. p-32

HOME REPAIRS Painting, carpentry, insulation, landscaping, custom cabinets. Call for free estimates 442-3872. Discount to all senior citizens. p-35

ROY COZART GENERAL CONT. Metal buildings Concrete New Homes Remodeling No job too large or small Free estimates 35 years experience 442-1912. p-33

NOTICE

If your water isn't good tasting, odorless and clear. Call Jean Jessup, 442-3766. p-33

DOZER SERVICE Tanking, brush pushing and all types of dirt work. \$35 per hour. Minimum 4 hours. Call Bob Hallmark, 442-2127. p-tfc

NEEDED: About size 16 formal, nice for teenager. Also, 2 girls 20 inch bicycles for sale. Call after 6 p.m. 442-3456. p-32

WANT TO BUY: Old fashioned commode with tank on wall in working condition. Pedestal lavatory in good condition. Call collect 806-237-3535. p-31

WANTED

HELP WANTED: Station attendant, cashiers, bookkeeper and general handyman. Must be experienced. Apply in person at Guthrie Truck Harbor, I-20 West, Cisco, p-18tfc

WANTED: To do sewing in my home. 609 Austin Ave. (College Hill). Call 442-4947. p-15tfc

WANTED: Landowners that are offering season and or day lease privileges for hunting game. Cisco Chamber of Commerce, P.O. Box 991, Cisco, Texas 78437, 817-442-2537. p-84tfc

HELP WANTED: Need live-in housekeeper-cook for a pleasant older lady. Not an invalid. Living expenses and small salary. Short term: 3 months now and 3 1/2 months in the fall. References required. Call 442-1163. p-30

WORK WANTED: I will refinish wood and metal furniture. I also will do any type of work around your place. Yard work. Prices reasonable. Call 442-2363. p-34

WANTED: Laundry attendant for weekends. Apply in person at Taylor Center No. 3, Cisco. p-19tfc

HELP WANTED: Mature cashier. 3-11 shift. \$3.50 per hour. Taylor Center, 100 Ave. D, Cisco. p-45tfc

PETS

TO GIVE AWAY-Puppies, approximately 2 months old, male or female. Call 442-2655, after 5 p.m. on weekdays, or anytime on weekends. p-30

FOR RENT

FOR RENT: Trailer space without gas hookup. Water furnished. \$35.00 monthly. Call 442-3593. p-28tfc

MINI WAREHOUSE STORAGE as low as \$20 month. Call 442-3340, Cisco. p-57tfc

MOBILE HOME SPACE FOR LEASE: One acre tract. 442-3330. p-4tfc

FOR SALE

FOR YOUR leisure reading time stop in at the Cisco Press and buy a book written by authors from the Eastland County area. 700 Ave. D. 442-2244.

GARAGE SALES

FIVE FAMILY SALE: Saturday, April 17, 8 to 4 only. Furniture, antiques, clothes all sizes, bedspread, curtains, lots of good items at Old Rust Processing Center, half way between Cisco and Eastland on Highway 80. Ya'll come rain or shine. p-30

SALE: 607 East 8th Street, Cisco. All day Saturday. 17 nylon paneled drapes, Frigidaire electric stove \$75, metal utility cart, 45 picture frames, radios, large T.V. walnut cabinet, also inquire Lowery organ appraised \$1200 will sell for \$600 firm. p-30

GARAGE SALE: 508 West 10th, Cisco. Water bed, pool table, clothes, T.V., misc. items. Saturday only, April 17. p-30

GARAGE SALE: Second residence on right after cross railroad tracks on Lake Road near college. Thursday and Friday. p-30

FOR SALE

FOR SALE: Put some pizzazz between your legs. O to 60 in 8 sec. But still gets 40 mpg. Come by 1604 Liggett or call 442-3454. p-32

FOR SALE: Want economical transportation? Then you need this 1980 Yamaha 650cc maxium 40 mpg or better. Come by 1604 Liggett or call 442-3454. p-32

THE CISCO PRESS has the "New Living Bible", including "The New Living Bible Catholic Version." They also have King James and Inspirational cards, for all occasions. 700 Ave. D. 442-2244.

FOR SALE: Small Library Tables, formica and wood tops. Prices \$7 to \$14. Red Owens, 711 East 13th, Cisco. p-38

FOR SALE: 1977 T-Bird. \$2450. Call 442-2572. p-33

FOR SALE: Very good shelled pecans. Call 442-2684. p-35

FOR SALE: '79 Mercury Capri. Turpo charged, low mileage and new tires. PS, PB, AC and A-FM/cassette. \$5000. Call 442-2500, 8-5. 442-4650 after 5. p-30

Tomato & pepper plants, 5 cents each; strawberry plants, \$1.25 doz.; geraniums 35 cents; begonias 25 cents; gift plants \$1.25 up; dish gardens \$2.50; cactus gardens \$2.50; hanging baskets \$3.50. ABC PLANT GARDEN, 405 West 13th, Cisco. p-30

REAL ESTATE

FOR SALE: Now receiving offers on Charlie Nosek's 3 room house and lot 50 ft. by 125 ft. at 1112 East 10th Street, Cisco. Terms cash. Require a 10% deposit to accompany offer. No warranty of property. Property to be sold as is. Seller reserves the right to reject any or all offers. Said property will be shown Sunday and Monday afternoons, April 18 and 19th, from 1:30 p.m. to 5:30 p.m. Mail offers to Mrs. Louise Pryor, 801 West 6th Street, Cisco, Texas 78437. p-28

One of the nicer homes in Cisco, excellent location, upkeep very good, paved street and not overpriced, you will like this place and there is no sign up in front. Your dream can come true, being offered is one of those stately, beautiful, well kept, two story dwellings. When this house is gone you may never ever have a chance to own one again. In many ways the house is priceless but you can buy it within reason. You will have the past, present and future all in one.

REAL ESTATE FOR SALE: 2 bd. house, 202 Ave. I, \$10,000.00. 4 acres outside city limits, Highway 80 east. Call 442-3593. p-28tfc

FOR SALE BY OWNER: 3 BR, 1 Bath, Living room, Dining room, Kitchen - corner lot - large oak trees - quite neighborhood - fireplace - double carport - storage/shed - 711 E. 21st, Cisco. Call 442-2211(ask for Ron Patton) or 442-4377 after 5:00 PM.

FOR SALE: 2 bedroom home with life time vinyl siding, all paneled, carpet and drapes, dishwasher and garbage disposal, 2 1/2 lots with good water well, 2 storage buildings, 2 air-conditioners, and pool table included. 508 East 8th, Cross Plains, 725-6648 or 725-7311. p-82tfc

Mary Yovonne McMillan Real Estate Broker 104 East 8th - 442-3846 806 West 13th. 2 bedrooms, 2 lots. 80% financing possible. \$22,000 708 Ave. I. 2 story with columns, 12 big rooms, pretty kitchen. \$70,000 30 acres south I-20 east city limits. \$55,000 Country store and home. Rising Star Highway. On one acre approximately. \$22,500 1302 Front. Brick home. 3 bedrooms, 1 1/4 bath, central h/a, fireplace, parlor stove, family room, living room, and hobby or office, fenced yard, pretty oak trees. Half block from junior-senior high school. One block to swimming pool. FHA or equity. \$65,000 1301 Harrell. Fresh as spring. All redone. 2 bedrooms, 2 baths, utility, 2 carport, central a/h. 308 East 20th. Large 3 bedroom house and good size shop building on 3 lots. Home and shop adaptable for many uses. \$40,000 ALMOST SOLD OUT WE NEED LISTINGS LET US SELL YOURS TOO Anita Webb, Associate, 442-3546 Ray Moody, Broker, 725-7279 Office hours 9-12 and 1-5 Mon.-Fri. Saturday & Sunday Anytime By Phone. "We solicit your listings."

FOR SALE

For Sale: 1977 Yamaha XS 750 with C.B. Fully dressed. \$1,700. Call 647-3330 or 629-8232. TF

FOR SALE: Four gentle ponies. 6x24 Dugan gooseneck trailer. Half-camper sleeper with door. Call after 5 p.m. 442-2304. p-20

FOR SALE: Partially burned house to be moved or torn down. 3 bdr., 2 baths, kitchen, dining room, and living room. Call after 7 p.m. 639-2259. Price is negotiable. T-31

FOR SALE: Country home. 3 bedroom, 2 bath, large kitchen, large game room, rock fireplace. Located on 4 1/2 fenced acres near Lake Leon. Big oak shade trees in fenced yard. Call 629-2449. T-30

FOR SALE: 79 Corvette, black on black. 34,000 miles. New tires, every possible option. Looks and runs like new. 629-8787. T-31

BUILDING MATERIALS FOR SALE: Lumber, plywood, siding, moulding and much more. Visit our sales office for prices. Hours 8 a.m. to 4:30 p.m., Mon. thru Fri. and 9 a.m. to 1 p.m. on Sat. Morgan Building Corp., Hwy. 69 North, Eastland, TX T-tnf

FOR SALE: 1975 Ford Elite in good condition. Must sell; \$1400. Ph: 725-6688 12-2c

For Sale: 1979 Dodge Ram D-50 AM/FM Cassette, Custom wheels, bucket seats, sun roof. \$4,200.00. Call 647-3176. TF

VILLAGE ANTIQUES: Genuine Butcher Block, stone keeper, oak tables, 7601 Buffalo Gap Road. 692-3361. Abilene, Texas. T-31

GUITAR AND PIANO SALE: We invite you to come in and look over our many specials. Douglas Piano and Musical, 1612 East Washington. Stephenville. Phone 965-4221. T-31

NEW TWO BEDROOM, 14 wide, \$9,495.00, delivered and set up. Westgate homes. Stephenville. 817/965-7876. T-31

ATTENTION DO IT YOURSELVES: We have several back yard and storage buildings that are slightly damaged or considered factory seconds that we are offering for sale at substantially discounted prices. Contact the factory sales office at Morgan Building Corp., Hwy. 69 N. in Eastland. Mon-Fri. 8:00 a.m.-4:00 p.m. or Sat. from 9:00 a.m.-1 p.m. TNF

FOR SALE: Large Commercial Building on Ave. D in Cisco. 50x100 feet. Front office. Rest rooms, clear-span back. Two large back doors (one on alley, one on slab). Ideal Commercial, Oil Field Related, Warehousing, Retail Center. Write Building, P.O. Box 29, Eastland, Texas 76448, or call 629-1707 or 629-2413. Tf

REDUCED: Juke boxes, pinballs, new and used pool tables...foosballs, and miscellaneous games. 677-2119. 1101 Cypress. Abilene, Texas. T-31

FOR SALE OR TRADE: Lovely 5,000 sq. ft. lodge and 5 individual newly renovated cabins on 12 acres, with 925 ft. of shoreline on Lake Brownwood. Part owner financing. We have acreage large or small as well as dealing in oil and gas production, leases, and oil field equipment. Call Dora Smith, Choate Realty, Cross Plains. (817) 725-6489 after 4 p.m. and weekends. 10-2c

BACK-HIP PROBLEMS? Try traction, plans for 3 positional device \$10. Can be built in 3 hours for \$6. T&G ENTERPRISES, Box 725, Black Mountain, NC 28711 T-36

CLASSIFIED ADS sure to get results

NEED TO SELL SOON: 3 bedroom, kitchen, living room, bath, large concrete cellar, on 100 ft. by 150 ft. lot. Fruit trees, 3 pecan trees. Strawn, Texas \$65,000 firm as is. If I improve house, price goes up. Phone 817-672-5978, Strawn, Texas. T-31

FOR SALE: The Criswell Study Bible; hardbound; \$19.95 at the Eastland Telegram. Edited by Dr. W.A. Criswell, pastor First Baptist, Dallas; Presentation page; King James Version; Partial contents: Books of the Bible, Spelling changes, The Scarlet Thread, Charts of Kings and Prophets, Chronology, Between the Testaments, Calendar, Family Trees, Harmony of the Gospels, Prophecies, monies, weights and measures, archaeological discoveries, glossary, subject index, concordance, maps. tf

VEGETARIAN CROPS: Delicious, economical, easy. Send \$3 and self-addressed stamped envelope for recipe: SCHULTZ, 7060 Elder Lane, Sun Prairie, WI 53590. T-37

FOR SALE: Two axels, one with electric brakes, 8 ply nylon tires, springs and equalizers. Call 629-2259. T-33

1981 Granada p/s, p/w, a/c, silver w/silver vinyl top; loaded (sharp car.) Call Jim toll free, 1-800-792-2942, or 259-2193 after 6.

1981 Mustang, 4 sp., a/c, p/s, stereo (beautiful car). Call Jim toll free 1-800-792-2942, or 259-2193 after 6.

1981 Lincoln Town car, loaded and nice. Call Jim toll free 1-800-792-2942, or 259-2193 after 6.

1981 F150 Explorer, a/c, p/s, p/d, stereo, right mileage. Call Jim toll free 1-800-792-2942, or 259-2193 after 6.

1982 F150 4X4, ready to work (sharp truck). Call Jim Toll Free 1-800-792-2942, or 259-2193 after 6. 14

NEED TO SELL SOON: 3 bedroom, kitchen, living room, bath, large concrete cellar, on 100 ft. by 150 ft. lot. Fruit trees, 3 pecan trees. Strawn, Texas \$6,500 firm as is. If I improve house, price goes up. Phone 817-672-5978, Strawn, Texas. T-32

FOR SALE: 3 bedroom, 1 bath home. Large kitchen, workshop in back, large pecan shade tree. Centrally located. 211 S. Walnut, Eastland. Call Ed Landry, San Antonio, 512/341-5697 or Doris Graham Loraine, 915/737-2744. T-37

EMPLOYMENT

LADIES-CAREER OPPORTUNITY
Nation's #1 Gift/Toy Party Program hiring AREA SUPERVISOR. No investment. Weekly checks. Free training, supplies and sample kit. Detail without obligation. Call Linda COLLECT (214)644-9500. p-31

HELP WANTED: We are now accepting applications for nurse aides. All shifts and afternoon dietary. Paid holidays, insurance, retirement and stock plan available. Apply in person 700 S. Ostrom, Eastland. T-30

GIANT PROFITS Selling recipes mailorder: Traders, Dept. "T" P.O. Box 706, Turnersville, N.J. 08012. T-32

HELP WANTED
WE NEED WORKERS SKILLED AND UNSKILLED. TOP WAGES AND BENEFITS. PEANUT CORPORATION OF AMERICA HWY 6 WEST GORMAN, TEXAS 817-734-2757. ASK FOR EDITH HARPER OR LARRY STEWART

THIS IS NOT SEASONAL WORK. ALSO LOOKING FOR STUDENTS PART-TIME AND SUMMER WORK. T-30

RUSSELL NEWMAN IS NOW HIRING. Russell Newman located on I-20 in Cisco is now hiring machine operators. Starting salary \$3.50 hr. Excellent company benefits. Paid vacation after 1 year. Company insurance available. Apply in person from 8-4:30 Mon.-Fri. Phone 442-2005. TNF

COOK OR COOK'S helper needed for evening shift. Full time. Apply in person at Best Western Restaurant. TNF

WANTED: Part-time workers at home who have out-of-town newspapers and magazines of family interest with classified sections. Paid \$1 each for replies on clipped classifieds addressed onto postage-paid cards we furnish. Get details at the Eastland Telegram. Tf

GARAGE SALE

GARAGE SALE
an inside Rummage Sale each Tues. & Fri. beginning March 5. 9am to 3 pm. 306 W. Plummer

GARAGE SALE: 524 Crestwood, April 15, 16 and 17. Girls clothing and other stuff. T-30

GARAGE SALE - MOVING: Couch, coffee table, end table, recliner, matching headboard w/frame and 2 drawer side table. Antique wire and brass bed. misc. household items. 7 Ridge Lane. Turn left off Crestwood and follow signs. Sat., April 17 9 to 6. T-31

WANTED

WANTED: Mature, dependable office help. Should type, have good telephone skills and be able to handle details. Monday through Friday, 40 hours, minimum wage to start; earned advances. Preference to person who knows Eastland people. Apply in person Monday after 10 a.m. at the Eastland Telegram. 29.

WANT TO BUY: Used furniture. S&K Sales, 515 E. Main, Eastland. Call 629-8382 or 629-2241. TC

I want to buy a registered male Chihuahua, that weighs 3 1/2 pounds or less. Call 325-6644 after 5:00 or weekends. T-31

"FOOD FACTS FOR BETTER HEALTH" Thousands of useable everyday nutrition facts never before compiled in one unique book. A must reference. Send \$5.75 to: B.F. ENTERPRISES, P.O. Box 27356, Las Vegas, NV 89126. T-36

PERSONAL

Do you need family, sex or love advice? Please call FREE 1-800-223-4141. Every week day night from 11 p.m. til 2 a.m.-Sally Jessy Raphael or listen on FM 97. T-tnf

SPEED LIMIT 55

Some drivers are still puzzled over the National 55 MPH speed limit. A recent survey shows that nearly 75 per cent of the drivers say they want to keep 55 because they know it SAVES LIVES and conserves fuel. But many drivers still exceed the limit on occasion.

CLASSIFIED ADS PRODUCE RESULTS!

J & A Bargain Box
New & Used Merchandise
629-1133
701 W. Main

A & A Repair
Air Conditioning & Heating
Service and Repair All Makes & Models
200 West Commerce - Eastland
629-1091 Nights & Weekends = 647-3570

THOMPSON'S USED CARS and FARM EQUIPMENT
At IH-20 & Hwy. 183, Cisco
Phone 442-1961, Day or Night

CARS—
1974 Chevrolet Impala, 4 dr.
1979 Ford LTD, 4 dr., 302 engine, power steering, power brakes and air.
1968 Pontiac, 4 dr., real clean, good work car.

TRUCKS—
1980 Ford pickup, 150-6 cylinder, standard transmission.

IT'S GARDENING TIME

TRACTORS—
1-3010 John Deere tractor, LP
1-4010 John Deere tractor, LP
1-40 Massey Ferguson tractor, LP
1-8N Ford tractor

Austin-Western Motor Grader, good condition.

We have just received some more grain drills and tandem discs.

We have a real good assortment of farming equipment, including: Chisels, Tandem discs, Breaking plows, Grain drills, Post hole diggers, and other such equipment.

NOTICE

IN JUST SIX months you can learn COMPUTER Programming. Operating on IBM Systems. Tuition loans 637-5211 Texas Institute 1820 Regal Row, Dallas, Texas 75235. Since 1966. T-33

Remnant Close Out
Decorator Fabric
While It Lasts
1706 W. Commerce
629-1319 TC

SERVICES

NORM'S GLASS
Auto
Residential
Commercial Mobile Unit
629-8161 T-33

PRIVATE INVESTIGATIONS, domestic, civil and criminal. Alexanders Private Investigation Service, State #A3106 Paul Alexander (817) 559-3415. P.O. Box 412, 1600 E. Walker, Breckenridge, Texas. T-37

POE FLORAL
609 W. Main-Eastland
IS EXCLUSIVE DISTRIBUTOR
ROOT'S SCENTED CANDLES
recognized nationwide as the best 629-1711

WE CARE ABOUT YOUR HEALTH
Specializing in physical ailments related to the spine and nervous system.
Dr. Geo. G. McPaul
Chiropractor
Telephone 647-3821
454 Pine Street Ranger
Please Clip & Save TC

BUDDY AARON INSURANCE
Talk to us about 35% diviations

Home-owners "B" Farm & Ranch owners "B"

and also ask about Farm Equipment Special Rates

Broad-Form Coverage on Commercial Properties

629-8533
P.O. Box 392
108 S. Seaman
Eastland, TX

Horse Auction
Horse sale 1st Sat. of each month. Tack sells at 11AM Horses at 1PM. Early consignments welcomed

OK Auction Co.
(817) 559-3612
Breckenridge, TX

TV RENTAL and Repair
Buy, sell or trade.
301 W. Commerce
629-8761

Over Head Doors
Garage Doors
Commercial
Automatic Door
Openers 629-8161 T-36

Quality Roto-tillers 5 H.P.B.S. Eng. Chain drive \$299.95. 647-3054 sale ends April 30, 1982. T-33

FOR SALE: 1981 Ford F150 Ranger supercab, 300-4, 4-speed overdrive, power and air. See at 1107 West 15th, Cisco, or call 817-442-1912. p-31tc

FOR RENT

FOR LEASE OR RENT: Office building, 502 Ave. D, Cisco. Front office, 20x24, carpet, drapes, paneling, central h/a. Additional space in rear, suitable for second office and storage. Two bathrooms. Call 629-2344. p-27tc

FOR RENT: Furnished or unfurnished apartments. Royal Oak Apartments, 1304 Royal Lane, Cisco. Call 442-3332. T-C

FOR RENT: 2 bedroom house and 2 bedroom trailer house in Eastland. Both \$165.00 per month and \$75.00 deposit. Call 442-1197. T-36

FOR SALE: 75 Pinto wagon
73 Chevy 4 door hard top
78 Ford super cab loaded
WE FINANCE
Call 629-8845 TC

FOR SALE
Individual. 1976 Case 580B, '68 Ford 4500, Ditch Witch R40, R60, R65, VP250, Roto Witch, 312 Push, trailers-Lowboy, 22' long, 3 axle, Ditch Witch T-8, Lowboy, gooseneck, 22' long 2 axle, rock saw, Ditch Witch ES24. All equipment in above average to excellent condition. Call (817)629-2344. p-31

FOR SALE: 'Antique Glass and Furniture' and other collectibles. 'We Buy Estates.' The House of Antiques moved to 908 So. Bassett, Eastland, Texas open every day. T-F

Majestic Theatre **RANGER DRIVE-IN THEATRE**

Eastland 629-1220 Ranger 647-3802

One Showing Only Each Evening
Open 7:30 Show Starts At 7:50 P.M.

One Showing Only Each Evening
Open 7:30 Show Starts At 8 P.M.

Fri. & Sat. Only

While vacationing in the Greek Isles, famous detective Hercule Poirot spotted a beautiful woman on the beach. Realizing that she was dead, he did not ask her to dinner.

EVIL UNDER THE SUN

Friday thru Tuesday

Science created him. Now Chuck Norris must destroy him.

He's an indestructible man fused with powers beyond comprehension. In one final showdown, he will push Chuck Norris to his limits. And beyond.

CHUCK NORRIS in SILENT RAGE

RAGTIME

DINO DE LAURENTIS PRESENTS A WOLFGANG PETERSEN FILM
RAGTIME with JAMES CAFFEY BRAD DOUBY WISSEY GUNN ELIZABETH WOODEN KENNETH WAMILLAN JAMES GOSN
WANDY PHOENIX HOWARD E. ROLLINS MARY STEINBERGER Music by RANDY NEWMAN A SUNLEY PRODUCTION
Executive Producers MICHAEL HAUGMAN and BERNARD WILLIAMS Screenplay by MICHAEL WELLSER
From the Novel "Ragtime" by E. L. DOCTOROW Produced by DINO DE LAURENTIS Directed by WOLFGANG PETERSEN

RESTRICTED
UNDER 17 REQUIRES ACCOMPANYING PARENT OR ADULT GUARDIAN

© 1982 COLUMBIA PICTURES INDUSTRIES, INC.

PAT MAYNARD REAL ESTATE

INT. 20 E. NORTH SIDE
629-8568 EASTLAND
442-1880 Cisco



HOMES

A beautiful 2 story home on 2 1/2 lots. 4 bedroom, 1 1/2 baths, formal dining room, study, carpet, central heat and air, thermostatically controlled attic fan upstairs. This home has approx. 3,000 sq. ft. and has been completely remodeled. \$93,500.

2200 sq. ft. in this 4 bedroom, (could be 5), 1 3/4 bath brick home. Carpet, built-ins and a 400 sq. ft. master bedroom. Fenced back yard large patio with Bar B-Q grill. All on a corner lot. \$82,000.

Under construction now! A 3 bedroom, 2 bath brick home, 1834 sq. ft. plus garage. It will be carpeted, a fireplace in a 30 x 24 den and dining area, snack bar and many other extras. Pick your own colors for this one.

Located close to downtown, a large 3 bedroom, 1 bath home that has been remodeled. Priced to sell at \$28,500.

Extra nice 2 bedroom, 1 bath home. Carpeted, central heat and air. This place has been completely remodeled, just like a new home. \$34,500.

A large 2 bedroom, 1 bath home. Living room with fireplace, formal dining room, carpeted and paneled. \$25,000.

At Lake Leon, a large 2 bedroom, 1 bath mobil home on a deeded lot. Large patio, two storage building and other extras. This is located in a good water area. \$30,500.

A 2 bedroom, 1 bath within walking distance to post office, hospital and doctors' offices. Priced to sell at \$18,000.

If you are single or just a couple, this 1 bedroom, 1 bath home will be perfect. Just had a complete plumbing job too. Only \$15,500.

An older 3 bedroom frame home on corner lot. Needs some work done on it. Terms can be arranged. \$16,000.

Want a new home? We have large lots available in exclusive area. City water, sewer and paved streets. This area is restricted to brick homes, only. Reasonably priced from \$4500 to \$4800.

CISCO HOMES

Partially furnished, 2 bedroom home, has large rooms, garage, garden spot and on corner lot. Only \$20,000!

Nice 5 bedroom, 3 1/2 bath brick home with fireplace and living room, separate den, carpet, built-ins, central heat and air and fenced back yard. Present loan can be assumed.

Large 3 bedroom, 1 bath older home. Has large rooms, separate dining room. Bathroom and kitchen have been remodeled. Also, separate garage and storage. \$21,000.

A nice 2 bedroom, 1 bath mobil home on 2 large corner lots. Central heat and air, large rooms, fenced back yard. You'll have country equipment, but still in city limits. Priced to sell at \$11,500.

Home plus rental! We have 3 mobil homes on 7 lots in Cisco. Hookups for two more. Priced to sell at \$23,000. \$375 monthly income now.

2 bedroom, 1 bath stone home on 2 1/2 lots. Lots of pecan, fruit and oak trees. Owner will consider terms. Reduced to \$15,000.

A large 2 story with 5 bedrooms, 2 baths, den, separate dining and breakfast rooms, located on corner lot. Has apartment attached. A very scenic yard with lots of trees.

A nice 3 bedroom, 1 3/4 bath home on corner lot. Central air and heat, new capret, modern kitchen and built-in dishwasher. Also, a garage and storage area.

Enjoy summer in your own swimming pool in privacy fenced yard. This large 3 bedroom, 1 3/4 bath, 2 story stone home also has large game room and a study, which could be a 4th bedroom. As a bonus, a fully furnished rent house goes with this property. 2 large corner lots. Only \$40,000.

SMALL ACREAGE WITH HOMES

20 acres located South of Eastland, with a nice 3400 sq. ft. home on it. Carpeted, fireplace, central heat and air and lots of cabinets, book cases and storage. \$125,000.

Located in Carbon, a 3 bedroom, 1 bath home on 10 acres. Extra large den with wood burning stove, carpeted, central heat and air, outbuildings, several wells and city water. Only \$49,500.

A 3 bedroom, 1 bath home on 40 acres located near Gorman. Has a 24 x 40 building, plus a barn and other sheds. The land is all cleared and has been in cultivation. \$75,000 and owner will carry a note.

11.19 acres with a nice 2 or 3 bedroom home, 3 car garage, plus barn and other outbuildings. The house is carpeted, built-ins in kitchen and with a fireplace. Lots of fruit and pecan trees. A beautiful place. \$64,000.

5 acres. A new 2 bedroom home that is carpeted, wood burning heater, heat pump and other extras. Also, on property is an old house that could be used for a barn. \$48,000.

FARMS & RANCHES

We have 2-4 acre tracts of land near Lake Leon. Water meter included with these. Owners will consider selling a large or smaller tract. priced at \$8500 each.

74 acres located on highway 2526 out of Carbon. 35 acres of cultivation and 1/4 minerals. \$53,500.

12 acres located near Lake Leon on highway. Good hunting land, none of it has been cleared. \$16,500.

Near Lake Leon, a 20 acre tract of land. Some cultivation and good hunting area. \$30,000, owner will finance.

62 acres near Union Center. Approx. 25 acres in cultivation. Good fences, 1/2 minerals. \$800 per acre.

150 acres south of Carbon, 60 acres in cultivation. Good hunting area for deer, turkey and quail. Has house that is good for hunters to stay in. \$500 per acre.

17 1/2 acres near Gorman off Desdemona highway. Water well, natural gas available, 1/4 minerals. \$25,000.

52 acres located north of Eastland on Wayland highway. All in cultivation, four tanks, 2 water wells, barns & pens, and good fences. \$52,000.

10 acre tracts near Gorman located on old Highway 6. City water available. \$10,000.

147 acres near Carbon with approx. 80 acres cleared. Fair to good fences, road frontage on three sides and some minerals. \$500 per acre with terms.

25 acres south of Eastland near Lake Leon. Road frontage, new stock tank, 20% down, owner financed. \$35,000.

500 acres north of Eastland on highway. Kline and native. An older 2 bedroom, 1 bath home with fireplace. Barn and other outbuildings. \$530 per acre.

320 acres located between Carbon and Gorman. Some cultivation, but mostly wooded. Good fences and hunting, some minerals included. \$500 per acre. Owner financed at 9% interest.

10 acres near Eastland. I20 frontage. \$5000 per acre. Terms can be arranged.

Approx. 55 acres in Ranger. Ideal location for subdivision. Utilities available. \$1500 per acre.

COMMERCIAL

Ideal location for a business. A 4400 sq. ft. building on large, paved corner lot. Close in. \$60,000.

2 acres on I20 Olden Ramp East. Ideal location for a business. \$20,000.

Approx. a 6 acre track off highway 80 E. Ideal location for a business. \$25,000.

Valuable I20 property! Approx. 4600 sq. ft. Building, very versatile. Easy accessibility. \$87,500.

In Cisco! A nice brick building with 5,000 sq. ft. in prime downtown location. \$60,000.

In Eastland! A 50' x 100' 2 story building on square. Ideal for retail business. \$32,500.

1.3 acres joining railroad tracks with spur. 3 buildings, one has office and bath, and a 2,000 gallon underground gas tank. \$65,000.

In Ranger! 4 1/2 acres on highway 80 W. 1800 sq. ft. office, 24,000 sq. ft. shop building, 2400 sq. ft. warehouse, other buildings and commercial antenna. Owner will consider terms. \$170,000.

In Rising Star, established service station and garage. Located on busy highway near downtown intersection. Good Income Potential. \$40,000.

Lot on Interstate 20 East, approx. 1/2 acre located near Best Western. Perfect for offices or business. \$16,000.

Located on Highway 80 E. near I20, approx. 1 1/2 acres with old house and large metal garage. Now used as a wrecking yard, but will be cleaned up. \$65,000.

LEASE PROPERTY

For Lease! Commercial 6 acres in Olden. Septic tank and utilities available. No building.

For commercial use only. One to five acres with I20 frontage.



We have other home, land, and commercial listings.

We appreciate your listings and business!

Office Open Saturday Mornings

Kay Bailey
Associate
629-2365

Pat Maynard
Broker
629-8063

Judy Orms
Associate
629-1218

Cindy Foster
Associate
629-8195

In Gorman **Russell Cordell**
Associate
734-2690

In Cisco **Ann Williams**
Associate
442-1880



"Rent-Don't Buy"
DON'S RENTAL
610 W. Main Eastland
629-1632

See
M.H. Perry
For
Southland Life
629-1566 or 629-1095
104 N. Lamar - Eastland

Residential and commercial. Remodeling, ad-ons, concrete work, new homes, electrical work, etc. Mickey Williams 652-2235. TC

NOTICE: Duke Johnson Contractor Remodeling, Concrete, Electrical, Plumbing, Fencing, Boat Dock, House Leveling. Call 647-3682 or 647-3679. T-C

Metal Buildings
All Welded Construction
Clear Span to 60' Wide
Any Length
Built to suit your needs
A-1 Sales
215 S. Walnut
629-2102 Anytime
T-C

Complete Remodeling
Concrete-Electrical
Roofing
Patios-Driveways
Room Additions
Siding-Windows
Plumbing
Chain Link Fence
No job too large for A-1 Sales
215 S. Walnut
629-2102 Anytime

Choice sites for
• Mobile homes
• Homes
Located south part of Pogue Ind. Park.
A-1 Sales
215 S. Walnut
629-2102 Anytime

NBC NEWS/MUSIC FM 97
RADIO ★ 24 HOURS

Beil Draperies
FASHION INTERIORS

Your Complete Decorating Center
Fine Custom Accessories

Draperies- Light Fixtures/Tables/Special Pieces Woven Wood Shades and Shower Curtains.
Carpet- Call 629-1319 For Appointment
Ceiling Fans - Or Come By
Mini Blinds- 1706 W. Commerce Eastland, Tx
Bedspreads- Fireplace Equipment

VISIT OUR SHOWROOM Free Estimates

LOANS **REAL ESTATE**
Carol Senkel
LOAN PRODUCTION & REAL ESTATE
COMPLETE LOAN SERVICE
(817) 629-8539 Office
(817) 629-1269 Res. TC
CAROL SENKEL, Broker
601 West Main Street
Eastland, Texas 76448

Lone Star Title & Abstract Co.
Joe B. Koonce, Mgr.
101 W. Main
Eastland, Texas 76448
(817) 629-2683

R&R Carpet Cleaning
Randall Rogers, Owner
FOR FREE ESTIMATE
Call 629-1121
Over 5 years service in this area.

MAKE IT SPECIAL....
MAKE IT KIVA
The SPECIAL PEOPLE at the KIVA know how and work hard to make your every visit SPECIAL.
Minutes away, for a Family Resort World Apart
Luxury Guest rooms and Suites.
Indoor and outdoor pools.
2 all-weather surface tennis courts
game room --saunas -- putting green -- exercise area -- hydro-spa whirlpool -- children's play area -- 2 restaurants:
The Gourmet Library and the Informal Sidewalk
For reservations:
(915) 695-2150 or (800) 592-4466

Kiva inn
MOTOR HOTEL
ABILENE, TEXAS
YOUR INN-DOOR RESORT OF FAMILYFUN

NEED A HOME
DRIVE A LITTLE
SAVE A LOT ON YOUR MOBIL HOME FHA VA FINANCING
WE ALSO HAVE MOBIL HOME INSURANCE
PHONE: **653-2432**
EASTLAND DIRECT FACTORY OUTLET
Interstate 20 Olden South Side of Highway

Accident Claims life of David Autry

An April 3 hike in the Organ Mountains east of Las Cruces, New Mexico ended in tragedy for David Thurman Autry, of Colorado City and the J.B. Autry Ranch near Cisco.

His body was found at the foot of a remote ledge on Thursday, after a massive four-day search. He was located by his father, J.B. Autry of Colorado City, and several near relatives. Apparently he died instantly from a fall.

David, an Engineering student at New Mexico State University in Las Cruces, had gone into the mountains for the hike on Saturday. When he failed to appear for classes on Monday, his friends became alarmed and began searching for him.

By Tuesday morning a massive area search was launched by the Sheriff's

Department of Dona Anna County. Search and rescue teams from neighboring towns, and many friends and relatives joined the group. They fanned out from the location of David's car, on the northeast side of the mountains.

David was a great-grandson of a pioneer Eastland County family, the John Thurmans, who established the ranch presently owned by the Autry family. His mother, Wanda Thurman Autry, is a daughter of the late Willard Thurman of Cisco and Colorado City.

Besides his parents, David Autry is survived by a brother, Lance, of the home, and three sisters, Angeline Autry of Abilene (a former student at CJC) Linda Autry of Brownwood, and Mrs. Jim Pfau of Holyoke, Colorado. Among his relatives in Eastland County are Viola Payne, an aunt, and Marvin Payne, a cousin.

David attended Tarleton University, and was awarded a B.S. Degree with highest honors in 1978. He did practice teaching in Biology at DeLeon High School in the spring of that

year. He farmed and ranched on the Cisco property at that time and until the fall of 1980, when he enrolled in the University at Las Cruces.

Besides his academic work at the University, David was interested in music. A Baptist, he was involved in the activities of the Baptist Church and Baptist Student Union on campus. The Baptist Churches of Las Cruces and the whole area assisted in the rescue operation. The Red Cross also assisted, setting up a feeding station at the campground where the search was based.

Memorial services for David Autry are being held at Cuthbert Cemetery, northwest of Colorado City near the family home, at 2:00 p.m. Saturday afternoon.

Ted Brice

The Garden Editor

13940 Peyton No. 110 Dallas, Texas 75240

TAMING WISTERIA

Wisteria is one of our most glamorous, hardy vines with long lavender stems hanging like clusters of ripened grapes. But after its

blossoms fade, wisteria often passes unnoticed. Even the most avid gardeners seem to overlook the fascinating trunk and lower branches prominent in winter when the wisteria leaves have fallen.

There is a compelling beauty in the twisting and twining stems of any aged vine—a bittersweet, an actinidia, a Dutchman's pipe—but more so in wisteria. Wisteria must be pruned. Without pruning, plants will choke and strangle trees, rip down down-spouts, trellises, and arbors and get under shingles on the roofs of houses. Vines are so vigorous that they take over anywhere, undermining porch and balcony railings, climbing several stories to embrace chimneys. Yet if it is pruned regularly, wisteria can be kept under control.

For abundant bloom wisteria should be in a sunny location. Vines will prosper even in quite deep shade, but blooms will be sparse.

The kind of soil is not important, but wisteria will respond to soil that is well prepared with plenty of peat moss, compost, dry manure, or shredded bark or leaves added. At the bottom of the hole scatter a few handfuls of bonemeal or superphosphate, slow acting fertilizer of 5-10-5. Bare-rooted plants should be set out in the early spring, making sure that the hole is large enough to accommodate the full spread of the roots. Plants in containers can be set out any time during the growing season, but either fall or spring is an ideal time. Feed establish vines in the early spring or late fall after the leaves have fallen, using a crowbar to get the fertilizer deep into the ground. Both bonemeal and superphosphate are excellent because they are slow acting, noncaustic fertilizer that promote the formation of flower buds.

Wisteria will need some kind of support. This may be a trellis, an arbor, a post, or fence, but the support should be strong.



Support The Little League Teams

See M.H. Perry for DISABILITY INSURANCE 629-1566 or 629-1095 104 N. Lamar-Eastland T.C.

NBC NEWS/MUSIC FM 97 RADIO ★ 24 HOURS

Ruth Fowler elected editor of Friendship Press

NEW YORK--Ruth Fowler, former director of communications for Bread for the World, has been elected editor of Friendship Press, a unit of the National Council of Churches.



Fowler will be responsible for editing and curriculum development for the Friendship Press, which publishes mission education materials on behalf of some 25 cooperating denominations.

Prior to her work for Bread for the World, a New York-based interdenominational political action group, Fowler worked for more than five years for the Southern Baptist Foreign Mission Board in Richmond, Va., as a writer and communicator.

Fowler grew up in Texas where she graduated from Hardin-Simmons University

and worked for the Abilene Reporter-News, the Cisco Press, and KRBC-TV as a journalist. She has done graduate work at Virginia Commonwealth University in communications and at Union Theological Seminary, New York City, in theology.

Her parents are Mr. and Mrs. W.E. Fowler of Putnam.

Beta Sigma Phi met in the Allsup home

The President Jo Eyley called the meeting of the Texas Preceptor Epsilon Beta chapter of Beta Sigma Phi to order in the home of Sue Allsup with 12 members present and one absent.

It was discussed and decided that the Social Committee would decide what to do for Founders Day and notify all the members.

Lorene Oliver introduced Cletus Williamson who gave a most enjoyable program on Easter and the Williamson family. She read articles

about Springtime and Renewing Our Faith and Hope at Easter then showed many beautiful slides of how her family renews their faith at home then in the mountains to view the magnificence of our creator.

Meeting was closed by members holding hands and repeating the closing ritual of the Mizpah.

The newspaper left out of the last report of the election of Eva Mills as President for 1982-1983.

Thursday, April 15, 1982

ANNOUNCING NAYLOR'S USED CARS HAS MOVED

New Location is 600 I-20 East Between Oak Motel and Colony Restaurant

- 1981 Ford Pickup
- 1980 Ford Supercab Pickup
- 1980 Chev. Pickup
- 1979 Cadillac Eldorado
- 1979 Coupe De Ville
- 1979 Olds Cutlass Supreme Brougham
- 1978 Buick LeSabre 4 Dr.
- 1977 Ford Van Club Wagon (Wheel Chair Lift)

Phone 817-442-1842

HOW TO WIN AT THE LOSING GAME

DIET CENTER®

What you don't know about nutrition probably shows on your waistline.

When you decide to lose weight, call Diet Center. Our program works and it's totally natural. You will lose weight quickly and safely, without hunger, nervousness or loss of energy but what's even more important, you'll learn how to keep it off! You'll learn how your body functions and what it needs to operate at peak efficiency. You'll meet daily with a counselor who cares and understands. She knows what it takes to lose weight and keep it off because she has done it herself!

LOSE 17 TO 25 POUNDS IN JUST 6 WEEKS!...

And, if necessary, that rate of reduction can be sustained until you have lost 50, 75 or even 100 pounds and more! Join the thousands of men, women and children who are losing over one million pounds each month at Diet Center. You'll be surprised at how satisfying a nutritionally balanced diet can be. Call today for a free, introductory consultation. It could change your life!

Join the thousands of men, women and children who are losing over one million pounds each month at 1,400 Diet Center locations across the United States and Canada.

"The Natural Way to Lose Weight"

NO SHOTS • NO DRUGS
NO PREPACKAGED FOODS
NO CONTRACTS

2012 W. Commerce
7:30 - 4:30
629-8361

Under New Management Air Conditioning

A&A Repair

Pre Summer Special Window Units: \$35⁰⁰

Includes Pick Up And Deliver And Freon. Parts If Needed Extra. Central Units \$22⁵⁰ Full Service Check Freon And Parts Extra. All Makes-All Models. Operated And Owned By Ted Meacham

629-1091 Nights and Weekends 647-3570 T-33

Dorothy's Sunshine Fabrics

1108 Avenue D, Cisco

442-1782 10 a.m. - 5 p.m.

We carry a full-line of fabrics and sewing notions. Coats and Clark Red Heart Yarn also available.

Lee Haney for State Representative

May 1 Democratic Primary

(pol. adv. pd. by Lee Haney, 311 N. Center, Brownwood)

STORAGE BUILDING SALE! 3 DAYS ONLY

10% TO 30% OFF

BUY DIRECT FROM FACTORY NEW - USED - DAMAGED & FACTORY SECONDS

ACRES OF PORTABLE BUILDINGS FROM 8' TO 12' - 40' AND LARGER

PERMANENT ALL STEEL BUILDINGS FOR GARAGES, FARM STORAGE, INDUSTRIAL USE, OVERHEAD OR SLIDING DOORS

MAINTENANCE FREE IMMEDIATE DELIVERY HEAVY DUTY FLOORS

DOUBLE OR OVERHEAD DOORS AVAILABLE ON SOME MODELS

2,3 OR MORE PERSON OFFICE

NEW DESIGN - BIGGER WINDOWS CLINICS - CLASSROOMS - CHURCHES - RETAIL STORES 200 TO 20,000 SQ. FT. AND UP IN MODULAR CONSTRUCTION

WE WILL CUSTOM DESIGN AN OFFICE TO SUIT YOUR NEEDS AT TREMENDOUS SAVINGS!

Morgan BUILDING SYSTEMS, INC.

MORGAN BUILDING SYSTEMS HWY. 69 NORTH EASTLAND TEXAS (817) 629-2668 April 16, 17 & 18

Lawn-Mower Value!

Priced right for spring!

BRIGGS & STRATTON

Powerstreak 20" 3 H.P. Mower

VALUE PRICED AT JUST **\$139.95**

Model 8202

- Dependable 4-cycle Briggs & Stratton engine
- Adjustable cutting heights
- All-steel construction for long life
- Chromed loop handle with remote throttle

CHARGE IT! Goodyear Revolving Charge Account

Use any of these other ways to buy: • Our Own Customer Credit Plan • VISA • MasterCard • American Express • Diners Club • Carte Blanche

GOODYEAR SERVICE STORE

Mon. thru Fri. 8:00 a.m. to 6:00 p.m.; Sat. 7:30 a.m. to 5:00 p.m.

Phone 629-2662 Everisto Jimenez, Mgr. Eastland

Fishing Boating Safety

Does Anybody Want To Swim Home?

Ever crawl on a friend's pleasure-boat presuming that the life preservers will be adequate? Suddenly you find that they are flimsy, without even enough to go around.

But who wants to be timid, mention more safety, and get off the boat if it isn't provided? After all - that would make you look like a "coward", especially in front of your best girl friend!

This is one of the "loaded" situations which can lead to tragic results. Yet the rules for fishing and boating safety sound so familiar and stereotyped that any Editor is tempted to discard such "dull" material from the

newspaper copy. But the sad fact is that almost everyone disregards these simple rules sooner or later.

For one thing, children should wear life jackets at all times while in a boat. Cushions are not adequate for children or non-swimmers. Cushion type life preservers are acceptable for the fair to good swimmer if used properly.

James T. Davis, fisheries specialist for the Texas Agricultural Extension Service, says that cushions should never be worn on the back with arms through the straps. This has the effect of floating the person face

down in the water. The cushion preserver should be worn either across the chest or with one leg and the opposite arm through the straps.

"Don't over load the boat," the Texas A&M specialist emphasizes. Most stern plates indicate the maximum safe load. If in doubt, don't go out! Balance the load in the boat. If the boat does overturn, stay with it. It is usually farther to swim to shore than it appears.

Around the farm pond or near fishing docks, a safety station should be established. Davis says that a simple safety station can be very effective if everyone is familiar with the use of the equipment.

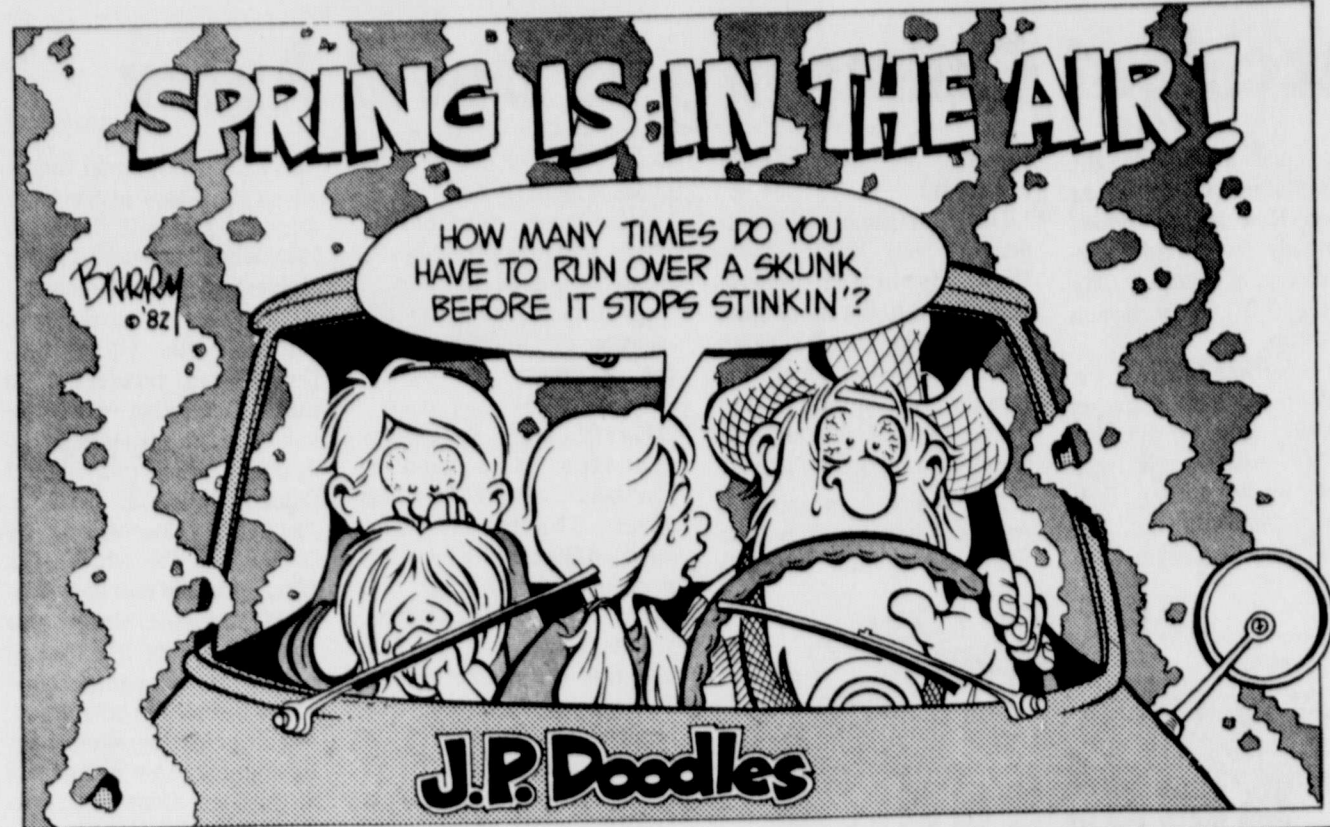
A post set about 15 ft. from the water and near the dock serves as a place to hang a rope, doughnut life preserver, inner tub, pole, or board. A 12 by 15 ft. long

fishing pole is very effective for rescuing someone who falls in the water near the shore.

For rescuing someone slightly farther from shore, a rope that can be easily thrown works best. Tie a very large knot in the end of the rope to make it throw better and to serve as a hand hold for the person being rescued.

A "doughnut" life preserver can be thrown 30 to 40 ft. by most people. An inflated innertube can also be used, but is difficult to throw any long distance. As an emergency measure a dry wood board about six ft. long can be scooted across the water.

Whatever the rescue method used, all persons should be familiar with the equipment available. Naturally the objective is to rescue the person in trouble - and delay can be tragic.



Jaurice White Is Guest Artist For Oil Belt District



Jaurice White will be guest artist for the Oil Belt District Association of Rebeahs and Odd Fellows April 20th at Rebeah Hall 300 N. Lamar St.

Jaurice will tell us how she became interested in oil painting giving the Association very different program including landscapes and beauty all around us in different areas of art.

After hearing her you will see shadows, streams, mountains and trees in the "eye of the beholder" is a beauty of God's creation.

Expressing her love for Him and appreciation of his handiwork thru painting.

Area Volunteers Are Helping With National Week

During National Volunteer Week, April 18-24, 1982, the Texas Department of Human Resources would like to express its appreciation for volunteers in the Eastland area who work to expand and enhance the services provided by the Department.

Ms. Duncan in providing direct client services which could not otherwise be provided.

Ms. Venita Smith is assisting in the DHR office, working with Ms. Jean Underhill who is a financial assistance eligibility worker. Ms. Smith files,

prepares forms, and answers the telephone.

With budget limitations which are being felt in all social services programs, volunteers like Ms. Corbell, Ms. Riggan, and Ms. Smith, provide valuable services in assisting the Department staff and clients.

Ms. Margaret Cobell has assisted Maria Duncan in the Community Care for the Aged and Disabled program

by directly assisting needy individuals for the past year. Recently, Ms. Ina Mae Riggan has also begun assisting

Public Notice Farm and Ranch Implements Exemption Must Be Filed

If you are the owner of farm or ranch equipment in Eastland County, a new exemption is now available.

The special session of the 1981 Texas Legislature passed an amendment to the Property Tax Code which allows for the exemption from taxation of farm or ranch equipment.

The exemption is not for the total value of the equipment. The reason for this is a recent Attorney General's Opinion (NW-451) which limits the exemption amount. The exemption is limited to \$15,000 in value for an individual and \$30,000 in value for a family.

It cannot be granted to a partnership or corporation and must be applied for each year between January 1 and May 1.

As the newly enacted State Property Tax Code requires all property to be placed on the tax rolls for 1982 at fair market value, owners of this type of property are urged to take advantage of the exemption.

The Eastland County Appraisal District is in the process of mailing out application forms and information

to property owners of the County. If you need a form and do not receive one, they are available at the Appraisal District Office. The Appraisal Office is located on the second floor of the Eastland County Courthouse.

The deadline for filing this exemption is May 1, 1982. For assistance in completing the application, please contact the Appraisal District Office. The telephone number is: 629-8597.

(4-14)

RANGER TIMES EASTLAND TELEGRAM CISCO PRESS
Ranger, Texas Eastland, Texas Cisco, Texas
Thursday, April 15, 1982

Come In-Sit Down-Relax

Chicken, Steaks (char-broiled), Seafood, Shrimp, Oysters, Scallops, Catfish and Lobsters, Hamburgers & Mexican Food

Easter Special Turkey & Dressing

A Smiling Waitress Will Wait On You To Serve You Better, Andy's Is Offering:

1. Full service at nights & Sundays
2. Breakfast served daily
3. Daily lunch specials-with fast service
4. Expanded menu including: Ham & cheese sandwiches, stew and cornbread, egg sandwiches, & bacon cheeseburgers and others
5. New hours, 5:00 a.m. - 10:00 p.m.

7 Days A Week

Andy's I-20 Eastland 629-2862

Gary has expanded: Opening Andy's Family Restaurant in Azle

A WORD ABOUT NEWS: FITZGERALD

KTAB TV
YOUR NEWS STATION
We've Got You Covered

Golden Destiny

Miles West 80
Open Mon.-Fri. 9 to 5
629-8492 629-8194

All Breeds Bathing, Clipping, Grooming.

Specializing in Poodles
Operated By Lorraine Lester

Town & Country REAL ESTATE

OFFICE HIGHWAY 80 E
FHA-VA CONVENTIONAL FINANCING
629-8391 629-1725

BARBARA LOVE, BROKER

SPACIOUS OLDER BRICK HOME- Like new inside and out. Approximately 2400 square feet, includes 4 bedrooms, 1 & 3/4 baths, or 3 bedrooms and large game room, large walk-in closet. This sits on 100 x 200 lot, large shade trees in back, Bar B Que pit and gas grill, garden spot, in established neighborhood.

COMMERCIAL PROPERTY
THRIVING BUSINESS- Ideal family operation. Retail sales and service in Ranger. Don't delay.
RENTAL INVESTMENT: 3 homes on one large lot. 100 percent occupancy, minimum upkeep. Chain link fence, 3 car metal garage - in good location convenient to schools. If you're in the rental market, don't miss this opportunity.
BRICK BUILDING with 20 x 25 ft. office on several lots in Gorman. Excellent for garage or small factory.

COMMERCIAL BUILDING WITH LOTS OF POTENTIAL: Approximately 6 acres located on I-20 access in Ranger. 3 truck stalls, one office and parts storage area, approx. one year old. Built-in air compressor and overhead hoist. Now used as diesel mechanic shop. Excellent location for exposure to Interstate 20.

COMMERCIAL BUILDING- Consisting of 4 offices, reception area, 2 baths, conference room, large storage bldg. in back, has 1,000 Gal. gasoline tank buried with electric pump. Owner financing with 29% down, 12% interest 10 years. 2 blocks from square.

INVESTORS- New 4 Plex, each unit has 2 bedrooms, living room & kitchen. 2 units have 1 1/2 baths, the other 2 have 1 bath. These are extra nice. This has existing loan that is assumable.

COMMERCIAL LAND FOR YOUR NEW BUSINESS IN!
EASTLAND - 2.77 acres on I20 East on access road. Ideal location!

ACREAGE
60 ACRES So. of Cisco, 1 mile off Hwy. 206. Approx. 30 acres coastal, 15 acres love grass, some timber. One good stock tank, shallow hand-dug well.
'LOOKING FOR A COUNTRY SITE FOR YOUR NEW HOME?' 12 1/2 acres on blacktop near Lake Leon has staff water meter in, access to lake thru nearby permanent easement.
BUILD your dream house on one of these 2 to 3 acre tracts. Located on Hwy. 6, 5 miles S. of Eastland. City water available.
160 ACRES South of Ranger off FM 571 in Rustic area. Unimproved, 2 tanks. Excellent hunting area for deer, turkey and quail. Ideal for group investment.
SMALL ACREAGE 2 small tracts of land, ranging from 4.33 to 4.23 acres. This has a city water meter installed. Nice quiet area, approximately 5 miles east of Eastland. No restrictions in this area.
NEED A PLACE FOR YOUR MOBILE HOME OR BUSINESS? This is it. Utilities and septic tank. Rock driveway, 24x32 building with 2 nice offices and a shop area. Plenty of room for a business needing parking area.
COMMERCIAL OR MOBILE HOME LOT: 50 ft. frontage on N. service road of I-20, 1/2 mile East of Eastland Exit off I-20. No improvements. Lot 50x100.
20 ACRES WITH LARGE HOME- 1 1/2 story, total electric, fireplace, city water, located on 183 North 7 miles from Eastland or Cisco.
NAME YOUR AMOUNT OF ACRES- From 20 or 40 acres, conveniently located to Eastland, Cisco and Breckenridge.
74.189 ACRES- 4 1/2 miles N.W. of Rising Star, 8 water wells, 4" wheel move & pipe, 13 acres coastal, 1/4 mineral rights, 2 producing oil wells, owner financing available. This is a good place.

WE WANT YOUR BUSINESS—YOU ARE OUR BUSINESS
PEGGY SWAFFORD 647-1050 HAZEL UNDERWOOD 629-1188 BARBARA LOVE 647-1397

E.L. Graham Hospital
 Visiting Hours: 2:00-4:00 & 7:00-9:00

Patients in the E.L. Graham Memorial Hospital were listed as follows:
 Clarence Wilcoxon
 Nelda James
 George Henry
 Elizabeth Linebarger
 Eva Moore
 Lillian Patterson
 Etta Porter
 Grover Hastings
 Melvin Scholl
 Mary Goode
 Fannie Townsend.

Eastland Memorial Hospital
 Visiting Hours: 2:30-4:00 & 7:00-8:30

Patients in the Eastland Memorial Hospital were listed as follows:
 Lottie Vaden
 Zula Collie
 Susan Boner
 Stephen Norris
 Lynda Hamburg
 Fay Chambers
 Ruby Carter
 Mary (Betty) Woods
 Burl G. Underwood
 Rebecca D. Brown
 Roxie A. Ward
 Maurine Miller
 William D. Belyeu
 Baby Girl Ward
 Florence Roper
 Pearl Parrack
 Jasper Elam
 Alfreed Hunter

Cleo Bell
 Zinnah Z. Bourland
 Callie L. Lindley
 Beatrice Ritchie
 Tania McCoy
 Clara Watts
 Margaret Brantley
 Vernon Snodgrass
 George Tankersley
 Flora Kincaid
 Vida Killion
 Flossie Broom
 Royce Taylor
 Marion Shankle
 James Pewett
 Kenneth Mangold
 Elvie Meroney
 Elvia Stevens
 Clarence Ham
 David Walker
 Alma Rice
 Mary Harper
 Stella McBee
 Mertie Jones
 Virgie Jarrett
 Geraldine Ince
 Grace Sprott
 Lucille Atwood
 Grace I. Brown

Minnie Wigington
 Weldon Gary
 John Webb
 Gracie Jenkins
 Edna Dickson
 Nannie Allman
 Arduth Been
 George Norris
 Wallace Britian
 Wilma Mitchell

Ranger General Hospital
 Visiting Hours 2:00-4:00 & 6:00-8:30

Patients in Ranger General Hospital:
 Ellen Holsey
 Lena Hatton
 James Pierce
 Frank Vaughan
 Paul Wagley
 Author Crossley
 Royce Allen
 Bethel Walker

Deadline Approaches For Insurance

The deadline is rapidly approaching for Eastland County farmers who want to carry insurance against the possible loss of their peanut crops. All-Risk Crop Insurance District Director, Ardell M. Kalmbach points out applications to insure spring planted crops be received by April 30th.

A new peanut policy will give better investment protection to farmers who chose

Anna Bell Stallings
 Naomi Polk
 Clyde Campbell
 Eunice Keith
 Lillian Looper
 Virginia Alfaro and Baby Boy
 Helen Crozby
 Olive Burns
 William Casey
 William Houlton

ding to F.W. Crouch, Jr., Field Operations Director for Federal Crop Insurance. "In addition, peanut farmers will also benefit from government subsidies on premiums and three coverage level options that have been added to all crops." Crouch said. The All-Risk Insurance program is designed to provide farmers an economical way to protect against a loss of the record high sums of money they will have to invest in their crops this spring. To participate in the government backed programs, farmers must contact any local agents authorized to sell and service All-Risk Insurance policies.

NBC NEWS/MUSIC FM 97
 RADIO ★ 24 HOURS

RANGER TIMES EAST AND TELEGRAM CISCO PRESS
 Ranger, Texas Eastland, Texas Cisco, Texas
 Thursday, April 15, 1982

MIND BOGGLING BUYS



1 Rack of Merchandise \$7.50
1 Rack of Spring Merchandise 1/3 off
All Remaining Spring & Summer 1/4 off
David & Quetta's
 1-20 W. of Best Western
 629-8030

TERRACE ROOM

BREAKFAST SPECIAL
 6AM - 11AM DAILY
 6 OZ. TOP SIRLOIN, 2 EGGS,
 HASH BROWNS, TOAST, AND JELLY
 \$2.00

EASTER SPECIAL BUFFET
 11:00 TO 2:00
 HAM, PRIME RIB, DRESSING,
 MASHED POTATOES, CANDIED YAMS,
 BLACK EYE PEAS, SWEET CORN, CORN BREAD, & FRESH
 BAKED BREAD WITH FULL SALAD BAR & DESSERTS
 WILL BE PECAN, APPLE & CHERRY PIE
 INTERSTATE 20 E EASTLAND \$2.25 PER PERSON

FROM HEIDENHEIMER'S Of Course

The Haggar Washable Suit. Guaranteed wash after wash after wash after wash



Haggar unconditionally guarantees that even after repeated machine washings and dryings, the Haggar Washable Suit will retain its good looks and fit for the normal life of the garment. If care instructions have been followed and you are not completely satisfied with the garment's performance, you may return it with your sales slip to your participating retailer for a full refund. This guarantee applies to all Haggar Washable Suits and Washable Sport Coats.

\$96.00

HEIDENHEIMER'S
 Your Family Western Store in Cisco

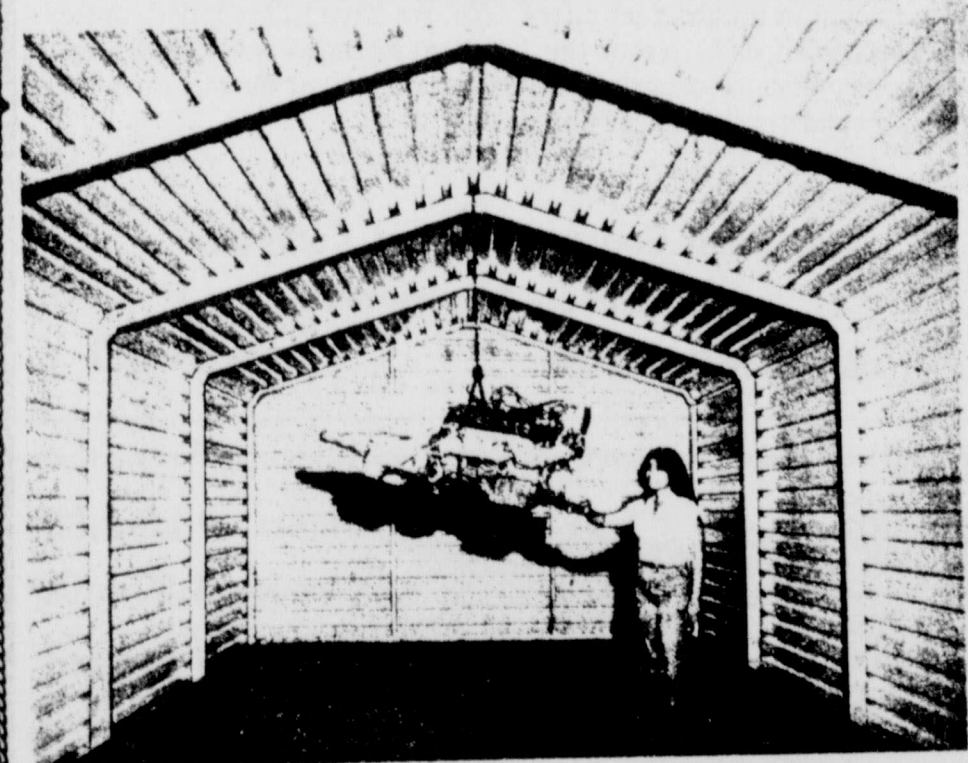
E.S.T. Building and Development Co. Inc.

1401 E. Highway 80 Abilene 915-677-6025

- Multi - Purpose ● Pre - Engineered ● All - Steel Construction ● Patented Design



OUR 20x40x10 is haulable on Texas highways. With a 10x10-ft. door, they are used by their owners for warehouses, truck workshops, farm buildings, hay barns or what have you. An outstanding all-purpose building!



This big V-8 engine and automatic transmission weighs about 1,000 pounds but it causes no deflection whatsoever when hung from one of the frames of a 14x30 Skidder Building. One building like this was loaded with 4,500 pounds per frame in a test for Southern Building Code certification with no damage. The unique shape of the building transfers all such loads through the sheet metal to the endwall panels permitting us to build stronger buildings with less materials than conventional buildings.

PORTABLE & PERMANENT BUILDINGS

- ★ Commercial and Industrial Buildings
- ★ Farm Buildings ★ Horse Stalls
- ★ Backyard Storage and Garages
- ★ Rent-a-Storage ★ Boat Barns
- ★ Airplane, Helicopter Hangers
- ★ Offices ★ Public Buildings
- ★ Compressor Covers

DISCOUNT PRICES

VARIETY OF COLORS IN STOCK

- 14' X 30' X 8'
- 20' X 30' X 8'
- 20' X 40' X 10'

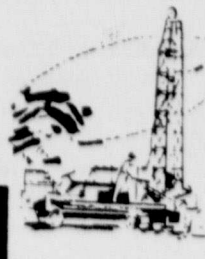
Sizes 8' X 12' to 40' X 60' are standard

For Your Convenience: Call or go by our local distributor

Nimrod Pipe and Supply

1849 Highway 80 West, Cisco 442-4002

OILFIELD DISPATCH



Thursday, April 15, 1982

Report on oil activity

Trinity Exploration Company of Fort Worth has filed for permit to drill the No. 1 Bennett, a 4,000-ft. developmental well eight miles northwest of Ranger.

Location is in a 106-acre lease in Eastland County's Mary Ann Clark Survey, A-51. The Bennett well is in the Green Show Field.

A Dallas-based operator has staked location for the No. 1 J.N. Gooch, a developmental well to be located one half mile west of Ranger. With projected total depth of 1,995 feet, the well is in an 88-acre lease in Eastland County's R.G. Teston and W.G. Watkins Survey, Eastland County Regular Field. The operator is McDaniel Oil Corporation.

Western Production Company of Fort Worth has revealed plans to drill a 1,700-ft. developmental well in the Scranton Field. Drillsite is in Eastland County's H&TC Survey, A-791 and had designated the venture as the No. 1 J.H. Elam. Drillsite is one mile east of Scranton.

A 4,000-ft. developmental well is planned by Trinity Exploration Company at a drillsite eight miles northwest of Rising Star, Eastland County. The location is in a 190-acre lease in the Mary Ann Clark Survey, A-51. Well's designation is the No. 1 J.A. Cox. It is in the Green Show Field.

Ridge Oil Company of Breckenridge has filed first production figures on a new oil well in the Northwest Ranger Field. The No. 1 Terrell showed potential to make 21 barrels of oil and 90,000 CF casinghead gas per day on an open choke.

The operator has 150 acres leased, with drillsite in Stephens County's Salvador Flores Survey, 14 miles southeast of Breckenridge. The well will produce from an interval 3,500 to 3,521 feet into the wellbore. Total drilling depth was 3,950 feet.

At a location 18 miles southeast of Breckenridge, Ridge Oil Company has

finalized a new oil producer in Stephens County's Northwest Ranger Field.

The well is designated as the No. 1 Frost, pumping oil at the rate of 30 barrels per day on an open choke. The well also showed potential for 96,000 cubic feet of casinghead gas per day.

Location is in a 160-acre lease in the H&BRR Survey. Bottomed at 3,975 feet, the well will produce from perforations 3,544 to 3,565 feet into the hole.

The No. 117 J.M. Ward "C" was finalized by Sun Exploration & Production of Abilene. It is a developmental well in the Stephens County Regular Field, four miles northeast of Breckenridge. Drillsite is in a 5,058-acre lease in Stephens County's TE&L Survey, A-678.

Daily potential of 55 barrels was posted with the Railroad Commission. The well went to a 3,320-ft. bottom. Production will be from perforations 3,158 to 3,170 feet into the wellbore.

At a location four miles east of Breckenridge, McClymond Brothers Inc. of Breckenridge has finalized a new gas producer in the Stephens County Regular Field.

The well is designated as the No. 1 Miss Sarah, flowing gas at the rate of 241,000 CF per day. Absolute open flow estimated at 1,000,000 CFPD.

Location is in a 160-acre lease in the T&PRR County Survey. Bottomed at 4,457 feet, the well will produce from perforations 4,003 to 4,118 feet into the hole.

Buck Wheat Resources of Eastland has filed first production figures on a new oil well in the Stephens County Regular Field. The No. 1 Norvell showed potential to make 35 barrels of oil and 20,000 CF casinghead gas per day.

The operator has 320 acres leased, with drillsite in Stephens County's John Stephenson Survey, 13 miles southeast of Cisco.

The well will produce from an interval 3,510 to 3,516 feet into the wellbore. Total drilling depth was 3,680 feet.

A 4,450-ft. wildcat is planned by Min-Tex Exploration Corp. of Mineral Wells at a drillsite two miles southeast of La Casa, Stephens County. The location is in a 160-acre lease in the T&PRR County Survey. Well's designation is the No. 4 Copeland Ranch.

At a location four miles southeast of Santo, Way Oil Company of Weatherford has finalized a new gas producer in Palo Pinto County's McClish-Stone Field.

The well is designated as the No. 1 Bosley, flowing gas at the rate of 1,275,000 CF per day on a 1.250 choke. Absolute open flow estimated at 1,740,000 CFPD.

Location is in a 157-acre lease in the J. Bayless Survey. Bottomed at 4,255 feet, the well will produce from perforations 3,614 to 3,632 feet into the hole.

Dallas Production Inc. of Dallas has filed first production figures on a new gas

well in the Set Ranch Field. The No. 24 Set Ranch showed potential to make 969,000 CF of gas per day on a 7/8-inch choke. Absolute open flow estimated at 1,600,000 CFPD.

The operator has 11,625-acres leased, with drillsite in Palo Pinto County's BBB&CRR County Survey, six miles north of Brad.

The well will produce from an interval 3,797 to 4,026 feet into the wellbore. Total drilling depth was 4,090 feet.

A 4,900-ft. wildcat is planned by M.O. Rife Jr. of Fort Worth at a drillsite six miles north of Palo Pinto, Palo Pinto County. The location is in a 1,970-acre lease in the Lewis B. Dayton Survey. Well's designation is the No. 42-C M.H. McMurrey.

Western Energy Resources of Fort Worth has filed for permit to drill the No. 1 Wells, a 4,800-ft. wildcat eight miles south of Mineral Wells. Location is in a 120-acre lease in Palo Pinto County's T&P Survey.

The No. 69D M.H. McMurrey was finalized by M.O. Rife Jr. It is a developmental well in the O'Laughlin Field, five miles west of Grafard. Drillsite is in a 1,300-acre lease in Palo Pinto County's Samuel F. Harding Survey.

Daily potential of 760,000 CF of gas on a 0.75-inch choke was posted with the Railroad Commission. Absolute open flow estimated at 1,580,000 CFPD. The well went to a 4,329-ft. bottom. Production will be from perforations 4,214 to 4,237 feet into the wellbore.

Flowing 1,237,000 CF of gas per day, the No. 73D was completed successfully in the O'Laughlin Field by M.O. Rife Jr.

Drillsite is five miles west of Grafard. It was drilled to 3,041-ft. total depth and will produce from an interval 2,822 to 2,915 feet into the wellbore. Production tests were run on a 0.75-inch choke, and absolute open flow estimated at 1,490,000 CFPD.

The location is in a 1,300-acre lease in Palo Pinto County's Samuel F. Harding Survey.

At a location in the city limits of Oran, Southern Crude Oil Resources Inc. of Fort Worth has finalized a new gas well in Palo Pinto County's Oran Field.

The well is designated as the No. 1 Mays, producing

gas at the rate of 425,000 CF per day on a .25-inch choke. Absolute open flow estimated at 490,000 CFPD.

Location is in a 28-acre lease in the A. Peters Survey. Bottomed at 4,690 feet, the well will produce from perforations 3,852 to 3,860 feet into the hole.

Roanoke Corp. of Fort Worth has filed first production figures on a new oil well in the Grafard Field. The No. 2 W.H. McKee showed potential to make 11 barrels of oil and 60,000 CF casinghead gas per day on a 20/64 choke.

The operator has 246 acres leased, with drillsite in Palo Pinto County's TE&L Survey, two miles northeast of Oran.

The well will produce from an interval 4,961 to 4,996 feet into the wellbore. Total drilling depth was 5,130 feet.

A Mineral Wells-based operator has staked location for the No. 1 Kessler et al, a developmental well to be located one half mile southeast of Mineral Wells. Location is in a 119-acre lease in Palo Pinto County's T&PRR County Survey, Towerlin & Ittleson Field. With projected total depth of 4,800 feet, the operator is Chester R. Upham Jr.

A 1,300-ft. developmental well is planned by Three Way Energy of Arlington at a drillsite three miles southeast of Nimrod, Eastland County. The location is in an 80-acre lease in the H&TCRR Survey, Section 74. Well's designation is the No. 5 Stroebel. It is in the Nimrod Field.

EXPLORATION SERVICES, INC.
Hydrocarbon Well Logging
Geological Services

MIKE DAWSON
DISTRICT OPERATIONS MGR
CENTRAL TEXAS DISTRICT

Home 817-442-1227
Office 817-629-8203
817-629-8549
Mobile 817-629-8162 Unit 9489

P.O. BOX 900
EASTLAND, TEXAS 76448 T.C.

PHILLIPS DRILLING

For all your drilling needs up to 3,000 ft.
Call day or night. competitive prices and dependable workmanship

Vernon Phillips Cross Plains
(817) 725-6275 or (817) 725-7746

ACE WELL SERVICE INC.
—Dale Jones—

Completions Swabbing
Workovers Roustabout Crews
Rods & Tubing

Fully Insured For Customers Protection
Radio Equipped Call Day Or Night
200 S. Newton 559-5439

ROUSTABOUT CREWS, WINCH TRUCKS, BULLDOZER, BACKHOE
WELDER, PIPE TRAILER, TANK SKIDS, EXTRA LONG POLES

Triple S Roustabout Service, Inc.
FULLY INSURED & EQUIPPED

Business Phones (817) 725-6252 or 725-7731

P.O. BOX 575 Kenneth Sowell (817) 725-7444
CROSS PLAINS, TEXAS 76443 Stuart Sowell (817) 725-7625 T-32

Eastland National Bank
salutes the oil industry.

We are eager to help in your growth and welcome the opportunity to serve you. You've got a friend — in Eastland.

EASTLAND NATIONAL BANK
201 East Main Street 817-629-8551 Member FDIC
Equal Opportunity Employer M-F-H T-C

Snow Oil Plaza

Pipe & Supply
Drilling Corp.
Well Service
Petroleum Land Leasing

Terry Patty T.C.

Off. (817) 629-8521
Linda Nelson
Res. (817) 629-8123

WANTED

Oil leases in Eastland, Callahan or Brown County. Top \$ for good prospects. Send information to Mountain Minerals Corp., 16990 Dallas Parkway No. 208 Dallas, Texas 75248. T-29

Office Space for Rent
Newly remodeled offices at 207 Lamar, up to 725 sq. ft. (5 offices) available. Start at \$125 month. Ph. 629-8901 T-28

See M.H. Perry for GROUP INSURANCE
629-1566 or 629-1095
104 N. Lamar-Eastland

Oil related businesses

We have the best location in Eastland for your business, in POGUE INDUSTRIAL PARK located across Highway 80 from Service Pipe & Supply. Sell by the lot or acre. A-1 SALES
275 S. Walnut 629-2102 Anytime T.C.

"ONE STOP OILFIELD SERVICE"

<p>SUNBELT TANK COMPANY</p> <p>MARION COWAN General Manager (817) 559-5351 (N) RON CORNWELL Plant Manager (817) 629-8673 (N)</p> <p>OILFIELD STORAGE TANKS GAS SEPARATORS WATER KNOCKOUTS OR GUNBARRELS GAS & DIESEL TANKS FARM STORAGE TANKS</p>	<p>SUNBELT WELL SERVICES</p> <p>ENGINEERING SERVICES DRILLING & OPERATING SERVICES PUMPER SERVICES CLAY A. MORRIS Engineer (817) 629-2825 (Night)</p> <p>COMPLETION & WORKOVER UNITS HERBERT NORMAN, Pusher (817) 559-2228 REVERSE CIRCULATING UNIT TIM HELMS, Operator (817) 647-5153 (Night)</p>	<p>DOOL ROUSTABOUT & CONSTRUCTION</p> <p>JIMMY DOOL, Manager (817) 629-8275 (Nights) 629-8162 Unit 9881 (Mobil)</p> <p>ROUSTABOUT CREWS DOZIER & BACKHOE SERVICES WELDING SANDBLASTING & COATING POLYETHYLENE PIPE RENTAL & SALES</p>
<p>MITCHELL'S ELECTRIC SERVICE</p> <p>RODNEY MITCHELL Manager (817) 629-8362 / 629-1273 (Day) (817) 629-2867 (Night)</p> <p>MOTORS & CONTROLS NEW CONSTRUCTION REWINDING & REPAIRS</p>	<p>For Information, Contact CLAUD (WINSTON) BOLES General Sales Manager (Day) (817) 629-1273 / 629-1493 (Night) (817) 629-8226</p>	<p>COOK PUMPING UNITS</p> <p>Sunbelt Carries a Full Line of Cook Pumping Units, Beam and Counter Balances. We Will Soon Stock a Complete Line of Oilfield Supplies.</p>

"ONE CALL DOES IT ALL"

SUNBELT WELL SERVICES 629-1273 / 629-1493
SUNBELT TANK COMPANY 629-2180 / 629-1273
SUBSIDIARIES OF DALLAS SUNBELT OIL & GAS INCORPORATED

Oil Is Where You Find It...

.....so sayeth the oilmen. So is love, happiness, success and all of the other elements that make up our lives. Where do you go to find title information? Not on the street corner or the barber shop or any other place except in an abstract office. Yes, we have it, compiled, indexed and assembled daily, from the very beginning down to the present time, plus years of experience and training. Visit us soon and let us have an opportunity to serve you.

Eastland County Abstract Company
Abstracts and Title Insurance
Pat and Annelle Miller 629-1077

Hours: 9:00-2:00
Drive-In: 4:00-6:00
Fr. Night Deposit

J.B. HICKS President
THE FIRST NATIONAL BANK
Gorman, Texas 76454

- Full Service Banking
- Checking ● Savings ● Loans
- Money Market Certificates
- Interest Bearing Checking Accounts

P.O. Box 38 Phone: 817-734-2255 Member FDIC T.C.

DWAYNE BULLOCK 629-2073
SAM BEGGS Days 629-2372

A-1 Eastland, Texas 76448
MUD LOGGING INC.
PH (817) 629-2073
T-31

H.D. Hosh 915-7622443
Randy Hosh 915-762-3062

3 H Drilling Co.
Rt. 1 Box 60, Albany, Tx. 76430
Rotary Drilling to 2500 feet.
Would consider interest in well.

H.D. Hosh 915-762-2443
Randy Hosh 915-762-3062
H.D. Hosh Dozier 915-762-3062
Rt. 1 Box 60 Albany, Tx. 76430 T.C.

SERVICE PIPE & SUPPLY CO.

New-Oil & Gas Well Equipment-Used
Subsurface Pump Sales & Service M-F

P.O. Box 587 Eastland, Texas 76448

Jacksboro Eastland Nilgore
(817)567-5586 (817)629-8528(214)984-8526

Full line of New & Used Pipe, Rods, Pumping Units, and Fittings.
Also Featuring Modern Pump Shop.

Nimrod Pipe & Supply
Route 2, Box 117A-Cisco, Texas 76437

Rick Roark, Mng. (817) 442-4002
Eddie Pevhouse, After Hours
Pump Shop Mng. (817) 442-3770 T.C.

NBC NEWS/MUSIC FM 97
RADIO ★ 24 HOURS

To List Here Call 442-2244 647-1101
629-1707

OILFIELD DISPATCH

Thursday, April 15, 1982

D&D Operating of Breckenridge has filed for permit to drill the No. 3 A. Dulin, a 4,100-ft. developmental well four miles west of Eastland. Location is in a 102-acre lease in Eastland County's H&TCRR Survey, Section 47. The Dulin well is in the Bankline-Owen Field.

Joseph D. Kennedy has revealed plans to drill a 2,900-ft. wildcat. The operator has 139 acres leased, with drillsite in Eastland County's Teresa Tyler Survey, A-492 and has designated the venture as the No. 2 Marilyn Harrison. Drillsite is five miles north Gorman.

A Grand Prairie-based operator has staked location for the No. 1 A. Hise, a

developmental well to be located five miles west of Ranger. With projected total depth of 4,000 feet, the well is in a 115-acre lease in Eastland County's Ranger Field, R.B. Truly Survey, A-682. The operator is North Ridge Corp.

The No. 1 C. Robertson was finaled by Show Petroleum Inc. It is a developmental well in the North Desdemona Field, six miles north of Gorman. Drillsite is in a 116-acre lease in Eastland County's McClenna County School Land League.

Daily potential of 5 barrels was posted with the Railroad Commission. The well went to a 3,796 bottom. Production will be from perforations 3,100 to 3,110 feet into the wellbore.

CRIME STOPPERS

For an enterprising thief, Texas' oilfields offer endless opportunity. Thirty to fifty million dollars worth of oilfield equipment was stolen in Texas last year. These losses are pushing the cost of pumping oil sky high, and that affects each of us.

The drilling boom in Texas has created a demand for materials which are hard to come by. Any tool, large or small, can catch the eye of a thief, as it represents a pocket full of money. This problem is running rampant in Texas and is hard to detect. Items are often taken to another state where they are stripped of serial numbers, given a fresh coat of paint and resold, sometimes back to the original owners.

The industry is fighting back with rewards, recovery systems and better identification methods. Governor

Clements and the Texas Legislature have implemented new laws to stop the growing crime wave in the oil patch — but they can't do it alone.

For the month of May, 1982, the Crime Stoppers Advisory Council is focusing its statewide "Crime of the Month" program on oilfield theft. Any citizen having information about oilfield theft is asked to call the anti-crime hotline at 1-800-252-TIPS. Cash rewards are available for information leading to the arrest and indictment of oilfield thieves. Citizens do not have to reveal their name, just their information, and they will be given a unique code number for identification purposes.

Let's get these people out of our society! Call 1-800-252-TIPS today to help stop oilfield theft in Texas.

S & S DRILLING CO.

OIL & GAS
Route 4
CISCO, TEXAS 76437

BILL GARY 442-3048
LEE STARR 442-3226

Natural Gas Dehydration Service

Contact Gas Dehydration Process Plants •
Dehydration Plant Operation & Repair Service •
Bureau Of Mines Type Water Content Test •
Kimray Pump Repair & Exchange •
—Work Guaranteed—

Call D.L. Covington 817-559-3655
1311 Renee Street
Breckenridge, Texas 76024 T-28

The Rossander Agency

OILFIELD INSURANCE SPECIALISTS
owners, Producers, Drilling Contractors,
Completion Companies, Roustabout Crews. All
lines of Oilfield Insurance blow out,
creighting underground pollution. Also all types
of umbrella coverages.

DAYS (817)629-2563
NIGHTS (817)629-2276
Try Us All You Can Save Is MONEY!!!

VILOISO (VILO) A. GARCIA Store Manager
MIKE MASSEY Sales Rep. 629-8032

H-F Pumps
Norris Sucker
Rods
Oilfield
Supplies

FLUOR Casing & Tubing
Heads
FLUOR SUPPLY COMPANY
227 S. Rusk Street
P.O. Box 61
Ranger, Texas 76470
Telephone: (817) 647-3734 T-30

XERXES FIBERGLASS OILFIELD TANKS
XERXES CORPORATION • A SUBSIDIARY OF PROFORM INC.

Fiberglass Oilfield Tanks and
Gunbarrel Separators

1400 W. Overland Trail
Arlene, Texas 79601
1-800-592-4459
915-673-8238 T-C

WATS 1-800-592-4459
Bus. 915-673-8238
Res. 915-695-4623

JIREH ENTERPRISES

Oil Field Assistance Service
Roustabout - Wench Truck - Backhoe -
Loader - Welding - Tanks Painted

Box 129 Cisco, TX 442-1828
JESUS IS LORD T-C

PETROLEUM LAND LEASING

"Don't Waste Another Day"

Terry Patty 817-629-1709
Located in Snow Oil Plaza T-C

Experienced Welder
NOW ON CALL
24 hours-weekends
after 5:00 p.m. weekdays

629-2213 T-C Gary Lindsey

AERIAL BUCKET TRUCKS • HOLE DIGGERS • DITCH DIGGERS

CARROLL ELECTRIC SERVICE CO.
ELECTRICAL MAINTENANCE CONSTRUCTION
OIL FIELD COMMERCIAL & RESIDENTIAL

P.O. BOX 891
EASTLAND, TEXAS 76448
Bus: 817/629-2842
629-8793
Night: 629-1320
RON CARROLL-OWNER T-14C

Bookkeeping and Tax Service

Ken Parrack
205 East Main, Ranger, 647-3022
116 North Seaman, Eastland, 629-8641

INCOME TAX RETURNS

MONTHLY AND QUARTERLY
REPORTING FOR BUSINESS

Individual, Partnership, and Corporation Tax Returns

IKE'S PAINT & BODY

On Hwy. 6, Carbon
Phone: 639-2426

FREE ESTIMATES
Auto & truck glass
installed and insurance claims
promptly handled. We work on
American and Imported cars and trucks.

BRADFORD Realty

Helen Bradford, Broker
Ken Parrack, Associate

Main Office-205 East Main-Ranger, Texas 647-3230
Branch Office-116 North Seaman-Eastland, Texas 629-8641

SAVE TAX DOLLARS-INVEST NOW and let rent income make your payments on these 4 houses on 150x136 foot lot in Eastland. Approx. 1868 square feet fully carpeted, 3 bedroom, 2 bath, fireplace, cedar cabinets, central heating and air conditioning. Would make lovely home. Other houses are now rented. Nice location.

BUSINESS BUILDING located on .614 Acres on Highway 80 West in Ranger. Approximately 1350 square feet newly remodeled would serve for four offices. Price reduced for quick sale. Call today.

LARGE BRICK BUILDING downtown Ranger. Excellent buy for Mechanic. Living quarters, lots of room for Garage. Priced right to sell. \$28,000.00

BEAUTIFUL 3 Br., 2 bath, C H/A, fireplace, cathedral ceiling one of the best built homes in Ranger - Pier & Beam with slab in Game Room with bar. Cedar inside and out. Approx. 2900 sq. ft. Assumable loan - 6 lots.

161 ACRES 10 miles northwest of Ranger will sell all or divide. 40 acres of coastal. 3 tanks, some trees. Good loading corrals, chute, hunting and fishing. Cross fenced, 5 pastures, road frontage on 2 sides, assumable loans with \$20,000 down. \$550.00 per acre. Beautiful home site among oak trees.

6 1/2 ACRES includes pecan orchard & fruit trees. Approximately 1900 square feet in house. Double car port & patio-Beautiful place. Make offer.

22 ACRES Close in-I-20 Highway frontage-in Ranger. Large House, lots etc. Call for more details.

120 ACRES 3/4 minerals on this. Cleared, excellent grass, city water available, some of the best black land in Stephens County. Will sell all or divide. Available financing. Need tax deduction? Consider this! \$550.00 A.

TWO-STORY 5 Br. 2 bath, fireplace, hardwood floors, some carpet. Priced to sell! \$31,500.00

APPROX. 13 lots - good location 2 blks. off Hwy. 80 \$4000.00

IDEAL Hwy 80 E. Business property! 2 A. with house and shop building. Lots of highway frontage. Great location - call today!

800 A. Coleman Co., Ranch land, 1/4 minerals, 10 wells and still drilling. Cross fenced, good tanks, excellent hunting \$100,000.00 down and owner carry \$320,000 at present FLB int. Rate.

320 A. Coleman Co. Black Land Farm - all cultivation. 1/2 minerals \$220,500. - 30% bal. down - Owner finance. Located on Hwy.

320 A. Coleman Co. 320 A. Black Land Cultivation 1/2 minerals, beautiful home, on Hwy. \$340,000 - 30% down and Bal. Owner financed.

MOBILE home to be moved - 14x8 Wayside. 3 Br., 2 b., 1 walk-in shower 4T C H/A, wet bar and stools, DW, stove, Ref. WI/M-W.&D. Carpeted, drapes, shades, \$21,000.00.

KINCAID REAL ESTATE

817/629-1781

100 S. Seaman St.
EASTLAND, TX 76448

RESIDENTIAL

COME LOOK AT THIS ONE! This house has 2 bdrms., 1 bath, big fenced yard with pretty trees and covered back porch. Will make someone a very comfortable home. Owner will finance. Priced lower for cash. \$35,000.

NOT GETTING OLDER-GETTING BETTER! This older frame home has been recently improved with paint, panelling and carpet. Has 2 or 3 bedrooms, 1 bath. Roomy house on big pretty lot. Lots of trees in nice quiet neighborhood. \$24,500.

DOUBLE WIDE MOBILE HOME Only three months old. Is fully furnished and has a fireplace, too. Has 3 bedrooms - 2 baths. Washer and dryer included. \$32,000.

IN RANGER-2 bedroom, 1 bath house with chain link fence. Would make a good first home. Has assumable 10% loan. Affordable and nice. \$18,000.

COZY & CUTE-2 bdrm, new paint and carpet. Small yard, carport on paved street. Nice for single or starter home. \$25,000.

AFFORDABLE LIVING-Start with this small home 2 or 3 bdrms., 1 bath, \$12,500. Owner will finance.

LARGE OLDER frame house on over sized lot. 7 rooms and full attic. Lots of space inside. Needs remodeling. Would like to trade for airplane or other. \$30,000.

CLEAN & NEAT - 2 bdrm. - 1 bath house with fenced backyard and attached 1 car garage. Nice yard and neighborhood \$21,000.

BUY - DON'T RENT! 1 bedroom, 1 bath house with new carpet and garage. Nice yard-nice neighborhood affordably priced for first home. \$17,500.

LAKE PROPERTY

LAKE LOTS-We also have many lots available some with excellent water frontage. The fishing is good and the price is right. LL-01.

HOMES & ACREAGE

LAKE LEON-2 bedroom, 1 1/2 bath on west end of lake. Fireplace, attached carport, storage bldg. Close to country club. Excellent condition. \$35,000.

COMMERCIAL

COMMERCIAL BRICK 2 STORY BUILDING 2 1/2 blocks from the courthouse square. Sturdy construction but needs remodeling. First floor has 2 large rooms with approx. 2,500 sq. ft. Second floor would make nice 2 bedroom, 1 bath apartment or office with approx. 1,000 sq. ft. ALSO: 2 bedroom, 1 bath frame house. New paint and carpet inside. All on 4 adjoining lots for \$40,000.00. Possible owner finance.

LARGE OLDER frame house on over sized lot. 7 rooms and full attic. Lots of space inside. Needs remodeling. Would like to trade for airplane or other. \$30,000. Great commercial location!!! Location on Hwy. 80 in Ranger.

THRIVING BUSINESS-Local business that grossed \$740,000 in 1979. Excellent cash flow and terrific location. Terms negotiable.

SEVERAL MOTELS-Listed in various parts of the state. All excellent investments. Call for location and details.

SMALL OFFICE BLDG.-Eastland. Clean, neat, lots of parking. Central heat/air. 704 sq. feet. \$32,000.

ACREAGE

5-7 ACRE HOMESITES-Lots of trees, nice view, city water. Close to town. Lake Leon, country club. Flexible financing. Sell or trade. Buy one or buy all! Call for more details.

78.4 ACRES-South of Cisco on Hwy. 2526. One tank, 15 acres coastal, 47 acres love grass. New corrals, new fences. One-fourth of the minerals go. \$96,000.

42.53 ACRES-Oak trees, pasture land. New tank-really pretty land. Come and look at it. Owner will finance. \$685/acre.

52.8 ACRES Coastal and love grasses, 3 tanks, water well, corrals, roping pen, barn, very pretty homesite. Northeast of Eastland. \$1000/acre.

97 ACRES-about 1/2 native pasture, some improvement. Older frame house and dairy barn. Owner finance. \$567.00/acre.

420 ACRES-Peanut farm. Fully cultivated and irrigated, 1/2 minerals. Beautiful 4 bdrm, 3 bath home with fireplace. Excellent investment. Call for more details.

53 ACRES Hunters Paradise! In south central Eastland County with cabin. Rough brush land away from it all. Owner will finance. \$850/acre.

90 ACRES-Excellent deer hunting between Carbon and Gorman. Partially fenced, new stock tank. Three room cabin. Some minerals. \$680/acre.

We want to SELL your listing

Eddie Kincaid (817)647-1902
Mita Kincaid (817)629-8757
Debby Kincaid (817)647-1902

Road Improvement Bids To Be Received April 13 & 14

AUSTIN—Bids to improve US Highway 283 and an Eastland County road are scheduled to be received April 13 and 14 by the State Department of Highways and Public Transportation. Brownwood District Engineer Lawrence Schulz said US 283 will be reconditioned, widened, and resurfaced from one mile south of Rockwood to 0.9 mile south of the Colorado River, a total of 3.7 miles. In addition, the narrow truss bridge on US 283 at the Colorado River will be replaced with a prestressed concrete structure. The existing roadway width of 22 feet will be expanded to 40 feet.

Plans are being made for the annual Cisco Frontier Jubilee Parade to be held Saturday, April 24 at 10:00 a.m. Trophies will be awarded to bands, riding clubs, floats, etc. For more information concerning the parade call Olin Odom, III at Cisco Junior College, 817/442-2567, extension 140.

Cisco Frontier Parade set for Sat. April 24

Plans are being made for the annual Cisco Frontier Jubilee Parade to be held Saturday, April 24 at 10:00 a.m. Trophies will be awarded to bands, riding clubs, floats, etc. For more information concerning the parade call Olin Odom, III at Cisco Junior College, 817/442-2567, extension 140.

Olney Savings home office being rebuilt

OLNEY, TEXAS—Construction has begun on the home office of Olney Savings, which is being rebuilt after a devastating fire last December which caused some \$1.7 million in damages.

According to Alan D. Myers, president and chief executive officer of Olney Savings, the building will be replaced, as before, with only minor changes. The construction is scheduled to take about six months.

Olney Savings remains fully operational out of three double trailers on the site. Commented Myers, "Friends from all over Texas came to our aid after the fire with materials, time and support. We are so appreciative of their hope and we look forward to giving a formal 'thank you' when we're back in our home." Olney Savings is a \$300 million plus savings and loan association with offices in Olney, Seymour, Jacksboro, Bridgeport, Nocona, Azle, Weatherford, Graham, Brownwood, Wichita Falls, Bowie, Archer City and Vernon. Other Divisions of Olney Savings are Ranger Savings in Ranger, Eastland Savings in Eastland and Electra Savings in Electra.

Senator Glasgow reports

One of the largest agencies to be reviewed next session by the Legislature is the Texas Railroad Commission. A more appropriate name for the Agency is probably the Texas Energy Commission. It is more involved with energy than railroads. Duties of the Railroad Commission include:

- Overseeing the oil and gas industry, regulating how wells are drilled, how far apart they must be and insuring a limit on waste, and at times even how much a well may produce;
- Responsibility for the safety of thousands of miles of gas pipelines and the safe handling of liquified petroleum gas;
- Regulates intra-state trucking and busing and to a limited extent, railroads;
- Serves as an appeals body for gas rate increases (PUC handles electric, telephone and water).

The Legislature will review all aspects of the Railroad Commission. The Sunset Commission is set up with certain criteria to be considered. Among these criteria are the following:

- The efficiency with which the Commission operates.
- An identification of the problem or need which the Commission is intended to address, to the extent to which those objectives have been achieved.
- An assessment of less restrictive or other alternative methods of performing any regulation that the Commission performs which would adequately protect the public.
- The extent to which the jurisdiction of the Commission overlap or duplicate those of other agencies and the extent to which that program as administered by the Commission can be consolidated with programs of other State Agencies.

Whether the Commission has recommended to the Legislature statutory changes calculated to be of benefit to the public rather than to an occupation, business or institution that the Commission regulates.

- The promptness and effectiveness with which the Commission disposes of the complaints concerning persons affected by the Agency.
- With possible exception of the Public Utilities Commission, this Agency probably has the greatest impact of any agency that will be reviewed during the next session.

I invite input from you on the functions and the workings of the Railroad Commission as you feel that it affects you.

Watching Washington

That government which is closest to the people is in the best position to know the needs and desires of those it governs. The President's New Federalism proposal is an attempt to turn over many responsibilities from the federal government to state and local governments.

I like the idea in general terms. Let me cite an example to show why.

Texas has historically gotten the short end of the stick when it comes to the federal highway program. When I went on the Senate Transportation Subcommittee in 1971 I learned that the year before our state had gotten back only 60 cents in federal highway funds for every \$1 we paid out in federal gasoline taxes. We managed to increase our share to 68 cents by 1975 and up to 88 cents in 1980. That is a great improvement over what it used to be, but Texas still pays out more in gasoline taxes than we get back in highway funds.

Under an ideal New Federalism program the federal government would turn back to Texas all the gasoline taxes collected in our state and all the responsibility for building and maintaining our highway system. In that event, Texas would certainly come out ahead.

We don't yet know the full details of the President's New Federalism proposal, but from what we know so far it appears that it will fall short of the ideal. Only a portion of the gasoline taxes collected in Texas will come back to Texas, along with part of the responsibility for our highway program.

They are talking about transferring to the states transportation, education, social and community development programs now funded by approximately \$47 billion in federal grants. A trust fund would be established with revenues from the gasoline, tobacco, alcohol, telephone and oil windfall profit taxes to finance the transfer until 1991.

At least some of the gasoline taxes paid by Texans would still be used to subsidize highway programs in other states. That causes me some concern and my concern is increased by what we now know about other facets of the New Federalism program.

The formula for dividing up New Federalism Trust Fund monies among the states is based on outdated census information and, since Texas grew more rapidly than anyone predicted during the 1970s, use of this old data will cost us money. The formula uses estimates based on the 1970 census even though 1980 census information has been available for some time now.

Texas today accounts for 6.2 percent of the people in this country. Yet, according to the White House, we would receive only 5.4 percent of the money in the New Federalism Trust Fund. That is a difference of some \$300 million a year and I have asked the President to even it up by using 1980 census information.

I want to support New Federalism. It is an attractive concept. I do not intend to prejudice the President's program. He is consulting closely with Congress and with state and local officials to produce as effective and fair and equitable a program as possible.

But if in the end New Federalism means that tax dollars from states like Texas will be used to unfairly subsidize programs in other states then I will oppose it. Sen. Lloyd Bentsen

New Roofs
Roofs
Stinson Roofing
Stinson Roofing
Free Estimates
Call after 6:00
5 yr. Guarantee
(817) 559-5555
Stinson

Lamar & Commerce
EASTLAND

We Serve 'Em Up
Hot... And Quick!
One good slice of our delicious pizza always leads to another! We also have a full menu of your favorite dishes!
The Pizza House
Monday-Thursday 11 am to 9 pm
Friday & Saturday 11 am to 10 pm
Closed Sundays
629-8731 or 629-8838

PROGRESS
IN 1982
NBC
NEWS/MUSIC
FM 97
RADIO ★ 24 HOURS

RANGER TIMES EASTLAND TELEGRAM CISCO PRESS
Ranger, Texas Eastland, Texas Cisco, Texas

PATSY'S DONUT SHOPPE
1006 W. Main 629-1482
Eastland
Open 5:30 a.m.
- 1:30 p.m.
Fresh Donuts Mon-Sat.

TIEMPO RADIAL SALE

Save Big Now Thru Saturday!

SALE ON ALL SEASON RADIAL'S

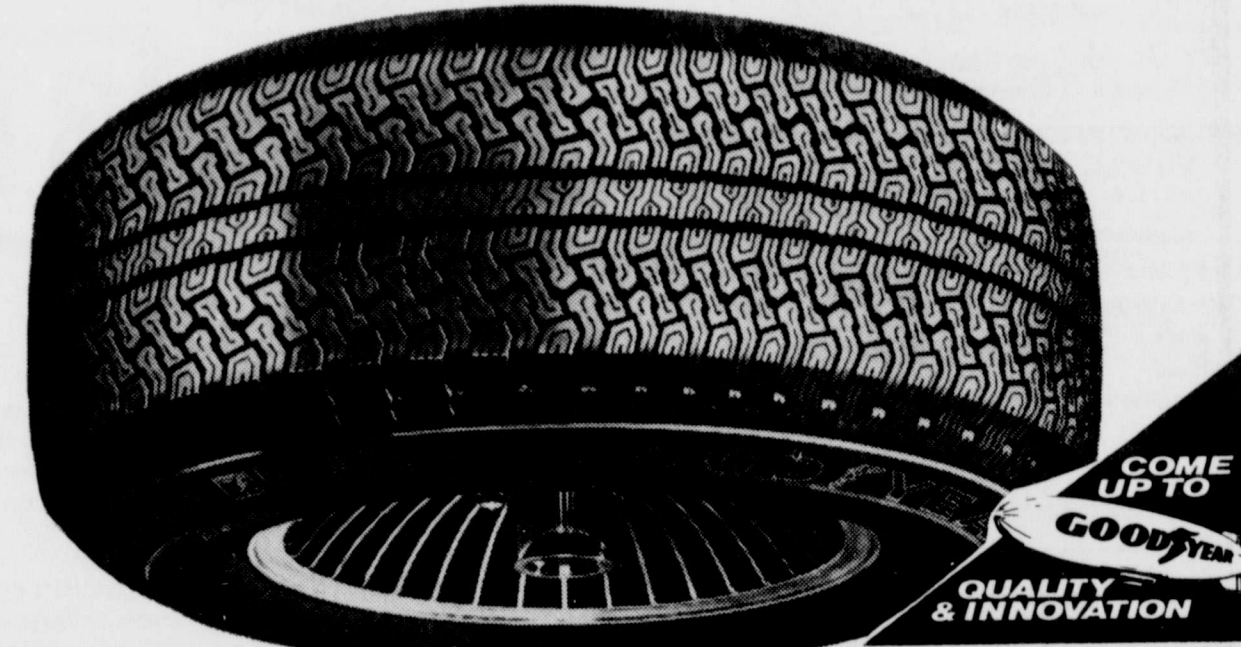
\$45

- All-season traction with over 10,000 biting edges.
- Gas saving steel-belted radial construction.

Whitewall Size	Sale Price Per Tire	Plus FET, No Trade Needed.
P185/80R13	\$57.00	\$1.91
P195/75R14	\$66.00	\$2.16
P215/75R14	\$71.00	\$2.47
P225/75R14	\$74.00	\$2.61
P205/75R15	\$70.00	\$2.42
P225/75R15	\$76.00	\$2.73

Per Tire
P155/80R13 Blackwall
Plus \$1.52 FET
No Trade Needed

Sale Ends Sat. Night



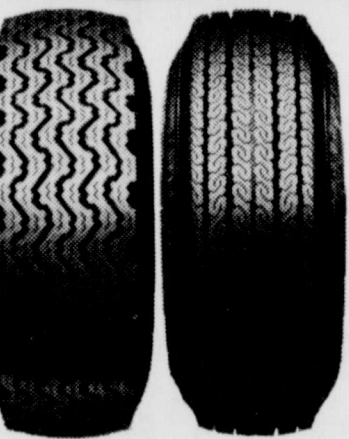
FOUR-WHEELER DEALS SAVE ON TRACKER AT

- One All-Terrain tire for four-wheel drive.
- Four-ply, triple-tempered polyester cord for toughness.
- Smooth driving on the road, heavy-duty traction off the road.

\$84

Size	Sidewall	Load Range	SALE PRICE PER TIRE	Plus FET No Trade Needed.
10-15	OWL	B	\$89.00	\$4.30
11-15	OWL	B	\$91.00	\$4.51

Sale Ends Sat. Night.



POWER STREAK II ONE TOUGH TIRE AT A PRICE THAT'S TOUGH TO BEAT

- Our newest diagonal-ply tire.
- Individual crossplies of tough polyester for strength.
- Shoulder-gripping edges for extra bite into curves.

\$32

Blackwall Size	Low Priced Per Tire	Plus FET, and old tire.
B7B-13	\$34.60	\$1.55
B7B-14	\$38.30	\$1.70
E7B-14	\$40.30	\$1.80
G7B-14	\$42.75	\$2.25
G7B-15	\$45.15	\$2.55

Other Size Blackwalls and Whitewalls also Low Priced.

Brake Service Your Choice



\$88

Import or domestic cars. Additional parts and services extra if needed.
Includes: Install new front grease seals, pack front wheel bearings, inspect hydraulic system, add fluid, road test.

2-Wheel Front Disc: Install new front brake pads, resurface front rotors, inspect calipers. OR
4-Wheel Drum: Install new brake lining and resurface all four drums.

Warranted 12 months or 12,000 miles whichever comes first.

Use any of these ways to buy: Goodyear Revolving Charge Account
• MasterCard • Visa • American Express • Carte Blanche
• Diners Club • Cash

Wheel Alignment



\$19

Imports with adjustable suspension includes front wheel drive Chevies, Casters, camber, and toe to proper alignment. Pherson Strut correction extra. MacPherson Strut correction extra. MacPherson steering systems. Most U.S. cars and additional services extra if needed.

Lifetime Alignment \$44
We will align your car as stated above then recheck and align it every 5 months or 5,000 miles - or whenever needed. Valid only at the Store where purchased. Offer does not cover the replacement of tires or parts that become worn or damaged. Agreement void if service work affecting the alignment is performed by any other outlet.

514 West Main Eastland, Texas
SATURDAY, APRIL 24TH 10:00 A.M.
514 West Main Eastland, Texas
SATURDAY, MAY 1ST

NOTICE: THIS AUCTION WILL BE HELD ON TWO SATURDAYS

FOLLOWING ITEMS TO SELL APRIL 24TH

- Gail Grinder & Mixer
- New Case Chisel Frame - 3 pt.
- Beau Wheel Balancer
- 9 Shank Chisel - 3 pt.
- 1013 McCullah Chain Saw
- Two Wheel Tilt Implement Trailer
- Wards Garden Tiller (5hp) - Like New
- JD Bottom Roller Plow
- 4 Bottom MF Mowboard, 14"-New
- Sulfur Duster (Used)
- 12 Mole Hog Feeder
- Section Harrows
- 6' Mohawk Blade - 3 pt.
- 4 Row JD Planter
- 2 Row Int. Planter-Less "A" Frame
- 2 Row JD Planter w/fertilizer Boxes (less "A" frame)
- McQuery Two-Horse Trailer
- White's Riding Lawn Mower, BHP(Like New)
- 14' Open Stock Trailer
- MF 126 Wire Tie Baller
- Cattle Guards
- Air Compressor
- Adjustable Drag (Used)
- Antique - All Metal, Wagon Wheels & Cultivator Wheels
- Sets-Fenders (970-1070) Case (New)
- Peanut Sacker on Wheels (Used)
- Peanut Digger for reruns (Used)
- Peanut Vine Cutters
- #12 MF Hay Baller
- 4 Row Stalk Cutter
- 3010 JD Tractor (New Tires on rear)
- B Farmall Tractor w/equipment
- SM Moline Tractor
- Numerous Combines & Tractors for parts
- "A" JD Cultivator - Complete
- "B" JD Cultivator - Complete
- Butane Bottle
- 16' Chrysler Boat, 100HP Mercury Engine w/trailer
- Propane Fuel Tank
- Suzuki 250 Motorcycle, Elec. Start
- Honda XL100 Motorcycle, Dirt/Street
- Dodge Pick-up
- Dodge Pick-up
- Chevrolet Car
- Volvo, Motor Good, Need Front End
- Ford Truck F500, (for parts)
- JD Grain Drill for parts
- Many other items

FOLLOWING ITEMS TO SELL MAY 1ST

- Service & Storage Counters
- Lots of Wooden Parts Bins
- Several Display Shelves
- Cash Register
- Adding Machine
- 3M Copying Machine
- 4 Gas Heaters
- 6 Bedder Standards
- Set of Gage Wheels
- Several New & Used Tractor Wheel Weights for All Types of Tractors
- 3 Case Mowboard Wings (New)
- 1 Centennial Belton Wire Winder (New)
- 1 Shredder Parts (New)
- Waldon Blade Mounting Bracket for A 100 & 1130 MF (New)
- 1 Waldon Mounting Bracket for XT 190
- 1 Allis-Chalmers (Used)
- Lots of MF Planter, Cultivator, & Plow Parts (New)
- Lots of JD Planter, Cultivator, & Plow Parts (New)
- New MF Tractor Parts
- Lots of New Lilliston Peanut Combine & Digger Parts
- Several Hydraulic Cylinders of various Sizes and Lengths (Used)
- New & Used JD Grain Drill Parts
- Lots of Oil Filters for Various Tractor MF Pulling Cultivator & Attachments
- MF Parts (New)
- Several New Peanut Digger Blades (Long & Short)
- 2 JD Tractor Warmers (Used) Fits All 3000 & 4000 Series
- Butane Regulators for Tractors (Used)
- Several Pieces of PTO Shafts (New & Used)
- 1 Tire Rack
- 2 Sweep Racks
- 1 New Complete JD Auger
- 3 JD 95 Combine Augar Housing-Long-New
- New & Used Case and MF Parts-Books
- 1 Microfish Parts Machine for JD, Case & MF Parts, with case & MF Fish Plates (Like New)
- 1 Cooling System Cleaner & Flusher
- 1 G JD-Block & Head (Used, but good)
- 1 G JD-Block - Good Reborn to use
- 1 D6 Cat Starting Engine (for parts)
- Many Other Items

GENTRY AUCTION COMPANY
Route 3, Box 19
Ranger, Texas 76440

AUCTIONEERS:
JACKIE D. GENTRY TSX 122-0395
JIM WILLIS TSX 023-1287
Licensed and Bonded

FOR INFORMATION:
JACKIE GENTRY (817) 647-1566
EDDIE SQUIRES (817) 629-2220
JIM WILLIS (817) 549-5080

CONCESSION AVAILABLE

AUCTIONEERS NOTE: Squires Farm Store has been in business for 17 years and has recently sold his building. He will be moving to a new location and is reducing his inventory.

All items need to be picked up by May 8th.

Drilling Report

Austin, Tex., April 5--Railroad Commission Chairman Jim Nugent announced that Texas operators reported 157 gas and 42 oil discoveries in March 1982.

One year ago, 104 gas and 58 oil discoveries were filed with the state's energy regulatory agency.

Gas discoveries in the third month of the year included 52 in the Refugio area, 47 in deep South Texas, 21 in West Central Texas, 20 in Southeast Texas, five each in East Texas, and North Texas, three in the San Angelo area, two in the Panhandle and one each in the San Antonio and Midland areas.

Oil discoveries included seven each in deep South Texas, East Texas and the San Angelo area, six in the Refugio area, four in the Lubbock area, three in North Texas, two each in Southeast Texas and the San Antonio and Panhandle areas, and one each in East Central Texas and Midland area.

Through the first three months of this year, there have been 385 gas and 129 oil discoveries throughout the state. For the same period last year, there were 287 gas and 184 oil discoveries.

In March, operators reported 594 exploratory and field tests wound up as dry holes. New applications for permits to drill oil and gas tests totaled 3,154 in March compared with 3,389 in the same period of 1981.

Applications to drill, deepen, plug back and for service wells in March amounted to 3,529 against 3,677 a year earlier.

Operators filed 1,013 amended applications to drill. A year earlier they submitted 867 amended requests.

GOOD YEAR
Everisto Jimenez, Mgr.
Your Local Goodyear Service Store
315 East Main
Mon. thru Fri. 7:30 a.m. to 6:00 p.m.; Sat. 7:30 a.m. to 5:00 p.m.
Phone 629-2662
Eastland

Weddings



MR. AND MRS. LANNY STRICKLAND

Miss Carol Weir Becomes Bride Of Lanny Strickland

Miss Carol Weir became the bride of Lanny Strickland in a double ring ceremony performed at 7:30 p.m. Thursday, April 1, at the Bible Baptist Church with Rev. Doyle Roberts officiating.

Gary Fink of Cisco was pianist and vocalist. Music played and sung was "Flesh of My Flesh."

The bride is the daughter of Mr. and Mrs. Norman Weir of Rio Vista. Mrs. Neoma Ingram of Cisco is mother of the groom.

Matron of honor was Mrs. Carla Blackwell, of Cisco, sister of the groom. She wore an off white sleeveless blouse trimmed in lace and buttoned front with long red skirt. She carried red and white long stem carnations.

Bridesmaid was Lisa Smith of Cisco. She wore a long sleeve white blouse with lace front and long red skirt. She carried red and white long stem carnations.

Wendy Strickland of Cisco, niece of the groom, was flower girl. She wore a red velvet dress with empire waist, white yolk and cap sleeves trimmed with lace. She carried a small basket of flowers.

Lisa Weir, sister of the bride, of Rio Vista, was receptionist.

Best man was Alan Ingram of Germany, cousin of the groom. Groomsman was Sam Blackwell, brother-in-law of the groom. Kevin Strickland, of Cisco, brother of the groom, was usher, and Derek Blackwell, of Cisco, nephew of the groom, served

as ring bearer.

The bride, given in marriage by her brother, wore a gown of off white polyester, empire waist with ruffled yolk and lace bodice topping semi-flow skirt and long train. Sleeves extended to elbow and formed a circular sleeve. Veil was short with small flowers trimming Juliet cap.

The reception was held in the church, immediately following the ceremony. Kathy High of Eastland, sister of the groom, and Joan Strickland of Cisco, sister-in-law of the groom, served the cake and punch.

The bride attended Cisco High School and is employed by Rambis Electric.

The groom attended Cisco High School and is employed by Rambis Electric and G.W. Rebel and Son Con-

struction.

After a wedding trip to points of interests in Fort Worth, the couple is living at 304 West 18th Street.

WORD of GOD

Thou shalt not lie with mankind, as with womankind: it is abomination.

Neither shalt thou lie with any beast to defile thyself therewith: neither shall any woman stand before a beast to lie down thereto: it is confusion.

Defile not ye yourselves in any of these things: for in all these the nations are defiled which I cast out before you:

Leviticus 18:22-24

Contract Pumping

Williams Pumping Service
R.L. (Rocky) Williams

P.O. BOX 451
RISING STAR TEXAS 76471

TELEPHONE
(817) 643 4692

WORK GUARANTEED
Septic Tank Service
Area Wide 24 hr. Service
- 7 Days A Week

CLEANING OUT & INSTALLING SEPTIC TANKS & DRAIN LINES
CLEANING OUT SAND TRAPS & GREASE TRAPS REPAIRING DRAIN LINES * BACKHOE SERVICE

442-4301 or 647-3494

Wards Septic Tank Service

FOCUS

by D. J. HERDA
America's Best Read
Syndicated Photo
Columnist



Get Creative with Your Portraits



High contrast and grain combine with a close camera angle to produce an interesting portrait.

There I was, on location in a dark lounge on Chicago's West Side in order to shoot an up-and-coming Country-and-Western band.

There she was, 15 pounds overweight, but with the nicest eyes I've seen in a long time. She was reluctant to pose. She wanted a few weeks to lose some weight. I wanted to photograph her then and there.

Of course, every successful portrait photographer knows the key to producing top quality, flattering portraits is to concentrate on and emphasize the model's best points--and disguise the weaknesses.

Overly full, round, or outright heavy faces can be "slimmed down and shaped" in the studio by careful arrangements of the lights. Long, thin faces can be "filled out" in a similar way.

Short, squatty noses can be lengthened via lighting and the choice of lenses. Long noses can be shortened similarly.

But how does one make the best of a bad situation--poor available light, cluttered background, one flash (the second malfunctioned), and the "wrong" lens? Elementary, my dear Watson.

I started by loading Ilford's HP5 thin-emulsion (72-exposure) black-and-white film in the camera. It has an ASA of 400, which is good for low-light situations, and a tendency to be "grainy," which isn't often good for portraits. Especially not if the end result is supposed to be flattering, alluring.

Next, I set the flash up on a bracket off to one side of the camera. If I hadn't the bracket, I would have held the flash off to one side or gotten someone to do it for me. Light coming from one side of the lens has more direction and interest to it than light coming from directly above the lens, which tends to flatten out a subject.

In order to soften the harsh glare from the flash unit, I pointed the flash head straight up and had someone hold a white card just behind the unit and tilted slightly toward the model.

Finally, I put a 200 mm lens on my camera, stepped back to about 12 feet, focused carefully, and shot. Needless to say, that long a lens at that short a distance filled the frame with the model's face, thus eliminating the problem of those 15 extra pounds. And bouncing the flash off the white card took much of the harshness out of the light, resulting in a softer, more pleasant illumination.

When I got home, I processed the film normally and ran off a couple of prints. The first print I developed normally in Kodak's Dektol diluted 1:2 (one part Dektol to two parts water). The results were interesting, but not what I wanted. There was too much grain in the shot, and several imperfections in the model's skin--things I hadn't noticed in the dimly lit lounge--bothered me.

So back to the enlarger--this time to underexpose the print, which I then overdeveloped in the Dektol. This produced a more limited range of the gray scale, dropping out the middle tones, as well as the annoying grain, and creating a high-contrast print.

The results, I think you'll agree, are intriguing. I captured what I wanted and eliminated what I didn't want. And the fact that the model's face (less than the entire face, in fact) filled the frame adds impact to the shot.

I'm pleased with the high-contrast print, although I'm not necessarily finished with it. There are other things to be done with such a print--like producing a Sabattier-effect photo or an ultra-high-contrast print or even a screened texture shot. But more about that in the future.

Thursday, April 15, 1982

all points bulletin
SCHOOL'S OPEN!
DRIVE WITH CARE!

Mary Kay Cosmetics

Now available in Cisco. For a private complimentary facial or reorder call

VIRGIE GREGG
PROFESSIONAL BEAUTY CONSULTANT
442-3460 P-911fc

MONUMENTS

CISCO MONUMENT WORKS

LOYAL & DORIS LUNDSTROM OWNER

CURBING
LAST DATES
708 E 8th
CISCO, TEX.

442-9995

GENERIC All-in-The-Ear Hearing Aid.
Brand Name Equivalent

\$395.00*

1 Year Factory Warranty
Custom Fit and Custom
Ear to your loss!

FREE Hearing Test!

Bring in loved one or friend whose voice you are familiar with to help with the test.

American Legion Hall
Thursday, April 15
9:30am to 1:30pm

Cisco,
TEXAS STATE HEARING AID CENTER
4201 A North 1st. Phil. Texas 79603
915/673-4989

* Small extra charge for needed options.
Standard Hearing Aids Also Available
If unable to attend
Call Us For FREE In Home Testing
Nerve Deafness CAN be Helped!

If your carpet is dirty Call

BILL'S CARPET CLEANERS

For Free Estimate 442-1363 p-32

Pasture Lease Wanted

200 acres or more within 25 miles of Cisco. Will pay top dollar for a 3 year or longer lease.

Call collect anytime.

915/672-5828 or 915/676-1397

HARGRAVE INSURANCE AGENCY

1106 Ave. D
Cisco, Tex

Personal Sales & Service For

- ☑ HOME Insurance
- ☑ Car Insurance
- ☑ Commercial Business Insurance
- ☑ Mobile Home Insurance & Travel Trailers
- ☑ Boat Insurance
- ☑ Life Insurance
- ☑ Bonds Of All Kinds

Shirley A. Hargrave
442-1477 Or 442-1059

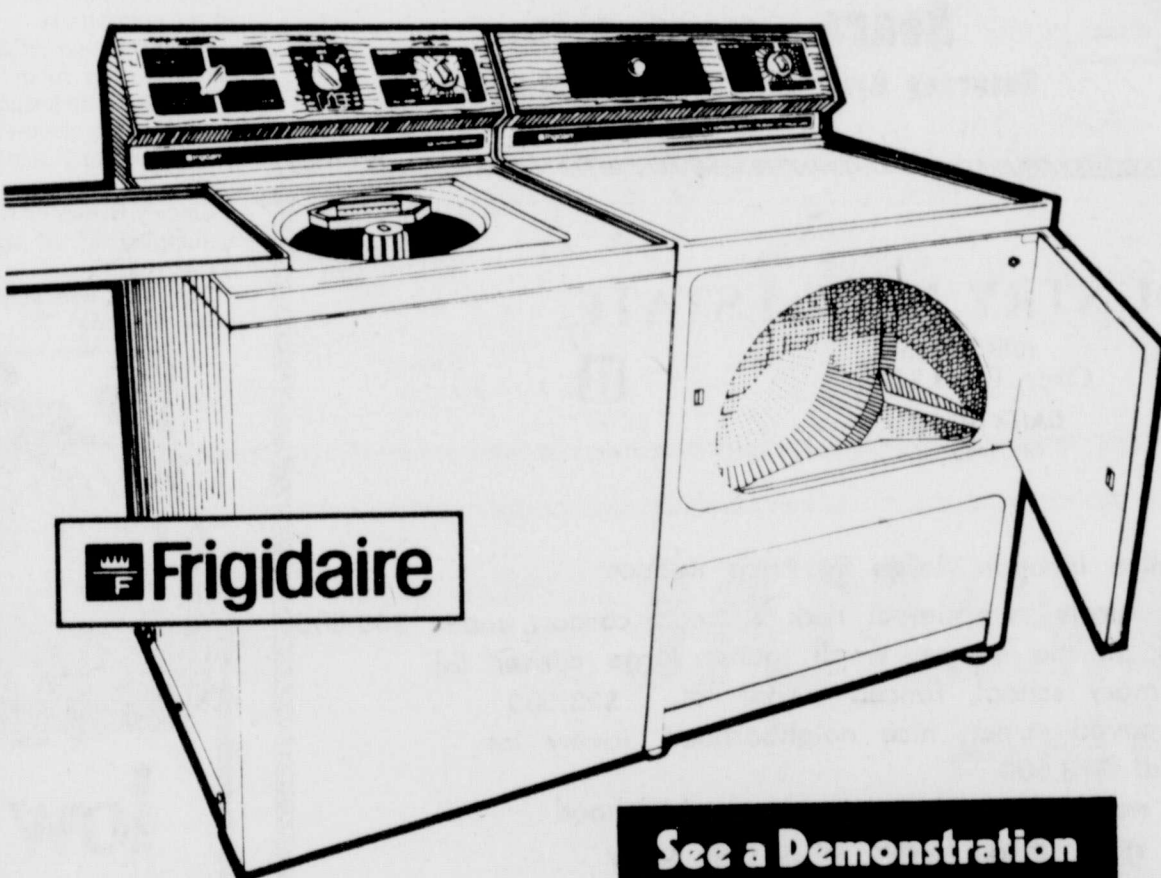
WANTED

Part-Time Agent For All-Risk Crop Insurance

in Eastland, Brown and Callahan Counties.
No License required.

Contact Webster Willoughby,
511 Early Blvd.,
next to Classic Inn Motel, Early, Tx.
(915) 643-4034. 11-26c

This dependable energy saving Frigidaire Laundry Pair can handle big family-size loads—up to a full 18 pounds.



Frigidaire

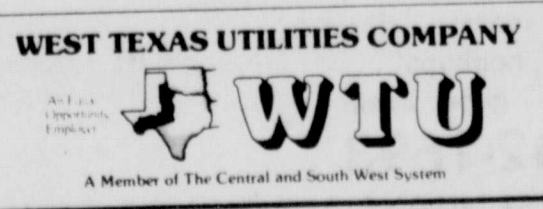
See a Demonstration TODAY!

Washer offers dependable cleaning power — even lets you conserve hot water and detergent

- No need to waste hot water. This Frigidaire Washer features a Water Level selector that lets you match the amount of water to the size of your washload.
- Depend on Frigidaire to keep lint from settling back on your clothes with the Lint Filter which snaps in and out for easy cleaning.
- New horizontal cleaning action passes clothes under the recirculating filter 8 to 14 times each cycle. The new system is equally effective for small, average or large loads.

Dryer puts big drying capacity within easy reach

- For easy loading and unloading the big oversize door opening — one of the largest in the industry — is positioned a comfortable 18 inches off the floor.
- For efficient drying, without hot spots that can damage fabrics Frigidaire gently pulls air through your clothes.
- For big-family wash loads this Frigidaire dryer provides gentle fabric care for up to 18 pounds of laundry.



Qualified Factory-Trained Servicemen Offer You The Finest In Appliance Service

Cats Ingram Recently Has 64th Birthday

C.H. (Cats) Ingram, a Cisco Law Enforcement officer for the past nine years, recently celebrated his 64th birthday.

A resident of Cisco for 44 years, Cats has served his community in several different capacities: as a patrolman, acting Chief of Police, Chief of Police and more recently as Cisco's Lake Patrol officer.

"I like Eastland County. I wouldn't live anywhere else. I've gone off. But I always come back. Everybody is friendly," he said.

Cats is originally from Nimrod. He is the son of John and Gerthie Ingram (both deceased).

"My grandparents raised me until they passed away. I was on my own at 16," he recalled.

According to Cats, he "hoboed around" for some time during the depression. At the age of 16, he was hopping freight trains and avoiding Rail Road Bulls.

"Those Rail Road Bulls, they'd knock you off the train. You had to watch them or they'd set you off."

During that time, Cats worked in the peanut fields, for one dollar per day. He also worked as a short-order cook and dishwasher.

At age 19, Cats married Miss Vergie Burge of Haskell (now deceased). His present wife is Janice Lee Hollingshead, of Cisco.

Before his nine year term as a police officer, Cats was employed by several local businessmen in varied capacities.

Perhaps, his most notable employment was that of dorm supervisor of Bivins Hall, CJC and that of Manager of the Laguna Hotel Coffee Shop.

He was also employed as a Railroad worker and mechanic.

"For about 14 years I ran a garage," he recalled.

Cats is perhaps best distinguished as an avid fisherman. His nickname conveys that. In our recent interview, he commented on the stocking of Lake Cisco by the Game Commission and recent catches made by local and visiting fishermen. To summarize, "they're biting."

Asked what citizens and visitors could do to improve recreational conditions at Lake Cisco, Cats stated that littering is one of the primary problems, and that the problem could be easily

solved by the responsible disposal of garbage.

Asked what his future plans were, Cats said he was thinking seriously of traveling around the country, visiting relatives and "doing some fishing."

Cats is the father of Councilman Bobby Ray Ingram of Cisco, Windell Ingram of Fort Worth, Mrs. Rozet Withers of Jacksboro, and the late Calvin David Ingram of Cisco; one stepdaughter, Carolyn Laird of Cisco; and is the grandfather of nine: Bobby and Randy Ingram, Tonia, Calvin and Sissy Ingram, all of Cisco, Tina, Rhonda and Terresa Withers of Jacksboro and Clifford David Ingram of Eastland.

Putnam News

By Anita Buchanan

Mrs. Taylor is visiting her family out of town for a few weeks. So anyone knowing news to report please call me, Anita Buchanan, at 682-3251.

School was out Thursday at 2:30 for Easter holidays. The kindergarten thru third grades had an Easter egg hunt at school. Classes will begin again Tuesday morning.

Rumor has it that Putnam was hit hard by the Easter Bunny. Eggs were found all over town. Hardest hit was around John D. Isenhower's. Helping hunt eggs there were W.L., Jamie and Rene Jagers. Eggs were also found in the yard of Annie Mae and Milton Donaways and all around the Buchanan house.

Zion Baptist Church also hosted an Easter egg hunt. In addition to the Easter egg hunts many families in Putnam gathered to attend church and feast.

Visiting with Milton and Annie Mae Donaway were Hubert Donaway and family of Odessa, L.C. Donaway and family of Albany, Lee Donaway and family of Hereford, Warren Donaway and family of Brownwood, George Ramsey and family of Glenwood Springs, Colo., Mrs. Otis Shorties of Midland, Miss Debbie Vines of Andrews and Mrs. Nettie Speegle of Putnam.

The Donaway family attended Sunday service at Mitchell Baptist Church where Leslie, one year old daughter of Warren and Cin-

dy Donaway, captured lots of attention in all of her pink ruffles.

Dinner guests in the John D. Isenhower home Sunday were Mr. and Mrs. Joe Fiore, Michael and Margaret, Mathew, Michelle and Maria of Houston, Mr. and Mr. Roy Petty, Dennis, Kerry, Randy and Ken of Eastland, Kim and Laura Massengill of Abilene, John Doyal, Meta and Martin, Mr. and Mrs. Calvin King and Ronald Green, Mr. and Mrs. Darryl Green of Clyde, Mr. and Mrs. David Isenhower, Timmy and Jessica, Mr. and Mrs. Roddy Reynolds, James and Steve of Abilene, Mrs. Gay McClenen of Dallas. Also visiting the Isenhower were Steve Grega and Jon Eisele officials at NASA in Houston.

Kathryn Ivie of Rock Springs and Mr. and Mrs. Charles Ivie and girls of Rosco visited with Mrs. Edith Ivie this weekend.

George Ramsey and family visited his dad, Jack Ramsey and Maxie Soloman.

Mr. and Mrs. James Stovall of Odessa visited Mrs. Nettie Speegle Saturday evening.

Ruby and Sid Weatherman spent Easter with Mr. and Mrs. Cecil Joyce in Rising Star. Mr. and Mrs. George Stewart and son from Abilene visited with Ruby and Sid Friday.

Visiting with Mr. and Mrs. Hershel Wagley Wednesday night was Harvey and Faye Wagley of Moran, Avis Miller and Clara Vaughn of the Dallas area and Bill Wagley and boys.

JoAnn, Hursel, Avis and Clara spent Easter holidays in Ruidoso, N.M. Andy Maxwell spent



Hunting Easter Eggs At Cisco Nursing Center

Moran News
By Mrs. Luke Huskey

Mr. and Mrs. Blackie Carvel of Fort Worth visited with her parents, Mr. and Mrs. O.K. Schooler and John last week.

REMEMBER The next flea market in Moran will be Saturday, April 24. Come and look or buy.

The Moran Country Musical will be held at the Moran Community Center on Friday night, April 23. Come and enjoy an evening of fun and fellowship. All area musicians are invited to attend. A concession stand will be open.

Mr. and Mrs. John McCandless and sons of Odessa spent a few days in Moran with relatives.

Mr. and Mrs. James Garrett and Gay of Big Lake spent the weekend in Moran with relatives and friends.

AMERICAN LEGION AUXILIARY The president being absent, the secretary opened the meeting by reading the minutes of the previous meeting. She led the group in the Preamble to the Constitution and the pledge to the flag.

Dollie Miller agreed to be the delegate to the fall convention in Roscoe in April.

Eighty-one dollars was deposited from the bake sale, held March 27. The Auxiliary members appreciate all donations and contributions.

The annual reports were to be sent in.

The group will sponsor a salad supper on Saturday afternoon, May 8, for the senior mothers and fathers of the community.

The group agreed to try to fix some lap robes for the veterans in the hospital.

The unit welcomed Billie Sue Offield as a prospective member.

Shirley Brewster has been a member of the auxiliary for 32 years.

The unit will sell buddy poppies on May 28.

low cost want ads work hard for you

Capture Her Heart with a Gift Photo
Quality - Snapshots
Cameras & Supplies
Films-All sizes
And of Course
Fine Photography
Is Our Business.
COTTON'S STUDIO

WORD of GOD
And he humbled thee, and suffered thee to hunger, and fed thee with manna, which thou knewest not, neither did thy fathers know; that he might make thee know that man doth not live by bread only, but by every word that proceedeth out of the mouth of the Lord doth man live.
Deuteronomy 8:3

The Cisco Press carries office supplies Stop in today.
Receipt Books Staplers
Stationery Folders

NOW OPEN FOR BUSINESS
CISCO LOAN PRODUCTION OFFICE
202 W. 8th P.O. Box 726 Cisco, Texas 76437
Jodi Crudginton, Loans
Hours open 9-12 1-4 Mon.-Fri
817-442-4303
"We're here today--to finance your tomorrow."
Commercial Loans Real Estate Loans
Automobile Loans Farm & Ranch Loans

WORD OF LIFE FAITH CENTER
Philippians 2:16
Sunday Morning-10:00
Sunday Evening-7:00
Thursday Evening-7:00
24 Hour Prayer Line 442-1828 442-4495 442-2355 442-4908
JESUS IS LORD
Temporarily Meeting At Cisco Revival Center
Corner of East 7th & Ave A Cisco P-85-ifc

'ROUND AND 'ROUND SHE GOES...
The question is... where will it stop? Many people have no idea. Life can be lived in a flurry of activity — fitting from person to person, to dream, and back again. Or it can just settle into a monotonous routine. Either way, meaninglessness has taken hold. Lack of meaning in life has been called furious activity around an empty center. That's what a whirlpool is. Activities, meetings, schedules, parties, appointments — but no direction. The swirling pace can get to you — especially if there's a hollowness inside. Jesus talked a lot about meaning in life. But he not only talked about it. He gives it! He came to take us out of the whirlpool and set us on course in the Life Stream.

BIBLE BAPTIST CHURCH
17th at Ave E
CISCO, TEXAS 76437

Sunday School..... 10:00 A.M.
Morning Service..... 11:00 A.M.
Evening Service..... 7:00 P.M.
Wednesday Service..... 8:00 P.M.



NEW! EXCLUSIVE! PANORAMA PORTRAIT
YOURS FOR ONLY \$12.95 WITH THE PURCHASE OF OUR LOW-PRICED PORTRAIT PACKAGE.
A stunning variety of poses in one portrait makes the Panorama a priceless memory of your child. Attractively matted and ready to frame. Our portrait package includes two 8x10s, three 5x7s and fifteen wallets. No additional charge for groups. Additional packages only \$12.00 with no deposit. Poses our selection. Beautiful backgrounds available. Ask about our Decorator Portrait.
\$12.95 PORTRAIT PACKAGE PRICE \$24 DEPOSIT
Sears 621 Ave. D. Cisco
Saturday April 17 10 am to 4:30 pm

BIG COUNTRY REAL ESTATE
509 E. 8th Cisco, Texas 76437
DANA GOOSEN Broker (817)442-3358

HOMES
Large 4Bd, 3 bath, block, nice location, large lot. Price Reduce
Corner Lot, 4 Bd 2 Bath, nicely remodeled, rock & cedar, carport, under \$40,000
NEW BRICK— 3Bd. 2 Bath all the extras, small lot or large corner lot
3Bd. large rooms, near primary school, fenced corner lot, \$23,500
Spacious 3Bd older home, paved street, nice neighborhood, lovely lot
3Bd near school, remodeled. \$13,500
2Bd. large rooms, nice lot needs face lift, pleasant neighborhood
2Bd W. 8th good business spot, large corner lot, owner carry
RISING STAR— 3Bd on 1/2 acre, pecan and fruit trees, large rooms
RANGER—NEW BRICK— 3Bd, 2 Bath, built ins, 2 car garage, (country)

LAKE CISCO PROPERTY
Lovely home. 3Bd. 1 Bath, fireplace, patios, porches, deepwater
2 Bd, 2 Bath, large rooms, laundry, patio, 2 nice lots, carport
2Bd, cabin on 2 lots & deep water, covered boat dock, \$30,000
1 Bd, main channel, two nice lots, carport & patio

ACREAGE & LOTS
1 & 2 acs, build sites, East of Cisco—Country life near town
4 acs & 3 Bd, lovely setting, assume low pmts with equity buy
20 acs & 3 Bd, mini farm, nice coastal field, trees, 5 mi SW Cisco
32 acs SW Cisco, mostly in coastal, spring water, nice spot
42 to 400 acs, 1/8 mins available, 3 Bd, Brick, cultivation, water, Nice
1/2 city block at 14th & Ave. E. 14 lots. 43 x 75, good price
10 lots mobil hookup, nice trees, needs dozer work, \$8,000
NORTH EASTLAND—11 acs, 4 Bd farm, good water & fences Nice

COMMERCIAL
EASTLAND—2 story remodeled station, apt upstairs, owner carry
EASTLAND— 4 plex, 1 Bd units, nets good income, close in
RANGER—2 Bd house, large building, mobile hookups
Building on corner East 80 Cisco, parking & good income

OFFICE (817) 442-1693
OFFICE HOURS 9-12 1-5 & SATURDAYS, SUNDAYS & EVENINGS CALL
Dana 442-3958 Penny 442-1707

Morren's GIFT SHOP
1013 W. MAIN
EASTLAND, TX.

OFFERS
The Art of Calligraphy
Instructor-Bea Haggard
Beginner-Phase 1
\$15 PLUS SUPPLIES
Day or Night April 20
9-11:30 a.m. 1-3:30 p.m. 6-8:30 p.m.
Classes Phone Register
Limited 629-2092 Early

Eastland Business Services
Complete accounting and income tax service.
Call 629-1061 or 629-1644

See M.H. Perry for EDUCATIONAL INSURANCE
629-1566 or 629-1095
104 N. Lamar-Eastland

NBC NEWS/MUSIC FM 97
RADIO ★ 24 HOURS

A & W Mobil Home Repair
Phone 893-6236
Deleon Texas TC

BIG COUNTRY REAL ESTATE
509 E. 8th Cisco,
New Brick 3 bdr 2 bath on 1 acre country setting with a view. Built by Rebel and Son.
Big Country Real Estate
Cisco 817/442-1693 or 442-1707
after 6:00 pm T-32

BOB TURNER SEED COMPANY
ROUTE 1 BRECKENRIDGE, TEXAS (817)559-2065
SORGUM SUDAN 3-WAY CROSS
KLEINGRASS 75
NATIVE GRASS SEED
ALL OTHER TYPES FIELD SEED

KING INSURANCE AGENCY REAL ESTATE

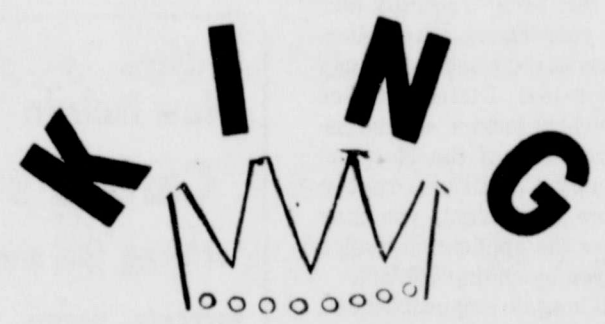
CISCO 106 W. 6th 442-2552
RANGER Mrs. Opal C. King-Broker Res. 647-1510
RANGER 207 Main 647-1171

THREE BEDROOM, One bath, carpeted, newly decorated, new plumbing, corner lot.
TWO BEDROOM, one bath, basement, carpet, carport, storage building, barn, fruit orchard, garden, several pecan trees, Approx. 10 acres. Close in, \$42,000.00. Assumable loan.
THREE STORY brick building, includes 2 offices (now rented) Four furnished apartments and plenty of space for business expansion. Owner will finance.

3 bedroom, 2 ba nice neighborhood. Garage and storage. **SOLD**
STRAWN
Strawn-Neat two bedroom, one bath cottage near school in quiet neighborhood. Spacious yard, some carpet, very affordable.
Lovely two story cottage, 4 bedroom and spacious kitchen dining area. Has been re-wired, extensively remodeled, with fresh decorating ideas. Ceiling fans, unique wall treatments, beautiful carpets. Must see to appreciate.

We Need and Appreciate Your Listings
Conventional, VA, and FHA Financing Available

Ardyth Caldwell 442-2134
Patricia C. Nowak 672-5711 672-5521



Lee Russell 647-1383
Don Adair 629-2848
Lilia Pittman 734-2055

Century 21 FOWLER REALTORS
Bill Griffith, Broker
820 West Main-Eastland 629-1769
107 A Main-Ranger 647-1302

Residential EASTLAND
WE HAVE new homes under construction. Call for details.
EXECUTIVE HOME. Perfect for entertaining in an exclusive area with a beautiful view overlooking Eastland. 3 bdr., 2 bath. Extras: Wet bar, sound system, vacuum system, unusual fireplace, sunken bathtub in master suite, microwave, trash compactor, Jenn-Air cooktop and more. \$85,000.00. E1
NEED TO INVEST? Two story home divided into two apartments. \$15,000.00. Call for details. E-12
TWO BEDROOM, 1 bath - has wall furnace and refrigerated air condition, carport on side of house, carpeted. This is only \$25,000.00. E-5
THREE BEDROOM, ONE bath nice older home. New kitchen cabinets, carpet throughout. \$30,000.00. E-7
NICE OLDER home situated on four lots. Two bedrooms, one bath. All new kitchen, beautiful fireplace, big beautiful lot. Call for more details and how to get this one. **SOLD**
IN OLDEN: Nice 3 bdr., one bath home. 100 x 100 foot lot. Paved street. This is really a neat place. E-16
RANGER
NICE: Three bedroom, one bath, den home. Completely carpeted. Back of house has an efficiency apt. Call for details. R-3
PUT YOUR FAMILY in a home of their own! Start with this nice two bedroom, one bath home in Ranger. Has central heat and air, redwood fence, living room and dining room. Call now! R-4
GOOD LOCATION-Nice two bedroom, one bath home in THE HODGES OAK PARK ADDITION of Ranger. Call for more information. R-5
IN A REAL GOOD LOCATION sits this nice two bedroom one bath home in Ranger, with small equity. Call for details. R-8
NICE Four bedroom, one bath house with one acre of land in Ranger, at a very low price. Has a lot of fruit trees such as; APPLES, PEARS, APRICOTS. Nice garden spot TOO! Call for more information. R-15
CONSIDER YOURSELF AT HOME in this cozy three bedroom, two bath home with living room, dining room, and BREAKFAST ROOM! Central heat and air. AND MORE! CALL FOR THE MORE! R-11
IN RANGER WE HAVE a two bedroom, one bath living room, dining room, and kitchen home. Has a one

car garage, cellar in back yard, drapes to be put in house. For more information call us today! R-1
CISCO
EXTRA NICE TWO BEDROOM, one bath home. Beautifully decorated, ceiling fan, one large garage and shop area. Call now. C-1
COUNTRY HOMES & ACREAGE
INSIDE CITY LIMITS: 1.2104 acres. All cleared land. Great for building a new home, or putting a mobile home on it. Like to know more about this? Call Now! A-19
55 ACRES good building site. Across from new high school in Ranger. May be subdivided or sold as a unit. A-6
DO YOU WANT TO OWN A HOUSE? Do you want to own some land? We've got the two together! A nice three bedroom, one bath home and approx. 5 acres. If this sounds good to you, call right now! HA-5
4 ACRES off old hwy. 80 E. 1/2 block from city water main. Excellent for pipe yard or for oilfield storage. A-10
SMALL ACREAGE TO BUILD ON between 2 and 3 acre tracts about 6 miles south of Eastland on Hwy. 6. City water and electricity available. Call for details. A-17
FRESH ON MARKET! 167 2/10 acres. Approx. 16 miles S. of Cisco on Rising Star Hwy. Has small older house, two tanks, peanut acreage, coastal and some wooded area. \$500 an acre. Owner will consider some financing. Call for information. A-15
5 1/2 ACRES-N/W of Olden. City water available. Small tank. Call for details. A-5
80 ACRES OF CLEARED LAND! In blue stem grass, fenced, with one tank, trap, and barn. CALL TODAY! A-7
COUNTRY LIVING-Close to Eastland. Three bedroom, two bath home on 13 acres. MANY EXTRAS! Priced in the Mid Seventies. Additional acreage available. HA-3
ACREAGE
70 ACRES OF GRAZING LAND! 1/4 mile frontage, two tanks and mesquite trees. Located on I-20 access road. Call today. A-8
4 ACRES CLOSE TO BEST WESTERN. I-20 access road, ideal for restaurant location or any other kind of business. A-3
COMMERCIAL & LOTS
ATTENTION MERCHANTS-RELOCATE! ONE half to ONE ACRE TRACTS, all utilities and pave street, situated in new shopping development. Adequate parking space, \$8,500.00. C-2
IN CISCO, 2 large lot with many oak trees. Utilities on property great for mobile home. L-15
PACKED WITH POTENTIAL Going business good income, excellent location. Call for details. CP-8
EXCELLENT BUSINESS LOCATION on Old Hwy. 80 West-has room for **SOLD** spaces, central heat and air, carpeted. CP-10
CISCO Excellent property for office with plenty of parking space. 150 x 150; lot with 1500 sq. ft. building. Owner financing with 25% down at 11% interest. Located on a main thoroughfare. CP-10

WE NEED AND APPRECIATE YOUR LISTINGS!
WE'RE HERE FOR YOU
Bill Griffith, Broker 647-1635
Shirley Griffith 647-1635
Becky Fowler-Bennett 915-698-8082
Kenneth Grice 647-1734
Trea Harris 1-559-8231 Breckenridge
Chris Frost Crum 629-8224



JAMES W. RATLIFF REALTOR-BROKER
647-1260 HOME 647-1667
COMMERCIAL PROPERTY



HOMES-RANGER
Mobil home on two beautiful lots with several large live-oak trees. Three bedrooms, 1 1/2 baths, two refrigeration units, cook top, wall oven, refrigerator storage building. \$10,200.00
Three bedrooms, 1 1/2 baths, living room, large kitchen, nice carpeting, central heat and air, double attached garage. This home looks real nice inside. \$35,000.00
Rock home on six lots, wood burning fireplace, three bedrooms, two baths, dining area, den area, a lot of nice live-oak trees in the yard, new carpet and drapes. FHA assumable loan. Shown by appointment only. \$80,000.00
Two story house with four bedrooms, two baths, living room, dining room, large kitchen, closed in back porch, separate garage with two storage rooms. This is a very attractive home in a good neighborhood on one and 1/2 lots.
Small house on corner lot, needs fixing up but is priced to sell. \$3500.00
Three bedrooms, one bath, living room, dining room, kitchen that is very attractive. This house has been completely re-done. The kitchen and bath will sell this house. Woodburning stove in living room, large new utility room, three outside storage buildings. \$18,000.00

Large three bedrooms, one bath, living room, dining room. All the rooms in this house are large. It needs to be redone but is priced to do just that. \$16,500.00
Brick two bedrooms, one bath, central heat and evaporative cooling, corner lot and 1/2. Fenced back yard. \$35,000.00
Three bedrooms, two baths, on three lots. This is an older home that has lots of floor space but needs re-doing. \$34,500.00

5.75 acres on access road just off I-20. \$1,200.00 per acre.
Two lots on Hwy. 80 west to next to Food Fare. A good commercial location.

FARMS AND RANCHES
310 acres just west of Ranger on Hwy. 717, dirt road on the back side.
160 acres north of Ranger in Stephens County. 74 acres in cultivation, 2 tanks, Staff Water, several barns and sheds, one home with three bedrooms.
90 acres southeast of Ranger, 20 acres of coastal, 18 acres blue stem, 16 acres in cultivation. Four tanks, one water well, barns, pens, big hay barn. You can buy this place with 23 head of cattle, John Deere tractor, mower, baler, and lots of equipment.
161 acres west of Ranger, cross fenced, 40 acres of coastal, klein and love grass. Good set of pens, four tanks.

LAKE PROPERTY
Thirty two acres just off the lake with a three bedroom home, two baths, several barns and sheds, young orchard, good garden spot. Ten acres of klein grass. \$60,000.00

Large living room with woodburning fireplace. Two bedrooms and two baths, one of the bedrooms is very large, nice kitchen. This place is on the lake with 2 1/2 deeded lots. Large garden plot with pump house from the lake also Staff Water. \$60,000.00

We solicit your listings on any type of Real Estate



The Dairyman-An Endangered Species

By Viola Payne

In the early 1900's a number of people, including town residents, kept milk cows. Many sold milk products, but this was still a time of relatively high prosperity for the fragmented industry.

Now, 80 years later, the American dairyman finds himself backed into a dilemma which can best be described by the good old west Texas saying as "between a rock and a hard place". Milk production is up, yet consumption of dairy products has dropped. And a recent farm bill enacted by the National Congress has lowered price supports. It's a complicated situation.

The curious thing about this picture is that the modern dairy farmer is usually an educated, articulate, organized individual who operates with advanced technology. His industry is highly organized also; he had a National Dairyman's Association to promote his product, represent him in Washington, and generally inform the public. (Naturally the dairyman pays a percentage of his net

to support these activities.) Yet the dairyman could still use advanced legal training, for he has enough regulation to keep a lawyer busy all year long.

Furthermore, dairymen can use some skills in public relations. For consumers sometimes accuse them of "getting rich", and complain that dairy products cost so much they can't buy what their families need. Some Eastland County children, for example, probably drink less milk than required for good health. The Government, in the meanwhile, is stuck with dairy products for which it has paid price supports. Apparently it is cheaper to give away some of the perishable commodities than pay storage.

The dairyman of 1900 and the operator of today have several things in common, at least. Milk still comes from high grade cows, usually Holsteins in this area. They must have high quality feed (such as alfalfa and roughage), and the dairy business is still primarily a domestic industry. Even in 1981 U.S. exports of dairy

products were very low - less than 1% of the national production. Oddly enough, U.S. imports were 2% of production.

Eastland County, unlike Erath County nearby, has never been a large center for dairying. But a few years ago it did have 23 commercial dairy farmers - now it has 7 or 8. Although these farmers sold an estimated \$820,000 worth of gross products last year, not much of that was net.

DeMarquis Gordon, Eastland County Agent, has estimates on profits made by dairy farmers.

"You can say," he reflects, "That each producer made only about \$229.00 last year on each cow he kept. And the average price for one of these cows, according to latest figures, is \$1,284.00."

"I estimate it would take \$200,000 to go into the dairy business today, and it would be best to have a lot of that in cash. For if you make a loan, the high interest rates are hard to repay."

"The dairy farmers actually receives only a small part of what the consumer pays for his product. The price he gets is fixed by national legislation, and that's a hard thing to change."

"The recent price rises in dairy products have come in

the areas of distributing and marketing, and the high cost of energy has played a big part in that."

Any study of the dairy business shows an industry which has undergone almost staggering changes during the last 100 years. Until the mid 1800's cows were never tested for disease. Milk could be distributed under any conditions - and often was. Sterilization of equipment was unknown. Until Pasteur made his discovery, there was no processing of milk. A virtual explosion in sanitation and marketing laws followed.

The type of dairy equipment used only 75 years ago is graphically pictured in a 1908 Sears Roebuck catalogue. It proudly presents "The Economy Cream Separator", describing it as "A wonderful of-fir", and "The World's Latest". On the next page a woman, with a face as tranquil as that of the cows roaming around, seems to be doing all the work connected with this machine. Shortly afterward comes a picture of a woman driving a cute little surrey hauling a can of cream. She waves gaily as she passes a worn-out, be-whiskered farmer hauling 15 cans of whole milk in an old wagon.

"What do you keep cows for?" The caption reads.

The farmer of long ago would be astonished at the methods used in milk production and distribution today. Eastland County farmers, like dairymen elsewhere, furnish sanitary buildings for their cows, and milk them by machines. The milk flows into cooling tanks, and before long it is sampled and tested and picked up by an A.M.P.I. (Associated Milk Producers Inc.) truck to be transported to a bulk plant some distance away. There are regulations against dairy farmers selling raw milk to consumers on their premises.

At the bulk plant the product is separated, graded, and processed. The Borden Company has a plant in Abilene, while Foremost milk is processed in Dallas. Other dairy products come to Eastland County from San Angelo. There are two distributors in Eastland who receive products from bulk plants and service local stores. They also haul milk and other items to towns in adjoining counties.

Consumers are often baffled at how milk prices are determined. They do not understand the relationship of the Federal Milk Order to pricing, and the objectives of the Order.

The legal basis for all marketing orders is Federal legislation known as the Agricultural Marketing Agreement Act of 1937. This far-reaching legislation, enacted during a term of Pres. Franklin D. Roosevelt, was supposed to guarantee fresh fluid milk into a market. It had two basic regulations covering milk within a market area. First, it required that milk be classified as to use, and provided for the establishment

of minimum prices for each classification use.

So Milk Marketing Orders became fundamental to Texas dairymen, with nearly all of them selling milk to processors regulated by these Orders. As a result, most Texas dairymen still receive payments for their milk based on a price determined under Federal Milk Marketing.

Currently there are discussions for and against this type of regulation of the dairy industry. Some people believe that the uniqueness and perishability of fluid milk requires an order. Other people argue that consumers have not been involved in establishing orders. The implications of the situation reach into all types of agriculture, including the basic idea of the family type farm. For some people are asking: Is it possible to trade freedom for security and lose both?

But that is not the American way - to give up on a dilemma. A better way must be found to get the dairy producer and consumer together. The way this problem is handled will affect not only the dairyman - but all of us.

Blagg withdraws

from state race

Reprinted from Brownwood Bull, March 26, 1982

John Lee Blagg announced Thursday that he is withdrawing from the race for state representative of the 65th Legislative District.

In announcing his decision, Blagg said that he was very thankful for all the support and encouragement he has received during the past two weeks. At this time, however, his energies will be devoted to his family business, Weakley-Watson, Inc. Blagg serves as vice president of the firm.

Blagg's announcement leaves only two candidates in the Democratic race, Lee Haney of Brownwood and Jim Parker of Comanche, one of whom will face Republican Gary W. Logan in November's election.

WORD OF GOD

Jesus said:

Likewise, I say unto you, there is joy in the presence of the angels of God over one sinner that repenteth.

Luke 15:10

Deadline for peanut contracts at hand

Additional peanuts produced for crushing or exporting must be contracted by APRIL 14, David W. Martin, County Executive Director, Eastland County Agricultural Stabilization and Conservation Service, said.

Additional peanuts are those marketed from a farm for which a poundage quota has been established and which are in excess of the poundage quota, and also those marketed from a farm for which no farm poundage quota has been established.

"This production must be either placed under an approved contract with a handler or be placed under price support loan, at the \$200. per ton loan rate. If the additional peanuts are marketed, or considered marketed, in any other way they will be designated as quota marketings and subject to a 38.5 cent pound penalty", the ASCS official said.

The peanut price support program no longer limits the number of acres of peanuts that can be planted. This means that any persons can grow peanuts anywhere in the country and market the peanuts for other than domestic edible use. Under previous programs, production was limited to farms with an allotment.

According to Martin, a handler may contract with a farmer to buy additional peanuts for crushing or export, or both. However, all contract forms CCC 1005 must be submitted to the county ASCS office for approval by April 14.

All peanut growers are required to certify their planted acres to the county ASCS office and have peanut marketing cards issued before they can sell peanuts. The cards reflect the number of pounds of peanuts that can be marketed for domestic edible uses or marketed as contract additional peanuts for export or crush. Peanuts marketed in excess of the contracted quantity are considered marketings of quota peanuts.



RANGER TIMES EASTLAND TELEGRAM CISCO PRESS
Ranger, Texas Eastland, Texas Cisco, Texas
Thursday, April 15, 1982

SUPPORT BARRIER FREE DESIGN

Easier to walk or wheel in **7-38**

JAY-WAY JANITORIAL SUPPLY

Commercial-Industrial-Residential

orders can be made by calling **629-2190**

FREE DELIVERY

A New You With A New Hairdo

Carline's Hair Fashions

offering the latest in men & women

haircuts, perms, and blow dries. Hot oil manicures available. **EASTER SPECIAL**

Open Tues-Fri ^{10:00} Perm **SALE \$25.00**

Carline introduces Marie Stroud & Vickie Huff to the staff **629-8001 7-34**

Legal Notice

1982 tax exemption deadline set for May 1

The end of the filing period for 1982 tax exemptions is now only three weeks away. The law requires that only those exemptions filed by May 1, 1982 be granted.

The law provides for many types of exemptions and a list of all of them would not be possible in the space available. However, the following is a short list of those exemptions available that will benefit the majority of the property owners of Eastland County, if they qualify.

\$5000 Residential Homestead Exemption:

This is a reduction in the taxable value of a persons residence for school tax purposes. All adult homeowners, regardless of age, are eligible to apply for this exemption.

\$10,000 Over-65 Residential Homestead Exemption:

This is a reduction in the taxable value by \$10,000 of the value of the residential homestead of all homeowners over 65 years of age who apply for the exemption. This \$10,000 is in addition to the \$5,000 granted to all qualified homeowners. The exemption again applies to school district taxes only, but does carry a "freeze". The tax amount due is frozen for the Over-65 owner at the amount paid in the first year they signed up.

\$10,000 Disability Exemption:

This exemption is granted by school districts to those who qualify as being totally disabled and unable to work. The law requires proof of the disablement to be provided before this exemption may be granted.

Disabled Veterans' Exemption:

This is an exemption of taxable value that ranges from \$1,500 in value for a ten (10%) disability to \$3,000 for a hundred (100%) percent disability. It is granted by all tax jurisdictions and must be applied for each year.

Open-Space Land Exemption:

This is an exemption granted on all land that is us-

Name Brand Fashions

Thousands of Garments To Choose From

Missy, Half & Large Sizes

Save 40-60%

New Arrivals Each Week

Open Mon.-Sat. 9:00 a.m.-5:30 p.m.

112 N. Lamar Eastland Next to Majestic Theater

Bill's Used Cars

E.I. 20 East Side of the Colony Restaurant
Phone--442-4192

1980—Lacar	1980—Malibu
1979—T-Bird	1977—Cordoba
1979—LTD	1975—MonteCarlo
1977—Impala	1973—Monte Carlo
1970—Cruiser 19000 Miles	1973—Monte Carlo

USED CARS PU
1981—Chev. 1/4 Ton 4 Sp.
1979—Ford 1/2 Ton 3 Sp.
1976—Jeep CJ 7 P.18TFC

Henson's Ranch Supply

Dublin 445-2601

Paint-House-Barn-Metal-Oilwell
5% Off 4 gal. or more
6' T-Post \$2.08 No. 1
6' T-Post #2 \$1.99

Barbwire	CFTI-32.95	Gaucho-22.95	No. 1 Sq. Tubing	1" 14 Ga. .33 Ft.	1 1/2 14 Ga. .41 Ft.	1 3/4 14 Ga. .42.5 ft.	1 1/2 14 Ga. .56 ft.	1 3/4 13 Ga. .72 ft.	2" 13 Ga. .82 ft.	4" 14 Ga. 1.53 ft.	1x2 15 Ga. .46 ft.	1x2 13 Ga. .52	3/4 Rod .28 ft.-Concrete Mesh 41.95 - 3/8 Rod 10.1f.	1/2 Rd. .15 ft.-Scretee 2.99 - Portland 5.14.	Angle Iron	8' Core Post	Hog Wire	Net Wire										
1 1/2"x1/8-.29 ft.	4"-4.39	32"-71.95	32"-55.95	1 1/2"x1/8-.31 ft.	5"-2.99	39"-81.95	39"-62.95	1 1/2"x3/16-.41 ft.	6 1/2"-9.95	47"-91.95	47"-69.95	2"x3/16-.41 ft.	7"-12.95	3"x3/16-.84 ft.	6"x8' Spruce	12" Stay in Stock	4'x25.95	Hog-15.95	2 3/8-.80	4x4x48"x20"-30.95	5'-39.95	Stock-16.95	3 1/2"-1.25	4x4x60"x20"-40.95	6'-41.95	Comb.-18.95	4 1/2"-1.75	(4x4x60x150 Roll-179.95)

Priefert Chute 985.00-Head Gate 180.00 & 233.00
Bate Buck \$170.00-Bale Buggy 790.00
4x2 welded wire in Stock - Pipe & Panel
Gates in Stock-Tubing Panel 21.00 & 29.00
Rd. & Oblong water trough in stock
T-34

STORAGE BUILDING SALE! 3 DAYS ONLY

BUY DIRECT FROM FACTORY NEW USED DAMAGED & FACTORY SECONDS IT'S YOUR CHANCE TO SAVE 10% TO 30%!

ALL NEW MORGAN ECONOMY STORAGE BUILDING

Long lasting steel and hardwood siding and steel or aluminum roofing.
Heavy duty 2 x 4 rigid wood frame construction.
Full strength door framing.
Heavy duty floor (optional).

Put this together yourself and save!

A COOL SHADY PLACE FOR FUN OUT OF THE SUN!

GAZEBO SPRING SPECIAL

You Erect. We Paint.

BUILD YOUR OWN METAL BUILDING FOR AS LOW AS \$5/SQ FT.*

Four men using hand tools and simple power equipment can erect a 24' x 24' steel frame building in just days or less. All components are finished, pre-fabricated and clearly marked "to coming together" by using simple "lock and wedge" system. No rivets, bolts or welding. No foundation required. Ideal for agricultural, commercial or business applications.
Choice of plastic or metal roof.
Choice of open to the peak or dropped eave style.
Personal overhead or slotted doors.
Full inside or triple canopy for protection.
Structural steel - not painted or galvanized.
Rust water pipe. Up to 80 PSF load ratings available.
Call for details about the savings available on metal building construction costs. We will erect the building for you at extra cost.
*See applicable contract and price schedule.

GREENHOUSES, TOO!

Available in 8 x 12 and 8 x 16
Delivered Fully Erected

IF YOU NEED TO LOCK IT UP OR KEEP IT DRY, YOU NEED A MORGAN STORAGE BUILDING.

BUY RENT LEASE

TERMS AVAILABLE CALL TODAY WE ACCEPT

MORGAN BUILDING SYSTEMS
HWY. 69 NORTH
EASTLAND, TEXAS 629-2668

SALE DATES
April
16, 17 & 18

h AUCTION h

TUESDAY ★ APRIL 20 ★ 11:00 A.M.

Gorman Community Farm Auction

LOCATION: Gorman, Texas (Eastland County) at the Mauney Farm Supply, (located 1 mile East of the Caution Light on Highway 6).

TRACTORS - TRAILER	1- 1969 MF 1100, Diesel, W.F.	1- 1969 MF 180, Diesel, W.F.	1- 1959 JD 730, L.P.G., W.I.	1- 18 Ft. Flatbed Tandem Axle Trailer, Bumper Hitch	1- 18 Ft. Stock Trailer, Tandem Axle	1- Gehl Grider/Mixer, PTO	1- Round Bale Forks
PEANUT COMBINE - EQUIPMENT - TRAILERS	1- Super Long Peanut Combine	1- 2 Row Long Peanut Digger	3- 8'x12' Peanut Trailers	1- 8'x10' Peanut Trailer	EQUIPMENT	1- JD Grain Drl. 7x13	1- MF 5 Bottom Moldboard Plow
1- 11 Shank Jeffrey Chisel Plow	1- 11 Shank Chisel	1- 4 Row JD Bedder	1- 4 Row MF Bedder	1- 4 Row IHC Bedder	1- 4 Row Tri-State Cultivator	1- 12 Ft. Long Tandem Disc, 3 Pt.	1- 8 Ft. Tandem Disc, 3 Pt.
1- 18 Disc Krause One-Way	1- 2 Row Cultivator, Shop	1- 4 Row Stalk Cutter, Shop	1- Universal Dnt Scoop, 3 Pt.	1- 5 Row Lay Off Rig	1- 15 Ft. Love Bar Flex Header Attachment (JD)	LIVESTOCK - HAY EQUIPMENT	
1- 114 Ft. Stock Trailer, Tandem Axle	1- Gehl Grider/Mixer, PTO	1- Round Bale Forks	1- Graves Bale Loader	1- IHC Side Delivery Rake, 3 Pt.	2- Sets Gage Wheels	25- 22" Discs, New	5- B&W Front Weights
1- Bumble Bee Hitch, 3 Pt.	1- Set of 18.4x30 Duals, Factory Built for MF	1- 500 Gal. Diesel Tank	1- 110 Gal. Diesel Tank	1- 285 Gal. Fuel Tank, Trailer Mounted	TOOL BAR MAKE-UP - DUALS		
2- Tool Bars	NOTE: This represents only a starter list. Many more pieces of equipment are expected by sale day.						

TO CONSIGN CALL: Tom Broom - 817/734-2842
Troy Underwood - 817-734-2643

NBC NEWS/MUSIC FM 97

RADIO ★ 24 HOURS

BURNS HUTSON

WHERE SELLING IS PERFORMANCE
TXS-012-0954

DANNY BURNS
915 / 235-9639

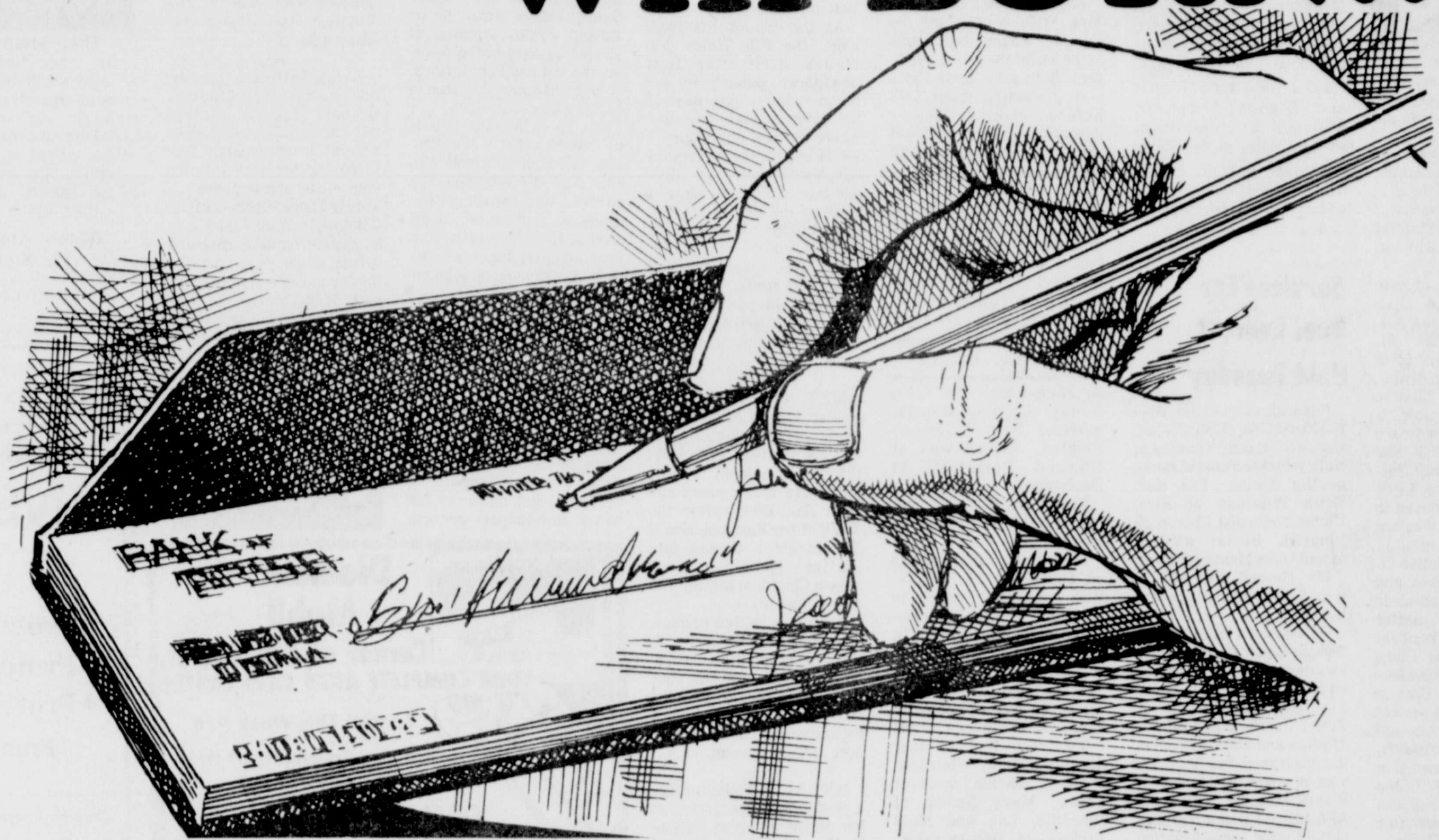
KEVIN HUTSON
T-30

AUCTIONEERS - REALTORS - SALES MANAGERS
1806 East Broadway • Sweetwater, Texas 79556 • 915 / 235-9639

CAUTION...

Hot Checks

Will BURN!!!



**The issuance of bad or hot checks
is punishable by law...**

HERE ARE THE FACTS:

- A worthless check written for less than \$5⁰⁰ could result in a \$200⁰⁰ fine.
- A worthless check written for from \$5⁰⁰ to \$20⁰⁰ could result in a 180-day jail sentence and/or a \$1,000 fine.
- A worthless check written for from \$20⁰⁰ to \$200⁰⁰ could result in a year in jail and/or a \$2,000 fine
- A worthless check written for from \$200 up to \$10,000 could result in a prison sentence of from 2 to 10 years and/or a \$5,000 fine.

Think Before You Write...

**IS IT WORTH
THE RISK?**

Sponsored as a Public Service by Your Local Hometown Newspaper

OBITUARY

Services For Albert Gus Sander Held Monday



Funeral services for Albert Gus Sander, 78, a former Cisco councilman, were at 10 a.m. Monday in Kimbrough Funeral Home Chapel. The Rev. Dell Crockett, pastor of Redeemer Lutheran Church, officiated, assisted by the Rev. David Adkins, pastor of First United Methodist Church. Burial was in Oakwood Cemetery.

Mr. Sander died at 5:40 a.m. Saturday in E.L. Graham Memorial Hospital. He was born July 20, 1903, in Greenville. He grew up in Clifton. He married Alwina Thiele on November 28, 1926, in Clifton. He bought a Western Auto hardware store in Belton in 1936 and operated the store until 1949, when he bought the Cisco Western Auto and moved to Cisco. He owned Western Auto stores for 45 years.

He served on the Belton City Council for 11 years, and on Cisco's council about 12 years. He was a charter member and past president of the Belton Lions Clubs before moving his membership to Cisco Lions Club in 1949. He maintained perfect attendance in both clubs until his health declined in 1977.

He served as a steward in both Belton and Cisco Methodist churches and also served in volunteer fire departments in both cities.

Survivors include his wife; a son and daughter-in-law, Richard C. and Dian D. Bedford; and a grandson, Eric of Bedford; a sister, Mrs. Minnie Schminke of Clifton.

Pallbearers were Awalt Landgraf, Craig Lund, Vandell Weathers, Archie Channess, Truman Kirk, Carl Gorr, Chuck Witzeg and Ricky Whatley.

The Cisco Lions Club served as honorary pallbearers.

Captain Tilgner Is Buried in East Malaysia

Malaysian burial services were held March 20 in Kuching, East Malaysia for Captain Armit C. Tilgner, 49, of Kuching who died there March 2 as a result of a helicopter crash. Tilgner was on an emergency medical evacuation near Sarawak, East Malaysia when his helicopter crashed in the jungle. Rescue operations were put in effect to find Tilgner. The crash was found fourteen days later. The American Embassy and the U.S. Navy were called in for the search. Evidence proved mechanical error caused the accident.

CARD OF THANKS

Card of Thanks
Words cannot fully express our appreciation for the kindness and sympathy extended to us by our friends, relatives and neighbors at the passing of our loved one. We will never forget you. May God bless each of you.

The family of Captain Armit C. Tilgner (Mick and Helen Kendrick and sons)

CARD OF THANKS
I would like to thank the friends of Mrs. Kyle Rich for their help, sympathy and flowers.

I would also like to extend my personal thanks for your understanding.
John Hambright

Captain Tilgner was retired after 20 years with the U.S. Army, having served seven years in Viet Nam. His travels took him to over 30 foreign countries. At the time of his death Tilgner was a helicopter pilot employed by Hornbill Skyways of Sarawak, East Malaysia, and had been since his retirement in 1973.

Memorial services were held March 24 at Our Lady of Lourds Catholic Church in Mineral Wells.

Survivors include one son, Armit 'John' Tilgner of Mineral Wells; four daughters, Helen Kendrick of Ranger, Armita Underwood of Mobile, Ala., Renate Jackson of Grand Prairie and Glenda Locke of Abilene; a step-father, Richard Salas of San Francisco; one brother, Fedele Salas of San Diego, Calif.; and four grandchildren; several aunts and uncles.

Services For Buel Everett Held Tuesday

Funeral services for Buel F. Everett, 65, of Big Spring, were at 3:30 p.m. Tuesday at Nalley-Pickle Funeral Home in Big Spring. The Rev. Keith Wiseman of First United Methodist Church officiated. Burial was at Mount Olive Memorial Park.

Mr. Everett died at 1:05 p.m. Sunday at a Big Spring hospital.

He was born November 4, 1906, in Callahan County. He married Euna Lee Stanley on November 10, 1936, at Anson. He had worked for Texas Pacific Railroad for 33 years and also had been in the insurance business. He was a member of Staked Plains Masonic Lodge 598 AF&AM. He was a member of the United Transportation Union and the Brotherhood of Locomotive Firemen and Engineers. He was a member of First United Methodist Church.

He was preceded in death by two brothers and two great-grandchildren.

Survivors include his wife; a son, Don of Fort Worth; two daughters, Sue Easterling and Janet Headding, both of Big Spring; his mother, Mrs. W.A. Everett of Cisco; four sisters, Angie Sandlin of Dallas, Onie Harris of Brenham, Era Sutton of Cisco and Velda Lee of Portales, N.M.; two brothers, Loren of Putnam and Bill of Merkel; nine grandchildren; three great-grandchildren and several nieces and nephews.

Funeral Services For Ruby Lilla Vann Held Wednesday

Funeral services for Ruby Lilla Vann, 77, of Breckenridge, were at 10 a.m. Wednesday at Melton Funeral Home in

People n Things

FRIENDS ARE congratulating Peggy Walton Jones and Ronnie Ledbetter of our town on the occasion of their marriage Tuesday night, March 30. The wedding took place at the Ledbetter home, 301 West 4th Street, with Ben Hubert, interim pastor of First Christian Church, officiating.

Ronnie and Peggy flew to Mexico City for a brief honeymoon. They're now back home and at work - she at Odessa Natural Gas and he at the Ledbetter Insurance Agency.

Peggy is the daughter of Mrs. W.P. Walton and the late Mr. Walton, and Ronnie is the son of the Jack Ledbetters. Both grew up in Cisco and graduated from CHS before seeking further education elsewhere. You'll want to join us in extending sincere best wishes.

SORRY TO HEAR that old friend John Webb of White Auto Store became ill last Friday and was taken to the Eastland Memorial Hospital (Room 220B). Understand he was suffering from a stomach ailment that might possibly require surgery.

Breckenridge. The Rev. Benny Hagan, Baptist minister from Cisco, officiated. Burial was at Howard Cemetery at Desdemona.

Mrs. Vann died at 8 a.m. Monday at Villa Haven Nursing Home.

Born Ruby Lilla Thomas on September 24, 1904, at Kirk, she was reared in Eastland County. She married Ammie Vann on July 19, 1925, at Carbon. He died July 20, 1962. They moved to Breckenridge in 1960 from Cisco. She was a member of Shelton Ave. Baptist Church.

Survivors include four daughters, Ruby Whitehead of Lawn, Johnnie Ingram of Cisco, Mary Smith of Pineville, La., and Rena Berkley of Breckenridge; three sons, Billy Joe of Anson, Richard of Stephenville and Robert of Breckenridge; a sister, Johnnie Shelton of Hondo; 24 grandchildren; and 21 great-grandchildren. Grandsons served as pallbearers.

A resident of Cisco for more than 35 years, Mr. John is well known and respected in these parts. He was a football star at Austin College and he probably refereed 500 football games (most of them for free) after coming to Cisco.

Here's wishing for John a speedy recovery.

THANKS TO THE E.D. Andersons of 1011 West 14th Street for a copy of the Fiji Times. They picked up during a visit in the Fiji Islands en route home from a vacation in Australia.

At the top of the front page, the Fiji Times proclaims itself "the first newspaper published in the world today - just west of the international date line where the new day begins." While in Fiji, the Andersons telephoned their son Mike and family. The call came in here on the day after they were talking. Sounds complicated, huh?

Mr. Anderson achieved celebrity status while in Australia. He was invited to play at the Royal Melbourne Golf Course in a tournament!

MET UP WITH Mr. Russell Latson of 1103 West 7th Street the other day. He and his mother, Mrs. V.W. (Thelma) Latson, moved back here a few years ago from San Diego after the death of her husband. She is the daughter of the late Walter Clements, well known Cisco blacksmith who died at age 101.

Russell, a retired painter, grew up here. He says "a little of his grandfather" rubbed off on him. He can shoe horses. He recalls that the late Mr. Clements had a reputation as one of the very best in horseshoeing.

MRS. LUCY Collier makes a pretty good impression on her neighbors up on Avenue N. She mows her lawn and does a good job. Lucy went over to Fort Worth last weekend to help her grandchildren hunt Easter eggs. . . CoFC Manager Gene Abbott played golf Sunday with his two son-in-laws James Isenhower and Anthony

Strother who brought their wives and children here for an Easter weekend visit in the Abbott home. . . The Rev. David Adkins wears two hats over at the First United Methodist Church on Sundays. When he is not presiding in the pulpit, he moves back into the choir loft to help with the singing. He's wearing a third hat these days - serving as the church secretary until a new one is employed. Mrs. Wesley Valek, secretary there for a couple of years or so, resigned recently to join the staff of the Eastland FM Radio Station.

that the sheriff will auction off a 1973 model Dodge Colt auto at Gilbert's Service Station at 402 West 8th Street in Cisco at 10 a.m. Tuesday, May 4. Understand you can see the car there.

MET UP WITH Sonny and Jeanelle McCrea of Rockwall in town Sunday. They were in town for an Easter weekend visit with home folks. Sonny is with the U.S. Treasury Department in Big D. . . Mrs. Annie Rendall had her children home for Easter weekend. . . Some 30 members of the CJC Student Government Association and their sponsor, Mrs. Gus Smothers, will spend Saturday at Six Flags in Arlington. . . The Marshall Joneses went over to Fort Worth to hunt Easter eggs last weekend.

A CALIFORNIA medical doctor dropped in at the E.L. Graham Hospital last Friday afternoon and spent several hours looking over Cisco and the area with the view of moving to Texas. . . This is annual Cisco Cleanup Campaign Week. And city trucks are hauling trash and debris. Trucks were making the rounds Monday, Tuesday and Wednesday. If they missed you, call City Hall. . . Mr. O.M. Speegle, who was a patient in a Waco hospital for several days, got home last weekend.

SEE BY THE legal notices in the Eastland Telegram that they're going to sell at Sheriff's Auction at 10 a.m. Tuesday, April 20, three Hereford yearlings. Same strayed to the Wilbur Boone place in Morton Valley and haven't been claimed. . . Another legal notice in the same newspaper reports

Diamond C Mobil
Corner of 8th Ave D.
YOUR COMPLETE AUTO CARE CENTER
Special This Week Are,
Tune up Special **\$30⁰⁰** Plus Tax
Includes Parts and Labor
Oil Change **\$15⁰⁰** Plus Tax
Includes Oil & Filter
Transmission oil Change **\$17⁰⁰** Plus Tax
Complete Grease Job **\$4⁰⁰** Plus Tax
Thursday, April 15, 1982
drive 55
the faster way

Comanche County Electric Coop Selects Youth Winners

William G. Parker, Manager of Comanche County Electric Cooperative announced the winners and alternates to this year's oral contest on the Subject "The Importance of R.E.A. to America."

This year's winners are Al West and Rebecca Waldrep. The alternates are Toby Cordell and Michelle Dempsey. Al West, 14 years of age, son of Mr. and Mrs. Homer

G. West is from the May area.

Rebecca Waldrep, 16, daughter of Mr. and Mrs. Benny Waldrep, is from the Comanche area.

Toby Cordell, 16, son of Mr. and Mrs. Russell Cordell is from the Gorman area. Michelle Dempsey, 17, daughter of Mr. and Mrs. H.B. Dempsey, is from the Cisco area.

As participants in the Youth Tour, local contest winners will travel by chartered bus to Washington D.C. on an all expense paid tour, and will spend 12 days visiting places of historical interest, World's Fair, visiting with members of Congress, and getting a first hand view of their government in action.

Approximately 1,000 Youth Tour participants from across the nation will meet during the week for a special program coordinated by the National Rural Electric Cooperative Association.

WORD OF GOD

Then shall two be in the field; the one shall be taken, and the other left.

Two women shall be grinding at the mill; the one shall be taken, and the other left.

Watch therefore; for ye know not what hour your Lord doth come.

Matthew 24:40-42

BUY CROP HAIL INSURANCE NOW!
• Protect Your Crops
• Protect Your Credit
• Protect 5 Years Of Profit
From A Disasterous Hail Storm
Crop hail notes are interest free if paid at maturity
SEE YOUR AGENT
HARGRAVE INSURANCE AGENCY
1106 Avenue D
Cisco, Texas 76437 442-1477

For All You Donut Lovers
WATCH FOR THE RE-OPENING OF
The Donut Shop
ON AVE. D IN CISCO.
We will be open April 3
We have been closed for some time but will re-open with the same quality as we had before.
We appreciate your support in the past and look forward to serving you again.
Larry and Peggy Ledbetter, Owners
J.D. and Lois Carr, Managers

Marvallee's Dress Shop
811 E. 8th Cisco Open 9-5:30

Light Weight Summer Jeans \$9⁹⁵	Braxton Jeans Reg. \$28⁰⁰ \$12⁹⁵
Braxton Stretch Jeans Reg. \$32⁰⁰ NOW \$15⁹⁵	Action West Embroidery Pocket \$15⁹⁵
Lycrl Stretch Jeans \$17⁹⁵	Denim Prairie Skirts \$15⁹⁵ and \$16⁹⁵
Denim Straight Skirts \$9⁹⁵	Denim Wrap Skirts \$14⁹⁵
All Tops \$2⁹⁵ to \$12⁹⁵	

VARIETY OF STYLES
SUNSENSOR SUNGLASSES
\$9⁹⁵
PAIR
BORDEN'S HI-PROTEIN MILK **\$1¹⁹** 1/2 GAL. CTN.

PRICES EFFECTIVE APRIL 15-17, 1982 WHILE SUPPLIES LAST
ALLSUP'S CONVENIENCE STORES
"THERE'S ONE NEAR YOU"
ASSORTED FLAVORS BORDEN'S SHERBET **\$1⁶⁹** 1/2 GAL.

GRANDMA GOODWIN OLD FASHIONED POTATO CHIPS
99⁰⁰ REG. \$1.49
8 OZ. BAG

Shurfine Vegetable Oil
79⁰⁰
24 oz. Bottle

ALL GRINDS FOLGER'S COFFEE **\$2⁴⁹** 1 LB. CAN

BORDEN'S COTTAGE CHEESE **79⁰⁰** 12 OZ. CTN.

DEL MONTE PINEAPPLE JUICE **\$1³⁹** 46 OZ. CAN

KRAFT HALFMOON CHEDDAR CHEESE **\$1⁶⁹** 10 OZ. PKG.

Large Eggs Dozen **79⁰⁰**

2 Liter Bottle Hot Only **\$1³⁵**
Pepsi

Shurfine Tuna
41⁰⁰ Reg. **\$1⁴¹**
6 1/2 oz. can

Burritos
3/99⁰⁰ Reg. **69⁰⁰ each**