

Women Given An Opportunity Through Mary Kay Cosmetics



MARY KAY ASH

"I'm often asked what my financial objectives were when we first started," says Mary Kay Ash, founder and chairman of the Board of Mary Kay Cosmetics. "Well, I didn't have any. My objectives were given women the opportunity to do anything they were smart enough to do. To me, P. and L. mean much more than profit and loss - it means people and love!"

Mary Kay (Harper & Row, \$10.95 illustrated; November 25, 1981) is the remarkable story of an indomitable woman who turned in \$5000 investment into a multi-million dollar international skin care and beauty business - with an approach

unique to corporate America.

Her son Richard Rogers, decided to join her in a new venture, and on September 13, 1963, with one shelf of cosmetics and 9 sales people, the company opened its doors.

Believing that the products and their application could best be presented on person-to-person basis, Mary Kay devised the formulas to be used in the basic skin care product line, she developed a new approach to skin care and a direct sales concept which would shape the success of the new company.

As the only wholesale distributor existing between the company and the consumer, the independent beauty consultant run in effect, her own company. Through a combination of selling and recruiting, she may earn advancement to independent sales director, or remain beauty consultant, working her own hours at her own pace and being compensated accordingly.

Mary Kay Cosmetics has become one of the nation's outstanding success stories. The company is an international organization with more than 12,000 beauty consultants throughout the U.S., Argentina, Canada and Australia.

For her achievement, Mary Kay Ash was given the Horatio Alger Award in 1978. Business Week named her as one of America's top corporate women. And in November 1979, she was named the subject of a 60 minutes television profile.

To what does Mary Kay attribute her astonishing success?

"We're a company that's known for the people we keep," she says, "and we think we keep the very best. Mary Kay women are the most loyal and dedicated people in the world. They define determination and purpose. They believe if they work hard enough - if they give enough of themselves - they will be successful, personally and professionally. And at Mary Kay Cosmetics they find their lives enriched with friends, accomplishments, and financial security."

Your Mary Kay Consultant in Eastland is Barbara Blakely. Phone 629-2739 or 329-2522, 206 South Oak, Eastland, Texas 76448.

NARFE

The NARFE (National Association of Retired Federal Employees) will meet at the Colony Restaurant in Cisco. They will meet at 1:00 p.m. Tuesday, November 24th.

This will be the monthly meeting and luncheon. All members are urged to attend.

REST TAKE A AREA BREAK

Joe Montgomery President of Texas Soil & Water Districts

Joe Montgomery, of Abilene and a farmer and cattleman, was re-elected president of the Association of Texas Soil and Water Conservation Districts by Texas conservation district directors at their annual meeting held recently in Amarillo.

Montgomery, who is also chairman of the Middle Clear Fork SWCD headquartered in Abilene, has also served as an alternate director, director and vice-president of the ATSWCDs. He is a former member on the Governor's Committee on Agriculture, and is currently active in appraising farm and ranch lands.

Other new directors and officers of the ATSWCDs were also elected at the Amarillo meeting.

Wilson Scaling of Henrietta, Texas was elected director of Area V which consists of 36 soil and water conservation districts in the Central to North Central area of the state. Scaling is a livestock and small grain producer.

Re-elected as director of the ATSWCDs is Waldo Smith of Brenham and W.Q. Richards of Paducah. Richards was elected vice president of the organization at the meeting. Smith was appointed secretary-treasurer.

Smith will represent Area III which consists of 48 SWCDs in the Panhandle and South Plains of Texas. He is a livestock and grain producer.

Campbell Cox of Nacogdoches represents Area IV which covers the Eastern portion of the state.

Alternate directors of the ATSWCDs include Roland Wheat of Higgins, Wynn Hamilton, Jr. of Saragosa, Alvin Hahn of Port Lavaca, Larry McCasland of Pittsburg and Clyde Hale of Sherman. Both Hahn and Hale are newly elected alternate directors.

The purpose of the ATSWCDs is to work with all organizations and agencies to further the cause of conservation and proper use of renewable natural resources.

Brittain's Discount Center

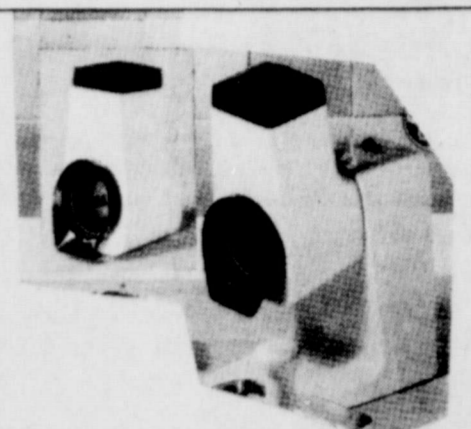
South Side of the Square in Eastland

LAYAWAY NOW

for Christmas



- 7. to 10. Laffun Heads. Pull their tie or kerchief and they roll their eyes, stick out their tongues, squirt a stream of water, then let loose a belly laugh!
- 7. Lady's Laffun Head, 8x8x5" Ref. \$29.95..... ONLY \$19.93
- 8. Man's Laffun Head, 8x8x5" Ref. \$29.95..... ONLY \$19.93
- 9. Man Yodeler, He yodels! 8x8x5" Ref. \$29.95..... ONLY \$19.93
- 10. Clown Laffun Head, 9x6x5" Ref. \$29.95..... ONLY \$19.93



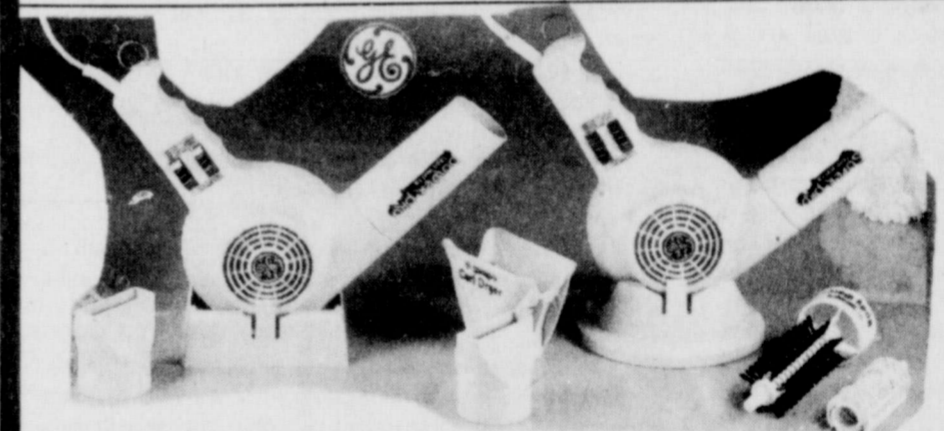
GE Slicer/ Shredder/ Grater Model SS1. Countertop appliance with 3 stainless steel cutters. Chute folds down for storage. Dishwasher safe. Ref. \$47.98..... ONLY \$34.97



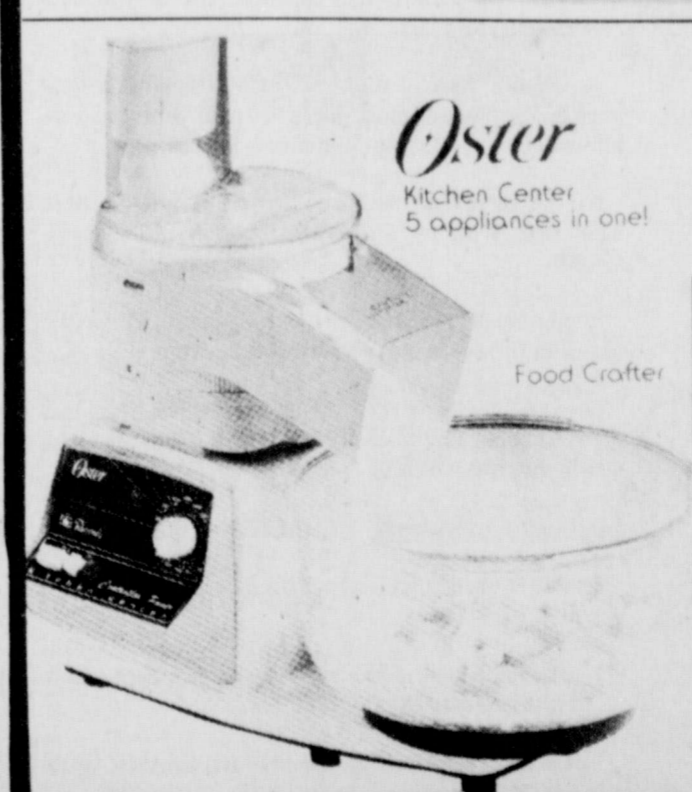
Hamilton Beach "Popaire II" Hot-Air Corn Popper Model 511. 4-qt. electric hot air popper. Built-in butter melter. Less calories - less clean-up! Ref. \$37.95..... ONLY \$29.97



Introducing Mickey Mouse Flying Saucer Audible Math Aid. Answers all questions in addition, subtraction, multiplication and division. Just program in the question - it gives audio and visual indication of right or wrong answers. Built-in speaker. Batteries are not included. Ref. \$16.95..... ONLY \$15.47



4. GE Super Pro Pistol Dryer Model PRO6. 1400 watts of drying power with four heat and two air settings. Five curling, drying, styling attachments included. Stand leaves hands free for brushing and drying. Hand-up ring for storage. Ref. \$29.98..... ONLY \$19.97



Oster "Kitchen Center" Food Preparation Center Model 979-16. 5 appliances in 1. Osterizer blender with 5-cup glass container which opens at both ends. Mixer masters even the heaviest batters. Dough maker kneads up to three 1-pound loaves at once. Heavy-duty food grinder/slicer/shredder/salad maker with 4 cutting discs for thick/thin, shred and French fry. Includes 2 glass bowls and cookbook. This versatile unit will save you time and allow you to experiment confidently! Ref. \$224.95..... ONLY \$143.97



Quasar 12" B & W TV Model XP3232. 100% solid state chassis. Detent UHF/VHF tuners. unienna for VHF/UHF reception. Low energy consumption. Ref. \$119.95..... ONLY \$99.9



Choose the type that's just right for your message or mood. To change the face, just change the ball. Full-size 90-character standard keyboard, wide carriage with powered return, key-set tabulator. Repeat forward and backspacing, repeat key for cross-outs and underlines. Uses quick-change ribbon cassettes, including multi-strike mylar and colors. Made in U.S.A. Ref. \$405.00..... ONLY \$257.97



33. Ceramic Miss Piggy Bank, 8 1/2" high. Ref. \$22.50..... ONLY \$16.93

34. Miss Piggy Heart-Shaped Box. Colorful heart-shaped box with Miss Piggy on top. Ref. \$24.95..... ONLY \$18.93

NO CREDIT CHECK

CARS

- 75 Buick Loaded
- 73 Buick Loaded
- 73 Buick Loaded
- 74 Madador
- 72 Ford Gal.
- 67 Fiat

WE FINANCE &

Small Down
 Low Payments
 We finance
 301 W. Commerce

TRUCKS

- 79 Ford Super Cab
- 78 Ford Super Cab
- 76 Ford 3/4 ton
- 74 Chev. 1/2 ton
- 69 Chevy 1/2 ton

Open 9:00 AM to 8:00 PM

629-8761

Enjoy Shopping in Cisco...Parking is FREE November 15th through January 15th.

Shop these popular name brands of quality merchandise.

- Florsheim Shoes
- Evan's House Shoes
- Jiffies House Shoes
- Botany "500" Suits
- Palm Beach Suits
- English Squire All Weather Coats
- Interwoven Socks
- Hubbard Slacks
- Joel Sport Shirts
- Arrow Two Pocket Shirts
- Pacific Trail Jackets
- Arrow Dress Shirts
- Stetson Hats
- Jockey Underwear
- Enro Shirts
- Enro Pajamas
- Enro Robes

- Pine State Sweaters
- Don Loper Neck Ties
- Lady Arrow Shirts
- Vanity Fair Underthings
- Vanity Fair Pajamas, Gown
- Vanity Fair Robes
- Ladies Slacks & Blazers
- Hanes Hosiery
- Men's Wool Tweed Sport Coats
- Men's Stevens Cloth Hats
- Hickok Belts
- Leather Trim Sweaters
- Long Sleeve Jump Suits
- Jiffy Travel Bags
- Well Stocked Gift Bar
- Gift Certificates
- "The Perfect Gift"

Gift Wrapping is FREE of any item purchased in our store.

Bob Elliott
 THE MAN'S STORE
 Cisco Texas



Oil News Report

L&M Oil Co., Dallas, filed application to drill No. 1 Beggs as an Eastland County wildcat seven miles northeast of Cisco.

Location for the planned 4,400-foot test is on a 240-acre lease.

It spots 1,327 feet from the south and 933 feet from the west lines of J.R. Stubbs Survey, A-2018.

EnRe Corp., San Antonio, will drill No. 2-A Cooper as a proposed 4,200-foot wildcat in the Cisco, Northwest (Ellenburger) Field eight miles northwest of Cisco.

Drillsite is 330 feet from

the north and 2,310 feet from the west lines of Section 476, SP Survey.

The lease is composed of 160 acres.

R.G.D. Inc., Eastland, plans to drill two proposed 4,000-foot wildcats in the county.

No. 1 Bledsoe is located on a 440-acre lease two miles south of Carbon.

Drillsite is 660 feet from the north and east lines of the northwest quarter of Section 35, Block 2, H&TC Survey.

Other test is No. 2 Mortimer, located one mile south

of Carbon on a 120-acre lease.

It spots 467 feet from the north and 2,183 feet from the east lines of Section 37, same block and survey.

Ridge Oil Co., Breckenridge, spotted No. 3 Mills in the Ranger, Northwest (Marble Falls) Field.

Location is one mile northwest of Ranger on a 131-acre lease.

Drillsite is 330 feet from the north and 990 feet from the west lines of Section 2, BBB&C Survey.

Jerry E. Wylie Oil Drilling Co., Abilene, staked No. 3 Alvis Scitern as a proposed 3,500-foot wildcat in the Carbon (Caddo) Field three miles east of Carbon.

Drillsite is 750 feet from the north and 1,250 feet from the east lines of Section 4, Block 2, H&TC Survey, A-771.

The lease is composed of 160 acres.

L.T. Abernethy, Abilene, staked No. 7 John J. Holland in the regular field three miles east of Carbon.

The planned 950-foot venture is located on a 99-acre lease.

It spots 1,840 feet from the north and 1,250 feet from the west lines of Section 3, Block 2, H&TC Survey.

Diverse Energy Inc. completed No. 1 Shell in Eastland County Regular Field three miles west of Gorman.

Wellsite is 466 feet from the north and 899 feet from the east lines of Section 16, Block 1, H&TC Survey.

Daily pumping potential was 27 barrels of 38 gravity oil, plus 48 barrels of water. The well is producing from perforations at 2,912-22 feet, treated with 500 gallons of acid.

Operator set the 4 1/2-inch

Oil related businesses we have best location in Eastland for your business.

In POGUE INDUSTRIAL PARK located across Highway 80 from Service Pipe & Supply. Sell by the lot or acre. A-1 Sales 215 S. Walnut 629-2102 Anytime

casing at 3,200 feet, and the hole is bottomed at 3,235 feet.

Colorado-Texas Development Corp. No. 5 Fee was completed in the regular

field two miles northeast of Cisco.

Location is 467 feet from the south and east lines of Section 81, Block 4, H&TC

Survey, A-237.

Completed on a pump, it had a daily potential of 11 barrels of 42 gravity oil, plus three barrels of water.

FOR SALE
37,500 ft. 5/8 new Trans-Lochen sucker rods, API specification at \$1¹⁵ per ft.
See at B.C. Construction Co. yard, Hwy. 80 W. Ranger. Call 647-1771.
After 6:00 p.m. call 629-2993.

Anderson Dozer & Backhoe Service
647-3437 653-2218
629-1207

JIREH ENTERPRISES
Oil Field Assistance Service
Roustabout - Wench Truck - Backhoe - Loader - Welding - Tanks Painted
Box 129 Cisco, TX 442-1828
JESUS IS LORD

S & S DRILLING CO.
OIL & GAS
Route 4
CISCO, TEXAS 76437
BILL GARY 442-3048
LEE STARR 442-3226

BRADY WELL SERVICE
P.O. BOX 926
ALBANY, TEXAS 76430
915/762-2505
Fully Insured
SWABBING SAND PUMPING RODS AND TUBING
OWNER & OPERATOR GERALD BRADY
Experienced Operator And Crew

AERIAL BUCKET TRUCKS • HOLE DIGGERS • DITCH DIGGERS
CARROLL ELECTRIC SERVICE CO.
ELECTRICAL MAINTENANCE CONSTRUCTION
OIL FIELD COMMERCIAL & RESIDENTIAL
P.O. BOX 881
EASTLAND, TEXAS 76448
Bus: 817/629-2842
629-8793
Night: 629-1320
RON CARROLL-OWNER

O. L. RODGERS
817/442-3133
MULTIVERSAL PIPE COMPANY
Casing-Tubing-Drill Pipe-Sucker Rods
Polyethylene Pipe & Equipment
P.O. Box 831
EASTLAND, TEXAS 76448
BUS. PHONE
817/629-8581
OR 817/629-2682

K&S Equipment & Machine Co.
Precision Machining & Welding
Compressor Valve Repair & Sales
All Types Gas Compressors & Equipment
109 N. Main
Rising Star 76471 Ph. (817) 643-3177
P.O. Box 426
Ph. (817) 643-3177

DEVIATIONS REDUCE PREMIUM
TO SAVE MONEY FOR FARM BUREAU MEMBERS
FARM & RANCH OWNERS AND HOMEOWNERS POLICIES
30% off Regular Rate with Texas Farm Bureau Mutual Insurance Company's Deviation
25% off Regular Rate with Southern Farm Bureau Casualty Insurance Company's Deviation
See your Texas Farm Bureau Insurance Companies' Agent at your County Farm Bureau Office to check if you qualify for either of these savings in premium for your Farm and Ranch Owners or Homeowners policies.
Joe Gosch-Jack Shultz-Helen Grimshaw
Eastland County Farm Bureau
Eastland 629-1704
Texas Farm Bureau Insurance Companies

THIS WEEK ONLY BUILDING CLEARANCE SALE
SAVE UP TO 25% GARAGES-WORKSHOPS
BIG SAVINGS ON LARGER BUILDINGS
ON THE SPOT FINANCING
90 DAYS SAME AS CASH
SAVE UP TO 25% OFFICES - COTTAGES
PICK YOUR BUILDING PICK YOUR PRICE
FREE DELIVERY
NO REASONABLE OFFER REFUSED
Morgan BUILDING SYSTEMS INC.
SIZES 12 X 12 TO 12 X 24
SIZES 10 X 20 THRU 12 X 40
SIZES 10 X 12 THRU 12 X 40
Hwy. 69 N. Eastland, TX 629-2668

Eastland National Bank salutes the oil industry.
We are eager to help in your growth and welcome the opportunity to serve you. You've got a friend — in Eastland.
EASTLAND NATIONAL BANK
201 East Main Street
617/629-8551
Equal Opportunity Employer M-F-H member FDIC

Oil Is Where You Find It...
.....so sayeth the oilmen. So is love, happiness, success and all of the other elements that make up our lives. Where do you go to find title information? Not on the street corner or the barber shop or any other place except in an abstract office. Yes, we have it, compiled, indexed and assembled daily, from the very beginning down to the present time, plus years of experience and training. Visit us soon and let us have an opportunity to serve you.
Eastland County Abstract Company
Pat And Annelle Miller
Abstracts and Title Insurance
Eastland, Texas

Hours: 9:00-2:00
Drive-In: 4:00-6:00 Fri
Night Deposit
THE FIRST NATIONAL BANK
Gorman, Texas 76454
J. B. HICKS President
Full Service Banking
Checking • Savings • Loans
Money Market Certificates
Interest Bearing Checking Accounts
P O Box 38 Phone: 817-734-2255 Member FDIC

GREAT WESTERN Natural Resources
• 0 - 6,000 Ft. Depths
• Day Rate Or Footage
• Fully Insured
• 24 Hr. Communications
• Competitive Rates
For All Of Your Current And Future Drilling Needs.
Give Us A Call! P.O. Box 874, Eastland, TX 76448
(817) 629-8516



PETROLEUM BUILDING V.I.P. SERVICE MEMBERSHIPS AVAILABLE!

The following services, designed to meet the needs of the Petroleum Industry, and related service companies are now being offered through the Petroleum Building in Eastland. If your offices are out of town, you are a one-man show, you are here part-time, or now and then, let us be your staff. We offer fast, courteous service for an hour, a day, a week, a month, or a lifetime, custom designed to meet your particular needs.

Our staff and facilities offer:

Complete secretarial services. We will type one letter, or prepare a full package at your command. Book-keeping, by the job or the hour. Let our competent staff prepare your press releases, Railroad Commission Reports, file Permits, search and compile County records, collect data from Petroleum Information, (members of P.I. only), payroll, statements, Quarterly Tax reports, Oil and gas leases and filing, and map duplications. Additional services are available, such as, postage meter, photocopies, package wrapping and mailings, bank reconciliations, Notary Public, and obtaining price quotes on services or supplies. When you don't have the time or staff to hunt or prepare for your immediate needs, let us do the details. It will save you time and money. For those of you operating an office in Eastland, your membership will insure you temporary coverage during your staff's vacation or absence. Why get behind when you can get ahead by joining the Petroleum V.I.P. Services now?

Memberships will be limited. Your membership also offers full Board Room and Conference facility availability. The Board Room will be available by reservation. Seating capacity 50-60 with theatre seating, conference table seating up to 25. Furnished with podium, projector screen, slide carousel or 16 mm projectors, presentation easels, chalk board, note pads, pens, pencils, place cards, ashtrays, name tags, coffee or soft drinks. Private restrooms will be provided. If desired, a confidential secretary will be available for minutes or meeting records.

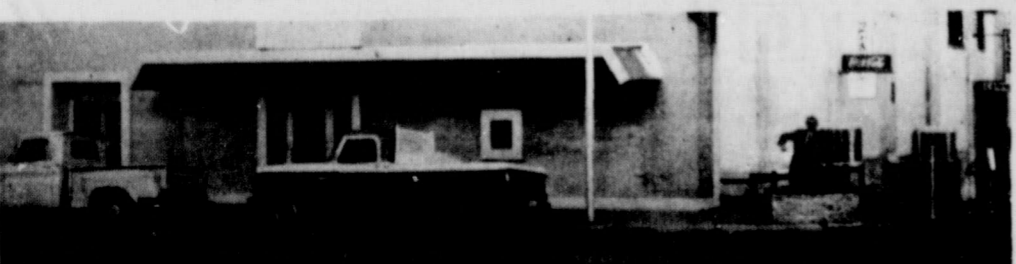
Your next conference should be in the board room of the Petroleum Building. Why pay for the extras, all the time on a square footage basis, when you can have the finest for less? The V.I.P. services will begin November 1, 1981. The membership fee will be \$150.00 per year for charter member (limited to fifty members) and after charter, memberships will be \$250.00 per year. Membership will be limited to insure the quality and availability of the facilities. The Petroleum Building will be open for your inspection the last week of October. Stop by and file your membership application now!

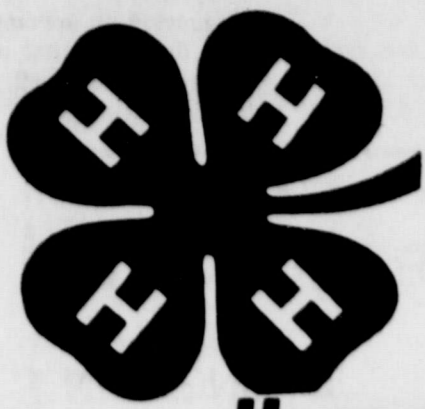
Please send additional information to:

Company Name _____
Address _____
City _____
State _____ Zip _____
Telephone _____
Individual _____
Position _____
Petroleum Building
112 S. Seaman
First Floor-Main Tower
Eastland, TX 76448
817/629-1543

LOOK WHAT'S GOING ON

AT PETROLEUM BLDG





Happenings

4-H BUILDS LEADERS

A good leader believes in people, encourages them and gives them responsibility. The leader also acts as a talent scout and develops a positive attitude toward getting things done.

Anyone who is willing to tackle a job that requires

cooperating with others can learn to be an effective leader.

This is where the 4-H program comes in—it can help youth become effective leaders.

The national 4-H leadership program, supported by Reader's Digest, stimulates

young people to become leaders through a variety of learn-by-doing activities. These activities help turn girls and boys 9-19 into the creative, inspiring individuals that others just naturally want to follow.

As a first step, 4-H members gain self-confidence by becoming experts at something whether it's baking a cake, fixing a bike or playing a game. Then, they share their expertise with others through demonstrations, speeches and exhibits. Soon they are serving on committees and holding offices in their 4-H clubs. As junior and teen leaders they are assisting younger 4-H'ers with their projects.

Finally, leadership skills learned in 4-H are carried over into the larger community. Nine national 4-H leadership winners reported activities that ranged from spearheading local charity drives and organizing leadership conferences for inner city teens to chairing a county youth committee for a congressional candidate. Each national winner receives a \$1,000 scholarship donated by Reader's Digest and two silver trays are presented in the name of the President of the United States.

Other recognition for program members include an expense-paid trip to National 4-H Congress in Chicago for one 4-H member per state and up to four medals of honor in each county.

Winners are chosen by the Extension Service, which conducts the 4-H program, and awards are arranged by the National 4-H Council.

Further details on becoming involved in the 4-H leadership program are available at the county Extension office.

4-H REACHES YOUTH IN MANY WAYS

Today's 4-H program is noted for its flexibility, a feature that makes it the largest youth-serving organization in the country.

4-H is flexible because it's organized in different ways, for different needs, in different places. Organization may take the form of community or neighborhood clubs, project clubs, special interest groups, television, and special activities. Young people may take part in 4-H through any or all of these.

The community or neighborhood 4-H club is associated with an area known to local people, such as a crossroads, a small village, a township, a section of a suburban community, a city block or blocks, or a housing complex. The number of 4-H members in a club may range from five or six to more than 100. This type of 4-H club continues from year to year. Usually both girls and boys belong to the club, enrolling in projects according to their interests.

In many areas, 4-H is organized on a "project club" basis. Young people are encouraged to form these clubs for a year or less. Examples include clubs for

gardens, clothing, dairy, automotive, horses, tractors and small engines. These 4-H clubs vary in number of members, and their territory may range from a neighborhood cluster of a few families or a city block to two or three towns or an entire county. In many counties, members of community or neighborhood 4-H clubs may belong to a larger area 4-H project club. Teenagers especially like this system.

In special interest groups, subjects taught depend on special interests and ages of girls and boys and how these relate to community needs. Young people may take part in this kind of intensive short-term group if they do not wish to be members of a 4-H club. They may get training in bicycle safety, health, first aid and firefighting or for jobs in local businesses.

In the late 1950s a State Cooperative Extension Service produced the first TV series. That series of 13 half-hour programs about electricity was designed for 9 to 11 year olds. Since then, several states have developed and shared 4-H TV. Television films or video tapes and educational materials for members and leaders are used in groups or individually. Many have been programmed through school systems. More than 6 million youth enrolled in "Mulligan Stew," the 4-H nutrition television programs developed by Extension Service and USDA in the early 70s.

Special educational activities often supplement 4-H programs. These include tours, 4-H junior and teen leader training workshops, achievement programs, camps, state conferences, seminars, recreational leadership training, share-the-fun festivals, project training meetings, career exploration, and exhibitions, fairs and shows.

Two major nationwide events are held for 4-H members each year, National Congress in late fall in Chicago and National 4-H Conference each spring at the National 4-H Center in Washington, D.C.

Among key events in Texas are State 4-H Roundup each June at Texas A&M University and State 4-H Congress in July in a major city.

Whichever method suits

you best, 4-H has a way for you to learn and have fun in an exciting youth program.

The 4-H Motto - "To make the best better" - is exemplified in the young people who excel in their achievement, citizenship and leadership projects.

Activities in these programs, conducted by the Texas Agricultural Extension Service, Texas A&M University System, range from sharing skills with mentally retarded youth and organizing a summer program at a school for the deaf to conducting a highway cleanup campaign. National 4-H programs in Achievement, Citizenship and Leadership stress interaction and involvement with others.

Among the most popular projects is the "Adopt a Grandparent Program". 4-H'ers not only become companions to senior citizens but also learn new perspectives from their elders. Many senior citizens share traditional skills as volunteer leaders.

Recognizing physical fitness is critical to good health. One 4-H club built a quarter-mile jogging and exercise course that included 12 exercise area interspersed along the track. Once complete, the youth gave the facility to the community for public use.

In some areas, young people get practical citizenship experience by running local government offices for a

day. For one 4-Her, the training she received as acting mayor convinced her that politics will not be her first career choice. Another youth found the experience of being district attorney "unforgettable".

Commented one local judge at the end of the day's program: "It's refreshing to see good kids. I was afraid the incentive to lead had died down. I was glad to see there are still youngsters willing to lead".

Ford, Coca-Cola and Reader's Digest provide awards and incentives to outstanding 4-H'ers in all 3 programs. Awards are arranged by the National 4-H Council and winners are selected by the Extension Service. Four members in

each county may receive medals of honor, one 4-Her from each state can earn an expense-paid trip to National 4-H Congress in Chicago, and nine national winners in each program receive \$1,000 scholarships. In addition, two 4-H'ers are named national winners in each program and receive 4-Hers highest honor, the Presidential Award, which is a silver tray presented in the name of the President of the United States.

Coca-Cola also provides certificates to two members

from each state. Reader's Digest encourages club participation by sponsoring the 4-H Citizenship-in-Action program, involving "seedmoney" for clubs to carry out innovative citizenship programs. Ford Motor Company also supports international 4-H programs.

Boys and girls 9 to 19, can learn more about the exciting opportunities in 4-H by contacting their county Extension office.

IKE'S PAINT & BODY
1 1/2 Miles North of Carbon
On Hwy. 6
Phone: 639-2426
We Work on American and Imported Cars and Trucks

THANKSGIVING SALE
Select Group of Fall & Winter Merchandise
40%-60% Off Reg. Price
1 Group of Wranglers & Saddleman's Jeans \$10.00
David & Quetta's
1-20 West of East Western

Zachry's
Something Special
Once Again Helping to Make Your Holiday Season A Time That Memories Will Be Made Of
Complete Line Of Christmas Supplies
Open Mon. Nov. 2
Mon.-Sat. 10A.M. to 6P.M.
Judy Orms 629-1218
305 N. Oak Eastland, Tx.

F. James Dabney
605 S. Seaman St.
629-1312
AGENT FOR
BROWN'S WORLD TRAVEL CENTER
201 East Adams at Fisk Avenue
Telephone (915) 643-2555
BROWNWOOD, TEXAS 76801
AIRLINE TICKETS AND RESERVATIONS WORLD WIDE

See M.H. Perry for HOSPITALIZATION INSURANCE
629-1566 or 629-1095

Name Brand Fashions



Thousands Of Garments To Choose

From Missy, Half & Large Sizes

Save 40-60% New Arrivals Each Week Open Mon.-Sat. 9:00 a.m.-5:30 p.m. 112 N. Lamar Eastland Next to Majestic Theater

TV RENTAL and Repair
Buy, sell or trade.
301 W. Commerce
629-8786

Beil's Draperies
FASHIONABLE INTERIORS
VISIT OUR SHOWROOM
Your Complete Decorating Center
Draperies - Carpet - Ceiling Fans - Mini Blinds - Bedspreads
Woven Wood Shades and Shower-Curtains
Rods & Parts - Fireplace Equipment
Fine Custom Accessories
Light Fixtures/Tables/Special Pieces
Call 629-1319 For Appointment-Or Come By
1706 W. Commerce Eastland, Tx Free Estimates

Majestic Theatre
Eastland 629-1220
One Showing Only Each Evening
Open 7:30 p.m. Showtime, 7:50 p.m.
Sunday, Monday, Tuesday
Inflation Nite Tuesday All Seats \$1.50
So Fine RYAN O'NEAL
"SCREWBALL" KEVIN THOMAS Los Angeles Times
"FUNNY!" RICHARD FREEMAN Newhouse Syndicate
"A KNOCKOUT" J. ROBERTSON Village Voice
Closed Wednesday

Starts Thursday
THE TRUE STORY OF A MAN YOU'LL ALWAYS REMEMBER HE BECAME A LEGEND YOU'LL NEVER FORGET...
Challenge to be Free
The greatest chase story in the history of the North!
STARRING MIKE MAZURKI as Faxon and JIMMY KANE as Doc Kane. Narrated by OPA MONTY
Executive Producer ARTHUR P. GLESS. A PACIFIC INTERNATIONAL ENTERPRISES INC. RELEASE. USA. COLOR BY CFI

RANGER DRIVE-IN THEATRE
Ranger 647-3802
One Showing Only Each Evening
Open 7:30 p.m. Showtime 8:00 p.m.

Sunday Last Day
"UNPARALLELED TERROR ...THE MOST HORRIFYING MOTION PICTURE YOU'LL EVER SEE!"
Rex Reed
THE TEXAS CHAINSAW MASSACRE
Produced and Directed by TOBE HOOPER
From NEW LINE CINEMA
MCA/XXX New Line Cinema Corp.

Thursday, Friday, Saturday & Sunday
I WANT YOU
STRIPES
COLUMBIA PICTURES PRESENTS AN IVAN REITMAN FILM
BILL MURRAY IN STRIPES
★ HAROLD RAMIS ★ WARREN OATES ★ ★ P.J. SOLES ★ JOHN CANDY ★
MUSIC BY ELMER BERNSTEIN SCREENPLAY BY LEN BLUM & DAN GOLDBERG AND HAROLD RAMIS
PRODUCED BY IVAN REITMAN AND DAN GOLDBERG
DIRECTED BY IVAN REITMAN

Homemaking Hints

By Janet Thomas

It has been traditional with some homemakers to stuff the neck and body cavities of the turkey with a stuffing or dressing before roasting. If you do want stuffing, I suggest that it be prepared separately and cooked in a covered baking dish, casserole, or slow cooker. Several good dressing mixes are available at your market that can be cooked on top of the stove just before the turkey is served.

If you are going to stuff the bird, do it just before roasting. Allow about 3/4 cut of stuffing per pound of turkey. For example, if you have a 16 pound bird, you'll need 12 cups of stuffing. Place the stuffing loosely in the neck and body cavities since it will expand as the turkey roasts.

For safety sake, do not stuff the bird the day before.

To save time, you could prepare the dry ingredients the day before, then add the liquid just before placing the stuffing in the bird's cavities. Never freeze an uncooked, stuffed turkey or a roasted, stuffed turkey. You should remove any leftover stuffing from the carcass and refrigerate immediately after the meal.

To prevent food poisoning, refrigerate the leftovers as soon as possible after serving. Wrap and refrigerate or remove meat from the bones.

Use gravy and stuffing within 2 to 3 days. Heat the stuffing thoroughly before serving. Serve refrigerated, cooked turkey meat within 2 to 3 days after roasting. It can be reheated or served cold. Freeze the rest of the turkey you won't be using within a couple of days.

Small meal-sized units, properly wrapped, may be frozen and held up to one month. Cooked stuffing may be frozen and kept for 3 to 4 weeks. If stored in the freezer for a longer period of time, turkey meat will not spoil, but a gradual deterioration in the quality takes place such as drying out of meat and development of "off" flavors.

Frozen dressing may be heated without thawing or can be thawed in the refrigerator. When ready to re-use gravies and broths, reheat to boiling before serving.

The holiday season is here and you might like to think about preparing pies and other baked goods and freezing them until needed. Fresh fruit, pumpkin, mince, chocolate and lemon chiffon pies all freeze successfully. Custard pies do not freeze well.

To thaw frozen baked fruit pies simply remove the wrapper and heat immediately in a 350° oven for 30 minutes. Allow chiffon pies to thaw at room temperature before serving.

RECIPE FOR THE WEEK:

Last Saturday afternoon, Mrs. L.C. Brown and myself were in Breckenridge to judge the Stephens County 4-H Food Show. They had a wonderful show with so many good dishes entered by the 4-H youth. This week I am featuring one of our favorites that was really good. You might like to try this one.

BLUEBERRY PEACH COBBLER

- 1 package wild blueberry muffin mix
- 1/4 cup sugar
- 1 tsp. cinnamon
- 3/4 stick butter
- 1/2 cup pecans
- 2 can peach pie filling

- 1/4 cup sugar
- 1 tsp. pecan extract

Preheat oven 350°. Wash blueberries and set aside to drain. In medium bowl combine dry muffin mix, 1/4 cup sugar, 1 tsp. cinnamon, and cut in butter. In 13 x 9 inch pan combine 2 cans peach pie filling, 1/2 cup pecans (chopped), 1/4 cup sugar, 1 tsp. pecan extract and blueberries. Spoon crumb topping over peach filling. Bake 35 to 40 minutes or until topping is golden brown. Yields 12 servings.

County Pecan Queen Pageant Date Changed To Dec. 14

The date of the Eastland County Pecan Queen Pageant has been changed from December 1 to December 14, Linda George announced today. Mrs. George and Nancy Childress are co-chairmen of the pageant.

The date was changed because of conflicts with girls' basketball games on December 1. The entry deadline has been moved to December 4. The pageant

will be at the Cisco Junior College auditorium at 7:00 p.m. Winner of the pageant will serve as the 1981-82 Eastland County Pecan Queen and will represent the county in the State Pecan Queen Pageant next July.

Organizations and businesses are encouraged to sponsor a girl in the contest. Each sponsor will pay a fee of \$15 to furnish items the contestant will need to represent the sponsor. Mrs.

George would like to hear from any sponsor who would like the name of a girl to sponsor or any girl who would like to enter, but needs a sponsor. Mrs. George's address is: Box 543, Rising Star, TX 76471. She may be contacted by calling 643-2061 in Rising Star.

Entry applications may be obtained from Mrs. George and the County Extension office in Eastland.

Contestants must be between the ages of 16 and 19 as of July 1982, single and her home must be in Eastland County.

Sunday, Nov. 22, 1981

CISCO RADIATOR SERVICE
207 E. 6th Street (Breckenridge Hwy)
Cisco, Texas
Cleaning-rod-ding-recoirng-auto-truck-tractor radiators-heaters. New radiator and heaters. Auto gas tanks cleaned-repaired. Open Monday thru Friday, 8 a.m. to 5:30 p.m. Call 442-1547, Cisco. p-5tc

GORDON SPOT

by DeMarquis Gordon

The harvest has been good this year in Eastland County. With Thanksgiving coming up this week we should take time to give thanks to the Lord for our good harvest.

It is also a week to appreciate our agricultural producers for their hard work. In fact, this week, November 20-26 has been named Farm-City Week.

Purpose of the observance is to focus on the involvement of farm and city people as partners in the growing, processing, marketing and consumption of food and fiber.

In other words, Farm-City Week is aimed at promoting better understanding between farm and city people and increasing the knowledge and appreciation of each for the American way of life.

Farm-City Week is under the direction of the National Farm-City Council, Inc., which is coordinated by Kiwanis International.

Agricultural production, marketing and processing provides jobs and income for about a fourth of the working force in Texas.

One out of every 30 Texans is a farmer or rancher, and 30% of the state's retail trade business is directly associated with agricultural production and selling of food and fiber products.

While the overall cost of living has increased about 11% from a year ago, food prices in the grocery store have increased 6.4% and apparel has risen less than 5%. This compares with an increase of nearly 13% in housing, 16% in fuels, 11.5% in medical care and 25% in public transportation.

Farm and city people make the best food and fiber team in the world and give this country the capacity to feed its own people and to export for economic gain as well as for humanitarian purposes.

Nationally farm exports total about \$44 billion with Texas contributing some \$3 billion. Production from about one out of every three acres of cropland is exported, with our leading customers being Japan, Netherlands, Mexico, China, Canada, Germany and Korea.

Texas leads the nation in exports of cotton, cottonseed and animal fats, is second in meats and meat products, hides and skins, and third in rice, peanuts and peanut oil.

Exports help both farm and city people make a living and at the same time, they boost the economy and offset some of the cost of imported oil.

Over the next few weeks, thousands of Texas farmers and ranchers will receive a crop or livestock questionnaire from the Texas Crop and Livestock Reporting Service or will be personally interviewed by their field staff. Information obtained provides the basis for determining the final acreage, yield, crop production, and livestock and poultry numbers in Texas.

All estimates published by the Texas Crop and Livestock Reporting Service are based on data provided by Texas farmers and ranchers in these surveys. That is why your cooperation is

necessary for accurate estimates. In return, these estimates are essential for you in making the wisest production and marketing decisions.

Because of today's spiraling costs and high interest rates, farmers and ranchers need all the accurate, up-to-date information they can get to wisely plan their production and marketing operations.

Accurate estimates also are essential to farm organizations and legislators in promotion, planning and enacting wise legislation.

Since the basic information for estimating in the reports must come from farmers and ranchers, you are really helping yourself.

Collection and publication of agricultural statistics is a cooperative effort between the Texas and U.S. Dept. of Agriculture. This cooperation avoids duplication of effort, saves money and increases the effectiveness of statistical reports.

Individual farm and ranch information is kept strictly confidential, and only state and county summaries become part of the final published estimate.

Have a Nice and Easy Thanksgiving

Hallmark Thanksgiving partyware in a rich traditional design sets a handsome holiday table. Start with our colorful turkey centerpiece and add coordinating accessories, including placemats, tablecovers and plates in three sizes.



© 1981 Hallmark Cards, Inc.

HEATHER'S Hallmark
CISCO, TEXAS 442-2091

J & A Bargain Box
701 W. Main
New & Used
Merchandise
629-1133

GOOD YEAR SERVICE STORES



AUTO WINTERIZING

GET COLD WEATHER-READY!

\$18

- Pressure test cooling system
- Drain radiator, refill with up to 2-gallons permanent anti-freeze
- Inspect fan belt tension and condition
- Check all hoses, tighten as needed

TOTAL ALIGNMENT HEADQUARTERS

PROLONG TIRE LIFE, BOOST MPG

Service Front Wheel...Rear Wheel... Four Wheel

\$19

- Inspect all four tires, correct air pressure
- Set front wheel caster, camber, toe to proper alignment
- Inspect steering and suspension systems
- Most U.S. cars imports with adjustable suspension includes front wheel drive Chevettes light trucks and cars requiring MacPherson Strut correction extra

YOUR CHOICE

\$88

IMPORT OR DOMESTIC CARS
Additional parts and services extra if needed

- 2-Wheel Front Disc: Install new front brake pads, resur-face front rotors, inspect calipers
- 4-Wheel Drum: Install new brake lining and resurface all four drums

Includes: Install new front grease seals, pack front wheel bearings, inspect hydraulic system, add fluid, road test

For More Good Years In Your Car, TURN IT OVER TO GOODYEAR

Just Say 'Charge It'

Goodyear Revolving Charge Account
Use any of these other ways to buy your Own Customer Credit Plan
• MasterCard • Visa • American Express
• Carte Blanche • Diners Club • Cash

Nationwide Auto Service Limited Warranty

All Goodyear service is warranted for a least 90 days or 3,000 miles whichever comes first... many services much longer if warranty service is ever required go to the Goodyear Service Store where the original work was performed and we'll fix it free if however you're more than 50 miles from the original store go to any of Goodyear's 1,340 Service Stores nationwide

Everisto Jimenez, Mgr. 315 East Main
Your Local Goodyear Store
Phone 629-2662 Mon. thru Fri. 7:30 a.m. to 6:00 p.m. Sat. 7:30 a.m. to 5:00 p.m. Eastland

LAWNDALE HOME FOR SENIOR CITIZENS Has Been Changed To

GORMAN CARE CENTER

600 W. Roosevelt

Phone 734-2202 - 2203

GORMAN, TEXAS 76454



NEW SIGN AT GORMAN CARE CENTER — Shown standing at left are Gorman Care Center Administrator C. W. Swanner and Chamber of Commerce President, Gene Foster.

Lawndale Home has served the community for approximately 25 years... and not as Gorman Care Center we hope to be more a part of the community and give good service for many years to come.

C. W. Swanner, Administrator

Wilda Swanner, Director of Nurses

Extension Offices To Host Information Day Open House Monday

The local Eastland County Extension Service office will be hosting an Information Day open house on Monday, November 23. The open house will be from 1:30 - 4:00 p.m. Monday afternoon. The Extension Service offices are located in the basement of the Eastland County Courthouse.

The Eastland County Extension Offices will have displays for you to see, refreshments to enjoy, and good opportunity to visit the H-H, home economics, and agriculture work being done in the county.

Hosts will be County Extension Agents Janet Thomas, DeMarquis Gor-

don, John Blair, Gordon Woolam, and Extension Service secretaries Diana Reynolds and Joanna Maynard.

Eastland Memorial Hospital

Visiting Hours:
2:30-4:00 &
7:00-8:30

Cathy N. Slate
Mary Gomez
Opal L. Reid
Margaret Holland
Winnie Duckworth
Vernon P. Snodgrass
Eva Lee Vaughan
Donald L. Kinnaird, Jr.
Elida Ashworth
Woodie Carlisle
Tom R. Isbell
Willie O. Kirby
Cherie Sublett
Betty L. Hart
Mary Chatham
Byron B. Wheat
Sarah Hickerson
Theresa Worcester
Millie Willett
Roy Skinner
Austin Williamson
Clinton Anderson
Billy Mitchell
Darrell Criswell
Arthur Littlefield
Fannie Littlefield
Thurman Willis
Tommie Anderson
M. Louise Dorsey
Helen Gattis
Geraldine Brecheen
Opal Gattis
Faye Tallent
Jerry Boggs
Florence Brown
Joyce Criswell
Mildred Squires
Ruby M. Pledger
Emma Strahan
George Norris
Oliver Hogan
Alice Burleson
Willard Liles
Oliver A. Ashton
Lester Wiggins
Lea Wright

Saladmaster
Sales & Service
Box 1235 Cisco
442-1357 p-102



Mrs. L.D. Keeney of Cisco was the winner of this 19 in. color T.V. given away during the Montgomery Wards October Truckload Sweepstakes Customer Contest. Mrs. Keeney is shown with Eastland store manager, Dee Wilson.

Comptroller mails checks for November city sales tax

State Comptroller Bob Bullock Thursday sent checks totaling \$96.4 million to 948 Texas cities as their share of the one-percent city sales tax for November.

The payment this month is \$16.3 million more than Texas cities received during a comparable period in 1980.

The payments push totals for Texas cities through November of this year to \$614.7 million—a 16.6 percent increase over payments for the same 11-month period in 1980.

The optional one-percent city sales tax is collected along with the state four-percent sales tax by merchants and businesses and is rebated each month by the Comptroller to the cities where it is levied.

Eastland's net payment

this period was \$28,696.26. The 1981 payments to date is \$164,462.48. The % change to date is 17.75%.

The Cisco net payment for this period is \$30,168.93. The 1981 payments to date is \$164,025.82. The % change to date is 4.77%.

For the town of Gorman the net payment this period is \$16,083.27. The 1981 payments to date is \$29,150.51. The percent change to date is \$16.83%.

Ranger's net payment this period was \$18,617.97. The 1981 payments to date are \$129,560.80. The % change to date is 36.95%.

FOR SALE

FOR SALE: 1972 Chevy 2 ton truck, 2 speed axle, 350 motor, refrigerated van bed, good condition. \$3,950. Call 442-1023, Cisco. p-95

E.W. Lovells To Be Honored On 50th Anniversary

Mr. and Mrs. E.W. (Buddy) Lovell of Lake Brownwood, formerly of Kokomo and Carbon, will be honored on their 50th wedding anniversary with an open house from 2:00 to 4:00 p.m. on Saturday, November 21, in the home of a daughter and son-in-law, Mr. and Mrs. Billy L. Graham at Thunderbird Bay at Lake Brownwood.

The open house will be hosted by their three daughters, Mrs. Billy Graham of Lake Brownwood, Mrs. J.A. Neill of Midland and Mrs. Terry Weatherford of Temple. The Lovells have four grand-

children and one great grandchild.

Mr. and Mrs. Lovell were married on Nov. 21, 1931 in the First Christian Church of Cisco, Texas. Mrs. Lovell is the former Lila Odell Wharton. She attended school at Kokomo, and Mr. Lovell attended school at Center Point south of Carbon.

The first four years after they were married they lived in the Eastland County area and farmed. They then moved to West Texas, living in several towns before moving to Monahans where they lived for twenty six years. Mr. Lovell was active in several phases of the oilfield, mainly in drilling. Mrs. Lovell is a homemaker.

The couple, now retired, moved to Thunderbird Bay on Lake Brownwood, near May, three years ago. Thunderbird Bay is on the north end of Lake Brownwood off Farm Road 2273 south of May.

All friends and relatives are invited to attend the open house.

E.L. Graham Hospital

Visiting Hours:
2:00-4:00 &
6:00-8:30

Opal Agnew
Roberta Johnston
Ada Mainard
Jesse Nelson
Freda Symm
Winnie Newman
Danny Yoch
Hershel Bassett
Coy Dial
Odessa Murray
Christine Parker
Thelma Bosworth
Mattie Coster
Gordon Murray.

OFFICE SPACE FOR RENT OR PURCHASE

116 N. Seaman, Eastland
Call 629-8641
or 647-3022

Secretarial & Telephone Answering Service Available

EASTLAND DENTAL CENTER

Dr. John D. Hill
General Dentist

- Exam with 4 x-rays \$9.00
- Adult Prophy \$20.00
- Simple Silver Filling \$10.00
- Simple Extraction \$10.00
- Reg. Denture \$490.00
- Immediate Denture \$560.00
- Porcelain Veneer Crown \$175.00

711 W. COMMERCE
AT DIXIE ST.

(Near Taylor Center & H&R Lumber)

629-8193

Single Adult Bible Study

Come Study
New Friends

Sundays 9:45
a.m.

on Plummer

Eastland

First Baptist Church

Bass Club Report

The Eastland County Bass Club held its November tournament on beautiful lake Cisco, Sunday the 8th. We had a total of 7 fishermen entered this month.

Fishing was rather slow overall with only 10 lbs. 6 oz. being weighed in. These were divided up between only 2 of our 7 members. Tommy Maynard took first place; with 6 lbs. 13 oz. Tommy also had the big bass for the day with 3 lbs. Second place went to Terry Wilson with 2 lbs. 9 oz.

Those fish caught were fooled by jigs and spinner baits. Fishing was hampered greatly by high winds and frontal conditions.

Hope to see you at our next meeting December 3, 1981. A film will be shown, so come and bring a friend.

Terry L. Wilson

LVN's have you tried a personal rewarding joy as a charge nurse in a nursing home. Cisco Nursing Center has openings for full time and part time LVN's on all shifts. Call 442-1471 or P.O. Box 190, 1401 Front Street, Cisco. p-94tfc

Sunday, Nov. 22, 1981

Olden Schedules Homecoming

The eighth annual Olden homecoming will be held Nov. 28 in the Olden gym. Registration will begin at 9 a.m. Tickets for the noon meal are \$3.50.

BUDDY AARON INSURANCE

Talk to us about
35% diviations

Home-owners "B"
Farm & Ranch
owners "B"

and also ask about
Farm Equipment
Special Rates

Broad-Form
Coverage on
Commercial
Properties

629-8533
P.O. Box 392
108 S. Seaman
Eastland, TX

R&R CARPET CLEANING

Over 5 years service in this area

Call 629-1121

FOR FREE ESTIMATE

Randall Rogers, owner

Take A Weekend Family Vacation

(without going far).

Kiva Inn is indeed Abilene's "Inn-Door Resort of Family Fun" all year long! Within the giant, beautifully landscaped atrium, climate-controlled for total comfort, a world of activity unfolds before your eyes. The distinctive blend of a luxury hotel and resort setting offers you the best of everything in West Texas... without going far!

- His and Hers Saunas
- Putting Green
- Exercise Area
- Hydro-Spa Whirlpool
- Childrens Play Area
- Game Room
- Two Restaurants
- Unique Cocktail Lounge
- Luxury Guest Room and Suites with Special Appointments
- Indoor and Outdoor Pools
- Two All-weather Surface Tennis Courts

Kiva Inn
MOTOR HOTEL

Hwy 80 West Abilene Texas 915-695-2150
For Reservations Call 1-800-592-4466

Golden Destiny
New Location
2 1/2 Miles West 80
Open Mon.-Fri. 9 to 5

Call
629-8492 629-8194

All Breeds
Bathing, Clipping, Grooming.
Specializing in Poodles
Operated By Lorraine Lester

marquise goes more places with...
more fashion...
more quality...
Gray, Tan or Black suede uppers

the woman who wants the most out of the shoes she wears...
marquise...
more affordable

just \$48.95 the pair

MY SHOE SHOPPE
1-20 West of Best Western

COPY MACHINES **CASH REGISTERS**

Eastland Office Supply
629-8942
112 N. Seaman TC
BUSINESS FURNITURE

U.S. DEPARTMENT OF HOUSING AND URBAN DEVELOPMENT
HUD HOMES FOR SALE
-Notice to Brokers-

Offers to purchase will be accepted on the following properties in accordance with normal bidding procedures:
Deadline for Receipt of Bids: Nov. 24, 1981, 4:30 p.m.
Bid Opening Date: Nov. 25, 1981, 11:00 a.m.

Case No.	Address	Price	Min. Deposit	Max. Mtg.	Liv. Area	Bdrms	Bath	G/C	A/C
179734-221	409 E. Sadowa, Eastland	22,500	500	22,000	1008	2	1		
178057	504 E. 10th, Cisco	26,000	600	25,400	1395	3	1	1	No

The following properties are available on First Come-First Served basis. Contact HUD office for information.

See Any Real Estate Broker

HUD
Property Disposition Branch
221 W. Lancaster-4th Floor
Fort Worth, Texas 76113 817-870-5537

DRIVE A LITTLE SAVE A LOT

EASTLAND Direct Factory Outlet

MOBILE HOME SALES
FHA & VA FINANCING
SINGLE WIDES
DOUBLE WIDES

WE SERVICE YOUR HOME FOR ONE YEAR AFTER THE SALE

653-2432
INT. 20 Olden, Texas
IF NO ANSWER, CALL 629-2117

DRIVE A LITTLE SAVE A LOT

Feast your eyes on

Holland's Drive-In

1505 W. Main -
Eastland - 629-2215

NOW OPEN

MONDAY thru SATURDAY
10 A.M. to 8:30 P.M.
(closed Sunday)

CLOSED
Thanksgiving Day
Open Friday

Enjoy our dining room or take out



JAMES W. RATLIFF

REALTOR-BROKER

647-1260

HOME 647-1667



HOMES-RANGER

New listing; Mobil home on Travis street, two bedrooms, one bath, all furniture that comes with a mobil home goes. Storage house goes with this place. Priced to sell \$7,750.00

About a year and a half old, two bedroom brick home, on two lots, central heat and vented evaporative cooling. One bath, range, dishwasher, fenced back yard. This is a corner lot, 1006 Foch Street.

New listing on Pine Street, three bedrooms, one bath older home that need someone to work on it. Very large rooms, could be made into a very nice place. Two lots go with this house \$22,500.00.

Three bedroom, one bath, large living and dining room combination. Central heat and air, washer dryer connections. Separate garage and storage room. This house is on two lots on Main Street. \$30,000.00

Approx. 5 acres of land in City limits with a three bedroom, two bath house. Central heat and air, horse barns, garage and storage. Very attractive place. \$45,000.00

Brick three bedrooms, two full baths, den with wood burning fireplace, kitchen with double oven, corning cooktop, dining room combination, central heat and air, utility room with washer and dryer connections. Fenced back yard with covered patio. Two storage buildings. This is in a nice neighborhood. \$75,000.00

Brick three bedrooms one and a half baths. Large den, central heat and air, range and dishwasher. This house is in Meadowbrook addition and would make some family a very nice home. FHA Financing available.

Two bedrooms, one bath, close to down town. Needs very little work, double garage. This house is on 1 1/2 lots, a good buy at \$10,000.00

1980 Mobil home on eight lots. Three bedrooms, two full baths, carport, central heat and air. There is a large 24x30 steel building with concrete floor that goes with this place, also a 14 x 20 storage building. \$65,000.00 some owner financing.

Rock two bedroom, central heat, one bath, living room, large kitchen, washer connection, range, refrigerator, would like to sell furnished. This house has 4 1/2 lots, six pecan trees and several fruit trees. \$40,000.00

LAKE PROPERTY

Tile block house on deeded lot, one large bedroom with very large living room with sleeping facilities. This place has a nice boat dock. All furniture goes with this \$30,000.00

COMMERCIAL PROPERTY

7,000 square foot Delta Steel Building in Ranger. This building has a large truck scale that goes with the building.

Two lots on Hwy. 80 just next to JRB. A good commercial location.

Three story brick **SOLD** Ranger with twelve lots.

Ten acres of land in the city limits, good place to develop. Will sell worth the money, \$10,000.

RANCH OUT OF RANGER

981 acres on I-20 just east of Ranger, excellent hunting place. Will run 60 pairs year round, small but nice house with central heat and air.

JUST OUT OF RANGER

25 acres of land with a four bedroom house, two full baths, Franklin Stove, very nice kitchen with plenty of cabinet space. Dishwasher, range and ovens, large pantry. Lots of closet space and storage. Several outside buildings, metal pens, water well, fenced garden spot. \$58,000.00

160 acres of land, one tank, 87 acres in cultivation, good fences, some improved pasture, 1/4 minerals. Owner will sell parts of this place also.



We solicit your listings on any type of Real Estate

Oneta Robinson Associate 629-1467

KINCAID REAL ESTATE

817/629-1781

100 S. Seaman St. Eastland, TX 76442

RESIDENTIAL

COME LOOK AT THIS ONE! This house has 2 bdrms., 1 bath, big fenced back yard with pretty trees and covered back porch. Will make someone a very comfortable home. Owner will finance. Priced lower for cash. \$35,000.

NOT GETTING OLDER-GETTING BETTER! This older frame home has been recently improved with paint, panelling and carpet. Has 2 or 3 bedrooms, 1 bath. Roomy house on big pretty lot. Lots of trees in nice quiet neighborhood. \$24,500.

CLOSE TO DOWNTOWN-3 bdrm., 1 bath older frame house. Large rooms with some improvements. House solidly constructed. Located on extra large lot in nice neighborhood. Has several bearing fruit trees and garden spot. 1 car garage. \$22,500.

NEWER BRICK HOME IN STEPHENVILLE-3 bdrm., 2 bath, fireplace, builtins, new carpet, custom drapes, central H&A, fenced yard, double attached garage. 2 blocks from high school.

LOW DOWN PAYMENT on this neat 2 bedroom, 1 bath mobile home **SOLD** on lot. Only \$1,000 down and owner finance. \$8,000.00

IDEAL MOBILE HOME SITE - City utilities available on this cleared lot in Olden. 150' x 75'. Owner finance. \$2,750.00

IN RANGER-2 bedroom, 1 bath house with chain link fence. Would make a good first home. Has assumable 10% loan. Affordable and nice. \$18,000.

COZY & CUTE - 2 bdrm, new paint and carpet. Small yard, carport on paved street. Nice for single or starter home. \$25,000.

AFFORDABLE LIVING-Start with this small home or 3 bdrms., 1 bath, 12,500. Owner will finance.

1 ACRE HOMESITE in Meador Valley. Hiway frontage. Lots of pretty trees **SOLD** could make a great homesite. Hurry before it's gone! \$4,750.

LARGE OLDER frame house on over sized lot. 7 rooms and full attic. Lots of space inside. Needs remodeling. Would like to trade for airplane or other. \$30,000.

DOUBLE WIDE MOBILE HOME Only three months old. Is fully furnished and has a fireplace, too. Has 3 bedrooms - 2 baths. Washer and dryer included. \$32,000.

LAKE PROPERTY

SUMMER HIDE-AWAY Modern cabin on deeded lot. Good fishing. **SOLD** on this one! LL-07 \$11,700

LAKE LOTS- We also have many lots available some with excellent water frontage. The fishing is good and the price is right. LL-01

COMMERCIAL

OWN A FAMILY BUSINESS-locally owned convenience stor with gas pumps. Has good cash flow. Owner will consider financing for right person. Also has trailer park on 3 acres. Can accommodate 21 trailers. Good buy. Call for information.

COMMERCIAL PROPERTY 2.9 acres on I-20 frontage road in Cisco. Owner would finance part with good down payment. \$20,000.

PRIME RAILROAD SPUR LOCATION-1 building with office, 1400 sq. ft. floor space - dock height, 2 storage buildings on 1 1/2 acres. Excellent for bulk delivery shipping point. \$75,000.

THRIVING BUSINESS - Local business that grossed \$740,000 in 1979. Excellent cash flow and terrific location. Terms negotiable.

COMMERCIAL LOCATION-Large bldg. site on N. access of I-20. Excellent location., Good investment. Owner finance, 25% down. \$25,000.00

EXCELLENT LOCATION - 1.5 acres on Hwy. 80 near I-20. Unlimited potential. Older 3 bdrm. house. Call for more information.

DEVELOPMENT POSSIBILITIES 151 acres with I20 frontage, paved hwy. Numerous options. Owner finance. \$1,000.00/acre.

SEVERAL MOTELS - listed in various parts of the state. All excellent investments. Call for location and details.

HOMES & ACREAGE

WANT TO LIVE IN THE COUNTRY? Try this 4 bedroom, 2 1/2 bath house on 2 acres of land. Has vaulted ceiling, ceiling fans, and very nice redwood deck. Lots of room. Call us to look. You'll like it. Priced at \$72,000.

LIVE IN THE COUNTRY! In this 2 bedroom house on 66 acres. Has city water and water well. 36 acres of pasture with 3 stock tanks and 30 acre fields. Also roping pens. Good fence and hiway frontage. Take a look - you'll like it. \$65,000.

COUNTRY HOME ON 120 ACRES- Income producing property-brings in over \$10,000/month in royalties! 120 acres is all in coastal area. This property has plenty of water with 5 water tanks. The house is a 3 bedroom, 2 bath with approximately 1900 sq. ft. This is a very nice place. Call us for the details.

ACREAGE

ONE ACRE IN COUNTRY-with city water and hiway frontage. Three tracts available. Will make very nice homesites! \$5,000.

52.8 ACRES-Coastal and love grasses. 3 tanks, water well, corrals, roping pen, barn, very pretty homesite. Northeast of Eastland. \$1000/acre

SPORTSMAN RETREAT-78.9 acres of hunting and fishing! 3 stocked tanks for fishing with live creek. Dove, quail, turkeys **SOLD** deer. 20 acres coastal and 13 ac. wheat. 1 acre fence garden. City water. Pretty campsite with all hook-ups. Some assumable financing. \$633/acre.

93.34 ACRES in Okra area. Has good stock tank, 57 acres cultivation, 18 acres of pretty timber. Also a 33 acre peanut allotment. Owner will finance with 29% down or will Texas VET/Also will divide. Has minerals that will go. Great buy at \$540/acre.

77 ACRES - Close to Ranger. Good pasture land, tank, easy access. Also good deer and turkey hunting. \$725/Acre.

49 ACRES - in northern part of Eastland County. Tank has been stocked. On good County Road less than 1 mile off pavement. \$700/Acre.

42.53 ACRES - Oak trees, pasture land. New tank - really pretty land. Come and look at it. Owner will finance. \$685/acre.

20 ACRES - available on paved highway about 4 miles from Eastland. All improved coastal bermuda, 1 tank, few trees, good fence **SOLD** possible owner finance. Will Tex. Vet. \$15,000

12 1/2 ACRES - Pecan orchard at Carbon, about 70 producing trees, city water and tank for a mobile home, all on paved hiway **SOLD** hiway. Owner financed at 10% interest. \$25,000.

39.29 ACRES - Farm **SOLD** Pasture. 1/2 minerals. Has tank and water south of Cisco on Hwy. 183. Priced at \$700/acre.

20 ACRES - Scenic and rustic area. Scattered trees, city water available 5 miles south of Cisco, ideal mobile home site. Owner finance. \$600.00

55 ACRES - All improve, good native grasses. Scattered oak trees, stock tanks, good fences. Old frame house. WILL TEXAS **SOLD** \$525/acre.

50 ACRES - All secluded 35 acres timber, river bottom, 2 tanks, well, 15 acres cultivation with small 1 bedroom house S. of Cisco. Some owner finance. \$1,000/acre.

97 ACRES-about 1/2 native pasture, some improvements. Older frame house and dairy barn. Owner finance. \$567.00/acre.

124 ACRES - Excellent **SOLD** on this property. Travel Trailer included. 1 acre pasture. \$50,000

420 ACRES - Peanut farm. Fully cultivated and irrigated, 1/2 minerals. Beautiful 4 bdrm., 3 bath home with fireplace. Excellent investment. Call for more details.

We have several other tracts of land from 37 acres up to 78 acres. Priced from \$685/acre to \$900/acre. Each tract has trees and at least one tank. Owner will consider financing. Call for more details.

We also buy and sell Oil & Gas Leases. Any inquiries may be directed to Eddie Kincaid (817) 617-1902.

FHA-VA-CONVENTIONAL FINANCING

We want to SELL your listing.

We have many other listings on ranches, motels, and apartments.

Eddie Kincaid (817) 647-1902 Mita Kincaid (817) 629-8757 Gilbert Meredith (817) 653-2472 Debby Kincaid (817) 647 1902 Robert M. Kincaid, Broker

time out for GOD

ATTEND THE CHURCH OF YOUR CHOICE

The following firms, recognizing the importance religion plays in our community, make this church page possible each Sunday.

White Elephant Restaurant Eating Out is Fun	Kimbrough Funeral Home 300 W. 9th 442-1211 Cisco, Texas
<i>Count Your Blessings</i>	Thornton Feed Mill 1200 Ave. D.
The Cisco Press 700 Avenue D 442-2244	Harold Reich Automotive 1201 Avenue D

Birthdays
We salute the following Ciscoans who have birthdays during the week:
November 23--Mrs. H.A. Carbary, Johnnie Smith, Mrs. Alvin Agnew, Mrs. Roy Pippen, Beverly Ann Preston and Luke Barber.
November 24--David Waters, Alton Laird, A.L. Fannin, Danny Ervin, Donald Williams, Andy Taylor, Randy Taylor, Clyde Thackerston, Gary Cotton

A THOUGHT FOR THE WEEK
November 28--Jerry Smith, Carl Gorr, C.A. Lassiter, Elsworth Mayer, Don Foster, Lloyd London, Pamela Webb and Charles Shannon Childers.
November 29--Al Heysler. Couples celebrating wedding anniversaries during the week include Mr. and Mrs. Carlton Holder, Nov. 23; Mr. and Mrs. Paul Blaine, Mr. and Mrs. M.M. Endebrock and Mr. and Mrs. Roy Pippen, Nov. 24; Mr. and Mrs. A.G. Sander, Nov. 26; Mr. and Mrs. J.C. Fletcher, Nov. 29.

Thanksgiving is a holiday we all take for granted. It has been a holiday for a long time and we can take it for granted that it will be celebrated many, many years hence. There is a vast difference between taking things for granted - and taking things with gratitude. They are separate attitudes. It actually indicates a difference in people; those who take things for granted and those who take things with gratitude. The Pilgrims in celebrating their first Thanksgiving could take nothing for granted. Their food, their shelter, their very lives could not be taken for granted. Every family among them, in just one year, lost one or more dear ones who were buried in a cemetery in a strange land . . . far from their homeland. In spite of their adversities they celebrated Thanksgiving - with gratitude to God. . . . On this Thanksgiving, would it not be proper to ask ourselves whether we take too many things for granted - and too few things with gratitude?

Cisco Funeral Home
442-1503 203 West 7th Cisco

We Welcome You...

To a "Spirit-Filled Church"

GREATER MOUNTAIN TOP PENTECOSTAL CHURCH

Just 10 minutes from Downtown Cisco
P.O. Box 269
Cisco

Ten Miles South On HWY 183
ALL MODERN FACILITIES
Sunday 10:00 A.M.
6:30 P.M.
Wednesday 7:30 P.M.

Help For All!

- Tape ministry
- Nursing Home Ministry
- Youth Center
- Children's Church
- Professional Personal and Family Counseling
- The Lost
- Those seeking additional spiritual growth
- Drug or Alcohol problems
- Those who enjoy "Back-to-the-Bible" sermons and "In-Depth" Bible studies

"The Rural Church where the City Folks Attend"

CHURCH SERVICES

Sunday, November 22, 1981
FIRST CHRISTIAN CHURCH
Sunday School begins at 9:40 a.m. and morning worship at 10:50. The JYF will meet at 4 p.m.
The afternoon CWF will meet at 3 p.m. Tuesday.
The general council of CWF will meet at 7:30 p.m. Wednesday.

REDEEMER LUTHERAN CHURCH
Sunday School and Bible classes begin at 9:30 a.m. The worship service begins at 10:30 a.m. Pastor Crockett's message is entitled "First Jesus, Then Death!" based on I Corinthians 15:20-28. The Lutheran Hour will be aired over KERC at 12:30 p.m. Pastor Wallace Schulz reminds everyone that God likes to be thanked for all His blessings, especially for His gift of Jesus as Savior. Hear his sermon entitled "Thanks for Everything!" Lutheran youth fellowship will meet in the Parish Hall at 5:00 p.m. Family night begins at 6:00 p.m.
The nominating committee will meet on Monday in the Parish Hall at 7:30 p.m. Adult Information Session will meet in the Parish Hall on Tuesday at 9:30 a.m. Church council will meet at 7:30 p.m. in the Parish Hall to prepare the agenda for the Quarterly Voters' Assembly on December 6. A.A.L. bake will be at the First National Bank at 8:30 a.m.
The Cisco Nursing Center worship service will be on Wednesday at 10:00 a.m.
The Thanksgiving Day worship service on Thursday begins at 10:00 a.m. Pastor Crockett's message is entitled "Cornucopias With Gratiacopias!" based on Philippians 4:6-20. Jesus' Friends Bible School will not meet on Thanksgiving Day, but resumes sessions on December 3.

Senior Citizens Nutrition Menu
Wednesday, November 25, will be a special day at the Cisco Senior Center.
We will be having our annual Thanksgiving Day luncheon!
Each year we have so many at the luncheon it is necessary for reservations to be made this year.
Please plan to attend the luncheon and make your reservations by calling 442-2263 or 442-1557, or by telling the registrar that you are planning to attend when you are having your lunch November 23.
Tell all those who are 60 years of age, or older, to plan to meet their friends at the luncheon. The Cisco Senior Center is the place where friends meet and new friends are made.
The Cisco Senior Center will be closed Friday, November 27, so the staff, the volunteers and its members may visit with their families.
Christmas is fast approaching and very special gifts for that very special one are being looked for. Be sure and contact the Senior Center Ceramic Workshop and look for the unusual this year!
The programs for the past week included: Rev. and Mrs. W.E. Hallenbeck, and Mrs. Larry Smith from the Church of God in Eastland, singing religious songs; Roy Speegle, Rea Hunt, and A.E. McNeely playing and singing old songs; Anny Dyzel, Vida Killion and Al Sims playing dinner music. A large group of the Senior Center choir, 35 in number, went to Rising Star to assist the Center at that location with their Thanksgiving program.
The menus for the coming week are:
Monday--beef stew with vegetables, sliced tomatoes, cornbread, gingerbread, butter and drink.
Wednesday--Thanksgiving luncheon: ham, sweet potatoes, green beans, birthday cake, bread, butter and drink.
Friday--NO LUNCHEON. The Center will be closed.
Ruth Cartee, Director



Church Directory

- FIRST BAPTIST CHURCH**
Rev. Buddy Sipe
Sunday School 9:30 a.m.
Morning Worship 10:50 a.m.
Church Training 6:00 p.m.
Evening Worship 7:00 p.m.
Wednesday: Mid-Week Prayer Meeting 7:00 p.m.
- FIRST PRESBYTERIAN CHURCH**
500 W. 6th St.
Rev. William C. Weeks
Pastor
Morning Service 11:00 a.m.
Sunday School 9:45 a.m.
- CHURCH OF GOD Seventh Day**
Romney Community
South of Cisco
Worship: 11:00 a.m. Saturday
Telephone 442-3962.
- FIRST EVANGELICAL METHODIST CHURCH**
Rev. John W. Clinton
Pastor
Highway 80 West
Across From Hospital
Sunday School 10:00 a.m.
Morning Worship 11:00 a.m.
Evening Worship 7:00 p.m.
Wednesday Hour of Power in Prayer 7:00 p.m.
- FOURTH STREET CHURCH OF CHRIST**
Sunday 10:30 a.m.
Evening 5:00 p.m.
- GREATER MOUNTAIN TOP UNITED PENTECOSTAL CHURCH**
Hwy. 183, 12 miles south of Cisco
P.O. Box 269 Cisco, Texas
Pastor John C. Jones
Phone 643-3629 Sunday.
Sunday School 10:00 a.m.
Morning Worship 11:00 a.m.
Evangelistic Services 7:00 p.m.
Wednesday Bible Study 7:30 p.m.
- CALVARY BAPTIST CHURCH**
Rev. John Hood
Pastor
18th and Ave. D
Sunday School 9:45 a.m.
Morning Worship 11:00 a.m.
Training Union 6:00 p.m.
Evening Worship 7 p.m.
Wednesday prayer meeting 7:30 p.m.
- FIRST UNITED PENTECOSTAL CHURCH**
307 W. 17th St.
Rev. Stephen F. Wheeler
Sunday School 10:00 a.m.
Morning Worship 11:00 a.m.
Evening Service 7:00 p.m.
Tuesday - Bible Study 7:30 p.m.
Friday - Youth Service 7:30 p.m.
- GREATER ST. MARKS BAPTIST CHURCH**
Rev. J.C. Mills
Pastor
Sunday School 9:45 a.m.
Morning Worship 11:00 a.m.; Evening Worship 6:00 p.m.
Wednesday Prayer Service 7:00 p.m.
- CHURCH OF THE NAZARENE**
W. 10th and Ave. N
Rev. C.L. Reneau
Pastor
Sunday School 9:45 a.m.
Morning Worship 10:45
Evening Worship 6:00
Wednesday Prayer Meeting 7:30 p.m.
- LONG BRANCH BAPTIST CHURCH**
Jeff Jackson,
Pastor
11 miles S. of City 183-follow signs
Sunday School 10:00 a.m.
Morning service 11:00
Sunday evening 7:00
Wednesday 7:00 p.m.
- WORD OF LIFE FAITH CENTER**
Corner of East 7th & Ave. A
Sunday morning 10:00
Sunday evening 7:00
Thursday evening 7:00
- CHURCH OF JESUS CHRIST OF LATTER DAY SAINTS**
Opening exercises 9:30
Primary: 9:30-11:10
Priesthood: 9:30-10:20
Relief Society: 9:30-10:20
Sunday School: 9:30-11:10
Sacrament Service: 11:20-12:30
- MARANATHA BAPTIST CHURCH**
Independent Fundamental
Pastor M.H. Jones
Highway 80 west of Eastland
Sunday School 10:00 a.m.
Prayer services 6:00 p.m.
Wednesday service 7:30 p.m.
- WESLEY UNITED METHODIST CHURCH**
Rev. David Adkins
Pastor
Avenue A
Morning Worship 9:00 a.m.
Church School 10:00 a.m.
Family Night: 4th Thursday each month.
Administrative Board Meeting: 1st Monday night each month.
- FIRST ASSEMBLY OF GOD**
307 W. 7th St.
Rev. O.T. Killion
Pastor
Phone 442-1561
Sunday School 9:45 a.m.
Morning Worship 11:00 a.m.
Evening Worship 7:00 p.m.
Wednesday--Bible Study 7:00 p.m.
- HOLY TRINITY EPISCOPAL CHURCH**
S. Seaman
Eastland, Texas
Vicar Releigh Denison
Holy Communion 11:00 a.m.
Church School 11:00 a.m.
- PLEASANT HILL BAPTIST CHURCH**
Pleasant Hill Community
8 miles south of Cisco
Dr. Leon Woods
Pastor
Sunday School 10:00 a.m.
Morning worship 11:00
Evening service 6:30
- REDEEMER LUTHERAN CHURCH**
Rev. Dell J. Crockett
Pastor
Ave. D and East 18th
Sunday School 9:30 a.m.
Worship Service 10:30 a.m.
- FAITH CHAPEL FULL GOSPEL CHURCH**
308 West 11th
Rev. James Harris
9:45 a.m. Sunday
7:00 p.m. Sunday
7:30 p.m. Wednesday
- GOSPEL ASSEMBLY**
1000 Ave. A and East 10th
Carl Begley-Minister
Bible teaching subject to question and children's Church Sunday 2:30 p.m.
Worship service Thursday & Saturday 7:30 p.m.
Special music & singing all services

