

# Book Fair Is Friday

The annual Book Fair sponsored by the E.L. Graham Memorial Hospital Ladies Auxiliary will be held Friday, October 16, in the lobby of the Laguna Hotel. Books will be on display from 9:00 a.m. to 5:00 p.m.

This will be a good time to stock up on some reading material for those cold days ahead of us.

## Cisco AARP Will Not Meet Thursday Night

The Cisco AARP will not meet Thursday night at the Corral Room. The meeting has been cancelled.

## College Regents Approve Equal Opportunity Plan

An equal opportunity education resolution was approved by the board of regents of Cisco Junior College at their monthly meeting Monday night, Dr. Norman Wallace, president, reported.

The resolution, which is similar to others adopted by colleges throughout the state, specifies that all activities of the college will be available without restrictions to everyone, including students and employees, Dr. Wallace said.

In other action, the board agreed to lease the old Spang building to Ted Fields for use in storing automobiles. A proposed outdoor sign for College Hill was studied but no action was taken.

The board discussed the recent national meeting for community college trustees held in Boston, Mass., noting particularly the responsibilities and liabilities of board members.

## Mini-Marathon Set October 20

How many times can you run 1/4 mile in one hour? Find out on October 20th by entering the Cisco Civic League Mini-Marathon. The track is being prepared under the direction of Mike Moore, city manager, and James Couch, CISD superintendent.

The track will start in the City Park (near the High School) go east onto school property east of the swimming pool, then come back into the City Park.

The age divisions of the race are: pre-k-kindergarten; first and second graders; third and fourth graders; fifth and sixth graders; junior high; senior high; out of school to 30; 30-50; over 50.

## Penney Store Is Burglarized Again

The J.C. Penney Company was entered by vandals Sunday afternoon for the second time within a week, Police Chief Larry Jernigan reported. Taken in the weekend robbery were watches, blankets, coats and other items of clothing, Mr. Jernigan said.

The building was entered through a roof opening, he added. Police believed the robbery took place before the rain since there was no tracks or mud in the building.

Police picked up a suspect Sunday night after he reportedly was offering watches for sale. He was being held for questioning Monday.

### Acknowledges Gifts

Dr. Norman Wallace, president of Cisco Junior College, acknowledges the contribution to the Cisco Junior College Memorial Endowment Fund by Mr. and Mrs. Gene Abbott in memory of Mrs. Rudene Sawyers.

Baked goods will also be on sale. You can buy a whole cake or just a slice. Coffee will also be sold.

So come, spend a while browsing, have a piece of cake and a cup of coffee - then purchase a supply of books for winter.

This is the only fund raising project of the Ladies Auxiliary and the monies gotten from this fair will be used to buy some needed equipment for our local hospital.

Buy a book and help the hospital.

Most books are priced at 25 cents and 50 cents. (I bought a copy of "Gone With The Wind" for 10 cents).  
Geneva Webb

## Cisco Football Teams Set For Action Thursday & Friday

Football teams from Cisco's public schools and junior college were scheduled to see action this week as the local football season passes the mid-season mark.

### Hawari & Lopez Receive Memorial Scholarships

Andy Mark Hawari and Oscar Lopez received individual Leon Maner Memorial scholarships at the annual scholarship banquet in Austin sponsored by the UT Ex-Students' Association on September 2, 1981. These scholarships have been established by alumni, friends, and students of the University of Texas as memorials and recognitions of excellence.

Mr. Hawari, son of Mr. and Mrs. Tarek Hawari, is studying government. Mr. Lopez, son of Mr. and Mrs. S Lopez, is studying English/communications.

The seventh, eighth and Junior Varsity teams are scheduled to play on Friday.

The seventh, eighth and Junior Varsity teams of Cisco Junior-Senior High are scheduled to travel to Dublin this Thursday. The seventh grade game is to begin at 5:00 p.m., followed by the eighth grade game at 6:00 p.m. and the Junior Varsity at 7:30 p.m.

## CYAA Football Games Rained Out Saturday

This past Saturday, the 3rd of October CYAA football games were rained out, but the Saturday before, September 26th, there were some jim-dandy games that were very close and some plays that were nothing short of spectacular.

Steelers 7 and Cowboys 0. The Steelers zapped the Cowboys in the 9-10 year old division game with a double reverse pitch-out from Quarterback Jeff Roark to Kevin Ward to Davin Hohertz, who scampered 50 yards for the touchdown. The point after was made on a quarterback sneak by Jeff Roark. Outstanding defensive players were Matt Goosen, Kenny Drozeski and

## Village Hotel Hit By Fire Monday Night

Fire and water nearly mixed in Eastland this week. During one of many downpours about 10 p.m. Monday, Eastland Policeman Charley Chaplin reported the vacant Village Hotel on fire.

Volunteer Fire Department responded, discovering that the blaze was coming from a pile of old clothes and chair cushions in the basement of the building, the fire was located near the laundry chute, and the smoke and site of flame was vented upwards, making it appear that there was fire in the upper floors too.

The Firemen reported the fire out by 10:45 but remained at the site until about 2 a.m., inspecting and making sure that there was no one in the building and that the fire didn't start again.

Lightning was first suspected because of the thunderstorm in progress, but was later discounted because of the location of the source of the fire. It is believed that possibly someone may have been sleeping in the vacant building, or the possibility of rats maybe starting the fire is considered. There is no electricity to the building.

Ranger and Cisco Volunteer Firemen responded and came to assist with the fire.

Firemen had trouble with the fire plug at the corner of Main and Mulberry, reporting it hard to open, and then the valve broke off, making it impossible to close.

The fire was located generally in the center of the building and did consider heat and smoke damage

# THE CISCO

'Your Hometown Paper'

© 1981-Eastland County Newspaper Co.

Number 83

Thursday, October 15, 1981

USPS No. 113780

## Eight Foot Rise Reported For Lake Cisco In Two-Day Rains

More than seven inches of rain fell Sunday and Monday nights throughout this Eastland County region, causing flood damage in places and raising the water level of area lakes. Forecasters called for continued rain possibilities through Wednesday.

City Manager Mike Moore reported that Lake Cisco had gained some eight feet of new water. Lake Bernie was full and the creek between it and Lake Cisco was running almost bank full, assuring considerable more new water for the big lake. Eattle Creek pumps were running, sending water to Lake Cisco at the rate of 1,000,000 gallons per day, Mr. Moore said.

Cisco schools were operating with absentees "about normal," although buses were unable to make their full routes Monday and Tuesday mornings, Supt. James Couch reported.

City streets suffered considerable damage from the heavy rain, Mr. Moore said. He added that the city's two street maintainers would hasten to make repairs as soon as the streets are dry enough for them to begin working.

Flood waters were reported on a number of streets. At least one automobile was flooded at West 9th and Avenue M as water was over two feet deep there early Monday and again early Tuesday. A fence was washed down near Primary School. Several homes on West 12th Street - a low area - were flooded, police reports showed.

Manager Harold Hendricks of Super Valu Grocery, 10th and Avenue D, reported that some three inches of water covered floors in his store Monday morning.

## Cisco Civic League To Sponsor Blood Drive Next Wednesday

A Cisco Blood Drive sponsored by the Cisco Civic League will be held on Wednesday, October 21, 1981, on the Cisco Junior College campus in the Student Union Building. A team of laboratory technicians from Mary Meek Blood Center of Abilene will be present from 9:00 a.m. to 3:00 p.m.

To date, the units of blood owed to Mary Meek Blood Center have been gradually reduced, and the Cisco citizens cannot be commended enough for their outstanding support of this ever so important project.

Due to Federal Drug Administration legislation, there are no longer routinely paid donors; therefore, blood donors must be solicited on a voluntary basis.

So necessary is this blood, for life itself, every appeal for continued support is sincerely offered and appreciated.

### Eastland Chapter AARP To Have Chili Supper

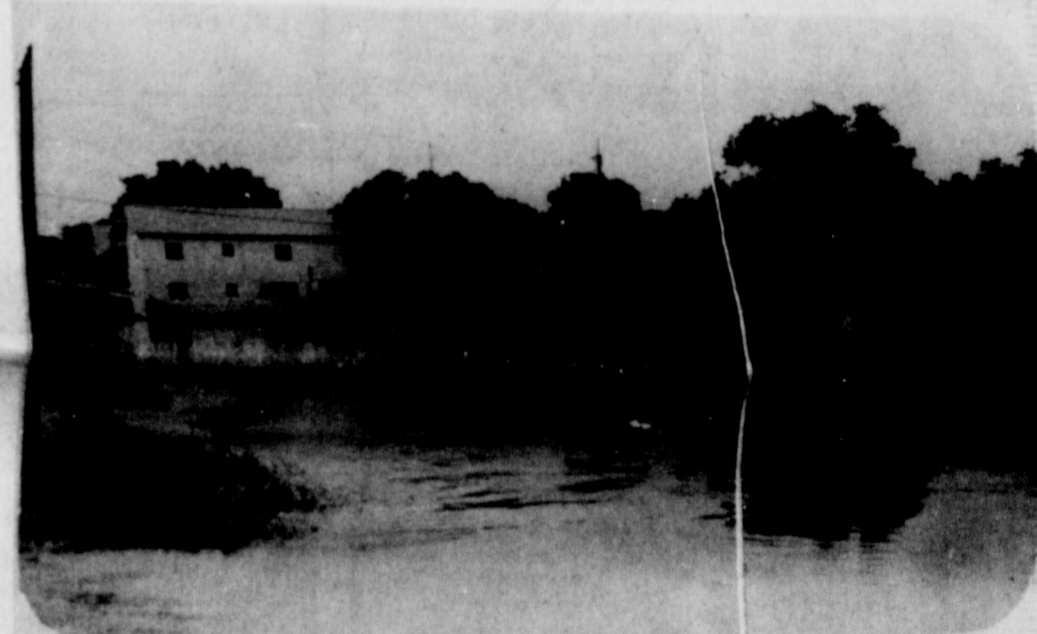
AARP Eastland Chapter No. 2428 meets Oct. 16 for a chili supper at 6:00 p.m. The program will be Doors of Mystery.

Everyone bring chili or accessories for it. Halloween dress and games.

Read the classifieds



West 13th Street at Thornton Feed Mill



Looking Southwest from Avenue A and East 9th Street

dricks of Super Valu Grocery, 10th and Avenue D, reported that some three inches of water covered floors in his store Monday morning.

The store delayed opening due to the water. Mr. Hendricks said damages would amount to several hundred dollars.

Further south on Avenue D, Thornton Feed Mill had water in a large hay barn, damaging hay and baling wire stored there. Not as far south, Hargrave Tin Shop and Sunshine Fabrics had some two inches of water on their floors early Monday, and Hargrave Insurance Agency had wet carpets. On East 8th Street, Granny's Cafe was unable to operate Monday morning as the kitchen was flooded.

Several stores on Avenue D had minor water problems.

Water flooded the Corral Room at the Laguna Hotel and the regular Monday luncheon for area senior citizens was cancelled.

The rainfall this week brought the total for the month to between nine and ten inches. A rain gauge at the Jimmie Lee residence near Lake Bernie registered 3.8 inches last week, 3.7 inches Sunday night and 1.5 inches Monday night - a total of nine inches. Other area gauges registered as much as 10 and 12 inches.

T.E. Owens, 711 East 13th, has maintained rainfall figures for the area for many years. His gauge showed 5.25 inches Monday morning and one inch Tuesday morning - more than 10 inches for the month. This area normally receives about 28 inches per year.

Gid Bowers, resident of Lake Cisco's Northshore area, told The Press that the lake was up between seven and eight feet.

**ROFFLER FRANCHISED HAIR CARE CENTER**  
Professional full service hair care for the whole family. Roffler Hair Products.  
LOBO & J.E.'s  
709 Ave. D  
442-9979 442-3551, Cisco p-89

Country & Western MUSIC LIVE 7-10 p.m. Fri-Sat. COLONY RESTAURANT p-87

**CISCO KID CAR WASH**  
3rd St. and Ave. E. Where Most People Wash. Wash your venetian blinds, throw rugs, motor.

**GIVE A GIFT OF LIFE!**  
CISCO BLOOD DRIVE AT CISCO JUNIOR COLLEGE STUDENT UNION BLDG.  
Wednesday, Oct. 21, 1981  
9:00 a.m. to 3:00 p.m.  
All area persons are invited to participate.  
p-85

**REST TAKE A AREA BREAK**  
Texas Office of Traffic Safety

**WORD OF GOD**  
For Those Sick In Body  
And when the tempter came to him, he said, If thou be the Son of God, command that these stones be made bread.  
But he answered and said, It is written, Man shall not live by bread alone, but by every word that proceedeth out of the mouth of God.  
Matthew 4:3-4



## Check New Laws To Reduce Tax Bite

New tax laws give individuals and businesses a chance to cut their 1981 taxes - but not without careful planning.

Recently signed legislation -- the Economical Recovery Act of 1981 -- makes sweeping changes in many federal tax laws, points out Dr. Richard Edwards, economist with the Texas Agricultural Extension Service, Texas A&M University System.

Changes in asset depreciation, investment tax credit, leasing, inventory methods and tax rates can all help reduce the tax bite for 1981, particularly as they relate to agribusinesses.

### Depreciation

Depreciation of business assets is the most significant of the changes, believes Edwards. Previously a complex matter dictated by IRS guidelines, the depreciation process has been simplified through the Accelerated Cost Recovery System (ACRS). ACRS recognizes the difference between the economic and usable lives of equipment, and most important, allows businesses to recover a portion of their equipment costs over a much more realistic time period.

Classes of depreciable assets have been reduced to three - 15 years, 5-year and 3-year, explains the economist. Most light trucks and cars fall into the 3-year class; fixtures and equipment, the 5-year group; and buildings, the 15-year class. Additionally, the depreciation method is accelerated and changes gradually over the next five years.

The new depreciation table is so structured that December purchases receive the full tax write-off, thus allowing more flexibility in year-end tax planning. An alternative to ACRS allows straight-line

depreciation for periods equal to or longer than the life of the property class the equipment would be in if ACRS was elected, noted Edwards.

### Investment Tax Credit

New tax laws also have simplified and liberalized investment tax credit. The time that eligible property must be held to get the full 10 percent tax credit has been reduced from seven to five years. Another change is that 6 percent credit is allowed on some eligible assets after just three years.

An additional change relates to the recapture of investment credit (if credit is taken and then the property is disposed of before the minimum number of years are met). The new law, in essence, allows an investment credit of 2 percent per year up to the maximum allowable for each year equipment is held, notes Edwards.

Remodeling of old facilities also provide increased tax incentives. Investment tax credit increases to 15 percent for structures 30 to 39 years and to 20 percent for those at least 40 years old.

### Leasing

In the past several restrictions were placed on the ability of leasing agents to show transaction as leases rather than conditional sales. Those restrictions have now been removed, says the economist, to simplify leasing.

### Inventory System

Another cost-saving device included in the new tax laws deals with adopting a LIFO (last in, first out) inventory system. This method of inventory accounting is generally preferred in times of inflation because it reduces tax liability, explains Edwards. But in the past it has been based on

complex indexes. New tax legislation allows the Secretary of the Treasury to establish suitable indexes as the basis for inventory valuation. This should be especially helpful for small businesses. The changes also will allow a business to spread out the added tax liability associated with the first year of LIFO accounting over three years.

### Tax Rate Reduction

Reduction in marginal tax rates for small businesses also should benefit agribusinesses, believes the economist. Starting in 1982, the marginal rate on income under \$25,000 will drop from 17 to 16 percent, with an additional drop to 15 percent the following year. For those in the \$25,000 to \$50,000 bracket, marginal tax rates will also drop 1 percent each of the next two years from the current 20 percent.

Individuals also were granted a reduction in marginal rates under the new legislation. A total reduction of 25 percent will be spread over a three-year period - 5 percent starting Oct. 1, 1981; 10 percent starting July 1, 1982; and 10 percent beginning July 1, 1983. The so-called marriage penalty tax also has been altered.

Beginning with the 1985 tax year, marginal tax brackets will be established to prevent inflation from pushing persons into higher brackets with no increase in "real" income. This should help the situation that most wage earners now face - paying a larger tax burden while seeing a decrease in spendable dollars, notes Edwards.

### Other Changes

Many other tax provisions have been liberalized under the 1981 tax legislation, adds the economist. These include individual retirement and Keough plans, estate and gift taxes, new employee credits, extension of carryover periods for operating losses and tax credits, and treatment of capital gains.

Looking at the current year and the changes that have been initiated, Edwards suggests including as many expenses as possible in 1981 since income will be taxed at a higher rate. Also, since the depreciation changes are retroactive to Jan. 1, purchases made this year come under the new accelerated depreciation rules and qualify for more liberal investment credit provisions.

See M.H. Perry for DISABILITY INSURANCE

629-1566 or 629-1095  
104 N. Lamar-Eastland

## New Texas Interest Rate Ceilings

COLLEGE STATION-- With fluctuating and occasionally high interest rates in the offing, borrowers should be aware of recent Texas legislation relating to interest rate ceilings.

House Bill 1228, dealing with permissible interest rate ceilings in Texas, became law last May 8 and provides alternative interest rate ceilings that apply to almost all types of loans. Exceptions include loans for mobile homes and home solicitation transactions.

The law allows creditors (lenders) to choose an interest rate allowed by a weekly, monthly, quarterly or annual ceiling, points out Dr. Ashley Lovell of Stephenville. This rate is calculated for each of the time periods on the basis of weekly auction rates of U.S. treasury bills.

An example of a recent interest rate based on this new legislation is as follows: a 24 percent interest rate applied for the weekly rate for Aug. 24-30, for the monthly rate for August, for the quarterly rate for July 1-September 30, and for the annual rate for July 1, 1981-June 30, 1982.

In this example, borrowings for personal, family, household or agricultural uses would be subject to a 24 percent per annum maximum rate. Credit in excess of \$250,000 for business, commercial, investment and similar uses would be subject to a 28 percent per annum limitation.

The state interest rate ceiling law does not affect federal preemptions for agricultural loans, notes Lovell.

Regarding the provisions of this new law, the economist notes the following items for agricultural producers:

--The law applies to variable rate loans.  
--A monthly ceiling is available only in variable rate contracts.  
--Once a creditor has chosen a ceiling rate, such as the weekly rate, for a particular contract, he can not change to another ceiling rate during the life of that contract.

--Applicable rules of the law to a specific situation depend on whether an open-end account or a closed-end contract is involved. An open-end account is a typical charge account or a revolving loan agreement.

--If the open- or closed-end loan is on a variable interest rate, the rate charged must not exceed the ceiling chosen for that agreement.  
--Once parties have agreed on an interest rate, they are also considered to have agreed to any lesser rate that a creditor may elect or be required to implement, unless other arrangements have been made.

--Regarding an open-end account, once a fixed rate is elected for a quarter or a year, that rate may not be increased during the specified period.  
--If a borrower refuses an interest rate increase on an open-end account, he has the right to pay off the existing balance, at the old rate and over the time period, under the same terms as prior to the rate change. However, additional charges to that account will be subject to the new terms.  
Applicable ceilings for renewals and extensions are the same as any other contracts negotiated at the time of the renewal or extension.

**WATCH OUT--  
DRIVE CAREFULLY**

Monthly, quarterly and annual interest rate ceilings calculated by the Consumer Credit Commission are published in the "Texas Register," points out Lovell. Local financial institutions also have this information.

A more detailed explanation of this new interest rate ceiling legislation is available from the Texas Bankers Association, 203 West 10th St., Austin, Tex. 78701. Include \$1 for postage and handling.

**HEIDENHEIMER'S**  
**SAFETY SHOES**

You've earned your Wings!

**Your Choice**  
**\$59.99**

Look good!  
Feel fit!

Long-lasting, good looking Red Wing Pecos pull-on boots are made for fun or work. You can depend on them for the kind of heel-huggin', easy wearin' fit that makes long, hard days seem shorter. Pick a pair of Pecos and feel fit.

**\$49.99**

**Red Wings**  
**HEIDENHEIMER'S**  
The Family Western Store in Cisco


**GOOD YEAR SERVICE STORES** *The Neighbor You Trust For The Brands You Know*

**SEMI-ANNUAL INVENTORY CLEARANCE**

**SAVE BIG on appliances, TV's, bicycles and MORE!**

**Shop Quetta's**  
**For A Complete Selection of Fall & Winter Merchandise**  
at  
**1/4 Off**  
**David & Quetta's**  
I-20 West of Best Western

a free Press



Your window to the world  
NATIONAL NEWSPAPER WEEK OCT. 11-17

See M.H. Perry for DISABILITY INSURANCE  
629-1566 or 629-1095  
104 N. Lamar-Eastland

APPLIANCE CLEARANCE		
QTY.	DESCRIPTION	SALE PRICE
2	17 cu ft GE ref with Ice model 0446	\$599.00
1	21 cu ft GE ref fresh avo. color model 0432	\$699.00
1	8 cu ft GE freezer	\$339.00
3	Jet 88 GE microwave time & temp cook	\$329.00
2	GE 1 speed washer model 5584	\$359.00
2	GE electric dryer model 5896	\$299.00
1	GE 30" electric range model 2019	\$439.00

**SALE ENDS SATURDAY**

**ODDS 'N ENDS**

QTY.	DESCRIPTION	SALE PRICE
2	GE Toast-R-Oven model 1100	\$45.95
1	GE Hand Mixer model 1500	\$11.95
1	GE Stand Mixer model 1400	\$65.95
1	GE FP-1 Food Processor model 1300	\$54.95
2	GE Broiler Oven model 2800	\$59.95
3	Eureka Cleaner 1412 model 1200	\$68.00

**KNOW YOUR BIBLE BETTER**  
ENROLL NOW IN A  
**FREE CORRESPONDENCE BIBLE STUDY COURSE**

- 30 LESSONS • GENESIS to REVELATION
- NON-DENOMINATIONAL • NO OBLIGATION (Clip and Mail Today for First Two Lessons)

Name \_\_\_\_\_  
Address \_\_\_\_\_  
CITY \_\_\_\_\_ STATE \_\_\_\_\_ ZIP \_\_\_\_\_

"BIBLE STUDY"  
P.O. Box 842 Eastland, TX 76448

**CHARGE IT!**

**Goodyear Revolving Charge Account**

Use any of these other ways to buy:  
• Our Own Customer Credit Plan  
• VISA • Mastercard  
• American Express  
• Carte Blanche  
• Diners Club

**SCRATCH & DENT DEALS**

QTY.	DESCRIPTION	SALE PRICE
1	Soundesign AM/FM 5" TV	\$177.00
3	GE 12" B/W TV model 0111	\$88.00
1	GE 13" Color TV with remote control model 1418	\$399.00
3	Soundesign AM/FM/recording cassette	\$199.00
2	Soundesign Cassette player with headphones	\$98.95

**CHARGE IT!** Use Goodyear's new Option Credit Plan to purchase Major Appliances, Television and Home Audio Products

Up to 30 months to pay  
Use any of these other ways to buy:  
• VISA • Mastercard • Carte Blanche  
• American Express • Diners Club

**EVERISTO JIMENEZ,** **Your Local Goodyear Store** Main Eastland  
Mon. thru Fri. 9:00 a.m. to 6:00 p.m.; Sat. 7:30 a.m. to 5:00 p.m.  
**Phone: 629-2662**

# October Is 4-H Month

The month of October is 4-H month. There are presently eight different 4-H Clubs and each club will enter a contest to promote 4-H during the month of October. The clubs will be sponsoring events like: 4-H Kite Flying, Bicycle Rodeo, Community Clean-Ups, Poster Contest. The club that gets the most points at the end of the month will receive \$25 prize.

## 4-H's Learn Conservation

Active involvement in the careful use of our nation's resources is a key objective of 4-H members in the conservation of natural resources and forestry programs conducted by the Texas Agricultural Extension Service.

In the 4-H conservation of natural resources program, supported by John Deere, members learn that constructive efforts can solve such man-made problems as diminishing wildlife populations, depletion of forest products, soil erosion and water and air pollution.

Activities in this program are varied, says John Blair, County Extension 4-H Program Coordinator. One 4-H club assisted in a bird census while another planted 8,000 pine seedlings to study migration patterns of the monarch butterfly. Individual 4-H members' projects include building conservation dams, landscaping

community buildings, and making white-tail deer surveys.

4-H members in the forestry program, sponsored by International Paper Co., learn to identify species of trees common to the area, plant trees from seeds or seedlings, learn about trees as a renewable energy resource, and become familiar with tools of the forest.

One national 4-H forestry winner commented, "The 4-H forestry program lets me be in the surroundings I enjoy the most". This youth helped clear a thicket and planted 100 white pine seedlings which he plans to grow to logging size. Other 4-Hers are involved in pest disease identification and forest management.

4-H work in both programs often leads members to career opportunities and part-time jobs, such as clear a roadway of litter

# 4-H's Celebrated National Week

Eastland County 4-H members joined some 140,000 boys and girls in Texas and more than 5 million across the nation in celebrating National 4-H Club Week October 4-10.

Theme of this year's observance was 'Future Pathways'. The theme challenged 4-H youth to become self-directing, productive citizens and leaders, pointed out John Blair, county 4-H program leader with the Texas Agricultural Extension Service, Texas A&M University System. The Extension Service is the parent organization of 4-H.

To celebrate the weeklong event, 4-Hers conducted a number of special activities, including radio programs, bicycle rodeos, poster contests, and method demonstrations.

According to the Extension Office 4-H is the nation's largest out-of-school educational youth organization which offers unique learning experiences for youth through its time-tested "learning-by-doing" approach. 4-Hers become involved in a variety of

practical, real-life activities that range from agriculture and clothing to health and wood science. Programs vary according to youth needs and community resources.

4-H involves youth from all social and economic backgrounds and gives them an opportunity to key in on such vital issues as energy conservation, better human nutrition, wise use of natural resources, and combating inflation. Furthermore, 4-H helps boys and girls gain knowledge and skills for their future careers.

In addition to recognizing the 4-H program and the many opportunities it offers our nation's youth, National 4-H Week is also a time for recognizing the work of the many volunteer leaders who give unselfishly of their time and resources to help youth grow and develop, add John Blair. 4-H boasts more than half a million volunteer leaders across the nation: 22,000 of those are in Texas.

harvesting timber and growing and selling Christmas trees.

Boys and girls, nine to 19 can learn more about the exciting opportunities available in 4-H by contacting the County Extension Office at 629-1093.

See M.H. Perry for GROUP INSURANCE 629-1566 or 629-1095 104 N. Lamar-Eastland



Ronald and Donna White are the proud parents of a baby girl, Laura Rebecca. She was born September 28 at 10:28 a.m. in the Ranger General Hospital. Laura weighed 8 pounds and 15 ounces and was 20 1/4 inches long.

Maternal grandparents are Mr. and Mrs. Wayne Cranfill of Ector, Texas and Paternal grandparents is Mrs. Dorothy White of Windom, Texas. This is the couple's first child.

J & A Bargain Box 701 W. Main Now & Used Merchandise 629-1133

# Plant Parasitic Nematodes

Gordon Woolam Plant Parasitic Nematodes are slender wormlike animals that move among soil particles and root surfaces. They attack numerous ornamental and garden plants as well as lawn grasses, peanuts, cotton, pecans and many other important plants. They are too small to be seen by the naked eye; however their damage is apparent in stunted, unproductive plants.

The most common Nematode encountered by the home gardener is the Root Knot Nematode. The Root galling caused by this pest are easily noticeable. Some of the more commonly attacked garden crops are Tomatoes, Okra and Beans.

If you suspected Nematode damage carefully dig up the plant roots and inspect them for Root Galling. Should Nematodes be present control measures are limited and no known measure will completely destroy all Nematodes. Chemical control for the home owner is currently limited to Vapam. This is a liquid which volatilize into a toxic gas after application. This application must be followed with a "water seal" or an airtight cover. Do not use this material around roots of living plants.

Because of the toxic effect of Vapam on living plants, some gardeners may be limited in the use of this material due to nearby trees or shrubs. In such cases

Thursday, October 15, 1981

home gardeners may be limited to non-chemical control measures. First of all remove all infected plants and roots. Next till the soil. Nematodes are water loving animals that if exposed to the drying effect of the soil will be destroyed. Nematode resistant varieties should be used when available to provide natural resistance.

Some of the Nematode resistant varieties are: Tomatoes - Big Set, Bonus, Better Boy and Small Fry; Southern Peas - Mississippi Silver; Sweet Potatoes - Jewel and Centennial; Sweet Corn - All varieties; Onions - all varieties; and Garlic - All varieties.

For further information, please contact the County Extension Office.

**Ranger General Hospital**  
Visiting Hours:  
2:00-4:00 &  
7:00-9:00

Thomas Huling  
Virner Tate  
Ora Crawford  
Minnie Bryant  
Lula Ramsey  
Josephine Rogers  
Rosie Lennie  
Ruby Waller  
Charlie Nosek  
Izetta Daniels  
Henry Scitern  
Dorthea DeShane  
Lena Bean  
Margaret Wells  
Maxine Offield

**E.L. Graham Hospital**  
Visiting Hours:  
2:00-4:00 &  
6:00-8:30

Hershel Bassett  
Sandra Snyder  
Minnie McCollum  
Myra Scarborough  
Juanita Neeley  
Ethel Crow  
Ethel Speed  
Coy Dial  
Odessa Murray  
Roy Huffmyer  
Theima Bosworth  
John Jessup  
Mabel Thetford  
R.L. Wyatt  
Baby Boy Snyder.

**Eastland Memorial Hospital**  
Visiting Hours:  
2:30-4:00 &  
7:00-8:30

Sadie Ishmael  
Bobbie Sullivent  
Lois Whately  
Barbara Constancio  
Norma Taylor  
Sarah Parmer  
Julian Lawrence  
Bobby Boudreaux  
Teddy Sanders  
Candy Neal  
Mary Yielding  
Ruby J. Ridling  
Naomi Duncan  
Martha Graves  
Colleen Wilhelm  
Clara Partridge  
Sidney Robertson  
Fawn Sanders  
Betty J. Ake  
Veda Milam  
Callie Lindley  
Emma Kimberlin  
Thomas Redman  
Oliver Walker  
Walter Maynard

## Myrle Poe selected as October Artist

Eastland County Art Association has selected Myrle Poe of Eastland as Artist of the Month. Myrle's art is now being shown at the Eastland National Bank.

Mrs. Poe was born in Eastland County. She graduated from Carbon High School and attended Randolph College at Cisco.

Many varieties of art have been of interest to Myrle since childhood. As a teenager, she did religious chalk talk demonstrations for Eastland County churches and she studied watercolor painting with a private teacher, Mrs. Guy Smith. In the early 1940's, she painted sample pottery for Quinn Pottery.

There was a period of many years when Myrle was

Marion H. Osburn  
Florence Brown  
Mary McClure  
Jimmy Maples  
Rose Blackwell  
Dean Minnick  
Elizabeth Piburn  
Elizabeth Sandlin  
Allene Smith  
Atha Williamson  
Mary Harden  
Josephine Pirkle  
Albino Turner  
Willie Harris  
Gordon Seabourn  
Ruby Tullos  
Eula L. Wright  
Lela Ham  
Thelma Rasberry  
Gayle L. Hardin  
Charlie Burnett  
Boyd Laqey  
Willie Lawson  
Elnathan Lawson  
Lester Wiggins  
George Hull  
Manon Cox

not able to pursue her art interests. But in 1977, she became quite active again and took lessons from these instructors: 1977-1978, Workshop, David Slade of South Fork, Colo.; 1978-1979, Workshop, Jean Liles of Hereford, TX and Billie Planche of Arlington, TX; 1979, Oil, Sybil Urban; 1979, Palette Knife and Oils, Jo Ann Hubbard. She also took a correspondence course in oils from Famous Artist School and in 1975, she attended a workshop by Phyllis Saunders of Seymour.

Myrle and her husband, J.C., will celebrate their 50th wedding anniversary in 1982. They have one daughter and two grandchildren. They enjoy travel trailering and Myrle likes to read, crochet, knit and collect rocks. She is a member of the First Baptist Church of Eastland, and she is active in local associations, including ECAA.

## Lights From The Christian World

Do not worry or fret my friend. As a follower of Jesus you need not fear the reproach, the insults, the past circumstances that surround you. The tomb is empty. Jesus arose! He died and bore the reproach of men, and the inconsistencies of the world for you. Today the tomb is empty. Yes, His followers are rejoicing today. Because He arose you can live and live abundantly in this life. You need not wait. Enjoy it now.

What greater joy and peace can one know than to come to the One who conquered all for you. Pause and remember the many good things you are enjoying. As a bridge spans the mighty river so Jesus serves to span the route you travel. This span leads you safely to life forever with Him.

**MIKE'S PAINT & BODY**  
1 1/2 Miles North of Carbon  
On Hwy. 6  
Phone: 639-2426  
We Work on American and Imported Cars and Trucks

**Ceiling Fans at Beil Draperies**  
Large Selection in Stock **25% OFF**  
Come  
From \$99.00 Up Models on Display  
Beil Draperies, 1706 W. Commerce, Eastland, 629-1319



**Fall REVIVAL**  
**FIRST BAPTIST CHURCH**  
Plummer Street - Eastland - 629-1671  
Sunday, Oct 11 to Sunday, Oct 18  
7:30 P.M. Nightly; 11 A.M. Sundays; 12 Noon Mon. thru Fri

**Noon Services Mon. thru Fri.**  
Public Invited To Have Lunch At The Church And Brief Service  
Elizabeth Swank Speaker  
In By 12 - Out by 1

**Dr. Fred Swank** ...Evangelist 43 years at Sagamore Hill Fort Worth.

**Carlton Dillard** ...in charge music Mrs. Dillard at the Piano.

**YOU AND YOUR FAMILY ARE INVITED TO ATTEND EVERY SERVICE.**

**FIRST BAPTIST CHURCH EASTLAND**  
REV. JIM HOOTEN, PASTOR

**Name Brand Fashions**

**Thousands Of Garments To Choose From Missy, Half & Large Sizes**

**Save 40-60% New Arrivals Each Week**  
Open Mon.-Sat. 9:00 a.m.-5:30 p.m.  
112 N. Lamar Eastland  
Next to Majestic Theater

**Golden Destiny**  
New Location  
2 1/2 Miles West 80  
Open Mon.-Fri. 9 to 5  
Call 629-8492 629-8194  
All Breeds Bathing, Clipping, Grooming.  
Specializing in Poodles  
Operated By Lorraine Lester

**AUCTION**  
Saturday, October 17, 1981  
At 1:00 P.M.  
2 Blocks South West of Western Manor -Ranger, Texas  
Corner of Elm Street  
Watch for Auction Signs

Selling will be the following items:

1 New Westinghouse Frost-free Refrigerator with ice maker	1 New Kenmore Dishwasher	1 Magic Chef Gas Range - Like New	1 Dinette Set with 4 chairs	Storage Shelf	Corningware Set	Dishes	Dining Table and 4 chairs	Assorted Cookware	Correll Dishes Service of 4	2 Electric Can Openers - Like New	2 Cutting Boards	1 Chopping Block	Utility Table	Ivy and Pot Plants	Sizzler Toaster Master	Coffee Mugs	Kitchen Clock	Canaster Set	Silverware	Utensils	New Cup Towels and Dish Cloths	Pot Holders and Hot Pads	Butcher Knives	Hand Mixer	Hamilton Beach 7 Speed Blender - Like New	West Bend Electric Skillet	1 New Presto Hot Dogger	Munsey Toaster Broiler	Kroehler Sofa, Chair and Ottoman	Swivel Rocker Like New	Marble Top Coffee Table	Brass Lamp	2 End Tables	Spanish Style Coffee Table	Wall Hat Rack	2 Hoover Vacuum Cleaners	Wicker Wall Hangings	Wicker Baskets	Bean Bags	1 Boston Rocker	Lamps	What-not-shelf	T.V. Trays - set of 6	1 Bedroom Suite with night stand, dresser & chest	Desk with Chair	1 Bed frame with head board	1 Full length mirror	New and Used Blankets and Sheets	New Matching sheets and Pillow Cases	New and Used Towels, Wash Cloths, & Hand Towels	1 Video Arcade Game Set with Tapes	1 Desk Lamp	Throw Pillows	Pictures	T.V. Stand	Plant Stand	1 Car Luggage Rack
---	--------------------------	-----------------------------------	-----------------------------	---------------	-----------------	--------	---------------------------	-------------------	-----------------------------	-----------------------------------	------------------	------------------	---------------	--------------------	------------------------	-------------	---------------	--------------	------------	----------	--------------------------------	--------------------------	----------------	------------	---	----------------------------	-------------------------	------------------------	----------------------------------	------------------------	-------------------------	------------	--------------	----------------------------	---------------	--------------------------	----------------------	----------------	-----------	-----------------	-------	----------------	-----------------------	---	-----------------	-----------------------------	----------------------	----------------------------------	--------------------------------------	---	------------------------------------	-------------	---------------	----------	------------	-------------	--------------------

Sale Conducted By:  
**Gentry Auction Company**  
Route 3 Box 19  
Ranger, Texas 76470  
A.C. 817 647-1566  
Auctioneer: Jackie D. Gentry TXS 121-0395  
Licensed and Bonded  
For Further Information, Call (817) 647-1566

# Board Approves Budget For Community Chest

A budget of \$13,350 will be the goal for the annual Cisco Community Chest Drive that will be conducted here during the next two weeks, President Winston Heidenheimer announced Monday.

The Cisco Lions Club will provide leadership for the drive and Ivan Webb, official of the Kamon companies, will serve as chairman, Mr. Heidenheimer said. The Rotary and Kiwanis Clubs as well as other Cisco clubs will assist with the campaign, he added.

The budget will represent the financial requirement of 14 organizations that work in the community, Mr. Heidenheimer said. A committee composed of Mrs. Cleatus Rattan, James Cotton, Mrs. Harry Donica and Joe Wheatley conducted hearings to prepare the budget.

The various organizations and their budget requirements were listed as follows: Red Cross, \$400; Salvation Army, \$100; Girl Scouts, \$2,400; Boy Scouts, \$2,400; USO, \$100; ABC Club

(Pony League), \$1,000; Little League, \$1,000; Cisco Girls Softball League, \$1,000; Mental Health Agency, \$150; Texas United Community Service, \$50; Cisco Child Care Center, \$1,200; Cisco Public Library, \$1,000; Senior Citizens, \$500; Cisco Welfare Association, \$2,000; and, operating expenses, \$50.

Officers of the Cisco Community Chest are: Mr. Heidenheimer, president; Ivan Webb, vice president; Emma Watts, secretary; Ron Patton, treasurer; and

the following directors: Mrs. Steve Cozart, Mrs. Cleatus Rattan, Mrs. Carl Bray, James Cotton, Mrs. Harry Donica, Mrs. M.D. Allison, Bill Roberts, Jim Pingleton, Mrs. Ed H. Harrell and Joe Wheatley.

"Every organization included in this year's budget plays an important role in our community," Mr. Heidenheimer said. "We must provide them with operating funds to insure their full usefulness to our town."

"Since a Community Chest drive was not held last year, it is our hope that everyone will make a real effort to help over-subscribe the budget for the coming year. Let's all make a very special effort to complete the budget drive in short order."

**Use The Classifieds**

## High Water Scenes Monday



Mobile Home in 1000 Block of Avenue B

Carole's Cafe on East 8th Street



Garden in 1000 Block of Avenue B

Creek by Carole's Cafe on East 8th Street



Looking West from 900 Block of Avenue A towards Mobile home on Avenue B

Cisco Kid Motel and Beech Street at East 8th



Intersection of West 14th Street and Avenue E

Creek behind Primary School

**Sweater Vest**  
**1/2 Price**  
**2 Styles Of Skirts**  
**1/2 Price**  
**Sweater And Matching Skirt**  
**\$16.95**  
**Long Gown**  
**40% Off Reg. Price**

**Marvallee's Dress Shop**  
611 East 8th Cisco

We Give Green Stamps p-83

Open 9 to 5:30 Monday-Saturday

West 9th Street and Avenue M



Driveway in 1000 Block of West 14th Street

Thursday, October 15, 1981

### WORD of GOD

Lord, how are they increased that trouble me! Many are they that rise up against me.

Many there be which say of my soul, There is no help for him in God. Selah.

But thou, O Lord, art a shield for me; my glory, and the lifter of mine head.

I cried unto the Lord with my voice, and he heard me out of his holy hill. Selah.

I laid me down and slept; I awakened; for the Lord sustained me.

I will not be afraid of ten thousands of people, that have set themselves against me round about.

Arise, O Lord; save me, O my God; for thou hast smitten all mine enemies upon the cheek bone; thou has broken the teeth of the ungodly.

Salvation belongeth unto the Lord; thy blessing is upon thy people, Selah.

Psalm 3



What is it for you? The job? The boss? Traffic? Bills? Pits? Family? Deadlines? Quotas? Getting on top? Or just staying afloat? Are there more conflicting demands in one day than you'd rather face in one week?

This pressurized pace of life can come from your own inner push for recognition and achievement. Or, it can be the result of those outer prodding demands.

You may not be able to alter your schedule or situation. But you can change the way you look at it, deal with it, live through it, and rise above it. Our people are realizing that an inner center of calm and serenity is available. What Jesus said about lasting peace that nothing can take away makes a lot of sense.

**We all have pressure — but do you have peace?**

**BIBLE BAPTIST CHURCH**

17th and Avenue E  
Cisco, Texas 76437

Bob Mayberry, Pastor  
Telephone 442-3964

Sunday School . . . . . 10:00 a.m.  
Morning Worship . . . . . 11:00 a.m.  
Evening Service . . . . . 7:00 p.m.  
Prayer Meeting, Wed . . . . . 8:00 p.m.

Independent - Fundamental - Premillennial

**"NERVE DEAFNESS" CAN BE HELPED**

If you hear but don't always understand what people are saying . . . words run together . . . people seem to mumble . . . you have to ask people to repeat . . . you have trouble understanding when more than one person is talking or when there are other noises.

**Early Detection Is Important**

**FREE ELECTRONIC HEARING TEST**

At the American Legion Hall, Cisco, Texas. Thursday, October 15, 1981 from 9:30 to 1:30. For our regular service center the 3rd Thursday of each month. Batteries and service for all makes.

Texas State Hearing Aid Center  
4201-A North 1st Abilene, Texas 79603  
Phone 915/673-4989, Barbara Ulmer, Dealer

**White Elephant Restaurant**

**Noon Buffet in Elephant Room**

**Served By Evelyn Wheat**

**Homemade Pastries and Bread Made By Bonnie Snyder**

**Open Daily 11 to 2 except Wednesday**

**\$3.95**

Come On Out And Join Us!

**WHITE ELEPHANT Restaurant**

170 West 1st, Cisco, Texas Open 24 Hours Every Day

**FAMILY-SIZE STORAGE IN**

# Amana

**REFRIGERATOR / FREEZERS**

DESIGNED FOR DEPENDABLE PERFORMANCE AND ENERGY EFFICIENCY

**Free-O-Frost™ throughout. No defrosting ever.**

**Textured steel door exteriors help hide fingerprints.**

**3-position Energy Saver Control helps save electricity.**

**Two automatic cold controls for refrigerator and freezer.**

**See these big capacity Amana refrigerator/freezers today!**

- WALL-TO-WALL REFRIGERATOR SHELVES GLIDE OUT FOR EASY ACCESS TO BACK ITEMS
- SMOKEY, SEE-THROUGH MEAT PAN AIDS FRESH MEAT STORAGE
- FAST-FREEZE FREEZER SHELF FREEZES FOOD QUICKLY

WEST TEXAS UTILITIES COMPANY

**WTU**

A Member of The Central and South West Systems

WTU Proudly Supports National 4-H Month

Qualified Factory-Trained Servicemen Offer You The Finest In Appliance Service



**TEXAS SOCIETY TO PREVENT BLINDESS-** Martha Harvey of Beaumont and her son Graham re-enact the "E game," a vision test that gave the first indication that Graham was seeing poorly. His eye problem was diagnosed as amblyopia or "lazy eye," had it not been detected and treated early, Gaham would have soon lost all useful sight in his right eye.

## New interest rates listed for USDA'S farmers home loans

The Farmers Home Administration in the U.S. Department of Agriculture will start charging higher interest rates today on several of its loan programs as a result of legislation enacted by Congress.

Dwight O. Calhoun, Acting Associate Administrator of FmHA said higher rates are required for community facility, water and waste disposal, emergency farm and limited resource farm

loans. The changes were included in the budget reconciliation bill passed by Congress just before the August recess.

In addition to the new rates, the use of prime farmland for development purposes will be more costly in some cases under provisions of the 1981 legislation. Calhoun cited as an example an extra 2 percent interest on loans used to finance community facility and certain other projects on "prime" or "unique" farmland.

"Prime" farmland is described as having the best combination of physical and chemical characteristics for producing food, feed, forage, fiber and oilseed crops. It also must be available for those uses.

"Unique" land is other than prime land having special combinations of soil quality, location, growing season and moisture to economically produce high quality or yields.

Increases in interest rates are:

PROGRAM: Water and Waste Disposal OLD RATE 5; NEW RATE 12.25

Community Facilities OLD RATE 5; NEW RATE \*12.25

Emergency Farm Loans (For disaster after Oct. 1,

## Hanna lowest on legislative spending

This area's representative to the Texas Legislature held his office expenses the lowest of all members of the Texas House and Senate members during the fiscal year 1980, according to an audit released last week in Austin.

State Rep. Joe Hanna cost the state the least of all 180 elected members of the legislature, the report showed. Each member is allotted an expense account for staff salaries, telephone and travel expenses, postage, and other costs.

Hanna said he believed in economy in government at all levels and that he did his best to curtail the expenses of his office.

At the other extreme Sen. Walter Mengden of Houston ran the legislature's most expensive office for the year.

State Auditor George McNeil's report for the year that ended Aug. 31, 1980, showed Mengden spent \$132,015, compared with only \$10,190 spent by Hanna. Mengden's total included an office payroll of \$73,979, the legislature's largest.

Top spender in the House, which has greater restrictions than the Senate on office expenditures, was Rep. Ron Wilson, also of Houston, who spent \$54,391. Wilson had the only five-figure telephone and telegraph bill, \$12,822.

## Only Two Spotlights Are Legal

While Faye Merritt - on the staff of the Eastland Telegram - drove on the Highway from Moran to Albany one night recently she met four bright lights, two sitting some distance above the others. In the darkness her first impression was of a possible accident, with one car rammed on top of the other. As she hastily pulled off the road she saw the that "thing" was simply a pickup, with two bright spotlights glaring high from each side of the vehicle.

This sight could confuse an approaching driver and cause an accident. In checking with the department of Public Safety, it was found that State Law permits any vehicle to have two spotlights. (And two only). But it is against the law for these spotlights to be so aimed that they will strike the windshield, mirror, windows, or occupant of any other vehicle. Violation of this is a Class C misdemeanor, punishable by a maximum fine of \$20.00.



By Richard

There seems to be some days when a person just shouldn't get out of bed as everything is going to go wrong regardless; that is the kind of weekend the Dallas Cowboys just had.

A string of injuries forced a number of new and inexperienced faces into starting positions and the team lucked it's way through some of its weaker opponents with big plays but without playing good strong consistent football. The last two weeks the Cowboys plays has dropped below that of the opposition with the 45 to 14 loss to San Francisco bordering on humor as the players made mistake after mistake.

As Gary Hogeboom was the only player suited out who didn't get to play, he was mentioned as possibly the outstanding player of the game by Cowboy officials.

The game wasn't the only bomb of the day however. A bomb threat was received and the Cowboy's plane had to be searched by a dog

trained to smell and locate bombs.

If that wasn't enough, disaster struck again. Backup defensive tackle Don Smerek who had injured a knee and had been placed on the injured reserve and left in Dallas with a knee operation ended up getting shot by what was thought to be a young man. Smerek was shot in the chest and was in serious condition at first but is now expected to recover without any permanent damage.

Harvey Martin spent most of the game Sunday on the sidelines with a leg problem. He could have some calcium deposits in the leg from old injury and not able to play against the Los Angeles Rams Sunday at Texas Stadium.

Center Robert Shaw also had to leave the game and will probably have an operation on the knee that is troubling him.

Coach Tom Landry will be looking to improve the team's play and changes in the starting lineup are possible. He says that the loss will test the young players and if they are potential N.F.L. stars, they will snap back and become winners.

One area that could eventually see changes is at linebacker with the possibility of Mike Hegman's return and of Anthony Dickerson

moving into a starting spot.

One possible need is for Danny White and some others to take a bigger leadership role in the team to inspire the youngsters.

The Rams may be playing without the services of quarterback Pat Haden Sunday but they are considered to be one of the best pro teams material-wise.

Every year a disastrous game seems to be routine for the Cowboys and some of their biggest disasters have been in years when they went to the Super Bowl.

Whether the team will put it together Sunday is a question, but the game will be at Texas Stadium, where the Cowboys usually win.

The big losses customarily come on road games where the team eats together at a hotel or other location where it has been prearranged for them to be served.

Gambling interests and organized crime are said to make millions when there is a drastic upset of a popular team like the Cowboys.

Just think, anything that players might consume that would reduce their metabolism, and thereby reduce their speed, quickness and strength could cause a big difference in a game without the players being aware of the source.

Makes you wonder sometimes, doesn't it?

There's a Naturalizer moc for every hour in your day... every look in your wardrobe!

COMES \$47.95

NATURALIZER HAS YOUR SIZE

Now, the unmatched comfort of genuine leather... an elegant touch of gold... a just-right look with sportswear and tailored fashions. And Naturalizer has your size!

MOCCASIN construction in a truly sophisticated look. Fine kidskin styling... an elegant touch of gold... a just-right look with sportswear and tailored fashions. And Naturalizer has your size!

MY SHOE SHOPPE  
1-20 West of Best Western

Kiddin refers to uppers

### REYNOLDS MANUFACTURING CO.

Customer Service Division

- Siding
- Storm Windows
- Replacement Windows
- Patio Storm Doors

SUNGLAS... THE ENERGY SAVING GLASS FOR YOUR HOME

105 E 8th - Cisco  
442-1380

FREE ESTIMATES

\$1,000 minimum 2½ year C.D. Effective October 13 thru October 26	RATE <b>15.65%</b>
Substantial penalty for early withdrawal.	YIELD <b>16.94%</b>
\$10,000 minimum 6-month C.D. Effective October 13 thru October 19	YIELD <b>13.75%</b>
Substantial penalty for early withdrawal.	YIELD <b>12.14%*</b>

\* The All-Savers C.D. offers substantial tax-free interest. Fixed rate is good for one year/minimum \$500. And it's insured by F.S.I.C. up to \$100,000. Please contact one of our savings counselors for more information.

RANGER SAVINGS EASTLAND SAVINGS

Olney, Seymour, Jacksboro, Bridgeport, Mocona, Weatherford, Azle, Graham, Archer City, Brownwood, Bowie, Wichita Falls and Vernon. Also Electro Savings in Electro, Ranger Savings in Ranger, Eastland Savings in Eastland. All divisions of Olney Savings.

ESLC

## THOMAS HEALTH FOODS

Specials October 14-21

½ Off SCHIFFS Vitamin B Complex

10% Off All Vitamin C Brands

SCHIFF-PLUS-Vitamins	ARROWHEAD Products
NAUTRE'S WAY Herbs	WORTHINGTON Foods
CELESTIAL Teas	HANES Vegetable Oils
ALEO VERA Drinks	Large Back of Health Books
Honey-Peanutbutter	Sea Salt-Nuts

1001 N. Breck Ave. Hours: Tues.-Sat. 9-6  
Phone: 559-3161 Odalee Thomas, Owner T-83

## Why gas is plentiful:

19,000 Wells

About 19,000 wells, in addition to pipeline agreements, now supply the natural gas we sell to you. Because of Lone Star's aggressive purchasing program, our supply position is strong. And we will contract for more gas whenever we can negotiate for terms favorable to you. Our ability to deliver all the gas you need for your home is another reason to be glad you're served by the Lone Star system.

Gas. It's plentiful, efficient and right for the times.





# Oil News

Dallas—The Railroad Commission set the Texas oil production rate for October 1981 at the market demand factor of 100 percent for the 56th month in a row and the 112th time since the Commission first went to the ceiling level in April 1972.

Chairman Jim

Nugent and Commissioners Mack Wallace and Buddy Temple directed the continuance of the maximum statewide allowable after receiving and reviewing purchaser nominations for Texas oil in October totaling 2,511,226 barrels per day, a decrease of 3,493 barrels daily when compared with September

1981 buyer requests. October 1980 nominations totaled 2,617,096 barrels daily.

Next month's permissible rate of output is calculated to average 3,051,490 b/d with actual production estimated at 2.46 million b/d. The maximum allowable applies to all but 10 fields in Texas that are assigned lower legal rates of flow for conservation purposes. Actual production in October 1980 was 2,519,344 barrels daily. Nugent reported that

October 1981 nominations for the purchase of Texas gas totaled 23,392,989 Mcf/d (thousand cubic feet per day). Gas nominations for September amounted to 24,961,348 Mcf/d. October 1980 gas nominations totaled 23,381,425 Mcf/d.

The next statewide oil and gas hearing will be held Tuesday, Oct. 20, at 9 a.m. in Austin at the Hilton Inn.

Major purchasers filed these floor nominations for Texas oil in October: Amoco Production,

215,000 barrels daily, down 2,5000 from the previous month; Cities Service, 80,000, unchanged; Conoco, 56,000, unchanged; Exxon, 303,500, down 800; Gulf, 112,000, unchanged; Marathon, 67,460, unchanged; Mobil, 199,700, down 2,400; Phillips Petroleum, 72,000, down 4,000; Shell Oil, 186,300 down 6,200; Sun Oil, 90,602, up 6,602; Texaco, 98,000, unchanged; Union Oil, 27,350 unchanged.

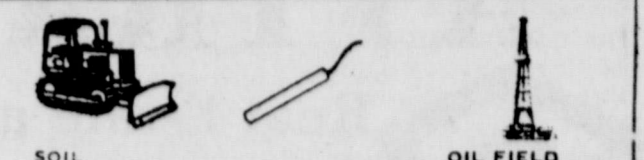
Significant changes in October nomina-

tions were submitted in writing by these purchasers of Texas crude oil:

Arco, 134,000, down 1,000; Basin, Inc., 39,770, up 2,994; Champlin, 2,500, down 1,200; Charter Crude Oil, 21,222, up 4,158; Chevron, 40,654, down 2,035; Clayco Inc., 22,380, up 1,510; Compton Corp., 2,960, up 1,050; Crude Co., 6,084, down 2,216; Diamond Shamrock, 11,257, down 2,440; Matador Pipelines, 81,340, down 6,700; Scurlock Oil, 95,800, up 6,800; Sigmores Refining, 4,790, up 3,020; Total Petroleum, Inc., 6,201, up 4,061; and Western Crude Oil, 27,317, down 2,584.

Chairman Nugent reported that crude oil and petroleum products imported into the U.S. averaged 4,443,000 barrels daily for the four weeks ending September 4, down 714,000 barrels from the same period a year earlier.

Oil related businesses  
We have best location  
in Eastland for your  
business  
In Pogue Industrial  
Park located across  
Highway 80 from Service  
Pipe & Supply  
Sell by the lot or acre  
A-1 Sales 215 S. Walnut  
629-2102 Anytime




**KOERNER CONSTRUCTION CO.**  
MINERAL WELLS, TX 76067  
JACK KOERNER  
O.P.C. (817) 682-4851  
RES. (817) 682-4850  
MOBILE: 325-0709  
Unit 5376

**Triple S Roustabout**  
Kenneth Sowell Service Stuart Sowell  
Box 575 FULLY INSURED & EQUIPPED  
Cross Plains 76443  
ROUSTABOUT CREWS  
Winch Trucks  
Welder, Bulldozer  
Pipe Trailer  
Tank Skids Extra Long Poles  
(817) 725-7731  
Dump Truck or 725-7444 — 725-7625 Back Hoe

AERIAL BUCKET TRUCKS • HOLE DIGGERS • DITCH DIGGERS  
**CARROLL ELECTRIC SERVICE CO.**  
ELECTRICAL MAINTENANCE CONSTRUCTION  
OIL FIELD COMMERCIAL & RESIDENTIAL  
P.O. BOX 891  
EASTLAND, TEXAS 76448  
Bus: 817/629-2842  
629-8793  
Night: 629-1320  
RON CARROLL-OWNER

*Jerry Maxwell*  
**Hsee Supply Co.**  
Oil Field Supply New - Used  
806 Spring Road  
RANGER, TEXAS 76470  
817/647-1749

O. L. RODGERS  
817/442-3133  
**MULTIVERSAL PIPE COMPANY**  
Casing Tubing Drill Pipe Sucker Rods  
Polyethylene Pipe & Equipment  
BUS. PHONE 817/629-8581  
P.O. Box 831 EASTLAND, TEXAS 76448 OR 817/629-2682

**Eastland National Bank**  
salutes the oil industry.  
We are eager to help in your growth and welcome the opportunity to serve you. You've got a friend — in Eastland.  
  
**EASTLAND NATIONAL BANK**  
201 East Main Street 817/629-8551 Member FDIC  
Equal Opportunity Employer M-F-H

K

# KINCAID REAL ESTATE

100 S. Seaman St. Eastland, TX 76448

817/629-1781

### RESIDENTIAL

**NOT GETTING OLDER-GETTING BETTER!** This older frame home has been recently improved with paint, panelling and carpet. Has 2 or 3 bedrooms, 1 bath. Roomy house on big pretty lot. Lots of trees in nice quiet neighborhood. \$24,500.

**CLOSE TO DOWNTOWN-3** bdrm., 1 bath older frame house. Large rooms with some improvements. House solidly constructed. Located on extra large lot in nice neighborhood. Has several bearing fruit trees and garden spot. 1 car garage. Owner will finance with one half down. \$25,000 CASH; \$27,500 if owner finances.

**NEWER BRICK HOME IN STEPHENVILLE-3** bdrm., 2 bath, fireplace, builtins, new carpet, custom drapes, central H&A, fenced yard, double attached garage. 2 blocks from high school.

**LOW DOWN PAYMENT** on this neat 2 bedroom, 1 bath mobile home **SOLD** on lot. Only \$1,000 down and owner finance. \$8,000.00

**IDEAL MOBILE HOME SITE** - City utilities available on this cleared lot in Olden. 150' x 75'. Owner finance. \$2,750.00

**COZY & CUTE** - 2 bdrm, new paint and carpet. Small yard, carport on paved street. Nice for single or starter home. \$25,000.

**AFFORDABLE LIVING**-Start with this small home 2 or 3 bdrms., 1 bath, 12,500. Owner will finance.

**3 ACRE HOMESITE** in Morton Valley. Hiway frontage. Lots of pretty trees. Would make a great homesite. Hurry before it's gone! \$4,750.

**LARGE OLDER** frame house on over sized lot. 7 rooms and full attic. Lots of space inside. Needs remodeling. Would like to trade for airplane or other. \$30,000.

**WANT TO INVEST IN RENTAL PROPERTY?** Small 1 bdrm., 1 bath rent house, stays rented continuously. Good return on investment. Call today. \$8,500.

### LAKE PROPERTY

**SUMMER HIDE-AWAY** modern cabin on deeded lot. Good fishing. **SOLD** for on this one! LL-07 \$11,700

**LAKE LOTS**- We also have many lots available some with excellent water frontage. The fishing is good and the price is right. LL-01

### HOMES & ACREAGE

**LIVE IN THE COUNTRY!** In this 2 bedroom house on 66 acres. Has city water and water well. 36 acres of pasture with 3 stock tanks, and 30 acre fields. Also roping pens. Good fences and hiway frontage. Take a look - you'll like it. \$65,000.

**COUNTRY HOME ON 120 ACRES**- Income producing property-brings in over \$10,000/month in royalties! 120 acres is all in coastal, plus property has plenty of water with 5 water wells. The house is a 3 bedroom, 2 bath with approximately 1900 sq. ft. This is a very nice place. Call us for the details.

### COMMERCIAL

**OWN A FAMILY BUSINESS**-locally owned convenience stor with gas pumps. Has good cash flow. Owner will consider financing for right person. Also has trailer park on 3 acres. Can accommodate 21 trailers. Good buy. Call for information.

**COMMERCIAL PROPERTY** 2.9 acres on I-20 frontage road in Cisco. Owner would finance part with good down payment. \$20,000.

**PRIME RAILROAD SPUR LOCATION**-1 building with office, 1400 sq. ft. floor space - dock height, 2 storage buildings on 1 1/2 acres. Excellent for bulk delivery shipping point. \$75,000.

**THRIVING BUSINESS** - Local business that grossed \$740,000 in 1979. Excellent cash flow and terrific location. Terms negotiable.

**COMMERCIAL LOCATION**-Large bldg. site on N. access of I-20. Excellent location., Good investment. Owner finance, 25% down. \$25,000.00

**EXCELLENT LOCATION** - 1.5 acres on Hwy. 80 near I-20. Unlimited potential. Older 3 bdrm. house. Call for more information.

**DEVELOPMENT POSSIBILITIES** 151 acres with 120 frontage, paved hwy. Nemerous options. Owner finance. \$1,000.00/acre.

**SEVERAL MOTELS** - listed in various parts of the state. All excellent investments. Call for location and details.

**INVESTMENT WITH RETURN** 4 unit apartment house. Small 2 room units upstairs, larger 2 room downstairs. Washer & dryer, \$700 month income. \$35,000.

### ACREAGE

**38 ACRES**-on Hwy 570 to Lake Leon. This is a bargain at \$550/ac. Has beautiful homesites, good all weather road, fronts the pavement. Lots of trees. Good investment!

**SPORTSMAN RETREAT**-78.9 acres of hunting and fishing! 3 stocked tanks for fishing with live creek. Dove, quail, turk **SOLD** deer. 20 acres coastal and 13 ac. wheat. 1 acre fenced garden. City water. Pretty campsite with all hook-ups. Some assumable financing. \$633/acre.

**93.34 ACRES** in Okra area. Has good stock tank, 57 acres cultivation, 18 acres of pretty timber. Also a 33 acre peanut allotment. Owner will finance with 29% down or will Texas VET/Also will divide. Has minerals that will go. Great buy at \$540/acre.

**77 ACRES** - Close to Ranger. Good pasture land, tank, easy access. Also good deer and turkey hunting. \$725/Acre.

**49 ACRES** - in northern part of Eastland County. Tank has been stocked. On good County Road less than 1 mile off pavement. \$700/Acre.

**42.53 ACRES** - Oak trees, pasture land. New tank - really pretty land. Come and look at it. Owner will finance. \$685/acre.

**20 ACRES** - available on paved highway about 4 miles from Eastland. All improved coastal bermuda, 1 tank, few trees, good fence. **SOLD** possible owner finance. Will Tex. Vet. \$15,000

**12 1/2 ACRES** - Pecan orchard at Carbon, about 70 producing trees, city water tank for a mobile home, all on paved hiway. **SOLD** early. Owner financed at 10% interest. \$25,000.

**39.29 ACRES** - Farm **SOLD** Pasture. 1/2 minerals. Has tank and water. **SOLD** south of Cisco on Hwy. 183. Priced at \$700/acre.

**20 ACRES** - Scenic and rustic area. Scattered trees, city water available 5 **SOLD** of Cisco, ideal mobile home site. Owner finance. \$900.00

**45 ACRES** - All improved native grasses. Stock tank. Oak tree countr **SOLD** TEXAS VET. \$525/acre.

**60 ACRES** - S. of Cisco close to Union Center, 25 acres peanuts, 1 good water well, good fences. Will divide. \$625/acre.

**85 ACRES** - All improve, good native grasses. Scattered oak trees, stock **SOLD** good fences. Old frame house. WILL TEXAS VET. \$525/acre.

**63 ACRES** - Some cultivation, beautiful trees. Excellent building site, fenced, city water. Some minerals. Pavement frontage. 750/acre. Assumable financing.

**50 ACRES** - Secluded 35 acres timber, river bottom, 2 tanks, well, 15 acres cultivation with small 1 bedroom house S. of Cisco. Some owner finance. \$850/acre.

**97 ACRES**-about 1/2 native pasture, some improvements. Older frame house and dairy barn. Owner finance. \$567.00/acre.

**124 ACRES** - Excellent **SOLD** g on this property. Travel Trailer included. \$50,000

**300 ACRES** - Two miles from Eastland, some timber, native and improved grasses, 2 tanks. Excellent ranch land. Financing arranged. 425/acre.

**420 ACRES** - Peanut farm. Fully cultivated and irrigated, 1/2 minerals. Beautiful 4 bdrm., 3 bath home with fireplace. Excellent investment. Call for more details.

We have several other tracts of land from 37 acres up to 78 acres. Priced from \$685/acre to \$900/acre. Each tract has trees and at least one tank.  
Owner will consider financing. Call for more details.

We also buy and sell Oil & Gas Leases. Any inquiries may be directed to Eddie Kincaid.

**FHA-VA-CONVENTIONAL FINANCING**

**We want to SELL your listing.**

**Robert M. Kincaid, Broker**

Eddie Kincaid (817) 629-1781

Milva Kincaid (817) 629-8757

Gilbert Meredith (817) 653-2472



**LOAN**  
Carol Senkel  
**LOAN PRODUCTION & REAL ESTATE**

COMPLETE LOAN SERVICE  
(817) 629-8539 Office  
(817) 629-1269 Res.

CAROL SENKEL, Broker  
801 West Main Street  
Eastland, Texas 76448

**REAL ESTATE**

Choice Building Sites  
Located East Side of  
Eastland near Gibsons  
Starting at \$3,000.00  
Can build to suit your  
needs or you build  
A-1 Sales  
215 S. Walnut  
629-2102 Anytime

**FOR SALE:** Lake lot at  
Lake Granbury. Also 2  
bedroom house in need  
of repairs 607 West 11th  
St., Cisco. Priced to sell.  
Call 442-1005, Cisco. p-78

**HOUSE FOR SALE**  
\$1500 down on 3  
bedroom, fixer upper.  
Inquire at 701 East 14th,  
Cisco. p-88

**FOR SALE  
OR LEASE**  
50 by 100 ft. brick  
building on Ave. D,  
Cisco. Office front;  
loading doors rear;  
rest rooms; clear-  
span interior. Call  
629-1707 or 629-2413.

**FOR SALE BY OWNER:** 3  
bedroom house, \$20,000.00.  
Terms. Owner will finance  
at 12% interest. Call 442-1561,  
Cisco. p-60fc

**FOR SALE BY OWNER:**  
New three bedroom brick  
house with one acre,  
fireplace, 1 1/2 bath at Car-  
bon. Call 639-2330 or 639-2226.  
T-90

Small Ads...  
Big Results!



**BRADFORD  
Realty**

Helen Bradford, Broker  
Ken Parrack, Associate

Main Office-205 East Main-Ranger, Texas 647-3230

Branch Office-116 North Seaman-Eastland, Texas 629-8641



**BUSINESS-COMMERCIAL**

**SAVE TAX DOLLARS-INVEST NOW** and let rent in-  
come make your payments on these 4 houses on 150x136  
foot lot in Eastland. Approx. 1868 square feet fully  
carpeted, 3 bedroom, 2 bath, fireplace, cedar cabinets,  
central heating and air conditioning. Would make lovely  
home. Other houses are now rented. Nice location.  
**STATION & GARAGE** Buy equipment and inventory,  
Rent Building in Strawn, Texas.

**MAKING MONEY-Going business on Highway 80 in  
Ranger. Call for details.**

**BUSINESS BUILDING** located on .614 Acres on  
Highway 80 West in Ranger. Approximately 1350  
square feet newly remodeled would serve for four of-  
fices. Price reduced for quick sale.

**LARGE BRICK BUILDING** downtown Ranger. Ex-  
cellent buy for Mechanic. Living quarters, lots of room  
for Garage. Priced right to sell.

**HOMES**

**GOOD BUY-2 bedroom-1 bath** frame on large lot in  
Strawn. Make us an offer. Look at this one-2 bedroom, 1  
bath, frame on 1 lot in Strawn, some carpet.

**ACREAGE**

161 acres 10 miles northwest of Ranger will sell all or  
divide. 40 acres of coastal. 3 tanks, some trees. Good  
hunting, good fishing.

DRIVE A LITTLE SAVE A LOT

**EASTLAND  
Direct Factory Outlet**

**MOBILE HOME SALES**

FHA & VA  
FINANCING

SINGLE WIDES  
DOUBLE WIDES

WE SERVICE  
YOUR HOME  
FOR ONE  
YEAR AFTER  
THE SALE

653-2432 IF NO ANSWER CALL  
629-2117

**JAMES W. RATLIFF**

**REALTOR-BROKER**

**647-1260 HOME 647-1667**

**COMMERCIAL PROPERTY**

7,000 square foot Delta Steel Building in Ranger. This  
building has a large truck scale that goes with the  
building.

Two lots on Hwy. 80 just next to JRB. A good commer-  
cial location.

Three story brick **SOLD** Ranger with twelve lots.

Ten acres of land in the city limits, good place to  
develop. Will sell worth the money, \$10,000.

**LAKE PROPERTY**

Tile block house on deeded lot, one large bedroom with  
very large living room with sleeping facilities. This  
place has a nice boat dock. All furniture goes with this  
\$30,000.00

Very nice small lake house on deeded lot. One large  
bedroom, kitchen, living room, then a large bedroom on  
the lake side. This on a good fishing part of the lake with  
a boat dock. \$22,500.00

We solicit your listings on any type of Real Estate

Oneta Robinson Associate 629-1467

**RANCH OUT OF RANGER**

981 acres on I-20 just east of Ranger, excellent hunting  
place. Will run 60 pairs year round, small but nice house  
with central heat and air.

**JUST OUT OF RANGER**

25 acres of land with a four bedroom house, two full  
baths, Franklin Stove, very nice kitchen with plenty of  
cabinet space. Dishwasher, range and ovens, large pan-  
try. Lots of closet space and storage. Several outside  
buildings, metal pens, water well, fenced garden spot.  
**\$58,000.00**

160 acres of land, one tank, 87 acres in cultivation, good  
fences, some improved pasture, 1/4 minerals. Owner will  
sell parts of this place also.

**HOMES-RANGER**

New listing; Mobil home on Travis street, two  
bedrooms, one bath, all furniture that comes with a  
mobil home goes. Storage house goes with this place.  
Priced to sell \$7,750.00

About a year and a half old, two bedroom brick home, on  
two lots, central heat and vented evaporative cooling.  
One bath, range, dishwasher, fenced back yard. This is a  
corner lot, 1006 Foch Street.

New listing on Pine Street, three bedrooms, one bath  
older home that need someone to work on it. Very large  
rooms, could be made into a very nice place. Two lots go  
with this house \$22,500.00.

Three bedroom, one bath, large living and dining room  
combination. Central heat and air, washer dryer connec-  
tions. Separate garage and storage room. This house is  
on two lots on Main Street. \$30,000.00

Approx. 5 acres of land in City limits with a three  
bedroom, two bath house. Central heat and air, horse  
barns, garage and storage. Very attractive place.  
\$45,000.00

Brick three bedrooms, two full baths, den with wood burn-  
ing fireplace, kitchen with double oven, corner-  
ing cooktop, dining room combination, central heat and air,  
utility room with washer and dryer connections. Fenced  
back yard with covered patio. Two storage buildings.  
This is in a nice neighborhood. \$75,000.00

**RESIDENTIAL**

OLDER 2 story house near **SOLD** in Carbon. Large lot  
with plenty of room for **SOLD**. Needs repair. Budget  
priced.

SPACIOUS HOME ON 2 LOTS-4 bedrooms, 1 1/2 baths, ful-  
ly carpeted, custom kitchen with built-ins, energy saving  
storm windows. Covered patio faces large, fenced back  
yard. Near schools. See this one soon!

A LITTLE BIT OF HISTORY: One of the oldest homes  
in Palo Pinto County, moved from Thurber to present  
site in Strawn in early 1900's. Restorable condition. On  
200' x 140' lot, and price includes 1975 14 x 80 total electric  
completely furnished mobile home. Price reduced!

PLENTY OF ROOM: This three bedroom or could be four  
bedroom, 1 3/4 bath home on corner lot. Assumable financ-  
ing with \$190 monthly payment. Owner said trade for  
anything of value for his equity.

IDEAL WEEK-END RETREAT, or year-around  
residence. Attractively remodelled 2 bedroom, 1 bath  
home on large deeded lot at LAKE LEON. Many extras in-  
cluded.

COZY 2 br, 1 bath completely remodelled inside, new  
carpet, on shaded lot, located in Ranger. Budget priced.

GORMAN: Ideal for retired or small family. This nice 2  
bedroom with separate utility sits on two lots with large  
garden area. Excellent condition, well insulated. City  
utilities and well for garden use. Reasonably priced.  
OWNER MUST SELL-Equity lowered - Lake Cisco: Love-  
ly South side home on **SOLD** only 4 1/2 miles from  
downtown. Two **SOLD** baths, fireplace, central  
H/A, glassed sun **SOLD** opens to wooden deck, beautiful  
view, fenced yard. Numerous extras. Call for details.

RENTAL PROPERTY - 3 bedroom 1 bath home on large  
lot. \$12,500.00.

PRICE DRASTICALLY REDUCED Invest your money in  
duplexes and have a hedge against inflation while you en-  
joy the tax advantages of rental property. We have two  
duplex units, brick, builtins, carpet, carports, 100% oc-  
cupancy. Inquire today.

STARTER HOME-Neat frame 1 bedroom, 1 bath, fully  
carpeted home on large lot in Olden. Affordable price for  
the newly weds or retirees. Call today-this maybe what  
you've been waiting for!

LAKE LEON: Deeded lot Approx. 200 ft. road frontage.  
Approx. 65 ft. waterfront. Willow Beach subdivision, old  
Staff Road.

NEW HOME COMPLETED on 2 1/4 ac. with own water  
well. 1300 sq. ft. Brick home, total electric.

YOU DESERVE A BREAK-This home offers more  
square foot per dollar value. Recently remodelled. All  
new kitchen with built-ins, central A/H, den with  
fireplace-and more. Call today.

**Town & Country REAL ESTATE**

OFFICE HIGHWAY 80 E  
FHA-VA CONVENTIONAL FINANCING

629-1725

BARBARA LOVE, BROKER

THRIVING BUSINESS-Ideal family operation. Retail  
sales and service in Ranger. Don't delay reap the holi-  
day profits.

EXECUTIVE HOME in prestigious neighborhood.  
Beautiful brick home for gracious living and entertain-  
ing. Immaculate interior with 3 bedrooms, 2 1/2 baths, liv-  
ing room with fireplace, dining area, breakfast area,  
separate utility. Double garage, covered patio. Large  
paved area with detached workshop and storage. Call  
for appointment.

**COMMERCIAL PROPERTY**  
NO VACANCIES - NO UPKEEP! 4 houses on 150x136' lot  
in Eastland. Rent all or live in large 3 bedroom, 2 bath,  
completely remodelled home. Many extras. Call today  
and take advantage of the fantastic rental market.

RISEING STAR - Large commercial/shop building located  
downtown area. REASONABLE, and you convert to your  
own needs.

BRICK BUILDING with 20 x 25 ft. office on several lots in  
Gorman. Excellent for garage or small factory.

OWNER HAS MOVED! We are looking for a family who  
needs over 1600 sq. ft. 3 bedrooms, 1 bath on corner lot,  
shaded by huge trees, with excellent garden space.  
Recently remodelled, with almost new range and  
refrigerator. Separate utility room with space for ironing,  
sewing. Don't wait. Call us today!

COMPLETELY REMODELED - 2 bedroom with car-  
port and storage room in Eastland. Perfect for the  
small family.

CHARM OF YESTERYEAR-With all of today's ameni-  
ties! You'll love the spacious, light and airy interior  
which includes, 4 bedrooms, 3 baths, sunny yellow kit-  
chen, glassed atrium. Upstairs bedroom-sitting room  
opens to redwood deck. You must see to appreciate the  
many unique features of this home.

**WE WANT YOUR BUSINESS - YOU ARE OUR BUSINESS**

PEGGYE SWAFFORD 647-1050

BARBARA LOVE 647-1397

**ACREAGE**

9 ACRES M/L only 8/10 mile West of Ranger City  
Limits. All cleared, county road two sides. \$2,000.00  
down, owner finance balance on contract for deed.

5 ACRES of oak trees is the setting for this large brick  
home with 3 bedroom, 2 1/2 baths, separate dining room  
and living room. Lived in only 2 years. Good water well, 2  
septic tanks, total electric. Located near Gorman.

53 ACRES convenient to Eastland. All cleared with scat-  
tered trees. Water a **SOLD** County Road. Will divide  
for Texas Vet. with papers.

60 ACRES So. of Cisco, 1 mile off Hwy. 206. Approx. 30  
acres coastal, 15 acres love grass, some timber. One good  
stock tank, shallow hand-dug well.

79 ACRES sandy land **SOLD** tal, mostly cleared, good  
fences, at Olden. Will

3,965 acres in City Limits with mobile home hookup, city  
water. Cleared, fenced, some large pecan trees.

60 ACRES, 26 acres peanut allotment, 1 water well, sandy  
loam, south of Cisco. Approx. 1 mile off pavement.

HORSE LOVERS - You must see this 120 acres with large,  
completely remodelled rock home. This place is set up for  
convenience of horse breeders and safety fenced to pro-  
tect your investment in your animals. 6 large sheds,  
numerous corrals, 3 water meters, 2 mobile homes,  
peanut allotment, 1/4 minerals, 4 stock tanks, cross-  
fenced, coastal and native grasses. CARBON AREA.

63.5 Acres near Eastland with frontage on blacktop.  
One tank and old well. Part wooded, good deer and  
turkey hunting. Will divide for Texas  
Vet. with papers in hand.

12.642 ACRES on FM 2461 near Lake Leon Dam. Blacktop  
frontage, staff water. Permanent easement to lake. Call  
today.

**BUILD** your dream house on one of these 2 to 3 acre  
tracts. Located on Hwy 6, 5 miles S. of Eastland. City  
water available.

51 ACRES with beautiful 3 bedroom, 2 bath 5 yr. old brick  
home. Horse pens, 3 stock tanks, 25 acres in coastal, good  
fences. Located 4 miles NE of Gorman.

18 acres, m/l approx. 6 miles So. of Eastland on Hwy. 6.  
Highway frontage **SOLD** are. 25% down and owner  
finance balance. C. soon.

6 1/4 ACRES with new large 2600 sq. ft., 3 bedroom, 2 full  
baths, family room, separate utility. Only 3 months old.  
Plenty of trees. Just outside the city limits of Gorman.  
Price reduced for quick sale.

20 ACRES approximately 3 miles west of Gorman. Co-Op  
water can be arranged. Some minerals





# Rain Sends N., S. Forks Leon River on Rampage

Eastland Countians were watching the sky at mid-week after days of the heaviest downpour to hit this area in many a year and it was still raining at press time.

Upwards of seven inches of rain fell Sunday night and early Monday morning, washing out roads, closing highways, swamping homes and businesses, and causing critical concern for the condition of old lake dams.

There were no reports of injuries, although there were many vehicles stalled from high-water locations throughout Eastland, Ranger and Cisco.

In Eastland Volunteer Firemen and individuals assisted with the removal of families and furnishings from just off both ends of Seaman St., where high waters were running into some homes.

Pafford Ambulance Service removed an invalid person from one home.

Moylan Construction Co., north of Eastland, moved virtually all of its equipment to high ground, above the threat of rising waters of the North Fork of the Leon.

Rain-talk around the county included the preniel concern for the safety of the old eathern dame at Lake Eastlnad north of town. As is customary, word was even heard that there might be some concern for Lake Cisco dam.

Highway Department crews were busy throughout closing certain areas and helping make sure that traffic continued to flow. North-bound 69 was closed.

Over seven inches of rain was recorded through Monday and at least another inch fell prior to Tuesday at 7. So far as is known, only

telephone service was hampered by the heavy rain. Electric power, water and sewer services continued normally.

Breckenridge was hardest hit Monday night, and was reported without electricity, water or phones Tuesday morning, and there were reports that the National Guard had been called to assist with the evacuation of residents from flooded homes.

The North and South forks of the Leon River which are fed by rain and run off from the area surrounding Cisco, were far out-of banks both north and south of the City of Eastland.

Many said that they were flooded further than they'd seem them in many years, perhaps ever. The Int. 20-State 6 interchange south of Eastland was indicated causing temporary closing

early Monday. The out of banks forks of the Leon formed temporary lakes both to the north and south of Eastland.

F.M. road 3101 was temporarily closed north of Eastland, but the road that crosses the old Eastland Lake was not damaged at that point as of presstime.

High water interfered with traffic flow on Hwy. 80 east in Eastland and water was flowing over the T&P Railroad tracks in the city. The trains were stopped and repair crews were standing by for fear of damage to the tracks.

According to Lewis Tiner, Eastland city manager, damage to city streets were pretty extensive. He went on to say that all the damage is still not known at this time because some of the streets are still under water.

Read the classifieds

## Courthouse News

Stanley J. Pirtle dba To Dr. Robert C. Miller Asgn OGL

Stanley J. Pirtle dba To Thomas Chalfant Asgn OGL Stanley J. Pirtle dba To Walter J. Baum Asgn OGL

Stanley J. Pirtle dba To Alfred J. Kobak Asgn OGL Stanley J. Pirtle dba To Howard I. Mason Asgn OGL

Stanley J. Pirtle dba To Robert O. Turek Asgn OGL Stanley J. Pirtle dba To Gerald Hirsch Asgn OGL

Stanley J. Pirtle dba To Carroll Sorelle Asgn OGL

Stanley J. Pirtle dba To Eugene S. Clark Asgn OGL Theodore Reich & Wife To Sunstar Properties OGL

Riddle Oil Co. To European Southwest Co. Asgn OGL

Gertrude M. Reynolds Ind. & Others To Litton Oil Corp. OGL

Harvey H. Russell & wife To Twin Drilling Co. OGL

L.G. Ross aka Lon G. Ross Dec'd To The Public Certified Copy Probate Jacky Rutledge & Wife To 1st St Bk, Rising Star Deed of trust

Charels Rose To Leland W. Carter OGML

Redeemer Luthern Ch. of Cisco To 1st Natl Bk, Cisco Deed of trust

Stephen Mark Riggs, Dec'd To The Public Proof of Heirship

Hellen Reansoner To James Wesley Beard & Others Rel. OGML

Jerry D. Robinson & Wife To Tommy Warford Appt. Sub. Trst.

Clifford Brawley Rust To The Public Certified Copy Probate

Virginia Weaver Russell To City of Eastland Warranty Deed

Sun Star Properties To Don Gorr Asgn ORR

Sun Star Properties To Deborah K. Jacoby Asgn ORR

Lorue Squyres To Ernestine Briley Warranty Deed

Lucille Hitchcock Standlee

## High Water Scene Monday



Looking North from 1000 Block of Avenue B in Cisco Monday morning



LOOKING WEST ON EASTLANDS MAIN STREET

Thursday, October 15, 1981

To J.E. Gardner OGML  
Homer Sanders & Wife To Grandpaw's Smokehouse Inc. Warranty Deed  
Johnny D. Scitern & Wife To Robert R. Adams & Wife Warranty Deed  
Kathryn Schmidt & Others To Cleo Davis Warranty Deed  
B.B. Spink To Hollis L. Cox OGL  
Ruth K. Sessions To Command Energy Corp. OGML  
Florence B. St. John To The Public Certified Copy Probate  
Bobby Glenn Standridge & others To Jack Bradshaw & Others OGML  
Southeastern Resources Corp. To Serpco, Inc. Asgn OGML  
Southeastern Resources Corp. To H.W. McCormick Asgn OGML  
Faye Swindal To Pinto Petroleum Inc. Asgn OGML  
Southeastern Resources Corp. To Claude E. Crider Asgn OGL  
Sioux Natl Bas Corp. To J.C. Bibby & Others Part. Asgn OGML  
Schkade Bros. Drlg. Co. To Clyde Houston Asgn OGL  
Southeastern Resources Corp. To Dan Flournoy & Others Asgn ORR  
Agnes Sullivent To Louise  
Hodges Warranty Deed  
Lois Spalding To William F. Bowles OGL  
Mary Daniel Stone To Leland W. Carter OGML  
Senkel Const. Co. To Roy Barnhill & Others Warranty Deed  
Naomi C. Stiefer To Frances Marie Zimmer Power of Atty.  
Sunbelt Savings To Ida Mae Cranfill Subordination Agreee  
Virgil T. Seaberry Jr. To The Public Aff'd  
Lena Ruth Stansell & Husband To E. Carter Bills II Tr. OGL  
C.D. Simmons & Wife To Charles L. Garrett Warranty Deed  
State of Texas To Frances Barnes Abstract of Judgment  
Charles L. Scarborough, Dec'd to The Public Proof of Heirship  
Jewel Davis Scarborough, Dec'd to The Public Proof of Heirship  
Davis Scarborough To Jim R. Wright M/D  
Lynn Talley To Odessa Natl Co. R/W  
Blanche O. Terrell To Sun Oil Co. OGML  
George M. Taff & Wife To T-Square Petro. Co. Inc. OGML  
Twin Drilling Co. Inc. To Harvey H. Russell Asgn OGL  
Amelia Tomlinson To Cibola Oil & Gas Co. Asgn OGL  
Judith A. Thomas To Thomas Resources Co. Asgn OGL  
James R. Templeton To Coy Oil Corp. OGML  
Patricia Tucker To Leland W. Carter OGML  
Mary Ann Tombs To Richard L. Viehmann Warranty Deed  
Bertha Tankersley To Frances Marie Zimmer Power of Atty.  
John Theis & Wife To Sidney W. Gill, Jr. Abstract of Judgment  
John Theis & Wife To Sidney W. Gill Jr. Judgment Default  
USA To Ralph I Ross & Wife Fed Tax Lein  
Union Central Life Ins. Co. To Jerry E. Wylie Amend. OGL  
U.S.A.-F.H.A. To Keith D. Evans & wife Rel. Deed of trust  
Grant Vadrine To Pinto Petroleum Inc. Asgn OGL  
J.F. Vaughan To Ola Marie Scott Power of Atty.  
Richard L. Viehmann Sr. To Betty Coffee & Husband Deed of trust

## THRIFTMART

# Super Valu Will Offer S&H Green Stamps Effective October 19.

Beginning October 19,  
Thriftmart and Super Valu Will Jointly Advertise  
Their Weekly Specials.  
Look For These Specials In The Newspaper Insert.

Both Stores Will Offer S&H Green Stamps  
And Discount Grocery Prices.

Be Sure To Watch For Our Grand Opening Specials Coming Soon.



**A DOLLAR SPENT IS A  
GIFT EARNED**  
TOTAL SHOPPING VALUE!



## Eden Off Lancaster-Ft. Worth Style

By Viola M. Payne  
Turning into the Botanic Gardens from busy Lancaster Rd. in western Ft. Worth gives a feeling of euphoria - a strange sense of unreality. Even the entrance to the place resembles pictures illustrating Bible stories for young people. You almost expect to see white-robed figures strolling under the trees, or lions and lambs romping together on the bright green grass. Surely the 114 acres in the area, including the Japanese Gardens, must be some of the loveliest real estate in Texas. It is hard to realize that the Botanic Gardens were once waste land, and the Japanese Gardens an abandoned gravel pit.

Work on the Botanic Gardens began as far back as 1933, when the city of Fort Worth decided some of the land along the Trinity River could be put to better use than providing an eye-sore for the public. But even while plans were being made for beautification the town was still in the grips of the depression. The Civilian Conservation Corp has just been established to give work to young people, so some of these men were taught how to build basic structures for the proposed garden. These included classic stone breezeways, retaining walls, magnificent flights of steps, and fountains.

This construction, of tan and gray native stone, is styled in a Grecian and European manner. It's as sound now as the day it was first mortared together - an enduring monument to the stone masons and workmen of the C.C.C. It is amazing that these young men, with generally urban backgrounds but none in the building trades, could have put together structures so lasting. But the C.C.C. was one of the Depression remedies which worked.

The bloom and color of the Botanic Gardens changes a great deal during the year, for it is arranged for seasonal variation. But one area - the formal rose garden - is filled with red roses from late April

through September. Here over 3,500 rose bushes are massed along flights of steps from a pergola, and around pools of hand-cut stone.

The grassy plots across the rest of the gently rolling acreage are bordered by splashes of color in the early Spring, from bulbs such as daffodils and tulips. Shrubs and such as redbuds, dogwood and azaleas are massed against the trees. Summer brings day lilies, petunias, zinnias and marigolds, ending with a stunning display of chrysanthemums in the fall. Winter, although more subdued, seems to always have a bit of color peeking through. And the trees, both native and transplanted, always curtain the scene.

Beside one of the roads into the Garden stands a modern Garden Center with offices, meeting rooms, and a small conservatory. Part of the conservatory features a spectacular collection of orchids and bromeliads gathered by a man named Charles Finance. Mr. Finance is only one of the many Ft. Worth volunteers who have donated countless hours to the Garden.

Behind the Garden Center is a garden for the blind and handicapped with waist-high, fragrant plants. Among these are lemon mint, rosemary, geraniums, thyme, and sage, bordered by the local Lighthouse for the Blind, identify each plant. A small fountain in the center adds a musical touch to the setting.

Scott Fikes, a Superintendent of Horticulture, is the person credited with starting the Japanese Garden in the 1960's. He had a vision of a quiet, meditative garden expressing a close relation between man and nature. He decided that the Japanese concept was what he wanted, and he convinced the City to buy the old gravel pit beside the Botanic Gardens. (Can you imagine some of the arguments in the City Council over that, and what he was probably called!)

By 1963 general plans for the Garden were drawn up, but it remained for Dr.

Kingsley Wu, then a professor at Texas Woman's University, to rework them and draw the final designs. The Garden was first opened to the public in 1970, and today visitors from all over the world pass through the Tori-Gate into another environment.

Unlike the Botanic Gardens, which charges nothing for admission, the Japanese Gardens has a small fee for adults. (None for children). Inside the large gate is small fenced garden, then a smaller Tori-Gate opening to the main Garden.

The original gravel pit was composed of outcroppings of conglomerate rock on two sides, leaving a central basin which now contains three large pools. The water for these is channeled from the nearby Trinity River, and falls into the area from a twenty ft. waterfall. After flowing through the entire garden, this water is tunneled back into the river.

Children particularly enjoy the colorful mandarin ducks which live beside the pools, and the bright-colored carp which flash through the water. Many tons of stone have been used to border the stream and the winding pathways of the garden. There are moss-covered native stones, pink granite from a bluff in Ft. Worth, stone steps donated from pioneer Ft. Worth homes, marble pieces from Marble Falls, Texas, and black and white rocks from the rivers of Mexico.

With an idea of giving quiet repose and communion in the garden, hundreds of trees were planted to go with the native oaks, hackberries, and mesquites. Pines are mingled with bamboo and lacy Japanese maples. Over 75,000 plants grown in the City greenhouses were placed among this backdrop of trees, including flowering cherries, peaches, Mexican plums, crabapples and dogwoods.

Five Shinto-style teahouses were built around trees on the western edge of the garden, above the ponds and arched Moon Bridge.

They add a focal point to the tranquility of the place.

Such visions as the Japanese and Botanic Gardens are quite a contrast to some aspects of life in Ft. Worth. They remind us that although a City can set forth the very worst man has to offer, it can also give the very best. Fortunately most of us have some control over where we spend our time. And the end result is that we become mentally what we behold.

So can Eastland County people afford to go see the Botanic Gardens? How can we afford not to go?

## Treasurer Harding Distributes \$25 Million For County Road Fund

State Treasurer Warren G. Harding announced today that early next week \$25,770,675.15 will be distributed to the 254 Texas counties. These funds are the Lateral Road Fund administered by the State Treasurer's office as allocated by the sixty-seventh legislature.

The Eastland County allocation is \$97,998.59, and the funds will be used for the construction and improvement of county roads. The lateral road fund is comprised of monies derived from

## Eastland County Young People Preparing For The Future

Viola Payne

Greg Qualls, the son of Lou Jane Qualls of Cisco, graduated from Cisco High School in 1980. His High School years were marked by numerous accomplishments, including that of reaching the State Finals in Choir in 1978 and 1979. He also excelled in academic work, publications, drama and photography.

At the present time Greg is enrolled in Cisco Junior College, where he is studying Business and Psychology. He also serves as Vice-President of the Student Government Association at C.J.C.

Greg attends the First Methodist Church in Cisco, and is very interested in Church activities. He still enjoys photography and music, but also spends quite a bit of time working at Sears Roebuck at Cisco.

Upon graduation at C.J.C., Greg hopes to attend the Perkins School of Theology at S.M.U. and become a Methodist minister.

Kathy Phillips of Cisco, a graduate of Cisco High School, is attending C.J.C. on a basketball scholarship. Her major is Psychology, and her goal upon graduation is to be a School Counselor and Coach - using both academic and sports talents. When she finished Cisco Junior College she plans to attend Wayland Baptist College or San Angelo State.

Kathy, an outstanding student, has had numerous awards. She was named "Who's Who In American High Schools" for 2 years,

President of her Senior Class in High School, Co-Captain for the High School Basketball team for 1979 and 1980. In 1980-81 she received Honorable Mention in the Hustle Award for basketball, and also came in 3rd place in District for several years. In softball Kathy was a pitcher for the Minibandits of Cisco for several years, and won numerous all-star trophies. Kathy is President of her Sunday School Class at the Calvary Baptist Church in Cisco, and finds the activities of the Church very interesting.

## Halloween Parties Are Fun...

...and Hallmark paper partyware makes them easy, too. Our perky pumpkin design is festive and makes clean-up a snap.



© 1981 Hallmark Cards, Inc.

## HEATHER'S

711 AVENUE D CISCO, TEXAS



9:30-5:00 M-F 10:00-5:00 Sat.

442-2091

SPONSORED BY CARBON LIONS CLUB

Sat., Oct. 17, 1981

All Day - Down Town Carbon

# Annual Fall BLIND MADE MOP and BROOM SALE

FALL 1981 PRICE LIST - ALL PRICES SUBJECT TO STATE SALES TAX

<b>Mops</b>	<b>WAREHOUSE MOP</b> 24 oz. 3 ply cotton #101 \$5.50	<b>COTTON HOUSE MOP</b> 16 oz. #102 \$3.75	<b>RAYON HOUSE MOP</b> 12 oz. #103 \$3.75	<b>TOY MOP</b> excellent utility & BBQ mop #104 \$2.00	<b>SPONGE MOP</b> with scrubber brush #105 \$5.25	<b>SPONGE MOP REFILL</b> #107 \$1.50	<b>WINDOW SQUEEGEE</b> combination sponge/scrubber/squeegee #142 \$2.75	<b>16 Oz. RAYON MOP HEAD</b> #116 \$3.50	<b>24 Oz. COTTON MOP HEAD</b> #124 \$4.00
-------------	--	--	---	--	---	---	---	---	--

<b>Brooms</b>	<b>WAREHOUSE BROOM</b> 4 rows stitching steel band #201 \$6.00	<b>HOUSE BROOM</b> 5 rows stitching #205 \$5.00	<b>DAINTIE BROOM</b> light weight 100% broom corn #206 \$4.00	<b>RAINBOW BROOM</b> light weight flanged plastic bristles #207 \$4.00	<b>WHISK BROOM</b> #208 \$2.00	<b>TOY BROOM</b> #209 \$2.00	<b>LAWN RAKE/CARPET BROOM</b> no-snap spring steel construction #210 \$5.50
---------------	--	---	---	--	-----------------------------------	---------------------------------	---

<b>Brushes</b>	<b>GARAGE/PATIO BRUSHES</b> Oil & grease resistant maroon plastic bristles for tough jobs on rough surfaces #314-14" Complete \$10.75 #318-18" Complete \$14.75 #324-24" Complete \$16.75	<b>TAMFICO FLOOR BRUSHES</b> Soft natural black tampico bristles for finest dust & dirt #418-18" Complete \$14.75 #424-24" Complete \$16.75	<b>PLASTIC FLOOR BRUSHES</b> Colorful soft plastic bristles with flanged tips resist moisture for fine dust indoor or out #518-18" Complete \$14.75 #524-24" Complete \$16.75	<b>GONG BRUSH</b> 9 1/2" handle #708 \$2.50	<b>GONG BRUSH</b> 20" handle #720 \$4.25	<b>BOWL BRUSH</b> #730 \$1.50	<b>COUNTER BRUSH</b> #740 \$4.50	<b>GRILL BBQ BRUSH</b> #768 \$4.00	<b>DELINER BRUSH</b> #777 \$2.50
----------------	---	--	--	---	--	----------------------------------	-------------------------------------	---------------------------------------	-------------------------------------

<b>Miscellaneous</b>	<b>DISH TOWELS</b> two to package #829 \$2.75	<b>SPONGE/SCOURER</b> #829 \$1.25	<b>SCRUBBERS</b> two to package #830 \$2.00	<b>DISH CLOTHS</b> four to package #821 \$2.75	<b>DUST CLOTH</b> #822 \$1.00	<b>POT HOLDER</b> #824 \$1.75	<b>OVEN MITTS</b> two to package #825 \$3.00	<b>WASHING MACHINE BAG</b> #827 \$2.75	<b>IRONING BOARD COVER &amp; PAD</b> #826 \$3.50	<b>TOILET BOWL DEODORIZER</b> #890 \$1.00	<b>FLY SWATTER</b> #843 \$1.50
----------------------	---	--------------------------------------	---	--	----------------------------------	----------------------------------	--	---	---	--	-----------------------------------

<b>Mats</b>	<b>RUBBER DOOR MATS</b> made from old tires almost indestructible Approximate sizes SMALL 14"X16" #901 \$ 7.50 LARGE 22"X39" #903 \$13.50	<b>GRASS DOOR MATS</b> deep green synthetic turf extremely wear & fade resistant Approximate sizes SMALL 18"X24" #911 \$5.00 LARGE 24"X36" #913 \$9.50
-------------	---	--

The Caravan Sales Truck brings quality Texas blind made products to you.

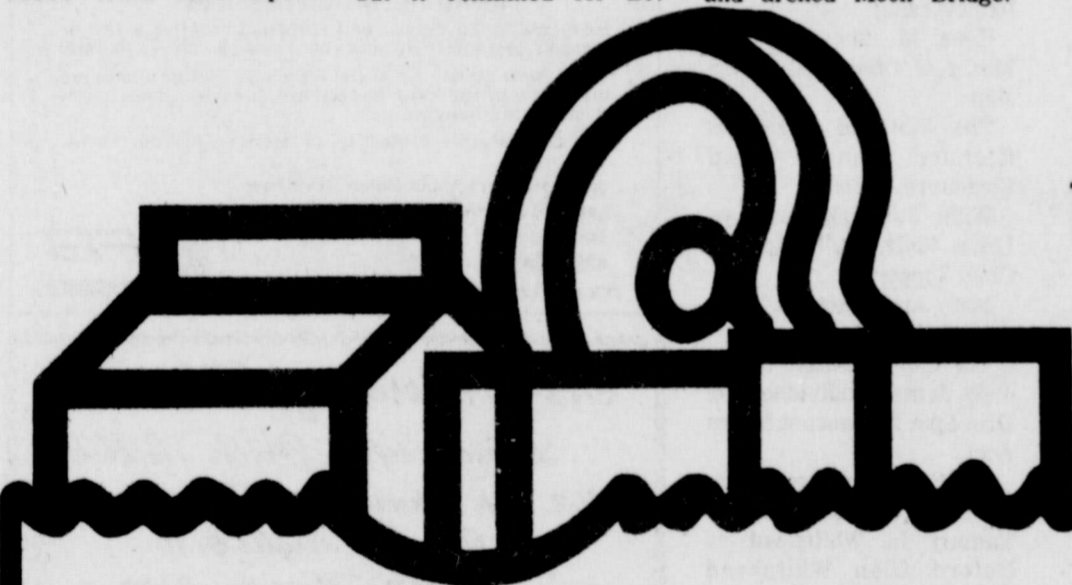
Helping your service club Helping the Lighthouses for the Blind

Caravan Sales for the Blind  
Route 13 • Box 276  
Eden Road  
Fort Worth, Texas 76119  
Telephone: 817/572-2051

## VOTE FOR 5.

HELP HOLD THE LINE ON YOUR FOOD COSTS!

(Pol. ad., paid for by the Eastland County Farm Bureau)



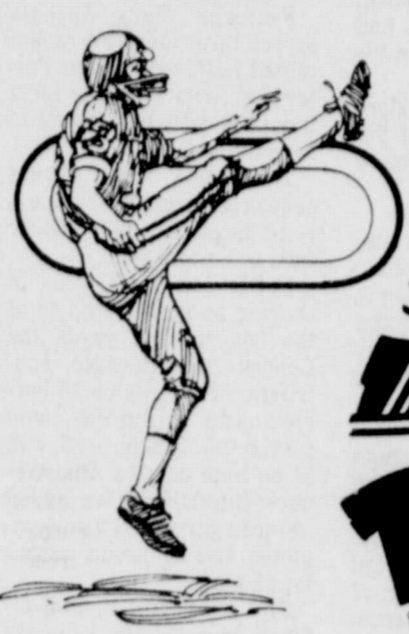
If you're concerned about rising grocery costs, here's something you can do about it.

On November 3, you can make a positive step toward helping hold the line on rising grocery costs. Proposition 5, one of seven proposed Constitutional Amendments which will be offered on the ballot, would include livestock and poultry with all other farm products as exempt from property (ad valorem) taxes. The effect of passage of this amendment will be to lower production costs for livestock and poultry. In the long run, this will be a positive step we can take to help hold the line on grocery price increases. For you and for your family, both now and especially in the future, this may be one of the most important votes you'll ever cast.





# FOOTBALL OPENING



Cisco Loboes  
Kicking Off  
At 7:30 P.M.

**Rah! Team! Rah!**



## 1981 SCHEDULE

### CHS Varsity

- Sept. 4 Haskell Home 8:00 p.m.
  - Sept. 11 Baird Away 8:00 p.m.
  - Sept. 18 Goldthwaite Away 8:00 p.m.
  - Sept. 25 OPEN
  - Oct. 2 Eastland Away 7:30 p.m.
  - Oct. 9 Early Home 7:30 p.m.
  - Oct. 16 Dublin Home 7:30 p.m.
  - Oct. 23 DeLeon Away 7:30 p.m.
  - Oct. 30 Bangs Home 7:30 p.m.
  - Nov. 6 Ranger Away 7:30 p.m.
  - ★ ★ Nov. 13 San Saba Home 7:30 p.m.
  - ★ ★ Homecoming
- ALL DISTRICT GAMES BEGIN AT 7:30 p.m.

### Cisco Junior College

- Sat. Sept. 5 McMurry Cisco 7:30
- Thur. Sept. 10 SMU Dallas 7:30
- Thur. Sept. 17 Texas Tech Lubbock 7:30
- Sat. Sept. 26 Ranger Breckenridge 7:30
- Thur. Oct. 1 U.T. Arlington 7:30
- Thur. Oct. 8 WTSU Canyon 5:00
- Fri. Oct. 16 TCU Ft. Worth 2:00
- Thur. Oct. 22 Ft. Hood Cisco 7:30
- Sat. Oct. 31 NMML Cisco 2:00
- Sat. Nov. 7 NEOAM Miami, Ok. 7:30

### JUNIOR VARSITY

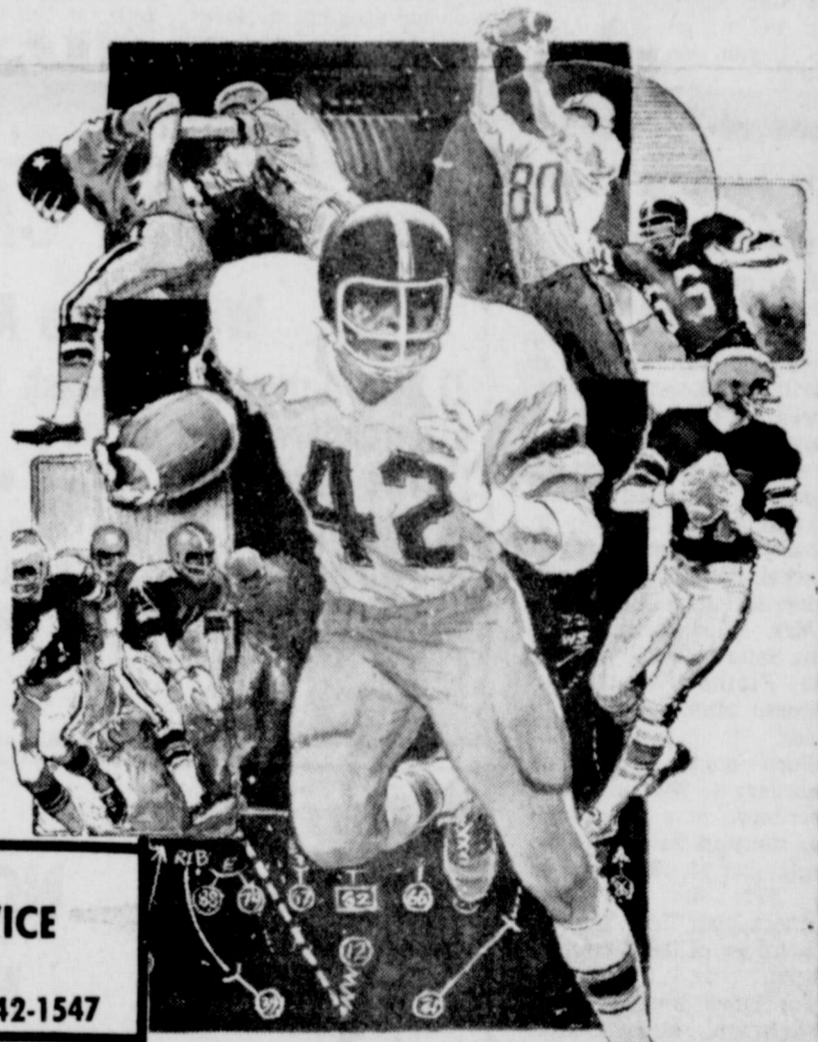
(all games played on Thursday nights)

Sept. 3	Haskell	Away	7:30 p.m.
Sept. 10	Baird	Home	7:30 p.m.
Sept. 17	DeLeon	Home	7:30 p.m.
Sept. 24		OPEN	
Oct. 1	Eastland	Home	7:30 p.m.
Oct. 8	Early	Away	7:30 p.m.
Oct. 15	Dublin	Away	7:30 p.m.
Oct. 22	DeLeon	Away	8:00 p.m.
Oct. 29	Bangs	Away	7:30 p.m.
Nov. 5	Ranger	Home	7:30 p.m.

### SEVENTH AND EIGHTH GRADE

(all games played on Thursday nights)

Sept. 10	Baird	Home	7th 5:00	8th 6:00
Sept. 17	DeLeon	Home	7th 5:00	8th 6:00
Oct. 1	Eastland	Home	7th 5:00	8th 6:00
Oct. 8	Early	Away	7th 5:00	8th 6:00
Oct. 15	Dublin	Away	7th 5:00	8th 6:00
Oct. 22	DeLeon	Away	7th 5:30	8th 6:30
Oct. 29	Bangs	Away	7th 5:00	8th 6:00
Nov. 5	Ranger	Home	7th 5:00	8th 6:00



**The First National Bank**  
CISCO, TEXAS  
Member F.D.I.C.

**QUICK WAY GROCERY DELICATESSEN & BAKERY**  
1104 West 8th Open 24 Hours 442-3508

Compliments of  
**CISCO RADIATOR SERVICE**  
Jim & Richard Butler  
207 East 6th 442-1547

Come On Out And Join Us!  
**WHITE ELEPHANT**  
Restaurant  
1-30 West Cisco, Texas Open 24 Hours Every Day

**STATE FARM INSURANCE**  
Eddie McMillan  
801 Avenue D. 442-1671

**TED'S AND REX'S ONE STOP**  
North Ave. D 442-1188 Cisco  
Groceries-Gas-Tires-Used Pickups-Utility Trailers-Guns-Ammo

**MERLE NORMAN COSMETIC STUDIO**  
709 Ave. D Cisco 442-3113

**CISCO FUNERAL HOME**  
203 West 7th 442-1503

**OIL STATES RUBBER CO.**  
Humbletown Cisco 442-3666

**Fashion Cleaners**  
110 West 6th 442-3540

**S&M SUPPLY & REYNOLDS MANUFACTURING CO.**  
Siding - Windows 105 East 8th  
Call Us For Free Estimates 442-2077

**KIMBROUGH FUNERAL HOME**  
300 West 9th 442-1211

**FOR SALE**

**SUPER VALU**  
1002 Ave. D Cisco

**THRIFT MART**  
1010 Ave. E Cisco

**PIERCE MOTOR COMPANY**  
119 West 7th 442-1566

**THE CISCO PRESS**  
700 Ave. D 442-2245

**CITY DRUG**  
800 Ave. D 442-2587 Cisco

**MADISON'S WESTERN STORE**  
"Look For The Horse"

Cisco, Eastland, Ranger

## SOUTHERN TV CABLE SYSTEM

Inviting You To Watch All Of The Games  
NCAA-AFL-NFL-WFL

