

PAGE ONE

A QUICK READ OF THE NEWS

A UFO has landed

Double-takes abound when people pass by Alan Lewis' house in Concord, Mich., where a flying saucer appears to have landed.

It's actually a 600-pound model made of fiberglass, aluminum, steel and plastic, and adorned with colored lights.

A plastic alien peers out from the silver spacecraft, which resembles an upside-down satellite dish propped on a plastic tube.

"I like having something not too many people have," Lewis said. "All the neighbors I've talked to, they're all for it. They think it's cool."

He said he bought the model from a roadside merchant just north of Lansing, Mich., and paid \$400, which included \$200 for delivery. He bolted it to a large concrete slab near the side of his house about six weeks ago.

Hot dogs or yogurt?

At Pacific Bell Park, where San Francisco Giants fans usually wash down hot dogs with cold beer and soft drinks, a unique food vendor has emerged: the farmer's market.

Apricots, plums and parfaits of yogurt with locally grown blackberries are all for sale at a farm stand on the elite club level where folks pay \$3,600 for season tickets.

The farm fruits probably will never rival the park's famed garlic fries — recently named by *Gourmet* magazine as one of the 100 great things about San Francisco — but they do offer a healthier alternative to the usual ballpark selections.

Fans also can now get lobster rolls at Tropicana Field in St. Petersburg, Fla., fish tacos at Qualcomm Stadium in San Diego and sushi at Safeco Field in Seattle.

County takes step toward tax abatements

JOURNAL STAFF REPORT

The Bailey County Commissioners' Court has taken the first step toward offering tax abatements to get industry into the county.

The action last week consisted of passing a resolution endorsing the concept of tax abatements and guidelines under which

such incentives could be granted.

County Judge Marilyn Cox said an earlier commissioners' court took similar action March 1989 but apparently never actually granted any tax abatements.

The action must be renewed every two years or it expires automatically, she added. It can be amended or repealed by a 3/4 vote

of the commissioners' court.

The county will have to schedule a public hearing now in order to declare a re-investment zone, which Cox suggested could include all the unincorporated parts of the county.

see TAX on page 2

Friona to host Beef/Forage Conference

JOURNAL STAFF REPORT

Texas Cooperative Extension has scheduled a Beef and Forage Conference for Aug. 9 at the Friona Community Center.

Registration for the event will be from 9 a.m. to 9:30 a.m.

The conference begins with Dr. Ted McCollum III, Extension beef specialist, speaking on "Tuberculosis Regulation" from 9:30 a.m. to 10 a.m.

Other speakers and topics include:

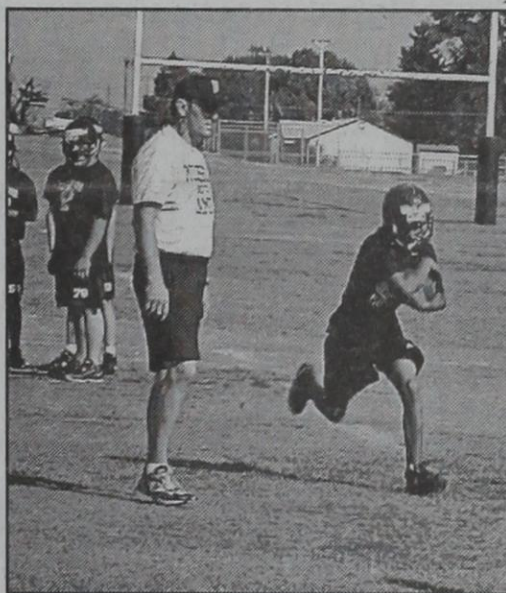
- 10 a.m. to 10:30 a.m. — "Optimizing Forage Production With Small Grains" by Dr. Calvin Trostle, Extension agronomist;
- 10:30 a.m. to 11 a.m. — "Stocker Cattle Management on Wheat Pasture," again by McCollum;
- 11 a.m. to 11:30 a.m. — "Alfalfa Production," again by Trostle;
- 11:30 a.m. to noon — "Drought Management Strategies for Cow/Calf Operations," by McCollum;
- Noon to 12:30 p.m. —

see BEEF on page 2



Journal photos: Beatrice Morin

Freshmen and coaches line up Monday during 2002's first day of two-a-day workouts.



Gridiron time!

Mule football teams have begun two-a-day workouts, with freshmen working as hard as anyone. At right, Rudy Gonzales runs a pattern while at left, Ely Villa hugs the ball. The varsity's first scrimmage is scheduled for 10 p.m. Aug. 17 at home against New Deal, while the opening game is set for 8:30 p.m. Aug. 30 at Seminole. The freshman season doesn't open until Sept. 12 at Shallowater.



LOTTO TEXAS

Drawing date: Saturday, August 3
Winning numbers: 2-16-20-30-41-42
Estimated jackpot: \$9 million
Winners: 0
Next drawing: Wednesday, August 7
Estimated jackpot: \$12 million

On this date in history

Aug. 9 — The first overland mail coach leaves San Antonio for San Diego (1857).

Aug. 12 — Temple Houston becomes the first child born in the Texas Governor's Mansion (1860).

LOCAL WEATHER

The National Weather Service is predicting a 30 percent chance of isolated thunderstorms across the area Thursday through Monday. High temperatures should range from about 90 on Saturday to about 94 Thursday and Monday. Morning lows should be consistently in the low 60s.

Editor Ronn Smith can be reached at 272-4536 or ctyankee@fivearea.com

Missed your paper? Call carrier Yolanda Martinez at 272-4536 during business hours, 8:30 a.m.-5 p.m.

Election judges, alternates named

JOURNAL STAFF REPORT

Bailey County commissioners last week appointed election judges and alternates for the next two years.

Terms expire July 31, 2004.

Those appointed and their party affiliation (where they specified one) include:

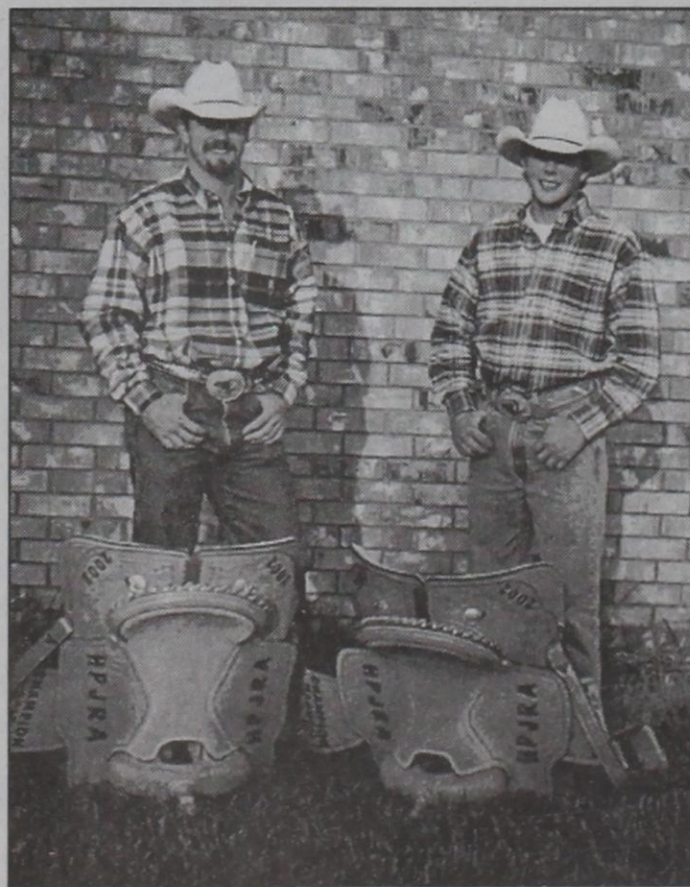
- Voting box No. 1 — Druscilla Hutton, Republican, judge; and JoAnne Head, Democrat, alternate; both of Muleshoe;
- Voting box No. 2 — Ernest Ramm, Republican, judge; and Freda Long, Democrat, alternate; both of Muleshoe;
- Voting box No. 3 — Paula Foley of Sudan, Republican, judge; and Kay Kindle of Maple, no party specified, alternate.
- Voting box No. 4 — Deborah Noble, Republican, judge; and Jan Springfield, Democrat, alternate; both of Muleshoe.
- Voting box No. 5 — J.C. Snitker of Morton, Democrat, judge; and Wanda Layton of Morton, Republican, alternate.
- Voting box No. 6 — Ginger Damron, Democrat, judge; and Ruth Hall, Republican, alternate; both of Sudan.
- Voting box No. 7 — Jim Hartline, no party specified, judge; and Cordelia Aguirre, no party specified; both of Muleshoe; and
- Voting box No. 8 (early voting) — Pat Kirk, no party specified, judge; and Joan Lewis, no party specified, alternate; both of Muleshoe.

Health fair set for Aug. 18; final planning is Aug. 13

Organizers of Muleshoe's Community-wide Health Fair announced this week that the event is scheduled for 4 p.m. to 7 p.m. Aug. 18 at the Eastside

City Park.

Also, another planning session will be held at 10 a.m. Aug. 13 in the Anne Camp Meeting Room at the library.



Courtesy photo

Champion cowboys

Jeffery "JT" Seaton (left) and Sterling "Spud" Via, both of Lazbuddie, show off the saddles they won recently as High Plains Junior Rodeo Association division champions. Via, son of Jan and Guy Walt Via, was the champion team roper (header) in the 13-to-15-year-old division. Seaton, son of Jimmie Dale and Rickie Seaton, was the champion calf roper in the 16-to-19-year-old division.

Farm-bill seminar scheduled

A 2002 farm-bill seminar is scheduled for Aug. 13 at the Bailey County Coliseum, according to Curtis Preston, Texas Cooperative Extension agent in Bailey County.

Registration begins at 8:30 a.m., with the first 200 registrants receiving a free lunch.

The seminar is open to the public, with the following speakers:

- Kim Hanlin and Curt Miller, Farm Service Agency directors for Bailey and Parmer counties, respectively, will kick off the seminar with an overview of the new farm program.

- Jackie Smith, an Extension economist, will review the bases-and-yield soft-

see BILL on page 2

AROUND MULESHOE

Football tickets going on sale

People who held reserved-seat tickets for Muleshoe Mule football last year may pick up their new ones starting Aug. 12 at the district administration office, 514 W. Avenue G.

Ticket holders may claim their tickets in person, by mail (with the ticket holder's personal-check) or via a third party (if payment is made with the ticket holder's personal check).

More information is available by calling Dana Rasco at 272-7400.

Church plans parenting class

Trinity Christian Center Church has scheduled a parenting class, "Growing Kids God's Way," to begin Sept. 10.

An introductory video will be shown at 7 p.m. Aug. 13 at the church. Registration deadline is Aug. 26.

The curriculum covers the husband-and-wife relationship, how to express love to a child, the child's conscience, discipline, obedience, building a healthy family and more.

More information is available from Curtis and Karie Preston at 272-5861 or the church office at 272-3877.

Public calendar

Aug. 8 — Muleshoe Economic Development Corp. board meeting cancelled.

Also on Aug. 8 — 6:30 p.m. at Leal's Restaurant. Blood Drive Committee meeting; anyone interested is welcome.

Also on Aug. 8 — 8:30 p.m. Fine Arts Boosters, in the high school band hall. All parents of high school art, speech, choir and band students are invited to help elect officers and plan for the coming school year.

Aug. 12-13 — Registration of Watson Junior High students. Hours on Aug. 12: 9 a.m. to 11 a.m. and 1 p.m. to 3 p.m. Hours on Aug. 13: 9 a.m. to 11 a.m., 1 p.m. to 3 p.m. and 5 p.m. to 7 p.m. Students new to the district may register through Aug. 9 from 8 a.m. to 11 a.m. and 1 p.m. to 3 p.m. Information: 272-7349.

BEEF

from page 1

Lunch;
 • 12:30 p.m. to 1 p.m. — "Tax Implication of Selling Cattle During Drought" by Jay Yates, Extension risk-management specialist from Lubbock;
 • 1 p.m. to 1:30 p.m. — "Financial and Risk Management Assistance for Beef

Producers" by Will Phinizy, Extension risk-management specialist from Uvalde; and
 • 1:30 p.m. to 2 p.m. — "Forage Pests" by Monti Vandiver, Parmer/Bailey County integrated pest-control management agent.
 The public is invited.

Aminals

By David Sung



"Wait, wait hold on. The lions just ordered another round. We don't hafta run away yet."

BILL

from page 1

ware available on the Internet.

• James Tillman, with the Natural Resource Conservation Service in Temple, Texas, will discuss the "equip" program.

The seminar will conclude after lunch with a panel discussion involving all the speakers, Preston said.

The seminar is sponsored by Texas Cooperative Extension, Muleshoe State Bank and Ronnie Holt Insurance.

More information is available by contacting Extension agents (in Bailey County) Curtis Preston at (806) 272-4584 or (in Parmer County) Cody Hill at (806) 481-3619.

TAX

from page 1

She said the measures approved are similar to those in effect in Parmer County, which has used the policy "several times" — such as during Excel expansions.

Tax breaks would be allowed for up to five years, two during construction and three thereafter.

The business would be required to bring at least five permanent full-time jobs or a \$300,000 capital

investment to the county. The tax break would be forfeited if the business is not operational for at least seven years.

In other action last week, the court accepted the only bid received for fuel (Dale Oil, at 5 cents per gallon above wholesale) and waived the probation period (for salary) for Dawn Merriott, director of aging and veterans' services.

THERE IS NO PLACE LIKE THIS PLACE ANYWHERE NEAR THIS PLACE SO THIS MUST BE THE PLACE

- Quality family eye care - Reasonable cost
- Friendly atmosphere - In Clovis
- Contact lenses - All types

*** NEW MEXICO & TEXAS MEDICAID *** VSP ***
 ECPA, MEDICARE, TRICARE *** DAVIS VISION INSURANCES FILED

Call for Appointment
 Se Habla Español

Dr. A.R. Ploudre
 (Optometrist)
 1515 GIDDING ST., CLOVIS
 505-762-2951

Do You Have Story or Photo Ideas? Let us know! We're striving to be your source for local news and views!

For story ideas, talk with Ronn Smith.
 For photo ideas, talk with Beatrice Morin.

272-4536

Muleshoe Journal USPS 367820
 Established February 23, 1924. Published by Triple S Publishing, Inc. Every Thursday at 304 W. Second, P.O. Box 449, Muleshoe, TX 79347.
 Periodicals Postage paid at Muleshoe, TX.
 POSTMASTER: Send address changes to the Bailey County Journal, P.O. Box 449, Muleshoe, TX 79347.
 We are qualified members of:
 Panhandle Press Association, National Newspaper Association, West Texas Press Association and Texas Press Association

WEST TEXAS PRESS ASSOCIATION
 PPA Panhandle Press Association

TA MEMBER 2002
TEXAS PRESS ASSOCIATION

Scot Stinnett, Publisher
 Lisa Stinnett, Vice-President/Comptroller
 Ronn Smith, Editor
 Beatrice Morin, Classifieds
 Leah Bell, Advertising
 Yolanda Martinez, Office Assistant

© 1990
 SUBSCRIPTIONS: Muleshoe Journal and Bailey County Journal
 By Carrier Yearly - \$22.00
 • Bailey County — by mail - \$24.00
 Elsewhere - \$26.00
 Advertising Rate Cards on Application

Advertisers should check their ad the first day of insertion. The Journals will not be liable for failure to publish an ad or for a typographical error or errors in publications except to the extent of the cost of the ad for the first day of insertion. Adjustment for errors will be limited to the cost of that portion of the ad where the error occurred.

Store #34
 312 W. AMERICAN BLVD.
 Muleshoe, TX
 (806) 272-4862

August 4, 2002 thru August 31, 2002

TOM'S SUNFLOWER SEEDS
 2.5 OZ.
2 \$1

PEPSI MOUNTAIN DEW, REG. OR DIET
\$1.69
 3 LTR.

PEPSI MOUNTAIN DEW, REG. OR DIET
\$1.79
 6 PACK

LANA'S PORK EGG ROLLS
 REG. \$1.29
2 \$1.29

TALLSUP 32 OZ.
89¢
 GET A FREE 5 STICK PACK OF WRIGLEY'S GUM

ALLSUP'S ADVANTAGE CARD
 No Connection Fee!

Don Honesto
 TARJETAS TELEFONICAS PREPAGADAS

PREPAID PHONE CARD
CoinSaver
 Great for Long Calls!

TOM'S CORN CHIPS OR PUFF CHEESE
 REG. 99¢
89¢

ALLSUP'S WATER
 6 PACK / .5 LITER
\$1.89

BUY 12 GALLONS OF FRESH ALLSUP'S MILK... GET ONE FREE!

ALL KODAK FILM \$1.00 OFF

BAR 5 HOT CAJUN SAUSAGE
 12 OZ.
99¢

ALLSUP'S COMBO MEALS

COMBO NO. 1	2 BURRITOS & 32 OZ. TALLSUP	\$2.29
COMBO NO. 2	CHICKEN BITES & 32 OZ. TALLSUP	\$2.59
COMBO NO. 3	BBQ SANDWICH, HOWLERS & 32 OZ. TALLSUP	\$2.49
COMBO NO. 4	BREAKFAST BURRITO, HASHBROWN & 16 OZ. COFFEE	\$1.99

Get the jump on perennials, fall veggies

By **RONN SMITH**
Editor

There's still time to start many perennials from seed this summer (see package directions) as well as start some of the more heat-tolerant fall vegetables.

Remember to plant turnips within the next week or so. Not only will you get a good supply of tender greens shortly, but the roots will be maturing as weather turns cooler, and the flavor will make you never want store-bought turnips again.

Well, maybe you already don't want store-bought turnips... What I mean is that even if you think you don't like turnips, fresh-dug ones might change your mind. They're sweet enough that it's a shame to cook them — chop them up in a salad or just slice them and eat!

Also think about planting a late crop of green beans and



beets.

Once things cool off, try planting a crop of radishes every two weeks until late September, and also most salad greens will produce a late crop.

Fall also is the proper time to plant garlic.

•••

Time to make decisions on spring-flowering bulbs, to be planted this fall.

There's no real substitute for buying them locally, where you can pick the individual bulbs or at least examine them in net bags to see that they all look alive.

But if you want quantities or varieties that aren't available locally at a practical price, you may want to order by mail.

There are more reliable mail-order outlets than I can list here — often the huge mail-order nurseries or else divisions of them. For instance, The Daffodil Mart was bought out a few years ago and became a subsidiary of White Flower Farm.

Some that are still independent "boutique" sources (as far as I know) are:

- Brent and Becky's Bulbs, 7463 Heath Trail, Gloucester, Va. 23061; (804) 693-3966; catalog free; www.brentandbeckybulbs.com.

Recommended as the best by Garden Design magazine, offering a great selection of unusual bulbs along with most of the common ones. "Brent and Becky" started The Daffodil Mart years ago

and sold out, but then shortly decided to go back into the business.

This has not been a catalog full of fancy color photos, but the prices generally reflect the savings of not putting out a fancy catalog.

- Russell Graham, 4030 Eagle Crest Road NW, Salem, Ore. 97304; (503) 362-1135; catalog \$2.

Huge number of ferns and other woodland plants (note: not for dry heat unless you want to baby them), as well as many unusual bulb offerings.

- John Scheepers Inc., 23 Tulip Drive, Bantam, Conn. 06740; (860) 567-1038; catalog free; www.johnscheepers.com.

Recommended as the best by some garden magazines. Also owns Van Engelen (same mailing address), which specializes in large orders with quantity dis-

counts.

- McClure and Zimmerman, P.O. Box 368, Friesland, Wis. 53935; (800) 883-6998.

Many unusual species, including hard-to-find daylily species (as opposed to the garden-bred varieties we all know).

- High Country Gardens, 2902 Rufina St., Santa Fe, N.M. 87507-2929; (800) 925-9387; www.highcountrygardens.com.

Mainly a source for dry-climate perennials, but in recent years has been adding bulbs. This year's selection of daffodils is pretty good, considering it's a sideline, and there are crocus, muscari and Dutch iris as well.

Back To School SALE

\$10 Off
Men's & Ladies Athletic & Leather Shoes



\$5 Off
Children's Athletic Shoes

Sale good through August 17
Williams Athletics
1405 W. American Blvd.
272-6853

Studies prove that reading increases knowledge. Read the Journal and you'll know it all!

OBITUARIES

FERN HOLT

Services were held Saturday at Calvary Baptist Church in Portales for Fern Holt, 68, of Portales. The Revs. Kenneth Dunsworth and Joe Riley officiated. Burial was in Morton Cemetery.

Wheeler Mortuary of Portales handled arrangements.

Mrs. Holt was born Sept. 8, 1933, in Texico. She died July 31 at home.

She moved to Portales from Pleasant Hill as a teen-ager. She attended junior high and high school in Portales, graduating in 1951. She earned an associate degree in secretarial science at Eastern New Mexico University.

She married Jackie Holt on Sept. 7, 1956.

She was the bookkeeper for Dr. Howard McDonald's optometry practice from 1977 to 1985. After his retirement, she worked for Dr. Johnny Barnes for about a year before joining Bishop Printing as bookkeeper. She worked there until 1994.

In retirement, she remained very active at Calvary Baptist Church, where she was a member. She sang in the choir, participated in the adult Sunday school class, helping keep Sunday school records and was active in Triple L.

She volunteered for Meals on Wheels and also helped at polling places during elections.

Mrs. Holt is survived by her husband; two sons, James A. Holt of Bartlesville, Okla., and Larry W. Holt of Gladewater, Texas; four sisters, Georgie Stone of Roswell, N.M., Nora Davis of Hereford, Betty Branch of Amarillo and Jessie Pate of Lovington, N.M.; and two grandchildren.

She was preceded in death by a brother, Bert Davis, and a sister, Gerene Martin.

Pallbearers were Ricky Smith, G.A. Gossett, Gaylan Gossett, Virgil Gossett, J.F. Stone and Mike Ryan.

GENEVA NICEWARNER
Services were held Wednesday at the First United Methodist Church of Morton for Geneva Famuliner Nicewarner, 91, of Morton. The Rev. Marvin Gregory officiated. Burial was in Morton Memorial Cemetery.

Ellis Funeral Home of Morton handled arrangements.

Mrs. Nicewarner was born

Aug. 25, 1910, at Garden City, Mo. She died Saturday at Cochran Memorial Hospital in Morton.

She married Joe Nicewarner on Nov. 13, 1948, in Lubbock. He died in February 1983.

She was a graduate of Garden City High School and had lived in Morton since 1931, when she moved there from Garden City.

She retired in 1948 from the First State Bank of Morton, where she worked as a bookkeeper.

She was a member of the First United Methodist Church, the 1936 Study Club of Morton and the Monday Bridge Club of Morton.

Mrs. Nicewarner is survived by two sisters-in-law, Jean Famuliner and Octavie Famuliner, both of Carrollton, Mo.; a brother-in-law, Howard Bartlett of Lubbock; five nephews, Dennis Famuliner, Donald Joe Famuliner, George Famuliner and Jim Famuliner, all of Carrollton, Mo., and Bill Barrett of Lubbock; and four nieces, Martha DeVries, Mary K. Hawkins and Barbara Baxter, all of Carrollton, Mo., and Susan Carter of Tulsa.

She also was preceded in death by a brother, Sherman Famuliner, in February 2000.

The family suggests memorials to the First United Methodist Church (418 W. Taylor St., Morton 79346).

BILL KNOWLTON

Services were held Tuesday at Bailey and Foster Chapel in Palestine, Texas, for Bill Knowlton, 64, of Palestine. The Rev. Larry B. Krohn and Christi Hoffman officiated. Burial was in Muleshoe Memorial Park with Glen Williams officiating.

Mr. Knowlton was born July 5, 1938, in Bailey County. He died Sunday at Palestine Regional Medical Center.

He was a Baptist and a self-employed electrician with membership in the International Brotherhood of Electrical Workers.

He is survived by three daughters, Sherri Green of Clinton, Iowa, Shawnda Chapel of Etoile, Texas, and Shelly McCurry of San Antonio; two sons, Billy Joe Knowlton of Anchorage, Alaska, and Rodney Knowlton of Nacogdoches; three sisters, Bea Mooney of Brushy Creek, Texas, Sharon

Campbell of Carlsbad, N.M., and Jacque Melton of Seminole, Okla.; six brothers, Wayne Knowlton of Guthrie, Okla., Marvin Knowlton of Arlington, Dennis Knowlton of Brownes Valley, Calif., Douglas Knowlton of Fort Worth and Gary Knowlton of Muleshoe; 11 grandchildren; and three great-grandchildren.

Grandsons were pallbearers.

OLLIE CHRISTIAN

Services are scheduled for 2 p.m. Saturday at the First Baptist Church of Morton for Ollie Christian, 92, of Morton. The Rev. Johnny Evans and Elder Jerry Ellis will officiate. Burial will be in Morton Memorial Cemetery.

Ellis Funeral Home of Morton is handling arrangements.

Mrs. Christian was born Jan. 7, 1910, in Rusk County, Texas. She died Sunday at Lynwood Manor in Lubbock.

She married H.Y. Christian in 1928 in Frederick, Okla. He died July 5, 1974.

She had lived in Cochran County since 1945 and was a member of Evans Chapel Church of God in Christ there. She was a homemaker.

Mrs. Christian is survived by two sons, Willard Douglas Christian of Morton and Charles Edward Christian of Marshall, Texas; a stepson,

Royce Christian of Maryland; a daughter, Bobbie Jean Crouch of Terrell, Texas; two stepdaughters, Margretta Downey of Oklahoma City and Annette Perkins of Dallas; two sisters, Mrs. Melvin Selman of Jacksonville, Texas, and Mrs. Ira Robinson of Morton; 11 grandchildren (including one she raised, Helen Peterson of Terrell); nine great-grandchildren; and two great-great-grandchildren.

All-You-Can-Eat Buffet

Includes Salad Bar
11:30 am - 1:30 pm
Sunday - Friday **\$4.99**
6 - 8 pm
Monday Night **\$4.99**
Kids Eat for **\$1.99**
Kids 4 & under Eat FREE! • All plus drink & tax
1412 W. American Blvd. • Muleshoe • 272-4213

She won't poll the audience
Propose with one of our gorgeous rings, and her final answer will be a quick and definite "YES!"
Woody's Jewelry
117 W. 2nd, Portales, 356-5641

10 Great Reasons to Attend CCC

1. Excellent College Close to Home
2. Affordable Tuition
3. Quality Instruction
4. Small Classes
5. Convenient Class Schedule
6. Courses Transfer Easily
7. Awesome Student Activities
8. Committed to Your Success
9. Leader in Technology
10. Great Child Care

You Can... at CCC
Registration - August 19-30
Admissions and Records Office, Room 126
Monday - Thursday, 8 a.m. - 7 p.m., and Friday, 8 a.m. - 4 p.m.
For information, call 769-4025. Visit www.clovis.edu for the complete Fall 2002 Course Schedule.

Curry County Fair
AUGUST 12-17, 2002

MIDWAY THRILLS & CHILLS!

Monday, August 12
Coke Cantastic Night
(\$12 wristband with 6 empty Coke or Diet Coke cans)
6 pm till midnight

Tuesday, August 13
Food Bank Night
(\$14 wristband with 2 cans of food)
5 pm till midnight

Wednesday, August 14
Bicycle Give-A-Way
5 pm till midnight

Thursday, August 15
Reader Appreciation Night
(3 wristbands for \$35 with coupon from the Thrifty Nickel)
5 pm till midnight

YOUTH DAY
AUGUST 17

FAIR GATE ADMISSION
\$5 adults
\$3 child (15 yrs & under)
\$4 senior citizens (50 yrs & over)
Free (5 yrs and under)

MONDAY ONLY!
\$1 NIGHT

-Futher information-
(505)762-8827

currycountyfair.com

Just for the Fun of It!

MULESHOE MULES
Varsity football

Aug. 30 8:00 p.m. Seminole.	There
Sept. 6 7:30 p.m. Amarillo Caprock.	Here
Sept. 13 8:00 p.m. Shallowater.	There
Sept. 20 8:00 p.m. Friona.	Here
Sept. 27 7:30 p.m. Lubbock Roosevelt.	There
Oct. 4 8:00 p.m. Open.	
Oct. 11 7:30 p.m. Littlefield*.	Here
Oct. 18 7:30 p.m. Brownfield*.	Here
Oct. 25 7:30 p.m. Dimmitt*.	There
Nov. 1 7:30 p.m. Lubbock Cooper*.	Here
Nov. 8 7:30 p.m. Slaton*.	There

* Denotes district game.

MULESHOE MULES

Junior varsity football

Sept. 5 7 p.m. Amarillo Caprock.	Here
Sept. 12 7 p.m. Shallowater.	Here
Sept. 19 7 p.m. Friona.	There
Sept. 26 7 p.m. Lubbock Roosevelt.	Here
Oct. 3 Open.	
Oct. 10 7 p.m. Littlefield*.	There
Oct. 17 7 p.m. Brownfield*.	There
Oct. 24 7 p.m. Dimmitt*.	Here
Oct. 31 7 p.m. Lubbock Cooper*.	There
Nov. 7 7 p.m. Slaton*.	Here

* Denotes district game

Treatment for locked veins may limit surgeries

SPECIAL TO THE JOURNAL

HOUSTON — A method that may reduce repeat surgeries for a painful leg condition is under investigation at Baylor College of Medicine.

The condition, known as peripheral vascular disease, occurs when arteries in the leg narrow, blocking blood circulation.

To bypass the blockage, surgeons commonly graft a healthy artery from the leg onto the diseased one.

"The procedure works well, but unfortunately nearly a quarter of all bypass procedures for peripheral vascular disease fail within a year and require another surgery," said Dr. Alan Lumsden, professor and chief of the vascular surgery section of the Michael E. DeBakey department of surgery at Baylor.

The condition makes walking painful, and also may cause numbness, tin-

gling and weakness in the legs. In severe cases, patients may develop sores on the leg or foot that don't heal, leading to gangrene — a serious condition that may require amputation.

Lumsden's research team is analyzing whether a process called oligodeonucleotide transfection will result in fewer graft failures and surgeries.

ODNs are small pieces of DNA one-thousandth the size of a typical gene. Transfection is the process of delivering this small DNA strand to the living cells in a vein graft.

The study uses a drug called CGT003 that contains ODN.

"The drug slows or stops cells in the blood vessel wall from growing, which we hope will reduce the narrowing that occurs in bypass grafts," Lumsden said.

A total of 1,400 subjects at 50 institutions across the United States are participat-

ing in the Phase III randomized, multi-center study, sponsored by the biotechnology company Corgentech.

Baylor plans to recruit 35 subjects who will be randomly assigned to receive a placebo graft or graft treated with the drug.

After being harvested in the usual manner from the leg, the grafts are bathed in the drug solution outside the

BIRTH

BARRON

Jaime and Viena Barrón of Muleshoe are the parents of a son, Jacob Oscar Barrón, born at 11:51 a.m. June 28 at Plains Regional Medical Center in Clovis.

He weighed 9 pounds, 5 ounces and was 24 inches long.

He is the couple's first child.

Grandparents are Doroteo and Maria Barrón and Oscar and Liberty

Hernández, all of Muleshoe.

Great-grandparents are Maria de Jesús Peña of Rio Grande City, Texas; and Epifanio and Delia Hernández and Juan Antonio and Justa Flores, all of Muleshoe.


Hernández, all of Muleshoe.

Great-grandparents are Maria de Jesús Peña of Rio Grande City, Texas; and Epifanio and Delia Hernández and Juan Antonio and Justa Flores, all of Muleshoe.

2002 Property Tax Rates in the City of Muleshoe, Muleshoe Area Hospital District, Bailey Co. General Fund and Bailey Co. Farm Road

This notice concerns 2002 property tax rates for the City of Muleshoe, Muleshoe Area Hospital District, Bailey County General Fund and Bailey County Farm Road. Its presents information about three tax rates. Last year's tax rate is the actual rate the taxing unit used to determine property taxes last year. This year's effective tax rate would impose the same total taxes as last year if you compare properties taxed in both years. This year's rollback tax rate is the highest tax rate the taxing unit can set before taxpayers can start tax rollback procedures. In each case these rates are found by dividing the total amount of taxes by the tax base (the total value of taxable property) with adjustments as required by state law. The rates are given per \$100 of property value. This notice contains a summary of actual effective and rollback tax rates' calculations. You can inspect a copy of the full calculations at 302 Main St., Muleshoe, Texas. This notice was prepared by Kaye Elliott, Chief Appraiser, on August 5, 2002.

	CITY OF MULESHOE	MULESHOE AREA HOSPITAL DIST.	BAILEY CO. GEN. FUN	BAILEY CO. FARM ROAD
LAST YEAR'S TAX RATE				
Last Year's Operating Taxes	596,997	600,710	1,044,523	216,694
+Last Year's Debt Taxes	-0-	-0-	-0-	-0-
=Last Year's Total Taxes	596,997	600,710	1,044,523	216,694
/Last Year's Tax Base	89,949,827	240,284,088	230,935,959	228,099,232
=Last Year's Total Tax Rate	.6637	.25	.4523	.0950
THIS YEAR'S EFFECTIVE TAX RATE				
Last Year's Adjusted Taxes	595,952	599,325	1,041,757	215,958
/This Year's Adjusted Tax Base	88,453,627	240,923,610	230,354,683	226,074,349
=This Year's Effective Tax Rate	.6737	.2487	.4522	.0955
x1.03=maximum rate unless unit publishes notices and holds hearing	.6939	.2561	.4657	.0983
THIS YEAR'S ROLLBACK TAX RATE				
Last Year's Adjusted Operating Taxes	595,952	599,325	1,196,349	215,958
/This Year's Adjusted Tax Base	88,453,627	240,923,610	230,354,683	226,074,349
=This Year's Effective Operating Rate	.6737	.2487	.5193	.0955
x1.08=Maximum Operating Rate	.7275	.2685	.5608	.1031
+This Year's Debt Rate	-0-	-0-	-0-	-0-
=This Year's Rollback Rate Before Adjustment	.7275	.2685	.5608	.1031
-Sales Tax Adjustment Rate	N/A	N/A	.0584	N/A
=Rollback Tax Rate	.7275	.2685	.5024	.1031
SCHEDULE A: UNENCUMBERED FUND BALANCES				
The following estimated balances will be left in the taxing unit's property tax accounts at the end of the fiscal year. These balances are not encumbered by a corresponding debt obligation.				
Maintenance & Operation of General Fund	-0-	-0-	-0-	-0-
SCHEDULE C: EXPECTED REVENUE FROM ADDITIONAL SALES TAX (see below)				
In calculating its effective and rollback tax rates, the unit estimated that it will receive \$___ in additional sales and use tax revenues. For County: The county has excluded any amount that is or will be distributed for economic development grants from this amount of expected sales tax revenue.				
	N/A	N/A	136,329	N/A
STATEMENT OF INCREASE/DECREASE				
If the City of Muleshoe adopts a 2002 tax rate equal to the effective tax rate of \$.6737 per \$100 of value, taxes would increase compared to 2001 taxes by \$5,423.				
If the Muleshoe Area Hospital Dist. adopts a 2002 tax rate equal to the effective tax rate of \$.2487 per \$100 of value, taxes would increase compared to 2001 taxes by \$6,566.				
If Bailey Co. General Fund adopts a 2002 tax rate equal to the effective tax rate of \$.4522 per \$100 of value, taxes would increase compared to 2001 taxes by \$10,497.				
If Bailey Co. Farm Road adopts a 2002 tax rate equal to the effective rate of \$.0955 per \$100 of value, taxes would increase compared to 2001 taxes by \$2,027.				



Muleshoe Cattle Market
SATURDAY, AUG. 3, 2002

REPRESENTATIVE SALES

1229 head of cattle, 226 hogs and 417 sheep and goats for a total of 1,872 animals were sold at the August 3rd sale. Market steady on stocker cattle with good demand. Not enough feeder cattle to truly test the market.

The Muleshoe Cattle Market is brought to you each week by Muleshoe Livestock Auction, located east of Muleshoe on U.S. 84. Muleshoe Livestock conducts sales every Saturday, beginning with hogs, sheep and goats at 10 a.m. and cattle following at approximately noon.

FOR INFORMATION ON SALES OR TO CONSIGN CATTLE, CALL (806) 272-4201

Seller, City	#	Type	Wt.	CWT or PH
Sunrise Farms, Nazareth	15	Hol. Bulls	115 lbs.	at \$123.00
Abel Centeno, Amherst	13	Hol. Bulls	135 lbs.	at \$127.00
Maria Coronado, Portales, NM	13	Hol. Bulls	152 lbs.	at \$125.00
Roy Lee Criswell, Pep	10	Hol. Bulls	190 lbs.	at \$121.00
Elizabeth Belcher, Portales, NM	4	Hol. Bulls	194 lbs.	at \$119.00
Anthony Lucero, Bosque Farms	14	Hol. Bulls	209 lbs.	at \$118.00
A&B Cattle, Muleshoe	6	Char. Strs	338 lbs.	at \$115.00
A&B Cattle, Muleshoe	6	Mxd. Strs	382 lbs.	at \$109.50
A&B Cattle, Muleshoe	7	Char. Strs	549 lbs.	at \$87.00
Charles Waggoner, Muleshoe	8	Mxd. Bulls	437 lbs.	at \$89.50
Peterson Ranch, Orla	21	Mxd. Strs	376 lbs.	at \$115.00
Peterson Ranch, Orla	51	Mxd. Strs	421 lbs.	at \$101.00
Peterson Ranch, Orla	49	Mxd. Strs	471 lbs.	at \$95.00
KP Farms, Lubbock		Char. Str	430 lbs.	at \$95.00
Buck Gossett, Anton		Char. Bull	570 lbs.	at \$76.00
Mike Henson, Ropesville		3 Char. Strs	693 lbs.	at \$78.00
A&B Cattle, Muleshoe	9	Mxd. Hfrs	330 lbs.	at \$102.50
A&B Cattle, Muleshoe	13	Mxd. Hfrs	400 lbs.	at \$88.00
A&B Cattle, Muleshoe	15	Mxd. Hfrs	504 lbs.	at \$80.50
Charles Waggoner, Muleshoe	3	Mxd. Hfrs	338 lbs.	at \$99.00
Peterson Ranch, Orla	15	Mxd. Hfrs	339 lbs.	at \$99.00
Peterson Ranch, Orla	42	Mxd. Hfrs	388 lbs.	at \$91.00
Peterson Ranch, Orla	35	Mxd. Hfrs	435 lbs.	at \$84.00
KP Farms, Lubbock	3	Red Hfrs	402 lbs.	at \$85.00
FM Farms, Brownfield	10	Mxd. Hfrs	485 lbs.	at \$82.50
FM Farms, Brownfield	7	Mxd. Hfrs	569 lbs.	at \$77.50
A&B Cattle, Muleshoe	2	Red Pairs		\$775.00
A&B Cattle, Muleshoe	2	Red Cows	1333 lbs.	at \$37.75
Kelly Harrison, Muleshoe		Char. Cow P6		\$490.00
Octavio Zertuche, Portales, NM		Bik. Cow	860 lbs.	at \$43.00
Randy Johnson, Muleshoe		BMF cow	1070 lbs.	at \$39.00
Chris Jimenez, Hale Center		Bra. Cow	745 lbs.	at \$38.50
Brandon Hill, Levelland		RWF Cow	1225 lbs.	at \$37.25

TODAY'S RECIPE

CHICKEN SALAD SANDWICH WITH ARUGULA AND PLUM TOMATOES

1/4 cup slivered almonds

1 store-bought roast chicken, meat removed from bone and shredded into bite-size pieces (about 3 1/2 cups)

1 (7-oz.) container prepared pesto

3 medium plum tomatoes

1 loaf (10-oz., 16-inch length) soft white Italian bread

4 oz. (1/2 cup) cream cheese, at room temperature

1 1/2 cups pre-washed arugula or spinach, patted dry

Adjust an oven rack to the middle position and heat the oven to 325 degrees.

Toast almonds in a small pan until they are fragrant and slightly browned, about 10 minutes. Cool and chop them coarsely.

Mix the almonds, chicken and pesto in a medium bowl; set aside.

Slice the ends from the tomatoes, halve the tomatoes lengthwise and remove and discard the seeds and flesh from each half. Flatten each half and sprinkle generously with salt. Drain on paper towels.

Halve the bread length-

wise and hollow out each half by pinching a crumb, about 1 inch deep, from each half, leaving a half-inch border of crumb.

Spread cream cheese over each hollowed-out half.

Lay tomatoes in each bread "trough," skin side down.

Top each side with half the arugula and spoon about 3 cups of chicken salad on the bottom half of the sandwich. (There may be some chicken left over.)

Top with the other half of the bread, pressing to close.

Can be held at room temperature for three to four hours (wrap tightly in plastic wrap).

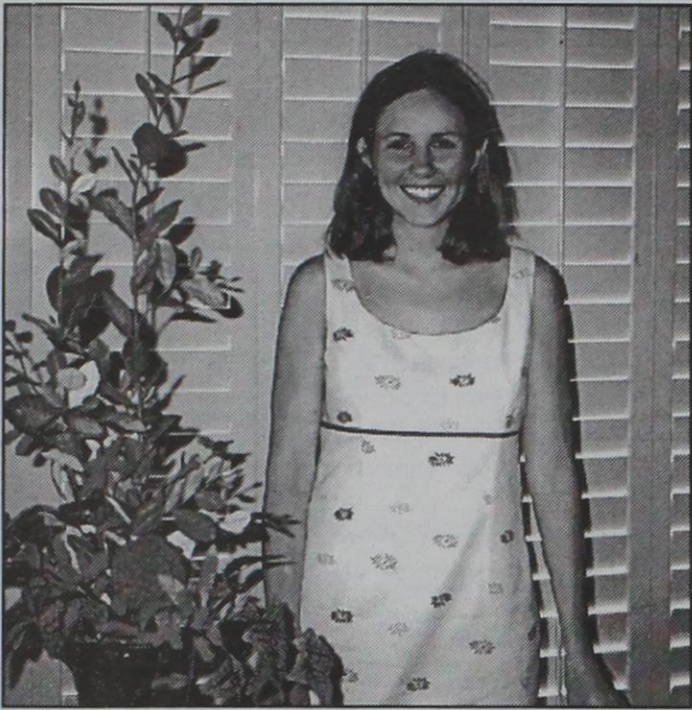
Cut into six portions and serve.

Calories per serving: 487

(Reprinted from USA Weekend)



TODAY'S HOTTEST TREND!
TURQUOISE
at Antiques & Fine Things
2104 West American Blvd.
272-4217



Holly Hutton pauses during her bridal shower.

Shower honors Holly Hutton

Holly Hutton of Dallas was honored with a bridal shower July 21 at the home of Ruth Locker in Muleshoe.

The prospective bride is the daughter of Terry and Druscilla Hutton of Muleshoe.

The prospective groom, Jonathan Mock of Amarillo, is the son of Buddy and Kim Mock of Denver City.

Special guests included the bride-elect's mother; the prospective groom's mother; Jarryn Mock, sister of the prospective groom; and Carol Reese, Melissa Putman, Ty Putman and Kaleigh Putman, cousins of the bride-elect.

Hostesses, in addition to

Locker, were Paula Benton, Janice Bradshaw, Dianne Brown, Terry Byers, Jeri Chapman, Criss Cleavinger, Beckye Conklin, Peggy Dent, Charlotte Field, Barbara Finney, Diana Harrison, Margaret Heathington, Rhonda Hodges, Hollye Hooten, Kay Lepard, Joan Lewis, Johnette Marlow, Jan Morris, Eileen Morton, Judy Puckett, Lela Ann Smith, Lenda Trussel and Lyn Vandiver.

Hostess gifts were a Kitchen Aid mixer and Kitchen Essentials cookware from Calphalon.

The wedding is scheduled for Aug. 31 at Westmont Christian Church in Lubbock.

'CREATIVE LIVING'

Information on fabric travel bags, cooking tips and decorating small spaces will be the topics on "Creative Living" at 1 p.m. Aug. 13 and 3 p.m. Aug. 17. (All times are Central.)

"Creative Living" airs on public broadcasting station KENW-TV from Eastern New Mexico University in Portales.

Lana Bennett of the Singer Sewing Co. in Flemington, N.J., will show how to make fabric travel bags in a variety of sizes and shapes.

Nancy Tekston, a representative of the National Onion Association from Greeley, Colo., will show how to shorten the cooking time for a quick lunch or dinner without the hassle.

Deborah Durham, a creative consultant from Los Angeles, will show some clever portable decorating ideas for those who live in apartments, military housing or even a college dorm.

Information on beauty products from honey, food safety and pattern fitting will be featured at 10:30 p.m. Aug. 13 and at 1 p.m. Aug. 15.

Gretchen Frederick, a

spokesperson for the National Honey Board in Longmont, Colo., will share some beauty secrets using honey, as well as discuss folklore about honey in uses such as sore-throat remedies.

Christine Palumbo, a registered dietitian representing the American Plastics Council in Washington, D.C., will provide tips on how to become more aware of shopping habits in order to prevent food contamination.

Evelyn Langston of Ozark Craft in Branson, Mo., will demonstrate the European Pattern Making

system that guarantees a perfect fit every time.

"Creative Living" is produced and hosted by Sheryl Borden of Portales.

The show is carried on more than 100 PBS stations in the United States, Canada, Guam and Puerto Rico, and is distributed by Westlink of Albuquerque.

Viewers can request copies of materials offered on the show by sending a first-class stamp for each hand-out requested, along with name, address and booklets requested, to "Creative Living" Requests, c/o KENW-TV, 52 Broadcast Center, Portales 88130.

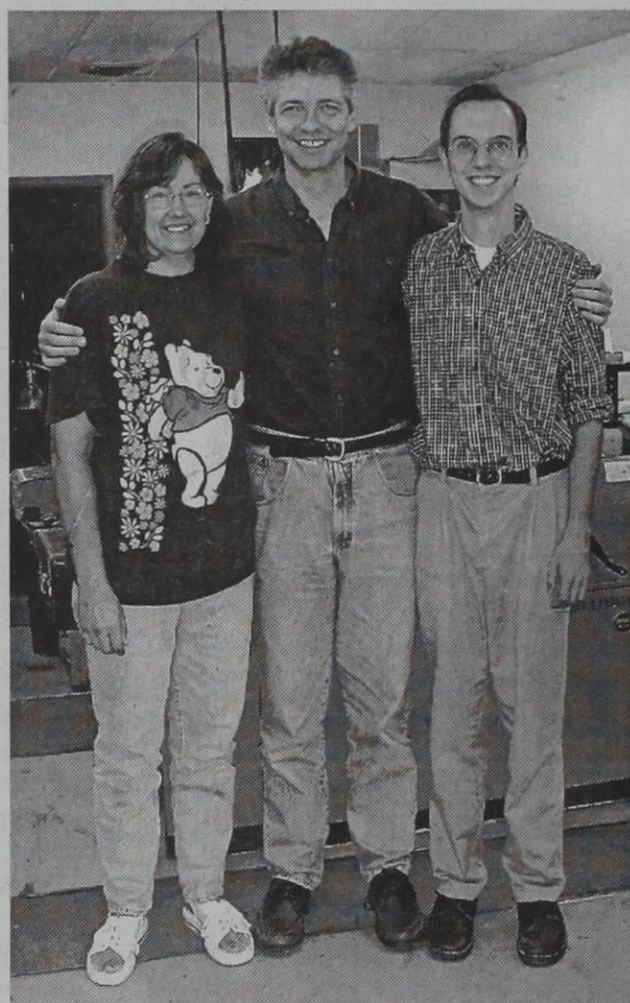
402

RED WING SHOES
Made in U.S.A.

The Fair Store
120 Main 272-3500

Subscribe today!

Wells & Janet Hall proudly announce
that Philip Hall will be taking over
the management of Bob Stovall Printing.



It is with many tears and many fond memories that we say good-bye to Muleshoe. I have accepted a job offer in Las Cruces, NM.

We have enjoyed our time here. In fact, it's the best place we've ever lived. They say that "home is where the heart is," and our hearts will always be in Muleshoe.

Stop by and see Philip for all your printing needs—even give him a hard time if you like! We expect him to do an excellent job of managing the shop. Janet and I will do some of the "behind the scenes" work from Las Cruces.

Thank you for our many great years in Muleshoe. We will miss you all.

—Wells & Janet

BOB STOVALL PRINTING

221 E. Ave. B • Muleshoe, Texas • 272-3373

LETTERS TO THE EDITOR

Dear Editor,

On a recent day off, I visited Fort Sumner, N.M. I enjoyed checking out its historical sights and reviewing the history of Billy the Kid.

I pondered the question of why Billy the Kid has so much appeal for so many of us Americans.

I came up with three answers, the first one being that we Americans are doers and are drawn to people who are good at what they do. Primarily, Billy the Kid was a killer, but he was exceptionally good at it.

But for me, there are two other important reasons that Billy's story has appeal: romance and freedom.

Certainly, Billy is an authentic part of one of the most romanticized parts of American history, the era of the cowboy of the 1870s and '80s. Our Old West is a great mythological part of the American character because it was (or we perceived it to be) full of romance and freedom, which are both very necessary to a full, enjoyable life.

Romance in its broad sense means the excitement, love and adventure of life. In Billy's acts of abandon and deprivation, there is excitement.

In his congenial relationship with the poor Mexican people of his time and place, there is the love of life.

And in his wild, short career as a desperado, there is extremely intense adventure.

Now, Billy's life was self-destructive; it was pretty negative. Being a killing machine is not a great vocational recommendation!

But because he became such a legend, there nearly had to be some of the elements of romance in his brief life.

Definitely there was freedom in the story of Billy the Kid. For a short while, there was freedom to ride with the

wind where he wanted to ride, shoot whom he wanted to shoot and do somewhat as he pleased.

He misused this freedom to negative and destructive ends, but in the John Wayne movie *Chisum* the image of Billy the Kid — riding hell-bent for leather down Main Street with gun drawn, shooting to the left and one enemy falls, shooting to the right and another one falls, and riding on with gun smoking — is impressed indelibly upon our minds.

Forgetting the outlaw, we remember the freedom of the Wild West in the image.

Without the romance of excitement and adventure in everyday life, and without the freedom to joyfully jump over the false fences and social restrictions that would hold us down and keep us from being the best human being we can be, life can be unbearably dull and debilitating.

A mentally healthy religion is one that promotes romance and freedom in everyday life.

The Rev. ALVIN PETTY
Frona

Dear Editor,

This is in regard to the front-page letter on July 4 regarding the tragic death of Tomasa Bustillos.

I live in California and I am the niece of Tomasa Bustillos (she was my mother's only sister).

There are not words to describe the world of pain this family has gone through.

My aunt was one of the most caring people on this earth and would have done anything for her family or anyone else.

The reason that I am writing is to thank you for printing this letter on such an important date to our country.

I would also like to thank Bob Arguillas, who was there at her last moments and wrote the letter.

Reading this letter gave me a sense of peace, and I believe it will help our family in our grieving.

Thank you to the unknown hero who prayed over my aunt and asked the Lord for his blessing in her time of need.

I would like to thank the Muleshoe community for their support at a painful time, including all the emergency personnel on the scene and at the hospital, and the sheriffs who escorted the funeral procession. (This is not allowed in California anymore.)

Also, thank you to the church where the Mass was held and the Guadalupanas for a wonderful meal.

I'd like to thank the funeral home for allowing us in to see my aunt after-hours, since we had just arrived from a 24-hour drive from California.

Last, I would like to thank the immediate family of Tomasa Bustillos for the love and warmth they gave to all of us who came from out of town to be with them. They went that extra mile during a very difficult time.

In closing, I just want to say that your community was very impressive, from the Heritage Hotel where we stayed to the restaurants where we ate.

The ladies at Lowe's grocery store even offered to bring what was needed to the house.

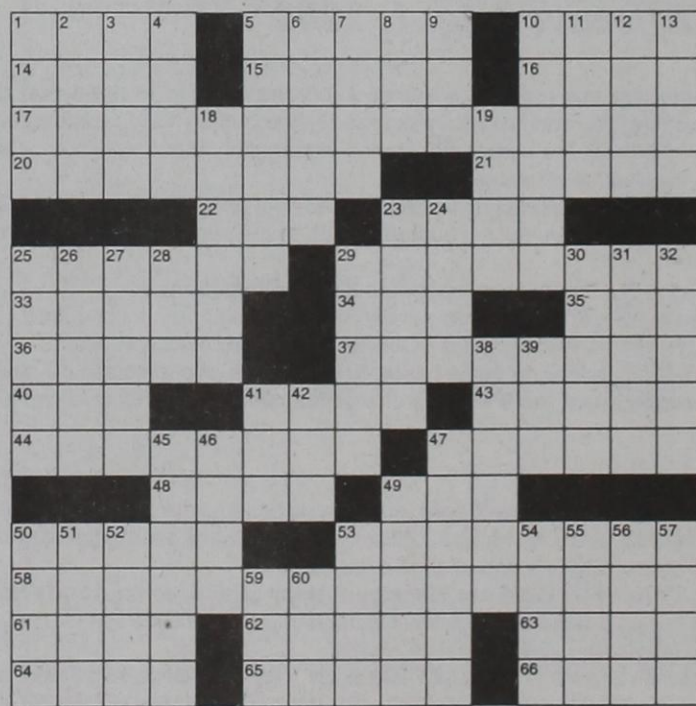
The array of plants and flowers from the different companies was impressive.

There truly are not words to express the gratitude and gratefulness that my family had for all the love, support and togetherness your community gave at such a needed time.

I feel this experience has not only opened my heart but has given me another reason to revisit Muleshoe, Texas.

LAURA AGUILAR
Oxnard, Calif.

JUST FOR FUN



10. Couches
11. Of an ode
12. Ancient Greek City
13. Fixes firmly
18. Scholar
19. Fencing sword
23. Separated with an instrument
24. Sea eagles
25. Formed
26. Conifer
27. Bodily cavities
28. Sun up in New York
29. Arguments
30. More lucid
31. Electronic communication
32. Saucy
38. However
39. Jima, WW II battlefield
41. No seats available
42. Female swan
45. Hallowed
46. A single undivided entity
47. Maneuvered
49. Badger
50. Crack
51. Rip
52. Cereal grain
53. Pulses
54. Expresses delight
55. Hawaiian Feast
56. Arthur, Wimbledon champion
57. Cause to be admitted
59. Package, abbr.
60. A nucleic acid, abbr.

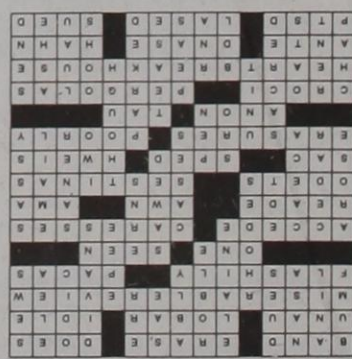
CLUES ACROSS

1. Ring
5. Remove
10. Eutherians
14. Sloth
15. Subdivision of a bodily organ
16. Otiose
17. Producer's nightmare
20. In an in poor taste way
21. Gnawing animals
22. United
23. Envisioned
25. Agree
29. Feelings
33. Charles Brit author 1814-1884
34. Slender bristlelike appendage
35. Doctors' group
36. Clifford, playwright, "Waiting for Lefty"
37. Provençal verses
40. Body cavity
41. Rushed
43. Chinese Moslems

CLUES DOWN

44. Expungings
47. Badly
48. Afterwards
49. Follows sigma
50. Types of irises
53. Frames
58. G.B. Shaw drama
61. Bet on
62. Enzyme
63. Jessica
64. Mental disturbance, abbr.
65. Emitted coherent radiation
66. Challenged

Crossword Answers



Research may make food supply safer

SPECIAL TO THE JOURNAL COLLEGE STATION
— In the future, the food supply may be safer thanks to research done this summer by Texas A&M University graduate student Jeff Nutt.

"A lot of research you hear about salmonella involves detecting it," Nutt said. "We studied a lot of the genetic properties (and) the physiological properties of salmonella. "We monitored a gene expression in salmonella — a specific gene." Salmonella is one of the most common causes of foodborne illnesses, Nutt said. The gene he was monitoring "allows (salmonella) to become pathogenic. This specific gene is required when salmonella invades into its host cells.

"Salmonella requires the expression of certain genes for successful infection within a host," Nutt said. "Some of these genes are triggered by certain environmental factors.

"The purpose of my research was to monitor the expression of a certain gene required for cell invasion in response to different environmental stimuli."

In other words, the goal was to determine if this specific gene could be altered through environmental factors to make it more or less "hot." If those environments could be determined and controlled, the researchers would have a tool that could be used to keep the gene from becoming active — and prevent salmonella from becoming infectious. Without this gene, salmonella cannot cause foodborne illness.

"This may be potentially used to help reduce the inci-

dence of foodborne disease outbreaks and/or be used to identify compounds or bacteria that help to suppress this infective genetic response," Nutt said.

And since foodborne illnesses — such as salmonella, *E. coli* and others caused by pathogens — can be potentially fatal, research that leads to ways of eliminating some of its causes will be of benefit to everyone, he said.

"Complete eradication of all (harmful) bacteria from all foods is an unattainable goal," Nutt said. "But it's something we all strive for — to lose a number of pathogenic bacteria."

He cautioned that his research was just the beginning of this process.

"More research needs to be done if this is the key," he said.

"In particular, studies are required to determine how stable increased virulence is in the environment," said Dr. Steven C. Ricke, Texas A&M poultry science associate professor and committee chairman for Nutt's thesis.

"In other words, once a pathogen becomes 'hot,' how long does it stay this way? Answering this question will dictate how much of a concern this is."

But foodborne illnesses are becoming more of a concern for many reasons.

For one, the most common sources of these infections — including chicken and egg dishes — are being joined by uncommon sources.

"There recently have been increasing instances of salmonella and *E. coli* in fresh fruits and in salads," Nutt said. This implies

that some industry practices may need to be studied and adjusted.

Also, "Food safety is a big topic right now, after Sept. 11, (and) the additional concerns of bioterrorism and anthrax in the mail," Nutt said.

"You assume a certain level of safety when you buy food," he added, and his research may eventually help consumers make that assumption.

Nutt, who earned a bachelor's degree in human nutrition from Texas A&M, said he decided to get a master's degree in food science after taking a course in food microbiology during his last semester as an undergraduate.

He hopes to use his education to help improve the quality of life for others.

"People want safe food," he said.

Tech Kickoff Luncheon set for Aug. 15

LUBBOCK — Third-year head football coach Mike Leach will be the featured speaker at the annual Red Raider Club Kickoff Luncheon on Aug. 15 at the Lubbock Civic Center.

The event gets underway with lunch at 11:30 a.m. and the program begins at 12:15 p.m.

Tickets are \$15 a person or \$150 for a table of eight.

Reservations or more information can be obtained by calling (806) 742-1196.

We Are Not Clownin' Around!

Advertising in "The Gray Pages" will get your business noticed for very little cash!

"The Gray Pages" is a business directory shamelessly named after the "Yellow Pages" and geared toward our readers and this area. The specific purpose of "The Gray Pages" is to create a lasting recognition of local products and services through repetition. In other words, we want our readers to automatically think of you and your business when they're ready to buy!

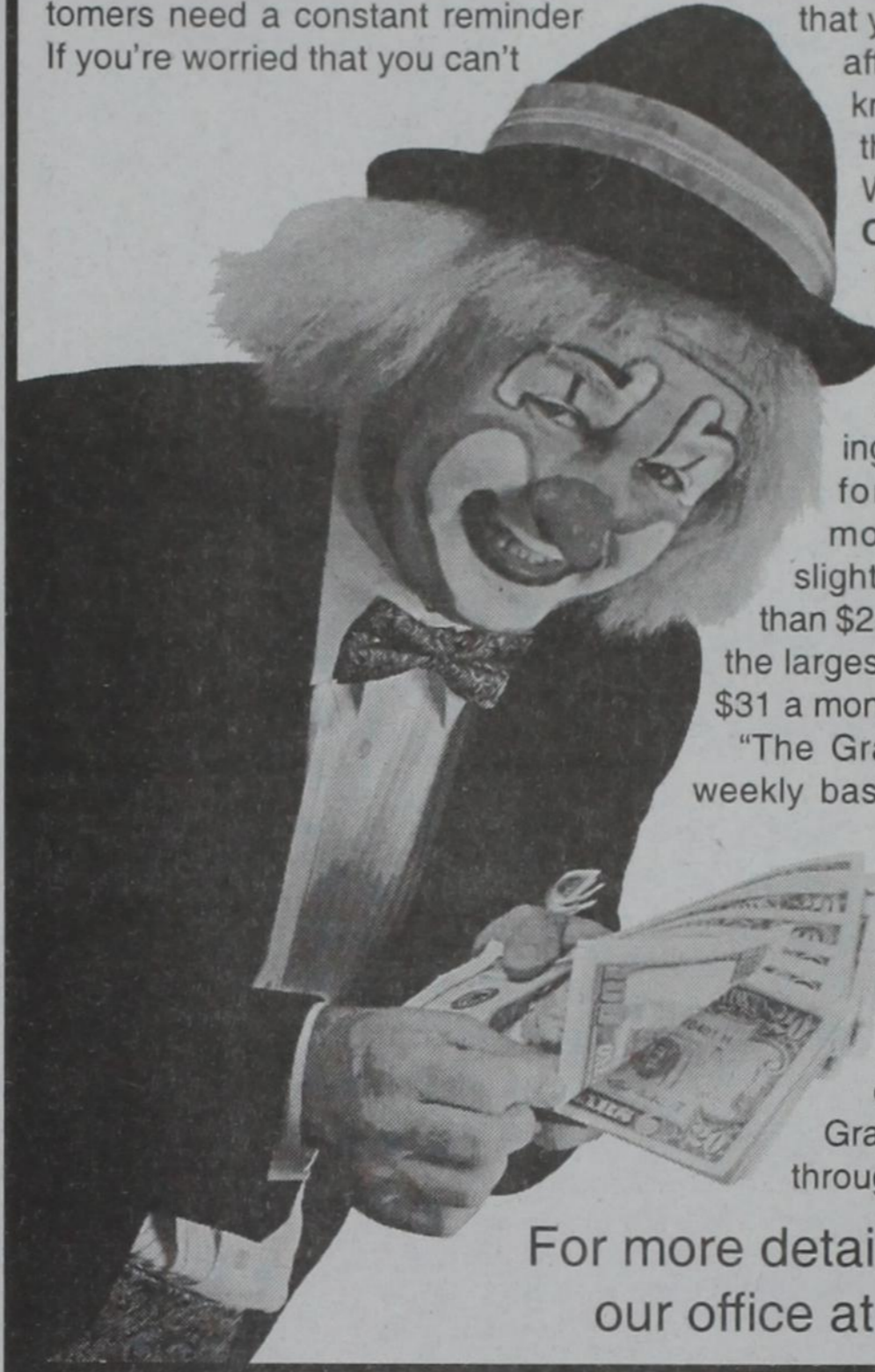
New people are moving into Bailey county every day and existing customers need a constant reminder that you're still here!

If you're worried that you can't afford to advertise but know that you need to, this is your lucky day! We've **LOWERED OUR PRICES DRAMATICALLY** for this directory! Your business can get 26 weeks of advertising in "The Gray Pages" for less than \$16 a month! Or choose a slightly larger ad for less than \$22 a month! Or choose the largest directory ad for just \$31 a month!

"The Gray Pages" run on a weekly basis (Sunday edition).

Each business is contracted for 26 weeks. It runs near (but separate from) the Classified section. We plan to continue to run "The Gray Pages" as a feature throughout the year.

For more details, please call our office at 272-4536.



Journal Classifieds

STOP & SHOP

Deadlines are 5 p.m. Monday and Thursday

Call 272-4536

Page 7, August 8, 2002

ESTATE SALE

ESTATE SALE

August 10th & 11th

309 East 18th St • Littlefield, Texas
Franciscan pottery, dishes, pots and pans. Lead crystal, figurines, blankets, sheets, towels, comforters, bedspreads, Christmas decor, glassware, collection of old hats, pictures, side table, books, knick-nacks, clothes, shoes, purses, pillows, collection of red and green depression glass. Lots of miscellaneous.
For info. call 806-933-4373 or 543-5596
Saturday full price • Sunday half-price from 1 pm to 4 pm
SATURDAY SALE STARTS AT 9 AM
SUNDAY SALE STARTS AT 1 PM

FOR SALE

Horizontal heater
120,000 BTU .
Asking \$300.
Call 806-771-1406.

GARAGE SALE

Garage Sale
919 E. Hickory
Friday, Aug. 9 &
Saturday, Aug. 10
8 am — 3 pm

Star Craft
Pop-Up
Camper
Call 272-3091

HUGE GARAGE SALE
Saturday, Aug. 10 @
Old Wiedebush Bldg.
8 am — 2 pm
Proceeds go to M.H.S.
Band's Spring Trip.

1993 Jeep
Cherokee
Red and Gold
Call 272-2021

Lazbuddie Junior Class
Garage Sale at
Jarman Seed
Aug. 9 & 10
6 am — 9 pm, Fri.
9 am — 2 pm, Sat.

GARAGE SALE

4-Family Garage Sale.
Saturday, August 10
9 am until ??
Hwy 84 to Lariat. Next
to Lutheran Church.

Garage Sale in Lazbuddie.
Saturday, Aug. 10
8 am — 12 only!
2 families are having
garage sale. 4 miles
east from Clay's Corner
on Hwy 145. Bikes,
daybed, comforters,
clothes & lots more.

HELP WANTED

NOW HIRING: RN's AND LVN's Full-time and Part-time, 8 or 12 hour shifts available. Flexible schedules also available. Excellent benefits and competitive salaries. Call Jo Blackwell or Deb Hendley for appointment or information at 806-250-3922 or apply in person Monday thru Friday 9 am to 4 pm:
PRAIRIE ACRES
201 E. 15th
FRIONA, TX 79035

**MANAGER
TRAINEE**
\$525/wk avg.
Call 766-7175

Business Office Manager — Experience preferred in office management and accounting. Proficient in integrated computer skills. Must be responsible, dependable, and motivated. Duties include overseeing data processing, admissions, collections, and billing personnel. Applications may be obtained from the Human Resource Office at Muleshoe Area Medical Center, 708 South First Street, Muleshoe, TX 79347. (806)272-4524.

**1000 CUSTOMERS
NEEDED!!**
LOANS, LOANS!
\$100-\$495
CALL 272-3673
CONTINENTAL CREDIT

**AZTECA
MILLING LP**
Wanted temporary
corn harvest help.
Drug test required.
Apply at Azteca
Milling, 1 1/4 mile E.
Hwy 84, 272-6701.

Production position
available. Now
accepting applications
for production position
at Hi-Pro Feeds.
Company insurance,
401k, paid holidays.
Must pass drug screen.
Apply in person at
Hi-Pro Feed in Friona.

Farwell Feed Yard is
looking for maintenance
and pen repair person.
Must know how to weld.
Apply in person. 1 1/2
mile south of Farwell on
stateline road.

HELP WANTED

TOWN AND COUNTRY FOOD STORES Is Looking For

People with Retail Experience
People with Food Service Experience

Presently Accepting Applications For
Store Manager Trainees
Assistant Managers
Food Service Managers

Great Benefits & Advancement Opportunity
Equal Opportunity Employer
Drug Testing Required
Applications available at all locations

Oilton Dairy Queen — Now seeking manager with experience in customer service & employee training. Must also demonstrate desire to increase profitability of business & become involved in community marketing. Benefits include competitive salary & bonus, generous stock ownership plan, vacation & health insurance. Interested applicants please contact Megan at 972-572-8919.

HELP WANTED

**NOW
HIRING**
Minsa has
several positions available
in our Production facility.
We are looking for hard-
working individuals to fill
these positions.
If interested, please
come to the main office at
Minsa 1 1/2 mile east and
fill out an application. EOE

Cattle crew position in
commercial feedyard.
Individual with horse
and cattle doctoring
experience a plus.
Excellent Health
insurance and 401k
retirement plan. For
more info Call Darren
(806)225-4400 ex 23
or come by Caprock 5
Bovina, TX

FOR LEASE

House for Lease. 3
bdrms., 2 bath, 8 miles
north of Muleshoe on
214, 1 mile east. For
applications, call
(806)965-2721, 788-
1849 or 438-2900.

REAL ESTATE

For Sale — 3
bedroom, 1 bath.
510 W. 2nd.
(915)573-6137 ask
for Margie Lopez.

640 acres —
Lazbuddie. Full
allotments, good
establish yields, good
water, 4 sprinklers, 4
wells, improvements.
Call 806-965-2895,
mobile 806-946-9413

Nieman Realty

116 E. Ave. C • George Nieman, Broker • 272-5285 or 272-5286

<p>RICHLAND HILLS - PARKRIDGE AREA</p> <ul style="list-style-type: none"> • NICE 3-3-1 Brick, Cent. A&H, built-ins, 2000+ lv. area, fenced yd., patio, stor. bldg., \$37.5K! RH-1 • NICE LOTS AVAILABLE, CALL FOR DETAILS!!! • VERY NICE 3-2-1 Brick, Elec. Heat Pump, built-ins, nice carpet, 1680 lv. area, fenced yd., MORE!!! \$60K! RH-2 <p style="text-align: center;">HIGHLAND AREA</p> <ul style="list-style-type: none"> • NICE 2-2-1+2 carport Home, built-ins, FP, Cent. A&H, 1987 lv. area, corner lot, wkshp, \$44.5K! HL-2 <p style="text-align: center;">LENAU - COUNTRY CLUB AREA</p> <ul style="list-style-type: none"> • 3-2-1 carport Home, Brick, Cent. A&H, built-ins, FP, 1,880 Lv. area, fenced yd., MORE!!! \$47.5K! L-1 • VERY NICE 2-1-1+1 Carport Brick Home, Cent. A&H, stove, nice, carpet, covered patio, fenced yd., MORE!!! \$41,900!!! <p style="text-align: center;">HIGH SCHOOL AREA</p> <ul style="list-style-type: none"> • VERY NICE 3-1-1 Brick, Heat pump, DW, nice carpets, fenced yd., MORE!!! \$37.5K! HS-1 • 3-2 Home, corner lot, fl. furn. heat, fenced yd. \$25K! HS-10 • 2-1 Home, Fl. furnace, fans, storage & 2 apartments, corner lot!!! PRICE REDUCED!!! \$30K HS-3 <p style="text-align: center;">IN CONTRACT</p> <ul style="list-style-type: none"> • NICE 3-2-2 carport Home, Cent. A&H, built-ins, guest cottage, workshop, storage, MORE!!! \$52K! HS-8 • 2-1 Home, corner lot, stove, refrig., fans, workshop & storage, fenced yd.!! \$23.5K!! HS-8 • 3-1-1/2-2 carport Home, wall furn. heat, oven, cooktop, basement, shop/ storage!! "AS IS"!! \$16K!! HS-6 • EARTH - 4-2-2 carport home, Heat Pump, fans, storage-workshop!! \$35K COMMERCIAL 	<ul style="list-style-type: none"> • EXCELLENT BUSINESS LOCATION—Approximately 6,550 sq. ft. building, high traffic area!! \$115K!!! • NICE six unit office complex, Cent. A&H, restroom facilities, and also has a nice one bedroom and two bedroom rental units. \$39.5K!!! • HWY. 84-150' frontage, office, warehouse, truck dock, railroad spur access, with or without fuel storage tanks!! \$30K!!! • GOOD INCOME PROPERTY - approx 3490' bldg. paved parking, good net lease!! PRICED TO SELL!! • VERY NICE 2300' bldg., Cent. A&H, 175' frontage on Hwy 84 & 70!! MUCH MORE!!! • 140'X100' tract on Hwy. 84 & 70, 1760' bldg., 1500' storage, 2400' cov. area, paved parking !! \$49.5K!!! • RANCH HOUSE CLUB/RESTAURANT!! \$70K!!! • Approximately 2,000 shop plus 450' office, cent. heat, evap. air, 250 x 100' tract on Hwy 84!! \$35K!!! <p style="text-align: center;">RURAL</p> <ul style="list-style-type: none"> • FIXER-UPPER - 3-2-2 Home, 3-1/2 bath, garage/carport, shop, barns, MORE!!! \$35K!!! • EXCELLENT DAIRY LOCATION-1120 ac., 7 circles, 20 wells, very nice 3-2-3 Home w/ basement, 40 x 60' barn w/ 30 x 40' shed, 3 mil. lb. grain facility, add. 3 bdrm. home, 2 mobile homes, on pavement convenient to Muleshoe, Clovis, Portales, & 5K head permit. Could be split if needed!! • W. of SUDAN-NICE 3-3-2 Brick Home, 5 acre tract on Hwy. 298, Cent. Air & Heat, built-ins, large Quonset Barn, MORE!!! \$95K!!! • PRICE REDUCED - 108 acres or 7 acre tract on Hwy. 70, approx. 2100' office area, 16,900' commercial bldg. w/ loading dock, 3,400' warehouse, new well, 2,800' runway!!! • STEGALL AREA - GOOD 80 acre farm!! PRICE TO SELL!!!
--	---



Lowe's Marketplace

401 W. American Blvd. Muleshoe, Texas 272-4585

WE RESERVE THE RIGHT TO LIMIT QUANTITIES IN TEXAS

WESTERN UNION MONEY TRANSFERSM
"The fastest way to send money"

AFFILIATED FOODS INC. MEMBER STORE AT PARTICIPATING STORES



SPECIAL X-TRA SAVINGS PRICING GOOD THRU SEPT. 3, 2002

- 12 ct. Rolling-Pin Premium **GLAZED DONUTS**
- 13-15 oz. Quaker Select Group **BAGGED CEREAL**
- 20 oz. Loaf **FRONTIER BREAD**
- 6 pack, 12 oz. btl. **POWERADE DRINKS**
- 7 lb. **BAG OF ICE**
- 6 pack, 1/2 liter btl. **AQUAFINA WATER**
- 6 ct., 4 oz. Lucky Leaf **APPLE SAUCE**
- Pre-Priced \$1.99 Frito Lay[®] **SANDWICH CRACKERS**
- 5 lb. bag All Purpose **GOLD MEDAL FLOUR**
- 4 lb. bag C&H **PURE CANE SUGAR**
- 6.4 oz. tube **CREST TOOTHPASTE**
- Bounty Big Roll **PAPER TOWELS**
- Golden Hawaiian Fresh **PINEAPPLE**
- 2 lb. bag Dole **CLASSIC SALAD**
- 18 oz. bag Dole **CLASSIC COLE SLAW**



EACH WITH 1 REWARD COUPON
1 ITEM PER COUPON



- Sno-White **CAULIFLOWER**
- Large California **CANTALOUPE**
- 11-13 oz. Asstd. Grinds (Excl. Decaf) **HILLS BROS. COFFEE**
- 64 oz. ctn. Florida's Natural **ORANGE JUICE**
- 48 oz. tub **IMPERIAL SPREAD**
- 22 oz. pkg. Sara Lee Frozen **LAYER CAKES**

- 6 ct.-12 oz. Owens Snackwiches **SAUSAGE BISCUITS**
- 10 oz. pkg. **HEALTHY CHOICE SLICED MEATS**
- 4 Roll pkg. Charmin **BATH TISSUE**
- 50 oz. box SunLight Auto **DISHWASHING DETERGENT**
- Pre-Priced \$2.99 **XTRA DETERGENT**
- 96 oz. jug Original or Scented **CLOROX ULTRA BLEACH**
- Asstd. Oscar Mayer 16-19 oz. **MEGA LUNCHABLES**
- Asstd. 9 oz. pkg. **HOT OR LEAN POCKETS**
- Asstd. **KID'S LUNCH BOX**
- 8 ct. pkg. Crayola **WASHABLE MARKERS**
- Asstd. Sizes & Colors **BACKPACKS**
- Bic 10 pack **CRISTAL PENS**
- 150 Sheets College or Wide **MEAD NOTEBOOK PAPER**
- 120 pages Mead 3 Subject **SPIRAL NOTEBOOK**



ASSTD. OWENS BREAKFAST SAUSAGE
1 LB. ROLL



DEL MONTE FRUIT TO GO FRUIT CUPS
4 CT. 5 OZ.



JELL-O PUDDING OR GELATIN CUPS
6 CT. PKG.



ASSTD. JUICY JUICE DRINKS
10 CT., 6.4 OZ.

RED DELICIOUS APPLES
5 LB. BAG



EACH WITH 1 REWARD COUPON



ASSTD. BLUE BELL ICE CREAM
1/2 GALLON ROUND



ALL VARIETIES LOWE'S OR SHURFINE MILK
GALLON



Here's How It Works! Lowe's is giving you deep discounts on many of the items you purchase everyday! For each dollar you spend at Lowe's, we will give you a point. After 50 points (or \$50), you will receive a Lowe's X-tra Savings Reward Coupon. This coupon can then be redeemed for deep discounts on selected items. Each month, Lowe's will select from our most popular items in the store and deeply discount them for our X-tra Savings Reward Coupon holders. Present your coupon and receive incredible savings on selected items. X-tra Savings Reward Program • Each Dollar You Spend Is Worth ONE (1) Point. • After you earn 50 points, you will receive a Lowe's X-tra Savings Reward Coupon • Use your Lowe's X-tra Savings Reward Coupon to get deep discounts on one of the selected items. • Only ONE (1) item can be purchased with each Reward Coupon. • Items will be changed monthly. THE X-TRA SAVINGS REWARD PROGRAM GOOD AT LOWE'S MULESHOE, CANYON AND TUCUMCARI STORES ONLY! Points are not transferable between stores. No substitutions please on X-tra Savings Reward items. Only one item may be purchased at the special deep discount per Reward Coupon.

MEAT

- FLANKIN STYLE **BEEF RIBS** LB **\$2.49**
- BONELESS **BEEF SHORT RIBS** LB **\$1.99**
- BEEF BONELESS **ARM ROAST** LB **\$1.79**
- X-TRA SAVINGS PAK BONE-IN **COUNTRY STYLE PORK RIBS** LB **\$1.19**
- X-TRA SAVINGS PAK WHOLE SLAB **PORK SPARE RIBS** LB **\$1.99**
- PORK **BABY BACK RIBS** LB **\$3.99**
- ASSTD. VARIETIES ECKRICH FUN KIT **LUNCH MAKERS** ... 10.6-12.2 OZ. **2/\$3**
- PEYTON'S REG. OR POLISH **SMOKED SAUSAGE** 14 OZ. **99¢**
- PEYTON'S **BREAKFAST SAUSAGE** 1 LB. ROLL **99¢**
- PEYTON'S **MEAT BOLOGNA** ... 12 OZ. PKG **99¢**
- ASSTD. SINGLE SERVE **NABISCO COOKIES OR CRACKERS** 1-1.75 OZ. **2/78¢**
- REFRESHING 12 PACK **COKE, SPRITE, DR. PEPPER OR DASANI WATER** 12 OZ. **2/\$6**
- REFRESHING 6 PACK **COKE, SPRITE, OR DR. PEPPER**... 1/2 LITER BTL. **2/\$5**

PRODUCE

- GARDEN FRESH **BROCCOLI** LBS **3/\$1**
- LARGE GREEN **BELL PEPPERS** **2/\$1**
- SUPER SELECT **CUCUMBERS** **2/\$1**
- FIRM, CRISP GREEN **CABBAGE** LBS **3/\$1**
- CELLO **CARROTS** 1 LB. PKGS **2/\$1**
- FRESH **WHITE ROSE POTATOES** LBS **2/\$1**
- OLATHE FRESH **SWEET CORN** EARS **3/\$1**
- GREENER SELECTION **DOLE SALAD** 12 OZ. PKGS **2/\$3**
- TANGY **GRAPEFRUIT** 5 LB. BAGS **2/\$3**
- SWEET AND JUICY **ORANGES** 4 LB. BAGS **2/\$3**
- RED DELICIOUS **APPLES** 3 LB. BAGS **2/\$3**
- RED RIPE CALIFORNIA **STRAWBERRIES** **2/\$3**
- SWEET AND JUICY LARGE **CANTALOUPES** **2/\$3**
- TANGY AND JUICY **LIMES** **12/\$1**

FROZEN & DAIRY

- ASSTD. HUNT'S **PUDDING OR JUICY GELS SNACK PACKS** 4 PACK **99¢**
- ASSTD. SUNNY DELIGHT **CITRUS PUNCH** 64 OZ. **97¢**
- ASSTD. TONY'S ITALIAN PASTRY CRUST **PIZZA** 13-18 OZ. **2/\$5**
- BREAST TENDERS AND CHICKEN **BANQUET CHICKEN** **2/\$6**
- BANQUET MOZZARELLA **CHEESE NUGGETS** **2/\$6**
- ASSTD. BANQUET **POT PIES** 7 OZ. PKGS **2/\$1**
- NEW YORK **GARLIC BREAD STICKS** 10.5 OZ. PKGS **2/\$4**
- SELECT GROUP KRAFT **CHUNK CHEESE** ... 8 OZ. PKGS **2/\$4**
- ASSTD. PILLSBURY **GRANDS! BISCUITS** 16.3-17.3 OZ. CANS **2/\$3**
- ASSTD. BETTY CROCKER **CAKE MIXES** 18-18.25 OZ. **99¢**
- Q AND Q **VERMICELLI** 5 OZ. PKGS **4/\$1**
- ASSTD. NABISCO SINGLE SERVE **NABISCO COOKIE OR CRACKER TRAY PACK** 12-24 OZ. **\$3.99**
- BRACKBURN'S **GRAPE OR APPLE JELLY** 18 OZ. JAR **99¢**

CASA DE LOWE'S MEXICAN FOOD

- CASA DE LOWE'S **BEEF OR CHEESE ENCHILADAS** 1 LB. PKG **\$2.49**
- CASA DE LOWE'S **BARBACOA OR CARNE GUISADA** ... 1 LB. PKG **\$3.99**
- CASA DE LOWE'S **CHICKEN OR SPINACH QUESADILLAS** 18 OZ. PKG **\$3.99**
- CASA DE LOWE'S **MENUDO** 1 LB. PKG **\$1.99**
- CASA DE LOWE'S **PORK TAMALES** 1 DOZEN **\$2.99**
- NORTHERN DOUBLE ROLL **WHITE OR ULTRA BATH TISSUE** 4 ROLL PKGS **2/\$4**
- ASSTD. 100 OZ. LIQUID OR 84 OZ. POWDER **FAB DETERGENT** ... YOUR CHOICE **\$2.99**
- 15 OZ. CHEERIOS • 15.25 OZ. HONEY NUT CHEX • 18 OZ. WHEATIES **GENERAL MILLS CEREAL** YOUR CHOICE **2/\$4**
- ASSTD. PETER PAN **PEANUT BUTTER** ... 17.6-18 OZ. **2/\$3**
- TENDER CRUST CRACKED **WHEAT BREAD** 24 OZ. LOAF **77¢**
- LAY'S[®] PRE-PRICED \$2.99 **POTATO CHIPS** 12.25 OZ. **3/\$5**
- ASSTD. NABISCO **RITZ CRACKERS** 14-16 OZ. **2/\$5**
- ASSTD. BETTY CROCKER **FROSTING** 12-16 OZ. **3/\$5**

WEEKLY PRICES EFFECTIVE AUG. 7-13, 2002