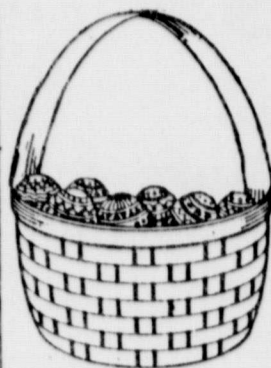


SAVE BY THE BASKET-FULL!



THROUGHOUT THE STORE: LOOK FOR SPECIAL SAVINGS TAGS

- JEWELRY
- LAMPS
- GIFTS
- NAME BRANDS
- NOVELTIES
- COSMETICS
- GLASSWARE
- FIRST-AID
- ART
- STAPLES

And An Up-To-Date Pharmacy
You Can Depend On! With Free Delivery!

Cards Accepted:
Medicare ACS
Mini-Med BlueCross
& Others

Don Stoner Pharmacy

Downtown Behind
The Beautiful Trees
On The North Side
Of The Square

Worth Looking For!



CENTRAL DRUG

103 W. Main St.
NORTH SIDE OF SQUARE
EASTLAND

629-2681

MediPren
Caplets
100's

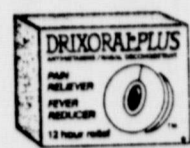
\$5.57



Drixoral Plus

24's... \$4.00

12's... \$2.00



White Shoulders
Cologne

While It Lasts!

1.5 oz. Cologne Spray,
Lotion, Gel, Talc

\$12.50

Sand & Sable
Spray Cologne
& Lotion

\$15.50

Chantilly
Hand & Body
Lotion
16 oz.

Reg. 10.00

\$5.00

Stay Free
Maxi Pads

24's

\$1.50



Kotex
12's

\$5.00

Proto-Chal
Fish Oil
Mini Cap

100's

\$2.95

Athletic
Supporters
Close-Out
\$1.00



News Briefs

EASTLAND

Johnnie High's Country Music Revue, featuring outstanding area and regional artists, will perform at the Majestic on Saturday, April 8 at 8 p.m. Held in Fort Worth at the Will Rogers Auditorium for the past nine years, the show usually consists of 15 to 20 different acts. It is geared toward family entertainment, and is fast paced. Two beautiful and talented Miss Texas winners will be with the Show in Eastland. A number of other acts will also be presented, including award-winning vocalists and instrumentalists. Several of these are from Abilene. Advance tickets for the Music Revue are \$7, while tickets at the door will be \$8. You may purchase your ticket now from an Olney Savings office, or mail your check to the Majestic Theatre, P.O. Box 705, Eastland, TX. 76448.

Larry Smith, a native of Odessa, is the new Assistance Resident Engineer in the Eastland office of the State Department of Highways and Public Transportation. In Eastland Mr. Smith will be responsible for the designing of roadways, the preparing of plans for construction jobs in Eastland and Stephens counties, and the issuing of utility permits on state road right-of-ways. The local office is presently preparing plans for rebuilding the Eastland to Desdemona Highways. The first construction will be from the I-20 overpass on East Main to the y northwest of Lake Leon. Smith and his wife Judy like the Eastland area, he says. They have two children.

Fires are a present threat in the Eastland County area, firemen says. With dead grass, low humidity and high winds, conditions are right for dangerous blazes. The Texas Forest Service has declared March a hazardous time for fires, and has asked that there be no outside burning during the month. Eastland firemen have had to fight two rural fires this past week which resulted from controlled burns getting out of control.

The Eastland Memorial Hospital Auxiliary will have a Spring Luncheon and gen-

eral meeting on Wednesday, March 29, from 11:30 a.m. to 1 p.m. at the hospital. All members are encouraged to attend, as well as anyone who is interested in becoming a member. The Auxiliary Board members will prepare and host the luncheon, and Hospital Administrator Marcia Carr will be in charge of the program. Reservations for the Luncheon must be made by Monday, March 27. You may call Linda Tonroy at 629-3431, or Sandy Stephenson at 629-3283.

CISCO

The Cisco City Council has designated the week of March 27-31 as the Spring Clean-Up Week for the city. During the week the city will be running trucks throughout the town collecting limbs, brush and other large debris set out by residents. The landfill will be open each day during Clean-Up week. City Hall will be maintaining a special "work order" list for the trash and brush pick-up effort, so any resident who has large items is asked to call. City Hall cannot accept special pick-up requests after 5 p.m. Thursday, March 30. Having clean-up week in March will give the people time to have property in good shape before the Folk Life Festival April 22-23.

The bridge on Williamson Dam at Lake Cisco is the main concern of the Texas Water Commission, according to Mike Moore, Cisco City Manager. The Commission told Moore that the bridge that goes across the top of the Dam is made of a different

type of concrete than the Dam. The bridge has begun to deteriorate and some concrete blocks have fallen off. The Texas Water Commission has become interested in concrete dams since the trouble with Possum Kingdom Dam began, Moore says. The Williamson Dam is similar to the Possum Kingdom Dam. The state of Texas has only five concrete dams, with the one at Cisco being the smallest of them all. Moore is checking with the Texas Department of Highways to see if they will help with the structure. The bridge going across the top of the dam was once part of the main Highway to Moran.

Special bank accounts for the family of Courtney Lynn Clayton have been set up at the First National Bank and Olney Savings in Cisco. Courtney, eight years old, was abducted last Sept. 2 when she walked to a store less than a block from her home in Stamford. Her parents are Mr. and Mrs. Stan Clayton, and a grandmother and several aunts, uncles and cousins live in Cisco. Any money contributed to the Clayton account will be used to help investigate the kidnapping.

Boy Scout Troop 287 is conducting a paper and aluminum can fund raiser. There will be a trailer sitting at 301 E. 21st St. during the month of March to receive paper items and the cans. On the paper items, please do not leave medical files, carbon paper, ink bags, ink containers or wet garbage. Acceptable paper includes newspapers, telephone books, catalogues, magazines, cardboard boxes, brown paper grocery bags, office files without carbon paper, paper feed sacks without plastic linings, office paper and printer's

scrap paper. Please clear out these items and give the Scouts a hand.

March 25 is the date of the area high school dance for Project Graduation. The dance will be held in the Corral Room in Cisco from 8 p.m. until midnight, with Jason Phillips the disc jockey. Parents For Teens rules will be enforced. Project Graduation is a drug and alcohol free party for Seniors and their guests, and last year around 150 graduates attended from around the county. Admission will be \$3 to the dance on March 25, with all proceeds going to benefit the Project Graduation Program. Area parents are welcome to chaperone.

RANGER

The Ranger Volunteer Fire Department Ladies Auxiliary is still accepting donations for their Second Annual Easter Egg Hunt. This will be held Sunday, March 26 at 3 p.m. in Memorial Park. The hunt is for children 10 yrs. old and under. All donations can be taken to the Fire Station.

The Alameda Cemetery Association meeting has been set for Saturday, May 6 this year. The Cemetery is located about 10 miles south of Ranger on FM Rd. 571. A sign on the west side of the Rd. reads Alameda Cemetery, which is about two miles down the dirt road. This is one of the oldest cemeteries in Eastland County, with the first grave in the cemetery being that of a woman killed and scalped by Indians in 1860. Alameda is a large, well-kept place, cared for by donations of the Cemetery Association members. Those meeting there on May 6 are invited to bring a basket lunch and attend a business meeting after noon. After this meeting the Alameda Exes will go to Ranger to meet and visit at the Ranger High School, having a catered supper at 5:30 p.m.

RISING STAR

Chemical brush control for small acreages will be the topic of a three-county program and field day in Rising Star on Tuesday, March 28. Agricultural committees in Brown, Comanche and Eastland County have planned the program, which

will begin at 9:30 a.m. in the First Baptist Church Fellowship building. Texas Agricultural Extension Service specialists Drs. Tommy Welch and Barron Rector will discuss individual plant treatment of oak, mesquite, greenbriar, prickly pear and other important species. They will also discuss grass management following brush control.

ONE DAY ONLY
3/25/89 Only

30% OFF

ALL DRESSES
Every Size,
Every Color!

JUST IN TIME FOR EASTER!
JUNIOR, MISSES AND WOMEN'S SIZES

Our Personal Service Makes The Difference!

FASHION CROSSROADS

MODE O' DAY
101 S. Lamar Eastland
629-1193

Rapid Refund

WHY WAIT FOR YOUR TAX REFUND WHEN YOU CAN GET YOUR MONEY FAST!

USE H&R BLOCK'S RAPID REFUND PROGRAM

It's a loan against your expected federal income tax refund. Available whether H&R Block prepares your tax return or not.

IT'S FAST! H&R BLOCK

For more details or to see if you qualify call H&R Block now.

219 Main St. 647-5129
Ranger, Tx.

110 W. Commerce 629-8121
Eastland, Tx.

We Will Meet Or Beat Any Competitive Prices.

Call Us Now For Fill Up Prices.
Discounts For Cash Delivery.

Chaney Gas Co.

708 W. Main, Eastland
(Across From H & R Lumber)

629-1751

After Hours
Gayle - 629-2128 Charles - 629-8614

At noon a free barbecue lunch will be served, courtesy of four chemical companies. The Upper Leon Soil and Water District will also be a sponsor of the program. In the afternoon there will be a tour of brush control demonstrations in Brown County near Rising

Star. Brown County Extension Agent Chuck Threet will discuss the demonstrations and results.

Eastland Telegram -
Ranger Times - Cisco
Press - Rising Star And
Callahan County Star
Thursday, March 23, 1989

THE SOUTHWEST LOOK!

IS HERE
(ON DISPLAY)

- Pottery
- Figurines
- Plants
- Wall Hangings
- Draperies

And Lots More!

BEIL DRAPERIES

1706 W. Commerce (Hwy 80 W.)
Eastland 629-1319

Red's Steakhouse & Club

Hwy 80 W. 629-3519 Eastland

"Mixed Company"

March 24 & 25

Next door In The Steakhouse...

Thursday - Sirloin For 2 \$9.95

NEW - Catfish!

Open Mon. - Fri. 4 - 12 p.m. Sat. - 4 - 1
Now Open Wed. Closed Sun.

Prater Equipment Co.

Heavy Equipment Contractors

Roads Utilities Dams Brush Work Developments

Free Estimates

817-842-5878 817-842-5244

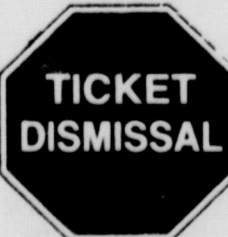
No Job Too Small or Too Large



SPECIALIZING IN YOUTH ACTIVITY PHOTOS

Sports • FFA • 4H • Proms
School • Scouts • Etc.
Trader Cards • Memory Mates •
Portrait Packages • Custom
Packages • All Work Guaranteed
Reasonable Prices

Don Porter • 817-629-2238 • Eastland, Tx



EASTLAND COUNTY DEFENSIVE DRIVING SCHOOL
Saturday Classes

Call 442-4479
Classes Forming Now
Defensive Driving
Reduces Your Auto
Insurance 10%



Rhonda Pipkin
Defensive Driving
Instructor

BEATY/ TALLEY TRAVEL

A Full Service Agency

With Our New Automated
Reservation, We Can Now
Issue BOARDING PASSES!

Maynard Bldg. Suite 1A
Eastland 817-629-8504



Rhonda Pipkin
Defensive
Driving
Instructor

Safe Driving Tips from Rhonda

Be a "Pro" driver. Drive safely in spite of hazardous driving by others or adverse driving conditions. One deceptively dangerous condition is rainfall especially when it first begins as a light mist. This first amount of moisture affects the oil soaked pavement and makes it slick. If visibility is good, people have a tendency to continue travelling at normal speeds, forgetting the adverse effects of rain on the road surface. Slow down and turn on the headlights when you turn on the windshield wipers. "See and be seen."

Honoring America's Providers

An upbeat outlook

*And now the 1989 forecasts
As in 1988, they're generally upbeat, at least that's true for the forecasts coming from the U.S. Department of Agriculture's Annual Outlook Conference in Washington during late November and early December.

Here's a summary of the outlook for U.S. agriculture, according to reports released during the conference.

Production-U.S. production of wheat, corn and soybeans is expected to rebound in 1989 in response to higher prices from drought reduced harvests. For some crops, the government also has eased its land bidding requirements for subsidy programs. In general, global grain and soybean stocks were down about one third in 1988, with reserves good for about two months of use for grains and 1 1/2 months for soybeans.

Exports-U.S. export values should rise by about \$1 billion to \$36.5 billion in fiscal year 1989, while volumes are forecast to decline by 8 percent to 136 million metric tonnes. The U.S. share of world grain trade is expected to slip to 46 percent from 50 percent in 1988.

Prices-World prices for wheat, corn and soybeans are expected to be at their highest point since 1985. Food prices are forecast to climb 3 percent to 5 percent, which compares with a 4 percent rise this year

that included the effects of the drought.

Income-Net farm income, which includes rising values of inventories of commodities, will increase by about 20 percent to between 44 billion and \$48 billion in 1989. Cash farm income is expected to fall about 10 percent to \$48 billion to \$52 billion. Higher production costs and lower direct government payments will draw down cash gains from rising farm prices.

Weather-Forecasters are assuming there will be a rebound from the drought in 1988. If not, all bets are off. Statistics do favor a return to more normal production, but climatologists are concerned about possible global warming trends.

Now for some details:
The global agricultural outlook for 1989 will be highlighted by smaller crops and higher prices but near-record meat supplies, a senior U.S. Department of Agriculture official said at the opening of the USDA annual Agricultural Outlook Conference. James Donald, chairman of the World Agricultural Outlook Board, said demand for both crop and animal products will be firm next year and crop prices will be strong. Expanded crop production is likely by the second half of the year.

Supplies of animal products will continue to be large, dampening livestock price increases, he said.

People Get More For Their Money

Table 1. The amount of food a factory worker's hourly pay would buy

Food item	1950	1986
White bread	10.1 lbs.	15.6 lbs.
Frying chickens	2.5 lbs.	10.4 lbs.
Milk	8.0 qts.	7.9 half gals.
Fresh potatoes	32.7 lbs.	36.5 lbs.
Eggs	2.4 doz.	10.1 doz.
Pork	2.7 lbs.	4.9 lbs.

NATIONAL AGRICULTURE DAY,
March 20, 1989 - in honoring America's providers: the 21 million men and women who make up the food and fiber industry.

* 1988 Fact Book of Agriculture
Agriculture Council of America Education Foundation



Honoring America's Providers

National Agriculture Day - Honoring America's Providers

National Agriculture Day is an annual observance which focuses national attention on the important contribution the food and fiber industry makes to the American economy. The official observance for 1989 Ag Day is March 20th.

All across the country people celebrate agriculture on this day, and during the week of March 19-25, to help increase the awareness of agriculture's accomplishments and the challenges it faces in continuing to meet the world's food and fiber needs.

How many people know American agriculture a production miracle? Well, it is! Consider these facts.

*Fewer than 2.5% of the nation's population, using only 60% of production capacity, can provide 250 million Americans food of the highest quality and purity at less cost as a percentage of income than any other country in the world.

*The food and fiber industry alone generates approximately 20% of the nation's Gross National Product and 20% of the national employment.

Farmers are consumers as well as producers

Like everyone else, the U.S. farmer is a consumer and a taxpayer, as well as a producer.

Farmers pay about \$3.7 billion in farm real estate taxes annually, and \$474 million in personal property taxes.

In 1986, farm operators spent about \$122 billion for goods and services to produce crops and livestock. They had available \$37.5 billion in personal income from production activities and government payment and \$44.7 billion from nonfarm sources to spend for personal taxes, debt reduction, investments, and some of the same things that city people buy.

Farmers' 1986 purchases included the following:

- \$6.4 billion for farm tractors and other motor vehicles, machinery, and equipment;
- \$9.5 billion for fuel, lubricants, and maintenance for machinery and motor vehicles used in the farm business;
- \$19 billion for feed and seed;
- \$5.8 billion for fertilizer and lime.

Small-scale agriculture

Small-scale agriculture implies people utilizing alternative systems to attain gainful employment. Small-scale agriculture, sometimes referred to as "small farms," constitutes a significant number of the Nation's 2.2 million farms, as noted in the 1988 Fact Book of Agriculture introduction.

When farms grossing less than \$40,000 annually are defined as "small," then more than 7 out of 10 U.S. farms are classified as small.

Awareness is growing that small-scale farmers make a significant contribution to economic development of both agribusiness and consumer industries of rural communities throughout the United States. Some say such people are the "mortar" providing rural communities with social and economic strengths. USDA's Office for Small-Scale Agriculture was created as part of the Cooperative State Research Service to increase and improve the flow of information about small-scale farming to agricultural producers and consumers. It is a focal point for distribution of USDA resources on this subject.

The office functions as a liaison to other USDA agencies such as the Extension Service and the Agricultural Research Service in identifying and directing research and educational programs to improve usefulness of information received by all small-scale farmers and others wishing to join their ranks.

Ongoing and planned activities of the office include:

- A bimonthly newsletter on small-scale agriculture;
- Factsheets on small-scale agriculture;
- A national directory of small-scale agriculture contacts;

*An assessment of all ongoing USDA research and educational efforts that target on small-scale agriculture;

- Continual monitoring and/or implementing of conferences on small-scale agriculture.

Table 15.—Agricultural productivity

Year	U.S. Population (July 1) (millions)	Index of total farm output (1977 = 100)	Index of output per work hour (1977 = 100)	Crops harvested (million acres)
1930	1123.1	43	NA	369
1940	1132.1	50	NA	341
1950	151.7	61	22	345
1955	165.3	69	30	340
1960	180.8	76	42	324
1965	194.4	82	56	298
1970	205.1	84	74	293
1975	216.0	95	90	336
1976	218.0	97	97	337
1977	220.2	100	100	345
1978	222.6	104	104	338
1979	225.1	111	113	348
1980	227.8	104	109	352
1981	230.1	118	123	366
1982	232.5	116	125	362
1983	234.8	96	99	306
1984	237.0	112	121	348
1985	239.3	119	140	342
1986	241.5	113	135	325

*Includes 50 States.
*Estimated
*Revisions made last year in the labor input series produced extensive changes to the indexes for labor and total output per work hour.

*January Harvest States Journal

Table 30.—Number of farms and land in farms, by States, June 1, 1985-87¹

State	Farms			Land in Farms		
	1985	1986	1987 ²	1985	1986	1987 ²
	Number			1,000 Acres		
Alabama	54,000	51,000	49,000	11,500	11,000	11,000
Arkansas	53,000	50,000	49,000	16,100	15,700	15,400
California	79,000	79,000	77,000	32,900	32,800	32,600
Georgia	50,000	49,000	48,000	13,500	13,500	13,000
Illinois	90,000	86,000	84,000	28,700	28,700	28,600
Indiana	80,000	77,000	72,000	16,400	16,400	16,200
Iowa	111,000	119,000	107,000	33,600	33,600	33,500
Kansas	72,000	70,000	70,000	48,000	47,900	47,900
Kentucky	100,000	99,000	99,000	14,500	14,500	14,500
Louisiana	36,000	36,000	36,000	10,100	10,000	9,700
Michigan	62,000	60,000	58,000	11,400	11,300	11,300
Minnesota	96,000	93,000	92,000	30,400	30,000	30,000
Mississippi	48,000	46,000	45,000	14,100	14,000	13,800
Missouri	115,000	115,000	114,000	30,800	30,700	30,600
Montana	23,800	23,600	23,300	61,000	61,900	60,800
Nebraska	59,000	57,000	56,000	47,200	47,200	47,200
North Carolina	76,000	73,000	72,000	10,800	10,800	10,800
North Dakota	34,000	33,000	32,500	40,900	40,700	40,500
Ohio	89,000	88,000	84,000	15,800	15,800	15,600
Oklahoma	71,000	71,000	70,000	33,000	33,000	33,000
South Carolina	27,500	27,000	26,000	5,500	5,400	5,200
South Dakota	36,500	36,000	35,000	44,500	44,500	44,500
Tennessee	98,000	96,000	96,000	13,400	13,000	12,600
Texas	177,000	162,000	160,000	135,500	134,000	133,200
Virginia	54,000	50,000	50,000	9,600	9,600	9,600
West Virginia	21,000	21,000	21,000	3,600	3,700	3,700
Wisconsin	83,000	82,000	80,000	17,700	17,600	17,500
Wyoming	9,000	8,800	8,700	34,800	34,800	34,800
United States	2,274,730	2,211,920	2,173,410	1,014,383	1,007,643	1,002,463

¹A farm is a place as of June 1 that sells or could sell \$1,000 of agriculture products during the year.
²Preliminary.

This Special Ag Day Message Sponsored By These Companies ...



...And These Supporters Of Area Agri-Business...

Jim Caldwell

Motors

Hwy. 80 E.

629-2636

Perkins

Implement, Inc.

403 E. Main

629-2665

Honoring America's Providers

An upbeat outlook

And now the 1989 forecasts
As in 1988, they're generally upbeat, at least that's true for the forecasts coming from the U.S. Department of Agriculture's Annual Outlook Conference in Washington during late November and early December.

Here's a summary of the outlook for U.S. agriculture, according to reports released during the conference.

Production-U.S. production of wheat, corn and soybeans is expected to rebound in 1989 in response to higher prices from drought reduced harvests. For some crops, the government also has eased its land idling requirements for subsidy programs. In general, global grain and soybean stocks were down about one third in 1988, with reserves good for about two months of use for grains and 1 1/2 months for soybeans.

Exports-U.S. export values should rise by about \$1 billion to \$3.5 billion in fiscal year 1989, while volumes are forecast to decline by 8 percent to 136 million metric tonnes. The U.S. share of world grain trade is expected to slip to 46 percent from 50 percent in 1988.

Prices-World prices for wheat, corn and soybeans are expected to be at their highest point since 1985. Food prices are forecast to climb 3 percent to 5 percent, which compares with a 4 percent rise this year

that included the effects of the drought.

Income-Net farm income, which includes rising values of inventories of commodities, will increase by about 20 percent to between 44 billion and \$48 billion in 1989. Cash farm income is expected to fall about 10 percent to \$48 billion to \$52 billion. Higher production costs and lower direct government payments will draw down cash gains from rising farm prices.

Weather-Forecasters are assuming there will be a rebound from the drought in 1988. If not, all bets are off. Statistics do favor a return to more normal production, but climatologists are concerned about possible global warming trends.

Now for some details:
The global agricultural outlook for 1989 will be highlighted by smaller crops and higher prices but near-record meat supplies, a senior U.S. Department of Agriculture official said at the opening of the USDA annual Agricultural Outlook Conference. James Donald, chairman of the World Agricultural Outlook Board, said demand for both crop and animal products will be firm next year and crop prices will be strong. Expanded crop production is likely by the second half of the year.

Supplies of animal products will continue to be large, dampening livestock price increases, he said.

People Get More For Their Money

Table 1. The amount of food a factory worker's hourly pay would buy

Food item	1950	1986
White bread	10.1 lbs.	15.6 lbs.
Frying chickens	2.5 lbs.	10.4 lbs.
Milk	8.0 qts.	7.9 half gals.
Fresh potatoes	32.7 lbs.	36.5 lbs.
Eggs	2.4 doz.	10.1 doz.
Pork	2.7 lbs.	4.9 lbs.

NATIONAL AGRICULTURE DAY,
March 20, 1989 - in honoring America's providers:
the 21 million men and women who make up the
food and fiber industry.

* 1988 Fact Book of Agriculture
Agriculture Council of America Education Foundation



Honoring America's Providers

National Agriculture Day - Honoring America's Providers

National Agriculture Day is an annual observance which focuses national attention on the important contribution the food and fiber industry makes to the American economy. The official observance for 1989 Ag Day is March 20th.

All across the country people celebrate agriculture on this day, and during the week of March 19-25, to help increase the awareness of agriculture's accomplishments and the challenges it faces in continuing to meet the world's food and fiber needs.

How many people know American agriculture a production miracle? Well, it is! Consider these facts.

*Fewer than 2.5% of the nation's population, using only 60% of production capacity, can provide 250 million Americans food of the highest quality and purity at less cost as a percentage of income than any other country in the world.

*The food and fiber industry alone generates approximately 20% of the nation's Gross National Product and 20% of the national employment.

Farmers are consumers as well as producers

Like everyone else, the U.S. farmer is a consumer and a taxpayer, as well as a producer.

Farmers pay about \$3.7 billion in farm real estate taxes annually, and \$474 million in personal property taxes.

In 1986, farm operators spent about \$122 billion for goods and services to produce crops and livestock. They had available \$37.5 billion in personal income from production activities and government payment and \$44.7 billion from nonfarm sources to spend for personal taxes, debt reduction, investments, and some of the same things that city people buy.

Farmers' 1986 purchases included the following:

- \$6.4 billion for farm tractors and other motor vehicles, machinery, and equipment;
- \$9.5 billion for fuel, lubricants, and maintenance for machinery and motor vehicles used in the farm business;
- \$19 billion for feed and seed;
- \$5.8 billion for fertilizer and lime.

Small-scale agriculture

Small-scale agriculture implies people utilizing alternative systems to attain gainful employment. Small-scale agriculture, sometimes referred to as "small farms," constitutes a significant number of the Nation's 2.2 million farms, as noted in the 1988 Fact Book of Agriculture introduction.

When farms grossing less than \$40,000 annually are defined as "small," then more than 7 out of 10 U.S. farms are classified as small.

Awareness is growing that small-scale farmers make a significant contribution to economic development of both agribusiness and consumer industries of rural communities throughout the United States. Some say such people are the "mortar" providing rural communities with social and economic strengths. USDA's Office for Small-Scale Agriculture was created as part of the Cooperative State Research Service to increase and improve the flow of information about small-scale farming to agricultural producers and consumers. It is a focal point for distribution of USDA resources on this subject.

The office functions as a liaison to other USDA agencies such as the Extension Service and the Agricultural Research Service in identifying and directing research and educational programs to improve usefulness of information received by all small-scale farmers and others wishing to join their ranks.

Ongoing and planned activities of the office include:

- A bimonthly newsletter on small-scale agriculture;
- Factsheets on small-scale agriculture;
- A national directory of small-scale agriculture contacts;

*An assessment of all ongoing USDA research and educational efforts that target on small-scale agriculture;

*Continual monitoring and/or implementing of conferences on small-scale agriculture.

Table 15.—Agricultural productivity

Year	U.S. Population (July 1) (millions)	Index of total farm output (1977 = 100)	Index of output per work hour (1977 = 100)	Crops harvested (million acres)
1930	123.1	43	NA	369
1940	132.1	50	NA	341
1950	151.7	61	22	345
1955	165.3	69	30	340
1960	180.8	76	42	324
1965	194.4	82	56	298
1970	205.1	84	74	293
1975	216.0	95	90	336
1976	218.0	97	97	337
1977	220.2	100	100	345
1978	222.6	104	104	348
1979	225.1	111	113	338
1980	227.8	104	109	352
1981	230.1	118	123	366
1982	232.5	116	125	362
1983	234.8	96	99	306
1984	237.0	112	121	348
1985	239.3	119	140	342
1986	241.5	113	135	325

¹Includes 50 States.
²Estimated
³Revisions made last year in the labor input series produced extensive changes to the indexes for labor and total output per work hour.

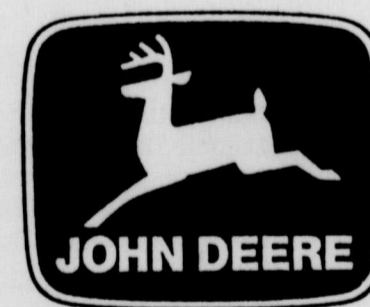
*January Harvest States Journal

Table 30.—Number of farms and land in farms, by States, June 1, 1985-87¹

State	Farms			Land in Farms		
	1985	1986	1987 ²	1985	1986	1987 ²
	Number			1,000 Acres		
Alabama	54,000	51,000	49,000	11,500	11,000	11,000
Arkansas	53,000	50,000	49,000	16,100	15,700	15,400
California	79,000	79,000	77,000	32,900	32,800	32,600
Georgia	50,000	49,000	48,000	13,500	13,500	13,000
Illinois	90,000	86,000	84,000	28,700	28,700	28,600
Indiana	80,000	77,000	72,000	16,400	16,400	16,200
Iowa	111,000	119,000	107,000	33,600	33,600	33,500
Kansas	72,000	70,000	70,000	48,000	47,900	47,900
Kentucky	100,000	99,000	99,000	14,500	14,500	14,500
Louisiana	36,000	36,000	36,000	10,100	10,000	9,700
Michigan	62,000	60,000	58,000	11,400	11,300	11,300
Minnesota	96,000	93,000	92,000	30,400	30,000	30,000
Mississippi	48,000	46,000	45,000	14,100	14,000	13,800
Missouri	115,000	115,000	114,000	30,800	30,700	30,600
Montana	23,800	23,600	23,300	61,000	61,900	60,800
Nebraska	59,000	57,000	56,000	47,200	47,200	47,200
North Carolina	76,000	73,000	72,000	10,800	10,800	10,800
North Dakota	34,000	33,000	32,500	40,900	40,700	40,500
Ohio	89,000	88,000	84,000	15,800	15,800	15,600
Oklahoma	71,000	71,000	70,000	33,000	33,000	33,000
South Carolina	27,500	27,000	26,000	5,500	5,400	5,200
South Dakota	36,500	36,000	35,000	44,500	44,500	44,500
Tennessee	98,000	96,000	96,000	13,400	13,000	12,600
Texas	177,000	162,000	160,000	135,500	134,000	133,200
Virginia	54,000	50,000	50,000	9,600	9,600	9,600
West Virginia	21,000	21,000	21,000	3,600	3,700	3,700
Wisconsin	83,000	82,000	80,000	17,700	17,600	17,500
Wyoming	9,000	8,800	8,700	34,800	34,800	34,800
United States	2,274,730	2,211,920	2,173,410	1,014,383	1,007,643	1,002,463

¹A farm is a place as of June 1 that sells or could sell \$1,000 of agriculture products during the year.
²Preliminary.

This Special Ag Day Message Sponsored By These Companies ...



...And These Supporters Of Area Agri-Business...

Jim Caldwell

Motors

Hwy. 80 E.

629-2636

Perkins

Implement, Inc.

403 E. Main

629-2665

Classic Film Shown To Eastland Music Club

The Eastland Music Study Club held its final study of the season Wed., March 15 on "The World of Musical Comedy".

Joyce Hewett, Club President, welcomed members and guests to the Eastland High School Band Hall. She presented "The Unsinkable Molly Brown," a musical

film, to illustrate this type of American compositions.

This classic film was made in the early 1960's by Metro-Goldwyn Mayer, and starred Debbie Reynolds. The theme was based on a story from the Gold Rush Days in Colorado, telling of a penniless and illiterate girl who marries a man who "strikes it rich."

Eastland 4-H Parent/Leader Assoc. Extends Thanks

The Eastland 4-H Parent/Leader Association would like to extend a special thanks to all who patronized the 4-H concessions during the County Livestock Show.

A special thanks to businesses and individuals who supported us:

• Crystal Ice Company

- Texas Peanut Producer's Board
- TU Electric, Eastland
- Coca Cola Bottling Company, Eastland & Abilene
- Dr. Pepper, Ranger
- Ranger Meat Company
- Eastland Telegram

4-H Rough Riders Horse Club To Meet Monday

The 4-H Rough Riders Horse Club is scheduled to meet Monday, March 27th, from 7:00 - 8:00 p.m. at the Eastland National Bank Community Room. Anyone interested in horses is welcome to attend.

The Fun Skits will be presented and judged at this time.

First place winners in each division will advance to District 8 Round-Up on April 15th, at Tarleton State University.

All 4-H members interested in making a presentation at County 4-H Round-up are welcome to call the County Extension office at 629-1093, for assistance.

Eastland County 4-H Round-Up is scheduled for Saturday, April 1, 1989. All 4-H Method Demonstration, Illustrated Talks and Share-

Get ready for Texas in the spring

FISHING TEXAS today.

Full color illustrations of all the sport fishes in Texas, plus tips on how to catch them.

\$12.95

Pick up your copy at the newspaper office.

FOR SALE

Commercial, Industrial or Retail Building Site in Pogue Park, Eastland, TX

\$1000 down \$100 per month

WRITE: Building Site, Box 29, Eastland, TX 76448

Insured Certificates of Deposit

6 month	9.65 %	\$10,000 minimum deposit
1 year	9.75 %	\$5,000 minimum deposit
2 year	9.75 %	\$5,000 minimum deposit
3 year	9.55 %	\$5,000 minimum deposit
5 year	9.45 %	\$5,000 minimum deposit

Stop in or call today for all the details.

Robert L. Steed
Investment Representative
107 West Main St., Box 1034
Eastland, TX 76448
(817) 629-3851

FSLIC or FDIC insured up to \$100,000.

Issuer's name available upon request.

May be subject of interest penalty for early withdrawal. Effective 3/16/89. Subject to availability.



Edward D. Jones & Co.

Member New York Stock Exchange, Inc.
Member Securities Investor Protection Corporation

Molly Brown's attempts to join the "cultured" Denver Society of that day provided quite a bit of entertainment. The film included a picture of the sinking of the Titanic, which Molly Brown survived.

Mrs. Hewett served soft drinks and popcorn during the film, adding to the Theatre atmosphere. At the conclusion of the Musical Club members were reminded of the next meeting of the group. This will be a Business Luncheon on Wednesday, April 5 at 12 noon at The Crossin' Restaurant.

Plans for National Music Week, May 7-14, will be discussed at that time.

4-H Project Show Winners

A successful 4-H Project Show was held in conjunction with the annual Eastland County Livestock Show.

Grand Champion winners for the Junior Division were Jessica Keith, of Eastland 4-H with a collection entry. Reserve Jr. Grand Champion winner was Brody Honea, of Cisco 4-H. Senior Grand Champion winner was Eric McDonald of Ranger 4-H with a photography entry. Reserve Sr. Grand Champion

winner was Kari Schuyler of Nimrod 4-H with a art drawing entry.

A special congratulations to all the other 4-H'ers which included:

Holly Greenwood, Chris Griffin, Elizabeth Jackson, Trisha Bowles, Julie Glueck, Kristie Collins, Amy Collins, Joanna Wallace, Diana Glover, Janice Glover, Erin

McDonald, Kory Collins, Jackie Hubbard, Kristen Stroebel, Karl Winge, Brent Stroebel, Jason Glueck, Stephanie Griffin, Rita Morano, Kevin Kanady, Sr., Brian Bailey.

The 4-H'ers also wish to thank the judges Mrs. Matty Rose, Mrs. Twila Lee, and Mrs. Lois Hodges.

The project show was sponsored by the Eastland 4-H Parent/Leader Association.

USE THE CLASSIFIEDS

If you want to drink That's your business.
If you want to stop drinking That's our business.
EASTLAND ALCOHOLICS ANONYMOUS
Tuesday & Saturday 8:00 p.m.
Corner of Lamar & Commerce Eastland

EVERY BUNNY GETS INTO PIZZA INN.
Hop on into Pizza Inn and celebrate Easter with the taste and place more and more people are getting into on special occasions.

Free Pizza
New York Style, Deep Dish Pan or Original Thin Crust
Buy any size, any style pizza at regular price and get the next smaller size pizza with equal number of toppings free.

All-You-Can-Eat Lunch Buffet \$2.97
Pan, Thin and New York Style pizzas, Salads, Pasta, and Potatoes.
Dine-in only.
Special children's prices available.

Pizza Inn

Pizza Inn.
Hwy. 80 E. Eastland 629-2269

The Easter Bunny will be at Pizza Inn From 11-2 Sunday March 26. Call about our Monday night Madness.

Poetic Verse

Glory To His Name

In our little country church
As I silently kneel in prayer
The world seems to close
in around me
But I know that my Jesus is near.

Oh glory to his holy name
When this cruel, sinful
world is over
Every knee shall humble
bow
And proclaim that He is
Lord.

So listen closely my dear

brother

To that tender voice that
calls within
He's so softly, tenderly
calling
For He may never come
this way again.

And when the Lord comes
in all His glory
From his Heavenly home
on high
And He calls home all His
children
Will you join with Him in
the sky.

Bob Harbin

Eastland Telegram - Ranger Times - Cisco Press
Thursday, March 23, 1989

MAJESTIC THEATRE

(A Non-Profit Organization) 629-1322

Nick Nolte Martin Short
THREE FUGITIVES

Fri., Sat., Sun., and Mon.,
March 24, 25, 26 & 27 7:30 p.m.
Fri., Sat., and Sun., All Seats \$3.00
Monday Night All Seats \$1.00

Pharmacy Topics

By Bob Mueller

Research at Memorial Sloan-Kettering Cancer Center in New York indicates that a synthetic blood-cell growth hormone helps cancer patients maintain a normal blood count in chemotherapy. Without it, a dangerously low blood count could force suspension of treatment.

Vitamin and mineral supplements seems to boost the IQ in youngsters, a British study found. Similar reports come from California State University.

Because diuretics may in some cases increase blood cholesterol and set off abnormal heart rhythms, some doctors order salt restriction for hypertensives, says the Journal of American Medical Association.

To avoid travelers' diarrhea, tourists of the future may take an "immunizing" tonic. Researchers at the University of Maryland School of Medicine are using pregnant cows to produce protective antibodies.

First-time mothers in their early 30s have babies as healthy as the firstborn of women in their 20s, according to the National Infant Mortality Survey. Risks are higher when new mothers are over 40.

You'll find everything you need to take care of your little one at Wal-Mart Pharmacy, Hwy. 80 East, Eastland, 629-3347.

cer104

WAIS 1-800-252-9174

AMERICAN CANCER SOCIETY

Does someone in your life have a drinking problem?

For Family and Friends

Al-Anon Family Group
629-2731

Dossey Studio

PRESENTS
"GREAT PORTRAITS"
A PORTRAIT PACKAGE SPECIAL
16 "Great Portraits" in Living Color
ONLY \$9.95
PLUS \$1.95 DEPOSIT When Photographed



• 1-8 x 10
• 3-5 x 7-8
• 12 Wallets
FREE 2 Beautiful Charms with package
ALL AGES - NO LIMIT
We use Kodak paper... for a good look.

DATES	DAYS	HOURS
Monday	March 27	1 - 7 p.m.
LOCATION	Friendship Inn (Banquet Room downstairs) CTR24	

Kelly Tires NEW STORE **Kelly Tires**
TYRE TEAM, INC.
1250 E. Main 629-2012

Spring Maintenance Special

Front Brake Special \$59.95

Includes: new grease seals, repacking bearings, truing rotors, and bleeding brake system.

Rear Brake Special \$54.95

Includes: truing drums, and adjusting and bleeding brake system.

Most American made autos and light trucks

Service Air Conditioners \$16.95

Includes: leak check, belt check, pressure check, and adding one can of freon.

Plus Our Service Department Offers Front End Alignment & Tune-Ups Along With Total Tire Service For American Made & Foreign Cars

Dan Hudson - Mechanic on duty with 24 years experience.

Now Presenting the Fastest Growing Skin Care Products in America OIL OF MINK COLLECTION

By Rose Marie

Don't buy -- try it first! 100% Guarantee
Call Now for "Complimentary Facial"

Some of our Products include:

- Non-surgical face lift - Touch of Youth Life
- Tanning-Fluid body veil (Restores moisture to your skin)
- Dry, Flaky Skin-Night Support (Softens existing lines)
- Deep cleanser - Facial Trio
- Wrinkles-100% Mink Oil (Restores PH balance to your skin)

East End of Shady Oaks Shopping Center

629-2019

Barbara Holland
Independent Distributor

Fishing Outdoors

By Terry L. Wilson

"Dallas Area Anglers Over Limit At Leon"

Saturday, March the 18th must have been the day to be fishing at Lake Leon. That is unless it turns your stomach to see two anglers haul 39 black bass home to eat. This would be 29 fish over the state limit which is 5 per person per day. I did not see this theft take place personally, but was informed of its happening by a local angler. Many of you can recall the past problems clubs from the Metroplex caused on Lake Leon with over-kill. WE can stop these slaughters folks, each time we are on or near the water watch for violators. And then jot down boat TX numbers, vehicle tag numbers and descriptions of the game thieves. Then call the local game warden as soon as possible. Please help make a difference folks stop game thieves and make sure your kids will have plenty to enjoy. Anyone observing game and fish law violations can call the TPWD Operation Game Thief number at 1-800-792-GAME, toll-free.

Still on the drawing board, but nearing completion is the Open Bass Tournament on Lake Leon April 30, 1989 to be hosted by the Eastland Volunteer Fire Department. The proposed event looks like this: Entry Fee \$25.00 with optional \$5.00 big bass. The guaranteed payback is proposed at 1st \$1,000.00; 2nd \$500.00; 3rd \$250.00 and 4th thru ? some excellent prizes. As I stated this event has not been confirmed to the point of my receiving a flyer, but it looks to be about to blast off.

April 23 will be the date for Eastland County Bass Clubs Open jackpot event. This tournament is open to anyone who has not failed a poly-graph test in another fishing event, or been found guilty of cheating. Payback will be based on the number of entrants. So be sure to spread the word the more entrants the more money paid back. As more details of these two events become available I will post them on.

March 25th members of the ECBC will meet at Chock-O-Block on Lake Leon. Fishing hours will be 7:00 a.m. until 4:00 p.m. You must be in line prior to 4:00 p.m. to weigh your fish. And don't forget all boats must be inspected prior to unloading the morning of the event. For further information you may contact Chuck Burgess at 653-2268.

April 1 and 2, Lake Granbury, Best Western Big Bass Tournament. Over \$11,000.00 in prizes and monies. Single largest bass overall \$5,000.00; Big Bass of the hour \$150.00; 2nd B.B. of the hour \$100.00 and 3rd B.B. of the hour \$50.00. Entry fee \$55.00 for either Saturday or Sunday or \$100.00 for both days.

April 1, Possum Kingdom Lake, Parker County Sportsmen Club Inc. \$4500.00 prize money guaranteed. Early entry post marked by Thursday, March 23 1989 will be \$25.00. Late entry at the Public Ramp No. 4 (South D&D) will be \$30.00. Both have an optional \$5.00 B.B. pot.

And my personal favorite for April's first weekend is the

17th Annual Brownwood Bass Club Open Tournament. Hosted by the Brownwood Bass Club. Of course Lake Brownwood will be fished with headquarters at Mountain View Lodge. \$4,045 in cash and prizes with \$1,250.00 guaranteed for 1st place. The entry fee will be \$25.00 with an optional \$5.00 big bass pot. This event is an excellent open for new tournament anglers to get started. Normally anyone who weighs a fish in at this receives something.

So mark your calendars for these upcoming events, and I'm sure more will be added for April soon.

Lake Leon bass and hybrid-striped bass are going crazy folks. Blacks to 7 pounds and one 9 pounder are being caught on a variety of baits. The hybrids are running up to 11 pounds and the Rapala Rattlin Rap seem to be the preferred baits. Don't forget to take a bite of poaching! Please.

A number of area teams were on Lake Twinn Buttes near San Angelo. This was the second event of the 1989 tour. I did not receive the results of area teams in time for this article. But I will try to let you know in my next cast. Remember it's not just "catch and release anymore, but Live Release". Treat your catch for better odds of survival.

Terry L. Wilson



The 71st Legislature has now passed the half-way mark, and, at last count, the number of bills filed in the Senate totaled 1,553. In the House of Representatives 3,062 bills have been filed, bringing the total number of bills filed so far this Session to 4,615.

The Legislature has started its work in earnest, and legislation is progressing through both houses that would affect District 22 and all of Texas.

Perhaps the most crucial issue to be faced this Session is reform of the Worker's Compensation Act. House Bill 1 has passed the House, and I am the bill's sponsor of the Senate. HB 1 has been referred to the Senate State Affairs Committee where it will be considered in the next couple of weeks.

Bills dealing with judicial reform and bills that would affect the State Board of Insurance and the Insurance Code have also been referred to Senate State Affairs. These bills have been sent to special subcommittees for close study and should be reported back to the entire committee in the

next few weeks. The Appropriations bill, which sets the state's budget, is nearing completion in both the Senate and the House. The Senate Finance Committee Subcommittees are holding the last of their mark up sessions, and the bill should be voted on by the entire committee soon.

The committee that I chair, Senate Jurisprudence, had received 173 bills by the half-way date. Some of the bills this committee will hear include legislation that would improve the enforcement of child support payments, revise the Deceptive Trades Practices Act and lower the cost of medical malpractice insurance which in turn would lower health costs, especially in rural areas.

By the 60th day of the Session I had filed 64 bills and one constitutional amendment. One of my legislative packages is designed to reform the selection and process of grand juries. These bills, when passed, will prevent "runaway" grand juries that abuse the power that all citi-

zens vest with them.

Other legislation I have filed include: a bill to allow small communities to establish Mental Health and Mental Retardation centers and a bill to create the Texas Public School Employees Group Insurance Program.

As of last week I had passed 18 bills through the Senate. Among these bills are legislation that gives county commissioners court greater flexibility in where they may meet and a bill that gives cities more authority to clean up land that becomes a health hazard. Other bills include: a bill to help cities develop a "Main Street" program to promote economic development; a bill that provide criminal penalties for those involved in illegal athletic recruiting and a bill to create pre-parole detention centers that will help ease county and state jail overcrowding.

Pleasant Hill Home Extension Club

The Pleasant Hill Home Extension Club had their regular monthly birthday party at the Canterbury Villa Nursing Home in Cisco.

We gave them eight of the gowns that we had been working on.

We enjoy doing this and they enjoy the goodies that are served.

Eastland Telegram - Ranger Times-Cisco Press
Thursday,
March 23, 1989

M.H. Perry Insurance

104 N. Lamar Eastland, TX

Phone 629-1566

- Life Insurance
- Hospitalization
- Group
- Cancer
- Supplement
- Medicare

CER104

Retirees Of District 23 Of State Department of Highways Plan Reunion For April 14

Retirees of District 23 of the State Department of Highways and Public Transportation are planning a reunion dinner to be held in Brownwood on April 14.

R.P. "Buddy" Haun, who is acting as planning liaison for retired employees of Eastland County, said that invitations have been sent to all known retirees. He asks that any retiree who did not receive an invitation, get in

touch with him for details about the get-together.

"This is our first try at having a reunion of all retired highway employees of the Brownwood district," Haun said, "and we want to have everybody there who can come."

He added that the dinner will be an opportunity to renew old friendships, visit, and just have a good time.

MEMBER
TEXAS PRESS ASSOCIATION

Quetta's

Shop now for your Easter Fashions
One group of Spring fashions at 40% off
Other Spring and Summer Ready To Wear At 1/4 off

Check our \$5 - \$25 Clearance Rack

Next To Friendship Inn, Eastland

CITY ELECTRIC COMPANY

Ron Carroll - Owner

All Electrical Services
Commercial - Residential - Oilfield

Featuring - 10% Off To Senior Citizens Always

"If It's Electrical - We Do It"

We Welcome The Opportunity To Bid Or Estimate Your Next Job.

Located 2 Mi. N. Eastland On Hwy. 69

Ph. 629-3315

629-3316

CER24

We're Having An Equipment Assignment Sale

on Saturday, March 25
10:00 a.m.
Parking Lot of
Ranger Auction Co.

Items Available:

Cars	Tools
Pickups	Stock Trailers
Tractors	Utility Trailers
Plows	Miscellaneous
Pipe	Items

If you have any consignment items for sale, call Jim Carruth at 647-1560, Jackie Gentry at 647-1308 or Ranger Auction Co. at 647-3247.

CER24

DRUG PROBLEM?

EASTLAND NARCOTICS
ANONYMOUS IS MEETING ON MONDAYS & THURSDAYS, AT CORNER OF COMMERCE & LAMAR
IT WORKS
HOTLINE-915-691-4280

International Hairport

1200 W. Plummer Eastland, Tx

SPRING SPECIALS

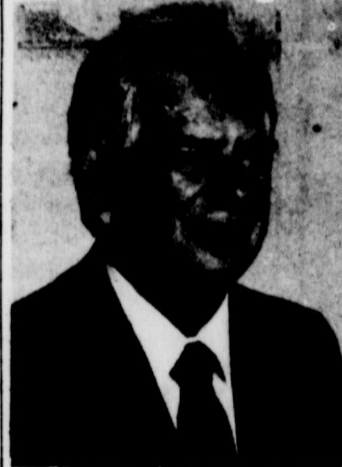
Tanning - 1 Month	\$25.00
Sunglitz	\$25.00
Perms	\$25.00

Russell, Donna & Stella invite you to call

629-8322

for an appointment today!

CER26



Act Will Effect Individuals Who Have Reportable Income.

Aaron Insurance

Buddy Aaron

108 S. Seaman St.
Eastland, Texas

CER104

Office - 817-629-8533
Home - 817-629-1086

NOTICE:

Buddy Aaron is the Man with the Plan - Call 629-8533 for Capital Gains.
NOTICE: Before Renewing C.D.'s, Money Market Certificates, or Treasury Bills, Let us Show You How To Save Tax Dollars. Effective Jan. 1, 1989, The Medicare Catastrophe Coverage



Helping Hands

Families once had only one car, one television set and even one bank account. But, today smart families open accounts for the household budget, for savings and even separate accounts for the kids. They make sense. And the convenience, security and record keeping capability help keep the family budget well in hand.

Open your new account today - for your family. They're as easy as cashing a check. Member FDIC.

the best we can be.

First State Bank

a member of the BBanc family of banks
Ranger, TX • 106 Main St. • member FDIC

MORAN NEWS

By Mrs. Luke Huskey

Mrs. Vashti Yonker, 73, of San Antonio and a former resident of Moran and a teacher in the Moran Public School, passed away in a hospital in San Antonio, last week. She was a niece of Mrs. Carroll Louder.

Mrs. Carroll Louder received treatment in Hendrick Hospital, Abilene.

Mr. and Mrs. M. Geo. Lane of Hurst visited with friends in Moran last Wednesday.

Mr. and Mrs. Wade Roberts attended the funeral for her mother in Lawton, Okla., one day last week.

Dub Midkiff attended a reunion of his Army buddies in Arlington over the weekend.

Mr. and Mrs. J. R. Steen of Abilene visited with Elma May Huskey, last Thursday.

Mr. and Mrs. Craig Dunbar and Ryan of Fort Worth spent the weekend with her parents, Mr. and Mrs. Marvin Kays and John, and her grandparents, Mr. and Mrs. L.C. Kays.

Mrs. Susie Garrett, daughter of Mr. and Mrs. James Garrett and Joe Clack, son of Rev. and Mrs. Jack Clack, were united in marriage Saturday morning in the home of the groom's parents, with Rev. Clack officiating.

Mrs. Lucion Brooks and Mildred Smith attended the Mesquite District Convention of Womens Clubs at Kiva Inn in Abilene Friday and Saturday.

Mrs. Mae Delle Jones, Worthy Matron, Hubert Brewster, Worthy Patron, Mrs. Larry Mohon, Mary Edwards, Mr. and Mrs. James Garrett, Mrs. Lorea Kays and Elma May Huskey represented Moran Chapter, No. 591, OES, at the "Reflections at the Well" School of Instructions for OES in Eastland Saturday and Saturday night.

BIRTHDAY CLUB

Seventeen members of the Moran Birthday Club met at the Ridge Cafe in Breckenridge last Tuesday night for the regular meeting for March.

The "Happy Birthday" song was sung to Frances Green and Ray Spurgeon, who have birthdays in March and to Imo Hitt who had a birthday in February and was unable to attend in February.

A humorous reading was given by Mrs. Lynn Williams, entitled "The Preacher and the Mountain Lady."

A St. Patrick's day theme was used for the entertainment of the group, with each one naming an Irish food or song.

Those present were Mr. and Mrs. R.W. Brooks, Imo Hitt, Frances Green, Elma May Huskey, Mr. and Mrs. Ray Spurgeon, Mr. and Mrs.

Marvin Kays, Ezra Weir, Mr. and Mrs. Lucion Brooks, Mildred Smith, Modell Green, Rene Brooks, and Mr. and Mrs. Lynn Williams.

Elma May Huskey will have charge of the program for April. Each one is asked to dress "funny" in keeping with the April Fools Day.

The people of Moran enjoyed a very beautiful weekend with sunshine and very little wind. A good rain would have made the days. The fruit trees are in bloom, and we hope that the cold weather will not destroy the fruit for this year. Today (Monday) is the first day of Spring, and we hope that the weather continues to be to our liking.

Area Dance To Be Held In Cisco Saturday Night

March 25, 1989, is the date of the area high school dance for Project Graduation. The dance will be held in the Corral Room in Cisco from 8 p.m. until midnight. Disc jockey will be Jason Phillips.

A View Point

Of E.L. Graham Memorial

By ROY CARTEE

You have been advised, by now, the E. L. Graham Hospital Board of Directors has ordered a referendum in regard to a tax raise. May 6, the voters have the opportunity to say "yes" or "no" in approving a tax rate increase from 12.724 cents to 28.409 cents per \$100.00.

The Board of Directors and administrator of the hospital have worked hard to keep from asking for the tax raise.

Many problems are causing rural hospitals to close, namely:

1. Medicare pays large cities more for various procedures and basic hospital care than they do for hospitals the size of Cisco.
2. Doctors are referring more cases to regional hospitals.
3. And, patients do not fully utilize their local hospitals for many reasons.

In considering the tax raise we must ask ourselves

this question. If we approve the raise will we save our hospital? Historically, the answer is no! If for no other reason than those noted above.

I doubt if you would consider a tax raise to keep the school buildings open if there were no children. Likewise, is it reasonable to think of keeping the hospital open when more and more we have no patients.

Now, what happens when the hospital is closed?

1. It will hurt the city economically. Businesses will go to a city that has fine health facilities.
2. The hospital building will be paid for regardless of whether it is open or closed.
3. If the hospital is closed for a period of time it must make application for accreditation and all the new regulations will be placed upon the management.
4. The matter of trauma stabilization may be a factor. However, transfers to a

regional hospital is apparently a fact of life.

The vote should not be taken lightly. The primary factor is not to let 300 people decide whether the hospital should be closed or be left open. No fewer than 800 votes ... yours, your neighbor, and mine ... should be cast to decide this important referendum. The Board of Directors have done you a favor by permitting a vote on the issue rather than demanding a roll back on the taxes. Talk it up! And let's get a minimum of 800 people at the polls.

Absentee Voters Can Begin Voting April 17

Any voter desiring to vote absentee by mail may notify the Absentee Voting Clerk at City Hall, and they will be forwarded the necessary information to make application to receive an absentee ballot.

If there are any questions concerning absentee voting by personal appearance, which begins on April 17,

Jana Yowell Places First In 1600 Meter Run At Wylie Bulldog Relay

Jana Yowell, junior at Cisco High School, was still able to come in first place in the 1600 meter run, even after she fell down during the race. The Cisco team participated in the Wylie Bulldog Relay held last Saturday, in Wylie.

There were about 24 runners in the 1600 meter run, according to Coach David Sumners. As Jana tried to break out of the pack, coming out of the first turn, she tripped and fell. The fall put her about 10 yards behind, before she could recover. By the end of the first lap, she was near the front. She finished nearly 10 seconds ahead of her nearest opponent.

1989, or the voting at the polls on May 6th, please contact Ginger Johnson, Absentee Voting Clerk, at City Hall.

Jana also came in first in the 3200 meter run, with 12:40.02. Another Lady Lobo, Marlena Trice, came in 7th place in the event.

Celia Weeks tied for 5th place in the discus throw. She threw 89'11". Kerrie Jessup came in 7th place with 88'8".

Stefanni Carlile came in 1st place in the 400 meter run with 64.42. Stefanni made the finals of the 400 with the 7th best time, according to Coach Sumners, but came back in the finals to win by a second over Cory of Breckenridge.

In the 1600 meter run, Jana Yowell came in first with 5:40.18. Lori Yowell came in 8th place.

Other Cisco Lady Lobos participating in the track meet were Janecka Strobel, Lori Justice, Becky Moore, and Leonor Soto.

The next track meet will be the Lobo Relays, to be held in Cisco on April 1, 1989.

THE CISCO PRESS Thursday, March 23, 1989

9's ARE WILD SALE!

March 20th thru 31st

Hunger Buster Cheese Nachos

Your Choice 99¢

Large French Fries Two Tacos 6

Breakfast served until 10:30
Breakfast Taquito ... 99¢

Biscuit Breakfast .. 99¢

Dairy Queen

2101 Conrad Hilton Ave.
442-2299
Phone orders welcomed

SUSAN J. SCHAEFER

Certified Public Accountant

105 W. 9th Phone (817) 442-4370 Cisco, Texas
Friday - 9:00 - 4:00

For your convenience, Tuesday evening
consultation available by appointment only
from 5:00 - 8:00 p.m.

Something New In Cisco...



"Eastland County's Worship Center"

Sunday:

10:00 A.M. Coffee & Donuts
with the pastor
10:30 A.M. Word & Worship
Service

6:00 PM Evangelistic Service

Wednesday:

Family Center
(Formerly the
Spot Restaurant)

7:30 P.M.
Bible Study

If you like to hear about ...

Jesus

... and want your children to learn of Him

Pastor John C. Jones, presents the living Christ through the message of "faith" weekly. A "faith oriented Spirit-filled church of signs & miracles."

"Your Special Invitation To Come And Worship"

Our new sanctuary is being built on the three acres joining our "family center" at 600 E. 8th (Hwy 80) where we temporarily meet for Wednesday night Bible study and Sunday Worship. Join us "where going to church is fun."

To The People Of Cisco

from

Olney Savings

You're probably fed up with bad economic news about Texas and our financial institutions, so how about a little good news for a change.

Under the Southwest Plan, several savings institutions have been combined to form single institutions with assets in the billions of dollars. Olney Savings is one of those vital organizations with assets of over 4.5 billion dollars. Olney is owned and operated by Texans, successful Texans, with a desire to see Texas and its people succeed.

It was important to fix those problems created by a puny economy, and now that it's done, it's time for everybody to get back to business. This is why we are writing this letter — because we appreciate your business and pledge to provide the products and services you need to make your lives simpler and more secure.

We are paying extremely competitive rates on your deposits, and we're making loans. Try doing business with Olney Savings. We'll make it worth your while.

Sincerely,

Alan D. Myers, Jr.
Chairman
CEO

 **OLNEY SAVINGS**
AND LOAN ASSOCIATION

Letter To The Editor

Editor:
We as residents of Cisco are going to be called on to vote in a tax increase for the Hospital District right away. I urge you to think this over carefully before voting this into effect. I do not want to see our Hospital close. However, the Government has decided the smaller hospitals are going to close and if you will inquire around, many of them have and are closed. It would be a shame to vote in an increase and be saddled for years with it and the Hospital close anyway.

It does take Revenue to keep anything operating. However, it seems the City

and Government are going to be forced to hunt revenue from another source because we are absolutely taxed to death. We are taxed for the privilege of working, tax here, there, and everywhere. Between taxes, insurance, and utilities, there's nothing left for survival.
Give us a break...

Sincerely,
Mrs. J.M. Wilson

NEWSPAPER DEADLINES:

Monday, 5:00 p.m.
(For Thursday Paper)
And
Thursday, 5:00 p.m.
(For Sunday Paper)

USE THE CLASSIFIEDS

In memorium

The Cisco Rural Volunteer Fire Department gratefully acknowledges receipt of donations from Mr. and Mrs.

Robert H. Donovan, Mr. and Mrs. J. C. Carr, Wm. B. Wright, Jr., and Mr. and Mrs. Don Lane.

The job of the Rural Fire Department is made easier because of this support by the community.

THE CISCO PRESS
Thursday, March 23, 1989



Happy Birthday Daddy!

Tina & David
George, Jeanette & Chris
Katrin, Billy,
Little Billy & Chris
Dottie & Johnny

Garl D. Gorr
Real Estate Brokerage
807 Conrad Hilton Ave., Cisco
442-3642 or Night 442-1642

Cisco area 88 ac farm, about 60 ac sandy field very good for peanuts or coastal, the rest good grass, no minerals.

Several lots for sale, good location. Three bedroom frame, worth the money. Very desirable two bedroom frame, good location, reasonably priced.

One of the finer dwellings in Cisco, 3 bedroom, large den, living room, dining area, kitchen, fire place, two car garage, storage building, fenced back yard on paved street.

Very nice roomy 2 bedroom frame in good area and paved street.

Need offer on two dwellings located side by side on south Avenue D.

Good 2 bedroom dwelling, financing possible.

Attractive commercial building down town on Conrad Hilton Avenue, need to be sold.

400 ac very scenic land, deer and turkey, good location.

We have 480 acres between Albany and Breckenridge that will be available soon, please inquire.

This is just a partial listing, whatever you need we probably have it!

SONIC Tuesday Nite 5 p.m. to close

FAMILY SPECIAL!
Burgers Half-Price!
BUY TWO, FOUR OR MORE!

© 1989 SONIC INDUSTRIES, INC.

"a word to the wise..."

Take time to teach your children Kite Safety.

- Always use wood, plastic and paper in kites; never use wire or metal.
- Always fly kites on dry, clear days, remember, wet string will conduct electricity.
- Always fly kites in open areas FAR FROM ELECTRIC POWER LINES and avoid busy streets and highways.
- Always call WTU if your kite gets snagged in a power line; do not pull on the string to retrieve it.

WEST TEXAS UTILITIES COMPANY
An Equal Opportunity Employer
WTU
A Member of The Central and South West System

Remember: Kite flying should be fun, please keep it safe.

Thrift Mart

"THE FRIENDLY FOLKS"

200 E. Main
Eastland 629-1667

1008 Ave. E.
Cisco 442-1126

PRICES EFFECTIVE
Jan. 18- Jan. 24

Cost Buster Coupon Savings March 15 - 21

Cost Buster
COUPON
Miracle Whip
Salad Dressing
Reg. or Light; 32 oz. Jar
\$1.29 Limit 1 w/ coupon

Cost Buster
COUPON
Any Beef Roast
Lean; Grain Fed
\$1.00 off Limit 1 w/ coupon

Cost Buster
COUPON
Stalk Celery
19¢ each Limit 1 w/ coupon

Cost Buster
COUPON
Aurora
Bath Tissue
White or Asst'd.; 4 Roll Pkg.
59¢ Limit 1 w/ coupon

Cost Buster
COUPON
Easter Bunny Cakes
\$1.00 off