



**Focus On Faith:**  
*The Root Of All Evil...*  
Page A2



**Sudan Hornets**  
**Take Region...**  
Page A7



# Muleshoe Journal

*Striving to be your source for local news*

75¢

Volume 93, No. 9      www.muleshojournal.com      Muleshoe, Texas      March 1, 2012

## 'Mules Lost First, Last Game Of Season'

By Larry Thornton  
Managing Editor

Superintendent Dr. Gene Sheets compared the problems with the state's accountability testing to ignoring the varsity Mules' successful football season and only noting it's losses at the beginning and end of the season during Monday's school board meeting.

With such words, Dr. Sheets recommended the Muleshoe Independent School District's board of

trustees approve a resolution calling for changes in the state's education accountability testing.

"We need to change the whole accountability system, it's becoming ridiculous," the superintendent said.

According to Sheets, the driving factor behind the current testing system is the lobbying power of Pearson, Inc., which has a contract with the State of Texas to provide educational accountability services

at a reported cost of half a billion dollars over the next five years.

"What's driving this?" Sheets said, "It might be

**"I'm not sure we can change it, but we need to send a message."**

— Dr. Gene Sheets

the \$100 million Pearson bills for testing. This is big business. It's an industry of testing."

According to the superintendent even Robert Scott, the

Texas Commissioner of Education, acknowledges the current system has "gone too far."

If the Muleshoe High School varsity football team's accomplishments for the past football season were judged by the same methods as is used in education

accountability, Sheets said, instead of saying that after losing its initial game the Mules went to the state playoffs, it would only note that the first and last games were lost.

"There needs to be some type of testing," Sheets said, and while he was uncertain the resolution approved Monday would accomplish its intended task, he said the state needs to move toward changing the system.

"I'm not sure we can

change it, but we need to send a message," Sheets said.

In other business, the school board:

- Approved the school calendar for 2012-13, which includes changes to the calendar recommended by the district's site base committee.

Although the site base committee recommended the district hold class on Labor Day, 2012, the school board voted

Continued on A3

## School Board Votes To Join 'Finance' Lawsuit

By Larry Thornton  
Managing Editor

The Muleshoe Independent School District Board of Trustees voted Monday to join with other school districts from across the state seeking equitable financing.

The action, which took place during the school board's regular meeting, seeks to force

handed down its landmark decision in Brown versus Topeka (Board of Education), which overturned the "separate but equal" state laws supporting racial segregation.

After Monday's meeting, the superintendent said a similar argument existed over the economic and financial disadvantages between the state's funding of "wealthy and poor" school districts.

Sheets compared Muleshoe's school district with that of Denver City's, which has a comparable student population and ethnicity, and noted that Muleshoe received approximately \$4 million less.

"Our students have to graduate on the same plan as a wealthy district student," he said, but added that the funding to support local education efforts were significantly less.

"If we had \$5,700 per student," Sheets said,

Continued on A12

**"Our kids deserve the same kind of education as everybody else."**

the state's legislature and courts to address the issue of school finance.

"I don't think the legislature is going to do anything unless we do," Superintendent Dr. Gene Sheets said.

"It's an economic development issue in our area," Dr. Sheets said.

In 1954, the United States Supreme Court



Photograph by Larry Thornton

Five Area Cooperative members partake of the meal at Saturday's annual meeting.

## Food, Finances Carry The Day At Five Area's Annual Meeting

By Larry Thornton  
Managing Editor

"We've always been on top," Sandy Vandevender, general manager of Five Area Telephone Cooperative said, referring to the company's consistently successful operation.

While there have been a few years with a narrow profit margin, according to Vandevender, who was recently elected to a second term as president of the National



Sandy Vandevender addresses the membership.

Telecommunications Cooperative Association, Five Area has a financial history that deserves the recognition it receives within the arena of telecommunications.

"If they would run their business like we run ours, they wouldn't be having problems," he said, referring to the federal government and the current economic and financial problems it has been experiencing.

"This cooperative has done very well," Vandevender said later in his report to the coop members during Saturday's annual meeting.

He also spoke of the decision to pay for the cooperative's infrastructure

any financial incentives to do so.

Concerning the cooperative's finances, Vandevender pointed out that its long term debt is only \$147,389. "I think that is outstanding," he added.

While speaking about the infrastructure improvements of the cooperative, Vandevender spoke of the effort to provide "fiber to the node" in rural areas, which has dramatically increased broadband capabilities for the cooperative's

**"If they would run their business like we run ours, they wouldn't be having problems..."**

grants.

Vandevender said there was no reason to burden the cooperative with the restrictions of government funding "until they get their act straight."

He also referred to the current White House administration's directives "to get broadband out to the people," while at the same time removing

rural business and residential customers.

"I only wish other cooperatives could look at what we've done at Five Area," he said. "I'm so enthused about the cooperative's effort."

In the annual financial report received from CPA Wade Wilson, the cooperative's total assets are \$19,852,506, as of Dec. 31, and it paid

Continued on A3

## MAHD Receives Windfall

By Larry Thornton  
Managing Editor

It's unusual for windfalls to blow around twice, but that was the case for the Muleshoe Area Hospital District, according to information presented at the Thursday, February 23, regular board meeting.

At the recommendation of CEO David Burke, the MAHD board approved a "proposed equipment list" that

will be purchased through a Health Resources and Services Administration grant the district had initially turned back.

Originally, the HRSC grant funds — received through Health and Human Services, were to be used in the expansion of the district's rural health clinic, but when the hospital district's efforts to raise the additional funds necessary for the expansion fell through and the federal

agency was notified, it was suggested that the hospital district change the focus of the grant and reapply.

Burke said this was done, and the revised grant application was approved for the purchase of some much needed equipment.

Concerning the equipment list, and the funds that would be expended, Burke noted that the hospital district wasn't required to solicit bids for the

Continued on A3

MEMBER FDIC **MULESHOE STATE BANK** Going Strong since 1931

We are pleased to introduce Muleshoe State Bank Online Banking. Come by our Muleshoe or Farwell location to sign up.

www.muleshoestatebank.com ~ Muleshoe Branch • 272-4561 • 101 W. American Blvd. ~ Farwell Branch • 481-9580 • 801 Ave. A



# OPINION

## Around Muleshoe...



Announcements from non-profit organizations in the Muleshoe area.

To post an announcement send an email to editor@muleshoejournal.com

### Blood Drive

Muleshoe City Hall will be hosting a blood drive with United Blood Services on Thursday, March 1, from 10 a.m. until 3:45 p.m. To schedule and appointment, log onto www.bloodhero.com, or call 1-800-333-6920. Walk-ins are also welcome.

### Meals on Wheels

Bailey County Meals on Wheels' volunteer appreciation cookout is set for Friday, March 30, at 11 a.m., at the Bailey County Courthouse. T-shirts will be \$10, and the "burger deal" is \$5.

### Crops Conference

The Llano Estacada Crops Conference, hosted by Texas AgriLife Extension Service in Bailey County, is scheduled for Monday, March 5, at the Bailey County Office of Texas AgriLife Extension Service, 118 W. Ave. C in Muleshoe.

Registration will begin at 8:30 a.m., and the program starts at 9 a.m. and concludes at noon. The cost of registration is \$10 at the door.

A total of three Texas Department of Agriculture continuing education credits will be offered. For more information call Curtis Preston at 806-272-4583.

### Project Graduation

Donations are being sought for Muleshoe's Project Graduation 2012, a drug-free, alcohol-free, parent-sponsored graduation celebration.

Donations should be addressed to "Project Graduation 2012, Attention: Carla Ambriz, c/o First Bank of Muleshoe, PO Box 565, Muleshoe, TX 79347-0565.



### Cool Light Work

Monday's chilly weather probably didn't bring thoughts of baseball to mind for most of Muleshoe's baseball fans, but both baseball and softball teams have been seeing action, which means the field's need to be lit for the inevitable night games. Pictured above, an electrician replaces some of the light bulbs at the Mules' ball field.

Photograph by Larry Thornton

## 'The Root Of All Kinds of Evil' Still Thrives

I'm not sure it would be particularly appropriate for me to begin, "There should be a special place in hell for..."

So I won't. But I'm tempted to. (And there really should.)

A fine older lady and dear friend (who I'd nominate for a special place in heaven when the time comes) has been getting fund-raising letters. So have we all! And many are legitimate.

But it seems to me that a good many, and even some of the legitimate ones, are just too slick. I don't trust "slick."

At best, it makes me wish legitimate charities would waste less money on fancy, formulaic fund-raising and the companies that produce such.

At worst, it makes my skin crawl. I want to put my hand over my wallet and back away slowly.

But the bulk mail plea for shekels that my friend just got is not what I'd call legitimate.



**Focus On Faith**  
Curtis Shelburne

I would definitely call it "slick." It's probably just barely legal. Just barely. An Internet search reveals that a number of states have filed cases against its senders.

ew if any have won. So the scam mailings go on.

The top portion of the fund-raising letter is a real check for \$2.50 made out to my friend and drawn on what is probably a real bank (with very low standards) from the account of "The Athlete's Foot Disease Fund."

Not really. The scammers' actual account (one of several set up by their several "charity funds," uses the name of a genuine and genuinely terrible disease. It even says that this "Fund" is a

program of... and they use the actual name of their larger scamming organization.

Read the fine print on the back and they'll tell you they've filed forms to be able to solicit legally as a non-profit organization, and that they're also scamming (not their word) in the name of three other horrible diseases.

They are working tirelessly, no doubt, to "radically alter" our healthcare system to "serve the interests of the American public."

Read more closely and you'll find that over 75 percent of what they take in is used for fund-raising and a good chunk of the 25percent left is devoted to "public education in conjunction with fund-raising appeals." Very little (probably none, truly) goes to actually fighting the disease.

And, oh, yes, they'll be happy to help you include them in your will so they can go on scamming you after

your death. They kindly include the words you can use to add a codicil to your will without having to re-draw it (which would involve a lawyer). They're very helpful.

Most people don't like to throw away checks. Many good people will return the \$2.50 check and add a donation.

And the scammers (again, just a little Internet research will give you the head thief's name and history of thievery) laugh all the way to the bank.

Oh, how I wish everyone would just cash these checks! (But is that safe? Dunno.)

I do know there is justice in the next world. If there is any here, the thieves will come down with some combination of the diseases in whose names they are fleecing the good-hearted and naive.

Some things never change. The "root of all kinds of evil" still thrives.

## Freshmen Parent Meeting Set For Monday

Contrary to what you may have heard in the news lately, the new STAAR tests "will" be given this spring to students in grades 3-9.

Students in grades 10-12 will still take the TAKS tests.

However, ninth

By  
Superintendent  
Dr. Gene Sheets

### Super news from MISD

graders begin the STAAR End-of-Course tests "this" year.

There are several decisions that need to be made by freshmen parents that will have serious consequences for their child, not only this year, but in the years to come.

Freshmen students and parents may not be aware of the serious ramifications of the new STAAR End-of-Course tests.

Because there has been some confusion about the ninth grade STAAR End-of-Course tests, Muleshoe High School will be hosting a meeting for parents of ninth graders this Monday, March 5, in the Muleshoe High School Commons Area at 6 p.m.

Counselors will talk to parents about the new graduation expectations for their ninth graders. We will be discussing the STAAR End-of-Course tests, credits,

expectations, summer school, summer retests, etc.

There will be refreshments, and the meeting will last about an hour. We will discuss:

- Encouraging parents through the changing process of the two state assessments
- The positive aspects of the STAAR test
- The new graduation requirements for the students who will graduate under the STAAR assessment program and how the STAAR End-of-Course tests will affect those graduation requirements
- The differences between the STAAR End-of-Course tests and the TAKS tests
- The 12 STAAR End-of-Course tests, and when students will take these tests
- The 15 percent rule, and the waiver for this year only.
- Mandatory summer

school for test failures

• State mandated student remediation for End-of-Course failures and what this means for students and their High School credits

• Summer, fall, and spring retests

• Cumulative scoring of the End-of-Course tests throughout high school

We appreciate our high school faculty and staff, especially our high school counselor and her assistant, for their work in helping our students and parents understand the new testing requirements for our ninth graders.

The transition from TAKS to STAAR will be a challenge for all of us.

We are committed to working together and communicating with each other so we can help every child at the Muleshoe Independent School District graduate as positive, ethical, and productive citizens who are life-long learners.

## Texas Cattle, Calves On Feed Up Slightly

Cattle and calves on feed for slaughter market in Texas feedlots with capacity of 1,000 head or more totaled 2.9 million head on Feb. 1, up one percent from a year ago.

According to the monthly report released by the Texas Field Office, the estimate was down one percent from the Jan. 1 level.

Producers placed 400 thousand head in commercial feedlots during January, down seven percent from last year and unchanged from the December 2011 total.

Texas commercial feeders marketed 415 thousand head during January, up six percent from last year and down one percent from last month.

On Feb. 1, there were 2.45 million head of cattle and calves on feed in the Northern High Plains, 84 percent of the state's total.

The number on feed across the area was up one percent from last year but down one percent from the January total.

January placements in the Northern High Plains totaled 348

thousand head, up three percent from the December total. Marketings were down four percent from last month to 353 thousand head.

Cattle and calves on feed for slaughter market in the United States in feedlots with a capacity of 1 thousand head or more totaled 11.8 million head on February 1, 2012. This inventory was two percent above Feb. 1, 2011.

Placements in feedlots during January totaled 1.85 million head, two percent below

January 2011. January placements of cattle and calves weighing less than 600 pounds totaled 445 thousand head; 600-699 pounds totaled 430 thousand head; 700-799 pounds totaled 525 thousand head; 800 pounds and greater totaled 447 thousand head.

Marketings of fed cattle during January totaled 1.82 million head, two percent above 2011.

**Thanks for reading the Journal!**

**Muleshoe Journal USPS 367820**  
Established Feb. 23, 1924 Published by Panhandle Weeklies, LLC.  
Every Thursday at 201 W. Ave. C, P.O. Box 449, Muleshoe, TX 79347.  
Periodicals paid at Muleshoe, TX.

Postmaster: Send address changes to the Muleshoe Journal, P.O. Box 449, Muleshoe, TX 79347.

We are qualified members of the Panhandle Press Association, West Texas Press Association and Texas Press Association

**David Wedel, Publisher**  
dwedel@hearstmp.com

**Larry Thornton, Managing Editor**  
editor@muleshoejournal.com

**Rhea Gonzales Ad Representative**  
adsales@muleshoejournal.com

**Ad Design / Classified Advertising**  
advertising@muleshoejournal.com  
classifieds@muleshoejournal.com

**Subscriptions:**  
By Carrier Yearly — \$27  
Bailey County, by mail — \$29  
Elsewhere — \$40  
By E-mail — \$22  
Advertising rate cards on request

Hours are 8 a.m. to 5 p.m., Monday - Thursday, and 8 a.m. to noon on Friday.  
\*Advertisers should check their ad the first day of insertion. The Journal will not be liable for failure to publish an ad or for a typographical error or errors in publications except to the extent of the cost of the ad for the first day of insertion. Adjustment for errors will be limited to the cost of that portion of the ad where the error occurred.

© 2012







# MAHD... Continued From A1

expenditure of the grant funds, however, multiple quotes were received on some of the higher-priced items. The hospital district's technology director, Bobby Turner, noted that during the process, one vendor reduced its initial quote by \$18,000.

In other business, the board:

- Discussed the concerns about cuts to Medicare and Medicaid during Burke's administrative report.

"We're having the problem in revenue because Medicare hasn't been sending the hospital its money," he said. "We don't know what the government is going to do. ...We depend on Medicare and Medicaid to make our system work."

Burke provided the board members with a communication he'd

received from the American Hospital Association noting a proposal from Pres. Barack Obama to reduce reimbursements from the two government agencies by \$320 billion over the next 10 years.

"The government is haggling over every issue that has to do with Medicare and Medicaid," Burke said.

- Called the May 12 general election for Place 1,3 and 5, currently held by Zona Gatewood, Herb Ramage and Bill Liles. As of Monday, Feb. 27, both Gatewood and Ramage had filed for reelection.

- Took no action on an agenda item concerning "internal agency operations."

Board member Bill Liles requested the discussion item to be placed on the agenda in a letter to Gatewood, the board president,

listing such things as the decision to place the administrator of Park View Nursing Care Center back under the direction of the hospital district's CEO; seeking a new administrator; contracting for services once more with Covenant Health Systems; as well as contracting with the hospital district's attorney to re-write the district's by-laws.

In regards to Liles' comments and concerns about the Park View administrator being placed back under the hospital district's CEO, Gatewood said apparently no board action was taken to separate the administration of the two facilities, and that since the current by-laws stipulate the CEO was to oversee operations for both facilities, no board

action was necessary. "It's according to the by-laws," she said.

"So you're not going to accept any of these," Liles replied, apparently referring to the items listed in his letter.

While Gatewood didn't address most of the other items in his letter, she did note that next month's agenda would include the appointment of a committee to work on possible changes to the district's by-laws.

## HealthTip

Small changes in eating will have a big impact on health. Just don't take that second helping or skip the dessert.

Be sure to tell someone you care about.

# Five Area Meeting...

Continued from A1  
property taxes in its six counties of operation totaling \$53,134.

Wilson said it was another successful year for the cooperative, due in large part to the cooperative's "quality accounting staff."

In the annual election conducted at the annual meeting, directors Keith Burch and Tom Watson were reelected.

## Obituaries and Death Notices

Death notices will be published free of charge in the Muleshoe Journal.

Obituaries will be published at the rate of \$4.50 per column inch.

In all cases, the death notice and obituary information should be submitted by the funeral home for verification purposes.

The guidelines that will be used to determine if, and how much the publication will cost is as follows:

### Death Notices...

Death notices may include the deceased's name, city of residence, age, date and place of birth, date and place of death, and the names of parents. Survivor information will not be included.

If the notice is to be published prior to any services, the time, date and location of services, and location of burial may be included.

If publication will be after said services, the time will not be included.

### Obituaries...

Obituaries printed in the Muleshoe Journal are printed at the rate of \$4.50 per column inch, and may contain a variety of information, including but not limited to: Date and details of funeral and place of burial; date and place of birth and parents names; date of marriage; biographical information; names of parents, spouses or children who have preceded the person in death; names of survivors; and where memorials may be directed.

A black and white photo will be included; however, there is an additional charge of \$75 to include a color photograph.

# MISD Accountability Resolution Approved

Continued from A1  
against it.

"There's going to be a lot of discord from the community," board member Caroll Precure said.

After considerable discussion, the school board decided to amend calendar with students having an early release day on May 31, and teachers beginning the school year with a "comp day" on Aug. 15, and Labor

Day remaining a school holiday.

- Called the May 12 trustee election for the positions currently held by Thurman Myers and Sergio Leal, both of whom have filed for reelection.

Muleshoe City Secretary LeAnn Gallman will be administering the election, and March 5 is the final date to file for a position on the ballot.

- Discussed a previous board action regarding the extension of the contract with food service provider Aramark during which MISD Business Manager Daniel Harper reported that changes in federal government menu requirements made it necessary for the contract to be rebid.

- Approved the minutes from the Jan. 16 board meeting as distributed.

- Approved an amendment to the school district's budget that included the intent to purchase some new equipment for the campus cafeterias. Harper explained that the funds accumulated in the food service account required either the expenditure of about \$100,000, or the return of the extra funds. Among the item to be replaced are an oven, dishwasher and tables.



**Lance Insurance**  
Competitive Rates, Variety of Leading Companies  
For Home, Auto, Commercial and Crop  
**806-227-2466**



Billy Joe Tolliver and Mike Mitchell invite you to come out and visit Adobe Auto Sales on the Levelland Highway.

## BUY HERE, PAY HERE

### ✓ better deals

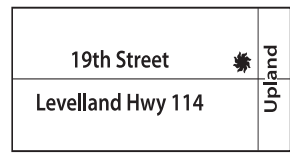
We have a large inventory of vehicles and a staff empowered to help you drive away in your dream car. We'll make a deal that works for you plus every Adobe Auto Sales vehicle comes with 3-month power train warranty so you can drive with confidence.

### ✓ better vehicles


Our large inventory of vehicles includes the makes and models you're looking for - in good condition, with lower mileage and and all newer models.

### ✓ better financing

We are uniquely able to offer both in-house and bank financing to ensure you get the best available rate with a payment you can afford.



**We would love for you to stop by so we can show you all we have to offer!**




**Chevrolet Impala LS**  
2008. Nothing better for the money! Great ride with great features.  
Stock #1778




**Chevrolet Tahoe LS**  
2007. Just waiting to bring the right owner lots of happiness - trouble free!  
Stock #1743



**Chevy Silverado 1500 LT1**  
2008. An awesome vehicle complete with 4-wheel drive and great safety!  
Stock #1745



**Chrysler 300C**  
2006. A smooth operator! This one won't last long! Lots of extras & safety!  
Stock #1786



**Chevrolet Trailblazer LS**  
2007. Drive this vehicle and feel like you just won the state lottery!  
Stock #1656



**Dodge Dakota SXT/Bighorn/Lonestar**  
2008. Spotless! You'll love driving this vehicle everywhere you go!  
Stock #1523



# Senior Citizen News

By Brittany Gibbs

Well, March has come in like a lion, so hopefully it will go out like a lamb!

We would like to remind everybody about our pancake breakfast on Saturday, March 3, from 7-11 a.m.

On the menu will be pancakes, bacon and sausage, a variety of syrups, coffee, milk and orange juice.

The price for adults is \$5 and children \$3. So, all of you husbands out there, bring your wives and treat them to a delicious breakfast they won't have to clean up after.

On March 6, at 10

a.m., Bunco will be the game to play at the Oneita Wagnon Senior Center, so grab a pal and come test your luck at this very fun game.

March 8 is bingo at 1:30 p.m., come enjoy a good time and yummy snacks. We are always welcome to any donation of bingo prizes, so next time your going through your closets, keep us in mind.

We would like to send our thoughts and prayers out to Wanda Kittrell and Vernell Nance as they are recovering from there surgeries. As well as all of you who may

be feeling under the weather.

## Menus for March 5-9:

- Monday March 5 — Baked chicken and dumplings, whole wheat roll, margarine, tossed salad with dressing, winter fruit cup. and low fat milk.
- Tuesday March 6 — Sloppy Joe's on a bun, country potato salad, carrots and zucchini, creamy fruit squares, and low fat milk.
- Wednesday March 7 — Chicken-fried

steak, mashed potatoes, country gravy, stewed okra, seasoned corn, pumpkin squares, and low fat milk.

- Thursday March 8 — Barbecue beef brisket, ranch-style beans, cornbread, buttered carrots, strawberries, and low fat milk.
- Friday March 9 — Breaded fish on a bun, lettuce, tomato, pickle tarter sauce, potato wedges, cole slaw with dressing, peach chantilly, and low fat milk.

## Use Sunscreen To Prevent Skin Cancer

## Local Meals On Wheels Announces Board Members

The new board of directors for Muleshoe's Meals on Wheels program was recently announced.

The board consists of Debra Redwine, president; Robin Dickerson, vice president; Shelby Carpenter, program director and secretary;

Shonda Black, Dee Betram and Davis Gray.

The MOW board is still looking for one more member.

Individuals interested in making the program the "best it can be," are asked to contact Carpenter at 806-272-3647.

**McDaniel's APPLIANCE** 1020 Main Street, Clovis, NM  
505-762-4481 or 800-682-7891

*Time for new appliances?*

**WE ARE YOUR HOMETOWN WHIRLPOOL DEALER.**

**Names & Numbers** WE NOW CARRY SPEED QUEEN!

**Whirlpool** Home Appliances

# BAILEY COUNTY DEVOTIONAL PAGE

**"THE FIVE AREA TELEPHONE COOPERATIVE, INC."**

West Plains Telecommunications, Inc.  
Five Area Systems, Inc. • Plateau Wireless  
Five Area Long Distance • Five Area Internet

302 Uvalde Muleshoe, USA (806) 272-5533

**MULESHOE VALLEY INC.**

2601 W. American Blvd.  
P.O. Box 631  
Muleshoe, Texas

(806) 272-4266  
Mobile (806) 946-8763  
mvinc@fivearea.com

**MCDONALD'S OF MULESHOE**

1315 W. American Blvd. • 272-3333

Open at 5 AM every day!

**i'm lovin' it**

**PACO FEED YARD, INC.**

Commercial Cattle Feeders

P.O. Box 956, Friona  
265-3281

Feller Hughs - Mgr.

**MAPLE COOP GIN**

927-5501

Maple, Texas

**Pizza Hut**

1412 W. American Blvd.  
Muleshoe • 272-4213

Open: Sun.-Mon. 11AM-11PM  
Lunch Buffet: Sun.-Fri. 11:30 AM-1:30PM  
Monday Night Buffet: 6-8PM

**PIZZA HUT WING STREET IS HERE!**

"Gather round the Good Stuff"

**Ray Lee EQUIPMENT CO., LTD.**

2800 West American Blvd.  
Muleshoe  
272-4296

**MULESHOE PEA & BEAN, INC.**

1680 CR 1044, Muleshoe • 272-5589

Nicky Nickels

**This spot could be yours!**

**Call Rhea at the Muleshoe Journal for more details!**

**IRRIGATION PUMPS & POWER**

**Zimmatic** W. Hwy. 84  
CENTER PIVOTS 272-5597

**Interim HEALTH CARE**

110 E. Ave. C  
Muleshoe 272-5549

www.InterimHealthcare.com

Elizabeth Jaime, CSR • Olivia Barrera, Home Health Aide  
Birdie Valdez, LVN • Brenda Testerman, RN Case Manager

**Lowe's MARKETPLACE**

401 W. American Blvd. • Muleshoe • 272-4585

**Muleshoe Journal**

www.muleshoejournal.com

201 W. Ave. C, Muleshoe  
806.272.4536 FAX 806.272.3567

## Proverbs 12: 1-4 (Solutions on A12)

K H R H O P F E Z Z D Z U T A D F S A G Z C N K C  
I U G G Q Q B P X I R M A A R Z Q E U E M E S A A  
L G W R U S O I S D A D H E M C H A V N G D J W T L  
M D C I I W N O I Z S E Z T R Z G A O L S B X W W S  
Q U S G P A R D A S E C N N P H G L G P E C Z P D  
I P T H M A O W T I A N G G A X W R C V E N P W P  
B L R T C S Z A C R Q K D D J I P E D H W O O N J  
H R A E E O B E A B O K K E C T K V U L I F H B R  
U Q F O G L N H E S M D I K K Q P E G A B T U U D  
U U S U I K C D R E C B E T N C R O O O Q A L J F  
L O Y S P E J X E F L D H N W O I H U C D G U N M  
X J H Y L R E T P M S P P I E W W Q Q X S Y E O  
D E N B T J O J K C N D O C I L B L H W M N K S O  
D O O W P B D O H C I S R E I H P R E Z N A Q D G  
E N N W O Q E E T G A A U O P R N I O D O A E G Y  
U B A L Q R M F U E O L B G L D D Y C V G C R T D  
O B P B V E C W I T D X W H K W O J A S A E A U M  
Z F V I S F X K Q W G D T U Z V N O K Y I F E Q M  
K Y I Q F U K Y A U C G M G C A U T G C R D I D U  
X Y R C R Q H A T E S C O R R E C T I O N C Y Y R

**"Whoever loves discipline loves knowledge, but whoever hates correction is stupid. Good people obtain favor from the Lord, but he condemns those who devise wicked schemes. No one can be established through wickedness, but the righteous cannot be uprooted. A wife of noble character is her husband's crown, but a disgraceful wife is like decay in his bones."**

This devotional & directory is made possible by these businesses who encourage all of us to attend worship services.

**ASSEMBLY OF GOD**  
FIRST ASSEMBLY OF GOD  
Pastor Ryan Pate  
521 South First Street  
272-3017  
S.S. 9:45 am,  
W.S. 10:30 am & 6:00 pm,  
Wed. 7:00 pm

**EL BUEN PASTOR**  
415 E. Ave. F - 272-5455  
Pastor Domingo Luna -  
272-4542  
S.S. 9:45 am, W.S. 11 am &  
6 pm; Wed. 7 pm

**CATHOLIC**  
IMMACULATE CONCEPTION  
CATHOLIC CHURCH  
805 E. Hickory  
Leonardo Pahamtang, Min.

**EPISCOPAL - CHARISMATIC**  
ST. CLEMENTS CHURCH  
COMMUNION OF CHRIST  
THE REDEEMER  
Hwy. 214 South • 272-5954  
Father Sergio Leal  
Sun. W.S. 10:30 am

Growth Gr. 1:30 pm;  
Wed. 7:00 pm

**LUTHERAN**  
ST. JOHN LUTHERAN  
Lariat, TX • David Symm, Min.  
S.S. 10:30 am; W.S. 9:30 am

**METHODIST**  
FIRST UNITED METHODIST  
507 W. 2nd St.  
S.S. 9:45; W.S. 11:00;  
Praise & Prayer 6 pm;  
First Sunday of Month  
4 pm Parkview Nursing Home  
Service

Mon. 9 am Ladies Bible Stdy;  
Tues. 6 pm Adult Bible Stdy;  
Pastor Monty Leavell,  
272-5517

**LAZBUDDIE METHODIST**  
S.S. 9:30 am; W.S. 10:30 am  
Pastor Ken Peterson  
965-2121

**EL DIVINO SALVADOR U.M.C.**  
619 E. 5th Street & Ave. G,  
Fernando Sanchez, Pastor  
272-6888

**BAPTIST**  
CALVARY BAPTIST  
1733 W. Ave. C.  
Rev. Jeff Coffman

**FIRST BAPTIST**  
220 West Ave. E  
Dr. Stacy Conner

**FIRST BAPTIST**  
Lazbuddie • 965-2126

**PRIMERA IGLESIA BAUTISTA**  
223 E. Ave. E  
Interim Rev. Troy Smith

**PRIMITIVE BAPTIST**  
621 South First  
Elder Bernard Gowens, Min.

**PROGRESS BAPTIST**  
Progress, TX

**PROGRESS SECOND BAPTIST**  
Arthur Hays, Min. - 1st & 3rd  
Sundays

**CHRISTIAN**  
TRINITY CHRISTIAN  
CENTER  
1723 W. American Blvd.  
272-3877

Reydon Stanford, Pastor  
Sun. W.S. 10:30 am

**CENTRO CRISTIANO**  
117 E. Birch St.  
Hermanos Barron  
S.S. 10 a.m.; W.S. 11 a.m. &  
6 p.m.; Wed. 7 p.m.

**CHURCH OF CHRIST**  
LARIAT CHURCH OF  
CHRIST  
Wesley Roach, Min.  
S.S. 10 a.m.; W.S. 11 a.m. &  
6 p.m.; Wed. 7:30 p.m.

**LAZBUDDIE CHURCH OF CHRIST**  
Nathan Crawford, Min.  
S.S. 9:30 am; W.S. 10:20 am  
& 5 pm; Wed. 7 pm

**MULESHOE CHURCH OF CHRIST**  
22nd & W. American Blvd.  
S.S. 9:30 am; W.S. 10:20 am  
& 6 pm; Wed. 7:30 pm

**16th & AVE. D CHURCH OF CHRIST**  
Curtis Shelburne, Min.  
272-4619  
S.S. 9:30 am; W.S. 10:30 am;

**PENTECOSTAL**  
UNITED PENTECOSTAL  
LIGHTHOUSE  
207 East Ave. G  
1-800-454-6051  
S.S. 10 am; Thursday,  
Bible Study 7 pm

**INTER DENOMINATIONAL NEW COVENANT**  
Plainview Hwy.  
Steve Claybrook, Pastor  
W.S. 10 am; Wed. 7 pm

**MULESHOE COWBOY FELLOWSHIP**  
710 E. American Blvd.  
Steve Friskup, Minister  
272-5199  
Service: 7:30 p.m. Thursday

**Antiques & Fine Things**  
2104 W. American Boulevard  
Muleshoe • 272-4217

**Trollbeads**  
every story has a bead!

**This spot could be yours!**

**Call Rhea at the Muleshoe Journal for more details!**

**CENTRAL COMPRESS & WAREHOUSE**

**SUDAN, TEXAS**

**Deaf Smith County Grain, Inc.**

Cliff A. Skiles, Jr.  
Job S. Skiles

**MCCORMICK SEEDS, INC.**

400 East Ash • 272-3156  
Muleshoe, Texas

**A COMPLETE LINE OF FIELD SEEDS**

Tim McCormick

**ST BANK** MEMBER FDIC

202 South First 272-4515

**Lial's TORTILLA FACTORY**

105 E. Ash St., Muleshoe • 272-5772  
Phillipians 4; "I can do all things through Christ who strengthens me."

**MULESHOE ANIMAL CLINIC**  
GENERAL PRACTICE

**MVS** MULESHOE VET SUPPLY

1430 US Hwy. 84, Muleshoe Office: 272-3061

**BOEHNING DAIRY**

690 CR 45, Earth  
"MILK - A PART OF EVERYTHING THAT IS GOOD!"

**BCEC** BAILEY COUNTY ELECTRIC COOPERATIVE ASSOCIATION

A Touchstone Energy Cooperative

Muleshoe — 272-4504 Morton — 266-8600

**WAYNE COPLEY TRUCKING**

CALICHE, SAND & ROCK PRODUCTS

P.O. Box 63 (806) 272-3697  
Muleshoe, Texas 79347 Mobile: (806) 946-8072

**J&S Dairy**

1260 CR 1038, Muleshoe  
272-7706

**To Place Your Ad Here**

**Call Rhea At Muleshoe Journal 272-4536**

# BAILEY COUNTY DEVOTIONAL PAGE



# Obituaries

## Glenn 'Pete' Mimms

Church service for Glenn Wheeler "Pete" Mimms, 93, of Shallowater, were held on Monday, Feb. 27, at 12th Street Church of Christ in Shallowater, with Otho Rogers of Melrose, N.M., officiating.

Burial followed in Lazbuddie Cemetery under the direction of Ellis Funeral Home.

Mr. Mimms died on Feb. 23, 2012, in Lubbock. He was born on June 1, 1918, in Dickens County, and married Bobby Bratton in Crosbyton on Jan. 24, 1945.

Mr. Mimms graduated from Ralls High School in 1936, and moved to the Lazbuddie community in 1953. He served his country on the home front during World War II as a farmer.

In Lazbuddie he was a longtime elder of the Lazbuddie Church of Christ.

He enjoyed gardening, farming,

and being a stockman, and was a member of the 12th Street Church of Christ in Shallowater

Survivors include his wife—Bobby B. Mimms of Shallowater; three sons — Kelly Mimms and wife Judy of Clovis, N.M., Clay Mimms and wife Reta of Ima, N.M., and Tracy Mimms and wife Andrea of Weed, N.M.; a daughter — Jill Moudy and husband Alvin of Lubbock; 18 grandchildren and 22 great-grandchildren; two sisters — Jerrine Parks of Ralls and Doris Moorman of Clovis, N.M.

He was preceded in death by five sisters — Gladys Gilstrap, Jewel Taylor, Claudia Porter, Leona Blanton and Merle McFarland; and four brothers — LeRoy Mimms, Darrell Mimms, Dalton Mimms and Marvin Mimms.

Memorials may be sent to The Children's Home of Lubbock, PO Box 2824 Lubbock, TX 79408.

## Lazbuddie ISD Releases Fourth Period Honor Rolls

The Lazbuddie Independent School District recently released its honor rolls for the fourth six-week period.

Among the students honored were:

Elementary "A" — Lluvia Alba, Kinley Coker, Illiana Lopez, Erin Martinez, Peyton Martinez, Bianca Morales, Jayden Morris, TJ Chavez, Aidan McDonald, Trail Townsend, John Henry Schacher, Sidney Urbantke, Devon Pacheco and Andres Solano.

Elementary "AB" — Noemi Garcia, Jacy Carpenter, Julia Ibarra, Ethan Martinez, Wyatt Rainey, Maggie Vasquez, Stephanie Villasenor, Renske Crujisen, Maribel Gomez, Jerry Reyes, Jr Vallejo, Miranda Salazar, Avery Timms, Guus Crujisen and Marisol Gomez.

Junior High "A" — TJ Ballard, Bernarndo Lopez, Ginsyn McGehee, Mattisun Hester and Ashley Scott.

Junior High "AB" — Triston Bomer, Julie Chavez, Georgia Taylor, Kenton Parish, Tamera Anderson,

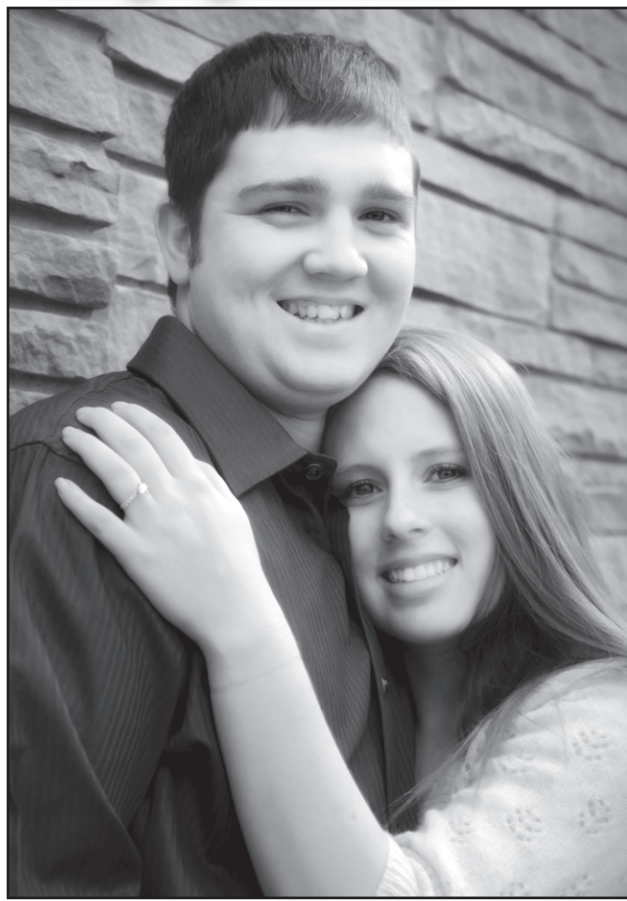
## Blood Drive Set For Thursday

Muleshoe City Hall will be hosting a blood drive with United Blood Services on Thursday, March 1, from 10 a.m. until 3:45 p.m.

To schedule and appointment, log onto www.bloodhero.com, or call 1-800-333-6920. Walk-ins are also welcome.

Shop the merchants who support your news!

# Engagement



DJ Atwood and Jessica Behrends

## Behrends, Atwood To Wed

Earl and Donita Behrends of Muleshoe announce the engagement of the daughter, Jessica Behrends, to DJ Atwood of Muleshoe.

The prospective bride is a 2010 graduate of Muleshoe High School, and is currently attending West Texas A&M, majoring in

science education.

She is currently employed as a resident assistant at the university.

The prospective groom is the son of Delbert and Robin Atwood of Muleshoe.

He is a 2010 graduate of Muleshoe High School, and is currently attending West Texas A&M, majoring in sports and exercise science.

He is currently employed at Home Depot.

The date of wedding ceremony has been set for July 28, 2012, at the University Church of Christ, in Canyon.

## Births

### Lamar Nightingale

Douglas and Katrina Nightingale of Muleshoe announce the birth of their son, Lamar Drew Nightingale, on Feb. 22, 2012, at 9:56 p.m., at Lamb Healthcare Center of Littlefield.

Lamar weighed eight pounds, six ounces at birth and was 21 inches in length.

He has one sister, Makayla.

## Subscribe Today!

*Thank you!*

*The Life in Christ Academy Preschool expresses a sincere thank you to members of the local communities for making the fundraiser dinner on February 12<sup>th</sup> a huge success!*

**We greatly appreciate anyone who generously donated or offered their service for the event.**

*May God Bless You!*

## Bailey County EMS Organization

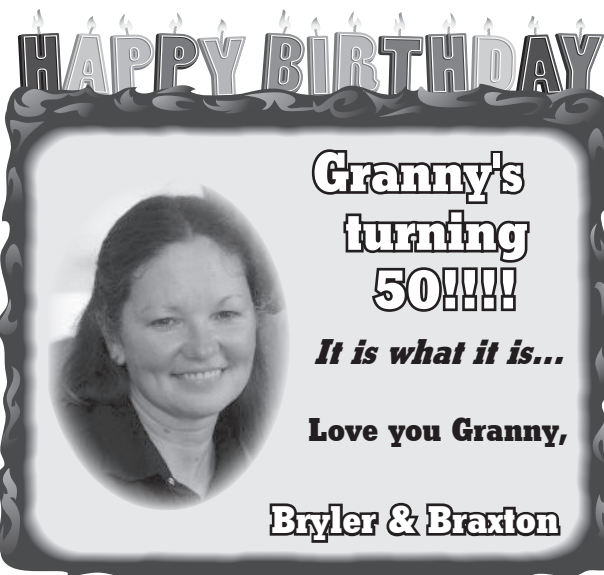
*Would like to thank the following businesses for their generous contributions to our service:*

**Muleshoe Pea & Bean  
Bamert Seed  
Hereford Feed Ingredients  
H&R Block  
Five Area Telephone  
Bailey County Electric  
Tina Davis-Rincones Law  
Partain Chiropractic**

*Donations can be mailed to:  
Bailey County EMS Organization  
715 W. 2nd, Muleshoe, TX 79347  
806.272.4390*

## Addresses For Charitable Giving Suggested

- Muleshoe Heritage Foundation Center, PO Box 201, Muleshoe, Texas 79347, (806) 272-5873.
- MOST Scholarship (given to all graduating MISD seniors yearly), c/o Superintendent Dr. Gene Sheets, 514 W. Ave. G, Muleshoe, TX 79347.
- Oneita Wagon Senior Center, PO Box 292, Muleshoe, TX 79347.
- Hope Chest, PO Box 175, Muleshoe, TX 79347
- Muleshoe Hospital Auxiliary, c/o Muleshoe Area Medical Center.
- Bailey County Food Pantry, PO Box 175, Muleshoe, TX 79347.
- Meals on Wheels, 300 First St., Muleshoe, TX 79347
- Muleshoe Volunteer Fire Department, c/o Muleshoe City Hall, 215 S. First, Muleshoe, TX 79347, or call 272-4528.
- Lazbuddie EMS and Volunteer Fire Department, PO Box 125, Lazbuddie, TX 79053.
- Park View Nursing Care Center, 1100 W. Ave. J, Muleshoe, TX 79347.
- Muleshoe Memorial Park Cemetery, Inc., 104 E. Ave. C, Muleshoe, TX 79347, or call 272-5727.
- Muleshoe Area Educational Foundation, PO Box 62, Muleshoe, TX 79347.
- Muleshoe Chamber of Commerce & Agriculture, 115 E. American Blvd., Muleshoe 79347.
- Bailey County Child Welfare Board, PO Box 243, Muleshoe TX 79346, or call 272-3204.
- Muleshoe Boy Scouts, 609 W. Seventh, Muleshoe, TX 79347, or call 806-946-9908.
- Bailey County Historical Commission, c/o Sammie Simpson, 812 FM 54, Sudan, TX 79371, or call 806-927-5191.



## Remember to "Render!" Taxable property renditions are due April 16.

### Does this apply to you?

If you own tangible personal property that is used to produce income, such as the equipment or inventory owned by a business, it does.

### What is a rendition?

A rendition is a report to your county appraisal district that lists all of the taxable property that you owned or controlled on Jan. 1 of this year. This often applies to furniture, fixtures, equipment or inventory owned by a business.

### What are the advantages of filing?

- You give your opinion of your property's value.
- You record your correct mailing address so your tax bills will go to the right address.
- If your property's value depreciated, you can file a report of decreased value.

### What is the deadline?

- The last day for filing 2012 renditions is April 16.
- An automatic extension is available if requested in writing by the April 16 deadline.
- The chief appraiser may grant an additional 15 days after the deadline for an owner who shows good cause in writing.

### REMEMBER!!

Filing is your responsibility. If you render late, don't render or file an incomplete or false rendition, you may face a 10 to 50 percent penalty.

File renditions with your local appraisal district at:  
**LOCAL APPRAISAL DISTRICT NAME, ADDRESS, PHONE GOES HERE**

**BAILEY CENTRAL APPRAISAL DISTRICT  
302 MAIN ST  
MULESHOE, TEXAS 79347  
806-272-5501**

### Or contact:

Texas Comptroller Susan Combs  
Property Tax Assistance Division  
P.O. Box 13528  
Austin, Texas 78711-3528

**or call:** 1-800-252-9121 and press "2" to access the menu and then press "1" to contact the Information Service Team.

**Or find us online at:** <http://window.state.tx.us/taxinfo/proptax>



A public service announcement courtesy of your county appraisal district.



# AGRICULTURAL NEWS



## FFA Students Place At San Angelo Show

Students from Muleshoe High School's Advanced Welding Class traveled to San Angelo to the annual Livestock Show and Rodeo, Feb. 21-23, where they

participated in the Agricultural Mechanics Show.

There were 275 projects from high schools around the state. Muleshoe had three projects exhibited by five students — a barbecue pit smoker built by Aaron Reyes, a hay trailer by Colten Harris and Cruz Castorena,

and a flatbed utility trailer by Alfredo Sanchez and Jordan Stroud.

Each project received a first place, blue ribbon in quality and craftsmanship, qualifying them for consideration for higher placement in their division.

The students also participated in a competition called the "Fastest Torch in the West," in which students use torches to speed cut against other students.

There were more than 100 students entered, and all of the Muleshoe Students were eliminated in the fourth round. At that time there were only about 25 students left.

## 2012 CRP Emergency Grazing Has Ended

Bailey County USDA Farm Service Agency (FSA) Executive Director Kim Hanlin, has announced that the 2012 Conservation Reserve Program (CRP) emergency grazing deadline was Feb. 28.

Producers who took advantage of the emergency grazing provisions were required to remove all livestock from CRP acres by the Feb. 28th deadline.

Producers must also provide

ending acreage and producer usage report certifications to the Bailey County office as soon as possible," Hanlin said.

There will be a 25 percent CRP payment reduction for CRP acres used for grazing under these emergency provisions.

For more information about CRP emergency grazing, contact the Bailey County FSA office at 272-4538 or go to the website [www.fsa.usda.gov/tx](http://www.fsa.usda.gov/tx).

## Llano Estacada Crops Conference To Be Held

The Llano Estacada Crops Conference, hosted by Texas AgriLife Extension Service in Bailey County, is scheduled for Monday, March 5, at the Bailey County Office of Texas AgriLife Extension Service, 118 W. Ave. C in Muleshoe.

The conference targets grain sorghum, sunflowers, and other cropping options. Topics include: Hybrid selection, weed management, irrigation

management and other production issues.

Information on new EPA regulations will be presented.

Registration will begin at 8:30 a.m., and the program starts at 9 a.m. and concludes at noon. Registration is \$10 at the door.

A total of three Texas Department of Ag continuing education credits will be offered.

For more information call Curtis Preston at 806-272-4583.

## Eating Healthy = Lower Cancer Risk



Bamert Seed Company is actively seeking applications for Administrative Assistant/Receptionist. Competitive pay, benefits, great work environment! Please call 806-272-5506 for more information.

*Need an ag loan?*



*We're the answer.*

Capital Farm Credit has been making loans for agriculture and rural real estate since 1917. The source of our strength is our cooperative structure: We share our earnings with our borrowers and operate in their best interests. In fact, we have returned more than \$400 million to our customers.

- Experienced in agricultural production loans
- Flexible loan programs to fit any operation
- Eligible for patronage program
- Competitive interest rates



Muleshoe Credit Office  
Contact Greg Lance  
806.272.3010

[CapitalFarmCredit.com](http://CapitalFarmCredit.com)



PART OF THE FARM CREDIT SYSTEM

TEXAS' LARGEST RURAL LENDER



**"The Quality You Expect  
at the Price You Don't"**

➤ QUALITY PRODUCTS ➤ UNBEATABLE PRICES ➤ KNOWLEDGEABLE STAFF

## TRI-STAR CHEMICAL

**proudly announces a**

**new convenient**

**location in OLTON!**

➤ Preplant to Harvest

➤ Name Brand & Generics

➤ Big Cash & Carry Savings

➤ Family Owned & Operated

**Olton**

209 N Hwy 168

Olton, TX 79064

806-285-2015

**Plainview**

1515 Industrial Blvd.  
Plainview, TX 79072  
806-291-8784

**Wolfforth**

9807 Hwy 62-82  
Wolfforth, TX 79382  
806-866-0874

[www.tristarchemical.net](http://www.tristarchemical.net)





# The Sudan Buzzy

## Nettes Clinch Another State Tourney Bid

By Cheri Sain  
Sudan Correspondent

The Sudan Nettes clinched another state tournament bid Saturday afternoon when the girls defeated the Panhandle Pantherettes by a score of 62-47.

Sudan Nette Danielle Logan dominated the court. Logan ended the game with 36 points. She had 14 field goals with one 3-pointer and seven free throws.

Logan had help from her teammates. Junior Jasmine Weaver had a monstrous night as she dominated inside the paint and scored 11 points.

Senior Bailee Black finished the game with eight points, Victoria Williams with four points, and Jade Goen with three points.

Sudan started the game off a little hesitant as Panhandle matched the Nettes in size and speed.

Panhandle would score the first five points of the game in the first few minutes of play.

Sudan missed some easy baskets underneath, but that did not stop Sudan from rallying.

Bailee Black scored the first bucket for the Nettes on a short jumper in the paint.

It was back and forth offense for both teams scoring on each of their possessions.

The last few minutes of play was a demonstration of sound offense technique as Sudan scored 17 points in the last two minutes while Panhandle could only muster two points.

The first quarter ended with Sudan on top, 17-9.

Panhandle used their break wisely and made some crucial adjustments. Panhandle would score 16 points in the second quarter while Sudan scored 16 as well.

The key factors for both teams was their dominating forwards both were in foul trouble, Nette Jasmine Weaver left the game for a while with two fouls and Panhandle's Kori Smith left the game with two fouls.

Sudan went in to the locker room ahead of the Ettes with a score of 33-25.

Panhandle came out firing the third quarter. The Nettes had trouble stopping Panhandle's Smith. Smith shot three baskets at the top of the key to take Panhandle within one point of the Nettes.

Coach Lisa Logan called a time out and settled the girls down and made adjustments on defense. After the timeout, the Nettes fended off the attack of Panhandle and kept the score in their favor, 45-38.

The Nettes had an agenda in mind for the fourth quarter. They were going to put the Ettes away and finish this game.

The girls were up by nine at the beginning of the quarter. Danielle Logan would score 12 points in the fourth quarter and her teammates would score

another five points to seal the deal.

Coach Logan, Coach Scisson, and the Nettes won the regional championship trophy and another trip to Austin, their third in five years.

"I am so proud of these girls," Coach Logan said.

"They made a commitment to each other, and they stuck by that commitment. Having some tough playoff games prepared us for this tournament. They never gave up on themselves or each other," she added.

The Nettes will play Snook in the first round of the state tournament in Austin on Thursday at 8:30 a.m.

If the girls win, they will face either Kerens or Martin's Mill for the championship game on Saturday morning.



Nette Bailee Black shoots during the recent game against Panhandle.



### Region Champs!

Pictured above, back row — Jade Goen, Caitlyn Netherland, Keela Chester, Kaylie Miller, Jasmine Weaver and Harlee Koontz; front row — KyLee Shultz, Victoria Williams, Danielle Logan, Bailee Black and Ashlee Koontz.

Pictured on the left: Nette Danielle Logan shoots during the game against Panhandle.

**SUDAN VETERINARY SERVICES**  
**S&S**  
**CHRIS LARSON D.V.M.**  
 ♦Specializing in Dairy Medicine♦  
 ♦Small Animal & Equine♦  
 ♦Same Day Minor Surgery♦  
 ♦Farm & House Calls♦  
 ♦Climate Controlled Boarding♦  
 ♦Services by Appointment Only♦  
 208 Ormand Street  
 806-227-2444 806-241-1915

www.muleshoejournal.com

**SUDAN ISD**  
**EXCELLENCE**  
 IN  
**EDUCATION**  
**WWW.SUDANISD.NET**  
 Hwy. 303 PHONE: (806) 227-2431  
 SUDAN, TX 79371 FAX: (806) 227-2146

**KING AG AVIATION, INC.**  
*Specializing in Aerial Spraying - Insecticide, Herbicide & Seeding - Field Scouting Service*  
 Johnny King Home (806) 227-2211  
 P.O. Box 189 Fax (806) 946-3659  
 Sudan, Texas 79371 Mobile (806) 946-7309  
 Business (806) 946-3399 Vernon Office (940) 552-6102

**COMPOSTED CATTLE MANURE**  
 Farwell Feed Yard -- Farwell  
 Cargill Cattle Feeders -- Bovina  
 Bovina Feeders -- Lazbuddie  
**BRANDON SCHILLING**  
 Mobile 806-225-7700  
 OFFICE 1-800-650-2550  
**NORTH PLAINS COMPOST, INC.**  
 PO BOX 1099  
 FARWELL, TEXAS 79325



## CONGRATULATIONS

David Redecop  
of Seminole, Texas

FOR WINNING THE IPAD2 IN OUR MOBILE BANKING CONTEST.



Download our FREE App TODAY!





# ENTERTAINMENT NEWS

We are choosing snacks that are...

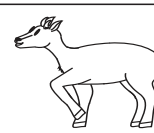


## Newspaper Fun!

www.readingclubfun.com

Annimills LLC © 2012 V9-N9

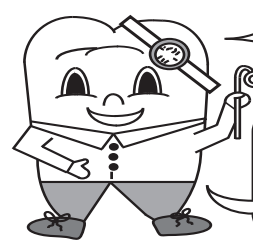
...less sticky and have less sugar.



## Brushing Up On Teeth!



"Hang Five!" Er, wait a minute, I think it's "High Five" for good dental health. Like all dolphins, I don't use a toothbrush, but I do have some teeth. I use them to catch fish, but then I swallow the fish whole. You (hopefully) use a toothbrush to clean your teeth. You don't catch fish with them, do you? If so, do you swallow the fish whole? What a good, tasty snack!



Come to visit my office twice a year. We'll clean and check your teeth!

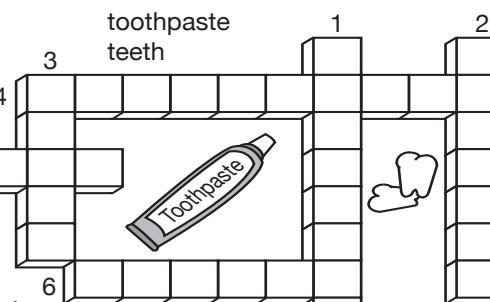
Meanwhile, you can sink your teeth into my dental puzzle below.

### Choosing Snacks and Treats

Speaking of good snacks, here are a few ideas for healthy treats between meals. Choosing snacks that are less sticky and have less sugar are better for your teeth.

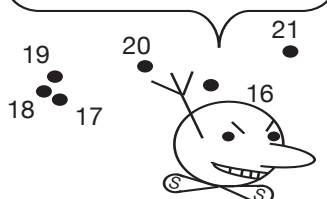
Fill in the vowels to spell out good treats:

1. fresh fr \_\_\_ ts - apples, grapes
2. p \_\_\_ pc \_\_\_ rn or rice cakes
3. v \_\_\_ g \_\_\_ t \_\_\_ bl \_\_\_ sticks - carrots, celery
4. n \_\_\_ ts and s \_\_\_ ds
5. m \_\_\_ lk instead of soda
6. ch \_\_\_ s \_\_\_ cubes

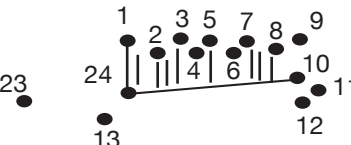
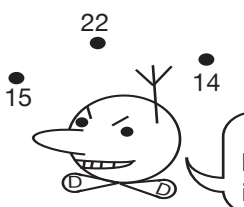


These grouchy guys love to see plaque on your teeth. They like teeth Sticky and Dull...but we don't!

Hey, Dull...let's hide this kid's t \_\_\_ thbr \_\_\_ sh.



### Plaque Pests



Oh yeah, Sticky...like he's going to notice that it's missing anyway!

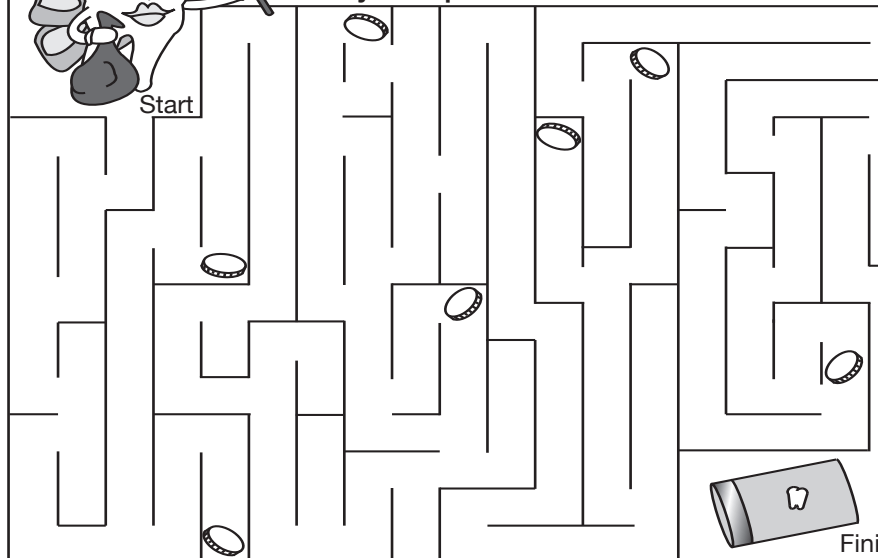


1. holes in teeth
2. person who takes care of teeth
3. 32 of these
4. brush with this to clean teeth
5. worn to correct a problem
6. makes teeth sticky and dull

Yay! Free Puzzles!

Visit our web site to print out new puzzles: **Sink Your Teeth Into This, Snow and Ice, and United States Presidents.** Don't forget to print out the new reading log and certificate set, too: [www.readingclubfun.com](http://www.readingclubfun.com)

**The Tooth Fairy** needs to pick up coins to put under the pillow when she picks up the tooth. Can you help her?



### Grin and 'Bear' It!

Bears have great teeth! You can, too, if you brush after meals and floss daily.



I'm called a sperm whale. I'm a toothed whale. Most animals have teeth to catch or chew food. Some use their teeth as a tool or for fighting -- or even for grooming.

- Match up the description of the teeth to the animal that has them:**
1. has very long teeth top and bottom; they are sharp and strong, can cut down trees
  2. do not have teeth, but the size and shape of their bills are suited to what they eat and where they get it
  3. has no upper front teeth; there is a thick pad there instead; it grabs leaves with its tongue and cuts them off with its front lower teeth and swallows them
  4. has strong, broad, flat teeth like chisels to chew grass
  5. uses two special teeth called fangs to poison prey or enemies
- A. birds  
B. giraffe  
C. beaver  
D. rattlesnake  
E. horse



### Tooth-Building Foods!



Milk has calcium that builds strong bones and teeth, but other foods have it, too!

- |                |          |
|----------------|----------|
| sesame seeds   | cheese   |
| collard greens | sardines |
| pudding        | almonds  |
| cottage cheese | kale     |
| ice cream      | tofu     |
| molasses       | milk     |
| oranges        | salmon   |
| oatmeal        | beans    |
| corn tortillas | broccoli |
| sweet potatoes | yogurt   |

Circle these foods that have calcium:

F T R P V K M Z L C J R Z R T W S J B P V P U D D I N G V O N Q  
 F N O K I Z P C N S S W E E T P O T A T O E S I M O H E E A V C  
 V K C O T T A G E C H E E S E I L I E R M R A Z O H G S P T E Y  
 W I C O L L A R D G R E E N S H L R M I M M Q L Z Z A A D M L M  
 B Q H S S V U Q N N R H Z D G L Q T Z T C E C P S W J R D A E M A  
 P X O P E R S E S A M E S E E D S T D Y O E T F X K R D L A O S  
 U H R S M N L S L A N B R O C C O L I A E F C V V Z G I M L L A  
 B H A K O A Z C O R N T O R T I L L A S B D U R T K W N O O A L  
 E R N V K B C E V L Q J N H H A M D X S A U H R E R W E N D S M  
 A X G Z Y C H E E S E Y O G U R T W W Y M T C Q G A W S D C S O  
 N P E W F B M T R Z W J G D S W U Z G G I H Y M F A M V S T E N  
 S Y S K L W N H J H M I L K X E U T J J Y S S M O S U P N R S K

Vertical text on the right edge of the word search.

**Tip your newspaper carrier**

This is the perfect way to tell your carrier "Thank you" for delivering your newspaper each week.

You're contributions are appreciated and we look forward to serving your home well into the future!

Missed your paper or have a special request? **Call Bobby or Melissa Flores at 272-5856.**

**Support The Merchants Who Support Your Local News!**

**SHOP THESE MULESHOE MERCHANTS!**

**Muleshoe Auto Parts**

Quick Oil Change & Service

102 W. American Blvd. 272-4288

**Auto Plus**

**FARMERS INSURANCE GROUP**

Symbol of Superior Service

**FARMERS**

Julie DeBruin Agent

Call for a free quote

**AUTO • LIFE HOME • BUSINESS**

1602 W. American Blvd. Muleshoe, Texas 272-7548

[jdebruin@farmersagent.com](mailto:jdebruin@farmersagent.com)

2233

RED WING SHOES®

Made in USA

**The Fair Store**

120 Main 272-3500

**Lowe's MARKETPLACE**

401 W. American Blvd. Muleshoe, Texas 272-4585

**We're at Your Service**

Visit the following local businesses for quality service and customer satisfaction!

Pre-Emergent "Green Stuff" Free Estimates!

**All-Chem**

PEST & TURF SOLUTIONS 806-897-2436

TPCL 604624 • LI 18631 • TDA 524801

• Pests • Termites • Weeds • Turf and Pest Programs • Trees • Bare Ground Weed Control

[www.all-chemtx.com](http://www.all-chemtx.com)

**If we can't fix it, throw it away!**

Sheetrock, Drywalling, Tape & Bed, Patch Up Jobs, Acoustic & Paneling, Small Concrete Jobs, Picket Fences, Bathroom Remodeling, Floor Tile, Sky Lights, Carports, Garage Doors, Insulation, Etc. Add On's and Roofing - References Available

**Handy Randy**

We will travel!

Pager: 766-9342 Home: 806-385-3103

Member of BBB of Lubbock

Cell: 806-632-5261 Littlefield, TX

Hosted by Clovis News Journal

**Spring Arts & Crafts Fair**

**March 10-11**

CLOVIS CIVIC CENTER

FREE ADMISSION FREE ADMISSION FREE ADMISSION

**Saturday 10:00 - 5:00 PM**

**Sunday 11:00 - 4:00 PM**

For More Information: Call Leslie Nagy at (575) 763-3431

**BRING A FRIEND!**

Interested in Advertising your business in this location? Call Rhea at the Muleshoe Journal, 272-4536 or 806-518-4606



# SPORTS NEWS

## Strong Finish Not Enough For Mule Victory

By Delton Wilhite  
Sportswriter

Juan Guerrero took a couple of inning to settle into his pitching groove but came back strong in the final three innings. He struck out four in the final three innings.

The Mules' bats seemed to follow Guerrero's arm and as he settled down on the mound the Mules began to get hits.

Guerrero gave up five hits in the first inning and the Mules committed a fielding error.

The Sundown Roughnecks scored five runs before the Mules pulled off a 6-3-5 double play. Sundown went on to defeat the Mules 14-3 in five innings.

Matt Barron scooped up a ground ball at short stop and threw the ball to Issac Baca at first for the first out. Baca tag first and threw the ball across the infield to Jesus Roman at third base.

Roman made the tag on the Roughneck attempting to slide into third. Guerrero struck out the ninth batter he faced in the first inning.

Barron led off the bottom half of the first inning with a single to right field and went to second on a passed ball. Matt Ambriz went down swinging for the Mules first out. Shawn

Atwood walked but Guerrero lined into a double play. The Mules trailed 5-0 after one inning.

Sundown's first three batters of the second inning singled, was hit by a pitch and hit a triple to the fence in right center field for two runs. Guerrero struck out the fourth batter of the inning.

An error and single gave the Roughnecks a fourth run. Guerrero fielded a slow roller back to the mound and made the throw to first for the second out.

The next batter blasted a line drive back at Guerrero. His reflexes were fast enough to get his glove up for the catch and the third out.

The Mules went down in order on strikes in the bottom of the second inning. Sundown led the Mules 9-0 after two innings.

Sundown scored three runs on three hits in the top of the third inning and the Mules did not score. The Rough Necks had increased their lead to 12-0.

Guerrero got the first Roughneck to ground out to Barron and struck out the second batter. Baca fielded a ground ball hit down the first baseline and stepped on first for the unassisted final out.

The Mules had held Sundown scoreless in

the top of the fourth inning.

Guerrero led off the bottom of the fourth with a line drive single to center. Carlos Sosa took Guerrero's place as a pitch runner.

Baca doubled to right field. Sosa attempted to score and ran into a tag at home. The quick relay from right to second and home got Sosa.

The Mules did not score after that and the score remained Sundown 12 Mules 0 after four innings.

An error, a single and double turned into the Roughnecks final two runs of the game. Guerrero struck out two.

Braden Bessire drew a walk to lead off for the Mules in the bottom of the fifth inning as did Austin Ross. Barron went down swinging on three pitches.

Ambriz drove a single up the middle that scored Bessire. Atwood grounded out to the pitcher and sacrificed home Ross. Guerrero's single to right brought home Ambriz for the Mules final run.

The Mules played Thursday in Shallowater's Rail Yard Classic.

The Mules defeated Slaton in the opening round.

The Mules were defeated by the Denver City Mustangs in the second game.



Photograph by Larry Thornton

Mule Jesus Roman awaits the ball as a Sundown runner approaches third base during last week's game.

## 'Tough' Local Ladies Take Down Brownfield

By Delton Wilhite  
Sportswriter

The Lady Mules fell behind the Brownfield Lady Cubs 17-13 with a half inning to play. Muleshoe rallied for five runs on two hits. The Lady Cubs helped out with six errors.

Alondra Villareal's walk-off single scored Jessica Kube for the 18-17 win.

"That was so exciting," said Mule softball coach Jason Cole. "We just beat a good Class 3A team. We are so young and had to be mentally tough today."

"The girls played good defense most of the time today and we hit well at times. We have to get rid of the errors and then we could have a very good season."

Brownfield took advantage of two Lady Mule errors in the first inning to score three runs.

The first three Lady Mule batters of the

game went down on strikes.

Samantha Ramirez struck out the lead-off batter in the second inning. The next lined out to Kube at second.

Villareal scooped up the ground ball at short and made the throw to Sabrina Chavez at final out.

Ramirez walked to lead off the bottom of the second inning. Dominique Mata and Adriana Loya were hit by pitches. The bases were loaded with just one out. A high pitch got away from the catcher and Ramirez scored the Lady Mules' first run.

Mandy Scolley walked to again load the bases. Kube's bunt went foul for the third strike and she was called out. Linda Sanchez took the count full before walking to force home Mata for the final run of the inning.

The Lady Mules trailed 3-2 after two

innings.

Ramirez struck out three of the five Cub batters in the top of the third inning. But Brownfield scored a run to increase the Cub lead to 4-2.

The Lady Mules sent 14 batters to the plate in the bottom half of the third inning. Ten runs crossed the plate on five hits and five base on balls.

The Lady Mules claimed a 12-4 lead. But the bats went silent after that until the fifth inning when the Lady Mules pushed across one run. The Lady Mules led 13-7 after five innings.

Brownfield rallied for six runs in the top of the sixth inning to tie the game at 13-13.

The Lady Mules got base runners to second and third in the bottom of the sixth but could not score.

Brownfield's hot streak continued and

Continued on A10



Photograph by Larry Thornton

### Ready!

A Muleshoe player prepares to swing during Monday's game against Smyer. Originally scheduled for Tuesday, Feb. 28, the game was moved up to Feb. 27.

Look for game details and photographs in next week's issue of the Muleshoe Journal.

### HealthTip

Did you know that chewing tobacco is almost as dangerous as smoking?

Consider ways to cut your risk by sometimes chewing gum instead.

Be sure to tell someone you care about.

### Support the Boosters Who Support Our Teams, Schools and Community!

**MULESHOE ANIMAL CLINIC & MULESHOE VET SUPPLY**  
1430 US HWY. 84, MULESHOE  
272-3061 OR 272-4990

**BCEC**  
A Touchstone Energy Cooperative  
**BAILEY COUNTY ELECTRIC COOPERATIVE ASSN.**  
610 E. American Blvd.  
Muleshoe • 272-4504

**McDonald's OF MULESHOE**  
1315 W. American Blvd.  
806-272-3333

**Muleshoe Tire**  
107 Main Street, Muleshoe  
272-4594

**FIVE AREA TELEPHONE COOPERATIVE**  
302 Uvalde Muleshoe, TX  
272-5533

**WESTCARD**  
**Western "66"**  
607 N. 1st St.  
Muleshoe • 272-4556

**CHS**  
Service Center  
Clovis Hwy. West  
Muleshoe • 272-4203  
Bruce Bruns, Location Mgr.

**Irrigation Pumps & Power**  
www.drippi.com  
West Hwy. 84  
Muleshoe • 272-5597  
**ZIMMATIC CENTER-PIVOTS**

**LOWE'S MARKETPLACE**  
401 W. American Blvd., Muleshoe  
272-4585

**MULESHOE VALLEY INC.**  
2601 W. American Blvd.  
P.O. Box 631  
Muleshoe, Texas  
(806) 272-4266  
Mobile (806) 946-8763  
mviinc@fivearea.com

**WE SUPPORT THE MULES & LADY MULES!**

**SOFTBALL**  
Mar. 6th • VG - 5:00 PM (Brownfield, There)  
Mar. 17th • VG - 12:00 PM (JVG - 12:00 PM (Floydada, Here)

**BASEBALL**  
Mar. 1 - 3 • VB - TBA (Sundown Tournament, There) • Mar. 2 - JVB • 5:00 PM (Whiteface, Here)  
Mar. 5th • VB 7:00 PM • JVB - 4:30 PM (Shallowater, There)



# SPORTS NEWS

## Varsity Softball... Continued From A9

the Lady Mules helped them with three errors in the top of the seventh inning. The Lady Cubs scored four runs on three hits to claim a 17-13 lead.

The Lady Mules needed four runs to extend the game and five for the win in the bottom of the seventh.

A fielding error at third allowed Villareal to reach first base. Samantha Vasquez walked and a fielding error on the pitcher put Chavez on first and load the bases with no outs.

Mata went down swinging for the first out. Loya's ground ball found a hole between

short and third for a single that scored Villareal.

A throwing error sent Vasquez home. Scolley grounded out to the pitcher but the sacrifice brought Chavez across the plate.

Loya was speeding around the bases and scored the tying run

when the throw home was too far for the catcher to make a play.

The second baseman bobbled Kube's ground ball long enough for Kube to cross the bag to put the winning run on base.

Kube stole second on the first pitch. Sanchez walked on five pitches. A passed ball allowed Kube and Sanchez to advance to second and

third.

Daniela Diaz took the count full and fouled off a pitch before drawing a walk to load the bases with two out.

Villareal took the first two pitches for balls. She took a big cut at a pitch over the plate for a strike. The next pitch was on the outside corner of the plate.

Villareal made solid contact and drove the

ball deep into right field for a walk-off single that brought Kube across for the win.

The Lady Mules hosted the Lubbock Titans Tuesday evening and will travel to Ralls for the Lady Jackrabbit Tournament March 1-3. The Lady Mules will start district Saturday on March 17, at noon, against the Floydada Lady Winds.

## Sosa Ties For Ninth Place At Regional Powerlifting Meet

By Delton Wilhite  
Sportswriter

Carlos Sosa tied for eighth place in the Region in powerlifting.

He placed third in the 132 pound class in the Bovina Powerlifting Meet Saturday, finishing with a total of 885 pounds.

The meet was the Mules final powerlifting meet of the regular season.

A lifter must make the top 10 in the Region to make it to the Regional Meet in Sundown on March 10.

"We will be shooting for a medal," Powerlifting coach Kirk

Byrd said.

Carlos is 50 pounds out of fifth.

The top five places at the Region Meet are awarded medals.

The first two places advance to the State Powerlifting Meet.

Coach Byrd said after the meet, "I would like to congratulate and thank all the lifters on a successful year."

"We had a young team and they worked to compete hard and finish the year strong. I look forward to working with them in the future," the coach said.

"Carlos (Sosa) was

our only senior on the team and set the pace for us this season. I knew he had a chance of making it to state and am very happy for him," Byrd added.

Francisco Elizalde finished ninth in the 114 pound class with a 530 pound total.

Christian Paez took seventh in the 123 pound class with a 655 pound total.

Tyler Strader, Issac Luebanos, Christian Lucio, and Jordan Russell also competed for the Mules, but no totals were available for them at the press deadline.

## NEWSPAPER POLICIES

**Editorials** are the opinion of the newspaper. They are written by staff members of the *Muleshoe Journal*. They are not signed because they express the position of the publisher, owners and the newspaper staff.

**Letters to the Editor** are written by readers of the newspaper. They are "brief" expressions of opinion (limited to 200 words), most concerning issues of local interest. Letters must be legible, with a single endorsement. All letters must be signed by the writer and must include a daytime telephone number for verification. Third party, form letters and unsigned letters will not be published.

**Columns** are the personal opinion of the writer whose byline appears with the column. Columns are assigned by the editor, and may be edited for content, length and space.

*Letters to the Editor can be sent to:*

**Editor - Muleshoe Journal**

**P.O. Box 449, Muleshoe, Texas 79347**

**Fax: 806.272.3567 or e-mail: editor@muleshoejournal.com**

## 2012 Muleshoe Mules/Lady Mules Track Schedule

**Varsity Boys/Girls/JV Boys**

**March 2- Friona**

**March 9-Shallowater**

**Spring Break**

**March 23-Muleshoe**

**March 30-Abernathy**

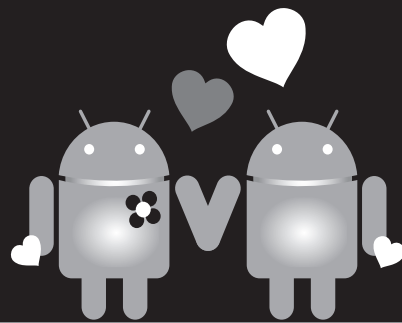
**April 5 (Thurs.) Roosevelt**

**April 12-District (Abernathy)**

**April (27-28)- Regionals (Odessa)**

**May(11-12)- State (Austin)**

**A SWEETHEART Deal You'll LOVE!**



With the Alcatel 990S Android phone and Plateau, you'll have access to 1000s of popular apps, the best regional network, and other extras you can only get from Plateau, such as **Unlimited Texting** for only **\$4.95** per month, Carryover Minutes and the lowest cost local calling plans.

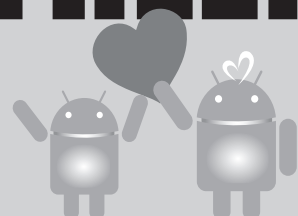
Find the nearest Plateau store at [www.plateautel.com](http://www.plateautel.com).

**Call today to learn more!**

**Sign up for new wireless service in February, and get the Alcatel 990S Android phone**

**FREE!**

Offer ends February 29, 2012. Alcatel 990S Android phone is available for FREE with a two-year contract for wireless service. Other restrictions apply. Visit a Plateau store for complete details.



## Muleshoe Meals on Wheels Volunteer Appreciation Cookout

**When : March 30<sup>th</sup>, 2012**

**Time : 11:30 AM**

**Place : Bailey County Courthouse Yard**

**Bring your Family and Friends and help us Thank our dedicated volunteers, while we all support our Meals on Wheels Program.**

**"WE DELIVER SMILES"**

**#10 Ship Sale**

**1-877-PLATEAU (752-8328)**  
[plateautel.com](http://plateautel.com)

**PLATEAU**



# CLASSIFIEDS

Deadline is Monday at noon to place a classified ad. Call 272-4536.

## HELP WANTED

**Cargill Cattle Feeders, Bovina Texas - Positions available in the cattle department. Cattle department responsibilities include processing cattle, doctoring, shipping, riding pens, and other duties as assigned. Applicants must be willing to perform all of these responsibilities. Work schedule will include 1 & 1/2 days off on most weeks and hours will average 50-60 straight wage no overtime. Position include full benefits package including 401K and Health Insurance. interested applicants should apply in person at Cargill Cattle Feeders 600 US HWY 60. (806)225-4400.**

**Cargill Cattle Feeders, Bovina Texas - Positions available as night watchman. Responsibilities include**

unloading cattle, bunk reading, housekeeping, and other duties assigned. Applicants must be willing to perform all of these responsibilities. This is night shift position 4pm to 4am. Work schedule will include 2 days off on most weeks and hours will average 50-60 straight wage no overtime. Position includes full benefits package including 401K and Health Insurance. Interested applicants should apply in person at Cargill Cattle Feeders 600 US Hwy 60. (806)225-4400.

Park View Nursing Care Center is looking for a part time activity assistance. Please contract Janis Morrison at 806-272-7578.

2 Temp positions: Farm work, 4/13/12 to 12/31/12 @ 15.00 p/hr. Housing

## FOR SALE

40' x 8' x 10' Fruehauf storage container for sale. Item sold "as is, where is." Located at 1431 FM 54, Littlefield, Texas. If interested in receiving a bid sheet, call 806-272-6026 or 325-672-2846 ext. 3114. All sealed bids must be received by March 9, 2012.

Price Reduced! Excellent Condition 1994 Fleetwood Double Wide Mobile Home 4br, 2bath, over 2000 sq. ft. Serious Inquiries 806-946-7698

**AUTOMOTIVE**

Super Nice 2002 Chevy Cavalier, 2 door, 4 cyl, 5 speed standard, 98,000 miles, hot heater, cold air, AM/FM & CD, \$3,200 OBO. 272-5348 or after 5pm 946-9888.

## HOUSE FOR SALE BY OWNER

1804 West Ave I. Nice 3 Bedroom/2 Bath brick home in Richland Hills. Has an extra room for office or another room, New Heater/AC unit, new dishwasher, skylights, and much more. Has huge insulated brick building in back with bathroom. Call 806-928-0339 or 512-787-6782.

All in a nice residential area \$115,000

\*Sorry, NO owner finance\* Call 806-777-4950 - 1765 CR 1033 MUST SEE! 3br/2 1/2ba w/

## HELP WANTED

The City of Mulshoe has an opening in the Public Works Dept. For an

## MISCELLANEOUS

**Dr. Joseph M. Gould MS, DPM**  
FOOT DOCTOR (podiatrist)  
Coming to Littlefield, TX  
**LAMB HEALTHCARE CENTER**  
Ingrown Nail? Heel Pain?  
For all foot and ankle problems call  
**(877) 837-0084**

## Subscribe with us today!

**MISCELLANEOUS**

**REAL ESTATE**

## HELP WANTED

**DRIVER**

**Now Hiring for Exciting Opportunity!**

Regional Drivers  
Home Every Other Day  
Set Route & Great Pay  
Milk Run to Tulsa, OK  
Free Medical Benefits Avail.  
CDL-A w/1 yr. T/T exp.  
Must have tank endorsement

**800-879-7826**  
www.ruan.com/jobs

**RUAN**  
Dedicated to Diversity. EOE

## REAL ESTATE

**Medwards REALTORS®**  
FARM & RANCH RESIDENTIAL COMMERCIAL

**LAND**

360 acres - Two pivots, on highway. With 1004 cotton yields. **SOLD**

1440 acres - Seven pivots, 600 gal. water, with 1021+ cotton yields. **SOLD**

360 acres - Three pivots, 500 gal. water, with 936+ cotton yields. **SOLD**

**Springlake** - 35 acres just east of town on Highway 70. Dryland cotton land or home place. \$70,000.00

**RESIDENTIAL**

**Sudan** - 104 Ormand, 2180sf 3-2-2 home, lots of space, nice yard, close to school, low cost/sq.ft. at \$65,500.

**Sudan** - 406 Wilson, 3-2-1. Very nice brick home. 1291sf at \$52,500.

**Sudan** - 205 Smith, 2-3-2, Plus basement or another bedroom 1794 sf plus 528 sf Garage, outside storage, close to school. \$97,800.

**COMMERCIAL**

**Mulshoe** - Investment Opportunity, (SELF STORAGE UNITS) - 509 West American Blvd. 44 units, plus office rental, 100% leased on 100 X 140 corner lot. W HWY 84. Asking \$174,500.

**Littlefield** - 701 West 3rd. Laguna Market: 40x40 metal building, combination Deli and convenience store. Money Maker. Large Lot close to school. Frisbee course brings in a lot of customers.

Monty Edwards Broker Vernie Moore Agent  
(806) 227-2465  
Free consultation! We will work with other brokers.  
www.medwardsrealtors.com

**STEPHENS REALTY**  
Keith Stephens, Broker  
Jane Stephens, Realtor

Keith 806-789-4311 Jane 806-787-5925  
stephensrealty@suddenlink.net  
www.stephensrealtytx.com

**MULESHOE: 1513 W Ave J - 3/2.5/2 + basement, Geo-thermal heat and air, Double Pane Windows, open concept, neutral colors, 2 water heaters, large workshop, many extras, outstanding location. Price Reduced \$138,000**

**MULESHOE: 905 Ivy - near COUNTRY CLUB - 3/3/2 - 2516 sq ft - large living area w/ fireplace, isolated master suite, extra storage thru/out, Central air/heat, one owner, great family home. Call for more details. \$134,600**

**Jb Sudderth Realty, Inc.**  
109 FIFTH STREET • BOX 887  
FARWELL, TEXAS 79325  
806/481-3288 • Fax 806/481-3388  
www.jbsudderthrealty.com

PEGGY SUDDERTH BROKER RES (806) 481-9148  
DAREN SUDDERTH BROKER / CERT. APPRAISER CELL (575) 799-4947

- Nice brick 1,450+- s.f. country home on 60 ac. near Progress, with 3 BR, 2 baths, ch/ref A/C, single car garage, metal roof, metal shop bldgs. & domestic well. Priced to sell. Call for more information.
- Large 3,500+- s.f. brick country home on 2.6 ac. N. of Lazbuddie, with 5 BR, 3 baths, ch/ref A/C, fireplace, basement, lots of recent remodeling, dom. well, and large 50' x 100' metal barn, on Hwy. Call for more details.
- Large 2,400+- s.f. stucco country home on 10 ac. near Progress, with 3 BR, 2 baths, has 2 living areas. Needs some carpet, but Sellers are willing to help. Call for more information.
- 157 acre irrigated farm with 2 irrigation wells, circle sprinkler, nice 3 BR, 2 bath, brick 2,000+- s.f. country home with basement, ch/ref A/C, fireplace, dom. well, and barns/corrals. Call for more details.
- 17 acre tract near Progress on paved road. Could be split into 2 smaller tracts. Would make nice home sites. Call for more information.

**Vic Coker Land Co.**  
Agricultural Real Estate

**Castro/Parmer Counties** - Dodd area. 303 acres 2 pivots, 4 wells, good soil, lays good. On pavement.

**Castro County** - Brick home on 16 acres. 3 bedroom, 2 bath, 2 car garage, 30' x 30' steel barn. Can sell with or separately from above 303 acres. **SOLD**

**Bailey County** - 177 Acres of C.R.P. One year remaining on current contract. On pavement. **SOLD**

**Parmer County** - 160 acres. Modest house and Quonset type steel building, circle sprinkler, 750 g.p.m. from 2 wells, Good basins & yields. **SOLD**

**Parmer County - Lazbuddie Area** - 120 Acres. 2 wells. 500 g.p.m. Zimmatic Sprinkler. **SOLD**

**Lamb County - Earth Area** - Nice 3 bedroom, 2.5 bath home with fenced yard. Fireplace, 2 large living areas, formal dining room, large office.

Vic Coker, Broker Barry Coker, Agent  
Cell 806-946-7242 Cell 806-787-0917  
316 Main Street • Mulshoe, Texas  
Office: 806-272-3100 • www.vicoland.com

**Byrd Realty**  
Ronald Byrd 575-760-1495  
Licensed Broker  
Crista Bass 806-946-7261  
Sales Associate  
Carleton Johnson 806-789-4289  
Sales Associate

- Very nice 3 bedroom, 2 bath brick home, central air and heat, fireplace, stove, dishwasher, extra room for den, bedroom, or playroom, new fenced backyard, 2 car garage, priced to sell. Call for an appointment today!
- Nice 2 bdr, 1 bath brick home central heat, appliances, large dining room, fenced backyard, only \$60,000. Call for an appointment today.
- Lazbuddie-New Country Listing on Highway** - Spacious Spanish Style brick home, 3 bedroom, 2 1/2 bath, built-ins, central A/H, sunroom with indoor grill, fireplace, office, large utility, lots of storage, patio, 2 car garage, plus a lot more, all on approx. 10 acres, call for an appointment today!!
- New Listing** - 2 bedroom, 2 bath home, central air and heat, fireplace, utility room, large living room/dining room, stove, dishwasher, all on corner lot, priced to sell.

228 Main Street, Mulshoe, Texas  
Check all of our listings at  
www.byrdrealestate.net

# Nieman Realty

116 E. Ave. C • George Nieman, Broker • 272-5285 or 272-5286  
CHECK OUR LISTING INFO., PHOTOS, ETC. ON-LINE AT www.niemanrealty.com  
HAVE BUYERS! NEED HOME AND LAND LISTINGS!!

**HIGH SCHOOL AREA**

- VERY NICE 3-2-2 Brick Home, Cent. A&H, built-ins, FP, approx. 2336' lv. area, auto. spklr, fenced yd, MORE!! \$125K!!
- NICE 3-2-2 Home, corner lot, built-ins, Cent. A&H, workshop/storage plus storage building!! 1974' lvg. area!! \$96K!! PRICE REDUCED \$79,500
- Remodeled 3-2-1 Det. Garage Home, Cent. A&H, built-ins, hdwood & tile floors, 4 fans, fenced yd., approx. 1520' lv. area!! \$80K!!
- REMODELED 2-1-1 (detached garage) Home, Cent. A&H, built-ins, workshop(stor.) fenced yd.!! MORE!! \$40K!!

**RURAL**

- VERY NICE CUSTOM BUILT 3 Bedroom, 3 Bath, 2 car garage home, at edge of town on 80 acres!! Geothermal heat & air, built-ins, FP, ash cabinets, approx. 2544' main lv. area plus 625' finished basement w/safe & storage, spklr system, beautiful trees and landscaping. circle spkr, 5 wire barbwire fence, 36' x 48' metal insulated bldg w/2 12' doors!! MUCH MORE!!
- VERY NICE 4-3 doublewide (2006) on 7.38 acres, Cent. A&H, built-in FP, 36' x 40' Metal Bldg. Septic system, domestic well, on pavement close to town!! \$152K \$130K!! MAKE OFFER
- NICE 4.8 acre homesites, deed restricted!! \$17,500!!
- LARIAT AREA - 3-1 Home, Cent. heat, 5 acres, 1989' lv. area (2 story), 2880' quonset barn, out bldgs., Reduced \$39K!! POSSIBLE OWNER FINANCE!!
- 3-2-2 HOME ON 2 AC. (2860 FM 303)- APPROX. 2146' lv. area, DW, ceiling fans, thermal windows, lg. conc. patio, workshop/storage!! \$89,000!! \$80 K!!
- PROGRESS- 3-2-2 Home, Cent, Geo, A&H, built-ins, FP, approx. 2064' lv. area on 1.24 acres, 2 wells, 720' insul. shop w/288' awning, carport, storage Bldg., cellar!! MUCH MORE!! \$125K!!
- West of Sudan 3-2-2 Brick Home on 5.57 acres, Cent. A&H, built-ins, approx. 2688' lv. area, fenced yd., 40' x 80' quonset barn!! MUCH MORE!! \$135K!!
- NICE 3-2-2 Home on 11 acres at edge of town, Cent. A&H, built-ins, FP, freshly painted interior, thermal windows & doors, plus 1 bdrm house, workshop, storage, greenhouse, plus 3 garages, barns & outbuildings!! \$155,000!!

**RICHLAND HILLS • PARKRIDGE • HIGHLAND**

- 2 Nicely Remodeled Duplex Units & 1 NEW Duplex Unit!! Price Reduced!! \$410K!!!!
- NICELY REMODELED 3-2-2 Brick, new Cent. A&H, built-ins, FP, 3125' lv. area, spklr. sys., fenced yard, MORE!! REDUCED \$195K!! MAKE OFFER!!
- Nicely Remodeled 3-2-2 Brick, Cent. A&H, built-ins, FP w/wood pellet insert, corner lot, fenced yd., auto. spklr., + lot w/stor. bldg.!! 2159' lv. area!! \$179K!! REDUCED!
- VERY NICE 3-2-2 Brick Home, Cent. A&H, built-ins, FP, approx. 2749' lv. area, lots of storage, nice courtyard & landscaping, workshop/storage/fenced yd., Much More!! Reduced-\$175K!
- VERY NICE 3-2-2 Brick Home on corner lot, Cent. A&H, built-ins, FP, remodeled bathrooms, nice carpet & tile, sunroom, fenced yd., auto. spklr., approx. 2216' liv area!! \$125K!!
- 3-2-2 Brick, Cent. A&H, built-ins, approx. 2310' lv. area, 2 Franklin wood stoves, storm shelter, fans, fenced yd., man. spklr.!!! \$120,000!!
- NICE 3-2-2 Brick Home, Cent. A&H, built-ins, FP, fans, auto. sprinkler, cov. patio!! Approx. 1781' lv. area!! \$82,500!!

**FM 1760 @ edge of town, nice 3-2-2 carport home on 3 acres, cent. A&H, built-ins, FP, approx. 2253' lv area, fenced, horse barn w/corrals, hay & tack room!! \$105K!!!!**

**Remodeled 3-2 Home on 20 acres, Cent. A&H, built-ins, basement, nice yard, auto. spklr., wkshp., stor. bldg. approx. 2145' lv. area!! \$150K!!**

**LENAU • COUNTRY CLUB**

- 3 Bdrm, 2 bath, 2 carport, Cent A&H, Dishwasher, WB Stove, approx. 2156' lv. area, \$60K!!
- 3-2-1 CP Brick Home, corner lot, fenced yd., DW, FP, tile & carpet, alarm sys., man. spklr., 2 cp & 2 stor. bldg.!! \$80K!!

**LAND & COMMERCIAL**

- Building w/approx. 3300' plus 1040' upstairs, Cent. A&H, 2 restrooms, MORE! \$39,500!! MAKE OFFER!!
- Approx. 1080' metal bldg. w/off. & 3 bay garage/workshop area plus chain link fenced area!! \$39,500!!
- GREAT BUSINESS LOCATION - 13000' Bldg., 7000' paved parking, corner lot, Hwy. 84 & Main. A&H, \$100,000!!
- NICE 7000' bldg., Cent. A&H (2-3 yrs old), corner lot, \$70,250!!
- 101.8 acres, edge of town, pasture & farm land, 1 irrig. well! \$122,244!!

LOOKING for Something FIND it, in the Mulshoe Journal

**PSSI**

**Need a Job?**

Now hiring for 3<sup>rd</sup> Shift Sanitation  
Contracted by Meat Packing Plant, in Friona Tx • Starting at \$9.00 per hour  
Company Benefits & Transportation available.

Now interviewing/taking applications at South Plains Community Action Center/SPARTAN Building; Mulshoe, Texas

<b>Interviews on Tuesday's</b>	Contact PSSI:
9:00 am – 12:00 pm	(806) 247-3144
<b>804 W. American Blvd.</b>	1304 West 9 <sup>th</sup> St.
Mulshoe, TX 79347	Friona Texas 79035
(806) 272-7537	

**HELP WANTED**

**Rehabilitation Technician**

FULL TIME POSITION

- High school diploma or GED/equivalent required
- One year of experience in the care and treatment of patients in a related area preferred
- Bilingual skills preferred

- Competitive pay
- Group health, life, dental, & more
- Paid vacation, sick & holidays
- New facility

To apply, send resume or fill out an application at:  
Parmer Medical Center  
Human Resources  
1307 Cleveland, Friona, TX 79035

Online application available at ParmerMedicalCenter.com



# School Finance... Continued From A1

an increase of about \$400 per student, "we'd have a million more per year."

"Our kids deserve the same kind of education as everybody else," said the superintendent.

He noted that this is most noticeable in the area of teacher retention. "Every day, teachers are looking at the options of moving to a higher paying school district," Sheets said.

Referring to actions taken by the state legislature regarding public education financing, the superintendent said, "They didn't vote to use

the rainy day fund, but they also didn't vote to use any windfall rainy days funds."

According to Dr. Sheets, about 500 of the state's approximately 1,000 school districts have joined in on of about five lawsuits seeking to force the legislature to resolve the school finance issues, but the goal is 75 percent participation.

While the superintendent admitted being reluctant to join in any lawsuit, he said it was time to do so. "We need to send a message," he said. "We're going to

tell the Texas Supreme Court they need to do something."

"Our students need the same advantages as everybody else," he added.

According to Superintendent Sheets, it will cost the school district about \$2,000 to join the lawsuit on the equitable financing issue.

During the discussion, board member Carroll Precure noted that at a recent "grassroots meeting" he attended state senators encouraged school districts to take such action.

"They want resolution, as well," Sheets said. "They need something to push them into it."

"I don't know the state wants to provide all of the kids a quality education," he said, "I don't know if they want to do that for Muleshoe's kids."

"I'm recommending that we join the lawsuit, and send a message to the legislature and the courts," he concluded.

The superintendent's recommendation received unanimous support and approval from the school board.

## Private Pesticide Applicator Training, Testing Offered At Bailey County

A Texas private pesticide applicator training and testing program will be conducted March 9 at the Texas AgriLife Extension Service office for Bailey County in Muleshoe.

The office is located at 118 West Ave. C.

The training will begin at 8:30 a.m. and testing should conclude by 2 p.m.

An abbreviated lunch break (on your own) will be taken between the training and testing sessions

according to Monti Vandiver, AgriLife Extension integrated pest management agent for Bailey and Parmer counties.

AgriLife Extension will provide the training and Texas Department of Agriculture will administer the test.

Registration is \$50 at the door and includes a Private Applicator Manual and a current TDA Laws & Regulations Manual.

Attendees are encouraged to bring a calculator for use during

testing.

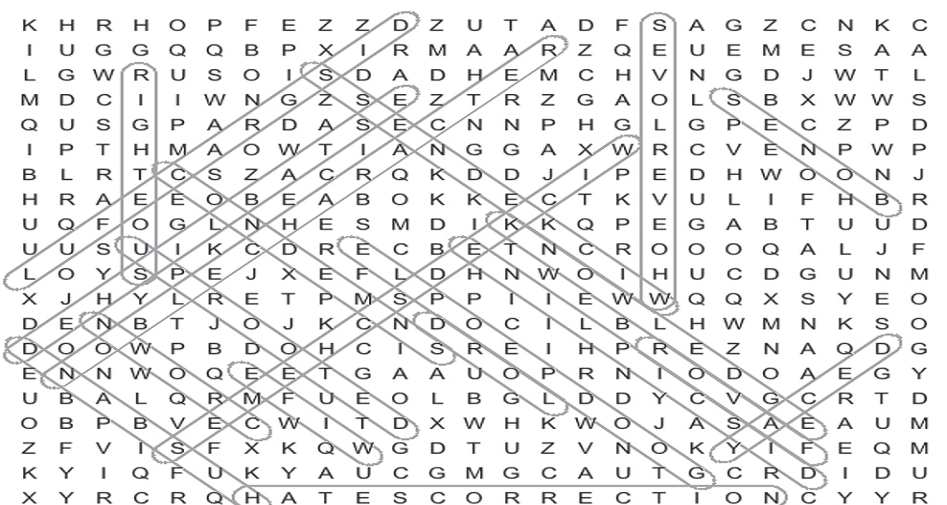
A private pesticide applicator license is required if someone uses or supervises the use of restricted-use or state-limited-use pesticides or regulated herbicides to produce an agricultural crop on personally owned property, rented property, property owned by his or her employer, property under his or her general control, or the property of another person if applied without compensation, other than the trading of personal services

between producers of agricultural commodities.

Individuals who want a Texas private applicator license must attend a private applicator training program offered by AgriLife Extension, pass the Texas Department of Agriculture private applicator exam, and purchase a license.

For more information or to obtain study materials early call AgriLife Extension at 806-272-4584.

### Proverbs 12:1-4



### Information About Joining The School Finance Lawsuit

**What outcome will the lawsuit seek?**  
The goal of this lawsuit is to achieve a funding system that treats all Texas children and taxpayers fairly, and provides each child the opportunities for a world-class education.

**How can a district, taxpayer, parent or business owner join the coalition?**  
They may contact the Equity Center office at 512/478-7313. There is no deadline to join.

**Muleshoe's Storm Siren Signals**  
"Hi-lo" wavering signal... seek more information by radio, television or internet.

Long steady signal, break, long steady signal... "all clear."

(Cut and keep!)

**Need Braces?**

Now offered at  
**J.W. HALTOM**  
Family Dentistry & Orthodontics

**Come in for an Ortho Consult for only \$99!**

- Invisalign, the new invisible braces now offered!
- Adults and children welcome!
- Convenient, no interest payment plan!

J.W. Haltom, Jessica Haltom, Amber Garcia and Erika Trotter

320 E. 8<sup>th</sup> St.  
385-6935  
Mon.- Thur. \* 8 to 5  
Fri. 8 to Noon

# SAVE WATER



Our water supply is dwindling.

# TO SAVE WEST TEXAS

Water conservation is the only hope for our region's future.

Let's work together to save our future.

High Plains Underground Water Conservation District  
www.hpwd.com

## Don't Miss Out on your local news!

# Subscribe TODAY!

## Muleshoe Journal

One year in Bailey County...carrier delivered **\$27.00**

One year in Bailey County...mailed **\$29.00**

One year "out of Bailey County" ...mailed **\$40.00**

Electronic delivery...www.muleshoejournal.com **\$22.00**

201 W Ave C, Muleshoe, TX 79347  
Call 806-272-4536



V B A I L E Y C O U N T Y E L E C T R I C X O J D N E M B T
M U L E S H O E E C O N O M I C D E V E L O P M E N T G H D
T M A M R O N N I E H O L T I N S U R A N C E H I L F Y R O
I I L S H A X J U A W D O S A K V R C J T A F T V Z F Y Y V
F F G P O L E B K T V W Z G B C I E O U B J S T D S X J N U
H B Z B X R Q V G X V F W Y G G Q V G T I P U T Z R E J I Q
Y K B R X S Z O I J H Z D M C O C R B X A J B F R X L Z G H
M K P E M V M D A F J J Y A D J T Y X K X L Q J Q J U P R N
N T X N S U K L I H K A H N I D S I T P N X X W J C H E E K
F S U L A K N Y X Y C W B S C M F F V O D A M W S U G Z N D
U J Y D G J W R B M T B E V S D Q G D H C P G F F P A N R Y
M O F R G F I W T T W V I X Q F Z A I Q X A Y L N W Z Q O Z
B K V G L S U O P D U F V V A Q S T V H P S M Y A R J N C V
J N K M U L E S H O E V A L L E Y I R R I G A T I O N Q S M
T P I U N F A R M E R S C O O P O F E N O C H S N U G Y Z
W R L G H L Y A R F J G K Z L W C T B L B G A U T R R A A I
L R X X P V E W R Z P F E T M U L E S H O E J O U R N A L E
C D Y A O O E S B M U L E S H O E A N I M A L C L I N I C V
S D F O S B O G H B E U P D U L H B J Y Y F F J Y X B S X A
V G Y H X F K C J O N R R Y B M F H J Y Y D N S U Q N T N Q
M F S N R V A J E J E J S T R A P O T U A K W A H O M L B O
J F E K U E Q R L L F S N I Z N C B D V U S W E H J O W Y A
K C X K K E Q K M K P Q T S N O S D N A D D A L L R A E F A
W Z Y U G D Y Z W B I A U A A S I L L E R U B L I W C J J D
H S V N Y U Y L I N U R M S T W G A G F J I U E F G H D M N
Z E G A N Y U T L N F R P O V E Y R F I H M N Z E G L Z W T
Y Y U K J J Y Y V R S U E U U W B U O B U J J L G O P S C A
R H C G K T Y H P N H A K A S M F A Q U O Z S K W Y H A G X
C P S I R R I G A T I O N P U M P A N D P O W E R H Y N P R
L O C S M Y G S L R I N X J D K A Q C K N A B T S R I F W D

Salute to Agriculture Advertisers

- Texas Farm Bureau ... page 8
Mohawk Auto Parts ... page 4
Irrigation Pump and Power ... page 5
Muleshoe Valley Irrigation ... page 6
Wilbur Ellis ... page 8
Muleshoe Animal Clinic ... page 9
Five Area ... page 10
Farmers Ins. Group ... page 11
Maple Coop Gin ... page 7
Bailey County Electric ... page 12
Farmers Coop of Enochs ... page 6
First Bank ... page 7
Muleshoe State Bank ... page 4
Muleshoe Economic Development ... page 3
Earl Ladd and Sons ... page 5
Ronnie Holt Insurance ... page 9
Clays Corner Gin ... page 2
Muleshoe Journal ... page 11 (Solutions on page 11)



Julie DeBruin
Insurance and Financial
Services Agent

FARMERS



1602 West
American Boulevard
Muleshoe, TX 79347

Bus: 806-272-7548
Fax: 806-272-4756

jdebruin@farmersagent.com

Registered Representative
Farmers Financial Solutions, LLC
30801 Agoura Road, Bldg.1,
Agoura Hills, CA 91301-2054
818-584-0200
Member FINRA & SIPC

AUTO • HOME • LIFE • BUSINESS

Look To Farmers
For Your Insurance Needs

Julie DeBruin is the agent for Farmers Insurance Group in Muleshoe.

She has been a resident of Bailey County since 2001, moving from central Texas. She is a graduate of Tarleton State University, where she studied accounting.

Julie worked in the accounting field before becoming an agent for Farmers Insurance.

Julie's agency offers insurance products for auto, home, life and business needs.

Don't forget, the agency can also help with preparing for retirement, rollovers, variable universal life insurance, 401(k) plans, IRA's and 529 College Savings Plans.

Stop by Farmers Insurance and talk with Julie DeBruin or her customer service representative, Armida Rascon, about all of your insurance needs.



Planting foxtail millet, a summer annual forage with low water needs, helps conserve water for subsequent crops. Photo by Scott Bauer/ ARS Image Gallery



Clay's Corner
Gin
806-965-2176

Serving Area Farmers
For Over 30 Years!

Please come by anytime for a cup of coffee or a cold soda pop. We look forward to serving you this season. Call Doyle Weir or Chandra Sanchez at Clays Corner Gin or Deon Hunt at Farwell Gin for any questions you might have.

Best wishes for a bountiful harvest this season!

Farwell Gin
806-481-3397



Salute to Agriculture Advertisers

V B A I L E Y C O U N T Y E L E C T R I C X O J D N E M B T
M U L E S H O E E C O N O M I C D E V E L O P M E N T G H D
T M A M R O N N I E H O L T I N S U R A N C E H I L F Y R O
I I L S H A X J U A W D O S A K V R C J T A F T V Z F Y Y V
F F G P O L E B K T V W Z G B C I E O U B J S T D S X J N U
H B Z B X R Q V G X V F W Y G G Q V G T I P U T Z R E J I Q
Y K B R X S Z O I J H Z D M C O C R B X A J B F R X L Z G H
M K P E M V M D A F J J Y A D J T Y X K X L Q J Q J U P R N
N T X N S U K L I H K A H N I D S I T P N X X W J C H E E K
F S U L A K N Y X Y C W B S C M F F V O D A M W S U G Z N D
U J Y D G J W R B M T B E V S D Q G D H C P G F F P A N R Y
M O F R G F I W T T W V I X Q F Z A I Q X A Y L N W Z Q O Z
B K V G L S U O P D U F V V A Q S T V H P S M Y A R J N C V
J N K M U L E S H O E V A L L E Y I R R I G A T I O N Q S M
T P I U N F A R M E R S C O O P O F E N O C H S N U G Y Z
W R L G H L Y A R F J G K Z L W C T B L B G A U T R R A A I
L R X X P V E W R Z P F E T M U L E S H O E J O U R N A L E
C D Y A O O E S B M U L E S H O E A N I M A L C L I N I C V
S D F O S B O G H B E U P D U L H B J Y Y F F J Y X B S X A
V G Y H X F K C J O N R R Y B M F H J Y Y D N S U Q N T N Q
M F S N R V A J E J E J S T R A P O T U A K W A H O M L B O
J F E K U E Q R L L F S N I Z N C B D V U S W E H J O W Y A
K C X K K E Q K M K P Q T S N O S D N A D D A L L R A E F A
W Z Y U G D Y Z W B I A U A A S I L L E R U B L I W C J J D
H S V N Y U Y L I N U R M S T W G A G F J I U E F G H D M N
Z E G A N Y U T L N F R P O V E Y R F I H M N Z E G L Z W T
Y Y U K J J Y Y V R S U E U U W B U O B U J J L G O P S C A
R H C G K T Y H P N H A K A S M F A Q U O Z S K W Y H A G X
C P S I R R I G A T I O N P U M P A N D P O W E R H Y N P R
L O C S M Y G S L R I N X J D K A Q C K N A B T S R I F W D

Muleshoe
Journal

Proudly Supports
the Agricultural Industry
and its Importance to the
Community!

201 W. Avenue C. • Muleshoe, TX 79347
806.272.4536



# MOHAWK AUTO PARTS, INC.

*Serving the farming and ranching community since 1968.*



*We appreciate all of our customers and we are thankful to live in such a great community*

**1701 W. American Blvd. • 272-4425**

## Prairie Restoration Also Helps Restore Water Quality

*By Ann Perry  
Agricultural Research Service*

U.S. Department of Agriculture (USDA) scientists are studying the overall improvement in water quality when native prairie vegetation is restored to fields once cropped with corn and soybeans.

Agricultural Research Service (ARS) scientists in Ames, Iowa, were part of a team that examined changes in groundwater during prairie establishment at the Neal Smith National Wildlife Refuge near Prairie City, Iowa. ARS is USDA's chief intramural scientific research agency.

ARS researchers Mark Tomer and Cynthia Cambardella work at the agency's National Laboratory for Agriculture and the Environment in Ames. Their group studied concentrations of nitrates and phosphorus in groundwater in a 17-acre field that was being converted from corn and soybean row-cropping into a reconstructed prairie. The researchers set up groundwater monitoring wells and collected water samples from 2002 through 2009.

After a final soybean harvest in 2003, the field was seeded with native grasses and forbs. As the prairie became established, nitrate concentrations in groundwater samples declined and stabilized within five years.

Initially, nitrate levels in groundwater samples taken at higher slopes averaged 10.6 parts per million (ppm), levels that can fuel the downstream development of the "dead zone" in the Gulf of Mexico.

But nitrate levels in groundwater samples taken near surface waterways averaged only 2.5 ppm, and after 2006, nitrates disappeared from the shallow groundwater near the waterways. Further upslope, groundwater samples still had measurable nitrate levels in 2006, but levels diminished to around 2 ppm after 2007.

Unlike nitrate, however, phosphorus levels did not decline. Between 2006 and 2009, phosphorus concentrations averaged 0.14 ppm along the ephemeral waterways, while average upland concentrations were only around 0.02 ppm. The higher phosphorus concentrations were found in shallow groundwater wells adjacent to grass waterways.

When groundwater levels rose enough to produce overland flows that contribute to stream flow, the phosphorus concentrations were high enough to threaten local water quality.

## A burn ban is in effect in Bailey County

The Bailey County Commissioners' Court reinstated its burn ban at its March 12 meeting due to current weather conditions.

County residents should remember that violators may face significant fines.



Researchers looked at four sets of cattle in different crude glycerin studies to determine its value as a livestock feed. (Texas AgriLife Research photo by Dr. Jim MacDonald)

**We Support Our Local and Surrounding Agriculture Industry!**



**Ronnie Holt Insurance Agency**  
218 S. Main St • 272-4271

## Alternative Feed... Continued from page 7

diets, often excess nitrogen is formed in the rumen, which is excreted as urea and volatilized into the atmosphere as ammonia. The crude glycerin may allow more of the nitrogen to be captured before it is excreted and, thus, reduce ammonia emissions of cattle grazing high quality forage.

"We also observed no negative impacts on animal health up to 10 percent inclusion in diets of newly received calves," MacDonald said.

## Working Together – Making a Difference!!

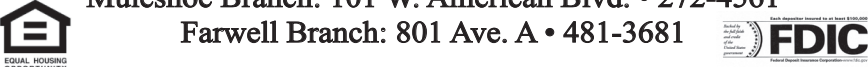
**Our Ag Producers Feed and Clothe the World**



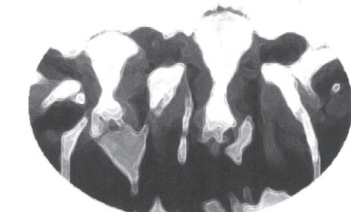
Since 1931, Muleshoe State Bank has been working shoulder to shoulder with the Ag Producers in our area to keep our community strong. We believe in them and the difference they make.

**Going Strong Since 1931**  
**MULESHOE STATE BANK**

www.muleshoestatebank.com  
Muleshoe Branch: 101 W. American Blvd. • 272-4561  
Farwell Branch: 801 Ave. A • 481-3681



## Muleshoe Animal Clinic Muleshoe Vet Supply Proudly Supports All Agricultural Industry



**Muleshoe Animal Clinic - (806) 272-3061**  
Barry Cowart, D.V.M. Steve Kennedy, D.V.M.  
Kevin Slone, D.V.M. Dusty Urbantke, D.V.M.  
Josh Lackey, D.V.M. Kevin Holman, D.V.M.  
Jesse Blades, D.V.M. Chris Gehman, D.V.M.  
Jennifer Ermon, D.V.M.

**Muleshoe Vet Supply - (806) 272-4990**  
1430 US Highway 84, Muleshoe, Texas

## Muleshoe Animal Clinic Has A Tradition Of Service

Muleshoe Animal Clinic began in 1960 with Jerry Gleason DVM as mixed animal practice. It continues to grow and expand to fit the needs of area cattle growers and dairymen.

MAC serves an area in the Texas Panhandle and Eastern New Mexico that extends to more than an 80 mile radius around Muleshoe.

Currently MAC is staffed by eight veterinarians with more than 75 years of practice experience.

These individuals have dedicated themselves to providing the best veterinary services available to the cattle growers and dairies on the Panhandle of Texas and Eastern New Mexico.

If you are in need of a service that we do not currently provide, please let us know and we will meet your needs as soon as possible.

"We look forward to getting to know you and working with you. Please, feel free to give us a call anytime, or come by the clinic for a cup of coffee and visit."



# New Insights Noted In Invasive Plant Management

By Ann Perry  
Agricultural Research Service

Over a decade of research at the U.S. Department of Agriculture (USDA) has resulted in the development of a new matrix for invasive plant management.

The model was created by scientists with the Agricultural Research Service (ARS) in Burns, Ore., and helps land

managers recognize how rangeland degradation processes vary across landscapes. ARS is USDA's chief scientific research agency.

Using the model can also increase the success rate of restoring native vegetation on damaged landscapes, which supports the USDA priority of responding to climate change.

Ecologist Roger Sheley synthesized a range of findings from scientific literature and field research to develop the model, which is called Ecologically Based Invasive-Plant Management (EBIPM).

The process is a mix of plant establishment and succession theories, ecological principles, the identification of parameters that contribute to invasive plant management, and management actions that help restore native forage plants for livestock and wildlife.

Sheley works at the ARS Range and Meadow Forage Management Research Unit in Burns.

Sheley and his colleagues based EBIPM on three general causes of plant succession: site availability, species availability, and species performance.

They identified site-specific ecological processes that influence plant succession dynamics and determined how these processes are modified by environmental and human factors that affect plant establishment and long-term vegetation change.

This information can be used to fine-tune the mechanisms and processes influencing plant succession, all of which helps rout invasive plants and support the return of native grasses and forbs.

Sheley and his colleagues tested their model in Montana's Kicking Horse Wildlife Mitigation Area at three sites that had varying degrees and types of damage from invasive plants. Using EBIPM, Sheley was able to increase the chance of restoration success by 66 percent over traditional approaches to invasive weed management.

Sheley believes that EBIPM, which is also called "augmentative restoration," could be a valuable new tool for land managers in the western rangelands, where invasive plants like cheatgrass are fueling wildfires and limiting livestock grazing options.

We would like to thank our loyal customers for their continued patronage.



We wish everyone a successful growing season.



Give us a call for your ginning needs:  
**Maple** 806-927-5501  
**Muleshoe** 806-272-4794

## Alternative Feed... Continued from page 5

Another portion of the study was funded by the Department of Transportation – Research and Innovative Technology Administration through the South Central Sun Grant program.

The studies were designed to determine the feeding value, optimal concentration and which dietary components were most optimally displaced by crude glycerin in growing diets, he said.

Within the studies, the researchers looked at two strategies: replace corn or replace some forage. In the studies replacing corn, the researchers saw an optimal inclusion between 2.5 percent and 7.5 percent glycerin, MacDonald said. At 10 percent inclusion, feed efficiency was reduced.

When forage was replaced in one study, they saw no change in average daily gain, but the cattle consumed less feed and so feed efficiency was improved, Brown said. The feed efficiency was improved when either five percent or 10 percent glycerin was fed. Another advantage is a less bulky ration as forage is replaced.

"I feel very comfortable using crude glycerin up to 7.5 percent of a diet," MacDonald said.

The researchers even tested for a possible negative impact on fiber digestibility, but found none when the crude glycerin was fed at the low levels.

"We also saw an increase in microbial protein and a reduction in rumen ammonia," MacDonald said.

This information could lead to further studies, he said. In high-forage

Continued on Page 9

**FARMERS COOP GIN ASSN. OF ENOCHS**  
Chemicals • Seed • Fuel & Oil • Fertilizer

Wade Baker, Manager  
806.927.5511  
Enochs, Texas  
3081 State Hwy. 214  
Morton, TX 79346

*"It's your Gin, if you use it"*

**VALLEY**  
The Leader in Precision Irrigation

Muleshoe Valley, Inc.  
2601 W. American Blvd.  
Muleshoe, TX 79347  
806-272-4266  
www.valmont.com/irrigation/

Often the little things make the biggest difference. When it comes to service and parts for your pivots, a small malfunction can cause a shutdown. When that happens on the driest day of the year, it's a big deal. That's why Valley has more trained, experienced pivot repair specialists than anyone. And we have parts distribution centers across the country, for fast access to the highest quality parts, to get you up and running in a hurry.

Maybe that's why there are more Valleys circling the globe than all the other brands combined. Your crops are too valuable to rely on anyone but Valley.

## 'Customers Are Our Greatest Asset'

"Customers are our greatest asset."

At First Bank of Muleshoe, we feel that our customers are our greatest asset. Your loyalty and support have enabled us to continue working towards a better community for over 50 years.

First National Bank was originally organized in 1955 by M.D. Gunstream. In 1985, the bank began conducting business under a state charter and was renamed First Bank of Muleshoe. In 1987, a branch in Bovina was purchased, followed by a new branch in Dimmitt in 1983. Through the years, our technology and employees have changed, but our objective has always been to serve our customers and the community.

We have three locations to provide the best possible service to our customers. First Bank has a staff of 40 employees among its three locations, and is currently approximately \$100 million in assets.

In this area of Texas and New Mexico, agriculture is a vital component of our financial structure. Originally farming and beef cattle operations were the base of our economy, however, other businesses including the dairy industry have relocated to this part of the country. The directors, officers and employees at First Bank continually pledge to provide the best service to all of our customers.

We are pleased to have First Bank Online and MasterCard™ debit card available to our customers. If we can provide better service to you, please feel free to contact in person, or by phone at any location or email us at info@fbmuleshoe.com

**A Land of Bounty**

Our forefathers fought and died to give future generations of Americans a better life and the freedom to succeed and prosper.

We remember those sacrifices every day and thank the agriculture industry for choosing to follow your dreams to West Texas. We wish you bountiful success.

**FIRST BANK**  
Member FDIC

<b>Muleshoe Branch</b> 202 S. 1st St. Muleshoe, Texas 272-4515	<b>Dimmitt Branch</b> 215 W. Bedford Dimmitt, Texas 647-2265	<b>Bovina Branch</b> 101 S. Third Bovina, Texas 238-1442
---	---	---





**Earth, Texas**

806.257.3456  
 Jamie Goodman  
 806.292.8857

**Littlefield, Texas**

806.385.4456  
 Justin Bellar  
 806.777.2999 (Mobile)

**Muleshoe, Texas**

806.224.3398  
 Roman Franco

**Friona, Texas**

806.265.3271  
 Cody Copeland  
 806.252.4549 (Mobile)

**Wilbur-Ellis: Committed To excellence**

Established in 1921, Wilbur-Ellis is an international marketer and distributor of agricultural products, animal feed and specialty chemicals and ingredients. By developing strong relationships, strategic market investments and the ability to capitalize on new opportunities, we've grown to a \$2.5 billion business.

Our three divisions are Agribusiness, Connell Brothers, and Feed. Each of these divisions succeed in their respective businesses by maintaining these core tenets:

- Taking a true partnership approach with customers and suppliers
- Identifying challenges and working side-by-side with customers and suppliers to solve problems
- Continually seeking new markets and growth opportunities
- Searching out innovative ways to increase efficiency and provide quality solutions

These are the growth engines for our company. They maximize the value we provide to customers and suppliers.

Agribusiness addresses crop challenges and individual grower needs with tailored solutions in crop protection, nutrition and seed technology. We maintain a full network of field specialists who live in the regions they serve. This enables them to gain a clear understanding of the problems their customers face, recognize and respond quickly to opportunities and develop strong one-to-one relationships.

With our advanced crop production technology and earth-friendly operations, we offer solutions that produce the best returns.

We have extensive experience in:

- Pest diagnosis
- Yield monitoring
- Soil analysis
- Water management
- Nutrition
- Regulatory and environmental issues

**Forage, Corn Feed Alternative May Come From Biodiesel Industry**

By Kay Ledbetter  
 skledbetter@ag.tamu.edu

Crude glycerin, a byproduct of biodiesel production, could be an economical ingredient in cattle diets, according to studies by Texas AgriLife Research and West Texas A&M University personnel.

Dr. Jim MacDonald, AgriLife Research beef cattle nutritionist in Amarillo, said during biodiesel production from sources such as cottonseed oil, glycerol is separated from fatty acids. The fatty acids become the biodiesel and the glycerol, combined with the impurities that remain, is a potential ingredient

in livestock feed.

"Crude glycerin is usually priced at a discount relative to corn, so we wanted to look at replacing corn to evaluate at the energy value of the glycerin," MacDonald said. "Then the question became, what if you replace forage, which would be the case with stocker cattle?"

MacDonald said glycerin has good flowability in low temperatures, as opposed to molasses or other similar products, and is non-corrosive to feeding equipment — both traits making it attractive to the cattle feeding industry.

Additionally, glycerin is low in phosphorus, protein and sulfur, which can be concentrated in other dietary ingredients, he said.

While the researchers knew the physical and nutritional properties made crude glycerin an attractive carrier in liquid supplement programs, relatively little was known about its performance implications in growing or high-concentrate finishing diets for beef cattle.

For the past two years, MacDonald has teamed up with Dr. Mike Brown at West Texas A&M University to conduct four experiments designed to determine the value of feeding crude glycerin in beef growing and finishing diets.

The studies were funded by the Texas Department of Agriculture Food and Fibers Research Grant Program with the thought that cottonseed oil could be used for biodiesel production. Capturing the value of the byproduct is important to bioenergy plants, and "that's where we came in," MacDonald said.

Continued on Page 7

**EARL LADD & SONS, INC.**  
 Since 1935  
**NEW AND USED EQUIPMENT**  
 Agco Allis • Hesston  
 Gleaner • Tye • Rhino • Massey  
*We support the dairy industry in West Texas and Muleshoe!*  
**602 W. American Blvd., Muleshoe • 272-3308 or 4672**



**TEXAS FARM BUREAU INSURANCE**  
 AUTO / HOME / LIFE

*We proudly support the Chamber of Commerce & Agriculture!*

**BAILEY COUNTY**

**Rickey Barrett** LUTCF, Agent  
**Toby Kitchens**, Agent  
**Danee "Dee" Bertram**, Agent

1612 W. American Blvd.  
 Muleshoe, TX  
**272.4567**

**Texas Farm Bureau Insurance: Part Of The Community**

Whether it is the annual Bailey County Junior Livestock Show, the annual Rotary Roping or sponsoring a fireman at the annual Texas A&M Fireman's School, Texas Farm Bureau Insurance (TFBI) here in Bailey County has made community part of its everyday business.

In addition to numerous local donations to all kinds of activities, TFBI also sponsors the Texas Farm Bureau Insurance Bailey County scholarship, which is awarded each year to a graduating senior from Muleshoe High School. They also co-sponsor two or three local juniors and seniors who are sent to participate in Texas Farm Bureau Insurance's annual citizenship seminars.

Texas Farm Bureau Insurance is your local full service insurance agency serving clients in Bailey County. Agent Rickey Barrett has been serving clients in Bailey County for Texas Farm Bureau Insurance for 29 years.

Agent Toby Kitchens has been with TFBI for three years.

You'll also find two smiling faces to greet you in the office. Letty Guerra and Carla Estrada are the secretaries for the Bailey County Farm Bureau. The office also employs one full time adjuster, Julie Vasquez, to service any claims you may have.

The local agency has been serving farmers, ranchers and their families for over 50 years and has always committed themselves to supporting agriculture and the people who work hard to make a living in the industry.

"We're committed to backing agriculture," said Barrett. "Our economy is dependent on keeping agriculture strong."

**IRRIGATION PUMPS & POWER**

**IPPI is a full service provider of agricultural irrigation equipment. Located in Muleshoe, Texas, IPPI is a leader in irrigation solutions.**

**Zimmatic CENTER-PIVOTS**  
**West Hwy. 84 Muleshoe, Texas 272-5597**  
**www.drippi.com**

**Irrigation Supply Company Has All Your Irrigation Needs**

Irrigation Pumps & Power has been in business for more than 30 years, and can help you with all of your irrigation needs.

"We are your top distributor of Zimmatic and offer parts and service for all center pivot systems," a company representative said. "We can help you save money by using the most efficient submersible and turbine pumps."

With the state-of-the-art Netafim Drip Irrigation, you will make the most of your water. Call Irrigation Pump & Power for all of your service needs and parts.

This "Salute to the West Texas Agriculture Industry" was produced by the staff of the *Muleshoe Journal*, 201 W. Ave. C, Muleshoe, TX 79347



# A New Tool For Mapping Water Use And Drought

By Dennis O'Brien  
Agricultural Research Service

Farmers and water managers may soon have an online tool to help them assess drought and irrigation impacts on water use and crop development, thanks to the work of two U.S. Department of Agriculture (USDA) scientists.

Agricultural Research Service (ARS) scientists Martha Anderson and Bill Kustas have developed an evapotranspiration (ET) and drought modeling system at the ARS Hydrology and Remote Sensing Laboratory in Beltsville, Md. The modeling system also will help forecasters monitor ET and drought conditions across the United States and overseas.

ARS is USDA's principal intramural scientific research agency, and the research supports the USDA priorities of responding to climate change and promoting international food security.

The model, known as ALEXI (Atmosphere-Land Exchange Inverse), uses thermal infrared imagery from satellites and calculates soil and plant temperatures that can be used to create maps of ET rates of plants growing in cultivated areas, forests and natural habitats around the world.

ET consists of the water evaporated from soil and plant surfaces, and the water vapor that escapes, or transpires, through plant leaf pores (stomata) as the plants absorb carbon dioxide through photosynthesis. Generally, evaporation cools surfaces, so a cooler land surface is an indicator of higher ET rates and wetter soils.

Water stress elevates soil and leaf temperatures, which can be detected by satellites. Anderson and Kustas can use satellite temperature data to create ET maps. The maps are capable of detecting rivers, lakes, wetlands, riparian buffers, irrigated cropland and areas under water stress.

The work is funded by the National Oceanic and Atmospheric Administration (NOAA) and the National Aeronautics and Space Administration (NASA). NOAA plans to use the system to generate ET estimates over the continental United States.

The system is expected to become particularly relevant as climate change presents challenges for growers and water managers in areas such as the Texas Panhandle, the Florida Everglades and the southwestern United States.

Getting routine ET estimates for individual fields is laborious, but the researchers are streamlining the process. With help from new satellite imagery, they hope to be able to move toward routine mapping at the "field scale" level.

ALEXI has been estimating evapotranspiration (ET) rates since 2000, but the researchers continue to refine the system and plan to make the maps available online soon on the U.S. Drought Portal at [www.drought.gov](http://www.drought.gov).

Anderson and Kustas, with colleagues, are currently mapping parts of Africa, including the Horn of Africa, where drought has caused famine in Somalia. Local ET data would be particularly helpful in places such as Africa, where networks of weather stations don't exist.

## The Five Area Communications Family...

**Five Area Telephone Cooperative, Inc.** was chartered May 1,1950. This is providing telephone service to approximately 1200 access lines in 6 exchanges, covering a 2000 square mile area in portions of Bailey, Parmer, Lamb, Castro and Cochran, and Hockley counties of West Texas.

Since the early years, the story of Five Area has been one of steady growth and development. The changes in the industry have been tremendous and have taken their toll on all telephone cooperatives, but Five Area has met the challenge of the times. Five Area Telephone Cooperative, Inc. is actively pursuing technology that will allow for the cost-effective deployment of broadband services in areas of low density and great mileage distances. More than 60 percent of our subscribers are located farther 10 miles from the central office and many are more than 20 miles .

**West Plains Telecommunications, Inc.** is a wholly owned subsidiary of Five Area Telephone Cooperative, Inc. and began operations October 1,1995. West Plains Telecommunications, Inc. serves the communities of Earth, Muleshoe, Olton, Springlake and Sudan using the latest in fiber optic and digital technology in telephone central office equipment.

**Five Area Long Distance** , a subsidiary of Five Area Telephone Cooperative, is a full service provider for all of your voice communications needs. This means simply one bill for your local and long distance services, friendly and knowledgeable customer representatives who you probably already know, and a dedicated commitment to quality and customer satisfaction. Furthermore, your dollar stays right here, in your own community where it can be invested and support your local economy.

We provide the same level of technology, including Digital Fiber Optic networks and Digital Switching as used by larger Long Distance Companies. This technology assures you long distance service that is always there and always clear. With our simple and competitive 1+ rate structure listed below, we take the confusion out of analyzing complicated rate plans loaded with fine print and miscellaneous surcharges. To sign up visit our office at 302 Uvalde, Muleshoe, Tx., give us a call at 1(800) 965-3253, (806)272-5533, or e-mail us at [billing@fivearea.com](mailto:billing@fivearea.com)



*We know that without the people who farm, ranch, dairy and engage in other Ag-related businesses, ensuring a bountiful future for all Americans would be impossible.*

**Thank you for hanging in there and sharing your hard work and harvest with the world!**

**THE FIVE AREA ORGANIZATION**



**Five Area Telephone Co-op, Inc. • West Plains Telecommunications, Inc.**  
**Plateau Wireless Network • Five Area Systems, Inc.**  
**Five Area Long Distance, Inc. • 5A Broadband**  
**fivearea.com (Your local Internet provider)**  
**Sandy Vandevender, C.E.O.**  
**302 Uvalde • 272-5533 or 800-741-6925**  
**fivearea@fivearea.com**

# Vision, Commitment And Cooperation

Vision, commitment and cooperation – these three words describe the attitude of the Muleshoe Economic Development Corporation.

Coupled with the local government's pro- business attitude, the MEDC promotes quality development of the West Texas region and is always searching for ways to enhance the quality of life for the citizens of Muleshoe and the surrounding area.

The MEDC has assisted in the creation and expansion of several businesses. Offers of incentives to businesses are based upon job creation and retention and the increase in tax base.

The MEDC is proud to be serving this area and asks that all citizens please advise them of any opportunities to further service this community.

The MEDC welcomes Dustin Cleavinger as the newest member of its board of directors. "Dustin is a native to Muleshoe and we are excited about his involvement in the community and promoting the progress of Muleshoe."

Also new this year is Kasey Coker, the MEDC's director. Coker filled the position after the retirement of Janet Claborn.

The MEDC would like to recognize Janet for her service and accomplishments while working for Muleshoe.

The MEDC also thanks all of the area residents who work in the agricultural industry for their hard work and diligence in providing a quality product.



## Muleshoe Economic Development Corporation

*Committed to Improving the Quality of Life of Bailey County Citizens*



**Gilrobert Rennels**  
**MEDC Board Member**

**Our Mission:**  
*The Muleshoe Economic Development Corporation (MEDC) is committed to the promotion of high quality development in the Muleshoe Area and to improvement in the quality of life for its citizens.*



**Dustin Cleavinger**  
**NEW MEDC Board Member**



**Mark Morton**  
**President**



**Jose Sanchez**  
**Vice President**



**Pat Angeley**  
**Secretary/Treasurer**

**We support our local Agricultural Industry!**

*Director of Economic Development*  
**Kasey Coker**  
215 S. First, Muleshoe  
806-272-7455  
FAX 806-272-5260  
Email: [muleshoe@fivearea.com](mailto:muleshoe@fivearea.com)  
[www.muleshoeedc.com](http://www.muleshoeedc.com)





# BCEC's New Building Is Ready To Serve Its Customers

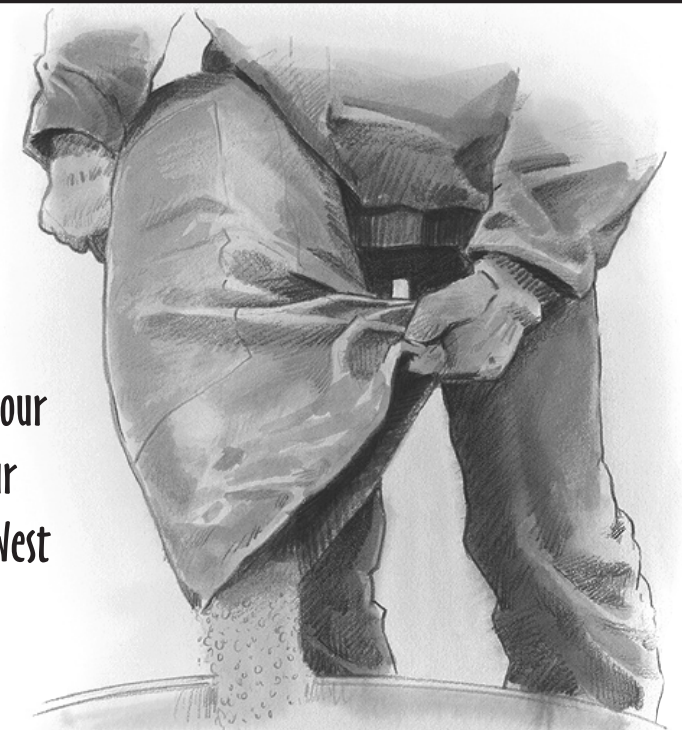
In March 2010, Bailey County Electric Cooperative, Inc. began work on the construction of a new building located on East American Boulevard in Muleshoe. The construction of this building is now complete.

The new building is 18,000 square feet, and includes 18 offices, a board meeting room, a commercial kitchen and a large meeting room with a 175 people capacity.



## WE SUPPORT THE AGRICULTURAL INDUSTRY!

We thank you for choosing Muleshoe and the surrounding area as your home. You pour your heart into farming, ranching and operating dairies and feedyards in this area and your hard work doesn't go unnoticed. Your innovative, forward thinking industries keep our West Texas economy strong and we pledge our full support today and in the future!



### Bailey County Electric Co-op Assn.

A Touchstone Energy® Cooperative  610 E. American Blvd • Muleshoe • 272-4504

# Saluting the West Texas Agriculture Industry

