

## NEWS BRIEFS

### Isett to run for the 19th U.S. Congressional seat

State Representative Carl H. Isett of Lubbock has announced his candidacy for the 19th U.S. Congressional seat being vacated by Larry Combest. Isett is in his fourth term in the Texas House of Representatives.

According to his press release, Isett has won several awards from conservative groups and he has a 100 percent rating by both the Texas State Rifle Association and the Texas Association of Business.

Gov. Perry appointed Isett to the Governor's Homeland Security Task Force, "a distinction shared by only three members of the Texas House."

Isett says he will, "promote a pro-growth economic policy of lower taxes and less regulation." He will, if elected, place a premium on strengthening our national defense and homeland security.

Isett, an accountant, and his wife, Cheri, have six children. He has a BA and Master degree in business from Texas Tech. He is serving as a Lieutenant Commander in the Naval Reserve.

### Christian Country artist to perform in concert

One of America's top Christian Country singer-songwriter, Pete Whitebird will be in concert on Saturday evening, Feb. 1 at the Oklahoma Lane Methodist Church. The concert will begin at 6:30 p.m. He will be in concert during the worship service on Sunday morning, Feb. 2 at Lazbuddie Methodist Church. The service at Lazbuddie begins at 10:30 a.m.

Whitebird, native American Chippewa Indian from Topeka, Kansas has burst onto the national radio scene with a string of smash hit radio singles. He has had nine chart-topping Christian Country radio hits, eight soaring all the way to number one.



Drawing date: Saturday, Jan. 18  
Winning numbers: 1-15-19-39-45-51  
Estimated jackpot: \$40 million  
Winners: 0  
Next drawing: Wednesday, Jan. 22  
Estimated jackpot: \$53 million

## LOCAL WEATHER

Partial sunshine for Thursday with highs in the low 50s and lows in the upper teens. Expect cloudy skies on Friday with highs in the low 50s, lows in the low 20s. A mix of sun and clouds for Saturday with highs in the upper 50s and lows in low 20s according to the National Weather Service's Tuesday forecast. Partly cloudy skies expected for next week through Wednesday with highs ranging from 67° to 55° and the lows from 33° to 22°.

General Manager Marshall Stinnett can be reached at 272-4536 or [cyankee@fivearea.com](mailto:cyankee@fivearea.com)

Missed your paper? Call carrier Yolanda Martínez at 272-4536 during business hours, 8:30 a.m.-5 p.m.

## Exhibitors face tough competition in show

New faces adorned the photos of the grand champions last weekend at the annual Bailey County Junior Livestock Show.

The two-day event ended Saturday with the annual Junior Livestock Sale.

In one of the most competitive shows of the weekend, J.R. Young captured the grand champion's banner in the Junior Market Swine Show. Young bested a field of 106 entries to claim the show's top prize.

Young's 237-pound Cross barrow finished one notch ahead of a Cross shown by Dal Whalin, who had the Reserve Grand champion. Both hogs came out of the light heavyweight class.

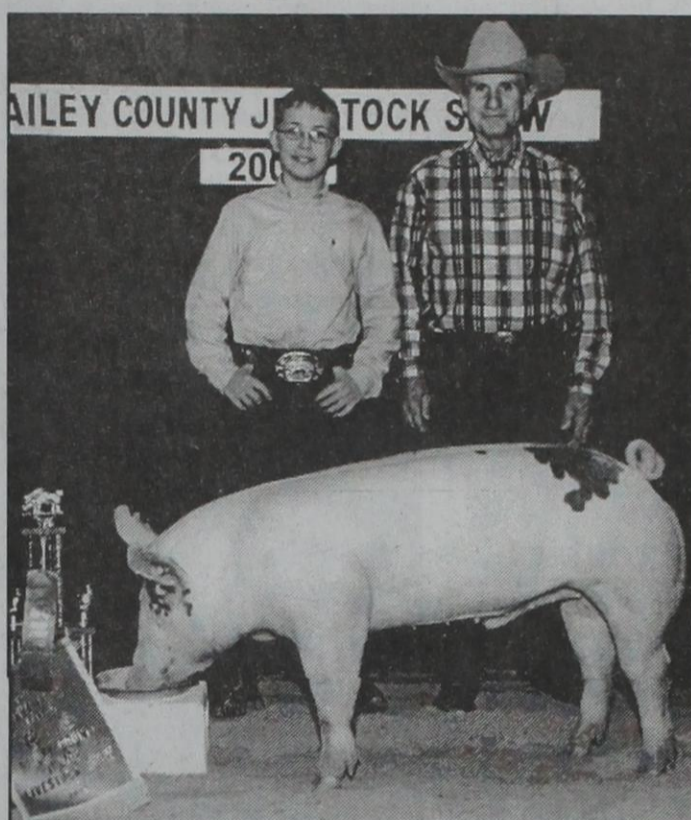
Also showing in the grand drive were Jackson Myers, who had the champion Hampshire; Madison Myers, who exhibited the champion Yorkshire; Andi Black, who had the champion Berkshire; Gunner Kerby, who had the champion Black OPB; Canaan Heinrich, who showed the champion White OPB and Sara Benham, who had the champion Duroc.

In the gilt show, Tyson Turnbow had the champion and Cassie Kirby had the reserve champion.

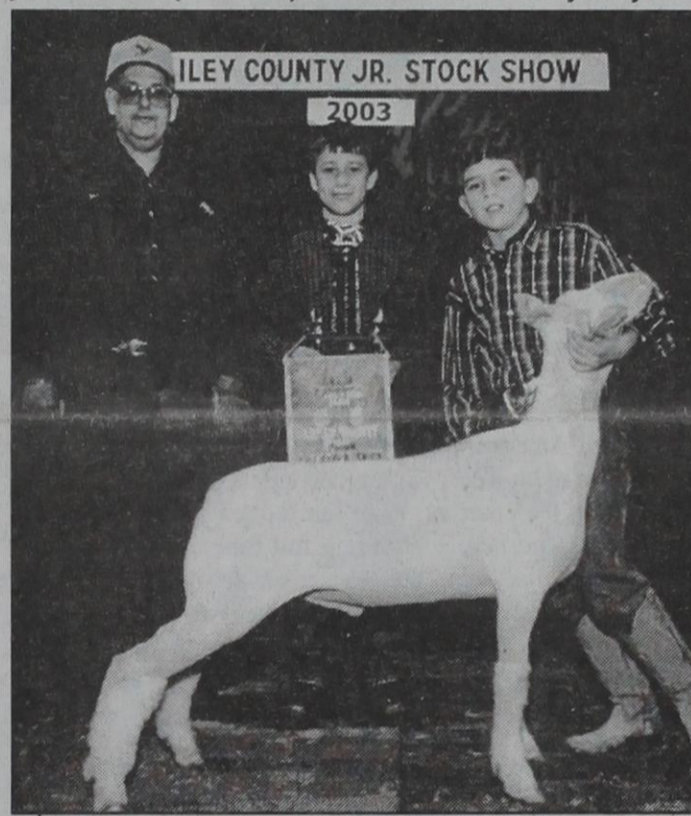
The hog show featured 106 barrows and 25 gilts; down slightly from 2002, when there were 107 barrows and 33 gilts shown.

Brandi Whalin was the senior and overall champion in the swine showmanship contest, while Mindy Hamilton was the junior champion.

The Junior Market Steer show was a contest between the Blacks—Marlie and Brady, a sister-brother combination. While Marlie won the American breed, Brady won both the British and Exotic divisions, making the grand drive an all-Black event.



Journal photos: Mike Hahn  
Pictured above is J.R. Young with his Grand champion Crossbred Barrow and buyer Joe Tarter of Muleshoe Feed Barn. Receiving the swine showmanship award was Brandi Whalin, not pictured. Pictured below is Colt Ellis (far right) showing his Grand Champion lamb purchased by Lowe's Marketplace. Also pictured are (from left) Bill Gilbert and Dusty Clayton.



## Commissioners approve construction of jail facility

By MARSHALL STINNETT  
Journal writer

According to County Judge Marilyn Cox, the Bailey County Commissioners' Court has entered into an agreement with Corplan Corrections to build a new 96-bed jail in Muleshoe on a lease purchase plan.

Corplan will build the new jail and lease it to Bailey County for 20 years. At the end of the lease, Bailey County will own the jail. The lease purchase will be backed

by municipal revenue bonds.

The location of the new jail was not revealed. "We are not giving out that information yet. We are still acquiring property," Cox said.

Cox told the *Journal* that the Court felt this was the best way to build a new jail because it didn't require taxpayers' money. The Court feels that being able to keep additional Federal prisoners and contracting cells with additional entities will more

than pay for the lease and expenses on the facility. The new jail will have several cells for female prisoners.

In 2002, the County received \$75,000 for keeping Federal prisoners in the current 22-bed facility along with local prisoners. The U.S. Marshal's Service pay the county \$38.50 a day plus transportation.

Cox said the Court had considered build-

see **JAIL** on page 2

## Martin picked as semifinalist

SPECIAL TO THE JOURNAL  
ATLANTA — Andrew Stephen Martin, a student at Lazbuddie High School has been selected



Martin

from over 100,000 applicants nationwide as a semifinalist in the 2002-2003 Coca-Cola Scholars Program. The Coca-Cola Scholars Foundation, a joint effort of Coca-Cola bottlers across America and the Coca-Cola Company, is one of the largest corporate-sponsored, merit scholarship programs of its kind in the United States. The program recognizes a diverse group of extraor-

dinary high school seniors who have demonstrated academic and civic excellence in their schools and communities.

Martin ranks with over 2,000 seniors who are in the running for \$1.8 million in college scholarships being awarded by the Coca-Cola Scholars Foundation. Students are selected to advance to this next phase based on the level of excellence, leadership and achievement demonstrated in school and community activities. This year marks the fifteenth year Coca-Cola will be awarding these scholarships, providing a total of \$23 million to assist young scholars nationwide in the pursuit of

see **SCHOLARS** on page 4

## Election filing at hand

The Muleshoe City Council met a short 30 minutes Tuesday. Mayor Pro Term Clifford Black chaired the meeting while Mayor Victor Leal and his family were attending the inauguration of Governor Rick Perry in Austin.

The council voted to accept the resignation of Councilman Jerry Hicks from District 3. Hicks and his wife are moving to Lubbock.

Hicks' position will be filled by special election on May 3, the same day of the mayor election and the special election called by Gov. Rick Perry to fill the con-

gressional seat vacated by Larry Combest.

The first day to file for mayor and councilman is February 17. Candidates do not have to live in district 3 to run for the position.

The council authorized City Manager David Brunson to send out a request for proposal for solid waste collection in Muleshoe. Duncan Disposal, current solid waste contractor, contract expires on August 1, 2003.

The city has been sharing an employee with the Muleshoe County Club for

see **FILING** on page 4

# Clearance Sale!



## MULESHOE MOTOR CO.

1125 W. American Blvd. • 272-4251 • 1-800-432-7617

ALL USED VEHICLES AT WHOLESALE PRICES!

# AROUND MULESHOE

## Three Way holds auction

The Three Way community will have a silent auction on Sunday, February 23, 2003 at the school cafeteria to begin raising funds for the community center. Members of surrounding communities, businesses and friends are invited to attend and encouraged to contribute items for the silent auction. Items will be ready for viewing and bidding at 3 p.m. Successful bidders will be announced at 4:30 p.m. Refreshments will be served.

Suggestions for the silent auction are: homemade pies, cakes or cookies, craft items, new appliances, heirlooms or antiques. Contact Darlene Dolle at 806-927-5470 to contribute an item for the auction.

## Management training held

Attention Food Service Establishments and Caterers — required Food Protection Management Training will be held in Levelland on February 10 and 11, 2003 and Littlefield on February 19 and 20, 2003. If you would like more information, contact the Bailey County Extension office. 272-4583.

## Church selling Valentine cookies

Calvary Baptist Church is holding its annual Valentine cookie sale through February 6. The church will have a nine inch cookie decorated with a personal Valentine message for \$5 or the new cookie bouquet for \$8 with each additional heart flower for \$2. Delivery will be available. Call 272-4012 or 272-4059 for orders. Mail payments and messages to Calvary Baptist Church, P.O. Box 378, Muleshoe, Texas 79347.

## Club funds help support projects

The Rotary Club of Muleshoe, provides a flag service to Muleshoe businesses on national holidays as a fundraiser to support its participation in various projects in Muleshoe.

Some projects funded by support include scholarships for graduating high school seniors, low interest loans for college students (sophomores and above), Meals on Wheels, trees in the park, Hope Chest, B.C. Food Pantry, B.C. Junior Livestock Show, eyeglasses for kids, M.O.S.T. scholarships, polio eradication and the Ryla Leadership Camp.

Annual fee is \$25.00 for those interested in participating in this fundraising event. Flags will be displayed at your

business on seven major holidays. Contact Mark Morton, 272-7519 or Lary Hooten, 272-4251 with any questions.

## Public calendar

**Jan. 23** — 5:30 p.m. Fine Arts Boosters Club will meet in the band hall to discuss the Fine Arts Night to Shine program. Program will be held on March 31. Parents of band, choir, speech and art students are asked to come and support their kids.

**Jan. 24** — Muleshoe AARP will meet Friday at noon at the Civic Center for a covered dish luncheon. All Members are urged to attend.

**Jan. 26** — Lazbuddie Junior Class will sponsor a pre-Super Bowl Game Dinner. The menu includes brisket, baked potatoes, green beans, salad, hot rolls and homemade desserts at \$6.50 per plate or \$5.00 for light plate. Carryouts will be available.



Journal photo: Mike Hahn

## Grand Champion Goat

Cydni Vandiver (far right) shows off her champion goat which was purchased by Todd and Frank Ellis. Pictured are (from left) Todd Ellis and Cami Jo Vandiver.

*Dear Secret Santa,  
Thanks again for thinking of us. It blesses our hearts and we pray God's blessings upon you and your family.*



See Bruce Cole Today for this 2003 GMC Yukon XL

2.9% FINANCING FOR 60 MOS\*



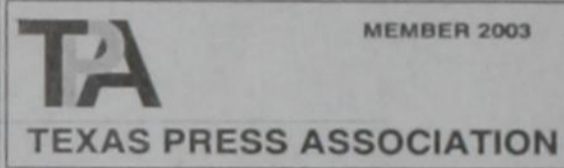
\$34,738

OR #G8037  
"The Country Store Where Deal 'in' Is Easy! Guaranteed!"  
**Richard Barton**  
3300 Mabry Drive Clovis, NM 88101 505-762-2986 / 1-888-569-1900  
www.richardbarton.com

Muleshoe Journal USPS 367820

Established February 23, 1924. Published by Triple S Publishing, Inc. Every Thursday at 304 W. Second, P.O. Box 449, Muleshoe, TX 79347. Periodicals Postage paid at Muleshoe, TX. POSTMASTER: Send address changes to the Muleshoe Journal, P.O. Box 449, Muleshoe, TX 79347. We are qualified members of: Panhandle Press Association, National Newspaper Association, West Texas Press Association and Texas Press Association.

WEST TEXAS PRESS ASSOCIATION  
PPA Panhandle Press Association



Scot Stinnett, Publisher  
Lisa Stinnett, Vice-President/Comptroller  
Marshall Stinnett, Office Manager  
Beatrice Morin, City Editor  
Leah Bell, Advertising  
Yolanda Martinez, Office Assistant

© 1990  
SUBSCRIPTIONS: Muleshoe Journal  
By Carrier Yearly - \$22.00  
Bailey County — by mail - \$24.00  
Elsewhere - \$26.00  
Advertising Rate Cards on Application

\*Advertisers should check their ad the first day of insertion. The Journal will not be liable for failure to publish an ad or for a typographical error or errors in publications except to the extent of the cost of the ad for the first day of insertion. Adjustment for errors will be limited to the cost of that portion of the ad where the error occurred.

## JAIL

from page 1

ing a 48-bed jail, but decided on the 96-bed jail because it only cost \$200,000 more. The cost of the new 18,762 square foot building will be in the \$3,000,000 range." After the construction warrantee, the maintenance on the new facility will be Bailey County's responsibility.

The adult probation office would be moved into the new jail complex. The probation office was moved to rented office space after a carbon monoxide alarm went off in the present jail complex. There is only one exit from the basement and the water heater and the heater is between the exit and the offices where the probation office was housed. The current jail complex was built in 1969.

Cox said the Texas Jail Standards Commission had been lenient on inspections of the current jail because they understood Bailey County was build-

ing a new jail.

The new jail facility would have an approved American Disability Act court room. The only court room in the court house is upstairs. The new court room could be used for County Court. Currently, if the

district court room is in use the County Court must meet in the cramped Commissioners' Court meeting room.

Cox said the new jail would require a full time cook and enough personnel to man the control room on a twenty-four

hour basis above the present jail staffing.

Cox said the current jail cells would be used for much needed storage for court house records.

## "Commonplaces Never Become Tiresome"

I was not particularly looking for wisdom when a friend and I walked into a Thai food restaurant recently; I was just looking for food and trying to make sense out of a menu filled with genuine Thai cuisine. What I ended up eating was excellent, but I'm still wondering about one menu item that just sounded interesting.

Laib.

L-A-R-B.

I still wonder what it is. A staple item in the Thai diet? A delicacy? The kind of thing a fellow just develops a taste for and says to his wife one evening after work, "Ya know,

when we cease to be curious and appreciative. We find that it is not a new scene which is needed, but a new viewpoint."

He is so right! Yes, there are times to take a trip, see new things, meet new people. But what most of us need far more is simply to open up our eyes to that which is beautiful and wonderful, joy-filled and life-giving, all around us every ordinary day in lots of ordinary places. Because, you see, there aren't any simply "ordinary" days or "ordinary" places. And you never met an "ordinary" person. Our extraordinary God never created anything or anyone who was just "ordinary."

The more I think about it, the more I realize that "commonplaces" are what God uses to make our lives uncommonly rich and interesting, and those who spurn them are poor no matter what their income.

The way your wife strokes your hand during a movie.

The wry smile of your son when you tell him that being taller than you is disrespectful.

Early morning fog or a blanket of new snow creating a completely new world just outside your front door.

A clear, calm, crisp winter night and the smell of an oak fire warming the heart of a home.

The crackle of that fire in the hearth, its warmth on your back, and a book in your hand.

The taste of chocolate.

The easy laughter and good-natured joking of good friends.

Your favorite chair or your oldest pair of slippers.

Taking a snooze in the sun, and realizing your dog is right about snoozes in the sun.

"Commonplaces never become tiresome." Thank God for them!

Curtis Shelburne is minister of the 16th & D Church of Christ in Muleshoe.



**Focus On Faith**

Curtis Shelburne

I could really go for a big bowl of laib right now! Man, that would hit the spot!"

I still don't know what it is. But I do think I found a bit of wisdom.

On the wall of the restaurant. Well, to be completely truthful, it was on the wall of the restroom of the restaurant, a place where I surely wasn't expecting to find any wisdom.

It was a quotation at the bottom of a Norman Rockwell print. The words were Rockwell's words, which is what gave them even deeper meaning. Rockwell, arguably America's most beloved artist, a man who succeeded in capturing on the canvas the warm heart and the living soul of this nation, wrote this: "Commonplaces never become tiresome. It is we who become tired

## Medicare Supplement Insurance...

The State Farm Way!

- flexible • affordable
- backed by good neighbor service



Call State Farm Agent:

Mark Morton  
101 Main Street  
Muleshoe, TX  
806-272-7519



Like a good neighbor, State Farm is there.®

statefarm.com  
State Farm Mutual Automobile Insurance Company  
Home Office: Bloomington, Illinois  
Call for details on coverage, costs, restrictions and renewability.  
Note: These policies are not connected with or endorsed by the United States Government or the Federal Medicare Program.  
P-98415 12/00c

# Towering Benefits

from Plateau Wireless

- Superior local coverage area where you live, work and play.
- Excellent reliability, friendly service and customer care.

Get a Nokia 3360 for only 1¢

with one-year contract on a qualified rate plan.\*

\*Limited time offer. Certain restrictions apply. See store for details.



PLATEAU Wireless  
"A CLOSER CONNECTION"

MULESHOE:  
Five Area Telephone Coop.  
302 Uvalde • (806) 272-7700

MULESHOE:  
Connection Warehouse  
117 Main St. • (806) 272-5532

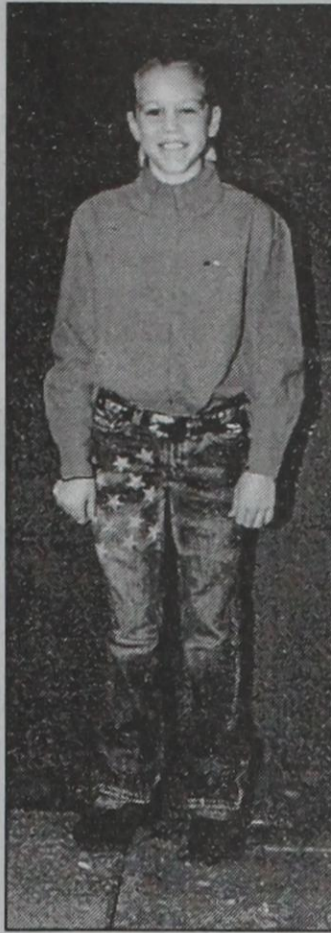
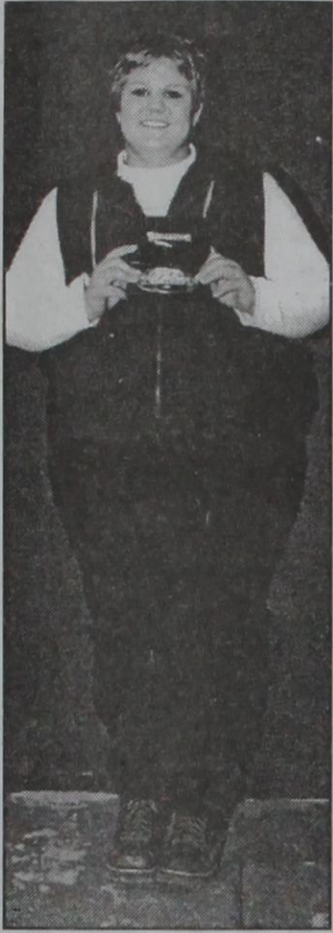
FRIONA: WT Services  
1010 Columbia • (806) 250-5555

Plateau plans have it all—great phones, plenty of minutes, all the range you'll ever need, and prices that are music to your ears.™

Michael Martin Murphey

www.plateauwireless.com  
1-877-PLATEAU





Journal photos: Mike Hahn

### Showmanship champions

Showmanship winners in this year's Bailey County Junior Livestock Show are (from left) Amy Burris, senior lamb; Colt Ellis, junior lamb; and Mindy Hamilton, junior swine.

### Lady Mules beat Dimmitt, Brownfield

By DELTON WILHITE  
Journal sportswriter

The Lady Mules completed the first lap of district 2-3A by downing the Dimmitt Bobbies in the Kenneth Cleveland Gymnasium 65-43 and returned home Friday to dump the unknown but scrappy Brownfield Lady Cubs 73-42.

Mindy Locker put the Lady Mules in front to stay with an 18-foot jumper as the first period began. Tori Barton and Sara Benham served notice on the Bobbies by completing a fast break with a half-court pass and a layup.

Barton drained a three from the top of the key to push the Muleshoe advantage to 7-2 just over three minutes into the game. Tiffany Flores grabbed a Bobbie pass and drove the lane to ignite a seven point Lady Mule run. A Bobbie hit from down town Dimmitt to end the first period with the Bobbies trailing 18-9.

Shani Rasco was held scoreless until the second quarter began. Rasco stuck back two rebounds to start the second period. She then ripped the ball away from a Bobbie on the Muleshoe base line and kissed the ball off the glass for two-points.

Fouled on the play Rasco finished the old fashion three-point play to push the Lady Mule lead to 27-12 with four minutes to play in the half. Rasco scored 13 of her 19 points in the second period and had back-to-back blocks with 25 seconds remaining in the half.

The Lady Mules led 35-24 at intermission and out scored the Bobbies 13-6 in:

the third period. Rasco and Benham recorded double-doubles against the Bobbies by scoring 19 and 17 points respectively and pulled down 10 rebounds apiece.

Kelsi Friskup added eight points, Locker six, Barton five and Lindsey Wood and Flores made four each for the Lady Mules.

The Brownfield Lady Cubs full court press and zone defense stunned the Lady Mules in the early going. With just under five minutes to play in the opening period the Lady Cubs owned a 9-7 advantage.

The final three minutes of the period was all Lady Mules with a 10-0 run in the final three minutes of the period to gain a 17-9 advantage. Locker powered down the lane for two points to continue the run and extended it to 14-0 when she put back her own shot to start the second period.

Brownfield cut the Lady Mule lead to 27-22 with an 11-6 run that ended when Friskup made one-of-two from the charity stripe. Muleshoe then went on a six-point run of their own with Barton draining a deuce just inside the free-throw line to push the Muleshoe lead to 34-22 after three periods.

In the final frame Jamie Carpenter picked a Lady Cub's pocket and scored and then nailed a three to seal the deal for the Lady Mules. Benham led all scorers with 24 points and Flores sank nine-of-ten free throws in the second half for 11 points.

Locker made nine, Friskup and Carpenter had seven each, and Rasco six, Barton five and Wood added one for the Lady Mules.

The Lady Mules hosted the Lubbock Cooper Lady Pirates Tuesday and travel to Littlefield to meet the Lady Cats in the second round, Friday January 17.

And the list just gets longer...

At Carolyn's Christmas Creations

- Antiques, Fine Furniture  
And Life Size Bronze Statues, Too
- Home Decor, Gourmet Food  
And Unique Jewelry For You!
- Wedding Gifts, Baby Gifts  
And Men's Gift Items Abound...
- Western Gift Items, Purses  
And Lots Of Shabby Chic To Be Found!
- New Christmas Items & Full Time Hours  
And A Total New Look For The Store
- Just Some Of What You'll Find  
At Carolyn's Christmas Creations...  
Even More Unique Than Before!

Now Open Mon.-Sat. 10-6

**Carolyn's Christmas Creations**  
224 W. 2nd St. • Muleshoe  
272-5911 • Major Credit Cards Accepted

402

**RED WING SHOES**  
Made in U.S.A.

**The Fair Store**  
120 Main 272-3500

## Big score for local food pantry

On Sunday, January 26, 2003, Muleshoe residents will join with others across the nation in promoting "Souper Bowl" Sunday! Held in conjunction with the NFL's Super Bowl, the event promotes the awareness of hunger in our nation.

Event coordinators will be garnering support from local churches and youth groups to help feed local hungry. The Bailey County Ministerial Alliance Food Pantry, which serves the residents from the county, will be the beneficiary of the proceeds.

People are asked to donate one can of soup and \$1.00 to the local agency during Sunday morning worship services. For those unable to donate at that time, the food and donation can be

taken to the Food Pantry the following Saturday from 9:00-10:30 a.m., February 1.

Utilizing Super Bowl Sunday to inspire and mobilize our youth to fight hunger and poverty in their own

community allows them to see mission emphasis on a firsthand local basis.

For further information, you may call Kay Graves at 272-5846 or Kay Mardis at 272-4561.

**See Darrel Green Today for this 2003 GMC ENVOY XL**

**0.0% FINANCING FOR 60 MOS\***

**\$3000 GM CASH BACK**

It's All New & Exciting!  
"The Country Store Where Deal' in 's Easy! Guaranteed!"

**Richard Barton**

3300 Mabry Drive Clovis, NM 88101 505-762-2986 / 1-888-569-1900

www.richardbarton.com

Sale dates have been extended thru Sat., Jan. 25th!

## STOCK UP SALE

- Children's Justin Boots ..... \$49.95
- George Strait Justin Boots
- Lace Up style, Reg. \$124.95 ..... Now \$89.95
- Pull On style, Reg. \$119.95 ..... Now \$84.95
- Men's & Women's Non-Steel Toe by Justin, Georgia & Double H ..... \$10 Off
- One Table Shoes ..... 1/2 Off
- One Rack Clothing ..... 1/2 Off
- Walls Coveralls & Jackets ..... \$15 Off
- Winter Jackets & Gloves ..... 25% Off

"The Hat Doctor" Michael Dean will be selling and creating Serratelli hats on Sat., Jan. 25th!

## Williams Athletics

1405 W. American Blvd. • Muleshoe • 272-6853

**AND COUNTRY JUNCTION** 2600 Mabry Drive Clovis, NM

**1-800-658-6378**

Open: Mon.-Fri. 9-6, Sat. 9-7 MDT

All Your Favorite Brands  
On Sale In January

### ALL WORK BOOTS \$20<sup>00</sup> Off

**Double Welt & Crepe Sole Boots**

- Tony Lama..... \$20 Off
- Anderson Bean..... \$20 Off
- Rios of Mercedes ..... \$20 Off
- Hondo ..... \$20 Off

**ARIAT REGULAR LEATHER BOOTS**  
NOW **\$149**

**Full Quill Ostrich Boots**

- Tony Lama ..... \$399
- Justin ..... \$399
- Ariat ..... \$399
- Anderson Bean ..... \$349
- Rios of Mercedes ..... \$449
- Nocona ..... \$299
- Cowtown ..... \$299

**ALL JACKETS & OUTERWEAR ..... 15% OFF**  
CARHARTT POWDER RIVER TEMPSCO WALLS

**Buy One Pair of Boots, Get a Belt for 15% Off**

**Smooth Ostrich Boots**

- Tony Lama ..... \$179
- Justin ..... \$179
- Nocona ..... \$99
- Cowtown ..... \$99
- Ariat ..... \$199

**OLATHE BOOTS ..... Reg. \$199 NOW \$179**

## SCHOLARS

from page 1

their educational goals.

As semifinalists, students must submit additional information that will be reviewed in February by a committee comprised of 27 educators from high schools and universities throughout the

United States. If advanced, Andy Martin will be among a total of 252 Finalist who will travel to Atlanta April 24-27, 2003 to attend the Coca-Cola Scholars Week-end. During their visit, they will attend a final interview process which will determine

whether they are designated as either a National or Regional Scholar. The 52 National Scholars will each receive a \$20,000 renewable scholarship award, while the 200 Regional Scholars will receive a \$4,000 renewable scholarship.

The program was created in 1986 by the Coca-Cola Bottlers and the Coca-Cola Company to commemorate the 100th anniversary of Coca-Cola and to establish a legacy for the education of tomorrow's leaders through scholarships.

## SHOW

from page 1

the champion mediumwool lamb, shown by Amy Burris. Also in the grand drive was the champion finewool cross, shown by Kelsy Friskup.

Burris was chosen the senior and overall showmanship winner in the lamb show, while Ellis was the junior winner.

There were 14 lambs in the show, compared to 27 a year ago.

**Bailey County Junior Livestock Show**  
Jan. 17-18

**Bailey County Coliseum JUNIOR MARKET GOATS**

**Class 1** (6 head, 60-68 lbs.) — 1. Cami Jo Vandiver; 2. Cydni Vandiver; 3. Marshal Head; 4. Dusty Clayton; 5. Colt Ellis; 6. Natalie Head.

**Class 2** (5 head, 70-85 lbs.) — 1. Cydni Vandiver; 2. Cami Jo Vandiver; 3. Cami Jo Vandiver; 4. Cydni Vandiver; 5. Courtney Mardis.

**Class 3** (6 head, 90-107 lbs.) — 1. Courtney Mardis; 2. Colt Ellis; 3. Courtney Mardis; 4. Dusty Clayton; 5. Clay Peña; 6. Natalie Head.

**Grand Champion Junior Market Goat**  
Cydni Vandiver  
1st, Class 2

## FILING

from page 1

the last two years and the council renewed the agreement.

The council set the holiday for 2003. They are New Year's Day, Good Friday, Memorial Day, Independence Day, Labor Day, Thanksgiving and the following Friday, Christmas Eve and Christmas Day, and one floating holiday.

**Reserve Grand Champion Junior Market Goat**

Cami Jo Vandiver  
2nd, Class 2

**Showmanship Senior Division**

Dusty Clayton

**Junior Division**

Courtney Mardis

**Overall**

Dusty Clayton

**JUNIOR MARKET LAMBS**

**Finewool**

**One Class** (1 head, 115 lbs.) — 1. Colt Ellis.

**Champion Finewool**

Colt Ellis

**Finewool Cross**

**One Class** (5 head, 102-122 lbs.) — 1. Kelsy Friskup; 2. Dusty Clayton;

3. Colt Ellis; 4. Dusty Clayton; 5. Jeremy Johnson.

**Champion Finewool Cross**

Kelsy Friskup

**Reserve Champion Finewool Cross**

Dusty Clayton

**Medium Wool**

**One Class** (7 head, 113-137 lbs.) — Amy Burris; 2. Dusty Clayton;

3. Colt Ellis; 4. Amy Burris; 5. Cory Sexton; 6. Cory Sexton; 7. Cory Sexton.

**Champion Medium Wool**

Amy Burris

**Reserve Champion Medium Wool**

Dusty Clayton

**Southdown**

**One Class** (1 head, 100 lbs.) — 1. Jeremy Johnson.

**Champion Southdown**

Jeremy Johnson

**Grand Champion Junior Market Lamb**

Colt Ellis

**Champion Finewool**

Reserve Grand

**Champion Junior Market Lamb**

Amy Burris

**Champion Mediumwool**

**Showmanship Senior Division**

Amy Burris

**Junior Division**

Colt Ellis

**Overall**

Amy Burris

**JUNIOR MARKET SWINE**

**Gilt Show**

**Class 1** (5 head, 166-190 lbs.) — 1. Diego Saenz; 2. Craig Black;

3. Marshal Head; 4. Chance Daniel; 5. Gradee Adrian.

**Class 2** (6 head, 196-206 lbs.) — 1. Cory Sexton; 2. Corie Ann Black; 3. T.J. Brantley; 4.

Stephanie Daniel; 5. Cody Kirby; 6. Arsenio Geter.

**Class 3** (7 head, 206-231 lbs.) — 1. Tyson Turnbow; 2. Dal Whalin; 3. Trent Black; 4. Logan Caddell; 5. Luis Saenz; 6. Niclas Green; 7. Roper Kerby.

**Class 3** (7 head, 240-265 lbs.) — 1. Cassie Kirby; 2. J.R. Young; 3. Clay Peña; 4. Summer Daniel; 5. Clay Peña; 6. Mandy Brantley; 7. Trista Green.

**Champion Gilt**

Tyson Turnbow

**1st, Class 3**

**Reserve Champion Gilt**

Cassie Kirby

**1st, Class 4**

**Junior Market Barrows**

Berkshires

see **RESULTS** on page 7

**Let Us Prepare Your Taxes!**

Let Continental Credit eliminate the confusion and uncertainty that make tax time so taxing! Bring us your W-2 forms and talk with our tax experts. Get your refund FAST by using the Refund Anticipation Loan (R.A.L.) program!

**Continental Credit**  
206 Main St. • Muleshoe • 272-3673

LET US HELP YOU WITH A TAXING SITUATION

M-Pyre Auto Sales, Inc. is now offering a tax preparation service. Bring your W-2 forms by 1112 American Blvd. in Muleshoe. With any vehicle purchase, we'll have a professional tax service to do your taxes.

**TAX REFUND EQUAL NEW CAR**

Curtis and Randy will work hard to make sure you get to keep more of what you worked so hard to earn.

**M-PYRE AUTO SALES, INC.**

1112 W. American Blvd.  
Muleshoe, TX • 806-272-7777

Open: Mon.-Sat. 9 am - 6 pm **RANCH HAND EQUIPMENT DEALER** Westin

**STATEMENT OF NONDISCRIMINATION**

Five Area Telephone Cooperative, Inc., and West Plains Telecommunications, Inc. are the recipients of Federal financial assistance from the Rural Electrification Administration, an agency of the U.S. Department of Agriculture, and is subject to the provisions of Title VI of the Civil Rights Act of 1964, as amended, Section 504 of the Rehabilitation Act of 1973, as amended, the Age Discrimination Act of 1975, as amended, and the rules and regulations of the U.S. Department of Agriculture which provide that no person in the United States on the basis of race, color, national origin, age, handicap, sex, marital status, income level, source of income, or geographic location shall be excluded from participation in, admission or access to, denied the benefits of, or otherwise be subjected to discrimination under any of this organization's programs or activities.

The person responsible for coordinating this organization's non-discrimination compliance efforts is Sandy Vandevender, General Manager. Any individual, or specific class of individuals, who feels that this organization has subjected them to discrimination may obtain further information about the statutes and regulations listed above from and/or file a written complaint with this organization; or the Secretary, U.S. Department of Agriculture, Washington, D.C. 20250; or the Administrator, Rural Utilities Service, Washington, D.C. 20250. Complaints must be filed within 180 days after the alleged discrimination. Confidentiality will be maintained to the extent possible.

See Kyle Potts Today for this 02 Pontiac Grand Prix SE.

Save Over \$6,000\*\*

\$227 Month\*

**Richard Barton**

3300 Mabry Drive Clovis, NM 88101 505-762-2986 / 1-888-569-1900

GMC www.richardbarton.com

**MULESHOE CHAMBER OF COMMERCE & AGRICULTURE IS REQUESTING YOUR ASSISTANCE IN HELPING TO SELECT OUR MONTHLY CANDIDATES FOR EMPLOYEE & BUSINESS OF THE MONTH**

If you are impressed by the excellent service of someone, or there is a business that you feel has "gone beyond the call of duty," write them down, cut this form out of the newspaper and drop it by our office at 115 E. American Blvd. or mail it to P.O. Box 356, Muleshoe, Texas 79347

Employee of the Month

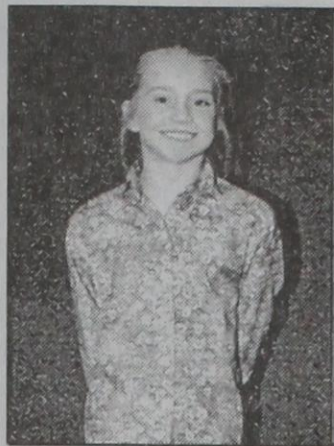
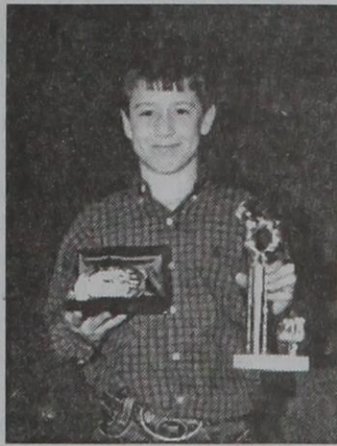
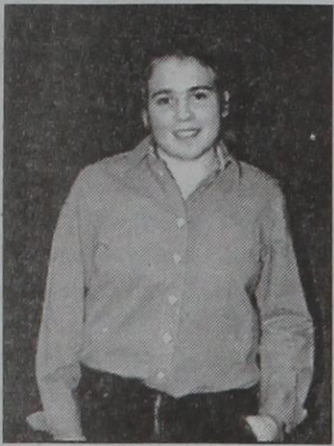
Business of the Month

**MULESHOE INDEPENDENT SCHOOL DISTRICT**

STATEMENT OF REVENUES, EXPENDITURES, AND CHANGES IN FUND BALANCES—  
GOVERNMENTAL FUND YEAR ENDED AUGUST 31, 2002

	General Fund	Five Area Community Telecommunication	Other Governmental Funds	Total Governmental Funds
<b>REVENUES:</b>				
Local and Intermediate Sources	\$2,977,005	\$208,040	\$161,474	\$3,346,519
State Program Revenues	6,643,408	—	200,970	6,844,378
Federal Program Revenues	109,946	—	1,554,123	1,664,069
Total Revenues	9,730,359	208,040	1,916,567	11,854,966
<b>EXPENDITURES:</b>				
Current:				
Instruction	5,352,388	186,990	850,020	6,389,398
Instructional Resources and Media Services	395,580	—	1,578	397,158
Curriculum Development and Instructional Staff Development	104,202	—	7,551	111,753
Instructional Leadership	211,551	—	72,339	283,890
School Leadership	629,888	—	—	629,888
Guidance, Counseling & Evaluation Services	297,183	—	11,266	308,449
Social Work Services	797	—	38,531	39,328
Health Services	107,390	—	—	107,390
Student (Pupil) Transportation	428,091	—	—	428,091
Food Services	29	—	568,032	568,061
Cocurricular/Extracurricular Activities	375,020	—	—	375,020
General Administration	480,572	—	—	480,572
Plant Maintenance and Operations	938,532	—	—	938,532
Security and Monitoring Services	5,300	—	—	5,300
Data Processing Services	25,666	—	—	25,666
Community Services	3,396	—	34,107	37,503
Capital Outlay	180,262	—	356,479	536,741
Payments to Shared Service Arrangements	279,556	21,050	—	300,606
Payments to Juvenile Justice Alternative Education Programs	750	—	—	750
Total Expenditures	9,816,153	208,040	1,939,903	11,964,096
Excess (Deficiency) Revenues Over (Under) Expenditures	(85,794)	—	(23,336)	(109,130)
Net Change in Fund Balance	(85,794)	—	(23,336)	(109,130)
Fund Balances (Beginning)	6,810,881	—	78,998	6,889,879
Fund Balances (Ending)	6,725,087	—	55,662	6,780,749

Call 272-4536 to subscribe.



Journal photos: Mike Hahn

### Showmanship Champions

Showmanship winners at this year's Bailey County Junior Livestock Show are (from left) Courtney Mardis, senior goat; Dusty Clyton, junior goat; and Baylee Bessire, junior steer.

## Corplan Corrections to build jail

By MARSHALL STINNETT  
Journal writer

Corplan Corrections is the firm the Bailey County Commissioners' Court has selected to build the new 96-bed jail facility in Muleshoe. The firm is headquartered in Argyle, Texas.

The company was founded in 1990 and the President is

James M. Parkey.

According to the company brochure, "this team has developed, designed, constructed and financed more correctional facilities than any other team in the nation."

The recent projects included: the Dalby Correction Center in Post; the Webb County Correctional Center in Laredo; the

Karnes County Correctional Center in Karnes City, the Bradshaw County Jail in Henderson, the Winkler County Jail in Kermit and the Garza County Regional Juvenile Detention Center in Post.

The Commissioners' Court has visited both facilities in Post and Winkler County according to County Judge Marilyn Cox.

### LADIES GOLF ASSOCIATION

The Muleshoe Country Club Ladies Association met Wed., Jan. 15 for their first luncheon this year. President Pat Kirk, presided over the meeting. Laverne Winn, secretary, read the minutes of the last meeting. Judy Wilbanks, treasurer, gave her report. Pat gave the birthdays for January. They were Jerrie Flowers, Linda Elder, Dorothy St. Clair, Laverne Winn and Deborah Noble.

All committees gave their plans for the year. A lot of activities are planned and looked forward to by the ladies. Ann McElroy gave a report on the coming Valentine shrimp peel and hors d'oeuvre party to be held Feb. 8. A lot of work has gone into making this a very special party, so do make plans to attend. Those attending the luncheon were Pat Kirk, Deborah Noble, Helen Templeton, Claudine Elliott, Laverne Winn,

Jo Rempe, Jeanetta Precure, Lynne Box, Judy Wilbanks, Ann McElroy, Jenny Bamert and Neats Foster.

Playday awards were given to Sheryl Engelking and Claudine

Elliott. Door prize was won by Ann McElroy. Ladies winning the golf scramble were Helen Templeton, Claudine Elliott, Neats Foster, Deborah Noble and Pat Kirk.

**See Darrel Green Today for this 01 Mercury Grand Marquis LS**

*Full Size Comfort!*

Kelley WB \$14,375  
**RB'S Price \$13,988**

*"The Country Store Where Deal' in 's Easy! Guaranteed!"*

**Richard Barton**

3300 Mabry Drive Clovis, NM 88101 505-762-2986 / 1-888-569-1900

[www.richardbarton.com](http://www.richardbarton.com)

**You snooze, you lose. Read the news!**

### REPRESENTATIVE SALES

976 head of cattle, 144 hogs and 199 sheep and goats for a total of 1,319 animals were sold at the January 18th sale. Market trend was steady on lightweight stocker calves. Feeder cattle 1-3 lower. Pairs and bred cows steady to higher on young cows. Packer cows steady to a dollar higher.

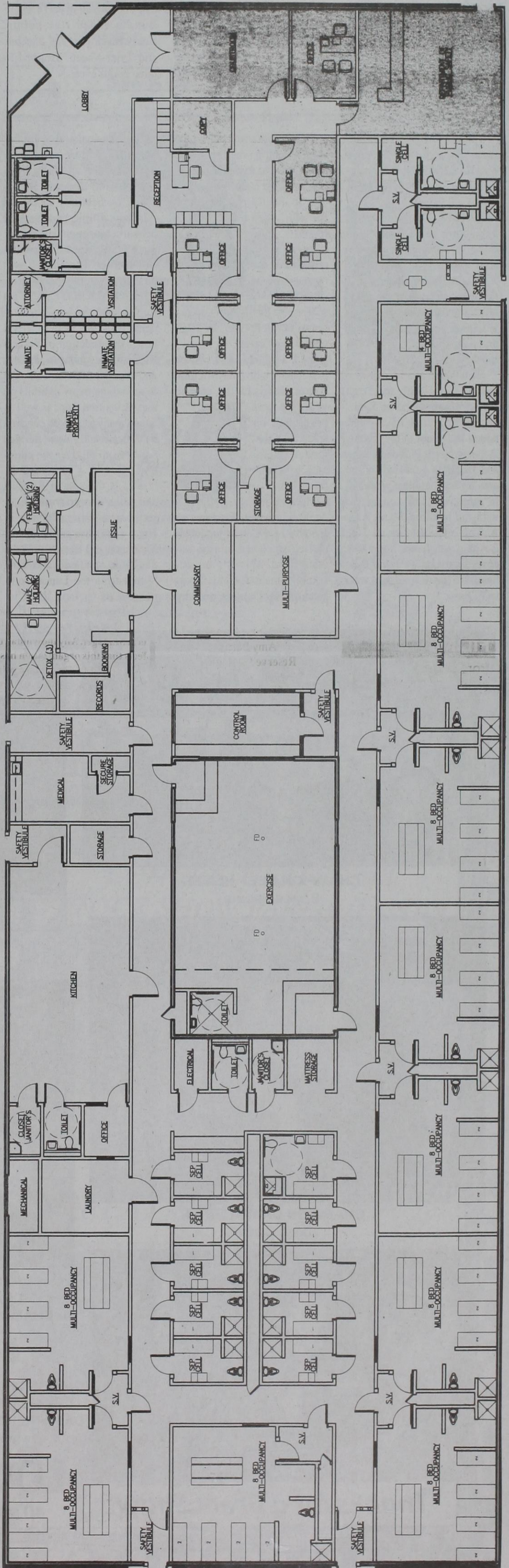
The Muleshoe Cattle Market is brought to you each week by Muleshoe Livestock Auction, located east of Muleshoe on U.S. 84. Muleshoe Livestock conducts sales every Saturday, beginning with hogs, sheep and goats at 10 a.m. and cattle following at approximately noon.

**FOR INFORMATION ON SALES OR TO CONSIGN CATTLE, CALL (806) 272-4201**

Seller, City	#	Type	Wt.	CWT or PH
Toby Slater, Canyon	4	Hol. bulls	203 lbs.	at \$100.00
Allen Hohnsbergen, Portales, NM	6	Hol. str	206 lbs.	at \$98.00
Jim West, Hereford	5	Hol. str	219 lbs.	at \$100.00
James Burt, Ft. Sumner, NM	3	Hol. bulls	327 lbs.	at \$85.00
Tommy Butler, Canyon		Brin. str	255 lbs.	at \$115.00
Ryan McNabb, Amherst	2	RWF str	220 lbs.	at \$128.00
Ryan McNabb, Amherst	3	Char. bulls	407 lbs.	at \$101.00
FM Farms, Brownfield	4	Char. bulls	306 lbs.	at \$121.00
Donald Caddell, Levelland	2	RWF bulls	415 lbs.	at \$95.00
B&S Ranches, Dattel, NM	15	Mxd. str	619 lbs.	at \$84.25
Wayne Wood, Monahans	15	Mxd. str	580 lbs.	at \$83.50
L.G. Layman, Muleshoe	5	Red bulls	632 lbs.	at \$78.25
Nick Hall, Sudan	6	Red bulls	642 lbs.	at \$80.00
Amigo Farms, Whiteface	2	Red str	700 lbs.	at \$78.50
John Hill, Abernathy	8	Blk. str	866 lbs.	at \$76.00
Chico Cattle, Abernathy	5	Blk. str	890 lbs.	at \$76.00
KP Farms, Lubbock	23	Mxd. hfr	315 lbs.	at \$95.00
Ryan McNabb, Amherst	2	Yell. hfr	330 lbs.	at \$94.00
FM Farms, Brownfield	4	Red hfr	359 lbs.	at \$90.00
B&S Ranches, Dattel, NM	10	Mxd. hfr	449 lbs.	at \$84.50
Don Rhodes, Hereford	6	Mxd. hfr	511 lbs.	at \$80.50
Nick Hall, Sudan	5	Red hfr	576 lbs.	at \$79.00
Donald Caddell, Levelland		Red hfr	665 lbs.	at \$77.25
Homer Ray, Clovis, NM	2	Mxd. hfr	683 lbs.	at \$78.50
B&P Cattle, Lubbock	2	Mxd. hfr	723 lbs.	at \$78.00
Hockley Co. Cattle, Levelland	3	Char. hfr	845 lbs.	at \$75.50
B&S Ranches, Dattel, NM	4	Blk. cows		\$745.00
B&S Ranches, Dattel, NM		Brang. pair		\$850.00
Caswell Cattle Co., Muleshoe	2	Mxd. cows P5		\$550.00
Caswell Cattle Co., Muleshoe		Spot cow	1215 lbs.	at \$39.00
Norma Dorethy, Denver City		Brn. cow	1005 lbs.	at \$40.00
Milton Anderson, Seminole		Brang. cow	1270 lbs.	at \$39.25
Milton Anderson, Seminole		Blk. bull	1555 lbs.	at \$50.50

## Preliminary Floor Plans for the New Bailey County Jail Complex

Square Footage	Bed Count		
	Cells	Bed	
Secure .....	14,884 sq. ft.	10	10
Administration .....	3,878 sq. ft.	2	2
<b>Total</b>	<b>18,762 sq. ft.</b>	<b>10</b>	<b>80</b>
		4 person multi-occupancy .....	4
		8 person multi-occupancy .....	80
		<b>Total Beds</b>	<b>96</b>



# Mules suffer district loss at the hands of Dimmitt

By DELTON WILHITE  
Journal sportswriter

The Dimmitt Bobcats evened the Mule's district season at 1-1 by dropping the Mules 80-45 in the Kenneth Cleveland Gymnasium last Tuesday night. But much like the ball they play with, the Mules bounced back on Friday against the Brownfield Cubs.

The Mules absorbed two big runs by the Cubs and came back from a 10-point deficit midway through the third period to defeat the Cubs 54-49.

In the first six minutes the

Mules took the action to Dimmitt. Landon Sheets nailed three treys, Tatom Heathington hit a mid-range shot from the elbow and Luis Sanchez hit from behind the arc to hang on to a 13-12 Muleshoe lead.

In the final two and half minutes, the Bobcats poured in 13 unanswered points for a 25-14 lead at the quarter break. Danny Bonilla opened the second period with a three to break the Dimmitt scoring run.

The two teams exchanged baskets with Dimmitt hanging on to a 10-point 39-29 advan-

tage at the intermission. The Bobcat defensive pressure in the third period held the Mules to only five points and opened a 56-34 margin with eight minutes left to play.

The Bobcat pressure remained strong and out scored the Mules 24-11 in the final period. Heathington paced the Mules with 16 points while Landon Sheets made four threes and 14 points all in the first half. Bonilla added five points, Brady Black four and Sanchez and Tyler Sheets dropped in three points each.

Landon Sheets picked up two quick personal fouls and had to sit out most of the first half in the confrontation with the Cubs. Brownfield grabbed a 14-7 first period advantage.

A.J. Flores cut three from the Cub lead as the second quarter began. Bonilla hit from behind the arc and Heathington nailed a baseline jumper to cut the Cub advantage to 15-10 in the first three minutes.

Heathington's jumper ignited a 14-3 Muleshoe run before the half ended with the Mules leading 27-22. The Cubs returned after intermission with blood in their eyes and mounted a 15-0 run in the first four minutes of the third quarter to take a 37-27 advantage.

Landon Sheets returned to the floor and Heathington dropped in an eight-foot jump shot that broke the Cub run and began a 13-2 Mule run to end

the third quarter with the Mules ahead 40-39.

The Cubs opened the final period with a basket before Black drove for a layup to give the Mules a lead they would not give up with just less than seven minutes remaining in the game. The Mules made seven of 13 free throws in the final period to hang on for the win.

"We came out flat in the first period and then again after half but stepped it up to take a lead at half and again in the final period," said Tatom Heathington. "When Landon (Sheets) went out with fouls the rest of us knew we had to step up if we were going to win tonight."

Heathington paced the Mules with 14 while Landon Sheets dropped in 12 and Bonilla added nine. Black made eight, Tyler Sheets five, Flores four and Layne Sheets chipped

in two for the Mules. The Mules made 17 of 29 free-throw opportunities while the Cubs only made nine of 22.

"It sure is nice when you win on Friday," said Mule coach Ralph Mason. "I told the kids if they had any hopes of making the playoffs they had to beat Slaton and Brownfield and they had to beat them both times."

"Luis (Sanchez) and Danny (Bonilla) shut down their shooters tonight as we ran a triangle and two defense and we made enough free throws down the stretch for the win. We dug two holes tonight and came out of both of them. Our kids really battled back at the end.... How about them Mules?"

The Mules hosted the Lubbock Cooper Pirates on Tuesday and traveled to Littlefield to tangle with the Wildcats to wrap up the first round of district competition.

## BAND NEWS

Three Muleshoe band students will perform at the civic center in Lubbock this Saturday at the All-region Band concerts.

Elizabeth Symm made the 3-A Junior High All-Region Band on flute after tryouts in Cooper in November. She will perform with the band on Saturday, January 25, at 2:30 p.m.



Symm

Jami Wedel and J.C. Orozco will perform with the High School Honor Band on Saturday at 3:30 after having obtained the honor at the tryouts in December at Floydada. Jami and J.C. both qualified for the area tryouts held last weekend in Sundown. They competed with the top students in Area A. This area includes all 1-A, 2-A and 3-A bands in an area covering the entire Texas Panhandle to Snyder and then west to El Paso.

Jami was fourth chair in the Honor Band on the flute. This is her 3rd year to make the All-region Band and her second year to qualify for the Area tryouts. She came in ninth out of 18 flutes trying out at Area. Jami is a senior and this is quite an accomplishment for her high school career.



Wedel

J.C., a sophomore, will be performing with the All-region Honor Band for the second year. He was third chair on snare at the regional tryout, which qualified him to compete in the Area auditions in Sundown on January 11. J.C. was first chair in Area which puts him the All-State Band. This is a big accomplishment for any Texas band member but is especially

difficult to make as a sophomore. J.C. will be traveling to San Antonio with the high school band director, Becky Jones, on February 12 for the All-State Clinic and Concert held in conjunction with the annual Texas Music Educator's Convention. The concert will be at San Antonio on February 15 at 11:00 a.m. J.C. will get to play with the very best students from the State of Texas under the direction of Francis McBeth, a legendary composer and conductor. He will also get to attend the many exhibits on the convention floor as well as attend many top-notch concerts by colleges and Armed Service bands from all over the country.

J.C. is the son of Richard and Alma Orozco from Muleshoe. Jami is the daughter of Jimmy and Susan Wedel of Muleshoe and Elizabeth is the daughter of David and Tina Symm from the Lariat Community.

# YOU'LL LOVE OUR COOKIES!

Calvary Baptist Church's Annual Valentine Cookie Sale has begun!

Purchase a 9 inch cookie decorated with your personal Valentine's message for only \$5! And we'll deliver it for you!  
New this year — COOKIE BOUQUETS! Get 3 heart-shaped 3 1/2 inch cookies with vase for only \$8! Additional heart flowers can be purchased for \$2 each.

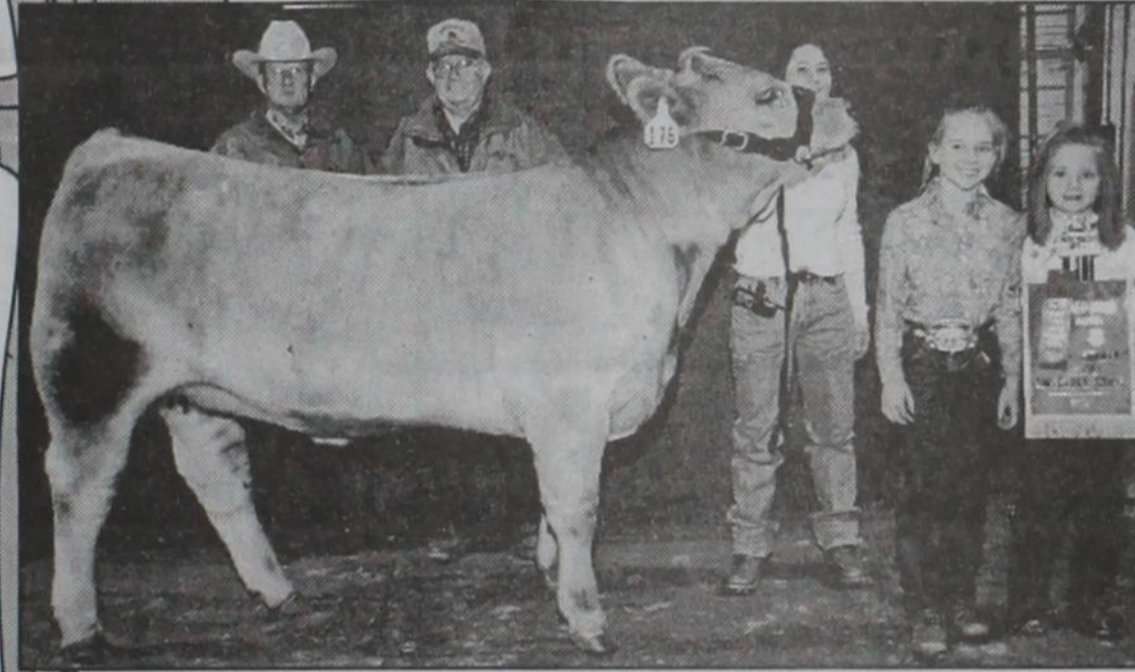


Orders will be taken through February 6, 2003

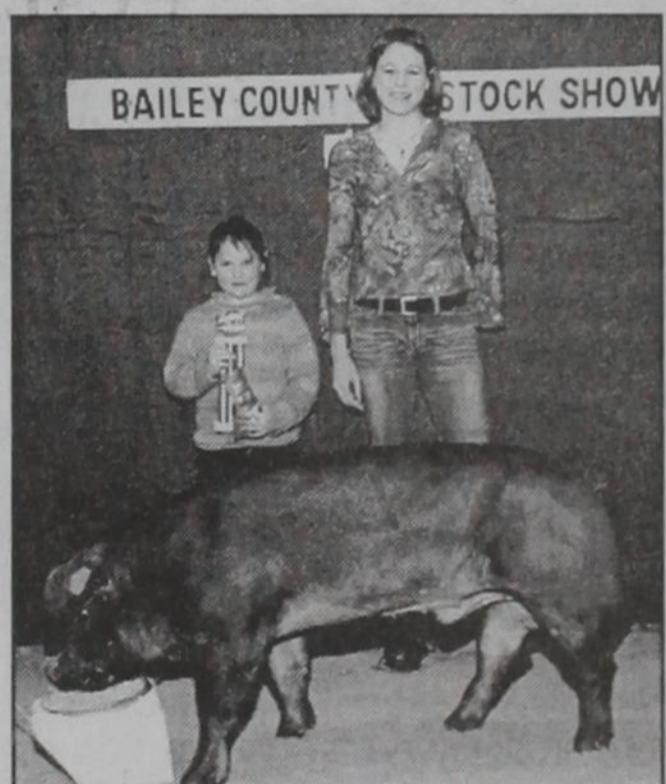
Telephone orders: 272-4012 or 272-4059

Mailed Payments & Messages:

Calvary Baptist Church - P.O. Box 378, Muleshoe, TX 79347



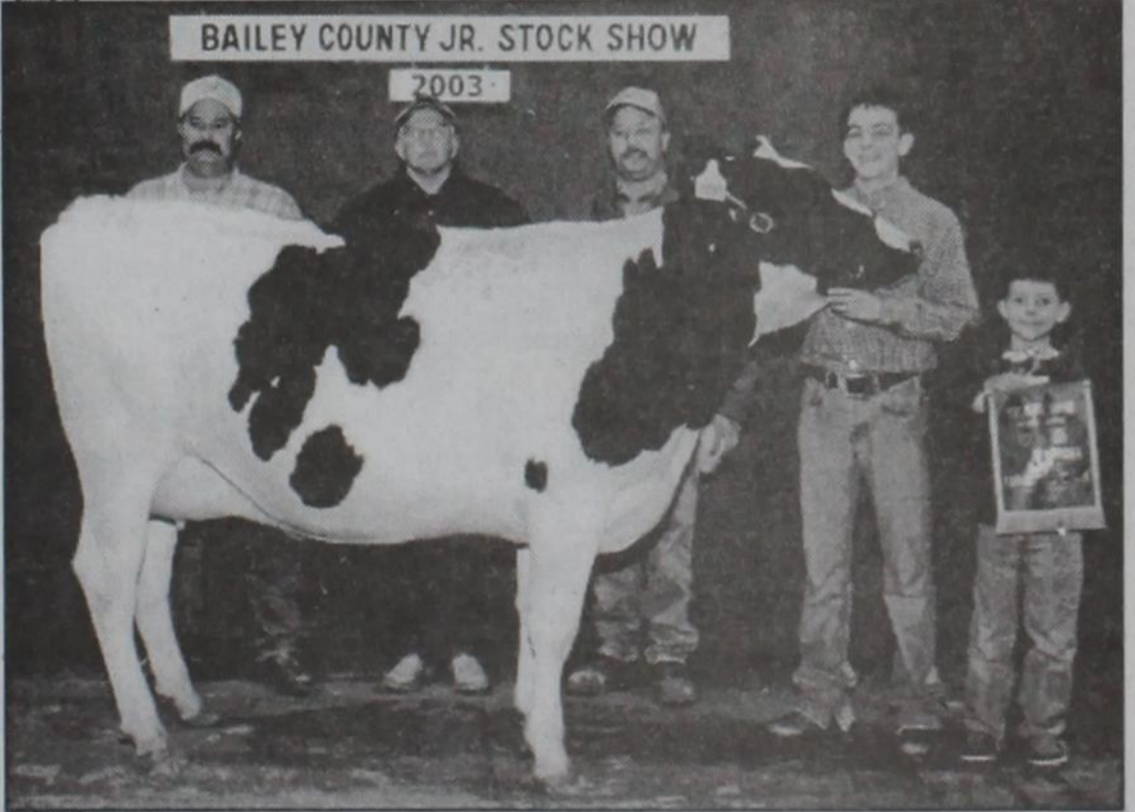
CHAMPION BEEF HEIFER  
Baylee Bessire



CHAMPION DUROC  
Sara Benham



RESERVE CHAMPION BLACK OPB  
Marshal Head



CHAMPION DAIRY HEIFER  
Logan Caddell



RESERVE GRAND CHAMPION LAMB/  
CHAMPION MEDIUM WOOL  
Amy Burris



RESERVE CHAMPION GILT  
Cassie Kirby



RESERVE CHAMPION DAIRY HEIFER  
Abby Lawrence

RESERVE CHAMPION HAMPSHIRE  
Amy Burris



Thanks for a Great Show!

LOWE'S MARKETPLACE

401 W. American Blvd. • Muleshoe • 272-4585









## LAZBUDDIE HONOR ROLL

### LAZBUDDIE

#### Third Six Weeks

#### "A" Honor Roll

**Second Grade** — Chandler Barnes, Andrew Branham, Karina Galaviz, Victor Godinez, Kolten Morris, Seth Russell, Denise Sanchez and Shea Scott.

**Third Grade** — Emily Agee, Merced Campos, Jarrod Jesko, Jordan Mason, Todd Nichols and Justin Schacher.

**Fourth Grade** — Jordan Hernandez and Colton Weaver.

**Fifth Grade** — Darin Ivy, Kayle Jesko, Kinzi

Schacher and Kyler Steinbock.

**Sixth Grade** — Brock Steinbock, RaJon Thorn and Chase Timms.

**Seventh Grade** — Chelsee Nichols, Brianna Sanchez and Brittney Schacher.

**Eighth Grade** — Amberlee Steinbock.

**Tenth Grade** — Kayla Parham.

**Eleventh Grade** — Shonah Black, Katy Louder, Robby Martin, Shawndee Nichols, Bethenie Sanchez, Michelle Scott and Stephen Thomas.

**Twelfth Grade** — Dustin Bartlett, Andy Martin and Brady Mimms.

#### "A/B" Honor Roll

**Second Grade** — Alfredo Chavira, Keena Diaz, Jessica Estrada, Colten Ingram, Ross Steinbock and Jared Timms.

**Third Grade** — Dallas Cox, Paola Estrada, Kylie McGehee and Kenton Randolph.

**Fourth Grade** — Tanner Beasley, Willy Dyck, Joseline Garcia, Lakota Goe, Arthur Gomez, Rodrigo Mata, Lacy Russell, Savannah Sain and Moises Tafoya.

**Fifth Grade** — Lydia Campos, Geovanni Garcia, Dylan Haney, Logan Mason, Frankie Rodriguez, Rhett Sain, Riley Smith and Monica Vera.

**Sixth Grade** — Richie Aguilar, Susie Dyck, Bart Guillen, Ryan Mason, Jacob Schacher, Brittany Sexton and Cassie Steinbock.

**Seventh Grade** — Laura Beliz and Regina Mata.

**Eighth Grade** — Erica Derma, Kyra Kimbrough, and Stephanie Williams.

**Ninth Grade** — Amanda Branham and Daniel Hefner.

**Tenth Grade** — Chris

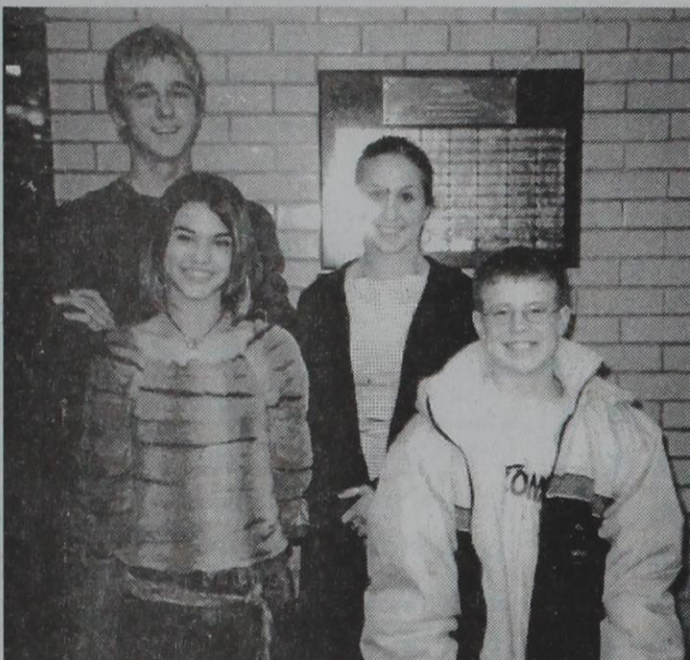
DeLeon, Mandy Haney, Ana Hernandez, Brett Mimms and Amanda Schaeffer.

**Eleventh Grade** — Thomas Garcia, Kelli Harris, Miriam Hernandez, Kera

Lewandowski, Raul Mata and Sterling Via.

**Twelfth Grade** — Brit-tany Brakebill, Omar Lopez, Michelle Puckett and Tobin Redwine.

## Lazbuddie picks students of the month



Lazbuddie December students of the month are left to right (top row) Dustin Bartlett and Katy Louder; (bottom) Kyra Kimbrough and Chase Timms.

Dustin Bartlett is the 18-year-old son of Rocky Bartlett and Renee Wright. His birthday is May 16. Things that are important to Dustin are goals, friends and family. 911 means a time where many American suffered and we all came together to help in a time of need. His high school goals are to be active in community service and organizations. He will graduate and attend the college of his choice. His favorite movie line is from the Fight Club, "Without, pain, without sacrifice, we would have nothing." If Dustin won a million dollars, he would start his own scholarship program to help the less fortunate kids achieve a higher education. His fa-

vorite list includes: *Songs We Wish We'd Written* CD by Pat Green and Cory Morrow, smoked pecan salmon, English Bulldogs, Adam Sandler, topaz, and a visit to New York. His fear factor is anything that crawls.

Katy Louder is the 17-year-old daughter of Lance and Terri Louder. She was born on October 16. Important things to her are family, friends, and salsa verde. 911 means a lot to Katy. Her plans are to graduate. Her favorite movie line is, "You got something to say?" — "Yeah, about a million things, but I can't express myself monosyllabically enough for you to understand it all." If Katy won a million dollars, she would

wet her pants. Her favorites include CD's too numerous to name, fried chicken mashed potatoes and gravy, a panda bear, Edward Norton, and a visit to Delaware. Her fear factor is clowns in tomato soup.

Chase Timms is the 12-year-old son of Chris and Jill Timms. He was born November 11. His family is the most important to him. 911 means an emergency. His goal for Jr. High is to get straight A's. His favorite movie line is "I'll be back." If he won a million dollars, he would buy himself a BMW ZW3. His favorite things are any CD, steak, Swedish meatballs, Longhorns, Arnold Schwarzenegger, ruby and a visit to Disney World. His fear factor is baby food (Yuk!!)

Kyra Kimbrough is the 14-year-old daughter of Kyle and Kim Kimbrough. She was born on December 5. Important things to Kyra are family, friends, school, and sports. 911 was a tragedy because so many people lost loved ones. Her goal for Jr. High is to make good grades and go to college. Her favorite movie line is, "Girl, please." If she won a million dollars, she would buy a Lotus and go on a huge shopping spree. Her favorite things are Eminem, snow crabs, fries, cheese sticks, a virgin strawberry daiquiri, White

Tiger, Tara Reid, blue sapphire and a trip to Hawaii. Her fear factor is tests.

See Cory Dudley Today for this 2003 GMC SIERRA 4 DR. Total Savings \$4,254. RB'S Price \$21,550. "The Country Store Where Deal 'n' Is Easy! Guaranteed!" Richard Barton. 3300 Mabry Drive Clovis, NM 88101 505-762-2986 / 1-888-569-1900. www.richardbarton.com

Place your ad in the Classifieds! Call 272-4536 and ask for Jessica.

ILEY COUNTY JR. STOCK SHOW 2003. CHAMPION FINEWool Colt Ellis. RESERVE CHAMPION FINEWool CROSS Dusty Clayton. We're Proud Of Every Stockshow Participant! BLACKWATER AGRI ASSN. INC. W. Hwy. 84 • Muleshoe 272-4962 or 272-5583

## Seventh grade Lady Mules triumph in double overtime

By DELTON WILHITE  
Journal sportswriter

The 0-3 seventh grade Lady Mules earned their first win of the season with a double overtime win in Dimmitt over the Bobbies 31-29. Then the Brownfield Lady Cubs fell to the Lady Mules 37-17. The Lady Mule win ended their first lap of district with a 2-3 record.

After the New Year began the Lady Mules fell to the Lubbock Cooper Lady Pirates 38-27. The Lady Mules jumped back into the win column by grabbing the gold in the four-team Lazbuddie Tournament.

During the tournament the Lady Mules hammered the Hart Lady Longhorns 44-13 and dropped the Nazareth Swiftettes 33-28 for the championship.

Gini Sheets led the Lady Mules in scoring at Dimmitt

with 15 points, seven coming in the over times. Cresent Crawford added seven, Cholv Hernandez dropped in six and DezRae Contreras and Kelsey Tipps chipped in two points each.

The Lady Mules raced out to a 13-2 advantage in the first period against the Lady Cubs of Brownfield. Sheets dropped in a trey from the top of the key to begin the second quarter and Jacy Lawrence hit from 15 feet to push the Muleshoe lead to 18-2.

Heather Barker scored six of her game high 14 points in the final two minutes of the first half. Sheets followed with eight, Hernandez six; Lawrence four, Crawford three and Contreras had two points for the Lady Mules.

The Lady Pirates of Cooper jumped out to an early 10-6 lead in the first period

and 16-10 by intermission. Sheets led the Lady Mules with 15 points and Contreras added six. Ashley Scolley, Kelsi Tipps and Cassie Kirby dropped in two points each for the Lady Mules.

In the opening game of the Lazbuddie Tournament against Hart, Crawford set the scoring pace with 18 points and Sheets added 16. Hernandez tossed in four and Ashley Grumbles, Barker and Kirby made two points each for Muleshoe.

In the championship tilt with Nazareth, Crawford led the Lady Mule charge with nine points while Hernandez and Contreras added eight points each. Sheets tossed in five, Tipps two and Grumbles had one for the Lady Mules.

The Lady Mules traveled to Littlefield and Slaton before participating in the Sudan Tournament January 25.

CONGRATULATIONS to all the participants and winners of the Area Livestock Shows! We salute each of you for your hard work and dedication in raising some of the finest livestock in the area!

Five Area Telephone Cooperative, Inc.  
West Plains Telecommunications, Inc.  
Five Area Systems, Inc.  
Five Area Long Distance  
Plateau Wireless  
Five Area Paging  
fivearea.com Your local Internet Provider

THE FIVE AREA TELEPHONE ORGANIZATION

# BAILEY COUNTY DEVOTIONAL PAGE

**LEO'S BLACKSMITH & MACHINE SHOP**  
 • MACHINE WORK & WELDING • FABRICATION  
 • ALUMINUM & CAST WELDING • STEEL • AG PARTS  
 • NUTS & BOLTS • DRIVE LINES • PORTABLE WELDING  
 310 W. American Blvd., Muleshoe  
 Daytime: 272-4418 After Hrs. Greg 272-5767 or Larry 272-5627

**A-PLUS HEATING & AIR CONDITIONING, INC.**  
 1212 W. American Blvd. 200 W. Hwy. 84  
 272-5175 • Muleshoe 227-2045 • Sudan

**AG AVIATION**  
 2 1/2 miles North on HWY 214  
 272-3066 FAX 272-8981  
 P.O. Box 68 • Muleshoe, TX

**MV INC.**  
 2601 W. American Blvd.  
 P.O. Box 631 Muleshoe, Texas  
 (806) 272-4266  
 Mobile (806) 946-8763  
 mvinc@fivearea.com

**VIOLA'S**  
 Mexican Food Restaurant  
 Open Tues-Sat 11:30 p.m. Sun. 11:30 p.m. Closed Monday  
 2002 W. American Blvd. • Muleshoe • 272-3838

**HUGO VASQUEZ CONSTRUCTION**  
**VASQUEZ LUMBER & HARDWARE**  
 General Construction, Concrete, Metal Buildings, Remodels  
 506 W. American Blvd. • Muleshoe • 272-5405

**Jarman Seed**  
**PIONEER.** 801 W. American Blvd.  
 Muleshoe, TX • 272-5985

**Muleshoe Feed Barn**  
 311 W. American Blvd. **HI-PRO**  
 Muleshoe, TX  
 272-5626

**GOODYEAR** **JAMES CRANE TIRE CO., INC.**  
 107 Main 272-4594  
 Mike Hahn Muleshoe, TX

1315 W. American Blvd.  
 272-3333  
 Muleshoe, TX  
 Now open at 5:30 a.m. every day!

**Muleshoe Country Club**

**Little Real Estate & Appraisal Services**  
 Residential • Commercial • Farm & Ranch  
 Walter B. "Jack" Little  
**272-4805**  
 MOBILE: 946-7965 Muleshoe FAX: 272-3729

**BRUCE, INC.** HEATING & AIR CONDITIONING  
 TACL-8003360C, LP08638  
 OFFICE (806) 272-5114  
 FAX (806) 272-5323  
 BILL L. BRUCE PRESIDENT  
 Hwy. 214 North Muleshoe, TX 79347

**WEST CAMP GIN, INC.**  
 Better Ginning & Courteous Service  
 James & Phyllis Shepard  
 Rt. 2 Box 1000 • 925-6681  
 Muleshoe, TX

**McCormick Seeds, Inc.**  
 400 East Ash • Muleshoe  
**272-3156**  
 Tim McCormick Roland McCormick

**Boehning Dairy**  
**DRINK MORE MILK.**  
 Brian & Tiffany Boehning Earth, Texas

**United Supermarkets**

**mins corporation**  
 P.O. Box 484 272-5545  
 Muleshoe, TX  
 FAX (806) 272-5135 (800) 852-8291

**Decorators Floral & Gifts**  
 616 South First 272-4340  
 Muleshoe, TX

**MULESHOE ANIMAL CLINIC**  
 GENERAL PRACTICE  
**M V S**  
 1430 US Hwy. 84 • Muleshoe Office: 272-3061

333 **Facts About The BIBLE** BY JOHN LEHTI

This is a dramatized version of facts taken from the Book of Genesis intending to show some of the customs of these ancient and traditional times

**ABRAM IN EGYPT**  
 WHEN THE LORD SPOKE TO ABRAM, TELLING HIM TO JOURNEY TO A FAR-OFF LAND, ABRAM TOOK WITH HIM ALL HIS SERVANTS, FLOCKS, SARAI HIS WIFE, AND LOT, HIS NEPHEW....

...HE HAD UNDERSTOOD THAT THE LORD WILL GUIDE HIM, AND HIS FAITH IS STRONG....

...NOW AS THEY ENTER CANAAN, THEY REST IN THEIR TENTS, WHILE THE FLOCKS KEEP GRAZING....

...BUT SOON A FAMINE HITS THE COUNTRY—THERE IS LITTLE OR NO FOOD FOR MAN OR BEAST....

...IT IS SAID THAT IN THE LAND OF EGYPT THERE IS FOOD AND ENOUGH FOR ALL TO EAT! AND ABRAM, WITH HUGE FLOCKS, AND MANY OTHER ANIMALS, AND SERVANTS MUST FIND A PLACE CAPABLE OF SUPPORTING THEM ALL—SO HE POINTS SOUTHWARD TO HIS HERDSMEN—THEY WILL ALL GO TO EGYPT!

**Next Week**  
 THE PLENTIFUL LAND!

This devotional & directory is made possible by these businesses who encourage all of us to attend worship services.

**ASSEMBLY OF GOD**  
 FIRST ASSEMBLY OF GOD  
 521 South First Street • 272-3017  
 Jack Stone, Min. • 272-3984  
 S.S. 9:45 am, W.S. 11 am & 6:30 pm,  
 Wed. 7:30 pm  
**EL BUEN PASTOR**  
 415 E. Ave. F • Pastor Felix Cadena  
 S.S. 9:45 am, W.S. 11 am & 6 pm; Wed. 7 pm

**BAPTIST**  
**CALVARY BAPTIST**  
 1733 W. Ave. C. Rev. Jeff Coffman  
**CIRCLE BACK BAPTIST**  
 Intersection FM 3397 & FM 298  
 Circle Back • 946-3676  
**FIRST BAPTIST**  
 220 West Ave. E.  
 Dr. Stacy Conner  
**FIRST BAPTIST**  
 Lazbuddie • 965-2126  
**PRIMERA IGLESIA BAUTISTA**  
 223 E. Ave. E. Rev. Greg Guzman  
**PRIMITIVE BAPTIST**  
 621 South First,  
 Elder Cleveland Bass, Min.  
**PROGRESS BAPTIST**  
 Progress, TX  
**PROGRESS SECOND BAPTIST**  
 Arthur Hays, Min.  
 1st & 3rd Sundays  
**RICHLAND HILLS BAPTIST**  
 17th & West Ave. D  
 Jason Schwope, Pastor  
**ST. MATTHEWS BAPTIST**  
 Corner of W. Boston & W. Birch  
 Floyd R. Monroe, Min.  
**THREE WAY BAPTIST**  
 927-5467  
**TRINITY BAPTIST**  
 314 E. Ave. B, Bennie Wright, Min.

**CHRISTIAN**  
**TRINITY CHRISTIAN CENTER**  
 1723 W. American Blvd. • 272-3877  
 Reydon Stanford, Min.

**CHURCH OF CHRIST**  
**LARIAT CHURCH OF CHRIST**  
 Sam Billingsley, Min.  
 S.S. 10 a.m.; W.S. 11 a.m. & 6 p.m., Wed. 7 p.m.  
**LAZBUDDIE CHURCH OF CHRIST**  
 Nathan Crawford, Min.  
 S.S. 9:30 am; W.S. 10:20 am & 5 pm; Wed. 7 pm  
**MULESHOE CHURCH OF CHRIST**  
 22nd & W. American Blvd., Harry Riggs, Min.  
 S.S. 9:30 am; W.S. 10:20 am  
 & 6 pm; Wed. 7:30 pm  
**16th & AVE. D CHURCH OF CHRIST**  
 Curtis Shelburne, Min. • 272-4619  
 S.S. 9:30 am; W.S. 10:30 am;  
 Growth Gr. 1:30 pm; Wed. 7:00 pm

**LUTHERAN**  
**ST. JOHN LUTHERAN**  
 Lariat, TX-David Symm, Min.  
 S.S. 10:30 am; W.S. 9:30 am

**METHODIST**  
**FIRST UNITED METHODIST**  
**HISPANIC MINISTRIES**  
 E. 5th and E. Ave. D  
 Pastor Benito Cavazos  
**FIRST UNITED METHODIST**  
 507 W. 2nd St., Pastor Brad Reeves  
**LAZBUDDIE METHODIST**  
 S.S. 9:30 am; W.S. 10:30 am  
 Rev. Randy Thomas • 965-2121  
**EL DIVINO SALVADOR U.M.C.**  
 619 E. 5th Street & Ave. G, Muleshoe  
 Javier Rodriguez, Pastor; 272-6888

**NAZARENE**  
**NEW VISION CHURCH OF THE NAZARENE**  
 814 W. Ave. C • 272-3622  
 Vance Roberts, Pastor-S.S. 10 & 11 am; W.S. 7 pm

**PENTECOSTAL**  
**UNITED PENTECOSTAL LIGHTHOUSE**  
 207 East Ave. G • 1-800-454-6051  
 S.S. 10 am; Thursday, Bible Study 7 pm

**INTER DENOMINATIONAL**  
**NEW COVENANT**  
 Plainview Hwy., Steve Claybrook, Pastor  
 W.S. 10 am; Wed. 7 pm  
**MULESHOE COWBOY FELLOWSHIP**  
 First Assembly of God Fellowship Hall  
 Steve Friskup, Minister—272-5199  
 Service: 7:30 p.m. Thursday

**CATHOLIC**  
**IMMACULATE CONCEPTION CATHOLIC CHURCH**  
 805 E. Hickory, Joseph Augustine, Min.

**CHARISMATIC EPISCOPAL**  
**ST. CLEMENTS**  
 1536 W. American Blvd. • 272-5954  
 Father Sergio Leal  
 Sun. W.S. 10:30 am

**"THE FIVE AREA TELEPHONE COOPERATIVE, INC."**  
 West Plains Telecommunications, Inc.  
 Five Area Systems, Inc., Plateau Wireless  
 Five Area Long Distance - Five Area Internet  
 302 Uvalde Muleshoe, USA (806) 272-5533

**Henry Insurance Agency**  
 "Serving You Since 1964"  
 111 West Avenue B 272-4581  
 Muleshoe, TX

**BAILEY COUNTY ELECTRIC COOPERATIVE ASSN.**  
 Muleshoe — 272-4504 Morton — 266-8600

**IRRIGATION PUMPS & POWER**  
**Zimmatic** W. Hwy. 84  
 CENTER-PIVOTS 272-4483

**Lowé's MARKETPLACE**  
 401 W. American Blvd. • Muleshoe • 272-4585

**RTM DAIRY**  
 Hwy. 84 & Airport Rd. • 965-3000  
 Muleshoe, Texas

**TEXAS FARM BUREAU INSURANCE CO.**  
 Life-Auto-Home-Crop  
**FARM BUREAU INSURANCE**  
 1612 W. American Blvd. • 272-4567 • Muleshoe

**FIRST UNITED BANK**  
 Member FDIC  
 227-2411 200 Main Street Sudan, TX

**ST. BANK** MEMBER FDIC  
 202 South First 272-4515

**Pizza Hut**  
 1412 W. American Blvd.  
 Muleshoe, Texas  
 272-4213  
 Open Sun.-Mon. 11 AM to 11 PM  
 Lunch Buffet: Sun.-Fri. 11:30 AM to 1:30 PM

**PACO FEED YARD, LTD.**  
 Commercial Cattle Feeders  
 P.O. Box 956 265-3281  
 Friona, TX  
 Feller Hughs-Mgr.

**J&S Dairy**  
 West of Muleshoe  
 272-7706 Muleshoe, TX

**SAIN IRRIGATION & MACHINES**  
 Complete Pump Service  
 W. American Blvd. 272-4397  
 Walt Sain Muleshoe, TX 272-4148

**T-L Irrigation Systems** Dealer  
**PRECURE ELECTRIC**  
 General Electrical Contracting  
 Residential • Commercial • Irrigation  
 424 N. 1st, Muleshoe  
 272-4844

Hwy. 84  
 Muleshoe, TX  
 272-4203  
 Manager  
 Bruce Bruns **AGRILIANCE**

**Leal's** 107 E. Ash  
 Muleshoe, TX  
 Tortilla Factory, Inc. 272-5772

**RONNIE HOLT INSURANCE AGENCY**  
 Specializing in Crop Insurance  
 218 Main, Muleshoe TX 272-4271

PASSENGER • TRUCK • TRACTOR  
**Alex's Tire Service**  
 For Service 24 Hrs. A Day  
**272-5012**  
 302 E. American Blvd. Alex Aguirre Muleshoe, Texas

**THE CONNECTION WAREHOUSE**  
**RadioShack** 272-5532  
 AND THE RENTAL PLACE - 272-4037  
 117 Main • Muleshoe, Texas

**Catfish Cove**  
 Seafood & More  
 "One bite and you're hooked!"  
 1201 W. American Blvd.  
 272-6767 • Muleshoe

**CENTRAL COMPRESS & WAREHOUSE**  
 SUDAN, TEXAS

**WES-TEX FEED YARDS, INC.**  
 Custom Cattle Feeding  
 272-7555 Muleshoe, TX

**FIRST AG CREDIT** Muleshoe  
 272-3010 • Fax 272-5388  
 1601 W. American Blvd. • P.O. Box 424 • Muleshoe, TX

**MAPLE COOP GIN**  
 927-5501  
 Maple, Texas

**FARMERS CO-OP ASS'N**  
 of ENOCHS  
 "Your Farmers Owned Gin"  
 Chemicals • Seed • Fuel & Oil • Fertilizer  
**COOP** 806-927-5511 Wade Baker, Mgr.

**MULESHOE PEA & BEAN, INC.**  
 1680 CR 1044 272-5589  
 Muleshoe, TX

**MULESHOE LIVESTOCK AUCTION**  
 Muleshoe, TX • Sale Every Saturday  
 Clayton, C.L. & Thurman Myers • 272-4201

**WESTERN DRUG**  
 & Something Special Gifts  
 1411 W. American Blvd. 272-3106 Muleshoe  
 SERVING INDIVIDUAL INVESTORS SINCE 1871

**Edward Jones**  
 Locally, talk with  
**KATHERINE SCHRAEDER**  
 220 S. Main St. - Muleshoe  
 806-272-4102 Member SIPC  
 • Stocks  
 • Mutual Funds  
 • Bonds • CDs • IRAs  
 • Government securities  
 • Money Market funds  
 • Tax-Free bonds  
 and much more

## Muleshoe Youth Girls Basketball



Bi-Dist. Champions District C

### Fifth and Sixth Grade Division

**MONARCHS** — Pictured are (back row, from left) Coach Richard Wills, Zandia Ballenger, Marisela Casanova, Janae Pyle, Gabby Agundis, Coach Tracy Pyle; (Kneeling, from left) Stephanie Kirby, Jasmine Bermea-Toscano, Crystal Quintanilla and Ashley (AJ) Johnson.



**SPARKS** — Pictured are (back row, from left) Coach Benny Parker, Mackenzie Elledge, Amelia Clemmons, Brenda Rodriguez, Tania Avila and Coach Rammie Garner; (Kneeling, from left) Jessica Behrends, Ashley Cisneros and Brenda Franco.



**SOL**—Pictured are (back row, from left) Coach Tony Scoley, Karina Avita, Whitney Villalobos, Sarah Moradi, Julia Castorena and Coach Ashley Scoley; (Kneeling, from left) Stephanie Garcia, Melissa Mendoza and Ali Eagle.



Courtesy photos: Susan Kerby

**STORM**—Pictured are (back row, from left) Coach Ashley Dickson, Crystal Olivas, Tabitha Orr, Coach Shawni Rasco, Brandi Hamilton, Amy Withrow and Coach Adena Johnson; (Kneeling, from left) Tessa Burris, Sarah Johnson, Caitlyn Durben and Maria Quintanilla.



**LYNX** — Pictured are (back row, from left) Coach Ricky Railsback, April Gardea, Yessenia Perez, Jessica Howard, Morgan Smith and Coach Heather Jaramillo; (Kneeling, from left) Briann Baca, Tiffany Standard, and Brittany Railsback.

## BIRTHS

### VAZQUEZ

Gerardo Vazquez and Alice Davila both of Clovis are the parents of a boy, Elijah Fredrick Vazquez, born at 1:40 p.m., January 9, 2003, at Lamb Healthcare Center.

He weighed 6 pounds, 2 ounces and was 18 1/4 inches long.

Grandparents are Minnie Davila of Sudan, the late Alfredo Perez, and Heriberto and Conception Vazquez of Clovis.

### ANDRADE

Benito and Antonia Andrade of Muleshoe are the parents of a boy, Benito Andrade Jr., born at 4:55 p.m. December 9, 2002 in Clovis, New Mexico.

He weighed 8 pounds, 4 ounces and was 21 1/2 inches long.

He has two sisters, Lupita, 12; Ruby, 5; and one brother, J. Pueblito, 11.

Grandparents are J. Pueblito and Maria Guadalupe Andrade, and Pedro and Eva Marrufo.

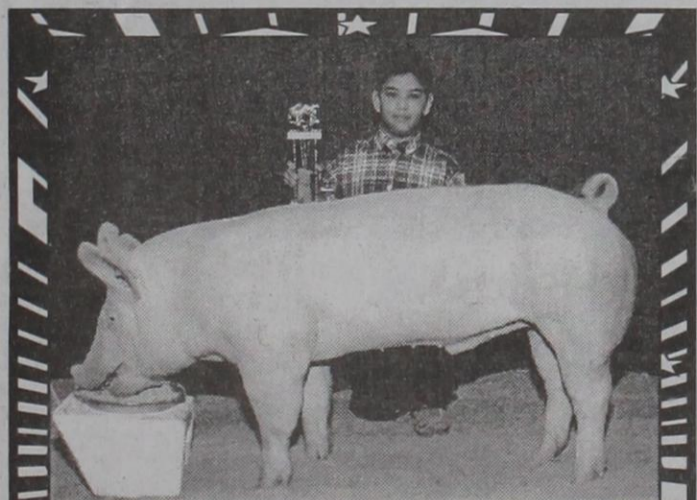
## HOSPITAL BOARD

The Board of Directors of Muleshoe Area Hospital District voted to lease purchase a six-channel heart monitoring machine, replace the water softening system and wrote off \$48,358 in bad debts at their regular scheduled meeting last Thursday.

The new monitoring machine will replace the

present monitor which only monitors four channels. The board voted to do a five-year lease purchase rather than to outright purchase the \$40,000 machine to help with the hospital cash flow.

The board accepted the bid of \$7,632.12 from Wilson Drilling for the new water softening system.



RESERVE CHAMPION YORKSHIRE  
Diego Saenz

We're Proud Of You!



1125 W. American Blvd. • 272-4251 • 1-800-432-7617

See Cory Dudley Today for this 97 Ford F150 XLT X-Cab

**\$186 Month\*** It's Ready For Work! #P5010A

"The Country Store Where Deal' in 's Easy! Guaranteed!"

**Richard Barton**

3300 Mabry Drive Clovis, NM 88101 505-762-2986 / 1-888-569-1900

PONTIAC BUICK GMC www.richardbarton.com  
So Habla Espanol \*10% down plus TT&L, 60 months @ 8.9% APR, WAC

Good Job Kids!  
2003

CHAMPION FINEWOOL CROSS  
Kelsy Friskup

**BAILEY COUNTY FARM BUREAU**

1612 W. American Blvd. • Muleshoe • 272-4567

## Scholarship deadline set

LEVELLAND — March 1 is scholarship application deadline for the 2003-2004 academic year at South Plains College.

SPC offers four different types of scholarship programs — College-Wide Scholar Awards and Scholarships, Program Specific Scholarships, Activity Scholarships and Nontraditional Scholarships.

Scholarship applications are available in the back of the General Catalog, in the Office of New Student Relations, Office of Development and through the college website,

www.southplainscollege.edu.

Scholarships are administered by the SPC Foundation and are generally awarded on the basis of academic achievement, character and leadership qualities.

Funds are made possible by donations to SPC from individuals, corporation, foundations, clubs and organizations.

Applicants will be notified June 1 whether or not they have received a scholarship.

To obtain a current scholarship guide or more information, contact the Office of Development at 806-894-9611, ext. 2219.

With Rapid Refund, we get you the most you have coming in less time. Ask about Rapid Refund electronic filing at an H&R Block office near you.

**GET IT EVEN FASTER THAN YOU CAN SPEND IT.**

H&R Block (806) 272-3332 Mon.-Fri. 9:00-6:00

H&R Block 104 E. Ave. C, Muleshoe, Texas 79347 Sat. 9:30-3:00, Call for late appt.

H&R BLOCK rapid refund

CHAMPION BERKSHIRE Andi Black

Great Show!

**LEO'S BLACKSMITH & MACHINE SHOP**

310 W. American Blvd. • Muleshoe • 272-4418

"ATV SPRING BLOWOUT"

THERE ISN'T AN ATV THAT COMPARES WITH AN ARCTIC CAT

**\$250 OFF**

MORE RACK CAPACITY • MORE GROUND CLEARANCE • MORE SUSPENSION TRAVEL

**\$250 OFF**  
250 (2X4) & 400 (4X4) AUTOMATICS  
STILL IN INVENTORY  
(MODEL 400I EXCLUDED)  
HURRY WHILE SUPPLY LASTS!

**C&H EQUIPMENT WOOD EQUIPMENT**

2501 W. American Blvd. Muleshoe, Texas (806) 272-5514

5500 Mabry Drive Clovis, New Mexico (505) 762-4453

**ARCTIC CAT**  
MORE TO GO ON!

ATVs can be hazardous to operate. For your safety always wear a helmet, eye protection, and protective clothing. Never ride on paved surfaces or public roads. Never carry passengers, never engage in stunt driving, riding and alcohol/drugs don't mix and could cause injury or even death. Read excessive speeds and be particularly careful on difficult terrain. The Arctic Cat ATV may not be ridden by anyone under 16 years of age. Arctic Cat recommends that all riders take a training course and that they read and understand their owner's manual before operation. For safety or training information in the US, call the ATV safety hotline at 800-857-2887. Along with concerned consumers everywhere, Arctic Cat urges you to "Ride Lightly" on public and private land. Preserve your future riding opportunities by showing respect for the environment, local laws, and the rights of others when you ride. NASCAR/ARCTIC is a registered trademark of the National Association of the Stock Car Auto Racing, Inc. www.nascar.com ©2002 Arctic Cat Sales Inc. ®/™Trademarks of Arctic Cat Inc., Thief River Falls, MN 56701. (218) 581-4999. Arctic Cat ATVs are world-class products from Arctic Cat Inc.

## OBITUARIES

### ROBERT S. OROZCO

Services were held Tuesday, January 21 at Immaculate Conception Catholic Church for Robert S.



Orozco

Orozco, 61 of Muleshoe. Rev. Ralph Reyes, OCD of San Antonio, cousin of the family and Rev. Joe Augustine officiated.

Burial was in the Muleshoe Memorial Park Cemetery.

Ellis Funeral Home of Muleshoe handled arrangements.

Mr. Orozco was born November 7, 1941 in Edinburg, Texas. He died January 17, 2003 at University Medical Center in Lubbock.

He married Dolores Castorena in Farwell on July 8, 1964.

Mr. Orozco moved to Muleshoe in 1952 from Haskell, Texas. He was a member of the Immaculate Conception Catholic Church of Muleshoe where he was a member of the Knights of Columbus, the Cursillistas, and the Sagrado Corazón Association.

He was a long time Little League coach in Muleshoe. In 1999, he was awarded a 25-year plaque for coaching Little League in Muleshoe. He was employed by Pivot Products in Muleshoe for twenty years. At the time of his death, he

was a welder for Irrigation Supply Company of Muleshoe. He helped build the largest statue of a mule shoe which is on display at the Muleshoe Heritage Center.

Mr. Orozco is survived by his wife, Dolores of Muleshoe; four sons, Richard and his wife, Alma Orozco; Rudy and his wife, Annette Orozco; Robert Orozco Jr., all of Muleshoe; and Ronnie Orozco of Lubbock; two daughters, Maria Theresa Orozco, and Mary Louisa Villegas and her husband Lupe all of Muleshoe; eleven grandchildren; four brothers, Luciano Orozco, Dolores Orozco, Josemaria Orozco, Jose Severo Orozco, all of Muleshoe and numerous nieces and nephews.

He was preceded in death by his parents, Mr. and Mrs. Narcisco Orozco, a sister, Concha Estrada, and a brother, Estevan Orozco.

The family suggest memorials be made to the American Cancer Society, 3411 73rd St., Lubbock, Texas 79423.

### OTTIE BYERS BRANAMAN CHESTER

Church services were held Friday, January 17 at First Baptist Church for Oattie Byers Branaman Chester, 84 of Muleshoe. The Dr. Stacy Conner and Rev. Steve Claybrooke officiated. Burial was in Muleshoe Memorial Park Cemetery.

Ellis Funeral Home

handled arrangements.

Mrs. Chester was born July 19, 1918 in Blessing, Texas. She died January 15 in the Park View Nursing Home in Muleshoe.

She married Glen Branaman in Slaton, Texas on March 5, 1938. She later remarried A.D. Chester in Clovis, N.M. on September 13, 1968.

Mrs. Chester had been a long time resident of Muleshoe. She had been a telephone operator and a nurse. She was a home-health nurse for a number of years. She was a member of the First Baptist Church in Muleshoe.

Mrs. Chester was survived by four sons, Travis Branaman of Atlanta, Ga., Kelsey Branaman of Menard, Texas, Douglas Branaman of Carlsbad, N.M. and Deon Branaman of Leander, Texas; five daughters, Darlene Cobb of Jewett, Texas, Jo Ella Wooten of Armona, Calif., Venida Farr and Joy Waller both of Belton, Texas and Jan Springfield of Muleshoe; one step son, Mike Chester of Shallowater, Texas; two sisters, Opal Morrison of Rockport, Texas and Dorothy Williamson of Lubbock; twenty-two grandchildren and twenty-nine great-grandchildren.

She was preceded in death by two sisters, Orabell Ham and Mildred Rush; one brother, Odel Byers and her

parents, Mr. and Mrs. W.R. Byers.

The family suggests memorials be made to Alzheimer Association South Plains Chapter, TTU-HSC, 3601 4th St., Rm. 3A 116, Lubbock, Texas 79430.

### INA SUE (FERGUSON) PETTY

Chapel services were held Wednesday, January 22 at the Ellis Funeral Chapel for Ina Sue Ferguson Petty, 54, of Lubbock. Rev. Jeff Coffman of Muleshoe officiated. Burial was in Oklahoma Lane Cemetery in Oklahoma Lane, Texas.

Ellis Funeral Home of Muleshoe handled arrangements.

Mrs. Petty was born May 3, 1948 in Hereford. She died January 17, in Lubbock.

Mrs. Petty was a seamstress.

Mrs. Petty is survived by four sons, Lee Thompson of Amarillo, Doug Thompson and Jason Petty both of Lubbock, and Jimmy Petty of Garland; two daughters, Stacy Thompson of Muleshoe and Olivia Thomas of Amarillo; her father, M.A. Ferguson of Amarillo; one sister, Phyllis Morrison of California; three brothers, Sandy Ferguson of Paris, Texas, Calvin Peters of Dalhart, Rodney Ferguson of Hereford; and thirteen grandchildren.

Mrs. Petty was preceded in death by her mother, Ruth

Ferguson.

The family suggests memorials be made to the

American Cancer Society, 3411 73rd St., Lubbock, Texas 79423.

See David Thompson Today for this 2003 Pontiac Grand Am SE

0.0% FINANCING FOR 60 MOS\* OR \$3,000 GM CASH BACK!

"The Country Store Where Deal' in 's Easy! Guaranteed!"

**Richard Barton**

3300 Mabry Drive Clovis, NM 88101 505-762-2986 / 1-888-569-1900

PONTIAC GMC www.richardbarton.com

We would like to express our appreciation and gratitude to each of you for your prayers, calls, cards, flowers, food and donations. We are so very grateful for all the support we have received during the loss of our loved one, Johnny. Your expressions of sympathy meant so much to us. We are blessed to live in such a loving and caring community.

Thank you,  
The Claborn Family

Journal Classifieds Work!  
Call 806-272-4536, ask for Jessica

## JENNYSLIPPER NEWS

The Jennyslippers met at the Girl Scout Hut on Tuesday, January 14. Ruby Green provided lunch at \$5 per person. Chicken spaghetti, corn casserole, mixed veggies with cheese, coleslaw and pound cake with sauce was served.

President Donna Kirk called the meeting to order at 12:10. Minutes from the previous meeting were read and accepted. The treasurer's report was also accepted as read.

Joyline Costen, from the nominating committee presented the Slate of Officers. These nominations were ac-

cepted: Brenda Tapley for president, Ellen Ladd for vice president, Elaine Parker for treasurer, and Gail Hargrove for secretary. There were no additional nominations from the floor. All four ladies were unanimously voted into office for the year 2003. The installation banquet will be held on Monday, January 27, at 7:00 p.m., in the fellowship hall of the 16th and D Church of Christ. Spouses are invited. A Pot Luck menu was agreed upon.

The Financial Aid Seminar will be held at the High School cafeteria on Monday, February 3 from 7:00 p.m. to

9:00 p.m. Refreshments will be served. The final arrangements for setup, tear down and refreshments will be discussed at the short business meeting that will follow our installation banquet.

Nelda Merriott requested financial assistance from Jennyslippers for the repair of the bathroom plumbing in the Girl Scout Hut. It was motioned and passed that we would pay for the repairs. As always, visitors are welcomed and encouraged. Our next regular meeting will be at the Girl Scout Hut on Tuesday, February 11 at 12 noon.

## COUNTY COURT NEWS

Rusty Allen Gregory was charged with possession of marijuana, deferred one year, fined \$450 plus \$235 in cost.

Jesus Ramiro Orozco was charged with terroristic threat, plea reset for 9:00 a.m., Friday, January 17.

Kendall Vance Smith charged with unlawful carrying of a weapon, fined \$350 plus \$211 in cost and sentenced to six months deferred adjudication probation.

Jorge Luis Ramirez was charged with evading arrest.

Trial is set for February 18, 2003.

James Ray Mason III was charged with driving while intoxicated, fined \$150 plus \$235 in court cost. Mason pled no contest. He was sentenced deferred adjudication probation for six months.

Christine Marie Oborny was charged with possession of marijuana. Pled not guilty. Trial is set for February 18.

Lawrence Elbert Edler was charged with enhanced driving while intoxicated. Trial is set for February 4.

Bobby Joe Guana was charged with assault and granted a continuance by the state.

Rafael Cabrera, motion to revoke probation. Probation was extended one year. Fined \$78 in court cost.

Rafael Cabrera, motion to revoke probation. Probation extended one year. Sentence is running concurrent with above charge. Fined \$78 in court cost.

Vicente Rosales Daniel was charged with driving while intoxicated. Court granted a continuance.

## HOSPITAL NEWS

The Muleshoe Area Medical Center reports the following patient load.

Jan. 9 — Porfirio Acosta, Virginia Drager, Phil E. Garrett, Lowell R. Hawkins, Norberto Hernandez, Leonard Hurt, Baby Mendoza, Juanita A. Mendoza, Leslie Mills and Norma Morales.

Jan. 10 — Porfirio Acosta, Virginia Drager, Lowell R. Hawkins,

Leonard Hurt, Angela C. Marmon, Baby Mendoza, Juanita A. Mendoza and Leslie Mills.

Jan. 11 — Edmond H. Awbrey, Mary P. Chappell, Leonard Hurt, Angela C. Marmon and Jewell L. Perry.

Jan. 12 — Edmond H. Awbrey, Mary P. Chappell, Leonard Hurt, Angela C. Marmon and Jewell L. Perry.

Jan. 13 — Edmond H. Awbrey, Mary P. Chappell,

Leonard Hurt, Angela C. Marmon and Jewell L. Perry.

Jan. 14 — Laura Blakes, Mary P. Chappell, Ruth Clements, Patricia Dial, Beverly J. Hardesty, Leonard Hurt and Boyd Magby.

Jan. 15 — Alvin R. Allison, J.B. Beall, Laura Blakes, Leland Boyd, Mary P. Chappell, Ruth Clements, Patricia Dial, Pamela Edwards and U. King.

2003

**CERMANIA**  
FARM MUTUAL INSURANCE  
222 Main • Muleshoe • 272-3979

A salute to the winners of the Bailey County Stock Show 2003!

**RESERVE GRAND CHAMPION STEER**  
Brett Bamert

**Parmar County Cotton Growers Co-op**  
825-3701  
Farwell, TX

**RESERVE CHAMPION AMERICAN STEER**  
Layne Sheets

Once Again, You Put On A Good Show Bailey County Youth!

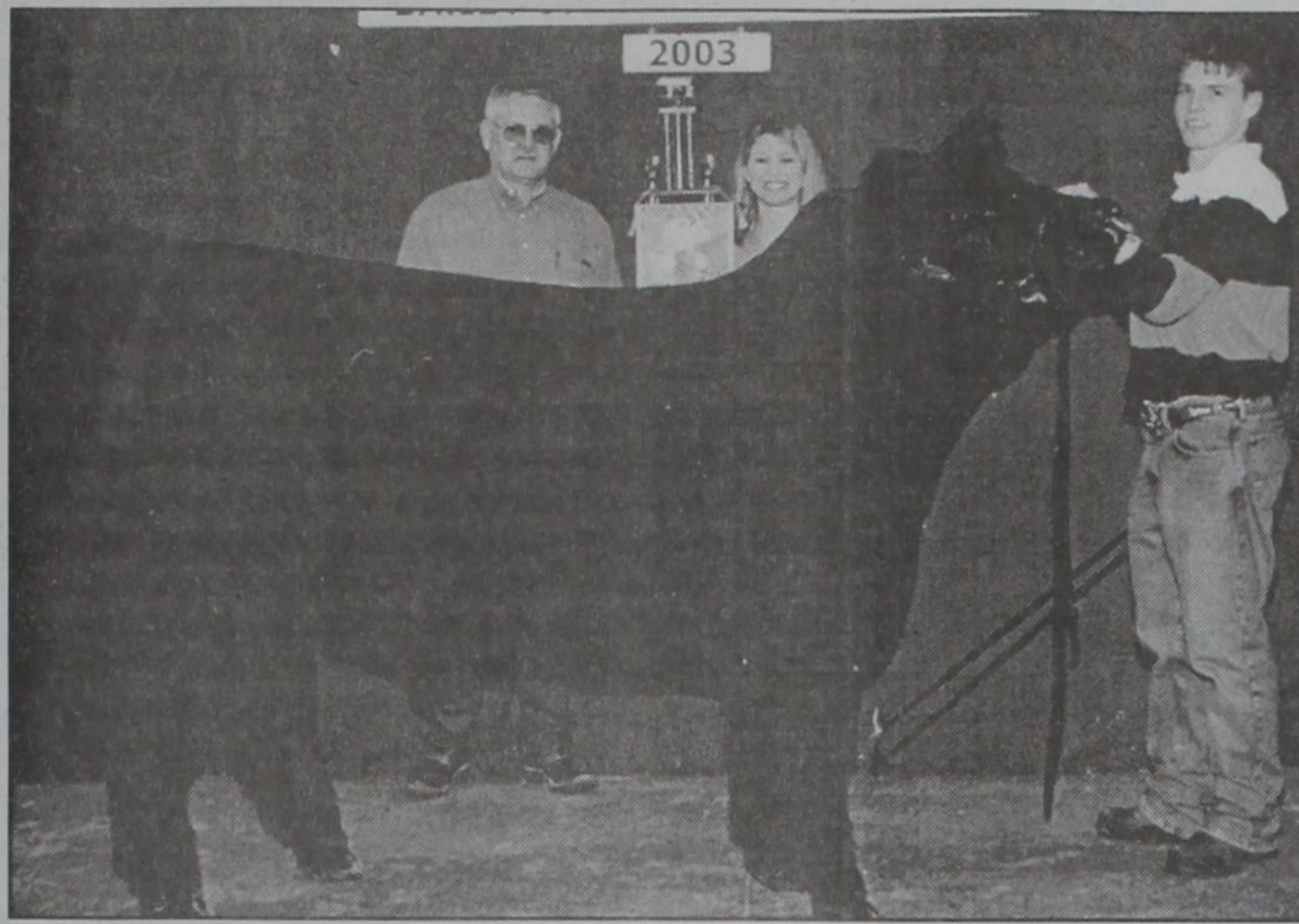
Muleshoe Feed Barn **HIPRO** RES. GRAND CHAMPION SWINE Dal Whalin

311 West American Blvd.-Muleshoe, Texas-272-5626

We're Proud Of You!

BAILEY COUNTY STOCK SHOW 2003

**CHAMPION WHITE OPB**  
Canaan Heinrich



### Grand champion steer

Brady Black poses with his grand champion steer (an exotic) at the Bailey County Junior Livestock Show. Standing with Black are buyer Lonnie McDonald of Wes Tex Feedyard and (holding trophy) Marlie Black.

# Hutton, Mock married



Mr. and Mrs. Jonathan Mock

bride, escorted by her father, entered to "Hornpipe for Water Music" by Handel. Chris Baker of Houston provided a special song, "For You" by John Denver as the couple signed a family bible. The wedding party left the church to "This Magic Moment."

The reception was held in the foyer of the church and was decorated with tulle covered trellises, columns with peace lilies, and ficus trees of twinkling white lights. The bride's table was appointed with white linen and silver serving pieces. The five-tiered Bavarian cream cake with butter cream frosting contained alternating fillings of Bavarian cream and amaretto cream and was decorated with fresh flowers. The groom's table displayed a three-tiered arrangement of chocolate covered strawberries dipped in white and milk chocolate. The beverage table of brass and glass used brass appointments to serve coffee and punch.

The house party included Mr. and Mrs.: Steve Benton, Lloyd Bradshaw, James Brown, Bob Finney, Aubrey Heathington, Gary Hooten, Robert Lepard, Gene Sheets and Monti Vandiver.

Following a wedding trip to Kauai, Hawaii, the couple reside in Amarillo where the groom is continuing his education as a third year medical student at Texas Tech University School of Medicine. The bride is employed by Stewart, Martin, Dudley and Webb. A rehearsal diner hosted by the groom's parents the night before the wedding was held at the Fifty Yard Line in Lubbock. Special guests included a host of family and friends.

a wedding bear.

The groom wore a traditional black tuxedo with matching cummerbund and bow tie. His boutonniere was a small Charlotte rose.

Groomsmen were Justin Mock of Ft. Worth, Kevin Graham of Denver City, George Kirkland of Lubbock, Jason Booker of Dallas, Joe Paul Conway of Hartford, Conn., Travis Speck of Raleigh, N.C., and Darren Keys of Dallas. They wore matching black tuxedos with cummerbund and bow ties. Ring bearer was Daniel Schulze, son of friends of the couple from Midland. He wore a match tuxedo to the groom. Ushers for the occasion were Corley Hutton of Round Rock, and Mark Long of Charlotte, N.C. All wore small Charlotte roses.

The church was adorned with peace lilies, white mums and a large floral arrangement of the bride's chosen flowers of Charlotte roses, tulips, gerberas, lizanthus, freesia, solidago and waxflower. The main aisle was roped with tulle and white lights.

Grandfathers of the bride, Sam Damron and Horace Hutton of Muleshoe and grandparents of the groom, Carlton and Bobbie Bullard of Garland and Elna Mock of Lubbock entered to the song "Hear My Prayer" sung by Jessica Goudeau. Parents of the couple entered to music provided by the Ellsworth Strings Quartet and trumpet as did the wedding party. The

### BIRTH VARGAS

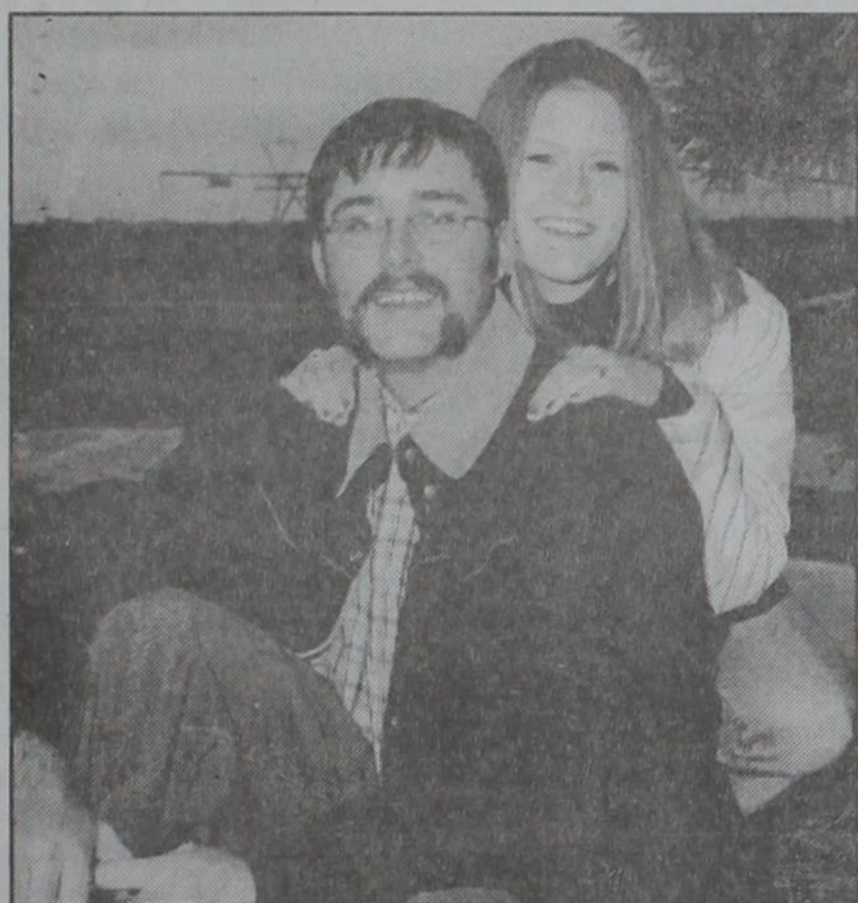
Jesse and Rose Vargas are the parents of a son, Isaac James Vargas, born at 1:32 a.m. at the Lamb Healthcare Center in Littlefield on January 21, 2003.

He weighed 7 pounds, 12 ounces and was 21 inches long.

He has one brother, Gabriel, age 9 and one sister, Jessica, age 6.

Grandparents are Camilo and Maria Espinoza, and Jesus and Sally Vargas, all of Muleshoe. Great-grandmother is Evangelina Orozco of Littlefield.

### ENGAGEMENT



### May-Kerby

Dennis and Vickie Baker of Clovis, NM and Danny May of Muleshoe announce the engagement and approaching marriage of their daughter, Ashley May, to Landon Kerby, son of Leslie and Susan Kerby of Muleshoe.

The bride-elect is a 2002 graduate of Muleshoe High School. She attends South Plains College in Levelland and works for West Texas Training Center as a gymnastics coach.

The prospective groom is a 2002 graduate of Muleshoe High School. He also attends South Plains College in Levelland and works at All-Tex Seed Co. of Levelland.

The wedding is scheduled for 4 p.m. on March 15, 2003 at First United Methodist Church in Muleshoe.

A reception will follow the ceremony.

## First Ag declares large cash dividend

First Ag Credit, Farm Credit Services board of directors declared a \$4.7 million cash patronage dividend at their December meeting based on 2002 earnings. The patronage dividend will reduce most customers' net cost of borrowing by approximately 70 basis points, or almost three-quarters of a percent.

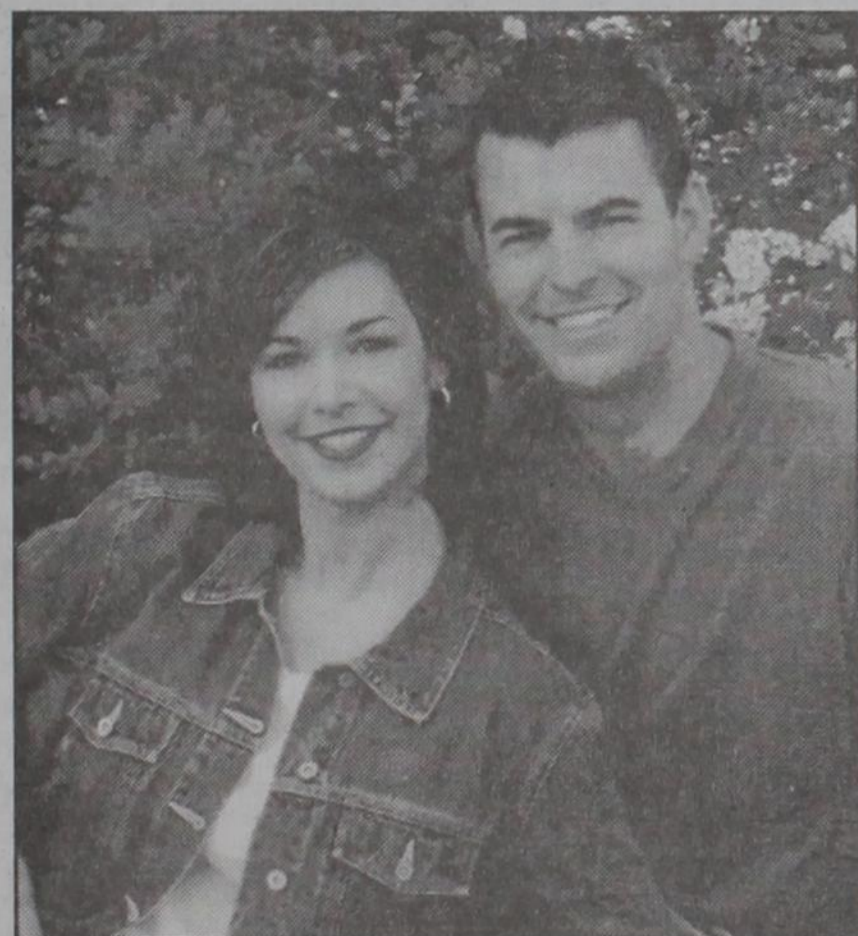
This is the fifth consecutive year that over 6,500 First Ag Credit stockholders will receive a cash dividend from their agricultural financing cooperative. Members will receive their checks in early spring.

Since January 1997, the association has returned nearly \$30 million in cash to its customers. Keith Vandivere, chairman of the board from Brownfield said the refund is an indication of the financial strength of the organization as well as "the dedication we have to our stockholders."

Terry Dane, CEO of First Ag Credit said, "We are pleased that once again we are able to return a substantial cash patronage dividend to our stockholders. First Ag Credit had another good year in 2002 and we want to share earnings with our members."

First Ag Credit, FCS has almost \$900 million in total assets and serves 113 counties in Texas with 37 offices conveniently located throughout its territory.

### ENGAGEMENT



### Timmins-Stephens

Mrs. Suzan Timmins of Bryan, Texas and Paul Timmins of Cleburne, Texas, announce the engagement and approaching marriage of their daughter, Katy Timmins of Bryan to Lieutenant Chasse Stephens of Fairfield, Calif., son of Darrell and Eva Dean Stephens of Farwell, Texas.

The bride-elect is a 1995 graduate of Bryan High School and received her B.S. in education from Texas A&M University. She is presently employed with Southwest Airlines as a flight attendant.

The prospective groom is a 1995 graduate of Farwell High School and received his engineering degree from Texas A&M University. He is currently a pilot in the U.S. Air Force and Stationed in Travis Air Force Base in California.

The couple will exchange vows at 7:00 p.m. on April 26 at the First United Methodist Church of Bryan, Texas.

See Bruce Cole Today for this 02 Pontiac Grand Am SE

Fuel For The Soul!

\$188 Month\*

#81283

"The Country Store Where Deal' in Is Easy! Guaranteed!"

**Richard Barton**

3300 Mabry Drive Clovis, NM 88101 505-762-2986 / 1-888-569-1900

PONTIAC BUICK GMC www.richardbarton.com

Se Habla Español \*10% down plus TT&L, 66 months @ 6.9% APR, WAC.

Thanks for reading the Journal

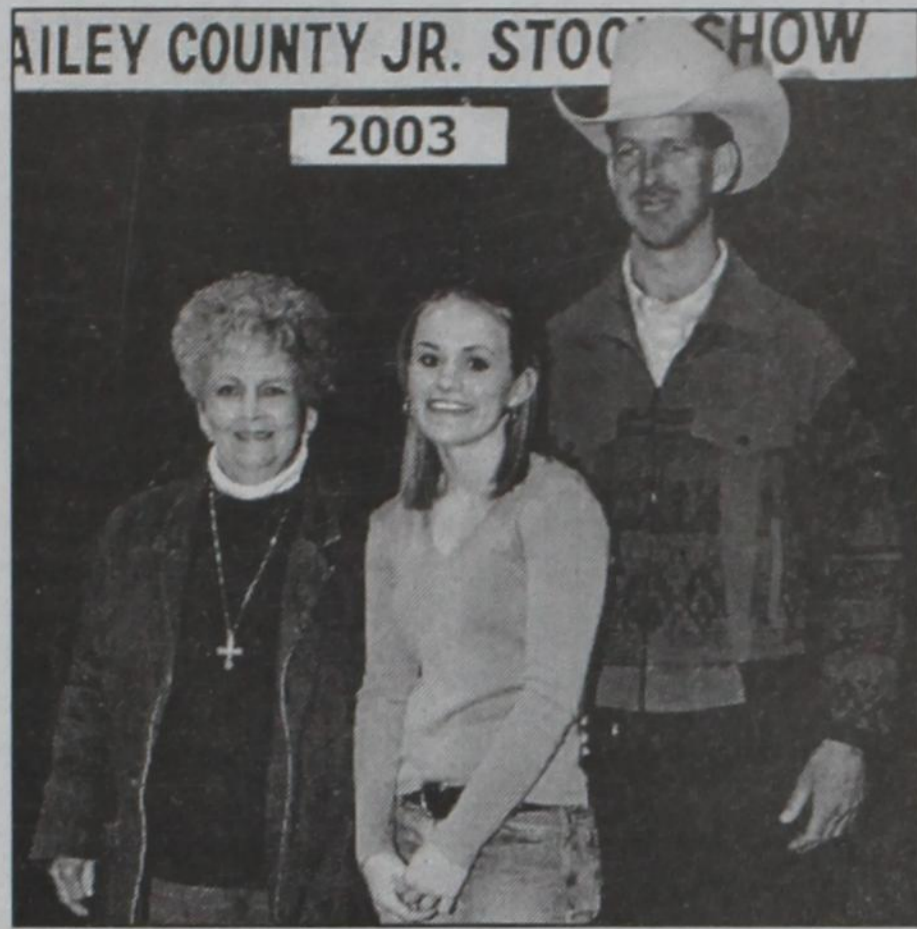
We're Proud Supporters of Bailey County Youth!

2003

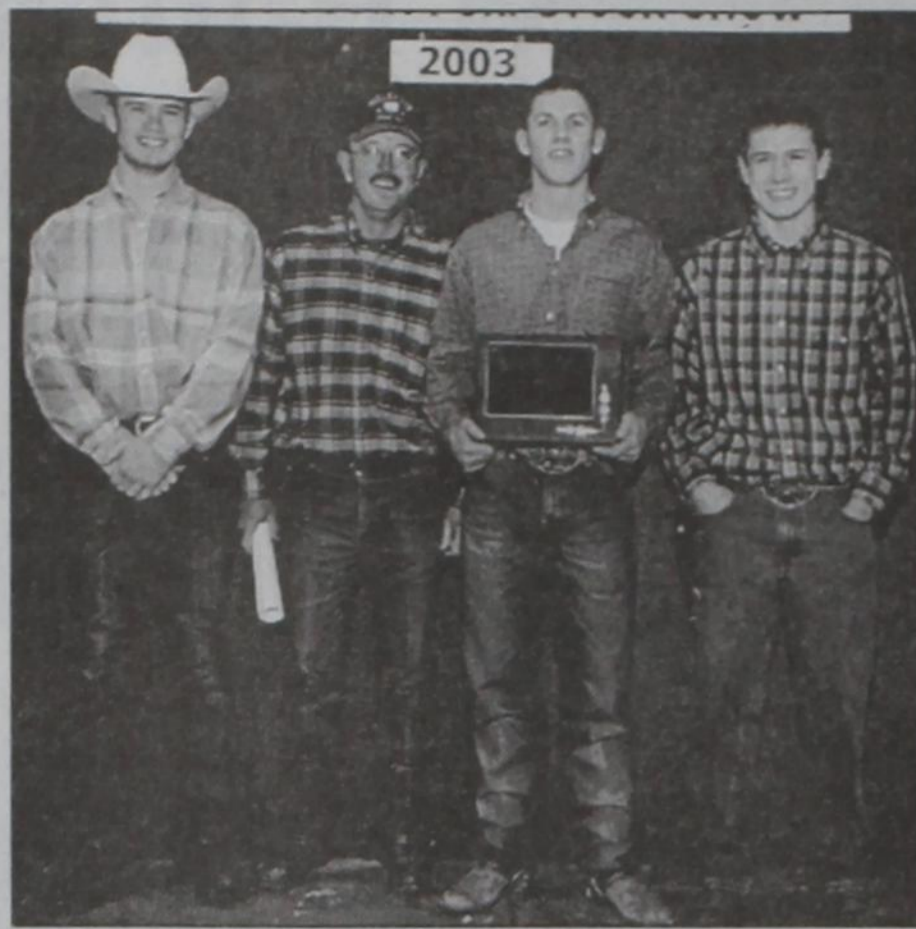
RESERVE CHAMPION BRITISH STEER  
Baylee Bessire

**BRATCHER**  
Motor Supply

107 E. Ave B • Muleshoe • 272-4288



**Joe Wheeler Scholarship Award**  
 Recipient of the first annual Joe Wheeler Scholarship Award at this year's Bailey County Jr. Livestock Show is Jodi Hawkins (center). Before his death, Wheeler was a staunch supporter of the local livestock show. Pictured with Hawkins are Letha Wheeler, his wife, and Wade Wheeler, his son.



**Jimmie Dale Black Award**  
 Recipient of the this year's Jimmie Dale Black Award at the Bailey County Junior Livestock Show was Cody Altman (third from left). Pictured with Altman are representatives of the Black family: Tyler Black, Tim Black and Trent Black. Altman also won the Sr. Steer Showmanship award.

**NURSING HOME NEWS**

Mrs. Guzman's class came Monday afternoon to visit and watch a Fox Fire movie with the residents.

The Christmas Card Project purchased four videos of the cathedrals of the residents. Christmas Card Project ladies also decorated the beauty shop and the therapy rooms for Valentine's Day.

Beverly Wagnon, Claudine Embry, Ruby Henderson, Edna Pearson, Linda Nowell and Josie Ovalle came Tuesday to shampoo and set the ladies hair. Josie gave hair cuts.

Don Locker visits his mom, Freida Locker, every evening.

Jewel Peeler was visited recently by Laverne James and her daughter Rheata White.

Mike Griffin and Joe Embry were among our visitors Tuesday.

James Wedel comes every Wednesday to go shopping and run errands.

Bill Haywood volunteered his time and talents to do work for the activity department Tuesday.

Tennie McCormick visited Park View on Tuesday afternoon. Among those she

visited were Gladys Wilson and Aline Locke.

Anita Johnson directed and assisted the residents in making crafts Thursday morning.

The Rev. Randy and Mrs. Thomas from the Methodist Church in Lazbuddie directed a hymn, praise and music devotional Thursday morning.

Zona Gatewood directed a sing-along in the special care unit Thursday morning.

Ladies from the Muleshoe Church of Christ baked pies for the residents. Beverly wagnon, Lanell Stancell, Glenda Dale, Marilyn Wilson and Billie Powell. Vivian White also assisted.

The Tommy Green family shared fresh flower arrangements with the residents last week.

Harold and Mary Jo Burge directed the bingo bash Saturday afternoon and the Burges served refreshments.

Buster Kittrell taught the Bible class Sunday morning. Special guest was Clara Lou Jones.

The Muleshoe Church of Christ directed the Communion service Sunday morning.

The Trinity Baptist

Church directed the church services Sunday afternoon.

Danny May and his associate climbed high on a ladder to take down the Christmas decorations around the nurses station last week.

Jim Kee was visited by his out-of-town family recently. Jan Pierce, Jim's daughter, visited him Tuesday.

Joyce Morrison was visited by the Rev. Jack and Debbie Stone and Mr. and Mrs. James Roy, Sharla Saylor and children, Joyce's daughter and grandchildren, and her husband Herman Morrison. Joyce attended her church, the First Assembly of God with her family Sunday.

Gladys Wilson attended her church the Muleshoe Church of Christ for services Sunday.

J.C. Shank is visited several times a week by her son and daughter-in-law, Gerald and Lula Maye Shanks.

Muriel Lewis was visited by her daughter and son-in-law Ellen and Gary Brinker over the weekend. Pat Wilson and grandchildren visited Muriel on Friday.

Lillian Street visits Pauline Guinn several times a week. Lillian and Pauline go out together shopping to

the beauty or to get an ice cream cone. Glenna Yell visits her mom frequently.

Tuesday morning the Rev. Gary and Judy Hubbard ministered to the residents in music, hymns and scripture. The birthday song was sung to Judy and birthday cake was served to Judy and the residents. The cake was baked by Janis Cowley.

Anne Locke, our ombudsman, came Monday morning and directed a devotional to the residents and the residents in the special care unit.

Mary Francis Holt was taken from a "drive" in her recliner chair by her son and daughter-in-law Jim and Wanda Holt, Friday.

Buster and Wanda Kittrell and Harold and Mary Jo Burge served coffee and doughnuts to the residents at coffee time Wednesday morning. Mr. Burge read humorous stories and thoughts to the residents. Glen Williams, Buster Kittrell and Loyce Killingsworth directed the devotional and inspiration time. Laura Killingsworth also participated in the service.

Glenda directed joined in the good voice.

**DISTRICT COURT NEWS**

Perry Lewis Whalin pled guilty to possession of a controlled substance. He was fined \$750 plus \$248 in court cost and \$140 in restitution. Whalin was sentenced to 160 hours of community service and was given deferred adjudication.

Francis Deneise Barnes was arraigned for possession of a controlled substance.

Ricardo Cadena arraigned for possession of a controlled substance.

Ricardo Cadena arraigned for driving while intoxicated.

Andres Fredico Chavez arraigned for possession of a controlled substance.

Nathaniel Duran arraigned for evading arrest with a vehicle.

Pauline Clifton arraigned for prohibited substance in the Bailey County Jail.

Forrest Alton Shannon waived arraignment for theft

and witness tampering.

Tommy Ray Marlow arraigned for possession of a controlled substance.

Alfonso Alarcón Marrufo arraigned for credit card abuse.

Charles Daniel Cook arraigned for credit card abuse.

Amanda Irene Mendoza waived arraignment for forgery.

Anissa Rae Norman arraigned for forgery.

Andres Martin Sigala arraigned for tampering with evidence.

Gabby Lopez Lucero remained in custody of the Sheriff until end of probation.

Anastacio G. Rodriguez motion to revoke probation dismissed.

**DIVORCES GRANTED**

Marshall Bennett Pool from Tonya Lynn Pool.

Roland Francis Dunn from Kathy Michelle Dunn

**SCHOOL MENUS**

**MULESHOE ELEMENTARIES**

January 27

**Breakfast** — Poptart, assorted cereal with toast and jelly, assorted juice and milk.

**Lunch** — Nachos, corn dog, campfire baked beans, Spanish rice, pears and milk.

January 28

**Breakfast** — Cinnamon toast, assorted cereal with toast and jelly, assorted juice and milk.

**Lunch** — Soft chicken fajita tacos, pizza, seasoned green beans, tossed salad, rosey applesauce and milk.

January 29

**Breakfast** — French-toast sticks, assorted cereal with toast and jelly, assorted juice and milk.

**Lunch** — Chicken nuggets with roll and gravy, hamburger, lettuce, pickles, mashed potatoes, seasoned broccoli, pineapple and milk.

January 30

**Breakfast** — Breakfast burrito, assorted cereal with toast and jelly, assorted juice and milk.

**Lunch** — Chef salad, pizza, seasoned corn, potato rounds, Blue Bell rainbow bar and milk.

January 31

**Breakfast** — Cinnamon rolls, assorted cereal with toast and jelly, assorted juice and milk.

**Lunch** — Chicken pot pie, hamburger, lettuce and pickles, tossed salad, peaches, brownies and milk.

MULESHOE SR./JR. HIGH  
 January 27

**Breakfast** — Breakfast pizza, poptart, assorted cereal, toast, jelly, assorted juice and milk variety.

**Lunch** — Szechwan chicken, chef salad, mixed vegetables, egg roll, assorted chilled fresh fruit, chocolate cake w/vanilla glaze and milk variety.

January 28

**Breakfast** — Buttermilk biscuit, Texas Cinnamon toast, assorted cereal, toast, jelly, assorted juice and milk variety.

**Lunch** — Spaghetti and meat, garlic breadsticks, baked potatoe w/butter & cheese, tossed salad, seasoned corn, assorted

chilled bluebell rainbow and milk variety.

January 29

**Breakfast** — Cinnamon rolls, bacon, egg and toast, assorted cereal, toast, jelly, assorted juice and milk variety.

**Lunch** — Salisbury steak, w/roll & brown gravy, chef salad, tossed salad, mashed potatoes, seasoned greens, assorted chilled fresh fruit, chocolate chip cookies and milk variety.

January 30

**Breakfast** — Waffles w/syrup, sausage patty, assorted cereal, toast, jelly, cheese toastassorted juice and milk variety.

**Lunch** — Corndog, baked potato w/butter & cheese, tossed salad, vegetable soup, assorted chilled fresh fruit, chocolate pudding and milk variety.

**"THE GRAY PAGES" BUSINESS DIRECTORY**

**AUTO REPAIR**  
 • All Phase General Mechanical  
 • Electrical • A/C • Front-End • Brakes  
**HI-TEK AUTOMOTIVE**  
 Complete Diagnostic & Repair Center  
 Foreign & Domestic  
**322 N. 1st • 272-3480**  
 Joe Flores & Shawn Rejino, Owners

**ELECTRONICS**  
**THE CONNECTION WAREHOUSE**  
**RadioShack Dealer**  
 Catch the Digital Wave!  
 • Digital Satellites • Digital Cell Phones  
 • Digital Cameras • DVD • Music  
 • Computer Access • And More!  
**117 Main • 272-5532 • Muleshoe**  
 Don't forget our Appliances & Free Delivery!

**GIFTS**  
 Shopper's Little Helper  
**CAROLYN'S Christmas Creations**  
 224 W. 2nd • Muleshoe • 272-5911  
 OPEN 7 DAYS A WEEK  
 CREDIT CARDS ACCEPTED  
 FREE DELIVERY EVERY DAY  
 • Gift Baskets • Gift Certificates  
 • Home Decor • Antique & Fine Furniture  
 • Bronzes • Much More!

**HANDY MAN**  
 They Call Me...  
**MR. FIX IT!**  
 ALL TYPES OF REPAIRS & SERVICES  
**Stephen L. Phillips**  
**(806) 946-9069**  
 "You name it, I can fix it!"  
 • Residential • Agricultural • Aca Pump  
 Repair • Service Calls on Farm Sprinklers  
 • Light Plumbing • Fence Repairs • Tree &  
 Shrub Pruning & Removal • Light Welding  
 & Repairs • Minor Electrical • Etc.

**OFFICE SUPPLIES**  
**Williams Brothers Office Supply**  
 FAX Service  
 Computer Supplies  
 Printer Paper  
 Computer Stationery  
 Complete Line of Office Supplies  
 1405 W. American Blvd.  
 Muleshoe • 272-3113

**TORTILLERIA**  
 Los invitamos a que visite  
**LA TORTILLERIA SAN FRANCISCO**  
 Los martes y los jueves para que lleve sus tortillas calientitas  
 De las 6 de la mañana hasta las 10.  
 De la mañana sabados y domingos venga para que sabore el rico menudo y la rica barbacoa de cabeza para comer aqui o para llevar. Tambien, tenemos un gran surtido de hierbas medicinales y especias Mexicanas. ¡Los esperamos!  
**403 MAIN • MULESHOE**  
**272-3502 • Sr. y Sra. Aurelio Cuevas**

**COSMETICS**  
**MARY KAY®**  
**Barbara Justiss**  
 Independent Beauty Consultant  
 1818 W. Avenue D  
 Muleshoe, Texas 79347  
 Home: 806-272-5419  
 Mobile: 806-683-6386  
 Web page: www.marykay.com/bjustiss  
 e-mail: bjustiss@fivearea.com

**FUELS**  
**West Texas Gas, Inc. and GASCARD®**  
 • 24 Hour Gasoline & Diesel  
 • Propane • Dripoint  
 • L.P.G. Motor Fuel  
 • BBQ & RV Bottles & Parts  
 • Holland BBQ Grills  
 • Hydraulic Hose Repair  
 Open: M-F 7:30 to 5:30; Sat. 7:30 to Noon  
**North 1st St., Muleshoe TX**  
**(806) 272-3157**

CALL 272-4536 TO ADVERTISE!  
**HANDY MAN**  
**A Helping Hand**  
 Minor House Repairs & Odd Jobs  
 TOWN OR COUNTRY QUALITY SERVICE  
 REASONABLE RATES  
 Serving Muleshoe and surrounding areas.  
**Kyle Shelton**  
**(806) 272-5159**  
 or (806) 946-9403

**RENT**  
 this space for only **\$21.67/mo.!**  
 6 month commitment  
 Call 272-4536 for details.

**RENTALS**  
**THE RENTAL PLACE**  
 Furniture, Appliances, TVs, Electronics, Etc.  
 FREE DELIVERY  
**103 MAIN ST.**  
**272-4037 • Muleshoe**

**TREE TRIMMING**  
**FRIESEN TREE TRIMMING**  
 Jay Friesen  
**(806) 946-7228**

**CUSTOM FARMING/HARVESTING**  
**Albo's Custom Harvesting**  
 NEWEST, MOST COST EFFICIENT EQUIPMENT for combining Black-Eye Peas, Milo, Etc. Also, Wheat Planting (One No Till Drill, One Regular) & Shredding  
**272-5385 or 777-9461**

**RENT**  
 this space for only **\$21.67/mo.!**  
 6 month commitment  
 Call 272-4536 for details.

**GARY'S HANDYMAN SERVICE**  
 Gary L. Johnston  
**Home: 272-3740**  
**Cell: 946-9774**  
 • Light Plumbing • Electrical • Sheetrock Repair  
 • Minor Roof Repair • Light Hauling • Mowing • Etc.

**INSURANCE**  
**Laurie Winchell**  
 Insurance Agent  
**FARMERS**  
 Call for a Free Quote.  
 • HEALTH • AUTO • LIFE  
 • HOME • BUSINESS  
**1602 W. American Blvd., Muleshoe**  
**272-7548 • FAX 272-4756**

**TIRES**  
**GOODYEAR**  
**JAMES CRANE TIRE CO., INC.**  
 107 Main Street  
**(806) 272-4594**  
 Mike Hahn, Owner

**THE GRAY PAGES**  
 Small ad—\$3.50/wk.\*  
 Med. ad—\$5/wk.\*  
 Large ad—\$7/wk.\*  
 \*26 week commitment  
 YOU READ THESE ADS. CHANCES ARE YOUR NEIGHBOR DID TOO.  
 CALL 272-4536 TO ADVERTISE.

# Journal Classifieds

## STOP & SHOP

Deadlines are 5 p.m. Friday

Call 272-4536

Page 15, January 23, 2003

### LEGALS

#### NOTICE OF REFERENDUM

In accordance with the provisions of the Texas Agriculture Code, Chapter 74, Subchapter D, and 4 Tex. Admin. Code, Chapter 3, Subchapter A, the Texas Department of Agriculture (the Department) will conduct a referendum on the proposition of whether or not cotton growers shall continue a boll weevil eradication program in the Northwest Plains Boll Weevil Eradication Zone.

The Northwest Plains Boll Weevil Eradication Zone consists of all of Bailey, Castro, Deaf Smith, Lamb and Parmer counties; and that part of Randall County that lies north and west of a line running along Highway 60 from the Deaf Smith County line east to Interstate 27; then running north along Interstate Highway 27 to the Potter County line. Also, as part of the referendum, a representative of the above-referenced zone will be elected to serve on the Texas Boll Weevil Eradication Foundation Board of Directors. The board is charged with administering the boll

weevil eradication program in Texas. The referendum and board election will be held by mail balloting. Ballots will be mailed by January 29, 2003. All ballots cast by mail must be postmarked no later than February 21, 2003, in order to be valid. Any cotton grower having cotton production in the year 2002 within the zone defined above is eligible to vote, and if he or she resides in the Northwest Plains Zone and has at least seven years experience as a cotton grower, can have his or her name placed on the ballot as a candidate in the board member election. A cotton grower is defined as a person who grows cotton and receives income from the sale of cotton. The term includes an individual who, as owner, landlord, tenant or sharecropper, is entitled to share in the cotton grown and available for marketing from the farm or share in the proceeds from the sale of the cotton from the farm.

Any person eligible to vote in the referendum or board member election who related documents may be acquired from Adling Associates Architects, 2529 74th Street, Lubbock, TX 79423 Telephone 806.748.0880, Facsimile 806.748.0744.

resides in the Northwest Plains Zone and meets the seven-year experience requirement may place his or her name in nomination for election to the Texas Boll Weevil Eradication Foundation Board by written application to the Department at the address provided below. Nomination forms are provided by the Department and must be signed by the nominee and at least ten other eligible voters. The nomination form must be received in Austin by January 22, 2003, and must provide legal residence of the applicant. A nomination form may be obtained by contacting the Department office or any county agent located in the voting area.

For more information regarding the referendum and election, or if you are a cotton grower in the above referenced area and do not receive a ballot, please contact the Texas Department of Agriculture, P.O. Box 12847, Austin, Texas, 78711, telephone 512-463-7593. Published in the Muleshoe Journal on January 9, January 16 and January 23, 2003.

#### NOTICE TO PROPOSERS

Sealed Proposals for Bailey County Courthouse Brick Tuckpointing & Painting will be received by Judge Marilyn Cox in her office in the Bailey County Courthouse, until 3:00 p.m., Wednesday, January 29, 2003. Any proposals received after the proposal opening will be returned unopened.

Mailed proposals should be addressed to Judge Marilyn Cox Bailey County Courthouse 300 South First Street Muleshoe, Texas 79347 Telephone 806.272.3077

Drawings, Specifications, and

#### DRIVERS WANTED

DRIVER - CDL (A)....Celebrating 40 years. Solos to 39 cents, Teams to 41 cents, O/O's to 87 cents. \$10K bonus. Condos. EOE. 1-800-925-5556 or KLLM.com

DRIVER - COMPANY & Owner/Ops - Regional - Home Weekly. Pay for experience up to 31 cpm Company, 81 cpm Owner/Ops. 1-800-454-2887, Arnold Transportation.

DRIVER - COVENANT TRANSPORT - Hiring experienced teams, solos and trainers. O/O Solos/Teams 83 cents. We are looking for experienced teams to run priority dispatch. Call 1-888-MORE-PAY (1-888-667-3729).

DRIVER: CRST FLATBED: Leasing Owner Operators! Regular runs to IN, IL, OH & Intrastate. TX/return loads back to Northeast TX. Paying

\$1.25-\$1.60 rate per loaded mile; low dead-head; trailers available; Quick Pay option; NO forced dispatch. Call today, 1-800-366-6361 www.crstflatbed.com

DRIVERS - EXPERIENCED/ INEXPERIENCED. Hot careers are at Central Refrigerated. Great pay, benefits, Lease Purchase Program. CDL/A w/8 months OTR required. 1-800-727-5865.

DRIVERS - NO EXPERIENCE? No problem. Low cost CDL training available. Meals, lodging and transportation provided. Tuition reimbursement. \$1,000 bonus. OTR, regional, dedicated freight. Swift Transportation, 1-800-231-5209.

DRIVER-O/O's WE need you! West Coast produce season is ready to roll. All O/O

### HELP WANTED

Bus Drivers Needed Muleshoe ISD is in need of Regular Bus Drivers and Substitute Bus Drivers. Drivers will need to be available to drive twice a day. For further details and an application, contact Richard Hawkins at 272-7329.

Loans up to \$500. No Credit, No Problem. Call 806-272-3673 or come by Continental Credit, 206 S. Main, Muleshoe, Tx. **Se Habla Espanol!**

**MANAGER TRAINEE \$525/wk avg. Call 766-7175**

**SILVERHAWK SECURITY** Has positions open for Security Guards. Must be 18, have Diploma or GED, with no criminal record. Call 295-8357 or come by security office at Excel in Friona Texas.

Contract cleaning position available one day a week at Muleshoe District Texas Boll Weevil Eradication Office. For a bid sheet, please contact Betsy @ (915) 672-2846 ext. 3143. Bid packages available thru 1/31/03 @ 5:00 PM CST.

**PARK VIEW HEALTHCARE CENTER**  
•Accepting applications for CNA's and LVN's  
•Be a part of the dynamic healthcare team in meeting the needs of the elderly.  
•You can make a difference in caring for others  
•Comprehensive benefit program for full-time employees  
Call or see Terri Brown, Director of Nursing Services Phone :272-7578  
Address: 1100 West Ave J, Muleshoe, TX

**TOWN AND COUNTRY FOOD STORES Is Looking For**  
People with Retail Experience  
People with Food Service Experience  
Presently Accepting Applications For Store Manager Trainees Assistant Managers Food Service Managers  
Great Benefits & Advancement Opportunity  
Equal Opportunity Employer  
Drug Testing Required  
Applications available at all locations

You read this ad. Chances are your neighbor did too! Let our classified section help you buy it, sell it or trade it! Call Jessica at 272-4536 or Fax us at 806-272-3567. Our classified section gives you more bang for your buck!

The Bailey County Sheriffs Department is looking for a few good men and women. Openings exist for a full time and part time Detention Officer. We are also accepting applications for Reserve Deputies. To be considered for these positions please pick up a employment application from the Bailey County Sheriffs Department, located at 300 South First, Muleshoe TX.

**FOR SALE**  
For Sale — 2 Cemetery Lots: 5 and 6, Garden 4, Block 81. \$300 each. Call 580-326-2935.

Car seats for sale, reasonable price for each. Have one that is for toddler, up to 27lbs and one up to 24lbs, is a reversible seat, \$25 each. Have an entertainment center \$40. Have a Graco stroller, \$50. Call 272-4536 after 1:00 p.m. ask for Jessica.

**ESTATE SALE**  
Estate Sale: 200 E. 21st in Littlefield. A Living Estate Sale starts: Saturday, Jan. 25 9a.m - 5p.m. / Sunday Jan. 26 1-4 p.m. everything 1/2 price. Antique living room & bedroom furniture, two freezers, refrigerator, washer & dryer, Franciscan Pottery, Hall & Roseville Pottery, T.V., '86 Olds Cutlass, 62,000 miles, good clean car. Lots of other Miscellaneous. For more information call Bill & JoJo at 806-933-4373 or 806-543-5596.

**DRIVERS WANTED**  
Fleet. Great pay. Singles and teams. 1-800-765-3952, Parkway Transport.

DRIVERS - REGIONAL - 10 states (70%). Home weekly - \$600-\$800. OTR - start .32, 6 months experience with CDL/A. Owner Operators - OTR .83 loaded and empty. Call Bob or Harold, National Freight, 1-800-666-0380.

DRIVER - TRUCKERS! FFE - Will get you home. FFE - Will get you paid. FFE - Will get you miles. Call 1-800-569-9232. Open all day, every day. Students: Training Assistance available.

SWIFT TRANSPORTATION IS hiring experienced Drivers and O/O. CDL training available. We pay for experience, great benefits, tuition reimbursement. 1-800-669-7943 (eoe-m/f)

**EDUCATION**  
UTEP at BEAUMONT - Paralegal Certificate Course! Classes begin February 1, 2003. Call 1-800-522-7737 or 1-915-747-5142. www.legalstudies.com

### REAL ESTATE

**Farm for Sale:** Quarter Section, Lamb County, near Earth. Sprinkler, house & barn. Call 781-7556.

\*2 Horse training facilities Lubbock  
\*407 Tyler, Whiteface 3/2 carport, nice, \$52,500  
\*321 Tyler, Whiteface 3/2/1/1 triple carport, corner, \$60,000  
\*40 ACRE TRACTS: 2 1/2 Mi. N. of city limits on Hwy 214 & 1/2 Mi. E. to SW corner. \$600/A  
\*Whiteface 260A, 1 1/2 W of 1780 on 125, S on CR 237, W on 1st Co Rd to NE corner \$157,600  
\*Morton, 163.6A, 6.5N on 214, 1/2 E on CR 20 \$77,000  
\*Fieldton - 400 gpm & circles  
\*2 Farms - Earth.

**LOTS MORE FARMS!**  
Farrar & Associates  
806-894-4386

Need to give animals away? If so, we'll run your "FREE" pet ads one time for FREE! Call 272-4536 for info.

**CASTRO & PARMER CO. TEXAS** — 1481 acres of choice, fully developed with sprinkler irrigation, excellent soil, equipment in top cond., pavement. Check our website for many farms, ranches & feedyards.  
**ATTENTION** — 1st TIME FARM BYERS — talk to your local F.S.A. office for financing on choice 160 acres in Lazbuddie area, one well piped to pivot. Please check our website for many other ag properties.  
**SE OF MULESHOE** — off of Hwy 84, 288 acres in CRP, fenced, working pens; wells.  
www.scotlandcompany.com  
Ben. G. Scott-Broker (800)933-9698 5 AM TO 10 PM

**Vic Coker Land Co.**  
Agricultural Real Estate

- 10,000 Head Feed Yard - Between Earth and Muleshoe. Very good condition, 2 Feed Trucks, 1 Large Loader. Includes 160 Acres with 2 Wells and Center Pivot Sprinkler.
- Two labors South of Muleshoe, All cultivated, very good dryland, bases & yields.
- Lazbuddie Area - 640 Acres, 4 Wells, 4 sprinklers, Good bases and yields. **SOLD**
- 320 Acres, Parmer County. 2 sprinklers, good water, excellent soil, on pavement
- Castro County - 270 Acres, 2 sprinklers, 3 wells, Excellent Farm. **SOLD**
- 2-160 Acre tracts - North and Northwest of Muleshoe. Both have sprinklers, will divide. Very reasonably priced.
- 132 Acres - Non-irrigated near Muleshoe, Allotted, Lays good. **SOLD**
- West Camp Area - 480 Acres, 2 Brick Homes, 3 Center Pivot Sprinklers, Fenced. Permit process underway
- 774 Acres of Native grass and 90 Acres Cultivated. Coyote Lake Area, Bailey County. **SOLD**
- Great Home in Muleshoe, 4-3-3, brick, Cent. A&H, fireplace, built-ins, living areas, large kitchen, dishwasher, double oven, large refrigerator, lots of storage, tile roof, outdoor barbecue, sprinkler system front and back.
- 40 Acres near Muleshoe, irrigated farm with side-roll sprinkler, nice barn, pens, outbuildings, 3 bedroom, 2 bath, all electric manufactured home. **Priced Reduced**
- Country Living with horse barn and roping Arena, 3-2-2, large kitchen, 2 living areas, basement, above ground pool, Muleshoe Area.
- Earth-Sprinklake Area - 160 Acres, Good Water, 1 Well, Center Pivot. Immediate Possession Possible. **SOLD**

316 Main Street  
Muleshoe, Texas  
Office 806-272-3100 Home 806-965-2468

### SERVICES

**PROFESSIONAL CARPET CLEANERS RENTED HERE**  
WE MAKE CLEANING FAST AND EASY!  
From **CARPET EXPRESS**  
**Dry Fry & Cox TRUE VALUE**  
401 S. 1st • Muleshoe • 272-4511  
Open: Mon - Sat. 8 am to 6 pm

**Nieman Realty**

116 E. Ave. C • George Nieman, Broker • 272-5285 or 272-5286

**RICHLAND HILLS - PARKRIDGE AREA**

- NICE LOTS AVAILABLE, CALL FOR DETAILS!!!!
- VERY NICE 3-2-1 Brick, Elec. Heat Pump, built-ins, nice carpet, 1680' lv. area, fenced yd., MORE!!! \$60K!! RH-2

**COUNTRY CLUB AREA**

- VERY NICE 2-1-1+1 Carport Brick Home, Cent. A&H, stove, nice, carpet, covered patio, fenced yd., MORE!!! \$41,900!!!
- NICE 3-2-2 Brick, Cent. A&H, built-ins, 7 fans, covered patio, fenced yd!! \$62.5K!!

**HIGH SCHOOL AREA**

- 3-2 Home, corner lot, fl. furn. heat, fenced yd. \$25K! HS-10
- VERY NICE 2-2-2 carport Mobile Home, Cent. A&H, built-ins, utility, deck w/hot tub, storage/workshop, fenced yd., MORE!!! \$28,500!! HS-9
- NICE 3-1-1 Home, Cent. A&H (Heat Pump), nice carpet & tile, fans, fenced yd., stor./shop bldg!!! MORE!!! \$39K!!! HS-2
- 2-1-1 Home, wall furnace heat, win. evap. air, stove, corner lot!!! \$30K!!! HS-3
- 2-1-1 home, floor furnace heat, new roof!!! \$13,500!! HS-5
- 3-2-1 Carport Home, Cent. A&H, built-ins, storm win. & doors!!! \$40K!! HS-7
- NICE 3-2 Home, new Cent. A&H, hardwood floors, 5 fans, storm win. & doors, stor. bldg., fenced yd.!!! \$41K!! HS-6
- EARTH - 4-2-2 carport home, Heat Pump, fans, storage-workshop!!! \$35K

**COMMERCIAL**

- HWY 84/70 - GREAT LOCATION - 2870' retail, 16640 shop, 6000 paved, RR spur w/ loading docks, 3.44 acre tract!!!
- GREAT LOCATION - 13,000 sq.ft. bldg. Cent. A&H, paved parking!!! \$85K!!!
- EXCELLENT BUSINESS LOCATION - Approximately 6,550 sq.ft. building, high traffic area!!! \$115K!!!

- NICE six unit office complex, Cent. A&H, restroom facilities, and also has a nice one bedroom and two bedroom rental units. \$39.5K!!!
- HWY. 84-150' frontage, office, warehouse, truck dock, railroad spur access, with or without fuel storage tanks!!! \$30K!!!
- GOOD INCOME PROPERTY - approx. 3490' bldg., paved parking, good net lease!!! PRICED TO SELL!!
- VERY NICE 2300' bldg., Cent. A&H, 175' frontage on Hwy 84 & 70!!! MUCH MORE!!!
- 140 X 100' tract on Hwy. 84 & 70, 1760' bldg., 1500' storage, 2400' cov. area, paved parking!! \$49.5K!!!
- RANCH HOUSE CLUB/RESTAURANT!!! \$70K!!!
- Approximately 2,000' shop plus 450' office, cent. heat, evap. air, 250' x 100' tract on Hwy 84!! \$35K!!!

**HIGHLAND AREA**

- 2-1 Home, wall furnace heat, roof evap. air, fenced yd., MORE!!! \$26.5K!!! HL-1
- 2-1 Home, Wall Furn. heat, evap. air, fenced yd. \$26.5K!!! HL-1

**RURAL**

- 3-1-1 carport home on one acre, wall heat, evap. air!!! \$12K!!!
- EXCELLENT DAIRY LOCATION - 1120ac, 7 circles, 20 wells, very nice 3-2-3 Home w/ basement, 40' x 60' barn w/ 30' x 40' shed, 3 mil. lb. grain facility, add. 3 bdrm. home, 2 mobile homes, on pavement convenient to Muleshoe, Clovis, Portales, & 5K head permit. Could be split if needed!!!
- W. of SUDAN - NICE 3-3-2 Brick Home, 5 acre tract on Hwy. 298, Cent. Air & Heat, built-ins, large Quonset Barn, MORE!!! \$95K!!!
- PRICE REDUCED - 108 acres or 7 acre tract on Hwy. 70, approx. 2100' office area, 16,900' commercial bldg. w/ loading dock, 3,400' warehouse, new well, 2,800' runway!!!
- GOOD 160 acre farm, fully allotted, 2 wells, valley circle!!!
- 3-1 Home on .59 acre, edge of town, wall furn. heat!!! \$35K!!!



# Lowe's Marketplace

401 W. American Blvd. Muleshoe, Texas 272-4585

WE RESERVE THE RIGHT TO LIMIT QUANTITIES IN TEXAS

WESTERN UNION MONEY TRANSFER™  
"The fastest way to send money"

AT AFFILIATED FOODS INC. MEMBER STORE AT PARTICIPATING STORES



## WEEKLY PRICES EFFECTIVE JANUARY 22-28

### MEAT

X-TRA SAVINGS PAK	
<b>GROUND CHUCK</b> ..... LB	<b>\$1<sup>89</sup></b>
BEEF BONELESS	
<b>CHUCK ROAST</b> ..... LB	<b>\$2<sup>29</sup></b>
CUBED	
<b>BEEF TRIPE</b> ..... LB	<b>89¢</b>
X-TRA SAVINGS PAK BONE IN	
<b>CHICKEN BREAST</b> ..... LB	<b>99¢</b>
10 LB. BAG (\$2.90 PER BAG)	
<b>CHICKEN LEG QTRS.</b> ..... LB	<b>29¢</b>
PILGRIM'S PRIDE	
<b>BUFFALO WINGS</b> ..... 1 LB. PKG	<b>\$1<sup>99</sup></b>
X-TRA SAVINGS PAK BONE IN	
COUNTRY STYLE	
<b>PORK RIBS</b> ..... LB	<b>99¢</b>
JOHN MORRELL 5 LB. BONELESS	
GOLDEN SMOKED (\$3.95 EACH)	
<b>WHOLE HAMS</b> ..... LB	<b>79¢</b>
OLD MILL	
<b>HOT LINKS</b> ..... LB	<b>\$1<sup>99</sup></b>
TAIL ON CENSEA	
<b>COOKED SHRIMP</b> ..... 2 LB. BAG	<b>\$9<sup>99</sup></b>
DECKER	
<b>MEAT FRANKS</b> ..... 12 OZ. PKGS	<b>2/<sup>\$1</sup></b>
DECKER ASSTD. VARIETIES SLICED	
<b>BACON</b> ..... 12 OZ. PKGS	<b>2/<sup>\$4</sup></b>
DECKER	
<b>SMOKED SAUSAGE</b> ..... 3 LB. PKG	<b>\$3<sup>99</sup></b>
DECKER REG. OR THICK SLICED	
<b>MEAT BOLOGNA</b> ..... 12 OZ. PKG	<b>99¢</b>
DECKER	
<b>COOKED HAM</b> ..... 10 OZ. PKG	<b>\$2<sup>39</sup></b>
DECKER	
<b>CHOPPED HAM</b> ..... 12 OZ. PKG	<b>\$1<sup>99</sup></b>

LOWE'S SANDWICH WHITE	
<b>BREAD</b> ..... 24 OZ.	<b>\$2/<sup>\$1</sup></b>
KRAFT REG. OR LIGHT	
<b>VELVEETA CHEESE</b> ...32 OZ. BOX	<b>\$3<sup>99</sup></b>
SELECT VARIETIES	
<b>DORITO®</b>	
<b>TORTILLA CHIPS</b>	
<b>OR LAY'S®</b>	
<b>POTATO CHIPS</b> ..... 12.25-13.5 OZ.	<b>3/<sup>\$5</sup></b>
SANTA FE 20 OZ. REG. OR 14 OZ. SEASONED	
<b>TORTILLA CHIPS</b> ..... LB	<b>2/<sup>\$5</sup></b>
SNACK TIME!	
<b>BUGLES, CHEX MIX</b>	
<b>OR GARDETTO'S</b> .....7.5-8.75 OZ.	<b>3/<sup>\$5</sup></b>
SHURFINE WITH PEANUTS	
<b>MIXED NUTS</b> ..... 11.5 OZ.	<b>2/<sup>\$6</sup></b>
GINGER ALE, TONIC WATER OR CLUB SODA	
<b>SHURFINE MIXERS</b> ..... 1 LITER	<b>2/<sup>\$1</sup></b>
SANTA FE ASSTD.	
<b>CHUNKY SALSA</b> ..... 16 OZ.	<b>2/<sup>\$5</sup></b>
SANTA FE JALAPENO	
<b>BEAN DIP</b> ..... 9 OZ. CANS	<b>3/<sup>\$5</sup></b>
SANTA FE MEDIUM	
<b>QUESO</b> ..... 15 OZ.	<b>2/<sup>\$6</sup></b>
LOWE'S	
<b>CHEESE CURLS</b> ..... 16 OZ. BAGS	<b>3/<sup>\$4</sup></b>
NABISCO	
<b>CHIPS AHOY!</b>	
<b>COOKIES</b> ..... 14-16 OZ.	<b>2/<sup>\$6</sup></b>
12-24 OZ. SELECT GR. GRAPENUTS,	
13 OZ. COCOA OR FRUITY PEBBLES	
OR 20 OZ. RAISIN BRAN	
<b>POST CEREAL</b> ..... YOUR CHOICE	<b>2/<sup>\$5</sup></b>
BUSH'S BEST CANNED	
<b>BLACKEYE PEAS OR</b>	
<b>PINTO BEANS</b> ..... 15.8-16 OZ.	<b>2/<sup>\$1</sup></b>
BUSH'S BEST REG. OR FAT FREE	
<b>REFRIED BEANS</b> ..... 16 OZ. CAN	<b>89¢</b>
ASSTD. LAS PALMAS	
<b>ENCHILADA SAUCE</b> ..... 19 OZ.	<b>3/<sup>\$5</sup></b>
HILLS BROS. SELECT GROUP	
EXCLUDES DECAF.	
<b>COFFEE</b> ..... 11.5-13 OZ. CANS	<b>2/<sup>\$4</sup></b>
ASSTD. KRAFT	
<b>HANDI-SNACK</b>	
<b>PUDDING</b> ..... 4 PACKS/3.5 OZ.	<b>4/<sup>\$5</sup></b>
FRONTIER ASSTD. VARIETIES	
<b>BREAD</b> ..... 20 OZ. LOAF	<b>99¢</b>

### PRODUCE

CREAMY HASS	
<b>AVOCADOS</b> .....	<b>3/<sup>\$1</sup></b>
PEELED	
<b>MINI CARROTS</b> ..... 16 OZ. PKG	<b>99¢</b>
SNO WHITE	
<b>MUSHROOMS</b> ..... 8 OZ. PKG	<b>99¢</b>
LARGE	
<b>BELL PEPPERS</b> ..... 2/ <sup>\$1</sup>	
GARDEN FRESH	
<b>CUCUMBERS</b> ..... 2/ <sup>\$1</sup>	
GARDEN FRESH	
<b>GREEN LEAF</b> ..... EACH	<b>79¢</b>
GARDEN FRESH	
<b>ROMAINE LETTUCE</b> ..... EACH	<b>79¢</b>
AVOMEX	
<b>GUACAMOLE DIP</b> ..... 16 OZ.	<b>\$2<sup>99</sup></b>
MANN'S	
<b>BROCCOLI &amp; CAULIFLOWER</b> ..... 16 OZ. PKG	<b>\$1<sup>99</sup></b>
ROASTED, RAW OR ROASTED AND SALTED	
<b>PEANUTS</b> ..... 16 OZ. PKGS	<b>2/<sup>\$3</sup></b>
GARDEN FRESH	
<b>CILANTRO</b> ..... BUNCHES	<b>3/<sup>\$1</sup></b>
FRESH BUNCH	
<b>SPINACH</b> ..... EACH	<b>79¢</b>
HOT AND SPICY	
<b>JALAPEÑO PEPPERS</b> ..... LB	<b>89¢</b>
DOLE	
<b>COLE SLAW</b> ..... 16 OZ. PKG	<b>89¢</b>
CELLO	
<b>TOMATOES</b> ..... 4 PACK PKGS	<b>2/<sup>\$3</sup></b>
TANGY, JUICY	
<b>LIMES</b> ..... 15/ <sup>\$1</sup>	
TEXAS RED	
<b>GRAPEFRUIT</b> .....	<b>5/<sup>\$1</sup></b>
WASHINGTON EXTRA FANCY	
<b>JONAGOLD APPLES</b> ..... LB	<b>79¢</b>
4 LB. BAG	
<b>NAVEL ORANGES</b> .....	<b>2/<sup>\$3</sup></b>

NABISCO 7-10 OZ. TRISCUITS,	
WHEAT THINS, BETTER CHEDDAR, ETC.	
OR 8-12 OZ. CHEESE NIPS	
<b>SNACK CRACKERS</b> ..... 2/ <sup>\$4</sup>	
TRAPPEY'S WHOLE OR SLICED	
<b>JALAPENO PEPPERS</b> ..... 12 OZ.	<b>4/<sup>\$5</sup></b>
Q AND Q	
<b>VERMICELLI</b> ..... 5 OZ.	<b>4/<sup>\$1</sup></b>
BUSH'S BEST	
<b>WHITE HOMINY</b> ..... 108 OZ. CANS	<b>2/<sup>\$5</sup></b>
CLAUDE'S 12-16 OZ.	
<b>BBQ BRISKET OR FAJITA</b>	
<b>MARINADE SAUCE</b> ..... 2/ <sup>\$4</sup>	
CASA DE LOWE'S HOMESTYLE OR BURRITO	
<b>FLOUR TORTILLAS</b> ..... 10 CT.	<b>89¢</b>
CHINET 12 CT.	
<b>PLASTIC BOWLS</b> ..... 16 OZ.	<b>99¢</b>
CHINET 20 CT. COLOR STRONGER HOLD	
<b>PLASTIC CUPS</b> ..... 16 OZ.	<b>99¢</b>
FIELD TRIAL CHUNK	
<b>DOG FOOD</b> ..... 35.2 LB	<b>\$10<sup>99</sup></b>
SCOTT WHITE, REG. ROLL	
<b>PAPER TOWELS</b> ..... EACH	<b>99¢</b>
OLD FASHIONED	
<b>ROOT BEER MUGS</b> ..... 21 OZ.	<b>\$1</b>
LARGE	
<b>SALAD BOWLS</b> ..... 12 INCH	<b>3/<sup>\$5</sup></b>
GREAT FOR PARTIES!	
<b>CHIP AND DIP</b>	
<b>STORAGE</b> ..... 2/ <sup>\$4</sup>	
6 PACK	
<b>POWERADE DRINKS</b> ..... 12 OZ.	<b>2/<sup>\$5</sup></b>
LOWE'S ASSTD.	
<b>SOFT DRINKS</b> ..... 3 LITER	<b>77¢</b>
ASSTD. VARIETIES	
<b>COCA-COLA,</b>	
<b>DR. PEPPER</b>	
<b>OR SPRITE</b> ..... 12 PK./12 OZ. CANS	<b>2/<sup>\$6</sup></b>
ASSTD. VARIETIES	
<b>COCA-COLA,</b>	
<b>DR. PEPPER</b>	
<b>OR SPRITE</b> ..... 6 PK.-1/2 LITER BTLs.	<b>3/<sup>\$5</sup></b>

### FROZEN & DAIRY

ASSTD. TINA'S	
<b>BURRITOS</b> ..... 4.25-5 OZ. PKGS	<b>5/<sup>\$1</sup></b>
RED BARON ORI. 12 IN.	
EXCLUDES RISING CRUST	
<b>PIZZA</b> ..... 21-24 OZ.	<b>2/<sup>\$5</sup></b>
SARA LEE SELECT GROUP	
<b>CHEESE CAKE</b> ..... 5.5-19 OZ.	<b>2/<sup>\$7</sup></b>
SARA LEE SELECT GROUP	
<b>CHEESE CAKE</b>	
<b>BITES</b> ..... 5.5-19 OZ.	<b>2/<sup>\$7</sup></b>
ASSTD. TOTINO'S	
<b>PARTY PIZZAS</b> ..... 9-10 OZ. PKGS	<b>4/<sup>\$5</sup></b>
TGIFRIDAY'S BUFFALO WINGS,	
POTATO SKINS OR ASSTD.	
<b>TGI FRIDAY'S</b>	
<b>POPPERS</b> ..... 8-10 OZ.	<b>2/<sup>\$6</sup></b>
ORE IDA ASSTD.	
<b>BAGEL BITES</b> ..... 7 OZ. PKGS	<b>2/<sup>\$4</sup></b>
ASSTD. VAR. SHURFINE OR LOWE'S	
<b>MILK</b> ..... GAL.	<b>\$1<sup>88</sup></b>
SHURFINE ASSTD.	
<b>ICE CREAM</b> ..... 1/2 GAL. RND.	<b>2/<sup>\$5</sup></b>
BLUE BUNNY ASSTD.	
<b>ICE CREAM</b>	
<b>SANDWICHES</b> ..... 10-12 CT.	<b>2/<sup>\$7</sup></b>
WHERE AVAILABLE SELECT GR. DREYER'S	
<b>ICE CREAM</b> ..... 1.75 QTS.	<b>2/<sup>\$6</sup></b>
SHURFINE SELECT VARIETIES	
<b>DIPS</b> ..... 8 OZ.	<b>3/<sup>\$2</sup></b>
KRAFT REG. OR 1/3 LESS FAT	
<b>CREAM CHEESE</b> ..... 8 OZ. BOXES	<b>3/<sup>\$5</sup></b>
BORDEN SELECT GR. SINGLES	
<b>AMERICAN CHEESE</b> ..... 12 OZ.	<b>\$1<sup>99</sup></b>
BORDEN SELECT GR.	
<b>SHREDDED CHEESE</b> ..... 8 OZ.	<b>2/<sup>\$4</sup></b>
KRAFT SELECT GROUP	
<b>CHUNK CHEESE</b> ..... 8 OZ.	<b>2/<sup>\$4</sup></b>
MARKET CUT COLBY OR	
<b>COLBY JACK CHEESE</b> ..... LB	<b>\$2<sup>39</sup></b>
MARKET CUT RED RIND	
<b>CHEESE</b> ..... LB	<b>\$2<sup>49</sup></b>

### HEALTH & BEAUTY

12 CT. MORNING RELIEF	
OR 24 CT. SELECT. VAR.	
<b>ALKA SELTZER</b> ..... YOUR CHOICE	<b>2/<sup>\$6</sup></b>
ORI. OR CHERRY CHEWABLE BAYER	
<b>CHILDREN'S ASPIRIN</b> .... 36 CT.	<b>2/<sup>\$4</sup></b>
SELECT GR. INVISIBLE SOLID SUAVE	
<b>ANTIPERSPIRANT</b> ..... 2.6 OZ.	<b>3/<sup>\$5</sup></b>
ASSTD. VARIETIES WESTERN FAMILY	
<b>COUGH DROPS</b> ..... 30 CT.	<b>99¢</b>

**WE'RE YOUR SUPER SAVINGS TEAM**

SEE OUR WEEKLY CIRCULAR FOR JANUARY'S X-TRA SAVINGS PRODUCTS