



Back to school lists included...  
Section B



Editorial:  
County services cost...  
Page 2



# Muleshoe Journal



Striving to be your source for local news

75¢

Volume 92, No. 301

www.muleshoejournal.com

Muleshoe, Texas

August 4, 2011

## Rollback considered for new ambulance

By Larry Thornton  
Managing Editor

Discussion of whether to prepare the Bailey County budget using the county's effective rate, holding off on a tax increase, or at the higher rollback rate topped Monday's commissioners' court special meeting.

According to the figures presented at the meeting, the .7558 effective rate is a total of .1092 for the county's FM funds, .5478 for maintenance and operation, and .0988 for the interest and sinking fund.

At the other end of

the scale, the rollback rate of .8102 is a total of .1179 for FM, .5935 for maintenance and operation, and the same .0988 for the interest and sinking fund.

Although Precinct 1 Commissioner Butch Vandiver suggested

taking whatever steps were necessary to hold to the effective rate and push back a tax increase for another year — offering to cut



his precinct's budget and asking the other commissioners to do the same, the "fly in the ointment" came from the county's need to replace

its oldest ambulance, a 1993 model that was described as being of questionable reliability.

The county's newest ambulances are a 2000

model with 210,000 miles and a 2006 model with 144,000 miles.

"I hate to go another year without an ambulance," Precinct 3 Commissioner Joey Kindle said.

"We'll have to go up on equipment repair if we don't get a new ambulance," County Judge Sheri Harrison said.

"I think we're setting ourselves up for disaster,"

she added. "We're looking at a six-year-old ambulance with \$150,000 miles... and that's the first out."

"I'm going to have to go with Joey about the ambulance," Precinct 2 commissioner CE Grant said, a feeling that was also shared by Precinct 4 Commissioner Juan Chavez.

Although the commissioners joined with Vandiver about the need to cut costs where possible, Kindle pointed out that this year's budget for his precinct was already \$10,000 less

Continued on page 3

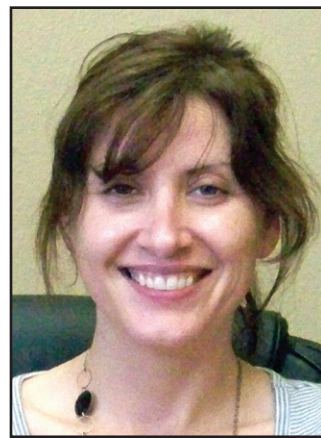


## Interim administrator hired at Park View nursing home

By Larry Thornton  
Managing Editor

An interim administrator has been hired for Park View Nursing Care Center, David Burke, CEO of the Muleshoe Area Hospital District, announced during Thursday's regular meeting.

While Burke's announcement was apparently accepted at face value by the majority of the board, former board president Bill Liles seemed to take issue with the CEO rather than the board taking such



Shanna Laughton

that he didn't have the resume with him, and said Liles could come by his office and see it.

According to Burke, the interim administrator for Park View — Shanna Laughton, formerly of Iowa, has 13 years experience as a nursing home administrator and would be operating on a six month provisional license.

Laughton's first day on the job was Tuesday, Aug. 2.

In other business, the MAHD board:

Continued on page 3

### Feel the excitement!

The excitement is already beginning to grow in Muleshoe. The Mules have taken to the field preparing for another season of football, and local fans are anticipating their favorite Friday night pastime. Pictured above and below, this year's team runs through some plays Tuesday morning at the Benny Douglass Stadium. Photographs by Larry Thornton



## Suicide victim identified through unusual means

By Larry Thornton  
Managing Editor

On Friday afternoon, June 26, a truck driver on Hwy. 214 made a gruesome discovery when he pulled over at the rest stop on the north edge of the Muleshoe Wildlife Refuge and discovered the body of a Caucasian

male, approximately 40 years of age, an apparent victim of suicide.

According to Bailey County Sheriff Richard Wills, identification of the body was hampered by the fact that the deceased had lost, discarded or destroyed such documentation.

Checking the

deceased's fingerprints against state and national records were unsuccessful as well, but Monday morning, the victim — whose identity though now known was being withheld pending notification of next of kin, was traced

Continued on page 2

## Journal receives WTPA awards

The Muleshoe Journal brought home two more awards this past weekend, this time from the West Texas Press Association's Better Newspaper Contest.

The editorials of managing editor Larry Thornton captured first place honors in the contest's weekly division, adding to the second place award received in the state-wide contest held by the Texas Press Association.

In their comments, the judges gave special attention to the editorial's local orientation.



Managing Editor  
Larry Thornton

At the same time, Thornton's columns garnered a third place win in the WTPA contest.

In their comments, the judges praised Thornton

for his "tongue in cheek" writing in his column about the Muleshoe Rotary Club being ambushed in an eastern state editorial, and the possibility of making millions with West Texas manure.

While not garnering awards, comments from the judges of other categories included:

- General Excellence — "Best part of the paper is the news writing."

- Special coverage — "Good coverage of what appears to be a simple shooting that escalates

Continued on page 3



MEMBER  
FDIC

MULESHOE STATE BANK



We are pleased to introduce Muleshoe State Bank Online Banking. Come by our Muleshoe or Farwell location to sign up.

www.muleshoestatebank.com ~ Muleshoe Branch • 272-4561 • 101 W. American Blvd. ~ Farwell Branch • 481-9580 • 801 Ave. A

Going  
Strong  
since  
1931

## Around Muleshoe...



Announcements from non-profit organizations in the Muleshoe area.

To post an announcement send an email to [editor@muleshoejournal.com](mailto:editor@muleshoejournal.com)

### Reserved stadium seats

Reserved seat tickets for the 2011 Muleshoe Mules football season will go on sale Monday, Aug. 1. The tickets are \$30 for five home games.

Persons who held reserved seat tickets for the 2010 football season may purchase their seating options at the MISD Administration office, located at 514 W. Ave. G, Monday through Friday, during regular business hours.

Beginning Monday, Aug. 22, all remaining tickets will go on sale on a first come, first serve basis.

Any reserved seats remaining after the season starts will be available at a cost of \$8 per game and may be purchased at the MISD administration office on game day.

If you have questions concerning the ticket sales, please contact Dana Rasco at 272-7400.

### Calvary concert

Three Bridges will be in concert on Friday, Aug. 5, beginning at 7 p.m., at Calvary Baptist Church in Muleshoe. This is a free concert. For further information please call 272-4012.

### Mini Mule cheer camp

A mini mule cheerleading camp will be held Aug. 10-11, from 8:30-11 a.m., Registration will be held between the coaches' office and the Old high school gym.

The cost is \$25 prior to Aug. 5, and \$30 thereafter.

### Muleshoe ISD registration

The Muleshoe Independent School District will be registering students on the following dates:

**Dillman Elementary** — Aug. 8-9, 8:30 a.m.-4 p.m. Updated shot record, birth certificate, social security card, Proof of income for PK and Head Start, Medicaid card for Hear Start, and proof of residency required.

**DeShazo Elementary** — Tuesday, Aug. 9, 12 noon until 7 p.m.; Wednesday, Aug. 10, 8 a.m. until 3 p.m.; and Thursday, Aug. 11, 7 a.m. until 12 noon.

**Watson Junior High** — Wednesday, Aug. 10, 12 noon until 7 p.m.; Thursday, Aug. 11, 7:30 a.m. until 5 p.m.

Students must be accompanied by a parent or guardian to register.

Also, a student immunization shot clinic will be held on Wednesday, Aug. 10, 9-11 a.m., in the junior high nurse's office.

If parents have any questions concerning registration, they may call 272-7349.

**Muleshoe High School** — Seniors, Tuesday, Aug. 9, 9-10 a.m.; Juniors, Tuesday, Aug. 9, 1-2 p.m.; Sophomores, Wednesday, Aug. 10, 9-11 a.m.; Freshman, Thursday, Aug. 11, 9-10 a.m.

New students will need to bring the following documents: Student's birth certificate, student's social security card, proof of guardianship (if not the parent), parents driver's license, proof of residency (gas bill, water bill, etc.) and shot records. Also, information for contacting the previous school attended will be needed.

### MISD yearbooks available

MISD yearbooks are in and will be available for purchase during the hours of registration at the Muleshoe High School main office.

[www.muleshoejournal.com](http://www.muleshoejournal.com)

**Muleshoe Journal USPS 367820**  
 Established Feb. 23, 1924 Published by Panhandle Weeklies, LLC.  
 Every Thursday at 201 W. Ave. C, P.O. Box 449, Muleshoe, TX 79347.  
 Periodicals paid at Muleshoe, TX.  
 Postmaster: Send address changes to the Muleshoe Journal, P.O. Box 449, Muleshoe, TX 79347.

We are qualified members of the Panhandle Press Association, West Texas Press Association and Texas Press Association

**Sandra Aven, Publisher**  
[saven@hearstnp.com](mailto:saven@hearstnp.com)

**Larry Thornton, Managing Editor**  
[editor@muleshoejournal.com](mailto:editor@muleshoejournal.com)

**Terry Brewster, Ad Representative**  
[adsales@muleshoejournal.com](mailto:adsales@muleshoejournal.com)

**Ad Design / Classified Advertising**  
[advertising@muleshoejournal.com](mailto:advertising@muleshoejournal.com)  
[classifieds@muleshoejournal.com](mailto:classifieds@muleshoejournal.com)

**Subscriptions:**  
 By Carrier Yearly — \$27  
 Bailey County, by mail — \$29  
 Elsewhere — \$40  
 By E-mail — \$22

Advertising rate cards on request

Hours are 8 a.m. to 5 p.m., Monday - Thursday, and 8 a.m. to noon on Friday.  
 Advertisers should check their ad for a typographical error or errors in publications except to the extent of the cost of the ad for the first day of insertion. Adjustment for errors will be limited to the cost of that portion of the ad where the error occurred.





# Editorial

## County services cost

Eyes from across the nation have been turned toward our Washington, DC, during the past few weeks, as leaders from both sides of the aisle battled over the national budget.

At Austin, state leaders were faced with similar problems earlier this year as they wrangled over the Lone Star State's tremendous financial shortfalls.

And, here in Bailey County, the commissioners' court has been in the same process, albeit with much smaller numbers.

Finding the funds necessary to provide services to the residents of Bailey County is never easy. While the federal and state governments may be forced to decide between programs and projects that can easily be described as "pork belly" from either side of the political aisle, such isn't the case in Muleshoe, where the commissioners' court Monday found itself struggling with the issue of a minimal tax increase or trying to make due with its current ambulance fleet for another year.

Obviously, during times of economic difficulties such as Bailey County has experienced in the last couple of years, the idea of a tax increase isn't a popular decision.

Where the idea of fiscal conservancy and support for social programs may divide leaders at the state and national level, Bailey County's elected officials — both Republican and Democrat — consistently come together to produce a budget that is so lean it squeaks.

We applaud the commissioners' court in their continued efforts not to raise the local tax burden, but sometimes there is no choice. To best serve the citizens they have sworn to

### Victim...

Continued from page 1 through what is possibly one of the most unusual means available.

"It's possibly the first time someone's been identified by their eyeglasses," Sheriff Wills said.

He explained that the frame of the victim's eyeglasses bore a model number that was traced to a store in the Dallas-metroplex, from which it was learned that only two such frames had been sold. One to a black male, and the other to a Caucasian male on whom it was discovered a missing person report had been filed.

After locating a thumbprint from the missing person, it was verified that it belonged to that of the apparent suicide victim.

### Elder Care Conference set

This year's Elder Care Conference has been set for Aug. 20, from 9 a.m. until 1 p.m., at the Oneita Wagon Senior Center.

Call Kathy Carr, Texas AgriLife Extension Service, 806-272-4583, for additional information.

serve, elected officials are sometimes forced to do the unpopular... in this case considering the approval of a budget at the rollback rate rather than the more acceptable effective rate.

Could the county do without a new ambulance? Certainly. All it needs to do is toss a coin the next time your mother, spouse or child needs to be rushed to the local emergency room or down to Lubbock. Which ambulance goes, and which stays... and if the two best are needed for emergency transfers will the last horse in the stable be sufficient for the job.

Emergency services — whether at the municipal, county or state level — are only needed when they're badly needed.

Several years ago, an officer we know jumped into his unit to back up another officer at a shootout with a double homicide, and the car didn't start. Whether it's a patrol car or an ambulance, when the hammer is about to fall is not a good time to call a mechanic.

In the weeks ahead, several local government entities, including the Bailey County Commissioners' Court, will be holding public hearings over proposed tax rates for the coming year. Before sounding off against an increase take a hard look at why it's believed necessary, and give support where support is due.

Remember! Letters to the editor must be signed and include a contact telephone number or email address for verification to be considered for publication in the *Journal*.

**McDaniel's**  
 APPLIANCE 1020 Main Street, Clovis, NM  
 505-762-4481 or 800-682-7891

*Time for new appliances?*

**WE ARE YOUR HOMETOWN WHIRLPOOL DEALER.**

**Names Numbers**  
THE FAST & ACCURATE WAY TO FIND ANY NUMBER

**WE NOW CARRY SPEED QUEEN!**

**Whirlpool**

*Valencia's*  
 (We've moved up by the big shop.)

**NEW LOCATION SALE!**

**15% off ALL Jewelry**

**Now - August 8<sup>th</sup>**

**1782 Hwy 214**  
 1 mile North of Hub on the right  
 (Mixer Center)  
**806-677-6367**

**Need Braces?**

Now offered at  
**J.W. HALTOM**  
 Family Dentistry & Orthodontics

**Come in for an Ortho Consult for only \$99!**

- Invisalign, the new invisible braces now offered!
- Adults and children welcome!
- Convenient, no interest payment plan!

320 E. 8<sup>th</sup> St.  
 385-6935  
 Monday - Thursday 8 to 5  
 Friday 8 to noon

Jessica Haltom, J.W. Haltom, Amber Garcia & Erika Trotter

**FREE Android Phones**

**NEW Family Data Plan**

- UNLIMITED local data
- Only \$10 per month (per line after 1st line)

Plateau Wireless has your whole family covered with back-to-school savings on the hottest Android phones. Sign up now, and up to four family members will receive a FREE Samsung Galaxy 5 Android phone with access to 1000s of popular apps!

And with our new family data plan, you'll save big on **UNLIMITED LOCAL DATA** for all family members.

To learn more, call us today!

**FREE Activation with donation of 3 school supplies (minimum \$10 value)!!**

Local Family Data Plan requires one Local Premium Browsing Plan per account. Lines two through four on Local Family Data Plan must also subscribe to a Voice Plan. Limit of four free Samsung Galaxy 5 phones available when subscribing to voice and data services. A two-year contract is required on each new phone. While supplies last. Other restrictions apply.

**877-PLATEAU**  
[plateauwireless.com](http://plateauwireless.com)

**PLATEAU**  
 Wireless

# MAHD meeting... Continued from page 1

Received a report from MAHD controller Vickie Groneman in which she noted that the hospital has been in the process of refunding some of the overpayments the district had previously received from patients.

Liles questioned the action, noting that the hospital district's board had suspended the refunding process several years ago.

In his response, Burke pointed out that it was something the district's auditors said needed to be done.

It should also be noted that at a previous audit presentation to the board it was noted that after a certain length of time such funds couldn't be held by the hospital district and were supposed to be turned over to the State Comptroller's office.

Liles also questioned the inclusion of land listed on the district's balance sheet at \$29,000, an item which Burke noted had been listed on the balance sheet for

several years. In 2005, the amount listed was \$21,000. This amount later increased, and from prior to January 2009 until July 2011 has been listed at its current \$29,000.

Liles also asked Burke if board approval had been received for work that has been completed at the Muleshoe Family Medicine Clinic.

Burke explained that it was work needed for Dr. Tyson Purdy to join the practice, and that it didn't require prior board authorization because it was for less than \$25,000.

Approved a debit card for the hospital district so individual employees purchasing items for the district won't need to use their personal cards and seek reimbursement afterwards.

Liles questioned the need for the card, suggesting that a purchase order accompanied by a check should be sufficient.

However Burke

explained that the accounting department wasn't set up to cut individual checks in the manner Liles suggested.

Liles also asked about the documentation procedure that would be followed regarding the debt card.

Discussed the upcoming district budget meetings and related tax rate public hearings.

Burke said the district's

tax rate would most likely remain at its 40 cent capped rate.

Approved the hospital's department policies and procedures, an annual action that is part of the district's audit process. According to Burke, no changes had been made to the policies and procedures since the board's last approval.

Granted privileges to Dr. Tyson Purdy at the

Muleshoe Area Medical Center. minutes from the June 23 regular meeting and the

Approved the June 27 special session.



**Lance Insurance**

Competitive Rates, Variety of Leading Companies  
For Home, Auto, Commercial and Crop

**806-227-2466**

The power of love to change bodies is legendary, built into folklore, common sense, and everyday experience. Love moves the flesh, it pushes matter around.... Throughout history, "tender loving care" has uniformly been recognized as a valuable element in healing.

Larry Dossey

## HOMETOWN HEROES

EMERGENCY PERSONNEL  
MEDICAL PROFESSIONALS  
CITY GOVERNMENT & EDUCATORS  
SPIRITUAL LEADERS

Thank you members of the medical community in Muleshoe and Bailey County for your loving care of the people of this area. Your commitment is appreciated, though we all too often let it go unsaid.



**Muleshoe Area Hospital District** - Function - To provide the best and most accurately advanced treatment possible for the community we represent with the most compassionate care possible. Our hospital district includes: Muleshoe Area Medical Center; Park View Nursing Care Center (Medicare Certified & Special Care); Muleshoe Family Medicine Clinic, Dr. Bruce Purdy, Dr. Grant Nitzel and Dr. Tyson Purdy; Medical Clinic of Muleshoe, Dr. Kyle Sheets, Sherry Whiteaker FNP, Suzanne Bunker, PA-C and Stacy Zevetchin, PA; Claborn Clinic, Family Medicine Clinic specializing in dermatology, Dr. Jobey Claborn; Outpatient Clinic, Judy Jacobs, RN. Area of coverage - Muleshoe Area Hospital District covers Bailey County and part of Parmer County. We provide services to all the surrounding areas. Starting with severe colds at our clinics to exploratory scopes and swing beds at our hospital, our long term goal is to provide the needed service that will accommodate the community we represent. Goals or Projects - It is our goal to provide an adequate supply of caring physicians to our area; providers that express a great desire to make Muleshoe their home. The hospital will continue to provide delicious/nutritious meals to our seniors through Meals-On-Wheels. Dr. Bruce Purdy has been serving our community for over 30 years, and now his son, Dr. Tyson Purdy is joining the practice with him and Dr. Grant Nitzel, and is our first "homegrown" doctor.

**Park View Nursing Care Center** - Function - To provide quality health, emotional, and spiritual care in a manner which demonstrates Christian concern while maintaining the fiscal integrity of Park View. Park View serves a 100 mile radius. 65 full time employees and 51 volunteers.

**Bailey County EMS** - Jackie Wayne Burris, Director/Paramedic; EMTs - Alex Garcia, Curby Brantley, Craig Giesbrecht, Karen Jones, Ralph Sanchez, Kevin Baize, Kendall Geisbrecht, Ron Morgan, Bryan Morris, Lawrence Geisbrecht, Justin Helton, and Erica Bartley; Paramedics - Kem Bales, Johnny Brooks, Joel Gershon, Michael Jordan, April Lee, Darrell Schmidt, Karen Burns and Chad Nickels. Function - Bailey County EMS is the primary Emergency Medical Service responder for the City of Muleshoe, and Bailey County. We provide emergency care and transport, as well as non-emergency medical care on a 24-hour/7-day basis. We currently have 2 ambulances that are licensed by the Texas Dept. of State Health Services as Basic Life Support Units with MICU (Mobile Intensive Care Unit) capability. We provide mutual aid for Earth, Sudan and Lazbuddie EMS, Clovis and Portales Fire Departments, and other EMS services. Goals/Projects - Bailey Co. EMS always welcomes the public to come by and see our operation, as well as have your blood pressure checked by one of our staff members. We also welcome those who would like to give back to the community by volunteering or donations. We would like to better educate the public to the nature of our service, and to always show a positive and professional image to the citizens that we serve.

**IntegraCare Home Health** - Caring... with every touch is the motto of our home health service. Upon welcoming IntegraCare into their homes, our patients discover that skilled care, compassion and caring are the special touch our patients want. Care focuses on helping people manage chronic conditions, recover from illnesses, surgeries, accidents or changes in medical status, all in the comfort of the home. We provide skilled nursing, physical and occupational therapy, wound care and post-surgical management, diabetic, blood pressure, low vision, foot care, fall prevention and home safety programs, home health aids, rehospitalization prevention and more! Our services cover patients in the South Plains region and Texas Panhandle as well as most of the state of Texas. Medicare typically pays 100% for all home health services. We will be honored to provide you or someone you know with the highest level of home health care. Kristen Meeks, RN, BSN Clinical Supervisor, Mandy Whitaker, RN Case Manager, Cassandra Toscano, LVN Schedule Coordinator, Shirley Hood, CNA, and Karen Jones, EMT Account Executive

**Interim Healthcare** - Function - Provide comprehensive home care, including wound care, diabetic education, administration of insulin, IV therapy, and nutritional assessment among many other services. Also, specialized programs that include "Hip & Knee" program, "Heart to Heart" cardiac program, Congestive Heart Failure Program, "Good For the Sole" foot program, Honeywell HornMed telemonitoring and Anodyne Therapy. Jurisdiction - Bailey, Lamb, Parmer, and Castro counties. Other departments/agencies - Offices located in Clovis, NM, Lubbock, Plainview, Amarillo, Pampa, Levelland, Crosbyton, Odessa, Big Springs and Midland. Goals or Projects - To provide the best quality health care for West Texas and Eastern New Mexico. We want to meet people's needs, short-term or long-term in a positive, caring manner enabling them to stay in the comfort of their homes as long as possible because we know there is truly "no place like home!"

**Regence Health Network** - Function - Community health care center. We specialize in: women's health, diabetic issues, hypertension, Texas Health checkups for Medicaid patients, school physicals, pediatrics, immunizations. Patients pay on a "sliding" scale. Regence serves all the surrounding area. Other Departments/Agencies - Plainview, Hereford and Amarillo.

**Support Medical of Muleshoe** - Function - We are a durable medical equipment company that provides oxygen, powerchairs, wheelchairs, walkers, hospital beds, diabetic supplies, bath aids, and compression hosiery, covering a 60 mile radius of Muleshoe. Goals or Projects - We are dedicated to providing quality service & products to those in and around our community. With compassion and efficiency, we strive to improve the quality of life of the people in the community. Other Departments/Agencies.

**Other Medical entities in Muleshoe** - Dentists - Dr. Robert Lepard, DDS, PA and Dr. Tom K. Bonds, DDA, PA; Pharmacies - United Pharmacy & K & K Pharmacy; Chiropractors - Partain Chiropractic; Optometrist - Dr. Jerry Redwine.

### We Love Our Hometown Heroes!

MULESHOE ANIMAL CLINIC & VET SUPPLY 1430 US Hwy. 84, Muleshoe • 272-3061/272-4990	MCDONALD'S OF MULESHOE 1315 W. American Blvd., Muleshoe • 272-3333	FARMERS INSURANCE 1602 W. American Blvd., Muleshoe • 272-7548
FIVE AREA TELEPHONE ORGANIZATION 302 Lvalde, Muleshoe • 272-5533	MULESHOE TIRE 107 Main Street, Muleshoe • 272-4594	BAILEY CENTRAL APPRAISAL DISTRICT 302 Main Street, Muleshoe • 272-5501
BAILEY COUNTY ELECTRIC CO-OP ASSN. 305 E. Ave. B, Muleshoe • 272-4504	MAPLE CO-OP GIN Hwy. 596, Maple • 927-5501	RAY LEE EQUIPMENT 2800 W. American Blvd., Muleshoe • 272-4296
LOWE'S MARKETPLACE 401 W. American Blvd., Muleshoe • 272-4585	MULESHOE JOURNAL 201 W. Ave. C., Muleshoe • 272-4536	UNITED SUPERMARKETS 104 W. 9th, Muleshoe • 272-3120

## Commissioners' court...

Continued from page 1 than last year's.

"If we can't do the effective rate," said Judge Harrison, "we might as well do the rollback. The hearings are the same, and the additional funds won't be much."

"Everything else is going up," she added.

The judge pointed out that according to the figures received from the Bailey County Appraisal

District, the county's property valuations had decreased by an estimated \$2,251,000, due in large part to the decrease in the amount of commodities being stored locally.

With the proposed rate increase, the judge estimated the property taxes on a \$100,000 home would rise by \$65.

"I hate to go up that much," Vandiver said.

## Extension of emergency grazing period announced

Emergency grazing outside the Primary Nesting Season may be authorized if the County is designated as level "D2 Drought-Severe" on the U.S. Drought Monitor.

The authorization is limited to 90 calendar days, with the possibility of one 30 calendar day extension, not to exceed

## Changes announced for cattle being sold

Effective Aug.1, the Texas Animal Health Commission will no longer require brucellosis testing of adult cattle for change of ownership.

TAHC will also cease to pay the \$2 per head supplement to markets for the testing.

Approximately half of the markets have indicated however, that they intend to continue testing all or some of the adult cattle sold through their markets.

For markets wishing to test, they will still be able to receive all the supplies currently being provided at no charge, including the brucellosis card test kits. TAHC inspectors will also be able to run the supplemental testing as usual if a card positive animal is disclosed. TAHC officials strongly encourage voluntary testing of Texas cattle to remain vigilant in keeping Texas Brucellosis free.

Continued on page 7

Sept. 30. Bailey County has received a 90 day CRP Emergency Grazing authorization with an ending date prior to Sept. 30.

On July 29, the Texas State FSA Committee reviewed the Texas Drought Monitor which revealed all counties continue to be designated at a level of "D3 Extreme" or greater.

Based on this information, the committee determined to extend the emergency grazing date through Sept. 30.

## Journal wins...

Continued from page 1 into a divisive community issue."

Journalist of the Year — "Pretty good writing overall. Editorial was very good. Coverage of crime stories were good; features were good... Good range of writing."

Feature writing — "Pretty good story. Lots of good quotes allowing the story to tell itself."

# We have pre-approved loans!

UNDER NEW MANAGEMENT, Come by & see Adriana or Rudy!

**LOANS FROM \$200 TO \$1,190**  
MORE IF YOU QUALIFY.

\* Must meet budget criteria and present verifying income & residence information.

Quick & Easy apps!



206 S. Main • Muleshoe, TX • 806-272-3673

# Senior Citizen News

By Laverne Winn

Thursday, Aug. 4, Rick with Lubbock Hearing Technology will be at the center.

If you need his services please mark your calendar.

We are working on the budget for the center for 2012.

Just a reminder that the center operates on mostly donations. So, if you need to make a special donation for birthdays, memorials, thank you, or just for friendship, make a donation and we will send acknowledge notices.

We have a great meeting place for the senior citizens of this area. We need and greatly appreciate all the support you can give us.

We invite all our senior citizens 60+ to come have lunch and visit with friends.

If you have someone

that you know would enjoy the outing, bring them with you. If you are under 60 there is a \$5 fee for lunch,

Our friends that are on the sick list, our prayers and get will wishes are with you. We have several out do to illness.

All you vacationing friends we hope to have you back soon.

Hope everyone has had a good summer and are getting ready to get back in the routine of coming to the center.

Remember we have eighty, dominoes, puzzles, a good library, and a big screen television for all to enjoy.

Menu for Aug. 8-12:

Monday, Aug. 8 — Cheeseburgers, pork and beans, lettuce, tomatoes, onions, pickles, green chilies, chips and lemon pudding.

Tuesday, Aug. 9 — Egg rolls, oriental veggies, salad and cake.

Wednesday, Aug. 10 — Grilled steak, gravy, mashed potatoes, green beans, salad, wheat roll and peach cobbler.

Thursday, Aug. 11 — Smothered chicken, mixed veggies, salad, biscuit, fruit and cookies.

Friday, Aug. 12 — Fish or chicken strips, gravy, pinto beans, coleslaw, cornbread and fruit salad.

# Muleshoe Country Club Ladies Association

The Ladies Association of Muleshoe Country Club met Wednesday, July 20.

The 16 members enjoyed a lunch of chickenspaghetti, salad and watermelon, and a chocolate ice cream dessert, prepared by Pat Kirk, Treena Matthews and Linda Erdmann.

Club president Lavern Winn started the monthly meeting, and recognized Pat Kirk and Marlene Martin as our birthdays for July.

Treena Matthews reported on the High Plains Paydays' held in June and July. On June 15, Muleshoe was represented in Tulia by three members. Deborah Noble won a point with low net in the second flight, and Helen Templeton won a point with low putts in the third flight.

Muleshoe hosted on July 13, and had seven participants. Tammy Black earned one point



by winning low gross in the second flight, Pat Kirk earned a point by winning low putts in the second flight, and Linda Erdmann won low net in the third flight, also earning one point.

The next reports given, by Jerie Flowers, were the Ladies Association June and July play day reports. For June 29 Shang-Hi, Helen and Anita won for first one down on last hand. For Shang-Hi on July 6, Analita Haley won for the first pat hand.

The golf winners for best sport award on June 15

were; Christie Whitt, Judy Wilbanks, Jerie Flowers and Anita Black.

On June 29, best sport award went to Helen and Anita.

Winning on July 6, for low putts were; Helen, Tammy and Elinor Yerby.

Helen then drew for the door prize, and Treena Matthews was our July winner. Jerie assigned teams for the scramble, and there were three teams playing.

The winning team consisted of Anita Black, Kay Field and Tammy Black.

"Trust in the Lord with all your heart and lean not on your own understanding..."

Proverbs 3:5, NIV



# BAILEY COUNTY DEVOTIONAL PAGE

**"THE FIVE AREA TELEPHONE COOPERATIVE, INC."**  
West Plains Telecommunications, Inc.  
Five Area Systems, Inc. • Plateau Wireless  
Five Area Long Distance • Five Area Internet  
302 Uvalde Muleshoe, USA (806) 272-5533

Save Wholeheartedly, as if you were serving the Lord, not men. Ephesians 6:7  
**MULESHOE VALLEY INC.**  
2601 W. American Blvd., P.O. Box 631 Muleshoe, Texas  
(806) 272-4266  
Mobile (806) 946-8763  
mvlinc@fivearea.com

**MCDONALD'S OF MULESHOE**  
1315 W. American Blvd. • 272-3333  
Open at 5 AM every day! i'm lovin' it

**PAGO FEED YARD, INC.**  
Commercial Cattle Feeders  
P.O. Box 956, Friona 265-3281  
Feller Hughs - Mgr.

**MAPLE COOP GIN**  
927-5501  
Maple, Texas

1412 W. American Blvd. Muleshoe • 272-4213  
Open: Sun.-Mon. 11AM-11PM  
Lunch Buffet: Sun.-Fri. 11:30 AM-1:30PM  
Monday Night Buffet: 6-8PM  
**PIZZA HUT WING STREET IS HERE!**  
"Gather round the Good Stuff"

2800 West American Blvd. Muleshoe 272-4296  
**Ray Lee EQUIPMENT CO., LTD.**

**MULESHOE PEA & BEAN, INC.**  
1680 CR 1044, Muleshoe • 272-5589  
Nicky Nickels

**United Supermarkets**

**IRRIGATION PUMPS & POWER**  
**Zimmatic** W. Hwy. 84 272-5597  
CENTER PIVOTS

**Interim HEALTH CARE.** 110 E. Ave. C Muleshoe 272-5549  
www.InterimHealthcare.com  
Elizabeth Jaime, CSR • Olivia Barrera, Home Health Aide  
Birdie Valdez, LVN • Brenda Testerman, RN Case Manager

**Lowe's MARKETPLACE**  
401 W. American Blvd. • Muleshoe • 272-4585

**Muleshoe Journal**  
www.muleshoejournal.com  
201 W. Ave. C, Muleshoe  
806.272.4536 FAX 806.272.3567

**Seven Churches**

W L V Y Z R H S O R S T U G N C N O L D  
K X E V S V A W S A R H G P W K X U K T  
S U L Y J K X K P I H N Y H T C K Q X U  
S E N H V L B O O K O F L I F E S Z P Y  
N N H Y Z D A E C I D O A L W L E D B Y  
S I A C E R C O D A A S C A R P V T Y Y  
F C E T R O U Z A Z I R R D H S E B Q V  
Q O H A A W O V F R N M A E A Y N A Z X  
E L N L T S Z D L A Z C S L D R C R A X  
W A W L S D F S W J R U T P X D A K E G  
H I O F G E N O H Q S I F H F R N Z Z O  
I T R J N G V Y E Z M M T I R X D D I N  
T I C E I D T E S U B N Y A L Q L J O P  
E A S Z N E D N N I G W H R Y F E U S I  
S N R E R E K X D S D O A C N H S D I X  
T S O B O L J U P L T R G Y R A T T O B  
O A T E M B C Q C W H A A A H S I W P G  
N M C L M U M A G R E P R S N C C I V S  
E F I L F O E E R T K I K S N Y K K L C  
V K V G M D I V A D F O Y E K J S V Z X

Ephesus  
Seven Stars  
Seven  
Candlesticks  
Tree of Life  
Smyrna  
Synagogue of Satan  
Victors Crown  
Pergamum  
Double edged  
Sword  
Nicolaitians  
White Stone  
Thyatira  
Jezebel  
Morning Star  
Sardis  
Book of Life  
Philadelphia  
Key of David  
Laodicea  
Lukewarm  
(Solutions on page 7)

This devotional & directory is made possible by these businesses who encourage all of us to attend worship services.

**ASSEMBLY OF GOD**  
FIRST ASSEMBLY OF GOD  
Pastor Ryan Pate  
521 South First Street  
272-3017  
S.S. 9:45 am,  
W.S. 10:30 am & 6:00 pm,  
Wed. 7:00 pm  
**EL BUEN PASTOR**  
415 E. Ave. F - 272-5455  
Pastor Domingo Luna -  
272-4542  
S.S. 9:45 am, W.S. 11 am &  
6 pm; Wed. 7 pm

**CATHOLIC**  
IMMACULATE CONCEPTION  
CATHOLIC CHURCH  
805 E. Hickory  
Leonardo Pahamtang, Min.

**EPISCOPAL - CHARISMATIC**  
ST. CLEMENTS CHURCH  
COMMUNION OF CHRIST  
THE REDEEMER  
Hwy. 214 South • 272-5954  
Father Sergio Leal  
Sun. W.S. 10:30 am

**CHRISTIAN TRINITY CHRISTIAN CENTER**  
1723 W. American Blvd.  
272-3877  
Reydon Stanford, Pastor  
Sun. W.S. 10:30 am  
**CENTRO CRISTIANO**  
117 E. Birch St.  
Hermanos Barron  
S.S. 10 a.m.; W.S. 11 a.m. &  
6 p.m.; Wed. 7 p.m.

**CHURCH OF CHRIST LARIAT CHURCH OF CHRIST**  
Wesley Roach, Min.  
S.S. 10 a.m.; W.S. 11 a.m. &  
6 p.m.; Wed. 7:30 p.m.  
**LAZBUDDIE CHURCH OF CHRIST**  
Nathan Crawford, Min.  
S.S. 9:30 am; W.S. 10:20 am  
& 5 pm; Wed. 7 pm  
**MULESHOE CHURCH OF CHRIST**  
22nd & W. American Blvd.  
S.S. 9:30 am; W.S. 10:20 am  
& 6 pm; Wed. 7:30 pm  
**16th & AVE. D CHURCH OF CHRIST**  
Curtis Shelburne, Min.  
272-4619  
S.S. 9:30 am; W.S. 10:30 am;

Growth Gr. 1:30 pm;  
Wed. 7:00 pm

**LUTHERAN**  
ST. JOHN LUTHERAN  
Lariat, TX • David Symm, Min.  
S.S. 10:30 am; W.S. 9:30 am

**METHODIST**  
FIRST UNITED METHODIST  
507 W. 2nd St.  
S.S. 9:45; W.S. 11:00;  
Praise & Prayer 6 pm;  
First Sunday of Month  
4 pm Parkview Nursing Home  
Service  
Mon. 9 am Ladies Bible Stdy;  
Tues. 6 pm Adult Bible Stdy;  
Pastor Monty Leavell,  
272-5517  
**LAZBUDDIE METHODIST**  
S.S. 9:30 am; W.S. 10:30 am  
Pastor Ken Peterson  
965-2121  
**EL DIVINO SALVADOR U.M.C.**  
619 E. 5th Street & Ave. G,  
Fernando Sanchez, Pastor  
272-6888

**PENTECOSTAL UNITED PENTECOSTAL LIGHTHOUSE**  
207 East Ave. G  
1-800-454-6051  
S.S. 10 am; Thursday,  
Bible Study 7 pm

**INTER DENOMINATIONAL NEW COVENANT**  
Plainview Hwy.  
Steve Claybrook, Pastor  
W.S. 10 am; Wed. 7 pm  
**MULESHOE COWBOY FELLOWSHIP**  
710 E. American Blvd.  
Steve Friskup, Minister  
272-5199  
Service: 7:30 p.m. Thursday

**Antiques & Fine Things**  
2104 W. American Boulevard  
Muleshoe • 272-4217  
**Trollbeads**  
every story has a bead

**TEXAS FARM BUREAU INSURANCE CO.**  
1612 W. American Blvd., Muleshoe • 272-4567  
**FARM BUREAU INSURANCE**

**CENTRAL COMPRESS & WAREHOUSE**  
SUDAN, TEXAS

**Deaf Smith County Grain, Inc.**  
Cliff A. Skiles, Jr.  
Jeb S. Skiles

**MCCORMICK SEEDS, INC.**  
400 East Ash • 272-3156  
Muleshoe, Texas  
A COMPLETE LINE OF FIELD SEEDS  
Tim McCormick

**1ST BANK** MEMBER FDIC  
202 South First 272-4515

**Lial's TORTILLA FACTORY**  
105 E. Ash St., Muleshoe • 272-5772  
Phillipians 4; "I can do all things through Christ who strengthens me."

**MULESHOE ANIMAL CLINIC**  
GENERAL PRACTICE  
**M V S**  
1430 US Hwy. 84, Muleshoe Office: 272-3061

**BOEHNING DAIRY**  
690 CR 45, Earth  
"MILK - A PART OF EVERYTHING THAT IS GOOD!"

**BCEC** BAILEY COUNTY ELECTRIC COOPERATIVE ASSOCIATION  
A Touchstone Energy Cooperative  
Muleshoe — 272-4504 Morton — 266-8600

**WAYNE COPLEY TRUCKING**  
CALICHE, SAND & ROCK PRODUCTS  
P.O. Box 63 Muleshoe, Texas 79347 (806) 272-3697  
Mobile: (806) 946-8072

**J&S Dairy**  
1260 CR 1038, Muleshoe  
272-7706

To Place Your Ad Here  
Call Terry At  
Muleshoe Journal  
272-4536

# BAILEY COUNTY DEVOTIONAL PAGE

# Obituaries

## Dan Newberry



Dan Newberry took his final journey to see his precious Savior on Monday, July 25, 2011, at the age of 65 years and 11 months. He fought a courageous battle with cancer for seven years.

Dan, along with his twin brother, Van were born in Quanah on Aug. 26, 1945, to Byron Vestal and Mary (Young) Newberry.

In 1947 the family moved to Hamlin, where Dan graduated from Hamlin High School in 1963. He attended Hardin-Simmons University on a golf scholarship. There he met the love of his life Kay Rainwater.

While at HSU he was a member of Sigma Delta Sigma Social club.

He was also Cadet Colonel of the Army ROTC his senior year at HSU. Upon graduation in 1968 he was commissioned a second lieutenant in the Regular Army, and served his country in Germany and Vietnam. He resigned his commission in July 1971 at the rank of Captain.

Dan taught Biology and coached at Hamlin Junior High from 1971-1974. In 1974 he moved his family to Wolfforth. He was the junior high and high school counselor for a year then he was promoted to principal of Frenship Junior High in 1975. He served there for nine years then he chose to

move to the elementary level.

He was principal of Reese Elementary and Casey Elementary from 1984 until his retirement in 2001. In 2001, he became a beloved member of the Resthaven Funeral Home Family.

Along with his bachelor's degree in biology and physical education from Hardin Simmons University, he received his Master of Education in 1974 in guidance and counseling.

In 1979, he received another Master of Education in mid-management from Sul Ross State University, Alpine.

Dan organized the Chapter of Nation Honor society at Frenship High School in 1975.

He was a member of the Texas Elementary Principals and Supervisors Association, Life member of Texas State Teachers Association, and a Bacon Heights Baptist Church deacon, where he also served on numerous committees.

Along with educational and church oriented activities, Dan volunteered his time to the community. He was an active member

of Wolfforth Lions Club, charter member of Wolfforth Area Chamber of Commerce and Agriculture and he served on the Wolfforth City Council for 10 years.

Dan is preceded in death by his father — BV Newberry, in 1994, and his daughter — Mollie Beth Newberry, in 1985.

Among those left to honor and cherish his memory are his loving wife — Kay Newberry; two sons — Todd Eric and Kyra Newberry of Muleshoe, Cory Dan and Tina Newberry of Plano; his mother — Mary Newberry; a brother — Van and Ann Newberry, all of Abilene; and several grandchildren — Kamron, Tyler, Nicholas, Addyson and Gabriela Newberry.

In lieu of flowers, memorials may be made to Bacon Heights Baptist Church Building Fund, Vista Care Hospice, Leslea Vardy Underwood Cancer Fund at Peoples Bank or the First Baptist Church of Muleshoe.

Celebration of Life services were held on Friday, July 29, at Bacon Heights Baptist Church with Dr. Jerry Joplin, Dr. Truman Johnson and Dr. Ken Horn officiating. Interment with military honors followed at Resthaven Memorial Park.

Condolences may be offered at [www.resthavenfuneralhome.com](http://www.resthavenfuneralhome.com).

## Dorothy Harlan



Funeral services for Dorothy Ray Harlan, 87, of Lubbock were held on Tuesday, Aug. 2, at the First Baptist Church of Muleshoe with Curtis Shelburne officiating.

Burial was held in Muleshoe Memorial Park Cemetery. Viewing will be Monday in the Ellis Funeral Home of Muleshoe.

Dorothy Harlan died on July 30, 2011, in Lubbock. She was born on Aug. 10, 1923, in Woodstock, Ga. to Robert Lee and Iva Ray [Brown] Jones. She was a Muleshoe graduate in Class of 1940, and married William Griffiths Harlan in Clovis N.M., on March 10, 1946.

She worked for Bailey County Electric during World War II and after the war she was a homemaker. She was saved at age 10 and was the longest living member of First Baptist Church in Muleshoe. Her favorite quotations

and scriptures were "God and family," "This too shall pass," and "My grace is sufficient for you,"

Survivors include a son — Samuel Gordon Harlan and wife Jean Ellen; two daughters — Connie Suellen Kenmore and husband Ronnie Kenmore, and Lee Ann Spray and husband Chris Spray; seven grandchildren — Christopher Kyle Kenmore, Kendra Leyan Thomas, William Barak Harlan, Megan Ray Hembree, Stacy Lee Miller, L'Ray Klafka and J'Cie Montalvo; and eight great-grandchildren — William Griffin Harlan, Lauren Kate

Harlan, Dorothy Grace Miller, Chance Russell Hembree, Miles Andrew Thomas, Christopher Kye Klafka, Haygen Reese Klafka and Timothy Ethan Montalvo.

She was preceded in death by her husband — William Griffiths Harlan in 1994, a granddaughter — D'Nae Spray in 1983, and siblings — Robert Lee Jones, Jack Edward Jones and Billye Ed Jones.

A special gratitude of thanks to the employees of Covenant Medical ICU Staff and Palliative Care Doctors and Nursing Staff, Dr. Holly Stewart and the Wedgewood South Assisted Living Staff.

Memorial Contributions may be made to: First Baptist Church Building Fund, 220 West Avenue C, Muleshoe, Texas 79347, or Covenant Palliative Care Unit, 3615 19th Street, Lubbock, Texas 79410.

## Pat Malone

Pat Evans Malone, 62, of Dallas, formerly of Muleshoe, died on July 9, 2011.

He was the son of Dudley and Ruth Malone, who preceded him in death.

He is survived by a sister — Kay Kimbrough of San Antonio; and a brother — Wayne Malone of Abilene.

Pat was a 1967 graduate of Muleshoe High School.

After his graduation, he studied and worked extensively in the nursing field, and had a 28-year tenure with Parkland Memorial Hospital of Dallas as a registered nurse.

A private memorial service in celebration of Pat's life was held in Dallas on July 16.

## Obituaries and Death notices

Death notices will be published free of charge in the Muleshoe Journal. There is a fee of \$30 for the publication of "basic obituaries." "Non-basic obituaries" will be published at the rate of \$4.50 per column inch. In all cases, the obituary information should be submitted by the funeral home for verification purposes.

The guidelines that will be used to determine if, and how much the publication will cost is as follows:

### Death Notices...

Death notices may include the deceased's name, city of residence, age, date and place of birth, date and place of death. If the notice is to be published prior to any services, the time, date and location of services, and location of burial may be included. If publication will be after said services, the time will not be included. An example is as follows:

### Basic obituary...

Basic obituaries printed in the Muleshoe Journal are printed at the basic rate of \$30, and may contain the following information: date and details of funeral and place of burial; date and place of birth and parents names; date of marriage; limited biographical information, including the highest level of schooling achieved, service in the Armed Forces, profession (and retirement information if applicable); names of parents, spouses or children who have preceded the person in death; names of survivors, including the spouse, parents, brothers, sisters and children. Only the number of grandchildren, great-grandchildren and great-great-grandchildren will be included; and where memorials may be directed. We will run a one column black and white photo at no charge.

### Non-basic obituary...

A larger photo, or content that varies from that listed for a basic obituary — such as the names of grandchildren, or additional relatives or relationships — will require the obituary to be published at a rate of \$4.50 per column inch.

## Jim Hartline

A memorial service for Jim Hartline, 79, was held Friday, July 29, at Ellis Funeral Home in Muleshoe.

Jim was born on March 19, 1932, in Mt. Glen, Ill., the third of four children to Francis and Mae Hartline. He died on July 27, 2011, in Lubbock.

During the Korean War, Jim was stationed at Reese Air Force Base in Lubbock from 1952-1956 as a master sergeant. While stationed there, he met Shirley Rankin, who became his wife on Nov. 10, 1954.

They made their home in Levelland until moving to Muleshoe in 1966, where Jim and Shirley remained up until his death.

While in Levelland, Jim was among a group of Hockley County citizens who petitioned the Texas State Board of Education in 1956 for permission to establish a junior college in Levelland. Given permission to hold an election, the citizens of Hockley County voted to establish South Plains College on April 2, 1957.

Jim was a local business man in Muleshoe, managing Jim's Pay N' Save, one of the first of the present day, Lowe's grocery stores chain. Later



he helped establish, operate and manage the Muleshoe Housing Authority as well as the Harmon Elliot Retirement Center.

He is preceded in death by his parents, two sisters, and daughter — Lori.

Jim is survived by his wife — Shirley; three sons and their spouses — James and Donna Hartline of Littlefield, Mark and Virgie Hartline of Muleshoe, and Bruce and Patty Hartline of Muleshoe; a brother — Curtis Hartline of Carbondale, Ill.; and two granddaughters they raised — Natalie Gutierrez of Plainview and Libby Leal of Amarillo. He is also survived by 12 additional grandchildren and 28 great-grandchildren.

Jim Hartline touched and motivated many lives through his time with us. He will be missed dearly.

"Listen, my son, to your father's instruction and do not forsake your mother's teaching. They will be a garland to grace your head and a chain to adorn your neck..."  
Proverbs 1:8-9, NIV



*We strive to improve your life through knowledge, experience, and service.*

## Get ready to lose those extra pounds!

We carry an extensive line of high quality pharmaceutical grade supplements by **PURE Encapsulations**. Pure Encapsulations supplements contain absolutely no hidden fillers, coatings, artificial colors or other excipients that would disrupt or diminish the bioavailability of the ingredients. Additionally, our products are always free of wheat, gluten, preservatives and hydrogenated oils.



offers the highest quality nutraceuticals manufactured to meet or exceed strict **cGMP quality standards**. NuMedica has pioneered the development of innovative, science-based nutritional supplements that are prescribed by thousands of licensed healthcare practitioners around the world. NuMedica prides itself on setting the standard for the highest quality, innovative nutritional formulas in the professional marketplace. For example we carry **Power Greens™**. An easy mixing, great tasting and energizing "phyto-nutrient" powder mix loaded with certified organic, whole food plant extracts.

We also carry **HC3 trim drops and Phase 1** a complete 40 day Dietary Program that contains essential minerals, vitamin B-12, antioxidants, detoxification support for optimal results. **How Does HCG Work?** HCG triggers the body to provide a constant flow of "food" metabolized from your stored fat that your body is breaking down and using. That means burning 3500 to 4000 calories of stored fat. Lose 1 to 2 pounds a day.



**Delivery • Online RX Refills • Fast Pay • Prescriptions by Mail**

*Hablamos Espanol!*

**Please contact us: Call: 806-272-7511**

**Fax: 806-272-7515, Email: [kay@k-pharmacy.com](mailto:kay@k-pharmacy.com)**

**or Website: [k-pharmacy.com](http://k-pharmacy.com)**

**Kay Campbell and Kristine Isaacson • Pharmacist/Owners, K-K Pharmacy  
1411 West American Blvd. • Muleshoe, TX 79347**

# A tale may be told by the length of chromosome tails

Have you heard about telomeres?

A telomere is "a region of repetitive DNA sequences at the end of a chromosome, which protects the end of the chromosome from deterioration or from fusion with neighboring chromosomes" (Wikipedia). Hmm.

Telomeres, it seems, are sort of like tails on the ends of our chromosomes. Like the plastic tips at the ends of shoelaces, they keep our chromosomes from "fraying" and may have a lot to do with how we age.

Young people have the longest telomeres. Their bodies are better able to fight off the effects of aging, such as weakening immune systems, etc. And so, may your chromosomes prosper and their telomeres be



**Focus On Faith**  
Curtis Shelburne

long!

A recent morning show segment on telomeres was interesting (and kind of funny). The doctor/reporter gal had made arrangements to have her telomeres tested.

(Yes, you can, too, for \$249.) They were revealing the results (eight percent margin of error) live on national TV.

Her physical age was on a chart. We waited for her "telomere age" to be banged up there on the same chart. (Yes, how heart-warming to a 54-year-old like me if his telomeres turned out to be what you'd expect in a 45-year-old!)

The doc was 59 (if she was honest), and we watched as her "telomere age" was revealed. Good news! It was a round number. Bad news! It was 70!

She took it pretty womanfully, I guess. She managed to get the words out, "Well, I'm not all that surprised." Oh, but she looked surprised. She looked like she was trying her best to breathe even though she'd just inhaled a golf ball!

Having recovered somewhat for the camera, she then betrayed, I think, both the arrogance common age-long to the human race, and the particularly striking arrogance of our time. She said, "Well, I'm not too surprised. I grew up in a home with second-hand smoke, and I partied too much sometimes in college."

But since then, she allowed as how she'd lived "a good life." She didn't mean morally. She just meant she'd been very serious about stuff like never drinking milk from a cow would actually claim, etc.

Well, living smarter will probably help you live longer (and the good doc vowed to be even more serious about it and come back in five years with longer telomeres).

But I've got news for you: you won't do everything right. You can't. And even if you do a bunch right, life has a way of dealing with such arrogance. (The Greeks called it "hubris." World-class pride.)

You'll slip in the shower and break your neck, or you'll be such a pain in the neck that somebody will run over you on purpose and put

you out of our misery!

The Apostle Paul is surely right: bodily exercise is "of some value." But let's be careful not to put all our eggs in this earthly basket. Besides, who in their right mind wants to live to be 120?

If we have no hope beyond this present life, then we'd better fixate on our fraying telomeres. But those who trust in God can live life with hope and joy, knowing that our life both here and hereafter is in good hands.

## Columnist discusses mental health, cases

I prepared notes that I thought I might refer to in writing this paper, but news about the terrible shooting in Arizona has captured my attention and made me feel so bad I'm not certain I can get in the proper frame of mind for that right now. But I will do the best I can.

I've had considerable experience working with those who had afflicted or deranged minds, and it is sometimes pretty hard to deal with them. They don't all conduct themselves alike. We have had a little of it in our family - as far as I know only two or three cases - but one turned out to be very serious.

An aunt and uncle (brother and sister) lived on top of a red hill near Pearson Switch in Oklahoma. They had a little oil well on their place, and he had trouble with the pumper. So one quiet Sunday morning he walked down the road to where he lived. He knocked on the door, the pumper came to the door and Uncle Frank shot and killed him.

So the courts committed both of them to the mental institution where they stayed the rest of their lives.

I was just a small child at that time, but I noticed that out kinfolks, "Uncle John, Uncle Jim" and other came to my father for advice and counsel. And that continued for years after we moved to Texas. In fact some of them moved in and lived with us.

Unless there's been some changes during recent years, which I doubt, mental illness is handled by the Probate Court. But during my life time there has been quite a lot of advancement in the care for and treatment of people that are afflicted with mental care for and treatment of people that are afflicted with mental or emotional problems.

Consequently there's not as much need for hospitalization now as there was years ago, and that is another thing we should be thankful for.

I served for more than 20 years as secretary of the board of trustees of the mental hospital in Plainview. Thus I witnessed the development, not only for mental illness, but for drug abuse, alcoholism and other emotional



problems.

We established local offices in several of the counties, so minor problems could be cared for on a local basis. There is no dollar value that can be put on the service that has been and is being rendered for people that need those treatments.

I'm satisfied that if Uncle Frank and Aunt Frannie had lived today

they would have enjoyed more normal lives, for they were capable people. And the pumper's life would have been spared.

People can be born with mental or emotional problems the same as they can be born with physical or emotional problems. And they should be treated for their problems - whatever they might be. For a human life is too

valuable to be wasted. "They that be whole don't need a physician, but they that are sick."

And it might be well that we give a little more thought to the ministry of Christ who came "not to call the righteous, but sinners to repentance."

With the exception of Christ, the Son of God, I doubt there being any individual that is not adversely affected, to some extent, by a mental or emotional imbalance of some kind. It is if or when that becomes so severe

Continued on page 10

**For Back-to-School and Fair**  
We honor NM & TX Tax-Free Days

**TAX Free WEEKENDS** August 5<sup>th</sup> & 6<sup>th</sup> August 19<sup>th</sup> & 20<sup>th</sup>

Save the Tax on **EVERYTHING STOREWIDE!**

**50% OFF** Dusty Rhodes 10X or less Straw Hats **Plus NO TAX!**

**RESISTOL** Resistol Straw Hats Reg. \$89 **Now \$29.99!! Plus NO TAX!**

Get Ready for the **RESISTOL FELT HAT SALE!**

**Fat Babies** Reg. \$89-149 **\$10 Off!**

**20% OFF!** Purses, Wallets, Bible Covers, Money Clips, Cell Phone Cases

**20% OFF!** 4-Piece, Copper Insets reg. \$2,689 - \$2,151

Save the Tax on **NEW & USED SADDLES, too!**

**Rainbow Spurs \$39** New Cactus Saddles \$250 off New Pish, Bill Hill & James Morris Saddles \$100 off Any Brand New Kid's Saddles \$50 off

Joe's Boot Shop carries a Complete Line of Feed! Best Horse Feed in America!

**Full Quill Ostrich \$399** Ariat, Justin, Nocona Reg. \$499

**\$259** Tin Haul Co. Toastin' a Narly Gator Reg. \$279

**Corral Ladies' Fashion Boots \$219 & \$229** Reg. \$239-\$249

**20% OFF!** Ladies' Tops, Men's Shirts, Kid's Clothing

**20% OFF!** Huge Selection

**20% OFF!** Oval Table - \$671 reg. \$839 Chairs - \$127 reg. \$159

**20% OFF!** Large Selection Lodge Cookware

**20% OFF!** Boots: \$9-\$39-\$49 \$59-\$69-\$79 \$89-\$99-\$109 \$129

**20% OFF!** Anderson Bean Men's & Ladies' Boots Reg. \$339-\$359 **\$20 Off!**

**20% OFF!** Wrangler, Cruel Girl & Cinch

**20% OFF!** Country Junction Everything! Limited to in-stock merchandise only. Does not include sale-priced merchandise. No Special Orders!

**20% OFF!** Bedroom Suites • Comforter Sets Designer Pillows • Rugs & Lamps & MORE!

**Don't forget to shop the BARGAIN BARN for the BEST DEALS EVER!**

**Not Just School Clothes! EVERYTHING!**

**We're at Your Service**

Visit the following local businesses for quality service and customer satisfaction

**CABINETS LOOKING**

*Wills Doors & More*

A LITTLE TIRED?

Ronnie Wills 806-441-0931  
Richard Wills 806-965-2897

Custom Cabinetry & Remodeling  
New Cabinets • Refacing Cabinets  
Remodel Kitchens • Remodel Baths

**Samaritan Hospice**  
"Neighbors making a difference"

**Serving 13 counties including:**  
Bailey, Parmer, Deaf Smith, Castro, Lamb and Hale.

Nurse on call 24/7  
426 N. Main, Suite E • Hereford, TX 79045  
806-363-6085 • 866-595-0564  
A non profit Christian organization

**RESCUE HEATING AND AIR**

**24 Hour Service Free Second Opinion & Estimates**

**272-5085**  
Sales • Service Installation  
21 Years Experience  
**100% Satisfaction Guarantee**  
TACLB23924E

**15% Off First Cleaning with Coupon**

**Next to Godliness Cleaning**

**Residential Cleaning**  
Call Kelly @ 806-272-3255

**R.A.S.S**  
*(Reliable, Alert, Security, Specialist)*

**Security & Private Investigations**

**JULIAN DOMINGUEZ: 806-946-6799**  
**RALPH SANCHEZ: 806-946-7189**

Office: 806-272-6025 • Fax: 806-272-5922  
2705 W. American Blvd., Muleshoe, TX 79347  
rassecuritypi@gmail.com  
"Licenced by the Texas Commission on Private Security" License # C16529

**If we can't fix it, throw it away!**

Sheetrock, Drywalling, Tape & Bed, Patch Up Jobs, Acoustic & Paneling, Small Concrete Jobs, Picket Fences, Bathroom Remodeling, Floor Tile, Sky Lights, Carports, Garage Doors, Insulation, Etc. Add On's and Roofing - References Available

**Handy Randy**  
*We will travel!*

Pager: 766-9342    Member of BBB of Lubbock    Cell: 806-632-5261  
Home: 806-385-3103    Littlefield, TX

**Klassy & Sassy**  
HAIR SALON  
**(806) 272-7785**

**804 W. American Blvd.**  
*Hair and Waxing*

Mon.-Fri. 9:00 a.m.-5:00 p.m. • Saturday 9:00 a.m.-Noon  
**Claudia Morales & Crystal Regalado**

**The Energy of Life Wellness Center**  
*Discover the benefits of*

**GOOD NUTRITION**  
Improve your health • Boost your energy  
Control your weight

**And enjoy life to the fullest!**

To make an appointment contact:  
Elvia Gutierrez \* 806-729-1831  
Mon.-Fri. 8 am-11am and 5 pm-8pm • Sat. 8am-11am  
122 E. Ave. B • Muleshoe, TX 79347

FOR LADIES ONLY

**ZUMBA**  
FITNESS

**DITCH THE WORKOUT! JOIN THE PARTY!**

**MONDAY - FRIDAY \* 8 AM - 8 PM**

For More Information Contact:  
**Carla Avila @ 432-294-2836**  
124 E. AVE. B., MULESHOE, TX

\* MERENGE \* SALSA \* REGGETON \* CUMBIA \* QUEBRADITA \* SAMBA \* YOU MAY BRING YOUR OWN TONING STICKS!

Must Show Valid Photo I.D. \* No Children Allowed

I love ice cream sandwiches!

I like to make root beer floats!

# Newspaper Fun!

www.readingclubfun.com

Animills LLC © 2011 V8-N32

## What's the Scoop?

We seem to like ice cream dished out any way we can get it! It is said to be the favorite dessert in our country.

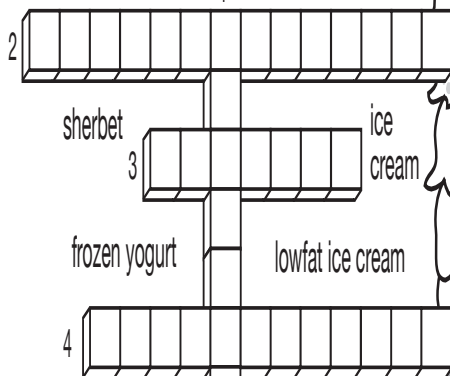
Can you find and circle these favorite

ice cream treats, flavors and toppings?

### How Do We Like It?

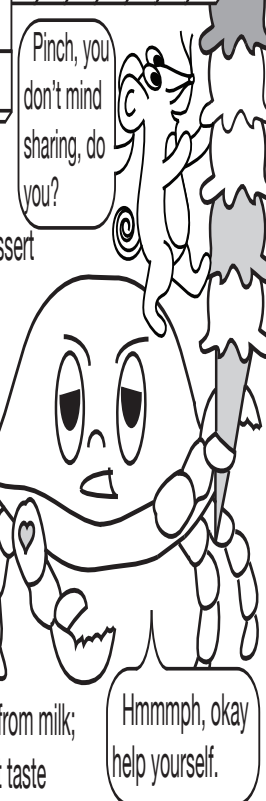
R C H O P P E D N U T S O E D C J O K I U H V  
 P E R F G V U H J Y I A W S E D C R G T Y H A  
 Y W E R C G H U M A R S H M A L L O W L O U N  
 V M I W E X F T Y H O P L K U J M N H U A S I  
 M I N T C H O C O L A T E C H I P I E D F T L  
 G L O E F R T G H U L P O O J R D E A S H L  
 O K M E F V Y U I J H A S O H F K O P L G D A  
 I S J B Y D F Y U H B F G K L I F R A P P E T  
 S H L J N I H F R B L P I I J G R E G F E U T  
 R A B L J S U N D A E K J E K O U P E G A J P  
 Y K H U G H K O U N K H F S X C T U I J C E Q  
 C E A Z G Y J I K A M H T A O L F J B F H O Y  
 Z F R E A J I Y U N K L M N J F Y R E D E C T  
 N K C A N D Y K L A V S O D A O P K L J S A Y  
 V F O D E Y I O K S X U H C A S O U E K H U R  
 F E O C Y R E D J P I O J R J H G B M O T U R  
 H J K E D A U B H L B J G E L I J O A B H U E  
 B U I S V B R H C I W D N A S Y U T R L O K B  
 B H E O U T G H J T G V D M L O K J A J B R W  
 M H S K O I U F R S E A C E S C T K C K O L A  
 V U T H E K O J U S P R I N K L E S L P I U R  
 L M Y G N K S E W D X A C T G Y H U I J O K T  
 C H O C O L A T E I E R I U F C H E R R I E S  
 I R E S C O L E S E G D U F T O H O S A O U I

What's your favorite frozen dessert? Frozen yogurt? Ice cream? Sherbet? Lowfat ice cream? Frozen desserts are great any time, but they are especially refreshing on hot summer days. Do you know your scoops?



Read the clues and fill in the puzzle:

- smooth, sweet frozen dessert made of cream, sugar, eggs and flavorings
- sweetened, frozen, less than 10% milk fat
- mostly made of water, sugar, flavoring and a small amount of milk
- like a custard, it is made from milk; it has a slight sour-sweet taste



Pinch, you don't mind sharing, do you?

Hmmph, okay help yourself.

- cherries
- caramel
- hot fudge
- chopped nuts
- marshmallow
- mint chocolate chip
- cookies and cream
- coffee
- vanilla
- chocolate
- strawberry
- peaches
- cookies
- candy
- sprinkles
- cone
- float
- soda
- frappe
- dish
- sundae
- bar
- milkshake
- banana split
- sandwich

### Mini Mule cheer camp set

A mini mule cheerleading camp will be held Aug. 10-11, from 8:30-11 a.m., Registration will be held between the coaches' office and the Old high school gym.

The cost is \$25 prior to Aug. 5, and \$30 thereafter.

**BONNIE BONCHO**  
 Back to School SALE!  
 \* Starting Thursday \*

Located inside The Studio  
 230 S. Main.  
 806-240-1698  
 806-292-2471

### SHOP THESE MULESHOE MERCHANTS!

**Muleshoe Auto Parts**

Quick Oil Change & Service  
 102 W. American Blvd.  
 272-4288

**Auto Plus**

**FARMERS INSURANCE GROUP**  
 Symbol of Superior Service

**FARMERS**

Julie DeBruin  
 Agent

Call for a free quote  
**AUTO • LIFE**  
**HOME • BUSINESS**  
 1602 W. American Blvd.  
 Muleshoe, Texas  
 272-7548  
 jdebruin@farmersagent.com

1105

**RED WING SHOES**  
 Made in USA

**The Fair Store**  
 120 Main 272-3500

**Lowe's**  
 MARKETPLACE

401 W. American Blvd.  
 Muleshoe, Texas  
 272-4585

## Cattle sales... Continued from page 3

remember that Brucellosis was found in two cattle herds in Texas earlier this year. Approximately 25 card positive (usually false positive) animals per month are detected throughout Texas markets.

The secondary test run by TAHC inspectors at markets will usually clear those consignments for sale unrestricted, and only require the card positive animal to be held up.

"Even though TAHC is undergoing drastic budget reductions, the agency will continue to provide a market inspector wherever cattle are sold to support all of the cattle programs underway," Dr. Dee Ellis, state veterinarian, said.

A separate issue regarding the identification of cattle is also under discussion. Historically all Texas cattle leaving a market have had a USDA eartag in place because they were brucellosis tested there.

The official identification of cattle

(usually with a metal eartag) is not completely linked to brucellosis testing however. TAHC and USDA rules require official identification on all cattle tested, but they also require the market to record existing official Id's on any adult cattle presented for sale, all dairy

cattle prior to movement, any bulls involved with the Trichomoniasis program and Mexican origin event cattle.

It is anticipated that a rule proposal in September that may require permanent identification of adult cattle sold at Texas markets.

### Seven Churches

W L V Y Z R H S O R S T U G N C N O L D  
 K X E V S V A W S A R H G P W K X U K T  
 S U L Y J K X K P I H N Y H T C K Q X U  
 S E N H V L B O O K O F L I F E S Z P Y  
 N N H Y Z D A E C I D O A L W L E D B Y  
 S I A C E R C O D A A S C A R P V T Y Y  
 F C E T R O U Z A Z I R R D H S E B Q V  
 Q O H A A W O V F R N M A E A Y N A Z X  
 E L N L T S Z D L A Z C S L D R C R A X  
 W A W L S D F S W J R U T P X D A K E G  
 H I O F G E N O H Q S I F H F R N Z Z O  
 I T R J N G V Y E Z M M T I R X D D I N  
 T I C E I D T E S U B N Y A L Q L J O P  
 E A S Z N E D N N I G W H R Y F E U S I  
 S N R E R E K X D S D O A C N H S D I X  
 T S O B O L J U P L T R G Y R A T T O B  
 O A T E M B C Q C W H A A A H S I W P G  
 N M C L M U M A G R E P R S N C I V S  
 E F I L F O E E R T K I K S N Y K L C  
 V K V G M D I V A D F O Y E K J S V Z X

## Weather on the South Plains can change quickly.



We're the answer.

Our name has weathered some changes; Originally, Federal Land Bank then, First Ag Credit and now, **Capital Farm Credit.**

But, we're still the same seasoned lenders that understand your agricultural needs. And, we have returned more than \$400 million to our customers in recent years.

Crosbyton | Lamesa | Levelland | Littlefield  
 Lubbock | Muleshoe | Spur

1.877.944.5500  
 CapitalFarmCredit.com



TEXAS' LARGEST RURAL LENDER

**FOR LADIES ONLY**

**ZUMBA**  
 FITNESS

**DITCH THE WORKOUT!  
 JOIN THE PARTY!**

**MONDAY - FRIDAY**  
**8 AM - 8 PM**

For More Information Contact:  
**Carla Avila @ 432-294-2836**  
 124 E. AVE. B., MULESHOE, TX

- \* MERENGE
- \* SALSA
- \* REGGETON
- \* CUMBIA
- \* QUEBRADITA
- \* SAMBA

YOU MAY BRING YOUR OWN TONING STICKS!!

Must Show Valid Photo I.D. \* No Children Allowed



# The Sudan Buzzy

## Sudan students are gearing up for another terrific year

Sudan High School students rustled out of bed bright and early on Monday morning, Aug. 1, to start the new fall season's training in athletics and music.

Cross country coaches, football coaches, and the band director opened their doors to prospective athletes and musicians to begin the training for their high aspirations.

Cross country training

began on Monday at 7 a.m. Many of the high school athletic girls compete in the program, and a handful of young men who do not play football also train for the competitions.

The football team began a new season as well on Monday, but this year the team has a new home and a new head coach.

Coach Gordon Martin, a 1986 graduate of Sudan High School, takes over the

athletic director and head football coach's position; however, his coaching staff remains unchanged from last year.

The coaching staff has taken up residence in their new field house where the increase of participants welcomes the bigger and better facilities. "The new facility is wonderful," Coach Martin said. "There is a new sense of pride with the players over the

new facility."

Forty-two football players attended the first day of practice, Coach Martin expects a few more players to arrive once they finish working out of state.

Fourteen players are returning as well as 12 freshman reported to practice.

"The boys have great attitudes and are working hard," Martin said.

The first football scrimmage is in less than two weeks on Aug. 12 when the team will scrimmage New Deal at the New Deal Lions Stadium.

The band students also began their new season on Monday. Band instructor Byron Morgan, in his third year at Sudan, met with each class of band members when they were checked out their

instruments and received their music.

In the afternoons, the band members worked in sections to learn the new show's tunes.

The band will be led on the field with Deric McCurry and Andrew Ames in their first year as drum majors.

As a reminder, Meet the Hornets' night will take place on Aug. 30, at 6 p.m.

## Sudan schools lead Lamb County learning

The Texas Education Agency released their 2011 District Accountability Ratings on July 29.

Many of the schools in Texas saw their ratings stay the same or decrease with few improving to a higher rating.

According to Texas State Educators Association Clinton Gill there were several factors that influenced the change in ratings for many school districts.

In years' past, TEA included a Texas Projection Measure that adjusted the

ratings. Before this year, a school's ratings would be adjusted if a student failed the TAKS test but showed improvement.

Also, special education students' results had more emphasis on the ratings.

In the 2010 state ratings, 210 school districts were considered Academically Unacceptable.

During the 2011 ratings, 569 school districts were deemed Academically Unacceptable.

That means that 359 more schools were rated the lowest mark. On the

Lubbock television news stations, it was reported that eight Lubbock schools were named Academically Unacceptable.

In Lamb County, Amherst ISD and Littlefield ISD were named Academically Unacceptable, and Springlake Earth ISD, Olton ISD and Sudan ISD were named Academically Acceptable.

As a campus, Sudan High School was the only high school in Lamb County to be given a Recognized rating.

Amherst High School and Littlefield High School were named Academically Unacceptable rating, and Springlake Earth High School and Olton High School was given the Academically Acceptable rating.

Elementary, Littlefield Elementary and Primary, Olton's Webb Elementary, and Springlake Earth Elementary were given a Recognized rating, and Sudan Elementary was given an Academically Acceptable rating.

Ratings that are based on TAKS will be suspended during the 2011-12 school year because a new accountability system will be developed to reflect on the testing system that will replace the TAKS test. It should be ready for use in 2013.

Many changes will be taking place with the new testing system that is called the STAAR test.

The Class of 2015, who are currently in the seventh grade, will be the first students who must meet the end-of-course testing requirements and pass their classes in order to graduate.

The tests are significantly more rigorous than previous tests.

Those graduating in the Classes of 2012-2014 will be required to still pass the TAKS test in order to graduate.

## Sudan's 'Monster' softball team qualified for regional tournament

For most Sudan teenagers, the summers are filled with swimming pools, hanging out at the wall, and summer jobs.

However, for the Sudan Monster Softball team it was the summer of baseball gloves, bats, and trophies.

The Sudan Monster Softball team qualified for the Babe Ruth Southwest Regional Tournament on July 19-25.

They qualified after competing in many baseball games and tournaments in this area.

The team consisted of Chesanie Brantley, Kaylie Miller, KyLee Shultz, Jessica Barrett, Katee Gonzales, Ashton Shultz, Eliana Herrera, Stormi Peck, Emily Ysasi, Kristina Thorn, Amber Binion, and Shaelynn Rosales. Coaches for the team were Chelsie Cline, Missy Shultz and Gabe

Narramore, and Tommy Whitehurst helped with the team.

They competed in the 16U division. The division was comprised of eight teams from Arkansas, Louisiana, Mississippi, and Texas.

The Monsters finished in the top six before being eliminated from the tournament by a team from Magnolia, Arkansas. Competition was very tough as most of the teams in the tournament played all year for this opportunity.

The Monsters formed a team in April and had tremendous success with such a short time to practice.

The tournament was held in Gulfport, Miss., and it was during a rainy week.

"The atmosphere and facilities were nice," Coach Missy Shultz said. "But there were several

rain delays being close proximity to the Gulf Coast."

Not only did the teams face wet fields, they also faced a couple of injuries from the conditions.

"The Monsters toughed out high heat and humidity, turned ankles, sore muscles, and even a possible broken hand to keep playing and competing," Shultz said.

The trip would not have been possible without the wonderful support of the community through numerous donations from businesses and people.

The team also raised money through a car wash and a meal.

The Monsters wanted to express their gratitude to everyone who supported them, prayed for them, and kept up with their tournament experience.

"It was a memory these girls will never forget," Shultz said.

## SUDAN ISD

**EXCELLENCE**

IN

**EDUCATION**

**WWW.SUDANISD.NET**

Hwy. 303 PHONE: (806) 227-2431  
 SUDAN, TX 79371 FAX: (806) 227-2146

### SUDAN VETERINARY SERVICES

## S&S

**CHRIS LARSON D.V.M.**

- ◆Specializing in Dairy Medicine◆
- ◆Small Animal & Equine◆
- ◆Same Day Minor Surgery◆
- ◆Farm & House Calls◆
- ◆Climate Controlled Boarding◆
- ◆Services by Appointment Only◆

208 Ormand Street

806-227-2444 806-241-1915

## King Ag AVIATION, Inc.

*Specializing in Aerial Spraying - Insecticide,  
Herbicide & Seeding - Field Scouting Service*

---

**Johnny King** Home (806) 227-2211  
 P.O. Box 189 Fax (806) 946-3659  
 Sudan, Texas 79371 Mobile (806) 946-7309  
 Business (806) 946-3399 Vernon Office (940) 552-6102

## COMPOSTED CATTLE MANURE

Farwell Feed Yard -- Farwell  
 Cargill Cattle Feeders -- Bovina  
 Bovina Feeders -- Lazbuddie

**BRANDON SCHILLING**  
 Mobile 806-225-7700  
 OFFICE 1-800-650-2550

**NORTH PLAINS COMPOST, INC.**  
 PO BOX 1099  
 FARWELL, TEXAS 79325

**LOANS**

*Wallet a little short of cash?*

**We have the help you need!**

LOANS UP TO \$1240  
 PRESTAMOS HASTA \$1240

**Call today! 272-7505**

Open: 9 am till 6 pm • M-F

**Reliable Finance**

1604 W. American Blvd. • Muleshoe, TX

### Online Bill Pay

No Stamps to Buy • No Driving Around Town • It's **FAST & Convenient**

**SIGN UP TODAY!**

EST. 1907  
**FIRST UNITED**  
 BANK MEMBER FDIC

We guarantee you'll be satisfied!

Amarillo • Canyon • Dimmitt • Earth • Lamesa • Littlefield • Lubbock • Seagraves • Seminole • Sudan

[www.FirstUnited.net](http://www.FirstUnited.net)



# CLASSIFIEDS

Deadline is Monday  
at 5 p.m. to place  
a classified ad.  
Call 272-4536.

## LEGAL/ PUBLIC NOTICE

TEXAS COMMISSION ON ENVIRONMENTAL QUALITY AMENDED NOTICE OF RECEIPT OF APPLICATION AND INTENT TO OBTAIN AIR PERMIT RENEWAL PERMIT NUMBER 45895 APPLICATION Minsa Corporation, has applied to the Texas Commission on Environmental Quality (TCEQ) for renewal of Air Quality Permit Number 45895, which would authorize continued operation of the Corn Flour Manufacturing Facility located at 1972 County Road 1068, Muleshoe, Bailey County, Texas 79347. The existing facility and/or related facilities are authorized to emit the following air contaminants: organic compounds, sulfur dioxide, carbon monoxide, nitrogen oxides, and particulate matter including particulate matter with diameters of 10 microns or less. This application was submitted to the TCEQ on January 27, 2011. The application will be available for viewing and copying at the TCEQ central office, TCEQ Lubbock regional office, and the Muleshoe Area Public Library, 322 West 2nd Street, Muleshoe, Bailey County, beginning the first day of publication of this notice. The facility's compliance file, if any exists, is available for public review in the Lubbock regional office of the TCEQ. The executive director has determined the application is administratively complete and will conduct a technical review of the application. In addition to the renewal, this permitting action includes the incorporation of the following authorizations or changes to authorized facilities related to this permit: amendments. An amendment application that is not subject to public notice or an opportunity for a contested case hearing is also being reviewed. The reasons for any changes or incorporations, to the extent they are included in the renewed permit, may include the enhancement of operational control at the plant or enforceability of the permit. For more information about this permit application or the

permitting process, please call the Office of Public Assistance, Toll Free, at 1-800-687-4040. The TCEQ may act on this application without seeking further public comment or providing an opportunity for a contested case hearing if certain criteria are met. PUBLIC COMMENT You may submit public comments, or a request for a contested case hearing to the Office of the Chief Clerk at the address below. The TCEQ will consider all public comments in developing a final decision on the application. The deadline to submit public comments is 15 days after newspaper notice is published. After the deadline for public comments, the executive director will prepare a response to all relevant and material, or significant public comments. Issues such as property values, noise, traffic safety, and zoning are outside of the TCEQ's jurisdiction to address in the permit process. After the technical review is complete the executive director will consider the comments and prepare a response to all relevant and material, or significant public comments. If only comments are received, the response to comments, along with the executive director's decision on the application, will then be mailed to everyone who submitted public comments or who is on the mailing list for this application, unless the application is directly referred to a contested case hearing. OPPORTUNITY FOR A CONTESTED CASE HEARING You may request a contested case hearing. The applicant or the executive director may also request that the application be directly referred to a contested case hearing after technical review of the application. A contested case hearing is a legal proceeding similar to a civil hearing after technical review of the application. A contested case hearing is a legal proceeding similar to a civil trial in state district court. Unless a written request for a contested case hearing is filed within 15 days from this notice, the executive director may act on the application. If no hearing request is received within this 15 day period, no further opportunity

for hearing will be provided. According to the Texas Clean Air Act ~ 382.056(0) a contested case hearing may only be granted if the applicant's compliance history is in the lowest classification under applicable compliance history requirements and if the hearing request is based on disputed issues of fact that are relevant and material to the Commission's decision on the application. Further, the Commission may only grant a hearing on those issues raised during the public comment period and not withdrawn. A person who may be affected by emissions of air contaminants from the facility is entitled to request a hearing. If requesting a contested case hearing, you must submit the following: (1) your name (or for a group or association, an official representative), mailing address, daytime phone number, and fax number, if any; (2) applicant's name and permit number; (3) the statement "[I/we] request a contested case hearing;" (4) a specific description of how you would be adversely affected by the application and air emissions from the facility in a way not common to the general public; (5) the location and distance of your property relative to the facility; and (6) a description of how you use the property which may be impacted by the facility. If the request is made by a group or association, the one or more members who have standing to request a hearing and the interests the group or association seeks to protect must also be identified. You may also submit your proposed adjustments to the application/permit which would satisfy your concerns. Requests for a contested case hearing must be submitted in writing within 15 days following this notice to the Office of the Chief Clerk at the address below. If any requests for a contested case hearing are timely filed, the executive director will forward the application and any requests for a contested case hearing to the Commissioners for their consideration at a scheduled Commission meeting. Unless the application is directly referred to a contested case hearing, the executive director will mail the response

to comments along with notification of Commission meeting to everyone who submitted comments or is on the mailing list for this application. If a hearing is granted, the subject of a hearing will be limited to disputed issues of fact relating to relevant and material air quality concerns raised during the comment period. Issues such as property values, noise, traffic safety, and zoning are outside of the Commission's jurisdiction to address in this proceeding. MAILING LIST In addition to submitting public comments, you may ask to be placed on a mailing list for this application by sending a request to the Office of the Chief Clerk at the address below. Those on the mailing list will receive copies of future public notices (if any) mailed by the Office of the Chief Clerk for this application. AGENCY CONTACTS AND INFORMATION All public comments and requests must be submitted either electronically at [www.tceq.texas.gov/about/comments.html](http://www.tceq.texas.gov/about/comments.html), or in writing to the Texas Commission on Environmental Quality, Office of the Chief Clerk, MC-105, P.O. Box 13087, Austin, Texas 78711-3087. If you choose to communicate with the TCEQ electronically, please be aware that your email address, like your physical mailing address, will become part of the agency's public record. For more information about this permit application or the permitting process, please call the Office of Public Assistance, Toll Free, at 1-800-687-4040. Si desea informacion en Espanol, puede llamar al 1-800-687-4040. General information regarding the TCEQ can be found at [www.tceq.texas.gov](http://www.tceq.texas.gov). Further information may also be obtained from Minsa Corporation, P.O. Box 484, Muleshoe, Texas 79347-0484 or by calling Mr. Brandon Cravens, Sources Environmental Sciences, Inc., at (713) 621-4474. Amended Notice Issuance Date: July 27, 2011. *Published in the Muleshoe Journal August 4, 2011.*

**NOTICE TO CREDITORS** Notice is hereby given that original Letter Testamentary for the Estate of DON SEALS, De-

ceased, were issued on July 29, 2011, in Cause No. 2559, pending in the Court of Bailey County, Texas, to: LAURA SEALS. All persons having claims against this Estate which is currently being administered are required to present them to the undersigned within the time and in the manner prescribed by law. c/o: **JOHNNY ACT-KINSON Attorney at Law P.O. Box 286 Farwell, Texas 79325** Dated the 29th day of July, 2011. **JOHNNY ACT-KINSON Attorney for LAURA SEALS State Bar No. 00835700 P.O. Box 286 Farwell, Texas 79325 Telephone: (806) 481-3361 Facsimile: (806) 481-9060. Published in the Muleshoe Journal August 4, 2011.**

## HELP WANTED

Sonic Drive In is now hiring self motivated Assistant Managers, skating carhops and cooks come by and see Candy today!

Fontera Feedyard is seeking someone interested in full time yard maintenance help, welding experience

**\* Delivery Technician Needed \***  
**Full Time**  
**8:30 a.m. - 5:30 p.m.**  
**Monday - Friday**  
*Must be 21 and have good customer service skills!*  
**BENEFITS INCLUDE:**  
• 401(k)  
• health insurance  
• company phone & vehicle  
**Support Medical Company**  
103 S. Main Street • (806) 272-7552  
Muleshoe • [www.supportmedical.com](http://www.supportmedical.com)

## REAL ESTATE

**Nieman Realty** REALTOR

116 E. Ave. C • George Nieman, Broker • 272-5285 or 272-5286  
CHECK OUR LISTING INFO., PHOTOS, ETC. ON-LINE AT [www.niemanrealty.com](http://www.niemanrealty.com)  
HAVE BUYERS! NEED HOME AND LAND LISTINGS!!

**HIGH SCHOOL AREA**

- VERY NICE 3-2-2 Brick Home, Cent. A&H, built-ins, FP, approx. 2336' lv. area, auto. spkrl, fenced yd, MORE!! \$125K!!
- VERY NICE 3-3-2 CP Home, Cent. A&H, built-ins, FP, approx. 2653' lv. area, covered deck & patio, workshop/store cellar!! Auto. spkrl (front yd.) \$140,000!!!
- NICE 3-2-2 Home, corner lot, built-ins, Cent. A&H, workshop/storage plus storage building!! 1974' lvg. area!! \$96K!!
- 3-1 Brick Home, enclosed garage, Cent. A&H, DW, Refrig., utility, workshop/storage!! MORE!! \$78K!!

**RICHLAND HILLS • PARKRIDGE • HIGHLAND**

- BEAUTIFULLY REMODELED 3-2 1/2-2 Brick Home on corner lot, Approx. 3325' Lv. Area, Cent. A&H, built-ins, FP, granite & marble countertops, nice flooring, lg. utility, Pantry, lg. patio w/tv & sound hookups, auto. spkrl, fenced yd., storage bldg., MUCH MORE!! \$245K!!
- 2 Nicely Remodeled Duplex Units & 1 NEW Duplex Unit!! *Price Reduced!! \$410K!!!!*
- NICELY REMODELED 3-2-2 Brick, new Cent. A&H, built-ins, FP, 3125' lv. area, spkrl. sys., fenced yard, MORE!! *REDUCED \$195K!! MAKE OFFER!!*
- NICE 3 Bedroom, 2 Bath, 1 car garage w/opener, New Cent. A&H, dishwasher, stove, approx. 1844' lv. area, fenced yard, storage bldg.!! \$89,000!!!
- Nicely Remodeled 3-2-2 Brick, Cent. A&H, built-ins, FP w/wood pellet insert, corner lot, fenced yd., auto. spkrl., + lot w/stor. bldg.!! 2159' lv. area!! \$189K!!
- 3-2 Home, Cent. Heat, win. evap., DW, stove, 1500' lv. area + 1 Bdr. Rental!! \$45K!!
- Very nice 3-2-2 Brick Home, built in 2006, built-ins, FP, approx. 2700' lv. area, central A&H fans, fenced yard., auto. spkrl., nicely landscaped, workshop/storage!! \$159K!!
- VERY NICE 3-2-2 Brick Home, Cent. A&H, built-ins, FP, approx. 2749' lv. area, lots of storage, nice courtyard & landscaping, workshop/storage/fenced yd., Much More!! Reduced-\$175K!
- NICE 3-2-2 Brick Home, Cent. A&H, built-ins, FP, ceiling fans, auto. spkrl., 25'x25' carport in back, stor. bldg.!! \$119K!!
- NICE 3-2-2+2 CP Brick Home, corner lot, Cent. A&H, built-ins, approx. 1950' lv. area, cov. patio, tile block fence, auto. spkrl., workshop/storage, storm cellar!! MUCH MORE!! \$97,500!!

**RURAL**

- VERY NICE CUSTOM BUILT 3 Bedroom, 3 Bath, 2 car garage home, at edge of town on 80 acres!! Geothermal heat & air, built-ins, FP, ash cabinets, approx. 2544' main lv. area plus 625' finished basement w/safe & storage, spkrl system, beautiful trees and landscaping, circle spkrlr, 5 wire barbwire fence, 36' x 48' metal insulated bldg w/2 12' doors!! MUCH MORE!!
- VERY NICE 4-3 doublewide (2006) on 7.38 acres, Cent. A&H, built-ins, FP, fenced yd., 25' x 40' Metal Bldg. septic system, domestic well, on pavement close to town!! \$152K \$130K!! *MAKE OFFER*
- NICE 4.8 acre homesites, deed restricted!! \$17,500!!
- LARIAT AREA - 3-1 Home, Cent. Heat, 5 acres, 1989' lv. area (2 story), 2880' quonset barn, out bldgs., *Reduced \$39K!! POSSIBLE OWNER FINANCE!!*
- 3-2-2 HOME ON 2 AC. (2860 FM 303)- APPROX. 2146' lv. area, DW, ceiling fans, thermal windows, lg. conc. patio, workshop/storage!! \$89,000!!
- PROGRESS- 3-2-2 Home, Cent. Geo, A&H, built-ins, FP, approx. 2064' lv. area on 1.24 acres, 2 wells, 720' insul. shop w/288' awning, carport, storage Bldg., cellar!! MUCH MORE!! \$125K!!
- West of Sudan 3-2-2 Brick Home on 5.57 acres, Cent. A&H, built-ins, approx. 2688' lv. area, fenced yd., 40' x 80' quonset barn!! MUCH MORE!! \$135K!!

**LENAU • COUNTRY CLUB**

- 3 Bdrm, 2 bath, 2 carport, Cent A&H, Dishwasher, WB Stove, approx. 2156' lv. area, 217 E. Elm. \$60K!!
- NICELY REMODELED 3-1-1, 2 carport, Brick home, Cent. A&H, built-ins, tile, wood laminate, & carpet flooring, thermal windows & doors, 6' metal fenced yd. on concrete foundation, wood blinds!! MORE! \$75K!!
- 2-1-2 Carport, Wall Furnace, evap. air, stor. bldgs, corner lot. \$45K

**COMMERCIAL**

- Building w/approx. 3300' plus 1040' upstairs, Cent. A&H, 2 restrooms, MORE! \$39,500!! *MAKE OFFER!!*
- REMODELED 1900' Off. Bldg., 106' x 140' lot on Hwy. 70 and 84!! \$79.5K!! *PRICE REDUCED \$62K!!*
- Approx. 1080' metal bldg. w/off. & 3 bay garage/workshop area plus chain link fenced area!! \$39,500!!
- NICE 3-2-2 Home on 11 acres at edge of town, Cent. A&H, built-ins, FP, freshley painted interior, thermal windows & doors, plus 1 bdrm house, workshop, storage, greenhouse, plus 3 garages, barns & outbuildings!! \$155,000!!

Cattle will include 1&1/2 days off on most weeks and hours will average 50-60 straight wage no overtime. Position includes full benefits package including 401 K and Health Insurance. Interested applicants should apply in person at Cargill Cattle Feeders 600 US Highway 60. (806) 225-4400. Work schedule

## REAL ESTATE

**M. Edwards Investment Group Inc.**  
Commercial Farm & Ranch Residential  
**(806) 227-2465**

Some homes you must just see to appreciate and this Sudan 32A Carport Home is truly move in ready. \$74,500

309 Worth St.- 3bed room/ bath with shop & garage on corner lot. \$40,000

10 Acres, 2514 S.E. Drive, Lubbock, TX. Security fenced, zoned M2, located just inside East Loop 289, easy access to I-27- Call agent.

**About Sold Out- Need Your Listings!**

Vernie Moore, Agent  
(806) 543-9347

**Vic Coker Land Co.**  
Agricultural Real Estate

**COTTE COUNTY**  
Paducah Area- 470 acres on pavement. 326 acres in C.R.P. Balance in native pasture. Excellent hunting. Good Wildlife cover & feed.

**BAILEY COUNTY**  
354 acres of C.R.P. Half just renewed for 10 years. Half has one year remaining on current contract. Near Wildlife refuge.

**BAILEY COUNTY**  
349 acres cultivated. Non irrigated. Exceptional direct payment. Immediate possession available.

**RURAL RESIDENTIAL**  
**LAMB COUNTY- EARTH AREA**  
Nice 3 bedroom, 2.5 bath home on 3 acres with fenced yard, nice storage building and on pavement. Fireplace, 2 large living areas, formal dinig room, large office. VERY NICE!

316 Main Street • Muleshoe, Texas  
Office: 806-272-3100 Home: 806-965-2468  
Website: [www.vicoland.com](http://www.vicoland.com)

**Byrd Realty**  
Ronald Byrd  
575-760-1495  
Licensed Broker  
Crista Bass  
806-946-7261  
Sales Associate  
Carleton Johnson  
806-789-4289  
Sales Associate

**NEW CONTRACT**

- *New Listing* -3 bedroom, 2 bath Brick Home- built-ins, fireplace, office, central, A&H, 2 car garage, fenced backyard.
- *New Listing Country Home* -Nice 3 bdr, 1 3/4 bath home on 60 acres, Cent A&H, 16 hills, 2 1/4 areas, septic system, perm. fence around acreage. Call for more details.
- *New Listing In Country* -2 or 3 bedroom, 1 3/4 bath home, central heat, office, fireplace, built-ins, lots of storage, basement, 2 car garage, storage buildings, all on approx. 2 acres.
- *New Listing*-Spacious 2 or 3 bedroom, 2 bath home, 2 living areas, large master bedroom and bath, furniture and appliances included, central air and heat, approx. 2004 sq.ft., Great Price!! Call for more details!
- *New Country Listing* -2 bedroom, 1 3/4 bath home, sunroom, built-ins, 2 living areas, utility, central air and heat, 2 car garage, 2 large barns, all on 3 acres.
- *New Country Listing* -3 or 4 bedroom, 1 3/4 bath home, central air and heat, utility, garage, barn, all on 1.5 acres.

228 Main Street, Muleshoe, Texas  
Check all of our listings at [www.byrdrealestate.net](http://www.byrdrealestate.net)



## Raised Grain Art grand opening

Raised Grain Art of Earth held its grand opening Saturday, July 30. Pictured above, Earth's Mayor J. Allen Gover cuts the ribbon as owners, Mickey and Dawn Merriott assist.

## Something worth saying... Continued from page 6

that it renders a person as being incapable of what we might term "acceptable conduct," we say he has "mental problems."

The question then is "how severe must it be, where do we draw the line?" That is a medical question, and if court action is needed an official statement by two doctors is required.

Then again it is to be heard in the probate court. And it is not a criminal action.

But the person, in whose interest the case was fillies, is entitled to all the rights afforded people in other cases-

being the right to legal counsel, the right to remain silent with the burden of proof resting on those that brought the charge, the right to be heard before an honorable judge, and a right to be heard by a jury of his peers-with all the other rights afforded by law.

Of which rights I am justly proud and thankful.

Mental problems, in which a person becomes severe sometimes causes problems within a family. And quite often the person being committed is pretty hard to work with. For it is almost

without exception that the first person one gets crossed with is a family member.

That will often show up when they don't want him to drive the car any more, he uses bad language or things of that nature.

I am delinquent with my writing because I haven't been well for some time.

In addition to other problems I've had two cases of staph infection — one which still bothers me. But I hope to be feeling better soon.

## Reading program winners announced

Muleshoe Librarian Dyan Dunagan has announced the following individuals as the winners in the summer reading program"

• The top reader for two years to Kindergarten is Kaitlyn Craig. She won a LeapFrog

Tag system with eight books and a tote.

• The top reader for the elementary group is Mario Melendez. Mario won a VTech

VReader System with three books and tote, and the complete series of "The Diary of a Wimpy

Kid." • The top Reader for the junior high group is Nathan Craig. Nathan's prize is a Nook Color Reader and accessories plus a \$25 gift card. The top high school

reader is Cristian Mora. His prize is a Nook Color Reader and accessories plus a \$25 gift card. "This has been the most successful program in the last 15 years," Dunagan said.

**g.w. boutique**  
never ordinary

**August 5-6th Sale!**

Buy 1 Reg. Price Item  
Get 2  
**50 - 70% off items\* FREE**

Buy 1 Sale Item  
Get 1  
**50 - 70% off item\* FREE** \* Clothing only

*New Fall Styles Arriving!*

**DON'T FORGET TAX-FREE WEEKEND!**

700 Commerce Way • Clovis, NM  
(575) 763-5030 • Mon - Sat • 10:30-5:00 PM

[www.muleshoejournal.com](http://www.muleshoejournal.com)

### Dillman Elementary Spring Round Up

**AUGUST 8-9, 2011**

**At Dillman Elementary**

(Corner of 18th & E)

**8:30 a.m. - 4:00 p.m.**

It is time once again to register your children for PreK, HeadStart and Kindergarten for 2011-2012 school year. To qualify for PreK your child **must be 4 years old on or before September 1, 2011**, be eligible for the Bilingual Program and/or qualify for Free/Reduced Lunches. **To qualify for Kindergarten your child must be 5 years old on or before September 1, 2011.**

Parents please remember to bring with you the following pieces of information when you come to register your child. **1. Updated Shot Record 2. Birth Certificate 3. Social Security Card 4. Proof of Income (Income Tax or W-2) (PK and Head Start Only) 5. Medicaid Card (Head Start) 6. Proof of Residency .**

**If you have questions please call Todd Newberry or Suzanne King at Dillman Elementary (272-7382)**

### La Matriculacion de Estudiantes

**en Dillman Elementary**

**Agosto 8-9, 2011**

(esquina de 18th & Ave E)

**8:30 a.m. - 4:00 p.m.**

Otra vez mas es tiempo para registrar a sus ninios escolar 2011-2012. Para que su nino sea eligible para el programa de PreK tendra que tener 4 anos antes del primero de septiembre de 2011, ser eligible para el programa Bilingue y/o calificar para almuerzos gratis o a precios reducidos. Para calificar para el programa de Kinder, su nino necesita tener 5 anos antes del primero septiembre del 2011.

Padres, por favor de traer la siguiente informacion cuando llegue a registrar a su nino. **1. Tarjeta de vacunas, 2. Certificado de nacimiento, 3. tarjeta del seguro social, 4. Verificacion de ingresos (income tax o las formas de W-2) (tan solo para PK y Head Start), 5. Tarjeta de Medicaid (Head Start), 6. Prueba de residencia**

**Si tiene cualquier pregunta, por favor de llamar a Todd Newberry o Suzanne King al 272-7382 en Dillman Elementary.**

### Correction Policy

Although the *Muleshoe Journal* tries to be accurate in the news stories and releases it publishes, the newspaper recognizes that errors occasionally occur.

An effort will be made to correct typographical errors, or misstatements of facts, in news stories voluntarily submitted for publication as soon as possible — if brought to the newspaper's attention in a timely manner, but

will not include rerunning the news story or related photographs.

Corrections necessary from inaccurate or illegible information provided to the newspaper will not be published free of charge.

Paid publication items — whether advertisements, obituaries or items that don't meet the criteria for free publication — may be rerun if the original publication includes significant error.

# More Classifieds

Stop and Shop

Deadline 5 p.m. Friday

### HELP WANTED

Cargill Cattle will average 50-60 Feeders, Bovina straight wage no Texas - positions overtime. Position available as includes full night-watchman. Responsibilities package including 401K and Health Insurance. include unloading cattle, bunk reading, housekeeping, and other duties assigned. Applicants must be willing to perform all of these responsibilities. This is a night shift position 4pm to 4am. Workschedule will include 2 days off on most weeks and hours

### GARAGE SALES

Multi-family Garage Sale Sat., Aug. 6, 8:00am. Some new mostly

used clothes, dishes, books and more. Muleshoe Barn. Sat. Aug 6, 2011. 1716 West Ave I 8:00am - 12:00.

### HOUSE FOR SALE BY OWNER

Two bedroom, two bath, fireplace. 607 W. Ave. B, Muleshoe. 806-647-4285.

4 1/2/1 Carport home. Newly remodeled kitchen, new roof, new exterior paint.

Central heat and air, all electric. Approx. 1400 sq. ft. Must See! Asking 69K. No owner finance. Located at 409 E. Austin. Call 806-777-4950.

### RN Needed

**6 am - 2 pm or 2 am - 10 pm**

**2 weekends a month**

Contact Mindy at Runningwater Draw Care Center Olton, Texas (806)285-2677

MOTIVATED SELLER! Halfway between Earth and Muleshoe on Highway 70 (9 miles east of Muleshoe) - 3 bedroom, 2 bath (1100 sq ft), with custom-built

carport, plus 1.78 acres. Windbreak trees - both established and recently planted. Sprinkler system. Central heat and air. Kitchen and living room recently renovated. Sale will include kitchen appliances (Refrigerator, Stove, Dishwasher, Microwave). Land includes

outbuildings - barn, silo, and shop. \$75,000.00. Call 946-8899 or 965-2727 to see.

### SERVICES

Concealed Handgun Classes, call for class dates. Private classes available, DPS Certified instructor Toby Turpen 806-364-6362.

### SERVICES

Why buy or Lease a combine? Guerrero Harvesting- Corn or Milo Harvesting \$14ac. 20cents hauling. Call Pete 325-998-0114 or Mike 325-214-2282.

### Subscribe!

### AUCTION

★ ★ ★ **AUCTION** ★ ★ ★

Saturday August 6<sup>th</sup> - 10 AM Sharp!

HEREFORD, TEXAS

LARGE BULL BARN

★ Off Hwy 60 ~ East Of Town ~ By Veteran's Park ★

Doors open at 8 am Day of Sale for Viewing, Auction will begin at 10 am Sharp! Everything must be moved day of sale.

**Rare Antique Firearms To Be Auctioned!** A Very Rare Authentic Antique 1855 "Colt" Revolving Rifle - Very Few Made - **Must See!** A Very Rare Highly Engraved Authentic Antique "Colt" Single Action Revolver with Engravings Everywhere - **Must See!** A Very Rare Authentic Antique "Winchester" 1866 Yellow Boy Lever Action Rifle. A Very Rare Authentic Antique "Colt" 1851 Navy Revolver. A Very Rare Authentic Antique "Whitney Kennedy" Lever Action Rifle. A Very Rare Authentic Antique "Winchester" 1873 Lever Action Rifle. A Very Rare Authentic Antique "Winchester" 1892 Lever Action Rifle. All Guns in Excellent Original Working Condition.

**And Many Other Antique Guns!** A Very Rare Antique Oak Signed "Stickley" Tea Cart. A Very Rare Size Antique Oak Sideboard with Beveled Mirrors and Paw Feet. An Oak Lawyers Stacking Bookcase. A Beautiful Antique "Sonora" Upright Phonograph. An Antique Gingerbread Bedroom Suite with Beautiful Matching Ladies Vanity Dresser and Chest - **Must See!** A Rare Antique "Grape-ola" Store Advertising Clock. A Rare Antique Oak Hall Stand. A Very Rare Antique "Pulver" 16 Gum Machine. A Beautiful Antique Tiger Oak Library Desk. A Beautiful Antique Oak Bookcase Secretary. A Very Rare Antique "Symphonion" Metal Disc Music Box - **Plays Great!** A Rare Antique Seth Thomas "Fashion" Double Dial Calendar Clock. A Very Rare 1920's "Turner" Toy Dump Truck and Several other Trucks by Marx and Wyandotte. A Beautiful Antique Grandfather Clock with Beautiful Case. **And Many More Unique Pieces of Furniture!** Several Outstanding "Remington", "G. Harvey" and "Russell" Framed Western Prints. Rare Old West Leather Calvary "U.S. Saddle Bags". A Large Collection of Western Bronze Statues including the "Coming Thru The Rye" by Frederic Remington. A Very Rare Never Seen 1856-C \$5 Gold Coin (Charlotte Mint Mark). 1924 \$20 Gold Coin, 1881 \$10 Gold Coin, 1883 \$5 Gold Coin, 1925-D \$2 1/2 Indian Gold Coin, 1851-O \$1 Gold Coin **And Several Other Gold Coins.** Over 350 Antique Silver Dollars. A Very Rare 1937-D 3 Legged Buffalo Nickel. A Very Nice 1883-CC Silver Dollar in Case, A Very Rare & Pristine 2006 Silver Eagle 20<sup>th</sup> Anniversary 3 Pcd. Graded MS/PP 70 Collection in Display Case. 1895-O Silver Dollar, 1834 Bust Quarter, 1875-S 20 Cent, 1853 Three Cent, 1846 Large Cent, 1865 2 Cent, 1858 Flying Eagle Cent. Large Currency Collection including Confederate Notes, A Rare 1934 \$1000 Note and **Many More Antique Coins!** Large Diamond Rings, Beautiful Large Heavy Cut Crystal Vase, Beautiful Leaded Glass Lamps, Beautiful Pair of Ruby Red Lusters, Perfume Bottles, Cast Iron Banks, Pickle Castors, Cast Iron Locks, Unique Salt & Pepper Set

**And Much More! Come Early For A Good Seat!**  
**Bring Your Truck, Newspaper & Boxes for Packing Your Items.**

This is Just A Partial List! ~ Make This Auction A Priority! No Buyer's Premium! Bring Cash or Check with Proper I.D. Dealer's Must Have Copy of Sales Tax Permit or Sales Tax will be Added, No Exceptions. Announcements Made Day of Sale Supersede All Other Advertisement. Auctioneer ~ Michael Mears TX. Lic. # 12703 405-381-3402

DRIVER

**RUAN**

**Local Driving Opportunities!**

**Based in Dalhart, TX, Roswell & Clovis, NM**

**NEW PAY PACKAGE!!**

**Up to \$60K / Year**

- \* Medical, Dental and Vision
- \* Excellent 401 (k) Plan
- \* Paid Holidays & Vacation

CDL-A w/ tank end. and 1yr. T/T experience

**800-879-7826**

[www.ruan.com](http://www.ruan.com)

Dedicated to Diversity. EOE



**PARMER MEDICAL CENTER**

Personalized Service. State-of-the-Art Care. Your Hospital.

**HELP WANTED**

**Licensed Vocational Nurse**

**TWO FULL TIME POSITIONS**

**8 p.m.-8 a.m. shift, shift differential.**

- Competitive pay
- Group health, life, dental, & more
- Paid vacation, sick & holidays
- New facility

**To apply, send resume or fill out an application at:**

Parmer Medical Center  
Human Resources  
1307 Cleveland  
Friona, TX 79035

Applications may be submitted online at [ParmerMedicalCenter.com](http://ParmerMedicalCenter.com)





# BACK TO SCHOOL

**Continued from previous page**  
**MISD Fifth Grade...**  
 Black only)  
 3 Packages Notebook Paper (Wide Rule)  
 1 Pair of Scissors  
 2 Spiral Notebooks (120 Pages)  
 1 (4 ounce) Bottle of Elmer's Glue or 1 Glue Stick  
 4 Boxes of Kleenex  
 1 2-inch 3 Ring Binder with pockets  
 1 Ruler  
 1 Package of Dividers  
 Package of Construction Paper  
 \*\*Extra supplies at teacher discretion.  
 \*\*Exceptions to this would be Special Education needs.  
 \*\*Absolutely "no" backpacks on wheels. They do not fit in the lockers. Label all coats and jackets with students name.

**Sixth Grade**  
Math  
 1" Binder  
 Set of 5-tab dividers  
 Spiral Notebook  
 Highlighter

English/Reading  
 1" binder  
 Set of 5-tab dividers  
 Pocket Folder  
 Spiral Notebook  
 Colored Pencils

Art  
 1 bottle Elmer's white glue,  
 2 boxes color pencils,  
 2 lead pencils,  
 1 eraser,  
 1 folder,  
 1 pencil sharpener.

LMS  
 Spiral notebook  
 Folder with pockets  
Social Studies  
 ruler  
 colored pencils (12 pack)

Science Supply List  
 Spiral notebook  
 Folder with brads  
 Markers (box of 8 or 10)

1 bottle or stick of glue  
 All Classes  
 2 boxes Kleenex ( to first period teacher)  
 Zippered pencil pouch  
 Regular ruled notebook paper  
 Blue or Black Pens  
 Pencils  
 Erasers (pencil toppers)  
 Red Pens

**Seventh Grade**  
 2 large boxes of Kleenexes (for first period teacher)  
 2 packages red pens or pencils  
 2 packages black and blue pens or pencils  
 2 packages pencils  
 1 package erasers  
 1 large pencil bag  
 2 glue sticks (science)  
 1 pair scissors (science)  
 2 boxes colored pencils (science and social studies)  
 1 pencil sharpener (math)  
 2 2-subiect spirals (math, english)

3 packs notebook paper (math, english)  
 1 pack 3x5 colored index cards (english)  
 1 folder with brads (english)  
 2 1-inch binders (english, math)

\*\* Art students will also need:  
 1 bottle of white glue  
 6 #2 pencils  
 2 boxes of colored pencils  
 2 erasers  
 1 pencil sharpener  
 1 folder

**Eighth Grade**  
English  
 2 Folders(non-plastic) with brads  
 Red Pen  
 Black pens  
 Box of pencils  
 Map colors  
 Notebook Paper -

1 Pair 5 - pointed scissors  
 1 red pocket folder with brads  
 3- #2 Pencils  
 Nap (blanket and small pillow)  
 1 Small plastic school box

2 Coloring books  
 Clorox wipes  
 Boys- 1 box gallon size ziplock bags  
 Girls- 1 box sandwich size ziplock bags  
 1 - Bottle hand sanitizer  
 Please put names on all supplies

**First grade**  
 2 - 8 Count boxes of large basic crayons  
 2- 16 Count boxes of basic crayons  
 1- 12 Count basic color pencils  
 1- 8 Count basic color

2 Large clorox or lysol wipes  
 1 Can lysol spray.  
 1 Pkg white cardstock

**Third grade**  
 Clipboard (no trapper keepers)  
 2 Pkgs wide-lined notebook paper  
 12- #2 Pencils  
 4 Red grading pencils  
 1 Box kleenex tissue  
 4 Glue sticks  
 5" Pointed scissors  
 Crayons  
 Washable markers  
 2 Pink erasers  
 1 Red pocket folder with brads

1 Blue pocket folder with brads  
 1 Green pocket folders with brads  
 1 Large spiral notebook  
 1-3 Subject blue spiral notebook  
 1 box quart size ziplock bags

School box (zippered lunch box style)  
 1 Bottle of germ-x  
 3 Clorox or lysol wipes  
 Colored pencils  
 2 Yellow highlighters  
 Chapstick (optional)  
 Please put names on all supplies

**Fourth grade**  
 1 Pack 100 sheet wide lined notebook paper  
 12- Pencils  
 3 Black or blue ink pens  
 6 Red ink pens  
 1 Large box of kleenex

2 Yellow pocket folders with brads  
 2 Red pocket folders with brads  
 2 Green pocket folders with brads  
 2 Blue pocket folders with brads  
 2 Purple pocket folders with brads

4 Highlighters  
 Basic pack of colored pencils  
 2 Pink flat erasers  
 Scissors  
 2 Spiral notebooks  
 1 Bottle hand sanitizer (optional)  
 Pencil box

**Fifth grade**  
 1 pack 100 sheet wide lined notebook paper  
 6 Pocket folders with brads (any color)  
 1 Teal pocket folder with brads  
 1 Purple pocket folder with brads

2 Spiral notebooks  
 1 -5 Subject spiral notebook  
 Map colors  
 12- #2 Pencils  
 12 Black or blue ink pens  
 6 Red grading pens  
 6 Red grading pencils  
 Scissors  
 Glue stick  
 3 Packages of dividers for folders  
 2 Pink flat erasers  
 1-3 Ring binder

**Sixth grade**  
 1 Pack 100 sheet wide lined notebook paper  
 8 Pocket folders with brads (any color)

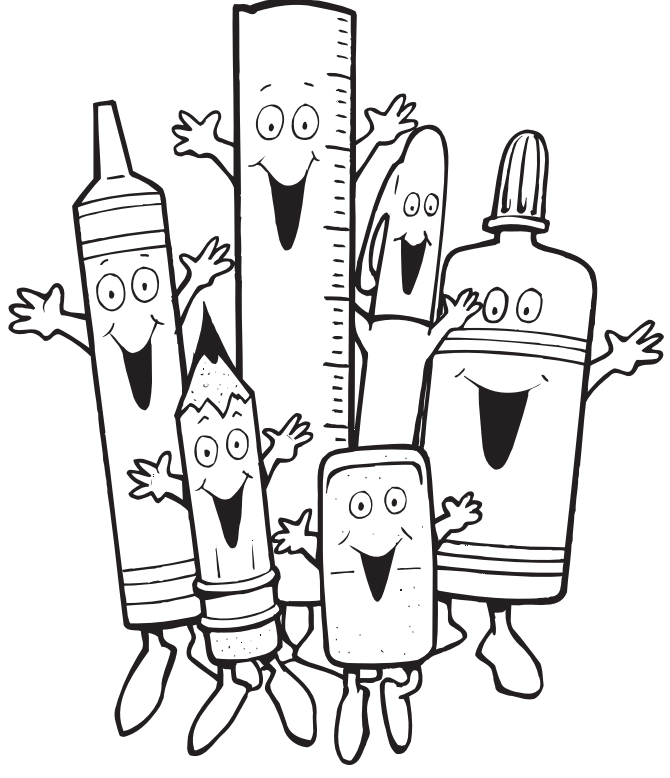
2 Green pocket folders with brads  
 2 Yellow pocket folders with brads

2 Spiral notebooks  
 1 -5 subject spiral notebook  
 Map colors  
 12 - #2 Pencils  
 12 Black or blue ink pens  
 6 Red grading pens  
 6 Red grading pencils  
 Scissors  
 Glue stick  
 2 Pink flat erasers  
 3 Pkgs of dividers (new students only)  
 1 - 3 Ring binder

**Seventh grade**  
 1 Pack 100 sheet wide lined notebook paper  
 5 Pocket folders with brads (any color)  
 3 Spiral notebooks

Map colors  
 12- #2 Pencils  
 12 Black or blue ink pens  
 6 Red grading pens  
 6 Red grading pencils  
 Scissors  
 Glue stick  
 3 Pkgs of dividers (new students only)  
 2 Pink flat erasers  
 2 Highlighters  
 1 -5 Subject spiral notebook  
 1 -3 Ring binder

**Lazbuddie ISD Pre-Kindergarten**  
 4 - Pencils  
 2 - 12 Pack Crayola Crayons  
 3 - 1.25 Ounce Elmer's School Glue  
 1 - Bottle Hand  
 Continued on next page



Wide Ruled  
 Kleenex (2 big boxes)  
 Note cards (colored)  
Math  
 Pencils, Colored Pencils, Graph Paper, Erasers, 1 Folder.

Science  
 Pencils, Colored Pencils, Erasers  
 1 Science Folder,  
 Notebook Paper - Wide Ruled  
Social Studies  
 Map Colors, Colored Pens (5)

Notebook Paper - Wide Ruled  
 1 inch Binder  
Spanish  
 1 inch Binder,  
 5 Dividers for binder,  
 Pens and pencils

Art/Broadcasting  
 1 bottle Elmer's white glue, 1 Folder, 1 Eraser, 1 Pencil Sharpener, 2 boxes colored pencils, 2 lead pencils  
Tech App  
 Notebook paper - Wide Ruled, 1 Pocket folder with brads, Pens  
 Pencils, 1 Box Kleenex.

**Sudan ISD Kindergarten**  
 2 - 8 Oz elmer's school glue  
 1 - box of 125 ct. Kleenex tissue  
 2- Toothbrushes  
 Toothpaste  
 3 -8 Pack crayola crayons  
 Assorted computer color paper

large markers  
 1 - Box basic color watercolors  
 12 - #2 Pencils  
 1 - Small pencil sharpener  
 2- Erasers  
 2- Small bottles school glue  
 4-Glue sticks  
 1 Pair sharp pointed scissors  
 2 -. Large boxes of kleenex  
 2- Cans lysol wipes  
 Boys- 1 box snack size ziplock bags  
 Girls- 1 box gallon size ziplock bags  
 No rulers, school boxes, or folders

**Second grade**  
 Notebook paper (wide ruled)  
 Clipboard  
 3 Large pkgs 42 pencils  
 Crayons  
 Scissors  
 8 Oz elmer's school glue

2 Pink flat erasers  
 1 Box kleenex tissue  
 3 Pkgs red grading pencils  
 1 Red pocket folder with brads  
 1 Green pocket folder with brads  
 1 Blue pocket folder with brads  
 1 Large wide ruled spiral (blue)  
 1 Large wide ruled spiral (any style)  
 1 Lunchbox for supplies (with strap)

*It's time to get in gear for another year!*  
*Good luck to all area students!*  
**Lazbuddie Garage & Supply**  
 Adora, Terry & Lee Scott  
 P.O. Box 100, Lazbuddie • 965-2188

**HAVE A GREAT SCHOOL YEAR!**  
**Support Medical of Muleshoe**  
 • Oxygen  
 • Motorized Wheelchairs  
 • Home Medical Equipment  
 • Scrubs  
 RETAIL SHOWROOM  
**Brandi Claunch**  
 BRANCH MANAGER  
 103 S. Main Street Muleshoe, Texas 79347  
 (806) 272-7552 Fax (806) 272-7561  
 www.supportmedical.com

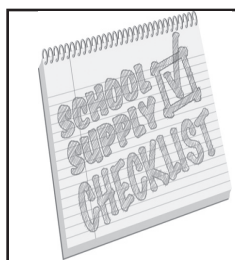
**Gry & True Value**  
 INC. & START RIGHT. START HERE.  
 401 S. First, Muleshoe 272-4511  
*We have your School Supplies & Office Supplies!*

**Fall Piano Lessons For All Ages!**  
**Call Fran Hamilton @ 272-4759**

**DON'T DREAD IT... TREAD IT.**  
**Make Tracks To Success This Year!**  
**Muleshoe Tire**  
 107 Main Street, Muleshoe • 272-4594

*Have a great school year students & school personnel!*  
*Come shop with us for all your school supply needs.....*  
**United Supermarkets**  
 104 W. 9th St., Muleshoe • 272-3120

**"Going Strong" into a successful future with Muleshoe ISD**  
 Going Strong since 1931  
**MULESHOE STATE BANK**  
 MEMBER FDIC  
 Muleshoe Branch 272-4561  
 101 W. American Blvd. Farwell Branch 481-9580  
 801 Ave. A



# BACK TO SCHOOL

- Continued from previous page**
- Sanitizer
  - 1 - Plastic School Box
  - 2 - 100 count Tissue (Puffs)
  - 1 - Kinder Rest Mat
  - 1 - Box of Wipes (Can be antibacterial)
  - 1 - Box Ziploc Bags
  - 3 - Glue Sticks
  - 1 - Watercolor Paints
- Kindergarten**
- 1 - Bag 8 Pencils
  - 2 - 16 Pack Crayola Crayon
  - 2 - 4 ounce Elmer's School Glue
  - 1 - Plastic School Box
  - 1 - 5" Pointed Fiskar Scissors
  - 1 - Kinder Mat or Towel
  - 2 - 100ct White Tissue (Kleenex)
  - 1 - Pink Eraser
  - 6 - Glue Sticks
  - 2 - 100 pack of Wet Ones
  - 2 - Wide Rule Notebook
  - 1 - 8 count Washable Markers
- First Grade**
- 2- Bottles White Glue
  - 2- Glue Sticks
  - 1- Pair Sharp Tip Scissors
  - 1- Pkg Watercolors/ paint
  - 10- Pencils
  - 1- Pink Eraser
  - 1- Composition Notebook
  - 2- Writing Tablets
  - 3- Boxes of Kleenex
  - 2- Rolls of Paper
  - Towels
  - 2- Pkg of Index Cards
  - 24- Count Crayons
  - 1 - Box Ziploc Bags
- 3 - Folders w/ Pockets and Brads
  - 1 - Bottle Hand Sanitizer
  - 1 - Box of Wipes
  - 1 - Plastic School Box
- Second Grade**
- 2 - Pkgs Pencils
  - 1 - 24 Pack Crayola Crayons
  - 1 - 4 ounce Elmer's School Glue
  - 1 - Plastic School Box
  - 1 - 5" Pointed Fiskar Scissors
  - 3 - White Facial Tissue (Kleenex)
  - 1 - Pink Flat Erasers
  - 1 - Container Clorox Wipes
  - 1 - Crayola Classic Markers
  - 4 - Eimers Glue Sticks
  - 4 - Folders w/Pockets and Brads
  - 1 - 1" Subject Wirebound Notebook
  - 1 - 12" Ruler
  - 2 - 200 Sheets Wide Ruled Paper
  - 1 - Bottle Hand Sanitizer
  - 2 - 1 inch - 3 ring Binder
  - 1 - Box of Quart or Gal Size Bags
- Third Grade**
- Bag 6 Pencils
  - 1 - Pack Crayola Crayons
  - 1 - 8 ounce Elmer's School Glue (White)
  - 1 - Plastic School Box
  - 1 - 7" Pointed Fiskar Scissors
  - 3 - 150 ct White Facial Tissue
  - 2 - Pink Flat Eraser
  - 200 Sheets Filler Paper
  - 1 - Crayola Markers
  - 1 - Containers Clorox

- Wipes
  - 5 - Folders with Pockets and Brads
  - 2 - Elmer's Glue Sticks
  - 1 - 1 Subject Wirebound Notebook
  - 1 - Box Ziplock Bags - Quart Size
  - 1 - Large Bottle Hand Sanitizer
  - 2 - 1 inch - 3 ring binder
  - 1 - Pkg Index Cards (4X6 with lines)
  - 1 - Pkg Colored Pencils
- Fourth Grade**
- 8 - #2 Pencils
  - 1 - Pk. Markers
  - 1 - Pkg. Map Pencils
  - 1 - 5 inch Pointed Fiskar Scissors
  - 1 - Box Quart Size Ziploc Bags
  - 3 - Boxes Kleenex
  - 1 - 4 ounce Elmers Glue
  - 4 - Elmers Glue Sticks
  - 3 - Colored Folders with Brads and Pockets
  - 1 - Plastic School Box
  - 1 - ruler, metric and standard; no bendable or folding rulers
  - 1 - 200 sheets Filler Paper -Wide
  - 2 - Spiral Notebooks
  - 1 - Black Sharpie
  - 2 - Black Ink Pens; erasable are fine, but not required
  - 2 - 3 Ring Binders (1-1/2 inch)
- Fifth Grade**
- 4 - #2 Pencils
  - 1 - 4 ounce Elmers School Glue
  - 1 - 5 inch Pointed Fiskar Scissors

- 3 - Box Kleenex
- 3 - pks of 100 (3x5) Index Cards
- 1 - black felt tip Markers
- 2 - Elmers Glue Sticks
- 5 - Colored Folders with Brads and Pockets
- 1 - Pkg. Map Pencils
- 1 - 12" Plastic Ruler (Metric and Standard)
- 2 - 3 Ring Binders (1-1/2 inch)
- 1 - 200 sheets Filler Paper (wide line)
- 1 - Black Sharpie
- 2 - Black Ink Pens
- 1 - Box Quart Size Ziploc Bags

### News about your college student

If your college student is graduating or has made the Dean's or President's List, in order for that information to appear in the *Muleshoe Journal*, we must receive notice from the respective educational institution. Your son or daughter must sign a release so the information can be sent to us. Have them visit their bursar's office to sign a form indicating they wish to share their good news! Once permission to share information has been granted, the college or university should send the info via email to: editor@muleshoejournal.com.

**H&R BLOCK**

104 E. Ave. C • 272-3332

*Wishing all students, teachers, staff and administrators a successful year!*

**Doggonit, Have A Good Year!**

**MULESHOE ANIMAL CLINIC & MULESHOE VET SUPPLY**

1430 US Hwy. 84, Muleshoe • 272-3061

**Support the merchants who support our kids!**

**Back To School**

Personal Loans from **\$200 to \$1190**

Call or Come Visit Us Today!

**CONTINENTAL CREDIT**

206 Main Street • Muleshoe (806) 272-3673  
www.continental-holding.com

All loans subject to our liberal credit policy and credit limitations, if any.

- ▼ **Snow Cones** (buy 10 get one free)
- ▼ **Hot Cheetos with cheese**
- ▼ **Pickle**
- ▼ **Frozen Pickle Juice**
- ▼ **Popcorn**
- ▼ **Mangonadas**

**Ice Express**

516 W. American Blvd. • 806-566-7858  
Tues. thru Sun. 12 pm to 9 pm

### MISD registration...

Continued from page 1 a.m. New students will need to bring the following documents: Student's birth certificate, student's social security card, proof of guardianship (if not the parent), parents driver's license, proof of residency (gas bill, water bill, etc.) and shot records. Also, information for contacting the previous school attended will be needed.

### Annual Texas sales tax holiday stretches budgets

Texas Comptroller Susan Combs says Texas families have a big opportunity to save money when they shop. The state's annual Sales Tax Holiday is scheduled for Friday, Saturday and Sunday, Aug. 19-21. "On that weekend, shoppers will pay no state or local sales tax on many school supplies, school backpacks and most children's and adults' clothing and shoes priced at less than \$100," Comptroller Combs said. "The tax break helps out when the kids' back-to-school lists are long and money is short," she added. This year, Combs predicts shoppers will save \$62.1 million in state and local sales taxes during the Sales Tax Holiday. The tax holiday weekend has been an annual event since 1999. Currently, the Tax Code sets the holiday for the third Friday, Saturday and Sunday in August. Lists of apparel and school supplies that may be purchased tax free can be found on the state comptroller's website at www.texastaxholiday.org.

### Get immunizations up to date before school starts

The Texas Department of State Health Services reminds parents to be sure their children are current on all required immunizations before school starts. Students must be vaccinated against certain preventable diseases before the first day of school, or they may not be allowed to attend class. "Immunizations are key to stopping the spread of disease and keeping children well," said Dr. David Lakey, DSHS commissioner. "Vaccinations are safe and have dramatically reduced the number of children who suffer and even die from serious illnesses like measles, polio or chicken pox," he said. The U.S. Centers for Disease Control and Prevention announced last week that deaths of young people due to chicken pox have fallen by 97 percent since the vaccine was introduced in 1995. Texas immunization requirements for the upcoming school year can be found in the School & Childcare section of ImmunizeTexas.org. Parents can check with their child's health care provider or local health department to find out when and where immunizations are available.

**Proud supporters of Lazbuddie ISD...**

*Fly into a great school year!!*

**Russell Spraying**

Ken & Clint Russell  
637 Hwy 214 • Lazbuddie  
806-965-2624

**CASA TORRES APPLIANCES**

We carry a **WIDE** selection of new & used name brand appliances! All appliances sold with warranty!

washers \* dryers \* stoves \* refrigerators

118 S. Main • Muleshoe, TX • Efrain Torres \* 806-393-5003

**WELCOME Back to School**

**Have a Great Year! Muleshoe Journal**

Striving to be your source for local news.  
201 W. Ave. C • 272-4536  
www.muleshoejournal.com

*Have a great school year!*

From Linda, Josie, Anna, e3 Esmeralda

**Trés Bella Salon**

1519 W. American Blvd. Muleshoe  
272-7516

**MINI MULE CHEERLEADING CAMP**

**WEDNESDAY & THURSDAY AUGUST 10 & 11 TH**

**\$30 PER CHILD \$25.00 IF YOU PRE-REGISTER BY AUG. 5**

\*T-Shirts 1st Come 1st Serve\*

Ages: 3 years old thru Upcoming 6th Grade

From 8:30 am to 11:00 am Registration will be between coaches office and old high school gymnasium.

For more info contact Dusty Gorman 806-292-0350

# Bus Safety Rules!

**Start**

You were late and almost missed the bus. Go back 1 space.

You waited for the bus five steps from the curb. Go forward 2 spaces.

You stayed in your seat while the bus was moving. Go forward 1 space.

*Muleshoe Mules!!*

You pushed someone as you got on the bus. Go back 2 spaces.

You were noisy and received a warning from the bus driver. Go back 2 spaces.

You waited until the bus came to a complete stop before leaving your seat. Go forward 1 space.

*Sudan Hornets!!*

Hey, kids! School is starting, and here is a little game to remind you how you to ride the bus safely. To play, you will need some buttons to use as game tokens and a die. Place the tokens on Start, choose a player to go first and have them roll the die and move their token the number of spots on the die. The first person to reach the school is the winner.

*Have A Great School Year!*

You stuck your arm out of the window. Go back 1 space.

You walked behind the bus where the driver couldn't see you. Go back 1 space.

*Lazbuddie Longhorns!!*

You left your backpack in the aisle. Go back 2 spaces.

**SCHOOL**

**SCHOOL BUS**

*This Ad and Information Proudly Sponsored By:*



**BAILEY COUNTY ELECTRIC COOPERATIVE ASSOCIATION**

A Touchstone Energy® Cooperative 

610 E. American Blvd., Muleshoe • 272-4504  
In Morton 266-8600



**Five Area Telephone Cooperative, Inc.  
West Plains Telecommunications, Inc.**

302 Uvalde, Muleshoe • 272-5533  
Sandy Vandevender, Gen. Mgr.