

Precinct 1 Road Bond Election Saturday

Resident qualified voters of Precinct One will approve or reject a \$500,000.00 bond issue Saturday which would pave 39-miles or additional roads within the road district which is designated as Road District 3.

The election will be held in the Bob Burgess garage. George Bradley has been appointed as the presiding judge and Bob Burgess has been designated as the assisting election judge.

In addition to the paving bond issue proper, the voters will vote on a separate ballot on the proposition as to whether they would prefer to pay off the bonds in 18 or 10 years. According to figures secured by County Commissioner Roscoe Dyess, the interest on the 18 year bonds would be \$273,986.25 as compared with \$128,715.00 on the 10 year bonds. Paying off the bonds within 10 years would save the taxpayers of the district \$145,271.25 on the interest paid on the bond issue.

The approximate annual road paying tax on a section of land with a \$3,200.00 county tax valuation would be \$27.50 for retirement of the 18-year bonds. The annual road bond tax on the same section of land for retirement of the 10-year term bonds would be approximately \$42.50.

The voters will have an opportunity to decide as to whether they would prefer the higher annual tax and save interest payments amounting to \$145,271.25, or if they would prefer to pay the higher amount of interest and spread their lower payments over a longer period of time.

Paving Routes
The proposed paving covers various parts of the precinct either tying into existing pavement or extending to U. S. highway 287.

The map of proposed paving adopted at the hearing for the election which was completed for Roscoe Dyess, county commissioner of precinct one, shows these designations:

From the northeast corner of section 398 in Block 1-T south for a distance of three miles;
From the northeast corner of section 459 in Block 1-T east for a distance of approximately 6½ miles east to U. S. 287;

From the northeast corner of section 398 in Block 1-T east 6 miles of U. S. 287;

From the northeast corner of section 272 in Block 1-T south for a distance of 1 mile;

From the northeast corner of section 343 in Block 1-T 4.5 miles west to U. S. 287;

From the northeast corner of section 334 in Block 1-T south 2 miles, and 1.75 miles east to U. S. 287;

From the northeast corner of section 334 in Block 1-T east 1.5 miles to U. S. 287;

From the northeast corner of section 19 in Block 2-T west 8 miles.

From U. S. 287 in the northeast corner of section 3 in Block 2-T, east for a distance of approximately 4.75 miles.

The route of the proposed paving was approved by the taxpayers of the road district who attended the hearing held in the Commissioners' Court room on April 13.

The election polls to determine the issues will be open in the Bob Burgess garage from 8:00 a. m. until 7:00 p. m. Saturday.

Bottle charts are maps showing the courses of sealed bottles thrown in the ocean.

Stratford High School Athletes Receive Jackets At Annual Banquet

Beth Naylor Is 8th Grade Valedictorian



Beth Naylor 94.57

Beth Naylor, 14-year old daughter of Mr. and Mrs. N. L. Naylor, has won the honor of being the valedictorian of the Eighth Grade Class. She won the honor with a scholastic average of 94.57.

Beth Naylor represented the county as the senior spelling bee champion this year. She is also a member of the Elementary School Band.

Labels Tell Safety Uses Of Chemicals

One way to safeguard against excessive fungicide and nematode residues on harvested crops and protect those who handle the materials is to follow the recommendations of the manufacturer.

Harlan E. Smith, extension plant pathologist, says the labeling of all fungicides and nematocides shipped interstate must be registered with the U. S. Department of Agriculture. All applications for registration or labeling are thoroughly examined to remove or modify any directions for use on particular crops which do not seem to meet the requirements of the law. Among other things, the USDA determines whether any treatment is likely to leave excessive chemical residues on the harvested raw agricultural commodities.

Smith suggests that the following rules be closely followed. Use a plant disease or nematode control chemical only on the crops for which it is recommended and in the amounts specified on the label. Applications of the pesticide should also be made in accordance with the label directions.

If a crop is not named on the label of a particular fungicide or nematocide, it may mean that no residue of that pesticide is permitted on that crop; and hence the treated crop could not be shipped if it contains a resi-

(Continued on Page 8)

Mrs. Eller Named Girl Of The Year



Mrs. Demus Eller

Mrs. Demus Eller has been selected as Exemplar "Girl of the Year" by her sorority sisters of Xi Epsilon Iota Chapter.

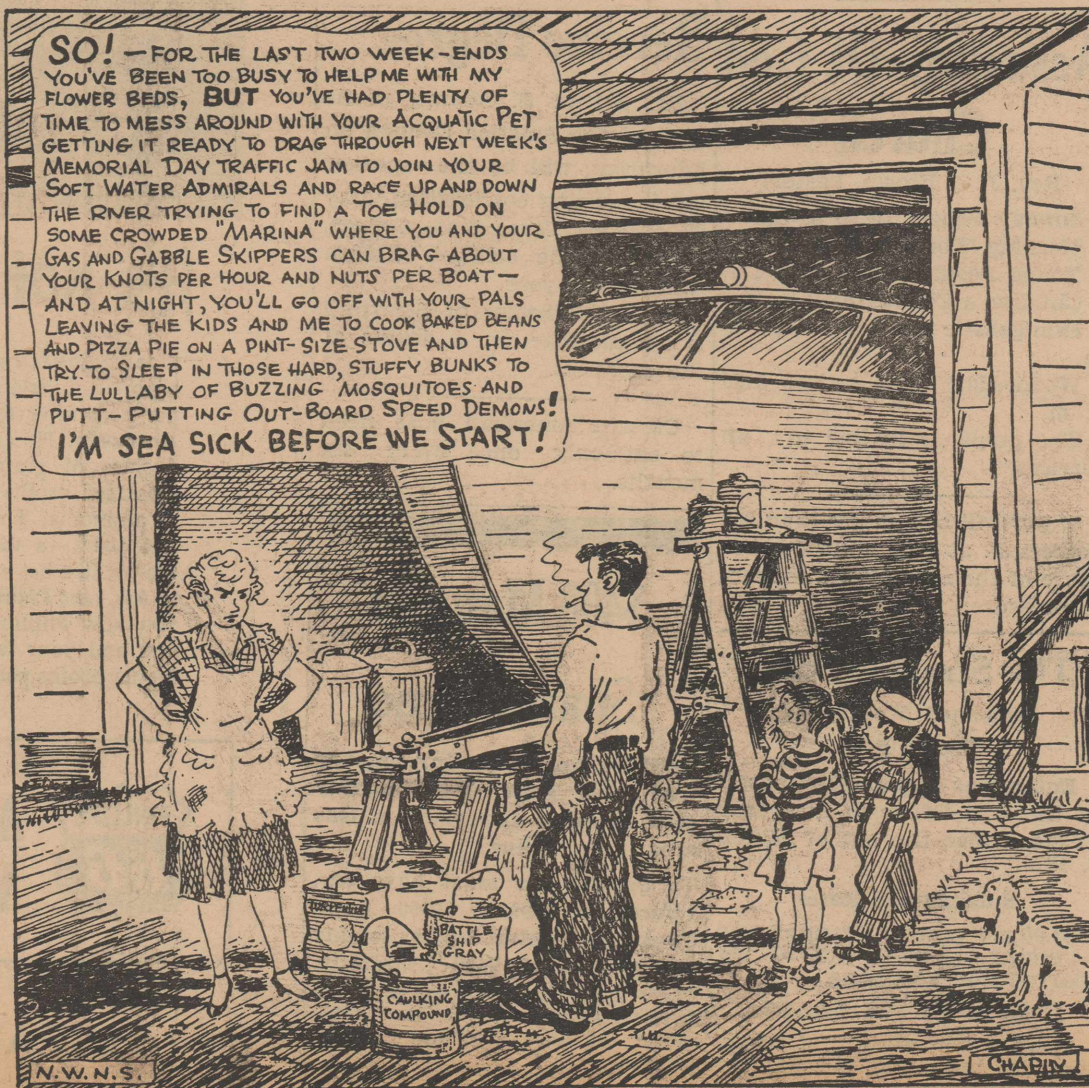
This is the highest honor the sorority can bestow on one of its members. The presentation of a full jeweled sorority pin was made to Mrs. Eller at the annual Founder's Day banquet April 30 at the Dumas County Club. This award is given to the member contributing the most to the chapter. Mrs. Eller has been treasurer of the chapter for three consecutive years.

John Haney Will Open 287 Truck Stop Saturday

John Haney will open the 287 Truck Stop and Cafe on U. S. 287 in the northwestern edge of Stratford Saturday. Free coffee and doughnuts will be served to guests visiting the business from 9:00 a. m. until 6:00 p. m.

Inspiration for the Bloomer Girls was Mrs. Amelia Jenks Bloomer, 19th century advocate of abolition, temperance and women's rights.

THE SAILOR'S WIFE PIPES UP!



High School Band Wins Music Festival Awards

Democrats Name Party Nominees

In a clean sweep of the county, district and state the voters of this part of Texas named their nominees for the general election in the first Democratic Primary held Saturday. Only the office of the judge of the court of criminal appeals remains in doubt to be decided in the second primary election to be held June 4.

Practically every precinct except number three polled their entire voting strength.

Unofficial tabulations of the county votes were:

For County Judge
F. M. Keener 599.

For Sheriff
A. L. (Doc) Wilson 544.

For Tax Assessor-Collector
John Kidwell 853.

For County Commissioner Of Precinct One
Roscoe Dyess 41.

For Precinct Chairman
Bob Burgess 51.

For Precinct Chairman Of Precinct Two
Travis Spurlock 61.

For County Commissioner Of Precinct Three
W. T. (Bill) Crabtree 135.

For Constable Of Precinct Two
Sam Spradling 142.

● **Correction**

The price on a two pound tin of Folger's Coffee which appeared in Albert's Grocery & Market advertisement last week as \$1.25, should have read \$1.29.

Lanita Judd Is 8th Grade Salutatorian



Lanita Judd 94.35

Lanita Judd, 13-year old daughter of Mr. and Mrs. Leroy Judd, is the salutatorian of the Eighth Grade Class. She won the honor with a scholastic average of 94.35.

Lanita Judd is a member of the Elementary School Band and she represented the county as the senior spelling bee champion in 1959.

County 4-H Bake Show May 14

All Sherman County 4-H Club girls are invited to enter the "Better Bake Show" to be held Saturday in the Sherman County Exhibits Building. Batter rolls and sponge cakes will be entered in the baking show.

Mrs. Aleatha Clark of Stratford and Mrs. Merrit Sweney of Sunray will do the judging.

Judging of the entries will begin at 9:30 a. m. and the winners will be announced at 12:00 o'clock noon.

Cynthia Heil Is 8th Grade Runner-Up

Cynthia Heil, 13-year old daughter of Mr. and Mrs. Dean Heil, was runner-up in the Eighth Grade Class for scholastic honors. She placed third among the students in her class with an average of 93.71.

Democratic Convention Saturday

The Democratic county convention will be held in the district court room at the courthouse in Stratford Saturday at 2:00 p. m. Delegates and their alternates to the state convention will be elected. The state convention will be held in the Municipal Auditorium in Austin Tuesday, June 14, at 10:00 a. m.

The Stratford High School Band was named "Outstanding Band in Concert Playing" in Class C at the Tri-State Music Festival in Enid, Oklahoma which was held May 4 through 7. The award was made following the final Grand Concert Saturday evening in Enid's Convention Hall.

Each band participating was given a division rating according to the following standards: Division I, superior; Division II, excellent; Division III, good; Division IV, fair; Division V, poor. The Stratford Band received a Division I in concert playing and Division II in sight-reading and parade marching. Two consecutive nights of rain prevented participation in the field marching. The band also won 2nd place in the parade in Class C bands.

Judges for Class C band in Concert Playing were Dr. D. O. Wiley of Texas Tech (retired), James Kerr of the University of Wichita, and Don McCathren of Duquesne University. Jim Jacobson of T. C. U. was the sight-reading judge. Parade judges were Dr. Frank Simon of Arizona University, Rex Shelton of Borger High School, and Richard Franko Goldman of the famed Goldman Band.

As was scheduled, several Stratford students participated in instrumental and twirling solos and ensembles and 12 students were selected to perform in the Tri-State Chorus and Tri-State Band. The band was in Enid from Wednesday afternoon until Saturday night.

Sorority Honors Mothers

Members of the Xi Epsilon Iota and Nu Beta Chapters of Beta Sigma Phi Sorority honored their mothers and guests at a Mother's Day tea on May 7, at 3:00 o'clock in the Fellowship Hall of the Baptist Church. Mrs. Maudie Flores played several numbers on the piano while members and guests arrived.

The welcome was given by Bobbie Cummings, who introduced Kathleen King, Chosen as the Beta Sigma Phi Woman of the Year. Highlights of her life were presented in a "This Is Your Life" fashion; also giving parts of her life were Mrs. Vera Pronger, who told of Mrs. King's church and civic work, and Mrs. Pearl Mullins, who told of her Eastern Star work. Mrs. Lela Moon, who was last year's Woman of the Year presented Mrs. King with a trophy. Miss Kay Spurlock, accompanied by Mrs. Lorraine Mehner, sang a song. Each sorority member introduced her mother and guest. Kay Spurlock sang another song. The program was concluded by Johnnie Vincent, who read two poems about "mother".

Refreshments of cookies, nuts, mints, and punch were then served to the guests and members. Margaret Reed served punch.

Sorority members and their guests present were Joan Bell, Mrs. J. D. Sims, Mrs. Polly Heil, Mrs. Charline Oquin, Mrs. R. E. Oquin, Mrs. Theresa Jackson, Mrs. H. T. Jackson, Mrs. J. R. Pendleton, Miss Minnie Laura Jackson, Mrs. Dorless Wells, Mrs. Leslie Parker, Mrs. Gaynelle Rif-

(Continued on Page 5)

Texas Has More Troubles

If sunny weather and the disappearance of influenza has you feeling secure and content, the State Department of Health has bad news.

Health officials warn of three separate menaces:

1. Rabies is on the increase, up 33 percent from this time last year. During the first three months of the year 218 positive cases were diagnosed.
2. It's the measles season with Travis County leading the state with 250 cases reported. Nueces County reported 205 cases and Galveston has 172 cases.
3. Stinging caterpillars are about and will be around feeding on trees and shrubs until

APPRECIATION

We are overwhelmed by the kindness, generosity and loving concern shown us during the illness in our family, and we wish to express sincere thanks to relatives, neighbors, friends and all who helped in so many different ways.

Mr. and Mrs. J. R. (Bob) Marshall and Family

Tin has accounted for about 70 per cent of the value of Bolivian exports in recent years.

fall. Health Department officials particularly urge parents to warn their children not to pick up the fuzzy, fascinating moth larvae. Stings should be treated as bee or wasp stings, by cleaning with the alcohol and covering with calamine or other lotion.

Stratford Abstract Co.

Minnie Laura Jackson, President

Incorporated 1907 — 53 years of Satisfactory Service to Sherman County Land Owners

Let Us Make Your Abstracts

— WE SHOW THE RECORDS — OFFICE IN AMERICAN LEGION BUILDING

Want Ads

Announcements



STRATFORD LODGE 874

J. D. McDaniel, W.M.

F. B. Mullins, Secy.

STATED COMMUNICATION

Third Thursday Every Month 7:00 P. M.

For Sale

FOR SALE: One 5 horse Firestone, and one 7 1/2 horse Neptune outboard motor, both in good condition. — Cecil Borth, Box 234, Stratford. 18-tfc

Stone-Field custom tailored Suits, sport coats and slacks. Measured to fit. See Edward Brannan, Phone 3521. 46-tfc

You can't get better Carpet Deals any where than you can at McMahan Furniture Co. 5-tfc

Several good used Vacuum Cleaners at bargain prices at McMahan Furniture Co. 20-tfc

LEES all-new 501 Nylon Carpet. For free estimate call WE 5-4811 Dumas, Collect. — Woody Furniture Co. 38-tfc

FOR SALE: Four residential lots on pavement in East Stratford, and two corner residential lots. — Darrell Cotney, Phone 3351. 18-tfc

For the best buys in Furniture and carpet, see Woody Furniture Co., Dumas, Texas, call WE 5-4811 collect for free estimate. 38-tfc

FOR SALE: Two wheel trailer. See Peder J. Norbye or J. J. Willey. 16-tfc

LOST bright carpet colors, restore them with Blue Lustré carpet and upholstery cleaner. McMahan Furniture Co. 20-tfc

FOR SALE: IHC Farmall Tractor with lister and planter attachment. — Lester Plunk, phone 3496. 3-tfc

USED School Buses for sale — for bid information contact Gilbert Mize, Supt. Perryton Schools, Perryton, Texas. 20-2tc

Come see the Massey-Ferguson Super 92 Combine with opposed motion on grain pan and sieves, 25% more capacity, new wind valves; six open straw walkers with grain pan extending full length. — Moore Implement Co. 5-tfc

FOR SALE: Berkshire open md bred glts, and boars. — Arthur Judd. 50-tfc

FOR SALE: Two wooden storm doors; custom made Bamboo drapes for windows 65x60, and 33x60; two drapes for windows at top of door. — Mrs. Phillip Bain. 18-tfc

Wanted

WANTED: Sewing to do in my home. Will also cover buckles, make button holes and belts. — Mrs. W. J. Lowe, Phone 4381. 13-tfc

Simon Bolivar is often called the George Washington of South America.

Methodist Church

(Rev. Raymond T. Dyess, Pastor)

Sunday School 9:45 a. m.

Morning worship 11:00 a. m.

M.Y.F. 6:00 p. m.

Intermediate Fellowship 6:00 p. m.

Junior additional session 6:00 p. m.

Evening worship 7:00 p. m.

Wesleyan Guild meets second Wednesday of each month at 7:30 p. m.

Choir practice: First and third Wednesday of each month, 7:30 p. m.

Official board meetings and all commissions second Wednesday of each month, 7:30 p. m. at the church.

W.S.C.S. Meetings: Third Wednesday of each month at the church at 2:30 p. m.

Circles meet the first Wednesday of each month; Mary Ethel Circle at 9:30 a. m., Flora Foreman Circle at 2:30 p. m., Florence Mullins Circle at 9:30 a. m.

Methodist Men meet the fourth Wednesday night of each month at 7:00 p. m.

M.Y.F. council meetings: First Sunday of every third month at 5:00 p. m.

FIRST

Christian Church

(B. R. Clark, Minister)

Sunday School 9:45 a. m.

Morning worship 10:45 a. m.

Youth groups 6:00 p. m.

Evening Worship 7:00 p. m.

Mid-week Bible Study and prayer 7:00 p. m.

A friendly welcome awaits you at any service of the First Christian Church.

Baptist Church

(M. E. Upchurch, Pastor)

Sunday School 10:00 a. m.

Morning Worship 11:00 a. m.

Training Union 6:30 p. m.

Evening Worship 7:30 p. m.

Mid-week prayer service 7:00 p. m. Wednesday.

Catholic Chapel

(Rev. James W. Sonderman, Mission Pastor, Phone Dalhart, CH9-4128)

Sundays

Mass 8:00 a. m.

Confession 7:40 a. m.

Teachers Training Course 3:00 p. m.

Saturdays

Children's catechism 3:00 p. m.

St. Joseph's Altar Society will meet May 18 at 8:00 p. m. in the home of Mrs. Joe Engelbrecht.

Church of Christ

(Vernon Williams, Minister)

Sunday Services

Bible Study 10:00 a. m.

Worship 10:55 a. m.

Evening Worship 6:00 p. m.

Tuesday

Ladies class 9:30 a. m.

Wednesday

Bible study 7:00 p. m.

A friendly welcome awaits you at all services.

Assembly Of God Church

(Rev. J. O. Brown, Pastor)

Sunday School 10:00 a. m.

Morning Worship 11:00 a. m.

Young People 6:00 p. m.

Children's Church 6:00 p. m.

Evangelistic Service 7:00 p. m.

Wednesday night service 8:00 p. m.

The public is invited to all services.

Water will boil at less than 212 degrees F. at high altitudes because of the reduced atmospheric pressure.

The Stratford Star

Published Weekly By

Brown Ross

Entered as second class matter at the Post Office in Stratford, Texas, under the act of March 8, 1879.

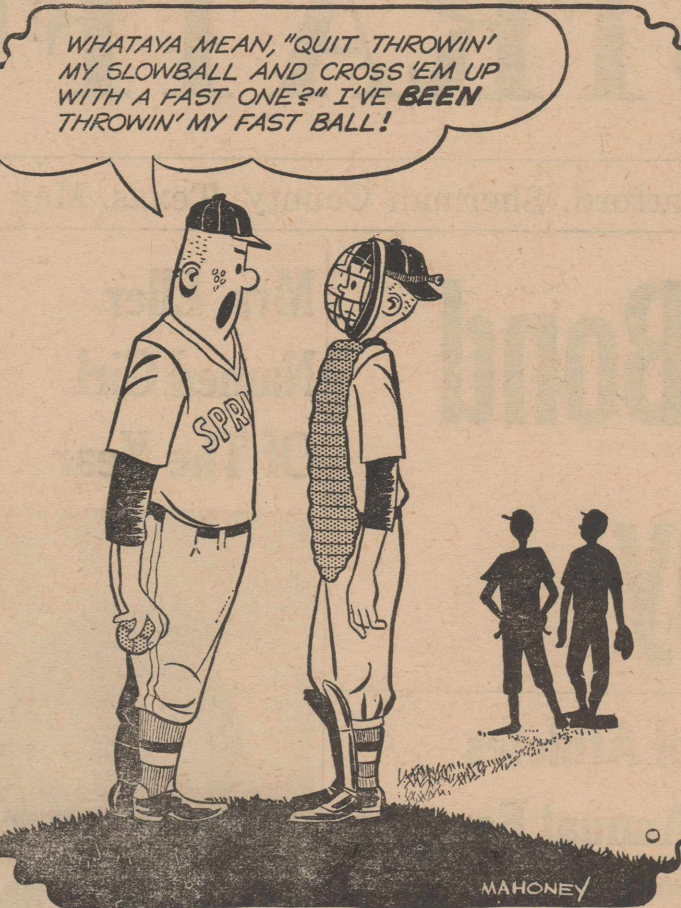
Subscription Rates

\$3.00 per year in Sherman and adjoining counties. \$3.50 per year outside first zone.

Classified and Legals

3 cents per word first insertion, 50c minimum, 2 cents per word subsequent insertions. Display rates on application.

HALF-PAST TEEN



Precinct Four Street-Road Paving Bond Election Set For June 4

June 4 has been set by the Commissioners' Court for an election when qualified tax-paying voters of Road District Four will approve or reject a \$350,000 paving bond issue. Road District Four is limited to the boundaries of precinct four.

If approved the bond issue will pave approximately 63 blocks of city streets in north and south Stratford, in addition to Fifth Street north to the city limits, approximately 1.25 miles of road on the north side of Stratford from U. S. 54 to U. S. 287, approximately 1/2 mile of road from the Gruver Highway to U. S. 287 on the south side of Stratford, and about 11 miles of road from U. S. Highway 54 north to the Oklahoma line.

Taxes for retirement of the bonds would be levied on property within the limits of precinct four. They would bear an interest rate not to exceed 4%, and would be liquidated within 19 years, or at an earlier date if funds derived from the taxes are sufficient to pay off the indebtedness.

The election was ordered after a hearing was held April 29. Several lengthy discussions developed at the hearing but the original proposed routes of the paving were left as they had been mapped.

The June 4 bond election will be held at the courthouse in Stratford.

Officers named to hold the election are: John R. Knight, presiding judge; H. L. Vincent, judge; Harold Quin and Marguerite Terrell, clerks.

Ledbetter To Receive Degree

Dr. Arthur S. Adams, president of the America Council on Education, will be the speaker for the spring convocation, May 22, at West Texas State College, climaxing the college's Golden Anniversary year.

James Ledbetter of Stratford is a candidate for a degree at the exercises.

Certain American boars need to eat only once every six months.

\$400 Monthly Spare Time

Refilling and collecting money from New Type high quality coin operated dispensers in this area. No selling.

To qualify you must have car, references, \$600 to \$1900 cash. Seven to twelve hours weekly can net up to \$400 monthly. More full time. For personal interview write P. O. Box 1055, Boise, Idaho. Include phone number.

Mrs. Paul Chesmer, served refreshments to the following members: Mrs. H. H. Caraway, Mrs. Bill Allen, Mrs. Carroll Wisdom, Mrs. E. R. Bell, Mrs. Fred McDaniel, Mrs. W. L. Pendleton, Mrs. Bill Reed and Mrs. W. G. Hart.

Notice Of School Board Equalization Tax And Budget Hearing Meeting

In obedience to an order of the Board of Equalization, regularly convened and sitting, notice is hereby given that said Board of Equalization will be in session at its regular meeting place in the school house in the city of STRATFORD, SHERMAN County, Texas, at 10:00 A. M. on Tuesday, the 31st day of May, 1960, for the purpose of a budget hearing and the determining, fixing and equalizing the value of any and all taxable property situated in STRATFORD Independent School District, SHERMAN and DALLAM Counties, Texas, for taxable purposes for the year

1960, and any and all persons interested in or having business with said Board are hereby notified to be present.

BY ORDER OF THE BOARD OF EQUALIZATION, LEON GUTHRIE Secretary, Stratford Independent School District Board of Trustees, Stratford Independent School District, Sherman County, Stratford, Texas, this 11th day of May 1960. (Pub. M-12-19-26)

Students of Mrs. E. E. Coons

Will Be Presented In A

DANCE RECITAL

in the

School Auditorium

Friday, May 13

at 8:00 P. M.

Sponsored by Nu Beta Chapter of Beta Sigma Phi

Admission: 25c and 50c

Doherty Weed Control

Work Guaranteed

LET DOHERTY SOLVE YOUR BINDWEED PROBLEMS

BEFORE SIGNING A CONTRACT, CHECK WITH US ON OUR TWO-PLAN PROPOSITION

CALL J. W. GUNNELS

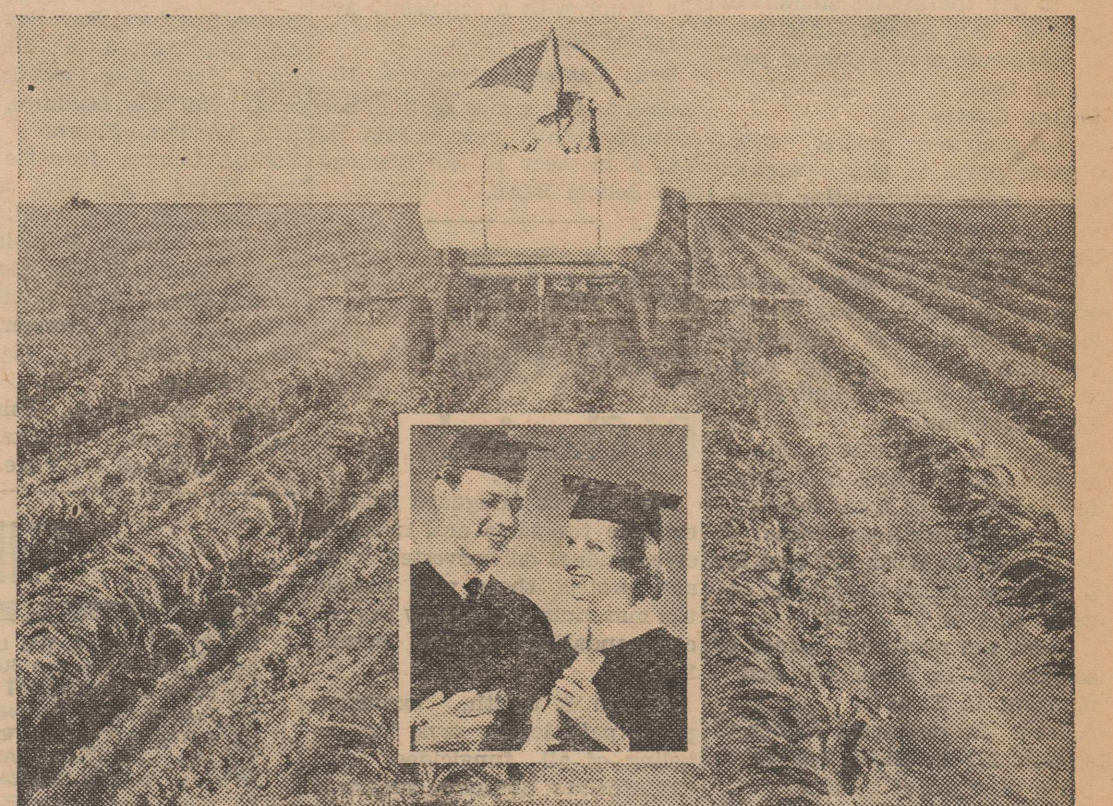
WE 5-2451 Dumas, Texas

OR C. C. PLUNK, YOUR LOCAL AGENT

PLUNK 66 OIL COMPANY

P. O. BOX 848 PHONE 2661 STRATFORD

Raise a college education in a sorghum field?



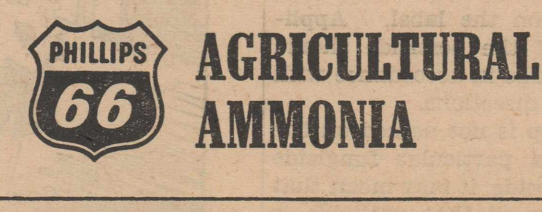
It's not fantastic! And here is why:

One leading farmer with 250 acres of maize reported a yield increase of 1625 pounds per acre after application of Phillips 66 Ammonia. He cut a total of 7250 extra bushels of grain and netted \$4050 in increased profits after deducting the cost of ammonia. This extra income for only two years—a total of \$8100—will more than send a boy or girl through college.

Ask your Phillips 66 Distributor to show you how Phillips 66 Ammonia can help you and your family live better through higher profits per acre.

	*Using Phillips Ammonia	Without Ammonia
Fixed Cost Per Acre	\$39	\$39
Ammonia Cost Per Acre	\$7	—
Yield Per Acre	97 bu.	68 bu.
Net Profit Per Acre	\$31.60	\$15.40
INCREASED PROFIT PER ACRE \$16.20		

*Example only. Grain sorghum 80¢ bu. Results vary, according to soil fertility, available moisture and cultural practices.



The Sign of Better Ammonia Service

STRATFORD BUTANE CO., Stratford, Texas

Snapshots: American Cathedral



The Cathedral of St. Augustine, Fla., is the home of America's oldest Christian parish north of Mexico. The present Cathedral was completed in 1797, enlarged and restored after fire of 1887. Parish records date back to 1594. Unlike other old buildings, the true age and significance of St. Augustine's imposing old Cathedral is not to be measured entirely in terms of the age and beauty of its stones, mortar and inward adornments. Actually one of the last Spanish structures to rise into St. Augustine's ancient skyline, the Cathedral stands as a crowning symbol of America's early Christian zeal. In a practical sense, the mightiest Spanish forts have crumbled into uselessness while the majestic Cathedral lives on as a monument to man's eternal quest for salvation.

NOTICE OF SALE OF STATE LAND

Sealed bids covering the sale of State land and improvements thereon located at Stratford, Sherman County, Texas, will be received at the office of Mr. Charles W. Smith, District Engineer, Amarillo, Texas until 2:00 P. M., May 16, 1960, and then publicly opened and read.

The property is located on U. S. Highway 287 one and one-half blocks southeast of said highway's intersection with U. S. Highway 54 in Stratford. It consists of all of Lots 1, 2, 3, 4, 5, 16, 17, 18, 19 and 20 in Block No. 100 of the original town site of Stratford, Sherman County, Texas, as shown on the official plat of said town recorded in Volume 3A, Page 645 of the Sherman County Deed Records and in Volume 9, Page 626 of said records. The Lots are all 30'x140' in size. The property fronts approximately 150 feet on U. S. Highway 287. The State will convey the land and improvements in fee and a complete abstract of title will be furnished to the successful bidder.

The improvements consist of approximately 900' of guard mesh fence.

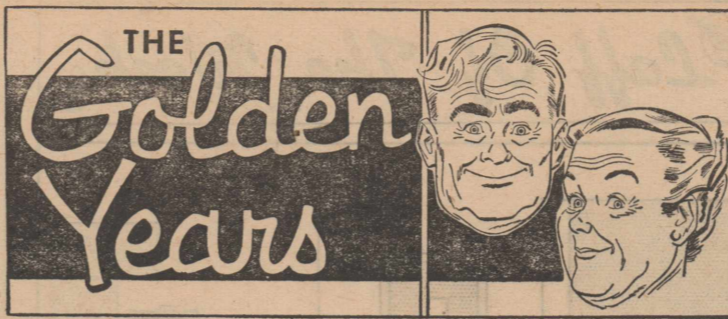
Each bid shall be accompanied by a Certified or Cashier's Check on a State or National Bank of the State of Texas in the amount of \$150,000, made payable without recourse to the order of the State Highway Commission of Texas, as a guarantee that the bidder, if successful, will consummate the purchase. Certified or Cashier's Check of the highest bidder may be retained until the purchase is consummated. Checks of all except the highest bidder will be returned within forty-eight hours after opening of bids.

Bids will be received on or before the hour and date set for the opening thereof, and must be in the hands of the official indicated above by that time. The price bid shall be construed to include expenses incurred in the sale of the property as required by law. Bids may be submitted by letter. Bidders or authorized agents are invited to be present.

The State reserves the right to reject any or all bids. When submitted by mail, the bids shall be addressed to Mr. Charles W. Smith, District Engineer, P. O. Box 2708, Amarillo, Texas, and the envelope marked: "BID ON SALE OF STATE LAND", with the date and hour of bid opening shown.

Bid forms and additional information may be obtained from Wayland Brown Sr. Maintenance Foreman located in the Texas Highway Department office at Stratford, Texas. (Pub. A-28; M-5-12)

It's profitable to read the ads.



By Thomas Collins

COUNTRY LIFE PLAN OF RETIREMENT

Harold W. Smith is taking it easy at home.

He was 65 last October 3, and with three months' grace under his company retirement policy he retired January 1. He left the office after a luncheon, a retirement gift—an engraved watch, probably—and his final pension papers.

Mr. Smith is retiring rich. He has an estate of about \$75,000 and a retirement income of about \$850 a month. The \$75,000 is divided as follows: \$34,000 in stocks which pay him \$1,190 a year (included in his \$850 income) a home worth \$35,000, \$3,800 in U. S. bonds and about \$2,000 in cash. The \$850 income includes top Social Security for himself and wife, company pension and the stock payments.

He began retiring four years ago.

"I started with my home," he says. "A \$35,000 house in the city can give you good living. And it can impress people when you're on the way up the ladder. But after age 60 it's economic stupidity. With retirement coming on, a home worth \$35,000 should give you more than housing."

So the Smiths sold their home for \$33,500 net. They bought an 80-acre farm for \$33,750 net. They bought it 43 miles from the city, two miles off a super highway and next door to a farmer who would rent 50 acres of their land.

"This took some doing," Mr. Smith said. "We had to decide first to swap our home for a farm, instead of for an apartment house or a hotel—which

also can give you income with your housing.

"Since I had four more years to work, the farm had to be near enough for me to drive into town every day. The land had to be good enough to rent out, if we were to get income, and so located that it could be rented."

The Smiths set out immediately to remodel the farm home so their living could conform reasonably well with their city standards.

They have done the following: Remodeled constantly, spending no more than the monthly salary would cover, developed a small flock of laying hens and a substantial garden, acquired a dog and two cats, converted part of the barn into sleeping bunks for Boy Scouts from the city who make safaris to the farm, invaded a town of 1,500 people three miles from the farm, became acquainted with everybody important, joined a church and established charge accounts.

Meanwhile, Mr. Smith has: Moved all his investment money into mutual funds ("because I'm no investment expert and this seemed next best"); started taking a five-day week, despite the fact most of his colleagues went to the office on Saturday ("because it was time I had the same rights as a ditch-digger, and I had things at the farm to do").

Mr. Smith, with all his money, is heading toward a modern version of the country squire.

For a copy of the new Golden Years booklet by Thomas Collins, send 35 cents in coin (no stamps) to Dept. "NWS", Box 102, Grand Central Station, New York 17, N. Y.

Den 5 Cubs Make Drums

(By Mike Vincent)

Den 5 met in our Den Mother's home, Monday, April 9.

All regular members and one new member, Albert Miranda,

were present.

Our Den Chief, Lanny Harris and Dwight Brooks helped us make drums.

Mike's mother Mrs. Walter Vincent, furnished refreshments of popsicles and potato chips.

We closed our meeting by forming the living circle.

ABSTRACTS

WE HAVE A COMPLETE ABSTRACT PLANT

Covering All Real Estate In Sherman County

We Furnish Quick Efficient Service On Short Notice

Sherman County Abstract Co.

Royal Pendleton, Manager

Stratford, Texas

YOUR CAR CAN'T Yell Before It's Hurt

So it's up to you to keep your car in first class shape so that there is no need to yell. Chances are that your vacation is just around the corner. Stop in for a check-up before you start and eliminate those car troubles that may wreck a long-awaited for vacation.

Gas — Oil — Tires

T. O. C. Motor Co.

Studebaker Cars and Trucks

Stop Termite Damage

Warning: Flying Ants May Be TERMITES

Termites work like silent prowlers all the year round. Have your home checked.

FREE INSPECTION Without Obligation

ORKIN

World's Largest Pest Control Company

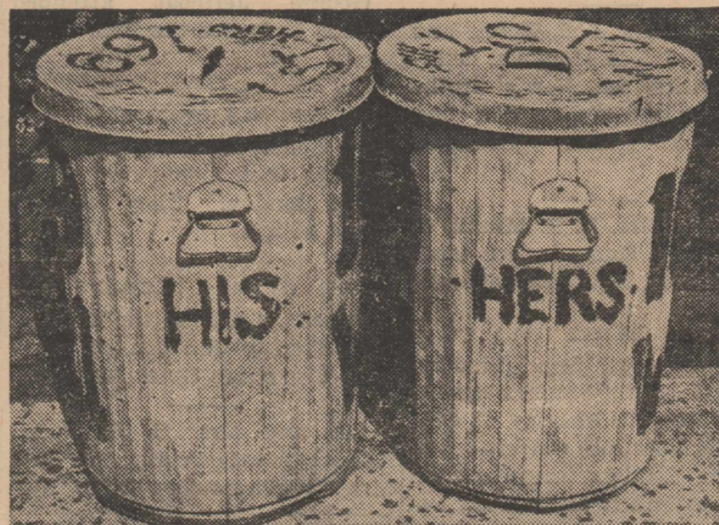
CONTACT

L. D. Burney

Box 88

Borger, Texas

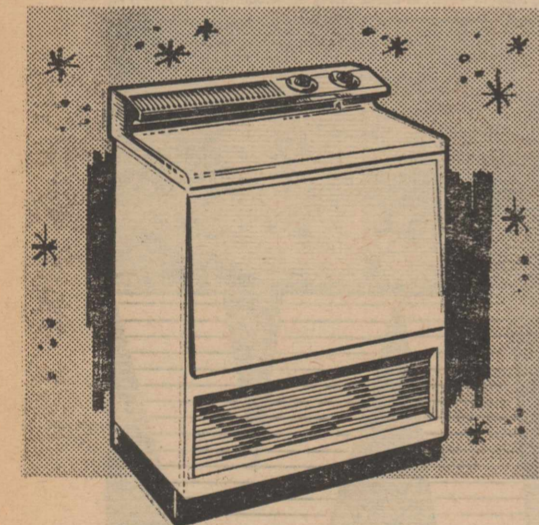
OR CALL COLLECT BR-4-2611



LATEST TIN . . . These "his" and "hers" garbage pails offer a new switch on elegant living in New York City, or are they mad at each other?

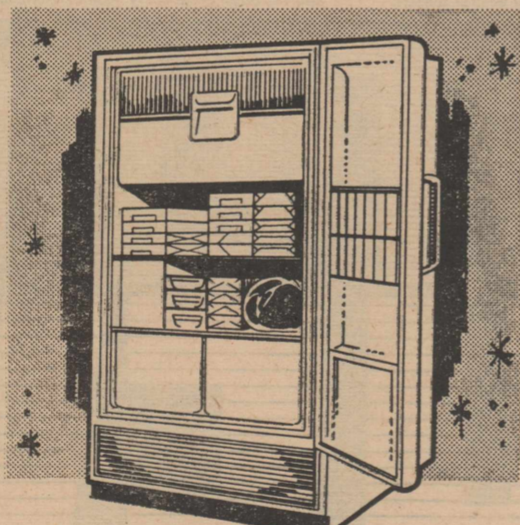


NEW HOTEL IN TOWN . . . The Hotel New Japan brightens the Tokyo scene in this aerial photo. The hotel has 350 rooms and is located in the center of the city.



ELECTRIC DRYER

Watch and win! See a demonstration of an electric clothes dryer—you may win it. Yes, after the demonstration of this appliance at your participating Reddy Kilowatt dealer's, your name will be entered on a registration card. You could win—you have the same opportunity as anyone else—why not try it?



ELECTRIC FREEZER

Watch and win! An electric home freezer is a money saver for every family. See a demonstration—ask the salesman to explain how foods can be bought in quantity at substantial savings—how garden-fresh vegetables can be quick frozen, preserving the nutrition so important to health. Be sure to register after you have your demonstration.

WATCH and WIN



ELECTRIC DISHWASHER

Watch and win! Here's an electric appliance that rids you of red, rough hands from messy dishwater. All you do is push a button or turn a dial. Dishes come out sparkling clean and far more sanitary than you can ever make them by hand washing. It's a great appliance . . . one you'd like to win. You may, too, by registering after you've had your demonstration.



ELECTRIC RANGE

Watch and win—the basic appliance that starts you on your clean, cool and convenient all-electric kitchen. By registering at your participating Reddy Kilowatt dealer's after you see your demonstration of an electric range, you may win the range demonstrated to you. Yes, watch and win!



WAVING WITH PALMS . . . Shapely Dottie Roberts beckons to the sun at Crandon Park Beach in Miami, Fla.

Thanks Friends

I wish to express my sincere appreciation for for the support which you gave me in the campaign and Democratic Primary Election Saturday in which I was named the nominee of the Democratic Party for the office of Sheriff of Sherman County.

A. L. 'Doc' Wilson

Darrell Conkey, Manager

SOUTHWESTERN PUBLIC SERVICE COMPANY

Town Talk

Mrs. J. G. Cummings has as a guests this week, her daughter, Mrs. Ralph Harding of Arlington. Mrs. Cummings and Mrs. Harding spent Mother's Day with Mr. and Mrs. Buddy Palmer in Amarillo.

Mr. and Mrs. H. B. Norris had as guests from Friday night to Monday night, their son-in-law and daughter, Mr. and Mrs. W. H. McAneny and children of Oklahoma City.

Mrs. George Harding and daughter, Toni Wane have returned to Stratford from Carlsbad, California, where they have lived for the past two years. They plan to make their home here as soon as Cpl. George Harding is discharged from the Marines the first of July.

Mrs. C. R. Foster had as overnight guests Saturday, her son and daughter-in-law, Mr. and Mrs. Sheldon Foster of Lubbock. They also remained for Mother's Day. Other guests Sunday were Mr. and Mrs. Arthur Foster, Marilyn and Laura, of Lubbock; Mr. and Mrs. Newton Foster, Terry Mike, Greg and Jay of Dalhart.

Mr. and Mrs. Earl Shirk visited in Liberal, Kansas, Sunday with Mrs. Shirk's brother and sister-in-law, Mr. and Mrs. B. H. Smith, of Plains, Kansas. Mrs. Smith is in a Liberal Hos-

pital, where she underwent surgery Wednesday of last week.

Mrs. Lena B. Keenan and Mrs. Leslie Keenan of Lamar, Colorado returned home Saturday after a visit in the home of Mr. and Mrs. Mike Burgess.

Mr. and Mrs. Fred L. Green of Amarillo visited their parents, Mrs. Louie Green and Mr. and Mrs. Herbert Folsom over the week end.

Mrs. Doris Anne Vincent and son, Sam, and Sammie Beall of Amarillo, were guests in the home of Mr. and Mrs. Russell Beall Sunday.

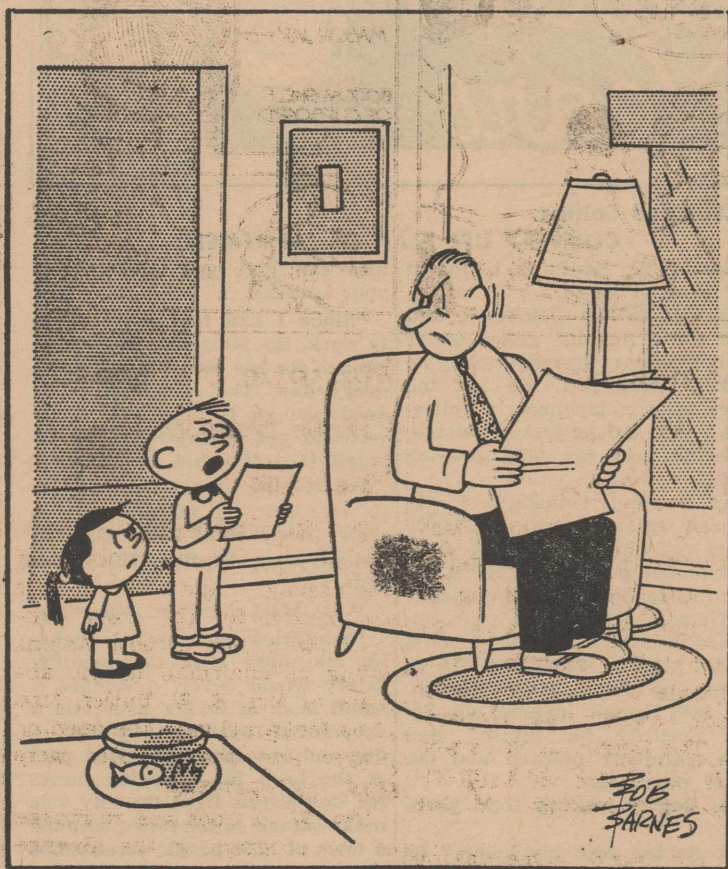
Mrs. Earl Kirkwood and Mrs. Eunice, Buster visited Earl Kirkwood in St. Anthony Hospital in Amarillo Sunday. Mrs. Ralph Harding and Mrs. J. G. Cummings returned home with them.

Mr. and Mrs. Luther Blades and young son, Orvill Lee enjoyed a fishing trip to Conchas Lake last week end.

Mr. and Mrs. Brown Ross had as guests Sunday, Mr. and Mrs. Philip C. Johnson and Crissy of Amarillo.

Mrs. A. G. Everett is in Danville, Illinois to be with a sister who is ill. She also plans to

Laff Of The Week



"... and either you meet our demands or get yourself some other children."

visit relatives in Kentucky before returning to her home sometime the middle of June.

Mrs. W. P. Cummings, Mrs. Rex Hudson and Mrs. W. E. Cummings were visitors in Guymon Tuesday.

Mrs. Paul Smith and her mother, Mrs. Frank Patterson, visited with Mrs. Smith's son and daughter-in-law, Mr. and Mrs. Bill Smith in Denver, Colorado over last week-end.

Mr. and Mrs. J. E. Norris and son, J. E. Jr., of Mangum, Oklahoma, visited Mr. Norris' brother and sister-in-law, Mr. and Mrs. H. B. Norris Thursday night.

Mr. and Mrs. R. E. Minnis of Hutchinson, Kansas were business visitors in Stratford Monday.

Mr. and Mrs. Paul Aduddell and Mrs. Bessie Mitchell visited from Friday to Monday at College Station and Calvert. In College Station, they visited their son and nephew, Paul Leroy Aduddell, student at A. and M. College. Open House was held and 3200 students marched in review in celebrating parents week and Mother's Day

at the college. In Calvert, Mrs. Mitchell and Mr. and Mrs. Aduddell visited Mr. and Mrs. C. T. Watson and Mrs. A. W. Klawetter.

Mr. and Mrs. Raymond Farrow of Amarillo spent the week end with Mrs. Farrow's grandparents, Mr. and Mrs. Joe Huff.

Mr. and Mrs. Harry Vincent of Texhoma spent Sunday afternoon with F. L. Yates.

George Jeffcoat attended market in Dallas the first of the week.

Mr. and Mrs. Arthur Judd took his parents, Mr. and Mrs. C. G. Gay, to their home in Haskell, Texas Sunday. They returned home Monday.

Mrs. Myrtle Sanders and daughters visited in the home of Mrs. Florene Johnson in Forgan, Oklahoma Saturday night.

Mr. and Mrs. H. B. Norris had as guests Friday, Mr. and Mrs. Ted Engram of Clovis, New

Mexico. Mrs. Engram and Mrs. Norris were friends when they were in grade school together.

Mr. and Mrs. C. T. Watson of Calvert are here looking after business interests.

Glenn Wakefield of Fort Leonardwood, Missouri is here for a week's visit in the home of his parents, Mr. and Mrs. Tom Wakefield.

Mr. and Mrs. Billy Borth of Neosho, Missouri are visiting in the home of his grandmother, Mrs. B. G. Borth.

Lynn Hudson of Lubbock spent the week end visiting in the home of Mr. and Mrs. Elmer Hudson.

Mr. and Mrs. Wayne Lyons of Pampa and Mr. and Mrs. Joe Bob James of Felt were guests in the home of Mr. and Mrs. Royal Pendleton Sunday.

Mother's Day visitors in the home of Mr. and Mrs. W. O. Cook were Mr. and Mrs. Wheeler Davis of Claude and Mr. and Mrs. Oron Smith of Amarillo.

Mrs. G. L. Taylor and Mr. and Mrs. T. L. Taylor and son, Bobby,

County Board Of Equalization Meeting May 25

NOTICE is hereby given that on the 25th day of May, A. D. 1960, at ten o'clock A. M., at the Court House of Sherman County, in Stratford, Texas, the

visited in the homes of Mr. and Mrs. Jerry Johnson and Mr. and Mrs. G. T. Adams in Lubbock Sunday.

Paul Chesmer was a business visitor in Amarillo Monday.

Commissioners' Court of Sherman County, Texas, will meet as a Board of Equalization, at which time and place any person who so desires may appear before such Board of Equalization to protest the valuation placed on his property in Sherman County for tax purposes.

WITNESS my hand and the seal of the Court, at office in Stratford, Texas, this 2nd day of May, A. D. 1960.

LELAH BONEY
Clerk, County Court,
Sherman County, Texas.
(Pub. M-12-19)

Sewing

Plain or Fancy
Buttonholes, Belts, Alterations
DRESSES

If its Sewing — We'll do it.

SEE

Mrs. Gladys Kirkwood

AT NINA'S SOUVENIR & GIFT SHOP — PHONE 2531

Give Your Lawn That Neat
Attractive Appearance
with a

Power Lawn Mower

Make Your Selection From Our
Large Stock Priced From

\$39.⁵⁰

LAWN & GARDEN TOOLS
VAN B.

Boston's

BIG TRADING POST

GAS-TOONS

They Go
Together
Our Care -
Your Car

"Darrell Is Sick —
So I'm Taking
Over For a
Few Days."

You can always
depend on our ex-
perienced atten-
dants.

Whenever your car needs
expert care, bring it in to
our modern service de-
partment. Our expert care
will keep your car in A-1
Shape.

WE USE
Chevron
Permalube Oils
and
Chevron Greases
for the finest all-around
care.

PHONE — 3351

Cotney Chevron Station

Darrell Cotney, Manager

this week's
patterns...
BY AUDREY LANE

1375
3-4 yrs.

390-N

Dress Pattern No. 1375—Diagram De-
light—A boon for busy mothers, this party
or play frock saves time and material.
And she will wear it with pride.
No. 1375 with PHOTO-GUIDE is in sizes
3, 4, 5, 6, 7 and 8 years. Size 4, 2 yards
of 35-inch.

Needlework Pattern No. 390-N—Per-
fect for baby's first public appearance!
This pretty cover is crocheted from soft,
fluffy wool then embroidered with gay
daisy motifs. No. 390-N has crochet and
embroidery directions; stitch illustrations.
Send 35c for each dress pattern, 25c
for each needlework pattern (add 10c for
each pattern for first class mailing) to
AUDREY LANE BUREAU, Dept. "NWNS,"
367 West Adams Street, Chicago 6, Ill.

Air Conditioning—temperatures made to order—for all-weather comfort. See The Dinah Shore Chevy Show in color Sundays, NBC-TV—the Pat Boone Chevy Showroom weekly, ABC-TV.

BEST LIKED CHEVY

Nomad 4-Dr. 6-Pass. Station Wagon.

No wonder wagons are number one with so many buyers of 1960's number one seller! Count up the reasons yourself: WIDEST CARGO AREA in Chevy's field—a whopping 5½ feet wide... FULL COIL SUSPENSION that rides right loaded or light... BIGGEST CHOICE OF ENGINES AND TRANSMISSIONS including

satin-smooth, shift-free TURBOGLIDE*... and a long list of Chevrolet delights like ROOMIER BODY BY FISHER. Your dealer can show you that YOU CAN'T BUY ANY CAR FOR LESS UNLESS IT'S A LOT LESS CAR.

*optional at extra cost

CHEVROLET
for economical transportation

Save—right now—during the Spring Fever Selling Spree at your local authorized Chevrolet dealer's

Davis Motor Co.

NORTH SECOND AND MAIN STRATFORD, TEXAS PHONE 3191

Riffes Return From Visit In Kentucky

Mr. and Mrs. Earl Riffe and Mr. and Mrs. J. B. Riffe of Texoma, have just returned from a trip to Kentucky. They visited many points of historical interest, such as Cumberland Gap, point of entry for most of the pioneers who came to Kentucky overland from Virginia; Old Kentucky Home at Federal Hill at Bardstown where Ste-

phen Foster was inspired to write "My Old Kentucky Home"; the Calumet Farms near Lexington; Lincoln Homestead and also attended the Kentucky Derby in Louisville.

They were especially interested in a monument which was recently erected to their great grandfather in Middleburg, Kentucky. On the plaque is the following inscription: "Dedicated to the Memory of General Christopher Riffe, 1764-1850, site of his cabin and grave; Christopher Riffe accompanied Col. Wm.

Among the Sick

Earl Kirkwood returned home Wednesday from St. Anthony Hospital in Amarillo where he has been under the care of an eye specialist.

Mrs. Ben Biddy was admitted to Coon Memorial Hospital as a medical patient Thursday night of last week.

Sid Board III was admitted to Dumas Memorial Hospital as a medical patient Monday.

Conde Donelson was admitted to Dumas Memorial Hospital as a medical patient Tuesday morning.

Mrs. Edgar Spurlock who became ill suddenly Friday while attending to business in town, was better Friday night, but her daughter, who was notified of her illness, came to Stratford Friday night and took her home with her. Mrs. Spurlock has been undergoing tests this week to determine the cause of her illness.

A. E. Lowe, who has been ill for some time is reported to be able to be up part of the time and eat his meals at the table.

John Lavake underwent surgery Wednesday morning in Dumas Memorial Hospital.

Harold Gray returned to Ft. Lyon Colorado to the Hospital Tuesday, where he underwent eye surgery Wednesday morning. He also plans to have dental work done while there.

J. R. (Bob) Marshall who has been ill the past six weeks in Amarillo, was brought home Tuesday. He is continuing to improve, having gained back sufficient strength to be out in yard part of the time.

A. E. Pronger, who has been a medical patient in Dumas Memorial Hospital, was brought home Monday.

Ernest Goule was taken to an Amarillo Hospital Wednesday.

Granvil Preston is a medical patient in Dumas Memorial Hospital.

Casey (great grandfather of Mark Twain) to Kentucky in 1784. He lived at Bryan's Station, Boonesborough, Logan's Station and Carpenter's Station. He bought 800 acres of land from the grandfather of Abraham Lincoln. Riffe became the first white settler of Casey County in 1793.

He was first State Representative from Casey County, served seven terms. He fought in the battle of the Thames in which Tecumseh was killed in the Kentucky Sixth Regiment. He was Lieutenant General of Kentucky State Military.

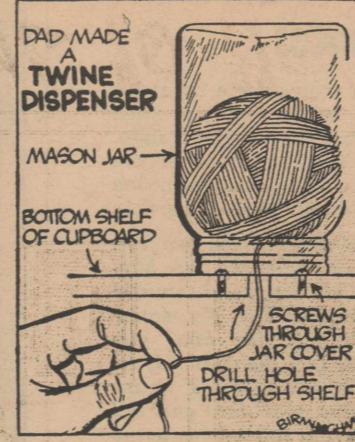
The two Riffe couples spent much of their time at Danville and Hustonville where the Riffe brothers were born and where they have friends and relatives.

Advertise Your Needs With A Classified Ad!

THE HANDY FAMILY



BY LLOYD BIRMINGHAM



Homemaking Girls Appear In Style Show

The Stratford P-TA met May 9 with the president, Max Stephenson, calling the meeting to order. Bob Burgess gave the invocation. The members voted to donate \$50 for records for the grade school music department. The freshman class won the room count and will keep the planter the remainder of the month.

Mrs. Strother's homemaking department entertained the audience with a style show, modeling the ensembles they made this year. A number of small children wore the clothes made for them by the homemaking girls. Carolee Baskin and Betty Naylor were the mistresses of ceremonies and Ann Burgess played piano selections throughout the style show.

The following were elected as 1960-1961 officers and were installed by Mrs. Harold Roberts: president, Mrs. H. H. Caraway; 1st vice-president, Mrs. W. H. Gaylord; 2nd vice-president, Mrs. B. L. Smith; 3rd vice-president, Mrs. Vern Foreman; secretary, Mrs. A. L. Ross; treasurer, Mrs. Walter Vincent; reporter, Mrs. E. J. Massie; historian, Mrs. Garland Bardwell.

Mrs. Caraway presented Mr. Stephenson a gift from the chapter in appreciation of his work.

Refreshments were served in the cafeteria by the high school mothers.

Marjorie Stephens Circle Studies Missions

The Marjorie Stephens Circle of the First Baptist W.M.U. met Wednesday, April 27, at the church for the circle program, with Mrs. Pruett Adkins acting as chairman in the absence of Mrs. E. W. Butler, Mrs. Elma McDaniel gave the opening prayer and the minutes were read and approved.

Mrs. W. O. Cook was in charge of the program, in the absence of Mrs. W. E. Pleyer. The lesson was on "Educating Youth in Missions," with Mrs. Adkins giving "Vitamin A, Christ Honoring"; Mrs. H. B. Norris, "Vitamin C, Christian Education"; Mrs. Howard Haffey, "Vitamin B, Be An Example" and Mrs. V. M. King "Vitamin D, Dedicated Home".

The meeting was closed with sentence prayers.

Those attending were Mesdames V. M. King, W. P. Brooks, Elma McDaniel, Howard Haffey, W. O. Cook, Pruett Adkins and H. B. Norris.

Sorority

(Continued from Page 1)

fe, Mrs. Corinne Eller, Mrs. Dick Farris, Mrs. Georgianna Lavake, Mrs. Jane Smith, Mrs. Geneva Wisdom, Mrs. C. R. Foster, Mrs. Nell Roberts, Mrs. Bettye Lasley, Mrs. LaVerne Lasley, Mrs. Juanita Donelson, Mrs. Jo June McDaniel, Mrs. John Whitson, Mrs. Bobbie Cummings, Mrs. S.

J. Calvird, Mrs. M. Dortch, Mrs. Johnnie Vincent, Mrs. H. L. Vincent, Mrs. Billie Byrd, Mrs. Alice Jeffcoat, Mrs. H. M. Williams, Mrs. Virginia Lamb, Mrs. Marie Gibney, Mrs. Lela Moon, Mrs. Nellie Blanck, Mrs. Pauline Martin, Mrs. Kathleen King, Mrs. Nannie Collins, Mrs. Ruby Davis, Mrs. Terry Flores, Mrs. Hattie Flores, Mrs. Helen Buckles, Mrs.

R. C. Buckles, Mrs. Margaret Reed, Mrs. Hattie Chemer, and Mrs. Elizabeth Zimmer. Special Guests were Mrs. W. T. Martin, Mrs. D. B. Grimes, Mrs. Sallie McAdams and Mrs. Wanda Riffe.

Temperatures above 125 degrees F. will cause blisters on the skin.

GIVE THE IDEAL
Gifts
FOR THE GRADUATES
SEE OUR LOVELY SELECTION OF
Cedar Chests Table Lamps
Book Cases
Magnus Chord Organs
Mirrors
Magazine Racks
HOOVER STEAM IRONS
On Special at \$14.95
McMahen Furniture Co.
Where The Furniture Wise Economize

Killing WITH Pleasure
Bindweed Our Specialty
TEXAS
WEED & GRASS CONTROL, Inc.
P. O. BOX 477 ODEM, TEXAS
Insured and Bonded, Okla. & Texas
IF IT HELPS? WE TAKE ASSIGNMENTS
4 Inspected Calibrated Rigs
Amchem Proven Benzac-Acids
Do A Better Job For Less
OFFICES
Stratford Phone 5051
GUYMON PHONE 130
BOISE CITY PHONE 6011
HOOKER PHONE OL 2-2403
HEREFORD PHONE E.M. 4-0979
CORPUS CHRISTI PHONE T.E. 5-9842

Appreciation
I am grateful for the support which you gave me in the Democratic Primary Election Saturday. It will be my intention to do everything that I can for the best interests of the county to justify the trust you have placed in me.
Roscoe Dyess

IDEAL FOR WHEAT HARVEST AND GRAIN HAULING
Dependable Used Trucks
THREE: 1955 Chevrolet 2-Ton Cab and Chassis \$850.00
EIGHT: Chevrolet 2-Ton Cab and Chassis \$1,250.00
THREE: International S-172 2 1/2 Ton Cab Chassis \$1,250.00
EIGHTEEN: International S-172 2 1/2 Ton Cab and Chassis \$1,450.00
157" wheelbase
2 Speed Rear Axle
Air over hydraulic brakes
4 Speed Transmission
6 cylinder engine
Heater & Defroster
825x20 Front Tires
900x20 Dual Rear Tires
Disc Wheels
Front Directional Signals
Outside Mirrors
154" wheelbase
2 Speed Rear Axle
Air over hydraulic brakes
5 Speed Transmission
6 cylinder engine
Heater & Defroster
900x20 Front & Dual Rear Tires
Disc Wheels
Front Directional Signals
Outside Mirrors
All trucks have been run through our shop, necessary repairs made. New Paint. All state inspected.
ALSO: Pickups — all sizes and descriptions
CONTACT IMMEDIATELY!
French Tool And Supply
915 East Second Odessa, Texas FE 7-2363

FOR AND ABOUT TEENAGERS

Dont Give Date-Breaker Too Many Chances

By C. D. Smith



THIS WEEK'S LETTER: "I am 16 years old. My sister is 18 and goes steady. Her boyfriend has a sister 15 and she likes the boy that started going with me first. Every time this boy gets around me and my sister's boyfriend's sister is not around, he acts like he thinks a lot of me but when she is around where I am he won't hardly look at me. My sister and her boyfriend keep trying to get him to go with her. It seems that they don't want him to go with me. Every time I have a date with him they get him to go with someone else and leave me sitting

at home. When this boy talks to me, my sister's boyfriend's sister gets mad at me and when he talks to her I get mad. What should I do?" Heartbroken.

HEARTBROKEN: Your heart will break again and again if you don't "sound off" and let yourself be heard when someone makes a date with you and breaks it to go out with someone else, leaving you stranded at home—sister's boyfriend's sister, or whoever it might be. Don't allow yourself to be a handy-Ella, always there when no other date is available.

Sometimes things come up and a date must be broken; but when a boy continually breaks a date, something is wrong. And, if you know he is going out with someone else, you know what is wrong.

Stand up on your own two feet. Forget about your sister, her boyfriend, and his sister, and consider only that certain boy. No matter how much you like him, you should "give him the word." If he asks you for a date, ask if he intends to keep that date and tell him in plain but soft-spoken terms that there will be no need to ask you for another date if he doesn't keep it.

I don't believe I would be mad at the sister's boyfriend's sister. She probably looks upon the whole thing in pretty much the same light as you do. Just stand up for your own rights. If the boy continually breaks dates with you, you'll be "heartbroken" until you stop saying "yes" and then wondering whether or not he will keep the date.

If you have a teenage problem you want to discuss, or an observation to make, address your letter to FOR AND ABOUT TEENAGERS, NATIONAL WEEKLY NEWSPAPER SERVICE, FRANKFORT, KY.



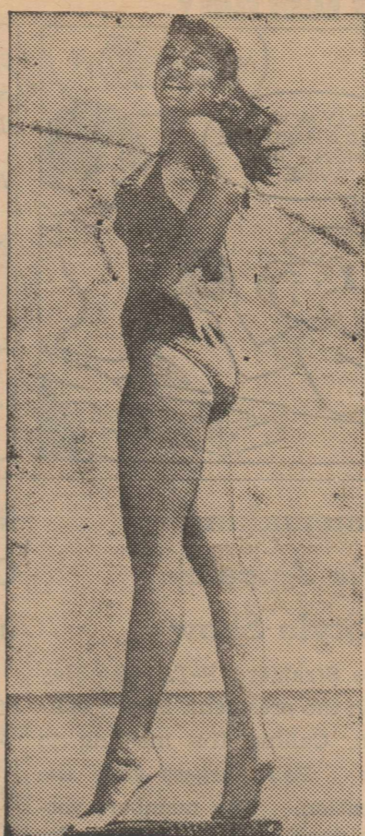
POOPED UP . . . Sticking his tongue out at the world seems to be all Major the bulldog cares to do. The old fellow of 6 weighs 75 pounds, lives in Jacksonville, Fla.

NOTICE OF Road Bond Election

THE STATE OF TEXAS) COUNTY OF SHERMAN) TO THE RESIDENT QUALIFIED ELECTORS OF ROAD DISTRICT NUMBER 4, OF SHERMAN COUNTY, TEXAS, Who own taxable property in said district and who have duly

rendered the same for taxation: TAKE NOTICE of an election to be held on the 4th day of June, 1960, with ROAD DISTRICT NUMBER 4, of SHERMAN COUNTY, TEXAS, for the purpose of submitting to the qualified electors who own taxable property in said District, and who have duly rendered the same for taxation, the fol-

lowing proposition: "WHETHER OR NOT the bonds of said ROAD DISTRICT NUMBER 4, of SHERMAN COUNTY, TEXAS, embracing lands wholly within said Sherman County, shall be issued in the total principal sum of THREE HUNDRED FIFTY THOUSAND DOLLARS (\$350,000), for the purpose of the construction, maintenance and operation of macadamized, graveled or paved roads and turnpikes, or in aid thereof, within and for said District, under and by virtue of the Constitution and laws of the State of Texas, particularly Section 52 of Article 3 of the Constitution, and Chapter 16 of the General Laws passed by the Thirty-ninth Legislature at its First Called Session in 1926, and amendments thereto, and which bonds are to bear interest at a rate not to exceed FOUR and THREE-FOURTHS PER CENTUM (4 3/4%) per annum, and to be issued in such denominations and payable at such time as may be deemed most expedient by the Commissioners' Court, but not to exceed NINETEEN (19) years from the date thereof; and shall ad valorem taxes be levied on all taxable property within said Road District for the purpose of paying the in-



TALL AND TERRIFIC . . . Tall as a Texan, Connie Sindell stands on a driftwood "pedestal" at Miami Beach, Fla.



When Stains are a Problem Those spots on white kid shoes, especially when cleaning fluid is not handy. It can usually be remedied with cuticle remover placed on a cotton swab, rubbed gently on the shoe. The fine sandpaper on an emery board will remove spots left on white felt hats or skirts. Mud spots on jackets, raincoats and trousers will often disappear

HELEN'S FAVORITE: Quick Cheese Soup (Serves 4) 1 can frozen cream of potato soup 3 cups milk 1 beef bouillon cube 1 1/2 cups shredded American cheese 1 teaspoon caraway seed Combine frozen soup, milk, bouillon cube in 2-quart saucepan. Cook slowly until well blended. Add shredded cheese and caraway seed. Stir until cheese is melted, then serve piping hot.

if they're rubbed with a chunk of raw potato. Black silk, sponged with a solution of ammonia to which a little bit of alcohol is added, will look almost like new. Cocoa and chocolate stains can be rubbed out of washable clothes with shortening. Wash in hot suds and there will be no brown stains left. Iodine stains, soaked in cold water, before the clothes are laundered will yield. If you've suede shoes spotted with grease, treat the stain with vinegar applied with an old toothbrush. Mildewed clothing will usually respond to the following: soak the stained clothing in buttermilk overnight, then launder as usual in the morning.

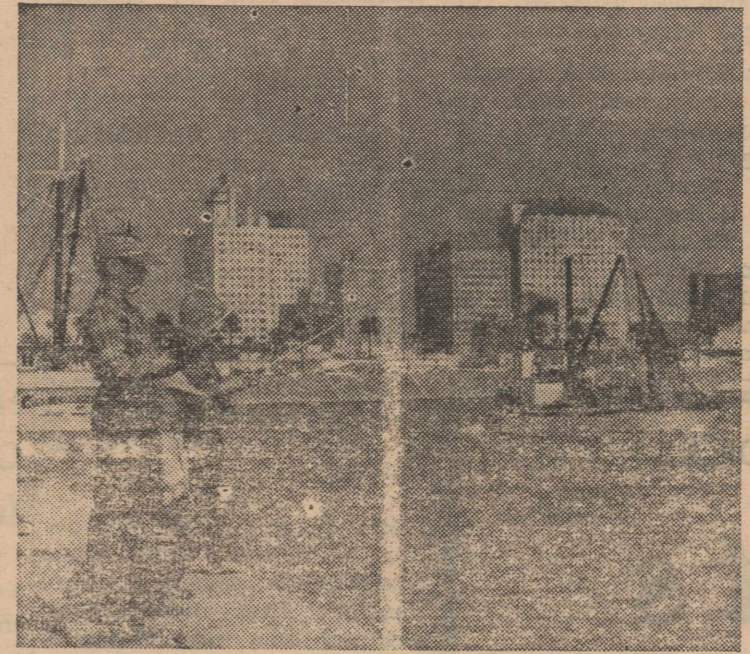
terest on said bonds and to provide a sinking fund for the redemption or payment thereof at maturity." FURTHER TAKE NOTICE that the manner of holding said election and canvassing and making returns thereof, shall be governed by the General Laws of this State, when not in conflict with the provisions of Chapter 16 of the General Laws passed by the Thirty-ninth Legislature at its First Called Session in 1926; that the ballots for said election shall be prepared in sufficient number and in conformity with Chapter 6, V.A.T.C.S. Election Code, as amended, and that printed on such ballots shall appear the following:

"FOR THE ISSUANCE OF BONDS AND THE LEVY OF AD VALOREM TAXES IN PAYMENT THEREOF" "AGAINST THE ISSUANCE OF BONDS AND THE LEVY OF AD VALOREM TAXES IN PAYMENT THEREOF" EACH VOTER shall mark out with pen or pencil one of such expressions, thus leaving the other as indicating his or her vote on the proposition. AND FURTHER TAKE NOTICE that the polling place and officers of said election shall be, respectively, as follows: Precinct Number 4 (Box No. 4) Voting Place District Court Room, Courthouse, Stratford, Texas. Election Officers John R. Knight, Presiding Judge; Verne Vincent, Judge; Harold Oquin, Clerk; Marguerite Terrell, Clerk. ONLY qualified electors who own taxable property in said ROAD DISTRICT NUMBER 4, of

AMERICANA

Corpus Christi, Texas

Cities To See



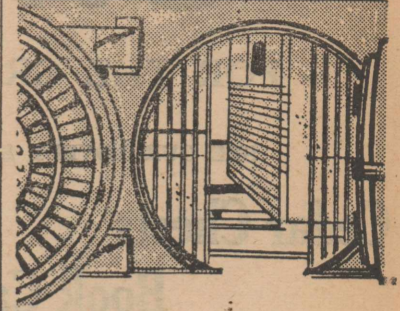
Long before the settlement of Corpus Christi, Tex., sea-faring Spanish "Conquistadores" plied the waters of the Gulf of Mexico, and it was one of these Alvarez Alonzo de Pineda, who discovered the blue waters of Corpus Christi Bay in the year 1519. The event took place on the Festival Day of Corpus Christi, said to have been first proclaimed by Pope Urban IV in 1264. The bay was named to fit the circumstance, and Corpus Christi later derived its name from this bay.

Spanish, Portuguese, English and French alternated in making port in Corpus Christi Bay. The galleons of Hernando Cortez appeared here as did the vessels of Jean Lafitte's freebooting band. The City of Corpus Christi began as a frontier trading post, founded in 1838-39 by Col. Henry L. Kinney, adventurer-impresario-colonizer. It was known as Kinney's Trading Post or Kinney's Ranch. Later the name was changed to Corpus Christi "to have a definite postmark for letters."

Corpus Christi calls itself "The Door to Wonderland." Population, 1950 census report, 106,287. Eight basic industries of the city and surrounding territory include agriculture, fishing, man-

ufacturing, United States Naval Air Station, oil, port, ranching, and tourists. Some 181 manufacturing establishments employ 9,740 men and women.

Points of interest in the area include the Naval Air Station, Knolle Jersey Dairy Farms, home of the largest Jersey herd in the world; Aransas National Wildlife Refuge, seasonal home of the famed Whooping Crane; King Ranch, a near-million acre spread, which normally has 85,000 head of cattle, making it one of the biggest beef producing enterprises in the world; La Bahia Mission, an important military objective throughout the period of the Texas Revolution. Old Mexico is only a four hour drive from Corpus Christi.



AS SAFE AS A VAULT

Bodily Injury Liability! Property Damage Liability! Medical Expense Liability! Keep your farming operation as safe as a vault from all possible liability claims. One policy - one premium - to secure you against costly accidents and costly lawsuits.

Your Farm Bureau Insurance Companies offer the very best Farmers Comprehensive Liability insurance to protect your farm or ranch from any financial liability risk. See your local Farm Bureau insurance agent right away.

Farm Bureau Insurance Companies IRA D. DIVINE, Agent

New Arrival

Mr. and Mrs. G. C. Harkins are the parents of an 8 pound 7 ounce son, Rodney Wayne, born Tuesday morning in the Stratford Clinic.

Kentucky Blue Grass thrives best in a limestone soil.



SHERMAN COUNTY, TEXAS, and who have duly rendered the same for taxation, shall be qualified to vote at said election.

The above and foregoing NOTICE OF ROAD BOND ELECTION is issued and given by me, pursuant to authority conferred by order of the Commissioners' Court, ordering said bond election, duly passed and adopted on the 29th day of April, 1960. WITNESS MY HAND AND THE SEAL OF THE COMMISSIONERS' COURT OF SHERMAN COUNTY, TEXAS, this 29th day of April, 1960. LELAH BONEY County Clerk and Ex-Officio Clerk of the Commissioners' Court of Sherman County, Texas. (Com. Court Seal) (Pub. M -5-12-19)

Always a phone at hand in a home that's Telephone-Planned!



"... it's no trouble—I'm in my workshop"

Spend much time at your hobby? Then an additional phone at your elbow will often prove a boon. And it's no luxury, either, at its low cost. Get a neat wall phone, it leaves your workbench clear.

GENERAL TELEPHONE America's Largest Independent Telephone System

Printing

IS OUR BUSINESS

and not a sideline

- LETTERHEADS ENVELOPES STATEMENTS BOOKLETS

Every Quality Has a Corresponding Price.

We Attempt to Please Our Customers

The Stratford Star

Thanks

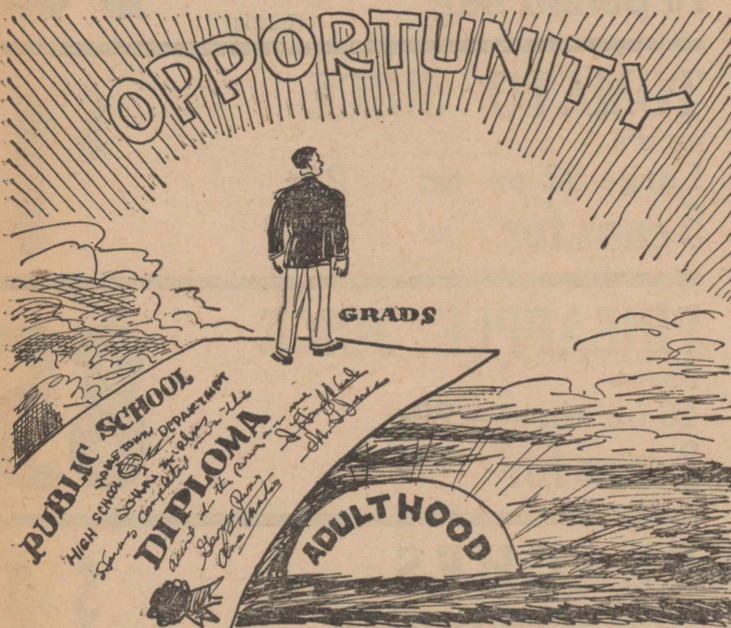
Your consideration and support in the Democratic Primary Election was greatly appreciated. I hope to continue to render the service which will meet with your approval.

John Kidwell

CANDY by Tom Dorr

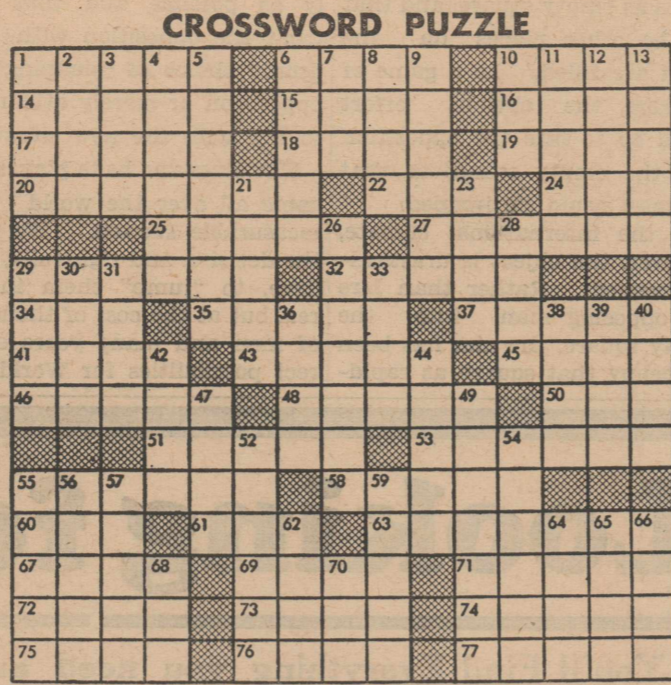


THESE WONDERFUL PEOPLE



Many young men and women of our community are about to take the leap into adulthood.

In our community there are a number of young men and women about to take one of the most important steps of their lives... graduation and a step toward adulthood. They have come this far because we have a good community, because we have provided opportunity for education as a united group. Let's keep it that way! Unite and join in community activities and endeavors; support your institutions and merchants.



CROSSWORD PUZZLE
PUZZLE No. 601

ACROSS
1 Save
6 To drain away
10 Stuffs
14 Writer of boys' success stories
15 English limits school
16 Came to earth
17 Red cosmetic
18 Wise man
19 Alcoholic beverage
20 To betray one's country
22 Juice of plant
24 Recent bodies of land (poet.)
27 Puts off
29 Repeatedly
32 Artist's stand
34 Bustle
35 One who resists authority
37 Mine veins
41 Greatest portion
43 More unusual
45 Donated
46 Showered rain and snow

DOWN
1 Stag
2 Genus of swans
3 Malarial fever
4 Get again
5 Article of furniture
6 Intervening (Law)
7 Greenland

ACROSS
48 Tree exudation
50 Cravat
51 Thoroughfares
53 Part of bicycle (pl.)
55 Restrains within certain limits
88 Cut wool from sheep
60 Malay gibbon
61 Mineral spring
63 Lured
67 High card (pl.)
69 Peruvian Indian
71 Elude
72 Frons of fork
73 Cross
74 Number
75 Seethe
76 Terminates
77 River of England

DOWN
8 Records in ship's journal
9 Messages as dough
10 Animal's foot
11 Girl's name
12 Eating place
13 Seethes
21 More ancient
23 To pare
26 Prophetess
28 To beat
29 Stream
30 Heavens obstructions
31 Part of face
33 Beverage (pl.)
36 Minstrel

ACROSS
38 Relevant information
39 Wicked
40 Observes
42 Gull-like bird
44 To mature
47 Young child (pl.)
49 Tidiest
52 Seek for
54 Golf club
55 Leths
58 Implied
57 Girl's name
59 Chiefs
62 Soon
64 Natural opening in earth
65 Paradise
66 Small depression (pl.)
68 Stitch
70 Fish

ANSWER TO PUZZLE No. 600
SPAS LOOTS STAB
HART ARROW AREA
ALBANY CLAM PILES
DRIVES BANE MOT
VEE PEL TOO
ALES BRASS ARCS
LED SOOT WISSAL
TA BELA CANTRO
ISSORTI LARK GIP
RELE SAINTE HALE
IRA REE PAR
ALP LORD SERIAL
BEELINE GARROTE
ERNE ESSAY OLEA
TODS STOPS WEND

Second Gas Tax Upheld

State Supreme Court has ruled the state has a right to collect a tax on gas when it is taken from the ground a second time.

Francita Gas Company had been taking gas from the ground in Jackson County, running it through a cycling plant and then re-injecting it into the ground.

The company paid a tax for the first extraction, but protested the state demand that it pay again when it took the gas out again. The Supreme Court held the company had to pay the "7 per cent of fair market price" production tax for the second extraction.

The famed blankets of Mysore, India, are so delicate that one 18 feet long can be rolled inside a hollow bamboo.

The term bluestocking to describe a learned woman was first used in Boswell's "Life of Johnson."

Extra Good

The Toast of the town! Our fresh, flavor-packed Bread is wonderful toasted — makes a real addition to every meal — served any way. It is just one of our top Bakery Products you'll want to try today!

WE CLOSE DAILY AT 4:00 P. M.

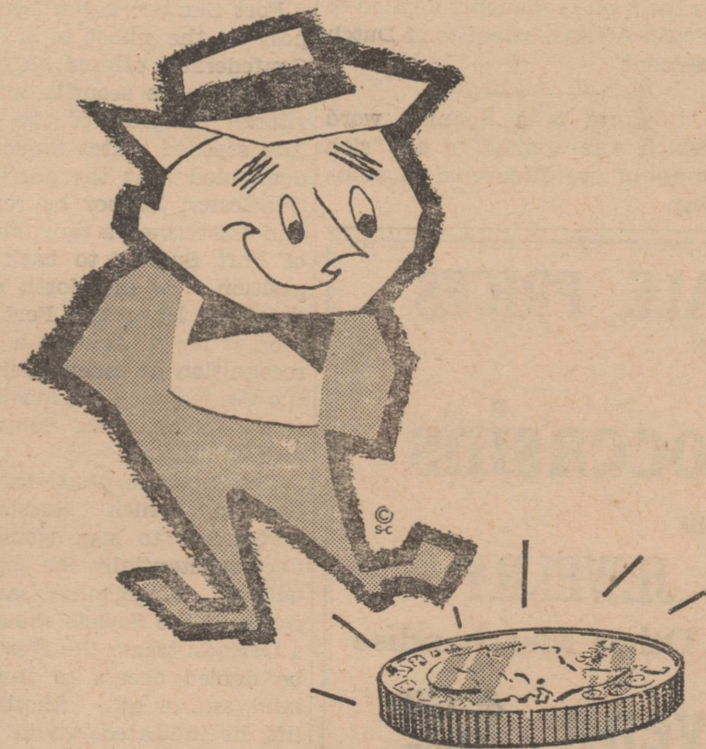
Palace Cafe

Thank You

I wish to Thank all of my friends and supporters for the aid they gave me in the campaign and for their votes in the election Saturday.

Albert Lee

SAVE



FOR

A

PURPOSE

Saving Money is A Lot Like Holding Down a Good Job. You Have To Work at It and Turn in a Good Performance Regularly.

A Job Means Security Today. Savings are Protection for the future. And the Future Always Gets Here, Without Asking If You Are Ready To Meet It. That's When Savings Keep Their Promise: Of A College Education For Children, Of A Home Of Your Own, A Family Trip or Comfortable Retirement.

We Invite You To Save Your Money In The First State Bank

Whether You Have A Large or Small Account You'll Find A Warm Welcome from Helpful People.

The First State Bank OF STRATFORD

Your Deposits Insured Up To \$10,000 By Federal Deposit Insurance Corporation

THE STATE OF TEXAS
TO THE UNKNOWN STOCKHOLDERS OF EXCHANGE BANK OF VANDALIA, A DEFUNCT CORPORATION, LATE OF VANDALIA, MISSOURI, THEIR HEIRS AND LEGAL REPRESENTATIVES; MINNIE M. SPRINGMAN: THE UNKNOWN HEIRS OF MINNIE M. SPRINGMAN, Deceased, THEIR HEIRS AND LEGAL REPRESENTATIVES, DEFENDANTS in the hereinafter styled and numbered Cause —

GREETING:
You and (each of you) are hereby commanded to appear, by filing a written answer, before the District Court of Sherman County, Texas, to be held at the Courthouse of said County, in the City of Stratford, Sherman County, Texas, at or before 10:00 a. m. of the First Monday after the expiration of forty-two (42) days from the date of issuance hereof; that is

to say, at or before 10:00 a. m. of Monday, the 6th day of June, A. D. 1960, and answer the petition of plaintiff, Gracie A. Pack in Cause No. 1453, in which Gracie A. Pack is Plaintiff and Minnie M. Springman and the unknown heirs of Minnie M. Springman, deceased, their heirs and legal representatives, and the unknown Stockholders of Exchange Bank of Vandalia, a defunct corporation, late of Vandalia, Missouri, their heirs and legal representatives, are Defendants, filed in said Court on the 22nd day of April, A. D. 1960, and the nature of which said suit is as follows:

This is a suit in trespass to try title, the Plaintiff Gracie A. Pack alleging that on or about the 1st day of September, A. D. 1959 she was in possession of, and claiming the fee simple title to Lots Thirteen (13), Fourteen (14), Fifteen (15), Sixteen (16), Seventeen (17) and Eighteen (18), in Block Thirty (30) in the City of Texhoma, Sherman County, Texas, according to the map or plat of said City of record in Volume 6A, page 640, Deed Records of Sherman County, Texas, when the defendants entered upon said premises and ejected the plaintiff therefrom to her damage in the amount of Five Thousand Dollars (\$5,000.00) and pleading the five and ten year statutes of limitation, and praying for decree and judgment of the Court granting her title and possession of said land and premises, for her damages and for general and special relief.

If this citation is not served within ninety (90) days of its issuance, it shall be returned unserved.

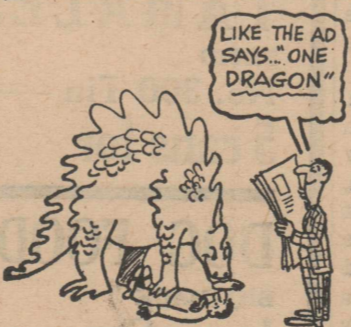
WITNESS, LELAH BONEY, Clerk of the District Court of Sherman County, Texas.

ISSUED and GIVEN under my hand and seal of said Court at office in the City of Stratford, Texas, this 22nd day of April, A. D. 1960.

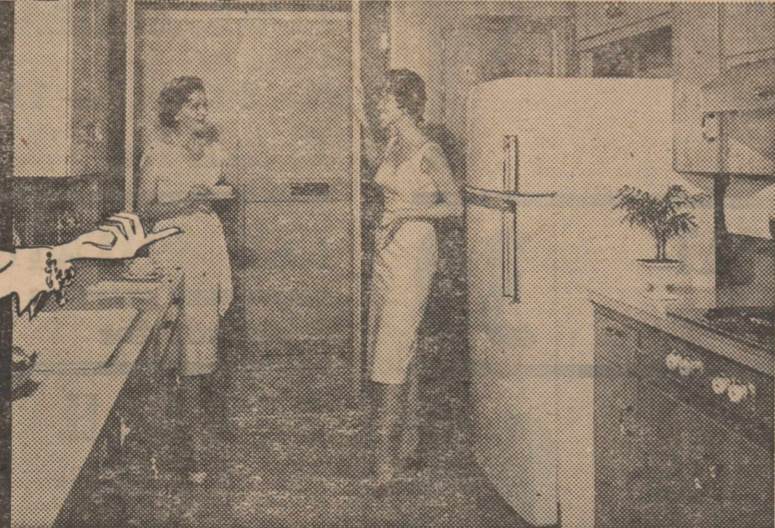
(Seal) LELAH BONEY
Clerk of the District Court in and for Sherman County, Texas.

(Pub. A-28; M-5-12-19)

It Pays — To Read Star Ads



GAS Best for Air Conditioning Best for Heating



Five Reasons Why ALL-GAS . ALL-YEAR Air Conditioning is Your Best Comfort Buy

- Comfort . . .** inexpensive GAS Air Conditioning brings year 'round climate control AUTOMATICALLY, cooling or heating at the touch of a dial. The air is filtered, circulated, ventilated and dehumidified . . . springlike weather throughout the year.
- Efficiency . . .** NO MOVING PARTS in the cooling and heating units to wear out. This assures continued maximum efficiency over the years.
- Economy . . .** Low fuel rates and the NO MOVING PARTS principle combine to make GAS Air Conditioning the most economical system on the market. Long life and low maintenance costs are an important factor to consider in figuring costs for home comfort.
- Modernity . . .** GAS Air Conditioning brings you the modern way to cool and heat.



STRATFORD, TEXAS

Call us for free estimates on economical GAS Air Conditioning for your home.

PHONE 5681

To Present Sorority Dance Recital Friday

Students of Mrs. E. E. Coons will be presented in a dance recital Friday night in the school auditorium. The program, sponsored by the Nu Beta Chapter of Beta Sigma Phi will begin at 8:00 p. m. Admission will be 25c and 50c.

• Stratford High (Continued from Page 1)

lege and a former coach of coaches Weldon Bates, Ronald Mills, and Jim Greenwood, was the principal speaker. Duard Lamb served as master of ceremonies. Jerry Galloway gave the invocation. Weldon Bates gave the welcome address. R. W. Standefer Jr. introduced the guests. Kay Spurlock, accompanied by Mrs. Lorraine Mehner, sang a vocal solo. Kenneth Kendrick introduced Frank Kimbrough. Kaye Webb, accompanied at the piano by Mrs. Lorraine Mehner, sang a vocal solo. The awards were presented by R. W. Standefer Jr., Weldon Bates, Ronald Mills, Jim Greenwood and James Stavenhagen. Kay Spurlock led the group in singing the school song. H. T. Galloway pronounced the benediction.

Special guests were: Mr. and Mrs. Ronald Mills, Mr. and Mrs. Jim Greenwood, Mr. and Mrs. Weldon Bates, James Stavenhagen, Frank Kimbrough, Mr. and Mrs. Kenneth Kendrick, Mr. and Mrs. Joy D. Smith, Mr. and Mrs. B. L. Smith, Mr. and Mrs. Leon Guthrie, Mr. and Mrs. W. L. Pendleton, Mr. and Mrs. Ernest Cummings, Mr. and Mrs. L. Halle, Mr. and Mrs. M. P. Bateman, Mr. and Mrs. H. T. Galloway, Mr. and Mrs. R. W. Standefer Jr., Mr. and Mrs. Duard Lamb, and Mrs. Lorraine Mehner.

• Labels Tell (Continued from Page 1)

due to that chemical. Growers who follow the recommended time and rate of application can be assured the pesticide will not contaminate the edible part of fruit or vegetable, or will have been removed or decreased enough by weather, decomposition, or oth-



DAPPER BABY SITTER . . . Former President Harry S. Truman talks to New York reporters during his regular morning stroll. He's in Gotham baby-sitting with his grandchildren while his daughter and her husband tour Europe.

County Tops Cancer Crusade Fund Goal

Mrs. E. J. Massie has announced that the 1960 Cancer Crusade was a tremendous success in Sherman County. It resulted in \$1,004.80 being raised for saving lives from the dreaded disease. The amount was above the goal for Sherman County and is an accomplishment that merits the pride of the county.

er process so that the residue will not be excessive at harvest time.

If custom applicators, including those using airplanes, are employed, be sure they too follow the rules or directions listed by the manufacturer or the pesticide used, emphasizes Smith.

Bleeding from a vein or an artery may be recognized by the dark color from the vein, and the bright red spurting flow from an artery.

Boer, meaning husbandmen, is the name commonly applied to South African colonists of Dutch descent.

Bonanza is a Spanish word which was applied to any rich mass of ore discovered in mining.

8th Grade Softballers Win Tourney

Eighth grade boys and girls softball teams played in the District 1-A softball tournament held in Sunray Thursday. Both boys and girls teams won the district championship.

International Checker Game Opens Soon (By Walter Rogers)

With only a few days remaining before the 4-power summit conference in Geneva, Communist boss Krushchev has renewed threats to conclude a separate peace with East Germany and thus attempt to isolate Democracy's outpost in West Berlin. By a curious historical coincidence, the grave problems of Germany present a striking comparison with the difficulties confronted almost 100 years ago by Union leaders just before the Civil War.

Fort Sumter, a Northern outpost in the midst of a hostile Confederacy, offered an obvious threat to the security and territorial integrity of the South. The seceded states immediately demanded that the garrison in Charleston Harbor be removed, and established a tight blockade of Fort Sumter to back up its position. If the North had agreed to leave the Fort, however, it risked at least a tacit recognition of independence for the Confederacy. Lincoln's decision to maintain Sumter led directly to war.

The separate peace with East Germany which Russia has threatened to sign would produce substantially the same situation. Krushchev said recently if the Soviets should sign a German treaty the West would be denied access to Berlin by land, sea, or air. Another airlift, he indicated, would be met with force of arms. The East Germans and their Russian masters would regard the presence of a free Berlin as a geographical threat similar to the one posed by Fort Sumter a century ago.

Geographically at least, the President would find himself in the same dilemma as Lincoln: efforts to reach West Berlin and maintain the Americans and Germans there would be a serious risk. Although I hope I am wrong, it is doubtful the summit conference will approach a German solution. French President de Gaulle, on the same day that Krushchev delivered his threat to Berlin, told the Congress in a joint meeting that he did not believe the troubles in Germany could be resolved at any time in the near future. If M. de Gaulle's view is substantially the one held by the other Western leaders, and I believe that it is, the possibilities of even an approach to the German question appear rather remote. I believe that the position America finds itself in today is one we have frequently occupied since the end of World War II. Anyone with even a vague understanding of checkers can understand this position quite readily. Assume there are two opposing men facing each other

across an empty square, and that all the other places on the board are filled. In a game of checkers, the obvious effort would be to lure the opposition into the empty square so that the man could be jumped.

In the international climate, however, the object is drastically reversed. Rather than lure the opposing man into the empty square, the aim has been to occupy that square as rapid-

ly as possible and thus confront the opposition with the deadly choice of "jumping" the opposition or merely attempting to live with the new situation.

The Russians have played this game all over the world with measurable success. We made the decision and rightfully, I believe, to "jump" them in Korea, but at the cost of thousands of men and many years of direct possibilities for World War

III. The record shows, however, that in the majority of cases the United States has not considered it diplomatically and properly ethical to "jump" the other man. The examples of this are legion. And the Russians have reaped substantial gains all through Eastern Europe, Asia, and Africa. The upcoming summit conference will subject our foreign policy,

past, present and future, to an important and possible far-reaching examination. I sincerely hope the President has done his homework well.

Checkers in reverse could be played in Berlin, if Krushchev carries out his threats. And the far-reaching implications of this game can be seen with a simple review of the dilemma which faced the North at Fort Sumter.

Looking for Bargains?

You'll Find Everything you need and Reap the Joys of BIG FOOD SAVINGS when you shop at Albert's.

Tuesday - Double Stamps with \$2.50 Cash Purchase or more Plus Tuesday Specials Redemption Center In Our Store

We Reserve the Right to Limit Quantities

Hams

ARMOUR'S STAR
READY-TO-EAT
WHOLE OR HALF — POUND

49

PICNIC HAMS

WATKINS
4 to 7 pound
Whole — pound

25

BEEF ROAST

U.S.D.A. Good

Chuck — pound

45

CLUB STEAK

U.S.D.A. Good

Pound

59

Shortening

KIMBELL'S PURE VEGETABLE

3 pound tin

69

CHEESE

Wilshire

2 pound box

59

POTTED MEAT

KIMBELL'S
Reg. Size Tin — 11¢
10 cans for

\$1

LUNCHEON MEAT

OSCAR MAYER
12 ounce tin

39

TUNA

Del Monte — 29¢

3 cans for

85

TAMALES

PATIO
No. 300 Tin — 21¢
5 cans for

\$1

DOG FOODS

BIG MACK
Large Can — 9¢
12 cans for

\$1

Sugar

PURE CANE
10 pound bag

98 (Limit)

TOMATO JUICE

HUNT'S
Large 32 oz. tin — 21¢
5 cans for

\$1

PINEAPPLE JUICE

WAPCO
46 oz. tin — 29¢
3 cans for

85

PEACHES

WHOLE SPICED CONTADINA
No. 2 1/2 Tin — 26¢
4 cans for

\$1

Oleo

BANNER

COLORED QUARTERS — POUND

14

Peas

EARLY JUNE DIAMOND
No. 303 Tin — 15¢
6 cans for

85

PORK & BEANS

KIMBELL'S
No. 300 tin — 11¢
10 cans for

\$1

NEW POTATOES

CALIFORNIA SHAFTERS
3 pounds for

25

SQUASH

No. 1 Yellow

Pound

9

FRESH CORN

Texas

4 ears for

29

RADISHES

Fancy Arkansas

Bunch

5

ALBERT'S GROCERY & MARKET - - Phone 4821

Clearance SALE PRICES

ON

Pixie Moccasins

AND

COSTUME JEWELRY

Prices Reduced On Other Merchandise

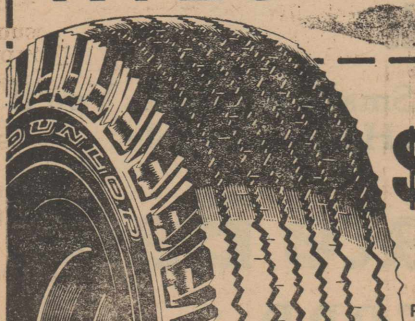
Nina's Souvenir & Gift Shop

PHONE 2531

SUPER SAVINGS SALE

BUY NOW AND SAVE!

DUNLOP NYLON TIRES



AS LOW AS
\$13.95

6.70 x 15
PLUS TAX AND RECAPABLE TIRE

Gulf Super Service