

National Wheat Growers Ready To Denounce Attack On Farm Subsidies

"False thinking" about subsidies was denounced by members of the executive committee of the National Association of Wheat Growers following a meeting in Denver.

"Industry and labor are helped by protective tariffs and countless other subsidies, all of which add to the cost of producing wheat. Farmers must have protection if the government continues to subsidize other groups," Jens Terjeson, spokesman for the committee reported.

"We hear a lot of talk about government guaranteeing a profit to the farmer," said Terjeson, Pendleton, Oregon wheat farmer and president of the wheat association. "We don't hear nearly as much talk about the government making contracts with the makers of war materials that guarantee manufacturers a profit."

"Wheat growers are making plans for a program that can be operated at a minimum cost to the government, and we are insisting that industry and labor do the same thing," stated Henry Christensen, Weld County, Colorado, wheat grower, vice-president of the national organization. "Cost plus contracts with industry are keeping farm machinery prices at an all time high. If other groups continue to be subsidized, farmers must have comparable help in order to stay in business," he emphasized.

Members questioned the proposed USDA policy to restrict wheat production in view of the millions of hungry people in the world. The committee agreed that "we should find a way to expand export trade so these people can be fed."

Producers from eight wheat states attended the executive meeting to make plans to carry out recommendations of the annual meeting of the national association held in Omaha last February.

Research plans to fight greenbugs, mosaic rust and smut were reported by Herb Hughes, Imperial, Nebraska producer, who had just returned from hearings with USDA officials and congressional committees in Washington, D. C.

Wheat policy for future years was discussed by Herb Clutter of Holcomb, Kansas, member of Secretary of Agriculture Benson's wheat advisory committee. Clutter reported on recent meetings of the advisory committee and referred to the following principles adopted at the annual meeting of the National Association of Wheat Growers as a guide for shaping the program in future years.

1. Least possible cost to the government.
2. Least possible government control of farm operations.
3. 100 per cent of parity on wheat used for food in the United States.
4. Floor under wheat prices in case of emergencies.
5. Maintain productivity of the soil for future generations.

Musicians Win Honors In Enid Contest

Jack Kelly and Park Hammons, soloists in the Stratford High School Band, who entered the Tri-State Music contest at Enid, Oklahoma several weeks ago, have been notified that they have been awarded honors for their participation.

Jack Kelly, a bass clarinet soloist, placed in first division and received a medal. He also won a scholarship to the summer music camp at Eureka, Arkansas and hopes to attend.

Park Hammons, tenor saxophone soloist, placed third in the Enid contest.

MRS. CLASON IS SERIOUSLY ILL
Mrs. Edith Clason of Calumet, Oklahoma is seriously ill, in an El Reno, Oklahoma hospital with heart trouble. Her daughter, Mrs. J. B. Willey, has been in El Reno, with her mother since May 26.

Abraham Lincoln was the first president to wear a beard.

1.01 Inch Rain Falls In Flash Showers

Flash showers fell in the vicinity of Stratford Wednesday and Thursday evenings bringing a total of 1.01 inches of moisture. Heavier rains have been reported in spotted locations.

Wednesday .08 of an inch fell at Stratford and .93 fell Thursday evening.

4-H Groups On Parade

4-H Club members are on parade in counties and districts in Texas. On June 25 the top parade of all will be held at Texas A. & M. College when more than 50 club girls revue in dresses they have made as a part of the 4-H Clothing Demonstration.

Mary Routh and Nena Robertson, clothing specialists for the Texas Agricultural Extension Service, say girls in 169 counties have studied this phase of the 4-H Club work and have entered their records and garments in the county dress revues. To be eligible a girl must have enrolled in a clothing program under the supervision of the county home demonstration agent. To participate in the District and State Revues, she must have been fourteen years of age and a club member for three years.

The specialists say a third of the high scoring girls from each of the 12 district revues will take part in the State 4-H Dress Revue at A. & M. College, June 25 at 8:00 A. M. in the ballroom of the Memorial Student Center. The number from each district depends upon the entries in the district revues, with a maximum of eight.

Judging 4-H clothing includes scoring the girl's record of all 4-H Club work and a story about the costume she has entered. A score card considers posture, poise and grooming; suitability of the design, color, fabric, fit, and general appearance of the costume on the girl; materials, trimming and workmanship on the garment; her record and story. The clothing specialists and county home demonstration agents judge the dress revues. Miss Mattie Walker, Head of the Home Economics Department at Tarleton State College, will assist the specialists with the State Dress Revue on June 25.

The girls have selected one of three types of costumes to model in the District and State Revues, a school dress, dress, or tailored outfit. The school outfit of cotton, wool, rayon or other suitable material could be a one-piece dress; two-piece outfit such as skirts and blouse or jacket; or jumper and blouse. A dress outfit, street length, one or two-piece dress of cotton, wool, rayon, silk or other suitable material, could be accessorized for church, school parties, or other social events.

The third class tailored out of wool or other suitable material, included such garments as tailored dresses, suits, or dress ensembles.

Miss Luelle King, County Home Demonstration Agent, says Lora Ann Schafer of the Texhoma 4-H Club will represent Sherman County at the District Dress Revue in Amarillo on June 5 and 6.

Louis A. Kalka Rites Saturday

MCLEAN — Funeral services for Louis Albert Kalka, 56 year old farmer and stockman who died in Groom Hospital Wednesday of last week, were conducted Saturday morning in the Sacred Heart Church in White Deer.

Mr. Kalka was the father of Miss Beatrice Kalka, a former home economics teacher in the Stratford school, who has been teaching in Germany.

Stratford, Texas is nearer six other state capitals than to the capital of Texas.

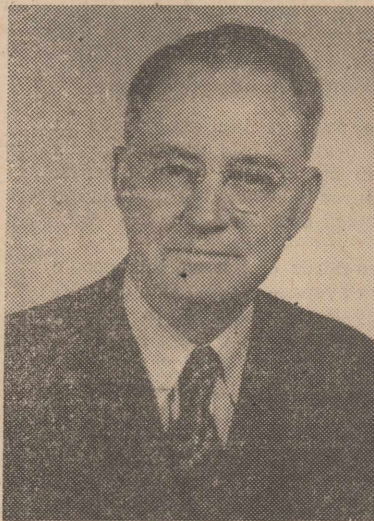
THE STRATFORD STAR

Volume 48.

Stratford, Sherman County, Texas, Thursday, June 4, 1953.

No. 35.

Rev. Neal Assigned To Stratford Church



Rev. T. Edgar Neal was assigned to the pastorate of the First Methodist Church in Stratford at the annual Northwest Texas Conference in Abilene, Texas last week. Rev. Neal has been serving the pastorate of the First Methodist Church at Hereford, Texas.

Rev. Neal is a native Texan. He served in the Central Texas Conference until coming to the Northwest Texas Conference. The new Methodist pastor has served four-year appointments with the First Methodist Church in Temple, Texas, the First Methodist Church in Corsicana, Texas and the Arlington Heights Methodist Church of Fort Worth, Texas. Rev. Neal served as district superintendent of the Cisco District for two years and as district superintendent of the Georgetown District for two years.

In the Northwest Texas Conference he has served pastorates with the Methodist Churches of Vernon, Plainview, San Jacinto, Amarillo and Hereford, Texas.

For four years Rev. Neal was president of the Conference Mission Board and is now Conference Missionary Secretary.

Death Claims Mrs. Kenney

Mrs. M. F. Kenney, 93-year old grandmother of Mike Burgess, passed away Tuesday of last week in a Vernon, Texas hospital. She was a resident of Ardmore, Oklahoma but had been making her home with a son in Chillicothe, Texas.

Funeral services were conducted at the First Baptist Church in Ardmore by Rev. Hughes, pastor, Thursday of last week.

Mrs. Kenney visited in the homes of relatives in Stratford in 1940.

Relatives from this territory attending the funeral were: Mike Burgess of Stratford, Mrs. L. J. Keenan of Las Animas, Colorado, Mrs. E. L. Koontz and Mr. and Mrs. J. B. Burgess of Amarillo. The aged grandmother was survived by 15 grandchildren, 30 great grandchildren and 6 great great grandchildren.

Koontz-Bosley Wedding Solemnized

West Amarillo Christian Church was the scene for the candlelight ceremony on Friday evening, May 22, uniting in marriage Peggy Jo Koontz and Kenneth Maxwell Bosley, 4220 Monroe.

Rev. Winston T. Wilbanks, pastor of the First Presbyterian Church of Canyon, read the double-ring service before an altar decorated with jade leaves, stock and candles.

Mrs. Bosley is the daughter of Mr. and Mrs. E. L. Koontz, former Stratford residents.

Mrs. Bosley graduated from Amarillo High School and attended Amarillo College.

The groom, a graduate of Canyon High School, served in the Army. He works for Southwestern Bell Telephone Co.

Miss Schafer Is Delegate To State 4-H Round-Up

Delma Dee Schafer, of the Texhoma 4-H Club, has been selected as a delegate to represent Sherman County at the State 4-H Club Round-Up to be held at College Station, June 8-12.

While at the Round-Up, the group will have many activities such as training meetings on recreation leadership and crafts, discussion groups, parties for the leaders and members, chuck wagon feed, banquet, and tour of the A. & M. College Campus, as well as hearing some well-known speakers one of which is Dr. G. C. Baker, Jr., chaplain, Southern Methodist University, who will use the theme of the Round-Up, "From Here Where — What Does The Future Hold For You?" as the basis for his address.

Others who will attend the Round-Up from Sherman County are Mrs. Roy Schafer, Texhoma, and Arthur Judd, Stratford, adult leaders; Sonny Judd, 4-H Club boy; and E. Goule, County Agricultural Agent.

Joe Flores To Receive Degree Friday

Joe Flores will be among the 653 seniors and graduate students to receive their degrees from Colorado A. & M. College at Fort Collins, Colorado Friday. He will get his degree in Animal Production.

Mr. and Mrs. J. W. Flores plan to attend their son's commencement exercises. Flores will receive his commission as a Second Lieutenant in the U. S. Air Force after graduation.

Joe Flores has been chosen by the executive committee and faculty advisors to receive the Erddy award as the outstanding Rodeo Club Member.

This award is presented by the parents of Jim Erddy, a former Aggie student who was killed in Korea September 12, 1952, and will be awarded annually for services rendered to the club, for leadership, scholarship and sportsmanship.

Flores has served as treasurer of the club, NIRA representative, and on the student council. He has also been an active rodeo contestant, winning third place as national calf-roping champion.

Miss McClendon To Wed Sunday

Of interest in Stratford and this area is the marriage of Miss Betty McClendon to Gaines Carden Franks, Oldham County agricultural agent at Vega which takes place Sunday afternoon at 3:00 in the First Baptist Church in Dalhart.

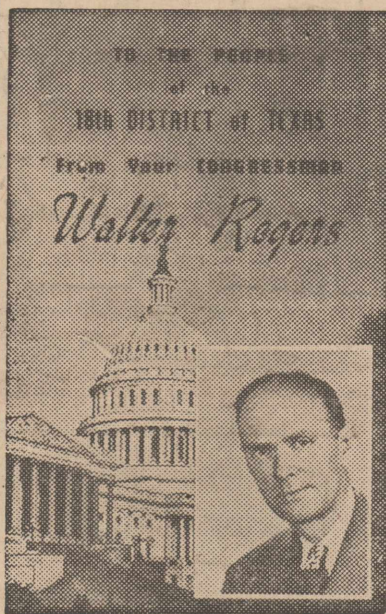
The bride-elect, gifted Dalhart singer, has appeared on a number of church and civic programs in Stratford. Her late father, J. H. McClendon, was well-known to many Sherman County residents. Mr. McClendon, an early-day cattleman, was for several years a member of the Livestock Sanitary Commission of Texas and brand inspector for the State of Texas, Southwestern Cattle Raisers Association.

Miss McClendon, to be given in marriage by her brother, Carl McClendon, will have two honor attendants, Mrs. Robert McAllister and Mrs. Lloyd Loftin, both of Dalhart.

Roger Morris, Vega, will serve as best man. Marjion Skains, Hereford, Lloyd Loftin and Duard Lamb are to be ushers.

New Arrival

Mr. and Mrs. Jack Goodwin are parents of an eight pound one ounce daughter, Jackie Lynn, who was born Sunday in Dumas Memorial Hospital.



The Tax Situation

The recent speech by President Eisenhower which definitely spelled out that the administration would not advocate or support tax reduction at this time has caused much discussion on Capitol Hill, putting it mildly. These discussions sometimes reach almost to the point of white heat. Much pressure is being exerted on the congressional advocates of tax reduction. What effect this pressure will have is difficult to tell. It does not presumably appear that the tax cut advocates will capitulate. However, the impact of Eisenhower's speech will have a telling effect.

The administration is in this dilemma. Until recently it has been assumed by all that the excess profits tax would be allowed to die and that Congress would take no affirmative action to extend it. This tax will expire by its own terms as of June 30th unless Congress does take affirmative action to extend it. The 1951 ten per cent increase in the individual income taxes will expire by its own terms on January 1, 1954. Chairman Reed of the House tax-writing committee introduced H. R. 1, which would move the expiration backwards from January 1, 1954, to July 1, 1953, on this particular tax. This was done because Chairman Reed assumed that the excess tax would be allowed to die, as people had been led to believe, and he felt that it was only fair to the individual income tax payer that the additional tax should expire at the same time that the corporate excess profits tax expired. If the excess profits tax is allowed to expire on June 30th, then the Reed bill will create a dark cloud on the political horizon. Unless it is passed by the Congress, the administration evidently feels that it would be charged with giving relief to corporations but none to the individual income tax payer. Therefore, if the excess profits tax is allowed to die, you can look for the Reed bill to pass.

The excess profits tax has been long condemned as a confiscatory, discriminatory and vicious tax that actually penalizes the small businessmen and prevents the growth or expansion of new and small businesses. It is expected that the administration will come forward with an overall tax bill. According to the President, this will not be until January, 1954. Some here think that it will come much earlier than that, perhaps in the fall or before, if Congress stays in session. However, to date there has been very little information as to what the administration wants in such a bill. Some think that a general sales tax on the federal level will be advocated to take the place of such taxes as the excess profits tax and many excise taxes that will expire on April 1, 1954. It is also anticipated that the national income will drop measurably. This would mean that the expected revenue from present tax laws will decrease accordingly. This in turn means that the budget will be thrown further out of balance. Many here expect a deficit for fiscal year 1954 of approximately 11 billion dollars.

Frankly, the tax picture, in-

(Continued on Page 8)

1954 Wheat Acreage Allotment Questions And Answers

Indoor Dream Swimming Pool Opened Tuesday

Stratford's "indoor dream" swimming pool opened Tuesday afternoon with a full house of swimmers and spectators.

The modern swimming pool is approximately 85x35 feet in size and is equipped with underwater lights. The wading pool for youngsters is approximately 35x15 feet in size.

Dressing rooms with all modern conveniences are available for both boys and girls.

The pool is open on week days from 2:00 to 5:30 P. M. and from 6:30 to 10:00 P. M. Sundays the pool is open from 2:00 to 5:00 P. M.

An admission charge of 25c for school students and 50c for adults is made.

Baker Duggins, charged with operation of the pool, says the public has been very cooperative in observing rules of the pool.

Max Stephenson Building New Home In Stratford

Mr. and Mrs. Max Stephenson are having a modern new brick veneer home built on lots located on South Fifth and Walnut Streets.

The new home has eight rooms and a bath. O. E. Heugatter is the contractor.

Mr. and Mrs. Stephenson hope to move into their new home next week.

Miss Bertha King Is Scheduled For Operation

Miss Bertha King is scheduled to undergo surgery in Neblett Hospital in Canyon Friday. She has been a patient in the hospital for two weeks.

A. W. Allen In Improved Condition

A. W. Allen is reported to be in an improved condition in St. Anthony Hospital in Amarillo where he was taken Wednesday evening of last week for treatment of a fractured right hip.

Kidney trouble complications caused relatives to be alarmed over his condition the first of the week. Thursday morning his condition had improved.

The 83-year old farmer-stockman was injured by a small tornado at his place 2 miles north of Stratford Wednesday of last week.

District 4-H Club Camp Held June 1-3

Five 4-H Club members, the County Extension Agents, and the I.F.Y.E. student attended the District 4-H Club Camp held at Don Harrington Boy Scout Camp near Amarillo, June 1-3. Those attending the camp from Sherman County were: Lora Ann Schafer, Texhoma; Donna Federic, Carolyn Folsom, Gerald Preston and Rex Burgess, Stratford; the agents, Miss Lucile King and E. Goule; and Robin Halbert, International Farm Youth Exchange Student from Australia.

While at camp these delegates were trained in recreation leading and crafts, including lamp making. They, in turn, will teach these things at 4-H Clubs and recreation parties in their county.

Sponsoring Dance Saturday Night In Legion Hall

A dance which is open to the public will be held in the American Legion Hall Saturday night. Dancing will start at 9:00 o'clock. The dance is being sponsored by the Stratford Post of the American Legion and music will be furnished by Bobby Carl and his 5-piece orchestra of Guymon, Oklahoma.

Sponsoring Dance Saturday Night In Legion Hall

(Continued on Page 8)

1. Question: How will State wheat allotments be computed for 1954?

Answer: The National wheat allotment will be apportioned to the States on the basis of the average seeded wheat acreage for the 10 years, 1943-52. The 1943-State acreage will include diverted wheat acreage for all applicable counties in the State under the 1943 Wheat Allotment Program; the 1945, 1946, and 1947 State acreages will include wheat war crop credits computed under Public Law 12, 79th Congress, for all applicable counties in the State for the three years; and the 1950-51 State acreages will include diverted wheat acreage for all applicable counties in the State under the Wheat Allotment Programs for these two years. (The 1951 Wheat Allotment Program was suspended before the 1951 crop of spring wheat was planted but after all of the 1951 crop of winter wheat was planted.) The State wheat acreages are subject to adjustment for abnormal weather conditions and for trends in wheat acreage during the 10 years.

2. Question: How will county wheat allotments be computed in 1954?

Answer: The State wheat acreage allotment will be apportioned to the wheat counties in the State on the basis of the same 10 years of wheat acreage and with the same adjustments for abnormal conditions and trends as are used in apportioning the National wheat acreage allotment to States. Adjustments may also be made for the promotion of soil conservation practices in individual counties.

3. Question: How will farm wheat allotments be computed for 1954?

Answer: Each farm on which an acreage of wheat (seeded for any purpose or volunteer wheat reaching maturity) was grown for the 1951 or 1952 or 1953 crops will be entitled to a 1954 allotment as a "old" farm.

A farm on which there was no wheat acreage for the 1951 or 1952 or 1953 crops may receive a 1954 allotment as a "new" farm upon proper and timely application to the P&MA county committee by the farm operator or owner. Not more than three percent of the county acreage allotment may be used for establishing allotments for "new" farms.

Provision is also made for the establishment of equitable allotments for (1) farms acquired by owners who were displaced from farms acquired for National Defense purposes in 1940 or thereafter by the U. S., and (2) farms acquired for National Defense purposes in 1940 or thereafter by the U. S. that are being returned to agricultural production by the originally displaced owner. A State wheat allotment pool will be established for these two purposes.

The remainder of the county allotment not reserved for "new" farm allotments, less reserves for errors and appeals, is apportioned to each "old" farm in the county on the basis of "usual" wheat acreage for each farm. In general, the "usual" wheat acreage is the average wheat acreage on the farm in recent years, but adjustments are permitted for acreages affected by drought, flood, failure of other crops, tillable acres, type of soil, topography, and substantial change in established crop rotation practices on the farm.

4. Question: When will a decision with respect to the 1954 wheat acreage allotments and 1954 wheat marketing quotas be made?

Answer: The Secretary of Agriculture is required by law to make a decision with respect to marketing quotas for the 1954 crop of wheat on or before July 1, 1953. At that time, if he finds that the supply of wheat for the 1953-54 marketing year that begins July 1 exceeds the normal supply for the marketing year by more than 20%, he is required by law, unless a national emergency exists, to call for a referendum of wheat farmers to be held not later than July 25, 1953 to determine whether or not such farmers are in favor of or opposed to marketing quotas on the 1954 crop.

(Continued on Page 8)

Want Ads

FOR SALE: Pretty crocheted things suitable for Gifts for most any occasion — luncheon cloths, pillow cases, center pieces, dollies and baby booties \$1.50 a pair. — Mrs. Earl C. Garoutte. 29-tfc

FOR SALE: Small house with two rooms and a bath, priced cheap. — Walter Vincent, Phone 4546. 29-tfc

FOR SALE: My home in Stratford. — Art Ross. 12-tfc

FOR SALE: My 7-room residence on Fourth and Maple. — Paul Aduddell. 18-tfc

FOR SALE: Story and half stucco house. Nine rooms and tile bath with floor furnace, electric hot water heater. Double garage, storm cellar and storage building 20x40. Located on four lots at Chestnut and 6th. Cash or terms. Phone 2611. — Leo L. Smith. 1-tfc

FOR RENT: Modern four room unfurnished house. — J. B. Willey, Phone 3491. 26-tfc

FOR RENT: Small furnished house. — Arthur Folsom. 20-tfc

FOR RENT: Nicely furnished 3-room modern house, Frigid-aire, Sixth and Wall Street. — R. E. Minnis. 24-tfc

FOR RENT: 4-room furnished apartment. — J. B. Willey, telephone 3491. 24-tfc

SMALL PARTLY FURNISHED HOUSE for rent for part time house work. Apply for particulars to Mrs. A. E. Pronger, Sixth and Main Street. 28-tfc

WANTED: Housekeeper; must have references; house available; excellent salary. — Mrs. W. N. Price, Phone 3071. 19-tfc

IF YOU HAVE any kind of carpenter work, cabinet or shop work, see Earl C. Garoutte. 13-tfc

SAWS sharpened with a power saw sharpener. See E. E. Hamilton at Hamilton Machine Shop. All work guaranteed. 25-tfc

STANLEY PRODUCTS, Phone 4281. — Mrs. Joe Knapp. 26-13tp

Long distance household moving. Years of service your guarantee of satisfaction. — Bruce & Son Transfer and Storage, Phone 192, Borger, Texas. 29-tfc

SERVEL ICE MAKER Refrigerators in both gas and electric models. — Van B. Boston. 25-tfc

FREE PICK-UP on dead stock. — Dalhart Rendering Co., Call Collect 417-W. 16-tfc

MONUMENTS — 1102 Elm Street — Charley Hays — Dalhart, Texas. 19-3tp-tfc

NEED FERTILIZER? — We can now supply you with Armour's Big Crop Fertilizers. Ammonium Nitrate 33%, 10-20-0, Vertagreen and many others. Special car load prices. We can also rid your wheat of those Spider Mites and leaf hoppers. — Call or See us for your Aerial Spraying Service — Rita Blanca Chemical Co., Office Builders Supply, Dalhart, Texas, Highway 87 South, Phone 894-W. 28c

FOR RENT: Modern Apartment. See Mrs. E. Hill, Phone 2941. 30-tfc

FOR your Indian Squaw and Fiesta Dresses, See Mrs. Woodall, Phone 3906. 31-tfc

PIANO FOR SALE: Steinway Piano, walnut case, for sale in this community for only \$249.00. For additional information write Clark-Shaw Music Store, 317 N. 8th St., Garden City, Kansas. 32-3tc

Want Ads

STRAYED: From wheat field 17 miles south and 2 miles west of Stratford, two white faced steer yearlings branded 1 — on left hip. Liberal reward offered. — Coy Holt, Gruver, Texas. 32-4tc

FOR SALE: 1949 Studebaker 2-ton Truck, L.W.B., in A-1 condition with Wheat King bed, 8.25x20 tires on rear; 1949 1-2 ton Studebaker, Stake Body, in good condition, three speeds; 1940 Dodge Four Door, motor just overhauled; 1940 Ford Tudor, good transportation; 1941 Buick Four Door, runs good; Rotary type Lawn Mower. — Homer Blake. See me for Yard Work and Land Scaping. 33-tfc

USED DOORS and Windows for sale. — J. B. McWilliams, Phone 4521. 33-3tc

WE EXTEND AN INVITATION TO YOU if you want to borrow to buy or improve a farm or ranch; Get in Touch with the Farm & Ranch Loan Service, Carson County Abstract Company, Panhandle, Texas, Phone 70. 34-10tc

WANTED: Your car body and paint work. We specialize in glass installation. — C & E Body & Paint Shop. 35-tfc

SEE US for Used Air Conditioners that are in good condition. — Woolsey Appliances. 35-tfc

Armadillos are always born in groups of four and of the same sex.

NOTICE TO CREDITORS OF THE ESTATE OF EZRA ELLIOTT, DECEASED

Notice is hereby given that original letters of administration upon the estate of Ezra Elliott, deceased, were granted to me, the undersigned, on the 27th day of April, 1953, by the County Court of Sherman County, Texas. All persons having claims against said estate are hereby required to present the same to me within the time prescribed by law. My residence and postoffice address are Pratt, County of Pratt, State of Kansas. Such claims, however, should be presented within such time to my attorney, Max W. Boyer, whose residence and postoffice address is Perryton, Ochiltree County, Texas, P. O. Box 128.

W. F. HARKRADER, Administrator of the Estate of Ezra Elliott, Deceased. (Pub. May 21-28, June 4-11)

NO. 148

AN ORDINANCE MODIFYING ORDINANCES NUMBERS 108 AND 132, PERTAINING TO FIRE LIMITS IN THE TOWN OF STRATFORD, TEXAS, BY EXCLUDING FROM SAID FIRE LIMITS ALL OF BLOCK NUMBER 83 OF SAID TOWN OF STRATFORD.

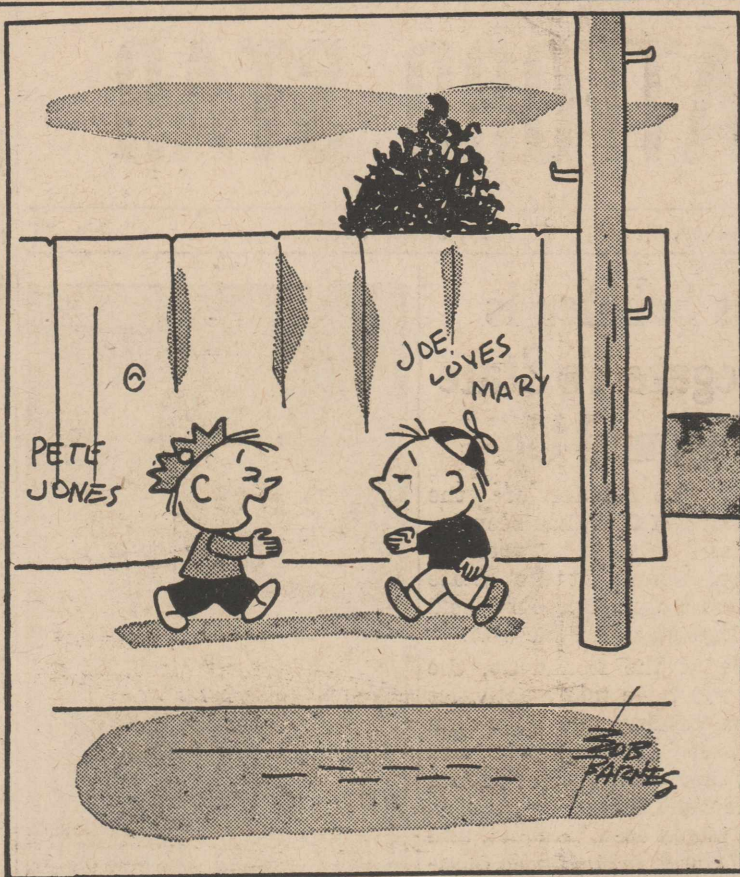
BE IT ORDAINED by the City Council of the City of Stratford, Texas, in regular meeting this 27th day of May, A. D. 1953, that Ordinance Numbers 108 and 132 of said City are hereby modified so that hereafter and from this date Block 83 in the Town of Stratford, Texas, according to the official plat of said Town, is hereby excluded from the fire limits of said City of Stratford, Texas.

DATED this 27th day of May, A. D. 1953.

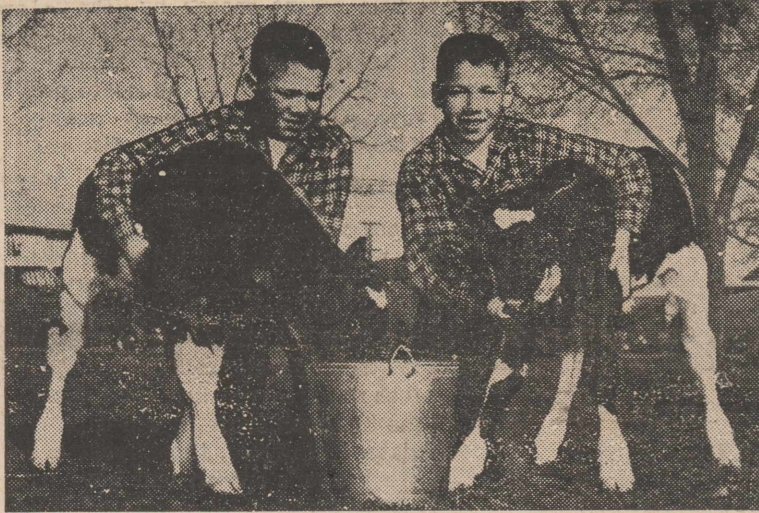
APPROVED: H. M. FLORES, Mayor, City of Stratford, Stratford, Texas.

ATTEST: W. P. FOREMAN, City Secretary. (Pub. June 4, 11, 18, 25)

LAFF OF THE WEEK



"Marvin Lindloff!—where have you been keeping yourself all these years?"



TWINS OWN TWIN CALVES . . . Bill and Will Cornelison, twin farm boys of New Franklin, Mo., pose with twin heifer calves born at college of agriculture in Columbia, Mo. The highly pedigreed Holstein calves weighed 93 and 94 pounds.

WEDDING STORY

By Virginia Peden

MAUDE PALEY had been writing wedding stories for a good many years now, but it had been a long time since one had been important enough to attend personally. Usually she phoned the family for details, or they sent the information to the Point News office. However, Ed Reilly, owner of the newspaper, had said this morning, "Hear that's going to be quite a shindig at the church on Laurel Ave. this evening. Think you can cover it, Maude?"

"For curiosity's sake, alone, I wouldn't miss it," the reporter had replied, her wide-mouthed grin creasing her thin cheeks. "It's liable to be the event of the season in more ways than one, you know."

"How so?" inquired Ed, stretching his lanky length in his swivel chair.

"Mary Anne Smith is to be maid of honor. And she's had her eye on the bridegroom, Johnny Kirby, for years. In fact, they were together a lot until the wedding announcement."

"Who's the bride?"

"My next door neighbor, Luella Jamison. Mary Anne's her first cousin, so I suppose that's why she's the main attendant. Anyway, Mary Anne has temperament—the hair-pulling kind. Never can tell what might happen."

Maude arrived at the church early and went to the basement, where the girls were getting ready.

The ring bearer, on the verge of a tantrum, had everyone on edge. And Mary Anne kept glaring at Luella.

Luella remained cool and quiet, her serenity a trifle annoying at a time like this, when it seemed more fitting for her to be flustered.

Maude went upstairs and settled her spare frame in a back pew. Candles were lit and the church darkened. Apprehension as well as happy expectation was evident in the whispers and soft talk.

A hush settled as the organ soared into the wedding march, and the procession began. As the maid of honor walked past Maude,

the latter noticed that the rejected girl's lower lip quivered ominously. Mary Anne clutched it quickly in her teeth, and raised her chin a trifle.

Maude remembered hearing Mrs. Smith whispering advice to her daughter to keep her pride and not to let on she cared. The reporter wondered how long Mary Anne would be able to keep her composure.

The bride paced slowly along the aisle, dark-haired, large-eyed, and solemn. She was almost as tall as her father, on whose arm she leaned.

Her lace-edged veil cascaded down from an orange-blossom halo, and her satin gown rippled into a frilly, full court train.

The party grouped itself in the amber, dusky glow of candle-light before the minister. His words were high-pitched and nervous, for this was a very special occasion for him and he was young for his job.

People strained forward, trying to catch every dignified syllable. When Johnny, shining with relief, had slipped the ring on his bride's finger, and they had received a brief blessing from the pastor, they turned to leave. A photographer took pictures while they posed for a few minutes, anxious to get away.

Then they hurried faster than they should have, past hundreds of indulgent, glad smiles. They reached the door to be showered in the vestibule with rice, kisses, best wishes, and congratulations.

Miss Fratchett played on, triumphantly now, for all had gone well, at least in the church. She could only pray that all would go as smoothly at the reception.

Maude huddled over her bundle of copy paper, scribbling fast. She wanted to get it all down while it was fresh in her mind, and while she was feeling inspired. Readers would want to read every little thing about this affair.

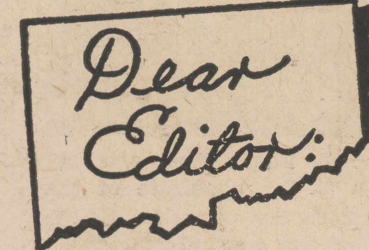
For in all the years Maude could remember, this was the first time there had ever been a Tom Thumb wedding in town.



NAMED TO UN . . . Mrs. Oswald B. Lord was chosen by Pres. Eisenhower to take place of Mrs. Eleanor Roosevelt on UN commission on human rights.

The average life expectancy at birth of two-thirds of the world's people is no more than 30 years, compared to 60 years or more in the advanced countries.

Two-thirds of the world's people get an average of 2,000 food calories a day—barely enough to support life.



. . . the letters start. Then from all over the free world come such comments as these from readers of THE CHRISTIAN SCIENCE MONITOR, an international daily newspaper:

"The Monitor is most reading for straight-thinking people. . ."

"I returned to school after a lapse of 18 years. I will get my degree from the college, but my education comes from the Monitor. . ."

"The Monitor gives me ideas for my work. . ."

"I truly enjoy its company. . ."

You, too, will find the Monitor informative, with complete world news. You will discover a constructive viewpoint in every news story.

Use the coupon below for a special introductory subscription — 3 months for only \$3.

The Christian Science Monitor, One, Norway St., Boston 15, Mass., U. S. A. Please send me an introductory subscription to The Christian Science Monitor — 76 issues. I enclose \$3. (name) (address) (city) (state) (zip) PB-11

I D. WHELAN, 2003 Handley, Saginaw, Michigan, worked for a company at a time when they were faced with quite a severe manpower shortage, and the manager assigned to him an area so large that it had him worried. He just couldn't conceive how he could handle such a situation. However, he realized that the people with whom he had to deal were good customers and it was up to him to do the best he could.

For some time he worked between twelve and fifteen hours a day trying to keep abreast of the situation. About 80 per cent of his time was spent on expediting work trying to get a maximum of critical material into the factory so that a satisfactory production rate could be maintained on the much needed electric refrigerators that they were manufacturing. He realized that he could not continue to go at his terrific pace and finally decided that he could concentrate on the most important things and let the others follow. He continued to be very busy, but after this simple decision he found that he could handle the situation considerably better; and it was not necessary for him to spend the long hours in trying to accomplish it. His worries subsided amazingly.

The extra effort that he expended was returned to him recently when he received a new appointment which meant an important promotion which surely would not have come if he had not simplified his work by doing the most important things first.



CARNEGIE

ATTENTION LADIES!

Attention Ladies

If you are looking for something cool and at the same time want to look your best, Come over and look at this fine selection of

SUMMER VOILES BEMBERGS And COTTONS

IN SIZES 10 TO 48 AND 9 TO 26 1/2

We specialize in Large Sizes

We Fit the Hard-To-Fit

ALSO A LARGE SELECTION OF

Boys and Girls Clothing

We Give S & H Green Stamps

Texhoma Dress Shop

Texhoma, Oklahoma

ATTENTION LADIES!

... fishin' for a FREEZER!



That's what the folks will do who own freezer-refrigerator combinations. They won't have to stuff themselves right after the catch, and get tired of eating fish. Their fish will be frozen for enjoyment long after the fishing trip is just a background for tall stories.

When the men start to get out their fishing equipment is a good time, ladies, to "fish" for a freezer-refrigerator combination.

SOUTHWESTERN PUBLIC SERVICE COMPANY

MAKE SECURITY

Your Beacon for '53

NOW — while times still offer an opportunity for prosperity — is the time to put money aside for the future. And there's no better place to save your money than here in this bank.

Accounts Federally Insured Up To \$10,000.00

The First State Bank OF STRATFORD

YOUR brain budget

- 1. Dwight D. Eisenhower is the ? president of the United States: (a) 43rd, (b) 33rd, (c) 34th. 2. A cassowary is: (a) a garment worn by a clergyman, (b) a bird, (c) a game played with cards. 3. The femur is: (a) a leg bone, (b) a jaw bone, (c) an arm bone. 4. The College of Cardinals now numbers: (a) 50, (b) 35, (c) 70.

ANSWERS

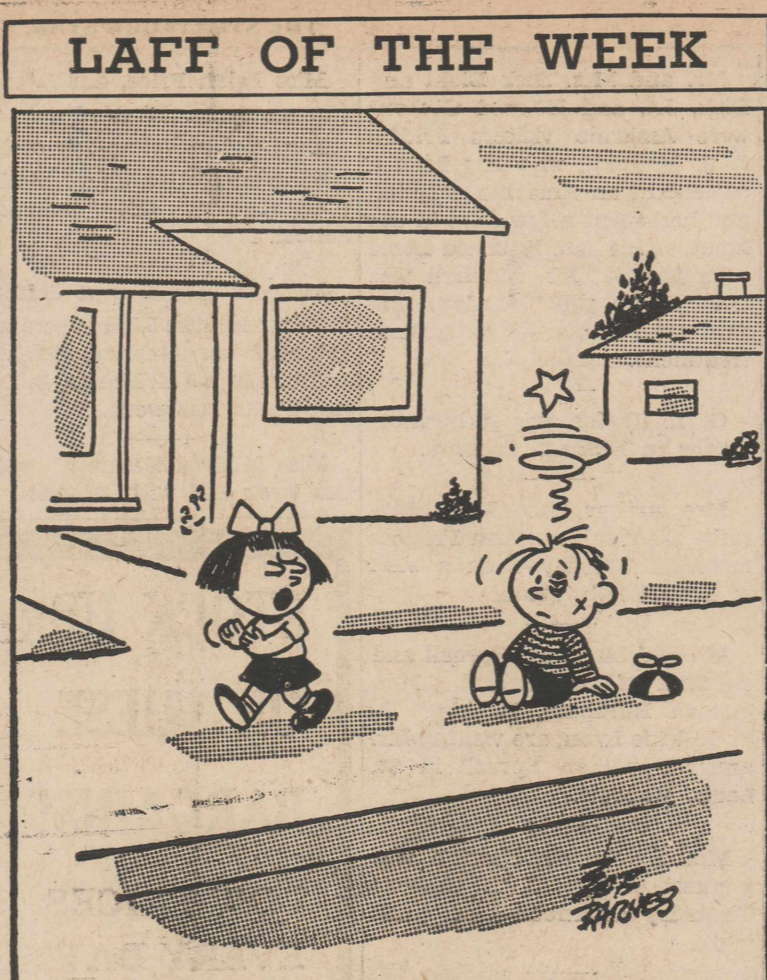
- 1. 34th 2. a bird 3. a leg bone 4. 50



TRIM OLD BRUSHES . . . Worn bristles on the outer row of a paint brush destroy the brush's flexibility. Use a sharp knife or razor to trim away this outer row and give the brush new life.



ELF DANCE . . . Leslie Caren, petite screen dancer and actress, gracefully tests water of wooded pond near Hollywood.



... And don't try any of that Humphrey Bogart stuff on me again!



ROK DRAFTEES . . . Womenfolk wish godspeed to group of South Koreans just called into the army to fight the communist invaders from the north.



PARIS ENVOY . . . C. Douglas Dillon, New York investment banker, has taken up his new duties as U. S. ambassador to France.

New Delhi, known as the Garden City of India and its capital, has 17 million square yards of parks, gardens and open lawns, 200 miles of hedges and 80,000 trees.

THIS WEEK'S RECIPE
Minted Peach Salad
 (Serves 6)
 6 canned cling peach halves
 Salad greens
 1 cup cottage cheese
 1/4 cup celery, chopped
 3 tablespoons lemon juice
 1/4 cup mint jelly
 3 maraschino cherries
 Drain peaches and arrange cup side up on salad greens. Blend cheese and celery and fill peaches with mixture. Beat lemon juice into jelly and top cheese-filled peaches with this mixture. Decorate each peach half with a half cherry.

J P Powell
M. D.
 Eye, Ear, Nose, and Throat
 Dalhart — Texas

They "OH" . . . They "AH"
 . . . and You Will Too!

Palace Cafe
 (Member Texas and National Restaurant Association)

Sunday's Sermon
 Rev. Robert H. Harper
 Building the Church at Ephesus.
 Lesson for May 3: Acts 19: 8-10;
 20: 17-27.
 Golden Text: 1 Corinthians 3: 11.

In Ephesus, where Paul labored for more than two years, he spoke at first in the synagogue. But, after three months, "hardened and disobedient" ones opposing him, he moved to the school of Tyrannus, where he spoke daily for two years. As Paul was later on his way to Jerusalem, between ships at Miletus, he sent for the elders of the church in Ephesus that he might have fellowship with them and strengthen their faith. From his conversation with them we learn much concerning his manner of life as a minister of the gospel and of his utter consecration to the work. He had testified both to Jews and Greeks alike and called them to repentance toward God and to faith in Christ. The Holy Spirit testified unto him and supported him in every city to which he went. He had suffered much for Christ. But he did not hold his life dear unto himself in his labors to accomplish his course and the ministry to which Christ had called him. Paul lingered with his friends as long as he could because he felt that they would see his face no more. Bound for Jerusalem, he did not know what would befall him along the way or in the city. Great was his consecration to a great task and we would do well to emulate his allegiance to his Lord.

Get TRIPLE PROTECTION!
 through your **STATE FARM** insurance agent today

MARGUERITE WILSON
 AT MASSIE MACHINE SHOP

Dr. V. G. Martin
 OPTOMETRIST
Dr. J. W. McCormick
 OPTOMETRIST
 DUMAS, TEXAS
 605 Bliss Ave. Phone 2-4621

YOU'LL FIND
Crosley TV
 AT WRIGHT DAVIS PONTIAC
 All sets sold to any customer are backed by CROSLLEY to be as good or better than any set made. You may try your new set out in 20 minutes. Aerial will raise to 80 feet.
WRIGHT DAVIS PONTIAC

We Buy Grain
 And Have Adequate
GRAIN STORAGE FACILITIES
 Federally Bonded Warehouses
 WE APPRECIATE YOUR PATRONAGE
STANDARD MILLING CO.
 Charles Miller, Mgr.
 Kerrick, Texas

Easy Does It

GETTING the home in spanking clean condition for the new season? You'll find these tips welcome help for your cleaning sessions. As one cleaning tool, have two pails or one pail with two compartments. One can hold your suds and the other the rinse, and you'll have both with you at the same time, as you need them. Make your own dustless dusters for dusting furniture and woodwork. Soak clean cloths for several hours in hot suds to which a few drops of turpentine have been added. Wring and hang to dry. Keep one of these in the living room where it will be handy. Lots of sponges make the cleaning jobs easier because they're easy to wring out, easy on the

RECIPE OF THE WEEK
Veal Loaves
 (Makes 8)
 1 pound ground veal
 1 pound ground pork
 1 can chicken soup
 1 cup quick-cooking oatmeal
 1 egg
 2 teaspoons salt
 1/4 teaspoon pepper
 1 tablespoon onion juice
 Paprika
 Combine ingredients in order given. Make into eight individual patties and pack on edge in a loaf pan, making into a solid loaf. Sprinkle with paprika. Bake in a moderate (350°F.) oven for 1 1/2 hours.

hands and lint-free. Rich lathers for cleaning build up quickly if you squeeze them accordion fashion in water and soap or detergent. Have three mops for treating your floors: one soft mop is used on polished floors, a string, cloth or sponge mop for linoleum and tiled surfaces and a detachable lamb's wool mop for polished floors.

Keep your dresser drawers clean by wiping every now and then with a soapy cloth, rinsing with a damp, clean cloth. Use plastic sheeting for lining drawers to make them easy to dust as well as smag-proof.

Wash shower curtains in suds in the bath tub. Swish in clean water and spread out to dry, never squeezing them as this creates creases which may mar their appearance.

A pound of coal contains the amount of heat produced by burning 13,000 safety matches completely from end to end.

We've got 'em! The widest range of **Ford Truck models ever built!**

For the right size, the right power, to keep ahead in today's swift-flowing traffic stream . . .

Over 190 brand new models in 19 Series . . . from Pickups to 55,000-lb. G.C.W. Big Jobs! Now the one right truck for your job!

- 9 CONVENTIONAL F-SERIES!
- 4 CAB FORWARD C-SERIES!
- 2 PARCEL DELIVERY P-SERIES!
- 4 SCHOOL BUS B-SERIES!

BRAND-NEW FORD BIG JOB! Series F-900, G.V.W. 27,000 lbs., tractor gross 55,000 lbs. G.C.W.

New TIME-SAVING features TO GET JOBS DONE FAST!

- Completely new Ford "Driverized" Cab gives brand-new working comfort! Now, Synchro-Silent transmissions standard in every model, eliminate double clutching! New set-back, wide-tread front axles for shorter turning! New double-cylinder rear brakes! New longer springs! Two new overhead-valve V-8's, a new Low-FRICTION Six, plus famous Truck V-8 and Big Six . . . making FIVE great engines to choose from! MORE new features than ever before introduced in any truck line!

See them today!

FORD ECONOMY TRUCKS
 SAVE TIME • SAVE MONEY • LAST LONGER F.D.A.F.

STRAFORD MOTOR CO.

Local News

Mr. and Mrs. I. D. Divine visited last week end in Canadian, Texas with Mr. and Mrs. James Ullom and daughters.

Mrs. T. J. Howell, Amarillo, was a Sunday afternoon guest in the home of her sister-in-law, Mrs. E. E. Riggs, and family.

Mr. and Mrs. Harry Spruell and little son, of Wichita, Kansas are the guests this week of his mother, Mrs. Mary Spruell, who is recovering from injuries she received in a fall recently.

Mr. and Mrs. Jim Resley, Spera and Jimmie of Del City, Texas, and his mother of Las Cruces, New Mexico, are visiting

relatives in Stratford and Muskogee, Oklahoma. Mrs. Resley is staying with her father, J. B. Willey, while her mother is in Oklahoma.

Dan Smith was a business visitor in Sayre, Oklahoma this week.

Miss Adabelle Knight, Conlen, was a patient in Loretto Hospital the first of the week.

Mr. and Mrs. Floyd Gafford of Tulla, Texas have moved to Stratford to make their home. He has accepted a position with Albert's Grocery.

Mr. and Mrs. Virgil Chisum, Amarillo, and Mr. and Mrs. R. A. Wilson, Dumas, were dinner guests in the T. D. Chisum home Sunday.

Mr. and Mrs. Dick Diehl and Dick, Jr., and Howard Gibbons were Amarillo visitors Friday. J. A. Mayhall, who has been a patient in an Amarillo hospital, and had spent a few days in the home of his son, returned home with them. Mr. Mayhall was not feeling well Monday, and returned to Amarillo for further treatment.

G. L. Taylor was a business visitor in Dalhart Tuesday.

Mrs. Arthur Ross, Mrs. Lorraine Mehner and Ann Frances returned Tuesday from a visit in Fort Worth, Texas.

Mr. and Mrs. Paul Spruell and children of Dumas and Mrs. Marvin Burkham, Robbie Jo and Vickie Lynn, are visiting Mr. and Mrs. Albert Spruell in St. Louis, Missouri.

Mrs. Joe Taylor, Kerrick, was a guest of Mrs. J. T. Gibbons Thursday afternoon of last week.

Mr. and Mrs. D. D. Woodall returned Tuesday from a visit with relatives in Kansas.

Mr. and Mrs. Shirk Kidwell, Windsor, Missouri, Mr. and Mrs. Lloyd Kidwell, Weslaco, Texas, were week end guests in the home of Mr. and Mrs. John Kidwell.

Carl Reeves was a business visitor in Plainview, Texas Tuesday.

Miss Martha Ross, a student in Mount Carmel Academy in Wichita, Kansas returned home Saturday to spend the summer with her parents, Mr. and Mrs. Brown Ross.

Jackie Davis, Texas Tech student, arrived Thursday for a short visit with relatives in Stratford.

Kenneth Wilson and Carol Reed, Texas Tech students, returned home Thursday for the summer holidays.

Mrs. Ivan Willey of Hugo, Colorado visited friends and relatives in Stratford over the week end.

Cyde Hudson, University of Texas student, is home for the summer holidays with his parents, Mr. and Mrs. Eugene Hudson.

Mr. and Mrs. Dan Foreman attended the graduation exercises of their daughter, Nell, in Abilene Stadium Tuesday night of last week. Miss Foreman has enrolled at McMurry College and will return to Abilene Sunday for the summer session.

Edward Seaman has returned home for the summer months after attending West Texas State College at Canyon the past year.

Mr. and Mrs. A. E. Pronger were visitors in Amarillo Tuesday.

Russell and Raymond Albert and S/Sgt. and Mrs. Richard Albert and children of Lubbock, Texas, visited relatives here last week end. Russell and Raymond remained for a visit with their father, Earl Albert.

Elmer Lyons of Seattle, Washington has been visiting friends and relatives in Stratford and Texhoma for the past week. John Lyons returned to Seattle to spend the summer with his father who is employed with the Boeing Aircraft factory.

Mr. and Mrs. Francis Johnson and children, Kenneth, Larry, Dale and Judy of Glasgow, Missouri, were guests in the home of Mr. and Mrs. V. W. Brands from Thursday until Saturday. Mrs. Johnson is a niece of Mr. Brands.

Mrs. J. B. McWilliams returned home Sunday evening from Amarillo where she has been visiting in the home of Mr. and Mrs. Eldon Looney. Mr. McWilliams took his son, Donald, to Amarillo and brought his wife home.

Mr. and Mrs. Harold Leonard brought his father, George Leonard, home Saturday. Mr. Leonard has been visiting in their home in Stamford, Texas. Sunday Mr. and Mrs. Leonard left for California where they will visit with her relatives.

Miss Lelah Price, daughter of Mr. and Mrs. W. N. Price, returned home Wednesday of last week from Dallas where she has been attending the Hockaday School.

Mr. and Mrs. George Jeffcoat were among the 5,000 buyers who attended the American Fashion Association's Fall Market in Dallas, Texas last week.

Miss Mildred Bennett spent the week end with friends in

Red River, New Mexico.

Grover Keown of Pratt, Kansas is a guest in the home of Mr. and Mrs. I. D. Wall.

Mr. and Mrs. V. A. Garoutte and son spent the week end fishing at Conchas, New Mexico.

Hayden Cooper, Ness City, Kansas, A. L. Cooper, Big Spring, Texas, and Mr. and Mrs. R. D. Jones, Brownfield, Texas were guests in the homes of Mrs. H.

J. Cooper and Mr. and Mrs. F. L. Yates Saturday and Sunday.

Mr. and Mrs. G. R. Garrison, Connie Garrison and Sharon Gillis left Tuesday morning for a visit with relatives in Missouri.

Mrs. Gordon B. Fedric left Thursday morning for Orlando, Florida, where she will join her husband, Sgt. Gordon B. Fedric, to make their home.

Read Star Ads - Try Stratford First

—Dr. Harry Arnold
—Dr. Edwina Arnold
Drs. Arnold & Arnold
Chiropractors
X-Ray Colon Therapy
713 Keeler Ave.
Phone 604 Dalhart, Texas

Gifts
FOR ALL OCCASIONS

Libbey's Safe Edge Glasses
Colorama Hostess Ware
Lu-Ray Pottery
Revere Ware
Heisey Crystal
Jones Hardware

"BETTER SEE"
Motorola
TV

For Better Home Entertainment

CAR And PICKUP
RADIOS
\$39.95 and up

Holland's T-V
AND RADIO STORES

Expert MECHANICS

ON DUTY
EVERY WEEK DAY

Our Mechanics are well trained men
and know all makes of cars.

We Will Be Glad To Have You As
Another Satisfied Customer.

TOC Motor Co.
Studebaker Cars And Trucks

STOCK UP ON THESE BARGAINS!

LOW PRICES EVERY DAY PLUS Valuable Coupons On Chinaware At No Extra Cost

BUY THE BEST FOR LESS AT ALBERT'S

THE VALUES-FINE THE PRICES-RIGHT THE SERVICE-GREAT THE HELP-POLITE AND SO I SAY, DEAR MRS. WHITE

25c Biscuits PUFFINS READY TO BAKE 16 BISCUIT TUBE 3 TUBES FOR **25c**

FRYERS Arkansas Fresh Dressed Pound	49c	Oranges California Sunkist 1 3/8 Size Dozen	25c
STEAK Grain Fed Loin T-Bone Or Club Pound	59c	Pineapple Fresh Mexican Sugar Loaf Each	25c
STEAK Grain Fed Round Pound	69c	Fresh Tomatoes South Texas Pound	15c
BACON Armours Repeat Layer Pack 1 Pound	59c	Radishes Colorado Nice Fresh Bunches 3 For	13c
Lunch Meat Assorted Pound	49c	Green Onions Colorado 3 Bunches For	13c

49c COFFEE White Swan Pound **49c**
(With \$10.00 Purchase or More)

OLEO Parkay Colored - Quarters Pound	26c	Ice Cream LANE'S Mellorine 2 Pints For 1/2 Gallon	29c 57c
Cheese Food Gold Crest 2 Pound Box	65c	Lane's Regular or Sherbert Pint 1/2 Gallon	24c 79c
Salmon Honey Boy Tall Tin	39c	Strawberries FROZEN Honer Brand 12 Oz. Box	29c
TUNA HI-NOTE	19c	Orange Juice Minute Maid 6 Oz. Tin	19c
Milk Borden's Tall Tin 2 For	25c	Peaches Val-Vita Big No. 2 1/2 Tin	28c OR 3 CANS FOR 81c
Tomato Soup Campbell's 2 Cans For	25c	Pears Pacific Gold Big No. 2 1/2 Tin	30c OR 3 CANS FOR 87c
Kool-Aid Assorted Flavors 6 Pkgs. For	25c	CORN Concho Cream Style No. 303 Tin	17c OR 6 CANS FOR 96c
Catsup Wapeco 12 Oz. Bottle	16c OR 5 BOTTLES FOR 75c	CORN White Swan Luncheon No. 303 Tin	21c OR 5 CANS FOR 99c
Vinegar Diamond Quart Bottle	15c	Green Beans & NEW POTATOES ALMA No. 303 Tin	17c OR 6 CANS FOR 96c
Tissue Northern 3 Rolls For	25c	Hominy Diamond Golden No. 303 Tin 3 Cans For	25c OR 12 CANS FOR 89c
TIDE LARGE BOX	29c	Pork & Beans White Swan Big 24 Oz. Tin	19c OR 5 CANS FOR 92c

Albert's Grocery & MARKET - - Phone 4821

Local News

Mr. and Mrs. J. B. Springfield returned Thursday of last week from Phoenix, Arizona, where they visited his grandfather who is ill.

Mr. and Mrs. J. L. Adams had as Sunday dinner guests Mr. and Mrs. Garland Bryan of Dalhart.

Mrs. Charlene Horn and daughter, Jernell, of Levelland, Texas, visited friends here last week end.

Mrs. W. D. Ellis visited her daughter, Mrs. E. F. Hamilton, and other relatives in Texhoma last week end.

Mr. and Mrs. Marvin Harrison and her sister, who had been visiting them, went to Dallas, Texas last week to visit another sister.

Mr. and Mrs. J. N. Foster and two daughters are visiting in Alabama with his mother. She has been in ill health for some time.

Little Miss Eloise Adkins spent

the first part of the week with her aunt and uncle, Mr. and Mrs. John Lavake.

Mrs. T. L. Taylor and daughter, Patricia, have been visiting Mrs. Taylor's mother in Charlotte, and other relatives in Abilene and Pleasanton, Texas, the past week.

Emery Blake, who underwent eye surgery recently, is now at home, and able to be up and around.

Mrs. James Powell and little daughter, Jamie Louise, of Dallas, Texas arrived Monday night for a visit with Mrs. Powell's parents, Mr. and Mrs. C. T. Watson, who met them in Dalhart. Mr. Powell is employed with the Humble Oil Company in Dallas.

Among students who are home from school are Misses Mildred Bennett, Mary Nan Davis, Dorothy Beal and Mary Crabtree.

Guymon Lions Club 25th Anniversary On June 11th

The Silver Anniversary Celebration of the Guymon Lions Club will be attended by Lions and their ladies from a five state area and by various lions club dignitaries. A special invitation has been extended the Lions Club at Stratford. The banquet and meeting will be ening will be William Lawson Hotel Dale in Guymon with more than 350 persons expected to be present.

Special entertainment is being planned for the program.

The guest speaker for the evening will be William Lawson Waldie, a director of Lions International and a member of the Vancouver, B. C. Lions Club. Mr. Waldie, a native of Scotland, holds important offices in World Banking Business and is a prominent figure in Lions International Affairs. James A. Richardson, a director of Lions International from Ada, Oklahoma is also expected to be present.

Mary Ethel Circle Gives Tea For Mrs. Nichols

Mrs. H. A. Nichols was honored with a tea given in the parlor of the First Methodist Church Tuesday afternoon by members of the Mary Ethel Circle of the Womans Society of Christian Service, the organization which bears her name.

The parlor was decorated with beautiful garden flowers. Mrs. F. B. Mullins and Mrs. A. L. King served punch from a lace covered serving table. An arrangement of White Dutch Iris and Honeysuckle formed the centerpiece before a background of six white tapers burning in crystal holders.

Miss Nell Foreman and Mrs. H. M. Flores furnished continuous piano music during the farewell tea.

About seventy-five ladies attended the tea, leaving many beautiful gifts for Mrs. Nichols, who left Thursday with her husband for their new pastorate at Anson, Texas.

McWilliams Is Transferred To Austin

A/3c Donald E. McWilliams left Saturday night for Austin, Texas after spending a 20-day furlough with his parents, Mr. and Mrs. J. B. McWilliams.

On May 5 Airman McWilliams received his Certificate of Proficiency from the Lowry Air Force Base at Denver, Colorado where he was trained as an Electronics Series System Mechanic.

Flora Foreman Circle Meeting Wednesday Morning

The Flora Foreman Circle of Womans Society of Christian Service met in the parlor of the First Methodist Church Wednesday at 9:30 A. M. for the regular weekly study meeting. The study was taken from the Book of Esther.

Mrs. Emil Blanck, circle chairman, presided. "Help Somebody Today" was sung by the group. Mrs. M. Dortch gave the devotional.

Mrs. A. L. Harrison led in prayer.

Mrs. Emil Blanck has been elected circle chairman. Mrs. J. W. Elliott is treasurer, and Mrs. J. B. McWilliams is secre-

tary. After a short business session Mrs. J. G. Cummings took charge of the lesson.

Mrs. A. L. Harrison gave an outline of the lesson.

Mrs. F. B. Mullins gave a short talk about the beautiful queen, Vashti, and her disobedience.

Mrs. A. E. Pronger discussed the conspiracy to destroy the Jews.

The rest of the lesson was discussed round-table fashion. The next lesson will be in Matthew on page 45 of the Adult Student.

Those present were: Mrs. C. W. Moon, Mrs. Nellie Blanck, Mrs. A. E. Pronger, Mrs. J. G. Cummings, Mrs. F. B. Mullins, Mrs. Hattie Flores, Mrs. Agnes Foster, Mrs. J. W. Elliott, Mrs. M. Dortch, Mrs. A. L. King, Mrs. W. P. Cummings, Mrs. A. L. Harrison and Mrs. J. B. McWilliams.

Close Business In Stratford

Mr. and Mrs. Henry Bryan, who have operated the Bendix Laundry in Stratford for the last 14 months, closed their business Monday morning. They have no definite plans for the future.

Group One Meets With Mrs. Frank Judd

Group One of the Christian Womens Fellowship of the First Christian Church met in the home of Mrs. Frank Judd Wednesday evening with seven ladies present. The meeting was opened with prayer by Mrs. L. L. Lyon. Mrs. Arthur Judd was the program leader. The Lord's prayer was repeated by the group. Mrs. L. L. Lyon conducted the devotional from the 10th chapter of Acts.

Mrs. Arthur Judd gave a very interesting talk on "Why We are Glad We Came to the Congo." Mrs. Frank Judd told of Dr. Totorido and his Pygmies.

A report was made of 12 books being read, 4 world calls, and 4 daily devotionals being conducted. A collection of \$12.45 was presented.

The meeting was dismissed with the Missionary benediction. A social hour was enjoyed and delicious refreshments were served by the hostess.

Kiddy Karnival Nets \$31.00 For Stratford Lions

Receipts of the Kiddy Karnival presented here Friday night by dancing pupils of Mrs. E. E. Coons netted \$31.00 which was presented to the Stratford Lions Club. Dalhart students of Mrs. Coons appeared on the program.

CARD OF THANKS

I wish to express my sincere appreciation of the cards, letters, and flowers which were sent to me while I was in the hospital. Your thoughtfulness made the days away from home seem shorter.

Emery Blake

Washer Load

For best results in your washing machine, don't overload it with too many clothes or too many large pieces of clothing. Miss Lucile King, County Home Demonstration Agent, says this advice comes as a result of an extensive study made at the

Ohio Experiment Station.

Findings from the study indicate proper loading is important for successful laundering in any washing machine. Research included washing 20,000 pounds of soiled clothes from 32 different families in 5 different automatic washers and a reliable, well-known conventional or non-automatic washer for comparison. During the study 75 women reported machines that would not remove soil and the trouble was often found to be over-loading. Ten self-service operators reported overloading as their greatest problem with cylinder type washers.

Manufacturers of the cylinder or agitator-type washers rated the load capacity as 9 pounds and the pulsator washer as 8 pounds. The Ohio study showed that all washers did a better job with 7 1-2 or 8 pound loads. This indicates it is wise to weigh clothes before putting them into the washer until the 8 pound load becomes easy to estimate.

The agent says the research also indicates a combination of large and small pieces is practical and satisfactory for family washing. Combinations of small items washed well because they could move freely, but a load of sheets, for example, gave trouble. In agitator-type washers a load of sheets could not move freely. They billowed around the agitators, and turned over so slowly that the mechanism seemed to work continuously only on part of the washing.

For best results, the research indicates a typical assortment for an 8 pound load: 2 sheets, 2 pillow slips, 2 bath towels, 2 men's white shirts, 2 luncheon cloths, and about a pound of tea towels or other small items. In the typical family wash there will be two such loads, then a third load of dresses and undergarments, and finally a load of colored or badly soiled items that must be washed separately from the white clothes.

Recipe of the Week

Deviled Dinner Beef Patties
1 pound ground round steak
1 teaspoon salt
1-4 cup chopped onion
1 tablespoon Worcestershire sauce.

1-4 cup butter or margarine, melted.
1 teaspoon prepared mustard.
1 tablespoon horse-radish.
1 clove garlic, finely mashed.
1-4 cup catsup.

Combine ground steak, salt, onion, mustard, horse-radish and garlic thoroughly. Shape into patties 1 1-2 inches thick. Place on aluminum foil on pie pan or rub the pan with fat and omit the foil. Place the broiler pan in a hot broiling oven with the surface of the steak 3 inches from the heat source. Broil 10 minutes or until the surface is well browned. Turn and broil 10 minutes more. Serve the hot patties on a hot platter or hot plates. Add the catsup to the butter and Worcestershire sauce. Pour over patties and serve at once.

Timely Tips

1. Beef is still coming to market in abundance and at lower prices.
2. One beef patty will furnish about 1-3 of the daily requirement of protein.

The advertisements have a message of importance for you.

The Stratford Star

Published Weekly By Brown Ross
Entered as second class matter at the post office in Stratford, Texas, under the act of March 3, 1879.

FOR ATHLETE'S FOOT USE A KERATOLYTIC BECAUSE—
It SLOUGHS OFF the tainted outer skin to expose buried fungi and kills it on contact. Get this STRONG, keratolytic fungicide, T-4-L, at any drug store. If not pleased in ONE HOUR, your 40c back. Now at City Drug and Yates Drug.

DANCE TO GOOD MUSIC

IN THE AMERICAN LEGION HALL
Saturday Night

Music Furnished by Bobby Carl.
His 5-piece orchestra begins playing at 9:00 o'clock

DANCE SPONSORED BY Stratford Post of The **American Legion**

Rev. W. B. Hogg of El Paso, Texas, memorized the Bible.

Roxy Theatre
STRATFORD, TEXAS

NOTICE:
NEW STARTING TIME
WEEK DAYS — Show Begins at 7:30 P. M.
SATURDAYS — Show Begins at 5:15 P. M.
SUNDAYS — Show Begins at 2:15 P. M.

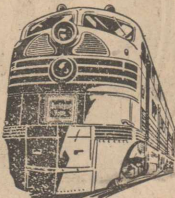
JUNE 5 And 6
Confidentially Connie
With Van Johnson, Janet Leigh and Louis Calhern
JUNE 7 And 8

Pony Express.
In TECHNICOLOR
Starring Charlton Heston, Rhonda Fleming, Jan Sterling and Forrest Tucker

JUNE 9 - 10 - 11
She's Back On Broadway
With Virginia Mayo, Steve Cochran, Gene Nelson, Frank Lovejoy and Patrice Wymore
WARNER COLOR

NEW FASTER TIME

BURLINGTON LINES TRAIN NO. 7
MORE THAN AN HOUR SHORTER
DENVER TO FORT WORTH - DALLAS



Provides new time-saving connections at the FORT WORTH-DALLAS GATEWAY with afternoon EAST-BOUND TRAINS for the Southeast, Atlantic Seaboard, and intermediate metropolitan areas.

Effective SUNDAY, MAY 31, 1953

Train No. 7 Southward	DENVER	Lv. 7:10 PM
	PUEBLO (Mountain Time)	Lv. 10:15 PM
	DALHART (Central Time)	Lv. 6:27 AM
	AMARILLO	Lv. 8:40 AM
	MEMPHIS	Lv. 10:28 AM
	CHILDRESS	Lv. 11:19 AM
	QUANAH	Lv. 11:57 AM
	VERNON	Lv. 12:34 PM
	WICHITA FALLS	Lv. 1:59 PM
	BOWIE	Lv. 3:00 PM
	FORT WORTH	Ar. 4:45 PM
	DALLAS	Ar. 6:00 PM

Ask agent about changes at other stations.

Burlington Route FORT WORTH AND DENVER RY.
FORT WORTH, TEXAS

The Wise Old Bird Says:
"DON'T BE LATE"

and that means:
"Service Every Farm Machine Ahead of Season in Our Shop!"

There is still time for you to get on our Early Bird Schedule for Blue Ribbon Service, but please don't delay.

Our list is filling up with the names of farmer customers who are scheduling machines for service ahead of every season.

Your tractor may be ready now, but how about your plow, planter, mower, harvesting machines and other equipment?

Look over your machines or ask us to come out and do it. Whether simple adjustments or complete overhaul are needed, we have the skilled mechanics and precision equipment to put farm equipment in first-class shape.

King Equipment Co.

PADS
FOR ALL SIZES OF AIR CONDITIONERS

with **CLEAR-VUE** Air Conditioning

HOME COOL HOME

ITS "CLEAR-VUE" DOES NOT OBSTRUCT VIEW

COME IN TODAY FOR FREE FOLDER and DEMONSTRATION

The Clear-Vue is attractive in any room. It can be used with any type of draperies or window blinds. Uses only a few inches of window space.

Van B. Boston

Firestone Tractor TIRES

OF ALL SIZES

We Install Tractor TIRES in the field

Garrison Motor Co.
Your Chrysler-Plymouth Dealer

LET US SERVICE YOUR CAR WHILE YOU SLEEP

Wash and Lube

24 HOUR SERVICE
Pickup and Delivery
PHONE 2481

Consumers Company
INTERSECTION HIGHWAYS 54 AND 287



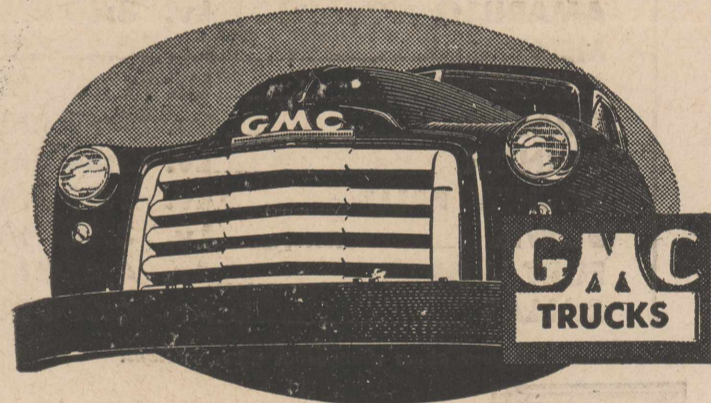
HEADS NEW CABINET OFFICE . . . President Eisenhower presents commission to Mrs. Oveta Culp Hobby as secretary of Health, Education and Welfare, newly-created department in the national government.

A total of 88 species of Arctic sea worms, close relatives of ordinary earthworms and of the strikingly luminescent "moon worms" of West Indian waters, have been identified at the U. S. National Museum. There were 1,540,000 marriages in the United States last year, a decrease of about 4 per cent from the 1951 total. The all-time high was set in 1946 when returning veterans brought the number to 2,300,000.

HOME CANNERS' FIRST CHOICE!

Ball DOME LIDS advertisement featuring an image of a jar lid and the text: 'Only BALL JARS come with DOME LIDS. No Guesswork! DOME DOWN... Jar Sealed.'

No other truck matches this value!



Find out the low cost of the 1953 GMC Pickup. Then remember—it includes:

- 105 HP Valve-in-head Engine • 8.0 to 1 Compression Ratio • "6-Footer" Cab • 45-Ampere Generator • Double-Acting Shock Absorbers • Recirculating Ball-Bearing Steering • Self-Energizing Brakes • Synchro-Mesh Transmission • 6-Ply Heavy-Duty Tires.

Get a real truck! VAN B. BOSTON

320 South First Street Stratford, Texas

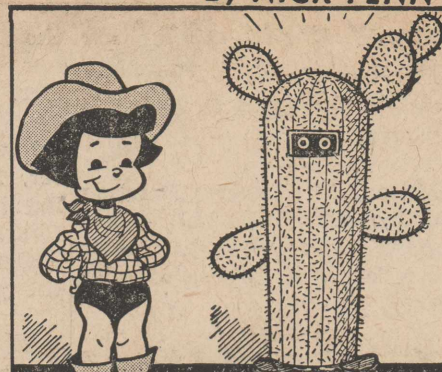
"Mile After Mile You'll Prefer Shamrock"



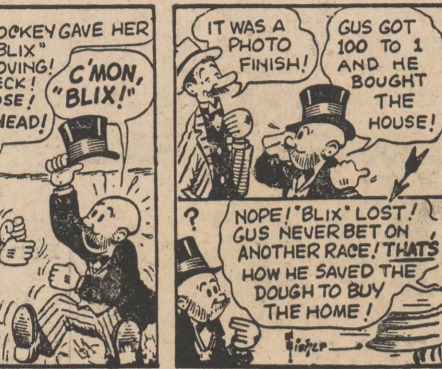
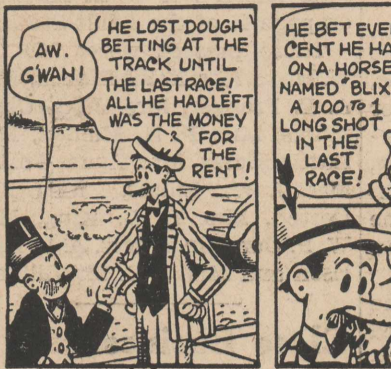
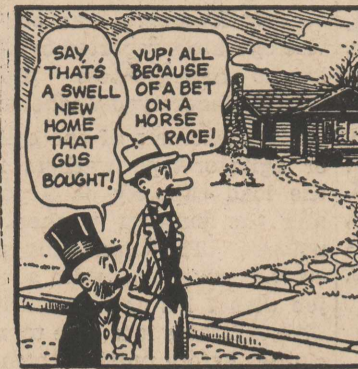
Successful business men watch expenses closely. That's why so many prefer Hi-Octane SHAMROCK gasoline. It gives you top performance at low cost... keeps your motor running smoother... longer. For real economy... fill up with SHAMROCK... A Mighty Good Brand.

Gasolines • Lubricants

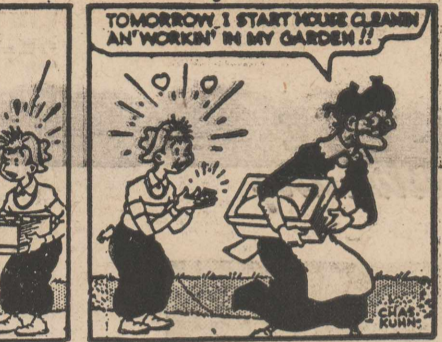
BESSIE



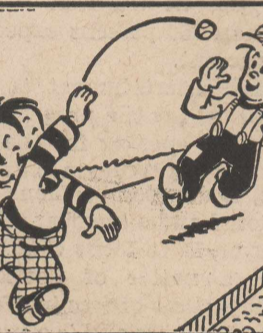
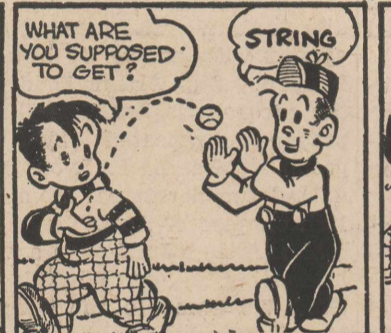
MUTT AND JEFF



GRANDMA



VIRGIL



Crossword Puzzle

Crossword puzzle grid with clues for horizontal and vertical words.

Answers to crossword puzzle clues, including: 1 Wrote Two Years Before the Mast, 5 Feline, 8 Spanish sword, etc.

The only white vulture found in the world was caught in Texas and is now in a San Antonio zoo.



NEW CITIZEN . . . Hedy La Marr, 38, is now an American citizen. The Viennese movie star came here from Mexico in 1938.

One of the strangest vests ever seen in Washington was worn by Sam Houston, United States senator from Texas before the Civil War. It was made from a panther skin. The metal thallium gets its name from the Greek word thallos, meaning "green twig." It shows as a green line in the spectroscope.

By NICK PENN

The Portland man crawled from the wrecked car he was driving, complaining only of being dizzy. The car turned over several times.

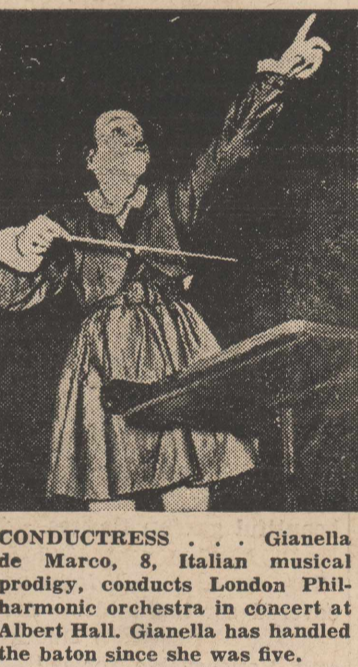
APPLIANCE REPAIRING Truck, Tractor AND Automotive Service Ernest Palmer Palmer Appliance Service & Garage

Certified SEED For Your Own PROTECTION Use The BEST QUALITY SEED Eller Seed On U. S. Highway 54

Oregon Car Dealer Demolishes 2 Cars

A Portland, Oregon used car dealer demolished two cars Saturday on U. S. 287 about 14 miles south of Stratford. The tow car and the car driven by the dealer were demolished when the driver lost control.

Wilson Funeral Directors DIAL 2601 STRATFORD, TEXAS Any Hour — Night or Day



CONDUCTRESS . . . Gianella de Marco, 8, Italian musical prodigy, conducts London Philharmonic orchestra in concert at Albert Hall. Gianella has handled the baton since she was five.

Today's Story: ADDING MACHINE PAPER 2 3/8 and 3 3/8 Inch ROLLS The Stratford Star



DIXIE GOVERNORS SEE PRESIDENT . . . Pres. Eisenhower poses with Gov. Allan Shivers (left) of Texas, and Gov. James F. Byrnes of South Carolina after lunching with a group of governors and congressional leaders at the White House.



IRAN OIL RIOT . . . Supporters of Premier Mossadegh's oil policies demonstrate in Teheran to force Iranian parliament to back Mossadegh in negotiations with U. S.



ISRAEL UNREST . . . Waving banners, demonstrators of "Friendship with USSR League" clash with anti-communist forces during uprising in Tel Aviv, Israel. A score were injured.



CLARK VISITS INDO-CHINA . . . Gen. Mark Clark, commander of UN forces in Korea, appears in center watching operation of mortar by Vietnam soldiers being trained at Nam Dinh military school.

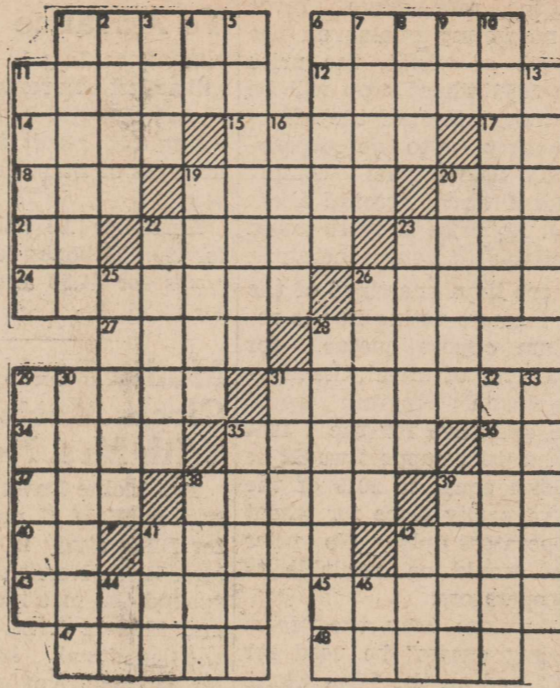
CROSSWORD PUZZLE

HORIZONTAL

- 1 A young hog
- 6 Abbreviated
- 11 Quick look
- 12 Small horse (pl.)
- 14 To estimate
- 15 To omit from consideration
- 17 A negation
- 18 Beverage
- 19 Pippens
- 20 Popular festival of Japan
- 21 A volume
- 22 Pained
- 23 Ice mass
- 24 Smudged
- 25 Green herbage affording food for animals
- 27 Hundredth of a right angle
- 28 A chart
- 29 Billiard shot
- 31 Consecrates by religious rites
- 34 A kiln
- 35 Extent of land (pl.)
- 36 Musical note
- 37 To soak
- 38 Untarnished
- 39 Allow
- 40 Printer's measure
- 41 Domestic
- 42 Cereal grain
- 43 Indolent
- 45 Ousts
- 47 Consumed
- 48 Borders of an object

VERTICAL

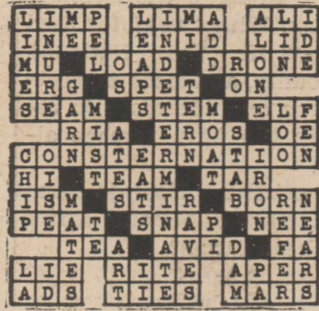
- 1 Zigzag downhill skiing course
- 2 Dislike intensely
- 3 Number
- 4 Symbol for actinium
- 5 Provided with a menacing display of strength
- 6 Examined secretly
- 7 Mortar carrier (pl.)
- 8 Number
- 9 Japanese measure
- 10 Singing voice (pl.)



PUZZLE NO. 223

- 11 The child's pea (pl.)
- 13 Arias
- 16 Prevaricated
- 19 Beat it (slang)
- 20 Pummels
- 22 Man's name
- 23 Metal
- 25 Bird
- 26 Gather after a reaper
- 28 Gratifies
- 29 Part of fruit (pl.)
- 30 Street
- 31 Raised
- 32 Chooses
- 33 Satisfies
- 35 Foreigner
- 38 Walking stick
- 39 Small insect (pl.)
- 41 Glove (var.)
- 42 To free of child for father
- 46 Roman number

Answer to Puzzle No. 222



Scottish Rite Meeting At Sunray

Russell Beall, F. M. Keener, Vern Foreman, W. O. Bryant, Carroll Wisdom and Rev. John Reaves attended the Scottish Rite meeting at Sunray Friday.

Rev. Reaves was the principal speaker at the meeting.

The next meeting of the Northwest Panhandle Scottish Rite Club will be held in Stratford in September. E. A. Wells, Texas Secretary of Scottish Rite

Bodies, of El Paso, Texas, will be present for the meeting.

C. W. Stradley Pipe & Supply Co.

PHONE — 5621
 TEXHOMA, TEXAS
 (Yard located by Texas School House)

— PIPE —
 (All sizes) 1 to 24 Inches
 See Us For Your Pipe Requirements.

TOP QUALITY MEATS

FRESH, TENDER Meats

WHOLESALE For Lockers and Home Freezers
 CUSTOM PROCESSING OF MEATS
 Hams and Bacons Cured To Tantalize Tastes

Stratford Frozen Food Lockers

ABSTRACTS

WE HAVE A COMPLETE ABSTRACT PLANT

Covering All Real Estate In Sherman County

We Furnish Quick, Efficient Service On Short Notice

Sherman County Abstract Co.

Royal Pendleton, Manager Stratford, Texas

Printing --

Wedding Invitations

Shower Invitations

Birth Announcements

Programs

Booklets

Letter Heads

Invoice Books

Envelopes

Statements

Order Books

Printing Is Our Business — And Not A Sideline

Printed Forms

The Stratford Star



1954 Wheat-

(Continued from Page 1)

of wheat.

The Secretary of Agriculture is required by law to establish a National wheat acreage allotment for the 1954 crop of wheat not later than July 15, 1953, unless a national emergency exists, and to apportion such allotment to States and counties. In this manner, the Secretary will have the benefit of July crop report of

the Bureau of Agricultural Economics before making determinations required by the law.

5. Question: Who is eligible to vote in the July wheat referendum if one is held?

Answer: Each person who, as owner, operator, tenant, or sharecropper, will be entitled to share in the proceeds of the 1954 crop of wheat on a farm on which more than 15 acres will be planted, shall be eligible to vote. If the farm has a 1954 allotment of more than 15 acres, they will be automatically eligible to vote.

6. Question: Will all wheat farmers be notified of 1954 farm wheat acreage allotments prior to the date of the referendum?

Answer: Yes. It is the policy to notify all farmers of allotments in advance of any referendum conducted by the Secretary of Agriculture.

7. Question: How many farmers must vote in favor of marketing quotas on the 1954 crop of wheat before such farm quotas would be in effect?

Answer: More than two-thirds of all wheat farmers in the United States who vote in the referendum must vote in favor of quotas on the 1954 crop of wheat before the program could be put into effect.

8. Question: How will the Wheat Price Support Program be affected by the results of the referendum?

Answer: If more than two-

thirds of the wheat farmers voting in the referendum favor farm marketing quotas on the 1954 crop of wheat, the price of the 1954 wheat crop will be supported at 90% of the effective parity price to the cooperators only (those who comply with farm wheat acreage allotments). No price support would be available to non-cooperators.

If more than one-third of the wheat farmers voting in the referendum oppose quotas for the 1954 crop of wheat, the Marketing Quota Program would not be operative for the 1954 crop and price support would be at a level equal to 50% of the effective parity price for wheat to cooperators only. No price support would be available to non-cooperators.

9. Question: May the "farm marketing excess" be used for feed or seed on the farm where produced and thus avoid a marketing quota penalty?

Answer: No. To "market" wheat means to dispose of wheat by sale, barter, exchange, gift or feeding. Wheat used for seed is included in the National, State, county, and farm marketing quotas and therefore is reflected in the farm acreage allotment.

10. Question: How do farm wheat acreage allotments affect small wheat farms?

Answer: As many as 15 acres of wheat may be harvested on any farm and the production may be disposed of in any manner without incurring any of the penalties of the Wheat Acreage Allotment and Marketing Quota Program. However, price support is not extended to the persons interested in the crop of wheat on a farm on which the wheat acreage allotment is overplanted. In addition, the penalty provisions of the Wheat Marketing Quota Program are not applicable to a farm on which the normal production of the planted acreage of wheat on the farm is less than 200 bushels.

Walter Rogers--

(Continued from Page 1)

sofar as tax relief for the individual taxpayer is concerned, is not good. I have not changed my position concerning relief for the American taxpayer. It is my opinion that the lessening of the present tax impositions upon the individual and small businesses will result in stimulation that will return more revenue for balancing the budget. It will also serve to guard against the operation of the law of diminishing returns, which is affecting the economy right now.

Investigations
The National Council of Churches of Christ in the United States, according to reports here, has created an investigating committee of their own to investigate the investigating committee of Congress that have indicated their intentions to investigate the churches. It looks like the country will not run short on investigations.

Corruption
It appears that there are people in all parties who think that public offices should be sold to the highest bidder. A grand jury in Georgia has recently indicted several men for attempted federal job selling under the new administration. Arrests have also been made in South Carolina on the same charges. High officials in the new administration have unqualifiedly stated that such culprits will be prosecuted and punished to the fullest extent of the law. Congress is keeping a wary eye on such practices and will expect the law to take its course in due order. Political pork-barrelism is no less dangerous today than it was a hundred years ago, and the quicker we get rid of it, the better off the taxpayer will be.

Governor Bibb Graves of Alabama appointed his wife as Senator in 1937.

DORTCH SHOE SHOP

Let Us Repair Those Worn Shoes For the Family

Candies Cold Drinks

Mr. and Mrs. G. C. Dortch, Owners

P. O. Box Rent To Advance

Effective July 1 postmasters will adjust box rents on the basis of gross postal receipts. This ruling will result in a raise in the rent of Stratford post office boxes.

Hereafter .60 boxes will rent for .90, .75 boxes for \$1.10, \$1.00 boxes for \$1.50 and \$1.50 boxes for \$2.25.

Mollie Davis Circle Meets With Mrs. Norris

The Mollie Davis Circle of the Baptist W. M. U. met Wednesday for Bible study in the home of Mrs. H. B. Norris. Mrs. Norris opened the meeting with prayer and Mrs. L. J. Davis conducted the devotional. Mrs. M. J. Carter had charge of the Bible study program. Mrs. Joe Brown dismissed the meeting with prayer.

Refreshments of coffee, lemonade, sandwiches and cookies were served to Mrs. Howard Hafey, Mrs. Joe Brown, Mrs. Joe Knapp, Mrs. Lee Grimes, Mrs. M. J. Carter and Mrs. L. J. Davis by the hostess, Mrs. H. B. Norris.

The circle will meet at the First Baptist Church Wednesday of next week.

Star H. D. Club Meets With Mrs. Donelson

The Star Home Demonstration Club met Tuesday in the home of Mrs. Shuler Donelson. After the business meeting a demonstration was given by Mrs. Donelson on "cookie tricks and trimmings."

A game was played with Mrs. Roscoe Dyess winning honors. Delicious refreshments were served to the following members: Mrs. J. W. Smith, Mrs. Roscoe Dyess, Mrs. Raymond Keener, Mrs. Harold Bennett, Mrs. J. B. McWilliams, Mrs. Archie Arnold and Mrs. Roy Mitchell by the hostess, Mrs. Shuler Donelson.

The next meeting of the club will be June 16 in the home of Mrs. Roscoe Dyess with the Star Club entertaining the members

of the Southside Club.

Mildred Crabtree Circle Meets With Mrs. Dean Oquin

The Mildred Crabtree Circle of the Baptist Womens Missionary Union met Wednesday in the home of Mrs. Dean Oquin for Bible study. The meeting was opened with prayer by Mrs. D. D. Howard.

The Bible lesson was taught by Mrs. Arlyn Halle. The meeting was closed by prayer by Mrs. John Lavake.

Refreshments were served to the following members: Mrs. V. M. King, Mrs. Roy Strother, Mrs. W. L. Hankey, Mrs. W. W. Davis, Mrs. D. Howard, Mrs. Arlyn Halle, Mrs. John Lavake and Mrs. Pruet Adkins by the hostess, Mrs. Dean Oquin.

Phil Harvey Building New Tourist Court

Phil Harvey is having a new modern tourist court erected on lots on U. S. Highway 54 just west of the Ross Chevron Station.

The new court will be composed of 11 units and living quarters for the owners.

Mr. and Mrs. Harvey are resi-

dents of Amarillo and plan to move to Stratford to make their home.

O. E. Heugatter has the construction contract.

Say You Saw It In The Star

CARD OF THANKS

We wish to express our appreciation of the patronage we have enjoyed during the time we operated the Bendix Laundry. Mr. and Mrs. Henry Bryan

Say You Saw It In The Star

Stop Taking Harsh Drugs for Constipation

End Chronic Dosing! Regain Normal Regularity This All-Vegetable Way!

Taking harsh drugs for constipation can punish you brutally! Their cramps and griping disrupt normal bowel action, make you feel in need of repeated dosing.

When you occasionally feel constipated, get gentle but sure relief. Take Dr. Caldwell's Senna Laxative contained in Syrup Pepsin. It's all-vegetable. No salts, no harsh drugs. Dr. Caldwell's contains an extract of Senna, oldest and one of the finest natural laxatives known to medicine.

Dr. Caldwell's Senna Laxative tastes good, acts mildly, brings thorough relief comfortably. Helps you get regular, ends chronic dosing. Even relieves stomach sourness that constipation often brings.

Try the new 25¢ size Dr. Caldwell's. Money back if not satisfied. Mail bottle to Box 280, New York 18, N. Y.

Flexible Spring Tooth HARROWS

REGULAR 35-TOOTH

Per Section

\$26.50

NEW And USED TRACTORS

FERTILENE FOR TREATING SEED

CHISELS and SPIKES

Sloan Implement Co.

"THERE'S THE ONLY PLACE YOU CAN BUY GENUINE JOHN DEERE PARTS!"



WHEN you buy replacement parts for your John Deere Farm Equipment, don't take a chance! You're assured of genuine John Deere Parts when you buy from a John Deere Dealer.

Genuine John Deere Parts are made in the same factories, of the same high quality material, by the same skilled workmen, from the same patterns and dies as the parts they replace. Genuine John Deere Parts are your assurance of continued fine field service that was yours when your John Deere equipment was new!

The next time you need replacement parts, insist on genuine John Deere Parts. Order your parts from us the next time you're in town.

Bennett Implement Co.

49¢ COFFEE

Folgers 49¢

(With a \$10.00 Purchase or More)

SPRY Or CRISCO	3 POUND TIN	89c	BABO Or AJAX	2 CANS	25c
WHITNEYS SALMON	TALL CAN	39c	CLOVERBLOOM RI-CHEDDA CHEESE	2 LB. LOAF	69c
VAN CAMPS Vienna Sausage	TWO FOR	39c	CLOROX	QUART	17c
TRELLIS 303 SIZE PEAS	TWO FOR	29c	JELLO	3 FOR	19c
QUALITY MEATS			FRESH VEGETABLES		
TENDERIZED BONELESS STEAK	U. S. CHOICE POUND	65c	LARGE RED TRIUMPHS NEW SPUDS	10 POUND MESH BAG	49c
FRESH LEAN GROUND BEEF	POUND	29c	LONG GREEN SLICERS CUKES	POUND	15c
ARMOUR'S STAR SLICED BACON	POUND	69c	SOUTH TEXAS RIB OKRA	POUND	25c
ASSORTED COLD CUTS	POUND	49c	FRESH IMPORTED LIMES	2 FOR	5c

Seaman Grocery

BEST QUALITY BEST PRICE