

Candidates To Learn Their Fates Saturday

Sherman County voters will probably poll the heaviest vote in the history of the county in the Democratic Primary election to be held Saturday.

More than 1,000 voters are listed on the roll of poll tax payers and exemptions.

Sheriff A. L. (Doc) Wilson is opposed by G. Ross Turner in the race for the office of Sheriff, Tax Assessor and Collector.

The race for county judge was electrified this week when friends and supporters of Walter Pendleton placed his name in the race for county judge. Pendleton is being advocated in a write-in campaign in opposition to County Judge Bob Ferguson who is a candidate for re-election.

Mrs. Leah Boney is unopposed for the office of County and District Clerk.

Mrs. Harry Sears is unopposed for the office of County Treasurer.

Burk Green is unopposed for the office of Justice of the Peace of Precinct 4.

Roscoe Dyess is unopposed for re-election to office as County Commissioner of Precinct One.

E. W. Carter is unopposed for re-election to the office as County Commissioner of Precinct Two.

County Commissioner W. T. (Bill) Crabtree is opposed by R. B. (Billy) Roberts in the race for County Commissioner of Precinct Three.

County Commissioner E. E. Hamilton is opposed by F. M. Keener and J. G. Cummings in the race for County Commissioner of Precinct Four.

Sam E. Wohlford, candidate for Representative of the 95th Legislative District of Texas, is opposed by Chas. Arford of Dalhart and Mike Kemp of Cactus.

Election Returns
Election returns as provided by law will be made available to the public by County Chairman Brown Ross at every two hour interval after the polls are closed until the final count has been completed.

Although every effort has been exerted to make possible the completion of the counting of the ballots by midnight, an all night vigil may be in store for election officials and the chairman.

In such event the election officials and the chairman will in all probability not have any sleep until many of the early rising citizens are stirring and desiring the final tabulations.

The final tabulations of the unofficial returns will be posted by the chairman on the front door window of the Stratford Star.

The County Chairman will not be available to the public until 3:00 P. M. Sunday. From 3:00 until 6:00 P. M. Sunday he will receive any candidate or legal voter at his residence in Stratford who desires information or wishes to place a protest for the action of the Sherman County Democratic Executive Committee which will meet in the County Commissioners' Court Room in the Courthouse in Stratford at 4:00 P. M. Wednesday, July 30, to canvass the returns of the election as prescribed by law.

Trainham On Roping Club Probation

R. J. Trainham, popular member of the Stratford Roping Club, will not be one of the participants in the roping contest Sunday, it was announced tonight by H. R. Tillery and Floyd Brannan. They state Trainham slipped off and was married. They further state that he will be chained at rodeo grounds Sunday, where he will sell tissue to raise funds for the roping club.

James Injured In Tulia Rodeo

Joe Bob James of Kerrick has a knee injury as the result of an accident while he was participating in the rodeo at Tulia, Texas Friday. James was engaged in a bull dogging contest when the accident occurred.

Wheat Growers Urged To Use Loan Program

Wheat growers are being reminded that a rush to market during the harvest period usually means the lowest prices of the year.

B. W. Vance, chairman of the State Production and Marketing Administration Committee, said today that in every marketing year in the last 13, early season cash hard winter wheat prices averaged the lowest of the year in either June, July or August. Last year the low was reached on July 25.

In 8 of the last 13 years, prices averaged highest in March or later. Except for 1946-47 and 1947-48, when demand was exceptionally strong, wheat prices have averaged around the loan level for the season.

June production prospects of 1,326 million bushels indicate that wheat supplies for the 1952-53 marketing year likely will be at record levels. The wheat carryover at the end of the year may well be double the carry-over at the beginning. The carry-over on July 1, 1952, is expected to be about 250 million bushels, which is below average and less than considered desirable.

Farmers are urged to protect the price for their crop by taking out a wheat loan or purchase agreement. The final loan rate for the 1952 crop, national average, has been announced at \$2.20 per bushel, compared with \$2.18 for the 1951 crop. Both on-farm and off-farm storage facilities have increased substantially in recent years, which should permit more orderly marketing of the large crop.

Farm Storage Facility Loan Program Extended

Extension of the Commodity Credit Corporation program providing loans to farmers to finance the construction or purchase of new farm storage facilities for grains and other storable crops was announced July 1 by the U. S. Department of Agriculture.

The original loan program, initiated in June 1949 and scheduled to expire June 30, 1951, was extended through June 30, 1952, and is now further extended through June 30, 1953. As of May 30, 1952 a total of 29,898 loans of approximately \$34,357,000 had been approved for farm storage structures having an aggregate capacity of over 122,000,000 bushels.

The Department also announced that beginning July 1, 1952, the loans will be available up to 80 per cent (previously 85 per cent) of the cost of the structure, to any owner-operator, tenant, landlord or partnership of producers wishing to erect a facility which will meet requirements for eligible storage under the price support program.

Loans will be payable in four annual installments (previously five installments), or earlier at the option of the borrower. The first installment will be payable twelve months after the loan is disbursed by CCC. (Previously, the first installment for all loans was scheduled to become payable at the end of January in each calendar year).

Interest on loans will be at the rate of 4 percent a year, as heretofore. Loans will be available through local lending agencies or from Production and Marketing Administration county committees. The farm storage facility loan program is available to producers of wheat, corn, oats, rye, barley, grain sorghums, soybeans, dry edible beans and peas, rice, peanuts, cottonseed, flaxseed, hay seeds, pasture seeds, and winter cover crop seeds.

The program has been extended for another year for the purpose of increasing farm storage space and of easing the pressure of transportation facilities. The Department has recommended increased production of several important crops this year to meet increased requirements both for immediate use and for emergency reserves. To take care of these reserves without putting undue strain on commercial storage and transportation facilities, farm storage capacity should be expanded in many areas.

A further extension of the program also gives farmers financial help in expanding farm storage at a time when steel for

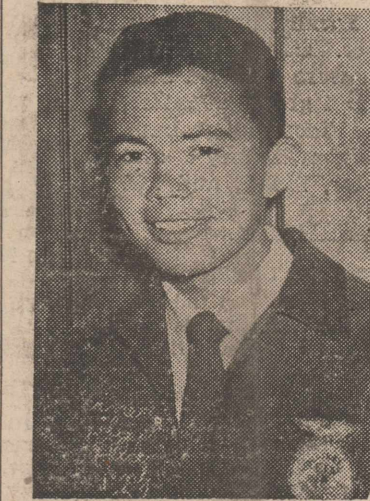
THE STRATFORD STAR

Volume 47. Stratford, Sherman County, Texas, Thursday, July 24, 1952. No. 42.

Senator Hazlewood Visits Stratford

Senator Grady Hazlewood was here Saturday visiting with Sherman County residents and working in the interest of his campaign for re-election.

Joe Dan Boyd Will Head FFA Boys



Joe Dan Boyd

Joe Dan Boyd of Winnsboro was elected 1952-53 state President of the Texas Association of Future Farmers of America at the 24th annual State Future Farmers Convention in Dallas Friday.

He is the 18-year old son of Mr. and Mrs. C. K. Cater of Winnsboro. Boyd succeeds Franklin Brandt of LaGrange.

Johnny Summerour, Roy Lee Newman and Joe Everett were presented with the Lone Star Farmer's Degree at the convention which was also attended by Douglas Carter and Duard Lamb, vocational agriculture teacher.

The three-day meeting, attended by 3,605 Future Farmers, highlighted the election of officers, a public speaking contest and the presentation of awards and scholarships. Fort Worth was chosen as the 1953 convention site.

New state Vice-Presidents of the Texas Future Farmers are Donnie Stroup, Canyon; Joe N. Stephens, Lamesa; Oran Little, Schultburg; Norman Evans, Graham; Donald Stodghill, Rockwall; Ralph Bachmayer, Taylor; Garland Carroll, Cleburne; Benny Hamilton, Nacogdoches; and Clyde Fischer, Victoria.

Mrs. Morris Is Surgical Patient

Mrs. Fate Morris was admitted to Dumas Memorial Hospital Tuesday evening where she underwent a minor operation Wednesday morning.

building more commercial storage may be tight. The program authorizes loans only on good, sound structures but such structures can be built in part with on-the-farm lumber and out-of-season farm labor.

Mrs. Green Is Ill In Amarillo

Mrs. Burk Green is a medical patient in Northwest Texas Hospital in Amarillo.

Fair Reaper Wins Memorial Handicap Race

Fair Reaper won the Gay Dalton Memorial Handicap race in Lamesa Park at Raton, New Mexico Sunday. Horses 3 years old and up participated. Fair Reaper is owned by Mr. and Mrs. W. C. Martin.

Trace Play, another horse owned by Mr. and Mrs. Martin, placed second in a race Saturday in Lamesa Park.

King Equipment Sponsoring Food Demonstration

Mrs. Evelyn Altman, International Harvester Home Economist, will conduct a frozen food demonstration in the King Equipment Co. building Thursday, July 31, at 8:00 P. M., it was announced this week by the firm.

Star Farmer; encourage more cooperation projects on a chapter level; and to provide bulletins and plans for improving homes farms.

Jack Earl Harrison of Huntington, winner of the state public speaking contest, will compete in a Tri-State contest August 1 at Oklahoma A. & M. College in Stillwater. Topic of his talk is "Protect Our Soils and Save America." Second, third, and fourth place winners in the State Event were Bill Hunter, Dimmitt; Joe N. Stephens, Lamesa; and Larry Umberson of Petty, a member of the West Lamar Future Farmers.

The Future Farmers chose Sarah Reynolds of Pittsburg as their 1952-53 State Sweetheart. Runners-up were Margaret Ep- perhart, Luling; Sue Glass, McLean; and Barbara Seale, Honey Grove.

The Texas Future Farmers selected Jerry Johnson of Nacogdoches to be a nominee for a national Future Farmer office. He will be considered by a national committee which makes the nominations.

Lone Star Farmer degrees were conferred on 579 boys, and A. J. Kitten of the Cooper Future Farmer Chapter in Lubbock County was presented as Star Lone Star Farmer. Star Farmers of the 10 Future Farmer Areas of Texas who were recognized at the Convention are Byron Wise, Brownfield; Leslie Oppermann, LaGrange; Damon Campbell, Hamilton; Jarrell

Matched Roping Contest Sunday At Rodeo Pens

A matched roping contest sponsored by the Stratford Roping Club will be held at the rodeo pens in Stratford Sunday afternoon. The rodeo performance will begin at 2:00 P. M.

Rex Tillery, R. J. Trainham, Hub Crawford, Tuffy Thompson, and Roy Mitchell, Stratford Roping Club members, will appear in a roping contest with Bill Wardlaw, Jeff Ward, Bob Allison, Ed Van Patton and Bob Meeks.

Each contestant will rope four calves.

A jack pot roping contest will be held immediately following the matched roping contest.

An admission charge of \$1.00 will be made for adults, and children will be admitted for 50c.

Gov. Shivers Answers Charges Of Opponents

Governor Allan Shivers this week accused his opposition of making "fantastic" charges in a last-minute effort to minimize the greatest farm-to-market road building program in Texas' history.

"The record shows that during my administration, there have been more miles of paved rural roads completed in Texas than anytime in history," Governor Shivers said. "And this is just the beginning, the program is just getting started."

"Yet in a desperate effort to confuse the people, this Washington-picked candidate for governor has plucked a lot of figures out of thin air, pieced them with some utterly ridiculous conclusions and passed them out as true facts."

Governor Shivers said that a tabulation of the distribution of state highway use tax money to counties revealed that \$718,243 had been channeled to Sherman county for road building purposes in the county during the Shivers administration.

The figures show that since Shivers became the state's chief executive, a total of \$569,600 had been spent or is being spent in Sherman county for the construction of 61 miles of farm-to-market roads.

These figures prove conclusively that the Shivers administration has consistently supported local governments in their effort to give rural areas paved roads, it was stated.

Governor Shivers has repeatedly said that he favors a paved road within sight of every farm and ranch house in Texas.

A breakdown of benefits received during Governor Shivers administration by this county from highway use tax money further shows that the county has received \$109,964 in license fees, \$38,679 has been paid this county in road bond funds.

The figures above do not include money spent by the state to build primary or main highways in this county.

State-wide since Governor Shivers took office, the state has spent \$102,797,972 for the construction of 7,632 miles of farm-to-market roads. Still to be built for which \$45,385,900 has been authorized are 3,654 miles of additional rural highways.

The figures released and quoted here confirm the fact that Governor Shivers has fought for and will continue to fight for more paved rural roads for every county in the state, it was stated.

The figures were compiled and state issued before Governor Shivers left for Chicago to attend the National Democratic convention.

Justice, Mansfield; Jeff White, Cooper; Oscar Richarz, Jr., Sabinal; Billy Vestal Fairfield, Bobby Beathard, Kirbyville; John C. Muckleroy, Taft; and A. J. Kitten.

In a Future Farmer talent contest, the East Texas Wranglers, a string band from Carthage, was chosen from among 13 entertainment groups as the 1952 Star Entertainers. A Rockdale Future Farmer string band placed second, and a Mansfield Spike Jones variety number won third.

A report by the Chapter Contest Committee rated the Nacogdoches, Clifton, and Lamesa Future Farmers Chapters as the top three of the state.

County 4-H Camp At Las Vegas

Approximately 81 4-H Club boys and girls and their adult leaders left Monday to attend the county 4-H camp which is being held at Camp Gallaneous, near Las Vegas, New Mexico.

Among those in the group are Mrs. A. E. Lowe, Mrs. John Haney and son, Danny, Mr. and Mrs. Earl Kirkwood, Mr. and Mrs. I. D. Wall, Mr. and Mrs. Roscoe Dyess, Mrs. Earl Riffe, Mr. and Mrs. Bob Burgess, Mr. and Mrs. H. C. Bennett, Hollis Harrington, Bobby Burleson, Anne Bradley, Betty Bradley, Cecil Borth, Gracene Parvin, "Butch" Keener, Ellen Dyess, Bill Dyess, Earnie Dyess, Linda Riffe, La Ruth Kendrick, Sharon Ann Hampton, Martha Crabtree, Minnie Crabtree, Charley Crabtree, Marilyn Bugner, Beth Walters, Ann Burgess, Bobbie Burgess, Rex Burgess, Mr. and Mrs. E. Goale, Larry Goale, Sherry Goale, Sonny Judd, Gay Judd, Holly Harrington, Lance Harrington, Carolyn Folsom, Stanley Folsom, Jimmy Smith, Shar- on Gamble, Granvil Preston, Gerald Preston, Lora Ann Schafer, Delma Dee Schafer, William Price, Miss Lucile King, Beverly Stradley, Betty Gore, Janice Stradley, Mr. and Mrs. Allen Boren, Mary Janice Boren, James Spurlock, Mildred Bennett, Nancy Bennett, Hal Bennett, Lyn Hudson, Sheryl Ragsdale, Robert Ragsdale, "Butch" Kirkwood, Billy Kirkwood, Karl Kirkwood, Milton Meyer, Vincent Meyer, Bobby Woolsey, Jere Courter, Bonnie Farris, Gaynelle Parker, Patricia Newman and Feliz Ramon.

Sammy Mac Ownby Injured In Fall

Sammy Mac Ownby, 3 1/2 year old son of Mr. and Mrs. Sam Ownby, was injured in a fall while running and playing at the family home Sunday. In his fall, Sammy Mac, cut a deep laceration in his left foot. Five stitches were used to close the wound.

Gets Diploma From Air Force

A 3c Donald McWilliam, who has completed his high school work, is now attending an Electronic school at Keesler Air Force Base, Mississippi.

CARD OF THANKS

I wish to take this opportunity to thank all of my friends and relatives for the beautiful flowers, cards and friendly visits during my illness.

Mrs. Lawrence Naugle

Political Announcements

(The following authorized Political Announcements are subject to the action of the Democratic Primary Election to be held Saturday, July 26.)

For Sheriff, Tax Assessor and Collector:
A. L. (Doc) WILSON.
G. ROSS TURNER

For County Judge and Ex-Officio Superintendent of Schools:
BOB FERGUSON.

For County and District Clerk:
MRS. LELAH BONEY.

For County Treasurer:
MRS. HARRY SEARS.

For Justice of the Peace, Precinct No. 4:
BURK GREEN.

For County Commissioner, Precinct No. 1:
ROSCOE DYESS

For County Commissioner; Precinct No. 2:
E. W. CARTER.

For County Commissioner, Precinct No. 3:
R. B. (Billy) ROBERTS.
W. T. (Bill) CRABTREE

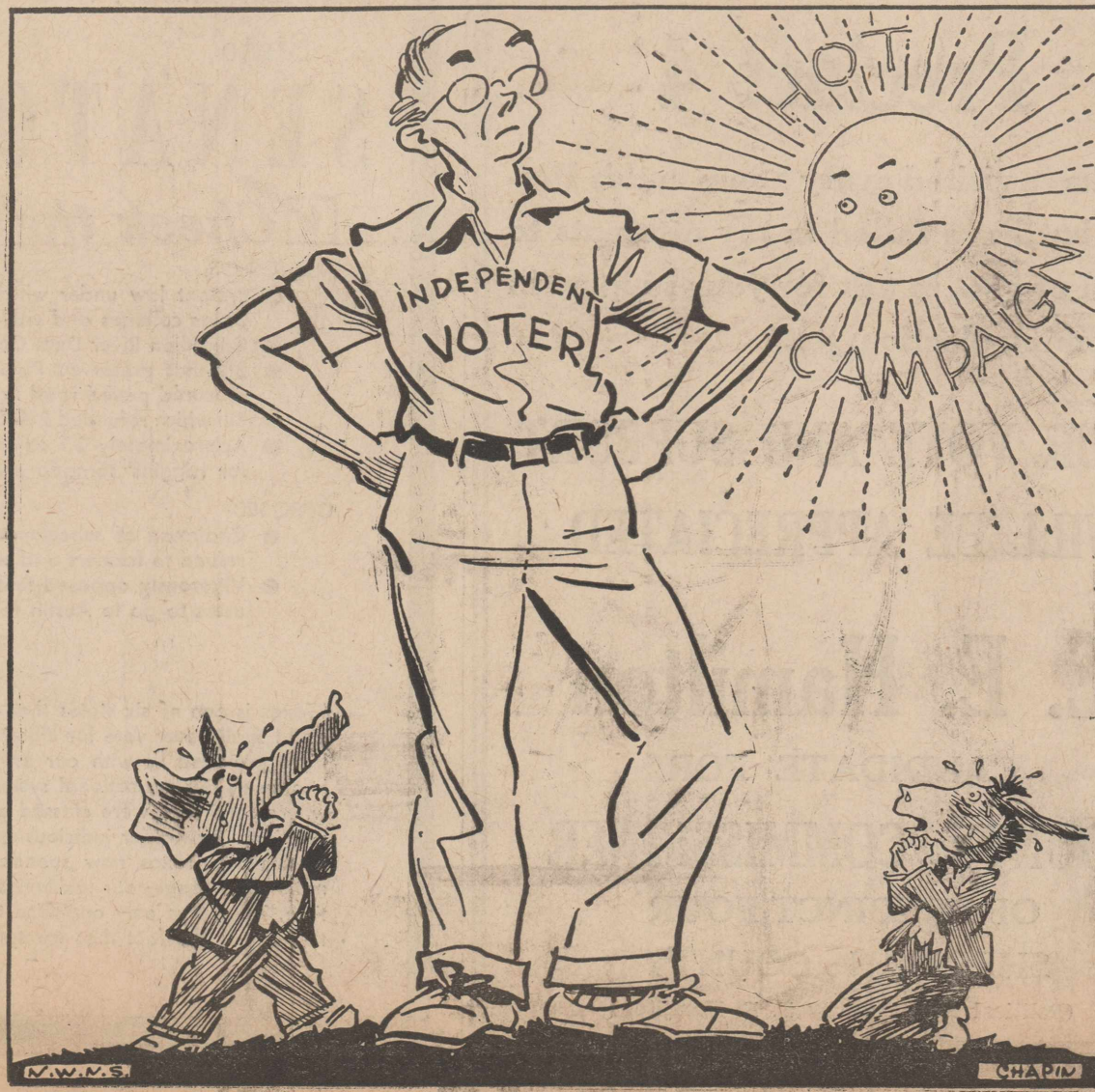
For County Commissioner, Precinct No. 4:
F. M. KEENER
E. E. HAMILTON
J. G. CUMMINGS.

For District Attorney; 69th Judicial District of Texas:
FLOYD H. RICHARDS

For State Representative; 95th District:
SAM E. WOHLFORD.

For State Senator; 31st Senatorial District:
GRADY HAZLEWOOD.

"KING FOR A DAY"



Stratford Abstract Co.

Minnie Laura Jackson, President
 Incorporated 1907 — 45 years of Satisfactory Service to
 Sherman County Land Owners
Let Us Make Your Abstracts
 WE SHOW THE RECORDS
 OFFICE IN AMERICAN LEGION BUILDING

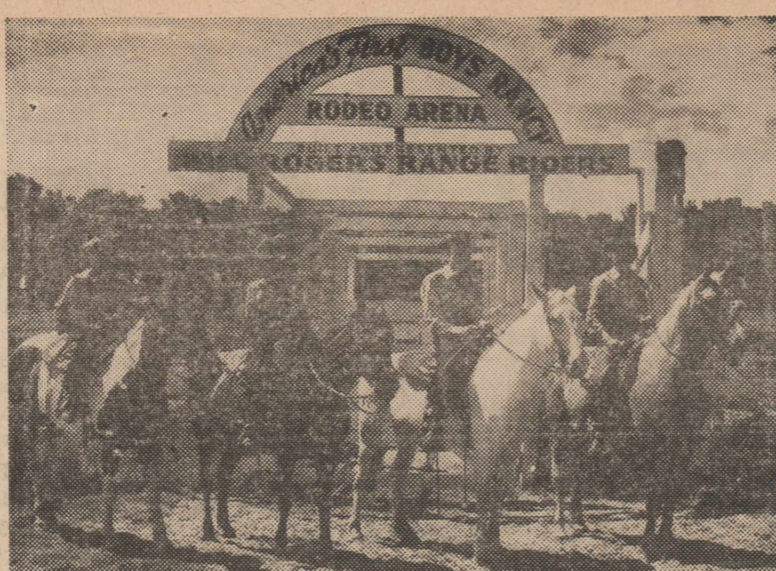
MR. WHEAT PRODUCER

We have plenty of storage facilities for handling your wheat at Etter. We issue Burrus Elevator Warehouse Receipts so you know your grain is safe. If you need cash, we will give liberal advance on all grain.

We are always paying top market prices so come by and see us.

J. C. Simons Grain Co.

Etter, Texas Phone 2-7577



Boys Ranch To Be Host To Famous Riding Club

America's First Boys' Ranch, located 40 miles Northwest of Amarillo, Texas, will be host over the Labor Day weekend to the renowned Clay County Bit and Spur Club of Kansas City.

The world-famous riding club has made appearance all over the nation and will make the trip to the Texas Panhandle and Boys' Ranch to assist in the festivities and performances of the Eighth Annual Boys' Ranch Rodeo. A special train with two Palace horse cars will carry the 70 club members and 48 horses to Amarillo from Kansas City.

The blue ribbon parade horses and silver mounted equipment, together with the colorful customs of the riders, will add much to the young Boys' Ranchers' big event. It is estimated that the value of the 48 horses with equipment is about \$336,000.

Also featured in the Boys' Ranch Rodeo will be movie star Chill Wills who is famous for his voice characterization of Francis the mule, Minnie Pearl of Grand Ole Opry fame, Jack Dempsey, former world heavyweight boxing champ, and the Whippoorwill and Georgia Brown, who are featured with Roy Rogers in all his movies.

The actual rodeo events will be handled solely by the boys from Boys' Ranch. The young cowhands do a fine job of riding and will put on a show Labor Day week-end equal to, and possibly better than, professional performances.

Present plans call for four complete shows, matinee and evening performances both Sunday, August 31st and Monday, September 1st.

The Boys' Ranch Eighth Annual Rodeo will be held in Amarillo to accommodate the expected crowd and the boys are looking forward to seeing all their friends in the Tri-State area.

Entertains With Birthday Dinner

Mrs. J. B. McWilliams entertained with a birthday dinner Sunday, honoring her daughter,

Mrs. Eldon Looney, and Mrs. Eunice Buster. Others enjoying the occasion were Mr. and Mrs. J. T. Huff, and granddaughters, Shelliah and Sherry Ingraham, of Conlen, Eldon Looney and little daughter, Elona, and Mr. McWilliams.

Anti-Fogging Liquid

Wilkins Co., Inc., Cortland 21, N.Y., has introduced what is described as a greatly improved liquid coating to prevent goggles and glasses from fogging and steaming. The liquid, called "Fog-Free," contains silicone and when tested on the glasses of ice-cream plant employees who moved from humid heat to freezing cold is said to have lasted a whole day with one application.

Want Ads

WATCH For these Prices: Will be able to deliver in the next few days; 461 acres of land in Dallam County; one-half section in Sherman County; land that you will be interested in, with all minerals or without; also a number of very attractive homes, priced to sell. — See C. E. Hill or Stratford Insurance Agency. 42-1tc

FOR SALE: 16x24 Chicken House; 6 cubic foot Used Kelvinator Home Freezer. — Mrs. A. N. Slay. 41-2tp

FOR SALE: Young laying Hens, priced at \$1.00 each. D. D. Howard at King Equipment Co. 42-1tc

BABY CHICKS: Order chicks now for spring delivery. Hatching all popular breeds. Crosses for meat and egg production. — Perryton Hatchery, Perryton, Texas. 15-tfc

FOR SALE: Two 20-foot Caterpillar combines, in good condition. \$1,500.00 for both. — Tommy Walker, inquire at Lola's Cafe. 40-tfc

INSTALL an Automatic Defroster and end defrosting drudgery for ever. Call 3781 for demonstration. — Mrs. Lena B. Keenan. 39-tfc

LOST: Brown leather Billfold containing my driver's license and other papers. Please return to or notify W. H. (Buster) Eggers, Box 241, Stratford. 41-2tp

WESTINGHOUSE TANK Vacuum with waxer special, \$6.70 extra. — Bonar House Shop. 38-tfc

NEWS and classified advertising must reach the Star office

not later than Wednesday evening to insure publication.

BARGAIN for sale: 3-room stucco house on 2 corner lots \$2,700. See Maude McDaniel Phone 4366. 39-tfc

FOR SALE: One Used Gas Refrigerator; Three 4-wheel Trailers, new, sell or trade; We will have Fertile again this year to treat your maize seed. Please place your orders now for fertelene or any other commercial type fertilizers. — Sloan Implement & Auto. 30-tfc

NEED LADY with car for good paying job. Write Helen Gray, 916 Alta Vista, Amarillo, Texas. 40-3tp

FOR SALE: Blonde Dinette Set, used less than six months, a bargain. — Mrs. C. R. Bonar. 38-tfc

FOR SALE: 2 1/2 residence lots on Maple Street, on pavement; also modern stucco chicken house to be moved. Phone 2391 or see Mrs. Arthur Ross. 38-tfc

INCOME Property for sale: 10-room house with 2 baths, partly furnished with 3-room garage apartment on 2 corner lots on pavement \$10,000. See Maude McDaniel, Phone 4366. 39-tfc

FOR RENT: Furnished apartment. See Mrs. E. Hill or Phone 2941. 40-tfc

WANTED: House Keeper, must have references, house available, excellent salary. — Mrs. W. N. Price, Phone 3071. 36-tfc

NEW MODELS of the Kelvinator Refrigerators and Home Freezers now in stock. — Van B. Boston. 42-tfc

PIES and Cakes baked for advance orders. Phone 3711. — Mrs. Bob Marshall. 14-4tc

SAWS sharpened with a power saw sharpener. See E. E. Hamilton at Hamilton Machine Shop 25-tfc

FOR SALE: 133 residence lots in south Stratford. — Earl Garoutte. 37-tfc

In case you see Stray Calves or Yearlings in Sherman or Dallam Counties branded /T on

left hip or /TU on right hip, please notify Arthur or Frank Judd.

News and advertising copy must reach the Star office not later than Wednesday evening to insure publication.

FOR SALE: a new set of double Wash Tubs, and a Used Thor wringer type Washing Machine, a bargain at \$30.00. — D. Howard at King Equipment Co. 40-tfc

LOST: six 600-pound heifers branded with tumbling T on left side or shoulder. — Leslie Parker. 39-tfc

FOR SALE: My 7-room home on North Fourth and Fulton Streets, paved all the way around, priced as a good bargain.

see me. — J. W. Flores. 32-tfc
 News and Want Ads must reach the Star office not later than Wednesday evening to insure publication.

MR. WHEAT PRODUCER — We have plenty of storage facilities for handling your wheat at Etter. We issue Burrus Elevator Warehouse Receipts so you know your grain is safe. If you need cash, we will give liberal advance on all grain. We are always paying top market prices so come by and see us. — J. C. Simons Grain Co., Etter, Texas, Phone 2-7577. 39-tfc

Long distance household moving. Years of service your guarantee of satisfaction. — Bruce & Son Transfer and Storage, Phone 192, Borger, Texas. 29-tfc

VOTE FOR

HERB PETRY Jr.

FOR

Congressman AT-LARGE

VOTE SATURDAY JULY 26TH



Youth - Vigor - Experience

A FRESH VIEWPOINT IN WASHINGTON

Vote For HERB PETRY Jr.

Paid Political Adv.

(Political Adv. Paid by Stratford Lions Club)

The Record Shows The People Know

RE-ELECT

Grady Hazlewood

Works for the Interest of the Panhandle!



Grady

HAZLEWOOD

State

SENATOR

Check the Legislative Record

AUTHOR OF:

- Present law under which all veterans of World War II have been attending Texas colleges and universities tuition free.
- Canadian River Dam Compact Commission Bill.
- Bill that preserved Palo Duro State Park for Panhandle enjoyment, and also procured paved road in the Park.
- Bill which refunded 2% for evaporation and shrinkage to filling station operators.
- Approximately 35 other bills for special localities, such as Tax Remission Bill for Higgins' tornado area; local school bills.

OPPOSED:

- Chairman of subcommittee that killed attempt to take away the gasoline tax refund to farmers and other non-highway users.
- Vigorously opposed first underground water bills which would have compelled users to go to Austin for permits and to show beneficial uses of water.

TAXES

"Texas is one of six states that has neither a general sales tax nor a state income tax and I shall never vote for either one. Taxes on oil and gas and other natural resources have provided us with our principal source of revenue. We have spent liberally on improving our educational system; on our state insane asylums and penitentiary system where conditions were classed as deplorable; on farm-to-market roads; and on old age pensions. I consider judicious spending in the interest of human advancement is a wise investment. Texas now spends 20% less per capita on state government than the national average; our tax levies are 25% less than the national average. At the same time, Texas has only one-third the per capita debt as the average other state. I think this attests the fact that we spend carefully and wisely and stay within our income."

(Paid for by Grady Hazlewood)

To The Voters

OF

Precinct 4

I have visited every home in this Precinct but have failed in my attempts to see all of you, to ask for your support in the coming election.

YOUR VOTE AND SUPPORT WILL BE APPRECIATED

E. E. Hamilton

CANDIDATE FOR

COUNTY COMMISSIONER

OF PRECINCT FOUR

SHERMAN COUNTY

(Political Adv. Paid by E. E. Hamilton)



Ford Tractors

IN THIS COMMUNITY!!!

There must be reasons and here they are

POWER

Talk about power . . . ask for a demonstration on your own farm — see how the Ford Tractor handles a 12" or 14" two-bottom plow. This power is available through a four-speed forward transmission.

ECONOMY

Weight and traction are added to the Ford Tractor through the implements it carries. No need for excess built-in weight in the tractor itself. This saves you money on both light and heavy jobs!

LONG LIFE

Treat the Ford Tractor right and it will "stay with you" a long while. Part tolerances are very close . . . and the Ford Motor Company knows how to keep them that way!

EASY HANDLING

Ford Tractor Hydraulic Touch Control takes the hard work out of manipulating implements. Automatic type steering and duo-servo brakes make the Ford Tractor an easy Tractor to handle.

CONVENIENT SERVICING

The Ford Tractor is a convenient tractor to service and overhaul. Parts are reasonable. What's more, our mechanics are specially trained to work on Ford Tractors.



YOUR HEADQUARTERS FOR FORD TRACTORS AND DEARBORN FARM EQUIPMENT

See it - Try it - and you'll buy it...
 ONLY Up to months to pay FREE DEMONSTRATION

Stratford Tractor Co.

Confusing Address
 In Chicago, apartment building 999 Lake Shore Drive is not located at 999 Lake Shore Drive. Instead, it is really 239 Lake Shore Drive. Confusing, isn't it? It happened this way: The owner of the building, a railroad enthusiast, named the building in honor of the New York Central's locomotive 999 which made the famous speed run years ago.

Copycats
 The style used by Henry Wadsworth Longfellow in his famous poem, "Hiawatha" was not original with him. The BOOK HOUSE FOR CHILDREN points out that the great American poet copied its "strange rhythm, alliterative use of words, and delightful repetitions" from the Finnish "Kalevala," oldest epic in Europe.

"I REMEMBER"
 BY THE OLD TIMERS

From Mrs. Pearl Boutwell, Rio Vista, Calif.: I remember when my mother used a 10-gallon jar for her freezer. She would pack her fryers, after dressing 30 or 40 of them, in the jar and cover with water. They would freeze solid over night sitting on the back porch. That was in Missouri where it was zero all winter.

From Mrs. Lillie Hicks, Marengo, Ind.: I remember when mother took her clothes to the creek and washed them on a rock that slanted into the water. She scrubbed her floors with sand.

From Mrs. Clara Tutmark, Alderwood Manor, Wash.: I remember when father took me to town to get new shoes—riding in the cutter, Nellie in the traces, and a hot water jug at my feet. What fun!

From Virginia Gruver, Thompson, Utah: I remember when I cut several pairs of long stockings in pieces and sewed them together so the children's knees wouldn't show. Now they don't wear any, and not only their knees show.

From the Old Cuss, Chicago: I remember a dog-powered tread mill that was used to churn butter. A mouth-powered tread mill, powered by my first wife's jaws, would have churned lots of butter—she was always chewing the fat.

From Casper Ross, Oklahoma City: I remember when Graham's Ongaunt was one of the most popular whiskers and mustache growers in the country. A kiss without a beard was like a hot dog without mustard, all the cute chicks of that day said.

(Mail your memories to THE OLD TIMER, BOX 340, FRANKFORT, KY.)

Busy Communists
 Since World War II, Russia has communized nine of its neighbor countries containing one-fourth of the human race (Poland, Czechoslovakia, Hungary, Romania, Bulgaria, Albania, Mongolian Republic, China, and Yugoslavia). In the same period, Western nations have granted freedom to 13 Asiatic states which hold another one-fourth of the earth's people. These, says the National Geographic Society, are India, Pakistan, Ceylon, Burma, Israel, Jordan, the Philippines, Syria, Lebanon, Indonesia, and Indochina's Viet Nam, Laos, and Cambodia.



SCRIPTURE: 1 Samuel 1:1-4-1a. DEVOTIONAL READING: 1 Samuel 2:1-10

God Prepared Him
 Lesson for July 27, 1952

WHEN A CHRISTIAN looks back, he can see God's hand better than he can see it looking forward. A Christian, even a worrying Christian (though there should be no such people as Christians who worry), can feel very thankful for God's blessings, care and guidance in the past, even while worrying over tomorrow's uncertainties. How foolish is this! God is even now making ready for the future. He is not to be taken by surprise. He knows what he wants and he knows how to get it. While we waste time in worry, God is at work. The story of Samuel is a case in point.

God's Home
 EVERY ONE KNOWS that the strongest single influence in a person's life is his home. We sometimes take that for granted. On the contrary, a home may wreck a man before he starts. It has been said that many alcoholics get their start, —not their start in drinking but their start in the nervous, unsettled disposition which easily slips down into alcoholism and other drug habits, before they are six years old. The wrong kind of parents, lack of harmony between father and mother, ill-treatment or simple neglect, can make a child already abnormal before he is old enough to go to school.

On the other hand, the foundation of a strong man can always be found in the home where he first lived. So it was with the remarkable man, the prophet Samuel.

In later life he became lawgiver, king-maker, preacher and general of the army; no ordinary man! The nation needed him; and when the time came, God produced him. But God produced his mother first.

God's Church
 AFTER LEAVING HOME, Samuel literally lived in the tabernacle, which served as a church in those far off days. The little boy found there a second home. Old Eli the priest no doubt came to mean much more to him than his own father did, his father whom he seldom saw.

So it still is, where the church is doing what it should for the children of its people. A child should not be afraid of the minister; he should not feel anything but love for the church. True, a church building is different from other buildings in that it is set apart for a sacred use. A church is the symbol of God's presence among men, and the sanctuary of a church ought to make all who come into it feel that this place is holy ground.

But that does not mean that a child should be afraid of the place, as some children are. If they have been coming there every Sunday since they can remember, sitting with the rest of the family in the family pew (sounds old-fashioned but there are still thousands of them), coming so regularly that no question is ever asked on Sunday morning, "Well, shall we go to church or not?" —then they will feel more at home on the inside of the church, when the Lord's Day comes, than they ever will on the outside.

Now this is not all always true. If children and young people are not attracted by the church, as too often they are not, whose fault is it? Whoever may be to blame, it is certain that a church which loses its young people is headed for its end.

The Voice of God
 IT IS MOST INTERESTING to know that when young Samuel heard the voice of God, it sounded just like the voice of Eli the priest. (If you heard the voice of God, whose human voice would it sound like?) At any rate, God prepared this great prophet Samuel not only by the influence of home and church, but by a personal religious experience. Now there is no real conflict or contradiction between religious education and conversion, between the church and the home, and the work of the Holy Spirit.

God was in Samuel's home, God was in that tabernacle, God was in his religious education. But God also came to him directly and not only through home and church. If we wonder sometimes where the Christian leaders for the next generation are coming from, we may be sure God is preparing them even now, in simple if obscure ways, as he did with Samuel of old.

(Copyright 1951 by the Division of Christian Education, National Council of the Churches of Christ of the United States of America Released by WNU Features.)

Sunday's Sermon

CHRIST never said it was any man's right to indulge in intemperate denunciations of another, however flagrant his crimes. His principle was that no one should dare to criticize his neighbor unless his own heart was filled with compassion and generosity. Criticism of others is justified only when it is tempered with charity. Parents scold their children for their misdeeds, but they do so in the spirit of pure love. This is the same impulse that should govern anyone who professes to be shocked and alarmed by the wrong-doing of others. Every rebuke should be accompanied by an inner prayer that the culprit will be inspired to amend his ways. Abusive tirades, bitter demands for punishment, outright condemnations are the self-proclaiming signs of the negative critic. They are often the hallmark also of the hypocritically self-righteous. They serve only to hurt and degrade the wrongdoer, who might, with just one word of understanding and love, be stirred to repentance and reform.

This was the case on Calvary, when the heart of Dismas was moved to sorrow by the patience and compassion of Him whom he had so often outraged.



An honest, fearless lawyer, former district judge and assistant attorney general of Texas; an ex-serviceman and school teacher; a home owner, church and civic worker; and a family man, Yarborough can and will make TEXAS a Governor of whom all can be proud. He is mature, sincere, diligent and able.

(Pol. Adv. Paid by Joe Phillips)

The peach crop in Texas is short but supplies from other producing areas of the nation are heavy. Homemakers may find it profitable to freeze or can peaches during the next two weeks when supplies are expected to be at their peak.

Shop the ads—Try Stratford first

... your electric range really "bakes the Cake!"



Bakes it better than any other cooking method, too. The accurate electric range oven—with its full insulation—assures you that the heat your cake recipe calls for will be maintained constantly. Yes, the electric range bakes the cake—takes the cake, too, for it's the modern cooking method—best by far of all there are.

SEE YOUR MODERN ELECTRIC APPLIANCE DEALER

SOUTHWESTERN PUBLIC SERVICE COMPANY
 27 YEARS OF GOOD CITIZENSHIP AND PUBLIC SERVICE

SATURDAY — When You Turn In Your Votes For Sheriff — TURN THEM IN FOR Turner
 THANK YOU
G. ROSS TURNER
 Candidate for Sheriff, Tax Assessor and Collector
 Sherman County
 (Political Adv. Paid by G. Ross Turner)

USED PHONOGRAPH Records 20c
 AND UP
 Many of these Records are almost like new.
 We Can Completely Install ANY TYPE OF
Television Tower and Aerial
 WE HAVE THEM IN STOCK
Holland's Radio Shop
 On U. S. Highway 287 between 4th and 5th Streets

For A Second Term
ALLAN SHIVERS FOR GOVERNOR

The Truth About Old Age Assistance
 Governor Allan Shivers wrote and helped pass the first Old-Age Assistance Law in Texas.
 He stands for equitable distribution of funds for the needy.
 Two years ago he was one of the leaders who tried to get more money for the aged, a cause that failed because the voters disapproved a constitutional amendment.
 Governor Shivers has, in the past and will in the future, advocate making available to our deserving aged citizens not merely enough for a meager existence, but sufficient funds to carry them through the evening years of life as proud, dignified citizens.
 An increase of \$5 in each pension check is due next October.

Together we will continue to build a greater Texas
Allan Shivers


(Political Adv. Paid for by Jack Dillard)

The Truth About County Road Funds
 Farm-to-market road building has been the greatest in history during the Shivers administration.
 During Governor Shivers' administration, Sherman county has received \$718,243 rural road benefits from state highway user taxes as follows:
 License fees \$109,964, road bond surplus \$38,679, construction of farm-to-market roads \$569,600.
 In this county, 61 miles of farm-to-market roads have been built.
 Governor Shivers' administration has consistently supported the Sherman county road building program and will continue to do so in the future.

For Better Values Shop The Star.

Be sure to vote on Saturday, and as you do, Remember BOB FERGUSON
 Now, as in the past, respectfully solicits your valued support in his candidacy for a second term as County Judge and Ex-Officio School Superintendent of Sherman County
 (Political Adv. Paid by Bob Ferguson)

YOUR brain budget



1. Unleavened bread lacks which: (a) flour, (b) yeast, (c) salt, (d) water?
2. Flat means which: (a) defiance, (b) surrender, (c) command?
3. Which is misspelled: (a) Filippino, (b) flagellate, (c) flagrant, (d) flabbergast?
4. A pygmy should make you think of which continent: (a) South America, (b) Asia, (c) Africa?
5. Which is the coarsest thread: (a) No. 60, (b) No. 30, (c) No. 50, (d) No. 40?

ANSWERS
 1—(b) Yeast
 2—(c) Command
 3—(c) Flagellate
 4—(c) Africa
 5—(a) No. 60

THERE IS NO SUBSTITUTE FOR EXPERIENCE

Let's Re-elect

BASCOM GILES

COMMISSIONER
of the GENERAL LAND OFFICE



HIS OUTSTANDING RECORD
 More Than TREBLING the Permanent Public Free School Fund.
 Was \$56,000,000
 Now almost \$200,000,000

Increased University of Texas and A&M Permanent Fund.
 Was \$ 27,000,000
 Now \$144,000,000

SPONSORING and administering the \$100,000,000 Veterans' Land Program... 25,000 homes provided for Texas Veterans.

ACTIVELY fighting U. S. Government seizure of Texas tidelands for 34 years—longer than any other State official.

BASCOM GILES' OUTSTANDING RECORD MERITS HIS RE-ELECTION

(Political Adv. Paid for by Adair Dyer)

There's nothing else like it!



Frigidaire RO-60
Range Shown \$389⁷⁵

FRIGIDAIRE

Electric Range with "Wonder Oven"

Imagine! Two ovens in one, or one extra-large oven.

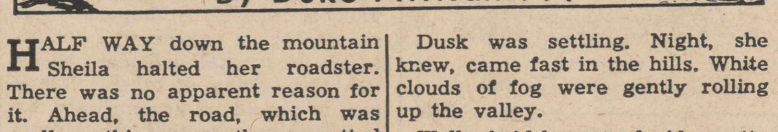
Lets you bake and broil at the same time in the same oven! Each oven has separate controls. Move the Divider to bottom position and you have one big oven with lock-stop shelves adjustable to 10 positions. Simpli-Matic Oven Control and Cook-Master Oven Clock Control. Lifetime Porcelain finish inside and out. Come in. See it today!

Also See All The Other New Frigidaire Electric Ranges Priced From \$168⁵⁰

Woolsey Appliances

DIAL 3431 Stratford, Texas

HALFWAY DOWN



By Duke Allisant...

HALF WAY down the mountain Sheila halted her roadster. There was no apparent reason for it. Ahead, the road, which was really nothing more than a rutted trail, sloped gently downward.

Night was coming on. Before she could reach the foot of the mountain it would be full dark, with no moon. It wasn't a very inviting prospect, but still she did not release the brake.

It was something Sheila had thought of that had caused her to stop. She was wondering whether or not she could leave Rodney forever, as she'd told him she was doing a half hour ago. She was wondering if she could ever bear the agony of not seeing him.

Today marked the third advent of Sheila into the mountain fastnesses where Rodney had a cabin, and where he lived, strangely contented with life. Contented! It puzzled her, this contentment. It angered her to think she loved him.

In the first place he was different. He came from mountain stock, had inherited all the soft gentleness that was characteristic of his people. There was something about the way he looked at her, the sound of his voice, the touch of his hand, that drew her irresistibly. On more than one occasion she cursed the day when at that college prom Rodney had bowed gravely and asked her to dance.

That was the beginning. From that moment until the day following graduation she had been happy. Of course she had no way of suspecting that he was going back into the mountains to live. He was rich. She knew, as everyone knew, that the Colburns had title to coal fields. He was intelligent, well educated,

Dusk was settling. Night, she knew, came fast in the hills. White clouds of fog were gently rolling up the valley.

Well, she'd have to decide pretty soon. She couldn't sit here forever.

And with this thought came realization that she was going back. Of course the realization was annoying. But there wasn't much she could do about it. She loved him, she couldn't bear the thoughts of being away from him forever and ever. Perhaps she'd get used to the hills...

She released the brake. The roadster coasted ahead 50 feet, at which point she swung the wheel sharply and backed into a widening. She had to repeat the maneuver twice before the nose of the car was pointed back up the mountain. . . .

And then she saw the man.

He was just a dim figure in the fast-gathering gloom, with the ghost-like fog entwining and obscuring the lower part of him. He came on, slowing at sight of the roadster. He had been running. She knew this by the quick sound of his breathing.

Sheila waited. He came up and stood beside the car, looking at her, breathing heavily.

"Trouble?" he asked.

Sheila shook her head. "No."

"I ran all the way down the mountain."

"Why?"

"Thought I'd find you here. Hoped I would."

"Why?"

He was breathing more evenly now. He reached out and took one of her hands. "I didn't want you to go. Couldn't bear it."

Sheila laughed. "You want me to come back up there—for good?"

"No."



'SANTA' DAYS OVER . . . In Chicago, "Col." Anthony Adams gave \$30 thousand to drinking pals. Police discovered he had been forging his employer's vouchers to finance his "philanthropies."

A good home manager is a planner, decision maker, director, teacher and an evaluator, coordinator and buyer.

COLORFUL PIECE GOODS

FABRICS

AVONDALE
CHAMBRAY

In Plaids, Stripes and Solids

Bubble-Air
CREPE

In the New Fall Shades

French Crepe
AND
Tissue Faille

Ross Bros. Dry Goods



PRISCILLA CLUB PARTY NEWS

(By Club Reporter)

Little Nancy Browder held the spotlight, being the honoree, and also the newest, tiniest, most dainty member when Twila Blank entertained the Priscilla Club Thursday last week. Ada Mae won the right to open the numerous lovely gifts after she and Syble contested by feeding Ruth Morris and Helen Sparks cokes from nursing bottles. Much hilarity ensued as they choked, were burped and had their faces wiped by the current mothers.

Lovely refreshment plates of ping lemonade, pink rosebud angel food cake and nuts were served to: Twila Blank, Ruth Morris, Ruby Lee Boney, Iona Bowen, Francis Browder, Catha Browder, R. A. Browder, Merle Armstrong, Annie Craig, Ruth Parks, Oreda Wells, Twila Craig, Hazle McRae, Larry McRae, Stanley McRae, Brenda McRae, Betty Crenshaw, Teresa Crenshaw, Ada Mae Browder, Billy Browder, Faye Cluck, Mary Belle Morris, Essie Whitmarsh, Mary Bolton, Bob Charles Bolton, Nell Craig, Velma Wyatt, Syble Boney, Mrs. Ollie Freeman of Gray, Oklahoma, Mrs. Laura Moon, Helen Sparks and Bynum of Amarillo, and Mrs. Maggie King of Stratford.

Mary Bolton says we will have as much fun as can be packed into one afternoon at her house July 31, and she is looking for all to be there.

MISS KALKA TO VISIT IN STRATFORD

Miss Beatrice Kalka, former home economics teacher in the Stratford school, is expected to arrive in Stratford for a visit within a few days, according to a letter received by Mrs. Marguerite Wilson.

Miss Kalka has been teaching in a school at Weisbaden, Germany.

Egg producers, who are participating in an egg grading program are now averaging better than five cents per dozen more for their eggs than are those selling on an ungraded basis. More quality eggs are needed.

Read Star Ads — Try Stratford First Say You Saw It In The Star

Aid School Program
Grade school instruction in the Los Angeles area is being reinforced by the radio division of the University of California at Los Angeles theater arts department through the use of four radio programs beamed directly at city and county classrooms.

Emergency Set-Ups
Medical societies in 329 communities have established night and emergency doctor call systems, according to a report by the Board of Trustees of the American Medical Association. A survey made in the summer of 1948 had shown only 60 such plans in operation.

J. G. "Grady" Cummings

RESPECTFULLY SOLICITS
YOUR VOTE
FOR THE OFFICE OF
COMMISSIONER
OF PRECINCT FOUR

- Has active interest in farm and town affairs.
- Is in a position to devote all the time necessary to the office of Precinct Commissioner, and
- Pledges himself, if elected, to serve the precinct, in a fair and impartial manner to the best of his ability.

(Political Adv. Paid by J. G. Cummings)

To the Voters of Sherman County

I had no plans for running for office this year, but since a large group of citizens have placed my name in the race for County Judge, I would like to take this means of expressing my appreciation to those people for their confidence in me, and to pledge to you, each and every voter, to fill the office to the best of my ability if elected.

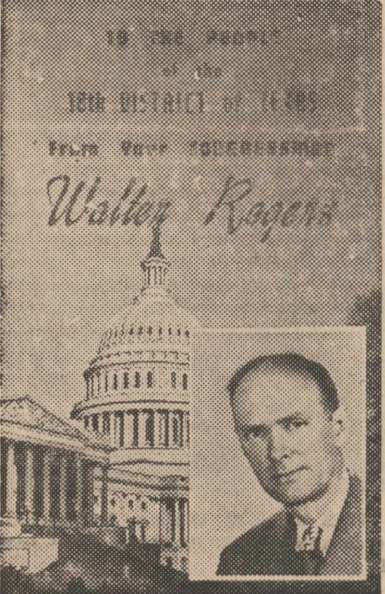
Your vote and support will be appreciated.

WALTER PENDLETON

(Political Adv. Paid by Walter Pendleton)

DORTCH SHOE SHOP
 Let Us Repair Those Worn Shoes For the Family
Candies Cold Drinks
Mr. and Mrs. G. C. Dortch, Owners

Parking Lanes Are Very Popular
 Parking lanes painted on Main Street last week through the efforts of the Stratford Lions have proven quite popular with the public. Much more parking space has been made available by their use.
 Joe Walsh and W. O. Bryant, appointed by President Alfred Pronger of the Lions Club, managed to get the city improvement project completed.



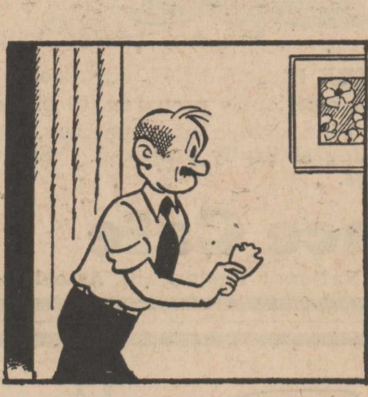
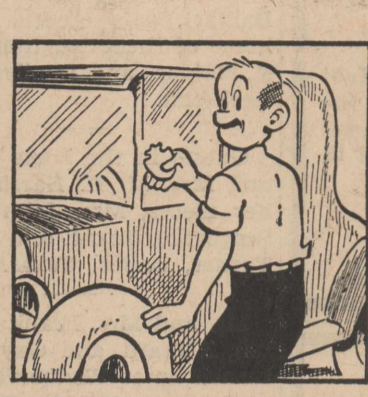
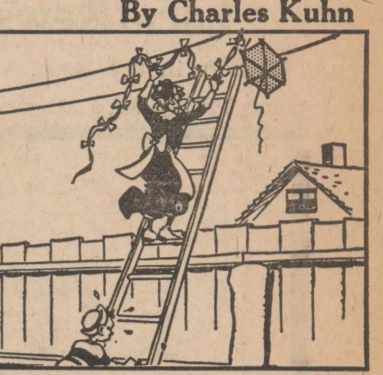
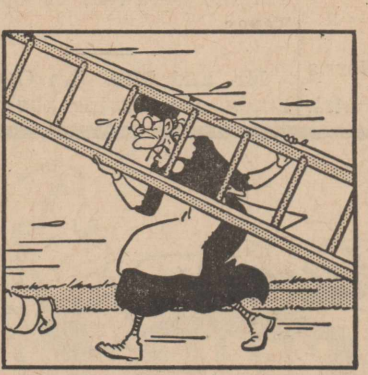
Walter Rogers

Communist Party Membership
 Here are some facts and figures concerning Communist Party membership in several countries. It must be remembered that all communists and communist sympathizers do not enroll themselves in the party records. Therefore these figures probably represent a minimum of the "pinks" in those countries.

Belgium
 Before 1939 known communists in Belgium were estimated to number about 9,000. Increases during World War II lifted the estimated total to 95,000 in early 1947. In the first postwar general elections held in February 1946, the communists received 300,000 votes, which probably represent the combined strength of the communists and their sympathizers. Since 1947 there seems to have been a decline in Belgium communist strength.

France
 In 1936 communist party membership in France showed only 100,000 enrolled, but in the elections, held in April of that year, communist candidates received about 1,500,000 votes, which is indicative of the fact that many voters are sympathizers and supporters of the movement even though they refuse to be identified as communists. Early in 1937 party membership increased to some 300,000, but in 1939 the government outlawed the party. It went underground, and probably lost initially in membership as well as in sympathizers. In the first postwar elections, held in November 1946, communist candidates received 5,004,121 votes of a total 19,661,515 cast (or better than 25 percent), and the party elected 173 members to the National Assembly, the largest single group among the 619 deputies. In the 1951 elections, however, communists lost considerably in the National Assembly (they secured 97 seats out of 627) and they also lost in the popular vote, receiving about 4,800,000. Present party membership figures are not known, but the total is probably somewhat (or perhaps considerably) less than the 1,300,000 figure given for the year 1947.

Italy
 In the early 1930's the illegal communist party in Italy was literally smothered by the gov-



TOP QUALITY MEATS
FRESH, TENDER Meats
 WHOLESALE For Lockers and Home Freezers
 CUSTOM PROCESSING OF MEATS
 Hams and Bacons Cured To Tantalize Tastes
Stratford Frozen Food Lockers

Wilson Funeral Directors
 DIAL 2601
 STRATFORD, TEXAS
 Any Hour — Night or Day

REPAIR FHA TITLE ONE LOANS FOR REPAIRS
 Are Available Without Down Payments
 See Clifford Byrd At
Foxworth-Galbraith Lumber Co.

DAVIS OLIVER CO.

LET US CHECK YOUR CAR FOR Safety!
 Let Us Check Your Tires and Be Safe!
FRONT WHEEL ALINEMENT
 Will Prevent Excessive Wear Of Your Tires And Insure You Thousands Of Miles Of Additional Service.
WHEEL BALANCING
 Is An Additional Service We Offer For Saving The Rubber On Your Tires and Preventing Accidents As The Result Of Abusive Wear On Your Tires.
DON'T WAIT FOR ACCIDENTS TO HAPPEN
 LET US TEST YOUR BRAKES
 Be Safe! Be Sure! Have Your Car Ready For An Emergency Stop.
Stratford Motor Co.
 DIAL 2851 STRATFORD, TEXAS

J P Powell M. D.
 Eye, Ear, Nose, and Throat
 Dalhart — Texas

PRICE DANIEL
 OF LIBERTY COUNTY
THE TEXAS CANDIDATE FOR U.S. SENATOR

The Price Daniel Record
 Attorney General of Texas, 1946-1952; crime-buster and leader of fight to save tidelands; Speaker, Texas House of Representatives before waiving exemption to enlist as private in World War II; only veteran in the race; married, 4 children; active in church and civic affairs; farmer and member of REA.
 "We must get our country back to God, and our government back to the people."
 (Political Adv. Paid by D. W. Wilson)

ernment and its leader, Palmiro Togliatti, fled to Moscow. Subsequently, several attempts were made by other underground communist leaders to form a "united front" with the socialists against Fascism. Such a front was established and was very active during the war. After the fall of Mussolini (late in 1943) committees for national liberation were set up in many parts of the country; communists formed the spearheads of these communities. After the war the membership in the communist party multiplied rapidly until today there are more than 2,000,000 Italian citizens enrolled.

Turkey
 Communists have never obtained a foothold in Turkey, whose government has exercised the strictest measures of control over them. Before the war they were suppressed, even though Turkey was on friendly terms with the Soviet Union. In 1946 there was some relaxation of control and the Turkish Proletarian and Peasant party was formed. It is estimated that the party's membership then totaled about 5,000. But late in the year this party, as well as other newly organized opposition and labor groups were again suppressed. Today there is no communist movement in Turkey; at least none that is allowed to function openly.

Yugoslavia
 In Yugoslavia, communists govern the country with absolute and unquestioned power. During the last quarter century they have not been numerous, and even today their number is estimated at only about 150,000 or somewhat less than one percent of Yugoslavia's population. Before the war the communists had an underground organization. This organization was active during the war years, and before the war's end, communists were in practical control of the country. In the first postwar elections the People's Front party (a combination of communists, several socialist, peasant, and other left-wing parties) received 6,725,047 votes, or 88.6 percent of the total votes cast. This is the group which, under communist leadership, has obtained absolute political power in the country. In the last general elections, held in March 1950, the government claimed 9,059,193 votes or more than 93 percent of the total votes cast. But these fig-

ures do not give any indication of the number of persons enrolled in the communist party. As stated previously the total may not be much in excess of the estimated 150,000.

For Better Values Shop The Star.

Reelect JOHN C. WHITE
 To A SECOND TERM AS TEXAS COMMISSIONER OF AGRICULTURE
 FOR CONTINUING PROGRESS IN TEXAS' LARGEST INDUSTRY

(Political Adv. Paid for by Bill Swindell)

This is National Farm Safety Week and a mighty good time to plan the practices that will

make your farm safe for the next 51 weeks. Don't be an accident victim.

MATCHED Calf Roping
Sunday, July 27
STRATFORD RODEO PENS
 Beginning at 2:00 P. M.
STRATFORD ROPING CLUB
 Composed of Rex Tillery, R. J. Trainham, Hub Crawford, Tuffy Thompson and Roy Mitchell
VS.
 Bill Wardlaw, Jeff Ward, Bob Allison, Ed Van Patton and Bob Meeks
 Each Contestant Will Rope Four Calves
JACK POT ROPING
 After Matched Roping Contest
 ADULTS \$1.00 AMMISSION: CHILDREN 50c

FOR GOVERNMENT BY AND FOR THE PEOPLE ---

VOTE FOR— Sam Wohlford
 OF SHERMAN COUNTY FOR
State Representative
 YOU WILL FIND SAM WOHLFORD

Fair and Impartial
 Considerate - Courteous
 Steady - Dependable
 Fair Minded - Decent

Political ambition is not a factor in Wohlford's race for State Representative. He is available for that job because friends and neighbors from all of the counties within the district have urged him to serve. This is truly a service draft made upon a man whom we feel we need in Austin.

Not Politically Ambitious But Willing To Serve His Neighbors

He has served Sherman County as R. E. A. Director, County P.M.A. Committeeman, Community School Trustee, Sherman County Gas Royalty Association, organizer and president, a splendid preparation for service in the State Legislature.

This Ad Paid For By Sherman County For Wohlford Committee — W. P. Foreman, Chairman

Local News

Visitors in the H. B. Norris home Friday were Mr. and Mrs. Timmie Caldwell, of Spearman, Texas.

Mr. and Mrs. Jim Oquin and Linda are leaving today for a visit in Illinois and Missouri.

Mr. and Mrs. Delbert Cummings and Cynthia were business visitors in Amarillo Tuesday.

Mrs. George Flemming, Harlingen, Texas, and Mrs. Fred Arrington, Rogers, Arkansas, sisters of Mrs. A. E. Pronger, came Sunday for a visit in the Pronger home.

Mr. and Mrs. C. M. Peden, Dalhart, were guests in the home of their daughter, Mrs. D. E. Malone, and family over the week-end.

Guests in the home of Mr. and Mrs. M. H. Harrison are her nieces, Mrs. John Putman, Seagoville, Texas, and Mrs. Otis Turner, Dallas, Texas.

Mr. and Mrs. Frank Ross and son, Richard, and Guy Ross returned home Wednesday of last week from Newell, South Dakota, where they visited a cousin of the Ross brothers, Mr. and Mrs. Robert Ross.

Mrs. Ora Bomer returned last week-end from a visit with relatives in Amarillo.

Bill Green, Amarillo, visited his sister, Mrs. Lucy Kelp, and other relatives Wednesday afternoon.

Miss Carroll Ann Parvin, Mrs. Alvin Judd and daughter, Sherryl, Mrs. F. D. Cummings and daughter, Cynthia, were visitors in Dalhart Monday morning.

Mrs. Fred Hale, visited her husband, Pvt. Fred Hale, in Camp Chaffie, Arkansas last week-end.

Mr. and Mrs. Homer Blake and Tommy visited relatives in Amarillo last week-end.

Mr. and Mrs. Russell Kelp visited her sister, Mrs. Carl Carmichael, and Mr. Carmichael in Yukon, Oklahoma last week-



WITH DIVINE AID . . . When the Rev. William Bowen called for divine aid, 200 men leaped to action in Santa Rosa, Calif., and built a church in five hours, 16 minutes.

Visitors one night last week in the H. B. Norris home were his brother, A. R. Norris, and son, Adrian, of Guthrie, Oklahoma.

Mrs. George Flemming, Harlingen, Texas, Mrs. Fred Arrington, Rogers, Arkansas, Mr. and Mrs. A. E. Pronger and P. J. Pronger left Wednesday for a visit at Red River, New Mexico.

Mr. and Mrs. Joe Peden, Red Bay, Alabama, were guests last week in the home of his niece, Mrs. D. E. Malone, and family.

Mrs. E. E. Riggs and son, Buddy, and Mrs. Brown Ross and daughter, Elizabeth, were visitors in Amarillo Monday.

Bobby Stump, son of Mr. and Mrs. Arnold Stump, of Texhoma, has been a guest in the home of his grandmother, Mrs. W. D. Ellis, since Wednesday of last week.

A/2c Billy Malone left Wednesday of last week after a 30-day furlough which he spent at home with his parents, Mr. and Mrs. D. E. Malone, and family. Malone is stationed at Moody Air Force Base, Georgia.

Chucko Robinson went by plane Sunday from Amarillo to Chicago, Illinois, for an extended visit with relatives.

Mr. and Mrs. Alvin O'Quin and little son, Ricky, returned Friday night from Cheyenne Wells, Colorado where they visited her parents, Mr. and Mrs. Theo Thompson and family.

Art Ross was a business visitor in Mt. Vernon, Texas the first of the week.

Mr. and Mrs. Baskin Brown

Kenneth Wilson, Billy Gore and Elbert Blum were Sunday dinner guests in the home of Mr. and Mrs. Jack Seig and Jackie.

Royal Pendleton was a business visitor in Spearman Monday. Mrs. Pendleton accompanied him for a visit with her sister, Mrs. Grady Pearson.

Mrs. P. A. Walsh and children, Round Rock, Texas, enroute to Yellowstone National Park, were business visitors here Tuesday morning. Mrs. Walsh is a Sherman County land own-

U. S. Presidents Thomas Jefferson and John Adams both died on July 4.

for Quick
Delicious MEALS

COME ON IN — THE FOODS FINE. Air Cooled Too! Wonderful, zesty meals, deliciously prepared, to please the palates of everyone! Fine choice of appetizers, entrees and desserts — everything skillfully prepared. Served in comfortable surroundings.

Palace Cafe
(Member Texas and National Restaurant Association)

TOWNE, SINGER AND HALIBURTON ALUMINUM LUGGAGE

IN SETS OR SEPARATE PIECES

Make An Inspection Tour of Our Stock Before You Buy

City Drug

Firestone

TIRES

6:00x16 TIRES For Only **\$14⁵⁰**

OTHER SIZE TIRES In a Proportionate Price Range

Garrison Motor Co.

Your Chrysler-Plymouth Dealer

Your Invitation To New Food Economy

You Are Cordially Invited To Attend An Interesting Frozen Food Demonstration Thursday, July 31 8:00 P. M. IN THE KING EQUIPMENT CO. BUILDING

Mrs. Evelyn Altman Home Economist

Learn how you, too, can lower your food costs through a new system of food preservation — with less preparation, time and work.

King Equipment Co.
A. L. King and Archie Arnold
Your International Harvester Dealers

GETTING A FREEZER? Do Be Wise . . . Get the Style you want in the proper Size!

Amana 12-12 cu. ft. upright holds 420 lbs. of frozen food

two Amana 12 cu. ft. HOME FREEZERS

Amana 120 12 cu. ft. chest type holds 420 lbs. of frozen food

Select the tested-and-proved RIGHT SIZE FREEZER for your family's needs and compare these AMANA features with other freezers at any price!

- All steel welded construction
- 4 1/2" fiberglass hand-packed insulation
- Gleaming white baked-on Dulux enamel finish
- Maximum freezing surfaces
- Hermetically sealed condensing unit
- 5 year warranty
- 5 year food protection plan

Ask for a FREE savings chart and food calendar showing when to buy foods in quantity for freezing at money-saving prices.

When You Think of Furniture— Think Of —

McMAHEN Furniture Co.

The Stratford Star
Published Weekly By Brown Ross.
Member Texas Press Association
Entered as second class matter at the Post Office in Stratford, Texas, under the act of March 3, 1919.

Classified and Legal
10 cents per line per insertion; 7 1/2 cents per line subsequent insertions. Display rates on application.

Subscription Rates
\$2.50 per year in Sherman and adjoining counties. \$3.00 per year outside first zone.

VOTE FOR

Walter Pendleton

Qualified Dependable

For County Judge

For Better Cooperation Between School, Community and the County Judge's Office

Scratch the Name of Bob Ferguson

WRITE IN THE NAME OF **WALTER PENDLETON**

(Sample Ballot)

FOR COUNTY JUDGE AND EX-OFFICIO Superintendent of Schools:

[] BOB FERGUSON

Walter Pendleton

QUALIFIED DEPENDABLE

(Political Adv. Paid by Friends and Supporters of Walter M. Pendleton by O. H. Ingham and John P. Steel, Acting Chairmen.)

Local News

Mr. and Mrs. Kenneth Pemberton, Lubbock, Texas, were week-end guests of their parents, Mr. and Mrs. John Pemberton and Mr. and Mrs. Leo Smith.

Clifford Byrd, Arthur Judd, and Frank Judd left Sunday night on a trip to Eagle Nest, New Mexico.

Mr. and Mrs. P. J. Pronger, Jr., returned home Saturday from a trip to Yellowstone National Park and other points of interest.

Mr. and Mrs. Charles Wisdom are vacationing in the mountains of Colorado.

Mr. and Mrs. Robert Pendleton and children, Ordway, Colorado, spent the week-end visiting with the Pendleton families on their way home from Lubbock, Texas.

Jimmy Milam, Yoder, Colorado, was a visitor here this week.

Mr. and Mrs. Claude Sloan attended the races in Raton, New Mexico Sunday.

Don Tusha left Tuesday for Silver City, New Mexico. Mrs. Tusha, who has been visiting there, will return home with him.

Mr. and Mrs. F. L. Yates, Bertie Sue and "Bubba" Patterson were visitors in Amarillo Tuesday.

Mr. and Mrs. T. L. Taylor and Robert Lester left Monday for La Veta, Colorado.

Mrs. C. E. Woods spent the week-end with her grandchildren in Dalhart while their parents attended a Chamber of Commerce meeting in Plainview, Texas.

Mrs. G. C. Dortch and Doris will leave Friday night to take her grandson, Dickie, to his home in Dallas, Texas, where they will visit with her son and family for a week.

Mrs. H. M. Flores and daughters, Sue Ellen and Barbara, spent the week-end visiting in Amarillo with her mother, Mrs. W. A. Hitchcock.

C. V. Penrose, Liberal, Kansas, was a business visitor here this week.

Mrs. Lucy Kelp and Johnny Bill Green spent the week-end visiting in Hereford with Mr. and Mrs. Dudley Green.

Mr. and Mrs. Cone Donelson, Pat Donelson, Mrs. Ben Biddy, Bruce Biddy, and Mrs. Louie Green visited in Meridian, Texas at the Big State Baseball Camp with B. A. Donelson, Benny Biddy and Fred Green from Saturday until Monday.

Pvt. and Mrs. Rex French returned to Fort Leonard Wood, Missouri today after a short visit with relatives in Stratford.

Mr. and Mrs. Fate Morris

Roxy Theatre
STRATFORD, TEXAS

STARTING TIME
Week Days 7:15 P. M.
Saturdays 5:15 P. M.
Sundays 2:15 P. M.

JULY 25 And 26
Virginia Mayo and Ronald Reagan In

She's Working Her Way Through College

COLOR By Technicolor
JULY 27 And 28
Robert Young and Janis Carter In

The Half Breed
Color by **TECHNICOLOR**

JULY 29
Love Is Better Than Ever
With Elizabeth Taylor and Larry Parks

A Yank in Indo-China
Starring John Archer

JULY 30 And 31
Janet Leigh and Peter Lawford In

Just This Once

spent the week-end in Bushland, Texas with Mr. and Mrs. Luther Arnold.

CARD OF THANKS

I wish to thank all of my friends for the beautiful flowers and cards I received while I was in the hospital.
Dick Farris

GRANT WORKERS PAY INCREASE

President Roy Autry of the Southwestern Associated Telephone Co., announced in Dallas Tuesday, the signing of a new one year contract with the Communications Workers of America, CIO, calling for an upward adjustment of wages for employees in a bargaining unit. This increase is subject to wage stabilization approval. The wage increase will cost the company nearly \$335,000 on an annual basis which will make it necessary for the company to seek further increases in telephone rates.

There are two barrels in a hogshhead.

Let's Re-elect



JUDGE GRAHAM SMEDLEY

to the SUPREME COURT OF TEXAS (Place 2)

- 12 Years on Supreme Court Commission of Appeals.
- 7 Years Associate Justice of Supreme Court.
- 6 Years Asst. Attorney General, handling state's oil, gas, irrigation and land suits - saved more than 100,000 acres to school fund.
- Active practice of civil law in Midland, Austin, Wichita Falls and Fort Worth.
- Endorsed by Bar Associations throughout Texas for second elective term.

"He is the type of Judge Texas needs"
(Pol. Adv. Paid for by William Kay Miller)

To the Voters Of Precinct 4

I have made an honest effort to see each of you personally to ask for your Vote and Support in the Democratic Primary Election Saturday. To those of you I may have missed as well as those I have seen, I wish to again request your consideration. I believe I am qualified for the office.

Some of My Qualifications

Served One Term as County Commissioner.

Took College Course In Engineering. Worked 3 years in Rock Island Bridge and Building Department, out of Amarillo Division.

2 Years Engineering Experience with Soil Conservation Service.

A Resident of Precinct Four for 22 Years.

48 Years of Age; old enough for mature judgment, young enough for progressive action.

F. M. Keener

Candidate For County Commissioner

Of Precinct 4 — Sherman County

(Political Adv. Paid by F. M. Keener)

Official MOTOR VEHICLE Inspection Station
Our Mechanical Department Has Been Designated AS AN OFFICIAL MOTOR VEHICLE INSPECTION STATION
We are anxious to cooperate with you in completing tests of your cars and issuing inspection stickers before the September 6 deadline.
Drive In Now For An Inspection
Davis Motor Co.
Your Chevrolet Dealer

The Big Store On 54
Graham Hoeme Plows
THE PLOW TO SAVE THE PLAINS
DON'T LET FLASH FLOODS CATCH YOU UNPREPARED
HAVE A PLACE FOR THE WATER TO GO.
Do not let wind erosion set in after the flash flood — conserve the moisture
GENUINE GRAHAM HOEME PLOWS And REPAIRS



CHISEL THE SOIL AND KNIFE WEEDS IN ONLY ONE OPERATION With the Exclusive, Patented Graham Combination Chisel and Knife Attachment. Fully adjustable to any depth. Knives overlap enough to cut all vegetation.

Prevents Erosion
Lowers Plowing Cost
Gives You Higher Yields

- 10 BIG ADVANTAGES**
1. Doubles Sub-Soil Moisture
 2. Prevents Soil Blowing
 3. Prevents Erosion by Water
 4. Built to Last a Lifetime
 5. Self-Sharpening Chisels
 6. No Side Draft
 7. Extra Light Draft
 8. Nothing to Grease
 9. Cuts Plowing Costs in Half
 10. Plows all Types of Land without Adjustments

Manufactured by **The GRAHAM-HOEME PLOW CO., INC.** Amarillo, Texas
P. O. Box 2050

ASK FOR FREE FOLDER AND DEMONSTRATION SOLD BY

Van B. Boston
YOUR MASSEY-HARRIS DEALER
THE BIG STORE ON 54

Summer Clearance Sale

DRESSES
Our Famous 1c SALE
ONE AT REGULAR PRICE AND A SECOND FOR
ONLY 1c

NYLON HOSE
Regular \$1.95 Pair
100 PAIRS — BROKEN SIZES
Limit 2 Pairs
ONLY 25c

SKIRTS
Small Group Regular \$5.95 Value
NOW \$3.99

BLOUSES
1 Group — One At Regular Price and A Second For
ONLY 1c

BLOUSES
1 Group Batiste Blouses with Maderia Handwork Trim. Regular \$7.95 and \$8.95 Values
ONLY \$2.99

MATERNITY DRESSES
ONE SMALL GROUP
\$2.99

MEN'S SHORTS
Knit Or Broadcloth — Reg. \$1.00 Value
ONLY 29c

MEN'S AND BOY'S KHAKI SHIRTS, SPORT SHIRTS And FANCY T SHIRTS
\$1.00

McIntosh Dry Goods

Barnyard Cafeteria
A cafeteria, with appropriate trays, has been designed for the feathered tribe of the barnyard. Roy E. Floch, Anacone, Wash., has designed a long counter containing trays for food, which is doled out sparingly from an overhead hopper. Baffle boards prevent fussy fowls from flicking their portions over the floor and wasting it, according to National Patent Council.

WE SMILE AT Washday Cares

Be Modern — side step wash-day cares. Spend those precious hours the way you want to — with your children, your friends or your hobby. Send us your laundry and see the difference.

BRYAN'S Bendix Laundry
Henry and Viola Bryan

Women Sculptors, Too
A statue of Frances E. Willard, reformer, by Helen Farnsworth Mears represents Illinois among the state selections in the U.S. Capitol's Statuary Hall. An annual reception in the Capitol crypt honors Adelaide Johnson, sculptress, now 104 years old, beside her group statue of Susan B. Anthony, Lucretia Mott, and Elizabeth Cady Stanton, suffragettes, unveiled in 1921. Helen Keller, Gertrude Stein, Sara Bernhardt, Mary Baker Eddy, and many other women have been immortalized in stone.

An archipelago is a group of islands.

Dr. Guy D. Clayton
Optometrist
By Appointment Only
First National Bank Bldg.
105 West Third
PHONE 60 DALHART, TEX.

Be A Good Manager

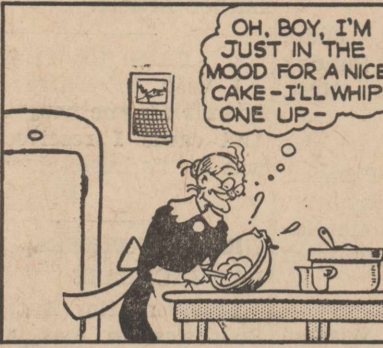
A homemaker can help herself be a good manager. In actual practices, good management means doing a job easier, according to Miss Lucile King, Home Demonstration Agent. It simply means work simplification.

Miss King points out that a good manager is a planner, a decision maker, a director, a teacher, an evaluator, coordinator and consumer buyer all at the same time. Home management furnishes the "how" and is the over-all direction of the activities in the home which lead toward achieving individual and family satisfaction.

One of the most important, yet often said to be the most troublesome, parts of home management is planning long-time goals. The family may know what they want today, tomorrow or next year, but often fail to recognize needs ten or more years away. Since planning is so important, Miss King says the whole home management program is effected when it is omitted.

Families need to recognize they live in cycles and should plan accordingly. The agent states that demands on family incomes are light during early

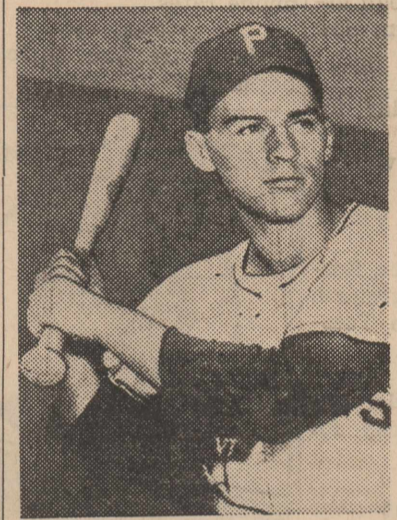
GRANDMA



By Charles Kuhn

marriage. They become increasingly heavier through grade and high school and perhaps even heavier during the college cycle.

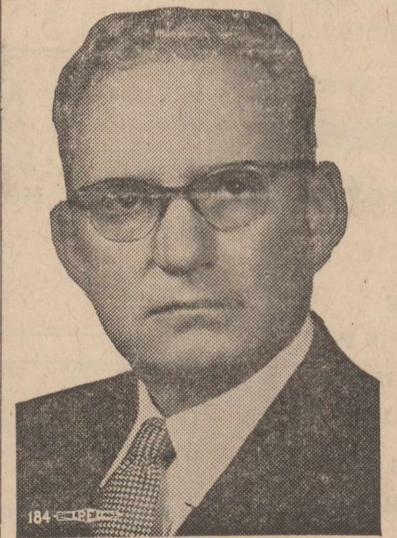
Then the recovery or "recovery period", after the children have left home, the financial demands become lighter again. Miss King explains that the retirement years are usually the lightest of all.



BONUS PLAYER . . . Dick Groat, former star shortstop-second baseman for the Duke university baseball team, signed a bonus contract with the Pittsburgh Pirates. Groat, who lives in Swissville, Pa., played first against New York.

RECIPE of the week

Tomato Soup Cake
2 cups sifted cake flour.
1 tablespoon baking powder.
1-2 teaspoon soda.
1-2 teaspoon cloves.
1-2 teaspoon cinnamon or mace.
1-2 teaspoon nutmeg.
1 cup seedless raisins.
1-2 cup shortening.
1 cup sugar.
2 eggs, well beaten.
1 can (1 1-4 cups) condensed tomato soup.
Sift together flour, baking powder, soda, and spices. Wash and cut raisins. (Roll in a small amount of the flour mixture). Cream shortening; add sugar gradually; then eggs, mixing thoroughly. Add flour mixture alternately with soup; stir until smooth. Fold in raisins. Pour into two greased and floured



JUDGE JOE S. MOSS

You Can Help Prevent A Monopoly

On April 3, 1911, Governor O. B. Colquitt signed a bill creating the Court of Civil Appeals at Amarillo, which decides appeals in civil cases tried in the courts of Sherman County and 45 other panhandle and south plains counties. In its history, there have been 17 judges serve the court, all of whom came from one of 8 counties in the 46 county district. There are 38 counties which never had a judge on the court. Sherman county never had one. Garza county never had one. A vote for Judge Joe S. Moss of Garza county for Associate Justice is a vote for Sherman county and 37 other counties which never had a judge on the court. Vote for Moss. A Civil Judge for a Civil Court.

(Pol. Adv. Paid by Joe S. Moss)

ABSTRACTS

WE HAVE A COMPLETE ABSTRACT PLANT

Covering All Real Estate In Sherman County

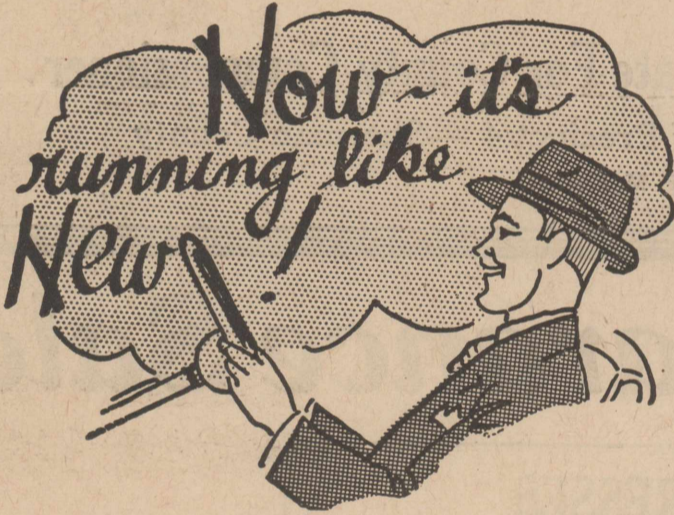
We Furnish Quick, Efficient Service On Short Notice

Sherman County Abstract Co.

Royal Pendleton, Manager

Stratford, Texas

EXPERT KNOW-HOW



There's an unbeatable combination for satisfying you — our customer — and it's the reason why more and more proud and thrifty car owners are letting us keep their cars in good running order and prevent serious automotive ills before they happen. We know you will like our service, too!

Have Your Work Done Before the Rush!

TOC Motor Co.

Studebaker Cars And Trucks

An Open Letter To A Family Man

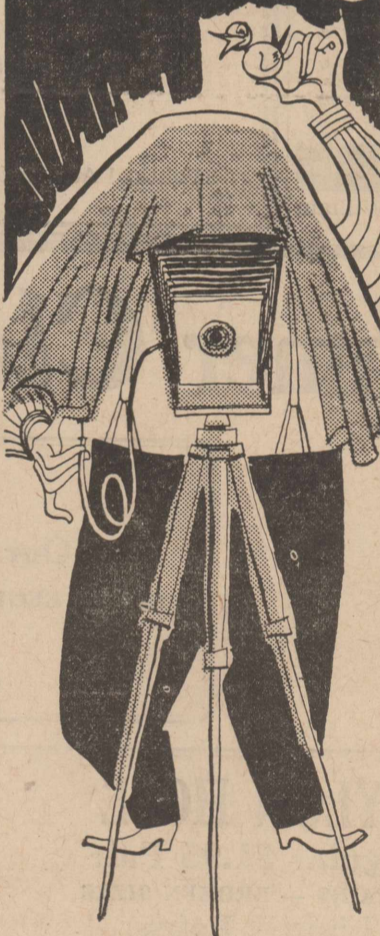
Dear Sir:

The best way to establish financial security for your family is to save regularly, depositing a percentage of your weekly or monthly income.

You will be pleased with the manner in which your dollars grow.

The First State Bank OF STRATFORD

SNAP THIS QUICK!



DODGE prices start just a few dollars more than the LOWEST-PRICED

cars

C. E.

WOODS

CO.

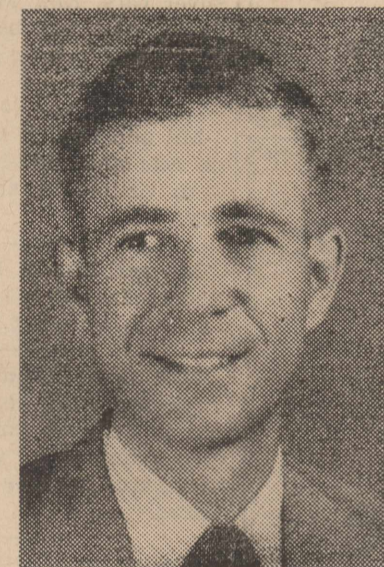
Vote For

James D.

(JIM)

CROW

Of Canadian, Texas



For State Senator

He Will Work For All the People

(Political Adv. Paid by James D. Crow)

Why do they last so long?

—because 1/2- to 2-ton trucks built by GMC have all these heavy-duty features—features most other manufacturers reserve "for big trucks only!"

Compare GMC point by point with any other truck!

Full-pressure lubrication protects all main bearings—force-feeds even to the piston pins!

Airplane-type main & rod bearings stand up under heavy pressures and high speeds—last longer!

Deep, rigid frame construction—just like the big GMC's—backbones the rugged, truck-built chassis!

"Shockproof," four-point cab suspension—same as heavy-duty

GMC's—prolongs the truck's life and protects the driver!

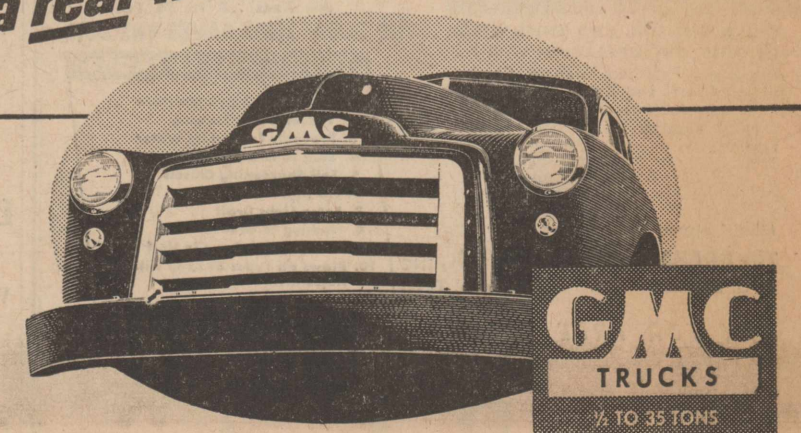
Recirculating ball-bearing steering mechanism assures "passenger car" ease in handling!

Long, "pillow-action" springs smooth the going, cushion the load!

"Luxury-type" seat cushions have individually wrapped coil springs like the big GMC road-liners—contribute to driver comfort and efficiency!

Get a real truck!

All-truck construction throughout



A General Motors Value

Van B. Boston

320 S. FIRST STREET

STRATFORD, TEXAS

You'll do better on a used truck with your GMC dealer

There are only nine general varieties of flowers. Many varieties of butterfly have a fragrance.

Brewster's Jewelry

Has Just Received A Nice Selection Of

Elgin Watches

Latest Styles for Ladies and Gentlemen

USE OUR LAY-AWAY PLAN

AND CHOOSE YOUR CHRISTMAS GIFTS OF JEWELRY NOW

Registered Select Diamond Rings

Watches and Bands

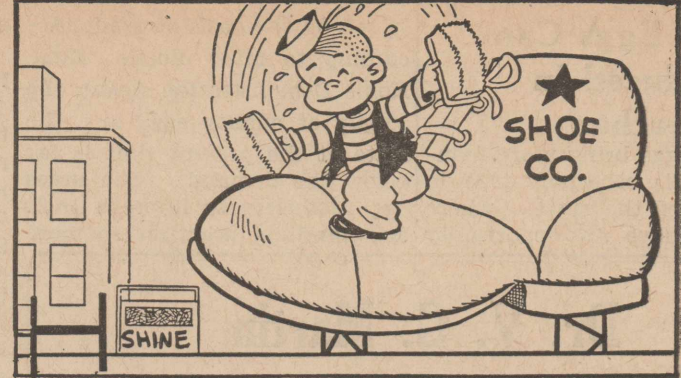
Costume Jewelry

IT IS OBVIOUSLY a weak gesture for Americans to assume the role of defenders of religious freedom if the loss of that freedom would not greatly affect their lives. When the first settlers came to these shores, the religious freedom they sought involved both a negative and a positive right. They wanted to be free from coercion by a dominant religious group whose views they did not share, and also to be free to practice the religion of their own choice. Many Americans today have clung only to the negative right. It is sometimes said that they have converted freedom of religion into freedom from religion.

Inactive Christians would do well to recall the challenging question voiced by Christ: "Why do ye call me Lord, and do not the things which I say?" Often the adherents of larger Churches are put to shame by the zealous activity of members of small sects. Such activity cannot be discounted as mere fanaticism. It is the outgrowth of deep, strong convictions. It comes from wholehearted dedication to a cause they regard as right.

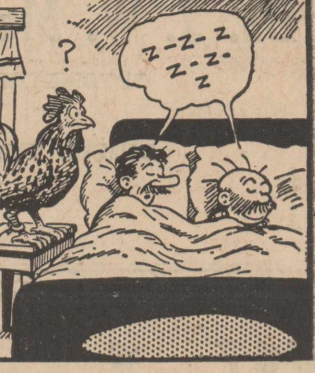
There is no doubt that any religious group would be more effective if all its members actively supported its program. Its internal life would be stronger, and it would be able to exercise a more positive influence on the community and on the nation. Any religion that is worth professing is worth practicing.

BESSIE



By NICK PENN

MUTT AND JEFF



By Bud Fisher

Honors Daughter On Fifth Birthday

Mrs. Leon Guthrie honored her daughter, Charlotte, on her fifth birthday, with a "Hobo" birthday party Wednesday morning at nine o'clock in the back yard of the Guthrie home.

While the little guests were arriving at the party, the swings were kept busy, and the games, "Drop the Handkerchief" and "Button, Button" were played, after which the little honoree opened and displayed her gifts.

Paper bags with the names of

each child printed on them in red, were given to the children. These bags which created a bit of excitement, contained favors, yo-yos for the boys, and a spinning toy for the girls, along with a sandwich, and a cup cake with which punch was served.

After the refreshments were eaten, hobo packs, which were made of red and white checked squares of cloth tied around candy, and placed on a stick, were presented to the honoree, Charlotte Guthrie, Cynthia Cummings, Cynthia Burk, Lynda Jean Smith, Barbara Stublefield, Jerry Byrd, Roy Finch,

Jimmy and Gary Hudson, Hank McIntosh, Larry Norris, and Alice and Becky Guthrie, sisters of the honoree.

The guests left the party, carrying the hobo packs over their shoulders.

Mrs. Chester Guthrie assisted in entertaining the children.

Baptist WMU Ladies Met Wednesday

Baptist WMU ladies met at the First Baptist Church Wednesday afternoon. "O, Speak To Me That I May Speak," was the opening hymn. Mrs. Clifford Byrd offered prayer.

Devotional thoughts, "What Does the Lord Require?" were given by Mrs. O. H. Ingham.

The discussions were on the subjects, "Liberty and Justice for All," by Mrs. M. E. Upchurch, "Can This Be Southern Baptists?" by Mrs. Clifford Byrd, "Liberty, Not a Racial Matter," by Mrs. O. H. Ingham, and "The Meaning of Democracy" and "What the Bible Has To Say," by Mrs. Arlyn Haile.

Other topics were: "Prejudice in Action," by Mrs. W. D. Ellis, "Who is Prejudiced?" by Mrs. Roy Strother, "What Not to Do," by Mrs. Lee Grimes, "What to Do," by Mrs. Clifford Byrd, "A Common Form of a Beginning," by Mrs. M. E. Upchurch.

Members stood and repeated the oath of allegiance to the U. S. flag and then to the Christian flag.

The meeting was dismissed by prayer by Mrs. E. B. McQueen. Mrs. E. E. Riggs had charge of the Sunbeams.

Those present who did not have parts on the program included Mrs. Pruett Adkins, Mrs. A. H. Ellison, Mrs. H. B. Norris, and Mrs. Ivan Bammes.

Alcohol Check

The most common methods of determining a person's blood alcohol concentration is to chemically analyze his blood, urine, or breath. The amount of alcohol in the urine or breath directly parallels the amount of alcohol in the blood, many scientists believe, and therefore, from the amount of alcohol excreted through the kidneys or lungs, the concentration of alcohol in the circulating blood can be determined accurately.

Say You Saw It In The Star

Fish in farm ponds may die from parasites and diseases, however, the shortage of oxygen is the most common cause of fish die-off in the summer time.

Farm and Ranch

LOANS

COMPETITIVE INTEREST RATES

NO BROKERAGE FEE

Priestly-Langhorne Agency

313 Denrock Phone 52 DALHART, TEXAS

Mr. And Mrs. Voter

Chas. A. Arford

A VOTE FOR

OF DALHART, TEXAS

For State Representative

IS A VOTE FOR A MAN WHO IS HONEST, SINCERE AND CAPABLE

- A Former City Councilman of Dalhart and Civic worker.
- 31 years in Dalhart, a property owner who knows the burden of taxation for the business man as well as the man who toils.
- A man who knows something about what the score is and will do his utmost in taking care of the interest of the people of the Panhandle, whether they be Farmer, Business man, Workman or Professional.
- My reference, any reliable business firm in Dalhart.

ELECT CHAS. A. ARFORD FOR YOUR STATE REPRESENTATIVE

(Political Adv. Paid By Chas. A. Arford)

BE SURE YOUR

TIRES

Are Safe

FOR THE VACATION SEASON

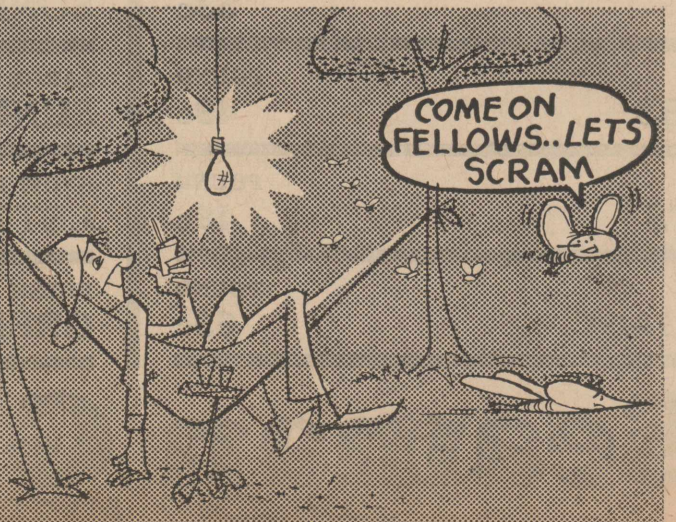
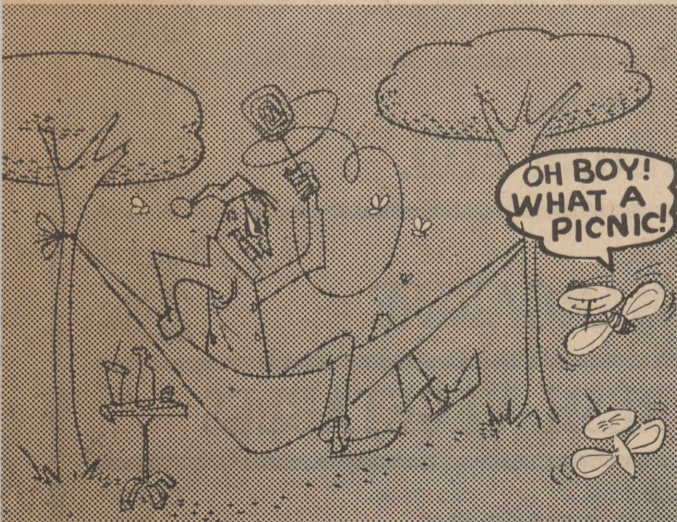
LET US TRADE YOU

NEW TIRES

For A Better Vacation

Consumers Co., Inc.

We Are Open 24 Hours A Day



"AWAY WITH BUGS" with the BUG-A-WAY Bulb

It does a good job, folks - with that WARM-YELLOW glow!

GET YOUR YELLOW BUG-A-WAY BULB AT YOUR BULB DEALER OR AT OUR OFFICE

SOUTHWESTERN PUBLIC SERVICE COMPANY

Ernest Northcutt



FOR

Associate Justice of the Court of Civil Appeals

Thirty-three years experience in the practice of civil law.

Eight years County Judge of Potter County, Texas.

Sixty years old, married, and three children.

ABLE, EXPERIENCED, MATURED

Your vote and influence will be sincerely appreciated.

(Paid for by Friends of Ernest Northcutt)

Quality Eggs Can Be Produced In Hot Weather

Quality eggs bring more money. This is especially true in the areas of the state where producers have an opportunity

to sell on the basis of grade. According to Miss Lucile King, Home Demonstration Agent, the supply of quality eggs in the state at the present time is far below the demand. She urges egg producers to improve their egg handling practices so more

quality eggs can be marketed.

The temperature of the freshly laid egg, she says, is above 100 degrees Fahrenheit and if the quality is to be maintained, rapid and thorough cooling is a must. Eggs will cool from 100 degrees Fahrenheit to 50 degrees F. in three hours when spread on a wire tray. It will take five hours for them to cool if held in a wire basket, twelve hours when held in solid pails and eighteen hours when held in a case.

Miss King explains the effect of heat upon the quality of eggs this way. She says eggs 100 days old may be better than some eggs that are only three days old because eggs held at 99.6 degrees F. drop to "B" grade in three days or less. Eggs held at 77 degrees F. will usually hold up for at least eight days; when held at 45 degrees F. they are still tops at 65 days and they retain their top quality for 100 days when held at 37 degrees F. This, she points out, clearly indicates that age does not effect the quality of eggs as directly as does the environment the egg receives.

The importance of humidity in the egg holding room is reflected in the fact that only 31% of the top grade eggs will be maintained when the humidity is allowed to drop below 75% and the temperature to rise above 65 degrees F. The failure of eggs producers and handlers to pre-cool egg cases, casing eggs before the animal heat is removed and marketing eggs less than twice per week greatly effects the percentage of high quality eggs marketed, says the agent, and thus reduces the economic return to both producers and handlers.

Here is another item that is often overlooked. It does make a difference whether the big or little end of the egg is placed down in the case. Research shows that only 73 out of 200 improperly packed eggs graded "A" or better when the eggs rode to town on the big end; while 164 out of 200 graded "A" or better when packed and transported with the large end up.

Miss King says egg producers are doing something about getting quality eggs to market in the summertime and cites figures from the areas in which

grading programs are operating to prove that it pays to produce and market quality eggs. Right now, she says, producers are averaging better than five cents per dozen more for eggs where they are graded. She urges producers to participate in a quality egg program because it's a sure way to increase the returns from the poultry flock.

Square Dance Jamboree At Pampa, Texas

The Pahnadle Square Dance Association's mid-summer jamboree will be held in Pampa, Texas Saturday, July 26, at the Hobart Street Park. Association members will be admitted free. A 60c admission charge will be made for others.

The advertisements have a message of importance for you.



NEW FACES . . . These children are Greek orphans whose faces were mutilated during civil war in Greece. Their visages have been repaired by plastic surgery. They are enjoying a lawn party in Mount Vernon, N.Y.

Serious drouth conditions have both a short and long time effect upon agriculture. Immediate result is limited crop and livestock production, long

time effect may result in shifts in population and production.

Herbert Hoover's father was a blacksmith.

Dr. V. G. Martin

OPTOMETRIST

Dr. J. W. McCormick

OPTOMETRIST

DUMAS, TEXAS

605 Bliss Ave.

Phone 2-4621

Welcome! To Our Store

We are working as fast as possible to restock our store with a complete new line of merchandise.

We will be happy to have you drop in for a visit and will be glad to supply you with any item from our present stock although the supply may be limited.

**G. E. APPLIANCES
GENERAL HARDWARE**

Jones Hardware

(Formerly Lovelace Department Store)

From: The HOUSTON PRESS — July 15, 1952

SHIVERS AGIN AUTO INSPECTION LAW; "Shall Change It Or Repeal It" He Says

By Ben Kaplan, Press Staff Writer

Governor Allan Shivers today said that the new auto inspection law should either be modified or repealed.

The Governor told the Press before he left Austin for Houston to make a campaign appearance that he had some ideas for changing the controversial law.

His idea is to take the red tape and confusion out of the law.

"The law was intended to bring about real safety and not inconvenience," said Governor Shivers.

"We need to stop killings on the highways. Texas has become the number one State in the United States for murder on the highways.

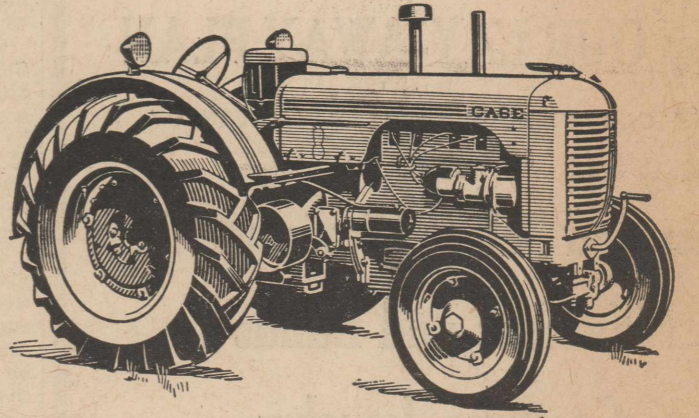
"The Legislature passed this inspection law by a vote of 117 to 12 in the House of Representatives and 19 to 9 in the State Senate, with the thought that it would save more than 200 Texas lives each year. If the law fails to do this and instead causes confusion and inconvenience, it ought to be changed or repealed."

The Governor said that he would recommend to the next session of the Legislature that it re-study and examine this law in view of the experience and either modify or repeal it.

(Several months ago, when it became apparent that the new law was causing inconvenience and confusion, Governor Shivers ordered it suspended until it can be reviewed by the Legislature.)

(Pol. Adv. — Paid for by Jack Dillard)

Now! Bigger Savings Than Ever!



MODEL "LA" Case Tractors Equipped For LP Gas

— Farmers using LP gas for tractor fuel report savings up to 1/3 over gasoline . . . savings in oil because LP gas keeps oil cleaner . . . savings in maintenance costs because engines run longer between overhauls.

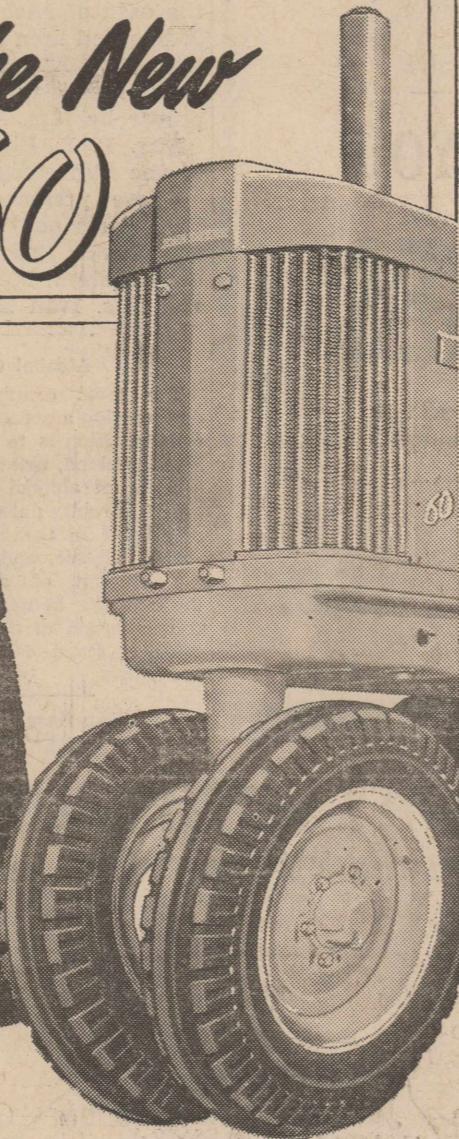
— Come in and see for yourself how much you can save with the famous Case "LA" Tractor equipped for LP gas. Ask for a demonstration. Take the wheel and see how easy the big Case "LA" steers and handles . . . how it "buckles down" on stiff pulls. Check over all the long-lasting, fuel-saving, maintenance-reducing features . . . important advantages that count for years of satisfaction and savings with the CASE "LA" Tractor.

CASE "LA" TRACTORS EQUIPPED FOR GASOLINE OR TRACTOR FUEL ARE AVAILABLE AS USUAL.

Sloan Implement & Auto

It's Here... the New
JOHN DEERE 60

...with Duplex Carburetion
... "Live" Power Shaft
... "Live" High-Pressure Powr-Trol
... Quick-Change Wheel Tread
... Effortless Steering, and Many other new features and major improvements



We're proud to announce the all-new John Deere "60" and "50" Tractors—successors to the famous Models "A" and "B." We have a "60" on display now. Come in and inspect it. The harder you are to please, the more impressed you're going to be and the sooner you'll want to get your hands on the wheel and put one of these tractors through its paces in the field. That's when you'll know they're truly great new tractors.

See it TODAY!

Bennett Implement Co.

SHOP HERE



SAVINGS

10 Pounds
CANE SUGAR 95c

Velveeta 2 Pounds
CHEESE FOOD LOAF 95c

3 Rolls
DELSEY 35c

Assorted Flavors 6 For
KOOL-AID 25c

MEATS

ARMOUR'S STAR POUND
BACON 53c

LEAN, MEATY POUND
SPARE RIBS 49c

ASSORTED POUND
COLD CUTS 49c

U. S. GOOD POUND
CHUCK ROAST 65c

Assorted Flavors
Borden's Regular Pint
ICE CREAM 23c

HI-C 46 Oz. Two For
ORANGE DRINK 49c

Reynolds Wrap Roll
ALUMINUM FOIL 35c

AZALEA Pound
OLEOMARGARINE 23c

FRESH VEGETABLES

LARGE SIZE DOZEN
SUNKIST LEMONS 35c

LARGE SIZE DOZEN
SUNKIST ORANGES 39c

SNOW BALL 2 LARGE HEADS
LETTUCE 25c

FRESH AND KRISP POUND
GREEN BEANS 19c

Seaman Grocery

BEST QUALITY

BEST PRICE