



Muleshoe Journal



Striving to be your source for local news

75¢

Volume 93, No. 4

www.muleshoejournal.com

Muleshoe, Texas

January 26, 2012



Sheriff's Deputy Assaulted By Rock Thrower

By Larry Thornton
Managing Editor

The Bailey County Sheriff's Department is currently investigating an incident in which one of its deputies was allegedly assaulted by students throwing rocks Thursday night, Jan. 19.

According to Sheriff Richard Wills, Dep. Kevin Jefferson was dispatched to a report of individuals trespassing on private property, at a caliche pit about two miles north of Muleshoe on Road 163.

After arriving, the deputy discovered a large number of individuals — juvenile and young adult students from Muleshoe High School, and vehicles at the location, some of

whom had apparently been drinking alcohol.

At some point, one or more individuals began throwing rocks at the patrol vehicle, damaging its window, said the sheriff.

"All of these kids need to recognize the seriousness of it," the sheriff said.

Officials at the Muleshoe Independent School District have been assisting in the investigation, said Wills.

After Dep. Jefferson called for assistance at the scene, additional law enforcement officers were dispatched, and helped escort several of the students to the sheriff's office, where they were temporarily detained.

Dairy Delivery

It's well known that the Bailey County Junior Livestock Show provides local youngsters with numerous educational opportunities, but this year there was an additional opportunity for some of the youngsters when one of the dairy heifers entered in the

show gave birth a week early.

Pictured above, some of the young show participants and spectators watch as two dairymen assist with the bull calf's delivered.

Photograph by Larry Thornton

County Jury Hands Down Hefty Sentence

By Larry Thornton
Managing Editor

A Bailey County jury returned after 19 minutes of deliberation to deliver a recommendation for a hefty prison sentence and fine against two young men who were involved in a local burglary spree in November 2010.

Because Edgar Hernandez, 18, and his brother, Silverio Hernandez, Jr., 19, had already plead guilty to the burglary of the Gary Parker residence on East Hickory, in the afternoon of Nov. 11, 2010, last week's hearing was limited to testimony needed to determine if and how long they would be incarcerated.

While such a residential burglary may result in a prison sentence of no less than two years nor more than 20 years, Dist. Attorney Katheryn Gurley requested a 15 year sentence, accompanied by the maximum fine of \$10,000 each.

And, in stark difference to the sentences handed down by an earlier Bailey County jury — which recommended the pair to be sentenced to a lengthy probation, at the suggestion of defense attorney David Martinez, for their part in the burglary of the Eva L. Ramey residence on West Ave. C, five days before the Parker burglary, the recent



Some of the property recovered from the burglars in November 2010.

jury decided in favor of the district attorney's recommendation.

In their testimony Thursday, the defendants were able to claim that they had not received the earlier

conviction because it is currently under appeal.

Also, in November 2011, an attempt to try the Hernandez brothers for burglarizing the Parker residence

ended in a mistrial because one of the jurors realized she had witnessed the pursuit and apprehension of the burglary suspects.

In another twist in the more recent proceedings, one of the state's witnesses — James Michael Griffin, a former jailer at the Bailey County Law Enforcement Center, was granted partial immunity concerning his testimony about the smuggling of contraband to the defendants while they were in the Bailey County jail.

After a search of

the jail blocks on Aug. 13, 2011, disclosed the presence of contraband, the subsequent investigation revealed that Griffin and one of the jail's "working inmates," had allegedly conspired with the defendants' mother to smuggle smoking tobacco into the facility.

The search had also revealed a small amount of marijuana, which the defendants had also used while incarcerated, however no testimony was entered concerning how it was brought into the jail.

Continued on A3

Car Thefts Under Investigation

The Muleshoe Police Department is currently investigating the theft of two vehicles — a 2004 Dodge Durango and a 2001 Mitsubishi, during the early morning hours of Monday, Jan. 9.

The vehicles, which were taken from East Austin and Chicago respectively, have been recovered in Clovis, N.M., and may be related to the theft of a vehicle from Clovis on the same night

which was recovered in Bailey County.

Muleshoe Police Det. Cassie Crandell described the Jan. 9 thefts as "crimes of opportunity," because the victims had left the keys in their vehicles.

However, Det. Crandell also noted that it is not uncommon for burglars entering a residence to look for the keys to the vehicles left at a residence, and urges local residents to take precautions.



Winds, Dust Assail Muleshoe

Stiff winds reaching speeds — according to area meteorologists — as high as 65 mph swept through Muleshoe Sunday. While there were reports of utility lines being down in surrounding communities, relatively minor damage occurred in the wind storm's wake locally.

Pictured on the left, one of the utility crew members checks out a tree that had blown into the lines in central Muleshoe.

Photograph
By Rhea Gonzales



First Bank is proud to announce our new MasterCard Debit Card.
FIRST BANK ONLINE www.fbmmuleshoe.com
202 S. First • Muleshoe, TX 79347 • 806-272-4515

OPINION

Around Muleshoe...



Announcements from non-profit organizations in the Muleshoe area.

To post an announcement send an email to editor@muleshoejournal.com

Cotton Conference

The Llano Estacado Cotton Conference is set for Jan. 26, from 8 a.m. until 3:30 p.m., at the Bailey County Electric Cooperative, 610 E. American Blvd., Muleshoe. Contact Curtis Preston at 806-272-4583, email c-preston@tamu.edu for additional information.

Southern Plains Conference

The 23rd annual Southern Plains Conference is set for Feb. 8-9, at the Muleshoe National Wildlife Refuge, located on Hwy 214, south of Muleshoe, and the Bailey County Coliseum, on West American Blvd., in Muleshoe.

Veterans' Service Officer

A Veterans Service Officer will be at the Bailey County Courthouse on Monday, Jan. 30, from 10 a.m. until 3 p.m. Individuals with issues related to their veteran benefits are invited to stop by and visit.

St. Ann's Dinner Planned

St. Ann's Catholic Church of Bovina will be hosting its annual German Sausage Dinner on Sunday, Jan. 29, from 11:30 a.m. until 2 p.m., at the St. Ann's Parish Hall, on Third St. in Bovina.

The meals are \$8 for adults and \$4 for children under six years of age. Take out plates will be available.

Girl Scout Cookies

Muleshoe's Girl Scouts will be holding a "cookie kick-off sale" on the front lawn of the Girl Scout Hut, 815 W. Second, on Saturday, Jan. 28, from 10 a.m. until 2 p.m.

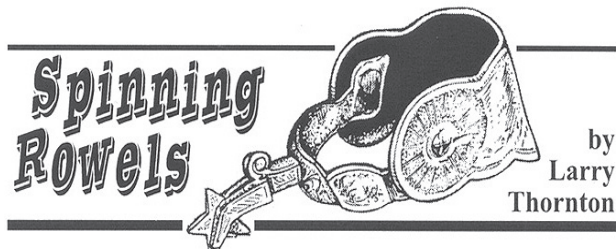
Flip Flopping On The Mules' Name

How long will the Mules remain "the Mules?"

If you've followed the sports news for the last couple of years, you might have noticed that several sports teams across the nation have been pressured into changing everything from team names to logos and mascots.

No longer can school-sponsored athletes remain confident that the team they signed with will still be called by or associated with either a particular name or school mascot by the end of the same season.

To a large degree, the pressure has arisen from the "political correctness" crowd, but isn't always the reason. After all, a few decades ago, there was a swarm of Yellow Jackets hovering around the Bailey County seat that suddenly sprouted hooves, switched their stingers for a tail, and



became the Muleshoe Mules.

Granted, it makes more sense for Mules to be associated with mule footwear, but who is to say it can't happen again, especially in this time when political correctness so easily changes to political insanity.

Yes, "the Muleshoe Mules" has an exciting, powerful ring to it, but have you ever given thought to the hurt feelings our high school athletes cause others just by the school district's choice of its mule moniker?

According to the dictionary, the term "mule" can refer to a stubborn individual, a person who transports illegal substances, or

a slipper that doesn't have a strap that fits around the heel.

Have you ever given thought to the number of "flip-flop" clad individuals we insult by referring to our varsity teams as "the Mules," or even "the Lady Mules?"

Ridiculous, you say? Maybe, but that's the kind of convoluted thinking that's risen in a Utah community which has denied its student body's request to call its team "the Cougars."

Apparently Panthers, Pumas and Mountain Lions would have passed the school board's muster. It's only the term "cougar" that has raised the hackles

of the school district's administration, and not because of any overt characteristic displayed by the large cat.

Nope, the school administrators aren't worried about embarrassing or enraging local wild cat fans. The group they're afraid of alienating are "middle-aged women with a romantic interest — more easily described as a "predatory interest, hence the name, in younger men."

Personally, I think the greater insult comes from the school board members who have forever decided to insult cougar mascots across the nation by referring to such December-May relationships in this manner rather than taking the requested name at face value.

But, who am I to say... I've apparently been cheering for a pair of flip flops.

The God Of All Beauty And Joy Will Have The Last Word

I began writing this particular column a week ago. The wind had been howling all day long.

Someone has said that nothing in nature is more beautiful than gently falling snow and the pristine glittering



Focus On Faith
Curtis Shelburne

blanket it creates. I agree. But if that's on one end of beauty's

scale, a wind-begotten brown dust-storm is on the other.

I dislike intense wind intensely. Or, to be more accurate, I despise dust-storms. I'm told that wind by itself, without dust and debris flying about in it, is much less objectionable. But if the wind blows here, it blows brown.

Nasty. Maddening. Depressing. Disgusting. Soul-parching. Supply your own list of depressing adjectives.

On the night before that particular Monday's particular onslaught of airborne particulate matter, a "weather-person" on one of our local television channels promised "spring-like" weather.

In New England that might be a different sort of promise, but I knew what it usually means here.

In some parts of the country, "spring" conjures up images of new life, verdant vegetation springing forth, the green guarantee of fruitful fertility. It does here, too.

But here it also brings up images of new vegetation being sandblasted into dry death and early decay, innocent new blades of greenery poking their little heads up and then wishing they could dive back under the ground's cover and dig back into the dirt to keep from being jerked up by their roots and cast dead into the brown stratosphere by gale-force winds.

"Spring-like." The weather gal meant unseasonably warm. She also meant wind, wind, more wind, and blowing dirt.

A pox on "spring-like!" It's January, for

goodness' sake! It's barely been officially winter for a month and already we're being attacked by "spring-like!"

I'd prefer "winter-like" any day over the wind howling outside my door and the dirt piling up on the window-sill. Give me "12 degrees and calm!" Away with "70 degrees and brown!" We'll get spring-like soon enough.

I'd already been thinking such dismal dust-driven thoughts a week before the Sunday that followed that Monday.

That Sunday the wind hit in the middle of the night. Not good. Long before church time, acres of farmland had already taken to the air and were flying by.

Caught by 60 mph winds, the front door of the church was pretty much ripped off its hinges. Why not? Coming unhinged in that mess seemed completely understandable.

But worship was warm anyway and surprisingly (to me) joyful even on that day. And, also surprising, that evening and the next morning were sunny and calm and still, beautiful by anyone's reckoning.

Maybe there's a parable here. In this fallen world, the winds of trouble and pain will blow, kicking up dust and suffering. We can count on that. But we can also count on our Father's promise that "joy comes in the morning."

The God of all beauty and joy, who once told the wind where to get off as he said, "Peace, be still," will have the last word.

Good will is more precious than gold

A good will. It is more precious than a gold nugget, and as hard to find. That was the opinion of the person who wrote it. And being as hard to find might make it as hard to prove.

I have never owned a gold nugget so I don't know what size nugget we are talking about. And the same question presents itself should we be speaking of a turbine, a flower or a small child.

We are speaking of something intangible, which means something incapable of being touched by human hands, but is of great value, much power and tremendous strength.

It is spiritual in nature for it is life of



higher quality than any of the natural things of this earth. The Apostle Paul spoke of it in this manner, "Now abide in faith, hope, charity, these three but the greatest of these is charity." — First Corinthians, chapter 15.

Now let us note, what is charity; Webster says it is the disposition to think well of others; universal love; an institution for the poor.

It is the thing referred to by this one man that served many years in the United States Senate, and four years

as vice president under Franklin Roosevelt. (I don't recall his name.) But he had made a speech, and at the close of it; apparently with considerable emotion, he said, "I would rather be a servant in the kingdom of God than to dwell in the seats of the mighty." And having said that he fell over dead.

And another situation was this. Elder Lowrance was preaching to a congregation in Clovis, N.M. He planned that, when the meeting was over he would come by for a visit with us here, and I was going to help him with the disposition of his estate. But shortly before he finished his sermon he fell over; a few minutes later he died.

So now, whatever life holds, or whatever is beyond life on this planet is theirs to enjoy. I don't profess to know much about what that might be, so I spend very little time talking about it.

The card also speaks of a youth "that is hard to keep." But I have considerable reservation about that. I would say that depends on how we go about it — and when.

And I would say also

that parents are the ones who should be the teachers. And teaching should begin upon birth of the child.

Children are born with certain fundamental principles that to some extent are with them and that affect their lives as long as they live. That may develop additional principles, and trains of thought, as they grow, and probably will, but those they have at birth will be with them, and will affect their thinking all their life.

Now let me give you an example or two to illustrate what I have referenced to. In this instance we were visiting in a home where there were two little girls. They were sisters and we were sitting at a table. I had a glass of orange juice and one girl said she would like some orange juice.

So I offered her mine, but she said "Oh no, I don't want to take yours," and she would not accept it because she would not feel good taking my orange juice.

A short while later I got an apple out of the refrigerator, and the other little girl saw me and came running and said, "I want a part of that apple." So I cut off about a third of it and offered it to her. But she wouldn't take it. She said, "no I want the

Continued on A3

Muleshoe Journal USPS 367820
 Established Feb. 23, 1924 Published by Panhandle Weeklies, LLC.
 Every Thursday at 201 W. Ave. C, P.O. Box 449, Muleshoe, TX 79347.
 Periodicals paid at Muleshoe, TX.
 Postmaster: Send address changes to the Muleshoe Journal, P.O. Box 449, Muleshoe, TX 79347.
 We are qualified members of the Panhandle Press Association, West Texas Press Association and Texas Press Association

David Wedel, Publisher
 dwedel@hearstmp.com

Larry Thornton, Managing Editor
 editor@muleshoejournal.com

Rhea Gonzales Ad Representative
 adsales@muleshoejournal.com

Ad Design / Classified Advertising
 advertising@muleshoejournal.com
 classifieds@muleshoejournal.com

Subscriptions:
 By Carrier Yearly — \$27
 Bailey County, by mail — \$29
 Elsewhere — \$40
 By E-mail — \$22
 Advertising rate cards on request

Hours are 8 a.m. to 5 p.m., Monday - Thursday, and 8 a.m. to noon on Friday.
 *Advertisers should check their ad the first day of insertion. The Journal will not be liable for failure to publish an ad or for a typographical error or errors in publications except to the extent of the cost of the ad for the first day of insertion. Adjustment for errors will be limited to the cost of that portion of the ad where the error occurred.

County Jury ... Continued from A1

While Silverio admitted smoking the marijuana during the recorded interview following the discovery of the contraband, Edgar Hernandez did not. However, during his testimony Thursday he admitted partaking of the illegal substance from the witness stand.

Although the defense attorney objected to the admission of the recorded interview, noting that he hadn't been contacted the sheriff's department, even though he had already been appointed to represent the brothers in cases not related to the contraband in the county jail, Dist. Judge Gordon H. Green overruled the defense attorney's motion.

these men don't follow the rules... even in jail," Gurley said in her closing argument, effectively shutting down the defense recommendation that they be given probation again. These men can't follow the rules."

"The buck stops here... it stops with you, ladies and gentlemen" Gurley said to the jury. "Send a message: If you steal from one of our citizens, you will be punished."

"They're asking you for a chance," Martinez said during his closing argument. "Does everyone who commits a crime need to be locked up?"

"Do the 'right thing' and put them on probation," Martinez added in his urging that the jury give the

Hernandez brothers "one last chance."

During the testimony received Wednesday, Jan. 18,, it was also pointed out that Muleshoe Police Lt. Benny Parker had been injured when his patrol unit was struck by the vehicle being driven by Silverio Hernandez, requiring knee surgery.

"I knew I was going to hit the police car," Silverio said, "but I wanted to get away."

In her testimony, Muleshoe Police Det. Cassie Crandell described the expression on Silverio's face at the time he rammed the police unit as being one of anger and determination.

On Nov. 11, Silverio and two unidentified juveniles who were

also involved in the burglaries were captured. The next day, Edgar turned himself in at the Muleshoe Police Department.

While most of the property from the Parker burglary was recovered from the suspects' vehicle after the pursuit, a large amount of jewelry, and a Marine diver's watch were not.

During his testimony, Gary Parker talked about the great sentimental value attached to the watch, which he'd received from his stepson upon his graduation from Marine Corps basic training, noting that it was something no amount of money could replace.

Similarly, part of the property from the Ramey burglary has not

been recovered. Judge Green, who sentenced the Hernandez brothers Thursday, also assessed restitution for the Parker burglary at \$4,500.

The defendants are reportedly facing two additional burglary charges from their activities in Muleshoe.

"The defendants Edgar and Silverio Hernandez admitted they burglarized the home of Mr. and Mrs. Parker and pled guilty to that crime," the district attorney said. "This trial was about the punishment that should be given for that burglary, and the jury came back with a stiff 15 year sentence that certainly reflects the seriousness of the crime

committed." "The Muleshoe Police Department, the Sheriff's Office and the Investigator for my office had done a very thorough job with the investigation of this burglary, other burglaries committed by the Hernandez brothers in this area, and violations committed while they were in the Bailey County jail," she added.

"I believe all their hard work paid off with a solid case to present to the jury. I appreciate the jury's willingness to impose a tough sentence in this case," Gurley said.

Thanks for reading!

Health Tech Students Visit The Reese Center

A couple of weeks ago, our high school nurse, Sharon Villa, took students from Muleshoe High School's Health Science Tech class to the South Plains College Reese Center Nursing School.

The Reese Center is different from any of the other SPC Nursing Schools because it has a simulation lab.

The school has several different mannequins from infant to adult sizes that are able to simulate anything from respiratory distress to seizures, and the students were able to have actual discussions with them, check their heart and lung sounds and also check their blood pressure.

The Reese Center also has something similar to a gaming system that allows the students to simulate starting an IV.

All seven of the students were extremely excited about the visit and all but two have since been scheduled to take the entrance exam to enter SPC's nursing program.

One of the two that didn't schedule the entrance exam is a

Super news from MISD By Superintendent Dr. Gene Sheets



From left to right, Keiry Nava, Melissa Casanova, Alyssa Leal and Patrick Mendoza

junior and cannot take it until she is a senior. The other student is a senior, but she has already committed to joining the Navy.

The Health Science Tech class is a tech prep class that allows the students to achieve their nurse's aide certification, or CNA.

The class lasts the entire year and they learn many different duties including patient care, measuring vital

signs, assisting with patient movement and exercise, infection control, assisting doctors and nurses, and communication.

The students have to complete 75 hours of classroom training and 24 hours of clinical training in a long term health care facility before they are able to take the state test to become certified.

Students have **Continued on A5**

Something Worth Saying...

Continued from A2
big piece."

Do you see the difference? The one declined because of her feelings towards me. The other one didn't seem to care about that. She wanted the big piece of the apple.

That was about 20 years ago and the difference is still with them and as fully pronounced as it was then.

I like children. I like to work and associate with them. But to be successful one must establish a relationship.

In other words we must "be friendly" and convince them that we have well being at heart. When we have done that they will look to us for direction, encouragement and training.

up in that atmosphere are not hard to keep. But those that grow up in an atmosphere where those things are misleading are the ones that are "hard to keep."

That's where we find the "bullies, thieves and

other delinquents."

Please note: The "card" referred to is one I found in my papers that was given to me by Rufus Gilbreath of the Gilbreath Grain and Seed. The title is "Good Will."

Need Braces?

Now offered at

J.W. HALTOM

Family Dentistry & Orthodontics

J.W. Haltom, Jessica Haltom, Amber Garcia and Erika Trotter

Come in for an Ortho Consult for only \$99!

- Invisalign, the new invisible braces now offered!
- Adults and children welcome!
- Convenient, no interest payment plan!

320 E. 8th St. 385-6935
Mon.- Thur. * 8 to 5
Fri. 8 to Noon

HANG ON A MINUTE...

Actually, hang on to ALL of your minutes with Carryover from Plateau.

Why forfeit wireless minutes at the end of every month? With Plateau, your unused minutes get carried over into the following month. In addition, Plateau provides you with benefits you won't get from other providers, including:

- **FREE** loyalty minutes which increase the longer you're a customer
- \$4.95 per month **UNLIMITED** texting
- **LOWEST** cost local calling plans
- The **MOST** regional cell sites, for the **BEST** local coverage

Find your nearest Plateau store at www.plateautel.com.

Call today to learn more!

With Carryover Minutes, unused plan minutes are carried over month to month. Loyalty Minutes earned are 30 minutes after one year of service, 60 minutes after three years of service and 100 minutes after five years of service. Carryover and Loyalty Minutes are removed on the date of disconnect and/or forfeited in the event of suspension/termination for nonpayment. Phone offer requires 2-year agreement. While supplies last Other restrictions apply.

Check out our

January clearance sale

on select phones!

1-877-PLATEAU (752-8328)

plateautel.com

PLATEAU

Senior Citizen News

By Laverne Winn

Wow! What a great birthday party. God has blessed me with so many wonderful friends. My heartfelt thanks go to all of you for your presence, the great cards and most of all for the much needed donations to the Oneita Wagnon Senior Center. I am still living in Muleshoe because of the good people and the senior center. May God bless each of you.

Congratulations to all of the stock show winners. Pat yourself on the back for the work and good job you have done. The senior citizens support you all the way.

Boy, if you want to do something in January, you better get with it. January is flying by. Still no moisture but we still keep our faith that God will send us the rain we need.

On Wednesday, Feb. 1, La Shea Mason, with Accolade Home Health, will be holding a Love Your Heart screening at the center. The helpers will be here beginning at 10 a.m., and will continue until lunch. This should be a very good service to you so mark your calendars to be at the center.

Don't forget our Bingo on Thursday afternoon. Call a friend and come in for good fellowship

and fun. Menu for Jan. 30 - Feb. 3:

Monday, Jan. 30 — Roast pork, sweet potatoes, succotash, whole wheat roll, banana pudding and low fat milk.

Tuesday, Jan. 31 — Beef stroganoff, noodle, whole wheat roll, margarine, mixed vegetable, winter fruit cup and low fat milk.

Wednesday, Feb. 1 — Chicken-fried steak, mashed potatoes, country gravy, stewed okra, seasoned corn, pumpkin squares and low fat milk.

Thursday, Feb. 2 — Sloppy joe on a bun, country potato salad,

carrots and zucchini, creamy fruit square and low fat milk.

Friday, Feb. 3 — Breaded fish on bun, lettuce, tomato, pickle, tartar sauce, potato wedges, coleslaw with dressing, peach chantilly and low fat milk.

Furgeson Honored

Johnny Furgeson, director of the Blackwater Valley Soil & Water Conservation District, pictured on the right, was recently awarded a plaque by the Texas State Soil and Water Conservation District for 25 years of service to the local SWCD.



BAILEY COUNTY DEVOTIONAL PAGE

"THE FIVE AREA TELEPHONE COOPERATIVE, INC."
West Plains Telecommunications, Inc.
Five Area Systems, Inc. • Plateau Wireless
Five Area Long Distance • Five Area Internet
302 Uvalde Muleshoe, USA (806) 272-5533

Serve Wholeheartedly as if you were serving the Lord, not men. Ephesians 6:7
MULESHOE VALLEY INC.
(806) 272-4266 Mobile (806) 946-8763 mvinc@fivearea.com
2601 W. American Blvd. P.O. Box 631 Muleshoe, Texas

MCDONALD'S OF MULESHOE
1315 W. American Blvd. • 272-3333
Open at 5 AM every day! i'm lovin' it

PACO FEED YARD, INC.
Commercial Cattle Feeders
P.O. Box 956, Friona 265-3281
Feller Hughs - Mgr.

MAPLE COOP GIN
927-5501
Maple, Texas

1412 W. American Blvd. Muleshoe • 272-4213
Open: Sun.-Mon. 11AM-11PM
Lunch Buffet: Sun.-Fri. 11:30 AM-1:30PM
Monday Night Buffet: 6-8PM
PIZZA HUT WING STREET IS HERE!
"Gather round the Good Stuff"

2800 West American Blvd. Muleshoe 272-4296
Ray Lee EQUIPMENT CO., LTD.

MULESHOE PEA & BEAN, INC.
1680 CR 1044, Muleshoe • 272-5589
Nicky Nickels

This spot could be yours!
Call Rhea at the Muleshoe Journal for more details!

IRRIGATION PUMPS & POWER
Zimmatic W. Hwy. 84 272-5597
CENTER PIVOTS

Interim HEALTH CARE
110 E. Ave. C Muleshoe 272-5549
www.InterimHealthcare.com
Elizabeth Jaime, CSR • Olivia Barrera, Home Health Aide
Birdie Valdez, LVN • Brenda Testerman, RN Case Manager

Lowe's MARKETPLACE
401 W. American Blvd. • Muleshoe • 272-4585

Muleshoe Journal
www.muleshoejournal.com
201 W. Ave. C, Muleshoe
806.272.4536 FAX 806.272.3567

Wives of the Bible

(Solutions on B4)

E H H Q M K M L Z F Y B R F A F N R W B P F G T C
E E M B R H P V L M Q C F H G R M H A K L I M B H
V L W O A V A S Z H S V J P J J G S W I G B I B K
G I X E N X O O Z N V C Z E N Y D V A F Y Y C C J
B Z L Z E C M S I L X U J U C K K Q I P D E H Y J
G A P M C E X P A H M V W K W H Y M A S P S A Q P
T B A S E M A T H A S A X N P A E F U D H L H Z
J E V H K Z T Y A X T E H S R I M D V S N L I B R
G T Q N B G T K Y A P R R W B N G F A L W R C R R
B H D H K M A Z R B F V Y E E X Y J G A P P B O A
E N D K T H K A V Z A R L L Z I C E V B J U R L F
U X P H K E H M U M Q T J D L P Q H F I E A N E G
A T I O O N V Q C N V N H X W S W O H G H L Q B G
Y I S L M S I E Q V A U T S T F Y S Z A N M V E H
D O P X G W H O D U W G H B H M G H B I D S K Z W
M T C N N H Z E B H W H S D Z E P E S L E M X E B
B I C G V G N F F J V R T B D C B B E E A U Q J H
R B M S A R A I N E W S O X S C P A R R D Y X M V
O E P O P O C C Z V J N W S M R J H Y K Q O Z D K
S J X U U U J Z Q R P V S W G D L N Y U O E H D R

Eve	Basemath	Atarah	Mary
Sarai	Jael	Maakah	Bathsheba
Rahab	Sapphira	Jehosheba	Hodesh
Jezebel	Abigail	Zeresh	Milkah
Adah	Michal	Elizabeth	Leah

This devotional & directory is made possible by these businesses who encourage all of us to attend worship services.

ASSEMBLY OF GOD
FIRST ASSEMBLY OF GOD
Pastor Ryan Pate
521 South First Street
272-3017
S.S. 9:45 am,
W.S. 10:30 am & 6:00 pm,
Wed. 7:00 pm
EL BUEN PASTOR
415 E. Ave. F - 272-5455
Pastor Domingo Luna -
272-4542
S.S. 9:45 am, W.S. 11 am &
6 pm; Wed. 7 pm

CATHOLIC
IMMACULATE CONCEPTION
CATHOLIC CHURCH
805 E. Hickory
Leonardo Pahamtang, Min.
EPISCOPAL - CHARISMATIC
ST. CLEMENTS CHURCH
COMMUNION OF CHRIST
THE REDEEMER
Hwy. 214 South • 272-5954
Father Sergio Leal
Sun. W.S. 10:30 am

Growth Gr. 1:30 pm;
Wed. 7:00 pm
LUTHERAN
ST. JOHN LUTHERAN
Lariat, TX • David Symm, Min.
S.S. 10:30 am; W.S. 9:30 am
METHODIST
FIRST UNITED METHODIST
507 W. 2nd St.
S.S. 9:45; W.S. 11:00;
Praise & Prayer 6 pm;
First Sunday of Month
4 pm Parkview Nursing Home
Service
Mon. 9 am Ladies Bible Stdy;
Tues. 6 pm Adult Bible Stdy;
Pastor Monty Leavell,
272-5517
LAZBUDDIE METHODIST
S.S. 9:30 am; W.S. 10:30 am
Pastor Ken Peterson
965-2121
EL DIVINO SALVADOR U.M.C.
619 E. 5th Street & Ave. G,
Fernando Sanchez, Pastor
272-6888

BAPTIST
CALVARY BAPTIST
1733 W. Ave. C.
Rev. Jeff Coffman
FIRST BAPTIST
220 West Ave. E
Dr. Stacy Conner
FIRST BAPTIST
Lazbuddie • 965-2126
PRIMERA IGLESIA
BAUTISTA
223 E. Ave. E
Interim Rev. Troy Smith
PRIMITIVE BAPTIST
621 South First
Elder Bernard Gowens, Min.
PROGRESS BAPTIST
Progress, TX
PROGRESS SECOND
BAPTIST
Arthur Hays, Min. - 1st & 3rd
Sundays
RICHLAND HILLS BAPTIST
Bro. Larry Thornton
17th & West Ave. D
S.S. 10 am; W.S. 11 am
www.rhbc-muleshoe.org
TRINITY BAPTIST
314 E. Ave. B - Bennie
Wright, Min.

CHRISTIAN
TRINITY CHRISTIAN
CENTER
1723 W. American Blvd.
272-3877
Reydon Stanford, Pastor
Sun. W.S. 10:30 am
CENTRO CRISTIANO
117 E. Birch St.
Hermanos Barron
S.S. 10 a.m.; W.S. 11 a.m. &
6 p.m.; Wed. 7 p.m.
CHURCH OF CHRIST
LARIAT CHURCH OF
CHRIST
Wesley Roach, Min.
S.S. 10 a.m.; W.S. 11 a.m. &
6 p.m.; Wed. 7:30 p.m.
LAZBUDDIE CHURCH OF CHRIST
Nathan Crawford, Min.
S.S. 9:30 am; W.S. 10:20 am
& 5 pm; Wed. 7 pm
MULESHOE CHURCH OF CHRIST
22nd & W. American Blvd.
S.S. 9:30 am; W.S. 10:20 am
& 6 pm; Wed. 7:30 pm
16th & AVE. D CHURCH OF CHRIST
Curtis Shelburne, Min.
272-4619
S.S. 9:30 am; W.S. 10:30 am;

PENTECOSTAL
UNITED PENTECOSTAL
LIGHTHOUSE
207 East Ave. G
1-800-454-6051
S.S. 10 am; Thursday,
Bible Study 7 pm
INTER DENOMINATIONAL NEW COVENANT
Plainview Hwy.
Steve Claybrook, Pastor
W.S. 10 am; Wed. 7 pm
MULESHOE COWBOY FELLOWSHIP
710 E. American Blvd.
Steve Friskup, Minister
272-5199
Service: 7:30 p.m. Thursday

Antiques & Fine Things
2104 W. American Boulevard
Muleshoe • 272-4217
Trollbeads
every story has a bead!

This spot could be yours!
Call Rhea at the Muleshoe Journal for more details!

CENTRAL COMPRESS & WAREHOUSE
SUDAN, TEXAS

Deaf Smith County Grain, Inc.
Cliff A. Skiles, Jr.
Job S. Skiles

MCCORMICK SEEDS, INC.
400 East Ash • 272-3156
Muleshoe, Texas
A COMPLETE LINE OF FIELD SEEDS
Tim McCormick

1ST BANK MEMBER FDIC
202 South First 272-4515

Lial's TORTILLA FACTORY
105 E. Ash St., Muleshoe • 272-5772
Phillipians 4; "I can do all things through Christ who strengthens me."

MULESHOE ANIMAL CLINIC
GENERAL PRACTICE
MVS
MULESHOE VET SUPPLY
1430 US Hwy. 84, Muleshoe Office: 272-3061

BOEHNING DAIRY
690 CR 45, Earth
"MILK - A PART OF EVERYTHING THAT IS GOOD!"

BCEC BAILEY COUNTY ELECTRIC COOPERATIVE ASSOCIATION
A Touchstone Energy Cooperative
Muleshoe — 272-4504 Morton — 266-8600

WAYNE COPLEY TRUCKING
CALICHE, SAND & ROCK PRODUCTS
P.O. Box 63 Muleshoe, Texas 79347 (806) 272-3697 Mobile: (806) 946-8072

J&S Dairy
1260 CR 1038, Muleshoe 272-7706

To Place Your Ad Here
Call Rhea At
Muleshoe Journal
272-4536

BAILEY COUNTY DEVOTIONAL PAGE

Obituaries

Floyd Becker

Church service for Floyd Becker, 91, of Muleshoe, were held on Friday, Jan. 20, at Farwell Country Church of Farwell with Orié Nightingale officiating.

Burial followed in Farwell Country Cemetery under the direction of Ellis Funeral Home of Muleshoe.

Mr. Becker died on Tuesday, Jan. 16, 2012, in Muleshoe.

He was born on March 9, 1920, to Peter and Martha (Unruh) Becker in Parker, S.D., and married Mandena Schmidt in Wimon, Calif., on Feb. 25, 1945. She preceded him in death in 2010.

He was also preceded in death by his parents.

Mr. Becker had lived in Halstead, Kan., and Colorado as a child. He moved to Oregon in

1957, and moved to the Muleshoe community in 1997.

He had been a Dairy farmer until he retired in 1997, and was a missionary for the Church of God in Christ Menonite in Nigeria Africa for 12 years.

Survivors include a daughter — Connie Giesbrecht and husband Lawrence of Muleshoe; three sisters — Winona Blosser and Isabel Castillo, both of Wichita, Kan., and Darlene Peaster of Atwater, Calif.; two brothers — James Becker of Sedgwick, Kan., and Tony Becker of Aurora, Calif.; seven grandchildren and 19 great-grandchildren.

Memorials may be sent to Park View Nursing Care Center, 1100 W. Ave. J., Muleshoe, TX 79347.

Muleshoe Country Club Ladies Association



Elinor Yerby with her appreciation gift from the Ladies Association.

The Ladies Association of Muleshoe Country Club started their new year at the Jan. 18 meeting with a luncheon provided by several of the members.

After welcoming the 16 members present, association president Linda Erdmann called the meeting to order. She began the meeting by asking Pat Kirk for a prayer and then introduced the other new officers.

This year's officers are: Linda Erdmann, president; Deborah Noble, vice president; Tammy Black, secretary; Judy Wilbank, treasurer; and Elinor Yerby, historian.

The play day chairman for 2012 is Jeri Flowers, and the High-Plains chairman is Treena Matthews.

During the meeting several topics were discussed, and a few general plans for the

year were made. Jeri Flowers, Laverne Winn and Deborah Noble were recognized for their January Birthdays.

After receiving the play day updates, and reports from Anita Black, and Matthews, Erdmann asked Yerby to present the 2011 scrapbook to the association.

She then received a gift from the members to recognize and thank her for all the hard work she does on each year's wonderful scrapbooks.

Marlene Martin then held the drawing, and the lucky winner was Linda Erdmann.

The meeting was then adjourned, and 11 ladies played cards.

Park View Heroes Announced

The Park View Support Group's Heroes for the month of January are Diego Del Torro and Celia Campos.

Club News



The Girl Scouts received 10 Girl Scout Guide binders in an awards ceremony on

Super News

Continued from A3 already begun earning their clinical hours, and they will complete this requirement this semester.

After successfully completing the course, the students will be able to work in different areas of health care, such as nursing homes, hospitals, clinics, hospice and home health.

Any student interested in pursuing a career in the health care field would definitely benefit from this class.

Our High School nurse, Sharon Villa, has done an outstanding job with this class and helping students pursue their dream of a career in the health care field.

We appreciate all of our faculty and staff for their commitment to helping all of our students become positive, ethical, and productive citizens who are life-long learners.

Fund Raiser Under Way

Calvary Baptist Church of Muleshoe is holding its annual Valentine cookies and bouquets fund raiser.

Valentine cookies and bouquets are for sale for pick up or delivery in Muleshoe.

Call Renee at 946-6160, Dolores at 946-9078 or Ann at 272-5914 to place an order.

Nursing Home News

As usual, January has proven to be a busy month for residents and staff at Park View Nursing Care Center.

As the month arrived, residents were still celebrating Christmas with the beautiful decorations still making the center look festive.

Volunteers came a few days later to remove the decorations and pack them for storage until Christmas 2012.

Each Sunday, residents are able to attend Sunday School with a teacher provided by First Baptist Church.

Sunday afternoons are devoted to various churches coming to conduct services of singing, Scripture reading and inspirational thoughts.

Churches participating in January included First United Methodist Church, Lariat Church of Christ, Muleshoe Cowboy Fellowship, and the Country Church.

The Muleshoe Church of Christ brings communion on Sunday

afternoons.

Other weekly events are beauty shop on Tuesday afternoons, singing and devotionals on Tuesday and Wednesday mornings, Wednesday afternoon sing-along and bingo on Monday and Saturday afternoons.

Residents will also be able to participate in ceramics class, moving to music and cooking

class.

Daily activities include coffee time, dominoes and Wii.

Special events will be a tribute to Dr. Martin Luther King, a pie party and the monthly birthday party.

Residents having birthdays this month are Jo Campbell, Junior Wright, Victor Contreras, Gumercindo Aguirre, Naomi Owen, Tommy

Floyd, Nina Rials and Mike Burrison.

Each will be honored at the party with birthday cake and punch.

The Park View Support Group meets the first Tuesday of each month at 7 p.m., at the M&M building on the Clovis highway.

Those interested in Park View and the activities there is invited to attend the meeting.

Remember your Sweetheart on
Valentine's Day



Send your special someone a
Valentine Greeting!
Greetings need to be in by
February 6, 2012 at noon



Muleshoe
Journal

201 West Ave C. Muleshoe, TX 79347

806-272-4536

We're at Your Service

Visit the following
local businesses for quality service
and customer satisfaction!

Interested in
Advertising your business
in this location? Call Rhea
at the Muleshoe Journal,
272-4536 or 806-518-4606

If we can't fix it, throw it away!

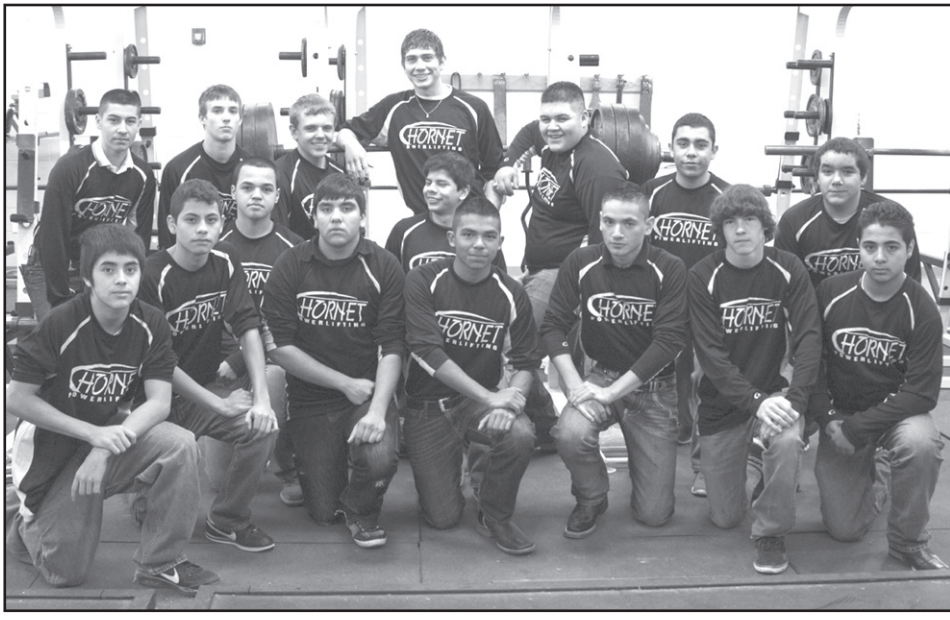
Sheetrock, Drywalling, Tape & Bed, Patch Up Jobs,
Acoustic & Paneling, Small Concrete Jobs,
Picket Fences, Bathroom Remodeling, Floor Tile,
Sky Lights, Carports, Garage Doors, Insulation, Etc.
Add On's and Roofing - References Available

Handy Randy
We will travel!

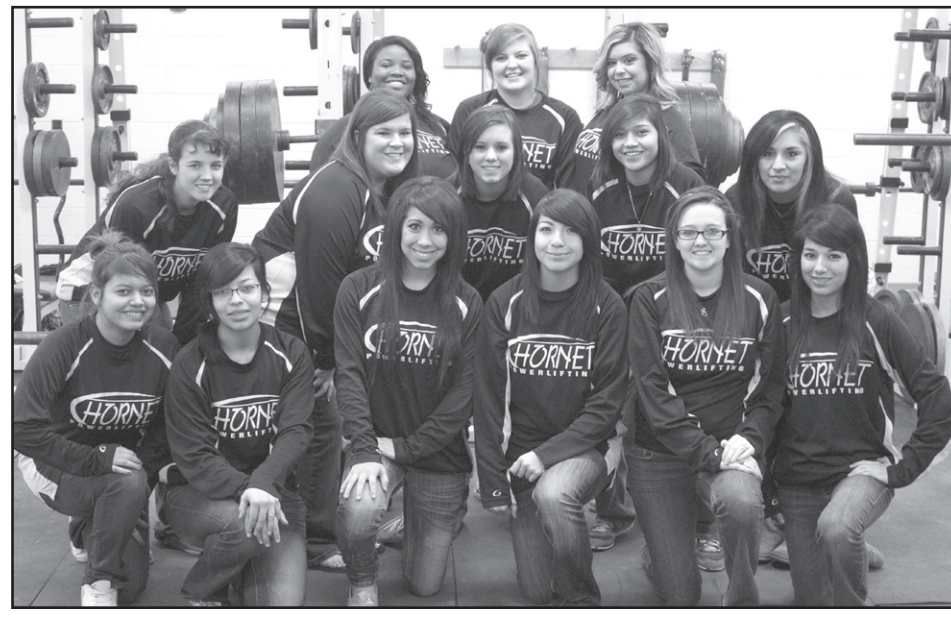
Pager: 766-9342 Cell: 806-632-5261
Home: 806-385-3103 Member of BBB of Lubbock Littlefield, TX



The Sudan Buzz



HoXavier Trillo, Nik Clarkson, Dex Baker, Osmar Diaz, Ivan Trillo, Cesar Medrano, Kolton Gonzales, Alex Figueroa, Jesus Lozoya, Edwin Delgado, Uriel Delgado, Jose Trejo, Salvador Salamanca, Jorge Guitron, Adam Martin and Ubaldo Roman



LaShae Weaver, Mackenzie Conley, Julie Gonzales, Amber Binion, Katee Gonzales, Kelbi Harris, Jasmine Godinez, Leandra Ruiz, Sarah Carrizales, Nancy Delgado, Hailee Gonzales, Mariah Martinez, Audrey Binion, Maribel Centeno

Sudan Powerlifters Place At Abernathy Meet

By Cheri Sain
Sudan Correspondent
Sudan powerlifting athletes competed at the Abernathy Powerlifting Meet recently, with the girls team overall placing second. Several of the individual lifters placed in their categories. Alex Figueroa finished fifth out of

seven in the 114 weight class. In the 123 weight class, Adam Martin finished second, Jorge Guitron finished fourth, Nick Clarkson finished sixth and Jesus Lozoya finished 10th. Salvador Salamanca finished first in the 132 weight class, Cesar Medrano finished

seventh out of 10 in the 148 weight class, and Osmar Diaz finished sixth and Edwin Delgado finished 13th out of 19 in the 181 weight class. Jose Trejo finished sixth out of 15 in the 198 weight class. Marie Carrizales finished third and Maribel Centeno

finished sixth in the 97 weight class. Hailee Gonzales finished first and Mariah Martinez finished second in the 123 weight class. Jazmine Godinez finished third, Amber Binion finished fourth, and Nancy Delgado finished fifth in the 132 weight class.

Leandra Briseno finished sixth, Sara Carrizales finished 14th, and Kelbi Harris finished 15th in the 148 weight class. Other members who placed in their weight divisions were

MacKenzie Conley finished fifth in her weight division, Julie Gonzales finished fourth in her weight division, Lashae Weaver finished fifth and Katee Gonzales finished sixth in their weight class.

Nettes defeat Farwell, Bovina

By Cheri Sain
Sudan Correspondent
This last week the Nettes won two district games against Bovina and Farwell. The Nettes easily won against Bovina with a score of 91-6, and they also beat Farwell with a score of 66-27.

and Caitlyn Netherland each with three points, and Jade Goen, KyLee Shultz, and Keela Chester each with two points. In the first quarter, the Nettes came out strong as the girls put up 30 points alone. Bovina would only score two points the entire first quarter.

starters pounded the inside and soon found themselves up by 67 with an ending quarter score of 73-6. The fourth quarter was once again dominated by good defense and smart play by the Nettes as they came away with a victory with a score of 91-6.

percentage. It was a great night for the Nettes on the non-scoring stats as well. The Nettes had 42 total rebounds, three blocked shots, and 25 steals. The Nettes then traveled to Farwell to play the Lady Blue.

The girls had a closer game against Farwell, but the Nettes came out on top Friday night. Logan would once again lead all scorers with 20 points. Other Nettes having a strong night were Williams with 13 points, Black with 11 points, and Weaver with nine points.

Other Nettes that scored were Goen with six points, Shultz with three points, and Ashlee Koontz and Miller each with two points.

In the Bovina game, Nette Danielle Logan led all scorers with 34 points. Junior Jasmine Weaver came in next with 20 points, and Victoria Williams had 14. Other Nettes who scored were Bailee Black with five points, Harlee Koontz with six points, Kaylie Miller

In the second quarter, the Nettes would add another 21 points to their lead. Bovina would finish their scoring for the game during this quarter adding four points before half. During the third quarter, the Nettes'

The Sudan Nettes shot at 51 percent for the night with 38 out of 74 of their shots falling through the hoop. They also made 10 out of the 15 free throws at a 66 percent shooting

Logan would once again lead all scorers with 20 points. Other Nettes having a strong night were Williams with 13 points, Black with 11 points, and Weaver with nine points.

The Nettes shot at 37 percent for the night with 21 out of 56 shots made. The Lady Blue percentage was at 21 percent. The Nettes will be playing Springlake-Earth on Tuesday night and will be back home to play the Lubbock Titans Friday night.

The Hornets tried to come back, and they were within seven points of the lead when fouls became key at the end. The Hornets lost to Farwell with a score of 55-44.

Bovina Falls To The Hornets

By Cheri Sain
Sudan Correspondent
The Sudan Hornets started the week off in their second district game with a win against Bovina at home. The final score was 55-47. Dayton Fisher led the Hornets with 15 points, and Tanner Fisher was close behind him with 14 points. Elijah Ramon scored nine points, Jake Chester had five points, Ty Shaw scored four points, Andrew Ramon and Reece Harper made three points, and BJ Johnson finished up with two points.

a strong showing by the Hornets. It was a closer game than the score showed, 55-44. Harper would lead all scores for the Hornets with 10 points. Jake Chester was close behind with nine points. Elijah Ramon made eight points, Tanner Fisher made seven points, Dayton Fisher made four points, Ty Shaw made three points, and BJ Johnson had two points. The first quarter of play started out with Tanner Fisher making quick baskets but wound up on the bench with two fouls in the middle of the first quarter. He would not see action again until the second half. The Hornets finished the quarter with a score of 11-17. The Hornets came out fighting in the second quarter with a strong performance from Reece Harper. Harper came off the bench to

make significant points including the last points before half. The Hornets took the halftime lead with a score of 27-25. The third quarter was rough on the Hornets and the bench had to step and play. The third quarter ended with a score of 43-32. Both Fisher boys were hampered by foul trouble. The Hornets tried to come back, and they were within seven points of the lead when fouls became key at the end. The Hornets lost to Farwell with a score of 55-44.

Other Nettes that scored were Goen with six points, Shultz with three points, and Ashlee Koontz and Miller each with two points. The Nettes shot at 37 percent for the night with 21 out of 56 shots made. The Lady Blue percentage was at 21 percent. The Nettes will be playing Springlake-Earth on Tuesday night and will be back home to play the Lubbock Titans Friday night.

Other Nettes that scored were Goen with six points, Shultz with three points, and Ashlee Koontz and Miller each with two points. The Nettes shot at 37 percent for the night with 21 out of 56 shots made. The Lady Blue percentage was at 21 percent. The Nettes will be playing Springlake-Earth on Tuesday night and will be back home to play the Lubbock Titans Friday night.

Other Nettes that scored were Goen with six points, Shultz with three points, and Ashlee Koontz and Miller each with two points. The Nettes shot at 37 percent for the night with 21 out of 56 shots made. The Lady Blue percentage was at 21 percent. The Nettes will be playing Springlake-Earth on Tuesday night and will be back home to play the Lubbock Titans Friday night.

Health Tip

Did you know that sunscreen rapidly loses effectiveness after one hour? If you are going to be out for a while, plan to put on more sunscreen to avoid sunburn.

KING AG AVIATION, INC.
Specializing in Aerial Spraying - Insecticide, Herbicide & Seeding - Field Scouting Service
Johnny King Home (806) 227-2211
P.O. Box 189 Fax (806) 946-3659
Sudan, Texas 79371 Mobile (806) 946-7309
Business (806) 946-3399 Vernon Office (940) 552-6102

SUDAN ISD
EXCELLENCE
IN
EDUCATION

WWW.SUDANISD.NET
HWY. 303 PHONE: (806) 227-2431
SUDAN, TX 79371 FAX: (806) 227-2146

SUDAN VETERINARY SERVICES
S&S
CHRIS LARSON D.V.M.
◆Specializing in Dairy Medicine◆
◆Small Animal & Equine◆
◆Same Day Minor Surgery◆
◆Farm & House Calls◆
◆Climate Controlled Boarding◆
◆Services by Appointment Only◆
208 Ormand Street
806-227-2444 806-241-1915

COMPOSTED CATTLE MANURE
Farwell Feed Yard -- Farwell
Cargill Cattle Feeders -- Bovina
Bovina Feeders -- Lazbuddie
BRANDON SCHILLING
Mobile 806-225-7700
OFFICE 1-800-650-2550
NORTH PLAINS COMPOST, INC.
PO BOX 1099
FARWELL, TEXAS 79325

CLASSIFIEDS

Deadline is Monday at noon to place a classified ad. Call 272-4536.

LEGAL PUBLIC NOTICE

NOTICE TO CONTRACTORS OF PROPOSED TEXAS DEPARTMENT OF TRANSPORTATION (TxDOT) CONTRACTS Sealed proposals for contracts listed below will be received by TxDOT until the date(s) shown below, and then publicly read. CONSTRUCTION/MAINTENANCE/BUILDING FACILITIES CONTRACT(S)

Dist/Div: Lubbock Contract 0905-00-052 for FY 2012 RRPMS AND SPECIALTY MRK in LUBBOCK County, etc will be opened on February 07, 2012 at 1:00 pm at the State Office. Contract 0905-00-066 for DISTRICT WIDE STRIPING in LUBBOCK County, etc will be opened on February 08, 2012 at 1:00 pm at the State Office.

Plans and specifications are available for inspection, along with bidding proposals, and applications for the TxDOT Prequalified Contractor's list, at the applicable State and/or Dist/Div Offices listed below. If applicable, bidders must submit prequalification information to TxDOT at least 10 days prior to the bid date to be eligible to bid on a project. Prequalification materials may be requested from the State Office listed below. Plans for the above contract(s) are available from TxDOT's website at www.txdot.gov and from reproduction companies at the expense of the contractor. NPO: 39068 State Office

----- Constr./Maint. Division 200 E. Riverside Dr. Austin, Texas

78704 Phone: 512-416-2540 Dist/Div Office(s) ----- Lubbock District District Engineer 135 Slaton Lubbock, Texas 79408-0771 Phone: 806-745-4411 Minimum wage rates are set out in bidding documents and the rates will be part of the contract. TXDOT ensures that bidders will not be discriminated against on the grounds of race, color, sex, or national origin. *Published in the Muleshoe Journal January 19 and January 26, 2012.*

HELP WANTED

5 Temp positions: Farm work, 3/1/12 to 12/31/12 @ \$15.00 p/hr. Housing provided, 48 hrs p/wk. 3/4 guarantee, transportation and subsistence expenses to worksite paid after 50% completion of contract. Tools, equipment provided at no cost. Min. 3 months experience. Duties: drive, plant, harvest, store grain, repair operate tractor, rock picker, plow, disc, drill, harvest equip, sprayer, grain truck. Must be able to lift 60 lbs and obtain a drivers license within 30-90 days following hire. Crafty Acres, Stanley, ND. Interested? **Apply at ND Workforce Solutions office job # 264877.**

2 Temp positions: Farm work, 3/1/12 to 12/31/12 @ \$15.00 p/hr. Housing provided, 48 hrs p/wk. 3/4 guarantee, transportation and subsistence expenses to worksite paid after 50% completion of contract. Tools, equipment provided at no cost. Min. 3 months experience. Duties: drive, plant, harvest, store grain, repair operate tractor,

rock picker, plow, disc, drill, harvest equip, sprayer, grain truck, must be able to lift 60 lbs and obtain a drivers license within 30-90 days following hire. Gary & Kevin Craft, Stanley, ND. Interested? **Apply at ND Workforce Solutions office job # 264982.**

8 Temp positions: Farm work, 3/1/12 to 12/31/12 @ 11.61 p/hr. Housing provided, 48 hrs p/wk. 3/4 guarantee, transportation and subsistence expenses to worksite paid after 50% completion of contract. Tools, equipment provided at no cost. Min. 3 months experience. Duties: drive, plant, harvest, store grain. Repair/operate tractor, rock picker, plow, disc, drill, harvest equip, sprayer, grain truck. Must be able to lift 60 lbs. Lindskov Ranch, Isabel, SD. **Apply at nearest SD Dept of Labor office use job listing # SD1547183.**

3 Temp positions: Farm work, 03/01/12 to 12/31/12 @ 15.00 p/hr. Housing provided, 48 hrs p/wk. 3/4 guarantee, transportation and subsistence expenses to worksite paid after 50% completion of contract. Tools, equipment provided at no cost. Min. 3 months experience. Duties: drive, plant, harvest, store grain, repair operate tractor, rock picker, plow, disc, drill, harvest equip, sprayer, grain truck. Must be able to lift 60 lbs & obtain a drivers license within 30-90 days following hire. Rick Wenzel, Wimbledon, ND. Interested? **Apply at ND Workforce Solutions office job #264893.**

2 Temp positions: Farm work, 03/01/12 to 12/31/12 @ 15.00 p/hr. Housing provided, 48 hrs p/wk. 3/4 guarantee, transportation and subsistence expenses to worksite paid after 50% completion of contract. Tools, equipment provided at no cost. Min. 3 months experience. Duties: drive, plant, harvest, store grain, repair operate tractor,

2 Temp positions: Farm work, 03/01/12 to 12/31/12 @ 15.00 p/hr. Housing provided, 48 hrs p/wk. 3/4 guarantee, transportation and subsistence expenses to worksite paid after 50% completion of contract. Tools, equipment provided at no cost. Min. 3 months experience. Duties: drive, plant, harvest, store grain, repair operate tractor, rock picker, plow, disc, drill, harvest equip, sprayer, grain truck. Must be able to lift 60 lbs & obtain a drivers license within 30-90 days following hire. Bodnar Farms, Langdon, ND. Interested? **Apply at ND Workforce Solutions office job #264742.**

3 Temp positions: Farm work, 03/01/12 to 12/31/12 @ 15.00 p/hr. Housing provided, 48 hrs p/wk. 3/4 guarantee, transportation and subsistence expenses to worksite paid after 50% completion of contract. Tools, equipment provided at no cost. Min. 3 months experience. Duties: drive, plant, harvest, store grain, repair operate tractor,

3 Temp positions: Farm work, 03/01/12 to 12/31/12 @ 15.00 p/hr. Housing provided, 48 hrs p/wk. 3/4 guarantee, transportation and subsistence expenses to worksite paid after 50% completion of contract. Tools, equipment provided at no cost. Min. 3 months experience. Duties: drive, plant, harvest, store grain, repair operate tractor,

MISCELLANEOUS
Attention Farmers Dairy manure for sale. Call 806-240-0184 806-292-2877

Angelic Notions - Tailoring to your needs - Help with the "extras" staff have limited time for: hygiene, nail care, reading, 10 yrs experience. References available. Non-medical individualized program to fit needs. Will do "odds/ends"- grocery shopping, pet care... Affordable rates. CALL 806-518-5989

Subscribe
REAL ESTATE



LAND
360 acres - Two pivots, on highway. With 1004 cotton yields.
1440 acres - Seven pivots, 600 gal. water, with 1021+ cotton yields.
360 acres - Three pivots, 500 gal. water, with 936+ cotton yields.
Springlake - 35 acres just east of town on Highway 70. Dryland cotton land or home place. \$70,000.00

RESIDENTIAL
Sudan - 104 Ormand, 2180sf 3-2-2 home, lots of space, nice yard, close to school, low cost/sq.ft. at \$65,500.
Sudan - 406 Wilson, 3-2-1. Very nice brick home. 1291sf at \$52,500.
Sudan - 205 Smith, 2-3-2. Plus basement or another bedroom 1794 sf plus 528 sf Garage, outside storage, close to school. \$97,800.

COMMERCIAL
Muleshoe - Investment Opportunity, (SELF STORAGE UNITS) - 509 West American Blvd. 44 units, plus office rental, 100% leased on 100 X 140 corner lot. W HWY 84. Asking \$174,500.
Littlefield - 701 West 3rd. Laguna Market. 40x40 metal building, combination Deli and convenience store. Money Maker, Large Lot close to school. Frisbee course brings in a lot of customers.
Monty Edwards Broker
Vernie Moore Agent
(806) 227-2465
Free consultation! We will work with other brokers.
www.medwardsrealtors.com

rock picker, plow, disc, drill, harvest equip, sprayer, grain truck. Must be able to lift 60 lbs & obtain a drivers license within 30-90 days following hire. Ulmer Farms, Fullerton, ND. Interested? **Apply at ND Workforce Solutions office job #264708.**

2 Temp positions: Farm work, 03/01/12 to 12/31/12 @ 15.00 p/hr. Housing provided, 48 hrs p/wk. 3/4 guarantee, transportation and subsistence expenses to worksite paid after 50% completion of contract. Tools, equipment provided at no cost. Min. 3 months experience. Duties: drive, plant, harvest, store grain, repair operate tractor, rock picker, plow, disc, drill, harvest equip, sprayer, grain truck. Must be able to lift 60 lbs & obtain a drivers license within 30-90 days following hire. Tofteland Farms, Antler, ND. Interested? **Apply at ND Workforce Solutions office job #264879.**

2 Temp positions: Farm work, 3/1/12 to 12/31/12 @ 11.61 p/hr. Housing provided, 48 hrs p/wk. 3/4 guarantee, transportation and subsistence expenses to worksite paid after 50% completion of contract. Tools, equipment provided at no cost. Min. 3 months experience. Duties: drive, plant, harvest, store grain, repair operate tractor, rock picker, plow, disc, drill, harvest equip, sprayer, grain truck. Must be able to lift 60 lbs & obtain a drivers license within 30-90 days following hire. Marshall Craft Farm, Stanley, ND. Interested? **Apply at ND Workforce Solutions office job #264719.**

REAL ESTATE



Keith Stephens, Broker
Jane Stephens, Realtor
Keith 806-789-4311 Jane 806-787-5925
stephensrealty@suddenlink.net
www.stephensrealtytx.com

MULESHOE: 1315 W Ave J - 3/2.5/2 + basement, Geo-thermal heat and air, Double Pane Windows, open concept, neutral colors, 2 water heaters, large workshop, many extras, outstanding location. **PRICE REDUCED!**

MULESHOE: 905 Ivy - near COUNTRY CLUB - 3/3/2 - 2516 sq ft - large living area w/ fireplace, isolated master suite, extra storage thru/out, Central air/heat, one owner, great family home. Call for more details.

LUBBOCK AREA: 16812 CR 2110 - 3 acres with 4BR/4 full bath/2 half bath/4 Car Garage + office/basement and game room. **4850 +/- sq ft open floor plan**, many extras, **PLUS** 50x30 wired & insulated shop w/loft. Call **Linda Scott** 806-781-5314. LAR MLS# 9983868.

LUBBOCK: 5819 - 110th St - 3/2/2 Garden Home, built 2005, 1987 sq ft, granite countertops, crown molding, extra storage, large closets, whirlpool tub/ separate shower in master suite, fireplace, open concept. Call Keith or Jane. LAR MLS# 9984412.



116 E. Ave. C • George Nieman, Broker • 272-5285 or 272-5286
CHECK OUR LISTING INFO., PHOTOS, ETC. ON-LINE AT www.niemanrealty.com
HAVE BUYERS! NEED HOME AND LAND LISTINGS!!


HIGH SCHOOL AREA
• VERY NICE 3-2-2 Brick Home, Cent. A&H, built-ins, FP, approx. 2336' lv. area, auto. spklr, fenced yd, MORE!! \$125K!!
• NICE 3-2-2 Home, corner lot, built-ins, Cent. A&H, workshop/storage plus storage building!! 1974' lvg. area!! \$96K!! PRICE REDUCED \$79,500
• 3-1 Brick Home, enclosed garage, Cent. A&H, DW, Refrig., utility, workshop/storage!! MORE!! \$76.5K!!
• Remodeled 3-2-1 Det. Garage Home, Cent. A&H, built-ins, hwdwood & tile floors, 4 fans, fenced yd., approx. 1520' lv. area!! \$80K!!

RICHLAND HILLS • PARKRIDGE • HIGHLAND
• 2 Nicely Remodeled Duplex Units & 1 NEW Duplex Unit!! **Price Reduced!! \$410K!!!!**
• NICELY REMODELED 3-2-2 Brick, new Cent. A&H, built-ins, FP, 3125' lv. area, spklr. sys., fenced yard, MORE!! **REDUCED \$195K!! MAKE OFFER!!**
• Nicely Remodeled 3-2-2 Brick, Cent. A&H, built-ins, FP w/wood pellet insert, corner lot, fenced yd., auto. spklr., + lot w/stor. bldg!! 2159' lv. area!! **\$179K!! REDUCED!**
• VERY NICE 3-2-2 Brick Home, Cent. A&H, built-ins, FP, approx. 2749' lv. area, lots of storage, nice courtyard & landscaping, workshop/storage/fenced yd., Much More!! **Reduced-\$175K!**
• VERY NICE 3-2-2 Brick Home on corner lot, Cent. A&H, built-ins, FP, remodeled bathrooms, nice carpet, tile, sunroom, fenced yd., auto. spklr., approx. 2216' lv area!! \$125K!!
• 2-2-2 Brick Home, corner lot, built-ins, approx. 1695' lv. area, fenced yard., wkshp/stor., storm cellar!! \$67K!!
• 3-2-2 Brick, Cent. A&H, built-ins, approx. 2310' lv. area, 2 Franklin wood stoves, storm shelter, fans, fenced yd., man. spklr.!!! \$120,000!!
• VERY NICE 3-2-2 Home, Cent. A&H, built-ins, approx. 2271' lv. area, basement, 26' x 30' metal insulated bldg., fence yd.!! \$155K!!

LENA • COUNTRY CLUB
• 3 Bdrm, 2 bath, 2 carport, CENT A&H, Dishwasher, WB Stove, approx. 2156' lv. area, 217 E. Elm. \$60K!!
• 3-2-1 CP Brick Home, corner lot, fenced yd., DW, FP, tile & carpet, alarm sys., man. spklr., 2 cp & 2 stor. bldg.!! \$80K!!

operate tractor, rock picker, plow, disc, drill, harvest equip, sprayer, grain truck. Must be able to lift 60 lbs. Ahlemeier Farms, Inc., Gettysburg, SD.

continued on a8
REAL ESTATE
1670 sq ft country home 3/1.5/1 on 8 acres! Newly painted inside and out, nice layout & great location, sunroom, storage area, cellar & barn. Call 777-4858 to schedule a walk through.



109 FIFTH STREET • BOX 887
FARWELL, TEXAS 79325
806/481-3288 • Fax 806/481-3388
www.jbsudderthrealty.com

PEGGY SUDDERTH BROKER RES (806) 481-8149
DAREN SUDDERTH BROKER / CERT APPRAISER CELL (575) 799-4947

- Nice brick 1,450+- s.f. country home on 60 ac. near Progress, with 3 BR, 2 baths, ch/ref A/C, single car garage, metal roof, metal shop bldgs. & domestic well. Priced to sell. Call for more information.
- Large 3,500+- s.f. brick country home on 2.6 ac. N. of Lazbuddie, with 5 BR, 3 baths, ch/ref A/C, fireplace, basement, lots of recent remodeling, dom. well, and large 50' x 100' metal barn, on Hwy. Call for more details.
- Large 2,400+- s.f. stucco country home on 10 ac. near Progress, with 3 BR, 2 baths, has 2 living areas. Needs some carpet, but Sellers are willing to help. Call for more information.
- 157 acre irrigated farm with 2 irrigation wells, circle sprinkler, nice 3 BR, 2 bath, brick 2,000+- s.f. country home with basement, ch/ref A/C, fireplace, dom. well, and barns/corrals. Call for more details.
- 17 acre tract near Progress on paved road. Could be split into 2 smaller tracts. Would make nice home sites. Call for more information.



Ronald Byrd 575-760-1495 Licensed Broker
Crista Bass 806-946-7261 Sales Associate
Carleton Johnson 806-789-4289 Sales Associate

- New Listing** -Very nice 3 bedroom, 2 bath brick home, central air and heat, fireplace, stove, dishwasher, extra room for den, bedroom, or playroom, new fenced backyard, 2 car garage, priced to sell. Call for an appointment today!
- New Listing** -Nice 2 bdr., 1 bath brick home, central heat, appliances, large utility, single care garage, fenced backyard, Only \$60,000. Call for an appointment today.
- Lazbuddie-New Country Listing on Highway**-Spacious Spanish Style brick home, 3 bedroom, 2 1/2 bath, built-ins, central A/H, sunroom with indoor grill, fireplace, office, large utility, lots of storage, patio, 2 car garage, plus a lot more, all on approx. 10 acres, call for an appointment today!!

228 Main Street, Muleshoe, Texas
Check all of our listings at www.byrdrealestate.net



Vic Coker Land Co.
Agricultural Real Estate

Cottle County - Redwood Area - 470 acres on pavement, 326 acres in C.R.P. Balance in native pasture. Excellent hunting, good wildlife cover & feed.
Bailey County - 654 acres of C.R.P. Half just renewed for 10 years. Half has no year remaining on current contract. Near Wildlife refuge.
Bailey County - 249 acres just accepted into the C.R.P. SAFE (prairie chickens) program for 15 years. Cover crop in place. Good return on the investment.
Castro/Parmer Counties - Dodd area. 303 acres, 2 pivots, 4 wells, good soil, lays good. On pavement.

RURAL RESIDENTIAL
Southwestern Castro County - Brick home on 16 acres. 3 bedroom, 2 bath, 2 car garage. 40' x 60' x 18' steel barn and other outbuildings.
Lamb County - Earth Area - PRICE REDUCED: Nice 3 bedroom, 2.5 bath home on 3 acres with fenced yard, nice storage building and on pavement. Fireplace, 2 large living areas, formal dining room, large office. VERY NICE!

Vic Coker, Broker Barry Coker, Agent
Cell 806-946-7242 Cell 806-787-0917
316 Main Street • Muleshoe, Texas
Office: 806-272-3100 • www.vicoland.com

More Classifieds

continued from a7

HELP WANTED

Apply at nearest SSD Dept of Labor office use job listing # SD1546649.

4 Temp positions: Farm work, 03/01/12 to 12/31/12 @ 15.00 p/hr. Housing provided, 48 hrs p/wk. 3/4 guarantee, transportation and subsistence expenses to worksite paid after 50% completion of contract. Tools, equipment provided at no cost. Min. 3 months experience. Duties: drive, plant, harvest, store grain, repair operate tractor, rock picker, plow, disc, drill, harvest equip, sprayer, grain truck. Must be able to lift 60 lbs & obtain a drivers license within 30-90 days following hire. Ken Rustad Farms, Roseglen, ND. Interested? **Apply at ND Workforce Solutions office job # 265052.**

3 Temp positions: Farm work, 03/01/12 to 12/31/12 @ 15.00 p/hr. Housing provided, 48 hrs p/wk. 3/4 guarantee, transportation and subsistence expenses to worksite paid after 50% completion of contract. Tools, equipment provided at no cost. Min. 3 months experience. Duties: drive, plant, harvest, store grain, repair operate tractor, rock picker, plow, disc, drill, harvest equip, sprayer, grain truck. Must be able to lift 60 lbs & obtain a drivers license within 30-90 days following hire. Ken Rustad Farms, Roseglen, ND. Interested? **Apply at ND Workforce Solutions office job # 265052.**

3 Temp positions: Farm work, 03/01/12 to 12/31/12 @ 15.00 p/hr. Housing provided, 48 hrs p/wk. 3/4 guarantee, transportation and subsistence expenses to worksite paid after 50% completion of contract. Tools, equipment provided at no cost. Min. 3 months experience. Duties: drive, plant, harvest, store grain, repair operate tractor, rock picker, plow, disc, drill, harvest equip, sprayer, grain truck. Must be able to lift 60 lbs & obtain a drivers license within 30-90 days following hire. Ken Rustad Farms, Roseglen, ND. Interested? **Apply at ND Workforce Solutions office job # 265052.**

p/hr. Housing provided, 48 hrs p/wk. 3/4 guarantee, transportation and subsistence expenses to worksite paid after 50% completion of contract. Tools, equipment provided at no cost. Min. 3 months experience. Duties: drive, plant, harvest, store grain, repair operate tractor, rock picker, plow, disc, drill, harvest equip, sprayer, grain truck. Must be able to lift 60 lb & read and speak sufficient English. Shotkoski Hay Co, Lexington, NE. **Apply at NE DOL & Workforce Dev use job # 109424.**

3 Temp positions: Farm work, 3/2/12 to 12/31/12 @ 11.61p/hr. Housing provided, 48 hrs p/wk. 3/4 guarantee, transportation and subsistence expenses to worksite paid after 50% completion of contract. Tools, equipment provided at no cost. Min. 3 months experience. Duties: drive, plant, harvest, store grain, repair operate tractor, rock picker, plow, disc, drill, harvest equip, sprayer, grain truck. Must be able to lift 60 lbs & obtain a drivers license within 30-90 days following hire. Kenneth Paulson, Webster, ND. Interested? **Apply at ND Workforce Solutions office job # 264274.**

3 Temp positions: Farm work, 3/1/12 to 12/31/12 @ \$11.61 p/hr. Housing provided, 48 hrs p/wk. 3/4 guarantee, transportation and subsistence expenses to worksite paid after 50% completion of contract. Tools, equipment provided at no cost. Min. 3 months experience. Duties: drive, plant, harvest, store grain, repair operate tractor, rock picker, plow, disc, drill, harvest equip, sprayer, grain truck. Must be able to lift 60lbs. M&R Rausch Farms, Gettysburg, SD. **Apply at nearest SD Dept of Labor office use job listing # SD1547861.**

3 Temp positions: Farm work, 3/1/12 to 12/31/12 @ 15.00p/hr. Housing provided, 48 hrs p/wk. 3/4 guarantee, transportation and subsistence expenses to worksite paid after 50% completion of contract. Tools, equipment provided at no cost. Min. 3 months experience. Duties: drive, plant, harvest, store grain, repair operate tractor, rock picker, plow, disc, drill, harvest equip, sprayer, grain truck. Must be able to lift 60 lbs & obtain a drivers license within 30-90 days following hire. Ken Rustad Farms, Roseglen, ND. Interested? **Apply at ND Workforce Solutions office job # 265052.**

provided, 48 hrs p/wk. 3/4 guarantee, transportation and subsistence expenses to worksite paid after 50% completion of contract. Tools, equipment provided at no cost. Min. 3 months experience. Duties: drive, plant, harvest, store grain, repair operate tractor, rock picker, plow, disc, drill, harvest equip, sprayer, grain truck. Must be able to lift 60 lbs & obtain a drivers license within 30-90 days following hire. DJ Coleman, Inc., Baldwin, ND. Interested? **Apply at ND Workforce Solutions office job #264694.**

3 Temp positions: Farm work, 3/1/12 to 12/31/12 @ 9.30 p/hr. Housing provided, 48 hrs p/wk. 3/4 guarantee, transportation and subsistence expenses to worksite paid after 50% completion of contract. Tools, equipment provided at no cost. Min. 3 months experience. Duties: drive, plant, harvest, store grain, repair operate tractor, rock picker, plow, disc, drill, harvest equip, sprayer, grain truck. Must be able to lift 60lbs. M&R Rausch Farms, Gettysburg, SD. **Apply at nearest SD Dept of Labor office use job listing # SD1547861.**

3 Temp positions: Farm work, 3/1/12 to 12/31/12 @ 15.00p/hr. Housing provided, 48 hrs p/wk. 3/4 guarantee, transportation and subsistence expenses to worksite paid after 50% completion of contract. Tools, equipment provided at no cost. Min. 3 months experience. Duties: drive, plant, harvest, store grain, repair operate tractor, rock picker, plow, disc, drill, harvest equip, sprayer, grain truck. Must be able to lift 60 lbs & obtain a drivers license within 30-90 days following hire. Ken Rustad Farms, Roseglen, ND. Interested? **Apply at ND Workforce Solutions office job # 265052.**

3 Temp positions: Farm work, 3/1/12 to 12/31/12 @ 15.00p/hr. Housing provided, 48 hrs p/wk. 3/4 guarantee, transportation and subsistence expenses to worksite paid after 50% completion of contract. Tools, equipment provided at no cost. Min. 3 months experience. Duties: drive, plant, harvest, store grain, repair operate tractor, rock picker, plow, disc, drill, harvest equip, sprayer, grain truck. Must be able to lift 60 lbs & obtain a drivers license within 30-90 days following hire. Ken Rustad Farms, Roseglen, ND. Interested? **Apply at ND Workforce Solutions office job # 265052.**

disc, drill, harvest equip, sprayer, grain truck, Must be able to lift 60 lbs. Basic literacy & math skills required. 4-C AG, Sulphur Rock, AR. **Apply at nearest AR Dept of Workforce Services office use job listing # 311149.**

2 Temp positions: Farm work, 3/1/12 to 12/31/12 @ 11.61p/hr. Housing provided, 48 hrs p/wk. 3/4 guarantee, transportation and subsistence expenses to worksite paid after 50% completion of contract. Tools, equipment provided at no cost. Min. 3 months experience. Duties: drive, plant, harvest, store grain, repair operate tractor, rock picker, plow, disc, drill, harvest equip, sprayer, grain truck. Must be able to lift 60lbs. Lazy Diamond M Ranch, Gettysburg, SD. **Apply at nearest SD Dept of Labor office use job listing # SD1547880.**

HELP WANTED

* Delivery Technician Needed *
Full Time
8:30 a.m. - 5:30 p.m.
Monday - Friday
Must be 21 and have good customer service skills!
BENEFITS INCLUDE:
• 401(k)
• health insurance
• company phone & vehicle
Support Medical Company
103 S. Main Street • (806) 272-7552
Muleshoe • www.supportmedical.com

grain truck. Must be able to lift 60lbs. Bollweg Farms, Harrold, SD. **Apply at nearest SD Dept of Labor office use job listing # SD1547880.**

2 Temp positions: Farm work, 3/2/12 to 12/31/12 @ 11.61p/hr. Housing provided, 48 hrs p/wk. 3/4 guarantee, transportation and subsistence expenses to worksite paid after 50% completion of contract. Tools, equipment provided at no cost. Min. 3 months experience. Duties: drive, plant, harvest, store grain, repair operate tractor, rock picker, plow, disc, drill, harvest equip, sprayer, grain truck. Must be able to lift 60lbs. Lazy Diamond M Ranch, Gettysburg, SD. **Apply at nearest SD Dept of Labor office use job listing # SD1547880.**

HELP WANTED

* Delivery Technician Needed *
Full Time
8:30 a.m. - 5:30 p.m.
Monday - Friday
Must be 21 and have good customer service skills!
BENEFITS INCLUDE:
• 401(k)
• health insurance
• company phone & vehicle
Support Medical Company
103 S. Main Street • (806) 272-7552
Muleshoe • www.supportmedical.com

grain truck. Must be able to lift 60lbs. Bollweg Farms, Harrold, SD. **Apply at nearest SD Dept of Labor office use job listing # SD1547880.**

2 Temp positions: Farm work, 3/2/12 to 12/31/12 @ 11.61p/hr. Housing provided, 48 hrs p/wk. 3/4 guarantee, transportation and subsistence expenses to worksite paid after 50% completion of contract. Tools, equipment provided at no cost. Min. 3 months experience. Duties: drive, plant, harvest, store grain, repair operate tractor, rock picker, plow, disc, drill, harvest equip, sprayer, grain truck. Must be able to lift 60lbs. Lazy Diamond M Ranch, Gettysburg, SD. **Apply at nearest SD Dept of Labor office use job listing # SD1547880.**

HELP WANTED

* Delivery Technician Needed *
Full Time
8:30 a.m. - 5:30 p.m.
Monday - Friday
Must be 21 and have good customer service skills!
BENEFITS INCLUDE:
• 401(k)
• health insurance
• company phone & vehicle
Support Medical Company
103 S. Main Street • (806) 272-7552
Muleshoe • www.supportmedical.com

use job listing # SD1547870. Excellent opportunity for Assembly and Handling Person. Apply in person C&H Equipment CDL and Farm background a plus. Great retirement benefits provided. EOE.

FOR RENT

For Lease - 517 W. Ave E. 2



NOW HIRING CRUDE OIL DRIVERS! PLEASE CALL, COME BY OR VISIT OUR WEB-SITE TO GET STARTED!

www.kimrad.com

806-331-7148 OR 7146

371 W LOOP 335 SOUTH AMARILLO, TX 79118

bedroom 2 bath. 475mo 475dep. Call 956-821-3082 or 956-624-6805.

SERVICES

Certified Nurse Aide Classes Beginning February 3rd. Pre-Registration is Required Class size is limited. Runningwater Draw Care Center 806-285-2677 - Olton.


Billy Joe Tolliver and Mike Mitchell invite you to come out and visit Adobe Auto Sales on the Levelland Highway.

BUY HERE, PAY HERE

- ✓ **better deals**
We have a large inventory of vehicles and a staff empowered to help you drive away in your dream car. We'll make a deal that works for you plus every Adobe Auto Sales vehicle comes with 3-month power train warranty so you can drive with confidence.
- ✓ **better vehicles**
Our large inventory of vehicles includes the makes and models you're looking for - in good condition, with lower mileage and and all newer models.
- ✓ **better financing**
We are uniquely able to offer both in-house and bank financing to ensure you get the best available rate with a payment you can afford.

We would love for you to stop by so we can show you all we have to offer!


19th Street	Upland
Levelland Hwy 114	



Buick Enclave CXL
2008. Just arrived! This one is an all around gem!
Stock #1837




Dodge Charger SXT
2010. Fabulous and spotless! Lots of amenities for your driving pleasure!
Stock #1813




Chevy Silverado 1500 Z71
2005. Look! Look! Look at this sporty red ext. cab with four-wheel drive!
Stock #1885



Chevrolet Tahoe LTZ
2008. Awesome with great mpg*! Excellent safety features.
Stock #1681



Dodge Ram 1500 SLT
2010. Sport/TRX. Take a road, any road - love it! Nicely equipped quad cab.
Stock #1861



Cadillac Escalade
2006. Loaded with luxury & safety features. Fun and sporty!
Stock #1847

SPORTS NEWS

Local Ladies Defeat Lady 'Lopes

By Delton Wilhite
Sportswriter

It took the Lady Mules an extra four minutes but they used the extra time to pick up their second District 2-2A win in a matter of only five days.

The Lady Mules used seven free throws in the added time to outscore the Abernathy Lady Lopes 11-10 and come away with a 59-58 victory.

The Idalou Lady Cats put a halt to the Lady Mule two-game win streak by defeating the Lady Mules 68-25 Friday night.

Carly Krug made the Lady Mules first hoop of the game for the Lady Mules against Abernathy from the elbow and she added a second before the period ended.

Adrienne Precure drained a 3-pointer from the wing and Kaylie Morris was just touching the arc and her shot only counted two points. McKenna



Photograph by Stacy Conner

Getting Away During Keep Away

Lady Mule Alyssa Leal fights for possession of the basketball during the recent game against Idalou, only to have it slip away.

Dunham scored a bucket in the paint and Alyssa Leal made both her free throws in the opening period.

Abernathy trailed by a single point going into the second quarter 13-12.

Abernathy repeated

their 12-point pace to take a 24-22 lead at the half.

Morris moved back about four feet and

drained a long distance 3-pointer to crank the Lady Mules in the second quarter. She added another hoop

before the quarter ended. Dominique Mata hit from about eight feet and Leal made two the charity line.

Precure nailed her second trey of the game to get the Lady Mules started in the third quarter. She added a

basket and two free throws for seven points in the quarter. Krug finished an old-fashioned three-point play and Leal, Mata and Dunham each added a basket.

The 16 points put the Lady Mules on top 38-35 with eight minutes left in regulation.

Abernathy made up the three-point deficit in the final period and had taken two-point

lead as time wound down. Precure made a hoop with just under a second left to tie the game at 48-48 and send the game to over time.

Mata made the Lady Mules first hoop of the final quarter and Morris added a basket and a pair of free throws. Leal dropped in a hoop.

Krug made three free throws in the extra time. Leal and Dunham made a basket. Leal also made two free throws and Dunham added one. Precure chipped in one from the charity line.

Four Lady Mules

were in double figures with Leal setting the pace with 12 points, six rebounds and three steals. Precure and Morris dropped in 11 points each. Precure also had eight rebounds and six assists. Morris finished with 10 rebounds, four assists and four steals. Krug added 10 points and six rebounds.

Dunham made seven points and 10 rebounds. Mata finished with six points.

Idalou jumped out to a 21-8 lead in the opening period. Morris made

the Lady Mules' first hoop of the evening and Leal dropped in two baskets. Precure's hoop rounded out the scoring for the Lady Mules in the first quarter.

Precure found the range from behind the arc in the second period. She added two free throws and a hoop. Morris hit a 3-pointer and Mata added a pair of free throws. The Lady Mules trailed 40-20 at the half.

Precure made the Lady Mules only basket of the third quarter and the Lady Mules fell behind 52-22 with eight minutes left to play.

Agundis made the Lady Mules' only hoop of the final period but Morris chipped in a free throw.

Precure led the Lady Mules with 11 points and Morris dropped in six. Leal added four points and Mata and Agundis chipped in two each.

The Lady Mules traveled to Tulia to battle the Hornets Tuesday night and return home to host the Dimmitt Bobbies on Friday.

'Foul Trouble' Creates Mule Problems

By Delton Wilhite
Sportswriter

Antelopes and Wildcats seemed to be endangered species and that requires special protection.

The Mules were in foul trouble almost from the opening tip of their last two games.

Abernathy shot 29 free throws Tuesday night and Idalou stepped to line 38 times Friday.

The Mules went down to defeat on both occasions with Abernathy out scoring the Mules 60-51 after having attempted almost three times more free throws.

Idalou raced away from the Mules 77-33 with over six times as many free throw opportunities.

Hector Flores led the Mules out of the gate with a 3-pointer and a free throw in the opening period.

Eli Leal made a basket near the midpoint of the quarter.

The Mules trailed 18-7 after one quarter.

Leal dropped in a pair of hoops and three charity tosses for seven points in the second period.

Beau Avila opened the quarter for the Mules with a basket and Saul Elizalde added a hoop.

The Mules had out scored the Antelopes 11-10 in the second period but trailed 28-18 at the half.

Leal scored his only hoop of the second half 10 seconds into the third quarter.

Avila added a pair of hoops and two free throws. Shawn Atwood made a hoop and Flores drained his second trey of the night.

The Mules trailed 42-

31 with eight minutes left to play.

Avila nailed back-to-back 3-pointers to open the final period. He added a pair of hoops before the game ended for 10 points in the quarter.

Eric Orozco drained a trey before having a fifth foul called on him. Elizalde hit a pair of buckets, Louie Guzman added one hoop and Juan Guerrero made a free throw.

Avila led the Mules in scoring with 18 points and Leal dropped in 12. Flores added seven points, Elizalde made six and Orozco had three.

Guzman and Atwood scored two points each and Guerrero chipped in one.

Leal scored the Mule's first basket for the Mules against Idalou. He added two more in the second period and a free throw.

Avila and Elizalde had a hoop each in the opening period and Guerrero added a basket in the second period. The Mules trailed 43-13 at the half.

The Mules made nine in the third period and 11 in the final frame. Leal opened the second half with back-to-back baskets. He added another hoop in the final frame along with a pair of treys.

Orozco nailed a trey

just before the third period ended and Flores added a hoop.

Avila opened the final period with a hoop and added a free throw.

Leal led the Mules with 19 points and Avila added five.

Orozco dropped in three points and Flores, Elizalde and Guerrero chipped in two points each.

The Mules traveled to Tulia to meet the Hornets Tuesday night and return home to take on the Dimmitt Bobcats Friday.



Photograph by Stacy Conner

Mule Beau Avila passes the ball in the recent game against Idalou.

BLACKWATER VALLEY SWCD

NOW taking orders for windbreak and ornamental trees.. We also have Pecan trees. **Reminder: Trees Sales End DON'T MISS!! March 14, 2012**

CALL 806-272-4538 EXT. 3
105 E. AVENUE D. MULESHOE

Support the Boosters Who Support Our Teams, Schools and Community!

MULESHOE ANIMAL CLINIC & MULESHOE VET SUPPLY

1430 US HWY. 84, MULESHOE
272-3061 OR 272-4990

BCEC
A Touchstone Energy Cooperative

BAILEY COUNTY ELECTRIC COOPERATIVE ASSN.
610 E. American Blvd.
Muleshoe • 272-4504

McDONALD'S OF MULESHOE

1315 W. American Blvd.
806-272-3333

Muleshoe Tire

107 Main Street, Muleshoe
272-4594

FIVE AREA TELEPHONE COOPERATIVE

302 Uvalde
Muleshoe, TX
272-5533

WESTCARD

Western "66"
607 N. 1st St.
Muleshoe • 272-4556

CHS

Service Center
Clovis Hwy. West
Muleshoe • 272-4203
Bruce Bruns, Location Mgr.

Irrigation Pumps & Power
www.drippi.com
West Hwy. 84
Muleshoe • 272-5597

ZIMMATIC CENTER-PIVOTS

LOWE'S MARKETPLACE
401 W. American Blvd., Muleshoe
272-4585

MULESHOE VALLEY INC.

2601 W. American Blvd.
P.O. Box 631
Muleshoe, Texas
(806) 272-4266
Mobile (806) 946-8763
mviinc@fivearea.com

WE SUPPORT THE MULES & LADY MULES!

Jan. 27th • JVB - 5:00 PM • VB - 8:00 PM (Dimmitt, Here)
JVG - 5:00 PM • VG - 6:30 PM
Jan. 31st • JVB - 5:00 PM • VB - 8:00 PM (Littlefield, There)
JVG - 5:00 PM • VG - 6:30 PM
Feb 3rd • JVB - 5:00 PM • VB - 8:00 PM (Floydada, There)
JVG - 5:00 PM • VG - 6:30 PM



SPORTS NEWS

JV Lady Mules Take Down The Lady Cats

By Delton Wilhite
Sportswriter

The JV Lady Mules doubled up on the Idalou Lady Cats Friday night and then went on to down them 26-23.

Samantha Vasquez hit a basket a minute and half into the game to get the Lady Mules started. Liliana Vasquez made two hoops and Celeste Flores added a bucket.

The Lady Mules led 8-4 at the end of the first quarter.

L. Vasquez went to the line and made both free throws to open the second period. Flores made a hoop and Shanice Rosas chipped in a free throw.

Daniela Diaz beat the buzzer for the final hoop of the half. The Lady Mules led 15-10 at the half.

Idalou made up ground in the third quarter by out scoring the Lady Mules 7-4.

L. Vasquez and Flores made a hoop each. The Lady Mules led 19-17 with eight minutes left to play.

Flores knocked down a pair of hoops in the final quarter. Carolina Franco added a basket and S. Vasquez made one from the charity line.

Flores led the Lady Mules with 10 points and L. Vasquez dropped in eight. S. Vasquez finished with three points and Franco and Diaz made two points each. Rosas chipped in a single point.

The Lady Mules traveled to Tulia Friday night and return home to host the Dimmitt Bobbies.

Eighth Grade Ladies Defeated By Idalou

By Delton Wilhite
Sportswriter

Idalou set the stage to defeat the eighth grade Lady Mules by out scoring the Lady Mules 9-5 in the opening period.

The Lady Mules battled Idalou a lot closer than when the two teams met the first time.

Idalou took that contest 47-7 but the Lady Mule put up a stronger battle on offense and defense and were defeated 26-16.

Sasha Esparza made two free throws for the Lady Mules first points of the game. Jo Moore scored in the paint and Cas Moore added a free throw.

The Lady Mules turned up the heat in the second period and held Idalou to just four points. Lindsey Burris and Esparza made a

hoop each.

The Lady Mules trailed 13-9 at the half.

Dez Guterrez and Esparza made a hoop each in the third period while Idalou scored nine to extend their advantage to 22-13.

Jo Moore cleaned up the back side by putting back a rebound in the final period and Cas Moore added a free throw.

Esparza led the Lady Mules with six points and Jo Moore dropped in four.

Burris, Cas Moore and Guterrez finished with two points each.

The Lady Mules traveled to Tulia Monday and will return home Jan. 30 to host the Dimmitt Bobbies in their final home appearance.

The Lady Mules will complete their season on the road in Littlefield.



Taking The High Road

Lady Mule Kaylie Morris "takes the high road," to block a shot during the recent game against the Idalou Lady Cats.

Photograph by Stacy Conner

Seventh Grade Ladies Bring The Fire Power

By Delton Wilhite
Sportswriter

The seventh grade Lady Mules brought enough fire power to the gym Monday night to defeat the Idalou Lady Cats.

Idalou had won the match up in their house 23-20 the Lady Mules returned the favor.

The Lady Mules defeated the Idalou 25-21 by utilizing a very stingy defense.

Idalou took a one point lead after one period 6-5. Emily Precure made a free throw 30 seconds into the game and added two more charity tosses

before the period ended. Sadie Sudduth made the Lady Mules first basket of the game.

Sa. Sudduth heated up with a pair of hoops in the second period.

Continued on B3

JV Mules Suffer Slow Start

By Delton Wilhite
Sportswriter

Tony Molina got off to a slow start against the Abernathy Antelopes Tuesday night scoring a single free throw in the opening period.

He added a basket in the second period.

He heated up in the second half with three baskets and free throw to lead the Mules with 10 points in a losing effort.

Abernathy recorded a 42-27 win over the Mules.

Blaine Hurtado finished with five points. He made a hoop in the second and third periods and made one from the line.

Austin Ross made all four of his points in the first period with a pair of hoops.

Juan Murillo made a bucket in the second and third periods for four points.

Joel Regalado and Adrian Torres made a hoop each in the second period.

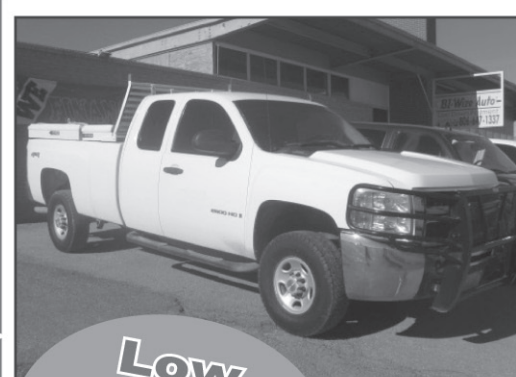
The Mules played Idalou on Friday night and traveled to Tulia to meet the Hornets January 24.

The Mules return home to host the Dimmitt Bobcats Friday night.

BUY HERE! ** PAY HERE!

BI-WIZE AUTO

Silverado
2500HD
2007



Low
Down
Payment!

CONTACT :

**Rick
Alarcon**

806.240.4008



**Maxima
2004**

**Mustang
GT
2002**



We Finance!

SI HABLA
ESPAÑOL

HUGE
SELECTION OF
SUV'S, PICK-UPS
AND CARS!

200 S. Broadway St.
Dimmitt, TX 79027
PH: 806.647.1337
www.biwizeauto.com



Our school board members are committed to public education and the continuing success of Muleshoe ISD students. Take time In January to thank MISD school board members for a job well done!

Thurman Myers, President
Daniel Guzman, Vice President
Carroll Precure, Secretary
Jay Cage
Kelly Kettner
Sergio Leal
Curtis Preston

AGRICULTURAL NEWS

USDA 2012 DCP, ACRE Sign-up Are Under Way

Bailey County USDA Farm Service Agency (FSA) Executive Director Kim Hanlin has announced that sign-up for the 2012 Direct and Counter-cyclical Program (DCP) and the Average Crop Revenue Election (ACRE) Program are under way, and continues through

June 1. "I encourage producers to make an appointment with our office to sign-up for program benefits," said Hanlin. Eligible DCP participants receive a direct payment and/or a counter-cyclical payment. Direct payment rates are established

by statute regardless of market prices. FSA reminds producers that the 2008 Farm Bill does not authorize advance direct payments. Counter-cyclical payments vary depending on market prices, and are issued only when the effective

price for a commodity is below its target price (which takes into account the direct payment rate, market price and loan rate). ACRE protects producers from farm market revenue declines when revenue triggers are met for a commodity at both the state and

farm level. Farms that are already enrolled in the Direct and Counter-Cyclical Program (DCP) for a crop year can elect to switch to ACRE before the end of sign-up. Both DCP and ACRE participants must sign annual contracts to be eligible for program benefits. All signatures

of producers who will receive a share of DCP and ACRE payments must be on file by the June 1 deadline. For more information about DCP and ACRE, please contact the Bailey County FSA office at 806-272-4538 or visit the web at www.fsa.usda.gov/tx.

Emergency Farm Loan Applications Are Being Accepted By Farm Service Agency

Applications for emergency farm loans for losses caused by Wildfires are being accepted at the Farm Service Agency (FSA) office located in 2431 S. Farwell Ave., Littlefield, Texas, Jim W. McCary said recently.

of actual production and/or physical losses resulting from the Wildfires. Jim W. McCary said farmers may be eligible for loans of up to 100 percent of their actual losses or the operating loan needed to continue the agricultural business, whichever is less.

production or suffered any physical loss to be eligible for an FSA emergency loan under this disaster designation," McCary said. Producers participating in the Federal Crop Insurance program will have to consider proceeds from those programs in determining their production loss.

loss. "Applications for loans under this emergency designation will be accepted until April 18, 2012, but farmers should apply as soon as possible. Delays in applying could create backlogs in processing, with possible delays into the new farming season", Jim W. McCary said.

The Lady Mules entered Monday's game against Idalou undefeated on the season. They had downed Idalou 35-22 in their initial meeting. The Lady Mules have moved several players to the junior varsity and varsity level since playing Idalou in the first round. But the Lady Mules put up a battle before finally going down to defeat 32-26.

Yanette Orozco opened the second half for the Lady Mules with a hoop and chipped in a free throw. DeBruin made a hoop on an in-bound play and Loya stuck back a rebound for a basket. Angelina Perez made a pair of free throws and a hoop. The Lady Mules had pushed their lead to 23-20 by out scoring Idalou 11-10 in the third period.

Cochran County is one of four primary Counties in Texas and Hockley, Lamb and Bailey Counties are three of 22 contiguous counties in Texas recently named by the President of the United States, Barack Hussein Obama II eligible for loans to cover part

For farmers unable to obtain credit from private commercial lenders, the interest rate is 3.75 percent. "As a general rule, a farmer must have suffered at least a 30 percent loss of crop

Additionally, any insurance proceeds received by producers as a result of the physical loss will have to be considered in determining their total

FSA is a credit agency of the U.S. Department of Agriculture. It is authorized to provide disaster emergency loans to recognized farmers who work at and rely on farming for a substantial part of their living. Eligibility is extended to individual farmers who meet U.S. citizenship requirements and to farming partnerships, corporations, or cooperatives in which U.S. citizenship requirements are met by individuals holding a majority interest.

The Lady Mules jumped out to a 10-6 lead in the first period. Adriana Loya set the scoring pace in the first period with three hoops. Miranda DeBruin and Jaida Gandarilla dropped in a hoop each. Defense took the second period as Idalou was held to four points and the Lady Mules only two points were put in by DeBruin. The Lady Mules led 12-10 at the half.

Idalou came alive in the final frame to out score the Lady Mules 12-3 for the win. Loya, Orozco and Bethany Prater made a free throw each in the final quarter. Loya led the Lady Mules with nine points, DeBruin dropped in six and Perez added four. Orozco made all three of her points in the third period, Granadarilla made two and Prater chipped in one. The Lady Mules will host the Dimmitt Bobbies Jan. 30.

January Cattle On Feed Are Up

Cattle and calves on feed for slaughter market in Texas feedlots with capacity of 1,000 head or more totaled 2.94 million head on Jan. 1, up four percent from a year ago.

Texas commercial feeders marketed 430,000 head during December, up eight percent from last year but down five percent from the November total.

head, down 16 percent from the November total. Marketings were up seven percent from last month to 375,000 head. Cattle and calves on feed for slaughter market in the United States in feedlots with a capacity of 1,000 head or more totaled 11.9 million head on Jan. 1. This inventory was three percent above Jan. 1, 2011.

Information regarding Disaster Assistance Programs may be found online at <http://disaster.fsa.usda.gov>.

The FSA office in 2431 S. Farwell Ave., Littlefield is open from 8 a.m. to 4:30 pm, Monday through Friday. Additional Information regarding Disaster Assistance Programs may be found online at <http://disaster.fsa.usda.gov>.

December placements of cattle and calves weighing less than 600 pounds totaled 550,000 head; 600-699 pounds totaled 390,000 head; 700-799 pounds totaled 365,000 head; 800 pounds and greater totaled 378,000 head. Marketings of fed cattle during December totaled 1.80 million head, two percent below 2010.

According to the monthly report released by the Texas Field Office, the estimate was down two percent from the Dec. 1 level. Producers placed 400,000 head in commercial feedlots during December, down five percent from a year ago, and down 15 percent from the November 2011 total.

On Jan. 1, there were 2.48 million head of cattle and calves on feed in the Northern High Plains, 84 percent of the state's total. The number on feed across the area was up four percent from last year but down two percent from the December total.

Placements in feedlots during December totaled 1.68 million head, six percent below December 2010.

The Lady Mules will complete their season on the road in Littlefield.

Reynolds continued to patrol the lane in the third quarter and dropped in a pair of hoops. Sydnie Sudduth joined the fray on offense with a 15-foot jump shot. Sa. Sudduth capped the quarter with a basket. Idalou's only hoop came at the buzzer and the Lady Mules had opened a 21-15 lead.

Idalou tried to come back in the final quarter but the Lady Mule tight defense continued to hold them down. Reynolds made the Lady Mules final hoop and Sa. Sudduth dropped in a pair of free throws to nail the door shut on Idalou. Sa. Sudduth and Reagan Reynolds led the Lady Mules with 10 points each. Precure added three points and

Reagan Reynolds controlled the paint and came alive with a pair of baskets. The Lady Mules held Idalou to seven points and tied the game at 13-13 by the intermission. Reynolds continued to patrol the lane in the third quarter and dropped in a pair of hoops.

Sy. Sudduth finished with two points. The Lady Mules traveled to Tulia Monday night and return home January 30 for their final home appearance of the year. The Lady Mules will complete their season on the road in Littlefield.

Marketings of fed cattle during December totaled 1.80 million head, two percent below 2010.

Reynolds continued to patrol the lane in the third quarter and dropped in a pair of hoops.

Sy. Sudduth finished with two points. The Lady Mules traveled to Tulia Monday night and return home January 30 for their final home appearance of the year. The Lady Mules will complete their season on the road in Littlefield.

Marketings of fed cattle during December totaled 1.80 million head, two percent below 2010.

Seventh Grade Ladies...

Continued from B2 Reagan Reynolds controlled the paint and came alive with a pair of baskets. The Lady Mules held Idalou to seven points and tied the game at 13-13 by the intermission. Reynolds continued to patrol the lane in the third quarter and dropped in a pair of hoops.

Sy. Sudduth finished with two points. The Lady Mules traveled to Tulia Monday night and return home January 30 for their final home appearance of the year. The Lady Mules will complete their season on the road in Littlefield.

Marketings of fed cattle during December totaled 1.80 million head, two percent below 2010.

Reynolds continued to patrol the lane in the third quarter and dropped in a pair of hoops.

Sy. Sudduth finished with two points. The Lady Mules traveled to Tulia Monday night and return home January 30 for their final home appearance of the year. The Lady Mules will complete their season on the road in Littlefield.

Marketings of fed cattle during December totaled 1.80 million head, two percent below 2010.

Freshmen Ladies Fall To Idalou, 32-26

By Delton Wilhite Sportswriter

The freshmen Lady Mules entered Monday's game against Idalou undefeated on the season. They had downed Idalou 35-22 in their initial meeting. The Lady Mules have moved several players to the junior varsity and varsity level since playing Idalou in the first round. But the Lady Mules put up a battle before finally going down to defeat 32-26.

Yanette Orozco opened the second half for the Lady Mules with a hoop and chipped in a free throw. DeBruin made a hoop on an in-bound play and Loya stuck back a rebound for a basket. Angelina Perez made a pair of free throws and a hoop. The Lady Mules had pushed their lead to 23-20 by out scoring Idalou 11-10 in the third period.

The Lady Mules jumped out to a 10-6 lead in the first period. Adriana Loya set the scoring pace in the first period with three hoops. Miranda DeBruin and Jaida Gandarilla dropped in a hoop each. Defense took the second period as Idalou was held to four points and the Lady Mules only two points were put in by DeBruin. The Lady Mules led 12-10 at the half.

Idalou came alive in the final frame to out score the Lady Mules 12-3 for the win. Loya, Orozco and Bethany Prater made a free throw each in the final quarter. Loya led the Lady Mules with nine points, DeBruin dropped in six and Perez added four. Orozco made all three of her points in the third period, Granadarilla made two and Prater chipped in one. The Lady Mules will host the Dimmitt Bobbies Jan. 30.

McDaniel's APPLIANCE 1020 Main Street, Clovis, NM
505-762-4481 or 800-682-7891

Time for new appliances?

WE ARE YOUR HOMETOWN WHIRLPOOL DEALER.

WE NOW CARRY SPEED QUEEN!

Names & Numbers namesandnumbers.com

Whirlpool

Don't Miss Out on your local news!

Subscribe TODAY!

Muleshoe Journal

One year in Bailey County...carrier delivered **\$27.00**

One year in Bailey County...mailed **\$29.00**

One year "out of Bailey County"...mailed **\$40.00**

Electronic delivery...www.muleshoejournal.com **\$22.00**

201 W Ave C, Muleshoe, TX 79347
Call 806-272-4536

INDOOR STORAGE FOR LARGE EQUIPMENT AVAILABLE

COMBINES, COTTON STRIPPERS, PLANTERS, TRAILERS, RVS


MONTHLY RATE DEPENDING ON SPACE USED

CALL MAX KING @ 806-946-8455 (CELL)
OR 806- 272-3918 (HOME)

Charles Oil & Gas, Inc.

DOT Inspections on semi trucks and trailers

Hwy. 60 Bovina, Texas 251-1284



ENTERTAINMENT NEWS

We always think about safety...  ...first when we try exciting new things. 

Newspaper Fun!

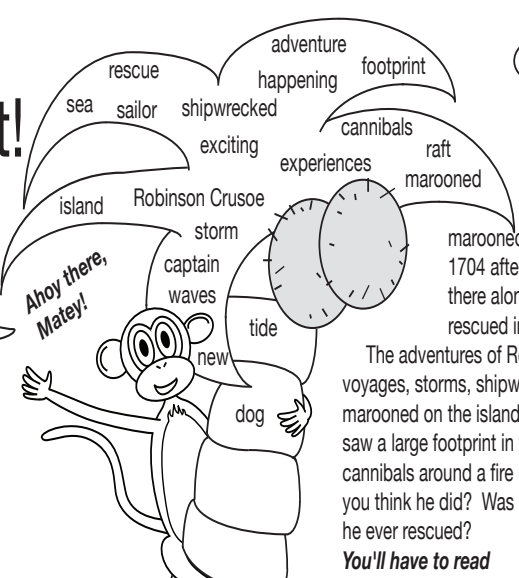
www.readingclubfun.com Annimills LLC © 2012 V9-N4

Adventures and Excitement!

Have you had any exciting adventures lately? Many people are adventurous. They like new and unusual experiences. A few people even like to do things that are very bold or full of risks. These people like danger and thrills.

I love new adventures but I think that we should leave the dangerous, bold acts to the characters in movies and books!

Did you know that some of the ideas for adventure stories are based on the events of real people's lives?



Daniel Defoe got the idea for his book, **Robinson Crusoe**, from the adventures of a real sailor. The sailor, named Alexander Selkirk, was marooned on an island in the Pacific Ocean in 1704 after an argument with his captain. He lived there alone for more than four years until he was rescued in 1709.

The adventures of Robinson Crusoe are filled with sea voyages, storms, shipwrecks and pirates! One day, after being marooned on the island (with only a dog for a friend), Crusoe saw a large footprint in the sand. Later, he saw about 30 cannibals around a fire ready to kill two men. What do you think he did? Was he ever rescued?

You'll have to read the book to find out!

Find and circle the words in the tree in the puzzle on the island!

SHIOSHILJBERHJ
 NJIYLNETRNASLI
 IHYPHENINGTGR
 AUROBINSONCRUSOEUAKEYEKENUY
 TURWIOSTREKDLKIERFESXWAVES
 PNIMNIEOIEFOOTPRINTKICPJKIW
 ADVENTUREIGUTBFDEXPERIENCES
 CYESAUMARONEDKUSTEATKUNVD
 YQNRURYESQXDIUBNJCOPISLAND
 MNVCZTIDEKCEWRPIHSUUNNIRTWA
 RGSDFVBNJKOIIYUIOPLKJEGNFVES

Print out: Super Bowl, Wildlife in Winter, and Africa Animals.

Visit our website: www.readingclubfun.com

More Free Puzzles!

Don't forget to print out free reading logs and certificate sets too.

Tagore, a famous poet from India, gave advice on "taking the plunge" into an adventure by saying "You can't cross the sea merely by..."

Use the signal flags below to fill in the blanks above:

Signal Flags A B C D E F G H I
 Each of these flags stands for a letter of the alphabet.

J K L M N O P Q R
 S T U V W X Y Z

February Adventures

What adventure is taking place here? Who is venturing forth to find out what is going on in the "outside" world? (Hint: This famous animal is poking his head out of his cozy winter home. If he sees his shadow, some believe that there will be six more weeks of winter.)

Ek! It's too cold to go outside yet!

Wow! It's so sunny today!

Yahoo!

This year we're making chicken and cheese empanadas. We're also stocking up on soda, veggie trays, chips and, of course, dips!

Super Bowl Excitement!

Pop Quiz!

Read each statement about the Super Bowl championship football game. Circle the letter "T" if you think it is true. If you think it is false, circle the letter "F."

- The Super Bowl is the first football game played to kick off the football season. T F
- This year the Super Bowl game is being played in Indianapolis, Indiana. T F
- The Super Bowl game is always played on a Tuesday. T F
- People like to gather together with their families and friends to watch the game. T F
- Some favorite Super Bowl foods are buffalo chicken wings, chili, mini meatballs, pizza, brownies, chips and dips. T F
- During the halftime show famous people play instruments and sing. T F

Wives of the Bible

E H H Q M K M L Z F Y B R F A F N R W B P F G T C
 E E M B R H P V L M Q C F H G R M H A K L I M B H
 V L W O A V A S Z H S V J P J J G S W A F Y B I B K
 G I X E N X O O Z N V C Z E N Y D V A I G Y I C C J
 B Z L Z E C M S I L X U J U C K K Q I P D E H Y J
 G A P M C E X P A H M V W K W H Y M A S P S A Q P
 T B A S E M A T H A S A X X N P A E F U D H L H Z
 J E V H K Z T Y A X T E H S R I M D V S N L I B R
 G T Q N B G T K Y A P R R W B N G F A L W R C R R
 B H D H K M A Z R B F V Y E E X Y J G A P P B O A
 E N D K T H K A V Z A R L L Z I C E V B J U R L F
 U X P H K E H M U M Q T J D L P Q H F I E A N E G
 A T I O O N V Q C N V N H X W S W O H G H L Q B G
 Y I S L M S I E Q V A U T S T F Y S Z A N M V E H
 D O P X G W H O D U W G H B H M G H B I D S K Z W
 M T C N N H Z E B H W H S D Z E P E S L E M X E B
 B I C G V G N F F J V R T B D C B B E E A U Q J H
 R B M S A R A I N E W S O X S C P A R R D Y X M V
 O E P O P O C C Z V J N W S M R J H Y K Q O Z D K
 S J X U U U J Z Q R P V S W G D L N Y U O E H D R

Cookies Available

Muleshoe's Girl Scouts will be holding a "cookie kick-off sale" on the front lawn of the Girl Scout Hut, 815 W. Second, on Saturday, Jan. 28, from 10 a.m. until 2 p.m.

Addresses for charitable giving suggested

- Muleshoe Heritage Foundation Center, P.O. Box 201, Muleshoe, Texas 79347, (806) 272-5873.
- MOST Scholarship (given to all graduating MISD seniors yearly), c/o Superintendent Dr. Gene Sheets, 514 W. Ave. G, Muleshoe, TX 79347.
- Oneita Wagnon Senior Center, P.O. Box 292, Muleshoe, TX 79347.
- Hope Chest, P.O. Box 175, Muleshoe, TX 79347
- Muleshoe Hospital Auxiliary, c/o Muleshoe Area Medical Center.
- Bailey County Food Pantry, P.O. Box 175, Muleshoe, TX 79347.
- Meals on Wheels, 300 1st St., Muleshoe, TX 79347
- Muleshoe Volunteer Fire Department, c/o Muleshoe City Hall, 215 S. First, Muleshoe, TX 79347, or call 272-4528.
- Lazbuddie EMS and Volunteer Fire Department, P.O. Box 125, Lazbuddie, TX 79053.
- Park View Nursing Care Center, 1100 W. Ave. J, Muleshoe, TX 79347.
- Muleshoe Memorial Park Cemetery, Inc., 104 E. Ave. C, Muleshoe, TX 79347, or call 272-5727.
- Muleshoe Area Educational Foundation, P.O. Box 62, Muleshoe, TX 79347.
- Muleshoe Chamber of Commerce & Agriculture, 115 E. American Blvd., Muleshoe 79347.
- Bailey County Child Welfare Board, P.O. Box 243, Muleshoe TX 79346, or call 272-3204.
- Muleshoe Boy Scouts, 609 W. Seventh, Muleshoe, TX 79347, or call 806-946-9908.

SHOP THESE MULESHOE MERCHANTS!

Muleshoe Auto Parts

Quick Oil Change & Service

102 W. American Blvd.
272-4288

Auto Plus

FARMERS

Julie DeBruin
Agent

Call for a free quote
**AUTO • LIFE
HOME • BUSINESS**

1602 W. American Blvd.
Muleshoe, Texas
272-7548
jdebruin@farmersagent.com

2231

RED WING SHOES
Made in USA

Lowe's

MARKETPLACE

401 W. American Blvd.
Muleshoe, Texas
272-4585

YOU'RE INVITED...
TO A TOWN HALL MEETING WITH

Jim Landtroop Texas State Representative
COURAGEOUS CONSERVATIVE

Thursday
February 2, 2012
3:00 - 4:00pm

Muleshoe State Bank
101 West American Boulevard

Pol. Adv. Paid for by Jim Landtroop Campaign; P.O. Box 1965, Plainview, TX 79073-1965.

Muleshoe Animal Clinic
Welcomes
Dr Jennifer Ermon

She will be taking appointments
Monday thru Friday
8:30 a.m. to 12:00 p.m.

Office (806) 272-3061

Dr Ermon graduated from Louisiana State University in 2007
She and her husband, Michael,
children Hayden & Grayson
moved here from Pine Grove, LA
Michael is the manager of Cal-Maine Foods in Farwell, TX

BAILEY COUNTY JUNIOR LIVESTOCK SHOW

2012 Junior Livestock Show Results Released

Local youngsters took part in the annual junior livestock show Friday and Saturday, Jan. 20-21, at the Bailey County Coliseum.

Among the recipients of this year's awards was Conner Harrison, who received the Jimmy Dale Black Award.

The results from the 2012 Bailey County Junior Livestock Show are as follows:

Beef Show

American — Conner Harrison, American, Breed Champion; Baylee Bessire, American, Reserve Breed.

Beef Heifer — Shelbi Harrison, Breed Champion; Marki Stearmer, Reserve Breed; T.J. McCall, 2; Baylee Bessire, 2; Trevor McCall, 3.

British — Braden Bessire, Reserve Champion; Baylee Bessire, Reserve Breed; Conner Harrison, 2; Baylee Bessire, 2; Shelbi Harrison, 3.

Exotic — Conner Harrison, Exotic, Grand Champion.

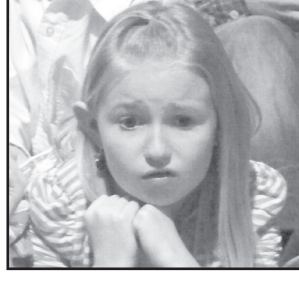
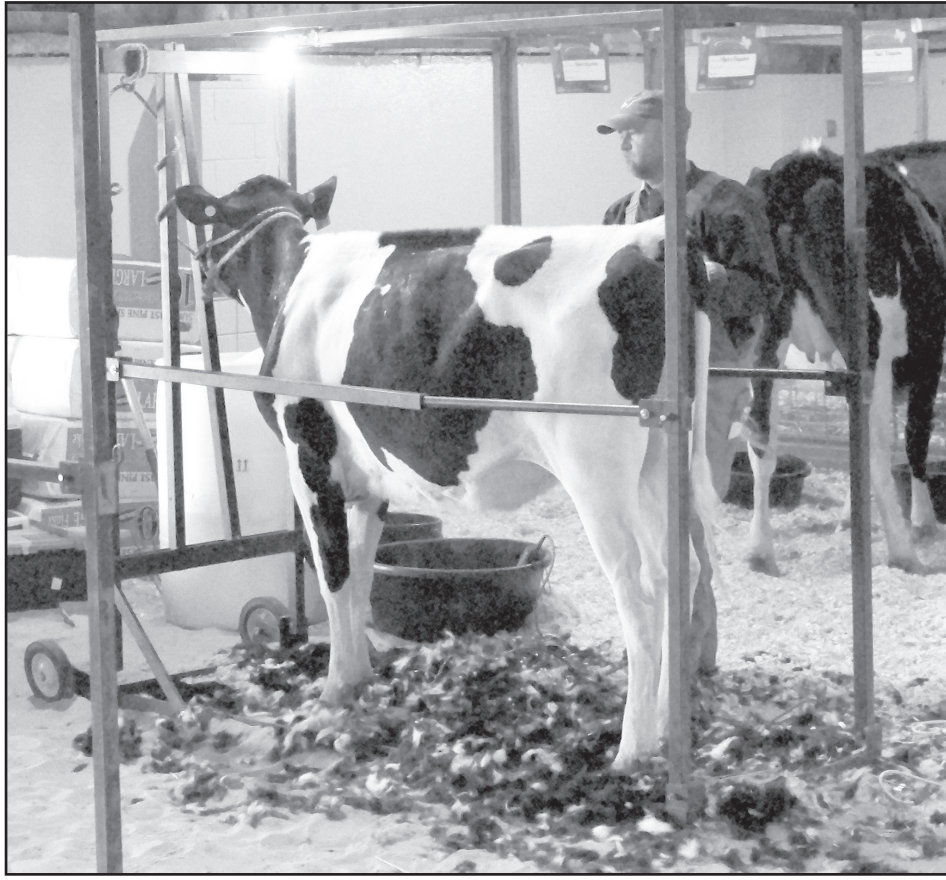
Dairy Show

Dairy — Aden Nickerson, 1; Miranda deBruin, 1; Abby Boehning, 1; Tori Beckerink, 1; Austin Atchley, 1; Martin Bejarano, Grand Champion; John deBruin, 1; Tori Beckerink, 2; John deBruin, 2; Saul Bejarano, 2; Triston Boehning, 2; Miranda deBruin, 2; Miranda deBruin, Reserve Champion; Triston Boehning, 2; Lani Ruthardt, 3; Triston Boehning, 3; Tori Beckerink, 3; T.J. Beckerink, 3; Abby Boehning, 3; Adan Bejarano, 3; Brandon Nickerson, 3; T.J. Beckerink, 4; Brandon Nickerson, 4; Keenan Wilson, 4; Austin Atchley, 4; John deBruin, 4; Keenan Wilson, 4; Chansee Wilson, 5; Aden Nickerson, 5; Aden Nickerson, 5; Gabe Beckerink, 5; Gabe Beckerink, 6.

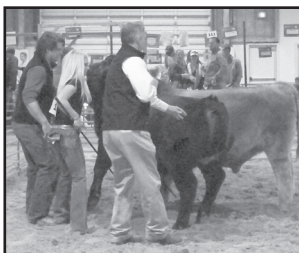
Goat Show

Goat — William Wauson, 1; Jose Quintana, 1; Shelbi Harrison, Reserve Champion; Lani Ruthardt, 1; Macoy Ruthardt, 1; Braden Bessire, 1; Baylee Bessire, 1; Braden Bessire, Grand Champion; Jose Quintana, 2; Mari Quintana, 2; Cassidy Cage, 2; Baylee

Continued on B6



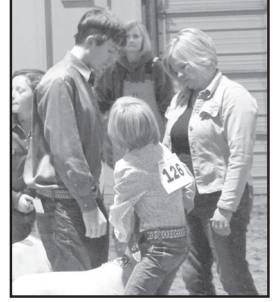
Photographs by Larry Thornton



Earl Ladd & Sons, Inc.

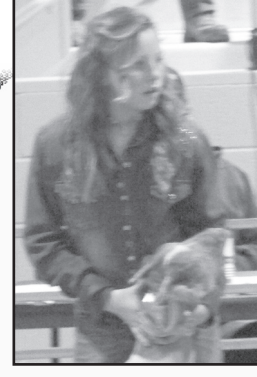
602 W. American Blvd., Muleshoe
(806) 272-3308

You're all winners in our eyes! Thanks for putting in the hard work that made the 2012 show such a success!



Good Job Kids!

We are proud of all the Area Stockshow Show Participants.



We know feeding and taking care of your show animals is big job.



We appreciate your hardwork and determination.

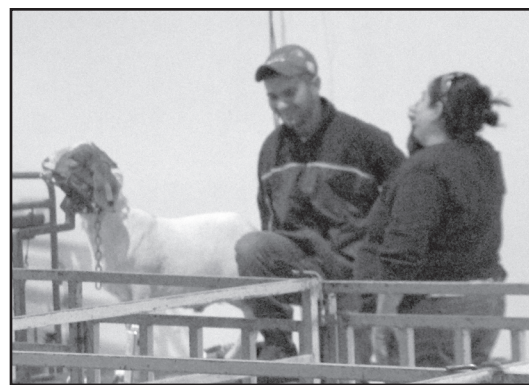
MULESHOE FEED BARN
HI-PRO 311 W. American Blvd HI-PRO
272-5626 or 225-7200
Arlyn Giesbrecht



BAILEY COUNTY ELECTRIC COOPERATIVE ASSOCIATION

A Touchstone Energy® Cooperative

610 E. American Blvd • Muleshoe • 272-4504



Congratulations Area Livestock Show Participants!

We are always proud to support the youth of Bailey County & the surrounding areas!

Hill, Sharp & Associates P.L.L.C.

CERTIFIED PUBLIC ACCOUNTANTS



We proudly support all the youth of Bailey County and the surrounding area.

Jana A. Hill CPA
C. David Sharp CPA

1910 West American Boulevard
Muleshoe, Texas 79347
(806) 272-7502

BAILEY COUNTY JUNIOR LIVESTOCK SHOW

Show Results...

Continued from B5
 Ruthardt, 2; Baylee Ruthardt, 2; Baylee Bessire, 2; Nathan Rejino, 2; Braden Bessire, 2; Chansee Wilson, 3; Alfredo Sanchez, 3; Lani Ruthardt, 3; William Wauson, 3; Mari Quintana, 3; Jessica Kube, 3; Cassidy Cage, 3; Baylee Bessire, 3; Chuy Valdez, 4; Drew Wilson, 4; Alfredo Sanchez, 4; Cassidy Cage, 4; Nathan Rejino, 4; Jessica Kube, 4; William Wauson, 5.

Hog Show

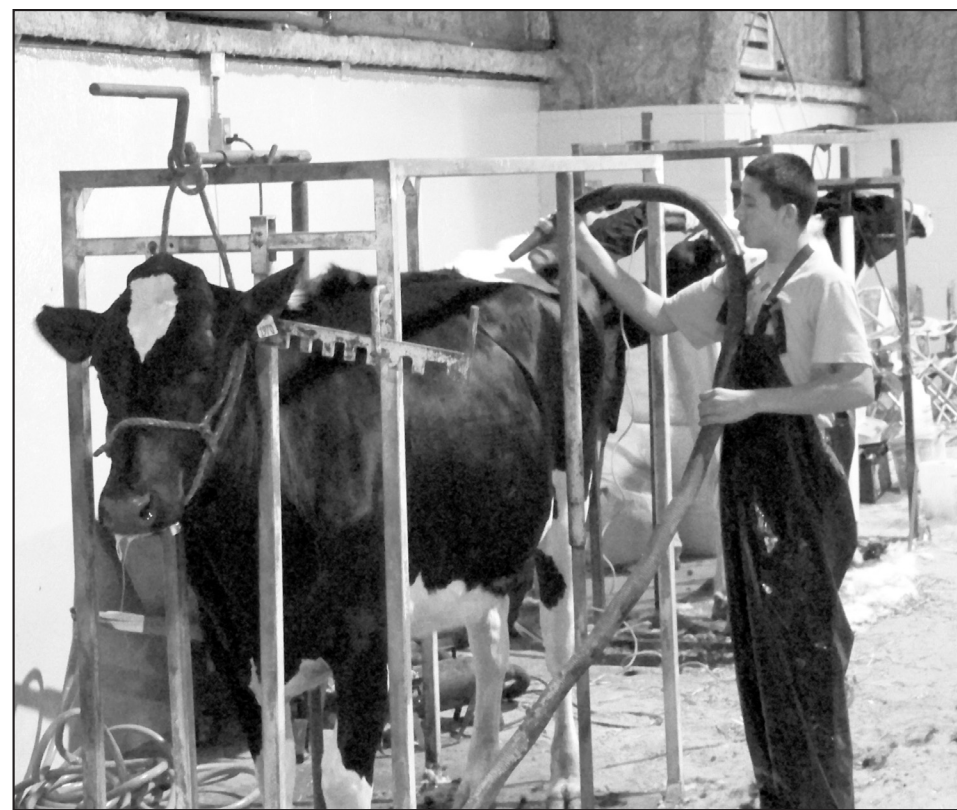
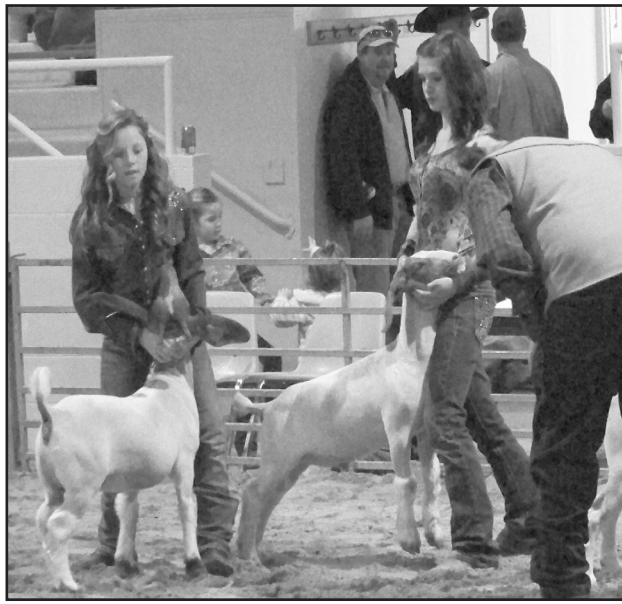
Berkshire — Judd Baker, Breed Champion; Kayla Preston, Reserve Breed; Nathan Rejino, 3; Jacob Kettner, 4; Kevin Pope, 5; Marki Stearmer, 6.

Black OPB — Ryan DeLeon, Breed Champion; Riley Kettner, Reserve Breed; William Wauson, 3; Colby Daniel, 4.

Cross — Garrison Myers, 1; Ryan DeLeon, 1; Abby Boehning, 1; Keely Dunham, 1; Kamron Newberry, 1; Ryan DeLeon, Reserve Champion; Dustin Stearmer, 2; McKenna Dunham, 2; Dagen Dunham, 2; TJ McCall, 2; Mollie Newberry, 2; Kevin Pope, Reserve Breed; Kristen Pope, 3; Judd Baker, 3; Riley Kettner, 3; Coleman Preston, 3; Trevor McCall, 3; Abby Boehning, 3; Dagen Dunham, 4; Keely Dunham, 4; Jacob Kettner, 4; Dylan Miller, 4; Triston Boehning, 4; Ashton Hunt, 5; Emma Lee, 5; Haley Hunt 5; 17, 5; Dustin Stearmer, 5; Brandon Nickerson, 5; Bode Box, 6; Marki Stearmer, 6; Eleodoro Benavides, 6; Kyndel Miller, 6.

Duroc — Keely Dunham, Duroc Breed Champion; Treg Box, Reserve Breed; Aden Nickerson, 3; Haley Hunt, 4; William Wauson, 5; Gilt — Keenan Wilson, 1; Coleman Preston, 1; McKenna Dunham, 1; Katelyn Kelley, Breed Champion; Tony Castillo, Reserve Breed; Treg Box, 2; Treg Box, 2; Aden Nickerson, 2; Mateo Castillo, 2; Dustin Stearmer, 2; Dylan Miller, 3; Kyndel Miller, 3; Triston Boehning, 3; Kamron Newberry, 3; Maddison Price, 3; Chansee Wilson, 4; Drew Wilson, 4; Mollie

Continued on B7



Way to go kids!

You're All Stars To Us!

Muleshoe Tire
 107 Main St. • Muleshoe
 272-4594

We're Proud of Every Livestock Show Winner and Participant!

Muleshoe Abstract
 108 W. Ave. D, Muleshoe • 272-4732

Congratulations to all our area Stock Show Participants!

We are proud of all your hard work!

Come see us for your hunting and fishing licenses...
 We have Shotguns, Rifles, Pistols
 Ammunition and much more...

2601 W. American Blvd. • 806-272-4266

Congratulations to all !

BOEHNING DAIRY
 690 CR 45, Earth, Texas
 "MILK - A PART OF EVERYTHING THAT IS GOOD!"

BAILEY COUNTY JUNIOR LIVESTOCK SHOW

Show Results...

Continued on B7
 Newberry, 4; Kamron Newberry, 4; Maddison Price, 4; Keenan Wilson, 5; Tyler Newberry, 5; Kayla Preston, 5; Abby Boehning, 5; Bode Box, 6; Katelyn Kelley, 6; Eleodoro Benavides, 6.

Hampshire — Brandon Nickerson, 1; Garrison Myers, Grand Champion, Judd Baker, Reserve Breed; Bode Box, 2; Marki Stearmer, 2; Triston Boehning, 2; Jaxon Lee, 2; Eleodoro Benavides, 3; Kayla Preston, 3; Coleman Preston, 4; McKenna Dunham, 4; Tyler Newberry, 4; Macoy Ruthard, 5; William Wauson, 5.

White OPB — Riley Kettner, Breed Champion; Dagen Dunham, Reserve Breed.

Yorkshire — Garrison Myers, Breed Champion; Jacob Kettner, Reserve Breed; Ashton Hunt, 3; Trevor McCall, 4; Macoy Ruthardt, 5.

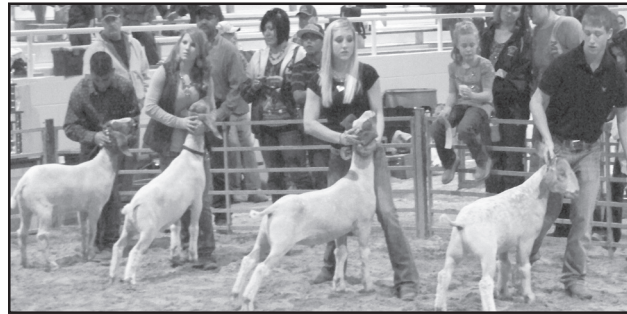
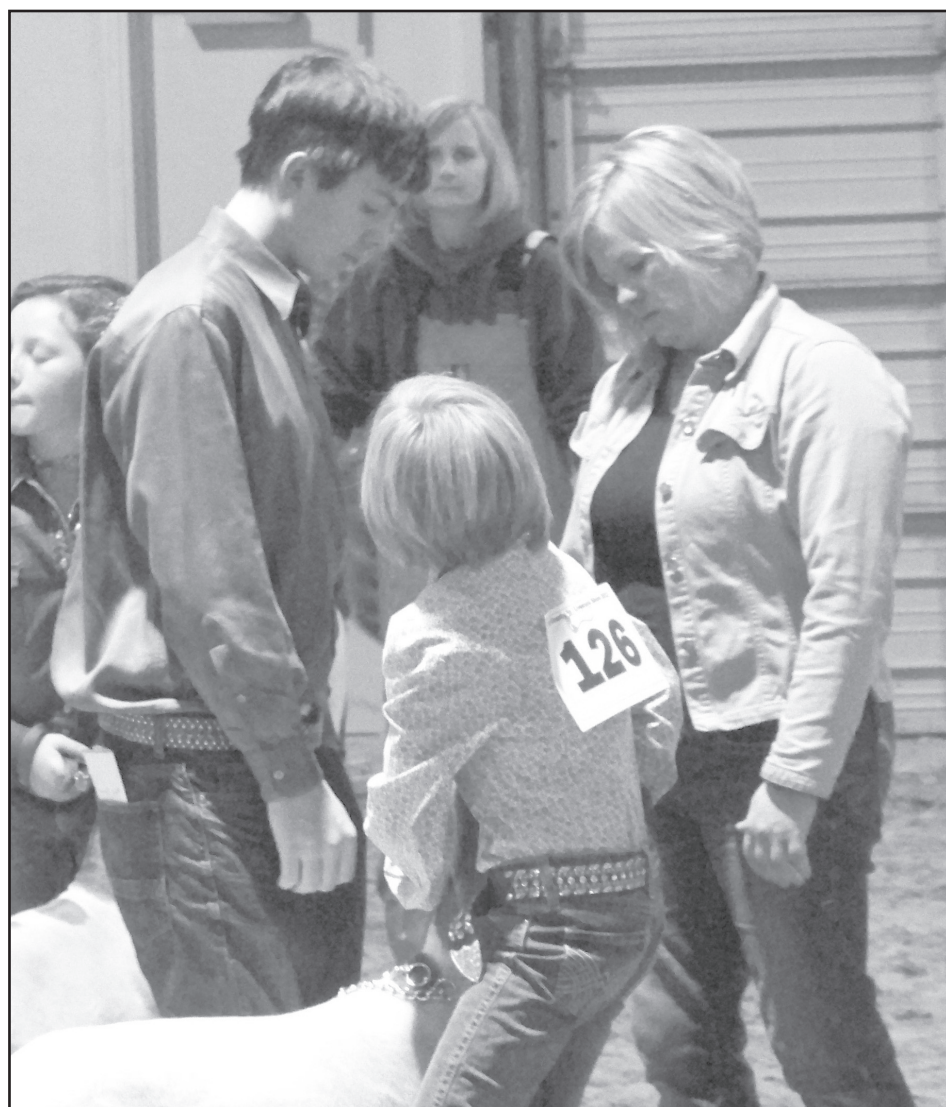
Lamb Show
 Fine Wool — Shelbi Harrison, Breed Champion.

Fine Wool Cross — Baylee Bessire, Breed Champion.

Med Wool — Logan Meiwes, 1; Baylee Bessire, 1; Logan Meiwes, Grand Champion; Chansee Wilson, 2; Braden Bessire, 2; Jayden Shearer, Reserve Champion; Jayden Shearer, 3; Braden Bessire, 3; Drew Wilson, 4.

Southdown — Lani Ruthardt, Breed Champion.

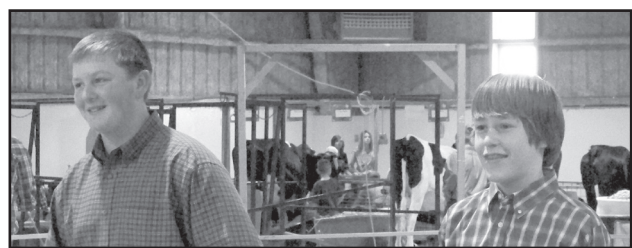
Good Job!



Congratulations on a great show!

You are all #1 to us!

CHS
 Service Center
 West Hwy. 84 • Muleshoe • 272-4203



CRAIG & JEANNETTE ALBIN

Dairy Direct

DAIRY SUPPLIES • PARTS
762-7997

EAST OF LOVE'S TRUCK STOP • CLOVIS, NM

We proudly support area Livestock Show Participants!

Congratulations! What a Grand Show!



Zimmatic IRRIGATION
 CENTER-PIVOT PUMPS & POWER
 W. Hwy. 84 • Muleshoe
 272-5597
www.drippi.com

H&R BLOCK
 Kay Wiseman
 104 E. Ave. C, Muleshoe • 272-3332

You're All Winners In Our Book!

We're proud of every participant in the 2012 Bailey County Jr. Livestock Show. Your commitment to your animals and putting on a great show is appreciated!

You Had An Awesome Show

FARMERS INSURANCE GROUP
 Symbol of Superior Service

FARMERS
 Julie DeBruin
 Agent
 Call for a free quote
AUTO • LIFE HOME • BUSINESS
 1602 W. American Blvd.
 Muleshoe, Texas
 272-7548
jdebruin@farmersagent.com

We Proudly Support The Youth of Bailey and Parmer Counties, FFA and 4-H! Thanks For A Great Show!

You are all #1 to us!

Good Job Kids!

MULESHOE STATE BANK
 GOING STRONG SINCE 1931

Muleshoe Branch
 101 W. American Blvd. • 272-4561

Farwell Branch
 801 Ave. A • 481-9580

Congratulations!

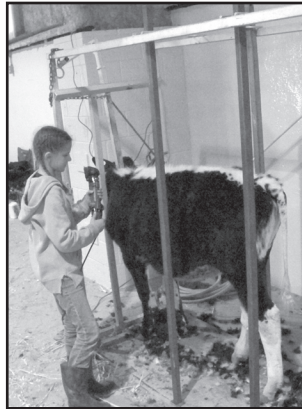
You are all winners!

Vic Coker Land Co.
 Agricultural Real Estate
 316 Main St. • Muleshoe, Texas • 272-3100

Good Luck as you take your animals to the next shows!

Thank you to all Area Stock Show Exhibitors for the Great Shows!

BAILEY COUNTY JUNIOR LIVESTOCK SHOW



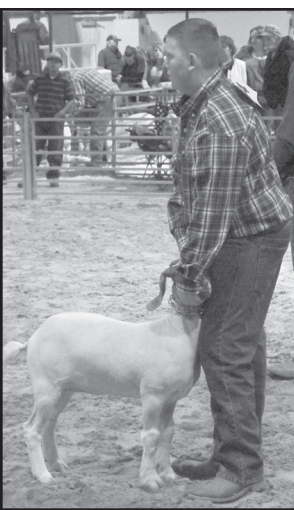
Dodd Cotton Gin

GOOD JOB!

2912 CR 504
965-2311



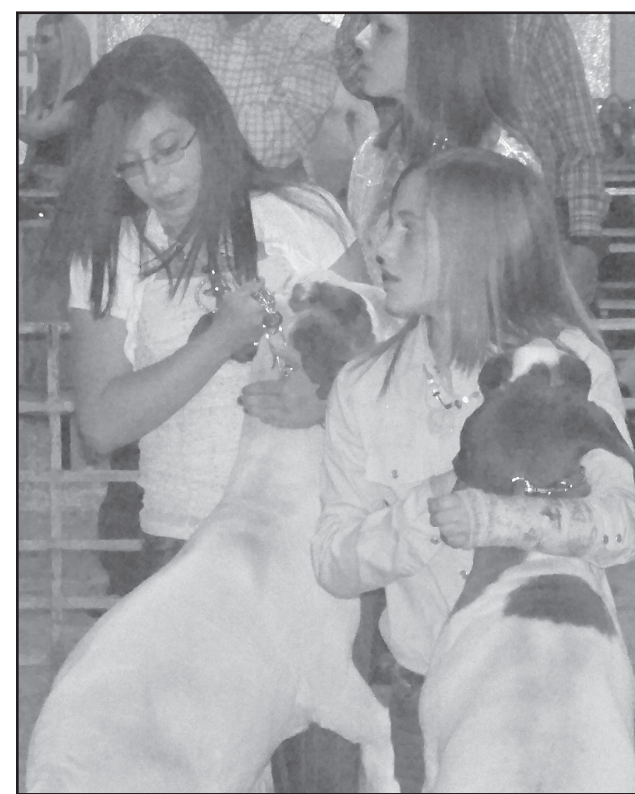
Congrats to those who participated!



We Salute Every Stockshow Participant!

You are all winners

BLACKWATER AGRI. ASSN. INC.
W. Hwy. 84 • Muleshoe
272-4962 or 272-5583



Congratulations!
You had a grand show!



You are all winners to us!



MOHAWK AUTO PARTS, INC
1701 W. AMERICAN BLVD.
MULESHOE • 272-4425

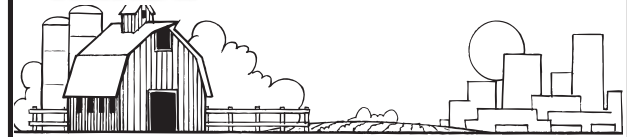
Congratulations to all Area Livestock Show Winners & Participants. Best of luck on upcoming shows.

"I can't do it" never yet accomplished anything; "I will try" has performed wonders.

-- George P. Burnham



Minsa Corporation
Hwy 84 East • Muleshoe
272-5545 • 800-852-8291

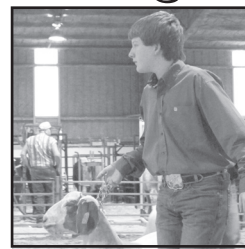


Chevron DALE OIL CO.
413 W. American Blvd., Muleshoe • 272-5576

*Congratulations on another fine show!
Good luck as you continue on!*



From the birthing pen to the show ring, your project animals have come a long way. And so have you. **Congratulations on a great show!**



Ronnie Holt INSURANCE

218 S. Main St • Muleshoe • 272-4271

PRECURE ELECTRIC 424 N. 1ST STREET
MULESHOE, TEXAS
272-4844 • MO. 946-7322

Carroll & Terri Precure

The Best Anywhere.
That's what we think of our Bailey County Jr. Livestock Show participants and their show animals. We urge you to support the youth of Bailey County in everything they try!