



The Midland Reporter-Telegram

METRO EDITION

DIAL 682-5311, P. O. Box 1650, MIDLAND, TEXAS
Vol. 50, No. 42, Daily 15¢, Sunday 35¢

FRIDAY, APRIL 20, 1979
36 PAGES, 4 SECTIONS

Wants out

Johnny Carson determined to exit despite \$2.5 million-a-year salary

LOS ANGELES (AP) — Johnny Carson wants to quit "The Tonight Show," but his attorney denies reports the entertainer is determined to leave NBC's popular late-night program sometime this fall.

The New York Times said Friday that Carson — whose \$2.5 million-a-year contract almost certainly makes him the highest-paid entertainer on television — would leave the talk show Sept. 30, his 17th anniversary as "Tonight" host.

But Carson's attorney, Henry I. Bushkin, who reportedly returned here from Las Vegas, Nev., with the entertainer hursday, told the Los Angeles Times his client had not set a firm departure date.

"After 17 years, Johnny feels he's given it his best shot," Bushkin said, acknowledging Carson had talked with NBC about leaving the program before his contract expires in the spring of 1981.

Carson's departure would be another serious blow for NBC, which has endured a disastrous season in the ratings. The network has been last in the weekly prime-time ratings all but five times since September, and though Carson's program is outside of prime-time, shock waves most certainly would be felt at the affiliate level.

Carson was unavailable for comment on the reports. A source connected with the "Tonight" show who asked not to be identified said, however, that Carson's request followed an ultimatum from NBC President Fred Silverman, who reportedly was upset by Carson's frequent absences from the show.

Bushkin denied that, and also took issue with reports from New York that Silverman had tried unsuccessfully to dissuade Carson from leaving. "That's not what happened," he told the Los Angeles Times.

One missing on tanker set afire by lightning

NEDERLAND, Texas (AP) — One of 33 crew members of a Liberian oil tanker was missing and presumed dead today after lightning touched off explosions on the ship in the Neches River, the Coast Guard said.

Of the other 32 men, the Coast Guard said 15 were hospitalized with cuts and burns and another 15 were treated and released. The Coast Guard said the two other men apparently escaped injury altogether.

In addition, authorities said, two dockworkers standing near the ship when the lightning struck were hospitalized with injuries.

The ship, the Sea Tiger, was leaking oil into the river and was in danger of sinking, the Coast Guard said.

Widespread street flooding caused by torrential rains in this coastal port near Houston hampered rescue efforts.

Authorities said lightning during a thunderstorm late Thursday touched off a series of explosions on the vessel and set it afire at a Sun Opl Co. dock.

Coast Guard spokesman Dave Galgaly said surviving crewmen reported seeing the one man die in the

explosions. His body had not been recovered. John Shaw, a Sun Oil vice president, said the lightning and explosion left most of the midsection a mass of twisted and torn metal.

Coast Guard Chief Petty Officer Robert Brown said it was not known how much of the 24,500 barrels of oil — more than 1 million gallons — still on board could be contained. Galgaly said the ship's capacity was about 250,000 barrels.

Crews from five Coast Guard vessels pumped foam into a 30-foot hole on the ship's starboard side trying to contain the blaze.

Shaw said the ship was manned by an Italian crew and had been leased to Gulf Oil Co.

Ambulance driver Pat Riley, one of the first to arrive on the scene, said, "I could see the men running down (the anchor rope). Some were running down and some were falling off. Men were just running off the ship."

Galgaly said a Japanese tanker, the Fukuyama Maru, was moved from a neighboring dock to avoid the threat of further explosions.

COMING SUNDAY

Small Town Texas Girls

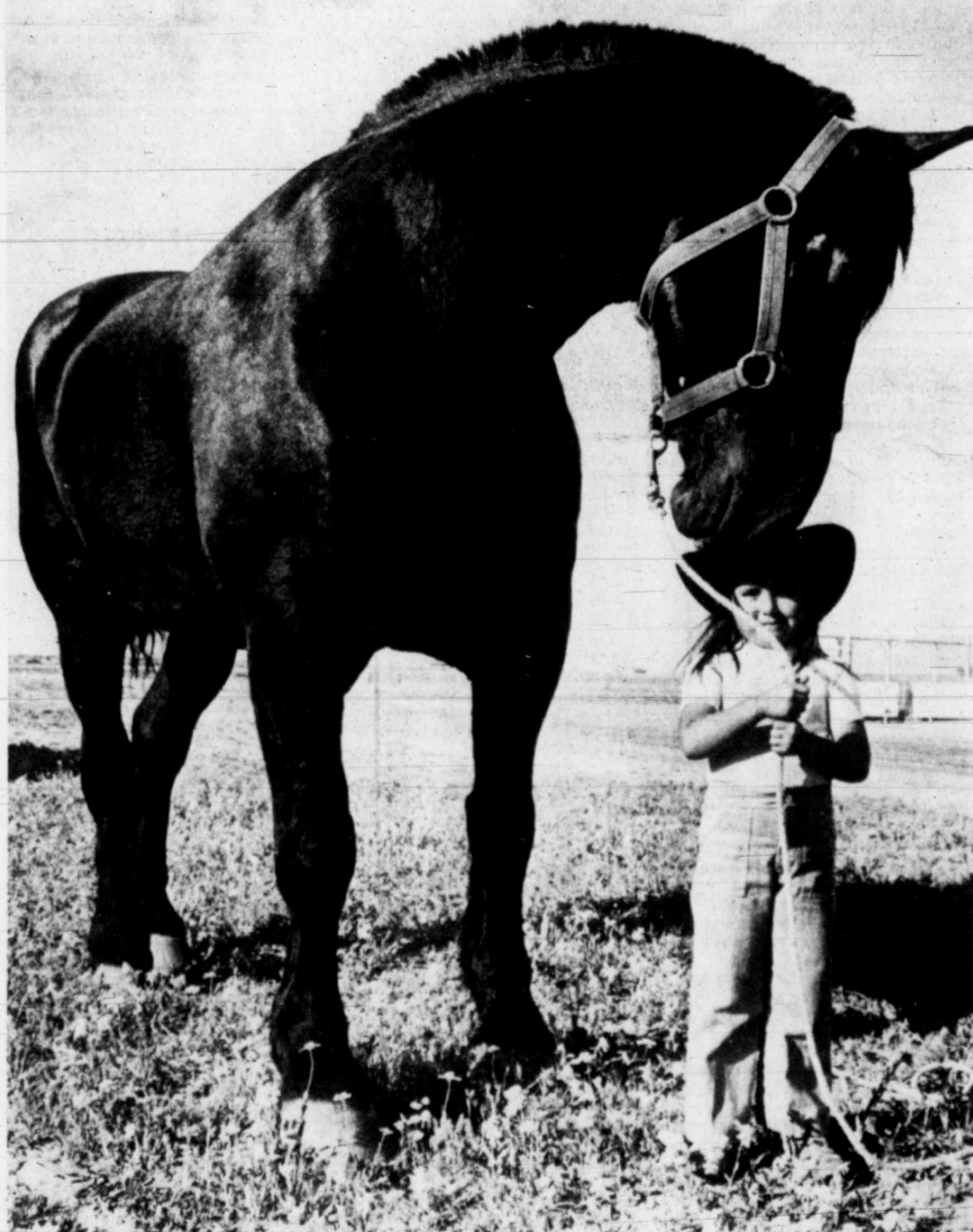
Can three girls from a small Texas town make it in a harsh world of reality? That's the theme of "Vanities," now at Theatre Midland. Sunday's West Texas Life offers a sneak preview of the play and its performers.

Christmas in April

Substandard homes of the elderly and handicapped in Midland soon will receive the benefit of the Christmas spirit when local volunteers make repairs under "Christmas in April." Read about it in Sunday's Lifestyle section.

Flying Rebel

Sky King long ago winged into radio's past, but there's another flying rancher around. This one dons the uniform of the Confederate Air Force and flies for the fun of it. Read about Midland rancher-oilman Joe Mabey on Sunday.



"Hey you down there, could you maybe find me a lump of sugar?" That might be what's on the mind of Herculese, a 2,700 pound Belgian horse, as he gently nudges the hat of 5-year-old Alona Gallegos of Socorro, N. M. The horse is part of a traveling show of large "items" — including a 3,500-pound steer and a house made from a red-

wood log — which may be seen at Thorp Arena, one mile west of Holiday Hill Road just off FM 868. The first American Junior Rodeo Association event of the year in Midland will continue through Saturday, with activities getting under way at 7 p.m. (Staff Photo by Mike Kardos)

Hospital cash problems

Director says inefficiencies add to money woes

By RICHARD MASON
Staff Writer

Midland Memorial Hospital's current financial condition surfaced again Thursday during a lengthy meeting of the Midland County Hospital District board of directors.

While directors learned that the hospital showed a net gain in revenues of \$55,422 for the month of March, the figure was more than \$87,000 under projected revenues.

As of March, the hospital showed a deficit of more than \$180,000 for this year, according to a financial statement presented to the board.

However, hospital administrator Wayne Ulrich and board president E.H. Magruder Jr. after the meeting said they predict the hospital will be operating in the black within a year to 24 months.

Following a statement that unpaid bills had increased by 7.8 percent over the same billing period last year, board member Dr. Michael Bureson began probing Ulrich about what the hospital was doing to bring these accounts receivable more in line with what he said was the state average.

BURLESON HAS CHARGED that it costs 25 to 30 percent more per patient to operate Midland Memorial Hospital than other hospitals of a similar size in Texas. He has cited figures contained in a Permian Basin Health Systems Agency report.

"The last time I checked into it, we were 60 to 90 days behind in filing claims," Bureson said.

Ulrich said the hospital has been filing insurance claims within seven to 10 days after dismissal, and that a new data processing system being installed at the hospital would alleviate the situation.

The financial statement for March showed more than \$2.9 million in outstanding accounts.

Of that total, more than \$1.1 million was less than 30 days old. However, more than \$1 million was more than three months due.

"If we're that up on filing claims, why are we still behind in accounts receivable," Bureson asked. "We ought to be making a lot of hay."

Nonetheless, other board members expressed opposition to a proposal Bureson made to bring in an outside management firm to streamline the hospital's financial operation.

Magruder said he "leans away" from the employment of hospital management companies because of

what he called potential conflicts of interest between those firms and supply companies, and because the district would lose control over the purchasing and subcontracting process.

Bureson countered that the idea "should not be dismissed out of hand."

"They all have systems that work," he added.

Newly elected board member Dr. Henrie Mast said he also was opposed to hiring a hospital management team.

Other hospital board members expressed opposition to a proposal Dr. Michael Bureson made to bring in an outside management firm.

"WE CAN HANDLE our own deal ourselves. I'm not ready to hire an outside firm," he said.

Mast later said if the hospital did not make improvements in its financial condition, "we ought to look for outside help."

In an interview following Thursday's meeting, Ulrich said the installation of a data processing package by McAuto Hospital Services, which will cost \$30,000, will reduce the backlog in accounts receivable.

He added that completion of the \$10 million construction and renovation on Midland Memorial Hospital will reduce excessive per patient costs for treatment.

The data processing system should be in operation by the beginning of the hospital's fiscal year, October 1.

The administrator contended the hospital could operate without a deficit.

"Not only do I foresee it, but up until this year, we have shown gains. In 19 to 24 months, the hospital will be in the black again," he said.

Ulrich said that much of the hospital's higher than average per patient cost were related to the "outmoded" physical plant.

"So much of the difficulty in operating this hospital is directly related to the physical plant," he said. "We do not have the ability under our present physical structure to staff the hospital with the same degree of ac-

curacy and flexibility that other hospitals more modern in design can do."

THE RENOVATION should reduce labor costs for patient care, Ulrich said. He then denied Dr. Bureson's charge that the facility is experiencing a 78 percent turnover in nursing personnel.

"It's not accurate," he said, adding that the turnover for the last six months on recruited nurses was 26 percent.

In a separate interview, Magruder said that, although the hospital is in a "transition period," the financial problems are being solved.

"By and large we'll conclude the first full fiscal year without having to appropriate more money than we budgeted," he said.

Magruder traced the hospital's financial problems to uncollected debts and indigent care. He said when the hospital became a hospital district, it inherited a backlog of between \$1.1 million and \$1.5 million in unpaid debts.

"These things varied from 30 days to over a year old," Magruder said. Currently, the hospital is charging off some of those debts. The board voted Thursday to write off \$83,000 in debts.

"Hopefully, if the hospital were able to run at a profit all the time, we would only have to devote money to indigent care," he said.

"I DON'T SEE any reason why it can't operate in the black," Magruder said.

In other action, newly-elected directors Scott Shelton and Dr. Henrie Mast were sworn into office, as was Magruder, who was re-elected April 7.

Shelton and Mast replace retiring board members L. Decker Dawson and Bob Pendleton. Neither sought re-election to the board.

The board met for more than 90 minutes behind closed doors to discuss property purchase and personnel matters before voting to purchase the lot directly east of Midland Memorial for expanded parking.

The board also learned of the possibility of a large financial gift.

Board members also authorized the transfer of \$119,000 from the tax fund to the operation budget to meet bills. That total brings the amount transferred out of the fund to date to \$369,000, about 65 percent of the anticipated transfer budgeted for this year.

Ike wanted bomb test confusion

SALT LAKE CITY (AP) — Southern Utah residents were uncertain about what dangers were posed by nuclear tests in neighboring Nevada during the 1950s, and newly declassified documents show the confusion was what then-President Dwight D. Eisenhower wanted.

At a time when pressure was mounting to move open-air testing elsewhere, Eisenhower told the Atomic Energy Commission in 1953 to keep the public "confused" so research could go on, according to materials declassified for a joint congressional committee.

The committee held a one-day hearing Thursday to study a possible link between the tests and cancer.

The federal agency frequently told southern Utah residents they were in no danger from the reddish clouds that drifted over their homes after the

nuclear tests, the documents show.

Gordon Dean, then-chairman of the commission, appeared reluctant to ask Eisenhower for permission to conduct a test because an outcry lingered over a previous blast, according to a diary written by Dean.

Eisenhower gave his permission on May 27, 1953, and "expressed some concern, not too serious, but made the suggestion that we leave 'thermonuclear' out of press releases and speeches. Also 'fusion' and 'hydrogen,'" according to the diary.

Dean, writing in his diary, continued, "The President says, 'keep them confused as to 'fission' and 'fusion.'"

Sen. Edward M. Kennedy, D-Mass., read the document into the record of the hearing, which he co-chaired.

Kennedy also called for declassification of more records from the testing era and related health data

emassed since then.

Kennedy read an excerpt from the transcript of a 1955 AEC meeting that he said typified what he called a pattern of deception. Then-Commissioner W.F. Libby was quoted as saying, "People have got to learn to live with the facts of life, and part of the facts of life are fallout."

Another commissioner, Thomas E. Murray, was quoted as saying, "We must not let anything interfere with this series of tests — nothing."

Other documents showed the commission was careful not to detonate bombs on days when winds blew toward Las Vegas or Los Angeles, but did nothing to protect Utah and Arizona residents from fallout.

Although there is no proof linking radioactive fallout to cancer, residents from southern Utah told the

panel about dozens of cancer deaths among relatives and friends.

The hearing lasted only one day, but Rep. Bob Eckhardt, D-Texas, Kennedy's co-chairman, said a similar hearing would be held Monday in Las Vegas. The panel is trying to determine if allegedly affected residents should be compensated by the government.

Elbert Pickett testified that he lost 10 members of his immediate family to cancer in 10 years.

"It was quite a sight," he said of the blasts. "These red-colored clouds would come over our area. We were told there was no danger."

"No one warned us," said Utah Gov. Scott Matheson, who lived in southern Utah 25 years ago. "I personally went outside the house and watched the mushroom cloud."

INSIDE TODAY

✓ **IN THE NEWS:** Northern Ireland struck by new wave of terror.....8A

✓ **LIFESTYLE:** Armed forces fall short of recruiting goals for women.....1B

✓ **SPORTS:** Tom Watson leads Tournament of Champions after first round.....1D

✓ **PEOPLE:** Priscilla Davis awarded \$3.3 million divorce settlement.....2A

Around Town.....1B
Bridge.....7B
Classified.....2C
Comics.....5D
Crossword.....5D

Dear Abby.....3B
Editorial.....4A
Entertainment.....6D
International.....8A
Lifestyle.....1B

Markets.....4B
Obituaries.....7A
Oil & gas.....1C
Sports.....1D
TV Schedule.....8B

Weather

Partly cloudy, becoming fair tonight and Saturday. Details on Page 2A.

Service

Delivery.....682-5311
Want Ads.....682-6222
Other Calls.....682-5311

WEATHER SUMMARY



A band of rain is forecast until Saturday morning from the western Gulf to the upper Great Lakes. Warm weather is forecast across the southern tier of states. Cold weather is predicted for the northern Plains, while most areas are expected to be sunny. (AP Laserphoto Map)



Today's satellite cloud picture, recorded at 3 a.m., shows bright cloud areas extending northward from Texas to Minnesota which have produced extensive heavy rains. The eastern third of the country continues to enjoy relatively cloud free conditions while cloudiness persists over the far northwest. (AP Laserphoto)

Midland statistics

MIDLAND, ODESSA, BIG LAKE, RANKIN, GARLAND CITY FORECAST: Partly cloudy and becoming fair tonight and Saturday. Not as warm Saturday. High today in the mid 80s. Low tonight in low 50s. High Saturday near 90 degrees. Winds becoming variable, mostly northerly, at 5 to 10 mph this afternoon and night.

ANDREWS, LAMESA, BIG SPRING, STANTON FORECAST: Partly cloudy and becoming fair tonight and Saturday. Not as warm Saturday. High today in the mid 80s. Low tonight in low 50s. High Saturday near 90 degrees. Winds becoming variable, mostly northerly, at 5 to 10 mph this afternoon and night.

NATIONAL WEATHER SERVICE READINGS:
 Yesterday's High: 83 degrees
 Overnight Low: 37 degrees
 Sunest today: 7:15 p.m.
 Sunrise tomorrow: 6:14 a.m.
 Precipitation: 0.0 inches
 Last 24 hours: 0.0 inches
 This month to date: 1.63 inches
 1979 to date: 2.96 inches

LOCAL TEMPERATURES:
 5 a.m. 66 7 p.m. 77
 8 a.m. 67 8 p.m. 77
 9 a.m. 69 9 p.m. 77
 10 a.m. 72 10 p.m. 77
 11 a.m. 74 11 p.m. 77
 noon 75 12 midnight 77
 1 p.m. 77 1 a.m. 77
 2 p.m. 78 2 a.m. 77
 3 p.m. 81 3 a.m. 77
 4 p.m. 83 4 a.m. 77
 5 p.m. 85 5 a.m. 77
 6 a.m. 82

SOUTHWEST TEMPERATURES:
 Abilene 81 81
 Denver 73 73
 Amarillo 73 73
 El Paso 73 73
 Ft. Worth 77 77
 Houston 81 81
 Lubbock 81 81
 Marfa 77 77
 Odessa 81 81
 Wichita Falls 80 80

The weather elsewhere

Thursday

City	Hi	Lo	Pre	Dir
Albany	59	25	cl	
Albuquerque	71	31	cl	
Amarillo	71	30	cl	
Anchorage	45	38	rn	
Asheville	76	36	cd	
Atlanta	72	56	cl	
Atlanta City	60	46	cl	
Baltimore	56	31	cd	
Birmingham	60	51	cd	
Bismarck	59	31	cd	
Boston	52	31	cd	
Brownsville	85	75	cd	
Buffalo	51	35	cd	
Chattanooga	71	56	cl	
Cincinnati	62	41	cd	
Cleveland	55	31	cd	
Columbus	63	29	cd	
Dallas/Ft. Worth	77	65	cd	
Dallas	73	51	cd	
Detroit	61	31	cd	
Fort Worth	86	75	cd	
Houston	90	82	cd	
Indianapolis	66	52	cd	
Jacksonville	77	59	cd	
Joplin	56	29	cd	
Kan. City	71	63	cd	
Las Vegas	76	57	cd	
Lubbock	81	60	cd	
Los Angeles	71	51	cd	
Los Angeles	68	52	cd	
Memphis	82	58	cd	
Miami	82	61	cd	
Minneapolis	63	46	cd	
Mpls. St. P.	81	65	cd	
Norfolk	76	60	cd	
Oklahoma City	69	62	cd	
Philadelphia	65	57	cd	
Pittsburgh	62	42	cd	
Pittsford Me.	56	29	cd	
Pittsford N.H.	57	31	cd	
Reno	59	28	cd	
Richmond	72	51	cd	
San Antonio	72	51	cd	
Salt Lake	87	65	cd	
San Francisco	62	41	cd	
Sandiego	68	57	cd	
San Jose	60	49	cd	
Seattle	58	47	cd	
Spokane	63	53	cd	
St. Louis	63	47	cd	
Tulsa	83	67	cd	
Washington	68	41	cd	

Shots fired in high-speed auto chase

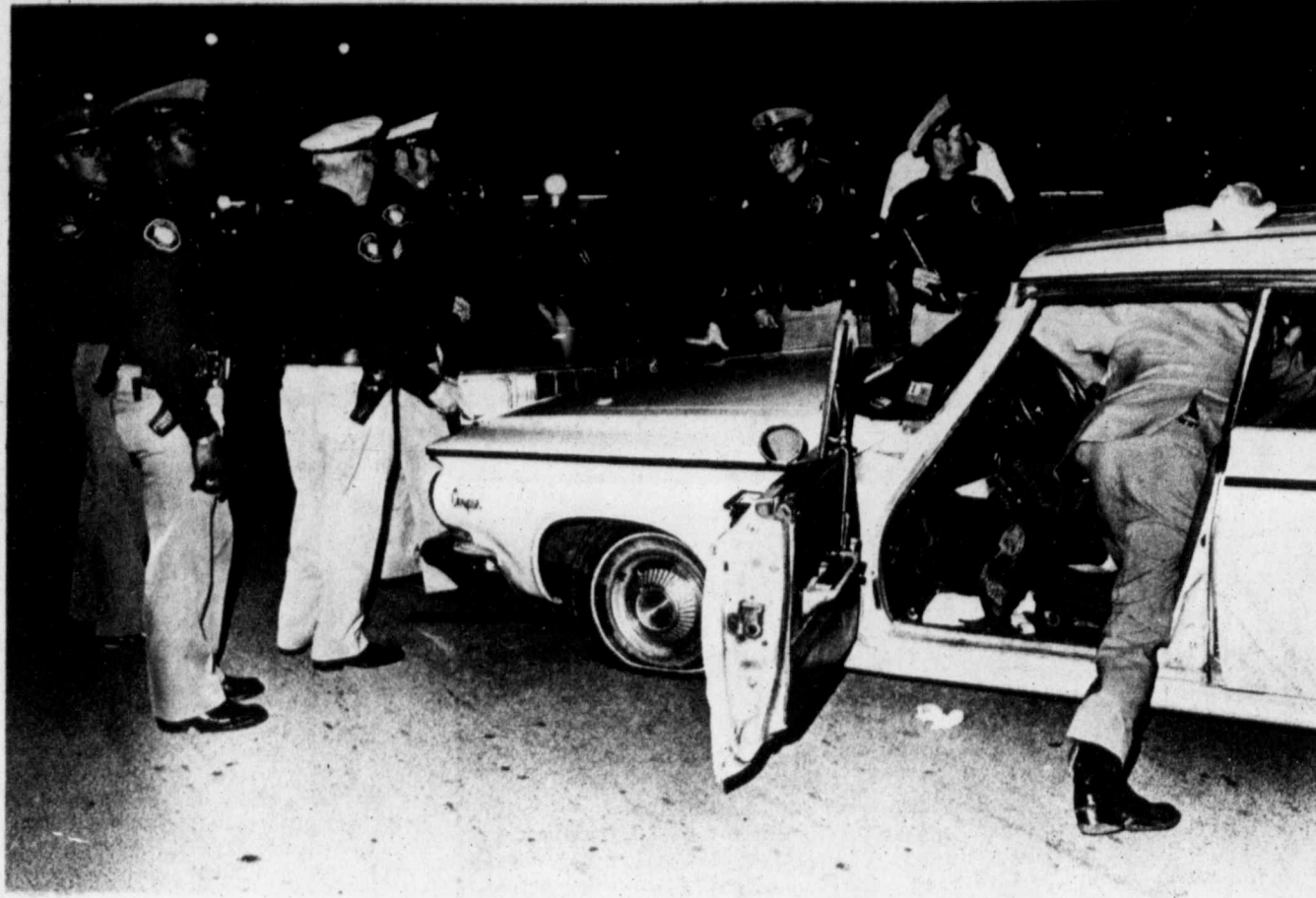
At least three shots were fired Thursday night at the climax of a high-speed chase involving Department of Public Safety troopers and a 30-year-old man, now in custody, witnesses said.

Officers from Midland Police Department and a trooper from the Department of Public Safety were involved in the chase, which ended at the corner of South Garfield Street and Front Avenue.

Police intercepted a car being pursued by the DPS at the intersection of Front Avenue and Fairgrounds Road about 11:29 p.m., police said.

Speeds of up to 110 mph were reached as four police units and a DPS vehicle chased the fleeing car, police said today.

The chase came to a close when officers blocked Front Avenue at its intersection with South Garfield Street with patrol cars, officials said.



Officers from the Midland Police Department examine the scene at the end of a high-speed chase Thursday night. The Department of Public Safety-initiated pursuit culminated in police shooting out the tires of a station wagon at the intersection of Front Avenue and South Garfield Street. No one was injured in the chase, but two patrol cars were damaged slightly. (Staff Photo by Brian Hender-shot)

According to reports, the man being chased attempted a turn north on to Garfield although a patrol car was being used to block him.

The driver of the car tried to push the patrol car out of the way, officers said, and when that attempt failed, the driver turned the car southward.

A second patrol car was hit when it attempted block the car's travel in that direction, police said.

According to witnesses on the scene, a Midland Police Department officer at one point fired several shots at the tires of the vehicle.

The man was arrested and was being held at Midland County Jail early today, police said.

DPS officials said information as to why the man was being pursued was not available early today.

Warmer weather being predicted through weekend

Patches of gossamer-like clouds over Midland this morning were supposed to drift away tonight and leave a blue sky devoid of any threat of rain.

With the clearness was to come a promise of warm weather stretching into the weekend, according to the weatherman.

The National Weather Service at Midland Regional Airport predicts a low tonight in the low 50s.

The high Saturday is expected to be near 80.

Southerly winds at 10 to 15 mph were to become variable, mostly northerly, at 5 to 10 mph tonight.

High reading for Thursday was 83 degrees, which missed the record high for an April 19 of 94 degrees, set in 1964.

Today's morning low of 57 degrees was 30 degrees above the record low for April 20 of 27 degrees, set in 1933.

Much of the Permian Basin this morning reported some partly cloudy skies and clearing.

Andrews reported some fog. Lamesa was clear and cool. Stanton was partly cloudy. Rankin was taking in some sunshine. Big Lake was somewhat cloudy, and Big Spring was partly cloudy.

Priscilla awarded \$3,340,818 in settlement of Davis divorce

FORT WORTH, Texas (AP) — A state district judge awarded Priscilla Davis \$3,340,818 in the settlement of her almost five-year-old divorce spat with millionaire Cullen Davis, but said she must give up the posh \$6 million dollar Fort Worth mansion.

Judge Clyde Ashworth, the third judge in the high-stakes divorce, ruled this morning that the majority of Davis' fortune was made before the couple married.

He said Davis made only about \$7 million during the couple's stormy 10-year marriage and ruled that Mrs. Davis was due about half of that amount.

He also faces murder charges in the slaying of Mrs. Davis' lover Stan Farr, and attempted murder charges in the wounding of Mrs. Davis and a chance visitor to the mansion.

A mistrial was declared last January when the jury could not reach a verdict in the trial in which Davis was charged with trying to solicit the murder of his first divorce judge, Joe Eldson. Prosecutors have said they will try the industrialist again on the charges. Eldson was not hurt.

Eldson disqualified himself from the divorce case and was replaced by retired State District Judge John Barron, who then became embroiled in a squabble with Tarrant County prosecutors when they subpoenaed trial records.

After reporters learned Barron had met privately with Davis, Barron disqualified himself. He denied any wrongdoing and said he met with both parties separately trying to arrange an out-of-court settlement.

Ashworth also awarded Mrs. Davis' lawyers \$1.25 million and ruled that Davis must pay half that amount from his separate property and Mrs. Davis must pay the remainder.

Mrs. Davis had asked the judge to award her \$50 million, the mansion, her personal possessions and her luxury automobile.

Her lawyers asked for between \$2.5 million and \$3 million in legal fees.

Davis' lawyers called the requests "an attempt by a voracious woman and her two opportunistic lawyers blinded to principle by the dollar signs in their eyes to set themselves up for life out of one man's inheritance — to which none of them is entitled."

Mrs. Davis should receive \$400,000, her car and personal possessions, they claim. They also say her lawyers should receive \$100,000.

The Fort Worth industrialist was acquitted by an Amarillo jury in August 1977 of charges he killed his 12-year-old stepdaughter, Andrea Wilborn, during an August 1976 shooting rampage at the Fort Worth mansion.

ELIZABETH, N.J. (AP) — The grounding of all Sikorsky S-61 civilian helicopters has been urged by the National Transportation Safety Board, which found metal fatigue in the tail rotor blade of a New York Airways S-61 that crashed at Newark Airport.

Three persons died and 15 were injured in the crash, which occurred shortly after the helicopter took off Wednesday.

"This preliminary examination disclosed a fatigue crack through approximately 90 percent of the leading edge spar," NTSB spokesman Brad Dunbar said Thursday. A spar is a rod-like device running the length of a helicopter blade.

It is the first time the board, in its 12-year existence, has recommended grounding a scheduled passenger-carrying commercial aircraft.

In Stratford, Conn., an official of Sikorsky Aircraft said the firm will cooperate with agencies investigating the fatal crash, but added that "we have not seen the safety board's recommendation yet."

Alan Wayne, a spokesman for the company, a division of United Technologies Corp., said the S-61 is "one of the most successful helicopters anywhere."

The helicopter "has flown more passengers than all other helicopters combined," he said.

The S-61 is a civilian version of the Marine One helicopter that President Carter uses, but a White House spokesman said the presidential craft has a shorter body and a completely different tail rotor system.

"We have no plans to ground it," spokesman Jim Purks said after conferring with the White House military office.

Texas thermometer

City	High	Low	Pcp
Abilene	81	65	0.00
Albino	82	67	0.00
Amarillo	71	50	0.00
Austin	80	63	0.00
Beaumont	77	61	1.11
Brownsville	85	75	0.00
Childress	78	65	0.00
College Station	75	60	0.00
Corpus Christi	81	65	0.00
Cottulla	81	63	0.00
Dalhart	82	65	0.00
Dallas	77	61	0.00
Del Rio	85	61	0.00
El Paso	83	67	0.00
Fort Worth	77	65	0.00
Galveston	73	63	0.00
Houston	78	66	0.00
Junction	81	65	0.00
Longview	77	63	0.00
Lubbock	81	66	0.00
Lufkin	73	65	0.00
McAllen	87	72	0.00
Midland	82	67	0.00
Midland	82	67	0.00
Mineral Wells	82	61	0.00
Palacios	82	67	0.00
San Antonio	81	66	0.00
San Angelo	80	67	0.00
Shreveport, La.	81	66	0.00
Stephenville	79	67	0.00
Texasarkana	80	66	0.00
Victoria	80	66	0.00
Waco	78	65	0.00
Wichita Falls	80	66	0.00
Wink	80	62	0.00

Texas area forecasts

West Texas: Generally fair west and partly cloudy east today and tonight with widely scattered showers and thunderstorms, eastern third today and southeast tonight and Saturday. Mostly fair Saturday except partly cloudy southeast. Cooler most of Panhandle today and tonight and southeast Saturday. Highs low 70s north to 90s Big Bend. Lows near 40 mountains to low 50s Panhandle to upper 50s south.

North Texas: Scattered showers and thunderstorms today, but ending in the west and diminishing elsewhere by tonight. Partly cloudy and warm Saturday, northwest but cloudy and mild with widely scattered showers continuing southeast half. Highs 71 to 80. Lows 56 to 61.

South Texas: Flash flood watch is in effect for South, east Texas today. Scattered showers and thunderstorms today, but ending in the west and diminishing elsewhere by tonight. Partly cloudy and warm Saturday, northwest but cloudy and mild with widely scattered showers continuing southeast half. Highs 71 to 80. Lows 56 to 61.

Port Arthur to Port O'Connor: Southeast winds 10 to 15 knots through Saturday. Seas 1 to 7 feet. Winds and seas higher in or near scattered thunderstorms.

Port O'Connor to Brownsville: Southeast winds 15 to 20 knots today and tonight and 10 to 15 knots Saturday. Seas 3 to 8 feet. Winds and seas higher in or near scattered thunderstorms.

Floodwaters force evacuation in Houston

By The Associated Press

Floodwaters from torrential rains struck the Houston and Beaumont areas late Thursday, forcing some evacuations, stranding motorists and flooding many homes and businesses.

Harris County Civil Defense officials predicted more flooding — and more evacuations — through the weekend, especially along the rain-swollen San Jacinto River east of Houston.

"We evacuated 111 persons from Bella Woods and about 100 persons from Banana Bend and Highland Shores Drive," said Harris County Civil Defense Director John Caswell. He predicted homes of more than 1,000 residents will have to be evacuated in Harris County before the week is over.

Some evacuations were under way Thursday in the Beaumont area near the Pine Island Bayou and Sour Lake and other areas near swollen river tributaries, the National Weather Service reported.

Both cities received six or more inches of rain Thursday, and Bevil Oaks north of Beaumont recorded 11.5 inches.

"All stores and businesses in downtown Beaumont were being flooded by running water up to two feet," the NWS reported just before midnight Thursday. The Red Cross set up seven shelters in Beaumont for flood refugees.

The NWS said 75 to 100 persons were stranded by deep water at Beaumont's Parkdale Mall. They were rescued early today.

The new rainstorms came one day after 800 to 1,000 residents in Conroe, 35 miles north of Houston, were evacuated from their homes after a nine-hour downpour filled streets and homes with water.

Caswell said current flooding in the Houston area would exceed that of 1973 when a record 49.8 feet of water crested the Lake Houston spillway.

"That was about five feet higher than the spillway," Caswell said. "This is going to be about six feet higher than the spillway and the extra 12 inches of water is going to affect a much larger area."

Forecasters said the crest was expected tonight.

Russ Luedke, a visitor from Neenah, Wis., was en route to see a play in Houston when the car he was riding in flooded out.

"We were just sitting there and a guy in a canoe came along and gave us a ride" to a nearby church, Luedke said. "I don't know if I'll ever come back to Texas again."

Water was reported over the tops of cars in the Alabama Theater parking lot in Houston. Police and firemen throughout the city were called out to assist stranded motorists.

A North American Soccer League game between Houston and New England went on as scheduled in the Astrodome despite waist-deep water in some areas outside the facility.

A crowd of 650 watched the game while others stalled on feeder roads leading to the Astrodome.

The floods also hampered rescue efforts at Nederland when a tanker exploded and burned when it was struck by lightning while unloading oil.

A four-inch downpour caused streets and underpasses to flood during rush hour traffic at Fort Worth Thursday afternoon and heavy thunderstorms roamed across much of South Texas throughout the night.

Rainfall amounts in the Houston and Beaumont area ranged from five to 12 inches in a 24-hour period, the National Weather Service said.

Rain continued in Southeast Texas during the early morning hours and forecasts called for more showers and thunderstorms throughout the day. Highs were to be mostly in the 70s and 80s.

A flash flood watch was extended for Southeast Texas. It covered the area along and east of a line from

College Station to Palacios.

Severe thunderstorms, packing strong, gusty winds, heavy rain, some small hail and intense lightning roared through the middle Texas coast area during the night. Several counties were under severe thunderstorm warnings during the night.

A special marine warning urged fishermen and small boat operators in the Gulf of Mexico in the Corpus Christi area to return to shore because of gusty winds and rough seas.

Baseball size hail fell in some northwest sections of the Panhandle late Thursday. A tornado watch was issued for northeast sections of the Panhandle.

Skies were clear in far West Texas, but cloudy over the remainder of the state. Early morning temperatures were mostly in the 50s and 60s. Extremes ranged from 49 at El Paso and Dalhart to 75 at Brownsville.

Border states forecasts

Oklahoma: Fair to partly cloudy northwest through Saturday. Scattered thunderstorms central and east today and east tonight, becoming fair to partly cloudy Saturday with widely scattered thunderstorms south-east. Highs in the 70s. Lows mid 40s Panhandle to near 50 elsewhere. Highs Saturday 80s and 70s except the low 80s extreme southwest.

New Mexico: Generally fair through Saturday. Cooler central and east today. Warmer most sections Saturday. Highs 50s and 60s mountains and northwest with the 70s elsewhere. Lows mostly 20 to 35 mountains and northwest 35 to 50 elsewhere. Highs Saturday 80s and 70s except the low 80s extreme southwest.

Louisiana: Heavy rainfall amounts expected western half state today. Thunderstorms likely statewide, becoming less numerous west half Saturday. Highs upper 70s to low 80s. Lows low to mid 60s. Highs Saturday 80s and 70s except the low 80s southwest.

Extended forecasts

Sunday Through Tuesday

West Texas: Generally fair over the weekend becoming partly cloudy by Tuesday. Continued mild nights and warm days. High in the 70s and 80s except 90s Big Bend valleys. Lows mainly in the 30s and 40s.

North Texas: Partly cloudy and mild. Highest temperatures in the 70s. Lowest temperatures in the 30s.

South Texas: Fair and mild Sunday. Partly cloudy and warm Monday through Tuesday. Lows in the 60s to upper 60s south. Highs Sunday mostly in the 80s. Highs Monday and Tuesday in the mid 80s to low 90s southwest.

Strong earthquake hits Alaska

GOLDEN, Colo. (AP) — A strong earthquake occurred in southern Alaska early today, an aftershock from a major quake that rocked the area nearly two months ago, a spokesman for the U.S. Geological Survey reported. There were no immediate reports of injuries or damage.

Plague case reported in New Mexico

SANTA FE, N.M. (AP) — A Thoreau, N.M., woman who died of plague apparently contracted the disease close to home but did not pass it to others in the area, the state's chief medical officer says.

Dr. Jonathan Mann said the 76-year-old woman, who died Sunday, may have had a very minimal case of pneumonic plague, which is potentially transmissible from person to person.

"We have reached all hospital personnel who took care of her as well as contacts in the community and none of them appear to be ill with symptoms suggestive of plague, he said.

He said it appears the woman contracted the disease in the general area of her home, but said an investigation is continuing.

"It will take some time to pinpoint the actual source of the plague," he said.

Water strands rush hour traffic

HOUSTON (AP) — The streets and freeways of Houston, usually packed with cars, became a giant parking lot as torrential rains ground the Bayou City to a halt.

Motorists on their way home during the rush hour Thursday were stranded for hours on some city freeways because of flooding under overpasses and because motorists could not exit onto flooded service roads.

Water rose to the windows of hundreds of cars caught in the bowl-like underpasses, which filled up quickly from the water running off the streets above.

Men in suits and women in skirts and high heels trudged through waist-deep water in a futile search for help, and many just abandoned their vehicles for local taverns.

"One man just came in here bleary-eyed," said Chris Dye of the New York Deli near the Galleria shopping mall. "He said he was on the highway for four hours and can't talk, eat or anything. He's just sitting here, staring."

He said three non-English-speaking patrons arrived there at 4 p.m. and

stayed late into the night, unable to get out because the water had risen to their car window in the parking lot.

The Mug, a coffee shop in the Montrose area, one of the hardest hit in Houston, was full most of the night. Manager Raoul Benaim said he was

Dance school reports burglary

Police received reports of a burglary Thursday at the Audrey Walker School of Dance at 3320 N. Big Spring St. The report, made at 10:25 a.m., indicated a total of \$619 in cash, checks and merchandise were taken in the burglary, police said.

A box of stainless steel fittings and tools with a total estimated value of \$467 were taken Thursday from a car belonging to Benton Guinn of the 4000 block of Pasadena Drive, police said.

Robert Rollins of the 200 block of Loraine Street reported to police Thursday the theft of tools valued at \$550.

wearing a bathing suit most of the evening because the water "was up to our knees."

The underpass on Highway 59 just west of downtown found many bewildered people standing on the concrete abutments beneath the overpasses, having abandoned their cars when the water reached the seats.

Strong earthquake hits Alaska

GOLDEN, Colo. (AP) — A strong earthquake occurred in southern Alaska early today, an aftershock from a major quake that rocked the area nearly two months ago, a spokesman for the U.S. Geological Survey reported. There were no immediate reports of injuries or damage.

Plague case reported in New Mexico

SANTA FE, N.M. (AP) — A Thoreau, N.M., woman who died of plague apparently contracted the disease close to home but did not pass it to others in the area, the state's chief medical officer says.

Dr. Jonathan Mann said the 76-year-old woman, who died Sunday, may have had a very minimal case of pneumonic plague, which is potentially transmissible from person to person.

"We have reached all hospital personnel who took care of her as well as contacts in the community and none of them appear to be ill with symptoms suggestive of plague, he said.

He said it appears the woman contracted the disease in the general area of her home, but said an investigation is continuing.

"It will take some time to pinpoint the actual source of the plague," he said.

DEATH

Grace
LAMESA
Murray Lor
2 p.m. Satur
Church with
pastor, offic
Burial with
Park direc
Home.
Mrs. Lon
hospital aft
She move
from Winte
ray, she
Long Noy
Survivors:
daughters,
essville ann
mesa; a son
sisters, Ru
N.M., Min
Ann Love
Dyees of F
ers, T.J. M
Murray o
grandchild
grandchild

Ethel

ANDREW
McDonald, 7
p.m. Satur
Home. Offi
Carl Grisso
Baptist Chu
Burial with
tery.
Mrs. McD
Andrews ho
ness.
She was i
field, Ala.
dent of And
of the First
Survivor
D.S.; a son
Big Sandy;
Ilamson of
er, H.B. Ca
grandchild
children.

Jame

MONAH
Kendrick J
stephate
Ozona, we
the Aubre
Junction. I
vett Ceme
Miller Fun
Jackson
juries sust
2 1/2 miles
He was i
tion. He h
years. He
Co. Jacks
Pentecost
May 7, 197
Other s
two sons,
daughters
his father

Marg

HOBBES
beth Gibb
Hobbs nu
Service
Pickle Fou
Texas.
Mrs. Gil

Ohir

about
TOKYO
Masayoshi
with Presi
next month

Bell

durin
DETRO
General i
leave off
summer,
Thursday,
Earlier,
resign b
Carter's f
said they
of this ye
In a disp
was to qui
back to ho
the summ
it."

That

That la
Kirbo, on
advisers.
"I want
before I
as saying,
who my st
The new
lieve Bell
lin R. Ci
eral in ch
sion, for h

DEATHS

Grace M. Long

LAMESA — Services for Grace Murray Long, 67, of Lamesa will be at 2 p.m. Saturday in the Second Baptist Church with the Rev. Clifton Igo, pastor, officiating.

Burial will be in Lamesa Memorial Park directed by Branon Funeral Home.

Mrs. Long died Thursday in a local hospital after a brief illness.

She moved to Lamesa 35 years ago from Winters. Formerly Grace Murray, she was married to John A. Long Nov. 28, 1929.

Survivors include her husband; two daughters, Barbara Walters of Gainessville and Joyce Pearson of Lamesa; a son, Ray Long of Knott; four sisters, Ruby Hughes of Lovington, N.M., Minnie Bonner of Kerrville, Ann Love of Big Spring and Lorette Dye of Roswell, N.M.; two brothers, T.J. Murray of Odessa and Bill Murray of Chickasha, Okla.; 11 grandchildren and seven great-grandchildren.

Ethel McDonald

ANDREWS — Services for Ethel C. McDonald, 76, of Andrews will be at 2 p.m. Saturday in Singleton Funeral Home. Officiating will be the Rev. Carl Grissom, pastor of the First Baptist Church.

Burial will be in Andrews Cemetery. Mrs. McDonald died Thursday in an Andrews hospital after a lengthy illness.

She was born Oct. 9, 1902, in Winfield, Ala. She was a longtime resident of Andrews. She was a member of the First Baptist Church.

Survivors include her husband; D.S.; a son, William D. Caddell of Big Sandy; a sister, Kathryn Williamson of Columbus, Miss.; a brother, H.B. Caddell of Gardendale, four grandchildren and five great-grandchildren.

James K. Jackson

MONAHANS — Services for James Kendrick Jackson, 38, of Grandfalls, stepfather of Barbara Spikes of Ozona, were to be at 2 p.m. today in the Aubrey Fife Funeral Home at Junction. Burial was to be in McKavett Cemetery directed by Wilson-Miller Funeral Home of Monahans.

Jackson died Wednesday from injuries sustained in an oilfield accident 2 1/2 miles south of Grandfalls.

He was born May 31, 1940, in Junction. He had lived in Grandfalls two years. He was employed by the 3-B Oil Co. Jackson was a member of the Pentecostal Church. He was married May 7, 1976, in Monahans.

Other survivors include his wife, two sons, two daughters, three stepdaughters, two brothers, four sisters, his father and eight grandchildren.

Margaret Gibbs

HOBBS, N.M. — Margaret Elizabeth Gibbs, 80, died Thursday in a Hobbs nursing home.

Services are pending at Nalley-Pickle Funeral Home in Big Spring, Texas.

Mrs. Gibbs was a native Texan and

a former resident of Big Spring. She was born June 5, 1898. She was a member of the Church of Christ.

Survivors include a daughter, Nancy Prease of Hobbs, and two sons, Cecil Gibbs of Knott, Texas and Melvin Gibbs of Deinerio, Texas.

T.C. Allen Sr.

CRANE — Services for Turner Cleveland Allen Sr., 79, of Crane will be at 2 p.m. Saturday in Larry D. Sheppard Funeral Home. Burial will be in Crane County Cemetery.

Allen died Thursday in a Crane hospital after a lengthy illness.

He was born Feb. 24, 1900, in Tellico Plains, Tenn. He was a member of the Baptist Church and the Oddfellows Lodge.

Survivors include four sons, T.C. Allen Jr., Guy Allen, Millard Allen and Keith Allen, all of Crane; a sister, Addy Jenkins of Tellico Plains, and two brothers, Tommy Allen of Tellico Plains and Henry Allen of York, Calif.

Edwin T. Crites

ELEPHANT BUTTE, N.M. — Services for Edwin T. Crites, 76, of Elephant Butte, father of R.W. Motley and Ina Manning, both of Odessa, and Louise Goodgame of Hobbs, N.M., were Tuesday in Chapel Hill Funeral Home in Truth or Consequences, N.M.

Burial was in Fort Bliss National Cemetery in El Paso.

Crites died April 13 in an Elephant Butte hospital after a short illness.

He was born June 15, 1902, in Champaign County, Ill. He had lived 12 years in Elephant Butte.

Other survivors include his wife, a son, three brothers and two sisters.

William Francis

CRANE — Services for William Graves Francis, 62, of Crane were to be at 10 a.m. today in Larry D. Sheppard Funeral Home. Burial was to be in Madisonville, Tenn.

He died Wednesday in a Crane hospital after a short illness.

Francis was born Aug. 1, 1916, in Tennessee. He was a truck driver. He was a veteran of World War II.

Survivors include two sisters, Margerette Hembrel and Darcus Manels, both of Hartman, Tenn., and a brother, Robert L. Francis of Madisonville.

Hardy L. Lewis

PORTALES, N.M. — Services for Hardy L. Lewis, 82, of the Floyd community, father of Lloyd Lewis of Hobbs, N.M., were to be at 2 p.m. today in Wheeler Funeral Home here. Burial was to be in Floyd Cemetery.

Lewis died Wednesday in a Clovis, N.M., hospital after a lengthy illness.

He was a retired farmer and had moved to Floyd from Ralls, Texas in 1939.

Other survivors include a wife, two sons, a daughter, a brother, a sister, 12 grandchildren and five great-grandchildren.

Ohira to talk with Carter about Soviet threat in Asia

TOKYO (AP) — Prime Minister Masayoshi Ohira says he will talk with President Carter in Washington next month about the threat posed by

the Soviet military buildup in Asia.

Observers here predict the Carter administration will try to slant the talks heavily toward the area of U.S.-Japanese trade, which has developed an heavy surplus in Japan's favor in recent years.

In an interview Thursday with the Associated Press and two other reporters, Ohira said Japan must increase its military strength to counter the Soviet buildup.

Whether it is offensive or defensive, it is "a development which we cannot remain unconcerned about," he said.

"This being a Japanese-American summit meeting, I believe it will be quite natural that the topic of how to operate our security pact will be taken up and in taking up this topic, I don't think we can ignore the Soviet military buildup in the area," he said.

Under its security treaty with the United States, Japan relies on America to deal with foreign aggression.

The treaties that ended World War II, as well as Japan's own post-war constitution, restricted Japan's development of a potentially offensive military force. It does have a Self-Defense Force of about 250,000 troops, but the size and duties of this force are a sore point with public anti-military groups as well as with the political opposition. Japan hopes to improve the quality of its army without a major increase in its size.

The Soviets have an estimated 300,000 troops in the Far East, many of them dug in on the tense border with China. In recent months they sent planes and ships to aid Vietnam in its war with China and there also have been reports of Russian "Backfire" bombers stationed in Siberia and the movement of an Soviet aircraft carrier into the Indian ocean.

Rogers Morton dies

EASTON, Md. (AP) — Rogers C.B. Morton, 64, who served as interior secretary under the Nixon administration and a member of former President Ford's cabinet as commerce secretary, died Thursday.

Morton, a five-term Maryland congressman, was also Nixon's floor manager at the 1968 GOP convention and later served as Ford's campaign manager in the 1976 primaries.



Griffin Bell

Bell to leave job during summer

DETROIT (AP) — U.S. Attorney General Griffin Bell says he will leave office before the end of the summer, the Detroit News reported Thursday.

Earlier, Bell had said he would resign before the end of President Carter's first term. Associates have said they expected it before the end of this year.

In a dispatch from Washington, Bell was quoted as saying he would go back to his Atlanta law firm "during the summer, certainly by the end of it."

That law firm includes Charles Kirbo, one of the president's closest advisers.

"I want to get my successor in place before I leave," Bell was quoted as saying. "I've got a pretty good idea who my successor will be."

The newspaper said "insiders" believe Bell will recommend Benjamin R. Civiletti, deputy attorney general in charge of the criminal division, for his job.

TANGLEWOOD STEREO HI-FI EQUIPMENT

Bolin Appliance Mart OPEN 9 AM TO 6 PM

LITTON Microwave Cooking

Bob Sez! WE WANT TO HAVE THE BEST APRIL IN THE 9 YEAR HISTORY OF BOLIN APPLIANCE AND THE BEST WAY HE KNOWS OF IS TO LOWER ALL PRICES FOR ONE DAY! THE SAVINGS WILL NEVER BE BETTER!

SUPER Saturday!

PRICES SLASHED FOR 9 SUPER HOURS!

WELCOME TO Midland Newcomers! Be sure to make us your headquarters for appliances and service! You'll find a warm welcome here!

PICK YOUR PRICE AND PICK YOUR SYSTEM!

QUALITY SOUND FOR LESS!

Whirlpool Microwave Ranges

LITTON Microwave Ranges

RCA SelectaVision VIDEO CASSETTE RECORDER AND CAMERAS

Color Console TV

Whirlpool Washers and Dryers

Whirlpool Microwave ☆ Touch Control

ACX121 RCA Black & White TV 12" diagonal

BLACK & WHITE TV'S

Combination Ranges

Whirlpool Electric and Gas Ranges

RCA ColorTrak 19" diagonal

Color Portables

Whirlpool Refrigerators-Freezers

LITTON Microwave Ovens

Why Buy Bolins
 • FAR BETTER SERVICE
 • ON THE SPOT FINANCING
 • OUR BUSINESS IS ONLY TV AND APPLIANCES
 • OUR PRICES GET YA IN
 • OUR SERVICE GETS YA BACK

ON THE SPOT FINANCING SERVICE AFTER THE SALE

RCA **LITTON** **Whirlpool**

Bolin Appliance Mart 3108 Curthbert

OUR TO TOWNERS BRING YOUR TRUCKS OR TRAILERS AND SAVE A BUNDLE SATURDAY ONLY 9 AM TO 6 PM

DS, 682-4222

No one was Hender-

self from placed by lge John embroiled it County bpoenaed

rron had arron disny any with both) arrange

g s

stigating that "we ard's rec-

ed for the ted Tech- is "one of ters any-

wn more copiers

s and ex-ar at its

ion of the President e House tial craft mpletely

ound it," after con- e military

packing rain, some lightning le Texas t. Several - thunder- night. ing urged operators he Corpus shore be- ough seas. in some Panhandle watch was ns of the

est Texas, der of the peratures d 60s. Ex- l Paso and e.

C

ost of the was up to

ay 59 just any bewile- concrete verpasses, s when the

telegram

ishing Company) and Saturday l. P.O. Box 1636,

nd, Texas

TY

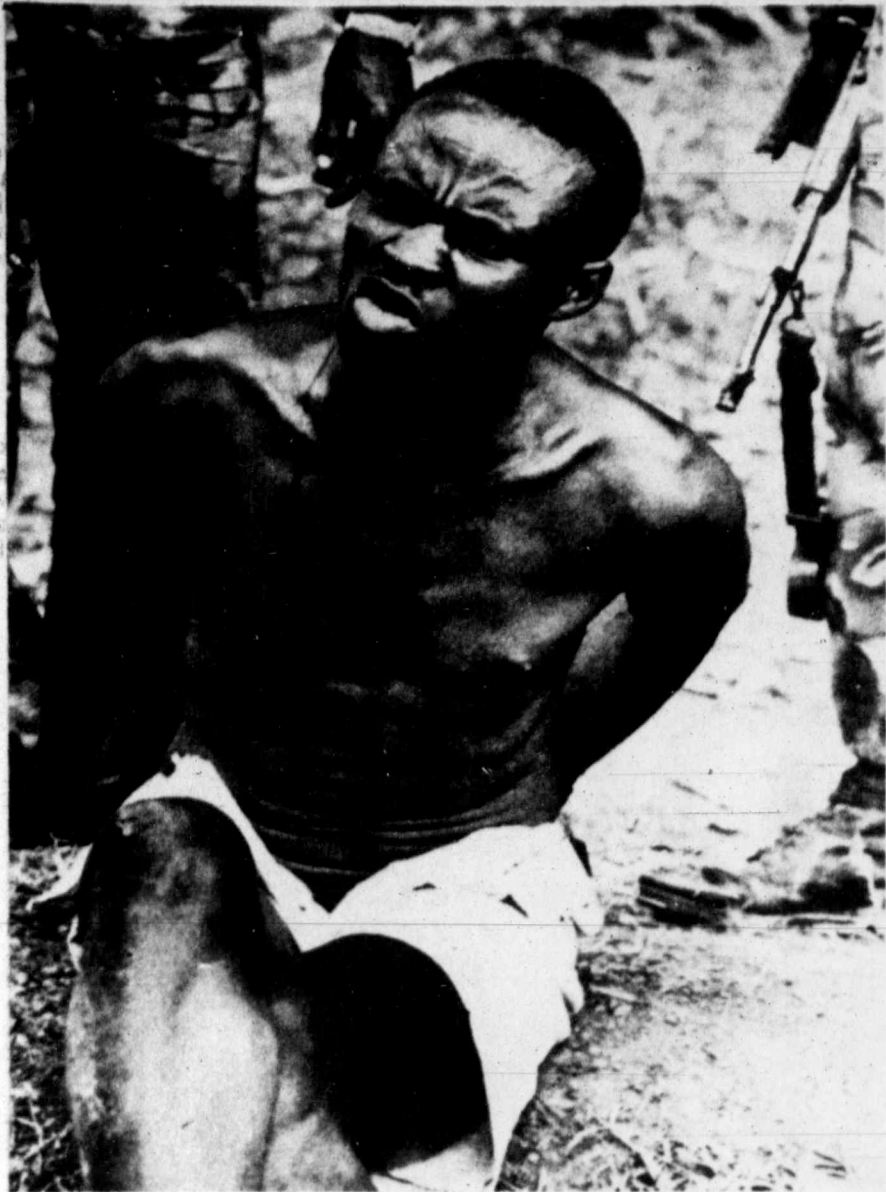
r. 6-Mos. 1-Mo. \$19.00 \$2.25 \$13.00 \$2.25 \$11.25 \$2.25

r. 6-Mos. 1-Mo. \$24.00 \$4.10 \$18.00 \$3.00 \$16.00 \$3.00

AS

r. 6-Mos. 1-Mo. \$26.50 \$4.35 \$20.50 \$3.25 \$18.50 \$3.25

no request. All description rates



A Ugandan prisoner has his hands tied to the feet of a Tanzanian soldier in Kampala. Captured by Tanzanian troops, the prisoner is believed to be part of Idi Amin's army. (AP Laserphoto)

Uganda slates plans for first local elections

KAMPALA, Uganda (AP) — Uganda's new provisional government announced its first local elections today and broadcast fresh appeals for troops backing deposed President Idi Amin to surrender. Radio Kampala said residents of town in the area of the Kampala, the capital, would go to the polls to elect local parish leaders Saturday, eight days after the new government took office pledging to restore democracy after eight years of Amin's dictatorship. Two of Amin's officers went on the radio, appealing to soldiers to stop fighting and back the new administration. "I appeal to all soldiers to renounce

Amin, because they will be well treated," said Maj. Joseph Adeke, senior Anglican chaplain to Amin's forces. "There should be no more bloodshed. Put down your weapons and come forward." A similar appeal was broadcast by Lt. Col. Are Kizza. Tanzanian and provisional government forces continued their drive east and north in a campaign they hoped would conquer remaining Amin forces in about one month. Although Kampala was taken April 10, its lifeline east to neighboring Kenya has remained unsafe because of resistance by remnants of Amin's army. Widespread looting, murders and massacres have been reported in the area.

Terror rocks Northern Ireland

BELFAST, Northern Ireland (AP) — Bloodied and battered by nearly 10 years of guerrilla warfare, Northern Ireland is reeling under a new wave of IRA terror that has killed 12 members of the security forces in two weeks.

The spring offensive of the outlawed Irish Republican Army's Provisional wing began in London with the bomb assassination of Airey Neave, the Conservative Party's spokesman on Northern Ireland, on March 30, the day after Prime Minister James Callaghan scheduled a general election for May 3.

The new guerrilla campaign opened in Northern Ireland six days later with an ambush outside a British army base in which two soldiers were killed. The IRA's 10 other victims since then have included three more soldiers, four policemen blown up Tuesday as their Land-Rover passed a parked, booby-trapped van, a part-time member of the Ulster Defense Regiment, a prison officer shot as he left his sister's wedding with his 3-year-old daughter and a woman prison officer and an army cadet killed Thursday.

The situation stirred up a storm today between U.S. House Speaker Thomas P. "Tip" O'Neill and British political leaders after O'Neill accused Britain of using Northern Ireland as a "political football." O'Neill made the remark in Dublin and then flew here with a congressional delegation.

In London, Shirley Williams, education minister and a leading member of Britain's Labor Party, said Irish-Americans had "very little idea of the truth of the situation in Northern Ireland."

Conservative leader Margaret Thatcher, hoping to become Britain's first woman prime minister, said the events in Northern Ireland "are too deeply tragic" to be used politically.

The spate of killings has hardened the British government's resolve that IRA terrorism would not force it to hand over the province to the neighboring Irish Republic.

Roy Mason, the cabinet member for Northern Ireland, has called for a "relentless drive" by the province's 1.5 million people against the guerrillas.

"They will not and must not succeed," he said. "Each incidence of violence creates a greater and growing determination on the part of the government and people to resist the imposition of a state of anarchy in which the gunman and the bomber hold sway. I am determined that they shall not achieve such a state."

Prime Minister James Callaghan said that if his Labor Party was returned to office in the election, he

would try and try again to find a political solution which would bring peace to the province's two bitterly opposed communities, the million Protestants and the half-million Roman Catholics.

But he had no new proposals to end the centuries of

enmity that erupted in the summer of 1969. Callaghan is heckled at every campaign meeting by a small group of demonstrators waving banners, shouting "Troops out of Ireland!" and accusing the army and the police of torture.

O'Neill asks British to aid Irish peace

DUBLIN, Ireland (AP) — House Speaker Thomas P. "Tip" O'Neill called on Britain's next government "to get serious negotiations moving quickly toward a just, realistic and workable solution" in Northern Ireland.

Speaking Thursday at a banquet given by Prime Minister Jack Lynch, O'Neill said he felt Britain was not treating the problem of the guerrilla war in the six Ulster counties with sufficient urgency.

"We have been concerned that the problem has been treated as a political football in London, or has otherwise been given a low priority," he said.

"So far as I am concerned, there is no more serious problem on the agenda of British politics."



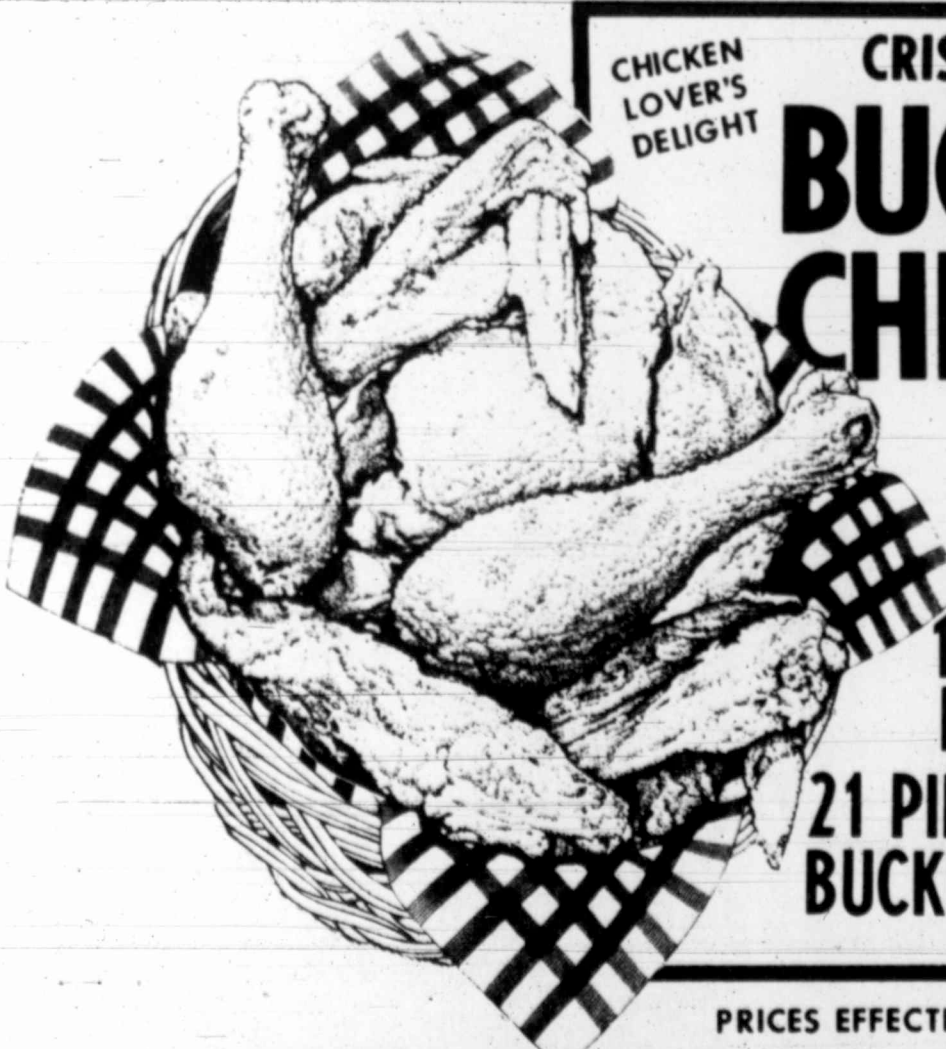
EDWARD E. RUNYAN FOR SCHOOL BOARD

KEEP YOUR SCHOOL BOARD INDEPENDENT

There are now two teachers on the school board. Three teachers would virtually assure control of the board by ex-employees of the district. Keep your school board free to act for Midland—not any special interest group. Midland needs Ed Runyan on the school board. RE-ELECT ED RUNYAN to the school board April 28th.

Pol ad paid for by committee to re-elect Ed Runyan, Ron Britton Chairman

FURR'S FAMILY KITCHEN FAMILY STYLE MEALS



CHICKEN LOVER'S DELIGHT

CRISPY GOLDEN BUCKET OF CHICKEN

9 PIECE BUCKET... \$2⁸⁹

15 PIECE BUCKET..... \$4⁸⁹

21 PIECE BUCKET \$6⁹⁹

PRICES EFFECTIVE THRU APRIL 22, 1979

ONE WHOLE BBQ CHICKEN

PLUS ONE PINT SALAD OF YOUR CHOICE ALL FOR \$3⁹⁹

LOCATED AT 2208 N. BIG SPRING MIDLAND



Handy Dan DO-IT-YOURSELF HOME CENTERS!

NURSERY SPECIALS

Free How-To CLINIC HOW-TO FERTILIZE YOUR LAWN Sat • April 21 11am & 2pm Sun. • April 22 2pm

PRICES GOOD THRU 4/25/79!



TRAY OF 6 Bedding Plants

12 PLANTS FOR 97¢

REGULAR 89¢ EACH Bedding size flowering plants. Assorted varieties. Sold in trays of 6 only.



8 INCH Hanging Baskets

4⁸⁸ REGULAR 6.99

Choose from begonias, moss rose and more. Lush planted baskets.



2 GALLON Climbing Roses

3⁴⁴ REGULAR 4.99

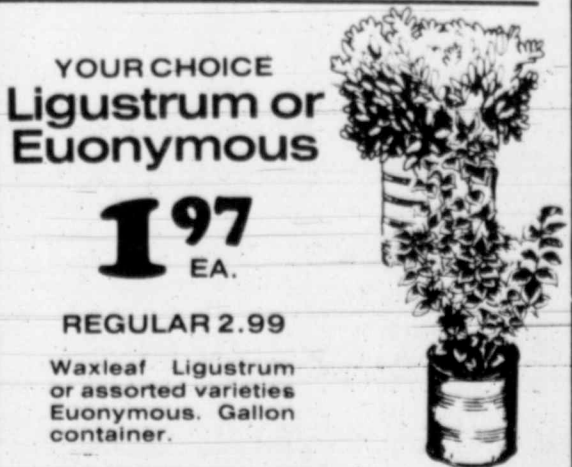
In bud and bloom. Plant along fence or trellis. Bloom almost all summer.



Gallon Container Flowering Honeysuckle

2²⁷ REGULAR 2.99

A vining type plant can be used on fence or trellis. Excellent ground cover.



YOUR CHOICE Ligustrum or Euonymus

1⁹⁷ EA. REGULAR 2.99

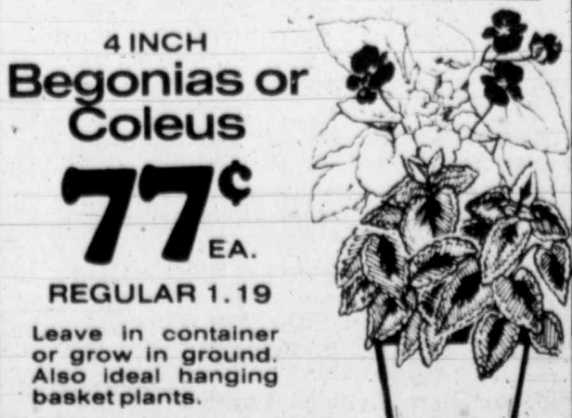
Waxleaf Ligustrum or assorted varieties Euonymus. Gallon container.



8 TO 10 FOOT Shade Trees

9⁹⁷ REGULAR 14.99

Balled, burlapped, ready to plant. Choose from Arizona Ash, Sycamore and others.



4 INCH Begonias or Coleus

77¢ EA. REGULAR 1.19

Leave in container or grow in ground. Also ideal hanging basket plants.

ANDREWS HYW. at CUTHBERT 694-6626 • MIDLAND

SECT

Midland received special Joint Comm Hospitals i Hospital W John E. the JCAH, mendation, mission on extends sp hospital for provided to efforts to health care to contain i applauded. "The act is evidence with nation It signifies to maintain care. By at land mem strated its tients and concluded. The JCA it organiza and survey facilities. M an accredi

...RICKY land has b Among Stu sities and Ricky is State Univ music maj He was ceremony Family W also prese mendation H. Smith. Ricky's Ross Jone

...WOMI of Midland invitations tourname will be li maximum Entries tion will el the tourn begins at i

...KARE ceton, has exhibit in t at The Uni um at Aus The art Color" a glasses in Karen is tin. Her w dents will May 6...

...PRIN Keridis of the guest well, of 42 The prince lege with at Schrien

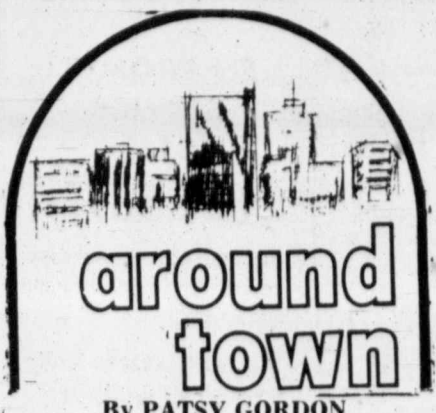
...NAVY monds, so of 3329 W designated Present Gold" m months of The avi basic stud gation; tra aircraft f advanced tended na ings aboar He is a Naval ac with a bac

...CHAP at 1 p.m. Mrs. B. tura...

...GRAN will spons day in M S Burt-Wh er. All are to the e

...CARE Bettye L. S honored TI Chico's. Caren is High Schc May. She University Mrs. Jir H. Young white was reflect The honor gift...

...KELL Mr. and M was honor with a skai Those Buckner, Sheely, Ca son, Sha McMullan, bie Elliott, and her co and the ho son. A spe mother, M Lake...



By PATSY GORDON Lifestyle Writer

Midland Memorial Hospital has received special recognition from the Joint Commission on Accreditation of Hospitals in observance of National Hospital Week May 6-12.

John E. Affeldt, MD, president of the JCAH, in an open letter of commendation, stated, "The Joint Commission on Accreditation of Hospitals extends special appreciation to this hospital for the quality of health care provided to its patients. Its voluntary efforts to improve the quality of health care while mindful of the need to contain health care costs are to be applauded."

"The achievement of accreditation is evidence of success in complying with national standards of excellence. It signifies a voluntary commitment to maintain a high quality of patient care. By attaining accreditation, Midland Memorial Hospital has demonstrated its accountability to the patients and community it serves," he concluded.

The JCAH is a private, not-for-profit organization that sets standards for and surveys health and health-related facilities. Midland Memorial has been an accredited hospital since 1955...

RICKY MARK BOWEN of Midland has been named to "Who's Who Among Students in American Universities and Colleges."

Ricky is attending Southwest Texas State University, where he is a junior music major.

He was honored at a presentation ceremony recently as a part of SWT's Family Weekend program. He was also presented with a letter of commendation from SWT President Lee H. Smith.

Ricky's parents are Mr. and Mrs. Ross Jones, of 800 Harvard St...

WOMEN'S GOLF ASSOCIATION of Midland Country Club will have an invitational "Hoot and Shoot" golf tournament Wednesday. The field will be limited to 60 players, with maximum handicap of 30.

Entries will close Sunday. Registration will close at 8:45 a.m. the day of the tournament. A shotgun start begins at 9 a.m....

KAREN GRAHAM, of 2907 Princeton, has a painting currently on exhibit in the Art Students' Exhibition at The University of Texas Art Museum at Austin.

The art work is entitled "Vintage in Color" and is an oil painting of glasses in shades of green.

Karen is an art student at UT-Austin. Her work and those of other students will remain on view through May 6...

PRINCE ABDUL Oglia Mahmud Keridis of Riyadh, Saudi Arabia, was the guest of Mr. and Mrs. O. Blackwell, of 4208 Boulder Drive, recently. The prince is currently attending college with the Blackwell's son, Gary, at Schriener College in Kerrville...

NAVY ENSIGN Ricky T. Hammonds, son of Mrs. Alfred Gillespie, of 3329 W. Wadley Ave., has been designated a naval aviator.

Presentation of the "Wings of Gold" marked culmination of 18 months of flight training.

The aviation curriculum included basic studies in engineering and navigation; training flights in simulators; aircraft familiarizations; basic and advanced instrument training; extended navigation flights and landings aboard an aircraft carrier.

He is a 1977 graduate of the U.S. Naval Academy, Annapolis, Md., with a bachelor of science degree...

CHAPTER BS, P.E.O., will meet at 1 p.m. Wednesday in the home of Mrs. B. J. Cordonnier, 1407 Ventura...

GRAND SQUARES of Midland will sponsor a dance at 8 p.m. Saturday in M Square Arena.

Burt Whitaker of Big Spring is caller. All area square dancers are invited to the event...

CAREN SHARP, daughter of Bettye L. Sharp, of 2816 Maxwell, was honored Thursday with a dinner at El Chico's.

Caren is a senior at Robert E. Lee High School and will graduate this May. She plans to attend Texas A&M University next fall.

Mrs. Jim Burton and Mrs. Robert H. Young were hostesses. Maroon and white was the color theme used, and was reflected in the table centerpiece. The honoree was presented with a gift...

KELLY DODSON, daughter of Mr. and Mrs. James "Doc" Dodson, was honored on her tenth birthday with a skating party...

Those attending were Shana Buckner, Demetria and Deandrea Sheely, Catherine and Amy Furgerson, Shannon Thomas, Denisa McMullan, Anna-Margaret Ray, Debbie Elliott, Sheila Davis, Kelly Nance and her cousin Alicia from Houston; and the honoree's sister, Jamie Dodson. A special guest was her grandmother, Mrs. D. K. McMullan of Big Lake...

Armed Forces fall short in enlistments

By FRED S. HOFFMAN AP Military Writer

WASHINGTON (AP) — Three of the four armed services fell short of their goals in enlisting women during the last six months.

Recent reports to Pentagon manpower officials show that the Marine Corps and Air Force shared the Army's previously disclosed failure to meet recruiting objectives for women in the first half of fiscal 1979.

However, the Army's shortfall was the most serious. The Army reached only 72 percent of its objective while the Marine Corps hit 90 percent and the Air Force recruited 99 percent of its goal.

The Navy alone was successful, making 101 percent of its quota.

The period covered by the report was from last Oct. 1 to March 31.

The Carter administration's hopes for quieting congressional criticism of the all-volunteer concept rest heavily on the ability to recruit increasingly more women in the future as the population of young men declines.

Under current plans, the total of enlisted women in the armed services would rise from 117,000 last year to 208,000 in 1984. The Army's share of this would increase from 50,000 in 1978 to 80,000 five years from now.

The Army's unexpected failure to attract enough women recruits is a particular cause of concern for manpower officials because the Army is the biggest of the services.

In a move to bring in more women volunteers, the Army recently announced a lowering of minimum mental standards, although it preferred to call the action "expanding Army service opportunities for young women."

Other services have not made any similar moves and are considered unlikely to do so unless they develop problems of the magnitude of those confronting the Army.

Army officials still are puzzling about reasons for the recent decline in the enlistment of women after what they regarded as successful recruitment over the last several years.

However, some officials acknowledge the Army may have been too optimistic about the potential number of women who might wish to serve.

They also say the decline could be attributable to a demonstrated preference by enlisted women for the traditional specialties, such as those in offices, hospitals and communications.

Although the Army has opened up but a few of its 345 military occupational specialties to women, statistics show that women still choose the traditional billets and appear reluctant to move into some of the other fields, leading to an oversupply in some of

the skills in which women have normally served before Pentagon officials sought to broaden their opportunities.

According to the most recently available occupational statistics, which reflect the situation as of last September, more than 36,000 of the 50,000 enlisted women were in administration, medical, communications, electronics, supply and service jobs.

Results

examined

Women who are happiest in dual-career marriages have only modest career ambitions, according to a University of Texas study.

Both men and women felt least conflict among roles when their spouses gave them support for their activities, when they had favorable self-concept and when they were committed to their jobs, explains Dorothy Taylor, a family life education specialist with the Texas Agricultural Extension Service, The Texas A&M University System.

SORORITY NEWS

ALPHA CHI OMEGA ALUMNAE

The Alpha Chi Omega Alumnae group will be having a salad luncheon and election of officers Wednesday, April 25 at 11 a.m. at the home of Mickey Hewitt, 2101 Hughes Ave.

All alumnae are welcome and for further information call Mickey at 691-3298.

yo-yos by CONNIE®

Yo-Yos certainly are a hole lot of fun!



\$30.



Bone Navy Camel White

\$30.

EARL MATNEY Shoes

Store Hours: 9:30 am-6 pm 682-9691

Tired of terminal wait? Watch for Permian Airways.

Foster care for abused children not provided in certain cases

More than 40 Texas counties do not provide foster care for child abuse victims from non-poverty level families, according to the Texas Department of Human Resources (DHR).

Without the availability of foster care, abused or neglected children from families not under income guidelines in the 41 counties often are forced to remain with their abusive parents unless a relative or neighbor is willing to care for the child.

Bernardo Lopez, regional director for DHR social services in West Texas, says the state currently provides protective foster care only to children from poverty-level families eligible for the AFDC (Aid to Families with Dependent Children) program.

Foster care for children from non-AFDC families is the responsibility of

county governments.

Some 117 Texas counties have a contract with DHR to provide protective foster care for children not eligible for state funded AFDC foster care, according to Lopez.

An additional 96 counties provide some limited funding on a case by case basis. Forty-one counties provide no funding.

Even in counties providing non-AFDC foster care, funds do not meet the need for specialized care for mentally retarded or emotionally disturbed children, Lopez said.

By law, DHR is responsible for assuring protection of all children in the state, regardless of a family's economic status.

When protective foster care is unavailable to non-AFDC children, DHR

officials say sometimes their only alternative is to love the child with their abusive parents with DHR guidance.

"All children in Texas—not just half of them—should be assured of foster care when needed," Lopez told the Ector County Foster Parents Association in Odessa recently.

"For this to be accomplished the state must assume responsibility for non-AFDC as well as AFDC foster care."

Lopez believes a state appropriation for protective foster care for all children is essential to assure equal protection of Texas children.

Legislation to provide non-AFDC foster care has been introduced in the current session of the legislature by Senator Chet Brooks of Pasadena and Representative Lynn Nabers of Brownwood.

Organize your fall wardrobe around the occasions in your life

DALLAS — Do you regard shopping for clothes as a pleasant way to pass time, or do you shop with a specific purpose in mind?

More and more women (with less and less time to spend) cluster their clothing purchases around specific occasions and find that it saves time and cuts down on impulse purchases that never seem to fit into their wardrobes.

At the recent Early Fall Market at the Dallas Apparel Mart, clothes focused on four important occasions—working, stepping out, weekend living, and disco dancing—that will dominate wardrobes in fall '79. Here are the new looks for the occasions in your life:

feminine laces, satins, velvets and brocades. Glamour accessories complete the look. Tiny hats, three-quarter length gloves, textured stockings, small structured bags and heavy jewelry combine to create the perfect mood for elegant dressing after five.

Weekends are for relaxing, and women will relax in style this fall. Autumn weekend-wear will include bulky outdoor knits, fitted skirts, kilts, longer fitted blazers, and pants that are tapered, stovepipe and stirruped. Fall leisure fabrics will provide comfort and fashion with soft flannels, soft leathers and suedes, color-flecked tweeds and natural yarns. Argyle socks, colored loafers,

leather belts, wool gloves and wrapped headscarves complete the weekend wardrobe.

The fourth occasion for today's woman is disco dancing, and apparel designers presented fashions for a separate disco wardrobe for fall. Two-piece maillots, either strapless or scoop necked, and torsoedights are a popular look for the more daring dancer. Short chemise dresses and full wrap skirts are also good for dancing. Fabrics for disco shimmer and shine in lame and sheer metallics. Accessories include opera gloves, stiletto heels, hair decorations and battery operated platform shoes that light up the dance floor.

SPRING SALE

OVERALL... it's FASHION!

ROSE HIPS
Fashion-Overalls
\$26.00-\$28.00
Reg. 36.00-38.00

\$4.00 OFF ANY Purse in the store

DITTOS
TOPS
\$9.60-\$16.00
Reg. 12.00-\$20.00

LEVIS FOR GIRLS preteen 7-14
Now 8.99
Reg. 14.00-\$15.

Levi Bendovers \$19.95
Reg. 22.00

FRIDAY & SATURDAY
694-2516

THE RAM
pants 'n' things for all ages
San Miguel Square Midkiff & Wadley

Casey's
Where Fashion Begins

5102 E. University Blvd.
Odessa, Texas 79761
915-367-8649

Robinson's

Bright silks



The all-out luxury of silk in brights and pastels that are perfect with suits... smashing with jeans. Short sleeves, silk crepe de chine, 48.00.

North "A" & W. Scharbauer Dr.



New president of the Midland Symphony Guild, Mrs. Frank Powell, center, visits with Mrs. W. J. Heath, outgoing president, and Dr. Tom Hohstadt, conductor of the Midland-Odesa Symphony. (Staff Photo)

The right signal to call is 682-6222

CHAPARRAL SHOP & GALLERY

SALE ON INDIAN MADE TURQUOISE & SILVER JEWELRY 20%-40% OFF

4305 W. ILLINOIS 694-0933



UDDIK NEWSPAPER

For PROMPT SERVICE CALL 682-5311

(Before 6:45 p.m. weekdays. Before 10:45 a.m. Saturday and Sunday)

We want you to have YOUR NEWSPAPER ON TIME EVERY TIME


The Midland Reporter-Telegram

Career girl

"WE CARE" 682-1678

329 DODSON 10 to 6 SIX DAYS A WEEK in The Village

The freshest of summer cords from Inner by Ship'n Shore



Layered and at ease in the most natural of pulled-together looks. With more definition in the slimmed, open-pleat skirt. More snap in the lively plaid shirt.

In the indispensable crispness of polyester/cotton cord. The best of all-around colors. Clay or Burnt Sienna. Sizes 6 to 16.

The Skirt \$21. The Blouse \$18.

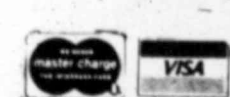
SALE

Spring Dresses
Trousers, Blazers,
Skirts, Vests,
Blouses,

Lou's

No. 162 San Miguel Square (In The Mall)

Lou Peters-Owner



Irish dish suits springtime

By CECILY BROWNSTONE
Associated Press Food Editor

DEAR CECILY: I understand that you have given recipes for Colcannon. Would you be so good as to print one again for those of us who have missed them? — VEGETABLE BUFF?

DEAR VEGETABLE BUFF: I'm happy you asked about Colcannon — that homey combination of potatoes, cabbage, onion, butter, milk and seasoning. It's a simple country dish from Ireland that, in my opinion, is as delicious as any so-called gourmet offering. This is an especially good time to try Colcannon because in springtime truckloads of attractive green heads of cabbage are brought to markets from many parts of the United States. The vegetable is in peak supply all over.

1½ cups tightly packed, coarsely grated (short lengths) green cabbage
Butter
1 small onion, chopped fine (about ¼ cup)
Milk
Salt and Pepper

According to the manufacturer's directions for your particular steamer, cook the potatoes in a bottom part of it until they are tender; at the same time cook the cabbage in an insert in the upper part of the steamer, just until the cabbage is tender-crisp. The potatoes, unless cut very small, will take longer than the cabbage to cook.

Meanwhile in a small skillet, in a couple of tablespoons of hot butter, gently cook the onion until golden.

Drain the potatoes and rice or mash until smooth. Drain the cabbage well. With a spoon, mix potatoes, cabbage and onion; stir in enough milk to make a consistency you like and season well with salt and pepper. Reheat and serve very hot with a pat of butter melting in a well in the center of each portion.

Makes 4 delicious servings.

Like many traditional dishes, there are various versions of Colcannon. There's also a little controversy surrounding its name. When the dish is called Colcannon should it be made with cabbage or kale? Theodora Fitzgibbon in her cookbook, "A Taste of Ireland," says, "Colcannon should correctly be made with kale, but is more often made with cabbage."

And the late Maura Laverty, known both for her novels and cookbooks, wrote that the potato-cabbage combination should be called Thump; only when potatoes and kale are combined should the dish be named Colcannon.

History of medicine program presented

The Woman's Auxiliary to the Midland County Medical Society held its monthly meeting Thursday at the home of Mrs. T. June Melton, 405 W. Broadway Ave.

The program, "The Way We Were" or "A History of the Practice of Medicine in Midland," was presented by Mrs. Melton.

Also, officers for 1979-1980 were elected. They include Mrs. Walter Parks, president; Mrs. Henry Page, president-elect; Mrs. Ralph Berry, first vice president; Mrs. Norman Fry, second vice president; Mrs. Josef Del, secretary; Mrs. Louis Barclay, treasurer, and Mrs. Albert Horne, parliamentarian.

Hostesses for the meeting were Mrs. Melton, Mrs. Thomas McIntosh, Mrs. Todor Graser, Mrs. Ramon Domingo and Mrs. Josef Del.

On the other hand, Frances Mayville Budin, author of "Recipes from Ireland," brings up the derivation of the name: "Cal ceannann is the Irish for Colcannon, cal means cabbage and ceannann means white-headed." Who wins out? Mrs. Budin? — C.B.

STEAMER COLCANNON

3 large (about 1½ pounds) potatoes, pared and cut up

HOROSCOPE

By CARROLL RIGHTER (Sat. Apr. 21)

GENERAL TENDENCIES: Decide just how modern and up-to-date you can become in your various activities and to make the original moves towards putting such a course in operation. Discuss with the most progressive persons you know their way to definite success.

ARIES (Mar. 21 to Apr. 19) Study friends well and know how to have more accord with them in the future. Put some drama into your activities so that you become more successful with them.

TAURUS (Apr. 20 to May 20) Take care you do not irk a bigwig in any way. Plan how to improve credit rating appreciably. Relax and spend more time with loved ones.

GEMINI (May 21 to June 21) Consult new experts so that you can advance more quickly in the future. Become acquainted with a dynamic and successful person.

MOON CHILDREN (June 22 to July 21) Plan early to handle responsibilities more intelligently and get excellent results thereby. Be dramatic with loved ones and get better response. Improve monetary status.

LEO (July 22 to Aug. 21) You understand views of partners better now and can reach a fine understanding with them. Civic pressure could find you rather bogged down, but handle the situation wisely. Take no risks with credit.

VIRGO (Aug. 22 to Sept. 22) Plan to get that work done in a different manner and gain approval of others. Take exercise or treatments that improve your state of health.

LIBRA (Sept. 23 to Oct. 23) Plan early future recreations with good friends. Buy a thoughtful gift for a loved one and you are back in his or her good graces.

SCORPIO (Oct. 24 to Nov. 21) Do whatever brings more harmony and understanding at your home. Wait until evening for any entertaining you have in mind.

SAGITTARIUS (Nov. 22 to Dec. 21) Read papers and brochures for information you need on various subjects. Drive carefully even while doing errands not distant from your home.

CAPRICORN (Dec. 22 to Jan. 20) Change your lifestyle somewhat so that you have more money to play with in the future. Talk to one who is very successful and get good ideas.

AQUARIUS (Jan. 21 to Feb. 19) Know what you want from the personal angle and how best to go after such aims. Meet with good friends for lunch or dinner.

PISCES (Feb. 20 to Mar. 20) You want to make radical changes, but this is not wise yet, so keep steadfast for the time being. Fine time to get advice from a bigwig you trust. Take no risks with finances.

there's a sale at Christy's!

Spring Clearance

Dresses and Designer Dresses

Sportswear...

Sweaters, pants, jackets
Blouses, T-shirts,

1/3 to 1/2 OFF and more

Christy's 44 Plaza Center Midland 682-4352

Alexander's IMPERIAL PRODUCE

"The Finest in Fresh Fruits and Vegetables"

RETAIL Imperial Shopping Center 3206-A Midkiff and Wadley Mon.-Sat. 9 a.m. to 6:30 Sundays 12:00 to 6:30

WHOLESALE

SATURDAY ONLY

Top-of-the-Season Beautiful Large California Red-N-Ripe

39¢ Pint Basket

79¢ Qt. Basket

STRAWBERRIES

Gandy's Whipping Cream

1/2 Pint Carton 39¢

California **BROCOLLI** Beautiful Large Green Head

49¢ lb.

Kentucky Wonder "Fresh Picked" Green Beans 59¢ lb.

New Crop! Vine Ripe Mexico-Sugar-Sweet EXTRA LARGE

CANTALOPES

WHILE SUPPLY LASTS!! 39¢ lb.

BEDDING PLANTS

including:

- Ageratum
- Alyssum
- Begonia
- Calceolium
- Chrysanthemum
- Dahlia
- Sheets Daisy
- Tomatoes
- Margolds
- Mass Rose
- Portulaca
- Starburst
- Song Dragon
- Violet
- Peppers

Priced 20¢ to 99¢

Come in and be dazzled by colors.

1P.M. - 5 P.M. Sunday 9:00-4:00 Mon. thru Sat.

Midland Garden Center

4615 Sinclair 4 Blocks West of Windsor Place Apt.

682-4352

Rush... the Active Sandals!

FAMOLARE

T-strap "Daytona" Bone or white leather on the Rush bottom. Slim, narrow, medium widths. \$29.

321 Dodson... Call 684-6764

GRIGSBY'S

fresh fashion from Garland in 3-piece dressing.

Orchid peach floral blouse, \$22.

Bolero, \$17.

Front-split skirt, \$22.

Handwritten note: "child... in cool light cotton!"

SPRING SPECIALS

SHORT SLEEVE VELOUR TOPS Reg. \$30 to \$32 \$14.99

GROUP OF SPRING 'N SUMMER PANTS Reg. \$20 to \$24 \$16

321 Dodson Shop 10 to 6

Rental va
Ch
cho
new
Betty (dent of T Sigma A
The cl Mrs. G guest
Other Duncan, Miles, re Luccous, Betty Ba Barker, J
The ou Broxson chairman mian Ba Sigma A
Mrs. B peting A assisted Duncan
By ABIG DEAR this good waits on near who came or country I hard for wouldn't first base I liked.
Well, I from wo times, an me was i at her doc
I asked wanted I she gave clothes to to buy around ar things sh set me ba
After I gifts, I about, dr Springs. She said she was a girl.
She al clothes I what do bucks a DENNY I
DEAR were, you to eat all \$400 lesso
DEAR and I hav for seven two child was rath jumpy thought n putting overtime finally by confessed been cari friend of also mar shock!
He cla herself at only hum try to for because i I've honei you thin expected this wor husband nothing I peneb be my husba I told G to social couple ar became a In orde argument
Limit
LA
We pri design medical plants i

Chapter chooses new officers

Betty Goode has been elected president of Texas Zeta Mu Chapter of Phi Sigma Alpha.

The chapter met in the home of Mrs. Goode, with Betty Jones as a guest.

Other officers named were Jackie Duncan, vice president; Lorraine Miles, recording secretary; Frances Luccion, corresponding secretary; Betty Banks, treasurer, and Thelma Barker, program moderator.

The outgoing president, Christine Broxson, will serve as scrapbook chairman and president of the Permian Basin Area Assembly of Phi Sigma Alpha.

Mrs. Banks led the study on "Competing Against Yourself." She was assisted by Thelma Echols, Mrs. Duncan and Mrs. Barker.



Members of the Eta Epsilon Zeta chapter of Zeta Phi Beta sorority prepare for a benefit tea Sunday at the Midland Federation of Black Women's Clubhouse. From the left are Mrs. James A. Johnson, president; Velta Baker, Bertha Starks and Johnie Shelton. The tea is being held as a benefit for the purchase of a hearing ear dog for Mary Bess of Midland, a former teacher in the Midland Public Schools. The event will be held at from 3 p.m. to 6 p.m. The public is invited to attend. (Staff Photo)

Officers selected

Officers were introduced at this week's meeting of the Permian AIMEES who met at Ranchland Hills Country Club.

Leading the group will be Jo Wornat, president; Rowena Galerston, first vice president; Kathy Freeman, second vice president; Phala Smith, secretary; Anita Lintzen, treasurer; Fena Berry and Betty Scott, directors.

Philanthropic chairman Shirley Brooks presented the two scholarship recipients to the group. They were Xan Phiffer and Jane Bishop, who attended the luncheon along with their mothers.

The AIMEES will adjourn for the summer and gather again at the membership coffee in September.

AFTER MASTECTOMY

Finally, a natural prosthesis for the woman who has undergone surgery for removal of the breast. Wear your transparent bras again...no special pocket is necessary, go strapless, even see-through. Tennis, swimming, or jogging is no longer a problem; the prosthesis will not slip, ride up, or absorb water. The NaturForm Prosthesis has the same form, color and texture of the natural breast, including the nipple and areola! It is not filled with liquid or silicone, so there is no danger of leakage or shrinkage; it even absorbs and maintains the body's temperature. **FOUR YEAR GUARANTEE.** Covered by most insurance.

This prosthesis is now available to residents of the Permian Basin area. Be professionally fitted in our private showing Saturday April 21, from 2:00 to 5:00 p.m. at 1909 McDonald.

For more information, call: 694-7886

DEAR ABBY He's hopping mad

By ABIGAIL VAN BUREN

DEAR ABBY: I met this good-looking girl who waits on tables in a place near where I work. She came on like a sweet country kid who worked hard for a living and wouldn't let a guy get to first base with her, which I liked.

Well, I took her home from work a couple of times, and all she'd give me was a goodnight kiss at her door.

I asked her what she wanted for Easter and she gave me a list of clothes to buy and where to buy them. I went around and bought all the things she wanted, which set me back \$400.

After I gave her these gifts, I asked her how about driving to Palm Springs for the weekend. She said nothing doing — she wasn't "that kind" of a girl.

She already wore the clothes I gave her, so what do I do now? \$400 bucks ain't hay. — DENNY IN PASADENA

DEAR DENNY: If it were, you'd have enough to eat all winter. Call it a \$400 lesson.

DEAR ABBY: Greg and I have been married for seven years and have two children. I noticed he was rather nervous and jumpy lately, but I thought maybe he'd been putting in too much overtime at work. He finally broke down and confessed that he had been carrying on with a friend of mine. (She's also married.) I was in shock!

He claims she threw herself at him and he was only human, so I should try to forgive and forget because it's all over now. I've honestly tried, but do you think I should be expected to socialize with this woman and her husband as though nothing had ever happened between her and my husband?

I told Greg I didn't care to socialize with this couple anymore and he became angry with me. In order to avoid arguments we've been

going out as a foursome, but it bothers me to even look at her.

I know that Christians should forgive, and I have prayed to the Lord for my feelings to change, but I still feel the same toward her. What should I do? — UNFORGIVING CHRISTIAN

DEAR CHRISTIAN: Keep praying, but to thine own self be true. And unless you feel completely comfortable with this woman, tell Greg that you, too are "only human," and you'd rather not be in her company. The Lord will understand.

DEAR ABBY: My girlfriend's mother lets her kids call her "Yetta," and I think that's neat.

I tried calling my mother "Sheila" and nearly got hit in the head.

My Mom said when kids call their parents by their first names it shows a lack of respect, and there would be none of that in our house.

I wonder how you feel about that, Abby. — SONIA

DEAR SONIA: I think your mother's wishes should be respected.

Are you the lonely face in the crowd? Friends make you a winner, and Abby tells you how to win them in her booklet, "How To Be Popular: You're Never Too Young or Too Old." Send \$1 with a long, self-addressed, stamped (28 cents) envelope to Abby: 132 Lasky Drive, Beverly Hills, Calif. 90212.

For You, Your Home and Your Family

Sears BEST BUYS

Available at most larger Sears retail stores in area; sizes, colors, styles may vary by stores

With the Spotlight on Value

A special purchase though not reduced is an exceptional value

22% OFF
Long and short sleeve pajamas

Regular \$8.99
7.19

Polyester and cotton pajamas have button front and Gripper™ snap waist and fly closure. Patterns and solids.

Sale ends April 21

Take time out to **SAVE 1/3**

Electric analog alarm clocks

Dependable alarm clocks, easy to read. Have repeat alarm feature.

Sale ends April 21

Save \$1.50
Standard size re-usable Billow Pillow

Regular \$9.50
\$8

Our best polyester pillow resists bunching and shifting. Cotton and polyester ticking.

Sale ends April 21

Save \$2
3-star basketball

Sears 3-star basketball is official weight and size.

Regular \$11.99
9.99

Sale ends April 21

Save \$2.50
on heavy-duty laundry detergent

Reg. \$15.99
13.49

10-lb. box

Removes more soil than the nation's leading detergent. Super-concentrated formula uses less detergent.

Sale ends April 21

23% OFF
Vacuum cleaner bags

Stock up now on Sears vacuum bags that fit Kenmore vacuums as well as many other brands of vacuums.

Regular \$1.29
99¢ pkg.

Sale ends April 21

Save \$1.50
Scroll top border wire

White or green border wire protects plants, shrubs, flowers. 25-ft. roll, 14-in. high. Vinyl-coated to resist rust.

Reg. \$5.99
4.49 25-ft. roll

Sale ends April 21

Save 17%
Sears Best 10W-40 motor oil

Regular 79¢
65¢ qt.

Multi-grade motor oil helps protect your engine at high speeds and stop-and-go driving.

Sale ends April 21

Special Purchase!
90-ft. outdoor extension cord

988

16-gauge, 3-wire. Plastic coated cord for safety and durability. Great value!

Limited quantities

\$20 off Craftsman 3.5-HP mower

Easy-starting Eager-1® engine. Lets you mow in tight places, 20-in. cut. With catcher. 5 heights.

Reg. \$179.99
159.99

Sale ends April 28

Save \$4
Latex fashion flat paint

One-coat when used as directed. Interior paint is washable, colorfast and spot resistant. 24 colors.

Regular \$12.99
8.99 gal.

Sale ends April 21

Save \$10!
Weatherbeater exterior latex flat

Reg. sep. prices of two 1-gallon cans total \$29.98
19.98 2-gal.

Ultra-flat white finish. One-coat when used as directed. Washable, non-yellowing, stain resistant, no chalk wash-down. White only.

Limited Quantities

FROM THE GARDEN SHOP

California Roses IN BUD AND BLOOM

Limited Quantity-Limited Varieties MOST COLORS AVAILABLE

FERTILIZERS

- Carl Pool
- Wacco
- Scotts
- Fertilome

★ Spreaders Loaned ★

SATURDAY AND SUNDAY SPECIALS

Michigan Peat 50 lbs. **2.95**

Canadian Peat 6 cu. ft. **11.95**

4 cu. ft. **9.95**

LANDSCAPE SERVICE

DAVIS GARDEN CENTER AND LANDSCAPING

2820 Golf Course Rd. 682-8046

We provide professional landscape and design services for home office or commercial property. Our best selection of plants is available now.

Each of these advertised items is readily available for sale as advertised

Sears Where America shops
Satisfaction Guaranteed or Your Money Back

-ASTROWORLD TICKETS- -SIX FLAGS TICKETS-
Available at Customer Convenience Center

MIDLAND Cathbert & Midkiff Rd. Phone 694-2581
OPEN 9:30 a.m. 'til 9 p.m. Thursdays and Fridays
Open 9:30 'til 6 Mon., Tues., Wed., Open 'til 7 Saturdays

PROMPT SERVICE CALL 2-5311

5:45 p.m. weekdays, 0:45 a.m. Saturday (9:00 p.m. Sunday)

Want you to have NEWSPAPER ON TIME EVERY TIME

Telegram

682-1678 to 6 SIX DAYS A WEEK The Village

The freshest Summer cords from Inner

Ship'n Shore

Layered and at ease in the most natural of pulled-together looks. With more definition the slimmest, open-pleat More snap in the lively plaid shirt. indispensable crispness polyester/cotton cord. est. of all-around colors. Clay or Burnt Sienna. Sizes 6 to 16.

The Skirt \$21. The Blouse \$18.

Wholesale and Wadley

ONLY

Land's End

Land's End

Land's End

Land's End

Land's End

Land's End

Land's End

Land's End

Land's End

Land's End

Land's End

Today's opening stock market report

New York Exchange

NEW YORK (AP) — Today's selected national prices for New York Stock Exchange issues:

Sales PE High Low Close Chg

ACF	2.10	110	33	23 1/2	23 1/2
AMP	1.24	72	16	16 1/2	16 1/2
AM Int	2.63	133	16	16	16
ASA	2.57	125	24	24 1/2	24 1/2
AMSP	1.12	50	12	12 1/2	12 1/2
Aetna	1.70	85	14	14 1/2	14 1/2
AFL	2.00	100	24	24 1/2	24 1/2
Alcoa	1.80	90	14	14 1/2	14 1/2
Alcan	2.37	117	24	24 1/2	24 1/2
Allied	1.20	60	12	12 1/2	12 1/2
Alltel	1.72	86	16	16 1/2	16 1/2
AllCh	2.20	110	24	24 1/2	24 1/2
Allstate	1.80	90	14	14 1/2	14 1/2
AllCh	1.70	85	14	14 1/2	14 1/2
Alcoa	2.40	120	24	24 1/2	24 1/2
Alcan	2.37	117	24	24 1/2	24 1/2
Alcoa	2.40	120	24	24 1/2	24 1/2
Alcan	2.37	117	24	24 1/2	24 1/2
Alcoa	2.40	120	24	24 1/2	24 1/2
Alcan	2.37	117	24	24 1/2	24 1/2

Energy

Duke	1.80	90	14	14 1/2	14 1/2
DuPont	1.72	86	16	16 1/2	16 1/2

Financial

East	1.80	90	14	14 1/2	14 1/2
East	1.80	90	14	14 1/2	14 1/2

Industrial

East	1.80	90	14	14 1/2	14 1/2
East	1.80	90	14	14 1/2	14 1/2

Transportation

East	1.80	90	14	14 1/2	14 1/2
East	1.80	90	14	14 1/2	14 1/2

Utilities

East	1.80	90	14	14 1/2	14 1/2
East	1.80	90	14	14 1/2	14 1/2

Government

East	1.80	90	14	14 1/2	14 1/2
East	1.80	90	14	14 1/2	14 1/2

Commodities

East	1.80	90	14	14 1/2	14 1/2
East	1.80	90	14	14 1/2	14 1/2

Foreign

East	1.80	90	14	14 1/2	14 1/2
East	1.80	90	14	14 1/2	14 1/2

Options

East	1.80	90	14	14 1/2	14 1/2
East	1.80	90	14	14 1/2	14 1/2

Special

East	1.80	90	14	14 1/2	14 1/2
East	1.80	90	14	14 1/2	14 1/2

Market Summary

East	1.80	90	14	14 1/2	14 1/2
East	1.80	90	14	14 1/2	14 1/2

Market Summary

East	1.80	90	14	14 1/2	14 1/2
East	1.80	90	14	14 1/2	14 1/2

Market Summary

East	1.80	90	14	14 1/2	14 1/2
East	1.80	90	14	14 1/2	14 1/2

Market Summary

East	1.80	90	14	14 1/2	14 1/2
East	1.80	90	14	14 1/2	14 1/2

Market Summary

East	1.80	90	14	14 1/2	14 1/2
East	1.80	90	14	14 1/2	14 1/2

Market Summary

East	1.80	90	14	14 1/2	14 1/2
East	1.80	90	14	14 1/2	14 1/2

Market Summary

East	1.80	90	14	14 1/2	14 1/2
East	1.80	90	14	14 1/2	14 1/2

Market Summary

East	1.80	90	14	14 1/2	14 1/2
East	1.80	90	14	14 1/2	14 1/2

Energy

East	1.80	90	14	14 1/2	14 1/2
East	1.80	90	14	14 1/2	14 1/2

Financial

East	1.80	90	14	14 1/2	14 1/2
East	1.80	90	14	14 1/2	14 1/2

Industrial

East	1.80	90	14	14 1/2	14 1/2
East	1.80	90	14	14 1/2	14 1/2

Transportation

East	1.80	90	14	14 1/2	14 1/2
East	1.80	90	14	14 1/2	14 1/2

Utilities

East	1.80	90	14	14 1/2	14 1/2
East	1.80	90	14	14 1/2	14 1/2

Government

East	1.80	90	14	14 1/2	14 1/2
East	1.80	90	14	14 1/2	14 1/2

Commodities

East	1.80	90	14	14 1/2	14 1/2
East	1.80	90	14	14 1/2	14 1/2

Foreign

East	1.80	90	14	14 1/2	14 1/2
East	1.80	90	14	14 1/2	14 1/2

Options

East	1.80	90	14	14 1/2	14 1/2
East	1.80	90	14	14 1/2	14 1/2

Special

East	1.80	90	14	14 1/2	14 1/2
East	1.80	90	14	14 1/2	14 1/2

Market Summary

East	1.80	90	14	14 1/2	14 1/2
East	1.80	90	14	14 1/2	14 1/2

Market Summary

East	1.80	90	14	14 1/2	14 1/2
East	1.80	90	14	14 1/2	14 1/2

Market Summary

East	1.80	90	14	14 1/2	14 1/2
East	1.80	90	14	14 1/2	14 1/2

Market Summary

East	1.80	90	14	14 1/2	14 1/2
East	1.80	90	14	14 1/2	14 1/2

Market Summary

East	1.80	90	14	14 1/2	14 1/2
East	1.80	90	14	14 1/2	14 1/2

Market Summary

East	1.80	90	14	14 1/2	14 1/2
East	1.80	90	14	14 1/2	14 1/2

Market Summary

East	1.80	90	14	14 1/2	14 1/2
East	1.80	90	14	14 1/2	14 1/2

Market Summary

East	1.80	90	14	14 1/2	14 1/2
East	1.80	90	14	14 1/2	14 1/2

Energy

East	1.80	90	14	14 1/2	14 1/2
East	1.80	90	14	14 1/2	14 1/2

Financial

East	1.80	90	14	14 1/2	14 1/2
East	1.80	90	14	14 1/2	14 1/2

Industrial

East	1.80	90	14	14 1/2	14 1/2
East	1.80	90	14	14 1/2	14 1/2

Transportation

East	1.80	90	14	14 1/2	14 1/2
East	1.80	90	14	14 1/2	14 1/2

Utilities

East	1.80	90	14	14 1/2	14 1/2
East	1.80	90	14	14 1/2	14 1/2

Government

East	1.80	90	14	14 1/2	14 1/2
East	1.80	90	14	14 1/2	14 1/2

Commodities

East	1.80	90	14	14 1/2	14 1/2
East	1.80	90	14	14 1/2	14 1/2

Foreign

East	1.80	90	14	14 1/2	14 1/2
East	1.80	90	14	14 1/2	14 1/2

Options

East	1.80	90	14	14 1/2	14 1/2
East	1.80	90	14	14 1/2	14 1/2

Special

East	1.80	90	14	14 1/2	14 1/2
East	1.80	90	14	14 1/2	14 1/2

Market Summary

East	1.80	90	14	14 1/2	14 1/2
East	1.80	90	14	14 1/2	14 1/2

Market Summary

East	1.80	90	14	14 1/2	14 1/2
East	1.80	90	14	14 1/2	14 1/2

Market Summary

East	1.80	90	14	14 1/2	14 1/2
East	1.80	90	14	14 1/2	14 1/2

Market Summary

East	1.80	90	14	14 1/2	14 1/2
East	1.80	90	14	14 1/2	14 1/2

Market Summary

East	1.80	90	14	14 1/2	14 1/2
East	1.80	90	14	14 1/2	14 1/2

Market Summary

East	1.80	90	14	14 1/2	14 1/2
East	1.80	90	14	14 1/2	14 1/2

Market Summary

East	1.80	90	14	14 1/2	14 1/2
East	1.80	90	14	14 1/2	14 1/2

Market Summary

East	1.80	90	14	14 1/2	14 1/2
East	1.80	90	14	14 1/2	14 1/2

Energy

East	1.80	90	14	14 1/2	14 1/2
East	1.80	90	14	14 1/2	14 1/2

Financial

East	1.80	90	14	14 1/2	14 1/2
East	1.80	90	14	14 1/2	14 1/2

Industrial

East	1.80	90
------	------	----

SECTION C

fall

they are by
ns and other
im one suc-

million new
States. Last
.6 million.

working-age
cord high of
ent rate was
1/2 years.

has en-
y and Leslie
b Rhoades,

nal science"
tistics, the
ure is still

me which the
yment — the
-aged blacks

are warning
in many
ten the onset

ear provided
onal income
pendling
ental Bank

ng the early
at business-
nt about the

ployment is
in the labor
lizing factor

erts say, in
d labor and
rates are

skilled labor
ll unemploy-
al Bank ob-

in business
ployment is
ontinued ex-
on is that the
ewhat in the

rs is likely to
is likely to
on wages,

added force
on's effort to
of that, any
hemselves be
f acting as a
f the Loeb

ics, where no
less a worse
ice. You can
eased unem-
increased em-

ng
of
ugs

ministration
arketing ap-
reathroughs
nexpensive

proposing a
on drug law
lation failed
argely due to

re uncertain,
easure was
ocates, Food
ennedy, an-

ry Joseph A.
Congress is
in Hill with
a tge measure
ing with the
rs this major

now-lengthy
ry and many
y of new life-

he Food and
drugs off the
unacceptably

s own
g laws

d M. Kennedy
to President
ion's prescrip-
Massachusetts

identified, said
d accomplish
the same time
g manufactur-

it year of the
d from House
s measure —
en up secret
lications and

his support of
is own after he
il in Congress

age the sale of
which the gov-
brand name

MERCIAL
DUSTRIAL
IL ESTATE

953-8212

Nugent believes Texans 'captives'

SAN ANTONIO, Texas (AP) — Texas electric consumers are "captive" to coal-hauling railroads, which are using their monopoly power to finance other traffic and generate a "bonanza" for their own stockholders, says a member of the Texas Railroad Commission.

Jim Nugent, one of three commissioners who regulate oil, natural gas and railroads in Texas, told a congressional subcommittee here Tuesday that Texas utilities might not be able to continue their conversion from more scarce natural gas to coal if railroads continue to increase their rates for hauling western coal.

The U.S. House Subcommittee on Oversight and Investigations, chaired by U.S. Rep. Bob Eckhardt of Houston, conducted hearings Monday in Houston and Tuesday in San Antonio.

Nugent displayed a graph for the committee that showed Texas supplies 48 percent of the natural gas used by American utilities to generate electricity.

Because of this, he added, the state will have a "pivotal role" in the nation's efforts to convert to coal as a prime energy source.

The Interstate Commerce Commission recently raised the rate Burlington Northern Railroad charges for hauling coal from Wyoming to San Antonio from \$7.78 per ton to \$17.01 per ton. That increase will cost San Antonio consumers an estimated \$11 million this year, officials have said.

Eckhardt pointed to that increase in opening the hearing and said the freight rates have soared because "captive markets permit a monopoly

of transportation. "I do not believe anyone will dispute the nation's need for a healthy rail system. However, we must ask which railroads are financially depressed and which are profitable," he said.

But Frank H. Coyne, Burlington Northern's chief financial officer, told the subcommittee that the coal-hauling rates must reflect railroad expenses.

Because of the coal-hauling business, Coyne said Burlington Northern made approximately \$326 million in roadway capital improvements from 1974 to 1978. During that same period, he said, the railroad acquired \$339.2 million worth of rolling stock for coal service.

To handle maximum projected coal traffic for the five-year period from 1979 through 1983, the railroad estimates it will have roadway expenditures of \$807.6 million and will acquire another \$728.6 million in additional rolling stock.

"Cost of capital is as unavoidable a cost as wages or fuel costs. If a company fails to pay labor, nobody will work for it," said Coyne. "If a company fails to pay capital, the market will not provide the funds necessary for replacement, maintenance and improvements of plant and equipment."

Coyne said Burlington Northern's return on its railway investment in 1978 was only 1.58 percent, while its after-tax cost of capital was 12 to 13 percent.

Wallace urges Carter to help solve conflicts

AUSTIN, Texas (AP) — Mack Wallace of the Texas Railroad Commission urged President Carter today to help settle "energy-environmental conflicts" to encourage the development of refinery capacity.

"The president's energy policies have turned to the right on production and must simultaneously turn to the right on refinery capacity," Wallace told the statewide oil allowable hearing.

Oil and gas executives applauded Wallace's remarks, and applauded again at the urging of Commission Chairman John Poerner, who said Wallace "is 60 days ahead of Washington on all important matters that come about."

"He (Wallace) is doing a spectacular job on the part of Texans — not only here but in Washington," said Poerner.

The three-member commission routinely set the statewide oil allowable for May at 100 percent.

There were a few field exceptions, such as the East Texas Field, which once again was restricted to 86 percent production.

Wallace said Carter's proposed energy program on April 5 "is no panacea but it is a major step in the right direction."

Wallace said, however, the program "falls short in several critical respects," and he offered these examples:

"The windfall profits tax does not maximize production. It siphons into wasteful bureaucracies tremendous amounts of capital which could otherwise be plowed back by the industry into exploration and production.

"The creation of an energy security fund by the federal government would do many things. What it would not do is produce energy in the short term. And that is what we need."

Wallace repeated a remark that "32 companies have tried to build refineries on the East Coast and not one has been built since 1954." He said one such company is the Hampton Roads Energy Co. Wallace said his data on the East Coast refinery came from President John Evans of Hampton Roads.

Wallace said Hampton Roads has tried since 1969 to complete a refinery project in Portsmouth, Va., and the project "has been embroiled in an environmental quagmire" for the past five years.

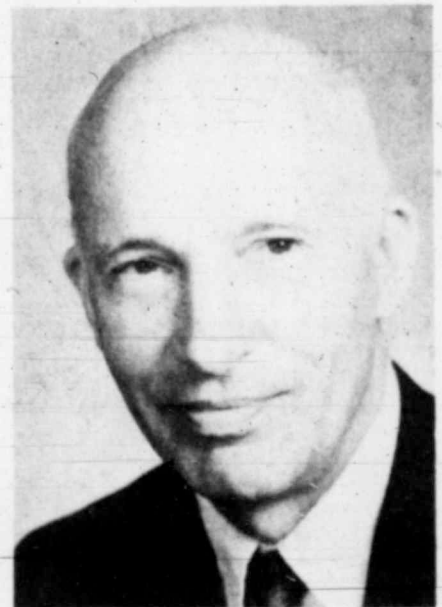
"If the Portsmouth refinery were presently in operation, it could be producing 60,000 barrels per day of low sulfur residual fuel oil and 80,000 barrels per day of unleaded gasoline. With projects like Long Beach-Midland to move the crude and Portsmouth to refine it, there would be no need of talk of allocation, of spot shortages, of inconvenience, of disruption, and of rationing," said Wallace.

Poerner reported major buyers of Texas crude oil had asked for 2,764,917 barrels a day in May, a decrease of 1,351 barrels daily from April.

He said crude and petroleum products imports into the United States totaled 8,280,800 barrels per day for the four-week average of April 2, and this represents 44 percent of the nation's current demand.

Here are the purchasers' crude oil nominations for May, in barrels per day, with any changes from April in

- Amoco 292,500 (down 5,000)
- Arco 152,400 (plus 1,200)
- Chevron 60,265
- Cities Service 100,000
- Continental 56,000
- Diamond Shamrock 14,738 (down 66)
- Exxon 406,000 (down 4,000)
- Gulf 132,000
- Marathon 67,460
- Mobil 226,700 (up 2,300)
- Phillips 80,000
- Shell 238,000 (up 7,000)
- Sun 107,700
- Texaco 112,000 (down 2,000)
- Union of California 46,300 (up 4,050)



W. H. Roberts III

Geologists to hear Roberts

W. H. Roberts III, with the Houston Technical Services Center of Gulf Research and Development Co., will be the speaker for the Tuesday noon meeting of the West Texas Geological Society.

The event will be in the Midland Hilton.

Roberts will talk on "Design & Function of Oil and Gas Traps."

Reservations should be made by contacting the WTGS office in Midland by 5 p. m. Friday.

Roberts received a degree in Geological Engineering from the Colorado School of Mines.

During World War II he controlled air traffic for the Federal Aviation Administration and served as an engineer in the Maritime Service. For the next 12 years, he worked in the Rocky Mountain area for Union Oil Co. of California, National Petroleum Corp., Ltd., and Gulf Oil Corp.

He has 27 years with Gulf, including eight years at the research center in Pittsburgh, Pa. He has been in Houston 13 years with the Houston Technical Services Center.

The paper he will present Tuesday was presented by him at the 1978 American Association of Petroleum Geologist annual meeting in Oklahoma City.

The paper introduces a number of new concepts in support of the anticlinal theory. The paper won the annual best paper award for 1977-78 given by the Houston Geological Society.

Potential reported

The official potential test has been filed by Adobe Oil & Gas Corp. on its No. 3 Barstow Unit, recently completed Ellenburger gas discovery in the Barstow multipay field of Ward County.

The RRC filing shows the discovery was completed for a calculated absolute open flow potential of 70,000,000 cubic feet of gas per day, through perforations from 19,690 to 19,717.5 feet after a 10,000-gallon acid treatment and a 100,000-gallon fracture job.

A re-entry project, it is botomed at 19,743 feet and five-inch casing is set at 19,743 feet. The plugged back depth is 19,719 feet. It formerly was a Fusselman gas well.

Location is 1,320 feet from northeast and 514 feet from northwest lines of section 35, block 33, H&T survey and three miles south of Barstow.

UPTON WELL
Hunt Oil Co. of Dallas No. 2-79 V. T. Amacker has been completed inside production in the Amacker-Tippett (Wolfcamp oil) pool of Upton County.

It is 5/8 mile east of other Wolfcamp production and was completed on the pump for 40 barrels of 41.9-gravity oil and 109 barrels of water, through perforations from 8,908 to 9,037 feet after 2,500 gallons of acid. The gas-oil ratio is 2,750-1.

The total depth is 9,918 feet and 5.5-inch pipe is set at 9,908 feet.

Location is 760 feet from north and 1,100 feet from west lines of section 79, block Y, GC&SF survey. It also is one and one-quarter miles east of Wolfcamp oil production.

Bid action reversed

NEW YORK (AP) — A U.S. District Court has reversed an action by Secretary of Interior Cecil D. Andrus that deprived a high bidder of an oil and gas drilling lease in the Baltimore Canyon off New Jersey.

The decision issued Wednesday by U.S. District Judge Milton Pollack mandated that the lease at issue be given to Stewart Capital Corp., of New York City, which submitted the high bid of \$213,000 last February.

The Stewart Capital bid was rejected by Andrus as legally "deficient" because of omission of what is called attestation on bid authorization papers signed by the corporation president, Alexander S. Bowers.

Last March 29, Andrus awarded the tract lease to Ocean Production Co., of New Orleans, and Murphy Oil Corp. of El Dorado, Ark., which had entered a joint bid of \$212,000.

Pollack, who conducted hearings after Stewart Capital filed a court challenge in Manhattan, ruled the Andrus action "erroneous in fact and law." The judge also said it was "legally unsupported and thus arbitrary and capricious even if not grounded on bad faith."

Chaves area gains project

Stevens Oil & Gas Co. of Roswell, N.M., No. 1-K O'Brien is to be drilled as a 2,900-foot project in Chaves County, N.M.

It is 2.5 miles southwest of Harlow Corp. of Amarillo No. 1 O'Brien-Fee, recently completed San Andres oil discovery and 330 feet from south and west lines of section 30-8-29c. Elevation is 3,950 feet.

The project also is 7/8 mile northeast of the Twin Lakes (San Andres) field and seven miles south of Elkins.

PECOS OUTPOST

A. G. Kasper of Midland No. 1 Foster Petroleum is to be drilled as a one-mile northwest outpost to gas production in the Chenot (Wolfcamp) field of Pecos County.

It is scheduled for a 4,650-foot bottom and is 467 feet from south and 853 feet from east lines of section 61, block 11, H&GN survey and six miles south of Girvin.

Adobe stakes Lea projects

Adobe Oil & Gas Corp. of Midland No. 2-16 State is a new 13,500-foot project in the Austin (Mississippi) pool of Lea County, 10 miles south of Tatum in Lea County, N.M.

It is 1,980 feet from north and west lines of section 16-14s-36c.

RE-ENTRY SET
Adobe No. 1 East Tatum Unit is to be re-entered as a wildcat in Lea County, three miles southeast of Tatum.

Originally drilled to 14,081 feet by Hilliard Oil & Gas, it is 660 feet from north and 990 feet from east lines of section 35-12s-36c. It will be plugged back and tested above 13,500 feet.

Carter expects windfall tax to pass in Congress

By DON IRWIN
The Los Angeles Times

JEKYLL ISLAND, Ga. — An aide said Thursday that President Carter expects Congress to grant his request for a tax on "windfall" oil company profits stemming from price decontrol and will forward his plan to Capitol Hill after he returns to Washington next week.

Presidential press secretary Jody Powell said that Carter will reaffirm the request for a 50 percent "windfall" tax he made in his April 5 energy message and will ignore oil companies' request for "plowback" tax credits.

Talking to reporters covering Carter's Easter visit to Sapelo Island near here, Powell outlined the procedures designed to get Carter's tax play before Congress, where he said the White House had uncovered "increasing support for this measure."

"It's our belief we will have the tax," Powell said. His approach suggested that the administration is girding for a major public-relations battle to enact the measure by which Carter hopes to balance the effects of steep energy price increases.

Powell said the administration would forward to key committees next week detailed specifications for a tax equal to half the estimated \$12 billion in extra profits the oil companies are expected to make in the first three years of decontrol.

By presidential order, prices of domestic crude will start June 1 on a phased increase to world levels that will be complete by Oct. 1, 1981. World prices are now about 50 percent above the prices allowed for newly discovered U.S. oil and about three times the \$6 a barrel now allowed for "old" oil from wells in production before 1973.

Specifications, rather than draft legislation, will be submitted, Powell said, because of requests from Capitol Hill that the highly technical business of drafting a new tax bill be left to staff specialists with expertise in the field. This is not an unusual procedure in drafting tax legislation.

The starting place for tax bills is the House Ways and Means Committee, whose chairman Rep. Al Ullman, D-Ore., said Wednesday in Salem, Ore., that he expected the windfall tax to pass Congress this year.

At the same news conference, however, Ullman avoided saying how closely he expects the final bill to follow through on Carter's request for a 50 percent levy.

Oil producers have protested that the tax rate proposed by Carter would reduce incentives for the intensive exploration they say will be required to develop significant new oil finds. The industry has urged some form of "plowback" provision that would give oil companies tax credit for their development expenses.

Powell noted that Carter's plan envisions funneling the yield of the windfall tax into a new "energy security fund" which would be dedicated to three politically persuasive activities: To aid mass transit; to speed development of new energy sources, and to help low-income families offset the higher energy costs that will result from decontrol.

Powell refused to say flatly that Carter would not accept some form of plowback provision.

The administration tax proposals have been under development by a White House task force headed by Stuart E. Eizenstat, the president's assistant for domestic affairs.

Eizenstat reported to the president by telephone over the weekend, Powell said, and again on Wednesday.

Midlanders spot wildcats

Operators have announced locations for two more wildcat projects in West Texas.

Tom Brown, Inc., of Midland No. 1 Doss will be dug as a 13,000-foot prospect in Gaines County, 17 miles east of Seminole.

It is 660 feet from north and east lines of labor 20, league 294, Lynn County School Land survey.

It is 7/8 mile south of a 12,830-foot failure and one mile northeast of a 12,918-foot dry hole. It also is two and three-eighths miles northeast of the Birge (Devonian) oil pool.

YOAKUM WILDCAT

John L. Cox, also of Midland, staked location for a 12,200-foot wildcat in west Yoakum County along the New Mexico-Texas state line.

It is No. 1 Field, 990 feet from north and 660 feet from west lines of section 347, block D, J. H. Gibson survey and one mile south of Bronco.

The site is one and seven-eighths miles northeast of production in the Bronco (Devonian) field.

DAWSON TEST
Anadarko Production Co., Midland, No. 1-37 Clyde Barron has been spotted as an 8,600-foot test in the Block 35 (Dean) area of Dawson County.

It is 1/2 mile east of production and 660 feet from south and 1,980 feet from west lines of section 37, block 35, T-S-S, & P survey and seven miles southeast of Lamesa.

day, on the progress of consultations the task force has been holding daily for the past week with the members and staffs of congressional committees with jurisdiction in the field. In addition to Ways and Means, he said, they included the Senate Finance Committee, the Energy committees of both Houses and the Joint Committee on Taxation.

The technical staffs that will handle the bill drafting process have had considerable experience in the area of windfall taxes. They have been asked to draft such bills three times since

the 1973 Arab embargo sent oil prices — and oil-company profits — soaring. However, none of the measures has come near to winning approval.

One reason has been the strong resistance to the tax from influential members of the Senate Finance Committee, including its chairman, Sen. Russell B. Long, D-Ga., Carter's decision to go along with price decontrol is expected to moderate Long's opposition somewhat this year, but Long is not expected to clear the way for a bill until or unless it includes "plowback" credits.

Carter to send specs on excess profits tax

SAPELO ISLAND, Ga. (AP) — The Carter administration has decided to send Congress next week "detailed specifications" for a proposed tax on "windfall" oil profits rather than detailed legislation, presidential press secretary Jody Powell said today.

Powell told reporters the administration will leave it to the appropriate congressional committees to put the specifications into the form of a draft bill.

This decision seemed to suggest President Carter has decided to take a more flexible approach toward the specifics of a tax bill he wants Congress to enact as he moves, on his own, to gradually decontrol the price of U.S.-produced crude oil.

However, Powell questioned this interpretation, saying, "That's not my understanding of it."

He argued the submission of specifications would "speed the process"

by avoiding the delay that would be necessary if highly technical details had to be worked out in advance.

The White House spokesman said most administration proposals destined for the tax-writing House Ways and Means Committee are submitted as specifications rather than as draft bills.

Powell said the specifications will follow the tax proposals Carter announced in general terms in an April 5 address to the nation on energy policy.

The spokesman reported that a special administration task force has been engaged in "thoroughgoing consultation" with the staffs of Senate and House committees that will handle the tax proposals.

"The consultations with the Hill (Capitol Hill) continue to show increasing support for this measure," he said.

DRILLING REPORT

ANDREWS COUNTY
Jale L. Hamon No. 2 Orion, drilling 12,200 feet, did not flow overnight, swabbed 14 barrels of oil and no water in 4 hours, shut down overnight.

Gulf No. 2 Landa-Federal, id 13,900 feet in shale, pulling oil of hole to 13,900 feet.

Gulf No. 1 S.E. Lea State, drilling 1,900 feet in anhydrite and salt.

CHAVES COUNTY
Exxon No. 1 Morgan-Federal, id 15,300 feet, preparing to run log.

Depco, Inc. No. 1 Brutar, id 9,397 feet, set 4 1/2-inch casing at total depth, 8,426 feet, awaiting fracture temperature survey, waiting on cement.

COTTLE COUNTY
Bass Enterprises No. 2 Havins, id 6,200 feet, spotted 180 gallons acid, prepared to run logs, perforations not reported.

CRANE COUNTY
Bass Enterprises No. 17 Moss, id 5,647 feet, dropped from report until completed.

CROCKET COUNTY
Delta Drilling No. 3-4 Meybin, id 2,200 feet, cemented casing, pulled out of hole with tubing and fractured perforations from 7,754 to 8,253 feet with 100,000 gallons and 80,750 pounds sand, flowing to pit on 24/64-inch choke, left open overnight and installing wellhead, shut down overnight.

Gulf No. 2 Lena Rogers, id 4,810 feet in lime and dolomite, set 5 1/2-inch casing at 4,800 feet, cut casing, snipping up hole and preventing and installing wellhead, shut down overnight.

Gulf No. 2 Lena Rogers, id 4,840 feet, pumped 26 barrels of oil and 137 barrels of water in 24 hours, through perforations from 4,480 to 4,742 feet.

Gulf No. 2 Sides, id 4,825 feet in dolomite, looking up electricity.

Gulf No. 3 Sides, id 4,825 feet, pumped 26 barrels of oil and 173 barrels of water in 24 hours, through perforations from 4,774 to 4,776 feet.

MIDLAND COUNTY
Mobil No. 6 John Snowden, id 9,300 feet in shale, tripping.

Mobil No. 300 Preston, id 8,982 feet, released rig.

Parker & Parsley No. 1 A Gulladay, id 2,200 feet, ran survey and found top of cement at 4,500 feet, cemented 4 1/2-inch casing at total depth, displaced with fresh water.

Parker & Parsley No. 1 Gulladay, id 4,130 feet, ran tubing, cleaning out hole.

RK Petroleum No. 1 Iris Jeffrey, drilling 4,855 feet in lime.

NOLAN COUNTY
De Lovelady No. 1 Howard, id 6,720 feet, pumped 26 barrels of oil and 98 barrels of water in 24 hours, through perforations from 6,152 to 6,183 feet.

PECOS COUNTY
Exxon No. 1 Langfield Corp. drilling 11,800 feet.

Gulf No. 2-1 Emma Lou, drilling 11,800 feet.

Gulf No. 1 Tomlinson, id 5,253 feet in lime and shale, pumping no oil and 80 barrels of water in 24 hours, through perforations 5,197 to 5,305 feet.

Mobil No. 3 Jrv B. Weatherby, id 12,140 feet, ran survey on 16 1/2-inch choke, slight show of gas, swabbed 3 barrels of distillate, 80 barrels of fresh water, show of oil and 97 percent water, through perforations 12,440 to 996 feet.

REAGAN COUNTY
Southern Royalty No. 1-1 University, drilling 5,500 feet in lime and shale.

Cities Service No. 1-BV University, id 5,500 feet in anhydrite and lime set 8 1/2-inch casing at total depth, cemented, circulated, snipped up blow out preventer.

Saxon No. 4-13 University, pumping 21 barrels of oil, and 143 barrels of water in 24 hours.

REEVES COUNTY
HNG No. 3-12 Sabine State, drilling 3,640 feet.

Texas, Inc. No. 1-BL Reeves Fee, id 4,800 feet, plugged 1,135 feet, set 5 1/2-inch casing at id, perforations 3,054 to 5,197 feet, acidized with 1,250 gallons, fractured with 4,100 gallons and 4,000 pounds, initial potential pumping 11 barrels of oil per day and 100 barrels of water in 24 hours, gravity 32.4, gas-oil ratio 2,727-1.

Gulf No. 7 Horry, plugged 6,658 feet, flowing 11 barrels of oil and 38 barrels of water in 24 hours through a 16 1/2-inch choke, shut in taking 4-point test.

Gulf No. 3 Ligon, id 13,470 feet in chert, drilling cement inside 5 1/2-inch liner from 10,132 to 11,066 feet.

LEGAL NOTICES

NOTICE TO ALL PERSONS HAVING CLAIMS AGAINST THE ESTATE OF THOMAS C. MILNER, DECEASED. Notice is hereby given that the original Letters Testamentary on the Estate of Thomas C. Milner, Deceased, were issued to Dorothy J. Milner, Midland, Texas, as Independent Executor on the 10th day of April, 1979, in the proceeding indicated below and the name of the said Independent Executor now holds such Letters Testamentary. All persons having claims against the Estate of Thomas C. Milner, Deceased, which is now being administered in the county below named, are hereby required to present the same to Dorothy J. Milner, Independent Executor of the Estate of Thomas C. Milner, Deceased, at the address below given, before such claims are barred by the general Statute of Limitation, before such estate is closed, and within the time prescribed by law. The address of the said Independent Executor is Route 4, 46 Lavera Lane, Midland, Texas 79701. DOROTHY J. MILNER

INDEPENDENT EXECUTOR OF THE WILL AND ESTATE OF THOMAS C. MILNER, DECEASED. Notice is hereby given that the original Letters Testamentary on the Estate of Thomas C. Milner, Deceased, were issued to Dorothy J. Milner, Midland, Texas, as Independent Executor on the 10th day of April, 1979, in the proceeding indicated below and the name of the said Independent Executor now holds such Letters Testamentary. All persons having claims against the Estate of Thomas C. Milner, Deceased, which is now being administered in the county below named, are hereby required to present the same to Dorothy J. Milner, Independent Executor of the Estate of Thomas C. Milner, Deceased, at the address below given, before such claims are barred by the general Statute of Limitation, before such estate is closed, and within the time prescribed by law. The address of the said Independent Executor is Route 4, 46 Lavera Lane, Midland, Texas 79701. DOROTHY J. MILNER

PUBLIC NOTICE. NOTICE IS HEREBY GIVEN THAT the County of Midland, State of Texas, at the regular meeting of the County Commissioners' Court at 1:30 p.m., April 23, 1979 will hold a public hearing to consider adoption of an Ordinance to amend the following:

ORDER OF THE COMMISSIONERS COURT OF MIDLAND COUNTY, TEXAS, PURSUANT TO AND UNDER THE AUTHORITY OF ARTICLE 2372m, VERNON'S CIVIL STATUTES OF THE STATE OF TEXAS TO PREVENT THE INTRODUCTION OR SPREAD OF RABIES, DECLARING THE AREA OF MIDLAND COUNTY TO BE IN DANGER OF A RABIES EPIZOOTIC IN THE ANIMAL POPULATION HEREOF, REQUIRING THE IMMEDIATE REPORTING OF ALL ANIMAL BITES OR ANIMALS SUSPECTED OF BEING RABID TO THE MIDLAND COUNTY CONSTABLE, REQUIRING THE IMMEDIATE VACCINATION OF ALL DOGS AND CATS IN MIDLAND COUNTY, AUTHORIZING THE FUNDING OF ALL BITING ANIMALS OR ANIMALS SUSPECTED OF BEING RABID TO BE PAID BY REASONABLE PENALTIES FOR VIOLATIONS OF THIS ORDER. WILLIAM B. A. DAVIS, Judge of the County of Midland, Texas (April 13, 20, 1979)

NOTICE TO ALL PERSONS HAVING CLAIMS AGAINST ESTATE OF ERNEST W. NEILL, DECEASED. Notice is hereby given that the original Letters Testamentary on the Estate of Ernest W. Neill, Deceased, were issued to the undersigned, Independent Executor on the 2nd day of April, 1979 in the proceeding indicated below and that she now holds such Letters. All persons having claims against the Estate which is being administered in the County named below are hereby required to present the same to the undersigned at the address given below before such claims are barred by the general Statute of Limitation, before such estate is closed, and within the time prescribed by law.

Independent Executor of the Estate of Ernest W. Neill, Deceased. Cause No. 104, in the County Court of Midland County, Texas. Address Notices To: P. O. Box 1540 Midland, Texas 79702 (April 20, 1979)

On or about April 9, 1979 Pioneer Natural Gas Company ("Pioneer"), a division of Pioneer Corporation, filed a Statement of Intent with the Railroad Commission of Texas proposing to increase natural gas rates. Pioneer is a subsidiary of the Industrial Division of Smith International, Inc. and Iowa Real Processors, Inc. pursuant to contracts between Pioneer and those two customers. The proposed rate increase is 24 per cent and is to become effective thirty-five (35) days after filing of the aforesaid Statement of Intent, or such other date as is permitted by the Railroad Commission. The increase will not constitute a "major change" as defined in Section 43 (b) of Article 1646, V.A.C.S., and will not affect any of Pioneer's customers other than those listed herein. (April 13, 20, 27, May 4, 1979)

Sealed bids will be accepted at the office of the County Auditor, second floor of the Midland County Courthouse, P. O. Box 1540, Midland, Texas, until 4:30 o'clock P.M. Friday, May 11, 1979, to be opened by the Commissioners' Court at 1:30 o'clock P.M. on May 14, 1979, at 1:30 o'clock P.M. for the following:

Two (2) 1979 pickup trucks. Specifications and bid information may be obtained from the County Auditor's Office. The County of Midland reserves the right to reject any and all bids and to waive all formalities. Erma White, County Auditor of Midland County, Texas (April 20, 27, 1979)

Classified Advertising Dial 682-6222

OFFICE HOURS: Week Days... 8 a.m. to 5 p.m.

Loge Notices

Keynote Chapter No. 172 & Council No. 183 have stated meeting 1st Tuesday each month, 7:30 P.M. Preparation & Petition work beginning for July 7th Rites. Petition forms available from Vern Adams, H.P. Pain Meyers, T.M. & Green Medley, Sec. Rec. All York Rites Masons urged to participate.

Acacia Lodge No. 1414 A.F. & A.M., 1000 Upland. Called meeting April 19th. Past Masters night at 8:00 year award. Refreshments to be served. Regular stated meeting 2nd & 4th Tuesdays of the month. Floor choirs: Monday night 7:30 P.M. Masons invited.

H. Miller, W. M., Al Talbot Secretary. Midland Lodge #423 A.F. & A.M., 1600 W. Wall, 482-3292. Stated meeting Thursday, April 26th at 8 P.M. Regular communication and efficiency examinations. Bobby Z. Ellis, W. M., George Medley, Secretary.

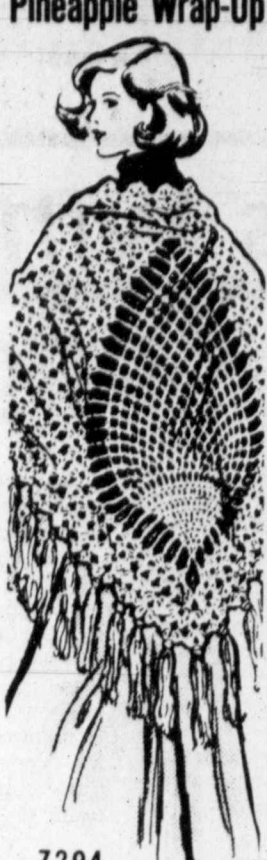
Midland Commandery #84 Knights Templar. Stated convocate third Tuesdays. Obligatory Eastern Service April 15 at 8:15 AM in the assembly. All Knights urged to attend. Visitors welcome. J.A. Bobbitt Commander. George Medley Recorder.

Midland Shrine Club. Friday meeting April 20th at 7:00 P.M. Lodge #623, 1600 W. Wall. Members' Shrine Business Meeting. Shrine Circus Kick-Off Dinner. Carpenter Hall, 2717 W. Wall. Free Bar-B-Que. Free Refreshments. Free Entertainment. Call 682-8181. W.E. Moler President; Robert O'Donnell, Vice; President.

FOR help with an unwed pregnancy, call Edna Gladney Home, Ft. Worth. Tel. 805-7214. SPECIALISTS in children's hair-shaping. Gilded-Cape Beauty Salon, 684-8742. NEED prayer? There are people willing to pray. Call 682-9549.

Personals

Pineapple Wrap-Up



7294 by Alice Brooks

Prettiest wrapping of all—this deep fringed shawl. Giant pineapple is the focus of attention on fashion's favorite accessory. Crochet shawl of synthetic worsted in very little time. Lovely gift! Pattern 7294; easy directions. \$1.50 for each pattern. Add 40¢ each pattern for first-class airmail and handling. Send to: Alice Brooks, Needlecraft Dept. 288, Midland Reporter-Telegram Box 163, Old Chelsea Sta., New York, NY 10011. Print Name, Address, Zip, Pattern Number, NEW/NOV/Our 1979 Needlecraft Catalog—over 200 popular designs, 3 free patterns printed inside. Send 75¢.

- 130-Sweaters-Size 38-56... \$1.50
129-Quick/Easy Transfers... \$1.50
128-Patchwork Quilts... \$1.50
127-Alghams 'n' Dollies... \$1.50
126-Crafty Flowers... \$1.50
125-Petal Quilts... \$1.50
124-Gifts 'n' Ornaments... \$1.50
123-Stitch 'n' Patch Quilts... \$1.25
122-Stuff 'n' Puff Quilts... \$1.25
121-Pillow Show-Offs... \$1.50
120-Crochet a Wardrobe... \$1.00
119-Flower Crochet... \$1.00
118-Crochet with Squares... \$1.00
116-Nifty Fifty Quilts... \$1.00
115-Ripple Crochet... \$1.00
114-Complete Alghams... \$1.00
112-Prize Alghams... \$1.00
111-Hairpin Crochet... \$1.00
107-Instant Sewing... \$1.00
105-Instant Crochet... \$1.00
103-15 Quilts for Today... \$1.00
102-Museum Quilts... \$1.00
101-Quilt Collection... \$1.00

Sew 'n' Save!

Printed Pattern



4509 WAIST 24"-32" by Anne Adams

Save \$10, \$20 or \$30—depending on the fabric you choose—when you sew spring's newest skirts. One is crisply pleated, the other has soft folds. Printed Pattern 4509: Misses Waist Sizes 24, 25, 26, 28, 30, 32. Size 26 1/2 pleated 2 yards 45-inch; other 1 7/8. \$1.50 for each pattern. Add 40¢ for each pattern for first-class airmail and handling. Send to: Anne Adams, Pattern Dept. 288, Midland Reporter-Telegram, 243 West 17 St., New York, NY 10011. Print Name, Address, ZIP, SIZE, and STYLE NUMBER.

CHANGE! The big-fashion changes are in our NEW SPRING-SUMMER PATTERN CATALOG. Dresses, tops, skirts, pants, vests, jackets plus \$1.50 free pattern coupon. Send 75¢ for Catalog. 130-Sweaters-Size 38-56... \$1.50
129-Quick/Easy Transfers... \$1.50
128-Patchwork Quilts... \$1.50
127-Alghams 'n' Dollies... \$1.50

BAND open for one night engagements. Call Bill Gowdin days. 482-8088, nights, 682-2250. REVEREND Florence, Palm Reader and Advisor, gives advice on all problems. 1000 W. Spring, 482-8282. CEMETERY lots. Resthaven Memorial Park now offering choice locations in the new Garden of Hope at pre-developed savings. Call Gene Hunter at 684-0750 or 684-5842.

PREGNANT? Problems? Birthright can help you to have your baby. Call to pray. Call 682-9549.

FOR help with an unwed pregnancy, call Edna Gladney Home, Ft. Worth. Tel. 805-7214. SPECIALISTS in children's hair-shaping. Gilded-Cape Beauty Salon, 684-8742. NEED prayer? There are people willing to pray. Call 682-9549.

WHO'S WHO FOR SERVICE

UNIVL REPAIR SERVICE. OFFICE HOTEL CAR BOAT. Save money on upholstery costs. Expert repairs done on your premises. Professional repairs, perfect color matching and graining. FREE ESTIMATES—CALL 684-9166. CARTA ENTERPRISES, INC.

AIR COND. SERVICE. A/R conditioning service and supply. Also sheet metal. 482-2713 or 483-3846 after 5. AIR conditioners serviced, repaired, and installed. Call 682-7410. ARTIC Circle Airpne Coilers on Sale Now. Call J. J. Air for sales, repair, service, installation. 563-3129.

SALES & SERVICE. Central refrigeration and evaporative air conditioning systems. Pads Parts Controls for all cooling units. JERRY'S SHEET METAL. 700 N. Ft. Worth 684-4495.

AUTO REPAIR. MECHANIC WORK. DONE AT MY HOME. TUNE UPS \$28. CALL: 683-4870 or stop by 911 S. Mineola.

CARPENTRY & CABINET. CALL The Custom Carpenter, 483-7544 for add-ons, repairs, cabinetry and new construction in Midland since 1948. CONCRETE WORK. CONCRETE work, sidewalks, driveways, curbs, slabs, and patios. Quality work done. Free estimates. 682-8114.

M & M DIRT CONSTRUCTION. Clean up, tractor work, top soil, fill dirt and hauling. PHONE 563-1588 or 563-1019.

HAULING. LIGHT hauling, trash, tree limbs, etc. Call 682-3567 or 684-7415. HOME REPAIRS & REMODELING. ADDITIONS, carpentry, sheet metal, customizing. 682-2713 or 483-3866 after 5.

SMALL HOME REPAIRS AND REMODELING. Carpets, family rooms, sun porches, concrete work, fence repairs, etc. at all kinds of home repairs. For fast, free low estimates. CALL ANYTIME 694-4083.

MR. FIX IT. Free Estimates, Low Prices. For all remodeling needs or repairs. Additions, garages, 25 years experience. Call 694-6726 Anytime.

SHAKLEE PRODUCTS. Now available at 1518 S. Atlanta 683-5175.

SHAKLEE PRODUCTS. Now available at 1518 S. Atlanta 683-5175.

COMMERCIAL COLLEGE. TRACTOR TRAILER TRAINING. DIESEL DRIVING ACADEMY, INC. CALL TOLL FREE Mon-Fri 9-5 1-800-351-8900.

REMODELING? ALL SIZE JOBS. ALL TYPE WORK. LARGE OR SMALL. Large Established Local Firm. ALL JOBS WARRANTED. Call Odeh Smith. MIDLAND BUILDING CENTERS. 3111 W. Front 697-2281.

HOME REPAIRS & REMODELING. HOME REPAIRS (Of All Types). Patios, carports, roofing, additions. Chimneys, fences, bathrooms. Fast Service. Free Estimates. CALL R. SCHARK, 697-6294 ANYTIME.

LAWN & GARDEN SERVICE. MARTIN'S TREE SERVICE. Specializing in Renovation, yard scaling, mowing & edging, tree and shrub trimming. Call after 6 PM. 682-8799 or 692-5095.

OLD YARD MAN. Going back into business. Time to get your yards ready. Scalping and combing. Shrub trimming and bed cleaning. Alleys and general clean up. Weekly and monthly mowing. Call before 8 AM and after 6 PM. 684-5928.

LAWN STATUARY. 4700 Andrews Highway. Odessa, 366-2940. Located in front of Jockey 7-Fruit Mart.

CONTECH MEDICAL DIVISION. Nurses and sitters. Part time & full time. CMS.

MOBILE HOME MOVING. MOBILE Home moving, anchoring, equipment, etc. Call 682-2713.

FINANCING AVAILABLE. Long term farm, ranch and commercial loans. Also refinancing. LUBBOCK MORTGAGE & INVESTMENT CO., INC. Metro Tower 1220 Broadway Lubbock, Texas 79402-5233.

HELP WANTED. HIGH school or college boy. After hours (11 to 6) during the week, all day Saturday. General duties. Apply in person only. Grammer Motors.

JOIN THE EMPLOYABLES. We can teach you OFFICE MACHINES in 3 months. (IBM Key punch included).

HELP WANTED. HELP wanted Pinkies Liquor Store. Apply Pinkies Northward Store 100 Northland Mall, West Scharbauer and North A.

HELP WANTED. PART TIME EMPLOYMENT. Leading Real Estate Company. Seeking assistant Secretary. Bookkeeping and/or Real Estate experience helpful. Free parking. Send resume to HARVEY LANGSTON REALTORS, INC., 1908 West Wall, Midland, TX 79701.

TEXAS ELECTRIC SERVICE COMPANY. Has immediate opening for stenographer. Apply in person at office, 123 N. Colorado.

HOLIDAY INN CASHIER & WAITRESS. Apply in person 3904 West Wall. HELP WANTED COUNTER GIRL. 9 TO 6. 5 Days. Good Pay.

DEGREED ACCOUNTANT. at once by small but well established CPA firm. Some travel required. Long hours necessary at times. Some experience in public accounting and taxes essential.

SALES MAN. Experienced completion salesman - cased hole logging tools, and perforation equipment. Car, expenses, bonuses provided. \$1,500 per month. Free negotiable. 563-0838.

EXPERIENCED OIL FIELD WELDERS NEEDED. Call 684-5654 8 AM to 5 PM.

WATER WELL SERVICE. BRADSHAW Pump Service. Since 1955. Sales, parts, service. 482-2381.

HELP WANTED. HIGH school or college boy. After hours (11 to 6) during the week, all day Saturday. General duties. Apply in person only. Grammer Motors.

HELP WANTED. HELP wanted Pinkies Liquor Store. Apply Pinkies Northward Store 100 Northland Mall, West Scharbauer and North A.

HELP WANTED. HELP wanted Pinkies Liquor Store. Apply Pinkies Northward Store 100 Northland Mall, West Scharbauer and North A.

HELP WANTED. HELP wanted Pinkies Liquor Store. Apply Pinkies Northward Store 100 Northland Mall, West Scharbauer and North A.

TRUCK RENTALS. Exceptional career for dynamic individual with experience in heavy duty truck rentals. Must be capable of coordinating rental department and developing the truck rental market in Lubbock area. Generous salary, company car, and benefits plus realistic growth potential. Confidential interview. For appointment call (806) 747-4278. John Needham.

LAND LEASE ADMIN. ASS'T. \$15-\$20K. Play primary role in continued success of independent oil and gas concern—choice North Dallas location. Through independent land lease expertise, ability to organize and assist at all levels of corporate and divisional activity. Must project polished, professional image with savvy and finesse. Top drawer secretarial skills. For information call Jane Drake (214) 387-1546, and/or send resume to: Sumrall Personnel Consultants, Inc., 4825 LB at Inwood Drive, Dallas, Texas 75234.

DEGREED ACCOUNTANT. at once by small but well established CPA firm. Some travel required. Long hours necessary at times. Some experience in public accounting and taxes essential.

SALES MAN. Experienced completion salesman - cased hole logging tools, and perforation equipment. Car, expenses, bonuses provided. \$1,500 per month. Free negotiable. 563-0838.

EXPERIENCED OIL FIELD WELDERS NEEDED. Call 684-5654 8 AM to 5 PM.

WATER WELL SERVICE. BRADSHAW Pump Service. Since 1955. Sales, parts, service. 482-2381.

HELP WANTED. HIGH school or college boy. After hours (11 to 6) during the week, all day Saturday. General duties. Apply in person only. Grammer Motors.

HELP WANTED. HELP wanted Pinkies Liquor Store. Apply Pinkies Northward Store 100 Northland Mall, West Scharbauer and North A.

HELP WANTED. HELP wanted Pinkies Liquor Store. Apply Pinkies Northward Store 100 Northland Mall, West Scharbauer and North A.

HELP WANTED. HELP wanted Pinkies Liquor Store. Apply Pinkies Northward Store 100 Northland Mall, West Scharbauer and North A.

HELP WANTED. HELP wanted Pinkies Liquor Store. Apply Pinkies Northward Store 100 Northland Mall, West Scharbauer and North A.

NEED. Waiters, Waitresses, Busmen. Full or part time. Luncheon & Dinner Service. Waiters & waitresses must be able to work from menu & willing to give excellent service. Call or see Mr. Greene. MIDLAND COUNTY CLUB 682-4378.

COMPUTER CENTER DIRECTOR. Service Center operation in educational environment. Languages required: Cobol, RPG, and Neal 3. Salary open. Application deadline: April 25. Apply Personnel Director, HOWARD COLLEGE, Big Spring, Texas (915) 267-6311, Ext. 71. Equal Opportunity. Affirmative Action Employer.

MAINTENANCE FOREMAN. Needed at Chapparral Apartments. Apply between 9:30 AM & 4:30 PM. Experience required.

HELP WANTED. Sales clerk for Hardware Department. Apply in person at the National Building Center, 3111 W. Front.

STEAM PLANT OPERATOR. Needed in central energy plant to operate boilers, pumps, and centrifugal refrigeration. 2 years experience preferred. Company paid insurance. Contact Gary Ellis, 362-0881. Equal opportunity employer.

PART TIME SECRETARY. Typing experience, some filing. GREAT SOUTHWEST CARE CENTER, 3203 SAUD 683-5403.

SHOP FOR PAPPAGALLO. Needs. Part time window and store display person. Apply in person at #6 Oak Ridge Square.

TACO PLAZA. RECEPTIONIST. Independent oil company. Excellent working conditions. Typing and filing ability required. Mail resume to Box 993, Midland, TX 79702.

WEST TEXAS BANK. Has immediate opening for ambitious career minded person in its Collection Department. Excellent fringe benefits and salary commensurate with experience. Contact Mr. Jim McCain, 915-267-5513, Big Spring, Texas.

MANAGER. For 50 plus luxury apartment units. Experience desired, but not essential. 682-4783.

The Midland Reporter-Telegram. NEW RATES EFFECTIVE APRIL 1, 1979. WANT AD ORDER FORM. WRITE YOUR WANT AD HERE TO DETERMINE COST OF YOUR AD, PUT EACH WORD IN SPACE PROVIDED. CHECK THE COST OF YOUR AD HERE. RATES SHOWN ARE BASED ON MULTIPLE INSERTIONS; MINIMUM CHARGE 15¢ PER WORD. CLIP AND MAIL—PLEASE ENCLOSE CHECK OR MONEY ORDER. Publish for Days, Beginning. NAME, ADDRESS, CITY, STATE, ZIP. PHONE. THE MIDLAND REPORTER-TELEGRAM CLASSIFIED DEPT. P. O. BOX 1650 MIDLAND, TEXAS 79702.