

Muleshoe Journal

Striving to be your source for local news

75¢

Volume 94, No. 48 www.muleshoejournal.com Muleshoe, Texas November 28, 2013

Federal 'Alien Transporting' Charges Follow DPS Traffic Stop

By Larry Thornton
 Editor

A traffic stop about four miles east of Muleshoe on Hwy. 84 has resulted in federal charges of transporting illegal aliens against two individuals.

According to Bailey County Sheriff Richard Wills, a Texas State Trooper stopped a Chevrolet suburban on Hwy. 84 on Oct. 22, and after discovering what appeared to be a large number of illegal aliens — all adults except for one juvenile, in the vehicle, contacted the Bailey County Sheriff's Department for assistance.

During the investigation which followed, the county officers transported the occupants of the vehicle to the Bailey County Law Enforcement Center, where they were fed and their health and well being was checked.

Sheriff Wills said this was standard procedure at Bailey County.

"Many of them were complaining about being hungry and needing to use the restroom," he said.

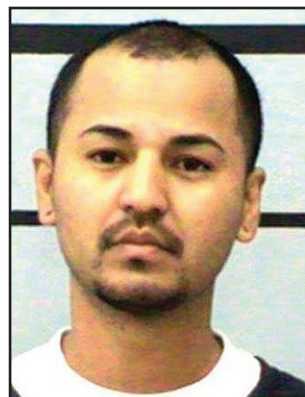
From what the occupants said, it was determined they had been in the vehicle for more than 12 hours.

The passengers' feet were also checked for possible injuries. Wills explained that several years ago it was discovered in a similar case the illegal aliens had severely burned their feet crossing the

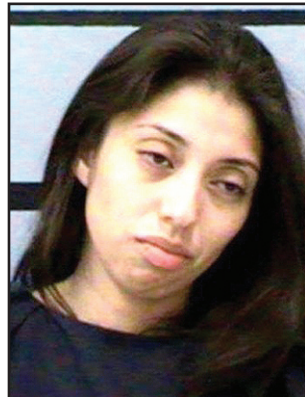
desert and were in need of medical treatment. Fortunately, this time no such treatment was needed.

While the passengers weren't incarcerated by Bailey County officials, that wasn't the case for the two individuals allegedly transporting them.

Driver Mirna Luna, 27, and Oscar Moreno-Cornejo, 41, were



Oscar Moreno-Cornejo



Mirna Luna

taken into custody by immigration officials and have been arraigned in federal court.

Reportedly, Luna and Moreno-Cornejo were planning to drop their passengers off at various locations across Texas.

The sheriff also noted that forfeiture proceedings have been started against the Chevrolet suburban used in the offense.



Winter Weather Woes

Muleshoe residents woke up to a reported nine inches of snow in areas Sunday morning, making travel difficult and causing the cancelation of many worship services and activities.

However conditions improved through the day due to the hard work of city, county and state road crews.

Photograph by Larry Thornton

MAHD Appoints Advisory Committee

By Larry Thornton
 Editor

The Muleshoe Area Hospital District Board of Directors took the first steps in its redistricting during a special meeting on Tuesday, Nov. 19.

A couple of years ago — shortly after Bailey County, the Muleshoe Independent School District, and the City of Muleshoe completed the redistricting process and submitted their

related paperwork to the US Department of Justice for approval, the hospital district began the process as well, contracting with the Underwood Law Firm, which handled the process for the City of Muleshoe, to guide MAHD through the process.

However, even before the advisory committee appointed at the time could begin the work on the issue, further

action was postponed pending receipt of additional information from the Department of Justice.

"The justice department was dragging their feet," said Muleshoe City Secretary LeAnn Gallman, who appeared before the MAHD board on Nov. 19, "and didn't have what the hospital district needed to complete its redistricting."

Since that time, she added the courts have ruled that the requirement for Texas public entities to submit their redistricting plans to the DOJ was unconstitutional, thus removing that requirement.

"The timing would be perfect," Gallman said for the MAHD board to complete the redistricting, allowing sufficient time for the

Continued on A3

Local Students Share Culinary Secrets

The students in Joan Nix's kindergarten class have shared their mothers — and in some cases father's, Thanksgiving Day culinary secrets. If you haven't decided how to prepare your holiday meal this year, maybe you will find their suggestions beneficial.

My mom gets the turkey at the farm. She takes it by running after it. She takes it home. She kills it with a knife. She puts it in the oven for 17 hours. The oven is 15 degrees hot. She tastes it to see if it is done. If



it tastes good it is done. Eat it with pumpkin pie. — Eduardo B.

My mom buys our turkey at United. She takes it home and puts it in the microwave for medium and she cooks it 1 minute. She takes it

out and we eat it with bread. My grandma comes to eat! My favorite part is to eat turkey! — Kevin C.

Buy your turkey at United. She cooks it in the oven. She puts it in a big pan with

salt, pepper, and lemon pepper on it. The oven is 7 degrees and she cooks it for 7 seconds. She can tell it's ready to eat when she gets excited. She puts it in the plate and she puts salad and salad dressing and turkey soup with it. We drink orange juice. She gets spoons for us. — Addilene B.

Mom gets the turkey from the United store. She takes and she puts salt, ketchup, mustard. She cooks it in the stove for 30 min. The oven is 40 inches hot. The

Continued on A3

The Christmas Key

By Larry Thornton
 Part 2

The dark little hut on the edge of the forest might have been a peaceful place to live, if it weren't so dark... if it weren't occupied by two of the meanest sisters to ever occupy a little hut on the edge of a forest, or anywhere else for that matter... if even a shred of good will ever brightened its interior.

In fact, for the past few hundred years,

Sophia and Porsha, had lived in the hut seeking to outdo each other in just plain meanness. Oh, they were kind enough to each other, after all, neither wished to live alone and even a tiny audience of one was better than none at all, but their eternally crabby nature tended to limit their number of friends.

In years past, they'd gloried in a variety of evil doings, both large and small, with the "hope" of bringing at least a dreary day to

anyone they encountered.

Years ago, most of the forest creatures had abandoned the area. Even the most pleasant-natured of bears tend toward grumpy when they're awakened too often from their winter hibernation for the entertainment of the winter witches.

And when things get so bad that even



the foul-natured trolls pack-up and move, choosing to abandon their bridges rather than live in the same vicinity as Sophia and Porsha, it says a lot about the neighborhood.

Still, there were some good things. There were... and, uh... Not to mention the... Oh, let's face it. Nothing and nobody wanted to live

or even go near Sophia and Porsha's dark little hut. Which certainly didn't brighten their mood any. A steady diet of tree fungus stew, because even the bravest pizza delivery boy wouldn't volunteer to bring them a triple anchovy and liver pizza, did nothing to lessen their gloom.

Someone once said, "Even the pizza delivery guy is important!" but not around Sophia and Porsha's place.

Now, on the eve of one of their greatest

triumphs, they could barely contain their glee.

"Let me hold it one more time," Porsha said, extending her wart-covered hand toward the object clutched in Sophia's hand.

With selfish sneer that approached a snarl, Sophia drew aside for a second before reluctantly handing over the key. "Alright," she said. "It's nothing but a glittering bauble,

Continued on A6

OPINION

Around Muleshoe...



Announcements from non-profit organizations in the Muleshoe area.

To post an announcement send an email to editor@muleshoejournal.com

Medicare Open Enrollment

Medicare open enrollment is coming up quickly. Open enrollment begins on Oct. 15 and runs through Dec. 7. If you are needing to enroll or compare prescription drug coverage call Shelby Carpenter at the Bailey County Office of Aging to make an appointment.

Her office number is 806-272-3647. Medicaid and Social Security counseling will also be available.

Carpenter can also assist residents in and around Bailey County with health insurance questions and concerns.

Christmas Card Project

Park View Nursing Care Center's Christmas Card Project is underway. This years monies will go for new patio furniture for the nursing home's new and enlarged patio, and for flag poles in both the front and the back of the facility.

Your cards may be mailed to Christmas Card Project, 1100 W. Ave. J, Muleshoe, Texas 79347, or dropped off at the same address. You may also drop off donations at Muleshoe State Bank and First Bank.

Dec. 19 is the cut off date to make donations.

Master Of Memory

The Bailey County Extension Office will be hosting "Master of Memory" on Wednesday, Nov. 20, 22, 26 and 27, at the Oneita Wagnon Senior Center.

Lunch is \$3 for seniors, and \$5 for everyone else. There is no charge for the "Master of Memory" program.

For more information, contact Kathy Carr at the Bailey County Extension Office, 272-4583.

SPCAA Funds

South Plains Community Action Association of Muleshoe, 804. W. American Blvd., has received additional funding for its low-income energy assistance program for the period ending Dec. 31.

Priority will be given to eligible households and to households including at least one member who is elderly, disabled or under five years of age.

For additional information contact Janie Posadas at the SPCAA office, or call 806-272-7537.

Thanksgiving, Winter Storms, Turkey And Snow



Focus On Faith
Curtis Shelburne

Thanksgiving will soon arrive, but the ice and snow of our first winter storm have outpaced the turkey.

So here's my question as I write on this frosty Saturday evening: When is a weekend snow event simply a meteorological occurrence and when, if ever, is it a test of faith?

After over 30 years in ministry, mostly in areas where we have real seasons and snow (which I love), here's my vote: Snow's snow.

If you want to elevate the weekend white stuff to test of faith status, be my guest. But as a test of faith, it's a very poor one — something worse than a paper cut and much less serious than a hemorrhoidal condition.

A test of faith? Nah. Not snow.

The church leaders I work with do well with this, I think. Our decision about services tomorrow will be much more about ice than theology.

That said, faith and theology do slide in here a bit. In my experience, folks who most know that they can fully trust Christ's completed sacrifice on the cross are folks who most often show real faith in practical ways.

They attend. They give. They help and encourage.

They're neither too "spiritual" to do real work or too lackadaisical to be counted on.

(I've seen World War II vintage folks in hospital beds who were just about to flatline who've rallied evidently just to write one more tithe check! Committed? Oh, yes!)

But I've also noticed

be more heartfelt. If you think I'm not religious enough to be a preacher, well, tell me some real news.

It's probably my carnality that makes me wonder if it's because we've been short of persecution, real tests of faith, that we'd ever see snow as a faith freeze-test: "Neither rain nor sleet nor snow, and I'd probably handle a lion in the Coliseum or being burned at the stake, too. Maybe better than you."

(That last part is Satan's favorite.)

Persecution may indeed come. If I feel a weird need to rush it, I figure I can always buy a plane ticket and go recite the Lord's Prayer aloud in a mosque in, say, Iran. That should do it.

But I doubt I need

to look that far for faith tests. How about getting up to help my wife do the dishes? Or changing a smelly diaper. Or a stinky attitude. Shoveling snow for a widow. Giving more than I can easily spare. Non-glitzy tests of faith abound. Right here. Right now. No snow required.

I'm fine with whatever decision we make about cancelling services tomorrow. So are our church leaders. No wonder I like working with them.

Snow's just snow. Unless... I find myself looking down my cold and drippy nose at folks who see the white stuff and make a different decision — either way — than me or mine.

Then snow has become a faith test. One that I've failed.

that the most faithful folks are often also among the most genuinely thankful for a Sunday when the Lord dumps a ton of snow on us, evidently expecting us to sleep late, toss a log on the fire, use good sense, and praise Him for a real surprise Sabbath rest.

I admit it. I always hope we get buried by a really big weekend snow once a year — so big that the "cancel or not" decision is easy.

I figure folks who habitually skip church if the barometric pressure isn't right or there's a heat wave in Mozambique get plenty of chances for Sunday sleep.

The rest of us deserve one, too. My thanksgiving on that Sunday could hardly



Lift up a child's voice. A child's life.™

Help an abused or neglected child at www.becomeacasa.org. Great Plains CASA for Kids, Inc. (806) 363-1211



Need Braces?

Now offered at
J.W. HALTOM
Family Dentistry & Orthodontics

• Invisalign, the new invisible braces now offered!

• Adults and children welcome!

• Convenient, no interest payment plan!

Come in for an Ortho Consult for only \$99!

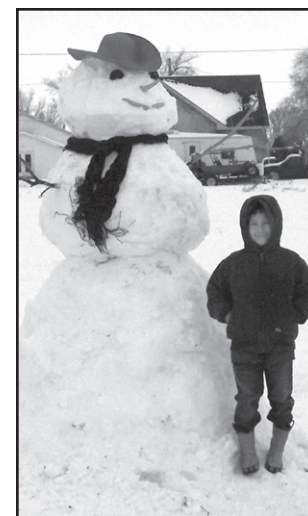
Hillary Harris, Amber Garcia, Jessica Haltom, & J.W. Haltom

320 E. 8th St.
385-6935
Monday - Thursday 8 to 5
Friday 8 to noon



C&W Designs Welcomed

The Muleshoe Chamber of Commerce & Agriculture welcomed C&W Designs, 104 W. Ave. D, in Muleshoe, with a ribbon cutting at their grand opening on Friday, Nov. 22. Pictured above, from left to right are Chris Weaver, Gina Wilkerson, Wade and Cassie Angeley, and Ashley Scolley.



Frosty And Friend...

There's just something about a field full of snow and a youngster that says: Build a snowman. Pictured above Isayah Garcia, 8, stands with his creation.

Muleshoe Journal USPS 367820

Established Feb. 23, 1924 Published by Panhandle Weeklies, LLC.
Every Thursday at 201 W. Ave. C, P.O. Box 449, Muleshoe, TX 79347.
Periodicals paid at Muleshoe, TX, and at additional mailing offices.
Postmaster: Send address changes to the Muleshoe Journal, P.O. Box 449, Muleshoe, TX 79347.

We are qualified members of the Panhandle Press Association, West Texas Press Association and Texas Press Association

David Wedel, Publisher
dwedel@hearstmp.com

Larry Thornton, Editor
editor@muleshoejournal.com

Rhea Gonzales Ad Representative
adsales@muleshoejournal.com

Ad Design / Classified Advertising
advertising@muleshoejournal.com
classifieds@muleshoejournal.com

Subscriptions:
By Carrier Yearly — \$27
Bailey County, by mail — \$29
Elsewhere — \$40
By E-mail — \$22
Advertising rate cards on request

Hours are 8 a.m. to 5 p.m., Monday - Thursday, and 8 a.m. to noon on Friday. *Advertisers should check their ad the first day of insertion. The Journal will not be liable for failure to publish an ad or for a typographical error or errors in publications except to the extent of the cost of the ad for the first day of insertion. Adjustment for errors will be limited to the cost of that portion of the ad where the error occurred.

© 2013
West Texas Press Association

Give... and Receive

Help a child in our community

Donate a toy and get Free activation

Make the season a little brighter with one of these...

Nexus 7 Tablet

Samsung Galaxy S4

Sony Xperia T

Alcatel M'Pop

Keep the celebrations going with unlimited calling, texting and data - starting at just \$50 per month!

Drop by your nearest Plateau store or call us today.

Sign up today and get a Free Alcatel M'Pop Android phone!

Phone offer ends December 31, 2013. To receive free activation, donated toy must be new, unwrapped and valued at \$10.00 or more. The Alcatel M'Pop is available for free only with a two-year contract for wireless service. While supplies last. Contract Term: One or two-year commitment required. Early termination fee: \$100 per year, maximum \$200 and is prorated. Activation Fee \$25.00. Partial megabytes rounded up. Full speeds available up to monthly data allotment; capable device required. After data allotment used, speeds slowed to up to 2G speeds for remainder of billing cycle. Night and weekend minutes are available when within the Plateau Network. Night and Weekend Hours: Monday through Thursday 7 p.m. through 6:59 a.m. and Friday 7 p.m. through Monday 6:59 a.m. Free Mobile to Mobile calls between Plateau mobile phones within the Plateau area. Roaming outside Plateau Network Home Area (U.S. and Canada): \$0.10 per minute voice call with Free Nationwide Long Distance, \$0.50 per MB Data. Additional taxes, fees and surcharges may apply. 50% usage on all plans must be on the Plateau network. Unlimited data: 4G speeds up to your selected plan of 2GB or 5GB. May not be available in all markets. Certain restrictions apply.

1-877-PLATEAU (752-8328)
www.plateautel.com

PLATEAU

Culinary Secrets... Continued From A1

clock tells her when its done. The turkey looks good to eat when it is done. It turns brown. Put it on the table. Eat it with corn, and berries. — Daniella R.

He get it in the forest. He has his blaster and he kills it. He go home and cook it in the microwave. He cooks it too hot. He cooks it 5 hours. It looks brown. I eat the turkey. We also have juices and water. — Angel C.

Mom gets the turkey from United. She cuts it and cooks it. She puts it in the oven for a little bit long 10 minutes. The The oven is 5 hot. It's ready to eat when it looks like "not dead" turkey. Put it in the plate. We eat it with chop sticks. We brush our teeth and go to bed.

— Jayden L.

My dad buys the turkey at United. He cools it in the refrigerator for a little bit. Then he puts fire in the oven. It is 10 degrees. He cooks the turkey for 4 days. It looks different. He looks in the oven and he says to me "The turkey is done. It is brown!" Eat it! — Julian S.

Mom buys the turkey at Walmart! She cooks it in the microwave for 7 hours. She knows it is done when it looks good. We eat pizza! — Luis V.

My dad buys a turkey at Clovis. He shoots it. He puts it in a fire. He eats it when it is dinner time! He puts chicken and sausage on it to make it taste good. That's it! — RJ C.

My mom don't like turkey so we have chicken salad. She just buys the salad at the store. We have chicken with it. And after she makes the food at the house we take it to church. — Aaron C.

My mom doesn't cook turkey so my grandma buys the turkey at the Walmart. She puts salad on. Her puts it in the oven for 10 minutes. She checks it to see if it is hot and brown and done. We eat more salad and then a whole lot more pumpkin pie! — Paula S.

Mom buys her turkey from Walmart. She puts it in oven for 100 miles. She puts this thing on the food that measures it. If it is super hot. her tastes it and if it is good her knows it is done. Her

puts salt, pimento and mustard, and ketchup and mayonnaise on it. We cut it into tiny pieces and give it to grandma — Santos M.

Mom buys it at "Walmar". She puts it in the oven for a 10 days. She opens the oven and she looks to see if the turkey is black. She cuts it and she gives it to us to eat. We eat it with salad dressing. That's all. — Natalie M. P.

Mom gets our turkey at Lubbock at United. She takes it home and bakes it for 141 minutes. The oven is 10 degrees hot. She can tell it's done cause she makes us taste it. (It tastes just like chicken!) Put salt on it. You also put salad dressing on it. — Carlos H.

We buy turkey at store. We cook it 5 hours. It is good. — Riki O.

My mom gets her turkey at Lubbock at United. She puts it in the microwave. She cooks it for 8 days. When it looks cheesy, it is done. She puts in on the table. She has water to drink. She also has apple juice. She has tomato soup. That's all! — Yajahira C.

My grandma makes the turkey. My mom buys it in the Clovis store. She cooks it in the oven. She puts lemon and salt on it. She cooks it till its ready. Finished! — Riki O.

MAHD Advisory Committee...

Continued from A1 required notices to be published in February before next year's elections.

The demographics people at the Underwood Law firm would provide the necessary information for the MAHD's advisory committee to make its recommendations to the hospital board for

approval.

"We won't have to send it to the Department of Justice like we have in the past," Gallman added.

The hospital district's board approved a motion seating Julian Dominguez, Susan Kerby, Yolanda Mendoza, Noemi Mora, Curtis Preston, Richard Hawkins, Alisa White,

Veronica Gomez, Lay Lures, Gina Wilkerson and Benny Parker to the board.

The committee is set to meet and go over the information from the Underwood Law firm on Dec. 3, and will present its findings to the MAHD board at its regular meeting on Dec. 19.

Muleshoe's UIL Division Expected To Change

By Larry Thornton

The Muleshoe Independent School District is expected to move up to Division 3A, Superintendent Dr. Gene Sheets said during Monday's school board meeting.

During the discussion of the district's enrollment report, the superintendent said the district divisions used for UIL competition are to expand from a "5A" system to a "6A" system with the majority of school districts—except for those currently in Div. 1A moving up a

division.

The schools remaining in the 1A division will be small schools that play six-man football this year. Schools that played previously were in Div. 1A, but played 11-man football, are expected to be moved to Div. 2A.

Whether a school district, such as Muleshoe, will be in 3A large school, or small school, will be released in the first week of December.

During the enrollment report, Sheets said the district was down about 40 students on "snapshot" day, with 352 enrolled in the high school on that day.

In other business Monday, Nov. 25, the school board:

- Were informed that SFE, the company which oversees the food services for MISD, has hired a new food services director.
- As previously, the director is shared with the Morton and Sudan school districts.
- Conducted a public hearing regarding the school district's 2011-12

School First Rating.

As in previous years, the school district received a "superior rating" on its financial review — which is based on the school district's audit from the 2011-12 school year.

Out of 70 possible points, Business Manager Daniel Harper noted that Muleshoe received 69 points — with the only mark against it being an issue Harper described as a "big district" indicator.

"We kind of take it for granted that we will have a superior rating," the superintendent said during his remarks about the hard work put forth by Harper and others involved in the school district's finances.

- Approved the first budget amendment for the current fiscal year.
- Re-appointed Daniel Guzman and Carroll Precure to the Bailey Central Appraisal District.
- Held the first reading of Update 98 to the board policy manual.

The Parmer County Soil and Water Conservation District announces that once again it is time to place your order for windbreak trees.

Parmer County SWCD has a nice selection of about 20 varieties of trees available. We have both hardwoods and evergreens.

Order early to insure you get what you want.

To Order Call the Parmer County SWCD office, 806-481-3311 and talk to Vera Bledsoe or Earl Behrends.

News about your college student

If your college student is graduating or has made the Dean's or President's List, in order for that information to appear in the *Muleshoe Journal*, we must receive notice from the respective educational institution.

Your son or daughter must sign a release so the information can be sent to us.

Have them visit their bursar's office to sign a form indicating they wish to share their good news!

Once permission to share information has been granted, the college or university should send the info via email to: editor@muleshoejournal.com.

WE'RE AT YOUR **Service**

Visit the following local businesses for quality service and customer satisfaction!

R&M PHARMACY
1411 West American Blvd.
PO Box 239
Muleshoe Texas

Kristine Isaacson PharmD., R.Ph.

806-272-7511
806-272-7515 fax

Interested in advertising your business here?

ONLY \$10⁰⁰ PER WEEK TO ADVERTISE HERE!

Contact **Rhea Gonzales** at the *Muleshoe Journal* 806-272-4536

R&M Home-Style Catering

Specializing in:
~catering small & large special events
~selling pre-made entrée & breakfast casseroles, side items, smoked meats, & desserts

Contact **Ryan**
Phone: (806)566-9002; Email: rmcatering@yahoo.com
Facebook: R&M Home-Style Catering

WE SMOKE & FRY TURKEYS, TOO!

NOW OPEN
PALM, CARD AND CRYSTAL BALL READER
222 W. 2ND STREET • MULESHOE

I CAN HELP IN LOVE, MARRIAGE, BUSINESS, HEALTH, HAPPINESS AND FINANCIAL.
I HAVE SPECIALLY BLESSED AND ANOINTED AMULETS, CHARMS, CANDLES, OILS AND INCENSE'S THAT CAN HELP IN MANY DIFFERENT AREAS AND PROBLEMS IN LIFE, I DO MEDITATIONS, CHAKRA, AURA, SPIRITUAL CLEANSINGS AND LIMPIAS.

FOR APPTS PLEASE CALL CINDY AT (806) 535-2867, IF NO ANSWER PLEASE DO LEAVE A MESSAGE, WILL BE OPEN FROM 10 AM TIL 8 PM, 7 DAYS A WEEK, READINGS HALF PRICE WITH AD, EXPIRES 1/31/14.

Muleshoe Heritage Center
Presents
WEST TEXAS CHRISTMAS
DECEMBER 7, 6-7:30 P.M.

Come join us for a FREE fun-filled evening & a great start to the Christmas Season.
\$50 Mule Bucks Drawing!


The Muleshoe Heritage Center historical buildings will be lighted and decorated and a host will give guided tours.
Free hot cider, Hot Chocolate, & Christmas cookies will be served.
We will entertain you with live Christmas music & bring the kids to see Santa!

THE S.C.A.C. AND Y.A.C. WILL GIVE A PRESENTATION OF MULESHOE'S 100 YEARS. THE S.C.A.C. WILL ALSO BE GIVING HAY RIDES.

Curtis Shelburne will be playing his new Christmas album in the new center and Pat & W.T. Watson will be playing in the Depot.

SANTA WILL BE AT THE DEPOT!

For more information contact: Dolores Harvey
(806) 272-5873 or 806-946-9078



Senior Citizen News

By Laverne Winn

The staff and members of the Oneita Wagnon Senior Center pray that everyone stayed safe this past weekend during the cold weather and especially while on the snow-covered roads.

They also hope that everyone will have a safe and happy Thanksgiving holiday time, and be sure to take time to give thanks for your blessings.

The center will close both Thanksgiving Day, Thursday, and Friday to give time for our folks to spend time with their families.

The center is thankful for all the folks that spend time in good fellowship and great meal time at the center. Thank you for your attendance.

If you have not been by the center lately, please come and visit.

There are dominoes matches, games of eighty which is like 42, puzzles to work, books to read, and computers to use. Then there is the visiting with good friends and good meals.

The week of December starts the run to the Christmas Season. The center is decked out with season decorations. Come in to see how our ladies have decorated for the upcoming season.

The center is able to stay open thru donations received. Help keep senior folks off the streets by helping to keep the center open by your tax deductible donation and get the tax benefit.

Now is a good time to send in your donation to get in this year's tax deductions.

An important day at the center is coming. On Saturday, Dec. 7, the center

will hold its quarterly Pancake Breakfast, 7-11 a.m.

The breakfast will be all you can eat with, of course, pancakes with bacon, sausage, milk, coffee, and syrups of different favors.

So get ready to come and enjoy a good breakfast for only five dollars adult and three dollars children.

Bring your friends and stay to watch the Christmas parade.

Dec. 2-6 menus:
Monday, Dec. 2—herb roasted chicken, potato wedges, whole wheat roll, margarine, peas and carrots, and strawberries with whipped topping.

Tuesday, Dec. 3—Roast pork, sweet potatoes, succotash, whole wheat roll, and banana pudding.

Wednesday, Dec. 4
Continued on A5

Dates Announced For Crop Reports

Bailey County USDA Farm Service Agency (FSA) Executive Director Kim Hanlin has announced that producers now have until Jan. 15, 2014, to report crops that have a Nov. 15, 2013, or Dec. 15, 2013, reporting deadline without paying a late-file fee.

Crops under this waiver include wheat and native and improved grasses intended for grazing or haying. The Risk Management Agency (RMA) did not grant a waiver so producers need to consult their crop insurance agent for deadlines for insured crops.

"In order to comply with FSA program eligibility requirements, all producers are encouraged to visit the Bailey County FSA office to file an accurate crop certification report by

the applicable deadline," said Hanlin.

The following acreage reporting dates are applicable for Bailey County:

- Dec. 15 — wheat, rye, triticale, etc.
- Jan. 15 — mixed forage, native grass
- May 15 — spring oats
- July 15 — corn, sorghum, sorghum forage, cotton, sunflowers, soybeans, CRP, Follow land, all vegetables

The following exceptions apply to the above acreage reporting dates:

- If the crop has not been planted by the above acreage reporting date, then the acreage must be reported no later than 15 calendar days after planting is completed.
- If a producer acquires additional

acreage after the above acreage reporting date, then the acreage must be reported no later than 30 calendar days after purchase or acquiring the lease. • If a perennial forage crop is reported with the intended use of "cover only," "green manure," "left standing," or "seed" then the acreage must be reported by July 15.

According to Hanlin, Noninsured Crop Disaster Assistance Program policy holders should note that the acreage reporting date for NAP covered crops is the earlier of the dates listed above or 15 calendar days before grazing or harvesting of the crop begins.

For questions regarding crop certification and crop loss reports, please contact the Bailey County FSA office at 806-272-4538

BAILEY COUNTY DEVOTIONAL PAGE

ASSEMBLY OF GOD
FIRST ASSEMBLY OF GOD
Pastor Ryan Pate
521 South First Street
272-3017
S.S. 9:45 am,
W.S. 10:45 am & 6:00 pm,
Wed. 7:00 pm

EL BUEN PASTOR
415 E. Ave. F - 272-5455
Pastor Ruben Acevedo
272-4542
S.S. 9:45 am, W.S. 11 am & 6 pm; Wed. 7 pm

BAPTIST
CALVARY BAPTIST
1733 W. Ave. C.
Rev. Jeff Coffman
FIRST BAPTIST
220 West Ave. E
Dr. Stacy Conner
FIRST BAPTIST
Lazbuddie • 965-2126
PRIMERA IGLESIA BAUTISTA
223 E. Ave. E
Rev. Rosendo Lopez
PRIMITIVE BAPTIST
621 South First
Elder Bernard Gowens, Min.
PROGRESS BAPTIST
Progress, TX
PROGRESS SECOND BAPTIST
Arthur Hays, Min. - 1st & 3rd Sundays
RICHLAND HILLS BAPTIST
Bro. Larry Thornton
17th & West Ave. D
S.S. 10 am; W.S. 11 am
www.rhbc-muleshoe.org

CATHOLIC
IMMACULATE CONCEPTION CATHOLIC CHURCH
805 E. Hickory
Leonardo Pahamtang, Min.
EPISCOPAL - CHARISMATIC
ST. CLEMENTS CHURCH

Bible Foods (Solutions on A5)

B Y D R Q G N D T N E I T A P E B Y T E L O J Q Z
U Y Q D R N E T H Q X R M W J F Q A B F D A V F Z
G W X S H Z P H B C G H P Y Y F U X E I S X S C A
E Y M Q K T I R I P S E H T F O H V A L T Y Q D D
C B U X E Y F O P L U W Y I C R A S R A Y O I W C
Z J M S P L D U O J M V Z U A T U Q I E U U L F L
P E R C G E V G W U E M M S H T W K N V K H J S V
L E E Q F T A H D Q F E A E A O L R G I X A N O H
K W H Z O E K T G U S P C K A K D O W L X V X N E
Q S T B R L T H R C R A V A E E H L I O A E W L C
E A O E T P R E G I L C N N E E J F T T K R K C I
E S N B H M Q B S L Y D C M W P V P H Z Z E Z I T
H T A I E O I O I Y G S M R O Y F E W W R C D K J
E F E R L C N N K E G R X F A O U O R P K E R W K
Q V N H O E G D N S B R S B Y N R P A Y R I O J S
L W O K R B L T H Y W M H H I Z J L K X S V I S F
N Y Z L D K L O J S C O T T H E N I U R G E Y O U
W U U T N E L B M U H R Y V Q Z V R L K X D J Z P
E U P T B I S E N V O N A E A G T V S B Y E W V Y
B Q H Z S R D Z T W B L M Y I V C Q O F Z L I P L

Cucumbers
Gourds
Leeks
Lentils
Onions
Barley
Bread
Flour
Millet
Partridge
Pigeon
Quail
Dove
Calf
Goat
Lamb
Oxen
Sheep
Venison
Butter
Cheese

This devotional & directory is made possible by these businesses who encourage all of us to attend worship services.

COMMUNION OF CHRIST THE REDEEMER
Hwy. 214 South • 272-5954
Father Sergio Leal
Sun. W.S. 10:30 am

CHRISTIAN TRINITY CHRISTIAN CENTER
1723 W. American Blvd.
272-3877
Reydon Stanford, Pastor
Sun. W.S. 10:30 am
CENTRO CRISTIANO
117 E. Birch St.
Hermanos Barron
S.S. 10 a.m.; W.S. 11 a.m. & 6 p.m.; Wed. 7 p.m.

CHURCH OF CHRIST LARIAT CHURCH OF CHRIST
Wesley Roach, Min.

S.S. 10 a.m.; W.S. 11 a.m. & 6 p.m.; Wed. 7:30 p.m.

LAZBUDDIE CHURCH OF CHRIST
Harrol Redwine, Min.
S.S. 9:30 am; W.S. 10:20 am & 5 pm; Wed. 6 pm

MULESHOE CHURCH OF CHRIST
22nd & W. American Blvd.
S.S. 9:30 am; W.S. 10:20 am & 6 pm; Wed. 7:30 pm
16th & AVE. D
CHURCH OF CHRIST
Curtis Shelburne, Min.
272-4619
S.S. 9:30 am; W.S. 10:30 am; Growth Gr. 1:30 pm; Wed. 7:00 pm

LUTHERAN ST. JOHN LUTHERAN
Lariat, TX • David Symm, Min.

S.S. 10:30 am; W.S. 9:30 am

METHODIST FIRST UNITED METHODIST
507 W. 2nd St.
S.S. 9:45; W.S. 11:00;
Praise & Prayer 6 pm;
First Sunday of Month
4 pm Parkview Nursing Home Service
Mon. 9 am Ladies Bible Stdy;
Tues. 6 pm Adult Bible Stdy;
Pastor Mindy McLanahan,
272-5517

LAZBUDDIE METHODIST
S.S. 9:30 am; W.S. 10:30 am
Pastor Ken Peterson
965-2121

EL DIVINO SALVADOR U.M.C.
619 E. 5th Street & Ave. G,
Fernando Sanchez, Pastor
272-6888

PENTECOSTAL
Iglesia Apostolica de la Fe en Cristo Jesus
207 East Ave. G
Sunday 1:30 pm
Wednesday 7:30 pm

INTER DENOMINATIONAL NEW COVENANT
Plainview Hwy.
Steve Claybrook, Pastor
W.S. 10 am; Wed. 7 pm
MULESHOE COWBOY FELLOWSHIP
710 E. American Blvd.
Steve Friskup, Minister
272-5199
Service: 7:30 p.m. Thursday

If you have changes to make to church information, please contact the Journal at 272-4536.

Serve Wholeheartedly, as if you were serving the Lord, not men. Ephesians 6:7

MULESHOE VALLEY INC.
2601 W. American Blvd.
P.O. Box 631
Muleshoe, Texas

(806) 272-4266
Mobile (806) 946-8763
mviinc@fivearea.com

Muleshoe Journal
201 W. Ave. C, Muleshoe
OFFICE: 806.272.4536

"THE FIVE AREA TELEPHONE COOPERATIVE, INC."
West Plains Telecommunications, Inc.
Five Area Systems, Inc. • Plateau Wireless
Five Area Long Distance • Five Area Internet
302 Uvalde Muleshoe, USA (806) 272-5533

SHIPMAN'S BODY SHOP, INC.
410 N. First St. • Muleshoe, TX
Office: 806-272-4408 • Fax: 806-272-3366 • Night # 806-336-5422

CENTRAL COMPRESS & WAREHOUSE
SUDAN, TEXAS

To place your ad here call Rhea at the Muleshoe Journal 806-272-4536

McCORMICK SEEDS, INC.
400 East Ash • 272-3156
Muleshoe, Texas
A COMPLETE LINE OF FIELD SEEDS
Tim McCormick

MAPLE COOP GIN
927-5501
Maple, Texas

Muleshoe Journal
201 W. Ave. C, Muleshoe
OFFICE: 806.272.4536

BOEHNING DAIRY
690 CR 45, Earth
"MILK - A PART OF EVERYTHING THAT IS GOOD!"

MULESHOE ANIMAL CLINIC
GENERAL PRACTICE
MVS
1430 US Hwy. 84, Muleshoe Office: 272-3061

Lial's TORTILLA FACTORY
105 E. Ash St., Muleshoe • 272-5772
Phillipians 4; "I can do all things through Christ who strengthens me."

Deaf Smith County Grain, Inc.
Cliff A. Skiles, Jr.
Jeb S. Skiles

McDONALD'S OF MULESHOE
1315 W. American Blvd. • 272-3333
Open at 5 AM every day! i'm lovin' it

WAYNE COPLEY TRUCKING
CALICHE, SAND & ROCK PRODUCTS
P.O. Box 63 Muleshoe, Texas 79347 (806) 272-3697 Mobile: (806) 946-8072

BCEC BAILEY COUNTY ELECTRIC COOPERATIVE ASSOCIATION
A Touchstone Energy® Cooperative
Muleshoe — 272-4504 Morton — 266-8600

Muleshoe Journal
www.muleshoejournal.com
201 W. Ave. C, Muleshoe
OFFICE: 806.272.4536
FAX: 806.272.3567

Pizza Hut
1412 W. American Blvd. Muleshoe • 272-4213
Open: Sun.-Mon. 11AM-11PM
Lunch Buffet: Sun.-Fri. 11:30 AM-1:30PM
Monday Night Buffet: 6-8PM
PIZZA HUT WING STREET IS HERE!
"Gather round the Good Stuff"

FARMERS
Julie DeBruin, Agent
1602 West Amer Blvd
Muleshoe, TX 79347
Bus: 806-272-7548
Fax: 806-272-4756

To Place Your Ad Here
Call Rhea At
Muleshoe Journal
806-272-4536 or
806-518-4606

Obituaries



Don Bryant

Funeral services for Don Bryant, 84, of Muleshoe, are scheduled for 2 p.m. on Friday, Nov. 29, at the First Baptist Church in Muleshoe with the Rev. Dr. Stacy Conner officiating.

Burial will follow in Muleshoe Memorial Park. Mr. Bryant died on Nov. 20, 2013, in Lubbock. He was born on Nov. 16, 1929, in Posey, to Emry Terrell and Lola Bryant, and married Mary Anna Watson in Muleshoe on April 10, 1948.

Mr. Bryant was a resident of the Muleshoe community all of his life, and was a lifetime Mason for 62 years.

He farmed in Bailey and Lamb counties from 1948 until 2009, and was selected as the Farm Family of the Year by the Muleshoe

Chamber of Commerce on two occasions.

In the mid-1970's, he was the PAG National Seed Dealer of the Year.

Mr. Bryant was a charter member of the Muleshoe Country Club, where he served as president for two terms. He served on the Earth Hospital District Board, and served as an election judge in Lamb County for many years.

He was also a licensed pilot.

Mr. Bryant was a member of the First Baptist Church in Muleshoe, where he taught a men's Sunday School for many years. He was preceded in death by his wife, Mary Anna, in 2008, his parents, five brothers and one sister.

Survivors include his three daughters — Terry Lynn Addison of Ft. Sumner, N.M., Treena Matthews of Dimmitt, and Stephanie Stephens of Plano; a sister-in-law — Pearl Whittimore of Forest City, N.C.; 10 grandchildren and seven great-grandchildren.

Memorials may be sent to Scottish Rite Hospital for Children, 2222 Welborn Street, Dallas, Texas, 75219 or online at www.tsrhc.org, or Muleshoe Memorial Park Cemetery, 104 E. Ave C, Muleshoe, Texas, 79347.

Online condolences can be made at www.ellisfuneralhomes.com.

Senior News...

Continued from A4 — Chicken-fried steak, mashed potatoes, country gravy, stewed okra, seasoned corn, and a pumpkin square.

Thursday, Dec. 5 — Vegetable beef stew, zucchini squash, tossed vegetable salad, low calorie french dressing, and a whole wheat dinner rolling.

Friday, Dec. 6 — Fish or chicken strips, borracho beans, green peas, tossed vegetable salad, low calorie french dressing, whole wheat roll, and tropical fruit mix.

Baby Showers



Taggart Feted

Nikki Taggart was recently honored with a baby shower in the home of Candace Norrod in Lubbock on Saturday, Nov. 9.

Hostesses for the event included Candace Norrod, Laura Wood, Linda Wood, Shelbi Bonds, Shelbi Robinson, Patti Kent, Rhonda Eagle, Rendi Hodge and Debbi Hutto.

The hostess gift included a Mamaroo and giftcard. Special guests attending included Annette Bonds, Reba Bonds, Shelly Durham and Shelbi Bonds.

Freshmen Open Season With Loss To Levelland Lobos

Olton did not have a ninth grade team so the freshmen Mules had to wait until Thursday to kickoff their home season against the Levelland Lobos.

Jessie Leal got the Mules started by sinking a pair of free throws. He was fouled while shooting.

The Lobos out scored the Mules 19-14 in the opening period and held on to defeat the Mules 61-52.

The Lobos scored the next two buckets before Jason Florez was fouled shooting and he made one of two free throws.

Boo Flores put back and offensive rebound with four minutes remaining in the first period and the Mules trailed 11-5.

Timothy Perez set up on the blocks and scored after posting up and getting the ball. Beto Diaz hit from behind the arc from the left wing.

Florez scored on a fast break to cut the Lobo lead to 15-12 with just under a minute left in the first period. Florez scored between a pair of Lobo baskets to end the period.

The Mules went on a 7-2 run in the final minute and half to cut the Lobo lead back to 33-27 at the intermission.

The Mules lost ground in the third quarter as Levelland out scored the Mules 13-10 to lead 46-37 with one quarter

remaining to be played. Flores was fouled hard early in the final period and was shaken up on the play. Javy Perez took his free throws and made the one and bonus.

J. Perez hit from the elbow with 4:15 remaining in the game and the Mules trailed 53-41.

Florez drove coast-to-coast on a fast break for a lay up. Tre Villa made a lay up and Donavan Gutierrez added a free throw.

Florez seemed to float down the baseline for a lay up. Florez drove the lane on the Mules next trip down the floor for a second lay up and cut the Lobo lead to 59-50.

The Lobos made a free throw before Timothy Perez drove the lane to end all scoring.

Florez set the scoring pace for the Mules with 18 points. Flores added 10 points and J. Perez dropped in eight.

Diaz finished with seven points, T. Perez had four, Leal made three and Villa chipped in two.

The Mules game against Dimmitt was cancelled Monday because of bad weather.

The Mules will travel Littlefield to play the Wildcats Dec. 2 before going to Denver City for the Mustang Tournament Dec. 5-7.

The Mules return home Dec. 9 to host the Tulia Hornets.

Death Notices

Cathy Branscum

Muleshoe resident Cathy Branscum, 60, died on Nov. 22, 2013, in Lubbock. She was born on June 16, 1953, in Slaton to Roland and Martha McCormick. Funeral services were held at Trinity Christian Church Burial was at Bailey County Cemetery.

Eating Healthy = Staying Healthy

Moonlight Madness

at Joe's Boot Shop

Friday, Nov. 29th
9AM 'til Midnight!

Sales Store-wide!

Boots Get Cheaper Starting by the Hour at 6PM During Moonlight Madness!

PEANUT AUCTION

Bring your November Joe's Boot Shop Receipts!

Present your Joe's Boot Shop Receipts Dated 11/1/13 - 11/29/13 on Nov. 29 at 8pm during Midnight Madness. For every \$5 you've spent at Joe's Boot Shop, you will receive a Bordon Peanut! Use your Bordon Peanuts to Buy any of the valuable items to be auctioned off at Joe's Boot Shop! Auction starts at 10pm! Auction items include: boots, belts, jackets, jeans, ropes & home decor from Joe's Boot Shop!

GET A FREE JUSTIN/WNFR GEAR BAG WITH A \$200 PURCHASE AT JOE'S BOOT SHOP! (WHILE SUPPLIES LAST)

Kids' & Ladies' 20% OFF!

FAT BABIES \$10 OFF!

Ladies' Fashion Boots \$20 OFF!

20% OFF!

20% OFF!

20% OFF!

Full Quill Ostrich \$50 OFF!

Alligator Boots \$50 OFF!

15% OFF His!

20% OFF Hers!

10% OFF!

10% OFF!

Don't Miss the COUNTRY JUNCTION CHRISTMAS OPEN HOUSE!

Friday, Dec. 6th: 9a-6p & Saturday, Dec. 7th: 9a-7p

20% OFF!*

STOREWIDE IN THE COUNTRY JUNCTION

Many NEW furniture & decor items at great SALE prices! Discount good through Christmas! (*Unless already discounted)

\$200 off Any New Adult Saddle in stock!

\$100 off Any Used Adult Saddle

2600 Mabry Drive Clovis NM

Births

Layne Davis

Chris and Felicia Davis of Lazbuddie announce the birth of their son, Layne Dusty Davis, on Oct. 26, 2013, at 6:26 a.m. (N.M.) at Plains Regional Medical Center of Clovis, N.M. Layne weighed seven

pounds, 7.8 ounces at birth and was 20-1/4 inches in length.

He has two siblings — Carson, 6, and Leelynn, 4.

His grandparents are Lynda Buchanan of Lazbuddie, and Kathy Hines of Clovis, N.M.

Bible Foods

T	E	L	K	F	O	N	T	Z	I	R	H	M	E	J	U	J	W	P	
M	H	I	N	V	O	G	A	Y	P	D	G	J	O	V	L	G	H	E	
S	B	O	E	P	S	X	E	H	F	Z	R	O	U	L	A	O	H	S	E
L	K	C	R	I	G	X	T	Z	G	C	D	M	X	F	D	B	H		
H	L	U	N	G	I	T	E	D	Z	J	N	U	I	B	T	F	J	Y	K
R	A	E	Z	E	R	C	I	U	M	M	A	S	M	A	P	I	X	S	C
J	V	Y	U	O	K	B	R	N	B	T	A	X	A	O	L	N	F	T	L
Q	H	N	R	N	A	J	T	E	G	K	G	A	R	S	T	P	C	Y	S
E	P	N	P	R	V	F	R	E	G	K	X	T	S	U	S	R	M	G	S
N	B	V	L	F	D	S	A	T	W	A	X	R	O	P	I	G	O	D	V
S	Z	E	T	E	L	G	P	X	O	L	E	T	X	B	B	G	R	A	W
T	Y	T	M	V	E	A	Y	T	N	T	N	W	E	M	Y	U	S	E	U
T	U	P	Q	R	C	K	C	R	T	X	K	N	N	L	O	R	J	R	Z
F	L	Q	E	L	U	B	S	U	Q	Z	E	B	E	G	L	B	T	B	D
L	V	Q	Y	R	O	B	R	U	C	C	N	M	S	M	I	K	T	O	R
R	K	J	X	Y	T	N	L	P	A	Z	T	K	Y	E	E	S	M	L	E
T	M	W	L	Y	O	A	I	F	I	N	W	T	S	U	E	G	U	D	O
C	N	V	U	O	B	T	H	O	L	N	C	I	P	Z	V	H	Z	O	
C	S	V	R	N	S	L	M	S	N	H	D	U	T	E	F	R	H	C	W
N	X	Q	G	Y	I	V	O	I	A	S	D	J	K	R	T	I	O	H	J

The Christmas Key... Continued From A1

anyway."

Porsha took the key with a grin, knowing her sister was right, but delighting in holding the symbol of their latest victory against Santa Claus and his army of good-natured do-gooders.

"Do you think he's discovered it missing?" Porsha said as she held out the key to let it gleam and glint in the light of the fireplace.

Sophia shrugged. "I don't know. Does it matter? The closer it gets to Christmas Eve, the more their horror will be."

As the thought grew in their minds of the shock the elves and even Santa would experience should they not open the cabinet until Christmas Eve to discover the magical key that allowed Santa to gain entrance to all the homes of the world missing sent shivers of glee down the sisters crooked spines.

"This will truly destroy Christmas!" Porsha said. "This time we'll win."

Dancing from foot to foot, she skipped out the door's hut as well

as her old bones could carry her, chortling and wheezing... wheezing and chortling.

This time, it did indeed look as if their plans to upset Santa's plans might succeed. Several years earlier, their attempt to cause Santa Claus ill by snatching Mrs. Bea, the magical doll that helped him monitor the Christmas desires of the world's children had almost succeeded... only to be foiled at the last minute by the little girl, April.

Just as they had that night, they'd used their powers to enter Santa's workshop and snatch Mrs. Bea from her cabinet while she slept and shared the dreams of children. By the time she'd awakened, Mrs. Bea had been transported far to the south, and placed on a department store shelf with a myriad of other dolls.

The sisters' mistake that year was grabbing the doll too early in the year. But this time, they'd waited longer. It was less than a month before Christmas Eve, far too little time for

Santa and his helpers to locate the key, even if they knew who had stolen the key and had an idea where to locate it.

Spinning in her excitement, Porsha tossed the key into the air, catching it as it came down, and tossing it a little higher the next time.

"Careful," Sophia said. "It will do us no good if you lose it."

Porsha's squeal of happiness was repeated as she tossed the key even higher... only this time, it didn't come back down.

"Sophia!" Porsha screamed, blaming her sibling, but when Sophia looked outside the hut's door, an expression of puzzlement covering her face Porsha realized something else was afoot.

* * * * *

"What absolutely fantastic luck," Darkbeak thought to himself as he gained altitude, the key's metal surface catching the morning's sunshine as he climbed into the sky.

Normally, the large

black crow wouldn't hazard a flight that took him over the dwelling of the winter witches, but on this day his thoughts of food had been enough of a distraction that he suddenly found himself doing just that.

And when his eyes caught the tempting glint of the sunlight on the metal object being tossed into the air it was more than he could stand. Pulling his wings close to his body in the manner of a falcon, the crow dropped toward the earth, and with near perfect timing, as the key reached its apex Darkbeak was there, in time to snatch the key with his beak, and with a strong beat of his wings sail upward again, southbound.

* * * * *

Toby's snow fort was short-lived, its walls and base rapidly disappearing with a warm breeze that turned the town's winter wonderland into a soggy mess of brown. Brown grass and brown earth replaced the blanket of white that had covered it for almost a week.

It also meant Toby was restricted to playing inside for a couple of days until the mud had a chance to dry.

"Mom, I won't play in the mud... this time," Toby said as she peered out the living room window. "I'll stay on the drive and the sidewalks."

"Yes, dear," her mother replied from the kitchen as she prepared

supper. "I believe you will try, but, angel, I honestly don't think you're capable of avoiding the mud."

"But, Mom..."

"Toby, why not put in a video game, and let me finish supper? You're father will be home soon."

Toby knew it was a fight she couldn't win. There had been too many times in which her best intentions had ended up covered in mud.

She'd learned at an early age that jumping over water puddles was more exciting than going around them, and the sad truth about most puddles is that there was mud underneath.

With a deep sigh, Toby turned from the window and powered up her game system. She was about to start the video game when her mother called from the kitchen.

"Toby, I forgot to ask if you've finished your homework."

Toby's dreary afternoon suddenly became even more dreary.

* * * * *

Far to the north, Santa's village had taken on many of the aspects of a military base. The wolf patrols had been doubled, and many of the geese that lived in the area were spending more time in the air, providing aerial surveillance.

The disappearance of the Christmas key had everyone at their highest state of

vigilance.

"Couldn't it have been misplaced?" an elder elf asked Santa.

The normally cheerful leader of the Christmas village, Santa Claus himself, shook his head slowly, only a portion of his concentration focusing on the elf's questions.

"No, something else is going on here," Santa said. "I should have suspected it when Mrs. Bea disappeared from the cabinet a few years ago."

"At the time," he continued, "she said she didn't remember being removed from the cabinet, only the events that occurred after she awoke in the south and was given as a present to April. We tried to find out how it happened, and even put up alarms in the shop, but..."

"The only thing we're certain of this time is that magic was used... powerful magic."

As Santa lapsed into silence again, the elf patted his arm before returning to his work.

For almost an hour, Santa Claus pondered the situation, trying to decide which of the beings he'd dealt with over the centuries that had both the power and the inclination to attempt to disrupt Christmas in this manner.

"Whoever did it is just down-right mean," he muttered to himself, seconds before a light went off in his head. "Sophia and Porsha," he exclaimed.

Continued next week

USDA Reminds Producers Of Sales Closing Date For Non-insurable Crops

Bailey County USDA Farm Service Agency Executive Director, Kim Hanlin, urges producers who want to purchase coverage through the Non-insurable Crop Disaster Assistance Program to do so before the sales closing date of Dec. 2, 2013.

The sales closing date is actually Dec. 1, but producers have until Monday, Dec. 2, to purchase coverage this year because Dec. 1 falls on a Sunday.

NAP provides financial assistance to producers of non-insurable crops when low yields/grazing loss, loss of inventory or prevented planting occur due to natural disasters including drought, freeze, hail, excessive moisture, excessive wind or hurricanes.

The following crops

have a NAP application closing date of Dec. 2: Grazing and forage/hay on native and improved grass, honey, potatoes, radishes, grapes and caneberrys.

"NAP allows producers to protect their investment by purchasing coverage for noninsurable crops," said Hanlin. "Natural disasters are an unavoidable part of farming and ranching and FSA programs like NAP help producers recover when they experience a loss," he said.

In order to meet eligibility requirements for NAP, crops must be noninsurable, commercially-produced agricultural commodity crops for which the catastrophic risk protection level of

crop insurance is not available.

In the event of a natural disaster, NAP covers the amount of loss greater than 50 percent of the expected production based on the approved yield and reported acreage.

Eligible producers can apply for coverage using form CCC-471, "Application for Coverage." Producers must file the application and pay a service fee by the Dec. 2 deadline.

The service fee is the lesser of \$250 per crop or \$750 per producer per administrative county, not to exceed a total of \$1,875 for a producer with farming interests in multiple counties.

Limited resource farmers may request a waiver of the service fee at the time the application for coverage is filed. Producers must recertify their limited resource status for each year that a waiver is requested.

For more information on sales closing dates and NAP, contact the Bailey County FSA office at 806-272-4538.

Master Of Memory Program Set

The Bailey County Extension Office will be hosting "Master of Memory" on Wednesday, Nov. 20, 22, 26 and 27, at the Oneita Wagnon Senior Center.

Lunch is \$3 for seniors, and \$5 for everyone else. There is no charge for the "Master of Memory" program. For more information, contact Kathy Carr at the Bailey County Extension Office, 272-4583.

COMPOSTED CATTLE MANURE

Paco Feed Yard -- Hub
Cargill Cattle Feeders -- Bovina
Bovina Feeders -- Lazbuddie

BRANDON SCHILLING
Mobile 806-225-7700
OFFICE 1-800-650-2550

NORTH PLAINS COMPOST, INC.
PO BOX 1099
FARWELL, TEXAS 79325

Subscribe!

Muleshoe Chamber of Commerce & Agriculture invites you to spend...
Christmas Around Muleshoe

"Christmas Around Muleshoe" participants will give one entry for every \$10 purchase (up to \$100) every day between **Nov. 16th and Dec. 14th**. The merchants will also have six special days customers will receive double entries - **Nov. 16th, Nov. 23rd, Nov. 30th, Dec. 7th, and Dec. 14th**. You will receive two entries for every \$10 purchase (up to \$100) on these six days! \$1000 Chamber Mule Bucks certificates and Gift certificates up to \$50 from sponsoring businesses will also be given away. Enter at the participating businesses listed below.

<p>Muleshoe Abstract Company Abstract & Title Insurance 103 W. Avenue D 272-4732 8:30-12:00, 1:00-5:00 M-F "Wishing everyone a safe and happy holiday season."</p>	<p>Scarves • Sweaters • Leggings HOLIDAY SHOPPING AT IT'S BEST. START OFF TAX FREE! Double Your Entries With Every \$10 Purchase On Nov. 16th WILLIAMS 272-6853 1405 W. Amer. Blvd.</p>	<p>MOHAWK AUTO PARTS, INC. Remember Double Entry Day AUTO PARTS Nov. 16th Lynn Moore 1701 W. American Blvd. • 272-4425</p>
<p>Muleshoe Heritage Center Dec. 7th Time to be announced Christmas on the Prairie Guided Tours, Refreshments & Live Entertainment For more information contact the: Muleshoe Heritage Foundation 2000 Ash • 272-5873 Muleshoe, TX 79347</p>	<p>Antiques & Fine Things 2104 W AMERICAN BLVD 272-4217 OPEN TUE.- FRI. 10:00 - 5:00</p>	<p>Trés Bella Salon 1519 W. American Blvd. Muleshoe 272-7516</p>
<p>Gry & Cox INC. 401 S. 1st Muleshoe 806-272-4511 Open: Mon.-Sat. 8-6</p>	<p>Acron's 2104 W American Blvd Muleshoe, TX 79347 806.272.8925 Monday - Friday: 9:30am - 6:00pm Saturday: 9:30am - 5:00pm Sunday: Closed</p>	<p>Touched by the Cross 119 W. 3rd Muleshoe • 806-272-3994 • PERSONALIZED CROSSES • CUSTOM DESIGNED FREE STANDING CROSSES • HAND TURNED PENS MADE FROM EXOTIC WOODS OR DEER ANTLERS • REGULAR ROLLER BALL PENS • SHOTGUN SHELL PENS • BOLT ACTION RIFLE PENS MON.-FRI. 8:30AM-12PM, 1PM-5:30PM</p>
<p>Once By The Closet You'll They can only see once! The Closet 230 Main Street • 806-225-7283 • Muleshoe (Located in The Studio)</p>	<p>Bailey County Senior Center 319 S. Main St. • 272-4969 8:00 AM-4:00 PM Mon.-Fri. Join us for a Pancake Breakfast. Dec. 7th 7 to 11 am Open to the public. Adults \$5 & Child Under 10 yr. \$3</p>	<p>WAYNE COPLEY TRUCKING CALICHE, SAND & ROCK PRODUCTS P.O. Box 63 Muleshoe, Texas 79347 (806) 272-3697 Mobile: (806) 946-8072</p>
<p>K&K PHARMACY 1411 W. American Blvd. Muleshoe, TX 806-272-7511</p>	<p>TIRE & SERVICE TIRE PROS MICHELIN Glenn Kahlich 220 E. American Blvd. Muleshoe, TX 79347 Cell: 806-344-7034 Shop: 806-272-4594 Fax: 806-272-8996</p>	<p>Lasting Impressions 516 South First Muleshoe, TX 79347 806-272-4287</p>

Other businesses will be added next week!



The Sudan Buzz

Skyrockets' Roar Surpasses Hornets' Buzz

By Cheri Sain
Sudan Correspondent

The Sudan Hornets played their last game of the season at the Area Championship game at Kimbrough Stadium in Canyon Friday night when the Wellington Rockets beat the Hornets with the score of 58-36.

Wellington received the ball first and drove 70 yards in seven plays to score with only 3:17 off the clock.

Their 2-point conversion was good giving them the eight point lead.

Sudan came firing on the field and scored on a pass from quarterback Stephen Schovajsa to Reece Harper in the middle of the end zone.

Edgar Nunez's point after was good, and the score was 8-7.

Wellington scored one more time in the first quarter when Terry Gilbreath ran two yards for the touchdown capping a six-play, 70 yard scoring drive. The 2-point conversion was good.

The start of the second

quarter ended like the first with Gilbreath scoring on a 19-yard touchdown run. The PAT was no good.

Wellington scored one more time with quarterback Klark Ashmore finding Gilbreath for a 17-yard score.

The 2-point conversion was good giving the Skyrockets the 30-7 lead.

The Hornets never backed down. BJ Johnson ran 59 yards for a Hornet touchdown with 4:58 left before half.

The 2-point conversion was good when Schovjasa passed to Ty Shaw to bring the score to 30-15 at half.

The Hornets were impressive out of the locker room. On their next two possessions, Sudan scored eating up precious seconds off the clock.

Johnson carried for four yards for the touchdown that capped off a 10-play, 74 yard scoring drive. The PAT pass was no good.

Sudan tried an on-side kick and the Hornets



Photograph by Cheri Sain

The Sudan Hornets' offensive line listens to the count during the game against the Skyrockets.

retained the ball on the 44 yard line.

Schovajsa passed to Johnson, and Johnson ran 25 yards for a Hornet touchdown.

The PAT kick was good closing the gap to where Sudan was only behind by two points, 30-28.

Wellington scored on their next possession when Ashmore carried

16 yards for the Skyrocket touchdown. The 2-point conversion was good.

Unfortunately on Sudan's next possession, Schovajsa threw an interception in the middle of the field, and Wellington ran it back to the four yard line.

Ashmore's pass to Jonathon Townsend was complete for another

Wellington touchdown. The 2-point conversion was no good giving the Skyrockets the 44-28 lead.

Wellington scored two more times in the fourth quarter increasing their lead to

58-28.

Sudan scored one more time late in the fourth quarter when Schovajsa found Tanner Fisher in the middle of the field, and Fisher ran it for a 50-yard

Continued on B3

Speech Students Place At UIL Congress

By Cheri Sain
Sudan Correspondent

On Nov. 12, Sudan speech students competed in Lubbock at Raintree Christian Church at the Region 17 UIL Congress Contest.

There were 44 contestants from 12 different 1A through 4A schools.

Competing for Sudan were Senior Deric McCurry, Junior Kendon Drennan, and Sophomore Carson

Phillips. All three Sudan students spoke well giving good speeches and advancing to the final round.

In the final chamber, two of the SHS students were not only in the top three 1A competitors but won overall medals.

Deric McCurry won third place overall, and Kendon Drennan won second place overall.

Not only did these student beat all of

their 2A through 4A competitors but earned berths at the State Congress Competition in Austin in January.

This is the first year for the new University Interscholastic League (UIL) Academic contest.

Modeled after the United States Congress, Congressional Debate or Congress, makes its debut during the 2013-14 school year.

To create a system for

the first year, the UIL used the 20 existing Educational Service Center Districts for each district competition.

For example, Sudan competed in Lubbock, but Lazbuddie competes in Amarillo. In each of the 20 districts, all classifications 1A through 5A will compete against each other.

Jonathan Robertson, their coach, remarked, "They exceeded my wildest expectation. I thought that we might be fortunate enough to get one into the top three 1A spots, but to beat all of the 2A through 4A competitors was nothing less than brilliant."



Carson Phillips, Deric McCurry, and Kendon Drennan compete at the UIL Congress Contest. All three Sudan contestants qualified for the final round, and McCurry and Drennan qualified for state competition.

Thank you for reading the Buzz!

SUDAN VETERINARY SERVICES

SvS

CHRIS LARSON D.V.M.

- ◆Specializing in Dairy Medicine◆
- ◆Small Animal & Equine◆
- ◆Same Day Minor Surgery◆
- ◆Farm & House Calls◆
- ◆Climate Controlled Boarding◆
- ◆Services by Appointment Only◆

1704 East Hwy. 84 • Sudan Tx

806-227-2444 806-241-1915

SUDAN ISD

EXCELLENCE

IN

EDUCATION

WWW.SUDANISD.NET

Hwy. 303 PHONE: (806) 227-2431
SUDAN, TX 79371 FAX: (806) 227-2146

KING Ag AVIATION, INC.

Specializing in Aerial Spraying - Insecticide, Herbicide & Seeding - Field Scouting Service

Johnny King Home (806) 227-2211
P.O. Box 189 Fax (806) 946-3659
Sudan, Texas 79371 Mobile (806) 946-7309
Business (806) 946-3399 Vernon Office (940) 552-6102

BLACK FRIDAY SAVINGS!

Aaron's

JOY

NORMOUS

BLACK FRIDAY

3 Days Only! Friday - Nov. 29, Saturday - Nov. 30 & Monday - Dec. 2, 2013

DOORS OPEN EARLY FRIDAY AT 7:00AM! (Regular Hours Saturday & Monday)
2104 W American Blvd • Muleshoe, TX 79347 • 806-272-8925



www.unitedsupermarkets.com



www.marketstreetunited.com



www.amigosunited.com

Prices effective November 29 - December 3, 2013

BUY 1 GET 1 FREE
of equal or lesser value

80% Lean Ground Beef

GENUINE TEXAS BEEF

BUY 1 GET 1 FREE
of equal or lesser value

Chicken Breast Fillets, Tenders or Thighs
Boneless, Skinless

Pilgrims

BUY 1 GET 1 FREE
of equal or lesser value

Fresh, Sweet NatureSweet Cherub Tomatoes
10.5 oz. Package

96 NuWar

BUY 1 GET 1 FREE
of equal or lesser value

Food Club Deli Style Sliced Cheese
All Varieties
6.67 - 8 oz.

BUY 1 GET 1 FREE
of equal or lesser value

Oscar Mayer Ham or Turkey
Selected Varieties
16 oz.

free PROFESSIONAL COOKWARE with bonus stickers

EARN AN EXTRA BONUS STICKER BY PURCHASING THE BONUS STICKER ITEM OF THE WEEK!

Charmin Bath Tissue
Selected Varieties, 6 Roll

4.97

BUY 1 GET 1 FREE
of equal or lesser value

Mrs. Baird's Honey Wheat Bread
20 oz.

BUY 1 GET 1 FREE
of equal or lesser value

Nabisco Chip Ahoy! Cookies
Selected Varieties
11.75 - 13 oz.

BUY 1 GET 1 FREE
of equal or lesser value

Cheetos or Fritos
Selected Varieties
9.5 - 10.25 oz.

BUY 1 GET 1 FREE
of equal or lesser value

Food Club Ice Cream
Selected Varieties
48 oz.

BUY 1 GET 1 FREE
of equal or lesser value

Ozarka Spring Water
6 Pack, 1/2 ltr. Bottles
or Sparkling Water, 1 ltr.
Selected Varieties

BUY 1 GET 1 FREE
of equal or lesser value

Coke, Sprite or Dr Pepper
Selected Varieties
6 Pack, 1/2 ltr. Bottles

BUY 1 GET 1 FREE
of equal or lesser value

Totino's Pizza
Selected Varieties
9.8 - 10.9 oz.

BUY 1 GET 1 FREE
of equal or lesser value

Wide Awake K-Cups
Selected Varieties
12 ct.

BUY 1 GET 1 FREE
of equal or lesser value

Food Club or Domestix Basics Paper Towels
3 Rolls

BUY 1 GET 1 FREE
of equal or lesser value

Kraft Mac & Cheese Cups
Selected Varieties
1.9 - 2.39 oz.

BUY 1 GET 1 FREE
of equal or lesser value

Domestix Batteries
AA or AAA
20 Pack

ROCK THE HOLIDAYS

Save \$5 instantly when you buy \$30 or more in iTunes gift cards

Subject to availability. See gift cards for details, terms, and conditions. Discount applied at register. TM and © 2013 Apple Inc. All rights reserved. Apple is not a participant in or sponsor of this promotion. While supplies last. No Rain Checks. Product offer may not be available in all states. Valid 11/29 - 12/3/13.

SPORTS NEWS

Mules Defeat Indians In Overtime

By Delton Wilhite
Sportswriter

The Mules opened their basketball season at home Tuesday night against the Morton Indians.

They traveled to Bovina Friday to play the Mustangs. The Indians and Mules ended regulation in a tie at 55-55.

Eli Leal hit Matt Barron with a half-court pass with time running out in overtime.

Barron scored to put the Mules ahead 64-63 for the win.

Two days of workouts made a difference in the Mules' game as they downed the Mustangs 41-23.

Leal drove the lane for a lay up to tie the game with Morton at 55-55.

Both teams had an opportunity to win the game with free throws before time expired.

Barron scored two points in the lane to give the Mules a brief lead as overtime started.

Morton hit back-to-

back 3-pointers to go up 61-57 over the Mules.

Barron picked an Indians pocket near mid court and drove the floor for a lay up.

He was fouled and added the free throw to cut the Morton lead to a single point.

The Indians made two of four charity toss for a 63-60 lead with 47 seconds on the clock.

Leal drove the floor for a lay up and the Mules went to a full-court press.

Keagan Gonzales picked off the Indian inbound pass at mid court and the Mules called time out with 35 seconds showing on the clock.

Leal fired a rocket from near mid court to Barron in the lane. Barron scored to put the Mules ahead with 13 seconds on the clock.

The Mules forced a turn over and extinguished the clock.

Leal paced the Mules in scoring with 26 points. Barron added 10 points, Grey Johnson, Wesley

Clarkson and Danny Campos dropped in six-points each.

Blayne Shipman dropped in four points, Nacho Elizalde, Keagan Gonzales and Austin Ross chipped in two points each.

Bovina made the first point of the game Friday night and the Mules welded the Mustangs to that single point for almost three and half minutes.

Leal made a reverse lay up on drive down the baseline to get the Mules started.

Leal tossed a pass high and long before Ross was airborne.

Ross almost appeared out of thin air, snagged the pass and kissed it off the glass for a lay up.

A Bovina player slapped the backboard when a Mule shot came off the glass.

The whistle blew and goal tending was called.

Leal got credit for the basket as he was the closest Mules to the

hoop. Elizalde dished to Ross on a fast break for a hoop to give the Mules an 8-1 lead.

The Mustangs back back-to-back baskets before Elizalde hit Shipman on the blocks to finish the break.

Leal hit a 3-pointer to end the first quarter with the Mules lead 13-5.

The Mules out scored Bovina by one point in the second period and three points in the third quarter.

The final quarter ended in a dead heat.

Leal led all scorers with 15 points.

Barron dropped in five points, Ross and Dagen Dunham added four points each.

Campos and Johnson made three points each, Shipman and Elizalde chipped in two each.

The Mules will return home on Dec. 3 to host the Hale Center Owls.

The Mules will host their first tournament in several years Dec. 5-7.



Mule Blaine Shipman jumps for the ball during the game against the Morton Indians.
Photograph by Gabby Perez

Ladies Fall To Maidens, 67-41

By Delton Wilhite
Sportswriter

The Maidens of Morton hit three 3-point shots in the opening period Tuesday evening and made six in the game to defeat the Lady Mules 47-30.

The Lady Mules traveled to Bovina on Friday and dominated the Lady Mustangs 67-41.

Adrienne Precure pushed the ball ahead to McKenna Dunham running on a fast break to answer the Maidens first trey. But Morton drained a second trey to lead the game 6-2.

The Maidens third trey came after Dunham made a free throw.

Sadie Sudduth drove the floor on a fast break and dished to A. Precure.

A. Precure and Dunham ran a pick-and-roll with Dunham scoring as the first quarter ended and the Lady Mules trailing 11-7.

Dunham led the Lady Mules in scoring with nine points.

Shanice Rosas added

seven points and Precure dropped in six.

Sa. Sudduth made four points, Daniela Diaz scored three points and Emily Precure chipped in one.

Diaz drove to the hoop for the Lady Mules first basket in Bovina. Bovina made back to back baskets to take the lead.

Dunham passed from the free throw circle to Rosas posting up on the blocks.

E. Precure sank a trey from the top of the key near the five-minute mark.

Bovina went on a 5-0 run to take a 11-9 lead with three minutes left in the opening period.

A. Precure tied the game with a jump shot from the elbow.

Reagan Reynolds went high to pick off a Bovina pass and the Lady Mules went the other way with the ball.

Dunham scored in the paint to break the tie.

Sydnie Sudduth was fouled shooting and made a free throw to



A Lady Mule shoots during the recent game against the Morton Maidens.
Photograph by Gabby Perez

end the first quarter with the Lady Mules leading 14-11.

The second quarter belonged the Lady Mules poured in 17 points and held Bovina to 12.

After the break the Lady Mules continued

to light up the score board.

They out paced Bovina 18-3 to lead the Lady Mustangs 49-26 with eight minutes left to play.

The Mustangs had their best quarter in

Continued on B2

FARWELL FUELS
North of Hwy 60 Farwell, TX
Serving Western Texas & Eastern New Mexico
PROPANE DELIVERY
Residential and Commercial
1-877-467-9261

Happy Thanksgiving!

ATHLETE OF THE WEEK
SHANICE ROSAS
Lady Mules 42
HBC
Higginbotham Brothers
ACE
The helpful place.
Serving Texas Communities Since 1881
1516 W. AMERICAN BLVD. • MULESHOE, TX
806-272-3351

Support the Boosters Who Support Our Teams, Schools and Community!

MULESHOE ANIMAL CLINIC & MULESHOE VET SUPPLY
1430 US HWY. 84, MULESHOE
272-3061 OR 272-4990

BCEC
A Touchstone Energy Cooperative
BAILEY COUNTY ELECTRIC COOPERATIVE ASSN.
610 E. American Blvd.
Muleshoe • 272-4504

Muleshoe Journal
www.muleshoejournal.com
201 W. Ave. C
272-4536
Striving to be your source for local news!

MICHELIN TIRE & SERVICE TIREWORKS TIRE PROS
Glenn Kahlich • M: 806-344-7034
220 E. American Blvd.
Muleshoe, TX 79347 • 272-4594

"Where Custom is Attainable!"
HR
Hartline Renovations
(806) 946-6652
Micah & Aubrey Rutland

McDonald's
i'm lovin' it
McDONALD'S
of Muleshoe
1025 W. American Blvd.
806-272-3333

FIVE AREA TELEPHONE COOPERATIVE
302 Uvalde
Muleshoe, TX
272-5533

evoive
EMBROIDERY
(806) 272-3865
117 South Main
MULESHOE, TX

La Espiga Rosa
Simplemente la mejor
104 West American Blvd
Muleshoe, TX
806-272-3822

H&R BLOCK
104 E. Ave C
Muleshoe, TX 79347
272-3332

WE SUPPORT THE MULES AND LADY MULES!

BASKETBALL

Dec. 3rd • JVG - 5:00 - JVB - 5:00 - VG - 6:30 - VB - 8:00 VS Hale Center (Here)
Dec. 5-7 • Muleshoe Tournament - VG - TBA - VB - TBA (Here)
Dec. 10th • JVG - 5:00 - JVB - 5:00 - VG - 6:30 - VB - 8:00 VS Floydada (Here)

WE SUPPORT THE MULES AND LADY MULES!

SPORTS NEWS

JV Lady Mules Defeat Valley Lady Patriots

By Delton Wilhite
Sportswriter

The Morton Maidens do not have a junior varsity team so the JV Lady Mules hosted the Valley Lady Patriots Tuesday evening, Nov. 19.

The game was moved up 30 minutes to accommodate the Patriots.

The Lady Mules did not score many points but played tough defense and held the Patriots' scoring down also.

Yasmine Sandoval and Marissa Reyes scored a hoop each.

Angie Perez added one free throw and Sasha Esparza made two charity tosses.

The Lady Mules led 7-4 after one quarter.

Dessiree Gutierrez made the Lady Mule first basket of the second period with four minutes left in the first half.

The Patriots could not score in the second period.

Sandoval made a free throw and Reyes added

two.

The Lady Mules led 12-4 at the half.

Reyes got the Lady Mules started with a basket early in the third quarter.

She completed an old-fashion three-point play later in the quarter.

Sandoval and Zoe Apodaca scored a hoop each to extend the Lady

Mule lead to 21-8 with one period left to play.

Esparza made the Lady Mules only hoop in the final quarter.

Reyes led the Lady Mules in scoring with nine points.

Sandoval dropped in five points and Esparza made four.

Gutierrez and Apodaca added two

points each and Perez chipped in one.

The Lady Mules were in a tournament at Hale Center and the JV2 Lady Mule game at Bovina was cancelled because of bad weather.

The Lady Mules will be back in action Dec. 3 when they host the Hale Center Owlettes.

JV2 Lady Mules Fall To Lady Whitefaces

By Delton Wilhite
Sportswriter

Olton does not have a freshmen girls team so the JV2 Lady Mules hosted the freshmen Hereford Lady Whitefaces.

The Lady Mules did not match up very well with Hereford.

The Lady Whitefaces jumped out to a 21-6 lead over the Lady Mules in the opening period and rolled on to a 70-13 win.

Kyan Garner passed to Paolett Landeros as she posted up. Landeros scored the Lady Mules first two points.

Mireya Ruvalcaba made one of two free throws before Ahtziri Elizalde cleaned up the backside. She put the rebound back for two points and was fouled.

Elizalde added the free throw to end the first period Lady Mule scoring.

Landeros set the Lady Mules scoring pace

with six points. Elizalde added five points and Ruvalcaba and Victoria Villalobos chipped in a point each.

The Lady Mules will travel to Dimmitt Monday to play the Bobbies.

The Lady Mules return home Dec. 2 to host the Littlefield Lady Cats.



Photograph by Gabby Perez



Photograph by Gabby Perez

Fighting For The Shot

A Lady Mule, pictured on the right, struggles to make a shot during the recent game against the Morton Maidens.

Varsity Ladies...

Continued from B1

The Mustangs had their best quarter in the final period.

Dunham set the Lady Mule scoring pace with 18 points.

A. Precure dropped in 14 points, Diaz made 12 and Rosas added 10.

E. Precure and Reynolds had five points each and Sy. Sudduth chipped in three points.

The Lady Mules will take a short Thanksgiving break and be back in action on Dec. 3 when they host the Hale Center Owlettes.

The Lady Mules will host their first tournament Dec. 5-7.

Passionate Play

Sometimes it just takes a glance to see how passionate a young basketball player is about his or her performance. Pictured above, an unidentified member of the Muleshoe High School JV2 team fights off an opponent during the game against Hereford.

Correction Policy

Although the *Muleshoe Journal* tries to be accurate in the news stories and releases it publishes, the newspaper recognizes that errors occasionally occur.

An effort will be made to correct typographical errors, or misstatements of facts, in news stories voluntarily submitted for publication as soon as possible — if brought to the newspaper's attention in a timely manner, but will not include rerunning the news story or related photographs.

Corrections necessary from inaccurate or illegible information provided to the newspaper will not be published free of charge.

Paid publication items — whether advertisements, obituaries or items that don't meet the criteria for free publication — may be rerun if the original publication includes significant error.

Help Us Celebrate Our New Location!

GREAT PLAINS AG INSURANCE

623 American Blvd. • Muleshoe, TX

Thursday, December 12th
11 a.m. – 1 p.m.
LUNCH WILL BE PROVIDED

Grand Opening

Online Subscription to the Muleshoe Journal

ONLY \$22.00

www.muleshoejournal.com

Send Your Student to College with an Online Subscription to the

Muleshoe Journal

201 W Ave C., Muleshoe, TX 79347 • Call 806-272-4536

Eighth Grade Ladies Improve On Season

By Delton Wilhite
Sportswriter

The eighth grade Lady Mules doubled up on the Fillies of Olton Monday for a 27-13 win and improved to 2-0 on the season.

Conley Niblett pulled down an offensive rebound and went up and under for the first basket of the game Monday evening.

Yvonne Diaz put back a rebound for a 4-0 Lady Mule lead.

Niblett was fouled shooting but made both free throws.

Olton scored the final four points of the period to cut the Lady Mule lead to 6-4.

Niblett connected with Diaz with a pass from the free throw line to start the second period.

Niblett broke to hoop and scored on an inbound play and Brianna Barron finished a fast break to end the first half with the Lady Mules leading 12-7.

The Lady Mules sailed through the second half for the win.

Niblett led the Lady Mules in scoring with 10 points.

Barron added eight points and Hallie Myatt dropped in six.

Lili Barrera finished with two points and Melody Moran chipped in one.



Photograph by Gabby Perez

Eighth grade Lady Mule fights for possession.

Seventh Grade Lady Mules Cruise To Win Over Olton Fillies

By Delton Wilhite
Sportswriter

Keely Dunham put back an offensive rebound to start the seventh grade Lady Mules first home appearance Monday against the Olton Fillies.

The Lady Mules never trailed after that but the game was tied once.

The Lady Mules cruised to a 31-13 win and are now 2-0 on the young season.

Natalie Diaz made a half-court pass to Abigail Boehning to finish a break.

Olton caught up with a bucket and two free throws to tie the game at 4-4 with three and a half minutes remaining in the first period.

Diaz again connected with Boehning on the blocks to put the Lady Mules in front to stay.

Miranda Melendez completed an old fashion play when she scored and was fouled.

She dropped in the free throw to complete the play.

Melendez added two points with a 10-foot jumper from the baseline to end the first period with the Lady Mules leading 11-7.

The Lady Mules increased their lead with an 8-0 run in the second period and 4-0 run in the third quarter.

Kyndal Miller scored to start the final quarter as she turned away from the baseline. She then grabbed a loose ball in the backcourt and drove the floor for a left-handed lay up.



Photograph by Gabby Perez

Unidentified seventh grade Lady Mule shoots during recent game against the Fillies.

Miller drove the floor on a break and dished to Reina Regalado for an easy two points.

Elizalde ended all scoring as she completed a fast break.

Elizalde and Miller led the Lady Mules in scoring with eight points each.

Melendez added five points and Boehning and Dunham dropped in four points each.

Regalado chipped in two points.

The Lady Mules traveled to Dimmitt to play the Bobbies Monday and are back in action on Monday, Dec. 2, when they host the Lady Cats of Littlefield.



Photograph by Gabby Perez

Give them something to be thankful for...

Send a loved one a subscription to the **Muleshoe Journal** today!!

One year in Bailey County...carrier delivered **\$27.00**

One year in Bailey County...mailed **\$29.00**

One year "out of Bailey County"...mailed **\$40.00**

Electronic delivery...www.muleshoejournal.com **\$22.00**

Muleshoe Journal
201 W Ave C, Muleshoe, TX 79347
Call 806-272-4536

Happy Thanksgiving
from the staff of the Muleshoe Journal!

You are invited to
Trinity Christian Center Church's Annual
"Christmas In The Country"

Concert to benefit Muleshoe Meals on Wheels

Dates:
THURSDAY, DECEMBER 5TH @ 7:00 P.M. AT
TRINITY CHRISTIAN CENTER CHURCH
1723 W. AMERICAN BLVD.
MULESHOE, TEXAS

WITH AN ENCORE PERFORMANCE
ON SUNDAY, DECEMBER 8TH @
6:00 P.M.

Doors will open at 6:00 p.m.
Admission is free with an offering taken up for Meals on Wheels. All proceeds will go directly to Meals on Wheels.

Seating is limited, so arrive early and invite a friend!

Tip your newspaper carrier

This is the perfect way to tell your carrier **"Thank you"** for delivering your newspaper each week.

You're contributions are appreciated and we look forward to serving your home well into the future!

Missed your paper or have a special request? **Call Bobby or Melissa Flores at 272-5856.**

Christmas

1. traditional Mexican Christmas dish, popular in southwestern states – corn dough with spicy pork or beef filling, wrapped in corn husks before cooking – served with sauce, cream or crumbly fresh cheese

2. treat of sugar, fruits and nuts: rolled into a ball or shaped to look like a fruit or a star

3. meat glazed with honey, brown sugar, mustard and pineapple juice

4. this pie is mostly dried fruit such as raisins – used to be made of chopped meats

5. cake made with candied fruit, nuts, spices

6. treat shaped into a cookie or a house

7. bird roasted, stuffed with apples, prunes, onions and sweet chestnuts (Germany, the United Kingdom and China)

8. pudding; been around for 600 years! – made with meat, pastry and fruits

9. spongy cake rolled like a log and, when cooled, filled with cream – decorated with powdered sugar, candy mushrooms and fresh berries; Bûche de Noël

10. yolks, milk, sugar and cream drink – often spiced with cinnamon or nutmeg

Hanukkah

1. jelly doughnut served fresh; sugared

2. deep fried puffs dipped in honey

3. part of a cow used in traditional Jewish dishes – holiday pot roast

4. Dreidels – treat made using different candies

5. made with egg noodles – can be served with vegetables or fruit

6. potato pancake fried with onions – cheeses or vegetables added

Holiday Foods and Treats

Hanukkah

Hanukkah is a Jewish holiday that honors the victory the Maccabees (a Jewish group) had over their enemy. It celebrates the rededication of their Temple in Jerusalem after it had been ruined. There was only enough oil in the lamps to keep the eternal flame in the Temple burning for one day. But, the oil kept burning for eight days while fresh oil was prepared! Hanukkah is a joyful celebration of the miracle that lasted for eight days.

Free Stuff

Come to visit and print out free puzzles: "H" is for... and Thanksgiving Balloon Parade @ www.readingclubfun.com

1. jelly doughnut served fresh; sugared

2. deep fried puffs dipped in honey

3. part of a cow used in traditional Jewish dishes – holiday pot roast

4. Dreidels – treat made using different candies

5. made with egg noodles – can be served with vegetables or fruit

6. potato pancake fried with onions – cheeses or vegetables added

Gingerbread Journey!

Help the Gingerbread family find its way home for the holidays.

Kwanzaa

Kwanzaa is a seven-day holiday celebrated by African-Americans and people in other countries whose families are from Africa. It is a time to think about their lives, family, history and community. It is a time of lighting candles, feasting and gift-giving.

1. used in casserole, fritters and pies

2. dish with tomato paste, peppers, onions

3. rich soup (onions, red peppers, chicken, rice)

4. fried _____ – vegetable is coated with flour, cornmeal, eggs, salt and pepper

5. main dish, flavored with citrus and cooked until crispy

6. traditional appetizer made from black-eyed peas

Sudan Hornets Fall To Wellington Skyrockets In Area Championship

Continued from A7 touchdown.

The PAT pass from Schovjsa to Harper was good. The final score was 58-36.

Total offense for the Hornets was 56 plays for 342 yards while Wellington had 59 plays for 488 yards.

Wellington had almost twice as many first downs as the Hornets, 29 for Wellington and 14 for Sudan.

Passing yardage was about equal with Schovjsa having nine completions out of 16 attempts and one interception for a total of 135 yards.

Ashmore had 10 completions out of 16 with one interception for a total of 152 yards.

Leading rushers for the night were Johnson with 25 carries for 170 yards and Schovjsa with seven carries for 29 yards.

Leading receivers are Fisher with two catches for 58 yards and Johnson with four



Photograph by Cheri Sain

Sudan sweeps around the Skyrocket defensive line.

catches for 51 yards.

Defensive leaders were Johnson with six unassisted and four assisted tackles, Fisher with five unassisted tackles, Luke Tiller with three unassisted and five assisted tackles, and Adam Martin with four unassisted and two assisted tackles.

"The boys played extremely hard and put themselves into a place to win but couldn't capitaize on some situations," Head Coach

Gordon Martin said.

"I am very proud of how far these boys came this season and look forward to another year of playoff football next year," he added.

It was an exciting year for Hornet football. The Hornets went 7-5 overall with district co-championship and bi-district championship trophies to add to the trophy case.

"Thanks for all of your support of the young people of Sudan,"

Martin said. "I know they appreciate it, and it is one of the reasons this is the greatest school and community in Texas."

Lubbock Dance School Performs At Sudan High School Auditorium

By Cheri Sain
Sudan Correspondent

The Dance Gallery School of Dance Arts from Lubbock entertained the audience of more than 100 Thursday night, Nov. 21, at the SPIN meeting in the Sudan High School auditorium.

The anti-bullying dance performance showed what happens as someone is being bullied and how one can make a difference to stand up to bullies.

The performance was entitled, "Sticks and Stones."

Two of Sudan High School's students are performers in the dance troupe, Sydney and Raemi Goen.

Before the performance, members of Sudan's FCCLA, SUDS, and Student Council shared a power point presentation over their community service efforts and shared upcoming volunteer activities for the months

of November and December.

Some of the activities include the canned food drives, coat drives, and time spent at the Harmonee House.

After the power point presentation, the Area Marching Band contest video was shown since so many could not make it to Odessa by 8 a.m.

Cookies and punch were served by members of these service organizations.

MORE Classifieds

Continued from B5

AUTOMOTIVE

For Sale- 2002 Buick Century \$2200. Call 806-946-8114

HOUSE FOR SALE BY OWNER

House For Sale by Owner- One of the Oldest English Tudor Style homes in Farwell. Unique in appearance & originality. 700 3rd Street. 3 Bedroom/ 2 Bath/ 2 Car Garage/Separate Apartment in Back, 2400 total sq.ft. Red brick, Wood Shake Shingle roof, 7 ft concrete block privacy fence, central heat & air, wood floors/carpet, tile bathrooms, underground sprinkler, covered front porch, unfinished basement, Backyard

Adventure playhouse/ swing set, separate fenced side yard play area, large shade trees surround the property. Shown by appt. only. Call 806 946 8968.

Country Club Area- 3-1-1 newly renovated interior, all mechanical systems new, adjacent lot included with sale. Priced to move quickly \$75,000! Shown by appt. only 806-946-6652.

SERVICES

Residential/ Commercial Overhead Door / Opener Repair & Replacement 32 yrs in business Toby Turpen 806-364-6362.

Custom Shredding, Wheat planting, CRP grass planting. Call 806-638-6449.

Let The Bidding Begin

W&J Auction

REAL ESTATE AND HOUSE HOLD GOODS AUCTION
Saturday, November 30, 2013
10:30 AM
1914 West Ave. E • Muleshoe, TX

- HOME FOR AUCTION -
 2 bedroom, 2 bath, living room, kitchen, attached garage
 House hold items • Appliances
 Collectibles • Miscellaneous items

DON'T MISS OUT ON THESE GREAT DEALS!

www.wjauction.com

* NO BUYERS PREMIUM * www.wjauction.com * Terms: Cash, Check, Visa or Mastercard *

CLASSIFIEDS

Deadline is Monday at noon to place a classified ad. Call 272-4536.

HELP WANTED

Muleshoe ISD is seeking qualified applicants for substitute teachers. Applicants must have High School diploma and must pass a background check. Apply on line at www.muleshoeisd.net. Published in the Muleshoe Journal November 7, November 14, November 21, and November 28, 2013.

AGP Grain Marketing in Bovina is looking for a full time Accounting Clerk. Duties will include basic accounting and answering phones. We offer outstanding benefits such as; 401K, Medical Insurance and Pension. Past accounting experience is a plus. Please stop by and fill out an application at 503 Gardner Ave, Bovina Tx. Off of Hwy 60. We are an equal opportunity employer.

2 temp positions: Livestock worker, 12/09/13 to 04/30/14 @ \$13

p/hr. Housing provided, 48 hrs p/wk. 3/4 guarantee, and transportation and subsistence expenses to worksite paid after 50% completion of contract. Tools, equipment provided at no cost. Min. 3 months experience. Duties: attend, feed, medicate, clean, herd, care for livestock, read and speak English. Work in adverse weather. Topp Herefords, Grace City, ND, Interested? **Apply at Job Service, Jamestown, ND, 701-253-6200, job order #335116.**

Automotive Technician Needed. GM experience preferred. ASE certifications a Plus. 2 years experience required. Must have own tools and current valid drivers license with no DUI's. Must pass a drug screen. Pay based on experience. Good benefits. Contact David Lookingbill @ 806-385-6464 or email: service@johnroley.com

2 temp positions: Equip. Operator, 12/19/13 to 04/30/14 @ \$15.25 p/hr. Housing provided, 48 hrs p/wk. 3/4 guarantee, and transportation and subsistence expenses to worksite paid after 50% completion of contract. Tools, equipment provided at no cost. Min. 3 months experience. Duties: Maintenance and repair of equipment & buildings, hauling fertilizer, cleaning seed. Driver's license required. Work in adverse weather. Dakota County Seed Company, Inc., Heimdal, ND. Interested? **Apply at Job Service ND, Devils Lake, ND, 701-662-9300, job order #340107.**

2 temp positions: Equip. Operator, 12/01/13 to 04/30/14 @ \$13 p/hr. Housing provided, 48 hrs p/wk. 3/4 guarantee, and transportation and subsistence expenses to worksite paid after 50% completion of contract. Tools, equipment

provided at no cost. Min. 3 months experience. Duties: attend, feed, medicate, clean, herd, care for livestock, read and speak English. Work in adverse weather. Corey Murray, Jamestown, ND. Interested? **Apply at Job Service, Jamestown, ND, 701-253-6200, job order #337279.**

6 temp positions: Livestock worker, 12/28/13 to 04/30/14 @ \$12.33 p/hr. Housing provided, 48 hrs p/wk. 3/4 guarantee, and transportation and subsistence expenses to worksite paid after 50% completion of contract. Tools, equipment provided at no cost. Min. 3 months experience. Duties: attend, feed, medicate, clean, herd, care for livestock, read and speak English. Work in adverse weather. Prairie Water, Minatare, NE. Interested? **Apply at Scottsbluff Career Center, Scottsbluff, NE, 308-632-1420, job**

order #188045. Equip. Oper., 12/19/13 to 04/30/14 @ \$12.33 p/hr. Housing provided, 48 hrs p/wk. 3/4 guarantee, and transportation and subsistence expenses to worksite paid after 50% completion of contract. Tools, equipment provided at no cost. Min. 3 months experience. Duties: repair of farm machinery, maintenance of farm machinery, hauling of large grain crop to market, hauling of fertilizer for spring planting, cleaning of seed for spring planting, maintenance on farm buildings and structures. Min. 3 months experience. Must be able to lift 60 lbs and work in adverse weather. Arnold Bros. Water Management, 2 temp positions:

Equip. Oper., 12/19/13 to 04/30/14 @ \$12.33 p/hr. Housing provided, 48 hrs p/wk. 3/4 guarantee, and transportation and subsistence expenses to worksite paid after 50% completion of contract. Tools, equipment provided at no cost. Min. 3 months experience. Duties: repair of farm machinery, maintenance of farm machinery, hauling of large grain crop to market, hauling of fertilizer for spring planting, cleaning of seed for spring planting, maintenance on farm buildings and structures. Min. 3 months experience. Must be able to lift 60 lbs and work in adverse weather. Arnold Bros. Water Management,

Hazel, SD. **Jamestown, ND, 701-253-6200, job order #338078.** 2 temp positions: Livestock worker, 12/28/13 to 04/30/14 @ \$13 p/hr. Housing provided, 48 hrs p/wk. 3/4 guarantee, and transportation and subsistence expenses to worksite paid after 50% completion of contract. Tools, equipment provided at no cost. Min. 3 months experience. Duties: attend, feed, medicate, clean, herd, care for livestock. Clark Coleman, Bismark, ND. Interested? **Apply at nearest Job Service ND or Job Service in Bismark, ND, 701-328-5000, job order #338344.**

Continued on B4

REAL ESTATE



LAND

Sudan
• 1260 Acres, Irrig/CRP/Grass -Trophy Mule deer Potential. Will Divide - Easy Access. FM 303

King County
• 320 Acres, Excellent hunting and scenic views. Has Turkey, quail, dove whitetail deer and wild hogs. 2 Trail Homes Included. 3200 CR 352

COMMERCIAL

Springlake / Earth
• Springlake Feed Yard For Sale - Permitted for 10K Head of Cattle, 5000 Ton Silage. Located on Hwy 70 4 Miles W. Of Earth Texas.

RESIDENTIAL

Sudan
• Wonderful Family Home! 539 Fm 298 4/3/2 \$325,000
• Country Living! 3/2/Carport - WOW Just Reduced to \$45,500

Amherst
• Very Well Kept 4/1.5/2 Priced To Sell! \$85,000

Monty Edwards Broker/REALTOR® 806.786.5426
Clint Jones REALTOR® 940.256.0069

Vernie Moore REALTOR® 806.543.9347
Mitch Edwards REALTOR® 806.777.4168

806.686.6371 Office
MEDWARDSREALTORS.com



Ronald Byrd 575-760-1495 Licensed Broker
Crista Bass 806-946-7261 Sales Associate
Carleton Johnson 806-789-4289 Sales Associate

- **New Listing**-Country Home on Highway-3 Bedroom, 1 3/4 bath brick home, central heat, built-ins, 2 car garage, boxcars for storage. Call for more details.
- **New Listing**-Country Club Addition- Very Nice 3 bedroom, 2 bath brick home, fireplace, built-ins, all electric, central heat and air, large utility, 2 car garage, sprinkler system, fenced backyard, across from the country club on corner lot. Call for more details.
- Nice 3 bedroom, 2 bath brick home, central air and heat, fireplace, appliances, large sunroom great for entertaining, finished basement, shop, sprinkler system, fenced backyard, patio, 2 car garage. Call for more details.
- Only \$67,900.00-3 bedroom, 2 bath brick home, central air & heat, appliances, single car garage, fenced backyard. Priced to sell.
- Country home on highway- 3 bedroom, 1 3/4 bath home, central air and heat, built-ins, jacuzzi tub, 2 living areas, 2 car garage, 2nd floor room for office of a business, fenced backyard, septic system, all on 10 acres!
- Nice 3 bedroom, 1 bath home, central air and heat, sprinkler system, detached garage, storage building, septic system, all on 5.75 acres. Priced to Sell, this one will not last long.
- **PRICE REDUCED IN Country on 10 acres.** Nice 4 bedroom, 2 1/2 bath brick home, fireplace, utility, built-ins, new vinyl roof and air, large storage, 2 car garage. Call for more details.

228 Main Street, Muleshoe, Texas
Check all of our listings at
www.byrdrealestate.net

REAL ESTATE



Vic Coker Land Co.
Agricultural Real Estate

Farmland/Investment

Bailey County - Southeast of Circle Back. 93.7 acres with 3 bedroom 2 1/2 bath brick home. 2 park garage, large finished basement, 30' x 40' x 12' insulated steel barn. As nice as it sounds. House, barn, and 4 acres can be sold separately.

Lamb County - 537 acres in two tracts. Sudan area. Good soils & fertility. 3 sprinklers, 1-5 years old, 2-10 years old. All well maintained. Excellent cotton yields. Each tract can be sold separately.

Bailey and Parmer Counties - 960 acres, 9 wells, 5 center pivot sprinklers, Brick house w/ improvements.

Bailey County - 177 acres, 10 year CRP contract. On pavement, could be a nice recreational place. Mule deer and other wildlife in the area.

Bailey County - 144 acres Northeast of Muleshoe. 2 wells, center pivot. Immediate possession available.

Vic Coker, Broker Cell 806-946-7242
Barry Coker, Agent Cell 806-787-0917

316 Main Street • Muleshoe, Texas
Office: 806-272-3100 • www.vicoland.com

COVER CROPS FOR SALE

WHEAT \$11.00/50lb. bag
CALL FOR BEST PRICING ON TRITICALE, OATS, BARLEY, & RYE

BROWNING SEED, INC.
806-293-5271
1-800-243-5271
After hours 806-729-1728

HELP WANTED

ACCOLADE HOME CARE

is currently seeking a Branch Agency Director in the Muleshoe, Texas area. It is required that the likely candidate **MUST BE** a Registered Nurse.

Accolade Home Care considers it an honor to care for our patients & to serve our employees. We offer competitive salaries, generous PTO benefits, excellent health and life options and a supportive work environment.

If you are interested in learning more about this opportunity, please contact Shelly Ollis at 817-709-7126 or you may email your resume to: shelly.ollis@FMS-Regional.com

SELECT STAFF

NOW HIRING!!!!
Seasonal Opportunities in Littlefield
\$10.50 per hour plus gas one way
General Labor
For immediate consideration, Contact
Lezleigh Smith at
(806)794-5511.



Triangle Realty, LLC
(806) 367-8334
info@trianglererealtyllc.com

- **Incredible 1 owner brick home in Earth.** 3/2 immaculate & updated. Formal living/dining combo, beautiful kitchen. Office with large walk in closet. Enormous den on back with fireplace. Pergola in back with patio, huge trees and beautifully landscaped front and back. Owners are offering \$8000.00 carpet allowance. 829 N. Fm 1055 Call Phyllis 806-685-1543.
- **Perfect home with something for everyone!** Tidy, old Chicago style brick home: immaculate and fresh with new paint and carpet to please the wife. 3/2. For the husband: huge steel shop in back, insulated with woodburning stove, sliding doors, plumbed for a bathroom. Big lot with steel fencing. 908 S Ave 1 Olton Call Phyllis (806) 685-1543
- **Awesome brick house 118 SW 2nd, Earth.** 4/3/4 Gorgeous yard with mature trees and sprinkler system. Call Phyllis: 806-685-1543
- **Lovely brick home 112 Main, Springlake, Texas!** 3/2/2 Large living/dining space. Call Phyllis: 806-685-1543.
- **837 E US Hwy 70, Earth.** 4/3 1/2/2 Potential for single or multi family home w/ 2 masters, restaurant, B & B, or hunting lodge. In need of TLC. Call Phyllis: 806-685-1543.
- **Prime Farmland In Lamb County, Texas!** 531± acres, two 1/4 mile pivots, four wells on property — all tied together — 500 gallon minute combined, per owner. 40x50 metal shop, cattle scales, working chute, automatic waters, pipe/cable working pens. Five-strand barbedwire fenced and cross-fenced around property. Call: JT — 806/681-3421.

NIEMAN REALTY

116 E. AVE. C • GEORGE NIEMAN, BROKER • 272-5285 OR 272-5286
CHECK OUR LISTING INFO., PHOTOS, ETC. ON-LINE AT WWW.NIEMANREALTY.COM
HAVE BUYERS! NEED HOME AND LAND LISTINGS!!

HIGH SCHOOL AREA

- 3-1.5-1 carport Home, Cent. A&H, stove thermal windows, "AS IS", MAKE OFFER!! \$47K!!!
- 3 Bedroom, 2 Bath, 2 Car Garage Home on corner lot, wall furnace heat, win. reffrig. air, stove, refrigerator, ceiling fans w/lights, large wkshop in garage, fenced yd., stor. bldg., includes 1 bdrm. rental unit!! **PRICE REDUCED!** \$78,900!!
- 5-3-2+2 carport home, Cent. Air & Heat, approx. 3124' lv. area, FP in den, WB stove in lv. area, 2 large workshops, stor. bldgs., +1 bdrm aptmt., corner lot, MUCH MORE!! \$140,000!! \$120K!!
- VERY NICE - 3 - 2 Brick Home, Cent. A&H, built-ins, WB stove, nice flooring, utility, thermal win. & doors, fans, fence yd., stor. bldg!! \$99K!!
- 3-2 1/2 - 2 carport HOME, corner lot, 2301' living area!! \$80K!!! REDUCED \$72K!!!

RICHLAND HILLS • PARKRIDGE • HIGHLAND

- 3 NICE DUPLEX UNITS TOTAL ELECTRIC, ALL APPLIANCES (2&3 Bdrm) \$350K!!!!
- VERY NICE 3-2-5-2 Brick Home, Cent. A&H, built-ins, FP, approx. 2749' lv. area, lots of storage, nice courtyard & landscaping, workshop/storage/ fenced yd., Much More!! Reduced-\$170K!
- 3-2 BDRM. DUPLEX UNITS, TOTAL ELECTRIC!! \$180K!!!
- 2-1 Home, wall furnace heat, window evap. air!! \$30,000!!!
- CUSTOM BUILT 3-2-5-2 Brick Home on corner lot, 2608' lv. area, built-ins, FP, covered patio w/ grill, fenced yd., auto spkrl., numerous amenities!! \$270 K!!
- VERY NICE 3-2-2 Brick Home, Cent. A&H, Built-ins, FP, thermal windows & doors, approx. 1876' lv. area, workshop/storage, fenced yd.!! \$119,500!!
- NICE 3-2-2+2 carport Home, corner lot, Cent. A&H, built-ins, ceiling fans w/light kits, storm doors, & windows, covered patio, tile block fence, auto. spkrl., workshop/storage. MUCH MORE!! \$135K!!

LENAU • COUNTRY CLUB

- 3 Bdrm, 2 bath, 2 carport, Cent A&H, Dishwasher, WB Stove, approx. 2156' lv. area, \$60K!! \$48K!!
- NICE 4.8 acre homesites, deed restricted!! \$17,500!!
- NICE 3-2-2 Home on 11 acres at edge of town, Cent. A&H, built-ins, FP, freshly painted interior, thermal windows & doors, plus 1 bdrm house, workshop, storage, greenhouse, plus 3 garages, barns & outbuildings!! \$455,000!! \$135,000!!
- FM 1760 @ edge of town, nice 3-2-2 carport home on 3 acres, cent. A&H, built-ins, FP, approx. 2253' lv area, fenced, horse barn w/corral, hay & tack room!! \$105K!!!!
- FM 303-4 Bedroom, 2 Bath, 2 Det. Garage, 2 acre tract, Par. Cent. A&H, Dw, disposal, thermal windows, storm doors, fans, stor. bldg.!! \$80!! \$69,500!!
- 3 Bedroom, 2 Bath Mobile Home (1998 Skyline), approx. 2280' lv. area, Cent. air&heat, built-ins, FP, metal roof, auto spkrl., 40' x 80' insulated metal building, w/office, 1/2 bath, workshop, loft storage, 220 electric, 14.68 acres on Hwy.84 close to town!! MUCH MORE!! \$157,900!!
- STEGALL 3-2-2 Austin Stone Home on 3.67 acres, Cent. A&H, built-ins, gas log FP, approx. 3064' living area, workshop/storage, 24'x36' metal shed, MORE!! \$125K!!
- MAPLE - 3-2-5-2 Brick Home on 2.48 acres, Cent. A&H, built-ins, gas log FP, approx. 2557' lv. area, (garage enclosed), storage unit!! MORE!! \$65K!!

LAND & COMMERCIAL

- Approx. 1080' metal bldg. w/off. & 3 bay garage/ workshop area plus chain link fenced area!! \$39,500!!
- GREAT BUSINESS LOCATION - 13000' Bldg., 7000' paved parking, corner lot, Hwy. 84 & Main. A&H, \$100,000!! **Price Reduced \$80,000!!**
- 101.8 acres, edge of town, pasture & farm land, 1 irrig. well!! \$122,244!!
- FOR LEASE - 2100' office space + 20,500' warehouse area!!
- 308 W. 2nd - 2856' bldg. - former Odd Fellows Lodge, PRICED TO SELL!! \$31,500
- 1020 S. Main - 200' x 1004' tract w/ 1000' Bldg.!! \$20K!!
- 2.95 acre tract with 2140' office + 17000' & 3465' ware houses 4 miles east on U.S. 70 - \$120K!!! \$99K!!
- CASTRO CO. / FM 303 - Approx. 440 acres, 6 subs, 1 turbine, 2 valley & 1 Zimmatic circle!! \$1750 per acre!!
- NICE OFFICE/SHOP/WAREHOUSE on approx. .7 acre tract, metal bldg. one 1/2 bath & one 3/4 bath, cent. A&H, city water, insulated \$85K REDUCED - \$50K!!
- 2007 W. American Blvd. - 100' x 140' tract - \$12750!!

Family

← united by tradition →



Thanks for letting us be a part of yours.

United
supermarkets