



# Muleshoe Journal



Striving to be your source for local news

75¢

Volume 90, No. 28

www.muleshoejournal.com

Muleshoe, Texas

July 10, 2014



Photograph by Gabby Perez

## Police Car Damaged In Pursuit Of Escapee

By Larry Thornton  
Editor

A Muleshoe Police Department vehicle was damaged during the pursuit and attempt to stop of an escaped felon from Portales on the afternoon of July 3, according to Police Chief Roy Rice.

Senovio Mendoza Jr., 32, was arrested east of Muleshoe on Hwy. 84, in Lamb County, near Sudan after a pursuit that reached speeds of about 90 miles per hour at points.

As of Monday, he was being held in the Bailey County Law Enforcement Center on three local charges, including evading in a motor vehicle, assault on a public servant, and reckless driving.

Additional charges related to Mendoza's escape in New Mexico are also expected. Reportedly, he was initially being held in Roosevelt County as an accomplice in a homicide.

According to Police Lt. Benny Parker, Mendoza was reportedly part of a small work detail at the Roosevelt County Fairgrounds when he struck an overseer in the face with a pickaxe, stole his wallet, keys and dark green GMC Sonoma pickup, and fled — eventually traveling on CR 1760 into Bailey County.

According to Chief Rice, Bailey County Deputy Elisar Andrade pulled the stolen vehicle over on 1760, but when he was exiting his patrol unit, the suspect pulled away.

Muleshoe Police Officer Len Aviles attempted unsuccessfully to

Continued on A3

Continued on A3

## Tour de United States

The Tour de France, which has been winding its way through the streets of England the last couple of days is a fast-paced cycling road rally that pits contestants against each other, the terrain... and according to recent reports, even the multitude of spectators lining the route.

Here in Muleshoe Friday, there was the "Tour de United States"

as local residents, including the two young ladies pictured above, wound their way through the streets of the Bailey County seat in celebration of Independence Day 2014.

While the equipment used by the competitors in England and France may be taller and faster, the ladies above were probably as tired by the time the parade ended.

## Resident Pleads Guilty To Human Trafficking

By Larry Thornton  
Editor

A Muleshoe man from Guatemala pled guilty last week in federal court to his involvement in human trafficking in Bailey County.

According to Police Lt. Benny Parker, the federal charges against Ricardo Suar-Gonzales, 30, stemmed from a call received by the Muleshoe Police Department on

the afternoon of April 27, regarding the possibility that seven individuals were being kept in shackles in a Guatemalan church building at 223 W. Ave. E.

Muleshoe police officers, and members of the Bailey County Sheriff's Department responded to the call, and after receiving permission from Linda Gomez to check the

welfare of anyone in the building.

Upon finding no one else, the officers were about to leave when Lt. Parker noticed a storm cellar door leading

down to a second, pad-locked door. By this time Suar-Gonzales had returned and not only granted permission to enter the locked door, but also retrieved the

key necessary to open it.

Behind the door, the officers found a small, spider-infested room, occupied by three

Continued on A3

## Another Trophy Won!

Muleshoe's Dallas Tosh, 18 — pictured on the right, third from the right — captured her second Muleshoe Journal Hot Dog Eating Trophy Friday, July 4, destroying five hot dogs, and her competition to take the adult division in 2 minutes, 56 seconds.

And in a bit of sibling rivalry, her brother — Billy Tosh II, took the trophy for the juvenile division in 1 minute, 43 seconds. In this year's competition, the juvenile division competition required the consumption of three hot dogs instead of the adult division's five. For a photograph of both winners, turn to page A2.



First Bank is proud to announce our new MasterCard Debit Card.

FIRST BANK ONLINE [www.fbmmuleshoe.com](http://www.fbmmuleshoe.com)

202 S. First • Muleshoe, TX 79347 • 806-272-4515



# OPINION

## Around Muleshoe...



Announcements from non-profit organizations in the Muleshoe area.

To post an announcement send an email to editor@muleshoejournal.com

### SPC Camp Bluegrass

South Plains College will host the 28th Annual Camp Bluegrass July 13-18. This year's camp will celebrate the music of the Stanley Brothers.

This six-day residential camp attracts bluegrass musicians of all ages and skill sets from across the nation. Classes are conducted in the Commercial Music building with nightly faculty concerts scheduled in the Tom T. Hall Production Studio.

The faculty concerts are free, and open to the public. For additional information, call Joe Carr, Professor of Music, at (806) 544-9703 or (806) 716-2493 or visit www.campbluegrass.com.

### Champion-Hot-Dog-Eaters



Winners of the 2014 Muleshoe Journal Hot Dog Eating Contest, Adult and Juvenile Division — Dallas Tosh, on the left, and Billy Tosh II.

## Ten Years Later, Hats Off to 'The Gipper!'

Never one to leave much to chance, Winston Churchill remarked, "History will be kind to me for I intend to write it." And he did.

As I read Churchill's The Second World War (every volume!), getting inside Churchill's head was fascinating.

It's now been a little over 10 years since another amazing man, Ronald Reagan, died (June 5, 2004). I remember watching the television coverage after Reagan's death, and wishing that Reagan had been the prolific writer Churchill was.

Reagan, too, had fascinating stories to tell.

It was a bit nauseating to see many of the same media moguls who gave Reagan nothing but trouble when he was in office tripping over themselves to try to honor him at his death.

I wonder how historians will one day evaluate his "legacy." I'm not qualified to do much evaluating myself, and it's way too soon anyway, but here's what I think that I think.

Reagan was certainly a "great communicator," even though he wasn't in the class of Churchill. Who could be?

I think our greatest president was Abraham Lincoln (though that top slot might well go to first president George Washington).

Lincoln was tried by fire, stood the test, and came out as pure gold. Reagan faced severe tests, too, but I think Lincoln's pre-eminence is clear.

The obvious



**Focus On Faith**  
Curtis Shelburne

similarity is that both spared no effort to tear down walls that never should have been built.

Evaluating Reagan. Well, we're still at least decades away from real perspective, but surely he easily makes it into the Top 10 Presidents List and probably into the upper half.

Reagan was a true leader because, like Churchill, he saw what was good in the heart of his nation, and he called his countrymen to embrace that vision for good.

Some would say he was naively idealistic about America; we have much more to fear from those who are naively blind to that which has truly been good about a nation that has twice in the last century "saved the world from total barbarism" (Charles Krauthammer's right on that!).

Churchill was right: England never had a finer hour than when she stood, utterly alone for far too long, against Hitler.

Churchill knew that freedom was good and tyranny was evil, and he never hesitated to say so.

Reagan also believed in freedom, and he

used exactly the right words when he called the Soviet Union an "evil empire." Only an evil system rotten to the core builds walls to keep its own citizens enslaved.

Reagan was right: Communism is not just wrong-headed; it is evil, and the right word needed to be used.

I've not heard a lot (that I trust) about Reagan's faith in God, but he was right on target in this belief:

Human rights are not rights granted to human beings by the State.

Freedom is a gift from the hand of God to every human being created in his image. Any system of government which says otherwise is wrong, evil.

God blessed us with a great president who didn't hesitate to say what is true.

So, 10 years later, hats off to "The Gipper!"



Visit the following local businesses for quality service and customer satisfaction!

**K & K PHARMACY**  
Our compounding professionals can formulate medications in specialized delivery systems such as sublingual drops, oral and nasal sprays, lollipops, rectal solutions, suppositories, creams, ointments, polyox bandages, and gels. **We specialize in wound and scar treatments.** Please contact us to discuss your patients' individualized needs. [mixmymeds@gmail.com](mailto:mixmymeds@gmail.com)  
1411 W. American Blvd • Muleshoe  
272-7511

Interested in Advertising your business in this location? Call Rhea at the Muleshoe Journal, 272-4536 or 806-518-4606

## Weather Whys: What Are Contrails

Q: You sometimes hear of contrails. What are they?

A: Contrails are what appear to be long lines of clouds high in the sky and they are formed from jet aircraft exhaust, explains Brent McRoberts of Texas A&M University.

"Contrails are created when very cold air freezes the warm and humid engine exhaust," he says.

"Air temperatures



where contrails are formed are usually minus 40 degrees or colder. Contrails could be compared to exhaling in winter and seeing your breath because it's so cold. When water vapor from the exhaust hits the cold air, ice crystals develop and they produce

a contrail," he adds.

Q: Do contrails affect the weather?

A: This is a question that is beginning to be seriously debated worldwide, McRoberts says.

"More and more scientists believe contrails act like natural cirrus clouds and block out solar energy from above and keep in the heat from below," he adds.

"A group of NASA scientists estimated that contrails cover about 0.1 percent to 0.4 percent of the Earth's skies in an average year. In heavy air traffic areas, as much as 20 percent of the sky may be covered by contrails. Another study shows that lower atmospheric temperatures across North America rose almost 0.5 degree per decade from 1975 to 1994, which is why some researchers believe contrails may have an impact on climate change over long periods of time."



# UPGRADE YOUR PHONE EVERY YEAR

How our NEW Fast Forward program works:

1. Sign up for one of Plateau's calling plans.
2. Choose the phone you want and its corresponding monthly payment.
3. Trade in your phone every year and get a new one with the latest technology.
4. Or, if you love the phone you have, keep it and own it after your payment term.

**GET THE PHONE YOU REALLY WANT FASTER, WITH FAST FORWARD FROM PLATEAU**

Call us today to learn more!

Available with 4G plans only. Upgrade is available once per year. When upgrading, customer must return their current device in decent working condition, including original box and charger. Each phone upgrade renews the two-year agreement. If customer chooses to disconnect service with Plateau during their agreement, they will be charged the full amount of their monthly device payment multiplied by the months remaining on the 24-month agreement. If a device is kept for 24 months, customer owns the device and only pays for service plan and any add-on services. Phone insurance of \$4.99 per month is required with this program. Normal insurance policies will be adhered to and customer is responsible for paying the corresponding deductible for the device. Certain restrictions apply.

1-877-PLATEAU (752-8328)  
www.plateautel.com

PLATEAU



**Muleshoe Journal USPS 367820**  
Established Feb. 23, 1924 Published by Panhandle Weeklies, LLC.  
Every Thursday at 201 W. Ave. C, P.O. Box 449, Muleshoe, TX 79347.  
Periodicals paid at Muleshoe, TX, and at additional mailing offices.  
Postmaster: Send address changes to the Muleshoe Journal, P.O. Box 449, Muleshoe, TX 79347.  
We are qualified members of the Panhandle Press Association, West Texas Press Association and Texas Press Association

**Michael Distelhorst, Publisher** © 2014  
[mdistelhorst@hearstmp.com](mailto:mdistelhorst@hearstmp.com)  
**Larry Thornton, Editor**  
[editor@muleshoejournal.com](mailto:editor@muleshoejournal.com)  
**Rhea Gonzales Ad Representative**  
[adsales@muleshoejournal.com](mailto:adsales@muleshoejournal.com)  
**Ad Design / Classified Advertising**  
[advertising@muleshoejournal.com](mailto:advertising@muleshoejournal.com)  
[classifieds@muleshoejournal.com](mailto:classifieds@muleshoejournal.com)

**Subscriptions:**  
By Carrier Yearly — \$27  
Bailey County, by mail — \$29  
Elsewhere — \$40  
By E-mail — \$22  
Advertising rate cards on request

Hours are 8 a.m. to 5 p.m., Monday - Thursday, and 8 a.m. to noon on Friday. \*Advertisers should check their ad the first day of insertion. The Journal will not be liable for failure to publish an ad or for a typographical error or errors in publications except to the extent of the cost of the ad for the first day of insertion. Adjustment for errors will be limited to the cost of that portion of the ad where the error occurred."



# Visiting The San Antonio Lackland Shelter

In West Texas, we know better than most that our nation is facing a serious problem with illegal immigration.

The Obama Administration keeps telling us our border is secure, but then why have 47,000 minors been able to sneak into the U.S. in the past five months?

And if children can navigate their way through, what other dangerous breaches should we be worried about?

I'm heading straight to the source to take a look at the situation and see what we can do to fix it.

I'll be visiting the temporary shelter set up by the Department of Health and Human Services (HHS) at Joint Base San Antonio Lackland, where many of the illegal minors are being housed.

I'll get a chance to

chat with HHS officials from Unaccompanied Children's Services, and learn more about what the Administration is doing to return these children to their home countries and to stop the growing numbers of unaccompanied children from attempting the trip in the first place.

## Fighting EPA's Aggressive Overregulation

Congress passed the Clean Water Act in 1972 to ensure the federal government and states would work together to efficiently reduce pollution in our nation's waterways.

And in the last 40 years, the Administration has repeatedly tried to squash states' rights

and expand its own authority under this law.

Most recently, the EPA and the U.S. Army Corps of Engineers (USACE) announced their proposal to give the federal government authority to regulate all sorts of new waterways, in a rule that could extend federal authority to even runoff ditches and stock ponds.

This is clearly an aggressive overreach that stomps on the original intent of the law and will have some serious consequences if it is fully implemented.

For example, it could even force Texas ranchers to pay to apply for a federal permit to graze their cattle near a muddy pond.

Earlier this year, I had the opportunity to interview Texan energy, environmental, and farming experts about the EPA's overregulation of Texas and confirm its burdensome impact on our economy.

## Food Program To Be Held

The Texas A&M AgriLife Extension Service will conduct a program explaining the role of genetically modified foods in the U.S. food supply beginning at noon on July 15 at the Dimmitt Senior Citizens Center, 218 West Jones St.

"We are constantly bombarded with information regarding GMOs to the point that it's hard to know what to believe," said Nancy Andersen, AgriLife Extension agent in Castro County.

"The purpose of this program is to help the public discern fact from fiction. Doing so will allow us to make informed decisions concerning the products we consume."

Andersen said the program is free and open to the public and a complimentary meal will be provided.

"We are especially encouraging our youth to attend this educational program to help them

I've already sent a letter to the EPA and USACE requesting they change course on this rule, and now I'm looking forward to questioning Deputy EPA Administrator Robert Perciasepe directly at a Science Committee hearing on Wednesday.

## Pushing for Quick Implementation of Farm Bill Reforms

After years of discussions with farmers and ranchers in Texas and meetings with my colleagues in Washington, I was pleased we passed a five-year Farm Bill this February. But my work on behalf of America's farmers and ranchers is far from over. Since February, the USDA has begun to implement our new agriculture policies.

On Thursday, I'll have a chance to question them on what they're doing to roll out the new reforms to the commodity program

understand what GMOs are and what part they will play in the future in feeding the world," she said.

The program's featured speaker will be Duane Simpson, regional director for state and local affairs for Monsanto Company, Saint Louis, Missouri.

Continued on A5

and crop insurance. I was proud our bill included a robust crop insurance program to ensure producers invest in their own risk management, and it's important we implement these reforms in a timely manner, as required by law, so our farmers and ranchers in Texas'

19th District and across the nation can do their part to feed and clothe America.

I look forward to hearing from the Administration on their efforts towards this goal.

You can watch the Agriculture Committee hearing live here at 8:30 a.m. CT on Thursday.

**Let The Bidding Begin** **W & J Auction**  
**MOVING AUCTION**  
**SATURDAY, JULY 12<sup>TH</sup>**  
**2300 MABRY DIVE • BEHIND JOE'S BOOT SHOP**  
**CLOVIS, NM 88101**

We Are Hunting Items For A Consignment Auction. Anything That Doesn't Eat Will Be Accepted. The Sooner You Call And Tell Me What You Have The Sooner We Can Have The Consignment Auction. Call Today!

\*\*\*\*\* NO BUYERS PREMIUM \* www.wjauction.com \*\*\*\*\*  
 4205 S Prince Clovis, NM 88101 \* Terms: Cash, Check, Visa or Mastercard

**W & J Auction, Inc.**  
 OUR KNOWLEDGE IS YOUR SECURITY  
 AUCTIONEERS: James Priest, Gid Priest, Butch Priest  
 TX LIC # 11077 & 15577  
 679-763-7311  
 Karl Campbell - Qualified Broker 12022

## Human Trafficking...

Continued from A1

males, one of whom was a juvenile.

According to Parker, the room had water dripping, smelled of mold, and offered atrocious living conditions.

During the investigation that followed, it was learned the three individuals from Guatemala were locked in the room because they didn't have sufficient funds to pay Suar-Gonzales for smuggling them into the country.

As for the sign on the building identifying it as a church, Parker indicated the sign appeared to be a cover used for the human trafficking business.

It was also learned that four other individuals alluded to in the initial report to the police department, had been taken to an undisclosed place by Suar-Gonzales.

According to Parker, US Immigration and Customs Enforcement officers were contacted, and the investigation was turned over to them.

Suar-Gonzales and Gomez were reportedly charged, and recently pled guilty, in federal court with harboring illegal aliens, and faces as much as 10 years in a federal penitentiary.

Gomez has yet to enter a plea.

## Escapee Pursuit...

Continued from A1  
 intercept Mendoza at 1760 and Hwy 84, to prevent him from entering Muleshoe at a high rate of speed.

Chief Rice also attempted to stop the stolen vehicle, only to have Mendoza to allegedly swerve at his unit in an apparent attempt to facilitate the escape and evading — this action resulted in the "assault on a public servant" charge.

Mendoza continued to evade police, traveling at a high rate of speed through Muleshoe, and at one point running other vehicles off the road

as it went through the highway construction zone east of town on Hwy. 84.

"He wasn't slowing down... he didn't care about anybody," said Rice.

"This guy was going through town whether we chased him or not," he added.

Rice's unit was damaged when an effort was made to strike the vehicle driven by Mendoza and slow it down.

According to the chief, the damage to the police unit was estimate at slightly more than \$2,000.

**Want whiter, brighter teeth?  
 Come see us!**



**J.W. Jessica Amber Hillary**  
**Dr. J.W. Haltom Family Dentistry**  
 • Nitrous oxide available  
 • Emergencies seen promptly.  
 • Insurance and credit cards accepted.  
**320 E. 8<sup>th</sup> St., Littlefield**  
 Hours: Mon. - Thurs. 8 to 5 Fri. 8 to noon  
**For Appt.: 385-6935**

## COMPOSTED CATTLE MANURE

**Paco Feed Yard -- Hub**  
**Cargill Cattle Feeders -- Bovina**  
**Bovina Feeders -- Lazbuddie**

**BRANDON SCHILLING**  
**Mobile 806-225-7700**  
**OFFICE 1-800-650-2550**

**NORTH PLAINS COMPOST, INC.**  
**PO BOX 789**  
**BOVINA, TEXAS 79009**

## LEGAL NOTICES

Sealed bids are now being accepted on the following property that has been acquired through delinquent property tax foreclosure. The bids will be opened by the Board of Directors at their regular scheduled meeting July 17, 2014 at 12:30 pm. The bids are due at the Bailey Central Appraisal District, 302 Main Street, Muleshoe, Texas by 5:00 pm., Wednesday, July 16, 2014.

Parkridge Addition, Lot 56 to the City of Muleshoe, Bailey County TX. 1005 W Ave J, Account # 11760

Parkridge Addition, Lot 42, to the City of Muleshoe, Bailey County TX. 1402 W Ave J, Account # 11746

Parkridge Addition, Lot 45, to the City of Muleshoe, Bailey County TX. 1024 W Ave J, Account # 11749

Parkridge Addition, Lot 77, to the City of Muleshoe, Bailey County TX. 1105 W 14th, Account # 11781

Highland Addition, Block 1, Lot 13 and W2 of Lot 14, to the City of Muleshoe, Bailey County TX. 1307 W Ave C. Account # 10837

Original Town - Muleshoe, Block 21, Lot 11, to the City of Muleshoe, Bailey County TX. 326 Main St, Account # 10185

Original Town - Muleshoe, Block 29, Lots 13, 14, 15, 16 and 17, to the City of Muleshoe, Bailey County TX. 421 Main St. Account #10238

For more information contact the Bailey Central Appraisal District, 302 Main St. Muleshoe Texas

The Board of Directors of the Bailey Central Appraisal District reserve the right to accept or reject any and all bids. The property is sold, and accepted, 'AS IS'.



# Senior Citizen News

*By Ron Hohes*  
 We at the Oneita Wagon Senior Center, hope that everyone had a great safe Fourth of July holiday weekend. The center's brisket lunch was well attended with all of the folks enjoying the parade and getting to visit during their time at the center. Also, there were even several games of dominoes and eighty while the visiting went

on. A special appreciation goes out to the high school classes of 1954 and 1979 for spending time at the center. It was special to get to hear some of their stories of their school time here in Muleshoe. Again, may we say to our folks who are traveling or being away due to illness, you are missed here at the center.

While we hope that your vacation time is great or the sickness is not serious, the center is waiting to welcome you back. Hope to see you soon. Your senior center is open from 8 a.m. until 4 p.m., Monday through Friday, for the rest of the Summer. Then, of course, the first Saturday of September — or Sept. 6 for those who want to know the exact date — will be time for the next senior center's pancake breakfast. The center's next official closed holiday will be Thanksgiving Day, Nov. 27.

**July 14-18 menus:**  
 Monday, July 14 — Crispy chicken on a bun, tomato and lettuce, mayonnaise, potato

wedges, carrot and raisin salad, and fruit cocktail. Tuesday, July 15 — Roast beef, baked potato with sour cream, buttered carrots, wheat roll, margarine, and chocolate pudding. Wednesday, July 16 — Grilled steak, mashed sweet potatoes, green beans, tossed vegetable salad, French dressing, cornbread, and tropical fruit salad. Thursday, July 17 — Hot dog on a bun, mustard, baked potato with sour cream, seasoned broccoli, and pineapple gelatin. Friday, July 18 — Fish or chicken strips, borracho beans, green peas, tossed vegetable salad, French dressing, whole wheat roll, and tropical fruit mix.

## Obituaries and Death Notices

Death notices will be published free of charge in the *Muleshoe Journal*.  
 Obituaries will be published at the rate of \$4.50 per column inch.  
 In all cases, the death notice and obituary information should be submitted by the funeral home for verification purposes.  
 The guidelines that will be used to determine if, and how much the publication will cost is as follows:  
**Death Notices...**  
 Death notices may include the deceased's name, city of residence, age, date and place of birth, date and place of death, and the names of parents. Survivor information will not be included.  
 If the notice is to be published prior to any services, the time, date and location of services, and location of burial may be included.  
 If publication will be after said services, the time will not be included.  
**Obituaries...**  
 Obituaries printed in the *Muleshoe Journal* are printed at the rate of \$4.50 per column inch, and may contain a variety of information, including but not limited to: Date and details of funeral and place of burial; date and place of birth and parents names; date of marriage; biographical information; names of parents, spouses or children who have preceded the person in death; names of survivors; and where memorials may be directed.  
 A black and white photo will be included; however, there is an additional charge of \$75 to include a color photograph.

**"Honor the LORD with your wealth, with the firstfruits of all your crops; then your barns will be filled to overflowing, and your vats will brim over with new wine."**  
 Proverbs 3:9-10, NIV



# BAILEY COUNTY DEVOTIONAL PAGE

**ASSEMBLY OF GOD**  
**FIRST ASSEMBLY OF GOD**  
 Pastor A. David & Kathryn Snodgrass  
 521 South First Street  
 272-3017  
 S.S. 9:45 am,  
 W.S. 10:45 am & 6:00 pm,  
 Wed. 7:00 pm  
**EL BUEN PASTOR**  
 415 E. Ave. F - 272-5455  
 Pastor Ruben Acevedo  
 272-4542  
 S.S. 9:45 am, W.S. 11 am &  
 6 pm; Wed. 7 pm

**BAPTIST**  
**CALVARY BAPTIST**  
 1733 W. Ave. C.  
 Rev. Jeff Coffman  
**FIRST BAPTIST**  
 220 West Ave. E  
 Dr. Stacy Conner  
**FIRST BAPTIST**  
 Lazbuddie • 965-2126  
**PRIMERA IGLESIA**  
**BAUTISTA**  
 223 E. Ave. E  
 Rev. Rosendo Lopez  
**PRIMITIVE BAPTIST**  
 621 South First  
 Elder Bernard Gowens, Min.  
**PROGRESS BAPTIST**  
 Progress, TX  
**PROGRESS SECOND**  
**BAPTIST**  
 Arthur Hays, Min. - 1st & 3rd Sundays  
**RICHLAND HILLS BAPTIST**  
 Bro. Larry Thornton  
 17th & West Ave. D  
 S.S. 10 am; W.S. 11 am  
 www.rhbc-muleshoe.org

**CATHOLIC**  
**IMMACULATE CONCEPTION**  
**CATHOLIC CHURCH**  
 805 E. Hickory  
 Leonard Pahamtang, Min.  
**EPISCOPAL -**  
**CHARISMATIC**  
**ST. CLEMENTS CHURCH**

**Bible Seasonings And Fruit** (Solutions on A5)

B	R	K	U	N	A	S	V	H	R	L	I	T	G	F	F	I	C	G	G
K	A	Q	Y	J	Z	T	G	I	C	I	N	N	A	M	O	N	E	M	G
R	L	R	X	P	Q	W	P	I	U	G	I	M	T	K	U	N	T	M	T
L	D	E	B	O	G	T	L	G	F	N	E	S	K	U	N	A	Z	N	G
J	N	I	J	M	N	R	S	D	Z	T	Z	U	D	M	P	I	C	D	P
M	T	J	I	E	A	H	P	Z	T	S	T	P	U	P	F	A	M	K	V
H	F	P	G	G	A	K	S	J	B	C	A	S	L	T	N	S	J	U	S
O	P	K	H	R	M	S	I	Q	C	Y	T	E	L	I	A	Q	F	F	C
H	I	M	I	A	L	R	E	E	S	A	S	X	S	L	S	B	P	I	A
B	S	L	W	N	C	Z	E	P	R	N	N	E	T	I	G	L	C	E	Z
K	T	G	A	A	R	T	X	D	A	A	I	W	B	Y	M	D	W	S	X
D	A	P	G	T	I	V	H	G	N	R	N	S	C	Y	G	M	E	I	H
P	C	S	L	E	H	I	E	K	F	A	G	L	I	L	U	V	E	A	B
V	H	M	S	S	C	Z	V	D	E	M	I	Y	M	A	I	B	U	R	P
Y	I	V	D	R	D	R	B	F	V	D	Z	R	K	L	R	T	D	H	F
G	O	V	U	S	D	N	E	M	D	U	J	X	O	Z	X	W	B	U	V
N	N	E	N	A	V	L	O	I	C	F	F	Y	C	K	Z	I	G	B	
B	U	Y	T	V	G	R	T	M	L	N	Q	X	I	G	T	Y	A	B	X
J	T	E	O	M	N	G	N	D	L	D	T	Q	L	P	V	I	Q	O	F
G	S	N	O	L	E	M	V	C	X	A	E	T	F	G	C	A	S	R	M

Anise  
 Coriander  
 Cinnamon  
 Cumin  
 Dill  
 Garlic  
 Mint  
 Mustard  
 Rue  
 Salt  
 Apples  
 Almonds  
 Dates  
 Figs  
 Grapes  
 Melons  
 Olives  
 Pistachio Nuts  
 Pomegranates  
 Raisins

This devotional & directory is made possible by these businesses who encourage all of us to attend worship services.

**COMMUNION OF CHRIST**  
**THE REDEEMER**  
 Hwy. 214 South • 272-5954  
 Father Sergio Leal  
 Sun. W.S. 10:30 am

**CHRISTIAN**  
**TRINITY CHRISTIAN**  
**CENTER**  
 1723 W. American Blvd.  
 272-3877  
 Reydon Stanford, Pastor  
 Sun. W.S. 10:30 am

**CENTRO CRISTIANO**  
 117 E. Birch St.  
 Hermanos Barron  
 S.S. 10 a.m.; W.S. 11 a.m. & 6 p.m.; Wed. 7 p.m.

**CHURCH OF CHRIST**  
**LARIAT CHURCH OF CHRIST**  
 Wesley Roach, Min.

S.S. 10 a.m.; W.S. 11 a.m. & 6 p.m.; Wed. 7:30 p.m.  
**LAZBUDDIE CHURCH OF CHRIST**  
 Harrol Redwine, Min.  
 S.S. 9:30 am; W.S. 10:20 am & 5 pm; Wed. 6 pm

**MULESHOE CHURCH OF CHRIST**  
 22nd & W. American Blvd.  
 S.S. 9:30 am; W.S. 10:20 am & 6 pm; Wed. 7:30 pm  
**16th & AVE. D**  
**CHURCH OF CHRIST**  
 Curtis Shelburne, Min.  
 272-4619  
 S.S. 9:30 am; W.S. 10:30 am; Growth Gr. 1:30 pm; Wed. 7:00 pm

**LUTHERAN**  
**ST. JOHN LUTHERAN**  
 Lariat, TX • David Symm, Min.

S.S. 10:30 am; W.S. 9:30 am

**METHODIST**  
**FIRST UNITED METHODIST**  
 507 W. 2nd St.  
 S.S. 9:45; W.S. 11:00;  
 Praise & Prayer 6 pm;  
 First Sunday of Month  
 4 pm Parkview Nursing Home Service  
 Mon. 9 am Ladies Bible Study;  
 Tues. 6 pm Adult Bible Study;  
 Pastor Mindy McLanahan,  
 272-5517

**LAZBUDDIE METHODIST**  
 S.S. 9:30 am; W.S. 10:30 am  
 Pastor Ken Peterson  
 965-2121

**EL DIVINO SALVADOR U.M.C.**  
 619 E. 5th Street & Ave. G,  
 Fernando Sanchez, Pastor  
 272-6888

**PENTECOSTAL**  
**Iglesia Apostolica de la Fe en Cristo Jesus**  
 207 East Ave. G  
 Sunday 1:30 pm  
 Wednesday 7:30 pm

**INTER DENOMINATIONAL**  
**NEW COVENANT**  
 Plainview Hwy.  
 Steve Claybrook, Pastor  
 W.S. 10 am; Wed. 7 pm  
**MULESHOE COWBOY**  
**FELLOWSHIP**  
 710 E. American Blvd.  
 Steve Friskup, Minister  
 272-5199  
 Service: 7:30 p.m. Thursday

*If you have changes to make to church information, please contact the Journal at 272-4536.*

Serve Wholeheartedly, as if you were serving the Lord, not men. Ephesians 6:7

**MULESHOE VALLEY INC.**  
 2601 W. American Blvd.  
 P.O. Box 631  
 Muleshoe, Texas

(806) 272-4266  
 Mobile (806) 946-8763  
 mviinc@fivearea.com

**Muleshoe Journal**  
 201 W. Ave. C, Muleshoe  
 OFFICE: 806.272.4536

**"THE FIVE AREA TELEPHONE COOPERATIVE, INC."**  
 West Plains Telecommunications, Inc.  
 Five Area Systems, Inc. • Plateau Wireless  
 Five Area Long Distance • Five Area Internet  
 302 Uvalde Muleshoe, USA (806) 272-5533

**SHIPMAN'S BODY SHOP, INC.**  
 410 N. First St. • Muleshoe, TX  
 Office: 806-272-4408 • Fax: 806-272-3366 • Night # 806-336-5422

**CENTRAL COMPRESS & WAREHOUSE**  
 SUDAN, TEXAS

To place your ad here call Rhea at the Muleshoe Journal 806-272-4536

**McCORMICK SEEDS, INC.**  
 400 East Ash • 272-3156  
 Muleshoe, Texas  
 A COMPLETE LINE OF FIELD SEEDS  
 Tim McCormick

**MAPLE COOP GIN**  
 927-5501  
 Maple, Texas

**Muleshoe Journal**  
 201 W. Ave. C, Muleshoe  
 OFFICE: 806.272.4536

**BOEHNING DAIRY**  
 690 CR 45, Earth  
 "MILK - A PART OF EVERYTHING THAT IS GOOD!"

**MULESHOE ANIMAL CLINIC**  
 GENERAL PRACTICE  
**MVS**  
 1430 US Hwy. 84, Muleshoe Office: 272-3061

**Leal's TORTILLA FACTORY**  
 105 E. Ash St., Muleshoe • 272-5772  
 Phillipians 4; "I can do all things through Christ who strengthens me."

**Deaf Smith County Grain, Inc.**  
 Cliff A. Skiles, Jr.  
 Jeb S. Skiles

**McDONALD'S OF MULESHOE**  
 1315 W. American Blvd. • 272-3333  
 Open at 5 AM every day! i'm lovin' it

**WAYNE COPLEY TRUCKING**  
 CALICHE, SAND & ROCK PRODUCTS  
 P.O. Box 63 (806) 272-3697  
 Muleshoe, Texas 79347 Mobile: (806) 946-8072

**BCEC** BAILEY COUNTY ELECTRIC COOPERATIVE ASSOCIATION  
 A Touchstone Energy Cooperative  
 Muleshoe — 272-4504 Morton — 266-8600

**Muleshoe Journal**  
 www.muleshoejournal.com

**Pizza Hut**  
 1412 W. American Blvd.  
 Muleshoe • 272-4213  
 Open: Sun.-Mon. 11AM-11PM  
 Lunch Buffet: Sun.-Fri. 11:30 AM-1:30PM  
 Monday Night Buffet: 6-8PM  
**PIZZA HUT WING STREET IS HERE!**  
 "Gather round the Good Stuff"

Julie DeBruin, AGENT 806-272-7548  
**FARMERS INSURANCE**  
 1602 W. Amer Blvd. Muleshoe, TX 79347

To Place Your Ad Here Call Rhea At **Muleshoe Journal**

201 W. Ave. C, Muleshoe  
 OFFICE: 806.272.4536  
 FAX: 806.272.3567

806-272-4536 or 806-518-4606



# Obituaries

## Jack Schuster

Funeral services for Jack Dudley Schuster, 87, of Muleshoe, were held on Wednesday, July 9, at the First Baptist Church of Muleshoe with Curtis Shelburne of Muleshoe officiating.

Burial will be in Muleshoe Memorial Park.

Jack died on July 6, 2014, in Lubbock. He was born on June 5, 1927, in Muleshoe to Henry E. and Sallie Mae (Mathis) Schuster, and married Cara Juan Bishop in Lubbock on Feb. 28, 1948.

Jack was a lifetime resident of the Muleshoe community. He farmed south of Muleshoe for more than 70 years, and served on the Needmore Gin board for more than 30 years; the Bailey County Farm Bureau board for two terms.

He was a lifetime member of the High Plains Research Foundation Board; and was one of the oldest members of the First Baptist Church of Muleshoe.

Jack received the Celebration of the Land Award for participation in the Great Plains Conservation Program in 1995 and the Outstanding Conservative Farmer Award in 1975.

He was preceded in



death by his parents; a son — Eric Schuster and a sister — Dorthy Crow.

Jack is survived by his wife — Cara Juan; a son — Alec Schuster and wife Lindy of Arnett, Okla.; two daughters — Debbe Lee Schuster of Salt Lake City, Utah, and Kathy Hunt of Muleshoe; a sister — Joannah Gartin of Wellington; five grandchildren — Leslee McGehee, Daniel Hunt, Shane Suthers, Carolyn Schuster and Melinda Schuster; and five great-grandchildren — Madden McGehee, Kersee McGehee, Kaitlyn Schuster, Ashton Suthers and Breelyn Suthers.

Memorials can be made to the Muleshoe Heritage Foundation, 2301 W. American Blvd., Muleshoe, Texas, 79347, and the First Baptist Church, 220 W. Ave E, Muleshoe, Texas, 79347.

Online condolences may be made at [www.ellisfuneralhomes.com](http://www.ellisfuneralhomes.com)

## Eugene Thornton

Eugene Thornton, 87, of Arkansas City, Kan., passed away on Wednesday, July 2, 2014, at his residence.

Memorial services were held on Saturday, July 5, at Trinity Baptist Church.

A memorial has been established with Trinity Baptist Church. Contributions can be made through the church or the Shelley Family Funeral Home.

Eugene "Gene" Thornton was born on May 6, 1927, in Marshall, Ark., the son of Nellie Thornton Bradford, before moving to Stilwell, Okla., a month later.

He served his country with the US Navy, entering at the age of 17 at the end of World War II and received an honorable discharge following the war.

Gene was united in marriage to Anna Lee Prather in Tonkawa, Okla.

He ran a barbershop on Summit Street in Arkansas City for many years, and was also a plumber and electrician as well.

His wife Anna Lee preceded him in death on June 11, 2011.

Survivors include his children — Anga Lee

## Food Program...

Continued from A3 Simpson's speaking points will include the status of GMOs in the marketplace.

For more information, contact Andersen at 806-647-4115, [nancy.andersen@agnet.tamu.edu](mailto:nancy.andersen@agnet.tamu.edu).

# Class Of 1954 Meets At Muleshoe

The Muleshoe High School Class of 1954 returned to Muleshoe to celebrate its '60th Class Reunion' this past week.

The celebration began by riding on a float in the Chamber of Commerce & Agriculture's Independence Day parade, July 4.

Wilson Drilling furnished the truck and trailer. Buddy Embry and Kenneth Henry arranged for the hay bales for seats. The float was decorated by Ray and Donna West, Kenneth and Darlene Henry, and Helen Cook.

Afterwards, the class gathered at the Oneita Wagon Senior Center for a barbecue lunch and visiting, and remained at the senior center where there were a number of albums and a poster by Jimmy Clyde Holt for the group to view.

One group also went to tour the remodeled Muleshoe High School.

A list of all classmates with their last known addresses was available — along with a memorial list — generating a lot of



Pictured above, left to right: Back row — Doris Underdown, Jimmy Clyde Holt, Sammy Donaldson, Ray West, Amrlon Inman and Lon Martin; front row — Kenneth Henry, Sue (Young) Rodfwra, Helen (Mitchell) Cook, Pearlene (Volkman) Bray, Madge (Johnson) Cannon, Dorothy (Underdown) Martin and Don Harmon.

reminscing.

In the evening, an informal snack was reportedly enjoyed by the class, with a lot more reminiscing.

The next day the class met at the Heritage Foundation Depot for... more reminiscing.

The group enjoyed a meal prepared by Kenneth and Darlene Henry, Ray and Donna West, and Darlene Henry.

Then the group then moved into the parlor for prizes and gag gifts directed by Helen (Mitchell) Cook assisted by Doris Underdown.

Sue (Young) Rodgers read the list of the

class' 24 departed classmates — Pat (Norwood) Johnson and Bill Holman, but a group photograph was taken of the remaining classmates by Wanda Holt.

The military veterans were recognized and thanked for their service.

Some of the

## Bible Seasonings And Fruit



## Engagement



## Almanza, Roberts To Wed

Joe and Florinda Champion of Plainview and Aldo Almanza of Lubbock announce the engagement of their daughter Patricia Almanza of Plainview to Brenton Roberts, also of Plainview.

The bride is the granddaughter of the late Hector and Maria Flores and the late Secondino Mendoza and Jose and Carlota Almanza of Muleshoe.

The bride is a 2005 graduate of Plainview High School and received an associate of science degree in business administration from South Plains College, Levelland.

She is pursuing a bachelor's degree at West Texas A&M in Canyon, and is employed at Walmart Distribution.

The groom is the son

of Morgan Jr. and Diane Roberts of Plainview.

The groom is the grandson of M.L. "Jack" and Martha Roberts of Las Cruces, NM, Forrest Cox and the late Eleanor Cox of Dodge City, Kan.

The groom is a 2005 Plainview High School graduate. He is currently pursuing an associate of science degree in business administration at South Plains College, and is also employed at Walmart Distribution.

The wedding will take place on Aug. 2, 2014, in the Immaculate Conception Church in Muleshoe at 3 p.m.

A reception and dance will follow at the La Mulita Ballroom.



Everett of Arkansas City, Kan., Larry Thornton and wife Dianne of Muleshoe, and Mary Ann Bourland and husband Jerry of Harrah, Okla.; four grandchildren — Leslie Konan, Jessica Thornton, Cody Everett, Sean Thornton; two great-grandchildren; and a brother — Wesley Bradford of Cookson, Okla.

In addition to his mother and wife, Gene was preceded in death by a son — James William Thornton; three sisters; and seven brothers.

**This is God and I approve of this message... Elect me**  
 DISCIPLESHIP - 9:45 AM • WORSHIP - 11:00 AM  
 FIRST UNITED METHODIST CHURCH  
 507 W. 2ND

Immaculate Conception Catholic Church  
 2014 Annual Grand Jamaica  
**Sunday - July 20<sup>th</sup>**  
**Noon - 9pm**  
 805 E. Hickory • Muleshoe, TX  
*Bring the whole family & join us for food, fun, games, live music and a good time!*

**RAFFLE - \$5 DONATION**  
*(Need Not be Present to Win)*  
 1ST PRIZE - \$1000 GIFT CARD  
 2ND PRIZE - 50" VIZIO LED TV  
 3RD PRIZE - \$500 GIFT CARD  
 4TH PRIZE - 64 GB MICROSOFT SURFACE TABLET  
 5TH PRIZE - \$300 GIFT CARD  
 6TH PRIZE - \$200 GIFT CARD  
 7, 8, 9TH PRIZE - \$100 GIFT CARD

**18 & UNDER YOUTH TALENT SHOW @ 2 pm**  
 Register day of Jamaica before 2pm  
**1<sup>ST</sup>, 2<sup>ND</sup> & 3<sup>RD</sup> PLACE PRIZES**

Contact any Church Member for raffle tickets.  
 For Ticket info contact Andy 272-4383, Richard 946-6063  
 For more info call Martha @ 272-5786

**YARD OF THE WEEK**

1709 W. AVE. B • STEVE & CHARLENE PHILLIPS

HBC Higginbotham Brothers  
 Serving Texas Communities Since 1881

**ACE**  
 The helpful place.  
 1516 W. AMERICAN BLVD. • MULESHOE, TX  
 806-272-3351

**Bill Johnston BJA Auctioneers**  
 WHEN ONLY THE BEST WILL DO CALL  
**Bill Johnston Auctioneers**  
 WE ARE AGENTS AND AGENTS ONLY!  
 MIKE ARCHIBEQUE

**CONTRACTORS • FARMERS • RANCHERS • DAIRYMEN**

# AUCTION

**PORTALES, NEW MEXICO**  
**Saturday • July 12, 2014 • TIME: 9:00 A.M.**

LOCATION: BILL JOHNSTON AUCTIONEERS LOT 3 MILES N.E. OF PORTALES, NEW MEXICO ON US HIGHWAY 70

**CONSIGNMENTS WELCOME**  
 Accepting the following types of consignments  
 TRACTORS • TRUCKS • TRAILERS • CONSTRUCTION EQUIPMENT • ATV'S • RV'S  
 AUTOMOBILES • LIVESTOCK EQUIPMENT • FARM IMPLEMENTS  
 INDUSTRIAL & SHOP EQUIPMENT

PLEASE CALL NOW TO HAVE YOUR EQUIPMENT LISTED ON OUR WEBPAGE  
**PO Box 747 • Portales, NM 88130 • Office: (575)356-5982**  
**www.bjayucca.net • E-mail address: bja@yucca.net**



# USDA Authorizes Emergency Haying Of CRP Acres

Bailey County USDA Farm Service Agency (FSA) Executive Director Mark Tucker has announced that Bailey County is authorized for emergency haying use of Conservation Reserve Program (CRP) acres for fiscal year (FY) 2014.

FSA's fiscal year runs from Oct. 1 to Sept. 30.

Unlike previous years, counties are not automatically approved for CRP emergency haying when they reach the D2 (severe drought) level on the U.S. Drought Monitor — [www.droughtmonitor.unl.edu](http://www.droughtmonitor.unl.edu).

If there is a need for

emergency haying, each local FSA Office must request approval from the Texas FSA State Committee.

Currently, 40 counties have received emergency haying approval.

The 60-day emergency haying period for these counties will end Aug. 31.

Based on a revised policy decision made by the Texas FSA State Committee, CRP acres hayed or grazed during fiscal year 2012 or 2013 will be considered eligible for emergency haying if the Natural Resources Conservation Service (NRCS) verifies,

on a case-by-case basis, that the conservation cover will sustain haying.

"Eligible producers who are interested in emergency haying of CRP must request approval from FSA before haying eligible acreage and must obtain a modified conservation plan from the NRCS that includes haying requirements," said Tucker.

Upon approval of emergency haying, producers must leave at least 50 percent of each field or contiguous field unharmed for wildlife.

For those counties that are eligible for

emergency haying and grazing, the same CRP acreage cannot be both hayed and/or grazed at the same time.

For example, if 50 percent of a field or contiguous field is hayed, the remaining unharmed 50 percent cannot be grazed; it must remain unharmed and ungrazed for the benefit of wildlife.

In addition, participants are limited to one hay cutting and are not permitted to sell any of the hay.

There will be no CRP annual rental payment reduction for 2014 emergency haying authorizations.

To take advantage of the emergency haying provisions, authorized producers can use the CRP acreage for their own livestock or may grant another livestock producer use of the CRP acreage for the purpose of haying.

Additionally, CRP land located within the Lesser Prairie Chicken Crucial Habitat Assessment Tool (CHAT) zones I, II and III will only be able to practice managed or routine grazing, managed harvesting,

emergency haying or emergency grazing one out of every three years.

This frequency regulation resets in 2014, meaning that any land hayed or grazed in prior years that meets the available forage requirement according to NRCS standards will be eligible for emergency use in 2014.

For more information and to request approval for emergency haying use of CRP acres contact the Bailey County FSA office at (806) 272-4538.



## The Sudan Buzz

### IRS Can Garnish Social Security Benefits

Q. I owe money for back taxes. I have been told that the IRS may collect by garnishing my Social Security benefits. Is this true? I really need this money to live.

A. As a general rule, Social Security benefits are "exempt" and protected from your creditors.

For example, if your bank or credit card company sues you they could not take any of your benefits.

The IRS, on the other hand, has greater collection rights than any other creditor.

As a general rule, under the Federal Payment Levy Program (FPLP) the IRS takes 15 percent of your benefits, provided you received more than \$750 a month.

The IRS does, however, have the right to take more. Before your benefits are garnished you will receive notice from the IRS.

The best way to protect against a garnishment is to contact them and work out a payment arrangement.

For more information, visit the IRS website, <http://www.irs.gov>, and search "social security and FPLP."

Q. How much notice am I entitled to before I am fired? I showed up for work this morning and was told it was my last day.

A. Am I entitled to two week's notice? This doesn't seem fair.

A. As a legal matter, you are not entitled to any prior notice. Unless you have an employment contract or union agreement that says otherwise,

you may be fired with no prior notice.

Your employer may not have treated you fairly, but from a legal standpoint, it had the right to do what it did.

Q. I sell t-shirts. Can I make a freehand copy of cartoon characters out of the newspaper and use it on a design? Someone told me this was illegal.

A. What you were told is true. Federal copyright law protects the owner of the cartoon character.

This means that you do not have the right to reproduce the character without permission.

It doesn't matter whether you make the copy freehand or with the assistance of a machine. You are still "copying" it.

Q. I can no longer afford my car payments. I called the finance company and told them that I was going to return the car.

They told me the law has changed and that I can no longer just return the car and call it even.

They said they would sell the car and that I would owe the difference between what I owe and how much they receive for the car. When did this law change?

A. The law has not change. The law has never been that you

may return a car and call it even.

When you return the car to the person to whom you owe money, that person may either keep the car and call it even or sell the car and apply the proceeds to the debt.

For example, assume you owe \$7,000 on your car note when you returned the car. The lender may call it even or, more likely, sell the car.

If the car were sold \$4,000, you would owe the difference between \$7,000 and \$4,000, or \$3,000.

The lender may collect this \$3,000 "deficiency" in the same manner as any other debt. You also may owe any additional costs incurred in selling the car.

Before you simply return the car, talk with the lender and see if you can work out a payment plan you can live with. Working things out is in everyone's best interest.

Q. What is a Power of Attorney for health care? How do I get one?

A. A Medical Power of Attorney for health care is the document that allows you to designate another person to make medical decisions regarding your health care in the event you are unable to do so.

### Ask A Lawyer...

By Richard Alderman

**KING AG AVIATION, INC.**

Specializing in Aerial Spraying - Insecticide, Herbicide & Seeding - Field Scouting Service

Johnny King Home (806) 227-2211  
P.O. Box 189 Fax (806) 946-3659  
Sudan, Texas 79371 Mobile (806) 946-7309  
Business (806) 946-3399 Vernon Office (940) 552-6102

**SUDAN VETERINARY SERVICES**

**SvS**

**CHRIS LARSON D.V.M.**

- ◆Specializing in Dairy Medicine◆
- ◆Small Animal & Equine◆
- ◆Same Day Minor Surgery◆
- ◆Farm & House Calls◆
- ◆Climate Controlled Boarding◆
- ◆Services by Appointment Only◆

1704 East Hwy. 84 • Sudan Tx  
806-227-2444 806-241-1915

*We are passionate about your health.*

*Early Detection can* **SAVE YOUR LIFE.**

**Yearly Peace of Mind** – If you're over 35 and have been putting off your annual mammogram...call today for an appointment that could save your life.

Digital mammography Close to Home.

**APPOINTMENTS AVAILABLE FOR THIS MOBILE LOCATION**

<b>Muleshoe Area Medical Center</b> 703 S. First St., Muleshoe	<b>Wednesday, July 30</b> 9:15 a.m. - 6:00 p.m.
---	--

**CALL NOW 1-800-377-4673**

Call 1-800-377-4673 to schedule your mammogram the next time our mammography coach comes to your city or for an appointment at the Harrington Breast Center in Amarillo.

Businesses, clinics and hospitals throughout the region are encouraged to invite the Mobile Mammography Coach to come to their location to offer breast screening services.

**HARRINGTON Breast Center**

A Department of **BBSA Hospital**

1310 Wallace Blvd. • Amarillo • [harringtonbreastcenter.org](http://harringtonbreastcenter.org)  
806-356-1905 • 800-377-4673

Like us on Facebook! [facebook.com/HarringtonBreastCenter](https://facebook.com/HarringtonBreastCenter)

**The Muleshoe Journal is looking for a news correspondent for Sudan and Sudan ISD.**

**If interested contact the Muleshoe Journal, 272-4536.**

**Honk... if you love Jesus! Text and drive if you want to meet him.**

**SUDAN ISD EXCELLENCE IN EDUCATION**

**WWW.SUDANISD.NET**  
HWY. 303 PHONE: (806) 227-2431  
SUDAN, TX 79371 FAX: (806) 227-2146



# CLASSIFIEDS

**Deadline is Monday at noon to place a classified ad. Call 272-4536.**

## LEGAL/PUBLIC NOTICE

**NOTICE OF SHERIFF'S SALE** (REAL ESTATE) BY VIRTUE OF A Writ of Execution issued out of the 287th District Court of Bailey County, Texas, in a certain cause numbered Cause #9250. On the 15th day of May A.D. 2014 Styled: Mary McKinney vs. Rafael Paez, to me, as Sheriff Richard Wills directed and delivered, I have levied upon this 25th day of June A.D. 2014 and will between the hours of 10:00 A.M. and 4:00 P.M. on the first Tuesday in August A.D. 2014, it being the 5th day of said month, at Bailey County Courthouse of said Bailey County, proceed to sell at public auction to the highest bidder, for cash in hand, all right, title and interest, if any, which the defendant had on the 25th day of June A.D. 2014, or at any time thereafter, of in and to the following described property: Original Town- Muleshoe, Block 12, Lot 10; 216 Main Street Muleshoe, Tx.; Commercial Building; 3500 square feet; and dimensions of said property 25' by 140'. Said property is levied on as the property of Rafael Paez and will be sold to satisfy the judgment for \$13,500 Dollars plus interest from 15th May, 2014 and costs of sale. GIVEN UNDER MY HAND on this 27th day of June A.D. 2014. Sheriff Richard Wills Bailey County, Texas By Richard Wills. *Published in the Muleshoe Journal July 10, July 17, July 24, and July 31, 2014*

responsibilities include processing cattle, doctoring, shipping, riding pens, and other duties as assigned. Applicants must be willing to perform all of these responsibilities. Work schedule will include 1 & 1/2 days off on most weeks and hours will average 50-60 straight wage no overtime. Position offers full benefits package including 401K and Health Insurance. Interested applicants should apply in person at Cargill Cattle Feeders, 600 US HWY 60, Bovina, Tx 806-225-4400

Paco Feed Yard LLC is looking to hire a mechanic and a feed truck driver. Apply in person. Muleshoe I.S.D. is accepting applications for a maintenance/bus driver position. You may apply online at www.muleshoeisd.net or by picking up an application at the M.I.S.D Administration office at 514 W. Ave. G, between the hours of 8:00 am and 4:00 pm., Monday thru Friday. Information concerning the position can be obtained by contacting Sam Whalin at 806-272-7330. Muleshoe I.S.D is an equal opportunity employer.

4 temp positions: Ag. Equipment Operator, 08/02/14 to 12/31/14. We offer \$9.87 p/hr at the time work is performed. Housing provided, 48 hrs p/wk. 3/4 guarantee, and transportation and subsistence expenses to worksite paid after 50% completion of contract. Tools, equipment provided at no cost. Duties: drive, harvest, store grain, repair operate tractor, rock picker, plow, disc, drill, harvest equip, sprayer,

**HELP WANTED**  
**Park View Nursing Care Center**  
Seeking LVN'S for Day & Night Positions. 12 hour shifts.  
Contact Yolanda at 272-7578

grain truck. Minimum 3 months experience. Must be able to lift 60 lbs. and to obtain driver's license within 30-90 days of hire. Joshua Graham Farms, Rayville, LA. Interested? Apply at nearest LA Career Solutions Center, or call 318-649-5398, job order #493953.

Truck Driver needed. Must have CDL. Apply at C&H Equipment.

PT Merchandiser to service magazines in Muleshoe. Apply to www.apply2jobs.com/tng

Savage-Tolk Energy Services has an immediate opening for a Team Member Support person. Applicants should be high school graduates or equivalent. Position will require rotating shift schedule and both night and day 12 hour shifts. For more information go to www.savageservices.com, click on employment and follow the links to apply.

Park View Nursing Care Center is taking applications for Part time Activity Asst. Must work weekends. Please come by 1100 West Ave J or call Janis Morrison at 806-272-7578 for more info.

**Find it in the Classifieds!**

**GARAGE SALES**  
Large Garage Sale- Friday, July 11th 8am-4pm and Saturday, July 12th 8am-1pm. We cleaned out our grandmothers house. 320 Hornet Drive, Sudan. Large and small household items.

**GARAGE SALE**  
4 Family Yard Sale -Friday, July 11th 8-2 and Saturday, July 12th 7-3, Lasting Impressions Parking Lot, 516 S. 1st, Misc. items, clothing and lots of great stuff!

**HOUSE FOR SALE BY OWNER**  
3/2 Stucco Home with Central air, Hardwood Floors, and fenced yard \$39,900 714 W 7th Street 512-293-3885

House For Sale by Owner- One of the Oldest English Tudor Style homes in Farwell. Unique in appearance & originality. 700 3rd Street. 3 Bedroom/ 2 Bath/ 2 Car Garage/Separate Apartment Back, 2400 total sq.ft. Red brick, Wood Shake Shingle roof, 7 ft concrete block privacy fence, central heat & air, wood floors/carpet, tile bathrooms, underground sprinkler, covered front porch, unfinished basement,

**REAL ESTATE**  
Very nice 3/2/2 with 2 living areas + sunroom 1800 sq. ft. \$119K in the heart of Muleshoe. Call Eve @ 806/777-0817  
Eve Darling, Broker

**Vic Coker Land Co.**  
Agricultural Real Estate  
FARMLAND/INVESTMENT  
CASTRO AND LAMB COUNTY- 753 ACRES IRRIGATED FARM. ALL CONTIGUOUS, 5 CENTER PIVOT SPRINKLERS, 10 IRRIGATION WELLS, 2 BARN, CATTLE PENS, ON PAVEMENT.  
BAILEY COUNTY/BULA AREA- 159 ACRES DRYLAND FARM, GOOD SOIL, SUDAN SCHOOL DISTRICT.  
BAILEY COUNTY- 152 ACRES, 2 IRRIGATION WELLS, 1 CENTER PIVOT SPRINKLER, ON PAVEMENT.  
BAILEY COUNTY- 2560 ACRES RANCH, DIVIDED INTO 4 PASTURES, HOUSE WITH OTHER IMPROVEMENTS, WITH FENCES.  
PARMER COUNTY- 155 ACRES IRRIGATED FARM, GOOD SOIL, LAYS GOOD, 1 CENTER PIVOT SPRINKLER, 2 IRRIGATION WELLS WITH SUBMERSIBLE PUMPS.  
BAILEY COUNTY- WEST CAMP AREA, 320 ACRE DRYLAND FARM, WITH NICE HOME AND METAL SHOP. 3BDR/2BTH HOME WITH FIREPLACE, LOCATED ON PAVEMENT.  
BAILEY COUNTY- 160 ACRE IRRIGATED FARM IN WEST CAMP AREA. WITH CENTER PIVOT SPRINKLER, 3 WELLS, LOCATED ON PAVEMENT.  
BAILEY COUNTY- 105 ACRE FARM WITH CENTER PIVOT SPRINKLER. 2 WELLS, CATTLE PENS, PARTIALLY FENCED, ON PAVEMENT.  
**RURAL RESIDENTIAL**  
MULESHOE- 3 BEDROOM, 1 3/4 BATH, 2 LIVING AREA W/ FIREPLACE, UPDATED NICELY, STORAGE BUILDING, BACK YARD PATIO, GREAT NEIGHBORHOOD.  
EARTH- LARGE ROCK HOUSE, 3 BEDROOM, 3 BATH, FORMAL DINING, LARGE FINISHED BASEMENT, CENTRAL H&A, ON FIVE ACRES.  
BAILEY COUNTY- COUNTRY HOME ON 14 ACRES. 3 BDR., 2/3 QTR BATH, 2 LIVING AREAS, FIREPLACE, LARGE INSULATED METAL SHOP, LIVESTOCK/HORSE CORRALS, ON PAVEMENT.  
PARMER COUNTY- NICE HOME ON 24 ACRES, 3 BDR, 2 BTH, BASEMENT, 3 CAR GARAGE, LARGE METAL SHOP, ON PAVEMENT.  
Vic Coker, Broker Cell 806-946-7242  
Barry Coker, Agent Cell 806-787-0917  
316 Main Street • Muleshoe, Texas  
Office: 806-272-3100 • www.vicoland.com

Backyard a Shop. 15K or Adventure Lease \$450/mo. playhouse/swing Located 1020 S. set, separate fenced Main Muleshoe, side yard play TX. Call 337-397- area, large shade 2456 or 337-348- trees surround the 1797. property. Shown by appt. only. Call 806-946-8968.

**SERVICES**  
Available Part-time Tractor Diver, also lawnmower repair. Call 806-946-8798 or 806-272-5229.

**REAL ESTATE**  
Sale or Lease- 4 City Lots with

**REAL ESTATE**  
**Edwards REALTORS**  
FARM & RANCH RESIDENTIAL COMMERCIAL  
**LAND**  
King County - Reduced To \$350,000  
• 320 Acres, Excellent hunting and scenic views. Has Turkey, quail, dove whitetail deer and wild hogs. 2 Trail Homes Included. 3200 CR 352  
**COMMERCIAL**  
Springlake / Earth  
• Springlake Feed Yard For Sale - Permitted for 10K Head of Cattle, 5000 Ton Silage. Located on Hwy 70 4 Miles W. Of Earth Texas.  
**RESIDENTIAL**  
Earth  
• Nice & Clean! 2/2 1/2 371 FM 1055 \$77,750  
Littlefield  
• Beautiful & Well Maintained - Updates Throughout 3/2 125 E. 25th \$139,500  
Sudan  
• Big and Roomy With 10 Acres! 4/3 2 FM 298 \$298,000  
• Nice Neighborhood - Great Location! 3/1.5/1 406 Wilson Street \$54,000  
• Great Investment With 3/1.5/2 411 Barnes Street \$20,000  
Vernie Moore REALTOR® 806.543.9347  
Clint Jones REALTOR® 940.256.0069  
Rhonda Severin REALTOR® 806.470.0524  
Mitch Edwards REALTOR® 806.777.4168  
Monty Edwards Broker/REALTOR® 806.786.5426  
806.686.6371 Office  
MEDwardsREALTORS.com

**NIEMAN REALTY**  
116 E. AVE. C • GEORGE NIEMAN, BROKER • 272-5285 OR 272-5286  
CHECK OUR LISTING INFO., PHOTOS, ETC. ON-LINE AT WWW.NIEMANREALTY.COM  
HAVE BUYERS! NEED HOME AND LAND LISTINGS!!  
**HIGH SCHOOL AREA**  
• 3-1.5-1 carport Home, Cent. A&H, stove thermal windows, "AS IS", MAKE OFFER!! \$47K!!!  
• 5-3-2+2 carport home, Cent. Air & Heat, approx. 3124' lv. area, FP in den, WB stove in lv. area, 2 large workshops, stor. bldgs., +1 bdrom aptmt., corner lot, MUCH MORE!! \$140,000!! \$120K!!  
• 3-2 1/2 - 2 carport HOME, corner lot, 2301' living area!! \$80K!!! REDUCED \$72K!!  
• Nice 3-2-2 Home, approx. 1974' lv. area, built-ins, corner lot, workshop/storage, fenced yd. MORE!! \$80K!!  
**RICHLAND HILLS • PARKRIDGE • HIGHLAND**  
• NICE 4-4-5-2 Brick Home, Cent. A&H, Built-ins, FP, Fans w/lights, basement, auto. spkrl., fenced yd., cov. patio, Approx. 3084' Lv. Area!! \$180K!!  
• VERY NICE 3-2-5-2 Brick Home, Cent. A&H, built-ins, FP, approx. 2749' lv. area, lots of storage, nice courtyard & landscaping, workshop/storage/ fenced yd., Much More!! **Reduced-\$155K!**  
• 3-2 BDRM. DUPLEX UNITS, TOTAL ELECTRIC!! \$180K!!!  
• 2-1 Home, wall furnace heat, window evap. air!! \$30,000!!!  
• CUSTOM BUILT 3-2-5-2 Brick Home on corner lot, 2608' lv. area, built-ins, FP, covered patio w/ grill, fenced yd., auto spkrl., numerous amenities!! \$270 K!!  
• VERY NICE 3-2-2 Brick Home, Cent. A&H, Built-ins, FP, thermal windows & doors, approx. 1876' lv. area, workshop/storage, fenced yd.!! \$119,500!!  
• NICE 3-2-2+2 carport Home, corner lot, Cent. A&H, built-ins, ceiling fans w/light kits, storm doors, & windows, covered patio, tile block fence, auto. spkrl., workshop/storage. MUCH MORE!! \$135K!!  
• NICE REMODELED 3-2-2 BRICK HOME, Cent. A&H, Built-ins, new carpet & tile, & countertops, new paint, approx. 1907' lv. area, cov. porch & patio, fenced yd., workshop/storage!! \$139,500!!

Multipurpose Rm Treehouse, 36x60 w/FP, Geothermal shop, Zimmatic central heating/ Sprinkler. 5 mi cooling, Tile West of Muleshoe Floors, Indoor on West Camp Rd. Hot tub, Abundant Jimmy Wedel 946- Trees, Large 7011.

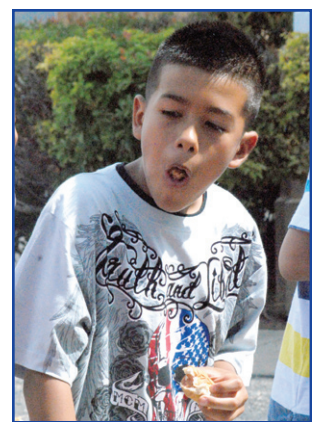
**FOR SALE**  
**Scott Land co, LLC**  
**FOR SALE -**  
USED - 1998 T & L Hydraulic drive 16 - Tower, 1/2 mi. sprinkler system, 60' spacing, 38' tires, located S. of Dimmitt, Texas, in good condition!  
Ben Scott Jr. - 800-933-9698

**REAL ESTATE**  
**Byrd Realty**  
Ronald Byrd 575-760-1495 Licensed Broker  
Crista Bass 806-946-7261 Sales Associate  
Carleton Johnson 806-789-4289 Sales Associate  
• **NEW LISTING-** 3 BEDROOM, 1 BATH HOME, BUILT-INS, WOOD FLOORS, LARGE LAUNDRY ROOM THAT ALSO COULD BE AN OFFICE OR PLAYROOM, CARPORTS, DETACHED GARAGE, CLOSE TO JR. HIGH AND HIGH SCHOOL, ALL ON CORNER LOT, PRICED TO SELL.  
• **NEW LISTING-** NICE 2 STORY 3 BEDROOM, 2 BATH HOME, CENTRAL AIR AND HEAT, FIREPLACE, LARGE KITCHEN WITH LOTS OF CABINETS, SPRINKLER SYSTEM, DOMESTIC WELL, SINGLE CAR GARAGE WITH WORKSHOP, STORAGE BUILDING, JUST OUTSIDE CITY LIMITS ON HIGHWAY, ALL ON APPROX. 1.27 ACRES.  
• **NEW LISTING-** NICE 3 BEDROOM, 2 BATH BRICK HOME, CENTRAL AIR AND HEAT, FREESTANDING FIREPLACE, STOVE, DISHWASHER, FENCED BACKYARD, GREAT HOME FOR A GREAT PRICE! ONLY \$79,000.00.  
• **JUST LISTED COUNTRY HOME ON HIGHWAY-** NICE 3 OR 4 BEDROOM, 2 BATH HOME, NEW CENTRAL AIR AND HEAT UNIT, SEPTIC SYSTEM, FIREPLACE, LARGE DEN, LOTS OF STORAGE, GARAGE, 2-CARPORTS, EXTRA BUILDING WITH BATHROOM, FENCED YARD, METAL ROOF, CELLAR, PLUS A LOT MORE, ALL ON 1.24 ACRES. CALL FOR AN APPOINTMENT TODAY!!  
• **PRICE REDUCED MOTIVATED SELLER!!**-VERY NICE 3 BEDROOM, 1 3/4 BATH BRICK HOME, CENTRAL AIR AND HEAT, ELECTRIC STOVE IN LIVING ROOM, BUILT-INS, WOOD SHUTTERS, ITS OF STORAGE, ALL ELECTRIC, UTILITY ROOM, 2 CAR GARAGE, SPRINKLER SYSTEM, FENCED BACKYARD, WALK-IN ATTIC SPACE, ALL ON CORNER LOT.  
• **NEW COMMERCIAL LISTING- PRICE REDUCED.** APPROX. 2240 SQ. FT. BUILDING ON MAIN HWY. 84. CENTRAL AIR AND HEAT. THIS IS THE HENRY NAILS BUILDING, ALSO HAS 150' X 90' ASPHALT PAVING. GREAT LOCATION!!  
• **475 ACRES NW OF MULESHOE-**, 5 WELLS, 3 CIRCULAR SPRINKLERS. LAYS WELL, 2 ADDITIONAL COUNTRY HOMES INCLUDED. REASONABLY PRICED!! CALL FOR DETAILS!!  
• **COUNTRY CLUB ADDITION-** VERY NICE 3 BEDROOM, 2 BATH BRICK HOME, FIREPLACE, BUILT-INS, ALL ELECTRIC, CENTRAL HEAT AND AIR, CABLE/UTILITY, 2 CAR GARAGE, SPRINKLER SYSTEM, FENCED BACKYARD, ACROSS FROM THE COUNTRY CLUB ON CORNER LOT. CALL FOR MORE DETAILS.  
• **ONLY \$67,900.00-** 3 BEDROOM, 2 BATH BRICK HOME, CENTRAL AIR & HEAT, APPLIANCES, SINGLE CAR GARAGE, FENCED BACKYARD. PRICED TO SELL.  
**228 MAIN STREET, MULESHOE, TEXAS**  
CHECK ALL OF OUR LISTINGS AT  
[www.byrdrealestate.net](http://www.byrdrealestate.net)

**Looking For A Job?**  
**Find It In The Classifieds.**



# INDEPENDENCE DAY 2014



Photographs by Gabby Perez  
(Watch for additional photographs next week.)

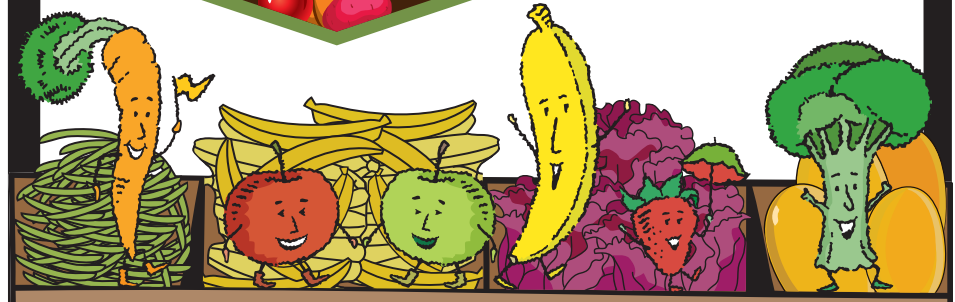


## Now Open

Barrett Produce's "Harvest Fresh"  
Fresh and Locally Grown Fruits and Vegetables  
**Tuesday - Saturday 9 am - 6 pm**



**1 mile East on HWY 84!**



We Always Answer Your Call  
**24/7!**  
**CROP HAIL INSURANCE**



**GREAT PLAINS**  
AG INSURANCE

Don Dixon Plainview Office 806-296-2782 Cell: 806-367-0121  
Rachel Myers Amarillo Office 806-418-2641 Cell: 806-640-2089  
Dustin Cleavinger Muleshoe Office 806-272-4271 Cell: 806-315-0735

*No waiting in line call and make appointment!  
All we need is your insurance estimate and auto.*

## WILLIAMS BODY SHOP

WE WORK WITH ALL INSURANCE COMPANIES.  
• Hail Damage/Body Repair  
• Paintless Dent Repair



*On request, our roll back wrecker will pick up your car or pickup and return it like new.*

PHONE: 806-385-4577  
CELL: 806-928-9399  
1028 WAYLON JENNINGS BLVD.  
LITTLEFIELD, TX