

Muleshoe Journal

Striving to be your source for local news 75¢
Volume 90, No. 26 www.muleshoejournal.com Muleshoe, Texas June 26, 2014

Plateau Announces Plans To Sell Its Wireless Service To AT&T

After several months of rumors, Plateau Telecommunications, Inc., announced Monday, June 23, that it has signed an agreement to sell Plateau Wireless assets to AT&T, pending FCC approval. The purchase includes Plateau Wireless' cellular customers

and related operations and assets throughout eastern New Mexico and West Texas. The wireless operations are currently comprised of partnerships between Plateau, Yucca Telecom, Five Area Telephone Cooperative, South Plains Telephone

Cooperative, Mid-Plains Rural Telephone Cooperative, and West Texas Rural Telephone. The transaction is expected to close in the second half of 2014. This sale does not affect Plateau's other lines of business such as cooperative landline service, fiber-to-the-

home and business and residential services such as advanced IPTV, ultra-fast Internet connections, and other IP-based services, according to the news release issued by Plateau. Plateau CEO Tom Phelps said, "Plateau is a very diverse

telecommunications company. While the wireless part of the business has certainly been important to us, we are pleased to be in a position to focus more on our other quality telecommunication services provided through our extensive fiber network."

Covering more than 23,000 square miles with more than 4,200 miles of company owned and shared fiber, Plateau provides dependable and technologically advanced services required by today's consumers, the Plateau announcement continued.



Photograph by Larry Thornton

EMS To Offer Discounts For Old Accounts

By Larry Thornton
Editor

The Bailey County Commissioners' Court voted 3-1 to offer individuals who have old unpaid accounts with the Bailey County EMS the opportunity to clear away their debts. In a move similar to that offered by the Muleshoe Area Hospital District several years ago, the commissioners' court voted to offer a 50 percent discount to individuals who have owed the ambulance service for several years.

account holders free of charge. The second involves a "demand letter," which would be followed by a civil suit. At the recommendation and motion of Precinct 1 Commissioner Butch Vandiver — seconded after a lengthy pause by County Judge Sherri Harrison, the court passed a motion authorizing the 50 percent discount. When asked about his dissenting vote, Precinct 4 Commissioner Juan Chavez said, "If they haven't paid, they're not going to pay." "If they owe it, we need to try to collect it," Vandiver said. "It's our responsibility." Although Precinct 2 Commissioner CE Grant said he "kind of agreed" with Chavez' point of view, he voted for the letters to be issued. Precinct 3 Commissioner Joey Kindle didn't attend Monday's regular session. In other business,

Special Delivery Cal Ripkin Style

There's an old saw that says: The best thing for the inside of a man, is the outside of a horse. Of course, a piece of horsehide stitched around tightly around yarn and a cork center has a lot to say for itself as well. Pictured above, a Littlefield batter sends a ball

"special delivery" to Brownfield's shortstop during Monday's Minor District game at the Roger Miller Ball Park. Five teams participated in Monday's tournament. For game and tournament results go to Muleshoe Youth Baseball, on Facebook™.

Journal Receives State Awards

The Muleshoe Journal was presented with four awards in the 2014 Texas Press Association's Better Newspaper Contest over the weekend. Hosted this year in Corpus Christi, the annual event marks the third first place win in the state-wide competition for the Muleshoe Journal. In 2007, the Journal

took first place with Editor Larry Thornton's editorials, and last year, another first place award was received for news photos. "Headlines make me want to read every

story," the judges said regarding the Journal's first place headline writing in Division 10, Small Weeklies. Previously, the Journal has received three third place awards for headline writing, and a fourth place, in the TPA competition. The Journal also received a third

place award for its editorials and its sports coverage. Previously, the newspaper had received first, second, third and fourth place awards for its editorials in the state competition. Regarding its sports coverage, the judges were impressed by the journal's efforts to include both high



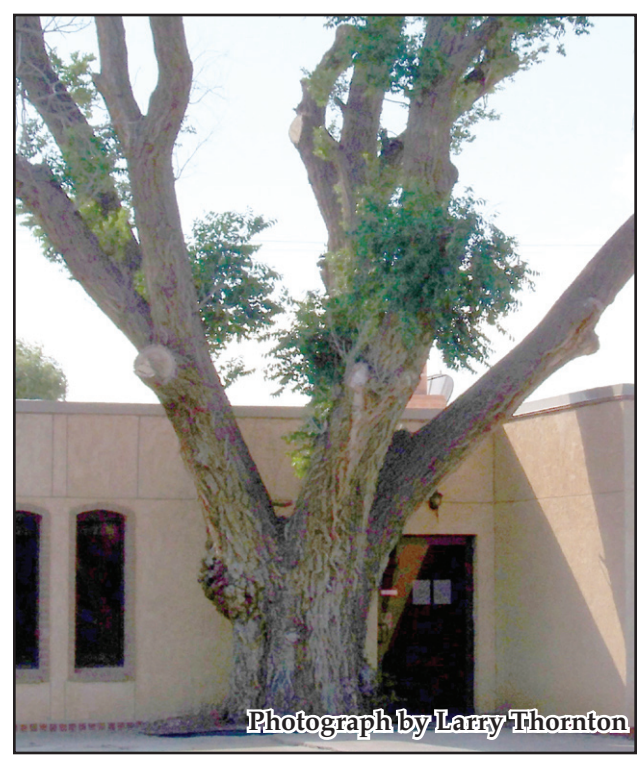
Continued on A2

Get Ready To Party In Muleshoe!

Other events to be held in the park will be a softball tournament, a volley ball tournament with teams from local emergency service agencies and local businesses, a variety of food vendors, and of course, the fireworks display. There will also be local entertainment provided in the park. Earlier in the day, the chamber's Independence Day parade will begin lining

up at 9 a.m., and will be held at 10 a.m. Individuals, organizations and businesses wishing to enter the Independence Day parade should contact the chamber of commerce office. Following the parade, the Muleshoe Journal's third annual Hot Dog Eating Contest will be held at the parking lot of the Bailey County Courthouse. Last year, Dallas

Continued on A2



Photograph by Larry Thornton

On The Chopping Block

Among the items to be discussed at Thursday's regular meeting of the Muleshoe Area Hospital District will be the removal of the tree next to the hospital's dining room entrance. Removal of the tree, pictured on the left, was briefly discussed by board members several years ago; however, no action was taken because it was believed to be the oldest tree in Bailey County.

FIRST BANK is proud to announce our new MasterCard Debit Card. **FIRST BANK ONLINE** www.fbmlshoe.com
202 S. First • Muleshoe, TX 79347 • 806-272-4515

OPINION

Gifting Problem Needs Fixing

Editorial

In what must be one of the greatest triumphs in the Obama administration's war against the Second Amendment, the US Supreme Court has ruled that if you purchase a firearm from a licensed dealer with the intent of gifting it to someone... you may have committed a felony.

For those yet unaware of the case which led to last week's 5-4 high court decision, a Virginia resident purchased a handgun, and later transferred the firearm to a relative in another state.

According to the information associated with the incident, the defendant's relative asked the defendant to purchase it for him at a lower price than was possible in his home state.

While those supporting the defendant in the case held to the interpretation that a "straw purchase" hadn't occurred because the person the weapon was transferred to could legally possess the weapon, gun control proponents... including the misguided Obama administration disagreed.

In its argument, the prosecutors standing before the court justices stated that allowing such transactions would hinder law enforcement attempts to identify the owner of a weapon used in a crime.

Apparently having to contact the person who had purchased the weapon from the dealer in such a case is more time consuming than to chase down the ownership of a firearm that was held by an individual for a few weeks, months or years before selling it to another.

The prosecutors contention was also that

when the purchaser signed the Bureau of Alcohol, Tobacco and Firearm's form 4473 required for purchases from a licensed gun dealer, the purchaser was stating that he or she was the "actual buyer" of the firearm, and that perjury was committed because the original intent was to acquire the firearm for another individual.

To be honest, there is little that can be said in opposition to the fact that according to the instructions provided with the form 4473 the firearm's purchaser didn't respond to the question in a truthful manner.

The only defense is that the "spirit of the law" isn't being upheld by the definition of "actual buyer" as stated on the federal form.

To the shooting public the issue boils down to whether it is the intent of the purchaser to provide the firearm to someone who can't legally possess a firearm, such as a convicted felon or someone who is mentally unstable.

Even the high court's conservative minority interpreted the intent of the wrongfully-answered question differently, voicing the opinion that the law prohibiting "straw purchases" didn't cover situations such as that which brought the question before the high court.

But in the eyes of the gun-haters — who are looking for any possible means to attack the Second Amendment and its proponents — it's no different, albeit on a lesser scale, than

an adult buying liquor for a minor.

Following the high court's split decision, Congress needs to address the issue

through legislation that will resolve the problems with the BATF's form 4473, and allow the legal transfer of a weapon from one lawful individual to another... no matter how long its been in the possession of the original purchaser.

Around Muleshoe...



Announcements from non-profit organizations in the Muleshoe area.

To post an announcement send an email to editor@muleshoejournal.com

SPC Camp Bluegrass

South Plains College will host the 28th Annual Camp Bluegrass July 13-18. This year's camp will celebrate the music of the Stanley Brothers.

This six-day residential camp attracts bluegrass musicians of all ages and skill sets from across the nation. Classes are conducted in the Commercial Music building with nightly faculty concerts scheduled in the Tom T. Hall Production Studio.

The faculty concerts are free, and open to the public. For additional information, call Joe Carr, Professor of Music, at (806) 544-9703 or (806) 716-2493 or visit www.campbluegrass.com.

Commissioners Court...

Continued from A1
court:

- Received a report from Sheriff Richard Wills, who said the number of "out-of-county prisoners had decreased in the last few days at the Bailey County Law Enforcement Center. Currently 40 "paid" out-of-county prisoners are being held, and 20

local prisoners.

- Tabled action regarding the appointment of someone to administer a joint county and city sex offender registration program. Previously, the city and county have administered separate registration programs.

- Approved payment of county bills totaling \$152,246.60.

Newspaper Awards...

Continued from A1
school and junior high sports stories.

Although the Journal has provided complete sports coverage, through the efforts of sportswriter Delton Wilhite, for several years, this was the newspaper's first state award in the category.

"The Journal is proud of its sports coverage," said Thornton. "When I first came to the newspaper, the Journal's

sports were primarily limited to the varsity teams, but as important as these high school teams are, our younger teams are also deserving of coverage."

The Journal also received a fourth place award for the sports photographs of Gabby Perez.

This is the newspaper's second TPA sports photography award. Previously, it had received a third place.

July 4th... Continued From A1

Tosh took the adult division title, while the juvenile division title claimed by Malachi Rodriguez.

Registration forms for the hotdog eating contest are available at the Muleshoe Journal office, 201 W. Ave. C. There is no charge to enter the contest.

There will also be a wide variety of activities on West American Blvd., including a car show at the Trinity Christian Church's parking lot.

Honk...
if you love Jesus!
Text and drive if you want to meet him.

Muleshoe Journal USPS 367820

Established Feb. 23, 1924 Published by Panhandle Weeklies, LLC.
Every Thursday at 201 W. Ave. C, P.O. Box 449, Muleshoe, TX 79347.

Periodicals paid at Muleshoe, TX, and at additional mailing offices.

Postmaster: Send address changes to the Muleshoe Journal, P.O. Box 449, Muleshoe, TX 79347.

We are qualified members of the Panhandle Press Association, West Texas Press Association and Texas Press Association

Michael Distelhorst, Publisher © 2014

mdistelhorst@hearstmp.com

Larry Thornton, Editor

editor@muleshoejournal.com

Rhea Gonzales Ad Representative

adsales@muleshoejournal.com

Ad Design / Classified Advertising

advertising@muleshoejournal.com

classifieds@muleshoejournal.com

Subscriptions:

By Carrier Yearly — \$27

Bailey County, by mail — \$29

Elsewhere — \$40

By E-mail — \$22

Advertising rate cards on request

Hours are 8 a.m. to 5 p.m., Monday - Thursday, and 8 a.m. to noon on Friday. *Advertisers should check their ad the first day of insertion. The Journal will not be liable for failure to publish an ad or for a typographical error or errors in publications except to the extent of the cost of the ad for the first day of insertion. Adjustment for errors will be limited to the cost of that portion of the ad where the error occurred."



Cattle Totals Are Down

Cattle and calves on feed for slaughter market in Texas feedlots with capacity of 1,000 head or more totaled 2.55 million head on June 1, down three percent from a year ago.

According to the monthly report released by the Texas Field Office, the estimate was up five percent from the May 1 level.

Producers placed 580,000 head in commercial feedlots during May, up two percent from a year ago and up 38 percent from April.

Texas commercial feeders marketed 450,000 head during May, down three percent from 2013 and down six percent from April.

On June 1, there were 2.24 million head of cattle and calves on feed in the Northern High

Continued on A6

CO-ED SOFTBALL TOURNAMENT

JULY 3, 4, 5TH

To register or for more information, contact Gina Wilkerson 806-240-2111, Rudy Perez 806-729-2100 or Becky 272-4248. Deadline is June 30th!

Hosted by **MULESHOE CHAMBER OF COMMERCE**

\$150.00 ENTRY FEE

GET READY!
for the **JULY 4TH PARADE**
FRIDAY • JULY 4TH
BEGINS 10 A.M. • LINE-UP @ 9 A.M.

If you are interested in being a vendor call Becky @ the Chamber 272-4248.

Vendor Fee \$25.00!
Vendors will set up at the New City Park

Get your Summer bling on!

J.W. HALTOM
Family Dentistry & Orthodontics

Come in for an Ortho Consult for only **\$99!**

- Invisalign, the new invisible braces now offered!
- Adults and children welcome!
- Convenient, no interest payment plan!

320 E. 8th St.
385-6935
Mon. - Thurs. 8 to 5
Friday 8 to noon

MULESHOE JOURNAL HOT DOG EATING CONTEST

July 4th 11:00 PM Courthouse Parking Lot.

~General Rules~:

- No purchase required to enter.
- THERE ARE TWO DIVISIONS: Adult (16 yrs and above) * Juvenile (10 - 15 yrs.)
- This contest is not open to staff or family members of the event sponsor, the Muleshoe Journal, or its affiliates.
- Contest division first place winners will receive a trophy.

~Contest Eating Rules~

This event will be a speed-eating contest, with the following rules in effect:

- Food items may be separated, but the entire item must be consumed. (The wrapper shouldn't be eaten.)
- A bottle of water will be supplied for each contestant; however, dunking or dousing the food items before consumption is not allowed.
- Condiments will be provided at contestant's request, but must be applied after the contest starts.
- Contestants will be given five wrapped hot dogs and buns. At the signal to start, the contestant will unwrap and consume their hot dogs. Once the food items are consumed, and the contestant's mouth is cleared of food, the individual contestant must shout to show their mouth is empty.
- Remember, talking with your mouth full will be deemed "picnic violation," as will failure to properly phrase the statement.
- An eating judge will identify a successful contestant. The winner will be determined by the event judge. The event will be recorded on video for broadcast, and may be utilized by the event judge to resolve any questions concerning the competition.
- Should a contestant be observed hiding his or her hot dogs, dropping them in part or in whole under the table, or placing them on another contestant's plate the guilty contestant will be deemed in performance of a "picnic violation," as determined by an eating judge, and receive an additional hot dog for consumption.
- Contestants who are unable to retain their food items will be disqualified.
- In such an event, contestants are encouraged to use the provided buckets for non-retention.
- In the event of a tie, the winner will be determined by the consumption of a second set of five hot dogs.
- Creative participation is encouraged, but good sportsmanship is required.
- Obviously, most rules of normal table etiquette, except for "picnic violations," are out the window.

The decisions of the eating judges and the event judge are final.

- The winners of the two divisions will receive a trophy to commemorate their achievement.

~Registration~

The event is limited the first 20 participants to register. Contestants may register prior to the event during regular business hours at the Muleshoe Journal news office. Unfilled slots will be open for registration on the morning of July 4, 2014, but registration will close 30 minutes prior to the contest's official time. All contestants are required to check in 15 minutes prior to the contest's official time.

God Has No Problem Identifying His Children

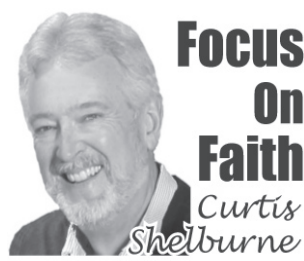
During one of the most famous battles ever fought, the World War II "Battle of the Bulge," the Germans made use of a battalion of men commanded by Major Otto Skorzeny, "the most daring commando in the German army."

According to author Stephen Ambrose in his book Citizen Soldier, 500 or so volunteers from that battalion were dressed in American uniforms and dispatched across the lines to wreak havoc and confusion, perpetrate mischief, and cause misery and mayhem in any way possible.

They spread misinformation about German strength and troop movements to lower morale among the American troops, misdirect the Allies, and generally spread seeds of panic.

They shifted directional signposts to wrong directions to cause further confusion.

Ambrose writes that once the American



Focus On Faith
Curtis Shelburne

troops realized what was happening, the word spread amazingly quickly: "Trust no one!"

American soldiers, particularly military police, began to quiz anyone who looked suspicious or who was crossing a barricade, with such questions as, "Who plays center field for the Yankees?" (I'd have been shot as a spy if they'd asked me that one!)

"Who is Mickey Mouse's wife?"

"What is the capital of Illinois?" (Ambrose says that even Gen. Omar Bradley was detained for answering correctly, "Springfield." The MP was sure it was Chicago.)

But the spy-detection gambit that most caught my interest had to do with a proofreading mistake

(and proofreading mistakes are the bane of this minister/writer/editor's existence!).

It seems that a German in an American officer's uniform was stopped at a roadblock. The man's English was flawless.

In fact, many of Skorzeny's men had spent some time living in America or Britain; one wonders how much trouble we could save ourselves if we just quit training our enemies?

This guy's identification papers were also perfect. In fact, it was the perfection of the German forger who produced his papers that cost this man his life as he was later shot as a spy.

Ambrose says that the authentic Adjutant General's ID card that all American soldiers carried had at its top these printed words: "NOT A PASS. FOR IDENTIFICATION ONLY." But the German forger had corrected the typically efficient bureaucratic spelling mistake and taken out the offending "N" so that the spy's card read, correctly but fatally, "IDENTIFICATION."

I am thankful that God the Father has no problem at all correctly identifying his children.

We may get our bloomers all bunched up and fuss about various rituals and rites, some of which are beautiful, meaningful, and God-

prescribed (but not for arguing about).

But the Apostle Paul makes it quite clear (read his letter to the Galatians!) that the proof that we're God's children is not ritual-based: it is that his Spirit lives in our hearts giving us life and producing wonderful "fruit," proof positive that we're God's people.

Oops! Did I say God has no trouble "identifying" his children?

Maybe you better make that "identifying."

Muleshoe's Designated Storm Shelters



The following locations have been designated as public storm shelters in the City of Muleshoe:

Bailey County Courthouse
300 S. First

County Probation Office
300 S. First

(Old county jail building, next to courthouse)

Muleshoe Public Library
322 W. Second

First United Methodist Church
507 W. Second

Please note that if the shelter is deemed "full," newly arriving individuals will be sent to another location.

Also, animals—other than certified service animals, are prohibited in the shelters.



Weather Whys: The Power Of Lightning

Q: Some bolts of lightning seem very faint, while others brighten up the entire sky. How powerful is lightning?

A: Most people aren't aware of the incredible energy and power of lightning, says Brent McRoberts of Texas A&M University.

"It's true that some bolts of lightning are much stronger than others," he explains. "At any given moment, there are about 1,200 thunderstorms occurring all over the Earth, and it's estimated that each second, there are about 100 lightning flashes somewhere over our planet. A typical lightning bolt contains about 250,000 kilowatt-hours of energy and instantly heats up the air around it to over 50,000 degrees Fahrenheit. The total energy released during the lifetime of a strong thunderstorm can exceed the energy released during an atomic explosion."

Q: Then how do people survive when struck by lightning?

A: Many don't, McRoberts adds. "Since 1959, about 90 people a year die in the U.S. as the result of lightning strikes," he says.

"Many people do survive after being hit by lightning, and there are some remarkable stories about individuals being literally knocked out of their shoes, or of horseshoes being blown off of horses as the bolt passes through their bodies. Florida and Arizona are two states known for lightning fatalities. In the summer months, Arizona has thunderstorms that occur almost every day during a monsoon period and these usually

contain lightning. Arizona averages about four lightning deaths a year, and nearly all of these fatalities occur during this three-month period."

Let The Bidding Begin

W & J Auction

MOVING AUCTION

SATURDAY, JUNE 28TH

1902 AVE G., • MULESHOE, TX

10:30 A.M. Muleshoe, Tx • VIEWING FRIDAY 9-5

LOTS OF GOOD STUFF!

***** NO BUYERS PREMIUM * www.wjauction.com *****

4205 S Prince Clovis, NM 88101 * Terms: Cash, Check, Visa or Mastercard

W & J Auction, Inc.

Clovis, NM 88101 OUR KNOWLEDGE IS YOUR SECURITY TX LIC # 11077 & 15577
AUCTIONEERS: James Priest, Gid Priest, Butch Priest 575-799-1418
Karl Campbell - Qualified Broker 12022

WE'RE AT YOUR

Service

Visit the following local businesses for quality service and customer satisfaction!

K & K PHARMACY

Our compounding professionals can formulate medications in specialized delivery systems such as sublingual drops, oral and nasal sprays, lollipops, rectal solutions, suppositories, creams, ointments, polyox bandages, and gels. We specialize in wound and scar treatments. Please contact us to discuss your patients' individualized needs. mixmymeds@gmail.com

1411 W. American Blvd • Muleshoe 272-7511

Jake's Handyman Service

• Tree Trimming • Dirt Hauling
• Doors & Windows • Yard, Metal Clean-Up

Free Estimates Call
806-437-6197

Hail Damaged Commercial Roof?

Save Up To 50% on Energy Bills With...
Spray Foam Roofing!

- * Seamless
- * BASF certified installers
- * A+ BBB Rating
- * In Business 47 Years
- * Great over metal roofs, too

If your spray foam roof was hail damaged, we have better options for repair including our exclusive chopped fiberglass emulsion room system!

Free Estimates & Free Infrared Inspection

(806) 928-6062

See videos & credentials at: Lubbockfoam.com

0% for 60 months* AND \$1,000 OFF¹

1 Family 1023E and 1025R with the purchase of two or more implements

0% for 60 months* OR UP TO \$2,000 OFF³

5D/5E Series Tractor

0% for 60 months* AND \$1,000 OFF²

3E Series Tractor with the purchase of two or more implements

DEERE SEASON

JOHN DEERE

So many tractors. So many savings.

It's Deere Season and time to save big on John Deere utility tractors. Get comfort, versatility, and the power you want along with a variety of ways to save on new 1 Family, 3E, 5D or 5E Series Tractors. Plus over 600 Frontier implements, too. But it's all for a limited time. So stop by or call today.

JohnDeere.com/Ag

BE IMPLEMENT

Call today for great deals on new and used John Deere equipment!

www.beimplement.com

Brownfield 806-637-3594	Lamesa 806-872-5474
Levelland 806-894-7343	Littlefield 806-385-5108
Morton 806-266-5535	O'Donnell 806-428-3245
	Tahoka 806-561-4549

*Offer valid 6/3/2014 through 7/31/2014. Subject to approved credit on John Deere Financial Installment Plan. Fixed Rate of 0.0% for 60 months. ¹\$1,000 OFF Implement Bonus on 1023E and 1025R Tractors. ²\$1,000 OFF implement bonus on the 3E Series Tractors. Implement Bonus is in addition to Low Rate financing and requires the purchase of 2 or more qualifying John Deere or Frontier implements. ³\$1,500 OFF or Fixed Rate of 0.0% for 60 months on 5D/5E Series 45-75 hp Tractors. \$2,000 OFF or Fixed Rate of 0.0% for 60 months on 5E Series 85-100 hp Tractors. Some restrictions apply, so see your dealer for complete details and other financing options. Valid only at participating US dealers.

BIP4X100626MJ-BV A0002KXBUZ59345

Senior Citizen News

The annual Oneita Wagon Senior Center Brisket Lunch will be held next week, on Friday, July 4.

The center will be open the morning of Friday, July 4, so come and play dominoes, eighty or just visit until parade time. Then at parade time, we will line the front of the center to view the parade.

After the parade, the special brisket lunch of brisket, potato salad, beans,

rolls, berry cobbler will be served, starting about 11 a.m.

Do not miss the lunch or the silent auction that is also being held for take-home desserts.

The senior center welcomes all out-of-town folks, especially those planning to

attend the Muleshoe High School class reunions, who are in for the Fourth of July celebration. Come and visit at the center.

Tuesday, July 1, will be the morning for Bunko, so Bunko players come to the center for some exciting Bunko games. The bell is ringing for you to come.

Then, of course, Thursday afternoon will be the weekly time for Bingo. The games of dominoes and eighty along with just fellowshiping together are every day events at the center.

Pick your favorite activity, and come and

participate. June 30 - July 4 menus:

Monday, Jun 30 — Chicken teriyaki, fried rice, seasoned vegetable blend, and strawberries and bananas.

Tuesday, July 1 — Salmon patties, scalloped potatoes, green peas, tossed vegetable salad, french dressing, wheat bread, and peach-apple crisp.

Wednesday, July 2 — Chicken-fried steak with brown gravy, scalloped potatoes, tossed vegetable salad, Italian dressing, green peas, and fruit salad.

Thursday, July 3 — Taco salad and corn

chips, seasoned corn, watermelon, and peach cobbler.

Friday, July 4 — Holiday, annual brisket lunch with silent dessert auction.



God made you a Limited Edition. Make Him Proud!!!

DISCIPLESHIP - 9:45 AM • WORSHIP - 11:00 AM
FIRST UNITED METHODIST CHURCH
507 W. 2ND

COMPOSTED CATTLE MANURE

Paco Feed Yard -- Hub
Cargill Cattle Feeders -- Bovina
Bovina Feeders -- Lazbuddie

BRANDON SCHILLING
Mobile 806-225-7700
OFFICE 1-800-650-2550

NORTH PLAINS COMPOST, INC.
PO BOX 789
BOVINA, TEXAS 79009

Whether you are a high school senior, or a senior adult... don't text and drive!!

BAILEY COUNTY DEVOTIONAL PAGE

ASSEMBLY OF GOD

FIRST ASSEMBLY OF GOD
Pastor A. David & Kathryn Snodgrass
521 South First Street
272-3017
S.S. 9:45 am,
W.S. 10:45 am & 6:00 pm,
Wed. 7:00 pm
EL BUEN PASTOR
415 E. Ave. F - 272-5455
Pastor Ruben Acevedo
272-4542
S.S. 9:45 am, W.S. 11 am & 6 pm; Wed. 7 pm

BAPTIST

CALVARY BAPTIST
1733 W. Ave. C.
Rev. Jeff Coffman
FIRST BAPTIST
220 West Ave. E
Dr. Stacy Conner
FIRST BAPTIST
Lazbuddie • 965-2126
PRIMERA IGLESIA BAUTISTA
223 E. Ave. E
Rev. Rosendo Lopez
PRIMITIVE BAPTIST
621 South First
Elder Bernard Gowens, Min.

PROGRESS BAPTIST
Progress, TX
PROGRESS SECOND BAPTIST

Arthur Hays, Min. - 1st & 3rd Sundays
RICHLAND HILLS BAPTIST
Bro. Larry Thornton
17th & West Ave. D
S.S. 10 am; W.S. 11 am
www.rhbc-muleshoe.org

CATHOLIC

IMMACULATE CONCEPTION CATHOLIC CHURCH
805 E. Hickory
Leonardo Pahamtang, Min.
EPISCOPAL - CHARISMATIC
ST. CLEMENTS CHURCH

Serve Wholeheartedly, as if you were serving the Lord, not men. (Ephesians 6:7)

MULESHOE ALLEY INC.
2601 W. American Blvd.
P.O. Box 631
Muleshoe, Texas
(806) 272-4266
Mobile (806) 946-8763
mviinc@fivearea.com

CENTRAL COMPRESS & WAREHOUSE

SUDAN, TEXAS

Muleshoe Journal

201 W. Ave. C, Muleshoe
OFFICE: 806.272.4536

Deaf Smith County Grain, Inc.

Cliff A. Skiles, Jr.
Jeb S. Skiles

Muleshoe Journal

www.muleshoejournal.com

201 W. Ave. C, Muleshoe
OFFICE: 806.272.4536
FAX: 806.272.3567

Slaves, Servants and Masters

(Solutions on A5)

C	Z	U	F	B	R	V	W	S	D	X	Z	Z	Y	R	A	Q	D	C	S
Z	C	C	F	L	T	A	A	O	M	O	L	W	A	G	L	K	T	P	A
R	X	S	U	I	D	R	H	K	H	V	S	F	B	V	A	K	G	U	N
Q	Q	A	C	Y	A	M	J	P	S	A	V	W	F	L	T	D	C	L	B
P	V	M	H	Z	L	H	A	I	U	Q	Q	H	A	H	G	N	M	N	
H	Y	V	B	C	P	A	U	T	T	M	U	P	B	B	Z	X	O	V	
R	I	I	A	G	R	W	N	A	M	L	O	I	R	T	S	B	I	Y	Q
R	O	D	E	O	M	J	Z	Z	S	L	P	P	S	N	K	B	D	M	S
A	S	L	A	S	P	I	S	P	H	G	Y	A	I	E	C	J	N	M	F
G	X	H	K	H	A	L	I	B	Z	Q	N	A	X	T	N	P	A	Z	G
A	D	X	L	F	C	X	M	L	N	F	X	I	D	K	H	O	M	I	K
H	W	F	S	V	N	A	C	A	H	X	W	R	K	I	I	J	A	L	H
I	R	A	W	B	H	O	Y	B	O	E	L	C	L	T	O	K	A	P	C
Y	D	D	Y	A	D	X	G	A	B	A	L	E	Q	S	V	M	N	A	P
W	A	O	R	W	G	E	D	N	B	I	M	I	E	V	E	Y	U	H	L
I	F	B	C	H	H	I	I	B	O	K	P	S	Q	Y	Z	S	M	P	
S	A	U	G	A	J	Q	Z	U	N	F	H	O	E	H	V	F	N	Z	A
A	X	X	Z	R	M	Q	B	O	S	C	F	L	G	C	A	X	J	F	O
A	B	I	M	E	L	E	K	D	M	Z	U	D	R	M	Z	I	N	J	J
C	H	R	I	S	T	J	T	I	A	Y	T	A	G	O	K	O	C	Y	R

Ziba	Pharoah	Onesimus	Gehazi	Zilpah
King Saul	Hagar	Philemon	Elisha	Laban
Joseph	Abraham	Bilah	Abimelek	Paul
Potiphar	Sarah	Naaman	Isaac	Christ

This devotional & directory is made possible by these businesses who encourage all of us to attend worship services.

COMMUNION OF CHRIST

THE REDEEMER
Hwy. 214 South • 272-5954
Father Sergio Leal
Sun. W.S. 10:30 am

CHRISTIAN TRINITY CHRISTIAN CENTER

1723 W. American Blvd.
272-3877

Reydon Stanford, Pastor
Sun. W.S. 10:30 am

CENTRO CRISTIANO

117 E. Birch St.
Hermanos Barron

S.S. 10 a.m.; W.S. 11 a.m. & 6 p.m.; Wed. 7 p.m.

CHURCH OF CHRIST

LARIAT CHURCH OF CHRIST
Wesley Roach, Min.

Muleshoe Journal

201 W. Ave. C, Muleshoe
OFFICE: 806.272.4536

To place your ad here call
Rhea at the Muleshoe Journal
806-272-4536



BOEHNING DAIRY

690 CR 45, Earth
"MILK - A PART OF EVERYTHING THAT IS GOOD!"

McDONALD'S OF MULESHOE

1315 W. American Blvd. • 272-3333
Open at 5 AM every day!



1412 W. American Blvd.
Muleshoe • 272-4213
Open: Sun.-Mon. 11AM-11PM
Lunch Buffet: Sun.-Fri. 11:30 AM-1:30PM
Monday Night Buffet: 6-8PM
PIZZA HUT WING STREET IS HERE!
"Gather round the Good Stuff"

S.S. 10 a.m.; W.S. 11 a.m. & 6 p.m.; Wed. 7:30 p.m.

LAZBUDDIE CHURCH OF CHRIST

Harrol Redwine, Min.
S.S. 9:30 am; W.S. 10:20 am & 5 pm; Wed. 6 pm

MULESHOE CHURCH OF CHRIST

22nd & W. American Blvd.
S.S. 9:30 am; W.S. 10:20 am & 6 pm; Wed. 7:30 pm

16th & AVE. D

CHURCH OF CHRIST

Curtis Shelburne, Min.
272-4619

S.S. 9:30 am; W.S. 10:30 am; Growth Gr. 1:30 pm; Wed. 7:00 pm

LUTHERAN

ST. JOHN LUTHERAN
Lariat, TX • David Symm, Min.



"THE FIVE AREA TELEPHONE COOPERATIVE, INC."

West Plains Telecommunications, Inc.
Five Area Systems, Inc. • Plateau Wireless
Five Area Long Distance • Five Area Internet
302 Uvalde Muleshoe, USA (806) 272-5533

McCORMICK SEEDS, INC.

400 East Ash • 272-3156
Muleshoe, Texas
A COMPLETE LINE OF FIELD SEEDS
Tim McCormick



MULESHOE ANIMAL CLINIC

GENERAL PRACTICE



1430 US Hwy. 84, Muleshoe Office: 272-3061

WAYNE COPLEY TRUCKING

CALICHE, SAND & ROCK PRODUCTS
P.O. Box 63 (806) 272-3697
Muleshoe, Texas 79347 Mobile: (806) 946-8072

Julie DeBruin,
AGENT
806-272-7548



1602 W. Amer Blvd.
Muleshoe, TX
79347

FARMERS INSURANCE

S.S. 10:30 am; W.S. 9:30 am

METHODIST

FIRST UNITED METHODIST

507 W. 2nd St.

S.S. 9:45; W.S. 11:00;

Praise & Prayer 6 pm;

First Sunday of Month

4 pm Parkview Nursing Home Service

Mon. 9 am Ladies Bible Stdy;

Tues. 6 pm Adult Bible Stdy;

Pastor Mindy McLanahan,
272-5517

LAZBUDDIE METHODIST

S.S. 9:30 am; W.S. 10:30 am

Pastor Ken Peterson
965-2121

EL DIVINO SALVADOR U.M.C.

619 E. 5th Street & Ave. G,
Fernando Sanchez, Pastor
272-6888

PENTECOSTAL

Iglesia Apostolica de la Fe en Cristo Jesus

207 East Ave. G

Sunday 1:30 pm

Wednesday 7:30 pm

INTER DENOMINATIONAL

NEW COVENANT

Plainview Hwy.

Steve Claybrook, Pastor

W.S. 10 am; Wed. 7 pm

MULESHOE COWBOY

FELLOWSHIP

710 E. American Blvd.

Steve Friskup, Minister
272-5199

Service: 7:30 p.m. Thursday

If you have changes to make to church information, please contact the Journal at 272-4536.

SHIPMAN'S BODY SHOP, INC.



410 N. First St. • Muleshoe, TX

Office: 806-272-4408 • Fax: 806-272-3366 • Night # 806-336-5422

MAPLE COOP GIN

927-5501

Maple, Texas

Lial's TORTILLA FACTORY

105 E. Ash St., Muleshoe • 272-5772

Phillipians 4; "I can do all things through Christ who strengthens me."



BAILEY COUNTY ELECTRIC COOPERATIVE ASSOCIATION

A Touchstone Energy Cooperative

Muleshoe — 272-4504 Morton — 266-8600

To Place Your Ad Here

Call Rhea At

Muleshoe Journal

806-272-4536 or
806-518-4606

Obituaries

John Dean

A future memorial service for John Kirkland Dean, 56, of the Woodlands will be planned in Lubbock.

Dean entered eternal peace at his home on May 14, 2014. He was born on Feb. 27, 1958, in Lubbock to Martin Kirkland Dean and John Anna Boyd Dean.

His grandfathers, John R. Dean and Hiley T. Boyd, Sr., were West Texas pioneers in both the cotton gin business and ranching.

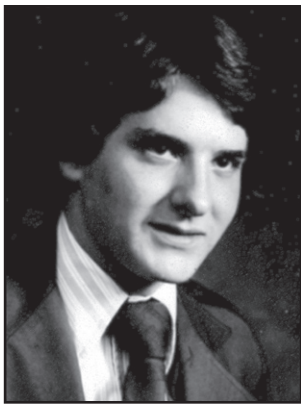
John grew up in Lubbock through early childhood and spent his later years in Muleshoe. He attended Muleshoe High School where he was active in the Order of DeMolay and stood out as a fierce competitor on the debate team. John received a bachelor of arts in communication from West Texas State University where he continued to excel in debate, his specialty.

As a young child, Johnny Dean was the mischievous little brown-eyed brother who was a novelty to his sister and her friends.

In later years, John was a favorite of his aunts and uncles with his witty and persuasive intelligence.

It was from countless hours spent with relatives listening to tales of family finding fame and fortune on the West Texas prairie (and it turns out that most were true) that John developed his lifelong interest in genealogy and an abiding love of family.

John is survived by



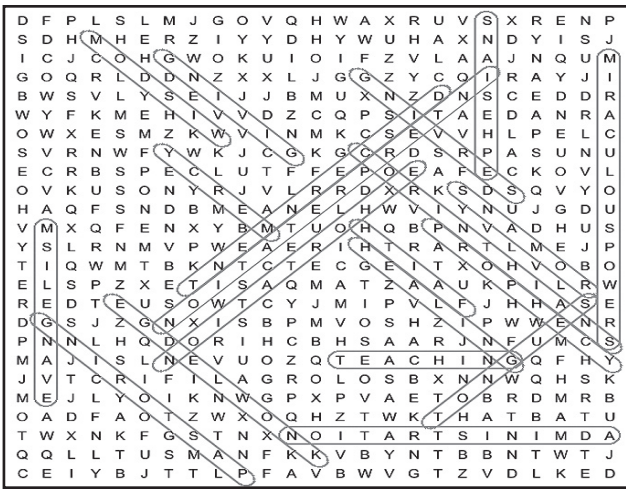
his beloved mother — John Anna; his sister — Dianna Dean Archer; nephew — Kirk; many devoted Boyd and Dean cousins; a cadre of loyal and supportive friends; and his faithful dachshunds — Honey and Scooter. The Woodlands was home to John for the past 30 years.

In this region, he pursued a roller coaster sales career primarily in the freight forwarding business developing a life-long pride in his profession.

John's neighbors have been wonderful during this transition, and his family is deeply grateful.

Memorials for John Dean may be sent to K-9 Angels Rescue of Houston or Dachshund Rescue of Houston.

Spiritual Gifts



Engagement



Thomas, Clark To Wed

John and Sandra Barnett announce the engagement and upcoming wedding of their daughter, Betty Lynn Thomas of Muleshoe, to James Joshua Clark, also of Muleshoe.

The prospective bride is employed as a radiology technologist at the Muleshoe Area Medical Center.

The prospective groom — who is the son of Gary and Brenda Clark, is a service technician at Livingston

Machinery Co. The wedding has been set for Thursday, July 4, 2014, at dusk in Muleshoe's West City Park.

MAHD Board Meeting Thursday

The Muleshoe Area Hospital District's board of directors is scheduled to meet in regular session on Thursday, June 6, at 6 p.m., in the dining room of the Muleshoe Area Medical Center.

Advanced Lube and Car Wash

**US DOT Inspections
Motorcycle Inspections • Flats
Car Washes • Minor Mechanical
Oil Changes**

502 N. 1ST • MULESHOE
272-5842 OR 946-7216

MULESHOE AREA HOSPITAL DISTRICT

Muleshoe Area Hospital District is proud to announce and welcome

Lindsay Johnson, PA-C



She is joining the practice of Muleshoe Family Medicine Clinic, 701 South 1st St. on July 1, 2014 and will work with Bruce D. Purdy, M.D.

Call 806-272-7531 for an appointment

Thank you for reading the Journal!

HARMON ELLIOTT SENIOR CITIZENS APARTMENT COMPLEX



LOCATED AT 901 W. AVE. K, MULESHOE HAS APARTMENTS AVAILABLE

- Apartments are extra nice & clean.
- Stove and refrigerator furnished.
- Water is furnished
- Grounds and all maintenance work, including yard maintenance, are included.
- Rental assistance is provided for qualified tenants.
- Handicap apartment available.

For more information or if you wish to look at an apartment, contact

RAQUEL POSADAS

806-272-5560 during business hours

TTY:1-800-735-2989

8:30 a.m. to 4:30 p.m.; Monday – Friday.

YARD OF THE WEEK



SALLY BUSTILLOS • 209 W. 5TH



Higginbotham Brothers

Serving Texas Communities Since 1887

1516 W. AMERICAN BLVD. • MULESHOE, TX
806-272-3351



The helpful place.

SHIPMAN'S BODY SHOP INC.

&



HAVE TEAMED UP!

410 N. First Muleshoe TX

HAIL REPAIR

PDR



The Sudan Buzz

Calling On The President To Act

I'm proud America has an honorable history built on legal immigration. But today we have a clear problem with illegal immigration.

More than 47,000 minors have illegally crossed the border into the United States in just the past five months. This number is up 815 percent from 2011.

And according to the Obama Administration, the problem will just keep growing.

This surge in illegal activity isn't a coincidence. It's the direct result of the Administration's failure to enforce our immigration laws.

They've insisted our border is secure — but if even children can find the holes, are we really protected against drugs, criminals, disease, and worse?

In Texas, we're seeing the effects of this border breach every day.

We're owed an explanation of exactly how the Administration is working to address the growing risk in our backyard.

Last Friday, I sent a letter to the White House with my fellow Texan Reps. Conaway and Thornberry, our neighbors to the north and south, urging the Administration to address the influx of illegal immigrants into Texas.

Communities throughout Texas deserve a safe and secure border. I hope the Administration will begin to work with

Cattle...

Continued from A2
Plains, 88 percent of the state's total. The number on feed across the area was down two percent from last year but up five percent from the May 1 total.

May placements in the Northern High Plains totaled 508,000 head, up 37 percent from the April total.

Marketings were down three percent from last month at 400,000 head.

Cattle and calves on feed for slaughter market in the United States in feedlots with a capacity of 1,000 head or more totaled 10.6 million head on June 1.

This inventory was down two percent from June 1, 2013.

Placements in feedlots during May totaled 1.91 million head, seven percent below May 2013.

May placements of cattle and calves weighing less than 600 pounds totaled 435,000 head; 600-699 pounds totaled 290,000 head; 700-799 pounds totaled 477,000 head; 800 pounds and greater totaled 710,000 head.

Marketings of fed cattle during May totaled 1.87 million head, four percent below 2013.

RANDY'S ROUNDUP

UPDATE BY CONGRESSMAN RANDY NEUGEBAUER

Congress to enforce the laws on the books, and to secure our border once and for all.

Evidence of IRS' Lois Lerner Abusing Power Lost?

It's been more than a year since we found out about IRS discrimination against groups that don't share their political views, and I'm still outraged at the Administration's abuse of power.

We've been doing everything we can in the House to get to the bottom of this and restore fairness in our nation's tax system. But as you've probably heard, IRS officials aren't doing their part to comply.

They claim that because of a computer crash, the exact emails we need to prove Lois Lerner's involvement in targeting conservative groups have been lost. But that doesn't add up. Laws require all federal agencies to back up their emails. And the IRS had a contract with a file-storage company for this very purpose. So why won't they turn over Lerner's emails?

And would the IRS

allow us taxpayers to use the same 'my dog ate my homework' excuse when tax season rolls around? I doubt it.

We're taking an aggressive approach to sort out the facts.

The House is pressing for interviews, briefings, and a Department of Justice investigation.

The Oversight Committee will hold hearings tonight and tomorrow to gather more information.

Unfortunately, this is the beginning of yet another investigation into foul play at the IRS.

We'll continue to hold the Administration accountable, at the IRS and across the federal government.

Reducing Regulatory Burden on Farmers and Ranchers

To plan ahead in the uncertain world of farming and ranching, many rely on the futures and commodities markets to protect against risk associated with their business.

But Washington keeps making it harder and harder for farmers and ranchers to get by.

Emergency Grazing Of CRP Acres Authorized

Bailey County USDA Farm Service Agency (FSA) Executive Director, Mark Tucker has announced that Bailey County was authorized for emergency grazing use of Conservation Reserve Program (CRP) acres for fiscal year (FY) 2014.

If there is a need for emergency grazing, each local FSA Office must request approval from the Texas FSA State Committee.

Currently, 59 counties have received emergency grazing approval.

The 90-day emergency grazing period for these counties will end Sept. 11.

Based on a policy decision made by the Texas FSA State Committee, CRP acres grazed during fiscal year 2012 or 2013 will be considered eligible for emergency grazing if NRCS verifies, on a case-by-case basis, that the conservation cover will sustain grazing.

"Eligible producers who are interested in emergency grazing

of CRP must request approval before grazing eligible acreage and must obtain a modified conservation plan from the Natural Resources Conservation Service that includes grazing provisions," said Tucker.

"Current provisions allow grazing on 100 percent of a field, up to the 75 percent stocking rate," he said.

There will be no CRP annual rental payment reduction for 2014 emergency grazing authorizations.

To take advantage of the emergency grazing provisions, authorized producers can use the CRP acreage for their own livestock or may grant another livestock producer use of the CRP acreage.

The eligible CRP acreage is limited to acres located within the approved county.

For more information and to request approval for emergency grazing use of CRP acres contact the Bailey County FSA office at (806)272-4538.

This week, the House is expected to vote on a bill to reauthorize and improve the Commodity Future Trading Commission (CFTC).

The Customer Protection and End-User Relief Act will reform the CFTC to make it more accountable to you.

It will give our farmers and ranchers the freedom to hedge against risk, grow their business, and create more jobs.

I look forward to supporting this bill when it comes up for a vote this week.

SUDAN VETERINARY SERVICES

S&S

CHRIS LARSON D.V.M.

♦Specializing in Dairy Medicine♦
 ♦Small Animal & Equine♦
 ♦Same Day Minor Surgery♦
 ♦Farm & House Calls♦
 ♦Climate Controlled Boarding♦
 ♦Services by Appointment Only♦

1704 East Hwy. 84 • Sudan Tx

806-227-2444 806-241-1915

KING AG AVIATION, INC.

Specializing in Aerial Spraying - Insecticide, Herbicide & Seeding - Field Scouting Service

Johnny King Home (806) 227-2211
 P.O. Box 189 Fax (806) 946-3659
 Sudan, Texas 79371 Mobile (806) 946-7309
 Business (806) 946-3399 Vernon Office (940) 552-6102



SPEAKING
from the heart

"What matters most to our patient is what matters most to me."

Accolade Occupational Therapist,
Charles Torres

At Accolade, we believe that all patients in our care should have expert medical care tailored specifically to their needs in a setting that they love best – their home.

You can count on experienced nurses, therapists and aides from Accolade Home Care to provide the highest quality care you need whether you are learning to live with a chronic illness or recovering from surgery while maintaining your independence.

No matter what medical challenges you may be facing – with Accolade you are not alone.



Morton
806-266-0022

Visit us online at AccoladeHomeCare.com

*No waiting in line call and make appointment!
All we need is your insurance estimate and auto.*

WILLIAMS BODY SHOP

WE WORK WITH ALL INSURANCE COMPANIES.

- Hail Damage/Body Repair
- Paintless Dent Repair

On request, our roll back wrecker will pick up your car or pickup and return it like new.

PHONE: 806-385-4577
CELL: 806-928-9399
1028 WAYLON JENNINGS BLVD.
LITTLEFIELD, TX

SUDAN ISD

EXCELLENCE

IN

EDUCATION



WWW.SUDANISD.NET

Hwy. 303 PHONE: (806) 227-2431
SUDAN, TX 79371 FAX: (806) 227-2146

We Always Answer Your Call

24/7!

CROP HAIL INSURANCE




Don Dixon Plainview Office
806-296-2782 Cell: 806-367-0121

Rachel Myers Amarillo Office
806-418-2641 Cell: 806-640-2089

Dustin Cleavinger Muleshoe Office
806-272-4271 Cell: 806-315-0735

CLASSIFIEDS

Deadline is Monday at noon to place a classified ad. Call 272-4536.

LEGAL/PUBLIC NOTICE

Public Notice is hereby given that South Plains Community Action Association Head Start and Early Head Start intends to destroy records of students who received special education and/or related services during 2007-2008. Records here in described include students receiving special education and/or related services in Brownfield, Denver City, Crosbyton, Floydada, Littlefield, Levelland, Lorenzo, Lubbock, Lorenzo, Morton, Muleshoe, O'Donnell, Olton, Plainview, Post, Ropesville, Slaton, Smyer and Sudan. Legal guardians of students with disabilities may upon request receive copies of records at SPCA-Head Start located at 410 Houston, Levelland, Texas 79336 during regular business hours.

Applicants must be willing to perform all of these responsibilities. Work schedule will include 1 & 1/2 days off on most weeks and hours will average 50-60 straight wage no overtime. Position offers full benefits package including 401K and Health Insurance. Interested applicants should apply in person at Cargill Cattle Feeders, 600 US HWY 60, Bovina, Tx 806-225-4400

Muleshoe Area Hospital District is taking applications for a Medical Assistant. Experience in a clinic is helpful. Please contact the human resource department at 708 S. 1st St., Muleshoe, Texas 79347 or email a resume to snichols@mahdtx.org

AUTO

2004 Dodge Stratus- Wreck on left rear. Very good motor, transmission & transaxle. Interior in good condition,

and good tires. Will sell whole car only, no parts. Asking \$1000. 806-272-4156

HOUSE FOR SALE BY OWNER

House For Sale by Owner- One of the Oldest English Tudor Style homes in Farwell. Unique in appearance & originality. 700 3rd Street. 3 Bedroom/ 2 Bath/ 2 Car Garage/Separate Apartment in Back, 2400 total sq.ft. Red brick, Wood Shake Shingle roof, 7 ft concrete block privacy fence, central heat & air, wood floors/carpet, tile bathrooms, underground sprinkler, covered front porch, unfinished basement, Backyard Adventure playhouse/swing set, separate fenced side yard play area, large shade

trees surround the property. Shown by appt. only. Call 806-946-8968.

SERVICES

Will do small area shredding. Call Ronnie 806-240-2113

SERVICES

Available Part-time Tractor Diver, also lawnmower repairs. Call 806-946-8798 or 806-272-5229.

REAL ESTATE

Sale or Lease- 4 City Lots with a Shop. 15K or Lease \$450/mo. Located 1020 S. Main Muleshoe, TX. Call 337-397-2456 or 337-348-1797.

HAVE A HOUSE TO SELL IN A SMALL TOWN?

I pay cash for your house. Call for a free quote today. Keith 806-317-8187.

Scott Land co, LLC

FOR SALE - USED - 1998 T & L Hydraulic drive 16 - Tower, 1/2 mi. sprinkler system, 60' spacing, 38' tires, located S. of Dimmitt, Texas, in good condition!

Ben Scott Jr. - 800-933-9698

HELP WANTED

TMC TEACHING & MENTORING COMMUNITIES

TMC provides center-based, full day Head Start services to eligible migrant/seasonal children and their families at five center in the Panhandle. Full-time positions are eligible to participate in medical, dental, vision, and life insurance. All positions are eligible to participate in 401k plans.

The Muleshoe Texas center currently has the following openings:

- Preschool Teacher
- Infant Toddler Teacher
- Teacher Aide
- Bus Aides
- Bus Driver/Custodian
- Family Service Advocate

Minimum Qualifications:

Teacher - AA/BA in Early Childhood Education or Child Development or AA/BA in related field (related field is defined by the Head Start Act of 2007 is a degree with 18 credit hours equivalent in Early Childhood Education).

Teacher Aide - High School Diploma AND Child Development Associate credential (CDA Preschool or ECC) that will be completed within one year, or be enrolled in a program leading towards an AA or BA degree in Early Childhood Development.

Bus Aide - Experience working with preschool children in a Head Start program or day care setting. Must be 18 years of age and be able to read and write English and Spanish.

Bus Driver/Custodian - Must have valid Commercial Driver's License (CDL) for at least six months in the state of employment with required endorsements, P and S. Must be at least 21 years of age.

Family Service Advocate - High School Diploma or GED. Two years experience working in a social service agency. Bilingual in English and Spanish.

Applications received via email, FAX, or mail to Western Regional Office

Coral Mabie, HR Manager
6104 45th Street, Suite A
Lubbock TX 79407
806.763.4187 (P)
806.763.9136 (F)
coral.mabie@mail.tmccentral.org

HOUSE & 80 Hot tub, ACRES FOR A bundant SALE 3-2-2 Brick Trees, Large RanchStyleHouse, Treehouse, 36x60 2428 sq ft, Large shop, Zimmatic Multipurpose Rm Sprinkler. 5 w/FP, Geothermal miles West of central heating/ Muleshoe on West cooling, Tile Camp Rd. Jimmy Floors, Indoor Wedel 946-7011.

REAL ESTATE

Very nice 3/2/2 with 2 living areas + sunroom 1800 sq. ft. \$119K in the heart of Muleshoe. Call Eve @ 806/777-0817

Eve Darling, Broker

TRIANGLE REALTY
Triangle Realty, LLC
(806) 367-8334
info@trianglererealtyllc.com

- **NEW LISTING:** 122 SW 1st EARTH: 3/2 WITH TALL DOUBLE CARPORT, BRICK HOME ON CORNER LOT. 2 LIVING AREAS, FENCED BACKYARD, SHOP, STORAGE. NEAT AND MOVE IN READY.
- **118 SW 2ND, EARTH. 4/3/4--MAKE AN OFFER.** Call Phyllis: 806-685-1543.
- **PRIME FARMLAND IN LAMB COUNTY, TEXAS!** 53 1/2 ACRES, TWO 1/4 MILE PIVOTS, FOUR WELLS ON PROPERTY - ALL TIED TOGETHER - 500 GALLON MINUTE COMBINED, PER OWNER. 40x50 METAL SHOP, CATTLE SCALES, WORKING CHUTE, AUTOMATIC WATERS, PIPE/CABLE WORKING PENS. FIVE-STRAND BARBEDWIRE FENCED AND CROSS-FENCED AROUND PROPERTY. CALL: JT - 806/681-3421.

Byrd Realty
Ronald Byrd 575-760-1495 Licensed Broker
Crista Bass 806-946-7261 Sales Associate
Carleton Johnson 806-789-4289 Sales Associate

- **NEW LISTING- 3 BEDROOM, 1 BATH HOME, BUILT-INS, WOOD FLOORS, LARGE LAUNDRY ROOM THAT ALSO COULD BE AN OFFICE OR PLAYROOM, CARPORTS, DETACHED GARAGE, CLOSE TO JR. HIGH AND HIGH SCHOOL, ALL ON CORNER LOT, PRICED TO SELL.**
 - **NEW LISTING- NICE 2 STORY 3 BEDROOM, 2 BATH HOME, CENTRAL AIR AND HEAT, FIREPLACE, LARGE KITCHEN WITH LOTS OF CABINETS, SPRINKLER SYSTEM, DOMESTIC WELL, SINGLE CAR GARAGE WITH WORKSHOP, STORAGE BUILDING, JUST OUTSIDE CITY LIMITS ON HIGHWAY, ALL ON APPROX. 1.27 ACRES.**
 - **NEW LISTING-NICE 3 BEDROOM, 2 BATH BRICK HOME, CENTRAL AIR AND HEAT, FREESTANDING FIREPLACE, STOVE, DISHWASHER, FENCED BACKYARD, GREAT HOME FOR A GREAT PRICE! ONLY \$79,000.00.**
 - **JUST LISTED COUNTRY HOME ON HIGHWAY- NICE 3 OR 4 BEDROOM, 2 BATH HOME, NEW CENTRAL AIR AND HEAT UNIT, SEPTIC SYSTEM, FIREPLACE, LARGE DEN, LOTS OF STORAGE, GARAGE, 2-CARPORTS, EXTRA BUILDING WITH BATHROOM, FENCED YARD, METAL ROOF, CELLAR, PLUS A LOT MORE, ALL ON 1.24 ACRES. CALL FOR AN APPOINTMENT TODAY!!**
 - **PRICE REDUCED MOTIVATED SELLER!!-VERY NICE 3 BEDROOM, 1 3/4 BATH BRICK HOME, CENTRAL AIR AND HEAT, ELECTRIC STOVE IN LIVING ROOM, BUILT-INS, WOOD SHUTTERS, ITS OF STORAGE, ALL ELECTRIC, UTILITY ROOM, 2 CAR GARAGE, SPRINKLER SYSTEM, FENCED BACKYARD, WALK-IN ATTIC SPACE, ALL ON CORNER LOT.**
 - **NEW COMMERCIAL LISTING- PRICE REDUCED. APPROX. 2240 SQ. FT. BUILDING ON MAIN HWY. 84- CENTRAL AIR AND HEAT. THIS IS THE HENRY NAILS BUILDING, ALSO HAS 150 X 90 ASPHALT PAVING. GREAT LOCATION!!**
 - **475 ACRES NW OF MULESHOE- 5 WELLS, 3 CIRCULAR SPRINKLERS. LAYS WELL, 2 ADDITIONAL COUNTRY HOMES INCLUDED. REASONABLY PRICED!! CALL FOR DETAILS!!**
 - **COUNTRY CLUB ADDITION- VERY NICE 3 BEDROOM, 2 BATH BRICK HOME, FIREPLACE, BUILT-INS, ALL ELECTRIC, CENTRAL HEAT AND AIR, LARGE UTILITY, 2 CAR GARAGE, SPRINKLER SYSTEM, FENCED BACKYARD, ACROSS FROM THE COUNTRY CLUB ON CORNER LOT. CALL FOR MORE DETAILS.**
 - **ONLY \$67,900.00-3 BEDROOM, 2 BATH BRICK HOME, CENTRAL AIR & HEAT, APPLIANCES, SINGLE CAR GARAGE, FENCED BACKYARD. PRICED TO SELL.**
- 228 MAIN STREET, MULESHOE, TEXAS**
CHECK ALL OF OUR LISTINGS AT www.byrdrealestate.net

NIEMAN REALTY

116 E. AVE. C • GEORGE NIEMAN, BROKER • 272-5285 OR 272-5286
CHECK OUR LISTING INFO., PHOTOS, ETC. ON-LINE AT WWW.NIEMANREALTY.COM
HAVE BUYERS? NEED HOME AND LAND LISTINGS!!

HIGH SCHOOL AREA

- 3-1.5-1 carport Home, Cent. A&H, stove thermal windows, "AS IS", MAKE OFFER!! \$47K!!!
- 5-3-2+2 carport home, Cent. Air & Heat, approx. 3124' lv. area, FP in den, WB stove in lv. area, 2 large workshops, stor. bldgs., +1 bdrm aptmt., corner lot, MUCH MORE!! \$140,000!! \$120K!!
- 3- 2 1/2 - 2 carport HOME, corner lot, 2301' living area!! \$80K!!! REDUCED \$72K!!
- Nice 3-2-2 Home, approx. 1974' lv. area, built-ins, corner lot, workshop/storage, fenced yd. MORE!! \$80K!!

RICHLAND HILLS • PARKRIDGE • HIGHLAND

- NICE 4-4.5-2 Brick Home, Cent. A&H, Built-ins, FP, Fans w/lights, basement, auto. spklr., fenced yd., cov. patio, Approx. 3084' Lv. Area!! \$180K!!
- VERY NICE 3-2.5-2 Brick Home, Cent. A&H, built-ins, FP, approx. 2749' lv.area, lots of storage, nice courtyard & landscaping, workshop/storage/ fenced yd., Much More!! **Reduced-\$155K!**
- 3-2 BDRM. DUPLEX UNITS, TOTAL ELECTRIC!! \$180K!!!
- 2-1 Home, wall furnace heat, window evap. air!! \$30,000!!!
- CUSTOM BUILT 3-2.5-2 Brick Home on corner lot, 2608' lv. area, built-ins, FP, covered patio w/ grill, fenced yd., auto spklr., numerous amenities!! \$270 K!!
- VERY NICE 3-2-2 Brick Home, Cent. A&H, Built-ins, FP, thermal windows & doors, approx. 1876' lv. area, workshop/storage, fenced yd.!! \$119,500!!
- NICE 3-2-2+2 carport Home, corner lot, Cent. A&H, built-ins, ceiling fans w/light kits, storm doors, & windows, covered patio, tile block fence, auto. spklr., workshop/storage. MUCH MORE!! \$135K!!
- NICE REMODELED 3-2-2 BRICK HOME, Cent. A&H, Built-ins, new carpet & tile, & countertops, new paint, approx. 1907' lv. area, cov. porch & patio, fenced yd., workshop/storage!! \$139,500!!

HELP WANTED
Park View Nursing Care Center
Seeking LVN'S for Day & Night Positions. 12 hour shifts.
Contact Yolanda at 272-7578

REAL ESTATE

Vic Coker Land Co.
Agricultural Real Estate
FARMLAND/INVESTMENT

CASTRO AND LAMB COUNTY- 753 ACRES IRRIGATED FARM ALL CONTIGUOUS, 5 CENTER PIVOT SPRINKLERS, 10 IRRIGATION WELLS, 2 BARN, CATTLE PENS, ON PAVEMENT.

BAILEY COUNTY/BULA AREA- 159 ACRES DRYLAND FARM, GOOD SOIL, SUDAN SCHOOL DISTRICT.

BAILEY COUNTY- 152 ACRES, 2 IRRIGATION WELLS, 1 CENTER PIVOT SPRINKLER, ON PAVEMENT.

BAILEY COUNTY- 2500 ACRES RANCH WELLS, DIVIDED INTO 4 PASTURES/HOME WITH OTHER IMPROVEMENTS, WITH FENCES.

PARMER COUNTY- 155 ACRES IRRIGATED FARM, GOOD SOIL, LAYS GOOD, 1 CENTER PIVOT SPRINKLER, 2 IRRIGATION WELLS WITH SUBMERSIBLE PUMPS.

BAILEY COUNTY- WEST CAMP AREA, 320 ACRE DRYLAND FARM, WITH NICE HOME AND METAL SHOP. 3BDR/2BTH HOME WITH FIREPLACE, LOCATED ON PAVEMENT.

BAILEY COUNTY- 160 ACRE IRRIGATED FARM IN WEST CAMP AREA. WITH CENTER PIVOT SPRINKLER, 3 WELLS, LOCATED ON PAVEMENT.

BAILEY COUNTY- 105 ACRE FARM WITH CENTER PIVOT SPRINKLER. 2 WELLS, CATTLE PENS, PARTIALLY FENCED, ON PAVEMENT.

RURAL RESIDENTIAL

MULESHOE- 3 BEDROOM, 1 3/4 BATH, 2 LIVING AREA W/ FIREPLACE, UPDATED NICELY, STORAGE BUILDING, BACK YARD PATIO, GREAT NEIGHBORHOOD.

EARTH- LARGE ROCK HOUSE, 3 BEDROOM, 3 BATH, FORMAL DINING, LARGE FINISHED BASEMENT, CENTRAL H&A, ON FIVE ACRES.

BAILEY COUNTY- COUNTRY HOME ON 14 ACRES. 3 BDR., 2/3 QTR BATH, 2 LIVING AREAS, FIREPLACE, LARGE INSULATED METAL SHOP, LIVESTOCK/HORSE CORRALS, ON PAVEMENT.

PARMER COUNTY- NICE HOME ON 7 1/2 ACRES, 3 BDR, 2 BTH, BASEMENT, 3 CAR GARAGE, LARGE METAL SHOP, ON PAVEMENT.

Vic Coker, Broker Call 806-946-7242
Barry Coker, Agent Call 806-787-0917
316 Main Street • Muleshoe, Texas
Office: 806-272-3100 • www.vicoland.com

Medwards REALTORS
FARM & RANCH RESIDENTIAL COMMERCIAL

LAND
King County - REDUCED!
320 Acres, Excellent hunting and scenic views. Has Turkey, quail, dove whitetail deer and wild hogs. 2 Trail Homes Included. 3200 CR 352

COMMERCIAL
Springlake / Earth
Springlake Feed Yard For Sale - Permitted for 10K Head of Cattle, 5000 Ton Silage. Located on Hwy 70 4 Miles W. Of Earth Texas.

RESIDENTIAL
Earth
New Listing - Nice & Clean! 2/2/1
371 FM 1055 \$77,750

Littlefield
Beautiful & Well Maintained - Updates Throughout 3/2/2 125 E. 25th \$139,500

Sudan
Big and Roomy With 10 Acres!
4/3/2 FM 298 \$298,000
Nice Neighborhood - Great Location!
3/1.5/1 406 Wilson Street \$54,000

Vernie Moore REALTOR® 806.543.9347
Clint Jones REALTOR® 940.256.0069

Rhonda Severin REALTOR® 806.470.0524
Mitch Edwards REALTOR® 806.777.4168

Monty Edwards
Broker/REALTOR®
806.786.5426
806.686.6371 Office
MEDWARDSREALTORS.com

HELP WANTED

2 temp positions: Ag. Equipment Operator, 08/05/14 to 12/31/14. We offer \$13.41 p/hr at the time work is performed. Housing provided, 48 hrs p/wk. 3/4 guarantee, and transportation and subsistence expenses to worksite paid after 50% completion of contract. Tools, equipment provided at no cost. Duties: drive, plant, harvest, store grain, repair operate tractor, rock picker, plow, disc, drill, harvest equip, sprayer, grain truck. Must be able to list 50 lbs. Minimum 3 months experience. Hoffman Farms, Dupree, SD. Interested? Apply at nearest SD Workforce Agency, or call 605-773-3372, job order #1654047.

Paco Feed Yard LLC is looking to hire a mechanic and a feed truck driver. Apply in person.

Cattle Department Cargill Cattle Feeders, LLC Bovina, Tx Cattle department responsibilities include processing cattle, doctoring, shipping, riding pens, and other duties as assigned.

CONTRACT

• NICE 4.8 acre homesites, deed restricted!! \$17,500!!

• NICE 3-2-2 Home on 11 acres at edge of town, Cent. A&H, built-ins, FP, freshly painted interior, thermal windows & doors plus 1 bdrm house, workshop, storage, greenhouse, plus 3 garages, barns & outbuildings!! \$455,000!! \$135,000!!

• FM 1760 @ edge of town, nice 3-2-2 carport home on 3 acres, cent. A&H, built-ins, FP, approx. 2253' lv area, fenced, horse barn w/corrals, hay & tack room!! \$105K!!!!

• FM 303-4 Bedroom, 2 Bath, 2 Det. Garage, 2 acre tract, Par. Cent. A&H, Dw, disposal, thermal windows, storm doors, fans, stor. bldg!! \$80!! \$69,500!!

• STEGALL 3-2-2 Austin Stone Home on 3.67 acres, Cent. A&H, built-ins, gas log FP, approx. 3064' living area, workshop/storage, 24'x36' metal shed, MORE!! \$125K!!

• MAPLE - 3-2.5-2 Brick Home on 2.48 acres, Cent. A&H, built-ins, gas log FP, approx. 2557' lv. area, (garage enclosed), storage unit!! MORE!! \$65K!!

LAND & COMMERCIAL

• Approx. 1080' metal bldg. w/off. & 3 bay garage/ workshop area plus chain link fenced area!! \$39,500!!

• GREAT BUSINESS LOCATION - 13000' Bldg., 7000' paved parking, corner lot, Hwy. 84 & Main. A&H, \$100,000!!! **Price Reduced \$60,000!!**

HAIL DAMAGE?

Vehicle Pick-up and Delivery at Home or Work

- **BBB A+ Rating**
- **100% Satisfaction**
- **References Available**
- **Premium Service**
- **National Warranty**
- **1-4 Day Service**
- **Rental Cars Available**
- **No Long Waiting Lists**

**FREE
ESTIMATES**



CLOVIS, NM • 575-763-4444
620 E LLANO ESTACADO BLVD.
PLAINVIEW, TX • 806-293-8888
2603 OLTON RD



United States Department of Agriculture
National Agricultural Statistics Service

Texas Milk Production

Issue No.: PR-130-14, June 18, 2014

Southern Plains Regional Field Office • Post Office Box 70 • Austin, Texas 78767 • 800-626-3142 • www.nass.usda.gov/tx

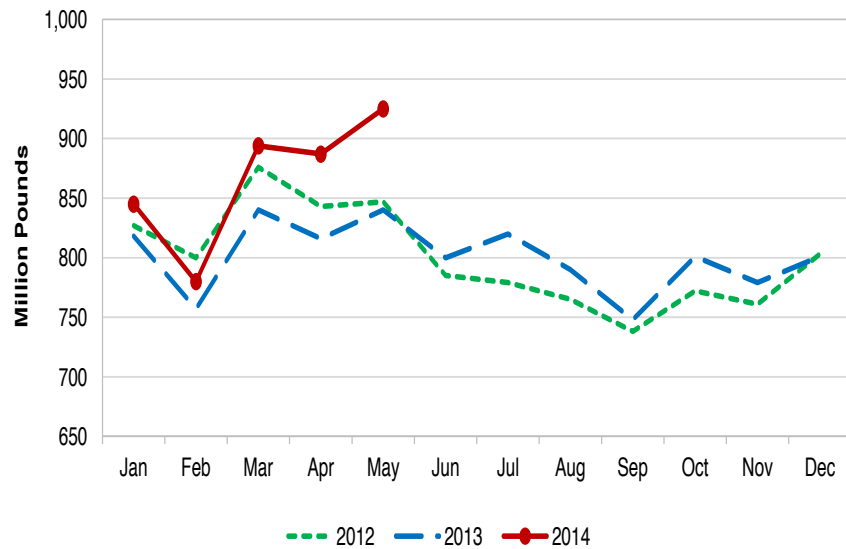


Contact: Kim Dapra or Jason Hardegree

Texas milk production totaled 925 million pounds during May 2014, up 10.1 percent from last year's production of 840 million pounds. April 2014 production totaled 887 million pounds.

The number of milk cows during May averaged 460 thousand head, up 5 thousand head from the April 2014 number. Production per cow averaged 2,010 pounds during May, 60 pounds higher than April 2014.

Texas Monthly Milk Production



U.S. Highlights: Milk production in the 23 states participating in the monthly survey totaled 16.9 billion pounds during May 2014, up 1.5 percent from production in these same states during May 2013. April revised production, at 16.3 billion pounds, was up 1.4 percent from April 2013. The April 2014 revision represented an increase of 27 million pounds or 0.2 percent from last month.

Production per cow during May averaged 1,976 pounds. This is the highest production per cow for the month of May since the 23 State series began in 2003. The average number of milk cows in the 23 states was 8.55 million head, 10 thousand head higher than last month.

NASS provides accurate, timely, useful and objective statistics in service to U.S. agriculture. The Agency invites you to express your thoughts and provide occasional feedback on our products and services by joining a data user community. To join, sign in at <http://usda.mannlib.cornell.edu/subscriptions> and look for "NASS Data User Community".

Link to U. S. Report: <http://usda.mannlib.cornell.edu/MannUsda/viewDocumentInfo.do?documentID=1103>

Link to USDA-NASS website: www.nass.usda.gov

JUNE IS
NATIONAL DAIRY MONTH

We join the rest of the nation in celebrating June as National Dairy Month. And we salute the dairies who have chosen to call West Texas home and thank you for the shot in the arm you've given our local and area economy!

Let Us Be Your One-Stop Communications Provider

THE FIVE AREA ORGANIZATION

Five Area Telephone Cooperative, Inc. - West Plains Telecommunications
Plateau Wireless Network - Five Area Systems - Five Area Long Distance
fivearea.com "Your Local Internet Provider"

302 Uvalde - Muleshoe, Texas
806-272-5533 or 1-800-741-6925
fivearea@fivearea.com

SUMMER of SHAKES

WITH 25 HAND-MIXED FLAVORS, IT DOESN'T GET ANY SWEETER

ORED® Cheesecake	Lemon Pie
ORED® Chocolate	Strawberry Cheesecake
ORED® Peanut Butter	Cheesecake
ORED® Caramel	Cookie Dough
Salted Caramel	Vanilla
Jalapeno Chocolate	Chocolate
Chocolate Hazelnut Cream	Strawberry
Peanut Butter	Caramel
Peanut Butter Fudge	Hot Fudge
Peanut Butter Caramel Pie	Pineapple
Chocolate Cream Pie	Fresh Banana
Banana Green Pie	Strawberry Banana
Coconut Cream Pie	

SONIC Enjoy 1/2 Price Shakes After 8PM All Summer Long!



Giving strength...

Growing strong...

Published by the
Muleshoe Journal ©2014

Dairy Salute advertisers
word search... page 2

B S D E E S K C I M R O C C M U L E S H O E C H A M B E R O F C O M M E R C E S
W Q X V R N J E C U Y B W L T H N Z B X J K D M T Y W Z D Q Q C P R I R X I E S
H O D H F E Y D Z U W D D Z O V N O J K M J F E C F Y B F X B Q H L U D Q N E B
H Y Q E B O O I I C L Z M X V Z T J U Z Q F Y M C C S K V C M I V G P X L I B Z
J H Q L Q N E Y S N S W U R E T T U R D N A N O S N I K T C A E G D I R D L A V
E U J A A Y Y D I I Y F D U Z X D K Z F V N W S W P W V V B M U K X Q C Z C I Y
E Z C L V N F Z R J F Q E B V Y G S R V B E K N T T X W V Y N F G C I X B L S I
U M D C Q O A D R T Y Y W I K B H L T X J T O A A R I J K J V O I L P W D A X R
N S F S A O M B I A G F H J E Z Y X V Z A A O B M X A Z S P U Y W S X D I M O V
M G D S Q C Y N G A Q P K H Y L B G H D B C L A S Q I P J F U M Y V Z O H I D W
A W N Q I F P B A I L E Y C O U N T Y E L E C T R I C C O O P Q R H M W A N C G
T L R A B I M O T C N I Y E L L A V E O H S E L U M R S E T A G K E S C E A W A
G K K Z L V K I I I U T J P E A W H H W S N C N K U N S J C U K N Y Q S P E P X
Y C C T V E L H O N E E Q X P P Q N S J K Q W S S L X D V U T A O F M P U O D K
O O B T V A I W N O K T X E E P I K O I U I O Q I E R N U E A S K J N K D H C B
Q Z G V E R V L P S Y G S Y Y G Z N O W L R X O X S I F B U D Z C W G M Z S O W
I R C N B E I E U T G I H D J Q E Q O S P H C C N H E J U J T A W M A X V E J L
E O D N X A N A M K R S H N Q X Z H O E B A U L O O V J O N N N X U W H K L W B
A M K P G T G L P T P Q Q V A L L N R I J O C U E E A B K E M O A L B K O U B B
O C H Y X E S S S W T Z M I E I D I O Q I A V Q N A X I N J F I R E A K P M X Z
Y R Y J D L T R A O A W D U P R T P V D M M V J S B A W Q Y Y P G S Y F B L L P
R J O L W E O E N M K J Z E I S L V A X K O T D K S N O D F S M K H Z S O F O T
K D L R E P N S D F U N F L K D I I J F Q A E G S T K Y X X G H O O Z G V K H M
H F A V Z H M T P O W B L R G I R U P L S B X D W R I H H C D W H E Q Z N J A R
C T L V E O A A O D K I O K R Y C C L J Z F K Z E A N U W G L T E J K G A J L M
D D M O N N C U W H N W O H D K R E E M M E L A Y C G T K F Q A X O Z Z X J M T
Z R M Z H E H R E G E V Z I F T B L G G T B B R Y T S N U F O N A U W G O W F X
J Q Y X R C I A R R V Y R E C N A R U S N I G A S N I A L P T A E R G B F C H L
C A P G Q O N N I P H E R E F O R D F E E D I N G R E D I E N T S N E L H G Y J
S X P J B O E T N P C B J E Y Y D W K U F L H F C G C Q H H M M U A V E G S B J
H W K Z R P R O C T N E M P O L E V E D C I M O N O C E E O H S E L U M K A A P
C B P K J J Y G H O Z M O L Y U Q C N V I Z D J A M C A K U U E R I M J P D F H
L K F A H G W S S O J E S M X Y A T C U O B T S C F U H E O B B T Y O G I H O D
V R D G T B F T O K E Q D J R Q W V U J E O U U G V B O S Q Z P D N I P W W K Q
D O D M D W M F N L K C M R E I P O A F U T O M N A W E D D P H E B J S X M W C

Dairy Salute Advertisers... Page

- Muleshoe Valley Inc... 3
- Irrigation Pumps and Power Inc... 5
- Leals Restaurant... 9
- Muleshoe Animal Clinic... 3
- Muleshoe Abstract... 4
- Hereford Feed Ingredients... 5
- Muleshoe Chamber of Commerce... 10
- Bailey County Electric Coop... 7
- Muleshoe Economic Development Corp... 6
- Mohawk Auto Parts... 11
- McCormick Seeds... 5
- Livingston Machinery... 7
- Dairy Direct... 4
- Wilson Drilling... 8
- Great Plains Ag Insurance... 8
- Muleshoe Journal... 11
- Aldridge Actkinson and Rutter, LLP... 5
- McDonalds... 8
- Tire Works Tire Pros... 10
- Five Area Telephone Coop... 12
- Sonic... 12

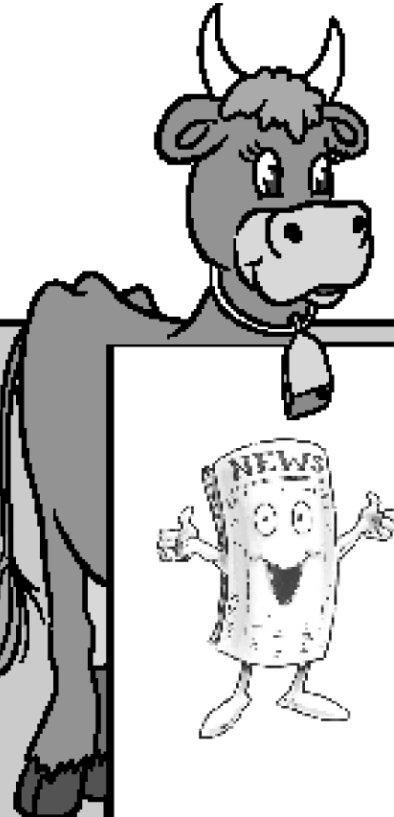
(Solutions on page 9)

Thank you for reading the Dairy Salute!

Mohawk Auto Parts proudly supports the Dairy Industry!



With 46 years of quality service, quality experience and quality parts, we strive to meet the needs of the dairy industry. Service is what we do!



The Muleshoe Journal proudly supports the Dairy Industry.

Muleshoe Journal
201 West Ave. C
Muleshoe, TX 79347
806-272-4536

MOHAWK AUTO PARTS, INC.

SALE!

CARQUEST R134a Refrigerant
AUTO PARTS

12 oz. can

ONLY \$6.99
WHILE SUPPLIES LAST!



**1701 W. American Blvd.
Muleshoe, TX 79347
272-4425**



**"THANK YOU,"
FOR CHOOSING TO LOCATE
YOUR DAIRIES IN THE
MULESHOE AREA!**

MULESHOE CHAMBER OF COMMERCE

The Future of Muleshoe

My name is Gina Wilkerson. I am the president of the Chamber of Commerce. I am married to Ronnie Wilkerson, my children are Kolby and Brittini, Kallan, Berklee Wilkerson.

As the chamber, we are here to make Muleshoe a better place to live and work. A place where people passing through can learn about Muleshoe. I take pride in being a part of the chamber and plan to do whatever I can for the community. I hope businesses in town as well as our dairies, feedyards, fertilizer and sprinkler businesses, vets, etc. just keep growing.

A goal I have as chamber president, is to help wherever needed and help to keep Muleshoe growing.

*Gina Wilkerson,
Chamber President*

Drink Milk!

**Muleshoe Animal Clinic
Muleshoe Vet Supply**

**PROUDLY
SUPPORTS**

THE DAIRY INDUSTRY

MULESHOE ANIMAL CLINIC - (806) 272-3061
 BARRY COWART, D.V.M. STEVE KENNEDY, D.V.M.
 DUSTY URBANTKE, D.V.M. JENNIFER ERMON, D.V.M.
 KEVIN HOLMAN, D.V.M. ELIZABETH MCCOLLUM, D.V.M.
 GARTH CUMMINGS, D.V.M.

MULESHOE VET SUPPLY - (806) 272-4990
 1430 US Highway 84, Muleshoe, Texas

Muleshoe Animal Clinic serves area dairy needs

Muleshoe Animal Clinic is a mixed animal practice that originated in 1960 in Muleshoe. MAC serves an area in the Texas Panhandle and Eastern New Mexico that extends to more than an 80 mile radius around Muleshoe.



Currently Muleshoe Animal Clinic is staffed by eight veterinarians; they provide veterinary services for over 75,000 milking cows as well the accompanying dry cows and numerous heifers on heifer-raising facilities.

These individuals have dedicated themselves to providing the best veterinary services available to the dairy producers.

Muleshoe Vet Supply works with the veterinary staff to provide many products and services for the dairy producers. We look forward to getting to

know you and working with you in the growth and development of your dairy.

**TIRE & SERVICE
TIREWORKS
TIRE PROS**

MICHELIN

Glenn Kahlich • Cell 806-344-7034

**220 E. AMERICAN BLVD. • MULESHOE, TX 79347
806-272-4594**

**WE PROUDLY SUPPORT
OUR LOCAL AND AREA
DAIRY INDUSTRY!**

We Proudly Serve The Dairy Industry. Come See Us For All Of Your Irrigation Needs!

- New & Used Center Pivots
- PVC Pipe & Fittings
- Parts & Service For All Brands
- Well Motors & Pump Panels
- Faultfinder Service

Serve Wholeheartedly, as if you were serving the Lord, not men. — Ephesians 6:7

**24 Hour Parts & Service:
946-9906
946-8763**

MULESHOE VALLEY INC.
2601 W. American Blvd.
Muleshoe, Texas
Office: 272-4266 Mo: 946-8763
mviinc@fivearea.com

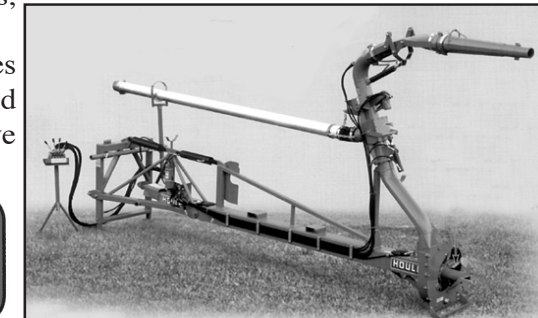
Muleshoe Valley, Inc. includes dairy wastewater equipment sales and service

In order to serve Muleshoe and the surrounding area dairies, Muleshoe Valley, Inc. is this area's dealer for Houle dairy wastewater supplies.

Houle has designated Muleshoe Valley's territory as all of New Mexico and West Texas to near Dallas and downward toward Odessa.

A full line of dairy wastewater products are available at Muleshoe Valley, including spreaders, tanks, pumps, agitators, aerators, separators and floating pumps.

"We provide sales and services from the barn to the field," said Muleshoe Valley, Inc. owner Steve Stancell.



HOULE

Facts About Dairy Farming In The Lone Star State Noted

The Texas Association of Dairy farmers offer the following facts about their contributions to the Lone Star State:

- Texas dairy farmers contribute to the economy. Texas has 473 Grade A dairies. In October 2012, the state's estimated 353,917 milk cows produced more than 768 million pounds of milk.

- An average dairy farm has 909 cows, produces 16.1 million pounds of milk per year and annually contributes \$3.2 million directly and \$8.1 million overall to the state's economy.

- Combined, the milk production and processing sectors yield a value added to the Texas economy of \$1.59 billion.

- This vibrant and growing industry continues to boost the rural job base and economy in Texas.

- For every 100 cows, a dairy

farm creates 4.1 jobs, both direct and indirect.

- Texas dairy farmers contribute to water quality. Dairy farmers follow strict national, state and local water quality guidelines and are regulated and permitted by the Texas Commission on Environmental Quality (TCEQ) and the Texas State Soil and Water Conservation Board (TSSWCB).

- Operating requirements include lined lagoon systems to contain on-farm water, manure management programs, continuous water testing, regular inspections and a site-specific nutrient management plan.

- Texas dairy farmers contribute to air quality. Dairy farmers work with university researchers, government, industry and other experts to invest in and develop new technologies to protect the

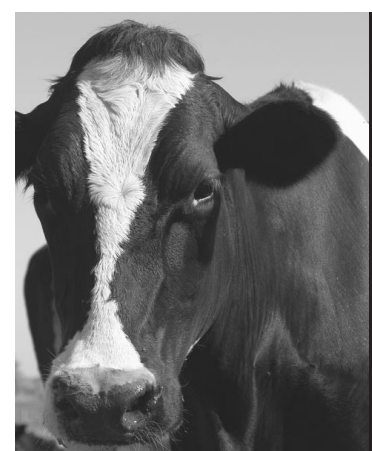
environment and conserve natural resources.

- Texas dairy farmers contribute to reduced water usage. Water used on the farm is recycled multiple times – it is used to cool milk in the milking process, to clean equipment and the milking facility and then to irrigate the farm's cropland.

- Dairy farmers are guided on water conservation practices,

including modernized water storage and delivery systems, by government agencies such as the Environmental Protection Agency, Natural Resources Conservation Service, TSSWCB and TCEQ.

The Texas Association of Dairy farmers (www.milk4texas.org) is a non-profit corporation comprised of dairy cooperatives whose members are individual milk producers in Texas.

We salute the hardworking folks in the dairy industry and offer our thanks for the opportunity to serve such fine people.

Muleshoe Abstract
103 W. Ave. D • Muleshoe
272-4732 • FAX 272-4733

The Dairy Case: Secrets, Stories And Facts About Milk

(NAPS) — Drink milk to your good health. A few facts can help you and your family enjoy the many great nutrients and health benefits that milk can offer while customizing your milk choice.

- Milk's been a part of the American diet since the 1600s. The first dairy cow arrived on the East Coast in the Jamestown Colony around 1611 and priests brought cows to the West Coast via Baja, California, around 1679.

- Today, milk goes from cow to dairy aisle in just about two days, which means getting the freshest possible beverage is as easy as a trip to the grocery store.

- Milk helps build strong bones and scientists now say it also helps reduce blood pressure, boost immunity, ward against diabetes, protect against certain types of cancer and can even help you lose weight.

- One cup of milk costs about 25 cents and is loaded with vitamins and nutrients like calcium, vitamin D, protein and potassium.

- To get the same calcium in a glass of milk, you'd have to eat 12 servings of whole grains, 10 cups of raw spinach or six servings of beans (legumes), so raise a glass!

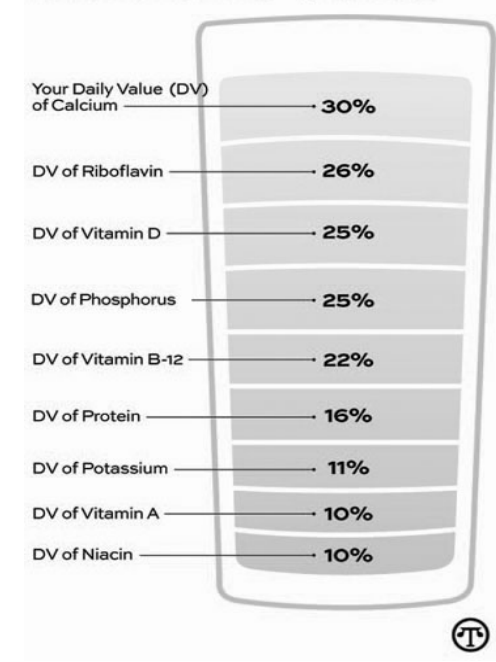
- Lactose-free milk is a great option for people who have lactose intolerance.

- They may also be able to tolerate foods cooked with milk or eat cheese and yogurt.

- Pediatricians recommend that kids drink whole or reduced-fat milk between the ages of 1 and 2.

- At this age, children need fat in their diets for nerve and brain development and milk is a good

One cup of milk—whether whole, low-fat or fat-free—provides:



One cup of milk provides an irreplaceable package of nine essential nutrients for just 25 cents a serving!

source, plus it's one that most kids like.

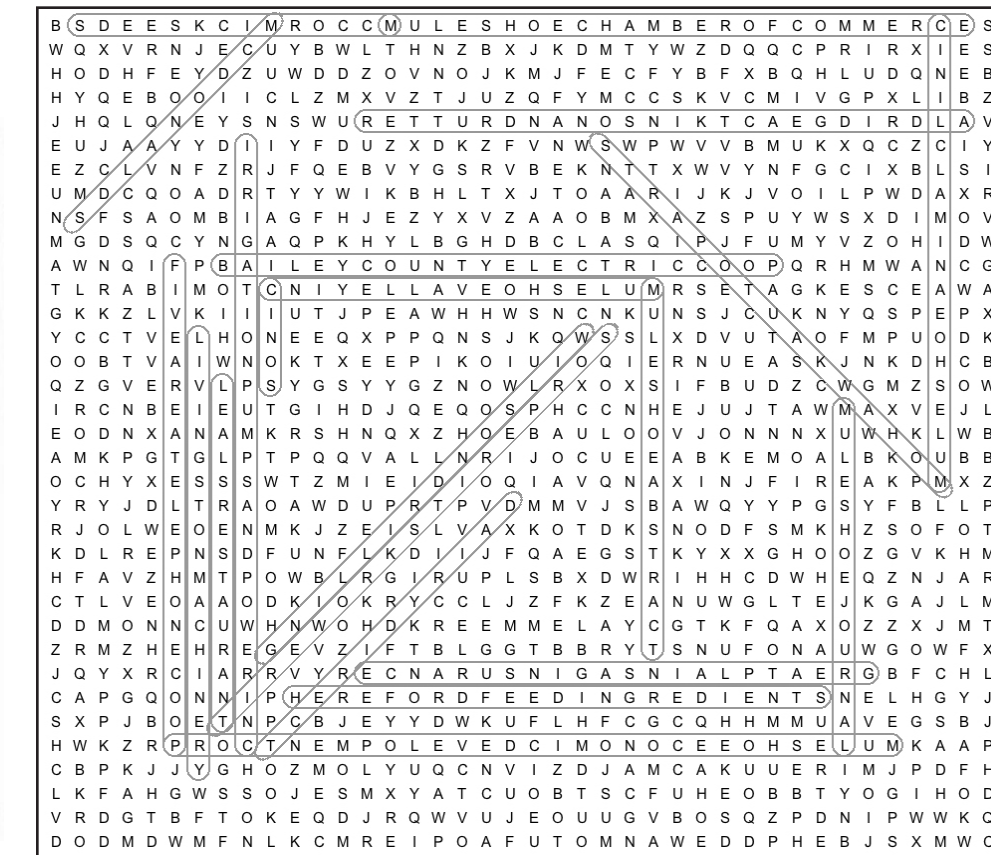
- Most Americans fall below the three cups of milk a day recommended by the USDA — but there are many easy and enjoyable ways to serve milk: glasses with dinner, cream soups, lattes, pudding for dessert, even hot cocoa to start your day or wind down your night.

For example, here's one great way to enjoy milk:

Chocorazz Smoothie
1 medium banana, sliced and frozen
1 cup fat-free chocolate milk
½ cup raspberry low-fat yogurt

Place banana, chocolate milk and yogurt in blender. Cover and blend until smooth. Pour into two glasses. Serve immediately.

Dairy Salute Advertisers



DAIRY FARMERS ARE THE CREAM OF THE CROP!
Thank you for providing us with dairy products that enrich our lives every day. Your industry is a big part of our growing economy!

WE CATER FOR ALL OCCASIONS!

Leal's

Store Hours:
Mon. - Sat. 11am - 9 pm • Sun. 11am - 3pm
1010 W. American Blvd.
Muleshoe, Texas • 272-3294

Tell them you saw it in the Journal's 'Salute to the Dairy Industry'!




GREAT PLAINS
AG INSURANCE

WE SUPPORT OUR LOCAL AND SURROUNDING DAIRY INDUSTRY!

SPECIALIZING IN CROP INSURANCE

218 S. Main St • 272-4271



"A Salute to the Dairy Industry" was produced by the staff of the *Muleshoe Journal*

201 W. Ave. C, Muleshoe, TX 79347

WE PROUDLY SUPPORT THE DAIRY INDUSTRY



1025 W. American Blvd. • Muleshoe TX 79347 • For Questions or Comments: 1-866 YOUR MCD
McDonald's of Muleshoe, Hereford, Dimmitt, Littlefield, Texas are Owned and Operated by: Steve & Susan Credle

Call Wilson Drilling for complete water well services

Wilson Drilling, Inc. has provided complete water well services to the area for over 40 years. It is a family owned and operated business that is fully licensed and insured. They offer a wide variety of pumps and motors for all of your agricultural and residential needs, specializing in low-maintenance equipment; and provide irrigation, domestic, test hole, environmental, municipal and industrial drilling. Wilson Drilling, Inc. stays up to date on new technologies and are able to provide service and support for all the newest products on the market today. Their other services include down-hole video and geophysical

borehole logging. Borehole geophysical logging includes the measurement of various chemical and physical characteristics of materials and fluids in and around a borehole. These important tools have a key advantage over surface methods in that measurements of the physical properties of soil and rock are recorded and analyzed underground at their location from wells or test holes. At Wilson Drilling, Inc. they know that timely maintenance and repair services are important to well owners. They are a full service company with experienced staff to make your life easier.



Wilson Drilling Inc.

2900 West American Blvd.
Muleshoe, Texas
(806) 272-5521

Family Owned and Operated for Over 40 Years



Improving The Feed Intake Of Dairy Cattle

*By Ellen Jordan, Ph.D.
Texas A&M AgriLife Extension Service*

Getting cows to maintain their dry matter intake during the summer continues to challenge dairy producers. Recently researchers have been investigating the feeding behavior of cows. When cows graze, they tend to eat mostly during the day, with a lot of their consumption occurring near sunrise and sunset. Once cows are housed in free stall barns, their feeding behavior becomes more influenced by when feed is delivered or pushed up and when milking occurs. Canadian researchers have reported that feed delivery is the most critical influencer of when feeding occurs. Since feed delivery is the primary driver of feed consumption, increasing the frequency of providing fresh feed can help increase dry matter intake. Another advantage of feeding multiple times per day is that rumen pH is more stable because the cow's feed intake is spread across a larger part of the day. Whenever rumen pH is more stable, milk fat is improved and fiber digestibility is enhanced as well. In addition, when cows are fed more times daily, the timid cows aren't displaced from the feedbunk as frequently. This means they are more apt to have access to an unsorted ration, which could lead to increased productivity. When cows are fed two or more times per day, there is less sorting of the ration than what is seen with once a day feeding. In general this results in increased dry matter intake and greater milk production.

Although feed push-up does make sure that the remaining feed is within reach of cows, it does not result in as much feed being consumed as the delivery of fresh feed. Stocking density influences feed intake as well. When insufficient bunk space is available, aggressive cows eat first; forcing more timid cows to wait their turn. This competition results in the cows consuming larger meals less frequently, which may also result in rumen pH disturbances. Research has shown that as bunk space per cow increases, the group average milk fat percentage increases and somatic cell counts decrease. The milk fat percentage increase may be a direct result of the more stable rumen fermentation resulting from a more uniform consumption of feed during the day. Having headlocks on the feed lanes improves consumption of feed, particularly for the more timid cows. Again this results in cows having a more stable dry matter intake, which may result in a more consistent rumen pH, ultimately improving milk fat percentage and productivity. In Texas, summers are hot and feed stability is an issue. Feeding more times a day can minimize the amount of heating occurring prior to consumption, provided fresh feed is used in mixing each batch. If silage is brought to a central location and stock piled for multiple feedings, some of the advantages of feeding multiple times a day can be lost. One important nutrient that often isn't discussed enough is water. Clean fresh water should be available to the cows at all times. Providing cows


Continued on page 6



McCORMICK SEEDS, INC.
P.O. Box 590
Muleshoe, Texas 79347
TEXAS' LARGEST DISTRIBUTOR OF FIELD SEEDS SELECTED AND PURCHASED DIRECT FROM THE GROWERS

A COMPLETE LINE OF FIELD SEEDS

Telephone: 806/272-3156
TIM McCORMICK TF 800/451-9996 or Cell 806/543-7402



HEREFORD FEED INGREDIENTS, INC.

DAVID R. TIPPS, Representative

Your source for Calcium Carbonate, Magnesium Carbonate, Ammonium Sulfate, Salt & Potash

(806) 272-5871 • 232 Main Street • Muleshoe, TX 79347



IRRIGATION PUMPS & POWER, INC.

COMPLETE PUMP SERVICE • CENTER PIVOTS
LEPA SYSTEMS • SALES & SERVICE
DRIP IRRIGATION • PVC PIPE & FITTINGS



THANKS TO LOCAL DAIRY FARMERS FOR THEIR HELP IN SUSTAINING THE HEALTH OF OUR LOCAL ECONOMY AS WELL AS THE HEALTH OF OUR RESIDENTS!

W. Hwy. 84 • Muleshoe • 272-5597 or 272-4483



Aldridge, Actkinson & Rutter, L.L.P.

FARWELL ABSTRACT COMPANY, INC.
SPECIALIZING IN LAND TITLES.

402 3rd St. Farwell, TX 79325



Try Ice Cream Topped With Raspberry Sauce

(NAPSI)— Here's the scoop —Americans really love ice cream and novelties.

People living in the United States indulge more than those in any

other nation in the world, averaging a whopping 48 pints of ice cream per person, per year.

Some additional "cool" facts:

- The first ice cream parlor in

America opened in New York City in 1776.

- It takes 12 gallons of milk to make one gallon of ice cream.

• The most popular flavors are vanilla, chocolate, butter pecan, strawberry and Neapolitan, followed closely by chocolate chip and French vanilla.

• Cherry is the No. 1 popsicle flavor. Twin popsicles were invented during the Depression so two children could share one treat.

Remember to make the ice cream aisle your last stop, keep your frozen purchases in a separate section of the cart and pack your ice cream in an additional brown paper bag for the ride home.

To make an easy, elegant dessert for family and friends, try a simple sauce over ice cream.

Ice Cream with Raspberry Sauce

1/2 gallon vanilla ice cream or frozen yogurt

12 oz. (1 1/2 cups) frozen raspberries

1 tablespoon cornstarch

2 tablespoons lemon juice

1/3 cup sugar

Fresh raspberries and mint (for garnish)

For sauce, combine raspberries, cornstarch, lemon juice and sugar in small saucepan and bring to boil over medium-high heat.

Cook until berries have broken down (about 5 minutes). Remove from heat and cool. To serve, place three large scoops of ice cream in each dish and top with raspberry Sauce, a few fresh raspberries and mint leaf. Serves six.

Visit www.EasyHomeMeals.com or the Easy Home Meals Facebook page for recipes.

Dairy Feed

Continued from page 5
access to water as they exit the parlor should be a priority.

All cows from a single turn of the parlor should be able to drink at once. A large PVC pipe cut in half can be made into a long water trough for exit lanes, provided the dairy has adequate pressure to keep the trough full when cows are drinking.

In addition, access to water in the holding pen has been beneficial in some herds.

Finally, don't forget that shades, fans and soakers over the feed lane

can help drive dry matter intake during the summer.

Install timers on soakers and fans that automatically increase the frequency of soaking as temperatures rise for optimal results.

Increasing the frequency of feed delivery, providing adequate bunk space for all cows to eat simultaneously, using the freshest feeds available, insuring an adequate supply of fresh, clean water and adjusting the cooling system as temperatures rise can all help in maintain summer dry matter intakes.

The Muleshoe Economic Development Corporation and the City of Muleshoe

Are Pleased To Salute The Dairymen Of Our Local Trade Area!!

Muleshoe Economic Development Corporation

Kasey Coker, Director

215 S. First St • Muleshoe, TX 79347 • (806) 272-7455

www.muleshoeedc.com



We say thanks to all those that work in the dairy industry for your hard work and diligence in providing a quality product. Your efforts have made a positive impact to the Muleshoe community.



The only thing it doesn't do is cut corners.

Now Fendt 700s work even harder in a redesigned, reengineered series. With power, technology, speed and comfort, it's designed to do even more with less than any other tractor. Take your operation to the next level, there's no replacement for a Fendt.



LIVINGSTON Machinery Company

Altus, OK | 3003 E. Broadway | 877.600.1005
Chickasha, OK | 5201 S. HWY 81 | 800.259.5088
Fairview, OK | 2005 N. Main St. | 800.970.9761
Muleshoe, TX | 602 W. American BLVD | 800.847.3119

PROUD TO DO OUR PART IN HELPING FARMERS FEED THE WORLD
Massey Ferguson • Hesston • Sunflower
Gleaner • Fendt • White Planters



BAILEY COUNTY ELECTRIC COOPERATIVE ASSOCIATION
A Touchstone Energy® Cooperative

We Support The Dairy Industry!

We thank you for choosing Muleshoe and the surrounding area as your home.

Your innovative, forward thinking industry has spawned economic growth in West Texas and we pledge our full support today and in the future!

Happy cows live in West Texas!

