

\*\*\*\*\*MIXED ADC 760  
385 08-27-00 W 42P 39S  
NEWS FILE  
HC 65M BOX 201  
DARK AR 72852-0065

## PAGE ONE

A QUICK READ OF THE NEWS

### Mail pales over nails

A Postal Service supervisor in St. Petersburg, Fla., says she was so stressed out after being ordered to cut her fingernails she has gone on medical leave.

Lolita Dash recently went on leave after her bosses said her inch-long nails violated the local postmaster's rule that nails can't extend more than a quarter-inch beyond the fingertip.

Dash, 36, who once had 5-inch thumbnails, says her problems began in 1995, when a new postmaster instituted the rule. She cut her nails the next year.

"I was in tears the whole time," she said. "It felt like cutting off a part of my finger."

She soon let her nails grow to about an inch long. But in March, her bosses began disciplinary proceedings, and within days, she went on medical leave — even though she had her nails cut to conform to the rule.

### Talk about bulk postage

Authorities in Morgantown, W. Va., are trying to find out who packaged two 10-foot pythons and dropped them in the mail.

The package was mailed from Morgantown's downtown post office and utilized a fake return address, a Morgantown Animal Control officer said.

The snakes were mailed to an animal shelter in Arlington, Va., where the woman who opened the box was "flabbergasted," the officer said.

"All they had to do was bring them to the pound, and we would've found a home for them," the officer added.



Drawing date: Saturday, April 22  
Winning numbers: 2-19-20-23-37-39  
Estimated jackpot: \$10 million  
Winners: 1  
Next drawing: Wednesday, April 26  
Estimated jackpot: \$4 million

### On this date in history

**April 27** — A Mexican expedition under the direction of Domingo Ramón and guided by Louis Juchereau de St. Denis sets out to re-occupy Texas (1716).

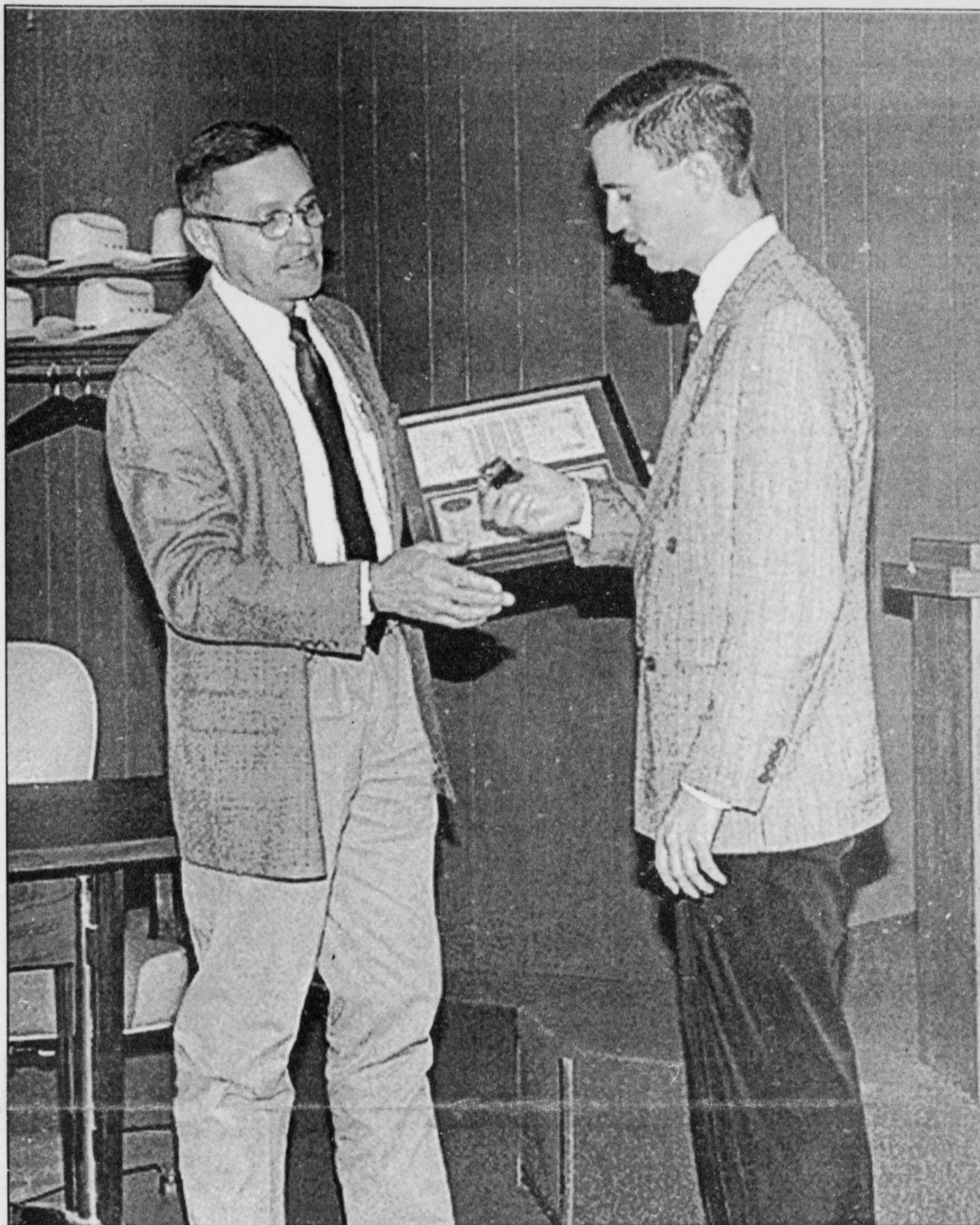
**April 29** — Thirty-four camels arrive at Indianola, Texas, as part of a U.S. Army experiment to determine their usefulness in mapping desert areas and tracking Indians (1856).

### LOCAL WEATHER

Partly cloudy conditions are expected through the weekend, with high temperatures gradually dropping from about 90 on Friday to about 76 on Monday. Expect morning lows to follow suit, falling from about 53 on Friday to 51 Saturday and to about 46 Sunday and Monday.

Editor Ronn Smith can be reached at 272-4536 or ctyankee@fivearea.com

Missed your paper? Call carrier Melissa Flores at 272-6719 or the Journal during business hours, 8:30 a.m.-5 p.m.



Journal photos: Beatrice Morin

### Rangers honor police chief

Chief Texas Ranger Bruce M. Casteel (above, at left) presents an outstanding performance award to Muleshoe Police Chief Don Carter for Carter's work in helping the Rangers establish a modern computer network. Casteel said Carter's contribution saves the Rangers "money, time and resources." At right, several Rangers gather around Carter and his award. From left are Casteel, Jimmy Halley, Carter, Carl Weathers, Dusty McCord, Dwayne Williams, Martin Hood and Warren Yeager.



### Baseball team drops squeaker

By KEVIN WILSON  
Writer

On Saturday, the Friona Chieftains survived a feverish Mule comeback on the baseball diamond to win 9-8.

Muleshoe's Cameron Nix gave up six runs in the first inning before being replaced by D.J. Domínguez, who pitched the rest of the way.

The Mules trailed 7-0 entering the third inning. Danny Ramírez led off the inning with a single and later scored on a sacrifice fly. Chris Barrerra singled late in the inning and came home on a two-run shot by catcher Mitch Mason.

Friona tacked on another run in the fourth for an 8-3 lead, but the Mules weren't dead yet.

With their playoff chances wilting, the Mules batted around the order in the fifth. Domínguez, Barrerra, Lucio Soto, Mason and James Barrett all scored to tie up the game. Muleshoe capitalized on four Chieftain errors in the inning.

Zac Barrett led off the sixth with a single for Friona. After stealing

second, he advanced on two sacrifice flies to give Friona a 9-8 lead.

The Mules put themselves in a great situation in the sixth. Muleshoe loaded the bases but could not take advantage of it. Mason grounded into a double play and Nix ended the inning with a grounder to second.

The Mules had a final chance to tie it in the seventh when Clint Black singled and stole second. Luck was not on the Mules' side, though, as Ramírez struck out to end the game.

Despite the loss, coach Donnie Scott said he was happy with his team's performance in the face of adversity.

"We spotted them six runs," Scott said. "The kids came back, and I'm proud of them for that."

The Mules still have a playoff shot, but they will need some help.

The Mules must beat 9-0 Lubbock Cooper and then hope for Littlefield to beat Lubbock Roosevelt and for Shallowater to beat Friona.

## Glickman seeks more China sales

SPECIAL TO THE JOURNAL  
WASHINGTON, D.C. — Agriculture Secretary Dan Glickman is leading a trade delegation on a week-long visit to China seeking expanded markets for U.S. agricultural products.

The delegation will visit Beijing, Shanghai and Hong Kong to discuss and learn more about U.S.-China relations, additional U.S. export opportunities, and China's commitment to market-opening agreements and international trade rules.

The delegation includes Rep. Norman Dicks (D-Wash.), Rep. Ruben Hinojosa (D-Texas), Rep. Gregory Meeks (D-N.Y.), Rep. Greg Walden (R-Ore.), and Gov. Edward Schafer (R) of North Dakota.

The Chinese market is now worth more than \$1 billion per year to American farmers and ranchers. USDA projections indicate that after China is granted permanent normal trade relations and joins the World Trade Organization, U.S. farm exports to China will increase by \$2 billion per year by 2005.

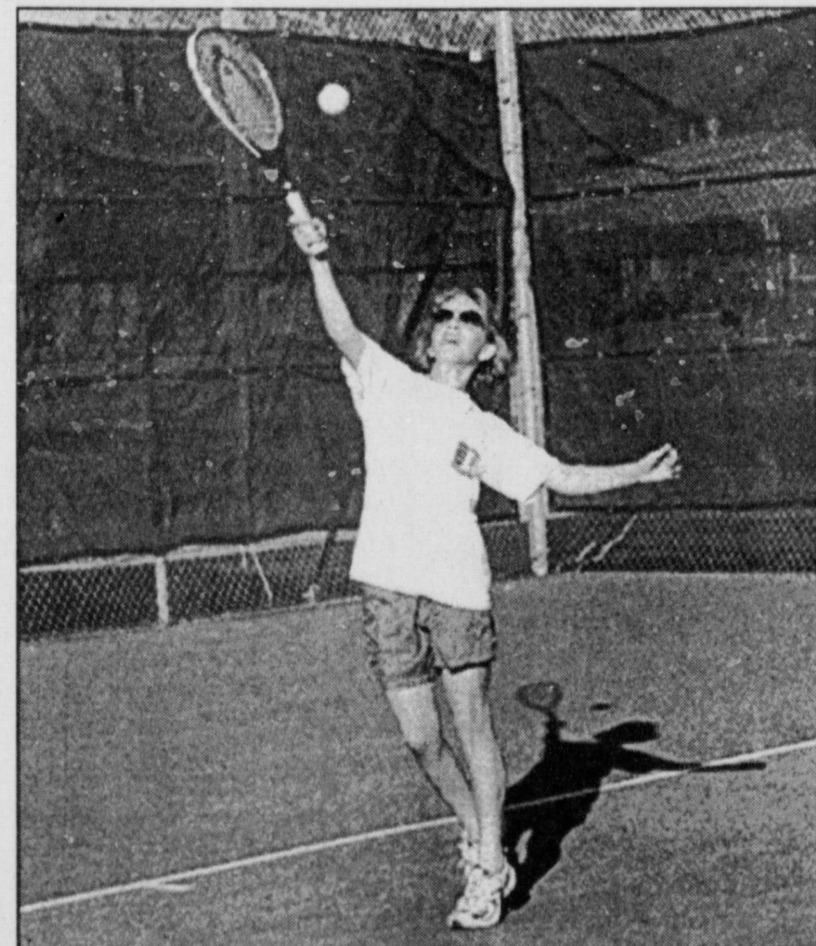
Recently, under the U.S.-China Agricultural Cooperation Agreement, the first direct exports of U.S. meat and the first California and Florida citrus exports were shipped to China.

China also purchased 50,000 metric tons of U.S. soft white, hard red, and spring wheat earlier this year.

The delegation departed Washington on April 24, arriving in Beijing the evening of April 25.

The group was to meet with senior Chinese officials, Chinese entrepreneurs and academics, and American busi-

see AG SALES on page 2



Journal photo: Beatrice Morin

### Making the most of it

Not everyone chooses to get lazy during school holidays. Thirteen-year-old Trissy Herington spent part of Monday's Easter break playing tennis with 12-year-old Lofton Herington and 16-year-old Terrell Herington. The summer-like weather is expected to last through the week, with Friday's temperature possibly reaching 90 degrees.



# AROUND MULESHOE

## Little League season starts Saturday

The Muleshoe Little League 2000 season kicks off at 2 p.m. April 29 at Roger Miller Park. A full day of games is scheduled, beginning with the Rockies vs. the Sox and the Sluggers vs. the Coyotes. The t-ball teams of red and orange also will start season play.

The concession stand will be open, and hot dogs will be sold throughout the day.

## Business classes to showcase portfolios

Muleshoe High School business and marketing students will exhibit their career portfolios to the public from 8:30 a.m. to 3 p.m. May 9.

The portfolios provide a record of the individual students' accomplishments and can be used for college placement, scholarship applications and job opportunities. A portfolio allows students to keep at their fingertips a biographical sketch, résumé or personal data sheet, sample job application form, work samples, reference letters and other useful documents.

Students will accept suggestions and constructive criticism as they continue to update and revise their projects.

## Heart association fund-raiser set

The Bailey County Division of the American Heart Association has scheduled its Clay Bird Shoot 2000 for 1 p.m. to 7 p.m. April 29 seven miles south of Muleshoe on the west side of Texas 214.

Games offered will include Annie Oakley, Monkey Shoot, Buddy Shoot, Quail Walk, Follow Me and a kids' division and non-winners shoot.

Prizes will be awarded for top individual, top team and the top in the kids' division.

Sandwiches, chips and drinks can be purchased at the site. More information is available by calling Joyce McGehee at 965-2950, Linda Tucker at 272-5118 or Anita Mitchell at 272-5630.

## Heritage Thrift Shop to 'burn the note'

The Muleshoe Heritage Foundation has paid off its loan for a new roof on the Heritage Thrift Shop and will celebrate with a note burning party April 28 at 2 p.m.

Ceremonies will take place at the shop; the public is invited.

## Laycock to address retired teachers

Dr. Kenneth Laycock of Canyon will speak at the regular meeting of the Muleshoe Retired Teachers Association at 3 p.m. May 17 in the Fellowship Hall of 16th and D Church of Christ.

Laycock has been a teacher, principal, superintendent, university administrator, service-center administrator and educational consultant to public schools and higher educational institutions.

## Keller appearing in WT production

Nathan Keller, a West Texas A&M University freshman from Muleshoe, is playing the role of La Marquise in a production of *Successful Strategies* at the Branding Iron Theater on the WT campus in Canyon through April 30.

The play is a comedy based on two young couples who find themselves in a "love triangle," complete with mind games, jealousy, frustration and a secret love affair that threatens to lead to the altar.

More information is available by contacting the university's theater department (806) 651-2798.

## Public calendar

April 27 — 7 p.m. Muleshoe Area Hospital District board will participate in a public hearing on the district's May 2 election propositions.

The deadline for items to appear in *Around Muleshoe* is 5 p.m. Monday for Thursday's edition and 5 p.m. Thursday for Sunday's edition. Items may be brought to the office at 304 W. Second, mailed to P.O. Box 449, called in to 272-4536 or faxed to 272-3567.

# Singing groups combine for 'Requiem' at ENMU

SPECIAL TO THE JOURNAL

The Eastern New Mexico University Chamber Singers, University Singers and community singers from around the area will perform Johannes Brahms' "A German Requiem" at 3 p.m. (Mountain time) April 30 in the University Theatre Center on the Portales campus. Admission is free.

Written from 1857 to 1868, the requiem is a seven-movement work written for choir, soprano and baritone soloists, and orchestra.

The ENMU performance will be sung in English and make use of Brahms' two piano version, with the instruments being played by ENMU faculty members Cheryl Pachak-Brooks and John Olsen.

Soloists will be ENMU faculty members Jeanie Ornellas and Tony Offerle.

The texts for the requiem

were arranged from the Old and New Testaments as "a benediction of consolation and a statement of faith for the living," according to a press release from ENMU.

The deaths of Brahms' mother and his friend, the composer Robert Schuman, are said to have influenced the composition of the requiem.

According to Dr. David Gerig, conductor for the ENMU performance, rehearsing the requiem has not been easy for the singers. Brahms' writing for voices is often instrumentally conceived; vocal ranges are sometimes extreme and the vocal lines have many skips that are difficult to negotiate.

"It's a real sense of accomplishment for the performers when all of the pieces come together," he said. "We're looking forward to presenting this. I think the audience will find it rewarding, too."

# Students eligible to enter poster contest

JOURNAL STAFF REPORT

Texas elementary school and junior high students are eligible to enter a contest and design a poster on the theme "What I Want To Be After College."

The entry deadline is 5 p.m. May 10, and winners will be announced the week of May 15.

Damaged or late entries will not be accepted, and determination of lost, damaged or late entries will be made by the Texas Tomorrow Fund, sponsor of the contest.

Drawings must be on a plain sheet of 8 1/2 x 11-inch paper and can be drawn in pencil, pen, crayon, watercolor, oil or water-based paint, or any other medium that is not computer-generated.

All entries must be submitted with an entry form and a parental release form taped to the back of the entry.

All entries become the property of the contest sponsor. Entrants and their parents agree to the use of their drawings and names for publication and for promotional display across the state.

Winners will be determined

by a panel of judges, based on originality, creativity and consistency with the theme.

A grand prize winner in each of two age categories will be chosen to receive a four-year college scholarship covering tuition and fees at any Texas public university or college. The winner may not transfer the scholarship to anyone else.

The teachers and classrooms of winners also will receive special prizes.

Employees and family

members of the Texas Tomorrow Fund and the Texas comptroller of public accounts are not eligible to win.

No purchase is necessary and the winner need not be present for the announcement in order to win.

To be eligible to enter, the student must only meet the above restrictions, be a Texas resident, and be enrolled in a public, private or home-based school at a grade level within one of the two categories.

More information can be

obtained from the entry and parental release forms or by calling (800) 445-4723.

The Texas Tomorrow Fund allows parents to deposit money with the state toward the future cost of their children's college education.

Members of the Texas Pre-paid Higher Education Tuition Board include Carole Keeton Rylander, John C. Anderson, Michael D. Gollob, Dr. Roy McClung, Jack R. Hamilton, E.J. Pederson and Beth Weakley.

## AG SALES

from page 1

ness leaders in Beijing on April 26. On April 27, the group will travel to Shanghai to meet with the Chairman of the Association for Relations Across the Taiwan Strait and China-based U.S. constituents.

The delegation also will tour a local grocery store that carries U.S. products, visit a cathedral, and have dinner with local members of the American Chamber of Commerce. On April 28, the delegation will visit a soybean crushing facility in Shanghai before traveling

to Hong Kong.

On April 29, they will meet with Hong Kong's chief executive and other senior government officials, Democratic Party leader Martin Lee, a group of Hong Kong CEOs, and local members of the American Chamber of Commerce.

They also will tour a produce processing center with U.S. products. The group will depart China on April 30, arriving back in the Washington area late that night.

## POOL TOURNAMENT

HONORING BLAINE HURTADO who was diagnosed with Leukemia Jan. 6, 2000



WILL BE HELD ON MAY 7, 2000

1st Place wins a stick & case

Come join the fun at... **BS & More Family Fun Center** 129 Main St. in Muleshoe

# AUTO EXPO 2000

**DRIVE & COMPARE ALL THE LATEST MODELS ALL IN ONE LOCATION!**

## 17 DIFFERENT BRANDS

FORD	CHRYSLER	CHEVROLET	GMC TRUCK	HONDA	DODGE
MERCURY	BUICK	MAZDA	Plymouth	AURORA	
Jeep	PONTIAC	MITSUBISHI	TOYOTA	Oldsmobile	Cadillac
					SATURN

**LOWEST PRICES OF THE YEAR**  
CLEARLY MARKED ON EVERY WINDOW  
NO HAGGLING NECESSARY!

**0.9% 60 MONTH FINANCING**  
FACTORY REBATES OF **\$2000**

**GUARANTEED HIGHEST VALUE**  
FOR YOUR TRADE-IN

**2000 PONTIAC FIREBIRD**

**\$1500 REBATE**

- Power Door Locks
- Power Windows
- Dual Power Sport Mirrors
- Power Antenna
- Automatic Transmission
- Much, Much More

ONLY **\$269** MSRP **\$269** FINANCING

\*538 due at lease inception<sup>1</sup> P153162

**2001 CHRYSLER PT CRUISER**

- Automatic Transmission
- Cruise Control
- AM/FM Stereo with CD Player
- Tilt Steering
- Power Door Locks
- Power Windows
- Air Conditioning
- Much, Much More

ONLY **\$299** MSRP **\$299** FINANCING

\*598 due at lease inception<sup>1</sup> DT25942

**2000 CHEVROLET SILVERADO EXT CAB 4x4**

- Vortec V-8 Engine
- Automatic Transmission
- Power Door Locks
- Electronic Speed Control
- AM/FM Stereo with Cassette, Seek/Scan & Clock
- 40/20/40 Seating
- Much, Much More

ONLY **\$339** MSRP **\$339** FINANCING

\*678 due at lease inception<sup>1</sup> CT30092

**2000 FORD WINDSTAR LX**

- Automatic Transmission
- Cruise Control
- AM/FM Stereo with CD Player
- Tilt Steering
- Power Windows
- Power Door Locks
- Air Conditioning
- Much, Much More

ONLY **\$349** MSRP **\$349** FINANCING

\*789 Due at lease inception<sup>1</sup> FTA95190

**2000 CHEVROLET TAHOE 4x4**

**Loaded LS Package**

- Vortec V-8 Engine
- Automatic Transmission
- Front/Rear Air Conditioning
- Leather Interior
- AM/FM Stereo, Cassette, CD Player
- Remote Keyless Entry
- Much, Much More

ONLY **\$439** MSRP **\$439** FINANCING

\*878 Due at lease inception<sup>1</sup> CT138707

**2001 FORD F-150 ALL NEW 1/2 TON SUPERCREW 4x4**

- Automatic Transmission
- Cruise Control
- AM/FM Stereo with CD Player
- Tilt Steering
- Power Door Locks
- Power Windows
- Air Conditioning
- Much, Much More

ONLY **\$499** MSRP **\$499** FINANCING

\*998 Due at lease inception<sup>1</sup> FTD83161

**1984 BMW 318i**

ONLY **\$1,995**

AZP2256

**1997 PLYMOUTH BREEZE**

ONLY **\$119**

ADP3737

**1998 FORD ESCORT**

ONLY **\$149**

FP273753

**1999 PONTIAC SUNFIRE**

ONLY **\$149**

QA502022

**1999 LINCOLN CONTINENTAL**

ONLY **\$3,995**

MA704025

**1997 MERCURY SABLE GS**

ONLY **\$159**

MA520584

**1997 CHRYSLER SEBRING**

ONLY **\$169**

ADP3626

**2000 TOYOTA COROLLA**

ONLY **\$179**

SA318506

**1995 DODGE CARAVAN**

ONLY **\$4,795**

AOA8723

**1997 MERCURY VILLAGER LS**

ONLY **\$199**

AFP6226

**1997 FORD EXPLORER**

ONLY **\$229**

AFP7013

**1998 PLYMOUTH GRAND VOYAGER**

ONLY **\$239**

VA533089

**1998 GMC C1500 EXTENDED CAB**

ONLY **\$249**

AGP1857

**1999 GMC SIERRA 271 4x4 EXTENDED CAB**

ONLY **\$319**

ZAS47616

U.S. Highway 70 halfway between Clovis & Portales

CLOVIS

GREYHOUND STADIUM

PORTALES

Blackwater Draw Museum

**THURSDAY - SUNDAY**

APRIL 27<sup>TH</sup> - 30<sup>TH</sup>

**GREYHOUND STADIUM**

9AM - 8PM THU-SAT 10AM - 5PM SUN

Sponsored by Strebek Auto Group. All vehicles subject to prior sale. OAC. \*No security deposit. Includes \$25 acquisition fee. 63 month lease. Rebates assigned to dealer. †48 - 84 months. ‡ 0.9 - 12% APR with 24% down. § T & L.



# Three Lazbuddie students to compete in regional track meet

## JOURNAL STAFF REPORT

Three Lazbuddie High School athletes will be competing in the regional track meet Friday and Saturday in Levelland.

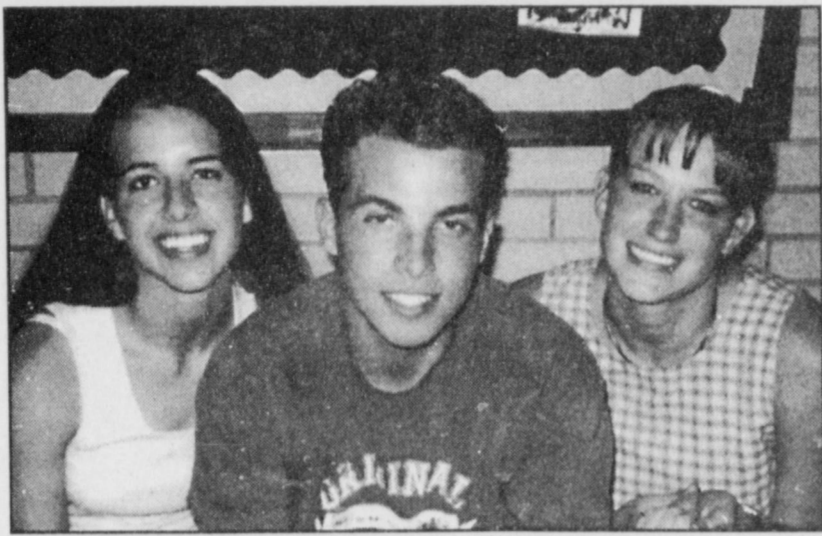
The trio — who qualified for regional at the April 14 area track meet in Abernathy — are Landon Parham, Scottie Brown and Laura Jo Via.

Parham won first place in the pole vault with a 12-foot effort.

Via was second in the shot put with a toss of 33 feet 4 1/2 inches, while Brown came in fourth in the 1,600-meter run with a time of 6:13.32.

Others who qualified for the area meet from Lazbuddie were Kayla Kimbrough, Savannah Black, Mayra Hernández, Jeffery Seaton and Jeffery Phillips.

Complete district results from



Lazbuddie's qualifiers for the regional track meet include (from left) Scottie Brown, Landon Parham and Laura Jo Via.

the April 7 meet at Canyon Randall include:

- Parham — first in pole vault, 11 feet 6 inches;
- Via — second in shot put, 31

feet 2 inches, and second in discus, 84 feet 2 1/2 inches;

- Brown — first in 1,600-meter run, 6:26.52, and second in 800-meter run, 2:48.08;

- Kimbrough — third in triple jump, 25 feet 6 1/4 inches; third in long jump, 13 feet 10 inches; fourth in 100-meter dash, 14.01; and fourth in 200-meter dash, 30.17;

- Black — second in 300-meter hurdles, 56.91, and third in 100-meter hurdles, 20.08;

- Hernández — sixth in 400-meter dash, 79.04;

- Seaton — second in 110-meter hurdles, 17.01; third in 300-meter hurdles, 47.37; fourth in discus, 112 feet 1/2 inch; fourth in long jump, 19 feet 2 1/4 inches;

- Phillips — fifth in triple jump, 32 feet 6 1/2 inches;

- Jake Louder — sixth in discus, 106 feet 1 inch;

- Michael Martínez — fifth in shot put, 34 feet 3 1/2 inches;

- Bobby Martha — sixth in shot

put, 34 feet 3 inches;

- Monse Meléndez — second in 800-meter run, 2:19.92; third in 1,600-meter run, 5:23.95; and sixth in 400-meter dash, 58.34;

- Girls' 400-meter relay (Brown, Kimbrough, Black and Hernández) — fourth, 58.80;

- Boys' 400-meter relay (Trevor Gartin, Andrew Martínez, Lucas DeLeón and Jeffery

Phillips) — sixth, 50.55; and

- Boys' 1,600-meter relay (Meléndez, Gartin, Phillips and Andrew Martínez) — fifth, 4:13.21.

# Less surgery for breast cancer being studied

## SPECIAL TO THE JOURNAL

HOUSTON — A procedure that would minimize the most debilitating part of breast-cancer surgery for most women is being studied by researchers at Baylor College of Medicine in Houston.

The procedure, known as a sentinel-node biopsy, removes only one or a few lymph nodes.

The standard practice has been to remove most of the underarm, or axillary, lymph nodes during breast-cancer surgery.

Two clinical trials are under way to determine if the new procedure is as effective as the current method.

Dr. Anthony Lucci, an assistant professor of surgery, and Dr. Richard Elledge, an associate professor of medicine, are principal investigators of the Baylor studies. The research, sponsored by the National Cancer Institute, is also under way at other sites.

"The underarm surgery, not the breast surgery, causes the most complications, so the sentinel-node biopsy would seem preferable to most women," Elledge said. "We're moving in the direction of less and less surgery for breast cancer."

Recovery time for the sentinel-node procedure would be much less.

Complications from a complete axillary lymph-node removal include a persistent burning sensation, infection, limitation of shoulder motion and lymphedema, swelling caused by excess fluid buildup.

"Lymphedema is the most

feared complication of breast-cancer surgery," Lucci said.

The type of operation routinely performed for breast cancer has changed dramatically over the years, from radical mastectomy to procedures requiring much less surgery, he said.

"Radical operations do not improve outcome from breast cancer," he said.

The sentinel node is the first lymph node to which breast cancer is likely to spread. The physician can identify the sentinel node by injecting dye or using a low-level radioactive substance.

In Lucci's study, women who have a sentinel node that is positive for cancer will be divided into two groups. One group will have further surgery to remove the underarm lymph nodes and the other will have no further surgery.

Both groups will undergo systemic chemotherapy and radiotherapy to the breast.

Lucci said it is important for physicians to determine if the prognosis is affected if only a very small number of cancer cells are found to have spread to a lymph node. This study will examine the effect of these tiny tumor deposits on prognosis and will look at bone marrow to determine whether more information can be gained about breast-cancer outcome.

In Elledge's study, half the patients will get the standard treatment of removal of the underarm lymph nodes and half will get the sentinel-node pro-

cedure. If the sentinel node is negative, there is no further surgery. If the sentinel node is positive, all the lymph nodes are removed.

"These studies are being done to find out if the sentinel-node

procedure will result in the same outcome as our standard surgeries with fewer side effects," Elledge said. "If it proves to be as effective, 70 percent of women could avoid the most difficult part of breast surgery."

## SENIOR CITIZEN NEWS

The Senior Citizens met April 26 at the Heritage Center Depot for a covered-dish luncheon.

The invocation was given by Zida Mae Black, while Buster Kittrell lead the Pledge of Allegiance.

Minutes of the previous meeting were read by Crystal Walton. Conard Carter played guitar

and sang favorite hymns. Members wished a happy birthday to J.C. Shanks.

Others present were Margaret Collins, Wanda Kittrell, Willard Carter, Katie Roubinek and Clifton Finley.

The meeting was dismissed with a prayer and the next meeting set for May 22.

**Muleshoe Journal** USPS 367820  
 Established February 23, 1924. Published by Triple S Publishing, Inc.  
 Every Thursday at 304 W. Second, Box 449, Muleshoe, TX 79347.  
 Second Class Postage paid at Muleshoe, TX.  
 POSTMASTER: Send address changes to the Bailey County Journal, P.O. Box 449, Muleshoe, TX 79347.  
 We are qualified members of:  
 Panhandle Press Association, National Newspaper Association,  
 West Texas Press Association and Texas Press Association

WEST TEXAS PRESS ASSOCIATION

PPA  
 Panhandle Press Association

**TA** MEMBER 2000  
 TEXAS PRESS ASSOCIATION

Scot Stinnett, Publisher  
 Lisa Stinnett, Vice-President/Comptroller  
 Ronn Smith, Editor  
 Beatrice Morin, Classifying  
 Leah Bell, Advertising

© 1990

SUBSCRIPTIONS: Muleshoe Journal and Bailey County Journal  
 By Carrier Yearly - \$22.00  
 Bailey County — by mail - \$24.00  
 Elsewhere - \$26.00  
 Advertising Rate Cards on Application

\*Advertisers should check their ad the first day of insertion. The Journals will not be liable for failure to publish an ad or for a typographical error or errors in publications except to the extent of the cost of the ad for the first day of insertion. Adjustment for errors will be limited to the cost of that portion of the ad where the error occurred.\*

# Area Business Directory

New Shipment of *Brighton*.

**SUNGLASSES  
 JEWELRY & ETC.**

Sterling Silver Jewelry

**Spring Clothing Arriving Daily!**

*Sheree's Attic* and MERLE NORMAN COSMETIC STUDIOS  
 The Place for the Beautiful Face™  
 1519 W. American Blvd. • 272-3459

**Muleshoe Art Loft**

Abundant Stock of Every Color & Piece

**ENAMELWARE**

**REDUCED 20%**

Limited Time Only!

- All Place Settings & Serving Pieces
- 4 Color Choices
- Perfect for a Summer BBQ

1529 W. American Blvd. 272-3485

**We Do Birthday Parties!** Dairy Queen

We'll supply your party with...

Clowns, Lots of Balloon Animals, Magic Tricks, Party Favors, Cake, Ice Cream & a Fun Bunch Meal with a Slush!

**ALL FOR ONLY \$4.99 per child**

7 child minimum. Call Vicki Ferguson for details.

**DAIRY QUEEN**

1201 W. American Blvd. • 272-3412

**WHY GREEN IS THE COLOR OF ENVY.**

LX133 Lawn Tractor  
 • 13 hp • 38-inch mower deck  
 • 5-speed shift-on-the-go transmission  
 \$1,999

325 Lawn & Garden Tractor  
 • 18 hp V-Twin engine • 48-inch Convertible mower deck • Auto. transmission  
 Now \$5,799\*

SAVE \$400

1105C Line Trimmer  
 • 1.05 hp • 15-inch cutting swath • 8.4 lbs  
 \$169.99

**DENT & CO.**

2800 W. American Blvd. • 272-4296

Now through July 5 — Save big money on a variety of John Deere equipment during Deere Season 2000.

## This Week's Featured Business...

**Dairy Queen**

**2 Hungr Buster Combos..... \$5**

**3 Tacos ..... \$1.99**

3-5 pm  
**Any Size Soft Drink..... 59¢**

Sat. & Sun. All Day  
**Small Sundae ..... 99¢**

Small  
**Ice Cream Cones ..... 75¢**

Coming May 1<sup>st</sup>

**Gourmet Burgers .... \$1.99**  
 Chili Cheese - Bacon Cheese - Jalapeño

**Large Misty Slush ..... 99¢**

Now taking applications for employment.  
 Apply in person.

**DAIRY QUEEN**

1201 W. American Blvd. • 272-3412

More bedding plants, shrubs & trees arriving weekly!

New! Saves Space!  
**GROW POTATOES IN A BIN!**  
 See potatoes, onions & bulk garden seed!

Get All Natural Lifetime Grubworm Control With..  
**MILKY SPORE**

*Kristy's Plants*

710 E. American Blvd. 272-5536

Like a good neighbor, State Farm is there.®

**HEALTH**

Rely on me for affordable protection against high medical costs.

Ask me about health insurance the State Farm way.

**Mark Morton, Agent**

101 S. Main St. • Muleshoe • 272-7519 or 1-800-867-9178

State Farm Mutual Automobile Insurance Company • Home Office: Bloomington, IL.  
 Call for details on coverage, costs, restrictions and renewability. [statefarm.com](http://statefarm.com)





Journal photo: Beatrice Morin

### Varsity boys' golfers

Members of the Muleshoe High School varsity boys' golf team (which finished third in district play) are (from left) coach Kodi Crane, Jordan Pool, Kole Magby, David Morris, Ryan Hodge (the district's individual champion) and A.J. Buhman.



Journal photo: Beatrice Morin

### Varsity girls' golf team

Members of the Muleshoe High School varsity girls' golf team (which finished third in district play) are (from left) coach Kodi Crane, Kristen Magby, Candace Hutto, Rendi Hodge, Amanda Bell and Ashley May.

## Problems with trees being addressed

**SPECIAL TO THE JOURNAL**  
Several calls have come to the Extension Office concerning insect- and disease-ridden trees.

Pests are more likely to be attracted to weak, stressed trees and shrubs. Here are some factors that cause trees to become stressed and susceptible to secondary pests:

- **Watering**—Improper watering (or lack of watering) is an important stress factor. To properly water trees, draw an imaginary line from the branch farthest from the trunk to the ground. This is where the tree's feeder roots seek

water. Applying water too closely to the trunk is not reaching these feeder roots. Drip lines are not recommended for large trees.

- **Planting**—Further investigation of these tree problems also revealed that some planting specifications are not being met. When planting trees and shrubs be sure the tree or shrub is removed from its container and that all root-ball coverings—wire and string—are removed.

- **Trimming**—It is also important to remember how harmful topping can be to a

tree and that it can take years off the tree's lifespan. Topping also exposes trees to harmful slime flux bacteria.

Proper trimming includes only branches that are in the way, sprouts, limbs rubbing or growing the wrong way, and dead limbs; no topping is necessary.

Taking proper care of trees will help them remain healthy and free of pests.

If watering seems too expensive, consider the cost of replacing trees and the time it will take them to grow to provide adequate shade or windbreaks.

Early Voting Has Begun...  
Get Out and Vote Now!

## WELLS HALL FOR MAYOR

I have seven reasons of my own for being concerned for the future, as well as yours.

Thanks for making us your news source!

# SAVE \$5500

In FINANCING CHARGES

## with 0.9% Financing for 60 Months

### 2000 Oldsmobile Silhouette

Save \$5,522 On Finance Charges

Just Compare!

60 Months @ 0.9% \$378/Mo. - \$511<sup>35</sup> Finance Charges  
60 Months @ 9.9% \$470<sup>44</sup>/Mo. - \$6,034<sup>44</sup> Finance Charges

### 2000 Chevrolet Venture

Save \$4,631 On Finance Charges

Just Compare!

60 Months @ 0.9% \$317<sup>33</sup>/Mo. - \$426<sup>30</sup> Finance Charges  
60 Months @ 9.9% \$394<sup>41</sup>/Mo. - \$5,060<sup>41</sup> Finance Charges

Save \$2,455 On Finance Charges

Compare!

60 Months @ 2.9% \$224<sup>40</sup>/Mo. - \$942<sup>36</sup> Finance Charges  
60 Months @ 9.9% \$264<sup>47</sup>/Mo. - \$3,387<sup>36</sup> Finance Charges

### \$1,000 College Grad Rebate!

4 Door, 4 Wheel Drive Sport Utility Vehicle For 2000 Tracker

\$295<sup>mo.</sup> Auto • Air • Tilt • Cruise • Alloy Wheels • AM/FM CD

**Over 150 Used Vehicles With Payments Under \$250/Mo!**

#### '98 Chevy C1500 PU

Auto • Air • Tilt • Cruise • AM/FM Cassette • Under 20,000 Miles

#### '99 Buick Century

Auto • Air • Tilt • Cruise • Power Windows • Power Locks • AM/FM Cassette

#### '97 Jeep Wrangler 4x4

Air • AM/FM Cassette • Hard Top

**OTHER USED VEHICLES THAT QUALIFY**

• '99 Chevy Geo - #5879	• '99 Chevy C1500 PU - #Y6244A	• '97 Chevy Venture Van - #6036	• '97 Mercury Grand Marquis - #5900
• '99 Chevy Lumina - #5968	• '98 Chevy Astro Van - #6009	• '97 Dodge D150 PU - #6003	• '98 Olds Alero - #5872
• '99 Chevy Malibu - #5870	• '97 Chrysler Sebring - #Y6056A	• '96 Chrysler LHS - #5828C	• '99 Olds 88 - #5974
• '97 Chevy S-10 PU - #96124A	• '98 Dodge Caravan - #Y2016A	• '97 GMC Safari Van - #5800A	• '97 Plymouth Voyager - #5953

\*10% down \*\* \$2797 plus \$1000 College Grad Rebate down - 60 months @ 5.9% APR. \$1000 down - 72 months @ 9.25%. All new & used vehicles on approved credit plus tax, title & license.

# BENDER

CHEVROLET Oldsmobile Cadillac

2500 MABRY DR. • 1-800-530-8842 • 763-4465

## JOE'S BOOT SHOP

We Ship Everywhere!

1-800-658-6378 106 E. American Blvd. Muleshoe, Texas

### And Country Junction

Surprise Your Secretary or Teacher with a Gift from Country Junction!

Natl. Professional Secretaries Week April 24-29

Natl. Teacher Appreciation Day May 9

Can't Decide? We have Gift Certificates! And we'll mail them anywhere!

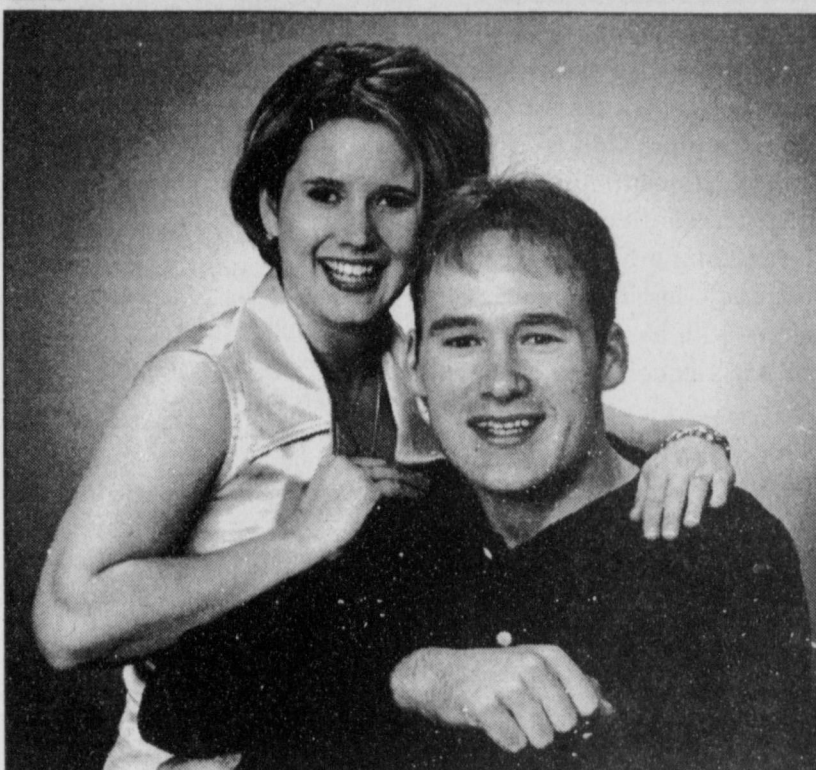
- Votive Candle Holders
- 50 Plus Fragrances of Yankee Candles
- Large & Medium Yankee Candle Holders
- Wind Chimes • Collectible Clocks • Frames
- Candle Toppers • Soap by the Slice
- Body Butter • Gift Baskets • Floral Arrangements
- Bath Items • & Tons More!

Experience is the best teacher!

by Roger Ascham 1568



**ENGAGEMENT**



**Bontempt-Precure**

Ray and Jeannetta Precure of Muleshoe and Judy McConnell of Arkadelphia, Ark., announce the approaching marriage of their children, Frank Precure and Joy Bontempt, both of Grand Prairie, Texas. The prospective groom is a 1990 graduate of Muleshoe High School who served four years in the U.S. Navy and is still a member of the Navy Reserves. He works in Arlington and plans to attend the University of Texas at Arlington this fall to study physics. He formerly attended South Plains College in Levelland. The bride-elect is a 1993 graduate of Malvern (Ark.) High School and also has attended South Plains College. The couple plans to marry May 20 at Word of Life Church in Grand Prairie.

**Camp seeks volunteer counselors**

**SPECIAL TO THE JOURNAL LUBBOCK** — The Muscular Dystrophy Association is seeking applications from people who would like to volunteer to spend a week as counselors at the MDA summer camp near Happy, Texas.

Volunteers will act as companions to campers (ages 6-21) with neuromuscular diseases during the camp session to be held June 4-9.

Counselors must be at least 16 years old and able to lift a child. They will be called upon to push wheelchairs and assist with grooming, dressing and feeding, plus help kids participate in the fun activities that come with summer camp, including swimming, horseback riding, arts and crafts, and canoeing.

"Camp is the highlight of the summer for the campers and volunteers. It's one week of the year when youngsters with muscle-wasting disorders are able

to fully participate in a wide range of group outdoor activities that are tailored for their limited mobility," says Norma Ball, MDA regional director.

"MDA summer camp has a relaxed atmosphere which allows campers to develop self-confidence and form lifelong friendships," she added.

More than 4,000 campers are expected to attend MDA camps this year. With the help of one-on-one volunteers, campers will enjoy a wide range of sports, recreation and nature activities.

MDA is a national voluntary health agency dedicated to finding treatments and cures for neuromuscular diseases affecting more than a million Americans. The association receives no governmental grants, nor does it seek fees from the families it serves.

For information or to volunteer, call the local MDA office in Lubbock at (806) 793-5632 or Amarillo at

(806) 371-8002, or call MDA national headquarters at (800) 572-1717.

Information about MDA programs and research advances is also available online at [www.mdausa.org](http://www.mdausa.org).

**Do you know who you are?**

You ARE a wonderful person. You ARE a beautiful lady. You ARE lots of fun to be around. (We'll have to talk about that "pool shark" thing.) I'm proud to call you my friend! You're a JOY to all who know you!

**UNHEARD OF LOW PRICES ON THE BEST HEARING AIDS MONEY CAN BUY NOW AVAILABLE IN MULESHOE**

featuring Digital & Programmable technology

Start the new millenium hearing the best you can by taking advantage of these fantastic savings. These products provide state-of-the-art technology and are backed by LIVINGSTON'S MONEY BACK GUARANTEE. Your satisfaction is 100% guaranteed, or your money back. Call today!

**COMPUTER PROGRAMMABLE IN THE EAR (ITE)**  
  
 Retails for \$1,225 ea. **\$725**

**COMPUTER PROGRAMMABLE CANAL AID (ITC)**  
  
 Retails for \$1,525 ea. **\$825**

**HIGH DEFINITION MOSTLY IN THE CANAL**  
  
 Retails for \$1,750 ea. **\$1,250**

**HIGH DEFINITION COMPLETELY IN THE CANAL**  
  
 Retails for \$1,750 ea. **\$1,250**

**LIVINGSTON**  
 Audiology & Hearing Aid Centers

Monday, May 1  
 Bailey County Coliseum in Muleshoe  
 Toll Free 1-800-828-0722  
[www.livingstonaudiology.com](http://www.livingstonaudiology.com)

Letters to the Editor make a difference!

**\$400 million more expected for schools**

**AUSTIN** — State Land Commissioner David Dewhurst said a change in investment strategy for the Permanent School Fund could earn up to \$400 million in additional funds for Texas public schools and help reduce pressure on Texas taxpayers.

Dewhurst recommended that the State Board of Education increase money to public schools without reducing the basic level of funding for public education by:

- Changing state law to permit additional earnings from the Available School Fund to be distributed to school districts without a reduction in the basic level of funding to public education; and

- Passing a constitutional amendment to permit a certain percentage of the total earnings of the Permanent School Fund to be distributed to schools through the Available School Fund each year.

"During the last eight years, the stock market has maintained the longest running expansion in U.S. history, but the Permanent School Fund's investments returned only 3.26 percent to Texas schoolchildren in the 1999 fiscal year and only 3.98 percent in fiscal year 1998," Dewhurst said.

"While this was an intentional strategy on the part of the (State Board of Education, to grow the fund, it is now time to help our schools," he said.

The Permanent School Fund is the largest trust fund for public education in the United States, with more than \$21 billion in assets.

**AG sues direct-mail firm**  
 Attorney General John Cornyn has sued Dallas-area direct-mail company owners Cecil Gaskamp and Christopher Etheridge whose businesses, The Lead Connection and Seniors Security Services, mail notices to senior citizens.

State Capital  
  
**HIGHLIGHTS**  
 Compiled by Ed Sterling  
 TEXAS PRESS ASSOCIATION

The notices appear to be official government correspondence and urge seniors to contact Seniors Security Services for information on how to protect themselves.

The company is paid to solicit leads for insurance salesmen who then attempt to sell seniors long-term care and burial or "final expense" insurance, Cornyn said.

"I will not tolerate a sale pitch that begins by frightening seniors into thinking they're about to lose their

Social Security or health-care benefits," Cornyn said.

The company's envelopes are designed to mislead recipients into thinking that they contain official communications from the federal government, Cornyn said.

The mailings bear the return address of Seniors Security Services and display an emblem that closely resembles a federal seal next to the address and the words "important update" printed in large, bold letters.

The lawsuit asks the court for an injunction prohibiting the misleading mailers, civil penalties to be paid to the state of up to \$10,000 per violation, attorney fees and investigative costs.

**Shrimp fishery in danger**

Texas' \$500 million shrimp industry is in danger of collapse unless actions are taken to reduce commercial harvests, according to an 18-month-long Texas Parks and Wildlife study.

"The population of adult spawning shrimp has been steadily

declining because of excessive fishing pressure both in the bays and the Gulf," said Parks and Wildlife Director Andrew Sansom.

Since the early 1970s, shrimping activity in Texas bays has increased more than 300 percent, according to the research.

With technological advances in equipment during the same period, the number of bay shrimp harvested has climbed more than 400 percent.

**Group protests inequities**

Reimbursements for female-specific surgeries are 37 percent to 50 percent lower than reimbursements for male-specific surgeries, The Equal Health Care Alliance of Austin said recently.

The alliance, which formed this month and has 3,000 members, is encouraging companies to renegotiate contracts with insurers in an attempt to remedy what they see as gender-based disparities.

Susan Dell, wife of Dell Computer Corp. founder Michael Dell, is a co-chairwoman of the alliance.

**It's Here THE ALL NEW PT CRUISER**



**10 TO CHOOSE FROM**  
**2000 DODGE RAM 1500**  
 STARTING AT **\$209** PER MO.\*  
 #05064  
 Air • Tilt • Cruise • AM/FM Cassette • Chrome Wheels

**6 TO CHOOSE FROM**  
**2000 DODGE INTREPID**  
 STARTING AT **\$249** PER MO.\*\*  
 #05080  
 Auto • Air • Tilt • Cruise • Power Locks • Power Windows • AM/FM Cassette

**WE HAVE A GREAT SELECTION OF PRE-OWNED CARS & TRUCKS WITH LOW MONTHLY PAYMENTS!**

'95 BUICK SKYLARK #6259 <b>\$137</b> DOWN <b>\$137</b> PER MO.	'95 BUICK REGAL #6538 <b>\$141</b> DOWN <b>\$141</b> PER MO.	'98 MERCURY TRACER #6498 <b>\$145</b> DOWN <b>\$145</b> PER MO.	'99 DODGE STRATUS #6330 <b>\$198</b> DOWN <b>\$198</b> PER MO.	'98 DODGE NEON #6425 <b>\$165</b> DOWN <b>\$165</b> PER MO.
'98 FORD ESCORT LX #6481 <b>\$165</b> DOWN <b>\$165</b> PER MO.	'96 OLDS CUTLASS #6359 <b>\$179</b> DOWN <b>\$179</b> PER MO.	'98 PONTIAC SUNFIRE #6461 <b>\$199</b> DOWN <b>\$199</b> PER MO.	'99 SATURN SL2 #6371 <b>\$225</b> DOWN <b>\$225</b> PER MO.	'99 MERCURY SABLE #6439 <b>\$249</b> DOWN <b>\$249</b> PER MO.

\*36 Mo. @ 9.45%. Optional Final Payment \$10,099.00 - 10% Down \*\*\*36 Mo. @ 5.9%. Optional Final Payment \$10,525.00 - 20% Down. All on Approved Credit plus Tax, Title and License.  
 \*\*12 Months @ 9.25% APR with Approved Credit plus Tax, Title and License.

**BENDER**

**Chrysler, Plymouth, Dodge**  
 3400 MABRY DR. • 762-4511 • 1-800-466-4513



2231

**RED WING SHOES**  
 Made in U.S.A.

**The Fair Store**  
 120 Main 272-3500





**Lazbuddie students honored**

Lazbuddie Elementary School students of the month for April include (back row, from left) pre-kindergartner Keen Diaz, daughter of Esmeralda Estrada; fourth-grader Megan McGuire, daughter of Marty and Donna McGuire; kindergartner Denise Sánchez, daughter of José and Luz María Andrade; first-grader Andrea Solano, daughter of Osvaldo and María Solano; second-grader Logan Mason, son of Shane and LeShea Mason; third-grader Jacob Schacher, son of Daniel and Mary Jo Schacher; fourth-grader George Alvarez, son of Gabriel Juárez Sr.; fifth-grader Jesse Gómez, son of Jesús and María Gómez. The students were selected based on character, leadership and citizenship; each was presented with a ribbon.

**Report backs genetically grown crops**

By STEWART TRUELSON  
American Farm  
Bureau Federation

Greenpeace director Lord Melchett told a British court he helped destroy a field of biotech corn last July because he thought the field was capable of unleashing an unstoppable infestation. He said his motive was to protect neighboring fields. The prosecutor said the whole thing, including the trial, was a publicity stunt. Arpad Pusztai, a biochemist who used to work at an institute in Scotland, also made headlines in the British press for claiming that biotech potatoes were harmful to rats. There was one problem with his study: The rats wouldn't eat enough potatoes. Toxicologists examined the data and said the rats died from starvation or known toxins in raw potatoes. Britain's *NewScientist* magazine gave Pusztai credit for proving rats hate potatoes. Had both men waited for the National Academy of Sciences' report on biotech crops, they could have saved themselves trouble and embarrassment. The report, published in April, said there is no proof that biotech

plants pose any more risk to health or the environment than conventional plants. It also found no evidence that biotech foods now on the market are unsafe to eat. "Just because a plant is transgenic doesn't make it dangerous," said Perry Adkisson, former Texas A&M University chancellor. Adkisson chaired a panel of 12 scientists that spent a year studying the need for additional regulation of biotech plants. They focused specifically on plants that were modified through biotechnology to make them resistant to certain pests and disease. The outcome has to be a disappointment to Melchett and others who refer to biotech plants as "Frankenstein foods." There was certainly nothing in this report to rouse the villagers to destroy a monster. Opponents of biotechnology were quiet after the report, but we haven't heard the last of them. They will continue to try to shake public confidence in biotechnology and the food supply through their own junk science or demonstrations like the ones in Boston and Seattle.

**'CREATIVE LIVING'**

Information on sewing with Ultrasuede and electronic knitting will be featured on "Creative Living" on May 2 at 1 p.m. and May 6 at 3 p.m. (All times are Central.) "Creative Living" airs on public broadcasting station KENW-TV from Eastern New Mexico University in Portales. Phyllis Eifler, owner of Sewing Innovations in Denver, will demonstrate techniques that make working with Ultrasuede comparatively easy. Susan Guagliumi of Studio by White in Cleveland, Ohio, will demonstrate electronic knitting, explaining how the new technology makes it possible to create beautiful custom-knit items by machine. Making pockets and expanding the wardrobe will be featured May 2 at 10:30 p.m. and May 4 at 1 p.m. Bobbie Carr of San Jose, Calif., a sewing expert, teacher and author, will demonstrate how to make perfect pockets every time. Cheryl Niehoff of Washing-

ton, D.C., fashion coordinator and independent sales manager for Weekenders Casual Wear, will show how to turn 9 pieces of clothing into 27 different outfits. "Creative Living" is produced and hosted by Sheryl Borden of Portales. The show is carried on more than 100 PBS stations in the United States, Canada, Guam

and Puerto Rico and is distributed by West Link of Albuquerque. Viewers can request copies of materials offered on the show by sending a first-class stamp for each handout requested, along with name, address and booklets requested, to "Creative Living" Requests, c/o KENW-TV, 52 Broadcast Center, Portales 88130.

**CASKETS AND MONUMENTS**  
"SAVE HUNDREDS OF DOLLARS!"  
FREE DELIVERY to your funeral home of choice within 100 miles of Hereford.  
337 N. MILES HEREFORD, TX  
**363-2700**

**Big. Bigger. Biggest.**

Introducing three new rate plans:

**Digital 300**  
300 minutes only \$34.95/month.

**Digital 600**  
600 minutes only \$64.95/month.

**Digital Area 1000**  
1000 minutes only \$89.95/month.

It doesn't get any better than this.

Plateau Wireless. People you know, communications you trust.

Call toll-free: **1-877-PLATEAU (752-8328)**

**PLATEAU Wireless**

<b>NEW MEXICO</b> CLOVIS Plateau Telecommunications 600 Main (505) 389-1234	<b>DOVNA</b> Kevin's Auto 105 Gardner (806) 238-1889	<b>BROWNFIELD</b> Cellular Plus 455 S. Hobson Rd. (806) 837-6232	<b>HAMILTON AUTO</b> 220 S. 5th (806) 637-4551	<b>DELL CITY</b> Dellcom, Inc. 610 S. Main (915) 964-2402	<b>JEM Cellular</b> 400 S. Lea St. (915) 964-2820	<b>DIMMIT</b> D&M Enterprises 128 1055 (806) 647-5103	<b>EARTH</b> Earth Reate 304 W. Main (806) 257-2291	<b>FARWELL</b> ENMR-Plateau 200 Ave. A (806) 481-3800	<b>FRIGONA</b> WT Services 1010 Columbia (806) 250-5555	<b>FRIGONA WHEAT GROWERS</b> 103 S. 5th St. (806) 250-3211	<b>FT. STOCKTON</b> Plateau Telecommunications 1003 N. Piccas (915) 940-7070	<b>GRANDFALLS</b> Price Electronics N. Hwy 19 (915) 547-2040	<b>HART</b> Tale Auto Parts Hwy 194 & Hwy 145 (806) 938-2641	<b>HEREFORD</b> WT Services/ Toys Biker S. Hwy 285 (806) 364-7311	<b>KERMIT</b> Kermit Electronics 511 N. Pine (806) 385-2345	<b>LEVELLAND</b> Plateau Wireless 701 College Ave. (806) 188-1400	<b>LORESTER</b> Communications 219 Capitol (806) 894-8881	<b>B&amp;E Radio Shack</b> 712 Austin (806) 894-8053	<b>GARY PALK</b> 502 E. Adams (806) 844-7472	<b>LITTLEFIELD</b> Larry's Radio Shack 601 10th Ave. (806) 385-3422	<b>RICHARDSON ENTERPRISES</b> 147 E. Delano (806) 385-7636	<b>LUBBOCK</b> Commercial Radio 1915 Texas Ave. (806) 744-5533	<b>LUBBOCK COMMUNICATIONS</b> 1519 N. University (806) 774-2626	<b>MIDLAND</b> The Telephone Store 4410. Midway Rd. Ste. C1 (915) 889-9885	<b>MONAHANS</b> Plateau Telecommunications 101 S. Betty (915) 943-1268	<b>MORTON</b> Farm Equipment Co. Lewistown Hwy (806) 266-5517	<b>MULESHOE</b> Five Area Telephone Corp 302 Uvalde (806) 272-5533	<b>WILSON APPLIANCE</b> 117 Main St. (806) 272-5532	<b>COZINA</b> John Henderson 214 Oak (915) 345-2503	<b>PECOS</b> Radio Shack 1120 S. 65th (915) 447-6184	<b>FLAINS</b> Flains Depot 302 Gateway Way (806) 456-7112	<b>PLAINVIEW</b> Two Way Radio & Paging 404 Columbia (806) 296-2672	<b>CARTWRIGHT CELLULAR</b> 2315 W. 5th St. (806) 296-6368	<b>SANDERSON</b> Dudley Motors 107 Main (915) 387-3592	<b>SAN ANGELO</b> Western Communications 2502 Knickerbocker Rd. (915) 949-3000	<b>SONORA</b> Rising Enterprises 107 Main (915) 387-3592	<b>VAN HORN</b> Van Horn Office Supply 100 Broadway (915) 283-2900
--	---	---	--	--	---	--	--	--	--	--	--	---	---	---	--	--	--	--	--	--	--	---	---	---	--	--	--	---	--	---	--	--	---	---	---	---	---

**You snooze, you loose. Read the News!!**

**REPRESENTATIVE SALES**

Seller, City	#	Type	Wt.	CWT or PH
Carmello Rodriguez, Albuquerque	8	Hol. Strs	266 lbs.	at \$110.00
John Hall, Seminole		Yell. Str	345 lbs.	at \$110.00
Alkali Cattle, Portales, NM		Char. Bull	395 lbs.	at \$120.00
Dennis Newton, Hereford		Char. Bull	515 lbs.	at \$95.00
BT Livestock, Morton		Bik. Str	540 lbs.	at \$98.00
D.C. Pearson, Ropesville	3	Red Strs	692 lbs.	at \$84.00
Green Harvest Farms, Earth	4	Bik. Strs	751 lbs.	at \$85.00
Dennis West, Portales, NM	2	Strs	888 lbs.	at \$77.50
Dink Miller, Floyd, NM	2	Bik. Strs	918 lbs.	at \$77.50
John Hall, Seminole		BMF Hfr	315 lbs.	at \$103.00
Diamond Back Ranch, Colo. City		RWF Hfr	350 lbs.	at \$97.00
Brent Huseman, Hereford	2	Mxd. Hfrs	453 lbs.	at \$91.00
Diamond Y Cattle, Muleshoe	16	Mxd. Hfrs	656 lbs.	at \$78.50
Etta Arnsperger, Lovington	10	Mxd. Hfrs	677 lbs.	at \$85.00
Etta Arnsperger, Lovington	7	Char. Hfrs	778 lbs.	at \$78.25
Terry Jesko, Muleshoe	7	Bik. Hfrs	899 lbs.	at \$71.00
Carl Hahn, Farwell	5	Bik. Pair		\$760.00
Alkali Cattle, Portales, NM		Char. Pair P		\$960.00
John Hall, Seminole		BWF Pair		\$700.00
Brent Huseman, Hereford		Bik. Cow P5		\$610.00
FM Farms, Brownfield	2	Red Cows P7		\$640.00
Bob Rogers, Muleshoe		Hol. Cow	1195 lbs.	at \$43.00
Cade Hooten, Muleshoe		Red Cow	1555 lbs.	at \$42.00
Mike Gilbert, Wolfforth		Red Cow	985 lbs.	at \$44.50
Alkali Cattle, Portales, NM		Bik. Cow	1495 lbs.	at \$43.00

**Muleshoe Cattle Market**  
SATURDAY, APRIL 22, 2000

554 head of cattle, 295 hogs and 350 sheep and goats for a total of 1,199 animals were sold at the April 22 sale. Market 1-2 lower on stocker cattle. Feeder cattle steady. Pairs & Bred cows fully steady with good demand. Packer cows 1 dollar higher. Already consigned for next week's sale are 50-60 pairs.

The Muleshoe Cattle Market is brought to you each week by Muleshoe Livestock Auction, located east of Muleshoe on U.S. 84. Muleshoe Livestock conducts sales every Saturday, beginning with hogs, sheep and goats at 10 a.m. and cattle following at approximately 12 noon.

**FOR INFORMATION ON SALES OR TO CONSIGN CATTLE, CALL (806) 272-4201**



pick up milk  
change oil  
mail package  
call before you dig

It may seem like a simple task, but it can save your life. If you dig into a natural gas line, you could cause a fire or explosion. With more than a million miles of pipeline in the country, there's only one way to dig safely. Call 1-800-545-6005 two days before you plan to dig.

Natural Gas Pipeline Company of America (NGPL) clearly marks where gas lines are located, and where you shouldn't dig. Calling for locations of natural gas facilities is more than just a good idea- it's the law.

And if you ever smell natural gas, leave the area immediately. Don't operate any equipment, don't flip any electrical switches. Simply get away and call NGPL from another location.

Please take the time to call before you dig. Your family will understand if you forget to pick up the milk.

**Natural Gas Pipeline Company of America**  
A Kinder Morgan Company  
**Emergency Number 1-800-733-2490**



# Water has to be in right place to be helpful

SPECIAL TO THE JOURNAL

Proper placement of water in the root-zone soil profile prior to the growing season is vital to crop success.

Producers should be aware of irrigation application efficiencies and other factors affecting the amount of water delivered to the soil as they begin pre-plant irrigation within the 15-county High Plains Underground Water Conservation District No. 1.

It is always important to consider the efficiency of an irrigation system when applying water during pre-plant irrigations. If a producer wishes to apply a specific amount of water to the soil, the efficiency of the irrigation system must be

considered in order to have an accurate calculation of the amount of water to be applied.

Wind and other climatic factors are major considerations when applying irrigation water. "Irrigation should be avoided during windy or adverse conditions," said Scott Orr, High Plains Water District acting water use/conservation division director.

Orr said a 10 percent loss in efficiency typically occurs, or an increase in evaporation occurs, for every 10 mph of wind velocity.

Producers also should consider the actual percentage of the soil surface being wetted by the irrigation system. Pre-plant

irrigation is usually made during late winter and early spring to soils with no cover crops.

While this increases the potential for evaporation, the cooler temperatures during this time of year help reduce evaporation losses, as compared to summertime irrigation applications.

Knowledge of soil types and their water-holding capacities is important when determining the amount of water to be applied to bring the root-zone soil profile to field capacity.

Since soil moisture is below normal this year, Orr says producers should not forget the importance of capturing rainfall through the use of furrow dikes. "Furrow diking, the practice

of creating small basins in the furrow to collect rainfall until it can soak into the soil, should be an essential part of a water-use efficiency program on any farm," Orr said.

This is a low-cost, high-return practice that can increase profitability for High Plains producers.

Additional irrigation application efficiency information is available by contacting High Plains Underground Water Conservation District No. 1, 2930 Avenue Q, Lubbock 79405-1499 or by calling (806)-762-0181. The district's web site is www.hpwd.com, and its e-mail addresses are hpwd@hpwd.com and info@hpwd.com.

**GUNS KNIVES INDIAN ARTIFACTS COLLECTIBLES JEWELRY**

**GUN & KNIFE SHOW**

**LUBBOCK FAIRGROUNDS**  
corner of Ave. A & 4th Street  
**Saturday, April 29 — 9 am to 5 pm**  
**Sunday, April 30 — 10 am to 5 pm**

"Early Bird Special" — 2 Adults for the price of one first hour each day!

Information Contact Don or Kim Hill (830) 257-5844

**GUNS KNIVES INDIAN ARTIFACTS COLLECTIBLES JEWELRY**

**Let Our Classified Section Work For You!**  
Talk with Bea about placing an ad today! 272-4536

## Journal Classifieds

## STOP & SHOP

Deadlines are 5 p.m. Monday and Thursday

Call 272-4536

Deadlines are 5 p.m. Monday and Thursday

**LEGALS      LEGAL NOTICES      HELP WANTED      HELP WANTED      SERVICES      FOR SALE      REAL ESTATE**

**NOTICE TO CREDITORS**  
Notice is hereby given that original Letters Testamentary for the Estate of Roberta Lucile Harper, Deceased, were issued on April 17, 2000, in Cause No. 2219, pending in the County Court of Bailey County, Texas, to: ROY LEE HARPER. The residence of the Independent Executor is Muleshoe, Bailey County, Texas; the post office address is: % JOHNNY ACTKINSON, Attorney at Law, P.O. Box 286, Farwell, Texas 79325. All persons having claims against this Estate which is currently being administered are required to present them within the time and in the matter prescribed by law. DATED the 17th day of April, 2000. ALDRIDGE, AYCOCK, ACTKINSON & RUTTER, L.L.P., P.O. Box 286, Farwell, Texas 79325. Signed by: Johnny Actkinson, Attorney for the Estate, State Bar No.: 00835700. Published in the Muleshoe Journal April 27, 2000.

**PUBLIC NOTICE CITY OF MULESHOE TEXAS COMMUNITY DEVELOPMENT PROGRAM**  
The City of Muleshoe will hold a public hearing at 5:05 p.m. on Monday, May 1, 2000 at City Hall, 215 S. First, Muleshoe, Texas, in regard to the submission of an application to the Texas Department of Housing and Community Affairs for a Texas Community Development Program (TCDP) grant. The purpose of this meeting is to allow citizens an opportunity to discuss the citizens participation plan, the development of local housing and community development needs, the amount of TCDP funding available, all eligible TCDP activities and the use of past TCDP funds. The City encourages citizens to participate in the development of this TCDP application and to make their views known at this public hearing. Citizens unable to attend this meeting may submit their views and proposals to Rick Hanna, City Manager, at the City Hall. Persons with disabilities that wish to attend this meeting should contact City Hall for assistance. Individuals who require auxiliary aids or services for this meeting should contact City Hall at least two days before the meeting so that appropriate arrangements can be made. For further information, contact Rick Hanna, City Manager at the City Hall 915/286-4222.

**RN, LVN, NURSE AIDE**  
Full-time or part-time. 31 bed Medicare-approved hospital. Contact Margaret Heathington, DON Muleshoe Area Medical Center, 708 South First Street, Muleshoe, TX 79347. 806-272-4524

**Accounting/Payroll personnel needed** apply at: C&H Equipment 2510 W. American Blvd.

**Receptionist** for local physician's office. Experience helpful. Must be responsible, dependable, congenial. Contact Iris Hinchey, Medical Clinic of Muleshoe, 701 S. First Street, Muleshoe, TX 79347. 806-272-7544

**AUTOMOTIVE TECHNICIAN**  
Need ASE qualified Master Technician. Must have at least 2 years experience. Excellent pay plan, plus group insurance and paid vacation. If you meet the above criteria contact Richard Barton @ 1-888-569-1900 9AM-6PM

**RN, LVN, CNA** Full-time or part-time. 54 bed Medicaid-approved nursing home. Excellent benefits. Contact Terri Brown, DON, Muleshoe Area Healthcare Center, 106 West Avenue H, Muleshoe, TX 79347. 806-272-7578

**Buckner Children and Family Services of Lubbock** has a full time position available for a Case-aide to provide Homemaker services to families with children at risk. Experience required, bilingual preferred. To be officed in Littlefield, please apply in person at 129 Brentwood Ave., Lubbock, Tx

**Homeworkers Needed** \$635 weekly processing mail. Easy! No experience needed. Call 1-800-440-1570 Ext. 5085 24Hrs

Newspaper carrier needed in Muleshoe for the Lubbock Avalanche Journal. Great part-time job for someone willing to get up early. Looking for honest dependable person with good transportation. Call Henry Holland 1-800-692-4021 ext. 8767

**ATTENTION work from home** earn \$450-\$1500 part-time or \$2000-\$4500 full time. 1-800-296-1334

**Area Title Researcher** must have dependable transportation and good handwriting skills. Call 1-800-701-2273

**Own a Computer? Put it to Work!** \$25-\$75/hr. PT/FT. 1-888-261-3975 www.4lifestyles.net

**Patience is a virtue!**

**SUMMER BABYSITTER NEEDED** in my home. Must have driver's license Call 272-5941 and leave a message

**BABYSITTING!** Summer is coming up. Do you have daycare? Meals provided. Lots of fun and TLC. Call 272-5059

**Concealed Handgun Course** April 29th in Muleshoe - Toby Turpen 806-364-6362 or toby@wrt.net

**We do custom farming, combining & shredding** For more information- (806) 272-3090 or leave a message

**COUNTRY DUMPSTER'S** RURAL GARBAGE SERVICE NO LONG TERM CONTRACTS Locally Owned & Operated Reasonable Prices 806-385-4585

**YARD SALE** Clothes and misc. items 315 W. 10th Thurs., April 27 - Sat., April 29. 9 a.m. - ?

**BUYING? SELLING?** [www.iwantacar.com](http://www.iwantacar.com) We can help!

**1991 Dodge Spirit** 63,000 original miles. Excellent interior \$400. 272-5427 after 7 p.m.

**Giant Warehouse Sale** at the Oak Tree Antiques 400 W. Hwy 84, in Sudan Fri.-Sat April 28-29 10 a.m.- 5:30 p.m. Lots of bargains, cleaning out warehouse, shop price also reduced! or call 806-227-2325

**FOR LEASE** For Lease Four Circles Good Water Excellent for peanuts (806) 925-6415 (806)679-8310

**FOR RENT - CONDO** Ruidoso Condo 3 Bedroom 3 Bath Sleeps 8 Call Debbie at (505) 420-6700 or (806) 285-3053

**Home For Sale** Excellent condition updated Brick Home For Sale in Country Club edition 3-2-2, corner lot, storage shed, Geo-Thermal Heating and Cooling, Plantation Shutters, new fence, sprinkler system. Call 806-272-5274 806-783-9307

**For Sale or Lease** \$34,000 / \$425.00 Brick, 3-1-1, Ceiling Fans, Central Heat/Air, Fenced 307 West Ave. K 806-272-4764 915-570-0574 Available June 1st.

**First Texas Ag Credit** Long & Short-Term Financing Rural Housing Operating & Improvements AgFAS Credit Approval Cash Percentage Program Low Stock Requirement 2% to \$3,000 Maximum Equipment Leasing 316 South Main Muleshoe, Texas 806-272-3010

**Anything Goes!**

**ADOPTION**  
Note: It is illegal to be paid for anything beyond medical and legal expenses in Texas adoption.

A BABY IS our dream. Love, laughter, and security awaits your newborn. Stay-at-home mom and devoted dad will cherish your baby. Expenses paid. Terry / Richard. 1-800-798-4833 or 1-800-974-2280.

**BUSINESS OPPORTUNITIES**  
AREA MCI, PAYPHONE routes. Reliable locations. Great income. (Local routes, free info) EZ money: (5K inv.) 1-800-264-6678.

MARS/NESTLE, ETC. Established vending route. Will sell by 5/7/2000. \$8,875 minimum investment. \$2000+ monthly income. Lease available with good credit. 1-800-637-7444.

**FLOODPLAINS AND WETLANDS EARLY PUBLIC NOTICE**  
DATE: April 27, 2000  
The City of Muleshoe, Texas is considering a water line improvement for residents in portion of eastern and western sections of the city as a CDBG project under the Texas Community Development Program for non-entitlement cities and counties. The project will provide improved water conditions for 328 low and moderate income families. The project is partially located in the 100-year floodplain. The City is interested in discussing alternatives to this project, and discussing possible measures to minimize any adverse impacts. A public hearing is scheduled on May 1, 2000 at 5:10 to discuss the proposed project. Please extend or send written comments to Rick Hanna, City Manager, City Hall, 215 S. First, Texas, 79347. Comments will be received until May 13, 2000. A more detailed description of the project and FEMA flood maps are available for citizen review at the City Hall, Muleshoe, Texas. Robert Montgomery Environmental Certifying Official

**DONATIONS**  
CHARITY CARS - DONATE your vehicle, tax deductible, free towing. We provide vehicles to needy families. As seen on Oprah and People Magazine! 1-800-442-4451 www.charitycars.org.

**DRIVERS WANTED**  
DRIVER - COVENANT TRANSPORT \*Coast to coast runs \*Teams start 42c-45c \*\$1,000 sign-on bonus for experienced company drivers. Experienced drivers and owner operators, 1-800-441-4394. For graduate students 1-800-338-6428.

**DRIVERS WANTED**  
ATTN. DRIVERS: FLEETWOOD Transportation hiring long-haul flatbed drivers. Peterbuilt equipment. Guaranteed home time and complete package of benefits. Also need long-haul owner operators. Call 1-800-458-4279.

**DRIVERS - CFI NOW Hiring!** OTR drivers. Company and owner operators. Super teams split up to .40-company. .84-owner operators. 1-800-CFI-DRIVE. www.cfidrive.com.

**DRIVER - 36 CPM & \$700 sign-on!** 1 1/2 days off for every 7 out. 6 months OTR. Siton Motor Lines. www.sitm.com. 1-800-533-4765.

**DRIVERS - LOOK AT** the options! Various types of runs for van, flatbed, and owner operators. CDL training is available. Call for more information now. Swift Transportation 1-800-284-8785 (eoe-m/f).

**It's the real thing!**

**Art is long life is short!!**

**Nieman Realty**  
116 E. Ave. C • George Nieman, Broker • 272-5285 or 272-5286

**RICHLAND HILLS — PARK RIDGE**

- JUST LISTED-VERY NICE 3-2-1 Brick, Cent. A&H, built-ins, FP, fans, auto spkIr., 1 car detached garage-workshop, fenced yd. More!!! \$70's!! RH-1
- NICE 3-2-1 Brick, Elct. Heat Pump, built-ins, nice carpet & drapes, patio, fenced yd., MORE!!! \$50's!!! RH-2
- PRICED REDUCED - LOT 83, PKRDG., - \$2,000 OR MAKE OFFER!!!

**HIGHLAND AREA**

- VERY NICE 2-1-1 Carport home, nicely remodeled, Cent. Heat, DW, fans, fenced yd., stor. bldg. \$29.5K!!! HL-1
- PRICE REDUCED - 3-2-2 Brick, corner lot, wall furnace heat, cent. evap. air, fenced yd., stor. workshop! MORE!!! \$49,500!!! HL-4

**LENAU - COUNTRY CLUB AREA**

- 2-1-1 Home, Cent. A&H, DW, MORE!!! \$29.5K!!! L-3
- 2-1-1 Home, 2 w/In-Contract, Cent. evap. air, fenced yd. \$22K!!! L-2
- NICE 3-2-2 Brick, Cent. Heat & Cent. Evap. air, built-ins, FP, fenced yd., stor. bldg.!!! \$40's!!! CC-1
- 3-1-1 Home, wall heat, DW, fenced yd. \$20's!! L-5
- 2-1-1 Home, Cent. A&H, new carpet, 4 fans, manual spkIr., stor. bldg., fenced yd. \$28K!!! L-1
- VERY NICE 3-2-1 Brick, Elec. Heat Pump, built-ins, fans, fence yd., MORE!!! \$39K!!! L-4

**COMMERCIAL**

- Duplex (2-2 bdrm. 1 bath units) plus 1 (2 or 3 bdrm) for residence or rental. \$30K!!!
- R.V./Mobile Home Park on 2.95 acres, home, office, 3 M.H. units. LET'S LOOK TODAY!!!
- APPROX. 4,800' shop plus 600' office area on a 60' x 130' lot!!! PRICE REDUCE!! 40K!!!
- 246' x 145' tract, Hwy. 84. \$29.5K!!!
- VERY NICE 51 UNIT MOTEL, Priced to sell!!! Call for details!!!
- NICE 26 UNIT MOTEL, Priced to Sell!!! Call for details!!!
- 56' x 140' tract, approx. 4700' bldg., \$35K!!!
- GOOD INCOME PROPERTY - approx. 3490' bldg., paved parking, good net lease!!! PRICED TO SELL!!!

**RURAL**

- PLEASANT VALLEY, Approx. 320 acres, 2 bdrm home, 1 bath, 2 car detached garage, on pavement!!!
- W. OF SUDAN-NICE 3-3-2 Brick Home, 5 acre tract on Hwy. 298, Cent. Air & Heat, built-ins, large Quonset Barn, MORE!!! \$95K!!!
- 5 Acre tract on pavement close to town!
- Approx. 108 acres on Hwy. 70, approx. 2100' office area, 16,900' of commercial bldg. w/loading dock, 3,400' warehouse!! 2,800' runway!!
- FIX UP-3-2-2 Carport Home & 2-1-1 Home on 20 acre tract, 50' x 150' shed, 54' x 80' sheet metal barn, MORE!!! \$55K!!!
- EARTH - (Hite Park Add.), 3 bdrm. 2 bath!! Call for Details!!!

Established Business: Land, Bldg. & Equip., \$75K!!  
Nice Building with approximately 15,450 sq. ft. of shop area plus approx. 1,044 sq. ft. office (Dual Fuel Heat Pump for Office), 6 station phone system, restrooms (1 w/shower), loading dock, approx. 195 foot frontage. MORE!!!  
**HIGH SCHOOL**  
• NICE 3-1-1 Brick, cent. heat, evap. air, DW, fans, fenced yd., workshop-storage, extra garage, MORE!!! \$38K!!! HS-6  
• VERY NICE 3-1-1 Brick, Heat pump, DW, nice carpets, fenced yd., MORE!!! \$30's!!! HS-1  
• NICE 3-2-1 Brick, Cent. A&H, built-ins, fenced yd., stor. bldg. Price Reduced!! \$52K!! HS-2  
• VERY NICE 3-1-1 Home, Cent. A&H, nice carpets, six fans, 2 stor. bldgs., fenced yd., \$30's!! HS-5  
• VERY NICE 3-1-1 Brick, Cent. A&H, stove, DW, fenced yd., MORE!!! \$38K!!! HS-4  
• 3-2-2 Brick, Dual Fuel Heat Pump, built-ins, fans, storage bldg., fenced yd., MORE!!! \$60K!!! HS-7  
• NICE 3-1-1 Home, Cent. Heat & Cent. Evap. Air, built-ins, stor. bldg., fenced yd., MORE!!! \$41.5K!!! HS8  
• VERY NICE 3-2-2 Brick, Dual Fuel Heat Pump, Built-ins, thermal windows, nice carpets, stro. bldg., fenced yd., MORE!!! \$64K!!! HS-9



# CELEBRATE

# GINO de MOYO

PRICES EFFECTIVE APRIL 26-MAY 2, 2000

## MEAT

- 10 lb. Bag  
**Chicken Leg Quarters** ..... lb. **17¢**
- Boneless Skinless  
**Chicken Breast** ..... lb. **\$2<sup>29</sup>**
- X-tra Savings Pak Beef  
**Charcoal Steaks** .... lb. **\$1<sup>69</sup>**
- X-tra Savings Pak  
Beef Bone-In Blade Cut  
or 7-Bone Steak  
**Chuck Steaks** ..... lb. **\$1<sup>59</sup>**
- Cubed  
**Beef Tripe** ..... lb. **69¢**
- Cry-O-Vac  
**Beef Tripas** ..... lb. **89¢**
- For Tamales Boneless  
**Pork Meat** ..... lb. **\$1<sup>69</sup>**
- Sliced Pork  
**Fajita Meat** ..... lb. **\$1<sup>99</sup>**
- Decker  
**Meat Franks** ..... 12 oz. pkg **69¢**
- Decker Honey Roasted,  
Smoked or Oven Roasted  
**White Turkey** .... 16 oz. pkg **2/<sup>5</sup>**
- Decker Regular or Thick Sliced  
**Meat Bologna** .... 12 oz. pkg **99¢**
- Decker  
**Smoked Sausage** ..... 3 lb. pkg **\$4<sup>49</sup>**
- Hillshire Farms Asstd. Varieties  
**Smoked Sausage** ..... 1 lb. pkg **2/<sup>5</sup>**
- Great on the Grill Longhorn  
**Hot Links** ..... lb. **\$1<sup>69</sup>**
- Shurfine Breakfast  
Regular or Hot  
**Pork Sausage** ..... 1 lb. roll **\$1<sup>89</sup>**
- Shurfine Breakfast  
Regular or Hot  
**Pork Sausage** ..... 2 lb. roll **\$3<sup>69</sup>**
- Casa de Lowe's  
4 ct. Baby Combo  
**Pizza** ..... ea. **\$1<sup>79</sup>**
- Casa de Lowe's 2 pk.  
10" Deluxe or Pepperoni  
**Pizza** ..... ea. **\$2<sup>79</sup>**
- Casa de Lowe's 2 pk.  
13" Deluxe or Pepperoni  
**Pizza** ..... ea. **\$3<sup>89</sup>**
- Casa de Lowe's  
**Pork Tamales** ..... doz. **\$2<sup>99</sup>**
- Casa de Lowe's  
Homestyle or Burrito Size  
**Flour Tortillas** ..... 10 ct. **79¢**
- Price's Regular or Jalapeño  
**Pimiento Cheese Spread** ..... 7.5 oz. tub **2/<sup>5</sup>**

- General Mills Reg. \$2.49  
**Cheerios** ..... 14.25-15 oz. **\$2<sup>29</sup>**
- General Mills Reg. \$2.99  
**Honey Nut Cheerios** ..... 20 oz. **\$2<sup>79</sup>**
- Asstd. Flavors 6 pack  
**Squeezit Drinks** ..... 6-6.75 oz. **4/<sup>5</sup>**
- Betty Crocker Asstd. Supreme  
**Brownie Mix** ... 19.8-22.5 oz. **3/<sup>5</sup>**
- EZ Spray  
**Spray N Wash** .... 22 oz. btl **2/<sup>5</sup>**
- Regular or Lemon  
**Electrasol** ..... 50 oz. **2/<sup>5</sup>**
- Asstd.  
**Lysol Spray** ..... 12 oz. can **\$3<sup>49</sup>**
- Refreshing  
**Coca-Cola, Sprite or Dr. Pepper** ..... 2 liter btl **99¢**
- Refreshing  
**Coca-Cola, Sprite or Dr. Pepper** ..... 6 pk.-.5 liter **2/<sup>5</sup>**
- Refreshing  
**Coca-Cola, Sprite or Dr. Pepper** ... 6 pk.-12 oz. cans **\$1<sup>69</sup>**

## PRODUCE

- Creamy Hass  
**Avocados** ..... 4/<sup>\$1</sup>
- Red Ripe Roma  
**Tomatoes** ..... lb. **79¢**
- U.S. No. 1 Baking  
**Potatoes** ..... lbs. **5/<sup>\$1</sup>**
- Sweet  
**Honeydew Melons** .. lb. **49¢**
- Mild Medium  
**Yellow Onions** ..... lbs. **4/<sup>\$1</sup>**
- Sweet  
**Cantaloupes** ..... ea. **99¢**
- Red Ripe  
**Watermelons** ..... ea. **\$2<sup>99</sup>**
- Fresh  
**Serano Peppers** ..... lb. **79¢**
- Hot and Spicy  
**Jalapeño Peppers** ... lb. **79¢**
- Sweet Tropical  
**Mangos** ..... 2/<sup>\$1</sup>

## HEALTH & BEAUTY

- Assorted  
**Serenity Pads** ..... 16-22 ct. **\$4<sup>27</sup>**
- Johnson & Johnson Asstd.  
**Baby Shampoo** ..... 15 oz. **\$2<sup>47</sup>**
- Caplets, Gelcaps or Geltabs  
**Tylenol Extra Strength** ..... 24 ct. **\$2<sup>87</sup>**
- For a Restful Night's Sleep  
**Simply Sleep** ..... 24 ct. **\$3<sup>47</sup>**

- 15.1 oz. Honey Crunch Corn Flakes • 13.5 oz. Rice Krispies
- 16 oz. Frosted Mini Wheats
- Kellogg's Cereal** ..... your choice **2/<sup>\$4</sup>**
- Dole Pitted or Chopped  
**Dates** ..... 8 oz. **\$1<sup>59</sup>**
- Nabisco Asstd.  
**Honey Maid Grahams** ..... 16 oz. **2/<sup>5</sup>**
- Old El Paso  
**Taco Shells** ..... 18 ct. **\$1<sup>79</sup>**
- Casserole  
**Pinto Beans** ..... 4 lb. bag **\$1<sup>99</sup>**
- Comet Long Grain  
**Rice** ..... 42 oz. box **\$1<sup>49</sup>**
- Quaker  
**Harina Preparada** .. 4 lb. bag **\$1<sup>99</sup>**
- La Moderna Asstd.  
**Pasta** ..... 7 oz. **5/<sup>\$1</sup>**
- Nabisco Asstd.  
**Oreo Cookies** ... 20 oz. pkg **2/<sup>5</sup>**
- Tostitos®  
**Con Queso Dip** ... 15.5 oz. **2/<sup>5</sup>**
- Lay's® — Reg. \$2.99  
**Potato Chips** ..... 13.25 oz. **3/<sup>5</sup>**
- Kraft Regular or Light  
**Mayo or Miracle Whip** ..... 16 oz. **\$1<sup>69</sup>**
- Shurfine Real  
**Chocolate Chips** .. 12 oz. **\$1<sup>19</sup>**
- 34 ct. Small • 18 ct. Ex. Large
- 26 ct. Medium • 18 ct. Large
- Fitti Diapers** ..... your choice **\$3<sup>99</sup>**
- XTRA Classic Asstd. Reg. \$2.99  
**Powdered Detergent** ..... 4.75-7 lb. **2/<sup>5</sup>**
- Nice'N Fluffy Reg. \$2.99  
**Softener** ..... 128 oz. liquid **2/<sup>5</sup>**
- Lavender or Lemon  
**Festival Cleanser** . 33.8 oz. **\$1<sup>19</sup>**
- Pine or Lemon  
**Pinalen Cleanser**.. 33.8 oz. **99¢**
- Shurfine Ultra  
**Bath Tissue** .... 4 double rolls **2/<sup>5</sup>**
- Betty Crocker Asstd.  
Microwave Pop•Secret  
**Popcorn** ..... 3 pack **3/<sup>5</sup>**

## FROZEN & DAIRY

- Delimex  
**Chicken & Cheese Quesadillas** ..... 21 oz. **\$3<sup>99</sup>**
- Delimex  
**Chicken & Cheese Wrapidos or Beef Wrapidos** ..... 24 oz. **\$3<sup>99</sup>**
- Casa de Lowe's Asstd.  
**Burritos** ..... 6 ct. **2/<sup>5</sup>**
- Asstd. 12 to 17 oz. pkg.  
**Patio Dinners** ..... ea. **79¢**
- Asstd.  
**Patio Burritos** ..... 5 oz. **4/<sup>\$1</sup>**
- Island, Citrus or Mango  
**Tampico Punch** ... 128 oz. **99¢**
- Island, Citrus or Mango  
**Tampico Punch** ... 16 oz. **2/<sup>\$1</sup>**
- Crinkle Cut, Country Style,  
Steak Fries or Golden  
**Ore-Ida Fries** ..... 24-32 oz. **\$1<sup>99</sup>**
- Asstd.  
**Jeno's Pizza** ..... 7.2-8.1 oz. **88¢**
- Lemon Pepper Breaded Fillets • Garlic Herb Breaded Fillets • Fish Fillet • Light & Crispy Sticks or Fillets
- Van de Kamp's Fish** ... 11-13 oz. pkg. **2/<sup>5</sup>**
- Asstd.  
**Kraft Singles** ..... 12 oz. pkg **\$2<sup>49</sup>**
- Banquet Asstd.  
**Select Menu or Value Menu Dinners** ..... 6.7-11 oz. pkg **4/<sup>5</sup>**
- Yellow, White, Pink or Chocolate  
**American Baked Polvone Cookies** ..... 16 oz. **2/<sup>5</sup>**
- Mrs. Smith's Natural Juice  
**Apple Pie** ..... 49 oz. **\$4<sup>99</sup>**

- Bull's Eye Original or Hickory  
**Barbecue Sauce** .. 16 oz. btl **2/<sup>5</sup>**
- Kraft Reg., Free or Seven Seas  
**Salad Dressing** ..... 8 oz. **3/<sup>5</sup>**
- Bama  
**Grape Jelly** ..... 32 oz. jar **99¢**
- Snow Cap  
**Lard** ..... 4 lb. box **\$1<sup>49</sup>**
- Dole  
**Pineapple Juice** .. 46 oz. **3/<sup>5</sup>**
- Dole Asstd. in Juice  
**Pineapple** ..... 20 oz. can **\$1<sup>29</sup>**
- Mrs. Butterworth's  
**Pancake Mix** .... 32 oz. box **2/<sup>5</sup>**
- Log Cabin  
**Syrup** ..... 24 oz. btl. **\$2<sup>99</sup>**

- Lux Baked Fruit Asstd.  
**Empanada** ..... 3 ct. **2/<sup>5</sup>**
- Shurfine Vegetable  
**Oil Spread** ..... 48 oz. tub **\$1<sup>19</sup>**
- Kraft American Asstd.  
**Deli Deluxe** ..... 12 oz. pkg **\$2<sup>79</sup>**
- Kraft Asstd. Shredded  
**Velveeta** ..... 8 oz. pkg **\$1<sup>99</sup>**
- Kraft Asstd.  
**Chunk Cheese** ..... 8 oz. **\$1<sup>99</sup>**
- Kraft Philadelphia Asstd.  
**Cheese Cake Snack Bars** ..... 8-9 oz. **2/<sup>5</sup>**
- Regular or Light Fudge  
Bars or Banana Fudge Bars  
**Blue Bell Bars** ..... 12 ct. **2/<sup>5</sup>**
- Blue Bell Asstd.  
**Ice Cream** .... 1/2 gallon round **2/<sup>5</sup>**
- Marie Callender's Asstd.  
**Cobblers or Pot Pies** ..... 15-17 oz. pkg **2/<sup>5</sup>**
- Marie Callender's Asstd.  
**Skillet Side Dish** .. 20 oz. **\$2<sup>99</sup>**
- Marie Callender's Asstd.  
**Complete Skillet Meals** ..... 22-25 oz. **\$3<sup>99</sup>**
- Marie Callender's Asstd.  
**Family Meals** ..... 37-48 oz. **\$5<sup>99</sup>**
- Marie Callender's  
**Macaroni & Cheese Family Meal** ..... 40 oz. pkg. **\$4<sup>59</sup>**
- Mozzarella Cheese  
Nuggets or Asstd.  
**Banquet Tenders, Nuggets or Wings** ..... 11-16 oz. **2/<sup>5</sup>**
- Lowe's Hydrogenized/  
Shurfine/SHURSAVING Low Fat  
Premium Quality All Varieties  
**Milk** ..... gallon **\$1<sup>97</sup>**

- Asstd. Smack  
**Ramen Noodles** .. 3 oz. **10/<sup>\$1</sup>**
- Jugos Del Valle  
**Nectar** ..... 11.3-11.5 oz. can **3/<sup>99</sup>**
- Pace Hot, Mild or Medium  
**Picante Sauce** ..... 16 oz. **2/<sup>5</sup>**
- Frosty Acres White  
**Hominy** ..... 111 oz. can **\$1<sup>79</sup>**
- Asstd. Juanita's  
**Menudo** ..... 29 oz. can **\$1<sup>99</sup>**
- Ellis Jumbo  
**Tamales** ..... 28 oz. can **\$1<sup>59</sup>**
- El Gallito  
**Jalapeño Peppers** .. 26 oz. **79¢**
- Mexicali Rose Instant  
**Refried Beans** ..... 7 oz. **2/<sup>5</sup>**

### Celebrate Cinco de Mayo!

- Knorr Chicken Flavor  
**Bouillon** ..... 3.3 oz. pkg **79¢**
- Nescafe Clasico  
**Instant Coffee** .... 7 oz. jar **\$4<sup>69</sup>**
- La Moderna  
**Marias Cookies** .. 21 oz. pkg **\$1<sup>19</sup>**
- Gamesa  
**Animal Cookies** .. 21 oz. pkg **99¢**
- Bufalo  
**Hot Sauce** ..... 5.5 oz. **69¢**
- Mexican  
**Coca-Cola** ..... 17 oz. btl. **89¢**
- La Moderna  
**Rikis Crackers** ..... 13 oz. **99¢**

- La Moderna  
**Coconut Bars** .... 28 oz. pkg **\$2<sup>39</sup>**
- Abuelita  
**Chocolate Drink Mix** .. 19 oz. **\$2<sup>19</sup>**
- Maizena Asstd.  
**Corn Starch Drink** .. 17 oz. **3/<sup>99</sup>**
- Topatio  
**Hot Sauce** ..... 10 oz. btl **99¢**
- Jarritos  
**Sodas** ..... 13.5 oz. btl. **2/<sup>5</sup>**

# Lowe's

## MARKETPLACE

401 W. American Blvd. Muleshoe 272-4585

WESTERN UNION MONEY TRANSFER<sup>SM</sup>

"The fastest way to send money"

MEMBER STORE AT PARTICIPATING STORES

WE RESERVE THE RIGHT TO LIMIT QUANTITIES IN TEXAS

As an added convenience, Lowe's in Muleshoe now has a wheelchair available for our customers in need of assistance while shopping.