

Robert Lee Observer

Vol. 93, No. 20

Robert Lee, Coke County, Texas (76945), Friday, Nov. 19, 1982

Single Copy 25c

Farm-City Week Set Nov. 19-25

"Farm and City: Partners in Progress--You Can't Have One Without the Other" is the theme of this year's Farm-City Week Nov. 19-25.

Purpose of the observance is to focus on the involvement of farm and city people as partners in the

50 YEARS AGO

B.M. Gramling was carried to San Angelo Wednesday unconscious with a hurting in his head, caused by the flu. As we go to press, he is some better. Every family in town has somebody sick, with their head under their wing.

Born to Mr. and Mrs. Roy Taylor on January, another girl - the 10th one. They also have 1 boy.

A bunch of young people at Sanco went up and stormed newlyweds Mr. and Mrs. Otis Campbell Friday night.

Jess Martin has moved to the pecan mott on Mountain Creek. This place was first settled on-by J. F. Byrd, father of W. G. Byrd in the spring of 1880. Mr. Martin will assist Mr. Byrd in managing his stock and farm.

The Sanco boys beat Robert Lee last Friday in basketball 14 to 10. The dirt and weed field was a little rough and so was the game. Earl Adkins, guard for the Sanco team, was injured and received a broken arm.

I am still on a tear, boys, about the bill in Austin to annex all county schools. Thos "Big I's" "Little You's" lobbyists are working hard. We've got to band together and speak in a language even those short mustache, tax-eating, college boys can understand. We ain't out of it yet.

Notice-- We have opened an independent service station near the Ice House and we are selling strictly first grade gasoline at 12 cents per gallon. This grade is usually sold at 16 cents. We have a standard brand of lube oil at 15 cents and 20 cents a quart. We also have water-white Kerosene for 8 cents a gallon, guaranteed to please. Free air and water-give us a trial. Wood Service Station--Open day and night.

The Robert Lee Senior Class met on Jan. 20, to organize for the year. The following officers were elected: Frank Dean Bryan, president; Vivian Roane, vice-president; Lela Higgins, secretary; Ruby Dodson, treasurer; Christine Glenn, sargent of arms; and Miss Morris, sponsor.

Eggs dropped down to 8 cents and 10 cents a dozen this week and it makes the poor old grocerymen dread to see every feller approaching with his bucket of eggs. They have about as much control over the market these days as my old nanny goat up there at the house but get blamed for it anyway.

Fingerwaves for that modern look--25 cents. See Marie Childress at Alice Roberts' Friday and Saturday.

Bert Sheppard, five year old son of Mr. and Mrs. Delmir Sheppard was kicked in the face by a colt with both hind feet on Thursday. Several stitches were taken above and below his eye but is hoped he is not seriously injured.

growing, processing, marketing and consumption of food and fiber.

In other words, Farm-City Week is aimed at promoting better understanding between farm and city people and increasing the knowledge and appreciation of each for the American way of life.

Farm-City Week is under the direction of the National Farm-City Council, Inc., which is coordinated by Kiwanis International.

Agricultural production, marketing and processing provides jobs and income for about a fourth of the working force in Texas.

One out of every 30 Texans is a farmer or rancher, and 30 percent of the state's retail trade business is directly associated with agricultural production and selling of food and fiber products.

Total cash receipts from Texas agricultural sales were just over \$10 billion in 1981. Economic activity generated from these marketings exceeded \$35 billion.

Total farm assets in Texas are estimated at \$80 billion. With 186,000 farms in Texas, assets average \$430,000 per farm. Many commercial size, full-time operators, have in excess of a million dollars invested in their farm or ranch business.

Texas ranks in third place in total cash receipts among the leading agricultural states, behind California and Iowa. Texas, however, is number one in the sales of cattle and calves, cotton, grain sorghum, sheep and wool, goats and mohair, cabbage and spinach.

One farm worker today provides food and fiber for 78 people. He also creates jobs for more than 5 nonfarm people who produce the things farmers need and who process, transport and merchandise the crops farmers harvest.

American agriculture is the world's largest commercial industry with assets exceeding \$1 trillion. This industry employs nearly 23 million people, a full 22 percent of America's total labor force. The agricultural industry encompasses manufacturing, farming, transportation, processing, and merchandising.

Farm and city people make the best food and fiber team in the world and give this country the capacity to feed its own people and to export for economic gain as well as for humanitarian purposes.

Paper To Be Printed Early Next Week

Due to the Thursday, Nov. 25, Thanksgiving holiday, the Observer will be mailed out on Wednesday, Nov. 24. In order to do this, Monday afternoon will be our deadline for turning your news and ads.

The Observer office will be closed on Thursday and Friday for Thanksgiving.

*Sell What You Don't Need
With a Want Ad*

ROBERTS UNDERGOES ADDITIONAL SURGERY

Additional surgery was performed on Douglas Roberts Tuesday at San Angelo's St. John's Hospital, resulting from complications of a ruptured appendix.

Douglas, a RLHS student, is the son of Mr. and Mrs. Bobby Roberts.

He first had emergency surgery on Oct. 23 and was able to come home last week, but was forced to return with the infection two days later.

Thanksgiving Holiday Set For Next Thursday

All offices in the Coke County Courthouse will be closed Thursday and Friday, Nov. 25 and 26 for Thanksgiving. Most Robert Lee businesses will be closed on Thursday only, with business resuming on Friday. However, several stores along main thoroughfares in town will remain open making gas and food available for customer convenience on both days.

Robert Lee schools will take a holiday on Thursday and Friday for Thanksgiving, as a prelude to the Christmas holiday season.

Large Number Of Deer Taken First Weekend

Local hunters and out of town leasers alike are well pleased with the opening weekend of deer and turkey season. A large number of deer have been reported taken. Best news of all seems to be the condition of the animals in comparison to other Texas areas. All the deer killed locally have been unusually fat, even better than last year. Turkey reports also point this up. As droughty conditions continue, this will change, but at this time deer weights seem to be up rather than down.

Antler development may be slightly less than 1981 locally, but some nice racks have been reported.

The near-freezing weekend temperatures allowed hunters to hang deer outside rather than use storage boxes which were a must in Nov. 1981 with temps in the 80's.

Mt. Creek Golf Club News

Mountain Creek Golf Club will host their annual ABC Turkey Shoot on Sunday, Nov. 21. Every player on each winning team will be awarded a plump, frozen turkey for holiday feasting.

Tea-off time for the tourney is 1:00 P.M.

Billie and Dubb Wallace of San Antonio were week end guests with her sister and family, Mr. and Mrs. Add Davis. The group did some deer hunting, with the Wallace's both bagging 8 point bucks.

R-Lee Basketball Season Opens Up

Basketballs are in the air again. It's time to move indoors to play and watch ballgames. Robert Lee junior high boys and girls basketball teams opened the season Monday night at Sterling City with a win each.

The RL girls dropped in 23 points to out score the SC girls, who had 16 points. Missy Grim had 14 points to lead the way, with Lee Ann Molinar making 5 and Rachel Metcalf 4 points.

The RL boys pulled out a squeaker with the final score 25-24 against the SC boys. Hitting 6 points each were Tim Garringer, James Paul Skip-

County Towns Receive Money From Sales Tax

Comptroller Bob Bullock has sent \$96.2 million to 967 Texas cities as their share of the 1% city sales tax for November. This payment reflects taxable sales made in September and reported to the state by the end of October.

Bronte was the recipient of a check for the sum of \$3,199.94. A total of \$20,648.50 had been paid to the city up to this date this year, which brings the payments up 26.02 percent.

Robert Lee was paid \$5,180.58 for the period between September and October. Payment to date for the year totals \$33,678.95 which is a 31.40 percent increase.

RL SCHOOL HONOR ROLLS

High School Principal Jerry Gibbs has released the honor roll for the second six weeks of school. It is listed below:

12th Grade - Quint Anthony, Martha Bickley, Tracie Fulkerson, Kyle Gibbs, Terry Joe Millican, Leigh Ann Runnion and Scott Stephens.

11th Grade - Sheri Ebenstein, Lesa Garringer, Dianne Gilchrest, Cathy Lewis and Carrath Metcalf.

10th Grade - Trampas Cox and Michael Wilson.

9th Grade - Dana Anthony, Patty Bloodworth and Kevin Johnson.

8th Grade - Becky Clendennen and Isaias Rodriguez.

7th Grade - Randy Gartman, Jason Herring, Rachel Metcalf and Robert Runnion.

Elementary Principal William Hood has announced the list of honor roll students for the second six weeks as follows:

3rd Grade - Eli Arellano, Carrie Davis, Mary Jo Naico, Christie Payne and Audra Pitcock.

4th Grade - Emily King and Janet Pentecost.

5th Grade - Tiffany Jameson.

6th Grade - Cody Anthony, Lisa Bower, Ericka Clendennen, Michael Lee, Scott Ray and Clint Smith.

worth, and Isaias Rodriguez. Wes Hood, Randy Gartman and Stevie Ebenstein each had 2, and Scott Robertson made 1.

Next game will be with Garden City in the local gym Nov. 18 starting at 5 p.m. for both boys and girls.

Monday night, Nov. 18, the Dogies travel to the east side of the county to take on rival foes the Bronte Shorthorns in games to start at 5 p.m.

HIGH SCHOOL

The high school basketball teams are getting into shape for the season with scrimmages to have taken place Tuesday night, Nov. 16, in the local gym. The girls were due to scrimmage the girls from Wall and the Steers took on the Winters Blizzards.

The schedule calls for the Robert Lee teams to travel to Eden Tuesday, Nov. 23, to take on the Bulldogs with tip-off time at 6:30 p.m.

Fans are urged to back the Steers at all the games (at home and on the road) to make this a winning season. Put the "Spirit" behind the Steers!

Christmas Food Show Nov. 22

Jan Keel, consumer specialist with Long Star Gas Company, will present a program on Christmas foods, accompanied by the recipes, and holiday decorations. The festive foods may be prepared as gifts. The presentation will be at 10:30 A.M. on Monday, Nov. 22, in the high school Homemaking department, sponsored by the F.H.A. and advisor Eloise Guerrant. The public is cordially invited to attend.

Silver Youth Escapes Serious Injury In Wreck

Michael Hunt, 17, of Silver escaped serious injury late Sunday afternoon in a one car accident near the downtown area. Hunt, a junior in Robert Lee High School, lost control of his late model car as he approached the intersection of 7th and Commerce Streets from the south. The car sheared off a utility pole, passed between the city water tower support and the stop sign, then proceeded across the street where it collided with two vehicles on the Ben Bessent Chevrolet used car lot. All three units received extensive damage.

A West Texas Utility crew from San Angelo and local employees worked into the night to set a new pole and restore service.

Ervin Watson is a patient in West Coke County Hospital. He was admitted on Tuesday morning suffering from pneumonia. Mrs. Watson reports he is slightly improved.

ROBERT LEE OBSERVER

PUBLISHED EVERY FRIDAY EXCEPT WEEK OF JULY 4 and WEEK AFTER CHRISTMAS

(USPS 467-480)

Phone 453-2433

P.O. Box 127

TA MEMBER 1982
TEXAS PRESS ASSOCIATION

Entered at the Post Office at Robert Lee, Texas 76945 as second class matter.

SUBSCRIPTION RATES

Per Year In Coke County	\$7.00
Per Year Elsewhere In Texas	\$9.00
Per Year Outside Texas	\$12.00

Any reflection on the character or standing of any person, firm or corporation is not intended and will be corrected upon notification.

Reed Family Holds Reunion

Relatives of Jim and Jessie Reed held a family reunion November 15 at the Recreational Hall in Robert Lee. The Jim Reed family lived in the old Edith Community in the early nineteen hundred.

The five remaining Reed children, from a family of nine, who attended the homecoming were: Pauline Coalson Barron, of Robert Lee, Audley and J.E. of Sweetwater, Waymon of Lake Jackson, and Bill from Judsonia, Arkansas, who has just recently moved to San Angelo.

Grandchildren, with great-grandchildren, were: Freida Reed Rushton, Sweetwater, Frances Smith, Mary Jo Lyons, Betty Adkins, Joyce Menge, Jim and Danny Reed and Elgene Douglas, all of San Angelo.

Following a delicious and bounteous meal, the group enjoyed games of dominoes and gospel songs rendered by the Roy Taylor family, children of Mary Reed Lyons and Danny Reed, accompanied on guitars and piano.

Old friends, who dropped by to visit the Reed members were: Sloan Boone, Mr. and Mrs. Dave King and Bud Thetford. The reunion was made more enjoyable by the added celebration of the second wedding anniversary of T. Paul and Pauline Reed Barron.

Hypertension, or high blood pressure, is a major health problem in the United States and is also a contributor to heart attacks and strokes. It has no clear signs of symptoms, and a person can have it and not know it, reminds Dr. Mary Ann Shirer, health education specialist with the Texas Agricultural Extension Service, Texas A&M University System. It is important for all individuals to have their blood pressure checked regularly --and if it is high--to follow the treatment prescribed by their doctors.

Big Bake Sale Set Nov. 24th

A double bake sale has been planned for the day before Thanksgiving by members of AON. The "handy for holiday" cakes and pies will be available in front of the post office at 9:00 a.m., Wednesday, November 24.

Plans for the bake sale were finalized at the first November meeting of Alpha Omicron Nu on November 8 in the home of Kaye Pitcock. Final plans were also made for a fall social to include members and their spouses. The social will take place Friday, November 19, at 7:00 P.M. in the Randy Bessent home.

The next meeting of AON is set for November 22 in the home of Ara Burns. Members are reminded to prepare for Pledge Rituals at this meeting.

PEANUT SUPPLIES UP DESPITE SHORTER CROP. Households won't have to worry about running out of peanut butter and other peanut products for a while. Peanuts are plentiful due to bountiful crops the past few years, and this year's short crop won't change the situation, says an economist with the Texas Agricultural Extension Service, Texas A&M University System. About 213,000 fewer acres of peanuts will be harvested in the U.S. this year compared to 1981 while the Texas crop will be down some 22,000 acres. However, the crop will add to an already growing supply in commercial storage, which on Sept. 1 was more than double the amount on hand a year ago.

COMMUNITY CHOIR TO PRESENT HOLIDAY PROGRAM

The Community Choir's annual Christmas program at the Nursing Home will be December 21 at 7:00 p.m. Practice sessions have been set for Dec. 2, 9, and 16 in the school music room at 7:00 p.m. We welcome all that desire to join with us.

LUNCHROOM MENUS

Monday, Nov.22: Corn dogs w/mustard, cheese stick, corn, tator tots w/catsup, milk and peach half.

Tuesday, Nov.23: Burritos, lettuce wedge, baked beans, milk and banana.

Wednesday, Nov. 24: Turkey and dressing, giblet gravy, cream potatoes, English peas, hot rolls and butter and rainbow jello.

Thursday and Friday, Nov. 25 and 26: **THANKSGIVING HOLIDAYS!**

Still Time To Plant Seeds

Your recently purchased bluebonnet seeds should already be in the ground **BUT** don't despair. It isn't too late--do it now! Don't be tempted to just scatter the seeds on top of our dry, hard soil. Water your area if necessary, rough the ground with a rake or spade, scatter seeds, then cover slightly. Water thoroughly, then again soon if it doesn't rain.

Bluebonnets are cold weather friends-- but they will need time to sprout and be watered regularly for a good percentage crop of those gorgeous blue spikes next April.

Honored With Baby Shower

Mrs. Tracy Irvin and baby son, Chase, of San Angelo were honored on Nov. 8 with a baby shower in the home of Mrs. Leta Aldridge.

Cookies and punch were served to guests as they viewed the numerous gifts. A blue and yellow theme was carried out in decorations.

Hostesses for the event were Linda Sparks, Marie Legg, Samantha Robertson, Shirley Anderson, Peggy Robertson and Mrs. Aldridge.

'64 Study Club Has Meeting

The '64 Study Club met Tuesday, Nov. 9 in the New Rec Hall for a program on "Getting Ready for Christmas". Seventeen members and sixteen guests were present.

President Irene Newell presided over a business meeting and reminded the members of the Birthday Party at the Nursing Home Nov. 23 at 6:30 p.m.

Doris Richards, home economist for West Texas Utilities Co., presented a very interesting program on Christmas foods and new ideas on wrapping and serving.

Members present were Mary Ivey, Thelma Jo Hinnard, Irene Newell, Olene Sims, Pauline Vaughan, Lois Dunklin, Opal Jacoby, Alice Beaty, Lois McClesky, Maybelle Stewart, Vivian Jacobs, Christine Roach, Nancy Allen, Pauline Barron, Lucile Bryan, Grace Ditmore and Zera Fields.



The Texas Crime Stoppers Advisory Council wants you to know some facts about drunk driving in Texas.

- One half of all traffic accidents involve a driver who has been drinking.
- It is estimated that on any weekday in Texas, 1 out of 50 drivers has been drinking or is drunk. On weekends, this ratio climbs to 1 in 10.
- Last year there were 36,774 reported accidents in Texas that were the result of DWI -- more than 100 per day.
- 23% of all traffic deaths in 1981 involved drunk driving. The ten year total of DWI related deaths in Texas is 19,000 -- more than the population of many Texas cities.

Texas should be outraged at this senseless destruction by drunk drivers. For too long, society has permitted innocent persons to be killed on our highways, because it is easier to ignore the DWI problem than to face it.

People have been led to believe that DWI is not really a crime, and the drunken driver is not really a criminal, but this is not true.

For the month of November, the Texas Crime Stoppers Advisory Council is focusing its statewide "Crime of the Month" on DWI. No reward is offered. Instead, the Council urges you to support local and statewide efforts to reduce the number of drunk drivers on Texas highways.

Every Texan must make a personal commitment to help put an end to this tragedy. Together we can prevent the drunk driver from spreading further death and destruction on our highways.

Patient Education Dept.

Facts From The U.S. Food and Drug Administration

Taking Medicine: When, How, What To Watch For

You've just been handed a prescription. You look forward to better health. But what do you know about that drug? Do you understand what it is meant to do? Do you know how to take it? Medicines can have some side effects, and they have to be taken correctly. So be sure to read instructions carefully, and don't hesitate to ask your doctor about:

- *When to take the medicine.* Some drugs should be taken on full stomachs, some on empty stomachs, some in the morning, some before going to bed. Also be sure to find out how many times a day the medicine should be taken.
- *How to take the medicine and how much.* Should the medication be taken with water, with milk, or without anything? Should the dose be one or two spoonfuls?
- *Can the least expensive form of the medicine be prescribed?* Often the doctor can write the prescription using the "generic" or official name of the medicine.
- *What not to take with the medicine.* Some medicines don't mix with alcohol, others shouldn't be mixed with other drugs. Be sure to let the doctor know what other medications you're taking.
- *What side effects the*



Ask your doctor when you should take your prescription medicine. Some drugs should be taken after meals, others before.

drugs can cause. Medicines may produce a variety of other reactions, including drowsiness, dizziness or nausea. Should an unexpected reaction occur, consult your doctor as soon as possible.

• *Can the prescription be refilled if you must take it frequently? And should you take all the medicine?* Usually, you should continue taking the drug for the entire time ordered by your doctor, even if you're feeling better.

Here are a few tips for over-the-counter drugs. These medicines are not meant to--and do not--cure disease. They should be used for temporary relief of minor symptoms. Read the label carefully. It will tell you how long to take the medicine and what the side effects may be.

A computer center manager told greenhouse growers at a recent conference at Texas A&M University that before too long, every business will need a computer. He said that computers are excellent for bookkeeping, inventory control and forecasting. Electronic filing systems can be used to record production control schedules, lists of customers and vendors, and similar information. Rather than using specialized software (computer programs) designed to fit specific operations the speaker suggested adapting business operations to an "off the shelf" program.

One of the most abundant minerals in the earth's crust is iron. Yet iron deficiency is the most common nutritional deficiency both in the U.S. and around the world, reports Dr. Dymple C. Cooksey, food and nutrition specialist with the Texas Agricultural Extension Service, Texas A&M University System. One way to be sure you are getting enough iron is to choose a combination of foods that are rich in iron and Vitamin C (ascorbic acid). The addition of Vitamin C is important because ascorbic acid helps to absorb iron into the body.



Scientists divide wasps into two groups-- social and solitary wasps. Social wasps, such as hornets and yellow jackets, live a community life, while each family of solitary wasps lives by itself.

- THANK YOU -

For your tremendous response to our GRAND OPENING and the welcome you have shown us. We appreciate your business and are looking forward to serving you.

Cracker Barrel Gro.

9th & Commerce

Robert Lee, Texas

PRE-THANKSGIVING **Food Sale**

WE WILL BE CLOSED THANKSGIVING DAY

RC Cola 2 Liter Bottle **99c**

Dr. Pepper 12 can crt. \$3.98

WAGNER DRINK qt. bot 65c

Parade Shortening 3 lb. can \$1.49

Towels Hi Dri Lge. Roll **59c**

Generic Toilet Tissue 4 roll pkg. 69c

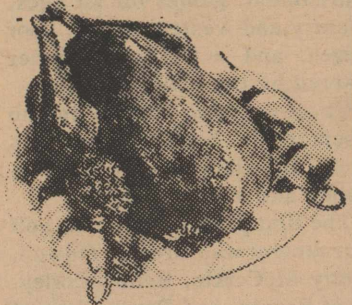
Zee Napkins 140 ct. pkg. 79c

Nice & Soft Facial Tissue 200 ct. box 79c

SUPER SUDS gt. box \$1.49

Sugar Parade Pure Cane 5 Lb. Bag **\$1.59**

ARMOUR STAR TURKEYS basted lb. **69c**



ARMOUR CHICKEN HENS lb. 69c

Armour Star Boneless Turkey lb. \$1.89

Sunday House Smoked Turkey Breast lb. \$2.59

Pork Chops Fresh Mixed Cuts Lb. **\$1.89**

HAM Hormel Fully Cooked In Halves-Lb. **\$3.69**

PARKAY OLEO, In Qtrs. lb. 59c

Dankworth Bulk Sliced Bacon lb. \$1.69

Celery Fresh Crisp Stalk **39c**



Washington Delicious APPLES lb. 49c

YELLOW ONIONS lb. 19c

Russet **POTATOES** 10lb. bag **\$1.19**

Sunbeam Moon Cookies 5 doz. ct. bag \$1.59

Mrs. Smith's Pie Crust 2 crust pkg. 99c

COOL WHIP Birdseye 8 Oz. Bowl **79c**

Franks Armour Turkey 12 Oz. Pkg. **79c**

Morrison's Corn Kits 6 oz. pkg. 4 for 99c

Parade Peaches 2 1/2 size can 79c

Argo or Parade Sweet Peas 303 can 35c

Del Monte Green Beans cut 303 size can 43c

Catsup Hunts 32 Oz. Bot. **\$1.49**

Parade Tomatoes 303 can 49c

Del Monte Pears 303 can 65c

Cranberry Sauce Ocean Spray 300 can Sauce 49c

Mandarian Oranges Del Monte 11 oz. can 53c

Prices Effective Nov. 19 thru 24 (Wednesday)



West Way Grocery



UNION TEXAS PETROLEUM EMPLOYEES ENJOY PICNIC

The employees of Union Texas Petroleum, and their guests, were honored with a Family Day Picnic at the Bronte Park, Saturday, Nov. 13. The family day gathering was given as an award for exceeding the design capacity of the Perkins Extraction Plant during 1982. The plant is located 25 miles west of Robert Lee with an office and maintenance yard in Bronte.

The day's activities enjoyed by those attending were a golf tournament, games for all ages, country and western music, door prizes, and a barbecue dinner catered by the Hitchin' Post.

There were big winners and no losers in the children's games as each contestant received a blue ribbon and a silver dollar.

The first place team in the golf tournament was Brenda Tidwell, Scotty McCorkle, Benny Corley, all of Bronte, and Barry Clark of Robert Lee with a reported 3 under par.

The horseshoe pitchin' trophy

Social Security News Items

Claims for payment under the medical insurance part of the Medicare program are handled by carriers under contract with the federal government. These carriers are responsible for determining if the service provided is covered by medical insurance and, if so, the approved charge for the service.

A carrier may decide that some or all of a service is not covered under medical insurance or that the charge for the service exceeds the approved amount. If the service is not covered, the carrier must deny the claim. If the charge exceeds the approved amount, the carrier may pay only the approved amount. If you disagree with the carrier's decision, you can appeal it by requesting in writing that the carrier review the claim. Any evidence to support the claim should be made within 6 months of the date of notice of the initial decision and may be made directly to the carrier or to a social security office, which will forward it to the carrier.

The carrier then reviews the evidence to determine if its original decision was correct. A notice of its review decision will be mailed to you.

If you are still not satisfied with the decision, you may request a hearing. However, a hearing is granted only if there is a difference of at least \$100 between the payment received on the claim and the bill for services minus any deductible and co-insurance amounts.

The request for a hearing must be made within 6 months of the date the notice of review decision was received. This request, too, can be sent directly to the carrier or to a social security office for forwarding to the carrier.

The hearing of an appeal for medical insurance payments is conducted by a hearing officer appointed by the carrier. If you do not appear at the hearing, the decision of the hearing officer is based on the evidence previously presented as well as any new evidence that you may have submitted.

The decision of the hearing officer is final: under the law, there is no further appeal.

Additional information about the right of appeal in relation to a Medicare medical insurance claim can be obtained from any social security office.

went to Cindy Savage of Houston, washer pitchin' award was won by Bill Jackson-- reported to be by "default". A tie was declared in the volleyball game. The beverage drinking title went to John Bakey of Enid, Okla. The Country Rimshots played country and western background music throughout the contests.

During the afternoon balloons were given to the children when all enjoyed refreshments and sampled the barbecue.

Guests registered before the barbecue dinner was served. Names were drawn for door prizes and winners announced were: 0-9 year olds, Corey Robinson and Lindsey Brown, each received a learning calculator; 10-13 year olds, Donya Cooper and Harlan Martin, received mini-pocket calculators. Lori Strickland and Pete Puentez won the quartz wrist watches in the 14-18 age group. Kodak disc cameras went to Louise Graves and Pat Hamilton.

After the dinner Saturday night employees and guests were hosted a dance at Bush Country.

Plant manager Chester Wilson stated that Union Texas Petroleum expects 1983 to be a better year than 1982, which has been a record setter, and projects continued activity for several years. Winton Milliff of Robert Lee is assistant plant manager.

Most Union Texas Petroleum employees live in Bronte and Robert Lee with the balance in Colorado City, San Angelo, Winters, Novice, Lawn and Silver.

Visitors to the Family Day Picnic were from Houston, Abilene, Midland, Odessa, San Angelo and Enid, Okla.

Union Texas Constructing New Building

A construction project by Union Texas Petroleum is underway at their original building site on N.E. Railroad Street in Bronte. Plant manager Chester Wilson said the area has been cleared and the foundation for a warehouse has been poured. The warehouse will be approximately 30' x 100'.

A six foot commercial chain link fence will enclose a large area where pipe and equipment will be stored.

Plans, also, call for a new office building of 28 feet by 60 feet to be built by early 1983. Six individual offices, conference room, supply office, and room for a future computer are included in the building.

Wilson said about twenty-five employees work out of the maintenance yard.

Poultry supplies are plentiful and poultry products are moving at a good clip throughout the U.S. Consumers are currently spending 21 percent of their grocery dollars on meat, and 15 percent of that goes for poultry products, says a poultry marketing specialist with the Texas Agricultural Extension Service, Texas A&M University System. Consumers are looking for value and are finding it in chicken nuggets, chicken patties, chicken weiners, chicken lunchmeat and chicken bologna. Processed chicken products are the fastest growing category in the meat case and more such products are on the way.

Farm Bureau to Have Annual State Meeting

The Texas Farm Bureau will select queen, talent, and speech contest winners and announce the 1982 Outstanding Young Farmer/Rancher during the organization's 49th annual meeting to be held in Dallas November 28-December 1.

Some 25 youngsters will compete November 28 in the semifinals of the free enterprise speech contest. Six finalists will compete beginning at 7:00 that night. The semifinals will be held at the Hilton; the finals in the Dallas Convention Center theatre. Tom Catchings, TFB director of special activities, will be the program moderator.

The winner will receive a \$2,000 scholarship; the next five finalists will get a \$1,500 scholarship; and four other contestants will receive a \$1,000 scholarship. The top four finalists will receive trips to Washington, D.C. and Williamsburg, Va.

Among the speech contestants will be Stan Ray of Robert Lee. Ray is the son of Dr. and Mrs. Phil Ray.

The average masonry fireplace delivers only 5 percent of the heat generated by the fire to the home. The other 95 percent goes up the chimney, says a forester with the Texas Agricultural Extension Service, Texas A&M University System. In addition, fire in a fireplace draws air into the home under windows, around doors and through cracks so that the fireplace my actually hinder, rather than help, the home heating system. To get the most efficiency out of a fireplace, make sure the chimney is clean of obstructions and creosote build-up. Allow ashes to accumulate to at least an inch deep to the hearth as they act as insulation. Add new logs to the rear of the fire, and use glass doors to keep home heat from escaping up the chimney.

RURAL INDUSTRIAL DEVELOPMENT WORKSHOP

A Rural Industrial Development Workshop at Texas A&M University Nov. 16-18 will focus on how to bring industries to rural areas and small towns, says a community development specialist with the Texas Agricultural Extension Service, Texas A&M University System. The workshop will feature speakers who have led successful moves to attract industries to specific areas. In addition, discussions will deal with financing, community attitudes toward growth, site location, speculative buildings, prospecting for industries and marketing an industrial site.

The number of Americans aged 65 and older increased by 27.9 percent in the decade of the 1970s, while the population as a whole increased by 11.4 percent during this 10-year period, reports Judith L. Warren, family life education specialist-aging with the Texas Agricultural Extension Service, Texas A&M University System.

"Living well is the best revenge." George Herbert

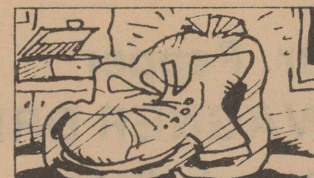
VA News Items

Many veterans and dependents in Texas received annual income questionnaire cards with their November pension checks.

It is important that those questionnaires be completed and returned by next January 1, so that future benefits may continue, said the Director, Waco Veterans Administration Regional Office.

Not all veterans and dependents received those questionnaires, he noted. But those who did must return them on time -- or future benefits will be automatically suspended.

Personal assistance in completing those cards may be obtained by visiting or telephoning the Waco VA Regional Office toll-free number listed in your telephone directory.



Plastic vegetable bags make good shoe bags when you're packing.

A SPECIAL THANK YOU TO ALL THE VOTERS OF COKE COUNTY

Your confidence in me as evidenced by your vote for me in the November 2 election was so gratifying, and I appreciate each one of you for your support.

I shall continue to fulfill the duties of my office to the best of my ability and look forward to the next four years of service to the residents of Coke County.

ETTIE HUBBARD

Pol. Adv. Pd. for by Ettie Hubbard

4th Annual JOINT VENTURE FOR CRIPPLED CHILDREN OILFIELD EQUIPMENT AND SERVICES SALE



1 p.m., Wednesday, December 1, 1982

Abilene Civic Center
Abilene, Texas

Benefits the West Texas Rehabilitation Center and the handicapped of the southwest
Abilene - San Angelo - Snyder
Central Office 4601 Hartford, Abilene, Texas 79605

For more information about participation in the Joint Venture for Crippled Children, call (915) 692-1633



Jerry Lackey's Country Folk

The price of wheat has been below the \$3.55 per bushel national loan rate in each of the first four months of the 1982-83 marketing year. This virtually assures that the maximum deficiency payment of 50 cents per bushel will be paid those producers who participated in the 1982 acreage reduction program. The low wheat prices have been fostered by an expected 2.8 billion bushel U.S. wheat harvest, up one percent from 1981. This record production was tallied despite the voluntary 15 percent acreage reduction program that was in effect for the 1981-82 crop.

A sagging world economy has prompted the USDA to re-evaluate and lower its export projections for the 1982-83 marketing year. In the October supply and demand report, projected 1982 exports were dropped 4 percent from the previous month's estimate to 1.7 billion bushels. Some analysts predict that the export figure could decline further as importers evaluate their projected needs in view of depressed world economic conditions.

In 1982-83 it is clear that total expected supply (approximately 4 billion bushels) will outstrip projected demand by about 1.4 billion bushels, resulting in a carry over to use ratio of 56 percent by the end of the current marketing year.

Although 78 percent of the

projected carry over stocks are expected to be tied up in the farmer-owned reserve or CCC inventory, it is unlikely that free stocks will be depleted in the current year. Thus, prices for the remainder of the current marketing year probably will not increase much above the 3.55 per bushel level.

Outlook for 1983-84 market prices is particularly hazardous given present information. Price enhancement for the 1983 crop will depend on several factors which at this point are unknown.

The 1983 wheat acreage reduction program will not materially affect this outlook. With current high carry over levels and normal production conditions, prices likely will be below loan rates for a substantial portion of the 1983-84 marketing season. Officials at Texas A&M University say the 1983 wheat program should be looked upon as a way by which farmers and ranchers can supplement their income, rather than as a solution to the farm surplus problem.

Stocks of wheat are simply too high for this program to substantially reduce the carry over. It is expected that less than 70 percent of wheat producers will participate in the program, and the resulting reduction in domestic production will be approximately 4-6 percent. Our calculations indicate that a 10 percent reduction in production would be required to bring the price of wheat above loan levels.

West Coke Hospital News

The following admissions and dismissals have been announced by the West Coke County Hospital:

Nov. 9: Santos Gloria and Julian Valenzuela admitted. No dismissals.

Nov. 10: No admissions. Santos Gloria dismissed.

Nov. 11: No admissions. No dismissals.

Nov. 12: No admissions. Josie Sims and Lena Russell dismissed.

Nov. 13: Harvey Reed admitted. No dismissals.

Nov. 14: No admissions. No dismissals.

Nov. 15: Doris Payne admitted. Harvey Reid dismissed.

SODIUM LABELING ON FOOD -

Individuals wanting or needing to restrict their sodium (salt) intake will soon find the task a bit easier. Through the voluntary effort of food processors, about 40 percent of all food sold through supermarkets will be labeled as to its sodium content, beginning next spring. The sodium labeling effort comes on the heels of recent rising concern over the effects of high sodium diets, says a food technologist with the Texas Agricultural Extension Service, Texas A&M University System. Numerous studies have been conducted on the effects of sodium in the diet, but results have been inconclusive.

Interest Rate On USDA Farmers Home Loans Drop Once Again

Interest rates for loan programs of the U.S. Department of Agriculture's Farmers Home Administration, which were lowered last month, have dropped again effective November 1, Secretary of Agriculture John R. Block announced.

Block said the additional reductions, which are as much as two percentage points for some loans, are possible because of the general move toward lower interest rates across all sectors of the economy.

"Lower interest rates for Farmers Home Loan Programs will be of great benefit to the entire rural economy and particularly for the nation's farmers who depend on credit so heavily," he said.

In the Farmer Programs, interest rates for farm operating loans have gone from 13.25 percent down to 11.5 percent. Farm ownership loans have been reduced from 13 percent to 11.5 percent. Interest rates for limited resource farm operating loans have been lowered from 10.25 percent to 8 percent and limited resource farm ownership loans dropped from 6.5 percent to 5.75 percent.

Some loans to help farmers recover from natural disasters will have a lower interest rate. The rates for production loans to farmers who need credit, but above the actual loss but who cannot get credit elsewhere will be lowered from 15.5 percent to 14 percent. The rate for actual loss loans remains at 8 percent.

Interest rates for single family housing loans dropped from 13.125 to 11.5 percent except for those who can afford the rates charged by the Department of

Housing and Urban Development. Their rates dropped a full point, from 13.5 to 12.5.

Loans for multi-family housing have been reduced from 13.125 to 11.5 percent.

The Farmers Home Administration (FmHA) provided loans to 7672 Texas farmers in Fiscal Year 1982 which ended on September 30, FmHA State Director J. Lynn Futch, announced today.

FmHA is a credit agency of the U.S. Department of Agriculture. It provides loan assistance to farmers who need financing who cannot get it from a private bank or other lending institution. The loans are to be repaid in full, plus interest, to the U.S. Government. FmHA has over 2,000 field offices throughout the country with 130 offices in Texas.

Early, preliminary figures show, that nationally the agency provided about 100,000 loans to farmers across the country. The total amount loaned through FmHA Farmers Programs was approximately \$4.1 billion.

The breakdown of Farmer Program preliminary totals show that Texas FmHA provided 3001 farm operating loans for \$106,170,070; 205 farm ownership loans for \$16,307,270; 4401 natural disaster emergency loans for \$257,136,730; and 36 soil and water loans for \$805,700. Some farmers received more than one type of loan. Mr. Futch said.



The best mattresses were once filled with white Arabian horsehair!

Avoid the last minute rush...
Layaway for Christmas NOW!

New Arrivals
LADIES' DRESSES

Stuart Randolph & Toni Todd - Sizes 6-18

FRIDAY & SATURDAY

10% OFF
Stuffed Shirt Blouses

Junior Sizes 5-13

All Coats

Children, Ladies & Mens

All Boy's Clothing

Jeans, Shirts, Overalls, Sweaters, etc. - Sizes Infants thru 20



WE HONOR MASTERCARD/VISA FOR YOUR SHOPPING CONVIENCE.

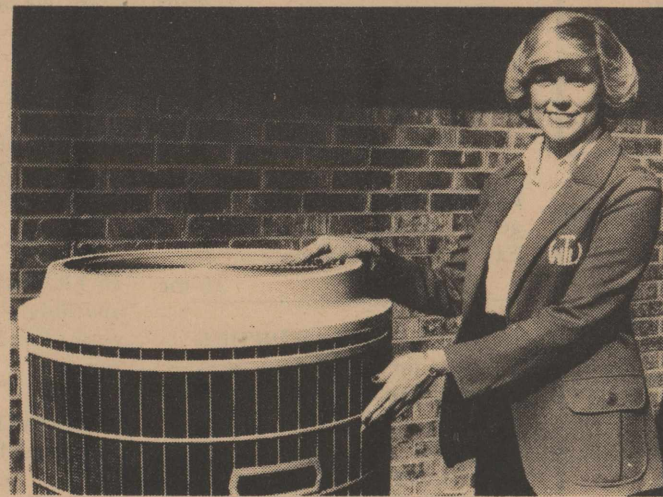
The Clothesline



Bronte, Texas

Phone 473-7791

IT WILL SAVE YOU MONEY....



The Heat Pump

the most efficient system for heating and cooling.

A heat pump can actually produce more than 2 units of heat for every unit of electricity used, in a properly insulated home.

Unlike a conventional furnace, the heat pump doesn't make heat. It transfers or "pumps" heat. Even on cold days, there is some warmth in the air. The heat pump transfers this heat into your home to warm you and your family.

THE ELECTRIC HEAT PUMP WILL SAVE YOU MONEY! If you have plans to buy, build or remodel, or need a new heating and cooling system for your home, call a local factory trained HEAT PUMP DEALER or talk with WTU. We will arrange for a WTU heating and cooling specialist to contact you.

WEST TEXAS UTILITIES COMPANY



A Member of The Central and South West System

Energy savings may vary according to home construction, family size, or energy usage habits.

WANT ADS

CLASSIFIED ADVERTISING RATES

1st Insertion ... Per Word 10c (\$1.50 Minimum)

2nd and Subsequent Insertions ... Per Word 7c (\$1.00 Minimum)

Additional 50c for Blind Ads
Cards of Thanks ... Same Rates
Legal Notices ... Same Rates

COPY DEADLINE

Class. Ads...4 p.m. Tuesday
Display Ads ... 4 p.m. Tuesday

Classified ads and Cards of Thanks are payable in Advance unless customer carries a regular account.

MILLER LIQUID FEED Service.
James Miller, 473-7271.
46-tfc-bp

PIANO TUNING AND REPAIR,
30 years experience. Phone Ben G. Arnold, 453-2361, Robert Lee.
13-tnc

MOORE DIRT CONTRACTOR
Bronte, Tex. Phone 473-3474.
We do caliche and dirt work, septic systems, road building, repair and new. 24-tfc-bp

I DO SAW SHARPENING of all kinds. B.F. Elkins-Call 453-2789 Robert Lee, Tx. 33-tn

SPARKS WATER WELL SERVICE, Windmill and Pump Work. Prompt service, 653-9311.
42-tn.

CUSTOM HOMES AND REMODELING
FHA-VA or Conventional
653-6361 San Angelo

FOR SALE
2 Bedroom Dwelling
To settle estate,
Six Room & Bath with Two Car Garage with 2 large Storerooms attached.
For appointment
Call G.C. Allen 453-2545
16-tnc

SAVE \$4.00
CAR WASH, CHANGE OIL
(5 Qts. Ford Oil), and
FILTER CHANGE
Reg. Price \$23.80
NOW \$19.80
Unusually muddy or vehicles with road tar - Extra Charge.
IVEY MOTOR CO.

Now accepting applications for a manager trainee and an assistant manager trainee in Sterling City. Paid vacations, profit sharing and life-hospitalization insurance benefits. Contact 378-6531 in Sterling City or Dairr Merrill, 453-2840 for more information.

SKINNY'S INC.
Abilene, Texas

GILLEYS DUMP TRUCK SERVICE-12 yd. truck. Local hauling Robert Lee-Bronte area. Call 453-2479. bp-48tnc

NEED A CAKE? Wedding, birthday, etc. Will cater weddings and anniversaries. Call Sharon Pitcock, 453-2038. 49-4tp

AA-1 REPAIR SERVICE-Mobile home repairs and service, power rotary sewer line cleaning. 453-2775. 4-tnc

HOUSE PAINTING - Interior or Exterior, George T. Weir, 453-2855 or 453-2853, Robert Lee. 40-24tpBP

FOR SALE

2 bedroom frame house, 790 sq. ft., under construction & available unfinished, located on 2 lots in Bayview Estates-- Priced to sell.

3 bedroom frame house, located on 100 ft. lot.

3 bedroom house, 2 full baths, 1,400 sq. ft., total electric. Located on large corner lot.

2 bedroom, 1 bath, furnished house, on 50 x 140 ft. corner lot, enclosed by chain link fence, with metal storage building.

4 lots, 3 storage buildings, storm cellar, porches, and connections for mobile home.

ADAMS LAND & REALTY CO.
Phone 453-2723 or 453-2721
or
655-9429

SPECIALIZING IN WATER COLOR Paintings of Old Homesteads, etc. George T. Weir, 453-2855 or 453-2853, Robert Lee. 40-24tpBP

ALL BREED DOG GROOMING-fast service, reasonable prices, by appointment only. 453-2810. 9-tnc

FOR SALE- large 4 bedroom 2 bath home, carpeted throughout, on 2 corner lots. 453-2720, or 453-2634, Robert Lee. bp16-tnc

FOR SALE: 1972 Chevrolet Car, good condition. See at Mack's Exxon Service Station. 16-tnc

PERFECT FOR HUNTING -camper for long bed pickup, contains stove, refrigerator, on propane or electric, has refrigerated air unit. Will consider trade. 453-2561. 16-tnc

HOLIDAY BAKING - will make fruitcakes and other baked goods to your order. Call 453-2851 after 5:00 p.m. 18-3tp

OWN YOUR OWN Jean-Sports-wear, Infant-Preteen or Ladies Apparel Store. Offering all nationally known brands such as Jordache, Chic, Lee, Levi, Vanderbilt, Calvin Klein, Wrangler over 200 other brands. \$7,900 to \$16,500 includes beginning inventory, airfare for one to Fashion Center, training, fixtures, grand opening promotions. Call Mr. Loughlin (612) 835 1304. 20-1tp

FIREWOOD FOR SALE - by cord or 1/2 cord. We deliver. Call 453-2802 or 453-2875. 17tnc

HARRY HAMLIN, BUILDER
Residential - Commercial
Cabinet Work - Remodeling
217 Commerce
Robert Lee, Tx. Ph. 453-2750

WILL BABYSIT in my home by the hour or by the day. Jody Brock, Corner Eucl & 10th St. 19-2tc

CARS \$100! Trucks \$75! Available at local government sales. Call (refundable) 1-714-569-0241 ext. 7967 for your directory on how to purchase. 24 hrs. 19-3tp

FOR SALE - 16 ft. flat bottom aluminum boat and trailer, comes with swival seats, oars, gas tank and 25 horse Evinrude motor. Call 453-2214 or 453-2202 after 4:30. 19-3tp

FOR SALE - 1980 Lowry Organ with rhythm section and magic genie chords. Great Christmas gift. 473-3401 or 473-5281. 20-2tcBP

FOR SALE - 14 x 80, 3 bedroom, 2 bath mobile home. For more information, call Truda Service, 512-771-3201. 19-2tc

SHOP WITHOUT going shopping, the Amway way. Amway products delivered to your home. June Gulley 453-2848. 5-tnc

SALE OR TRADE - 1970 Chevy pickup with camper, Bronte, 473-4401. 1tpBP

FOR SALE - Two good black and white TVs on roll-around carts. Your choice \$42.00. Hughes TV, Bronte. 47-2tcBP

FOR SALE - Shelled pecans, \$5.00 per quart. Call Rhonda Hood, 453-2065. 20-4tc

BAKE SALE - 9:00 a.m. Saturday, Nov. 20, front of Post Office. Order of Eastern Star. 20-1tc

16 YR. OLD JR. needs a job, do anything-- Have done ranch work. 453-2507, Brantley Robertson. 20-2tp

ART SALE - Sat. Nov. 20, paintings by Billie Barrett and Zelma Selvidge, also some Christmas decorations and other items suitable for gifts. 210 E. First, Robert Lee. 20-1tp

METAL BUILDING AND ALL STEEL CARPORTS ALL TYPES OF ROOFING
653-6361 San Angelo

Have loads of felt appliques, stocking kits, tree skirts and many more items for your Christmas needs.

Small and large afghans, dolls, tissue covers and many more gift ideas.

Sewing Machine \$50.00.
Fireplace blower with motor \$30.00.

Come by the **THREAD SHED** or call 453-2418

THAT'S A FACT



SHORT-BUT IMMORTAL!

ABRAHAM LINCOLN'S GETTYSBURG ADDRESS WAS SO SHORT (ABOUT TWO MINUTES), THE PHOTOGRAPHER DIDN'T HAVE TIME TO TAKE HIS PICTURE!



FINDERS KEEPERS!

WHEN YOU INVEST IN THE PAYROLL SAVINGS PLAN YOUR SPECIFIED AMOUNT IS PUT ASIDE FROM YOUR PAYCHECK TO BUY U.S. SAVINGS BONDS. AND WITH EVERY PAYCHECK, YOUR MONEY GROWS. IMAGINE YOUR SURPRISE WHEN AFTER A TIME YOU FIND OUT YOU OWN A SIZABLE NEST EGG!

★★★★★

MARINES!

THE CELEBRATED MARINE CORPS WAS ACTUALLY ORIGINATED BY THE ENGLISH IN 1740. THREE REGIMENTS WERE RECRUITED IN NEW YORK TO SERVE UNDER THE BRITISH FLAG!

WORSHIP WITH US AT

Southside Church of Christ

BIBLE STUDY...10:00 a.m. EVENING WORSHIP...6 p.m.
WORSHIP.....11:00 a.m. WED. BIBLE STUDY...7 p.m.

-THE FRIENDLY CHURCH-
WHERE THE BIBLE IS TAUGHT

Family Bond.

Your family's savings program is unique. You have different needs. And different concerns. That's why so many families have made U.S. Savings Bonds their family bond. It's the bond that holds a family's savings program together.

That's because bonds offer so many guarantees. Guarantees that are just right for any family. Like guaranteed interest return. Guaranteed tax benefits. Guaranteed safety. And all backed by the most solid guarantee of all. America.

So, when you're looking for that bond as unique as your savings needs, look to U.S. Savings Bonds. They really are the Family Bond.



When you put part of your savings into U.S. Savings Bonds you're helping to build a brighter future for your country and for yourself.

Ad Council A public service of this publication and The Advertising Council



LOOK WHO'S NEW

Emma Lee is the new baby daughter of Mr. and Mrs. Johnny Millican of San Angelo. She was born at Shannon Hospital on Nov. 9 at 10:48 A.M. and weighed 8 pounds 3 ounces.

Happy grandparents are Mr. and Mrs. Donald Reed of Spearman and Mr. and Mrs. Bunyan Millican of Silver.

Milton Tomlinson, who had back surgery recently in Dallas, is at home now and able to be about. He says that doctors fused some vertebrae and told him to come home and begin walking some.

Alpha Kappa Pi Meets Nov. 13

Alpha Kappa Pi met November 13 in the home of Jackie Walker with twelve members present.

Tray favors for the nursing home and hospital, Christmas morning will be provided by the Alpha Kappa Pi. A spokesman for the sorority said they need more bud vases. If you have any to donate, please call Evelyn Flanagan at 453-2441.

Alpha Kappa Pi would like to take this opportunity to thank everyone that had a part in making the "annual Robert Lee Christmas Party" a success.

Delores McCabe gave the program for the evening. Members enjoyed looking at Mrs. McCabe's scrapbook which was submitted the year she was chosen as state "Conservation Home-maker of Texas".

The next meeting will be Nov. 17 in the home of Gay Sawyer.

NO ONE EXPECTED ME!

I dreamed God came the other night

And Heaven's gates swung wide--

With kindly grace an angel Welcomed me inside; And there to my astonishment, Stood folks I'd known on earth, Some I had judged and labeled As unfit with little worth-- Then angry words rose to my lips,

But never were set free, For every face showed stunned surprise;

No one expected me!

—Marjory Walker



Many people once considered it bad luck to mention the name of a king.

NEW ODOR METER - A new device to measure odors in the air we breathe has been developed by a Texas A&M University team. Called a butanol olfactometer, the device can be used to measure odor intensity alongside or downwind of odor sources such as refineries, sewage treatment plants, feedlots of similar facili-

ties, says an agricultural engineer with the Texas Agricultural Experiment Station and Texas Agricultural Extension Service. The device can differentiate between varying degrees of odor intensity with good accuracy, is portable to field locations and can be used to demonstrate results at hearings and in courts.

WE INVITE YOU

TO BE WITH US FOR WORSHIP AND STUDY AT ALL THESE SERVICES

SUNDAYS: 10 a.m. and 6 p.m. - WEDNESDAYS: 7:30 p.m.

NORTHSIDE CHURCH OF CHRIST

Clyde Dukes, Minister

Phone 453-2375

CHADBOURNE AND W. 9th

ROBERT LEE, TEXAS

Happy Thanksgiving

Long ago on a brisk clear day in a sheltered, wooded clearing, a harvest feast, a humble meal of wild turkey and Indian corn, was shared by native and newcomer.

With this act of sharing of the harvest of a bountiful land, began the tradition of a feast of Thanksgiving, a tradition carried on through the years.

Today, in observation of this commemorative day of Thanksgiving, we shall be gathered together again in thanks for the blessings of a land bestowed upon a people and shared by a people, as it once was and is now.

Robert Lee Observer



Thanksgiving Day

FOOD SPECIALS



GLADIOLA FLOUR

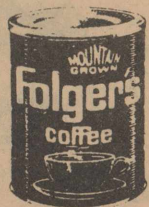
5 lb. bag 89c



DEL MONTE PUMPKIN 303 can 59c
Del Monte Pineapple 15 oz. can 63c
Del Monte Mandarin Oranges 16 oz. 79c

Green Beans Parade Cut 303 Can 3 For **\$1**

Parade Sweet Peas, 303 can 2 for 73c
PARADE PEACHES 2 1/2 can 85c
Bruces Cut Sweet Potatoes 16 oz. 55c



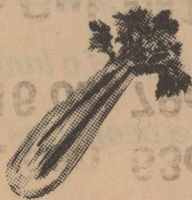
Coffee Folgers Lb. Can **\$2.09**

Blackburn White Syrup 32 oz. \$1.09
JELLO, Asst. Flavors 3 oz. box 2 for 69c
Parade Salad Dressing qt. jar 99c

Parade **Shortening** 3 Lb. Can **\$1.49**

Ocean Spray Cranberry Sauce 16 oz. 69c

Celery Fresh Stalk Each **35c**



APPLES, Washington Del. lb. 49c
YELLOW ONIONS lb. 19c
SUNKIST NAVEL ORANGES lb. 69c

Potatoes 10 Lb. Bag **\$1.19**

Pie Shells Mrs. Smith Deluxe Each **99c**

Magic Garden Strawberries 10 oz. 69c

Cool Whip 8 Oz. Crt. **79c**

Kraft Phil. Cream Cheese 8 oz. pkg. 89c
Lite Fluff Biscuits, 8 oz. can 2 for 49c

Soft Oleo Meadowlake Lb. Tub **63c**

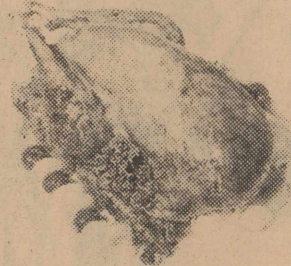
Corn Kits 2 for **47c**

BAKERS COCONUT 7 oz. pkg. 69c
Kraft Miniature Marshmallows 10 oz. 49c
GAIN DETERGENT king size \$3.29

Joy Liquid 32 Oz. Bottle **\$1.69**

ZEE NAPKINS 60 ct. pkg. 39c

Turkeys



Armour Star

Lb. **69c**

LONGHORN CHEESE lb. \$2.29

BACON Gooch Lb. Pkg. **\$1.79**

Gooch Country Sausage 2 lb. bag \$2.69

Hams Farmland Boneless Cooked Lb. **\$2.39**

Prices Good November 19th thru November 24th
"HAPPY THANKSGIVING"

Baker's Groc. & Mkt.