



MULESHOE JOURNAL

'The Community of Opportunity-Where Water Makes the Difference'

Weather

May 23	85	49
May 24	85	52
May 25	82	50
May 26	87	50
May 27	93	51

Volume 58, No. 23

10 Pages Today

Published Every Thursday at Muleshoe, Bailey County, Texas 79347

Thursday, May 28, 1981

'True Happiness' Graduation Topic

Graduation excitement is more than by just the seniors initial bubbling, but the large amount of joy glowing from the audience participation in the excitement.

An audience remembering when, hoping for.

Uncertainty of the future is the only thing that taunts the evening. An uncertainty which will perhaps be the motivation or deterrent to each member of the graduating class. But this memorable occasion was not darkened with signs of gloom as the 97 seniors were anxiously capping and combing and re-

capping before Muleshoe Baccalaureate and Commencement exercises Friday evening.

Escorts Susie Pierce and Curtis Wheeler paraded the seniors who were dressed with traditional robe and mortar board past a packed house.

"Every nation is filled with unhappy people," said David Cox, minister of the Muleshoe Church of Christ in his address to the senior. "I want you to be happy. Everybody wants you to be happy and God wants you to be happy," he encouraged.

Cox, whose daughter Awyna, was a member of the graduating class, took his text from Ecclesiastes which he described as a happy book.

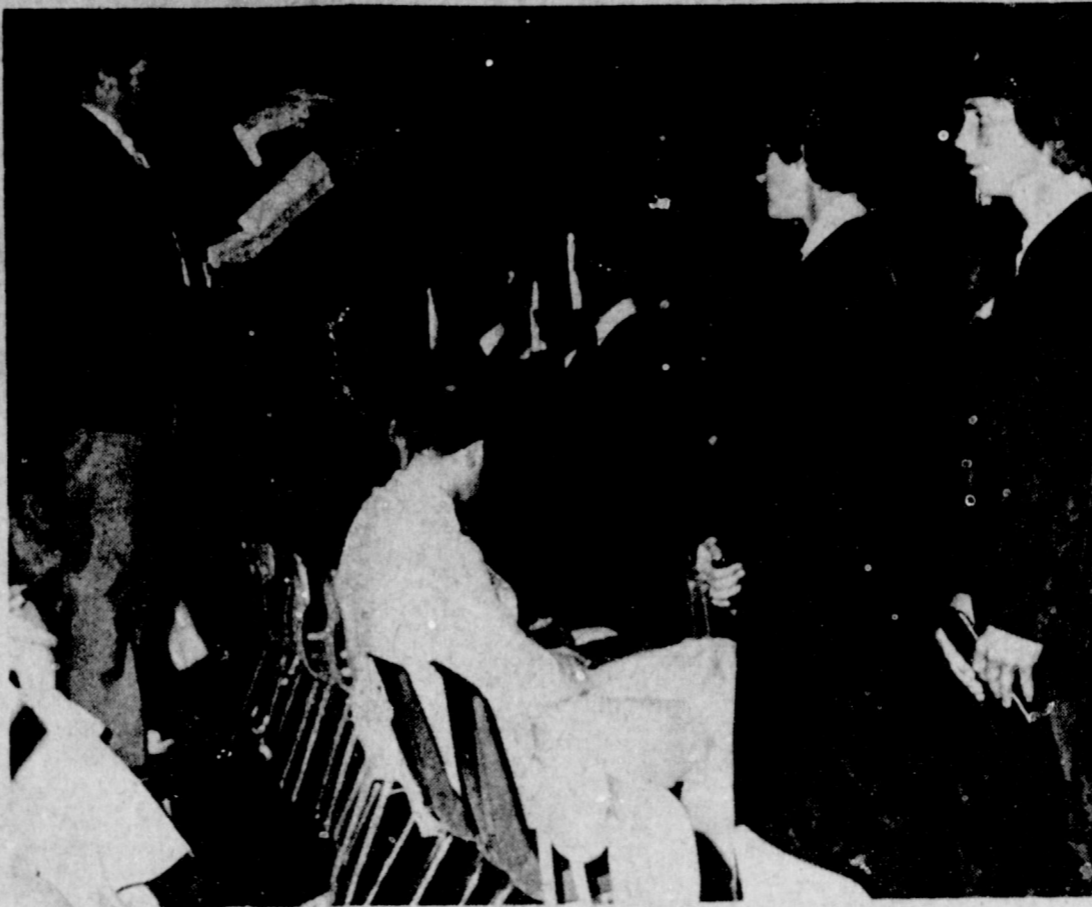
The orator asked the packed house to imagine a three act play with Solo-

mon the main character. Solomon, who was blessed with great wisdom, could not find happiness. Cox elaborated that today, education without God is vanity. "Many people seek education on how to make a living and ignore how to make a life."

Wealth also did not bring happiness to Solomon. "Some people will do just about anything to get that wealth," said Cox. And closing the play, the audience discovered that even being King over all of Israel with great power and authority did not foster happiness.

Cox concluded that true happiness could only be found in the Word of God, "Fear God and Keep His commandments. This is the duty of man-his pur-

Cont. Page 6, Col. 2



WE'VE ONLY JUST BEGUN--Members of the 1981 Muleshoe graduating class sing their class song "We've Only Just Begun" to close out the graduation ceremonies Friday evening. The lyrics of the song state the class sentiment "We've Only Just Begun...to Live."

Bailey County 4-Hers Will Travel To Iowa

A 4-H exchange program will send about 15 Bailey County 4-Hers to Iowa this summer. The 4-Hers will travel to Guthrie Center, Iowa in July to spend a week with a family there. Next summer about 20 Iowa 4-Hers will travel to Bailey County for a week.

The exchange program is designed for high school age 4-H youth to learn how people live and work in other parts of the country.

The host county in Iowa has planned some exciting events for our 4-Hers. The events include a visit to the Iowa State 4-H center, Living History Farms, a farm tour and pig roast and several other events.

Bailey County 4-Hers are working hard to raise funds to offset the cost of traveling to Iowa by sponsoring a used battery round-up. Funds raised from this event will go toward paying travel expenses of the 4-Hers to Iowa this summer.

If anyone has used batteries which they would like to donate, the 4-Hers would be glad to take them off your hands. To contact someone about your batteries call the Extension office at 272-4583.

Arrangements will be made for someone to pick up your batteries or for delivery at some other point, whichever is convenient.

Bailey County 4-Hers ask for your support in this exciting venture. They need your help to make it to Iowa this summer.

Youth who have signed up to go to Iowa are: Brenda Flowers, Kristi Spies, Sharla Morrison. Cont. Page 6, Col. 6

Grain Depresses Area Markets

Commodity Credit Corporation will not sell 23 to 25 million bushels of the government owned corn that is now stored in the Texas High Plains. This volume has been designated for use in disaster programs only, according to a USDA announcement.

No decision has been announced about the disposition of the balance of the CCC corn. Grain Sorghum Producers Association (GSPA) is urging CCC to state that it will not be sold in this area. It has been estimated that the release of the grain here could cost High Plains grain sorghum producers \$100 million in lower prices.

This grain was originally destined for the Soviet Union, intercepted by the embargo and purchased by CCC. It was shipped from the northern Corn Belt with the government paying all costs of transportation, storage and interest to have it relocated in High Plains storage facilities.

USDA's indecision and failure to make a clear statement regarding the amount, quality and disposition of the grain have fostered rumors and distrust in both buyers and

sellers and kept prices depressed through out the winter and spring months. In general, feedlot grain buyers are buying only enough grain to fill their immediate needs and waiting for the release of the CCC corn to lower prices.

The frustration and uncertainty and their effect on the market are shown in Cont. Page 6, Col. 2

Man Fined For Carrying Deadly Weapon

The Muleshoe Police Department reports that a man was picked up and fined two hundred and fifty dollars by the County Court for unlawful carrying of a deadly weapon on Memorial Day.

A male was also fined May 25 for reckless driving. The incident was filed with the county court.

On May 24, three, charged with public intoxication had paid fines.

One DWI was picked up and filed with the county court May 23 along with a theft. One woman is out on bond.

Around Muleshoe

The A.W. Copleys, of San Antonio, formerly of Muleshoe, and their daughter, Mrs. Doris Jean Copley Priest, of Minnapolis, Minn., were in Muleshoe Tuesday, May 26, visiting.

The ladies fellowship at the Community Church will sponsor skating from 7-10 p.m. Friday, May 29. Admission fee will be \$1 per skater.

Winners of door prizes at Thornton Chevrolet's showing of the 1982 Cavalier were Joel McCray, the Super Cooker and T.W. Berry the Igloo Kool-Rest.

Navy Seaman Apprentice Michael S. McKinley, whose wife, Peggy, is the daughter of Dottie Lagrone of Sudan, Texas, has recently returned from a deployment to the Western Pacific and the Indian Ocean.

He is a crewmember aboard the aircraft carrier USS Ranger, homeported in San Diego.

Arraignments for Bailey County District Court have been set for Wednesday, May 27. Jury trials will be held June 8, with jury selection next week.

Mrs. Earl Ladd, Sr., has returned home to Muleshoe after being hospitalized in Lubbock due to injuries suffered in a recent accident here.

School buses will run at regular time Thursday on the final day of Muleshoe Public School.

Grade reports will be given to junior high students Thursday and high school students can pick up their report cards Friday at 11:30 a.m.

State Comptroller Bob Bullock has announced that Johnny Laceywell from his Lubbock Field Office will be at the Bailey County Courthouse in the Commissioner's Court on Tuesday, June 9, 1981 from 2 p.m. to 4 p.m.. A comptroller's representative is available to assist local residents at the courthouse every second Tuesday of each month.

Cont. Page 6, Col. 1

Reconstruction Due On 6666 Ranch Barn

Work will begin this month on the reconstruction of the historic 6666 Ranch barn at the Ranching Heritage Center in Lubbock.

Contract documents for the work were signed Thursday, May 14, by Ranching Heritage Association President Harold P. "Bo" Brown and by representatives of H.R. Bundock Inc. of Lubbock.

The barn, which is to be rebuilt on the west side of the Ranching Heritage Center complex, is to be "substantially completed" by September 19 so it can be dedicated during Ranch Day activities at that time. When finally restored, the barn will include an assembly room with stage, tack room, carriage room, kitchen and restrooms.

Donated last year by Mrs. B.F. "Anne" Phillips of the 6666, the 3,512 square foot barn was built about 1908 by Samuel Burk

Burnett, Mrs. Phillips' great grandfather. Mrs. Phillips gave the barn to the Ranching Heritage Center in honor of the contributions made to the ranching industry by Burnett, his son Thomas Loyd Burnett and Ann Burnett Tandy, the daughter of Tom Burnett and mother of Mrs. Phillips. Earlier this year Mrs. Phillips was appointed a regent of Texas Tech University by Gov. William P. Clements.

In addition to the barn, Mrs. Phillips gave for display at the Ranching Heritage Center furniture once used by Burk Burnett and articles that once belonged to famed Comanche Chief Quanah Parker. She also provided \$250,000 for restoration of the barn and display of the exhibits.

Preliminary site work has begun at the Ranching Heritage Center for the barn. The western berm Cont. Page 6, Col. 3

County Rabies Clinic Scheduled June 4

Muleshoe City Council met Tuesday, May 26 for their regular meeting.

A discussion of the admission prices for the city swimming pool resulted in the raising of admission from \$1.00 to \$1.50 per person and from \$20.00 to

\$30.00 for season passes per person. This change is basically to offset operating costs during the summer season.

Also discussed was the upcoming Rabies Clinic to be held on June 4 from 2:30 to 5:00 p.m. at the Fire Station in Muleshoe. Emphasis was placed on the fact that this is a county-wide clinic-not just city. All dog and cat owners are encouraged to bring their animals for vaccination. At the time of vaccination, the animals will be issued a tag for the cost of \$1.00. In addition to this will be the veterinary fee customarily charged for this service.

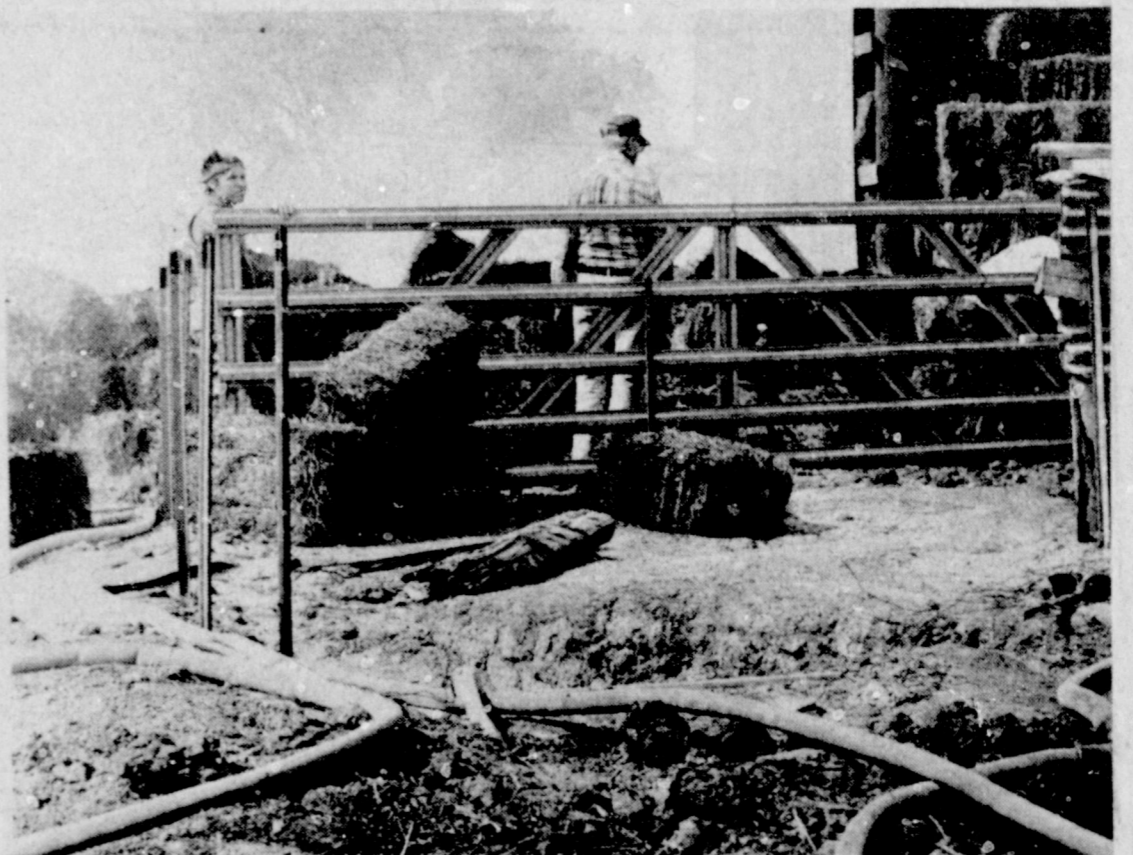
Information provided that stated there are approximately 1500 to 2000 dogs in the city of Muleshoe. City Manager, Dave Marr stated: "In order to have effective epidemic control, at least 80% of these animals should have vaccine."

Marr also stated in connection with the 1981 budget, "We are progressing in normal fashion, and budget work sessions will begin towards the middle of June."

Presentwere: Ronnie Shafer, A.V. Wood, Mayor Charles Bratcher, Bob Finney, Paul Wilbanks, Dave Marr, City Secretary Mary Watkins and Shirley Farmer.



A ROLLIN' GOOD TIME--Several Muleshoe Jr. High eighth graders got into the roll of things while practicing for the event at the recent eighth grade fun day in the park.



HAY BARN FIRE--Muleshoe Volunteer Firemen keep a watchful eye on burning green hay which was dragged out of the Prairie View Dairy Friday afternoon. Firemen battled the blaze for over three hours according to Jack Dunham. The barn received little damage, but several hundred bales of hay were lost.

Vacation Bible School Scheduled June 8-12

The First United Methodist Church Vacation Bible School is to be held June 8th through June 12th.

Jesus, Your Word Lives In Me is the theme for the school, to be held each weekday from 9 a.m. to 11:15 a.m. Friday, June 12th there will be a sing-song program and sack lunch to begin at noon. All interested persons are welcome to attend and join in the sack lunch fun.

Classes will be offered for ages 3 years old or before Sept. 1st, 1980 through, the child that has just completed the 6th grade.

A back to basics approach to Bible study and Christian living is offered.

red in VBS. Bible based lessons will be taught with excitement and variety through the use of many advanced teaching methods. Students will be challenged and involved through such activities as these: song time, Bible study, interesting visual demonstrations, classroom interaction, craft making, and many other innovative methods in keeping with the theme, Jesus Your Word Lives In Me.

The challenging lessons are centered on the Beatitudes of Jesus teaching youth the importance of God's word and of following "Beautiful Attitudes" of Jesus Christ.

For information regarding attending and or assist-

ing, call Rhonda Little, 272-3802 or Carol Cox 272-4396.

Field First In Tourney

Terry Field grabbed top honors at the Muleshoe Country Club men's and womens Memorial Day Golf Tournament. Field shot a 63.

The second place finish went to Curtis Smith with a 64, followed by Laverne Winn, 65 and Ray Precure, 66.

Twenty-eight golfers participated in the tourney and winners received gift certificates from the Pro Shop.

Head Pro Ken Garrison has announced the Men's Ginny-Slipper Partnership Tournament will be June 13 & 14.

Water Bill Evaporating In Senate

A bill (HJR33), sponsored by Speaker Bill Clayton, that would dedicate surplus state funds to be used for water resource development and other purposes, appears to be in trouble in the Seante. The bill, along with HB 2569 (enabling legislation) is in the Seante Finance Committee. Some West Texas Senators are giving HJR 33 only a little better than a 50/50 chance to pass.

Originally, HJR 33 directed half of the surplus to the water development fund and half to a fund to

Help Urged In Program

Boys and Girls, Join the "Monster Madness" Reading Club at the Muleshoe Area Public Library! Registration will begin Friday, May 29, at 10 a.m. and continue on thru the program. But you should start early to earn the most awards! We have a Mystery Monster in the library - you can help find him! You can find many new monster books to read too.

Movies will be shown every Wednesday morning from 10 to 11 a.m. in the basement of the library for Reading Club members, and film-strips will be shown every day as time permits.

An award and recognition day will be held after the close of the six weeks, on July 15, at 10 a.m. at which time all participants will be honored, awards will be given, and the top readers will be recognized. This will be six fun-filled weeks, so join early!

Mrs. Bernis Camp, librarian says, there are some rules which need to be observed... We ask the cooperation of parent: in seeing that their children are reading the books they take home, seeing that the child is reading on the right level, and helping them to return the books on time, and in good condition. There will be a limit of six books at a time per child, unless a parent is present. Books will be checked out and taken home to read and count. We do not have the staff to supervise their rreading in the library, and they need to have the time to read each book thoroughly, added Mrs. Camp.

If a child has books overdue at this time, or owes overdue fees, they will have to clear their record to participate in the Summer Program. Small children must be accompanied by a parent when they come to the library.

retire state debt. Since the last issue of SCAN, the debt retirement fund has been eliminated, and that portion of the surplus would now be directed to any special use the legislature desires.

HJR 33 is being strongly opposed by the Sierra Club and the League of Women

Voters. The League has testified that they are opposed to the concept of dedication of surplus state funds for a specific use.

Concerned citizens are urged by the West Texas and Muleshoe Chambers of Commerce to contact their Senator immediately and voice support for HJR 33.

It is also suggested that calls be made to Senator Grant Jones, Chairman of the Senate Finance Committee and to Lt. Governor Bill Hobby.

Strom Thurmond, Senator (R-SC): "The Pentagon could save taxpayers billions of dollars by just changing its contracting procedures."

RECIPE

Ginger Ale Salad

- 1 T gelatin
- 2 T cold water
- 1/2 c boiling water
- 1/2 c ginger ale
- 2 T lemon juice
- 1 T sugar
- 1 c sliced canned peaches or pears
- 1 c orange sections
- 1/4 c fresh strawberries sliced
- 1/4 c grapes, seeded and

cut in half
1/2 c diced canned pineapple

Soften the gelatin in the cold water then add the boiling water and stir until dissolved. Add the ginger ale, lemon juice, and sugar. Place in refrigerator to cool. When mixture begins to thicken fold in all fruit. Pour into a ring mold or individual molds and chill until set. Serves six.

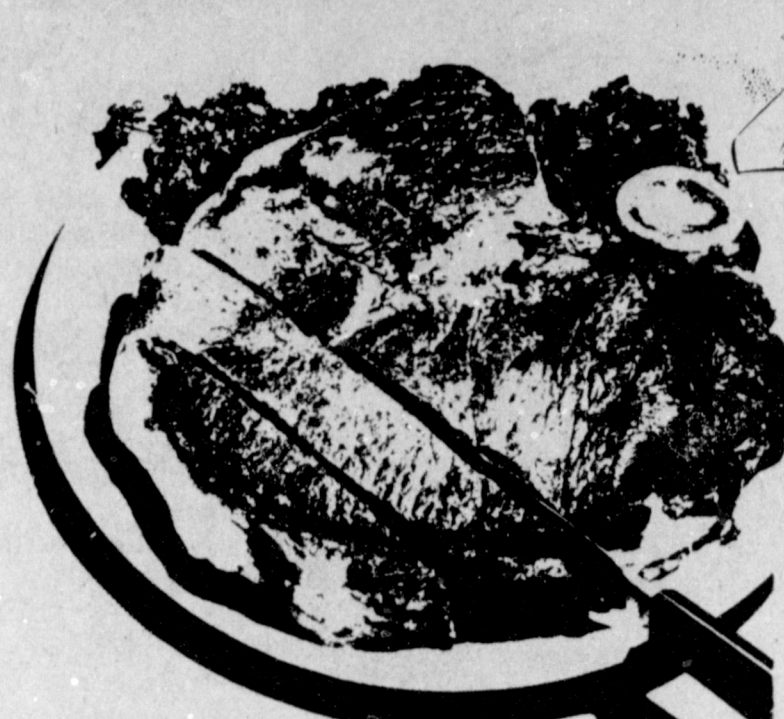
House rejects spending increase for social programs. House panel approves Social Security changes.

American Life & Accident Insurance Company

Cash Burial Cancer N S C A Group
Hospitalization Specialist in the 100% Medicare Supplement
Life Insurance

Robert Wilson

Local Branch Office
Box 431 Phone 272-4069 #7 Briercroft Ofc. Park
Muleshoe, Texas 79347 Suite 110 Phone 806 765-8985
Lubbock, Texas 79412

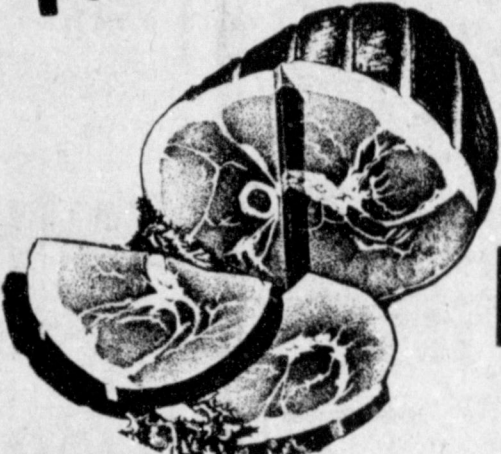


Tenderloin

TEN TIMES OUT OF EVERY TEN!
Trimmed to perfection and priced to please!

FULL CUT BONE IN

Round Steak \$2.19 LB.



PEYTON'S HICKORY SMOKED

HAM

SHANK END LB. 98¢

BUTT END LB. \$1.09

HORMEL'S BLACK LABEL

BACON

LB. \$1.69

T-BONE STEAK LB. \$2.98

SIRLION STEAK LB. \$2.49

EXTRA LEAN GROUND BEEF LB. \$1.69

ECKRICH SMOKED SAUSAGE 1 LB. \$1.99

LAUNDRY DETERGENT

Dash

\$2.98

King Size 6 lbs. 4 oz.

KOUNTY KIST

Corn

3 FOR \$1

VAC PACK 12 OZ.

King Cola

\$1.29

6 PACK 12 OZ REG. DIET

MACARONI & CHEESE

\$0.39

KRAFT 7 1/2 OZ. PKG.

Joy

\$1.49

32 oz. liquid Dish Detergent

HUGGIES DIAPERS

\$2.99

KLEENEX DISPOSABLE 24 CT. NEWBORN 14 CT. O-NIGHT 18 CT. DAYTIME 12 CT. TODDLER

Dog Food

\$4.39

FIELD TRIAL CHUNK STYLE 25 LB

LYSOL DISINFECTANT

\$1.19

REG.-SCENT II 6 OZ.

WHITE SWAN PEANUT BUTTER

\$1.99

CRUNCHY OR SMOOTH 18 OZ.

VANILLA WAFERS

69¢

SUNSHINE 11 OZ.

Margarine

2 FOR 89¢

WHITE SWAN QTRS 1 LB

FABRIC SOFTENER

\$2.59

BOUNCE 60 CT. 35' OFF

COAST SUPER BATH SOAP

59¢

12' OFF 7 OZ.

LAUNDRY DETERGENT WISK

\$1.69

15' OFF 32 OZ.

Always the best in produce!

TAKE HOME THESE MONEY-SAVING SPECIALS

TEXAS RED RIPE WATER MELONS LB. 19¢

VINE RIPE CANTALOUPE LB. 49¢

CALIFORNIA NEW CROP CHERRIES BINGS LB. 99¢

CALIFORNIA ICEBERG LETTUCE EACH 49¢

CALIFORNIA LARGE GREEN PODS BELL PEPPERS LB. 49¢

TEXAS SMALL FANCY YELLOW SQUASH LB. 29¢

Frozen Foods

Vegetables 69¢

16 OZ. BREADED SQUASH CHOP, BROCCOLI CUT CORN PEAS & CARROTS GREEN PEAS

CORN ON THE COB

99¢

4 CT. BIRDSEYE

APPLE JUICE

89¢

12 OZ. MANDARIN

Health & Beauty Aids

Noxzema 99¢

2.5 OZ.

BAND-AIDS

\$1.29

30 CT. WIDE PLASTIC & SHEER STRIPS

BIC SHIVERS

69¢

3 CT.

True Value

HARDWARE VALUE OF THE MONTH

688

White Supplies Last

The 3x5-ft. cotton flag has double-sewn stripes, printed stars, brass grommets. 6-ft. aluminum pole has eagle ornament. Easy mount. AFP-06

QUANTITIES LIMITED

Fry & Cox
401 S 1st
272-4511

White's Cashway Supermarket

Open 7:30 To 9:00 Monday To Saturday 12: P.M. To 9:00 P.M. Sunday

Double Gunn Bros. Stamps Every Wednesday & Saturday

We Welcome WIC Card & USDA Food Stamps

Get Ready on the Firing Line for —

"THE BIG DOUBLE BARREL SHOOT OUT"

Early Development Important To Cotton

High Plains cotton farmers can expect to face the old question of whether or not to replant damaged stands as the new growing season advances. Emergence time of the seedlings is a key consideration when farmers are faced with replanting decisions, says a specialist with the Texas Agricultural Extension Service.

With planting in full swing, optimism is high about the prospects for the area's 1981 crop, said Dr. James R. Supak, area cotton agronomist with the Extension Service. But he noted that hail, wind, sand, seedling disease and Ascochyta blight are among the hazards which can transform a beautiful patch of cotton into a field of sickly, weakened plants that appear to have little or no chance for survival.

"Should this happen on your farm, bear in mind the manner in which this planting came up to a stand," Supak advised. "Did the crop come up to a fairly uniform stand in four to seven days, or was emergence slow and spread out over two weeks?"

Pilot Discusses Flying Career

Major Lee Bauer of Cannon Air Force Base, Clovis, N.M., presented a program to Beth Skipworth's fifth grade class during career day activities.

Major Bauer showed a film about an actual aerial fighter plane attack during World War II. He later presented a program before all of the fifth grade classes showing a film and answering questions about his career as a fighter pilot.

As indication of how cotton plants in these two situations are apt to perform is revealed in results of a study conducted several years ago by U.S. Department of Agriculture engineers at Lubbock. In this study, Supak said, the engineers used two seed lots varying in quality, one with 65 and the other with 85 percent germination. The seed were planted at two-, three- and four-inch depths under nearly optimum conditions of soil moisture and temperature.

Part of their findings, indicate that emergence time has a dominant influence on yield, the Extension agronomist said. Regardless of planting depth, seedlings that emerged within five days produced the best yields.

"Rapid, uniform emergence indicates strong, vigorous plants that quickly

establish good root systems, have strength to overcome many adversities, and have the potential to produce a good crop," Supak said.

Slow stand development indicates that much of the seeds' energy reserves were depleted in the germination and emergence process, he cautioned. The late-emerging seedlings are in a weakened condition and any adversity tends to further reduce stands and lower the yield capability of the surviving plants.

"Should the need arise to replant or save the existing stand, keep in mind how the crop came up to a stand," Supak urged. Rapid, uniform emergence with good early growth means the stand is apt to recover from moderate damage by hail, sand or wind, from Ascochyta blight or other hazards and still make a good yield, he

said.

But a slow-emerging, sickly stand is apt to have higher mortality and sustain more permanent damage that limits its yield potential. "Often, it is best to replant in this situation," Supak advised.

RECIPE

Spicy Gingerbread

2 1/2 c sifter regular all-purpose flour
1 1/2 t baking soda
1/2 t ground cloves
1 t cinnamon
1 t ginger
1/4 t salt
1/2 c shortening
1/2 c granulated sugar
1 medium egg, unbeaten
1 c molasses
1 c hot water

Grease, then line with waxed paper, bottom of a 9 inch by 9 inch by 2 inch pan. Sift flour, soda, cloves, cinnamon, ginger, salt. In a large bowl, with electric mixer at medium speed, mix shortening with sugar, then with egg until very light and fluffy—about 4 minutes altogether; beat in molasses. At low speed, beat in alternately, just until smooth, flour mixture in fourths and hot water in thirds. Turn into pan. Bake 50 to 55 minutes in a 350 degree oven or until cake tester inserted in center of cake comes out clean.

Let cake cool on a rack for 10 to 15 minutes. Loosen cake with spatula; place another rack on top. Invert and lift off pan. Cool completely, then cut into squares. Serve plain or with ice cream or a ready-prepared whipped cream.



CAREER DAYS—Major Lee Bauer, in full military flight gear, presented a program about his career to fifth graders at Mary DeShazo.

Muleshoe Journal (ISSN 367-650)

Established February 22, 1934. Published by Muleshoe Publishing Co., Inc. Every Thursday at 304 W. Second. Box 98. Muleshoe, Texas 79347. Second class postage paid at Muleshoe, Texas 79347.

TA MEMBER 1981
TEXAS PRESS ASSOCIATION

L.B. Hall - President
James Woods - Vice President
Clyde L. Jones - News Editor
Evelyn Harris - Circulation
Bobby Millage - Advertising
Bookkeeper

SUBSCRIPTIONS:
Muleshoe Journal and Bailey County Journal
Bailey and surrounding counties..... \$10.00
Muleshoe Journal and Bailey County Journal
Elsewhere in Texas..... \$11.00
Muleshoe Journal and Bailey County Journal
Outside of Texas..... \$12.00
Yearly by Carrier..... \$11.50
Monthly by Carrier..... \$1.00
Advertising rate card on application

Shop now
and Save at

WHERE YOU ALWAYS BUY THE BEST FOR LESS
GIBSON'S
DISCOUNT CENTERS

Store Hours:
Mon-Sat. 9-7
Sun. 1-6



Prices Effective May 28 - 30

 <p>Ladies Swim Suits Asst. Styles Reg. \$9⁹⁹ \$7⁸⁸</p>	 <p>Reg. \$12⁹⁹ \$9⁸⁸</p>	 <p>Boy's Short Sets Reg. \$6⁹⁹ - \$7⁹⁹ \$5⁸⁸</p>
--	---	---

<p>Gold Star Oscillating Fans 16" 3 Speed \$29⁹⁹ 12" \$21⁹⁹</p> 	<p>Jrs. Short Sets Third Generation Polyester/Cotton \$8⁸⁸</p> 
---	--

<p>Astro Turf Door Mat by Mansanto \$3⁸⁸</p>	<p>Giant Round Wastebasket By Loma No. 107 \$3⁹⁹</p>	<p>G.E. Super Pro 1400 Watts Pistol Dryer With All Attachments \$19⁹⁹</p>
---	---	--

HEALTH & BEAUTY AIDS

 <p>Cutex Polish Remover 4 Fl. oz. Regular or Lemon 71¢</p>	<p>Polident with Denture Bath 40 Tablets \$1²⁹</p>	 <p>Safeguard Deodorant Soap 5 oz. bar 2/\$1</p>
--	---	---

 <p>Right Guard Bronz 10 oz. \$2⁴⁷</p>	 <p>Flex Net All Weather Hairspray 12 oz. Pump \$1⁹⁹</p>	 <p>Agree Shampoo Oily or Reg. Formulas 12 fl. oz. \$2⁰⁹</p>
--	--	--

<p>Kwik Seal Tub & Tile Caulk By Dap 6 oz. Tube 99¢</p>	<p>Tempest Propane Torch Model LP-5555 \$8⁸⁸</p>	 <p>Weather Proof Lantern By Ray-O-Vac No. L295-SP \$5⁸⁸</p>
---	---	--

<p>Deluxe Auto Snack Tray By Rubbermaid No. 2999 \$3⁹⁹</p>	 <p>Kleenex Facial Tissues 200 ct. 79¢</p>	<p>Real Kill Indoor Outdoor Plus Flying Insect, Garden Pests, & Roach Killers 11 oz. \$1⁹⁹</p>
---	---	---

HOUSE CLEANING BUYS

 <p>Era Laundry Detergent GT. 32 oz. Bottle \$1⁶⁹</p>	 <p>Ivory Dishwashing Liquid GT. 22 oz. \$1²²</p>
---	---



Richland Hills Baptist Church Spring Revival

featuring

Bro. Brock Sanders

Schedule of Services

Wednesday, May 27.....7:30 p.m.
Thursday, May 28.....7:00 p.m.
Friday, May 29.....7:00 p.m.
Sunday School May 31.....10:00 a.m.
Sunday Services May 31.....11:00 a.m.

Free Seating

Everyone Invited
Hope To See You There

Nursery Provided

1601 W. Ave. D

Muleshoe



MISS MELODY MAULDIN

Miss Mauldin Feted With Prenuptial Shower

Miss Melody Mauldin, bride elect of Travis Smith, was feted with a prenuptial shower, from 7-8:30 p.m. Saturday May 23, in the friendship room of the 16th and Ave. D. Church of Christ.

The honoree and her mother, Mrs. Sherry Pugh, greeted the guests. Debbie Pugh, sister of the bride, registered the guests.

Shannon Springfield and

Tammie Areen served white cake (with yellow roses), yellow punch, yellow mints and nuts from crystal appointments.

A white lace over yellow cloth covered the serving table. The honoree's corsage was made of white daisies.

Special guests were: Mrs. Sherry Pugh, honoree's mother, Debbie Pugh, sister of the honoree, and the honoree's aunt, Margaret Durbin.

The hostesses gifts were; dishes, flat ware and an electric fry pan. Hostess for the occasion were; Bernice Holderman, Jan Springfield, Doris Palmer, Edith Palmer, Barbara Puckett, Margie Hawkins and Gladys Wilson.

Also Terry Willey, Charlene Bartholf, Ronda Kitchens, Deloris Kelton, Jeanie Garth, Janie Gibbins, Paula Madrid, Connie Alanis, Fannie Hicks, Louise King, Jo Harmon, Venida Collins, Mrs. W.M. Harmon, Lucy Faye Smith, Nita Griffith, Faye Poyner and Shirley Farmer.

Use a pressure canner for home canning low-acid foods, such as meats and vegetables (but not tomatoes), says Mary K. Sweeten, a foods and nutrition specialist.

A pressure canner is a "must" for low-acid foods so they can reach temperatures high enough to kill botulism-causing bacteria spores that produce the deadly toxin, she adds.

Mrs. Sweeten is on the home economics staff of the Texas Agricultural Extension Service, The Texas A&M University System.

Three-Way 4-H Presents Skit Intituled 4-H Is..

The Three Way 4-H Club was represented at Districe II Roundup by nine members, Donae Parker placed first in the junior division of Home Environment, and the Share-the Fun team received a participant ribbon. They did a skit entitled, "4-H Is..." Members of the team were Jodie, Jamie and Wade Wheeler, Dane and D'nae Dewbre, Bryan Kindle, Jeanine Robertson and Melinda Turney.

Officers for the 1981-82 year were elected, they are: President, Belinda Wheeler, Vice-president, Donae Parker, Secretary, Jodie Wheeler, Treasurer, Michelle Lane, Parliamentarian, Jamie Wheeler and Reporter, Staci Kirby. Council delegates are Belinda Wheeler, Donae Parker, Mitzi Robertson and Staci Kirby.

County Fashion Revue is scheduled for June 19th, and records are due in on June 17th.

The different camps that are available this summer were discussed. The meeting was adjourned.

Mr. and Mrs. Wayne Clark
and
Mr. Mrs. Roy Precure
invite you to share in the joy of
the marriage uniting their children

Joni Lea
and
Carroll Grant

This Celebration of love will be
on Saturday, the thirtieth day of May
nineteen hundred and eighty-one
at eight o'clock in the evening
Lazbuddie Church of Christ
Lazbuddie, Texas



MISS JULIE CARLISLE

Faced with a "lemon," consumers tend to replace rather than complain, says Bonnie Piernot, a family resource management specialist.

Studies show that consumers would rather spend money to replace a faulty item than invest time dealing with manufacturers, government agencies or lawyers, she says.

Wives are quicker to give up on a product than their husbands, but they're also more inclined to register a complaint about the product, says Mrs. Piernot, on the home economics staff of the Texas Agricultural Extension The Texas A&M University System.

Association Of Retired Persons Holds Meeting

The regular meeting of the American Association of Retired Persons, Muleshoe Chapter No. 3169, was held May 22nd, in the

Miss Carlisle Named National Semi-Finalist

McCall's Pattern Company and Eastman Kodak announced Wednesday that Julie Carlisle, daughter of Mr. and Mrs. Nelson Carlisle of Goodland, was one of sixty national semi-finalists in their Sew n Show contest.

Contestants made garments containing a minimum of 50% Kodol polyester from McCall's Patterns. Miss Carlisle's garment is a white pant suit of Palencia broadcloth teamed with a bright blue shirt also of 65% Kodol and 34% cotton. She submitted a color photograph May 9 to the McCall's Pattern Company. As a semifinalist, she will receive a Kodak Camera.

Julie, a student at Three Way High School at Maple has to submit her garment for further judging in New York.

If Julie is selected as one of four regional winners, she and her homemaking teacher, Sandra Pool, will win an all expense paid trip to New York City for four days, where Julie will model for the McCall's Pattern Catalog. Winners will be announced in New York in June.

Muleshoe Civic Center. Preceding the meeting, a luncheon was held. The invocation was given by Matt Dudley.

The meeting was called to order by the President, Mrs. Myrtle Creamer; Pledge of Allegiance, led by Mrs. Lela Gunter, was given and Prayer was offered by Zed Robinson.

A cordial Welcome was extended by the President; to the guests, Mr. and Mrs. Oscar White and Mrs. Ercel Whitt, and one new member, Mrs. Alline Bell, were introduced.

Minutes of the previous meeting were read and approved. In the absence of Mrs. Beatrice Blackburn, Mrs. Faye Lambert

gave the Treasurer's report.

Reports were given on the Fun Carnival, held in Plainview, May 7th, at which, President, Mrs. Myrtle Creamer, was honored as an outstanding Senior Citizen.

The afghan was made and donated to the club by Mrs. Clea Williams, the daughter of the President.

The President expressed her appreciation to all who assisted with this project. A special Thanks going to Mrs. Jewell Strong; Mrs. Maud Young, Mrs. Roxie Hoover and Mrs. Ruth Timms, who worked tirelessly on the quilt. The Benediction was given by Jesse Pruitt.

Harry L. Everett, DDS
Announces
The Opening Of An Office For
The Practice Of Orthodontics
At
1201 Cleveland, Friona, Texas
By Appointment
806-247-3880

Register For
Summer Classes
Now!
● Ballet ● Jazz ● All
Around Gymnastics ● Trampoline
Boys & Girls, 3 yrs. & up
Ladies Evening Exercise
Hawkins & Purdy's School of Dance & Gymnastics
965-2353 272-3483 or 4017

MOUNTAIN DEW,
DIET PEPSI OR
PEPSI COLA
99¢
2 LITER BTL.

ALLSUP'S
CONVENIENCE STORES
"THERE'S ONE NEAR YOU"
PRICES EFFECTIVE MAY 28-30, 1981
WHILE SUPPLIES LAST
AFFILIATED FOODS INC.
MEMBER STORE

BORDEN'S FRUIT DRINK 1 GAL. **99¢**
JOHNSON 2 per pkg. PIE SHELLS **59¢**

BORDEN'S ASSORTED FLAVORS
ICE CREAM
\$1.59
1/2 GAL. NO. CTR.

MAGIC GARDEN
STRAWBERRIES
10 oz. **49¢**

1 lb. **RATH BACON** \$1.09
ASSORTED FLAVORS REG. \$1.09
DORITO'S 8 OZ. PKG. **99¢**
BORDEN'S ORANGE JUICE QT. **89¢**
GLADIOLA FLOUR 5 LB. BAG **\$1.09**
MORTON ASSORTED DINNERS PKG. **89¢**
OPEN 24 HOURS 365 DAYS A YEAR
We're proud to give you more!

ALLSUP'S ALLSUP'S CRISPY FRESH COOKED
CORN DOGS
3 \$1.00 FOR

11% FINANCING

WHITE FARM EQUIPMENT PUTS A STOP ON FINANCING INFLATION... SO YOU CAN GET THE EQUIPMENT YOU NEED, NOW!

The new White Farm Equipment Company doesn't believe inflation should stop you from getting the equipment you need to turn a profit. And here are the savings to back it up. **Save with 11% or 14% financing on our entire line of equipment.** Buy any new piece of White Farm Equipment or selected used equipment from May 1 through June 30, 1981 and we'll finance it for you at an annual percentage rate of only 11% for one year or 14% for three years. That's financing you can farm with! **Or save with White Silver Certificates worth up to \$6,750.** When you purchase any new

White Field Boss® Tractor or Harvest Boss® Combine, you may receive White Silver Certificates instead of any other financing or savings options. These Silver Certificates may be used for the purchase of any other new White Farm Equipment complete tool product before October 31, 1981. See us for complete details. **Choose a cash rebate worth up to \$4,500** instead of any other financing option or savings offer listed. Just buy the new White Farm Equipment tractor or combine you need by June 30, 1981. See the chart for a complete list of qualifying

equipment, Silver Certificate amounts and rebates. **Or save with Waiver of Finance until September 1, 1981.** Buy any new piece of White Farm Equipment or selected used equipment during the program period and you'll pay no finance charge until September 1, 1981. **We want to be your farm equipment dealer. We've got the equipment, the service... and now the savings you need to help you turn a profit this year.** So don't put off stopping in. Our equipment selection will never be better than today. Plus the sooner you buy, the more you can save.

MODEL	Retail Financing or 11% for 1 year 14% for 3 years	Silver Certificate Amount		Cash Rebate Amount		Waiver of Finance Until September 1, 1981
		May	June	May	June	
Compact Tractors	YES	Save up to \$600	Save up to \$450	Save up to \$400	Save up to \$300	YES
Utility Tractors	YES	Save up to \$975	Save up to \$750	Save up to \$650	Save up to \$500	YES
2WD Field Tractors	YES	Save up to \$3,750	Save up to \$2,850	Save up to \$2,500	Save up to \$1,900	YES
4WD Tractors	YES	Save up to \$4,500	Save up to \$3,375	Save up to \$3,000	Save up to \$2,250	YES
All Combines	YES	Save up to \$6,750	Save up to \$5,100	Save up to \$4,500	Save up to \$3,400	YES

PLEASE NOTE: All new White implements including Seed Boss Planters, and selected used equipment qualify for the 11% and 14% financing or Waiver of Finance options.

WHITE FRY & COX
Farm Equipment
401 S. 1st. Muleshoe 272-4511

Mrs. Wartes Honored With Baby Shower

Mrs. Mike Wartes was honored with a baby shower Saturday, May 23, from 10-11:30 a.m. in the parlor of the First Baptist Church. The guests were greeted by Mrs. Mike Mayberry. Mrs. Steve Taylor, Mrs. Jerry Robinson, Mrs. Alan Cornelius and Mrs. Roger Morris served fresh fruit (from a watermelon bassinet), sweet breads, juice and coffee from crystal and pewter service.

The serving table was covered with a white lace cloth and enhanced with an arrangement of pink silk flowers arranged with baby articles. The honoree's corsage was made of pink carnations accented with daisies. Special guests were Mrs. Roland Johnson, mother of the honoree, Mrs. Ronnie Wooten and Miss Roma Johnson, the honoree's sisters, Mrs. Larry Wortes,

mother-in-law of the honoree, and Mrs. Jay Wooten. The hostesses gift was a white wicker rocking cradle. Hostesses for the occasion were: Mrs. Steve Taylor, Mrs. W.T. Watson, Mrs. Mike Mayberry, Mrs. Rex Black and Mrs. Paul Poynor.

Also Mrs. Charls Lewis, Mrs. Bruce Woods, Mrs. Ken Box, Mrs. Jerry Robison, Mrs. Alan Cornelius, Mrs. Gary Skaggs, Mrs. Reagan Cox, Mrs. Jim Jennings, Mrs. Max King, Mrs. Johnny Ferguson, Mrs. Lewis Scoggin and Mrs. David Saylor.

Mrs. Mount Honored With Baby Shower

Mrs. Allie (Ann) Mount was honored with a baby shower Saturday, May 23, from 2-4 p.m. in the home of Mrs. Demp Foster.

A hanging stork greeted the guests, in the courtyard of the Foster home. A navy blue linen cloth covered the gift table, in the garden room, and an orchid served as the centerpiece. An ecru tablecloth cover-

ed the serving table. A spring bouquet of silk flowers accented the table.

Refreshments of assorted finger sandwiches, petite fours, nuts, mints, coffee, tea and punch were served from brass appointments.

Special guests were Mrs. Mounts mother, Mrs. Ruby Yost of Ingalls, Kansas and

her sister, Karen Smith and daughter, Susan from Pratt, Kansas.

The hostesses gift was a wicker changing table. Hostesses for the occasion were Paulette Foster, Claire Brown, Debra St. Clair, Pam Morris, Sarah Black, Rica Anderson, Marilyn Young, Lisa McElroy, Beverly Parke, Karen Tunnell and Christi Whitt.

Faster Ways With Microwaves

CRAB AU GRATIN (shown)
Total cooking time: 16 min. 30 sec.

2 tablespoons butter or margarine
1/2 cup fine dry bread crumbs
1/2 cup (2 ounces) shredded process Swiss cheese
1/4 cup sliced almonds

4 tablespoons butter or margarine
1/2 cup all-purpose flour
1/2 teaspoon grated lemon peel
1/2 teaspoon salt
1/2 teaspoon dry mustard
Dash white pepper
2 cups light cream

1 slightly beaten egg
2 1/2 cups flaked dungeness crab (16 ounces)
3 tablespoons sliced green onion
Snipped parsley

In small bowl, melt the 2 tablespoons butter at HIGH for 30 seconds. Toss crumbs and cheese with butter; set aside. Spread almonds in pie plate. Cook at HIGH for 3 to 4 minutes or till golden, stirring once. Stir almonds into crumb mixture; set aside.

In 2-quart glass measure, melt the 4 tablespoons butter at HIGH for 1 minute. Stir in flour, lemon peel, salt, dry mustard, and pepper. Add cream. Cook at HIGH for 6 to 7 minutes or till thickened and bubbly, stirring often.

When you go on a vacation trip in your car remember that death takes no holidays.

Questions To Ask Your Appraiser

By Dexter D. MacBride, ASA
Executive Vice President
American Society of Appraisers

If you need to retain an appraiser for the purpose of buying or selling a home, selling the family business or farm, insuring your valuables, etc., you should know beforehand if the appraiser is qualified to do the job you have in mind. To help you in the selection process, I suggest you ask the appraiser the following questions:

1. What is your general appraisal and educational background?
2. What specific experience do you have with the kind of property I wish to have appraised?
3. Are you a member of a

professional appraisal society?

4. Does that Society test and certify? If so, are you a designated member?
5. Is that designation based on successfully completing written exams?
6. How long ago did you pass the exam?
7. What continuing education are you involved in to keep current?
8. Does your Society require Re-certification to make sure you are up-to-date in education and changes in the profession?
9. What do you charge for your services?

The appraiser you select should possess relevant experience, education, skill and integrity. Don't hesitate to ask for credentials.

Aides seek yacht for President Reagan.



MRS. MIKE WARTES



MRS. ANN MOUNT

Muleshoe Singing Group Meets

The Muleshoe Singing Group met Saturday, May 23, with 24 present. Cecil Rundell was in charge, he played two numbers on the harp, accompanied by Eva Ashford. Mrs. John Gunter gave the opening prayer.

Mrs. Miller, Cecil Rundell, Mrs. Gunter and Mrs. Gibson sang two hymns. Two hymns were also sang by Cecil Rundell, Mrs. Robinson, Mrs. Gibson and Mrs. Miller.

Mary Jane Rundell and Lorene Mills sang a duet. Mr. Upchurch sang a solo. A special number was sang by Mrs. Gunter, Mrs. Gibson, Mrs. Wilterding and Mrs. Miller.

Cecil Rundell sang a solo. The closing prayer was given by Jess Pruitt.

Just For You!

Kids Crusade

Featuring
Randy The Dummy!

Puppets!

Filmstrips!

Prizes!

with
Louis & Mary
Smith

May 27-31, 1981

Wed.-Fri. 7:30 p.m.

Sunday 6:30 p.m.

1st Assembly of God

Muleshoe



New Ladies Exercise Class
Age 17-100
Starting June 1st
Mon-Wed-Fri
10-11 a.m.
Old Legion Hall
Corner 15th & Ave B
\$1.00 per Visit
For Information 272-5347

Best Of Press

Right
A statesman is made out of the right kind of timber when he can lead the people out of the woods.
-Journal, Greensboro.

The Same
Economy is just a way of spending money without getting any fun out of it.
-Reporter, Kanawha, Ia.

Good Advice
After all is said and done it's time to break up the party.
-Tribune, Chicago.

MOONLIGHT

Stock Reduction Sale

Thurs. May 28

Closed Until 2 p.m. getting ready for sale - Open Until 10 p.m.

Ralph the Wrangler Clown Will Be Here

Free Balloons For Kids

Tiny Lynn Western Band To Play In Parking Lot From 6-9 p.m.

All Items Not On Sale 10% off

Large Selection of Boys, Girls, & Students

Fashion Jeans

up to 50% off

Mens Western Shirts
Long Or Short Sleeve

Buy 2 at Reg. Price
Get Third Free Of Equal or Less Value

Junior Sizes
Painter Pants

Reg. 17⁹⁵ \$12⁹⁵

Student Big Bell
Wrangler Jeans

\$8⁹⁵

All Kids Clothes up to 50% off

Western Belts

Names Put On

Free

1 Group
Kids
Sale Boots
\$15 & Up

Western Sport Coats

Reg. \$105⁰⁰ & \$95⁰⁰

Now 74⁹⁵

& 68⁹⁵

1 Group
Mens
Western Shirts \$10⁹⁹

All Moccasins at Reduced Prices

Dee Cee
Overalls

Reg. 21⁵⁰ \$14⁹⁵
NOW

1 Group
Mens

Knit Pants

reg. \$18⁹⁵ NOW \$11⁰⁰

All Ladies Tops & Jeans 30% off

Special Sale Table

Boys & Students Pants at Low Prices

1981 Model Close-Out

ZENITH



Hurry, subject to stock on hand only!

SAVE ON ALL 1981 MODEL ZENITH TELEVISIONS, STEREOS, RADIOS, VCRS

We Have A Trained Technician To Service Our Products

Wilson
Appliances

117 Main

272-5531

Store Hours
Mon. - Sat.
8:00 - 6:00



Muleshoe
Wilson's WESTERN WEAR Inc.

1910 W. American Blvd.

272-4663

Health Center Supporters Attend Meeting

Participants in the South Plains Health Systems project from Muleshoe, Earth and Littlefield were to testify before the full health systems agency Tuesday evening in Lubbock.

The meeting Tuesday, at the Methodist Hospital, was to voice support for funding for the program.

Approximately 400 Plainview and Lubbock residents appeared before the SPHS review advisory committee last week to comment about the executive committees rejecting the \$2.4 million migrant and rural health center program of South Plains Health Providers.

Muleshoe...

Cont. from Page 1

Fran Berryhill, a freshman at West Texas State University from Muleshoe, has been presented two Branding Iron Theatre awards for her performances in productions by the WTSU Department of Speech and Theatre.

Berryhill received the awards as a best supporting actress in a dramatic production for "Wait Until Dark" and as best actress in a one-act play directed by students.

Berryhill, a speech and mass communications major, is the daughter of Marie Lamb of Muleshoe.

Grain...

Cont. from Page 1

the following incidents. * CCC has sold at least one million bushels of corn at a discount, because it was considered "not storable" when it arrived in Plainview, Texas. * One elevator operator reported that his sales of grain were cut in half because his feolot customers were buying the CCC corn instead. Another said, "It has cost my elevator \$100 thousand this week." * High Plains grain buyers are being advised against buying grain because the expected release of the CCC stocks will lower the price. * Texas Cattle Feeders Association has advised all area feedlot operators to appeal to their congressmen and the USDA to have the grain released.

The cattle-feeding area of the High Plains is a grain deficit area—that is, more grain is consumed than produced. The deficit is filled with grain shipped from the southern Corn Belt—Nebraska, Kansas and Missouri. Although production costs are much higher on irrigated grain from the High Plains, it can compete because freight costs must be added to the price of imported grain. The grain production economy of this area is based on that fact. For USDA to pay those freight charges, is, in effect, discounting the imported grain by that amount.

Graduation...

Cont. from Page 1

WTSU Graduates from Muleshoe include Teresa Ellis, who received a Bachelor of Science degree in elementary education; Martha Garcia, Bachelor of Arts in elementary education; Tammye Hicks, Bachelor of Science in Nursing; James Mardis, Bachelor of Science in animal science; Kristi Phelps, Bachelor of Science in physical education; Matthew Phelps, Bachelor of Science in agricultural business and economics; and Alta Ramm, Bachelor of Science in elementary education.

Keva Roming, the class valedictorian, challenged the 1981 class to bring pride to the school and its teachers by seeking to better oneself in the times ahead.

Ms. Roming expressed pride in a hometown that was short on quantity but had a "quality of citizens." She bid farewell to the students she had shared the good times and disappointments and to the parents, friends and teachers who would always be cherished.

Wayland Ethridge, MHS principal presented scholarship and awards to the seniors and members of the School Board awarded the diplomas.

The Senior Class of 1981 closed the ceremony by singing the class song, "We've Only Just Begun"

Lauri Burgess from Muleshoe has been named to the Presidents list at WTSU. The Dean's list names 667 students while the Presidents list includes 163 students.

To be named to the Dean's List, students must have ended the semester with a grade point average of 3.25 to 3.84 for at least 12 semester credit hours completed. The President's List includes students with grade point averages of 3.85 to 4.0 for 12 semester hours of work.

Rickover says Navy should build subs.

Percentage of women smokers decreases.



WATER TROUBLES—Muleshoe Volunteer Firemen and other volunteers were faced with water troubles Friday afternoon at the Prairie View Dairy fire. Howard Watson helped out with two trailers of water. Fifteen firemen and 20 others were on hand to battle the blaze.

Barn...

Cont. from Page 1

between the fence and existing historic buildings will be cut approximately between the Matador office building and the Renderbrook Spade blacksmith shop to provide access to the barn. The front of the restored barn will face east toward the other buildings at the center.

The Ranching Heritage Center is a unique outdoor exhibit depicting the history of ranching in America. The Ranching Heritage Association was formed to support the center.



WINNER OF FFA RIFLE—Donna Parish was the winner of the Remington 870 12 gauge rifle which was given away at the FFA's May 23 Trap Shoot. The rifle was donated by Taylor Gun Shop of Seagraves.

BRIEFS

Reward of \$500,000 offered for Atlanta's killer.

Senate votes to cut Social Security benefits and others.

Socialist Mitterrand wins in French election.

NATO ministers endorse U.S. arms talk plans.

Mormons don't want MX missile system deployed.

Boot & Shoe Repair

617 E. Amer. Blvd.

4-H...

Cont. from Page 1

Jacinda Gleason, Selia Shaw, Jerry Gleason,

Jimmy Gleason, Jay Shaw,

Mitzi Robertson, Sherry Henry, Robin Kindle, Donae Parker, adult sponsors, Mr. and Mrs. Don Parker and Jim Irwin.

Now In Stock ...
Custom Designed
Flexible Couplers To Replace
Original Equipment U-Joints
On Any Center Pivot.

Nu-Flex Surface Ditch Plastic Tubing To Save Water Loss In The Conventional Open Ditch.

Parts & Service Available For Lockwood & Pringle.

All Types of Drops In Stock,

Including The Adjustable Profit Drop.



Your Partner In Progress ...



Campbell
IRRIGATION SYSTEMS

604 North 1st.

272-5536

SOVEREIGN

SAVE UP TO 20% OFF OUR REG. LOW PRICES

A&M
FARM AND RANCH SUPPLY

STORE HOURS:
7:30 - 5:30
Monday - Saturday

Complete Farm Store

For years Steel belted radials have been the established standard of the industry... now

ARAMID — the space-age tire cord material has been developed by Dupont laboratories to replace steel as a belt material in radial tires. Aramid is the ideal material for tires because it combines the toughness and durability of steel at one fifth of the weight with the comfort and smooth ride of a fabric belted radial.

MILEAGE
Stronger than steel Aramid gives equal performance with less weight. Lighter weight reduces internal friction and heat build up.

SMOOTH RIDE
The flexible lightweight Aramid belts plus super tough Polyester cord radial body plies delivers a smooth, comfortable ride.

SKID RESISTANCE
Sovereign's computerized tread pattern effectively drains out water and improves traction in wet or dry weather. Radial construction keeps the tread flat on the road with a surefooted grip. Flexible sidewalls absorb lateral force; on curves and corners the tread remains in contact with the road.

ALL WEATHER TRACTION
Special tread rubber compounding stays flexible in cold weather to deliver improved traction on any kind of road condition. New computer-designed tread improves traction by channeling water away on wet roads.

IMPACT PROTECTION
Aramid is the strongest tire cord ever developed. Pound for pound it's five times stronger than steel. Two Aramid belts over strong polyester cord radial body plies provide flexible strength for great durability.

OUR GOOD

RADIAL CR-10
POLYESTER/GLASS
O.E. WHITEWALL

Polyster and glass construction with an aggressive tread design. Great radial tire performance and good looks. Original equipment sidewall.

STOCK NO.	SIZE	REG.	SALE	FET
23C45	P21575R15	77.30	69.57	2.58
23C49	P22575R15	81.76	73.58	2.74
23C64	P2357R15	84.94	76.45	2.85

OUR BEST POLYESTER

NUMBER	REG.	SALE	FET
A78-13	33.20	26.56	1.50
B78-13	34.29	27.43	1.61
C78-13	36.00	28.80	1.79
C78-14	36.17	28.94	1.68
D78-14	36.61	29.29	1.79
E78-14	38.96	31.17	2.04
F78-14	40.96	32.77	2.14
G78-14	42.06	33.65	2.28
H78-14	45.33	36.26	2.52
G78-15	43.79	35.03	2.36
H78-15	46.12	36.90	2.57
J78-15	48.40	38.70	2.79
L78-15	49.75	39.80	2.84

Constructed with 2 belts of steel cord and 2 tough body plies of Polyester Cord. Good traction on both wet and dry pavement. In many cases it eliminates winter tire changeover.

OUR BETTER

ALL SEASON STEEL BELTED RADIAL

SIZE	REG.	SALE	FET
P16580R13	41.17	33.89	1.89
P1857R13	44.65	36.75	2.02
P1857R14	50.41	41.50	2.19
P19575R14	51.25	41.75	2.33
P20575R14	54.67	45.00	2.48
P21575R14	57.62	47.75	2.58
P22575R14	59.34	50.75	2.81
P20575R15	56.08	46.25	2.57
P21575R15	59.70	48.75	2.75
P22575R15	61.57	51.75	2.93
P23575R15	65.89	53.75	3.11

PREMIER IV POLYESTER/STEEL WHITEWALL

FREE MOUNTING * FREE BALANCING

*** NO-TRADE REQUIRED**

*** FULL ROAD HAZARD GUARANTEE**

*** OPTIONAL COMPUTER BALANCE ONLY \$3.50 EA**

A&M

FARM & RANCH SUPPLY

1601 S. Ave. D Portales
2600 E. Mabry Drive Clovis
1302 W. American Blvd. Muleshoe

Test results prove the complete performance of Asgrow corn hybrids.

come grow with asgrow

RX 90 A Proven Winner
RX 962W White Hybrid With A Wide Range Of Adaptation
RX 125W & RX 153W The Old Standard Whites For The High Plains

for further information: Bennie Pickrell 806-385-3763

Helen M. Ellis Services Held In Amarillo

Funeral services for Helen M. Ellis, 77, of Amarillo were held at 10 a.m. Tuesday in the Sanctuary of the First Baptist Church in Amarillo, with Dr. Winford Moore, Pastor, officiating.

Interment was in Llano Cemetery at Amarillo under the direction of Schooler-Gordon Funeral Directors. Mrs. Ellis died at 3:30 p.m. Friday, in Bivins Memorial Nursing Home in Amarillo.

She retired in 1969 from Pioneer Natural Gas where she was an auditor for 22 years. She was a member of the First Baptist Church in Amarillo.

Survivors include two sons, Frank Harrison Ellis, Jr. of Muleshoe and Lyman Leon Ellis of Tokyo, Japan; one daughter, Berna Ruth Ellis of Amarillo; three brothers, Edwin Molyneaux of Madrid, Spain, Russell Molyneaux of Amarillo, and Gordon Molyneaux of Roswell; three grandchildren and two great grandchildren.

The family requests memorials be made to the First Baptist Church or to the Bivins Memorial Nursing Home.

BIBLE VERSE

Let your light so shine before men, that they may see your good works, and glorify your Father which is in heaven.

1. Who is the author of the above statement?
2. To whom was he speaking?
3. Of what famous discourse is this verse a part?
4. Where may it be found?

Answers to Bible Verse

1. Jesus, as recorded by Matthew.
2. His disciples and the multitude gathered around him.
3. The Sermon on the Mount.
4. Matthew 5:16.



MRS. MATTIE HEARD

Mattie E. Heard Services Held Wednesday

Funeral services for Mattie E. Heard, 79, were held at 3 p.m. Wednesday in Ellis Funeral Home Chapel of the Chimes with Rev. Clarence Todder, pastor of the Parkview Baptist Church in Littlefield and Rev. B.C. Stonecipher, pastor of the Longview Baptist Church, officiating.

Burial was in the Sudan Cemetery under the direction of Ellis Funeral Home. Mrs. Heard died at 8:18 p.m. Saturday at the Muleshoe Nursing Home.

She was born June 23, 1901 in Atlanta, Ga., and was a Muleshoe resident for 44 years, moving here from Vernon. She was a housewife, her husband, Carl, died in 1950. She was a member of the Longview Baptist Church for 35 years.

Survivors include five daughters, Mrs. Bernice Owen of Well, Nev., Mrs. Sarah Burkhart of Battle Mountain, Nev., Mrs. Ruth Drake of Woodland, Calif., Mrs. Karl Dean Helker of Portales, and Mrs. Allene Harvey of Clovis; one son, C.T. Heard of Littlefield; two sisters, Mrs. Minnie Phillips of Cummings, Ga. and Mrs. Naonia Adams of Forest Park, Ga.; 16 grandchildren and 22 great grandchildren.

J. A. Nickels Services Held Monday

Services for J.A. "Johnny" Nickels, 54, were held at 2 p.m. Monday in the First United Methodist Church with Rev. Bill Kent, pastor, officiating, assisted by Rev. Brock Sanders of the Richland Hills Baptist Church.



J.A. "JOHNNY" NICKELS

Interment was in the Bailey County Memorial Park under the direction of Ellis Funeral Home. Nickels died at 4:40 p.m. Saturday in Methodist Hospital in Lubbock.

He had been a resident of Muleshoe since 1929, he moved here from Floydada where he was born Feb. 27, 1927. He was a veteran of World War II, serving in the U.S. Navy. He was a ginner and farmer, a member of the Lubbock Cotton Exchange, Plains Cotton Growers, Inc., National Cotton Council and a former board member of the Independent Cotton Ginners Association.

Survivors include his mother, Mrs. Bertie Nickels of Muleshoe; three daughters, Mrs. Jenda Bruns and Mrs. Kerma McGuire, both of Muleshoe, and Mrs. Belinda Henry of Honestead, Fla.; five sisters, Mrs. Doris

Reeves of Farwell, Mrs. Floris Gilley and Mrs. Joan Lowry, both of Amarillo, Mrs. Evelyn Riley of Muleshoe and Mrs. Nina Adud-

dell of Littlefield; a brother Ed Nickels of Muleshoe; and four grandsons.

U.S. seeks Japanese aid to contain Soviets.

Almost Human
The latest electronic computers are so human that they blame their mistakes on other electronic computers.

True
All too often a clear conscience is nothing more than a poor memory. -Barker, Des Moines.

If Not N.O.W. When?

If you haven't yet combined your savings and checking accounts into a Muleshoe State Bank N.O.W. Account, you're losing interest—fast!! The N.O.W. Account acts like a regular checking account—there when you need it. Open a N.O.W. Account—now and watch your interest grow!!



MULESHOE STATE BANK

Member FDIC. 272-4561



Thornton Chevrolet is Overstocked And We Have To Make Room For More New Cars And Trucks On Their Way. We Have Cut The Prices Of The New And Used Cars And Trucks In Stock Down To The Bone. For One Week Only! These Are Some Of The Bargains Available For Immediate Delivery.

New Cars

1981 Chevette, 4 Door Hatchback Sedan, 4 Cylinder Engine, 4 Speed Manual Transmission, Air Conditioned, Tinted Glass, Radial w/w, LH Remote Sport Mirror, Silver Metallic, Maroon Cloth Bucket Seats, Stock no. C-134 List \$6,297⁹⁵ Sale \$5,995

1981 Citation 2 Door Hatchback Coupe, Tinted Glass, Color Keyed Floor Mats, Deluxe Exterior, Body Side Moldings, Air, Sport Mirrors, Power Brakes, Cruise w/Resume, 4 Cylinder Engine, Automatic, Tilt Wheel, Power Steering, Radial White Walls, AM/FM Stereo, Beige Custom Cloth Bench, Light Brown Metallic Stock no. C-106 List \$8,651⁹³ Sale \$7,875

1981 Caprice Classic 4 Door Sedan, Power Door Locks, Tinted Glass, Color Key Floor Mats, Body Side Moldings, Door Edge Guards, Air Conditioning, Remote Mirror, Cruise w/Resume, 5.0 Litre V-8, Auto Overdrive, Tilt Wheel, P205 Radial W/W, Aux Lighting, H-D Battery, AM Radio, Dual Rear Speakers, Bumper Rub Strips, H-D Cooling, Bumper Guards, Cream, Champagne Vinyl Roof, Champagne Cloth Bench, Stock no. C-124 List \$9,998⁹⁹ Sale \$8,906

1981 Malibu V Classic 4 Door, Tinted Glass, Dlx Body Side Moldings, Mats, Air, Cruise w/Resume, 4.4 Litre V-8, Automatic, Tilt, Radial W/W, Aux Lighting, AM/FM Stereo, White, Dark Blue Cloth Bench. Stock no. C-133 List \$9,344⁴⁴ Sale \$8,285

1980 Chevrolet 3/4 Ton, H-D Chassis, Silverado, Air, Tilt, Cruise, Cloth Seat, PS, PB, New Tires 18,000 Miles Sale \$6,495

1978 Olds Cutlass 4 Door, Air, Power Steering, Power Brakes, Cruise, Automatic, Very Clean, Was \$3,695 Sale \$3,395

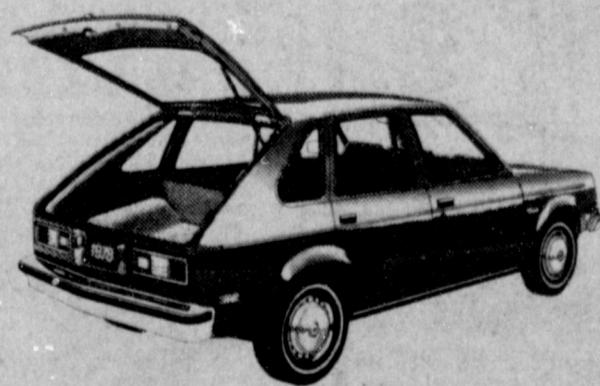


See The New Luxurious Travel Van Now In Stock



See The New 1982 Cavalier

Used Cars and Trucks



1981 Long Wide Half Ton, Tinted Glass, Dome Lamp, H-D F&R Shocks, Stab Bar, 3.08 Axle, Power Brakes, H-D Alternator, 250 CID 6 Cyl. Automatic Power Steering, H-D Battery, Cigar Lighter, AM Radio, H-D Radiator, P205 S/B Radials, Gauges, Stock no. T-188 List \$8,385⁸⁵ Sale \$6,995

1981 Long Wide Half Ton, Tinted Glass, Air Conditioning, H-D F&R Shocks, Stabilizer Bar, 3.08 Axle, H-D Rear Springs, Power Brakes, 305 ESC V-8, Automatic, Power Steering, Cigar Lighter, P225 S/B Radial W/W, Gauges, Chrome F&R Bumpers, Deluxe Front Appearance, Custom Molding PKG, Bright Metal Wheel Covers, AM Radio, Stock no. T-185 List \$9,522⁵⁵ Sale \$7,995

1981 Long Wide Half Ton, Air Cond, Tinted Glass, Stainless B/Eye Mirrors, Stabilizer Bar, 3.08 Axle, H-D Rear Springs, H-D Power Brakes, 305 ESC V-8, Automatic, Aux Fuel Tank, Power Steering, Rally Wheels, Cargo Lamp, Quartz Electric Clock, H-D Trans Oil Cooler, Chrome Front Bumper Guards, P235 S/B Radial W/W, Silverado, AM/FM Radio, Cruise w/Resume, Tilt Wheel, Intermittent Windshield Wipers, Custom Cloth Bench Stock no., T-176 List \$10,270.55 Sale \$8,697

1981 Long Wide Half Ton 4 Wheel Drive, Tinted Glass, Air, Dome Lamp, 2.73 Axle, 305 ESC V-8, Automatic, H-D Battery, P235 S/B Radials, Gauges, Carmine Custom Vinyl Bench, Stock no. T-157 List \$10,281⁵⁵ Sale \$8,895

1978 Chevette 4 Door Hatchback, 38,000 miles Was \$2,795 Sale \$2,595

1978 Monza, Air, AM/FM, New Tires, Very Clean, 22,000 miles Was \$3,695 Sale \$3,395

Low GMAC Financing With Up To 48 Months To Pay

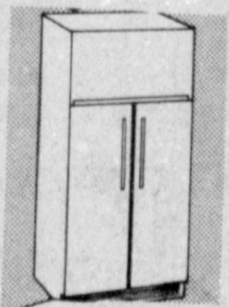
Thornton Chevrolet, Inc.

**SEE: Roy Whitt At West American Lot, Phone 272-4449
Harold Thornton At The Downtown Office, 201 Main, 272-4521**

NATIONAL FRIGIDAIRE WEEK

We Need Your Old Refrigerator.

EVERYTHING ON THING SALE



MAY 28— JUNE 10

HARVEY BASS

122 S. 1st. Muleshoe 272-3030

The Sandhills Philosopher

Editor's note: The Sandhills Philosopher on his Johnson grass farm on Sandy Creek examines British Royalty this week.

Dear editor:
To while away the time I was reading a newspaper article about Prince Charles and the British Royalty and how out of touch with modern times the whole thing seems. Why, the British aren't even smart enough to hire a stunt man to fall off Charles' horse for him.

In fact, the idea of

"royal blood" and passing the Kingship or Queenship down from one generation to the next without even the fun of holding an election seems sort of ridiculous and I couldn't understand why the English do it, until I read that article.

According to it, the marriage of Prince Charles and Lady Diana next July is expected to bring in over a million tourists who, along with the British common folk themselves, will buy millions of dollars worth of souvenirs, including royal ashtrays, royal coat hangers and anything else tourist will go for. One outfit has already sold 750 spots at windows overlooking the bridal parade route at \$335 apiece.

You can figure it, a

million tourists spending an average of \$1,000 apiece, including doubled hotel room rates out of respect for Royalty, comes to a billion dollars. Since it costs only about a million dollars a year to keep Prince Charles, that's a thousand percent return on their investment. You can see why the British people, especially hotel, restaurant and bus and airline people, support British Royalty. It sure beats some Chamber of Commerce sponsoring a Cumquat Queen.

And not only will tourist flock to England to see the Royal wedding, they flock there even when there isn't such a block-buster event, just to see the changing of the Guard at Buckingham Palace, although as far as I

know the Guard has never in 400 years caught anybody trying to sneak in.

The British aren't about to give up their fondness for Royalty, as long as there are democratic tourists alive. It brings in more tourist dollars than the Grand Canyon, Disney Land or Congress, even when it's in session.

Yours faithfully,
J.A.

FOR YOUTH

ONCE WON'T HURT?

Young people often think of shoplifting as a caper. They may believe that even if they're caught, the store owner won't prosecute—especially for a first offense.

This is definitely no longer true, if it ever was. And as more and more stores tighten their security systems, the chances of getting caught have increased dramatically.

Shoplifting is not just a harmless caper. Shoplifting is a crime! In fact, if the retail price of stolen merchandise exceeds \$100, shoplifting is a felony for which you may be severely fined or even go to jail.

Shoplifting is not just a legal problem for those who get caught. It is also a moral problem. It violates the moral injunction, "Thou shalt not steal."

A helpful booklet called "Danger—Hands Off!" gives information about shoplifting and its consequences and offers advice about how to cope with this problem. For your free copy of this booklet write to: International LLL, 2185 Hampton Ave., St. Louis, Mo. 63139.

Sudan News

By Evelyn Ritchie

Mr. and Mrs. Connie Franks and family hosted a

West Plains Medical Center Report

ADMITTED

May 21, Maria E. Garza
May 22, Freda Roberts, John Burch, Clinton Busby, Marilyn Engelking, Eliose Gray, Esther Steelman, Julia Hernandez
May 23, Margie Copley, George Williams, Maria Medina
May 24, Fernando Mora
May 25, Anna Hernandez, Lynn Thompson
May 26, Bradli Longo, Rosemary Monreal, J.R. Atkinson

DISMISSED

May 21, Melvin James, Donna Hawkins, Lanelda Mills, Lynn Thompson, Ruby Gore, Dwayne Shafer
May 22, Hazel Riddle, Lupe Flores, Judy Lodsdon, Juan Gutierrez
May 23, Carol Kenemer, Jerry Mick, Maria Garza
May 24, Robert Montgomery, Marilyn Engelking
May 25, Bobby Bryan, George Williams, Clinton Busby, Fernando Eloise Gray

dinner Sunday, May 10 on Mother's Day in honor of his mother. Attending were his parents, Mr. and Mrs. J.C. Franks and his sister, Mr. and Mrs. Johnny Williamson and Tonya all of Amherst.

Arriving Friday afternoon from Denver, Colorado for Mother's Day weekend, were Linda Wells, Ed Gawkoski, Leslie, Lisa and Edward. They spent the weekend with Mr. and Mrs. J.C. Wells. Other out of town visitors during the weekend with them were Wanda Patton and Lori, Dion Patton, Casey and Alan all of Lubbock; Mary Williford,

Rita and Rose of Abernathy; Kenneth Wells, Jeff and Chris and Jo Gaye Mapp and Amanda, all of Hobbs, N.M.

Friday night supper guests in the Wayne Doty home were Linda Wells, Ed Gawkoski, Leslie, Lisa and Edward of Denver, Colorado; Mr. and Mrs. David Doty and Daniel and Crystal McNeese of Littlefield; Mr. and Mrs. J.C. Wells, Mr. and Mrs. Glenn Chester, John and Mitch and Mr. and Mrs. Curtis Chester, Chad and Josh.

Mrs. Doyle Mapp and Amanda of Hobbs, N.M. spent Mothers Day week-

end with her parents, Mr. and Mrs. Wayne Doty and Donald. Other visitors Sunday were Kenneth Wells, Jeff and Chris.

Mothers Day visitors with Frances Gardner were her daughters, Vickie Bowery and children of Eunice, N.M. and Diana Gardner of Lubbock.

Mrs. Muriel Crouch was in Lovington, N.M. Sunday to visit her granddaughter, Mr. and Mrs. Terry Duncan and grandson, Mr. and Mrs. Duddy Crouch and family.

The Biblical day of rest is fast being converted into something else.



INTERNATIONAL HARVESTER'S AXIAL-FLOW COMBINE—International Harvester's Axial-Flow combine harvested more wheat per unit area at both high and moderate feed rates during comparative tests with conventional machines. At moderate feed rates on four series of trials, conducted by Kansas State University agricultural engineers, the Axial-Flow averaged a 4.5% yield advantage. The IH machine also consistently caused less crackage in all varieties of wheat harvested, the engineers reported.

EXTRA SPECIAL, SPECIAL

Five Point

DOG FOOD

50 LB BAG 25 LB BAG

9³⁶ 5¹⁵

A&M
FARM AND RANCH SUPPLY

Alert
Cat Food

3⁴⁵

10 LB. Bag

RCA COLOR TV

STOCK REDUCTION SALE

HURRY! SALE ENDS

QUANTITIES ARE LIMITED!

RCA XL-100 13" COLOR TV
\$299⁹⁵

RCA 25" CONSOLE CHANNELED RETORNA/SCAN CONTROL
\$599⁹⁵

RCA 25" CONSOLE CHANNELED RETORNA/SCAN CONTROL
\$639⁹⁵

RCA

POCKET BIG SAVINGS DURING RCA'S STOCK REDUCTION SALE AT:

We Service What We Sell

Muleshoe

HARVEY BASS

122 S. 1st. 272-3030

Appliance

GAS GRILLING

... It will turn you into a cook-out connoisseur

PATIO KITCHEN

PK cast aluminum grills feature stainless steel burners — "H" shaped for maximum heat distribution... stainless steel for long trouble-free life, and heavy steel rod cool grates.

PK Delta 1

Only **\$6.72** per month*

Single burner model with 270 sq. in. chromed steel cooking grid.
List price \$150.50
Less 20% -30.10
..... 120.40
Plus installation 70.00
..... 190.40
5% sales tax 9.52
CASH PRICE \$199.92
BUDGET PRICE* \$241.92
Budget terms: no down payment, \$6.72 per month for 36 months.

PK Regent 1

Only **\$8.71** per month*

Dual burner and controls let you use one-half or all of burner. 326 sq. in. cast iron cooking grid.
List price \$271.00
Less 20% -54.20
..... 216.80
Plus installation 70.00
..... 286.80
5% sales tax 14.34
CASH PRICE \$299.14
BUDGET PRICE* \$313.56
Budget terms: no down payment, \$8.71 per month for 36 months.

DUCANE

Ducane cast aluminum grills feature top-ported stainless steel burners, which last longer and save gas... and a unique coal grate designed to prevent flare-ups and grease collection at the bottom of the firebox. Some models have Rotis-A-Grate, a separate vertical burner for rotisserie from behind the meat, and porcelainized-steel cooking grids.

The Challenger 800

Only **\$8.57** per month*

Single burner model with 305 sq. in. nickel-chrome plated grid.
List price \$216.00
Less 20% -43.20
..... 172.80
Plus installation 70.00
..... 242.80
5% sales tax 12.14
CASH PRICE \$254.94
BUDGET PRICE* \$298.52
Budget terms: no down payment, \$8.57 per month for 36 months.

The Challenger 1500

Only **\$12.27** per month*

Twin burners, dual controls — one for each side which saves gas when you don't need to use the total cooking surface. 405 sq. in. nickel-chrome plated grid.
List price \$347.00
Less 20% -69.40
..... 277.60
Plus installation 70.00
..... 347.60
5% sales tax 17.38
CASH PRICE \$364.98
BUDGET PRICE* \$441.72
Budget terms: no down payment, \$12.27 per month for 36 months.

The Trophy 2000

Only **\$14.89** per month*

Two burners — one with a 310 sq. in. porcelainized-steel cooking grid, the other a Rotis-A-Grate® vertical burner, rotisserie motor and spit, and electronic ignition.
List price \$440.00
Less 20% -88.00
..... 352.00
Plus installation 78.00
..... 430.00
5% sales tax 21.50
CASH PRICE \$451.50
BUDGET PRICE* \$536.04
Budget terms: no down payment, \$14.89 per month for 36 months.

The Champion 4000

Only **\$21.92** per month*

All the features of The Trophy 2000 packaged in an elegant cart with large storage areas, redwood-stained side shelf, heavy duty wheels, and connection hose.
List price \$720.00
Less 20% -144.00
..... 576.00
Plus installation 45.00
..... 621.00
5% sales tax 31.05
CASH PRICE \$652.05
BUDGET PRICE* \$769.12
Budget terms: no down payment, \$21.92 per month for 36 months.

JACUZZI JET CHEF

Jacuzzi Jet Chef cast aluminum grills feature Char-Brown enamel finish, rust-resistant porcelainized cast iron cooking grid, cast iron and nickel alloy burner, and heat indicator on lid.

Jet Chef 3010

Only **\$10.07** per month*

Single burner and control with 340 sq. in. cooking surface.
List price \$269.00
Less 20% -53.80
..... 215.20
Plus installation 0.00
..... 215.20
5% sales tax 10.76
CASH PRICE \$225.96
BUDGET PRICE* \$262.52
Budget terms: no down payment, \$10.07 per month for 36 months.

Jet Chef 4020

Only **\$12.32** per month*

Larger grillhead with twin burner, dual controls and 454 sq. in. cooking grid.
List price \$349.00
Less 20% -69.80
..... 279.20
Plus installation 70.00
..... 349.20
5% sales tax 17.46
CASH PRICE \$366.66
BUDGET PRICE* \$443.52
Budget terms: no down payment, \$12.32 per month for 36 months.

ENERGAS

*Budget terms are available at 12.3/4% annual interest on the declining balance; price includes sales tax and normal post-type installation, except for Ducane Champion 4000.

ENERGAS © ENERGAS 1981
Ask any Energas employee

WHAT'S HAPPENING IN THE...

CLASSIFIED SECTION

**Deadline For Classified Ads Is 11:00
Tuesdays And Fridays**

CLASSIFIED RATES
1st Insertion,
Per Word--\$.15
Minimum Charge--
\$2.00
2nd Insertion,
Per Word--\$.13
3rd Insertion,
Per Word--\$.10
Minimum Charge--
\$1.80
½ Cheaper to run
Classifieds 3 times or more
CARD OF THANKS
25 Words--\$3.90
Over 25 Words
Charged at regular
Classified Rates
Classified Display--
\$1.55 per column inch
Double Rate for
Blind Ads
**DEADLINE FOR
INSERTION**
11 a.m. Tues. for Thurs.
11 a.m. Fri. for Sun.
**WE RESERVE THE
RIGHT TO CLASSIFY
REVISE OR REJECT
ANY AD.**
**NOT RESPONSIBLE FOR
ANY ERROR AFTER AD
HAS RUN ONCE.**

1. PERSONALS
.....
**WE BUY USED
FURNITURE AND
APPLIANCES**
CALL 272-3030
**HARVEY BASS
APPLIANCE**
1-18s-tfc

**PHOTOGRAPHY BY
OECIA**
For a lifetime of memories,
let us put your wedding in
beautiful pictures. Call
Oecia for your date.
385-5169, 512 Phelps, Lit-
tlefield, Tx. 79339.
1-6s-tfc

Custom farming, 8 row
equipment. Reasonable
rates call 272-5317 before 8
a.m. or after 7 p.m.
1-16s-tfc

LAWNS MOWED
reasonable and depen-
dable Call Alan Faulk-
ner at 272-5027 after
4:30
1-18s-tfc

Licensed Day Care for the
Summer Only. Call now to
reserve a spot for your
child over 18 months of
age. Diane Allison
272-3364.
1-19t-tfc

Want To Mow Lawns. Call
272-4536 between 1 and
5:50 p.m. Ask for Bruce.
272-3259 after 5:30 p.m.
1-19s-tfc

Hay Hauling
Contact Gene Snell
965-2665
1-19s-tfc

2. LOST & FOUND
.....
LOST: Saturday morning,
April 18, in the vicinity of
the Ranch House Motel.
Male Pit Bull puppy, 5
months. Black with white
mask, white throat and 4
white socks. Has blue ny-
lon collar with name tag.
Answers to the name of
Diablo. Reward offered.
Dianne Tanner 272-4261
Ext. 42 or West Plains
Medical Center 272-4524.
2-17t-tfc

3. HELP WANTED
.....
Semi truck driver. Wages
negotiable. Contact Bill
Gable 965-2644.
3-18s-tfc

Economy Got You Down?
Avon offers good \$\$\$ nice
people, great prizes.

Call Nettie 272-3208
Oneida 272-3346
3-21s-2tc
Wanted: Someone to rake
& water yard.
516 W. 8th.
3-21s-2tc

Help Wanted: Meter read-
er for Bailey County Elec-
tric Cooperative. Good sal-
ary, excellent fringe bene-
fits. Closing date May 27.
Apply at 305 E. Ave. B.
Muleshoe, Tx. An equal
opportunity employer.
3-21s-2tc

Help Wanted, General
office work, must type 55
wpm. Write Box 449,
Muleshoe.
3-21s-tfc

NEED COOK Apply at
West Plains Medical Cen-
ter to Ruby Clark.
3-22t-3tc

Experienced Farm Hand
needed. House and utilities
furnished. Call after 9 p.m.
946-3471.
3-22t-tfc

SERVICE MANAGER and
auto mechanics needed
immediately. Apply Gar-
land, Chrysler, Plymouth,
Dodge in Littlefield. Call
385-4454 days or 385-4874
nights.
3-22t-6tc

5. APTS. FOR RENT
.....
FOR RENT; 1, 2, & 3 bed-
room apartments. (utilities
paid). Unfurnished except
stove and refrigerator.
Starting \$215 or less. Call
collect 1-806-247-3666.
5-22t-8tc

**8. REAL ESTATE
FOR SALE**
.....

We want your business.
**REMEMBER
REID REAL ESTATE
THURSIE REID
272-3142**
OR
**George Nieman
965-2488**
OR
**Dianne Nieman
965-2488**
8-19s-ttfc

HOUSE FOR SALE
Just remodeled, 3 bedroom
1 bath, garaged house.
Call 272-3810 after 7 p.m.
8-12s-tfc

For Sale: 1979 Marshfield
14x80 trailer. Unfurnished,
take up payments.
Call 272-5670 after 4:30.
8-21s-3tp

1.440 acres or less. South-
east part of Farmer County
on FM 214 on Running
Water Draw. 7 miles
southeast of Bovina. \$250
per acre. Jones appraisal
Farm and Ranch, B.L.
Jones, Jr., Broker. [806]
799-5040 or 795-6359.
8-20t-6tc

**Krebs Real Estate
Sales and Appraisals**
201 W. Ave. C
Muleshoe, Texas

FOR SALE: 3 bedroom, 2
bath, brick, living room,
den with fireplace, office,
Richland Hills. 272-4701.
8-21t-tfc

FOR SALE 2 bedroom
home with garage. Call
272-4434 or 272-5434 after
5 p.m.
8-20s-tfc

House for Sale: 3 bedroom,
1 1/2 bath, central heat, ref.
air; 912 W. 9th or call
272-3439
8-21s-3tp

For all your real estate
needs call:
GLAZE & GOFORTH
112 AVE. C
272-4208
8-11-tfc

HOUSE FOR SALE: 2241
sq. ft. of living area with 3
bedrooms, 2 bathrooms,
living room, den with fire-
place, game room, kitchen
with all built-in appliances,
storage house with 120 sq.
ft., 2 car garage, central
heat and refrigerated a/c.
1903 W. Ave. G, across the
street from the elementary
school. Call 806/ 296-6595
after 6 p.m. and on week-
ends.
8-16s-tfc

FOR SALE: 3 bedroom, 2
bath house, brick. 1850
sq. ft. Very good location.
272-5487 before 5 p.m. or
272-5170 after 5 p.m.
8-11s-tfc

HOUSE FOR SALE: 3
bedroom, 2 bath, living
room, large den with fire-
place. Central air and heat.
2000 sq. ft. Call 272-3235
after 1 p.m.
8-19s-tfc

HOUSE FOR SALE: 1770
sq. ft., living area, 3 bed-
room, 2 bath, brick, fire-
place, skylight, cathedral
ceiling, fenced, double
garage, custom brick patio,
corner lot, utility room,
etc. 1002 W. 7th, Mule-
shoe. 272-4737.
8-20t-tfc

FOR SALE: 160 acres ir-
rigated land in West Camp
area. 2 good wells, ideal
row watering. Some un-
derground pipe. Call
272-3767.
8-20t-tfc

MUST SELL: 3 bedroom, 2
bath brick house, fenced
backyard, 1815 W. Ave. C
Call 272-3767.
8-20t-tfc

FOR SALE BY OWNER
3 bedroom brick, 1 1/2 baths
garage and fenced back-
yard. 301 E. Dallas 272-
3409.
8-19t-tfc

**SMALLWOOD
REAL ESTATE**
232 Main 272-4838
Joe and Ricky
Smallwood

4 bedroom, brick, 2
bath, refrigerated air,
large storage.

3 bedroom, 2 bath,
close to Junior High
School.

See or Call
Joe or Ricky
8-19s-tfc

**TOWN and
COUNTRY
REAL ESTATE**
FARM RANCHES HOMES
JOHN W. SMITH, Broker
806 272-4678 or 272-3725

Large brick home, 3
bedrooms, 2 baths,
central heat, kitchen &
den, drapes go. Has it's
own water well and lots
of concrete. \$64,000.00.

Stucco house has 3
bedrooms, 2 baths, new
paint inside and out and
new carpet. \$27,590.

2 bedroom, all carpet,
drapes, stove, refrigera-
tor, and air condition-
er. Single garage. Real
nice for \$24,000. 216
W. 12th.

16 X 20 fram c.m.mer-
cial building to be
moved. See at Smith's
L.P. Gas.

8-15s-tfc

NW Lamb Co. 160
Acres, 3 wells, excel-
lent water, lays real
good, 3 bedroom house,
\$1200 acre, owner will
finance.

NW Bailey Co. 320
Acres, 5 wells, un-
derground tile, extremely
level, owner financing,
real good water.

NW Bailey Co. 240
Acres, excellent stock
farm, some hay and
permanent pasture,
grain storage w/dryer,
pens and working fac-
ilities, well improved, 3
wells w/ tile, owner will
finance.

NE Cochran Co. 644
Acres, lays good, house
and barn, 300 wet
acres, two wells, good
lint base.

Bovina, Texas, 1312
Acres, good dryland
farm, large amount of
depreciable assets,
good disaster wheat
base, some assumable
loan, \$350 acre.

Call J.B. Douglas
792-4394 or 793-5827
8-20t-tfc
Jim Willis Realtors
3411 73rd St.
Lubbock, Tx. 79423
8-20t-10tc

**J.B. SUDDERTH
REALTY INC.**
Box 627
109 Fifth St.
Farwell, Texas 79325
Phone [806] 481-3288
or 481-9149

60 Acres west of Mule-
shoe on highway. One 6
inch well, side - roll
sprinkler. Steel build-
ing. 2 sets of nice
improvements.

160 acres northwest of
Muleshoe, 2 wells, lays
good on FM highway.
8-49s-tfc

HOUSE FOR SALE: Rich-
land Hills Division. 3 bed-
room, 2 bath brick home, 2
car garage, brick storage
building and fenced yard.
1828 W. Ave. E Inquire
next door or call 272-3644.
8-16t-tfc

**9. AUTOMOBILES
FOR SALE**
.....
1978 Chevrolet Luv Pickup
Converted to butane. Call
927-5415 after 4 p.m.
9-21as-4tc

FOR SALE: Motorcycle -
1977 Kawasaki KZ 1000,
cruise, vetter farrings,
saddle bags and box, and
custom seat. Call 385-4659
after 6 p.m. Roland Bell,
Littlefield.
11-11s-tfc

For Sale: 1978 Buick
Electra Limited. 28,000
miles very nice. 272-4754,
call after 6 p.m.
9-21s-tfc

**10. FARM EQUIPMENT
FOR SALE**
.....

**FOR SALE
USED EQUIPMENT**
14 ft. Miller offset disc. 13
chisel, 3 bar Hamby plow,
14 ft. offset John Deere
tandem plow, Gleaner 'C'
Combine (wheat). Call
825-3856 or 965-2329.
10-19s-7tp

11. FOR SALE OR TRADE
.....
Sewing machine sale on all
new and used machines.
From \$45 up. Repair all
makes. Commercial ma-
chines discounted. Pope
Viking Sewing Center, 600
Prince, Clovis, N.M. 762-
6006.
11-18s-8tc

FOR SALE: Alfalfa Hay-
First Cutting.
Ricky Bennett
Call 806-825-3822
11-20t-tfc

12. HOUSEHOLD GOODS
.....

**BURROWS
UPHOLSTERY AND
FURNITURE REPAIR**
118 W. AVE. C
in the rear
PHONE 272-4255
12-30s-tfc

**13. PROPERTY
FOR LEASE**
.....
Trailer space for rent, 205
W. 7th. Call 272-4735.
13-18s-tfc

15. MISCELLANEOUS
.....
**FRANK'S
REFRIGERATION
APPLIANCE & SERVICE
PARTS & REPAIR**
315 W. 3rd Pk. 272-3822
15-7t-tfc

**Gage Construction
Bob Gage**
Specialize in Custom
Fireplaces
Phone 272-5240
Or
272-5105
at **Muleshoe
Home Center**
213 S. 1st
Muleshoe, Texas
15-4s-tfc

Want a propane system?
check with
**SMITH LP GAS
MULESHOE**
15-30s-tfc

16. LIVESTOCK
.....
Grain fed beefs for sale.
Deliver to locker. Contact
Rockin 'S' Cattle, Rex
Black, 272-3431.
16-21s-8tc

Weakest Moment
A man is never so
weak as when a pretty girl
is telling him how strong
he is.
-Bulletin, Philadelphia.

Definition
Imagination: Some-
thing that sits up with a
wife when her husband is
out late.
-Star, Minneapolis.

Nursing Home News By Joy Stancell

Thursday afternoon Doc
Goucher, Mrs. Hodges'
son and daughter-in-law,
came to play dominoes
with Mrs. Hodge, Bertie
Hendrix, Alma Henley,
Russ Duncan, Grace
Kemp, Rosemary Pool and
Edith Bruns.

Friday morning Ora Rob-
erts, Rosemary Pool, Russ
Duncan, Marie Patton,
Alma Henley, Lottie Hall,
Edith Bruns, Maggie Lon-
don, Marie Engram made
telephone note pads in
crafts.

Friday afternoon the
Richland Hills Baptist
Church came to have a
devotional with the resi-
dents.

Saturday morning E.B.
Wilson came to have Bibie
Study with Ruby McCam-
ish, Maggie London, Grace
Kemp, Marie Engram,
Archie Scarlett, Russ Dun-
can, Marie Patton, Alma
Henley, Chellie Bradley,
Dottie Wilterding.

Sunday afternoon the
Muleshoe Methodist
Church came to have sing-
ing with Marie Engram,
Alma Henley, Alma Shoff-
ner, Marie Patton, Ora
Roberts, Russ Duncan,
Doshia Dykes, Archie Scar-
lett, Vera Inman, Ruby
McCamish Lottie Hall,
Rosemary Pool, Bulah Con-
nell, Grace Kemp and Ber-
tie Hendrix.

Public Notice
Whereas, on the 2nd day
of February 1980, Gene A.
Snell executed and deliv-
ered to Dent-Rempe, Inc.,
Muleshoe, Texas, a certain
Retail Installment Contract
and Security Agreement
which was subsequently
assigned to John Deere
Company, and thereon
mortgaged the following
described property, to wit,
1 - M-P 510 Diesel Comb-
ine, S/N 2242; 1 - John
Deere 282 Cotton Stripper,
S/N 1001.

The maker of the Retail
Installment Contract and
Security Agreement has
defaulted in compliance
with the terms of said
Retail Installment Contract
and Security Agreement.
John Deere Company, the
owner and holder of said
Retail Installment Contract
and Security Agreement on
account thereof, is offering
said property for sale in
accordance with the terms
of said Retail Installment
Contract and Security
Agreement. John Deere
Company has the right to
bid.

Now, therefore, notice is
hereby given that on the
4th of June 1981 at 10:00
a.m. of said date, John
Deere Company will offer
for sale at Dent-Rempe,
Inc., Muleshoe, Texas, to
the highest bidder the
above described property.
TERMS OF SALE: CASH
Additional information
concerning the security in-
terest held by John Deere
Company in the above
described collateral may be
obtained from: John Deere
Company, Financial Serv-
ices, P.O. Box 20598, Dal-
las, Texas 75220
Witness our hands this
18th day of May 1981.
John Deere Company
15-21s-2tc

Tuesday afternoon the
Hospital and Nursing Aux.
came to work in the beauty
shop. They shampooed and
set about 20 ladies hair.

Thursday May 28th the
Needmore Community
Club will host our monthly
Birthday party.

Willie Steinbock was
visited Tuesday by Rex,
and Betty Steinbock.

Mr. Snow returned to
the Nursing Home Monday
after being hospitalized.
Welcome back Mr. Snow.

Mary Stevenson's daugh-
ter from East Texas is
here visiting this week.

Mr. Jerry Mudgett is in
the hospital in Lubbock.

Dottie Wilterding was
visited Tuesday by Jo
Phelps.

Mrs. Mary Worthman is
visited daily by her daugh-
ter.

Mrs. Tiffie was visited
by Mrs. Odum.

Alma Henley's daughter
Celo came Thursday and
took her shopping.

Clara Weaver was visit-
ed by Jimmie, Shannon,
Chad, Maud Kersey, Glen-
da Jennings, and Dorena
Fegetey.

Effie Jennings was visit-
ed Sunday Evening by her
granddaughter, her great
granddaughter and two of
her great great granddaugh-
ters.

Marie Engram was visit-
ed by Stacey Campbell,
Maud Kersey, Mr. & Mrs.
Kenneth Precure, Wilma
Waddle, Krissie Campbell,
Bernice Feitz, Polly Heris-
son, Ronda Kevin, Devin
Sizemore, Terry Williams,
Dana Brewer and Sheri
Ellard.

Rose Sebring is visited
several times a week by
Mrs. Walter Sebring.

It is good to see Mr.

Hamilton sitting at the
nursing station greeting
people and smiling. Eva
Atwood sits with him daily
and gives him a lot of
T.L.C.

Ora Roberts was visited
by Mrs. Routon, Mrs.
Sliger, Ruby Clark, Lois
West, Cordelia Cochran,
Freeda McOfee, Bernice
Feitz and Una Askew.

Thursday Morning
Homer Millsap took the
residents on a ride in the
Senior Citizens bus. They
went out to Bertie Hendrix
home and they saw the
crops along the way. Resi-
dents going for the ride
were Charles Long, Bertie
Hendrix, Jose Garcia, Mar-
ie Engram, Ora Roberts,
Ruby McCamish, Russ
Duncan, Marie Patton
and Grace Kemp.

Keith Fuller was visited
by her daughter, Mrs.
Kenneth Precure and her
daughter, Jean from Hou-
ston was here visiting.

The American Blvd.
Church of Christ came to
sing to the residents Sun-
day afternoon.

Sunday morning E.B.
Wilson came to have Bible
study with the residents.

Tuesday afternoon the
hospital and nursing home
auxiliary came to shampoo
and set the ladies hair. The
auxiliary ladies fixed about
22 ladies hair.

Mr. Long has been set-
ting in the sun. He getting
a pretty good tan.

Dottie Wilterding's visi-
tors this week were Mr.
and Mrs. D.B. Head, Lona
Embry, and Jo Phelps.

Revealing
Bathing suits point out
the figure, but pants re-
veal the facts.
-Times, Chicago.

Explained
Home Rule: Where
dad is chief executive and
mother is the speaker of
the house.
-Enterprise, Lisbon, Me.

Major Medical that's worth a Million.

Contact:
**Ricky
Smallwood
272-4531**

**Time Insurance has just
introduced a bold new major
medical plan offering:**
\$1,000,000 in lifetime benefits
per insured party.
Payment of all covered charges
both in and out of the hospital.
Without schedules.
A deductible you pay just once
a year rather than with each
medical occurrence.
And the plan is area-rated so
you don't pay for higher risk
areas of the country.
Call us for full details.

Smallwood-Harmon Ins.
232 Main Muleshoe
TIME INSURANCE COMPANY

SHOP RITE



Prices Good Thursday 23
thru Wednesday 29
501 W. Amer. Blvd. 272-4739
Open Daily 8 am to 9 pm
Open Sunday 9 am to 8 pm

Each of these advertised items is readily available for sale at or below the advertised price in each store, except as specifically noted in this ad. We reserve the right to limit quantities. None sold to dealers.

A CHANCE TO WIN \$1,000!

ODDS TO WIN

Odds vary depending on the number of Game Tickets you obtain. The more tickets you collect the better your chance of winning.
WINNING DEAL Series # WD15 is being played in 5 participating Shop Rite Food Stores located in Belton and Grants, New Mexico and Houston, Tulsa and Norman, Texas, and 11 Piggy Piggy Stores located in Amarillo, Lubbock, Fairbault, Richards, Childs, Tatum or Comanches, Silver City, Carrizo and Carlsbad, New Mexico and Floydada and Seminole, Texas.
Scheduled termination date of this promotion is February 15, 1981 however, WINNING DEAL officially ends when all Game Tickets are distributed.
Copyright, 1980 Wallace Games, Inc.
Game program may be repeated by similar demand.
The total number and worth of prizes to be awarded will depend upon the number of winning tickets actually received.

ODDS CHART EFFECTIVE FEBRUARY 18, 1981

PRIZE VALUE	NUMBER OF PRIZES	ODDS FOR ONE GAME TICKET	ODDS FOR 6 GAME TICKETS	ODDS FOR 12 GAME TICKETS
\$1,000	1	1 in 351650	1 in 70330	1 in 35165
\$100	52	1 in 763	1 in 1526	1 in 378
\$25 Groceries	140	1 in 2512	1 in 502	1 in 251
\$10	244	1 in 1441	1 in 288	1 in 144
\$5	490	1 in 718	1 in 144	1 in 72
\$2	1553	1 in 226	1 in 45	1 in 23
\$1	5580	1 in 37	1 in 7.4	1 in 3.7
TOTAL NO. PRIZES	12040	1 in 29	1 in 5.8	1 in 2.9



Pork Roast
Fresh Boston Butt Bone In
\$1.09 lb.



Box-O-Chicken
or Split Fryers
USDA Grade A.
57¢ lb.

7-Bone Steak \$1.69
Beef Center Cut lb.

Arm Beef \$1.79
Roast Round Bone Shoulder lb.

Cheese Borden \$2.39
American Singles 16 oz. pkg.

Pork Roast \$1.19
Boston Butt Boneless lb.

Bacon \$1.49
Sliced Wilson's 16 oz. pkg.

Bologna \$1.59
Wilson's All Meat 16 oz. pkg.

Fryer 99¢
Fresh USDA Grade A Legs or Thighs lb.

Pork Steak \$1.19
Fresh Boston Butt Bone In lb.

Ground Beef
Not less than 80% Lean
\$1.79 lb.
3 lbs or over

Chuck Roast
Beef Blade Cut
\$1.29 lb.

7-Bone Roast
Beef Center Cut
\$1.59 lb.

- Garlic Salt** Schillings 3 3/4 oz. **95¢**
- Reynolds** 25 ft. **47¢**
- Sanka** Instant Coffee 8 oz. jar **\$4.69**
- Spray & Wash** Pre-Wash 16 oz. btl. **\$1.79**
- Rice Krispies** Kellogg 13 oz. pkg. **\$1.29**
- Era Detergent** 32 oz. Heavy Duty Liquid btl. **\$1.79**
- Vera** 3 ply Facial Tissue 134 ct. pkg. **79¢**
- Glass Plus** Window Cleaner Re-Fill 32 oz. btl. **\$1.19**
- Maxwell House** Coffee Regular, Drip Electric Perk 1 lb. can **\$2.39**
- Rice** Comet, Regular Long Grain 28 oz. pkg. **93¢**
- Snickers** Snack Bars 10 oz. pkg. **\$1.49**
- Master Blend** Coffee Regular, Drip, Electric Perk 13 oz. can **\$2.19**
- Eagle Brand** Milk 14 oz. can **\$1.09**
- Raid** Ant & Roach Killer Aerosol 11 oz. can **\$1.78**
- Solo** 20 ct. Party Cup 16 oz. pkg. **89¢**
- Tea Bags** Lipton 100 ct. **\$2.75**
- Cat's Pride** Absorbent 10 lb. bag **\$1.19**
- Salt** Morton Ice Cream 4 lb. **59¢**
- Catsup** Del Monte 14 oz. btl. **55¢**
- Napkins** Zee Luncheon 60 ct. **39¢**



New Crop California
Peaches
lb. **59¢**

Yellow Onions 4/lb. **\$1**

Cucumbers Long Green ea. **5/\$1**

Lemons Sunkist ea. **8/\$1**

Spinach Fresh Green Bunch **79¢**

Carrots Fresh Crunchy ea. **3/\$1**



Kraft Parkay Margarine
1 lb. pkg. **53¢**




Kool-Aid
All Flavors Canisters 15 qt can **\$3.99**
Unsweetened 2 qt pkg.s **7/\$1**



Libby Vienna Sausage
5 oz. can **2/88¢**



Dawn
Liquid Dish Detergent 13¢ off Off Label
22 oz. btl. **\$1.19**



Marina Bath Tissue
4 roll pkg. **\$1.05**



Pepsi
32 oz. 6pk **\$1.49**



YOU GET MUCH MORE AT A GREEN STAMP STORE

DOUBLE S&H GREEN STAMPS EVERY WED. AND SAT.