

# Complete Bailey County Election Returns, Page 8

**Weather...**  
Nov. 5-- 61 49  
Nov. 6-- 64 36  
Nov. 7-- 44 31  
Nov. 8-- 58 32  
Nov. 5, .03 of rain and on the 6th, .09 rain for a total of 16.37 for the year.

# MULESHOE JOURNAL



20¢

'The Community of Opportunity-Where Water Makes the Difference'

Volume 55, Number 46

16 Pages

Published Every Thursday at Muleshoe, Bailey County, Texas 79347

Thursday November 9, 1978

## Kent Hance Takes Bailey County Vote

### Council Awards Bid For Painting Tower

Following a lengthy discussion Tuesday morning, members of the Muleshoe City Council approved a bid to clean and repaint a 250,000 elevated water storage tank.

After tabulation of the four bids received, and discussing the advantages of an epoxy or vinyl paint over zinc dust, the low bidder was Lupton Painting Co., of Shawnee, Okla. with a bid of \$14,450 and a 90 day completion time.

Other bids were by Southwest Tank and Tower Co., \$21,181; Dean Jones, Contractor, \$20,050 and Water Tank Service Company, \$20,600.

Attending the council

meeting was Mack Tubb, attorney from Hereford, who is acting as the paving project completed this fall in Muleshoe.

He presented the status of collections for the paving as completed, and turned some accounts back over to the city for collection. The city council unanimously approved filing a foreclosure suit on Mid-Co of Lubbock to recover the cost of paving their property in the Country Club Addition.

Council members also elected to remain members of the National League of Cities and pay the current assessment of \$300 plus an assessment of \$51 for the cities' portion of a building fee for new offices for the lobbying group. They approved the 15 year pay plan of \$51 per year.

Jack Eades, assistant to the City Manager, announced that for the second time, no bids have been received for construction of a concession/restroom at the new city park.

He was given approval to negotiate contracts for construction of the building as long as he stays within the budget limits on the new construction.

The Office of Revenue Sharing sent a letter to the

Cont. Page 6, Col. 2

### Dimmitt Lions Plan Pancakes Before Game

The Dimmitt Lions Club will serve "all the pancakes, bacon and sausage you can eat" at its annual Pancake Supper on Friday before the Muleshoe-Dimmitt football game in Dimmitt.

The supper will be in the Dimmitt High School Cafeteria, at the east end of the high school building, near the football field.

Serving will begin at 5 p.m. and continue until gametime at 7:30. Admission will be \$1.75 for adults and \$1 for children ages 12 and under.

Diners will have their choice of coffee, tea or milk with their meal.

"We want to especially invite Muleshoe fans to come and enjoy pancakes with us before the game," Chairman Bob Caddell said. "It will save you the trouble of getting supper out of the way before you leave for the game, and you are bound to see somebody you know, or meet some new friends."



**SHERIFF'S CAR TOTALED...**Damage to a late model Bailey County Sheriff's office car was extensive Saturday night. Driver of the vehicle was Deputy Sheriff James Williams, who came upon a dead end while in pursuit of another vehicle and found he had no brakes. He received injuries to his face and leg in the accident.

## Mules-Bobcats Will Tangle This Friday

Since 1929, the Muleshoe Mules, or Yellowjackets, as the Muleshoe football team was formerly named, have met the Dimmitt Bobcats a total of 32 times.

In 1929, two games were played. In the first game, the Bobcats eked out a 12-7 win before falling 26-0 in the second game played that year.

There was no action between the teams again until 1935, when the Bobcats defeated Muleshoe 6-13. In 1936, the teams played to a 6-6 tie and in 1937, the Mules won 19-0.

Then, since 1955, the

Mules have played the Dimmitt team yearly. At this point, following the 32 times the teams have met, Dimmitt holds a slight edge on wins. They have won 17 games to 13 for Muleshoe, with two ties.

But, since 1960, Muleshoe has a better record. Muleshoe has won ten games, Dimmitt seven games, with one tie.

This week, the Mules will travel to Dimmitt for the 33rd game between the two teams, and a crucial game it will be. By the time it is over, the Mules could be in the District 3-AA playoffs.

At this point, the Mules are leading the pack with a 3-0 district record for this year and 7-1 for the overall season. At the same time, the Bobcats hold a 2-1 record, their only loss being a 21-7 game against Littlefield.

Muleshoe's only loss for the year was in their fifth game of the season, a 21-7 loss to Idalou. Idalou fell to Abernathy, 16-13 last week. On October 6, Muleshoe edged out Abernathy, 26-20.

Muleshoe Head Football Coach Mike Wartes said this will be the game to decide whether or not the Mules will be in the playoffs.

He reminded, "Our boys

Cont. page 6, Col. 1

### Police Report

Irene Splawn reported four years probation given Eloy Gloria, Marvin Schestedt and Miguel on various charges in district court late last week.

She also reported other sheriff's office activity as being the arrest of one person for driving while intoxicated and two charged with drunk.

Arrests by the Muleshoe City police included three for assault, six for public intoxication and one sleeper locked up overnight.

Reports to the city police included one hit and run vehicle accident; one forgery; damage to a mailbox; the vandalism by painting of Pete, the Memorial Mule and police recovered a green girl's bicycle, which is presently at the police department.

Cont. page 6, Col. 1

### Two Wrecks On Saturday Hurt Three

Saturday wrecks wreaked havoc with two trucks and a Bailey County Sheriff's office car.

In the first accident, at 11:51 Saturday morning, Gordon Blevins, 27, had slowed to make a turn into his home three miles east of Muleshoe on Highway 70.

He was driving a truck loaded with dead cattle. His truck was struck from behind by a truck from L.A. Jordan Trucking Co. of Combes, Tex.

The Blevins truck skidded out of control and overturned onto its side across a water filled ditch. Blevins crawled out of the truck before collapsing unconscious, beside the truck.

He was taken to West Plains Medical Center by Singleton-Ellis ambulance where he was hospitalized for treatment of neck and back injuries. Minor injuries were suffered by the driver of the other truck.

Ironically, James Williams, who drove the ambulance with Blevins, was the victim of the next accident.

At 10:55 p.m. Saturday night, Deputy Sheriff Williams asked for assistance at a dead end road west of the Muleshoe Co-op Gin. Officers found the county sheriff's office vehicle smashed into an embankment.

Williams told investigating officers THP Troopers Larry King and Don Thomas that he was in pursuit of another vehicle when his brakes failed as he neared the dead end.

He was taken to West Plains Medical Center in another sheriff's office vehicle for treatment of

Cont. page 6, col. 1

### Earth Catholic Church Plans Sunday Dinner

A turkey and German sausage dinner will be served by St. Mary Magdalen Catholic Church in Earth from 11 a.m. - 3 p.m. on Sunday, Nov. 12.

The dinner will be a benefit to obtain funds for the newly completed Catholic hall. Tickets will be 13 for adults and \$1.50 for children.

Also available will be German sausage by the pound for take home sales. Members of the church said they would like to have everyone in the area enjoy the harvesttime dinner with them.

### Tower And Clements Favored By County

Bailey County voters, who have traditionally stood by Senator John Tower, once again asserted their choice by giving the Senator 886 votes to challenger Bob Krueger's 624 votes. Raza Unida candidate Luis A. Diaz De Leon got 16 votes.

At the same time, in the general election, voters turned down independent oil producer George Bush in favor of Kent Hance, a native of Dimmitt. Bush, a Republican, received 486 votes to 1041 for his Democratic opponent, Hance.

A total of 1,573, or around 47 percent of the 3,327 registered voters in Bailey County made it to the polls Tuesday for the general election. A total of 429 persons voted in the courthouse box, with the second largest box, with 398 votes, being the American Legion.

In another turnaround, Democrat John Hill trailed his Republican opponent, Bill Clements in the governor's race in this county. Clements, who had 819 Bailey County votes, barely edged by Hill, who had 715.

Mario C. Compean Raza Unida candidate for governor, received 18 votes in Bailey County.

Democrat Bill Hobby was the unanimous choice of county voters for Lieutenant Governor with 901 votes, compared to 519 for his Republican opponent, Gaylord Marshall.

Another Democrat, Mark White, got the nod in this county for Attorney General, with 785 votes. Republican Jim Baker was 100 votes behind, with 685 votes.

In the only other contested race on a statewide basis, Bailey County voters went for John H. Poerner for Railroad Commissioner, and granted him 914 votes, while 470 ballots were cast for James W. Lacy, his Republican opponent.

Cont. page 6, Col. 3

### Local Jaycees Set Trap Shoot For Saturday

Muleshoe's Jaycees were so successful with the trap shoot conducted during an all-day rain last Saturday, that they plan another trap shoot this Saturday, Nov. 11.

The trap shoot will be in the same location, across the highway from Robert Green Inc., starting at 1 p.m.

Shotgun shells and refreshments will be available during the afternoon.

Tickets will also be on sale for the Remington 1100 model automatic vented rib .12 gauge shotgun. It will be presented by the Muleshoe Jaycees at noon on opening day of the Pheasant season, Dec. 9.

### Rain, Frost Slowing Down Cotton Harvest

Although rain started in the area last Friday with a slow drizzle that turned into brief downpours and deposited up to two inches in the area, little to no damage was expected on cotton maturing in the fields.

In Muleshoe, an unofficial 1.35 inches was recorded, with heavier amounts both south and northeast of Muleshoe. Northeast of Muleshoe, more than two inches was caught in rain gauges.

Earl Richards of the Muleshoe Co-op Gin, said the rain would not hurt the cotton very much, and also said the heavy frost Monday night would not do much other than cause the plants to lose a few leaves, which would allow cotton bolls to open.

With the ground so wet, Richards predicted that it would be almost a week before the cotton gins could be operating much again.

Bailey County and the

surrounding area has a lot of late cotton due to adverse weather conditions earlier in the year.

Temperatures near 30 Monday night were expected to move upward and drop no lower than around 40 Wednesday night.

The cold front that slam-

Cont. page 6, col. 1

### Muleshoe Study Club Bazaar Set Tomorrow

Christmas decorations, tree ornaments, baked goods and flea market items will be on sale tomorrow (Friday) when the Muleshoe Study Club plans a bazaar at the Bailey County Civic center and Coliseum.

They invite everyone to come look over their special items when the doors open at 10 a.m.

### Norse Duo Visit Here During Tour

Two young people on a nationwide tour from Oslo, Norway, paused in Muleshoe Thursday afternoon and visited at the Muleshoe Chamber of Commerce and Agriculture.

Bjorg Arnesen and John Moen, both chemical engineers in Oslo, a large Norwegian city, said they have been traveling the United States for the past two months, and will tour for another two to three weeks before flying back to Norway.

They said they purchased a station wagon on arrival in Seattle, Wash., and have visited points of interest all along the western and northern parts of the U.S.

During a trip to Los Angeles, both said they were intensely uncomfortable from the heat wave in that area while they were there. They were unaccustomed to fires such as the massive brush fires in the Los Angeles area, and said they saw a lot of smoke from the fires.

The duo was unanimous in that they had underestimated prices in the U.S., and were finding the trip was costing them a little more than they had expected.

On leaving Muleshoe, they planned to travel through Lubbock and across Texas to the Arkansas border and into Tennessee where they have friends.

Both commented on the very flat land in this part of the country and said they were ready to get back to rolling country and trees.



**CHECKING INTO TEXAS...**John Moen, left, and Bjorg Arnesen, of Oslo, Norway stopped at the Muleshoe Chamber of Commerce and Agriculture Thursday afternoon to pick up literature and information on Texas. They are touring the U.S. at this time.

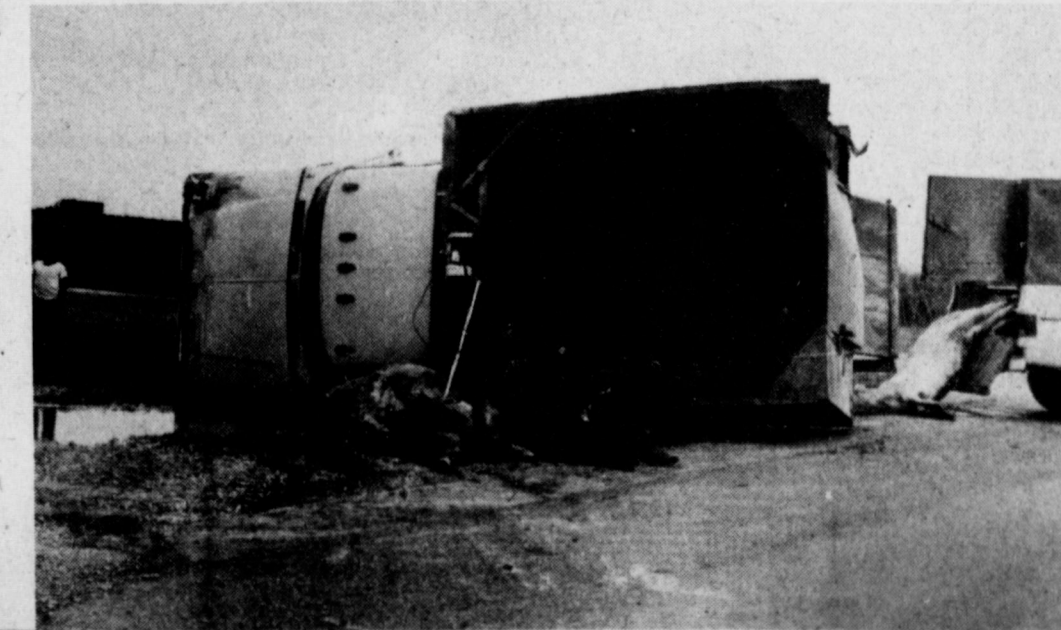
### around Muleshoe

John D. Border, a former Muleshoe resident died Tuesday, October 31, in Portland, Oregon.

Services were conducted on Friday, Nov. 3 in Peake Memorial Chapel in Portland, Oregon.

Attending from Muleshoe was Phyllis Beavers. She was accompanied by her sons, Glen Border and John Border II. Glen Border officiated at his grandfather's funeral.

Cont. page 6, Col. 1



**DRIVER INJURED...**Gordon Blevins, 27, was the driver of this truck when it was struck on the right back by another truck and overturned approximately three miles east of Muleshoe Saturday afternoon. Blevins was hospitalized at West Plains Medical Center for treatment of neck and back injuries. The cattle pictured were a load of dead cattle being hauled by Blevins.



**ARDATH GLASSCOCK**  
**Mrs. Glasscock**  
**Final Rites**  
**Held Tuesday**

Funeral services for Ardash Glasscock, 71, were conducted at 3:30 p.m. Tuesday in the First Baptist Church with Rev. J.E. Meeks, pastor, officiating. Burial was in Bailey County Memorial Park under direction of Singleton-Ellis Funeral Home.

Mrs. Glasscock died at 3:30 p.m. Saturday at West Plains Medical Center following a lengthy illness. She was born May 5, 1907 at Denton, and had lived in Bailey County since December, 1930, moving here from Frederick, Oklahoma. She was married to T.L. 'Red' Glasscock on October 27, 1934, at Muleshoe. Mrs. Glasscock was a member of the First Baptist Church of Muleshoe.

Survivors include her husband, Red; three sisters, Mrs. Eunice Austin, Altus, Okla.; Mrs. Nellie Neely, Ojai, Calif. and Mrs. Ruth Martin, Springtown; and two brothers, Hebron Gilbreath, Anchorage, Alaska and Francis Gilbreath, Muleshoe.

**On**  
**Wall Street**  
**By Bob Hill**

The Occupational Safety & Health Administration (OSHA) has restricted exposure of workers to toxic chemicals and metals such as benzene, lead and cadmium because of the danger of disease. But pity the poor artist. No one seems to be on the lookout for him or her.

Artists often work in cramped, poorly ventilated quarters and work with many of the same toxic substances. OSHA says it has no authority over artists. The Consumer Product Safety Commission deals only with household products. So the \$2.7 billion arts and crafts supply industry does on largely deregulated.

OSHA has finally decided to hold a conference in Washington to gather available data on health hazards facing artists. Activities of artists closely parallel industrial processes...from printmaking, which uses dangerous solvents, to welding, use of laser beams and toxic styrene. Many paints contain lead carbonate or cadmium sulfide.

One of the few companies adequately disclosing the contents of developing chemicals is Eastman Kodak. It also has a 24 hour hot line to answer questions about its photographic chemicals. In addition, the Crayon, Water Color & Craft Institute makes sure that children's products are nontoxic.

Artists are the best control over protecting their work environment. An art teacher in Maryland has claimed in a workmen's compensation suit that he now has aplastic anemia (a blood disorder that is frequently fatal) after exposure to benzene used as a solvent in photolithography. He is trying to recover \$70,000 in medical expenses.

Other artists are using respirators, gloves and dust masks when working around materials. The are not sure of the danger in years to come but they are not taking chances.

**Classified**  
**Ads**  
**Get**  
**Results**

**Lazbuddie**  
**News**

**Pam McDonald**

The Lazbuddie F.H.A. members and the Young Homemakers held their annual fall style show Nov. 2 at 7:30 p.m. in the school cafeteria. A buffet style supper was served before the modeling. Clothes were modeled from Muleshoe and Clovis stores.

The Lazbuddie Senior Class will be selling magazines through Nov. 5. Also they are now selling Longhorn '79 annuals for \$10.40. If interested, contact any senior.

The Senior class would like to thank the Muleshoe merchants for donating the prizes for the bingo

games at the Halloween Carnival.

The Methodist Youth are selling stationary. If interested in purchasing, contact any Lazbuddie Methodist Youth.

Visiting in the home of Mr. and Mrs. Bill Morris were her parents, Mr. and Mrs. Robert Mote, and her grandmother, Mrs. V.R. Rodgers, all of Plainview.

Visiting in the home of Mr. and Mrs. Dewayne Sexton was her parents, Mr. and Mrs. Dee McDade of Wildorado.

The Lazbuddie Senior '79 Travel Club had the drawing for the hindquarter of a beef last Saturday night. The winner was Mrs. Irma Templar of Lazbuddie.

The Lazbuddie seventh

grade class would like to give a special thank you to the merchants in Muleshoe for their donation of prizes for their carnival.

Mr. and Mrs. Curley Dale and boys visited a couple of weekends ago with r. and Mrs. Lyn Eldon Randolph in Springtown. Mrs. Randolph is the former Pat Dale of Lazbuddie.

The Templar family held a family get-together in the home of Mr. and Mrs. Bob Templar last weekend. Mr. and Mrs. Jason Myers of Riverside, Ca., also attended.

**FLOOD INDICTED**  
A federal grand jury indicted Rep. Daniel Flood, D-Pa., on bribery and conspiracy charges, accusing the 74-year-old congressman of bartering his influence for \$16,500 in payoffs.

**Grass Tetany**  
**Kills Cattle**  
**On Pastureland**

Cattle in some parts of Texas may find lush forage to their liking this time of the year, but the grass could be a "death trap."

The problem afflicting cattle, especially cows in late pregnancy or early lactation, is known as grass tetany or grass staggers, points out Don Dorsett, forage specialist with the Texas Agricultural Extension Service.

"Grass tetany is caused by a deficiency of magnesium in the animal's diet," explains Dorsett. The problem is most prevalent in early spring and late fall when forage is often lush but is low in magnesium. Dry grasses can also be a factor once cold weather hits.

"Grass tetany is most often a problem when cows are on a strict grass diet. It is particularly prevalent in pregnant cows of those with young calves that have a high energy requirement which cannot be met with grass alone," notes Dorsett.

To prevent grass tetany, the specialist suggests supplementing cattle, especially cows, with a grain or other high energy, magnesium containing feed and establishing legumes in grass pastures. Legumes contain adequate amounts of magnesium to meet animal requirements.

When should a cattleman suspect grass-tetany in his herd?

"The physical symptoms are broad and include a depressed appetite, nervousness, stiff movements, twitching of the muscles, extreme excitement, grating of teeth,

convulsions, coma and finally death of the animal," explains Dorsett. "From the onset of the symptoms until coma usually takes less than ten hours, and few animals survive once coma is reached."

Although physical symptoms of grass tetany appear suddenly, the condition actually occurs over a period of several weeks, notes the specialist. Livestock can store magnesium in their bones, and during short periods of deficiency in feed, they have the ability to use this magnesium. However, when the stored supply is exhausted, the physical symptoms appear, first in older animals.

**Reserve**  
Believing all you hear is matched only by telling all you know.  
-Globe, Mason City, Ia.

**Silent**  
**Killer**  
**Loose**  
**In**  
**Texas.**

Protect yourself. Have your blood pressure checked at a free American Heart Association blood pressure screening in your area, or by your doctor.

American Heart Association

**Double Gunn Bros.**  
**Stamps**  
**Every**  
**Wednesday**

**Whites CASHWAY**  
**We Reserve The Right To Limit Quantities**

7:30 a.m. til 9:00 p.m.  
402 Main **MONDAY-SATURDAY**  
272-4244 **NEW STORE HOURS 12:00 pm to**  
**OPEN ON SUNDAY 8:00pm**

**CHOPPING PRICES**

RAGU SPAGHETTI SAUCE 32 OZ. JAR \$1.49

HILTONS OYSTER STEW 10 1/2 OZ. CAN 59¢

TANG ORANGE FLAVORED BREAKFAST DRINK 27 OZ. JAR \$1.89

LIBBY TOMATO SAUCE 8 OZ. CAN 5/51

REYNOLDS WRAP 25 FT. ROLL 39¢

BOUNTY PAPER TOWELS JUMBO ROLL 79¢

ASSORTED FLAVORS JELLO 3 OZ. PKG. 5/51

MILNOT CANNED MILK 13 OZ. CAN 3/51

BEST MAID SWEET RELISH 12 OZ. JAR 59¢

BUCKWHEATS CEREAL 15 OZ. BOX 89¢

KEEBLER FRENCH VANILLA CREME COOKIES 16 OZ. PKG. 89¢

SWEET SIXTEEN MARGARINE OLEO 1 LB. PKG. 49¢

BORDEN FRUIT DRINK ASS'T FLAVORS FRUIT DRINK 1 GALLON JUG 79¢

MR. CLEAN 28 OZ. BOTTLE \$1.19

OXYDOL DETERGENT GIANT SIZE BOX \$1.29

EASY OFF OVEN CLEANER 16 OZ. CAN \$1.59

**COCA COLA**  
2 LITER GLASS BOTTLE PLUS DEPOSIT  
**59¢**

**CHILI**  
RANCH STYLE NO BEANS  
**\$1.09**  
19 OZ. CAN

**SALMON**  
HCNEY BOY 15 1/2 OZ. CAN  
**\$1.49**

**OPEN SUNDAY 12:00pm - 8:00pm**

**GO Gunn-Ho**  
FOR 1000 EXTRA GUNN BROS. STAMPS.  
Easy Way to Fill Books Fast!

**PRODUCE**

TEXAS RUBY RED GRAPEFRUIT 39¢ LB.

TEXAS SWEET & JUICY ORANGES (18 LB. BAG) \$3.99

CALIFORNIA PURPLE TOP TURNIPS 35¢ LB.

CALIFORNIA GARDEN FRESH ONIONS BUNCH 15¢

COLORADO CRISP GREEN CABBAGE 15¢ LB.

**WE HELP YOU... MEAT YOUR BUDGET**

AMOURS STAR VERIBEST PORK CHOPS \$1.89 LB.

AMOUR STAR THICK SLICED BACON \$2.99 (2 LB. PKG.)

PEYTONS SMOKED HOT LINKS 99¢ LB.

AMOUR STAR SMOKED (SMOKEES) SAUSAGE 99¢ 12 OZ. PKG.

AMOURS STAR VERIBEST PORK CHOPS \$1.49 LB.  
CENTER CUTS FAMILY PACK

GULF PRIDE FRESH OYSTERS \$1.59 (10 OZ. PKG.)

**FROZEN FOOD TRAW**

JOHNSTONS MINCE PIES 36 OZ. PKG. \$1.69

STILLWELL FRESH FROZEN PEAS & CARROTS (20 OZ. PKG.) 65¢

ORE-IDA GOLDEN CRINKLE POTATOES 5 LB. BAG \$1.89

KEITHS DINNER ROLLS 24 CT. PKG. 69¢

**WE WELCOME USDA FOOD STAMP COUPONS**

**COME TO CASHWAY FOR YOUR WIC CARD PURCHASES**

**Saltines**  
WHITE SWAN 49¢  
1 LB. BOX

**Shortening**  
WHITE SWAN 99¢  
42 OZ. TIN

(LIMIT 1 WITH \$10.00 PURCHASE OR MORE.)

**Hams Hams Hams**

**Hams**  
AMOUR STAR DRY CURE WHOLE \$1.29

AMOUR STAR DRY CURE BUTT END \$1.39 LB.

AMOUR STAR DRY CURE SHANK END \$1.29 LB.

# OSHA Cotton Dust Ruling Has Impact

The Occupational Safety and Health Administration (OSHA) standards to reduce cotton dust emission in the textile mill industry could inflict a \$2.5 billion economic impact on the cotton industry as a whole.

Nationwide research is being conducted to determine, as closely as possible, precise economic burdens imposed by these regulations and lessening of these burdens by new technologies.

This research is headed by Dr. Don E. Ethridge, adjunct professor of agricultural economics at Texas Tech University and economist with the U.S. Department of Agriculture (USDA). The study involves scientists with the Economics, Statistics and Cooperative Service (ESCS) and the Science and Education Administration (SEA) of the USDA.

Other researchers at Texas Tech and Texas A&M University are cooperating. To estimate impacts of proposed standards Ethridge and his associates are devising models of textile mills and associated industries. They also are designing a world model to determine international repercussions.

found, economic impacts will probably result in further substitution of man-made fibers for cotton.

Three new technologies, proposed by SEA, are being studied as possible means of reducing cotton dust emissions. The three are a tuft-to-yarn fiber preparing-spinning system, harvesting unopened cotton bolls and additional lint cleaning at the gin.

The tuft-to-yarn system would reduce, by as much as 60 percent, the total labor now required by conventional systems, according to Ethridge, although more highly skilled labor would be required. The system, to be completely enclosed, would eliminate almost all dust and noise associated with milling.

In order to determine its economic feasibility, a computerized textile mill model would be used to define further research and development needs of the tuft-to-yarn system and to estimate final costs of implementing the system.

A second solution of the dust problem might be harvesting unopened cotton bolls. This method would significantly reduce, if not eliminate, exposure of the fiber to such field conditions as wind-blown soil and bacterial and fungal contamination, which may contribute to byssinosis. Leaves, stems and other plant trash may be more completely removed, which would eliminate another source of dust in the final milling process.

Removing these sources of trash and dust could also result in a substantially higher quality cotton, at least in some respects, Ethridge said. Unopened boll harvesting would also open possibilities of chemically treating the fiber before spinning to improve its competitive position with synthetic fibers.

An estimate of the economic and technical potentials of this method would be made by using several analytical models to estimate possible costs and profits.

A third proposal is additional lint cleaning at the gin. Several new systems for ginning and cleaning cotton fiber are under consideration, Ethridge said. The objective would be to deliver clean, undamaged cotton lint to the textile mill free from excess dust.

One problem with this process in the past was that lint cleaning equipment had to be operated at high speed in order to process all incoming cotton during the brief 8-14 week ginning season. The cotton could not be completely cleaned at these high rates of speed because of damage to the fiber.

This problem might be solved, according to SEA scientists, by storing the ginned lint so it could be brought back and more thoroughly processed and cleaned at slower rates of speed over a longer period.

Estimates of the costs of holding the cotton for longer periods of time would be made through a gin model analysis.

Other models to be included in the complete analytical system are an econometric model, which will estimate general demand for textiles, cotton demand by mills, export and import demands and the domestic cotton supply; a world cotton model, which will estimate total world cotton and cotton textile production and consumption and trade by countries and regions of the world; a cottonseed oil mill model, which will provide data on costs and profits of the cottonseed industry; and an input-output model to provide estimates of inter-industry income and employment, and effects of imports and exports of all textiles.

Economic inputs from each model will all combine to provide an overview of the cotton industry. One overview would show the industry as it now stands, one would demonstrate possible repercussions of OSHA standards and other would demonstrate possible effects of new technologies.

The research, now six months old, will be conducted over a three-year period, Ethridge said.

Once it has served to determine impacts on the cotton industry, he explained it could be used by universities and research foundations for studies in other areas of the industry.

Ethridge hopes to have the entire program operational on the Texas Tech computer system by the end of the research period.

## West Plains Medical Center Report

**ADMISSIONS:**  
November 2-- Sharon Eubanks, Clara Angeley, Darrell Mason, Debbie Vaughn, Sandra Carranza.  
November 3-- Doris Palmer, Therisa Stanford, Laurie Kilton, Kay Van Hur.

November 4-- Byron Griffiths, Marie Espinoza, Audrey Martin, Ella Chambers, Gordon Blevins, Elvov Simnacher.  
November 5-- Helen Price, Hope King.  
November 6 -- Johnny Flores, Henry Bass, Ben Foster, Ruth Gore, Cephas Roebuck, Glen L. Phipps.

**DISMISSALS:**  
November 2-- Roy Murray.

November 3-- Charlie Felts, Darrell Mason, Nico Bara, Margaret Jones.  
November 4-- Pearl Cox, Clyde Krebs, Everett Lambert, Deborah Hernandez and baby girl, Sharon Eubanks, Sandra Carranza.  
November 5-- Marie Espinoza, Robert Hunt, Regina Triana, Theresa Stanford.

November 6-- Henry Dwain Shackelford, Debbie Vaughn, Elvov Simnacher.

**Not Here**  
Gob--After all, fools are the people that really make life interesting. When all the fools are gone I wouldn't care to be here.  
Marine--Don't worry; you won't.



**PLAYERS OF THE WEEK...** Players of the week for the Muleshoe-Olton game last Friday include from left, back row, Charles Briscoe, defensive back; Dennis Watson, defensive lineman; Dickie Sudduth, receiver; and front row, from left, Gaylon Strahan, offensive lineman; Jeep Shanks, back and Mark Harmon, defensive lineman.

## Three Way News

By Mrs. H.W. Garvin

The 4-H banquet was held in the Three Way School, Monday night with several winning awards.

Mr. and Mrs. Rayford Masten visited their daughter, Mr. and Mrs. Lamar Pollard in Whitherel, Sunday and then went on to Seymour on business for a few days.

Rev. and Mrs. Marvin Gregory from Morton were dinner guests in the home of Mrs. H. W. Garvin, Tuesday morning.

Mrs. and Mr. Bobby Kindie were in Clovis, N.M. Monday to be with her father, J.T. Lemons as he underwent major surgery.

The community received about an inch of rain the first part of the week, slowing the harvest but doing the rest of the world a lot of good.

Mr. and Mrs. George Tyson were in Lubbock Thursday and Friday to help their children.

Mr. and Mrs. Marvin Long from Amarillo spent Wednesday night with Mr. and Mrs. S.G. Long.

Mr. and Mrs. George Tyson were dinner guests in the home of their daughter at Enoch, Sunday and helped their grandson, Donny Young, celebrate his birthday.

Mrs. Beadie Powell visited Mrs. Rayford Masten, Sunday afternoon.

Mr. and Mrs. R. R. Kindie were in Clovis, N.M. Saturday evening to visit J.T. Lemons who is a patient in the Clovis Hospital.

Three Way football team played Cotton Center Friday night there and lost the game.

Flattery is more dangerous than hatred.  
-Baltasar Gracian.

## Consumer Food News

Budget items at Texas grocery markets this week include eggs, fryer chickens, onions and potatoes, Gwendolyn Clyatt reports.

Also, low-price feature items are bananas and cheeses in some markets, she says.

Mrs. Clyatt is a consumer marketing information specialist with the Texas Agricultural Extension Service, The Texas A&M University System.

This week's price-quality trends are the following: **POULTRY**-- Eggs are a low-price source of top-quality protein compared to many meats. Fryer chicken prices are steady with features on whole birds and parts.

**Fresh Vegetables**-- Both onions and potatoes have low prices. Other economical items are pumpkin, bell peppers, cooking greens and dry

beans.

Varying prices -- with some bargains -- appear on cabbage, rutabagas, hard-shell squash, sweet potatoes, Brussel sprouts, eggplant and cauliflower. Compare prices on these before buying.

**Fresh Fruits**-- Bananas have feature prices in many markets.

Apple production is heading toward a record second largest crop in 45 years -- perhaps 11 percent over last year. Best buys are bagged apples usually.

Reasonable prices appear on pears, cranberries and grapes.

Grapefruit supplies and quality are improving weekly.

**Dairy**-- Many varieties of cheese are features in some markets.

**Pork**-- Prices are still relatively high. However, the most economical cuts, generally, are Boston butt roasts, rib and loin-end roasts, quarter-loin cut into chops and liver.

**Beef**-- Prices also remain relatively high. A few markets are featuring chuck

cuts of beef, sirloin steaks and liver. One economy item is ground beef with soy protein.

**Holiday Watchwords**-- Fruitcake bakers -- it isn't too early to shop for ingredients. Crop damage will make raisin prices higher probably, but prunes or dates work as well.

## BUYING? SELLING? CHECK OUT THE...

**Classifieds**  
Of The  
Muleshoe  
Or  
Bailey  
County  
Journals



**LYSOL SPRAY**  
REG 1.83 \$1.59

**BREEZE LAUNDRY DETERGENT**  
REG 2.69 \$2.39

**BATH SOAP ZEST**  
REG 2/89¢ 3/\$1

**RAINBARREL FAB SOFTNER**  
79¢

## Welcome FALL

**SPILLMATE PAPER TOWELS**  
REG 79¢ 2/\$1

**AURORA SOFT PRINT 2-ROLL PK. TISSUE**  
REG 53¢ 39¢

**FLEX CONDITIONER** \$1.55  
REG 1.87

**ANTI-PERSPIRANT ROLL-ON SURE** \$1.69  
REG 1.95

**FLEX SHAMPOO** \$1.55  
REG 1.87

**SHOWBOAT Pork & Beans**  
REG 27¢ 5/\$1  
**SNOWDRIFT SHORTENING** \$1.28  
REG 1.47

**EVERY DAY LOW PRICES**

GAL. HOMO MILK	\$1.99
1/2 GAL. HOMO MILK	1.03
GAL., LOWFAT MILK	1.85
1/2 GAL. LOWFAT	93¢
1/2 GAL. BUTTERMILK	93¢
1 LB. COTTAGE CHEESE	85¢
2 LB. COTTAGE CHEESE	1.39
WHIPPING CREAM	55¢

**Layaway Now For Christmas**

**SOUND DESIGN AM/FM Stereo Receiver With 8-Track/Cassette Player**  
REG 210.59 \$155

**Ammunition Sale!**

**Federal Ammunition**

**GAME LOAD**  
REG  
12 GA. 3.79  
16 GA. 3.19  
20 GA. 3.49 \$2.85

**FIELD LOAD**  
REG  
12 GA. 4.79  
16 GA. 4.67  
20 GA. 4.29 \$3.65

**Lay-away Now For Xmas**

**SHURFINE SUGAR** 88¢

PRICES EFFECTIVE 11 (9-12)

ONLY 36 DAYS 'TIL CHRISTMAS

# Ceremony Unites Miss Manbeck, Christopher Crawford In Austin

A double ceremony united Miss Donna LaVerne Manbeck and Christopher James Crawford, both of Austin, on November 4 in the Windsor Park Assembly of God Church of Austin. The double ring ceremony was performed by Rev. Gary Martindale. Miss Manbeck's sister, Miss Darla Lynne Manbeck of Algria and Billy Mac Sylvester of Austin were also married in the ceremony.

Miss Manbeck is the daughter of C.F. Manbeck and Mrs. Mickie Manbeck, both of Austin. Crawford is the son of Jim Crawford of Austin and Mrs. Guy Belt, Jr. of Muleshoe. The wedding altar was flanked with white baskets of greenery. The pews were marked with white bows.

Carolyn Preece of Austin sang "If" and "The Wedding Song". Kim Crawford of Austin sang "Follow Me". They were accompanied by Mrs. Jim Crawford on the piano and Mrs. Alan Combs on the organ.

Miss Manbeck was escorted and given in marriage by her father. She wore a white lace gown with a Princess waistline. The long sleeves were trimmed with lace ruffles. The sheer neckline featured a high lace collar. Her full skirt flowed at the back into a train. Her sheer illusion veil trimmed with lace was joined with Juliet cap. She carried a bouquet of white roses with baby's breath, accented with blue streamers and bows.



MRS. LELAND FERRIS AND BENNETT LELAND

## Mrs. Ferris, Bennett Feted With Baby Shower

A baby shower feted Mrs. Leland Ferris and her four week old son, Bennett Leland on November 5 in the home of Mrs. Vance Wagnon. The honorees are former residents of Muleshoe and now make their home at Pampa.

Mrs. Ferris was presented with a corsage of coral roses with white satin leaves and bows. Guests were greeted by Mrs. Ferris; Mrs. Joe Ferris, her mother-in-law; Mrs. Morris Douglass, her mother and Mrs. Wagnon.

The table was laid with a white lace cloth. An arrangement of yellow daisies accented the table. Silver appointments were used to serve cookies, nuts, mints, spiced tea and coffee. Mrs. Clifford Black assisted with the serving.

The hostesses gave Bennett Leland a stroller as a registration date set for Calvary Christian School.

First Baptist Church of Lazbuddie announces a new addition to Calvary Christian Schools. In September, the church began a Christian School using the Accelerated Christian Education School Curriculum. Beginning in January, they will open Calvary Seminary. This seminary will incorporate the curriculum of "National Institute in Biblical Studies".

On every Tuesday, beginning January 2, six hours of teaching will be presented, using taped sessions on Audio-video cassettes. Additional discussion, lectures and study assignments will be included. This is a three year program equivalent to a Bible college education. Teachers such as Jack Taylor, Maj. Ian Thomas, John R. Stott and J.I. Packer are among the many God-appointed faculty members.

Those interested in such training should contact Steve Phillips, c/o First Baptist Church, Box 67, Lazbuddie, Texas, 79053. The phone number is 965-2126. Pre-registration is \$15 and is due by Nov. 21. Final registration of \$125 is due by December 15.



MRS. CHRISTOPHER JAMES CRAWFORD  
[nee] MISS DONNA LAVERNE MANBECK

### Monthly Meeting of PTA Slated For Monday

The monthly meeting of the Parents Teacher Association will be held Nov. 13 at 3:45 in the Mary DeShazo Cafeteria. A staff member from Central Plains Family Center from Plainview will give a program on "Learning Disabilities". Babysitters will be provided for your children. An executive meeting will be held before the regular meeting at 3:15 p.m.

On earth there is nothing great but man; in man there is nothing great but mind.  
-William Hamilton.

Little minds are interested in the extraordinary; great minds in the commonplace.  
-Elbert Hubbard.

## Exotic Boots

Ostrich      Lizard  
Python      Antelope  
Elephant      Shark

-Just Arrived-  
Large Selection Of  
Flannel Shirts

FREE Gift Wrapping  
Use Our  
Layaway Plan

**ee's WESTERN WEAR**

1910 W. Amer. Blvd.      272-4663

Why buy "whole life" insurance when you already have group term insurance?  
No reason. Unless you want protection that lasts a lifetime no matter how long you live. Ready cash for emergencies. And some other important benefits.  
Ask a professional. Person to person.

**Curtis Walker**  
Box 512  
Ph 272-4876

**Southwestern Life**  
Person-to-person service for 75 years.

# PROTECTION

## HANG TEN.

# Special

## 20% off

### On All Hang Ten Merchandise

Thurs.-Fri.-Sat.  
Nov. 9-10-11

## LATRELL'S FASHIONS

PHONE 806 272-3459  
1519 WEST AMERICAN BLVD.  
MULESHOE, TEXAS 79347.  
East End Art Loft Complex

### Muleshoe Singing Group

Met

The Muleshoe Singing Group met Saturday, Nov. 4 at 7 p.m.

The meeting opened with Zed Robinson singing the theme song. The prayer was given by Mrs. Burford.

There were 20 members present. Don Bell and Mr. and Mrs. Homer Milsap, all of Muleshoe, attended the meeting.

The Muleshoe Singing Group will not meet this coming Saturday so that they may attend a revival in Progress. The next meeting will be Nov. 18 at 6:30 p.m. in the Nazarene Church at 814 West Ave. C.

Refreshments were served and the closing prayer was given by Bro. Ridley, pastor of the Nazarene Church.

## National Convention Of W.I.F.E.

The National Convention of W.I.F.E. (Women Involved in Farm Economics) was held this past weekend, Nov. 3-5 in Billings, Montana.

The convention opened with nearly 500 farm wives and their husbands hearing Arnold Paulson, National Director of NORM (National Organization of Raw Materials) speak on his economic theory. Paulson said, "The nations economy is facing collapse" by constant under-payment to the nations raw material producers. Agricultural products make up 70% of these raw materials.

Saturday's session began with Senator John Melcher, Montana, as guest speaker. He credited W.I.F.E. members with taking agriculture to Washington D.C. "Their fresh new approach was extremely effecting in lobbying for agricultural legislation."

Following a welcome by Governor Tom Judge, Montana, W.I.F.E. President Betty Majors, Osceola, Neb., opened the meeting with a report on W.I.F.E. activities during the past year.

During the afternoon session, W.I.F.E. members from across the nation attended workshops and commodity meetings.

The evening banquet, attended by many husbands and guests, was highlighted by speaker, Lt. Gov. Ted Schwinder, Montana.

On Sunday W.I.F.E. members considered resolutions submitted by individual states covering a wide range of issues vital to agriculture.

President Majors closed the convention by reminding W.I.F.E. members that only by working together as a united force could they continue to educate and inform the American people on the vital issues of agriculture.

Those attending from the Tri-County Chapter of W.I.F.E. in Muleshoe were Mrs. Guy Austin, voting delegate, Mrs. Don McGuire, alternate, Mrs. Charles Saylor, Texas State President and Mrs. Gene Hamilton, Secretary-Treasurer of the local chapter.

Mrs. Gary McCray, local chapter president, urges all women who are interested in joining to contact her at 925-6738.

*Fashion*

An attractive late summer classic consists of a belted dress with long sleeves and accoridian pleated skirt in creamy white with a sleeveless vest in tan.

Plaids are very popular for school and college wear. Matching small and large plaid of the same design are combined in dresses. Choose a "family" plaid and sew at least one garment for each member of the family.

Mr. and Mrs. Ernest Ramm  
and  
Mr. and Mrs. Billy J. Owen, Jr.  
invite you to share in the joy of  
the marriage uniting their children

Delores Ruth  
and  
Billy J.

This celebration of love will be  
on Saturday, the eleventh of November  
Nineteen hundred and seventy-eight  
at seven o'clock in the evening  
St. John's Lutheran Church  
Lariat, Texas

Reception following

## Announcing ...

CASEY INSURANCE AGENCY NAMED ALLSTATE INSURANCE AGENCY IN MULESHOE, TEXAS

Casey Insurance Agency, an established insurance agency in Muleshoe since 1951, has been named the area representative for Allstate Insurance companies in Muleshoe and vicinity.

The agency will continue to represent other insurance companies as it does now, in addition to representing Allstate.

Allstate auto, homeowners, renters, boatowners, theft, personal liability insurance, business insurance for companies large and small, life and health insurance and the Allstate Motor Club will be offered by the Casey Insurance Agency.

"We are pleased to add Allstate, one of the best known, most widely accepted names in the business, to our complete insurance line for people in the Muleshoe area", Beverly Ann Heathington, owner of the agency, said.

An additional member of the agency staff is Billie Dean Bayless.

**Beverly & Billie**  
Invite Everyone  
To Come In & Talk  
Over Their Insurance  
Problems With Them.

## Casey Insurance Agency

121 E. Ave. C      Muleshoe



**MOST UNUSUAL...** These four cousins are all active in sports in Muleshoe High School. It is unusual to have all the cousins active in one phase of a school at a time. From left are Becky Turner, daughter of Mr. and Mrs. Doyce Turner; Steve Turner, son of Mr. and Mrs. Royce Turner; Keith Hawkins, son of Mr. and Mrs. Peanut Hawkins and Jill Turner, daughter of Mr. and Mrs. Royce Turner. Their local grandparents are Mr. and Mrs. Doyle Turner, Mr. and Mrs. A.R. McGuire, Mr. and Mrs. Kenneth Briscoe and Mr. and Mrs. F.M. Hawkins. Local Great-grandparents include Mr. and Mrs. C.E. Briscoe and Mrs. Fred Brans.

### Friendship Club Met To Plan Party

The Friendship Club met November 2 in the home of Mrs. Gladys Dorsey. After the invocation by Mrs. Katherine Cole, a covered dish luncheon was served by the hostesses, Mrs. Dorsey and Mrs. Viola Layne. The business meeting was called to order by the president, Mrs. Gladys Dorsey and Mrs. Jewell Griffiths read the minutes of the last meeting. The financial report was given by Mrs. J.W. Witherspoon. Thank you cards were read and Mrs. George Johnson and Mrs. S.M. Ethridge gave their reports on cards that were sent. The annual Red Dress Christmas party

was discussed and planned. The president made appointments to fill the Nominating, Decorating and Yearbook Committees. The Christmas party will be at the Corral Restaurant on December 18 at 6:30 p.m.

One new member, Mrs. Sena Stevens was present and eighteen members attended. Those present were Mrs. W.T. Andrews, Katherine Cole, Rob Dameron, Gladys Dorsey, Mrs. S.M. Ethridge, Jewell Griffiths, Mrs. E.W. Johnson, Viola Layne, Mrs. N.C. Moore, Mrs. D.D. Ray, Mrs. G.G. Johnson, Mrs. A.J. Shafer, Sally Schuster, Mrs. S.F. Swafford, Mrs. F.W. Watts, Mrs. J.W. Witherspoon, Mary Young and Mrs. W.E. Young. The meeting was closed with a prayer by Sally Schuster.

A lot of worry can be wasted on others.

### CROSSWORD

1	2	3	4	5	6	7	8	9
10			11			12		
13								
14			15	16	17		18	
19		20				21		
22	23	24			25		26	27
28								
29								
30								
31								
32								
33								
34								
35								
36								
37								
38								
39								
40								
41								
42								
43								
44								
45								
46								
47								
48								
49								
50								

- ACROSS**
- 1-Stupor
  - 5-Righteous
  - 10-Grant
  - 12-Sports building
  - 13-Cut
  - 14-"My Rosary" composer
  - 15-Layer
  - 16-Hudson ...
  - 18-Employ
  - 19-Not so hot
  - 21-Charges
  - 22-Make up for
  - 24-Actor Grant
  - 27-Spur part
  - 30-Period
- DOWN**
- 1-Singer Johnny
  - 2-Young bird
  - 3-Muskie's milieu
  - 4-Spark stream
  - 5-Numerous
  - 6-Mining product
  - 7-Stage offering
  - 8-Plant with fragrant seeds
  - 9-Rustic roads
  - 11-Bookkeeping entry
  - 17-Admire greatly
  - 20-Remuneration
  - 21-Opposite of 5 down
  - 23-Famous
  - 24-Cooped up
  - 25-Playing marble
  - 26-Try to disprove
  - 28-Delight
  - 29-Encumbered
  - 31-... Rabbit
  - 33-Units
  - 35-Puny poem
  - 37-Large container

- ANSWERS ACROSS**
- 1-Coma
  - 5-Moral
  - 10-Award
  - 12-Arena
  - 13-Slice
  - 14-Nevin
  - 15-Hen
  - 16-Bay
  - 18-Use
  - 19-Tepid
  - 21-Fees
- ANSWERS DOWN**
- 1-Cash
  - 2-Owllet
  - 3-Maine
  - 4-Arc
  - 5-Many
  - 6-Ore
  - 7-Revue
  - 8-Anise
  - 9-Lanes
  - 11-Debit
  - 17-Adore
  - 20-Pay
  - 21-Few
  - 23-Noted
  - 24-Caged
  - 25-Agate
  - 26-Rebut
  - 28-Elate
  - 29-Laden
  - 31-Brer
  - 33-Weds
  - 35-Ode
  - 37-Vat

**SHUGART COUPON**  
**Thur. Nov. 16**  
**Pay-N-Save**  
 515 W. Amer. Blvd.  
 9 WALLET SIZE COLOR PORTRAITS 99¢  
 FREE 8 x 10 OFFER  
 Extra charge for GROUPS

### Leisure Cooking New Magazine For Microwaves

Leisure cooking, "The Microwave Method", a monthly magazine devoted to the millions of microwave owners in the United States, made its publication debut with the October, 1978 issue, which is now available. The magazine is published by Microwave Master, Inc., headquartered in Richardson, Texas. "The magazine is designed to fill a void in the microwave cooking market," said Joe Sandifer, spokesman for the publishers. "Most people who buy microwave ovens do not have the slightest idea how to use them effectively. They have spent hundreds of dollars for an appliance that can save them time and money, yet they end up using them to warm baby bottles."

Leisure Cooking presents dozens of recipes in its Oct. issue and will continue to do so in the future. Each recipe has been tested and retested by members of the magazine's staff. Some of the recipes in the October issue show how to cook filet of sole, omelet supreme, rib roast, cinnamon cake, crepes and other foods.

"We believe the microwave oven is the greatest innovation in cooking since the invention of fire," Sandifer said. "Our intention is to show people how to use it effectively. Along with the recipes, we are presenting color photographs, feature articles on microwave products, and other stories of interest to microwave owners."



### LATEST ARRIVALS

**Meredith Elizabeth May**  
 Mr. and Mrs. Kenzil of Odessa are the proud parents of a new baby girl born October 22 at 6:45 p.m. She was named Meredith Elizabeth and weighed eight pounds and eight ounces. She has one sister, Melissa, who is three. Grandparents are Mr. and Mrs. Roy May of Sudan and Mr. and Mrs. Smith of Roscoe and Mr. Woody of Stanton.

**Samuel Paul Espinoza**  
 Mr. and Mrs. Camilo Espinoza of Muleshoe are the proud parents of a new baby boy born November 4 at 2:46 p.m. in the West Plains Medical Center. He was named Samuel Paul and weighed eight pounds and twelve ounces. The couple have nine other children. Grandparents are Mr. and Mrs. Felipe Orozco of Muleshoe.

**Priscila Hernandez**  
 Mr. and Mrs. Robert N. Hernandez of Friona are the proud parents of a new baby girl born November 2 at 10:13 a.m. in the West Plains Medical Center. She was named Priscila and weighed six pounds and fifteen ounces. The couple have one other child, Naftali. Grandparents are Mr. and Mrs. Asencio Hernandez of Lubbock and Mr. and Mrs. Rasael Rodriguez of Friona. Great-grandparents are Rev. S. P. Villagomez of Monterrey, Mexico.

### TOPS Has Weekly Meeting

The TOPS Club met Thursday, Nov. 2 in the meeting room of Bailey County Electric.

The meeting was called to order by Mrs. Owen Jones. Mrs. Waylon Harris gave the roll call with 18 members weighing in. The club sang the TOPS song and recited the pledge.

The weekly queen was Mrs. Waylon Harris with first runner up, Mrs. Nan Gatlin and second runner up Mrs. Beulah Gatewood. The monthly queen was Mrs. J.M. Hefner with first runner up Mrs. Rannetta Dawson and second runner up Mrs. Ronnie Garner. The KOPS monthly queen was Mrs. Mae Provenza. The can-can was drawn and accepted by Mrs. Buria Vinson. The meeting was dismissed with the Goodnight Song.

Thought for the day, the secret of success is to do all you can without thought of fame.

**More people go to museums than play tennis, go bowling, jog, play softball, or go fishing.**

**Support The Arts**  
 That's where the people are.  
 National Endowment for the Arts  
 A Public Service of This Newspaper & The Advertising Council  
**NATIONAL ENDOWMENT FOR THE ARTS CAMPAIGN**  
 NSPPR. AD NO. NEA-78-958(C)

Save 50% to 75% of the electricity normally used in cooking!  
  
**Radarange Model RR7D**  
 Here's the fastest, most efficient, energy-saving way to cook! Cook family-size roasts in minutes instead of hours. Thaw frozen foods, reheat cooked dishes unbelievably fast. Most foods cook in 1/2 the usual time with 50% to 75% savings on electricity you normally use in cooking. All the heat goes into the food, none is wasted!  
 • Pull down see-through door with electric lock • COOKMATIC Power Shift™ • Start switch, Stop switch and Light switch • Cooking indicator dial light • Removable oven tray • Many more work-and-time saving conveniences.  
 \*Comparison test figures were made by leading West Coast and Mid-West utilities and Amana Ann MacGregor Test Kitchen using the appropriate conventional cooking in an electric oven, range top or electric fry pan.  
**\$399<sup>95</sup>** It's No. 1  
**HARVEY BASS**  
 122 S. 1st 272-3030

Because the microwave is so easy to use, the magazine also has a column and recipes for children entitled "Mini-Microwavers." This is the only magazine in the country published exclusively for microwave cooking, Sandifer said. The idea for the magazine came about when the publishers bought microwave ovens and found no information on how to use them. "We checked and found that everyone was in the same situation," Sandifer said. "We decided to find out the best way to use the ovens and then tell it to our readers in the most entertaining and attractive way possible." Subscriptions are available at \$10.50 a year from Leisure Cooking, P.O. Box 2027, Richardson, Texas 75080.

**Youth Dance Will Be Held, Saturday**  
 The Triangle C.B. Club will sponsor a Youth Dance on November 11 from 8 to 12 p.m. in the Bailey County Civic Center. Country and western music will be provided by "Last of a Kind" from Sudan. Tickets will be sold at the door for \$3 per couple or \$2 for single. Proceeds will be used to purchase equipment for the Civic Center.

**Good Reason**  
 She: "Does your husband still find you entertaining?"  
 Her: "Not if I can help it."  
**Consistent**  
 "My wife will never go to bed before two o'clock in the morning—I can't break her of the habit."  
 "What does she do all the time?"  
 "Wait up for me."

**Dear Louisa,**  
 I have one little son and my husband always takes the hour after the evening meal to talk to him or read to him or sometimes plays a simple game with him. He says as he is away all day it gives him a chance to know his boy better and to enjoy him. This routine also allows me to do the dishes and tidy things up until our son is ready for bed and then my husband and I can enjoy the evening together.  
 My sister is married to a man and they have three small children but he doesn't pay them any attention. He says nursing is woman's work and he sits and reads or watches television while she struggles with the dishes and the children—getting them to bed.  
 Don't you think he is very selfish and inconsiderate to act this way?  
 S.W.—Mich.  
 Answer:  
 I realize that a man who



**PEE WEES...** The Pee Wee 4-H Cooking Class met November 6 at 3:30 p.m. This was the last meeting of the year. Pictured, from left to right, are Jenny Bennett, Mistl Taylor, Heather Baker, Glenn Flowers and Holly Huckaby.

**LOUISA'S LETTER**

has been working hard all day is tired when he gets home in the evening and is ready to relax. But a woman who has been doing all of her work and caring for three children has also had a hard day and certainly needs a helping hand. She probably resents his attitude which doesn't make for good feeling in the home. I really think this man is losing more than he is gaining by acting as he does. He would not only earn the gratitude of his wife, by lending a helping hand, but he would get the love and adoration of his children, if he would spare them an hour out of each day. And, after all, an hour a day is not too much for anyone to give to a child they have brought into the world. The time spent in this manner would mean much more to this man than the hour he devotes to himself. Louisa.  
 Address letters: Louisa, Box 532, Orangeburg, S.C. 29115

### Pee Wee Held Last Meeting Of Year

The Pee Wee Class of the Muleshoe 4-H Club met Monday, November 6 in the 16th and Ave. D Church of Christ. This was the last meeting of the year for the Pee Wees. They studied place settings and prepared chili. Plans were made for the Bailey County 4-H Food Show that will be held Saturday in the Bailey County Civic Center. Those attending the meeting were Holly Huckaby, Mistl Taylor, Glenn Flowers, Heather Baker, Jenny Bennett, Michelle Stevenson, Lisa Coleman, Penny Klesel, Rae Lynn Klesel and Pam Plank. Mrs. Roy Baker was the project leader.

**ON SMALLPOX**  
 ATLANTA -- The world has been free of smallpox for one year, a milestone in medical history, the National Center for Disease Control in Atlanta and the United Nations in New York reported.

**CARS & ANTI-INFLATION**  
 DETROIT -- The nation's automakers are taking a closer look at President Carter's anti-inflation program amid indications it may allow some firms to boost 1979 car prices higher than this year's rate of increase.

**Sewing Machine Clinic**  
 Fall Tune Up Special  
 Oil, Delint, Adjust  
 Tensions  
 25 yrs. experience  
 \$9.50 in Your Home.  
 Call 272-5555

**Litton Has Great Ideas For The Holidays**  
**LITTON'S Exclusive Meal-In-One Microwave**  
 • Now cook 1, 2, 3 foods ... or a complete meal all at once with no rotating  
 • Vari-Cook power control that lets you cook with the precision of conventional cooking  
 • Family-size interior ... 25% larger than most ovens  
 • Easy-to-clean interior, Micro-Browner that sears, grills and browns.  
 Model 540  
 • Litton microwaves, cost no more than ordinary microwaves  
**Litton... changing the way America Cooks.**  
**Buy a Litton microwave built-in with a lot more built in**  
 Model 820  
 • Solid-state microwave oven with 1.2 cu. ft. interior  
 • Memorymatic™ microwave program cooking. Programs meals at the touch of a finger.  
 • Vari-Cook™ variable power oven control for time and cooking speed.  
 • Vari-Temp™ automatic temperature control and sensor for exact food temperature.  
 • Extra wide self-cleaning conventional oven — full 3.9 cu. ft. capacity  
 • Bronze see-thru glass door.  
**LITTON Compact Microwave**  
 Perfect for Mobile Homes ... Small Areas  
 Model 120  
 • Litton's automatic defrost, 25-minute timer  
 • Compact, yet roomy, fits in smaller cabinet areas  
 • Removable glass shelf, large, easy-to-clean  
 • Same power as larger Litton microwaves  
**Litton Microwave with Hold-Warm Feature**  
 Model 445  
 • Vari-Temp automatic temperature control with food sensor. Insures proper doneness.  
 • 99-Minute digital timer, automatic hold-warm  
**Also Available Are 3 New Models 455, 465, 560**  
**They Have Some Great Features**  
**Come In & Let Helen & Bruce Demonstrate Them To You.**  
**Wilson Appliances**  
 Quality Merchandise Good Service Fair Prices  
 STORE HOURS: MON. - SAT 272-5531 117 MAIN S.A.M. - 6 P.M.

### Mules...

Cont. from page 1

want to be in the play-offs, and have played all year to be there. We are really going to have to play our best game, but we are fired up and excited about the game."

He said it won't be easy, because Dimmitt is big and the players are swift.

For instance, last week, against Morton, Dennis Veals, who will be a strong contender, had 322 yards rushing in 28 carries against the Indians. One of his runs was a 99 and one half yard touchdown run from scrimmage.

Coach Wartes thinks the secret will be to try to contain not only Veals, but outstanding Bobcat newcomer, Jimmy Stewart.

Veals has a running speed of 9.7 and Coach Wartes said another two players also have a running speed below 10 seconds. This will create difficulties if any of the players break into the open.

Veals was out earlier in the season with injuries, and the Bobcats have lost only one game since he returned to the line-up.

Coach Wartes said the Mules attitude is "tremendous" and said the boys are playing very well now. They have been enjoying

the last two or three games "and they really realize they will have to play hard against Dimmitt."

Jerry Vance, head football coach for the Dimmitt Bobcats, was very cautious in his predictions for the Friday night game. He did say the Bobcats have played better ball the last two to three weeks than they have all season.

He said the Bobcats will be playing out of the 'I' formation and does not expect to be playing as much a passing game as they will be depending on the fast and strong running of their backs.

"We have been very fortunate in rushing," he commented, "and with quarterback Jack Stewart, Dennis Veals and Randy Roberts, we will be rushing a lot."

Coach Vance said the Muleshoe Mules have "quickness" that his team will have to watch, and commented, "We are bigger, but not as fast as Muleshoe." However, this statement is not quite carried out by Veals' 322 rushing yards last week.

Game time is 7:30 at the football stadium in Dimmitt and will be a crucial game on the Mules' march to the district playoffs.

### Council...

Cont. from page 1

City telling them the city's entitlement for revenue sharing funds has been cut by some \$13,538 because the city has a larger per capita income than in the past.

City Manager Dave Marr informed council members that the Parks and Wildlife Department has informed the city that their 1979 Park Grant application had been turned down. The city had applied to build a new softball field, improve the Babe Ruth field and improve the East Park's softball field. The application will be resubmitted in April.

Copies of the appeal filed by Southwestern Public Service Company to the Public Utilities Commission on the electric rate case were distributed as well as a statement of consolidated earnings from Southwestern Public Service Company.

Discussions were held on the proposal from the State Highway Department on drainage of U.S. 84 and West 12th Street and on the proposed resurfacing of SH 214.

It was decided to invite the State Highway Department engineers to a future city council meeting.

Also discussed was an estimate for a concrete valley with curb and gutter to be located at the intersection of Ash and Reno Streets. The improvement will be included in the next city budget.

Keeping up with consumers — the trash compactor is one of the most popular and useful kitchen appliances to come along in recent years. Researchers at KitchenAid appliances attribute this to the fact that the compactor has proven its worth in kitchen cleanup.

These experts say because trash is reduced to as little as one-fourth its original size with a compactor, disposing of such items as cans, cartons,



**GREAT AMERICAN SMOKEOUT...Monday morning, Muleshoe Mayor Ken Henry signed a proclamation designating Thursday, November 16 at the 1978 Great American Smokeout. All Americans have been asked to quit smoking for a day on November 16 by the American Cancer Society. Pictured with Mayor Henry is Terry Bouchelle, of the American Cancer Society's Bailey County Chapter.**

### Vote...

Cont. from page 1

Two write-in candidates sought the position of constable in Bailey County, both officially declared write-in candidates were unopposed.

Tom Watson, with 54 votes, won the constable race in Precinct Four; and Thomas Ridgeway Black was named constable of Precinct Two with 17 write-in votes.

At the West Camp Baptist Church, 102 persons voted; 111 at Three Way; 232 at the First United Methodist Church; 94 at Bula; 72 at Needmore and 55 at the Muleshoe Fire Station. This year, a total of 80 persons voted by absentee ballot in the general election.

Voters overwhelmingly voted approval of the tax relief amendment, with 1109 votes for and only 221 against the proposal.

They also approved Amendment One by a vote of 812-402; turned down Amendment Two 454-776; also turned down Amendment Three, 468-751; approved Amendment Four, 761-482; edged by with Amendment Five, 649-568; approved Amendment Six by 100, 646-546; narrowly approved Amendment Seven, 591-569 and approved Amendment Eight, 777-425.

Around midnight Tuesday, final tabulations of the votes in Bailey County were being run up in the office of Hazel Gilbreath, County Clerk. The box from the American Legion was the last box to come in before 11:30 p.m.

At presstime Wednesday morning, Hill was trailing Clements in the Governor's race. Clements had 1,139,484 votes to 1,121,468 for Hill, to be leading by 18,016 votes.

Senator John Tower was leading his Democratic challenger, Bob Krueger

by a very small margin. At presstime, Tower had 1,106,332 votes, compared to 1,092,103 for Krueger, a 14,229 difference. Complete returns, although still unofficial from

the 19 county area, comprising the 19th Congressional District showed Kent Hance outdistanced Republican candidate George Bush. Hance had 52,890 votes to 46,922 for Bush, a 5,968 lead.

### Lazbuddie Methodist Plans Film

"He Restored My Soul," a new Gospel Films, Inc., release, will be shown at Lazbuddie United Methodist Church on Sunday, Nov. 12 at 6:30 p.m., according to the pastor, Rev. Wesley Putnam. He said all interested persons are cordially invited to attend the movie.

In 1961 Merrill Womach was flying enroute to Spokane, Washington, to spend Thanksgiving Day with his wife and children. His twin-engine plane was forced down in a show storm in Beaver Marsh, Oregon. The next morning he took off on the slushy runway.

Two hundred feet above the trees, both engines quit. He tried to get back to the airport, but the plane fell short by 50 yards and crashed in the timber. The explosion of 108 gallons of high test aviation fuel was heard miles away.

Critically burned, Womach crawled to a nearby road where he was picked up and put in the back seat of a car and hurried to a hospital in Klamath Falls, Ore. "Amazingly," said Rev. Putnam, "he sang all the way."

Through more than 50 operations and months of surgery, he faced many complications, critical illnesses and impending death. Two blood clots passed through his heart and into his lungs and it was only after his family heard him sing after surgery that his family knew

he had survived. "With a voice range that covers more than four octaves, Merrill Womach has thrilled countless audiences with a radiance that causes listeners to forget his scars and focus attention upon a beautiful man

whose rise from the ashes is an inspiration to all who get to know him," added the minister.

The true story film of Merrill Womach is the latest release of Gospel Films, Inc., of Muskegon, Michigan.

### Judge Rules Fire Ant Bait To Be Removed from Market

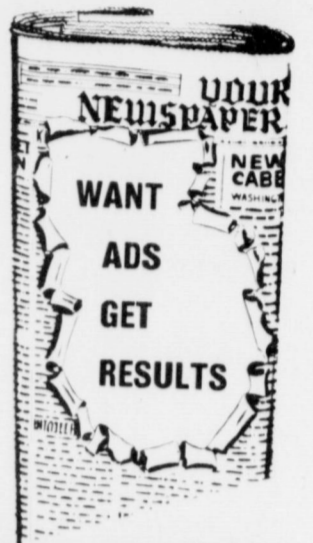
AUSTIN--A federal judge's ruling to stall the use of ferriamicide leaves Texans without an effective pesticide to combat fire ants between now and the first frost, Agriculture Commissioner Reagan V. Brown has stated.

"The recent rains and cool weather have prompted an increase in fire ant activity and a rash of calls from people who want help in controlling them," Brown said.

In an Environmental Defense Fund (EDF) lawsuit against the Environmental Protection Agency (EPA), Judge Gerhard Gesell ruled that the EPA acted in a "confusing and clumsy manner" in approving the use of ferriamicide, a substitute for the banned pesticide mirex.

Brown said control of fire ants will be impossible if ferriamicide is banned. Other pesticides available for fire ant control must be sprayed directly on the insects. They do not get into the heart of the huge mounds where the queens live.

"Recent reports that fire ants eliminate boll weevils is true," Brown continued. "They also eliminate earthworms, ground mice, birds and baby calves. The American public is becoming more hostile toward the people who want to leave them with no weapons to fight fire ants and other pests. The insects are winning in this country, and we had better wake up before it is too late."



### Winner...

Cont. from page 1

The second and third place winners each missed one game. In second place was Nona Blake Douglass, who missed only the Tulane-Miami, Fla. game. She was only 18 points away on the double tiebreaker scores.

Third place winner was Sammy Gonzales Jr., who also had another third place winner this season. He also missed the Tulane-Miami, Fla. game, and was 24 points away on the tiebreakers.

Also missing one game, was Judy Brockman, but her tiebreaker score was 30; a former first place winner, Elaine Roddam, also missed one game, but her tiebreaker score was 34; Sue Bessire missed one game, and her tiebreaker score was 35 and Galen D. Bock missed one game and his tiebreaker score was 44.

Missing two games were Frank Jesko, Derrel Embry, Earl Richards, Francisco Torres, Randall Stevens, Owen Jones, Dick Engleking, Toni King, Mike Perez, Margarita Gutierrez, Beatriz Gutierrez, Sam Gonzales, Sr. and Cliff Buckner.

### Rain...

Cont. from page 1

med through the area Monday morning brought cold wind, dust and a rapidly dropping temperature. The high on Monday only reached 45 degrees, before coming down to around 30 for Monday night.

With the passage of the cold front, the weather was expected to continue on the warming trend for the most of the rest of the week.

Corn harvest is virtually complete, and cotton farmers hailed the clearing skies and frost which would enhance their crop prospects as it would force cotton bolls to mature and be ready for harvest. Already, the cotton in this area is several weeks later than the cotton last year.

Cotton ginning is expected to continue well into December and last later in the year than it has been during the past few years.

### Wrecks...

facial and leg injuries. He was not hospitalized.

The vehicle being pursued by the deputy sheriff did not stop, and officers were seeking identification of the person or persons in the vehicle.

# Get the FORD REWARD

Free Atlas\* with a test-drive.

### LTD. New American Road Car

With more passenger room, handling ease and window area. LTD for 1979 offers road car comfort and luxury for the long trips Texans love. Road test LTD.



### Pinto. The Great Little Workhorse

The complete small car, Pinto for 1979 has more standard features than ever, plus a striking new look inside and out. Great price, great economy, plus a new redesigned fuel system. Fun test a Pinto!



### Mustang Rides Again

A whole new breed of Mustang excitement. Dramatic new sportscar styling and performance tells you it's a new breed of Mustang. Take a Mustang test drive... you'll see.



Bob Lilly, for your Texas Ford Dealer

\*Rand McNally Road Atlas and Travel Guide, Free with a test drive at your Texas Ford Dealer.

Map out the best way to go, the best things to see in the USA, Canada and Mexico.

# Texans are BIG on Ford

# Muleshoe Motor Co.

1225 W. Amer. Blvd.

272-4251

## WINTERIZE

### NOW!



### RADIATOR SPECIAL

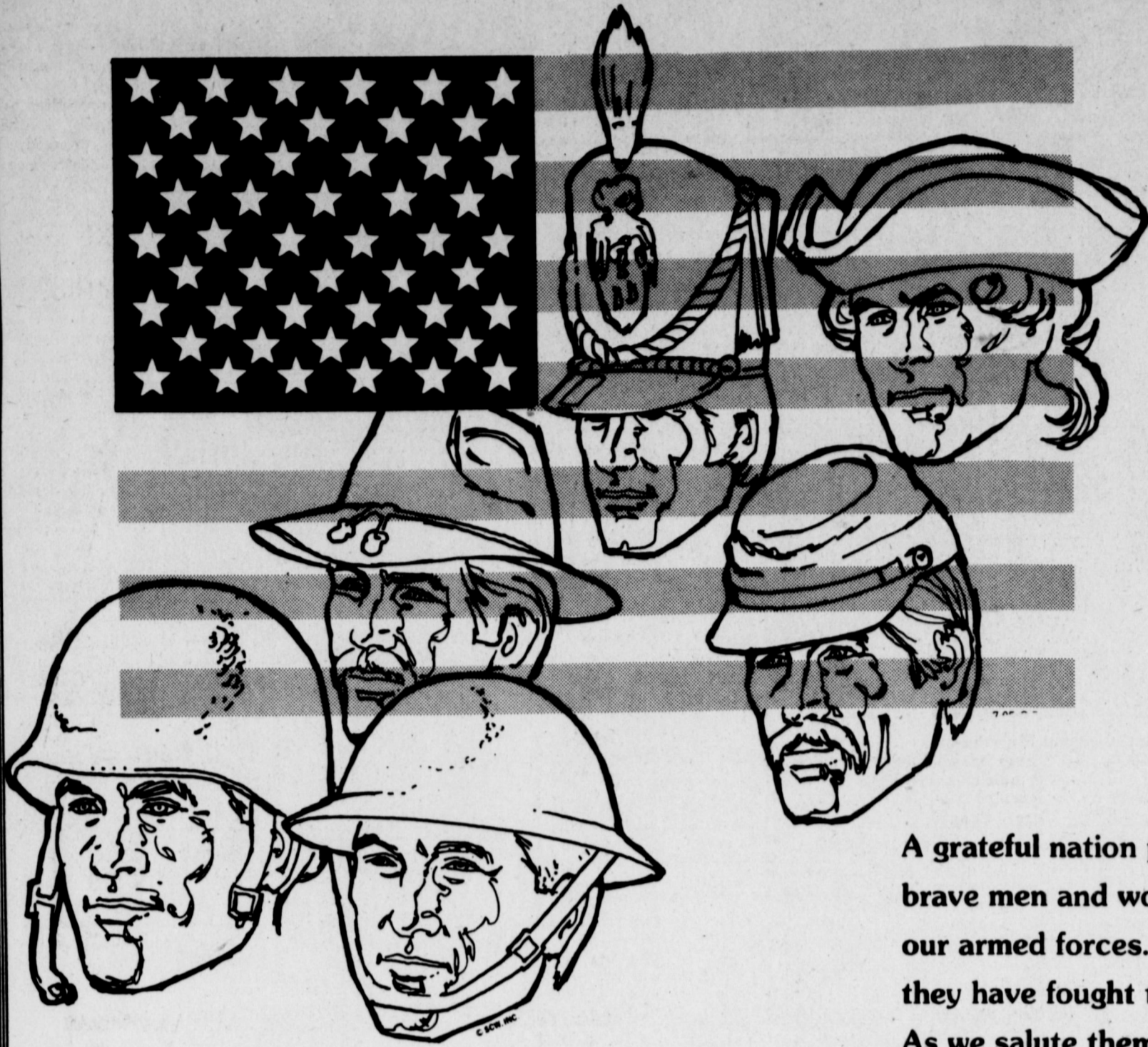
Protect your radiator for cold-weather driving. We'll flush your cooling system, add 2 gallons of anti-freeze and inspect all belts and hoses.

**Plains AUTO PARTS**  
P. O. Box 386  
MULESHOE, TEXAS  
79347

**Muleshoe Journal**  
MEMBER TEXAS PRESS ASSOCIATION  
E.B. Hall, President  
James Wade, Vice President  
Clara Williams, News  
Barbara Wilson, Secretary  
Paula Green, Office  
Bobby Midgett, Advertising  
Blaine Parker, Subscription

# VETERANS DAY

## 1978



A grateful nation pauses to remember the brave men and women who have served in our armed forces. With honor and courage they have fought to keep our country free. As we salute them, let us reaffirm our devotion to the ideals of democracy they risked their lives for.

PRESENTED BY THE FOLLOWING CIVIC MINDED MERCHANTS

Pay-n-Save Foods

Muleshoe Floral & Gift

Muleshoe Auto Parts

Leo's Blacksmith & Machine Shop

Beaver's Flowerland

Decorators Nursery & Floral

Bailey County Memorial Park

Robert Green Inc.

Lee's Western Wear



Wooley-Hurst Inc.

Main Street Beauty Shop

Western Drug

Muleshoe Co-op Gin

Western Auto

San Francisco Cafe

Cobb's Department Store

Shipman & Son Body Shop

Black Insurance Company

Albertsons Shop For Men

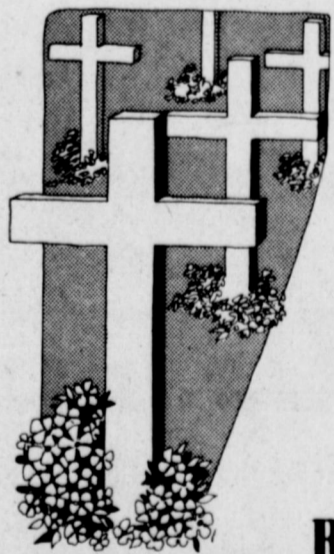
1st. National Bank

Smallwood-Harmon-Field Insurance

Dairy Queen

Sonic Drive-In

Ranch House Motel



Cashway Grocery



John's Custom Mills

Muleshoe State Bank

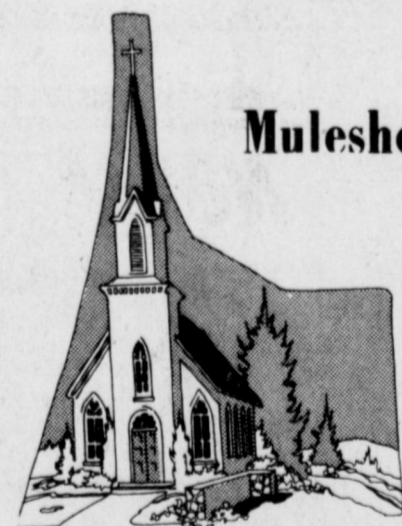
James Crane Tire Co.

Corral Restaurant

Lookin' Good

First Street Conoco

Watson Alfalfa



Ray Griffiths & Sons Inc.

W.Q. Casey Insurance

Flowers Auction Service

Valley Motel

Bailey County Electric Cooperative Association

Farm Bureau Ins.  
Ray Davis, Mgr.

Lambert Cleaners

Farmer's Cooperative Elevator



Lindsey Credit Jewelers

Earl Ladd & Sons Inc.

Muleshoe Publishing Company

Winkler Meat Company

## Bailey County General Election Results

	Box 1 Bailey County Courthouse	Box 2 West Camp Baptist Church	Box 3 American Legion Hall	Box 4 Three Way School	Box 5 Methodist Church, Muleshoe	Box 6 Bala Community Center	Box 7 Needmore Community Center	Box 8 Muleshoe Fire Station	ABSENTEE	TOTAL
United States Senator										
Robert (Bob) Krueger	151	31	116	72	97	59	46	17	35	624
John Tower	271	68	267	39	122	34	24	21	40	886
Luis A. Diaz DeLeon	0	0	0	0	1	1	1	13	0	16
Miguel Pendas	0	0	0	0	0	0	0	0	0	-0-
United States Representative, 19th District										
Kent Hance	269	75	255	97	132	88	57	23	45	1041
George Bush	149	25	137	13	91	5	13	19	34	486
Governor										
John Hill	157	57	141	78	105	79	50	15	33	715
Bill Clements	265	42	253	33	118	15	21	27	45	819
Mario C. Compean	3	0	0	0	1	0	0	13	1	18
Sara Jean Johnston	0	0	0	0	0	0	0	0	0	-0-
Lieutenant Governor										
Bill Hobby	222	62	196	98	131	86	51	17	38	901
Gaylord Marshall	173	26	164	0	0	0	0	1	31	519
Andrea Doorack	0	0	0	0	0	0	0	0	0	-0-
Attorney General										
Mark White	198	47	154	88	115	83	47	20	33	785
Jim Baker	205	46	218	21	102	11	19	21	42	685
Agnes Chapa	-0-	0	-0-	0	0	0	1	2	0	3
Comptroller of Public Accounts										
Bob Bullock	293	67	247	103	145	89	55	23	51	1073
State Treasurer										
Warren C. Harding	296	71	254	105	143	90	56	28	56	1099
Derrick Adams	0	0	0	0	0	0	0	1	0	-1-
Commissioner of General Land Office										
Bob Armstrong	286	67	241	104	142	89	54	26	52	1061
Commissioner of Agriculture										
Reagan V. Brown	288	68	235	105	144	88	54	25	53	1060
Railroad Commissioner										
Mack Wallace	291	69	245	103	143	88	54	28	52	1073
Jana Pellusch	0	0	0	0	0	0	0	1	0	1
Railroad Commissioner (Unexpired Term)										
John H. Foerner	231	57	192	95	137	86	51	23	42	914
James W. Lacy	145	25	157	11	71	7	11	15	28	470
Chief Justice, Supreme Court										
Joe R. Greenhill	273	67	238	99	136	88	55	27	49	1032
Associate Justice, Supreme Court, Place 1										
Franklin Spears	273	62	237	100	137	88	54	26	47	1024
Associate Justice, Supreme Court, Place 2										
Sam D. Johnson	271	64	235	100	138	88	54	25	47	1022
Associate Justice, Supreme Court, Place 3 (4 Year Unexpired Term)										
Charles W. Barrow	271	65	233	100	138	88	53	25	47	1020
Associate Justice, Supreme Court, Place 4 (2 Year Unexpired Term)										
Robert M. Campbell	266	65	233	100	137	88	53	26	48	1016
Judge, Court of Criminal Appeals, Place 1										
Wendell A. Odum	265	65	233	100	136	88	54	25	49	1015
Judge, Court of Criminal Appeals, Place 2										
Sam Houston Clinton	265	65	232	100	136	88	54	25	48	1013
Judge, Court of Criminal Appeals, Place 3										
W. C. (Bill) Davis	266	65	232	100	136	88	54	25	48	1014
State Representative, 74th District										
Bill Clayton	300	70	266	105	154	86	59	29	54	1123
Chief Justice, Court of Civil Appeals, 7th District										
Mary Lou Robinson	267	63	236	100	141	87	56	26	48	1024
Associate Justice, Court of Civil Appeals, 7th District (Unexpired Term)										
Carlton B. Dodson	267	64	238	100	138	87	54	25	49	1022
District Judge, 154th District										
Pat Boone, Jr.	311	71	259	105	151	89	57	31	56	1130
County Judge										
Glen Williams	325	73	278	105	161	89	61	36	57	1185
District Clerk										
Nelda Merriott	335	71	283	106	162	89	62	32	60	1200
County Clerk										
Hazel Gilbreath	333	73	284	106	165	88	61	34	60	1204
County Tax Assessor- Collector (Unexpired Term)										
LaVayne Williams	337	72	288	106	164	89	63	33	61	1213
County Treasurer										
Edith Wilt	333	72	281	105	160	89	62	29	60	1191
Justice of the Peace, Precinct 1										
K. B. Martin		321							12	333

## How Bailey County Voted On Amendments

Amendment	FOR	AGAINST
<b>THE TAX RELIEF AMENDMENT</b>	1109	221
<p><small>The constitutional amendment providing for tax relief for residential homeowners, elderly persons, disabled persons, and agricultural land; for personal property exemptions; for truth in taxation procedures, including citizen involvement; for a redefinition of the tax base for limitations on state spending; and for property tax administration. (La enmienda constitucional proporciona alivio de impuestos para hogares seguros residenciales, personas mayores de edad, personas incapacitadas, y tierras agrícolas; exenciones de bienes muebles; la certeza en procedimientos fiscales a la imposición de impuestos, incluyendo participación de ciudadanos; de nuevo definición de la base de impuestos; limitando los gastos del estado; y la administración de impuestos sobre propiedad.)</small></p>		
<b>No. 1</b>	812	402
<p><small>The constitutional amendment deleting the archaic reference to the "Deaf and Dumb Asylum," allowing certain products and services of handicapped individuals to be used by agencies and departments of state government, requiring the procurement of other products and services required in the operation of state government to be made under bids awarded to the lowest responsible bidder, making all such procurement processes subject to laws enacted by the legislature and eliminating the requirement that the Governor of Texas, the Secretary of State, and the Comptroller of Public Accounts of Texas be personally involved with such transactions. (La enmienda constitucional elimina la referencia arcaica al "Instituto de Sordos y Mudos," permitiendo que ciertos productos y servicios de personas incapacitadas sean usados por agencias y departamentos del gobierno del estado, requiriendo que otros productos y servicios requeridos en la operación del gobierno del estado sean obtenidos por ofertas concedidas al postor responsable que ofrece al precio más bajo, haciendo que todos los procesos de procuración sean sujetos a las leyes establecidas por la legislatura y eliminando el requisito que el Gobernador de Texas, el Secretario de Estado, y el Comptroller de Cuentas Públicas de Texas participen personalmente en tales negociaciones.)</small></p>		
<b>No. 2</b>	454	776
<p><small>The constitutional amendment to provide that the legislature may permit political subdivisions to issue revenue bonds to develop employment opportunities for its citizens. (La enmienda constitucional para disponer que la legislatura puede permitir que las subdivisiones políticas que emiten bonos de ingresos, para desarrollar oportunidades de empleo para sus ciudadanos.)</small></p>		
<b>No. 3</b>	468	751
<p><small>The constitutional amendment to give the legislature the power to authorize cities and towns to issue bonds to finance the redevelopment of blighted areas and prohibiting any city or town from granting its money or lending its credit for such purposes. (La enmienda constitucional que da a la legislatura el poder de autorizar las ciudades y pueblos para emitir bonos para financiar el desarrollo de áreas deterioradas y prohibir cualquier ciudad o pueblo de conceder su dinero o prestar su crédito para tales fines.)</small></p>		
<b>No. 4</b>	761	482
<p><small>The constitutional amendment authorizing the legislature to exempt from taxation solar and wind-powered energy devices. (La enmienda constitucional autorizando a la legislatura para eximir de impuestos aparatos de energía solar o de viento.)</small></p>		
<b>No. 5</b>	649	568
<p><small>The constitutional amendment to extend the jurisdiction of justices of the peace in civil cases. (La enmienda constitucional para extender la competencia de los jueces de paz en causas civiles.)</small></p>		
<b>No. 6</b>	646	546
<p><small>The constitutional amendment permitting the legislature to increase the number of justices on a court of civil appeals, permitting a court of civil appeals to sit in sections, and requiring a concurrence of a majority of justices to decide a case. (La enmienda constitucional permitiendo que la legislatura aumente el número de jueces en cualquier Corte de Apelaciones Civiles, permitiendo que Cortes de Apelaciones Civiles sesionen por secciones, y requiriendo la concurrencia de una mayoría de jueces para decidir una causa.)</small></p>		
<b>No. 7</b>	591	569
<p><small>The constitutional amendment to repeal the constitutional authority for the State Building Commission and the State Building Fund. (La enmienda constitucional para abrogar la autoridad constitucional de la Comisión de Edificios del Estado y el Fondo de Edificios del Estado.)</small></p>		
<b>No. 8</b>	777	425
<p><small>The constitutional amendment authorizing certain districts to engage in fire-fighting activities and to issue bonds or to issue bonds or otherwise lend their credit for fire-fighting purposes. (La enmienda constitucional autorizando que ciertos distritos participen en actividades contra incendios y emitan bonos o de otra manera presten crédito para tales propósitos.)</small></p>		

### Sudan News By Evelyn Ritchie

Candice and Courtney Coldiron of Abilene are visiting with their grandparents Mr. and Mrs. Dewey Coldiron.

Leanna Conley was honored on her eleventh birthday with a slumber party Thursday night.

Debbie Hall of Canyon was home during the weekend as was several other college students including, Matt Hana, Steve Ritchie, Kelli Hargrove, Jodi Vernon, Rex Beacus and Ann Nix.

Mr. and Mrs. Jim Hargrove and Mrs. Pat Newsum have been in Lubbock frequently the past several days to be with their mother, Mrs. Polly Hargrove who has been hospitalized with a broken ankle.

Mr. and Mrs. James Arnold were in Ardmore, Okla. recently to attend the funeral services

of her brother Roy White.

Mr. and Mrs. Raymond Gage have moved into a new home on highway 303.

Michael Conley was honored Thursday on his eighth birthday with a party in the home of his mother.

A cake decorated with the cookie monster and punch was served.

### Sheep Numbers Up in Feedlots

Texas drylot sheep feeders reported 89,000 head of sheep and lambs on feed for slaughter as of Oct. 1, an increase of 25 per cent over last year, Agriculture Commissioner Reagan V. Brown has noted.

"The 89,000 head represented an 11-per cent rise over September, with placements during that month totaling 46,000 head," he stated.

Sheep and lambs marketed for slaughter during September numbered 37,000, according to the Texas Crop and Livestock Reporting Service.

## Opening Soon

### Complete Irrigation Service.

**Specializing In Service To Our  
Customers**



**LOCKWOOD**  
CENTER PIVOT IRRIGATION



**Campbell**  
IRRIGATION SYSTEMS  
Of Muleshoe

604 N. 1st 272-5536



### Nursing Home News

By Joy Stancell

Sunday morning, E.B. Wilson came for Bible Study with the residents. Those attending were Archie Scarlett, Maggie London, Marie Patton, Edna Henderson, Lottie Hall, Dottie Wilterdine, Marie Engram, Ed Clark and Onnie McDaniel.

Sunday after noon the Church of the Independent Baptist came to sing for the residents. Those attending were Lottie Hall, Archie Scarlett, Ed. Clark, Maggie London, Marie Engram, Dottie Wilterdine, Edna Henderson, Marie Patton, Berdie Phelps, Arthur Bradley and Carrie Boydston.

Monday, Rosie McKillip and Mr. and Mrs. C.W. Burford came and played dominoes with Marie Engram and Docia Perish.

Tuesday the Hospital Auxiliary came and worked in the beauty shop, fixing the ladies' hair. The residents that had their hair set and shampooed were Maggie London, Docia Perish, Marie Engram, Edna Henderson, Marie Patton, Lottie Hall, Berdie Phelps, Clara Angeley, Rose Sebring and Chellie Bradley.

Those attending the Halloween Party, sponsored by the Young Homemakers, Tuesday afternoon, were, Lottie Hall, Onnie McDaniel, Carrie Boydston, Berdie Phelps, Ed Clark, Archie Scarlett, Abe Mallouf, Rose Sebring, Clara Angeley, E.P. Farmer, Edna Henderson, Marie Patton, Docia Perish, Willie Steinbock, Marie Engram and Dottie Wilterdine.

Thursday Mrs. Lena Brown from Dr. Redwine's office came to straighten the resident's glasses.

Wednesday Mrs. Darrell Jennings and Mrs. Glen Lust came for music therapy. The residents attending were Annie Brown, Carrie Boydston, Marie Engram, Lottie Hall, Edna Henderson, Marie Patton, Maggie London, Docia Perish, Chellie Bradley, Dottie Wilterdine, Willie Steinbock, Berdie Phelps, Onnie McDaniel, Abe Mallouf, W.W. Parker, Archie Scarlett, Virgil Sweat and Ed Clark.

Thursday Terry Bouchelle came to give auto-harp lessons. Residents attending were Marie Engram, Dottie Wilterdine, Maggie London, Docia Perish, Archie Scarlett, Marie Patton and Abe Mallouf.

Friday, some women from the First Baptist Church came to give a devotional to the residents.

Clara Weaver was visited by her husband, Quinn; her daughter-in-law, Mrs. Jimmy Weaver; Mrs. Jerry Weaver and her grandchildren, Joley, Bob and Chad who came to trick or treat with her.

Dara Slaughter was visited by her husband, William Slaughter of Levelland.

Dottie Wilterdine visited in the home of her niece, Mrs. D.B. Head.

Onnie McDaniels was visited by her granddaughters, Mrs. Judy Wilbanks, Mrs. Homer Allgood and her sister, Mr. and Mrs. Rudolph Moraw.

Mrs. Mattie Glasscock was visited by her daughters, Mrs. Price Stephenson and Mrs. Henry Randolph.

Rose Sebring was visited by her sister-in-law, Mrs. W.D. Sebring.

Ella Chambers is improving daily after surgery on her hip. She is in the Methodist Hospital in Lubbock.

Marie Engram has a new pantsuit, it was made and given to her by Mrs. Afton Stancell.

Mrs. Joy Tibbits came and fixed the November bulletin board for the residents.

Walter Underdown is a new resident at the Nursing Home.

Mrs. Donnie Thomas, the Director of Nurses at the Nursing Home was in the hospital this week.

Mrs. Bulah Harper has returned to the Nursing Home after being in the hospital.

Mr. and Mrs. Arthur Bradley were visited by Mr. and Mrs. Carol Davis of Muleshoe and Mr. and Mrs. Wesley Byrom.

Rosalio Luera is back in the Nursing Home after a stay in the Amarillo Hospital. He was visited this week by his family and Pat Bobo.

E.P. Farmer was visited by his grandchildren, Casey and Kim Farmer.

Docia Perish visited in the home of her daughter, Mrs. Bruce Higgs of Earth. She also attended a bridal shower for her grandson.

Edna Henderson was visited by her daughter-in-law, Mrs. Bobby Henderson and Mrs. Walter Underdown, Mrs. Wilhite and her niece from Dallas, Mrs. Blanch Collier.

Marie Patton was visited by her daughter of Sudan, Mrs. Billy Gore.

Abe Mallouf was visited by his daughter, Mrs. Betty Jo Estep of Plains.

- ONE MINUTE SPORTS QUIZ**
1. Name the East and West teams that will play for the NL title.
  2. Who meets for the AL East and West title?
  3. Name the AL and NL batting champs.
  3. Who won the World Series of Golf?
  5. Name the quarterback for the Washington Red Skins.

- Answers to Sports Quiz**
1. Philadelphia Phillies and Los Angeles Dodgers.
  2. New York Yankees and Kansas City.
  3. Rod Carew, Minnesota Twins; Dave Parker, Pittsburgh Pirates.
  4. Gil Morgan.
  5. Joe Theismann.

**Sex Flo!**  
Professor--What is the outstanding contribution that chemistry has given the world?  
Flo--Blondes!



**SHOTGUN TO BE GIVEN AWAY...**This Remington Model 1100 automatic .12 gauge shotgun will be presented some lucky winner by the Muleshoe Jaycees on Saturday, December 9. Barry Cowart, chairman of the project, shows off the shotgun that is available for the winner. Tickets are \$1 each.

### Leftover Crops May Feed Cattle

One way to expand livestock production in West Texas may be to make better use of whatever is left in the field after crops are harvested. Members of the Livestock Industry Committee of the Lubbock Chamber of Commerce, believing crop residue can make a difference in Lubbock area expansion, are the initiating sponsor of a seminar on "Profitable Use of Crop Residue" to take place from 9-11:45 a.m., Thursday (Nov. 2), at the Plains Co-op Oil Mill, 2901 Ave. A in Lubbock. The seminar is open free to the public. Seminar co-sponsors, with the committee, are the Texas Agricultural Extension Service, Texas Tech University and the Agriculture Department of Lubbock Christian College. Marvin Sartin, extension economist with the Texas Agricultural Extension Service, will begin the seminar, helping farmers and feeders to determine prices for grazing or cash sales of harvested residue. "Our goal," Lennon said, "is expansion of livestock production in this area. We invite all farmers and livestock producers to attend. The seminar will take little time and the benefits should come in bigger profits."

### Drought Causes Honey Reduction

AUSTIN--The Texas honey industry is feeling the effects of this year's widespread drought, and production from commercial apiaries is expected to drop by 22 per cent, according to the Texas Department of Agriculture. With 16,000 fewer bee colonies this year than in 1977, the Texas Crop and Livestock Reporting Service predicts honey production will be down to less than five million pounds, compared to 6.36 million pounds last year. "Texas ranked third in the nation in number of bee colonies in 1977," commented Agriculture Commissioner Reagan V. Brown, "but dry weather, plus heavy flooding when the rains did come, caused many apiaries to move to more favorable out-of-state locations. "We hope this is a temporary move," Brown said, "and that the weather improves next year to help the industry gain strength in the state." Throughout the rest of the U. S., production is expected to increase 44 per cent above last year, up to almost 150 million pounds. Yield per colony is predicted at 74.6 pounds in 20 selected honey producing states, compared to only 55 pounds per colony in Texas.

### Bula News

By Norma Bellar

Mariw Suwgs of Midland visited in the home of Mr. and Mrs. V.C. Weaver, Sunday.

Danny Miller, son of Mr. and Mrs. Al Miller, formerly of Three Way is in critical condition at the Methodist Hospital in Lubbock.

Wade and Brian Pollard of Witharal spent the weekend with their grandparents, Mr. and Mrs. Lloyd Pollard.

Mr. and Mrs. Carl Pollard of Stegal visited in the home of Mr. and Mrs. Lloyd Pollard, Sunday.

Bro. Eddie Riley and P.R. Pierce attended a Brotherhood Rally at the First Baptist Church of Littlefield last Tuesday.

Mr. and Mrs. John Latham went to the Texas Tech Rodeo, Wednesday night, to watch their grandson, Chris DeSautell ride in the bronc riding.

Mr. and Mrs. Jeryl Bellar, Cheryl and Jeryl Jr. and Mr. and Mrs. John Bellar of Littlefield went to the Texas Tech Rodeo, Saturday night.

J.O. Dane died Wednesday evening, October 25, in the home of his daughter, Mrs. Joe Clark of Chico. He was a former resident of Enochs and a member of the Enochs Baptist Church for 34 years. He was 72 years of age.

Memorial services were held at 2 p.m., Friday at the Enochs Baptist Church with Rev. Charlie Shaw, officiating. Pall bearers were Clyde Price, E.C. McCall, Bob Newton, Raymond Austin, Jerry Nichols and Keith Price. Burial was in the Enochs Cemetery.

Rev. and Mrs. Charlie Shaw spend Monday night with his mother, Mr. and Mrs. L.B. Kelso in Lubbock and went to be with his brother-in-law, George Clark, who had open heart surgery, Tuesday morning. They also went back Saturday to visit him and Mrs. Dale Nichols who is in the Highland Hospital.

Mrs. Joe Don Phillips of Levelland and her sisters came to see their father, L.G. Harris for the past weekend. Harris has been ill.

Mrs. Eula Archer has been a patient in the Littlefield Hospital since Wednesday afternoon.

Mrs. J.W. Layton, Mrs. Harold Layton and Mrs. H.H. Snow of Muleshoe were in Amarillo Monday to visit their nephew, Glen Edwards Cash who is very ill and a patient in the hospital there.

Mrs. Gracy Swanner of Lubbock and Mrs. Ray Cunningham of Slide spent Monday evening til Wed. afternoon with their sister, Mr. and Mrs. J.D. Bayless. Tuesday Mrs. Swanner, Mrs. Cunningham and Mr. and Mrs. Bayless were dinner guests in the home of the women's brother, Mr. and Mrs. Claud Coffman of Muleshoe.

Mr. and Mrs. Robert Sihhan of Littlefield came by and visited with her parents, Mr. and Mrs. E.M. Autry, one day the past week.

The Bula and Enochs Arthritis drive did real well, the collected \$337.50.

Glen Edward, son of Mrs. Vida Cash of Hereford, underwent surgery, Tuesday morning and had a toe removed. Later that night, he had to have his leg amputated. At last report, he was improving. The Cash's are former residents of Enochs.

Mr. and Mrs. J.E. Layton and son, Keith, were among 17 guests Sunday at the home of her sister, Mr. and Mrs. Bill Burris of Wellman. They helped her father, Carl Hall celebrate his 77th birthday.

Dale Nichols and daughter, Paula, visited his wife, Rose at the Highland Hospital Saturday and Sun. They spent Saturday night with his brother, Mr. and Mrs. Harold Dean Nichols of Idalou.

Miss Lisa Diane Fletcher and Eddie Wayne Vandlandingham of Lubbock were married Oct. 9 at the Shepard King Lutheran Church of Lubbock. Vandlandingham is a former resident of Enochs.

Mr. and Mrs. Jerry Nichols and Mrs. Flo Nichols drove to Lubbock, Sunday, to see his mother, Mrs. Dale Nichols at the Highland Hospital.

Brent George, son of Mr. and Mrs. Robert George of Lubbock and grandson of Mr. and Mrs.

E.N. McCall was enroute home from Amarillo when he collided with a cattle truck. He was hospitalized overnight at the North West Texas Hospital in Amarillo with cuts and abrasions.

Mrs. Winnie Byars was in Lubbock, Saturday, and visited her daughter, Mrs. Jack Parr. She also visited Mrs. Dale Nichols and Mrs. George Autry.

Mr. and Mrs. Bob Adams spent Saturday night with her sister-in-law Mrs. Jenita Harris of Lubbock.

**Logical?**  
Teacher--If I have 25 apples in a ring and I take one away, what do I have?  
Johnny--A ring with an apple missing.  
British overseas diplomats told to spend less.

Put Your **HELP WANTED** In The **Classifieds**

## ALLSUP'S CONVENIENCE STORES

PRICES GOOD NOV. 6-12, 1978

<p style="text-align: center; font-weight: bold; font-size: 1.2em;">Come back to GOODNESS</p> <table border="1" style="width: 100%; border-collapse: collapse;"> <tr><td style="width: 50%;">SHURFINE WAFFLE SYRUP 32 OZ. BTL. 79¢</td><td style="width: 50%;">SHURFINE CATSUP 32 OZ. BTL. 79¢</td></tr> <tr><td>SHURFINE SALAD DRESSING 32 OZ. JAR. 79¢</td><td>SHURFINE SALTINE CRACKERS 16 OZ. BOX 2 FOR \$1</td></tr> <tr><td>SHURFINE DOG FOOD 15 OZ. CAN 7 FOR \$1</td><td></td></tr> </table>	SHURFINE WAFFLE SYRUP 32 OZ. BTL. 79¢	SHURFINE CATSUP 32 OZ. BTL. 79¢	SHURFINE SALAD DRESSING 32 OZ. JAR. 79¢	SHURFINE SALTINE CRACKERS 16 OZ. BOX 2 FOR \$1	SHURFINE DOG FOOD 15 OZ. CAN 7 FOR \$1		<table border="1" style="width: 100%; border-collapse: collapse;"> <tr><td style="width: 50%;">SHURFRESH QUALITY SLICED BACON 1 LB. PKG. \$1.39</td><td style="width: 50%;">REGULAR/DEEP SHURFRESH FRANKS 12 OZ. PKG. 89¢</td></tr> <tr><td>SHURFRESH PORK SAUSAGE 1 LB. ROLL 99¢</td><td>REGULAR/DEEP SLICED SHURFRESH BOLOGNA 12 OZ. PKG. 89¢</td></tr> </table>	SHURFRESH QUALITY SLICED BACON 1 LB. PKG. \$1.39	REGULAR/DEEP SHURFRESH FRANKS 12 OZ. PKG. 89¢	SHURFRESH PORK SAUSAGE 1 LB. ROLL 99¢	REGULAR/DEEP SLICED SHURFRESH BOLOGNA 12 OZ. PKG. 89¢	<table border="1" style="width: 100%; border-collapse: collapse;"> <tr><td style="width: 50%;">SHURFRESH HALFMOON CHEESE 10 OZ. PKG. \$1.05</td><td style="width: 50%;">SHURFINE EARLY HARVEST SWEET PEAS 17 OZ. CANS 3 FOR \$1</td></tr> <tr><td>SHURFRESH SLICED AMER. CHEESE 12 OZ. PKG. \$1.09</td><td>SHURFINE WHOLE PEELLED TOMATOES 16 OZ. CANS 2 FOR 69¢</td></tr> <tr><td>SHURFINE FROZEN ORANGE JUICE 3 8 OZ. CANS \$1</td><td>SHURFINE TOMATO SAUCE 8 OZ. CANS 6 FOR \$1</td></tr> </table>	SHURFRESH HALFMOON CHEESE 10 OZ. PKG. \$1.05	SHURFINE EARLY HARVEST SWEET PEAS 17 OZ. CANS 3 FOR \$1	SHURFRESH SLICED AMER. CHEESE 12 OZ. PKG. \$1.09	SHURFINE WHOLE PEELLED TOMATOES 16 OZ. CANS 2 FOR 69¢	SHURFINE FROZEN ORANGE JUICE 3 8 OZ. CANS \$1	SHURFINE TOMATO SAUCE 8 OZ. CANS 6 FOR \$1						
SHURFINE WAFFLE SYRUP 32 OZ. BTL. 79¢	SHURFINE CATSUP 32 OZ. BTL. 79¢																							
SHURFINE SALAD DRESSING 32 OZ. JAR. 79¢	SHURFINE SALTINE CRACKERS 16 OZ. BOX 2 FOR \$1																							
SHURFINE DOG FOOD 15 OZ. CAN 7 FOR \$1																								
SHURFRESH QUALITY SLICED BACON 1 LB. PKG. \$1.39	REGULAR/DEEP SHURFRESH FRANKS 12 OZ. PKG. 89¢																							
SHURFRESH PORK SAUSAGE 1 LB. ROLL 99¢	REGULAR/DEEP SLICED SHURFRESH BOLOGNA 12 OZ. PKG. 89¢																							
SHURFRESH HALFMOON CHEESE 10 OZ. PKG. \$1.05	SHURFINE EARLY HARVEST SWEET PEAS 17 OZ. CANS 3 FOR \$1																							
SHURFRESH SLICED AMER. CHEESE 12 OZ. PKG. \$1.09	SHURFINE WHOLE PEELLED TOMATOES 16 OZ. CANS 2 FOR 69¢																							
SHURFINE FROZEN ORANGE JUICE 3 8 OZ. CANS \$1	SHURFINE TOMATO SAUCE 8 OZ. CANS 6 FOR \$1																							
<table border="1" style="width: 100%; border-collapse: collapse;"> <tr><td style="width: 50%;">SHURFINE VAC PAK COFFEE 1 LB. CAN \$2.19 ALL BRANDS</td><td style="width: 50%;">SHURFINE GRANULATED SUGAR 5 LB. BAG 89¢</td></tr> <tr><td>SHURFINE PINK ONLY BATHROOM TISSUE 8 ROLL PAK \$1.19</td><td>WRITERS SHURFINE BLEACH 69¢</td></tr> </table>	SHURFINE VAC PAK COFFEE 1 LB. CAN \$2.19 ALL BRANDS	SHURFINE GRANULATED SUGAR 5 LB. BAG 89¢	SHURFINE PINK ONLY BATHROOM TISSUE 8 ROLL PAK \$1.19	WRITERS SHURFINE BLEACH 69¢	<table border="1" style="width: 100%; border-collapse: collapse;"> <tr><td style="width: 50%;">SHURFRESH SELF-BASTING TURKEY 10/14 LBS. 79¢ WITH TIMER</td><td style="width: 50%;">ALLSUP'S MILK GAL. \$1.89</td></tr> </table>	SHURFRESH SELF-BASTING TURKEY 10/14 LBS. 79¢ WITH TIMER	ALLSUP'S MILK GAL. \$1.89	<table border="1" style="width: 100%; border-collapse: collapse;"> <tr><td style="width: 50%;">REFRESHING COCA COLA 12 OZ. CUP 10¢</td><td style="width: 50%;">SHURFINE BARTLETT PEARS 16 OZ. CANS 2 FOR 89¢</td></tr> <tr><td></td><td>SHURFINE SPINACH 15 OZ. CANS 3 FOR \$1</td></tr> <tr><td></td><td>SHURFINE SHIELLED BLACKKEYES 15 OZ. CANS 4 FOR \$1</td></tr> <tr><td></td><td>SHURFINE GOLDEN CORN CM / WK 17 OZ. CANS 4 FOR \$1</td></tr> <tr><td></td><td>SHURFINE DM / SM BISCUITS 8 OZ. CANS 8 FOR \$1</td></tr> <tr><td></td><td>SHURFINE CUT GREEN BEANS 16 OZ. CANS 4 FOR \$1</td></tr> <tr><td></td><td>SHURFINE PAPER ASST'D TOWELS JOB ROLLS 2 FOR \$1</td></tr> <tr><td></td><td>SHURFINE VANILLA WAFERS 10 OZ. PKGS. 2 FOR 69¢</td></tr> </table>	REFRESHING COCA COLA 12 OZ. CUP 10¢	SHURFINE BARTLETT PEARS 16 OZ. CANS 2 FOR 89¢		SHURFINE SPINACH 15 OZ. CANS 3 FOR \$1		SHURFINE SHIELLED BLACKKEYES 15 OZ. CANS 4 FOR \$1		SHURFINE GOLDEN CORN CM / WK 17 OZ. CANS 4 FOR \$1		SHURFINE DM / SM BISCUITS 8 OZ. CANS 8 FOR \$1		SHURFINE CUT GREEN BEANS 16 OZ. CANS 4 FOR \$1		SHURFINE PAPER ASST'D TOWELS JOB ROLLS 2 FOR \$1		SHURFINE VANILLA WAFERS 10 OZ. PKGS. 2 FOR 69¢
SHURFINE VAC PAK COFFEE 1 LB. CAN \$2.19 ALL BRANDS	SHURFINE GRANULATED SUGAR 5 LB. BAG 89¢																							
SHURFINE PINK ONLY BATHROOM TISSUE 8 ROLL PAK \$1.19	WRITERS SHURFINE BLEACH 69¢																							
SHURFRESH SELF-BASTING TURKEY 10/14 LBS. 79¢ WITH TIMER	ALLSUP'S MILK GAL. \$1.89																							
REFRESHING COCA COLA 12 OZ. CUP 10¢	SHURFINE BARTLETT PEARS 16 OZ. CANS 2 FOR 89¢																							
	SHURFINE SPINACH 15 OZ. CANS 3 FOR \$1																							
	SHURFINE SHIELLED BLACKKEYES 15 OZ. CANS 4 FOR \$1																							
	SHURFINE GOLDEN CORN CM / WK 17 OZ. CANS 4 FOR \$1																							
	SHURFINE DM / SM BISCUITS 8 OZ. CANS 8 FOR \$1																							
	SHURFINE CUT GREEN BEANS 16 OZ. CANS 4 FOR \$1																							
	SHURFINE PAPER ASST'D TOWELS JOB ROLLS 2 FOR \$1																							
	SHURFINE VANILLA WAFERS 10 OZ. PKGS. 2 FOR 69¢																							

## PLOW WITH PULL

17-HP L185DT with four wheel drive and moldboard plow

- 2 cylinder diesel engine.
- 8 forward speeds, 2 reverse.
- 3-point hitch with Category 1.
- Hydraulic lift with position control.
- Front and rear PTO shafts.

Plus a full line of tractors and implements for nearly every job on the face of the earth!

# KUBOTA

Test drive a Kubota diesel tractor now at

## Sprink-L-Rite Corporation

2610 E. Mabry Drive Clovis, N.M.

**True Value**  
HARDWARE STORE

## TOOL VALUE

of the Month

QUANTITIES LIMITED

MECHANIC now 3.99

While Supplies Last

### RIVET TOOL KIT

For do-it-yourself home fastening jobs! Easy-to-follow instructions. Incl. assorted rivets. K110

## Dry Box

401 South First MULESHOE, TEXAS 79347

# BACK THE MULES

**ATTEND THE GAMES**

**FOOTBALL**  
*Contest*

NOV. 10, 1978  
**Muleshoe At Dimmitt**  
7:30 p.m.

**Tri-County SAVINGS AND LOAN ASSOCIATION**  
OFFICES IN MULESHOE, FARRELL, FRONA, LITTLEFIELD  
272-5527

**TOM FLOWERS AUCTION**  
Clovis Hwy. 272-4154

**ROBERT GREEN, INC.**  
"Your Oldsmobile, Buick, Pontiac & GMC Dealer"  
Clovis Hwy. 272-4588

 **SONIC DRIVE IN**  
1633 W. Amer. Blvd. 272-3998

 **DECORATORS**  
Nursery & Floral  
Telephone 272-3660 616 South First

 **MULESHOE STATE BANK**  
101 AMERICAN BLVD. 272-4561 MEMBER FDIC

**WILLIAMS BROS. OFFICE SUPPLY**  
322 Main 272-3113

**WILSON DRILLING**  
W. Hwy. 84 272-5521

**MULESHOE FLORAL & GIFT**  
121 Main 272-4287

**ANA'S HOUSE OF BEAUTY**  
109 E. Ave. B. 272-4152

**DARI DELITE**  
210 N. 1st. 272-4482

 **Beaver Flowerland**  
530 S. 1st., Muleshoe, Texas - Phone 272-3116

**WESTERN DRUG**  
114 Main 272-3106

**BAILEY COUNTY ELECTRIC COOPERATIVE ASSOCIATION**  
305 E. Ave. B. 272-4504

**EL NUEVO LEALS' RESTAURANT**  
1542 W. Amer. Blvd. 272-3294

**RANCH HOUSE MOTEL**  
W. Hwy. 84 272-4261

**WATSON ALFALFA**  
272-4038

**MULESHOE COOPERATIVE GINS**  
272-4794

**JOHNNIES SAFETY CENTER**  
320 E. Amer. Blvd. 272-3043

**W. Q. CASEY INS.**  
121 E.A. ve. C. 272-4331

 **CORRAL RESTAURANT**  
MULESHOE, TEXAS 272-3182  
HAL AND RENÉE ANDERSON

 **Cobb's**  
218 Main 272-5511

 **WESTERN SPRINKLERS INC.**  
W. Hwy. 84 ZIMMATIC CENTER PIVOT SYSTEMS

**WEEKLY PRIZES!**

1ST PRIZE \$5 2ND PRIZE \$3 3RD PRIZE \$2

**GRAND PRIZE \$50**

And TWO tickets to the Cotton Bowl, January 1st. There will also be a contest and prizes for the Bowl games.

**RULES**

1. The contestant must be 12 years or older.
2. Only one entry per person may be made for any one contest.
3. Weekly contests are open to everyone except employees and families of this newspaper; bring or mail your entries to the Journal office.
4. Mailed entries must be postmarked not later than 5:30 p.m. Friday; winners names will be published in this newspaper each Thursday following the close of the weekly contest.
5. Check the team you think will win; 10 points for 1st place, 6 points for 2nd place and 4 points for 3rd place determines the Grand Prize winner.
6. The tie-breakers will count as one of the games picked, the predicted scores will be used to determine the top three places in that week's contest, if necessary, and cash prizes and points will be divided between winners in event of ties. Please write FOOTBALL CONTEST on envelope of mailed entry. Decision of the Journal's scoring judges will be final.

**LAST WEEK'S WINNERS**  
FIRST PRIZE Doyle Weir  
SECOND PRIZE Nona Blake Douglass  
THIRD PRIZE Sammy Gonzales, Jr.

You Have Until 5:30 p.m. Friday To Enter

**OFFICIAL ENTRY FORM**  
PICK THE WINNING TEAMS

1. STANFORD .....	<input type="checkbox"/>	ARIZONA STATE .....	<input type="checkbox"/>
2. WEST TEXAS .....	<input type="checkbox"/>	DRAKE .....	<input type="checkbox"/>
3. WASHINGTON .....	<input type="checkbox"/>	SOUTHERN CALIFORNIA .....	<input type="checkbox"/>
4. FLORIDA .....	<input type="checkbox"/>	GEORGIA .....	<input type="checkbox"/>
5. ARMY .....	<input type="checkbox"/>	BOSTON COLLEGE .....	<input type="checkbox"/>
6. OKLAHOMA STATE .....	<input type="checkbox"/>	IOWA STATE .....	<input type="checkbox"/>
7. MISSISSIPPI .....	<input type="checkbox"/>	TULANE .....	<input type="checkbox"/>
8. WASHINGTON STATE .....	<input type="checkbox"/>	CALIFORNIA .....	<input type="checkbox"/>

**TIEBREAKER**

1. HOUSTON .....	<input type="checkbox"/>	TEXAS .....	<input type="checkbox"/>
2. NEBRASKA .....	<input type="checkbox"/>	OKLAHOMA .....	<input type="checkbox"/>

NAME \_\_\_\_\_  
ADDRESS \_\_\_\_\_  
CITY \_\_\_\_\_ PHONE \_\_\_\_\_

Please write FOOTBALL CONTEST Box 449, Muleshoe, Texas on envelope of mailed entry.

**CLIFF ALLEN CUSTOM SADDLE MAKER**  
1021 W. American Blvd. 272-4898

**CARL BAMERT SEED FARMS**  
RFD 3 272-4787

**SINGLETON ELLIS FUNERAL HOME**  
104 E. Ave. F. 272-4574

**WEBB'S SPUDNUT SHOP**  
328 S. Main 272-3542

**FIRST NATIONAL BANK**  
224 S. 1st. 272-4515


**TEXAS SESAME**  
Division of Paris Milling Co.  
Railroad Street 272-4231

**ROBERT RUIZ, INC.**  
Hwy. 70 272-4226

**MAIN STREET BEAUTY SALON**  
115 Main 272-3448

**MOHAWK AUTO PARTS**  
1701 W. Amer. Blvd. 272-4425

**WINKLER MEAT CO.**  
We do custom butchering  
401 Main 272-4703

 Henry Insurance Agency  
111 W. Ave. B. 272-4581

 Richard Kimbrough, mgr.  
312 W. 2nd. 272-4229

**GORDON WILSON APPLIANCE**  
YOUR MAYTAG, ZENITH DEALER  
117 Main

**DENT-REMPE, INC.**  
 JOHN DEERE  
1516 W. Amer. Blvd. 272-4296

 **Lee's WESTERN WEAR**  
1910 W. Amer. Blvd. 272-4663



# CLASSIFIED ADS

## THE PLACE TO LOOK



**Deadline For Classified Ads Is At 11:00  
Tuesdays And Fridays**

**OPEN RATES**  
1st insertion, per word - \$.11  
2nd and add., per word - \$.09  
**NATIONAL RATES**  
1st insertion, per word - \$.11  
2nd and add., per word - \$.07  
Minimum Charge:  
1st insertion - \$1.65  
2nd insertion - \$1.35  
**CARD OF THANKS**  
30 words - \$3.00  
Over 30 words charged at regular classified rates.  
Classified Display - \$1.40 per column inch.  
Double Rate for Blind Ads.

**DEADLINE FOR INSERTION**  
11:00 Tuesday for Thursday  
11:00 Friday for Sunday  
WE RESERVE THE RIGHT TO CLASSIFY, REVISE OR REJECT ANY AD.

NOT RESPONSIBLE FOR ANY ERROR AFTER AD HAS RUN ONCE.  
Effective May 1, 1978.

### 1. PERSONALS

**FOR YOUR ALOA VERA PRODUCTS**  
see Doris Wedel  
224 W. 2nd.  
Phone 272 3283  
1-42s-tfc

**WATER PILLS** and laxatives may deplete your body's essential Potassium. Ask for K Forte' at the Western Drug.  
1-45t-2tp

### 2. LOST & FOUND

**LOST:** Set of keys, reward offered. Call 272-5049.  
2-45t-2tc

### 3. HELP WANTED

**HELP WANTED:** A part time or full time experienced hairdresser. Benefits. Call Anna at 272-4152.  
3-38t-tfc

**WANTED:** Farm hand, top wages. References required. Call John Mitchell at 965-2160.  
3-44s-8tc

**LIFE INSURANCE:** Outstanding Career Opportunities in sales and Management. Experience helpful, but not necessary. Excellent General Agent Contract for the experienced agent. Man or Woman, Will Train. Send resume to Muleshoe Journal, Box 449, Muleshoe, Texas 79347.  
3-42t-8tp

**HELP WANTED:** Contract Appliance Delivery Man. Must have own truck and tools. Some knowledge of appliances required. Insurance requirements. Contact Sears, Roebuck and Co. 129 Main in Muleshoe or Call 272-4216 ONLY.  
3-44t-4tp

**HELP WANTED:** An Ohio Oil Co. offers Plenty of Money plus cash bonuses, fringe benefits to mature individual in Muleshoe Area. Regardless of experience, write C.C. Read, Pres., American Lubricants Co., Box 696, Dayton, Ohio 45401.  
3-45t-1tc

**OWN YOUR OWN**  
beautiful Jean and Fashion shop, offering the latest in Fashion Jeans, Sportswear, Ladies Apparel, Costume Jewelry and other related fashions. You may select your beginning inventory from over 135 Nationally known brands. \$15,000 includes beginning inventory training and fixtures. You may have your store open in as little as 15 days. Call collect for Mr. Wilkerson at 501-329-8326.  
3-45t-1tp

**HELP WANTED:** Sales person, \$125 per week and commission, car allowance. Must be willing to work. Call 257-2145.  
3-45t-2tc

**HELP WANTED:** Seamstress wanted, for details call Charlie 965-2471.  
3-45t-tfc

**4. HOUSES FOR RENT**

**FOR RENT:** Brand new 2 bedroom Mobile Home, furnished. \$285 per month including water and sewage. See at Ranch House Motel.  
4-41s-tfc

**HOME FOR RENT:** 2 bedroom, den, and 2 car garage, 215 Ave. 1 or call collect 892-2437 after 8 p.m.  
8-37t-tfc

**5. APTS. FOR RENT**

**FOR RENT:** 2 bedroom apt. Refrigerated air, central heat, Adults only. No children or pets. \$225.00 per month. Call 272-4726 or 272-4889.  
5-40t-tfc

### 8. REAL ESTATE

**HOUSE FOR SALE:** 411 W. 2nd. Call 647-5241, Dimmitt, R.V. Ivy.  
8-45t-8tp

**HIGHWAY 214 NORTH  
MULESHOE, TEXAS**  
**TOWN and COUNTRY REAL ESTATE**

**2 bedroom houses**  
2 new 3 bedroom houses with single garages

1 - 3 bedroom - 3 car garage, fireplace, 1600 sq. ft. brick, Richland Hills

1-3 bedroom Brick, Richland Hills, 2400 sq. ft.

Several small Acreages 2 miles North or 3 miles East

Some oil for Mobile Homes.

**FARMS HOMES RANCHES**  
**JOHN W. SMITH**  
272-4678  
broker

**KREBBS REAL ESTATE**  
122 W. Ave. C  
Appraisals  
Lots  
10 percent down, 10 yrs. Several nice homes in City and Country.  
8-40s-tfc

**FOR SALE:** My farm, 104 Acres, 2 wells, all underground pipe. Improved. Erwin Nieman, Call 965-2638.  
8-43t-5tp

**SMALLWOOD REAL ESTATE**  
232 Main  
272 4838  
Two new 3 bedroom, 2 bath, brick houses, fenced back yard. Country home, 2 bedroom, one bath 3/4 acre lot of fruit trees.  
8-40t-tfc

**FOR SALE:** Beautiful home in good neighborhood. 3 bedroom, 2 full baths. Call 272-3183 for an appointment.  
8-43t-tfc

**FOR SALE BEAVERS FLOWERLAND**  
CALL  
272-3024.  
8-42s-tfc

80 acre tract with good water, on pavement.  
Lee Pool  
Real Estate  
615 Ave. J  
272-3139  
8-41t-tfc

**FOR SALE OR TRADE:** Dinner Bell Cafe. Price includes business, fixtures, building and lots. Call 505-546-6233 or write P.O. Box 1279, Deming, N.M. 88030.  
8-44s-tfc

**E.E. HOLLAND REAL ESTATE**  
113 W. Ave. D  
PHONE 272-3293  
DAY OR NIGHT  
Robin Davis, Salesman  
FOR SALE: 30 acres North of Muleshoe, close in. Exclusive.  
8-45t-tfc

156 Acres, 3 bedroom home domestic well, 2 wells 30 and 50 hp. motors on Friona Highway close in.  
8-45t-tfc

**RICHLAND HILLS HOME FOR SALE:** 3 bedroom, 2 bath, single garage, carpet and drapes. Fenced backyard with storage house. Call after 5 p.m., 272-3041.  
8-43t-tfc

**For all your real estate needs**  
Call:  
**GLAZE & GOFORTH**  
112 Ave. C  
272-4208  
8-11s-tfc

**FOR SALE:** New 3 bedroom energy efficient brick home, 2 car garage, 1 3/4 baths, cedar fence, by J&R Construction, 703 Ave. J. Call 272-3758 or 272-4347.  
8-40s-tfc

**"remember" REID REAL ESTATE**  
We Need Your Business  
Visit with us for your Real Estate business.

5 bedroom, 3 bath, under \$25,000.00.

177 Acres in Wheat.  
Call 272-3142.  
8-42t-tfc

**FOR SALE:** Nice 3 bedroom, 1 3/4 bath, garage, large fenced yard with storage building. Call after 6 p.m., 272-4754.  
8-45s-tfc

**TOWN & COUNTRY EQUITIES**

Country Grocery Store, Texaco Station, with 3 bedroom home.

Two bedroom, den and livingroom, 1 car garage. \$21,500.00

120 Acres with 8 inch well and 2 bedroom house.

272-3761 or 272-4693, Lucille Harp  
8-45s-4tc

**LOT FOR SALE:** 75 x 140, 7th and K. Call 272-5074 after 4 p.m.  
8-44s-tfc

**9. AUTOMOBILES FOR SALE**

**FOR SALE:** 1074 Luxury Lemans. Approximately \$4,000 miles. Excellent condition. Call 965-2155 after 6 p.m.  
9-45t-4tc

**FOR SALE:** 1977 Ford F150 Custom Pickup. Power and air, 13,000 miles. Call 257-3804.  
9-41s-tfc

**FOR SALE:** 1975 Mercury Monarch, 35,000 miles. Call 965-2757 after 6 p.m. 9-44t-tfc

**10. FARM EQUIP. FOR SALE**

**PVC PIPE FOR SALE**  
1/2" - 200# - .10  
3/4" - 200# - .11  
1" - 200# - .13  
1 1/4" - 160# - .15  
1 1/2" - 160# - .20  
2" - 160# - .25  
3" - 160# - .55  
4" - 16" - .85  
3" - Sch. 40 - .85  
4" - Sch. 40 - 1.25  
All fittings available also.

**STATE LINE IRRIGATION COMPANY, INC.**  
MULESHOE, TEXAS  
710 E. Amer. Blvd.  
Phone 272-3450  
10-45s-tfc

**FOR SALE:** John Deere Model 33 cotton stripper, good condition. Call 946-3679.  
10-43s-tfc

**11. FOR SALE OR TRADE**

**FOR SALE OR TRADE:** 80 acres, 1 good 8" well, 2 side row springlers, 3 bedroom brick house, 800 head feed lot with one Harvester. Will sell all as complete unit or will divide. Contact T.L. Timmons, Phone 272-3819.  
11-36s-tfc

**12. HOUSEHOLD GOODS**

**FOR SALE:** Two bedroom House, to be moved, 14 cotton trailers, T.V. Antenna and tower, Contact Elvis Childs, Box 516, Farwell, Texas. Call 481-9303.  
12-44t-4tp

**BURROWS UPHOLSTERING\*** new address, 118 W. Ave. C in the rear. Phone 272-4255  
12-39s-tfc

**14. FARM PROP. FOR LEASE**

**FOR RENT:** 160 Acres, 3 wells, 3 motors. Phone 795-0566, Lubbock, after 8 p.m.  
14-42t-8tp

**15. MISCELLANEOUS**

**INTERESTED IN SEEKING**  
200 to 250 acres of good farm land for vegetables, with good wells. Within a 30 mile radius toward Lubbudde. Terms, or cash lease or share crop. Robert Ruiz, Inc., 806-272-4226 or 512-383-6236, ask for Richard or Robert, Sr. Also may contact local representative, Mr. W.H. Lee at 272-3728.  
15-42t-20tc

**Your End Sale**  
\$100.00 off  
KIRBY CLASSIC III  
Plus trade in  
Call  
LOYD WHITE  
(Area dist.)  
LITTLEFIELD TEXAS  
PHONE 385-3357  
15-42t-tfc

**MAKE SPARE TIME MONEY**  
at home. If you sew, embroidery, paint or have a craft Call Charlie, 965-2471.  
15-45t-tfc

**RENTAL SERVICE**  
Washers, dryers, televisions, refrigerators. By week or month.  
Call 272-5531  
WILSON APPLIANCE  
117 MAIN  
MULESHOE, TX.  
15-16-tfc

**PHILLIPS HOUSE OF MUSIC**  
118 MAIN  
CLOVIS, NEW MEXICO  
Pianos, organs, band instruments, new and used. Professional repairs, sheet music, rentals, terms.  
Phone: 505-763-5041.  
15-30s-tfc

**SIGN UP NOW** for piano lessons. Twelve years experience, Bachelor of Music Degree. Call Mrs. Susie Rhodes, 272-4139 15-35s-tfc

**FOR SALE:** 2 lots in Garden 3 of Bailey County Memorial Park. Call 272-3346 after 5 p.m. or write Bill Dale, Rt. 2, Marlon, Kentucky 42064.  
15-44t-4tc

Custom Designed and Made-To-Order RINGS-N-THINGS BY JEROLLY 918 E Hickory Phone 272-3163

**FOR SALE:** Tomatoes, okra and bell peppers. Four miles west on 1760, 1 mile north and 1/4 west. Robert and Frankie Lunsford. Phone 272-3748.  
15-38s-tfc

**FOR SERVICE ON T.V. Call 272-5531.**  
WILSON APPLIANCE  
117 MAIN  
MULESHOE, TX  
We stock parts and do service on Zenith, Sylvania, RCA, Catalina. Store Hours 8-6 Monday-Saturday.  
15-16s-tfc

**DRY FOAM CLEANING METHOD AVAILABLE**  
Car and furniture upholstery  
Call 272-4415  
15-45s-2tp

**ELECTRICAL WORK:** Reasonable rates, jobs large or small, Jerry Teaff Electric. Phone 933-4659, Bula  
15-31t-tfc

**FOR NEW HOMES,** add on or remodel. Call J&R Construction, 272-4347 or 272-3758.  
15-41t-tfc

**ASPHALT ROOFING, COMPOSITION SHINGLES,** new roof and repairs. Free estimates. Call Collect  
RON FOSHEE  
385-5680.

**LITTLEFIELD ROOFING**  
15-42s-tfc

**Card Of Thanks**  
We would like to express our appreciation and thanks to Frank Ellis and his staff, to Dr. Albertson and the Hospital staff for their quick response to our call. To Bro. Prevo for his visit and to all our friends and neighbors for calls, cards, food and memorials. May God bless each of you.  
The family of Frank Strong  
15-45t-1tp

**Legal Notice**

**NOTICE TO ALL PERSONS HAVING CLAIMS AGAINST THE ESTATE OF MAMIE MILLER DECEASED**  
Notice is hereby given that original Letters Testamentary for the Estate of Mamie Miller, were issued on November 6, 1978, in Cause No. 1304, pending in the County Court of Bailey County, Texas, to: **ARTIE FAYE O'HAIR.** The residence of such Executor is Farmer County, Texas. The post office address is:  
**P.O. BOX 28**  
Bovina, Texas 79009.  
All persons having claims against this Estate which is currently being administered are required to present within the time and in the manner prescribed by law.  
Dated the 6th day of November, 1978.  
**YOUNG & GREEN**  
103 W. Ave. D  
Muleshoe, Texas 79347  
Attorney for the Estate  
By Jack D. Young (s)  
Jack D. Young  
15-45t-1tc

**Other Games — South and Southwest**

Angelo State	22	Sam Houston	14
Ark.-Monticello	30	Panhandle	7
Ark.-Pine Bluff	21	Bishop	13
Arkansas Tech	21	Southern State	14
Austin	23	Ross	6
Austin Peay	24	Tennessee Tech	14
Catawba	21	Gulfport	10
Concord	45	Bluefield	6
Delta State	21	Livingston	20
East Texas	25	S. F. Austin	20
Indiana Kentucky	23	Georgetown	17
Elizabeth City	25	St. Paul's	6
Eron	20	Lenoir-Rhyne	6
Fayetteville	20	J. C. Smith	12
Georgetown, DC	27	Washington & Lee	17
Grambling	27	South Carolina State	12
Hampden-Sydney	22	Randolph-Macon	20
Henderson	22	Central Arkansas	21
Howard	23	No Carolina Central	23
Indiana	23	Georgetown, Ky	20
James Madison	28	Emory & Henry	9
Lafayette	21	Davidson	16

**Other Games — Far West**

**Other Games — East**

**Other Games — Midwest**

## Houston-Texas Game Decides Championship

Oklahoma meets Nebraska and Houston plays Texas.. the only little insignificant things at stake on the outcome of these two football games are a couple of conference championships, three or possibly four bowl bids, and maybe a national championship, nothing else!

Nebraska is the host team in the Big Eight showdown against undefeated Oklahoma. The conference championship will most certainly go to the winner, though each has a league game remaining on its schedule. The Cornhuskers have rolled up 372 points in posting a nine and one season so far, their only loss coming in their opener versus Alabama. Oklahoma is 10 and 0, and Kansas is the only team that came close to sacking the Sooners. Oklahoma won, 17-16. Oklahoma leads the series between the two powers, 31 wins to 23 for Nebraska, the Sooners roaring to a 38-7 win last season. Upsets in this 1978 season are becoming more of a rule than an exception, so it shouldn't be surprising that our nod goes to Nebraska by an extra point. However, the power quotients still put Oklahoma in the Number One position in the country.

Texas and Houston have each lost once, but both are undefeated in the Southwest Conference. The Longhorns were beaten rather soundly by Oklahoma, and the Cougars were defeated by Memphis State in the opening game of the season. Since

Houston is the newest member of the conference, the two schools have only met four times on the grid-iron, Texas winning twice, Houston once, and there was a tie. The Longhorns won last year, 35-21, but this year may be different. The game is being played in Austin, but we are picking Houston by one point.

The forecasting scoreboard through October 28 reads thusly: 1,199 happy picks and 424 disgusting boners for a .739 average. Georgia runs into a very rough hurdle in its quest for a share of the Southeast Conference championship with Alabama. Florida hosts the Bulldogs in Jacksonville, and we think the Gators will slip it to Georgia by a point.

In the Pac-10, Southern

California and Washington meet in an elimination contest. The loser will be knocked out of the conference race. The loser: Washington by two.

It's surprising what a public speaker will say to gain publicity.  
Not every trash basket catches all the stuff that should be thrown into it.

## Bookmobile News

By Lorene Sooter  
Tuesday, Nov. 14-  
Morton--9:30 - 11:45  
Wednesday, Nov. 15--  
Circleback--9 - 10  
Bula #1-- 10:30 - 11:30  
Enochs -- 12 - 1  
Thursday, Nov. 16--  
Amherst -- 9:15 - 10:15  
Springlake 1--11 - 11:45  
Springlake 2 -- 12 - 1  
Earth -- 1:15 - 3:45  
Friday, Nov. 17  
Pleasant Valley -- 10 - 11  
Sudan #1 -- 12 - 1  
Sudan #2 -- 1 - 3:45

**True Value**  
BARGAIN of the MONTH  
now 8.99  
4-Qt. CORN POPPER  
It's self-buttering! Top-loading butter cup. Popper shuts off automatically. Cover doubles as serving bowl. 65526  
Quantities Limited  
401 S. 1st  
MULESHOE, TEX.

## Harmon Forecast

1—OKLAHOMA	6—HOUSTON	11—NOTRE DAME	16—PURDUE
2—PENN STATE	7—SOUTHERN CAL	12—GEORGIA	17—MICHIGAN STATE
3—ALABAMA	8—TEXAS	13—CLEMSON	18—ARKANSAS
4—NEBRASKA	9—U.C.L.A.	14—WASHINGTON	19—OHIO STATE
5—MICHIGAN	10—MARYLAND	15—L.S.U.	20—GEORGIA TECH

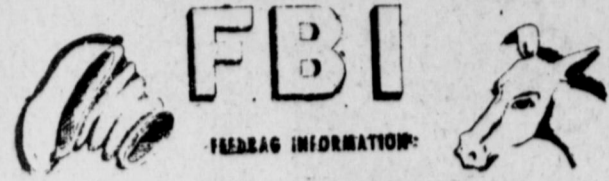
Saturday, Nov. 11 — Major Colleges

Alabama	27	L.S.U.	17
Arizona	24	V.M.I.	21
Arkansas	23	Oregon	17
Army	22	Baylor	17
Baylor	21	Western Michigan	16
Brown	34	San Diego State	24
Bucknell	23	Dartmouth	24
California	23	Colgate	22
Central Michigan	28	Washington State	22
Cincinnati	24	Eastern Michigan	13
Clemson	23	Ohio	8
Colorado	24	North Carolina	10
Columbia	24	Kansas State	15
Delaware	24	Villanova	20
Duke	23	Wake Forest	20
East Carolina	24	William & Mary	17
East Tennessee	25	Middle Tennessee	10
Florida State	24	P.V.I.	17
Fullerton	31	Georgia	12
Furman	30	Western Carolina	28
Georgia Tech	35	Air Force	6
Harvard	20	Pennsylvania	14
Hawaii	27	New Mexico State	25
Holy Cross	21	Massachusetts	13
Indiana	26	Iowa	21
Kentucky	31	Vanderbilt	16
Louisiana Tech	20	Arkansas State	16
Louisville	30	Memphis State	21
Maryland	35	Virginia	7
Marshall	30	Lamar	30
Miami (Ohio)	27	Kent State	10
Michigan State	28	Minnesota	10
Michigan	49	Northwestern	0
Mississippi State	25	Auburn	20
Missouri	33	Kansas	14
Montana State	28	Fresno State	23
Navy	17	Syracuse	8
Nebraska	35	Oklahoma	27
New Mexico	27	Colorado State	13
North Texas	27	NE Louisiana	10
Notre Dame	21	Tennessee	10
Ohio State	38	Illinois	13
Oklahoma State	24	Iowa State	22
Pacific	27	San Jose State	21
Penn State	27	No Carolina State	12
Pittsburgh	27	West Virginia	10
Purdue	30	Wisconsin	10
Richmond	21	Tenn.-Chattanooga	10
Southern California	22	Washington	20
Southern Illinois	24	Marshall	14
S.M.U.	35	Rice	13
South'n Mississippi	20	Bowling Green	9
SW Louisiana	27	NW Louisiana	24
Stanford	27	Arizona State	20
Temple	23	Rutgers	13
Texas Tech	34	C.U.	7
Toledo	20	Northern Illinois	17
Tulane	21	Mississippi	19
Tulsa	28	Wichita	19
U.C.L.A.	31	Oregon State	13
Utah State	25	Weber State	17
Utah	25	U.T.E.P.	7
West Texas	28	Drake	24
Wyoming	28	Nevada-Las Vegas	25
Yale	24	Princeton	13

**Other Games — South and Southwest**

Ark.-Monticello	30	Sam Houston	14
Ark.-Pine Bluff	21	Panhandle	7
Arkansas Tech	21	Bishop	13
Austin	23	Southern State	14
Austin Peay	24	Ross	6
Catawba	21	Tennessee Tech	14
Concord	45	Gulfport	10
Delta State	21	Bluefield	6
East Texas	25	Livingston	20
Indiana Kentucky	23	S. F. Austin	20
Elizabeth City	25	Georgetown	17
Eron	20	St. Paul's	6
Fayetteville	20	Lenoir-Rhyne	6
Georgetown, DC	27		

At Muleshoe Junior High



Littlefield Wins Over Eighth

On Tuesday night, Oct. 26, the 8th grade Mules played Littlefield here and got beat 25-0. In the first half of the game, defense just could not get going and let Littlefield score 18 points. In the second half of the game, the defense did a little better by letting Littlefield only score 6 points to make the final score of the game Mules - 0, Littlefield, 25.

Player Of The Week

The 8th grade athletic girls have been really doing a good job in work out the past few days. And one of the girls who has really been hustling is Tina Olivarez. Tina has a lot of enthusiasm, which the coaches really like to see in their players! "Tina has good form on her set shots," says Coach Scott, "and is very consistent in making it." She also did not play last year, but they are expecting quite a bit from her this year, if she keeps up the good work she will make a great player. Coach Scott would also like to compliment all of the 8th grade girls on their efforts during the past week, and keep up the work!

The Journalism Staff would like to congratulate Tina and the 8th grade girls on their hard work and enthusiasm!!!!!!

The Sandhills Philosopher

Editor's note: The Sandhills Philosopher on his Johnson grass farm on Sandy Creek comes up with a suggestion for the foreign leaders of the world.

Dear editor: I don't know about the rest of you, although I have an idea, but when the experts start reporting on how the dollar has fallen on the world markets, I don't know what they are talking about.

Around here, I don't know whether a dollar buys less because it is worth less or because a tractor bolt is just priced higher.

Anyway, it seems to be a fact that the dollar is considered now at its cheapest in world history, far below the Japanese yen, German mark, British pound, Russian ruble and, for all I know, South Sea conch shells and Navaho beads.

Based on that, I have hit on a brilliant idea foreign leaders have somehow completely overlooked.

Now is the perfect time for them to pay off those staggering war debts they owe us. Why don't they out-smart us, buy up a wad of those cheap dollars, and pay up off in one fell swoop?

I don't know how much they owe us for World War I and II loans but it is in the billions and billions of dollars, and here is their chance to wipe the slate clean. Get out of debt at half price.

I am sure the foreign leaders just have not thought of this slick financial move and the minute it occurs to them they will swing into action.

Because I have no idea how much circulation The Journal has in the foreign capitals of the world, I suggest you send some sample copies of your paper with this idea in it to all the foreign countries that owe us money. You could get a list from Washington.

On second thought, that won't be necessary. Just send copies everywhere. They all owe us money. Yours faithfully, J.A.

Growing Up

You are only young once, but you can stay immature indefinitely.

-Chronicle, Odebolt, Ia.

\*\*\*\*

Too many people claim to know all the answers.

Cheerleaders Conduct First JH-Pep Rally

The M.J.H. cheerleaders had their first pep rally Thursday, Oct. 26. It was really exciting and everyone had a lot of spirit and enthusiasm. Michael Isaac gave the 8th grade speech and Darin Shaw gave the 7th grade speech. The band gave everyone a lot

of spirit and the played real well. We hope the next pep rally will be as good. Out second pep rally was held on Thurs., Nov. 2 and sure enough it was even better!!!!!!

FOR THE BEST RESULTS ADVERTISE CLASSIFIED

Seventh Grade Ties 14-14 With L-Field

On Thursday night, Oct. 26, the 7th grade Mules played Littlefield here and tied 14-14. At halftime Littlefield was ahead 8-0. In the second half Littlefield scored again then the Mules scored twice to tie up the game. The 7th grade Mules played a good game.

Lower Prices Mark Cotton During Week

Prices High Plains cotton growers received were around \$1.25 to \$2.50 per bale lower the week ending Nov. 3, according to Paul R. Dickson, Area Director at USDA's Marketing Services Office in Lubbock.

Growers sold mixed lots of mostly grades 42 and better, staples 30 - 33, mikes 3.5 - 4.9 around 58.15 cents per pound.

New crop lots of mostly grade 43, staples 30 and 31, mikes 3.5 - 4.9 brought about 54.30 cents per pound, Dickson said.

High Plains Marketing Services Offices graded 28,000 samples this week, bringing the season's total to 100,000. This compares with 727,000 graded by Nov. 3 last year, according to USDA's Agricultural Marketing Service.

Predominant High Plains grades this week were grade 41 at 19 percent, grade 32 was nine percent, grade 42 accounted for 43 percent, and grade 52 was eight percent. Four percent were reduced one grade because of bark.

Staple lengths were mostly staple 31 at 21 percent, and staple 33 accounted for 23 percent.

# WE COMPARE OUR PRICES WITH OTHERS TO MAKE SURE WE SAVE YOU MONEY!

**PIGGLY WIGGLY**

Each of these advertised items is required to be readily available for sale at or below the advertised price in each store, except as specifically noted in this ad.  
Prices good thru November 11, 1978. We reserve the right to limit quantities. None sold to dealers.

**FARMER JONES SAUSAGE**

1 LB. 1.10<sup>9</sup>    2 LBS. 2.20<sup>9</sup>

**KRAFT REAL MAYONNAISE**

99¢

32 OZ.

We constantly check competition in your town to make sure you save storewide at Piggly Wiggly.

**BOUNTY DESIGNER, DECORATOR OR ASSORTED TOWELS**

59¢

**BANQUET FRIED CHICKEN**

189

2 LBS.

**PIGGLY WIGGLY LARGE EGGS**

65¢

DOZ.

**CAMPBELL SOUP CHICKEN NOODLE**

5 10 1/2 OZ. CANS \$1

**NEW! cheer**

REDUCES WRINKLING while it cleans!

129

49 OZ.

**HUNT'S TOMATO SAUCE PASTE KETCHUP**

39¢    59¢    43¢

**MINUTE MAID ORANGE JUICE**

48¢

**LIBBY'S POTTED MEAT**

39¢

**PETER PAN, CREAMY OR CRUNCHY PEANUT BUTTER**

179

**Play Bingo Magic! Win Up to \$5,000.00!**

**SWANSON BEEF, CHICKEN OR TURKEY POT PIE**

39¢

**PIGGLY WIGGLY SALTINE CRACKERS**

55¢

**PIGGLY WIGGLY GRAPEFRUIT JUICE**

59¢

**BLUE BONNET SPREAD OLEO**

119

**ADORN HARD TO HOLD OR UNSCENTED HAIR SPRAY**

149

**PILLSBURY HUNGRY JACK INSTANT POTATOES**

105

**MENNEN SPEED STICK**

98¢

**USDA HEAVY WESTERN BEEF BONELESS RUMP OR BOTTOM ROUND ROAST**

179

**USDA HEAVY WESTERN BEEF BONELESS BOTTOM ROUND STEAK**

189

**FARMER JONES FRANKS**

79¢

**MEDALLION TURKEY**

89¢

**SMALL LEAN PORK SPARE RIBS**

149

**EXTRA LEAN GROUND ROUND**

149

**GLOVER HOT LINKS or BRAND CHORIZOS**

99¢

**FARMER JONES LUNCHEON MEATS**

89¢

**KRAFT AMERICAN SLICED CHEESE**

119

**Barney's Butcher Shop Sale!**

The side you cannot see is just as good or better.

**Stan's Produce Sale!**

"Be Satisfied With Piggly Wiggly Produce or Double Your Money Back!"

**RED or GOLDEN WASHINGTON STATE DELICIOUS APPLES**

3 LB. BAG 89¢

**CALIFORNIA BROCCOLI**

39¢

**RUSSET BAKING POTATOES**

10 LB. BAG 88¢

