

Muleshoe Journal

DEDICATED TO THE PROGRESS AND DEVELOPMENT OF BAILEY COUNTY AND THE GREAT MULESHOE COUNTRY
VOL. 44 — NO. 18 12 PAGES Published Every Thursday At Muleshoe, Bailey County, Texas — 79347 THURSDAY, MAY 5, 1966

3 Contested County Races Spark Saturday's Primary

Bookmobile to Continue, Four Counties Appropriate Funds

Continuation of services of the High Plains Library bookmobile was assured this week when the four counties involved gave their official blessing to the program.

In a joint meeting Wednesday, commissioners and judges of Bailey, Parmer, Lamb and Cochran counties agreed that

the service has been successful during the "free" trial period, and that generally the public wants it continued.

(Bailey county commissioners Monday adopted a resolution approving continuation of the program.)

After discussing the matter with Mrs. R. T. Shamblin, field

consultant for the state library, the group appeared receptive to undertake a \$14,000 bookmobile budget in 1967. One of the commissioners at the joint session put it this way: "The decision appears to have been made."

The \$14,000 budget will cover the estimated operating ex-

penses, including salaries, gas and oil for the bus, repairs and maintenance, supplies, and books and materials during 1967.

The High Plains Bookmobile, by agreement between the four counties and the Texas State Library in March, 1964, had

(Continued on page 4)

45 Cast Absentee Ballots

Three county races — county judge, district clerk and a commissioner's race — spark interest in next Saturday's Democratic primary here, and those three contests will be the magnet to draw a predicted "high number" of voters to the polls, political observers predict.

Otherwise, the primary is expected to be a "relatively quiet" affair, state and national contests being of only passing interest here, these same political observers summarized.

A fairly heavy absentee vote was noted, casting ballots before Tuesday deadline.

Two men, both from Muleshoe, are battling it out for the county judge's post which Glen Williams will vacate next January. Williams did not choose to seek reelection. Calvin P. Calvert, a Muleshoe grocer, is facing Don W. Cihak, an attorney, for the Democratic nod for county judge. Nomination is equivalent to election since there is no Republican candidate for that post.

The newly-created district clerk's job is sought by two Muleshoe women; Nelda Merriott, a clerk in the present clerk's office, is facing Thelma Reid, operator of a stamp redemption store, for the district clerk's position. Hazel Gilbreath, county-district clerk under the present setup, is unopposed for the county clerk's position. This will be the first time the two posts have been separated, population alone determining whether a county has separate county and district jobs.

Two county commissioners are to be nominated, but only one incumbent faces opposition; (Continued on page 8)

Roger Miller To Play Here

Ed Edmondson a player manager for the Muleshoe Little League, announced Wednesday that the popular singer Roger Miller will present two benefit programs in Muleshoe Monday, May 16 for the benefit of the Little League.

All receipts will go to the Little League, Miller donating his time. Two shows will be presented, the first at 7:30 followed by a second show later. Admission will be \$2 per person, adults and children alike.

If I'm Elected.

Some of the candidates who face opposition in Saturday's election were asked by The Journal what they would do if elected.

Below are some of the answers received:

Don Cihak (Candidate for County Judge):

"If I were elected County Judge of this County, I would take the following steps upon taking office:

"Firstly, I would set the criminal cases under the jurisdiction of the County Court for trial for the reason that the public, as well as the defendant, is entitled to a speedy disposition of criminal offenses. Civil cases are generally left to the discretion of the attorneys representing the parties as to when they wish the matter brought to trial.

"Secondly, in the field of juvenile matters, I would institute a program whereby parents, as well as teachers and others, might keep me informed

(Continued on page 8)

Chamber of Commerce Ups Budget, Program Expanded

Acting under the stimulus of the resignation of their manager, Roy Davis, directors of the Muleshoe Chamber of Commerce have set new, higher goals for both support and operation of the organization. An increase of 1/3 in the budget, from \$15,000 to \$20,000, as well as more membership and participation is being sought by the board to increase its potential for accomplishment.

After a special meeting, a spokesman for the group said, "We're sorry we are losing our manager, and we know it is time now to increase our

dues and get new members so a good manager can be held." After taking stock of the chamber's position in relation to the past growth of the community and its future needs, the directors determined to set a course designed to better mobilize resources of both manpower and money.

While real progress is being made, with several major projects underway, an even higher level of activity on a broader front is the goal of the group, and their study indicated more money would be necessary. "We appeal to every member of the chamber to take a look at his dues — his investment in the future of the community — and see if he can't increase it," president Charles Lewis said. He then went on to urge that individuals and businesses not already members join now, to help insure the new intensified program.

The board met Tuesday morning to plan a re-evaluation program of current dues, and individual directors will be contacting members asking increases in dues investments. They will meet again next Wednesday, May 11, at 6:30 a.m. at the Corral Drive In Restaurant to report on their work and continue consideration of the new program.

Efforts have already begun

to secure a new manager, and the entire board will screen and interview applicants.



Dr. Charles L. Lewis pilots chamber

better chamber of commerce, if we are to have a bigger and better town," Dr. Lewis said, "and I hope every one will pitch in and help do the job."

Roy Davis Is Going To Kermit

Resignation of Roy Davis, Muleshoe chamber of commerce manager for the past 3 years, was officially announced this week by Charles Lewis, president. The board of directors of that organization accepted the resignation "with regrets" at a special, called meeting.

A special vote of commendation was given by the directors to Davis for his service which began May 16, 1963. Projects and accomplishments of the organization during this period were many and varied and included

The organization of the

(Continued on page 6)

C-C to Seek Our Most Courteous

Who is Muleshoe's most courteous salesman or sales woman?

The Muleshoe Chamber of Commerce, through its "Go-Go" Retail Merchants' committee, hopes to find the answer to that question each month, and then at the end of the figure, take all the scores and come up with the most courteous for the year.

This was decided on at a meeting of the committee at Paul's Restaurant Tuesday morning with the "Go-Go Muleshoe" chairman, Harvey Bass, in charge. Jay Spain will be chairman of the "courteous salesman" committee.

The trophy will be a "traveling trophy" and will go from store to store as the trophy is passed from one "courteous" winner to another. Name of each monthly winner will be engraved on the trophy. The winning employee each month also will be given a trophy after the winner is picked by a "secret committee", Spain explained.

(Continued on page 4)

Muleshoe Literary Contest Slated for Saturday Morning

Muleshoe literary contest, in which the three elementary schools in Muleshoe will be competing intramural against one another in 21 different divisions, will be held in the Muleshoe high school Saturday morning.

Story-telling events will begin at 8:30 a.m. in room 14 featuring the second grades. This will mean four from Mary DeShazo, four from Richland Hills and four from Hilltop. At 9:15 the third grades will compete in story-telling.

Judges for these events will be Mary Scoggin, Wayland Ethridge and Jackie McAlpin. Betty Jennings will be the story teller.

Spelling competition will begin at 8:30 in room 12 with eight from Mary DeShazo, eight from Richland and two from Hilltop going against each other. Ninety words will be chosen from the fourth grade text, Jim Martin and three future teachers will be the graders and directors.

The fifth grade will compete at 8:30 in room 11. Eight will

represent DeShazo and Richland and two will represent Hilltop. The sixth graders will compete at 8:30 also in room 11. Bee Miller will be the director and Doris Brown, Johnnie Patterson and the future teachers will be the graders of this event.

Picture memory will begin at 9:45. Eight pupils will represent DeShazo and Richland and two will represent Hilltop, from the fourth and fifth grades, in the High School Library. The art students will



Pardon My Goosepimples!

It's spring, all right, because the calendar says so. Somebody, however, forgot to inform the thermometer, so this picture of Pam St. Clair in the spirea (or maybe you call it bridalwreath) is a goosepimple special. Even so, it's a flower among many, chilly though all may have been when this early May pix was taken. (Journal Photo)



3 Boys' Given Every Chance' But They Land in Gatesville Anyway

"We gave them every chance we could because they were very young and we had hoped we could make something out of them before it was too late. Well, we just couldn't do it."

So (sadly) summed up County Judge Glen Williams. He was discussing three Bailey county youths 14 to 16 years who were taken to Gatesville this week to start serving time in the state boys' school.

"We tried," the judge repeat-

ed. "We tried everything, but they kept right on getting into trouble. We had no other alternative than to send them to Gatesville."

One of the lads, now 16, had been in court several times in the past, and he was under probation at the time he got into his latest trouble. Absenteeism was one charge, another was burglary and then the complaint from the school that he was incorrigible. After that, he began floating checks in Clovis without bothering to have any money in the bank in the first place. He was on probation at the time.

Then there was the 14-year-old lad who had appeared before Judge Williams on several occasions during recent months. Once he was charged with breaking into a school and making off with several items. Then he was arrested in Clovis with other lads and they were charged with having beer

(Continued on page 6)

Temperatures

By J. R. Klump
Official U. S. Weather man

	HIGH	LOW	RAIN
May 1	45	38.8	.03
May 2	59	39	
May 3	70	41	
May 4	72	43	
	SUNRISE	SUNSET	
May 5	5:55	7:33	
May 6	5:54	7:34	
May 7	5:53	7:35	
May 8	5:52	7:36	

Only Three Posts Sought by More Than One Candidate

For County Judge



Don W. Cihak



Calvin P. Colvert



R. P. McCall

For Commissioner, Precinct 4



Charlie J. Tiller



C.C. Snitker

For District Clerk



Thursie Reid



Nelda Merriott



OUTSTANDING YOUNG EDUCATOR - Mrs. Willie McAlpin, president of Muleshoe Classroom Teachers Association, was presented an award for the outstanding young educator named by the Jaycees. The presentation was made by Ted Weaver at the CTA meeting Tuesday in the Mary DeShazo Library.

'Outstanding Young Educator' Presented Mrs. McAlpin

Mrs. Willie McAlpin was presented the Jaycees' "outstanding young educator" award by Ted Weaver at the Muleshoe Classroom Teachers Association meeting Monday afternoon in the Mary DeShazo Library. Mrs. McAlpin is a member of the board of directors of South Western Educational Learning Laboratory at Eastern New Mexico University; a member of professional organizations: National Educational Association, Texas State Teachers Association and Classroom Teachers Association; she is a current president of the Muleshoe CTA; teaches seventh grade reading and is a graduate of Levelland High School and West Texas State University. According to Ted Weaver, "she is highly respected and recognized on local, district and state levels as a progressive teacher."

Mike Kimbrough Takes First

Mike Kimbrough took a first place award last weekend in the Lubbock Science Fair, Sharon Wrinkle, Glen Harrison, Rex Black and Boyd Lee McCamish won third place awards on their exhibit. These pupils represent Mary DeShazo Elementary School. Pupils taking exhibits were Sharon Wrinkle, David Hardgrove, Arthur Lopez, Sofia Torres, Keith Range, Roger Hallum, Glen Harrison, Mike Kimbrough, Rex Black and Boyd Lee McCamish.

Local Women Attend Confab



Mrs. Joe Costen, Mrs. John Watson and Mrs. Wilson Witherspoon attended the District 1 Conference of the Texas Division of American Association of University Women Saturday at the Holiday Inn in Lubbock.

Theme of the conference was "Focus of Leadership Toward Continuing Intellectual Growth Advancement of Women and Responsibility to Society."

Mrs. B. T. Rucker, president of the Lubbock branch, welcomed the conferees and presided during the meetings. Mrs. O. A. Kinchen, district consultant, gave a report on the Little Rock Regional Conference, and Mrs. Tom Karrh, president of the Plainview branch, gave a report of the Waco State Conference.

Shirley Blair, Michael Bean Set June Date

The engagement and approaching marriage of Shirley Ann Blair to Michael Grant Bean is being announced by Miss Blair's parents, Mr. and Mrs. M. G. Killough. Bean is the son of Mr. and Mrs. John Bean. The prospective bride attends Muleshoe High School and the prospective bride-groom is a 1964 graduate of Lazbuddie High School. The couple plan to exchange vows in the Trinity Baptist Church, June 5 at 3 p.m. The event is to be attended by friends of the couple.

Robert Evans Is New Son

Robert Mathew Evans was born in the Green Memorial Hospital April 13 at 8:33 a.m. and weighed nine pounds and nine ounces. Robert is the son of Mr. and Mrs. Mel Evans, who live on the wildlife refuge. Mrs. Evans' mother, Mrs. Robert Wallis from Yakima, Wash., is visiting with the Evans'. She will return to Washington next week.

Mrs. Billie Carr, president of Tahoka; Mrs. James Montgomery, Levelland; Miss Sue Whitson, president of the Brownfield Branch; Mrs. J. L. Teal, Lubbock; Mrs. R. L. Groves, Lubbock; and Mrs. John Watson, Muleshoe; were on the program. Mrs. Kinchen quoted Dr. Hottle who spoke at the Little Rock conference: "Intellectuals must lead, intellectuals must see values; they must give light rather than hear."

Dr. Dow, International AAUW president, was quoted by Mrs. Kinchen: "The past is prologue. AAUW members must set their heads with facts but must think and evaluate. Members of AAUW should never do things that some one else can do." Branches represented were Brownfield, Levelland, Lubbock, Muleshoe, Plainview and Tahoka.

Women Attend School

Mrs. John Lippe, Mrs. Harold Roar, Odessa; and Mrs. Walter Hanson, Mrs. Ted Hufford and Mrs. W. M. Vinson, Muleshoe, attended the southwest conference convention of the American Lutheran Church at Gruver Friday. Mrs. Vinson is president of the Muleshoe A.L.C.W. Mrs. Lippe was elected vice-president of council at the conference in Gruver.



SCHOLARSHIP - Mrs. F. D. Harris was presented a \$25 Classroom Teachers Association Scholarship by the president of the Muleshoe CTA, Mrs. Willie McAlpin at Monday afternoon's meeting in Mary DeShazo Library. Mrs. Harris is a teacher in the Hilltop School and is the wife of the principal of Hilltop. (JP)

ESA Will Draw Lucky Name

Some lucky woman will walk away with a wig from Chubby's Beauty Shop Saturday afternoon given by the Epsilon Sigma Alpha Sorority. A \$1 donation to the club will enable you to a ticket which may be the lucky one called Saturday. Proceeds from the sale will go into the library fund. The

ESA Sorority pays into the fund each year. Anyone wishing to give a donation to the sorority may contact a member of the club.

Terry Dedyne Feted at Party

Terry Paul Dedyne was honored on his 7th birthday Saturday with a party at his

home at 723 W. Ave. E. Games of bingo, bean games and games of ball were enjoyed by Jim, David and Bobby Di-Azzio, Terry Wayne and Deanne Mick, Dan Dedyne and the honoree, Terry Paul. Prizes were given. Following games, refreshments of hot dogs, ice cream, cake and kool aid were served by the honoree's mother, Lois Dedyne and Rose DiAzzio.

Note to new cooks: when you are grating rind from orange or lemon, use the grater with a light touch so that you remove only the colored part of the skin and not the white part underneath.

MOTHER

REIGNS SUPREME ON HER DAY, Sunday, May 8

MAKE YOUR TRIBUTE to HER ONE OF DISTINCTION

WE WILL ASSIST IN SELECTIONS FAIR STORE

120 Main Muleshoe

25 Years Ago

At a special called meeting of the Muleshoe School Board members Thursday evening of last week; two additional teachers of the local schools were re-elected for another term. They are Miss Essa Lee Roberts who is teaching public school music in Muleshoe grammar school and Prof. Bill Dawson, band leader.

A truck belonging to Matt Dudley was damaged considerably last Friday, when struck by lightning near the sand and gravel pit at Tolar, N.M.

Mrs. Tye Young had the sad misfortune of getting dogbitten this week. She was visiting in Farwell at the time and a dog sneaked up and helped himself to a bite of the calf of her leg.

Mr. and Mrs. Jack Lenderson are the parents of a daughter, born in Lubbock Sunday night.

MOTHER'S DAY with GIFTS FIT FOR A QUEEN!



WE LOVE YOU, MOM!

There's No Other Like Mother..... And Here's Your Opportunity To Make Mom Feel Like A Queen! Think of All She Means To You And Express Your Love With

GIFTS THAT SAY...

- "WE LOVE YOU, MCM"
- . COATS
- . DRESSES
- . SWIM SUITS
- . SPORTSWEAR

. LOVELY LINGERIE . ACCESSORIES

Cobb's

MULESHOE STORE

of MULESHOE **PERRY'S** KNOWN FOR BETTER VALUES

SCENIC PICTURES MAPLE FINISH FRAME REG. \$9.00 SPECIAL.....\$6.88

CHIP & DIP SET Special For MOTHER'S DAY \$1.29

LUGGAGE SET 3 Piece SPECIAL \$12.88

GLASS DECANTERS Italian Asst. Colors 99¢

ALL FLORAL ARRANGEMENTS 20% off

Special LADIES PURSES WHITE ONLY REG. \$2.98..... NOW \$1.99

HEAD SCARFS Chiffon Asst. Colors 32¢

PINCH BOWL SET Complete With Cups & Ladle Heavy Cut Glass ONLY \$6.95

LADIES HALF SLIPS Asst. Colors..... 77¢

CHECK AT PERRY'S FOR FREE FILM KODAK INSTAMATIC MOVIE CAMERA MODEL M 2 LOADS IN A SECOND FULLY GUARANTEED SAVE \$10.00 REG. \$49.95 SPECIAL! \$39.95



Gay way to celebrate May...

ANNUAL HOSIERY SALE

Tres Gay! Only in May does Beauty Mist offer a bargain like this. Stock up and save on these nationally advertised first-quality stockings with the beautifully proportioned fit. Tremendous once-a-year value. Get yours today.

beauty mist.

Save on nationally advertised fine seamless stockings

MAY 2 THRU 16

Regularly \$1 per pair

NOW ONLY..... 79¢

6 PAIRS ONLY... \$4.50

Save... \$1.50

Cobb's



OUTSTANDING GIRL — Sue DeVaney, president of the Epsilon Sigma Alpha was awarded the title of 'outstanding girl' at the sorority's mother-daughter luncheon Tuesday. The luncheon was held at the Muleshoe Country Club. (Journal Photo)

Sue DeVaney Wins Title of 'Outstanding Girl' at Luncheon

Sue DeVaney, president of the ESA Sorority, was named the outstanding girl for the year in the sorority at the club's annual mother-daughter luncheon held in the Muleshoe Country Club Tuesday. Bettye Mathews and Jerrie Wagon were named as runner-ups for the title. Mrs. DeVaney was presented a bouquet.

Approximately 30 members and their mothers attended the luncheon and enjoyed a book review given by Mrs. Horace Blackburn, following the luncheon.

Mrs. Noel Woodley was a special guest for the sorority. Mrs. Woodley started the Ep-

silon Sigma Alpha Sorority in Muleshoe.



Masons Attend Olton Meet

Alton Epting, Worshipful Master of Muleshoe Lodge No. 1237 AF&AM along with Tom Smith, Elbert Nowell, Boyd Davis, D. T. Garth, James Wallace, Glen Lust and Ray Cline attended a Masonic Workshop meeting for officers and members of five Lodges at 8 p.m. last Friday in Olton Lodge 1257.

L. B. Montgomery, Littlefield, who is chairman of the six-county Masonic Workshop Area E-7, conducted the meeting. Other chapters represented were Littlefield, Sudan, Earth and Olton.

Nearly 200 workshop meetings are held semi-annually for officers over 970 Texas Masonic Lodges.

The meetings are authorized by H. W. Fullingim, Odessa, who holds the highest Masonic position in the state as Grand Master of Masons in Texas.

The Masonic Order is the state's largest fraternal organization with nearly 250,000 members. It is noted for its activities in the field of charity and in the self-improvement of its members.

Another workshop will be held in Anton May 30 at 8 p.m., and according to Epting, it is hoped four of the Lodges officers will attend so Muleshoe Lodge can be 100%.

Scholarship Given

Ellen English, daughter of W. E. English, 218 Birch and Mrs. Doris English, 322 W. Ave. B, has been awarded an applied music scholarship at West Texas State University, Canyon. This is a four-year scholarship and will pay for her private instruction.

Ellen is a senior at Muleshoe High School and plans to enter West Texas this fall. She will major in nursing and minor in flute.

Ellen is a member of the Muleshoe Mighty "M" Band and has qualified to attend the state solo and ensemble contest in Austin this June. She also is a member of the National Honor Society and Tri M, the National Music Honor Society.



Mrs. Harold Cast is Honored With Stork Shower in Bank Room

Mrs. Harold Ray Cast was honored with a stork shower Friday from 5:30 to 7:30 p.m. in the community room of the Muleshoe State Bank building.

A stork decorated the serving table which was overlaid with pink. Punch and orange and lemon thins were served. A hostesses' gift of a car bed and a blanket were presented the honoree by the hostesses, Mrs. W. Q. Casey, Mrs. Burel Black, Mrs. John Blackburn, Mrs. Kenneth Wells, Mrs. Bud Gilliland and Donna Pre-

cure. Some 20 guests were registered by Mrs. John Blackburn. Special guests attending the shower were the honoree's mother, Mrs. R. B. Chappell and the honoree's mother, Mrs. R. B. Chappell and the honoree's grand mother, Mrs. Addie Culpepper.

— Add a little prepared horseradish to applesauce and serve with roast pork.

Classroom Teachers Association Installs Officers in Library

Muleshoe Classroom Teachers Association met Monday afternoon in the Mary DeShazo Elementary School Library for the purpose of installation.

Following the business meeting conducted by the president, Mrs. W. V. McAlpin, Mrs. Jack Beddingfield, installed the officers for the 1966-67 term. The following poem was read by Mrs. Beddingfield which was written for the occasion by Mrs. Horace Blackburn.

THE CLASSROOM TEACHER
By Beatrice Blackburn
The life of a classroom teacher can never be called her own.

Her responsibility is to others— Many are the seeds she has sown.

If the child does not respond Or learn the rudiments for life— It's the teacher who's partly to blame. She sows a life of happiness or strife.

A dedicated teacher is one Who never grows weary or tired.

Too many lives are waiting, By her to be inspired.

It's up to you, fellow teachers, How our world will go round. You mold the lives of our men— You lead the child to principles, sound.

If you fail, What will your answer be? Will it be, I didn't know— You can't blame poor little me?

If you succeed, Many will never know— Because you're just a teacher— Perhaps insignificant in life's row.

But, nevertheless, never forget You're sowing seeds every day. By the teacher our world goes (Continued on page 6)

VOTE FOR YOUR QUALIFIED CANDIDATE



NELDA MERRIOTT

FOR DISTRICT CLERK OF BAILEY COUNTY

★ 10 YEARS of QUALIFIED SERVICE IN COUNTY AND DISTRICT CLERK OFFICE

★ **DEPENDABLE** ★ **CAPABLE**

YOUR VOTE and INFLUENCE APPRECIATED

DEMOCRATIC PRIMARY MAY 7

Pd. Adv.

Catalog Sales Agency

MONTGOMERY WARD

LOOK WHAT'S COMING TO TOWN

WARDS CATALOG SALES AGENCY GRAND OPENING

Come join the parade to and get in on all the fun

407 Main Street

BELOW ARE A FEW OF THE OPENING SPECIALS

Hi, Neighbors!
We'll be looking forward to serving all of you, in our new Montgomery Ward Catalog Sales Agency.

GET BIG SAVINGS ON GRAND OPENING SPECIALS

- Super House Paint; was \$5.98, ... now \$3.98
- 20 # Signature Detergent; ... Sale Price \$3.59
- Full Size Bedspread; was \$14.94 now, \$9.88
- 12" Portable TV; was \$99.95, ... now \$82.00
- 21" Color TV; was \$399.00, ... now \$349.00
- 6 Transistor Radio; ... Sale Price \$5.39
- 2 1/2 Qt. Ice Cream Freezer; was \$4.66, now \$3.99
- 26"X45" Scatter Rugs; was \$4.99 now, \$3.99

DOOR PRIZES
Free Favors
FREE CATALOGS



PHAMA ANDERSON (Owner)

BIG 3 DAY GRAND OPENING
THURSDAY, FRIDAY, SATURDAY: MAY 5-6-7

★ ★ ★
YOU ARE MOST CORDIALLY INVITED TO ATTEND

ASK FOR OUR SUMMER CATALOG

Remember, everything in Wards Catalog is available on convenient credit terms, with NO MONEY DOWN. We will be glad to help you open a credit account if you do not already have one. A charge account will add to the ease and convenience of your Catalog Shopping.

DC COME BY FOR A VISIT DURING OUR GRAND OPENING!

PAY NO MONEY DOWN WHEN YOU BUY AT WARD'S
VISIT THE STORE OR PHONE 272-4561

The Muleshoe Journal

Published each Thursday by the Muleshoe Publishing Co.
302 West Second Street, Muleshoe, Texas
Member of The Associated Press
Entered as second class matter at the Muleshoe Post
Office under act of Congress March 3, 1897

SUBSCRIPTION RATES
Immediate Territory-----\$4.00
Out of Territory-----\$4.50
Both papers in territory-----\$5.50
Both papers outside territory-----\$6.25

Advertising Rate on Application.
L. B. HALL-----Publisher
RAMON MARTIN-----Editor
PAT JOHNSON-----Woman's Editor



COMPARE NOTES - Candidates for office, Don Cihak (wants to be county judge here) and Jack Hightower (wants to be state senator) got together here this week to compare notes on their experiences during the campaign. (Morris Nowlin Photo)

GIFT Suggestions for Mother's Day SUNDAY, MAY 8

THE ROYAL FAMILY OF FINE CHOCOLATES



THE GIFT THAT'S SURE TO PLEASE

DAMRON REXALL DRUG

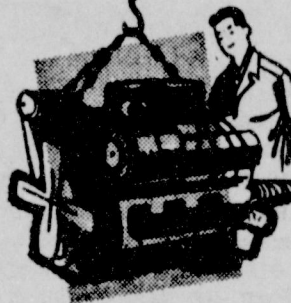
3 PHARMACISTS to Serve You

AUTO REPAIRS



ENGINES OVERHAULED

For top efficiency, trouble-free mileage, let us overhaul that engine now. Depend on us for expert repairs and installation. Drive in today.



REMEMBER!! IN MULESHOE IT'S

PLAINS AUTO SERVICE DEPT.

421 Main Muleshoe Ph. 272-4576

Bookmobile. . .

(Continued from page 1)

been operating on a three-week circuit, involving 42 stops. The vehicle and its 10,000 book collection have been housed in a building secured here by "library-interested people and organizations" which also houses the Mule-Area Public Library. The headquarters also has been provided free of charge to the Texas State Library during this period, an arrangement which is expected to continue after the counties take it over. Strong and positive sentiment for the program was expressed by the various counties during the four-county talk-over session here.

Judge Johnny Love of Cochran county said that his commissioners court had already voted to approve the program. Judges J. B. Davis and Lloyd Brewer of Lamb and Parmer counties respectively indicated their commissioners had given informal approval to their portion of the costs. Mrs. Shanblin described Bailey county as the heart of the bookmobile project and explained that if this county drop-

Courteous

(Continued from page 1)

The contest will open immediately and first winner will be announced at the committee's next meeting, the first Tuesday in June. The organization also decided to hold its first "sidewalk sale" July 1 when merchants will literally move stocks out onto the sidewalk and offer it for bargain prices for that one day only. Jerry Nell Wagon is chairman. It also was announced that the second monthly "family night jamboree" will be held May 21 in the high school auditorium with Olin Burrows in charge. The first in the series was held last month and was highly successful. Roy Davis expressed his thanks to the group for their cooperation with him during the three years he has served as chamber manager here. He is leaving June 1 to become chamber manager at Kermit.

Present at the Go-Go committee meeting were John Shelton, Harvey Bass, Lyndal Murray, Nelda Mullins, Opal Thompson, Earl Harris, Wayne Williams, Gil Lamb, L. B. Hall, Mildred Howell, Roy Davis, Roger Albertson, Buddy Parsons, Pat Glover, Sam Damon, Olin Burrows, Morris Nowlin.

Bailey Court

Gives its Ok To Bookmobile

WHEREAS a proposal and a budget for the continued operation of the Bookmobile for the year 1967 in the area composed of Bailey, Parmer, Lamb, and Cochran Counties has been submitted to this Court, and WHEREAS it appears that if the said proposal is not accepted the area will lose the Bookmobile and with it approximately 9,500 books, and WHEREAS the Commissioner Courts in the other Counties have committed themselves to support the said program, and WHEREAS it appears that the people of Bailey County want the Bookmobile service continued, THEREFORE be it ordered that this Court does hereby agree to support it, and to include \$2,620 in the 1967 budget for that purpose, which amount is to be paid from the Bailey County General Fund.

ped out, the TSL had several other areas asking for the bookmobile and the book collection on Jan. 1 if inter-county cooperation fails to materialize. After the meeting, Judge Williams of Bailey county said: "(1) In consideration of the positive and definite interest of other counties, (2) Because the whole area would lose the library program should Bailey county not cooperate and (3) because of the interest manifested by the people of this county, the Bailey county court is expected to give its approval."

Williams said he planned to include the \$2600 in the budget for next year, "felling it would be adopted by the commissioners for next year."

"Members of the Parmer county commissioners court attending, in addition to Judge Brewer, were commissioners Charlie Jefferson, Bovina; George Crain, Lazbuddie, and Tom Lewallen, Friona. Accompanying Judge Davis from Lamb county were commissioners A. J. Spain, Olton, and Hubert Dykes, Sudan.

Members of the Bailey county commissioners court present, in addition to Judge Williams, were Ike Stinson, Muleshoe; Loyd Stevens, West Camp; Bill Eubanks, Maple, and R. P. McCall, Bula.

Analyze Irrigation At Peak Period

It's not good business to guess at the quality of irrigation water. Rather than be in doubt as to harmful effects of the water on future soil productivity, County Agent Adams suggests having the water evaluated by a chemical analysis. The ideal time to collect samples is during the highest period of water use.

The need for a chemical analysis is particularly important in areas where new wells are being drilled or old ones are deeper than average for the area. If wells extend into the red bed formation, there is a greater possibility of dangerous salt levels in the water.

Soils vary widely in their ability to tolerate salt without being harmed and some crops are more tolerant than others. Clays, where the water intake rate is already slow, can be made even less porous by a water high in sodium. Obtaining stands can become a problem on the lighter soils due to sodium accumulation that "seals" or crusts the surface, the county agent said.

Water samples may be submitted to the Soil Testing Laboratory at Texas A&M University, College Station. Samples must be accompanied by the complete information sheet which is available from the offices of local county agents.

NOTICE

To Bus Passengers and Express Customers
Additional Bus Service For Muleshoe, Texas
Now In Effect

From Dallas and Lubbock Westbound:
LEAVE MULESHOE
1:00 am 8:00am 1:10pm 6:00 pm

From Albuquerque and Clovis Eastbound:
LEAVE MULESHOE
5:10a.m. 9:30am 7:00pm 10:20pm
To Plainview 1:20 p.m.

T N M & O COACHES, INC.
Corner Drug Muleshoe, Texas
Phone 272-3240 Open 8:00 a.m. to 8:00pm
Sundays 1:00 p.m. 7:00 p.m.

THE CONSERVATIVE IN THE RACE

GALLOWAY CALHOUN

of Tyler
For
ATTORNEY GENERAL

Only candidate who has been a prosecutor or served in the Attorney General's office.
(Pd. Pol. Adv. by G. Calhoun)

Dear Friends of El Monterrey:

As you have perhaps noticed, I am no longer associated with El Monterrey, as of April 1st, 1966.

To our kind friends everywhere -- especially of Clovis, Portales, Muleshoe, Hereford, Bovina, Friona, Sudan, Littlefield, etc., may I express my appreciation for your past patronage -- Not only for the past 8 years, during my ownership, but also for the previous 12 years when my father (Col. Weede) was associated with the Gray Reed's. As you know, my Aunt & Uncle (Sis & Gray Reed) were the original founders some 30 years ago.

Although I've sold all my interest in El Monterrey, I have retained the right to enter any business in any location -- even to direct competition to El Monterrey.

Sincerely
James A. Weede Jr.
& Family
Clovis, N. M.

DON W. CIHAK

COUNTY JUDGE of BAILEY COUNTY

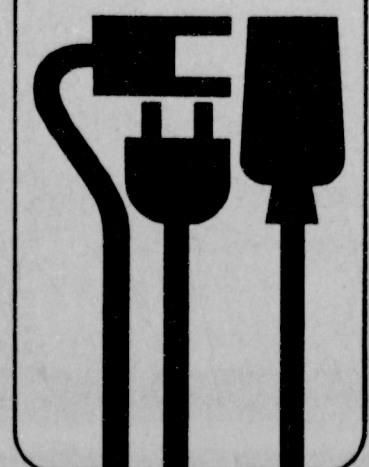


- ★ QUALIFIED: A Practicing Attorney at Law For Over 7 Years
- ★ VETERAN: United States Air Force; Active Duty 7 Years-Reserve Captain, 7 Years
- ★ INTERESTED IN BAILEY COUNTY: Seeking To Promote This County As A Progressive Area For Agriculture and Industry
- ★ HUSBAND and FATHER: Married 12 Years, One Daughter

YOUR VOTE and INFLUENCE APPRECIATED ON MAY 7

A Paid Political Announcement

Perk, pop, zzzounds, such useful little sounds! Find **ELECTRIC APPLIANCES--SMALL...** in the **YELLOW PAGES.** Where your fingers do the walking.



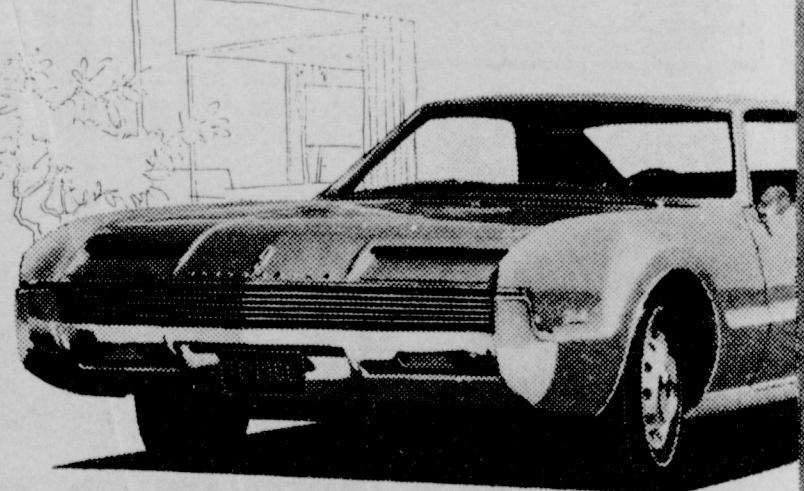
See your Olds Dealer...

THE MAN WHO HAS

EVERYTHING...

*
Toronado! Car of the year!
Front wheel drive! Space for six!
Get the buy of a lifetime now on a Toronado...or any one of 40 Toronado-inspired Oldsmobiles!
TORONADO • 98's • 88's • F-85's

HAS THE BEST BUYS IN TOWN!



STEP OUT FRONT ... In a Rocket Action Car! **OLDSMOBILE** GREAT TIME TO GO WHERE THE ACTION IS...SEE YOUR NEARBY OLDSMOBILE QUALITY DEALER NOW

Today's Meditation

By J. Frank Peery
 GOD WITH US IN OUR FRUSTRATION
 Read Mark 6:45-51
 Scripture verse: "And he saw that they were distressed in rowing, for the wind was against them. And about the fourth watch of the night he came to them."
 —Mark 6:48
 How often in life the wind is against us. We choose our direction, we strive manfully at the oars, but make little or no progress. Circumstances, counter currents, competition, and seemingly insoluble problems thwart us, balk our best efforts, and frustrate us to the point of utter discouragement. It is at times like these that success or failure is determined by whether or not someone draws near to renew our courage and lend added strength.
 There is little in life more difficult to bear than frustration. To give your best as you face in what seems to be the right direction, and then to realize that progress is nil is to know the frustration of apparent futility. Is God concerned about these discouraging experiences? Yes, if we can take this incident in the life of the disciples at its face value. And why not! Jesus did not have to come to the disciples in the storm. He could have watched them give up and allow themselves to be driven by the wind back to their launching point. But his heart was with them in their distress, and his presence was all they needed to reach their goal.
 God has many ways of coming to us in our frustrations. Some-

times it is in a promise from the Scriptures, sometimes it is through new courage inspired by prayer, and often it is through the hand of an understanding friend.

LOOK WITHIN: What frustrating experiences have I had in which I have been aware of strength beyond my own that has enabled me to press on to achievement? Am I trusting in God's faithfulness for today's and tomorrow's tests?
LOOK UP: Give thanks that through His Son, God assures us that He cares for us in our frustrations and will supply us with the strength we need. Ask for faith to believe this more fully.
AFFIRMATION: I will face frustration with the assurance that God is at my side.

Roping Club Sets Pee-Wee Rodeo

The monthly meeting of the Muleshoe Roping Club was held at John's Custom Mill Monday at 8 p.m.
 Members present were: Rudolph Morow, president; Hal Phipps, Dillard Morris, Joe Myers, Delbert Spraberry, Lewis Dodge, Lewis Blaylock, Leon Warren.
 New member Jodie Barrett and sons Rickie and Ronnie were welcomed to the club.
 The Muleshoe Roping Club is currently having weekly ropings on Tuesday and Thursday evenings and Sunday afternoon. Roping privileges may be obtained by paying a \$25 season fee or \$1 for three loops. There is no gate admission for the ropings and spectators are welcome.
 There will be a Pee-Wee rodeo sponsored by the Muleshoe Roping Club, June 5, at 2 p.m.
 Fifty-four ribbons will be awarded in the following events: Barrell Racing, Pole Bending, Chicken Race, Cigar Race, Flag Race, Waggon Race, Calf Roping, Calf Riding, Greased Pig Race. Entry fee will be 50 cents for each event.
 Age groups will be 12 years and under and 12 to 15 years. There is to be no gate admission.
 The next meeting of the Muleshoe Roping Club will be Tuesday May 31.

res.
 High Jump, 3rd place: Pruitt.
 Pole Vault, 3rd place: Jose Torres, 4th place: Johnny Waltrip.
 Shot Put, 6th place: Pruitt.
 Discus, 5th place: Roberts.
 6th place: Houston.

Rites Conducted For Stovall Infant

Graveside rites for Debbie Ann Stovall, infant daughter of Mr. and Mrs. Bob Stovall, were conducted in Babyland Memorial Park Wednesday with the Rev. B. C. Stonecipher, pastor of the Progress Baptist Church and Gene Stovall officiating.
 The little girl died in the West Plains Hospital Monday following birth.
 Debbie Stovall is also survived by a brother, Bobby Jr., and a sister, Carolyn, of the home and grandparents, Mr. and Mrs. N. F. Stovall, Muleshoe; and Mr. and Mrs. Clare Wallace, Casa Grande, Ariz.

\$20 Million Plant For Dimmitt Gets Go Ahead Signal

Aaron T. Isaacs, secretary and general manager of the Dimmitt Wheat Growers, Inc. announced at a special called press conference at the association's office at Dimmitt, after three years of careful engineering and marketing studies, by the Wheat Growers, that a wet grain sorghum milling plant will be constructed at Dimmitt. Total capital investments to exceed \$20 million.
 The plant to be constructed adjacent to the present Dimmitt Wheat Growers Elevators at Dimmitt.
 It is designed to grind 20,000 bushels per day, approximately 7 million bushels per year, operating around the clock with expandable features.
 Union Starch and Refining Company, Inc. of Columbus, Ind., will supervise, construct, oversee construction, manage operation of the plant and market the product.
 The plant is divided into two main areas with the railroad siding between them connected with a weatherproof service bridge. The building and area will cover over 2,000,000 square feet over a 30 acre tract.
 Isaacs stated the plant will be the most modern automated Grain Processing Plant in the world today.
 It will employ some 100 people with an annual payroll in excess of \$1 million.
 Isaacs also said the plant is 100% cooperative owned by Dimmitt Wheat Growers, Inc., which is made up of over 700 farmers in the Dimmitt area, whose grain sorghum production capacity exceeds the expected needs of the proposed mill. These farmers operate farms in and around Castro County, which is acknowledged to be the grain sorghum capital of the world since this area is uniquely suited to the growing of sorghum.

More Tests Due In Sesame Study At Foundation

HALFWAY — Dr. Earl H. Collister, Executive Vice-President of the High Plains Research Foundation, announced that research with the sesame plant — one of the world's earliest sources of human food — will be expanded at the Foundation during 1966. He stated that the Foundation's expansion in this field of research is necessary in order to help meet the needs of many areas of Texas for alternate cash crops which can be grown in a diversified system of farming.
 Sesame is one of the world's oldest food crops for humans. Seed production by the ancient sesame plant is a source of good quality vegetable oil, and the cake or meal provides an excellent protein for human foods, poultry, and livestock. The high quality sesame protein can be used in the enrichment of many human foods. Sesame meal is rich in vitamin B, calcium, and phosphorus. Sesame seeds contain approximately 50 percent oil, 25 percent protein, 11 percent carbohydrates, 5 percent ash, 4 percent crude fiber and 5 percent moisture.
 In addition to being an excellent oil for cooking, oleomargarine and shortenings, sesame oils can be used in the manufacturing of paints, soaps, cosmetics, perfumes, insecticides and pharmaceutical products. The seeds are used in garnishing bakery products and in the manufacturing of food snacks and candies.
 The objective of the Foundation's research program with sesame is to develop high yielding, non-shattering varieties adapted to harvesting with a grain combine. In all of the countries throughout the world where sesame is grown, it must be hand-harvested when the seeds ripen since the plants will shatter their seed.
 Five hundred experimental strains will be used in the Foundation's research work with sesame during the past nine years. New sources of breeding material are currently being received from scientists in 20 countries. These seeds are being furnished at the Foundation on a direct exchange basis so that desirable genetic traits can be selected for use in the breeding work at Halfway.
 Seeds of several sesame strains are being irradiated at the Atomic Energy Laboratory at Oakridge, Tennessee by Dr. Osborne, Associate Professor, Plant Genetics. The purpose of this work is to induce mutations by breaking the chromosomes with a source of irradiation energy, and thereby possibly bring about new and unusual plant types.
 The Foundation's goal is to develop high yielding varieties adapted to complete mechanization for production under irrigated and dry land conditions. The paper shell, non-shattering pod characteristic is being used in developing improved varieties. The paper-shell pod can be threshed easily with a regular grain combine.
 In commenting further about the Foundation's research work with sesame, Dr. Collister stated that, "Sesame offers a possibility of alleviating some of the hunger and starvation throughout the world by providing a good source of protein, minerals, and vitamins as a natural food. Since it can be grown throughout many countries, it affords a very definite opportunity to be used as a world food crop of the future."



IN MISSISSIPPI — Airman Isaac W. Quickel, son of Mr. and Mrs. I. W. Quickel of 303 Avenue G, Farwell, has been selected for training at Keesler AFB, Miss., as an Air Force communications — electronics specialist. The airman, a 1964 graduate of Farwell High School recently completed basic training at Lackland AFB. He attended Texas Western College. His wife is the former Cheryl Brownlow.

Grant to Help State's Aging Given to A&M

Walter H. Richter, chairman of the Governor's Committee on Aging and also chairman of the Governor's Office of Economic Opportunity, recently presented a grant-in-aid to Director John E. Hutchison of the Texas A&M Agricultural Extension Service for use in expanding educational programs for the aging.
 The grant, first to be presented in Texas under provisions of the Older Americans Act, is designed specifically for developing aging programs through the various County Program Building Committees and subcommittees.
 As a result of the grant, Director Hutchison announced that Miss Leota Lane has been

employed as Extension family life education specialist to give leadership to educational aspects of the aging in Texas. Geriatrics came into sharp focus in Texas about a year ago, Hutchison explained, when an intensified statewide approach and coordinated effort in studying problems of senior citizens was launched. Governor John Connally and Texas A&M President Earl Rudder signed an agreement in January 1965, setting up the cooperative plan between the Governor's Committee on Aging and the Texas Agricultural Extension Service "through the existing framework of County Program Building Committees."
 The Governor's Committee on Aging announced this week that 183 counties are in some state of organizational activity (Continued on page 6)

VOTE MAY 7 FOR A STRONG, GROWING TEXAS ECONOMY
LET'S BYRON KEEP TUNNELL
RAILROAD COMMISSIONER!

LOVE, LUST AND ADVENTURE!
 M-G-M presents
 A JOHN FORD FILM
women
 INTERPRETER
 THUR — FRI
 MAY 5-6

JAMES STEWART
 THE STAR OF "SHENANDOAH"
 IN THE ADVENTURE THAT MATCHES THE MIGHT OF TEXAS!
JAMES STEWART MAUREEN OHARA

"THE RARE BREED"
 TECHNICOLOR • PANAVISION
 A UNIVERSAL PICTURE
 SAT — SUN
 MAY 7-8

COX Drive-IN
 Phone 272-4600

Your Chevrolet will give you better service with AMALIE 100% Pure Pennsylvania Motor Oil

Why? Today's high compression engines running at high or low speeds; running in grueling stop and go traffic require the superior oiliness, the heat resistance found only in AMALIE Pennsylvania Oil.
 AMALIE is the oil of oil refined from the world's finest crude by special low-heat process. AMALIE stands up under engine heat long after conventional oils break down, thin out, drain off. Cuts wear, insures long miles of smooth engine performance...

change to AMALIE 100% Pure Pennsylvania Motor Oil!

 Your service station man will stock AMALIE for you... Just ask him.

Wiedebush & Childers

Three Way Enters District Meet

Students from Three Way School will participate in the UIL District 5-B Literary Meet Saturday at Shallowater. Entries are as follows:
 Story Telling: Kent Hicks.
 Number Sense: Sam Feagley, Geneo Abbe, Johnny Furgeson.
 Declaration: Mike Lynskey, Kathy Hicks.
 Seventh - Eighth Spelling: Geneo Abbe, Kathy Hicks.
 Fifth - Sixth Spelling: Mike Duarte, Jeff Lynskey.
 Ready - Writing: J. L. Hutcheson, Mike Sowder, Mike Roberts.
 Three Way finished in fourth place in District 5-B Junior High Track Meet held at Frenship School Wednesday, April 27. Coach Ronny Aldridge's team was out-ranked by Cooper, Anton and New Deal; however, 14 ribbons were won by the Three Way boys as follows:
 100 yd. dash, 4th place: Johnny Pruitt.
 440 yd. dash, 4th place: Francisco Torres.
 100 yd. low hurdles, 2nd place: Pruitt.
 880 yd. relay, 4th place: Pruitt, Torres, Mike Roberts, Clinton Houston.
 Broad Jump, 2nd place: Tor-

Mighty 'M' Band Makes Rating

The Muleshoe Mighty "M" Band made a II rating on concert and a III rating on sight-reading at UILAAA Band Contest in Hereford Friday. Canyon and Hereford made sweepstakes.

Scientists Look At Man's Nature

Spiritual versus materialistic views of man's nature will be explored at Christian Science church services this Sunday in a Bible Lesson on "Adam and Fallen Man."
 In addition to passages from the opening chapters of Genesis, Bible readings will present the account of Jesus raising Lazarus from the grave, and these lines from Ephesians and Isaiah: "Awake thou that sleepest, and arise from the dead, and Christ shall give thee light... Shake thyself from the dust."
 Interpretive statements to be read from the Christian Science textbook will include these: "This awakening is the forever coming of Christ, the advanced appearing of Truth, which casts out error and heals the sick... When we wake to the truth of being, all disease, pain, weakness, weariness, sorrow, sin, death, will be unknown, and the mortal dream will forever cease" ("Science and Health with Key to the Scriptures" by Mary Baker Eddy)

Get this heavy-duty garment bag from us, your Sanitone Certified Master Drycleaner
 Made of heavy gauge plastic, this bag is ideal for travel or storage. Full length zipper. Rich blue color goes well with most modern luggage. Only \$50.00 with drycleaning order of \$5.00 or more!

LAMBERT CLEANERS

Mother is Queen
MOTHER'S DAY SPECIAL
CYMBIDIUM ORCHID CORSAGES
POTTED PLANTS
CUT FLOWERS GIFTS
DECORATORS 216 FLORAL
 Phone 272-4340 Muleshoe, Texas

COME FLY!

IT'S PIPER FUN-to-FLY TIME
 The welcome mat's out. You're invited to come take a flight with us. Piper dealers everywhere are observing Piper Fun-to-Fly Time with a special Introductory Flight Lesson that will fascinate you. You'll handle the controls yourself, you'll see how simple, pleasant and fascinating it is to fly a quiet, comfortable, modern airplane like the Piper Cherokee.
\$5 SPECIAL INTRODUCTORY FLIGHT LESSON
 For just \$5 you'll fly with an expert government-rated flight instructor in a dual-controlled Piper Cherokee. In just minutes he'll have you handling it with ease and confidence. And perhaps there'll be time to fly over your neighborhood.
 You'll fly in the **PIPER CHEROKEE** with modern low wing—seven ways better:
 1. Better visibility 2. Better stability 3. Air cushion landings.
 4. Lower center of gravity 5. Wider landing gear.
 6. Greater comfort 7. Ample reserve power and performance.
COME VISIT US SOON AT THE AIRPORT... HOW ABOUT THIS WEEKEND?
MULESHOE FLYING SERVICE
 Muleshoe Municipal Airport
 PHONE 272-3066 MULESHOE, TEXAS
PIPER PIPER HAS BUILT MORE AIRPLANES THAN ANY OTHER MANUFACTURER IN THE WORLD

Installation. . . .

(Continued from page 3)

round- With responsibilities all the way.

Responsibilities of a child's life- The most precious thing of all. Will you help him rise to heights, Or will you cause him to trip and fall?

You have a new year ahead To plant, water, and hoe. Do the very best that you can To help each child to grow.

Your rewards may not be money- With not many thanks will you be blessed.

But when you come to the end of life's row You can say, "Lord, I did my best!"

The Muleshoe Classroom

Teachers Association, an affiliate of the National Education Association and Texas Classroom Teachers Association, shares with those associations in the worthy professional purposes to elevate the character and advance the interests of the profession of teaching and to promote the cause of education in the United States.

Officers installed were: Mrs. Joe Costen, vice-president; Mrs. Ernest Kerr, secretary; Kenneth Landers, treasurer; and Ted Weaver, parliamentarian. Wayland Ethridge, incoming president was unable to be at the meeting.

Retiring officers were Mrs. W. V. McAlpin, president; Mrs. Al Harrison, vice-president; Mrs. Hollie Francis, secretary; Ben Gramling, treasurer and Keith Bray, parliamentarian.

A past president pin was presented to Mrs. W. V. McAlpin by Mrs. Al Harrison. CTA extended to Mrs. Ed Johnson and Mrs. Senn Slemmons a certificate stating "up-

on retirement, recognition and gratitude for faithful services as a member of the instructional staff of the Muleshoe Independent Schools and as a contributor during many years to the purposes and achievements of public education."

Mrs. Johnson has been teaching for about 20 years with 11 years in Muleshoe. Both have served as president of the Muleshoe CTA.

Mrs. F. D. Harris was awarded the first CTA \$25 scholarship for a teacher. The welfare committee headed by Mrs. Robert Sanders, was worked on this scholarship and the guideline for election for some time.

The scholarship grant is to be used during the current summer, in an accredited college or university. The applicant must be a member of the National Education Association; Texas State Teachers Association; Muleshoe local State Teachers Association, Texas Classroom Teachers Association and Muleshoe Classroom Teachers Association and must be a classroom teacher. Mrs. McAlpin drew the name from a container in which all applications were collected.

Mrs. Harris will attend Prairie View College this summer. She is currently a second grade teacher in Hilltop School.



Roy Davis

Davis

(Continued from page 1) United Fund for the Muleshoe Area

Promotion through four counties of the High Plains Bookmobile library program. . . . An intensive area-relations program

Special events such as the Golden Jubilee, Mule Memorial celebration and 4th of July picnic

The development of a proposal for an area junior college

The organization of the Muleshoe area Industrial Foundation

City Planning commission. . . . aided school bond program

Regret over Davis' move was expressed by Dr. Lewis who said, "we regret losing Mr. Davis, but feel his advancement to a bigger field was well deserved and we wish him every good fortune in his new area."

Davis will become manager of the Kermit Chamber of Commerce, effective June 1. Kermit is a city of 11,000. Davis has two daughters—Ann 18 and Jean, 17. Ann will graduate from

Muleshoe high this month.

In commenting about his move, Davis said: "It has been a pleasure to be associated with this organization, and I want to express my appreciation for the kindness and cooperation of the officers and directors and the people of Muleshoe Area.

"Muleshoe will always have a warm spot in our hearts, and we hope to visit in the community often."

Davis came here from Nacoma in north Central Texas a town of 3000 which was his first chamber post. A native of Childress, he was reared in Wichita Falls where he attended public school and Midwestern University. He had been in investigation work, motel management and public relations with a utility company before entering chamber work. He's now in his 5th year in chamber work. He has completed 5th year studies at the Institute for Organization Management presented by the Chamber of Commerce of US at the University of Houston each summer and third year studies at the Industrial Development Institute sponsored by the American Industrial Council at the University of Oklahoma each summer.

He has been active in professional organizations, having been elected twice to the board of directors of Chamber of Commerce Executives of West Texas. He is a member of the Texas Chamber of Commerce Managers, American Chamber of Commerce Executives, Texas Industrial Development Council and American Industrial Council.

He is a state director of Texas United Fund, state director of USO area co-chairman, Post-conference committee, Governor's conference on libraries and a member of Executive committee, South Plains Council of Boy Scouts of America, Local Service Unit Committee of the Salvation Army, the Rotary Club, Texas Library Association, Friends of Texas Libraries, Farm Bureau and the American Legion.

Active in fund-raising field, Davis has served as executive secretary of the MAUF. He recently aided in the formation of the Cochran county United Fund and has appeared as speaker or panelist for UF programs in Amarillo, Littlefield, Lubbock and Dallas.

Davis has become well known

throughout this area aiding civic and charitable activities in adjoining towns. He has often expressed the philosophy that Muleshoe should take a leadership position serving the surrounding area in every way possible.

3 Boys

(Continued from page 1)

in their car. Still another charge lodged against the lad was helping to steal a motorcycle, and finally he turned to forging checks which he cashed here and in Clovis.

The third lad had never been before Judge Williams until he was hauled into court this week along with the other two and charged in the check offense. But the judge said the boy had been in trouble before he moved here and had been expelled from school as an incorrigible.

The lad had been in trouble in Vernon, the judge was told, and had stolen an automobile. Here he was charged with stealing a motorcycle and being involved in forgeries in Muleshoe and in Clovis. The sums ranged from \$20 down to \$10. He had passed two at a grocery store and cafe and was trying to pass another in Clovis when arrested.

"That's the way it happens now and then," the judge summed up. "Try as we do to rehabilitate a boy, sometimes we just can't get the job done. Even the parents of these three boys admitted that the best thing for all concerned would be to send them to Gatesville. But it's a pretty sad case and always a sad chore when I have to send a boy to the reform school," he concluded.

The cotton plant yields 175 pounds of seed with each 100 pounds of fiber.

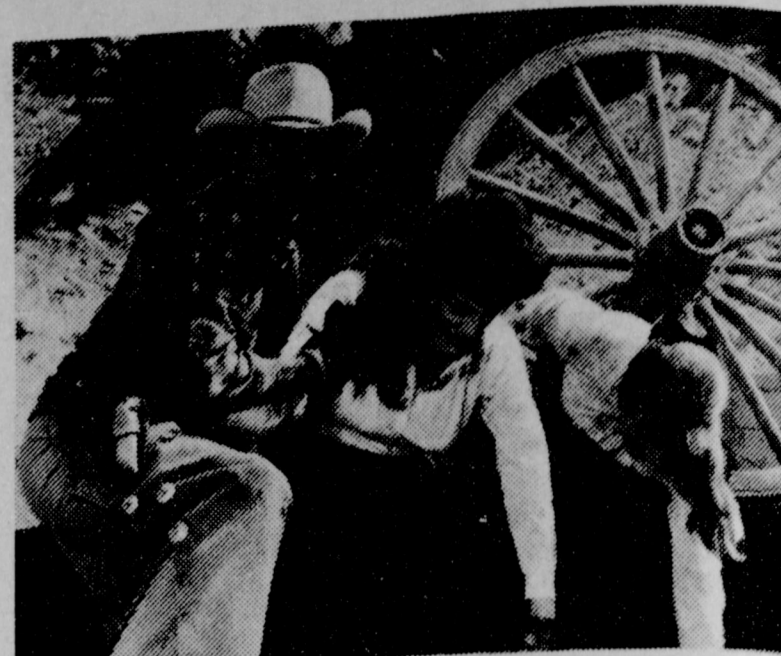
"Chenille", a tufted cotton, comes from the French word for caterpillar.

Cotton growing and weaving were established in Europe early in the 8th Century.

Cotton is used to make a host of items: cloth, food, industrial materials, chemicals.

Cotton fibers can be more readily modified before drying than after.

Cotton has a special affinity for vat dyes, the most color-fast dyes produced.



NARROW ESCAPE - Jimmy Stewart races to the rescue of Maureen O'Hara and Juliet Mills after their wagon is overturned during a wild stampede of longhorn steers in Universal's stirring western drama, "The Rare Breed," in Technicolor and Panavision, starring Stewart, Miss O'Hara and Brian Keith; co-starring Miss Mills, Don Galloway, David Brian. The picture is showing Saturday and Sunday at the Cox Drive In.

TAKE MOTHER OUT TO DINNER

SUNDAY MAY 8th AT PAUL'S FINE FOODS Clovis Road Muleshoe, Texas

CUSTOM FLOORS CARPET

Linoleum • Tile Cabinet Tops

BUDGET PLANNED PAYMENTS Tailored To Fit Your Income

EXPERT INSTALLATION AVAILABLE

JOHNSON-POOL FURNITURE And APPLIANCE

320 Main MULESHOE Ph. 272-4591

Mother's Day SPECIALS

SAY IT WITH FLOWERS


POTTED PLANTS CORSAGES FLORAL ARRANGEMENTS

HAND BAGS BEAUTIFULLY DECORATED

HAND BAG KITS DESIGN THEM TO SUIT YOUR FANCY WIDE SELECTION to CHOOSE a GIFT FROM MULESHOE FLORAL

611 R. S. First Ph. 272-4287

WHY TAKE A CHANCE ?? WHY TRADE A RECORD FOR A PROMISE ??



PRESIDENT OF SENATE PRESIDING
(ELECTED UNANIMOUSLY UPON SENATOR MOFFETT'S NOMINATING SPEECH)

MORAL ENVIRONMENT

ONLY Andy Rogers has

- *passed or voted for legislature to control obscene, lewd, lascivious literature, movies, etc.
- *passed or voted for legislation to control narcotics and pep pills
- *voted against sale of liquor to minors
- *voted and supported a Code of ETHICS for Legislators
- *voted for the LOBBYIST control Bill
- *voted for the LOBBYIST Registration Bill
- *Loan Shark Control

Andy Rogers-----

- *wears no man's yoke or brand
- *is not trying to ride back into office on anyone's coat tails
- *prefers to stand on his own record and accomplishments

SHALL the Wichita Falls OIL and BANK Kings rule our district ????????????

ROGERS Record on Taxes - - ONLY CANDIDATE

- *opposed to deficit spending
- *opposed to increased college tuition
- *co-authored the amendment to Gilmer-Aiken Laws - has already saved our 21 counties over \$7,000,000 in local taxes
- *co-authored bill which cut your state property tax 30c per \$100.00 valuation
- *to oppose tax cuts for Utility Companies, Natural Gas Production, AND the \$64,000,000 give-away of highway funds to pay utilities to move from state-owned right-of-ways where they were already NON-PAYING guests- WHILE YOUR TAXES WERE BEING RAISED
- *in last 8 years with guts enough to try to place a tax on BEER

Let's LOOK at the RECORD

ROGERS Record on Water - - - -

- *co-authored bill that declared underground water the property of the LANDOWNERS
- *fought all attempts of outside interests to gain control and ownership of our water rights
- *helped kill the bill to tax underground water and all your property to build downstate dams
- *irrigation gas users - -authored (and passed through Seante) bill to protect from monopoly utility company prices

SENIORITY-----6th in our State Senate

- *4 years in the House of Representatives and 14 years in the Senate
- *Chairman of Agriculture and Livestock
- *Former Chairman of Education, Constitutional Amendments, Military and Veteran's Affairs
- *Recognized leader for agriculture, education and independent business man - 0 - farm-to-market roads, Rural Telephone, animal health laws, etc.

THE ONE CANDIDATE WITH A PROVEN RECORD of EXPERIENCE----LEADERSHIP - - - EFFECTIVENESS FOR HONEST ECONOMICAL STATE GOVERNMENT

RE-ELECT ANDY ROGERS

DEMOCRAT—STATE SENATE

PAID POLITICAL ADVERTISEMENT

Inflation's Evidence is Manifold, Tower Charges; Dollar Worth 85¢

By Sen. John G. Tower

Most Texans with whom I have visited in recent weeks have told me about something that costs them more than it used to or more than they think it ought to. Some federal bureaucrats have characterized this development as only "crawling" inflation. By any name it is genuine inflation — and some people are talking apprehensively about runaway inflation.

Evidences of this inflation are manifold. The February cost-of-living increase was the greatest in 15 years. Our dollar which was worth 100 cents in 1955 is now an 85-cent dollar. Today's dollar is worth 75 cents compared to the 1950 dollar, and only 44 cents compared to the 1940 dollar. It is the cheapest dollar in our nation's history.

Every Texan, young and old, has been touched by and penalized by inflation. And, it's high time inflation was brought under control. The lesson of history is that every major inflation has been aggravated by excessive government spending and it is a matter of grave concern to me that continual federal deficit spending and continuing federal irresponsibility have operated to drive out the cost of living ever upward.

Unrestrained federal spending or non-defense programs is a principal cause of our inflation. This inflation has been spurred by unwise governmental policies that have substituted compulsion for freedom and thrown the market place out of kilter by attempting to substitute for it a federally-planned economy.

Wheat, Midland Bermuda Blend; Grazing is Good

PLAINVIEW — Wheat fall seeded in a 30-acre Midland Bermuda grass pasture continues to provide excellent grazing this spring on a Hale county farm located about five miles west of here.

The combination pasture has helped owner Harry Igo to lower feed expense greatly for his 66 registered Angus cattle this past fall and winter.

A few others are beginning to try interplanting of small grains in Midland pastures on the High Plains, says Hale county agent Ollie Liner. However, Igo's system seems to be the most successful attempt so far, he said.

Forage production is not as great as with conventional wheat pastures, Liner said, but he believes the system could benefit hundreds of cattlemen in West Texas because it stretches Midland pastures for almost year around use.

A sod drill, fertilizer and good management are credited for the success of Igo's double-grass pasture, according to the county agent.

The drill used to plant the stand is especially designed for grass seeding in established sod and native range. It is equipped with large coulters and rugged shanks that penetrate the turf to give good placement of seed and fertilizer.

Yet, the plain fact is that the federal government, even in the face of war and inflation, is not reducing its domestic spending nor placing responsible priorities on its spending. There are many places in which the federal government could restrain its spending. It could establish reasonable priorities which take into account the fact that we cannot have a Great Society if we have a Bankrupt Society.

But, rather than cut spending, the government now is indicating it may seek to alleviate its own insolvency by once again tapping the pocketbooks of its still solvent citizens. In short, it suggests that it fight inflation by imposing an income-tax hike atop already increased Social Security taxes and already accelerated tax withhold-

ing. An income-tax increase without controlled federal spending would accomplish two things: 1) It would leave inflation pressures unchanged by merely shifting spending from individuals to government; and 2) it would increase each individual's cost of living even further. In coming months I will be doing everything possible to reverse the cost-of-living increase and to restore reason to federal financing.

Igo's seeder plants four rows on 20-inch centers. When the field was planted in mid-September, the seeder was doubled back over some parts of the pasture to give 10-inch rows and driven both ways in other parts to make a criss-cross pattern.

The seeder also did a good job of renovating the Bermuda-grass, Liner said. It tore up matted sod, he said, allowing aeration of the soil and improving water penetration, particularly on the caliche slopes.

About one bushel of wheat was planted per acre and 100 pounds of 18-46-0 and 100 of ammonium nitrate per acre were banded two inches below the seed.

The large nitrate application could sometimes cause damage in this instance, Liner said.

Fall rains brought the field to a good stand and cattle were first grazed on it in early November. Rotation grazing and crop residue on the farm made it possible to winter the 66 cattle with less than 300 bales of alfalfa and light supplementation with cottonseed cake.

The field received one irrigation in January.

In late March, Igo applied 1,000 pounds per acre of ammonium nitrate to boost growth of the wheat and hurry the midland into production.

Fertilizer rates used on the pasture might be excessive, according to the well known county agent. He says soil test recommendations could indicate the fertilizer applications that would give the best economic returns.

Liner believes that well managed wheat-Bermudagrass pastures could work for stockmen throughout West Texas. He said the practice could also be applied on playa lakes throughout the area to create small, profitable livestock operations for countless crop farmers.



HERE'S TO YOU, MOM!

HAVE A WONDERFUL DAY

Take Home EXTRA Savings!

In Addition to Money-Saving Values, We Give You Gunn Bros. Stamps as an EXTRA BONUS!

SHORTENING

DIAMOND # 303 CAN

TOMATOES 6 FOR \$1

KIMBELLS 'OVEN READY'

BISCUITS 3 for 19¢

SWIFT'S JEWEL

3 LB. 59¢

PRODUCE SPECIALS



LEMONS

CALIFORNIA SUNKIST

Lb. 19¢

Washington Extra Fancy Winesap

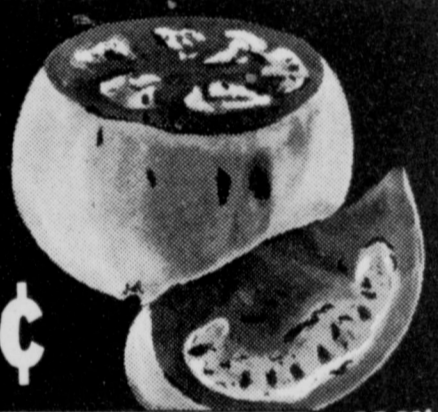
APPLES Lb. 19¢

California Crisp Green

CELERY HEARTS Cello Pkg. 29¢

TOMATOES

CHOICE GARDEN FRESH



Lb. 19¢

FRÖZEN FOODS DEPT.

Keith's 10 oz. Pkg. Whole Baby

OKRA Banquet 2 for 39¢

T-V DINNERS 39¢

Rip Tide Paked

STUFFED CRABS Morton's 25¢

HONEY BUNS Libby's 6 oz. can 4 for \$1

FRUIT DRINK Your Choice 5 for 59¢

FREE!

100,000 GUNN BROS. STAMPS

REGISTER EVERY DAY

ALL YOU NEED TO DO IS SIGN YOUR CASH REGISTER TAPE AND DROP IT IN THE BOX! FOUR BIG GUNN BROS. STAMPS WINNERS EACH WEEK, FOUR BIG WINNERS... GROCERIES... EACH WEEK.

CLOSED on SUNDAYS

GUNN BROS. STAMPS

Double Every

WEDNESDAY

- Giant Size OXYDOL Sizing - Magic Box 69¢
- SPRAY cut ironing time in 1/2 49¢
- C & H Magic Frosting
- SUGAR 13 oz. Box 2 for 49¢
- Instant Hershey's COCOA MIX 2 lb. box 69¢
- Del Monte Pineapple-Grapefruit DRINK 46 oz. can 39¢
- Delsey Bath Room TISSUE 4 roll pkg. 49¢
- Ranch Style COFFEE 1 lb. tin 69¢
- Heinz Strained BABY FOOD 13 for \$1.00
- Your Choice Gladiola Cake Mixes 3 for 89¢
- Jumbo Bremners PIES 12 to box 45¢
- Deckers OLEO 1 lb. ctn. 3 for 49¢
- Longhorn Midget CHEESE \$1.09
- Hunt's Steakhouse CATSUP 14 oz. bottle 19¢
- Canny Scot Breakfast APRICOTS 8 oz. cello pkg. 39¢
- 6 bottle ctn. COCA-COLA (plus deposit) 3 for \$1.00
- Bartlett Pacific Gold PEARS #2 1/2 can 3 for \$1
- Kimbell's White HOMINY #300 can 7 for 49¢
- Kraft Macaroni & Cheese DINNER 7 1/2 oz. box 19¢
- Del Monte SAUERKRAUT #303 can 6 for \$1.00
- Libby's 1/2s can VIENNA SAUSAGE 4 for \$1.00
- GLADIOLA FLOUR 5 LB. BAG 49¢

SWEET CORN

FLORIDA TENDER GOLDEN EARS

EACH

5¢



Pinkney's Sun Ray Pure Pork

SAUSAGE

2 Lb. BAG

59¢

Pinkney's Sun Ray Sugar Cured

HAMS BUTT HALF LB. 53¢

Pinkney's Sun Ray Sugar Cured

HAMS SHANKS HALF LB. 49¢

Swift's Premium Proten Beef

SIRLOIN STEAK LB. 89¢

Swift's Premium Proten Beef

T-BONE STEAK LB. 98¢

Amour's Star All Meat Sliced

BOLOGNA 12 OZ. PKG. 49¢

Amour's Cloverbloom Longhorn

CHEDDER CHEESE LB. 59¢



Swifts Premium Thin Sliced

BACON

1 Lb. PKG.

79¢

Listen to MULETRAIN over KMUL 10:15 a. m. sponsored by CASHWAY

White's CASHWAY

A SAVINGS

INSTITUTION DEDICATED TO THRIFT AND HOME OWNERSHIP



First Federal Savings & Loan Association of Clovis

HOME OFFICE

4th & File Sts. Clovis, N. Mex. ASSETS EXCEED \$50 MILLION

BRANCH OFFICE

2nd & Abilene Fortales, N. Mex.

Current Dividend

4 1/2%

PAID OR COMPOUNDED QUARTERLY

THRIFT AND HOME OWNERSHIP SAFEGUARDS TO AMERICAN LIBERTY

Muleshoe . . .

(Continued from page 1)
 have two children and are active in the First Baptist Church here. He has preached at a number of churches in this area for the last three years.

 The barnstorm will be held in the Aubrey Heathington barn following the junior-senior banquet Saturday night.

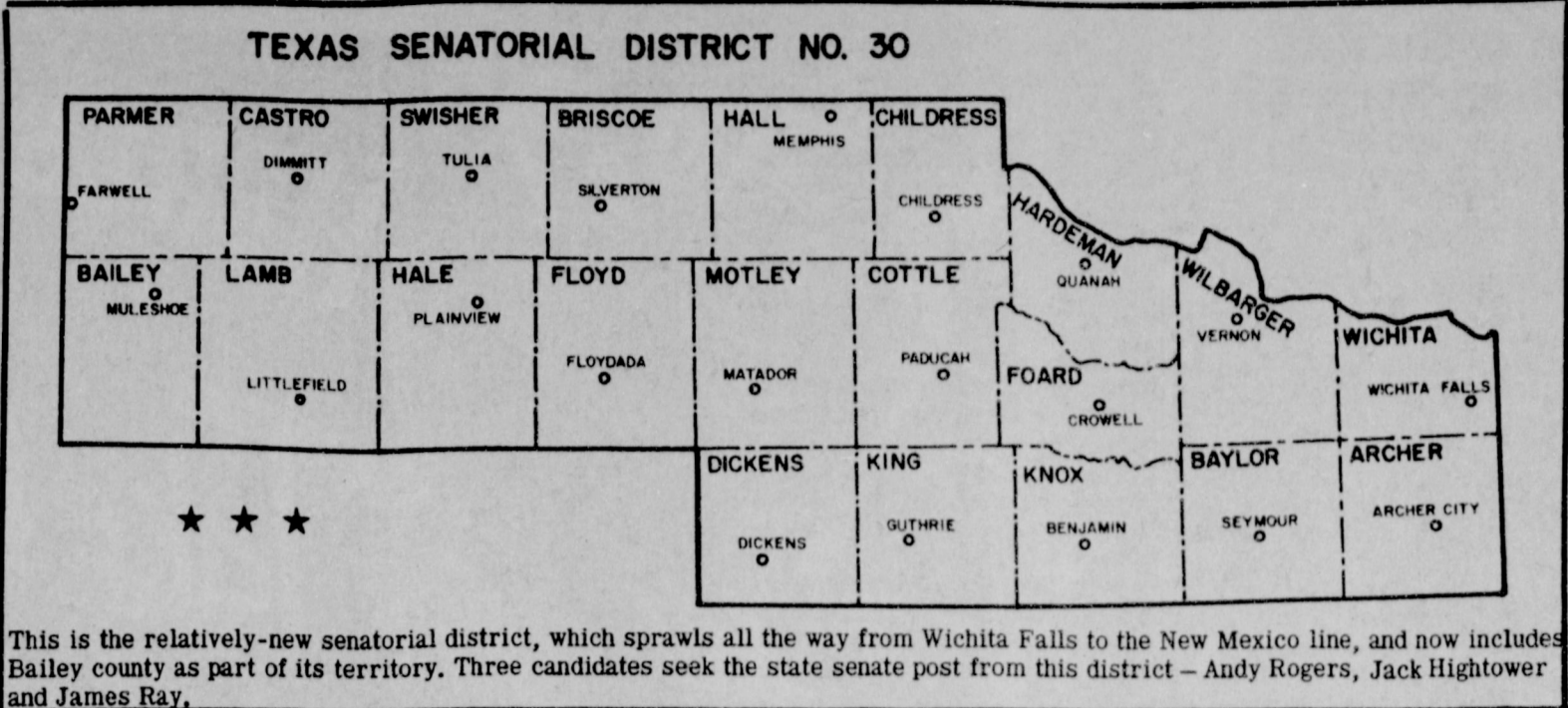
 Mr. and Mrs. Kenneth Johnson, Krissa and Kelly, Portales, visited in the home of Mrs. J. W. Johnson and the Bill Johnson home Sunday.

 The city of Muleshoe will hold its tax board of equalization meeting Thursday, May 12 in

the city hall.

 Don Houston Douglas, Muleshoe high school senior, and the son of Mr. and Mrs. Ralph Douglas, will attend the sixth Texas nuclear science symposium at the University of Texas June 11 - 15. He will be accompanied by Eric Smith, science instructor, Southwestern Public Service Co. is sponsoring the student and teacher to the symposium, a joint project of TU and the Texas Atomic Energy Research Foundation of which the electric company is a member. Douglas, captain of the Muleshoe basketball team, is an honor student and active in all sports and in several clubs.

 Going to the 573rd District Rotary conference to be held in Big Spring from Muleshoe will be Mr. and Mrs. Robert Alford, Mr. and Mrs. John Shelton, Mr. and Mrs. John Crow, Mr. and Mrs. Doug Haynes and Roy Davis next Friday and Saturday. At Rotary Tuesday Roy Davis was in charge of the program and introduced Don Chak who gave a talk on the Muleshoe Industrial Foundation (MAIF) and announced that the foundation has received its charter from the state. He also told many ways that the foundation will improve the Muleshoe area. Harmon Elliott, chairman of MAIF demonstrated that even now in its infancy, the organization can help answer outside industrial queries.



This is the relatively-new senatorial district, which sprawls all the way from Wichita Falls to the New Mexico line, and now includes Bailey county as part of its territory. Three candidates seek the state senate post from this district - Andy Rogers, Jack Hightower and James Ray.

Stay in the heart of (downtown) TEXAS

- AMARILLO**: 4th and Park Streets, 15 Minutes from Heart of Downtown. Phone DR 4-1571.
- CORPUS CHRISTI**: Southwest & S. Houston, Downtown, Minutes from Heart of Downtown. Phone TU 4-4915.
- EL PASO**: Main & Kansas Sts., Three Blocks from Heart of Downtown. Phone 533-2041.
- AUSTIN**: 11th and San Jacinto Sts., Capital Building. Phone BR 2-7151.
- FT. WORTH**: 10th & Houston Sts., Across from City Hall & Federal Center. Phone ED 8-2911.
- HOUSTON**: Times & Commerce, Downtown, 15 Minutes from Heart of Downtown. Phone 728-6843.

Everything you need is DOWNTOWN and at the DOWNTOWNER you're there

- Free parking
- Free swimming pool with patio
- Free television and hi-fi music
- Oversize double beds
- Meeting and banquet rooms
- No charge for children under 17 occupying room with parents

DOWNTOWNER MOTOR INNS

"THE SIGN OF HAPPY TRAVEL"

Literary . . .

(Continued from page 1)

grade this event and Elizabeth Black and Rollie McNutt will be the directors. Declaration will be held featuring the sixth grade girls and boys from Junior High at 9:45 in the High School auditorium. Four boys and four girls will vie. At 11 a.m. the fifth grade girls and boys will compete in declamation in the High School Auditorium. Two will represent DeShazo, two from Richard and one from Hilltop. Kerry Moore will be the director of this event. Spelling will be featured at 8:30 in room 16 in the Junior High building when the seventh and eighth grades compete. Eight will represent each grade. Lucy Faye Smith will be the director and 120 words will be given. Clarence Hawkins will be the director of the "number sense" competition in the Junior High building in room 22 at 9:30. Eight each will represent the

Elected

(Continued from page 1)

ed of any youths who they believe may need guidance and counseling. Just as far as possible, the strictest confidence would be preserved. "Thirdly, persons who are truly needy should not have to wait for any long periods of time before being given assistance. I would propose to carry out investigations myself, if necessary, to determine these peoples needs, and what would most help them again to become self sufficient. "Fourthly, I would not be content merely to fulfill the obligations of Ex Officio County School Superintendent. I would seek to use the Office of County Judge to bring to the attention of every person the importance in today's world of securing for our children the very best education that our schools can provide. "Lastly, as Presiding Officer of the Commissioner's Court, I would seek to promote the interests of all citizens of this County, and to see to it that the orders of the Commissioner's Court reflect the desires of the citizens of this County acting through this representation." Calvin P. Calvert, (Candidate for County Judge): "Bailey county has been good to me and has served me well in the past 40 years. If elected to the office of county judge, I will serve Bailey county honorably with a humble heart, honest intentions, and with equal justice to all people coming under my jurisdiction. "I am in full support of our Library and Bookmobile and

3 Races

(Continued from page 1)

R. P. McCall, precinct 4 commissioner, is being opposed by Charlie J. Tiller and C. C. Snitker. Loyd Stevens, precinct 2 commissioner, is unopposed in the primary. Unopposed on the Democratic ticket are Pat Boone for district judge; Hazel Gilbreath, for county clerk; Edith Witt for county treasurer, and Loyd Stevens, commissioner precinct 2. The Republican primary party ballot contains nine names of candidates seeking as many jobs. They include John Tower, U. S. Senate; T. E. Kennerly, governor; Kellis Dibrell, for lieutenant governor; Hobb Stewart, for attorney general; Rudy T. Garza, for comptroller of public accounts; Lawrence Daffan Gilmer, for state treasurer; Albert Fay, commissioner of general land office; Jack Garrett, for commissioner of agriculture, and Bob Price, for representative in congress 18th district. On state and federal levels, these candidates seek the democratic nomination: For governor: John Connally, Stanley C. Woods and Johnnie Mae Hackworth. For lieutenant governor: Preston Smith, and Bill Hollowell. For U. S. Senate: Waggoner Carr and John R. Jack Willoughby. For attorney general: Crawford C. Martin, Galloway Calhoun and Franklin Spears. For commissioner of agriculture: John C. White, unopposed. For commissioner of general land office: Jerry Sadler and Fred Williams. For comptroller of public accounts, Robert S. Calvert, unopposed. For state treasurer: Jess James. For railroad commissioner: Byron Tunnell, Paul H. Haring and P. S. Puss Ervins. For chief justice, supreme court of Texas: Robert W. Calvert, unopposed. For associate justice, Place 1, Clyde E. Smith, unopposed. For Place 2: Joe Greenhill. For court of criminal appeals: John F. Jack and William T. McDonald. For court of civil appeals, seventh supreme judicial district: James G. Denton, unopposed. For congressman, 18th congressional district, Walter Rogers. For state senator, 30th senatorial district: Jack Hightower, Andy Rogers and James Ray. For state representative, district 75, Jesse T. George, unopposed. Democratic County Chairman Harvey Bass said voting places for the democratic primary will be as follows: City hall for Box 1-A. Election house on W. 2nd, for Muleshoe Box 1, West Camp at the church. Mays at Longview Baptist Church. Three-Way in the Three Way School.

Restitution in criminal cases;

also typing all judgments into the minutes and figuring court costs. I realize the responsibility involved in serving our growing, progressive county in this capacity and I will give my best efforts in fulfilling the duties in a manner that I hope you will be pleased with. I will be glad to be of service to anyone desiring my help and the office of District Clerk will always be open to you. Your vote for Nelda Merriott for District Clerk will be gratefully appreciated. "I have been a resident of Bailey County for 18 years and graduated from Muleshoe High School in 1953. My husband, Lonnie, grew up here also and graduated from Lazbuddie High School. We have two sons, Gary in the 5th grade and Mickey who is in the 1st grade. My parents are Mr. and Mrs. V. V. LeBleu, who reside here in Muleshoe. "I have been active in church and also in the Rebekah lodge since joining them in 1949. I have worked since 1947, starting with keeping books, and then I sold home products for five years. I have been with the stamp redemption store for four years." Nelda Merriott (Candidate for District Clerk): "I want to work for the officials and be of service to everyone having dealings with me. I want to carry out the duties of that office. I have lived here since 1934 and was married here. "My second husband died four years ago, and I have two children of my own and four step children, the youngest one 10. All the others are married. "I have been in the office of the County and District Clerk's Office since 1955 and I have learned all phases of the work carried on in the office. As sole Clerk of the highest Judicial Court I would give efficient, friendly service and carry on the many duties of the office in a business-like manner. Among those duties are filing and docketing court cases, typing certified copies, issuing various writs, and keeping records of all child support payments and

CALVIN P. CALVERT
 Candidate For
COUNTY JUDGE - BAILEY COUNTY

Dear Friends,

It has been my desire to contact everyone in Bailey County, and talk with you personally. In the event I have failed to see you, I would like to take this means of asking your consideration and vote in the forthcoming election, May 7, 1966.

NOW I would like to mention some of the Duties of County Judge-----

Friends, the office of County Judge is very important to our county government, and carries with it a great responsibility. I would like to mention a few of the duties of a County Judge that are very important to our county.

COMMISSIONER COURT

Our county government is controlled by our commissioners from our four precincts of Bailey County. Your County Judge presides at the head of your Commissioner's Court. I feel the man that has this responsibility should be a man like Calvin P. Calvert. This man has seen Bailey County grow from a child. He has been educated in Bailey County and has a wide knowledge of our county. Its assets, and tax structure. I feel that with this knowledge I can work with the commissioners in keeping our county moving in a progressive manner.

OUR SCHOOLS

Our schools and job of Ex-Officio School Superintendent. I have lived in all three of our school districts, and I have helped build schools in each district. I am proud to have had that part, helping to promote our Educational Program in Bailey County. I have seen our schools grow from somewhere around fifteen small schools over the county, to three of the finest school systems on the plains of Texas. I am proud of our school system and the small part I have had in the 28 years I have been a taxpayer in this county. I will continue to support our county to better educate our children. This would include continued support of our Library and Book Mobile. I have always supported and been a friend to our library.

OUR JUVENILE PROBLEMS

I feel if we provide education for our young boys and girls, and keep them busy with constructive programs, we will have made a giant step in the direction of wiping out our juvenile problems.

WELFARE

I have been asked how I felt about the problems of welfare and our senior citizens. Certainly..... wouldn't we want to help our mothers and fathers? They have worked a lifetime preparing this county for you and I to enjoy. Also, I am willing to help anyone that is willing to help himself when given the chance. I am not for a "give-away" program.

OUR COUNTY COURT

I have been led to believe that men were created equal - with equal rights under our Constitution of the Government of our United States. Regardless of his or her standing, physically or socially or money wise, race, color or creed. If anyone should come under the jurisdiction of Bailey County Court, and if elected, I will act only after all the facts have been presented, forgetting personalities, and act only the facts and the truth, to be sure any decision will be made with fairness and justice to all parties concerned.

Now, in conclusion, I would like to say this: It has been a pleasure talking to you and visiting with you. If what I have said agrees with your thinking, then I would appreciate your vote in this forthcoming election.

VOTE FOR CALVIN P. CALVERT FOR YOUR NEXT BAILEY COUNTY JUDGE, Saturday, May 7, 1966.

Thank you, and may God bless each of you,
 Calvin P. Calvert
 Paid Pol. Adv.

I am deeply grateful for your continued confidence. I hope that I may merit your support again on May 7th-- both at the polls and at your precinct convention, to continue the important progress we are making together.



SEE GOVERNOR CONNALLY ON TV THURSDAY NIGHT, MAY 5

RE-ELECT GOVERNOR JOHN **CONNALLY** FOR A GREATER TEXAS!

Political ad paid for by Connally for Governor Campaign Committee, Lewis Timberlake, Chairman

Almost Two To One... TEXAS ATTORNEYS



ONION FOR COURT OF CRIMINAL APPEALS

In a statewide poll of attorneys sponsored by the State Bar of Texas, Judge Onion was the choice of lawyers by almost a two to one majority. These professional men and women have watched Judge Onion's judicial performance and indicated their approval of his ability and the need for full time Judges devoting full time effort.

A Dedicated and Qualified Candidate

- ★ 12th year of Judicial Experience
- ★ 10 years Judge of 175th District Court
- ★ Four Years Assistant Criminal District Attorney
- ★ World War II veteran — U. S. Marine Corps
- ★ Active member of the State Bar of Texas and the American Bar Association.

FOR A FULL-TIME JUDGE
 Vote For Judge John F. (Jack)

ONION COURT OF CRIMINAL APPEALS
 Winner of State Bar Poll
 Almost Two to One

Better Cotton On Less Water Is Research Aim

HALFWAY — Producing high quality cotton with less water will be possible in the future with the use of a growth regulator in the form of a hormone. Dr. Arthur F. Gohlke, Senior Soil Scientist and Administrative Assistant of the High Plains Research Foundation, has been conducting research in this field at the Foundation and at Michigan State University. Cotton yields under limited rainfall and light irrigation conditions can be increased 15 to 50% over the non-treated cotton. This has been shown by the use of a growth regulator hormone. The application of this principle may also favorably influence production in other crops. This research study has been underway at the Foundation in the laboratory, greenhouse and field. This growth regulator

hormone is still highly experimental for general use by the Federal Food and Drug Agency. The research will be continued at the Foundation on the effect of cotton and other crops including grasses. The yield of the cotton treated with 1/2 pound of the hormone per acre was 676 pounds, while the non-treated cotton produced only 504 pounds of lint per acre under the same limited water application. The efficiency of soaking seed and applying hormone to the soil at planting is also being investigated. The Paymaster III variety of cotton was seeded in 20-inch rows at 72 pounds of acid delinted seed per acre on May 8, 1965. The hormone was sprayed with three rates on July 31. The irrigation during the season consisted of a pre-plant and one very light irrigation on August 5th. All plots were fertilized uniformly with an 80-60-0 rate from 11-48-0 (Ammonium phosphate

and anhydrous ammonia). The height on the hormone sprayed cotton was 8.5 inches and the untreated 16.5 inches. The study disclosed that water uptake and needs for growth could be reduced without any apparent harmful effect on the plants. A stronger plant with more efficient water utilization has been the result. Leaves on the cotton plant were 30% thicker, thereby more efficient in the use of water and plant food. Ninety-nine per cent of the water taken up by the cotton plant evaporates from the leaves. Dr. Earl Collister, Executive Vice-President of the Foundation, stated that the research with chemical hormone and growth regulators is being expanded in the Foundation's program for 1966.

Chemicals Fail Cottonroot Rot

No chemical has yet been devised which satisfactorily controls cotton root rot on ornamental plants, Dr. C. Wendell Horne, Extension plant pathologist at Texas A&M University, says. He said county agricultural agents have received many calls from homeowners wanting information on a marketed material which is supposed to cure or control root rot and root knot nematode-infested plants. The product is widely advertised on radio and in newspapers. "As of this date, no chemical has been devised which will satisfactorily control cotton root rot around living plants," the pathologist said. "Qualified research workers have tested fungicide materials, as well as cultural control techniques, for many years." On the other hand, he added, it might be that chemicals sold for root rot do have some beneficial effect on plants. Some have minor elements which may be short in certain soil type areas. The materials, along with thorough watering, will no doubt relieve drought stress and possible nutrient deficiencies.



AWARDED — U. S. Air Force Major William H. Lyle Jr. (right), son of Mrs. Faye M. Lyle of Sudan, Tex., receives the Air Medal at Fuchu Air Station, Japan. (U.S. Air Force Photo)

Sudan Air Force Major Given Medal For Outstanding Work in Vietnam

FUCHU, Japan — U. S. Air Force Major William H. Lyle Jr., son of Mrs. Faye M. Lyle of Sudan, has received the second oak leaf cluster to the Air Medal at Fuchu Air Station, Japan. Major Lyle was presented the award for participation in combat support missions under extremely hazardous conditions in Vietnam. The major is chief of the tactical reconnaissance division at Headquarters, Fifth Air Force, Fuchu, Fifth Air Force is a major component of the Pacific Air Forces which provides offensive-defensive airpower for the U. S. and its allies in the Pacific, Far East and Southeast Asia. "In the absence of research-proven chemicals, it's suggested that growers use plants which are tolerant or resistant to attacks of root rot fungus if they live in an area where this disease is a problem," Horne emphasized.

Major Lyle, who served in the Southwest Pacific during World War II, was commissioned by direct appointment. A graduate of Sudan High School, he attended Jackson College, Honolulu, during his off-duty hours. His wife, Eleanor, is the daughter of Mrs. Myrtle Holman of 227 Cove Blvd., Panama City, Fla.

Cotton fiber is static-free. Cotton is tops in comfort.

Cotton has been used since pre-historic times.

PCG 'Matches' High Plains Spinning Qualities With Foreign Cottons

"Complete success" is the term used by James Parker, textile consultant for Plains Cotton Growers, Inc., to describe the organization's first personal offering of free technical service to foreign cotton mills. Parker has just returned from La Paz, Bolivia, with a firm commitment from a textile mill there to begin using our cotton. "We can expect this company to place its first order with a local shipper almost immediately," he said.

San Antonio Man To Head Texas' State Jaycees

Glenn Reed, San Antonio, has been elected state president of the Texas Junior Chamber of Commerce. The 35-year-old Reed took the top office after five years of membership in the Jaycees. Reed campaigned in the recent Houston convention, attended by 2400 Jaycees, on a program that proved a popular vote-getter. "The purpose of the Jaycees is to provide leadership training through community development," he told the delegates. "We need to provide more men of Jaycee age, 21 to 35, with this training. The challenge of Jaycee projects, both at the state and local levels, should be designed to provide our members with this training.

"Government is playing a larger part in our lives today. Therefore, young men should play a larger and more active role in government to shape the future of our state and nation. The goal is to encourage more men of Jaycee age to work with the party of their choice at any level."

Reed was just promoted to director of merchandising at Lone Star Brewing Company, San Antonio, where he has been employed since 1949. His first job was as a helper on a route truck and he quickly advanced to driver-salesman status. He believed that he had a greater future in sales promotion so asked President Harry Jersig for a position in the San Antonio sales department, although it meant less money at the time.

As a city sales representative, and later as an off-premise salesman, he was awarded the Distinguished Salesman's Award in 1962 by the San Antonio Sales and Marketing Executives. He was promoted to assistant director of merchandising in 1964 and assumed his present position in April 1966. He is responsible today for the preparation and location of Lone Star Brewing Company's point-of-purchase advertising.

is to show a yarn quality or price advantage to be gained from a switch to Plains cotton. The results from this work have been highly rewarding to area producers. Some 40 major projects have been completed, several others are underway, and domestic mills are now using about 200,000 bales of High Plains cotton that otherwise they would have been buying from other sections of the cotton belt. This brings from the textile industry to the Plains approximately \$25 million a year that previously went elsewhere. The testing and analysis work is done by PCG in the fiber laboratory and pilot spinning plant of Texas Tech's Textile

Research Laboratory. PCG for years has given both moral and financial encouragement to the expansion and modernization of Tech's fiber lab and pilot plant, and the facilities there are now unexcelled anywhere in the U.S. where cotton testing is done.

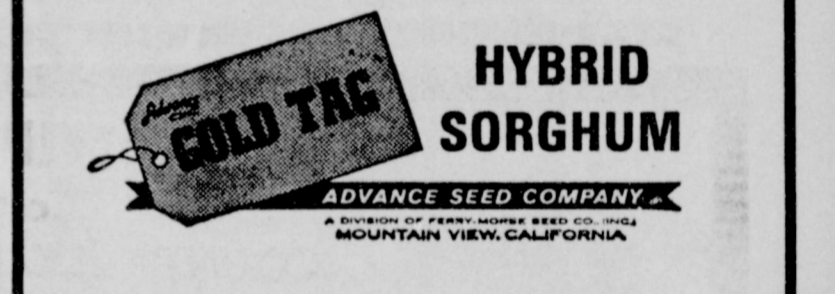
Foreign mills, too, have shown a great deal of interest in the service, and some foreign requests for fiber and spinning tests have been filled. But here the effort is severely hampered by delays and lack of personal consultation with mill officials. Consequently, benefits to producers have been slim to date. However, for the past year, PCG has been investigating the feasibility of expanding personal consultant work to include mills in foreign countries. Parker's trip to La Paz is the first concrete evidence that progress is being made in this direction.

The Foreign Agriculture Service of USDA, using P. L. 480 foreign currency funds, paid the expense of the trip to Bolivia under a temporary agreement. And if PCG can secure a permanent arrangement of the same nature with FAS, this will overcome much of the expense obstacle.

BETTER YIELDS FROM CLEANER FIELDS

Recent tests show the full line of Advance GOLD TAG sorghum hybrids had no more than .0003% outcrossings per acre. You can get this same kind of result in your own field. Your Authorized Advance GOLD TAG Dealer has the variety that's right for your soil and climate conditions.

See your Authorized Advance GOLD TAG Dealer



A A A GRAIN CO. 113 N. First Muleshoe

VOTE for Thursie Reid for District Clerk QUALIFIED

NEED THIS POSITION AND WILL DEVOTE MY TIME TO THE OFFICE
Your Vote and Influence Will Be Appreciated
May 7
Pd. Pol. Adv.

If you haven't examined a new Chevrolet since Telstar II, the twist or electric toothbrushes,

1966 Impala Sport Sedan—a more powerful, more beautiful car at a most pleasing price.

shame on you!

You've been missing out on a lot that's new and better since '62:

- A more powerful standard Six and V8 (155 and 195 hp, respectively).
- New Turbo-Jet V8s with displacements of 396 and 427 cubic inches that you can order.
- A fully synchronized 3-speed transmission as standard.
- A Turbo Hydra-Matic transmission available.
- Deep-twist carpeting on every model.
- Six-month or 6,000-mile lubrication intervals.
- Self-adjusting brakes.
- A Delcotron generator that extends battery life.
- Self-cleaning rocker panels.
- Up to 3" more shoulder room; increased leg and head room.
- A smoother coil-spring suspension.
- New sound and vibration dampeners throughout.
- A longer body, a wider frame and tread.
- Items you can add, such as AM-FM Multiplex Stereo radio, Comfortron automatic heating and air conditioning, and a Tilt-telescopic steering wheel (or one that tilts only).
- Standard safety items on all models, including front and rear seat belts, back-up lights, windshield washers, padded instrument panel, padded visors, 2-speed electric wipers, outside mirror, shatter-resistant inside mirror and non-glare wiper arms. (Use them to best advantage.)
- And of course the great buys you can get right now from your Chevrolet dealer.

Move out in May CHEVROLET
the Chevrolet Way
See your Chevrolet dealer! CHEVROLET • CHEVELLE • CHEVY II • CORVAIR
42-5827

CROW CHEVROLET COMPANY
201 MAIN ST. MULESHOE PH. 272-3100

VOTE MAY 7 FOR A VOICE OF EXPERIENCE AND INTEGRITY FOR TEXAS!

Most Knowledgeable Man in State Government
—Governor John Connally.

One man stands tall as THE qualified candidate in the Attorney General's race. He is so obviously the best choice that more than 75 newspapers have endorsed him over two young opponents.

CRAWFORD MARTIN HAS A 20-YEAR RECORD OF PUBLIC SERVICE

- Served as mayor of Hillsboro
- 14 years a key leader in the State Senate . . . three times unopposed for re-election.
- Twice selected as his Secretary of State by Governor John Connally.

CRAWFORD MARTIN HAS WORKED FOR ALL TEXANS.

- Helped write or pass most of our important laws enacted the past decade.
- A proven friend of senior citizens. Helped obtain first medical aid for elderly.
- Fought to pass the first laws controlling loan sharks.
- Was a key leader in passing insurance reform legislation.
- A leader in passing Gilmer-Aikin laws for better education in Texas.

IF YOU KNEW ALL THREE, YOUR CHOICE WOULD BE . . .

CRAWFORD MARTIN
FOR ATTORNEY GENERAL

Political ad paid for by Martin Campaign Committee, George Cowden, Chairman

EXPERIENCED!!! ★ ★ ★ ★ ★
ENERGETIC!!! ★ ★ ★ ★ ★
EFFECTIVE!!! ★

RE-ELECT JACK HIGHTOWER STATE SENATOR for the 30th DISTRICT

EFFECTIVE: Jack Hightower's public service proves that it is not length of service but type of service that counts most. He is known and respected in Austin as a conscientious, effective, worker for the people of his district. He has consistently supported measures to:

- *Improve the training of our girls and boys in the public schools.
- *Avoid duplication and waste in state government.
- *Meet our State responsibility to our senior citizens and provide for adequate assistance and medical care for them.
- *Provide a system of higher education which will meet the growing demands for better educational opportunities.
- *Give the full strength and support of the State of Texas to its number one business-- agriculture. Agricultural Research puts more dollars in the pockets of Texans.
- *Strengthen law enforcement.
- *Conserve and develop water resources and protect water rights.
- *Attract new industries and tourists to our state.
- *Provide better care for the mentally ill and mentally retarded.

DEMOCRATIC PRIMARY
Pd. Political Ad.

Television Schedule For Muleshoe Area

★ ★ ★

KING BROS.

GRAIN & SEED CO.

Complete ELEVATOR SERVICE

AND SEED PROCESSING

FOR THE

MULESHOE AREA

FIRST NATIONAL BANK MULESHOE

4%

ON 12-MONTH CERTIFICATES OF DEPOSIT

3%

ON SAVINGS COMPOUNDED QUARTERLY

FINANCE YOUR CAR WITH US! PERSONAL LOANS



GOOD LOVIN', Young Rascals
MONDAY, MONDAY, Mamas and Papas
S.O.U.L. AND INSPIRATION, Righteous Brothers
SECRET AGENT MAN, Rivers
KICKS, Paul Revere and Raiders
SLOOP JOHN B., Beach Boys
TIME WON'T LET ME, Outsiders
BANG, BANG, Cher
LEANING ON THE LAMP POST, Herman's Hermits
GLORIA, Shadows of the Knight



The Most Trusted Name in Television

Harvey Bass Appliance
 122 S 1st.
 Phone 272-3030

KGNC - TV (4)

Amarillo
 Muleshoe Cable 4
 Mon. thru Fri.

Daytime Viewing

6:30 - Am. College
 7:00 - Today
 7:25 - News
 7:30 - Today
 8:00 - Today
 8:25 - Soc. Sec.
 8:30 - Today
 9:00 - Eye Guess
 9:25 - News
 9:30 - Concentra.
 10:00 - M. Star
 10:30 - P. Bay
 11:00 - Jeopardy
 11:30 - P. Office
 11:55 - NBC News
 12:00 - News
 12:10 - Weather
 12:15 - R. Brent
 12:30 - Make-Deal
 12:55 - NBC News
 1:00 - Our Lives
 1:30 - The Doctors
 2:00 - Another World
 2:30 - Don't Say
 3:00 - Match Game
 3:25 - NBC News
 3:30 - Sheriff Bill
 4:30 - Cheyenne
 5:30 - Hunt-Brink.
 6:00 - News

THURS EVENING

6:15 - Weather
 6:25 - Sports
 6:30 - D. Boone
 7:30 - Laredo
 8:30 - M. Finn
 9:00 - D. Martin
 10:00 - News
 10:15 - Weather
 10:25 - Sports
 10:30 - Tonight

FRIDAY EVENING

6:15 - Weather
 6:25 - Sports
 6:30 - Movies
 8:30 - Mr. Roberts
 9:00 - UNCLE
 10:00 - News
 10:15 - Weather
 10:25 - Sports
 10:30 - Tonight

SATURDAY

7:00 - Roy Rog.
 8:00 - The Jetsons
 8:30 - Atom Ant
 9:00 - Squirrel
 9:30 - Underdog
 10:00 - Top Cat
 10:30 - Fury
 11:00 - Three Stooges
 11:30 - Cotton John
 12:00 - Baseball
 3:00 - Wide City
 4:00 - Checkmate
 5:00 - Golf
 5:30 - Scherer-McN.
 6:00 - News
 6:15 - Weather
 6:25 - Sports
 6:30 - Flipper
 7:00 - Jeanie
 7:30 - Get Smart
 8:00 - Movie
 10:30 - News
 10:45 - Weather
 10:55 - Sports
 11:00 - Theatre

SUNDAY

7:30 - Comedy Time
 8:00 - Cot. John
 8:30 - Weather
 8:45 - In Dixie
 9:45 - Matinee
 11:00 - Church
 12:00 - Meet Press
 12:30 - Cup Playoff
 3:00 - Texas Open
 4:00 - Vietnam
 5:00 - S. Davis Jr.
 6:00 - News
 6:15 - Weather
 6:25 - Sports
 6:30 - Disney
 7:30 - Branded
 8:00 - Bonanza
 9:00 - Wackiest
 10:00 - News
 10:15 - Weather
 10:25 - Sports
 10:30 - Dir. Choice
 12:00 - Sign Off

KVII - TV (7)

Amarillo
 Muleshoe Cable 5
 Mon. thru Fri.

Daytime Viewing

6:25 - Featurette
 6:30 - Agriculture
 6:45 - Weather
 6:50 - News
 7:00 - Mod. Edu.
 7:30 - Exercise
 8:00 - Movie
 10:00 - S. Marbat
 10:30 - Dating Time
 11:00 - Donna R.
 11:30 - Father
 12:00 - Ben Casey
 1:00 - For Women
 1:30 - A Time
 1:55 - Women's News
 2:00 - Gen. Hosp.
 2:30 - Y. Marrieds
 3:00 - Nurses
 3:30 - H. Patrol
 4:00 - B. Masterson
 4:30 - Where Action
 5:00 - P. Jennings
 5:15 - News
 5:25 - Weather
 5:30 - Wells Fargo
 6:00 - Rifleman

THURS EVENING

6:30 - Batman
 7:00 - Gidget
 7:30 - H. Phyle
 8:00 - Bewitched
 9:00 - Baron
 10:00 - Untouchables
 11:00 - News
 11:10 - Weather
 11:20 - Movie

FRIDAY EVENING

6:30 - Flintstones
 7:00 - Tammy
 7:30 - Adams
 8:00 - Honey West
 8:30 - Farmer's D.
 9:00 - Movie
 11:00 - News
 11:10 - Weather
 11:20 - Movie

SATURDAY

7:30 - Mod. Edu.
 8:00 - Silver Wings
 8:30 - Baptist Church
 9:00 - Porky Pig
 9:30 - Beatles
 10:00 - Casper
 10:30 - Mag. Gor.
 11:00 - Bugs Bunny
 11:30 - Milton
 12:00 - Hoppity
 12:30 - Bandstand
 1:30 - Movie
 3:50 - C. of C
 4:00 - Sports
 5:30 - Big Pic.
 6:00 - Viet Nam
 6:30 - Ozsie-Har.
 7:00 - D. Reed
 7:30 - L. Welk
 8:30 - Hol. Palace
 9:30 - C. Martial
 10:30 - Movie

SUNDAY

7:30 - Mod. Edu.
 8:00 - Oral Roberts
 8:30 - Christ For
 9:00 - Beany
 9:30 - Peter Pot.
 10:00 - Bullwinkle
 10:30 - Discovery
 11:00 - Church
 11:30 - Church
 12:00 - Directions
 12:30 - Issues-Ans.
 1:00 - Movie
 3:00 - Special
 4:00 - Honest Jess
 4:15 - Movie
 7:00 - The FBI
 8:00 - Movie
 10:15 - News
 10:30 - Movie

KFDA - TV (10)

Amarillo
 Muleshoe Cable 6
 Mon. thru Fri.

Daytime Viewing

6:25 - Sign On
 6:27 - Meditation
 6:30 - Am. College
 7:00 - Farm News
 7:30 - Tri Report
 8:00 - Capt. Kang.
 9:00 - I Love Lucy
 9:30 - McCoys
 10:00 - Andy
 11:00 - Love of Life
 11:30 - Search T.
 11:45 - Guiding Lgt.
 12:00 - News
 12:10 - Weather
 12:20 - Farm-Ranch
 12:30 - The World T.
 1:00 - Password
 1:30 - Art Linkletter
 2:00 - To Tell Truth
 2:25 - CBS News
 2:30 - Edge of Night
 3:00 - Sec. Storm
 4:00 - Science Fic.
 4:30 - Mr. Mim.
 5:00 - Cartoons
 5:30 - CBS News
 6:00 - News
 6:20 - Weather

THURS EVENING

6:30 - Munsters
 7:00 - Gilligans
 7:30 - Three Sons
 8:00 - Movie
 10:00 - News
 10:15 - Weather
 10:25 - Background
 10:30 - Movie
 10:55 - News
 11:00 - Movie

FRIDAY EVENING

6:30 - Wild West
 7:00 - Hog. Heroes
 8:00 - G. P. Vls
 8:30 - Smothers
 9:00 - E. Tubb
 9:30 - City West.
 10:00 - News
 10:15 - Weather
 10:30 - Movie
 10:55 - News
 11:00 - Movie

SATURDAY

6:45 - Sign On
 7:00 - Cartoon
 7:30 - Lone Ranger
 8:00 - Heckle-Jeck
 8:30 - Tenn. Tux.
 9:00 - M. Mouse
 9:30 - Lassie
 10:00 - Tom-Jerry
 10:30 - Quick Draw
 11:00 - Sky King
 11:30 - Linus
 12:00 - Flicka
 12:30 - News
 12:45 - Movie

SATURDAY

5:00 - Wilburn B.
 5:30 - Port. Wag.
 6:00 - News
 6:20 - Weather
 6:30 - J. Gleason
 7:30 - S. Agent
 8:00 - Loner
 9:00 - Gunsmoke
 10:00 - News
 10:15 - Weather
 10:25 - Sports
 10:30 - Movie
 11:00 - Movie

SUNDAY

8:00 - Pattern
 8:30 - Church
 9:30 - Lefevers
 10:00 - Wills family
 10:30 - Religious
 11:00 - Film
 1:30 - Sports
 3:00 - Detectives
 3:30 - Westerners
 4:00 - Mr. Ed
 4:30 - Amateur
 5:00 - 20 th Cen.
 5:30 - News
 5:50 - Weather
 6:00 - Lassie
 6:30 - Martin
 7:00 - Ed Sullivan
 8:00 - P. Mason
 9:00 - Candid Cam.
 9:30 - W. My Line
 10:00 - News
 10:15 - Weather
 10:25 - Sports
 10:30 - Movie
 10:55 - News
 11:00 - Movie

KCBD - TV (11)

Lubbock
 Muleshoe Cable 2
 Mon. thru Fri.

Daytime Viewing

7:00 - Headlines
 7:05 - Farm Report
 7:25 - Weather
 7:30 - Today
 8:25 - News
 8:30 - Today
 9:00 - Eye Guess
 9:25 - News
 9:30 - Concert.
 10:00 - M. Star
 10:30 - P. Bay
 11:00 - Jeopardy
 11:30 - P. Office
 11:55 - News
 12:00 - Noon Rpt.
 12:15 - Com. Close
 12:55 - News
 1:00 - Our Lives
 1:30 - Doctors
 2:00 - Another Wor.
 3:00 - Match G.
 3:25 - Aff. Rpt.
 3:30 - Nurses
 4:30 - Beaver
 5:00 - Cartoons
 5:30 - Hunt-Brink.
 6:00 - News

THURS EVENING

6:30 - D. Boone
 7:30 - Laredo
 8:30 - Mickie Finn
 9:00 - D. Martin
 10:00 - News
 10:30 - Tonight

FRIDAY EVENING

6:30 - E. Tubb
 7:00 - M. Village
 7:30 - Movie
 9:00 - UNCLE
 10:00 - Report
 10:30 - Tonight

SATURDAY

7:30 - R. Rogers
 8:30 - Atom Ant
 9:00 - Squirrel
 9:30 - Underdog
 10:00 - Top Cat
 10:30 - Fury
 11:00 - Hoppity
 11:30 - Cartoons
 12:00 - Baseball

SATURDAY

2:45 - Movie
 4:30 - Golf
 5:00 - Lone Ranger
 5:30 - Scherer-Mc.
 6:00 - News
 6:30 - Flipper
 7:30 - Get Smart
 8:00 - Movie
 10:00 - News
 10:30 - Movie

SUNDAY

7:30 - Mag. Gor.
 8:00 - Peter Pot.
 8:30 - Beany-Ce.
 9:00 - Herald of
 10:00 - Discovery
 10:30 - Drama
 10:45 - Church
 12:30 - Hockey
 3:00 - Checkmate
 4:00 - Viet Nam
 4:30 - Col Bowl
 5:30 - Theater
 6:00 - News
 6:30 - W. Disney
 7:30 - Branded
 8:00 - Bonanza
 9:00 - Wackiest
 10:00 - News
 10:15 - Weather
 10:25 - Sports
 10:30 - Movie

SUNDAY

6:55 - Sign On
 7:00 - Bullwinkle
 7:30 - Looney Tunes
 8:00 - Linus
 8:30 - Movie
 10:45 - Church
 11:45 - News-Wea
 12:00 - Basketball
 2:00 - Inquiry
 2:30 - Face Nation
 3:00 - Mrs. Johns
 4:00 - Bowling
 5:00 - 20th Cent.
 5:30 - Munsters
 6:00 - Lassie
 6:30 - F. Troop
 7:00 - The FBI
 8:00 - P. Mason
 9:00 - Green Acres
 9:30 - Smothers
 10:00 - News
 10:30 - Movie
 12:00 - Sign Off

★ ★ ★

Higginbotham Bartlett

Building Needs



Lumber

Paint Wallpaper

Hardware

Houseware

Gifts

Higginbotham Bartlett

MULESHOE



For Year-Long Enjoyment

INSTALL NOW

Three Plans for Hook-Up

MULESHOE ANTENNA CO.

Call Now

Phone 272-3310
 220 W 2nd.

KBFM FM Stereo Radio, Lubbock _____ 90 Meg
 KSEL FM Radio, Lubbock _____ 89 Meg

ALSUP CLEANERS

Offer These FINE SERVICES

1. Drive-In Window Service for your convenience in cold weather.
2. Re-sizing of cottons to finer texture for that like-new look.
3. Alterations of all kinds of men's, women's and children's clothing.
4. A personal touch for your clothing by people who care how you look.

THAT'S

ALSUP

CLEANERS

Use Pesticides With Care, Warns A & M Chemist

It's almost summertime again. That means insect-time, too.

With the demise of the fly-swatter, everyone from the housewife and home gardner to the farmer, uses pesticide chemicals to control insects. Jack Price, Extension leader, agricultural chemical section, Texas A&M University, says pesticides have provided a great boost to agriculture, but can be harmful if not properly used.

Misuse of pesticides not only results in poor insect control - it can also create an unnecessary hazards to humans and to crops, he cautions.

Price offers these common sense rules for safe use of pesticide chemicals:

- Buy the right chemical for the job.
- Transport the chemical in the bed of the truck or the trunk of the car - not in the driver's compartment.
- Read the label, understand and follow the directions.
- Use clean equipment, properly designed for the job.
- Mix pesticide solutions in a well ventilated area, preferably outside and avoid inhaling pesticide sprays or dust.
- Apply when there is little or no wind to minimize drifting of the spray or dust.
- Apply when there is little or no wind to minimize drifting of the spray or dust.
- Don't use pesticides near wells, cisterns or other water sources.

Connally Warns Democrats Face Loss of Control

AUSTIN - Governor John Connally warned Texans here this week that failure to vote and to attend precinct conventions Saturday, May 7th could result in a takeover of the state Democratic party by a minority group.

"Frankly, a small, militant group of people is trying this year to take over the Democratic Party of Texas for their own purposes", Connally said. "The only way to prevent this is for conscientious citizens to turn out en masse at the polls, and at their neighborhood precinct conventions to make sure that the voice of the majority continues to shape our party and government.

"Voter apathy is the constant threat to good government," he said. "And if we like the kind of stability and progress we've had in Texas, we'd better guard it carefully on election day. The fellow who thinks his vote isn't important this year couldn't be more wrong, regardless whether some of the races may appear close."

"It is very important that all qualified Texans be certain to vote on May 7th. And I particularly urge them to attend their precinct conventions after the polls close. I hope they will elect delegates to their county conventions who will support my administration, and our program for continued progress in Texas."

Delegates named in precinct conventions will attend county conventions May 14, and those conventions in turn select delegations to the state convention in September in Austin.

The Sandhills Philosopher

Editor's note: The Sandhills Philosopher on his Johnson grass farm seems impressed by the way cities are seeking Federal aid.

Dear editor:
 Now that cities have stopped decoupling farmers from getting Federal subsidies, which occurred about the same time the cities started getting some themselves, I was pleased to read an item I ran across in a newspaper last night.

According to it, an official in a big city has come out with a proposal I could kick myself for not thinking up years ago. His idea is that, since the Federal government wants to help the cities out financially, the nation needs help, or will take it, which is nearly the same thing, once they get used to it, the best way to handle the distribution most efficiently is to "provide a lump sum to every city based on population," and then - and here's the kicker - "let these amounts be without strings for the cities to use in any manner they deem best in their local wisdom."

Why didn't us farmers think that up? It's one thing to get a check from the government, but invariably there's a bunch of rules and regulations tied to it. You've got to plant this much, or you can't plant that much, or you've got to keep the weeds off the unnes part, etc., etc.

How could Washington know better than I what ought to be done out here on this Johnson grass farm? Always insisting on some kind of bureaucratic interference. Then coming around to make sure you've complied. Depend on the cities to outsmart us.

Of course, it should have been done a long time ago, the sensible way is to just turn the money over, whether it's a city or a farm, and let everybody work out his own problems without any outside advice.

The next time us farmers need a new farm program, if we're smart we'll get somebody in town to help us write it. Yours faithfully,
 J. A.

Where In The World Can You Go To Top Journal Want Ads For Thrift?

Meet the MULESHOE STATE BANK CUSTOMER of the Week



RONNIE SHAFER

Muleshoe State Bank's customer of the week is Ronnie Shafer, a carpenter-contractor. Shafer, his wife Patsy, and their children, Dwayne 5, and Lynette 2, live at 623 W. Am. Blvd. He and his family attend the Primitive Baptist Church in Muleshoe. Shafer has banked with the Muleshoe State Bank for 13 years and says, "I don't think Mr. Casey and his staff can be beaten."

Muleshoe State Bank is proud to recognize this customer of the week.

MULESHOE STATE BANK



For All Your Needs

Prescriptions

Veterinary

Drugs

CALL ON YOUR

WALGREEN AGENCY

Cosmetics

Phone 272-3106

WESTERN DRUG

TRADE CLASSIFIED SELL BUY ADS LEASE

WANT ADS - PH. 272-4536

1 time per word - 4¢ 3 times per word - 10¢
2 times per word - 7¢ 4 times per word - 13¢
After 1st issue, 3¢ per word each additional time.
Minimum charge 50¢
Card of Thanks \$1.00

DEADLINE FOR CLASSIFIED ADVERTISING PAGE:
For placing or cancelling ads is Monday, 4 p. m. for Thursday paper and Thursday, 4 p. m. for Sunday's.
Too late to classify is Tuesday, 4 p. m. for Thursday's and 4 p. m. Friday for Sunday's issue. Double rate for blind ads.

Check your ad and report errors immediately. The Journal reserves the right to classify, revise, or reject any classified ad, and is not responsible for errors after the ad has run once.

CLASSIFIED DISPLAY
85¢ per column inch
90¢ per column inch for reverses

1. PERSONALS

AVON, Phone 3510.
1-491-4tc

FOR RENT, 15 ft. camper,
By day or week. Call 272-3163.
1-35a-4tc

WANTED
Baby sitting and sewing. Contact
Janette Clayton at Muleshoe
Journal until 5 call 272-4536
or after 5 call 965-2140.
1-131-4tc

Bea Air Sales & Service. Call
Wayland Harris.
1-173-4tc

Am interested in making
loans and buying first and second
lien notes secured with
farm and ranch lands.
J. S. Steele
Citizens Bank Bldg.
Cloviss, New Mexico
Dial 763-4471 or 763-6455
1-17a-4tc

Refilling and collecting
money from NEW TYPE high
quality coin operated dispensers
in this area. No selling.
To qualify you must have cash
references, \$600 to \$1900 cash.
Seven to twelve hours weekly
can net excellent monthly in-
come. More full time. For per-
sonal interview write P. O. Box
10573, DALLAS, TEXAS 75207.
Include phone number.
1-181-14p

COMMERCIAL ART WORK
Efficient, capable, guaranteed
work. Reasonable Prices.
Theresa Freeman
Phone 272-6816
1-171-34p

Can you use \$35 - \$50 a
week in addition to your present
earnings? Supply consumers in
Muleshoe with the large Raw-
leigh line. Start earning im-
mediately. See R. E. Dor,
P. O. Box 56, Muleshoe or write
Rawleigh TE-270-337, Mem-
phis, Tenn.
1-181-4tc

PADRY & T. V. Repairs. Tules
checked free. Free picking &
delivery in city limits only.
Bob's T. V. Ph. 272-3302
412 1/2 N. Main.

This app is good for \$1.00
or any job done before June
1st. 1966. Limit one ad per job
sent. If no. brought in.
1-181-4tc

2. HELP WANTED

Help Wanted: Car Hop. Bill's
Drive In. Ph. 272-4925.
2-66-4tc

WANTED - New and used
car get ready mechanic. Crow
Chevrolet Co.
2-31a-4tc

Wanted Beautician: Call
Dorothy's Beauty Salon - 272-
4615 or 272-4487. 705 West
1st across from West Plains
Hospital.
2-141-4tc

Beautician needed. Call 272-
3646.
2-161-4tc

WANTED SERVICE STATION
Mgr. Godwin Service Station,
1016 W. American Blvd. Phone
272-8946.
2p

4. HOUSES FOR RENT

FOR RENT: 2 bedroom house
and garage. Call 4346.

FOR SALE: New Home, Three
bedroom, 1 3/4 bath, carpeted,
draped, fireplace, thermal win-
dows throughout, wood floors,
1609 West Avenue B, Phone
272-4797.
2-154-4tc

For Sale - Choice lots, busi-
ness and others,
2 and 3 bedroom homes, small
tracts and farms.
HOLLAND REAL ESTATE
121 American Blvd.
Phone 272-3293
2-17a-4tc

BEST OF EVERYTHING!
Is in this large 3 bedroom with
family room, fireplace, 2 full
baths, air conditioning, all ap-
pliances, fence, double garage,
located in Richland Hills, Price
only \$21,000.

ARE YOU TRAPPED?
In your small home you've out-
grown and can't sell. Get free
of your white elephant by
trading for one of the homes
we have to offer. We take trade
ins on new and used homes.

THERE'S A SPECIAL HOUSE!
near Richland Hills school, 3
bedrooms, with nylon carpet,
1 3/4 baths, single car garage
and only \$14,500.00 with \$500.00
down. We would like to save
this unusually nice home for an
unusually nice family so that
everything will fit into your
place.

FOR RENT: 2 bedroom house
newly decorated. Call Mrs. A.
J. Leuderson at 272-3038 or
1818 West Ave. D.
4-141-4tc

FOR RENT: 3 bedroom,
carpeted, draped, gas or elec-
tric range, washer and dryer
connections, school bus route,
ready for immediate occupancy.
Located at 502 Dallas St. Call
3926 or 6244 for showing.
4-7a-4tc

FOR RENT: 3 room furnished
apt. For Rent: 2 bedroom house.
Call 272-4812 - 323 West Ave. E.
4-12a-4tc

EDDIE LANE REAL ESTATE
PHONE 272-4439
Residence
Eddie Lane 272-4366
Buddy Lane 272-3774
Jimmie Pitcock 272-4454

FOR SALE: Lots 190' x .500'
for exclusive residential area
on Clovis Highway. Near Pop's
Cafe, See J. T. Shofner, Ph.
272-4855, Route 2, Box 304.
2-11-4tc

EXCLUSIVE
"Guest Man's Dream"
One of finest stock farms in
Bailey Co! Complete in every
detail - ready to go. 135 A.
Midland Bermuda. 14' x 60'
metal barn, corrals, & chute
- 8' well & 4' well on N. G.
- 2240' complete rolling sprink-
lers - 2700' underground irrig.
pipe - all fenced and cross-
fenced - irr. motors & all
EQUIPMENT

Model 600 MM irr. motor;
Model 500 Case tractor on
but; 2-cattle trailers; heavy-
duty shredder; stock trailer;
2-sail & mineral feeders; grass
harrow; AND 1/4 of all in-
struments. ONLY \$275.-00 per acre.
\$20,000 down & terms. Will
TRADE for good 5% notes.
DON'T LET THIS ONE GET
BY! Shown by appointment only.

FOR RENT: 3 room and bath
furnished apt. See Sam Ghos-
on at Sam's Auto Store.
5-44-4tc

For Rent: 3 room furnished
apartment. Nice trailer space.
272-2465.
5-2a-4tc

For Rent: Unfurnished Apt.
3 rooms and bath. Inquire at
121 West Ave. J.
5-12a-4tc

3 room modern apt. with
utility room carpeted and
clean. See Mrs. Ira Thomas
at 1412 West Ave. C. Phone
272-4463.
5-18a-4tc

3. ROOMS FOR RENT

For rent: nice quiet bedroom
410 West Second.
6-101-4tc

Nice bedroom for rent with
or without kitchen privileges.
609 West 7th. Phone 272-6905.
6-16a-4tc

6. REAL ESTATE FOR SALE

House for Sale: Real Buy.
Small down payment, small
monthly payments. Call 3150
after 5 p.m. 4954.
2-15a-4tc

Real Nice 3 bedroom, liv-
ing room and den, 2 baths
double garage. Country Club.
3 bedroom living room and
den carpeted - Double carport
- Storage house - fenced yard.
South of West Plains Hospital.
3 bedroom one and one-half
bath - den - large back yard
- fenced in Lenau Addition.
Apartments for rent. Call
6481 or 6485.
2-10a-4tc

FOR SALE: 6 room house, 2
baths, large basement, laundry
room, fenced back yard on 1/2
block land. Wall heater. Call
272-9706.
2-15a-4tc

FOR SALE: Southside Gulf Ser-
vice Station. Call 272-8571, 506
South First.
2-90a-4tc

FOR SALE: 2 bedroom house
with 50 x 140 ft. lot, wall
heater. Call 272-9706.

Excellent location on 6th
Street. A Stone's throw from Jr.
H. and High School grounds. Two
fully carpeted homes for sale.
of Rent - 3 bedrooms, den,
2 baths, at 601 W. 6th. Also
smaller home next door. See
J. K. Adams on phone 4489.
2-181-4tc

LAND AUCTION

Tuesday, May 10, 1966, at 10
A.M., LaRue Norris, receiver,
will sell at public auction the
surface only the West 213 acres,
more or less, of the North half
of Section 140, Block 4T, T&N
O Ry. Co. Survey, Ochiltree,
County, Texas, located 9 miles
south of Weka, Texas or 8 miles
east of Spearman, Texas on
F.M. 755 and 4 miles south.
Good level land, ideal for
irrigation, in 10 inch water
area.

Sale to be held at the land.
Terms: 10 % escrow, balance
upon closing, terms of pos-
session announced at sale. For
further details contact LaRue
Norris, Box 117, Perryton, Tex-
as, Phone 435-2136.

8-181-24p

9. AUTOS FOR SALE

1964 Chev. 2 Dr. Hardtop,
Factory air. See at Ted's Quick
Stop, 220 West Ave. C, 272-
4170.
9-181-8tp

For Sale: 1963 Chevy 4 Dr.
with air conditioner, Call James
Glaze 272-4549.
9-181-8tc

10. FIRE EQUIPMENT

FOR SALE: Used 12" hy-
drants, 7 and 8" gated pipe;
and 5' sprinkler pipe.
Chapman Supply Co.
-Morton Highway -
-Phone 272-3472-
10-131-4tc

11. FOR SALE OR TRADE

For Sale: 3 D. Rotary hose
New and Used.
NORWOOD IMPLEMENTS
1026 South Main
11-171-4tc

For Sale: Two fishing motors.
One 5 h.p. and one 16 h.p. in
running condition, and reason-
able. Phone 4452.
11a-171-4tc

For Sale: Good used piano -
contact Lucile Cherry.
11-41-4tc

12. HOUSEHOLD GOODS

"To party with good credit:
Repossession late model Singer
sewing machine in console cab-
inet. Will zig-zag, blind hem,
fancy stitches, etc., 5 payments
at \$6.62 or will discount for
cash. Write Credit Manager,
1114 19th Street, Lubbock, Tex-
as."
12-15a-4tc

13. MISCELLANEOUS

TAKE soil away the blue
Lustre way from carpets and
upholstery. Rent electric steam-
pooter \$1. Riggintoolian - Bart-
lett.
15-181-4tc

FOR RENT: Building at 107
East 3rd Street, will re-
model to suit tenant. In-
quire at Dr. Putnam's of-
fice, or call 4452.
15-18a-4tc

Yard Service of any kind,
large or small. Have all kinds
of yard equipment. Call Lou-
nie Merriott at Whites, 272-
3511 or residence 272-6071.
15-151-4tc

16. LIVESTOCK

1 - Parade Saddle
1 - 3 year old Bronze Gold-
ing 3/4 Quarterhorse.
1 - 20 month old Colt - Gen-
tle and a pet.
1 - 28 old Colt
1 1/2 Appaloosa
1 - Kenmore, Cabinet Style,
sewing machine plenty attach-
ments.
See 1 3/4 miles northeast of
town Barles W. Redwine. Call
965-2825 after 5 p.m.
16-181-4tc

18. SEED AND FEED

Extra High quality Texas 550,
606, 610, Muleshoe Elevator.
17-181-12tc

For Sale: Midland Bermuda
Springs or will do complete job.
Vernon Bryant, Ph. 272-3759
after 6 p.m.
17-171-8tp

For Sale: Dryland Gregg cotton
seed good germination, \$6
per hundred. Contact Nova Bar-
sey, 272-4105 or Baker Farm
Supply.
17-181-8tp

CARD OF THANKS

The family of V. L. Bradley
Jr. wish to take this means to
express their thanks for the
kindness shown them during the
recent passing of their loved
one. For the many flowers, food,
cards, visits, to the fire depart-
ment and to the Masonic Lodge,
a special thanks. May God bless
each of you in our prayer.
Mrs. V. L. Bradley, Jr.
Mr. and Mrs. Jim Beller
-1tc

STATE OF TEXAS
COUNTY OF BAILEY)

NOTICE

To any and all persons
interested in the Townsite of
Muleshoe, Bailey County, Tex-
as:

You are hereby commanded to
appear and protest, if you so
desire, and if any protest you
have, the application of Tye C.
Young which was filed with the
Commissioner's Court of
Bailey County, Texas, on the
11th day of April A.D. 1966,
for permission to cancel,
revoke and vacate and return
to acreage of all of that por-
tion of the Townsite of Muleshoe,
Bailey County, Texas, lo-
cated and situated on the fol-
lowing described property, to-
wit:

In Section Number Twenty
One (21), Block Y. W. D. &
F. W. Johnson Subdivision No.
2, Bailey County, Texas, de-
scribed by metes and bounds
as follows:

BEGINNING at a point in
the East line of the NW/4 of
Section 21, Block Y. W. D. &
F. W. Johnson Subdivision No.
2, Bailey County, Texas, from
whence the SE corner of said
NW/4 of Section 21 bears S
9 deg 42' W 135.88 feet;

TRENCHE N 0 deg 42' E along
the East line of the NW/4 of
Section 21, a distance of 646.62
feet to a point in the SW ROW
line of the P & SF RR co.;

TRENCHE N 54 deg 00' W
along the SW ROW of the P
& SF RR Co. a distance of
956.2 feet to an IP set for the
NE corner of a 3.013 acre tract
of land;

TRENCHE S 46 deg 30' 30"
W along the SE line of the said
3.013 acre tract a distance of
360 feet to a point for cor-
ner, same being the Northwest
corner of a 2.971 acre tract
heretofore deeded to the State
of Texas as shown in Vol.
96, page 256 of the Deed Re-
cords of Bailey County, Texas;

TRENCHE S 41 deg 25' 30"
E along the North line of the
above mentioned 2.971 acre
tract, a distance of 1572.78 feet
to the place of beginning.

A hearing of which said ap-
plication will be heard in the
Commissioner's Court Room
in the County Courthouse at
Muleshoe, Bailey County,
Texas, at 10 o'clock A.M. on
the 9th day of May A.D. 1966,
at a regular term of said Com-
missioner's Court.

Witness our hands this 11th
day of April A.D. 1966.
S/S Glen Williams,
County Judge, Bailey County,
Texas
S/S I. M. Stinson,
Commissioner, Precinct 1,
Bailey County, Texas
S/S Lloyd Stephens,
Commissioner, Precinct 2,
Bailey County, Texas
S/S W. H. Estanks,
Commissioner, Precinct 3,
Bailey County, Texas
S/S E. F. McCall,
Commissioner, Precinct 4,
Bailey County, Texas

County Treasurer
EDITH WILLY

County Clerk
HAZEL GIBBREATH

District Clerk
NELDA MERRIOTT
THURSE (Miss Alice) REED

County Commissioner
Bailey County Precinct No. 1
E. F. McCALL
CHARLIE J. TILLER
C. C. SMITZER

Bailey County Precinct No. 2
LLOYD STEPHENS

Bailey County Judge
CALVIN CALVERT
DON W. CHEAK

MULESHOE INDEPENDENT SCHOOL DISTRICT NOTICE TO BIDDERS

The Muleshoe Independent
School District will receive
sealed bids for the sale of the
property commonly known as
the Hilltop School as of this
date, April 25, 1966. This prop-
erty is located in the Morri-
son Addition #2.

Legal Description:

All of lots 1 through 23, block
7, Morrison Addition No. 2, to
the City of Muleshoe, Bailey
County, Texas

Size of school house - 83' x
46.5' - 3,776 total sq. ft.
Size of residence - 48' x 28'
- 1,344 sq. ft.

Bids may be submitted for this
property as follows:

- A. Total property including
2.19 acres of land, three
bedroom house, and
school house.
B. School house, as separate
item, to be moved or de-
molded with foundation
and sidewalks being re-
moved 12 inches below
ground level.
C. Three bedroom house and
2.19 acres of land.

Bids will be opened at the reg-
ular board meeting on Monday,
May 16, 1966 at 8:00 P.M.

The Board of Trustees of the
Muleshoe Independent School
District reserves the right to
reject any and/or all bids, if
necessary for the best interest
of the Muleshoe Independent
School District.

Signed: Joe Embry
President, Board of Trustees

Signed: John W. Smith
Secretary, Board of Trustees



SPRING IS 'BUSTING' OUT ALL OVER

Lancaster Gets
25-Year Award
For Ag-Engineers
D. B. Lancaster, manager of
Bailey County Electric Co-
operative Association has re-
ceived 25 year membership
service bar from the Southwest
Region of the American Society
of Agricultural Engineers. The
annual meeting was held in the
Lafayette Hotel, Little Rock,
Ark. The Southwest Region of
the American Society of Agri-
cultural Engineers is com-
prised of approximately 450
members from Arkansas, Louis-
iana, Oklahoma and Texas.
Twenty-six technical papers
day session. The five profes-
sional divisions of ASAE in-
clude the engineering aspects
of soil and water conservation,
power and machinery, farm
buildings and structures, elec-
tric power and processing, and
research and education.
C. S. Morrison, Moline, Ill.,
ASAE President, presented the
principal address entitled "Agri-
cultural Engineering Re-
search and Development in In-
dustry." Other featured speak-
ers were W. R. Clark, vice-
president, National Society of
Professional Engineers, Tulsa,
Okla., and M. E. Bloodworth,
Head, Soils and Crops Science
Department, Texas A&M Uni-
versity, College Station, Tex.
The American Society of Agri-
cultural Engineers is a non-
profit technical, professional,
and educational organization of
engineers working in and for
better agriculture. The society
was founded in 1907 and now has
over 6,300 members in the
United States and 60 foreign
countries.

FOR RENT OR LEASE
30' X 140' Building In Muleshoe
326 Main... formerly
The Montgomery Ward Store...
PERFECT BUSINESS LOCATION
Will Re Model Suit Tenants.
CONTACT: 211 Jimmie Street, Muleshoe, Mo. 272-3163

TITLE FILM IS AVAILABLE
NEW YORK (AP) - "Elements
of Victory" a 30 minute 16 mm
color film on the highlights of
Green Bay's 20-12 victory over
Cleveland for the National Foot-
ball League championship is
available for local showings
without charge.
Adult groups may obtain the
loan of a print by writing Sports
Bureau, 777 Third Avenue, New
York, N. Y. 10017.

BUSINESS DIRECTORY
Political Announcements
Farley Insurance Agency
Real Estate and Insurance
FARM & CITY LOANS
SERVICE BEYOND THE
CONTRACT
209 West Avenue B
Off. Ph. 272-4127 Res. 272-9775

HEATHINGTON LUMBER
COMPANY
Lumber, Paint,
Builders Hardware
CLOVIS RD. - Ph. 272-6797

WILLIAMS
SEED CLEANING CO.
PHONE 272-2751 Muleshoe

SINGLETON FUNERAL HOME
2405 E. ONE (Old Hwy. 101)
PHONE 272-4774

Robinson's Boot Shop
127 Main - Phone 272-4721
FINE WESTERN WEAR
Men, Women & Children
SHOE REPAIR SHOP
The Robinson
Serving Muleshoe since 1925.

Play Piggly Wiggly's new & exciting, fun, cash game



QUIK CASH

IT'S FUN,
IT'S FAST,
IT'S FREE!

\$175,000
IN
CASH
PRIZES!

WIN
UP TO
\$1000.00

39,000
LUCKY
WINNERS!

come join the fun
and
Win Cash!

WIN \$1000, \$500,
\$20, \$5, \$1 CASH!

HERE'S HOW YOU CAN BE A WINNER!

Just stop in at your friendly Piggly Wiggly and pick up your free Quik Cash Card. Erase the gold spot on the front of the card with a pencil eraser. Underneath you will find one, two, or three letters. Save these letters until you can spell one of the words on the back of the card (Thousand, Hundred, Twenty, Ten, Five, or One) . . . then take the cards to your manager for your cash prize!

WIN UP TO \$1,000 HOW TO WIN

Erase GOLD SPOT to find 1, 2 or 3 letters. Save letters until you can spell exactly any WORD shown below. Then, simply present your winning "QUIK CASH" cards to store manager for your prize. IT'S QUICK, EASY and FUN!

QUIK CASH
© 1965, SPOT-O-GOLD CORP.

SPELL	WIN
ONE	\$1
TEN	\$5
TWENTY	\$10
HUNDRED	\$20
THOUSAND	\$100
THOUSAND	\$1,000

Watch our ads for expiration dates. Our employees and their immediate families are not eligible for awards. No Purchase Required.



HEALTH & HOME NEEDS!

ZORRIES

SUMMER FOOTWEAR
GROSS STRAP, CHILDREN'S
LADIES AND MEN'S, ASST.
SIZES REG. 39¢ VALUE

29¢

SHAMPOO BARECK FOR DRY, OR NORMAL HAIR. REG. 98¢ 8oz. 87¢

79¢

HAIR DRESSING ACRYL CREAM. REG. 70¢ 4oz. 70¢

FROZEN FOODS!

FRUIT PIES

BANQUET 3 FAM. SIZE 89¢

APPLE, CHERRY, PEACH

ROLLS 24ct. BAG 19¢

BROCCOLI SPEARS 3oz. 79¢

FRUIT COCKTAIL

STOKELY'S, FINEST

5 NO. 303 CANS \$1.

This week
GET YOUR **Sheffield**
BONE WHITE
Coffee Cup

Each week a piece of Sheffield Dinner will be featured for just 9¢. For each \$5 in grocery purchases, you are entitled to one piece at this low price. There's no limit . . . with a \$10 purchase you can get two pieces . . . and so on.

9¢

only
with every \$5 purchase

WE RESERVE THE RIGHT TO LIMIT QUANTITIES!

THESE PRICES GOOD MAY 5-7 1966 IN MULESHOE, TEXAS.

Highest Quality Meats! Always At Piggly Wiggly!

FULLY COOKED HAMS

SWIFT'S PREMIUM

BUTT, HALF OR WHOLE LB. 59¢

SHANK PORTION LB. 53¢

CUBE STEAK U.S.D.A. CHOICE BEEF BONELESS, WASTIC FREE 98¢

RUMP ROAST U.S.D.A. CHOICE, AGED HEAVY BEEF 79¢

RIB EYE STEAK U.S.D.A. CHOICE, AGED HEAVY BEEF 1.98

PORK RIBS LEAN, NORTHERN PORK 69¢

PORK STEAK LEAN, NORTHERN PORK 69¢

NEW YORK STEAK U.S.D.A. CHOICE \$1.69

RIB STEAK BONELESS, U.S.D.A. CHOICE, AGED, LB. 98¢

FAMILY STEAK U.S.D.A. CHOICE AGED, LB. 69¢

CURE 81 HAMS HOPKINS' FULLY COOKED BONELESS \$1.29

SLICED BACON SWIFT'S PREMIUM 79¢

ROASTING CHICKENS WILSON'S, CERTIFIED, 3 to 4 lbs. AVERAGE 49¢

PORK CHOPS FAMILY PAK, 1/4 PORK LOIN, CENTER, CUT RIB, LOIN AND FIRST CUT CHOPS, 2 1/2 to 3 1/2 LB. AVG. 79¢

Hen Turkeys ROSE BRAND 8 to 12 LB. AVG. 39¢

CREAM CHEESE KRAFT'S PHILADELPHIA 8oz. PKG. 29¢

CHUCK ROAST U.S.D.A. CHOICE, AGED, HEAVY BEEF, VALU-TRIMMED 53¢

GREEN BEANS 6¢

STOKELY'S FINEST CUT NO. 303 CANS

TOMATO JUICE 4¢

STOKELY'S FINEST 46oz. CANS

FRESH PIGGLY WIGGLY PRODUCE!!!

STRAWBERRIES

CALIFORNIA, EXTRA FANCY, RED RIPE PINT

29¢

ORIGINAL OIL PAINTING REPRODUCTIONS

KING SIZE T.V. TRAYS

Only 88¢

WITH EACH \$5.00 PURCHASE

GREEN ONIONS EACH 5¢

SUGAR C&H HOLLY or IMPERIAL 5 LB. BAG 49¢

SWEET PEAS STOKELY'S HONEY POD 5 NO. 303 CANS \$1.

CRACKERS BREMNER, SALTINES 1 LB. BOX 19¢

PEACHES STOKELY'S, YELLOW CLING, SLICED OR HALVES 3 NO. 2 1/2 CANS 89¢

FLOUR GOLDEN WEST FULLY GUARANTEED 5 POUND BAG 45¢

PRESERVES GARDEN CLUB ALL VARIETIES 3 18oz. TUMBLERS \$1.

JUMBO PIES BREMNER CHOCOLATE DEVILS FOOD OR BANANAS, 14oz. 39¢

CAKE MIX GOOD-N-RICH, ASST. FLAVORS 4 19oz. BOXES \$1.

BEVERAGES RITE GOOD ASST. FLAVORS NO DEPOSIT NO RETURN 6 28oz. BTLS. \$1.

Lowest Prices . . . Greatest Variety . . . always at . . .

Piggly Wiggly