

Postal union's leaders still debating contract

By OWEN ULLMANN

WASHINGTON (AP) — Local leaders of a key postal union are deciding whether to endorse or reject a pro-

posed contract that has sparked wildcat walkouts at mail facilities serving New York and California. The 49-member national bargaining advisory committee of the American

Postal Workers Union was scheduled to vote on the accord today, providing a barometer of support by the APWU's 280,000 rank-and-file members.

A close vote was expected. "I wouldn't bet on the outcome of this one," said one union official, asking not to be named.

Leaders of the APWU were anxious to win the committee's support, but intend to submit the accord to the membership for ratification even if the local leaders vote their disapproval, said one union source.

The tentative three-year contract, which covers 554,000 postal workers represented by four unions, has been criticized as inadequate by a number of local union leaders, who have called for its rejection.

A "no" vote by a majority of the APWU's advisory committee would increase pressure on the union's leaders to try to renegotiate the agreement with the U.S. Postal Service. APWU officials said their union's constitution requires that the advi-

sory committee meet to discuss the proposed contract and help conduct the ratification vote. But there is no clear requirement in the constitution that the committee must endorse the pact before it can be sent to the rank-and-file, according to the officials.

Meanwhile, postal officials here said wildcat strikes by union members at facilities serving New York and California were slowly abating.

Postal Service officials said worker attendance improved Wednesday at bulk mail centers for New York, San Francisco and Los Angeles, where some employees walked off the job last Friday to protest the contract.

Postal Service spokesman David McLean said 72 percent of the work force showed up at the New York center in Jersey City, N.J., Wednesday morning, up from 61 percent the day before.

Attendance at the San Francisco center in Richmond, Calif., reached 74 percent for the Wednesday morning shift, up from 69 percent the day before. Attendance at the Los Angeles

center was 90 percent for the Wednesday morning shift, McLean said.

The Postal Service has sent letters of dismissal to 82 employees at the three centers for participating in the walkouts, which are prohibited by federal law. More dismissals were likely, said McLean.

He added that processing of packages and second- and third-class mail was running close to normal despite the walkouts. However, postal officials in New York said the walkouts there had created a three-day backlog in processing the mail.

First-class mail is not handled at the centers.

The new agreement, reached early Friday, continues a ban against layoffs and provides a 19.5 percent wage increase, including cost-of-living adjustments, over three years.

Some local leaders have complained that the wage increase is not

high enough. Others have expressed dissatisfaction with work rules dealing with mandatory overtime and the size of mail routes.

Many of the sharpest attacks have come from the nation's largest local, the New York Area Postal Union, which led an illegal strike in 1970. The union has scheduled a strike vote for next Monday, and other locals have indicated they may follow a New York-initiated strike.

Other locals have taken straw votes calling for a rejection of the contract. But the votes are not recognized by the leaders of the APWU, National Association of Letter Carriers and Mailhandlers division of Laborers' International.

The three unions hope to mail official ballots to the membership by next week. It would be at least another three weeks before the votes could be tabulated.

Legislators set to continue work on tax amendments

By LEE JONES

AUSTIN, Texas (AP) — House members have muddled the tax relief waters with votes to prohibit income taxes and to spare one car per family from property taxation.

Both the House and Senate were

Castro attacks stand on rights

MIAMI (AP) — Fidel Castro assailed the human rights push of President Carter while the United States maintains relations with "the racists of South Africa" and the "Zionists who have uprooted the Palestine people."

"How can they talk about human rights in a country where a millionaire and beggar live side by side; where the Indian has been exterminated, the Negro discriminated, women demoralized, and great numbers of Chicanos, Puerto Ricans and Latin-Americans are hated, exploited and humiliated," said the Cuban president in a Wednesday night speech to mark the 25th anniversary of his revolution.

On July 26, 1953, Castro and his followers attacked the army barracks in Santiago de Cuba, leading to the downfall of former President Fulgen- cio Batista.

Castro criticized U.S. relations with "the racists of South Africa who have oppressed 20 million Africans" and "the aggressive Zionists who have uprooted the Palestine people from their lands and have prevented them from returning to their Arab countries."

In his two-hour speech, Castro said that every U.S. president has a rhetorical phrase for Latin America and the world.

"One spoke of the 'good neighbor,' another of the Alliance for Progress, and now the watchword is 'human rights,'" Castro said.

"Nothing changes in its policies toward the hemisphere and the world," he said. "Everything stays the same. Its diplomacy and the strength of the dollar is always present."

scheduled to work today on their separate versions of a package of constitutional amendments designed to ease the burden of real estate taxes.

House members worked seven hours on their proposal Wednesday, quitting at 7:30 p.m.

Lt. Gov. Bill Hobby said the package before the Senate, along with bills repealing the state sales tax on utilities and increasing inheritance tax exemptions, would save Texans \$1 billion over the next three fiscal years.

"This will give some genuine relief to taxpayers, and we can go home," Hobby said Wednesday.

Each version would tax agricultural land on productivity instead of market value; give taxpayers some leverage against local property tax increases; drop the rarely obeyed constitutional requirement that intangibles — such as cash, stocks and bonds — must be taxed; and provide some kind of homestead exemption from school taxes.

If the voters are to have a chance to make a decision on property tax relief at the Nov. 7 election, both chambers of the Legislature must approve a single package with a two-thirds vote in each house.

House decisions on various changes could make it more difficult to win agreement.

A key House vote Wednesday was the 144-25 roll call against tacking Galveston Rep. Doug McLeod's amendment prohibiting a personal or corporation income tax.

The amendment then was approved on voice vote.

Rep. Ron Waters, D-Houston, tried to cut corporations out of the amendment, leaving only a ban on a personal income tax.

"Business taxes ought to be available as an option" for future legislators, he said.

"We are all aware of why Texas is prospering so much. The reason industry is coming to this state is because we don't have a corporation income tax," McLeod replied.

Rep. Froy Salinas, D-Lubbock, won voice vote approval of his amendment exempting one automobile per family from property taxes after the House refused, 89-47, to table it.

Labeling urged

WASHINGTON (AP)

The Federal Trade Commission staff wants purchasers of home insulation to receive information on the product's effectiveness.

The staff suggested Wednesday that the information be on labels and in advertising.

COOL IDEA FOR HOT WEATHER SAVINGS...

100 sq. ft. of

Scotchint

Sun Control Film on sun-facing windows can equal one ton of air conditioning!

3M ENERGY CONTROL CENTER 563-1642

SPECIAL EVENT
Huge once-in-a-lifetime SALE of articles from the greatest ocean liners HAVE ARRIVED IN MIDLAND

Here, for you to see and touch, nautical treasures rescued from the late great luxury liners. From the Queen Elizabeth and the Queen Mary, all the great ships of the world. Such as: compasses, sextants, chronometers, and other instruments of all kinds, including relics from the British Admiralty Service.

China Glasses, Maps, Table Cloths and More. Some are over 100 years old. From 1.50 to 7,200.00 including... ACTUAL LONDON STREET LAMPS YOURS TO TAKE WITH YOU...

MIDLAND HILTON
HERE NOW

THROUGH SUNDAY JULY 30

POPULAR DEMAND

HOURS MON-FRI 10 am to 9 pm - SAT & SUN 10 am to 8 pm
OPEN TO THE PUBLIC NO ADMISSION CHARGE

OFFICIAL STAR WARS
Texas Instruments Digital Watches
© 1977 Twentieth Century-Fox Film Corp.

FREE Star Wars Poster and Iron-on Patch with each purchase!

IT 527-1
Reg. 16⁹⁹ **12⁹⁹** ea.

PEYTON'S
TOYS • HOBBIES • CRAFTS
Mayfield & Michigan Across from Peyton's Bikes

ALBERTSONS DRUGS & FOODS
1002 ANDREWS HIGHWAY
Thurs., Fri., Sat., Sun. July 27, 28, 29, 30

PAINT-UP, FIX-UP TIME

Stretch Your Painting Dollars!

100 CASH BACK per gallon from DuPont

LUCITE Wall Paint
NO STIR • NO MESS • 1/2 HOUR DRY • WATER CLEANUP

LUCITE House Paint
BUILT-IN PRIMER • DRIES IN AN HOUR • WATER CLEANUP

OUR LOW SALE PRICE	\$6⁹⁹	OUR LOW SALE PRICE	\$8⁹⁹
LESS DU PONT'S CASH BACK	\$1⁰⁰	LESS DU PONT'S CASH BACK	\$1⁰⁰
YOUR COST AFTER RECEIVING DU PONT'S CASH BACK	\$5⁹⁹	YOUR COST AFTER RECEIVING DU PONT'S CASH BACK	\$7⁹⁹

REDWOOD STAIN DROP CLOTH BETTY DAVIS 1 GAL \$1⁹⁹ 9"X12" EXTRA HEAVY 79^c

SUPERBUFF ROLLER COVER & FRAME FITS ELECTRIC DRILLS 9" BY DuPont \$3⁹⁹ \$1⁹⁹

PAINTING PAD KIT KIT INCLUDES: 7" PAD, 1" PAD PLASTIC TRAY AND PAINT EDGER. \$3⁹⁹	ROTO STRIPPER FINE TOOL FOR STRIPPING PAINT OFF. FITS ELECTRIC DRILL. \$4⁸⁸	PAINT BRUSHES 2" to 3 1/2" 99^c	ROLLER & TRAY TOUGH PLASTIC TRAY 9-INCH ROLLER EASY TO USE. \$1³⁹	SPRAY PAINT QUALITY LUCITE SPRAY ENAMEL 12.75 OZ. CAN \$1⁴⁹	MASKING TAPE 1"X60 YDS. 3M BRAND ALL PURPOSE 69^c
--	--	---	--	--	---

Soleri pegs away at building Arizona dream city

By MIKE McCLOY

PARADISE VALLEY, Ariz. (AP) — The country's supply of youthful idealism dwindles, but visionary architect Paolo Soleri continues to build his dream city.

"We once had 250 students a year," Soleri, 59, said. "Now we're down to about 150."

The students pay \$430 to help raise the Arcosanti prototype city at Cordes Junction, about 70 miles north of this Phoenix suburb. The fee covers five weeks of meals, primitive housing, hard construction work and an hour or two a week with Soleri.

"Young people are becoming more security minded," said Soleri, whose

project was begun in 1970. "Instead of thinking about creating a new world, they're worrying about where the money is coming from for the next day or two."

Work goes on, however, with a cafe, several homes, a foundry and ceramics studio completed on the 860 acres of high desert.

"We could not do what we are doing without the affluent young person," the native Italian said. "The youth in this country might be spoiled, but it is less cynical than in many other countries."

A concrete shortage which has pushed back the construction schedule, Soleri said, "was unexpected. "We can buy some cement for \$3-4

a bag," he said, "and on the black market, you can get as much cement as you want for \$12, but we can't afford that."

The project is designed to provide housing and facilities for 5,000, with energy and food from the sun and giant greenhouses. It combines ecology and architecture and eliminates automobiles.

Lacking public or foundation funding, the project survives on \$250,000 to \$500,000 a year, mostly from workshop fees and the sale of Soleri's books, windbells and drawings.

"I've been proposing Arcosanti as an alternative to Las Vegas and Disneyland — as an alternative to those kind of thrills," he said.

Cultural festivals are staged at the project every fall, Soleri noted. "We also want to develop a cultural center with some impact, perhaps as substantial as Walt Disney in his field."

Arcosanti rises up the side of an arroyo. Four acres of inclined greenhouses will capture the sun's energy for horticulture and heating. On a plateau above the greenhouses, curved concrete buildings provide space for culture and commerce.

The main housing structure will rise as a wide pyramid behind the cultural center. Current emphasis is on construction of the East Crescent, to provide housing on the plateau for 60 persons who will work on the 25-story main structure.

While Arcosanti is a concrete expression of Soleri's vision of people drawing close for harmony with their environment, it also speaks to his theological beliefs. He considers it a step in man's journey from the physi-

cal to the spiritual. "We are not the children of divinity," said Soleri. "We are the father of divinity. So it's our task to turn the physical universe into a divine universe."

Air pollution suit asked

AUSTIN, Texas (AP) — The Texas Air Control Board said Wednesday the attorney general's office has been asked to file suit against Uni Oil Inc., Corpus Christi.

The board said its investigations have confirmed that the company has substantially completed construction of a 10,000 barrel-a-day crude oil

distillation unit without an air pollution permit. The Texas Clean Air Act requires air pollution permits for all new construction or modification.

If found guilty of the alleged violation, Uni Oil would be liable for up to \$1,000 a day in penalties, the board said.



Great Pickin's!

All the fruits and vegetables look great at Safeway this week and they taste as good as they look! Come pick your family's favorites from our beautiful array of crispy, fresh vegetables and sweet, juicy fruits, berries and melons. The finest from all the important growing areas are here. Enjoy them at Safeway's money-saving prices. (There are special savings this week on many of the treats pictured!)

Crisp Celery Lb. 29¢

Croton Norma 6-Inch Pot \$4.49
 Marble Queen Ivy 6-Inch Pot \$4.29
 Bartlett Pears Lb. 49¢
 Nectarines Lb. 49¢
 Santa Rosa Plums Lb. 39¢

Success Rice 4-Ct. Boil in Bags 14-Oz. Box 75¢

Instant Tea CROWN COLONY 3-Oz. Jar \$1.79

Mug-O-Lunch Betty Crocker Macaroni & Cheese Spaghetti & Sauce Beef Noodles & Gravy 3-Oz. Ctns. 2.89¢

INSTANT MONEY Game Series 289

CHICKEN-of-the-SEA Chunk Tuna In Oil or In Water 6.5-Oz. Can 59¢

KRAFT Mayonnaise Qt. Jar \$1.09

Rules and Instructions: Series 289

- TO OBTAIN MATERIAL. With each visit to participating store, each adult (18 years or older) may obtain one ticket and on first visit, one Collector Card. No Purchase Required.
- TO PLAY. Scratch off boxes with edge of coin to reveal prize amounts. INSTANT GAME. Three (3) prize amounts of a kind on one ticket wins that prize. COLLECT GAME. Correctly place collector stubs on Collector Card. Complete any columns, see that prize. Watch for "You Win" \$100 or \$1,000 Collector Stub and win that amount instantly!
- TO CLAIM PRIZE. Submit tickets for verification to Store Manager (sign on back in his presence). Winners of \$1-\$20 Game paid in cash at store. Redemption of over \$20. Complete Claimant's Form (prize receipt) for payment by check.
- OFFER NOT OPEN TO. Employees of sponsoring retailer, its subsidiaries, manufacturers of Game, their advertising agencies and families of foregoing.
- ALL TICKETS are subject to verification, are void and may be rejected if not obtained through legitimate channels, or if illegible, mutilated, forged, tampered with or irregular in any way, or contain printing or other errors. Liability for regular ticket, or those not verified, limited to replacement of ticket. Void where taxed or restricted by law. Person(s) using any device, scheme, information or method other than fair chance to play and win is disqualified. Retailer reserves the right to limit prize to one per household. Valid winning tickets must be presented within two (2) weeks after end of Game or prizes are forfeited. Winning tickets become property of sponsoring retailer and cannot be returned. State, Federal and other taxes imposed on any or all prizes are sole responsibility of winners.
- GAME ENDS ON OCT. 15, 1978. OR UPON DISTRIBUTION OF ALL TICKETS IF SOONER.
- ALL TICKETS AND COLLECTOR'S CARDS must have same series number and are valid only in that Series No. Game.
- UPDATING ODDS. Odds to win and number of prizes unclaimed will be updated each week after thirty (30) days for all prize categories \$25.00 and over.
- TICKET VOID IF it does not contain in front Series No. Security Pattern, and title "INSTANT MONEY" under scratch-off box. \$ Symbol and spelled out word.
- TICKETS—One per address per day also available by sending stamped, self-addressed envelope to Instant Money, Series 289, 23 Chestnut Street, Englewood, N.J. 07631.

Series 289 is played in 59 participating Safeway Stores in the State of Texas, cities of El Paso, Maria, Alpine, Ft. Stockton, Pecos, Odessa, Midland and in the State of New Mexico, cities of Hobbs, Carlsbad, Artesia, Roswell, Alamogordo, Ruidoso, Las Cruces, Deming, Silver City, Socorro, Belen, Albuquerque, Las Vegas, Santa Fe, Los Alamos, Espanola, Taos.

SAFETY SPECIAL Lemonade Mix MINUTE MAID CRYSTALS Regular or 30.7-Oz. Pink Can \$1.79

EVERYDAY LOW PRICE Cheddar Cheese SAFEWAY Longhorn Style Chunk .. Lb. \$1.89

SAFETY SPECIAL Daytime Diapers TRULY FINE Extra 48-Ct. Absorbent Size \$3.99

SAFETY SPECIAL Peak Toothpaste 4.5-Oz. Tube 79¢

SAFETY SPECIAL Faberge WHEAT/HONEY Regular or Oily Shampoo or Conditioner 15-Oz. Btl. \$1.39

Double Ticket Day WEDNESDAY

Instant Money Winners ...

Prize Value	Instant Game	Collect Game	Total Prizes	Total \$ Value	Odds for 1 Store Visit	Odds for 13 Store Visits	Odds for 26 Store Visits
\$1000	25	25	50	\$50,000	1 in 200,000	1 in 15,385	1 in 7,683
\$100	125	125	250	\$25,000	1 in 40,000	1 in 3,077	1 in 1,539
\$50	125	125	250	\$12,500	1 in 40,000	1 in 3,077	1 in 1,539
\$20	200	200	400	\$8,000	1 in 25,000	1 in 1,823	1 in 882
\$5	2,500	2,500	5,000	\$12,500	1 in 4,000	1 in 308	1 in 154
\$2	7,500	7,500	15,000	\$15,000	1 in 1,333	1 in 103	1 in 52
\$1	17,000	17,000	34,000	\$17,000	1 in 120	1 in 10	1 in 5
Total	87,475	87,475	174,950	\$200,000	1 in 114	1 in 8.7	1 in 4.3

Kay Fields \$100.00
 Mrs. Steve Betton \$50.00
 Mrs. B. David Buthman \$1000.00
 Myrtle Lindsay \$100.00
 Ernestine Ramirez \$100.00

Paul D. Lavertz \$1000.00
 Mary Wells \$50.00
 Inez Morris \$50.00
 Nancy Rodriguez \$50.00
 Dick Yates \$50.00

SAFETY SPECIAL Safeway Motor Oil 10W-40 Qt. Can 62¢

SAFETY SPECIAL Safeway Oil Filter Ea. \$2.09

SAFETY SPECIAL Safeway Air Filter FROM \$1.99

SAFETY SPECIAL SAFEWAY

©COPYRIGHT 1963, 68, 72 SAFEWAY STORES, INC.

Insurance ads trigger lawsuit against firms

By DEBORAH MESCE
BRIDGEPORT, Conn. (AP) — "And now the big winners in today's lawsuits ..." begins an Aetna Life & Casualty advertisement. In the background is a television logo for a hypothetical program called "Liability Jackpot."

Aetna says that ad and others in a series are designed to tell the public about issues that contribute to the rising cost of insurance premiums. But a Bridgeport law firm, believing the ads are "misleading" and "deceptive," has filed a class action suit against Aetna and three other major insurance firms. The lawyers say the ads constitute jury tampering.

"What they're asking is for jurors to violate their oath ... Jurors are supposed to evaluate a case not on the basis of their own self-interest but on the facts and the law," said Theodore Koskoff.

Besides Aetna, others named in the

suit are Travelers Insurance Cos. of Hartford, St. Paul Cos. Inc. of Minnesota and Crum and Forster of New Jersey and its subsidiary, the North River Insurance Co.

The suit, filed early this year in Superior Court on behalf of four Connecticut residents involved in damage suit litigation, claims the ads have hurt the plaintiffs' chances of receiving monetary awards from juries.

Filed by the Koskoff, Koskoff & Bieder law firm, the suit claims the ads are "unfair, deceptive, untrue and/or misleading." It seeks an unspecified amount in damages, attorneys fees and corrective advertisements.

The case probably will go to trial in the fall.

Most of the 13 ads, which ran in newspapers, magazines and other publications, linked rising jury awards and increased premiums.

One Aetna ad begins: "Too bad judges can't read this to a jury." An

accompanying picture shows a judge with a note reading: "When awarding damages in liability cases, the jury is cautioned to be fair and to bear in mind that money does not grow on trees. It must be paid through insurance premiums from uninvolved parties, such as yourselves."

The Aetna ads end with: "Aetna wants insurance to be affordable."

A St. Paul Cos. ad begins "You really think it's the insurance company that's paying for all those large jury awards?"

In defense of the ads, an Aetna statement says, "We feel we have a right and an obligation to publicly comment on issues affecting the rising costs of liability insurance."

The suit says "despite the over-all implication that insurance companies are losing money left and right ... assets of property and casualty companies have continually increased since 1952."

High jury awards "was only one of

a myriad of things" contributing to the rising cost of insurance premiums, said George Hinckley, vice president of marketing services for Travelers. "We're not trying to single out one cause of high costs."

The issue involves "corporate freedom of speech," he said.

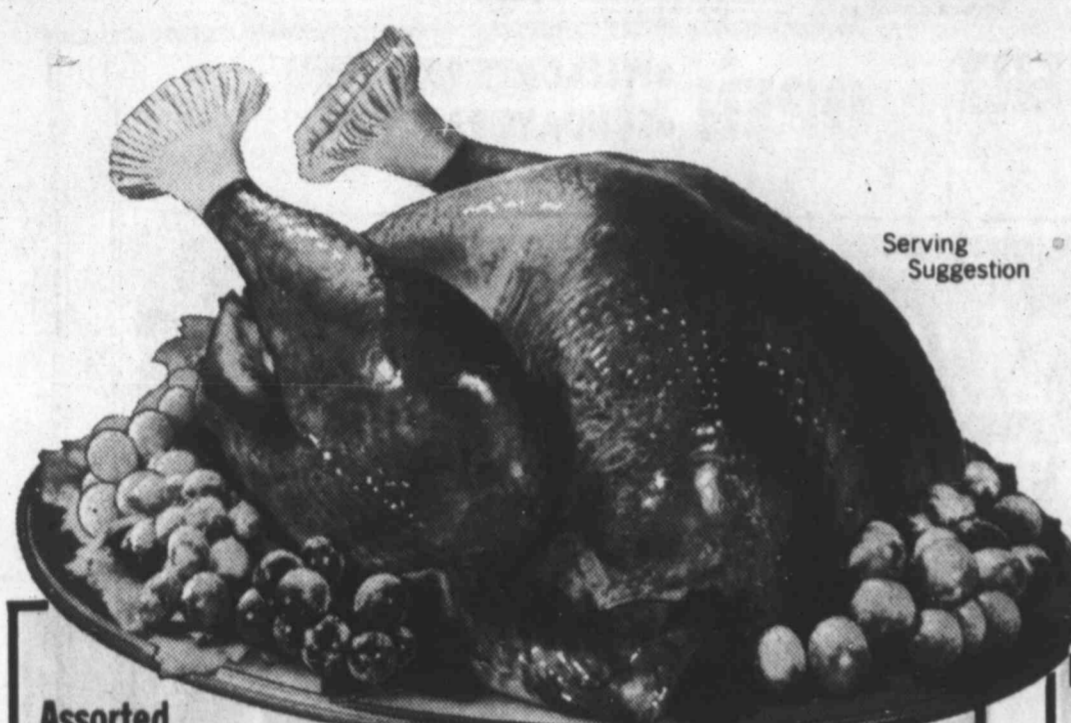
"The system was being explained rather than being accused of anything," Hinckley said.

Koskoff disagreed, saying the ads "tamper with the judicial system."

"It's all right to explain the system provided you're truthful about it." But he said the ads contain "lies" and "half truths."

"Furthermore when they are doing it for the purposes of influencing juries, under the cloak of the 1st Amendment, and not for the purpose of debate, it's dishonest," he said.

"It's about time there was a complete overhaul of the insurance industry. They've had a license to steal too long."



TROPHY Turkeys

Grade-A HENS or TOMS **Lb. 75¢**

SAFEWAY

These items & Prices Available July 27, 28, 29, 1978 at Your Nearby Safeway Located at:

Assorted **Pork Chops** **\$1.19** Lb.

Beef Steaks **\$1.15** Lb. (USDA CHOICE GRADE BEEF 7-Bone Cut)

MANOR HOUSE **Grade-A Fryers** **63¢** Whole Lb.

SAFEWAY **Ground Beef** **\$1.09** Regular Lb.

Parkay KRAFT MARGARINE Soft or Maxi-Cup **75¢** 1-Lb. Size

Candy BABY RUTH or BUTTERFINGER **\$1** 2.8-Oz. Bars

Tang ORANGE DRINK **\$1.69** 27-Oz. Jar

More Meat Selections

Sausage Whole Hog Hot or Regular 2-Lb. Roll **\$2.99**

Sliced Bacon **\$1.29** 12-Oz. Pkg.

Boneless Pot Roast **\$1.49** USDA CHOICE GRADE BEEF Shoulder Cut Chuck Rolled & Tied 1-Lb.

Sliced Bologna **\$1.59** Meat or Beef 1-Lb. Pkg.

Blue Morrow CHICKEN FRIED Beef Patties or Fingers **\$1.19** 1-Lb. Pkg.

PLAZA SHOPPING CENTER
2500 W. ILLINOIS

Official USDA Food Stamp Redemption Store

Stainless Flatware

SALAD FORK **49¢** Each

Doric or Normandy Sugar Shell/Pastry Server **\$2.49** Each Set

WIN UP TO \$1,000

Spumoni LUCERNE ICE CREAM **\$1.19** 1/2-Gal. Ctn.

Fruit Juice Bars PARTY PRIDE 12-Count 3-Oz. Bars **\$1.19**

Lemonade BEL-AIR Regular or Pink **\$1** 12-Oz. Cans

Large Eggs LUCERNE GRADE-A EXTRA LARGE DOZEN **69¢** 73¢

Gold Medal Flour 5-Lb. Bag **69¢**

EGGO WAFFLES **79¢** 11-oz. Box BLUEBERRY or STRAWBERRY

PHOTO PROCESSING Color Reprints from Slides **3.99¢** FOR

Beverage Ice **69¢** 10-lb. Bag PARTY PRIDE

Safeway Socks Misses Cuff Knee-Hi **99¢** EACH PAIR

SAFEWAY SUPERSTORE!

NEW AT SAFEWAY VIDAL SASSOON Hair Products 2-Oz. Shampoo 2-Oz. Finishing Rinse or 2-Oz. Protein Pac Treatment \$2.49 Protein Re-Moisturizing Creme 4-Oz. Size \$3.49	FLAMBEAU PARTY POPS Makes 8 Frozen Treats Each \$1.09	ALABASTER ELEGANTE PITCHER 1 1/2-Qt. Size Each 99¢	WEST BEND 2 to 6 Cup HOT POT Each \$12.98	POPCORN POPPER Four Quart BUTTERMATIC \$12.98	KIDS FISH CAKE SHOES Each Pair \$1.78
Pennzoil Motor Oil P-ZL 10W-50 Qt. Can 99¢	Lip Quencher ALL FLAVORS EACH \$1.99	Skin Quencher 4-Oz. Lotion \$1.19	ICE CUBE TRAY & BIN ea. 99¢		

THESE ITEMS AVAILABLE JULY 27, 28, 29, 1978 AT YOUR NEARBY SAFEWAY SUPER STORE LOCATED AT:

PLAZA SHOPPING CENTER ONLY

S & F Beverage Company EL PASO, TEXAS **Pabst Blue Ribbon Beer** 12-Oz. Cans 6-Pack **\$1.49**
Beer available in Safeway Stores at S & F Beverage Company Concessions

LUCERNE 1/2% Low Fat Milk **75¢** 1/2-Gal. Ctn.

These items available only at the Safeway locations indicated!

IMPROVEMENT SALE

THESE SPECIALS ARE EFFECTIVE FROM NOON THURSDAY THRU SUNDAY!!



USE YOUR CARDS AT GIBSON'S



GIBSON'S POLICY
Each advertised item is required to be readily available for sale at or below the advertised price at all stores listed, unless specifically otherwise noted in this ad. If an advertised item is not available for purchase due to any unforeseen reason, Gibson's will sell you a comparable quality item at a comparable reduction in price. Gibson's policy is to give our customers complete satisfaction.

3111 CUTHBERT

OPEN •WEEKDAYS 9AM-10PM
•SUNDAYS 9AM-9PM

\$1.00 CASH BACK
from Du Pont

SAVE WITH LUCITE!



DuPont Lucite
WALL PAINT

1-GALLON CAN
REG. 8.49
SALE PRICE 6.88

5⁸⁸

★Your Cost After Refund

SAVE \$1.00, \$3.00, \$5.00 or more!

SAVE with our low prices ... SAVE AGAIN with DuPont's \$1.00 per gal. CASH BACK

Du Pont Lucite
HOUSE PAINT



1-GALLON CAN
REG. 9.98
SALE PRICE 8.88

7⁸⁸

★Your Cost After Refund

To get the \$1.00 per gallon CASH BACK from DuPont... use this mail-in certificate.

HURRY! Du Pont's \$1.00 per gallon CASH BACK applies to LUCITE gallons purchased between July 22 and August 13, 1978

MAIL IN CERTIFICATE

\$1.00 CASH BACK

Offer good only on gallons of LUCITE® Paints purchased between July 22 & August 13, 1978. Quota not eligible.

NO. GALLONS PURCHASED x \$1.00 = TOTAL CASH BACK (attach and return)

MAIL: Attach with register receipt from retail store. Plus one from portion of gallon label must accompany label for each \$1.00 required (portion of label required illustrated on right). Send complete name and address in duplicate on plain paper to: LUCITE CASH BACK, P.O. Box 1778, Midland, Texas, 79701.

RECEIVE \$1.00 Cash Back check by mail for each gallon purchased. This offer good only on purchases made between JULY 22 and AUGUST 13, 1978. (Please mail no later than September 15, 1978.)

PLEASE NOTE: Portions of gallon label required may not be mechanically reproduced. Request and receipt can not be returned. Please show \$ marks for CASH BACK check.

NAME

STREET

CITY

STATE ZIP

AREA CODE PHONE

PAT JOHNSON 6 FT. WOOD STEPLADDER

REG. 22.49

Now ONLY **16⁴⁴**

WOOSTER No. B2600 4 inch wide PAINT BRUSH

Reg. 1.95 NOW ... **1⁴⁴**

MASKING TAPE

Borden's 1/2" width

REG. 49¢ Now ONLY **29¢**

All Purpose Plastic DROP CLOTH

1001 USES NO. HM006 9 x 12 FT.

REG. 28¢ EACH **5¹ FOR ONLY**



COMPLETE PHARMACY

HOME IMPROVEMENT CENTER

GARDEN CENTER



JIMMY'S WHITE HOUSE

'Official business' tag doesn't apply to families of staff

By FRANK CORMIER

WASHINGTON (AP) — Together with President Carter's official family sometimes carries a hefty price tag — to the private chagrin of some of Carter's key advisers.

In question is the price exacted by Carter economizers each time someone flies to the presidential retreat at Camp David, Md., without enjoying official-business status.

That means, for example, that if the president invites assistant Frank Moore to bring his family to Camp David for a weekend with the Carters, Moore can expect to get a bill for the 30-minute helicopter flight from Washington.

Moore won't be billed for himself, because even the hardnosed chief economizer, presidential cousin Hugh Carter Jr., assumes Moore was invited because of his official position as the chief White House lobbyist with Congress.

But Moore can count on getting dunned for a transportation charge for his wife, Nancy, and their four children.

With a family of that size, accepting a presidential invitation to relax in the beautiful Catoctin Mountains can be an expensive proposition.

Hugh Carter figures a Camp David trip by helicopter is worth close to \$50 a head. In the Moore example cited, multiply that by five.

The Moore example isn't theoretical, either. He and other members of the White House senior staff actually were invited last year to spend an autumn weekend at Camp David with their families and the Carters.

The mountaintop gathering, which coincided with the escalation of Carter's manifold problems and erosion of his standings in the polls, was seen at the time as an effort to pull the White House staff closer together in the face of adversity.

To an outsider, that might seem to

fall into the category of official business.

But Hugh Carter wasn't about to confer official status on wives and children. So helicopter bills were sent to Moore, press secretary Jody Powell and such other key Carter aides as Stuart Eizenstat, Hamilton Jordan and Tim Kraft because they were accompanied by kinfolk.

It's a fairly well kept secret that some of the bill recipients were outraged and stalled for weeks before paying up.

In a nutshell, they didn't expect to have to pay as much as \$200-plus, in some cases, for the pleasure of accepting a generous presidential invitation.

Some of the aggrieved aides doubt the president knew they were billed for the journey. But each one questioned said he wouldn't think about raising the issue in the Oval Office; Carter has more important matters to deal with.

Hugh Carter Jr., told a reporter he simply applied guidelines drafted at the start of the administration to carry out Carter's insistent demand that no one in his White House be accused of joy-riding at the taxpayer's expense.

In fact, the presidential cousin said Carter himself is billed regularly when daughter Amy takes a playmate with her to Camp David.

"I think Rosalynn writes the checks," said Hugh Carter.

The bills are sent out, at Hugh Carter's direction, by the White House Military Office, which helps arrange military transportation for the president.

Checks are payable to the U.S. Treasury and the monies collected are added to the general fund, Hugh Carter said. He reported there is no means of directly reimbursing the military units that provide the helicopters.



GIBSON'S

Anniversary 11th

SALE DAYS

SPECIALS

NOON THURSDAY

THRU

SATURDAY



WE GLADLY ACCEPT U.S.A. FOOD STAMPS

FARMLAND Premium Grade BACON

Vac Pac

LB. **1.39**

Glover's Select Beef BONELESS CHARCOAL STEAK

LB. **1.89**

Glover's Select Beef Round Steak

LB. **1.69**

Glover's Select Beef SANDWICH TENDER

Cubed Steaks

LB. **1.89**

FARMLAND HAMS

5-Lb. Canned Ham **849**

3-Lb. Canned Ham **549**

1 1/2-Lb. Canned Ham **349**

Canned Picnic 3-LB. CAN **449**

Canned Ham Patties 12-OZ. **139**

CHEESE SLICES Borden's American Singles 12-OZ. PKG. **129**

GROUND BEEF Extra Lean LB. **149**

FRYER BREASTS Jumbo Pac (Split Breasts) LB. **105**

HOT LINKS Glover's, Reg. 99c Lb. **89c**

BREADED SHRIMP Fisher Boy LB. **239**

FISH FILLETS or STICKS Mrs. Paul's 14-oz. **159**

WHITE SWAN

• Whole Kernel or Cream Style Golden Corn

• Cut Green Beans

• Pork & Beans • Peas

16 and 17 Oz. Cans **4 FOR \$1**

Mountain Grown FOLGER'S COFFEE

1-LB. CAN **2.79**

BANQUET Frozen Fried Chicken

2-LB. BOX **1.99**

TANG ORANGE DRINK MIX

27-OZ. JAR **1.49**

KRAFT MACARONI AND CHEESE DINNER

3 7 1/4-Oz. Boxes **89c**

SUNSHINE Chip-A-Roos Cookies

12-OZ. PKG. **69c**

Gibson's Grade "A" LARGE EGGS

Dozen **69c**

TOTINO'S Frozen Pizza

• Cheese • Hamburger • Sausage • pepperoni

13 and 13 1/2-OZ. **79c**

KRAFT Barbecue Sauce

16-OZ. BTL. **59c**

Carnation Chunk Light TUNA

6 1/2-Oz. Can **59c**

EVER FRESH Frozen HONEY BUNS

10-OZ. PKG. **59c**

TEXIZE Spray 'n Wash

Laundry Soil & Stain Remover

16-OZ. **97c**

CLAIROL CONDITIONING SHAMPOO

16-OZ. **1.27**

STYLE HAIR SPRAY

11-OZ. CAN **69c**

LUSCIOUS SWEET...JUICY LARODA Plums

NOW... **3.15** LBS. FOR

COLGATE INSTANT SHAVE

11-OZ. CANS **2 FOR \$1**

Chiffon Spill-Mate Towels

5-OZ. SIZE **53c**

BAN BASIC Non-Aerosol Anti-Perspirant Spray

5-OZ. SIZE **1.89**

PECOS CANTALOUPE

Field Ripened

A SWEET REFRESHING SUMMER TREAT!

LB. **15c**

JUNO NECTARINES

The Smooth Skin Peach LB. **49c**

LARGE TEXAS GRAY WATERMELONS

20-30 LB. Average Guaranteed **1.69** EACH

CALIFORNIA NO. 1 SALAD SIZE TOMATOES

FIRM RIPE TASTY LB. **49c**

CALIFORNIA FRESH CRISPY HEAD LETTUCE

2 LARGE HEADS **88c**

TEXAS NO. 1 RUSSET POTATOES

10-LB. BAG **1.79**

DEATHS

S.P. Hazlip

S.P. "Steve" Hazlip, 75, died Tuesday at his home at 1007 W. Tennessee Ave.

Services were to be at 3 p.m. today in the Episcopal Church of the Holy Trinity with the Rev. Sam Hulse, pastor, officiating, and the Rev. Derk Manley assisting. Burial was to be in Resthaven Memorial Park Cemetery directed by Newnie W. Ellis Funeral Home.

Hazlip was born Nov. 1, 1902, in Mayersville, Miss. He spent his early life in Greenville, Miss., and attended Greenville Military Academy and Sewanee Military Academy. He also attended Sewanee University.

He began work with the old Humble Oil and Refining Co. in the Houston area. He then worked in the land department of Navarro Oil Co. He lived in several cities, including the Tyler-Longview area, Calgary, Canada, and Wichita Falls before coming to West Texas in the 1920s.

He was a charter member of the Permian Basin Pioneers. He moved to Midland in 1936 as division manager for Reed Roller Bit and served in this capacity until his retirement in 1959. He later was a representative with Oil Field Rentals in this area, retiring permanently in 1967. He was a member of the Episcopal Church of the Holy Trinity.

Survivors include his wife, Inez; two daughters, Mrs. Mark (June) McMahon of Los Alamos, N.M., and Mrs. Christian (Netta) C. Weichsel II of New Braunfels; a sister, Mrs. Frank W. Michaux of Houston; his stepmother, Mrs. J.K. Hazlip of San Diego, Calif., and a half-sister, Jackie Simpson of San Diego.

The family requests memorials be made to the Episcopal Church of the Holy Trinity.

John Stacy

GILMER — Services were held here Saturday for John Thomas Stacy, 60, father of Janet Prado of Midland. Stacy died Thursday at his home at Ore City after a brief illness.

Burial followed in Coffeetown Cemetery near Ore City, with Loyd Funeral Home in charge.

Stacy, a carpenter, was a Navy veteran of World War II. He was a member of Jehovah's Witnesses.

In addition to the Midland daughter, he is survived by his wife, four other daughters, his mother, two brothers, five sisters and 13 grandchildren.

Mrs. J.B. Neill

LAMESA — Services for Mrs. J.B. (Laverne) Neill, 51, of Lamesa will be at 10 a.m. Friday in Downtown Church of Christ here with O.H. Tabor, a Church of Christ minister, officiating.

Burial will be in Lamesa Memorial Park directed by Branon Funeral Home.

Mrs. Neill died Wednesday after a lengthy illness.

She was born and reared in Dawson County. She was graduated from Union High School in 1945. She married J.B. Neill in Dawson County on Aug. 21, 1946. She was a longtime member of the Downtown Church of Christ.

Survivors include her husband; three daughters, Linda Berry, Barbara Cude and Patsy Shook, all of Lamesa; her parents, Mr. and Mrs. Claude Miller of Lamesa; two brothers, Vernon Miller and Leland Miller, both of Lamesa, and six grandchildren.

Hattie Warner

ODESSA — Hattie Bell Warner, 82, of Odessa, died early Wednesday in an Odessa nursing home after a brief illness.

Services will be at 2 p.m. Saturday at Thompson's Funeral Home in Jacksonville. Burial will be in Whitehouse Cemetery near Jacksonville.

She was born Sept. 17, 1895, in Van Zandt County. She was a member of the Church of Christ. She married Coleman C. Warner in March 1940 in Baytown. He died in 1970.

Survivors include four daughters, Mrs. Joel Wilmon of Odessa, Billie Christine Ashley of Baytown, Evelyn Brown of Dallas and Zella Ives of Saudi Arabia; a brother, George Riley Scott of Odessa; two sisters, Lellie McNeely of Jacksonville and Alma Mitchum of Tyler; 14 grandchildren, 15 great-grandchildren and four great-great-grandchildren.

Edmond Hicks Sr.

HOBBS, N.M. — Services for Edmond B. Hicks Sr., 54, of Hobbs will be at 10 a.m. Friday in the Taylor Street Church of Christ with Gary Montgomery, minister, officiating. Burial will be in Memory Gardens here.

Hicks died Wednesday in a Lubbock hospital.

Hicks was born Feb. 27, 1924, in Slaton, Tex. He was an employee of El Paso Natural Gas Co. and a resident of Lea County, New Mexico for 31 years. A veteran of World War II, Hicks was a member of the Taylor

Fast train kills TV cameraman

ATLANTA (AP) — Jimmy Harmon needed just one more piece of film for the television documentary on the Southern Crescent passenger train. It was a piece of film that cost him his life.

The 31-year-old cameraman for WXIA-TV, Atlanta, was perched on a trestle Wednesday, with two cameras, waiting for the Southern Railway System passenger train to round a bend, said Chuck Johnson, a police spokesman in suburban DeKalb County.

Harmon, of Stone Mountain, Ga., was killed instantly by the New Orleans-bound train, which included 10 cars and four engines and was going about 50 mph, Johnson said.

Arthur Vickers

ANDREWS — Arthur L. Vickers, 52, died Tuesday in an Andrews hospital following a sudden illness.

Services will be at 2 p.m. Friday in the First Baptist Church. Burial will follow in Andrews Cemetery under the direction of Singleton Funeral Home.

Vickers was born July 12, 1926. He had lived in Andrews for about six years. He was a drilling foreman for Atlantic Richfield Co. until two months ago. He moved here from Covington, Okla.

Survivors include his wife, Betty; a son, Butch Vickers of Odessa; a daughter, Paula Faye Freese of Hudson, Iowa; his mother, Bessie Blanche Vickers of Bogata; a sister, Faye Bell of Bogata; five brothers, John Ray Vickers of Tours, France, Gerald Vickers of Corpus Christi, Billy Joe Vickers of Talco, Jimmy Glenn Vickers of Ardmore, Okla., and Harold Franklin Vickers of El Paso, and a grandchild.

The family has requested that memorials be made to the American Heart Association.

Blanche Barfoot

JAYTON — Services for Blanche B. Barfoot, 88, of Jayton, grandmother of Mrs. Jodie Stegall of Midland, were to be at 2 p.m. today in the First United Methodist Church of Jayton with the Rev. William Hunt, pastor of the First Presbyterian Church of Sweetwater, Dr. Ned Hicks of Coushatta, La., and Eldon C. Wade of Star City, Ark., officiating.

Burial was to be in Jayton Cemetery.

Mrs. Barfoot died Wednesday in the home of her daughter. Born on Dec. 26, 1879, in Henderson County, she was married to John W. Barfoot on July 28, 1896. The couple resided in Jayton, where he farmed and she operated the Barfoot Hotel for many years. She was a charter member of the First Presbyterian Church of Jayton. Her husband preceded her in death.

Other survivors include two grandchildren, three great-grandchildren and two great-great-grandchildren.



BABY OIL IN A NEW BATH SOAP

New Gentle Touch...

Leaves your skin feeling baby soft, baby smooth. Gentle Touch babies your body with every bath. So you step out feeling soft, smooth and clean all over. The fragrance? As gentle as its name. And Gentle Touch lasts and lasts. Go ahead—baby yourself. With baby oil in your new bath soap!

CLIP NOW AND SAVE

7¢

GT 7/27/78 MOM

BABY YOUR POCKETBOOK—

SAVE 7¢

ON GENTLE TOUCH, YOUR NEW BATH SOAP WITH BABY OIL.

Gentle Touch

TO DEALER: You are authorized to act as our agent for the redemption of this coupon. We will reimburse you 7¢ plus 5¢ for handling, provided that you and the customer have complied with terms of our coupon offer. Limit one coupon per family. This coupon is good only when submitted by a consumer for redemption at time of purchasing specified brand. The consumer must pay any tax involved. This coupon is non-transferable. Expires proving purchase of sufficient stock.

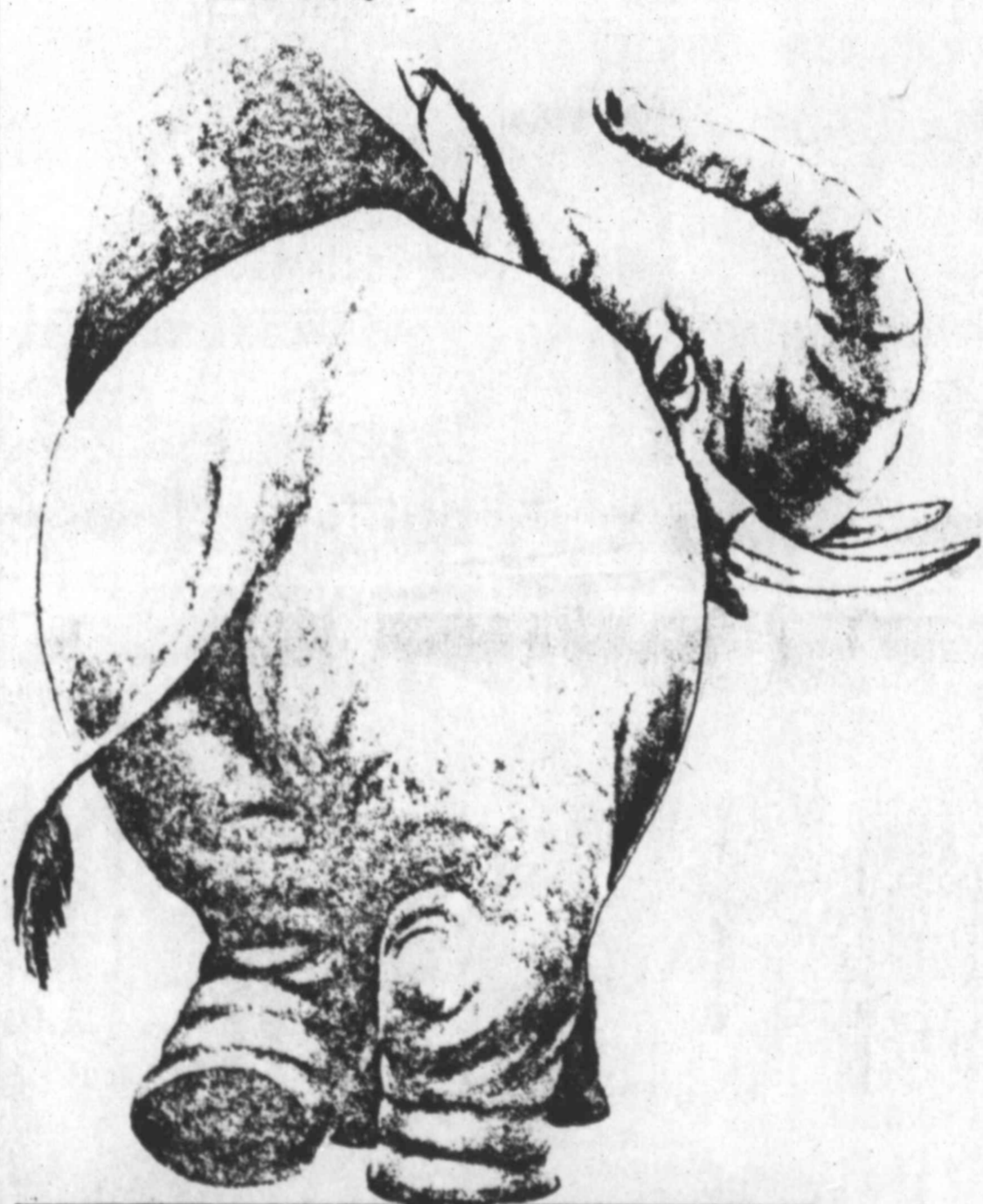
of the brand to cover coupons presented must be shown upon request. Coupons will not be honored and will be void if presented through outside agencies, brokers or others who are not retail distributors of this brand. Coupon is void if prohibited, taxed, or restricted. Cash value 1/20¢ of 1¢. Coupon expires July 28, 1978. Andrew-Jurgens Company, Box 1200, Clinton, Iowa 52734.

GT 7/27/78 MOM

CLIP NOW AND SAVE

7¢

SATURDAY LAST DAY!



ALL GREAT THINGS COME TO AN END. LIKE OUR

ANNUAL JULY CLEARANCE SALE!!!!

DON'T FORGET TO SHOP EACH DEPARTMENT... JUST LOOK FOR THE HALF-PRICE SAVINGS SIGNS AND SAVE, SAVE, SAVE... TIME IS RUNNING OUT...

1/2 OFF

ALL SALES FINAL. NO RETURNS, REFUNDS, EXCHANGES OR LAY-AWAYS ON SALE ITEMS. ALL SALE ITEMS ARE IN SPECIAL GROUPS.

GRAMMER MURPHEY

TO PUT THE WANT ADS TO WORK Dial 682-6222

Why Not INVESTIGATE A FUNERAL SERVICE POLICY! **ELLIS FUNERAL HOME** 801 Andrews Hwy. 683-5555

CLIP HERE

RING RIOT SALE

THURS. FRI. SAT. JULY 27, 28, 29th 9 A.M. to 7 P.M. at **WALGREENS**

\$3.71 \$19.95 with coupon

Lifetime Guarantee PRONG MOUNTED—HAND SET STONE 18K HGE or "Sterling Silver"

14.95 "Bring in your diamonds and see if you can tell the difference"

BE THERE!

9.95

9.95

9.95

Easy Summertime Entertaining



The best summer menus are those that delight your guests but take little of your time or energy. As a welcome change from the usual barbecue or picnic fare, we suggest you consider one of these pleasurable alternatives.

- Set out an assortment of unusual breads and some delectable cheeses from Denmark; accompany with fresh fruits. On another table, offer several wines for tasting and salted almonds for nibbling.
- Serve a sensational salad with soup. Make the salad high in protein with almonds and cheese.
- Set up a Sandwich Bar and let guests create their own.
- Host a "San Francisco Supper" featuring a fabulous pasta-vegetable dish of egg noodles cooked in a sauce made with three cheeses, ringed with sautéed vegetables, and crowned with roasted almonds.
- Pass dill-seasoned almonds and Danish Dip (with fruits or vegetables) with popular light aperitifs such as chilled California white wine or naturally-carbonated mineral water with fresh lime wedges.

Copenhagen Salad

1 pound fresh peas, hulled (1 cup)	1 tablespoon minced onion
1 cup diced celery	1/4 teaspoon prepared mustard
3/4 cup diced Creamy Ifuvari cheese	1/8 teaspoon salt
1/2 cup whole natural (unblanched) almonds, chopped, roasted	2 medium tomatoes, cut into wedges
1/2 cup dairy sour cream	Watercress or parsley
1 tablespoon lemon juice	

Cook peas in lightly salted boiling water until barely tender (1 to 2 minutes); drain thoroughly. Combine peas, celery, cheese, almonds, sour cream, lemon juice, onion, mustard and salt. Toss lightly to mix. Spoon into 4 individual glasses or bowls or one serving bowl. Garnish with tomatoes and watercress. Makes 4 servings (3 cups).

Danish Dip

1/2 cup sliced natural (unblanched) almonds	1/3 cup Danish blue cheese, crumbled
2 cups dairy sour cream	1/2 cup whipping cream, whipped

Spread almonds in shallow pan. Toast at 350 degrees for 5 minutes or until light gold in color. Cool. Reserve 1 to 2 tablespoons for garnish. Crush remainder with rolling pin. Mix crushed almonds, sour cream and blue cheese; fold in whipped cream; turn into bowl. Sprinkle with reserved sliced almonds.

Serve with strawberries, apple or pear wedges, cubes of melon, assorted crackers or raw vegetables. Makes 4 cups dip.

Dilly Almonds

1 cup whole natural (unblanched) almonds	2 teaspoons butter
1 cup whole blanched almonds	3/4 teaspoon dill weed
	1/2 teaspoon seasoned salt

Spread almonds in shallow baking pan. Bake at 300 degrees for 25 minutes. Melt butter in skillet. Add almonds, dill weed and salt; stir over medium heat just until almonds are well-coated. Turn onto paper towels to cool thoroughly. Store in tightly-closed container in refrigerator. Makes 2 cups.

Almond-Coated Cheese

Spread roasted diced almonds on waxed paper or plastic wrap; place a block of natural Danish Cream Cheese with Orange or other fruit flavor in center. Bring up sides of paper to help coat cheese with almonds, then turn cheese over and, with fingers, pat almonds onto any areas of cheese that have not been covered. Slice and serve with assorted crackers or rounds of raw zucchini or carrots.

Danish Sandwiches

For the base of each, choose a bread such as rye, dark rye or pumpnickel, buttered. In most cases, use only half a slice per sandwich. Shown from left to right: Almond-Coated Cheese (see recipe) and lettuce; Danish Cream Cheese with Herbs, watercress, cherry tomato wedges and green pepper strip; Danish Fontina, shrimp, dillweed (optional) and lettuce; Danish Blue Cheese and radish slices with lettuce.



San Francisco Supper

(Pasta with Vegetables)

8 ounces medium egg noodles	1 cup grated Erom cheese (Danish Fort Salut)
Boiling salted water	3/4 cup whole natural (unblanched) almonds, chopped and roasted
2 tablespoons butter	1/3 cup dry white wine
2/3 cup half-and-half	1/4 teaspoon pepper
1 cup grated Danish Fontina or Tybo cheese	Vegetables*
1 cup grated Samsøe or Scenbo cheese	

Cook noodles in boiling salted water 8 minutes or until barely tender; drain thoroughly in colander. Return noodles to pan and stir in butter, half-and-half, cheeses, almonds, wine and pepper. Cook over low heat, stirring occasionally, until cheeses have melted. Spoon into center of platter. Surround with Vegetables.

*Vegetables: In skillet, heat 2 tablespoons vegetable oil. Add 1 cup chopped onion and sauté 2 minutes or until softened. Stir in 1 small eggplant cut into 3/4-inch cubes (3 to 4 cups), 1/2 pound yellow crook-neck squash cut into 1-inch half-rounds, and 1 medium green pepper cut into 1-inch squares. Cook over medium-high heat, stirring occasionally, for about 6 minutes or until eggplant is fork-tender. Mix in 2 medium tomatoes cut into 1-inch cubes, 1 cup thinly sliced celery, 3 tablespoons butter, 3/4 teaspoon dry basil, 1/4 teaspoon salt and 1/8 teaspoon pepper. Stir over medium-high heat until thoroughly heated. Makes 4 servings.



