

around  
**muleshoe**  
with the journal staff

This year's annual "Trick or Treat" project for CROP will be carried out by Muleshoe youth the night of Tuesday, Oct. 25, the county CROP chairman, the Rev. J. Frank Peery, announced. Muleshoe churches are cooperating in the program for CROP.

Cub Scout Pack 620 began selling Halloween candy door-to-door Tuesday and will continue this sales campaign until Halloween. Pack 620 is sponsored by the Lions Club. Proceeds from sales go into the Cub Pack 620 fund.

Mr. and Mrs. Joe Carroll and Mr. and Mrs. Jerry Spies returned to Muleshoe Sunday evening from a three-day hunting trip to Pagosa Springs, Colo. Mrs. Carroll reported the men went out Saturday morning early and were back to camp with their quota by 9 a.m.

Three young Muleshoe residents, two of school age, continued in serious condition in Hospitals in Littlefield and Lubbock Wednesday as a result of two separate accidents. Jackie Jean Brown and Fay See MULESHOE on Page 2

## Record Crowd Likely

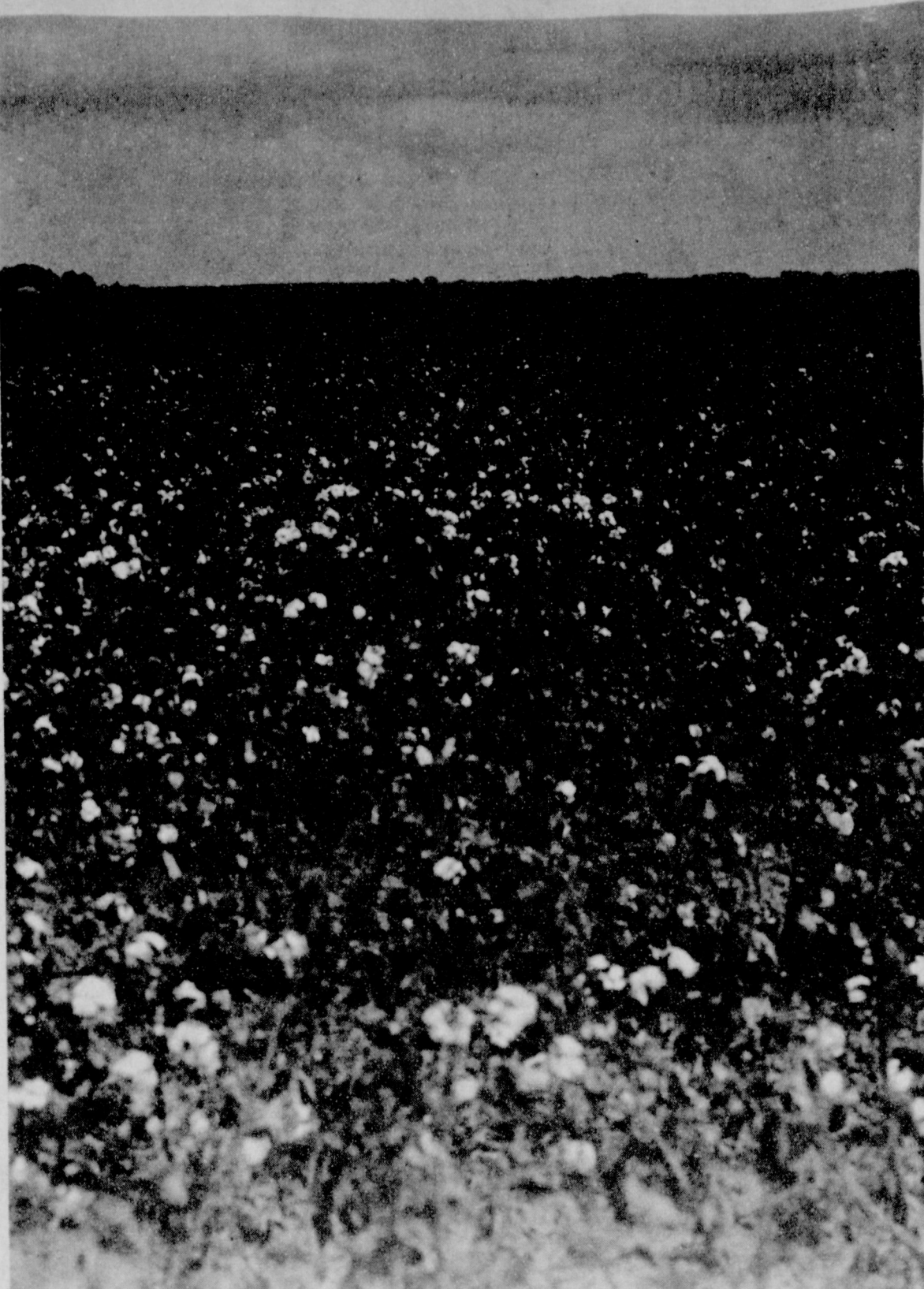
Tomorrow night's football game between Dumas and Muleshoe should see a record turnout, school officials say.

As a result, tickets are on sale at both junior and senior high school offices as well as all three drugstores, Superintendent Neal Dillman said.

Advance prices are \$1.50 for adults and 50 cents for students. However, at the gate prices for students will be 75 cents. Meantime, coaches here were putting their team through rigid workouts in preparation for the powerful Damas Demons, always a top grid outfit in Texas. Both teams had an "off" night this past week on their schedules.

Another parallel: the game tomorrow launches the conference play for both outfits.

As with all conference games, the Friday night setto will start at 7:30.



NATURE'S DEFOLIANT - Muleshoe area cotton set a quick defoliation of mid October when the thermometer nose-dived to 25 last Friday night, dipped to 26 the next night and back to below freezing again Monday night. Note wilted leaves. (Journal Photo)

## Junior College Gets School Board Approval

Muleshoe school board this week unanimously approved a proposed junior college for this area after hearing a report on the current status of the proposal made by D. B. Lancaster and Jim Crawford. The proposed junior college district will comprise 11 present school districts.

The junior college action topped activities at the monthly board session which Superintendent Neal Dillman termed "report night." In addition to the college report, several other reports were made, ranging all the way from football

receipts to a complete breakdown of the school attendance and library participation.

The complete 1966-67 budget was approved, a formality previously taken care of but not finalized until after an audit of the previous year's budget had been completed. Dillman said copies of this audit are required to be mailed to the Texas Education Agency and county clerks of both Bailey and Lamb counties.

The board approved employment of Janet Schroeder as a third grade teacher in Mary DeShazo school. She holds a

master of arts degree from the Panhandle (Okla.) A&M College, Goodwell, and is the wife of Raymond Schroeder, a basketball coach and teacher in Muleshoe high school.

John Q. Public, sports fan, is supporting the football program with his pocketbook at about the same level as last year, a gate report made by the superintendent revealed. On See COLLEGE on Page 2

## Bulldozer Gets a Job

When bulldozers arrive on the scene sometime next spring to start turning dirt for the widening of U. S. 84 west of Muleshoe, they are going to find a couple of little buildings smack in the middle of the right-of-way.

Not that it will bother the 'dozer at all to find a couple of tiny shacks in its path, bulldozers can take such things in stride, literally. But the shacks are all that will be left on the road when actual construction gets under way.

Seems nobody wanted the tiny houses. When the county advertised for bids on the little structures, nobody was interested in buying.

Came time for the final vintup of matters such as telephone poles, water lines and buildings, and these little houses were still standing - or leaning - on the state property. And now it's too late to advertise for bidders again.

"Just have to 'dozer it off when the contract is let next spring," commented Judge Glen Williams.

# The Muleshoe Journal

Dedicated to the progress and development of Bailey County and the great Muleshoe country

12 PAGES

VOL 44 -- NO. 42

Published every Thursday at Muleshoe, Bailey County, Texas

THURSDAY, OCTOBER 20, 1966

## Winter Lands Sharp Blow to Area Crops

### First Freezing Weather Strikes

One day the flowers were blooming, the grass was green and the cotton still had the leaves it had been wearing since early spring. It was summertime.

The next morning it was winter - just like that! The cotton leaves had withered, the peanuts quit blooming abruptly and the grass turned tannish. Because winter came to the Muleshoe area just that quickly. The thermometer was a rogue; it sneaked way down in the tube to 25, chortled a bit in the higher readings the next day, and then sunk to 26 the next night. That was Friday night and Saturday night. Sunday night it behaved itself, galloping down only to 46, but Monday night it was below the freezing point again - dipping to 31.

And thus the first freeze of the year came suddenly and violently to put an end to the growing season, and as late as midweek farmers were still surveying their fields, trying to determine just how much damage had been done to their

crops, particularly cotton.

Opinions were mixed, but most agreed that the "late" cotton had been damaged, and that many a happy young green boll was literally nipped in the boll.

One farmer put it this way: "I had been trying to decide whether to use chemicals and defoliate, but I had decided to hold off awhile because the young bolls were still too green. Well, nature took care of the problem for me; nature defoliated for me -- and quickly."

He said he figures his yield "definitely will be cut" but he said he doubts that the damage will be too great since only

See WINTER on Page 2

### Schools' Cost: \$1 Million

It costs \$1,049,176 to run the Muleshoe Independent School system for a school year. At least that's the budget for the current school year.

Salaries, of course, top the costs with transportation the next biggest item, but guess what comes third.

It's electricity which last last school year ran to \$11,927.26. Water cost \$3,202.90 and gas \$5240.53. Telephone service ran to \$1625.48. This ran total utilities to \$21,936.17.

Salaries amounted to \$771,170 and debt service \$143,300. Pupil transportation amounted to \$30,300.

### Jo Wood Wins Week's Contest

A woman moved into the top guessing spot this week in the Journals - sponsored football guessing contest. She is Jo Wood, 318 W. 8th, Muleshoe. J. K. Adams, county agent, finished in second spot. Each missed one winner, but Mrs. Wood did a better job of guessing the score of the Arkansas-Texas game which finished with a 12-7 win for Arkansas. She guessed the score at 14-7. Adams said the score would be 21-17 in favor of Arkansas. Mrs. Wood missed the winner of the TCU-Texas A&M game, and Adams failed to pick the successful team in the California-Washington battle.

\*\*\*



Jo Wood

### Anglo Students Far Outnumber Negroes, Latins

Muleshoe schools, fully integrated this year for the first time in both pupils and teachers, still are predominately Anglo, Neal Dillman, superintendent, told the school board this week in reporting on the first six-weeks' activities.

The report showed that enrollment of Negro pupils is only 118, while Anglo total is 1473 and Latin enrollment stands at 514. The breakdown, by schools, is available at his office.

He also released figures on teachers' qualifications. Of 117 "certified" personnel, 26 have masters' degrees and 86 bachelor degrees. Five are without degrees.

Nineteen teachers, because of the acute shortage of teachers throughout the state, are teaching on "emergency" permits only. Seven of these are in high school, five in junior high, three in Richland Hills and four in Mary DeShazo.



MISS SUGARBEET - Miss Sherri Smith, 18, who won the crown of "Miss Muleshoe" last summer, added another laurel this past week when she was crowned "Miss Sugarbeet" in ceremonies in Friona. She was sponsored by the Muleshoe Jaycees. She is the daughter of Mr. and Mrs. Les Smith. (Nowlin Photo)

## Hatfield Dies In Viet Battle

Death of the first Muleshoe-born military man in the Viet Nam conflict was reported here this week when Woodward S. Hatfield, Jr., 21, a Navy corpsman, died in action.

His father, Pete Hatfield, is chief of police at Knox City, and formerly was a policeman in Muleshoe. The youth's wife, Louise Hatfield, lives in Tucumcari, N.M., with her parents, Mr. and Mrs. J. L. Heafner.

The telegram informed Mrs. Hatfield that her husband had been killed by a hand grenade while "in a defensive position" in Kyan Ngai, South Viet Nam.

Hatfield had been in the Navy for two years and in the South Viet Nam area approximately six months. He and his wife

were married in ceremonies at the Muleshoe Church of Christ in March.

Hatfield was born and reared in Muleshoe and was graduated from high school here in 1964.

His body is expected to reach the United States in about 10 days, and services will be held here, followed by burial in a Muleshoe cemetery.

Survivors, in addition to his wife, and parents, are two sisters, Mrs. Shirley Waller and Mrs. Brenda Comer, both of Lubbock.

He received his basic at Camp Pendleton, California. He was born here in March, 1945.

\*\*\*



Woodward S. Hatfield Jr.

## Historical Group Talking Museum Here, Help Needed

Pioneers of Bailey county and the Muleshoe area - and their offspring - may as well start dusting off their memories, those old trunks and boxes of family heirlooms and other memorabilia.

In fact, the Bailey County Historical Survey Committee and W. E. Medlock, Lubbock, owner of the original Muleshoe Ranch headquarters, have started possibilities of big promotional plans for Muleshoe

and preliminary plans for formation of a county museum to house and preserve historical objects from early area days.

The object of both parties is the establishment of a perpetual and permanent Bailey County museum in the Muleshoe Ranch cookhouse. (Note: Muleshoe Ranch was born Sept. 1902 from the huge XIT ranch of Texas; its name was given by E. K. Warren and Andy Hicks to the ranch in 1907; and later

in 1913, upon land grant by Santa Fe (then Pecos-Northern Texas) Railway Company was given to the infant organization townsites, then named Muleshoe for its procreator, Muleshoe Ranch.)

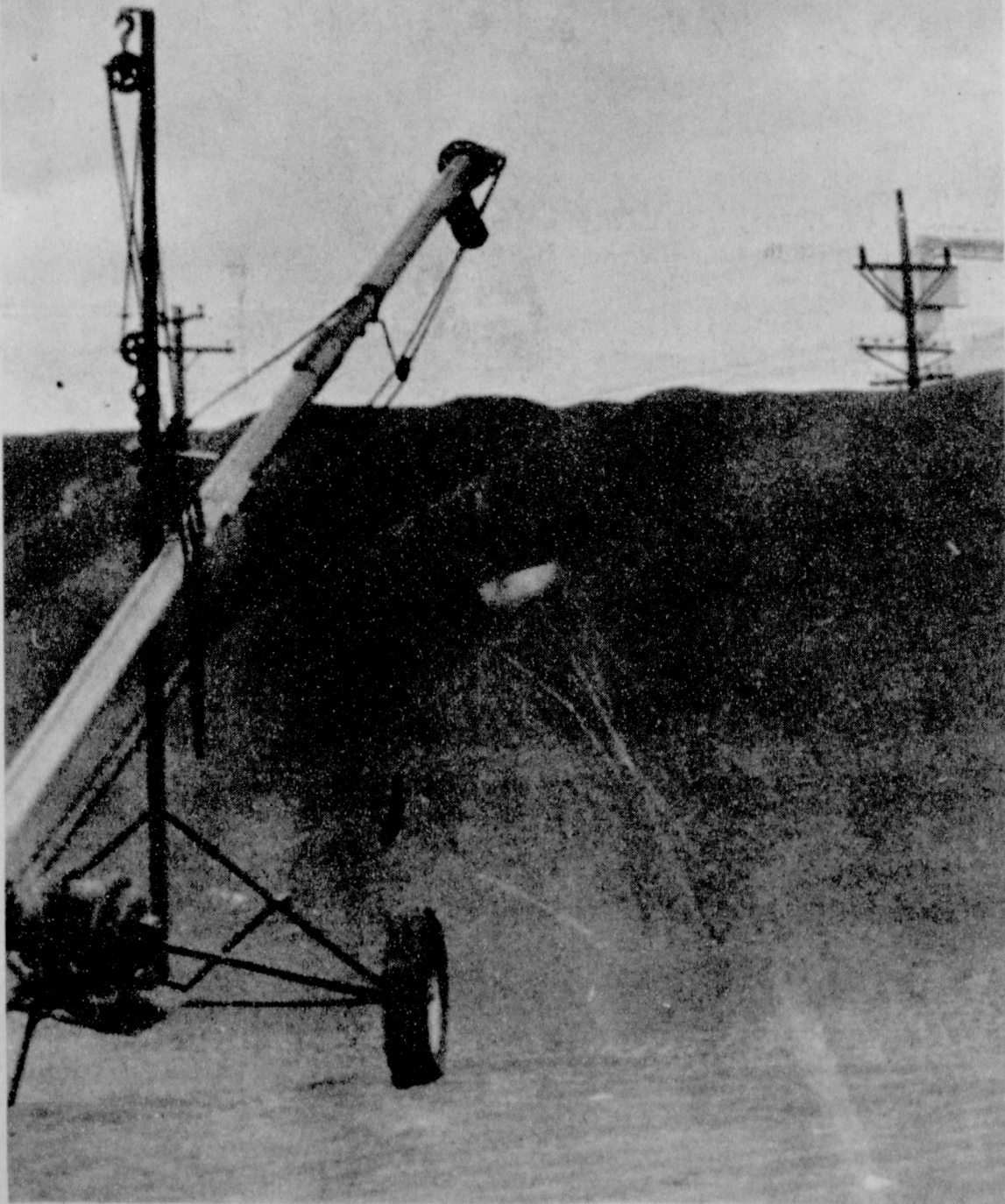
At the called Monday meeting Medlock and Dr. Ray Tatum, Ph. D. both of Lubbock, met with the local historical committee, upon invitation. County Judge

See MUSEUM on Page 2

### TEMPERATURES

By R. J. Klump  
Official U. S. Weatherman

	High	Low	Rain
Oct. 16	63	27	
Oct. 17	36	40	.10
Oct. 18	55	30	
Oct. 19	64	23	
	Sunrise		Sunset
Oct. 20	6:56	6:08	
Oct. 21	6:57	6:07	
Oct. 22	6:58	6:06	
Oct. 23	6:58	6:05	



MOUNTAIN OF GRAIN - Each year grain sorghum stacked up outside elevators in mountain-like formations. The scene above, shows telephone-pole high stacks, is typical of this year's crop. (Journal Photo)



### College...

(Continued from Page 1)

Oct. 17, 1966, the figure stood at \$4444.41, while on Oct. 19 last year, the amount was \$4538.60.

The superintendent also reported that 12 persons are enrolled in the Monday, Tuesday, Thursday six-weeks type-writing course for adults, 12 in the Tuesday Spanish class and 10 in the Thursday session. These courses also run for six weeks.

The superintendent also reported that enrollment figures are running about the same as last year. Figures, as of Oct. 17 were as follows: high school, 530; junior high, 546; Richland Hills, 479; Mary DeShazo, 536 for a total of 2091.

Last year on Oct. 29, the figures were: high school, 527; junior high, 532; Richland Hills, 520; Mary DeShazo, 494, and Hilltop (since abolished) Negro school, 49, for a total of 2122.

Average daily attendance report for the first six weeks this year stood at 2017.46 as compared with 2056.43 at the end of the first period last year. Junior high led all other schools in average daily attendance for the first six weeks with a 97.3 record. Richland Hills was only a shade behind with 97.0. High school had a record of 96.73, and Mary DeShazo, 96.11.

The board was told that the school is proud of its library participation record for the first six months of the new school year with 5220 books, periodicals and papers checked out. By schools, the record was 1603 for high school, 1381 for junior high, 642 for Mary DeShazo and 1294 for Richland Hills.

### Screwworms In Area Cattle

A case of screw worms has just been confirmed in a large feedlot in the Sudan area.

The Texas Animal Health Commission is making every effort to prevent a general outbreak of this very obnoxious pest. The premises will be inspected thoroughly; immediate control measures will be instituted and an aerial drop of sterile male flies from Mission will be made Tuesday or Wednesday.

We would like to emphasize that the fight against the screw worm is a continuous and expensive one. We would like to suggest the following control measures to stockmen.

1. Delay castrating and dehorning until after fly season.
2. Check cattle closely for open wounds.
3. Collect and send in larvae samples.
4. Better control measures against all flies are indicated.

### Muleshoe...

(Continued from Page 1)

Weaver were in a hospital in Littlefield after an automobile accident near Littlefield last Friday. Sharon Blaylock, injured when struck by an automobile as she was crossing the highway near her home Monday, continued in serious condition in Methodist Hospital, Lubbock.

\*\*\*\*\*  
First Methodist Church's game room again will be open to all high school students for an after-game fellowship, the church pastor, the Rev. J. Frank Peery, announced. A program will be presented, games will be played and refreshments served.



When Robin Reynolds, 5, of Garland, Texas visited the State Fair of Texas in Dallas recently, she couldn't resist the generous impulse to stop and offer "Big Tex" 52-ft.-high Fair symbol, one of her Texas-size Kleenex tissues. "Poor man, it's so hot he might want a wipe his face or something," said Robin. Through trick perspective the photographer made it possible for 43-inch Robin to place the over-size tissue in the giant statue's outstretched hand.

### Mule Juniors Trample LaPlata

Muleshoe's Wheelin' & Dealin' 7th grade football team rang up another victory Tuesday afternoon by smothering Hereford's LaPlata 20-0, and the 8th graders played LaPlata to and 6-8 tie.

If the Young Mules can take Friona and Morton they will have the first perfect record tallied by a Muleshoe 7th grade team in 10 years, says head junior high coach, Bob Graves.

In Tuesday's game Lee Wayne Clodfelter ran over from the 12-yard-line for the first TD and then he scored the second tallie after a 65-yard run. David Spain crossed for the extra two points and then came back to take a short pass from Clodfelter at the Mule 40 and galloped off the 60 yards for the touchdown.

Only Mule score made in the 8th grade series was by David Parker, but it was a story-book score - a 90 yard run. Keith Turner crossed over for the two extra points.

Muleshoe Masonic Lodge No. 1237 AF&AM is having a called meeting tonight at 7:30 in the Masonic Hall according to the Worshipful Master of the Lodge, Tom Smith. The meeting will be on degree work.

### Winter...

(Continued from Page 1)

the green bolls were hit. Most of his cotton was already "well open". But another farmer said he had been forced to replant late in the spring, resulting in late maturity. He figured his crop had been reduced by 25 percent, but admitted that his situation was extreme.

Grain sorghum, on the other hand, apparently was damaged little, if at all. Most sorghum

was mature, and a large percent has already been harvested.

Vegetables were hard hit, tomatoes being written off as a closed chapter for 1966. Harlan Redwine lost 12 acres of tomatoes in Friday night's freeze, and other tomato growers also were hard hit.

Meantime, projected yield for the 23-county Plains Cotton Growers area has been upped slightly, increasing for 1967 29 pounds per acre from 513 pounds this year. Projected yields are set by the U. S. Department of Agriculture on the basis of "average" production for the previous three years and other factors such as changes in cultural practices and trends in yield.

And these are important to farmers because both price support payments and acreage diversion payments under the

current cotton program are based on projected yield.

Here in Bailey county, however, the projected yield for next year is four pounds under this year's 495 average.

In 1966 producers were paid 9.42 cents per pound times their projected yield on each acre of their "domestic" allotment which is 65 percent of each farm's total allotment. In addition, a payment of 10.5 cents per pound times the projected yield for diverted acreage, up to 35 percent of the total allotment.

The domestic allotment for 1967 again has been set at 65 percent but the department of agriculture has yet to announce the rate of payments for price support or diverted acreage. Says Plains Cotton Growers, Inc.:

In 1966, farmers on the Plains signed up to plant only 1,451,407 acres of cotton. They were required by law to reduce allotments by 12.5 percent, and had the option of diverting up to 35 percent of their acreage. Average diversion for the 23 counties 32.7 percent.

And this picture is not expected to change greatly in 1967, since payment rates for diversion will likely be as high or higher than 1966.

So, assuming the same average rate of acreage diversion, planted acreage in 1967 should approximate 1,457,600 acres on the Plains, plus whatever acreage may be leased or bought for the area.

### Police Chief Talks to Rotary Club on Safety

Police Chief Harold White told the Muleshoe Rotary Club Tuesday that safety "usually applies only to the other fellow, and not to me" and because of this attitude, many accidents occur.

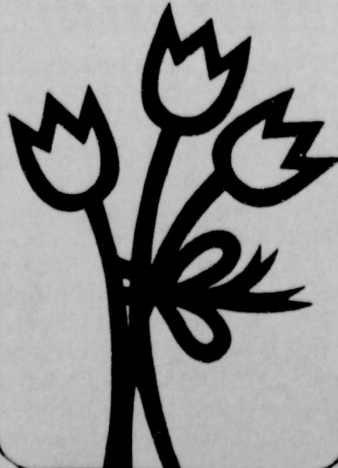
He said Muleshoe has had 150 accidents inside the city limits and Bailey county another 70. Many of these, the chief holds, could have been avoided. "What about the other guy?" he asked. "If he isn't paying attention to his driving, then are you prepared to take action to avoid an accident?" "Don't make yourself an accident looking for some place to happen!"

**ROBIN HOOD RETURNS**  
KNOXVILLE, Tenn. (AP) - Shades of Robin Hood and Sherwood Forest!

The list of items missing from a Knoxville home which was burglarized included an "engraved semi-recoil 160-inch bow."

### Tiptoetiptoe.

Surprise her with a bunch. Look under **FLORISTS** in the **YELLOW PAGES**. Where your fingers do the walking.



### Museum

(Continued from Page 1)

Glen Williams presided in absence of committee chairman Cecil Davis, who is in the hospital.

Discussion underway, with details of making the historic cookhouse into a museum, was begun. The building was originally used by ranch cook and his family in early operations as bunkhouse and cookhouse.

Medlock, present ranch owner who purchased land from W. F. Moss, Lubbock, tentatively offered use of cookhouse for a museum. He added that original windmill, built by Andy Hicks, first ranch foreman, the old storm cellar and rail fence, are to be preserved also on the headquarter's site.

Protection of property, by either caretaker or community volunteers, historic society promotion, gathering of historic objects, upkeep of grounds and building, location, operation, tourist and highway information were included in the discussion.

Preliminary study of issues involved were made, with a call meeting or the regular Oct. 31 meeting set as formulation plans' date.

The cooperation and interest of area citizens is vitally needed to make this project a success. Interested persons especially members of pioneer families and volunteer helpers, are urged to express their interest. Please telephone Mrs. Horace Blackburn, society sec-

retary, or any member of the local historical society. Objects may be given or loaned for museum display.

Members present, in addition to committee guests Medlock and Tatum, were Judge Williams, Mrs. Blackburn, Mrs. O. N. Jennings, Howard Carlyle, Mrs. Larry Hall, M. H. Laney, and Frank Snyder.

At the Oct. 31 meeting, a contact and membership roll list will be compiled. Every family who has lived in the county prior to 1940 is asked to furnish statistics for a family story to be printed in book form. The data will be compiled by a volunteer member of the local historical committee.

## A SAFE WINTER DRIVING TIP...

### GET A MOTOR TUNE-UP...

Keep that engine humming through those cold days ahead. Let our motor specialists thoroughly go over that motor today.



### PLAINS AUTO SERVICE DEPT.

421 Main Muleshoe Ph. 272-4576

## Enjoy The Convenience

OF PERSONALIZED SERVICE

"Right to your front door"

# Home Delivery

BY CARRIER BOY

Of The

## Bailey County Journal

and ... **Muleshoe Journal**

For Only **55¢** per month

**\$5.50 plus 50¢ CARRIER DELIVERY ... \$6.00**

9 MONTHS SPECIAL COLLEGE SUBSCRIPTION... \$5.00  
(October through June)

Pay one of the authorized route carrier below promptly -- and -- remember, he is a self-employed young man in the newspaper delivery business for your neighborhood.

CITY RT. 1  
LANCE PUCKETT - Ph. 272-3084  
All area in Lenau Addition.

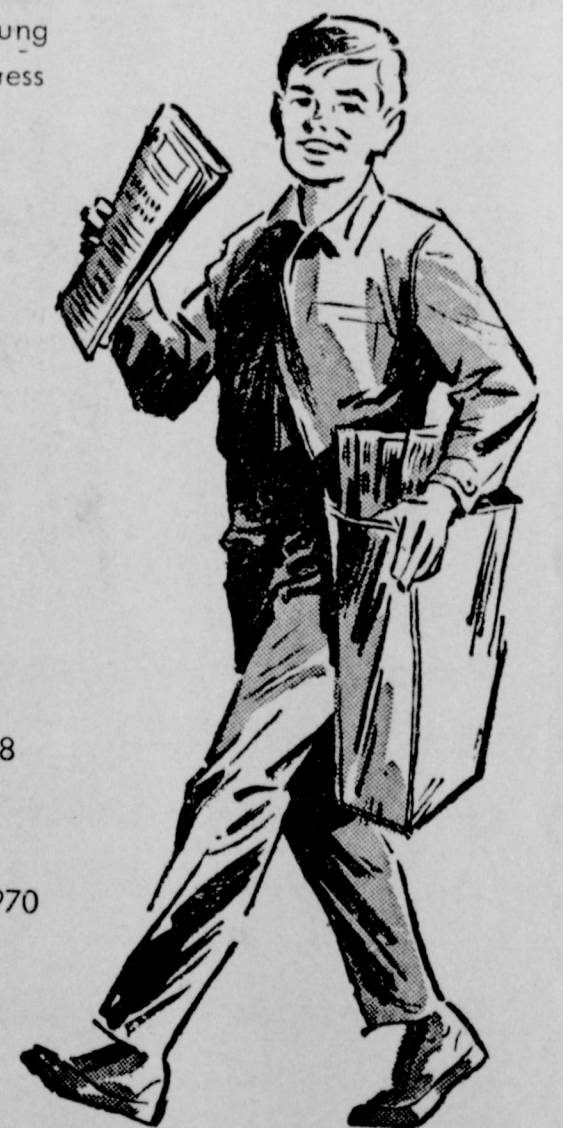
CITY RT. 2  
NEIL KING - Ph. 272-4028  
All area East of West 2nd, South of the railroad tracks.

CITY RT. 3  
DAVID SPAIN - Ph. 272-3544  
All area from West 3rd to 7th

CITY RT. 4  
TOMMY LEMONS - Ph. 272-4608  
All area from West 7th to 15th

CITY RT. 5  
MICHAEL HUCKABY - Ph. 272-3970  
All area from 15th thru 20th, From American Blvd. to Ave E., Richland Hills.

CITY RT. 6  
PERRY HALL - Ph. 272-4749  
All area from 17th thru 20th, From Avenue E through Ave. I Richland Hills.



**Contract Your Friendly Carrier Boy**

**Don't Delay — Make Sure You GET EVERY ISSUE BY SUBSCRIBING TODAY**



Co-ordinated  
Slacks And  
Tops In The  
Latest Colors

MONTGOMERY CENTER  
LUBBOCK, TEXAS



### Memo To GRAIN GROWERS.....

## TIDE'S Fall Plow-Down Program Will Make You Money!

Tide's Fall plow-down program is designed to make you money:

1. Fall plow-down spreads your work load... reduces time, labor and equipment requirements at planting time.
2. Fall plow-down insures against uncertain Spring weather... gives you two opportunities to apply a complete fertilizer program. (Fall and Spring)
3. Fall plow-down aids in decomposing stalks and builds up soil nutrients.

Basic suppliers say demand for Spring fertilizer will exceed the supply of raw materials and hopper cars. As soon as possible after harvest, shred your stalks and apply Tide's Prescription-Blend fertilizer and start your Fall plow-down program.

### PRESCRIPTION MIX FERTILIZER

Tide takes soil samples from your land, free of charge to determine exactly what your soil needs. Then your fertilizer is mixed from high analysis raw materials to fit your exact requirements. Because it is made "on order", your fertilizer is fresh, dry, and free-flowing.

### ECONOMICAL

With "prescription-mix", you buy only the nitrogen, phosphate, and potash your soil tests show you need. Storage is no problem, as Tide's TiltBox, holding 14,000 pounds, provides air-tight delivery and storage at the end of the row.

### TIDE SERVICES

Tide grower services and products are planned to save time and labor... help take the guess-work out of farming. Agricultural Consultants, free soil tests, and Tide's custom designed, weather proof, delivery and storage equipment, cut your production costs.

TRY TIDE... you'll be glad you did.

# TIDE

Symbol of Quality

LITTLEFIELD ----- 385-5735  
HART ----- 938-2191  
FARWELL ----- 481-3346  
HEREFORD ----- 364-0712  
BLACK ----- 265-3540  
CLAYS CORNER ----- 965-2330



## J. D. Sullivan, 46, Dies; Rites Held In Muleshoe

Funeral services were held Tuesday at 2 p.m. at the Northside Church of Christ for J. D. Sullivan, 46, who died in West Plains Hospital Sunday afternoon shortly after being admitted.

Rites were conducted by Leonard and Van McCormick, Clovis. Burial was in Memorial Park Cemetery with Singleton Funeral Home in charge of arrangements.

Pallbearers were Johnnie Henderson, Ellis Mick, Martin Oliver, Fred Johnson, Junior Purcell and A. J. Roberts.

Survivors include his widow, Oleata Chaney, Muleshoe; one son, Donnie Grubbs, Needmore; and a daughter, Mrs. Rosie Grubb, Hereford; his parents, Mr. and Mrs. C. F. Sullivan, Muleshoe; five sisters, Mrs. Earl W. Owen and Mrs. Ollis Terrell, Muleshoe; Mrs. Martin Hall, Childress; Mrs. C. A. Atchison, Perryton; and Mrs. C. J. Cobb Jr., Waco; two brothers, J. E. Sullivan and Tommie Sullivan, both of Muleshoe.

Chaney was born May 7, 1920 in Clint and lived at 219 Quincy St. and had lived here since 1924, moving here from Lockney.

Also surviving is a step-daughter from Hereford, Mrs. Raymond Turner.

## B. E. Chaney, 92 Dies; Services Held in Muleshoe

Funeral services for B. E. Chaney, 92, who died in West Texas Hospital Saturday, were held in Richland Hills Baptist Church Sunday afternoon, conducted by the Rev. Willie Hazel, First Baptist Church, Sudan; the Rev. Jack Welch, Lubbock; the Rev. Ira Waddell, Amarillo; and the Rev. Rowland Hallway, pastor of Richland Hills Baptist Church.

Burial, with Singleton Funeral Home, Muleshoe, in charge, was in Memorial Park Cemetery.

Pallbearers were Spencer Beavers, Jack Robert, Roy Atchinson, Joe Shipman, J. T. Eubanks and Elmer Smith. Mensone Sunday School class Richland Hills Baptist Church were honorary pallbearers, along with Red Murrell and Harold King.

Survivors include his wife, Martha; four daughters, Mrs. A. G. Tunnell, Muleshoe; Mrs. Willie Welch, Dallas; Mrs. Laura Burdine, Lubbock; and Mrs. Ola Lindsey, Corrigan; two sisters, Mrs. Zelpha Goodman, Dallas and Mrs. Ava Lee Pope, Franklin, Ky; eight grandchildren, 13 great-grandchildren and two great-great grandchildren.

Mr. Chaney was born Dec. 1, 1873 in Gatlin, Tenn. He had lived in Muleshoe since 1921, moving here from Texico, N.M. He was a life member of Masonic Lodge.

**The Lonely Heart**

LOST AND FOUND

SCOT BROWN

## Governor Sets Oct. 24-31 CROP Week in Texas

The Rev. J. Frank Peery, chairman of Bailey County CROP campaign, pointed out Wednesday that Governor Connally has proclaimed CROP week in Texas for Oct. 24-31.

The proclamation follows: "Our nation has joined in the Freedom From Hunger campaign of the Food and Agricultural Organization of the United Nations to help alleviate suffering from hunger and malnutrition among the world's population.

"Church World Service, a relief agency of 24 national church bodies, recognized by our government to receive and distribute Public Law 480 foods, is the sponsoring agency of CROP, the Christian Rural Overseas Program.

"CROP is the only community-wide church food appeal in our state for overseas programs of the churches. As a program of the Texas Council of Churches CROP is the program of 20 denominational

units of our State through the Division of Christian Mission with its local appeals organized, planned and conducted by local volunteer workers.

"CROP also receives designations for other overseas church relief agencies such as American Friends Service Committee, Catholic Relief Services, Lutheran World Relief and Mennonite Central Committee.

"Texas is blessed with abundance, and most of its residents are capable of rendering a helping hand to others. Through CROP, we have the opportunity to express our gratitude to God by way of our gifts to the needy of other lands.

"THEREFORE, I, as Governor of Texas, do hereby designate the week of October 24-31 as TEXAS CROP WEEK in Texas, and urge widest participation to community CROP appeals." (signed and sealed September 22 1966)

## Hospital News

### GREEN MEMORIAL

**ADMISSIONS:** Mrs. Cella Matthiesen, Mrs. Darrell Kennemer and Candy Regena.

**DISMISSALS:** Guy Austin, Mrs. Jerry Littau and Gus Taylor.

### WEST PLAINS

**ADMISSIONS:** Bobbie Field, Mrs. Francisco Gonzales, Baby Girl Gonzales, Ronald Wright, Kenneth Wilson, and Jerry Petty.

**DISMISSALS:** Mrs. David Hafner and baby girl, W. M. Hudspeth, Mrs. Elvon DeVaney, Mrs. Carrie Dulbase, Mrs. Vinnie Scott, Ronald Wright, Mrs. Francisco Gonzales and baby girl, Kenneth Wilson, Jerry Petty, and Bobbie Field.

Solar cells that convert sunshine into electricity are being used to power electronic devices on satellites.



UP LEADERS - Advance gifts division of the United Fund campaign has been gathering in money at a rapid clip, and here are two of the leading campaigners. Mrs. Gib Howell and (far right) Clarence Jones, John Shelton (left) is general chairman and Jeff Peeler the advance gifts chairman.

## Social Security Q's and A's

Q. If I take my widow's benefits at age 60 at the reduced rate, will they be increased at age 62?

A. No. Once you take the reduced benefits before age 62, your benefit would continue at the reduced rate even after age 62.

Q. At age 58 I became entitled to disability benefits on my own account but receive only \$45 a month. Is it possible for me to qualify now at age 61 on my deceased husband's record?

A. In all likelihood, yes. You should check with your social security office as soon as possible as your widow's benefit could possibly be higher than the \$45 you now receive.

## CONSTITUTIONAL AMENDMENTS

Scratch or mark out one statement so that the one remaining shall indicate the way you wish to vote.

### NO. 1

**FOR:** the Constitutional Amendment to provide that all land owned by natural persons designated for agricultural use shall be assessed for all tax purposes on the consideration of only those factors relative to such agricultural use.

**AGAINST:** the Constitutional Amendment to provide that all land owned by natural persons designated for agricultural use shall be assessed for all tax purposes on the consideration of only those factors relative to such agricultural use.

### NO. 2

**FOR:** the addition of Section 12 of Article IX of the Constitution, authorizing the Legislature to provide by law for the creation, establishment, maintenance and operation of Airport Authorities composed of one or more counties, and authorizing the levy of a tax not to exceed Seventy-Five Cents (75c) on the One Hundred Dollars (\$100) valuation of all taxable property within such Airport Authority except the property of state regulated common carriers required by law to pay a tax upon intangible assets, after approval of its voters.

**AGAINST:** the addition of Section 12 of Article IX of the Constitution, authorizing the Legislature to provide by law for the creation, establishment, maintenance and operation of Airport Authorities composed of one or more counties, and authorizing the levy of a tax not to exceed Seventy-Five Cents (75c) on the One Hundred Dollars (\$100) valuation of all taxable property within such Airport Authority except the property of state regulated common carriers required by law to pay a tax upon intangible assets, after approval of its voters.

### NO. 3

**FOR:** the Constitutional Amendment withdrawing Arlington State College from participation in the Permanent University Fund.

**AGAINST:** the Constitutional Amendment withdrawing Arlington State College from participation in the Permanent University Fund.

### NO. 4

**FOR:** the Constitutional Amendment changing the maximum term of office of directors of conservation and reclamation districts from two to six years.

**AGAINST:** the Constitutional Amendment changing the maximum term of office of directors of conservation and reclamation districts from two to six years.

### NO. 5

**FOR:** the Constitutional Amendment authorizing the Texas Legislature to establish a State-wide Cooperative System of Retirement, Disability and Death Benefits for the officials and employees of the various counties or other political subdivisions of the state, or political subdivisions of a county; authorizing the Legislature to provide for a voluntary merger into the system authorized by this Amendment by those officers and employees covered by the provisions of subsection (b) of Section 6 of Article XVI of the Texas Constitution as now existing or may hereafter be established; providing the costs of this System shall be borne by the counties and other political subdivisions of the state and political subdivisions of the county electing to participate therein and the officers and employees covered by the System, and forbidding the Legislature from making any appropriations for the operation of this System.

**AGAINST:** the Constitutional Amendment authorizing the Texas Legislature to establish a State-wide Cooperative System of Retirement, Disability and Death Benefits for the officials and employees of the various counties or other political subdivisions of the state, or political subdivisions of a county; authorizing the Legislature to provide for a voluntary merger into the system authorized by this Amendment by those officers and employees covered by the provisions of subsection (b) of Section 6 of Article XVI of the Texas Constitution as now existing or may hereafter be established; providing the costs of this System shall be borne by the counties and other political subdivisions of the state and political subdivisions of the county electing to participate therein and the officers and employees covered by the System, and forbidding the Legislature from making any appropriations for the operation of this System.

### NO. 6

**FOR:** the Constitutional Amendment providing for the payment of assistance by the State of Texas to the surviving spouse and minor children of law enforcement officers, custodial personnel of the Texas Department of Corrections or full-paid firemen who suffer violent death in the course of the performance of their duties as law enforcement officers, custodial personnel, of the Texas Department of Corrections or as full-paid firemen.

**AGAINST:** the Constitutional Amendment providing for the payment of assistance by the State of Texas to the surviving spouse and minor children of law enforcement officers, custodial personnel of the Texas Department of Corrections or full-paid firemen who suffer violent death in the course of the performance of their duties as law enforcement officers, custodial personnel, of the Texas Department of Corrections or as full-paid firemen.

### NO. 7

**FOR:** repealing the poll tax as a requirement for voting.

**AGAINST:** repealing the poll tax as a requirement for voting.

DEMOCRATIC PARTY	REPUBLICAN PARTY	CONSTITUTION PARTY	CONSERVATIVE PARTY	WRITE-IN
For Governor: JOHN CONNALLY	For Governor: T. E. KENNERLY	For Governor: TOMMYE GILLESPIE	For Governor: BARD A. LOGAN	For Governor:
For United States Senator: WAGGONER CARR	For United States Senator: JOHN TOWER	For United States Senator: JAMES BARKER HOLLAND		For United States Senator:
For Lieutenant Governor: PRESTON SMITH	For Lieutenant Governor: KELLIS DIBRELL	For Lieutenant Governor: WILLIAM A. (BILL) JOHNSON		For Lieutenant Governor:
For Attorney General of Texas: CRAWFORD C. MARTIN	For Attorney General of Texas: ROBB STEWART	For Attorney General of Texas: JOHN C. WILLIAMS		For Attorney General of Texas:
For Commissioner of Agriculture: JOHN C. WHITE	For Commissioner of Agriculture: JACK GARRETT	For Commissioner of Agriculture: DEREK C. BOWNS		For Commissioner of Agriculture:
For Commissioner of General Land Office: JERRY SADLER	For Commissioner of General Land Office: ALBERT FAY	For Commissioner of General Land Office: JOSEPH L. TILLER		For Commissioner of General Land Office:
For Comptroller of Public Accounts: ROBERT S. CALVERT	For Comptroller of Public Accounts: RUDY T. GARZA	For Comptroller of Public Accounts: WILLIAM McDANIEL		For Comptroller of Public Accounts:
For State Treasurer: JESSE JAMES	For State Treasurer: LAWRENCE DAFFAN GILMER	For State Treasurer: JESSE LEE JAMES		For State Treasurer:
For Railroad Commissioner: BYRON TUNNELL	For Railroad Commissioner: DAVID R. CLARK			For Railroad Commissioner:
For Chief Justice of Supreme Court: ROBERT W. CALVERT				For Chief Justice of Supreme Court:
For Associate Justice of Supreme Court, Place 1: CLYDE E. SMITH				For Associate Justice of Supreme Court, Place 1:
For Associate Justice of Supreme Court, Place 2: JOE GREENHILL				For Associate Justice of Supreme Court, Place 2:
For Judge, Court of Criminal Appeals: JOHN F. (JACK) ONION				For Judge, Court of Criminal Appeals:
For United States Congressman, 18th Congressional District: DEE D. MILLER	For United States Congressman, 18th Congressional District: BOB PEACE			For United States Congressman, 18th Congressional District:
For District Judge, 154th District: PAT BOON JR.				For District Judge, 154th District:
For State Senator, 30th Senatorial District: JACK GUTTOWER				For State Senator, 30th Senatorial District:
For State Representative, 75th District: JESSE GEORGE				For State Representative, 75th District:
For County Judge and Ex-Officio County School Superintendent: DON W. CHALK				For County Judge and Ex-Officio County School Superintendent:
For District Clerk: NELDA MERRITT				For District Clerk:
For County Clerk: HAZEL GILBREATH				For County Clerk:
For County Treasurer: EDITH WILT				For County Treasurer:
For County Commissioner, Precinct 2: LLOYD STEPHENS				For County Commissioner, Precinct 2:
For County Commissioner, Precinct 4: R. P. McCALL				For County Commissioner, Precinct 4:
For Justice of Peace, Precinct 1: JOE D. VAUGHN				For Justice of Peace, Precinct 1:

Scratch or mark out one statement so that the one remaining shall indicate the way you wish to vote.

### NO. 8

**FOR:** the Constitutional Amendment permitting persons qualified to vote in this State except for the residence requirements in the county or district to vote for Presidential and Vice Presidential Electors and for all state-wide offices, questions or propositions, and permitting citizens of the United States recently arrived or departed from the State to vote for Presidential and Vice Presidential Electors.

**AGAINST:** the Constitutional Amendment permitting persons qualified to vote in this State except for the residence requirements in the county or district to vote for Presidential and Vice Presidential Electors and for all state-wide offices, questions or propositions, and permitting citizens of the United States recently arrived or departed from the State to vote for Presidential and Vice Presidential Electors.

### NO. 9

**FOR:** the Amendment to the State Constitution providing for a Court of Criminal Appeals of five members, and prescribing the term of said court.

**AGAINST:** the Amendment to the State Constitution providing for a Court of Criminal Appeals of five members, and prescribing the term of said court.

### NO. 10

**FOR:** the Amendment to Section 3-b of Article VII of the Constitution of Texas providing that taxes or bonds previously voted in any independent school district or in any junior college district shall not be abrogated, cancelled or invalidated by any change in boundaries and authorizing the continuance of the levy of taxes after such change without further election.

**AGAINST:** the Amendment to Section 3-b of Article VII of the Constitution of Texas providing that taxes or bonds previously voted in any independent school district or in any junior college district shall not be abrogated, cancelled or invalidated by any change in boundaries and authorizing the continuance of the levy of taxes after such change without further election.

### NO. 11

**FOR:** the Constitutional Amendment authorizing the issuance of an additional \$200,000,000 in Texas Water Development Bonds and providing for further investment of the Texas Water Development Fund in reservoirs and associated facilities.

**AGAINST:** the Constitutional Amendment authorizing the issuance of an additional \$200,000,000 in Texas Water Development Bonds and providing for further investment of the Texas Water Development Fund in reservoirs and associated facilities.

### NO. 12

**FOR:** the Constitutional Amendment providing the method and manner for dissolution of hospital districts.

**AGAINST:** the Constitutional Amendment providing the method and manner for dissolution of hospital districts.

### NO. 13

**FOR:** the Amendment to the Constitution authorizing the Legislature to provide by statute for any county having one million, two hundred thousand (1,200,000) or more inhabitants to consolidate the functions of government and for such counties or any political subdivision(s) located therein to contract for the performance of functions of government.

**AGAINST:** the Amendment to the Constitution authorizing the Legislature to provide by statute for any county having one million, two hundred thousand (1,200,000) or more inhabitants to consolidate the functions of government and for such counties or any political subdivision(s) located therein to contract for the performance of functions of government.

### NO. 14

**FOR:** the Constitutional Amendment to allow members of the Armed Forces who are residents of Texas to vote.

**AGAINST:** the Constitutional Amendment to allow members of the Armed Forces who are residents of Texas to vote.

### NO. 15

**FOR:** the Constitutional Amendment authorizing assistance to the blind, crippled, or otherwise physically or mentally handicapped, in the form of grants of public funds, obtained from private or federal sources only, to local level or other private, nonsectarian associations, groups, and nonprofit organizations for establishing and equipping facilities to assist the handicapped in becoming gainfully employed, for their rehabilitation, or restoration or for providing other services essential for the better care and treatment of the handicapped.

**AGAINST:** the Constitutional Amendment authorizing assistance to the blind, crippled, or otherwise physically or mentally handicapped, in the form of grants of public funds, obtained from private or federal sources only, to local level or other private, nonsectarian associations, groups, and nonprofit organizations for establishing and equipping facilities to assist the handicapped in becoming gainfully employed, for their rehabilitation, or restoration or for providing other services essential for the better care and treatment of the handicapped.

### NO. 16

**FOR:** the Constitutional Amendment establishing the date on which newly elected Members of the Legislature shall qualify and take office.

**AGAINST:** the Constitutional Amendment establishing the date on which newly elected Members of the Legislature shall qualify and take office.

## Strippers Strippers Strippers

- #30 Brush or Steel with Revolutionary Auger elevator
- Economical # 22
- .1H or Triangle Baskets
- Air Delivery to Trailer- #22 or #30
- Several used Strippers #21's, #77's

We Have The Unit For YOUR Need!



Johnson-Nix, Inc.  
Muleshoe

Your Home Owned Bank

Presented as a public service by

# FIRST NATIONAL BANK

Member FDIC



# Epsilon Sigma Alpha Hosts District Meet



REGISTRATION-Betty Matthews who served at the registration table Sunday at the district ESA meeting, is shown here pinning a badge on Alice Barron, Lubbock. Muleshoe chapter members were hostesses for the district meeting. (Journal Photo)



SHOWS ART WORK -- Mrs. Charles Mayhugh presented a program on her art work at the Epsilon Sigma Alpha District meeting Sunday afternoon held in the community room of the First National Bank building. (Journal Photo)

District IX meeting of Epsilon Sigma Alpha Sorority was held here Sunday in the community room of the First National Bank building at 2 p.m. Muleshoe's Epsilon Chi Chapter acted as hostesses.

Louise Smith, Alpha Gamma Chapter from Lubbock, and district vice-president, presided over the meeting. Invocation was given by Carol Johnson, Epsilon Chi, Muleshoe.

Jeri Wagner gave the welcome address, and the response was given by Alice Barron, Lubbock Chapter.

After discussion, the group decided to give \$100 to Yoakum County Hospital for heart equipment.

Jo Addine Mayhugh gave a program on her painting and also gave interesting talks as to how she became interested in painting. She is a pupil of Mrs. Elizabeth Black.

The door prize was won by Ann Snitker, Lubbock.

Chapters represented other than Muleshoe were Iota Eta, Sudan; Gamma Nu, Lubbock; Alpha Gamma, Lubbock; Delta Mu, Seminole; Kappa Tau, Denver City, and Iota Pi, Plains. Decorations were carried out in a fall motif. Next meeting will be in Plains Jan. 15.

## Night P-TA Meetings Due At DeShazo?

Delwin L. Jones, Lubbock Texas, House of Representative member, spoke on Better Education Through Legislation, at the Monday afternoon meeting of the Mary DeShazo Elementary School P-TA. Jones brought out in his speech how our schools could do a better job for our children if more parents were interested in legislation.

Mrs. Wanda Harmon, first vice-president, presided over the meeting in the absence of the president, Glen Williams. Minutes of the previous meeting were read and accepted by Mrs. Jay Spain and the treasurer's report was given by Mrs. Hugh Yeates. Membership committee chairman reported 108 members have now joined the Mary DeShazo P-TA. A contest among the rooms will continue along with the membership drive through November.

It was announced that a leadership procedure course would be conducted Oct. 25 in the community room of the Muleshoe State Bank; also members were reminded of the Bi-County Council meeting in Olton.

Mrs. Radie Burleson's first grade room won the room count.

Mrs. Frank Ellis gave a talk on the chili supper to be Nov. 4 from 5:30 to 8 p.m. She mentioned that each member would be contacted to bring food or contribute \$1 toward the purchase of foods.

Parts of a letter were read by the presiding officer, as to having P-TA meetings at night so the working mother could attend the meetings. Mrs. Harmon asked the membership to think about whether they would like to try having meetings at night and the matter would be voted on at the next P-TA meeting.

Mrs. Irvin St. Clair introduced the speaker for the afternoon and following the talk, he was presented a token of appreciation by the first-vice-president.

Next meeting for the P-TA will be Nov. 21 when Mrs. Horace Blackburn, former Muleshoe teacher, will bring the program on "The Individual Learner Comes First." Plans", said Mrs. Bryant. The fall motif was used in table decorations and in program covers.

Gammie Iota Chapter, Plainview, was hostess and Delta XI Chapter, Hereford, won the attendance award. The 1967 Regional will be held in Amarillo.

## Club Will Have Rummage Sale

Members of the Progressive Homes Club will have a rummage sale beginning Saturday at approximately 9 a.m. in the building formerly occupied by Murray's Jewelry and next door to Lud Taylor's Barber Shop. Members of the club will be at the building from 2 to 4 Friday for anyone who would like to donate clothing to the sale. The sale will be conducted all day Saturday.

## Class Will Send To Lottie-Moon

The TEL Sunday School Class of the First Baptist Church voted not to exchange Christmas gifts but to give a love offering to Lottie-Moon Christmas offering.

The circle met in the home of Mrs. Rose Allen for this regular meeting and social. Opening with prayer by Rose Allen, a devotion was given by Myrtle Alsup. Reports were given by other class officers.

Refreshments of coffee, punch, cookies and nuts were served to Lorene Hatch, Beulah Moherall, Lovie Benson, Myrtle Guinn, Ethel Miller, Maudie Long, Pearl Hammock, Ellen Spencer, Pearl Jennings, Bessie Harlin, Jo Garth, Birdie Paul, Myrtle Alsup, and the hostess, Rose Allen. "Blest Be the Tie That Binds" was sung as a closing song.

## Capt. Maddox Returns From Viet Nam



Capt. Bob G. Maddox having just returned from Viet Nam has spent the past week visiting his mother, Mrs. Mary Maddox, Muleshoe, and friends and relatives in Clovis, N.M. Maddox, a 1957 graduate of Clovis High School, was sent to Viet Nam

Even book-keepers are good cooks, or this holds true for Mrs. John Blackwell. Mrs. Blackwell belongs to the Trinity Baptist Church and says her hobbies are cooking and sewing when she has time.

Our cook for this week gives a recipe for:

**STRAWBERRY CAKE**  
1 pkg. white cake mix  
3 tablespoons sifted flour  
4 eggs  
3/4 cup Wesson oil  
1/2 cup water  
1 box strawberry jello  
1 box frozen strawberries

**METHOD:**  
Combine cake mix, flour, eggs, wesson oil and water until well mixed. Add strawberry jello until mixture is smooth. Add 1/2 of frozen strawberries and mix until well blended. Bake at 350 degrees for approximately 30 minutes or until done. Bakes best in one-layer pan.

**ICING:**  
White icing mix.  
Mix according to directions on box. Add other half of strawberries and mix until well blended. When cake is cooled, frost. Cake keeps best in refrigerator and will also freeze for later use.

## 4-H Club Has Annual Program

The Pleasant Valley 4-H club held their annual achievement program recently in the community building at Pleasant Valley with the president, Lyla Pitts, mistress of ceremonies. Jim Allison led the pledge of allegiance and Aubrey Pitts led the 4-H pledge and motto. Collin Flatt then led the group in a prayer.

A welcome was given by David Crenshaw and Rhonda Embry and Vickie Crenshaw started the program off with a talk about the 4-H dress revue and favorite foot show.

David Crenshaw gave a talk on wood working. John and Lyla Pitts gave a demonstration on mouth to mouth resuscitation.

Rhonda Embry played selected pieces on the piano followed by a talk on the rifle team and its accomplishments given by Collin Flatt and Sam and Fred Allison.

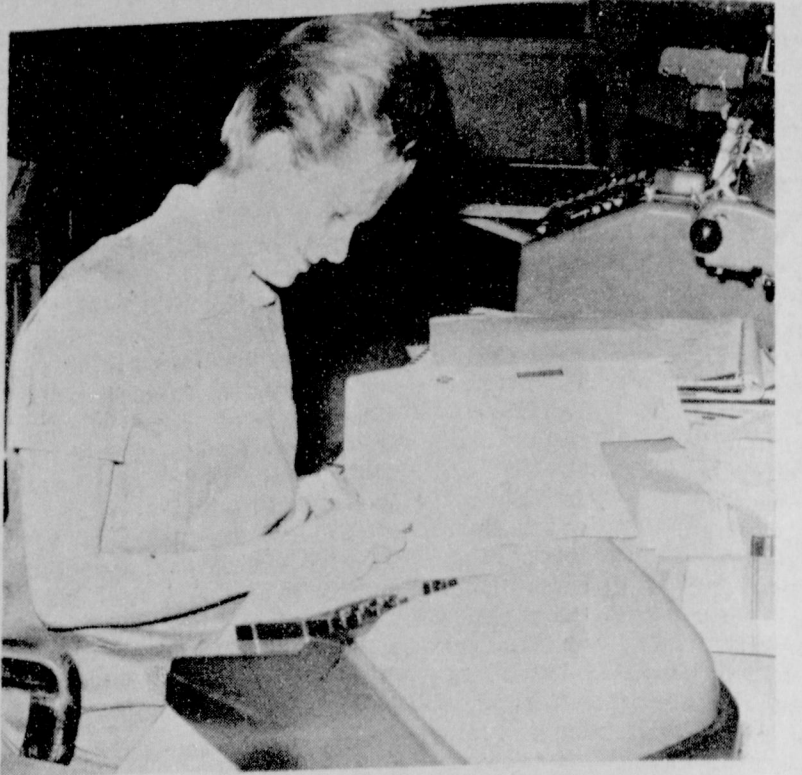
Richard Fox gave a history of the Pleasant Valley community, which was enjoyed by all.

Special guests were Mr. and Mrs. Neal Dillman, David and Mark, Mrs. Sam McKinstry and Mrs. Worfleight.

In Sept. 1965. While serving as an Artilleryman in the 1st infantry Division, Maddox was decorated with two bronze stars for valor, the purple heart, two air medals, the army commendation medal for valor and was awarded the combat infantryman's badge. After taking his thirty day leave, Maddox is assigned to Fort Sill, Okla. where he will be an instructor in the Artillery and Missile Center.

## Mrs. John Blackwell Bookkeeper and Cook

Gourmet Cook:



## Plans Continue For Carnival

Muleshoe's Halloween Carnival looks like the best yet, according to members of the Fine Arts Boosters, who say new booths and other additions are being added to the carnival.

The carnival will be Oct. 31 in the Bus Barn. Anyone interested in a booth, may contact Owen Jones at the Bailey County Electric Co-op.

The queen's contest will be held in the High School Auditorium at 10 p.m. to climax the affair. Admission will be 25 cents for adults and 10 cents for school age children.

## Local Teachers Attend Meet

Mrs. Jack Beddingfield, Mrs. Joe Costen, and Mrs. John Watson attended the regional meeting of the Delta Kappa Gamma Society Saturday, Oct. 15 at the Plainview High School in Plainview. Mrs. Velma Weaver, Dumas, State Area V Director, and Mrs. Stella Bryant, Vernon, State Chairman of Finance, were the directors.

Registration and coffee were at 9 a.m. Theme of the meeting was "Make No Little Plans" and each of the nine chapters represented had a part relative to the theme. Plans for improving initiations, scholarships, music, programs and understanding the future course of Delta Kappa Gamma were projected through skits, demonstrations and visual aids. The music was directed by Mrs. Lee Nowlin, Plainview.

Mrs. Stella Bryant challenged and inspired her listeners to take some time each day to think, to live, to read, to listen, to pray, and to serve, during the luncheon. Life can be so exciting if we "Make No Little

# LIVING is BETTER with The Fort Worth Star-Telegram

**NOW!** REDUCED MAIL RATES FOR A LIMITED TIME YOU CAN SUBSCRIBE TO THE Fort Worth STAR-TELEGRAM by mail and SAVE! REAL MONEY

Morning with Sunday **\$18.95** 7 days a week one year by mail  
Reg. \$25.20  
You Save \$6.25

Morning Except Sunday **\$14.95** 6 days a week one year by mail  
Reg. \$18.00  
You Save \$3.05

Evening Edition available at full rate.

BY MAIL in TEXAS and BORDERING States Only

Expanded news coverage of the Star-Telegram means a greater STATE newspaper for you than ever before, more sports coverage, too, more than any other Texas newspaper. There's more reading enjoyment for every member of the family... that's why LIVING IS BETTER with the Fort Worth Star-Telegram. Subscribe now and save.

Fill out and mail to the Star-Telegram today, or See Your Hometown Agent.

FORT WORTH STAR-TELEGRAM  
400 W. 7th, Fort Worth, Texas 76102  
Send Attached in check or money order for \$

Morning With Sunday  Morning Without Sunday

NAME \_\_\_\_\_  
ADDRESS \_\_\_\_\_  
CITY \_\_\_\_\_  
STATE \_\_\_\_\_ ZIP NO. \_\_\_\_\_

Johnson-Pool Furniture & Appl.

# MAYTAG



# SURPRISE

24 HOUR SPECIAL Introduction of New Maytag In Stunning *spanish avocado*

# SALE!

SPECIAL PRICES on THE FULL LINE OF MAYTAG WASHERS & DRYERS..You'll Be Surprised !!!



No Washer Holds More Clothes...  
... See The New Slim, Trim Maytag Dryer

Maytag's famous circle of heat drying!  
A fresh air system that changes and filters the air in the drying chamber every 2 seconds!  
Looking for a value? Come in and get it!

Choose From Many Models, Features And Colors... Hurry!

Great New MAYTAG 5\*2\*5 WARRANTY\*

\*Free repair or exchange of defective parts or cabinet if it fails, installation of parts in the responsibility of selling franchisee. Maytag dealer within first year. Service after installation is extra.



You'll never buy Maytag Dependability for less!  
**Johnson-Pool Furniture & Appliance**

320 Main

Muleshoe

LIBERAL TRADE-INS \* INSTANT CREDIT!

## ANOTHER \$25 WINNER!! FROM THE CLOVERLAKE 'MYSTERY MAN'



This week's lucky Cloverlake \$25. check recipient is Mrs. Kenneth Buck, 121 W. Ave. H. Mrs. Buck is pictured with Jack Barker, Cloverlake Mystery Man, R giving her the check and Thurman White, owner of White's Cashway where she purchased the Cloverlake product

**BE ON THE LOOK-OUT FOR THE CLOVERLAKE MYSTERY MAN "YOU MAY BE THE NEXT TO WIN"**

SAVE YOUR CLOVERLAKE POINTS FOR VALUABLE "FREE" PREMIUMS....



### New Reading Techniques Are Presented P-TA

Mrs. Elizabeth Watson, curriculum director of the Muleshoe Schools, assisted by teachers of the Developmental Reading Rooms in Richland Hills, gave a very interesting program at the Richland Hills P-TA meeting Monday afternoon in the cafeteria. The group gave demonstrations of the equipment and materials to be used to help children increase their reading ability. Mrs. Glen Willoughby, second grade teacher, demonstrated the Peabody Language Kit, which contains colorful pictures and puppets. The kit also helps children to express themselves freely. She demonstrated the "Show and Tell" machine, a machine with a record and film-strip of interesting stories which appeal to children. Mrs. A. T. Henderson, third grade teacher, showed the parents how the controlled reader is used. Filmstrips of stories on the child's reading level are shown. After each showing a comprehension check is given and if the child maintains a high average, the reading level and speed are increased gradually.

Buddy Sparks, fifth grade teacher, and Mrs. James Crane, fourth grade teacher, showed how the tape recorder with head sets, record player and Tach X are used. The overhead projector and multi-level library books were also shown. Mrs. Watson brought out the main object for the reader is comprehension, not speed.

The organization met with hostesses, Mrs. Cleo Ward, chairman, assisting were Mrs. Vic Benedict, Mrs. Charles Isaacs, Mrs. Clark Polson and Mrs. Bill Cooper.

American Education week will be observed during the week of Nov. 6-12. Principal of Richland Hills Elementary School, Milton Oyler, urged parents to visit their school at any time, but especially during this week. Open house will be observed one night during the week.

It was reported that the pancake supper served Sept. 16 netted \$237.39 and that parties for the rooms who sold the most tickets have been given.

Membership chairman reported a total of 185 P-TA members at the present time.

Announcements were made concerning the Bi-County Council meeting to be held Nov. 1 at 2 p.m. at Spade; also the state P-TA convention in Austin, Nov. 15. Mrs. James

Macha will attend the convention as a delegate from the local P-TA.

The Texas Congress of Parents and Teachers Proposed Legislation Program for 1966-67 were adopted by the Richland Hills P-TA members with the exception of extending the school curriculum to include kindergarten and additional vocational and technical training programs. Laws voted on and passed were:

1. Improve the Texas Minimum Foundation School Program and ensure quality education for all Texas children through:

a. Adequate staffing of all public schools in Texas.

b. Adequate teacher compensation and additional teacher training programs.

c. Expansion of library and visual aid services, including the use of educational television.

d. Extending the school curriculum to include kindergarten and additional vocational and technical training programs.

e. Adequate and equitable provision of state funds as needed to provide a superior educational program in Texas.

2. Improve laws that relate to the safety and health of all citizens as well as children and youth, and provide for the enforcement thereof. Specific areas of concern are:

a. Traffic safety and improved Driver's License laws.

b. Provision for a Driver's Education program geared to the eventual training of all high school students.

c. Strengthened laws concerning the sale, possession, and/or use of alcohol, narcotics, stimulant and depressant drugs by children and youth.

d. Expanded health education programs, public health and mental health programs.

e. Inclusion in planned school



**EXPLAINS TO MOTHERS** - Mrs. Mabel Wolfe, second grade teacher at Mary DeShazo, explains workbooks and other teaching methods in the second grade. The second grade mothers and teachers met in the cafeteria Tuesday morning for coffee and getting acquainted with her child's teacher and method of teaching. The fourth grade will have hospitality time Thursday from 9 to 10 a.m. and the fifth grade, Friday from 9 to 10 a.m. Mrs. Sylvester Tanguma, second grade mother, looks on.

(Journal Photo)

curriculum of health education including sex education and venereal disease education.

3. Strengthen laws and provide for the enforcement thereof, concerning the delinquent child in Texas by providing:

a. Additional school attendance officers.

b. Improved facilities for the dependant and neglected child.

c. Additional juvenile parole and restraining facilities.

d. Improved Juvenile Court facilities.

4. Strengthen laws and provide for the enforcement thereof, as regards the punishment and/or term of commitment of law violators, including sex offenders.

5. Strengthen laws and provide for the enforcement thereof as regards the publication and/or sale of obscene publi-

cations and films.

Next meeting of the P-TA will be Nov. 21 at 4:15 in the cafeteria, with Mrs. Benny Pena, director and the assistance of Mrs. Bernis Camp, Mrs. Joe Sooter, Mrs. Horton Griffin, Mrs. Glen Harlin, Mrs. A. S. Stovall, and Mrs. J. R. Carter. The program will be "Library Facilities to Meet All Needs."

**CONGRATULATIONS TO:**

Capt. and Mrs. Don Wilson Copley of McGuire Air Force Base, N. J., on the birth of a baby girl, Patricia DeAnna, born Oct. 14. She weighed 8 pounds, 2 ounces and has a brother, Don Jr., awaiting her arrival at home. Mr. and Mrs. A. W. Copley, Muleshoe and A. W. Anthony, Sr., Friona, are grandparents in this area.

### Ellen Lewis, Larry Seales Repeat Double Ring Vows



Mr. and Mrs. Larry Don Seales ... the former Ellen Lewis

Amid pink tapers and baskets of pink mums and pink and white gladioli, Miss Ellen Lou Lewis and Larry Don Seales were united in holy matrimony. The double-ring ceremony took place in the First Presbyterian Church, Oct. 8, with the pastor of the YL Methodist Church, the Rev. A. N. Moles, officiating.

The bride is the daughter of Mr. and Mrs. Leon Lewis of the YL community and the groom is the son of Mr. and Mrs. Don Seales, Needmore.

The bride was escorted and given in marriage by her father in a tan and white street-length dress with black accessories. She carried a bridal bouquet consisting of pink gladiolias nestled on bows of tulle and

streamers of paquot tied with love knots.

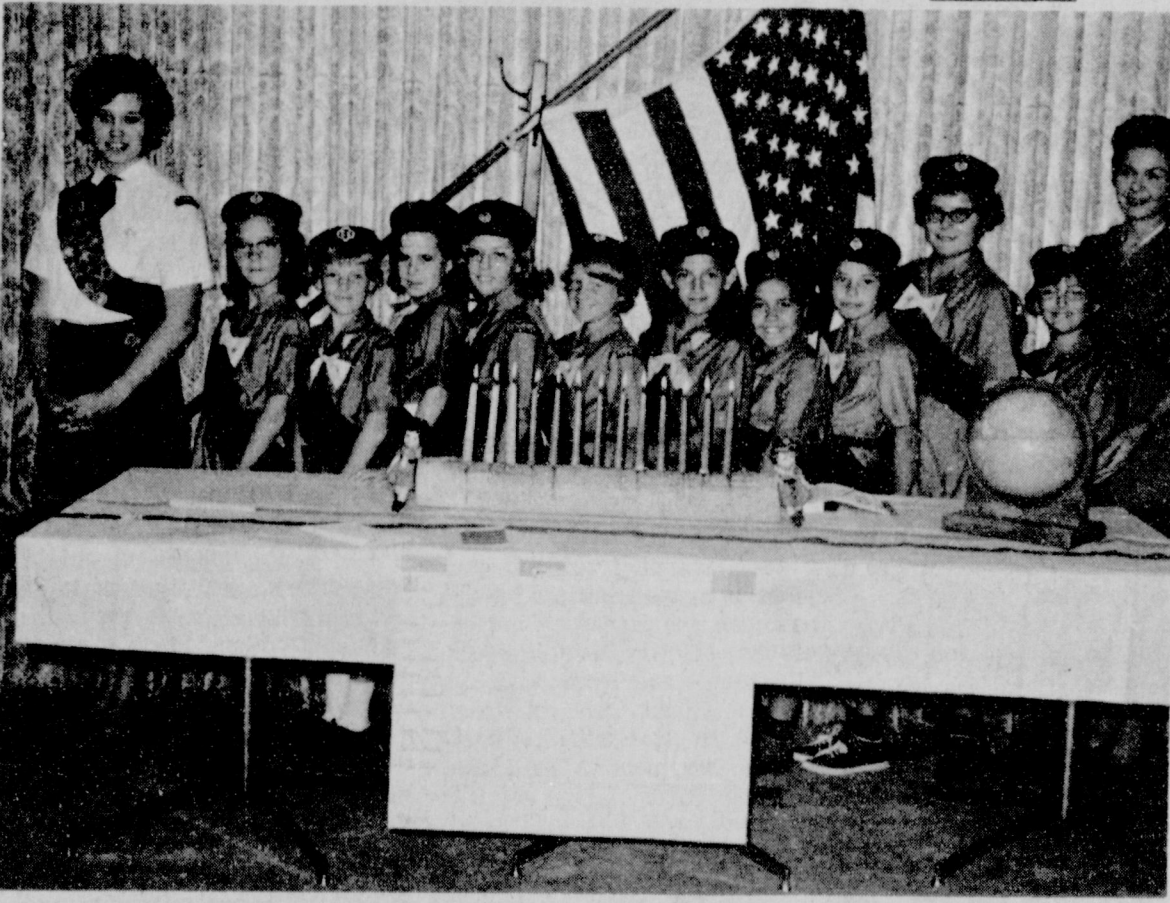
Jenda Nickels served the bride as maid of honor. She wore a blue street length dress with black accessories. She carried a bouquet similar to the bride's.

Rickey Barrett, Needmore, served as best man.

Mrs. Byron Gwynn provided traditional wedding music.

Following a wedding trip to Lubbock, the couple returned to Muleshoe High School where the bride is a junior and the groom is a senior. They live in the Needmore community where the groom is engaged with his father in farming.

The bride is a member of the FHA and the groom is a member of the FFA and the rodeo club.



**GIRL SCOUT TROOP 136** -- At Fly-up Ceremonies Monday afternoon at the Muleshoe State Bank Community room, ten Brownie Girl Scouts of Troop 136 were inducted into Junior Girl Scouting, with parents as invited guests. Pictured following the ceremony in which ten green candles representing the ten Girl Scout laws repeated by girls and three yellow candles representing the three parts of promise were lighted, were Girl Scouts Penny Langer, senior Girl Scout troop advisor; Carol Camp, Sandra Stallings, Lawren Hall, Prisca Young, Beverly McCamish, Alice Gonzales, Noemi Anzaldua, Suzan Barrett, Diane Dale, Kelly Cihak and Mrs. Larry B. Hall, Troop 136 leader. The girls received Girl Scout pins, World Friendship pins and their Brownie Fly-up wings/badges. Assisting were Jessica Hall, leader; Noreen Stallings, asst. leader; Penny Langer, senior GS advisor; and troop mothers Martha Young and Betty Cihak.

### Zelda Marshall, George Watts Exchange Vows

Miss Zelda Joyce Marshall and George Willis Watts exchanged double ring vows Saturday in the Church of Christ

in Bovina.

The minister of the church, Lavern Stewart, read the marriage ceremony before an archway of roses and greenery flanked with candelabra and baskets of gladioli.

A kneeling bench before the altar completed the decor.

The bride is the daughter of Mr. and Mrs. B. L. Marshall, Bovina, and the groom's parents are Mr. and Mrs. Floyd J. Watts, Abilene.

The bride was given in marriage by her father in a gown of white candlelight satin trimmed with re-embroidered Alecon lace and seed pearls featuring a Sabrina neckline and long tapered sleeves. The A-line skirt flowed into a chapel train trimmed with Alecon lace.

See WATTS on Page 7

**Cut the work and cost of rug cleaning!**

**RENT**

A Bissell Electric rug shampooer

**Bissell \$1.00** per day

**Johnson-Pool Furniture & Appl.** 320 Main

### YOUR FRIEND FOR LIFE



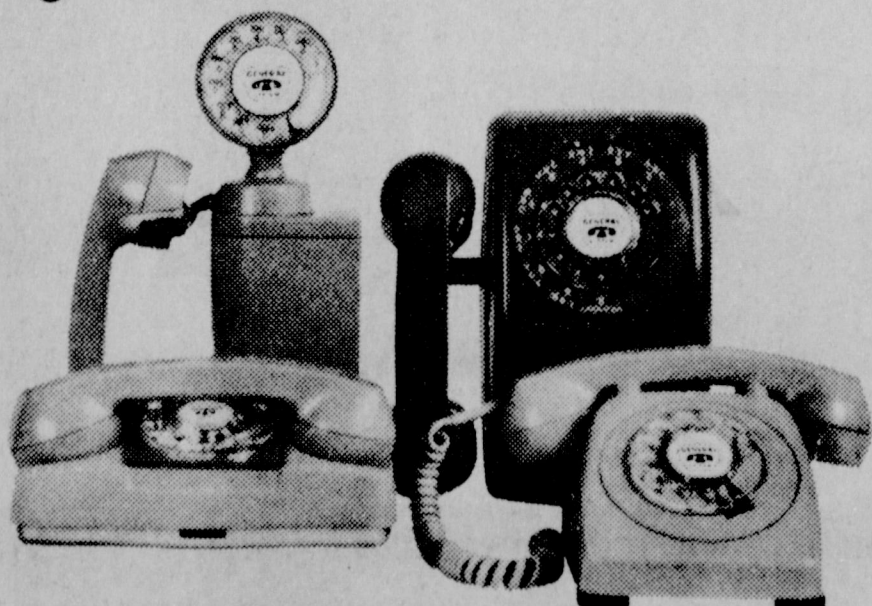
VIC BENEDICT

Ever wonder if your life insurance really fits your needs? Talk with your Southwestern Life Agent. Special courses - involving 500 extra hours of study - teach him to analyze particular cases for particular people. You'll see why he's called "Your Friend for Life."



**Southwestern Life** Ph. 272-3218 P.O. Box 625

## Which one do you want next?



Will it be the lovely, little STARLITE® telephone for the bedroom? Or the smart SPACE-MAKER® phone or Wallphone for

the kitchen or family room? All in decorator colors. Call our Business Office for details.

**GENERAL TELEPHONE** A Member of the GTE Family of Companies

Thurs. Fri. & Sat. **RAND**

**RED WING SHOES**

# 3 Day SHOE SALE

**STAR BRAND SERVICE SHOES**

**ACME BOOTS**

**Hi BROWS**

**OUR ENTIRE STOCK OF SHOES REDUCED**

*Bring the whole family... the more you buy the more you save!*

HERE IT IS

Starts Thursday morning and ends Saturday night... Three days only... Not just a few, but every pair of shoes in our entire stock reduced for this sensational get acquainted sale... We want you to see our selections, we want you to observe the quality, we want you to get acquainted with our real money saving values on footwear for the entire family. Choose from our own brands or select from many high quality nationally advertised brands. You'll find the season's newest styles, colors and creations. Plan now not to miss it... Make it a family affair... YOU'LL SAVE

**Poll Parrot** SHOES FOR BOYS AND GIRLS

**Handcraft** SHOES FOR YOUNG MEN

**Gophers**

## Miss Wonderful

Yes, you can choose from over 12 Nationally Advertised Brands in Men's, Women's and Children's Footwear. You'll recognize these brands the minute you see them. All from the nation's largest shoe manufacturers.

# SAVE 10%

*Skamps*

*Petite* SLIPERS FOR WOMEN

**ON EVERY-SHOE IN STOCK!**



# Court Expansion Plan Good One

THE PEOPLE of Texas will have an opportunity on November 8 to approve a much needed improvement in the State's judicial system.

Among the 16 proposed Constitutional amendments on the ballot will be one increasing the Court of Criminal Appeals from three elective judges and two commissioners, appointed by the three judges, to a court of five judges. The amendment No. 9, would also knock out the present enforced three-month vacation of the Court.

Thus, it would mean more efficient working of cases and back up the right of citizens to a "speedy hearing and disposition" of charges against them. Although the three judges and two commissioners decided 1,479 cases in 1965, the end of the year found them with 2,002 cases pending. The amendment would do for them what a 1944 amendment did for the Supreme Court in increasing its membership to nine.

A particularly able presentation of the advantages of the enlarged Criminal Appeals Court has been made by Plainview's Meade F. Griffin, Associate Justice of the Supreme Court of Texas. He points out that it would provide that the voters elect the Presiding Judge, rather than leaving his appointment to two of the three judges. This, he says, "will give the continuity to the office and will benefit the administration of the details of the workings of the Court. It will also put the Presiding Judge of the Court of Criminal Appeals on the same basis as that of the Supreme Chief Justice of the Supreme Court."

Objections to the change have not made much point. One of them is the contention that the State should have only one Court of final appeal. However, the system of two, one handling civil matters, and the other criminal, permits a desirable socialization by the judges. Some opponents claim that judges of both Courts really ought to be appointed rather than elected by the people. That idea can be debated at great length—although we think it is wrong—but in the meantime the need for strengthening the Criminal Appeals Court is immediate.

The voters can take care of it by voting "Yes" on Proposition No. 9.

--Lubbock Avalanche Journal

# Free Time or Space Barred

Editor's note -- The following code for radio stations and newspapers has been adopted in Texas, and deals with candidates or with amendments. The copy here was provided by the Texas Press Association of which the Journals are a member.

Rule 1. If you are a corporation, do not give or lend any money, equipment, radio time, newspaper space, or anything else of value to any candidate for an elective office, or anyone working for such a candidate.

The sale of any services you have to offer must be on a cash basis.

You cannot, as a good will gesture, lend a candidate or any of his helpers the use of any equipment you might have, such as, for example, microphones, loud speakers, or printing presses. You cannot lend out the services or your employees to help him write speeches, and still keep the reporter on the payroll. This is not an exhaustive list, it is merely illustrative.

Rule 2. Rule 1 is also fully applicable to activities designed to defeat a candidate. In other words, the acts prohibited by Rule 1 in helping a candidate are also prohibited in opposing a candidate. Two examples will suffice: (1) You cannot give money to a person who intends to spend it to defeat a candidate. (2) You cannot give away free newspaper space for a statement saying, "Do not vote for A."

Rule 3. Rules 1 and 2 are also applicable to activities designed to aid or defeat any measure before the people for a vote. Several illustrations are appropriate.

(1) You cannot give away free radio time to speakers favoring the adoption of a proposed constitutional amendment. Nor could you give free time to speakers opposed to the amendment.

(2) It is not entirely safe, although it may not be illegal, to give away free newspaper space to people favoring or opposing a certain school bond issue. The uncertainty arises over whether a school bond issue is a "political measure" not over the illegality of giving away free space. The latter is clearly illegal when done to influence voting on a political measure to be submitted to a vote of the people.

(3) You cannot sell radio time or newspaper space on credit to persons favoring or opposing the adoption of a new city charter. Any such sale must be for cash.

Rule 4. Do not promise to do anything prohibited by the rules above. A promise to give money, lend equipment, give free radio time or free newspaper space, etc., is just as illegal as actually giving the money, etc.

Rule 5. The four rules above apply to any election including school board, city, county, district, state, or national.

The penalties for violation of the above rules are severe. The corporation may be liable in a civil suit to each opponent of the candidate supported for twice the amount of the loan or gift.

Any officer or director of the corporation who consents to a violation of the code may be fined \$100 to \$5,000, and put in the penitentiary for one to five years, or both.

Rule 6. Make all sales of your services to politicians and or their supporters for cash. The rule applies to anyone who wants to use your services or talk for or against any candidate for public office or about any political measure up for a popular vote. (As your political advertising representative Texas Press Association collects CASH-IN-ADVANCE for all political advertising ordered in your newspaper through your Central Office in Austin.)

Rule 7. Accept no political advertising for printing or broadcasting unless it is signed by the person who pays for it.

It will be risky to accept payment for political advertising from anyone other than the candidate, his campaign manager or an assistant campaign manager. The law forbids any individual from paying over \$25 to buy services in aiding or defeating a candidate. The individual must make the contribution to the candidate and let him buy the services. Thus, if you accept \$100 for radio time from a supporter of a candidate, the supporter would be guilty of a crime, and you might also be a party to the crime. To ascertain whether a person is a campaign manager or assistant campaign manager, call the Secretary of State's Office and the County Clerk's office.

Rule 8. All political advertising must be labelled "political advertising."

For the purpose of Rule 7 and 8, political advertising includes everything printed in a newspaper or spoken over the radio for or against a political candidate, for which you have received money.

The penalty for violation of Rule 7 and 8 is a fine up to \$100. Federal Law is even stiffer - Title 18, Page 611, United States Code Annotated, Section 612, says:

Publication or distribution of political statements: Whoever willfully publishes or distributes or causes to be distributed or published, or for the purpose of publishing or distributing the same, knowingly deposits for mailing or delivery or causes to be deposited for mailing or delivery, or except in cases in employees of the Post Office Department in the official discharge of their duties, knowingly transports or causes to be transported in interstate commerce, any card, pamphlet, circular, poster, dodger, advertisement, writing, or other statement relating to or concerning any person who has publicly declared his intention to seek the office of president, or vice-president of the United States or senator or representative in, or delegate or resident



CLOUD THAT WON'T GO AWAY

# Price Says Mobs 'Weaken Nation'

"I believe that with the rights of American freedom goes an equal responsibility of citizenship. Respect for law and order in our free society is basic to our survival as a nation," congressional candidate Bob Price said.

"Violence and illegal breach of the peace by any mob awakens our nation and undermines the American goal of equal opportunity for all the people," he said at the opening of his Pampa headquarters.

"Since 1960 the crime rate in this country has risen about six times faster than our population. The overall crime rate for the nation has increased 25 percent," the 18th District candidate said.

Price said he supports amendments to the Law Enforcement Act of 1965 which will provide another way for the Federal Government to continue this aid, primarily through improved systems for the gathering and exchange of police information.

"I believe the doctrine of 'civil disobedience' whether

practiced by so-called 'peace-niks' or any other group, must be rejected before it becomes disastrous," he added.

"If everyone has a right to engage in riots or other forms of public disobediences to protest real or imagined wrongs, then the example may be set by the minority today will be followed by the majority tomorrow," Price states.

Bob Price believes this nation can no longer tolerate men who put themselves above the law.

He favors vigorous law enforcement at every level of government - local, state, and national. Beyond this, he believes our judiciary must be supported by strong sentencing of the guilty while protecting the constitutional rights of all citizens, regardless of race, color or creed.

"As your congressman I would work with the Federal Bureau of Investigation Police Academy in expanding their training to every law enforcement agency in the 18th District," Price said.

# Miller Wants Water Study

Dee Miller, Democratic candidate for Congress, in a speech to the annual meeting of the Farmers Union at Nazareth, said:

"The next Congress must act to advance more water resources development and research affecting the entire Panhandle and High Plains area."

Miller said construction of the mammoth Canadian River dam and aqueduct project, serving the 11 Panhandle and South Plains cities of the Canadian River Municipal Water Association, will be completed next year.

"It is time to begin now pressing for other much-needed water development projects in our area," Miller said. "Proposals and plans are in various stages for water projects in several areas of the 18th Congressional District, and in the 90th Congress beginning in January. I will do my best to see that they are approved."

Miller said he would do everything possible to see that the Panhandle--and all of West Texas west of the 98th meridian--are retained in study and investigation provisions of

the Colorado River Basin Project Act, which calls for a large-scale, across-the-board study of all aspects of water resources development in the Southwest.

The present Congress is not expected to complete action on the Lower Colorado Act, Miller noted.

"As far as our area is concerned, this very important legislation will be the most important single water development measure to be considered in the next Congress," Miller said. "Although our area is now included in its provisions, it will be vital for the next Congressman representing our district to see that we remain on the bill--and to this objective I pledge my very best effort."

"We must not fail to continue our fight for water in other ways, however," Miller noted. "The desalinization program, the recharging studies, and conservation measures must receive the close attention of your Congressman, also."

"As your Congressman, I would work to the best of my ability toward solution of these problems."

commissioner to Congress, in a primary, general, or special election, or convention of a political party, or has caused or permitted his intention to do so to be publicly declared, which does not contain the names of the persons, associations, committees, and corporations responsible for the publication or distribution of the same, and the name of each of the officers of each such association, committee, or corporation, shall be fined not more than \$1,000 or imprisoned not more than one year, or both.

# Carr Says GOP Adds 'Pressure'

AUSTIN--Republican nationally are subjecting Texas voters to unparalleled pressures in an attempt to dictate the outcome of the U. S. Senate race, Democratic nominee Waggoner Carr has declared. He warned that the build-up of "outside money" outside names, outside influences of all kinds" will continue up to the Nov. 8 election.

"In my 15 years in politics in this state, I have never seen anything like it," the Texas Attorney General said. "The Republicans on the outside are trying by every way they can to influence Texans in the selection of the representative they want in the Senate." Carr reminded it is the job of a Texas Senator to represent Texas, "not New York, as these outsiders want him to do."

Carr also slapped at 14 Republican Congressmen who told President Johnson he should postpone his Asian summit meeting until after the election. When the President is on a mission trying to bring about an honorable peace, he should have united support at home, Carr pointed out.

The Democratic candidate pledged his own efforts as Sen-

ator to support the Food for Peace Program, which he said accounted for the sale of \$114.8 million in Texas agricultural products in the federal fiscal year 1966 and was responsible for the sale of \$41.5 million in Texas cotton.

Yet Senator John Tower wanted to cut next year's program in half, Carr said. "My Republican opponent has voted against every economic aid bill that has been considered in his term of office, and this includes Alliance for Progress. Why should we keep the Texas farmer from selling his products in foreign lands?" Carr questioned. "We should make it possible for our farmers to have a larger, not lesser, share of the world market."

Carr's schedule for the next seven days calls for him to be in Abilene Thursday (Oct. 20), Fort Worth on Friday (Oct. 21), Odessa on Saturday (Oct. 22), Panna Maria on Sunday (Oct. 23) in North Texas on Monday (Oct. 24), in East Texas Tuesday (Oct. 25) and Houston Wednesday (Oct. 26). The Panna Maria date celebrates 1000 years of Polish Christianity and nationhood.

# Dollar's Slump Worries Tower

By Sen. John Tower

Seldom in our history has inflation hit Americans so hard. Our dollar is worth less than ever before. Costs of living are higher than ever. Interest rates continue to spiral upward and "tight money" plagues our economy.

Massive, unwise deficit spending by the federal government is the cause of this inflation. An unrealistic federal budget compounds the trouble.

Much of the spending proposed for this year was for unnecessary foreign aid and for new, unproven domestic schemes which would be better restricted to planning levels until inflation is under control. If we would hold current domestic spending at present levels and not initiate new spending, the expanding economy soon would produce enough revenues to balance the domestic budget.

So far this session of Congress I have voted to cut some \$3.8 billion of unnecessary spending. I'll support other cuts this month. As a matter of priorities, I have supported some spending wisely cut by the Administration from programs of importance to Texans or to prosecution of the war--such as soil and water conservation, education assistance, Vietnam G. I. Bill, and the school milk program. On balance, my votes would have resulted in restoring black ink to the non-defense budget.

I will continue to press for such spending cuts and delays. It makes no sense for the federal government to punish its

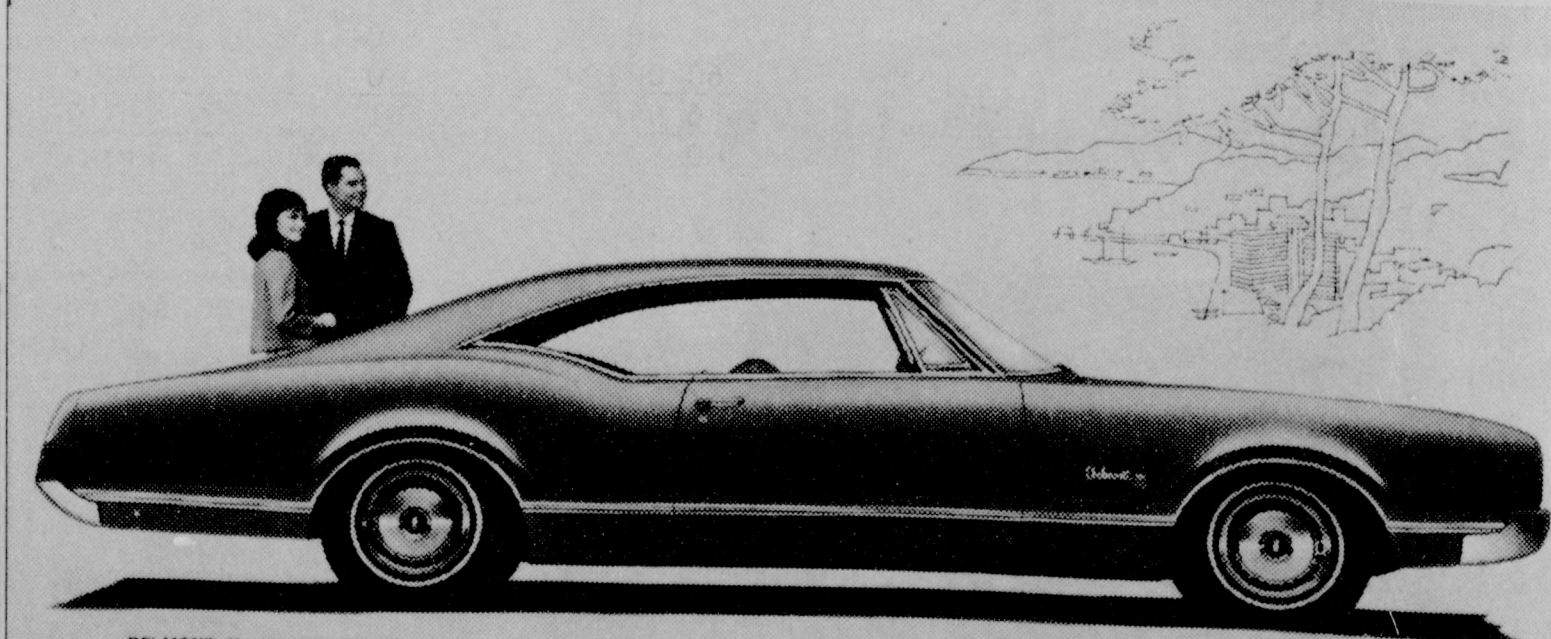
citizens by increasing taxes which can only further increase the individual American's cost of living.

In addition, I have advocated these measures as a program to combat inflation:

1. Submission to Congress of a new fiscal 1967 budget reflecting a surplus in domestic spending.
2. Financing costs of winning the war through delays and reductions in planned domestic spending.
3. Maintenance during times of high-level prosperity of a significant surplus in the federal budget, helping reduce pressures of the national debt.
4. Pursuit of fiscal policies making arbitrary federal wage and price "guidelines" unnecessary.
5. Protection of the independence of the Federal Reserve System.
6. Fighting of unemployment through meaningful human-renewal education and training rather than by unending welfare handouts and federal make-work projects.
7. Ending the international balance of payments deficit and the out-flow of American gold.
8. Elimination of overlapping duplicating federal bureaucracies.
9. Creation of a non-partisan Congressional review commission to revise government spending and organization.
10. Restoration to the states of tax bases necessary to support increased initiatives by state and local governments.

# Delmont 88 is here-- Oldsmobile's new lowest-priced 88!

First we made Delmont look like a car you can't afford. Then we priced it so you could.



Oldsmobile's new full-size 88 series, the Delmont, looks expensive. In actual fact, it's not. Delmont 88 prices start below many models with "low-price names." Rakish Toronado styling. Proved 88 chassis, brakes and suspension. And Rocket V-8 Engines available with Oldsmobile's exclusive new Climatic Combustion Control. (3-speed Turbo Hydramatic can be had with both 330- and 425-cubic-inch V-8s.) See your Olds Dealer today about the four new Delmont 88s!

The Rocket Action Cars are out front again!

Olds thinks of your safety, too, with the GM-developed energy-absorbing steering column that can compress on severe impact up to 8 1/2 inches; safety door latches and hinges; lane change signal in direction-signal control; backup lights; plus many other safety features--all standard.

Engineered for excitement... Toronado-style!

'67 OLDSMOBILE

BROCK IMPLEMENT COMPANY, INC.

422 N. FIRST  
SEE YOUR NEARBY OLDSMOBILE DEALER FOR: TORONADO • NINETY-EIGHT • DELTA 88 • DELMONT 88 • CUTLASS SUPREME • F-85 • VISTA-CRUISER • 4-4-2

MULESHOE, TEXAS

The MULESHOE JOURNAL  
Established February 23, 1924  
Published by Muleshoe Publishing Co., Inc.  
Every Thursday at 304 W. Second  
P. O. Drawer 449, Muleshoe, Texas 79347

Member TEXAS PRESS ASSOCIATION 1966

Entered as second-class matter at Muleshoe, Bailey County, Texas 79347 Post Office, under Act of Congress, March 3, 1897; postage paid. Member Texas Press Association

Larry B. Hall, President & Publisher  
Jessica Perry Hall, Secretary-Treasurer  
Ramon Martin, Editor  
Pat (Mrs. Bill) Johnson, Woman's Editor

SUBSCRIPTIONS:  
Zone I-Bailey, Farmer Cochran and Lamb counties: \$4.00 per year, \$4.50 per year by carrier. With Sunday Bailey County Journal both papers: \$5.50 per year; \$6.00 per year by carrier.  
Zone II-Out-of-Territory: \$4.50 per year; With Sunday Bailey County Journal, both papers, \$6.25 per year.  
Monthly, by carrier - 55¢; Single copies-10¢  
Advertising rate card on application.

The Sandhills Philosopher

Editor's note: The Sandhills philosopher on his Johnson grass farm apparently has had his television set repaired, his letter this week indicates.

Dear editor:

I knew it would be mastered sooner or later, and can now report that television, according to an advertisement I read in a newspaper last night between westerns, has come of age.

As I understand it, one of the problems of television has been that people go to sleep while watching it and the set keeps right on working. If you're watching it from a bed or couch, you might sleep all night with the set still going. If you're in a chair and doze off, you might get waked up when Thrush sets off an explosion to destroy North America. Just because a program is dull is no sign it is quiet.

According to this advertisement, however, the problem has now been licked. A company has come out with a set that automatically turns itself off.

I don't have the details, but I presume you look over the night's television program, figure you can stay awake through the first two or three but estimate along about half way through the fourth you've likely to doze off. So you set the automatic switch, and can go to sleep anytime, even through the first or second, still knowing the set will blink off by itself. This is one of the greatest strides I guess television has made.

Incidentally, I have long wondered why the television rating firms, instead of putting a gadget on selected people's sets to record when they're turned on, don't put the gadget on the people themselves to record when they're awake. Unless they're both going at the same time, the test is unreliable.

Non-the-less, I am pleased

Yours faithfully  
J.A.

VETERANS' LAND BOARD SALE

The Veterans' Land Board will receive sealed bids at the General Land Office, Austin, Texas, until 10:00 o'clock A.M., November 15, 1966, for the sale of 104 tracts of land. 93 tracts offered to eligible Texas Veterans only in Briscoe, Brown, Caldwell, Cameron, Culberson, Deaf Smith, Denton, Dimmit, Gaines, Hidalgo, Hunt, Jasper, Kimble, Lamar, Lime-stone, Maverick, McCulloch, Medina, Montgomery, Nacogdoches, Newton, Orange, Parker, Reeves, Runnels, Smith, Ward, Webb, Williamson, Winkler, Uvalde & Zavala Counties. 11 tracts offered to non-veterans and eligible Texas Veterans in Erath, Hidalgo, Maverick, Uvalde & Zavala Counties.

Tracts may be financed through the Veterans' Land Program. For information and listing of tracts write to:

JERRY SADLER  
Commissioner of the General Land Office  
Chairman of the Veterans' Land Board  
Austin, Texas

MRS BAIRD'S

Stays Fresh Longer



**Watts...**

Continued from p.5

Her flowing bouffant veil of illusion was attached to a confieur of pearls and sequins. Moalca Moyers, Ferris, was the bride's maid of honor and bridesmaids were Mrs. Jim Nichols, Abilene, Freda Hickman, Lubbock, Mrs. Billy Lynn Marshall, Lubbock, sister-in-law of the bride and Miss Kay Embree, Tahoka. Meloney Marshall, sister of the bride, was junior bridesmaid.

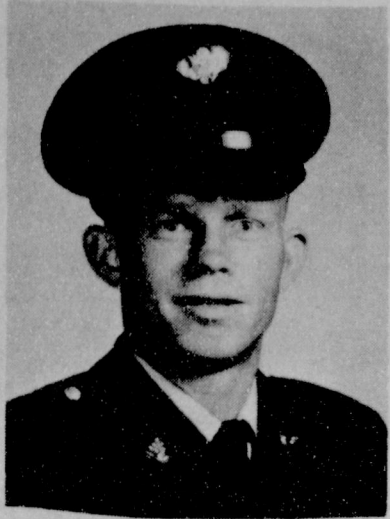
Kim Miller, Abilene, served the bridegroom as best man and groomsmen were Bobby Gene Ragan, Larry Wilson, Glenn Smyth and Jim Nichols, Abilene, and Billy Lynn Marshall, Lubbock, brother of the bride.

Maria Boardman and Jesse Boardman, Stratford, cousins of the bride were flower girl and ring bearer.

Candlelighters were James Lee Calaway and Randy Jones, Bovina, who also served as ushers.

Vocal selections, "One Hand, One Heart", "More", "Whither Thou Goest", "Twelfth of Never," were presented by Mrs. Marlin Ferguson, soloist from Bovina. A trio composed of Miss Mrs. Nichols and Miss Hickman sang "You'll Never Walk Alone" as the couple lighted an unlighted center taper from two burning ones which were then extinguished, at the closing of the ceremony. The bride presented the bridegroom's mother with a rose.

A reception followed the ceremony in Fellowship Hall of the church. The bride's table was laid with a white net cloth over white satin. Ribbons of blue chiffon, caught with blue



VIET NAM--Pvt. 1st/C Fred Smith, son of Mr. and Mrs. David Aylesworth, is now stationed in Viet Nam. Smith is a 1959 graduate of Lazbuddie High School.

**Cotton Batting Factory Landed By Littlefield**

Littlefield saw the fruition of many months of hard work and diligent effort this past Thursday morning when Mancil Hall, Chairman of the Littlefield Chamber of Commerce Industrial Committee, received a telegram from Congressman George Mahon stating that the Small Business Administration had approved a loan to the Littlefield Industrial Corporation.

The loan application was made some months ago for the purpose of gaining government assistance in financing a new industry for Littlefield. The granting of the loan came within two days of the deadline set for this financial aid.

The new industry, hopefully to be in production the early part of next year, is Keeton Felt and Supply Company. The Littlefield plant will manufacture cotton batting to be used principally as upholstery material for automobiles and furniture. The raw material to be used will be cotton notes, a cotton waste material to be secured from the gins in this area. The availability of this waste matter was a major factor in choosing Littlefield for the plant location.

Harry H. Keeton, Jr., chairman of the Board of Keeton Industries and Keeton Felt and Supply Company, indicated that the plant, initially, would employ 25 persons and add an estimated \$100,000 annual payroll to the area's economy. Keeton further indicated that these figures could double within six months to a year in accordance with present plans.

These plans tentatively call for the manufacturing of quilted about six months. The same raw material will be used for the manufacture of the blankets as is used for the cotton batting.

Keeton Industries began as a family operation in Fort Worth, Texas in 1898. Since that time, additional plants have been added in Oklahoma City, Houston, Texarkana, Chicago, Phoenix and Atlanta. Though there is still a plant in Fort Worth, the headquarters have been established in Oklahoma City. Keeton Felt and Supply Company is an individual corporation.

According to E. J. Wicker, president of Littlefield Industrial Corporation, two all-steel buildings, comprised of some 45,000 square feet of floor space, will be constructed on a ten acre tract of the corporation's industrial area located just east of the Nipak complex on business highway 84.

**Bookmobile Schedule**

WEDNESDAY	
Circleback	8:45-9:45
Bula #1	10:15-11:15
Bula #2	12:00-1:00
THURSDAY	
Amherst #1	9:15-9:45
Amherst #2	9:45-10:15
Springlake #1	11:00-11:45
Springlake #2	12:00-1:00
Earth	1:15-3:45
FRIDAY	
Pleasant Valley	
Sudan #1	12:00-1:00
Sudan #2	1:00-4:00
SATURDAY	
Morton	9:30-12:00

**SIX GIANTS**

PITTSBURGH (AP) — Pittsburgh is home to six giant industrial firms with annual sales of more than \$1 billion each. They are Aluminum Company of America (Alcoa), Gulf Oil Corp., National Steel Corp., U.S. Steel Corp. and Westinghouse Electric Corp.

**Announcing**

The Muleshoe Electric, Ancel Ashford, owner & manager, has purchased the E.R. Hart Co. We are in the process of moving and ask our customers to bear with us during this move. Ashford invites all old and new customers to call on him for the following services, PLUS:

- COLEMAN HEATERS
- AEROMOTOR WINDMILLS
- ALL TYPES PIPE & PIPE FITTINGS
- AIR COMPRESSORS
- ELECTRIC MOTOR REWINDING & REBUILDING
- DAYTON ELECTRIC MOTORS WHOLESALE & RETAIL
- BERKLEY PUMPS
- COMPLETE LINE OF STARTERS AND GENERATOR PARTS & REPAIR
- V-BELTS & DRIVES
- PUMP REPAIR AND SERVICES

*'We Appreciate Your Business'*

**MULESHOE ELECTRIC**

Formerly E.R. Hart Co.

Phone 272-3330

210 E. 3rd.

DISTRICT	I-AAA	Season Cumulative	10-17-66	SEA	DISC	PUNIS	LIST	Y	R	U	S	P	ASSES	HAD	PUNH	PUNIS	YOS	RUSHED	YOS	PASSED	
TEAM	W	L	T	W	L	T	W	L	T	W	L	T	W	L	T	W	L	T	W	L	T
DUMAS	4	1	0	0	70	41	59	979	279	68	26	4	9	8	13	548	420	84	230	46	
HEREFORD	4	1	0	0	112	51	78	1097	153	31	10	3	17	11	19	683	373	62	166	28	
MULESHOE	2	2	0	0	83	52	6	96	26	8	2	3	3	1	5	189	238	48	8	2	
PERRYTON	2	3	0	0	110	85	54	514	462	95	31	5	4	4	17	635	770	154	194	39	
CANYON	2	3	0	0	56	66	65	845	337	81	29	4	11	10	23	654	729	146	210	42	
TULIA	2	3	0	0	70	106	52	983	255	58	20	6	9	9	25	890	1357	271	338	68	

Presented in the public interest by:  
**HARVEY BASS APPLIANCE**

**MULESHOE INDEPENDENT SCHOOL DISTRICT**

Muleshoe, Texas

**STATEMENT OF CASH RECEIPTS AND DISBURSEMENT**

August 31, 1966

Description	Operating Fund			Title I	Title II	Food Service Fund	Athletic Fund	Building Fund	Interest & Sinking Fund	Totals
	St. & Co. Available	Local Maint.	Trans- portation							
Opening Cash Balance 9-1-65	\$ 13 015 01	\$ 13 885 31	\$ 4 875 00	\$ -0-	\$ -0-	\$ 2 131 48	\$ 188 34	\$ -0-	\$ 7 474 04	\$ 41 569 18
<b>Receipts</b>										
10 Local Sources	\$ -0-	\$318 489 65	\$ -0-	\$ -0-	\$ -0-	\$74 508 10	\$17 654 30	\$ 2 363 96	\$145 004 21	\$ 558 020 22
20 County Sources	-0-	-0-	-0-	-0-	-0-	-0-	-0-	-0-	-0-	-0-
30 State Sources	177 616 29	302 680 49	43 344 00	59 490 90	-0-	11 457 06	-0-	-0-	-0-	594 588 74
40 Federal Sources	-0-	164 13	-0-	-0-	-0-	-0-	-0-	-0-	-0-	164 13
50 Sale of Bonds	-0-	-0-	-0-	-0-	-0-	-0-	-0-	-0-	-0-	-0-
60 Loans	-0-	-0-	-0-	-0-	-0-	-0-	-0-	-0-	-0-	-0-
70 Sale of Property	-0-	5 612 31	3 536 00	-0-	-0-	-0-	-0-	-0-	-0-	9 148 31
80 Incoming Transfers	-0-	-0-	-0-	-0-	-0-	-0-	-0-	-0-	-0-	-0-
85 Interfund Transfers	-0-	-0-	5 031 89	-0-	2 500 00	-0-	-0-	-0-	-0-	7 531 89
Returned Checks	-0-	-0-	-0-	-0-	-0-	(10 11)	-0-	-0-	-0-	(10 11)
Investments Sold	-0-	60 000 00	-0-	-0-	-0-	-0-	-0-	188 626 63	40 000 00	288 626 63
<b>TOTAL CASH RECEIPTS</b>	<b>\$177 616 29</b>	<b>\$686 946 58</b>	<b>\$51 911 89</b>	<b>\$59 490 90</b>	<b>\$ 2 500 00</b>	<b>\$85 955 05</b>	<b>\$17 654 30</b>	<b>\$190 990 59</b>	<b>\$185 004 21</b>	<b>\$1 458 069 81</b>
<b>TOTAL FUNDS AVAILABLE</b>	<b>\$190 631 30</b>	<b>\$700 831 89</b>	<b>\$56 786 89</b>	<b>\$59 490 90</b>	<b>\$ 2 500 00</b>	<b>\$88 086 53</b>	<b>\$17 842 64</b>	<b>\$190 990 59</b>	<b>\$192 478 25</b>	<b>\$1 499 638 99</b>
<b>Disbursements</b>										
Budgetary Disbursements	\$194 213 84	\$624 841 06	\$54 678 62	\$35 040 33	\$ 2 594 57	\$ -0-	\$ -0-	\$135 473 24	\$144 089 08	\$1 190 930 74
Retirement of Cur. Loans	-0-	-0-	-0-	-0-	-0-	-0-	-0-	-0-	-0-	-0-
Food Service Fund	-0-	-0-	-0-	-0-	-0-	93 806 16	-0-	-0-	-0-	93 806 16
Athletic Fund	-0-	-0-	-0-	-0-	-0-	-0-	17 828 77	-0-	-0-	17 828 77
Interfund Transfers	-0-	7 531 89	-0-	-0-	-0-	-0-	-0-	-0-	-0-	7 531 89
Investments Purchased	-0-	60 000 00	-0-	-0-	-0-	-0-	-0-	-0-	43 350 71	103 350 71
Inventory Purchases	-0-	-0-	-0-	-0-	-0-	-0-	-0-	-0-	-0-	-0-
Prior Yr. Pmts. Liquidated	1 693 93	14 423 28	251 17	-0-	-0-	13 85	-0-	55 517 35	12 59	71 912 17
<b>TOTAL CASH DISBURSEMENTS</b>	<b>\$195 907 77</b>	<b>\$706 796 23</b>	<b>\$54 929 79</b>	<b>\$35 040 33</b>	<b>\$ 2 594 57</b>	<b>\$93 820 01</b>	<b>\$17 828 77</b>	<b>\$190 990 59</b>	<b>\$187 452 38</b>	<b>\$1 485 360 44</b>
Closing Cash Bal. 8-31-66	\$ (5 276 47)	\$ (5 964 34)	\$ 1 857 10	\$24 450 57	\$ (94 57)	\$ (5 733 48)	\$ 13 87	\$ -0-	\$ 5 025 87	\$ 14 278 55
Less: A/C's Pay. 8-31-66	4 285 34	10 949 46	17 10	30 499 96	1 929 73	54 45	-0-	-0-	39 00	47 775 04
<b>UNENCUMBERED CASH BALANCE 8-31-66</b>	<b>\$ (9 561 81)</b>	<b>\$ (16 913 80)</b>	<b>\$ 1 840 00</b>	<b>\$ (6 049 39)</b>	<b>\$ (2 024 30)</b>	<b>\$ (5 787 93)</b>	<b>\$ 13 87</b>	<b>\$ -0-</b>	<b>\$ 4 986 87</b>	<b>\$ (33 496 49)</b>
Add: Temp. Inv. & Time Deposits Bal. 8-31-66	-0-	-0-	-0-	-0-	-0-	-0-	-0-	-0-	33 159 59	33 159 59
<b>UNENCUMBERED FUND BALANCE 8-31-66</b>	<b>\$ (9 561 81)</b>	<b>\$ (16 913 80)</b>	<b>\$ 1 840 00</b>	<b>\$ (6 049 39)</b>	<b>\$ (2 024 30)</b>	<b>\$ (5 787 93)</b>	<b>\$ 13 87</b>	<b>\$ -0-</b>	<b>\$ 38 146 46</b>	<b>\$ (336 90)</b>



# ENTER TODAY! MULESHOE'S ANNUAL FOOTBALL

# CONTEST

## and WIN CASH PRIZES!



**WIN WEEKLY PRIZES!**  
**1st. Place \$5. . . . 2nd. Place \$3**  
**GRAND PRIZE \$50**  
 For Expenses and Two Tickets to the  
**Cotton Bowl at Dallas, Texas. There Will**  
**Also Be a Contest & Prizes For The Bowl Games!**

### RULES OF THE CONTEST:

Muleshoe Publishing Co. Box 449 - Muleshoe, Texas

- . Only one entry per person may be made for any one contest.
- . Weekly contests are open to everyone except employees and families of this newspaper.
- . Entries are to be judged by the Sports Editor and staff of this newspaper.
- . Bring or mail your entries to the Journal office. Mailed entries must be postmarked not later than 5 p.m. Friday.
- . Winners names will be published in this newspaper each Thursday following the close of the weekly contest.
- . Choose the team you think will win.
- . 10 points for 1st. place, 5 points for 2nd place determines the Grand Prize Winner.

**DON'T WAIT--  
 ENTER NOW!  
 YOU CAN WIN**

THIS CONTEST MADE POSSIBLE BY THE FOLLOWING PROGRESSIVE FIRMS:

**1st. Place Winner**  
 Jo Wood

**2nd. Place Winner**  
 J. K. Adams

**LET'S BACK THE MULES**

Muleshoe vs. Dumas, here 7:30 P.M.

- |   |                                  |
|---|----------------------------------|
| <b>Pool Insurance</b>                   | <b>First National Bank</b>       |
| <b>Leal's Tortilla</b>                  | <b>King Grain &amp; Seed Co.</b> |
| <b>M. E. Lee &amp; Son Construction</b> | <b>The Fashion Shop</b>          |
| <b>Shafer's Bell Station</b>            | <b>Muleshoe Motor Co.</b>        |
| <b>Ben Franklin</b>                     | <b>White Cashway</b>             |
| <b>Muleshoe State Bank</b>              | <b>Piggly Wiggly</b>             |
| <b>Richland Hills Texaco</b>            | <b>Bovell Motor Supply</b>       |
| <b>James B. Glaze Company</b>           | <b>W. Q. Casey Ins.</b>          |
| <b>Beavers Flowerland</b>               | <b>Muleshoe Floral</b>           |
| <b>Muleshoe Publishing Co.</b>          | <b>Progress Gin</b>              |
| <b>Western Drug</b>                     | <b>Lindsey Credit Jewelry</b>    |
| <b>Ladd Pontiac</b>                     | <b>E. R. Hart Co.</b>            |
| <b>Brock Motor Co.</b>                  | <b>Paul's Cafe</b>               |
| <b>Murray's Muleshoe Jewelry</b>        | <b>Texas Sesame</b>              |
| <b>Dari-Delite</b>                      | <b>D &amp; G Grocery</b>         |
| <b>Muleshoe Co-op Gin</b>               | <b>West Plains Hospital</b>      |
| <b>L &amp; H Grocery</b>                | <b>Cobb's</b>                    |
| <b>Union Compress &amp; Warehouse</b>   |                                  |

### OFFICIAL ENTRY FORM ONLY ONE ENTRY PER PERSON

NAME _____	ADDRESS _____
CITY _____	STATE _____
1. Baylor <input type="checkbox"/>	Texas A&M <input type="checkbox"/>
2. Harvard <input type="checkbox"/>	Dartmouth <input type="checkbox"/>
3. Michigan State <input type="checkbox"/>	Purdue <input type="checkbox"/>
4. Minnesota <input type="checkbox"/>	Michigan <input type="checkbox"/>
5. Texas Western <input type="checkbox"/>	San Jose State <input type="checkbox"/>
6. Florida <input type="checkbox"/>	LSU <input type="checkbox"/>
7. Illinois <input type="checkbox"/>	Stanford <input type="checkbox"/>
8. N. Texas State <input type="checkbox"/>	So. Illinois <input type="checkbox"/>
9. Oregon <input type="checkbox"/>	Washington <input type="checkbox"/>

**TIE BREAKER**

Muleshoe \_\_\_\_\_ SCORE Dumas \_\_\_\_\_ SCORE

**DON'T MISS ANY OF THE FUN PRIZES**  
**SUBSCRIBE TO OUR PAPER: CALL 272-4536**



# No Sales Tax Boost is Likely

By Vern Sanford  
Texas Press Association

AUSTIN-Gov. John Connally soon will be making his decision on state spending and tax recommendations.

His budget staff is rushing to completion a tentative budget and revenue bill for presentation to the governor by the end of the month.

Word is that the revenue measure, contrary to early speculation, does NOT call for any upward revision in the state's basic two percent general sales tax rate. It may include a gasoline tax increase, college tuition boost and adding alcoholic beverages to the sales tax.

Money requests from departments and agencies, totaling \$1,200,000,000, are being trimmed considerably. Best estimates indicate the tentative budget presented for Connally's review will require less than \$200,000,000 in new money.

Governor's proposals definitely will contain some form of financial relief for cities, but not the 50-50 split in new state revenues they are asking. Connally's spreading programs may be restrained by these factors:

Possibility of a substantial federal tax raise next year and the chance of future sharing of surplus U.S. income with state governments on an unrestricted grant basis.

A public school study by the governor's committee almost certainly will call for readjustments in the cost load of the educational system, and final recommendations will not be known for two years.

A metropolitan areas study conceivably could result in proposals for sweeping alterations in local government finance procedures.

WATER AMENDMENT--Governor Connally has launched a campaign for adoption of Constitutional Amendment No. 11. Amendment would do three things: give a constitutional guarantee to safeguarding water in river basins of origin; and permit use of the Fund for construction by the Texas Water Development Board of water treatment and transportation facilities.

About 150 leaders of state and local water governing agencies

and other interested citizens attended the meeting and elected former Gov. Price Daniel of Liberty, chairman of a steering committee to seek voter approval of the Proposition. On another front, the Water Development Board announced that it will ask for an emergency appropriation of \$625,000 from the Legislature to complete the water planning work to bring the Texas Water Plan to completion in about six months.

ATTY. GEN. SPEAKS-Atty. Gen. Waggoner Carr withdrew his opinion that cable tv services are public utilities. But he reiterated his ruling that such firms have the right to place cables along state highways within the highway right-of-way.

In other opinion, Carr said the Secretary of State cannot approve a statement of intent to dissolve a corporation listing less than three directors, since to be a corporation it must have at least three directors.

COURT SPEAKS--State Supreme Court ordered Land Commissioner Jerry Sadler to file sulphur claims of Duval Corporation and Piper Petroleum Company in Pecos County. Sadler had refused, claiming old laws relied on by the firms are no longer applicable, and the companies are trying to get \$2,000 an acre mineral rights for 50 cents.

In other action during the week, high court:

Affirmed \$304,800 in penalties against four East Texas oilmen (Gregg County) for slant-well drilling in Wood County.

Agreed with Railroad Commission that new truck service between Houston and San Antonio by Alamo Express, Inc., is justified.

Stuck by its July 13 decision that commissioners precincts of Midland County do not have to be formed on the basis of equal population.

Sustained lower court findings that state sales tax may be collected on equipment leased to load and unload ships in foreign trade.

Upheld \$73,980 damage judgement for Montgomery County family who successfully maintained San Jacinto River diverted from their property by an artificial channel and dam

constructed by Tennessee Gas Transmission Company.

ANNUAL INFESTATIONS Texas is pulling out of its serious screwworm epidemic. But now a big outbreak in Encephalomyelitis (sleeping sickness) among horses seems to be taking hold.

Some 40 cases were reported to the State Health Department covering a two-week period. But a spokesman said it likely will get worse before it gets better.

Cases were from Travis, Erath, Cherokee, Angelina and Washington counties. Texas Veterinary Medical Association also says the disease has been reported in East, Central and South Texas and the Hill Country.

PARK LAND "OWED FOR" Land Commissioner Jerry Sadler has written Governor Connally the 37,000 acres in area of proposed Guadalupe National Park in Culberson and Hudspeth Counties has never been paid for by the private purchaser.

Sadler said the interest has been kept up, but the Abilene owner still owes the state \$37,000 on the land he agreed to buy for \$1 an acre 40 years ago.

Congress has passed and sent to the President a bill to establish a 71,000-acre national park. Land cost has been estimated at \$1,800,000 and development at \$10,300,000. While favoring creation of the park, Sadler insisted that Texas retain the mineral interest in some 45,000 acres.

Federal bill requires donation of minerals owned by both the state and private interests, Sadler said.

APPOINTMENTS--Governor Connally announced appointment of Arthur R. Marroquin of Austin as chief of the migrant division in the Texas office of Economic Opportunity. He replaces Al Ramirez of Edinburg.

J. Curtiss Brown of Houston has been named to the Board of Directors of the Texas Bar. He will complete the unexpired term of U.S. District Judge John V. Singleton, Jr. of Houston, who resigned to accept appointment to the federal bench.

SHORT SNORTS At a hearing on loan problems a consumer industry spokesman suggested higher legal ceiling on "small loans" (now \$1,500 in Texas).

Arroyo Colorado in Cameron County is one of 82 areas selected for possible inclusion in National Wilderness System.

# FOOD FLAVOR-ITES

AT HEFTY SAVINGS! GUNN BROS. STAMPS



## FRYERS

Fresh Dressed USDA Grade 'A'

Whole lb. **29¢**

Summer Armour's Muenchner SAUSAGE	Lb. 69¢
Armour Star All Meat Vac Pak FRANKS	Lb. 59¢
Armour's Cloverbloom Longhorn Cheddar CHEESE	Lb. 69¢
Small-Rodeo Fresh Country Style SPARE RIBS	Lb. 55¢
Swift's Premium Proten Beef CLUB STEAKS	Lb. 79¢
Swift's Premium Proten Beef SIRLOIN STEAK	Lb. 89¢

ARMOUR STAR THIN SLICED  
**BACON** 1 Lb. Pkg. **79¢**

# PORK & BEANS

HUNT'S  
2 1/2 CAN  
**PEACHES**  
**25¢**

Kimbell's #300 Can

**Hi-C Orange Drink**  
46 Oz. CAN  
**25¢**

**5¢**

### FROZEN FOODS

Banquet, Family Size CREAM PIES	3 For 89¢
Keith's 24 Count Pkg. DINNER ROLLS	19¢
Baked Ripe Tide STUFFED CRAB	25¢
Keith's, Cut 9 Oz. Pkg. GREEN BEANS	19¢

Ellis #300 Can With Beans  
**Chili**  
**29¢**

# BANANAS



Golden Ripe

Lb. **10¢**

CALIFORNIA SNOW WHITE CAULIFLOWER	Lb. 29¢
MULESHOE HOME GROWN PUMPKIN	Lb. 5¢
OCEAN SPRAY CRANBERRIES	1 Lb. Cello Pkg. 35¢

**CARROTS**  
GARDEN FRESH  
1 Lb. Cello Pkg. **5¢**

## Meet the MULESHOE STATE BANK CUSTOMER of the Week



W.F. HARPER

Muleshoe State Bank recognizes W.F. Harper as "Customer of the Week." Harper, a retired farmer, lives 5 miles northeast of Muleshoe. He and his wife, Lucille, have one married son, Roy Lee, who lives in Albuquerque. Harper has banked at Muleshoe State for the past 10 years and says: "I think the personnel at the bank are the most wonderful people I've met. The Harpers attend the Methodist Church. Muleshoe State Bank is proud to recognize this customer of the week."

MULESHOE STATE BANK



Ahoy Nabisco Chips COOKIES 14 1/4 Oz. Pkg.	45¢
Swift's Brookfield CHEESE 2 Lb. Box	79¢
Kimbell's "Oven Ready" BISCUITS	6 For 49¢
Hunt's Hickory Flavor CATSUP 14 Oz. Btl.	15¢
Jif 18 Oz. Jar PEANUT BUTTER	59¢
Parson's Sudsy AMMONIA 28 Oz. Btl.	29¢
Giant Size Box CHEER	69¢
Hershey's Semi-Sweet DANTIES 12 Oz. Pkg.	39¢
Delsey 4 Roll Pkg. BATH ROOM TISSUE	49¢
Kaiser 25" Roll ALUMINUM FOIL	29¢
Jim Dandy DOG FOOD 25 Lb. Bag	\$2.99
Mazola Pure Corn Oil CORN OIL 24 Oz. Btl.	59¢
Kimbell's Drip or Reg. COFFEE 1 Lb. Tin	69¢
6 Btl. Ctn. King Size COCA-COLA	2 For 79¢
Swift's Whole, Canned CHICKEN 3 Lb. Net Wt.	98¢
Sunshine, Chopped #303 Can TURNIPS & GREENS	2 For 29¢
Cracker Barrel CRACKERS 1 Lb. Box	2 For 45¢
1 Gallon Ctn. MILK	89¢
Round Top BREAD Reg. 1 1/2 Lb.	25¢

Listen to MULETRAIN over KMUL 10:15 a.m. sponsored by WHITE'S CASHWAY

Whites' CASHWAY



# TELEVISION SCHEDULE FOR THE MULESHOE AREA

**FOOTBALL IS FOREMOST**

**KING BROS.**

**GRAIN & SEED CO.**

**Complete ELEVATOR SERVICE**

★ ★ ★ ★

**AND**

**SEED PROCESSING**

**FOR THE MULESHOE AREA**

**ALSUP CLEANERS**

Offer These FINE SERVICES

1. Drive-in window service for your convenience in cold weather.
2. Re-sizing of cottons to finer texture for that like-new look.
3. Alterations of all kinds of men's, women's and children's clothing.
4. A personal touch for your clothing by people who care how you look.

**THAT'S ALSUP CLEANERS**

Phone 272-3076

**RE-PRINTS FROM ANY PHOTO**



MADE BY THE

**JOURNALS**

IN PAST ISSUES

8 X 10

**\$2**

**KGNC - TV (4)**  
Amarillo  
Muleshoe Cable 4  
Daytime Viewing

7:00 - Today  
7:25 - News  
7:30 - Today  
8:00 - Today  
8:30 - Eye Guess  
9:25 - News  
9:30 - Concentration  
10:00 - M. Star  
10:30 - P. Bay  
11:00 - Jeopardy  
11:30 - P. Office  
11:55 - NBC News  
12:00 - News  
12:10 - Weather  
12:15 - R. Brent  
12:30 - Make-Deal  
12:55 - NBC News  
1:00 - Our Lives  
1:30 - The Doctors  
2:00 - Another World  
2:30 - Don't Say  
3:00 - Match Game  
3:25 - NBC News  
3:30 - Sheriff Bill  
4:30 - Bronco  
5:30 - Hunt-Brink.  
6:00 - News

**THURS EVENING**

6:15 - Weather  
6:25 - Sports  
6:30 Tarzan  
7:30 Star Trek  
8:30 Branded inn's  
9:00 - Dean Martin  
10:00 - News  
10:15 - Weather  
10:25 - Sports  
10:30 - Tonight

Friday evening

5:30 AFL-NY-Miami  
8:00 Movie  
10:00 - News  
10:15 - Weather  
10:25 - Sports  
10:30 - Tonight  
12:00 - Sign Off

Saturday

7:00 - Roy Rog.  
8:00 Super 6  
8:30 - Atom Ant  
9:00 - Squirrel  
9:30 Space Kid  
10:00 Cool McCool  
10:30 Jetsons  
11:00 Top Cat  
11:30 - Milton  
12:00 - Cotton John  
12:00 - Baseball  
3:00 Golf  
4:30 Hollywood Stars  
5:00 Golden Jubilee  
5:30 - Scherr-mcN.  
6:00 - News  
6:15 - Weather  
6:30 Flipper  
8:00 Preview  
9:00 American Pag.

10:00 - News  
10:15 - Weather  
10:25 - Sports  
10:30 - Movie  
12:00 - Sign Off

**SUNDAY**

7:30 - Dixie  
8:00 Cotton John  
8:30 Forecast  
8:45 - Sheriff Bill  
9:30 - Roy Rogers  
10:30 - Dixie (Cont.)  
11:00 - Church  
12:00 Meet Press  
12:30 Hollywood  
1:30 Football  
4:30 College Bowl  
5:00 Laramie  
6:00 - News  
6:25 - Sports  
6:30 - Disney  
7:30 Hey, Landlord  
8:00 - Bonanza  
9:00 Andy Williams

10:00 - News  
10:15 - Weather  
10:25 - Sports  
10:30 - Tonight Show  
12:00 - Sign Off

**KVII - TV (7)**  
Amarillo  
Muleshoe Cable 5  
Daytime Viewing

6:15 - Agriculture  
6:45 - Weather  
6:50 - News  
7:00 - Mod. Edu.  
7:30 - Exercise  
8:00 - Movie  
10:00 - S. Market  
10:30 - Dating Game  
11:00 - Donna Reed  
11:30 - Father  
12:00 - Ben Casey  
1:00 - For Women  
1:30 - A Time  
1:55 - Women's News  
2:00 - Gen. Hosp.  
2:30 - Nurses  
3:00 - N. Shadows  
3:30 - Action Is  
4:00 - Trails West  
4:30 - H. Patrol  
5:00 - P. Jennings  
5:15 - News  
5:25 - Weather  
5:30 - Wells Fargo  
6:00 - Rifleman

**THURS EVENING**

6:30 - Batman  
7:00 F. Troop  
7:30 Races  
8:00 Bewitched  
8:30 That Girl  
9:00 The Hawk  
10:00 News  
10:30 McKenzie Show  
11:00 Movie

**FRIDAY**

6:30 Green Hornet  
7:00 Time Tunnel  
8:00 Milton Berle  
9:00 12 o'clock High  
10:00 - News  
10:10 - Weather  
10:15 - Agri-Business  
10:30 - Movie

**SATURDAY**

7:30 - Mod. Edu.  
8:00 - Silver Wings  
8:30 - Baptist Church  
9:00 King Kong  
9:30 - Beatles  
10:00 - Casper  
10:30 - Mag. Gor.  
11:00 - Bugs Bunny  
11:30 - Milton  
12:00 - Hoppity  
12:30 Sports  
2:00 Football - NCAA  
5:30 NFL  
6:00 Grimes  
6:30 Shane  
7:30 Lawrence Welk  
8:30 Hollywood Pal.  
9:30 Movie

**SUNDAY**

7:30 - Mod. Edu.  
8:00 - Oral Roberts  
8:30 - Christ For  
9:00 - Beany  
9:30 - Peter Pot.  
10:00 - Bullwinkle  
10:30 - Discovery  
11:00 - Church  
12:00 Dory Funk  
1:30 Direction  
2:00 Mormon  
2:30 Linus  
3:00 Football S.  
4:00 - Honest Jess  
4:15 - Matinee  
6:00 Dating Game  
7:00 - FBI  
8:00 - Movie  
10:15 - News  
10:30 - Movie

**SUNDAY**

8:00 - Pattern  
8:30 - Church  
9:30 LaFavers  
10:00 Wills Family  
11:00 - Film  
1:00 - Sc. Fic.  
1:30 NFL Football  
4:00 Tell Truth  
4:30 - Amateur  
5:00 - 20th Cen.  
5:30 - News  
5:50 - Weather  
6:00 - Carnival  
6:30 - Martian  
7:00 - Ed Sullivan

9:00 - Can. Cam.  
9:30 - W. My Line  
10:00 - News  
10:15 - Weather  
10:25 - Sports  
10:30 - Movie  
10:55 - News  
11:00 - Movie

**KFDA - TV (10)**  
Amarillo  
Muleshoe Cable 6  
Daytime Viewing

6:25 0 Sign On  
6:27 - Meditation  
6:30 - Am. College  
7:00 - Farm News  
7:30 - Tri Report  
8:00 - Capt. Kang.  
9:00 - I Love Lucy  
9:30 - McCoys  
10 - Andy  
11: J - Dick Van Dyke  
11:00 - Search T.  
11:45 - Guiding Lgt.  
12:00 - News  
12:10 - Weather  
12:20 - Farm-Ranch  
12:30 - The World T.  
1:00 - Password  
1:30 - Art Linletter  
2:00 - To Tell Truth  
2:25 - CBS News  
2:30 - Edge of Night  
3:00 - Secret Storm  
4:00 - Sc. Fiction  
4:30 - Mr. Mim.  
5:00 - Cartoons  
5:30 - CBS News  
6:00 - News  
6:20 - Weather

**THURS EVENING**

6:30 Jericho  
7:30 - Three Sons  
8:00 - Movie  
9:00 - Dean Martin  
10:00 - News  
10:15 - Weather  
10:30 - Movie  
10:55 - News  
11:00 - Movie

**FRIDAY EVENING**

5:30 Huntley-Brink.  
6:00 News  
6:30 Tarzan  
7:30 Man-U.N.C.L.E.  
8:30 T.H.E. Cat  
9:00 Laredo  
10:00 News  
10:30 Tonight

**SATURDAY**

7:30 - R. Rog.  
8:00 Super Six  
1:30 Movies  
3:00 Movie  
5:00 Lone Ranger  
5:30 - Scherer-McN.  
6:00 - News  
6:30 - Flipper  
7:00 - Jeanie  
7:30 - Get Smart  
8:00 Movie  
10:00 News  
10:30 Movie

**SUNDAY**

7:25 - Sign On  
7:30 - Mag. Gor.  
8:00 - Peter Pot.  
8:30 - Beany  
9:00 - Herald of  
9:30 - Living  
10:00 - Discovery  
10:30 - Drama  
10:45 - Church  
12:00 AFL  
3:00 Meet Press  
3:30 Fron. Faith  
4:00 VietNam Rept.  
4:30 College Bowl  
5:00 Frank McGee  
5:30 - Red Raider  
6:00 - News  
6:30 - Disney  
7:30 Hey, Landlord  
9:00 Andy Williams

**SUNDAY**

6:55 Sign On  
7:00 Looney Tunes  
7:30 Space Ghost  
8:00 Casper  
8:30 - Movie  
10:15 Country Junc.  
11:45 Face Nation

1:30 News-Wea.  
1:45 Pre-Game  
2:00 Football  
4:45 Scoreboard  
5:00 Campaign 66  
5:30 King Kong  
6:30 Green hornet  
7:00 Ed Sullivan  
8:00 Gary Moore  
9:00 Carol & Com.  
10:00 - News  
10:20 - Movie  
1:30 - Sign Off

**KCBD - TV (11)**  
Lubbock  
Muleshoe Cable 2  
Daytime Viewing

7:00 - Headlines  
7:05 - Farm Report  
7:25 - Weather  
7:30 - Today  
8:25 - News  
8:30 - Today  
9:00 - Eye Guess  
9:25 - News  
9:30 - Concentration  
10:00 - M. Star  
10:30 - P. Bay  
11:00 - Jeopardy  
11:55 - News  
12:00 - Noon Rptl  
12:15 - Com. Close  
12:30 - Make Deal  
1:00 - Our Lives  
1:30 - Doctors  
2:00 - Another World  
2:30 - Don't Say  
3:00 - Match G.  
3:25 - Aft. Rpt  
3:30 - S. Sweep  
4:00 - Father  
4:30 - Beaver  
5:00 - Cartoons  
5:30 - Hunt-Brink.  
6:00 - News

**THURS EVENING**

6:30 Daniel Boone  
7:30 Movie  
9:00 - Dean Martin  
10:00 News  
10:30 Tonight Show

**FRIDAY EVENING**

5:30 Huntley-Brink.  
6:00 News  
6:30 Tarzan  
7:30 Man-U.N.C.L.E.  
8:30 T.H.E. Cat  
9:00 Laredo  
10:00 News  
10:30 Tonight

**SATURDAY**

7:30 - R. Rog.  
8:00 Super Six  
1:30 Movies  
3:00 Movie  
5:00 Lone Ranger  
5:30 - Scherer-McN.  
6:00 - News  
6:30 - Flipper  
7:00 - Jeanie  
7:30 - Get Smart  
8:00 Movie  
10:00 News  
10:30 Movie

**SUNDAY**

7:25 - Sign On  
7:30 - Mag. Gor.  
8:00 - Peter Pot.  
8:30 - Beany  
9:00 - Herald of  
9:30 - Living  
10:00 - Discovery  
10:30 - Drama  
10:45 - Church  
12:00 AFL  
3:00 Meet Press  
3:30 Fron. Faith  
4:00 VietNam Rept.  
4:30 College Bowl  
5:00 Frank McGee  
5:30 - Red Raider  
6:00 - News  
6:30 - Disney  
7:30 Hey, Landlord  
9:00 Andy Williams

**SUNDAY**

6:55 Sign On  
7:00 Looney Tunes  
7:30 Space Ghost  
8:00 Casper  
8:30 - Movie  
10:15 Country Junc.  
11:45 Face Nation

1:30 News-Wea.  
1:45 Pre-Game  
2:00 Football  
4:45 Scoreboard  
5:00 Campaign 66  
5:30 King Kong  
6:30 Green hornet  
7:00 Ed Sullivan  
8:00 Gary Moore  
9:00 Carol & Com.  
10:00 - News  
10:20 - Movie  
1:30 - Sign Off

**KLBK - TV (13)**  
Lubbock  
Muleshoe Cable 3  
Daytime Viewing

5:55 - Sign On  
6:00 - Sun. Sem.  
6:30 - Jimmy Dean  
6:45 - Farm-Ranch  
7:05 - M. Wallace  
7:30 - Morn. Show  
8:00 - Capt. Kang.  
9:00 - Donna  
9:30 - McCoys  
10:00 - Andy  
10:30 - D. Dyke  
11:00 - Love of Life  
11:25 - CBS News  
11:30 - Search  
11:45 - Guiding  
12:00 - WTTN News  
12:12 - Farm Ranch  
12:25 - Weather  
12:30 - World Turns

**THURS EVENING**

6:00 - News  
6:10 - Weather  
6:20 - News  
6:30 Batman  
7:00 Races  
7:30 Three Sons  
8:00 - Movie  
10:00 - News-Wea.  
10:30 - Theatre  
2:00 - Sign Off

**FRIDAY EVENING**

6:00 - News  
6:10 - Weather  
6:20 - News  
6:30 Batman  
7:00 - Bewitched  
7:30 - Hog. Heroes  
8:00 The Monroes  
9:00 Fugitive  
10:00 News  
10:30 Movie

**SATURDAY**

5:55 - Sign On  
6:00 - Sun. Sem.  
6:30 Carnival  
7:30 Monster  
8:00 M. Mouse  
8:30 Underdog  
9:00 Frankenstein  
10:00 Superman  
10:30 Lone Ranger  
11:00 Road Runner  
11:30 Beagles  
12:30 TBA

**SUNDAY**

1:00 Wrestling  
2:00 NCAA-Pre-G  
2:15 Football  
5:00 Scoreboard  
5:30 - Pickin Time  
6:00 - P. Wag.  
6:30 Shame  
7:30 Lawrence Welk  
8:30 Pistols &  
9:00 - Gunsmoke

**SUNDAY**

1:30 News-Wea.  
1:45 Pre-Game  
2:00 Football  
4:45 Scoreboard  
5:00 Campaign 66  
5:30 King Kong  
6:30 Green hornet  
7:00 Ed Sullivan  
8:00 Gary Moore  
9:00 Carol & Com.  
10:00 - News  
10:20 - Movie  
1:30 - Sign Off

**PREMIERE WEEK SET**

**Higginbotham Bartlett Building Needs**

Paint  
Lumber  
Wallpaper  
Hardware  
Houseware  
Gifts



**Higginbotham Bartlett Muleshoe**

**Abel Cable**  
For Year-Long Enjoyment

**INSTALL NOW Three Plans for Hook-Up**

KBFM FM Stereo Radio, Lubbock.....90 Meg.  
KSEL FM Radio, Lubbock.....89 Meg.

**MULESHOE ANTENNA CO. Call Now**  
Phone 272-3310

**Remember Your College Student With A Subscription To The Muleshoe & Bailey Co. Journal**

9 MONTHS SPECIAL COLLEGE SUBSCRIPTION \$5.00

**A&M Schedules**

COLLEGE STATION-Special entertainment and demonstrations will add a new dimension to Texas A&M University's annual Horse Short Course here Nov. 6-8.

Program chairman B. F. Yeates, Extension Service animal husbandman, said the overall session is still in the planning stage, but tentative plans for the extra attractions call for a Shetland show, polo game, and performance demonstrations with a wide variety of horse types.

Demonstrations will include cutting horses, Shetland harness, Arabian native costumes polo techniques, Tennessee Walkers, and gaited and jumping horses.

Yeates said a short course subject expected to draw much attention involves ethics in the horse business. Activities start the first day with registration, the Shetland show and polo game. Registration continues the second day, and the short course gets down to business with a talk on the Texas horse industry. Short course speakers are not yet confirmed.

The ethics session is next. Yeates said probable areas to be covered are relationships between the stud manager and mare owner, buyer and seller, owner and veterinarian, owner and insurance company, and owner and trainer.

Other second-day topics are nutrition, genetics, reproduction, and a panel discussion on settling mares. The latter will include pasture breeding, hand breeding and artificial insemination.

The demonstration of various horse types and equipment is scheduled for the evening of Nov. 7. A&M veterinarians take over the final short course session Nov. 8. Topics to be covered are immunization programs for disease prevention, internal and external parasites, cystitis and lameness.

Yeates said a special feature will be an actual post mortem

**THE FAMILY LAWYER**

**Repairman's Blunder**

When Ed's car was repaired at the corner garage, the mechanic made one small mistake: he left out part of the steering apparatus. Driving home, Ed lost control of the car and crashed into a fire hydrant.

Was the garage legally liable for his accident? The proprietor said no, insisting that once a car left the premises his responsibility came to an end.

But Ed collected. The court said liability for negligence extends as far as the "natural and probable consequences" of the error.

Take the case of a motorist whose brakes, improperly repaired, failed at the crest of a hill. When he sued later for damages, the garage owner argued:

"Even if our repair job was bad, he made matters worse by his own negligence. Instead of rolling wildly downhill, he should have halted the car by jamming against the abutment at the side of the road."

But the court placed responsibility on the garage alone. Refusing to find the motorist negligent, the court said:

"An ordinarily prudent man is not prone to remain calm, cool, and collected in an emergency, and one so imperiled is not required to make the decision which seems soundest in light of subsequent circumstances."

A public service feature of the American Bar Association and the State Bar of Texas. Written by Will Bernard.

**Fri. & Sat. Oct 21-22**  
**Sun. & Mon. Oct. 23-24**

**Wallace Theatre**

**Cary Grant**  
"NORTH BY NORTHWEST"

**IS THIS THE GIRL NEXT DOOR?**  
DORIS DAY TAYLOR GODFREY  
"THE BOTTOM BRASS"

**This is Camaro, buckets and all.**



Camaro Sport Coupe with style trim group you can add.

**All standard**—Strato-bucket seats. Carpeting. Rich vinyl upholstery. A 140-hp Six or a big-car V8 (210 hp!), depending on model. New safety features like dual master cylinder brake system with warning light.

**Whatever else you want, ask for!**

**Camaro Rally Sport**—Pull the switch "on" and headlights appear at each end of the full-width grille. You also get special exterior trim and RS emblems. Then order the Custom Interior, something else again.

**Camaro SS 350**—Besides Camaro's biggest V8 (295 hp!), SS 350 comes with a scoop-styled hood, bold striping around grille, big, fat red stripe tires. Add Rally Sport equipment, too. Camaro's your idea of a car!

**Command Performance**

**CHEVROLET Camaro**  
the Chevrolet you've been waiting for

Everything new that could happen... happened! Now at your Chevrolet dealer's!

**CROW CHEVROLET COMPANY**  
201 Main Muleshoe Ph. 272-3100

**Call on Your Walgreen Agency For All Your Needs**

**PRESCRIPTIONS VETERINARY WESTERN DRUG**

**COSMETICS DRUGS**

Phone 272-3106



# TRADE CLASSIFIED SELL BUY ADS LEASE

### WANT ADS - PH. 272-4536

1 time per word - - 4¢      3 times per word - - 10¢  
2 times per word - - 7¢      4 times per word - - 13¢  
After 1st issue, 3¢ per word each additional time.  
Minimum charge 50¢  
Card of Thanks \$1.00

\*\*\*\*\*

DEADLINE FOR CLASSIFIED ADVERTISING PAGE:  
For placing or cancelling ads is Monday, 4 p. m. for Thursday's paper and Thursday, 4 p. m. for Sunday's.  
Too late to classify is Tuesday, 4 p. m. for Thursday's and 4 p. m. Friday for Sunday's issue. Double rate for blind ads.

\*\*\*\*\*

Check your ad and report errors immediately. The Journal reserves the right to classify, revise, or reject any classified ad, and is not responsible for errors after the ad has run once.

\*\*\*\*\*

CLASSIFIED DISPLAY  
85¢ per column inch  
90¢ per column inch  
for reverses.

### MOVING OUT OF STATE-

Must sell home, 1830 square feet, besides garage, 2 story brick house. Attractive, close to schools. Storage galore, dishwasher, disposal, electric built-in range, nice yard, 1013 West 2nd, Phone 272-3579 or 272-3164.

373 A. Extra nice 5 B. R. house with att. garage. All brick, including brick well house. Nice large Quonset barn. 2-8" walls, N. gas wells and house. One mile 1/2' U. G. pipe also pump at a big tank over acre. 1/2" tank pipe on pump there. Good roads. Price \$550 acre or sell with \$35,000 or might trade for 160a or 80a. Has good allotments as any one. Gov. check was \$14,000 for 1966 One of the best farms in Parmer County.

80 A. with full 8" well, N. G. motor goes, 1/2 mile U. G. pipe, 40 A. hay, 20A. bermuda grass, 16 A. Cotton-Feed. Price \$30,000 with \$12,000 down. Practically level land and clean. See these good buys, and many more listings Bailey, Parmer, Lamb and other Co. Will be courteous to you.

80 A. with full 8" well, N. G. motor goes, 1/2 mile U. G. pipe, 40 A. hay, 20A. bermuda grass, 16 A. Cotton-Feed. Price \$30,000 with \$12,000 down. Practically level land and clean. See these good buys, and many more listings Bailey, Parmer, Lamb and other Co. Will be courteous to you.

FOR SALE: Quarter section of land, Well improved, 2 bedroom home, Located 8 miles from Bovina in good water area. "It has a 6" well by choice." All waters beautifully from half mile of underground tile. All in cultivation and all just as perfect as can be found anywhere. 30 a. cotton allot, balance in wheat and maize. Price \$72,000 has a \$42,000 low interest loan can be assumed. Contact O. W. Rinehart at GLASSCOCK REAL ESTATE, Office phone 238-3231 or residence phone 238-4452, Bovina, Texas. 8-41t-2tc

2 year old house, like new! Central air and heat, 3 bedroom, carpet, draped, utility, roomy garage, 1400 sq. feet, built-ins, 1803 W. Ave. G. Established 6%, \$10,200 loan, \$14,800. Wayland Ethridge, 721 Ave. C., Phone 272-3133, 8-42t-tfc

FOR SALE: 80 acres of land northwest of Muleshoe - Call 925-3510; Leldon Phillips. 8-41s-tfc

160 Acres next to city limits, west of Muleshoe, 1/2 minerals, 10% down, 14 years, 5 3/4%, ideal for small tract sales or farming, \$500 per acre. Dial 272-3515.

FOR SALE: 194 acres 2 miles E on Hiway 84. Allotments, 35 acres cotton and 148 acres milo, 40 acres in midland Bermuda and 40 acres in alfalfa. 1/4 mile underground pipe. 1 mile 4 and 5 inch sprinkler system. 1/2 mile 6 inch mainline 2-8 inch wells. One with 50 hp electric motor. Call 289-0552, area code 507 after 5:00 p.m. 8-40s-8tc

FOR SALE: My home, 2 miles out on Friona Hwy. Containing about 3 acres, 4 bedroom house, barn, chicken house and pens. Call 272-3635. N. R. Hiley, Rt. 1, Muleshoe. 8-40s-4tp

## LEGAL NOTICE

STATEMENT OF OWNERSHIP, MANAGEMENT AND CIRCULATION (Act of October 23, 1962; Section 4360, Title 39, United States Code).

1. Date of filing - 9-29-66
2. Title of Publication - Muleshoe Journal.
3. Frequency of issue, weekly
4. Location of known office of publication (street, city, county, state, zip code, 304 West 2nd Muleshoe, Texas 79347.)
5. Location of the headquarters or general business offices of the publishers (not printers) 304 West Second, Muleshoe, Texas 79347
6. Names and addresses of publisher, editor, and managing editor, Publisher (Name and address) L. B. Hall, Box 449, Muleshoe, Texas 79347. Editor, (Name and address) Ray Martin, Muleshoe, Texas 79347.
7. Owner (If owned by a corporation its name and address must be stated and also immediately thereunder the names and addresses of stockholders owning or holding 1 percent or more of total amount of stock. If not owned by a corporation, the names and address of the individual owners must be given. If owned by a partnership or other unincorporated firm, its name and address, as well as that of each individual must be given.) L. B. Hall, Box 449, Muleshoe, Texas

- (Mrs.) Jessica P. Hall, Box 449, Muleshoe, Texas.
- E. Q. Perry, 608 West 9, Plainview, Texas.
8. Known bondholders, mortgagees, and other security holders owning or holding 1 percent or more of total bonds, mortgages or other securities are: (If there are none, so state) none.

9. Paragraphs 7 and 8 include, in cases where the stockholder or security holder appears upon the books of the company as trustee or other fiduciary relation the name of the person or corporation for whom such trustee is acting, also the statements in the two paragraphs show the affiant's full knowledge and belief as to the circumstances and conditions under which stockholders and security holders do not appear upon the books of the company as trustees, hold stock and securities in a capacity other than that of a bona fide owner. Names and addresses of individuals who are stockholders of a corporation which itself is a stockholder or holder of bonds, mortgages or other securities of the publishing corporation have been included in paragraphs 7 and 8 when, the interests of such individuals are equivalent to 1 percent or more of the total amount of the stock or securities of publishing corporation.

10. This item must be completed for all publications except those which do not carry advertising other than the publisher's own and which are named in sections 132.231, 132.232, and 132.233, postal manual (Sections 4355A, 4355b and 4356 of Title 39, United States Code.)

- A. Total no. copies printed (Net press run). Average No. copies each issue during preceding 12 months. 2650. Single issue nearest filing date, 2695.
- B. Paid circulation: 1. Sales through dealers and carriers, street vendors and counter sales. Average no. copies each issue during pre-

10. Farm equipment: 1. good used tandem stock trailer, Diamond Trailer Sales, Phone 272-3547. 10-41t-2tc

12. Household goods: Good Credit: Repossessed 1965 Model zig-zag equipped Slinger Sewing machine in Walnut console. Embroidery patterns, buttonholes, etc. Six payments of \$5.46. Cash discount. Write Credit Manager, 1114 19th Street, Lubbock, Texas. 12-37t-tfc

15. Miscellaneous: Dishwasher: 1963 Frigidaire portable dishwasher, with cutting board top. Not useable in new home with built-ins. Price: Very reasonable. Phone 272-4749. 12-40t-tfp

FOR SALE: Quilts and quilt tops. Muleshoe Nursing Home, Room 72. 12-41t-2tp

15. Miscellaneous: Wine sap Apples - Yellow delicious and East Texas Yams - all at \$3.00, or \$1/50 1/2 bu, Park in front Muleshoe Locker Co, Wednesday and Saturday. H. H. Snow, 308 20th St. Phone 4185 - Muleshoe, Tex. 15-42t-1tp

### All-Schools' Grid Schedule

You'll Want to Clip This Schedule for Future Use!

DATE	VARSITY	B TEAM	FRESHMEN	7 & 8th GRADE
Oct. 21	Dumas 7:30 H			Morton T
Oct. 25			Morton 5 T	
Oct. 27	Tulia H			Friona H
Nov. 1		Hereford H	Hereford 5:30 H	
Nov. 3				Inner Squad
Nov. 4	Hereford 7:30 H			
Nov. 8		Canyon 7 H	Morton 5:30 H	
Nov. 10	Canyon 7:30 H			
Nov. 11	Perryton 2 H			
Nov. 19				

## COTTON TALKS

FROM PLAINS COTTON MARKETING INC.

LUBBOCK--The State Agricultural Stabilization and Conservation Service office at College Station has released base cotton acreage allotments and projected yields for the 23 High Plains Counties represented by Plains Cotton Growers, Inc.

Total base allotment for the 23 counties in 1967 comes to 2,165,872, as compared with 2,122,770 in 1966. Excepting Motley County, all counties in the area received a slight increase in base acreage, and Motley county dropped only 126 acres.

Most of the 43,102 acre increase is believed to have come from acres purchased by Plains producers in other parts of the state and brought to this area under the "Sale and Lease" provision of the Agricultural Act of 1965.

That provision was effective for the first time in 1966 and remains in effect in 1967. Producers may buy allotments, or lease them, from any of 77 Texas counties that voted either in 1965 or 1966 to permit out-of-county transfers.

Leased acres do not show up in base allotments on the Plains. These remain a part of the base allotment in the counties from which they were leased, and there is no record of how many acres may have been leased to the Plains either in 1966 or 1967.

Sales or leases under the law must be completed between June 1 and January 1 of each year. Wilmer Smith, of New Home, was named chairman of Plains Cotton Growers' newly formed "Coordinating Committee for Market Development" when the group met for the first time October 13.

The committee discussed the varied approaches which can be used to improve the market position of High Plains cotton. And it was agreed that one of the first steps would be a comprehensive market survey to more clearly define the problem in terms of what qualities of cotton will be most likely to find ready markets in the years immediately ahead.

available to them before they move too far in any direction, "just as General Motors needs to know about the demand for pick-ups before they start building them."

The committee was originally appointed by President Smith as a "Cotton Quality Committee," but after discussing market surveys, breeding and research programs, government domestic and export policies, need for variety identification and other things, it became apparent that the name was an oversimplification of the job that was to be done.

The name was changed to "Coordinating Committee for Market Development" to reflect the many things that must be done and the many organizations and people that will be involved if the market position of High Plains Cotton is to be improved.

### The Lonely Heart

25th Floor

### TYPING STUDENTS

8 1/2 x 11" Approx. 500 Sheets  
**50¢ PER PKG.**  
IDEAL FOR KIDS TO SKETCH ON!

Scratch Pads 6 X 5" Each Pad **5¢**

Muleshoe Publishing Co. 304 W. 2nd.

### 1. PERSONALS

AVON, Phone 3510. 1-46t-tfc

FOR RENT, 15 ft. camper. By day or week, Call 272-3163. -35s-tfc

Building For Lease: Located at 210 West Ave. B. Will remodel to suit tenant. Contact Eddie Lane Real Estate 272-4433 1-37t-8tp

Want to do ironing, \$1.65 dozen, Phone 272-4685. 1-41t-3tp

Repair sales and Service, Phone 482-9017. 321 Griffin, Texico, New Mexico. 1-37s-tfc

LUZIER cosmetics, NUTRILITE Food Supplement, Mrs. E. E. Holland, 121 American Blvd, Phone 272-3293. 1-39s-tfc

Wanted: Baby-sitting, Day or by hour. Location across street from Richland Hills School. Call 272-4911. 1-41s-tfc

Anyone having abstracts or other important papers in the files of Cecil H. Tate please contact Mrs. Cecil Tate, Ph. 272-3444 1-42t-tfc

Painting - inside and out, First class work, Leading paint, Phone 272-4122. 1-42t-s-tfn

Roofing specialist, Buildups, Phone 272-4122, John Bruton. 1-42t-s-tfn

### CARD OF THANKS

The family of B. E. Chaney wish to thank each and everyone for their many acts of kindness, sympathy, floral offerings, food and the ministers helpful words during the illness and passing of our loved one. May God's richest blessings be with you, is our prayer. B. E. Chaney family 1-42t-2tc

### PERMANENT POSITION FOR RIGHT PERSON IN MULESHOE ROOM FOR ADVANCEMENT

Business opportunity for right person - Bookkeeping, typing, sales experience helpful. Managerial and public relations qualities preferred. Send complete resume of previous experience, education and personal background to Muleshoe Journal, Box 449, Muleshoe, Texas. 1-42t-6tc

### 3. HELP WANTED

Beautyician needed. Call 272-3448. 3-16t-tfc

BEAUTY COUNSELORS need mature business woman with ability to supervise, hire, and train women as cosmetic advisors in Muleshoe and surrounding area. Write Marcella Reed, 4407 West 18th, Lubbock, Texas. 3-40s-9tp

### WANTED NEWSPAPERBOYS

Responsible, conscientious, progressive-minded boys. Age 12 to 17. To deliver twice weekly Journals on city carrier routes. Phone Journal's office or come by Journals at 304 West 2nd St. MULESHOE PUBLISHING CO. 3-40t-tfp

### 4. HOUSES FOR RENT

FOR RENT: Clean 3 room furnished house. Adults only. Phone 272-4452. 4-40s-tfc

For Rent: 3 bedroom house. Call 272-3434. 4-42t-2tp

FOR RENT: 2 bedroom house newly decorated. Call 272-3038 or see Mrs. Jack Lenderson at 1818 West Ave. D. 4-26s-tfc

FOR RENT: 2 bedroom house 3 1/2 west on Hwy. 1760. Phone 272-3567 4-37t-tfc

FOR RENT: 3 bedroom house located at 722 W. Ave. E. Newly decorated throughout. Call 272-4073. 4-40t-tfc

### 5. APTS. FOR RENT

For Rent: 1 and 2 bedroom apt. Furnished or unfurnished 3 bedroom house, Call W. R. Byers, 272-3697 5-33s-tfc

THREE room furnished apt. for rent. Call or see Mrs. Jack Lenderson 272-3038. 5-32t-tfc

3 room unfurnished apt. See Spencer Beavers at Post Office. 5-10t-tfc

FURNISHED APARTMENTS: Trailer Space, Briscoe Apartments. Phone 272-3465. 5-28t-tfc

FOR RENT: 1 and 2 bedroom apt. Furnished or unfurnished. 3 bedroom house. Call D.L. Morrison Jr., 4886 5-31s-tfc

### 6. ROOMS FOR RENT

Bedroom for rent, 410 West 2nd, Rosie McKillip. 6-41t-tfc

FOR RENT: Nice quiet bedroom, 807 west 7th. Call 272-4903. 6035t-tfc

### 7. WANTED TO RENT

Want to rent dry land or irrigated farm - would buy equipment. Phone 272-4908 or write P. O. Box 691, Muleshoe, Texas. 7-40t-tfc

### 8. REAL ESTATE FOR SALE

For Sale: 1/2 Section, 5 Wells, all level land, fully allotted, 7 miles east of Muleshoe. 889-3367. Halfway, Tex. 8-39t-8tp

For Sale: 3 Br. Brick, 2 tile baths, lr, den office, two car garage, built-in oven, surface unit, dishwasher, disposal, central heat with ref. air cond. 5' tile fence and 12x25 ft. tile bldg. Shown by appointment only. Call 272-4763, noon or after 5:30 p.m. Spud Thomas. 1729 Ave. E. 8-37s-tfc

HOUSE FOR SALE OR TRADE 2 bedroom with large finished basement, carpeted, floor furnace. Small down payment. Would take pick-up, car or livestock or what have-you. Well located at 418 W. 5th. Also a 1954 Chevrolet 2 door, new motor, good condition, Ph. 272-3778 or see Boyd Landers. 8-38t-tfc

Will do custom stripping. Contact Welda Slayton at 65-2140. 5-42t-tfp

### It's Time to Dream

Once again you are a young miss, alive with youthful radiance. Tonight you make your debut. Ah! There, your gown... surely the most lovely creation in all of the world... and the shoes... truly Cinderella must live again. Softly you brush your hair... a halo for your lovely young face. Would you like to recapture that night of long ago? 2nd Debut has a very special line-drawing formula that goes a long way toward bringing back that youthful look. It makes your facial skin drink small but sufficient quantities of water... facial lines temporarily smooth out, as the water beneath the skin's surface pushes them upward out of sight. 2nd Debut-formulated with C-E-F 600 for normal skin-with C-E-F 1200 for double potency. Get it at your drug or department store today. ARRIVALS LTD., CHICAGO, U.S.A.

# BUSINESS DIRECTORY

### Robinson's Boot Shop

127 Main - Phone 272-4721

FINE WESTERN WEAR

Men, Women & Children

SHOE REPAIR SHOP

The Robinsons

Serving Muleshoe since 1925.

### Farley Insurance Agency

Real Estate and Insurance

FARM & CITY LOANS

SERVICE BEYOND THE CONTRACT

300 West Avenue B

Off. Ph. 272-4187 Res. 272-3778

Give once for many

## THE UNITED WAY

### SINGLETON FUNERAL HOME

4 HOUR AMBULANCE SERVICE

PHONE 272-4574 MULESHOE

### HEATHINGTON LUMBER COMPANY

Lumber, Paint

Builders Hardware

Clovie Rd. Phone 272-6797



### Goose Looms As Cure For Sports Luck

AUSTIN--Wing shots will get a contrasting target Oct. 25 when the annual wild goose season opens.

The scattergun reports, many increasingly frustrated by futile efforts to solve tricky mourning dove flight patterns, will be able to test their luck with the ponderous big birds.

And, the Texas Parks and Wildlife Department notes, this year might bring them more luck, providing they have keen eyesight and know their geese from dawn silhouettes.

This is because the Department recommended that the daily shooting period begin at one half hour before sunrise, instead of at sunrise as has been the case in recent years. Daily shooting must end at sunset.

The old sport knows very well that the extra half hour when the cunning geese are not so easily spooked from the assorted hunters' ramparts, is the prime time to get lucky.

But the Department points out that there is an identification problem to test the hunters' know how. That is, that the daily and possession bag limits of five may include only one white front (or speckled belly). And these prized birds on a murky morning may show up on the sportsmen's radar as a big, fat tempting target when the limit of one already has been reached.

### Students Return To Three Way For Homecoming

By Mrs. H. W. Garvin

THREE WAY- Among those college students home for the homecoming at Three Way were Katherine Masten, Madlyn Galt, Doyleen Davis, Linda Heard, and Tommy Terrell from South Plains at Levelland, Janice and Gary Toombs and John Tucker from Tech and Barbara Warren all from Lubbock. Sharyn Wittner and Geneva Huff from Wayland college at Plainview.

Mr. Clarence Benton from Phoenix, Ariz. has been visiting his daughter and family, the Rayford Mastens the past 2 weeks.

The WMS of the Maple Baptist Church met in the church Tuesday. Mrs. Tucker opened with a prayer. Mrs. Heard gave a brief survey of Pakistan and India. Mrs. Petree gave the lesson from the book "Beneath the Himalayas" and the annual reports were filled out. The meeting closed with a prayer given by Mrs. Wright. Those present were Mrs. A. E. Robinson, Mrs. Dennis Heard, Mrs. E. M. Lowe, Mrs. C. A. Petree, Mrs. E. A. Wright, Mrs. George Fines and Mrs. Frank Fine, and Mrs. D. L. Tucker.

Glen Lowe was home for the homecoming at Three Way, Glen and a buddy, David Young, stationed with the air force at Del Rio were here for a few days.

Mrs. Bobby Dupler and daughter spend the weekend with the Gib Dupler's. Mrs. Bobby Dupler lives at Earth.

Mrs. Dutch Powell, Mrs. Paul Powell and Marie Robinson were shopping in Lubbock Friday.

Mrs. Bill Dupler and daughter visited the Clifford Duplers Sunday.

Thursday night the Junior high boys played Cotton Center on the home field with Three Way winning the game. Saturday night the senior football boys played Flower Grove at the homecoming game, winning by 48-0. At halftime Joy Eubanks was crowned football queen.

Those visiting in the D. S. Fowler home Sunday were Mr. and Mrs. Henderson, Lubbock, Mrs. Hensley from East Texas and Mr. and Mrs. James Fowler from Canyon.

Mr. and Mrs. Johnnie Wheeler spend the past week visiting their son and family, the Joe Wheelers at Cunningham, Tex.

Mr. and Mrs. H. W. Garvin returned home Wednesday from a trip to visit their daughter and family, at Crestview, Fla. On the way home they visited with a sister at Comanche and attended their golden wedding anniversary. They also visited another sister in Brownwood and a brother in the Veterans Hospital in Houston.

Mr. and Mrs. Cecil Lendsey spent the weekend in Fort Worth visiting her mother and sister.

Mr. and Mrs. Hoyt Strickland and family, Hobbs, N.M. spent the weekend in the W. C. Eubanks home. Mrs. Strickland and Mrs. Eubanks are sisters.

The Federal law stipulates that hunters may shoot two Canada geese, or one Canada and one whitefront. It also limits the take to one Ross' goose. But snows and blues that prevail in the Texas coastal wintering grounds in huge clouds, have no such restrictions. However, whatever the combination, no more than five geese may be taken by one hunter in one day. The same limit applies to possession.

Apparently, goose flights from the north have been normal, C. D. Stutzenbaker, Department biologist stationed on the coast, said ordinarily 90

### It's 'Happiness' For Texas Tech's Fall Celebration

LUBBOCK -- "Happiness is Texas Tech" will be the theme of Tech's 1966 Homecoming Celebration Friday and Saturday.

The Homecoming parade and all other major weekend events will be based on the "Happiness" theme as Tech observes its 41st anniversary and honors students from past years. While alumni are looking forward to reunions with old friends, Tech students will be busy next week selecting Homecoming finalists, putting the finishing touches on floats and dorm decorations and preparing for the multitude of receptions by the various fraternities, sororities and departments of the university.

Special guests on campus during the festive weekend will include 41 former editors of "The Toreador."

Highlighting the jam-packed schedule will be the Tech-SMU

football game at 2 p.m. Saturday in Jones Stadium, preceeded by the presentation of the Homecoming Queen and her court.

Saturday's schedule will kick off at 10 a.m. with the annual Homecoming Parade through downtown Lubbock which will include more than 25 floats and six bands.

All Exes will be guests of several Lubbock firms at 11:30 a.m. Saturday at a free luncheon in Lubbock Municipal Coliseum. Hosts will be Furr's, Dunlap's, and Frontier Stamps.

Final of the Homecoming weekend will be a series of

Saturday night dances. The Exes dance, sponsored by the Ex-Students Association, will begin at 9 p.m. at KoKo Palace to the music of the Mark Anthony Orchestra.

Union sponsored dances will start at 8:30 p.m. in Municipal Coliseum and in the Union Ballroom. Music in the Coliseum will be The Outsiders. The Al Good Orchestra will play in the Ballroom. Tickets will admit students to either dance.

The mark of an educated man is to see something in a mud puddle besides mud. Grit.

CLOCK FOR THE MOON NEW YORK - If the high-frequency tuning fork clock designed for Project Apollo's moon use were unpressurized it would "gain time" at a rate of 21 seconds a day, because of the lack of air pressure on the surface of the moon. But that would still make it more accurate than most quality wrist timepieces here on earth, according to its manufacturer.

The specially designed clock's master tuning fork will be in tiny pressurized chamber, Bulova Watch Company engineers report. Thus the fork's vibration rate of 360 times a second will not be affected by the lack of air pressure on the moon's surface.

THEY MEET AGAIN AFTER 40 YEARS PERTH, Australia (AP) - The liner Northern Star brought together here two families who had not seen each other for 40 years.

Mr. and Mrs. H. Miller, of Mt. Lawley, an inner suburb, waved a welcome to Mrs. M. Hunter of New Zealand, who was travelling home from Britain.

The Millers originally came from Ryton-on-Tyne near Newcastle (UK) and Mrs. Hunter came from Greenside, Kent.

The last time the two families saw each other was in England in 1926, shortly before they emigrated, the Millers to Australia and Mrs. Hunter to New Zealand.

WE GIVE GREEN STAMPS

WE GIVE GREEN STAMPS

WE GIVE GREEN STAMPS

WE GIVE GREEN STAMPS

WE GIVE GREEN STAMPS

WE GIVE GREEN STAMPS

WE GIVE GREEN STAMPS

WE GIVE GREEN STAMPS

WE GIVE GREEN STAMPS

WE GIVE GREEN STAMPS

WE GIVE GREEN STAMPS

WE GIVE GREEN STAMPS

WE GIVE GREEN STAMPS

WE GIVE GREEN STAMPS

WE GIVE GREEN STAMPS

WE GIVE GREEN STAMPS

WE GIVE GREEN STAMPS

WE GIVE GREEN STAMPS

WE GIVE GREEN STAMPS

WE GIVE GREEN STAMPS

WE GIVE GREEN STAMPS

WE GIVE GREEN STAMPS

WE GIVE GREEN STAMPS

WE GIVE GREEN STAMPS

WE GIVE GREEN STAMPS

WE GIVE GREEN STAMPS

WE GIVE GREEN STAMPS

WE GIVE GREEN STAMPS



**SUGAR**  
C & H, Holly, Imperial 5-Lb. Bag **49¢**



**CATSUP**  
Hunt's Fancy 2-20-Oz. Bottles **49¢**



**BAKERITE**  
Pure Shortening 3-Lb. Can **59¢**

**Bleach**  
Du Rite, Liquid 1/2-Gallon Jug **25¢**

**Green Beans**  
Renown, Cut 2-No. 303 Cans **25¢**

**Cottage Cheese**  
All Brands 2-Lb. Ctn. **49¢**

**Napkins**  
Softly, Assorted Colors Big 200-Ct. Pkg. **23¢**

**Vegetable Oil**  
Bessie Lee 24-Oz. Bottle **43¢**

**Instant Coffee**  
Maxwell House 10-Oz. Jar **\$1.39**

**Coffee**  
Maryland Club 1-Lb. Can **69¢**

**Chili & Beans**  
Ellis 2-Lb. Can **\$1.37**

**Salad Dressing**  
SuZan Big 24-Oz. Can **39¢**

**Salad Dressing**  
SuZan Quart Jar **29¢**

**Exciting New Decorator Designed Samsonite FOLDING TABLE \$3.99**

**Canned Meat & Fish!**

**Tuna** Breast O Chicken, Chunk No. 1/2 Can **39¢**

**Salmon** Libby, Red No. 1/2 Can **69¢**

**Shrimp** Orleans, Medium 4 1/2-Oz. Can **69¢**

**Chicken Stew** Bounty 19-Oz. Can **59¢**

**Sauces & Dressings!**

**Dressing** Kraft, Roka Cheese 9-Oz. Bottle **43¢**

**Tartar Sauce** Hallman's 8-Oz. Jar **31¢**

**Dressing** Sheild's, Old Style 8-Oz. Bottle **39¢**

**Dressing** Durkee's, Famous 10-Oz. Bottle **43¢**

**Mexican Food Values!**

**Fortillas** San Francisco, Com Meal, 20-Ct. Pkg. **25¢**

**Big Time Values!**

**Soy Sauce** La Choy, 5-Oz. Bottle **19¢**

**Chop Suey** La Choy, Beef No. 303 Can **67¢**

**Bean Sprouts** La Choy No. 303 Can **17¢**

**Vegetables** La Choy, Mixed No. 303 Can **49¢**

**Salt** Carey's Plain or Iodized 2-26-Oz. Boxes **19¢**

**Baby Cereals** Gerber's, Asst. Flavors, 8-Oz. Box **19¢**

**Rice** Carolina Long Grain 2-Lb. Pkg. **39¢**

**Soap** White King, Powdered Giant Box **79¢**

**Detergent** White King D Giant Box **79¢**

**Water Softener** White King Giant Box **65¢**

**Water Softener** White King King Size **\$1.25**

**FULLY COOKED HAM**

Swift's Premium, Shank Portion 49¢

**Pork Roast** Loin, 2 1/2 to 3 1/2-Lb. Size 69¢

**Sausage** Pork, Pinkneys 2-Lb. Cloth Bag **89¢**

**PORK STEAK**

Cut From Boston Butts, Lean 59¢

**Fryers** Whole Pound 29¢

**Rib Roast** U.S. Choice, Valu-Trimmed, Semi-Boneless 69¢

**Sirloin Steak** U.S. Choice, Valu-Trimmed 98¢

**Rump Roast** U.S. Choice, Valu-Trimmed 99¢

**Baking Hens** Swift's Premium, Large 5 to 7-Lb. Size 49¢

**Swiss Steak** U.S. Choice, Valu-Trimmed 89¢

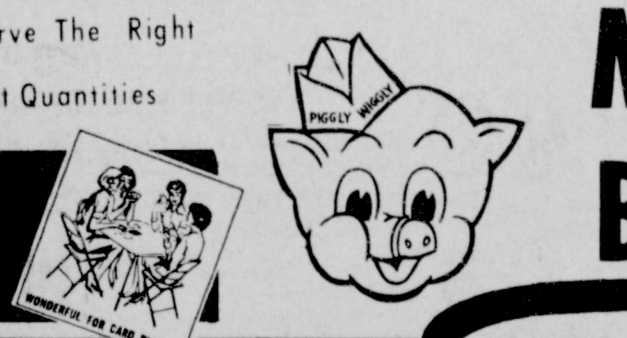
**Sliced Bologna** Glover's All Meat 12-Oz. Pkg. **49¢**

**Link Sausage** Blue Morrow's 12-Oz. Pkg. **55¢**

**Canned Hams** Wilson's Corn King 3-Lb. Can **\$2.98**

**Canned Hams** Wilson's Corn King 5-Lb. Can **\$4.99**

**Sliced Cheese** American or Fimento 2-8-Oz. Pkgs. **69¢**



**meat dept. values!**

**Fryer Parts**  
Fresh U.S.D.A. "A" Grade

**Breasts** All White Meat 59¢

**Legs & Thighs** Juicy Dark Meat 49¢

**Wings** Juicy White Meat 29¢

**Backs & Necks** Excellent for Stewing or Dumplings 10¢

THESE PRICES GOOD OCT. 20-26 AT YOUR PIGGLY WIGGLY IN Muleshoe

WE RESERVE THE RIGHT TO LIMIT QUANTITIES.

**Milk** All Brands Gallon **89¢**

**Bread** Round Top Reg. 1/2 Lb. Loaf **25¢**

**produce values!**

**Bananas** Chiquita, Golden Ripe 10¢

**Celery** California, Fresh Green Pascal, Large Size 10¢

**Cauliflower** California, Fresh Snow-White 29¢

**Radishes** California, Fresh 3 Large Bunches **25¢**

**Store Manager's Special!**

**Milk** All Brands Gallon **89¢**

**Bread** Round Top Reg. 1/2 Lb. Loaf **25¢**

**Lowest Prices... Greatest Variety... always at...**

**Piggly Wiggly**