

How Much Water is Needed for Cotton and Grain Sorghum?

Many years of irrigation research have led to the development of a number of basic principles farmers can use to decide the time and amount of water to apply to cotton and grain sorghum on the High Plains, says J. K. Adams, County Agent, Bailey County.

Scientists have found that cotton uses about one-tenth of an inch of water per day up to about the square stage. Then the plant's water consumption

increases rapidly until it reaches a peak of from .25 to .4 inches per day at the peak bloom stage.

Irrigation should be based on this water-use information, says Adams, but, of course will be influenced by rainfall and the watering capability of the irrigation system.

If only one irrigation will be made, the agent says it should ideally go on at early peak bloom.

Cotton to be irrigated twice or more during the summer has been found to produce more efficiently when the first irrigation is applied in the first white bloom period with the others following in the peak bloom period, Adams said.

More than ten years of studies at the South Plains Research and Extension Center, near Lubbock, indicate that a pre-plant plus two summer irrigations will produce the maximum net return in the long run, Adams said.

Additional irrigations naturally increase per acre yields, but he says the yields do not increase proportionally with the amount of water added.

Late irrigations are sometimes not paid for by the small increases in yield and they can lower the cotton's quality, the agent said. Regardless of the number of irrigations following a pre-plant, the first application generally should not precede the first white bloom.

Excessive moisture before bloom generally encourages excessive vegetable growth rather than fruiting.

In every row irrigation, the highest yield per acre-inch of water has been obtained with a pre-plant plus one summer irrigation.

"Even this efficiency may be increased along with increases in per acre yields with the same

amount of water, by the use of alternate furrow irrigation," says Extension Irrigation Specialist Bill Lyle of Lubbock.

This permits more timely applications of limited water. Proper timing of irrigation is often more important than the total amount applied, Lyle says.

Grain sorghum irrigation is also more important when planning the irrigation schedule on most area farms. Grain sorghum uses less than one-tenth of an inch of water

per day up to about the seven leaf stage and then the use rate increases rapidly.

Adams said the peak water use of more than .3 inches per day comes between the boot and bloom stage.

Research indicates the best grain sorghum yields are produced when available soil moisture is kept at or above about 45 per cent of capacity from the pre-boot to the soft dough stage.

The Muleshoe Journal

DEDICATED TO THE PROGRESS AND DEVELOPMENT OF BAILEY COUNTY AND THE GREAT MULESHOE COUNTRY

VOL. 44---NO. 29 20 PAGES Published Every Thursday at Muleshoe, Bailey County, Texas — 79347 THURSDAY, JULY 21, 1966

\$ 284,000 Motel Complex Announced Here

in muleshoe
With the Journal Staff

Next Sunday morning will be the Rev. W.A. Appling Day at the First Methodist Church here, the pastor, the Rev. J. Frank Peery has announced. Mr. Appling, who lives in Plainview, is the new district superintendent for this district. He will preach at the morning hour, a covered-dish dinner in the Fellowship Hall is planned for noon, and quarterly conference will be held at 2:30, first for the new Methodist year.

Guests at the luncheon will also be the Rev. Steve Lara and his family. He is the new pastor of the Latin-American Methodist Church here.

Before coming to the Plainview district as superintendent, Mr. Appling served churches in Midland, Lubbock, and Stamford. He graduated from

It's Ice Cream, Cake for Visitors From Venezuela

Muleshoe Young Farmers Association will have a typically American reception-- home made ice cream and cake-- Saturday night for eight Venezuelan agricultural leaders who will be in Muleshoe as part of a two-months' North American tour, Ben Roming said Wednesday.

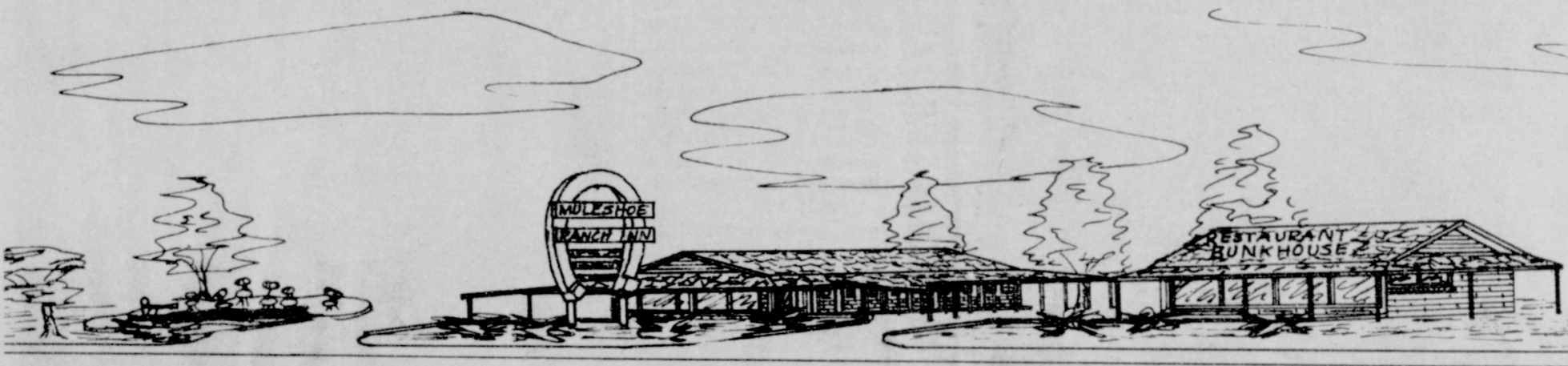
The ice cream supper will be held in the high school cafeteria, starting at 8:30 p.m. The public is invited to attend, Roming said, but everyone is invited to bring cake or ice cream.

The Venezuelans will arrive Saturday and will be in this area until July 28. Gordon Murrah, who visited Venezuela as an exchange farmer last year will be host for the group here.

"Young Farmers Organization hopes everyone who is interested in this goodwill visit will be at the ice cream supper," Roming said. "We believe the program the visitors will bring will be extremely interesting."

On the tour are six men and two women, including these:

Temperatures		
By R. J. Klump Official U. S. Weatherman		
	High	Low
July 17	100	69
July 18	98	72
July 19	94	70
July 20	95	67
	Sunrise Sunset	
July 21	5:52	7:55
July 22	5:52	7:55
July 23	5:53	7:54
July 24	5:54	7:54



HIGHWAY VIEW OF COMPLEX--This is the way the new Muleshoe Ranch Inn, a five-acre complex at the west edge of Muleshoe, will appear to travelers on U. S. 84-70 which it fronts.

Area to Cover 5-Acre Tract

Muleshoe is to have a new \$284,000 motel complex which will include an ultra modern motel with swimming pool, a

large restaurant, a modern mobile home park, playground facilities and spaces for additional buildings.

The new complex will be located at Muleshoe's western edge on U. S. Highway 84 on part of the old Muleshoe Ranch property, according to W. H. Medlock, who recently purchased the old Muleshoe Ranch headquarters and historical site. The land includes a half-mile frontage on U.S. 84 - 70 and the new development will face the northeast.

The western theme, with thick shingled roof rags, will be used throughout the complex, and other firms establishing business in the center, must also follow the western theme, it was explained.

Say the builders: "The complex will have a restaurant with the western theme and atmosphere, with private

dining rooms and it is expected to be comparable to any in the southwest." He said the restaurant will not be a drive-in. He also added that "it is planned to have the most modern and completely luxurious

(Continued on Page 7)

Weeds Shield Youth

A skinny New Mexico Latin-American, fleet of foot, used Muleshoe alley weeds as a hiding place to escape officers seeking the 17-year-old lad on a forgery charge. But a barracks building at Stegall a few hours later yielded up the boy to Sheriff Dee Clements and others. His name was given as Johnny F. Lucero.

"He was skinny and could run," the sheriff explained. "We nearly had him two or three times but he got away, running and then hiding in the tall weeds."

Now the lad is in the county jail in lieu of \$1000 bond set by Justice of the Peace Joe Vaughn following a preliminary hearing. He is charged with forging and passing a \$35 check to The Fair Store here. The check was drawn on J. R. Carter, a farmer living south of Muleshoe.

The sheriff says the boy, who calls Las Vegas, N.M. his home town, came into town one day last week and passed the \$35 check. Later he passed another for \$41 to the same store, and a \$72 one at Cashway Grocery.

The search for the boy got under way while he was still in downtown Muleshoe,

(Continued on Page 7)

Each Courthouse Officer Can Set Own Schedule

Each particular elected county official can decide whether he wants to keep his office open on Saturday morning, or, for that matter, he can decide whether to close his office on Monday or Tuesday or any other day in the week, "within reason."

Venezuelans To Present Program

Eight agricultural leaders from Venezuela who will be in Muleshoe over the weekend as part of a national tour, will present the program at next Monday's July meeting of the Muleshoe Area Senior Citizens' Organization (Masco), the coordinator of the organization the Rev. J. Frank Peery, announced Wednesday.

The July session will be held in Fellowship Hall of First Methodist Church from 2 to 4 p.m., Mr. Peery said.

The program will start with group singing led by Ebb Randall, Enoch. Refreshments will be served. Oldsters needing rides to and from the meeting were asked to call Mr. Peery at 272-4847.

attorney general, county commissioners here say. "We have nothing whatsoever to do with setting office hours for any elected official or his crew," said a spokesman for the commissioners this week. The office hour bit came about after the Retail Business Committee, the "Go-Go" committee of the Chamber of Commerce, at a recent meeting recommended that the courthouse open on Saturday mornings.

The opinions of the attorney general regarding courthouse hours was cited by the court's spokesman. "We have had a copy of that opinion for a long time," he said, "and we

know that the commissioners have nothing to do with establishing their hours."

One courthouse worker, in commenting on the Go-Go request, said: "It wouldn't even pay the light bill." She said "so little business was done on Saturday mornings back in the days when we did stay open that it was definitely not worth while. We had only two or three 'customers' each Saturday and I doubt very seriously that the closing or opening of the courthouse would have any effect on Main Street business. Folks just don't go to the courthouse on Saturdays

(Continued on Page 7)

Pro-Am Tourney Here Ends In Tie For Eight Golfers

Four teams tied for first place here this week in the annual professional-amateur golf event at the Muleshoe Country Club. The meet, a West Texas Chapter PGA approved affair, ended with eight men having low ball totals of 55, which is 17 under par.

One team was made up of Joe Turner, Olton; George Richards, Springlake; W.L. Eddleman, Friona; and Wayne Stark, Friona. C. Chambers, Friona; J.D. Williams, Olton; Roy Roberts, Olton; and Bill Turner, Olton, composed another team.

Lloyd Carter, Friona; Mickey

(Continued on Page 7)

United Fund Budget is Set

Muleshoe Area United Fund officers and directors have set the 1966-67 United Fund budget at \$13,931, according to Robert Alford, president. This is a slight increase from last year's budget.

The board and officers met recently in the community room of the Muleshoe State Bank and approved budgets for the 13 agencies to make up this year's UF roster.

Agencies approved include:

Bailey County Junior Livestock Show, Boy Scouts of America, Salvation Army, Girl Scouts, Babe Ruth Baseball League, American Red Cross, Muleshoe Area Youth Center, United Service Organizations (USO), 4-H Youth Development Corp., Medical Research Foundation of Texas, the Texas United Fund, Muleshoe Area Senior Citizens Organization (MASCO), and Southwestern Diabetic Foundation.



SAFETY PROCLAIMED - Next week has been proclaimed Farm Safety Week in Bailey County, and here County Judge Glen Williams is shown signing the proclamation. Watching are Lyla Pitts, representing Future Homemakers; Clifford Black, FFA; Aubrey Heathington, Young Farmers Ass.; Morris McKillip, secretary and James Warren, president of the Bailey County Farm Bureau, the week's sponsoring agency.

(Journal Photo)

County Judge Glen Williams has officially proclaimed July 24-30, as FARM SAFETY WEEK in Bailey County, according to James Warren, president of the county Farm Bureau.

The local farm organization is coordinating activities for the special farm safety campaign.

President Johnson and Governor Connally have previously designated that week on national and state levels as a period

to call attention to worthwhile safety practices that can reduce disabling injuries and death.

The county farm leader said that the accidental death rate for farm residents has increased since 1961. "Your efforts are vital if this trend is to be reversed, and needless suffering and losses substantially reduced," Warren continued. He emphasized that farming remains one of the most hazardous occupations in America today.

In his official proclamation, County Judge Williams said: "All the citizens of Bailey county are deeply concerned about the safety and well-being of farm families from whom we receive our abundance of food and other essential agricultural commodities.

"Farm and ranch accidents reap a grim harvest of approx-

(Continued on Page 7)

Girl Scouts Camp In Full Swing

If you happen to drive by the end of the football stadium here and wondered why all the little girls and tents and the campish look around the end of the field. Girl Scouts are enjoying the annual day camp now going on.

Monday morning brought 41 girls out to enjoy the festivities of out-of-door life as taught scouting.

In the top picture is the mustang unit II with Carol Camp getting water from a

clorox bottle, Kim Bryant using the soap which is wrapped in nylon, and Debra Millsap using the towel which is hanging from the clothes line. Lower picture shows unit III who call themselves the bucking broncs. Building the fire and getting ready for the noon's cookout is Cindy Alice Gonzales, Sharon Harris and in the background are Carol Brown and Donann Harris.

The Outlaws Unit Iare Ynette Tanguma, Keila Walker, Cindy Knight, Diane Vinson, Deloris Vinson, Carol Brown, Nora Gonzales, Naomi Anzadula, Rhonda Stevenson, Donann Harmon, Christi McKinney, Pam Tarrera, Peggy Williams, with deputies Monica Griffiths, Barbara Harper, Jana Cockrell and Karen St. Clair.

Unit II named themselves the mustangs. In this group are Kim Bryant, Shirley Brown, Carol Camp, Debra Haynes, Lauren Hall, Lashell Lewis, Debra Millsap, Beverly Mc Camish, Marcia Rudd, Cynthia Rogers, Vicki Redwine, Pam Vinson, Regina Williams, with Bessie Vinson, vigilante leader and deputy aides, Linda Vinson, Janice St. Clair, and Pattie Payne.

Named bucking broncs are unit III which includes Jana Bruns, Kelly Cihak, Alice Gonzales, Cindy Hall, Teresa Hamilton, Delores Howard Sharon Harris, Tammy Lawson, Terrie Stinson, Sandra Stallings, Margie Pruitt and Cammid



Waggoner. Mildred Knight and June Vinson are vigilantes for this group and deputy leaders are Dana Damron, Marilyn Pool and Brenda St. Clair.

United States Marshal for the entire camp is Betty Cihak and her camp deputies are Melba King, Jessica Hall and Pam St. Clair.

Young People Home From Trip To Tres Ritos

A number of young people from the First Methodist Church returned to Muleshoe Friday from a five-day ramble at Tres Ritos.

The group stayed at Tres Ritos Lodge, planned for the next year's programs and activities. Wednesday, the group took a side trip to Taos going to museums, art galleries, the fish hatchery and some old historic churches of the area. The boys caught enough trout for the young people to have a fish fry Thursday night.

Young people making the trip were Marsha Blackman, Vondale Bleeker, Ann Davis, Jean Davis, Ann Douglass, Jean Haskins, Lindy Kerr, Susan McVickers, Lana Moore, Val Moore, Patsy Peery, Stephy Peery, Andy Kay Thompson, Brenda Wyer, Kathy Wyer, Clifford Black, Alfred Bleeker, Gary Edwards, Royce Harris, Jerry Haskins, Jim Mardis, Gary Murrah, and sponsors, Joyce Adams, Mrs. J.K. Adams, Mr. and Mrs. Bob Breckenridge, Mr. and Mrs. Vernon Bleeker, Mr. and Mrs. Leasel Richardson and the Rev. J. Frank Peery.



SCHOOL TOURS FARM-Some 150 excited children who are attending summer school made a tour of the L. V. Kolar farm Friday morning. Stocking up on the peacock feathers seemed to be the main interest of the little folk. The cows, pigs, chickens, peacocks and other animals drew a lot of interest from the children and also to the teachers and other adults making the trip. Even the school nurse, Mrs. Gordon Tiller, made the trip in case of an accident, but she was allowed to view the sights instead of using her band-aids and other medical supplies she carried along on one of the three buses taken for the trip. (Journal Photo)

The recipe for Eggs Benedict usually calls for toasted English muffins topped with sauteed slices of cooked ham, poached eggs and Hollandaise Sauce. Instead of using the ham, you can substitute slices of Canadian bacon.

For a quick Creole Sauce to serve with meat loaf, add sauteed onion and green pepper to canned tomato sauce and heat.

Will Buy a good Used Clothing SWAP SHOP Phone 272-3074

Group Visits Six Flags

Several young people from the First Baptist Church returned home Friday from Six Flags Over Texas. Sponsors going were Mrs. Walter Buice, Mrs. J. Lewis Morris, Mrs. Bettye Glaze, Mrs. Ilene Seewart, Mrs. Ed Little, and Walter Buice. Taking cars and acting as sponsors were Judy Inman and Cooper Young.

Young people making the trip were: Bobby Allison, Benna Bairrington, Virginia Bowers, Walta Bulce, Patty Camp, Diane Crawford, Larry Crawford, David Davis, Jan Everett, Terry Field, Harriet Glaze, Noreen Green, Lee Ann Harlan, Leonard Henderson, David Henderson, David Hodges, Judy Jones, Shirley Jones, Gary Little, Greg Little, Melanie Moore, Lewis Wayne Morris, Nanette Morris, Dan Parson, Gene Parson, Brenda Scott, Donald Scott, Johnna Shelton, J.C. Slaughter, Bucky Taylor, Keith Turner, Darrell Wilson, Susan Wood, Cynthia Wrinkle, Kerry Stewart and Sharon Stewart.

Hospital News

GREEN MEMORIAL

ADMISSIONS

Fred Graham
Oran G. Reeves, Sr.
George Williams
Edd Johnson
Ivetta Dominguez
Mrs. Gordon Murrah

DISMISSALS

Linda Ive and Baby boy
Gary Shipman

ATHLETE'S FOOT - HOW TO TREAT IT

IN ONE HOUR after applying T-4-L (a batch of chemicals in alcohol), itching must stop in 4 days infected skin sloughs off. Then you watch a HEALTHY skin appear! Sound simple? Try it. Thousands have. If not DELIGHTED, your 48¢ back at any drug counter. NOW at

DAMRON DRUG

Skin Blooms Again with 2nd Debut

With this non-surgical face lift, lined, prematurely aged faces appear to have suddenly been reborn. Hard to find are even the most fearsome signs of on-coming crows feet and wrinkles that inconsiderately shouted your age just a few days ago. Smoother now is your skin to a fingertip touch with a fresh young feeling of moisture beneath, and roses tinting your cheeks. For 2nd Debut gives a true lift without the surgeon's scalpel—a lift that lasts a long time, an ageless look that's much more intriguing than common youthfulness. The lift comes from underneath as you apply 2nd Debut on the surface. 2nd Debut (with CEF 600) for the woman of no more than 40. 2nd Debut (with CEF 1200) for the impatient lady a few years older—at good department and drug stores.

Ratzafratz!
Missed out? There's plenty more. Look under FURNITURE DEALERS in the YELLOW PAGES. Where your fingers do the walking.

WELLBORN ANNUAL Mother and Daughter SPECIAL

Again we offer this Sensational Special. Mother buys a permanent NOW!—July 19 through July 29 to take advantage of this special. Permanents \$10 to \$25. Shampoo, set and cut FREE permanent.

\$1.00

If you don't have a daughter, bring a friend. Make your appointment NOW!—July 19 through July 29 to take advantage of this special. Permanents \$10 to \$25. Shampoo, set and cut FREE permanent.

Wellborn Beauty Shop
Phone 3-4040 day & night
101 Avenue J MULESHOE

July Cooler Sale!

FLOGUIDE GRILLE
AIR VOLUME CONTROL
GLIDE-A-MATIC PAD FRAMES
EQUI-FLOW WATER SYSTEM
ALUMINUM BLOWER PULLEY
LOCK SCREW CONSTRUCTION
POSITIVE RUST PROTECTION
DOUBLE PROTECTED BOTTOM PAN
SPECIAL DUTY MOTOR
GERM GARD COOLING FILTERS
POWER-THRUST BLOWER
PUSH-BUTTON CONTROLS

Advanced engineering and design features provide unexcelled performance and beauty to give any home a refreshing new atmosphere of Cool, Healthful Comfort. Only the attractive grille appears inside. Does not cut off light or view. Installation is easy and inexpensive in either double hung or casement windows. Models are complete with window fillers, resting legs and hanging chains. Deluxe Window View Air Coolers are available in two sizes to meet any cooling requirement.

Special LOW LOW PRICES

ON REMAINING STOCK OF **WRIGHT COOLERS**
As Low As **\$119⁹⁵**

JOHNSON-POOL FURNITURE and APPLIANCE

320 MAIN MULESHOE PH. 272.4591

First Baptists Attend Camp In Floydada

Leaving the First Baptist Church here for Floydada Monday morning were Junior girls Renee Morrison, Brenda Weeks, Nanette Morris, Ruby Page, Jaque Turner, Jennifer David, Sonja Newsom, Karon Hamilton, Brenda Lane, Sharon Wrinkle, Belinda Hinkley, Sylvia Gough, Donna Grimley, and sponsors, Mrs. Roy Wrinkle, Mrs. Eugene Griffin and Mrs. Edger Hartley.

The young people will return from the Plains Baptist Assembly Wednesday and the intermediate girls will leave to return Friday. The intermediate boys will leave Monday and return Wednesday from their encampment.

Franklin Mann Family Given House-Warming

The employees of Cobbs Department hosted a surprise house warming Friday night for the Franklin Mann family in their new home in the Morrison addition.

Ice cream and cake were enjoyed by those attending, followed by playing "42" and visiting.

Nursing Home Members Feted With Party

Several members of the Muleshoe Nursing Home along with guests crowded into the social room Tuesday afternoon to join in wishing Hattie Jackson, Lula Brock and Mrs. Willie McDorman a happy birthday. Mrs. Jackson, 87, has been a resident of the home since February of 1964 and has a son, R.E. and daughter Mrs. H.R. Scarbrough, Muleshoe. Mrs. Brock, 77, has resided in the home since March of last year. She has two sons living in Kansas and California. Mrs. McDorman, 87, has lived in the home eight months. She has six children; Marvin, California; James, Farwell and Johnny in New Mexico; Lois Shields, Salt Lake City, Utah; Mildred Pense, Spencerville, Okla. and Mrs. Byron Gwyn of Muleshoe.

Members of the Alpha Circle hosted by Mrs. Larry Combs, from the First Methodist entertained the group by leading singing selections. Refreshments followed and honorees opened their gifts.

Muleshoe Band Members Attend Canyon Camp

High School and Junior High Band Camp is now going on at Canyon. Muleshoe students left Sunday to attend the camp.

Attending from Muleshoe were Lee Ann Yerby, Karen Mayhugh and Cynthia Wrinkle. Lee Ann's roommate was a former Muleshoe resident, Marcille Airhart from Levelland. Parents attending the camp at West Texas State University were Mr. and Mrs. Chester Yerby, Mr. and Mrs. Charles Mayhugh, Mr. and Mrs. Roy Wrinkle and Mr. and Mrs. Bobby Airhart from Levelland. The group will return to Muleshoe in two weeks.

SEMI ANNUAL CLEARANCE SALE

SPRING and SUMMER SUITS SPORTSWEAR

Previous Sale 1/3 Off NOW FURTHER MARK-DOWN

DRESSES **1/2 OFF**

Sweetheart Lane
120 E. Ave. B Phone 272-3916

FRESH PRODUCE ARRIVING EVERY TUESDAY FRIDAY

BANANAS 10 ¢ Lb.

TOMATOES Vine Ripe 29¢ or 4 Lb. For \$1.00
Lettuce Large Heads 2/39¢
POTATOES #1 Whites 20 Lb. Bag 98¢

BREAD LG. LOAVES 2 For 49¢

Kelly Milk 89¢ GAL.

Large FRYER S 69¢ Each

B & D FRUIT MARKET
410 E AMERICAN BLVD.



Jean Haskins
...at the organ

Jean Haskins, Pianist and Organist, Performs at Three Churches Sunday

Jean Haskins, daughter of Mr. and Mrs. George Haskins, Jr., is playing music each Sunday morning for three churches. She plays the organ for the St. Paul Lutheran Church at 8:30 then goes to the First Methodist Church where she plays the piano for the third grade Sunday School Class and then goes to the Presbyterian Church where she plays the organ. Jean has been playing the piano for 6 years and has taken

organ 1 year. She is a member of the First Methodist Choir, freshman contest choir at school, and is helping this week with singing at Girl Scout Day Camp. She has helped with Girl Scouts in Muleshoe the past two years. Each Sunday you can usually find Jean at the Muleshoe Nursing Home where she plays and the M.Y.F. entertains the residents with songs.

Trinity Baptists Dedicate New Building In Services Held Sunday

Several hundred persons were at the Trinity Baptist Church Sunday afternoon to witness the dedication of their new building, recently erected here. The new building will seat 400 people.

Many remained following the regular morning worship services for the noon meal served in the old auditorium. Following dinner, at 1:30 began the song services under the direction of Marvin Lewis, music and educational director of the church. The Rev. Troy Walker, pastor of the church, gave the recognition which was followed by the history of the church by Charles Bratcher. The choir then presented special music and the message followed by the Rev. J.E. Moore, first pastor of the Trinity Baptist Church who now lives at Abilene. The Rev. Don Murray, pastor of the First Baptist Church, concluded the service with the prayer of dedication.

Evening worship services were conducted in the regular manner. Since the beginning of the church in 1954, some 594 members have been added to the church roll and membership continues to grow. Also added to the beauty of the church Sunday were its many

floral offerings. The members of the Trinity Baptist Church are proud of their new structure and hope that in years to come, a larger building will be needed to take care of the new members.

FRI. & SAT.
JULY 22-23



SUN. & MON.
JULY 24-25



WALLACE
THEATRE

Eighth Annual Tourney Slated For Thursday

The eighth annual one-day women's partnership tournament will be held Thursday with a shot gun start at 9 a.m. Registration can be made by contacting Mrs. Irvin St. Clair or the Muleshoe Country Club not later than today.

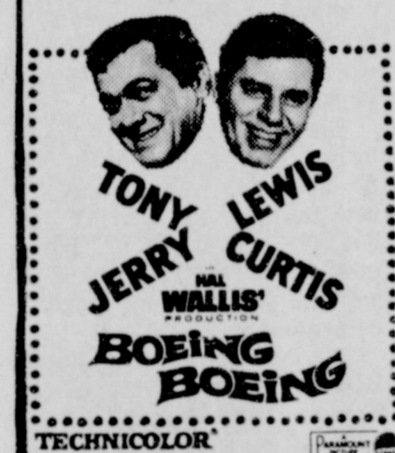
Coffee and donuts will be served preceding the tee-off at 9 a.m. and a luncheon and awarding of prizes will follow later in the day. Mrs. Irvin St. Clair is chairman of the tournament and working with her on this committee are Ruth Malone and Marie White.

4-H News

The teen sewing team met in the home of Mrs. Harold Mardis and spent the afternoon sewing.

Present for the sewing spree were Barbara Wilhite, Darla Kendall, and Diane Crawford. The girls will have their final meeting July 20.

THURS. FRI
JULY 21-22



SAT
JULY 23



SUN. & MON.
JULY 24-25



Summer Camps Scheduled by Trinity Church

Gwen Patterson, Becky and Bonnie Sain and Debbie Burchel left the Burchel home Monday to attend camp at Floydada Baptist Grounds. Mrs. Burchel is sponsor for the groups.

Next Monday the R.A.'s will leave the church for a three-day stay at Floydada. Durward Patterson and Mrs. Larry Roloff will go to Glorieta.

Hospital News

WEST PLAINS HOSPITAL

Music Camp with the young people's group.

Mrs. Patterson and Mrs. Walker recently attended the primary conference.

Mrs. Marvin Lewis and Mrs. R. G. Bennett, Jr., Mrs. A. M. Bradley and Opal Horseley plan to go to the W.M.U. camp Friday at Floydada.

The Rev. Troy Walker and family have recently returned from Glorieta.

ADMISSIONS

Mrs. Marseline Ovalle
Alvino Bryan
Ronald Gene Steele
Mrs. Bill Kinard and baby girl
Bob Hardaway
Dickie Shaw
Mrs. Acension Tigerina
David Talley
Howard Cox
David Taylor
Wilbur Lee McNabb
Baby Pedro Ovalle
Florence Dickson
Mike Ary
J.A. Jackson

Continued on page 6

Want to Secure Your Future?

No Beauty School is Better Equipped to Train You For One of The Highest Earning Professions. Than

ADELLE'S BEAUTY SCHOOL

We Welcome You to Visit Us or Fill Out This Coupon And Mail it to Us For More Information.

Adelle's Beauty School
708 Quincey
Plainview, Texas
Name _____
Street _____
City _____ State _____

BIG SAVINGS IN EVERY SACK

WE GIVE BUCCANEER STAMPS DOUBLE ON WEDNESDAY

SHURFRESH MILK

- GERBER Strained **BABY FOOD** 10 For \$1
- JELLO** Ass't'd flavors 3 oz. pkg. 3 For 25¢
- DASH **DOG FOOD** 1 lb. can 3 For 35¢
- NESTLE **ICED TEA MIX** Lemon flavored 4 oz. jar 49¢
- SHURFINE **SWEET PICKLES** 16 oz. jar 3 For \$1
- LIBBY'S **DEEP BROWN BEANS** 14 oz. can 6 For 89¢
- ENERGY **DETERGENT** 22oz. Bottle 3 For \$1
- SOFLIN **NAPKINS** 200 ct. 29¢

SHURFRESH BISCUITS

13 CANS FOR **\$1**

SHURFINE QT. JAR **SALAD DRESSING** 39¢

BACON 1 LB. PKG. **59¢**

SUGAR 98¢

PUREX 1/2 gal. 10 LB. BAG

BLEACH 29¢

LIGHT CRUST

FLOUR 39¢

5 LB. BAG

Round Steak Juicy & Tender Lb. 89¢

Beef Short Ribs Lean & Meaty 3 LBS. FOR \$1

BANANAS

GOLDEN RIPE LB. 10¢

LARGE SIZE 3 **AVOCADOS** for 25¢

POTATOES

REDS 20 Lb. BAG 59¢

SHOP JIM'S DRUG DEPT. FOR THESE SAVINGS

- BAYER **ASPIRIN** 100 ct. 59¢
- Rubbing Alcohol** Pt. bottle 9¢
- STYLE **SPRAY NET** 69¢
- SO - SOFT **HAND LOTION** \$1.00 size 49¢

The ColorMaster marks a great step forward in the annals of haircoloring.

Here is an absolutely amazing machine that literally quintuples the number of color jobs you can handle in one day, simply by cutting processing time up to 80%. Fast, comfortable, convenient, the ColorMaster

in no way changes any of the procedures, processes or skills you bring to the art of haircoloring. It simply slashes away drastically at processing time—ColorMaster gives you

Virgin bleach-outs in as little as 30 minutes

Retouch bleach-outs in as little as 10 minutes

Tinting and Toning in as little as 5 minutes

And it's

FAST... COMFORTABLE

... CONVENIENT



Bernice Holderman, demonstrating the New Color Master to Mrs. Jimmie Seaton

CALL FOR AN APPOINTMENT TODAY

Tommy Adams Doris Moore Sue Moore Bernice Holderman Darla Criswell

MAIN STREET BEAUTY SALON

115 MAIN MULESHOE, TEXAS PHONE 272-3448

Jim's Pay N' Save

FRIENDLIEST STORE IN TOWN

QUALITY MERCHANDISE AT LOWEST PRICES

Open 7 Days A Week

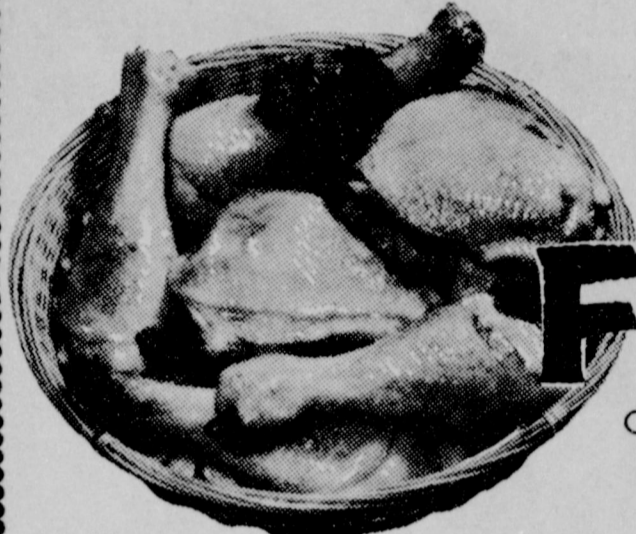
Save Food Dollars

COMPARE OUR **LOW PRICES**

ARIZONA RED
POTATOES
20 Lb. BAG **69¢**

SQUASH
Home Grown
Garden Fresh
Lb. **5¢**

CALIFORNIA RUBY RED
GRAPEFRUIT Lb. 17¢
PEARS
CALIFORNIA FANCY
TREE RIPE



WHOLE FRYERS



Lb. **19¢**
Lb. **33¢**

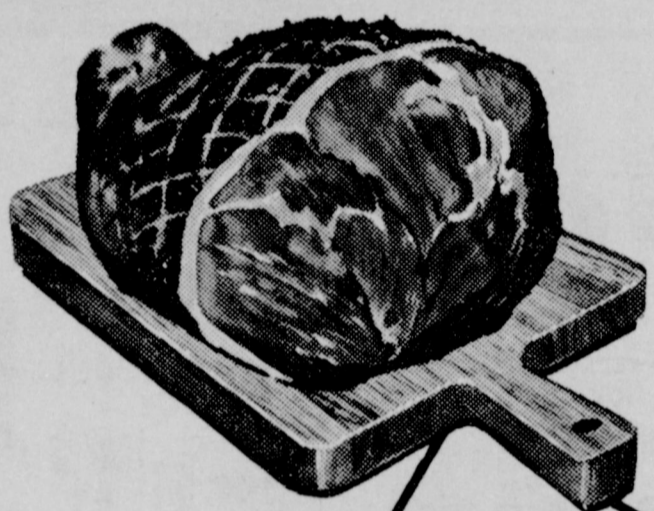
GOLD NUGGET USDA 'GRADE A' FRESH

PORK PICNIC

PINKNEY'S SUN-RAY
SUGAR CURED SMOKED

WHOLE

Lb. **39¢**



SWIFT'S JEWEL
SHORTENING
3 Lb. TIN **59¢**

GUNN BROS. STAMPS
Double Every
WEDNESDAY

Rodeo All Meat
BOLOGNA Lb. Pkg. **59¢**
Swift's Premium All Meat
FRANKS 12 oz. Pkg. **49¢**
Swift's Premium Thin Sliced
BACON Lb. Pkg. **89¢**
Swift's Premium Proten Beef
CLUB STEAKS Lb. **79¢**

FROZEN FOODS!

Groten's 8 oz. Pkg.
CATFISH STICKS **39¢**
Morton's Family Size
CREAM PIES 3 For \$1
Longhorn 1 Lb. Pkg.
BEEF STEAKETTES **69¢**
Keith's 8 oz. Pkg.
BRUSSELS SPROUTS 2 For 45¢

ALWAYS READY TO ENJOY
BELL
Assorted Flavors
1/2 Gal. **79¢**
Ctn

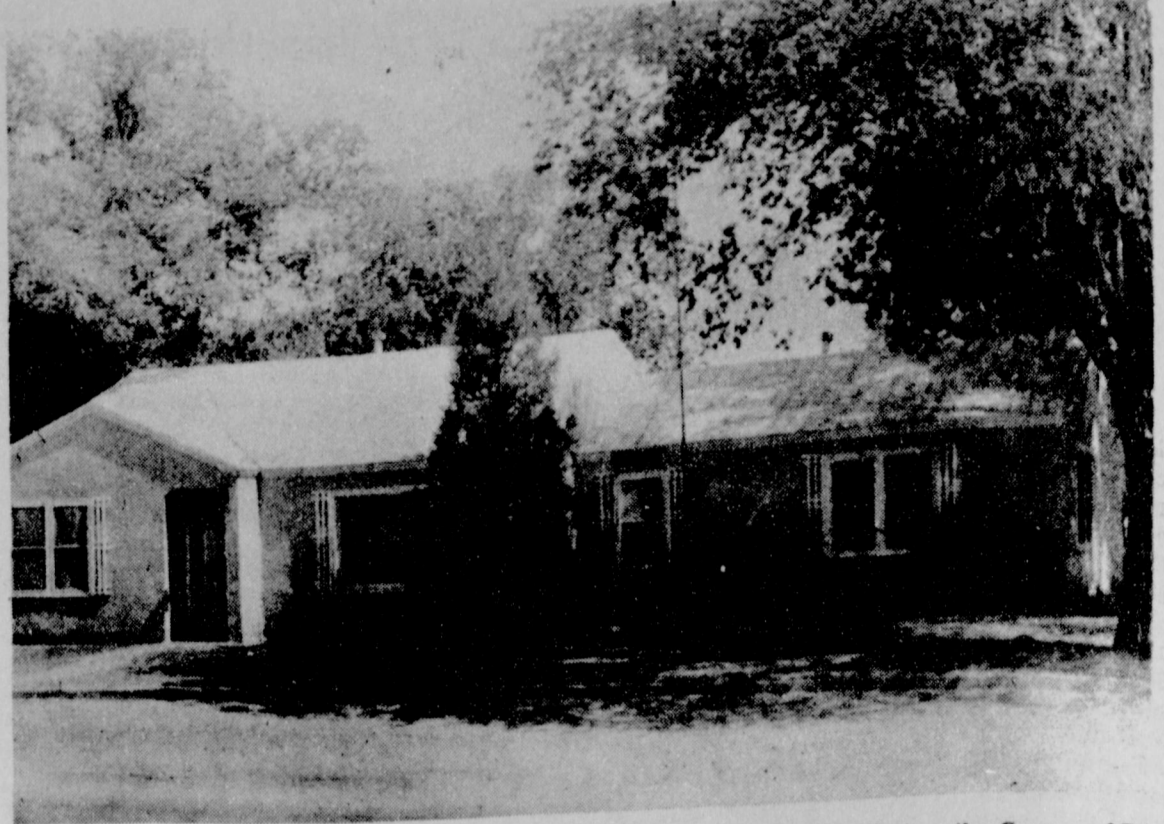
DEL MONTE 46 OZ. CAN

TOMATO JUICE 3 for **89¢**



KRAFT'S
MIRACLE WHIP
Qt. Jar **49¢**

Sunshine Lady Joan Asst.	12 oz. Pkg.	45¢
COOKIES	Qt. Bottle	69¢
PINEX Kimbells	Giant Size Box	69¢
FAB	5 lb. bag	39¢
Gladiola White Meal Pillsbury Best	5 lb. bag	49¢
FLOUR Delsey	4 roll pkg.	49¢
Bath Room Tissue	8 oz. Pkg.	2 For 23¢
Gladiola Magic Devil Food, White, Yellow	White Swan Chopped No. 303 Can	2 For 29¢
Cake Mixes	1 lb. tin	73¢
TURNIP GREENS Maryland Club	No. 303 Can	19¢
COFFEE Drip or Reg.	Swift's 1/2 s can	2 For 45¢
CORN Libby's Whole Kernel Golden	12 Bottle Ctn. Plus Deposit	79¢
VIENNA SAUSAGE	Cracker Barrel	2 For 45¢
COCA-COLA	Aunt Jane's 26 oz. Jar	39¢
CRACKERS 1 lb. Box		
PICKLES Icebergs, Polish or Kosher Dills		



NEW EARTH FIRM--Singleton, Parsons & Ellis Funeral Home, Inc., located on the Corner of First and Date, is ready to serve the public in funeral facilities. The newly established funeral home features a preparation room, reposing room, and selection room.

June Accident Summary Shows Three Injuries

The Texas Highway Patrol investigated 5 accidents on rural highways in Bailey County during the month of June, according to Sergeant Thurman Keffer Highway Patrol Supervisor of this area.

These crashes resulted in three persons injured and an estimated property damage of \$4,300.

The report also shows that Hockley county had seven accidents with two injuries and \$3210 in damages.

Lamb county had eight accidents in June with one injury and property damage of \$8020. Lubbock county shows 36 rural accidents, 16 injuries and property damage of \$20,955.

The rural traffic accident summary for this county during the first six months of 1966 shows a total of 29 accidents resulting in no persons killed, 21 persons injured, and an estimated property damage of \$33,485.

The number of traffic deaths in Texas continues to rise. For the first six months of 1966 there have been 1470 traffic deaths compared to 1325 traffic deaths for the first months of 1965. This 11% increase is very alarming, and chances are it will become very critical because of vacation months and holiday periods still ahead to intensify the magnitude of the accident picture.

The Sergeant stated, "It is estimated that at the end of 1966 traffic deaths in Texas will increase about 10% over 1965 which means approximately 3300 persons will be killed in traffic accidents." The Sergeant added one other comment, "To control accidents, we must first learn to control ourselves."

Three Men Open New Funeral Home at Earth

Percy Parsons, Olton; Frank Ellis, Muleshoe; and C.V. Singleton, Seminole, have opened the Parsons-Ellis-Singleton Funeral Home in Earth, it was announced recently.

The new firm, located on the corner of First and Date, features a preparation room, re-

posing room and a selection room with a complete line of caskets and clothing.

All three of the owners have been in the funeral home business for a number of years, Ellis operating a home in Muleshoe for the past seven years, Parsons moved to Olton eight years ago and founded the Parsons Funeral Home there. A formal opening for the new funeral home is to be held soon, Ellis said.

Will Buy Good Used Clothing
SWAP SHOP
Phone 272-3074

A SAVINGS INSTITUTION DEDICATED TO THRIFT AND HOME OWNERSHIP



First Federal Savings & Loan Association of Clovis

HOME OFFICE
801 Pile St.
Clovis, N. Mex.

BRANCH OFFICE
2nd. & Abilene
Portales, N. Mex.

Current Dividend **5%**
PAID OR COMPOUNDED QUARTERLY

THRIFT AND HOME OWNERSHIP SAFEGUARDS TO AMERICAN LIBERTY

Need Santa Fe freight or passenger information?

Just give us a call.



"Si! Si! your local Santa Fe agent is as near as your phone."



Muleshoe Agent, Horace Holt

Listen to MULETRAIN over KMUL 10:15 a.m. sponsored by CASHWAY

White's CASHWAY

Austin Highlights

Commissioners' Shuffling Due?

By Vern Sanford
Texas Press Association
AUSTIN—There could be a new look around many Texas county commissioner's courts under a reapportionment opinion laid down by the Texas Supreme Court in the case brought by Mayor Hank Avery of Midland. Avery maintained that it isn't constitutional for one Midland County Commissioner to represent 95 per cent of the county's population-- the City of Midland-- while the other three commissioners represented only 5 per cent of the people. Supreme Court agreed, 8-1, but with reservations. It held that the ratio was not fair representation, but that the re-division of county precincts, which it told Dist. Judge Joe B. Dibrell of Coleman to order, could consider factors other than population.

Declining to extend the population-only rule which the U.S. Supreme Court has applied to state legislatures, Supreme Court held that a commissioner's court is not a legislative body. Court's majority wrote that the road, bridge and tax activities of the commissioners courts have more concern to rural residents than to city dwellers. In recent years, such courts have concerned themselves mainly with non-urban areas, leaving city matters to the city governments.

Supreme Court concluded that not just population, but also factors such as miles of county road, taxable values and geography, plus the "convenience of the people" set out in the Texas Constitution, can be taken into account by a commissioner's court in dividing the county into four precincts. High court agreed with Judge Dibrell that the present Midland County situation obviously is arbitrary and should be declared invalid.

Case either will go back to Judge Dibrell for final decision or will be appealed to the U.S. Supreme Court by either Mayor Avery or Midland County--since neither won a clear-cut victory.

State Water Pollution Control Board approved a committee of the Cattle Feeders Division, Texas and Southwest Cattle Raisers Association, which plans to ask the 1967 Legislature for a feed lot licensing law, tying in with water pollution control.

Committee members are Grady Shepard, Hale Center; James W. Witherspoon, Hereford; Alfred Negley, San Antonio; Fred Wulff, Brady; Jack Carruthers, Friona.

Hereford Feed Yards, Inc., with which Witherspoon is associated, just received the first Water Pollution Control Board permit for disposal of wastes from cattle feed lot. It provides that the company retain waste runoff waters from all rainfalls of two inches or less in a day, and lots must provide for dewatering retention facilities between rainfalls by spray irrigation.

OTHER POLLUTION PLANS
Pollution-Multiple Use Legislative Study Committee, headed by Sen. Culp Kruger of El Campo, will hold public hearings in early fall to check into salt water disposal problems in oil and gas fields--and pollution problems resulting from feed lot operations, plus septic tank problems that could lead to water pollution.

Animal health in Texas comes to the front ranks in agricultural-livestock concern nowadays.

Screwworm eradication workers at the sterile fly plant in Mission stepped up eradication efforts in the Brooks-Goliad-Beville area where six cases were reported last week and in the stretch from Culberson County to Eddy, N.M. where 12 cases were confirmed.

Dr. B. B. Vail, Jr. told the Animal Health Commission that they need more reports from ranchers.

Dr. S. B. Walker of the Commission and Dr. S. C. Gartman of the U. S. Department of Agriculture's Animal Health Division asked livestock producers also to report promptly any signs of sore mouth condition or blister-like sores on udders or above hooves of animals to combat a recent outbreak of vesicular stomatitis.

In similar farm reports, State Agriculture Comm. John White announced an emergency quarantine on movement of some fruits and vegetables from Cameron County -- to prevent spread of Mediterranean Fruit

Fly.

Dr. Walker recommended a more flexible program for accepting petitions for Type II control testing for brucellosis --now done only from counties next to test counties after a break from the 'contiguous county' requirement has been tested. He said it worked hard- ships on area veterinarians. **STUDENT BONDS TOP RATED**

Learning that two top national investor services rate Texas College Student Loan Bonds, authorized by voters last fall, as "triple A" investments (highest rating possible), the Coordinating Board for Texas College and University System decided to sell \$10,000,000 of the \$85,000,000 authorized bonds at its July 18 meeting.

Institutional agreements now are being prepared by the Board so loans will be available to students in September. **HEAD START WATCH-Regional OEO director Bill Crook of Austin cautioned Head Start administrators that they will be under "continuous review" by his Austin offices, "to remedy any program deficiencies that might be identified by on-site evaluations."**

Crook said so far not one single bad audit, case of misappropriation or mishandling of any funds has been produced by Texas' program. He says he is very interested in keeping that good record.

OEO has contracted with the Texas Education Foundation, private corporation administering Camp Gary Job Corps Center for men, for \$3,200,000 to develop and operate a Job Corps center for women at McKinney. First 100 women students are scheduled to enroll at McKinney in March, 1967.

SHORT SNORTS
Weldon Watson has resigned as executive director of the Parks and Wildlife Department. Texas Industrial Commission reports record 327 new plants were located in the state last year and prospects for 1967 look even better.

Texas Highway Department officials say it cost the State 3.4 cents of every dollar spent on highway maintenance to clean up after vandals and litterbugs last year (some \$1,526,582). Wm. L. Ferguson of Henderson is new Texas Liquor Control Board Assistant Administrator.

Enochs Couple Attend Funeral For Mrs. Dicks

By Mrs. Jerome Cash
ENOCHS--Mr. and Mrs. Carl Hall spent Friday night in Lubbock with her brother, J.F. McGinnis, on Saturday they all drove to Milsap, to attend the funeral of Mrs. Dick, mother of Bill Dick of Portales, and Jess Dick of California, former residents of this community.

Mr. and Mrs. J.E. Layton and boys spent Sunday with her sister and family Mrs. Bill Burris, Wellman.

Mrs. Myrna Turney and children spent Sunday in Clovis visiting her sister and family Mrs. Jack Jackson.

Mr. and Mrs. N.O. Sullivan Lubbock spent Friday visiting Mr. and Mrs. Joe Milsap.

Dorothy and Rita Spence spent last week in Lubbock visiting their three sisters Mrs. Donna Archer, Mrs. Douglas Betts and Mrs. David Williams. Mrs. Archer brought them home Saturday and spent Saturday, also coming home with them were two of their grandchildren Jeff and Pam Williams to spend the week.

Mrs. Leland Finley and children of Lubbock visited her parents the J.D. Boyles last Wednesday. The grandchildren stay on for a few days with their grandparents, Mr. and Mrs. J.D. Bayless, they returned home Saturday.

Visiting in the home of H.C. Brashear last week were their son of Ft. Worth, Mr. and Mrs. Lee Roy Brashear, and their daughter and children Mrs. Stanley Stafford, Lubbock. Mr. and Mrs. Jerome Cash visited Mr. and Mrs. H.H. Snow, Muleshoe, Sunday afternoon.

Visiting in the E.C. Gillian last week were her mother Mrs. F.M. Scillian, Quanah, an aunt Mrs. E.J. Bragg and cousin J.H. Bragg, both of Midland, and on Sunday their sons and families visited them. Gilbert, of West Camp, Jerry of Three-way and Wayne of Morton.

'No Speech' FM Station Takes To the Air Soon

A new and unique type of radio broadcasting service will begin in Lubbock soon, featuring serious music 18 hours a day. According to KLBK management, the new KLBK-FM Stereo will debut early in August with a slogan of "You're never more than a minute away from music."

KLBK-FM will operate with 100,000 watts power, making it as powerful as any radio station in the United States. Its coverage will extend for a hundred miles in every direction, from its position at 94.5 on the FM dial.

There will be no speech programming whatever on the station, with serious music comprising its total output. Music will range from Broadway show scores at the lightest, to full length symphonies, operas and chamber music. At the beginning, ten hours of each 18-hour broadcasting day will be transmitted in stereo. Commercials will be limited both as to number and length. A monthly program guide will be published and made available to listeners.

Equipment for the station has arrived in Lubbock and is now being installed. Erection of the FM antenna on the KLBK-TV tower is expected this week, following which tests will be made leading to an early August commencement of regular operations.

Gerald Proctor, formerly of Beaumont, has joined the KLBK staff as FM Station Manager.

Posters Tell Of Texas' Attractions

--An old Chinese proverb says that one picture is worth a thousand words.

The Texas Highway Department believes it, and proved it today with the release of a set of spectacular new color posters to help tell the story of Texas varied attractions.

The Highway Department expects the new posters will be valuable additions to its comprehensive line-up of Texas travel material.

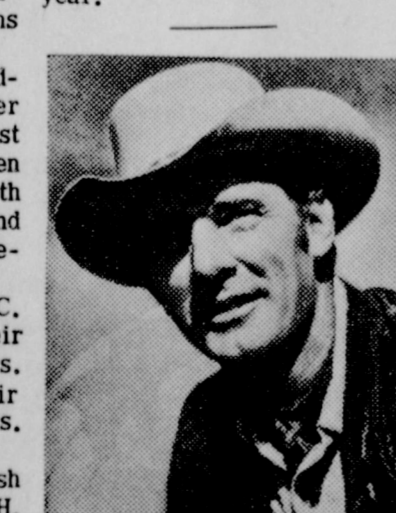
Although they will not be available to individuals for personal use, the posters will be supplied free for display in airline, train and bus terminals, in the offices of travel agents, and at the sites of conventions and expositions where the impressive Texas vistas will be exposed to large numbers of passers-by.

The new posters depict color-saturated scenes at Caddo Lake State Park, an Indian at the Alabama-Coushatto Reservation, an auburn haired Texas beauty inspecting richly-laden grapefruit trees in the Rio Grande Valley, and a glowing sunset on Texas' subtropical coast.

Along with those entirely new scenes, three popular earlier posters have been slightly revised and reprinted. They include the Alamo, a rodeo cowboy on a bucking horse, and magnificent Santa Elena Canyon in Big Bend National Park.

The seven newly-printed scenes will join two currently available posters which illustrate impressive El Capitan mountain in West Texas, and the sun-drenched beach of Padre Island.

In all, the posters represent another facet of more than three and one-half million pieces of printed Texas travel material which the Highway Department distributes free each year.



Dennis Weaver, "Chester" of TV's "Gunsmoke," has an important role in Ralph Nelson's "Duel at Diablo," western epic in color by Deluxe opening July 24 at the Cox Theatre under United Artists release. James Garner and Sidney Poitier head cast.

WIN! UP TO 5X GREEN STAMPS PLAY
Match the Stamp!
AT PIGGLY WIGGLY!

SPERRY & HUTCHINSON DISCOUNT FOR CASH

SUGAR 49¢

C&H, HOLLY OR IMPERIAL 5LB BAG

FRYERS 33¢

U.S.D.A. GRADE A WHOLE POUND CUT UP POUND 37¢

STEAK 89¢

ROUND, U.S.D.A. CHOICE, AGED HEAVY BEEF, VALU-TRIMMED LB.

STEAK 59¢

FAMILY, U.S.D.A. CHOICE, AGED HEAVY BEEF VALU-TRIMMED LB.

PORK CHOPS \$1.39

BONELESS LEAN NORTHERN PORK RIBS CHOPS... LB.

LUNCH MEAT 3.00

BUTCHER BOY, OLIVE PICKLE BOLDINA OR SPICED LUNCHEON Pkg.

FISH STICKS 4.00

SEA STAR 8 OZ. PKGS.

FISH STEAKS 55¢

ICELANDIC BREADED COD PERCH 12 OZ. PKG.

STEAK 1.98

BONELESS RIB EYE U.S.D.A. CHOICE AGED, HEAVY BEEF, VALU-TRIMMED... LB.

EGGS 39¢

IDEAL Doz. GRADE A MEDIUM

Coffee 69¢

FOLGER'S ALL GRINDS 2 LB CAN \$1.37 3 LB CAN \$2.05... 1 LB CAN

Peas 29¢

ROSEDALE, GARDEN SWEET 2 #303 CANS

Rice 25¢

ARROW, MEDIUM GRAIN 2 LB BAG

Potatoes 19¢

INSTANT, GOOD N. RICH 7oz. BAG

Flour 39¢

SUNLIGHT, FULLY GUARANTEED... 5LB BAG

Viennas 5.00

VAN CAMPS #1/2 CANS

Beverages 6.00

RITE GOOD ASST'D FLAVORS NO DEPOSIT NO RETURN 28 OZ. BTL.

Pears 1.00

PACIFIC GOLD 3 #1/2 CANS

THESE PRICES GOOD IN MULESHOE, JULY 21, 22, 23, 24, 25, 1966



STEAK 79¢

SWISS, ARM BONE CUT U.S.D.A. CHOICE, AGED, HEAVY BEEF, VALU-TRIMMED... LB.

GROUND BEEF 89¢

LEAN, 100% ALL BEEF, DATED TO 2LB ASSURE FRESHNESS

PORK RIBS 69¢

LEAN NORTHERN PORK COUNTRY STYLE LB.

FRANKS 59¢

BUTCHER BOY ALL MEAT LB.

SAUSAGE 59¢

LINK, BLUE MORROW'S LITTLE PIGGY 12 OZ. PKG.

SAUSAGE 89¢

PINKNEY'S ALL PORK 2LB PKG.

ROAST 89¢

BONELESS SHOULDER, U.S.D.A. CHOICE, AGED, HEAVY BEEF VALU-TRIMMED... LB.

ROAST 79¢

RUMP OR PILES, U.S.D.A. CHOICE AGED, HEAVY BEEF LB.

BABY FOOD 3 4/2 27

HEINZ, STRAINED FRUITS AND VEGETABLES

HEALTH & BEAUTY AIDS!

Deodorant... 7 OZ. \$1.99

MACLEAN'S 84 OFF LABEL, REG. 95¢ VALUE FAMILY SIZE TUBE... 69¢

Toothpaste... 3 OZ. 69¢

KELLAR, ALUMINUM FOLDING, EXTRA HEAVY WEBBING, EXTRA WIDE ARM REST, TUBULAR CONST. \$2.88

Lawn Chair... VALUE \$2.00

FROZEN FOODS!

LEMONADE 29¢

TIP TOP PLAIN OR PINK 3 6 OZ. CANS

POTATOES 1.00

VALLEY GOLD 3 2LB. BAGS

CORN 47¢

ON THE COB BIRDSEYE 4 EARS PER PKG.

SPINACH 59¢

LIBBY'S CHOPPED 100% OR LEAF... 3 PAGES



FRESH PIGGLY WIGGLY PRODUCE!

WATERMELON 59¢

CHARLESTON GREY EACH

Cauliflower 29¢

CELLO WRAPPED LB.

Potatoes 59¢

HOME GROWN NEW RED 25 LB. BAGS

Lowest Prices... Greatest Variety... always at...



Television Schedule For Muleshoe Area

★ ★ ★	★ ★ ★	★ ★ ★	★ ★ ★	★ ★ ★
KGNC - TV (4)	KVII - TV (7)	KFDA - TV (10)	KCBD - TV (11)	KLBK - TV (15)
Amarillo	Amarillo	Amarillo	Lubbock	Lubbock
Muleshoe Cable 4	Muleshoe Cable 5	Muleshoe Cable 6	Muleshoe Cable 2	Muleshoe Cable 3
Daytime Viewing	Daytime Viewing	Daytime Viewing	Daytime Viewing	Daytime Viewing
7:00 - Today 7:25 - News 7:30 - Today 8:00 - Today 9:00 - Eye Guess 9:25 - News 9:30 - Concentration 10:00 - M. Star 10:30 - P. Bay 11:00 - Jeopardy 11:30 - P. Office 11:55 - NBC News 12:00 - News 12:10 - Weather 12:15 - R. Brent 12:30 - Make-Deal 12:55 - NBC News 1:00 - Our Lives 1:30 - The Doctors 2:00 - Another World 2:30 - Don't Say 3:00 - Match Game 3:25 - NBC News 3:30 - Sheriff Bill 4:30 - Bronco 5:30 - Hunt-Brink. 6:00 - News	6:15 - Agriculture 6:45 - Weather 6:50 - News 7:00 - Mod. Edu. 7:30 - Exercise 8:00 - Movie 10:00 - S. Market 10:30 - Dating Game 11:00 - Donna Reed 11:30 - Father 12:00 - Ben Casey 1:00 - For Women 1:00 - Newly Wed 1:30 - A Time 1:55 - Women's News 2:00 - Gen. Hosp. 2:30 - Nurses 3:00 - N. Shadows 3:30 - Action Is 4:00 - Trails West 4:30 - H. Patrol 5:00 - P. Jennings 5:15 - News 5:25 - Weather 5:30 - Wells Fargo 6:00 - Rifleman	6:25 0 Sign On 6:27 - Meditation 6:30 - Am. College 7:00 - Farm News 7:30 - Tri Report 8:00 - Capt. Kang. 9:00 - I Love Lucy 9:30 - McCoys 10:00 - Andy 10:30 - Dick Van Dyke 11:00 - Search T. 11:45 - Guiding Lgt. 12:00 - News 12:10 - Weather 12:20 - Farm- Ranch 12:30 - The World T. 1:00 - Password 1:30 - Art Linletter 2:00 - To Tell Truth 2:25 - CBS News 2:30 - Edge of Night 3:00 - Secret Storm 4:00 - Sc. Fiction 4:30 - Mr. Mim. 5:00 - Cartoons 6:00 - News 6:20 - Weather	7:00 - Headlines 7:05 - Farm Report 7:25 - Weather 7:30 - Today 8:25 - News 8:30 - Today 9:00 - Eye Guess 9:25 - News 9:30 - Concentration 10:00 - M. Star 10:30 - P. Bay 11:00 - Jeopardy 11:30 - P. Office 11:55 - News 12:00 - Noon Rptl 12:15 - Com. Close 12:30 - Make Deal 1:00 - Our Lives 1:30 - Doctors 2:00 - Another World 2:30 - Don't Say 3:00 - Match G. 3:25 - Aff. Rpt 3:30 - S. Sweep 4:00 - Father 4:30 - Beaver 5:00 - Cartoons 5:30 - Hunt-Brink. 6:00 - News	5:55 - Sign On 6:00 - Sun. Sem. 6:30 - Jimmy Dean 6:45 - Farm-Ranch 7:05 - M. Wallace 7:30 - Morn. Show 8:00 - Capt. Kang. 9:00 - Donna 9:30 - McCoys 10:00 - Andy 10:30 - D. Dyke 11:00 - Love of Life 11:25 - CBS News 11:30 - Search 11:45 - Guiding 12:00 - WTTN News 12:12 - Farm Ranch 12:25 - Weather 12:30 - World Turns 1:00 - Password 1:30 - Houseparty 2:00 - Gen. Hos. 2:30 - Edge Night 3:00 - Sec. Storm 3:30 - Dating G. 4:00 - Tele Bingo 4:30 - Col. Car. 5:00 - Rifleman 5:30 - News
THURS EVENING	THURS EVENING	THURS EVENING	THURS EVENING	THURS EVENING
6:15 - Weather 6:25 - Sports 6:30 - D. Boone 7:30 - Special 8:30 - Mickie Finn's 9:00 - Dean Martin 10:00 - News 10:15 - Weather 10:25 - Sports 10:30 - Tonight	6:30 - Batman 7:00 - Gidget 7:30 - H. Phye 8:00 - Bewitched 8:30 - Peyton Place 9:00 - Baron 10:00 - Untouchable 11:00 - News 11:10 - Weather 11:15 - Movie	6:30 - Munsters 7:00 - Gilligans 7:30 - Three Sons 8:00 - Movie 10:00 - News 10:15 - Weather 10:30 - Movie 10:55 - News 11:00 - Movie	6:30 - Munsters 6:30 - D. Boone 7:30 - Palladium 7:30 - Mickie Finn's 9:00 - Dean Martin 10:00 - News 10:30 - Tonight	6:00 - News 6:10 - Weather 6:20 - News 6:30 - Batman 7:00 - Gilligan 7:30 - Three Sons 8:00 - Movie 10:00 - News-Wea. 10:30 - Theatre 12:00 - Sign Off
Friday evening	FRIDAY EVENING	FRIDAY EVENING	FRIDAY EVENING	FRIDAY EVENING
6:15 - Weather 6:25 - Sports 6:30 - Movies 8:30 - Mr. Roberts 9:00 - UNCLE 10:00 - News 10:15 - Weather 10:25 - Sports 10:30 - Tonight 12:00 - Sign Off	6:30 - Flintstones 7:00 - Tammy 7:30 - Adams 8:00 - Honey West 8:30 - Farmer's D. 9:00 - Movie 11:00 - News 11:10 - Weather 11:15 - Movie	6:30 - Wild West 7:00 - Hog. Heroes 8:00 - G. Pyle 8:30 - Smothers Bros. 9:00 - E. Tubb 9:30 - W. Music 10:00 - News 10:15 - Weather 10:30 - TBA 10:55 - News 11:00 - Movie	6:30 - Buck Owens 7:30 - Palladium 9:00 - UNCLE 10:00 - Report 10:30 - Tonight	6:00 - News 6:10 - Weather 6:20 - News 6:30 - Batman 7:00 - D. VanDyke 7:30 - Hog. Heroes 8:00 - G. Pyle 8:30 - Bewitched 9:00 - L. Welk 10:00 - News 10:30 - Movie 12:00 - Sign Off
Saturday	SATURDAY	SATURDAY	SATURDAY	SATURDAY
7:00 - Roy Rog. 8:00 - The Jetsons 8:30 - Atom Ant 9:00 - Squirrel 9:30 - Underdog 10:00 - Top Cat 10:30 - Fury 11:00 - Superman 11:30 - Cotton John 12:00 - Baseball 3:00 - Wide Country 4:00 - Checkmate 5:00 - Golf 5:30 - Scherr-McN. 6:00 - News 6:15 - Weather 6:30 - Sports 7:00 - Jeanie 7:30 - Get Smart 8:00 - Movie 10:00 - News 10:15 - Weather 10:25 - Sports 10:30 - Movie 12:00 - Sign Off	7:30 - Mod. Edu. 8:00 - Silver Wings 8:30 - Baptist Church 9:00 - Porky Pig 9:30 - Beatles 10:00 - Casper 10:30 - Mag. Gor. 11:00 - Bugs Bunny 11:30 - Milton 12:00 - Hoppity 12:30 - Bandstand 1:30 - Matinee 3:00 - P.G. A. Golf 4:30 - Movie 6:00 - Viet Nam 6:30 - Ozzie-Har. 7:00 - D. Reed 7:30 - L. Welk 8:30 - Hol Palace 9:30 - C. Martial 10:30 - Movie	6:45 - Sign On 7:00 - Cartoon 7:30 - Lone Ranger 8:00 - Heckle Jeckle 8:30 - Tenn. Tux. 9:00 - M. Mouse 9:30 - Lassie 10:00 - Tom- Jerry 10:30 - Quick Draw 11:00 - Sky King 11:30 - Linus 12:00 - Flicka 12:30 - News 12:45 - Movie 5:00 - Wilburn B. 5:30 - P. Wagnor 6:00 - News 6:20 - Weather 6:30 - Showcase 7:00 - S. Agent 8:00 - F. Familiar 9:00 - Gunsmoke 10:00 - News 10:15 - Weather 10:25 - Sports 10:30 - Movie 11:00 - Movie	7:30 - R. Rog. 8:30 - Atom Ant 9:00 - Squirrel 9:30 - Underdog 10:00 - Top Cat 10:30 - Fury 11:00 - H. Hopper 11:30 - Cartoon 12:00 - Baseball 2:45 - Movie 4:00 - Theater 4:30 - Sam Sneed 5:00 - Lone Ranger 5:30 - Scherer-McN. 6:00 - News 6:30 - Flipper 7:00 - Jeannie 7:30 - Get Smart 8:00 - Movie 10:00 - News 10:30 - Movie	7:30 - Porky 8:00 - Heckle-Jeckle 8:30 - Milton 9:00 - M. Mouse 9:30 - Beatles 10:00 - Tom-Jerry 10:30 - Casper 11:00 - Sky King 11:30 - Lassie 12:00 - Flicka 12:30 - Bandstand 1:00 - Film 3:00 - Wrestling 4:30 - Bobby Lord 5:00 - Wilburn Bros. 5:30 - Pickin Time 6:00 - P. Wag. 6:30 - J. James 7:00 - Shenandoah 7:30 - Wild West 8:30 - Rifleman 9:00 - Gunsmoke 10:00 - News-Wea. 10:20 - Movie 12:00 - Late Show 1:30 - Sign Off
SUNDAY	SUNDAY	SUNDAY	SUNDAY	SUNDAY
7:30 - Comedy Time 8:00 - Cot. John 8:30 - Weather 8:45 - In Dixie 9:45 - Movie 10:50 - Church 12:00 - Biography 12:30 - Meet Press 1:30 - Bronco 2:30 - Senate Hearing 4:00 - Sportsman 4:30 - Sportsman 5:00 - Mitch Miller 6:00 - News 6:15 - Weather 6:25 - Sports 6:30 - Disney 7:30 - Branded 8:00 - Bonanza 9:00 - Wackiest 10:00 - News 10:15 - Weather 10:25 - Sports 10:30 - Dir. Choice 12:00 - Sign Off	7:30 - Mod. Edu. 8:00 - Oral Roberts 8:30 - Christ For 9:00 - Beany 9:30 - Peter Pot. 10:00 - Bullwinkle 10:30 - Discovery 11:00 - Church 12:00 - W.T. Adven. 12:30 - Issues-Ans. 1:00 - Western 2:00 - P.G.A. Golf 4:00 - Honest Jess 4:15 - Matinee 6:00 - Voyage to 7:00 - FBI 8:00 - Movie 10:15 - News 10:30 - Movie	8:00 - Pattern 8:30 - Church 9:30 - Gospel 10:30 - Religious 11:00 - Film 1:00 - Sc. Fic. 1:30 - Sports 3:00 - Detectives 3:30 - Westerners 4:00 - Mr. Ed 4:30 - Amateur 5:00 - 20th Cen. 5:30 - News 5:50 - Weather 6:00 - Carnival 6:30 - Martian 7:00 - Ed Sullivan 8:00 - P. Mason 9:00 - Can. Cam. 9:30 - W. My Line 10:00 - News 10:15 - Weather 10:25 - Sports 10:30 - Movie 10:55 - News 11:00 - Movie	7:25 - Sign On 7:30 - Mag. Gor. 8:00 - Peter Pot. 8:30 - Beany 9:00 - Herald of 9:30 - Living 10:00 - Discovery 10:30 - Drama 10:45 - Church 12:00 - Meet Press 12:30 - Frontiers of 1:00 - Movie 2:00 - Sen. Hearings 4:00 - Viet Nam 4:30 - Sportsman 5:00 - F. McGee 5:30 - Theater 6:00 - News 6:30 - Disney 7:30 - Branded 8:00 - Bonanza 9:00 - Wackiest 10:00 - News 10:15 - Weather 10:25 - Sports 10:30 - Movie	6:55 - Sign On 7:00 - Bullwinkle 7:30 - Looney Tunes 8:00 - Linus 8:30 - Movie 10:45 - Church 11:45 - Inquiry 12:15 - Face Nation 12:45 - News 1:00 - Peter Gunn 1:30 - Sports 3:00 - Womens G. 4:00 - Bowling 4:30 - Amateur 5:00 - 20 th Cen. 6:00 - Lassie 6:30 - F Troop 7:00 - FBI 8:00 - P. Mason 9:00 - Green Ace 9:30 - Smothers 10:00 - News 10:20 - Movie 1:30 - Sign Off

KING BROS.
GRAIN & SEED CO.
Complete ELEVATOR SERVICE
AND SEED PROCESSING
FOR THE MULESHOE AREA
RE-PRINTS FROM ANY PHOTO JOURNALS
IN PAST ISSUES 8 X 10 \$2



MADE BY THE
JOURNALS
IN PAST ISSUES
8 X 10
\$2

THIS SPACE FOR SALE

Call on Your Walgreen Agency For All Your Needs
PRESCRIPTIONS VETERINARY COSMETICS DRUGS
WESTERN DRUG Phone 272-3106

Hospital..
Continued from page 3
DISMISSALS
Celia Vargas and baby girl Mrs. Jerrell Otwell Ernest Lovelady Mrs. Ernest Lovelady David Taylor Mrs. Bill Kinard and baby girl Mrs. Marceline Ovalle Alford Bleeker Barbara Ann Williams Paul Raymon Howard Cox H.N. Nivens Bob Hardaway Paul Gonzales David Talley Mike Ary

Higginbotham Bartlett Building Needs

Lumber
Paint
Wallpaper
Hardware
Houseware
Gifts

Higginbotham Bartlett MULESHOE

Abel Cable
For Year-Long Enjoyment

INSTALL NOW Three Plans for Hook-Up
MULESHOE ANTENNA CO. Call Now
Phone 272-3310

WIEDEBUSH & CHILDERS
VEHICLES ARE 2-WAY RADIO EQUIPPED
To Assure You of Prompt Service in **BUTANE PROPANE AMALIE MOTOR OIL FRAM OIL FILTERS**

DIAL 272-4218
Clovis Highway
Muleshoe
We Deliver Anywhere

The Muleshoe Journal
Published each Thursday by the Muleshoe Publishing Co.
302 West Second Street, Muleshoe, Texas
Member of the Associated Press
Entered as second class matter at the Muleshoe Post Office under act of Congress March 3, 1897
SUBSCRIPTION RATES
Immediate Territory-----\$4.00
Out of Territory-----\$4.50
Both Papers in Territory-----\$5.50
Both Papers Outside Territory-----\$6.25
Advertising rate on Application
L. B. HALL-----Publisher
RAMON MARTIN-----Editor
PAT JOHNSON-----Woman's Editor

GRAPE FIZZ
(Yield: Five 12-ounce servings)
1 pint vanilla ice cream, softened
3/4 cup (6-oz. can) frozen concentrated grape juice, thawed
3 cups milk
3 bottles (7-oz. each) ginger ale, chilled vanilla ice cream
In large bowl while beating 1 pint ice cream, blend in grape juice; gradually blend in milk.

Will Buy Good Used Clothing SWAP SHOP
Phone 272-3074

ENGINE REPAIRS
From minor to major motor repairs, our service is expert in every detail.
Try us!
Also Front End Aligning & Wheel Balancing
PLAINS AUTO SERVICE DEPT.
421 Main Muleshoe Ph. 272-4576

AUTO SPECIALISTS REPAIR SPECIALISTS

Meet the MULESHOE STATE BANK CUSTOMER of the Week



CONRAD WILLIAMS
Muleshoe State Bank honors Conrad Williams as their "Customer of the Week". Williams and his wife, Mildred, make their home 9 miles north of Goodland, where he is engaged in farming. They have three children; Wendell 15; Wenonah, 20, a student at W.T.S.U.; and a married son, Carter, who lives at Goodland. The Williams attend the Primitive Baptist Church. He has been a Muleshoe State Bank Customer for 37 years and says, "They are all nice, I think they are O.K."
Muleshoe State Bank is proud to recognize this customer of the week.

MULESHOE STATE BANK

TRADE CLASSIFIED SELL BUY ADS LEASE

WANT ADS - PH. 272-4536

1 time per word - 4¢ 3 times per word - 10¢
2 times per word - 7¢ 4 times per word - 13¢
After 1st issue, 3¢ per word each additional time.
Minimum charge 50¢
Card of Thanks \$1.00

DEADLINE FOR CLASSIFIED ADVERTISING PAGE:
For placing or cancelling ads is Monday, 4 p. m. for
Thursday's paper and Thursday, 4 p. m. for Sunday's
Too late to classify is Tuesday, 4 p. m. for Thursday's
and 4 p. m. Friday for Sunday's issue. Double rate for
blind ads.

Check your ad and report errors immediately. The
Journal reserves the right to classify, revise, or re-
ject any classified ad, and is not responsible for er-
rors after the ad has run once.

CLASSIFIED DISPLAY
85¢ per column inch
90¢ per column inch
for reverses.

1. PERSONALS

AVON, Phone 3510.
1-46t-tfc

FOR RENT, 15 ft. camper.
By day or week. Call 272-3163.
1-35s-tfc

Rex Air Sales & Service,
Write Box 232, Texico, N. M.
1-23t-tfc

If you need an auctioneer,
I can't think of a better one.
Emmette Cross, "The Cowboy
Auctioneer"
1-29s-2tc

3. HELP WANTED

Beautician needed. Call 272-
3448.
3-16t-tfc

WANTED - New and used
car get ready mechanic. Crow
Chevrolet Co.
3-11s-tfc

Local telephone solicitation
in the Muleshoe area; full or
part-time. \$1.25 an hour. Send
resume to 2109 Ave. Q, Room
216, Lubbock.
3-29t-2tc

NOTICE

I will haul and stack your
hay by the ton or bale. Phone
CA 3-3857, Plainview, Texas.
3-28s-4tp

Part time insurance inspec-
tor needed, must not be
connected in any way with the
sale of insurance. Apply to
Box 805, Lubbock, Texas
3-29t-3tc

4. HOUSES FOR RENT

FOR RENT: 2 bedroom house
at 608 East 4th. Call 946-2410.
4-26s-tfc

FOR RENT: 2 bedroom house
newly decorated. Call 272-3038
or see Mrs. Jack Lenderson at
1818 West Ave. D.
4-26s-tfc

FOR RENT OR SALE: 1 bed-
room furnished house at 209
West 13th St. Call 4932.
4-26t-4tc

For rent - 3 room and bath
unfurnished cottage, free water,
lawn maintained. One person
or couple only. See Ike or Lois
Robinson at Robinson Boot Shop
or call 272-3392 or 272-4721
4-21t-tfc

FOR RENT: Unfurnished
house. \$25 per month. Couple
only. 712 2nd St.
4-23t-tfc

FOR RENT: Nice 2 bedroom
carpet, fenced back yard, wired
for everything. 272-4052.
Lewis Stewart
4-29s-tfc

5. APTS. FOR RENT

For Rent: 3 room and bath
furnished Apt. See Sam Gho-
son at Sam's Auto Store.
5-44-tfc

Enjoy 1200 square feet of lux-
ury apartment living. 2 bed-
room, 1 1/2 baths, electric
kitchen with dishwasher and
disposal. Patio with private
yard. Fully carpeted and dra-
ped. Plus cool, clean, central
refrigerated air conditioning.
See Les Jones at the Post Of-
fice or call 272-3167.
5-28s-tfc

Furnished apartment for
rent: Air-conditioned, bills
paid. Layne Apartments, 524
South First.
5-29s-tfc

FOR RENT: A 2 bedroom
apartment and a 1 bedroom
apartment. Contact 272-4337
or Sheriffs Office, Dee Cle-
ments.
5-28s-tfc

FURNISHED APARTMENTS:
Trailer Space, Briscoe Apart-
ments. Phone 272-3465.
5-28t-tfc

FOR RENT: 3 room furnished
apt. Bills paid. Contact at
323 West Ave. E, or Call
272-4222.
5-26s-tfc

For Rent: 1 or 2 bedroom apt.
furnished or unfurnished. See
Billy or D. L. Morrison at Bil-
ly's Superette. Call 4485.
5-5t-tfc

3 room unfurnished apt. See
Spencer Beavers at Post Office.
5-10t-tfc

3 room apt. for rent. Call
or see Mrs. Jack Lenderson -
272-3038.
5-3s-tfc

3 room modern furnished apt.
Mrs. Ira Thomas, 1412 W. Ave
C.
5-22t-tfc

6. ROOMS FOR RENT

Nice quiet bedroom for rent.
Call 272-4903. 807 West 7.
6-26t-tfc

FOR RENT: Nice, quiet
bedroom. 410 West Second.
6-29s-tfc

8. REAL ESTATE FOR SALE

FOR SALE: 3-BR-2 Bath,
carpeted, drapes, garage,
carport, central heat, stove,
dishwasher, and disposal.
Paneled den and kitchen;
fenced yard and patio, close
to schools. Will carry part
of \$1500 down. Assume low
interest, FHA loan of \$12600.
803 W. 7th. Glenn Gaston
7008 Manor Dr. Ft. Worth,
Texas. Ph. 817-BV-14439.
-29t-5tp

FOR SALE: By owner - 29.9
acres adjoining Muleshoe city
limits. \$2500 per acre and
smaller portions slightly more.
Call CA 4-5877 in Plainview,
Texas.
8-26s-8tc

FOR RENT OR LEASE:
30 x 40' Building
Formerly Wards store
Will Remodel
Contact Bill Jim St. Clair
Phone 272-4630

3 bedroom, den, 2 baths,
double garage, fireplace, built-
ins, carpet, fence, central heat
& air. Richland Hills Addition.
Possession June 1. \$1000 down.
Call L. H. Alex Adams. Ph.
272-3496 or 272-3335. Apt. for
rent.
8-19t-tfc

FOR SALE: 3 bedroom, 2
bath with Built-in oven and
range. Living room, den, fully
carpeted. 2 car garage. Call
4485 or 4486.
8-28s-tfc

FOR SALE: New Home. Three
bedroom. 1 3/4 bath, carpeted,
draped, fireplace, thermal win-
dows throughout, wood floors,
1609 West Avenue B. Phone
272-4797.
8-16t-tfc

FOR SALE: 1 nice 3 bed-
room, 2 year old. 1 nice
large 3 room furnished. Both
on same lot. Priced to sell
exclusive.
CROSS REAL ESTATE AND
INSURANCE
8-29s-2tc

For Sale: Southside Gulf Ser-
vice Station. Call 272-3571. 506
South First.
8-40s-tfc

ALL THE PLEASURE OF
LIVING IN THE COUNTRY. 1
block off FRIONA highway on
the Co-op Gin Road. 4 room
house can be bought real cheap.
Smallwood Real Estate. Phone
272-4838.
8-27s-4tc

10. FARM EQUIPMENT

FOR SALE: Farm equipment
6-row John Deere Monitor; 1-
6 row Rand J Crust Buster;
2-4 row gang rotor hoe; 1-3 pt
1-drag; 4-9 row sand fighters;
2-4 row stalk cutters; 1-6 row
stalk cutter; 1-14' International
disc; 1-10' John Deere Kellfer;
2-Combine trailers; 1-4 section
harrow; 1-13' Graham Hamie;
1-4 room and bath house to be
moved. See Durwood Chisholm,
Baccus Chevrolet, Sudan, Tex-
as.
10-23t-tfc

11. FOR SALE OR TRADE

FOR SALE: Dishwasher.
Call 965-2668.
11-28t-tfc

12. HOUSEHOLD GOODS

FOR SALE: Used piano, 206
West 6th
11-29t-tfc

"Need party with good credit
in Muleshoe area to take over
payments on late model Singer
sewing machine, cabinet option-
al. Will button hole, zig-zag,
fancy designs, \$26.50. Cash or
5 payments at \$5.72. Write Credit
Manager, 1114 19th Street,
Lubbock, Texas."
12-22s-tfc

14. Farm Property To Rent

FOR RENT: 160 acres; good
10" well. 1 1/2 miles out of
Muleshoe. To be put in alfalfa
in August. Write Robert Eddins,
1710 Main, Lubbock, Texas.
14-23t-tfc

15. MISCELLANEOUS

FOR SALE: Fresh milk. Del-
iver Mon., Wed., Friday. 85¢
a gal., 40¢ 1/2 gal. Butter-
milk. Cows are T.B. and Bang
tested. R.H. White, Star Route,
Sudan.
15-28s-8tp

EXCELLENT, efficient and
economical, that's Blue Lustre,
carpet and upholstery cleaner.
Rent electric shampooer \$1.
Higginbotham-Bartlett
15-29t-tfc

Complex.

(Continued from Page 1)

'Muleshoe Ranch Inn' also in
the western atmosphere,
modern and high degree of out-
standing features equal to any
that might be found in the south-
west."

He said that services and
benefits, "usually enjoyed only
at luxury hotels or motels with
the addition of all the style and
in keeping with the old tradi-
tions from the Muleshoe Ranch
historical site atmosphere."

To be included on the five-
acre complex will be an over-
night mobile home facility with
the most modern conveniences,
including playground facilities,
barbecue setup and a permanent
type mobile home park with
other retail businesses in the
drawings."

He said the complex is to
have a 'beautiful modern
swimming pool with tables,
patio features and beautiful
landscaping."

Owners of the motel will
be Mr. and Mrs. Bill Shankles,
well-known residents of the
Muleshoe area for many years.
He said they "will welcome
inquiries from those interested
in leasing certain businesses
in the complex."

It was explained that con-
struction will get under way as
soon as plans are completed
with the first phase of con-
struction to be the motel and
the mobile home park.

Medlock said he is planning
to make other business loca-
tions available and persons in-
terested could contact him at
the Muleshoe ranch or at his
Lubbock address.

Visitors.

(Continued from Page 1)

Virgilio Brito, a Brahman cattl-
raiser who lives on a 450-
acre farm. He also raises
black beans, a popular South
American dish.

Pedro Antonio Hernandez
Perez, who raises rice and
sesame on a 238-acre farm,
and a bachelor.

Rafael Jose Jimenez Periera,
who raises sugar cane, grain
sorghum, corn, rice, sesame,
and cotton in his 500-acre farm.
Memesto Lucidio Navarro
Leon, who operates a 1000-
acre farm featuring a major
dairy. His wife, who is also
on the tour, is director of a
school which she and her hus-
band started for under-
privileged children.

Jorge Rodriguez, a county
extension agent for the Council
of Rural Welfare.

Ramon Sosa Gonzales, a
breeder of Brahman cattle on
a 1700-acre farm who is presi-
dent of the Regional Cattleman's
Association.

With him also is Mrs. Sosa
who "is busy raising - not
cattle - but seven children,"
according to the literature sent
by Farmers and World Affairs,
Inc., head of the tour.

Guide for the trip will be Von
Peacock, FWA Latin-American
field representative.

WANTED: Someone with good
credit to assume balances on
spinet piano in this area, small
monthly payments, first pay-
ment in September. Write Mr.
Hall, Box 3192, Lubbock, Texas
79410
15-29t-3 tp



Arthur C. Splawn

Splawn Graduates From Air School

CHANDLER, Ariz.-- Second
Lieutenant Arthur C. Splawn,
son of Mr. and Mrs. Howard K.
Splawn of 419 W. 9, Muleshoe,
has been awarded U. S. Air
Force silver wings upon gradu-
ation at Williams AFB, Ariz.

Following specialized air-
crew training at other bases,
he will be assigned to MacDill
AFB, Fla. He will be an F-4C
Phantom II pilot in the Tacti-
cal Air Command which pro-
vides combat reconnaissance,
aerial firepower and assault
airlift for U. S. Army forces.

The lieutenant, a graduate of
Muleshoe High School, received
a B. B. A. degree from West
Texas State University. He
is a member of Alpha Kappa
Psi.

Lieutenant Splawn was com-
missioned in 1965 upon com-
pletion of Officer Training
School at Lackland AFB, Texas.

Shots. . . .

(Continued from Page 1)

it was explained.
The shots will be given
from 1 to 5 p.m. on the
ground floor of the court-
house.

"We certainly are grate-
ful to the nurses and to the
doctors who have contrib-
uted their time so generously
to make our program a suc-
cess," Mrs. Mills summed
up.

The women's service club
chairman estimates 1000
shots have been given since
monthly series was started
in March. Mrs. J.C.
Spain is president of the
Jaycee-ettes.

Pro- Am

(Continued from Page 1)

Mingus, Friona; Leroy Thomp-
son, Muleshoe, and Max Ma-
lone; Olton, formed the third
team; and Ricky Botkin, Mule-
shoe; Ted Whillock, Morton;
Jack Straw, Hereford; and
Bob Barber, Muleshoe, made
up the other first place team.

Amarillo's Johnny Ethridge
had a two-under-par 79 for low
amateur honors. Russell Ha-
berer, Muleshoe, and Tim Hun-
ley, Post, tied for second with
71 scores.

Bob Baker of Hereford was
low pro with 65. Ray Hardy
of Clovis carded 68. In the
pro- pro- division, David
Bessire of Lubbock and Hardy
had a 63 low ball total.

Weeds

(Continued from Page 1)

the sheriff's office, police
and even units from the
volunteer fire department
joining in. He was spotted
at least two or three times.

One of his escapades in-
cluded changing his clothes
and returning to downtown
Muleshoe, apparently to at-
tempt to pass more checks,
the sheriff said. However,
he was recognized as the
same boy who had passed the
earlier checks, and the
merchant gave chase. The
boy outran him and presuma-
bly hid in weeds again.

The sheriff said the boy
is 5 feet, 8 inches tall and
weighs 140 pounds.

This would appear to be
check-passing time, the
sheriff said, since "we ar-
rested six or seven other
persons on alleged bad check
charges," over the weekend.

Closing

(Continued from Page 1)

any more."

Another comment heard was:
"This Saturday opening routine
is for the birds; it simply
isn't done any more. Prac-
tically all the towns in Texas
now close their courthouses
all day Saturday; they found it
simply didn't justify the extra
cost."

She explained that if the
offices are kept open on Satur-
days, "Somebody's going to
have to pay the various
clerks for four more hours'
work each week."

However, it was pointed out
by one courthouse official, that
"one of the main reasons why
we started closing on Satur-
day mornings was to forestall
a raise in salaries for all
clerks." She said the five-
day schedule was arranged in
lieu of a general raise for
courthouse workers."

The courthouse has taken no
definite action on the matter,
although officials have been
discussing the matter among
themselves since the Go-Go
suggestion was made.

Safety

(Continued from Page 1)

imately 150 fatalities and thou-
sands more suffer painful dis-
abling injuries each year in
Texas, plus the great economic
loss, causes profound physical
and psychological damage
suffered by members of farm
families that are involved."

During this special week, a
statewide farm accident pre-
vention education program will
be undertaken by the Texas
Farm Bureau, the Texas Farm
and Ranch Safety Council, the
Texas Agricultural Extension
Service, 4-H Clubs, the Texas
Safety Association, Future
Farmers and Future Home-
makers of Texas and the Bailey
County Farm Bureau, with
the theme "Safety is Victory
Over Accidents."

County Farm Bureau Presi-
dent James Warren said that a
different phase of safety would
be emphasized each day during
the week: Sunday - reverence
for life; Monday - safety be-
gins at home; Tuesday - ag-
ricultural chemicals; Wednes-
day - prevent falls; Thursday -
rural highway safety; Friday -
farm machinery; Saturday -
recreation safety.



BOMBS AWAY!

Hi-Plains Happenings

LIQUOR SOUGHT

The 33-year-old struggle to determine the legality of beer
sales in Precinct 2 of Cochran County may finally come to an
end as the forces of the "wets" and the "drys" square off at
the polls in a local option election August 2.

The election was ordered by members of the Cochran County
Commissioners Court, meeting at the courthouse Monday morn-
ing following the presentation of a petition to County Judge
J. A. Love requesting the action.

Application for the petition was signed by 13 Whiteface
residents and filed by County Clerk Lessye Silvers Friday
morning. The petition, bearing 66 signatures and eight notar-
ized statements by poll tax exempt voters over 60 years of
age, was filed in the clerk's office early Monday and exam-
ined by the County Tax Assessor-Collector.

--Morton Tribune

TAX RATE UPPED

A whole conglomeration of necessary business lay before
Hereford's school trustees in their regular meeting Tuesday
night, when they had to really "beat it out" in efforts to have
the Hereford schools in good running shape for the upcoming
school year.

Big items on the agenda involved planning the area voca-
tional school and setting a new tax rate to meet financial needs
of the system this year.

Taxes had to go up to meet increased costs, from \$1.85 to
\$2.10, a 13.5 per cent increase. This figure is close to what was
predicted in public forum earlier in June.

--Hereford Brand

BONDS APPROVED

Olton's city council set its sights on street repairs as soon
as possible this week after certifying voting returns which
approved a \$60,000 bond election at the polls last Saturday.

A turnout of 223 voters gave the green light on the street
improvements, 129-90. Four ballots were mutilated.

Only apparent disappointment to the council was the light
turnout. They had hoped for a better representation of voters
this time.

An earlier election saw the proposal defeated by a 139-120
count.

Approval of the bond issue means about 25 blocks of new
paving and a large amount of seal coating and repair to other
city streets.

About \$35,000 will be spent on new paving, and \$25,000 on
seal coating.

--Olton Enterprise

TAX SUITS FILED

City Manager Richard Bean and Mayor J. E. Chisholm
jointly announced this week that the city had begun legal pro-
ceedings against property owners who have failed to pay their
taxes.

The action was started last year when the city hired the
law firm of Gowdy and Kirk, to study the delinquent tax rolls,
and take what action they felt necessary to collect some of the
over \$40,000 in back taxes.

Hank Gowdy, who is handling the proceeding for the city
said to date 33 cases have been filed, for collection in dis-
trict court, and more filings are anticipated.

--County Wide News, Littlefield

BETTLE WORRY

Last week, for the first time so far as local residents
know, the European Elm Bark Beetle, which is a known car-
rier of Dutch Elm Disease, was found in Farwell.

The insects were found in great numbers by John Christian
in an elm tree in his back yard. Christian, a graduate ento-
mologist, said that he first suspected the beetles might be
present when he noted small twigs from the tree falling to
the ground. It was not long before the tree was showing much
damage.

--State Line Tribune, Farwell

MERCHANTS MEET

All Lockney merchants are invited and urged to attend a
meeting tonight (Thursday) at 7:30 to discuss mutual problems
and promotional ideas. The meeting is scheduled for the Com-
munity Room of First National Bank.

The Chamber of Commerce is arranging details. Erwin
Boyd, C-C president, has appointed a committee composed of
Leon Wofford, Thurman Davis, Claude Brown and Art Baker
Jr., to contact all local merchants.

An August sidewalk sale or trade day will be discussed.
Several persons have expressed a belief that a business
persons' meeting would be advantageous to all. Ideas of var-
ious nature will be aired.

--Lockney Beacon

BUSINESS DIRECTORY

Robinson's Boot Shop
127 Main - Phone 272-4721

FINE WESTERN WEAR
Men, Women & Children

SHOE REPAIR SHOP

Ike Robinson
Serving Muleshoe since 1925.

Farley Insurance Agency
Real Estate and Insurance

FARM & CITY LOANS
SERVICE BEYOND THE CONTRACT

209 West Avenue B
Off. Ph. 272-4721 Res 272-3778

SINGLETON FUNERAL HOME
24 HOUR AMBULANCE SERVICE

PHONE 272-4574

HEATHINGTON LUMBER COMPANY

Lumber, Paint
Builders Hardware

Clovis Rd. Phone 272-4797

MULESHOE STATE BANK

NOW PAYS , EFFECTIVE JULY 20, 1966

5%

ON ONE YEAR CERTIFICATES OF DEPOSIT

Interest Payable Semi-Annually

4%
Interest
Compounded
Semi-annually

on
**SAVINGS
ACCOUNTS**

'It Does Make A Difference Where You Save'

MULESHOE STATE BANK

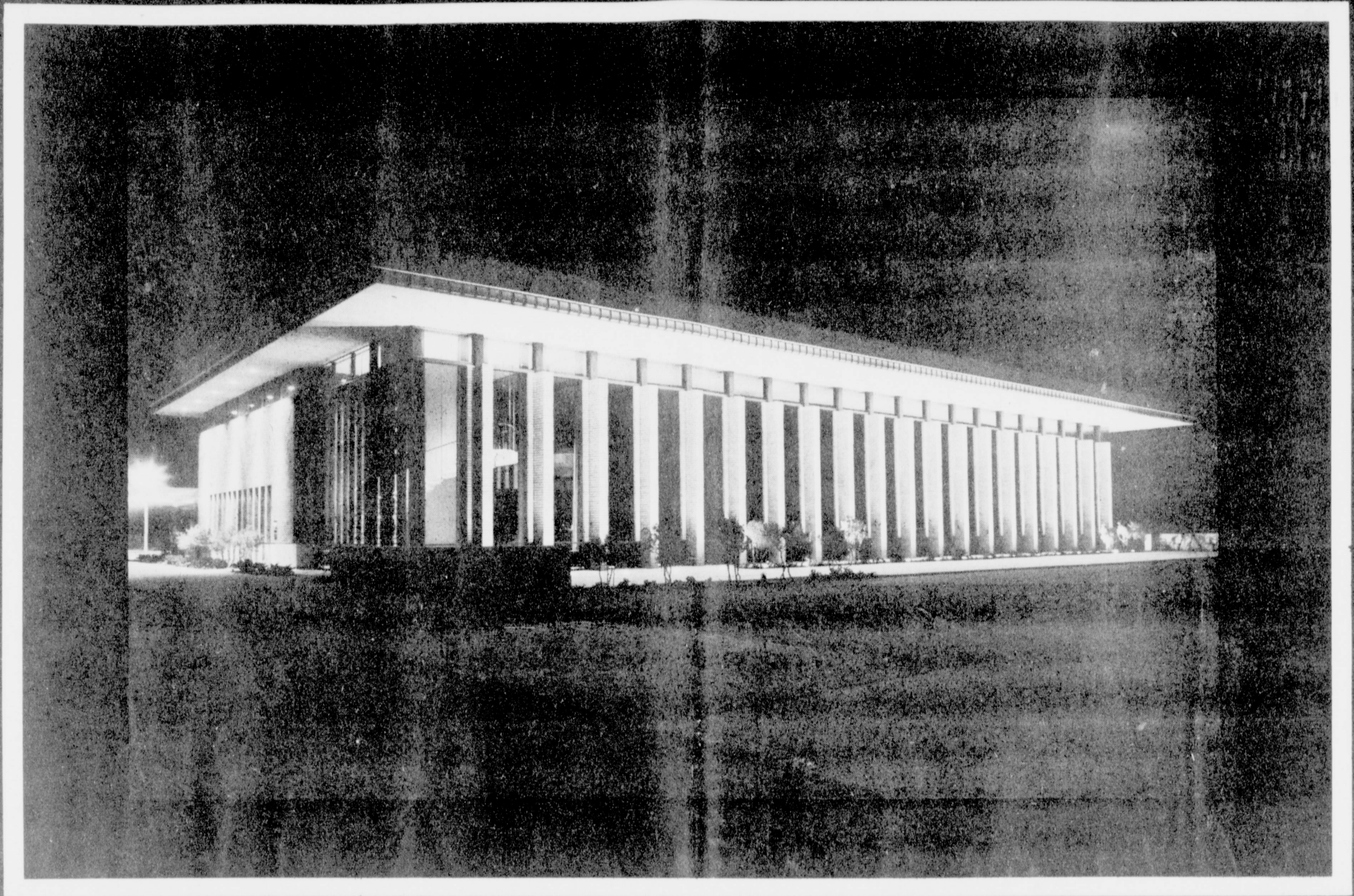
Member FDIC

US Depository

Phone 272-4571

Muleshoe, Texas

You are **INVITED**



To The

GRAND OPENING

OF THE NEW

**First Federal Savings And Loan Association
Home Office - 801 Pile St.**

Sat. And Sun. July 23rd And 24th.

Ribbon Cutting

10 A.M. July 23RD

HOURS JULY 23rd 10:00 A.M. - 5 P.M. - JULY 24th 2 P.M. - 5 P.M.

REGISTER FOR FREE DOOR PRIZES

Preface

The directors, officers and employees of the First Federal Savings and Loan Association are proud to be a part of a business which has as its aim the betterment of the family as well as the community. During the 32 years First Federal has been in business, it has made a total of 16,503 loans aggregating \$9,132,227 to the people of Clovis and its trade area. First Federal Savers have received dividends totaling \$12,754,907 since its organization. We now serve approximately 4600 mortgage loan customers who have borrowed 42.8 million and 11,334 savings customers who have saved 41.3 million. Our total assets now approx. \$50 million.

It is gratifying to have the increasing number of people use our Savings and Loan Services because we know that many of these come to us on the basis of the recommendations of friends and neighbors. This continued confidence in our management -- as attested by your continued patronage -- can only spur us on to provide even better thrift and home financing services in the years ahead. The new First Federal building is evidence that we intend to do this. The years ahead do indeed look bright for Clovis in its realm of growth. Clovis is the hub for this trade area and as it grows your First Federal Savings & Loan Association will grow. We want you to think of First Federal as being your Savings and Loan Association, as it is a mutual association which belongs to those who are savings account holders and borrowers in the Association.

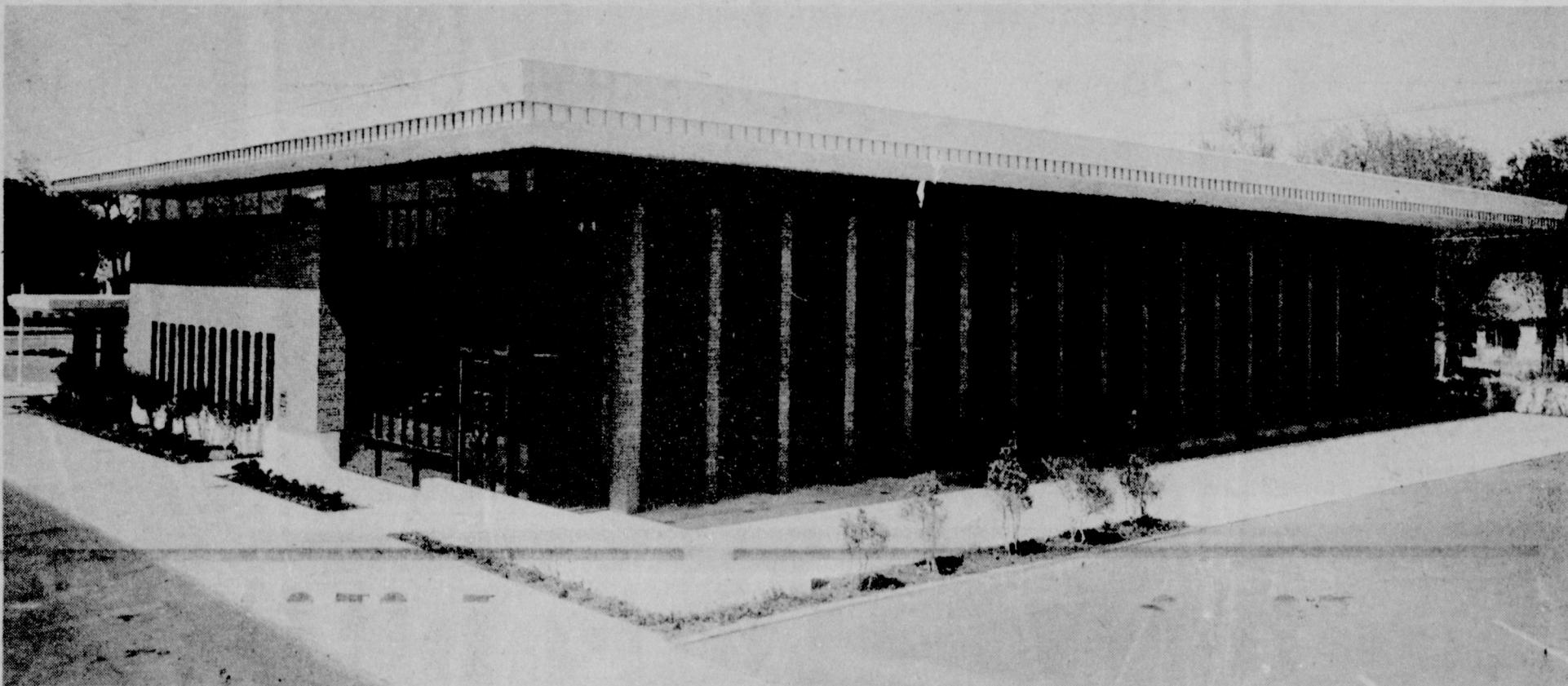
ANNOUNCING --

A BIG DIVIDEND
PAID ON ALL
Savings Accounts

5%

DEPOSIT BY 15th EARN FROM 1st
AT
FIRST FEDERAL SAVINGS AND LOAN
ASSOCIATION

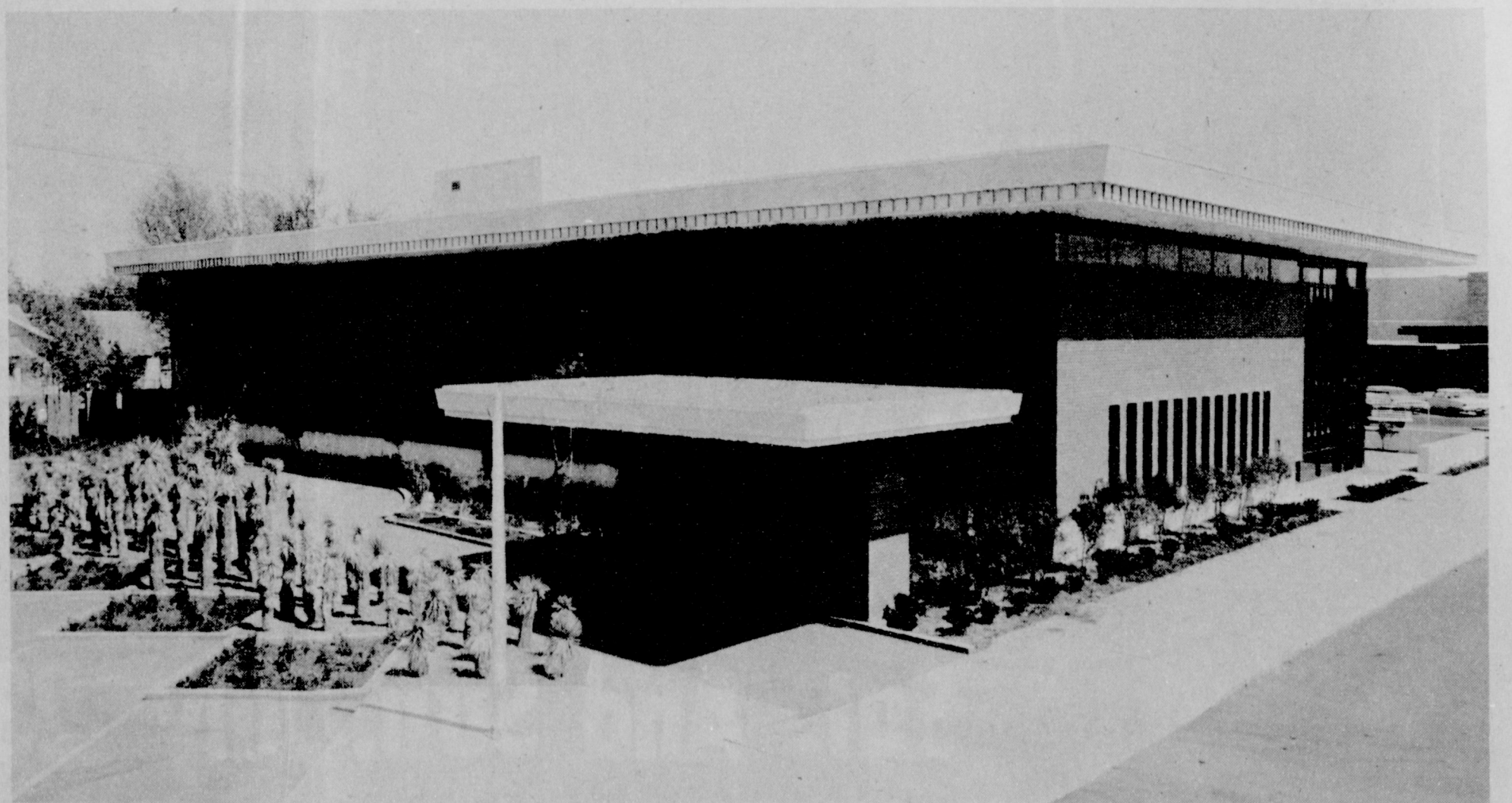
CONGRATULATIONS



To The Officers And
Directors Of First
Federal Savings And
Loan Association On
Their New Home
Office Building.

It Adds Beauty And Dignity To The Business Community
Of Clovis And Vicinity.

We Are Proud Of Our
Accomplishments As The
General Contractor For
This Project. Let Our
Firm Consult With You
On Your Next Building
Program.

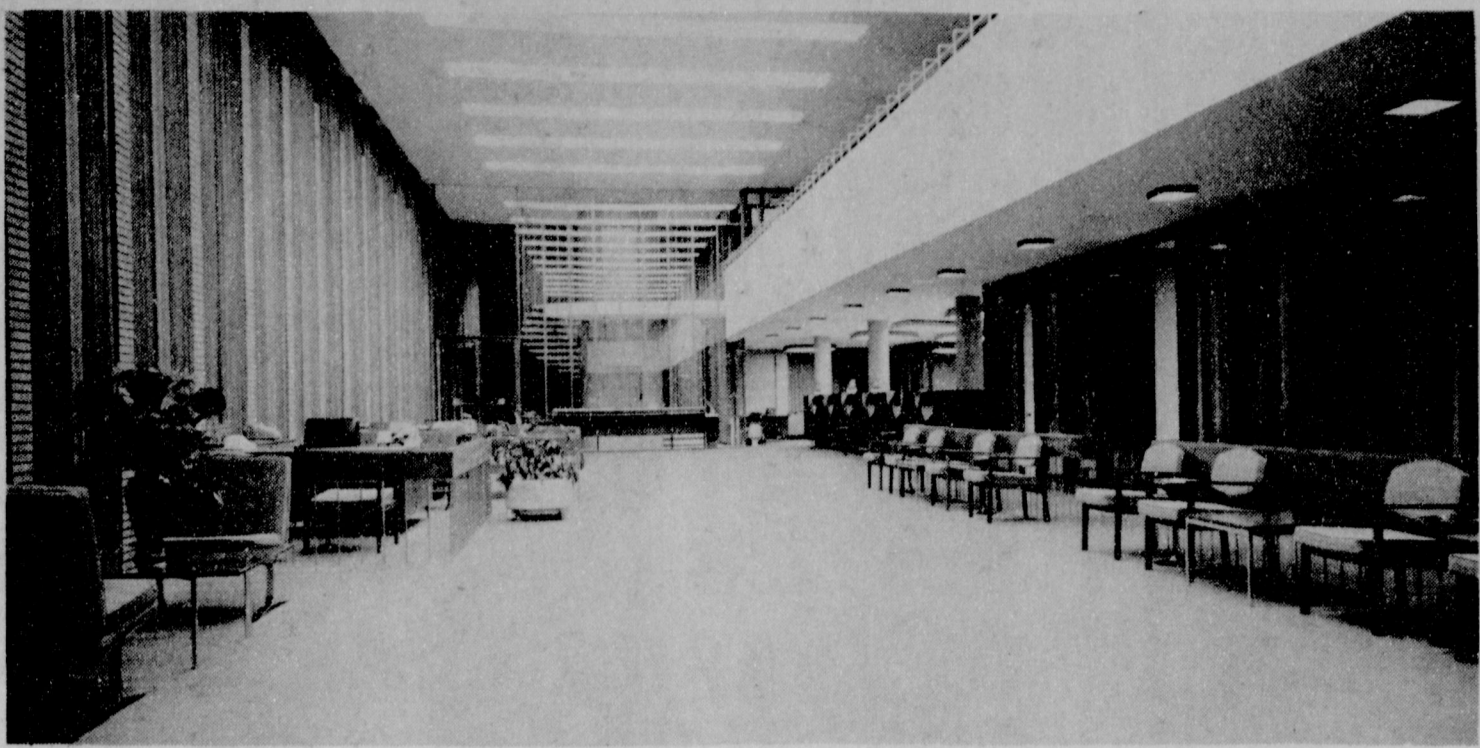


GRIGGS AND WILLIAMS

CONSTRUCTION COMPANY INCORPORATED

BOX 781 - CLOVIS, N. MEX.

Our Congratulations



To The Officers And Directors Of
First Federal Savings And Loan On
The Dedication Of Their New Building.

We Are Pleased To Have Been The
Electrical Contractors On The
Beautiful Addition To The Business
Community Of Clovis.

MOORE ELECTRIC CO.

1016 Fairway Terrace

Clovis, N. Mex.



SCOTT MCGHEE was elected to the First Federal Board of Directors January 20, 1960. Mr. McGhee is owner of the McGhee Trucking Company. Mr. McGhee is a member of First Federal Loan Committee.

Historical Development Of First Federal

On July 23, 1934, a meeting for the purpose of the organization of the "First Federal Savings and Loan Association of Clovis" was called to order by S. A. Jones, temporary chairman, with C. Roy Smith serving as temporary secretary. Mr. Smith called the roll of temporary directors, who signed director acceptance.

The first Board of Directors were made up of the following men: -- J. B. Teague, President; Dr. L. C. Cox, Vice-President; S. A. Jones, J. B. Comer, and J. W. Board; with C. Roy Smith being appointed Secretary-Treasurer to manage the association. Mr. Otto Smith and Fred Dennis were appointed attorneys to represent the association.

The location to commence business was 115 West 4th Street, Clovis New Mexico.

At this meeting a resolution was adopted to apply to the Federal Home Loan Bank for membership, which was immediately granted. Prior to this, a Federal charter had been approved on July 10, 1934, but was not delivered until the July 23 organizational meeting.

At the time of organization of First Federal Savings and Loan Assn. of Clovis it had thirty members with assets of \$5,600. C. Roy Smith, Secretary-Treasurer served the first year without compensation.

At the beginning of the second year the Board of Directors approved a salary of \$50, per month for Mr. Smith. In the meantime First Federal had begun making progress for on November 3, 1934, the Federal Savings & Loan Insurance Corporation approved First Federal as a member, insuring its savings accounts.

On February 15, 1935, the Board of Directors was increased in number from five to seven with the addition of J. H. Lee and Add Hobbs of Portales. On June 3, 1936, A. H. Ribble of Portales replaced Add Hobbs on the Board of Directors, however, A. H. Ribble soon resigned with C. Roy Smith replacing him as a member of the Board on January 20, 1937. At this same meeting Otto Smith was elected a member of the Board to fill the vacancy of J. W. Board who resigned.

Arno Rodes was elected a Director on December 2, 1938, to replace J. B. Reague who resigned. W. H. Spaulding was elected a Director on July 7, 1939, to fill the vacancy left by S. A. Jones who resigned. N. W. Ballew was elected a Director on January 21, 1942, to replace J. H. Lee who had resigned. George P. Baxter was elected a Director on July 7, 1944, to replace Dr. L. C. Cox who had resigned.

The constitution and by-laws were amended on August 14, 1959, to provide for eleven board members instead of seven, which resulted in the election of the following four men to the board: Clyde Rayl, Lynn L. Martin, Reese Cagle and Roy L. Keeter.

Scott McGhee was elected a Director on January 20, 1960, to fill a vacancy left by C. Roy Smith. E. T. Hensley, Jr. was elected on May 11, 1961, to fill the vacancy left by the death of Otto Smith. E. C. Kelso was elected on June 14, 1962, to fill the vacancy left by the death of J. B. Comer. Carl P. Rodolph was elected on February 10, 1965, to fill the vacancy left by the death of W. H. Spaulding. K. Barnett, Jr. was elected on

(Continued To Page 5)



WE SALUTE PROGRESS!

Our Best Wishes To The Officers And
Directors Of First Federal On The
Opening Of Their New Home Office.

It Is A Privilege To Work With This Organization
In Loans-Insurance And Appraisals.

Fred McGinnis

Company

BOX 689

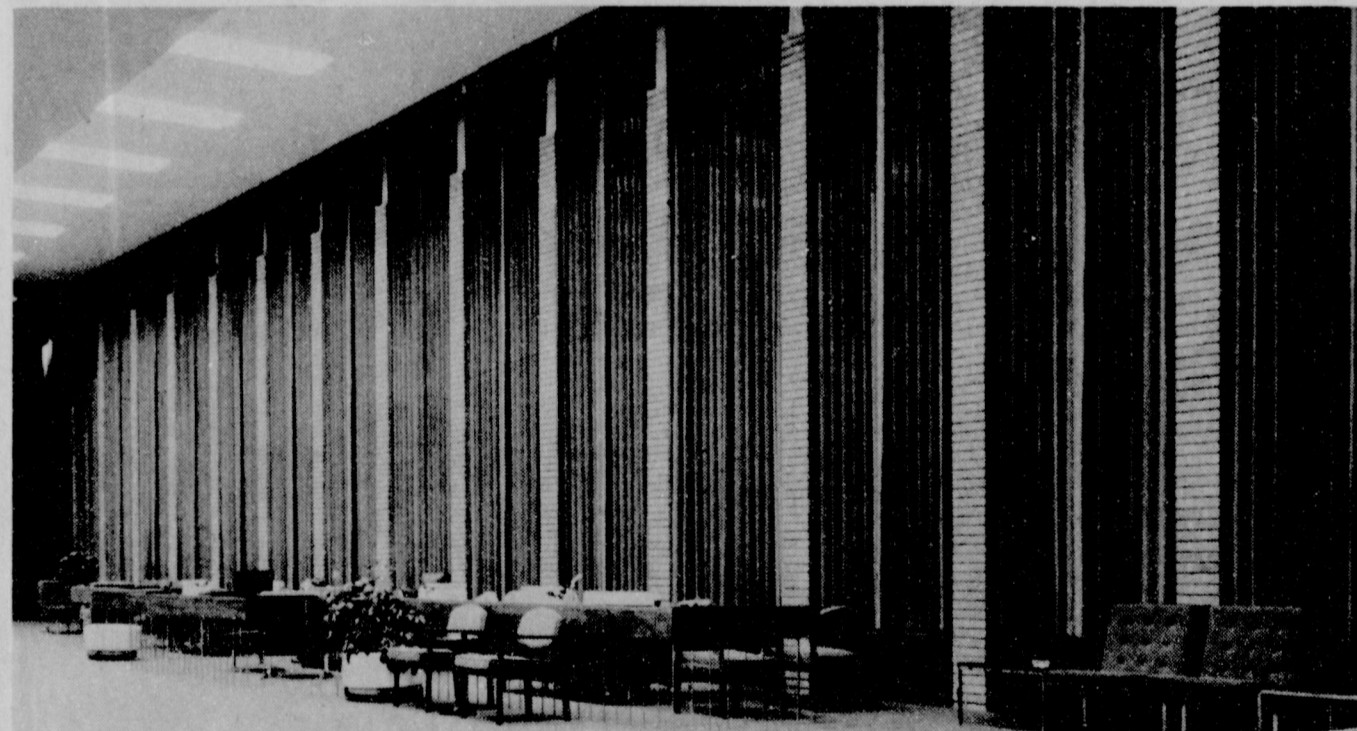
CLOVIS, NEW MEXICO

Real Estate

Beauty - Simplicity - Durability In Modern Office Equipment



MR. CLYDE RAYL



CONGRATULATIONS AND GOOD LUCK TO FIRST FEDERAL --
WE ARE PROUD TO HAVE FURNISHED ALL THE DESKS AND
OFFICE ACCESSORIES ALONG WITH THE COMPLETE LOBBY
AND EMPLOYEE LOUNGE FURNITURE.

GOODMAN OFFICE SUPPLY

1212 Main St.

Clovis, N. Mex.

Ph. 763-5589

First Federal As Savings Institution

In its function of encouraging thrift, First Federal endeavors to serve all types of savings and investment customers. These include the systematic saver who sets up a regular savings program with every intention of

adhering to it rigidly; the casual saver who saves in irregular amounts for a variety of purposes and who may draw on his savings for a specific purpose, a down payment on a new home, new car, vacation and

etc.; the individual who has already accumulated a specific sum and wishes to invest it safely for a regular source of income; and those who wish to accumulate a larger fund by investing the income derived from a savings fund, First Federal's passbook and the certificate accounts are described as follows:

1. **PASSBOOK SAVINGS ACCOUNT** - a customer may save any amount at any time. Dividends are credited to this type account quarterly on March 31st, June 30th, September 30th and December 31st. 2. **CERTIFICATE SAVINGS ACCOUNT** - in which the customer may save in multiples of \$100. Dividends on this type account are paid by check and mailed to the saver on each quarterly dividend payment date.

Both type savings accounts start earning from the 1st of the respective month in which the account is opened or added to, provided the money is saved by the 10th of the month. The savings account must be with First Federal at the quarterly dividend paying date in order to participate in distribution of the earnings paid to the saving members. The amount of dividend paid is based on the earnings of the Association. First Federal's current dividend rate on savings is 5% per annum.

The following type of accounts may be opened at First Federal:

1. Individual Account
2. Joint Tenancy Account
3. Fiduciary Account
4. Joint Trust Account
5. Individual Trust Account
6. Corporations
7. Institutions
8. Organizations
9. Government Agencies

A man and wife may have accounts insured up to \$30,000 and a man and wife with one child may have insured accounts up to \$70,000.

EXAMPLE

Man	\$10,000
Wife	10,000
Man and Wife	10,000
Total \$30,000		
Man	\$10,000
Wife	10,000
Child	10,000
Man and Wife	10,000
Man and Child	10,000
Wife and Child	10,000
Man, Wife and Child	10,000
SAFETY Total \$70,000		

Undoubtedly, safety ranks first in the minds of the great

majority of those who save. The First Federal saver has confidence that his savings are safe, that he will not lose his investment. The insurance of savings accounts by the Federal Savings & Loan Insurance Corporation (FSLIC) gives him this confidence as well as the fact that our association has attained a strong financial position, with reserves of approximately 8.5% of its Savings Accounts. Good sound management also has added to the safety of the individual savings.

AVAILABILITY
It is the policy of First Federal to pay all withdrawal requests immediately on demand, and no saver has ever had to wait for his money, although regulations provide that upon receipt of a written request from any holder of a savings account of the association for the withdrawal from such account of all or any part of the withdrawal value thereof, the

association shall within 30 days pay the amount requested.

CONVENIENCE
To the potential customer convenience means a variety of things, such as parking, drive-in window facility, location and accessibility of the association's office. To others it is the ease with which an account may be opened, added to, or withdrawn. First Federal, a friendly savings institution offers all of these atomic age conveniences including a TV drive-in window for savings deposits and loan payments.

BRAM

Our Best WISHES TO FIRST FEDERAL SAVINGS AND LOAN. GRAHAM Abstract Company P.O. Box 626 Ph. 356-4721 Portales, N. Mex.

CONGRATULATIONS
To First Federal Savings And Loan On Their New Office Building

Automotive Replacement Parts
C & T
AUTO SUPPLY INC.
Portales, N.M. 500 E. Second St.

association shall within 30 days pay the amount requested.



MIKE HARE
Loans



GENE ECHOLS
Loan Service



PAUL E. HUMBERT
Teller
Portales Branch

Our Best Regards To
First Federal Savings And Loan
On Dedicating Your New
Home Office Bldg. July 23-24

A MIGHTY BIG ASSET FOR EASTERN NEW MEXICO.

HENRY T. WICKER
REALTOR
An Ass'n.
812 E Brazos Portales

Congratulations
FIRST FEDERAL SAVINGS AND LOAN ASS'N.
FROM
CASHWAY
SUPERMARKETS - CLOVIS, N. MEX.

New Mexico Citizens Can Justly Be Proud Of The New, Ultra Modern First Federal Savings And Loan Building -- One Of The Southwest's Most Magnificent New Structures.

Our Congratulations To The Officers And Directors On The Formal Opening Of This New Building.

Douglas B. Stone, President

Portales National Bank
109 E. 2nd Portales, N.M.
Member FDIC

CONGRATULATIONS

The Entire State Of New Mexico Will Admire And Enjoy The New First Federal Savings And Loan Building.

The Officers And Directors Are To Be Commended On Making This Beautiful Addition To New Mexico Possible.

1st National Bank
Of Portales
316 W. 2nd Portales, N.M.
Member FDIC

CONGRATULATIONS



To The Officers And Directors
Of First Federal Savings And
Loan Association From

HUNKER ABSTRACT CO.

304 Rencher St.

CLOVIS - - - NEW MEXICO

Abstracts
Title Insurance

Bernard Hunker
Owner

Dividends, Not Interest, Paid To Stockholders

You won't collect any interest on money you have in a savings and loan association, but the dividends you get probably will be bigger than the interest a commercial bank would pay.

On the other hand, when you become a shareholder in a savings and loan association, you actually own stock in the organization instead of being a depositor, points out Clyde Rayl, president of 1st Federal Savings and Loan Association.

"MUTUAL THRIFT"
Mr. Rayl describes the savings and loan setup as "a mutual thrift organization, in which people place money in share accounts." When they do this, they become shareholders. The money is used in most cases to finance homes.

Dividends, not interest, are paid to shareholders out of profits. Because profits are never a certainty until they are made, savings and loan associations can only anticipate, rather than promise, a specific dividend rate.

DIFFERENT THAN BANKS
On the other hand, the commercial bank is a depository of funds. When you put money into a bank savings account, you know in advance what the interest rate will be. This rate is guaranteed by the bank.

Banks usually make immediate payment of time deposit, or savings account funds on demand. They may delay payment up to 30 days, but no longer, before making the payment in full.

Withdrawal of funds from a savings and loan association actually involves application by the shareholder to the association for repurchase of shares.

Most savings and loan associations now buy back the shares promptly, but there is always a possibility that an association cannot do so if they have a high percentage of funds tied up in long-term real estate mortgages.

DEPOSITS INSURED

However, funds are insured by an agency of the federal government.

If the association can't pay off within 30 days, members asking share repurchase can be put on a rotation basis, getting up to \$1,000 of their funds each time their names come around again, until they have been paid back all their money from the association's receipts.

Only if this "take your turn" maneuver fails may an association be found "in default." In this case, the Federal Savings and Loan Insurance Corp. will make good member accounts up to \$10,000 per account.



To
First Federal
Savings And
Loan Association



JAY B.
THOMPSON
AGENCY

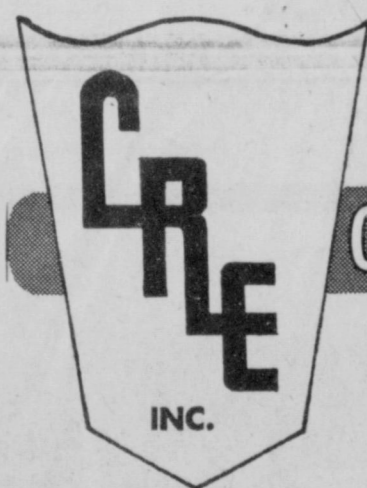
TEL. 356-4488

107 NORTH AVENUE A

PORTALES, NEW MEXICO

OUR CONGRATULATIONS TO FIRST FEDERAL SAVINGS AND LOAN ASS'N

"ALL CLOVIS IS PROUD
OF YOUR NEW HOME
OFFICE BUILDING"



CLOVIS REAL ESTATE INC.

"WE SELL CLOVIS"

CALL

763-5503

1217 Main - Clovis



FAYE FARROW
Asst. Secy.-Treas.
Accounting Department

History --

(Continued From Page 3)
March 11, 1965, to fill the vacancy left by the death of George P. Baxter.



CLYDE RAYL, president-manager of First Federal and elected to its Board of Directors on July 31, 1959, Mr. Rayl prior to his association with First Federal served twenty years with the Citizens Bank and twelve years as co-owner of the Clovis Cattle Commission Company. During the seven years Mr. Rayl has been president-manager of First Federal its assets have doubled in size, having grown from 23.7 million to \$49.6 million.

Our Congratulations

To

First Federal Savings
And Loan Association

COLONIAL PARK

615 Main

#6 In The Village

Ph. 762-4541

WE SALUTE

FIRST FEDERAL ON
THEIR GRAND OPENING

July 23-24

Flowers For Glad Or

Sad Occasions

Flowers By Wire

"LET GEORGE DO IT"



Reiser
Florist

1207 Mitchel Clovis

WE CONGRATULATE
FIRST FEDERAL SAVINGS AND
LOAN ON FORGING ANOTHER
LINK IN A STRONG AND
PROSPEROUS

CLOVIS

The Grand Opening Of This Beautiful Structure, July 23-24 Marks The Culmination Of A Dream And The Beginning Of A Reality For The Officers And Directors Of First Federal. We Applaud This Contribution To Clovis' Rapidly Growing Business And Financial District.

THE

CITIZEN BANK

Clovis - Texico - Fort Sumner
Member F.D.I.C.

OUR BEST WISHES

To
FIRST FEDERAL
SAVINGS And
LOAN On The
GRAND
OPENING
JULY 23-24

Of Your New
Home
Office



CARMACK & SONS, INC.

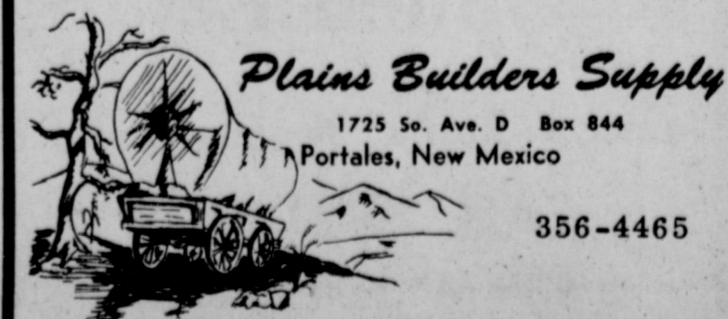
314 MAIN CLOVIS, N. M.

"The men's store where women like to shop"

All Of
EASTERN
NEW MEXICO
IS PROUD
OF THE NEW
FIRST FEDERAL
BUILDING

OUR
SINCERE

BEST WISHES!



Plains Builders Supply

1725 So. Ave. D Box 844
Portales, New Mexico

356-4465

**32 Years Of
Continuous Growth
1934-1965**

Dec. 31, 1934	\$30,202
Dec. 31, 1935	108,647
Dec. 31, 1936	183,016
Dec. 31, 1937	271,723
Dec. 31, 1938	393,414
Dec. 31, 1939	523,654
Dec. 31, 1940	684,038
Dec. 31, 1941	820,653
Dec. 31, 1942	910,840
Dec. 31, 1943	1,474,750
Dec. 31, 1944	1,778,687
Dec. 31, 1945	2,106,126
Dec. 31, 1946	3,172,707
Dec. 31, 1947	4,494,529
Dec. 31, 1948	5,465,780
Dec. 31, 1949	6,526,474
Dec. 31, 1950	8,668,163
Dec. 31, 1951	9,486,157
Dec. 31, 1952	11,327,644
Dec. 31, 1953	11,805,289
Dec. 31, 1954	14,835,186
Dec. 31, 1955	18,621,963
Dec. 31, 1956	20,315,628
Dec. 31, 1957	20,685,332
Dec. 31, 1959	25,084,249
Dec. 31, 1960	26,984,411
Dec. 31, 1961	30,082,975
Dec. 31, 1962	34,120,509
Dec. 31, 1963	39,417,946
Dec. 31, 1964	45,135,135
Dec. 31, 1965	49,582,985



ARNO A. RODES has served as a member of the Board of Directors of First Federal since 1938 having owned and operated the Rodes Men's Store at 214 Main until his retirement.



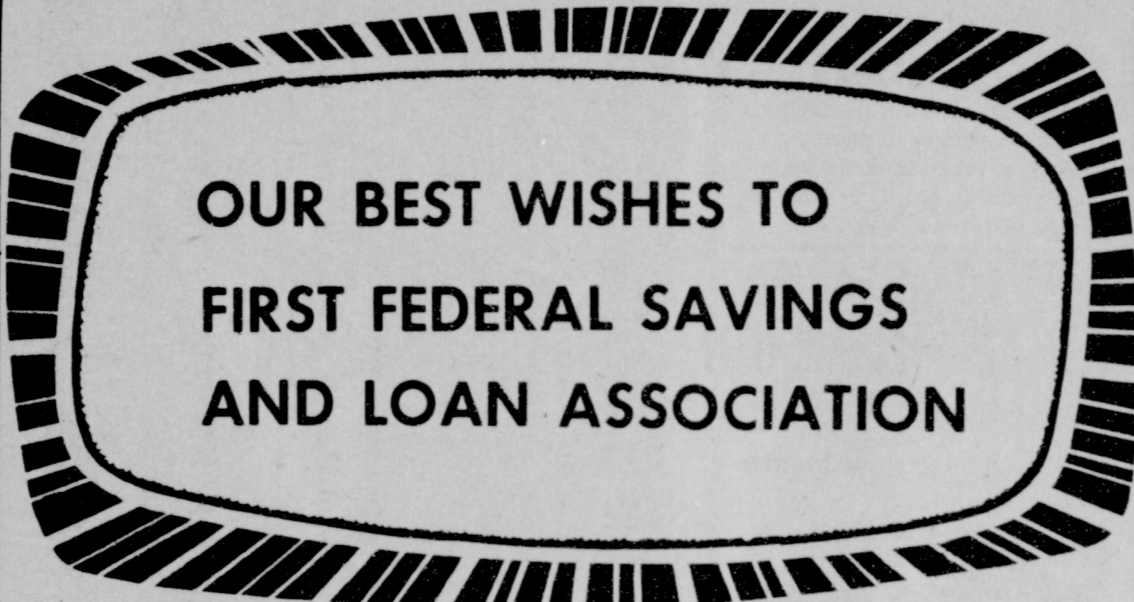
ROY L. KEETER was elected a Director July 1959 and is a member of its loan committee. Mr. Keeter is the manager of the Clovis Production Credit Association.

A & B Realty

Our Congratulations To
Our Neighbor - - - From

**Bob Horton
Arlene S. Cleveland
E. H. (Monk) Horton**

Across The Street
115 E. 9th St. Clovis
Phone 762-4561



We Are All Proud of Your Building

R. B. Allen Lumber Company

317 SO. MAIN AVE. TELEPHONE REpublic 356-6688

Portales, New Mexico

A Complete Building Service

Sherwood Mortuary, Inc.

"Home of the
DALE LEE SHERWOOD
MEMORIAL CHAPEL

10th at Main ☆ Phone 762-4435

This is a home of peace and solace for the bereaved and is dedicated to the memory of those who have passed on to eternal sleep.

Troy L. Sherwood Charles V. Sherwood

**We
Congratulate
FIRST FEDERAL**

Savings And Loan Association
On The Grand Opening Of
Their New Home Office Bldg.
July 23-24

To Buy-Sell-Trade See



**BURNS
AGENCY**

"Since 1908"

Real Estate

James F. Burns Thomas E. Burns

CALL 762-4403
420 Mitchell - Clovis



**Our Congratulations
To First Federal**



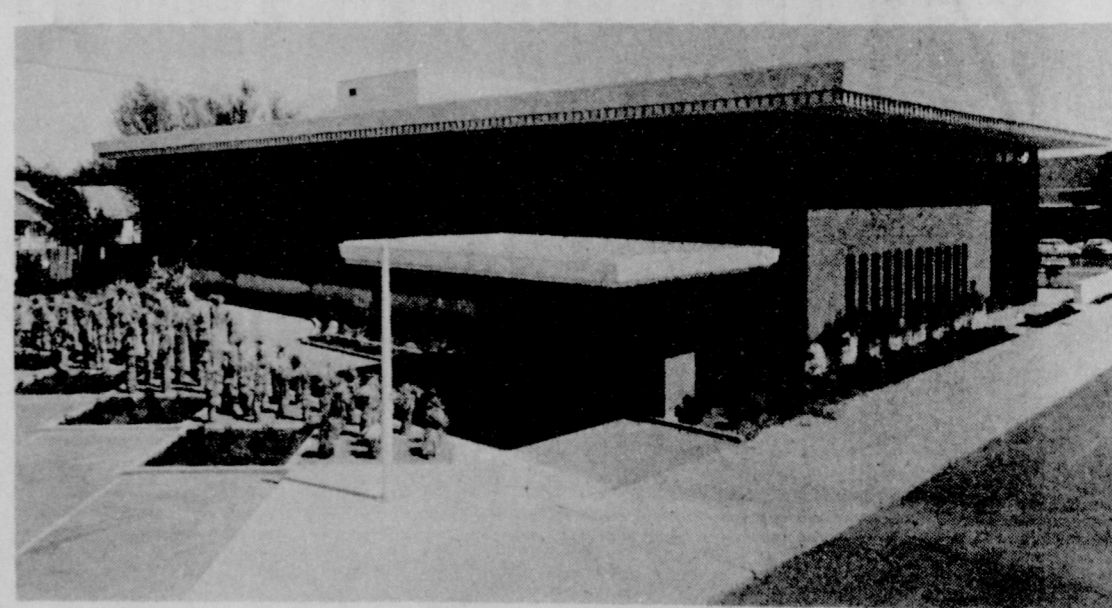
The Beauty Of This Interior Is Emphasized
By The Choice Of Complimenting Floral
Arrangements. To Have A Restful And
Beautiful Interior For Your Office Let Us
Design Floral Arrangements For You.

**CLOVIS FLORAL
COMPANY**

Established In 1922

501 E. 5th

Ph. 763-5543



We Are Pleased To Have Furnished
The Paving For The New First Federal
Building. Beautiful Grounds And
Parking Areas Add To The Beauty
Of A Well Planned Building.

Our Congratulations To The
Officers And Directors On
Their Grand Opening

July 23 - 24

**K. Barnett And Sons
Contractors**

2405 W. 7th

- Clovis -

Ph. 762-4407

★ FREE GIFTS FOR EVERYONE!

Drive Your Car With The Children Into Our TV Drive-In Window To See Themselves On TV And Receive A Free Gift.

★ REGISTER FOR DOOR PRICES!

1. One Color TV Set!
2. Two Prizes Of Earnings On \$1,000,000.00 For One Day At First Federal's Current Yearly 5 % Dividend!
3. 10 Teflon Skillets!

First Drawing Sat. July 23rd At 4:30 P.M.

Second Drawing Sun. July 24th At 4:30 P.M.

OUR CONGRATULATIONS TO FIRST FEDERAL

We Are Proud Of A Growing Clovis!

Wade's Sporting Goods
 120 Main / Phone 763.4114
 Clovis' Most Complete Sporting Goods Store

SELF'S RADIO & TELEVISION
 Sales and Service
 121 W. 5th — Clovis, New Mexico

Dayhoff Shoes Inc.
 Clovis, N. Mex.



Franklin's
 SMART APPAREL FOR WOMEN
 PHONE: 763-7134
 306 MAIN STREET
 CLOVIS, NEW MEXICO

Home Owned and Operated by WALTER HOSKINS
Western Auto ASSOCIATE STORE
 303 MAIN STREET
 CLOVIS, NEW MEXICO

Sassers Western Wear
 311 Main St. Clovis

KINNEY SHOE CORPORATION
 410 Main St. Clovis

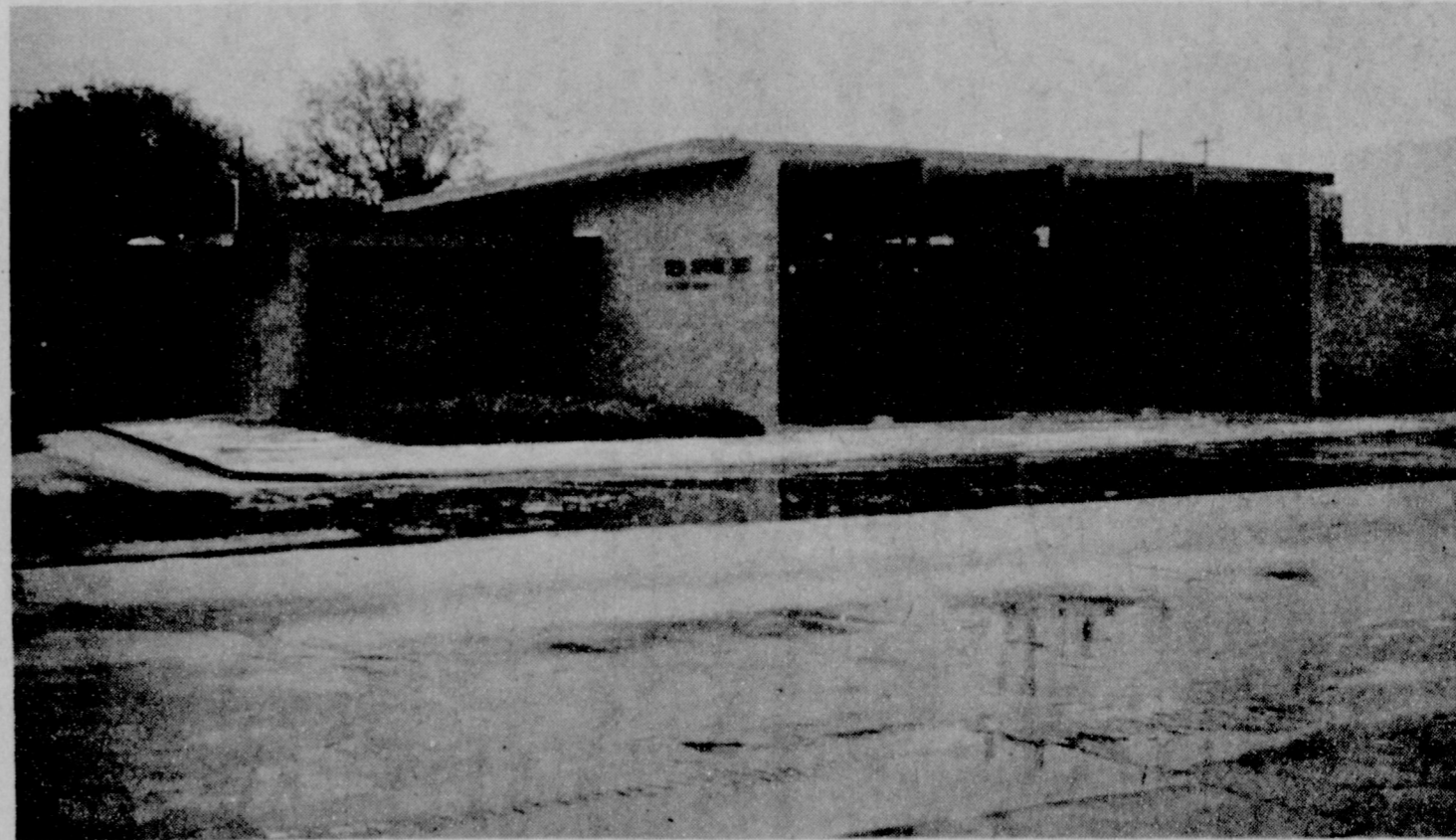
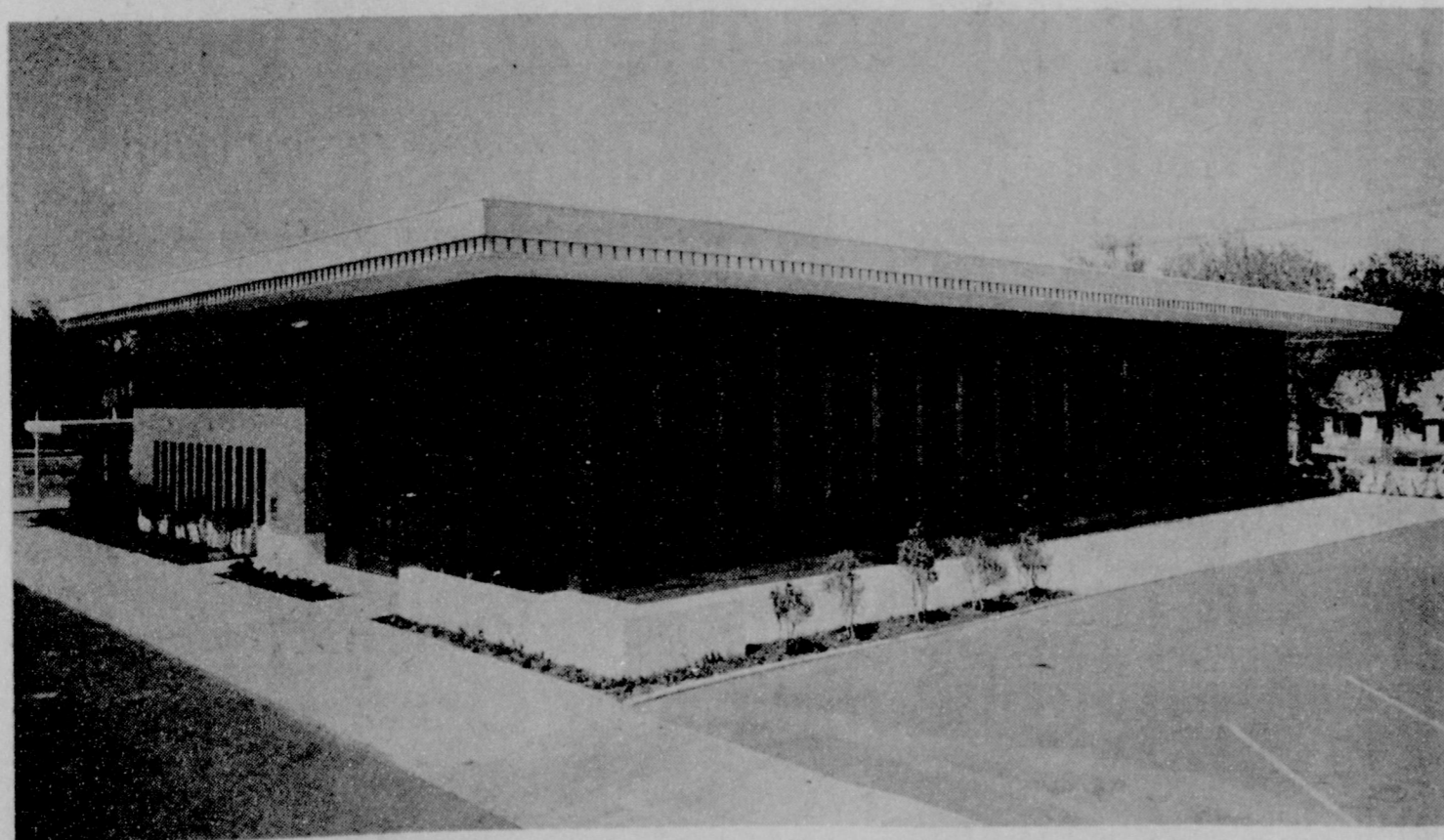
Stanley Lawol
 PRESCRIPTIONS
 SEVENTH & MAIN
 PHONE 763-3451
 CLOVIS, NEW MEXICO

JACK HOLT
"The Clothier"
 304 MAIN CLOVIS

Fine Jewelry
 At
SUTTERS
 THE HALL OF DIAMONDS
 103 W. 4th Clovis

WELCOME NEIGHBOR - - -

WE ARE PROUD AND HAPPY TO WELCOME THE FIRST FEDERAL SAVINGS AND LOAN ASSOCIATION AS OUR BUSINESS NEIGHBOR ON THE CORNER of 8th and PILE.

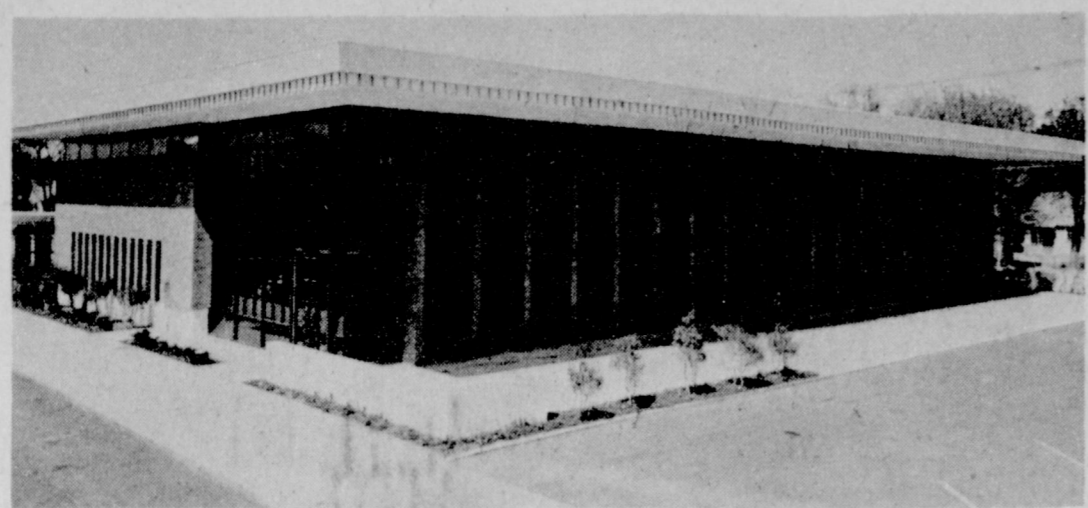


8th and Pile, Clovis - - A GOOD CORNER FOR GOOD BUSINESS



FIRST NATIONAL BANK
 OF CURRY COUNTY
 CLOVIS, NEW MEXICO

PERMANENT BEAUTY



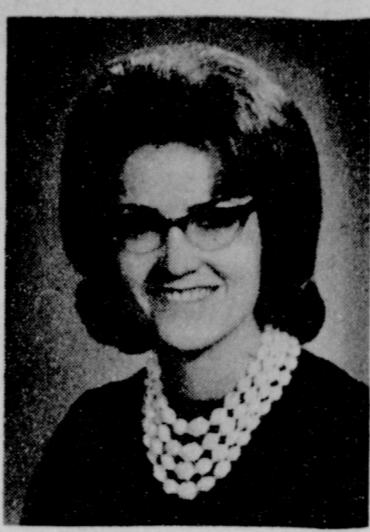
A Quality Roof Is The Crowning Glory Of A Beautiful Building. We Are Proud Of Our Roof On The New First Federal Building. Our Best Wishes To The Officers And Directors On Their Grand Opening.

New Mexico Roofing And Sheetmetal Co.

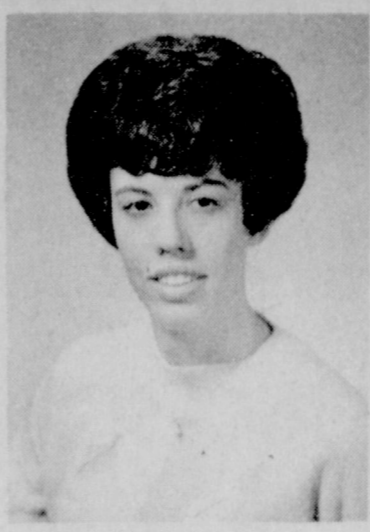
Johns-Manville Approved Built-Up Roofers

121 W. 1st. Clovis

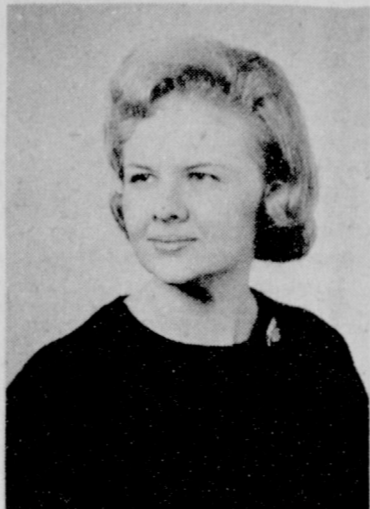
Ph. 763-4115



BONNY L. DORRIS
Stenographer
Portales Branch



NAN BOST
Bookkeeping



ANNA FRAZEE BURKETT
Stenographer
Loan Department



JOANN MAULDIN
Stenographer
Loan Service



PEARL GLIDEWELL
Savings



ELAINE HORTON
Teller



BRAVO!

For
First Federal Savings
And Loan Association.
On Building This New
And Beautiful Addition
To The Eastern New Mexico
And West Texas Area.

**McGehee Truck
Company**

1413 W. 7th Clovis

OUR CONGRATULATIONS TO FIRST FEDERAL ON HELPING TO BUILD A BETTER CLOVIS.

WE ARE ALL PROUD OF YOUR NEW HOME OFFICE BLDG. - - 801 PILE ST.

Commercial Residential
Farm & Ranch Sub Divisions

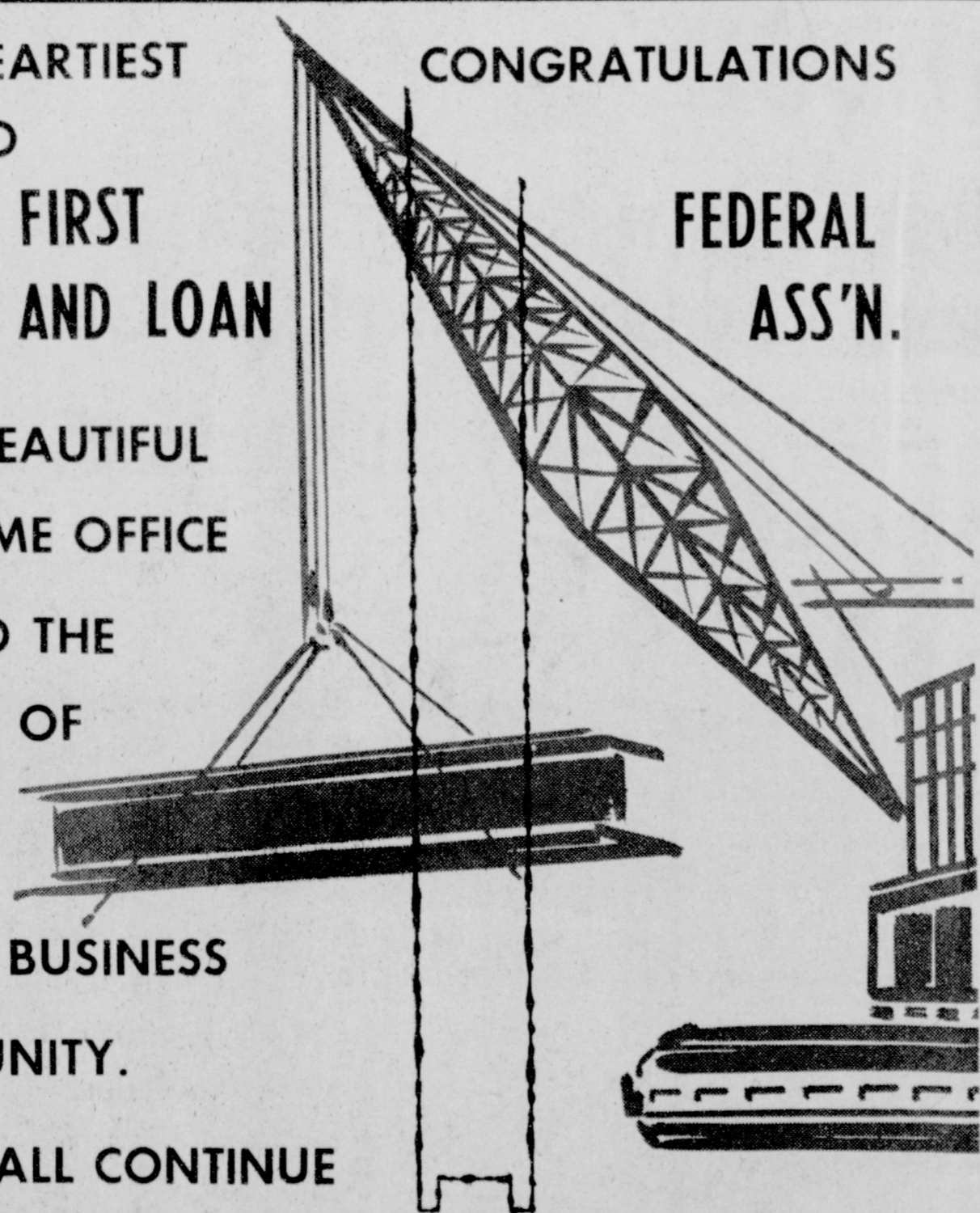
In Clovis, it's
BELL
REAL ESTATE CO., INC.

1808 W. 21st Clovis Phone 763-4441

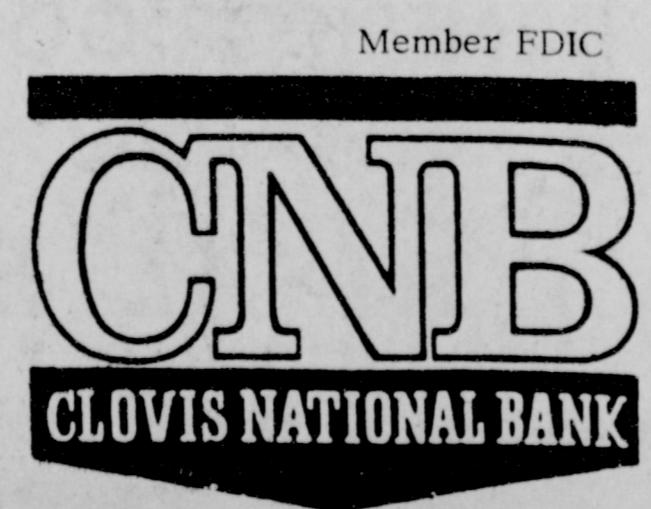
OUR HEARTIEST TO FIRST SAVINGS AND LOAN

CONGRATULATIONS TO FEDERAL ASS'N.

YOUR BEAUTIFUL NEW HOME OFFICE ADDS TO THE BEAUTY OF THE CLOVIS BUSINESS COMMUNITY.



LET US ALL CONTINUE TO WORK FOR A BETTER COMMUNITY IN WHICH WE WORK AND LIVE.



CONGRATULATIONS

First Federal Savings & Loan Ass'n. On The Opening Of Your New Beautiful Building In Clovis.

We Are Proud We Were Selected As Official Photographers For All Your Living Color And Black And White Photography Of Your New Home.

Yarberry's
Of Clovis

1010 Main

Pho. 3-7980

Government Supervisory Agencies

The Federal Home Loan Bank System was established in 1932. The fundamental purpose of the FHLB is to provide a central credit facility that supplements the resources of its member institutions. In the performance of

this basic function, the System serves as a source of secondary liquidity to member institutions withdrawal demands. It supplies funds to smooth out the differences between the contra-seasonal flow of savings and the

closing of construction and home purchase loans. It supplements local lending resources in capital-deficit areas by helping to shift funds from capital-surplus areas.

THE FEDERAL SAVINGS AND LOAN INSURANCE CORPORATION

The Federal Savings and Loan Insurance Corporation (FSLIC) is an instrumentality of the federal government created by Congress to insure savings accounts at savings and loan associations.

The FSLIC was established in 1934, the year in which the Federal Deposit Insurance Corporation (FDIC) began to insure deposits in commercial and savings banks. Similar in purpose and structure to the FDIC insures savings accounts against loss up to \$10,000.

An insured account may be held by an individual, by a partnership or corporation, or by a public official acting as an agent of the United States, a state or other political subdivision. An individual may hold one account insured up to \$10,000 and may be the joint owner of other accounts that also qualify for full coverage.

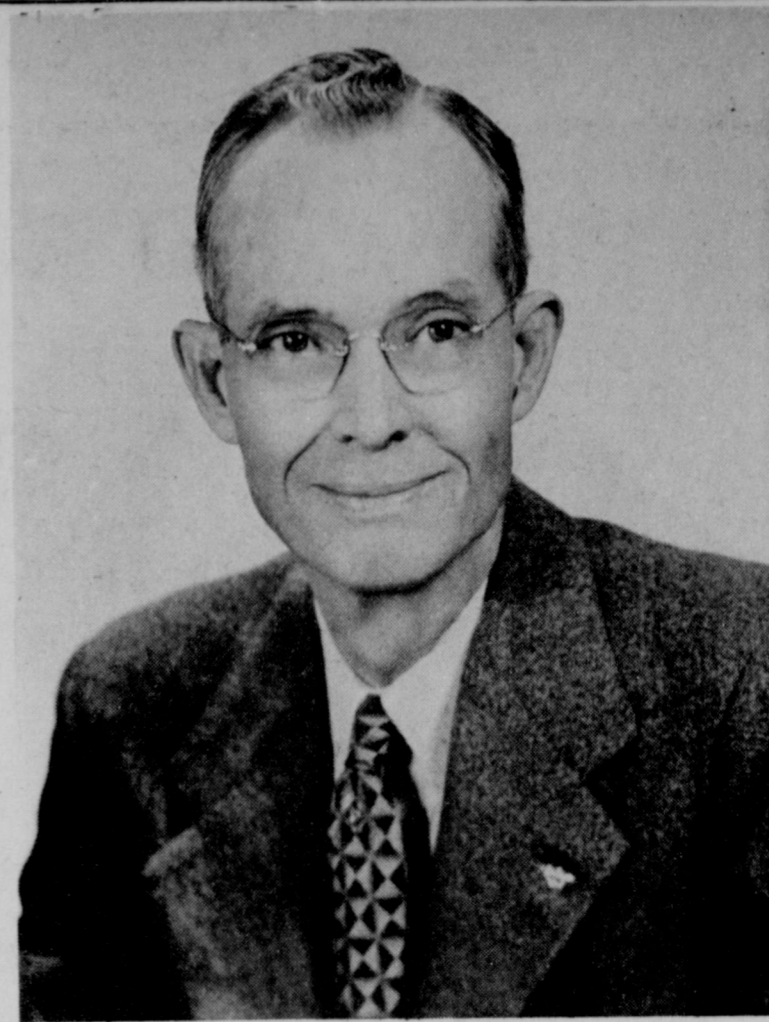
THE FHLB BOARD

The FHLB System is organized in a manner similar to the Federal Reserve System. It is comprised of the Federal Home

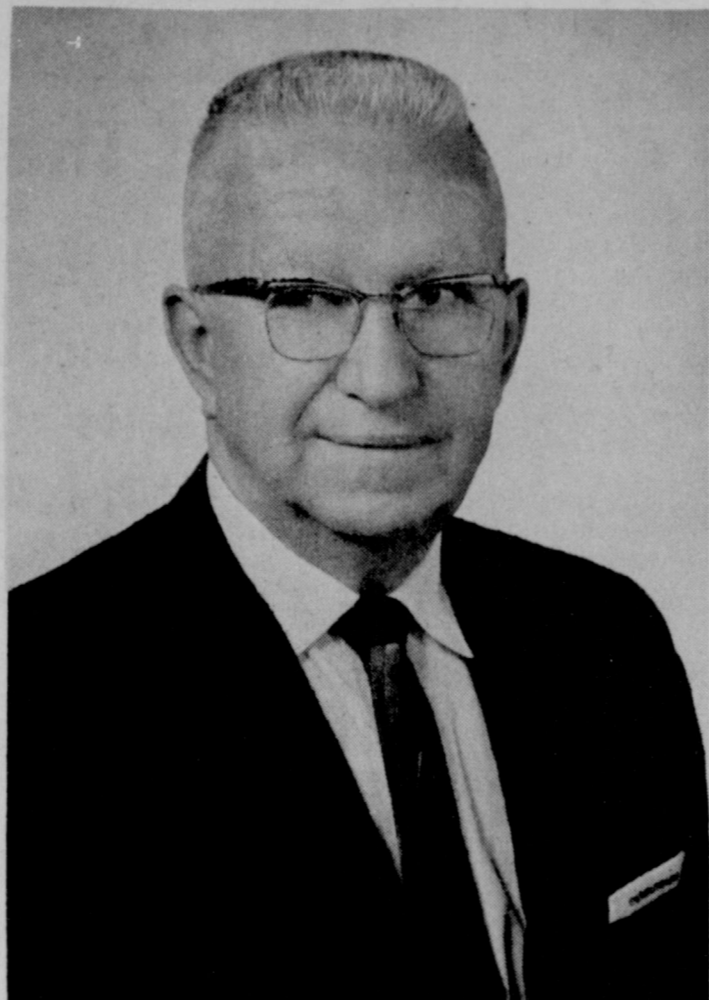
Loan Bank Board, the regional Banks and member institutions. The Board, located in Washington, D.C., regulates and governs the Bank System. It is the char-

tering and regulatory authority for federal savings and loan associations. It also governs the Federal Savings and Loan In-

urance Corporation which insures savings at all federal associations and at state-charter associations that qualify for coverage.



N. W. BALLEW one of the first savers with First Federal at the time of its charter in 1934 is now chairman of the Board of Directors. Mr. Ballew was owner and operator of the John Deere Plow Company until his retirement.



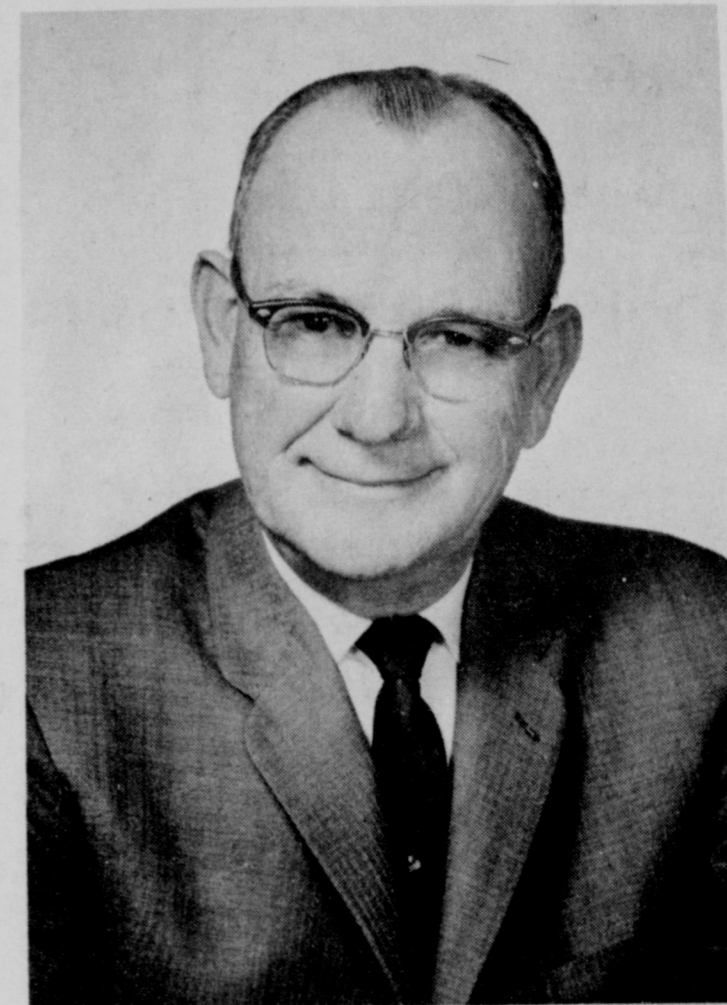
ERNEST WHEELER, JR., was appointed to the First Federal Board of Directors May 1966 to serve the unexpired term of Judge E. T. Hensley Jr. Mr. Wheeler is the owner of Wheeler Mortuary of Portales and co-owner of the Steed Funeral Home in Clovis. He also serves as president of Eastern New Mexico University Board of Regents.



K. BARNETT, JR., was elected to First Federal Board of Directors March 11, 1965. Mr. Barnett is a co-partner with his father in the K. Barnett Construction Company.



REESE CAGLE was elected a Director to First Federal July 1959 at which time he was co-owner of the Gateway Auto Co. Mr. Cagle became employed as First Federal Real Estate appraiser when the Gateway Auto Co. was sold.



CARL P. RODOLPH was elected to First Federal Board February 11, 1965. Mr. Rodolph is a retired J. C. Penny Co. store manager. He serves as a Director of Lions International 1955-58. He is a member of First Federal loan committee.



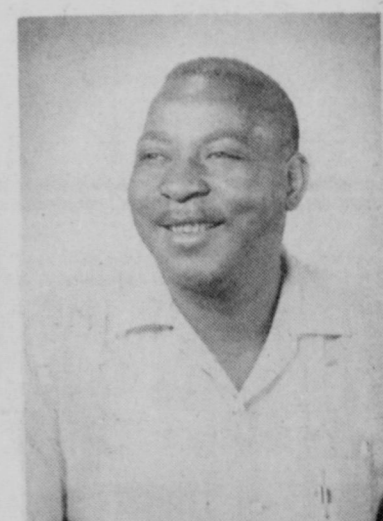
CHARLES RUTLEDGE
Vice President
Loan Department



RUFUS FREEMAN
Vice President
Loan Service



CAROL TURNER
Stenographer
Loan Service



JAMES SNEED
Custodian

Our Heartiest
Congratulations
To The Officers And Directors Of
First Federal Savings A & Loan
From
Armstrong Insurance Agency
Box 926 Portales

Entrust Your Prescription To The Men Who Care At Price Drug They Protect Your Health They Protect Your Budget!
Price Drug
"The Store That Cares"

Congratulations To First Federal Savings & Loan On Your New Home Office.

We, Too, Will Be In A New Home In Early August To Serve The People Of Eastern New Mexico And West Texas.



520 Main St.
Clovis, New Mexico



Your New Office Building Is A Big Boost For The EAST SIDE OF NEW MEXICO

"The Best Side Of The Best State"

Eastwood Const. Co.

2717 Gidding Ph. 3-6568

Past Members Of The Board Of Directors

- *J. B. Teague, First Pres. of Board, 7-23-34 to 12-2-38.
- Dr. L. C. Cox, First Vice Pres. of Board (Later President), 7-23-34 to 12-2-38.
- *S. A. Jones, 7-23-34 to 1-21-42.
- *J. W. Board, 7-23-34 to 1-20-37.
- *John B. Comer, 7-23-34 to 4-1-62.
- *J. H. Lee, 2-15-35 to 1-21-42.
- *Add Hobbs, 2-15-35 to 1-3-36.
- A. H. Ribble, 1-3-36 to 1-20-37.
- C. Roy Smith, 1-20-37 to 12-31-59.
- *Otto Smith, 1-20-37 to 3-10-61.
- *W. H. Spaulding, 7-7-39 to 12-14-64.
- *George P. Baxter, 7-7-44 to 12-23-64.
- *Deceased

ATTORNEYS-AT-LAW
SERVING FIRST FEDERAL
Smith, Smith, & Tharp, Clovis, New Mexico
Aldridge, Aldridge & Harding, Farwell, Texas
Pat R. Bobo, Muleshoe, Texas

AFFILIATES
Federal Home Loan Bank
Federal Savings and Loan Insurance Corporation
United States Savings and Loan Foundation
New Mexico Savings and Loan League

A BOOST FOR CLOVIS
The Beautiful New First Federal Savings And Loan Home Office Building Is A Big Boost For The Commercial And Real Estate Business In Clovis
OUR CONGRATULATIONS
Triangle Builders Supply INC.
2400-N. PRINCE ST. CLOVIS



E. T. HENSLEY, Jr.
Past Director

First Federal Savings & Loan As A Mortgage Lending Institution

Savings placed in First Federal are invested primarily in amortized first mortgages secured by residential real estate. The bulk of this real estate consists primarily of owner-occupied, single family dwellings which have proved to be the most desirable of all real estate loans. Amortized loans increase the association liquidity, scale-down risk at a more rapid rate than depreciation, and affords additional protection against decline in the real estate market.

THREE VARIOUS LOAN PLANS
The three various loan plans used by First Federal are the (1) conventional, (2) Federal Housing Administration and (3) Veterans Administration (G.I.).

CONVENTIONAL LOAN PLAN
The Conventional Loan is the standard and most popular type loan. Under this plan the potential borrower completes a mortgage loan application which is studied to determine whether the applicant can and will repay the loan. The property is examined and appraised to determine whether the security will protect the association if the borrower is unable to repay the funds borrowed. The interest rates and terms vary with the characteristics of the individual and his security, the amount of loan and conditions of the mortgage market at the time the loan is made. Following approval of the loan, the borrower's abstract is sent to the abstractor to be brought to date, then it is sent to the Association's attorney for a preliminary title opinion. Upon the return of the abstract and attorney's preliminary title opinion the loan papers are ready to sign, providing all defects in the title, if any, have been cleared. After the borrower's have signed the note, mortgage and other required papers, the loan funds are ready to be disbursed. The conventional loan

provides for liberal terms of prepayment, and also provides for monthly payment of taxes and insurance into an escrow fund. One-twelfth of the annual taxes and insurance is included in the monthly payment and is available for the payment of taxes and insurance when they come due. These are open-end mortgages which provide for additional advances. The Conventional Loan is used for the financing of commercial buildings as well as for homes.

FEDERAL HOUSING ADMINISTRATION LOAN PLAN

In this plan the Federal Housing Administration (F.H.A.) insures against loss on a loan that is made subject to conditions outlined by the F.H.A. This plan is patterned after the conventional loan plan. F. H. A. loans are processed in a manner similar to the conventional loans, except that the association must comply with the terms of the National Housing Act and use its rules, regulations, and forms. The F. H. A. receives from the association an annual premium of 1/2 of 1% on the declining balance of each insured mortgage. This premium is actually paid by the borrower and is included in his monthly installment being paid into the borrower's escrow account until due. If an F.H.A. bor-

rower defaults on his mortgage contract the lender transfers the property's title after foreclosure to the F.H.A. in exchange for debentures covering the balance due on the mortgage.

VETERANS ADMINISTRATION LOAN PLAN

A properly qualified veteran applying for a V.A. loan, commonly referred to as a G.I. loan, fills out an application with the loan department of the association just as he would for a conventional loan. After the association has taken the application the regional veterans administration is contacted. This office appoints an appraiser who determines whether the purchase price of the property is reasonable. After the appraisal report is reviewed by the V.A. office, a final valuation on the property approved by the Veterans Administration is submitted to the association. If the loan with the V.A. approval is made by the association, a "guaranty" is issued by the V.A., limited to 60% of the property's value of \$7,500, whichever is less. If it is necessary to foreclose on the mortgaged property, the association may file its claim with the V.A. for the full amount of the guaranty to be paid in cash.

Our Congratulations And Sincere Best Wishes To Officers And Personnel Of First Federal Savings & Loan On The Completion Of Their New Offices.

It Has Been Our Pleasure Throughout The Years Since Its Organization To Serve This Fine Institution.

Clovis Office Equipment Co.

509 Main St.

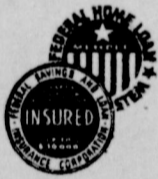
Phone 763-3495



Second and Avenue A
PORTALES, NEW MEXICO

Federal Savings And Loan Assn. of Portales Congratulates The Officers and Directors of First Federal Savings And Loan on Their New Office Building.

Federal Savings And Loan is Insured Safety



rower's preliminary title opinion the loan papers are ready to sign, providing all defects in the title, if any, have been cleared. After the borrower's have signed the note, mortgage and other required papers, the loan funds are ready to be disbursed. The conventional loan



PAT NORTON
Savings



E. C. KELSO was elected to First Federal Board of Directors June 14, 1962. Mr. Kelso is a long time resident of Clovis and one of Curry County's successful irrigation farmers. Mr. Kelso also served as a Curry County Commissioner.

Congratulations

To

FIRST FEDERAL SAVINGS AND LOAN

On Their New Office Building

JONQUIL COLONY

615 Main #6 In The Village Ph. 762-4541

Our Heartiest

CONGRATULATIONS

To

The Officers And Directors Of FIRST FEDERAL SAVINGS AND LOAN On Their New Home Office Building.



507 East Second St Telephone 356-5704 Portales, New Mexico

Herbert Lumber Co.

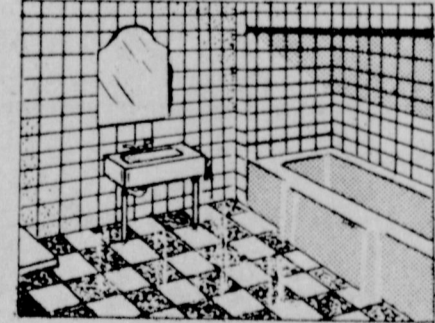
If it goes in the building ... we sell it!

- LUMBER • HARDWARE • PIPE
- ROOFING MATERIAL • SASH and DOORS
- PLUMBING MATERIALS • PAINT and VARNISH

COMPLETE LINE OF MATERIALS FOR
PLASTERERS • BRICKLAYERS • CEMENT WORKERS

DIAL ...
356-8515
1604 S. AVENUE D
PORTALES

TILE FLOOR & WALL SPECIALTIES



TILE FOR EVERY PURPOSE

- ★ Ceramic
- ★ Rubber Tile
- ★ Carpets & Rugs
- ★ Asphalt
- ★ Cork Tile
- ★ Vinyl
- ★ Sales & Installation

LINOLEUM
PHONE
763-5753

ASK ABOUT OUR GUARANTEE ON All Work & Material (FREE ESTIMATES)

MARTIN TILE & MANTEL CO.

106 LEA

CLOVIS

Martin Tile & Mantel

ALL KINDS OF TILE AND LINOLEUM

106 NORTH LEA STREET

Clovis, New Mexico

Phone 763-5753

P. O. Box 971

STRENGTH-STABILITY

In The **INSURED** Savings And Loan Association

We Are Proud To Be One Of The Federally Insured Savings And Loan Associations.

Our Compliments To First Federal Savings And Loan Association

STATE SAVINGS AND



LOAN ASSOCIATION

1106 MAIN STREET

CLOVIS, NEW MEXICO

TELEPHONE 762-2933

**Our Best Wishes
To
First Federal Savings
And Loan Ass'n.**

J. E. BOOTHE, INSURANCE

INSURANCE - ABSTRACTS
113 WEST SECOND
PORTALES, NEW MEXICO
REpublic 6-5971

**OUR
CONGRATULATIONS
TO
FIRST FEDERAL
SAVINGS AND LOAN
ASSOCIATION**

PORTALES ABSTRACT CO.
SMITH WRIGHT
ABSTRACTS - INSURANCE - BONDS
PORTALES, NEW MEXICO

**PROGRESS FOR OUR
GROWING COMMUNITY**

Our Congratulations To
First Federal On This Beautiful
New Addition To The Business
And Real Estate Community
Of Clovis

EUBANK ENTERPRISES

Licensed Broker
Member

Multiple Listing Service

Ph. 762-1271

1416 Pile

Clovis



**LOOK OVER
THE NEW
FIRST**

**FEDERAL BUILDING
July 23-24**

Look Over The New
Vinyl Wall Siding
And Let Us Figure
On Your Next Job!

McDANIELS INC.

1020 Main

Clovis



LYNN L. MARTIN was employed as vice president November 15, 1951 and became Executive Vice President and a member of the Board of Directors in July 1959, First Federal during Mr. Martins 15 years of employment has grown from 9.5 million to its present \$49.6 million in assets.



NEIL McBRIDE
Asst. Vice President
Loan Department



REX HUDSON
Vice President
Controller - Accounting



BILL R. BOONE
Asst. Vice Pres. - Manager
Portales Branch Office

3 Sources Of FHLB Funds

Funds used to extend credit to members of the Federal Home Loan Bank System are derived from three principal sources. They are capital stock, deposits of members, and consolidated obligations of the FHLB system that are sold on the open market.

A breakdown of the three funds is as follows: Capital stock, Federal Home Loan Bank stock owned by member institutions passed \$1 billion for the first time in 1961.

The original \$125 million investment by the U. S. Treasury was repaid in 1951 so, since then, all outstanding stock has been held by members.

Since the beginning of their operations, the banks have paid almost \$200 million in dividends

on their capital stock. Nearly \$173 million of this has gone to members; the remainder was paid to the U. S. government during the period it held FHLB shares.

The \$30 million distributed in 1961 represents an average annual return of 2.78 per cent on the members' investment. Deposits by members, a second source of the funds, in-

creased nearly 26 per cent in 1961 to a new high of nearly 1.2 billion.

The amount members have on deposit with the regional banks generally moves inversely to the demand for mortgage money. When loan demand eases, funds deposited by member institutions tend to move upward.

Consolidated obligations. Three-fifths of the aggregate funds of the Federal Home Loan Banks at the end of 1961 were represented by the deposits and stockholdings of members.

Through the fiscal agent of the FHLB Board, the system has access to the capital markets in securing additional funds as required. The consolidations increased 24 per cent in 1961 over the previous year.



LENNA GOODMAN
Teller



HAZEL TRAUGHER
Asst. Secretary
Portales Branch Office



GEORGE MILBURN
Head Teller



DIXIE HOGG
Asst. Vice Pres. - Secy.
Savings



VIVA DAVIS
Teller



MARY HEATHINGTON
Teller

**OUR BEST
WISHES**

to the
Officials of
FIRST FEDERAL
SAVINGS AND
LOAN ASS'N.

Wheeler
MORTUARY

Portales, New Mexico

**Congratulations
From**

M. O. WALL

Real Estate Agency

109 W. 2nd

Portales

**We Congratulate
First Federal On The
Grand Opening Of
Their New Building
July 23-24**



LEON "BO" WOMACK - - REALTOR

410 Pile St.

Ph. 762-2992

- Clovis

Congratulations

To

FIRST FEDERAL SAVINGS & LOAN

ARROW REAL ESTATE

Of Clovis

615 Main

#7 In The Village

Ph. 762-4545

**DON'T FORGET
The GRAND OPENING
Of The New
FIRST FEDERAL
SAVINGS AND LOAN**

Home Office Building

July 23 - 24



Our Congratulations to First Federal on
This Beautiful Building. It is a Magnificent
Addition to the Growth of
Clovis and Vicinity.



CLOVIS PRODUCTION CREDIT ASSOCIATION

TELEPHONE: 763-3332 AC. 505

GRAND AT 4TH, P. O. BOX 959, CLOVIS, NEW MEXICO 88101

Congratulations

To First Federal On Its
Beautiful New Facilities.
We Are Proud To Be An
Integral Part Of The
Growth Of First Federal
And The Clovis Area.

**Curry County
Abstract Co.**

762-4787

407 Pile St.

REPRESENTING:

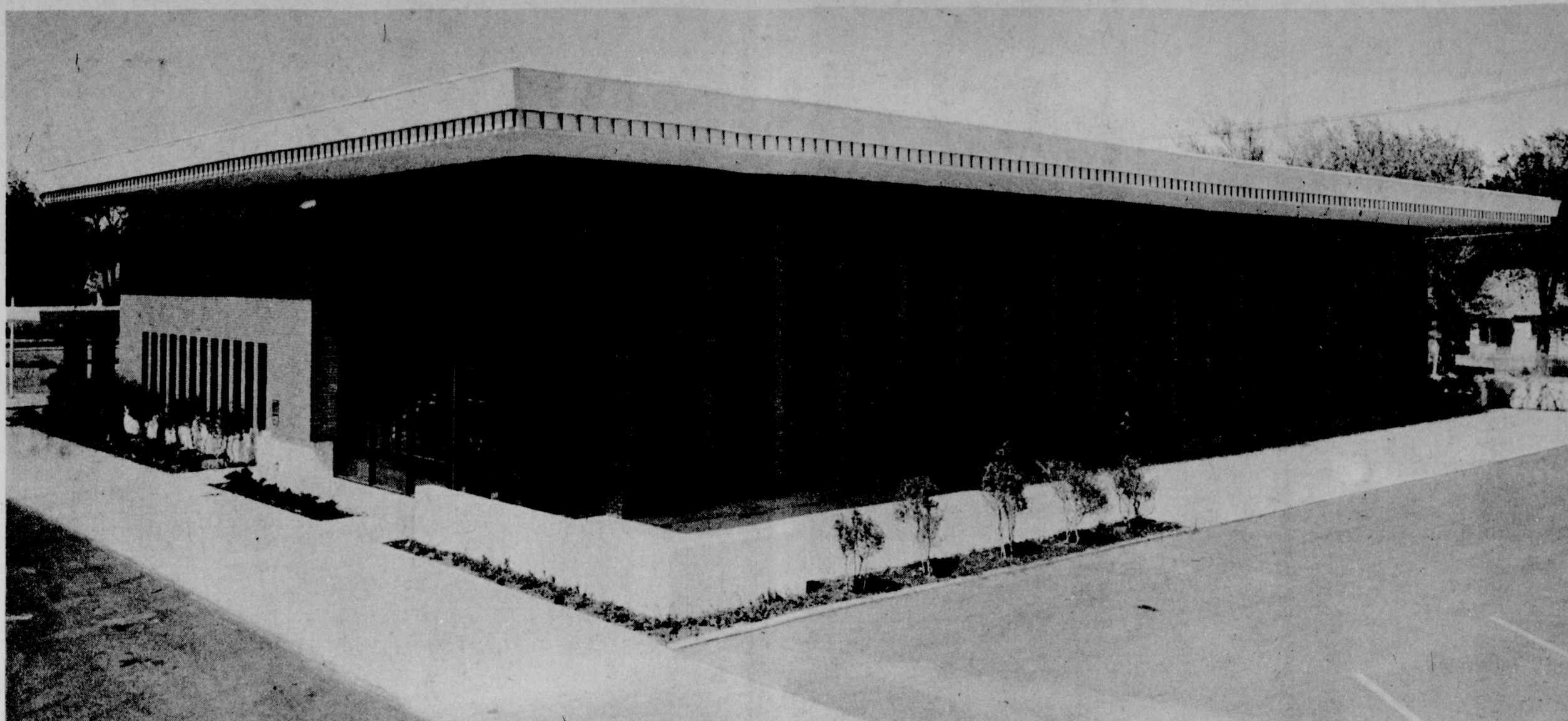


THE NATIONAL TITLE INSURANCE COMPANY WITH THE LOCAL TOUCH

Lawyers Title Insurance Corporation

Home Office - Richmond, Virginia

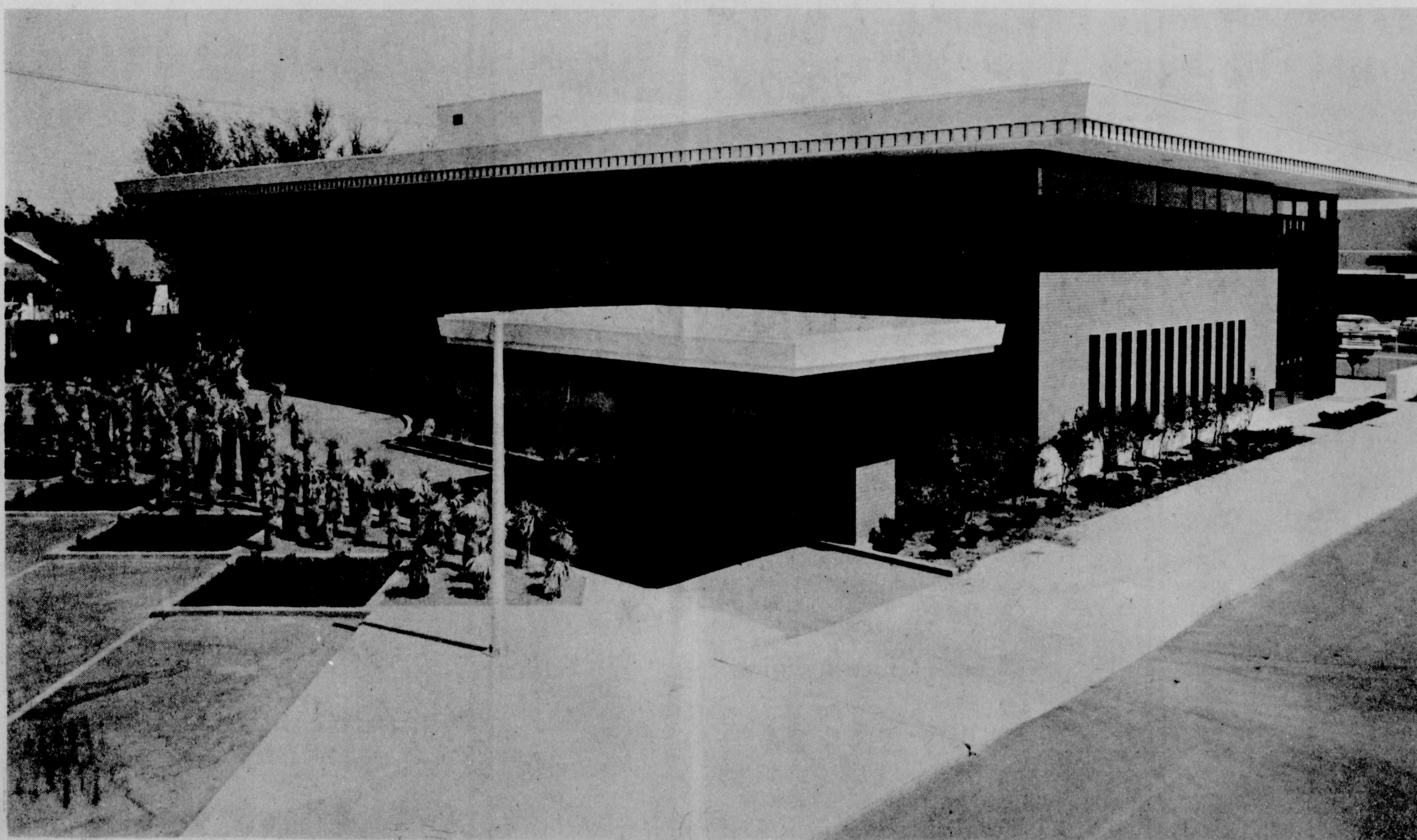
LAWYERS TITLE SERVICE AVAILABLE IN 45 STATES, INCLUDING HAWAII, AND IN THE DISTRICT OF COLUMBIA, PUERTO RICO AND CANADA. NATIONAL DIVISION OFFICES: CHICAGO, DALLAS, DETROIT, LOS ANGELES, NEW YORK, PHILADELPHIA. OVER 375 BRANCH AND AGENCY OFFICES. MORE THAN 18,500 APPROVED ATTORNEYS ARE LOCATED THROUGHOUT THE OPERATING TERRITORY.



FIRST FEDERAL

SAVINGS AND LOAN ASSOCIATION

AN INSTITUTION WHOSE BUILDING EXPRESSES
Their Faith And Confidence In The Future Growth Of The
Entire Community That They Serve.



**OUR COMPLIMENTS
TO
FIRST FEDERAL SAVINGS AND LOAN AND TO ALL CLOVIS
MARVIN E. KNEDLER - ARCHITECT**