

Evelyn Carter And Lorene Ritchey Establish High Scholastic Ratings

R. W. Stewart, high school principal, announces the receipt of a report from the National Pepsi-Cola Scholarship Board on the examinations taken by the two seniors, Evelyn Carter and Lorene Ritchey, who were selected by the class for the privilege of being the examinees. The ratings are given in deciles with a rating of 10 meaning that the student ranked in the top 10 percent, a rating of 1 that he ranked in the bottom 10 percent. Evelyn had a state rating of 9 and a national rating of 8. Lorene had a state rating of 8 and a national rating of 6.

The national deciles are based on the rating of 44,000 participants. Quoting from the report: "Please remember that the group with which your students are compared is a superior one. The lowest tenth of this group may still rank above the average of high school graduates in general." Ratings of 9 and 8 are excellent and Stratford High is proud of the students who made them.

The examinations were given for the purpose of determining the top-ranking senior in each state; this senior, selected on the basis of his intelligence, background, and ability as revealed in the very comprehensive test, was awarded a four-year scholarship in the college of his choice.

REA Applications Should Be Placed By February 10th

At a recent meeting of the members of the Rita Blanca Cooperation it was voted unanimously to buy the electrical facilities of the Southwestern Public Service Co. in Texline. Glynn W. Scott, manager of the Rita Blanca Electric Cooperative, announces that an application will be made to the Rural Electrification Administration for funds to construct approximately four hundred miles of electric distribution lines to some four hundred farm families. All applicants for electric service have been requested to furnish the exact location of services desired. It is necessary that this information either through correspondence or a direct visit be placed with the project office at 611 Tennessee, Dalhart, by February 10.

Dr. Hill To United Nations Institute

Dr. J. A. Hill, president of West Texas State College, was signally honored recently when he was invited to attend a United Nations Institute in Lake Success, N. Y.

The Institute will be held February 26, 27 and 28, and will include a dinner meeting in the Waldorf-Astoria Hotel in New York City.

General purpose of the Institute is to give some of the outstanding educators in the United States an opportunity to study first-hand the work of the United Nations and its related agencies.

New York University's School of Education is sponsoring the institute. The invitation was issued by Ernest O. Melby, dean of the School of Education, who said in a letter to Dr. Hill, "I am enclosing with this letter an unusual invitation. You are among those educational leaders who have been invited to attend the United Nations Institute. The Institute will permit you to observe the Security Council and the other organs of the United Nations in operation, to hear from and talk with international leaders of the world of nations. There will be other sessions at which you may have the opportunity to observe school and college programs dealing with the United Nations."

Dr. Hill said he accepted the invitation and that he is looking forward to a "valuable and interesting three days at the United Nations Headquarters."

A pasture is a labor-saving device, since the animals gather their own feed and spread manure as they graze, cutting down on the farmer's work.

Wayne Williams Laid To Rest Saturday

Last rites for Wayne Williams, 38, were conducted at the First Baptist Church Saturday afternoon by Rev. Herbert Hughes, pastor of the Baptist Church at Gruver, assisted by Rev. Howard Whately, pastor of the local church.

Williams succumbed to injuries incurred in a traffic accident north of San Angelo, Texas Tuesday of last week.

Joe Wayne Williams was born July 11, 1909 at Floydada, Texas. He was married to Velma King May 26, 1929. To this union three children were born, Joe Wayne, Jr., who preceded his father in death November 26, 1942; Christine 11, and Rex, 8 years old.

He is survived by his widow, two children, his parents, Mr. and Mrs. Joe Williams of Lancaster, California; five sisters; Mrs. Grace Dishon, Goldhill, Oregon; Mrs. Cecil Reed, McAllen, Texas; Mrs. Momie Boone, Los Angeles, California; Mrs. Audine Sharp, Los Angeles, California; Mrs. Lena Stark, Marshall, Missouri; two brothers, W. R. Williams, Sunray, and Orville Williams, San Fernando, California.

Mr. and Mrs. Joe Williams, Mrs. Grace Dishon, Mrs. Lena Stark, and W. R. Williams were here for the last rites.

Mr. and Mrs. J. T. Cartwright, Canyon, Mr. and Mrs. Boston Smith, Wellington, and a host of friends from Dallam County mingled with local residents to pay their last tribute of respect to the plainsman whose personality had endeared him to those with whom he had come in contact.

Interment was made in the Stratford cemetery under the supervision of Wilson Funeral Directors.

CARD OF THANKS

We wish to express our sincere appreciation of the many courtesies of our friends during our bereavement, and for the beautiful floral offerings.

Mrs. Wayne Williams and children, Mr. and Mrs. V. M. King, Mr. and Mrs. Joe Williams, Mr. and Mrs. W. R. Williams, Mrs. Grace Dishon, Mrs. Lena Stark.

City Real Estate Values Continue To Increase

A continued increase in the value of city property in Stratford was noticed in the bidding on property sold for delinquent taxes here Tuesday morning.

Lots along paved highways sold for almost \$600 each while residential lots gradually tapered off to \$25 in the outskirts of the city.

A small 20 acre plot sold for delinquent taxes brought \$20 an acre.

Lots at Texhoma sold for amounts considered normal values and two plots were bid in by the Texhoma Independent School District.

PTA Meeting Postponed Until Monday

The meeting of the Parent Teacher Association scheduled for Monday of this week has been postponed until Monday afternoon of next week due to inclement weather conditions. The meeting will be called to order at 3:30 P. M.

F. B. Mullins will speak, using the subject, "Your Government is You."

I. D. Divine will comment on the subject, "How Can I Be a Better Citizen?"

Mrs. Tommy Wakefield will deliver the Founder's Day address and auction the cakes.

Important business is to be brought before the organization and all members are urged to be present.

Refreshments will be served by the 7th and 8th grades.

THE STRATFORD STAR

Volume 43.

Stratford, Sherman County, Texas, Thursday, February 5, 1948.

No. 18.

Agricultural Organizations Voice Working Policies

The power of organizations is the greatest influence on Federal legislation. Sometimes this power is used rightly, some times not. How is the power you lend your farm organization used? In your name, all manner of laws are passed, rulings made, programs built.

Politically, the farmer has come of age in the last 20 years. He has done it through organization.

His strength is at the grass roots, but his voice is heard clearly in the halls of Congress, in the White House study, and in the corridors of the South Agricultural building.

The farm spokesman most recognized in Washington are the Big Three general farm organizations, Farm Bureau, Grange, Farmers Union.

Next to them in importance, notably on specialized marketing issues, are the National Council of Farm Cooperatives and the National Cooperative Milk Producers' Association.

Next to them in importance, notably on specialized marketing issues, are the National Council of Farm Cooperatives and the National Cooperative Milk Producers' Association.

The Big Three have a combined membership representing about 1 1/2 million of the 4 million farmers whose primary occupation is farming. Farm Bureau claims 1,275,000 members; Grange, 825,000; Farmers Union, 145,000. Outsiders estimate the farmers represented by each in the rough ratio of 7-3-1: Bureau, Grange, Union.

Next to the Midwest, the South is the stronghold of the Farm Bureau. There the Grange and Farmers Union are weak. The South, with about half the total U. S. farm population, has only one-quarter of the total Big Three farm organization membership.

Yet the South, with its strong Southern Farm Block in Congress, for years has swung a preponderant weight in national farm affairs, despite the inclination of many Southern states to ignore the lead of their national group.

Like labor, agriculture is only about 40 percent organized. Add in co-op membership and it won't run above 50 percent. And like organized labor, organized agriculture is badly split. Farm leaders find it hard to agree on more than a few things.

In spite of family quarrels, and of being a minority group in society, agriculture is no longer the nation's underdog. The Big Three can point with pride to a long list of laws mostly constructive, to the fast-growing co-op movement, to strong influence in local affairs, and to its farm lobbyists, rated the most potent in Washington.

Farm Bureau has the most influence in the capitol, but not as much as a few years ago. The Grange has come to the front, fast, especially since Republicans captured Congress.

Farm Bureau's setback, perhaps only temporary, is chiefly due to antagonisms aroused among some Congressmen and in other farm groups by its hard driving pressure politics. The Bureau overplayed its very strong hand.

Led for years by likable Ed O'Neal of Alabama, with tireless Ray Ogg doing the spadework, the Bureau pressed hard to win its points, knew all the tricks of the trade, and used them.

The Farm Bureau now has a new president. The resignation of O'Neal, the Alabamian, was accepted last December, and an Iowa, Allan Kline, who had been vice-president, was elected to sit in the top chair. R. E. Short, of Arkansas, was selected vice-president.

What Kline's new leadership may mean can only be a matter of conjecture this soon. Moreover, the Farm Bureau is anything but a one-man organization, and it's not likely to undergo any violent changes in its system or "tactical warfare" just because the venerable O'Neal has departed and someone else is the chief.

On the other hand, Kline, although a comparatively silent sort of man in the past, is generally believed to be more liberal in his views than his predecessor from Montgomery, and some effect of this newer farm philosophy is likely to be seen, sooner or later, in the principles and practices of the Bureau.

Even more specific, there's a decisive geographical difference in these two men's background. Alabama is definitely not Iowa, not even agriculturally speaking, and this presidential "hop" from Montgomery to Des Moines may be an important factor in the Bureau's future.

But the way the Farm Bureau gets things done isn't going to change. It's a highly efficient organization. It puts in its best licks back among its county membership. There, in each Congressman's district, the fires are laid and nourished by the local farm bureaus. In Washington, the Farm Bureau lobby waits just long enough for the Congressman to feel the fire getting hot, then it moves in to get action.

The American Farm Bureau Federation threatens no Congressman's political life, that's done back home.

Farm Bureau communication lines from grass roots to Washington are fast, and the whole pressure system is remarkably effective. On a more limited scale, Farmers Union uses the same tactics.

The Grange communication lines into Washington operate more slowly, and pressure politics are avoided. The Grange makes a point of never asking Congressmen to vote its way. Its lobbyists simply explain the organization's position, and let it go at that.

The Grange swings political power, just the same. Throughout the long Democratic regime, its leadership has rated here as predominantly Republican. This is natural since its membership is heaviest in the normally GOP dairy, poultry, livestock and fruit and vegetable areas of the Northeast, Lake and Midwest states, and the Pacific Coast.

When the GOP took over Congress, the Grange just naturally had the inside track.

National master of the Grange is Albert Goss, as quiet and cautious as Ed O'Neal was colorful and bold, or as Farmers Union's Jim Patton is forceful and eloquent.

Two Southerners have great influence in national Grange headquarters in Washington: Fred Bailey, publicity director, an ex-newspaperman from Texas, and Dr. J. T. Sanders, legislative representative, a former professor of economics at Oklahoma A. & M. College.

Farmers Union influence in Congress is mostly through left-wingers, of whom only a handful remain. This is one reason the Union cut its Washington staff to one man, Russell Smith, a Georgian. The Grange has 14, the Farm Bureau 9.

Where the Bureau is rich, and Grange well-off, the Union is poor. It is small in membership and its dues are low. Its ideal is the family type farm, and it champions the small farmer.

Second oldest of the three, founded in Texas in 1902, Farmers Union's greatest strength is in the Great Plains. North Dakota is its No. 1 state. This may explain its radical tradition, for it is the plains that gave birth to Populism, the farmer-labor movement, and the late Senator George Norris, "father" of TVA.

In Washington the Union and its dynamic, young Coloradoan president, Jim Patton, have strong backing from labor and liberal groups in the East. Some see this as the Union's weakness, charge that it's stronger in New York City than in the Corn Belt.

Yet this backing, plus its Plains strength and Patton's strong personality, have given the Farmers Union a national influence out of all proportion to its membership.

Patton himself is an eloquent speaker, a master of the bell-ringing phrase. Some examples: "Every dollar of every price boost gives roughly 90 cents to those farmers who are better off and 10 cents to those who most need increased income, the

children and the land are the long-time victims of rural poverty, while prices must be protected, something more needs to be done."

Grange leaders believe that the Farm Bureau's new president, Kline, thinks more nearly as they do on the fundamental difference between the two organizations, the part government should play in farm affairs.

The Farm Bureau would have the government go much further in underwriting farm prices, and consequently regulating farm production, than would the Grange. The Grange sees the primary responsibility on the farmer, with the government coming into the picture only when conditions get beyond control of the individual.

In the 1930's, the Grange took little interest in AAA and other programs the Farm Bureau pushed. The Grange is old, conservative, and not easily excited.

The chief things Grange and Farm Bureau agree on are the new market research program, marketing agreements, protection for co-ops and the need for soil conservation, but there's complete disagreement on methods. The Farmers Union would also agree on these same things. The Farm Bureau would abolish the Soil Conservation Service and turn it over pretty much to the Extension Service and state experiment stations. It has four bills in Congress to do this.

Both Grange and Farmers Union are fighting this, they always team up against the Farm Bureau on its tie-up with the Extension Service. They claim this is unfair public subsidization of farm organization to the exclusion of the others.

Goss, however, at last November's annual session of the Grange at Columbus, Ohio, made a statement about soil conservation that deserved more attention than it got. It was plainly critical of the present system by which soil conservation work is carried on.

"One of our most serious domestic problems," he admitted "is the continual drain on our soils largely through erosion. While we have made wonderful progress in soil conservation as compared with the past, we must recognize," he added, significantly, "that a system which pays cash bonuses to farmers for doing what good farmers ought to do anyway, and which does not reach land owners who persist in allowing their soils to wash away, can hardly be considered the basis for a sound, permanent program."

On the other hand, the Grange is fighting against the Farmers Union in supporting the Farm Bureau fertilizer bill. This would expand government fertilizer manufacture and distribute it cooperatively on a demonstration basis. Bureau and Union want more fertilizer and think it proper for the government to help get it. Grange isn't against more fertilizer, but thinks private industry can supply it, and sees the bill as a step toward state socialism.

The Grange stands for accepted things like conservation, research and hard money. It's not unprogressive, but moves cautiously. It makes much of its fraternal rites and local social affairs.

At the other extreme is the Farmers Union, which prides itself on having advanced ideas on most subjects. In McNary-Haugen days its went for cost-of-production. In New Deal days it fathered crop insurance and took the old Farm Security Administration under its wing.

During the war it urged full production by complete use of all land and labor down to the last sharecropper and government contracts with farmers to assure fair dealing. Now it advocates a "cradle to the grave" farm program that promises more than any long range program yet offered.

Between these two extremes stands the Farm Bureau, which comes nearer in its outlook to representing the business farmer than the others. This isn't to

(Continued on Page 2)

Bonar-Drenner Wedding Friday

Miss Kathryn Bonar, daughter of Mrs. C. R. Bonar and the late C. R. Bonar, was married to Robert H. Drenner of Austin, Texas Friday.

Vows were exchanged in the parlor of the Congregational Church at four thirty o'clock in the afternoon with Rev. Fred A. Cole officiating. A former room-mate of the bride and her husband, Mr. and Mrs. Frank Adelman, were in attendance, and Mrs. C. R. Bonar, the bride's mother, was present.

The bride was beautiful in simplicity attire, wearing a Charneuse gabardine suit in rose-beige with a black straw sailor, patent pumps and white gloves. Her corsage was of white rose-buds and she wore a five strand necklace of pearls as her only adornment.

Mrs. Drenner is a graduate of the Moundsville High School of Moundsville, West Virginia. She attended Colorado Woman's College and is now a student of the University of Texas where she was selected "Aqua Carnival Beauty," and a nominee of Delta Zeta for "Sweet Heart of Sigma Chi." She is a major in psychology.

The groom served in the army air corps as a navigator three years, having received two DFC's, the air medal and seven clusters. He is also a student in the University of Texas, and an assistant in the Psychology Department. Both the bride and the groom expect to receive their respective degrees at the end of the summer term this year.

Fire Department Issues Warning To Hose Violators

A warning to spectators driving over fire hose has been issued by the local volunteer fire department this week. Driving over a fire hose is a violation of the state uniform traffic law.

Local firemen do not intend to press charges against those who have been known to have violated this safety measure but ask the cooperation of the public in preventing this practice which might not only break the hose at a time when the control of a fire depends on a supply of water but will result in future breaks.

Hereafter spectators at all fires are requested to park their cars at least one block from the fire to prevent traffic congestion which may hinder members of the department in getting to their stations in fighting fire.

Pitman To Operate Body And Paint Shop

Mr. and Mrs. Clyde Pitman and son, Dwain, moved here from Amarillo Sunday to accept a position with the Stratford Motor Co. Pitman, an experienced metal and body works man, will be in charge of the body and paint shop McMinn and Wisdom plan to operate in their present location after moving their business to its new home near completion just across the street.

Political Announcements

Authorized Political announcements subject to the action of the Texas Democratic Primary, Saturday, July 24th

For County Judge and Ex-Officio Superintendent of Schools: L. P. HUNTER.

For County and District Clerk: Mrs. LELAH BONEY.

For County Treasurer: JOHN HANEY.

For Sheriff, Tax Assessor and Collector: JOHN KIDWELL, J. W. GAROUTTE.

For County Commissioner, Precinct No. 1: ROSCOE DYESS.

John Haney Announces For County Treasurer

John Haney is asking for public office for the first time this week by announcing as a candidate for the office of County Treasurer of Sherman County.

Mr. Haney says he is familiar with the records kept in this office and capable of handling the work. If elected he will serve the residents of the county to the best of his ability.

He will make an attempt to personally contact all the voters before the primary election July 24 and will appreciate the public's consideration of his application for office.

833 Qualified Voters Listed In County

Sherman County residents paid 812 poll taxes and secured 21 exemptions for a total voting strength of 833, the largest number of qualified voters in the county's history. Previously the number of paid poll taxes in the county has ranged near 700.

Interest in the elections for 1948 has resulted in the largest number of poll taxes being paid in the state of Texas at any period during its history, according to available figures.

1948 license tags have arrived at the tax collectors office and may be secured at the vehicle owners convenience although the use of the new tags is not required until April 1.

Attended MYF Meeting In Gruver Sunday

Those from Stratford who attended the MYF meeting in Gruver Sunday were Mr. and Mrs. A. L. Ross, Georgianna Skillen, Millie Bennett, and Ruby Dell Harding. At this meeting interesting reports were given on the Methodist Youth Conference which was recently held in Cleveland, Ohio.

Lions Have Social Evening

Stratford Lions honored their ladies with ladies night at the meeting Monday night. About seventy were present to enjoy the talk made by George Graham, superintendent of schools at Hereford, who used the subject, "self control."

Church News

FIRST BAPTIST CHURCH
Howard Whately, Pastor

Sunday School 10:00 A. M.
Morning Worship 11:00 A. M.
Training Union 6:30 P. M.
Evening Worship Service 7:30 P. M.
W. M. U. Wednesday 2:00 P. M.

CHURCH OF CHRIST
Bible classes 10:00 A. M.
Morning services 11:00 A. M.
Evening services 7:30 P. M.
Wednesday evening services 7:30 P. M.

ASSEMBLY OF GOD CHURCH
Sunday School 10:00 A. M.
Morning worship 11:00 A. M.
Evangelistic service 8:00 P. M.
Bible study and prayer meeting Thursday evening at 8:00 P. M.

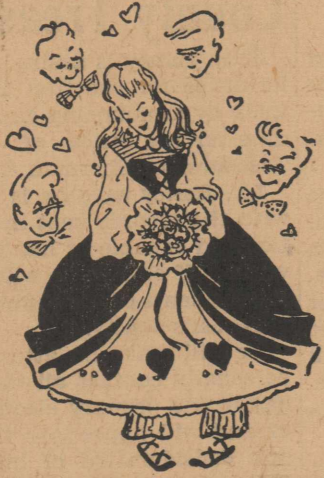
Everyone is invited to attend these services.

CHRISTIAN CHURCH
Sunday School 10:00 A. M.
Morning Services 11:00 A. M.
Evening Services 7:20 P. M.
A nursery under competent supervision provides care for infants during church services.
Rev. John W. Reaves, Pastor

METHODIST CHURCH
(Rev. H. A. Nichols, Pastor)
Sunday School 10:00 A. M.
Vesper services Sunday evening at 5:00 P. M.
Junior League 6:00 P. M.
Intermediate MYF 6:00 P. M.
Senior MYF 8:00 P. M.
W. S. C. S. Wednesday at 2:30 P. M.
Choir practice Wednesday night at 7:30.

Thursday night is Intermediate play night from 7:00 to 8:00 P. M.

INCY-DENTS
By Moss-Yates



Displaying New Shipments Of Valentine Candy

Price Range of \$1 to \$6

HALLMARK CARDS
Suitable for All Occasions

Any One of Our Attractive Selection Of
LADIES WATCHES
Would Make a Grand Valentine Present

Drugs and Drug Sundries

Yates Drug

Agricultural-

(Continued from Page 1)
say the Bureau doesn't have many small farmers, perhaps more than any other organization, nor that the majority of Grange and Farmers Union members aren't business farmers.

It's simply that Farm Bureau councils seem most concerned

with the economic needs of the growing class of business farmers.

Looking to the future, all three are more or less haunted by the farmer's fear of surpluses, but their responses are different. Farm Bureau would control production through AAA. Grange would adjust production by lowering piece supports for surplus commodities. Farmers Union

would avoid surpluses altogether by having the government underwrite full industrial employment, consumption and farm income.

On price supports, the Farm Bureau would keep them high, the Grange would have them low, but adjustable up or down; the Farm Union would have the government guarantee annual prices agreed upon every year by representatives of agriculture, consumers and the government.

All would push markets to the limit, but their limits differ. Farm Bureau would subsidize exports, but not domestic consumption. Grange opposes export subsidies, but in a pinch might agree to subsidize food for low income groups. Farmers Union would do both. It sees no limit until hunger is banished from the earth.

In BASKETBALL
or GASOLINE

IT'S
CONTROL
THAT COUNTS!



PHILLIPS 66 IS **CONTROLLED*** TO GIVE
YOU QUICK STARTING AND EASY WARM-UP!

Passing or shooting—top-notch ball handling depends on control! Producing a fine winter-time gasoline takes control, too!

And that's just what we do with Phillips 66 Gasoline—control it by selectively blending the high-quality components that go into it to meet your driving needs all year 'round!



Pull up to the orange-and-black "66" shield and get a tankful . . . you'll see what we mean!

* "VOLATILITY CONTROLLED"
TO GIVE YOU FAST STARTS!



Ralph Harding
Phillips 66 Wholesale Jobber

This Bank

AND

YOUR CREDIT

It is a mistake for the young business man to say "I have no need of credit, I buy and sell for Cash." It is right and proper to pay promptly but the successful businessman is the one who establishes a credit and protects it as he would his character.

Credit is a necessary factor in the building up of your business.

This bank desires as customers, young business men with ability to successfully conduct their business. We know the business man's requirements and will lend our assistance willingly to honest efforts to build up a credit.

First State Bank OF STRATFORD

Figures revealed by the weather station at Panhandle A. & M. College, Goodwell, show that 80

percent of the moisture in the Goodwell region over a 37 year period fell between April 17 and October 23.

Stratford Abstract Co.

Minnie Laura Jackson, President
Incorporated 1907 — 41 years of Satisfactory Service to Sherman County Land Owners

Let Us Make Your Abstracts
WE SHOW THE RECORDS
Office on Corner of Main Street and Grand Avenue

ABSTRACTS

WE HAVE A COMPLETE
ABSTRACT PLANT

Covering All Real Estate In Sherman County

We Furnish Quick, Efficient Service
On Short Notice

Sherman County Abstract Co.
Royal Pendleton, Manager Stratford, Texas

Protect The Life Of Your

FORD

With Genuine Parts And
Accessories

A small investment in having your car tuned-up for cold weather driving will give added service and may save you considerable inconvenience on cold mornings.

Be Safe, let our mechanics make a careful check of your motor and have it ready to give service in whatever weather that may come to the plains.

Stratford Motor Co.
YOUR FORD DEALER

Stratford Lodge 874



A. F. & A. M.
Stated
Communication

SECOND FRIDAY NIGHT OF
EACH MONTH

K. L. ELLER, W. M.
A. L. KING, Secretary

As to farm programs, all three will fight to keep the Commodity Credit Corporation as the giant bank for farm price support. All would retain the farm credit system, but the Farm Bureau and Grange would make it independent of the Department of Agriculture. The Farmers Union would "liberalize" it, and slant it more to the needs of the small farmer.

All three back soil conservation, but vary on methods. All favor extension work, but the Grange and Farmers Union would divorce it from the Farm Bureau in states where there is a close tie-up.

Farm Bureau and Farmers Union believe in local farm program administration by elected farmer committees. The Grange,

perhaps because it sees less need for government programs, is luke-warm on this.

The Grange is the most conservative as to lowering tariff barriers and freer world trade; Farmers Union is the most liberal. All three agree in hearty support of food and agriculture organization as the one United Nations agency which is agriculture's own. They see it as a means of improving world food production and distribution and of spreading agricultural know-how to all.

Each believes it is fair toward organized labor, but labor leaders usually rate the Farm Bureau and Grange as hostile. Farmers Union is outright pro-labor. The view is growing among all, however, that labor is the farmer's chief customer, and that labor's record in support of farm measures is good.

Turkey, Instead of Eagle, Advocated for Great Seal

Benjamin Franklin suggested the turkey as a most appropriate bird for the Great Seal of the United States, according to Illinois state museum.

Day after day as the meeting wore on, Franklin argued in favor of the turkey—a noble bird of good ancestry, he said, a bird unique to America, a bird far more fitting and different than the eagle which John Adams, Thomas Jefferson and others wanted.

The eagle was an old emblem; it was a shopworn creature which had seen much abuse and had known much shame. It would be better to have a new, fresh, insignia for the new, fresh nation, Franklin argued. But the eagle was chosen.

The Great Seal was created, but an ancient Roman would have found much that was familiar in it. So would the stiff-lipped members of the House of Hapsburg; so would Charlemagne and the Bonapartes. For the eagle has long been a symbol of power, nobility and conquest. Caesar's men marched under the Roman eagle; most of the ruling houses of Europe used the heraldic eagle. So it came about that in Philadelphia the committee overruled Franklin's turkey and chose the American eagle. On the Great Seal he stands today with an olive branch in one claw and arrows in the other, symbolizing a love of peace backed with armed might.

BABY CHICKS

EACH MONDAY AND THURSDAY

Big Husky Started Chicks
ON SPECIAL ORDER

We Have Installed Buildings and Brooding Equipment To Really Do The Job.

Write Us, Or Better Yet Come To See Us

Dalhart Hatchery

P. O. Box 427 Dalhart, Texas Phone 339-R

FOR SALE!

Buildings - All Sizes

Army Barracks

Wood Floors

PLUMBING

Stools, Urinals, Pipe, Fittings, Lavatories, Showers, Stoves, Hot Water

Units, Air Conditioning Units

Double Walk in Boxes

See

Henry J. Cohn

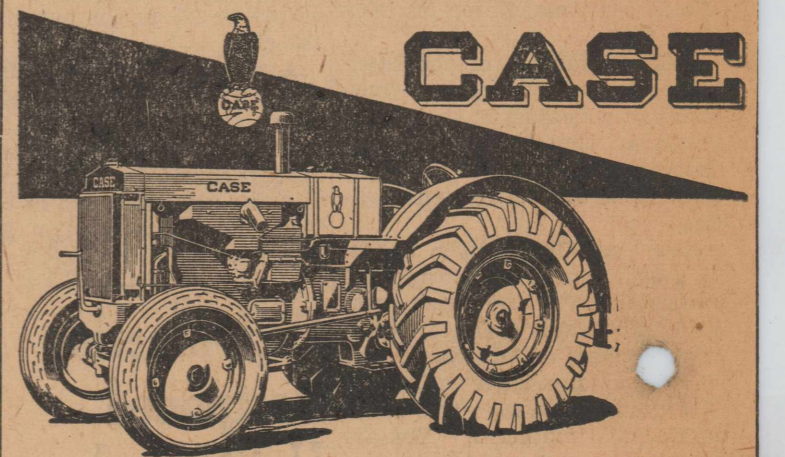
Main Hangar East Air Base
DALHART, TEXAS

MANN'S



Malted Milk Bread
At Your Favorite
Grocery

FIND OUT THE TRUTH about TRACTORS CASE



Genuine Case Repair Overhauls
In Our Service Department Mean

Economy in Grease and Oil.
Economy in Repairs and Adjustments.
Economy in Depreciation.
Economy in Operator's Time.
Economy in a Wider Range of Usefulness.
Economy in Faster Work.
Economy in Work of a Better Quality.
Genuine Case Repairs Give Better, Faster Service at Less Cost.

Cowdrey

Hardware & Implement
J. I. CASE SALES AND SERVICE

Schooling Costs Advanced Only 5%
Only five cents more of each

tax dollar was required to educate the more than 1,500,000 grade, high school and college students in Texas during the last

fiscal year than it did to pay the pensions of fewer than a quarter million aged, blind persons and needy children.

The 33 cents of each tax dollar expended by the state for higher and public education is also only 5 percent more than went into the maintenance and construction of highways last year. Comptroller Sheppard's figures disclose.

At the same time it was shown that the total cost of state government has more than tripled in fifteen years.

Lee Tires

We Look Forward to Giving You A Liberal Trade-In Allowance and placing a new set of

LEE TIRES

On Your Car This Year

Phillips 66 BATTERIES

Your old battery may or may not last through the winter. If in doubt and you wish to avoid inconveniences, let us install a new one. However we will replace the ones that conk out with the same consideration as the ones replaced when we are not experiencing an extreme cold wave.

Car Washing and Greasing

Harding & Parker

Wayne Harding Carroll Parker

In November 1947, the National Education Association reported that colleges and universities in the U. S. were serving 2,338,226 students compared with the 1946 peak of 2,078,095. About 48 percent of the students are veterans. Shop the ads—Try Stratford first

If You Want Guaranteed and Accurate

Watch and Clock Repairing

You Can Have It Done

At The

STRATFORD TIME SHOP

We Are Specialists In This Work

January Reductions

50% REDUCTION

ON ONE ASSORTMENT OF

COSTUME JEWELRY

One Assortment Of VARIOUS ITEMS

At \$1 Each

TAKE YOUR CHOICE

SEE THE NEW GENERAL MILLS

Pressure Quick Sauce Pan

BEING SPONSORED BY BETTY CROCKER NOW ON DISPLAY AT OUR STORE

Get Your VALENTINES Now

WE HAVE THEM

Lovelace Department Store

"Where Customers Send Their Friends"

STUDEBAKER SALES & SERVICE

COMPLETE PARTS STOCK — ACCESSORIES

Fully equipped Body and Paint Shop

Complete Mechanical Service on all Makes of Cars.

AUTO GLASS

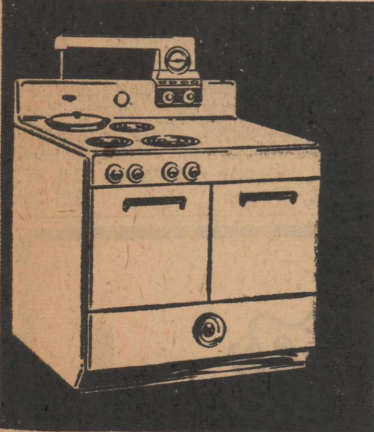
Phone or write for appointment.

KOEHLER MOTOR COMPANY

Ph. 123 302 Rock Island Ave.

P. O. Box 1072 Dalhart, Texas

Come in! See the New 1947- Frigidaire Electric Range



It's beautiful in design, far advanced in improvements and new conveniences. See how Frigidaire really makes all cooking Carefree Cooking.

- Extra-large porcelain oven.
- Radiant tube 5-speed cooking units.
- Cook-Master oven clock control.
- Double-Duty Thermizer cooker.
- Waist-high, smokeless type broiler.
- All-porcelain inside and out.

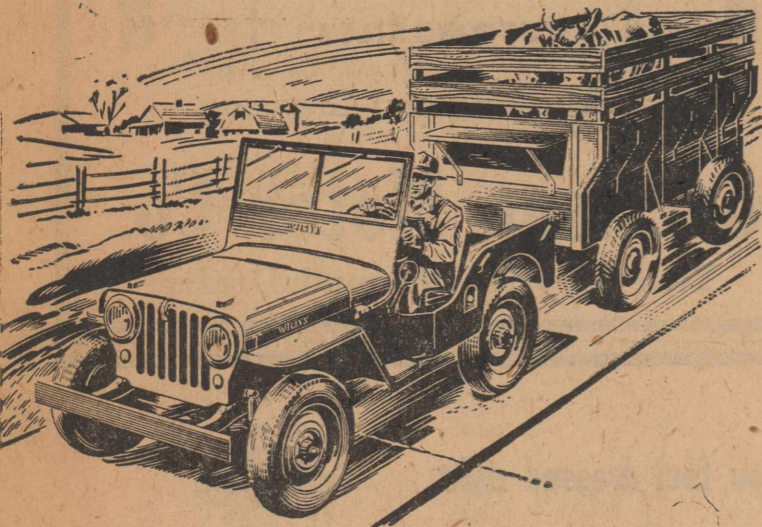
and many, many others

Duby

Plumbing & Electric

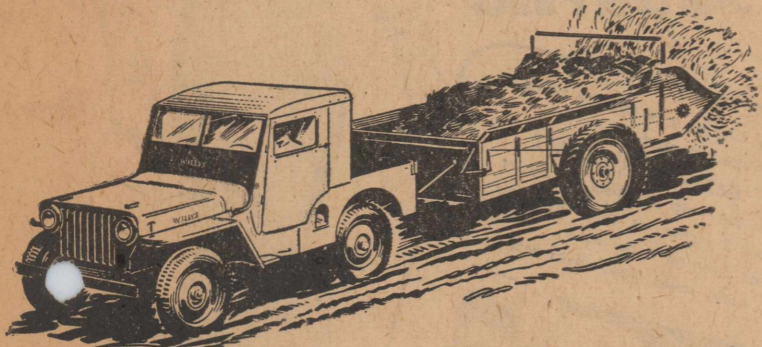
Phone 143

Power for Pulling



2-Wheel-Drive for the Highway

The Universal "Jeep's" wide speed range on hard roads saves valuable working time and its 4-wheel-drive pulling power for slippery roads and steep grades makes it the ideal farm tow-truck. It gives economical, satisfactory service, whether hauling hay to the next county or taking livestock to market. It's a handy pickup, 100—carries 1200 lbs.



4-Wheel-Drive for Field Work

For off-the-road service—in the field or over rough ground—the versatile "Jeep" has traction at every wheel and a choice of six forward speeds to give correct gear ratios for the work at hand. In 4-wheel-drive, the "Jeep" also works as a tractor... helps farmers the year 'round and is ready for virtually any hauling job.

THE UNIVERSAL **Jeep** Slay Motor Co.

Safety in Driving

(First of a Series)

What is your T.L.Q.?

Your traffic law quotient, that is. Do you know that laws that help protect you from an automobile accident?

To familiarize the public with traffic laws and the necessity for obeying them, The Texas Department of Public Safety is cooperating in a nationwide "Learn and Obey Traffic Laws" program during February.

"In almost every accident, one or more drivers were violating some traffic law," said Colonel Homer Garrison, Jr., Director. "Better voluntary observance of traffic laws would save a lot of lives."

One of the most common causes of accident is driving in the wrong lane, according to W. J. Elliott, Chief of the Texas Highway Patrol Division. He pointed out that National Safety Council statistics show driving on the wrong side of the road to be the second most frequent violation reported in traffic mishaps.

Keep right and you'll be left, to drive another day, he said, and listed these rules:

1. Drive to the right of the centerline. On three-lane roads, never drive in the far left lane, and on four-lane roads, never

drive to the left of the center.

2. Drive to the left on a two-lane road, in the center lane on a three-lane road, or in the lane next to the center on a four-lane road only to overtake and pass a slower moving vehicle, and then only when you are sure that everything is clear.

3. On multiple lane roads, drive in one lane. Don't change from one lane to another without looking back on both sides. Be sure a car is not overtaking you at the side and to the rear, a blind spot in many automobiles.

4. In some cases it is legal to overtake and pass on the right, but this is not a universal rule. Even where it is legal, it should be done with care because many drivers are not expecting it. Overtaking and passing on the right may be made when:

- a. The driver in front is making a left turn.
- b. On "one-way" streets.
- c. On a pavement wide enough for two or more lines of moving traffic in each direction.

The new Uniform Act regulating traffic requires that all movements must be made "in safety." All drivers are therefore required by law to be alert at all times.

J. P. Powell M. D.

Eye, Ear, Nose and Throat

Dalhart — Texas

Mid-Way Cafe

Pleasing Customers With Regular Meals and Short Orders

C. E. Leonard

Motor trucks and tractors have replaced horses and petroleum products have replaced enough oats, corn and hay to release some 55 million acres of cropland for market production since World War 1.

Wages to farm workers have tripled since 1940. An all-time high was set in 1947.

HERE'S THE MUD AND SNOW HUSKY THAT "DIGS YOU OUT"

CO-OP BAR LUG

Here's the tire built to "dig you out" when the going gets tough instead of dig you in.

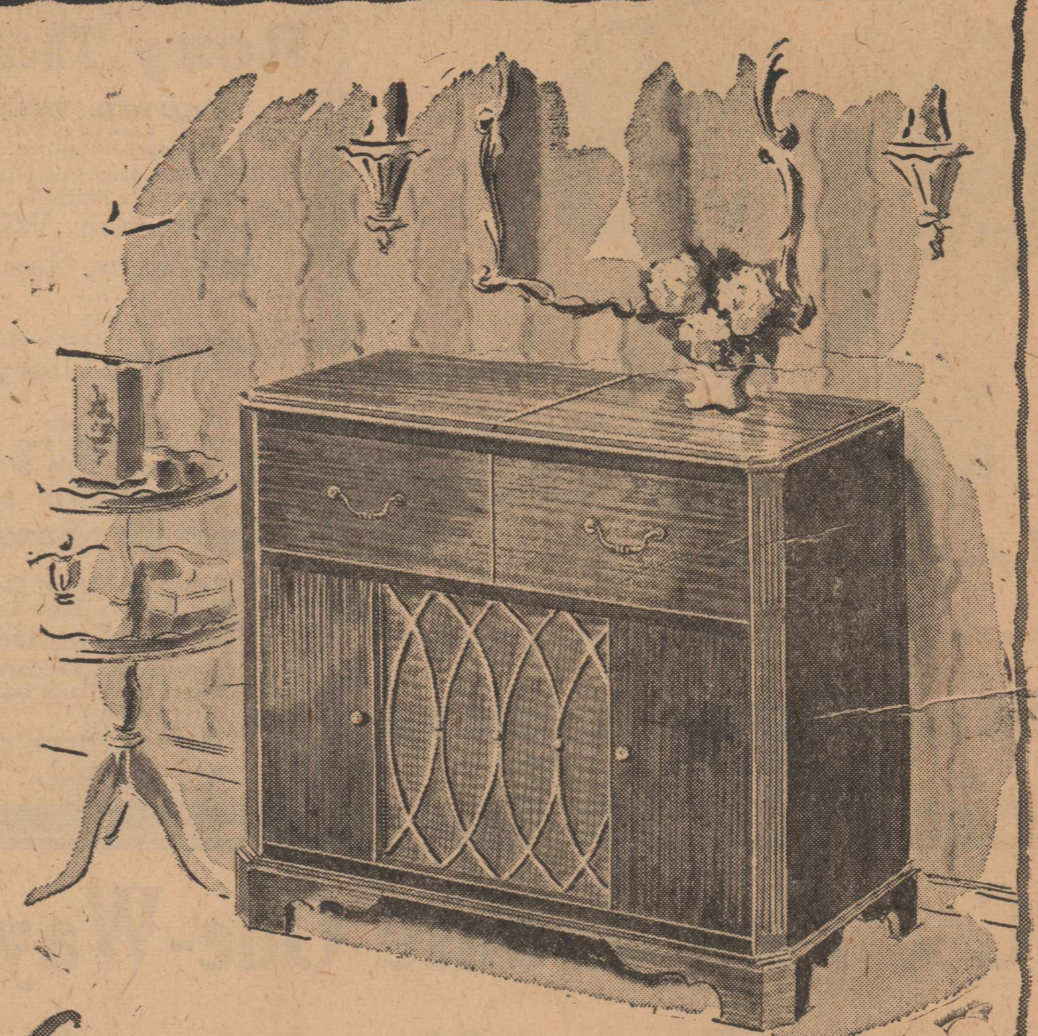
This Co-op mud and snow husky features an open tread design that kicks out clogs with every turn of the wheel. Sticky shoulder buttresses give extra traction, prevent side slips. And non-directional lugs provide excellent forward and backward traction.

Come in now and see this great tire. It's backed by a liberal CO-OP Warranty.

AVAILABLE FOR TRUCKS, TOO! The Co-op Bar Lug Heavy Service truck tire gives you extra strength and extra mileage, plus forward and backward traction, extra shoulder traction to block side slips, and positive self-cleaning action.

Consumers Co., Inc.

"We are Open 24 Hours a Day"



CLASSIC BEAUTY...

OUTSTANDING PERFORMANCE...

Hoffman RADIO—THE SOUND BUY

Beauty that home decorators love, matchless performance by the radio that is the choice of California music lovers—all yours in this Hoffman AM-FM radio and automatic record changer. As charming to look at as it is to hear. Custom-quality at a popular price. 379.50

Raymond's Radio Service

Local News

C. D. Holmes was a business visitor in Amarillo Tuesday. Mr. and Mrs. Frank Baber, Texhoma, were dinner guests of the Russell Kelp's Friday night. Mr. and Mrs. Graydon Gamble and Mrs. W. R. Gamble were business visitors in Amarillo

Tuesday. Harry Ingham left Monday for a visit in Hot Springs, New Mexico. Mr. and Mrs. O. W. Wharton, Tucumcari, New Mexico, were guests in the Dick Diehl home Friday. Miss Edith Kite and Miss Marjorie Shiflett, Goodwell, were visitors in the home of Miss

Stratford Frozen Food Lockers

Locker Storage by the Month or the Year. COMPLETE MEAT PROCESSING Killing, Cooling, Cutting, Wrapping, Lard Rendering, Curing, Smoking, and Quick Freezing YOUR GROCERY PATRONAGE APPRECIATED

TENDER BEEF FOR SALE	54¢
150 Pounds Processed, Pound	
1/2 of 1/2 BEEF	54¢
Processed, Pound	
PORK FOR SALE	49
80 to 100 Pound Halves, Processed, Pound	

VALENTINES!

VALENTINE NAPKINS
COCKTAIL And DINNER NAPKINS
Pettie Combination Valentine
NAPKINS and MATCHES

Kimball's Flower of the Month Hankies
FOR LADIES AND MEN

STATIONERY

With Colored Inks and Hand Decorated Boxes

NOTES with Colored Inks

Robbie's Gift Shoppe

Phone 140

**New Spring Line of Samples
Are Here**



Tailored to Measure by
KLING BROS., CHICAGO

A powerful pair!

Place Your Orders Now For Early Delivery On Easter Suits

Stratford Cleaners

Phone 90

ONE-DAY SERVICE

ON WET AND DRY WASHES
QUILTS AND BLANKETS

Drying Unit Makes Washing and Drying Possible During All Kinds of Weather

We Appreciate Your Patronage and Try To Treat Every Customer with Every Courtesy

Bendix Laundry

FRANK AND EMILY ROSS

Baby Chicks

See Us And Leave Your Orders

We Can Supply Most Any Breed

Most Any Time.

FRYERS

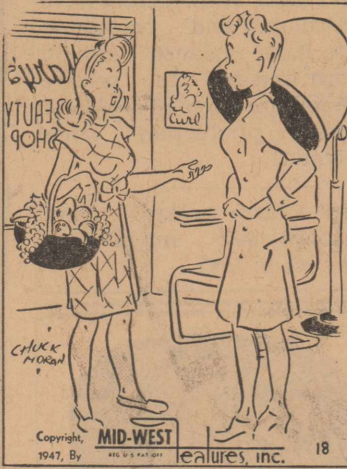
DRESSED OR ON FOOT

Harrison Poultry & Feed

Kite's mother, Mrs. Marion Anderson, last week-end. Jack Wright, Boise City, visited Howard Gibbons Saturday. Jack Golladay attended a Ford Motor Co. laboratory school in Amarillo the first of the week. Mrs. A. C. Jackson, son, Joe Terry, and daughter, Barbara, Lubbock, spent last week-end visiting in the H. T. Jackson and J. R. Pendleton homes. Mr. and Mrs. Marvin Burkhart and children and Mrs. Mary Stacey were Sunday dinner guests in the Paul Spruell home. Mr. and Mrs. Eugene Harrison and son of Lubock are here for a visit with Mr. and Mrs. M. H. Harrison. Dick Diehl was in Plainview buying cattle Tuesday. Mr. and Mrs. D. B. Grimes were Sunday visitors in the home of his brother, Mr. and Mrs. S. L. Grimes in Amarillo.

Shuler Donelson was a visitor in Amarillo Monday. Mr. and Mrs. Tom Gibbons, Texhoma, visited their mother, Mrs. J. T. Gibbons Sunday. Miss Lavern Mayhall, Amarillo, visited her parents, Mr. and Mrs. Albert Mayhall, Monday and Tuesday. Hayden Cooper, Ness City, Kansas, was here for a short visit Monday. He was accompanied by his mother, Mrs. H. J. Cooper to Big Spring for a visit with relatives. Mr. and Mrs. Ernest Kelp, Mr. and Mrs. Russell Kelp and Serena were Sunday guests at the Tom Gibbons home near Texhoma. Mrs. D. L. Buckles returned

**WAITRESS HATTY
By Palace Cafe**



Palace Cafe

RUSSELL BEALL, Proprietor

Roxy Theatre

STRATFORD, TEXAS

February 5 and 6
Bud Abbott, Lou Costello and Marjorie Main In
"The Wistful Widow of Wagon Gap"

February 7
Eddie Dean and Roscoe Ates In
"West To Glory"

February 8 and 9
Cary Grant, Mirna Loy and Shirley Temple In
"The Bachelor and the Bobby-Soxer"

February 10 and 11
The Bowery Boys In
"News Hounds"
Plus Second Feature
Gary Cooper and Basil Bathbone In
"Adventures of Marco Polo"

Livestock Auction

EXPECTING 1,000 TO 1,500
CATTLE OF ALL CLASSES

MONDAY, FEB. 9th

Selling Only One Day — Selling Until We Finish

Receipts last Monday approximately 1200 mixed cattle besides the Registered Cattle.

For a Reliable, Dependable Market Ship Or Consign Your Next Cattle To

Augustine Livestock Commission Co.

TEXHOMA, OKLAHOMA

Modern Yards and Facilities — Best Accomodations

FOR THE

QUEEN OF HEARTS ON

Valentine

**BONAR
Pharmacy**

Fountain Service

Phone 29



The South's finest chocolates since 1906 — fresh shipments received regularly.

Tuesday from a visit with her brother and sisters in Muskogee and Oakmulgee, Oklahoma.

Roy Allen and George Allen attended the livestock sale at Dalhart AAF, during day at Dalhart AAF, nights, DeSoto Hotel, Dalhart. 18-2tc

Mr. and Mrs. Kenneth Kendrick were business visitors in Amarillo Tuesday. They went from there to Canyon to attend a ball game Tuesday night.

Mr. and Mrs. Pruet Adkins and Mrs. Winnie Brooks visited Mr. and Mrs. Henry Beauchamp in Clayton, New Mexico Thursday of last week.

Dick Diehl and Howard Gibbons attended the livestock auction in Texhoma Monday.

Mr. and Mrs. Luther Arnold, Bushland, were guests in the home of Mr. and Mrs. Fate Morris over the week-end.

Mr. and Mrs. Frank Judd are visiting with relatives in California.

Mr. and Mrs. H. C. Bennett and son, Hal, left Sunday for a visit on the West coast.

W. P. Schooler, Amarillo, is a guest in the home of Mr. and Mrs. F. L. Yates.

More than 8 out of 10 U. S. farms have radios, and 6 out of 10 have electricity from a central power station.

Want Ads

FOR SALE: New John Deere Model D Tractor.—Elmer Robinson, Phone 99, Springer, New Mexico. 18-3tp

PIPE FOR SALE: From 1 to 2 inch black and galvanized.—Bill Harkins, 120 West 5th Street, Dumas, Texas, Telephone 21421. 17-2tp

FOR SALE: Good Used Cook Stove.—McMahan Furniture. -18

FOR SALE: Used dining table, 4 chairs and a buffet for \$25.—Mrs. Ernest Lovelace. 17-tfc

FOR SALE: One 1947 Jeep.—Slay's Furniture. 18-tfc

LOST: Small blue purse, containing watch and other valuables, has the name of Dorless Parker on school meal ticket. Liberal reward for return to owner.—Dorless Parker. 18-tfc

"Buildings and Good Used Building Material for sale: 20x50 and 20x40 surplus army barracks, from Dalhart AAF, delivered intact. Also dimension lumber; sheathing; fir flooring; excellent oak flooring; asphalt shingles;

pipe, 3-4 to 5 inch; booster pumps; lavatories; stools; valves; new warm morning coal stoves; large coal furnace. See Walt Habiger, during day at Dalhart AAF, nights, DeSoto Hotel, Dalhart. 18-2tc

LOST: Dark blue fender skirt. If found call Gene Wilson. 18-tfc

BACKUS USED CARS: 1948 Ford, Fordor Super Deluxe; 1948 Ford, Club Coupe Super Deluxe; 1948 Ford, Tudor Super Deluxe; 1947 Ford, Tudor Super Deluxe; 1940 Ford, Tudor; 1947 Chevrolet, Aero Sedan; 1947 Chevrolet, Fordor; 1946 Chevrolet Club Coupe; 1947 Oldsmobile, Fordor Hydromatic; 1938 Plymouth, Tudor; 1947 Chevrolet, Two Ton Truck. Most of 1948 models less than 50 miles. Trade and Terms. Phone 699-W or 610-W, Dalhart, Texas. 16-ttc



Chrysler Corporation
MOPAR PARTS
for
CHRYSLER AND PLYMOUTH
AUTOMOBILES

Car Washing and Greasing

Garrison Motor Co.

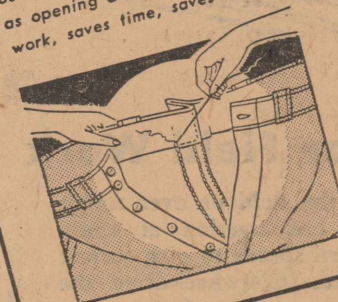
Your Chrysler-Plymouth Dealer

You feel dressed right for the job when you

wear **Dickie's** Shirts & Pants



Only Dickies give you the pants with the patented EASY-ALTER OUTLET... the waist and seat can be let out 2 inches, as quick and easy as opening a our sack... saves work, saves time, saves money



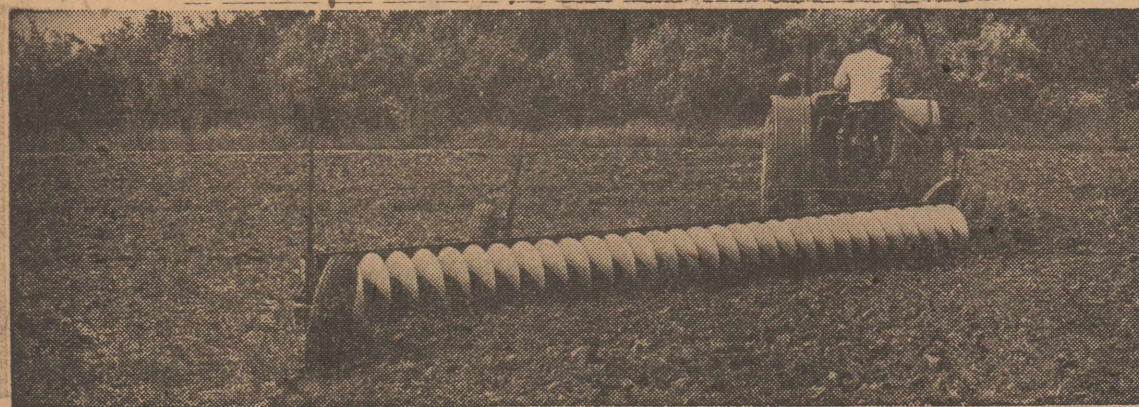
Dickies SHIRTS & PANTS
Shirts, \$3.95
Pants, \$3.95

On almost any job you feel right in Dickie's matched Shirts and Pants... tailored from tough, dressy-looking Army Twill that keeps its color and life through many a wash day. Yes, Dickies are made for work... with strong, man-size pockets... roomy seat... smooth fit around the waist, and belt loops in the right places. It doesn't cost... it PAYS to dress right for work in long-wearing Dickies. Get yours this week at...

McIntosh Dry Goods

Get Your Krause One-Way Plows Now!

WE HAVE THEM IN STOCK



W. T. MARTIN

IHC Farm Implements And Repairs

News of the Sick

Little Miss Senora Mullican was taken back to an Amarillo

hospital Saturday suffering from an infection in both ears. She is said to be in an improved condition.

Lynn Allen has been on the sick list this week. Deputy Sheriff A. L. Wilson was out Tuesday for the first time after a long siege of influenza.

Mrs. S. J. Calvird, who is in Loretta Hospital, is reported slightly improved.

Mrs. Roy Allen has been ill for several days. County Judge L. P. Hunter returned to his office this week after a short illness.

Mr. and Mrs. Lamoine Palmer have a sick baby in their home.

Mrs. E. D. Lavake is expected to be well enough to be brought home from a Dalhart hospital this week.

Buy the Best for Less

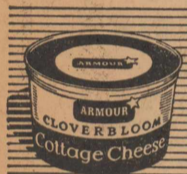
Quick Frozen Fruits and Vegetables
Ice Cream and Fryers

PEACHES
Del Haven
Syrup Packed
No. 2 1/2 Can **26**

PRUNES
Del Monte
In Heavy Syrup
10 Ounce Jar **26**

APRICOTS
Del Monte
Whole Unpeeled
In Heavy Syrup
29 Ounce Jar **33**

PURE LARD
Armour's Star
 3 Lb. Carton **99**

COTTAGE CHEESE
Armour's Star
 1 Lb. Box **24**

BABY FOOD
Gerbers
3 Cans for **25**

SYRUP
Penick's
Crystal White
75 Ounce Jar **55**


FOLGER'S COFFEE
Pound **55**

BROOMS
Good 5-Tie **79**

Sta-Wax Furniture POLISH
1 Quart **\$1.59**
Reg. \$1.75 Value

CATSUP
White Swan
14 Ounce Bottle **22**

DREFT
Regular Size **35**


Chmere Bouquet
WITH THE FRAGRANCE MEN LOVE
12¢ 2 FOR 23¢


LAVA SOAP
2 Regular Bars for **19**

ORANGE JUICE
Brimfull
No. 2 Can **23**
2 For

SLICED BACON
Armour's Star
1 Pound **75**


Repeat Sliced
1 Pound **65**

SAUSAGE
Armour's
Country Style
Sliced Or
1 Pound Rolls **45**

CURED HAMS
Armour's Star
10 to 12 Lb. Average
 Whole Or 1/2 Lb. **64**

PORK CHOPS
Good Lean
1 Pound **49**

PEANUT BUTTER
Armour's Star
 2 Lb. Jar **55**

CARROTS
Nice Large Bunch
2 Bunches For **19**

RADISHES
Nice Large Bunch
2 Bunches **9**

CELERY
Nice Large Stalk **19**

APPLES
Fancy Delicious
2 Pounds **25**

ORANGES
California
2 Pounds **17**

DICED CARROTS
C.H.B.
No. 2 Can 2 For **19**

CORN
Stokleys
Finest Cream Style
No. 2 Can 2 For **43**

PEAS
Brimfull
Early June
No. 2 Can 2 For **37**

WHOLE GREEN BEANS
CCC Brand
No. 2 Can 2 For **27**

TOMATOES
Concho
No. 2 Can 2 For **33**

Star Club Takes Up Landscaping

The Star Home Demonstration Club studied landscaping and shrubs and plants best suited for this country at the meeting of the club in the home of Mrs. Raymond Keener Tuesday. "Making landscaping convenient is more important than making it beautiful" said Miss Dorothy Dixon, home demonstration agent.

Mrs. Raymond Keener demonstrated her "landscaping plan," and how to draw one.

Those present were Mrs. Tommy Wakefield, Mrs. Shuler Donelson, Mrs. Harold Bennett, Mrs. Ralph Keener, Mrs. S. J. Lavake, Mrs. J. W. Smith, Mrs. Raymond Keener, and Miss Dorothy Dixon.

The club adjourned to meet Tuesday, February 10, at 11:30 A. M. but the hostess has not been selected for this meeting.

New Arrivals

Mr. and Mrs. Owen O'Quin became the parents of a daughter born Monday afternoon in Loretta Hospital in Dalhart.

OLIVER

The Finest Farm Machinery
Sales and Service

Davis Brothers

Wright Davis, Mgr.



The Car Situation Is Tough!
But You Don't Have To Drive Them In This Condition

Drive in and let us check your motor troubles — you may be pleasantly surprised to find that we have the parts needed to place Your Chevrolet in perfect condition.

Davis Motor Co.

"YOUR CHEVROLET DEALER"

Farm Bureau Requests County Farm Labor Office

Hawkins and Williams of the area office of the Texas Employment Commission located in Amarillo met with the local farm bureau directors Monday and discussed plans for operating the farm labor program in Sherman County. The local farm organization is interested in the operation of this labor program which

was recently transferred out from under the supervision of the local county agent to the employment commission of Terrell because it will effect the labor and harvesting machinery made available to Sherman County farmers during wheat harvest and plowing season.

The plan outlined by the employment commission representatives calls for a program similar to the farm labor program administered by the Extension Service on a restricted scale supervised from the Amarillo area office by their field men. The number of personnel for operating the program on the funds allotted would not permit the commission to place a local representative in each county, Mr. Hawkins stated. They ask for local cooperation in carrying out the farm labor program and promised three day service on calls for farm labor and employment. Mr. Williams said a telephone call or letter to him in Amarillo would be processed and on the third day a farmer or ranchman from Sherman County could interview as many as six or eight men in his office about work or employment. The early morning radio program giving news flashes on wheat harvest situations carried last year over an Amarillo station will be continued and other facilities for publicity will be used by the Commission in helping the farmer with his harvest.

The local farm bureau directors opposed the remote control features of this plan to administer the farm labor program, as farmers in Sherman County have experienced delays in securing harvest machinery during the rush of harvest with local representation in past years and see this as a weakness in the new plan that will result in loss of wheat during harvest time.

STOCKMEN

We can now load any size truck at our dock with COTTONSEED Cubes, COTTONSEED Meal, SOYBEAN Pellets SOYBEAN Meal or 21% Protein RANGE CUBES

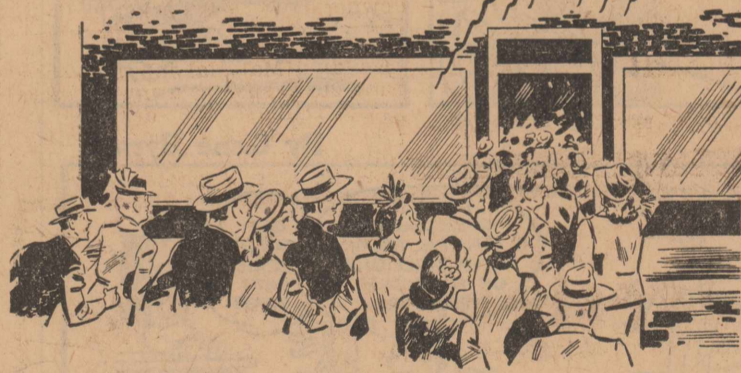
Call, write or wire us for delivered quotations on carload cake

AMARILLO OIL MILL COMPANY

Phone 2-3340 Box 1650

Amarillo, Texas

There's Magnetism in a WELL LIGHTED Place of Business



Watch the crowds... they flock to a well lighted place of business.

There's a lesson for both the buyer and the seller in this buying parade toward a store or shop that uses good lighting.

Wise buyers go to a well lighted store because there they can see what they're buying.

Wise sellers know that good lighting attracts more business, means more sales, more profit.

Your Public Service Company can help you plan for better lighting in your place of business. Call us.

We have nothing to sell but good electric service.

I'LL COME TO YOUR HOME OR PLACE OF BUSINESS



A Public Service Company lighting specialist will come to your home, office, or place of business to give you recommendations as to how to obtain the best in lighting. There's no obligation. Just call or write your nearest Public Service office.

SOUTHWESTERN PUBLIC SERVICE COMPANY

23 YEARS OF GOOD CITIZENSHIP AND PUBLIC SERVICE

Electric Fire Saturday In School Gym

Fire caused by a short in the wiring over the ceiling of the high school gymnasium Saturday morning resulted in a fire department alarm and general excitement among the citizens of the town although actual damage was not considered costly.

The fire was discovered about 11:30 as work was being com-

pleted in cleaning the gymnasium after the president's ball to wax the floor for basketball games.

Smoke started pouring from one of the light fixtures and a small portion of the ceiling was scorched.

For Life Insurance See

Walter M. Pendleton

Local Representative

Southwestern Life Insurance Co of Dallas, Texas

Valentine Day Will Soon Be Here

There is no better Valentine than your Portrait, and no better place to have it made than at Bond's.

Give a Valentine that will not end up in the waste basket

Bring Us Your Photo Finishing

BOND STUDIO

Portraits With A Personality

50% Off SALE



On Our Entire Stock Of

Woolen

Piece Goods

Plaids, Solids and Pastel Colors

"second wind" FEATURES

inside and out



stylish *Weather-Bird* SHOES FOR BOYS AND GIRLS

When ordinary shoes give up... Weather-Birds get their "second wind". Thanks to the 5 special, weatherized features... and extra reinforcements in vital parts.



Ross Bros. Dry Goods

ALBERT'S Grocery & Market

STRAN-STEEL "QUONSETS"

Practical, low-cost, all-steel buildings. Easy to erect; will not sag, warp or rot. Permanent, fire-safe construction. Call today for full details.

adaptable to many purposes

UTILITY BUILDING
BARN • GARAGE • OFFICE
SUMMER CAMP • STORAGE
TOOL SHOP • MANUFACTURING HOME

Ralph Harding

LOW-COST, ALL-STEEL BUILDINGS

King, Though Absolute Monarch, Up for Trial

Although King Ibn-Saud of Saudi Arabia is an absolute monarch, any of his subjects may have him brought to court. In one such recent trial, he was accused of breaking a Koranic law by leasing oil lands to infidels. The king appeared and won the case by claiming he was obeying the will of the Prophet by making his country prosperous. In the past 10 years, it is estimated, royalties resulting from these leases have totaled more than \$200,000,000.



Get this quick 3-WAY RELIEF!

- 1. Offensive cough due to colds, smoking? Get this prescription-type formula of proven cough-relief ingredients long used by doctors. Quick, long-lasting relief 3 important ways:
- 2. Eases throat tickle
- 3. Soothes raw, irritated membranes
- 4. Helps loosen phlegm

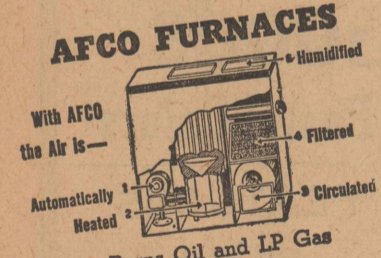


PILES TROUBLE? For Quick Relief

DON'T DELAY ANY LONGER! Now, a doctor's formula, you can use at home to relieve distressing discomfort of pain-itch-irritation due to piles. Tends to soothe and shrink swelling. Use this proven doctor's formula. You'll be amazed at its speedy action relief. Ask your druggist today for Thornton & Minor's Rectal Ointment or Suppositories. Follow label instructions. For sale at all drug stores.

HEAD COLD QUIZ... WHAT CAUSES A SNEEZE?

Answer: Irritation in the nose. Just 2 drops, Penetro Nose Drops in each nostril, check irritant—and sniffles almost instantly. You feel relief, breathe easier quickly. 3 generous sizes. Buy **PENETRO NOSE DROPS**



Wholesale Distributor
WICHITA SHEET METAL WORKS
322-24 North Washington
Wichita 2, Kansas

GIRLS! WOMEN! try this if you're NERVOUS

On 'CERTAIN DAYS' of Month—Do female functional monthly disturbances make you feel nervous, irritable, so weak and tired out—at such times? Then do try Lydia E. Pinkham's Vegetable Compound to relieve such symptoms. It's famous for this! Taken regularly — Pinkham's Compound helps build up resistance against such distress. Also a great stomachic tonic!

WNU—H 05—48

That Nagging Backache

May Warn of Disordered Kidney Action
Modern life with its hurry and worry, irregular habits, improper eating and drinking—its risk of exposure and infection—throws heavy strain on the work of the kidneys. They are apt to become over-taxed and fail to filter excess acid and other impurities from the life-giving blood.
You may suffer nagging backache, headache, dizziness, getting up at night, tired, nervous, all worn out. Other signs of kidney or bladder disorder are sometimes burning, scanty or too frequent urination.
Try Doan's Pills. Doan's help the kidneys to pass off harmful excess body waste. They have had more than half century of public approval. Are recommended by grateful users everywhere. Ask your neighbor!



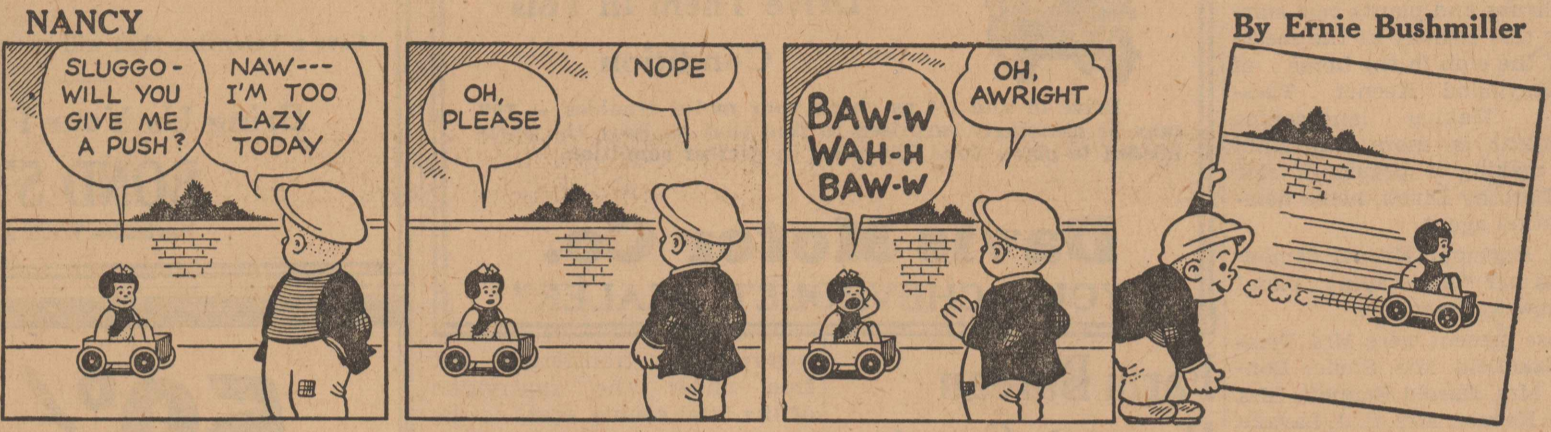
BOBBY SOX
By Marly Links

"Adele's the center of every conversation ever since she's been psychoanalyzed!"



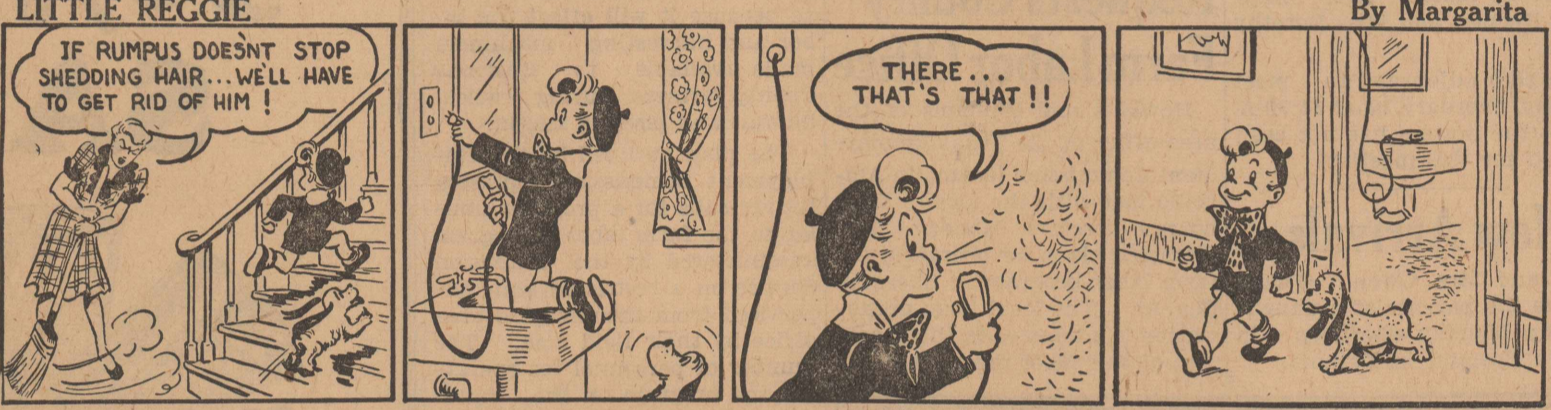
CROSS TOWN
By Roland Coe

"You don't know much about art, do yuh? That thing he's paintin' that looks like our barn is the silo. The thing that looks like the silo is really the barn!"



NANCY

By Ernie Bushmiller



LITTLE REGGIE

By Margarita



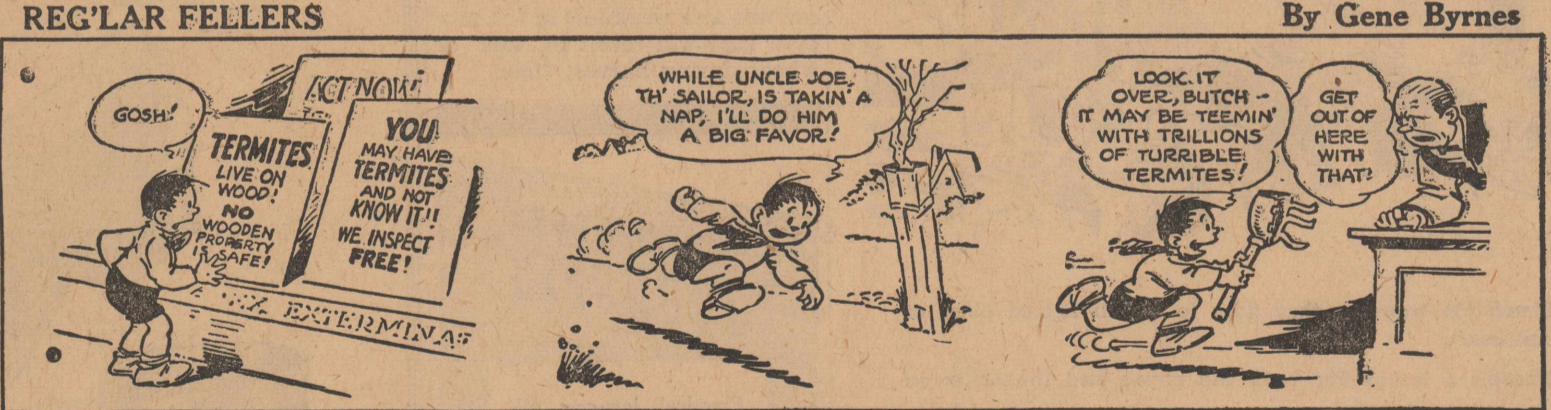
MUTT AND JEFF

By Bud Fisher



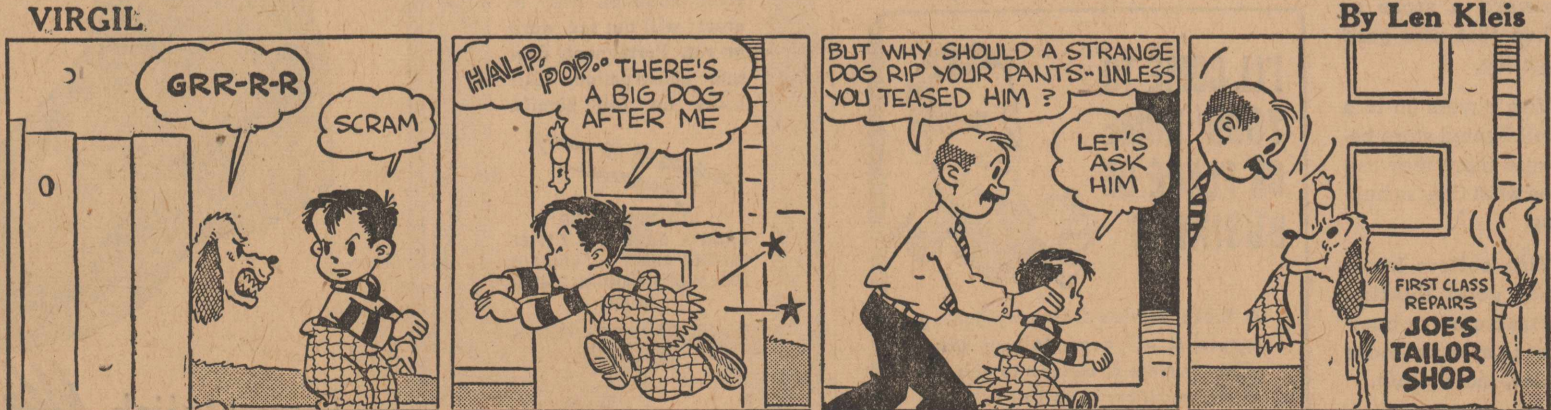
JITTER

By Arthur Pointer



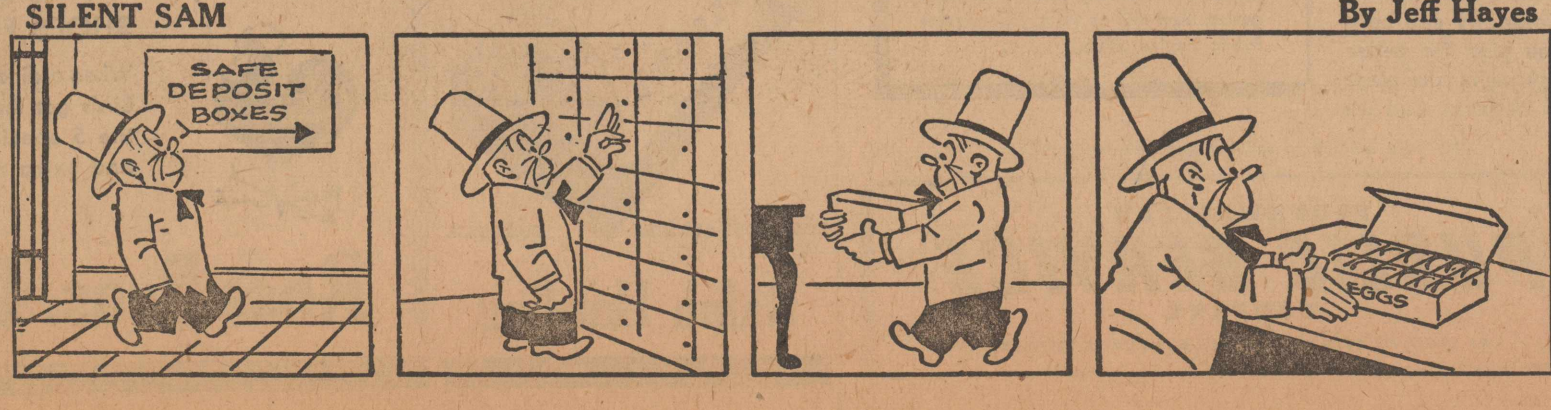
REG'LAR FELLERS

By Gene Byrnes



VIRGIL

By Len Kleis



SILENT SAM

By Jeff Hayes

SEWING CIRCLE PATTERNS Make a New Blouse for Spring



Pattern No. 8248 comes in sizes 12, 14, 16, 18 and 20. Size 14, bow blouse, 2 yards of 35 or 39-inch; round necked blouse, 1 1/2 yards for short sleeves; 2 1/4 yards for long sleeves.

SEWING CIRCLE PATTERN DEPT.
530 South Wells St. Chicago 7, Ill.
Enclose 25 cents in coins for each pattern desired.
Pattern No. _____ Size _____
Name _____
Address _____

Splendid Cough Relief Is Easily Mixed at Home

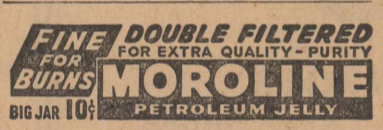
To get quick and satisfying relief from coughs due to colds, mix this recipe in your kitchen. Once tried, you'll never be without it.
First, make a syrup by stirring 3 cups granulated sugar and one cup of water a few moments, until dissolved. A child could do it. No cooking needed. Or you can use corn syrup or liquid honey, instead of sugar syrup.
Then get 2 1/2 ounces of Pinex from any druggist. This is a special compound of proven ingredients, in concentrated form, well-known for its quick action on throat and bronchial irritations.
Put the Pinex in a pint bottle, and fill up with your syrup. This makes a full pint of splendid medicine and you get about four times as much for your money. Never spoils. Tastes fine. And for quick, blessed relief, it is surprising. You can feel it take hold in a way that means business. It loosens the phlegm, soothes the irritated membranes, and eases the soreness. Thus it makes breathing easy, and lets you sleep. Money refunded if not pleased in every way.
Pinex Is Swift Acting!

Now's the time to plan on some exciting new blouses for your spring suit. The two styles shown go together easily and have a choice of sleeve lengths—a wonderful way to pep up your winter wardrobe, too.

Final Shortcoming

Mike Clancy had been working on New York harbor tugboats for fifty years when he fell overboard and was drowned. This brought about a very fine wake, at which the highest praise was given the deceased by various friends and relatives.

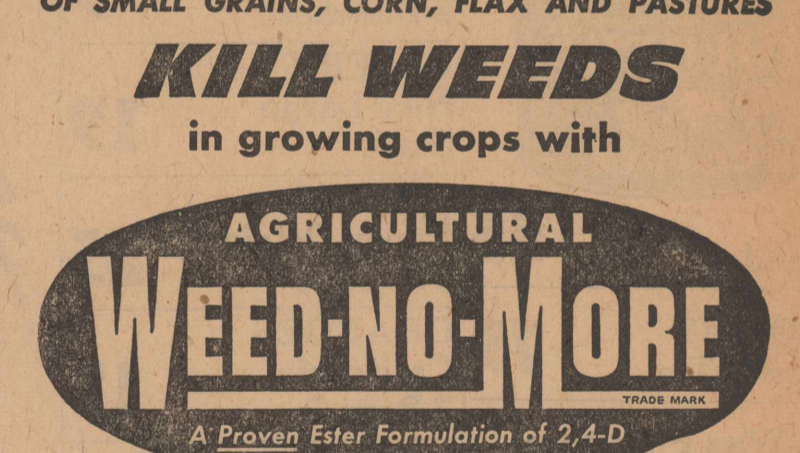
During the proceedings, a friend of the widow asked: "Did Mike leave you well fixed?"
"Sure, an' he did that." "Tis \$50,000 he's after leavin' me."
The friend rolled her eyes heavenward. "Tch, tch, tch," she said. "Think of that. And him that couldn't read or write."
"Yes," agreed the widow, shaking her head seriously, "nor swim."



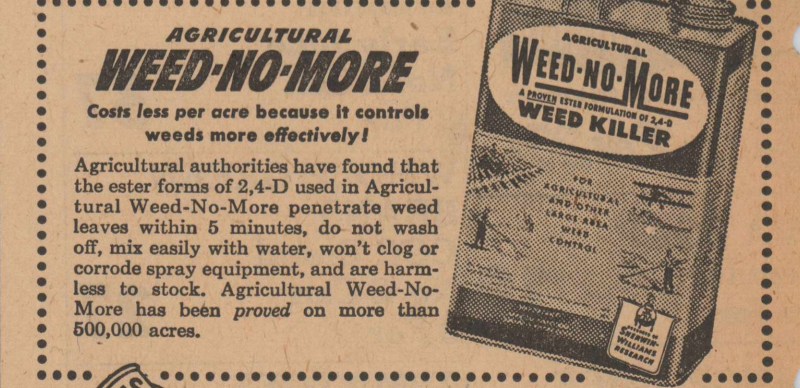
Older folks say it's common sense...
ALL-VEGETABLE LAXATIVE
In NR (Nature's Remedy) Tablets, there are no chemicals, no minerals, no phenol derivatives. NR Tablets are different—act different. Purely vegetable—a combination of 10 vegetable ingredients formulated over 50 years ago. Uncoated or candy coated, their action is dependable, thorough, yet gentle, as millions of NR's have proved. Get a 25¢ box. Use as directed.



Get higher yields OF SMALL GRAINS, CORN, FLAX AND PASTURES



The new miracle chemical 2,4-D in Agricultural Weed-No-More, brings you the practical, low-cost way to kill weeds in growing small grains.
Spraying Agricultural Weed-No-More on young corn is faster than cultivating, kills weeds right up to the corn plants, makes row-planting practical.
On pastures, fence rows, ditch banks, and grassed waterways, Agricultural Weed-No-More kills many weeds, roots and all.
Agricultural Weed-No-More goes on fast—covers 7 to 15 acres per hour. It goes far, too—1/4 pint to 2 pints in only 5 gallons of water treats 1 acre! Apply it by the new low-gallonage method developed and proved by Sherwin-Williams Research. Use a simple, low-cost rig that you or any local shop can quickly assemble.



AGRICULTURAL WEED-NO-MORE
Costs less per acre because it controls weeds more effectively!
Agricultural authorities have found that the ester forms of 2,4-D used in Agricultural Weed-No-More penetrate weed leaves within 5 minutes, do not wash off, mix easily with water, won't clog or corrode spray equipment, and are harmless to stock. Agricultural Weed-No-More has been proved on more than 500,000 acres.
SEE WEED-NO-MORE AT WORK IN NEW SOUND MOVIE
Ask your county agent, vo-ag teacher or farm supply dealer to arrange for you and your neighbors to see "Agriculture's New Conquest." It will show you how you can boost yields and profits with 2,4-D.
FREE BULLETINS
See your farm supply dealer for free bulletins on Agricultural Weed-No-More and on the proved, low-gallonage spray method and easy-to-build spray rig. If he can't supply you at once, write direct to Agricultural Chemicals Division, 1229 Midland Bldg., Cleveland 1, Ohio.
Acme White Lead & Color Works, Detroit • W. W. Lawrence & Co., Pittsburgh
The Lowe Brothers Co., Dayton • John Lucas & Co., Inc., Philadelphia
The Martin-Senour Co., Chicago • The Sherwin-Williams Co., Cleveland
PRODUCT OF SHERWIN-WILLIAMS RESEARCH

CLASSIFIED DEPARTMENT

AUTOS, TRUCKS & ACCESS.

FORD—School Bus, 28 passenger, brand new, Hick's body. KANSAS MOTORS, Inc., 9th & Minnesota, Kansas City, Mo.

BUSINESS & INVEST. OPPOR.

PHOTO STUDIO Wisconsin Progressive community, Fully equip., mod. Owner must go to Mexico. Get full details now. Sacrifice price. H. G. GREEN, 3159 Roosevelt Rd., Chicago, Ill.

FARM MACHINERY & EQUIP.

WANTED—New Ford: A. B. G. M. John Deere; M. H. A. or B. McCormick; WC C or B Allis tractors; AG Case, AC '60 or 12A John Deere combines. HAROLD HESS, Minneapolis, Kansas. Phone 393.

RED AND WHITE TOP SILO

MORE FEED FROM FEWER ACRES Making ensilage from a sparse crop is a sure way to make it pay off. A "Red & White Top" silo full of silage costs less than any comparable feed with the same nutritive value.

CLIP THIS COUPON FOR FREE LITERATURE

PLEASE SEND LITERATURE ON: SILO BUZZARD ENSILAGE CUTTER GRAIN BINS WATER TANK POULTRY HOUSE DAIRY BARN

NAME ADDRESS CITY STATE ZIP

NAME ADDRESS CITY STATE ZIP

NAME ADDRESS CITY STATE ZIP

NAME ADDRESS CITY STATE ZIP

NAME ADDRESS CITY STATE ZIP

NAME ADDRESS CITY STATE ZIP

NAME ADDRESS CITY STATE ZIP

NAME ADDRESS CITY STATE ZIP

NAME ADDRESS CITY STATE ZIP

NAME ADDRESS CITY STATE ZIP

NAME ADDRESS CITY STATE ZIP

NAME ADDRESS CITY STATE ZIP

NAME ADDRESS CITY STATE ZIP

NAME ADDRESS CITY STATE ZIP

NAME ADDRESS CITY STATE ZIP

NAME ADDRESS CITY STATE ZIP

NAME ADDRESS CITY STATE ZIP

NAME ADDRESS CITY STATE ZIP

NAME ADDRESS CITY STATE ZIP

NAME ADDRESS CITY STATE ZIP

NAME ADDRESS CITY STATE ZIP

NAME ADDRESS CITY STATE ZIP

NAME ADDRESS CITY STATE ZIP

NAME ADDRESS CITY STATE ZIP

NAME ADDRESS CITY STATE ZIP

NAME ADDRESS CITY STATE ZIP

NAME ADDRESS CITY STATE ZIP

NAME ADDRESS CITY STATE ZIP

NAME ADDRESS CITY STATE ZIP

NAME ADDRESS CITY STATE ZIP

NAME ADDRESS CITY STATE ZIP

NAME ADDRESS CITY STATE ZIP

NAME ADDRESS CITY STATE ZIP

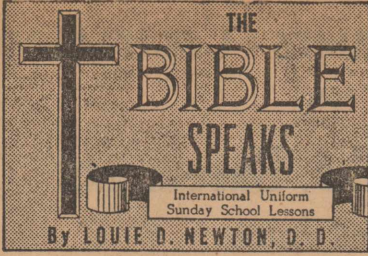
NAME ADDRESS CITY STATE ZIP

NAME ADDRESS CITY STATE ZIP

NAME ADDRESS CITY STATE ZIP

NAME ADDRESS CITY STATE ZIP

NAME ADDRESS CITY STATE ZIP



By LOUIE D. NEWTON, D. D.

SCRIPTURE: John 6:35-40; 13:3-17; Colossians 1:9-20.

DEVOTIONAL READING: Philipians 2:5-11.

The Nature of Jesus

Lesson for February 8, 1948

ONE of the most discerning comments on the nature of Jesus I have ever heard came from an aged Indian in one of the western states a few years ago when I chanced to be waiting for a friend at the entrance of the reservation. This old gentleman was sitting on a large rock. I tried to speak with him, but he did not seem to understand what I said. Then my friend drove up, and introduced me to the Indian. "This man knows our Jesus," my friend said to the Indian. His face brightened, and he held out his hand to me. "Jesus help Indian love white man," he said. Just so, Jesus helps white man love white man, too.

The lesson for Sunday is found in John 6:35-40; 13:3-17; and Colossians 1:9-20, with Philipians 2:5-11 as the devotional reading.

TEACHER AND LORD TAKE the opening passage, John 13:3-17, where Jesus is pictured as taking a basin of water and towel, kneeling at the disciples' feet, washing their feet, and drying them. Do you not feel the blessed Saviour's very nature flooding the scene?

It requires true love, true humility, to serve in that role. Suppose someone came to render this service to you? And suppose that One was the Son of God?

Why did Jesus wash the disciples' feet? Because he loved them, and he wanted them to love other people enough to do for them anything that would convince them of the love which they had in their hearts for them. Here we see him as the great teacher.

"AS I HAVE LOVED YOU" BUT Peter draws back. He cannot conceive of Jesus washing his feet. Why? Because Peter did not yet understand the nature of Jesus. The memory verse for Sunday is helpful just here. Jesus said, "Love one another; even as I have loved you," John 13:34.

Peter acted very naturally, even if he may be tempted to say that he acted foolishly. In fact, he acted just about like any of us would have acted under similar circumstances.

But when Jesus explained to Peter what he was about, Peter then asked that Jesus wash not only his feet, but also his hands and head.

THIS IS JESUS INTERMEDIATES, young people and adults, having carefully read the passage in the 13th chapter of John, where Jesus washes the disciples' feet, will now turn to John 6:35-40, and Colossians 1:9-20, and see the expansion of this great truth over into the expressed will of God for his followers.

A true understanding of this section will lead us to ponder prayerfully the nature of Jesus in the various titles accorded him in the Scriptures—Son of Man, Son of God, Master, Rabbi, Teacher, Physician, Vine, Light, Good Shepherd, Bread of Life, Comforter, Friend and Saviour.

All of these titles he bore, and yet we see him kneeling to wash the feet of everyday people. "Thy gentleness hath made me great." Intermediates and young people will wisely set themselves to the task of identifying the nature of Jesus in the people of their community. Such study will lead you to earnestly seek to walk in his blessed example, loving as he loved.

"WHAT THINK YE OF CHRIST?" AND now we are ready for the climax of the lesson, when Peter declares, "Thou art the Christ, the Son of the Living God," Matthew 16:16.

We cannot long stand in the presence of the story of this lesson and fall to conclude with Peter that none save the Son of God can do such wondrous things—can love as he loved.

Beginning with the incarnation, we follow through the sweeping claims of Jesus, and we know of a truth that he was very God. Convinced, then, that we are in the presence of God when we contemplate the nature of Jesus, what are we to say? Does not Isaac Watts suggest the answer?

When I survey the wondrous cross, On which the Prince of glory died, My richest gain I count but loss, And pour contempt on all my pride. See, from his head, his hands, his feet, Sorrow and love flow mingled down, Did e'er such love and sorrow meet, Or thorns compose so rich a crown? Were the whole realm of nature mine, That were a present far too small, Love so amazing, so divine, Demands my soul, my life, my all!

(Copyright by the International Council of Religious Education on behalf of 40 Protestant denominations. Released by WNU Features.)

PEARL: COME HOME

It was all my fault, Pearl. I admit I was surly and grumpy. No wonder that even the kids were scared of me. But everything's better now. I've found out that constipation caused by lack of bulk in my diet can be licked! Believe me, I advise others who suffer the same way to do what I did: just eat a bowlful of KELLOGG'S ALL-BRAN every day and drink plenty of water. They say it's America's most famous laxative cereal—believe me, it sure gets my vote. Or make it up into muffins—they taste grand too... Come home, dear, and find a bran new man waiting for you. That's me—your ever-lovin' husband, JOE.

FEELING POORLY?

See how SCOTT'S helps build you up!

If you feel run down, and can't hang on—maybe you don't get enough natural A & D Vitamin food. Then try good-tasting SCOTT'S Emulsion—the HIGH ENERGY FOOD TONIC! See how you begin to get your strength back! How you can fight off colds! How you can get your appetite back! How you can get your energy back! How you can get your life back! How you can get your life back! How you can get your life back!

SCOTT'S EMULSION HIGH ENERGY TONIC

NEW! ST. JOSEPH ASPIRIN FOR CHILDREN

Has orange flavor that's sweetest to a child's taste. Easy to give. 50 Tablets for 35c. Try it!

PREferred BY MILLIONS SO PURE, SO FAST, SO DEPENDABLE. St. Joseph ASPIRIN

Beware Coughs That Hang On

Creamulsion relieves promptly because it goes right to the seat of the trouble to help loosen and expel germ laden phlegm, and aid nature to soothe and heal raw, tender, inflamed bronchial mucous membranes. Tell your druggist to sell you a bottle of Creamulsion with the understanding you must like the way it quickly allays the cough or you are to have your money back.

CREOMULSION FOR COUGHS, CHEST COLDS, BRONCHITIS

SPEEDED-UP COMFORT for so-called KIDNEY SUFFERERS

Backaches, leg pains, broken sleep, painful passages usually go so much quicker if you turn to Foley (the new kidney-bladder) pills. They stimulate sluggish kidneys; then ALLAY BLADDER IRRITATION, that's the cause of most pains, aches, urges once thought entirely due to kidney. So for quicker, longer-lasting relief, soothe bladder as well as stimulate kidney action. Do this: use Foley (the new kidney-bladder) pills; they also have direct sedative-like action on bladder. At your druggist. Unless you find them far more satisfactory, DOUBLE YOUR MONEY BACK.

BACK ACHE TORTURE?

SORETONE Liniment's Heating Pad Action Gives Quick Relief!

For fast, gentle relief of aches from back strain, muscle strain, lumbago pain, due to fatigue, exposure, use the liniment specially made to soothe such symptoms. Soretone Liniment has scientific rubefacient ingredients that act like glowing warmth from a heating pad. Helps attract fresh surface blood to superficial pain area. Soretone is different! Nothing else "just like it." Quick, satisfying results must be yours or money back. 50c. Economy size \$1.00. Try Soretone for Athlete's Foot. Kills all 5 types of common fungi—on contact!

TRY POST-WAR "FASTER ACTING" 666 COLD TABLETS

Relieve the aches and "sleep robbing" misery of Colds fast with 666 (Tablets or Liquid). Caution: Use only as directed.

IF YOU WERE A WAVE, WAC, MARINE or SPAR

Find out what Nursing offers you!

—an education leading to R. N. —more opportunities every year in hospitals, public health, etc. —your allowance under the G. I. Bill of Rights often covers your entire nursing course. —ask for more information at the hospital where you would like to enter nursing.



For Special Delivery

The Postmaster-General, Washington, D. C. Dear Sir:

For the luvvavime will you do something about curbing the issue of postage stamps or at least getting them down to a size so a customer will know when he is buying a three-cent stamp and when he is buying a roll of wall paper, a plastic storm-shutter or a blow-out patch?

I see where a new one is coming out in a few days called the Sutter Gold Discovery stamp, which will be another one a little too big to lift. This on the heels of something called the "Everglades National Park Three" which was about as weird a looking thing to put on a letter that I ever saw. It was too big for any letter I would ever write and rich stomach-ache green. This Sutter stamp, I see, will be deep purple and certainly no smaller. From the pictures of it in the papers I would think it about the size of an old Currier and Ives print, only it has more stuff on it than Currier and Ives would have attempted.

It looks like a summer resort souvenir postal of the type the boosters club would get up and more words than you would find on anything but a billposter for a cigarette or liver pill. In big letters like you would find on yellow newspaper extra proclaiming a Third World War it says:

CALIFORNIA GOLD CENTENNIAL Sutter's Mill, Coloma Where James W. Marshall Discovery Started the Rush of Argonauts 1848 U. S. POSTAGE 1948

What is happening among the fellows who design, authorize and print postage stamps in this country today? Is it being done by a lot of refugees from advertisement agencies and some organization dedicated to ignoring the paper shortage? Has anybody who is a designer of whiskey labels got a hand in this business?

How does Washington reconcile this unnecessary use of paper, mulcillage, dyes and inks with its nonstop economy drives and "Don't Waste" campaigns? Huh?

I had a letter the other day that required three three-centers, an air-mail and a special, and I had to splice two envelopes together in order to find room for them. Is that right?

Maybe you are concentrating on making life exciting for stamp collectors or just having good clean fun, I wouldn't know. But you are making life miserable for the people who mail letters and just want a simple stamp, not a curio, a kidney plaster or a synthetic Indian blanket.

Have a heart, Elmer.

HENRY SPEAKS I had a little platform—Some hard work I had done; When Harry Truman took it And now I'm out of one.

VANISHING AMERICANISMS "Send the trunk by express; it will get there faster."

"May I help you with your bags, ma'am?"

"The cab driver seemed pleased with the ten cent tip on a five block journey."

As a fellow who has owned many dogs and had to housebreak them all, we can understand why President Truman wants that new White House balcony.

It might be interesting if Sen. Glen Taylor decided to run for the vice presidency. The people never have had a chance so far to see what a whole horse could do for them in public office.

"Stalin Reported Dead."—Headline. Even if he guaranteed it nobody would believe it.

The fellow who calls a 40 billion dollar budget "staggering" is a poor judge of unsteady locomotion.

Walt Disney Pictures, Inc., made a gross of nearly seven million dollars last year. That's just Donald Ducky.

There is not a woman on the stage in "Command Performance," but we will bet the movie will put on a ladies' night. We expect to see 'em in riding clothes and swim-suits and it is our guess that the bombing scenes will be interrupted frequently for haystack shots.

Clark Gable, it is reported, will play the lead in "Command Decision," in which Paul Kelly is such a magnificent star on Broadway. Paul, being precisely what the book ordered, is not the type, it seems.

New Method Simplifies Building Poultry House



ANYONE who can drive a nail and saw a board should be able to build this poultry house. A simplified pattern method of construction has been worked out which takes all the mystery out of building.

The pattern now available at small cost provides—first, a complete purchase list of lumber needed and explains exactly where each piece is used; second, it contains complete step by step directions written in language everyone can understand; third, it provides assembly illustrations which show the location of each framing member and fourth, full size patterns are provided for cutting all angles on rafter and gable studs. These are traced directly on to the wood. The rafters and gable studs are then cut to the drawn lines. The pattern method for building this poultry house is designed for the person who knows nothing whatsoever about building. And yet, because it is so easy to follow, and because it offers sound methods of building, handymen and carpenters, as well as the average homemaker, successfully use this pattern.

Measuring 10 feet by 10 feet this house provides an ideal place for a small flock of hens. Its size, however, is such that many people use it for storage of various tools or for use as a backyard workshop.

Send 60c in coin for House Pattern No. 14 to Pattern Publishing Company, P. O. Box 215, Pleasantville, New York.

Works Where Most Colds Start

DOUBLE-DUTY NOSE DROPS

Don't delay! At the first warning sniffle or sneeze, put a few drops of Vicks Va-tro-nol in each nostril. For if used in time, Va-tro-nol helps prevent many colds from developing. Relieves head cold distress fast. Try it! Follow directions in package.

TAKE LAXATIVES? Try This Instead

JUST THE JUICE OF A LEMON IN A GLASS OF WATER FIRST THING ON ARISING LEMON IN WATER IS GOOD FOR YOU Try it 10 days. Sunkist

Get Well QUICKER

From Your Cough Due to a Cold

FOLEY'S Honey & Tar Cough Compound

Gosh, I wish we could have new piston rings!

Old horses stay old. But old engines that smoke and burn oil and waste power can be made young again with Sealed Power Piston Rings. There's a Sealed Power Piston Ring Set specifically engineered to do the best possible job in your car, truck or tractor engine, whatever the make, model or cylinder wear condition. See your Sealed Power Franchise Dealer. Save oil, save gas, restore power!

Send a postal for illustrated, informative new booklet on 7 ways to save oil. It's free and may save you lots of money. Sealed Power Corp., Dept. W2, Muskegon, Mich.

GIVE YOUR ENGINE THAT "NEW-CAR FEEL!"

SEALED POWER PISTON RINGS BEST IN NEW ENGINES! BEST IN OLD ENGINES!

Either way, the answer is P.A.!

Dick Wade prefers P.A. in a pipe and Bill Fischer likes P.A. for "makin's" cigarettes—but both agree—"You can't beat Prince Albert for real smoking joy!"

CRIMP CUT PRINCE ALBERT IS A GREAT PIPE TOBACCO—SO RICH TASTING AND SO MILD AND EASY ON THE TONGUE

"There is no other tobacco like crimp cut Prince Albert for a grand-tasting smoke with real pipe comfort," says Dick Wade. P.A. smokes cool and mild, right down through the last puff.

It might be interesting if Sen. Glen Taylor decided to run for the vice presidency. The people never have had a chance so far to see what a whole horse could do for them in public office.

"Stalin Reported Dead."—Headline. Even if he guaranteed it nobody would believe it.

The fellow who calls a 40 billion dollar budget "staggering" is a poor judge of unsteady locomotion.

Walt Disney Pictures, Inc., made a gross of nearly seven million dollars last year. That's just Donald Ducky.

There is not a woman on the stage in "Command Performance," but we will bet the movie will put on a ladies' night. We expect to see 'em in riding clothes and swim-suits and it is our guess that the bombing scenes will be interrupted frequently for haystack shots.

Clark Gable, it is reported, will play the lead in "Command Decision," in which Paul Kelly is such a magnificent star on Broadway. Paul, being precisely what the book ordered, is not the type, it seems.

PRINCE ALBERT CRIMP CUT LONG BURNING BLEND CIGARETTE TOBACCO

PRINCE ALBERT CRIMP CUT IS A GREAT PIPE TOBACCO—SO RICH TASTING AND SO MILD AND EASY ON THE TONGUE

"There is no other tobacco like crimp cut Prince Albert for a grand-tasting smoke with real pipe comfort," says Dick Wade. P.A. smokes cool and mild, right down through the last puff.

It might be interesting if Sen. Glen Taylor decided to run for the vice presidency. The people never have had a chance so far to see what a whole horse could do for them in public office.

"Stalin Reported Dead."—Headline. Even if he guaranteed it nobody would believe it.

The fellow who calls a 40 billion dollar budget "staggering" is a poor judge of unsteady locomotion.

Walt Disney Pictures, Inc., made a gross of nearly seven million dollars last year. That's just Donald Ducky.

There is not a woman on the stage in "Command Performance," but we will bet the movie will put on a ladies' night. We expect to see 'em in riding clothes and swim-suits and it is our guess that the bombing scenes will be interrupted frequently for haystack shots.

Clark Gable, it is reported, will play the lead in "Command Decision," in which Paul Kelly is such a magnificent star on Broadway. Paul, being precisely what the book ordered, is not the type, it seems.

PRINCE ALBERT CRIMP CUT IS A GREAT PIPE TOBACCO—SO RICH TASTING AND SO MILD AND EASY ON THE TONGUE

"There is no other tobacco like crimp cut Prince Albert for a grand-tasting smoke with real pipe comfort," says Dick Wade. P.A. smokes cool and mild, right down through the last puff.

It might be interesting if Sen. Glen Taylor decided to run for the vice presidency. The people never have had a chance so far to see what a whole horse could do for them in public office.

"Stalin Reported Dead."—Headline. Even if he guaranteed it nobody would believe it.

The fellow who calls a 40 billion dollar budget "staggering" is a poor judge of unsteady locomotion.

Walt Disney Pictures, Inc., made a gross of nearly seven million dollars last year. That's just Donald Ducky.

There is not a woman on the stage in "Command Performance," but we will bet the movie will put on a ladies' night. We expect to see 'em in riding clothes and swim-suits and it is our guess that the bombing scenes will be interrupted frequently for haystack shots.

Clark Gable, it is reported, will play the lead in "Command Decision," in which Paul Kelly is such a magnificent star on Broadway. Paul, being precisely what the book ordered, is not the type, it seems.

PRINCE ALBERT CRIMP CUT IS A GREAT PIPE TOBACCO—SO RICH TASTING AND SO MILD AND EASY ON THE TONGUE

"There is no other tobacco like crimp cut Prince Albert for a grand-tasting smoke with real pipe comfort," says Dick Wade. P.A. smokes cool and mild, right down through the last puff.

It might be interesting if Sen. Glen Taylor decided to run for the vice presidency. The people never have had a chance so far to see what a whole horse could do for them in public office.

"Stalin Reported Dead."—Headline. Even if he guaranteed it nobody would believe it.

The fellow who calls a 40 billion dollar budget "staggering" is a poor judge of unsteady locomotion.

Walt Disney Pictures, Inc., made a gross of nearly seven million dollars last year. That's just Donald Ducky.

Works Where Most Colds Start

DOUBLE-DUTY NOSE DROPS

Don't delay! At the first warning sniffle or sneeze, put a few drops of Vicks Va-tro-nol in each nostril. For if used in time, Va-tro-nol helps prevent many colds from developing. Relieves head cold distress fast. Try it! Follow directions in package.

TAKE LAXATIVES? Try This Instead

JUST THE JUICE OF A LEMON IN A GLASS OF WATER FIRST THING ON ARISING LEMON IN WATER IS GOOD FOR YOU Try it 10 days. Sunkist

Get Well QUICKER

From Your Cough Due to a Cold

FOLEY'S Honey & Tar Cough Compound

Gosh, I wish we could have new piston rings!

Old horses stay old. But old engines that smoke and burn oil and waste power can be made young again with Sealed Power Piston Rings. There's a Sealed Power Piston Ring Set specifically engineered to do the best possible job in your car, truck or tractor engine, whatever the make, model or cylinder wear condition. See your Sealed Power Franchise Dealer. Save oil, save gas, restore power!

Send a postal for illustrated, informative new booklet on 7 ways to save oil. It's free and may save you lots of money. Sealed Power Corp., Dept. W2, Muskegon, Mich.

GIVE YOUR ENGINE THAT "NEW-CAR FEEL!"

SEALED POWER PISTON RINGS BEST IN NEW ENGINES! BEST IN OLD ENGINES!

Either way, the answer is P.A.!

Dick Wade prefers P.A. in a pipe and Bill Fischer likes P.A. for "makin's" cigarettes—but both agree—"You can't beat Prince Albert for real smoking joy!"

CRIMP CUT PRINCE ALBERT IS A GREAT PIPE TOBACCO—SO RICH TASTING AND SO MILD AND EASY ON THE TONGUE

"There is no other tobacco like crimp cut Prince Albert for a grand-tasting smoke with real pipe comfort," says Dick Wade. P.A. smokes cool and mild, right down through the last puff.

It might be interesting if Sen. Glen Taylor decided to run for the vice presidency. The people never have had a chance so far to see what a whole horse could do for them in public office.

"Stalin Reported Dead."—Headline. Even if he guaranteed it nobody would believe it.

The fellow who calls a 40 billion dollar budget "staggering" is a poor judge of unsteady locomotion.

Walt Disney Pictures, Inc., made a gross of nearly seven million dollars last year. That's just Donald Ducky.

There is not a woman on the stage in "Command Performance," but we will bet the movie will put on a ladies' night. We expect to see 'em in riding clothes and swim-suits and it is our guess that the bombing scenes will be interrupted frequently for haystack shots.

Clark Gable, it is reported, will play the lead in "Command Decision," in which Paul Kelly is such a magnificent star on Broadway. Paul, being precisely what the book ordered, is not the type, it seems.

PRINCE ALBERT CRIMP CUT IS A GREAT PIPE TOBACCO—SO RICH TASTING AND SO MILD AND EASY ON THE TONGUE

"There is no other tobacco like crimp cut Prince Albert for a grand-tasting smoke with real pipe comfort," says Dick Wade. P.A. smokes cool and mild, right down through the last puff.

It might be interesting if Sen. Glen Taylor decided to run for the vice presidency. The people never have had a chance so far to see what a whole horse could do for them in public office.

Hank Says:

You know all the time more and more people are traveling

by air but they are sure taking a chance. Air travel just won't be safe until they get it to where you can land in your own back yard, this having to travel from

the airport to town by car is just too hazardous.
Yours precariously,
Hank.

Wilson Funeral Directors

AMBULANCE SERVICE
FUNERAL SERVICE

Boise City, Okla. Phone 31
Stratford, Texas Phone 60

We Can Make Immediate Delivery On

- 1-Kelvinator Refrigerator.
- 1-Electric Maytag Square Tub Washer
- 1-Electric Maytag Round Tub Washer.
- 1-Maytag Home Freezer.
- 1-O'Keefe-Merritt Butane Gas Range.
- 1-O'Keefe-Merritt Natural Gas Range.
- 1-Grand Range Natural Gas.
- 1-Thor Automatic Washer.
- 1-Thor Ironer.

New Shipment of Bed Room Suites
Blonde Oak — Solid Mahogany Poster — Walnut Veneer
Morning Glory Mattresses with Matching Box Springs
Slay's Furniture Store

If The Weather Threatens

To Stall Your Car

Let Us Place It Back In Service With A

WINTER TUNE-UP

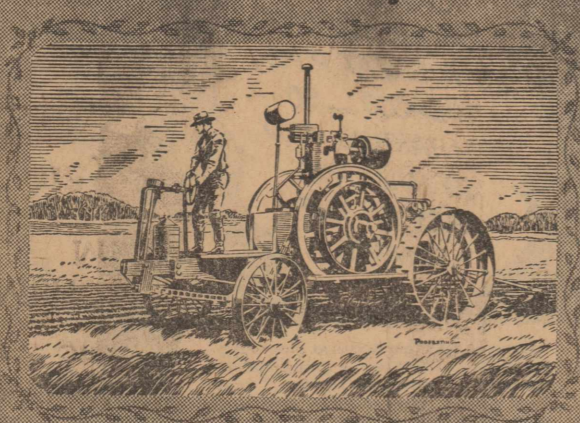
Let Us Keep Your Car Up — So It Won't

Let You Down.

TOC Motor Co.

Studebaker Sales and Service

Album of American Agriculture



THEY CALLED IT A TRACTOR

DURING the summer of 1892, in the shade of a village store in northern Iowa, John Froelich built the first gasoline tractor that propelled itself either forward or backward. On the day of its first trial, Froelich's one-cylinder, gasoline burner stilled the most rabid critic and proved that it could pull drawn equipment as well as operate belt-driven machines.

The tractor company organized by John Froelich and his friends later became a part of the John Deere organization. From this beginning, came the famous John Deere Model "D" tractor—developed to meet the unprecedented demand for power equipment unleashed by World War I.

Today, the modern line of John Deere Tractors is playing a vital role in the power farming age. Come in soon and let us show you why a John Deere Tractor will be your best tractor investment.

Bennett Implement Co.

JOHN DEERE QUALITY FARM EQUIPMENT

Petit Jurors Summoned For February 16

A venire of 200 men has been summoned to report for petit jury service at 2:00 P. M. Monday, February 16, when district court convenes.

Jurors summoned for this term of court include: E. F. Hamilton, Leonard Plunk, W. W. Steel, Jr., Emmett Oldaker, Tom Lavake, Jack Dettie, A. B. Morris, J. B. Riffe, W. C. Martin, D. E. Malone, Owen Hudson, C. L. Roach, W. D. Eller, R. C. Worley, N. W. Hudson, Oscar Stavlo, F. W. Boney, Barney Lanners, Richard Adams, C. A. Weatherford, S. R. Cluck, Elmer Hudson, Garland Boardwell, C. T. Williams, A. L. King, D. W. Wilson, Frank Blanks, J. E. Woolley, L. F. Denney, J. N. Bridwell, Clifford Bowles, Roy Worley, G. H. Allen, P. J. Pronger, Jr., F. D. Brannan, Jewel Adams, Herbert Folsom, D. B. Grimes, Luther Browder, Pruet C. Adkins, F. L. Davis, Ira A. Oldaker, T. A. Doolley, Paul Aduddell, Sam R. Lasley, Bob Everett, L. M. Fedric, Earl Albert, E. F. Fisk, Merritt Sweeney, C. F. Kauffman, Roy Allen, J. R. Morris, Roy Browder, Harvey Spurlock, Archie Arnold, J. W. Flores, H. A. Carter, Travis Spurlock, Alfred Bammes, Wayne Harding, Sam Lasley, Lester Wells, T. N. Beard, George Bradley, Floyd Keener, C. G. Williams, H. C. Bennett, Meritt Green, Joe Billington, Allen Cartrite, Ben O. Biddy, Baskin Brown, Joe Hamilton, Ernest Baskin, Homer Blake, Raymond Keener, N. D. Kelp, Dean Cluck, Earl Bond, Sidney Park, D. G. Cluck, Lawrence Baugh, Van B. Boston, Dan Foreman, T. F. Baskin, Bedford Berry, L. E. Brannan, G. R. Garrison, W. W. Steel, Harry Bullington, L. D. Brewer, Fate Morris, Arthur Judd, Ermel Chesser, W. O. Bryant, G. L. Harland, J. M. Gorman, E. R. Cox, C. L. Cameron, Roy Harris, R. C. Buckles, Carl Craig, T. D. Chisum, Ernest Lovelace, R. L. Baskin, Paul Craig, W. O. Cook, Merritt Sweny, Kenneth Borth, S. W. Fitzgerald, C. W. Cowdrey, R. F. Frel, Bob Burgess, Charles Gaddy, Ernest Cummings, E. J. Massie, Oma Ellison, Hoyt Gist, S. L. Cunningham, C. E. Kundert, Dick Farris, Rennie Hamilton, W. W. Davis, Roy D. Schafer, Verne Foreman, Alfred Harland, Cone Donelson, N. F. Renner, J. D. Huggins, Charlie Hass, Shuler Donelson, Louie Green, John Lavake, Roy O. Hickman, G. C. Dortch, Sam Wohlford, Arthur Milton, A. H. Husmann, B. E. Dovel, Louie Lanners, Rollo Newman, Bill Lasley, Joe A. Duby, Herman Lavake, R. E. O'Quin, Walter Lasley, K. L. Eller, Ray McNeal, W. E. Pleyer, Dale Meyer, O. L. McMinn, Sherman Holt, Glenn Reed, F. D. Mason, M. H. Etheridge, J. L. Faris, Jim Taylor, Byron Fedric, Tom Wakefield, Hose Flores, Chas. T. Watson, Arthur Folsom, Howard Whatley, Ray Gore, W. L. Williams, Jack B. Golladay, Dick Woolsey, L. L. Grimes, Kenneth Kendrick, Peter Gunzelman, Chester Guthrie.

Ranchers - Farmers - Contractors

FOR

Ponds, Tanks, Basements

OR ANY OTHER

BULLDOZER WORK

CONTACT

Hunter Robertson

Phone 2-3351

DUMAS, TEXAS

Or Contact Garrison Motor Co.

Homer L. Halle, W. L. Hankey, Ralph Harding, C. R. Hawkins, J. W. Hodges, E. H. Hudson, O. H. Ingham, Harry Jackson, John R. Knight, C. E. Leonard, F. B. Mullins, J. D. McDaniel, Willis Naugle, J. C. O'Brien, Leslie H. Parker, J. R. Pendleton, Walter Pendleton, Melvin Phillips, W. L. Pipkin, Lester Plunk, E. N. Riffe, Harry Sears, Earl Shirr, C. W. Sloan, Leo L. Smith, Peach Smith, John P. Steel, and R. A. Strother.

Snow Covering Remains Over Texas Plains

Snow falling Thursday morning of last week continues to remain in a blanket three inches deep over the plains section, melting during the day and freezing at night.

Official moisture content of the snow as gauged in Stratford was .47 of an inch.

Say You Saw It In The Star

NEW FARM MACHINERY

- 2-WB-9 IHC Tractors.
 - 2-W-9 IHC Tractors.
 - 1-Co-Op Self Propelled Combine.
 - 2-IHC Self Propelled Combines.
 - 1-Massey-Harris Self Propelled Combine.
 - 4-Van Brunt 10-inch Wheat Drills.
 - 1-'48 Hudson 4-Door Sedan.
 - 1-'48 Mercury Coupe with Radio and Heater.
 - 1-New 1/2 Ton Chevrolet Pick-Up.
- John Kimbrel
New and Used Cars

SEE A. L. ROSS

at the

Ross Service Station

for immediate delivery on

Kaiser-Frazer Cars

Service Station located at McMahan Furniture Store. Although we are not completely set-up we can deliver your new KAISER-FRAZER immediately at list price.

Come in and see us. Let us give you a demonstration ride in the wonderful new KAISER-FRAZER

Ross Service Station

RETAIL LUMBER

Quality Paints

Builder's Hardware

The season's change but our friendly service remains the same — ask us — we may have what you need.

Foxworth-Galbraith Lumber Co.

On the Floor Goods

Mayrath Grain Loaders

21 and 27 Foot Sizes

Barbed Wire

Sucker Rods

In All Sizes

Well Cylinders

Bendix Home Laundries

7 to 11 Foot

Stock Tanks

One 6x6 Foot

Redwood Storage Tank

Ward Floor Furnaces

6 and 8 Foot

Servel Refrigerators

Supplies for the Home, Farm, and Ranch

Van B. Boston

Big Sale on CANNED Fruits

- Buy by the Dozen!
- Brimfull Tomato Catsup 19 \$2.10
- 14 Ounces DOZEN
- Concho Cream Style CORN No. 2 Can Dozen 19 \$2.28
- Elm Brand TOMATOES No. 2 Can Dozen 16 \$1.85
- Marco Brand SPINACH No. 2 1/2 Can Dozen 23 \$2.66

- Buy by the case!
- Nile Brand Bartlett PEARS No. 2 1/2 Can Case 35 \$8.25
- Square Meal Freestone PEACHES in Light Syrup No. 2 1/2 Can Case 30 \$7.08
- Red and White Whole APRICOTS No. 2 1/2 Can in Heavy Syrup Case 29 \$6.50
- KRAUT Scott County No. 2 1/2 Can Dozen 15 \$1.75

- Iceburg HEAD LETTUCE Pound 13
- Fancy Sunkist LEMONS Pound 15
- California Pascal CELERY Pound 15
- Texas Fresh Green ONIONS Bunch 10
- Yellow ONIONS Pound 15
- Crisp California CARROTS Bunch 10
- Fresh, Crisp RADISHES 2 Bunches 9
- Sunkist Oranges Pound 11
- Pikney Shankless PICNIC HAMS Pound 49
- Plymouth BACON SQUARES Pound 49
- Lean PORK ROASTS Pound 49
- Pure Pork SAUSAGE Pound 49
- Armours Sliced BACON Pound 69
- Fancy ROUND STEAK Pound 73

Brown's Food Store