

Muleshoe Journal

DEDICATED TO THE PROGRESS AND DEVELOPMENT OF BAILEY COUNTY AND THE GREAT MULESHOE COUNTRY

FOURTEEN PAGES
VOL. 43 — NO. 49

Published Every Thursday At Muleshoe, Bailey County, Texas — 79347

THURSDAY, DECEMBER 9, 1965

United Fund Over Goal, January Jubilee Planned

Muleshoe Area United Fund is over the top!

Mrs. Thurman White, president, and Gil Lamb, campaign chairman, said Wednesday that the goal of \$13,500 had been exceeded by 8 percent, and there are still a few workers who have not completed their reports.

"It looks like we have had another successful year," Lamb said, "and we are pleased and grateful over the success of the campaign. Despite the fact that she has been ill throughout much of the campaign, the president spent more hours than her energy would permit in putting on the 1965 drive. She had done much of the preliminary work and had planned the entire year's drive before she became ill. The rest of us who worked in the campaign were all the more eager to carry on

the campaign."

Lamb said Wednesday that a victory "jubilee" supper will be held sometime in January, adding that the officers felt "with all that is included on the pre-Christmas program it would be best to wait until after the start of the new year before staging our victory celebration. We'll announce the date soon after Christmas."

Lamb asked that those who have not completed their canvassing do so as soon as possible or those who have not returned their individual pledge

cards should see Mrs. Pat Bibo, UF treasurer. "We know there are some who still would like to make contributions if given an opportunity," the campaign chairman said.

The success of the campaign is an "example of teamwork," the drive head said. "We have had splendid cooperation throughout the drive."

Here are the names of those who have aided in this year's successful drive which will provide working funds for 10 agencies operating in the Muleshoe area:

Professional group was headed by Robert Alford with team captain Creston Faver; and Irvin St. Clair, Frank Peery, Eddie Faust, Haney Poiner, Bobby Airhart (See GOAL Page 5)

Home Lighting Entry Deadline Is Tomorrow

Deadline for entering the annual Chamber of Commerce home Christmas lighting contest is tomorrow night, Chamber Manager Roy Davis warned, pointing out that judging is to take place Saturday, Dec. 11.

First entry to be received at chamber headquarters was the J. D. Spurgeon entry, 1722 W. Ave. B, and the second entry was received a short time later when the J. R. Otwell family entered their home at 918 E. Hickory.

Persons interested in entering were asked to call chamber headquarters, 272-4274, today or tomorrow.

First prize will receive a "Ready-Lite", second will get \$20 in cash and third will receive \$15 in cash.

Homes that won last year included the J. R. Otwell family, the Roy Whittle and the Truman Lindsays in that order.

Here are the features on which the contest is judged: Overall Effectiveness; Visual

Service Station Hijacked

A 41-year-old Texaco, N. M. resident is awaiting trial here on a charge of strong-arming a Muleshoe night-time filling station attendant and making off with \$198 in cash and checks. Victim was Albert Cowgar.

Charged in Justice Joe Vaughn's court was Calvin Eddie Young who has lived in Texaco since 1925. Young was returned to county jail after his preliminary hearing. Justice Vaughn set bond at \$2000, but Young had been unable to make bond at mid-week.

The actual charge against Young was a "bit unusual," officers explained, in that he was charged with "robbery by assault." Allegedly he twisted Cowgar's arm and forced him to hand over the filling station's receipts.

Officers said Young got a total of nearly \$200 in the 1 a.m. robbery Tuesday, but that a big part of the money was in checks. Apparently the checks had been destroyed when officers arrested Young only an hour after the alleged robbery took place.

The station, a Deep Rock all-night station, is located on West 84-70.

Police Chief Carl Neely said Young claimed to be driving an automobile owned by a cousin. Young was captured in Morton some 45 minutes after the Muleshoe police department put out the all-points broadcast.

Senior Citizens' Second Monthly Meeting is Set

Bailey county senior citizens will hold their second monthly party next Monday, Dec. 13, in Fellowship Hall of First Methodist Church, starting at 2:30, sponsored by the "Committee of 16," headed by the Rev. J. Frank Peery.

Mr. Peery has not announced the program for this second meeting of the senior citizens, but it is presumed it will follow the same general pattern as the first meeting held in November.

This session also will start at 2:30 p.m. and is open to all citizens 65 and over. It is possible that a permanent organization will be set up at next Monday's meeting, although it is likely that officers will not be named until the January session is held.

Mr. Peery announced Wednesday that The Gospelaires, popular local quartet, will sing for Monday's session.

Long Weekends Dreaded; County Record Studied

Texas Department of Public Safety soon will take a look at the 1965 record and see how it compares with the year before. Sgt. Thurman Keefe of the Highway Patrol, said in Muleshoe this week. The department is anxiously awaiting grim records for 1965, the patrol sergeant said, but fearful of two long weekends yet to come — the Christmas week and the New Year's weekend.

Looking back at 1964, this county had in traffic deaths as compared with a three-year average of seven deaths. The sergeant stated that 143 counties had more deaths in 1964 than the previous three year average. Seven counties had the same number of deaths in 1964 as the previous three year average.

The largest increase in the number of deaths in 1964 over the previous three year average was 53 in Harris County. The largest decrease in the number of deaths in 1964 from the previous three year average was nine in Collin County.

The 1964 death total for the state was 3,006, an increase of 277 deaths over the 1963 all time high of 2,729 deaths. The sergeant added, "With this increase in traffic deaths, it is a challenge which every responsible citizen must accept to do his best to reduce the traffic deaths on our streets and highways."



BICYCLE WINNER — Winner of the top prize for "best decorated bicycle" in last Saturday's annual Christmas parade was this Lazbuddie youth, Randy Hardage. He received \$10. Freddy Farris, Muleshoe, placed second, and Ricky Hardage, Lazbuddie, won third. (Journal Photo)

Company He Keeps Is Lad's Problem

The company he keeps apparently has got a 15-year-old Muleshoe boy into trouble in N. W. Mexico.

Seems the boy had been having a "little trouble right along, mostly with drinking even if he is only 15 years old."

But the deputy blamed his trouble on the company he has been keeping.

Well, Sunday night, that company landed in jail with the 15-year-old boy in Roswell. They were caught, sheriff's officers here were informed, breaking into automobiles and attempting to make off with items stashed in the cars.

With the 15-year-old lad when they were arrested in Roswell Sunday were a 17-year-old juvenile and a 20-year-old adult who had been on prison logs before.

The 20-year-old was released only this month from the penitentiary at Huntsville. He was believed to be the leader of the

Swint Captures District Berth; 3 on Honorary

Six-foot, 185-pound Ronnie Swint, a Muleshoe high school senior, was named to the mythical 1-AAA team by coaches of the district. He placed on both the offense and defense squads, named to fullback on the offense and left half-back on the defense outfit.

Although he was the only Muleshoe player to make the top 1-AAA teams, three others were picked by the coaches for honorable mention and two of these also made honorable mention for both offense and defense.

Terry Kendall was named center on the honorary offense outfit and guard on the defense slub. Joe Adams was picked for the honorable mention for both teams, halfback on offense and safety on defense. Terry Trapp was picked as a guard on defense for the honorary outfit.



Ronnie Swint

Creeky Jail Bulges, Women 'Board Out'

Bailey County's ancient jail, long inadequate, is almost literally creaking under its "customer" load this week.

The jail is bulging at the seams, what with more than twice as many prisoners now housed in the bastille than it was ever intended to accommodate.

Of course, points out the sheriff's office, the jail was originally built to serve just Bailey county, and the Bailey county which the jail served in those early days was much smaller, population-wise, than today.

Nevertheless, it must serve for the county jail, for city prisoners, for an occasional state prisoner and for federal prisoners.

As a matter of fact, it's the last classification who are straining the walls of the old jail right at the moment; several of the prisoners are being held for immigration officers after being picked up in this area by Border Patrolmen.

As a result of the heavy influx of prisoners, Sheriff De

ff's office, the jail was originally built to serve just Bailey county, and the Bailey county which the jail served in those early days was much smaller, population-wise, than today.

Nevertheless, it must serve for the county jail, for city prisoners, for an occasional state prisoner and for federal prisoners.

As a matter of fact, it's the last classification who are straining the walls of the old jail right at the moment; several of the prisoners are being held for immigration officers after being picked up in this area by Border Patrolmen.

As a result of the heavy influx of prisoners, Sheriff De

(See JAIL Page 5)

Stickers Blare Jaycee Backing Of Viet Fight

Bold stickers that proclaim backing for "our boys in Viet Nam," are being distributed here by the Muleshoe Jaycees, says the club president, Kenneth Henry.

The back-up program is part of a nation-wide project by the U. S. Jaycees who favor a Nam.

Said Henry: "Recently James Skidmore Jr., president of the U. S. Jaycees, reported to President Johnson that our civic group has endorsed this policy through a recently-completed referendum vote of the Jaycees' 5760 chapters in 50 states and the District of Columbia."

The organization here is backing the national organization in this stand, and the stickers are in line with that program.

The national Jaycee leader told President Johnson that the Jaycees took this stand (for stay tough policy) because they realize that "to achieve victory over communist aggression, force as well as diplomatic resources are often necessary."

Jaycees have 260,000 members and it was the first national organization to give full endorsement to the peace-time draft back in 1940.

Henry quoted Skidmore as saying: "Now, as in 1940, we do not find it easy to enter into conflict. We fear war more than anyone, for it directly affects the lives of our members, the young men of America."

"More than 92 percent of our members are veterans and young men who will be called upon to defend their nation," he added.



BACK VIET NAM FIGHTERS — Stickers like the one which Larry Henry is attaching to the bumper of his automobile are being distributed here by the Muleshoe Jaycees. The stickers read, "We back our boys in Viet Nam." Kenneth Henry, Jaycee president, said the Jaycees bought a supply of the stickers and will distribute them free. (Journal Photo)

Winners Listed In Yule Parade

Winners in the annual Christmas parade here were listed as follows:

First Division: First prize of \$50 to the Muleshoe High school choir. Theme: "Merry Christmas in Siam."

Second place winner in float was the Assembly of God C.A. organization with the theme, "Peace on Earth." Prize was \$35.

In the best decorated bicycle division, Randy Hardage, Lazbuddie, won first place of \$10. Freddy Farris, Muleshoe, placed second, winning \$5, and Ricky Hardage, Lazbuddie, placed third to win \$2.50.

In the best individual costume division, Patti Sullivan and Reba Higginbotham won first prize of \$5. They were dressed as Christmas presents."

Temperatures

	High	Low
Dec. 5	73	27
Dec. 6	71	23
Dec. 7	60	24
Dec. 8	64	31
	Sunrise	Sunset
Dec. 9	7:40	5:39
Dec. 10	7:41	5:39
Dec. 11	7:42	5:39
Dec. 12	7:42	5:40



SANTA ARRIVES — When Santa Claus arrived via private plane last Saturday from the North Pole, first to greet him was Yo-Yo, the pilot's Poodle. Actually, Yo-Yo was not much interested in St. Nick; he had trotted out on the runway to see Morgan Locker (still in plane above) who had flown Mr. Claus here for Saturday's big parade.

in muleshoe
With the Journal Staff

Muleshoe area residents were told Wednesday that the district Social Security office will remain open on Saturday mornings now. John G. Hutton, district manager, told the Journal Wednesday that the office also will be open from 4:30 a.m. until 4:45 p.m. Monday through Friday.

A. A. Traweck, a Santa Fe employee who formerly lived here, is recovering from a broken back suffered in an accident sustained in Muleshoe several days ago, according to Mrs. Traweck. She said the accident occurred when Traweck was attempting to unload some cattle. The Trawecks now live in Slattan.

Sharron Hutton modeled the dress she made at the district 4-H contest held in Lubbock last Saturday.

Muleshoe schools will start their Christmas holidays Dec. 22, Superintendent Neal Dillman said Wednesday. The yule vacation will continue until Jan. 3.

Muleshoe's Methodist Men will entertain members of the Muleshoe varsity football team at the organization's regular breakfast in Fellowship Hall this morning.

Santa will be in his workshop Saturday at 2:30 p.m. and on Saturday until 6 p.m. from Dec. 10 through Dec. 18. The shop also will be open Tuesday afternoon, Dec. 23, and Friday morning, Dec. 24 from 10 until 11:30.

Only 14 SHOPPING DAYS 'TIL Christmas

Jewellene Brackman, V. Scoggin Are United in Ceremony Here

★ ★ ★



Mrs. V. Scoggin

Miss Jewellene Brackman, daughter of Mr. and Mrs. J. J. Brackman and Verlyn Scoggin, son of Mr. and Mrs. Lewis Scoggin, were united in marriage Sunday at 9 a.m. in the Baptist parsonage here, with the Rev. Don Murray performing the ceremony.

Harriet Glaze, Linda Fowler and Renee Howell were the bride's attendants and Gary Sullivan, Jerry Redwine and Ricky Barrett were attendants for the groom.

Attending the wedding were the bride's parents, Mr. and Mrs. J. J. Brackman, the groom's parents, Mr. and Mrs. Lewis Scoggin, Jerry Scoggin, brother of the groom, Mrs. Eileen Bell, grandmother of the groom and Mrs. Don Murray.

At the present time the couple are at home at 719 W. Ave. E.

Betty Villa, Guadalupe Rejino Exchange Wedding Vows Here

Betty Villa and Guadalupe Rejino became man and wife before baskets of gladiola and asters with lemon leaves and candles in the Immaculate Conception of Mary Catholic Church here last Sunday at 12:15 p.m.

The bride is the daughter of Hilario Villa and the bridegroom is the son of Mr. and Mrs. Concepcion Rejino, Muleshoe.

Given in marriage by her father the bride wore a formal length gown with long tapered sleeves of chantilly lace and long train connected to the bodice with two satin bows. The bride carried a white Bible with a bouquet of carnations.

Mary Rejino, maid of honor, wore a turquoise velvet dress with three-quarter length sleeves. She wore a pill box hat with net veil and carried a long stem carnation.

Bridesmaids were Valda Hernandez, Shallowater, and Mary Tanguma, Muleshoe. They wore dresses identical to the maid of honor.

Rose Ann Chavez was flower girl and Jimmy Villa, Muleshoe, was ring bearer. Ben Rejino, Bovina, served as best man and groomsmen were Nickolas Hernandez, Shallowater, and Sylvester Tanjuma, Muleshoe.

For her daughter's wedding,

Mrs. Villa chose a blue satin dress with black accessories. A reception was held in the American Legion Hall immediately following the ceremony.

Following a short wedding trip the couple will be at home in Muleshoe where the groom is engaged in farming west of town and the bride is employed at Damron Drug.

For traveling the bride chose a two-piece beige and brown suit with matching accessories.

Homemakers Enjoy Social

Homemakers Class of the First Baptist Church met Thursday evening at 7:30 for a regular class meeting and Christmas social. Mrs. Jimmie Pitcock, president, presided during the business session and Mrs. Roy Wrinkle gave the Christmas story "The Gift of the Magi" by O. Henry.

Seasonal games were played and refreshments of cranberry punch and fruit cake were served by the hostesses, Mrs. Roy Wrinkle and Mrs. John Watson, to the following: Mrs. Creston Favor, Mrs. James Barrington, Mrs. Jimmy Crawford, Mrs. Bobby Free, Mrs. Joannah Green, Mrs. Bobby Grogan, Mrs. Charles Mayhugh, Mrs. Jerry Roberts, Mrs. Edgar Hartley, Mrs. Charles King, Mrs. Albert Fields and Mrs. Jimmie Pitcock.



LLANO ESTACADO DISPLAYS BAZAAR ITEMS — Some of the members of the Llano Estacado Civic Club are pictured here displaying some of the items

which will be on sale at the E. T. Ford home Sunday following the holiday home tour. The tour will begin at 1:30 p.m. at any of the homes to be on display. (JP)

IF YOUR HAIR IS NOT
BECOMING TO YOU...
YOU SHOULD BE
COMING TO US!

WELLBORN'S BEAUTY SHOP

101 Ave. J. Ph. 3-4040

GIFT HINTS FOR SANTA

FRIGIDAIRE APPLIANCE

- Washers and Dryers . . . 5 Yr. Protection Plan
- Dishwashers . . . Front and Top Loading
- Electric Ranges . . . Flairs and Free Standing and Self Cleaning Ovens
- Refrigerator - Freezers . . . With NEW Power Capsule.



WHIRLPOOL

WASHERS AND DRYERS

RCA TELEVISION

Black & White and Color

RCA STEREO

Portable and Console

RCA TAPE RECORDERS

All Solid State

RCA RADIOS

AM-FM Clock and Portable

Motorola Televisions

Black & White and Color

Motorola Stereos

Portable and Console

Motorola Radios

AM-FM Clock and Portable

SHOP NOW FOR CHRISTMAS!

SEWING MACHINES

- Necchi
- Singer
- Good Housekeeper
- Nelco

VACUUM CLEANERS

- Hoover and Singer

SINGER TYPEWRITERS

LAMPS
Floor and Table

SMALL APPLIANCES

- Coffee Makers
- Mixers
- Toasters
- Roasters
- Waffle Makers
- Irons
- Electric Skillets
- Can Openers
- Hot Plates
- Electric Carving Knives

Harvey Bass Appliance

122 S. FIRST

Muleshoe, Texas

Phone. 272-3030



Sharon Chisholm

★ ★ ★

Sharon Chisholm Announces Date

Mr. and Mrs. W. E. Chisholm Sudan, announce the engagement and approaching marriage of their daughter, Sharon, to Gary Mac Brown, son of Mr. and Mrs. Dee Brown, Muleshoe.

Vows will be repeated in the home of the bride on Dec. 26, with a reception following. The bride-elect will be a 1966 graduate of Muleshoe High School. The prospective groom is a freshman at Eastern New Mexico University and a graduate of Lazbuddie High School.

The couple will be at home in Portales where the groom will continue his schooling.

Wills-Knowlton Set Date

Mr. and Mrs. Tom Wills, Lubbock, announce the engagement and approaching marriage of their daughter, Linda Carroll, to Douglas Lee Knowlton, son of Mr. and Mrs. W. H. Knowlton, Muleshoe.

The bride-elect is a 1964 graduate of Lubbock High School and is employed by Bookers Business Service Company.

The prospective bridegroom is a graduate of Muleshoe High School and is employed by Bookers Business Service Company.

Wedding vows for the couple will be repeated at 7:30 p. m. Jan. 14 in Lubbock Second Baptist Church.

Christmas Party Set For Club

December 14 was the date set for the annual Christmas party for the Friendship Club in the First Methodist Church Fellowship Hall at 7:30 p. m. The club met Monday night in the home of Mrs. Joe Damron for their regular meeting and social with Mrs. W. T. Andrews, president, presiding over the meeting.

Program chairman, Mrs. Ray Griffith gave a Christmas program, after which refreshments were served by the hostesses, Rob Damron and Irma Ray, co-hostesses.

Santa, I Want...

Dear Santa
I am 5 years old, I want a football suit. I also have a baby sister, please bring her a baby doll.
Thank you
Danny & Kim Wilson
424 W. 9th

Dear Santa,
I am a little boy six years old. My name is Dave Rush. I want a fire truck, a wrecker truck, a gun and holster set and some new blue jeans for Christmas.
Love,
Dave Rush
1101 W. Ave. C

Dear Santa,
I have been a good girl. My name is Darlene Rush. I am 9 years old. My birthday is January the first.
I want a paint-by number set, Peter Pan picture book, Doll luggage Nurse kit, treasure Hunt, wall telephone, Pop-up toy, etch-a-sketch, 1 fashion cutie, Crazy clock game. My little brothers, Wesley and Stacy want some cars and trucks.
Love,
Darlene Rush
1101 W. Ave. C

Casey Home Scene of Coffee Monday

A Christmas coffee was given in the home of Mrs. W. Q. Casey Monday morning with some 150 guests counted according to one of the hostesses, Mrs. Horace Hutton. Other hostesses for the coffee were Mrs. W. Q. Casey and Mrs. J. G. Aron.

Carrying out the Christmas theme, the table was covered with a linen cloth with cut work with Christmas arrangements, candleabra with blue candles and a silver service.

Coffee was served in red Santa mugs. Also fruit cakes of several descriptions, bread and other Christmas goodies were served.

Love,
Dan Joseph Dedyne
Muleshoe Journal

COTTON ON THE GROUND? ...Pick it up!



WITH A **ROOD** Cotton Harvester
SALES SERVICE PARTS
NEW & USED MACHINES
Farm Proven Quality
TEXAS COTTON HARVESTER SALES CO.
5604 S. QUIRT SH 7-1261 LUBBOCK

Llano Estacado Make Final Plans For Holiday Home Tour

Llano Estacado Civic club are working out final details on their holiday home tour, according to the president of the club, Skeet Bliss.

Shirley Pettiet is chairman of the tour. Assisting her are Sharon Wolfington, Pat King, Wanda Harmon, Jo Harmon, Janelle Turner, Nelda Hunt, Darlene Henry, Vicki Young, Mary Watkins and Skeet Bliss. Clara Sudduth is chairman of the bazaar and Janelle Turner is chairman of refreshments.

A map of the tour can be picked up at any of the homes to be on display. Refreshments, registering for the door prize, and a bazaar table will be featured at the 1st home, the E. T. Ford home. Several items will be on sale here, of which will be Christmas decorations, gifts and other useful items made by the club members. Tickets may be purchased from any club member or may be picked up at any of the homes for a \$1 a person.

Brite and I want a dress and a Blouse. I want a skirt and bring my sister a Blouse. And bring my Mother some dress. And bring my daddy some Boots and a gun.
Love,
Vickie Stigaulde
Rte 2 Box 306

Love,
Dan Joseph Dedyne
Muleshoe Journal

Dear Santa,
I would like to have a Baby Boy and a Bicycle and bring my big sister a Typewriter and I want a bed. I want Baby

Love,
Dan Joseph Dedyne
Muleshoe Journal

Love,
Dan Joseph Dedyne
Muleshoe Journal

Love,
Dan Joseph Dedyne
Muleshoe Journal

Love,
Dan Joseph Dedyne
Muleshoe Journal

Love,
Dan Joseph Dedyne
Muleshoe Journal

Love,
Dan Joseph Dedyne
Muleshoe Journal

Love,
Dan Joseph Dedyne
Muleshoe Journal

Love,
Dan Joseph Dedyne
Muleshoe Journal

Love,
Dan Joseph Dedyne
Muleshoe Journal

Love,
Dan Joseph Dedyne
Muleshoe Journal

Love,
Dan Joseph Dedyne
Muleshoe Journal

Address of the homes entered in the tour are: J. G. Aron, 619 W. 7th; Joannah Green, 405 W. 6th; Eddie Faust, 1915 W. Ave. F; Lynn Polson, 1911 W. Ave. F; James Freeman, 1805 W. Ave. H; Sam Damron, 1815 W. Ave. G; Elbert Nowell, 1525 W. Ave. C and the E. T. Ford home on the Plainview Highway.
Time for the tour Sunday afternoon will be from 1:30 to 5 p.m.

Jo Anne Bray Speaks To Club

Jo Ann Bray, demonstration agent for Bailey County Electric Co-operative, gave hints on making candy at the Lazbuddie Young Homemakers meeting Thursday in the Home making cottage. Mrs. Ellis introduced Mrs. Bray. She also gave information on making winter strawberries and pulled peanut brittle.

Those attending the meeting sampled the results of Mrs. Bray's work, after which Barbara Lust served refreshments to Charlene Farley, Marilyn Engelking, Beverly Hall, Kitty Gallman, Barbara Lust, Emily Riddle, Irene Thurmon, Judy Nelson, Sue Windom, Louise Engelking and Mrs. Earl Ellis, advisor.

Next meeting for the club will be Jan. 6 in the Homemaking cottage.

Farmers Union INSURANCES
Announce the Appointment of...

GENE PHILLIPS

Offering Complete Multiple-Line Insurance Service

AUTO

FARM AND PERSONAL LIABILITY

HOMEOWNERS

FARMOWNERS

CROP HAIL

FIRE

HOSPITAL

LIFE

One-Stop Insurance Service for Home, Family and Farm

FREMAN DAVIS AGENCY, Box F, Farmers Union Co-op Lazbuddie, Texas Phone 965-2949



Throw Away Your Snow Shovel!

In cities and towns snow is nightmarish to foot traffic as well as automobile traffic. Every year thousands of people are injured on icy sidewalks and other thousands of motorists find themselves in accidents due to icy roadways. In a typical year during the "cleanup" of snow laden sidewalks, more than 5,000 people suffer from heart attacks caused by the exertion of shoveling or trudging through heavy drifts of snow.

What is the answer?

One of the answers is to melt snow as it falls and before it sticks and piles on sidewalks, streets, roadways.

How to do this?

It's done many places with a snow removal system that consists of butt-welded steel pipe embedded in the concrete of a sidewalk, an interchange, a roadway. When the snow falls, hot fluids circulate through the hairpins of steel pipe melting the snow at the rate of one inch per hour and before it accumulates.

Results according to the Committee of Steel Pipe Producers? No more shoveling of sidewalks, no more scraping of roadways, because with steel pipe snow melting systems the snow melts as it falls.

Today, steel pipe snow melting systems are in use across the nation. Most are installed in walks and driveways of private homes and commercial buildings or at important street intersections.

But, there are many places where snow melting systems are used to protect lives and property. Thousands of buses move freely in and out in the New York Port Authority West Side Bus Terminal every winter day thanks to steel pipe snow melting. Snow- and ice-free interchanges are assured on many parkways and turnpikes, such as the Indiana East-West toll road where snow melting systems eliminate toll plaza accidents and increase traffic handling capabilities at points of entry and exit.

Santa, I Want...

Dear Santa,
I want a G. I. Joe set. I want a football too. And I want a belt. I want 5 plaid shirt, and I want 6 pairs of cordwory pants.

Love,
Jim Allison
Rte. 1

Dear Santa,
io womt a car
io womt a tractor
io womt a farm
io womt a Bats
io womt a truck
io womt a race car

Love,
Jose Cortez
West Camp

Dear Santa,
I want a Tresa that her hair will grow, and I want something for her to wear. And I would like to have a typewriter. And I want a set of dishes. But if you can not give it to me that is ok.

Love
Vicky Griffin
1632 West Ave D.



WINNING FLOAT—This float, "Merry Christmas in Siam," won \$50 and first prize in the annual Christmas parade

here last Saturday. It was entered by the Muleshoe High School Choir. (Journal Photo)

SHOP MULESHOE FIRST

'King and I' Hits Full Rehearsal Schedule Here

Muleshoe High School fine arts' production of "The King and I," has hit its full rehearsal schedule, says Kerry Moore, fine arts department chairman.

The production includes 100 young men and women on the stage, back stage and in the orchestra.

"The King and I" production opens Tuesday, Jan. 4 at 8 p.m. in the high school auditorium. The production will begin at 6 p.m. on Thursday, Jan. 6 and Sat., Jan. 8. Seats are \$1.50 bought in advance or \$1.75 at

the door. You may call 272-3020 in Muleshoe to purchase your tickets.

"The King and I" takes place in Bangkok, Siam, during the 1860's in the court of the king, played by Gary Edwards, a very talented actor and vocalist. Jane Branscum, the leading lady in "The Music Man" last year is playing the part of Anna.

Make plans to see musical comedy at its best January 4-6-8. These tickets would make superb Christmas gifts.

Eat As You Learn
HOPKINSVILLE, Ky. (AP) — The front window of a restaurant here carries this inviting sign:

"WANTED — Customers: Experience not necessary."

PATZER CHIROPRACTIC CLINIC
MULESHOE, TEXAS
Phone 3-9670
1540 American Blvd.
KEEP SMILING

POYNOR'S WHITE STORES, INC.

HANEY and PAUL POYNOR . . . OWNERS

DISCOUNT PRICES ON GIFT ITEMS

BARBI DOLL

BENDABLE

LIST \$3.98
POYNOR'S PRICE **\$1.99**



Baby First Step DOLL

LIST \$19.95
POYNOR'S PRICE **\$11.47**

TEFLON COOKWARE

11 PIECE SET

POYNOR'S PRICE **\$17.88**



ELECTRIC CAN OPENER

1 YEAR GUARANTEE

POYNOR'S PRICE **\$5.47**

NO. 69-396

6 FOOT ALUMINUM Christmas TREE

POYNOR'S PRICE

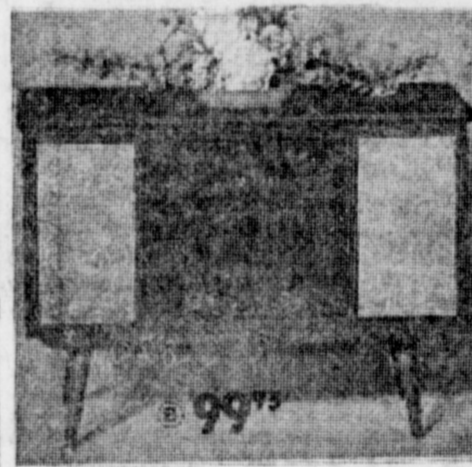
\$3.97

NO. 99-410

CATALINA STEREO CONSOLE

4 SPEAKERS

POYNOR'S PRICE **\$99.95**



The music isn't played—it's transformed! The heart of this set is precision engineered with 4 perfectly matched speakers! Comes in a regal walnut veneer cabinet—simple understated elegance. Truly classic! 122-680

24 in. or 26 in. BOY'S or GIRL'S Texas Ranger BICYCLE

POYNOR'S PRICE **\$29.99**

10"—NO. 65-107
TRICYCLE POYNOR'S PRICE **\$6.99**



ETCH-A-SKETCH

LIST \$4.00—POYNOR'S PRICE

\$1.99

ELECTRIC SLICING KNIFE

1 YEAR GUARANTEE

POYNOR'S PRICE

\$7.47

NO. 69-453



ELECTRIC PINBALL GAME

LIST \$14.95
POYNOR'S PRICE

\$10.99

44' x 26" CHRISTMAS GIFT WRAP

POYNOR'S PRICE **88c**

PRICES IN EFFECT
THURS., FRIDAY and SATURDAY
DECEMBER 9-10-11 ONLY

Santa, I Want...

Dear Santa,
Please bring ne a OM and a truck-track also a big brusser and also a radio sata we colered a pitcher of you thank you Santa.

Love,
Gary White
1624 West Ave B

Dear Santa,
I want a Football And my brother wants a car and a Electric train.

Love,
Joe Castillo
Muleshoe

Dear Santa,
I want Color Curl and I want a Tresse doll and I want a dress. I want Tresse Make up. My little brother wants Gi Joe clothes. And we drew a picture Santa Claus.

Love,
Candace Carter
Aparment

Dear Santa,
I would like to have Typewriter. And a Suzy Cute, and some of her clouths and her carriage. My little sister would like to have a wauking doll a Suzy cute and some of her clothes.

Love,
Prisca Young
1901 West Ave. D

Dear Santa,
I want a doll for Christmas. I want Baby Brite. My sister wants a Baby Brite, too. Baby Brite comes with a baby bed, bathanette and a Highchair. We colored a picture of Santa Claus.

Love,
Faith Free
Rts. 1

Dear Santa,
I would like a new set of bed mattresses and a bike. I would also like a radio. If you can, bring me a birth stone ring and a watch to go with my new blue dress. Our class colered a picture of you. I colerered your cheeks and nose red. All of the pictures of you were pretty. Thats because you are sweet

anyway.
Love,
Terri Crane
1907 West Ave. E.

Dear Santa,
My Brother wants a bicycle for Christmas. And I want a typewriter. Please can you bring And my brother has been a good boy. My mother wants a fur coat. And my Daddy wants a New TV. And my aunt wants a new pair of shoes. And My uncle wants a new neck tie. And Ronnie wants a new coat.

Love,
Debra Mills
Muleshoe

D-ar Santa,
I want a Jonny Eagle Mag bamba, James Bond set, Super-Ball, Koochie Komba, boots, and a cowboy suit.

Love,
Max Buhrman
Rte. 1
Muleshoe, Teaxas

Dear Santa,
I want a B-B Gun for Christmas and a Farm Set too. I want a Etch-a Scetch. My brother wants a Foot ball set and a G. I. Joe. My other brother wants a Porky Pig Hand-Puppet. Thats all I want for Christmas.

Love,
David Watson
Route 2

Would you bring ne a Bette-Beauty Parlor set. And a crying Doll. Ken and shipper. And some. And some: Hi Hill. And some Dishes.

Love,
Laura Waddell
1908 Ave. F

Dear Santa
I like a Macbanba to Santa Claus, I with a race car and a toy chest as to and electric train and bicycle.

Love,
Larry Sexton
Rte. West Camp

Dear Santa,
I want a mouse that drinks white coffee. I want a beathle wig for my mommie. I want a vac-u-form for Christmas. I have been a nice boy.

Love,
Jamyne Johnson

CO-OP Chatter by FARMERS CO-OPERATIVE ELEVATOR




FARMERS CO-OPERATIVE Elevator
FERTILIZER • GRAIN • SEED
H.L. WARD, Manager
MULESHOE, TEXAS
Phone 5350 6660

The Muleshoe Journal
 Published each Thursday by The Muleshoe Publishing Co
 374 West Second Street, Muleshoe, Texas
 Member of The Associated Press
 Entered as second class matter at the Muleshoe Post Office under act of Congress, March 3, 1897.

SUBSCRIPTION RATES
 Immediate Territory \$4.00
 Out of Territory \$4.50
 Combined with Bailey County Journal \$5.50
 Both papers in territory \$5.50
 Both Papers outside territory \$6.25
 Advertising Rate on Application.

L. B. HALL Publisher
 RAMON MARTIN Editor
 PAT JOHNSON Woman's Editor
 JAY SPAIN Mech. Supt.



125th Edition Of Almanac Off the Press

Maps of leading lakes and historical sites, new U. S. Census business data, ZIP codes for all Texas post offices and many other new features are found in the 1966-'67 Texas Almanac, just published by The Dallas Morning News.

Larger by 48 pages than the last edition, this issue marks the 125th anniversary of the establishment of the firm which publishes The News and the 110th anniversary of the founding of the Texas Almanac. Dr. DeWitt Reddick, director, Schools of Communication and Journalism, University of Texas, is author of the history of "Texas Oldest Business Institution" in this edition.

Other exclusive features in the Texas Almanac listed by editor Walter B. Moore include: Population estimates for Texas cities, towns and counties. Individual County maps and information. A guide to pronunciation of difficult Texas place names. Individual pages of economic information for each of Texas' 40 largest cities. Twenty pages with scenes and maps of historic towns and counties. Reproductions of work by leading Texas artists.

An expanded recreation section, with color pictures and an introduction by Frank Tolbert of The News.

Election returns for 1964 and earlier years, including Texas' vote in all presidential and gubernatorial elections.

Complete text of the Texas Constitution, with amendments adopted through 1964 and descriptions of amendments submitted in 1965 and for 1966.

Lists of state, county and municipal officials and summaries of state, county and municipal governments and finances.

Also listed are more than 500 Texas trade and professional organizations, colleges and universities, libraries and museums and theater groups.

Agricultural information and chapters on plant life, weather, minerals, employment and labor, banking, wholesale and retail trade, service industries, insurance and numerous other topics have been compiled with the assistance of hundreds of

LAZBUDDIE NEWS
 By Mrs. C. A. Watson
 LAZBUDDIE — Sunday visitors in the L. R. Hall home were Mr. and Mrs. James Beavers and children from Kress. The James Hall family from Fort Worth were recent visitors in the home of his parents, the

L. R. Halls.
 Mr. and Mrs. C. C. Greaf, Mr. and Mrs. Freeman Davis and children, and Mr. and Mrs. James Welch and children attended the church conference of the Reorganized Church of Jesus Christ over the past week end in Amarillo.

Mr. and Mrs. Euel Mitchell returned home from a recent trip to Saint Jo where they visited his Mother, Mrs. Mitchell in a hospital there. Mrs. Mitchell has been bed fast for some time.

Mr. and Mrs. Billy Hardage, Lubbock were here recently to see his parents, Mr. and Mrs. L. M. Hardage. Mrs. Billy Hardage is presently teaching in Lubbock. Billy is a student in Texas Tech.

Shopping in Lubbock Friday of last week were Mr. and Mrs. Lee Mason from Lazbuddie.

Debbie Bullock, Alene Embry, Cynthia Harvey and Mack Holt went to Lubbock Tech College Saturday to take their college entrance test. Cynthia Harvey and Toni Smith visited in Lubbock over the weekend with Cynthia's aunt.

The group was met by Linda Lesley, daughter of the T. O. Lesley's, former Lazbuddie student. Miss Lesley escorted them through the Texas Tech buildings. She is a student at the college this year.

Paul Wilbanks was home recently visiting friends and relatives here. He is a student in Southwestern State College, Weatherford, Okla.

Congratulations to the Lazbuddie Girls 8th grade basketball girls and their coach Bruce Rhodes for having won the championship at the Muleshoe Tourney the past weekend. The girls go to Farwell this weekend to enter the tournament there.

Mr. and Mrs. Frank Hinkson were in Wilcox, Ariz. several days visiting her sister, Mrs. Dan Hinkson.

Birthday greetings this week go to: H. W. Moore, Deloras Delgado, Brent Hall, Glen Morris, John Gulley, Deanna Starford, Lyndon Foster, Taft Vich and Ruby Bruns.



SECOND-PLACE FLOAT — With the theme, "Peace on Earth," this float entered by the Muleshoe Assembly of God Church's C.A. organization won second in last Saturday's Christmas parade. A \$35 cash prize went with the award. (Journal Photo)

Central States News Views

OHIO IS more than 500 miles from Salina, Kas. where this sign causes double-takes from motorists. If the driver continues on for three more blocks he'll find Salina's Ohio street.



A TWO-HATTED GAL is Mrs. Virginia Watson who works as a secretary on weekdays and on weekends drives giant dragsters.



TALLEST U. S. monument, the 630-foot Gateway Arch in St. Louis, is "topped out" with a Picker-Tech Ops "gamma camera" making x-ray checks of its steel welds for invisible flaws.



Santa, I Want...

Dear Santa,
 Would you please bring me some G. I. Joes and a jeep, a Electric Train, Tip-It, Tommy Eagle, Fish-bit-It, Time bomb, Monkey and Cheetas Some Cowboys and Indians, Braek It, king of The hill, Some Trucks, and a watch,
 Love,
 Keith St. Clair
 West Ave D

Dear Santa,
 I would like a piano. And I would like a watch. A I would like to have a monkey.
 Love,
 Cindy Knight
 Route 2

Dear Santa,
 I would like a Taperecorder and a G. I. Joe. And a Seacret Sam. And a Electric Race Set. And a Building Boulders. And a Snowcone Maker. And a coke Machine. We colored a picture of you.
 Love,
 Terry Bairrington
 1909 West Ave. F

Dear Santa,
 I want King of the Hill, bicycle, Jhonny Eagle, Mac Bam-Ba, tracks, house-shoes, G. I. Joe, electric race set, and Jhonny seven
 Love,
 Grant Morrison
 Rout 3

Dear Santa Claus
 I would like a watch and a dog.
 I would like a crusader.
 I would like a vac-u-maker.
 I would like a foot ball.
 I would like a duck.
 I would like a beebgun,
 from Arthur Marilo
 to Santa Claus
 Box 47

Texans who are authorities in their fields.

EGG CARTON SEAL — BLUE
 APPROVED THESE EGGS HAVE BEEN INSPECTED BY THE TEXAS DEPARTMENT OF AGRICULTURE AND FOUND TO MEET THE GRADE SPECIFICATIONS CLAIMED ON THE LABEL.
 John C. White
 COMMISSIONER OF AGRICULTURE

GASOLINE PUMP AND SCALES SEAL
 JOHN C. WHITE
 COMMISSIONER
 1 2 1 61 62 63 64
 WEIGHS AND MEASURES
 003245
 APPROVED
 TEXAS DEPARTMENT OF AGRICULTURE

PRE-PACK FOOD SEAL — RED
 APPROVED THIS PRODUCT HAS BEEN EXAMINED BY THE TEXAS DEPARTMENT OF AGRICULTURE WEIGHTS & MEASURES SECTION AND FOUND TO BE CORRECTLY LABELLED AT THE TIME OF INSPECTION.
 John C. White
 COMMISSIONER OF AGRICULTURE

WATCH FOR THESE SEALS OF PROTECTION — When one of these three seals appears on a product or scale in the supermarket or on service station gasoline pumps, it means an inspector of the Texas Department of Agriculture has made a consumer protection inspection. The seals, bearing the signature of Commissioner John C. White, assure Texas housewives and motorists of getting full value, measure, or quality for the shopping dollar on such commodities as eggs, pre-packaged meats and foods and gasoline.

SHOP MULESHOE FIRST



CHARLOTTE DAVIS **TAMRA JENNINGS** **VICKIE BROYLES**

JACKIE SEATON **CHERYL RANAGE** **CAROLYN MORRIS**

WE'RE PROUD OF OUR "LAZBUDDIE LONGHORN" BASKETBALL TEAM

FARMERS UNION CO-OP
 LAZBUDDIE, TEXAS PHONE 965-2949

Christmas Gifts
 for every member of the family at Western Auto!

SANTA SIZZLER
 76-Pc. Racer Set
 Remote control! 2 extra body shells. Exciting "over n under" track. Hours of thrills, spills and skills! E1106
\$4.99 See Hold 'til Christmas

SANTA SIZZLER
 3-Pc. Kitchen
 In Yellow & Coppertone
 Look! Sturdy All-Metal Refrigerator, Range and Sink w/Running Water!
 Scaled height for the young hostess to serve in style! 15" refrigerator has adjustable shelf, miniature cartons. 11 1/2" range with sliding shelf, see-thru oven door. 11 1/2" sink. Pots n pans, play food, apron! E1625
\$5.99

Top Performance at Savings!
 82-Channel 23" Console with Insta-Vu
 No Money Down! Walnut or Maple Finish

Mahogany finish cabinet **\$188.88** Reg. **\$198.88**

- Insta-Vu... bright, clear picture and full sound the instant you turn the set on!
- Tri-Centric Memory Tuner... convenient single-dial tuning — no annoying adjustments!
- 20,000 volts of big-picture power for best reception... even in fringe areas!

Beautifully styled console at a low, get-it-now price! Keved ABC and 3-stage IF prevent flutter and distortion, give sharp long-distance reception! Tinted aluminum picture tube, matched 4" and 5" speakers. Diagonal screen measurement. 2DC1613,15,17

Nationwide Service!

REMEMBER TO SEE EARL HARRIS IN MULESHOE

Goal

Continued from Page One • Frank Ellis, Vic Benedict, Bob Parks, Marshall Cook and Don Chhak.

In the Progress area Mrs. David Stovall was chairman with Mrs. Neva Calvert, Mrs. Margaret White, Mrs. Chuck Stallings, Mrs. Eugene Black and Mrs. Pat Gunter as workers.

Mrs. Bill Millen headed the YL area workers with Linda Hall, M. H. Laney and Harold Allison as solicitors.

Chairman at West Camp was Mrs. D. O. Burelsmith, while chairman in the south part of the county included Ernest Martin and Neil Arnold as co-chairmen. Also Mrs. Clifford Mar- dis and the Maple Lions club.

'City' farmers' group included Bill Jim St. Clair, chairman; Bernard Phelps and J. G. Arm- Commercial Division was headed by Lyndal Murray, with these captains: Don Harmon, Jim Jennings, Ernest Kerr and Don Chhak. Workers include David Suddeth, D. B. Lancaster, Jim Bryant, Ben Porter, Clarence Jones, Bob Stovall, Ray Cline, Dave Hardison, Roger Gotrell, Dee Clements, Buddy Black and Delbert Barry.

Johnny Shelton was chairman of the advance division with Doug Haynes as associate chairman. Team captains in that division were Harmon Elliott, Jeff Peeler, Vic Benedict, Don Harmon, Verge Lane and Myron Pool.

Workers also included Earl Harris, Roger Albertson, Doc Botkin, Curtis Walker, Albert Field, Buddie Lane, James Crane, George Bragg, Wayne Williams, Owen Jones, Bennie Porter, Marvin Lewis, George Williams, Billy Morrison, Jim Milner, Olan Burrows, Pat Glover, Joe Smallwood, T. B. Hicks, John Miller, Robert Blackwood, James Hughes and Jerry Garlington.

In the school division, Superintendent Neal Dillman was chairman, with these captains: Ralph Stevenson, R. E. Everett, Bill Taylor, Milton Oyler, F. D. Harris, Mrs. Jewell Blackwell and Murrell Brown.

Employee division was head-

ed by Kenneth Henry with these team captains: Franklin Mann, Joe Gonzales, Bill Kinard, Jimmy Lane and Jim Berry.

Other solicitors were Pat Glover, Curtis Walker, Bob Stovall, Larry Henry, Elvon DeVaney, Kenneth Stevens, Bob Wingo, Davis Suddeth, Harold Pruitt, Ted Weaver, Richard Hawkins, Sonny Shoemaker, David Cunningham, Syl Tanguma, Noel Gilmore, Jay Spain, Creston Fafer and Keith Bray.

Berth

Continued from Page One • Inet, Sherry Trapp, 1st alternate, Linda Kerr, baritone sax, Pat Malone, 1st chair; alto sax, Pam Seymour, Jan Everett, and Val Moore, bassoon, Carola Bass, 1st chair; French horn, Jan Landers; trumpet, Dennis Burrows; basses, Neil Finley and Jimmy Francis; string bass, Stephanie Peery, 1st chair, and Jean Davis, cornets, Hal Anderson, Ray Sanchez, and Linda Griffiths, 1st alternate, Billy Kelley.

The contestants in All-Region will go to Lubbock Friday to practice for a concert to be held Saturday night.

The 240 members of bands in Region I of the Texas Music Educators will perform Saturday in Lubbock. The concert will be presented at Monterey High School auditorium at 7:30 P. M. Two bands of 120 members each will present numbers under the direction of two guest clinicians. The first band to perform will be made up of members from Class AAA, and AAAA.

The director of the AAA and AAAAA band will be Clifton Williams, composer in residence at the University of Texas. A graduate of LSU, Williams has done graduate work on his doctorate at the Eastman School of Music. He has won the Ost-walt Award for the best new composition three times. He has some twenty published works of major importance. He has been selected as guest director for organizations from

Deadline

Continued from Page One • impact, attractiveness. Does the entry present a pleasing combination of color and material? Is it easily seen from the street? If figures are used, are they in good scale and proportion to one another? 50 points. Appropriateness. Does the entry portray or relate to the meaning or a story, legend, or custom of Christmas, either religious or secular? If lighting itself is the decoration, rather than only the means of lighting the scene, is the combination of colors or use of lighting suggestive of Christmas? 20 points. Function: Are all of the en-

Jail

Continued from Page One • Clements is "boarding out" some of the prisoners, including women "guests" of the county. "There is just no place at all to care for women prisoners, he explained, "so we have to take them to Lubbock for keeping." Clements explained, "Now with our jail filled to more than twice its capacity, we have six prisoners being boarded outside the county."

Among "new" prisoners on hand at the start of the week was a Negro charged with driving while intoxicated and a drunk, both picked up by the city.

A man wanted in Muleshoe on a charge of stealing a pickup truck owned by M. L. Shipp, however, is not among those being huddled together in the inadequate Bailey county jail. He is being held in New Mexico after being filed on by the Federal Bureau of Investigation charged with taking stolen property across the state line.

The pickup was stolen here Sunday afternoon and its driver was picked up in Fort Sumner a short time later.

one coast to the other. Williams is the composer of the Air Force Academy anthem and official march. Included on the concert program will be numbers which Williams composed.

try parts working. (If any of the lights are out, part of the effect is lost.) If the decoration has mechanical parts, are they working? If figures are used, are they all standing up straight and in order? 15 points. Originality. Does the material or combination of material used in the entry, show originality? Is it a new idea or fresh approach to an old idea? 10 points. Unity. Does the entry carry out one story, theme or idea? Is the lighting in keeping with the theme? 5 points.

LATE
WANT ADS

WANTED: A boy between ages of 12 and 15 to deliver papers on Sunday. Apply in person. Muleshoe Publishing Co. 3-49t-tfc

FOR Rent: Nice quiet bedroom. Rosie McKillip, 410 W. Second. Ph. 272-3928. 8-49t-tfc

For Sale: 3 bedroom house with garage and shop in back located in Lenau addition at 204 E. Cedar. Low down payment. Call 272-4190 or Dan Atkins at Muleshoe Motor. 8-49t-tfc

743 cotton acreage to lease for one year in Bailey County. Mrs. Hugh Fisher, SH 4-1618, 2501 23rd, Lubbock, Texas. 12-49t-1tp

Topsy Spirals URBANA, I. (AP) — A barber pole that runs backwards and causes the stripes to spiral down instead of up, is mixing up the customers.

Barber Paul White says he has tried about everything to correct the backward spiral but is unable to make it spiral in the right direction.

"I tried reversing the motor, and I tried reversing the painted cellophane cylinder," he said mournfully. "Nothing worked. So I came to the conclusion the stripes were just painted on backwards, or upside down, or something."



DOLLS

24 INCH
WALKING
DOLL
\$3.98

Mattel Baby First Step
WALKS BY HERSELF **only \$14.88**

G-I JOE DOLLS

\$2.99

FULL ASSORTMENT OF
Tonka Toys

TEFLON COOKWARE

9 PIECE SET
ONLY **\$13.88**

BOXED
Christmas
PAPER
4 ROLLS
104 INCHES
67¢

BROWNIE FUN SAVER

Movie
Camera
BY KODAK

Camera GIFTS

SPECIAL \$18.88

LIVE CHRISTMAS TREES

Green **\$1.98**
White **\$2.98**

COLOR WHEEL

IT SHINE 4 DIFFERENT
COLORS ON YOUR TREE
only \$3.98

OPEN 'TIL 8 P.M.
EVERY NIGHT
UNTIL CHRISTMAS
FOR YOUR SHOPPING
CONVENIENCE

PERRY'S

5-10 25-\$1.00
LAY-A-WAY FOR
CHRISTMAS NOW!



RAMONA ESPINOSA



NEDDA FOSTER



MARILYN BARNES



SHERRY ROBINSON



CONNIE HARLAN



MARSHA SCHUMANN

OUR TEAM . . .
THE
"LONGHORNS"
ARE TOPS WITH US!

**FREEMAN DAVIS
INSURANCE AGENCY**

LAZBUDDIE, TEXAS

PHONE 965-2949

PRE-CHRISTMAS SPECIAL AT THE JOURNAL

25% OFF

On All Printed Letterheads and Envelopes



TAKE ADVANTAGE OF OUR
PRE-CHRISTMAS SALE



Beautiful Papers and Distinctive
Type Faces For All Your
PRINTING REQUIREMENTS



Let us design, lay out and print your letter-
head, booklet, business card or brochure. Call
us for ideas and dummies. Over 25 years ex-
perience at your fingertips.

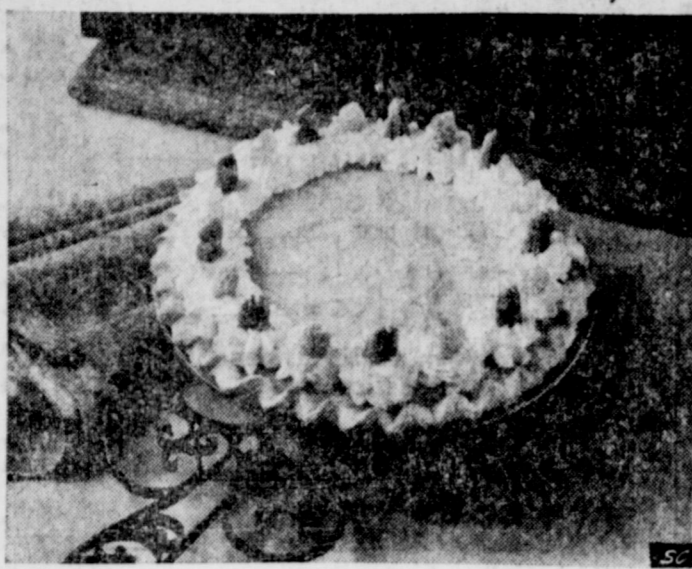


**PICK-UP
DELIVERY**

Phone 272-4536
or Come By
304 WEST
SECOND



Best Of Tradition And Today



Some cooks toss aside holiday traditions. Wiser ones keep the best of two worlds—the heritage of a pumpkin pie streamlined in the making with a modern convenient canned pie-filling. Imagine, no paring, cooking, or mashing; just blending, folding and chilling. In this Borden Kitchen recipe, the magic of sweetened condensed milk even produces a no-cook filling.

Pumpkin Chiffon Pie
(Makes one 9-inch pie)

- | | |
|--|---|
| 1 (9-inch) baked pastry shell | 1 tablespoon (1 envelope) unflavored gelatine |
| 1-1/3 cups (15-oz. can) Eagle Brand sweetened condensed milk | 2 tablespoons cold water |
| 1 (1 lb. 2-oz.) can Comstock pumpkin pie-filling | 2 cups (1 pint) heavy cream |
| | Pecan halves; optional |
| | Preserved crystallized ginger; optional |

In a large bowl, gradually stir condensed milk into pumpkin pie-filling; blend thoroughly. Add gelatine to water. Let stand 5 minutes to soften. Dissolve the softened gelatine over boiling water. Gradually stir gelatine into pumpkin mixture. Whip 1 cup of the heavy cream until stiff. Gently fold cream into pumpkin mixture. Place mixture over ice water; chill until it mounds slightly when dropped from a spoon. Turn into prepared pastry shell. Chill in refrigerator about 4-5 hours or until well set. To serve: whip remaining 1 cup heavy cream until stiff. Attach an Ateco #6 Star pastry tube to a decorating bag. Fill with whipped cream. Pipe cream around edge of pie. If desired, garnish each cream mound with pecan halves or pieces of crystallized ginger.

Top Three Way Pupils Named

Three Way Independent School honor rolls were announced this week by Ann Sowder, school secretary. The top pupils were listed in two grade categories — "high" honor pupils with averages of 93 and up, and "honor" students with averages of 87 to 93.

The list, by grades, follows:
HIGH
First Grade: Kandy Brooks, Gloria Simpson, Diana Ornelas, Albert Amparan, Shery Lynskey, Bobby Holder, Cindy Hutcheson.

HONORS
First Grade: Lloyd Joyce, Doug Vanstory, Antonio Marez, Winfa Marez, Etta Warren.

HIGH
Second Grade: Mary Ann Perez, Karen Corkery, Randy Locke, Connie Richardson, Leann Abbe, Sheila Reaves, Linda Holly, Shannon Sowder.

HONORS
Second Grade: James Cornish, Donnie Nichols, Danny Miller, Robert Philips, Felipa Perez, Andy Warren.

HIGH
Third Grade: Kim Brooks, Debra Burkett, Chuck Dupler, Kathy Foard, Debbie Furgeson, Kent Hicks, Rickie Myers, Robby Sowder, Yvonna Vanstory.

HONORS
Third Grade: Rickie Lee, Martina Morin, Pam Partlow, Dan Simpson.

HIGH
Fourth Grade: Johnny Boyce, Mark Corkery, Lynn Carpenter.

HONORS
Fourth Grade: Ronnie Kenley, Danette Lana, Joe Maldonado, Dovie Miller, Maria Rosa, Ronnie Richardson.

HIGH
Fifth Grade: Cheryl Abbe, Patty Carpenter, Ellis Grimes, Rena Neutzler, Terry Pollard, Lee Sanderson, Ann Warren.

HONORS
Sixth Grade: Mary Mercado.

HONORS
Sixth Grade: Jerry Nichols, Sandra Simpson, Larry Neutzler.

High
Seventh Grade: Suzy Herrera, Denna Waltrip, Geneo Abbe.



QUESTION BEFORE TEXAS

John Furgeson.

HONORS
Seventh Grade: Rhonda Dupler, Alan Davis, Michael Sowder.

HIGH
Eighth Grade: Sam Feagley, Kathy Hicks.

HONORS
Eighth Grade: Mike Lynskey.

HIGH
High School: Chester Huff, Joy Eubanks, Gayle Gant, Julia Burkett, Doyleen Davis, Johnny Harris.

HONORS
High School: Charlie Abbe, Wendell Williams, Jan Heard, Perry Lynskey, Sharyn Wittner.

Case of the Bolted Bolt
SALINA, Kan. (AP) — L. W. Nelson thought someone had fired a gun at his front door when he saw the glass shatter. While he called police, a neighbor, J. H. Morris, began searching his lawn for a bolt which had fallen from his power mower.

Police solved both mysteries. They found the bolt from Morris' mower on Nelson's living room floor where it was thrown by the mower blade.

Couple of Honest Guys

WELLINGTON, Australia (AP) — An honest citizen found one-half of a one pound (\$2.80) note, and handed it in to police. A few weeks later, another citizen arrived at the police station to turn in the other half he had found.

As there was no claimant, police changed the torn note into two 10 shilling notes (each worth \$1.40), and gave one to each.

Late But Lucky

LOUISVILLE (AP) — Jim Siewert, a Louisville student in Athens, Greece, decided to visit the Acropolis but reached the landmark at dusk — too late to be admitted.

As Siewert stood admiring the view, a car pulled up and out stepped King Constantine and Queen Anne, followed by Queen Mother Fredericka and her three daughters.

The royal party started inside and the King beckoned Siewert to follow.

For an hour he browsed through the ancient ruins, with Queen Fredericka providing a running commentary.

USDA Worried: 'Mike' Readings Still Skidding

Cotton stripping operations increased this week and the Lubbock, Brownfield and Lamesa Classing Offices of the USDA received the largest number of samples received any week this season, according to W. K. Palmer, in charge of the Lubbock Office.

The three USDA Classing Offices classed 225,600 samples during the week ending Friday, December 3rd.

Through December 3rd the Lubbock Office had classed a total of 520,500 samples, the Brownfield Office 42,400 and the Lamesa Office 57,600. This brought the total classed this

season at the three offices to 620,500. Through December 3rd of last year the three offices had classed a total of 591,100 samples of the 1964 crop.

Grades of the cotton classed at the Lubbock Office were about the same as during the previous week. Seventy-one per cent of the cotton was classed in the White Grades and 29 per cent in the Light Spotted Grades.

Middling made up 18 per cent of the total classed at Lubbock last week, Strict Low Middling 48 per cent, Middling Light Spotted 20 per cent and Strict Low Middling Light Spotted 8 per cent.

Staple length remained about the same last week and continued to average approximately 15-16 of an inch. Eighty-two per cent of all cotton classed at Lubbock last week was 15-16 of an

inch and shorter and 65 per cent was 15-16.

Micronaire continued to decline. Thirty-three per cent of all cotton "miked" in the Lubbock Office was in the desirable category. Fifteen per cent "Miked" 3.3 and 3.4, 31 per cent was 3.0 through 3.2, 17 per cent was 2.7 through 2.9 and 4 per cent was in the 2.6 and below, or Wasty, category.

The Consumer and Marketing ported steady trading in the new crop cotton at slightly lower prices. Average prices paid for the most predominant qualities were: Middling 15-16 — 27.65, Middling 31-32 — 28.25, Strict Low Middling 15-16 — 26.45, Strict Low Middling 31-32 — 26.95, Middling Light Spotted 15-16 — 26.50 and Middling Light Spotted 31-32 — 27.00.

Prices paid farmers for cottonseed ranged from \$45 to \$55 per ton.

HERE COMES

SANTA CLAUS

TO

Cobb's

IN MULESHOE

FROM 6 TO 8 P.M.

THURSDAY

DECEMBER 9-16-23

Registered Nurses

You may be eligible for immediate active duty with the.....

U. S. Army Nurse Corps

You are NEEDED!



Contact your Army Recruiter Today

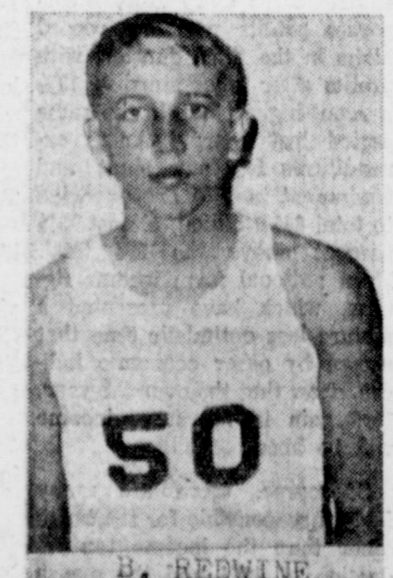
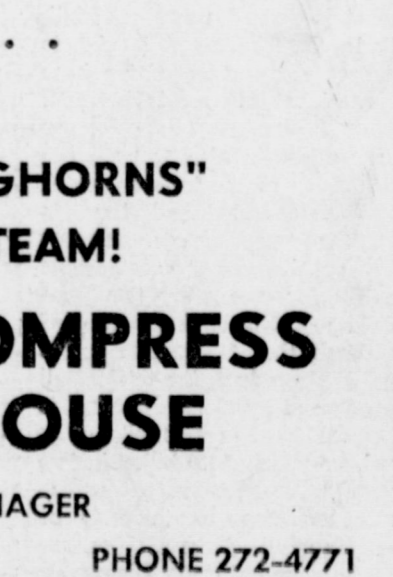
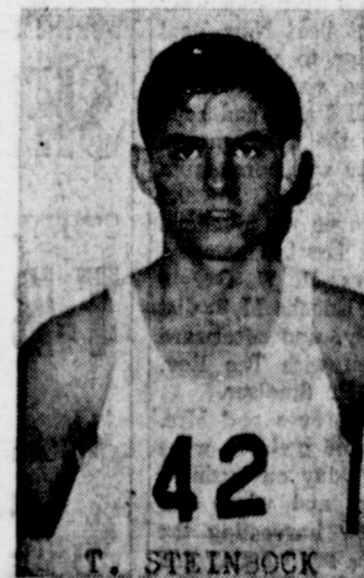
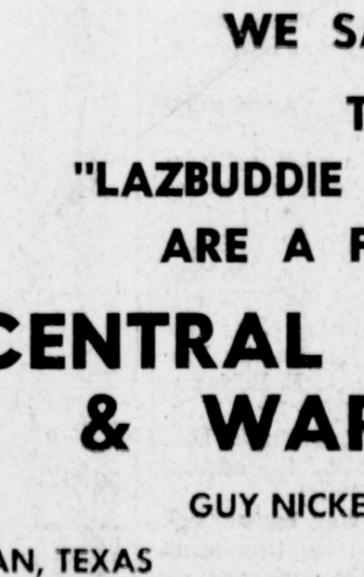
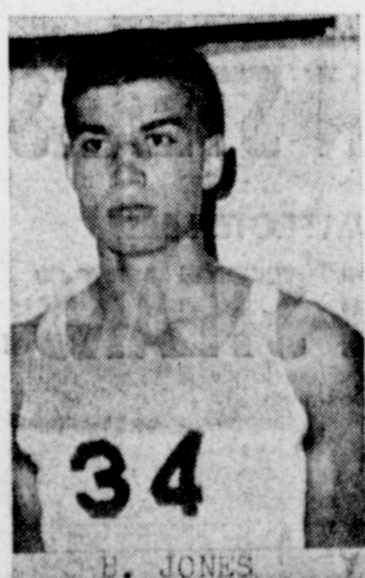
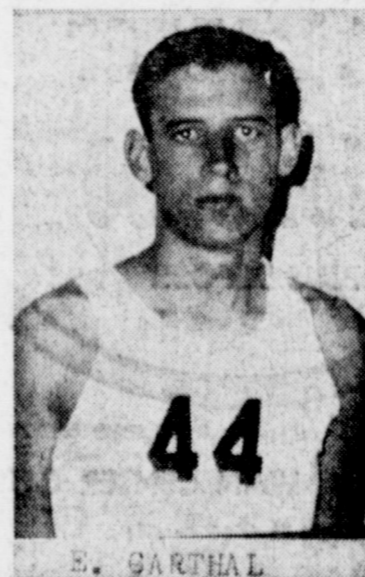
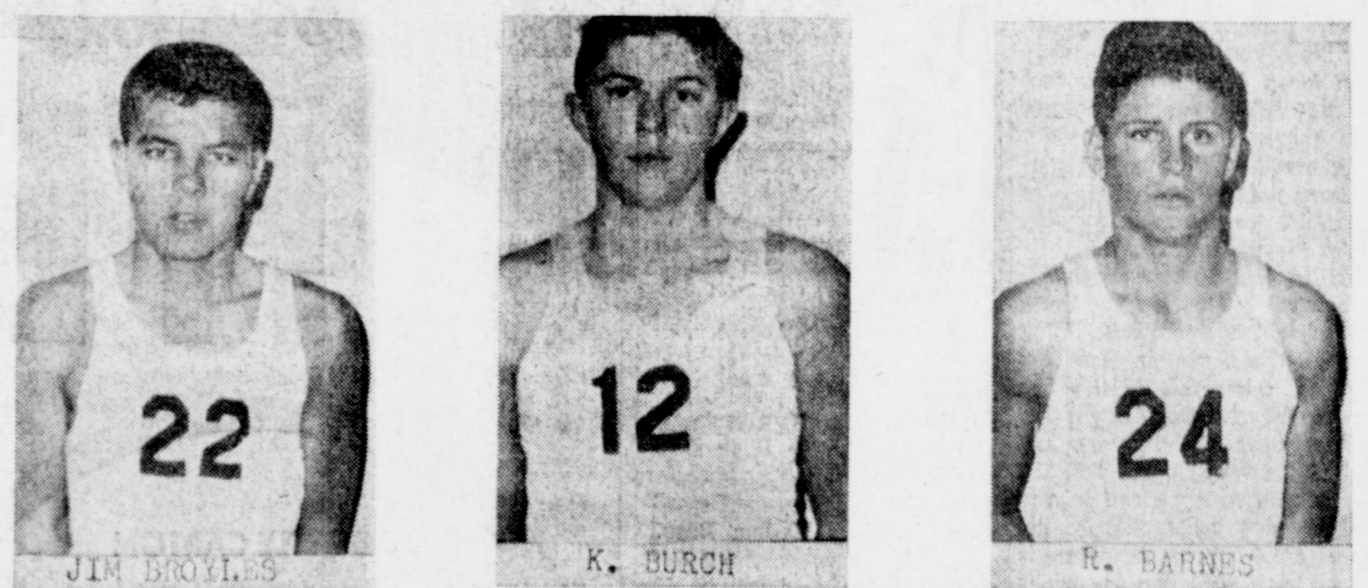
MULESHOE SAYS
MERRY CHRISTMAS
WITH A

BIG CHRISTMAS DRAWING
DOZENS OF AM-FM TRANSISTOR RADIOS . . . PLUS,
AS A GRAND PRIZE
A BIG COLOR TV SET TO BE GIVEN AWAY FREE

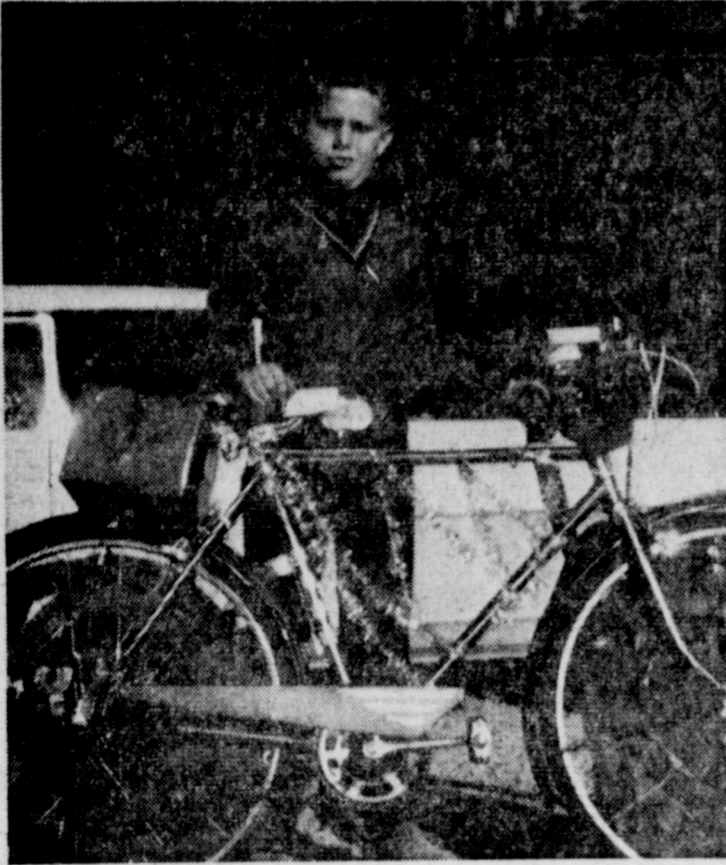
DRAWING TO BE HELD FRIDAY, DECEMBER 24 — 1 P.M. AT THE WALLACE THEATRE IN MULESHOE. NO PURCHASE NECESSARY. YOU MUST BE PRESENT TO WIN.

BE SURE TO REGISTER FREE EACH TIME YOU ARE IN ONE OF THESE BUSINESSES DISPLAYING THE GREEN "CHRISTMAS DRAWING" SIGN.

- | | | |
|---------------------------|-------------------------|------------------------------|
| Piggly Wiggly | Muleshoe Co-op Gin | Sears Roebuck & Company |
| Paymaster Gin | Damron Rexall Drug | Higginbotham-Barlett Co. |
| L&H Grocery | Perry Bros. Variety | Lambert Cleaners |
| Muleshoe State Bank | The Fashion Shop | Morris Douglass Implement |
| Bobo Insurance Agency | Lane's Furniture Store | Bovell Motor Supply |
| Whites Auto Store | C. R. Anthony Co. | Union Compress & Whse. |
| Cobb's Department Store | Western Auto Store | First Street Conoco |
| Tri-County Savings & Loan | Harvey Bass Appliance | Western Drug |
| James Glaze Company | Ben Franklin Store | Williams Bros. Office Supply |
| First National Bank | Pool Insurance | Heathington Lumber Co. |
| Plains Auto Parts | Production Credit Assn. | Lindsey Jewelry |
| Fair Department Store | Holts | Wagnon Grocery |
| Red's Food Market | Paul's Cafe | Main Street Beauty Salon |
| John's Custom Mill | St. Clair's | KMUL Radio |
| Cashway Grocery | Muleshoe Motor Company | Gilbreath Seed & Grain |
| | W. D. Moore | Econo-Mart |



WE SAY . . .
THE
"LAZBUDDIE LONGHORNS"
ARE A FINE TEAM!
CENTRAL COMPRESS & WAREHOUSE
GUY NICKELS, MANAGER
SUDAN, TEXAS PHONE 272-4771



THIRD WINNER — Taking third prize in the best-decorated bicycle division of last Saturday's Christmas parade was Rickey Hardage, Lazbuddie. He won \$2.50. (Journal Photo)

Tax Reform Action Facing Congress

By Congressman Walter Rogers

It is likely that Congress will devote attention to income tax reform proposals in the Session beginning in January. Whether a further tax cut will be possible remains to be seen; stepped-up spending, mainly as the result of the war in Viet Nam, may prevent any reductions in the near future. At any rate, income tax reform proposals will come under scrutiny as further efforts are made to straighten out inequities in the internal revenue code.

I hope very much that the House Ways and Means Committee, which has jurisdiction over tax legislation in the House of Representatives, can give close attention to a proposal, I have introduced in Congress after Congress. My bill would increase the personal income tax exemption for a taxpayer, the additional exemption for his spouse, and the exemption for a dependent from \$600 to \$1000. The enactment of this measure is, in my view, long overdue. The original purpose of the \$600 exemption was to assist taxpayers in meeting basic living expenses of their families, but the \$600 exemption is now out of step with the times and should be increased. Of all proposed changes in the tax laws, I think this is the one calling for attention first.

The lesson of the income tax cut of 1964, which reduced the tax burden on American private citizens and corporations by some \$11.5 billion per year, is that tax reduction provides great incentive to the private free capital for spending on expanded business capacity to meet increased consumer ability levels. The effect is also to generate expansion of the base on which taxes are levied and, thus, to increase tax revenues. The effect is also to generate expansion of the base on which taxes are levied and, thus, to increase tax revenues. The 1964 tax cut is given considerable credit for continuing the record boom we have experienced through the 1960s. The gross national product, the total of all goods and services produced, is headed for the \$700 billion level, up nearly \$200 billion in five years. The most recent economic indicators continue to be encouraging. Among them are these summations: Disposable personal income soared \$12½ billion in the third quarter, the change since early 1950; corporate profits rose to record highs in the third quarter, with profits after taxes standing 19½ percent higher than in the same period last year; business expenditures for new plant and equipment in 1965 are expected to total \$50.9 billion, almost 13½ percent above the 1964 total. Even national farm income figures, which have presented a picture less optimistic than that shown by other economic indices, show that the over-the-year, 1965 gain in net farm income will be about \$1 billion.

Of course, there are many factors responsible for the boom other than the income tax reduction of 1964 and the excise tax reduction of 1965, although I was pleased to support both actions in the conviction they

were needed and would be helpful. I do think the Nation has the necessary experience to know that wisely planned tax reduction encourages private enterprise to do a first-rate job of developing the economy. One of the triumphs of the 1964 and 1965 income and excise tax reductions was that it showed the great strength of the so-called "private sector" of the economy and helped silence those who believe the only path to economic growth lies with massively increased government spending in "make-work" activities.

I'm pleased to report that there is growing evidence of support for my proposal to increase personal income tax exemptions. Attention has come during the continuing controversy over whether parents should receive tax credit for their children's college educations. I believe the sounder approach is through an increase in personal exemptions as an action in which every family in the country would be able to benefit.

Three Way News

By Mrs. H. W. Garvin
THREE WAY — Airman James P. Long left Thursday for 18 months in Okinawa. He will be stationed at Kadena Base.

Rayford Masten went to Seymour Saturday on business. He came home Saturday night.

The WMS of the Maple Baptist Church met Tuesday morning for the week of prayer. The week's program was on foreign missions, the theme, "Trying Sacrifice". Monday's and Tuesday's program was held Tuesday in the home of Mrs. Robinson after the program coffee and cake were served to Mrs. E. A. Wright, Mrs. T. D. Cavis, Mrs. A. E. Robinson, the hostess. Wednesday the WMS met in the Petree home for the programs of the week. Present were Mrs. A. E. Robinson, Mrs. E. S. Wright, Mrs. D. L. Tucker, Mrs. T. D. Davis, Mrs. Dennis Heard and the hostess, Mrs. C. A. Petree.

The Three Way basketball teams were in the tournament in new deal the past weekend. The boys were beat by the New Deal boys and were out the Three Way girls were beat their first game but beat New Deal and Shallowater to win consolation. We are very proud of our basketball teams and hope they keep up the good games.

Gary Toombs was home from Tech for the weekend. He had as his guest over the weekend his roommate, Lourie Ganaway. Mr. and Mrs. H. W. Garvin visited in the Enoch Methodist Church Sunday, and afterward they ate lunch with The Rev. and Mrs. C. R. Smelser.

Mrs. R. L. Reeves and Mrs. Jack Reeves and children were in Lubbock Friday on business. The farmers and wives are very busy now harvesting the cotton. All gins are running and so are all the people.

Classifieds Get Results!

FRESH PRODUCE

TEXAS JUICY SWEET
Oranges 5 LB. BAG **39c**

FRESH OCEAN SPRAY
Cranberries Lb. Box **29c**

CALIFORNIA CRISP GREEN
Celery **lb. 9c**

COCONUTS



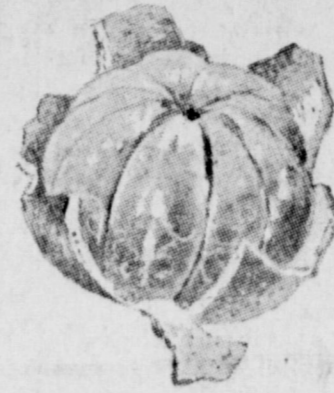
19c
EACH

TANGERINES

CALIFORNIA SUNKIST

LB.

19c



SAVE ON Frozen Foods

- Thomas DATE-NUT LOAF, 1 lb. box **25c**
- Johnston's 9 Inch Family Size FRUIT PIES **59c**
- Ole South Graham Cracker Crumb PIE SHELLS **49c**
- Patio 20 oz. pkg. TAMALES and CHILI GRAVY **49c**
- Stilwell, 10 oz. pkg. CREAM PEAS **19c**

CRISCO OIL NEW GIANT SIZE BOTTLE **79c**

TIDE GIANT SIZE BOX **59c**

COFFEE KIMBELLS DRIP or REG. 1 LB. TIN **69c**

6 BOTTLE CARTON
KING SIZE
Dr. Pepper
3 for \$1.00
PLUS DEPOSIT

PORK CHOPS
PICKNEY'S LEAN FIRST CUTS
LB. 59c

HORMELS BLACK LABEL THIN SLICED
BACON 1 LB. PKG. **79c**

HUNTS
SLICED or HALVES
PEACHES
NO. 2½ CANS
4 for \$1.00

PORK
SPARE RIBS
PICKNEY'S FRESH LEAN SMALL
LB. 49c

PICKNEY'S EXTRA LEAN CENTER CUTS
PORK CHOPS LB. **79c**

SWIFT'S PREMIUM PROTEIN BEEF
SIRLOIN STEAKS LB. **89c**

SWIFT'S PREMIUM PROTEIN BEEF
T-BONE STEAKS LB. **98c**



GUNN BROS.
STAMPS
DOUBLE EVERY
WEDNESDAY

White's **CASHWAY**

Listen To
MULETRAIN
10:15 A.M.
over **KMUL**
sponsored by
CASHWAY

Farm Bureau Adopts Resolutions on State Issues from Taxes to Herbicides

Texas Farm Bureau, after first giving thanks "to Almighty God for the many blessings He has bestowed upon us as a nation and individual, adopted a bulk program for 1966 at its annual convention in Dallas recently. The state policies totaled more than 25 declarations, plus an almost equal number of national resolutions, not to mention a number of state and national declarations.

The state platform follows:

EDUCATION
We recommend that local school boards have the school selected by a committee including an equal number of laymen and teachers.

We recommend that the textbook investigation committee of the Legislature of the State of Texas be continued, and we further recommend that the committee include laymen in equal numbers to teachers on this committee.

We recommend that the Director of Research and Education continue the excellent textbook studies of the past several years in order that proper protests can be made to those texts which contain content foreign to Farm Bureau philosophy.

LAW ENFORCEMENT
We commend our local and state police authorities for their vigorous enforcement of the law. We denounce with equal vigor lawlessness and civil disobedience. We deplore the fact that the new Code of Criminal Procedure tends to overprotect the offender and hinder law enforcement.

We urge adoption of a criminal code which will strengthen law enforcement rather than weaken it.

PUBLIC SCHOOLS
We oppose bussing of public school students out of neighborhood districts for the purpose of achieving racial balance.

SALES TAX
We request that the State Comptroller amend his present policy so as to accept in good faith sales tax exemption affidavits for crawler tractors and other heavy equipment when

such equipment is to be used only for farm and ranch work in the production of food and feed for livestock production. Furthermore, if the Comptroller will not amend his present policy, we request of the Attorney General a ruling as to the intent of the sales tax law exempting farm equipment according to intent of the law.

SCHOOLS
We believe parents should challenge some sets of psychological tests that are being used in some Texas schools. These tests pry into the private and personal lives of children and their families under the guise of progressive education. These tests were approved by the Texas Education Agency as part of the Civil Rights Act. School officials should note these tests are not required. We urge the Texas Commissioner of Education to outlaw these prying tests. We also deplore the id of a tax paid researchers being sent out from the U. S. Office of Education to make shocking intrusions into school children's minds.

STATE LEGISLATURE
We recommend that our State Legislature appoint a joint House Senate Committee on Un-American activities, with particular attention to our educational institutions.

TAXES
The 59th Legislature in 1965 voted to submit to the voters of Texas a proposed Constitutional Amendment (H.J.R. 79) which would require tax assessor-collectors to consider only agricultural use when assessing agricultural land for taxes. This proposed Constitutional Amendment will be submitted to the voters in November of 1966. We believe that passage of this vital Amendment depends on the action we take toward insuring a favorable vote. We therefore recommend that every method available to us be used to assure a favorable vote on H.J.R. 79 in November of 1966.

We recommend that County Commissioners appoint equalization boards with equitable rural representation.

LIVESTOCK
We recommend that records be kept of all brands and marks on cattle when slaughtered.

We recommend that auction sale barns, commission companies, federally-inspected stockyards, meat packers and processors be adequately bonded to protect the consignor and buyer.

COTTON
We recommend that the following policy on Page 4 of the 1965 State Policy Book be deleted: "We recommend that the State ASC Committee put into effect a regulation, or rigidly enforce present regulation, which will immediately stop future manipulation of cotton allotments, such as: transferring and/or purchasing and transferring cotton allotments from one farm unit to another."

We recommend that cotton gins be required to maintain and use accurate scales to determine the amount of seed being ginned instead of using percentage factors to arrive at such determination.

We recommend that the diapause research program for the extermination of the boll weevil be extended throughout the state.

FEED GRAIN
We recommend that Texas Farm Bureau conduct an educational program to the end that grain sorghum producers in Texas plant only smut-resistant varieties.

FRUITS AND VEGETABLES
We recommend that citrus fruits and citrus-related ornamental plants, or any other plants imported to Texas from any other state, be subject to strict quarantine and inspection by the Texas Department of Agriculture to prevent the importation of disease, viruses, fungi and insects, both soil borne and plant borne, that could be detrimental to agriculture in Texas.

table harvest vehicles be required by State Law to bear a sign showing the name of the company for which they are harvesting.

We favor a reciprocal trade arrangement between states which would provide penalties on produce coming into Texas equivalent to penalties imposed on Texas produce going into other states.

We recommend that all imported fruits be stamped to show country of origin at the first place of handling and that the State Department of Agriculture enforce such regulations in Texas.

We will support legislation prohibiting the use of certain agricultural chemicals in the vicinity of citrus groves by aerial applicators when such chemicals are known to be injurious to citrus fruits or trees. We further recommend that aerial applicators operating in the vicinity of citrus groves be bonded or certified. See BUREAU, Page B-2



GIRLS' VARSITY — Here's the varsity squad for the 1965-66 Muleshoe edition. Pictured are (front row, l-r) Susan Pendergrass, manager; Linda Gross, Joyce Puckett, Jeannie King, Carolyn Embry, Dana Moore

and Sandra Garlington, manager, and, second row: Velma Jackson, Eva Denney, Dianne Wilson, Debbie Bryant, Kathie Baker and Patsy Myers. (Journal Photo)



do it NOW...get it over with...save time...save money!
Shop early for Christmas

You'll Buy For Yourself and for Christmas Gifts too

24" x 46" MARTEX SCREEN PRINT TOWELS



Values you dream of but don't often find

Irregulars or Regulars \$1.99 to \$3.49 **2 FOR \$3**

Thick thirsty towels you'll be proud to own or to give as gifts. Only through a huge special purchase made months ago it is possible to bring to you this better quality at such a low, low price. 100% cotton turkish knit. This will be a sellout so shop early.

Machine Washable, Lint Free

THERMAL BLANKET

All Season Thermal Weave 100% cotton. Comfortably light, non-allergenic.



4.99

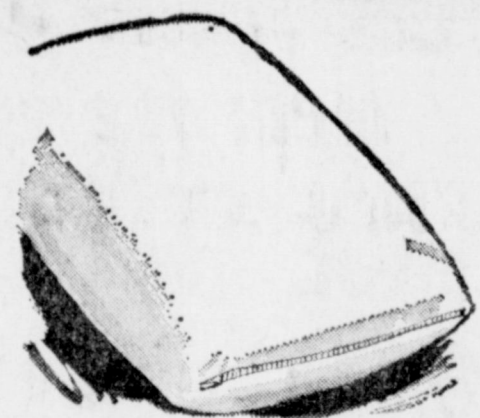
72"x90" Fits Full or Twin Size Beds

Use this thermal weave blanket with light over-cover and body heat is retained. Use no over-cover and body heat is permitted to escape. Machine washable. Colors: white, pink, green, blue, yellow, lilac, beige.

Special Sale 3.98 Quality

Moulded Natural Foam Latex BED PILLOWS

2 FOR \$5.



- White
- Pink
- Blue

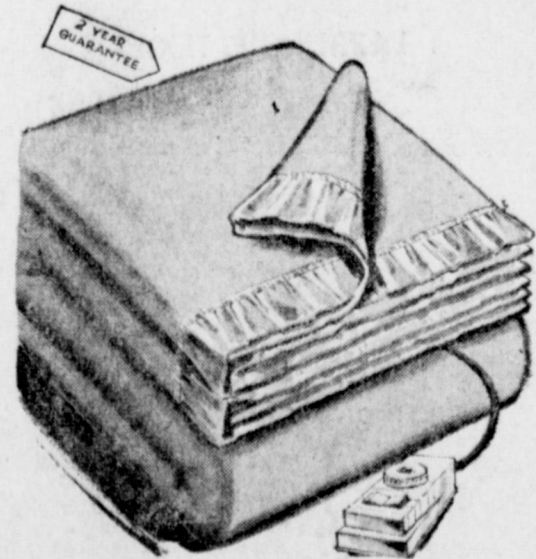
ZIP-OFF COVER

SIZE 20"x26"x5 3/4"

Pure natural foam Latex rubber bed pillow. 80 square sanforized percale zip off cover. Non allergenic. All first quality. Buy for the home and for gifts.

Quality you can depend on — thrifty prices to save you money

AUTOMATIC ELECTRIC BLANKETS



2-Year Unconditional Guarantee

\$10

72"x84" size, single control, 80% rayon, 20% cotton with 6 inch nylon binding at top. Snap fasteners for contour corners. Moth proof, non allergenic. Pink, Blue, Green, Beige.

Meet the **MULESHOE STATE BANK CUSTOMER of the Week**



Roe Stroud

Muleshoe State Bank's customer of the week is Roe Stroud of 507 E 4th Street. Stroud is a retired ginner. He and his wife, Reba, attend the Baptist Church. Stroud said he had banked with the Muleshoe State Bank 24 years and "I think it's a mighty nice bank — real good." We are proud to recognize this customer of the week.

Muleshoe State Bank

"YOUR GOOD NEIGHBOR SINCE 1914"



BUREAU

(Continued from Page B-1)
ry special liability insurance.
We recommend that all im-

ported vegetables be labeled State Department of Agriculture when packaged to show the country of origin and that the enforce such regulations in Texas.

RICE

We recommend that the Texas Agricultural Experiment Station at Beaumont accelerate its research on rice relative to soils, varieties, and diseases, with particular attention to 'East' and kernel smut.

FARM LABOR

Faced with a shortage of "stoop labor" for vegetable production and hand work in the fields, farmers must find the answer to higher production costs and farm labor shortages

through use of mechanization in the growing and handling of many crops. We recommend that more funds be made available for mechanization research.

We oppose the extension of unemployment compensation to farm labor in Texas.

We recommend bond for commercial labor recruiters be increased to \$15,000, and that each sub-agent of commercial recruiters also be bonded for the same amount.

We recommend that the penalty for violation of any labor recruiting law by a commercial labor recruiter be increased to a minimum of \$1,000 and or three(3) months in jail for each offense.

A person moving from one state to another should not be allowed to draw unemployment compensation from the former state if jobs are available within the state to which he has moved.

NATURAL RESOURCES

We recommend that revenue from sales of fishing license and boat license be used in part to develop fish passes from the Gulf to the bays.

We urge that Bee County be allowed a hunting season on White-wing doves.

SOIL AND WATER

We support the present statute allowing the construction and operation of stock tanks and ponds up to 200-acre-foot capacity and will oppose vehemently any attempt to curtail the application of the law or the restriction of use of these small installations.

We endorse the watershed protection and flood prevention act which provides federal assistance in developing a program of complete upstream watershed soil and water conservation, flood prevention, and water recharge. However, we feel it would be better if more but smaller dams were built.

Such programs should provide positive protection to any and all prior beneficial users and riparian owners to protect the rights of all irrigators by rating them over and ahead of new industries and new municipal developments.

WATER

It is urgent that we do everything possible to immediately

stop oil companies in the State of Texas from using underground and/or surface fresh water supplies for secondary recovery of oil by water flooding.

We recommend that the Texas Farm Bureau support broad-scale water projects on a state and national level and that Texas cooperate with other states to develop water resources beneficial to the states involved.

COUNTY COMMISSIONERS

We oppose compulsory reassignment of County Commissioners, precincts on a population basis.

We believe that the best interests of our society will not be served by establishment of proposed Civilian Review Boards authorized to review law enforcement agencies in Texas municipalities.

We recommend that capital punishment be retained in the Penal Code of the State of Texas.

HERBICIDES AND INSECTICIDES

We recommend that applicators of agricultural chemicals who inadvertently or otherwise pollute lakes and streams through such applications be held legally liable for actual damages which might occur as a result.

HIGHWAYS

We reaffirm our support of the Farm-to-Market road program as adopted in 1962, and will oppose any effort to divert funds from this program to a Scenic-Recreation road program.

INSECTS, PLANT DISEASES, AND PEST CONTROL

We recommend that Experiment Stations continue to expand research in the control of spider mites and midge in grain sorghum, streaked mosaic in other plants, and continue to expand research on biological insect control.

SAFETY

We recommend that the highway department put a white stripe along the outer edge of the pavement on all highways.

We recommend more rigid enforcement of the Texas drivers' license laws with stiffer penalties for violations.

We recommend that drivers' education programs be made available to all secondary schools.

We favor a State law requiring each and every school bus be equipped with a revolving amber light. This light should be mounted on the top of the vehicle so as to be visible from all sides and be 1 ft burning at all times when the bus is being operated in transporting children to and from school or for various school activities.

TRANSPORTATION

Top priority in the Farm-to-Market road program should be given to completion of roads already started, with built-in planning to assure that these roads will connect with other hard-surfaced roads.

We recommend approval of proposed regulations to permit barge traffic on Toledo Bend Lake and Sam Rayburn Lake.

TELEPHONES

We recommend that the Texas Farm Bureau continue to work for better rural telephone service in Texas.

FARM BUREAU PROGRAM

We recommend that a report to the county of origin be made as to the disposition of those State Bonds.

We recommend that the Texas Farm Bureau make a complete study of the feasibility of expanding services to and for its members, taking into consideration both present and future needs and to report their findings to the county Farm Bureaus.

We recommend that the Texas Farm Bureau pay expenses of District winner of Talent Find and Discussion Meet, as well as Queen Contest district winner to the State convention, beginning in 1965, on equitable basis with the Queen Contest.

ning in 1965, on equitable basis with the Queen Contest.

PUBLIC RELATIONS

We recommend that county Farm Bureaus be encouraged to make use of the vast amount of information available to them to carry out an intensive Public Relations Program at the local level.

STATE CONSTITUTION

We oppose the Trial de Novo becoming a part of our State Constitution. We believe the proper application of Trial de Novo is in being made a part of specific legislation.

We recommend retention of

See BUREAU, Page 3

More people buy Chevrolets? Yes!
Than any other make car? Yes!
Any other? Yes!
There must be reasons. Sure!
Name ten. OK:

1. All these comforts are available: steering wheels that tilt or tilt and telescope; AM/FM Multiplex Stereo radio, first ever offered in cars; and Strato-bucket seats (to give you just a sampling).
2. Comforton automatic heating and cooling you can order—Just dial the temperature and turn it on; Comforton automatically keeps you comfortable no matter what the weather outside.
3. More engine choices—the widest horsepower range available: the 425-hp Turbo-Jet V8 in Chevrolet and Corvette to a 90-hp Four in Chevy II.
4. Body by Fisher—Craftsmanship by the world's best known coachmakers with everything from luxurious interiors to the long luster Magic-Mirror acrylic lacquer finish.
5. Self-cleaning rocker panels flush out salt and other corrosives with rainwater, dry themselves with outside air—another way Chevrolet takes extra care so you needn't bother.
6. A hushed and gentled ride with body mounts designed to isolate vibration better and shock absorbers matched to body style—coupe, sedan, convertible, wagon.
7. America's only rear-engined car, Corvair, with more weight over the driving wheels where you need it and less on the steering wheels where you don't.
8. America's only true sports car, Corvette, with fully independent suspension, four-wheel disc brakes and engines you can order up to 427 cubic inches.
9. Higher resale value—Chevrolets traditionally are worth more at trade-in time because more people want Chevrolets... new or used.
10. All these safety features standard now: seat belts, front and rear; padded dash and sun visors; outside mirror (use it always before passing); shatter-resistant inside mirror; 2-speed electric windshield wipers for better visibility in a downpour; windshield washers; back-up lights.

CHEVROLET Leadership...the Chevrolet Way.

42-5827

CROW CHEVROLET COMPANY

201 MAIN

MULESHOE

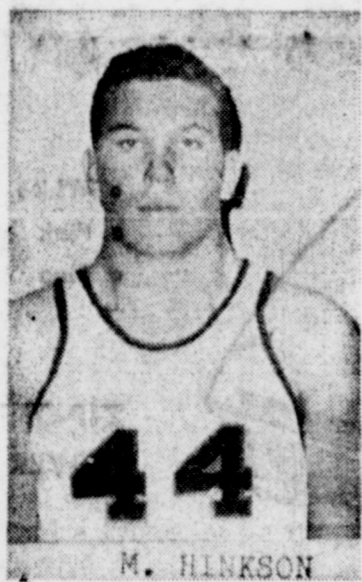
PH. 272-3100

Irrigated Farm Land Sale

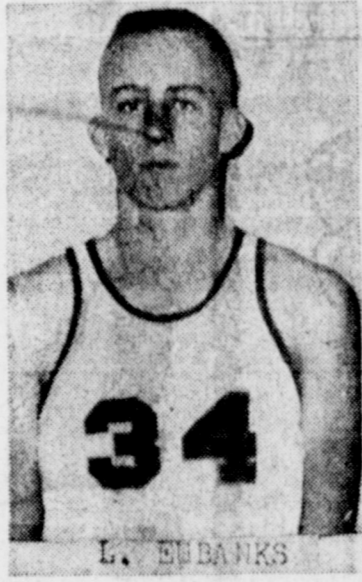
640 or 2 — 320 Acres. 7 full 8" wells with pumps, underground pipe . . . 4 miles West of Muleshoe. 200 acres Burmuda grass, 18 acres cotton, 90 acres grain . . . All fenced . . . house.

20% Down — 15 Years on Balance
6% Interest

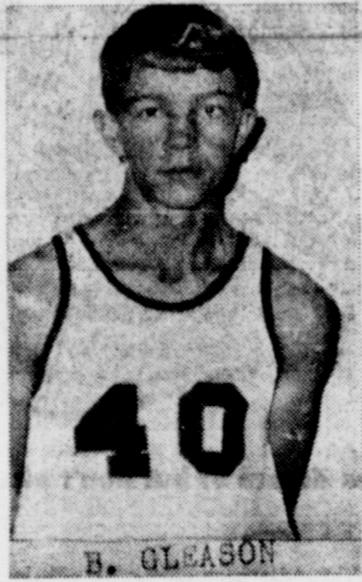
Call or see Jack Hicks, 272-3515
\$360.00 PER ACRE



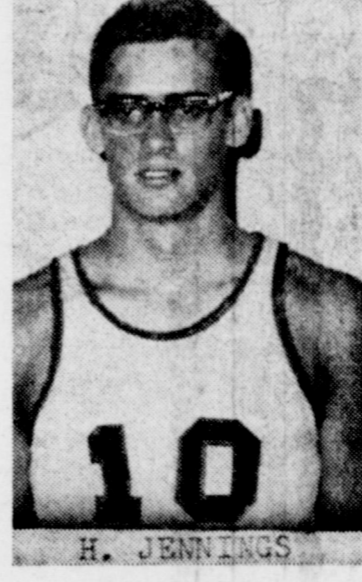
M. HINKSON



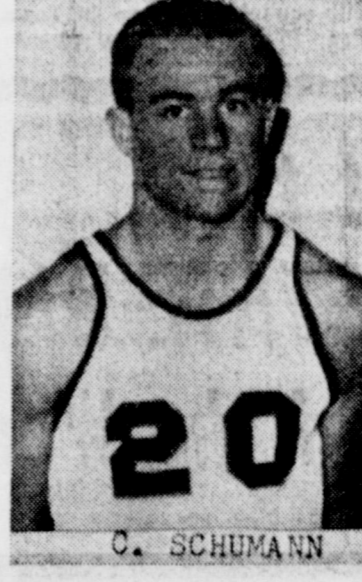
L. EMBANKS



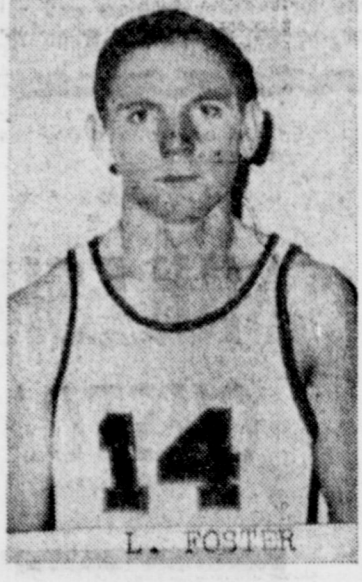
B. GLEASON



H. JENNINGS



C. SCHUMANN



L. FOSTER

THE LAZBUDDIE "LONGHORNS" ARE WINNERS WITH US!

FOSTER FERTILIZER CO.

BOX 52

LAZBUDDIE, TEXAS

PHONE 965-2921

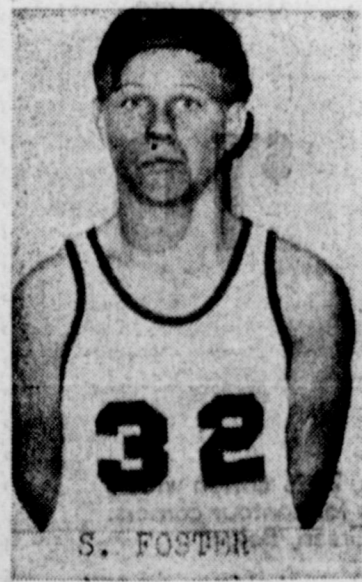


LARRY KENT
HEAD COACH

WE'RE BACKING OUR TEAM

THE "Lazbuddie Longhorns" SHERLEY-ANDERSON LAZBUDDIE ELEVATOR

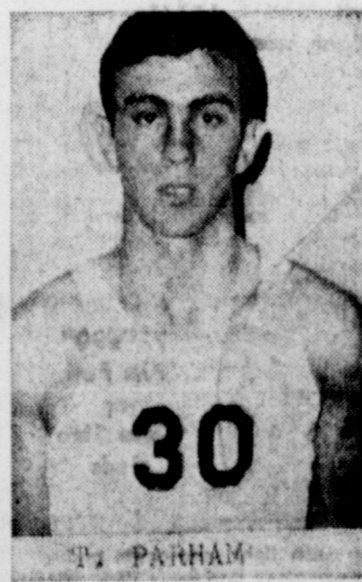
FEDERAL LICENSED AND BONDED
PHONE 965-2922



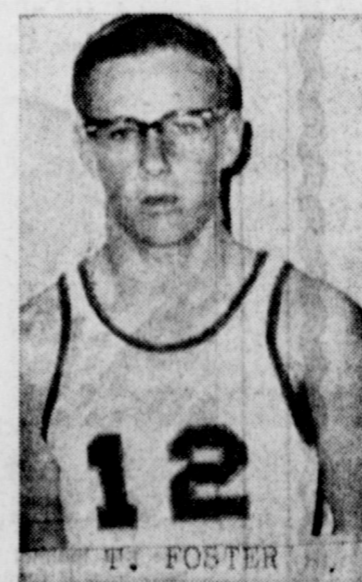
S. FOSTER



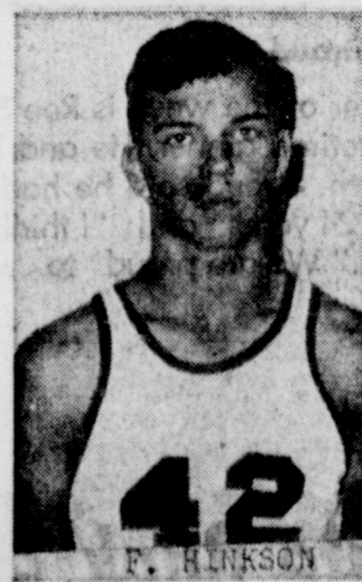
G. MATTHEWS



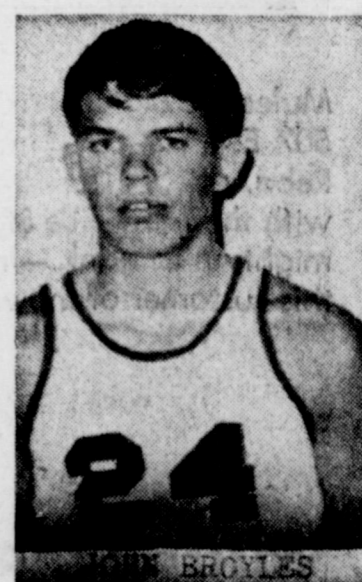
T. PARHAM



W. FOSTER



F. HINKSON



BROYLES

No Early Decision Due on Poll Taxes

By Vern Sanford
Texas Press Association
 AUSTIN — Fate of Texas' 63-year-old poll tax as a voting requirement rests in the hands of a three-judge federal court. They heard four hours of arguments here last week in an historic case to abolish the levy. Judges announced that no immediate ruling would be made. They advised Texans who want to be eligible to vote next year to pay the \$1.75 fee

before the January 31 deadline. In frequent questions during the arguments, the judges indicated concern over several complex legal points. Circuit Judge John R. Brown repeatedly speculated on the court's earlier position, in assessing an apparently unsupported congressional finding in the 1965 voting rights act, that the Texas levy discriminates against Negroes.

"How do we go about reviewing the basis for a congressional finding?" Brown wondered aloud. "Or does the case come to us as though Congress had not made these findings? This is a very unusual point of law."

Texas Atty. Gen. Waggoner Carr maintained that Congress had made its finding "without so much as a scintilla of evidence." He pointed out that U. S. Atty. Gen. Nicholas Katzenbach himself had testified before a Senate committee that he had no complaints of voter discrimination in this state. Katzenbach later filed the suit under terms of the voting rights act.

U. S. Justice Department Atty. Stephen J. Pollak, acknowledging that there is no overt refusal to give Texas Negroes voting rights, argued that due to basically inferior education, income of Negroes is lower and the tax, therefore, falls heavier on them.

One judge wondered, perhaps hopefully, if the U. S. Supreme Court might rule on some of the questions submitted in an earlier Virginia case before federal judges in Texas have to hand down their decision.

Hearing here was the first of four cases brought by the justice department, under congressional direction, to challenge poll tax validity head-on. Others will be held in Mississippi on December 10; Alabama on December 20; and Virginia on January 17.

Pollution Program — Gov. John Connally has advised John Gardner, U. S. Secretary of Health, Education and Welfare, that Texas plans to control pollution on its streams and in its coastal waters.

Such a certification is required by the new federal law aimed at stopping pollution of public waters throughout the United States. If states fail to get pollution control programs in operation by June 30, 1967, then Uncle Sam will take over and adopt its own programs and rules.

Connally's formal certification came as the Texas Water Pollution Control took its biggest step yet. It adopted rules and standards for discharges of municipal and industrial waste into the Houston Ship Channel. Industry spokesmen at the public hearing estimated Ship Channel industry will have to spend between \$50,000,000 and

\$100,000,000 for treatment facilities to meet these standards.

Even then, Joe G. Moore Jr., Chairman of the Board, estimated that the new requirements would eliminate only half the pollution in the Channel.

Mayor Seaborn Cravey of Baytown strongly protested against the Board plan to allow more pollution in the mid-Channel area above Baytown. He fears fish kills which sometimes make living unbearable in Baytown will continue when rains wash slugs of polluted water down the Channel.

But the Board unanimously adopted its three-zone plan, effective immediately.

A seventh member was added to the Board by Connally's selection of Howard Rose of Midland, his former administrative assistant. He will represent the public.

News Committee Meets — A nine-member committee studying the role of the press in crime and court news coverage declared its opposition to legislation that would restrict news reporters in covering stories.

Lawmakers and news executives serve on committee set up by last Legislature. Group selected Felix McKnight, Dallas Times Herald editor, as chairman.

McKnight said the Committee hopes to establish guidelines to protect the rights of individuals named in court charges; also to preserve freedom of the press;

and to avoid a fight over legislation.

Courts Speak — State Supreme Court refused to review a case involving the will of the late Mrs. Sarita Kennedy East, estimated at \$300,000,000. Court also refused to grant a writ of error to the group contesting the will. Contest has never been tried.

Court of Criminal Appeals reversed Houston and Bryan murder convictions because of improper questioning and insufficient circumstantial evidence in trial courts.

Appointments — William A. Hazlewood Jr. of Abilene is the new assistant veterans employment representative with the Texas Employment Commission. He will work out of Dallas.

Salt Water Pollution Committee of the House of Representatives held its first meeting here. Rep. Renal Rosson of Snyder is chairman. Members include Reps. John Allen of Longview, Temple Dickson of Sweetwater, Tom Holmes of Granbury and Felix McDonald of Edinburg. Also Joe Kilgore of Austin, Harry Loftis of Tyler, Charles P. McGaha of Wichita Falls, Judge W. H. Rampey of Winters and John Ben Shepperd of Odessa.

Aggie Coeds? — Board members of Texas A&M University denied a report that they voted to admit girls to the virtually all-male school on a non-discriminatory basis.

Chairman later said qualified women should be admitted if they could not get degrees at another university in fields they want to pursue. He said A&M Pres. Earl Rudder was asked to study every coed application in order to guard against discrimination. He revealed that a committee will report its findings on the question of coeducation next April.

Attorney General Carr recently declared that present policies of admitting only women who are wives, daughters or widows of faculty members and students would be difficult to defend in court. He proposed that A&M either limit its enrollment to men only or become fully co-educational.

Land Program Ends — State Veterans Land Program ended November 30 when the last commitment for purchase of property was issued.

Land Commissioner Jerry Sadler said 35,500 Texas veterans bought over 3,000,000 acres of land at average price of \$81 an acre. On November 2 Texas voters turned down a constitutional amendment proposal designed to extend the long-term, low-interest, land purchase program.

Attorney General Rules — University faculty members may serve unpaid on state or federal boards or commissions not exercising sovereign powers, subject to Board of Regents' approval, Atty. Gen. Waggoner Carr held.

In other opinions, Carr concluded: A person must be present in person to enter a plea of guilty to misdemeanor charges punishable by jail sentence. An appropriation to the Upper Red River Flood Control and Irrigation District, for a water gauging station at Prairie Dog Fork Bridge in Hall County, is valid.

Awards — Governor Connally has presented awards to ten Texans in recognition of outstanding contributions to the conservation of wildlife and related natural resources.

Honors were paid at the Governor's Award Banquet in Austin to Harry Hershig of San Antonio, Dr. Richard M. Robinson of College Station, Henry N.

Smith of Temple, Sen. Culp Kreuger of El Campo, Arthur Temple of Diboll, Dr. William B. Davis of College Station, James Natho of Cuero, Sen. Tom Creighton of Mineral Wells and Kenneth Forcee of Dallas.

Program was sponsored by the Sportsmen's Clubs of Texas, the Sears-Roebuck Foundation and the National Wildlife Federation.

Short Snorts
 Governor Connally approved five new federal anti-poverty programs with U. S. grants of more than \$1,200,000 — in Corpus Christi, Laredo, Roma, Pharr and Rio Grande City. Texas business activity declined five percent in October, second drop in row since the business index reached an all-time

high in August, UT's Bureau of Business Research reports.

Senior Budget Examiner Charles W. Croslin has resigned from Governor Connally's staff to become Administrative Assistant of the Parks and Wildlife Department, effective December 1.

Walter Richter of Gonzales resigned his state senate seat after Attorney General ruled he could not be both Senator and director of the Texas Economic Opportunity Office.

A senate committee, headed by Sen. Criss Cole of Houston, is studying ways to recruit young people into the nursing field and reclaim 10,000 inactive licensed nurses.

— SHOP MULESHOE FIRST —

BUREAU

(Continued From Page B 2)

Justice of Peace Courts.

We recommend that unclaimed gas tax refunds due airplane owners and users be used for construction, repairing, and generally improving small airports.

A qualified taxpaying voter in any bond election for the state of Texas or any of its political sub-divisions should be a person otherwise qualified to vote and a person who had taxable property on the tax roll of the State of Texas or political sub-division calling the bond election for the previous year or who has rendered property for the current tax roll at least six months prior to the date of the bond election that is called.

YOUR OLDSMOBILE will give you better service with **AMALIE** 100% Pure Pennsylvania Motor Oil

Why? Today's high compression engines running at high or low speeds; running in grinding stop and go traffic require the superior oiliness, the heat resistance found only in AMALIE Pennsylvania Oil. AMALIE is the oilier oil refined from the world's finest crude by special low-heat process. AMALIE stands up under engine heat long after conventional oils break down, thin out, drain off. Cuts wear, insures long miles of smooth engine performance...



Wiedebush & Childers



JUGGLING all your goals in one savings account?
Open several-one for each goal!
 "WHAT'S THE DIFFERENCE?" you might ask. "One savings account or several?"
 With 2 or more accounts, you can earmark your savings for each goal...plan your progress carefully. And you may have special needs—where a trust or investment account would best serve you. Choose from a wide variety of savings accounts here. All earn the same liberal return.

First Federal Savings & Loan
 Home Office 4th & Pile Clovis, N.M.
 Branch Office 2nd & Abilene Portales, N.M.

"CURRENT DIVIDEND 4%%"

60¢

PER BALE
OVER THE LOAN
GUARANTEED
ON ALL
TYPES OF
COTTON
AT

JOHN PURDY & SON GIN
 MULESHOE, TEXAS

215 E 6th STREET

PHONE 272-3279

TRADE CLASSIFIED SELL BUY ADS LEASE

WANT ADS - PH. 272-4536

1 time per word — 4c 3 times per word — 10c
 2 times per word — 7c 4 times per word — 13c
 After 1st issue, 3c per word each additional time.
 Minimum charge 50c
 Card of Thanks \$1.00

DEADLINE FOR CLASSIFIED ADVERTISING PAGE:
 For Thursday's Issue: Monday, 12 Noon
 For Sunday's Issue: Thursday, 12 Noon
TO LATE TO CLASSIFY
 Thursday Issue — Tuesday 5 P.M.
 Sunday Issue — Friday 3 p.m.
 Double Rate for Blind Ads.

1. Personals

Employment Wanted: Part time; even. or Sunday. Experienced - office, typing etc. Reply to Box 449 L., Muleshoe Publishing Co. 1-48t-2fc

AVON. Phone 3510 1-46t-1fc

WANTED: Baby sitting in my home nights. Will do ironing. Day call 3060, after 6:30 p.m. call 4606. 1-47s-1fc

HOUSES FOR SALE

Redi-Built or BRICK, 3-BEDROOMS, 2-BATHS, 90-FT. LOT APARTMENTS FOR RENT Licensed Plumber for all your needs

CALL—
BILLY MORRISON
 Ph. 272-3421 or 272-3213

Large home, formal living room, 3 large bedrooms, 2 large baths. Large den with kitchen offset. Carpeted. Double garage.

3 large bedrooms. 2 full baths. Large living room. Lots of cabinets, O'Keefe and Merritt Range. On pavement. Double garage.

Phone 272-4485 or come to Billy's Supperette and see D. L. Morrison or Billy. 8-41s-1fc

10. Farm Equip for sale

NEW 1965 GMC PICKUP DELIVERED \$1749.00 LADD PONTIAC Muleshoe, Tex. Ph. 272-3308 10-34t-1fc

FOR SALE — 4009 Ford Tractor. Call 946-2656 after 5 p.m. 10-49s-4tp

For Sale: Good 1950 International Farmal tractor on butane for stripper. Good tires and has been taken good care of.

No. 15 John Deere stripper ready to run. Contact Weldon Slayton 965-2140. Can see equipment 6 miles N of Muleshoe. 10-44t-1fc

Santa, I Want...

Dear Santa Claus, I want a baby first-step and a toy poodle. With love, Kelly Ann Cihak, 407 W 17th Muleshoe Tex.

Dear Santa Claus, I want a b b gun for Christmas and I want a puppy. I want some clothes. Your Friend Kenneth Fender Rt 2 Box 291

Dear Santa Claus, I want a road race set and a crusader 101 and a tv. With love Mark King 309 e dat Mulshoe

I would like a Skipper doll. I would like a Tammy doll too. I would like a Heidi too. With love, Jana Garrett Rt. 2 Box 255

Dear Santa Claus, I would like to have a watch, and a Mistle doll, and a Tressy. I would like to give gifts to other people. With Love, Rhonda Stevenson 409 E. Austin

Dear Santa Claus, I would like to have a watch that tells the time, the date, and month. And a Johnny express for Christmas. With love Joe P. Briscoe 213 East First

Christmas. My brothers are 4, 3 and 2 years old and they want, Kevin — a train, Ronnie — a target gun set and Mike — just anything for little boys. Don't forget Mama and Daddy they have been good too. I love you, Wesley Allen Ray Rt. 2, Box 294

Dear Santa Claus, I want a typewriter, Skipper doll and go-go wheels. Love Vicki Redwine 220 West 11st

a football helmet and a new guiter. Don't forget all the other boys and girls. Love, Jeep Shanks Route 1, Box 94

Dear Santa Claus I want a creepy crawler set and a power shop. 401, Astin Muleshoe Tex. Love Tom

Dear Santa Claus, Would you please get me a Nancy nursedoll? I know I will get more gifts. But I wish I would get a Nancy nurse doll. And I wish you a Merry Christmas time. love, Carol Camp 1537 W. Ave B. Muleshoe Texas

Rex Air — Rainbow Sales & Service. We repair & trade, washes air-humidifier - cold vaporizer — the only unit that cleans through water. \$50. S. & H. Green Stamps to anyone who wishes to see a free show of the unit. Absolutely no obligation. Call or write 1702 D. Yonker St. Plainview, Texas. Call CA. 47216. 1-48s-8tc

160 A. dry land, 2 bedroom home, good allotments \$175.00 acre.

198 A. heavy Farmer County land, good improvements, allotted.

10" well with underground pipe. \$500.00 per acre.

4 Sections of development land, underground water guaranteed \$60.00 per acre.

80 A. with 8" well, 2 bedroom house, close in \$500.00.

Choice North Plains listings priced from \$198.00 per acre. Strong water.

2 and 3 bedroom homes well located. Sale or trade.

EDDIE LANE REAL ESTATE
 PHONE 272-4439
 Residence
 Eddie Lane 272-4368
 Buddy Lane 272-3774
 Jimmie Pitcock 272-4454

WANTED GOPHERS

Have gopher killing machine. This is time of year to kill them in alfalfa and grass. Call 925-3336 if interested. 14-45t-8tc

For Sale: Lots 100' x 300' for exclusive residential area on Clovis highway. Near Pop's Cafe. See J. T. Shofner. Ph. 272-4533, Route 2, Box 304. 8-47t-8tc

960 ACRES GRASS

50 acres Midland Bermuda, Balance Native Grasses, 6" irrigation well, 2 BR. house, pressure pump, barns, sheds, and corals. Running creek through pasture. 2 hours from Dimmitt. \$85,000, \$30,000 Down.

640 acres, 178 acres cotton other allotments. 200 acres grass. 3-6" irrigation wells. Located on pavement. 2 hours from Dimmitt. \$175 acres. \$30,000 Down.

20,000 acre Ranch a good one \$37.50 acre. 29 per cent Down. 7,000 acres grass, 300 cow unit \$37.50 acre. 29 per cent Down.

Several improved 160 a., 320 a., 640 a., farms in Castro and Deaf Smith Counties.
 L. C. Lee
 304 W. Bedford—Pho. 647-2171
 Res. 719 W. Lee—Pho. 647-2244
 Dimmitt, Texas 8-49s-2tc

FOR SALE

L.H. No. 21 Stripper With Green Bol' attachment \$350
 Wagner front end loader \$185
 Servis shredder \$200
 21 Stripper \$350
 1960 Ford Tractor \$1100
 1950 M Farmall \$500
 3 pt. for Farmall \$65
 11 Ft. Hoame \$200
 J. D. 3-16" spinner \$485
 Cline Land leveler \$375
NORWOOD USED IMPLEMENTS
 1026 South Main
 Muleshoe Ph. 272-4073 10-39t-1fc

USED PIPE AT CLOSE OUT PRICES

Lightweight aluminum pipe in 30' and 40' lengths; 3", 4", 5" and 6" in diameter call or write **J. B. KNIGHT CO.** Area Code 806 Phone 637-3557 Box 1152, Brownfield 10-49t-1fc

Dear Santa Claus, I want a watch and a doll and a play puppy and a wood burning set and a play table with six chairs and a Tressy doll and a fur coat and a piano and a bicycle and a poodle, too. With love, Rita M. Delyado Rt. 2, Box 149

Dear Santa Claus, I want a watch for Christmas, and I want a Skipper for Christmas, and I want Clothes to wear. With love, Cindy Stovall Box 159, Muleshoe, Tes

Dear Santa Claus, I would like a tiny tears doll. I would like a watch too. And

Dear Santa Claus, I am going to get a smoke rifle. And I am going to get a play bulldozer. love Jimmy Henderson Rt. 2

Dear Santa Claus, I will take what ever I get. with love from Danny Ray Moore Box 387 Mulshoe

Dear Santa, I am 5 years old and I have been a good boy. I would like a set of boxing robes for

FOR SALE

IRRIGATION SYSTEMS

Fully Guaranteed — Prompt Service

- PLASTIC
- CONCRETE
- ASBESTOS-CEMENT
- PORTABLE ALUMINUM

CONTACT THE FRIENDLY FOLKS AT **STATE LINE IRRIGATION** 1916 W. 7th — Phone 762-4557 Clovis, New Mexico T. L. TIMMONS, Mgr. Muleshoe-Res. Phone 272-3109, John Hammock Muleshoe-Res. Phone 272-3270, James Macha

OTWELL'S VACUUM CLEANER REPAIR

Filter Queen Distributor Disposable Bags For All Makes

SALES SERVICE

All Vacuum Cleaners Repaired New and Used Cleaners

After 6 p.m. or before 8 a.m. Phone 272-3163 918 East Hickory

FOR RENT: 15 ft. camper by day or week, call 272-3163. 1-35s-1fc

LOOK!

We have in your area an extremely fine Spinnet Piano. No down payment required. Write immediately to: SCHROEDER ORGAN & PIANO CO., INC. 1436 East McDowell Rd. Phoenix, Arizona. 1-49t-1tp

FOR SALE: Approx. 194 acres irrigated land. 114 acres cultivation, 35 cotton, 160 grain, 40 alfalfa, 40 Midland Bermuda grass. Two 8" wells, 1/4 mile underground pipe, one mile sprinkler system. Low down payment will handle. Write 121 Ave. B, Muleshoe, Texas or call 272-4282. 8-46s-8tc

For Sale: Brick 2 bedroom and den — 3 bedroom frame house — 2 bedroom frame house. All close to school. Call 272-3365. 8-43t-1fc

For Sale: 160 A 3 miles North of Progress. \$450 an acre. Phone 965-2642. 8-49s-4tp

For sale, 160 acres West Camp Community, 2 wells. Natural gas, 45 acres cotton, terms, Arch Fowler, 306 W. 7th. 8-49t-8tp

For sale: 3 year old house, 3 bedroom, living room, 15' by 30' den, double garage, fenced in yard, storage galore. Should see inside to appreciate. Over 1900 square feet besides garage. House on 100' lot. Only \$17,500. Hershel Ward, 1013 West 2nd. Phone. 272-3579. 8-49t-1fc

FOR SALE: Immediate possession for our 3 bedroom home, 413 East Dallas. Carpets, drapes, and built-in electric stove, 1-1/2 baths; central air-conditioning and heating; back yard fenced, plenty of closets. G.I. 4 1/2 percent loan covering purchase price. A good buy for quick sale. Contact or phone L. B. Hall at 272-4749 or 272-4536. 8-44t-1fc

FOR SALE: Three bedroom home. Eleven apartments — or will sell seven apartments. All this is on one block, North Muleshoe. Pays 15 percent. Better look this over. Call C. E. Briscoe, 272-3465. 8-47s-1fc

Improved 724 A on state 214 1 1/2 Mi. South of Needmore, 126 A. cotton, 290 feed grain, 269 grass. Priced for immediate sale. Terms open. Lee Howard, Area Code 806, FL 6-1441 or 764-2512. 8-48t-4tp

For Sale — good 160 acres near Muleshoe. Improved, all cultivated. Possession Jan. 1966. Terms if desired. Owner James W. Jennings. Route 2, Phone 925-3327. 8-45s-1fc

For Sale: 3 bedroom, living room, carpeted With backyard fence. FHA loan approved, small down payment. Will consider car, pickup or Ford tractor trade-in. Call 825-2478 between 8 a.m. & 5 p.m. 8-48s-3tc

For sale — 3 bedroom house, good location, good terms. Contact Arch Fowler, 306 W. 7th. 8-49t-8tp

12. Household Goods

Repossessed 65 model sewing machines, Singers, Whites, Universals, Remingtons; guaranteed. Singer is in 4 drawer walnut cabinet; will zig-zag, blind hem, fancy stitches, etc. \$34.50 cash or 7 payments at \$5.96. Must have good credit. Write Lubbock Sewing Center, 1114 19th Street, Lubbock, Texas. 12-47t-1fc

13. Property for Lease

For cash lease 1/2 half section irrigated land 5 miles south west of Clovis, N. M. Box 5201, Lubbock, Tex. R. S. Gentry. 13-49t-2tc

LEGAL NOTICE

THE STATE OF TEXAS To any Sheriff or any Constable within the State of Texas — Greeting:

You are hereby commanded to cause to be published once each week for four consecutive weeks, the first publication to be at least twenty-eight days before the return day thereof, in a newspaper printed in Bailey County, Texas, the accompanying citation, of which the herein below following is a true copy.

CITATION BY PUBLICATION THE STATE OF TEXAS TO: OFILIA CARDENAS SOT ELO, Defendant, Greeting: YOU ARE HEREBY COMMANDED to appear before the Honorable DISTRICT Court of Bailey County at the Courthouse thereof, in MULESHOE, Texas, by filing a written answer at or before 10 o'clock A. M. of the first Monday next after the expiration of forty-two days from the date of the issuance of this citation, same being the 17th day of January A. D. 1966, to Plaintiff's Petition filed in said court, on the 1st day of November A. D. 1965, in this cause, numbered 2569 on the docket of said court and styled JOSE M. SOTELO, Plaintiff, vs. OFILIA CARDENAS SOTELO, Defendant.

A brief statement of the nature of this suit is as follows, to-wit: DIVORCE as is more fully shown by Plaintiff's Petition on file in this suit.

If this citation is not served within ninety days after the date of its issuance, it shall be returned unserved.

The officer executing this writ shall promptly serve the same according to requirements of law, and the mandates hereof, and make due return as the law directs.

Issued and given under my hand and the seal of said court at Muleshoe, Texas, this 3 day of December A. D. 1965. Attest: S-S Hazle Gilbreath Clerk, 154th District Court, Bailey County, Texas. 8-41t-1fc

2. LOST & FOUND

Lost in Lazbuddie vicinity: Two white face heifers, weight 450 lbs. branded block on left hip. Call James Glaze, Muleshoe. 2-46t-8tc

4. Houses for Rent

For rent: small house, one bedroom, furnished, is nice. Call 272-4932. 4-48s-4tc

For Rent: 2 bedroom house. See at 319 West Ave. E. 4-48s-1fc

1 bedroom house with utility for rent. Call Lewis Blaylock, 946-2688 or 272-4373. 4-48s-1fc

Trailer Space, 323 W. Ave. E. Phone 272-4812. 4-48t-1fc

For rent, 2 bedroom house. Edith Goucher. 272-3779. 4-48t-1fc

House for rent. Furnished 2 bedroom home, 902 South Main. \$50 per month. Phone 965-2738. 4-48t-4tc

5. Apts. for Rent

For rent: Trailer space and furnished apartments. Phone 272-3465. 5-48t-1fc

For Rent: 3 room and bath furnished house. See Sam Ghosson or Sam's Auto Store. 5-44t-1fc

Trailer space for rent. Also three room unfurnished apartment. 14th St. Trailer Park. Mrs. J. L. Redwine, 272-4957. 5-46s-8tp

14. Insurance

Farms — Homeowners - Auto - Crop Hall Let us be your Insurance Man Lane Insurance Agency 113 Ave D Phone 272-4439 15-41t-1fc

WANTED TO BUY modern 1, 2, or 3 bedroom house to be moved. Hal Phipps, 946-2401. Needmore. 15-49s-2tc

Ceramic miniature Mules for sale. See Mrs. E. H. Hall at 505 Austen St. or call 272-4784. 15-48s-3tc

Wanted cotton stripping. Call 965-2140. 15-44t-1fc

Wanted: Cotton stripping: Have stripper with green boll attachment. Call 272-4191 after 5 p.m. 15-43t-1fc

Akin Exterminating Co. GUARANTEED-SCIENTIFIC PEST CONTROL Call 272-3905 15-44t-1fc

You saved and slaved for wall to wall carpet. Keep it new with Blue Laster. Rent electric shampooer, \$1. Higginbotham — Bartlett. 15-49t-1fc

15. Miscellaneous

For Classified Ads Dial 2350

6. Rooms for Rent

Bedroom for rent — See Ida Tapp. Last house north of Calvert's grocery 6-4s-1fc

7. Real Estate for Sale

For Sale: 40 acres, 15 acres cotton allotments, 8 in. well with carrier pipe, 3 bedroom house Ph. 272-3758. 8-46t-8tp

9. Autos for Sale

1962 Pontiac Catalina 4 Door All power, factory air. Consider trade. \$1395. Call 272-4170. 9-47s-1fc

1965 Chev. Impala 2 Dr. Hard top, air and power. Fully loaded 1100 miles, like new. Elvis Childs, 925-3223. 9-48s-3tc

SHOP MULESHOE FIRST

FARLEY INSURANCE AGENCY

Real Estate and Insurance

FARM & CITY LOANS SERVICE BEYOND THE CONTRACT 209 West Avenue B Off. Pho. 272-4727 Res. 272-3776

HEATHINGTON LUMBER COMPANY

Lumber, Paint, Builders Hardware Clovis Rd. - Ph. 272-4797

Safe 'n' Sound

By MYRON POOL

DO YOU BELONG TO THE CHAMBER OF COMMERCE? . . . The Chamber of Commerce will conduct its annual membership drive this week. Your support is needed by this great organization . . . By support, we mean active participation as well as financial assistance . . . Every person who makes his living in Muleshoe should devote a part of his time and money to help the improvement and growth of this fine city . . . JOIN THE CHAMBER OF COMMERCE NOW . . . When you want the finest in insurance, join the hundreds of satisfied clients who patronize this Agency.

For the Best Farm Loans and Home Loans Contact **POOL Insurance Company** Phone 272-4531 Muleshoe

WILLIAMS SEED CLEANING CO.

Phone 272-3251 Muleshoe

SINGLETON FUNERAL HOME

24 HOUR AMBULANCE SERVICE PHONE 272-4574 MULESHOE

Robinson's Boot Shop

127 Main — Phone 272-4721 FINE WESTERN WEAR Men, Women & Children SHOE REPAIR SHOP Ike Robinson Serving Muleshoe since 1925.

Robinson's Boot Shop

127 Main — Phone 272-4721 FINE WESTERN WEAR Men, Women & Children SHOE REPAIR SHOP Ike Robinson Serving Muleshoe since 1925.

Robinson's Boot Shop

127 Main — Phone 272-4721 FINE WESTERN WEAR Men, Women & Children SHOE REPAIR SHOP Ike Robinson Serving Muleshoe since 1925.

Robinson's Boot Shop

127 Main — Phone 272-4721 FINE WESTERN WEAR Men, Women & Children SHOE REPAIR SHOP Ike Robinson Serving Muleshoe since 1925.

Santa, I Want...

Dear Santa Clause:
For Christmas I would like a Stocking with candy and a Bicycle and a T.V.
Mary Herrera

Dear Santa Clause,
I want a chalk board with chalk and a chalk eraser. I also want some school shoes. What I want most of all is, for everyone to be happy on Christmas day.
I have been a good girl, Leesa Marie Sanderlin

Dear Santa,
I would like a Skooter doll, Skates, Snow Cone Maker, Cotton Candy Maker, I also want some dresses for Barbie. I have been a good girl.
Love always
Lequice Herman

Dear Santa Clause:
I would like to have a Slot car, B. B. Gun, Battery Powered truck, Electric Guitar.
Your friend,
Rob Aford

Dear Santa Clause:
I would like to have a Mother's Racing set, A Six Finger Six and a Slot Racer.
Your friend,
Marland King

Dear Santa Clause:
I would like a car, and a BB gun and a ball and a cowboy and man and a little house. I like a house and a boat and an Indian Hat and a bird. I like a bed and a table.
Your friend,
Roberto Hernandez

Dear Santa Claus,
I want a doll and a watch and a Easy Bake oven.
with love
Genice Crosby

Dear Santa Clause
I want a Battery Powered car for Christmas or a walky talky set, or a B. B. Gun or a Portable F. V.
Your friend
Darrell Fudge

Dear Santa Claus
I would like to have a new airplane, a baby goat, a house made of candy, A Camera, a new car, a B. B. Gun to shoot my teacher and brother Johnny.
Larry Don Vaughn

Dear Santa,
My little brother wants a toy Tiger that talks. My sister next to the youngest wants a doll named Penny Brite. My sister in the second grade wants a Rag doll that has a pony tail and I want a Baton and I want to



MAJOR KILLERS

Dear Santa Claus,
I would like to have a Slot car, B. B. Gun, Battery Powered truck, Electric Guitar.
Your friend,
Rob Aford

Dear Santa Clause:
I want a Baton and a Radio. I also want a Skateboard. Most of all I want some Records by Rog r Miller and Stamps for my Stamp Book.
Love Always,
Sandie Kay Haley
Richland Hills School

Dear Santa Clause:
For Christmas I would like a Bicycle. And if you don't get tired from making the trip from the North Pole get one for my sister Mary.
Beatrice M. Gonzales

Dear Santa Claus,
I want a sting-ray bicycle with gears and hand brakes. I want to get a leather foot ball. I have been a nice boy and I help my daddy farm.
Your friend,
Don Johnson
p.s. Send my mother some shoes she happens to be very tender-footed.

I want a Bicycle, and Wheel-o for Christmas. And I would also like a Monkey for Christmas. We colored a picture of you some of us are not done yet but the ones that are up they are very pretty. We are going to have a Christmas party on December 22. Would you

like to come to our Christmas. I hope you can come Santa
Linda McCormick
Gen. Del.

Dear Santa Claus,
I want a b b gun for Christmas. A power shop for Christmas. I want a bicycle.
With love
Jesus Gloria
Moeshse Toy

Dear Santa,
What I want for Christmas is a Bible, a Bebe gun, a Electric train, a football, a basketball, and a football suit.
Love,
Ricky Duckworth
Rte. 1 Box 128

Dear Santa,
I want a Troll Doll and a Troll Doll's House and a Beate Wallet and a Sidewalk Surfboard. I want a Bookcase and Skipper's Red Sensation and Skipper's Underwear and some Mink Jewelry.
Love,
Jana Oyler
1416 West Ave. C

Dear Santa,
I want a electric train. That has a big caboose. And a cap that has fuer. But bast of all is my Dog. My dog wants a big bon. So big that he could not eat it.
Love,
Terry Smith
Rte.

MM MINNEAPOLIS-MOLINE
World's Finest Tractors

NEW! -110hp G1000
Built for those who **FARM BIG!**

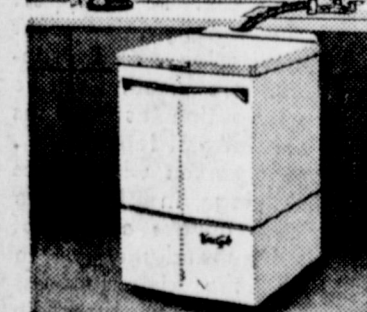
EIGHT-PLOW POWER — Now 110 hp, 504 cu. in. 6-cylinder Big MM engine in your choice of economical LP gas- or diesel-fueled types.
ROW CROP TYPE — Turns short like a small tractor — adjustable to fit your rows — adapts to ordinary implements
HUNDREDS OF IMPROVEMENTS — Includes such new features as: dual shaft PTO for 540 and 1000 rpm; a new alternator; new 3 pt. hitch, drawbar and heavy-duty hydraulics. Many other comfort and convenience features

Make A Date For A Demonstration Drive At:
FRY & COX INC.
Your Friendly One Stop Farm Store in Muleshoe
401 S. First Phone 272-4511



Time for a KitchenAid dishwasher

There are far more important things to do than dishes. Now is the time to buy a KITCHENAID PORTABLE DISHWASHER.



- MODEL KD-5
- No installation. Use it right away.
- Automatic-Lift Top Rack.
- Three push button cycles.
- Porcelain enamel inside and out.
- Exclusive KitchenAid 4-Way Wash and Flo-Thru drying performance.
- Proven KitchenAid dependability.
- Edged Colomathone or White.

PLUS MANY MORE OUTSTANDING FEATURES

Don't be switched from the best... **KitchenAid**

JOHNSON-POOL FURNITURE and APPLIANCE

WIDE CLEAN BRIGHT AISLES!

COURTESY ALL THE WAY TO YOUR CAR!

LOWEST PRICES! ON EVERY SHEET

QUALITY YOU CAN COUNT ON!

Gold Medal, Kitchen Tested FLOUR, 5 lb. bag 55c

Good-N-Rich, Asst. Flavors CAKE MIX, 19 oz. boxes 4 for \$1

Lotus, Sliced APPLES, No. 2 can 19c

Paradise Old English FRUIT CAKE MIX, 16 oz. pkg. 39c

Kounty Kist, Cut GREEN BEANS, 303 cans 2 for 29c

Du-Rite BLEACH, 1/2 gal. plastic 25c

Produce from Piggly Wiggly!
Yellow, US No. 1 Mild

ONIONS LB. 5c

DELICIOUS, FANCY APPLES LB. 10c

SYRUP Blackburn's Waffle 32 Oz. Btl 35c

Piggly Wiggly ...home of national brands

IMPERIAL, HOLLY OR C&H SUGAR 5 lb. bag 49c

IDEAL, GRADE A MEDIUM EGGS DOZEN 49c

SUZAN SALAD DRESSING QUART 29c

FROZEN FOODS!

Tater-Tots 2 bags 39c

Bread Dough 3 1 lb. loaves 39c

HEALTH and BEAUTY AIDS!

Electric Knife Chef-Mate, Serrated Twin Stainless Steel Blades, Removable, Guaranteed 1 year Reg. \$19.95 Each \$7.99

ICICLE Brite Star, Silver, Extra Long, fire Proof, 300 Strand Reg. 25c re 2 boxes 35c

THESE PRICES GOOD DEC. 9-11 IN MULESHOE, TEX. WE RESERVE THE RIGHT TO LIMIT QUANTITIES!

Piggly Wiggly Meats! Table Trimmed for Economy

Chuck ROAST USDA Choice, Aged, Heavy Beef, Value-Trimmed, lb. 49c

Pork ROAST Lean Northern Pork, Picnic Cut Pound 39c

Complexion Bar Soap, All Colors, 2c Off Label, 3 Reg. Bars CAMAY 35c

Liquid Detergent, 13c Off Label, 22 Oz. Btl. JOY 55c

Powdered Cleanser, 3c Off Label COMET, Giant Can 21c

Detergent Tablets, 10c Off Label SALVO, 24 Ct. Box 73c

New Improved Detergent, 10c Off Label, Giant Box OXYDOL, 79c

Personal Bar Soap IVORY 4 Bar Pack 29c

Nestle, Semi-Sweet, 2c Off MORSELS, 6 Oz. Pkg. 23c

Borden, Non-Such, 9 Oz. Jar MINCE MEAT 31c

Green Giant PEAS, 6-8 Oz. Cans \$1

Baker Angel Flake, 7c Off, 14 Oz. Pkg. COCONUT 59c

USDA choice, aged, hvy. beef RIB STEAK, valu-trimmed, LB. 79c

100% beef, dated for freshness GROUND BEEF 3 lbs. \$1

Lean Northern Pork, Country Style PORK RIBS, Lb. 59c

Butcher Boy, All Meat SLICED BOLOGNA, Lb. 55c

Blue Morrow's All Pork SAUSAGE, 2 lb. pkg. \$1.39

Pork Chops Lean, Northern Pork First Cuts Pound 59c

DAMITA, ASS'T. COLORS TOILET TISSUE 4 roll pack 19c

SANTA ROSA Pineapple Juice 46 OZ. CAN 25c

PLAINS OR HOMETREAT, ASS'T MELLORINE 3 1/2 Gallons \$1

Del Monte FRUIT COCKTAIL, No. 303 Can 27c

Hi-Vi 50% DOG FOOD, 11 No. 1 Cans \$1

Aurora, Ass't. Colors, Bathroom TISSUE, 2 Roll Pack 27c

Antifreeze—1 Gal. Can PRESTONE \$1.59

Lowest Prices... Greatest Variety... always at...

Piggly Wiggly KING SIZE—6 BOTTLE CARTONS **PEPSI COLA** 3 CTNS. \$1