

ig Frost Yet?

Weather Runs The Gamut Cold, Hot, Wet, Dry, Frosty

ather which blew hot, cold, and dry all in a single end, left farmers puzzled and some of them were hit by their pocketbooks after hail led in from the southwest day to beat cotton and grain thum to the ground. he hail damage, however, was not extensive, area-wise. Farmers around Three Way were hurt, and some farmers in the opposite direction, around Pleasant Valley, also reported damage. But for many, the pea-sized hail did little or no damage. Around Needmore, some

★ ★ ★ ★ ★ ★



HAIL DAMAGE — Last Sunday's rain and hail damaged some fields, left others unscathed. At the Bill Johnson place at Pleasant Valley, grain sorghum was shattered by pea-sized hail. Here Johnson shows one of the damaged heads. (Journal Photo)

damage was reported, but Virgle Obenhaus said damage at his place was "not extensive", but a 2½-inch rain delayed harvesting operations. A bright sun at mid-week, however, brightened the harvest prospect, and soggy grain and cotton were drying out rapidly.

The Lazbuddie-Clay's Corner area received heavy rain and some hail Sunday, Mrs. C. A. Watson reported, but she added that it is "not believed that the hail did much damage to crops, however."

She said Oran Broyles reported the heaviest amount of rain, his gauge showing 2.3 inches. At Pleasant Valley, Bill Johnson said his grain sorghum suffered considerable damage, despite the fact that most of the hail which fell was only pea sized. He said his fields were "white as snow" after the hail. Although clear weather and bright sun followed the weekend's violent siege, temperatures also dipped sharply, hitting the low 40's here in Muleshoe. The low temperatures had invaded this area late Sunday after Sunday morning rains and hail had erased Saturday's 90-degree readings.

Despite some damage from the rain and hail, cotton was not believed to be seriously hurt, and earlier the Lubbock cotton classing office of USDA had reported grade and staple had been improved.

Harvest, the USDA reported, had picked up speed on the South Plains. The Lubbock and Lamesa Cotton classing offices classed 9400 samples during the week ending Oct. 15 to bring the total to 16,600 for the season.

Possibility of an early frost loomed Tuesday after farmers in the immediate vicinity of Muleshoe reported frost sightings. One farmer said his thermometer had dropped to 35 degrees and "frost was white as snow" on some of my land."

Littlefield and Hereford were each pounded with heavy rains Sunday. Littlefield getting winds up to 60 mph along with hail and rain.

Rainfall at the Lubbock Weather Bureau was measured at 8.1 inches, and some hail was reported to have fallen in southwest and central Lubbock. East of the thunderstorm area, Texas was warm and humid. The cool air from the

in muleshoe

With the Journal Staff

Big Drive Is On; United Fund Off To Speedy Start

Two Muleshoe women, Mrs. Ralph Hall and Mrs. Toby Hatch, were involved in an accident near Shallowater Tuesday morning. They were taken to West Texas Hospital in Lubbock and were reported to be in good condition.

Muleshoe Area's United Fund campaign for 1965 is off to a good start, and "We are very enthusiastic about it," says the campaign manager, Gil Lamb. The breakfasts have been held this week, and the final in the series is slated for 6:30 this morning. Last week, the rural kickoff breakfast was held.

The week's series started with a breakfast for two groups, the advance and professional classes with Johnny Shelton and Robert Alford as chairmen of the two divisions respectively. Thirty attended the first meet-

Tony Haberer, Muleshoe, was high man in the first annual Yaleta Rough Riders' Ranch Hand rodeo held at the Rough Rider's arena in the lower Rio Grande valley Saturday with a score of 61 points.

High Plains bookmobile will be in Progress, Oklahoma Lane and Rhea community this morning, and at Friona and Black Thursday afternoon. Friday's schedule includes Hub, Whites elevator, Lazbuddie and Clay's corner. Saturday the Bookmobile will be at two locations in Friona, according to Georgia Pena, bookmobile librarian.

Bobby Joe Blackburn, son of Mr. and Mrs. Claude Blackburn, Lazbuddie, was promoted to sergeant Oct. 11 at Fort Hood. He went into the army in Dec. 1963 and will be discharged in December. Bobby Joe is a graduate of Lazbuddie high school and his wife, the former Jan Bryant, is a graduate of Muleshoe High School.

DeAlgodon Study Club of Maple will sell dictionaries at the Three Way Homecoming from 4:30 until 6:45 p.m. Saturday. The dictionaries will be donated to the school for classroom use.

Rep. Bill Clayton, Springlake, will discuss the 10 amendments to be voted on Nov. 2 at the Needmore community building Thursday at 7:30 p.m. The public is invited to attend. Women of the community will sell coffee and pie, according to Mrs. Ru-



RAMADA WINNER — Drawing for last week's winner in the "Weekend at the Ramada" contest, was Hazel Gilbreath, county-district clerk. Name of the winner will be announced Sunday. Thirteen Muleshoe firms are cooperating in the 10-weeks' contest. (Journal Photo)

Here's Example Of Cotton Law's Effect On The Farmer

Details of the new cotton plan, passed last week by Congress, became clearer this week after Secretary of Agriculture Orville Freeman announced acreage allotments and

a grower referendum slated for Nov. 23. An analysis of the new bill was given by Plains Cotton Growers, Inc. PCG also gave a typical example of how cotton plant alternatives will affect gross income of a High Plains farmer.

The PCG analysis reads: Price support payments will be made in 1966 at 9.42 cents per pound on the projected yield from domestic allotment (65 percent of effective allotment.) The Secretary of Agriculture will set the amount of this payment for each of the succeeding three years, but the combined loan value plus the price support payment must provide the farmer with at least 65 percent of parity on 87.5 percent of effective allotment. Parity is now 41.76 cents per pound.

Acreage diversion payments, 1966, will be 10.5 cents per pound times projected yield from diverted acres up to 35 percent of effective allotment. Producers have the choice of diverting the minimum 12.5, 25 or 35 percent of allotments. After 1966 the Secretary is directed to set diversion payments at no less than 25 percent of parity on the acreage required to be diverted. He may require cooperators to divert less, but not more, than 12.5 percent of their allotments after 1966.

Diversion payments on the difference between the mandatory diverted acreage and 35 percent of allotments apparently may be set by the Secre-

tary anywhere between zero and 40 percent of parity after 1966.

One half of these payments; may be made at the time the producer signs up to participate in the program. The other half will be made at the Secretary's discretion. This is one of the points awaiting the Secretary's decision before the total effects can be calculated.

The method of determining "projected yield," is also a point in question. The Conference report says: "Projected farm yield for any crop of cotton shall be determined on the basis of the yield per harvested acre on the farm during each of the three calendar years immediately preceding the year in which such projected farm yield is determined, adjusted for abnormal weather conditions, for trends in yields, and for any significant changes in production practices . . ."

But, the report further stipulates that projected yield shall in no event be less than the normal yield as established under the current program. This makes clear that projected yield for 1966 cannot be below normal yield as already established for a farm. But it is not plainly spelled out whether the normal yield might be re-figured in 1967, 1968 or 1969. For an example of how the three permissible alternatives would affect gross income on a High Plains farm, assume the following: 1. 100 acre effective allot-

ment. 2. 100 acre effective allotment. 3. 100 acre effective allotment.

ment. 4. 100 acre effective allotment. 5. 100 acre effective allotment.

ment. 6. 100 acre effective allotment. 7. 100 acre effective allotment.

ment. 8. 100 acre effective allotment. 9. 100 acre effective allotment.

ment. 10. 100 acre effective allotment. 11. 100 acre effective allotment.

ment. 12. 100 acre effective allotment. 13. 100 acre effective allotment.

ment. 14. 100 acre effective allotment. 15. 100 acre effective allotment.

County Court Crackdown Sends Six Check-Writers To Jail Here

Judge Invokes 'Enhancement' Act In Fines

A crackdown on check-writers whose checks "bounce" was in evidence in county court here this week after six persons had been sent to jail for short-to-long term sentences, following pleas of guilty.

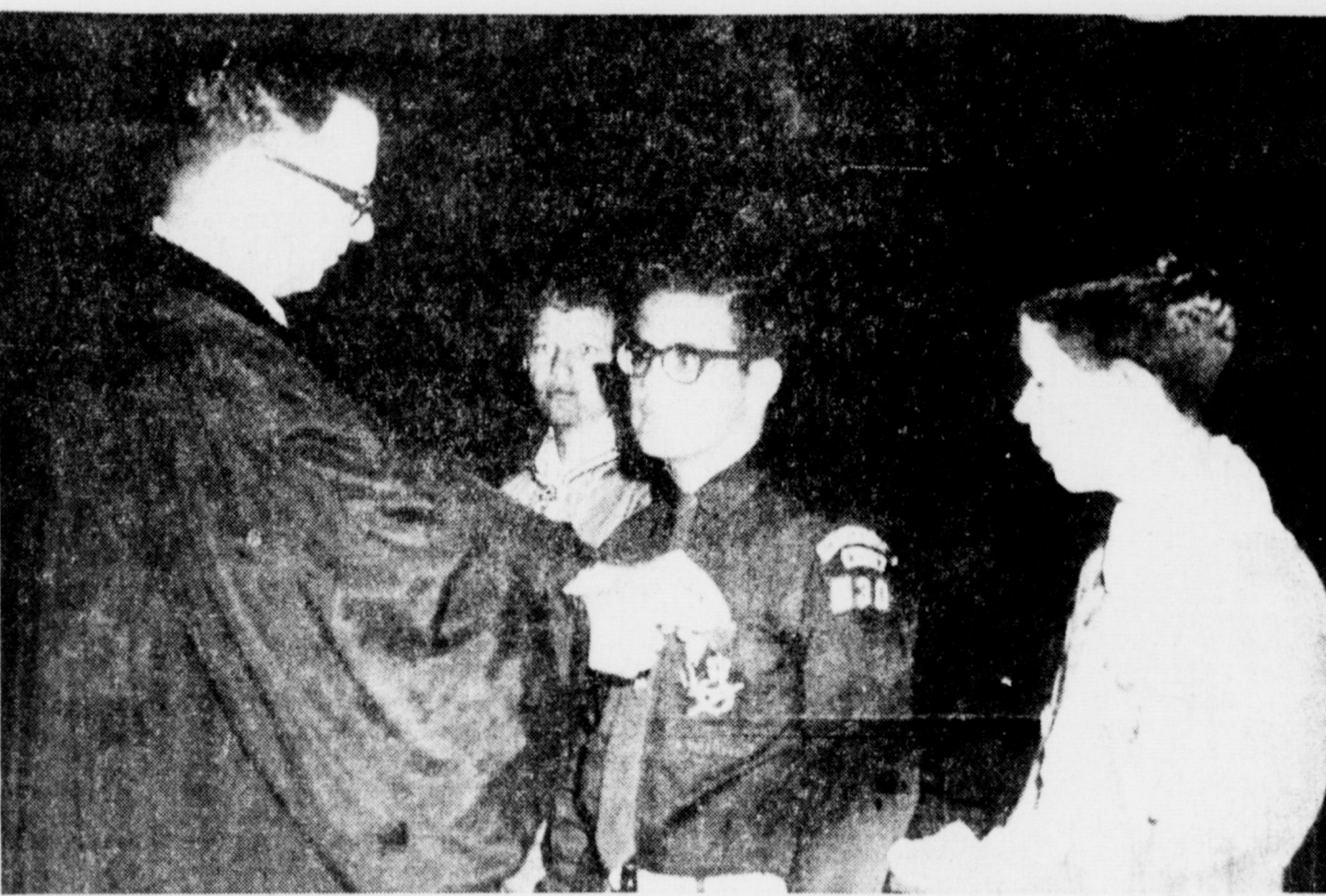
The "enhancement" feature of the hot-check law was put into effect in at least one case which piled up the days the check-giver must spend in jail. "Many of the new cases which we had on file were on defendants, who had previously been fined for worthless checks," County Attorney Roger Gorrell explained, "so the enhancement feature was invoked."

Under such action, the "previous" record of the defendant can be used to step up the length of time in jail, a one-day sentence being extended to 30 days, for example.

"We got to checking through and discovered that many of the people who are now appearing before the court on worthless check charges had been fined long ago for similar offenses," Gorrell explained. "When such cases were brought to the attention of the judge, he invoked the enhancement feature."

A Farwell woman, charged in five worthless check cases, will be spending considerable time in the Bailey county jail after receiving \$20 fines in each case, plus court costs. She paid \$425 in fines, etc. Judge Glen Williams also assessed a one-day jail sentence in each case.

All five check cases were tried on the same day, and all were heard Oct. 12, records show. All were given to Muleshoe.



GOD AND COUNTRY AWARD — Three Muleshoe Scouts have received the coveted "God and Country" Award, the latest being Billy Kelly (center) who received his pin from the Rev. J. Frank Peery, pastor of the First Methodist Church, in ceremonies last Sunday.

With him were Paul Lenau and Jerry Haskins, each of whom had received the award earlier. Kelly is the son of Mr. and Mrs. Roy E. Kelly. Paul's parents are Mr. and Mrs. Charles Lenau, and Jerry is the son of Mr. and Mrs. George Haskins Jr. (Journal Photo)

The Big One (Ouch!) Comes Next!

Mules To Journey To Dumas Friday To Tangle With Texas Top AAA Team

Muleshoe Mules go straight into the kings den this week to attempt the Herculean task of throttling the state's top AAA team — nothing less! All of which merely means that Willie McAlpin's Muleshoe Mules go to Dumas, than which

there is no finer AAA team in the entire state of Texas. In fact, Dumas is so rated by the Dallas News poll. Last week Dumas trimmed the powerful Capitol Hill out fit from Oklahoma City, 48-12, and Capitol Hill is rated as one of the top schoolboy outfits in Oklahoma City's eight high schools.

The week before, Dumas bettered another top-ranking Oklahoma team, nosing Lawton, Okla., 20-19. Both would be rated at AAA in Texas. Besides these two top teams,

Dumas, the Dumas Demons have been cleaning up on some of the top Texas outfits, including Palo Duro of Amarillo, a 4-A team; Borger, and an El Paso team, not to mention Carlsbad, N.M.

It's done with a brand of team work seldom seen on a high school squad, coaches point out, rather than through a "hero" brand of ball; the entire team works as a smoothly-operating unit, and even with the first-string quarterback out of the game, Dumas went right ahead to win. In fact, they continued their victorious series even after the second-string quarterback also was

shelved with an injury. From now on, it's playing-for-keeps for the Mules. Next week it will be Tulsa, another top-ranked team, rated ninth on a state-wide basis by the Dallas News.

Among the Triple-A teams, after Dumas comes Brownwood, San Marcos, Deer Park, McKinney, Donna, Weatherford, South Garland, Tulsa and Bridge City. For AA teams, it's this order: Alpine, Denver City, Bellville, Cameron, Jacksboro, Clarksville, Iowa Park, Plano, Crockett and Port Acres.

Glasscock Gets Week's Grid Cash

Two new comers to the winning rinks in the Journal's football contest, popped up in the top places as score-guessers, a check Wednesday revealed.

Winning first was T. L. Glasscock, Box 531, Muleshoe, and in second place was Alton Epting, Box 135, Muleshoe. This past week's guess-arama was obviously a tough one with even the top winner missing four guesses, while Epting missed five.

Glasscock missed Alabama-Tennessee; Iowa State-Columbia; and U-CLA-Missouri. Both men picked Arkansas to beat Texas, a correct prediction.

The contest continues this week, and rules will be found on Page A-1.

Queens Lining Up For Big Carnival

The queens — 12 of them — are all lined up and ready for the Oct. 30 school carnival, and they're fighting it out along the penny-a-vote front.

Each organization has selected its queen, escort and campaign manager, according to Mrs. Gib Howell and campaign is now going on full blast.

Meantime, plans for the big carnival — "The biggest one we've ever held," says Tootie Middlebrooks — is making headway. More attractions, more events are booked than ever before. Middlebrooks says, and every inch of space probably will be filled in the big bus barn by the time the carnival kicks off Saturday night, Oct. 30.

Here are the queens, their escorts and their campaign managers: High school choir: Sherry Smity, Charles Jones and Bob Park. Freshman choir: Kerma Nickels, Dean Black, Jonna Shelton. Eighth Grade Choir: Kathryn

Dorsey, Brent Tanner and Larry Mason.

Sixth Grade Choir: Debra Williams, Larry Ratliff and Leland Ferris.

Seventh Grade Choir: Tonya Powers, Bryn Brady and Mack Baker.

First Period Beginners' Band: Sue Dorsey, Randy Burris and Martha Jane Chapman.

First Period Beginners' Band: Sue Dorsey, Randy Burris and Martha Jane Chapman.

Second Period Band: Metz Bass, Lance Tucker and Vicki Stallings.

Cadet Band: Marsha Johnson, Jerry Scoggins and Jan Lemons.

Junior High Band: Ann Douglas and Darrel Wilson. (Manager not listed). High School band: Jane Branscum, Gary Edwards and Pete Guinn. Jog School Art Department: Judy Elliott, Joe Adams and Carlson Nowlin. High School Speech and Drama: Pam St. Clair, Mike Bryant and Larry Myers.

Temperatures

	High	Low
October 17	86	57
October 18	68	43
October 19	60	59
October 20	69	40
October 18	1.52 Rain	
Sunrise		
October 21	6:57	6:07
October 22	6:58	6:06
October 23	6:58	6:05
October 24	6:59	6:04



Sheryl Stevens

Sheryl Stevens and Bobby Borden Reveal December Wedding Plans

Mr. and Mrs. Elmo Stevens, Earth, announce the engagement and approaching marriage of their daughter, Sheryl, to Bobby Borden, son of Mr. and Mrs. R. L. Borden, Portales, N. M.

Miss Stevens is a sophomore at ENMU and is majoring in home economics. She is a member of the student council, R.A.Y.S. and Alpha Delta Pi Sorority.

Borden, a junior at ENMU, is an industrial management major and is a member of the

board of activities. Vows for the couple will be repeated in the First Methodist Church here Dec. 18 at 5 p.m.

Virginia Crouse Brings Program On Americanism

Miss Virginia Crouse, a senior student of West Texas University presented a program of Americanism at the Muleshoe Study Club last Thursday which met in the home of Mrs. W. Q. Casey with fourteen members and five guests present.

Miss Crouse, who was secured by Magann Lamb, showed a film on the Palo Duro Canyon and the Amphi Theater. Speaking on the West Plains Heritage and encouraging clubs and cities to participate in visiting and purchasing tickets and sending information of interest to this project was part of Miss Crouse's speech to the club. She was accompanied here by her mother, Mrs. T. V. Crouse, Canyon. Her father is a professor at the University.

Mrs. J. G. Arnn gave a talk on "My Home Town". She gave information on the Mule Memorial and the placing of an historical monument on the Muleshoe Ranch House.

Pledge to the American flag was given and the roll call was answered by "What's good about America".

The business session was presided over by the president, Mrs. Ray Martin. She read an invitation from the Farwell Club to hear Mrs. Robert Tipps, president of the Caprock District of the T.F.W.C. which was held Monday at 7:30 p.m. The meeting will be in the First Methodist Church.

The sixth annual district board meeting will be in the First Methodist Church. The theme of the convention was to be "Treasurer's Within Our Reach".

Reports were given from chairman of Fine Arts, Legislation and Public Affairs.

Refreshments of apple pie with whipping cream and coffee were served to the fourteen members and the following guests: Miss Virginia Crouse and mother, Mrs. T. V. Crouse, Canyon, Mrs. Hubert Gilbreath, eBrady, Magann Lamb of K.M.U.L. and Joe Harbin of R.E.A.

The tavern business of ancient Rome fell off in direct proportion to the economic decline of the Empire and didn't get solidly back on its feet until the time of the Crusades in the Middle Ages.

H.D. Club Will Elect Officers At Next Meeting

Reports were given by the chairman of several committees at the Bailey County H. D. council meeting which met last Wednesday in the Community Room of the First National Bank with seven members and the agent present.

Committees reporting were Phebe Gray, yearbook, Dolores Gaddy, recreation; Myrtle Wells, finance; Lela Mardis, E. E. E., Phebe Gray, THDA; Myrtle Wells, reporter; Lauretta Baker; Progress Club and Leota McMakin, Needmore Club.

Ada Murrah, president, presided and read the poem "Do you Just Belong" for the opening exercise.

Dolores Gaddy led recreation with Myrtle Wells awarded the prize.

An invitation to visit the Holy Sugar Co., Hereford, was accepted and plans were made to take this tour Nov. 4.

All ladies interested in Home Demonstration work are invited to meet with the agent, Jean Martin Tuesday in the First National Bank Community Room at 2 p.m.

Reports of the state meeting were given by Ada Murrah and Leota McMakin.

Election of officers will be held at the next meeting which will be Nov. 3.

Present for the meeting were Ada Murrah, Lela Mardis, Dolores Gaddy, Myrtle Wells, Phebe Gray, Janie Moraw, Leota McMakin and Jean Martin.

K.C. Patzers Attend Seminar

Dr. and Mrs. K. C. Patzer, Floydada, and youngest son, Bart, left this past week-end for Atlanta, Ga. to attend the Grotic Research Seminar during this week. The classes have been held previously in Ann Arbor, Mich.

Mrs. Patzer and son will visit in Jasper, Ala. with her brother and family, Dr. J. C. Chapman.

SHOP MULESHOE FIRST



JIMMY FRANCIS — This is one of Jimmy Francis' paintings he has hanging in the Muleshoe Area Public Library. He was a gold key winner in last year's "Scholastic" contest. He is one of Mrs. Elizabeth Black's students. (Journal Photo)

Richland P-TA Hears Panel Talk

Tootie Middlebrooks, Roy Dyer, Dorothy Green and Alex Williams brought an interesting program at the Richland Hills P-TA meeting which was held Monday afternoon in the Richland Hills Cafeteria with 93 persons attending the meeting.

Mrs. Miller's fourth grade won the room count with 11 mothers attending.

The Rev. Alvin Keswater gave the invocation and the minutes of the previous meeting were read by Mrs. Raymond Hodges.

The treasurers report was given and reported that the balance on hand is \$396.32.

Mrs. Fox's second grade room was presented a book for her room winning room count for last meeting.

Mrs. Earl Ladd reported on the good attendance of the pancake supper.

It was voted to send two members to the state meeting to be held in Corpus this year if they could be secured.

The next meeting for the Richland Hills Unit will be Nov. 15 with a program on "Developing a Community Climate for Educations" given by Mrs. J.

Mrs. Jackson New Class President

Mrs. S. L. Jackson was elected president of the Followers Sunday School Class of the First Baptist Church when the group entertained with a coffee Thursday morning at 9:30 in the home of Mrs. Myron Pool at 601 W. 6th St.

Other officers elected were Mrs. Myron Pool, vice-president; Mrs. George Hicks, assistant secretary; Mrs. L. C. Roddam, treasurer and Mrs. Jewel Griffiths and Mrs. A. L. Davis, group leaders.

Teacher of the class is Mrs. Eddie Lane and the assistant teacher is Mrs. B. O. McDaniel.

Attending the coffee were Mrs. A. L. Davis, Mrs. L. C. Roddam, Mrs. Toby Hatch, Mrs. S. L. Jackson, Mrs. George Hicks, Mrs. Jewel Griffiths, Mrs. W. T. Andrews, Mrs. Eddie Lane and the hostess, Mrs. Myron Pool.

The meeting was closed with a devotional given by Mrs. Eddie Lane from Matt. 5: 14-16.

W. Watson, Curriculum Director for the Muleshoe Schools.

Saturday Marks Homecoming For Three-Way School

Three-Way will be observing their homecoming Saturday, according to Ann Sowder. Dinner will be served at 5:30 p.m. with Underwoods catering and the game will follow at 7:30 p.m. against Smyer. A football hero and sweetheart will be crowned at half-time.

IF YOUR HAIR IS NOT BECOMING TO YOU... YOU SHOULD BE COMING TO US!

WELLBORN'S BEAUTY SHOP

101 Ave. J. Ph. 3-4040

Zip Reminder CRESTWOOD, Ky. (AP) — No one has trouble remembering the Zip Code number for Crestwood.

Postmaster Fred Lindsey obtained permission to have the number painted on the town's water tank which towers over the community.

Math Sessions Set At School

Mary DeShazo P-TA is sponsoring an adult math study class with Mrs. Glenna Lane, a local qualified teacher teaching the sessions. Mrs. Lane will cover materials your child will be taught from the first through the sixth grades.

The P-TA has agreed to pay half of the initial cost for the course. Each person planning to take the course, please pay your \$2 fee plus \$1.65 for text books so the P-TA can order the needed books and materials for the school.

The sessions will begin Nov. 1. Each session will be from 7 p.m. to 9 p.m. in the Mary DeShazo Library. Sessions will be given on Nov. 1, 8, 15, 22, and 29, Dec. 6, 13, and 20.

Persons wanting further information on the matter, please contact Mrs. Clifford Mardis, president, Phone 946-3416, or Mrs. Jay Spain, 3-5440.

ENOCHS NEWS

By Mrs. Jerome Cash — Mrs. George Henderson, Amarillo, visited her sister, Mrs. J. D. Bayless, last week.

They drove to Levelland one day and visited another sister, Mrs. Grace Swanner. Also visiting in the Bayless home on Thursday were their two daughters from Lubbock, Mrs. Leland Findley and Linda, and Mrs. Joe Dook.

Mr. and Mrs. Jerome Cash visited Saturday afternoon with their son and family, Dudley Cash at Portales, N. M.

Brent and Martham George, Lubbock, spent a few days last week with their grandparents, Mr. and Mrs. E. N. McCall.

Mr. and Mrs. Jack Jackson and family, Clovis, spent the weekend visiting her parents, Mr. and Mrs. J. E. Autry.

Mrs. F. A. Thomas, reported her daughter, Mrs. Gale Pugh, Midland is home doing fine, after undergoing surgery in Baylor Hospital, Dallas.

Classifieds Get Results!



Meet MY COUNTRY COUSIN

This young rural housewife is really no different from her city cousin. Rural electrification with its marvelous conveniences liberates her from drudgery, brightens her day, lightens her chores, and heightens her interest in the world around her.

The member-owned Bailey County Electric Cooperative has helped erase the lines between city and "country". They are doing it with a first rate electric utility they built themselves to serve themselves. In the process, the Bailey County Electric Cooperative has strengthened the rural economy, attracted rural industry and provided a better, brighter world for its member-owners. Bailey County Electric Cooperative is helping Texas grow.

Bailey County Electric Cooperative Association

MONEY IN THE SLOT

puts profit in your pot!

SAVE BY MAIL...the easy way to practice regular thrift without more effort than that required to make out a check...seal and mail an envelope to us. Your savings are safe and extremely profitable. Save regularly... by mail.

First Federal Savings & Loan

Home Office
4th & Pile
Clovis, N.M.



Branch Office
2nd & Abilene
Portales, N.M.

CURRENT DIVIDEND 4 1/2%

LANE'S FURNITURE

FRIDAY
October 22
9:00 - 5:00

6

KING - SIZE
WALLET PHOTOS
99c
No Age Limit
Adults Included



ACTUAL
SIZE
NO LIMIT
ON AMOUNT
OF PICTURES

The Shugart Studios will have Dean Kirkpatrick, a highly skilled photographer, here in our store all day.

SIX FOR
99c
Tax Included

Shugart Studios
AT
LANE'S FURNITURE

111 MAIN MULESHOE PHONE 6430



ROSEBUD CHAPTER — These are the new officers who were installed for the Rosebud Chapter Monday night. (l-r) are Kerma Nichols, president; Vina Bass, first vice-president; Kathy Williams, second vice-president; Debbie Burris, third vice-president; Johanna

Shelton, fourth vice-president. Top row - Vickie Stout, fifth vice-president; Karla Lovelady, treasurer; Linda Kerr, secretary; Renee Dyer, historian and Sheryl Mason, parliamentarian. (Journal Photo)

4-H Girls Attend Achievement Tour

By Cricket B. Taylor
Parmer Co. H. D. Agent
Home Improvement Achievement Tour of Oklahoma Lane 4-H girls was held Saturday, from 2 to 4:30 p.m. A total of 25 members and 14 adults met at the Oklahoma Lane Community Center and went to the homes of Mrs. Johnnie Rundell, Gilbert Kaltwasser, Leon Billingsley and Webb Gober. Here they saw result of work done by the 4-H girls in the improvement of their bedrooms and homes through 4-H work. At the home Tina, Sheree and Gay Rundell the most outstanding improvements included the study center that was located

in the corner of the large bedroom shared by the three girls. The desk, study lamp, chair and a screen divider to prevent distraction when working, was a useful and attractive grouping. Shelves, and racks provided for in a closet made greater use of space, and drawer dividers to help keep clothing orderly and easy to find was another addition that attracted attention. A large cedar chest was refinished in a natural low sheen satin finish by the girls in a workshop last summer, was of interest especially to the adults. Cheryl Kaltwasser's bulletin board, bedside table and decorative bird cage attracted attention of the group along with other improvements. The attractive refinished walnut bedside table of Janis Billingsley created interest of the

group. Re-arrangement of closet and drawer space for greater convenience was another feature of improvement in her bedroom. A very small closet with a lot of usable space was the outstanding feature of Kathryn Gober's room, along with the refinished sewing stand, picture, and bookshelves for parents room. The project work is under the direction of the County Extension Service. According to Mrs. Cricket B. Taylor, County Extension Agent, the objectives of the bedroom improvement project is to make bedrooms more useful, convenient and attractive by providing a place for all personal things, making better use of space, select appropriate colors, picture and furniture to meet the needs of bedroom activities. Mrs. Webb Gober, project leader, assisted by Mrs. Rundell explained and discussed the project work carried out by the girls. At the Webb Gober home, refreshments were served to the following: Lazbuddie Club, Mrs. Ralph Broyles, Mrs. Roy Miller, Patience Broyles, Maxine Broyles, Ann Blackstone, Diane Coker, Kathy Coker; Oklahoma Lane Club, Tina Rundell, Sheree Rundell, Gaye Rundell, Kathryn Gober, Janis Billingsley, Cheryl Kaltwasser, Mrs. Johnnie Rundell, Mrs. Gilbert Kaltwasser, Mrs. Webb Gober, Mrs. Walter Kaltwasser, Mrs. Cyrus Dale, Thonda and Cindy Dale; Bovina Club, Mrs. Howard Shook, Loy Christian, Nancy Hutto, Kathy Shook, Ina Quintana; Farwell Club, Mrs. W. T. Magness, Carolyn Herington, Bessie Bowery, Lynne White, Joyce White; Friona Club, Mrs. Walter Schueler, Mrs. Franklin Bauer, Carla and Steve Bauer, Mrs. Carl Schlenker, Vickie Schueler, Rhonda Bauer, Jan Jameson, and Carleen Schlenker.

Top Students At Three-Way Are Announced

Honor roll for the first six weeks of the school year for Three Way Schools was announced by Ann Sowder, school secretary. Listed by top honors (93-100) and honors (87-93) were: First grade: Bobby Holder, Kandy Brooks and Albert Ampan; top; and Diana Ornelas, Sheryl Lynskey, Craig Kirby and Gloria Simpson. Second grade: Leann Abbe, Karen Corkery, Randy Locke, Shelia Reaves, Shannon Sow-

der, Konnie Richardson; top; James Cornish, Linda Holley, Felipa Perez, Mary Ann Perez, Andy Warren, Robert Phillips, Donnie Nichols. Third grade: Kim Brooks, Debra Burkett, Kathy Foard, Debbie Furgerson, Patti Heard, Kent Hicks, Robby Sowder, Yvonna Vanstory; top; Oralia DeLa Rosa, Martina Morin, Chuck Dupler, Rickie Meyers, Dan Simpson. Fourth grade: Johnny Boyce, Mark Corkery, Ronnie Richardson; top; Lynn Carpenter, Dian Dunn, Dovie Miller, Eddie Miller. Fifth grade: Cheryl Abbe; top; Patty Carpenter, Ellis Grimes, Terry Pollard, Kandy Sowder. Sixth grade: Mary Mercado, Sandra Simpson; top; Jefflynkey, Larry Neutzler, Michael Sowder.

Seventh grade: Johnny Furgerson, Dena Waltrip, Geneo Abbe; top; Micheal Sowder. Eighth grade: Sam Feagley; top; Kathy Hicks, Mike Lynskey. Ninth grade: Chester Huff; top; Jan Heard, Bruce Pruitt. Tenth grade: Joy Eubands, Gayle Gant; top; Perry Lynskey. Eleventh grade: Julia Burket; top; James Kindle. Twelfth grade: Johnny Harris; top; Sharyn Whittner, Doyleen Davis. (Mrs.) Ann Sowder School Secretary

LaRue Services Held Tuesday

Graveside services were conducted Tuesday in Babyland at Bailey County Memorial Park for the infant son of Mr. and Mrs. Kenneth Wayne LaRue, Muleshoe. The baby was born in Green Memorial Hospital Sunday and died a short time later. Survivors other than the parents are grandparents, Mr. and Mrs. Dutch LaRue, Muleshoe, C. M. Hollis, Oklahoma City, Okla., and Bruce Slayden, Muleshoe. The Rev. J. Frank Peery, pastor of the First Methodist Church, officiated at the services.

Tacky Party Set By Social Club

The Pleasant Valley Social Club is sponsoring a Halloween Tacky party which will be held at the community center building Saturday night at 8 p.m. There will be games for children and adults, according to Dolores Duncan. The party is being given for the public.

W.H. Autrey's Services Held

Funeral services were held Wednesday at 2 p.m. in the First Methodist Church, Hereford, for Will H. Autrey, 80, longtime South Plains resident. Autrey was a resident of Muleshoe from 1934 to 1955 when he moved to Hereford. Officiating was the Rev. Hershel Thurston, pastor, assisted by the Rev. Russell McAnally, pastor of the Friona Methodist Church. Burial followed in the West Park Cemetery in Hereford under direction of Claborn Funeral Home of Friona. Survivors include his wife; two sons, Leon, Friona, and W. H. Ulysses; two brothers, O. J. Melrose, N.M. and Jim, Amarillo; and six grandchildren.

'LOTS OF SPORTS'

THIS WEEKEND ON KMUL RADIO

- FRIDAY** — 7:50 A.M. * Muleshoe Hi School Coaches Interview
3:45 P.M. * Muleshoe Hi School Pep Rally
4:15 P.M. * Lazbuddie Hi School Coaches Interview
4:30 P.M. * 3-Way Hi School Coaches Interview
4:45 P.M. * Bula Hi School Coaches Interview
- SATURDAY** — 8:05 A.M. * Muleshoe-Dumas Football game (Tape - recorded play-by-play)
1:00 P.M. * Lazbuddie-Nazareth Football game (Tape - recorded play-by-play)
2:15 P.M. * WEST TEXAS STATE-NEW MEXICO STATE FOOTBALL (Live from Buffalo Bowl, Canyon)
ALSO ... Saturday, 11 a.m., "Pigskin Roundup" Southwest Conference Highlights, Game Predictions
- SUNDAY** — 1:30 P.M. * 3-Way Homecoming Game (Tape - recorded play-by-play)

K M U L RADIO
1380 KC — 1000 WATTS MULESHOE



DARRELL TURNER, WITH A NEW 66 CAPRICE, AT CROW CHEVROLET CO.

Darrell Turner

SALESMAN
TRAINED TO HANDLE
YOUR
AUTO NEEDS
AT
CROW CHEVROLET CO.

LATE
WANT ADS
Steel Refrigerated car now available. Write Box 543, Clovis, N. M. or call 763-5501 collect. 15-431-4tc

YOUR FRIEND FOR LIFE

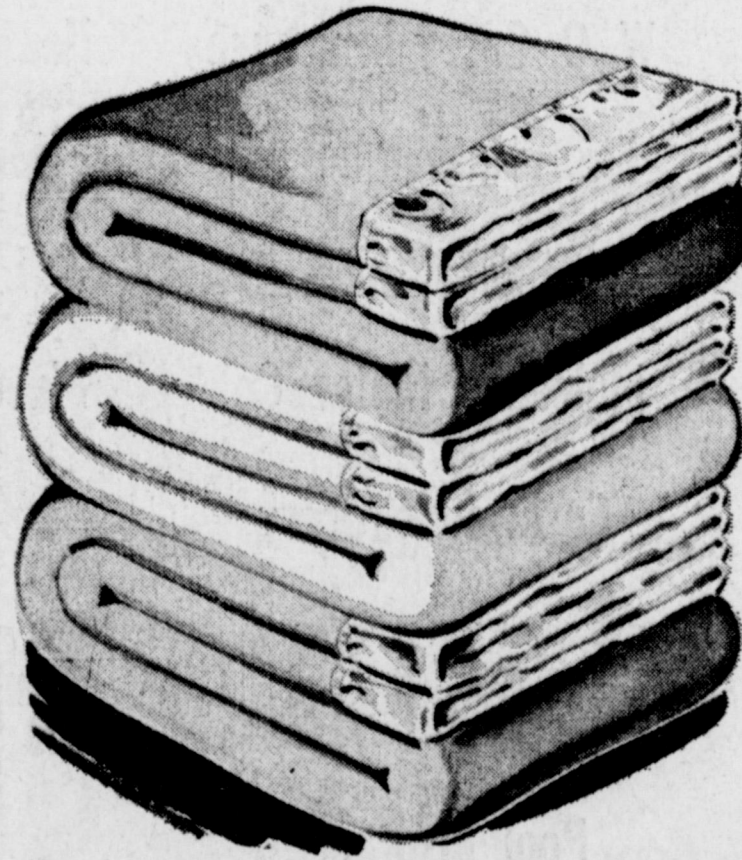


VIC BENEDICT
Life insurance is his business. He is required to complete a graduate-level life insurance education which requires over 500 extra hours of study, qualifying him to counsel you wisely. That's how he becomes Your Friend for Life. See him when he calls.
Southwestern Life
ADDRESS & TELEPHONE NO.
P.O. Box 625 Ph. 3-2180
Muleshoe, Texas

Anthony's
C. R. ANTHONY CO.

SUPER SPECIAL PURCHASE VALUE 72x90 BLANKETS

Big Savings on better quality. Shop Save Now!



- SOLIDS, PLAIDS, SCREEN PRINTS
- 72" x 90" Size Fits Full or Twin Beds
- Wide Bindings Winter Weights
- One of the greatest buys you'll see in '65"
- Buy for Yourself Buy for Gifts

\$2.99

Only through an extra special purchase from one of the country's largest blanket manufacturers is this super value possible. Just imagine, first quality, values up to \$5 blankets at only \$2.99. Choose from beautiful assorted solid colors and plaids or from assorted color printed and jacquard designs. Rayon with Nylon and Acrilan Acrylic blends. This is truly one of the greatest blanket buys you'll see so hurry to Anthony's now for your share.

MULESHOE'S ANNUAL

1st Place Winner
T.L. Glasscock
2nd Place Winner -
Alton Epting



FOOTBALL CONTEST



MULESHOE
AT
DUMAS
OCT. 22
7:30 P.M.

CONTEST RULES

MULESHOE PUBLISHING CO.
Box 449 — Muleshoe, Texas

- * Only one entry per person may be made for any one contest.
- * Weekly contests are open to everyone except employes and families of this newspaper.
- * Entries are to be judged by the sports editor and staff of this newspaper. All decisions of judges are final.
- * Entries must be submitted on the official form, as printed in this paper.
- * Bring or mail your entries to the Journal office. Mailed entries must be post marked not later than 5 p.m. Friday.
- * The deadline for weekly submission is 5 p.m. Friday.
- * Winners names will be published in this newspaper each Thursday following the close of the weekly contest.
- * Choose team you think will win.
- * 10 points for 1st. place, 5 points for 2nd place determines Grand Prize Winner.

WIN WEEKLY PRIZES!

1st. Place \$5 2nd. Place \$3

GRAND PRIZE \$50

FOR EXPENSES AND TWO TICKETS TO THE COTTON BOWL AT DALLAS, TEXAS. THERE WILL ALSO BE A CONTEST AND PRIZES FOR THE BOWL GAMES!

YOU MAY WIN!

THIS CONTEST MADE POSSIBLE BY THE FOLLOWING FIRMS:

- | | | |
|---|---|--|
| Brock Motor Co. | Western Drug | Piggly Wiggly |
| James B. Glaze Ins. | W. Q. Casey Insurance | Heathington Lumber |
| E. R. Hart Co. | First National Bank | Muleshoe Floral |
| Beavers Flowerland | Paul's Cafe | L & H Grocery |
| Ladd Pontiac | Muleshoe Motor Co. | Muleshoe Co-op Gin |
| Ben Franklin Store | Cashway Grocery | <i>Cobb's</i> |
| Muleshoe State Bank |  | Jennings Insurance |
| D & G Grocery | Pool Insurance | <i>The Fashion Shop</i>
OF MULESHOE |
|  | Farmers Co-op Elevator | Johnson-Pool Furniture and Appliance |
| King Bros Grain & Seed Co. | Johnson Furniture | Dari Delite |
| | Muleshoe Auto Parts | Bovell Motor Supply |

LET'S BACK

THE

MULES!

ENTER TODAY!

FUN! PRIZES!

Only One Entry Per Person

OFFICIAL ENTRY FORM

One Entry Per Person

-Iowa vs Northwestern.....
-Michigan vs Minnesota.....
-Michigan State vs Purdue.....
-Notre Dame vs So. Calif.....
-Alabama vs Florida State.....
-TCU vs Clemson.....
-Georgia vs Kentucky.....
-SMU vs Texas Tech.....
-UCLA vs California.....
-Tie Breaker.....

Muleshoe Dumas
SCORE SCORE

NAME PHONE
ADDRESS CITY

The Muleshoe Journal

Published each Thursday by The Muleshoe Publishing Co.
304 West Second Street, Muleshoe, Texas
Member of The Associated Press
Entered as second class matter at the Muleshoe Post Office under act of Congress, March 3, 1897.

SUBSCRIPTION RATES

Immediate Territory \$4.00
Out of Territory \$4.50
Combined with Bailey County Journal \$5.50
Both papers in territory \$6.25
Both Papers outside territory \$6.25
Advertising Rate on Application.

L. B. HALL Publisher
RAMON MARTIN Editor
PAT JOHNSON Woman's Editor
JAY SPAIN Mech. Supt.



Cotton

(Continued from Page One)

2,500 lbs. per acre projected farm yield.
3,500 lbs. per acre actual yield.
4,18 cents per lb. loan value (300 points off middling-inch).
With these assumptions, the producer who plants the maximum permissible, 87.5 acres, would receive:
18 cents loan times 87.5 bales produced . . . \$7,875; 942 cents per lb. on 65 bales (projected yield from domestic acres . . . \$3,961.50; 10.5 cents per lb. on 12.5 bales (projected yield from diverted acres) . . . \$656.25; Total Gross Income . . . \$11,592.75.

If he plants 75 acres he would get:

18 cent loan times 75 bales produced . . . \$6,750; 942 cents per lb. on 65 bales (projected yield from domestic acres) . . . \$3,961.50; 10.5 cent per lb. on 25 bales (projected yield from diverted acres) . . . \$11,124.
Planting 65 acres, he would get:

18 cent loan times 65 bales produced . . . \$5,850; 942 cents per lb. on 65 bales (projected yield from domestic acres) . . . \$3,961.50; 10.5 cent per lb. on 35 bales (projected yield from diverted acres) . . . \$1,837.50; Total Gross Income \$10,749.

It can be seen that gross income under normal conditions would likely be less with the greater acreage cut. To determine which alternative will bring the best net return, each farmer will need to inject his own acreage allotment, yield, production costs, cost of diverting acreage to approved conservation practices and other factors.

Also, it is to be hoped that the market price for cotton will be above the loan value used here. This possibility will depend to a large extent on how the Secretary handles CCC stocks. The bill places some restrictions on the sale of CCC stocks, but it is generally thought that the Secretary has enough latitude to either bolster or depress market prices.

Reports are already being received that some landlords have notified tenants they will not rent in 1966. Presumably they have calculated increased income from the land by farming it themselves under the new program. Whether they are wise in this decision may de-

Frost

(Continued from Page One)

rains was expected to spread slowly eastward and penetrate central Texas by the end of the week.
Behind the front, rains and light hail were reported in several areas on the South Plains.
Hereford reported two inches of rainfall Sunday, while the cool winds and heavy air brought 1.75 inches of precipitation into Spur and Snyder.
Crosbyton reported 1.30 inches, Plainview 1.25 during a 24-hour period up to 6 p.m. Sunday. Light hail accompanied the rains at Crosbyton and Spur.

pend on the Secretary's interpretation of the law, which says, "The Secretary shall provide adequate safeguards to protect the interests of tenants and sharecroppers. . . ." To date there is no indication as to what those "safe-guards" might be.

Sale or lease and transfer of allotments between growers within a state may be permitted by the Secretary "if he determines that it will not impair the effective operation of the program involved." The word is that such sales or leases will be permitted at least in 1966, subject to the following restrictions:

1. A two-thirds majority vote by growers in a county referendum before allotments can move across county lines (to be held November 23 this year);
2. Adjustment of transferred allotments from one farm to another when there is a significant difference in yields on the two farms;
3. Total cotton allotment for any farm to which an allotment is transferred by sale or lease can not exceed the farm acreage allotment for 1965 (excluding more than one hundred acres);
4. No sale of a farm allotment shall be permitted if any sale of cotton allotment to the same farm has been made within the three immediately preceding years;
5. No transfer of allotments from farms subject to a mortgage or other lien unless agreed to by the lienholder, and
6. No transfer of allotments between January 1 and June 1 of any year.

To qualify for diversion payments under the law, a farm will be required to devote to approved conservation practices an acreage equal to the sum of (a) the reduction in cotton acreage required to qualify for such payments and (b) the average acreage of cropland devoted to soil conserving crops or practices during a base period prescribed by the Secretary.

The Secretary may permit planting of guar, sesame, safflower, sunflower, castor bean, mustard seed, crambé, plant-ego ovato or flaxseed. The rate of payments would then be determined by the Secretary at up to one-half the payment rate otherwise applicable.

Producers may elect to apply to county ASC offices for additional acreage, produce cotton outside the program, and forego all loan and payment privileges. All cotton from the farm electing this route must be exported.

The Secretary has a maximum of 250,000 acres that can be applied to all such requests in 1966. How they will be apportioned has not been announced, but they will be available only to the holder of an allotment in 1965 or his heir.
The 250,000 acres for this purpose is called "export market acreage reserve." For 1967, 1968 and 1969, the size of this export market acreage reserve will be the same if cotton carryover is reduced by as much as one million bales. Otherwise the export acreage will be cut in proportion to the amount the carryover reduction falls short of a million bales.

Muleshoe

(Continued from Page One)

The Midland-Odessa area came in for a 1.20 reading with small hail reported.
Amarillo soaked up .91 inches, Olton .90, Levelland .85, Lovington .60, Sudan .80, Tahoka .65, Silverton .60 and Andrews 1.
Canyon, 19 miles south of Amarillo, reported some wind damage, with two houses losing roofs, another some shingles as winds rose in the afternoon hours.
Andrews and Hale Center reported 1-inch rains.
In general the area was hit by cool, moist front in the early afternoon hours with partial clearings by the waning hours of Sunday.

Children's Home Ironing Is Done By Maple Women

(Continued from Page One)

William T. Bovell III, whose mother, Mrs. Juarena E. Bovell lives at 305 E. Fir, Muleshoe, received an early promotion to Army pay grade, private E-2, following successful completion of basic combat training at Fort Polk, La. Oct. 9.

First session of a series of Saturday morning workshops for teachers of Mathematics, 1-6 and linguistics for secondary English Teachers, will be held Saturday at the new Coronado High School, 34th and Uti-ca, Lubbock, from 9 until 12 noon. Local teachers who will attend are Mrs. Radie Burleson, Mrs. Loyce Killingsworth, Mrs. Troy Walker, Mrs. Joe Pough, Mrs. Donald Prather, Mrs. Robert Sanders, Mrs. Addie Mae Spence and Buddy Sparks. Mrs. Eric Smith, a high school English teacher, will attend the linguistics course.

Muleshoe High School choir under direction of Leasel Richardson, presented the program at Rotary club Tuesday when Earl Harris was program chairman. They sang selections from "My Fair Lady and a series of love songs. Work is now under way by the fine arts department on "The King and I" to be presented Jan. 4, 6 and 8. Rotarians were told by Harmon Elliott, sergeant-at-arms, that next week members who fail to wear Rotary buttons will be fined 25 cents.

The king of the Kafa tribe in Africa can be looked at only by his wives, attendants and high officials. He cannot touch food, so must be fed. His insignia of office include a golden armband, a conical hat, a drum, an umbrella, a bed and a chair.

SHOP MULESHOE FIRST

VOTE FOR

AMENDMENT 7

- Exempts private charity hospitals doing at least \$1,500,000.00 in free work per year from ad valorem taxes except those paid to the State of Texas.
- Exempts property only in the home county of hospital.
- Money saved on taxes must go to charity work in the hospital.
- Does not exempt state taxes.
- Helps private hospitals to help Texans.

Vote For
 Vote Against
(Pol. Adv. Pd. by Walter G. Sterling, Chairman)

CO-OP Chatter by FARMERS CO-OPERATIVE ELEVATOR



FARMERS CO-OPERATIVE Elevator
FERTILIZER • GRAIN • SEED
H.L. WARD, Manager
MULESHOE, TEXAS
Phone 5350 6660



GIFT FOR THE FD — When the Bailey County Volunteer Fire Department answered a call at the home of a Farm Bureau insured member, the department is given a \$75 check. This is such a cere-

mony, Ben Cockrell, manager, is shown presenting a check to the department's treasurer, Tootie Middlebrooks, while Fire Chief Earl Ladd watches. (Journal Photo)

Court

(Continued from Page One)

shoe firms. Pleading guilty to the five charges was Mrs. William Hammond. The "enhancement" act was invoked in the case of Roy Odell Underwood, who was brought into court, charged with giving a worthless check. He pleaded guilty and was fined \$15 and given a day in jail. The same day he was arrested on a charge of giving a \$12 check to Western Drug Store. On a plea of guilty to the second charge, he was fined \$10 and his jail sentence was "enhanced" to a total of 30 days in jail.

Other cases included these: Dan Wallace, pleaded guilty to worthless check charge. Fined \$20 and costs and assessed one day in jail.

Juan Vitla, charged with driving while intoxicated. He pleaded not guilty and bond was set at \$1000. Six days later he changed his not guilty plea to guilty and was fined \$150, given three days in jail and his driver's license was suspended.

Leslie Smith pleaded guilty to assault on a female and was fined \$150 and costs.

James H. Nichols pleaded guilty to giving a worthless check and was fined \$20 and costs and given one day in jail.

Juan Olvera Cabello was charged with driving while intoxicated. He pleaded guilty when brought before Judge Williams, and was fined \$100 and costs, given three days in jail and his driver's license was suspended.

Mrs. Henry Samis pleaded not guilty to a charge of giving a worthless check. Bond was set

Drive

(Continued from Page One)

ing, "and were highly enthusiastic about the program," Lamb explained.

Then on Tuesday morning, Lyndal Murray and his workers in the commercial division met and organized their campaign. Both meetings were held at Paul's Restaurant.

Wednesday morning's breakfast was for the school division with superintendent Neal Dillman in charge. The breakfast was held at the Dinner Bell restaurant.

Thursday morning's breakfast will be held at Paul's and was for employees' workers, headed by Kenneth Henry. He had a "fine bunch of workers lined up for that division," Lamb said.

Lamb said the organization is carrying on despite the temporary loss of the president, Mrs. Thurman White who is in Scott-White Hospital in Temple for tests. "She has always done so much work for the United Fund that we miss her," Lamb said, "but are grateful that the work is continuing anyway."

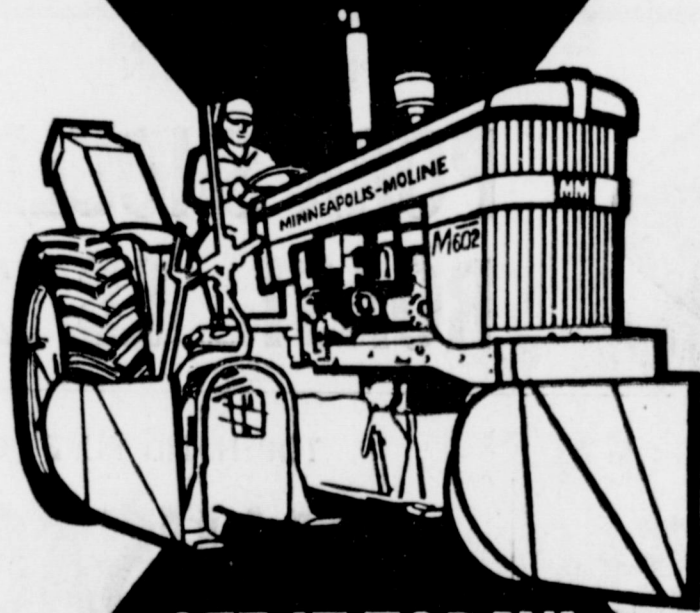
He said the \$13,500 budget is 11.2 percent higher than last year, and contributors are "being asked to up their giving accordingly," Lamb concluded.

SHOP MULESHOE FIRST

at \$200 and the case set for hearing at the November term of county court.

Mrs. Hal Cardwell pleaded guilty to giving a worthless check and was fined \$15 and costs and sentenced to one day in jail.

NOW ON DISPLAY!



SEE IT TODAY!

MINNEAPOLIS-MOLINE S-26 COTTON STRIPPER

Neat and fast working. Delivers cleanest cotton. Stripper rolls and beater are new and improved. High-speed fan and baffle work together to separate green bolls from ready-to-gin cotton. Unitized construction, collapsible hoods and hydraulic lifting enable one man to mount the S-26 on a tractor in minutes—unmount it just as quickly.

It's the best cotton stripper that money can buy! Come in and see it today!



World's Finest Tractors

SPECIAL PRICE \$1,350.00
INCLUDING MOUNTING ON YOUR TRACTOR

FRY & COX

YOUR FRIENDLY ONE STOP FARM STORE
401 S FIRST MULESHOE PHONE 3-3660

Meet the MULESHOE STATE BANK CUSTOMER of the Week



Jerry Mack Hall

This week's customer of the week is Jerry Mack Hall, farmer of the YL Community. Hall and his wife, Linda, have two children: Brandon, 5 and Tuana, 3. They attend the YL Methodist Church. Hall said he had banked with the Muleshoe State Bank 5 years and "It's the best bank I've ever done business with." We are proud to recognize this customer of the week.

Muleshoe State Bank

"YOUR GOOD NEIGHBOR SINCE 1914"





COLLAGE PAINTING — Kay Rogers hung this particular painting at Williams Bros. this past week. Several paintings are hung in the building and are known as collage paintings. They are done from tissue paper. (Journal Photo)



JOE ADAMS — Joe Adams has two of his paintings hanging in the Muleshoe Area Library. This is the first time one has been shown. Joe was a gold key winner in last year's "Scholastic" contest. He is one of Mrs. Elizabeth Black's students. (Journal Photo)



ENDS BASIC — Pvt. James H. Seiber, son of Mr. and Mrs. L. T. Seiber, Muleshoe, has completed his eight-weeks of basic training at Fort Polk, La., and is enroute to Fort Gordon, Ga., where he will attend eight-weeks of communications training.



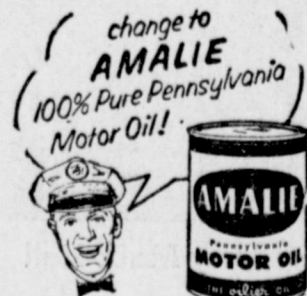
ON LEAVE — A-C Melvin Wayne Seiber, son of Mr. and Mrs. L. T. Seiber, Muleshoe, is home visiting on a short leave before leaving for Viet-Nam for one year. His wife and sons will make their home in Houston.

Trade Agreement
KATMANDU, Nepal (AP) — Nepal and the Soviet Union have signed a most favored nations treaty designed to increase their two-way trade.

You
PONTIAC
will give you
better service
with **AMALIE**
100% Pure Pennsylvania
Motor Oil

Why? Today's high compression engines running at high or low speeds; running in grueling stop and go traffic require the superior oiliness, the heat resistance found only in AMALIE Pennsylvania Oil.

AMALIE is the oiler oil refined from the world's finest crude by special low-heat process. AMALIE stands up under engine heat long after conventional oils break down, thin out, drain off. Cuts wear, insures long miles of smooth engine performance...



Your service station man will stock AMALIE for you... Just ask him.

Wiedebush & Childers

PATZER
CHIROPRACTIC CLINIC
MULESHOE, TEXAS
Phone 3-9670
1540 American Blvd.
KEEP SMILING

FREE
COME IN AND REGISTER
"RAMADA Week-end"
COMPLETE DETAILS IN BAILEY CO. JOURNAL
Need not be present to win
Drawing Every Week, Register Here For
Each week's Drawing
DATES SUBJECT TO AVAILABILITIES

DR. PEPPER

6 BOTTLE CTN. KING SIZE
3 FOR \$1.00

PLUS DEPOSIT

FROZEN FOOD

- Libby's Golden Sweet Whole Kernel
CORN 24 Oz 35c
- Keiths 10 Oz
BREADED SHRIMP 59c
- Patio Beef
ENCHILADA DINNERS 39c
- Sara Lee (Your Choice)
CAKES 69c

RADISHES
CALIFORNIA LARGE BUNCH

BUNCH **5¢**

- Crackers** Supreme Saltine 2 Lb. Box 59c
- Cookies** Nabisco Choco. Chip 16 Oz. Pkg. 39c
- Plum Jam** Bama I Red 18 Oz. 35c
- Peanut Butter** Bama 18 Oz. 59c
- Salad Dressing** Kraft Miracle Whip 16 Oz. 35c
- Pop Corn** Pop's Rite Yellow 2 Lb. Bag 35c
- Bathroom Tissue** Delsey 4 Roll Pkg. 49c
- Napkins** Kim Extra Soft 200 Ct. 35c
- Pancake Mix** Aunt Jemima 2 Lb. 43c
- Gladiola Flour** 25 Lb. Bag \$1⁹⁸
- Filler Paper** Notebook 500 Count 69c
- Green Beans** Del Monte Blue Lake Cut 140. 303 Can 23c
- Spinach** Del Monte No. 303 Can 15c
- Pineapple Grapefruit or Florida Punch** Hi-C Your Choice **3 For 89c**
- Chili Beans** Ellis Western Style No 300 Can 10c
- Coffee** Maxwell House Drip or Reg. 1 Lb. Tin 75c
- Laundry Detergent** Cheer 6.5 Oz. Size 69c
- Disinfectant Spray** Lysol 6.5 Oz. Size \$1¹⁹
- Instant Cocoa Mix** Hershey's 2 Lb. 69c
- AJAX** Plastic Decorator Container 17 Oz 19c

GUNN BROS.
STAMPS
DOUBLE EVERY
WEDNESDAY.

FOOD BARGAINS BY THE BAGFUL

KIMBELLS OLD FASHION "OVEN READY"

BISCUITS CAN **5¢**

SNOWDRIFT
SHORTENING 3 LB. TIN **59¢**

BON AIR 69c SIZE
POTATO CHIPS **59¢**

Fresh
PRODUCE
BELL PEPPERS

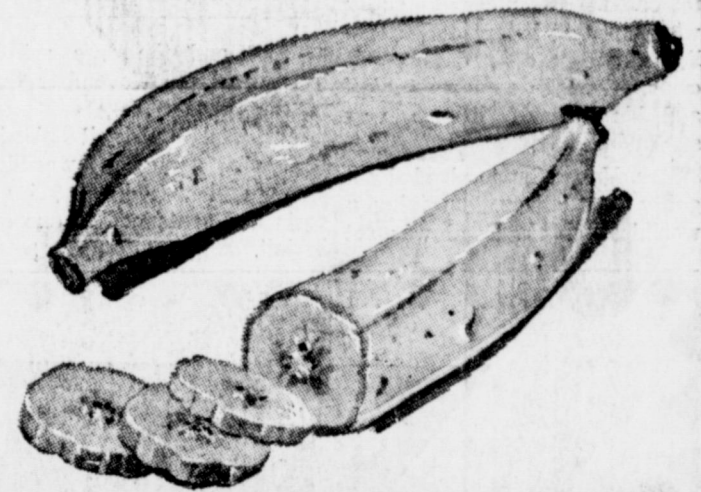
TEXAS GREEN Lb. 15c

WHITE ONIONS
NO. 1 NEW CROP Lb. 9c

BANANAS

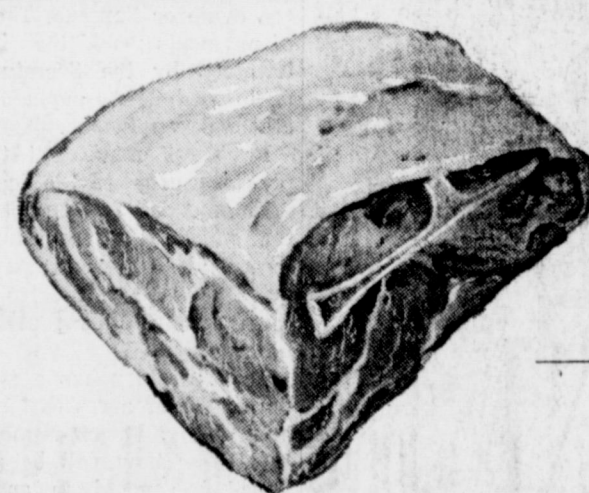
GOLDEN RIPE

Lb. **10¢**



PICKNEYS LEAN

PORK SHOULDER ROAST LB. 29c



DECKERS QUALITY SLICED
BACON 1 Lb. Pkg 79c

PICKNEYS JUMBO PAC
FRANKS 3 Lb. Pkg. \$1

PICKNEYS LEAN
PORK STEAKS Lb 39c

SWIFTS PREMIUM PROTEN BEEF
SIRLON STEAKS Lb 89c

SWIFTS PREMIUM PROTEN BEEF
T-BONE STEAKS Lb 98c

HAMBURGER MEAT

SWIFTS PREMIUM PROTEN BEEF **3 Lb. \$1.00**

TOP HAND PURE PORK

SAUSAGE

2 Lb. PKG. **79¢**

NORBEST USDA GRADE A
FRESH FROZEN

TURKEY HENS

8 - 14 Lb. AVERAGE **39¢**

Listen To
MULETRAIN
10:15 A.M.
over **KMUL**
sponsored by
CASHWAY

White's **CASHWAY**

Sudan Women Attend Area Meeting Of Women's Clubs At Lorenzo

By Evelyn M. Scott
SUDAN — A number of members of the 1935 Study Club were in Lorenzo Saturday to attend a Board meeting and workshop of the Caprock District of Texas Federation of Women's Clubs.

Attending were Mrs. W. V. Terry, Mrs. R. D. Nix, Mrs. R. S. Gatewood, Mrs. S. D. Hay.

Mr. and Mrs. Guy Walden returned Sunday from Chicago where they attended a Bankers Convention.

Among those from Sudan attending the Tech-TCU football game in Lubbock were Mr. and Mrs. W. V. Terry, Mr. and Mrs. Doyle Watkins, Rev. and Mrs. Jack Riley, Mr. and Mrs. Rodney Nichols, Mr. and Mrs. F. M. Smith, Mr. and Mrs. Ralph May, Mr. and Mrs. Jacky Van Ness, Mr. and Mrs. Ronnie Gatewood, Mr. and Mrs. Tom King.

Mr. and Mrs. J. W. Olds, Mr. and Mrs. Edgar Williams, and Mr. and Mrs. Cleo Whitmore left Monday morning for fishing at Lake Navajo in New Mexico. The women will return home after a few days fishing and the men continue on to Colorado for hunting. Also to join the group are Jimmy Carpenter, R. C. Williams and son, Lynn, Marvin Sharrick.

Mrs. R. S. Gatewood and Mrs. Glenn Gatewood visited Saturday night in the home of Mr. and Mrs. Jerry Bridwell in Lubbock. They attended church services Sunday morning at the Broadway Church of Christ.

Mr. and Mrs. C. E. Nichols attended the Tech-TCU game Saturday night and were overnight guests in the home of Mr. and Mrs. L. A. Purtell in Lubbock.

Glen Owens, missionary to Brazil, spoke at the Wednesday evening services at the Church of Christ.

"Parliamentary Procedure" was the subject topic at the meeting of the 1935 Study Club held Monday evening in the home of Mrs. Jack Riley. Co-hostess was Mrs. Max Broch.

Mrs. W. V. Terry was por-

gram director and Mrs. Gordon Taylor gave a paper on Parliamentary Procedure. Mrs. C. E. Nichols discussed "Constitution and Duties of the club officers". Mrs. J. S. Smith answered the roll call with a discussion of "Current News of Our Nation". Mrs. Marvin Tollett spoke on "Space".

The motto for the evening was "Life is not too short but that there is always time for courtesy".

The project for the evening was "Donations to Penny Art and Penny Music funds."

Mrs. S. D. Hay presided at the business meeting when plans were made for the club to have a fishing pond at the annual Halloween carnival.

Mrs. S. D. Hay presided at plans were made for the club to have a fishing pond at the annual Halloween carnival.

Mrs. Hay closed the meeting with the leading of the club collect.

Other activities during the evening included the signing of a "Get-Well" card to be sent to the Rev. and Mrs. Willie Hazel.

Present were Mrs. Hay, Mrs. Nichols, Mrs. Taylor, Mrs. Tollett, Mrs. Smith, Mrs. Terry, Mrs. Weaver Barnett, Mrs. R. S. Gatewood, Mrs. W. E. Hancock, Mrs. F. M. Smith, Mrs. Beulah Wiseman, Mrs. Sara Woods, Mrs. R. D. Nix.

Mrs. Edna Bellamy has returned from an extended visit with her children and families including Dr. and Mrs. Ralph Bellamy in Dallas, Mr. and Mrs. Gus Ed Bellamy in Fort Worth, Mr. and Mrs. James Henry Bellamy in Snyder. She also visited her sister, Mrs. Lillie May Chesher in Fort Worth.

Mr. and Mrs. Tommy Cate returned Sunday from a trip to East Texas. They visited her parents, Mr. and Mrs. J. O. Cherry in Streetman and while in Houston toured the Astro Dome.

Fifty-one were present for the meeting Friday afternoon of the "Young of Heart Senior Citizens Club" held in the community

center. The First Baptist church was in charge of the program and Jack Noblet brought the devotional. Mrs. Lester Shanks sang a solo.

Mrs. J. S. Smith presided at the meeting. Refreshments of cookies and punch were served. Mrs. W. V. Terry led the program at the meeting Monday morning of the WSCS, First Methodist Church, when the subject topic was "Participation on War and Poverty".

Mrs. Frank Lane, president, presided at the business meeting.

Serving as hostess was Mrs. W. H. Lyle who served rolls with coffee.

Present were Mrs. Terry, Mrs. Lyle, Mrs. Jack Riley, Mrs. A. Pinkerton, Mrs. J. S. Smith, Mrs. C. M. Furneaux, Mrs. Radney Nichols, Mrs. Matt Nix, Mrs. Joe Burt Markham, Mrs. Shelby Morris, Mrs. Bruce Newman, Mrs. J. W. House, Mrs. Ralph May.

Mrs. J. S. Smith visited recently with her son and family, Dr. and Mrs. E. N. Nichols in Lubbock.

Mrs. Max Bulloch led the topic discussion "Missionary Message of the Bible" at the Bible Study held Monday morning by Mrs. John Buth, Mrs. James P. Arnold, Mrs. Marjorie Nelson, Mrs. Halbert Marvey, Mrs. Oscar Vinson, Mrs. L. F. Meeks.

Mrs. Melvin Campbell of Littlefield visited Saturday evening in the home of her parents, Mr. and Mrs. Oscar Vinson.

The Intermediate GA's of the First Baptist church met Monday afternoon when an election of officers was held.

Named president was Nancy Lance; vice president, Janet Ritchie, secretary, Penny Mudgett; assistant secretary, Cynthia Wiseman. Those named chairman were Debbie Powell, Kathy Rice, Janet Ritchie, Nita Whiteaker, Connie Lance, Kathy Rice, Nancy Lance, Judi West.

Other activities included the practice of singing "I'll Meet you In the Morning." The group will sing the selection when visiting the Muleshoe Rest Home.

Nita Whiteaker will lead the program on Stewardship at the meeting next Monday.

Meeting with the group were

Mrs. Lester Shanks and Mrs. Jim Bob Hargrove.

Dyanne Curry, student at Tech, was home during the weekend to visit her parents, Mr. and Mrs. Bill Curry.

Mr. and Mrs. Marvin Tollett and Mr. and Mrs. Bill Curry were among those from Sudan to attend the Tech-TCU football game Saturday night.

Miss Judy Wolf, bride-elect of Tommy Taylor, was honored with a bridal shower Saturday afternoon, Oct. 2, in the home of Mrs. Lester Shanks. Guests called between three and four-thirty.

Mrs. John Harmon of Littlefield registered the guests.

Pink and white were the colors used for party decorations. Performing the serving hospitalities were Mrs. Shanks, Mrs. Bob Masten, Mrs. Dorman Chester.

The hostesses gift was an electric blanket.

Hostesses included Mrs. Shanks, Mrs. Masten, Mrs. Harmon, Mrs. W. C. Masten, Mrs. B. A. Harramore, Mrs. Joe Salem, Mrs. G. W. Masten, Mrs. Paul Chisholm.

Mr. and Mrs. Lester Shanks were honored with a housewarming when friends called at their new home on Smith St. Monday evening, Oct. 4.

They were given assorted items as hostess gifts including a place setting of silver, a clock, bathroom planter and cookware.

Hostesses were Mrs. O. L. Turner, Mrs. Donnie Cowart, Mrs. Dick West, Mrs. Doyle Terrell, Mrs. Billy Chester, Mrs. Bob Nelson, Mrs. Tom McKenzie, Mrs. Jimmy Carpenter, Mrs. Lindel Harlin, Mrs. Doris Brogdon, Mrs. Max Bulloch, Mrs. Vernetta Mathis, Mrs. Glyn Williams, Mrs. Richard Powell, Mrs. Joe Bob Hargrove, Mrs. Calvin Jordan, Mrs. Dorman Chester, Mrs. Wayman Mrs. Coy McKenzie, Mrs. Harvey Grigsby.

Mr. and Mrs. Radney Nichols, Mr. and Mrs. J. W. Olds and Miss Bertha Vereen were dinner guests at the El Monterey in Clovis Thursday evening. The occasion was Mr. Olds birthday.

Visiting Sunday in the home of Mrs. Birdie Walsler was her sister and husband, Mr. and Mrs. Earl Lancaster of South-

land.

Mrs. Bob Masten has been confined to the hospital in Amherst.

Mr. and Mrs. Brent Wiseman and Mr. and Mrs. Dean Wiseman visited recently with Brenda Bernethy who is confined to a hospital in Lubbock. She is the daughter of Mr. and Mrs. J. D. Bernethy of Littlefield.

E. W. Parmer has been confined to the hospital in Amherst.

R. D. Nix, R. S. Gatewood and Matt Nix returned Sunday night from a fishing trip to Buchanan Lake.

Mrs. E. E. Bartee of Lamesa visited during the weekend with relatives including her brother and family, Mr. and Mrs. R. D. Nix.

Ed Ray has been confined to a hospital in Littlefield.

Mr. and Mrs. R. D. Nix were in Lubbock Monday to attend the funeral services of David Kline.

Mr. and Mrs. Joe Rone and Steve Lumpkin were in Graham last week to visit in the home of Mr. and Mrs. Jack Lumpkin. Steve remained for several days. Returning home with Mr. and Mrs. Rone was Mrs. C. A. Daneil who also visit relatives in Morton while here.

Mrs. Noel Lumpkin visited the first of the week in the home of her son and family, Mr. and Mrs. Marvin Ballard in Carlsbad.

Mrs. C. M. Furneaux and sister Mrs. J. T. OBrien of Fort Worth have returned from Las Vegas where they attended a golf tournament to see Mrs. O'Brien's granddaughter, Sandra Haynie, participate. Miss Haynie was the winner of the tournament.

Mrs. E. Pope and Mrs. C. B. Alexander were in Muleshoe Friday afternoon to visit Mrs. Alexander's mother, Mrs. Harper, who is confined to a hospital there.

Mr. and Mrs. Elgen Baccus and Mr. and Mrs. Wayne Howell are at Lake Brownwood fishing.

Mrs. John Williams of Sundown visited last week in the home of Mr. and Mrs. Lynn Olds.



Of Law and Love

Viewers-with-alarm have always found much to criticize in our system of criminal justice. How outrageous it is when criminals escape the punishment they deserve! How monstrous it is when an innocent man is

convicted by mistake! But such criticism often skips blithely over the toughest question of all: which man is guilty, which innocent? Everyone wants to be hard on the guilty and easy on the innocent. But, of necessity, we must start the law's wheels turning before we really know which one we are dealing with.

For example: Should we strictly limit the right of policemen to search a private home? Should we keep questionable evidence out of the courtroom? Such rules will protect many an honest citizen from unjust harassment. Yet, the very same rules will also protect many a hardened criminal from being caught.

This basic dilemma, of having to deal with persons whose guilt or innocence is not yet settled, has always bedeviled the administration of criminal justice.

And in recent years, two major developments have added fresh stress and strain to the whole problem.

1) Important methods of law enforcement, long used in many sections of the country, have been held unconstitutional by Court. Landmark decisions have left confusion and disarray in their wake.

2) Crime — brutal, sinister, sophisticated — has reached a record high.

Thus it has become urgent public business to both clarify and modernize our entire apparatus of criminal justice. To that end, a massive, unprecedented project is now under way.

Eighty of the nations most eminent experts, assembled by the American Bar Association, are drawing up detailed guidelines — a set of national minimum standards — for lawyers and judges, prosecutors and police.

These guidelines, to cover everything from original arrest to final plea, should provide us with a system of criminal procedure that is both fair and effective. Such a system is, in itself, one of the mightiest weapons in the war on crime.

It is of course fitting that we should view with alarm any coddling of criminals or oppression of innocents. But with alarm only, not with despair, solid progress is afoot.

A public service feature of the American Bar Association and the State Bar of Texas. Written by Will Bernard.

They Stand Corrected

BEAVER DAM, Ky. (AP) — Mr. and Mrs. Cecil Daniels found a unique method for attracting business to their motel. It's advertised along the highway as "Daniels Motel."

"Lots of people stop to tell us our sign is misspelled," Mrs. Daniels says, "and then most of them stay overnight."

Tax Notice

State and County Taxes for the year of 1965
Are payable after October 1st.

Statements of all property on the rendered roll are now in the mail. Some property owners may not receive a statement because of recent change in ownership or because owner has not rendered to Tax Assessor. If you do not receive a tax statement by October 5th, give legal description of your property to county Tax office and statement will be sent to you.

STATE and COUNTY TAXES

PAYABLE AT THE COUNTY COURT HOUSE
Tax Assessor's Office Main Floor

Pay State Taxes Early - Save Discount

- 3% Discount if paid in October
- 2% Discount if paid in November
- 1% Discount if paid in December

Poll taxes for 1966 now available at both offices.

JEAN LOVELADY

BAILEY COUNTY TAX ASSESSOR-COLLECTOR

WOULD YOU LIKE TO SAVE ON FINANCING YOUR NEW CAR?

YOU NOT ONLY SAVE OVER FINANCE COMPANY CHARGES, BUT YOU STRENGTHEN YOUR CREDIT FOR OTHER LOANS WITH LOCAL PEOPLE WHO ARE PERSONALLY INTERESTED IN YOU.

YOU CAN INSURE WITH YOUR LOCAL INSURANCE AGENT FOR MAXIMUM SERVICE AND PROTECTION.

FIRST NATIONAL BANK

MEMBER FDIC
MULESHOE, TEXAS



MR. FARMER . . . Look At The Advantages Of The Early Harvest Cotton Green Boll Separator & Basket

- The Most Efficient In Green Boll Separation.
- It Enables Earlier Harvesting Than Any Other Separator
- More Capacity — 1½ To 2 Bales. No Turning Or Dumping In The Middle Of The Field.
- No Mounting On Top Of Tractor Each Year, Just Hook Up Like A Trailer.
- Saves Labor. • Strongly Constructed.

See Or Call
Virgil Nowell . . 825-2464 Okla. Lane Leldon Phillips 825-2462 Okla. Lane Exch.

SHOP MULESHOE FIRST

Television Schedule For Muleshoe Area

KING BROS.

GRAIN & SEED CO.

Complete
ELEVATOR
SERVICE
AND SEED
PROCESSING
FOR
The Muleshoe
Area.

FIRST NATIONAL BANK MULESHOE

4%
ON 12-MONTH CERTIFICATES OF DEPOSIT

3%
ON SAVINGS COMPOUNDED QUARTERLY

FINANCE YOUR CAR WITH US! PERSONAL LOANS

PAINT

and
Hardware



Chas. L. Lenax

LUMBER COMPANY

202 E. Ash

KGNC - TV (4) Amarillo
Muleshoe Cable 4
Mon. thru Fri.
Daytime Viewing

6:30 - Am. College
7:00 - Today Show
8:00 - Today Show
9:00 - F. Phrases
9:25 - News
9:30 - Concentration
10:00 - M. Star
10:30 - P. Bay
11:00 - Jeopardy
11:30 - P. Office
11:55 - NBC News
12:00 - News
12:10 - Weather
12:20 - Ruth Brent
12:30 - Make A Deal
12:55 - NBC News
1:00 - Truth
1:30 - The Doctors
2:00 - Another Wor
2:30 - C-Don't Say
3:00 - Match Game
3:25 - NBC News
3:30 - Sheriff Bill
4:30 - Laramie
5:30 - Hunt-Brink.
6:00 - News

Thursday Evening

6:15 - Weather
6:25 - Sports
6:30 - D. Boone
7:30 - Laredo
8:30 - Mona Mc.
9:00 - D. Martin
10:00 - News
10:15 - Weather
10:25 - Sports
10:30 - C-Tonight

Friday Evening

6:15 - Weather
6:25 - Sports
6:30 - Showtime
8:30 - Mr. Roberts
9:00 - U.N.C.L.E.
10:00 - News
10:15 - Weather
10:25 - Sports
10:30 - C-Tonight Sh
12:00 - Sign Off

Saturday Evening

7:00 - Roy Rog.
8:00 - The Jetsons
8:30 - Atom Ant
9:00 - Squirrel
9:30 - Underdog
10:00 - Top Cat
10:30 - Fury
11:00 - Three Stoog
11:30 - C. John
12:15 - Movie
4:15 - Movie
6:00 - News
6:15 - Weather
6:25 - Sports
6:30 - Flipper
7:00 - I Dream
8:00 - Movie
10:30 - News
10:45 - Weather
10:55 - Sports
11:00 - Movie

Sunday Evening

7:30 - Comedy Tin
8:00 - C. John
8:30 - Dixie
9:30 - A & Trial
11:00 - Church
12:00 - Meet Press
12:30 - R. Diamond
1:00 - Wild Kingdom
1:30 - College Bow
4:30 - College Bow
5:00 - Convoy
6:00 - News
6:15 - Weather
6:25 - Sports
6:30 - W. Disney
7:30 - Branded
8:00 - Bonanza
9:00 - Wackiest
10:00 - News
10:15 - Weather
10:25 - Sports
10:30 - Director's
12:00 - Sign off

KVII - TV (7) Amarillo
Muleshoe Cable 5
Mon. thru Fri.
Daytime Viewing

6:30 - Wake-up
7:00 - Crop-Stock
7:15 - Weather
7:20 - News
7:30 - Wells Fargo
8:00 - Movie
10:00 - Young set
11:00 - Donna
11:30 - Father
11:55 - News
12:00 - Ben Casey
1:00 - Nurses
1:30 - A Time
1:55 - Women's New
2:00 - Gen. Hosp.
2:30 - Young Mar.
3:00 - No Time
3:30 - Action
4:00 - L. Beaver
4:30 - H. Patrol
5:00 - P. Jennings
5:15 - News
5:25 - Weather
5:30 - Rifleman
6:00 - Bat Mastejr.

Thursday Evening

6:30 - S. Burke
7:30 - Crackerby
8:00 - Bewitched
8:30 - Peyton Plac
9:00 - Hot Summer
10:00 - Local News
10:15 - Weather
10:20 - Crop Stock
10:30 - Aquanuts
11:00 - Movie

Friday Evening

6:30 - Flintstones
7:00 - Tammy
7:30 - Adams
8:00 - Honey West
8:30 - P. Place
9:00 - J. Dean
10:00 - News
10:15 - Weather
10:20 - Crop-Stock
10:30 - Movie
10:50 - Football
10:55 - News
11:30 - Movie

Saturday Evening

7:00 - Movie
8:30 - College
9:00 - Shenanigans
9:30 - Church
10:00 - Casper
10:30 - Porky Pig
11:00 - Bugs Bunny
11:30 - Milton
12:00 - Hoppity
12:30 - Bandstand
1:30 - Movie
3:00 - R. Derby
4:00 - Sports
5:30 - Music
6:00 - Masterson
6:30 - Shindig
7:30 - L. Welk
8:30 - H. Palace
9:30 - Ripcord
10:00 - Movie
12:00 - Movie
1:30 - Thriller

Sunday Evening

7:00 - To Whom
7:15 - Church
7:30 - Search
8:00 - Herald of Tru
8:30 - Oral Roberts
9:00 - Church
9:30 - Beany
10:00 Bullwinkle
10:30 - Discovery
11:00 - N. V. Peale
11:30 - D. Funk
12:00 - Directions
12:30 - Issues Ans.
1:00 - ABC Scope
1:30 - Movie
3:00 - Chamber
3:30 - Topper
4:00 - Beatles
4:30 - A. Oakley
5:00 - R. Rider
5:30 - O'Toole
6:00 - Voyage to
7:00 - F. B. I.
8:00 - Movie
10:00 - News
10:15 - Weather
10:30 - Joe Kirbe
11:00 - Movie
1:00 - H. Jungle

KFDA - TV (10) Amarillo
Muleshoe Cable 6
Mon. thru Fri.
Daytime Viewing

6:25 - Sign On
6:27 - Meditation
6:30 - College
7:00 - Farm News
7:20 - News
7:30 - Tri Report
7:50 - News
8:15 - Capt. Kang
9:00 - I Love Lucy
9:30 - McCoys
10:00 - Andy
10:30 - D. Van Dy.
11:00 - Love of Life
11:25 - CBS News
11:30 - Search T.
11:45 - Guiding Ligh
12:00 - News
12:10 - Weather
12:20 - Farm & Ra
12:30 - The World T
1:00 - Password
1:30 - Art Linklette
2:00 - To Tell Tru
2:25 - CBS News
2:30 - Edge of Nigh
3:00 - Secret Storm
3:30 - S. Preston
4:00 - Proud Eagle
5:00 - Lone Ranger
5:30 - CBS News
6:00 - News
6:20 - Weather

Thursday Evening

6:30 - Munsters
7:00 - Gilligan's
8:00 - Movie
10:15 - Weather
10:20 - Background
10:45 - Movie
11:10 - Movie

Friday Evening

6:30 - Wild West
7:30 - Hogan's H.
8:00 - G. Pyle
8:30 - Smothers I
9:00 - Slattery
10:00 - News
10:15 - Weather
10:25 - Sports
10:30 - Movie
10:55 - News
11:00 - Movie

Saturday Evening

6:45 - Cartoon Time
7:00 - C. Kangaroo
8:00 - Heckle-Jeckle
8:30 - Tenn. Tux.
9:00 - M. Mouse
9:30 - Lion Hearted
10:00 - Tom-Jerry
10:30 - Quick Draw
11:00 - Sky King
11:30 - Lassie
12:00 - Fieka
12:30 - News
12:45 - Movie
4:00 - Wrestling
5:00 - Wilburn B.
5:30 - Porter Wagon
6:00 - News
6:20 - Weather
6:30 - J. Gleason
7:30 - Trials of
8:30 - The Loner
9:00 - Gunsmoke
10:00 - News
10:15 - Weather
10:25 - Sports
10:30 - Movie
10:55 - News
11:00 - Movie

Sunday Evening

8:00 - Pattern
8:30 - Church Serv.
9:30 - Religious
10:30 - Pioneers
11:00 - Music
11:45 - Football
3:30 - Science
4:00 - Mr. Ed
4:30 - Amateur
5:00 - 20th Cen.
5:30 - News
5:50 - Weather
6:00 - Lassie
6:30 - Martian
7:00 - Ed Sullivan
8:00 - P. Mason
9:00 - Candid Came
9:30 - W. My Line
10:00 - News
10:15 - Weather
10:25 - Sports
10:30 - Movie
10:55 - News
11:00 - Movie

KCBD - TV (11) Lubbock
Muleshoe Cable 2
Mon. thru Fri.
Daytime Viewing

7:30 - Headlines
7:05 - Farm Report
7:25 - Weather
7:30 - Today
8:25 - News Report
8:30 - Today
9:00 - Fr. Phrases
9:25 - News
9:30 - Concentrati
10:00 - M. Star
10:30 - P. Bay
11:00 - Jeopardy
11:30 - P. Office
11:55 - News
12:00 - N and W.
12:15 - Com. Closeup
12:30 - Let's Deal
12:55 - News
1:00 - Truth
1:30 - Doctors
2:00 - Another Worl
2:30 - C-Don't Say
3:00 - Match Game
3:25 - Afternoon Rep
3:30 - Nurses
4:00 - Father Knows
4:30 - Superman
5:00 - Cartoons
5:30 - Hunt-Brink.
6:00 - News ..

Thursday Evening

6:30 - D. Boone
7:30 - Laredo
8:30 - Mona Mc.
9:00 - D. Martin
10:00 - News
10:30 - Tonight

Friday Evening

6:30 - Camp Run.
7:00 - Hank
7:30 - Convoy
8:30 - Mr. Roberts
9:00 - U.N.C.L.E.
10:00 - News
10:30 - C-Tonight

Saturday Evening

7:30 - Roy Rogers
8:30 - Atom Ant
9:00 - Squirrel
9:30 - Underdog
10:00 - Top Cat
10:30 - Fury
11:00 - First Look
11:30 - Exploring
12:00 - Football
3:15 - Music
5:00 - Lone Ranger
5:30 - Scherer, Mc
6:00 - News
6:30 - Flipper
7:00 - Jeanne
7:30 - Get Smart
8:00 - Movie
10:00 - News
10:30 - Movie

Sunday Evening

8:25 - Sign on
8:30 - Shenanigans
9:00 - A. Oakley
9:30 - Beany-Cecil
10:00 - Discovery
10:30 - Drama
10:45 - Church
12:00 - Meet Press
12:30 - Faith
1:00 - W. Kingdom
1:30 - Football
4:30 - College Bow
5:00 - Frank McGe
5:30 - Red Raider
6:00 - News
6:30 - Wond. World
7:30 - Branded
8:00 - C-Bonanza
9:00 - Wackiest
10:00 - News
10:30 - Movie

KLBK - TV (13) Lubbock
Muleshoe Cable 3
Mon. thru Fri.
Daytime Viewing

5:55 - Sign on
6:00 - Sun. Sem.
6:30 - Cartoon Cir.
6:30 - Sam. Ser
7:00 - Farm
7:20 - Second cup
7:30 - News
7:55 - News
8:00 - Capt. Kangar
9:00 - Donna
9:30 - McCoys
10:00 - Andy
10:30 - D. Dyke
11:00 - Love of Life
11:25 - CBS News
11:30 - Search
11:45 - Guiding
12:00 - WTTN News
12:10 - Farm & Ra
12:25 - Weather
12:30 - World Turns
1:00 - Password
1:30 - Houseparty
2:00 - Gen. Hos.
2:30 - Edge of Nigh
3:00 - Secret Storm
3:30 - Ben Casey
4:30 - Cal. Carniva
5:00 - Rifleman
5:30 - News

Thursday Evening

6:00 - News
6:10 - Weather
6:20 - News
6:30 - Munsters
7:00 - Gilligan
8:00 - Movie
10:45 - Movie

Friday Evening

6:00 - News
6:10 - Weather
6:20 - News
6:30 - Wild West
7:30 - Hogan's Her
8:00 - G. Pyle
8:30 - Bewitched
9:00 - J. Dean
10:00 - News
10:30 - Movie


Saturday Evening

5:55 - Sign On.
6:00 - Summer Sen
6:30 - S. Preston
7:00 - Bugs
7:30 - Porky
8:00 - Heckle - Jec
8:30 - Milton
9:00 - Mighty Mous
9:30 - Beatles
10:00 - Tom & Jerry
10:30 - Casper
11:00 - Sky King
11:30 - Lassie
12:00 - Flicka
12:30 - Bandstand
1:30 - Film
2:00 - Wrestling
3:00 - Golf
4:30 - Grand Ole
5:00 - Wilburn b.
5:30 - Pickin T.
6:00 - Porter Wagon
6:30 - Jesse James
7:00 - Shenandoah
7:30 - Rawhide
8:30 - The Loner
9:00 - Gunsmoke
10:00 - News-Wea.
10:20 - Movie
12:00 - Late Show
1:30 - Sign Off

Sunday Evening


6:55 - Sign On
7:00 - Bullwinkle
7:30 - Looney Tunes
8:00 - Linus
8:30 - Movie
10:00 - TBA
10:45 - Church
11:45 - Football
2:30 - Scoreboard
2:45 - Music
3:00 - News-Wea.
3:15 - Inquiry
4:00 - Bowling
4:30 - Amateur
5:00 - 20th Cen.
5:30 - Green Acres
6:00 - Voyage
7:00 - FBI
8:00 - P. Mason
9:00 - C. Camera
9:30 - D. Van Dyke
10:00 - News
10:20 - Movie
12:00 - Sign Off

Higginbotham Bartlett Building Needs



Lumber
Paint
Wallpaper
Hardware
Houseware
Gifts

Higginbotham Bartlett MULESHOE



For Year-Long
Enjoyment

INSTALL NOW

Three
Plans
for
Hook-Up

Muleshoe Antenna Co.
Call Now

107 East Third
Phone 3-3100

ALSUP CLEANERS

Offer These
FINE SERVICES

1. Drive-In Window Service for your convenience in cold weather.
2. Re-sizing of cottons to finer texture for that like-new look.
3. Alterations of all kinds of men's, women's and children's clothing.
4. A personal touch for your clothing by people who care how you look.

THAT'S ALSUP CLEANERS
Phone 3-0760



OUTDOORS IN TEXAS

By Vern Sanford
WAX CAR - WAX GUN
Guns stay shiny if you wax 'em every time you wax your car. The hard-gloss wax gives guns and cars the same protection and beauty.

PENLIGHT USEFUL - Handy around camp - and a big help to the fisherman too - is a small penlight. Hang it on a cord around your neck. Then you always have a light, but you don't lose a hand holding it. Real handy when it comes to tying on hooks, swivels, lures, etc. at night. In such cases fishermen often place the penlight in the mouth so the rays go directly where they are looking.

PRESERVING LEATHER - Here's a modern version of an old Indian formula for preserving leather hunting boots. Mix a half pint of carbon tetrachloride with five spoonfuls of deer tallow and blend until mixture is smooth. Rub down leather goods with the liquid. Carbon-tet allows tallow to flow and be absorbed. Deer tallow keeps leather soft and pliable.

QUICKIE DISHWASHER - DRYER - Take a mesh onion bag on your next camping trip. After dinner put silverware therein and dip in boiling water. Let dry in a tree. No work, no worry, no waste.

EASY WAY TO DRY LINE - Thread a needle with the end of your nylon fishing line, then run it through a sponge. Draw

line through sponge and you've got it really dry.

EMERGENCY LINE GUIDE - What do you do when you're on a fishing trip and you break a line guide on your only fishing rod? Here's one answer to the problem. Just clip the catch section off a safety pin. Bend the shank so legs project both ways from eye. Lash these legs to rod with monofilament. Works great!

SUBSTITUTE SHEARPIN - Among the many items that can be used temporarily to replace a shear pin is a fish hook (or a couple of fish hooks).

DOUBLE-TIE BOOT LACES - Walk through the woods and you know what happens to boot laces. They frequently become untied. Stop this quick by tying large bows, then tying the bows. Looping one bow through the other holds laces fast. Still they untie easily at day's end.

ADDING FLOATATION - Building a small boat for use on stock tanks? If so, glue styrofoam strips under the seats to make the boat unsinkable.

CORK FLOAT SOLVES PROBLEM - When that extra-live minnow on your hook keeps on diving deep into vegetation where fish can't find it, try this. Attach a small cork just above the shank of the hook. Cork should be small enough that the fish can carry it down. But it should be large enough to prevent the minnow from getting

too deep.

EYEGLASS INSURANCE - If you wear eyeglasses while you ski, attach a fishing bobber to each arm of the glasses. Then if they fall off they'll float and can easily be recovered.

TRANSPORTING LIVE BA - Those cardboard or plastic milk cartons, especially the larger sizes, make handy on-trip bait carriers for minnow worms, etc.

LOCATING LEAKS - Fishing boots leaking lately? To locate the trouble spot fill your bathtub about half full of water and put the leaky boot in with the top out. Then insert a vacuum cleaner hose in the boot and start the blower. A stream of bubbles will mark the hole, tiny though it may be.

DRYING MATCHES - Wet matches can be dried by turning them over and over in your hair. It seems that the combination of oil and static electricity often recharges flagging igniter chemicals. Of course you could end up with phosphorus in your hair.

HOOK SHARPENING - A quick way to sharpen small fishing hooks is to run them through a piece of fine sandpaper several times.

SANDING THE GUN STOCK - Getting a velvet finish on a gun stock depends primarily on the sanding. And it's the last 19 per cent of the sanding that really counts. Trick is to wet the wood and sand it with the finest sandpaper you can buy. Another trick is to use extremely fine wet sandpaper.

Classifieds Get Results!

Now! New Chevelle

SUPER SPORT 396



New Chevelle SS 396 Sport Coupe - with clean-sculpted all-new Body by Fisher

by Chevrolet

Two new Super Sport beauties for '66—a hardtop and convertible—propelled by nothing less than the new Turbo-Jet 396 V8.

This remarkably efficient power plant, with aircraft-type valves, deep-breathing ports and other design advances, develops 325 hp in the standard version. And you're welcome to order more—in a 360-hp version—if you're so inclined.

Both Chevelle SS 396 models ride on a special flat-cornering chassis. A fully synchronized 3-speed transmission with floor-mounted stick shift is standard. Or you can order a 4-speed or Powerglide—also Strato-bucket front seats, center console and full SS instrumentation.

Your Chevrolet dealer's is the place to see how all this feels from behind the wheel. He's a great believer in letting the customers handle the merchandise.

See the new '66 Chevrolet, Chevelle, Chevy II, Corvair and Corvette at your dealer's

CROW CHEVROLET CO.
201 MAIN MULESHOE PH. 3-1000

42-5827

For All Your Needs

— CALL ON YOUR — Phone 3-1060

WALGREEN AGENCY
WESTERN DRUG

Veterinary
Cosmetics

BUY and SELL BUSINESS LEADS WANT BETTER JOBS ADS LOST and FOUND REAL ESTATE

WANT ADS -- PHONE 2350

1 time per word — 4c 3 times per word — 10c
 2 times per word — 7c 4 times per word — 13c
 After 1st issue, 3c per word each additional time.
 Minimum charge 50c
 Card of Thanks \$1.00

DEADLINE FOR CLASSIFIED ADVERTISING PAGE:
 For Thursday's Issue: Monday, 12 Noon
 For Sunday's Issue: Thursday, 12 Noon
TO LATE TO CLASSIFY
 Thursday Issue — Tuesday 5 P.M.
 Sunday Issue — Friday 3 p.m.
 Double Rate for Blind Ads.

1. Personals

LUZIER'S COSMETICS
 Free Demonstration
 Satisfaction Guaranteed
MRS. E. E. HOLLAND
 Ph. Off. 3-2930 · Res. 3-2930
 121 American Blvd.
 1-49s-tfc

FOR RENT: 15 ft. camper by day or week, call 3-1630. 1-35s-tfc

Custom cutting wanted. Call Weldon Slayton, 965-2140 or contact 6 mi. North of Muleshoe where Mid Way Fertilizer formerly was, Turn left, 1st house on right. 1-37s-tfc

Sewing wanted. Call Mrs. Weldon Slayton, 965-2140 or see at 6 miles North of Muleshoe, turn left where Mid-Way Fert. formerly was located. First house on right. 1-37t-tfc

For Rent — trailer space. Lot 50' by 140'. See at 1506 W. Ave. D. 1-42s-3tp

Am interested in making loans and buying first and second lien notes secured with farm and ranch land. J. J. Steele, Citizens Bank Building, Clovis, N.M. Dial 763-4471 or 763-6455. 42s-tfc

Lazbuddie Public School is accepting bids on office and cafeteria furniture until 4 p.m. Nov. 4, 1965. 1-42t-tfc

For Sale, Antiques. Must vacate building. Rocky Supply. 1-42-tfc

3. Help Wanted

Wanted Hair Stylist. Experience important but not necessary. Come by Wellborn Beauty Shop. 3-40s-tfc

4. Houses for Rent

For rent, 5 room house. Newly decorated inside. See Marie Engram 416 West 4th. 4-40t-tfc

FOR RENT: 3 bedroom brick house in country, Phone 4600, Russell Bryant. 4-35t-tfc

For rent - Small house unfurnished. Ph. 3-4682 or see at 224 E. 5th. 4-37s-tfc

For rent — 4 room modern house. Call 3-9163 or 7600. 4-41t-tfc

3 room modern furnished house. Call 3-9163 or 7600, Barbara Burton. 4-42t-tfc

For Rent: 1 bedroom house. Nicely furnished. West 13th St. Phone 4982. 4-42t-tfc

5. Apts. for Rent

Space for 3 trailers, and small apartment for rent Call 3-4650. 5-40t-tfc

FOR RENT: Two bedroom apartment, carpeted, draped, built - ins. Phone 3-4960 or 3-33-50. 5-28s-tfc

FOR RENT: 3 room furnished apartment, trailer space. 323 West Ave. E. Phone 8120. 5-31s-tfc

For rent. Furnished apt. 3 rooms and bath. See Mrs. Jack Lenderson or call 3-0380. 5-39s-tfc

6. Rooms for Rent

Bedroom for rent — See Ida Tapp. Last house north of Calvert's grocery. 6-4s-tfc

Nice Bedroom with kitchen privileges. Phone 7771, days, or 7772 nights. 807 W 7th. 6-41t-tfc

7. Wanted to Rent

Want to rent: Two - three bedroom home, with garage and fenced yard. Possibly, option to buy. Near Richland Hills School. Unfurnished only. Will furnish references. Reply quoting price and complete information to: Box 449, Muleshoe Journal. 7-37s-tfc

8. Real Estate for Sale

For Sale: Well located 3 bedroom house. Will sell with two year rental contract with option to buy. Phone 7050 days. 4520 after 5 p.m. 8-41t-tfc

For Sale — Choice Bailey County 80 — with good water and allotments. West of Muleshoe. Phone Bobby Airhart — 2540. 8-42s-tfc

FOR SALE: 2 bedroom, Lenua addition Call 3-4300 or 3-3472 for appointment. 8-16t-tfc

For Sale: Southside Gulf Service Station. Call 3-5710. 506 South First. 8-40s-tfc

HOUSES FOR SALE
 Redi-Built or BRICK, 3-BEDROOMS, 2-BATHS, 90-FT. LOT
 APARTMENTS FOR RENT
 Licensed Plumber for all your needs
CALL—
BILLY MORRISON
 Ph. 4850 or 3-2130

3 BR 2 Baths den, fireplace, 2 car garage near Richland Hills. 8-42s-tfc

3 BR 1 Bath house. Lenua Addition, fenced back yard. FHA loan approved. Priced: \$8,500.00. 8-40t-tfc

3 BR 1 Bath 2 car garage, conveniently located between three schools. \$11,500, terms arranged. 8-40t-tfc

240 A. strong irrigated land house 1-10' and 1-8" wells. 3000' underground tile. Good allotments. 160 A. Dry Land 2 BR modern house domestic well. Good allotments. 165.00 per acre. 80 A. Close in. 8" well, 2 BR modern house. \$500.00 per acre. Good terms available on this one. 8-40t-tfc

Good Missouri stock farms for sale or trade. Commercial and ranch property available through our exclusive CLS listing service. List your property with us where personal attention is given. 8-41t-tfc

EDDIE LANE REAL ESTATE
 PHONE 4390
 Residence
 Eddie Lane 5680
 Buddy Lane 3-5741
 Jimmie Pitcock 4540

Wanted low cost lots, phone 3-1910 or 5881. 8-31s-tfc

3 Brick Homes
 1-2 Bedroom double garage
 1-3 Bedroom single garage
 1-3 Bedroom double garage
 C. W. Wilhite
 Phone 3-5580 8-34s-tfc

ALL VETERANS
 Who have had 90 days active service at ANY TIME \$200.00 move in cost new 3 Bedroom 2 baths 1 or 2 car garage.
 SEE
 Eddie Lane Real Estate
 Phone 4390 8-41s-tfc

FOR SALE: New 3 bedroom brick home. Call 3-4300 or 3-3472. 8-16t-tfc

For Sale — small equity, 3 bedroom residence in Lubbock Call owner at 3-2249 for information. David Sudduth, 201 E. Fir, Muleshoe, Texas. 8-40s-tfc

10. Farm Equip for sale
 NEW 1965 GMC PICKUP DELIVERED \$1748.00
 LADD PONTIAC
 Muleshoe, Tex. Ph. 3-3080 10-34t-tfc

See it and you will have it. Large rooms. Big paneled den with fireplace. Lovely kitchen with bar and all. O'Keefe and Merritt Appliances. Full double oven.
 3 big bedroom and 2 bath. Fully carpeted. Double car garage on pavement. All brick.
SOLD
 payment.
 Large home, formal living room, 3 large bedrooms. 2 large baths. Large den with kitchen offset. Carpeted. Double garage.
 3 large bedrooms, 2 full baths. Large living room. Lots of cabinets, O'Keefe and Merritt Range. On pavement. Double garage.
 Phone 4850 or come to Billy's Supperette and see D. L. Morrison or Billy. 8-41s-tfc

170 A. irrig. — \$135 per A. 25 per cent down. 1-8" well. 160 A., 2-8" wells, good all lots., perfect. \$550 per A. 160 A., 1-8" and 1-10" wells, perfect. \$600. Will Trade on irrig. 1/2. 640 A., 4-8" wells, \$550. Trade on irrig. Lazbuddy area. 320 A. dryland, excel. improv., perfect, \$225. Wanted: rough 80 tightland close in — Listings Appreciated — buyers waiting. Krebs Real Estate. Phone 3-1910. 8-38s-tfc

FOR SALE
 I.H. No. 21 Stripper With Green Boll attachment \$450
 I. H. Single Wheel \$75.00
 Servis shredder \$200
 Farm-all - M - 3pt. \$65
 11 Ft. Haome \$200
 J. D. Spinner plow \$500
 Ford Rear Scoop \$45.00
 Cline Land leveler \$375
 Cotton Basket \$50
 Ford Tractor And Loader \$475.00
NORWOOD USED IMPLEMENTS
 1926 South Main
 Muleshoe Ph 3-3213 10-39t-tfc

11. For Sale or Trade
 For sale: Sewing machine. Fleetwood. Call 965-2761. In good condition. 11-41t-3tc

12. Household Goods
 Wanted responsible party to take over payments on late model Singer sewing machine in Muleshoe area. Will zig-zag, fancy stitching, etc. 5 payments \$4.96 or \$25.00 cash. Write Credit Department, 1114 19th Street, Lubbock, Texas. 12-34t-tfc

15. Miscellaneous
 Maize Cutting and Hauling wanted. Leave word at Ray Griffiths elevator or call Porter 3-5175, Clovis, Collect. C. P. Johnson. 15-37t-tfc

DO YOU HAVE ROACHES !!
 CALL 3-3050 or 3-9040
 Akin Exterminating Co.
 Home Owned & Operated 15-32t-tfc

Treat rugs right, they'll be a delight if cleaned with Blue Lustre. Rent electric shampooer. \$1. Higginbotham — Bartlett. 15-42t-tfc

FOR
 Steel Barns AND Commercial Buildings
 Call Your Better Buildings Representative
 25 percent dn. - fall terms
 Call
 Horace Henley Jr.
 Dimmitt, Tex. Ph. 647; 3501 after 7:00 p.m. 15-39s-tfc

INSURANCE
 Farms — Homeowners - Auto - Crop Hail
 Let us be your Insurance Man
 Lane Insurance Agency
 113 Ave D Phone 4390 15-41t-tfc

Good Merchandise Buena Mercancia Economart Main Street Mayur Calle Muleshoe, Texas - 79347 15-27t-tfc

17. Seed & Feed
 FOR SALE: Early Sumac Cane Seed. Phone 965-2675, Morris McKillip. 17-22s-tfc

FOR SALE — Hay. Call 965-2140 or contact Weldon Slayton, 6 miles north Muleshoe. 17-30t-tfc

Longer State Terms Opposed By Labor

AUSTIN — Campaigns now are underway for and against the 10 proposed constitutional amendments to be voted on November 2.

However, little is being said on behalf of perhaps the most controversial of all the proposals — extending the terms of office of the governor and other state-wide officials to four years. Gov. John Connally promised an all-out drive for it. Organized labor strongly opposes the term stretch-out. A 46-member committee of leading citizens, headed by Dal-

las banker Ben H. Wooten, is pushing Amendment 1 to increase the state college property tax levy for college building purposes from five to 10 cents. Opposition to the tax increase is developing in San Antonio.

State Bar Association is battling for Amendment 8. It provides for automatic retirement of over-age judges and sets up a commission to recommend disciplinary action against misbehaving judges. A variety of groups have kind words to say for Amendment 2 to increase the Veterans' Land Fund to \$200,000,000 and revive the program of long-term, low-interest loans to veterans for there is opposition here, too. Other amendment proposals: Permitting Texas' participation in cooperative federal-state programs of assistance to and medical care for aged, needy and handicapped; clarifying investment authority for the board of trustees of the teacher retirement system; authorizing the Legislature to set up an \$85,000,000 student loan fund; from local property taxes; permitting the Legislature to raise salaries of Speaker of the House and Lieutenant Governor and to increase lawmakers' expense allowances from \$12 to \$20 a day; and lengthening terms of state representatives from two to four years.

Many observers have expressed concern that opposition to the four-year-terms amendments may spread over to other less controversial measures. A light voter turnout is forecast.

Strikes Governor — Flue confined Governor Connally to his bed all last week.

On advice of his doctor, he cancelled speeches in El Paso, Paris, Houston and Dallas. He's taking no chances on a relapse, since he is scheduled to leave the country for Japan and Vietnam on a State Department-sponsored tour for governors late this month.

Texas Buys Plane — State is buying, for \$85,000, a used, 11-passenger twin-engine airplane for use of the governor and other state officials.

Legislature this year appropriated \$275,000 for purchase of the plane and allotted another \$150,000 to maintain it. But Connally elected to save money and invest in a time-tested used model which has been completely reconditioned and equipped with latest safety and communications equipment.

Courts Speak — State Supreme Court, reversing lower courts, threw out State Comptroller Robert S. Calvert's cancellation of Houston tobacco wholesaler Mair J. Schepps' ("House of Tobacco, Inc.") state permit.

Court, in one of its 114 rulings opening day of its 1965-66 session, said Calvert's cancellation was unconstitutional because he held no hearing on case.

Harry M. Harrington Jr., Longview oilman, asked court to throw out as unconstitutional the law under which attorney general has brought more than 100 civil penalty suits against slant-well operators and won more than \$1,600,000 in penalties for state. Harrington, with three others, was assessed \$304,800 in penalties.

High court in other cases: Agreed Shell Oil Company should be permitted to install its trademark on seven service stations leased from El Paso Natural Gas Products Company.

Declined to review lower court dismissal of Lower Naches Valley Authority suit against City of Beaumont.

Set a hearing December 1 in controversy over Hurricane Carla insurance claims.

Rejected effort of Corpus Christi lawyer to get two other attorneys disbarred.

Record Lease Sale — Land said addition of \$6,800,000 from last state oil and gas lease sale of 1965 brought the year's total to a record \$85,000,000. Sale covering 131,660 acres of land located throughout the

state averaged over \$52 per acre on bonus payments. High bids were made by Phillips Petroleum Company which paid \$293,760 for each of two Gulf of Mexico tracts in Brazoria County.

All leases, except four river and bayou tracts, were awarded by the School Land Board for five-year terms and a one-sixth royalty on production. River and bayou tracts were leased for two years.

New income boosted permanent public school fund to over \$652,000,000.

Cotton Pact Signed — Threat of a Texas embargo on Mexican cotton was ended last week with the signing of a new agreement by U. S., Mexico and Texas regulating planting on both sides of the border.

Agreement, reached in two-day conference at Brownsville and Matamoros, set planting dates of February 1 — March 31; stalk destruction deadline at August 31; and plow-up by September 15. Experimental late planting would be permitted only at agricultural experiment stations in Matamoros and Rio Grande Valley Areas.

AG Rules — Atty. Gen. Waggoner Carr has ruled a Commissioners Court may not lease a county hospital if the lease allows the lessee to encumber the land, buildings and equipment. The court may not create debts in any manner other than time warrants or bonds duly voted upon by the property holders of the county.

In other rulings, Carr said: Commission for Indian Affairs may execute long-term leases with federal agency for public housing on tribal land — but only with approval of a majority of Indians on Alabama-Coushatta Reservation.

Reserve for bad debts and reserve for bond depletion for First Lockhart National Bank are not taxable to bank, but should be taken into consideration in determining value of bank stock for ad valorem tax purposes.

Tabloid "National Informer" and "National Tattler" publications meet test of "weekly newspapers."

Parks and Wildlife Department is authorized to participate in Land and Water Conservation Fund Act and receive

federal grants-in-aid.

Modern State Parks — Texas Parks and Wildlife Department has released a full color film, available to clubs and various other groups, depicting the step-by-step conversion of areas into public recreation parks.

Film shows how state funds have been put to use in modernizing state parks all across Texas.

Draft Talk — Young men who married before August 27 may be called for physical-mental examinations by some Texas draft boards in November. This, to help fill the Texas quota of more than 6,000 men.

Col. Morris S. Schwartz, state Selective Service director, said the decision was made because some local draft boards may not have enough men otherwise.

Order doesn't pertain to married men with children.

Draft-age men are warned by Selective Service that it's a criminal offense to mutilate draft cards and subjects drafted to five years imprisonment, a fine up to \$10,000, or both. Destroying a card can speed up induction, warning said.

Appointments — House speaker Ben Barnes named Rep. Steve Burgess of Nacogdoches to South Central Interstate Forest Fire Protection Compact Advisory Committee.

He designated Reps. Neil Caldwell of Angleton, L. DeWitt Hale of Corpus Christi and Renal B. Rosson of Snyder as delegates to conference on workmen's compensation and rehabilitation in Oklahoma City this week.

Barnes appointed Reps. W. T. Dungan of McKinney, John Ray Harrison of Pasadena, Alonzo W. Jamison Jr. of Denton, George H. Richards of Huntsville, and Vernon J. Stewart, Wichita Falls to the House Interim Committee on Juvenile Crime, State Securities Commission

er William M. King announced addition of J. Alan St. John to his staff as securities analyst. Other additions announced by King: attorneys Dain Whitworth, J. E. DeVilbiss and Hugh Wright; and securities analyst Lewis Keith.

Textbook Protest — A total of 324 textbooks are being studied by the State Textbook Committee for possible adoption in Texas public schools, but five are being protested.

All of the books protested deal with economics, and all of the publishing houses involved have filed answers to the protesters, Mr. and Mrs. M. F. Gabler of Longview.

Mental Retardation — First Governor's Conference of Mental Retardation, climaxing a two-year statewide study of the problem, will be held March 17-19 in Austin.

Conference will be charged with the task of providing recommendations on how to provide a better life for the mentally retarded.

Twelve task forces developing a tentative state plan to combat the problem have slated October 16-17 meeting in Austin.

Texas Press Association
 The first commissioner of the Southeastern Conference was the late Martin S. Conner, a former governor of Mississippi, who served from 1940 until his health forced him to resign in 1947.

SPECIAL
 Small T Bone Salad & Fries \$1.35
 Rich, Thick MALT or SHAKE 30c
BILL'S DRIVE IN
 Phone 7250
 19th and Clovis Road

OTWELL'S VACUUM CLEANER REPAIR
 Filter Queen Distributor
 Disposable Bags For All Makes
SALES SERVICE
 All Vacuum Cleaners Repaired After 6 p.m. or before 8 a.m.
 Phone 3-1630 918 East Hickory

BUSINESS DIRECTORY

Farley Insurance Agency
 Real Estate and Insurance
FARM & CITY LOANS
SERVICE BEYOND THE CONTRACT
 209 West Avenue B
 Off. Ph. 7270 — Res. 3-0343

Safe 'n' Sound
 LEE R. POOL
 Before you take the wheel of your car... take a look at your insurance. In these days of mounting traffic tolls, increased repair and replacement costs... how well insured are you? Right now is the time for you to find out, before it is too late... One skyhigh liability judgment could plunge you into financial and legal trouble... costing you your business, your home and your future. Don't gamble... Let us give you an independent evaluation of your automobile insurance coverage. It may be the wisest thing you ever did!

HEATHINGTON LUMBER COMPANY
 Lumber, Paint, Builders Hardware
 Clovis Rd. — Ph. 7970

COTTONSEED DELINTED
 Phone 3-2510 — Muleshoe
WILLIAMS SEED CLEANING CO.

SINGLETON FUNERAL HOME
 24 HOUR AMBULANCE SERVICE
 PHONE 2860 MULESHOE

Robinson's Boot Shop
 127 Main—Phone 7219
FINE WESTERN WEAR
 Men, Women & Children
SHOE REPAIR SHOP
 Ike Robinson
 Serving Muleshoe since 1925.

For the Best Farm Loans and Home Loans
 Contact
POOL Insurance Company
 Phone 2950
 Muleshoe