



FFA GALS — Muleshoe Chapter Future Farmers of America members have named their two top lassies for the year, Sweetheart and Plowgirl, and here the chapter president, Morris Lewis, poses with the two girls, Elizabeth Burris, Sweetheart, and Pam St. Clair, Plowgirl. (Journal Photo)

Dry-Weather Route To Portales Due To Open Before End Of Year

If all goes well, Muleshoe will have a "dry-weather" route to Portales, N. M. before the end of the year.

That's the word of County Judge Glen Williams who says County Commissioner Loyd Stevens has been working "night and day" to sign up property agreements along the Texas side of the route.

When completed, the route will whittle at least 15 miles off the present route which now goes through Clovis.

Backers of the route long have seen the need for such a route, but efforts to secure such a road in the past have been unfruitful until recent months. Eventually, many people along the route believe, U. S. Highway 70 will be re-routed and Clovis will be omitted from the highway.

Meantime, Roosevelt county, N. M., has virtually completed its portion of the road, cutting

through several ranches and farms to make a direct route to the Texas line, Judge Williams said. The route will be

graveled on the New Mexico side and probably will be paved "before many months," New Mexico officials said this week.

Commissioner Stevens has been busy for several weeks, signing up easements. All but

one piece of property has been signed up, and suit on that property will be held this week, the judge said.

The land owners have granted free right-of-way strips through their properties in areas where no road now exists.

The judge said the county will be fencing "on ranches which will be traversed by the road."

"It's just a country road at present," the judge said, "and no plans are being made for paving at the present time."

However, paving probably will come later, and in all probability the highway will be paved within a year or so.

The new route will follow FR 1760 extending west from Muleshoe. However, where the pre-

sent 1760 route turns north at the Tom Smith corner, the new route will go straight west to the New Mexico Line, a distance of 12 miles. Seven miles of new route will be built.

Much of the road will be 100 foot right-of-way.

"The new route will be of great benefit to Texas students attending Eastern New Mexico University in Portales," the judge said. "This is especially true in summer time when more students commute to ENMU. Even a dirt road will be of great benefit to such students."

Cotton, Grain Sorghum Harvest Slowed By Rains; Cool Weather

Farm work slowed to a crawl this week in West Texas and the Muleshoe area as showers and cool weather dominated the weather picture.

Virtually all farm work had halted after showers had spotted the area Sunday, Monday and Tuesday. Combines in some sections were stalled in grain sorghum fields after 21 inch of rain had fallen in Muleshoe.

Cotton was making little or no progress, but farmers were pleased that temperatures rose well above the freezing line. A sudden dip in the mercury last week had threatened the cotton crop, but apparently the 34-degree reading did not seriously

effect cotton. A few farmers reported scattered damage.

"For the most part," one farm expert said, "the cool weather and the rains have virtually stopped all growth and gins have had little to do since last week. However, I do not think the weather has damaged cotton, although the crop badly needs lots of sunshine and warm weather in order to mature properly."

Farmers are hoping that the freezing weather will not show up before the end of the month, in which case the crop would have time to mature.

Maize harvest was slowed throughout the West Texas area, and along with it, small-grain seeding, fall plowing and cotton-stripping.

Planting of wheat and oats also has slowed, and harvest of tomatoes for the commercial market, usually in full swing at this time of October, had also slowed to a crawl.

Meantime, the weather continued cool, although the mercury did not sag to last week's

See HARVEST, Page 5

Crane Contest Is Set

Muleshoe Jaycees are kicking off their annual sandhills crane hunt, and this year's event will be the "biggest" ever, promises Dr. Jerry Gleason, general chairman. The contest this year, too, will be publicized state wide, and will offer an attractive shotgun to the hunter who bags the biggest sandhills crane during a 30-day period.

In addition, the club will sponsor a daily hunt, the killer of the biggest bird taking half the day's entry fees.

Entry fee will be \$1 per person per event. Sponsors pointed out that this is the only area in the world where sandhill cranes can be hunted, and the contest here is being patterned after a similar project for duck hunting in Michigan.

Sponsors say sandhill cranes number 130,000. The official weighing station will be set up at Muleshoe Farm & Ranch Store. Jaycees also will provide hunting areas for those who wish to hunt, and will serve as guides for out-of-town hunters.

DeShazo To Serve \$1 Chili Supper

The Mary DeShazo Parent-Teachers Association will have a chili supper Friday at 5:30 p.m. in the high school cafeteria.

Admission for the supper will be \$1 for adults and 50 cents for children under the eighth grade, according to Mrs. Charles Waggoner.

Temperatures

	High	Low	Rain
Oct. 3	76	41	
Oct. 4	69	40	
Oct. 5	57	43	.15
Oct. 6	68	51	
	Sunrise	Sunset	
Oct. 7	6:46	6:24	
Oct. 8	6:47	6:23	
Oct. 9	6:47	6:21	
Oct. 10	6:48	6:30	

Representative George Outlines Amendments; He Favors 1, 4 and 10

State Representative Jesse T. George, youngest member of the Texas Legislature and Bailey County's Austin lawmaker, was the principal speaker of the Muleshoe Rotary Club, Tuesday. George concentrated his remarks on the 10 proposed constitutional amendments to the state constitution to be submitted to Texas voters on Nov. 2.

In beginning his talk, George commended the citizens of Bailey County for their support to the defeated Sept. 7 proposed constitutional amendment which would have increased the Texas Senate from 31 to 39 members. "Your outspoken interest in the rural portion of our State is commendable. I regret that more of our rural citizens did not participate in the support of this vital piece of legislation," George added.

To assist in the understanding of the forthcoming amendments, Representative George distributed mimeographed copies of the amendments to Rotarians and visitors. George presented an informative background on 6 of the amendments, giving both pro and con views on each.

the state ad valorem tax by 5 cents on the \$100 valuation, would, if adopted provide that 10 cents of each \$100 valuation be used for building construction by state institutions of higher learning. George emphasized that the adoption of this amendment, "would change the present method of allocation of the tax from the amount based on average enrollment over the five years preceding the date of allocation to an amount 90 percent based on projected enrollment and 10 percent on additional space requirements needed."

Amendment No. 4, authorizing a four-year term of office for the governor and all other state officials elected in statewide elections, would give the people of Texas more efficient officers, and would serve as a stimulant to voter interest as governors would run in non-presidential years. George pointed out. He continued by saying, "Thirty-five of the fifty states, including Texas' neighbors of Oklahoma, Louisiana, and Colorado have four year terms for governor." George further added, "Opponents to

See GEORGE, Page 5

Community Center Sought By Jaycees

Muleshoe Jaycees are launching one of the most ambitious projects they have yet undertaken.

They will sponsor a campaign to build a community center in Muleshoe. Announcement that this active Muleshoe club for young men will sponsor the community center idea was made Wednesday, following a meeting of the Jaycee board Tuesday.

A spokesman for the group explained the drive for a community center like this: "We figure that as small communities like YL and Maple can have community centers, then we figure it's high time Muleshoe came through with a first-class community center, too."

The spokesman pointed to such towns as Dumas and Hereford, both of which have complete community centers which are in constant use for various large or small meetings. Hereford's center accommodates some four different meetings at a time, and Dumas has recently opened a new and elaborate center.

The Jaycees will ask other civic clubs and organizations to join with them in promoting a community center, it was explained. "We hope that many individuals and organizations

shoe came through with a first-class community center, too."

The spokesman pointed to such towns as Dumas and Hereford, both of which have complete community centers which are in constant use for various large or small meetings. Hereford's center accommodates some four different meetings at a time, and Dumas has recently opened a new and elaborate center.

The Jaycees will ask other civic clubs and organizations to join with them in promoting a community center, it was explained. "We hope that many individuals and organizations

See JAYCEES, Page 5

in
muleshoe
With the Journal Staff

Muleshoe Jaycees are whole saling picture postcards of the Muleshoe Mule memorial. The cards are available at most business establishments in Muleshoe with Pat Glover as general chairman. The Jaycees also have announced they will have a booth at the annual school carnival to be staged as a Halloween attraction.

Mr. and Mrs. Ed Wallace Enochs, were recent visitors at the Sam Rayburn library in Bonhan. Admission to the library is free between 10 and 4 o'clock. Sunday hours are 2 p.m. until 5 p.m.

Freddy Locker, 9-year-old son of Mr. and Mrs. Morgan Locker, is in Medical Arts Hospital in Lubbock, undergoing tests and treatments in an effort to save sight in his left eye. He was injured when hit in the eye with a rock last Sunday while playing.

Henry Redwine entered Me-See MULESHOE, Page 5

Abernathy Man Is Best Guesser

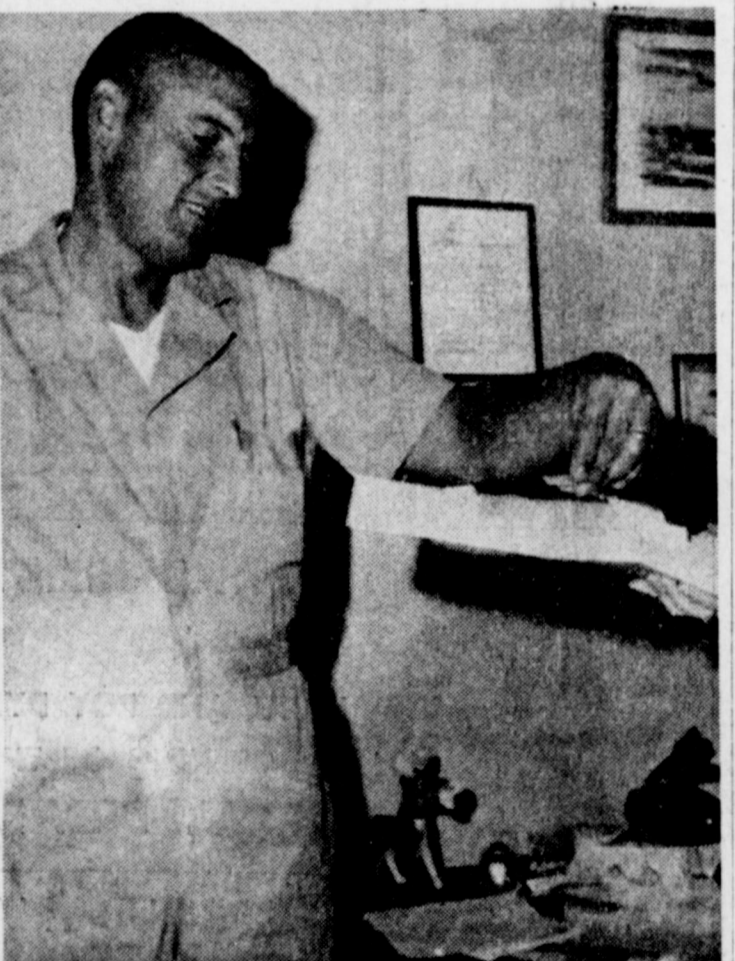
An Abernathy man hung up the first perfect score for the season in the Journal's weekly football prognostigating contest, a check of entry forms revealed Wednesday.

He is Joe Dell Hester, 845, Abernathy.

And only a shade behind was James Roy Jones, 1804 W. Birch, Muleshoe. This was Jones' second time in a row to finish in the paydirt; a week ago he won first place in the guessing game.

Hosier picked all nine of the winners in the college series, and set the Texas Tech victory at 20-16 over Texas A&M. Jones missed two of the winners and he was only nine points off on the Tech-A&M game.

The contest continues this week and rules can be found on page 3, Sect. B.



WINNER PICKED — Allen Haley drew this week's winner in the "Weekend at the Ramada" contest, sponsored by 13 Muleshoe firms. The winner will be revealed next Sunday. Meantime, the contest continues with these sponsors: Perry's, Cashway Grocery, Plains Auto Parts, L&H Grocery, Brock Motor Co., Beavers Flowerland, Dari Delite, Ray Griffiths & Sons, Cobb's, Anthony's, Richland Hills Texaco Station, Tri-County Savings and Loan, and the Fashion Shop. (Journal Photo)

Mules, Mustangs Tangle

Two undefeated teams Muleshoe and Denver City will tangle at Benny Douglas stadium here tomorrow night as Muleshoe reaches the halfway point in its 1965 season. This will be the Mules' final non-conference game after this week's game and an Oct. 15 open date, the Mules will buckle to the serious business of winning — or trying to win — conference battles.

Muleshoe came through with a victory last Friday night over Friona — a 21-0 win. At the same time, Denver City was downing Littlefield Wildcats 14-6 on the Littlefield home pasture.

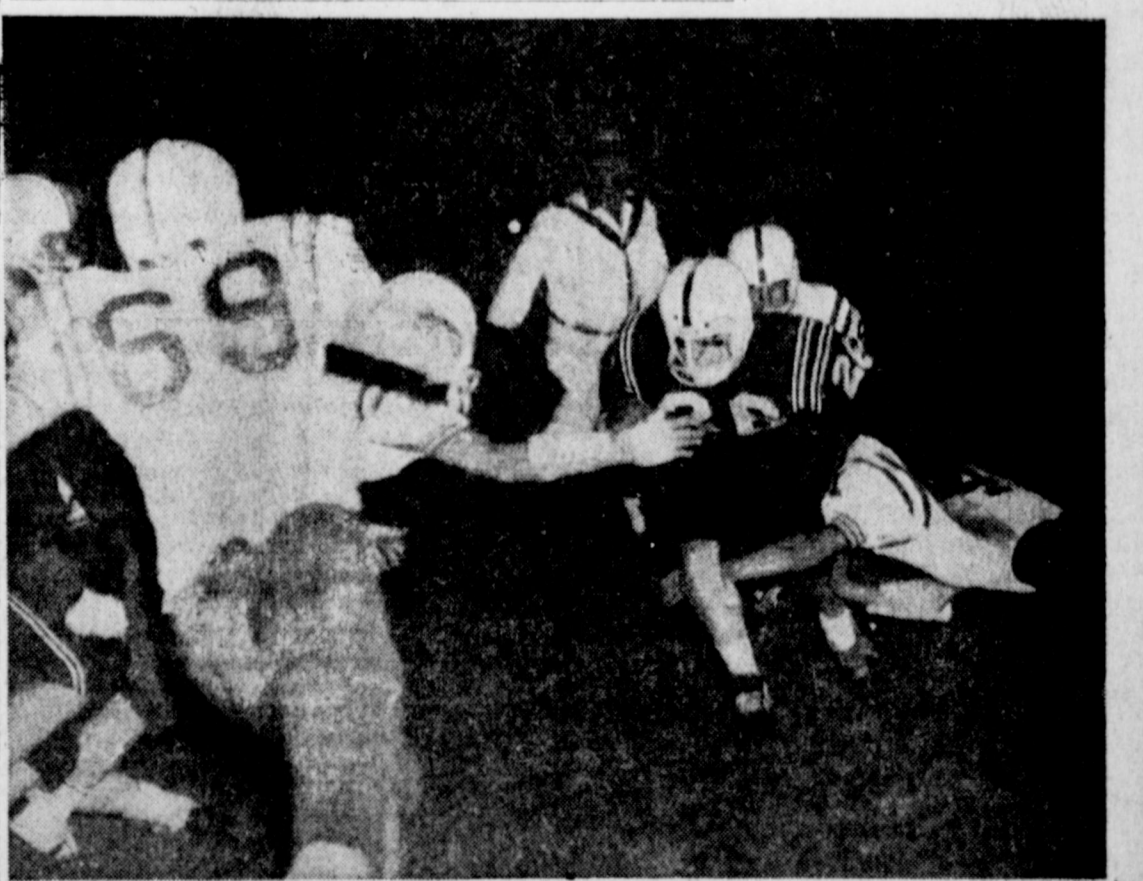
Although the Wildcats made several good plays and got at least two major breaks, they were unable to walk with the ball often enough.

Comer led the Mustangs with 36 yards in eight carries, statistics of the Littlefield-Denver City setto revealed. Sharp got 26 in 6 attempts and Mitchell netted 20 in 15 tries. Mitchell completed two of three passes good for 77 yards, while left-hander Young threw three times completing one good for 47 yards.

In Friona, meantime, Muleshoe was showing its best brand of ball for the season. From the start of the game, the Mules' superiority glowed.

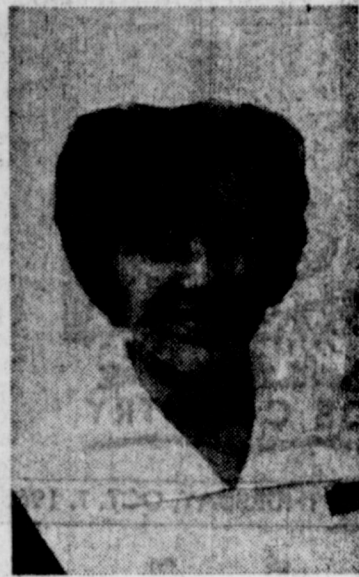
Since tomorrow night's game is also a non-conference affair, Friday night's engagement also will start at 8 p.m. After this week, all games will start at 7:30 since all will be conference battles.

★ ★ ★



ADAMS SCORES — Muleshoe rung up a couple of TDs at last Friday night's game with Friona, and this is Joe

Adams, HB, going across the goal line from the 3 for the first one. (Photo By Royce Blackshear)



Sandra Jackson Completes Course

Sandra Jackson, daughter of Mr. and Mrs. A. L. Jackson, Muleshoe, has finished 36 weeks of required college courses, and started the second part of the nursing curriculum — 90 weeks of intensive, comprehensive nursing courses at the Northwest Texas Hospital School of Nursing, which is accredited by the National League of Nursing and the State Board of Nursing Examiners. Upon completion of this final phase of nursing Miss Jackson will be eligible to take the State Board of Nursing Examination for licensure as a Registered Nurse.

The twilight insect known as the walking stick is the skunk of its small world. Whenever menaced by an enemy, this tiny wingless creature ejects a vile spray from glands in its thorax.

FTA Works On Yearbooks

Everyone was reminded to keep in mind the District Convention to be held in Plainview, Dec. 11 at the Future Teachers of America which was held Monday in the High School, according to Ruth Ann Duckworth.

Joe Putman, president presided over the meeting in which a chaplain was voted for. Also those wishing to run for Miss F.T.A. or Mr. F.T.A. are urged to turn in their names to Kerry Moore.

The District Meeting Planning Session is to be held in Plainview on Oct. 23. Those wishing to go are asked to contact Kerry Moore.

Yearbook Committee is scheduled to meet Wednesday to discuss plans for 1965 F.T.A. Yearbooks. The committee is made up of Ruth Ann Duckworth, chairman, Mike Bryant, Jeannie King, Sharron Hutton and Vicky Hennesson.

Constitution Committee are also scheduled to meet soon which include Charles Murray, chairman, Linda Griffiths and Charlotte Barnett.

A salad supper is to be given Nov. 22.

Fireworks are as old as civilization, the National Geographic says. Combustibles similar to those exploded on the Fourth of July were made by ancient Chinese and Indian fire-makers with charcoal and saltpeter. The later addition of sulphur produced gunpowder long before the invention of the gun.

SHOP MULESHOE FIRST



Today's Meditation

By Rev. Clifton Corcoran

The world famous scientist wrote a series of inspiring essays called "Prayer is Power". Out of his rich experience this research expert proved that in the life of everyone there is a strong force on which each one of us can rely in his hour of need. We call that force prayer. Why does it get results when everything else fails? Because it is an appeal to God. It is an appeal for help, for light, for guidance. Holy Scripture is filled with proofs and assurances of the power of prayer. Christ tells very clearly, "If you ask the Father anything in my name, He will give it to you. Christ urges with direct appeal, Ask and you shall receive. Why have we failed to follow the God-Man's directions? Don't we believe in the power of prayer?"

Too many people have a false idea about prayer. They feel that it is a ritual for Sundays and for church only. This thinking is all wrong. It is nothing like Christ said—Pray always. Besides, prayer is nothing but simple communion with God heart to heart speech with our good God.

It goes without saying that prayer requires preparation. It is a powerful statement and it affects the world condition in our times; but the Holy Bible says, with desolation is the whole world made desolate because no man thinks with his heart. Our soul demands an atmosphere of interior calm. Faith gives us this great gift, gives us this great gift, but God expects us to be alert. Many spiritual writers have insisted on an easy simple practice of praying to God. These short ardent exclamations of love and confidence in God. For example, the words of Thomas, the doubting Apostle, My Lord and My God. Or the easy generous wish—All for Christ. This type of prayer suits the

Copleys Return From New Jersey, Virginia Trip

Mr. and Mrs. A. W. Copley have returned to Muleshoe from visits with their son, Lt. Don W. Copley and family in McGuire A.F.B., New Jersey; their daughter and family, the R. R. Calkins in Triangle, Va.; Mrs. Copley's sister, Mrs. Roy Elrod and Lt. Eol. Elrod also of Triangle, and Mrs. Copley's brother and wife, Mr. and Mrs. Graham Chandler in Clarks-ville, Va.

They visited in Richmond, Va. with Mr. Copley's mother who celebrated her 88th birthday Sept. 21, and his two sisters and two brothers and other relatives in Richmond and South Boston.

Before returning to Teaxs, the Copleys went sight-seeing in Washington, D.C.



For sale. My home W. B. McAdams. Could be made 2 bedroom and den or 3 bedrooms. Carport, fenced in back yard with shrubs. Would carry a good loan. FHA appraised. Located at 305 Chicago St. Lenuu Addition. 8-40-tfc

Card of Thanks
We greatly appreciate the sympathy, food, flowers and kindness expressed by our friends during the loss of our beloved wife, and mother
God Bless You All
Tom Vitela & family
Sudan
40t-ltc

adult and the child alike. It is always answered because God always hears the appeal of His children and in an attempt to carry out the wishes of our King, Christ — to pray always.



NURSING HOME — The Muleshoe Nursing Home may be a rest home but it is also a working place for some of its residents, like Claudia Lite, Flora Hardin, Jessie

Lewis and Elizabeth Morrow (l-r) shown here. The women are doing embroidery, applique work, piecing quilts and crocheting. (Journal Photo)

Tower Airs Views On DC Home Rule

By Sen. John G. Tower
During recent weeks the Congress has been especially concerned with the question of Home Rule for the District of Columbia. This question of Home Rule for our nation's complex and emotional matter. Unfortunately, rather than being considered dispassionately and calmly, it has been con-

sidered incorrectly as a matter of civil rights and voting rights and freedom of choice and a dozen other catch phrases and principles upon which all Americans agree.

What must be remembered is that the District of Columbia is unique in America. It is the seat of the government that investigates, legislates and operates for all Americans.

The national government was moved to the District of Columbia with the specific intent of removing it from normal status. It was moved after the State of Pennsylvania was unwilling or unable to protect the Congress against mobs and demonstrations in Philadelphia.

This intended uniqueness of the District was carefully provided for in our Constitution which gives the nationally-elected Congress sole authority to legislate for the nation's capital.

Of course, Congress has an obligation to govern the District well, and the overwhelming evidence is that it has done just that. Of course, residents of the District have citizen's rights, and a Constitutional amendment has granted them the right to vote in Presidential elections.

But, the rights of citizens of the District of Columbia residents of their own choice do not and must not override the rights of the citizens of the nation. The District of Columbia does not belong only to its often temporary residents. The District of Columbia belongs to all Americans. Therefore, the final governmental decisions for the District must remain with the elected representatives of all Americans — the Congress.

Improvements can be made in the way our nation's capital is governed. Its streets and law enforcement can be improved. Local participation in its affairs can be increased. But, its unique status as the property and responsibility of all Americans should not be circumvented.

Clayton Places Third In Meet

Attending the Texas Muzzle Loading Association at San Angelo Friday, Saturday and Sunday were Mr. and Mrs. David Wyer, Mr. and Mrs. Ray Clayton and Gene Roberts.

Clayton won third on 200-yard targets and third on 50-yard missing out match.

Sixty-seven contestants from all over the state attended the meet.

James Fowlers Visit Las Vegas

Mr. and Mrs. James Fowler of the Fowler Automotive here, left Monday morning from Amarillo by plane enroute to Las Vegas, Nevada where they are spending a three-day all expense paid trip courtesy of American Parts Company.

All men going from the company will be attending school in the mornings. They will attend shows, enjoy entertainment and various other scheduled events, according to Mrs. James Fowler.

Classifieds Get Results!

Buzzzzzbusy,
busy, busy people find FLORISTS fast in the **YELLOW PAGES.**
Where your fingers do the walking.

CONGRATULATIONS TO HAZEL AND ROY DYER ON THE OPENING OF THE NEW CORRAL DRIVE IN

WE ARE PROUD THAT WE DESIGNED AND EQUIPPED THIS FINE RESTAURANT

LOFLEY DISTRIBUTING COMPANY
2018 4th St. LUBBOCK, TEXAS PH PO 2-1059

MATERNITIES? LATEST FALL
DRESSES . FORMALS
LINGERIE . SLACKS
TOPS

MATERNITY SHOP
1010 THIRTEENTH DOWNTOWN
MONTEREY CENTER 50th AND FLINT
SUBURBAN
LUBBOCK, TEXAS

IF YOUR HAIR IS NOT BECOMING TO YOU... YOU SHOULD BE COMING TO US!

WELLBORN'S BEAUTY SHOP
101 Ave. J. Ph. 3-4040

This is a Special Invitation to our Showing of the Beautiful new 1966 CHEVROLETS

Thursday, October 7
CROW CHEVROLET CO.



BASKET WEAVING — Lance Puckett and Dean Gardner are displaying baskets which they are making under the supervision of Barbara Puckett. Some of the boys are making bird houses and other baskets. Eight boys are entered in the project. (Journal Photo)

ThreeWay News

By Mrs. H. W. Garvin
Mrs. R. L. Reeves is in Methodist Hospital, Lubbock, and will undergo surgery Tuesday. Mrs. Fred Kelley underwent surgery in Green Memorial Hospital last Tuesday.

Mrs. H. W. Garvin was hostess to a Tupperware party Tuesday. Wilma Polson of Muleshoe is the dealer. Several enjoyed the party.

W.M.S. of the Maple Baptist Church met Tuesday morning in the home of Mrs. C. A. Petree. Mrs. Petree brought the lesson from the mission study book "Go Home and Tell." Those present were Mrs. E. M. Lowe, Mrs. A. E. Robinson, Mrs. E. A. Wright, Mrs. Dennis Herd and the hostess, Mrs. Petree.

Those visiting in the Bill Dupler home Wednesday night were Mr. and Mrs. R. E. Sowder, Mr. and Mrs. S. E. Kelly from

Gib Dupler and children, Donald Peel and Janet Stratton, Muleshoe. It was the birthday of Mary Jo Dupler and her grandmother, Mrs. Sowder of Muleshoe.

Mr. and Mrs. Sammy Sowder, born Wednesday night at Portales. He weighed 6 lbs. 5 oz. and is named Robert Allen. The State Line Butain Co. held their annual meeting Tuesday at the school gym. A good crowd was in the Three-attended and had a nice meeting. Several gifts were given.

The Three Way Lions Club had a pancake supper before the football game Friday night at the school cafeteria.

The Three Way football boys won the game over Bula Friday night.

There will be a shower for Mr. and Mrs. Dutch Harrison Friday afternoon in the Palu Carlie home. The Harrisons lost their furniture and all dishes and linens in a fire. Mrs. Harrison is the former Shirley Reeves.

A banana plant requires nine to 12 months of sunshine and also frequent, heavy rains before it bears marketable fruit.

Farm Bureau To Name Eight New Directors

Farm Bureau will name eight new directors and members will draw for a \$150 jackpot when the Bailey county organization holds its annual session tomorrow night at 7:30. Joe Wheeler, president, announced. The session will be held in the junior-senior cafeteria.

Walter Sains Entertain Guests

Mr. and Mrs. Walter Sain had week-end visitors in their home. Walter Sain's brother and family were visiting here from Dodson. Mr. and Mrs. Doyle Sain. Also his mother, Mrs. Mrs. John Sain and three sisters, Mrs. George Province, Clarence Jones and Mrs. Nan Gatlin.

According to Mrs. Sain the family had a nice time visiting throughout the day.

Directors are to be named for posts now held by Arlen Simpson, Ernest Ramm, Kenneth Powell, C. E. Mason, E. M. Lackey, Ruel Kirby, Glen Harris and Les Bruns.

Refreshments will be served. Meantime, Farm Bureau Women's committee will meet for a Dutch lunch at Paul's restaurant at 1 o'clock today, according to Ann Little, chairman of the women's group. All women are urged to attend.

Refusal to share food is a grave sin to Africa's Bushmen. These nomads eke out a bare existence from the harsh, barren expanse of the Kalahari.

The rapid rise in consumption of coal and oil has increased the amount of carbon dioxide in the earth's atmosphere. Since carbon dioxide helps the earth to hold the heat of the sun, some scientists predict that the earth's temperature will increase appreciably in the coming years. This might have wide-ranging effects, such as the melting of much polar ice and a rise in the sea level.

French trains are carrying 20 percent more passengers and 70 percent more freight than before World War II. Because of technical innovations, however, France's national railway is doing the job with 150,000 fewer men.

BE SURE TO SEE OUR SHOWING THURSDAY, OCTOBER 14 OF THE NEW "1966" OLDSMOBILE and BUICK Brock Motor Co. Inc.



450 Physicians Ordered To Take Physical Exams

About 450 physicians are currently being ordered to take physical examinations by Texas draft boards, Col. Morris S. Schwartz, state Selective Service director says.

This is part of the preparation for anticipated calls for doctors, dentists, and veterinarians to enter on active armed forces duty in January.

The Texas share of a national call for 1,529 physicians, 350 dentists, and 100 veterinarians has not been received, Col. Schwartz said. The Texas quota is expected to be about 5 per cent of the national total, he said.

Some dentists and veterinarians will also get physical examinations, but not so many as physicians because only those born in 1937 or later will be affected by the order at this time.

Local draft boards have been directed to obtain current classification information from all physicians available in classes I-A and I-A-O and deferred in classes I-A, 2-S, and 3-A.

After receiving this information, the boards will reopen all these cases and consider them anew. This processing, including any appeals, is scheduled of completion by Dec. 1.

er. Betty Wuerflein and son, iel and Brenda Lackey. Members were Alma Turner, Betty Jackson, Ruth Holt, Sue Holt, Ruth Lackey, Jean Allison, Florene Platt, Beth Skipworth, Hazel Wesh, Gaynell Pitts, Zelma Crenshaw and Dolores Dancan.

Basket Weaving Is Scout Project

Taking basket weaving under the direction of Barbara Puckett are Lance Puckett, Dean Gardner, Mike Duncan, Larry Shafer, Woody Parker, David Parker, John Garth and Donnie Puckett. The boys are with Troop 620 of the Boy Scouts.

The boys delivered circulars for Montgomery Ward and earned the money to buy the basket weaving kits. Each boy will weave three different items.

TO SHOW FAT LAMB — Future Farmer Steve Childers, 17, son of Mr. and Mrs. Drew C. Childers of Ferris, will show this fat lamb in the Junior Lamb Show at the Fair of Texas in Dallas. Looking on is Jo Ann Pugh, 18, daughter of Mr. and Mrs. Odie Pugh of Ferris, Sweetheart of the Ferris FFA Chapter. (AP Wirephoto)

Halloween Party Planned By Club

Plans are being made for the Halloween Tacky Party to be held Oct. 23 for the members of the Pleasant Valley Social Club. The club met Thursday night in the Pleasant Valley Community Building with Lenore Wells as hostess and Florene Platt, president calling the meeting to order.

Committees were appointed for cleaning, decorating, refreshments and entertainment

for the Halloween party. All favorite games will be played. The annual anniversary dinner was discussed and a committee will report next meeting on restaurant accommodations.

Gaynell Pitts and Ruth Lackey opened their birthday gifts from their secret pals.

Lenore led the group in two games, with the Sad Soc team winning the most points.

The next meeting for the club will be Oct. 13 at the Community Center at 2:30 p.m. with Ruth Lackey as hostess.

Attending the meeting were Katie Roubinek, Bonnie Haber-

BE SURE TO SEE OUR SHOWING THURSDAY, OCTOBER 14 OF THE NEW "1966" OLDSMOBILE and BUICK Brock Motor Co. Inc.

CONGRATULATIONS TO THE NEW Corral Drive Inn
"A BEAUTIFUL BUILDING"
GLAD WE HAD A PART IN IT
READY MIX CONCRETE COMPANY
CLOVIS HYW. MULESHOE PHONE 3-4300

October

is **ANTHONY MONTH**

special month of super values

100% WOOLENS AND WOOL BLENDS 56"-60" WIDE

2.98 - 3.98 Quality Special October Price

2 YDS. 3.50

Pastels, Deep Tones in Flannels, Crepes, Suitings, Diagonal Weaves, and Novelties

All First Quality

Shop Save at Anthony's

Nationally Famous

SPENCER'S CHILDREN'S Cotton Knit SLEEPERS

Sizes 0 - 1 - 2 - 3
2 Pair in book fold pack. 2-Piece style

2 FOR 1.99

Famous Spencers quality made sleepers. 100% soft combed cotton. Easy on two piece style with non slip soles on feet. Approved by Good Housekeeping, commended by Parents Magazine.

43 YEARS OF VALUE LEADERSHIP
300 STORES, 21 STATES

CORDUROY CAPRIS

Choose **WIDE WALE** or **PINWALE**
Sizes 10 to 20. Black or Colors.

2.57 .. 2 PAIR \$5.

Slim trim-fitting capris expertly tailored of fine combed corduroy. Colors: black, bright red, turquoise, brown. Big savings at Anthony's.

REMEMBER TO LAY-A-WAY TODAY AT ANTHONY'S

October Special Savings at Anthony's

New Knit-Fit Lined GLOVE LEATHER LOAFERS

Right in style
Right in price

4.66

2 PAIR \$9.

Right in style—Right in price. This sleek new loafer will be a fashion favorite. The new innovation laminated lining add extra comfort fit. Composition soles that will give long satisfactory wear. Size 6 to 9 narrow, 4 1/2 to 10 Med. width.

Committee Named To Study Schools

By Vera Sanford
Texas Press Association

AUSTIN — A governor's committee soon will embark on the most-ambitious effort yet undertaken in Texas to find what's wrong with the public schools and to make them better.

Governor John Connally rapidly is completing appointments to his 15-member committee which was authorized by the 59th Legislature. It is expected to be in operation within the next month.

Activities, to a large extent, parallel those of the earlier Governor's committee on Education Beyond the High School which probed needs of higher education. However, this new assignment necessarily is more massive.

A three-year study of the public school system and formulation of a long-range plan to

make Texas "a national leader in educational aspiration, commitment and achievement" was directed by the Legislature. Connally insisted the study requirement be made a part of the school teacher pay act of 1965.

State financing to the tune of \$100,000 this year and \$150,000 next year is provided for — with additional funds expected from federal sources.

Every state agency and institution and all state and local school officials are directed by the Legislature to cooperate with the committee in a "pervasive inquiry into every facet of Texas public elementary and secondary education."

Meanwhile, the Coordinating Board for Texas Colleges and Universities — a product of the earlier higher education study — has set October 18 for its next meeting here. Session will be the powerful board's first real chance to get down to planning for higher education needs since its organizational meeting September 20.

Attorney General Rules — A person placed on probation for first-offense driving while intoxicated is not subject to automatic suspension of driver's license, Atty. Gen. Waggoner Carr has ruled.

In an opinion requested by Fort Bend County Atty. R. A. Stallings of Richmond, Carr concluded that since a proba-

tioned sentence is not a final conviction, there is no automatic license suspension. If probation is revoked and judgment becomes final, the license would be suspended at that time, Carr said.

Opinion settled widespread speculation on terms of the new Misdemeanor Probation Law.

In separate opinion, Carr held a newspaper printed by contract and mailed in one county for distribution in another county legally is eligible to publish constitutional amendment advertising. Secretary of State Crawford C. Martin requested the opinion, referring specifically to the Ganado Tribune, circulated in Jackson County, but printed and mailed in Lavaca County.

Cancellation Sought — Colorado City and Mitchell County filed suit in 53rd District Court in Austin to cancel the permit for the Robert Lee dam project on the Colorado River.

Contention is that it precludes the construction of a dam to supply Mitchell County needs and hurts their hopes for future development.

Dam Permit On Nueces — An application has been filed with the Texas Water Rights Commission for a proposed dam on the Nueces River at the Smyth Crossing site in the Zama District To. 1.

Application proposes a reservoir of 66,670 acre-feet at nor-

mal spillway level, 164,350 acre-feet at service spillway crest. A slow release of flood water, is proposed.

Reservoir Refused — Texas Water Rights Commission denied application for \$4,750,000 reservoir on Village Creek near Kountze in Hardin County.

Commission acted after opponents testified the project would mean an added tax burden of \$308,992 a year for property owners in the southeast Texas area and that additional 33,000 acre feet of water which the dam would impound will not be needed for more than 30 years.

Advocates were advised they could reapply for creation of a district empowered only with making surveys to determine feasibility or to develop plans for a water supply program if desired.

Appointments — Glenn Biggs, Abilene realtor, now is executive administrative assistant to Speaker of House Ben F. Barnes.

Begg's main responsibility will be management of activities involving interim legislative committees and implementing work of Texas Legislative Council, research arm of the Legislature.

Barnes also appointed five lawmakers to the important committee to study criminal law revision. They are Reps. Dudley Mann of El Paso, Wal-

ter Knapp of Amarillo, Rayford Price of Frankston, Joe Shannon of Fort Worth and Jack Woods of Waco. Group will study punishment, penalties, sentence and definition of crimes. Also, it will review related federal laws and laws of other states.

Soldiering — Draft quotas have doubled and local boards no longer are as liberal in deferment policies for students.

Col. Morris S. Schwartz, state Selective Service director, still is recommending deferment of for 12 more semester hours.

A student is recommended for deferment only if there is evidence to prove he is making progress toward his bachelor's degree in four years, or in five if the degree requires additional study, Schwartz said.

A student may take even less than a full load if he is able to complete his college training in four or five years.

Colonel Schwartz said draft headquarters would not recommend deferment of students taking less than nine hours.

Those who drop out of school, can expect termination of deferments.

About 450 Texas doctors have been ordered to take required physical examinations by Texas draft boards as part of anticipated calls for doctors, dentists and veterinarians to enter active armed forced duty in January.

At the present time, only those born in 1937 or later will be affected.

Communicable Disease — As the state's population increases, the number of communicable disease cases increase. Gonorrhea accounts for more illness than any other disease plaguing the state's inhabitants, says the State Department of Health and this year's total tops last year's by almost 1,000.

Strep throat is second behind gonorrhea, in the number of cases each year. Only last week, 631 cases were reported, as compared with 759 cases of gonorrhea. Syphilis is third, with 140 cases noted last week.

Business Booming — Texas retail sales for August totalled nearly \$1,300,000,000. This is a record for August, seven percent above August of 1964. So states the UT Bureau of Business Research.

Bureau reported "general optimism" for a high sales level throughout 1965. Christmas shopping season volume is expected to top the 1964 record by five to 10 per cent. Automobiles, major items of household equipment, color television sets and other leisure goods are major contributors to the sales boom.

Quarantine — Texas Highway Department has given notice in 11 Texas counties that soil and soil moving equipment operating in regulated areas is subject to plant quarantine regulation.

Regulations apply to cleaning soil from equipment before it is moved from regulated areas. These counties are Harris, Hardin, Jasper, Jefferson, Liberty, Newton, Orange, Tyler, Bexar, Montgomery and Dallas.

Big Game Season — Hunting season for big game opened — for bow and arrow hunters and antelope shooters — last weekend.


Regular season begins November 13 for counties under regulatory responsibility of Parks and Wildlife Department and November 16 in those functioning under separate laws.

P&W Commission has held

The Muleshoe Journal
Published each Thursday by The Muleshoe Publishing
304 West Second Street, Muleshoe, Texas
Member of The Associated Press
Entered as second class matter at the Muleshoe Office under act of Congress, March 3, 1897.

SUBSCRIPTION RATES
Immediate Territory \$4
Out of Territory \$4
Combined with Bailey County Journal
Both papers in territory \$5
9th Papers outside territory \$6
Advertising Rate on Application.

L. B. HALL Publisher
RAMON MARTIN Editor
PAT JOHNSON Woman's Editor
JAY SPAIN Mech. Supt.



CO-OP Chatter by FARMERS CO-OPERATIVE ELEVATOR

109



FARMERS CO-OPERATIVE Elevator
Fertilizer • Grain • Seed
H.L. WARD, Manager
MULESHOE, TEXAS



A BAND — Out in front of the Kilgore College Ranger Band will be pretty Rosemary Smith, a graduate of Union Grove High School and holder of 18 medals for twirling and clarinet solos. The 90-member band makes appearance all over the U.S. with the famed Kilgore Rangerettes. In addition to serving as drum major, Rosemary will be featured vocalist for the Kilgore College Stage Band. (AP Wirephoto)



The tiger scores again!

It's dramatically fresh and new, but still very, very Pontiac. That's written all over it, from the no-doubt-about-it new front end to the trimly tailored rear. (Did you think for one minute that we'd leave out the unique Pontiac styling character you like so well? Never!)

Another nice thing about the '66 Pontiacs is that there are more of them—3 new super-sumptuous Broughams and 4 Venturas. And, of course, for you other Pontiac lovers we've got a bright new Grand Prix, new Catalinas, new Star Chief Executives—all with new Wide-Track ride and improved cat-



and again!

You're looking at the newest thing in tigers. Sleek, lean-muscled new style. New power that starts with a revolutionary new kind of six and ranges through four V-8's. Crisp curves shape the new silhouette, and the sports coupe sports a smartly recessed rear window.

Pontiac's revolutionary overhead cam six acts more like a V-8, looks like no six you ever saw, and still remembers that saving is what six buyers buy sixes for. Delivers 165 hp (or you can specify the sports package which includes the 207-hp version). And it's standard on all Tempests, Tempest Customs and Le Mans. V-8's? Up to 360 hp in the GTO. See all the '66 tigers in tiger country today. **Wide-Track Pontiac/'66**

Come to tiger country. See all the Wide-Track tigers at your Pontiac dealers.

LADD PONTIAC
602 West American Blvd. Muleshoe, Texas

hearings and is setting seasons, bag limits and methods of taking wildlife resources in 35 counties newly placed under its responsibility.

Free hunts of wildlife management areas will accommodate 2,680 hunters this year. Hunters have until October 25 to apply to P&W Department. A public drawing will determine participants.

Agriculture Meet — Representatives of the Texas and U. S. Departments of Agriculture are planning a meeting with Mexican agricultural officials to discuss international pest control problems, mainly pink bollworm.

Mexican violations of the 12 year old international planting and plow-up agreements on cotton have caused serious problems in insect control. Meetings have been set to get working agreements back into effect as a protective measure for the Texas cotton industry.

Dist. Judge John F. Onion Jr. of San Antonio, who helped draft the new state Criminal

code will not affect pre-trial news coverage practices . . . State Savings and Loan Commissioner James O. Gerst approved application for a charter for Trinity Valley Savings and Loan Association in Cleveland and heard contested application for Dallas County Savings Association in DeSoto . . . U. S. Department of Agriculture has authorized emergency loans to farmers in Austin, Camp, Crosby, Donley, Falls, Franklin, Haskell, Reeves, Titus, and Yoakum counties . . . Parks and Wildlife Commission has amended its July 29 South Texas order prohibiting the possession of more than 50 catfish, none of which can be less than 11 inches long, but exempts catfish produced in private waters, so as not to outlaw operations of catfish farmers.

the fastest thing on roots!

TRUDAN I
The true sudan hybrid from Northrup King!

Trudan I grows surprisingly fast . . . reports of one and three inches a day are not uncommon. Harrows after grazing is almost unbelievable; it sometimes grows at almost twice the rate of ordinary sudangrass. Trudan I is very palatable, produces well as a pasture crop, hay, silage, or green chop. Its yield potential is tremendous wherever ordinary sudangrass grows.

MAIZE SEED

NK 310 HIGHEST YIELDER. LATE MATURING. STRONG STABILITY. STURDY PLANTS.

NK 255 NEW. YELLOW ENDOSPERM. MED. LATE MATURING. SMUT RESISTANCE. EXCELLENT STABILITY.

NK 125 COMBINES EASILY. SMUT RESISTANCE. LARGE HEAVY, SEMI-OPEN HEAD, UNIFORMITY.

PLUS MANY OTHER VARIETIES


WAYNE PETERSON
RT. 1 BOX 37 MULESHOE PH 965-2371

You **PONTIAC** will give you better service with **AMALIE** 100% Pure Pennsylvania Motor Oil

Why? Today's high compression engines running at high or low speeds; running in grueling stop and go traffic require the superior oilness, the heat resistance found only in **AMALIE** Pennsylvania Oil.

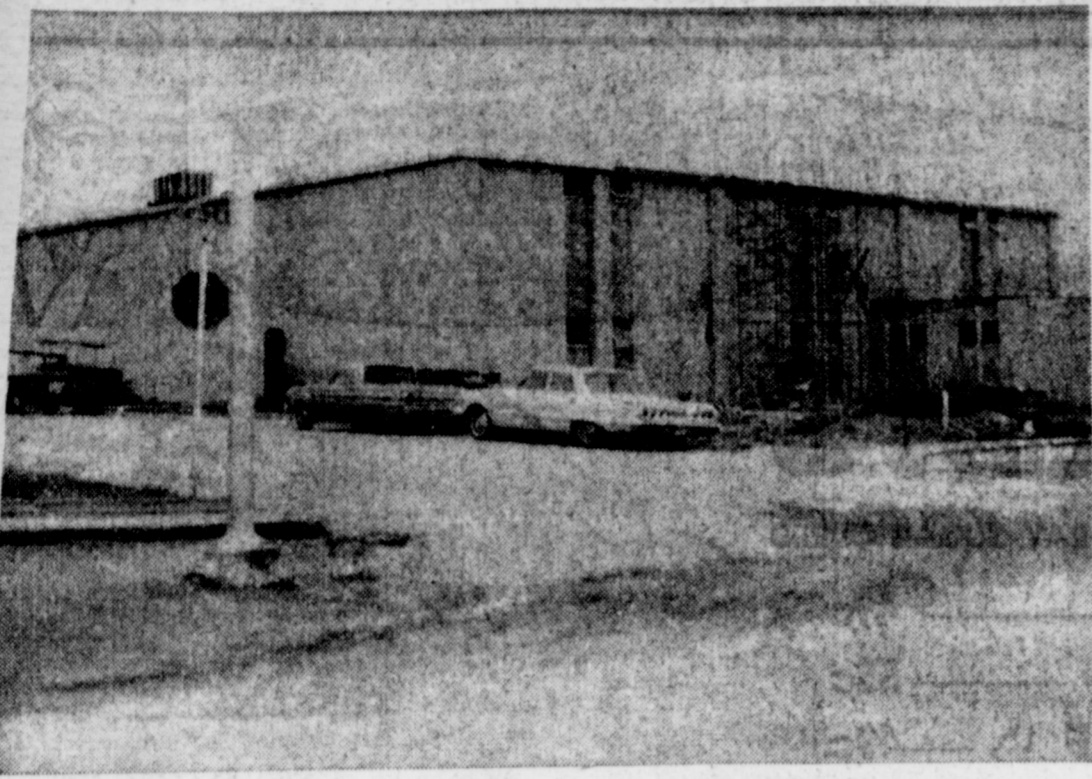
AMALIE is the oiler oil refined from the world's finest crude by special low-heat process. **AMALIE** stands up under engine heat long after conventional oils break down, thin out, drain off. Cuts wear, insures long miles of smooth engine performance . . .

change to **AMALIE** 100% Pure Pennsylvania Motor Oil!



Your service station man will stock **AMALIE** for you . . . Just ask him.

Wiedebush & Childers



GYM MAKES PROGRESS — Last of the new construction projects in Muleshoe schools' 8 million building program, the junior high gymnasium, is making progress.

The new gymnasium will be the scene of all varsity basketball games when the structure is finished. (Journal Photo)

Harvest

(Continued from Page One) low marks barely above the freezing line.

Temperatures here dipped only into the low 50s at mid-week, but the weather seemed much colder due to the high humidity and cloudy skies.

The Panhandle-South Plains weather was typical of that throughout the nation. Except for an area in the far west, the entire nation was under a "cool" front, and virtually all points in Texas reported showers at mid-week.

Muleshoe got as much as .75 inches, Dimmitt and Floydada received a quarter-inch and Friona recorded .15 inch. Abernathy and Petersburg each received .1 and Clovis gauged .09 inch. Showers also were reported at Littlefield, Levelland, the heaviest amounts recorded being at Littlefield which gauged 1.1 inch.

Despite the wet weather and the clouds which held temperatures in the '50s, prospects for good harvests here remained bright. However, return of sunshine and warmer weather is badly needed for cotton, experts agreed.

Muleshoe

(Continued from Page One)

Methodist Hospital in Lubbock, Tuesday evening for possible surgery, according to Mrs. Redwine. He is employed by W. A. Finn here.

Chief of Police Carl Neely is in fair condition in West Texas Hospital in Lubbock after undergoing lung surgery Monday.

Paul Whitecotton, owner and operator of Pauls Restaurant, underwent major surgery in Methodist Hospital Monday and was reported doing "as well as could be expected."

For the third time this season, First Methodist Church will open its new annex for after-game fellowship Friday night, according to the pastor. All pupils of senior high are invited to stop by for sandwiches, cold drinks, hot chocolate, singing, fellowship.

Low-Level Roughage Is Economical In Cattle Feeding, Tests Show

Cattlemen in the Southwest and West are starting to feed fattening rations of up to 90 percent concentrates in many feedlots.

Why? Roughage costs have increased. Transportation costs have increased, and mechanization of roughage handling is costly. To sum it up simply — there is more cattle feeding going on, and costs are higher than ever.

Cottonseed hulls have been used as roughage in cattle feeding for over 100 years, but their recent high cost has caused scientists to search for less costly roughages. To these researchers also has come the question from cattlemen, "Which is the more economical, a high percentage of a roughage, or a low percentage of the roughage?"

In answer to the queries, Texas A&M University's Coastal Beeville is conducting extensive tests to determine the influence of kind and level of roughage

on beef cattle performance. Bill Conrad, in charge of the tests, said 4 roughages, at 3 levels (10, 20 and 30 percent of the ration) are being used.

In a 1964 test at the Beeville Experiment Station, 120 good quality crossbred steer calves, with an average initial weight of 448 pounds, were divided into 12 uniform groups on a basis of weight and grade. All animals were implanted with 30 mg. of diethylstilbestrol.

Nine groups got feed mixtures containing cottonseed hulls, rice hulls or flax shives as roughages at all three levels. Two groups were fed mixtures with ammoniated rice hulls at levels of 10 and 20 percent. The twelfth group was fed on an all-concentrate ration.

Rice hulls, although available in vast quantities throughout the rice growing areas of the world, have not found a ready market because of their apparent low nutritive value and because their use has sometimes caused harmful effects on cattle when fed the former high roughage levels. Recently, a process to ammoniate the hulls was developed. Ammoniating the hulls increases their protein equivalent value to a guaranteed minimum of 10 percent.

The ammoniated rice hulls are made by exposing them to an atmosphere of ammonium with heat and pressure in the presence of a catalyst.

All feed mixtures in the test were formulated to contain 13 percent crude protein. The concentrates used were grain sorghum and cottonseed meal. Five percent alfalfa leaf meal and one percent bone meal were included in all mixtures.

In average figures, the 4 roughages at 10 percent of the ration, gave a per day gain of 2.48 pounds and a return per head of \$9.03. At a 20 percent level, the 4 roughages gave a 2.38 pound a day gain and a return per head of \$7.25. At a 30 percent level, 3 roughages had a 2.08 pounds per day gain and yielded a return per head of \$4.15. In other words, as the level of roughage decreased, return in dollars increased. This

indicates feeding a low level of roughage (10 percent) is more economical than a 20 or 30 percent level.

Cottonseed hulls fed at a 10 percent level, gave a return per head of \$7.53, while at a 20 percent level, the return per head was only 64 cents.

Rice hulls at 10 percent returned \$12.72 a head, and at 30 percent, returned only 15 cents per head.

In ammoniated rice hulls the gap was closer, with a 10 percent level returning \$12.58 per head and a 20 percent level returning \$10.89 a head. But in all 3 instances, the lower roughage level was the most economical.

The return from all-concentrate feeding was highest of all rations. On all-concentrate, the steers gained 2.37 pounds a day; took only 678 pounds of feed per cwt. gain and had a return per head of \$14.80.

Daily gains were highest from the ammoniated rice hulls, which averaged 2.59 pounds per day. Second, was cottonseed hulls at 2.52 pounds a day, followed by rice hulls at 2.27 and flax shives at 2.03 pounds per day.

Feeding the flax shives as a roughage is relatively new. Flax is grown quite extensively in the South Texas and other areas for seed, but little use has been made of the straw. Shives are the portion left after removal of the fibers suitable for use in manufacturing linen fabrics and high quality paper.

The annual production of shives amounts to a considerable quantity, and in recent years, flax millers have sought their possible use as cattle feed. The nutritive value of shives is considered to be low, however. The tests at the Beeville Experiment Station seem to

Church Holds Candle Service

A candlelight communion service was held at the First Christian Church at 6 p.m. which began with an organ prelude and candlelighting service by Lissa Brown and Sandra Haley.

The Lord's prayer was recited in unison followed by congregational singing and special music.

Introduction to the Sacrament was given followed by word, of institution and the communion prayer and distribution of the emblems.

The benediction was given and was followed by choral hymn.

Participating in the choir were Charlene Haynie, Margerite Wright, Jona Kay Goucher, Cheri Kemp, Debbie Wagnon, Dale Bell, Sandra Haley, Joan Harper, Brenda Harper, Elaine Moore, Ara McGee, Clay Mick and Glen Maltby. Alta Moore presided at the organ and Jane Grow was choir director. Ushers were Gregg Harper and Robbie Young.

bear this out, since flax shives produced the lowest per day gain, lowest return per head, lowest dressing percent and the poorest carcass grades.

Researchers at the Beeville Experiment Station plan to continue their search for new inexpensive roughages. If rice hulls, flax shives and ammoniated rice hulls could be used in place of cottonseed hulls in a high concentrate ration, a substantial outlet could be developed for the by-products of rice and flax, and at the same time, roughage and cattle feeding costs could be lowered.

George

(Continued from Page One)

this amendment stress that through 35 of the states have such a provision for governor's terms, over half of them have restrictions upon his re-election. This amendment provides for no restrictions.

Amendment No. 10, which George holds as a parallel amendment to the 4-year state-wide officials terms, provides for four-year terms for members of the Texas House of Representatives, with one-half of the 16 amendments to be submitted in 1966.

In concluding his talk, George emphasized that "it is important that responsible citizens

between the executive and legislative branches of State government. Lawmaker George said, "Adoption of both amendments would be vital to candidates because it would decrease enormous campaign expenses, and would enable lawmakers to concentrate more on the formulation of local and state policy, the responsibility which they owe the people of Texas."

Following adjournment, George told the group that he would support the ten amendments on Nov. 2, but that he had reservations on some of the 16 amendments to be submitted in 1966.

In concluding his talk, George emphasized that "it is important that responsible citizens

acquaint themselves with these proposals, as they are the very basis of our representative form of government. For here, the people of Texas express themselves at the polls. Don't let apathy and complacency take the place of responsive and responsible citizenry."

George was introduced by Larry Hall, program chairman. Student Rotarian for the day was Roger Barrman, and Bob Prune, a member of the Texaco, the Texaco Farwell club, also was a guest.

Jaycees

(Continued from Page One)

will join us in promoting this badly-needed facility," the spokesman concluded.

The Jaycee board also picked the "Jaycee of the Month." His name will be announced at next Monday's luncheon meeting of the club.

Falconry is the oldest field sport of which there is any record. It is believed that falconry was known in China approximately 4,000 years ago.

PATZER
CHIROPRACTIC CLINIC
MULESHOE, TEXAS
Phone 3-9670
1540 American Blvd.
KEEP SMILING

BE SURE TO SEE OUR SHOWING THURSDAY, OCTOBER 14 OF THE NEW "1966" OLDSMOBILE and BUICK Brock Motor Co. Inc.

EVERY JOB WELCOME

JOB PRINTING

COMMERCIAL PRINTING

Social PRINTING

NO JOB IS TOO LARGE OR TOO SMALL

LET US PUT OUR PRESSES TO WORK FOR YOU!

MULESHOE PUBLISHING CO.

304 W. 2ND PHONE 2350

COTTON HARVEST SPECIAL!

WE HAVE A GOOD SUPPLY OF COTTON TRAILERS FOR YOUR HARVEST NEEDS

JOHNSON - POOL TIRE CO.

WILL BUILD BEDS TO YOUR SPECIFICATION

WE HAVE A LIMITED SUPPLY OF:

DOUBLE AND DUAL 90 TRAILER TIRES 14" and 15" SIZE

750 - 14 RE-CAPS \$6.95 TAX INCLUDED

PORTABLE 1/2 HP AIR COMPRESSOR \$99.95

JOHNSON - POOL TIRE CO.

301 N. 1st. MULESHOE PH. 7680

Rogers Opposes Sugar Measure, Says Bill Unfair

Congressman Walter Rogers said Saturday the Sugar Act extension bill due to come before the House of Representatives this week "perpetuates a long-standing injustice against American farmers who raise sugar-beet and sugar cane."

Congressman Rogers said the bill, which establishes quotas on sugar to be sold in the United States, "continues the present high level of foreign sugar imports while seriously restricting the right of American farmers to supply the American market."

Under the parliamentary rule by which the bill reaches the House floor for debate and decision, amendments to correct the situation will not be permitted, Congressman Rogers noted. "Without the parliamentary protections they so carefully work to establish, the foreign sugar interests would be stripped of their quota protection. I believe the majority of House members favor granting much larger quotas to U. S. sugar producers — but again this year they will not be given the opportunity to correct this injustice," he said.

Congressman Rogers also objected to the five-year duration of the program proposed in the bill. "The excessive length of the program was deliberately designed to prevent domestic producers from having a chance at the U. S. marketplace until foreign interests had realized huge profits."

Only two amendments to the bill are to be deliberated. One would eliminate the sugar quota for any foreign country which employs a sugar lobbyist in Washington during the life of the program. The other would permit the Treasury to recapture about \$210 million a year of profit foreign producers will make because the U.S. domestic price is pegged above world sugar price levels.

Also expected to be considered by the House this week are the final version of the Omnibus Farm Bill — the bill to be cleared by the conference committee charged with resolving differences in House and Senate-passed versions — and the highway beautification bill.

Congressman Rogers' bill aimed at insuring an adequate railroad freight car supply will be one of the proposals to be considered in two days of hearings scheduled this week by the House Committee on Interstate Commerce which the Congressman is a ranking member.

"The purpose of my bill is to encourage a freight car supply adequate to meet national defense requirements and to alleviate emergencies such as sometimes develop in the Texas Panhandle-South Plains area at grain harvest time," Congressman Rogers said.

Football Teams Win Games

Muleshoe seventh grade won their game with Morton Friday night 26 to 0. Stephen Black made a touchdown for Muleshoe as did Keith Turner and Randy Bragg. Randy Duckworth made a touchdown and an extra point.

The eighth grade also won their game with Morton 13 to 0. Jun Putman caught a pass from Robert Duckworth making a touchdown and later an extra point. Robert Dickworth also made a touchdown.

Next game for the teams will be at Plainview at 5 p.m. Tuesday, according to Coach Graves.

Self-Made Man Tells How It's Done In USA

NORWALK, Conn. (AP) — Is modern youth being deprived of realizing the great American dream, Rags to Riches? Self-made millionaire Louis Gardella, trucker and marina operator, thinks they are.

Stress on college education itself, may keep them from it, he says. Four of his five sons never attended college, and the least interested in school of the five has been the most adaptable to business.

"Stick-to-it-iveness is the secret of success, in my opinion," he says. "But to stick, one must enjoy his work. A boy should learn early to like his work for his own self-respect."

"We are in danger of raising a nation of softies. Too many will foot all the bills Junior can run up for luxuries," he says. "If he will just please study the 'status symbol' career they prefer for him." He believes youngsters should spend the years after high school to develop in a job they enjoy doing rather than become a college misfit.

"To earn what you get in life is to appreciate it, whether it is a bicycle or car. Kids don't respect their elders or property today. They bum around with diplomas in their pockets while parents pick up tabs for their cars and even their homes after marriage, waiting for them to get jobs that wont dirty their hands, he says.

The charming sea-tanned type 59 year old father has strong capable hands. He began working at 15, baling and selling waste paper from his Minnesota-born fathers fruit store. After a stint in the Merchant Marine, which he sized up as offering a limited future, he approached a Norwalk boat line for a local trucking contract. At 17, he bought his first truck with his \$800 savings. Six months later he had another, and at 18 owned four.

BALLOONS FREE For the Kiddies ALL DAY SATURDAY

ALL DAY SAT. OCT. 9
 "SWIFTS PREMIUM HAM"
HAM SANDWICHES 10¢
FREE - FREE - FREE DR. PEPPERS ALL DAY SATURDAY

PICKNEYS LEAN RIB CENTER CUT PORK CHOPS Pound..... 69c
 PICKNEYS LEAN FIRST CUT PORK CHOPS Pound..... 49c
 SWIFTS PREMIUM PROTEN BEEF CLUB STEAKS Pound..... 79c

TEXAS GARDEN FRESH TOMATOES Pound..... 9c

Carrots
 TEXAS GARDEN FRESH
1 LB. CELLO PKG. 5¢

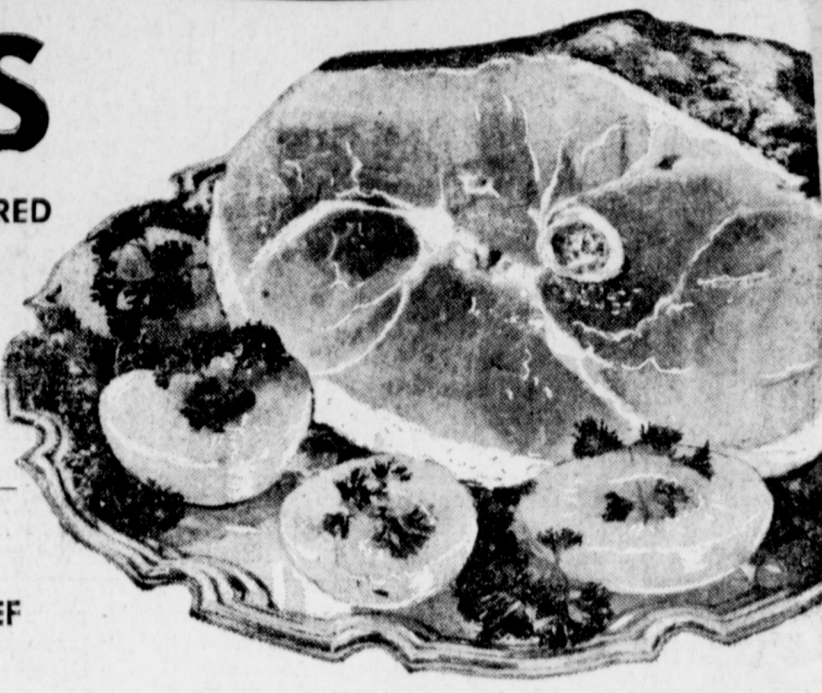
Pickles Heinz Sweet 25 Oz. Jar..... 39c
 Catsup Hunts Tomato Family Size Btl. 20 Oz..... 29c
 Apple Butter Bama Pure 29 Oz. Jar..... 35c
 Book Matches 50's..... 2 For 29c
 Crisco 3 Pound Tin..... 79c
 Bath Room Tissue Aurora 2 Roll Pkg. 25c
 Salt Kimbells Plain or Iodized 26 Oz. Round Box..... 2 For 19c
 Gladiola Pound Cake Mix..... 29c
 Pineapple - Drink Del Monte 46 Oz. Can..... 3 For 89c
 Grapefruit 3 Oz. Jar..... 69c
 Instant Tea Liptons 3 Oz. Jar..... 69c
 Peanuts Fishers "Dry Roast" 13 Oz. Can..... 69c
 Dr. Pepper 12 Bottle Ctn Plus Deposit..... 69c
 KRAFT Macaroni & Cheese Dinner..... 19c
 Beef Stew Austex No 300 Can..... 33c
 Babo Cleanser Giant Size Can..... 19c
 Detergent E.Z. Time Pink Lotion King Size..... 49c
 Hominy Kimbell White No 300 Can..... 3 For 25c
 Alka-Seltzer 63c Size..... 39c
 Cough Syrup Vicks Formula 44 98c Size..... 79c

GUNN BROS. STAMPS DOUBLE EVERY WEDNESDAY.



HAMS

PICKNEYS SUN RAY SUGAR CURED
 WHOLE LB. 49c
 BUTT HALF Lb. 55c
 SHANK HALF Lb. 49c



HAMBURGER MEAT
 SWIFTS PREMIUM PROTEN BEEF
 3 LB. FOR \$1.00

BACON

HORMELS RANGE BRAND
 2 LB. PKG. \$1.59

FREE COME IN AND REGISTER "RAMADA Week-end" COMPLETE DETAILS IN BAILEY CO. JOURNAL Need not be present to win Drawing Every Week, Register Here For Each week's Drawing DATES SUBJECT TO AVAILABILITIES



GRAPES
 CALIFORNIA TOKAYS
LB. 10¢

ONIONS
 COLORADO NO. 1 YELLOW
LB. 7¢

—FROZEN FOODS—
 MORTONS PARKER HOUSE
 ROLLS 24 Count Pkg. 19c
 BIRDS EYE AWAKE 9 Oz. Can..... 3 For \$1.00
 STILWELLS WHOLE NEW POTATOES 1 1/2 Lb. Pkg. 35c
 OLE SOUTH GRAHAM GRACKER CRUMB PIE SHELLS..... 49c
 JOHNSTONS 9 IN. FAMILY SIZE FRUIT PIES..... 59c

BE SURE TO SEE OUR SHOWING THURSDAY, OCTOBER 14 OF THE NEW "1966" OLDSMOBILE and BUICK Brock Motor Co. Inc.

Shopping? Vacationing? Sightseeing? Business? Races? **EL PASO** the exciting international city invites you to visit . . . stay at the

PLAZA MOTOR HOTEL
 Formerly THE HILTON HOTEL
 Overlooking the historic Plaza in the heart of downtown. Within walking distance of fine stores and everything downtown . . . just a stone's throw from Juarez, Mexico . . . minutes away from North America's most beautiful dog and horse track . . . the Plaza offers you the convenience of free parking, comfortable rooms, gracious service, fine food, and reasonable rates.

On your next trip to El Paso, combine luxurious comfort with the utmost in convenience. Make the Plaza Motor Hotel—Oregon at Mills—your El Paso address.

Phone, wire or write JACK GREGORY, Gen. Mgr. For reservations Phone 632-5661

FOLGERS DRIP OR REG. **COFFEE** 1 LB. TIN..... **75¢**
\$1.39
 RED BARN **ANTI-FREEZE** 1 GAL CAN..... **19¢**
 KIMBELLS R.S.P. **CHERRIES** NO. 303 CAN..... **19¢**
 DEL MONTE **SWEET PEAS** NO. 303 CAN..... **19¢**

White's CASHWAY

Listen To MULETRAIN 10:15 A.M. over KMUL sponsored by CASHWAY



NEW RESTAURANT — Roy and Hazel Dyer have opened their new Corral Drive-Inn restaurant and this is Dyer standing at the cash stand in the restaurant. Note portion of private dining room in rear. The restaurant was closed for six weeks for a complete remodeling job. (Journal Photo)

Please pick up your forms for your weddings and announcements at the Journal office. We would be glad to help you with your story if you will come by the office. Glossy prints may be used for your weddings. Also, if you will contact The Journal on your wedding shower, a picture can be arranged. Also forms are available for your club reporters at the office.

Cut crisp rolls in half lengthwise and butter the cut sides; add a layer of cole slaw and one of fried oysters as the filling for an unusual sandwich.

The tiny coastal island of Mozambique, which gave the big province, Mazambique, its name, is world headquarters for cashew nuts.



OFFICERS OF PLAINS COTTON GROWERS — New Forkner, Lubbock, Chairman of the Board; J.D. Smith, Littlefield, President, and L.D. (Don) Anderson, Crosbyton, Vice President. The new leaders were installed at PCG's annual meeting the following Saturday.

Lazbuddie 4-H Names Officers For Next Year

By Mrs. C. A. Watson
LAZBUDDIE — The Lazbuddie 4-H Club met Monday night at the school auditorium. New officers elected were: Thresa Seaton, president; Kathy Coker, vice-president; Dale Blackstone, secretary-treasurer; Patience Broyles, reporter; and Billy Eubanks, council delegate.

The new officers will take over their duties after Jan. 1, 1966. The organization leaders for the club are Mrs. Ralph Broyles and Roy Miller. The club meets each fourth Monday night unless special meetings are called.

Dick Chitwood was home over the weekend to be with his parents, Mr. and Mrs. E. D. Chitwood Jr. Dick is a student at Texas A&M. Mr. and Mrs. Chitwood and Dick attended the Texas A&M — Texas Tech football game in Lubbock Saturday night.

Mr. and Mrs. Wesley Barnes of Lazbuddie announce the coming wedding of their daughter, Wynell to Larry White, Elizabethton, Tenn. Wedding vows will be exchanged the evening of Nov. 26. The Rev. Bill Curry from Quitaque will perform the ceremony.

Miss Barnes is a 1964 graduate of Lazbuddie high school, and Larry graduated from Elizabethton High school. He has been in the armed forces stationed at Roswell, N. M. The couple plan to attend the Tennessee State college after their marriage.

Guests in the Paul Templeton home last week were her brothers and their families, Mr. and Mrs. Richard Peice and children from California and the Eugene Pierce family from Odessa.

Visiting over the weekend with the Templetons were her parents, Mr. and Mrs. H. W. King, El Paso. Sunday guests were Mr. and Mrs. Alton Morgan from Amherst. Mrs. Morgan and Mrs. Templeton are sisters. Saturday Mrs. Templeton and two of their children and Mrs. Alton Morgan attend-

ed the fair in Lubbock. Mr. and Mrs. Preston Duley and Diane from Tucumcari, visited her parents, Mr. and Mrs. W. R. Broadhurst over the weekend.

Mr. and Mrs. Earnest Nowell returned last week from several days. Vacation in New Mexico and Colorado.

Sunday afternoon visitors in the C. A. Watson home were Mr. and Mrs. Harvey Bass, California and Vina from Muleshoe.

Birthday Greetings to Elsa Flores, Earnestene Templer, John Parros, Karla Hall, Anna Delgado, Ginger Johnson, Esmeralda Andrado, James Harvey, Velma Vanlandingham, Linda Hargrove, Larry Eubanks, Mike Ward, Marlene Beavers, Jess Bruns, Rebecca Jane Stroud, Earnestene Templer, Debra Bullock.

San Francisco 49er assistant coach Bill Johnson joined the football club as a center in 1948 and has been with it ever since.

The snowy owl is one of the few owl species that migrate.

NOW! '66 CHEVROLETS



Caprice Custom Coupe

NEW CAPRICE BY CHEVROLET

Custom Coupe, Sedan and two luxurious new Custom Wagons now. Liquid smooth ride. Power you can order just as

smooth and pin-drop quiet. Turbo-Jet V8 engines that go all the way up to 425 hp. Shimmering new interiors. The look of hand-rubbed walnut trim. Elegance everywhere. Made by Chevrolet, so you know what a beautiful value it must be.



NEW CHEVROLET JET-SMOOTHER

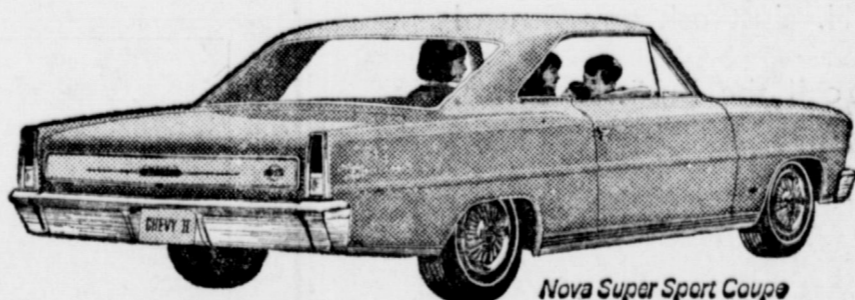
We've again specially tailored those coil springs at every wheel to each body style. We've put in new softer shock absorbers. No Chevrolet has ever had a ride like this. Power begins with a thrifty Six at 155 hp, and goes on from there. Turbo-Jet V8's available at 325 hp, 390 hp and 425 hp in all the new Impalas, Bel Airs and Biscaynes. Model shown: Impala Super Sport Coupe.

NEW CHEVELLE SUPER SPORT 396

New 300's. New 300 Deluxe models. New Malibus. And two new Super Sport 396's—coupe and convertible—with engines that tell you exactly what kind of Chevellies they are. Both are available with 396-cu.-in. Turbo-Jet V8's, either 325 hp or 360 hp. And both come with special hood, grille, suspension, emblems, red stripe tires, floor-mounted shift. Twelve beautiful new Chevellies in all—and all as new inside as they are outside, headlamps to taillights.



Chevelle Super Sport 396 Coupe



Nova Super Sport Coupe



Corvair Sport Coupe

ALL NEW CHEVY II

It's so different, we should really call it the Chevy III. Roofs are swept way back on coupes. Fenders, grille, hood, taillights and bumpers are new on all seven models. Interiors are richer. Power available up to a 350-hp Turbo-Fire V8. You can even order headrests for the front seats and Mag-style wheel covers. What's the economical, dependable Chevy II coming to? A lot of smart '66 car buyers, we figure.

'66 CORVAIR UNIQUE

Still America's only rear-engine car. And with the special steering and suspension you can add, there's no better way to rid yourself of prematurely gray driving. Lots new. Corvair, like all the '66 Chevrolets, has a padded dash, seat belts front and back, new fully synchronized 3-speed, Corsas, Monzas, 500's. Get one. Stay young.

SEE THE NEW 1966 CAPRICE • CHEVROLET • CHEVELLE • CHEVY II • CORVAIR • CORVETTE NOW AT YOUR CHEVROLET DEALER'S

CROW CHEVROLET COMPANY

201 MAIN

MULESHOE

PH 3-1000

42-5827

Free

With 10 gallons or more of quality Shamrock gasoline you'll receive a five pound bag of name brand sugar free during our opening celebration.

FIVE POUNDS OF SUGAR

AND BRING THE FAMILY GIFTS FOR THE ADULTS, LOLLIPOPS FOR THE KIDS!

during **SHAMROCK DAYS**

OCT. 8 and 9, 1965

AT **F & W SHAMROCK**

1112 W. American in Muleshoe

A. J. Webb, Operator

ALL APPROVED OIL COMPANY CREDIT CARDS ACCEPTED

LATE

WANT ADS

LEGAL NOTICE

THE STATE OF TEXAS
TO: Mary E. Crawford and
Owan D. Reed Defendants,
Greeting;

You are hereby commanded to appear by filing a written answer to the Plaintiffs' Petition at or before ten o'clock A.M. of the first Monday after the expiration of forty-two days from the date of the issuance of this citation, same being Monday the 8th day of November, 1965, at or before ten o'clock A.M. before the Special Commissioners duly appointed by the Judge of the County Court of Bailey County, Texas, at the Court House of said County in Muleshoe, Texas.

Cyr, et al.
The names of the parties are as follows:

The State of Texas and Bailey County are plaintiffs, and Bennie St. Cyr and wife, Cecile R. St. Cyr and J. O. Crawford, Mary E. Crawford, Roy Reed, Welma Dane, Wanda Hargrove, Owan D. Reed, Delsie Dove, Nell Meek, Ben Crawford, Douglas Ruby, and Jess Osborn are defendants.

A brief statement of the nature of this suit is as follows, to wit: Proceedings in eminent domain in connection with the State of Texas constructing, laying out and reconstructing a highway, designated as a part of the State Highway System by the State Highway Commission of the State of Texas, in Bailey County, Texas, and that such construction, reconstruction and maintenance upon said highway is surveyed through, across and upon, and will cross, run through and upon the following described real property situated in Bailey County, Texas: 0.247 acre of land, more or less, same being part of a one acre tract, more or less, out of that portion of the Northwest

one-fourth of Sec. 21, Block Y, State Capitol Land, Bailey County, Texas, lying South of U. S. Hwy. 84 known as Tract No. 1, Parsons Subdivision, same same Tract No. 1 having been conveyed to J. O. Crawford by H. B. Crawford by deed dated May 1, 1945, and of record in Vol. 41, Page 231, Deed Records of Bailey County, which 0.247 acre of land, more or less, being all of the following described 0.283 acre of land, more or less, save and except 0.036 acre thereof included in the right-of-way of a public road 40 ft. wide, the centerline of which lies along the North line of Sec. 21, which 0.283 acre of land, more or less, being more particularly described by metes and bounds as follows: Beginning at the Northwest corner of Sec. 21:

THENCE S 89 deg. 13' E with the North line of Sec. 21 a distance of 67.56 ft. to a point in the South right-of-way line of present U. S. Hwy. 84; THENCE, with the South right-of-way line of present U. S. Hwy. 84, from a tangent bearing S 48 deg. 21' 14" E around a curve to the right having a radius of 2,814.93 ft. a distance of 184.39 ft. to a point

in a tangent bearing S 44 deg. 36' 03" E, same point being the most easterly corner of the aforesaid one acre tract of land, same point being the most northerly corner of a tract of land owned by Eva Murrah;

THENCE S 48 deg. 58' 48" W with the Southeast line of the aforesaid one acre tract and the Northwest line of the Eva Murrah property a distance of 44.93 ft. to a point;

THENCE from a tangent bearing N 52 deg. 06' 21" W around a curve to the left having a radius of 2,864.93 ft. a distance of 94.71 ft. to a point in a tangent bearing N 54 deg. 06' W;

THENCE N 54 deg. 06' W 102.56 ft. to a point;

THENCE N 89 deg. 12' W 9.53 ft. to a point in the West line of Sec. 21;

THENCE N 1 deg. 16' E with the West line of Sec. 21 a distance of 40.00 ft. to the point of beginning.

as is more fully shown by Plaintiffs' petition on file in this suit.

If this citation is not served within ninety days of the date of its issuance, it shall be returned unserved.

The officer executing this

process shall promptly execute the same according to law, and make due return as the law directs.

Issued and given under my hand and the Seal of the County Court, at office in Muleshoe, Texas, this 21st day of September, 1965.

Hazel Gilbreath Clerk, Bailey County Court, Bailey County, Texas. 381-41te

Witnesses Attend Lamesa Seminar

"Despite the present world troubles and woeful expectations, the future of the earth is bright with a Bible promise. Through the power of the resurrection God will bring forth millions who will enjoy this earth made into a paradise for man to inhabit forever", 461 persons were told Sunday afternoon. They had met for the final day of Jehovah's Witnesses three-day seminar in Lamesa.

A. A. Catanzaro, traveling representative of the Watchtower Society, went on to say, "The Bible teaches that when a man dies, he is truly dead, not in a vague hereafter, or in torment. Psalm 146:3,4." He stated: "The Bible also holds forth the hope of a resurrection, a returning to life here upon the earth, both for the just and the unjust." He was speaking on the subject "What Does the Resurrection of the Dead Mean for You and Yours?"

To his listeners from 16 congregations in Texas New Mexico and Oklahoma, Catanzaro, using the Bible stated, "Persons who have lost loved ones to the enemy death, can expectantly look for the return of these through God's power of the resurrection. What a joyous reunion this will be living in God's righteous new order — receiving their loved ones back from the grave. The hope of a resurrection should inspire all honest-hearted persons to seek understanding of this Bible promise by God."

"What is the basis for resurrection?" Catanzaro asked. "It is Christ Jesus, God's only begotten son, who sacrificially laid down his life in behalf of all obedient mankind." "Persons resurrected", he added, "will live on a paradise earth forever."

Boyd Lowery, presiding minister said regular meetings will be resumed this week at the Kingdom Hall on Friona Road in Muleshoe.

G.J. Garth Feted At Birthday Party

A family-get-together at the Claude Garth home in Friona Sunday honored G. J. Garth at his eightieth birthday which he observed Saturday.

Forty-seven were present for the event and seven of the eight children were present. Also two brothers and a sister, Herbert Garth, Friona, Charley Garth, Muleshoe and Mr. and Mrs. V. Harris, Dallas.

The groups of the five generations were at the party. Children helping Mr. Garth celebrate his party with a birthday cake were Anie Schmitz, Seagraves; Aline Stallcup, San Antonio; Wayne and Claude Garth, Friona; Royce, Margie and Jannie Morrow.



DONATED BY LADY BIRD — This display donated by Mrs. Lyndon B. Johnson is feature at the Harrison County Historical Museum in Marshall. It includes a ball gown she wore at a reception for representatives of the Japanese government, invitations and other White House mementos of the event. (AP Wirephoto)

Rogers Views State Department, Suggests Complete Investigation

INTERNATIONAL CHAOS same time as the conflict between India and Pakistan was in full force, was nothing more than an action to injure India. Such action by the Red Chinese serves to create another front for India to which troops had to be assigned by India. This nailed down troops and equipment that would have otherwise been employed against Pakistan. The logical conclusion would be that Red China was trying to help Pakistan in a war that was being fought primarily with equipment furnished by both Indians and Pakistanis by the United States taxpayers.

One would think that India's reaction to such a situation would be bitter hatred against the Red Chinese with something of good will to the U. S. A. for the equipment and the aid making her defenses possible. Yet at the Interparliamentary Conference in Ottawa, Canada, the Indian representative literally blistered the U. S. A. for its position against the admission of Red China to the United Nations. This is only one of the many situations that have arisen to befuddle the thinking of anyone on international relations. Another is the attitude and actions of Charles de Gaulle, the unquestioned ruler of our long time ally, France; a country that the U. S. A. has actually saved in two world wars since 1914.

Now we are confronted with another violent controversy between two nations that have received vast amounts of foreign aid from the U. S. A. India and Pakistan are at each others throats. Although a temporary truce is in effect, the possibility of avoiding a bitter war in this section of the world has not been measurably diminished. It is my opinion that the activities of the Red Chinese in attacking India at the

If on Labor Day a Texas motorist were to start driving over the State-maintained highway system for 10 hours a day at an average speed of 60 miles an hour he wouldn't be home again until Christmas Eve.

The Amazon River's bottom is mostly a series of sand dunes, rippling over long stretches with underlying layers of dense, gray clay.

Many other situations could be documented but to do so in this newsletter would be repetitious. Whatever might be the number of such cases, almost without exception, the result has been the same. Something is bound to be wrong. If it is not the foreign aid approach, as many would argue, then it must be something else within the operations of this program, or the activities of our State Department. It is my opinion, and I repeat it, that the time for a complete and full investigation of the State Department, both as to policy and personnel, is long overdue.

WALTER ROGERS
MEMBER OF CONGRESS
18th DISTRICT, TEXAS

The human body contains 639 different muscles. The only parts of the body which do not have muscles are the knuckles and the shin bones.



CANDIDATE — Secretary of State Crawford Martin, above, said in Austin, that he will be a candidate for State Attorney General in the 1966 elections. (AP Wirephoto).

The new Lake Powell National Recreation Area, an easy drive north of the all-year vacation capital of Phoenix, Ariz. already is providing record trout catches and off-beat boat trips for vacationists.

Nowadays packaged dried fruit may usually be cooked without the soaking old-fashioned recipes always called for.



BOYS 8 through 13 enter our free PUNT, PASS & KICK competition!

October 8 is your LAST DAY to sign up!

WIN! Warm-up jacket, helmet or regulation-size PP&K football, or handsome PP&K trophy! You compete only with boys your own age. It's free! It's fun! It's easy! FREE instruction book on punting, passing, kicking... also, an attractive PP&K tie-lapel pin when you register. Bring dad when you sign up. Get full details at...

MULESHOE MOTOR CO. "At The Crossroads"



You don't have to run, when you have more than one



ANOTHER TELEPHONE IN THE KITCHEN



ANOTHER TELEPHONE FOR TEEN-AGERS



ANOTHER TELEPHONE IN THE DEN



ANOTHER TELEPHONE IN THE BEDROOM

ADD-A-PHONE MONTH... get yours now for modern time-saving convenience

A telephone wherever you are in your home... this is modern living at its best... for you don't have to run when you have more than one! There's no need to waste time and energy when it's so easy to have additional phones in the living room, bedroom, kitchen, den or family room. Costs so little, too, just a few cents a day for this modern convenience. Choose a desk phone, wall phone, Spacemaker or the new Starlite®, in decorator colors to harmonize with any room. You've wanted additional phones for a long time, in one or more places in your home. Begin to live modern during ADD-A-PHONE MONTH. Just ask any General Telephone employee or call the Business Office. Do it today... NOW!



GENERAL TELEPHONE

WE WISH TO Congratulate THE Corral Drive Inn On Their Opening

WE WERE HAPPY TO HAVE HAD THE PART OF INSTALLING THE CARPET IN THIS BEAUTIFUL NEW RESTAURANT

JOHNSON FURNITURE

2101 W. AMERICAN BLVD. PHONE 5150

MULESHOE'S ANNUAL



FOOTBALL CONTEST

1st Place Winner -
Joe Dell Hosier
2nd Place Winner -
James Roy Jones



DENVER CITY
AT
MULESHOE
FRIDAY
8 P.M.

CONTEST RULES

MULESHOE PUBLISHING CO.
Box 449 — Muleshoe, Texas

- * Only one entry per person may be made for any one contest.
- * Weekly contests are open to everyone except employes and families of this newspaper.
- * Entries are to be judged by the sports editor and staff of this newspaper. All decisions of judges are final.
- * Entries must be submitted on the official form, as printed in this paper.
- * Bring or mail your entries to the Journal office. Mailed entries must be post marked not later than 5 p.m. Friday.
- * The deadline for weekly submission is 5 p.m. Friday.
- * Winners names will be published in this newspaper each Thursday following the close of the weekly contest.
- * Choose team you think will win.
- * 10 points for 1st. place, 5 points for 2nd place determines Grand Prize Winner.

WIN WEEKLY PRIZES!

1st. Place \$5 2nd. Place \$3

GRAND PRIZE \$50

FOR EXPENSES AND TWO TICKETS TO THE COTTON BOWL AT DALLAS, TEXAS. THERE WILL ALSO BE A CONTEST AND PRIZES FOR THE BOWL GAMES!

YOU MAY WIN!

THIS CONTEST MADE POSSIBLE BY THE FOLLOWING FIRMS:

- | | | |
|---|---|--|
| Brock Motor Co. | Western Drug | Piggly Wiggly |
| James B. Glaze Ins. | W. Q. Casey Insurance | Heathington Lumber |
| E. R. Hart Co. | First National Bank | Muleshoe Floral |
| Beavers Flowerland | Paul's Cafe | L & H Grocery |
| Ladd Pontiac | Muleshoe Motor Co. | Muleshoe Co-op Gin |
| Ben Franklin Store | Cashway Grocery | <i>Cobb's</i> |
| Muleshoe State Bank |  | Jennings Insurance |
| D & G Grocery | Pool Insurance | <i>The Fashion Shop</i>
OF MULESHOE |
|  | Farmers Co-op Elevator | Johnson-Pool Furniture and Appliance |
| King Bros Grain & Seed Co. | Johnson Furniture | Dari Delite |
| | Muleshoe Auto Parts | Central Texaco Sta. |
| | | Bovell Motor Supply |

LET'S BACK

THE

MULES!

ENTER TODAY!

FUN! PRIZES!

Only One Entry Per Person

OFFICIAL ENTRY FORM

One Entry Per Person

- California vs. Air Force.....
- Syracuse vs UCLA.....
- Dartmouth vs Penn.....
- Colorado State vs Texas Western.....
- Stanford vs Oregon.....
- Kentucky vs Florida St.....
- Michigan St. vs Michigan.....
- NC State vs North Carolina.....
- Howard vs Columbia.....

— Tie Breaker —

Florida SCORE Mississippi..... SCORE

NAME PHONE
ADDRESS CITY

SHOP MULESHOE FIRST

Television Schedule For Muleshoe Area

KING BROS.
GRAIN & SEED CO.
Complete ELEVATOR SERVICE AND SEED PROCESSING FOR The Muleshoe Area.

FIRST NATIONAL BANK MULESHOE
4%
ON 12-MONTH CERTIFICATES OF DEPOSIT
3%
ON SAVINGS COMPOUNDED QUARTERLY
FINANCE YOUR CAR WITH US! PERSONAL LOANS

LUMBER PAINT

and **Hardware**

Chas. L. Lenay

LUMBER COMPANY
202 E. Ash

KGNC - TV (4) Amarillo
Muleshoe Cable 4
Mon. thru Fri.
Daytime Viewing
7:00 - Today Show
8:00 - Today Show
9:00 - F. Phrases
9:25 - News
9:30 - Concentration
10:00 - M. Star
10:30 - P. Bay
11:00 - Jeopardy
11:55 - P. Office
12:00 - NBC News
12:10 - Weather
12:20 - Ruth Brent
12:30 - Make A Deal
12:55 - NBC News
1:00 - Truth
1:30 - The Doctors
2:00 - Another Wor
2:30 - C-Don't Say
3:00 - Match Game
3:25 - NBC News
3:30 - Sheriff Bill
4:30 - Laramie
5:30 - Hunt-Brink
6:00 - News
Thursday Evening
6:15 - Weather
6:25 - Sports
6:30 - D. Boone
7:30 - Laredo
8:30 - Mona Mc.
9:00 - D. Martin
10:00 - News
10:15 - Weather
10:25 - Sports
10:30 - C-Tonight
Friday Evening
8:15 - Weather
6:25 - Sports
6:30 - Showtime
8:30 - Mr. Roberts
9:00 - U.N.C.L.E.
9:00 - News
10:15 - Weather
10:25 - Sports
10:30 - C-Tonight Sh
12:00 - Sign Off

Saturday Viewing
7:00 - Roy Rog.
8:00 - The Jetsons
8:30 - Atom Ant
9:00 - Squirrel
9:30 - Underdog
10:00 - Top Cat
11:00 - Movie
11:00 - C. John
10:30 - Fury
11:00 - Movie
1:00 - C. John
2:00 - Football
3:30 - R. Diamond
6:00 - News
6:15 - Weather
6:25 - Sports
6:30 - Flipper
7:00 - I Dream
7:30 - Get Smart
8:00 - Movie
10:00 - News
10:15 - Weather
10:25 - Sports
10:30 - Movie
12:45 - Sign Off

Sunday Viewing
7:00 - To Whom
7:15 - Church
7:30 - Search
8:00 - Herald of Tru
8:30 - Oral Roberts
9:00 - Church
9:30 - Beany
10:00 - Bullwinkle
10:30 - Discovery
11:00 - N. V. Peale
11:30 - D. Funk
12:00 - Meet Press
12:00 - Checkmate
1:30 - College Bow
2:00 - Sunday
2:30 - Football
5:30 - R. Diamond
6:00 - News
6:15 - Weather
6:25 - Sports
6:30 - W. Disney
7:30 - Branded
8:00 - Bonanza
9:00 - Wackiest
10:00 - News
10:15 - Weather
10:25 - Sports
10:30 - Director's
12:00 - Sign off

KVII - TV (7) Amarillo
Muleshoe Cable 5
Mon. thru Fri.
Daytime Viewing
6:30 - Wake-up
7:00 - Crop-Stock
7:15 - Weather
7:20 - News
7:30 - Wells Fargo
8:00 - Movie
10:00 - Young set
11:00 - Donna
11:30 - Father
11:55 - News
12:00 - Ben Casey
1:00 - Nurses
1:30 - A Time
1:55 - Women's Nes
2:00 - Gen. Hosp.
2:30 - Young Mar.
3:00 - No Time
3:30 - Action
4:00 - L. Beaver
4:30 - H. Patrol
5:00 - P. Jennings
5:15 - News
5:25 - Weather
5:30 - Rifleman
6:00 - Bat Master.
Thursday Evening
6:30 - S. Burke
7:30 - Crackerby
8:00 - Bewitched
8:30 - Peyton Place
9:00 - Hot Summer
10:00 - Local News
10:15 - Weather
10:20 - Crop Stock
10:30 - Aquanuts
11:00 - Movie
Friday Evening
6:30 - Flintstones
7:00 - Tammy
7:50 - Adams
8:00 - Honey West
8:30 - P. Place
9:00 - J. Dean
10:00 - News
10:15 - Weather
10:20 - Crop-Stock
10:30 - Movie
10:50 - Football
10:55 - News
11:30 - Movie
Saturday Viewing
7:00 - Movie
8:30 - College
9:00 - Shenanigans
9:30 - Church
10:00 - Casper
10:30 - Porky Pig
11:00 - Bugs Bunny
11:30 - Milton
12:00 - Hoppity
12:30 - Bandstand
1:30 - Movie
3:00 - R. Derby
4:00 - Sports
5:30 - Rifleman
6:00 - Masterson
6:30 - Shindig
7:00 - King Fam.
8:30 - H. Palace
9:30 - Music
9:45 - Preview
12:00 - Movie
1:30 - Thriller
Sunday Viewing
7:00 - To Whom
7:15 - Church
7:30 - Search
8:00 - Herald of Tru
8:30 - Oral Roberts
9:00 - Church
9:30 - Beany
10:00 - Bullwinkle
10:30 - Discovery
11:00 - N. V. Peale
11:30 - D. Funk
12:00 - Meet Press
12:30 - Issues Ans.
1:00 - ABC Scope
1:30 - Movie
3:00 - Chamber
3:30 - Topper
4:00 - Beatles
4:30 - A. Oakley
5:00 - R. Rider
5:30 - O'Toole
6:00 - Voyage to
7:00 - F. B. I
8:00 - Movie
10:00 - News
10:15 - Weather
10:30 - Joe Kirbe
11:00 - Movie
1:00 - H. Jungle

Friday Evening
6:30 - Wild West
6:30 - Hogan's H.
8:00 - G. Pyle
8:30 - Smothers I
9:00 - Slattery
10:00 - News
10:15 - Weather
10:25 - Sports
10:30 - Movie
10:55 - News
11:00 - Movie
Saturday Viewing
6:45 - Cartoon Time
7:00 - C. Kangaroo
8:00 - Heckle-Jeckle
8:30 - Tenn. Tux.
9:00 - M. Mouse
9:30 - Lion Hearted
10:00 - Tom-Jerry
10:30 - Quick Draw
11:00 - Sky King
11:30 - Lassie
12:00 - News
12:45 - Movie
4:00 - Wrestling
5:00 - Wilburn B.
5:30 - Porter Wagon
6:00 - News
6:20 - Weather
6:30 - J. Gleason
7:30 - Trials of
8:30 - The Loner
9:00 - Gunsmoke
10:00 - News
10:15 - Weather
10:25 - Sports
10:30 - Movie
10:55 - News
11:00 - Movie
Sunday Viewing
8:00 - Pattern
8:30 - Church Serv.
9:30 - Gospel
10:30 - Religious
11:15 - Football
2:30 - Sgt. Preston
3:00 - L. Ranger
3:30 - Science
4:00 - Mr. Ed
4:30 - Amateur
5:00 - 20th Cen.
5:30 - News
5:50 - Weather
6:00 - Lassie
6:30 - Martian
7:00 - Ed Sullivan
8:00 - P. Mason
9:00 - Candid Cam
9:30 - W. My Line
10:00 - News
10:15 - Weather
10:25 - Sports
10:30 - Red Raider
11:00 - News
11:05 - Movie

Saturday Viewing
6:45 - Cartoon Time
7:00 - C. Kangaroo
8:00 - Heckle-Jeckle
8:30 - Tenn. Tux.
9:00 - M. Mouse
9:30 - Lion Hearted
10:00 - Tom-Jerry
10:30 - Quick Draw
11:00 - Sky King
11:30 - Lassie
12:00 - News
12:45 - Movie
4:00 - Wrestling
5:00 - Wilburn B.
5:30 - Porter Wagon
6:00 - News
6:20 - Weather
6:30 - J. Gleason
7:30 - Trials of
8:30 - The Loner
9:00 - Gunsmoke
10:00 - News
10:15 - Weather
10:25 - Sports
10:30 - Movie
10:55 - News
11:00 - Movie
Sunday Viewing
8:00 - Pattern
8:30 - Church Serv.
9:30 - Gospel
10:30 - Religious
11:15 - Football
2:30 - Sgt. Preston
3:00 - L. Ranger
3:30 - Science
4:00 - Mr. Ed
4:30 - Amateur
5:00 - 20th Cen.
5:30 - News
5:50 - Weather
6:00 - Lassie
6:30 - Martian
7:00 - Ed Sullivan
8:00 - P. Mason
9:00 - Candid Cam
9:30 - W. My Line
10:00 - News
10:15 - Weather
10:25 - Sports
10:30 - Red Raider
11:00 - News
11:05 - Movie

KFDD - TV (10) Amarillo
Muleshoe Cable 6
Mon. thru Fri.
Daytime Viewing
6:25 - Sign On
6:27 - Meditation
6:30 - College
7:00 - Farm News
7:20 - News
7:30 - Tri Report
7:50 - News
8:15 - Capt. Kang.
9:00 - I Love Lucy
9:30 - McCoys
10:00 - Andy
10:30 - D. Van Dy
11:00 - Love of Life
11:25 - CBS News
11:30 - Search T.
11:45 - Guiding Ligh
12:00 - News
12:10 - Weather
12:20 - Farm & Ra
12:30 - The World T
1:00 - Password
1:30 - Art Linklette
2:00 - To Tell Tru
2:25 - CBS News
2:30 - Edge of Nigh
3:00 - Secret Storm
3:30 - S. Preston
4:00 - Proud Eagle
5:00 - Lone Ranger
5:30 - CBS News
6:00 - News
6:20 - Weather
Thursday Evening
6:30 - Munsters
7:00 - A. Griffith
8:00 - Movie
10:15 - News
10:30 - Weather
10:40 - Background
10:45 - Flicker
11:15 - News
11:20 - Flicker
Friday Evening
6:30 - Wild West
6:30 - Hogan's H.
8:00 - G. Pyle
8:30 - Smothers I
9:00 - Slattery
10:00 - News
10:15 - Weather
10:25 - Sports
10:30 - Movie
10:55 - News
11:00 - Movie
Saturday Viewing
6:45 - Cartoon Time
7:00 - C. Kangaroo
8:00 - Heckle-Jeckle
8:30 - Tenn. Tux.
9:00 - M. Mouse
9:30 - Lion Hearted
10:00 - Tom-Jerry
10:30 - Quick Draw
11:00 - Sky King
11:30 - Lassie
12:00 - News
12:45 - Movie
4:00 - Wrestling
5:00 - Wilburn B.
5:30 - Porter Wagon
6:00 - News
6:20 - Weather
6:30 - J. Gleason
7:30 - Trials of
8:30 - The Loner
9:00 - Gunsmoke
10:00 - News
10:15 - Weather
10:25 - Sports
10:30 - Movie
10:55 - News
11:00 - Movie
Sunday Viewing
8:00 - Pattern
8:30 - Church Serv.
9:30 - Gospel
10:30 - Religious
11:15 - Football
2:30 - Sgt. Preston
3:00 - L. Ranger
3:30 - Science
4:00 - Mr. Ed
4:30 - Amateur
5:00 - 20th Cen.
5:30 - News
5:50 - Weather
6:00 - Lassie
6:30 - Martian
7:00 - Ed Sullivan
8:00 - P. Mason
9:00 - Candid Cam
9:30 - W. My Line
10:00 - News
10:15 - Weather
10:25 - Sports
10:30 - Red Raider
11:00 - News
11:05 - Movie

Thursday Evening
6:30 - Munsters
7:00 - A. Griffith
8:00 - Movie
10:15 - News
10:30 - Weather
10:40 - Background
10:45 - Flicker
11:15 - News
11:20 - Flicker
Friday Evening
6:30 - Wild West
6:30 - Hogan's H.
8:00 - G. Pyle
8:30 - Smothers I
9:00 - Slattery
10:00 - News
10:15 - Weather
10:25 - Sports
10:30 - Movie
10:55 - News
11:00 - Movie
Saturday Viewing
6:45 - Cartoon Time
7:00 - C. Kangaroo
8:00 - Heckle-Jeckle
8:30 - Tenn. Tux.
9:00 - M. Mouse
9:30 - Lion Hearted
10:00 - Tom-Jerry
10:30 - Quick Draw
11:00 - Sky King
11:30 - Lassie
12:00 - News
12:45 - Movie
4:00 - Wrestling
5:00 - Wilburn B.
5:30 - Porter Wagon
6:00 - News
6:20 - Weather
6:30 - J. Gleason
7:30 - Trials of
8:30 - The Loner
9:00 - Gunsmoke
10:00 - News
10:15 - Weather
10:25 - Sports
10:30 - Movie
10:55 - News
11:00 - Movie
Sunday Viewing
8:00 - Pattern
8:30 - Church Serv.
9:30 - Gospel
10:30 - Religious
11:15 - Football
2:30 - Sgt. Preston
3:00 - L. Ranger
3:30 - Science
4:00 - Mr. Ed
4:30 - Amateur
5:00 - 20th Cen.
5:30 - News
5:50 - Weather
6:00 - Lassie
6:30 - Martian
7:00 - Ed Sullivan
8:00 - P. Mason
9:00 - Candid Cam
9:30 - W. My Line
10:00 - News
10:15 - Weather
10:25 - Sports
10:30 - Red Raider
11:00 - News
11:05 - Movie

Sunday Viewing
8:00 - Pattern
8:30 - Church Serv.
9:30 - Gospel
10:30 - Religious
11:15 - Football
2:30 - Sgt. Preston
3:00 - L. Ranger
3:30 - Science
4:00 - Mr. Ed
4:30 - Amateur
5:00 - 20th Cen.
5:30 - News
5:50 - Weather
6:00 - Lassie
6:30 - Martian
7:00 - Ed Sullivan
8:00 - P. Mason
9:00 - Candid Cam
9:30 - W. My Line
10:00 - News
10:15 - Weather
10:25 - Sports
10:30 - Red Raider
11:00 - News
11:05 - Movie

KCBD - TV (11) Lubbock
Muleshoe Cable 2
Mon. thru Fri.
Daytime Viewing
7:30 - Headlines
7:05 - Farm Report
7:25 - Weather
7:30 - Today
8:25 - News Report
8:30 - Today
9:00 - Kartoons
9:25 - News
9:30 - Concentrati
10:00 - M. Star
10:30 - P. Bay
11:00 - Jeopardy
11:30 - P. Office
11:55 - News
12:00 - N and W.
12:15 - Com. Closeup
12:30 - Let's Deal
12:55 - News
1:00 - Truth
1:30 - Doctors
2:00 - Another Worl
2:30 - C-Don't Say
3:00 - Match Gam
3:25 - Afternoon Rep
3:30 - Nurses
4:00 - Father Knows
4:30 - Superman
5:00 - Cartoons
5:30 - Hunt-Brink.
6:00 - News ..
Thursday Evening
6:30 - D. Boone
7:30 - Laredo
8:30 - Mona Mc.
9:00 - D. Martin
10:00 - News
10:30 - Tonight
Friday Evening
6:30 - Camp Run.
7:00 - Hank
7:30 - Convoy
8:30 - Mr. Roberts
9:00 - U.N.C.L.E.
10:00 - News
10:30 - C-Tonight
Saturday Viewing
5:55 - Sign On
6:00 - Summer Sen
6:30 - S. Preston
7:00 - Bugs
7:30 - Porky
8:00 - Heckle - Jecl
8:30 - Ten. Tuxedo
9:00 - Mighty Mous
9:30 - Beatles
10:00 - Tom & Jerry
10:30 - Casper
11:00 - Sky King
11:30 - Lassie
12:00 - Flicka
12:30 - Bandstand
1:30 - Film
3:30 - Wrestling
4:30 - Grand Ole
5:00 - Wilburn b.
5:30 - Pickin T.
6:00 - Porter Wagon
6:30 - Jesse James
7:00 - Shenandoah
7:30 - Rawhide
8:30 - The Loner
9:00 - Gunsmoke
10:00 - News-Wea.
10:20 - Movie
12:00 - Late Show
1:30 - Sign Off
Sunday Viewing
6:55 - Sign On
7:00 - Bullwinkle
7:30 - TBA
8:00 - Linus
8:30 - Movie
10:30 - Cartoons
10:45 - Church
11:45 - Inquiry
12:00 - Nation
12:30 - News-Wea.
12:45 - Football
3:30 - Scoreboard
3:45 - Music
4:00 - Bowling
4:30 - Amateur
5:00 - 20th Cen.
5:30 - Green Acres
6:00 - Voyage
7:00 - FBI
8:00 - P. Mason
9:00 - C. Camera
9:30 - D. Van Dyke
10:00 - News
10:20 - Movie
12:00 - Sign Off


Friday Evening
6:30 - Camp Run.
7:00 - Hank
7:30 - Convoy
8:30 - Mr. Roberts
9:00 - U.N.C.L.E.
10:00 - News
10:30 - C-Tonight
Saturday Viewing
5:55 - Sign On
6:00 - Summer Sen
6:30 - S. Preston
7:00 - Bugs
7:30 - Porky
8:00 - Heckle - Jecl
8:30 - Ten. Tuxedo
9:00 - Mighty Mous
9:30 - Beatles
10:00 - Tom & Jerry
10:30 - Casper
11:00 - Sky King
11:30 - Lassie
12:00 - Flicka
12:30 - Bandstand
1:30 - Film
3:30 - Wrestling
4:30 - Grand Ole
5:00 - Wilburn b.
5:30 - Pickin T.
6:00 - Porter Wagon
6:30 - Jesse James
7:00 - Shenandoah
7:30 - Rawhide
8:30 - The Loner
9:00 - Gunsmoke
10:00 - News-Wea.
10:20 - Movie
12:00 - Late Show
1:30 - Sign Off
Sunday Viewing
6:55 - Sign On
7:00 - Bullwinkle
7:30 - TBA
8:00 - Linus
8:30 - Movie
10:30 - Cartoons
10:45 - Church
11:45 - Inquiry
12:00 - Nation
12:30 - News-Wea.
12:45 - Football
3:30 - Scoreboard
3:45 - Music
4:00 - Bowling
4:30 - Amateur
5:00 - 20th Cen.
5:30 - Green Acres
6:00 - Voyage
7:00 - FBI
8:00 - P. Mason
9:00 - C. Camera
9:30 - D. Van Dyke
10:00 - News
10:20 - Movie
12:00 - Sign Off

Sunday Viewing
6:55 - Sign On
7:00 - Bullwinkle
7:30 - TBA
8:00 - Linus
8:30 - Movie
10:30 - Cartoons
10:45 - Church
11:45 - Inquiry
12:00 - Nation
12:30 - News-Wea.
12:45 - Football
3:30 - Scoreboard
3:45 - Music
4:00 - Bowling
4:30 - Amateur
5:00 - 20th Cen.
5:30 - Green Acres
6:00 - Voyage
7:00 - FBI
8:00 - P. Mason
9:00 - C. Camera
9:30 - D. Van Dyke
10:00 - News
10:20 - Movie
12:00 - Sign Off

KLBK - TV (13) Lubbock
Muleshoe Cable 3
Mon. thru Fri.
Daytime Viewing
5:55 - Sign on
6:00 - Sun. Sem.
6:30 - Cartoon Cir.
6:20 - Sam. Ser
7:00 - Farm
7:20 - Second cup
7:35 - News
8:00 - Capt. Kangar
9:00 - Donna
9:30 - McCoys
10:00 - Andy
10:30 - D. Dyke
11:00 - Love of Life
11:25 - CBS News
11:30 - Search
11:45 - Guiding
12:00 - WTTN News
12:10 - Farm & Ra
12:25 - Weather
12:30 - World Turn
1:00 - Password
1:30 - Houseparty
2:00 - Gen. Hos.
2:30 - Edge of Nigh
3:00 - Secret Storm
3:30 - Ben Casey
4:30 - Cal. Carniva
5:00 - Rifleman
5:30 - News
Thursday Evening
6:00 - News
6:10 - Weather
6:20 - News
6:30 - Munsters
7:00 - Gilligan
8:00 - Movie
10:15 - News-Wea.
10:45 - Movie
Friday Evening
6:00 - News
6:10 - Weather
6:15 - Weather
6:20 - News
6:30 - Wild West
7:30 - Hogans Herc
8:00 - G. Pyle
8:30 - Bewitched
9:00 - J. Dean
10:00 - News
10:30 - Movie
Saturday Viewing
5:55 - Sign On
6:00 - Summer Sen
6:30 - S. Preston
7:00 - Bugs
7:30 - Porky
8:00 - Heckle - Jecl
8:30 - Ten. Tuxedo
9:00 - Mighty Mous
9:30 - Beatles
10:00 - Tom & Jerry
10:30 - Casper
11:00 - Sky King
11:30 - Lassie
12:00 - Flicka
12:30 - Bandstand
1:30 - Film
3:30 - Wrestling
4:30 - Grand Ole
5:00 - Wilburn b.
5:30 - Pickin T.
6:00 - Porter Wagon
6:30 - Jesse James
7:00 - Shenandoah
7:30 - Rawhide
8:30 - The Loner
9:00 - Gunsmoke
10:00 - News-Wea.
10:20 - Movie
12:00 - Late Show
1:30 - Sign Off
Sunday Viewing
6:55 - Sign On
7:00 - Bullwinkle
7:30 - TBA
8:00 - Linus
8:30 - Movie
10:30 - Cartoons
10:45 - Church
11:45 - Inquiry
12:00 - Nation
12:30 - News-Wea.
12:45 - Football
3:30 - Scoreboard
3:45 - Music
4:00 - Bowling
4:30 - Amateur
5:00 - 20th Cen.
5:30 - Green Acres
6:00 - Voyage
7:00 - FBI
8:00 - P. Mason
9:00 - C. Camera
9:30 - D. Van Dyke
10:00 - News
10:20 - Movie
12:00 - Sign Off

Friday Evening
6:00 - News
6:10 - Weather
6:15 - Weather
6:20 - News
6:30 - Wild West
7:30 - Hogans Herc
8:00 - G. Pyle
8:30 - Bewitched
9:00 - J. Dean
10:00 - News
10:30 - Movie
Saturday Viewing
5:55 - Sign On
6:00 - Summer Sen
6:30 - S. Preston
7:00 - Bugs
7:30 - Porky
8:00 - Heckle - Jecl
8:30 - Ten. Tuxedo
9:00 - Mighty Mous
9:30 - Beatles
10:00 - Tom & Jerry
10:30 - Casper
11:00 - Sky King
11:30 - Lassie
12:00 - Flicka
12:30 - Bandstand
1:30 - Film
3:30 - Wrestling
4:30 - Grand Ole
5:00 - Wilburn b.
5:30 - Pickin T.
6:00 - Porter Wagon
6:30 - Jesse James
7:00 - Shenandoah
7:30 - Rawhide
8:30 - The Loner
9:00 - Gunsmoke
10:00 - News-Wea.
10:20 - Movie
12:00 - Late Show
1:30 - Sign Off
Sunday Viewing
6:55 - Sign On
7:00 - Bullwinkle
7:30 - TBA
8:00 - Linus
8:30 - Movie
10:30 - Cartoons
10:45 - Church
11:45 - Inquiry
12:00 - Nation
12:30 - News-Wea.
12:45 - Football
3:30 - Scoreboard
3:45 - Music
4:00 - Bowling
4:30 - Amateur
5:00 - 20th Cen.
5:30 - Green Acres
6:00 - Voyage
7:00 - FBI
8:00 - P. Mason
9:00 - C. Camera
9:30 - D. Van Dyke
10:00 - News
10:20 - Movie
12:00 - Sign Off

Sunday Viewing
6:55 - Sign On
7:00 - Bullwinkle
7:30 - TBA
8:00 - Linus
8:30 - Movie
10:30 - Cartoons
10:45 - Church
11:45 - Inquiry
12:00 - Nation
12:30 - News-Wea.
12:45 - Football
3:30 - Scoreboard
3:45 - Music
4:00 - Bowling
4:30 - Amateur
5:00 - 20th Cen.
5:30 - Green Acres
6:00 - Voyage
7:00 - FBI
8:00 - P. Mason
9:00 - C. Camera
9:30 - D. Van Dyke
10:00 - News
10:20 - Movie
12:00 - Sign Off

Higginbotham Bartlett
Building Needs

Lumber Paint
Hardware Wallpaper
Houseware Gifts
Higginbotham Bartlett MULESHOE
For Year-Long Enjoyment
INSTALL NOW
Three Plans for Hook-Up Muleshoe Antenna Co. Call Now
107 East Third
Phone 3-3100

ALSUP CLEANERS
Offer These FINE SERVICES
1. Drive-In Window Service for your convenience in cold weather.
2. Re-sizing of cottons to finer texture for that like-new look.
3. Alterations of all kinds of men's, women's and children's clothing
4. A personal touch for your clothing by people who care how you look.
THAT'S ALSUP CLEANERS
Phone 3-0760

ALSUP CLEANERS
Offer These FINE SERVICES
1. Drive-In Window Service for your convenience in cold weather.
2. Re-sizing of cottons to finer texture for that like-new look.
3. Alterations of all kinds of men's, women's and children's clothing
4. A personal touch for your clothing by people who care how you look.
THAT'S ALSUP CLEANERS
Phone 3-0760



Of Law and Love

Mischief in Mind
"There is no law," said Oliver Wendell Holmes, "against a man's intending to commit a murder the day after tomorrow."

But suppose the man still has mischief in mind when the day after tomorrow comes. And

Warning Given On Chemical's Soybean Use

Some growers are using the chemical pentachlorophenol as a desiccant on soybeans intended for use for food, or oil. Such use could result in illegal residues being found in the soybeans, and consequent crop seizures, says says Dr. Homer Brady, Extension weed specialist at Texas A-M University.

Dr. Brady said that pentachlorophenol is registered with the USDA as a desiccant on a number of crops grown for seed only, including soybeans. The registered use for this crop carries the following limitations: Apply two to four days before harvest; do not graze treated areas or feed treated forage or threshings to livestock; and do not use seed from treated crops for food, feed, or oil purposes.

There is no pesticidal product registered with USDA for pre-harvest desiccation of commercial soybeans grown for food, feed, or oil purposes.

Dr. Brady pointed out that federal regulations require that all pesticide products, including desiccants and defoliant, moving in interstate commerce be registered with the Secretary of Agriculture. These products must be formulated and labeled so they meet Federal standards when used for the purposes approved in the registration. The regulations are administered by USDA's Agricultural Research Service under the Federal Insecticide, Fungicide, and Rodenticide Act.

suppose he aims a gun at his intended victim and fires a shot. Then, even though he misses, he has indeed committed a crime: attempted murder.

Evil intent, by itself, is never a crime. Our jails would overflow if we punished every person who, however fleetingly, intends to cheat, slander, rob, or assault somebody else. There must surely be 1,000 clenched fists for every thrown punch.

Nor is active preparation necessarily a crime. The man who buys a gun, with murder in mind, is not yet guilty of attempted murder. The man who puts matches in his pocket, with arson in mind, is not yet guilty of attempted arson.

At what stage does unpunishable preparation turn into punishable attempt? Where is the "point of no return"?

One test is the "specialness" of the preparation. A man who acquires special-purpose printing plates may be more clearly committed to the crime of counterfeiting than the man who acquires general-purpose ink.

Another test is the nearness, both in time and space, of the crime itself. The man two days away from a murder, in Holmes's example, still has time to

cool off. A man planning a change in his mind before the scene of the crime: attempted murder. The law makes due allowance for the chance that either conscience or his effort to a halt.

But, when the preparation unmistakably evil, and the victim is put in imminent danger, the law says a criminal attempt has been made — though no actual harm is done.

For example, a cook who has mixed oatmeal with her employment was held guilty of attempted murder even though she decided not to eat it.

True, she might have reached at the last moment and tched the dish away. How the court concluded that a man who would go that far not belong in a kitchen, ser oatmeal, but in a jail, ser time.

A public service feature the American Bar Association and the State Bar of Texas. Written by Will Brenard.

State Fair of Texas!

EXPOSITION OF THE AMERICAS

ROYAL CANADIAN MOUNTED POLICE "MUSICAL RIDE" Oct. 9-17

DANZAS Y CANTOS DE MEXICO — Oct. 15-21

DEEP RIVER FIFE & DRUM CORPS — Oct. 16-24

BROADWAY MUSICAL HIT "FUNNY GIRL" — Oct. 8-24

THE EXCITING WORLD OF ICE CAPEDES

COLOSSAL FREE CIRCUS

MARK WILSON AND HIS MAGIC LAND OF ALLAKAZAM

FREE FASHION SHOW & WOMEN'S EVENTS

FREE COTTON BOWL SPECTACULARS: Mon. Oct. 11 — TEXAS MUSIC FESTIVAL, fireworks, 8 p.m.; Thurs. Oct. 14 — MEXICO DAY PROGRAM, featuring Danzas y Cantos de Mexico, fireworks, 8 p.m.; Fri. Oct. 15 — DALLAS SYMPHONY SPECTACULAR, fireworks, 7 p.m.; Sat. Oct. 16 — MILITARY TATTOO, fireworks, 8 p.m.; Tues. Oct. 19 — EAST TEXAS ON

BUY and SELL BUSINESS LEADS

WANT ADS

BETTER JOBS

LOST and FOUND REAL ESTATE

WANT ADS -- PHONE 2350

time per word ... 4c ... 3 times per word ... 10c ... 2 times per word ... 7c ... 4 times per word ... 13c

DEADLINE FOR CLASSIFIED ADVERTISING PAGE:

For Thursday's Issue: Monday, 12 Noon
For Sunday's Issue: Thursday, 12 Noon
TO...LATE...TO...CLASSIFY

1. Personals

LUZIER'S COSMETICS
Free Demonstration
Satisfaction Guaranteed
MRS. E. E. HOLLAND
Ph. Off. 3-2930 - Res. 3-2930
121 American Blvd.
1-49s-tfc

FOR RENT: 15 ft. camper
by day or week, call 3-1630.
1-35s-tfc

Custom cutting wanted. Call
Weldon Slayton 965-2140 or contact
6 mi. North of Muleshoe
where Mid Way Fertilizer formerly
was. Turn left, 1st house
on right.
1-37s-tfc

Sewing wanted. Call Mrs. Weldon
Slayton. 965-2140 or see at
6 miles North of Muleshoe, turn
left where Mid-Way Fert. formerly
was located. First house
on right.
1-37i-tfc

3. Help Wanted

Route salesman - Muleshoe
area - Will train right man.
Contact Ken Wallace at Highland
Hotel, Monday or Tuesday
from 6 to 8 p.m.
3-40s-2

Wanted Hair Stylist. Experience
important but not necessary.
Come by Wellborn Beauty
Shop.
3-40s-tfc

4. Houses for Rent

FOR RENT: 3 bedroom brick
house in country, Phone 4600,
Russell Bryant.
4-35i-tfc

For rent - Small house unfurnished.
Ph. 3-4682 or see at
224 E. 5th.
4-37s-tfc

Three bedroom house for rent,
516 W. 3rd. Phone 7900 or
Ph. 3-0310 R. E. Kelley
4-38s-tfc

For rent. 5 room house. Newly
decorated inside. See Marie
Engram 416 West 4th.
4-40i-tfc

Three room house. Also one
side of furnished duplex. Whites.
See Ernest Lovelady, 116 East
Ave. F.
4-46s-3ip

5. Apts. for Rent

Space for 3 trailers, and small
apartment for rent Call 3-4650.
5-40i-tfc

FOR RENT: Two bedroom
apartment, carpeted, draped,
built - ins. Phone 3-4960 or 3-33-
50.
5-28s-tfc

FOR RENT: 3 room furnished
apartment, trailer space.
323 West Ave. E. Phone 8120.
5-31s-tfc

For Rent. Furnished apartment.
319 West Ave. E. Adults
only.
5-37s-4fc

Furnished - 1 side of a duplex
furnished, air conditioned, bills
paid, Mrs. C. E. Layne, Ph.
4960, Next to Beaver's Flower-
land.
5-39i-tfc

For rent. Furnished apt. 3
rooms and bath. See Mrs. Jack
Lenderson or call 3-0380.
5-39s-tfc

6. Rooms for Rent

Nice front bedroom. Private
bath. For rent - 807 W. 7th.
Night-7772 - Ph. 7771.
6-39i-3ip

Bedroom for rent - See Ida
Tapp. Last house north of
Calvert's grocery.
6-4s-tfc

Willie Mays is the only player
on the San Francisco Giants'
roster who moved from New
York with the baseball team in
1958.

7. Wanted to Rent

Want to rent: Two - three
bedroom home, with garage
and fenced yard. Possibly,
option to buy. Near Richland
Hills School. Unfurnished
only. Will furnish references.
Reply quoting price and complete
information to: Box 449,
Muleshoe Journal.
7-37s-4fc

8. Real Estate for Sale

170 A. irrig. - \$135 per A.
25 per cent down. 1-8" well.
160 A. 2-8" wells, good all
lots., perfect. \$550 per A.

150 A., 1-8" and 1-10" wells,
perfect. \$600. Will Trade on
irrig. 1/2.

640 A. 4-8" wells, \$550. Trade
on irrig. Lazbuddy area.

320 A. dryland excel. improv-
ment., perfect. \$225.

Wanted: rough 80 tightland
close in - Listings Appreciated
- buyers waiting.
Krebbs Real Estate. Phone 3-
1910.
8-38s-tfc

FOR SALE: 2 bedroom, Lenau
addition Call 3-4300 or 3-3472
for appointment.
8-16i-tfc

HOUSES FOR SALE
Redi-Built or BRICK, 3-BEDROOMS, 2-BATHS, 90-FT. LOT
APARTMENTS FOR RENT
Licensed Plumber for all your needs
CALL- BILLY MORRISON
Ph. 4850 or 3-2130

3 BR 2 baths, den, fireplace,
2 car garage. Terms. Richland
Hills.
4-37s-tfc

3 BR 1 bath house in Lenau
Addition. Fenced back yard. FHA
loan commitment. \$18,500.

240 A. Irrigated land. 2 strong
wells underground tile and good
allotments.

160 A. of dry land, 2 BR modern
house, domestic well, good
cotton allotment.

80 A close to town 8" well -
2 BR house. 20 per cent down.

3 BR 2 bath brick veneer at
1714 West Ave. G. Fireplace,
paneled den and kitchen. Fully
equipped. Over 1800 sq. ft. in
living area. Being built under
FHIA.

Eddie Lane Real Estate
P. O. Drawer 610
Phone Res. 3-3741 - 4390
8-35i-tfc

Two and three B.R. new
brick home and other

Labor dry land. Good
cotton ait. \$200 per A.

Half sec. Farmer. Co.
2 W. N. G. good red land.
good alt. \$530 per A.

160 Bailey Co. 2 wells,
good alt. level. \$500 per A.

Ranch will carry 173 cows,
sell or trade for farm.

160 A. 2 well N. G. with
U. G. tile. Will divide.

Real Estate
Ernest E. Holland
Ph. day or night 3-2930
131 Am. Blvd.
8-40s-2tc

3 Brick Homes
1-2 Bedroom double garage
1-3 Bedroom single garage
1-3 Bedroom double garage
C. W. Wilhite
Phone 3-3580
8-34s-tfc

For Sale: Southside Golf Service
Station. Call 3-5710. 566
South First.
8-40s-tfc

For Sale: 80 A Bailey County
cotton, wheat and grain allot-
ments, dry land. small down
payment. Box 11, Whiteface.
Phone 3461.
8-40i-2ip

Wanted low cost lots, phone
3-1910 or 5881.
8-31s-tfc

3 bedroom house for sale.
Newly painted outside and re-
decorated inside. New fenced-
in back yard. See at 202 East
Cedar or call 3-0940. Low Equi-
ty.
8-38i-tfc

FOR SALE: New 3 bedroom
brick home. Call 3-4300 or 3-3472
8-16i-tfc

Home
413 East Dallas
IS NOW FOR SALE
Located in Lenau addi-
tion, with school bus stop at
"front door"

Three bedroom home, 18
foot by 18 foot living room,
1 3/4 bathrooms, newly floored
and cabinet topped
kitchen; utility room, garage -

Trees, flowers, lawns
back yard is fenced.

Occupancy sometime after
Sept 15: upon completion
of new home.

Shown by appointment,
please.
Phone or see:
L. B. Hall
413 East Dallas
Home: 7490 Office: 2360
8-34s-tfp

3 bedroom brick in Lubbock,
sale or trade for house in Mule-
shoe. SW 5-5467 after 6 p.m.
8-37s-9ip

For Sale. By owner. Brick
front, 3 bedroom, 2 baths and
den house and lot located at
501 East Austin St. Contact
Wendell Speck at 965-2762 after
6 or call 2560 before 6.
8-40i-2tc

For Sale - small equity, 3
bedroom residence in Lubbock
Call owner at 3-2249 for infor-
mation. David Sudduth, 201 E.
Fir, Muleshoe, Texas.,
8-40s-tfc

FOR SALE
3 Bedroom Brice 19th St.
3 Bedroom Brick Ave D.
237 Acres. Bailey Co. terms
to suit. Wells, cotton &
grain.
160 Acres. Bailey Paved
Road. Priced to sell.
160 Acres. close in on paved-
ment. 8" well. 25 Ac.
cotton \$300.00. Easy terms.
Income property sale or
trade.
We Need Listings
L. H. (Alex) Adams Rally
119 W. 3rd St.
Ph. 3-3350 - 3-4960
8-40i-tfc

FOR SALE
1962 4 door Bel Air
factory air, radio and heater.
\$1095. Buford Bates. 946-2416.
9-38i-5tp

For Sale: '49 Buick, one
wheel trailer. Lottie Buck, 818
South First.
9-40s-2tc

NEW 1965
GMC PICKUP
DELIVERED \$1749.00
LADD PONTIAC
Muleshoe, Tex. Ph. 3-3689
10-34i-tfc

FOR SALE
I.H. No. 21 Stripper With
Green Boll Atch. \$550.00
I.H. Front Single Wheel
\$75.00
Trevis shredder \$200
Ford Rear Scoop \$45.00
I. H. Combine Corn Head
\$250.00
Cline Land Lever \$375.00
Cotton Basket \$30
Ford Tractor And Loader
\$475.00
NORWOOD USED
IMPLEMENTS
1026 South Main
Muleshoe Ph 3-3213
10-39i-tfc

Under new coach Johnny
Pont, formerly of Yale. Indian-
a's football team will utilize
a flanker back and rely heavily
on an option series.

LEGAL NOTICE

NOTICE TO ALL PERSONS
HAVING CLAIMS AGAINST
ESTATE OF GRACE CHRIS-
TINE VANLANDINGHAM, DE-
CEASED:

Notice is hereby given that ori-
ginal letters testamentary upon
the estate of Grace Christine
Vanlandingham were issued to
me, the undersigned, on the 4th
day of October, A.D. 1965, in
the proceeding indicated below
my signature hereto, which is
still pending, and that I now
hold such letters. All persons
having claims against said es-
tate, which is being adminis-
tered, in the County named below,
are hereby required to present
the same to me respectively
at the office of my attorney,
Pat R. Bobo, at 108 East Ave-
nue C, Muleshoe, Texas, whose
post office address is Box 409,
Muleshoe, Texas, before suit up-
on same are barred by the gen-
eral statutes of limitation, be-
fore such estate is closed, and
within the time prescribed by
law. My residence address is:
W. C. Vanlandingham
404 S. E. 7th
Morton, Texas

DATED this 4th day of Octo-
ber, A. D. 1965.

S. S. W. C. Vanlandingham,
W. C. Vanlandingham, Ex-
ecutor of the Estate of Grace
Christine Vanlandingham, No.
718, in the County Court of Bal-
ley County, Texas.
40i-tfc

For sale - 6 used 4 bale
trailers good condition at a bar-
gain. 2 row shredder. 14' A. C.
Tandum - good condition. Call
collect. I will show this equip-
ment, could deliver. W. B. Mit-
chell. SW5-7946, Lubbock, 5530
17th place.
10-40i-2tp

Proceedings in eminent domain
in connection with the State of
Texas constructing, laying out
and reconstructing a highway,
designated as a part of the
State Highway System by the
the State Highway Commission
of the State of Texas, in Bailey
County, Texas, and that such
construction, reconstruction and
maintenance upon said high-
way is surveyed through, ac-
ross and upon, and will cross-
run through and upon the fol-
lowing described real property
situated in Bailey County, Te-
xas: 0.056 acre of land, more
or less, being part of Parsons
Tract No. 1, Parsons Subdivi-
sion out of the Northwest one-
fourth of Sec. 21, Block Y,
State Capitol Land, Bailey
County, Texas, lying South of
U. S. Hwy. 84, having been con-
veyed to J. O. Crawford by H.
D. Crawford by deed dated May
1, 1945, and of record in Vol.
41, Page 231, Deed Records of
Bailey County, which 0.056 acre
of land, more or less, being
more particularly described by
metes and bounds as follows:
Beginning at the point of inter-
section of the Northwest line of
the Crawford property and the
Southeast right-of-way line of
present U. S. Hwy. 84, same
point being 67.56 ft. S 89 deg.
13' E and 337.35 ft. S 44 deg.
55' 07" E and 26.84 ft. S 41 deg.
29' E of the Northwest corner
of Sec. 21;

THENCE S 41 deg. 29' E with
the South right-of-way line of
present U. S. Hwy. 84 a distance
of 347.78 ft. to a point;

THENCE from a tangent
bearing N 41 deg. 29' W around
a curve to the left having a
radius of 2,864.93 ft. a distance
of 348.92 ft. to a point in a
tangent bearing N 48 deg. 27'
41" W, same point being in the
Northwest line of the Crawford
property and the Southeast line
of a tract of land owned by Eva
Murray;

THENCE N 49 deg. 17' E
with the Northwest line of the
Crawford property and the
Southeast line of the Murray
property a distance of 21.22 ft.
to the point of beginning.

as is more fully shown by
Plaintiffs' petition on file in this
suit.

If this citation is not served
within ninety days of the date
of its issuance, it shall be re-
turned unserved.

The officer executing this
process shall promptly execute
the same according to law, and
make due return as the law
directs.

Issued and given under my
hand and the Seal of the County
Court, at office in Muleshoe.

Dee Clements, Sheriff of
Bailey County, Texas.
39i-31tc

Texas, this 21st day of Sep-
tember, 1965.
Attest:
Hazel Gilbreath, Clerk, Bal-
ley County Court, Bailey
County, Texas.
38i-41tc

11. For Sale or Trade
Cattle: Must sell. E. E. Her-
ring or H. H. Caldwell pens.
Clovis, N. M.
11-39i-4tp

12. Household Goods
Wanted responsible party to
take over payments on late
model Singer sewing machine
in Muleshoe area. Will zig-
zag, fancy stitching, etc. 5 pay-
ments \$4.99 or \$25.00 cash.
Write Credit Department, 1114
19th Street, Lubbock, Texas.
12-34i-tfc

15. Miscellaneous
DO YOU
HAVE ROACHES !!
CALL 3-3050 or 3-9040
Akin Exterminating Co.
Home Owned & Operated
15-32i-tfc

Maise Cutting and Hauling
wanted. Leave word at Ray
Griffiths elevator or call Por-
ter 3-5175. Clovis, Collect. C. P.
Johnson.
15-37i-tfc

Good Merchandise
Buena Mercancia
Economart Main Street
Mayur Calle
Muleshoe, Texas - 79347
15-27i-tfc

The amazing Blue Lustre
will leave your upholstery beau-
tifully soft and clean. Rent elec-
tric shampooer. \$1. Higginbo-
tham - Bartlett.
15-20i-tfc

Flats Fixed - \$75
Wash Job - \$2.25
Grease Job - \$1.25
Special Oil - \$3.1
Register for 10 gal. gas
to be given away every
Saturday.
D B's Mobile Service
3rd and American Blvd.
Block off Main on Sudan
Highway
15-40s3tp

FOR
Steel Barns -
AND
Commercial Buildings
Call Your
Better Buildings
Representative
15 percent dn. - fall term
Call
Horace Henley Jr.
Dimmit, Tex. Ph. 647, 3501
after 7:00 p.m.
15-39s-tfc

17. Seed & Feed
FOR SALE: Early Sumac Cane
Seed. Phone 965-2675, Morris Mc-
Killip.
17-22s-tfc

FOR SALE - Hay. Call 965-
2140 or contact Weldon Slayton,
6 miles north Muleshoe.
17-30i-tfc

LEGAL NOTICE

THE STATE OF TEXAS
TO: Mary E. Crawford and
Owan D. Reed, Defendants,
Greeting.

You are hereby commanded
to appear by filing a written
answer to the Plaintiff's Peti-
tion at or before ten o'clock
A.M. of the first Monday after
the expiration of forty-two days
from the date of the issuance of
this citation, same being Mon-
day the 8th day of November,
1965, at or before ten o'clock
A.M. before the Special Com-
missioners duly appointed by
the Judge of the County Court
of Bailey County, Texas, at the
Court House of said County in
Muleshoe, Texas.

Said Plaintiffs' Statement was
filed with the County Judge of
Bailey County, Texas, on the
20th day of September, 1965, in
this Cause numbered 730, and
styled The State of Texas, et al.
plaintiffs vs. J. O. Crawford, et
al. The names of the parties
are as follows:

The State of Texas and Bal-
ley County, Texas are plain-
tiffs, and J. O. Crawford, Mary
E. Crawford, Roy Reed, Wel-
ma Dane, Wanda Hargrove,
Owan D. Reed, Delsie Dove,
Nell Meek, Ben Crawford, Dou-
glas Ruby, and Jess Osborn are
defendants.

A brief statement of the na-
ture of this suit is as follows,
to wit:

Proceedings in eminent domain
in connection with the State of
Texas constructing, laying out
and reconstructing a highway,

designated as a part of the
State Highway System by the
the State Highway Commission
of the State of Texas, in Bailey
County, Texas, and that such
construction, reconstruction and
maintenance upon said high-
way is surveyed through, ac-
ross and upon, and will cross-
run through and upon the fol-
lowing described real property
situated in Bailey County, Te-
xas: 0.056 acre of land, more
or less, being part of Parsons
Tract No. 1, Parsons Subdivi-
sion out of the Northwest one-
fourth of Sec. 21, Block Y,
State Capitol Land, Bailey
County, Texas, lying South of
U. S. Hwy. 84, having been con-
veyed to J. O. Crawford by H.
D. Crawford by deed dated May
1, 1945, and of record in Vol.
41, Page 231, Deed Records of
Bailey County, which 0.056 acre
of land, more or less, being
more particularly described by
metes and bounds as follows:
Beginning at the point of inter-
section of the Northwest line of
the Crawford property and the
Southeast right-of-way line of
present U. S. Hwy. 84, same
point being 67.56 ft. S 89 deg.
13' E and 337.35 ft. S 44 deg.
55' 07" E and 26.84 ft. S 41 deg.
29' E of the Northwest corner
of Sec. 21;

THENCE S 41 deg. 29' E with
the South right-of-way line of
present U. S. Hwy. 84 a distance
of 347.78 ft. to a point;

THENCE from a tangent
bearing N 41 deg. 29' W around
a curve to the left having a
radius of 2,864.93 ft. a distance
of 348.92 ft. to a point in a
tangent bearing N 48 deg. 27'
41" W, same point being in the
Northwest line of the Crawford
property and the Southeast line
of a tract of land owned by Eva
Murray;

THENCE N 49 deg. 17' E
with the Northwest line of the
Crawford property and the
Southeast line of the Murray
property a distance of 21.22 ft.
to the point of beginning.

as is more fully shown by
Plaintiffs' petition on file in this
suit.

If this citation is not served
within ninety days of the date
of its issuance, it shall be re-
turned unserved.

The officer executing this
process shall promptly execute
the same according to law, and
make due return as the law
directs.

Issued and given under my
hand and the Seal of the County
Court, at office in Muleshoe.

Dee Clements, Sheriff of
Bailey County, Texas.
39i-31tc

Texas, this 21st day of Sep-
tember, 1965.
Attest:
Hazel Gilbreath, Clerk, Bal-
ley County Court, Bailey
County, Texas.
38i-41tc

Let Youth Help Plan Own Future,

Carr Tells State's Homemakers

Texas youth must be allow-
ed to have a hand in planning
their own future, for the answer
to juvenile problems lies
not in corrections, but in pre-
vention.
Texas Attorney General Wag-
goner Carr, addressing the an-
nual meeting of the Texas
Home Demonstration Associa-
tion in Austin recently, empha-

LEGAL NOTICE

THE STATE OF TEXAS
COUNTY OF BAILEY
NOTICE OF SALE UNDER
ORDER OF SALE AS UNDER
EXECUTION

By virtue of an order of sale
issued out of the District Court
of Bailey County, Texas, on a
judgment rendered in said Court
on the 7th day of September,
1965, in favor of M. W. Bulloch
and against E. S. Abbott, et al.,
in the case of M. W. Bulloch
against E. S. Abbott, et al., No.
2827 in such Court, I did on
the 28th day of September, 1965,
at 10:00 o'clock A.M., levy up-
on the following described lots,
tract or parcel of land situate
in the County of Bailey, State
of Texas, and more particu-
larly described as follows, to-
wit:

All of Lots Numbers Eleven
(11) and Twelve (12), Block
Number Forty Three (43), Ori-
ginal Town of Muleshoe, Bailey
County, Texas,

and on the 2nd day of Novem-
ber, 1965, being the first Tues-
day of said month, between the
hours of 10:00 o'clock A. M.
and 4:00 o'clock P. M. on said
day, at the courthouse door of
said County, I will offer for
sale and sell at public auction,

for cash, all the right, title and
interest of the said E. S. Ab-
bott in and to said property.

Dated at Muleshoe, Texas,
this 28th day of September,
1965.

Dee Clements, Sheriff of
Bailey County, Texas.
39i-31tc

Texas, this 21st day of Sep-
tember, 1965.
Attest:
Hazel Gilbreath, Clerk, Bal-
ley County Court, Bailey
County, Texas.
38i-41tc

Big Attendance

Marks Field Day

At South Plains

County Agent J. K. Adams,
who recently attended the an-
nual field day at the South
Plains Research and Extension
Center, located north of Lub-
bock, reports the event was one
of the most successful ever
held at the research installa-
tion.

Extenson and Research per-
sonnel were gratified by the
turnout for the four-hour event
which was held September 28.
They were apprehensive about
attendance after the field day
had to be postponed onewek
because of heavy rains.

It was reported that four-
acre inches of pre-irrigation wa-
ter, followed by two summer
irrigations, proved superior to
eight acre-inches pre-irrigation
water followed by the same two
summer irrigations on station
tests.

Also, eight pound seeding rate
for double-row grain sorghum
proved superior to heavier seed-
ing rates as proven by yield
test on station.

Current projects include
such programs as the teenage
jury system now in operation
in over 10 Texas cities, and the
unique Tutorial Program be-
gun in 1964 by high school stu-
dents who tutor sixth graders
in an effort to keep them in
school," Carr said.

Despite current efforts to
help youth, Carr said many
more are needed. "The urbaniza-
tion of Texas has made it
difficult for the people of a city
to supply guidance to each
child - yet we know that un-
less the trend of youth crime
and delinquency can be chang-
ed, the future will be an era
of internal violence the like of
which we never have seen,"
Carr warned.

Mrs. C. R. Berkley of Od-
essa, president of the THDA,
has announced that Corpus Chri-
sti will be host for the 1966
meeting of the women's organi-
zation.

SHOP MULESHOE FIRST

-SPECIAL-
Steak fingers \$3.85
Salad and French fries
Rich, Thick
MALT or SHAKE
30c
BILL'S DRIVE IN
Phone 7250
19th and Clovis Road

There are more than 19,000
bridges on the Texas highway
system.

BUSINESS DIRECTORY

Farley Insurance Agency
Real Estate and Insurance
FARM & CITY LOANS
SERVICE BEYOND THE
CONTRACT
209 West Avenue B
Off. Ph. 7270 - Res. 3-0343

Safe 'n' Sound
By Lee R. Pool
This week I would like to
tell you about an ideal
package policy that pro-
tects you and members of
your family in a
single
policy
from
just a-
bout any-
thing that
could
happen, to or on your
property and at a fair
price for such protection..
This new comprehensive
dwelling policy places
broad protection within
the reach of all homeown-
ers...It offers an insur-
ance program built around
your fire policy, with the
addition of theft, personal
liability and other auxil-
iary coverage, and is writ-
ten for three years. Why
not give us a call today
and let us tell you more
about this wonderful pro-
tection policy.

HEATHINGTON LUMBER
COMPANY
Lumber, Paint,
Builders Hardware
Clovis Rd. - Ph. 7970

COTTONSEED DELINTED
Phone 3-2510 - Muleshoe
WILLIAMS
SEED CLEANING CO.

SINGLETON FUN

The Sandhills Philosopher



Editor's note: The Sandhill's Philosopher on his Johnson grass farm reports on a new phase of weather reporting this week.

Dear editor:
I was sitting at home the other night reading a newspaper while I was waiting for a western to come on and decided to turn to an inside page but didn't because about that time I looked over the edge and noticed a spider had started a web from the left side of the paper to my shoulder and if I moved my arm it'd break, and after all, watching a spider spin a web is fascinating and when he gets it done it's probably as effective against world problems as the average editorial page anyway, so I just sat there awhile and re-read the front page.

I glanced down at the weather forecast in the lower right hand corner and got to thinking.

Weather forecasts have improved a great deal in the last year or two.

I don't mean in accuracy, I mean in language.

It used to be that a weather forecast would read: Fair Tomorrow, or Rain Tomorrow. There it was, in black and white, rain or fair, and if it rained when it had said fair, or was fair when it had said rain, you had the weather bureau over the barrel. "Why can't they learn how to predict the weather?" you'd demand. It was satisfying. It was a clean-cut victory of nature over man.

But not anymore. Now, if there's a possibility of some rain tomorrow, the forecast will read: Showers over 20 percent of the area, or, if they're a lit-

tle surer, Showers over 30 percent, and they'll even go as high as 40 percent, and on rare occasions when they're dead sure, 70 percent.

This is what I'm talking about. It cuts down on the amount of criticism the weatherman gets. Where's the man who's going to get in his car and travel all over the area seeing if it rained over 20 percent of the territory? Nobody ever knows for sure, and the batting average of the forecaster stays indefinite and unchallenged. It reads good on paper in general but sometimes not in particular, like when the national cost-of-living dropped 1 percent the same month the transmission fell out of your tractor and your car ran into a light pole.

I don't know what happened to that spider. I fell asleep and dropped the paper.

Yours faithfully,
J.A.

Wayland Harris Is Wreck Victim

Wayland Harris, Muleshoe, is in a Snyder hospital after turning over a truck load of cattle belonging to H. M. Gable Cattle Co.

Harris is not considered to be in serious condition. It was reported to the Journal the cattle had to be cut out of the truck in which they were riding.

SHOP MULESHOE FIRST

FREE!
CANNON NYLONS

1 PAIR CANNON NYLONS FREE WITH 15¢ PIGGLY WIGGLY GREEN CASH TAPES DATED AFTER SEPT. 14th

Cannon Seamless Stretch
the sophisticated stocking with the second-skin look and fit!

Folgers, All Grinds

COFFEE 1 Lb. Can 69c

Holly
SUGAR 10 Lb. Bag 89c

Hunt's Halves or Slices

PEACHES No. 2 1/2 Can... 5 For \$1.00

Plains Borden's & Foremost

MELLORINE 1/2 Gal 25c

CAMPFIRE

Pork & Beans 3 NO. 300 CANS 25¢ DOUBLE

FROZEN FOODS!

Banquet, Beef, Chicken, Turkey Dinners 3 1 1/2 oz Pkgs. \$1

Johnston Pumpkin & Mince Pies 69c

Libby 24 Oz. Poly Bag Peas or Cut Corn ... 2 for 93c

GREEN BEANS

SEABROOK FRENCH OR CUT ... 5 9 OZ. Pkg. \$1.00

LIVELIER FLAVOR! LOWER IN PRICE! PIGGLY WIGGLY PRODUCE!

APPLES

10¢

FANCY DELICIOUS POUND.....

FRESH TABLE SIZE, CLIP TOP

CARROTS POUND..... **3 1/2¢**

PIGGLY WIGGLY MEATS—FINEST QUALITY IN TOWN

USDA CHOICE, AGED, HEAVY BEEF, VALU-TRIMMED

Chuck Roast POUND..... **45¢**

USDA GRADE "A" WHOLE

Fryers POUND..... **27¢**

USDA Choice, Aged Heavy Beef, Value-Trimmed, Arm Bone Cut

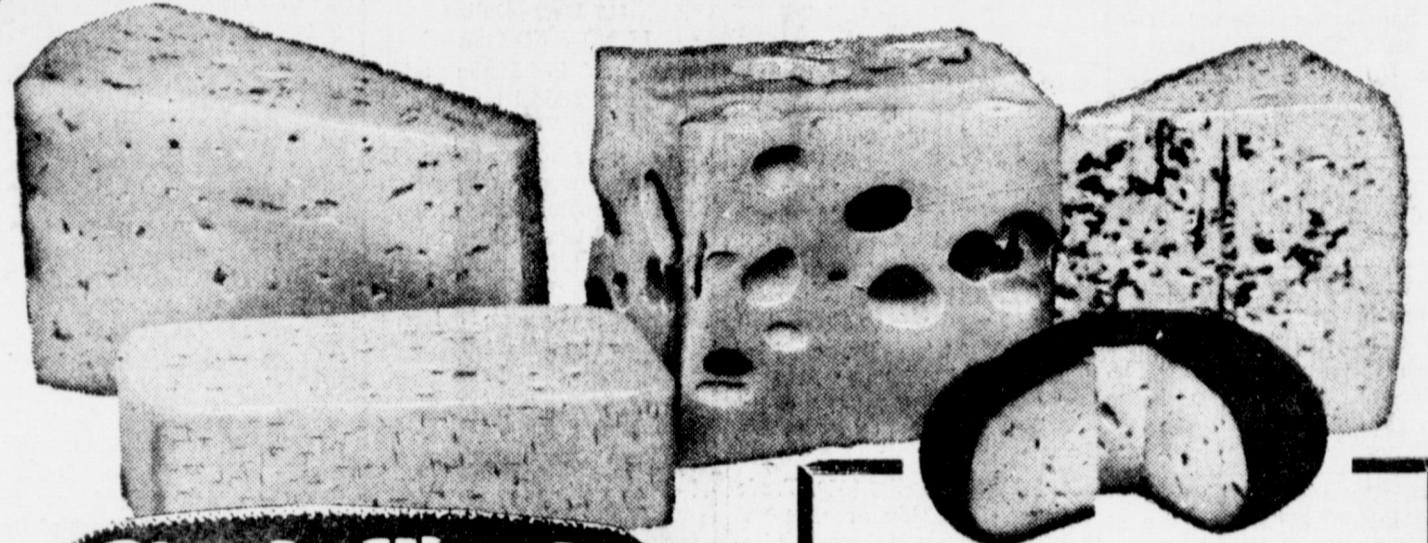
SWISS STEAK Pound... 69c

Rath's Black Hawk, Boneless, Smoked
Canned Ham 3 Pound \$3.59

LINK SAUSAGE

BLUE MORROW LITTLE PIGGY 12 OZ. PKG..... **55c**

"PIGGLY WIGGLY IS A WONDERFUL WORLD OF CHEESE! BIGGEST VARIETY! LOWEST PRICES!"



Piggly Wiggly

Block Style
LONGHORN CHEESE Lb.... 59c
Sharp, 8 to 12 Oz. Chunks
CHEDDAR CHEESE Lb.... 83c
Monterey Jack, Low Calorie
JACK CHEESE Lb.... 75c
Big Eye, 9-15 Oz. Chunks
SWISS CHEESE Lb.... 89c
9-15 Oz. Chunks
MOZZARELLO CHEESE Lb.... 75c
American or Pimento
SLICED CHEESE 3 - 8 Oz Pkg... \$1.00

Ideal, Grade A Medium
EGGS 3 Dozen \$1.00
Elgin Colored, Solid
OLEO 2 1 - Lb. Pkgs..... 25c
Hi-C Fruit, All Flavors
DRINKS 46 Oz Cans... 3 For 89c

Del Monte C.S. or WK
CORN 5 No 303 Cans \$1.00
Festival, Strawberry
PRESERVES 2 Lb. Jar..... 59c

HEALTH and BEAUTY AIDS!

HYTONE, WIDE RULE, POLY WRAPPED, REG 63c
FILLER PAPER 300 Ct. Pkg..... 33c
Soft-N-Easy, Reg. 99c 17 Oz. Can
HAIR SPRAY 69c
Head & Shoulders, Reg \$1.00 8c off Med. Size
DANDRUFF SHAMPOO 59c
Right Guard, Decorated Label, Reg. \$1.49 Family Size
DEODORANT 99c
Reg. 98c 60 Ct. BH
EXCEDRIN 79c

TYPE A SCHOOL LUNCHES
HELP DEVELOP GOOD EATING HABITS

NATIONAL SCHOOL LUNCH WEEK OCTOBER 10-16. In the current school year about 18 million children will be served nutritious noonday meals under the National School Lunch Program. It is administered by the U.S. Department of Agriculture's Consumer and Marketing Service, which provides about a fifth of the total cost in cash and food. This program makes it possible for children to enjoy a complete lunch for an average payment of only 27 cents. A tenth of the nearly 3 billion lunches consumed last year were served free or at reduced prices to youngsters who could not afford the full price. About 71,000 public and non-profit private schools are expected to take part in the program this year.

MONEY IN THE SLOT

puts profit in your pot!

SAVE BY MAIL...the easy way to practice regular thrift without more effort than that required to make out a check... seal and mail an envelope to us. Your savings are safe and extremely profitable. Save regularly... by mail.

First Federal Savings & Loan

Home Office
4th & Pile
Clovis, N.M.



Branch Office
2nd & Abilene
Portales, N.M.

CURRENT DIVIDEND 4 1/2%

These Prices Good In Muleshoe, Texas

October 7, 8, 9, 1965

We Reserve The Right To Limit Quantities

Lowest Prices... Greatest Variety... always at...
Piggly Wiggly